

# Blockworlds 0.1.0: A demonstration of anti-aliased geophysics for probabilistic inversions of implicit and kinematic geological models

Richard Scalzo<sup>1,7</sup>, Mark Lindsay<sup>2,4,7</sup>, Mark Jessell<sup>2,7</sup>, Guillaume Pirot<sup>2,7</sup>, Jeremie Giraud<sup>2,5,7</sup>, Edward Cripps<sup>3,7</sup>, and Sally Cripps<sup>1,6,7</sup>

<sup>1</sup>School of Mathematics and Statistics, The University of Sydney, Darlington, NSW 2008, Australia

<sup>2</sup>Centre for Exploration Targeting, School of Earth Sciences, The University of Western Australia, Crawley, WA 6009, Australia

<sup>3</sup>Department of Mathematics and Statistics, The University of Western Australia, Crawley, WA 6009, Australia

<sup>4</sup>CSIRO Mineral Resources, Kensington, WA 6151, Australia

<sup>5</sup>RING Team, GeoResources, Université de Lorraine, 54000, Nancy, France

<sup>6</sup>CSIRO Data61, Eveleigh, NSW 2015, Australia

<sup>7</sup>ARC Industrial Transformation and Training Centre in Data Analytics for Resources and the Environment (DARE)

**Correspondence:** Richard Scalzo (richard.scalzo@sydney.edu.au)

**Abstract.** Parametric geological models such as implicit or kinematic models provide low-dimensional, interpretable representations of 3-D geological structures. Combining these models with geophysical data in a probabilistic joint inversion framework provides an opportunity to directly quantify uncertainty in geological interpretations. For best results, [\[..<sup>1</sup> \]care must be taken with the intermediate step of rendering parametric geology in a](#) finite-resolution discrete basis [\[..<sup>2</sup> \]for](#) the geophysical calculation [\[..<sup>3</sup> \]](#). [Calculating geophysics from naively voxelised geology, as exported from](#) commonly used geological modeling tools [\[..<sup>4</sup> \]](#), [can](#) produce a poor approximation to the true [\[..<sup>5</sup> \]likelihood](#), degrading posterior inference for structural parameters. We [\[..<sup>6</sup> \]develop a simple integrated Bayesian inversion code, called Blockworlds, showcasing a numerical scheme to calculate](#) anti-aliased rock properties [\[..<sup>7</sup> \]over](#) regular meshes for use with gravity and magnetic sensors. [\[..<sup>8</sup> \]We use Blockworlds to demonstrate](#) anti-aliasing in the context of [\[..<sup>9</sup> \]an implicit model with kinematic action](#) for simple tectonic histories, showing its impact on the structure of the [\[..<sup>10</sup> \]likelihood](#) for gravity anomaly.

---

<sup>1</sup>removed: the projection of the geological parameter space onto the

<sup>2</sup>removed: of

<sup>3</sup>removed: must be faithful within the power of the data to discriminate. We show that naively exporting voxelised geology as done in

<sup>4</sup>removed: can easily

<sup>5</sup>removed: geophysical

<sup>6</sup>removed: then demonstrate a numerical forward-modeling scheme for calculating

<sup>7</sup>removed: on

<sup>8</sup>removed: Finally, we explore

<sup>9</sup>removed: a kinematic forward model

<sup>10</sup>removed: geophysical

# 1 Introduction

Geological modeling of subsurface structures is critical to decision-making across numerous application areas, including mining, groundwater, resource exploration, natural hazard assessment, and engineering, yet is also subject to considerable uncertainty (e.g. [1]). Uncertainty arises in numerous places within the model-building workflow, including: sparse, noisy, and/or  
15 heterogeneous geological observations and rock property measurements; the indirect nature of geophysical measurements; the non-uniqueness of inverse problem solutions; and the ambiguity of geological interpretations (?). Rigorous quantification of uncertainty is therefore critical to decision-making informed by models, and is becoming an increasingly active area of research in geology and geophysics ([11]).

Bayesian methods provide a probabilistically coherent framework for reasoning about uncertainty [12] (?). Although  
20 not the only way to account for uncertainty in earth science settings, Bayesian reasoning enables the natural integration of heterogeneous data and expert knowledge [13] (?), guides the acquisition of additional data for maximum information gain (e.g. ?), enables selection among competing conceptual models (e.g. ??), and optimizes management of risk in decision-making over possible outcomes (e.g. ?).

Bayesian methods are used in both geology and geophysics, [14] but with different framing for inference problems. In  
25 the geophysics community, where quantitative inversion frameworks have been in use for decades (??), the core problem is framed as a non-parametric imaging of the subsurface. The model parameters [15] directly define discretized spatial fields of rock properties, from which forward geophysics are calculated to reproduce observations. Model structures rich enough to be useful are often very high-dimensional, and variations in spatial scales and resolutions make the full covariance matrix cumbersome and impractical to evaluate (?). [16] Although the discrete geophysical image representation may naturally reflect  
30 the geological interpretation — for example, in the transdimensional inversions reviewed in ? — this is not usually the case, and much effort goes into [17] developing models with priors or regularizing terms to constrain the outputs of geophysical inversions to be geologically reasonable.

[18] Examples include: the hierarchical Bayesian "lithologic tomography" of ? and ?; structure-coupled multiphysics approaches (?); and flexible models based on Voronoi tessellations or multi-point statistics (e.g. ??). Level-set methods (????)

---

<sup>11</sup>removed: The reduction of geological uncertainty through fusion of complementary types of information or data, including geophysics, has long been of comparable interest (e.g. ??????).

<sup>12</sup>removed: , particularly in the context of beliefs about latent or unobserved entities and their causal influence on observations

<sup>13</sup>removed: (??)

<sup>14</sup>removed: where the question of how to combine disparate types of information depends upon the framing of the problem

<sup>15</sup>removed: comprise a segmentation of the subsurface along with rock properties within each segment; applying a forward geophysics operator to this model produces synthetic data that can be compared to

<sup>16</sup>removed: Inverse problems are notoriously ill-posed, and priors or regularizing terms must be included alongside the likelihood to target sensible regions of parameter space.

<sup>17</sup>removed: constraining

<sup>18</sup>removed: These limitations surrounding interpretability and dimensionality are common to representations of geological structure in terms of very flexible models, including those that incorporate other geological concepts.

35 solve for the boundaries of discrete rock units; these methods are more parsimonious than traditional volumetric inversions, but still invert for [..<sup>19</sup>] a flexible, high-dimensional description of static 3-D properties.

In contrast, the core problem in geology is to interpret observations in terms of geological histories and processes (?). This becomes important in the structural geology of ore-forming systems, where details of the history become important and flexible treatment of 3-D geological structures as random fields is inadequate (?). The mineral exploration community has developed 3-D geological forward models [..<sup>20</sup>] that can capture much of the complexity of real systems (e.g. ?). Implicit models (?) represent interfaces between geological units as isosurfaces of a scalar field defined over 3-D space [..<sup>21</sup>]. The popular industry software package 3D GeoModeller (?), and the open-source code GemPy (?), [..<sup>22</sup>] interpolate this scalar field directly from structural geological observations by co-kriging (?). Kinematic models (?) use a parametrized description of [..<sup>23</sup>] volume deformations produced by tectonic events; the open-source package Noddy (?) is commonly used. The recently released open-source [..<sup>24</sup>] package LoopStructural (?) combines elements of [..<sup>25</sup>] co-kriging and kinematic implicit models for additional geological richness and realism.

[..<sup>26</sup>] For models with no constraints from geophysics, geological uncertainty can be quantified by generating Monte Carlo realizations (?) of geological datasets (???). In a Bayesian treatment, this amounts to drawing samples from the prior (?).

[..<sup>27</sup>] Conditioning geological forward models on geophysical observations [..<sup>28</sup>] makes it tractable to perform full posterior inference in an interpretable parameter space of reduced dimension. This can be done using sampling methods such as Markov chain Monte Carlo methods ("MCMC"; ??), which are becoming increasingly sophisticated and widely used in geological and geophysical modeling (???). [..<sup>29</sup>] Additionally, [..<sup>30</sup>] parametric geology naturally obeys constraints imposed by the forward geological process, and can be used for inference over that process [..<sup>31</sup>], unlike non-parametric geophysical inversions that incorporate a static, voxelized geological model as a prior mean (?????). Kinematic models are especially well-suited for this approach since they [..<sup>32</sup>] represent geological hypotheses in terms of structural observations and event histories, but [..<sup>33</sup>] avoid the full computational burden of dynamic process-based simulations. Performing Bayesian inference

---

<sup>19</sup>removed: an explicit description of geological and geophysical properties. Uncertainty in an assumed geology can be incorporated into a geophysical inversion as a prior (?????), although doing so does not directly address questions about the covariance structure or interpretability of the resulting model. ? provide some assistance to model interpretation by demonstrating how neural networks can recover geology from the geophysical model; however, this work uses a very simple neural net and the classification process does not consider prior geological uncertainty.

<sup>20</sup>removed: , such as implicit and kinematic models,

<sup>21</sup>removed: , which can be conditioned directly on structural geological observations by co-kriging (?); the

<sup>22</sup>removed: are notable examples

<sup>23</sup>removed: tectonic events to forward-model a 3-D volume

<sup>24</sup>removed: LoopStructural package

<sup>25</sup>removed: implicit and kinematic

<sup>26</sup>removed: For models that interpolate structural data

<sup>27</sup>removed: The automated conditioning of

<sup>28</sup>removed: simplifies uncertainty quantification by sampling from the posterior distribution in the low-dimensional geological parameter space

<sup>29</sup>removed: Uncertainty can then be quantified in the volumetric basis by generating the discrete geologies associated with the sampled geological parameters.

<sup>30</sup>removed: this approach

<sup>31</sup>removed: . Implicit and kinematic models are

<sup>32</sup>removed: formalize

<sup>33</sup>removed: have simplified parametric forms that

over kinematic model parameters could open the door to more general Bayesian model selection over geological histories or conceptual models.

60 <sup>[..<sup>34</sup> ]</sup>Probabilistic inversion workflows that incorporate forward geophysics based on forward-modelled 3-D structural geology are, to date, still uncommon<sup>[..<sup>35</sup> ]</sup>, owing in part to computational challenges faced by sampling algorithms. The pyNoddy code (?) provided a wrapper to Noddy to enable Monte Carlo sampling of 3-D block models and potential fields, but not posterior sampling of an inversion conditioned on gravity or magnetic data. The *Obsidian* distributed inversion code (?) implemented a geological model of a layered sedimentary basin with explicit unit boundaries to explore geothermal potential (?); it <sup>[..<sup>36</sup> ]</sup>featured multiple geophysical sensors and <sup>[..<sup>37</sup> ]</sup>a parallel-tempered MCMC sampler <sup>[..<sup>38</sup> ]</sup>for complete 65 <sup>[..<sup>39</sup> ]</sup>exploration of multi-modal posteriors<sup>[..<sup>39</sup> ]</sup>. *Obsidian* has been extended with new within-chain MCMC proposals inside the parallel-tempered framework (?) and a new sensor likelihood for field observations of surface lithostratigraphy (?); <sup>[..<sup>40</sup> ]</sup>but the limitations of its geological model make it an unlikely engine for general-purpose inversions. ? present a <sup>[..<sup>41</sup> ]</sup>workflow using GeoModeller to render the geology, Noddy for calculation of geophysical fields, and pymc2 (?) for MCMC sampling. GemPy's support for information other than structural geological measurements is as yet fairly limited, but includes forward 70 modeling of gravity sensors and topology.

<sup>[..<sup>42</sup> ]</sup>This paper describes a simple Bayesian inversion framework, called Blockworlds, which to our knowledge is the first to perform full posterior inference based on forward geophysics from an implicit geological model with kinematic elements. Although not yet intended to serve as a production-ready geological modeling package, Blockworlds' design addresses an obstacle for inversion workflows that resample parametrized 3-D geometry of geological units onto a discrete volumetric mesh for geophysical calculations. Discontinuous changes in rock properties <sup>[..<sup>43</sup> ]</sup>across unit interfaces <sup>[..<sup>44</sup> ]</sup>may become undersampled unless the mesh is chosen to align with those interfaces (?).<sup>[..<sup>45</sup> ]</sup>; since implicit and kinematic geological models naturally represent geology volumetrically, <sup>[..<sup>46</sup> ]</sup>this alignment is not easily <sup>[..<sup>47</sup> ]</sup>made without first evaluating the model, <sup>[..<sup>48</sup> ]</sup>incurring additional computational overhead. Flexible geophysical inversions can adjust rock properties

---

<sup>34</sup>removed: Sampling from Bayesian posterior distributions can be complicated, and consequently probabilistic

<sup>35</sup>removed: . However, the uptake of recent advances in Markov chain Monte Carlo methods ("MCMC"; ??) by the geological and geophysical community have begun to address this issue

<sup>36</sup>removed: supported

<sup>37</sup>removed: used a distributed

<sup>38</sup>removed: to draw from the

<sup>39</sup>removed: that may arise in underconstrained inverse problems

<sup>40</sup>removed: however,

<sup>41</sup>removed: more general workflow that uses

<sup>42</sup>removed: All of the abovementioned workflows resample the

<sup>43</sup>removed: that commonly occur in these models

<sup>44</sup>removed: then become undersampled ,

<sup>45</sup>removed: . Since

<sup>46</sup>removed: aligning mesh cell boundaries with geological interfaces that change with model parameters

<sup>47</sup>removed: done

<sup>48</sup>removed: and incurs

in individual boundary voxels to partially compensate for loss of accuracy, but [..<sup>49</sup>]models that condition rock properties directly on geological parameters lose much of this freedom. This can result in artefacts in the likelihood that hinder convergence of estimation methods, [..<sup>50</sup>]degrade posterior inference over structural parameters, and [..<sup>51</sup>]preclude the use of [..<sup>52</sup>]posterior derivative information.

[..<sup>53</sup>]To address the issue of undersampled interfaces, Blockworlds incorporates numerical anti-aliasing [..<sup>54</sup>]into its discretization step. Anti-aliasing to address undersampling has a long history in computer graphics (????) and in geophysics, for example finite-difference solutions of seismic wave equations (????). *Obsidian* anti-aliases physical rock properties using volume averages in voxels with partial unit membership [..<sup>55</sup>], though this is not mentioned in associated publications (??) and the implementation depends upon [..<sup>56</sup>]the *Obsidian* parametrization. Blockworlds' prescription is more general, operating on the scalar field values that define interface positions in all implicit models, and thus can be straightforwardly implemented for implicit models using other types of interpolation schemes such as co-kriging.

[..<sup>57</sup>]The paper is organized as follows. Section 2 explains the aliasing effect, including its influence on the likelihood, and describes the algorithm used in Blockworlds to address it. Section ?? describes how Blockworlds evaluates kinematic event histories, then introduces a set of synthetic kinematic geological models we use as benchmarks. Section ?? summarizes gravity inversion experiments based on these models, demonstrating the influence of anti-aliasing on MCMC sampling. Section ?? discusses future directions, including use with other geophysical sensors and curvilinear coordinate systems, and we conclude in Section ??.

## 2 Methods

### 2.1 Chaining forward models in geophysics calculations from structural geology

The forward modeling of observations falls under the calculation of the likelihood  $p(\mathbf{d}|\boldsymbol{\theta})$ , which describes the probability of observing data  $\mathbf{d}$  given that the causal process generating the data has true parameters  $\boldsymbol{\theta}$ . A Bayesian inversion proceeds by combining the likelihood with a prior  $p(\boldsymbol{\theta})$  that describes the strength of belief, in terms of probability, that the causal process has true parameters  $\boldsymbol{\theta}$  before any data are taken into account. In non-parametric geophysical inversions the prior includes regularization terms that penalize undesirable solutions. In parametric inversions, the choice of parametrization corresponds

---

<sup>49</sup>removed: this is not naturally true of geological forward models . Undersampled discontinuities in forward-modeled rock properties can lead to discontinuities in the geophysical likelihood , which hinders

<sup>50</sup>removed: degrades

<sup>51</sup>removed: precludes

<sup>52</sup>removed: derivative information needed by advanced optimization or sampling methods

<sup>53</sup>removed: *Obsidian* addresses this issue using an

<sup>54</sup>removed: algorithm which averages

<sup>55</sup>removed: —

<sup>56</sup>removed: a specific parametrization of geological structure. Anti-aliasing to address undersampling has a long history in computer graphics (????) and in geophysics, for example finite-difference solutions of seismic wave equations (????)

<sup>57</sup>removed: This paper describes a generalized numerical anti-aliasing scheme for implicit and kinematic geological models discretized onto fixed three-dimensional meshes. We demonstrate the principle with a toy kinematic modeling code, Blockworlds, written in Python 3.

to a strong regularization on the discretized geology, with the prior distribution providing further constraints. The posterior distribution  $p(\boldsymbol{\theta}|\mathbf{d})$ , describing probabilistic beliefs about  $\boldsymbol{\theta}$  once the data have been taken into account, is then determined through Bayes's theorem:

$$p(\boldsymbol{\theta}|\mathbf{d}) \propto p(\mathbf{d}|\boldsymbol{\theta})p(\boldsymbol{\theta}). \quad (1)$$

For parameter estimation, the unnormalized right-hand side can then be sampled using MCMC algorithms for full uncertainty quantification.

While some measurements, such as structural observations, can be computed directly from a continuous functional form for the geological forward model, likelihoods based on simulation of geophysical sensors may require discretization of the geology to calculate. The [\[.58\]](#) likelihood terms in this case each involve the composition of two forward models:

1. a mapping  $g : \Theta \rightarrow \mathcal{G}$  from the parameter space  $\Theta$  into a space  $\mathcal{G}$  of discrete volumetric representations (such as block models); and
2. a mapping  $f : \mathcal{G} \rightarrow \mathcal{D}$  from the space of discretizations into the space of possible realizations of the data.

Structural geology is chiefly concerned with the map  $g$ , and often reckons uncertainty not in terms of parameter variance, but in terms of the properties of an ensemble of discrete voxelized models (e.g. [??](#)). Inversions of geophysical sensor data such as gravity, magnetism, conductivity, or seismic are chiefly concerned with the map  $f$ .

[\[.59\]](#) The accuracy of a parametric inversion will depend on the accuracy with which  $f \circ g$  can be computed. [\[.60\]](#)

Although discretization methods such as adaptive meshes [\(?\)](#) or basis functions aligned with geological features [\(?\)](#) [\[.61\]](#) can improve the fidelity of  $g$ , these mappings are not guaranteed to be suitable for efficient and accurate computation of  $f$ . Furthermore, existing geological engines frequently export to a simple fixed basis that may be adequate for visualization in an interactive workflow, but cause trouble in automated inversion workflows, producing the aliasing effects discussed in the next subsection.

## 2.2 Aliasing and its effects on the posterior

To show a straightforward example, we calculate a grid scan through the posterior for inversion of forward gravity from a uniform-density spherical intrusion. An analytic solution exists, so we can compare directly to the true posterior. We model a  $1 \text{ km}^3$  cubical volume, and fix the sphere's position at the center. Gravity anomaly data were generated from the analytic model on an evenly spaced [\[.62\]](#)  $20 \times 20$  survey grid at the surface ( $z = 0$ ), with Gaussian measurement noise at the level of [\[.63\]](#) 10% of the signal amplitude added. We used the SimPEG library [\(?\)](#) to generate meshes and calculate the action of the

---

<sup>58</sup>removed: geophysical

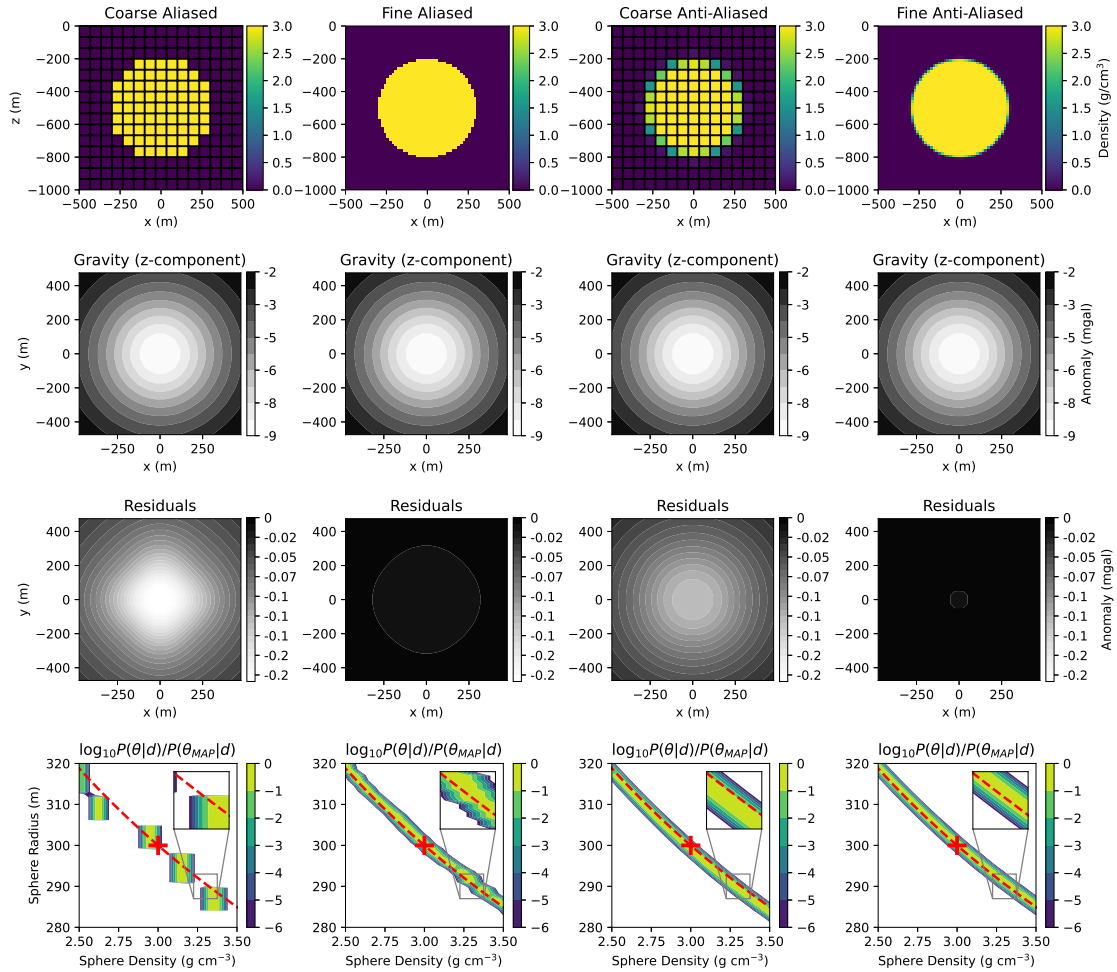
<sup>59</sup>removed: An exact representation of the geology in discrete form is rarely possible, so that the accuracy of the inference

<sup>60</sup>removed: The fidelity of discrete geological representations is important to both the geology and geophysics communities, and is reflected for example in the use of adaptive meshes that respect the strength of data constraints [\(?\)](#) or the use of basis functions that lie along

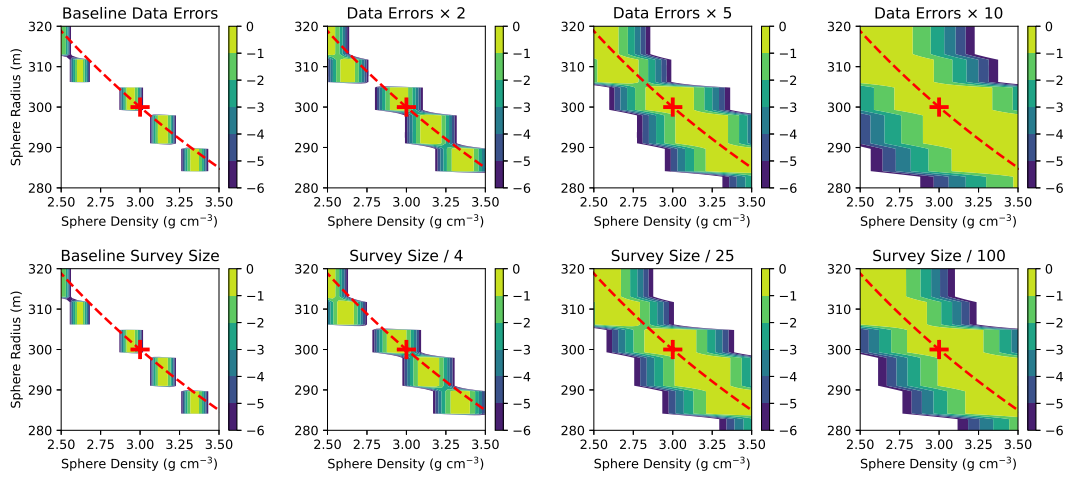
<sup>61</sup>removed: . Existing tools, however,

<sup>62</sup>removed:  $10 \times 10$

<sup>63</sup>removed: 5



**Figure 1.** Calculation of posterior distribution for the radius and density of a uniform spherical inclusion from gravity inversion. Top row: cross-section of 3-D rock density field for the true model from which the data are generated. 2nd row: Simulated gravity field at surface. 3rd row: Residuals of simulated gravity field from analytic solution. Bottom row: cross-section through the posterior for an independent Gaussian likelihood. Discretization schemes shown (columns, left to right): coarse aliased mesh ( $15^3$  cells), fine aliased mesh ( $60^3$  cells), coarse anti-aliased mesh, fine anti-aliased mesh. The true parameters are shown by the red cross, while the red dashed line indicates the degeneracy relation in Eq. 2 that constitutes the maximum-likelihood ridge of the analytic solution.



**Figure 2.** Influence of data error on the posterior distribution for the sphere inversion problem. The panels from left to right show the effects of multiplying the standard deviation of Gaussian noise on gravity observations by factors of 1 (baseline), 2, 5, and 10.

130 forward model for the gravity sensor in the inversion loop. To emphasize the role of the likelihood in a scenario with vague prior constraints, we use uniform priors on the mass density  $\rho$  and radius  $R$  ( $300 \pm 100$  m) of the sphere. Given spherical symmetry, the data constrain only the total mass  $M$  of the intrusion, and so the region of high posterior probability density follows the curve

$$\rho = \frac{3M}{4\pi R^3} [..^{64}] \quad (2)$$

135 [..<sup>65</sup>]

Figure 1 shows the results of this exercise. Four discretizations of the sphere are shown: a coarse mesh, with the rock density for each cell queried from the true geology at the center of that cell; a higher-resolution mesh, with cell sizes refined by a factor of 4 along each axis; a coarse mesh on which the rock density has been averaged throughout the cell, using the anti-aliasing scheme described in the next section; and a high-resolution mesh using the same anti-aliasing scheme. The gravity fields are visually indistinguishable for all four versions, but the posteriors look very different.

When inverting on the coarse mesh with no anti-aliasing, [..<sup>66</sup>]the density in a given cell changes only when the sphere radius crosses over the centre of one or more mesh cells, and then it changes discontinuously. This in turn induces spurious structure into the [..<sup>67</sup>]likelihood, and hence the posterior distribution of the inversion parameters [..<sup>68</sup>]. The numerical posterior becomes a collection of isolated modes, scattered along the locus of degeneracy between  $\rho$  and  $R$  (red dashed line) on which the true parameters (red cross) lie, but none of which appropriately quantify the uncertainty in the true analytic problem.

<sup>65</sup>removed: which the discrete posterior should reflect.

<sup>66</sup>removed: discontinuous changes in rock properties occur whenever

<sup>67</sup>removed: geophysical

<sup>68</sup>removed: : the



These artefacts can be suppressed by refining the mesh, though at the cost of increasing the number of voxels (and the computation time); in this case, by a factor of  $4^3 = 64$ . Importantly, the underlying posterior for this high-resolution mesh is not free of discontinuities, but takes on a terraced appearance.

The inversions with anti-aliased geology result in continuous, even smooth, posteriors that trace the analytic solution and run at nearly the same speed. A closer look reveals that the coarse-mesh anti-aliased posterior is slightly offset toward the bottom-left relative to the analytic curve, while the fine-mesh posterior is not. This is a <sup>[..<sup>69</sup>]</sup>product of low mesh resolution, which the anti-aliasing <sup>[..<sup>70</sup>]</sup>approximation only partially mitigates (see Sect. 2.4). Each anti-aliased interface is treated locally as a plane surface. For a given gravity signal, spheres with higher density have smaller radius and thus higher curvature at the interface; the departure from the true posterior will grow as the sphere radius approaches the voxel size. The bias amounts to  $\sim 1\%$  of the sphere's mass at the true parameter values, which the data are just sufficient to detect. Thus, while anti-aliasing may incidentally improve the accuracy of geophysical field calculations, its primary benefit is to reproduce the continuous structure of the underlying likelihood.

<sup>[..<sup>71</sup>]</sup>We will later directly test the influence of aliasing on the performance of MCMC, since the capacity for full posterior inference is one of the major advantages of parametric geological inversions. However, aliasing will cause problems for a broad variety of estimation algorithms. Even for fine mesh resolution, the likelihood is piecewise constant along spatially aliased geological parameters, and so components of the likelihood gradient in those directions are zero almost everywhere, in a measure-theoretic sense. Methods such as Nelder-Mead (for optimization) and Metropolis random walk (for sampling) that do not rely on posterior gradient information will seem to work with a fine enough mesh, although at greater computational cost and with no warning of the extent of aliasing effects unless run multiple times from different starting points. Gradient-based methods, such as stochastic gradient descent or Hamiltonian Monte Carlo, will fail catastrophically, since the zero gradient of an aliased likelihood will not reflect its geometry. The covariance matrix used to estimate local uncertainty in the fit from an optimization algorithm will be singular, since the components of the Hessian along aliased directions will be zero. Finally, while the gravity inverse problems we consider in this paper are linear, an attempt to invert for parametric geology based on a nonlinear sensor would face discontinuous changes in the sensitivity kernel with parameters, with unpredictable effects on parameter estimation.

One could argue that the likelihood might be less badly aliased if the data constraints were weaker. Inflating the data errors can be viewed as a form of tempering, which we would expect to merge the multiple aliased modes. Figure 2 shows the results of inflating the errors in the "coarse aliased" discretization of the sphere problem by various factors until the isolated modes in the original problem have merged. The distribution becomes fully navigable only for data errors a factor of 5–10 times larger than our original problem — that is, for data errors comparable to the amplitude of the signal itself. Furthermore, the blockiness or terracing is a function of the discretization scale only, so that any estimation methods relying on gradients will break down along the aliased spatial parameters in the same way as before.

---

<sup>69</sup>removed: result of the approximation used when

<sup>70</sup>removed: the voxel density, which treats each interface locally as a plane surface

<sup>71</sup>removed: The accuracy of the geophysical field calculation is not dramatically improved by anti-aliasing, but the posterior density becomes much more navigable. This highlights another critical feature of the problem, which is that

This kind of catastrophic breakdown occurs because of the restrictive conditioning of rock properties on parametric geology, so we do not expect the same kind of effect to arise in flexible geophysical inversions that derive their priors from discretized geological models (e.g. ?). The geophysical sensor model is a smooth function of the *rock properties*, and so when the rock properties are the primary model parameters, the likelihood remains smooth. Highly restrictive model error terms that are inconsistent with the data may still hamper performance or inference. While it would be interesting to examine non-zero voxelization model errors for the kind of parametric inversion we investigate in this paper, this is a technically complex issue that we defer to future work. For now we note simply that aliasing still arises even in a parametric model that is in other respects perfectly specified, and that treating it explicitly will remove aliasing [..<sup>72</sup>] contributions to model errors in future parametric inversions. [..<sup>73</sup>]

While [..<sup>74</sup>]our example may seem artificial, widely used geological modeling tools such as Noddy and GeoModeller usually export on rectangular meshes, with lithology or rock properties evaluated at the center of each mesh cell precisely as described above. Any ongoing development or support of geological modeling tools intended for use in probabilistic workflows should keep examples like this in mind. [..<sup>75</sup>]Complex structure imparted by faults, folding, dykes and sills is highly sensitive to discretization. The situation may arise where the causative body for a strong geophysical anomaly, such as a thin and relatively magnetic or remanently magnetised dyke, is removed from the geological prior due to overly coarse discretization parameters, while a resulting strong magnetic response remains. Inversion schemes are not intended to address situations where the target is unintentionally removed from the data.

### 195 2.3 Fitting an anti-aliasing function

The [..<sup>76</sup>]main idea behind anti-aliasing is to produce rock property values in each mesh cell such that the action of a sensor on the anti-aliased model best approximates the action of the same sensor on the same geology exported to a higher-resolution mesh. In this section we will develop an anti-aliasing [..<sup>77</sup>]

---

<sup>72</sup>removed: produces effects distinct from mis-specification of the parametric geological model

<sup>73</sup>removed: Model calibration methods (e.g. ?) that address correlated model residuals will not remove discontinuities from aliasing .

<sup>74</sup>removed: this

<sup>75</sup>removed: Similar issues may afflict geophysical inversions that use such exported geologies as priors: although the posterior mean of the inversion output is a flexible function of space, a biased mean function in the form of an aliased geological prior may still influence the inversion in the neighborhood of discontinuous contacts.

<sup>76</sup>removed: anti-aliased discretization is not, in volumetric terms, as accurate a description of the underlying geology as the high-resolution mesh . Instead, the

<sup>77</sup>removed: prescription captures the response of the sensor to the underlying parametrized geology. While there could in principle be many configurations of rock that result in the same cell-averaged rock properties, the parametric form of the geological model identifies the specific possibilities of interest and strongly constrains the inversion. In a joint inversion of multiple sensors, different sub-mesh prescriptions or different meshes may be appropriate for the different sensors, as long as these faithfully represent the sensor response to the infinite-resolution geology and can be efficiently calculated given the geological parameters.

[..<sup>78</sup>]prescription for gravity anomaly, which responds linearly to mass density. We frame the problem as a regression  
 200 that uses the position of a geological interface within a mesh cell to predict what the mean mass density would be for that  
 cell in a high-resolution model.

[..<sup>79</sup>]The top panel of Figure 3 shows the geometry of the problem. For simplicity, we assume constant rock density  
 within each unit, which reduces the problem to predicting the fraction of the cell's volume lying to either side of the  
 interface. We further assume that the interface is flat at the spatial scale of a single [..<sup>80</sup>]mesh cell, so that it can be  
 205 approximated by a plane surface defined by a point  $\mathbf{r} = (r_x, r_y, r_z)$  [..<sup>81</sup>]and a unit normal  $\mathbf{n} = (n_x, n_y, n_z)$ [..<sup>82</sup>]. Due to  
 the translational symmetry of a plane, the influence of  $\mathbf{r}$  can be reduced to the projected distance  $u_{\perp}$  of the plane from the  
 voxel centre  $\mathbf{r}_0$ . The unit normal  $\mathbf{n}$  can be described in terms of two angles in spherical coordinates; due to the rotational  
 symmetries of a cubical voxel, it is enough to specify the polar angle with respect to the normal to the cube face that a ray  
 210 drawn from  $\mathbf{r}_0$  along  $\mathbf{n}$  intersects, and the azimuthal angle with respect to a coordinate system projected onto that cube  
 face. Expressing the angles in terms of ratios of components of  $\mathbf{n}$  results in three main predictive features:

$$u_{\perp} = (\mathbf{r} - \mathbf{r}_0) \cdot \mathbf{n} / h \tag{3}$$

$$\eta = \sqrt{1 - n_{\max}^2} / n_{\max} \tag{4}$$

$$\xi = n_{\min} / \sqrt{1 - n_{\max}^2} \tag{5}$$

where  $h$  is the voxel size,  $n_{\min} = \min\{n_x, n_y, n_z\}$ ,  $n_{\max} = \max\{n_x, n_y, n_z\}$ , and  $\mathbf{r}_0$  is the voxel center. [..<sup>83</sup>]  
 215 **To train the regression**, we generate a synthetic dataset of 1000  $(\mathbf{r}, \mathbf{n})$  pairs with which a plane interface might intersect a  
 generic voxel[..<sup>84</sup>]. In each pair,  $\mathbf{r}$  is distributed uniformly in space, and  $\mathbf{n}$  uniformly in solid angle. We calculate the partial  
 voxel volume beneath the plane numerically by mesh refinement to  $20\times$  higher resolution.

Figure 3 shows three different possible functional forms for the [..<sup>85</sup>]regression: a piecewise linear function of  $u_{\perp}$  alone;  
 a linear regression model including interaction terms up to third order, where the regressors have been transformed by a  
 220 hyperbolic tangent function to maintain boundary conditions and keep fractional volumes between 0 and 1; and a Gaussian  
 process regression. A linear regression model based on the single feature  $u_{\perp}$  — the normal distance to the plane from the voxel

---

<sup>78</sup>removed: In the case of gravity and magnetic anomaly, calculating forward geophysics on a fixed volumetric mesh is convenient: first, it is conventional for current geology engines, and second, the sensitivities can be cached for fast forward calculations. Potential-field sensors are linear sensors that represent a spatial average of rock properties, so averaging rock properties over voxels with partial membership in multiple units is the desired prescription. We expect the true sensor response to be a continuous, perhaps even smooth, function of the geological parameters that describe the interface geometry, except perhaps in regions where a geological contact pinches a unit to zero thickness. Thus we seek a smooth interpolant to be evaluated at the centers of mesh cells as an approximation to a numerical average. This will also make the numerical posterior a smooth function of the parameters, enabling future use of advanced MCMC proposals that require derivative information, such as Hamiltonian Monte Carlo (?).

<sup>79</sup>removed: To fit for such an interpolating function, we approximate the interface between two units of constant density as a plane at the

<sup>80</sup>removed: voxel. Such a plane is

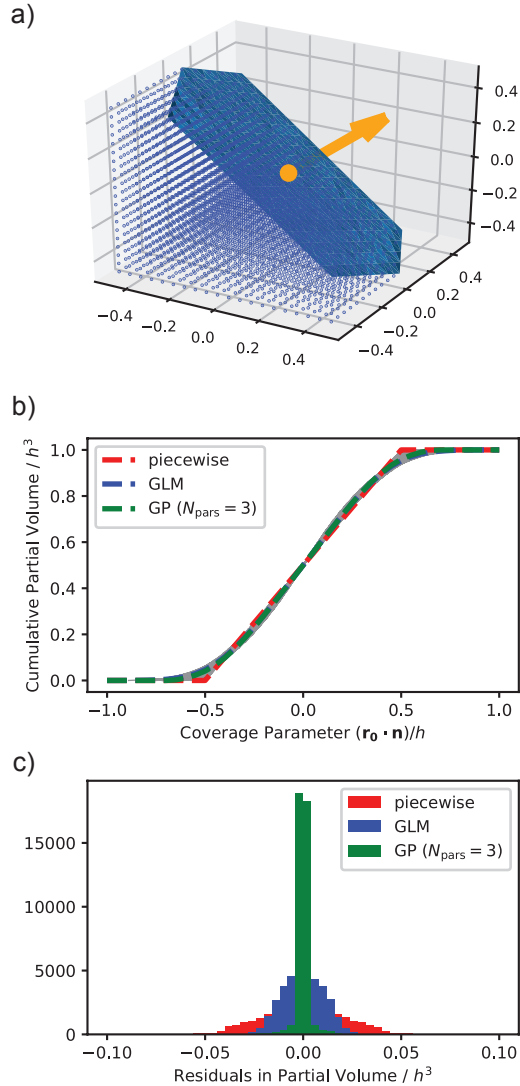
<sup>81</sup>removed: on its surface,

<sup>82</sup>removed: (see Fig. 3). Exploiting the symmetries of the cube, we reduce these to

<sup>83</sup>removed: For training

<sup>84</sup>removed: ; in

<sup>85</sup>removed: interpolant



**Figure 3.** (a) Numerical approach to calculating partial volumes. The interface is approximated by a plane running through the voxel. A cloud of points is generated in a regular grid, and the partial volume is then the fraction of these points that satisfy  $u_{\perp} = (\mathbf{r} - \mathbf{r}_0) \cdot \mathbf{n}/h = 0$ , where  $\mathbf{r}_0 = (r_x, r_y, r_z)_0$  is a point on the interface and  $\mathbf{n} = (n_x, n_y, n_z)$  is a unit normal vector. (b) Regression models for fast evaluation of partial volumes using data generated from the approximate numerical scheme (gray curves): a piecewise linear interpolation over  $u_{\perp}$  (red), a generalized linear model with up to third-order terms (blue), and a Gaussian process that also includes features associated with the orientation of the interface (green). (c) Precision of partial volume models. The piecewise model reaches 2% RMS accuracy. A linear regression reaches 1% accuracy, as does a Gaussian process regression with a single feature  $u_{\perp}$ . A GP with three features that captures the directionality of the interface with respect to the cube boundaries reaches 0.3% accuracy.

center — can provide smooth anti-aliasing to 1% RMS accuracy (5% worst-case); the optimized form is

$$v(u_{\perp}) = \frac{1}{2} [1 + \tanh(2.2u_{\perp} + 3.2u_{\perp}^3)] \quad (6)$$

This functional form provides negligible computational overhead in our implementation as part of a MCMC inversion loop, and has derivatives of all orders. Including orientation features in the linear regression results in negligible improvements in accuracy while increasing computation time. The Gaussian process does not provide meaningful improvement over the linear regression using  $u_{\perp}$  alone; it attains accuracy of 0.3% RMS (3% worst-case) using three features, but is many times slower to evaluate. [..<sup>86</sup>] We use Eq. 6 for further experiments in this paper.

## 2.4 [..<sup>87</sup>] Potential limitations of anti-aliasing

[..<sup>88</sup>] Since the anti-aliasing approximation amounts to a strong prior on sub-mesh structure, understanding its limitations is critical in practical modeling. The approximation giving rise to Eq. 3 and Eq. 6 will break down when interface curvature becomes significant. Common sense suggests that no length scale parameter in the inference problem should ever be less than the voxel size  $h$ . These situations can be difficult to detect from inside the inversion. Spatial scale parameters, such as fold wavelengths, may produce high-curvature interfaces only in some regions of parameter space. Curvature measured using the Hessian adds computational overhead and may miss structures beneath the Nyquist limit if evaluated on the same mesh as the inversion itself. However, as shown in Fig. 1, departures from the true posterior can occur even at higher resolution, depending upon the resolving power of the data and the structure of the likelihood.

Another drawback in anti-aliasing is that it ignores the relative orientations of interfaces in voxels spanning multiple interfaces. If only one interface passes through a voxel, Eq. 6 should result in a faithful representation of its density. If, however, that voxel is later faulted or brought up against an unconformity, the true mean density in the voxel depends on which of the two formations is preferentially replaced by the new obtruding unit; Eq. 6 will only give some mean value roughly correct when the two interfaces intersect at right angles. Anti-aliasing will thus become increasingly inaccurate with each successive application to a voxel. This effect can cause biases even in geologies with exactly flat interfaces; we expect it to be more pronounced in models with multiply-faulted interfaces in regions where the geophysical sensitivity is the highest, for example near the surface. Such regions of complexity can be identified by flagging voxels within a projected distance  $u_{\perp} < h$  of an interface [..<sup>89</sup>]

[..<sup>90</sup>]

---

<sup>86</sup>removed: Other models involving techniques such as functional PCA might give improved results, but all three interpolants provide satisfactory performance for our purposes. To the extent that small numerical errors are randomized across multiple interface voxels, their contributions should cancel out.

<sup>87</sup>removed: Anti-aliasing for implicit models

<sup>88</sup>removed: For implicit geological models, each interface is defined as the level set  $\Phi(\mathbf{r}) = \Phi_0$  of some scalar field  $\Phi$ . In contemporary geological modeling suites this field represents an interpolation of structural measurements (??). The value of  $\Phi$  corresponds roughly to depth or to geological time, but has no intrinsic physical meaning except to ensure that the geologic series of interfaces it defines are conformable; the specific value  $\Phi_0$  representing an interface is fixed by observations (from surfacemeasurements or boreholes). In this case,  $u_{\perp}$  can be calculated easily by locally calibrating the scalar field to represent a physical distance in the neighborhood

<sup>89</sup>removed: : for a voxel centered at  $\mathbf{r}_0$ , a Taylor expansion of  $\Phi$  gives

[..<sup>91</sup> ]

[..<sup>92</sup>]

250 [..<sup>93</sup> ], and the additional uncertainty in the lithology can be treated explicitly — for example, by assigning latent variables in the statistical model to account for it.

Once an inversion has been performed, the best practice to assess bias will still be to repeat it with a different cell size. In the next section we will discuss metrics to evaluate the global agreement of posteriors based on different mesh sizes, allowing quantitative evaluation, online or offline, of the value to the user of running at a given mesh resolution.

## 255 3 Experiments with kinematic models

To illustrate the impact of anti-aliasing on more realistic geologies, [..<sup>94</sup> ]Blockworlds implements anti-aliased geology within a simplified kinematic model, patterned after Noddy (??). We chose to write our own demonstration code rather than modifying Noddy both for ease of prototyping, and to demonstrate how anti-aliasing interacts with the kinematic calculations. We [..<sup>95</sup> ]construct a range of [..<sup>96</sup> ]3-D models and visualize slices through each Bayesian model posterior to demonstrate the influence of anti-aliasing on the calculations.

### 3.1 Kinematic model events

The calculation begins with a basement layer of uniform density,  $g_0(\mathbf{r}|\rho_0) = \rho_0$ . [..<sup>97</sup> ]Each subsequent event is parametrized by a collection of parameters  $\theta_i$ , [..<sup>98</sup> ]with  $\Theta_i = \{\theta_0, \theta_1, \dots, \theta_i\}$  [..<sup>99</sup> ]denoting the collection of parameters for all events up to event  $i$ . Each event operates recursively on the geologies that came before it. The action of the anti-aliasing operator  $A$  for an interface [..<sup>100</sup> ]between two geological units with rock properties  $g_+$  and  $g_-$ , at projected distance  $u_\perp$  from the voxel centre, is given by

$$A[..\sup{101}][..\sup{102}]u_\perp; g_+, g_-] = g_- + (g_+ - g_-)v(u_\perp) \quad (7)$$

where [..<sup>103</sup> ] $u_\perp$  and  $v(u_\perp)$  are given by Eq. [..<sup>104</sup> ]3 and Eq. [..<sup>105</sup> ]6. The anti-aliasing must be applied in the co-moving coordinate frame of each event [..<sup>106</sup> ].

---

<sup>91</sup>removed: which, since  $\mathbf{n} = \nabla\Phi/|\nabla\Phi|$ , can be rearranged to give

<sup>93</sup>removed: In this way, each voxel can be anti-aliased simply by evaluating the field and its gradient at the voxel center

<sup>94</sup>removed: we implement

<sup>95</sup>removed: then

<sup>96</sup>removed: Bayesian

<sup>97</sup>removed: For non-trivial geologies, we parametrize each subsequent event

<sup>98</sup>removed: and let

<sup>99</sup>removed: denote

<sup>100</sup>removed:  $\Phi(\mathbf{r}) = \Phi_0$

<sup>103</sup>removed:  $v(u_\perp)$  and

<sup>104</sup>removed: 6

<sup>105</sup>removed: 3 with voxel size  $h$

<sup>106</sup>removed: , to ensure that voxels that are modified by multiple transformations are averaged sequentially for each event

270 The Blockworlds code covers four elementary event types, each parametrized by its own scalar field that takes a zero value at the relevant interface:

- **Stratigraphic layer** —  $\theta_i = (\Delta z_i, \rho_i)$  for a layer with thickness  $\Delta z_i$  and mass density  $\rho_i$ :

$$g_i(\mathbf{r}|\Theta_i) = A[\mathbf{r} \cdot \mathbf{u}_z - \Delta z_i; g_{i-1}(\mathbf{r} - \Delta z_i \mathbf{u}_z | \Theta_{i-1}), \rho_i] \quad (8)$$

- **Fault** —  $\theta_i = (\mathbf{r}_{0,i}, \mathbf{n}_i, s_i)$  [..<sup>107</sup>]

275 [..<sup>108</sup>][[..<sup>109</sup>]]

[..<sup>110</sup>] for a fault passing through a point  $\mathbf{r}_{0,i}$  with unit normal  $\mathbf{n}_i$  and dip-slip displacement  $s_i$ . Our parametrization constrains  $\mathbf{r} = (x, y, 0)$  to lie on the surface, and uses a polar representation for  $\mathbf{n}$  [..<sup>111</sup>] derived from dip and dip direction (?)[..<sup>112</sup>]. Given these elements, we calculate  $\mathbf{v} = \frac{(\mathbf{u}_z \times \mathbf{n}) \times \mathbf{n}}{|(\mathbf{u}_z \times \mathbf{n}) \times \mathbf{n}|}$  resulting in a vector pointing in the dip-slip [..<sup>113</sup>] direction parallel to the fault plane, with no strike-slip component. Then:

$$280 \quad g_i(\mathbf{r}|\Theta_i) = A[(\mathbf{r} - \mathbf{r}_{0,i}) \cdot \mathbf{n}_i; g_{i-1}(\mathbf{r} + s\mathbf{v} | \Theta_{i-1}), g_{i-1}(\mathbf{r} | \Theta_{i-1})] \quad (9)$$

- **Fold** —  $\theta_i = (\mathbf{n}_i, \psi_i, \phi_i, L_i, B_i)$  [..<sup>114</sup>]

[..<sup>115</sup>]

[..<sup>116</sup>] for a fold with axis defined by a unit vector  $\mathbf{n}_i$ , pitch angle  $\psi_i$ , phase angle  $\phi_i$ , wavelength  $L_i$  and amplitude  $B_i$ . Given  $\mathbf{n}_i$ , we generate two unit vectors  $\mathbf{v}_0 = \frac{\mathbf{u}_z \times \mathbf{n}}{|\mathbf{u}_z \times \mathbf{n}|}$  and  $\mathbf{v}_1 = \frac{(\mathbf{u}_z \times \mathbf{n}) \times \mathbf{n}}{|(\mathbf{u}_z \times \mathbf{n}) \times \mathbf{n}|}$ , defining an orthonormal structural frame  $\{\mathbf{v}_0, \mathbf{v}_1, \mathbf{n}_i\}$ . Rock elements are displaced laterally by a vector field

285

$$\begin{aligned} \Delta \mathbf{r} &= B_i \sin(2\pi(\mathbf{r} \cdot \mathbf{n}_i)/L + \phi) \\ &\times (\sin(\psi_i)\mathbf{v}_0 + \cos(\psi_i)\mathbf{v}_1) \end{aligned} \quad (10)$$

with the background geology displaced according to

$$g_i(\mathbf{r}|\Theta_i) = g_{i-1}(\mathbf{r} + \Delta \mathbf{r} | \Theta_{i-1}) \quad (11)$$

- **Spherical intrusion** —  $\theta_i = (\mathbf{r}_{0,i}, R_i, \rho_i)$  for a sphere of radius  $R_i$  and uniform density  $\rho_i$  centered at  $\mathbf{r}_{0,i}$ :

$$290 \quad g_i(\mathbf{r}|\Theta_i) = A[|\mathbf{r} - \mathbf{r}_{0,i}| - R_i; \rho_i, g_{i-1}(\mathbf{r} | \Theta_{i-1})] \quad (12)$$

<sup>107</sup>removed: :

<sup>110</sup>removed: where  $\mathbf{r}_0$  is a point on the fault ,

<sup>111</sup>removed: is a unit normal direction to the fault, and  $\mathbf{v}$  is a slip vector. In our parametrization we constrain  $\mathbf{r}$  to lie at zero depth, we parametrize  $\mathbf{n}$  in polar representation

<sup>112</sup>removed: , and we fix  $\mathbf{v} = \frac{(\mathbf{u}_z \times \mathbf{n}) \times \mathbf{n}}{|(\mathbf{u}_z \times \mathbf{n}) \times \mathbf{n}|}$  so that  $s$  describes

<sup>113</sup>removed: displacement only

<sup>114</sup>removed: :

<sup>116</sup>removed: where  $\{\mathbf{v}_0, \mathbf{v}_1, \mathbf{n}_i\}$  form an orthonormal frame including the fold axis  $\mathbf{n}$ ,

Figures [..<sup>117</sup>]?? shows the action of the kinematic elements of the model alongside an anti-aliased version of the voxelized density volume, calculated over a 1 km<sup>3</sup> rectilinear mesh 15 × 15 × 15 voxels on a side.

### 3.2 Setup of specific 3-D models

295 We construct a series of [..<sup>118</sup>]fifteen kinematic models, with true configurations shown in Fig. [..<sup>119</sup>]??. Each model occupies a 1 km<sup>3</sup> cubical volume, and is discretized on a rectilinear mesh with cubical voxels. All have three stratigraphic layers and two [..<sup>120</sup>]additional tectonic events, varying in order and positioning.

[..<sup>127</sup>]The first set of models focus on planar dip-slip faults, with final configurations as follows.

- **Model 1:** a typical graben structure with two intersecting faults, both exhibiting normal movement[..<sup>128</sup>].
- 300 – **Model 2:** a negative flower structure resulting from trans-tension, where both a sub-vertical fault and high-angle fault exhibit normal movement. [..<sup>129</sup>]
- **Model 3:** two reverse faults dipping at the same angle and away from each other. [..<sup>130</sup>]
- **Model 4:** two parallel sub-vertical faults of opposing displacement: the left fault with left-side-up movement, the right fault with right-side-up movement. [..<sup>131</sup>]
- 305 – **Model 5:** a positive flower structure resulting from transpression, where both a sub-vertical fault and high-angle fault exhibit reverse movement[..<sup>132</sup>].
- **Model 6:** two high-angle faults, the left displaying thrust movement and the right displaying normal movement. [..<sup>133</sup>]
- **Model 7:** a similar scenario [..<sup>134</sup>]to Model 6, except the movement for both faults is reverse. [..<sup>135</sup>]

We also include some additional folded configurations, selected to test the anticipated limitations of anti-aliasing de-  
310 scribed in Section 2.4. These use the same stratigraphic history as the two-fault [..<sup>136</sup>]events except when parameter changes are explicitly noted.

---

<sup>117</sup>removed: ?? and ?? show

<sup>118</sup>removed: eight

<sup>119</sup>removed: ?? and Fig. ??.

<sup>120</sup>removed: planar dip-slip faults, but the relative positioning of the faults differs

<sup>127</sup>removed: The final configuration of Model 1 represents

<sup>128</sup>removed: (see Fig. ??). The final configuration of Model 2 represents

<sup>129</sup>removed: The final configuration of Model 3 represents

<sup>130</sup>removed: The final configuration of Model 4 represents

<sup>131</sup>removed: The final configuration of Model 5 represents

<sup>132</sup>removed: (see Fig. ??). The final configuration of Model 6 represents

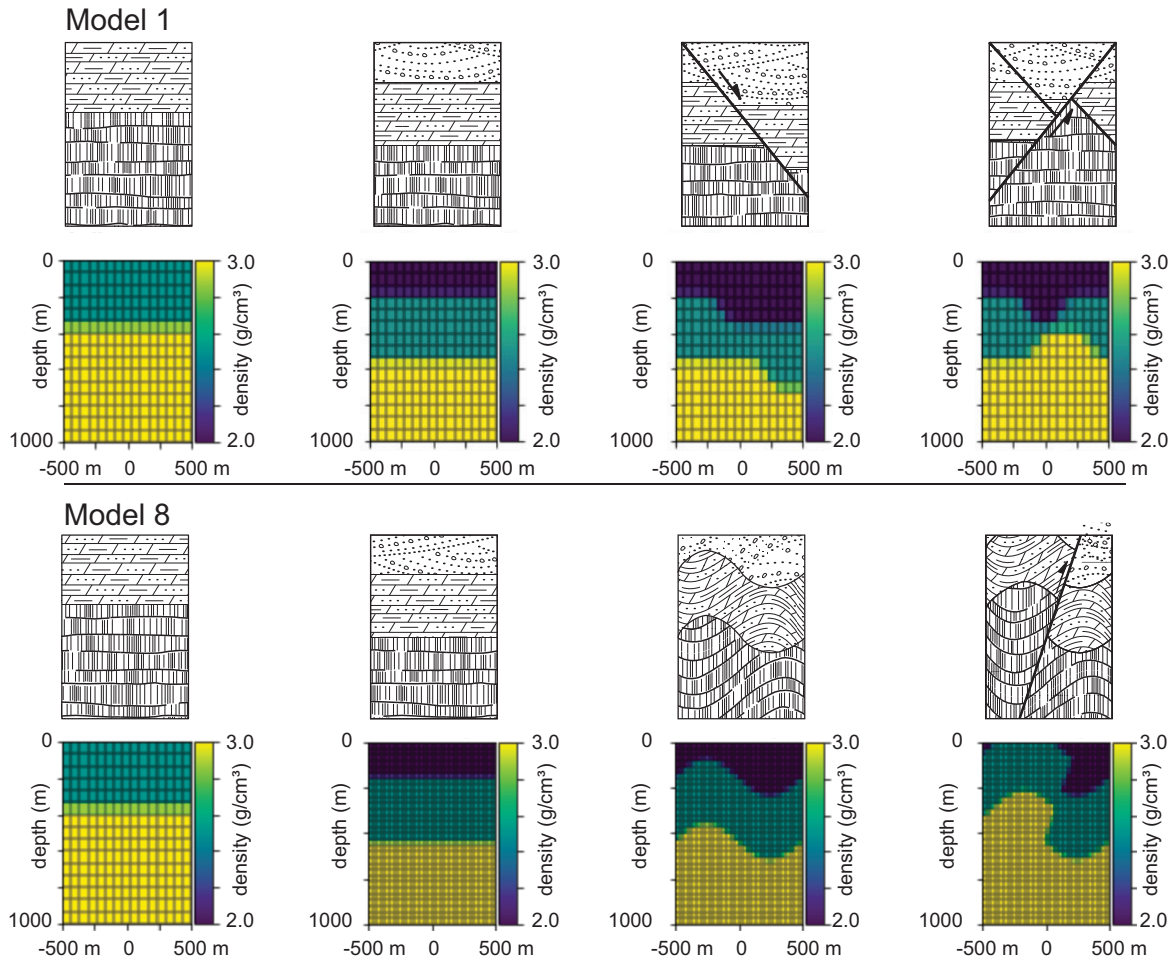
<sup>133</sup>removed: The final configuration of Model 7 represents

<sup>134</sup>removed: as

<sup>135</sup>removed: The final configuration of Model 8 diverges from the

<sup>136</sup>removed: scheme of the previous models by including a folding event. The stratigraphic history remains the same, however is subject to upright and open folding





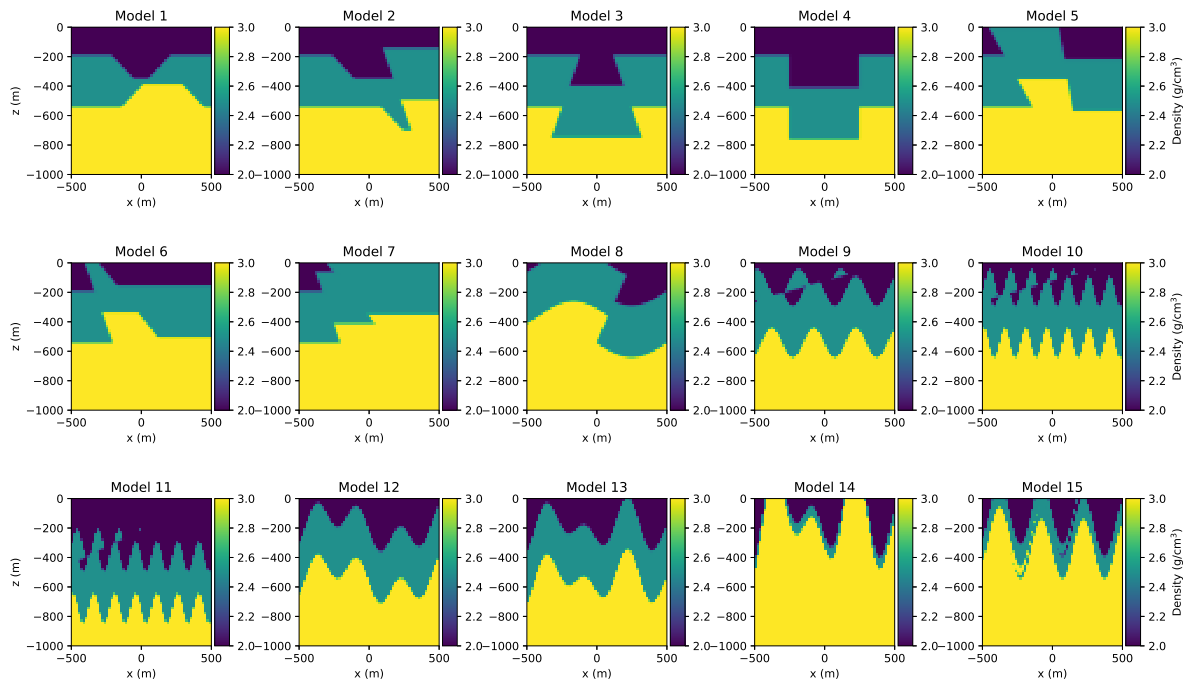
**Figure 4.** Calculation of forward geology for Models [..<sup>121</sup>] 1 and 8 through a sequence of tectonic events: the addition of two stratigraphic layers and two faults. Top: geology; bottom: anti-aliased, voxelised rendering.

- **Model 8:** an upright, open fold of 500[..<sup>137</sup>] m wavelength, with a west-dipping, high-angle reverse fault offsetting the fold limbs[..<sup>138</sup>].
- **Model 9:** a tighter fold of wavelength 300 m, cut across by a low-angle reverse fault to create near-surface voxels in the block model traversed by multiple interfaces.
- **Model 10:** a more extreme version of Model 9 created by reducing the fold wavelength to 150 m, near the Nyquist sampling limit for the coarse voxel size.

315

<sup>137</sup>removed: m wavelength. A

<sup>138</sup>removed: completes the scenario.



**Figure 5.** [..<sup>122</sup>] Voxelized final states of [..<sup>123</sup>] all models in [..<sup>124</sup>] suite, [..<sup>125</sup>] displaying 3-D geology [..<sup>126</sup>] in cross section.

- **Model 11:** similar to Model 10, but with a deeper surface layer to create aliased voxels farther beneath the surface.
- 320 – **Model 12:** a folded fold, with two folds of wavelength 300 m and with the second upright fold at a 70-degree azimuthal with respect to the first.
- **Model 13:** two upright folds of different wavelengths (300 m and 500 m) with axes aligned.
- **Model 14:** a version of Model 13 with thinner surface stratigraphic layers (75 m each) to create near-surface voxels with multiple parallel interfaces.
- 325 – **Model 15:** a stratigraphy with a thinner surface layer (150 m) and a low-angle reverse fault that has been folded, again to create a final state with high complexity in near-surface voxels.

We [..<sup>265</sup>] choose prior distributions for the parameters to simulate the realistic incorporation of structural geological knowledge, as shown in Table [..<sup>266</sup>]?? and Table ??.

<sup>265</sup>removed: also

<sup>266</sup>removed: ??

**Table 1.** Parameter true values and prior distributions for [..<sup>139</sup>]fault-focused kinematic [..<sup>140</sup>]models, labeled M1 to [..<sup>141</sup>]M7. The prior mean is set to the true value for each parameter.

Parameter	M1	M2	M3	M4	M5	M6	M7	[.. <sup>142</sup> ]	Prior
Basement Density ( $\text{g cm}^{-3}$ )	3.0	3.0	3.0	3.0	3.0	3.0	3.0	[.. <sup>143</sup> ]	Lognormal ( $\sigma = 0.1 \text{ g cm}^{-3}$ )
Layer 1 Thickness (m)	350	350	350	350	350	350	350	[.. <sup>144</sup> ]	Lognormal ( $\sigma = 50 \text{ m}$ )
Layer 1 Density ( $\text{g cm}^{-3}$ )	2.5	2.5	2.5	2.5	2.5	2.5	2.5	[.. <sup>145</sup> ]	Lognormal ( $\sigma = 0.1 \text{ g cm}^{-3}$ )
Layer 2 Thickness (m)	190	190	190	190	190	190	190		Lognormal ( $\sigma = 50 \text{ m}$ )
Layer 2 Density ( $\text{g cm}^{-3}$ )	2.0	2.0	2.0	2.0	2.0	2.0	2.0		Lognormal ( $\sigma = 0.1 \text{ g cm}^{-3}$ )
Fault 1 Contact X Position (m)	-400	-450	-50	-250	-450	-400	-400		Normal ( $\sigma = 1 \text{ m}$ )
Fault 1 Contact Y Position (m)	0	0	0	0	0	0	0		Normal ( $\sigma = 1 \text{ m}$ )
Fault 1 Polar Elevation (deg)	45	45	-20	0	30	20	20		vMF ( $\kappa = 25$ )
Fault 1 Polar Azimuth (deg)	0	0	0	0	0	0	0		vMF ( $\kappa = 25$ )
Fault 1 Dip-Direction Slip (m)	-220	-220	-220	-220	220	220	140		Normal ( $\sigma = 150 \text{ m}$ )
Fault 2 Contact X Position (m)	400	50	50	250	50	-300	-300		Normal ( $\sigma = 1 \text{ m}$ )
Fault 2 Contact Y Position (m)	0	0	0	0	0	0	0		Normal ( $\sigma = 1 \text{ m}$ )
Fault 2 Polar Elevation (deg)	-45	20	20	0	10	40	40		vMF ( $\kappa = 25$ )
Fault 2 Polar Azimuth (deg)	0	0	0	0	0	0	0		vMF ( $\kappa = 25$ )
Fault 2 Dip-Direction Slip (m)	220	220	220	220	-220	-220	80		Normal ( $\sigma = 150 \text{ m}$ )

quantities), and von-Mises-Fisher (for angular quantities) — for simplicity and interpretability in terms of scale parameters, which reflect the precision of available structural information. The positions of the anchor points lying on the fault planes have very narrow priors ( $\sigma = 1 \text{ m}$ ), appropriate for surface observation localized by GPS. The fault slip parameters reflect rough estimates ( $\sigma = 150 \text{ m}$ ), an extent comparable to the true slip value for each fault. The polar representations of the fault directions are constrained by a von Mises-Fisher (vMF) distribution with  $\kappa = 25$ , corresponding to a full width at half maximum of about 16 degrees (?). In each case the prior mode rests at the true parameter values, to ensure that mis-specification of the prior does not complicate the aliasing effects we set out to examine.

For each model, we examine four regimes of resolution and aliasing. We consider a "coarse"  $15 \times 15 \times 15$  mesh ( $h = 66.6 \text{ m}$ ) as well as a "fine"  $75 \times 75 \times 75$  mesh ( $h = 13.3 \text{ m}$ ), both with and without anti-aliasing. The anti-aliased model on the fine mesh is taken to be the true model for the purposes of calculating a common synthetic forward gravity dataset against which to evaluate the likelihood.

We generate synthetic geophysics data based on the true model parameters, with measurements spaced evenly in a  $20 \times 20$  grid at the surface (grid spacing of  $50 \text{ m}$ ), and add independent Gaussian noise with a standard deviation  $\sigma_0$  of 5% of the

**Table 2.** Parameter true values and prior distributions for fold-focused kinematic models, labeled M8 to M15.

\* In M15, the stratigraphy is faulted first, then folded.

Parameter	M8	M9	M10	M11	M12	M13	M14	M15
Basement Density (g cm <sup>-3</sup> )	3.0	3.0	3.0	3.0	3.0	3.0	3.0	3.0
Layer 1 Thickness (m)	350	350	350	350	350	350	75	75
Layer 1 Density (g cm <sup>-3</sup> )	2.5	2.5	2.5	2.5	2.5	2.5	2.5	2.5
Layer 2 Thickness (m)	190	190	190	390	190	190	75	75
Layer 2 Density (g cm <sup>-3</sup> )	2.0	2.0	2.0	2.0	2.0	2.0	2.0	2.0
Fold 1 Axis Elevation (deg)	[ <sup>.146</sup> ]0	[ <sup>.147</sup> ]0	[ <sup>.148</sup> ]0	[ <sup>.149</sup> ]0	[ <sup>.150</sup> ]0	[ <sup>.151</sup> ]0	[ <sup>.152</sup> ]0	[ <sup>.153</sup> ]0
Fold 1 Axis Azimuth (deg)	[ <sup>.153</sup> ]0	[ <sup>.154</sup> ]0	[ <sup>.155</sup> ]0	[ <sup>.156</sup> ]0	[ <sup>.157</sup> ]0	[ <sup>.158</sup> ]0	[ <sup>.159</sup> ]0	[ <sup>.160</sup> ]0
Fold 1 Pitch Angle (deg)	[ <sup>.160</sup> ]0	[ <sup>.161</sup> ]0	[ <sup>.162</sup> ]0	[ <sup>.163</sup> ]0	[ <sup>.164</sup> ]0	[ <sup>.165</sup> ]0	[ <sup>.166</sup> ]0	[ <sup>.167</sup> ]0
Fold 1 Phase Angle (deg)	[ <sup>.167</sup> ]0	[ <sup>.168</sup> ]0	[ <sup>.169</sup> ]0	[ <sup>.170</sup> ]0	[ <sup>.171</sup> ]0	[ <sup>.172</sup> ]0	[ <sup>.173</sup> ]0	[ <sup>.174</sup> ]0
Fold 1 Wavelength (m)	[ <sup>.174</sup> ]1000	[ <sup>.175</sup> ]300	[ <sup>.176</sup> ]150	[ <sup>.177</sup> ]150	[ <sup>.178</sup> ]300	[ <sup>.179</sup> ]300	[ <sup>.180</sup> ]300	[ <sup>.181</sup> ]300
Fold 1 Amplitude (m)	[ <sup>.182</sup> ]100	[ <sup>.183</sup> ]100	[ <sup>.184</sup> ]100	[ <sup>.185</sup> ]100	[ <sup>.186</sup> ]100	[ <sup>.187</sup> ]100	[ <sup>.188</sup> ]200	[ <sup>.189</sup> ]200
[ <sup>.190</sup> ]Fold 2 Axis Elevation (deg)	[ <sup>.191</sup> ]—	[ <sup>.192</sup> ]—	[ <sup>.193</sup> ]—	[ <sup>.194</sup> ]—	[ <sup>.195</sup> ]0	[ <sup>.196</sup> ]0	[ <sup>.197</sup> ]0	[ <sup>.198</sup> ]0
[ <sup>.200</sup> ]Fold 2 Axis Azimuth (deg)	[ <sup>.201</sup> ]—	[ <sup>.202</sup> ]—	[ <sup>.203</sup> ]—	—	70	0	0	0
Fold 2 Pitch Angle (deg)	—	—	—	—	0	0	0	0
[ <sup>.205</sup> ]Fold 2 Phase Angle (deg)	[ <sup>.206</sup> ]—	[ <sup>.207</sup> ]—	[ <sup>.208</sup> ]—	—	0	[ <sup>.209</sup> ]0	[ <sup>.210</sup> ]0	[ <sup>.211</sup> ]0
[ <sup>.214</sup> ]Fold 2 Wavelength (m)	[ <sup>.215</sup> ]—	[ <sup>.216</sup> ]—	[ <sup>.217</sup> ]—	[ <sup>.218</sup> ]—	[ <sup>.219</sup> ]300	[ <sup>.220</sup> ]500	[ <sup>.221</sup> ]500	[ <sup>.222</sup> ]500
[ <sup>.224</sup> ]Fold 2 Amplitude (m)	[ <sup>.225</sup> ]—	[ <sup>.226</sup> ]—	[ <sup>.227</sup> ]—	[ <sup>.228</sup> ]—	[ <sup>.229</sup> ]100	[ <sup>.230</sup> ]100	[ <sup>.231</sup> ]200	[ <sup>.232</sup> ]200
Fault [ <sup>.233</sup> ]1 Contact X Position (m)	[ <sup>.234</sup> ]250	[ <sup>.235</sup> ]450	[ <sup>.236</sup> ]450	[ <sup>.237</sup> ]450	[ <sup>.238</sup> ]—	[ <sup>.239</sup> ]—	[ <sup>.240</sup> ]—	[ <sup>.241</sup> ]—
Fault [ <sup>.241</sup> ]1 Contact Y Position (m)	0	0	0	0	[ <sup>.242</sup> ]—	[ <sup>.243</sup> ]—	[ <sup>.244</sup> ]—	[ <sup>.245</sup> ]—
Fault [ <sup>.245</sup> ]1 Polar Elevation (deg)	[ <sup>.246</sup> ]−205	[ <sup>.247</sup> ]−255	[ <sup>.248</sup> ]−255	[ <sup>.249</sup> ]−245	[ <sup>.250</sup> ]—	[ <sup>.251</sup> ]—	[ <sup>.252</sup> ]—	[ <sup>.253</sup> ]—
Fault [ <sup>.253</sup> ]1 Polar Azimuth (deg)	0	0	0	0	[ <sup>.254</sup> ]—	[ <sup>.255</sup> ]—	[ <sup>.256</sup> ]—	[ <sup>.257</sup> ]—
Fault [ <sup>.257</sup> ]1 Dip-Direction Slip (m)	[ <sup>.258</sup> ]200	[ <sup>.259</sup> ]200	[ <sup>.260</sup> ]200	[ <sup>.261</sup> ]200	[ <sup>.262</sup> ]—	[ <sup>.263</sup> ]—	[ <sup>.264</sup> ]—	[ <sup>.265</sup> ]—

sample standard deviation of the data across the survey. Each data point  $y_j$  is [<sup>.267</sup>]thus generated according to

$$p(y_j|\boldsymbol{\theta}, \sigma^2) = \frac{1}{\sqrt{2\pi\sigma^2}} \exp\left[-\frac{(y_j - f_j(\boldsymbol{\theta}))^2}{2\sigma^2}\right] [\text{.268}], \quad (13)$$

where  $f_j(\boldsymbol{\theta})$  is the forward model for the geophysical measurement  $y_j$  given the geological parameters  $\boldsymbol{\theta}$ . In a realistic situation, we may not know the noise variance  $\sigma^2$  exactly, but we can account for our uncertain knowledge over it by including a hierarchical prior for  $\sigma^2$ . If we choose this prior to be an inverse gamma distribution,

$$p(\sigma^2|\alpha, \beta) = \frac{\beta^\alpha}{\Gamma(\alpha)} \sigma^{-2(\alpha+1)} \exp\left(-\frac{\beta}{\sigma^2}\right), \quad (14)$$

---

<sup>267</sup>removed: therefore

the integral over  $\sigma^2$  can be solved analytically, saving the computational expense of sampling over  $\sigma^2$  by MCMC (see ??):

$$\begin{aligned}
 p(y_j|\boldsymbol{\theta}, \alpha, \beta) &= \int_0^\infty p(y_j|\boldsymbol{\theta}, \sigma^2)p(\sigma^2|\alpha, \beta) d\sigma^2 \\
 &= \frac{\Gamma(\alpha + \frac{1}{2})}{\Gamma(\alpha)\sqrt{2\pi\beta}} \left[ \frac{(y_j - f_j(\boldsymbol{\theta}))^2}{2\beta} + 1 \right]^{-(\alpha + \frac{1}{2})}
 \end{aligned} \tag{15}$$

so that the likelihood has the form of a  $t$ -distribution with  $\nu = 2\alpha$  degrees of freedom and scale parameter  $\sqrt{\beta/\alpha}$ . For our experiments we choose  $\alpha = 2.5$ ,  $\beta = 2.5 \times \sigma_0^2$ , a weakly informative prior with mean and mode close to the true variance used to generate the data. The full likelihood is then the product of the likelihoods for independent data points,

$$p(\mathbf{d}|\boldsymbol{\theta}, \alpha, \beta) = \prod_{j=1}^N p(y_j|\boldsymbol{\theta}, \alpha, \beta). \tag{16}$$

As with the earlier synthetic examples for a spherical intrusion, we used SimPEG (?) for calculation of forward gravity. The SimPEG Simulation3DIntegral class uses a closed-form integral expression for the contribution to the gravitational field from a rectangular prism of constant density (??): for example, for the  $z$ -component,

$$\begin{aligned}
 g_z(\mathbf{r}) &= -G\rho_0 \sum_{i=1}^2 \sum_{j=1}^2 \sum_{k=1}^2 \mu_{ijk} \\
 &\times \left[ x'_i \ln(y'_i + r'_{ijk}) + y'_j \ln(y'_j + r'_{ijk}) \right. \\
 &\left. + 2z'_k \arctan\left(\frac{x'_i y'_j}{z'_k r'_{ijk}}\right) \right]
 \end{aligned} \tag{17}$$

where  $\mathbf{r} = (x, y, z)$  is the location of the gravity sensor,  $\mathbf{r}_{ijk} = (x_i, y_j, z_k)$  runs over each corner of the prism, and  $\mathbf{r}' = \mathbf{r} - \mathbf{r}_{ijk}$  with  $r' = |\mathbf{r}'|$ . This form is widely used in geophysics and is one of the benefits of working over rectangular meshes. The total gravity signal is then the sum of the contributions for each mesh cell. Since the expression is linear in the density for each mesh cell, the forward model sensitivities can be cached for fast likelihood evaluation.

### 3.3 Posterior slices and MCMC sampling

To illustrate some of the effects caused by aliasing and some of the limits of anti-aliasing, we visualize a series of two-dimensional slices through the posterior distribution. Pairs of free parameters are scanned on a regular  $30 \times 30$  grid centered on their true values, with all other parameters held fixed at their true values. This produces a set of figures similar to Fig. 1 for the kinematic models.

We also perform MCMC over the parameters of the kinematic models to demonstrate the impact of [..<sup>269</sup>]anti-aliasing on chain mixing. [..<sup>270</sup>]The aliased posterior has no useful derivative information for structural parameters, so we are limited to random walk proposals. [..<sup>271</sup>]For our tests we choose the adaptive Metropolis random walk algorithm of ?, which is used in contemporary studies such as ? and is the simplest algorithm likely to give good performance on posteriors with the kind

<sup>269</sup>removed: aliasing

<sup>270</sup>removed: Since the aliased posterior is effectively piecewise constant, it

<sup>271</sup>removed: Due to the strong covariances seen in the conditional posterior slices,

of strong covariances seen in the conditional posterior slices. This algorithm starts from an initial guess  $\theta_0$  and proposes a  
 375 new value  $\theta'$  at time step  $t$  from a multivariate normal distribution centered on the current state  $\theta_t$ :

$$q(\theta'|\theta_t) \sim N(\theta_t, \eta_d [..^{272}] \Sigma_t), \quad (18)$$

where  $\eta_d$  is a global step size parameter depending only on the dimension of the space, and

$$\Sigma_t = \begin{cases} \Sigma_0 & \text{for } t \leq t_0 \\ \text{cov}\{\theta_i\} & \text{for } t > t_0 \end{cases} \quad (19)$$

The covariance matrix of the proposal is estimated from the current chain history, so that after an initial non-adaptive random  
 380 walk period of length  $t_0$  steps, the walk gradually transitions from an initial-guess covariance  $\Sigma_0$  to match the estimated  
 posterior covariance. [..<sup>273</sup>] States are accepted according to the usual Metropolis-Hastings criterion, setting  $\theta_{t+1} = \theta'$   
 with probability

$$\alpha = \min \left\{ 1, \frac{p(\mathbf{d}|\theta')p(\theta')q(\theta|\theta')}{p(\mathbf{d}|\theta)p(\theta)q(\theta'|\theta)} \right\} \quad (20)$$

and  $\theta_{t+1} = \theta_t$  with probability  $1 - \alpha$ . [..<sup>274</sup>] We use an adaptation length of  $t_0 = 1000$  and an initial diagonal covariance matrix  
 385 of step sizes set to 20% of the prior width for each parameter (0.02 g cm<sup>-3</sup> for densities, 10 m for layer thicknesses, 30 m for  
 fault slips and 3 degrees for angular variables).

We use the coarse  $15 \times 15 \times 15$  mesh for calculations, since this will give much faster results for MCMC and highlight the  
 impact of aliasing on chain mixing. We run  $M = 4$  chains for  $N = 10^5$  samples from the posterior of each model, with and  
 without anti-aliasing. We initialize each chain with an independent prior draw, and discard the first 20% of samples as burn-in.  
 390 Each chain took 6 minutes to run on an Intel Core i7 2.6 GHz processor.

We use the integrated autocorrelation time to measure MCMC efficiency within each chain, and the potential scale reduction  
 factor (PSRF; ?) to estimate the extent of convergence to the true posterior. The autocorrelation time  $\tau$  is the approximate  
 number of chain iterates required to produce a single independent sample from the posterior, so that the chain length  $N$  divided  
 by  $\tau$  becomes one possible measure of effective sample size. The potential scale reduction factor  $\hat{R}$ , formed from multiple  
 395 chains, is the factor by which the posterior variance estimated from those chains could be further reduced by continuing to  
 sample. A PSRF near 1 suggests that multiple chains from different starting conditions have achieved similar means and  
 variances, and thus are sampling from a common stationary distribution; a large PSRF shows a residual dependence on starting  
 conditions. The PSRF is usually given for each parameter in a multi-dimensional chain; some dimensions may mix quickly  
 while others take a long time to converge.

---

<sup>273</sup>removed: Although this process depends upon the past chain history and thus is not strictly Markov, the preconditioning of the random walk steps  
 approaches a fixed value as the number of steps increases. A more rigorous definition of "vanishing adaptation" (?), which this method satisfies, guarantees  
 convergence to the true posterior distribution. Since this method is still a Metropolis-Hastings method, it uses the usual acceptance criterion

<sup>274</sup>removed: This proposal can become maladapted for posteriors with locally varying covariance structure (?); we use it here since it is commonly employed  
 and also for comparison with contemporary studies such as ?.

400 Finally, to quantify the overall accuracy of the posterior density calculation, we use the Kullback-Liebler divergence

$$D_{\text{KL}}(p||q) = \int (\log p(\boldsymbol{\theta}) - \log q(\boldsymbol{\theta})) p(\boldsymbol{\theta}) d\boldsymbol{\theta} \quad (21)$$

where  $p(\boldsymbol{\theta}) = p_{\text{lo}}(\boldsymbol{\theta}|\mathbf{y})$  represents the posterior based on a low-resolution mesh (with or without anti-aliasing), and  $q(\boldsymbol{\theta}) = p_{\text{hi}}(\boldsymbol{\theta}|\mathbf{y})$  represents the high-resolution, anti-aliased posterior.  $D_{\text{KL}}$  is a global measure sensitive to biases and covariances across all parameters. Since it requires integration over the posterior, this metric is not available to check  
405 results of single-point optimization algorithms. We use the MCMC chain itself to calculate the integral, representing it as the difference in log probability density averaged over samples from the low-resolution posterior.

## 4 Results

### 4.1 Posterior cross sections

Two-dimensional slices through the posterior distribution for selected variable pairs are shown for Model 1 (in Fig. ??) and  
410 Model 6 (in Fig. ??). Similar sets of plots for all [..<sup>275</sup>] models can be regenerated automatically by scripts in the Blockworlds repository.

Model 1 is relatively well-behaved; the aliased posterior has a single dominant mode near the true value. This is a situation in which the aliasing effects function mainly to make the likelihood appear blocky and terraced. Although proposals that require derivatives of the likelihood will fail on this posterior, it can still be navigated by appropriately tuned random walks, or by the  
415 discontinuous Hamiltonian Monte Carlo sampler of ?.

Nevertheless, the benefits of anti-aliasing are still clear. Merely increasing the mesh resolution of the coarse aliased model by a factor of 5 (and the computational cost by over 100×) is insufficient to completely suppress aliasing artefacts. The coarse aliased model fails to capture the full extent of the very strong correlation between the dip-slips of the two faults, though the fine aliased model does so reasonably well. The posteriors of the two anti-aliased models deviate only negligibly from each  
420 other for all parameters.

Model 6 presents a more challenging case where a coarse mesh does not fully resolve structures close to the surface, resulting in bias for the low-resolution models. The layer thicknesses of the coarse aliased model are explicitly multi-modal as the interfaces hover between depths, and the modes for several variables are significantly offset from their true values. These values become sharp modes in a broader parameter space, easily missed by any inappropriately scaled MCMC proposal. The fine  
425 aliased model reproduces the overall posterior shapes, with some distortions relative to the fine anti-aliased reference model. The coarse anti-aliased model produces a smooth posterior and recovers the correct overall correlations between parameters, but are somewhat offset from the true values.

Models 10 and 11 show yet more dramatic differences between the low-resolution and high-resolution models, even with anti-aliasing. This is expected, since the true fold wavelength for these models is close to the Nyquist limit for the  
430 coarse mesh scale, and sub-Nyquist wavelengths are not excluded by the priors. Model 9 shows that when the fold

---

<sup>275</sup>removed: eight

wavelength is relaxed from  $\sim 2h$  to  $\sim 5h$ , anti-aliasing gives much better results. In Model 11, where the undersampled structure is positioned farther beneath the surface, the apparent effects are less apparent than in Model 10, but still appear in directly linked variables such as the fold wavelength.

The biases caused by aliasing seem to be strongest in angular variables such as fault directions. For Model 6, the best-fit dip-slip angles are offset from the true values by more than 10 degrees, corresponding to the extent through which the scan must sweep to obtain any difference in rock property for a few near-surface voxels in the coarse aliased model. Anti-aliasing the coarse-mesh model largely, but not completely, mitigates this bias. In Model 10 the layer thicknesses are the only model parameters that can be robustly estimated without refining the mesh to resolve structure.

These results confirm that our algorithm can reproduce the continuous behavior in an underlying posterior distribution, and can enable significant computational savings even for complex models as long as the interfaces are smooth on the mesh scale. It cannot — and is not intended to — recover more complex structures beneath the mesh scale that violate the core assumptions under which it was derived.

## 4.2 MCMC sampling

Table ?? shows the average, best-case, and worst-case values of  $\tau$  and  $\hat{R}$  across all model parameters, as well as the K-L divergence  $D_{KL}$ . The posterior is challenging to navigate and all chains have autocorrelation times of order hundreds to thousands of samples, comparable to the performance of *Obsidian* for the Moomba models (?). Chains for anti-aliased models have shorter autocorrelation times by a factor of 2–10 than chains for aliased models, owing to the smoother, more Gaussian structure of the posterior. Most dramatically, the aliased chains still have large PSRF for several variables even after  $10^5$  samples. The anti-aliased chains converge more consistently to the same distribution, with final PSRF values close to 1 for all variables for most models, and much closer to 1 than the aliased chains even on the more challenging, adversarial model configurations.

Models 5, 6, 10, 14, and 15 are challenging models for which the anti-aliased chain also has trouble mixing fully. An example trace plot from Model 5 is shown in Fig. ?. One of the chains in the anti-aliased version has fallen into a different mode from the other three, characterized by shifts in the thicknesses and densities of stratigraphic layers as well as a shift in the dip angle of the fault. In contrast, none of the four traces in the aliased model seems to be sampling from the same distribution; each chain has learned a different proposal scaling, and chains occasionally jump between modes at adjacent parameter values characteristic of the ones seen in lower-dimensional projections. Each chain, considered on its own, would give a very different impression of the uncertainty in the inversion. This qualitative behavior is characteristic of sampling for the other models.

Complementing the trace plots and MCMC performance metrics as a global measure of posterior inference accuracy, the K-L divergence shows that anti-aliasing usually improves correspondence with the high-resolution posterior by a large

---

<sup>308</sup>removed: consistently converge

<sup>309</sup>removed: closer

<sup>310</sup>removed: and

<sup>311</sup>removed: produce challenging exceptions to these trends on



margin. Anti-aliased models with large values of  $D_{\text{KL}}$  correspond well with sub-Nyquist structures or with regions of complexity close to the surface, confirming our intuition that inference in these models benefits from finer mesh resolution. The aliased posteriors show differences with the high-resolution posteriors spanning many orders of magnitude in probability density, averaged over those modes the chain was able to reach. Since the aliased chains did not in general mix well, their values of  $D_{\text{KL}}$  should be taken as indicative, whereas the anti-aliased chains with low  $\hat{R}$  represent more robust estimates of the true divergence.

To fully characterize uncertainty in [<sup>312</sup>]truly multi-modal problems, parallel tempering should be used to sample from all modes in proportion to their posterior probability. However, without anti-aliasing, the low-temperature chain in the tempering scheme will mix poorly and will rely more heavily on swap proposals to explore the posterior. The modes that do appear in anti-aliased posteriors are also more likely to represent distinct interpretations, rather than poorly-resolved strong correlations between variables.

## 5 Discussion and Future Work

We have experimentally demonstrated the use and benefit of anti-aliasing only for kinematic models acting on a regular rectangular mesh. However, we see several natural extensions to this work that extend the range and impact of anti-aliasing for parametric geological models. We describe these future directions in the following section.

### 5.1 Anti-aliasing in terms of the implicit scalar field

Although Blockworlds forward-models geology through the action of parametrized tectonic events, it is still an implicit model in the sense that the unit interfaces are defined to be level sets of a scalar field, which we parametrize simply in terms of the distance to the interface. The mathematics of our anti-aliasing prescription generalizes to any differentiable scalar field, including those used in co-kriging models that interpolate structural measurements (??). These models will have different posterior geometries than kinematic models, since the modification of structural parameters produces more localized changes in the block models. However, we see no intrinsic reason why the following treatment for general scalar fields should not work just as well as for other types of implicit models, provided the interpolated geological structures have minimal curvature on the mesh scale.

For implicit geological models, each interface is defined as the level set  $\Phi(\mathbf{r}) = \Phi_0$  of some scalar field  $\Phi$ . The value of  $\Phi$  corresponds roughly to depth or to geological time, but has no intrinsic physical meaning except to ensure that the geologic series of interfaces it defines are conformable. In interpolation models, the specific value  $\Phi_0$  representing an interface is fixed by observations (from surface measurements or boreholes). In this case,  $u_{\perp}$  can be calculated easily by locally calibrating the scalar field to represent a physical distance in the neighborhood of an interface: for a voxel centered at  $\mathbf{r}_0$ , a first-order approximation of  $\Phi$  gives

$$\Phi(\mathbf{r}) = \Phi(\mathbf{r}_0) + (\mathbf{r} - \mathbf{r}_0) \cdot \nabla\Phi + \mathcal{O}(\mathbf{r} - \mathbf{r}_0)^2 = \Phi_0, \quad (22)$$

---

<sup>312</sup>removed: these poorly-constrained models

which, using Equation 3 and writing the interface unit normal as  $\mathbf{n} = \nabla\Phi/|\nabla\Phi|$ , can be rearranged to give

$$u_{\perp} = (\Phi_0 - \Phi(\mathbf{r}_0))/|h\nabla\Phi|. \quad (23)$$

495 In this way, each voxel can be anti-aliased simply by evaluating the scalar field and its gradient at the voxel center. For co-kriging models, the scalar field itself must be evaluated at the voxel centers to render it, and the field gradient can be evaluated straightforward using the same trained model by differentiating the kernel.

## 5.2 Anti-aliasing in curvilinear coordinates

The development of the anti-aliasing [..<sup>313</sup>] mapping in Section 2.3 and [..<sup>314</sup>] its generalization in ?? assume that each voxel  
500 is a cube. However, mesh cells with varying aspect ratios are common in geophysical inversions, for example in dealing with varying sensitivity with depth or with boundary conditions where high resolution is less important. It may also be useful for some problems to work in curvilinear coordinates.

[..<sup>315</sup>] Another useful avenue of future work would be to extend Equation ?? to more general coordinate systems. Let  $\mathbf{J} = \partial\mathbf{r}/\partial\mathbf{u}$  be the Jacobian of the transformation from dimensionless coordinates  $\mathbf{u}$  on a unit voxel to physical coordinates  
505  $\mathbf{r}$ , so that to first order  $\mathbf{u} = \mathbf{J}^{-1}(\mathbf{r} - \mathbf{r}_0)$ . Equation [..<sup>316</sup>] 3, defining the projection of a reference point in the voxel onto an interface running through the voxel, then becomes

$$u_{\perp} = \mathbf{u} \cdot \frac{1}{|\mathbf{J}\mathbf{n}|} \mathbf{J}\mathbf{n}, \quad (24)$$

and Equation 3, defining  $u_{\perp}$  in terms of scalar field values for an implicit model, becomes

$$u_{\perp} = (\Phi_0 - \Phi(\mathbf{r}_0))/|\mathbf{J}\nabla\Phi|. \quad (25)$$

## 510 5.3 Anti-aliasing for other geophysical sensors

In this paper we have focused on gravity since it is among the most widely used geophysical sensors in an exploration context, and since its linear response makes an anti-aliasing treatment straightforward. All of our results [..<sup>317</sup>] extend immediately to magnetic sensors given the strong mathematical equivalence, and may also be appropriate for linear forward models of other sensors such as thermal or electric conductivity, or for the slowness in travel-time tomography.

515 Useful schemes to anti-alias forward-modeled geology may exist for other sensors, as long as the sensor action at scales beneath the mesh spacing can be usefully approximated by a computationally simple function of the rock properties and the interface geometry. Frequency-dependent sensors that probe a range of physical scales may require a frequency-dependent anti-aliasing function, and similarly for sensors with anisotropic interactions with interfaces. While there is nothing fundamental

---

<sup>313</sup>removed: mappings in Sections

<sup>314</sup>removed: ?? assumes

<sup>315</sup>removed: Although Blockworlds does not implement this functionality, a change of variable should be enough to extend the anti-aliasing prescription

<sup>316</sup>removed: 6

<sup>317</sup>removed: should

that prevents anti-aliasing for sensors that respond non-linearly to rock properties, mesh refinement may be more important in  
 520 these cases to ensure the numerical accuracy, as well as the continuity, of the posterior. The framework in this paper treats only  
 quantities defined at mesh cell centers; while it may be possible to derive similar relations for quantities defined on mesh cell  
 faces and edges, as in finite-volume treatments of electromagnetic sensors, this represents future work.

## 5.4 [..<sup>318</sup> ]

[..<sup>319</sup> ]

525 [..<sup>320</sup> ]

[..<sup>321</sup>][..<sup>322</sup>][..<sup>323</sup>][..<sup>324</sup>]

[..<sup>325</sup> ]

[..<sup>326</sup> ]

[..<sup>327</sup> ]

530 [..<sup>328</sup> ]

[..<sup>329</sup> ]

[..<sup>330</sup> ]

---

<sup>318</sup>removed: Limitations of anti-aliasing

<sup>319</sup>removed: Since the anti-aliasing approximation amounts to a strong prior on sub-mesh structure, understanding its limitations is critical in practical modeling. Common sense suggests that no length scale parameter in the inference problem should ever be less than the voxel size  $h$ . However, as shown in Fig. 1, departures from the true posterior can occur even at higher resolution, depending upon the resolving power of the data and the structure of the likelihood.

<sup>320</sup>removed: The approximation giving rise to the first-order anti-aliasing scheme described in Eq. 6 and Eq. 3 will break down when higher-order terms in the expansion become significant. This will manifest in a departure of the position of the best-fit flat plane from the expected position, and in curvature of local interfaces. We can use the second-order term of the expansion to estimate this, so that our particular scheme assumes

<sup>325</sup>removed: where  $\mathbf{H}_\Phi$  is the Hessian of  $\Phi$  evaluated at the cell center  $\mathbf{r}_0$ .

<sup>326</sup>removed: This leads us towards a criterion we can use to evaluate whether our model is under-resolved within a given mesh cell. Although we would expect the Hessian to be expensive to calculate at every mesh cell, it should be accessible to implicit models based on co-kriging, and could be spot-checked only for cells lying near interfaces. Furthermore, within the context of MCMC, it might suffice to perform such a spot check about once per autocorrelation time, when the Markov chain migrates to a new, independent region of parameter space. Carrying out the maximization explicitly is also probably not needed; the behavior will depend on the largest singular value of  $\mathbf{H}_\Phi$ , but a simpler criterion to evaluate is

<sup>328</sup>removed: An example for the sphere follows: setting  $\Phi(\mathbf{r}) = |\mathbf{r}|^2$ , we have  $\nabla\Phi = 2\mathbf{r}$  and  $\mathbf{H}_\Phi = 2\mathbf{I}$ . Equation ?? then holds when  $h/|\mathbf{r}| \gg 1$ , and we expect the aliasing to hold near the true sphere radius  $R$  when  $h \ll R$ , as we might expect.

<sup>329</sup>removed: A more practical calibration can be given, again, by working out a limiting case. For a sphere with radius equal to the mesh cell size, Eq. 3 will overestimate its volume by a factor between 8% (if  $\nabla\Phi$  points normal to a voxel face) to 20% (if it points along the voxel diagonal instead). The sphere is an extreme case in that it has positive curvature everywhere, while a sinusoidally folded interface has no intrinsic curvature. Analytic calculations for other special cases give deviations proportional to  $\delta v$ , with estimated partial volume errors around  $0.1\delta v$ . For the sphere in Sect. 2.2,  $R/h = 4.5$ , so that  $0.1\delta v = 2\%$ . Since about half of the sphere's voxels lie at the interface, this is enough to explain the bias in inference shown in Fig. 1.

<sup>330</sup>removed: Another drawback in anti-aliasing is that it ignores the relative orientations of interfaces in voxels spanning multiple interfaces. If only one interface passes through a voxel, Eq. ?? should result in a faithful representation of its density. If, however, that voxel is later faulted or brought up against

## 6 Conclusions

535 Our experiments show the potential pitfalls of using oversimplified projections of 3-D structural geology onto a volumetric basis for calculation of synthetic geophysics, and demonstrate an intuitive, efficient solution. Anti-aliasing reproduces the smooth behavior of the underlying posterior with respect to the geological parameters, to enhance convergence of optimization or mixing of sampling methods and to enable the use of derivative information in these methods. Anti-aliasing enables a fixed volumetric basis to more faithfully represent sensor response to latent discrete geology with interfaces that are flat on the scale  
 540 of a mesh cell, reducing the computational burden of forward geophysics in an inversion loop. Our algorithm is also coordinate-invariant and can be combined with curvilinear meshes, and with mesh refinement techniques such as octrees (e.g. ?), for even stronger results. Finally, the K-L divergence between versions of the log posterior using different mesh resolutions can be calculated using MCMC samples, either online or in post-processing as a diagnostic, allowing the user to determine how much the problem would benefit from additional mesh refinement.

545 We have focused on calculations over 3-D Cartesian volumetric meshes because implicit and kinematic models are naturally volumetric, and because existing geological modeling codes already export rock properties onto meshes as block models. Introducing anti-aliasing into these geological models is a minimally invasive modification to enhance their use in MCMC-based Bayesian inversions. Other [<sup>332</sup>] discretization schemes built to align with geological interfaces, such as [<sup>333</sup>] pillar grids (?), may mitigate aliasing along the pillar, but still suffer aliasing of features cutting across the pillar axis and are  
 550 more limited in their representational power. Alternate methods for calculating gravity and magnetics [<sup>334</sup>], such as the Cauchy surface method (??) or finite-volume methods on tetrahedral meshes ?? require many fewer discrete elements than a 3-D volumetric mesh to achieve a given accuracy, since they follow an explicit lower-dimensional discretization of each interface. These methods are most suitable for geological models that already parametrize unit interfaces explicitly. Using them with implicit models, or with kinematic models that work by deforming and transporting volumetric elements, would introduce  
 555 additional computational overhead in tracking the positions of interfaces and updating an associated lower-dimensional mesh. The sensor response coefficients would then also have to be updated each time the model parameters are updated. There may

---

an unconformity, the true mean density in the voxel depends on which of the two formations is preferentially replaced by the new obtruding unit; Eq. ?? will only give some mean value roughly correct when the two interfaces intersect at right angles. Anti-aliasing will thus become increasingly inaccurate with each successive application to a voxel. This effect can cause biases even in geologies with exactly flat interfaces, but should remain small as long as the affected voxels are not too numerous or too close to the surface. Such regions of complexity can be identified by flagging voxels within a projected distance  $u_{\perp} < h$  of an interface, and the additional uncertainty in the lithology can be treated explicitly — for example, by assigning latent variables in the statistical model to account for it.

<sup>331</sup>removed: Once an inversion has been performed, the best practice to assess bias will still be to repeat it with a different cell size. However, using these metrics to assess an ensemble of models drawn from the prior, or tracking affected voxels while a trial inversion is running, could still be useful in determining a suitable cell size for the final model.

<sup>332</sup>removed: methods

<sup>333</sup>removed: the Cauchy surface method

<sup>334</sup>removed: (??),

still be geological use cases where tracking interfaces during the sampling process is more efficient than a finite volume solution involving every voxel, but we defer examination of such cases to future work.

The accurate and efficient projection of these simple geological models onto meshes for geophysics calculations is a prerequisite to inversion for structural and kinematic parameters in more realistic situations. We can now take clear next steps towards MCMC sampling of kinematic histories for richer, higher-dimensional models. In addition, we can now move towards sampling of hierarchical geophysical inversions that use a parametric structural model as a mean function. This will enable voxel-space inversions for which the geological prior is expressed in terms of uncertain interpretable parameters, or inversions for geology that include uncertainty due to residual rock property variations constrained by geophysics. These would represent more complete probabilistic treatments of geological uncertainty in light of available constraints from geophysics.

*Code and data availability.* The version of the Blockworlds model code used in this paper is archived with Zenodo (DOI: 10.5281/zenodo.5759225). The datasets used in the inversions are synthetic and can be reproduced exactly by running a set of scripts from the command line that fix the random number seed used to generate those datasets, as described in the package manual.

## Appendix A: MCMC performance metrics

In the definitions to follow, we follow notation introduced in ?. Consider  $M$  Markov chains, each of length  $N$  and with  $d$ -dimensional parameter vectors, are run independently or in parallel. Let  $\theta_{ki}^{[j]}$  denote parameter  $k$  of  $d$ , drawn at iteration  $[j]$  of  $N$  in chain  $i$  of  $M$ . Let

$$\hat{\theta}_{ki} = \frac{1}{N} \sum_{j=1}^N \theta_{ki}^{[j]} \quad (\text{A1})$$

denote the sample mean of parameter  $k$  over the  $N$  iterates of chain  $i$ , and

$$s_{ki} = \frac{1}{M-1} \sum_{j=1}^N (\theta_{ki}^{[j]} - \hat{\theta}_{ki}) \quad (\text{A2})$$

denote the sample variance of parameter  $k$  over chain  $i$ . Let  $\tilde{\theta}_k = \sum_{i=1}^M \hat{\theta}_{ki}$  denote the sample mean of  $\hat{\theta}_{ki}$  across all chains. To summarize variation in parameter estimates across chains, let

$$B_k = \frac{1}{M-1} \sum_{i=1}^M (\theta_{ki}^{[j]} - \hat{\theta}_{ki}) \quad (\text{A3})$$

denote the sample variance in  $\hat{\theta}_{ki}$  across chains, and

$$W_k = \frac{1}{M} \sum_{i=1}^M s_{ki}^2 \quad (\text{A4})$$

denote the sample mean of  $s_{ki}^2$  across chains. Thus  $B_k$  is a measure of the variance in parameter estimates made from the history of samples in any single chain on its own, and  $W_k$  is a measure of the overall variance of a parameter within any single chain.

## A1 Integrated autocorrelation time

585 The autocorrelation function, measuring the correlation between parameter draws separated by a lag  $l$  when treating each chain as a time series, is

$$\rho_{lki} = \frac{1}{(N-l)W_k} (\theta_{ki}^{[j]} - \hat{\theta}_{ki}) (\theta_{ki}^{[j-l]} - \hat{\theta}_{ki}). \quad (\text{A5})$$

The integrated autocorrelation time (IACT), the sum of the autocorrelation function over lags  $l$  gives an estimate of the number of chain samples required to obtain an independent draw from the stationary distribution:

$$590 \tau_{ki} = 1 + 2 \sum_{l=1}^N \left(1 - \frac{k}{N}\right) \rho_{lki}. \quad (\text{A6})$$

## A2 Potential scale reduction factor

The potential scale reduction factor (PSRF) was introduced as a metric for chain convergence by ?. It measures the extent to which uncertainty in a parameter could be reduced by continuing to sample beyond the nominal chain length  $N$ . A simple version often implemented is

$$595 \frac{\hat{V}_k}{W_k} = \frac{N-1}{N} + \frac{M+1}{MN} \frac{B_k}{W_k} \quad (\text{A7})$$

The behavior of the metric is driven by the ratio  $B_k/W_k$ , or the variance in parameter means from different chains as a fraction of the overall marginal variance in that parameter. This can be large because of small number statistics in a unimodal problem, but it can also be large because of poor mixing between modes in a multimodal problem, which increases the autocorrelation between samples. ? advocate searching for multiple modes in advance and drawing starting points for MCMC from an overdispersed approximation to the posterior. They also account for sampling variability, including correlation between samples, via the modified metric

$$\hat{R} = \frac{\hat{V}}{W} \frac{\nu}{\nu-2}, \quad (\text{A8})$$

where  $\nu = 2\hat{V}^2/\text{v}\hat{\text{a}}\text{r}(\hat{V})$  represents the number of degrees of freedom in a  $t$ -distribution for  $\tilde{\theta}_k$ , with

$$\begin{aligned} \text{v}\hat{\text{a}}\text{r}(\hat{V}_k) &= \left(\frac{N-1}{N}\right)^2 \frac{1}{M} \text{v}\hat{\text{a}}\text{r}(s_{ki}^2) \\ &+ \left(\frac{M+1}{MN}\right)^2 \frac{2}{M-1} B^2 \\ &+ 2 \frac{(M+1)(N-1)}{MN^2} \frac{N}{M} \\ &\times \left[ \text{c}\hat{\text{o}}\text{v}(s_{ki}^2, \hat{\theta}_{ki}^2) - 2\tilde{\theta}_k \text{c}\hat{\text{o}}\text{v}(s_{ki}^2, \hat{\theta}_{ki}) \right]. \end{aligned} \quad (\text{A9})$$

We use the metric  $\hat{R}$  for our experiments, given that autocorrelation times can be quite long for our chains.

*Author contributions.* The study was conceptualized by SC, who with MJ provided funding and resources. RS was responsible for project administration, designed the methodology, wrote the Blockworlds code resulting in v0.1, and carried out the main investigation and formal analysis under supervision from SC, EC, and MJ. RS and ML validated and visualized the results. RS wrote the original draft text with contributions from ML, for which all coauthors provided a review and critical evaluation.

*Competing interests.* The authors declare that they have no conflict of interest.

*Acknowledgements.* Parts of this research were conducted by the Australian Research Council Industrial Transformation Training Centre in Data Analytics for Resources and the Environment (DARE), through project number IC190100031. The work has been supported by the Mineral Exploration Cooperative Research Centre whose activities are funded by the Australian Government's Cooperative Research Centre Programme. This is MinEx CRC Document 2021/34. MDL acknowledges funding from ARC DECRA DE190100431 and MinEx CRC. We thank Alistair Reid and Malcolm Sambridge for useful discussions.

## References

- 620 Andrieu, C. and Thoms, J.: A tutorial on adaptive MCMC, *Statistics and Computing*, 18, 343–373, <https://doi.org/10.1007/s11222-008-9110-y>, <http://link.springer.com/10.1007/s11222-008-9110-y>, 2008.
- Backus, G. and Gilbert, F.: The Resolving Power of Gross Earth Data, *Geophysical Journal of the Royal Astronomical Society*, 16, 169–205, <https://doi.org/10.1111/j.1365-246X.1968.tb00216.x>, 1968.
- Backus, G. and Gilbert, F.: Uniqueness in the inversion of inaccurate gross Earth data, *Philosophical Transactions of the Royal Society of London. Series A, Mathematical and Physical Sciences*, 266, 123–192, <https://doi.org/10.1111/j.1365-246X.1968.tb00216.x>, 1970.
- 625 Backus, G. E.: Long-wave elastic anisotropy produced by horizontal layering, *Journal of Geophysical Research*, 67, 4427–4440, 1962.
- Backus, G. E. and Gilbert, J. F.: Numerical Applications of a Formalism for Geophysical Inverse Problems, *Geophysical Journal of the Royal Astronomical Society*, 13, 247–276, <https://doi.org/10.1111/j.1365-246X.1967.tb02159.x>, 1967.
- Beardsmore, G., Durrant-Whyte, H., and Callaghan, S. O.: A Bayesian inference tool for geophysical joint inversions, *ASEG Extended Abstracts 2016.1* (2016): 1–10., pp. 1–10, 2016.
- 630 Bond, C. E.: Uncertainty in structural interpretation: Lessons to be learnt, *Journal of Structural Geology*, 74, 185–200, <https://doi.org/10.1016/j.jsg.2015.03.003>, 2015.
- Bosch, M.: Lithologic tomography: From plural geophysical data to lithology estimation, *Journal of Geophysical Research: Solid Earth*, 104, 749–766, <https://doi.org/10.1029/1998JB900014>, 1999.
- 635 Bosch, M.: Inference Networks in Earth Models with Multiple Components and Data, in: *Geophysical Monograph Series*, edited by Moorkamp, M., Lelièvre, P. G., Linde, N., and Khan, A., pp. 29–47, John Wiley & Sons, Inc, Hoboken, NJ, <https://doi.org/10.1002/9781118929063.ch3>, 2016.
- Bosch, M., Guillen, A., and Ledru, P.: Lithologic tomography: an application to geophysical data from the Cadomian belt of northern Brittany, France, *Tectonophysics*, 331, 197–227, [https://doi.org/10.1016/S0040-1951\(00\)00243-2](https://doi.org/10.1016/S0040-1951(00)00243-2), 2001.
- 640 Brunetti, C., Bianchi, M., Pirot, G., and Linde, N.: Hydrogeological Model Selection Among Complex Spatial Priors, *Water Resources Research*, 55, 6729–6753, <https://doi.org/10.1029/2019WR024840>, 2019.
- Cai, H. and Zhdanov, M.: Application of Cauchy-type integrals in developing effective methods for depth-to-basement inversion of gravity and gravity gradiometry data, *GEOPHYSICS*, 80, G81–G94, <https://doi.org/10.1190/geo2014-0332.1>, <http://library.seg.org/doi/10.1190/geo2014-0332.1>, 2015.
- 645 Calcagno, P., Chilès, J., Courrioux, G., and Guillen, A.: Geological modelling from field data and geological knowledge, *Physics of the Earth and Planetary Interiors*, 171, 147–157, <https://doi.org/10.1016/j.pepi.2008.06.013>, 2008.
- Capdeville, Y., Guillot, L., and Marigo, J.-J.: 1-D non-periodic homogenization for the seismic wave equation. *Geophysical Journal International*, *Geophysical Journal International*, 181, 897–910, 2010.
- Catmull, E.: A hidden-surface algorithm with anti-aliasing, in: *Proceedings of the 5th Annual Conference on Computer Graphics and Interactive Techniques*, pp. 6–11, 1978.
- 650 Cockett, R., Kang, S., Heagy, L. J., Pidlisecky, A., and Oldenburg, D. W.: SimPEG: An open source framework for simulation and gradient based parameter estimation in geophysical applications, *Computers & Geosciences*, 85, 142–154, <https://doi.org/10.1016/j.cageo.2015.09.015>, 2015.
- Cook, R. L.: Stochastic sampling in computer graphics, *ACM Transactions on Graphics*, 5, 51–72, 1986.



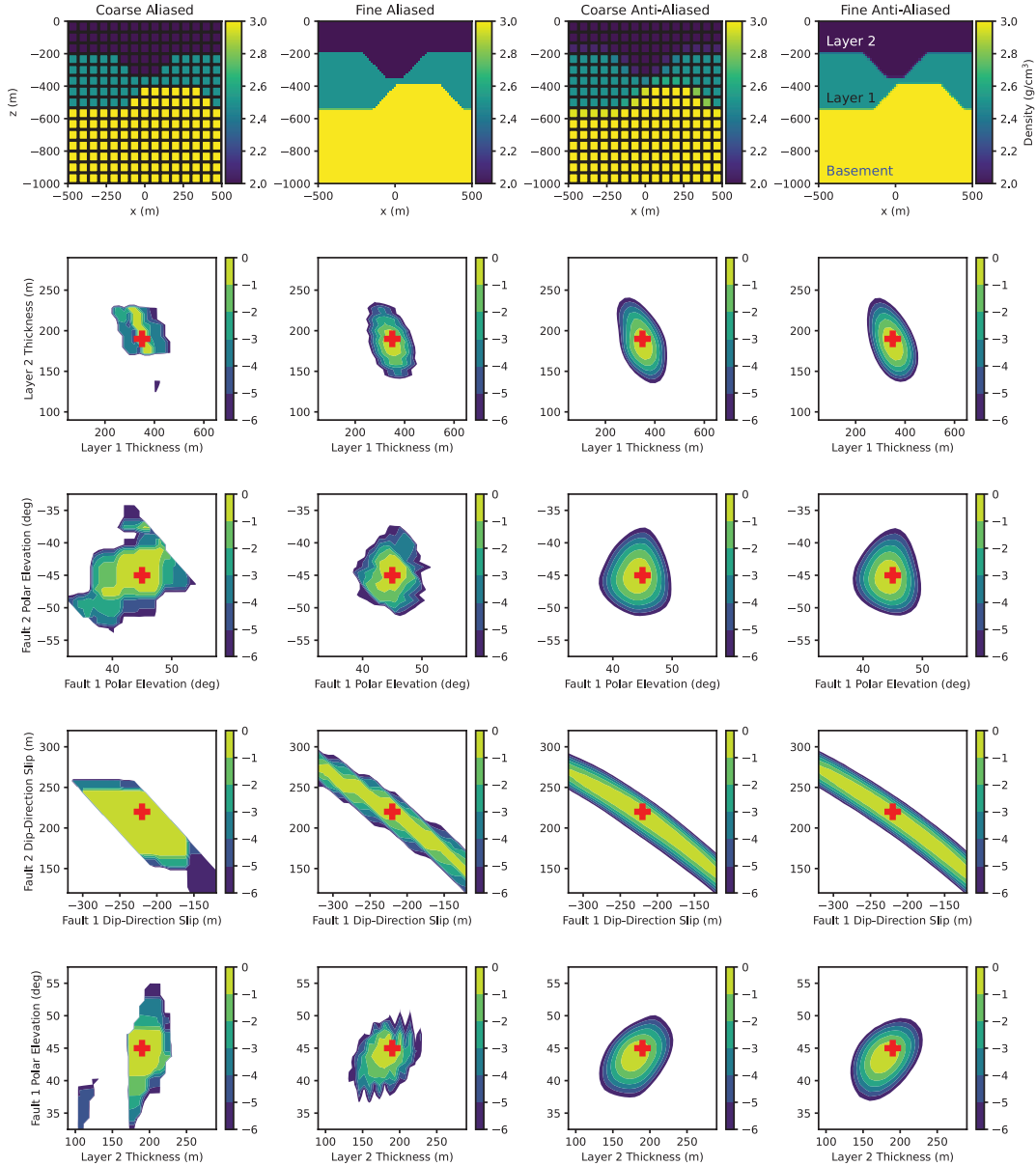
- 655 Cordua, K. S., Hansen, T. M., and Mosegaard, K.: Monte Carlo full-waveform inversion of crosshole GPR data using multiple-point geostatistical a priori information, *GEOPHYSICS*, 77, H19–H31, <https://doi.org/10.1190/geo2011-0170.1>, 2012.
- Crow, F. C.: The aliasing problem in computer-generated shaded images, *Communications of the ACM*, 20, 799–805, 1977.
- de la Varga, M., Schaaf, A., and Wellmann, F.: GemPy 1.0: open-source stochastic geological modeling and inversion, *Geoscience Model Development Discussions*, submitted, 50, 2018.
- 660 de Pasquale, G., Linde, N., Doetsch, J., and Holbrook, W. S.: Probabilistic inference of subsurface heterogeneity and interface geometry using geophysical data, *Geophysical Journal International*, 217, 816–831, <https://doi.org/10.1093/gji/ggz055>, 2019.
- Eckhardt, E. A.: Partnership between geology and geophysics in prospecting for oil, *GEOPHYSICS*, 5, 209–214, <https://doi.org/10.1190/1.1441804>, 1940.
- Frodeman, R.: Geological reasoning: Geology as an interpretive and historical science, *Geological Society of America Bulletin*, 107, 960–665 0968, [https://doi.org/10.1130/0016-7606\(1995\)107<0960:GRGAAI>2.3.CO;2](https://doi.org/10.1130/0016-7606(1995)107<0960:GRGAAI>2.3.CO;2), 1995.
- Gallardo, L. A. and Meju, M. A.: Structure-coupled multiphysics imaging in geophysical sciences, *Reviews of Geophysics*, 49, 2011.
- Gelman, A. and Rubin, D.: Inference from Iterative Simulation Using Multiple Sequences, *Statistical Science*, 7, 457–472, 1992.
- Giraud, J., Pakyuz-Charrier, E., Jessell, M., Lindsay, M., Martin, R., and Ogarko, V.: Uncertainty reduction through geologically conditioned petrophysical constraints in joint inversion, *GEOPHYSICS*, 82, ID19–ID34, <https://doi.org/10.1190/geo2016-0615.1>, 2017.
- 670 Giraud, J., Pakyuz-Charrier, E., Ogarko, V., Jessell, M., Lindsay, M., and Martin, R.: Impact of uncertain geology in constrained geophysical inversion, *ASEG Extended Abstracts*, 2018, 1, [https://doi.org/10.1071/ASEG2018abM1\\_2F](https://doi.org/10.1071/ASEG2018abM1_2F), 2018.
- Giraud, J., Lindsay, M., Ogarko, V., Jessell, M., Martin, R., and Pakyuz-Charrier, E.: Integration of geoscientific uncertainty into geophysical inversion by means of local gradient regularization, *Solid Earth*, 10, 193–210, <https://doi.org/10.5194/se-10-193-2019>, 2019a.
- Giraud, J., Ogarko, V., Lindsay, M., Pakyuz-Charrier, E., Jessell, M., and Martin, R.: Sensitivity of constrained joint inversions to geological and petrophysical input data uncertainties with posterior geological analysis, *Geophysical Journal International*, 218, 666–688, 675 <https://doi.org/10.1093/gji/ggz152>, 2019b.
- Giraud, J., Lindsay, M., Jessell, M., and Ogarko, V.: Towards plausible lithological classification from geophysical inversion: honouring geological principles in subsurface imaging, *Solid Earth*, 11, 419–436, <https://doi.org/10.5194/se-11-419-2020>, 2020.
- Giraud, J., Lindsay, M., and Jessell, M.: Generalization of level-set inversion to an arbitrary number of geologic units in a regularized 680 least-squares framework, *GEOPHYSICS*, 86, R623–R637, <https://doi.org/10.1190/geo2020-0263.1>, <https://library.seg.org/doi/10.1190/geo2020-0263.1>, 2021a.
- Giraud, J., Ogarko, V., Martin, R., Jessell, M., and Lindsay, M.: Structural, petrophysical and geological constraints in potential field inversion using the Tomofast-x v1.0 open-source code, *Geoscientific Model Development Discussions*, 2021, 1–51, <https://doi.org/10.5194/gmd-2021-14>, <https://gmd.copernicus.org/preprints/gmd-2021-14/>, 2021b.
- 685 Götze, H. and Lahmeyer, B.: Application of three-dimensional interactive modeling in gravity and magnetics, *Geophysics*, 53, 1096–1108, <https://doi.org/10.1190/1.1442546>, 1988.
- Grose, L., Ailleres, L., Laurent, G., and Jessell, M.: LoopStructural 1.0: Time aware geological modelling, *Geoscientific Model Development Discussions*, 2020, 1–31, <https://doi.org/10.5194/gmd-2020-336>, <https://gmd.copernicus.org/preprints/gmd-2020-336/>, 2020.
- Guillen, A., Calcagno, P., Courrioux, G., Joly, A., and Ledru, P.: Geological modelling from field data and geological knowledge Part 690 II. Modelling validation using gravity and magnetic data inversion, *Physics of the Earth and Planetary Interiors*, 171, 158–169, <https://doi.org/10.1016/j.pepi.2008.06.014>, 2008.

- Haario, H., Saksman, E., and Tamminen, J.: An Adaptive Metropolis Algorithm, *Bernoulli*, 7, 223, <https://doi.org/10.2307/3318737>, iSBN: 1350-7265, 2001.
- 695 Haber, E. and Heldmann, S.: An octree multigrid method for quasi-static Maxwell's equations with highly discontinuous coefficients, *Journal of Computational Physics*, 223, 783–796, <https://doi.org/https://doi.org/10.1016/j.jcp.2006.10.012>, <https://www.sciencedirect.com/science/article/pii/S0021999106004748>, 2007.
- Hastings, W. K.: Monte Carlo sampling methods using Markov chains and their applications, *Biometrika*, 57, 97–109, <https://doi.org/10.1093/biomet/57.1.97>, 1970.
- Houlding, S. W.: 3D Geoscience modeling: computer techniques for geological characterization, Springer Verlag, 46, 85–90, 1994.
- 700 Jessell, M., Pakyuz-Charrier, E., Lindsay, M., Giraud, J., and de Kemp, E.: Assessing and Mitigating Uncertainty in Three-Dimensional Geologic Models in Contrasting Geologic Scenarios, in: *Metals, Minerals, and Society*, Society of Economic Geologists (SEG), <https://doi.org/10.5382/SP.21.04>, 2018.
- Jessell, M. W.: “Noddy” – An interactive Map creation Package, Master's thesis, Imperial College of Science and Technology, London, UK, 1981.
- 705 Jessell, M. W. and Valenta, R. K.: Structural geophysics: Integrated structural and geophysical modelling, in: *Structural Geology and Personal Computers*, edited by De Paor, D. G., pp. 303–324, Elsevier, Oxford, UK, 1993.
- Jessell, M. W., Ailleres, L., and de Kemp, E. A.: Towards an integrated inversion of geoscientific data: What price of geology?, *Tectonophysics*, 490, 294–306, <https://doi.org/10.1016/j.tecto.2010.05.020>, 2010.
- Kennedy, M. C. and O'Hagan, A.: Bayesian calibration of computer models, *Journal of the Royal Statistical Society: Series B (Statistical Methodology)*, 63, 425–464, <https://doi.org/10.1111/1467-9868.00294>, 2001.
- 710 Koene, E. F. M., Wittsten, J., and Robertsson, J. O. A.: Finite-difference modeling of 2-D wave propagation in the vicinity of dipping interfaces: a comparison of anti-aliasing and equivalent medium approaches, 2021.
- Lajaunie, C., Courrioux, G., and Manuel, L.: Foliation fields and 3D cartography in geology: Principles of a method based on potential interpolation, *Mathematical Geology*, 29, 571–584, <https://doi.org/10.1007/BF02775087>, 1997.
- 715 Li, W., Lu, W., Qian, J., and Li, Y.: A multiple level-set method for 3D inversion of magnetic data, *Geophysics*, 82, J61–J81, <https://doi.org/10.1190/GEO2016-0530.1>, 2017.
- Li, Y. and Oldenburg, D. W.: 3-D inversion of gravity data, *Geophysics*, 63, 109–119, <https://doi.org/10.1190/1.1444302>, 1998.
- Li, Y. and Oldenburg, D. W.: Incorporating geological dip information into geophysical inversions, *GEOPHYSICS*, 65, 148–157, <https://doi.org/10.1190/1.1444705>, 2000.
- 720 Linde, N., Ginsbourger, D., Irving, J., Nobile, F., and Doucet, A.: On uncertainty quantification in hydrogeology and hydrogeophysics, *Advances in Water Resources*, 110, 166 – 181, <https://doi.org/10.1016/j.advwatres.2017.10.014>, 2017.
- Lindsay, M., Jessell, M., Ailleres, L., Perrouy, S., de Kemp, E., and Betts, P.: Geodiversity: Exploration of 3D geological model space, *Tectonophysics*, 594, 27–37, <https://doi.org/https://doi.org/10.1016/j.tecto.2013.03.013>, <https://www.sciencedirect.com/science/article/pii/S004019511300187X>, 2013.
- 725 Lindsay, M. D., Aillères, L., Jessell, M. W., de Kemp, E. A., and Betts, P. G.: Locating and quantifying geological uncertainty in three-dimensional models: Analysis of the Gippsland Basin, southeastern Australia, *Tectonophysics*, 546-547, 10–27, <https://doi.org/https://doi.org/10.1016/j.tecto.2012.04.007>, <https://www.sciencedirect.com/science/article/pii/S0040195112002004>, 2012.

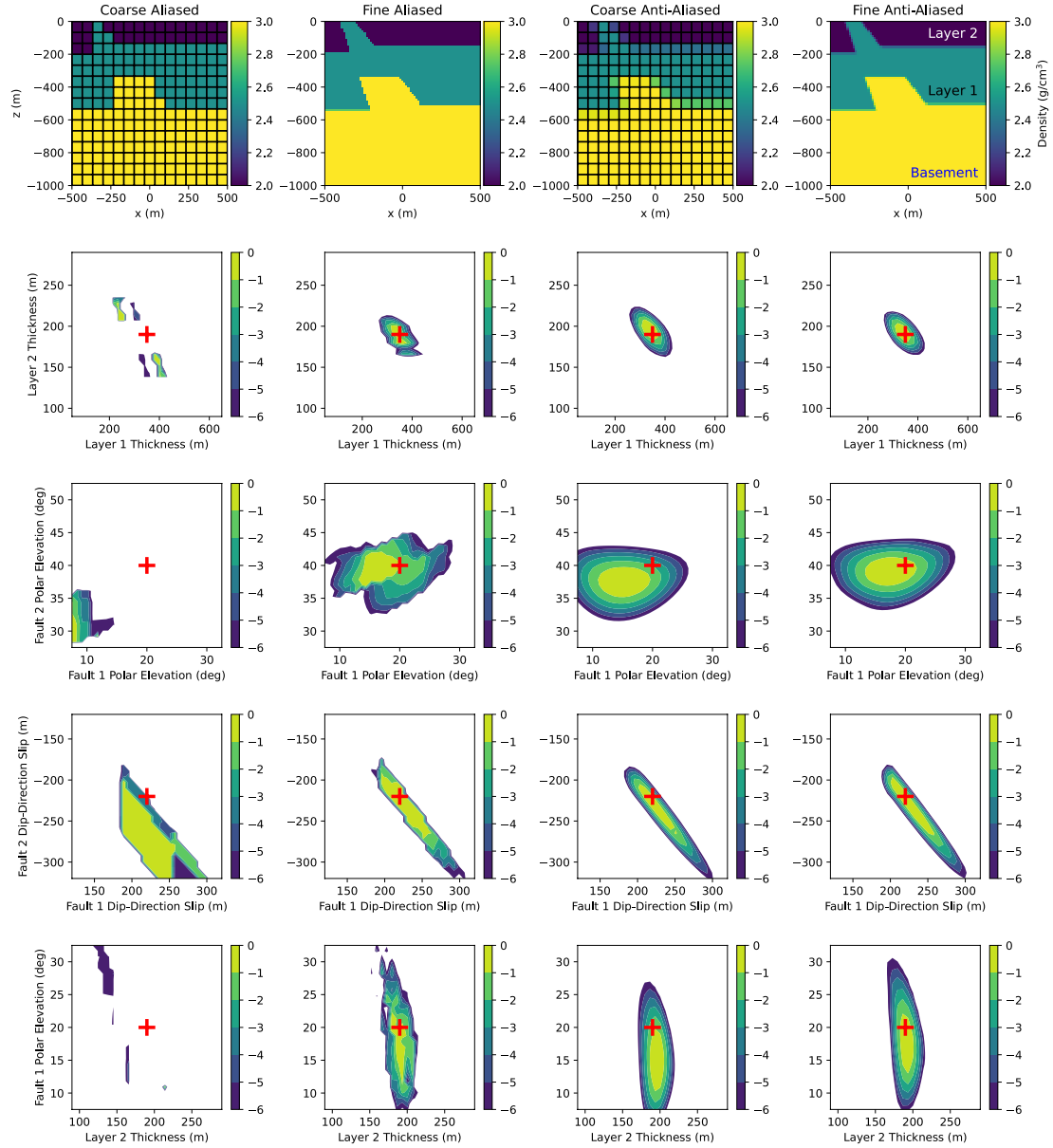
- Lindsay, M. D., Occhipinti, S., Laflamme, C., Aitken, A., and Ramos, L.: Mapping undercover: integrated geoscientific interpretation and 3D modelling of a Proterozoic basin, *Solid Earth*, 11, 1053–1077, <https://doi.org/10.5194/se-11-1053-2020>, <https://se.copernicus.org/articles/11/1053/2020/>, 2020.
- 730 McCalman, L., O’Callaghan, S. T., Reid, A., Shen, D., Carter, S., Krieger, L., Beardsmore, G. R., Bonilla, E. V., and Ramos, F. T.: Distributed Bayesian geophysical inversions, *Proceedings of the Thirty-Ninth Workshop on Geothermal Reservoir Engineering*, Stanford University, pp. 1–11, 2014.
- Metropolis, N. and Ulam, S.: The Monte Carlo Method, *Journal of the American Statistical Association*, 44, 335–341, 1949.
- 735 Metropolis, N., Rosenbluth, A. W., Rosenbluth, M. N., Teller, A. H., and Teller, E.: Equation of State Calculations by Fast Computing Machines, *The Journal of Chemical Physics*, 21, 1087–1092, <https://doi.org/10.1063/1.1699114>, 1953.
- Moczo, P., Kristek, J., Vavrycuk, V., Archuleta, R. J., and Halada, L.: 3d heterogeneous staggered-grid finite-difference modeling of seismic motion with volume harmonic and arithmetic averaging of elastic moduli and densities., *Bulletin of the Seismological Society of America*, 92, 3042–3066, 2002.
- 740 Mosegaard, K. and Sambridge, M.: Monte Carlo analysis of inverse problems, *Inverse Problems*, 18, R29–R54, <https://doi.org/10.1088/0266-5611/18/3/201>, 2002.
- Mosegaard, K. and Tarantola, A.: Monte Carlo sampling of solutions to inverse problems, *Journal of Geophysical Research: Solid Earth*, 100, 12 431–12 447, <https://doi.org/10.1029/94JB03097>, 1995.
- Muir, F., Dellinger, J., Etgen, J., and Nichols, D.: Modeling elastic fields across irregular boundaries, *Geophysics*, 57, 1189–1193, 1992.
- 745 Neal, R. M.: MCMC using Hamiltonian dynamics, *Handbook of Markov Chain Monte Carlo*, pp. 113–162, <https://doi.org/doi:10.1201/b10905-6>, arXiv: 1206.1901 ISBN: 9781420079418, 2011.
- Nishimura, A., Dunson, D., and Lu, J.: Discontinuous Hamiltonian Monte Carlo for discrete parameters and discontinuous likelihoods, arXiv:1705.08510 [stat], <http://arxiv.org/abs/1705.08510>, arXiv: 1705.08510, 2019.
- Ogarko, V., Giraud, J., Martin, R., and Jessell, M.: Disjoint interval bound constraints using the alternating direction method of multipliers for geologically constrained inversion: Application to gravity data, *GEOPHYSICS*, 86, G1–G11, <https://doi.org/10.1190/geo2019-0633.1>, 2021.
- 750 Okabe, M.: Analytical expressions for gravity anomalies due to homogeneous polyhedral bodies and translations into magnetic anomalies, *Geophysics*, 44, 730, <https://doi.org/10.1190/1.1440973>, 1979.
- Olierook, H. K., Scalzo, R., Kohn, D., Chandra, R., Farahbakhsh, E., Clark, C., Reddy, S. M., and Müller, R. D.: Bayesian geological and geophysical data fusion for the construction and uncertainty quantification of 3D geological models, *Geoscience Frontiers*, <https://doi.org/10.1016/j.gsf.2020.04.015>, 2020.
- 755 Osher, S. and Sethian, J. A.: Fronts propagating with curvature-dependent speed: Algorithms based on Hamilton-Jacobi formulations, *Journal of Computational Physics*, 79, 12–49, [https://doi.org/10.1016/0021-9991\(88\)90002-2](https://doi.org/10.1016/0021-9991(88)90002-2), 1988.
- Öztireli, A. C.: A Comprehensive Theory and Variational Framework for Anti-aliasing Sampling Patterns, *Computer Graphics Forum*, 39, 133–148, 2020.
- 760 Pakyuz-Charrier, E., Giraud, J., Ogarko, V., Lindsay, M., and Jessell, M.: Drillhole uncertainty propagation for three-dimensional geological modeling using Monte Carlo, *Tectonophysics*, 747–748, 16–39, <https://doi.org/10.1016/j.tecto.2018.09.005>, 2018a.
- Pakyuz-Charrier, E., Lindsay, M., Ogarko, V., Giraud, J., and Jessell, M.: Monte Carlo simulation for uncertainty estimation on structural data in implicit 3-D geological modeling, a guide for disturbance distribution selection and parameterization, *Solid Earth*, 9, 385–402, <https://doi.org/10.5194/se-9-385-2018>, 2018b.
- 765

- Pakyuz-Charrier, E., Jessell, M., Giraud, J., Lindsay, M., and Ogarko, V.: Topological analysis in Monte Carlo simulation for uncertainty propagation, *Solid Earth*, 10, 1663–1684, <https://doi.org/10.5194/se-10-1663-2019>, 2019.
- Patil, A., Huard, D., and Fannesbeck, C. J.: PyMC: Bayesian stochastic modelling in Python, *J. Stat. Softw.*, pp. 1–81, 2010.
- 770 Perrouty, S., Lindsay, M., Jessell, M., Aillères, L., Martin, R., and Bourassa, Y.: 3D modeling of the Ashanti Belt, southwest Ghana: Evidence for a litho-stratigraphic control on gold occurrences within the Birimian Sefwi Group, *Ore Geology Reviews*, 63, 252 – 264, <https://doi.org/10.1016/j.oregeorev.2014.05.011>, 2014.
- Pirot, G., Renard, P., Huber, E., Straubhaar, J., and Huggenberger, P.: Influence of conceptual model uncertainty on contaminant transport forecasting in braided river aquifers, *Journal of Hydrology*, 531, 124 – 141, <https://doi.org/10.1016/j.jhydrol.2015.07.036>, groundwater flow and transport in aquifers: Insights from modeling and characterization at the field scale, 2015.
- 775 Pirot, G., Linde, N., Mariethoz, G., and Bradford, J. H.: Probabilistic inversion with graph cuts: Application to the Boise Hydrogeophysical Research Site, *Water Resources Research*, 53, 1231–1250, <https://doi.org/10.1002/2016WR019347>, 2017.
- Pirot, G., Huber, E., Irving, J., and Linde, N.: Reduction of conceptual model uncertainty using ground-penetrating radar profiles: Field-demonstration for a braided-river aquifer, *Journal of Hydrology*, 571, 254 – 264, <https://doi.org/10.1016/j.jhydrol.2019.01.047>, 2019a.
- Pirot, G., Kritiyakierne, T., Ginsbourger, D., and Renard, P.: Contaminant source localization via Bayesian global optimization, *Hydrology and Earth System Sciences*, 23, 351–369, <https://doi.org/10.5194/hess-23-351-2019>, 2019b.
- 780 Quigley, M. C., Bennetts, L. G., Durance, P., Kuhnert, P. M., Lindsay, M. D., Pembleton, K. G., Roberts, M. E., and White, C. J.: The provision and utility of science and uncertainty to decision-makers: earth science case studies, *Environment Systems and Decisions*, 39, 307–348, <https://doi.org/10.1007/s10669-019-09728-0>, 2019.
- Rawlinson, N., Fichtner, A., Sambridge, M., and Young, M. K.: Seismic Tomography and the Assessment of Uncertainty, in: *Advances in Geophysics*, vol. 55, pp. 1–76, Elsevier, <https://doi.org/10.1016/bs.agph.2014.08.001>, 2014.
- 785 Sambridge, M., Bodin, T., Gallagher, K., and Tkalcic, H.: Transdimensional inference in the geosciences, *Philosophical Transactions of the Royal Society A: Mathematical, Physical and Engineering Sciences*, 371, 20110547–20110547, <https://doi.org/10.1098/rsta.2011.0547>, ISBN: 1364503X (ISSN), 2012.
- Santosa, F.: A level-set approach for inverse problems involving obstacles, *ESAIM: Control, Optimisation and Calculus of Variations*, 1, 17–33, <https://doi.org/10.1051/cocv:1996101>, 1996.
- 790 Scalzo, R., Kohn, D., Olierook, H., Houseman, G., Chandra, R., Girolami, M., and Cripps, S.: Efficiency and robustness in Monte Carlo sampling for 3-D geophysical inversions with Obsidian v0.1.2: setting up for success, *Geoscientific Model Development*, 12, 2941–2960, <https://doi.org/10.5194/gmd-12-2941-2019>, 2019.
- Schmidt, S., Anikiev, D., Götze, H.-J., Gomez Garcia, A., Gomez Dacal, M. L., Meessen, C., Plonka, C., Rodriguez Picada, C., Spooner, C., and Scheck-Wenderoth, M.: IGMAS+ – a tool for interdisciplinary 3D potential field modelling of complex geological structures, in: *EGU General Assembly 2020*, pp. EGU2020–8383, <https://doi.org/10.5194/egusphere-egu2020-8383>, <https://meetingorganizer.copernicus.org/EGU2020/EGU2020-8383.html>, 2020.
- 795 Tarantola, A. and Valette, B.: Generalized nonlinear inverse problems solved using the least squares criterion, *Reviews of Geophysics*, 20, 219–232, <https://doi.org/10.1029/RG020i002p00219>, 1982.
- 800 Varouchakis, E. A., Yetilmezsoy, K., and Karatzas, G. P.: A decision-making framework for sustainable management of groundwater resources under uncertainty: combination of Bayesian risk approach and statistical tools, *Water Policy*, 21, 602–622, <https://doi.org/10.2166/wp.2019.128>, 2019.

- Wang, Z., Yin, Z., Caers, J., and Zuo, R.: A Monte Carlo-based framework for risk-return analysis in mineral prospectivity mapping, *Geoscience Frontiers*, 11, 2297 – 2308, <https://doi.org/10.1016/j.gsf.2020.02.010>, 2020.
- 805 Wegener, A.: Die Entstehung der Kontinente und Ozeane, *The Geographical Journal*, 61, 304, <https://doi.org/10.2307/1781265>, 1923.
- Wellmann, F. and Caumon, G.: 3-D Structural geological models: Concepts, methods, and uncertainties, in: *Advances in Geophysics*, vol. 59, pp. 1–121, Elsevier, <https://doi.org/10.1016/bs.agph.2018.09.001>, 2018.
- Wellmann, J. F. and Regenauer-Lieb, K.: Uncertainties have a meaning: Information entropy as a quality measure for 3-D geological models, *Tectonophysics*, 526-529, 207–216, <https://doi.org/10.1016/j.tecto.2011.05.001>, 2012.
- 810 Wellmann, J. F., Thiele, S. T., Lindsay, M. D., and Jessell, M. W.: pynoddy 1.0: an experimental platform for automated 3-D kinematic and potential field modelling, *Geoscientific Model Development*, 9, 1019–1035, <https://doi.org/10.5194/gmd-9-1019-2016>, 2016.
- Wellmann, J. F., de la Varga, M., Murdie, R. E., Gessner, K., and Jessell, M.: Uncertainty estimation for a geological model of the Sandstone greenstone belt, Western Australia – insights from integrated geological and geophysical inversion in a Bayesian inference framework, *Geological Society, London, Special Publications*, 453, 41–56, <https://doi.org/10.1144/SP453.12>, 2017.
- 815 Witter, J. B., Trainor-Guitton, W. J., and Siler, D. L.: Uncertainty and risk evaluation during the exploration stage of geothermal development: A review, *Geothermics*, 78, 233 – 242, <https://doi.org/10.1016/j.geothermics.2018.12.011>, 2019.
- Zhdanov, M. S. and Liu, X.: 3-D Cauchy-type integrals for terrain correction of gravity and gravity gradiometry data, *Geophysical Journal International*, 194, 249–268, <https://doi.org/10.1093/gji/ggt120>, <http://academic.oup.com/gji/article/194/1/249/650016/3D-Cauchytype-integrals-for-terrain-correction-of>, 2013.
- 820 Zheglova, P., Lelievre, P. G., and Farquharson, C. G.: Multiple level-set joint inversion of traveltimes and gravity data with application to ore delineation: A synthetic study, *Geophysics*, 83, R13–R30, <https://doi.org/10.1190/GEO2016-0675.1>, 2018.



**Figure 6.** The log posterior distribution of pairs of parameters, denoted by  $\theta$ , in kinematic model 1, relative to the maximal value  $\log_{10}[p(\theta|\mathbf{d})/p(\hat{\theta}_{\text{MAP}}|\mathbf{d})]$ , where  $\hat{\theta}_{\text{MAP}} = \text{argmax}_{\theta} p(\theta|\mathbf{d})$ . In each slice, the true values of gridded parameters are marked with red crosses, and parameters not plotted are fixed at their true values. Columns correspond to different discretization schemes, from left to right: coarse mesh ( $15^3$ ) with no anti-aliasing; fine mesh ( $75^3$ ) with no anti-aliasing; coarse mesh with anti-aliasing; fine mesh with anti-aliasing. The top row shows a vertical cross-section at  $y = 0$  of the 3-D rock density field under each discretization scheme. Rows 2-5 correspond to different pairs of parameters in  $\theta$ ; For row 2,  $\theta$  consists of the two non-basement layer thicknesses; for row 3,  $\theta$  consists of the dip direction angles of the two faults; for row 4,  $\theta$  consists of the fault slips; for row 5,  $\theta$  consists of the dip of the first fault and the thickness of the top layer.



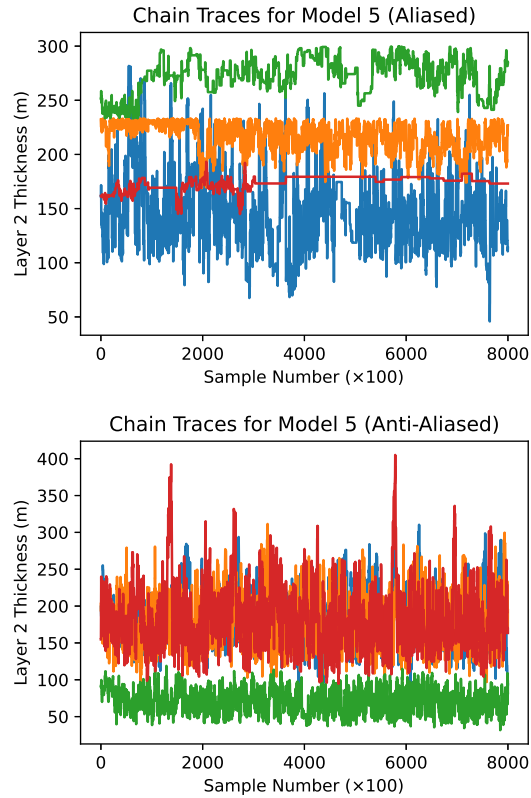
**Figure 7.** The log posterior distribution of pairs of parameters for Model 6. All plot properties are the same as in Fig. ??.

**Table 3.** Performance metrics for each MCMC run[[..276](#) ]: mean (best-case, worst-case) integrated autocorrelation time  $\tau$  in samples ( $\times 10^3$ )[[..277](#) ]; mean (best-case, worst-case) potential scale reduction factor  $\hat{R}$  calculated across 4 runs starting from independent prior draws[[..278](#) ]; and sample Kullback-Liebler divergence  $D_{\text{KL}}$  between the given model and the fine-mesh anti-aliased version, [[..279](#) ]calculated by combining samples from all 4 runs thinned by a factor of 1000.

Runs marked with 'AA' are coarse-mesh anti-aliased, while those marked with only a single-digit [[..280](#) ]model number have

Model	$\tau_{\text{mean}} (\tau_{\text{min}}, \tau_{\text{max}})$	$\hat{R}_{\text{mean}} (\hat{R}_{\text{min}}, \hat{R}_{\text{max}})$	$D_{\text{KL}}$
1	0.6 (0.3, 0.8) [ <a href="#">..282</a> ] $\times 10^3$	1.34 (1.00, 3.53)	14.78
1-AA	0.4 (0.2, 0.6) [ <a href="#">..283</a> ] $\times 10^3$	1.01 (1.00, 1.04)	0.12
2	2.3 (0.6, 5.3) [ <a href="#">..284</a> ] $\times 10^3$	1.59 (1.00, 5.83)	17.63
2-AA	0.2 (0.2, 0.3) [ <a href="#">..285</a> ] $\times 10^3$	1.00 (1.00, 1.01)	-0.08
3	2.5 (0.3, 6.2) [ <a href="#">..286</a> ] $\times 10^3$	2.65 (1.00, [ <a href="#">..287</a> ]15.4)	21.65
3-AA	1.0 (0.2, 3.2) [ <a href="#">..288</a> ] $\times 10^3$	1.11 (1.00, 1.47)	0.01
4	3.5 (0.6, 6.9) [ <a href="#">..289</a> ] $\times 10^3$	3.03 (1.01, [ <a href="#">..290</a> ]21.6)	19.27
4-AA	0.6 (0.1, 1.9) [ <a href="#">..291</a> ] $\times 10^3$	1.01 (1.00, 1.06)	-0.08
5	3.5 (0.8, 6.6) [ <a href="#">..292</a> ] $\times 10^3$	[ <a href="#">..293</a> ]214 (1.04, [ <a href="#">..294</a> ]2720)	184.5
5-AA	0.3 (0.2, 0.3) [ <a href="#">..295</a> ] $\times 10^3$	[ <a href="#">..296</a> ]19.9 (1.00, [ <a href="#">..297</a> ]120)	-3.14
6	4.1 (0.4, 6.6) [ <a href="#">..298</a> ] $\times 10^3$	6.92 (1.01, [ <a href="#">..299</a> ]27.0)	27.94
6-AA	0.6 (0.2, 1.2) [ <a href="#">..300</a> ] $\times 10^3$	[ <a href="#">..301</a> ]12.1 (1.00, [ <a href="#">..302</a> ]72.1)	-8.71
7	2.0 (0.6, 5.6) [ <a href="#">..303</a> ] $\times 10^3$	2.39 (1.00, 8.48)	29.81
7-AA	0.3 (0.2, 0.4) [ <a href="#">..304</a> ] $\times 10^3$	1.00 (1.00, 1.01)	-0.45
anti-aliasing [ <a href="#">..281</a> ]turned off.			
8	2.5 (0.3, 6.7) [ <a href="#">..305</a> ] $\times 10^3$	5.52 (1.00, [ <a href="#">..306</a> ]36.9)	29.76
8-AA	0.1 (0.1, 0.1) [ <a href="#">..307</a> ] $\times 10^3$	1.00 (1.00, 1.00)	-1.74
9	1.9 (0.5, 4.0) $\times 10^3$	13.0 (1.05, 89.5)	12.18
9-AA	0.3 (0.1, 0.6) $\times 10^3$	4.97 (1.00, 25.0)	0.53
10	3.6 (1.3, 5.4) $\times 10^3$	1.60 (1.02, 5.47)	-2.78
10-AA	2.6 (2.1, 3.3) $\times 10^3$	1.09 (1.00, 1.26)	-10.76
11	0.2 (0.2, 0.2) $\times 10^3$	1.00 (1.00, 1.01)	1.72
11-AA	0.1 (0.1, 0.1) $\times 10^3$	1.00 (1.00, 1.01)	1.14
12	1.8 (0.4, 5.6) $\times 10^3$	75.4 (1.03, 659)	4.33
12-AA	0.1 (0.1, 0.2) $\times 10^3$	1.00 (1.00, 1.01)	-5.38
13	2.4 (1.0, 3.7) $\times 10^3$	17.0 (1.01, 89.9)	11.85
13-AA	0.2 (0.1, 0.3) $\times 10^3$	1.00 (1.00, 1.02)	-8.11
14	5.9 (1.5, 9.5) $\times 10^3$	160 (1.37, 2350)	101.4
14-AA	1.1 (0.2, 1.7) $\times 10^3$	16.5 (1.00, 133)	8.70
15	3.7 (0.5, 8.2) $\times 10^3$	176 (1.20, 2180)	47.16
15-AA	2.0 (0.1, 6.2) $\times 10^3$	1.73 (1.01, 7.09)	-11.97





**Figure 8.** Trace plots for Fault 1 basement density during MCMC sampling of Model 5 (coarse mesh). The four colors in each plot represent four separate chains started from different prior draws. Traces begin at the end of burn-in and are thinned by a factor of 100 (every 100<sup>th</sup> trace point is shown). Top: aliased model. Bottom: anti-aliased model.