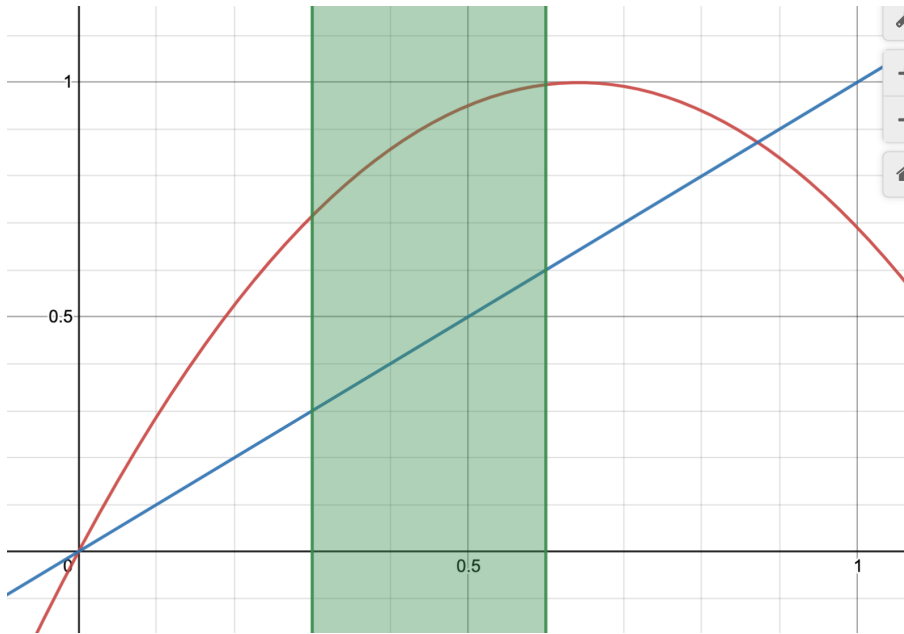


For this revision we have implemented the empirical function of soil moisture limitation described in Moyano et al. (2013), where $r(fW) = 3.11 fW - 2.42 fW^2$, which shows anoxia at higher soil moisture proportions. We compare this new implementation (red curve below) to the linear scaling below (blue line below):



The green shading represents the range of soil moisture proportions found in our sites (Table 1).