

A physically based distributed karst hydrological model (QMG model-V1.0) for flood simulations

Ji Li^{1,*}, Daoxian Yuan^{1,2}, Fuxi Zhang³, Jiao Liu⁴, Mingguo Ma¹

¹Chongqing Jinpo Mountain Karst Ecosystem National Observation and Research Station, Chongqing Key Laboratory of Karst Environment, School of Geographical Sciences, Southwest University, Chongqing 400715, China

²Key Laboratory of Karst Dynamics, MNR & Guangxi, Institute of Karst Geology, Chinese Academy of Geological Sciences, Guilin 541004, China

³College of Engineering Science and Technology, Shanghai Ocean University; Shanghai Engineering Research Center of Marine Renewable Energy 201306, China

⁴Chongqing municipal hydrological monitoring station, Chongqing 401120, China

Corresponding author: Ji Li (445776649@qq.com)

Abstract Karst trough and valley landforms are prone to flooding, primarily because of the unique hydrogeological features of karst landform, which are conducive to the spread of rapid runoff. Hydrological models that represent the complicated hydrological processes in karst regions are effective for predicting karst flooding, but their application has been hampered by their complex model structures and associated parameter set, especially so for distributed hydrological models, which require large amounts of hydrogeological data. Distributed hydrological models for predicting the flooding is highly dependent on distributed modeling, complicated boundary parameters setting, and tremendous hydrogeological data processing that is both time and computational power consuming. Proposed here is a distributed physically-based karst hydrological model, known as the

QMG (Qingmuguan) model. The structural design of this model is relatively simple, and it is generally divided into surface and underground double-layered structures. The parameters that represent the structural functions of each layer have clear physical meanings, and the parameters are less than those of the current distributed models. This allows modeling in karst areas with only a small amount of necessary hydrogeological data. 18 flood processes across the karst underground river in the Qingmuguan karst trough valley are simulated by the QMG model, and the simulated values agree well with observations, for which the average value of Nash–Sutcliffe coefficient was 0.92. A sensitivity analysis shows that the infiltration coefficient, permeability coefficient, and rock porosity are the parameters that require the most attention in model calibration and optimization. The improved predictability of karst flooding by the proposed QMG model promotes a better mechanistic depicting of runoff generation and confluence in karst trough valleys.

Keywords: Simulation and forecasting of karst floods; Karst trough valleys; QMG (Qingmuguan) model; Parametric optimization; Parameter sensitivity analysis

1 Introduction

Karst trough and valley landforms are very common in China, especially in the southwest. In general, these karst areas are water scarce during most of the year because their surfaces store very little rainfall, but they are also potential birthplaces for floods because trough and valley landforms and topographic features facilitate the formation and propagation of floods (White, 2002; Li et al., 2021). The coexistence of drought and flood is a typical phenomenon in these karst trough and valley areas. Taking the example of the present study area, i.e. the Qingmuguan karst trough valley, floods used to happen here constantly during the rainy season. In recent years, with more extreme rainfall events and the increased area of construction land in the region, rainfall infiltration has decreased and rapid runoff over

impervious surfaces has increased, resulting in frequent catastrophic flooding in the basin (Liu et al., 2009). Excess water overflows from karst sinkholes and underground river outlets often occur during floods (Jourde et al., 2007, 2014; Martinotti et al., 2017), flooding large areas of farmland and residential areas and causing serious economic losses (Gutierrez, 2010; Parise, 2010; Yu et al., 2020). Therefore, it is both important and urgent to simulate and predict karst flooding events in karst trough and valleys such as the study area.

Hydrological models can be effective for forecasting floods and evaluating water resources in karst areas (Bonacci et al., 2006; Ford and Williams, 2007; Williams, 2008, 2009). However, modelling floods in karst regions is extremely difficult because of the complex hydrogeological structure. Karst water-bearing systems consist of multiple media under the influence of complex karst development dynamics (Worthington et al., 2000; Kovács and Perrochet, 2008; Gutierrez, 2010), such as karst caves, conduits, fissures and pores, and are usually highly spatially heterogeneous (Chang and Liu, 2015; Teixeiraparente et al., 2019). In addition, the intricate surface hydrogeological conditions and the hydrodynamic conditions inside the karst water-bearing medium result in significant temporal and spatial differences in the hydrological processes in karst areas (Geyer et al., 2008; Bittner et al., 2020).

In early studies of flood forecasting in karst regions, simplified lumped hydrological models were commonly used to describe the rainfall–discharge relationship (e.g. Kovács and Sauter, 2007; Fleury et al., 2007b; Jukić and Denić, 2009; Hartmann et al., 2014a). With the development of physical exploration technology and the progress made in mathematics, computing and other interdisciplinary disciplines, the level of modelling has gradually improved (Hartmann and Baker, 2017; Hartmann, 2018; Petrie et al., 2021), and distributed hydrological models have subsequently become widely used in karst areas. The main difference between lumped and distributed hydrological models is that the latter divide the entire basin into many sub-basins to calculate the runoff generation and confluence, thereby better describing the physical properties of the hydrological processes inside the karst water-bearing system (Jourde et al., 2007; Hartmann, 2018; Epting et al., 2018).

Because of their simple structure and little demand for modelling data, lumped

hydrological models have been used widely in karst areas (Kurtulus and Razack, 2007; Ladouche et al., 2014). In a lumped model, the river basin is considered as a whole to calculate the runoff generation and confluence, and there is no division running into sub-basins (Dewandel et al., 2003; Bittner et al., 2020). Lumped models usually consider the inputs and outputs of the model (Liedl and Sauter, 2003; Hartmann and Bake, 2013, 2017). In addition, most of the model parameters are not optimized in a lumped model, and the physical meaning of each parameter is unclear (Chen, 2009; Bittner et al., 2020).

Distributed hydrological models are of active interest in flood simulation and forecasting research (Ambroise et al., 1996; Beven and Binley, 2006; Zhu and Li, 2014). Compared with a lumped model, a distributed model has a more definite physical significance for the model structure in terms of its mechanism (Meng and Wang, 2010; Epting et al., 2018). In a distributed hydrological model, an entire karst basin can be divided into many sub-basins (Birk et al., 2005) using high-resolution digital elevation map (DEM) data. In the rainfall-runoff algorithm of the model, the hydrogeological conditions and karst aquifer characteristics can be considered fully to simulate precisely the runoff generation and confluence (Martinotti et al., 2017; Gang et al., 2019). The commonly used basin distributed hydrological models (i.e. not a special groundwater numerical model such as MODFLOW) have also been applied widely in karst areas and include the SHE/MIKE SHE model (Abbott et al., 1986a,b; Doummar et al., 2012), SWMM model (Peterson and Wicks, 2006; Blansett and Hamlett, 2010; Blansett, 2011), TOPMODEL (Ambroise et al., 1996; Suo et al., 2007; Lu et al., 2013; Pan, 2014) and SWAT model (Peterson and Hamlett, 1998; Ren, 2006).

The commonly used distributed hydrological models have multiple structures and numerous parameters (Lu et al., 2013; Pan, 2014), which means that a distributed model may need vast amounts of data to build its framework in karst regions. For example, the distributed groundwater model MODFLOW-CFPM1 requires detailed data regarding the distribution of karst conduits in a study area (Reimann et al., 2009). Another example is the Karst–Liuxihe model (Li et al., 2019), there are fifteen parameters and five underground vertical structures in the model. Such a complex structure makes the modeling data demand

is large, and the modeling in karst area is extremely difficult. In addition, a special borehole pumping test may be required to obtain the rock permeability coefficient.

To overcome the difficulty of the large modelling-data demands for distributed hydrological models in karst areas, a new physically based distributed hydrological model—known as the QMG (Qingmuguan) model-V1.0—was developed in the present study. Other commonly used karst groundwater models with complex structure and parameters—such as the aforementioned MODFLOW-CFPM1 model—require a lot of hydrogeological data for modelling in karst areas (Qin and Jiang, 2014). The new QMG model has a high potential for application in karst hydrological simulation and forecasting. It has certain advantages in its framework and structural design, having a double-layer structure and fewer parameters. The horizontal structure is divided into river channel units and slope units, and the vertical structure below the surface is divided into a shallow karst aquifer and a deep karst aquifer system. This relatively simple model structure reduces the demand for modelling data in karst areas, and only a small amount of hydrogeological data is needed for modelling. To ensure that the QMG model works well in karst flood simulation and prediction despite its relatively simple structure and parameters, we carefully designed the algorithms for runoff generation and confluence in the model. Also, to verify the applicability of the QMG model to flood simulation in karst basins, we selected the Qingmuguan karst trough valley in Chongqing, China as the study area for a flood simulation and uncertainty analysis. In particular, we analysed the sensitivity of the model parameters.

2 Study area and data

2.1 Landform and topography

The Qingmuguan karst trough valley is located in the southeastern part of the Sichuan Basin, China at the junction of the Beibei and Shapingba districts in Chongqing, with the coordinates of 29°40'N–29°47'N, 106°17'E–106°20'E. The basin covers an area of 13.4 km² and is part of the southern extension of the anticline at Wintang Gorge in the Jinyun Mountains, with the anticlinal axis of Qingmuguan located in a parallel valley in eastern

Sichuan (Yang et al., 2008). The surface of the anticline is heavily fragmented, and faults are extremely well developed with large areas of Triassic carbonate rocks exposed. Under the long-term erosion of karst water, a typical karst trough landform has formed (Liu et al., 2009). This karst trough landform provides convenient conditions for flood propagation, and the development of karst landforms is extremely common in the karst region of southwest China, especially in the karst region of Chongqing.

The basin is oriented in a narrow band of slightly curved arcs and is ~12 km long from north to south. The direction of the mountains in the region is generally consistent with the direction of the tectonic line. The map in Figure 1 gives an overview of the Qingmuguan karst basin.

Figure 1. The Qingmuguan karst basin.

2.2 Hydrogeological conditions

The Qingmuguan basin is located within the subtropical humid monsoon climate zone, with an average temperature of 16.5 °C and an average precipitation of 1250 mm concentrated mainly in May–September. An underground river system has developed in the karst trough valley, with a length of 7.4 km, and the water supply of the underground river is mainly rainfall recharge (Zhang, 2012). Most of the precipitation is collected along the hill slope into the karst depressions at the bottom of the trough valley, where it is recharged to the underground river through the dispersed infiltration of surface karst fissures and sinkholes (Fig. 1a). An upstream surface river collects in a gentle valley and enters the underground river through the Yankou sinkhole (elevation 524 m). Surface water in the middle and lower reaches of the river system enters the underground river system mainly through cover collapse sinkholes (Gutierrez et al., 2014) or fissures.

The stratigraphic and lithologic characteristics of the basin are dominated largely by carbonate rocks of the Lower Triassic Jialingjiang Group (T_{1j}) and Middle Triassic Leikou Slope Group (T_{2l}) on both sides of the slope, with some quartz sandstone and mudstone outcrops of the Upper Triassic Xujiahe Group (T_{3xj}) (Zhang, 2012). The topography of the

basin presents a general anticline (Fig. 1b), where carbonate rocks on the surface are corroded and fragmented, high permeability. Compared with the core of the anticline, the shale of the anticline are less eroded and form a good waterproof layer.

To investigate the distribution of karst conduits in the underground river system, we conducted a tracer test in the study area. The tracer was placed into the Yankou sinkhole and recovered in the Jiangjia spring (Fig. 1a,c). According to the tracer test results (Gou et al., 2010), the karst water-bearing medium in the aquifer was anisotropic, and the karst conduits in the underground river were extremely well developed, and there was a large single-channel underground river about five meters wide. The response of the underground river to rainfall was very fast, with the peak flow observed at the outlet of Jiangjia spring 6–8 h after rainfall based on the tracer test results. The flood peak rose quickly and the duration of the peak flow was short. The underground river system in the study area is dominated by large karst conduits, which is not conducive to water storage in water-bearing media, but is very conducive to the propagation of floods.

2.3 Data

To build the QMG model to simulate the karst flood events, the necessary modelling baseline data had to be collected, including: 1) high-resolution DEM data and hydrogeological data (e.g., the thickness of the epikarst zone, rainfall infiltration coefficient on different karst landforms, and permeability coefficient of rock); 2) land-use and soil type data; and 3) rainfall data in the basin and water flow data of the underground river. The DEM data was downloaded from a free database on the public Internet, with an initial spatial resolution of 30×30 m. The spatial resolution of landuse and soil types were 1000×1000 m, and they were also downloaded from the Internet. After considering the applicability of modelling and computational strength, as well as the size of the basin in the study area (13.4 km^2), the spatial resolution of the three types of data was resampled uniformly in the QMG model and downscaled to 15×15 m based on a spatial discrete method by Berry et. (2010).

The hydrogeological data necessary for modelling was obtained in three simple ways. 1) A basin survey was conducted to obtain the thickness of the epikarst zone, which was

187 achieved by observing the rock formations on hillsides following cutting for road
188 construction. Information was collected regarding the location, general shape, and size of
189 karst depressions and sinkholes, which had a significant impact on compiling the DEM data
190 and determining the convergence process of surface runoff. And the sinkholes in the basin
191 are cover collapse sinkholes (Gutierrez et al., 2014) according to the basin survey. There are
192 3 large sinkholes (more than 3 meters in diameter) and 12 small sinkholes less than 1 meter
193 in diameter. The rest of the sinkholes between 1 and 3 meters in diameter are 5 in total.
194 The confluence calculation of these sinkholes in the model was based on the results of
195 previous study (Meng et al., 2009). 2) Empirical equations developed for similar basins were
196 used to obtain the rainfall infiltration coefficient for different karst landforms and the
197 permeability coefficient of rock. For example, the rock permeability coefficient was
198 calculated based on an empirical equation from a pumping test in a coal mine in the study
199 area (Li et al., 2019). 3) A tracer experiment was conducted in the study area (Gou et al.,
200 2010) to obtain information on the underground river direction and flow velocity, for
201 instance, underground karst conduits are well developed in the area, which form an
202 underground river about five meters wide. There is no hydraulic connection between the
203 underground river system in the area and the adjacent basin, means there is no overflow
204 recharge.

205 Rainfall and flood data are important model inputs, and represent the driving factors
206 that allow hydrological models to operate. In the study area, rainfall data was acquired by
207 two rain gauges located in the basin (Fig. 1a). Point rainfall was then spatially interpolated
208 into basin-level rainfall (for such a small basin area rainfall results obtained from two rain
209 gauges was considered representative). There were 18 karst flood events in the period of 14
210 April 2017 to 10 June 2019. We built a rectangular open channel at the underground river
211 outlet and set up a river gauge on it (Fig. 1a) to record the water level and flow data every 15
212 minutes.

3 Methodology

3.1 Hydrological model framework and algorithms

The hydrological model developed in this study was named the QMG model after the basin for which it was developed and to which it was first applied, i.e. the Qingmuguan basin. The QMG model has a two-layer structure, including a surface part and an underground part. The surface structure mainly performing the calculation of runoff generation and the confluence of the surface river, while the underground structure performs the confluence calculation of the underground river system.

The structure of the QMG model is divided into a two-layer structure, both horizontally and vertically. The horizontal structure of the model is divided into river channel units and slope units. The vertical structure below the surface is divided into a shallow karst aquifer (including soil layers, karst fissures and conduit systems in the epikarst zone) and a deep karst aquifer system (bedrock and underground river system). This relatively simple model structure means that only a small amount of hydrogeological data is needed in karst regions. Figure 2 shows a flowchart of the modelling and calculation procedures required for the QMG model.

Figure 2. Modelling flow chart of QMG (Qingmuguan) model.

To describe accurately the runoff generation and confluence on a grid scale, these karst sub-basins are further divided into many karst hydrological response units (KHRUs) based on the high-resolution (15×15 m) DEM data in the model. The specific steps involved in the division were adopted by referring to studies of hydrological response units (HRUs) in TOPMODEL by Pan (2014). As the smallest basin computing units, the KHRUs can effectively ignore the spatial differences of karst development within the units and reduce the uncertainty in the classification of model units. Figure 3 shows the spatial structure of the KHRUs.

Figure 3. Spatial structure of karst hydrological response units (KHRUs) (Li et al., 2021).

The right-hand side of Figure 3 shows a three-dimensional spatial model of KHRUs established in the laboratory to reflect visually the storage and movement of water in the

karst water-bearing medium with each spatial anisotropy, and to provide technical support for establishing the hydrological model.

The modelling and operation of the QMG model consists of three main stages: 1) spatial interpolation, and the retention of rainfall and evaporation calculations; 2) runoff generation and confluence calculation for the surface river; and 3) confluence calculation for the underground runoff, including the confluence in the shallow karst aquifer and the underground river system.

3.1.1 Rainfall and evaporation calculation

In the QMG model, the spatial interpolation of rainfall is accomplished by a kriging method using the ArcGIS 10.2 software. The Tyson polygon method may be a simpler method for rainfall interpolation if the number of rainfall gauges in the basin is sufficient. The point rainfall observed by the two rainfall gauges in the basin (Fig. 1a) was interpolated spatially into areal rainfall for the entire basin.

Basin evapotranspiration in the KHRUs was mainly vegetal, soil evaporation and water surface evaporation. They were calculated using the following equations (modified from Li et al., 2020):

$$\begin{cases} E_v = V^{t+\Delta t} - V^t - P_v \\ E_s = \lambda E_p, \text{ if } F = F_c \\ E_s = \lambda E_p \frac{F}{F_c}, \text{ if } F < F_{\text{sat}} \\ E_w = \Delta e \cdot \left[1.12 + 0.62(\Delta T)^{0.9} \right] \cdot \left[0.084 + 0.24(1 - \gamma^2)^{1/2} \right] \cdot \left[0.348 + 0.5\omega^{1.8-1.137\omega^{0.05}} \right] \end{cases} \quad (1)$$

Here, E_v [mm] is the vegetal discharge, $V^{t+\Delta t} - V^t$ [mm] is the rainfall variation by vegetation interception, P_v [mm] is the vegetation interception of rainfall and E_s [mm] is the actual soil evaporation. The term λ is the evaporation coefficient. The term E_p [mm] is the evaporation capability, which can be measured experimentally or estimated by the water surface evaporation equation E_w . The term F [mm] is the actual soil moisture, F_{sat} [mm] is the saturation moisture content, F_c [mm] is the field capacity, E_w [mm/d] is the evaporation of the water surface and $\Delta e = e_0 - e_{150}$ [hPa] is the draught

head between the saturation vapour pressure of the water surface and the air vapour pressure 150 m above the water surface. The term $\Delta T = t_0 - T_{150}$ [°C] is the temperature difference between the water surface and the temperature 150 m above the water surface, γ is the relative humidity 150 m above the water surface and ω [m/s] is the wind speed 150 m above the water surface.

3.1.2 Runoff generation

In the QMG model, the surface runoff generation in river channel units means the rainfall in the river system after deducting evaporation losses. This portion of the runoff will participate in the confluence process directly through the river system, rather than undergoing infiltration. In contrast, the process of runoff generation in slope units is more complex, and its classification is related to the developmental characteristics of surface karst in the basin, rainfall intensity and soil moisture. For example, when the soil moisture content is already saturated, there is the potential for excess infiltration surface runoff in exposed karst slope units. The surface runoff generation of the KHRUs in the river channel units and slope units can be described by the following equations (modified from Chen, 2009, 2018; Li et al., 2020):

$$\begin{cases} P_r(t) = [P_i(t) - E_p] \frac{L \cdot W_{\max}}{A} \\ R_{si} = (P_i - f_i), P_i \geq f_{\max} \\ R_{si} = 0, P_i < f_{\max} \\ f_{\max} = \alpha(F_c - F)^\beta + F_s \end{cases} \quad (2)$$

Here, $P_r(t)$ [mm] is the net rainfall (deducting evaporation losses) in the river channel units at time t [h], $P_i(t)$ [mm] is the rainfall in the river channel units, L [m] is the length of the river channel, W_{\max} [m] is the maximum width of the river channel selected and A [m²] is the cross-sectional area of the river channel. R_{si} [mm] is termed the excess infiltration runoff in the QMG model, when the vadose zone is short of water and has not been filled. The infiltration capacity f_{\max} is different in different karst landform units, α , β are the parameters of the Holtan model and F_s [mm] is the stable depth of soil water infiltration.

In the KHRUs (Fig. 3), underground runoff is generated primarily from the infiltration

of rainwater and direct confluence recharge from sinkholes or skylights. In the QMG model, the underground runoff is calculated by the following equations (modified from Chen, 2018):

$$\begin{cases} R_g = R_0 \exp(-pt^m) \\ R_e = v_e \cdot I_w \cdot z \end{cases} \quad (3)$$

where

$$\begin{cases} \frac{\partial R_e}{\partial x} + I_w \cdot z \cdot \frac{\partial F}{\partial t} = R_r - R_{\text{epi}} \\ v_e = K \cdot \tan(\alpha), \quad F > F_c \\ v_e = 0, \quad F \leq F_c \end{cases} \quad (4)$$

Here, R_g [mm] is the underground runoff depth (this part of the underground runoff is mainly from the direct confluence supply of the karst sinkholes or karst windows in the study area), R_0 [mm] is the average depth of the underground runoff, p and m are attenuation coefficients calculated by conducting a tracer test in the study area, R_e [L/s] is the underground runoff generated from rainfall infiltration in the epikarst zone, I_w [mm] is the width of the underground runoff on the KHRUs, z [mm] is the thickness of the epikarst zone, R_r [mm²/s] is the runoff recharge on the KHRUs during period t , R_{epi} [mm²/s] is the water infiltration from rainfall, v_e [mm/s] is the flow velocity of the underground runoff, K [mm/s] is the current permeability coefficient and α is the hydraulic gradient of the underground runoff. If the current soil moisture is less than the field capacity, i.e. $F \leq F_c$, then the vadose zone is not yet full, there will be no underground runoff generation, and rainfall infiltration at this time will continue to compensate for the lack of water in the vadose zone until it is full and before runoff is generated.

3.1.3 Channel routing and confluence

In the QMG model, the calculation of runoff confluence on the KHRUs includes the confluence of surface river channel and underground runoff. There are already many mature and classical algorithms available for calculating the runoff confluence in river channel units

and slope units, such as the Saint-Venant equations and Muskingum convergence model. In this study, the Saint-Venant equations were adopted to describe the confluence in the surface river and hill slope units, for which a wave movement equation was adopted to calculate confluence in slope units (Chen, 2009):

$$\begin{cases} \frac{\partial Q}{\partial x} + L \frac{\partial h}{\partial t} = q \\ S_f - S_0 = 0 \end{cases} \quad (5)$$

where

$$Q = v h L = \frac{L}{n} h^{\frac{5}{3}} S_0^{\frac{1}{2}}. \quad (6)$$

Here, we customized two variables a and b :

$$\begin{cases} a = \left(\frac{n}{L} S_0^{-\frac{1}{2}} \right)^{\frac{3}{5}} \\ b = \frac{3}{5} \end{cases} \quad (7)$$

Equation (7) was substituted into Eq. (5) and discretized by a finite-difference method, giving

$$\begin{cases} \frac{\partial Q}{\partial x} + abQ^{(b-1)} \frac{\partial Q}{\partial t} - q = 0 \\ \frac{\Delta t}{\Delta x} Q_{i+1}^{t+1} + a(Q_{i+1}^{t+1})^b = \frac{\Delta t}{\Delta x} Q_i^{t+1} + a(Q_{i+1}^t)^b + q_{i+1}^{t+1} \Delta t \end{cases} \quad (8)$$

The Newton–Raphson method was used for the iterative calculation using Eq. (8):

$$[Q_{i+1}^{t+1}]^{k+1} = [Q_{i+1}^{t+1}]^k - \frac{\frac{\Delta t}{\Delta x} [Q_{i+1}^{t+1}]^k + a([Q_{i+1}^{t+1}]^k)^b - \frac{\Delta t}{\Delta x} Q_i^{t+1} - a(Q_{i+1}^t)^b - q_{i+1}^{t+1} \Delta t}{\frac{\Delta t}{\Delta x} + ab([Q_{i+1}^{t+1}]^k)^{b-1}}, \quad (9)$$

where Q [L/s] is the confluence of water flow in slope units, L [dm] is its runoff width, h [dm] is the runoff depth and q [dm²/s] is the lateral inflow on the KHRUs. Here, the friction slope S_f equals the hill slope S_0 , and the inertia term and the pressure term in the motion equation of the Saint-Venant equations were ignored. The term v [dm/s] is the flow velocity of surface runoff in the slope units as calculated by the Manning equation, n is the roughness

coefficient of the slope units, Q_i^{t+1} [L/s] is the slope inflow in the KHRU at time $t+1$ and Q_{i+1}^{t+1} [L/s] is the slope discharge in the upper adjacent KHRU at time $t+1$.

Similarly, the surface river channel confluence was described based on the Saint-Venant equation, where a diffusion wave movement equation was adopted, meaning that the inertia term in the motion equation was ignored:

$$\begin{cases} \frac{\partial Q}{\partial x} + \frac{\partial A}{\partial t} = q \\ S_f = S_0 - \frac{\partial h}{\partial x} \end{cases} \quad (10)$$

A finite-difference method and the Newton–Raphson method were used for the iterative calculation of the above equation:

$$\begin{cases} [Q_{i+1}^{t+1}]^{k+1} = [Q_{i+1}^{t+1}]^k - \frac{\frac{\Delta t}{\Delta x} [Q_{i+1}^{t+1}]^k + c([Q_{i+1}^{t+1}]^k)^b - \frac{\Delta t}{\Delta x} Q_i^{t+1} - c(Q_{i+1}^t)^b - q_{i+1}^{t+1} \Delta t}{\frac{\Delta t}{\Delta x} + cb([Q_{i+1}^{t+1}]^k)^{b-1}} \\ c = (\frac{1}{3600} n \chi^{\frac{2}{3}} S_f^{-\frac{1}{2}})^{\frac{3}{5}} \end{cases} \quad (11)$$

where Q [L/s] is the water flow in surface river channel units, A [dm²] is the discharge section area, c is a custom intermediate variable and χ [dm] is the wetted perimeter of the discharge section area.

The underground runoff in the model includes the confluence of the epikarst zone and underground river. In the epikarst zone, the karst water-bearing media are highly heterogeneous (Williams, 2008). For example, the anisotropic karst fissure systems and conduit systems consist of the corrosion fractures. When rainfall infiltrates into the epikarst zone, water moves slowly through the small (less than 10cm in this study) karst fissure systems, while it flows rapidly in larger (more than 10cm) conduits. The key to determining the confluence velocity lies in the width of karst fractures. In the KHRUs (Fig. 3), the 10-cm width of the fracture was used as a threshold value (Atkinson, 1977) based on the borehole pumping test in the basin, meaning that if the fracture width exceeded 10 cm, then the water movement into it was defined as rapid flow; otherwise, it was defined as slow flow. The

confluence in the epikarst zone was calculated by the following equation (modified from Beven and Binley, 2006):

$$Q(t)_{ijk} = b_{ijk} \cdot \frac{\Delta h}{\Delta l} R_i C_j \cdot T(t)_{\text{slow/rapid}} \quad (12)$$

where

$$\begin{cases} T(t)_{\text{slow}} = nr \frac{\rho g R_i C_j L_k}{12\nu} \\ T(t)_{\text{rapid}} = \frac{K_{ij} (e^{-f_{ij} h_{ij}} - e^{-f_{ij} z_{ij}})}{f_{ij}} \end{cases} \quad (13)$$

Here, $Q(t)_{ijk}$ [L/s] is the flow confluence in the epikarst zone at time t , b_{ijk} [dm] is the runoff width, $\frac{\Delta h}{\Delta l}$ is the dimensionless hydraulic gradient, $T(t)_{\text{slow/rapid}}$ is the dimensionless hydraulic conductivity, ρ [g/L] is the density of the water flow, g [m/s²] is gravitational acceleration, n is the valid computational units, $R_i C_j L_k$ [L] is the volume of the ijk -th KHRU, ν is the kinematic viscosity coefficient, f_{ij} is the attenuation coefficient in the epikarst zone, h_{ij} [dm] is the depth of shallow groundwater and z_{ij} [dm] is the thickness of the epikarst zone.

The distinction between rapid and slow flows in the epikarst zone is not absolute. The 10-cm width of a karst fracture as the dividing threshold is underrepresented due to the only five limited boreholes have been tested for pumping in the region. In fact, there is usually water exchange between the rapid and slow flows at the junction of large and small fissures in karst aquifers. In the QMG model, this water exchange can be described with this equation (modified form Li et al., 2021):

$$\begin{cases} Q = \alpha_{i,j,k} (h_n - h_{i,j,k}) \\ \alpha_{i,j,k} = \sum_{ip=1}^{np} \frac{(K_w)_{i,j,k} \pi d_{ip} \frac{1}{2} (\Delta l_{ip} \tau_{ip})}{r_{ip}} \end{cases} \quad (14)$$

Here, $\alpha_{i,j,k}$ [dm²/s] is the water exchange coefficient in the ijk -th KHRU, $(h_n - h_{i,j,k})$ [dm] is the water head difference between the rapid and slow flows at the junction of large

and small fissures in KHRUs, np is the number of fissure systems connected to the adjacent conduit systems, $(K_w)_{i,j,k}$ [dm/s] is the permeability coefficient at the junction of a fissure and conduit, d_{ip} and r_{ip} [dm] are the conduit diameter and radius, respectively, Δl_{ip} [dm] is the length of the connection between conduits i and p , and τ_{ip} is the conduit curvature. Some of the parameters in this equation, such as $(K_w)_{i,j,k}$ and $(h_n - h_{i,j,k})$, were obtained by conducting an infiltration test in the study area.

The confluence of the underground river system plays an important role for the confluence at the basin outlet. To facilitate the calculation of confluence in the QMG model, the underground river systems can be generalized into large multiple conduit systems. During floods, these conduit systems are mostly under pressure. Whether the water flow is laminar or turbulent depends on the flow regime at that time. The water flow into these conduits is calculated by the Hagen–Poiseuille equation and the Darcy–Weisbach equation (Shoemaker et al., 2008):

$$\begin{cases} Q_{\text{laminar}} = -A \frac{gd^2 \partial h}{32\nu \partial x} = -A \frac{\rho g d^2 \Delta h}{32\mu \tau \Delta l} \\ Q_{\text{turbulent}} = -2A \sqrt{\frac{2gd|\Delta h|}{\Delta l \tau}} \log \left(\frac{H_c}{3.71d} + \frac{2.51\nu}{d \sqrt{\frac{2gd^3|\Delta h|}{\Delta l \tau}}} \right) \frac{\Delta h}{|\Delta h|} \end{cases} \quad (15)$$

Here, Q_{laminar} [L/s] is the water flow of the laminar flow in the conduit systems, A [dm²] is the conduit cross-sectional area, d [dm] is the conduit diameter, ρ [kg/dm³] is the density of the underground river, $\nu = \mu / \rho$ is the coefficient of kinematic viscosity, $\Delta h / \tau \Delta l$ is the hydraulic slope of the conduits, τ is the dimensionless conduit curvature, $Q_{\text{turbulent}}$ [L/s] is the turbulent flow in the conduit systems and H_c [dm] is the average conduit wall height.

3.2 Parameter optimization

In total, the QMG model has 12 parameters, of which flow direction and slope are

topographic parameters that can be determined from the DEM without parametric optimization, while the remaining 10 parameters require calibration. Other distributed hydrological models with multiple structures usually have many parameters. For example, the Karst–Liuxihe model (Li et al., 2021) has 15 parameters that must be calibrated. In the QMG model, each parameter is normalized as

$$x_i = x_i^* / x_{i0}, \quad (16)$$

where x_i is the dimensionless parameter value i after it is normalized, x_i^* is the parameter value i in actual physical units, and x_{i0} is the initial or final value of x_i . Through the processing of Eq. (16), the value range of the model parameters is limited to a hypercube $K_n = (X \mid 0 \leq x_i \leq 1, i = 1, 2, \dots, n)$, K is a dimensionless value. This normalized treatment ignores the influence of the spatiotemporal variation of the underlying surface attributes on the parameters, while also simplifying the classification and number of the model parameters to a certain extent. Accordingly, the model parameters can be divided further into rainfall-evaporation ones, epikarst-zone ones and underground-river ones. Table 1 lists the parameters of the QMG model.

Table 1. Parameters of QMG model.

Because the QMG model has relatively few parameters, it is possible to calibrate them manually, which has the advantage that the operation is easy to implement and does not require a special program for parameter optimization. However, the disadvantage is that it is subjective, which can lead to great uncertainty in the manual parameter calibration process. To compare the effects of parameter optimization on model performance, this study used both manual parameter calibration and the improved chaotic particle swarm optimization algorithm (IPSO) for the automatic calibration of model parameters, and compared the effects of both on flood simulation.

In general, the structure and parameters of a standard particle swarm optimization algorithm (PSO) are simple, with the initial parameter values obtained at random. For parameter optimization in high-dimensional multi-peak hydrological models, the standard PSO is easily limited to a local convergence and cannot achieve the optimal effect, while the

late evolution of the algorithm may also cause problems, such as precocity and stagnant evolution, due to the ‘inert’ aggregation of particles, which seriously affects the efficiency of parameter selection. It is necessary to overcome the above problems and make the algorithm converge to the global optimal solution with a high probability. In parameter optimization for the QMG model, we improved the standard PSO algorithm by adding chaos theory, and developed the IPSO, where 10 cycles of chaotic disturbances were added to improve the activity of the particles. The inverse mapping equation of the chaotic variable is

$$\begin{cases} X_{ij} = X_{\min} + (X_{\max} - X_{\min}) * Z_{ij} \\ Z'_{ij} = (1 - \alpha)Z^* + \alpha Z_{ij} \end{cases} \quad (17)$$

where X_{ij} is the optimization variable for the model parameters, $(X_{\max} - X_{\min})$ is the difference between its maximum and its minimum, Z_{ij} is the variable before the disturbance is added and Z'_{ij} represents the chaotic variables after a disturbance is added, α is a variable determined by the adaptive algorithm, $0 \leq \alpha \leq 1$, and Z^* is the chaotic variable formed when the optimal particle maps to the interval [0,1]. In parameter optimization, the flowchart of the IPSO is shown in Figure 4.

Figure 4. Algorithm flow chart of IPSO.

3.3 Uncertainty analysis

Uncertainties in hydrological model simulation results usually originate from three aspects: input data, model structure and model parameters (Krzysztofowicz, 2014). In the present study, the input data (e.g. rainfall, flood events and some hydrogeological data) were first validated and pre-processed through observations to reduce their uncertainties.

Second, we simplified the structure of the QMG model to reduce the structural uncertainty. As a mathematical and physical model, a hydrological model has some uncertainty in flood simulation and forecasting because of the errors in system structure and the algorithm (Krzysztofowicz and Kelly, 2000). The model was designed with full consideration of the relationship between the amount of data required to build the model and

its performance for flood simulation and forecasting in karst regions, and the model's entire framework was integrated through simple structures and easy-to-implement algorithms, using the concept of distributed hydrological modelling. Conventionally, the extent of uncertainty is increased with the growing complexity of the model structure. We therefore ensured that the structure of the QMG model was simple when it was designed, and the model was divided into surface and underground double-layer structures to reduce its structural uncertainty.

Third, we focus on analysing the uncertainty and sensitivity of the model parameters and their optimization method, for which a multi-parametric sensitivity analysis method (Choi et al., 1999; Li et al., 2020) was used to analyse the sensitivity of the parameters in the QMG model. The steps in the parameter sensitivity analysis are as follows.

1) Selection of appropriate objective function

The Nash–Sutcliffe coefficient is widely used as the objective function to evaluate the performance of hydrological models (Li et al., 2020, 2021). It was therefore used to assess the QMG model. Because the most important factor in flood forecasting is the peak discharge, it is used in the Nash coefficient equation:

$$NSC = 1 - \frac{\sum_{i=1}^n (Q_i - Q_i')^2}{\sum_{i=1}^n (Q_i - \bar{Q})^2}, \quad (18)$$

where NSC is the Nash–Sutcliffe coefficient, Q_i [L/s] are the observed flow discharges, Q_i' [L/s] are the simulated discharges, \bar{Q} [L/s] is the average observed discharge and n [h] is the observation period.

2) Parameter sequence sampling

The Monte Carlo sampling method was used to sample 8000 groups of parameter sequences. The parametric sensitivity of the QMG model was analysed and evaluated by comparing the differences between the a priori and a posteriori distributions of the parameters.

3) Parameter sensitivity assessment

The a priori distribution of a model parameter means its probability distribution, while the a posteriori distribution refers to the conditional distribution calculated after sample sampling, and it can be calculated based on the simulation result of the parametric optimization. If there is a significant difference between the priori distribution and its posteriori distribution of the parameter, then the parameter being tested has a high sensitivity, whereas if there is no obvious difference, then the parameter is insensitive. The parametric priori distribution is calculated as

$$\begin{cases} P_{i,j}(NSC_{i,j} \geq 0.85) = \frac{n}{N+1} \times 100 \\ \sigma_i = \sum_{j=1}^n (P_{i,j} - \overline{P_{i,j}})^2 \end{cases} \quad (19)$$

where $P_{i,j}$ is the a priori distribution's probability when $NSC_{i,j} \geq 0.85$. We used a simulated Nash coefficient of 0.85 as the threshold value, and n was the number of occurrences of a Nash coefficient greater than 0.85 in flood simulations. In each simulation, only a certain parameter was changed, while the remaining parameters remained unchanged. If the Nash coefficient of this simulation exceeded 0.85, then the flood simulation results were considered acceptable. The term σ_i is the difference between the acceptable value and its mean, which represents the parametric sensitivity ($0 < \sigma_i < 1$). The higher the σ_i value, the more sensitive the parameter. N is the 8000 parameter sequences, and $\overline{P_{i,j}}$ is the average value of the a priori distribution.

3.4 Model Setting

Once the model was built, some of the initial conditions had to be set before running it to simulate and forecast floods, such as basin division, the setting of initial soil moisture, and the assumption of the initial parameter range. 1) In the study area, the entire Qingmuguan karst basin was divided into 893 KHRUs, including 65 surface river units, 466 hill slope units, and 362 underground river units. The division of these units formed the basis for calculating the process of runoff generation and convergence. 2) The initial soil moisture

was set to 0–100% of the saturation moisture content in the basin, and the specific soil moisture before each flood had to be determined by a trial calculation. 3) The waterhead boundary conditions of the groundwater were determined by a tracer test in the basin, where a perennial stable water level adjacent the groundwater-divide was used as the fixed waterhead boundary. The base flow of the underground river was determined to be 35 L/s from the perennial average dry season runoff. 4) The range of initial parameters and convergence conditions were assumed before parameter optimization (Figure 4). 5) Parameter optimization and flood simulation validated the performance of the QMG model in karst basins.

4 Results and discussion

4.1 Parameter Sensitivity Results

The number of parameters in a distributed hydrological model is generally large, and it is important to perform a sensitivity analysis of each parameter to quantitatively assess the impact of the different parameters on model performance. In the QMG model, each parameter was divided into four categories according to its sensitivity: (i) highly sensitive, (ii) sensitive, (iii) moderately sensitive, and (v) insensitive. In the calibration of model parameters, insensitive ones do not need to be calibrated, which can greatly reduce the amount of calculation and improve the efficiency of model operation.

The flow process in the calibration period (14 April to 10 May 2017) was adopted to calculate the sensitivity of the model parameters, for which the calculation principle was equation (19), and the parameter sensitivity results are calculated in Table 2.

Table 2 Parametric sensitivity results in QMG model.

In Table 2, the value of σ_i [equation (19)] represents a parameter's sensitivity, and the higher the value, the more sensitive the parameter is. From the results in Table 2, it was found that the rainfall infiltration coefficient, rock permeability coefficient, rock porosity, and the related parameters of soil water content, such as the saturated water content, and field capacity, were sensitive parameters. The order of parameter sensitivity was as follows: infiltration coefficient > permeability coefficient > rock porosity > specific yield > saturated

water content > field capacity > flow direction > thickness > slope > Soil coefficient > channel roughness > evaporation coefficient.

In the QMG model, parameters are classified as highly sensitive, sensitive, moderately sensitive, and insensitive according to their influence on the flood simulation results. In Table 4, we divided the sensitivity of model parameters into four levels based on the σ_i value: 1) highly sensitive parameters, $0.8 < \sigma_i < 1$; 2) sensitive parameters, $0.65 < \sigma_i < 0.8$; 3) moderately sensitive parameters, $0.45 < \sigma_i < 0.65$; and 4) insensitive parameters, $0 < \sigma_i < 0.45$. The highly sensitive parameters were the infiltration coefficient, permeability coefficient, rock porosity, and specific yield. The sensitive parameters were the saturated water content, field capacity, and thickness of the epikarst zone. The moderately sensitive parameters were flow direction, slope, and soil coefficient. The insensitive parameters were channel roughness and the evaporation coefficient.

4.2 Parametric Optimization

In total, the QMG model has 12 parameters, of which only eight need to be optimized, which is relatively few for distributed models. The parameters of flow direction and slope as well as the insensitive parameters of channel roughness and the evaporation coefficient need not be calibrated, which can improve the convergence efficiency of the model parameter optimization.

In the study area, 18 karst floods during the period 14 April 2017 to 10 June 2019 were recorded at the underground river outlet to validate the effects of the QMG model in karst hydrological simulations. The calibration period was 14 April to 10 May 2017 at the beginning of the flow process, with the remainder of the time being the validation period. In the QMG model, the IPSO algorithm was used to optimize the model parameters. To show the necessity of parameter optimization for the distributed hydrological model, the study specifically compared the flood simulations obtained using the initial parameters of the model (without parameter calibration) and the optimized parameters. Figure 5 shows the iteration process of parameter optimization for the QMG model.

Figure 5 Iteration process of parametric optimization.

Figure 5 shows that almost all parameters fluctuated widely at the beginning of the optimization, and then after about 15 iterations of the optimization calculation, most of the linear fluctuations become significantly less volatile, which indicated that the algorithm tended to converge (possibly only locally). When the number of iterations exceeded 25, all parameters remained essentially unchanged, meaning that the algorithm had converged (at this point there was global convergence). It took only 25 iterations to reach a definite convergence of the parameter rates with this IPSO algorithm, which is extremely efficient in terms of the parameter optimization of distributed hydrological models. In previous studies of the parametric optimization for the Karst-Liuxihe model in similar basin areas, 50 automatic parameter optimization iterations were required to reach convergence (Li et al., 2021), demonstrating the effectiveness of the IPSO algorithm.

To evaluate the effect of parameter optimization, the convergence efficiency of the algorithm, and more importantly, the parameters after calibration were used to simulate floods. Figure 6 shows the flood simulation effects.

Figure 6 Flow simulation results of QMG model based on parameter optimization.

Figure 6 shows that the flows simulated by parameter optimization were better than those simulated by the initial model parameters. The simulated flow processes based on the initial parameters were relatively small, with the simulated peak flows in particular being smaller than the observed values, and there were large errors between the two values. In contrast, the simulated flows produced by the QMG model after parameter optimization were very similar to the observed values, which indicates that calibration of the model parameters is necessary and that there was an improvement in parameter optimization through the use of the IPSO algorithm in this study. In addition, it was found that the flow simulation effect was better in the calibration periods than in the validation periods (Fig. 6).

To compare the results of the flow processes simulation with the initial model parameters and the optimized parameters, six evaluation indices (Nash–Sutcliffe coefficient, correlation coefficient, relative flow process error, flood peak error, water balance

coefficient, and peak time error) were applied in this study, and the results are presented in Table 3.

Table 3 Flood simulation evaluation index through parametric optimization.

Table 3 shows that the evaluation indices of the flood simulations after parametric optimization were better than those of the initial model parameters. The average values of the initial parameters for these six indices 0.81, 0.74, 27%, 31%, 0.80, and 5 h, respectively. For the optimized parameters, the average values were 0.90, 0.91, 16%, 14%, 0.94, and 3 h, respectively. The flood simulation effects after parameter optimization clearly improved, implying that parameter optimization for the QMG model is necessary, and the IPSO algorithm for parameter optimization is an effective approach that can greatly improve the convergence efficiency of parameter optimization, and also ensure that the model performs well in flood simulations.

4.3 Model Validation in Flood Simulations

Following parameter optimization, we simulated the whole flow process (14 April 2017 to 10 June 2019) based on the optimized and initial parameters of the QMG model (Fig. 6), which enabled a visual reflection of the model used in the simulation of a long series of flow processes. To reflect the simulation effect of the model for different flood events, we divided the whole flow process into 18 flood events, then used the initial parameters of the model and the optimized parameters, respectively, to verify the model performance in flood simulations. Figure 7 and Table 4 show the flood simulation effects and their evaluation indices using both the initial and the optimized parameters.

Figure 7 Flood simulation effects based on initial and optimized parameters.

Table 4 Flood simulation indices for model validation.

Figure 7 shows that the flood simulation results using the initial parameters were smaller than the observed values, and the model performance improved in flood simulations after parameter optimization. The simulated flood processes were in good agreement with observations, and were especially effective for simulating flood peak flows. From flood simulation indices in Table 4, the average water balance coefficient based on the initial

parameters was 0.69, i.e., much less than 1, indicating that the simulated water in the model was unbalanced. After parameter optimization, the average value was 0.92, indicating that parameter optimization had a significant impact on the model water balance calculation.

Table 4 shows that the average values of the six indices (Nash–Sutcliffe coefficient, correlation coefficient, relative flow process error, flood peak error, water balance coefficient, and peak time error) for the initial parameters were 0.79, 0.74, 26%, 25%, 0.69, and 5 h, respectively, while for the optimized parameters the average values were 0.92, 0.90, 10%, 11%, 0.92, and 2 h, respectively. All evaluation indices improved after parameter optimization, with the average values of the Nash coefficient, correlation coefficient, and water balance coefficient increasing by 0.13, 0.16, and 0.23, respectively. The average values of the relative flow process error, flood peak error, and peak time error decreased by 15%, 14%, and 3 h, respectively. These reasonable flood simulation results confirmed that parameter optimization by the IPSO algorithm was necessary and effective for the QMG model.

Compared with the overall flow process simulation shown in Figure 6, each flood process was better simulated by the QMG model (Fig. 7). This was because in the function of the QMG model and its algorithm design, the main consideration was the calculation of the flood process, but the correlation algorithm of the dry season runoff was not described well enough. For example, equations (12)–(15) are the flood convergence algorithm. As a result, the model is not good at simulating other flow processes, such as dry season runoff, leading to a low accuracy in the overall flow process. The next phase of our research will focus on refining the algorithm related to dry season runoff and improving the comprehensive performance of the model.

4.4 Uncertainty analysis

4.4.1 Assessment and reduction of uncertainty

In general, the uncertainty in model simulation is due mainly to three aspects of the model: (i) the uncertainty of its input data, (ii) the uncertainty of its structure and algorithm and (iii) the uncertainty of its parameters. In the practical application of a hydrological model, these

three uncertainties are usually interwoven, which leads to the overall uncertainty of the final simulation results (Krzysztofowicz, 2014). Therefore, the present study focused on the uncertainties in the input data, the model structure and the parameters to reduce the overall uncertainty of the simulation results.

First, the input data—mainly rainfall-runoff data and hydrogeological data—were pre-processed, which substantially reduced their uncertainty. Second, we simplified the structure of the QMG model, which is reflected in the fact that it has only two layers of spatial structure in the horizontal and vertical directions. This relatively simple structure reduced greatly the uncertainty due to the model structure. In contrast, the underground structure of our previous Karst–Liuxihe model (Li et al., 2021) has five layers, which leads to great uncertainty. Third, appropriate algorithms for runoff generation and confluence were selected. Different models were designed for different purposes, which leads to great differences in the algorithms used. In the QMG model, most of the rainfall-runoff algorithms used have been validated by the research results of others, and some of them were improved to suit karst flood simulation and forecasting by the QMG model. For example, the algorithm for the generation of excess infiltration runoff [Eq. (2)] was an improvement of the version used in the Liuxihe model (Chen, 2009, 2018; Li et al., 2020). Finally, the algorithm for parameter optimization was improved. Considering the shortcomings of the standard PSO algorithm that tends to converge locally, this study developed the IPSO for parameter optimization by adding chaotic perturbation factors. The flood simulation results after parameter optimization were much better than those of the initial model parameters (Figs. 6 and 7 and Tables 2 and 3), which indicates that parameter optimization is necessary for a distributed hydrological model and can reduce the uncertainty of the model parameters.

4.4.2 Parameter sensitivity analysis

The parameter-sensitivity results in Table 2 show that the rainfall-infiltration coefficient in the QMG model was the most sensitive parameter. It was the key to determining the generation of excess infiltration surface runoff and separating surface runoff from subsurface runoff. If the rainfall infiltration coefficient was greater than the infiltration capacity, excess infiltration surface runoff was generated on the exposed karst landforms; otherwise, all

rainfall would infiltrate to meet the water deficit in the vadose zone, and then continue to seep down into the underground river system, eventually flowing out of the basin through the underground river outlet. The confluence modes of surface runoff and underground runoff were completely different, resulting in a large difference in the simulated flow results. Therefore, the rainfall infiltration coefficient had the greatest impact on the final flood simulation results.

Other highly sensitive parameters such as the rock permeability coefficient, rock porosity and specific yield were used as the basis for dividing between slow flow in karst fissures and rapid flow in conduits. The division of slow and rapid flows also had a great impact on the discharge at the outlet of the basin. Slow flow plays an important role in water storage in a karst aquifer and is very important for the replenishment of river base flow in the dry season. Rapid flow in large conduit systems dominates the flood runoff and is the main component of the flood water volume in the flood season.

Parameters related to the soil water content, including the saturated water content, field capacity and thickness, were sensitive parameters and had a large influence on the flood simulation results. This is because the soil moisture content prior to flooding affects how flood flows rise and when peaks occur. If the soil is already very wet or even saturated before the flooding, the flood will rise quickly to reach a peak, and the process line of the flood peak flow will be sharp and thin. This type of flood process forms easily and can lead to disaster-causing flood events. In contrast, if the soil in the basin is very dry before the flooding, the rainfall will first meet the water shortage of the vadose zone, and after it is replenished the rainfall will infiltrate into the underground river. The flood peak of the river basin outlet is therefore delayed.

The moderately sensitive parameters were flow direction, slope and the soil coefficient. They had a specific influence on the flood simulation results, but the influence was not as great as that of the highly sensitive and sensitive parameters. The insensitive parameters were channel roughness and the evaporation coefficient. The amount of water lost by evapotranspiration is very small in the total flood water, and it was therefore the least sensitive parameter in the QMG model.

5 Conclusions

This study proposed a new distributed physically based hydrological model, i.e. the QMG model, to simulate floods accurately in karst trough and valley landforms. The main conclusions of this paper are as follows.

This QMG model has a high application potential in karst hydrology simulations. Other distributed hydrological models usually have multiple structures, resulting in the need for a large amount of data to build models in karst areas (Kraller et al., 2014). The QMG model has only a double-layer structure, with a clear physical meaning, and a small amount of basic data is needed to build the model in karst areas, such as some necessary hydrogeological data. For example, the distribution and flow direction of underground rivers is required, which can be inferred from a tracer test, leading to a low modelling cost. There were fewer parameters in the QMG model than in other distributed hydrological models, with only 10 parameters that needed to be calibrated.

The flood simulation after parameter optimization was much better than the simulation using the initial model parameters. After parameter optimization, the average values of the Nash coefficient, correlation coefficient and water balance coefficient increased by 0.13, 0.16 and 0.23, respectively, while the average relative flow process error, flood peak error and peak time error decreased by 15%, 14% and 3 h, respectively. Parameter optimization is necessary for a distributed hydrological model, and the improvement of the IPSO algorithm in this study was an effective way to achieve this.

In the QMG model, the rainfall infiltration coefficient I_c , rock permeability coefficient K , rock porosity R_p and the parameters related to the soil water content were sensitive parameters. The order of parameter sensitivity was infiltration coefficient > permeability coefficient > rock porosity > specific yield > saturated water content > field capacity > flow direction > thickness > slope > soil coefficient > channel roughness > evaporation coefficient.

This QMG model is suitable for karst trough and valley landform like this study area, where the topography is conducive to the spread of flood water. Whether this model is

applicable to the karst areas of other landforms still needs to be verified in the future studies. In addition, the basin area is very small, where the hydrological similarity between different small basin areas varies greatly (Kong and Rui, 2003). The size of the area to be modelled has a great influence on the choice of model spatial resolution (Chen et al., 2017). Therefore, whether the QMG model is suitable for flood forecasting in large karst basins needs to be determined.

Model development.

This QMG model presented in this study uses the Visual Basic language programming. The general framework of the model and the algorithm consist of three parts: the modeling approach, the algorithm of rainfall-runoff generation and confluence, and the parameter optimization algorithm. As a free and open source hydrological modeling program (QMG model-V1.0), we provide all modeling packages, including model code, installation package, simulation data package and user manual, free of charge. It is important to note that the model we provide are for scientific research purposes only and should not be used for any commercial purposes. Creative Commons Attribution 4.0 International.

Model installation program can be downloaded from ZENODO, cite as JI LI. (2021, June 16). QMG model-V1.0. Zenodo. <http://doi.org/10.5281/zenodo.4964701>, and <http://doi.org/10.5281/zenodo.4964697> (registration required). User manual can be downloaded from <http://doi.org/10.5281/zenodo.4964754>.

Code availability.

All code for the QMG model-V1.0 in this paper are available and free, the code can be downloaded from ZENODO, Cite as JI LI. (2021, June 16). QMG model-V1.0 code (Version v1.0). Zenodo. <http://doi.org/10.5281/zenodo.4964709> (registration required).

Data availability.

All data used in this paper are available, findable, accessible, interoperable, and reusable. The simulation data and modelling data package can be downloaded from <http://doi.org/10.5281/zenodo.4964727>. The DEM was downloaded from the Shuttle Radar Topography Mission database at <http://srtm.csi.cgiar.org>. The land use-type data were downloaded from <http://landcover.usgs.gov>, and the soil-type data were downloaded from <http://www.isric.org>. These data were last accessed on 15 October 2020.

Author contributions. JIL was responsible for the calculations and writing of the whole paper. DY helped conceive the structure of the model. ZF and JL provided significant assistance in the English translation of the paper. MM provided flow data of the study area.

Competing interests.

The authors declare that they have no conflicts of interest.

Acknowledgments.

This study was supported by the National Natural Science Foundation of China (41830648), the National Science Foundation for Young Scientists of China (42101031), Fundamental Research Funds for the Central Universities (), Chongqing Natural Science Foundation (cstc2021jcyj-msxm0007), the Chongqing Education Commission Science and technology research Foundation (KJQN202100201), the drought monitoring, analysing and early warning of typical prone-to-drought areas of Chongqing (20C00183), and the Open Project Program of Guangxi Key Science and Technology Innovation Base on Karst Dynamics (KDL & Guangxi 202009, KDL & Guangxi 202012).

References

- Abbott, M. B., Bathurst, J. C., Cunge, J. A., O'Connell, P. E., and Rasmussen, J.: An Introduction to the European Hydrologic System-System Hydrologue European, 'SHE', a: History and Philosophy of a Physically-based, Distributed Modelling System, J. Hydrol., 87, 45–59, 1986a.
- Abbott, M. B., Bathurst, J. C., Cunge, J. A., O'Connell, P. E., and Rasmussen, J.: An Introduction to the European Hydrologic System-System Hydrologue European, 'SHE', b: Structure of a Physically based, distributed modeling System, J. Hydrol., 87, 61–77, 1986b.
- Ambroise, B., Beven, K., and Freer, J.: Toward a generalization of the TOPMODEL concepts: Topographic indices of hydrologic similarity. Water Resources Research, 32, 2135-2145, 1996.
- Atkinson, T.C.: Diffuse flow and conduit flow in limestone terrain in the Mendip Hills, Somerset (Great Britain). Journal of Hydrology, 35, 93-110. [https://doi.org/10.1016/0022-1694\(77\)90079-8](https://doi.org/10.1016/0022-1694(77)90079-8), 1977.
- Berry, R.A., Saurel, R., and Lemetayer, O.: The discrete equation method (DEM) for fully compressible, two-phase flows in ducts of spatially varying cross-section. Nuclear Engineering & Design, 240(11), 3797-3818, 2010.
- Beven, K., and Binley, A.: The future of distributed models: Model calibration and uncertainty prediction. Hydrological Processes, 6, 279-298, 2006.
- Birk, S., Geyer, T., Liedl, R., and Sauter, M.: Process-based interpretation of tracer tests in carbonate aquifers. Ground Water, 43(3), 381-388, 2005.
- Bittner, D., Parente, M.T., Mattis, S., Wohlmuth, B., and Chiogna, G.: Identifying relevant hydrological and catchment properties in active subspaces: An inference study of a lumped karst aquifer model. ADVANCES IN WATER RESOURCES, 135, 550-560. [doi: 10.1016/j.advwatres.2019.103472](https://doi.org/10.1016/j.advwatres.2019.103472), 2020.

794 Blansett, K. L., and Hamlett, J. M.: Challenges of Stormwater Modeling for Urbanized Karst
795 Basins. Pittsburgh, Pennsylvania, an ASABE Meeting Presentation, Paper Number:
796 1009274. [doi:10.13031/2013.29840](https://doi.org/10.13031/2013.29840), 2010.

797 Blansett, K. L.: Flow, water quality, and SWMM model analysis for five urban karst basins..
798 (Doctoral dissertation). The Pennsylvania State University,USA, 2011.

799 Bonacci, O., Ljubenkov, I., and Roje-Bonacci, T.: Karst flash floods: an example from
800 the Dinaric karst Croatia. *Nat. Hazards Earth Syst. Sci.* 6, 195–203, 2006.

801 Chang, Y., and Liu, L.: A review of hydrological models in karst areas. *Engineering*
802 *investigation*, 43,37-44, 2015.

803 Chen, G.M., Jia, J.Y., and Han, Q.: Research on inertia weight reduction strategy of Particle
804 Swarm optimization algorithm. *Journal of Xi'an Jiaotong University*, 40(1),53-56, 2006.

805 Choi, J., Harvey, J. W., and Conklin, M. H.: Use of multi-parameter sensitivity analysis to
806 determine relative importance of factors influencing natural attenuation of mining
807 contaminants. the Toxic Substances Hydrology Program Meeting, Charleston,South
808 Carolina, 1999.

809 Chen, Y. B.: *Liuxihe Model*, China Science and Technology Press, Beijing, China, 2009.

810 Chen, Y., Li, J., and Xu, H.: Improving flood forecasting capability of physically based
811 distributed hydrological models by parameter optimization. *Hydrol. Earth Syst. Sci.* 20,
812 375-392. <https://doi.org/10.5194/hess-20-375-2016>, 2016.

813 Chen, Y., Li, J., Wang, H., Qin, J., and Dong, L.: Large watershed flood forecasting with
814 high-resolution distributed hydrological model. *Hydrol. Earth Syst. Sci.* 21, 735-749.
815 <https://doi.org/10.5194/hess-21-735-2017>, 2017.

816 Chen, Y.: *Distributed Hydrological Models*. Springer Berlin Heidelberg, Berlin, Germany.
817 https://doi.org/10.1007/978-3-642-40457-3_23-1, 2018.

818 Dewandel, B., Lachassagne, P., Bakalowicz, M., Weng, P., and Malki, A.A.: Evaluation of
819 aquifer thickness by analysing recession hydrographs. Application to the Oman

820 ophiolite hard-rock aquifer. *Journal of Hydrology*, 274,248-269, 2003.

821 Dubois, E., Doummar, J., S é verin Pistre, S., and Larocque, M.: Calibration of a lumped karst
822 system model and application to the Qachqouch karst spring (Lebanon) under climate
823 change conditions. *Hydrol. Earth Syst. Sci.*, 24, 4275-4290.
824 <https://doi.org/10.5194/hess-24-4275-2020>, 2020.

825 Doummar, J., Sauter, M., and Geyer, T.: Simulation of flow processes in a large scale karst
826 system with an integrated catchment model (MIKE SHE) – identification of relevant
827 parameters influencing spring discharge. *Journal of Hydrology*, 426-427, 112-123,
828 2012.

829 Epting, J., Page, R.M., and Auckenthaler, A.: Process-based monitoring and modeling of
830 Karst springs–Linking intrinsic to specific vulnerability. *Science of the Total*
831 *Environment*, 625, 403-415, 2018.

832 Fleury, P., Plagnes, V., and Bakalowicz, M.: Modelling of the functioning of karst aquifers
833 with a reservoir model: Application to Fontaine de Vaucluse (South of France). *Journal*
834 *of Hydrology*, 345,38-49. <http://dx.doi.org/10.1016/j.jhydrol.2007.07.014>, 2007b.

835 Ford, D. C., and Williams, P.W.: *Karst geomorphology and hydrology*. Wiley, Chichester,
836 England, 2007.

837 Gang, L., Tong, F.G., and Bin,T.: A Finite Element Model for Simulating Surface Runoff and
838 Unsaturated Seepage Flow in the Shallow Subsurface. *Hydrological Processes*,
839 6,102-120. doi: 10.1002/hyp.13564, 2019.

840 Geyer, T., Birk, S., Liedl, R., and Sauter, M.: Quantification of temporal distribution of
841 recharge in karst systems from spring hydrographs. *Journal of Hydrology*, 348(30),
842 452-463, 2008.

843 Gou, P.F., Jiang, Y.J., Hu, Z.Y., Pu, J.B., and Yang, P.H.: A study of the variations in
844 hydrology and hydrochemistry under the condition of a storm in a typical karst
845 subterranean stream. *HYDROGEOLOGY&ENGINEERING GEOLOGY*,37(5),20-25,
846 2010.

847 Gutierrez, F.: Hazards associated with karst. In: Alcantara, I. & A. Goudie (Eds.),
 848 Geomorphological Hazards and Disaster Prevention. Cambridge University Press,
 849 Cambridge, 161–175, 2010.

850 Gutierrez, F., Parise, M., D' Waele, J., and Jourde, H.: A review on natural and human-
 851 induced geohazards and impacts in karst. *Earth Science Reviews*, 138, 61-88, 2014.

852 Hartmann, A., and Baker, A.: Progress in the hydrologic simulation of time variant of karst
 853 systems-Exemplified at a karst spring in Southern Spain. *Advances in Water Resources*,
 854 54,149-160, 2013.

855 Hartmann, A., Goldscheider, N., Wagener, T., Lange, J., and Weiler, M.: Karst water
 856 resources in a changing world: Review of hydrological modeling approaches. *Reviews*
 857 *of Geophysics* 52: 218-242. doi: [10.1002/2013RG000443](https://doi.org/10.1002/2013RG000443), 2014a.

858 Hartmann, A., and Baker, A.: Modelling karst vadose zone hydrology and its relevance for
 859 paleoclimate reconstruction. *Earth-Science Reviews*, 172, 178-192, 2017.

860 Hartmann, A.: Experiences in calibrating and evaluating lumped karst hydrological models.
 861 London: Geological Society, Special Publications, 2018.

862 Jourde, H., Roesch, A., Guinot, V., and Bailly-Comte, V.: Dynamics and contribution of
 863 karst groundwater to surface flow during Mediterranean flood. *Environ. Geol.* 51 (5),
 864 725–730, 2007.

865 Jourde, H., Lafare, A., Mazzilli, N., Belaud, G., Neppel, L., Doerfliger, N., and Cernesson, F.:
 866 Flash flood mitigation as a positive consequence of anthropogenic forcings on the
 867 groundwater resource in a karst catchment. *Environ. Earth Sci.* 71, 573–583,2014.

868 Jukić, D., and Denić-Jukić, V.: Groundwater balance estimation in karst by using a
 869 conceptual rainfall–runoff model. *Journal of Hydrology*, 373, 302-315.
 870 <http://dx.doi.org/10.1016/j.jhydrol.2009.04.035>, 2009.

871 Kong, F.Z., and Rui, X.F.: Hydrological similarity of catchments based on topography.

872 GEOGRAPHICAL RESEARCH, (06), 709-715, 2003.

873 Kovács, A., and Sauter, M.: Modelling karst hydrodynamics. In: Goldscheider N, Drew D
874 (eds) Methods in karst hydrogeology, IAH international contributions to hydrogeology;
875 26,264 p, 2007.

876 Kovács, A., and Perrochet, P.: A quantitative approach to spring hydrograph decomposition.
877 Journal of Hydrology, 352, 16-29. <http://dx.doi.org/10.1016/j.jhydrol.2007.12.009>,
878 2008.

879 Kurtulus, B., and Razack, M.: Evaluation of the ability of an artificial neural network model
880 to simulate the input-output responses of a large karstic aquifer: the la rochefoucauld
881 aquifer (charente, france). Hydrogeology Journal, 15(2), 241-254, 2007.

882 Krzysztofowicz, R., and Kelly, K.: Hydrologic uncertainty processor for probabilistic river
883 stage forecasting. Water Resources Research, 36(11),3265-3277, 2000.

884 Krzysztofowicz, R.: Probabilistic flood forecast : Exact and approximate predictive
885 distributions. Journal of Hydrology, 517(1), 643-651, 2014.

886 Kraller, G., Warscher, M., Strasser, U., Kunstmann, H., and Franz, H.: Distributed
887 hydrological modeling and model adaption in high alpine karst at regional scale
888 (berchtesgaden alps, germany). Springer International Publishing Switzerland.
889 https://doi.org/10.1007/978-3-319-06139-9_8, 2014.

890 Ladouche, B., Marechal, J. C., and Dorfliger, N.: Semi-distributed lumped model of a karst
891 system under active management. Journal of Hydrology, 509,215-230, 2014.

892 Li, J., Chen, Y., Wang, H., Qin, J., Li, J., and Chiao, S.: Extending flood forecasting lead
893 time in a large basin by coupling WRF QPF with a distributed hydrological model,
894 Hydrol. Earth Syst. Sci. 21, 1279–1294. <https://doi.org/10.5194/hess-21-1279-2017>,
895 2017.

896 Li, J., Yuan, D., Liu, J., Jiang, Y., Chen, Y., Hsu, K. L., and Sorooshian, S.: Predicting floods
897 in a large karst river basin by coupling PERSIANN-CCS QPEs with a physically based
898 distributed hydrological model. Hydrol. Earth Syst. Sci. 23, 1505-1532.

899 <https://doi.org/10.5194/hess-23-1505-2019>, 2019.

900 Li, J., Hong, A., Yuan, D., Jiang,Y., Deng,S., Cao,C., and Liu, J.: A new distributed
 901 karst-tunnel hydrological model and tunnel hydrological effect simulations. Journal of
 902 Hydrology, 593, 125639. <https://doi.org/10.1016/j.jhydrol.2020.125639>, 2020.

903 Li, J., Hong, A., Yuan, D., Jiang,Y., Zhang,Y., Deng,S., Cao,C., Liu, J., and Chen,Y.:
 904 Elaborate Simulations and Forecasting of the Effects of Urbanization on Karst Flood
 905 Events Using the Improved Karst-Liuxihe Model.CATENA,197,104990.
 906 <https://doi.org/10.1016/j.catena.2020.104990>, 2021.

907 Liedl, R., Sauter, M., Huckinghaus, D., Clemens, T., and Teutsch, G.: Simulation of the
 908 development of karst aquifers using a coupled continuum pipe flow model. Water
 909 Resources Research, 39, 50-57, 2003.

910 Liu, X., Jiang, Y.J., Ye, M.Y., Yang, P.H., Hu, Z.Y., and Li, Y.Q.: Study on hydrologic regime
 911 of underground river in typical karst valley- A case study on the Qingmuguan
 912 subterranean stream in Chongqing. CARSOLOGICA SINICA, 28(2),149-154, 2009.

913 Lu, D. B., Shi, Z. T., Gu, S. X., and Zeng, J. J.: Application of Hydrological Model in the
 914 Karst Area. Water-saving irrigation.11, 31-34. [doi:1007-4929\(2013\)11-031-04](https://doi.org/10.1007-4929(2013)11-031-04), 2013.

915 Martinotti, M.E., Pisano, L., Marchesini, I., Rossi, M., Peruccacci, S., Brunetti, M.T.,
 916 Melillo, M.,Amoruso, G., Loiacono, P., Vennari, C., Vessia, G., Trabace, M., Parise, M.,
 917 and Guzzetti, F.: Landslides, floods and sinkholes in a karst environment: the 1–6
 918 September 2014 Gargano event, southern Italy. Natural Hazards and Earth System
 919 Sciences, 17, 467-480, 2017.

920 Meng, H.H., Wang, N.C., Su, W.C., and Huo, Y.: Modeling and application of karst
 921 semi-distributed hydrological model based on sinkholes. SCIENTIA GEOGRAPHICA
 922 SINICA, 5, 550-554. [doi: 10.3969/j.issn.1000-0690.2009.04.014](https://doi.org/10.3969/j.issn.1000-0690.2009.04.014), 2009.

923 Meng, H.H., and Wang, N.C.: Advances in the study of hydrological models in karst basin.
 924 Progress in Geography, 29,1311-1318, 2010.

925 Pan, H.Y.: Hydrological model and application in karst watersheds. China University of

Geosciences. Doctoral Dissertation, Wuhan, China, 2014.

Parise, M.: Hazards in karst, Proceedings Int. Conf. “Sustainability of the karst environment. Dinaric karst and other karst regions”, IHP-Unesco, Series on Groundwater,2, 155-162, 2010.

Peterson, E.W., and Wicks, C. M.: Assessing the importance of conduit geometry and physical parameters in karst systems using the storm water management model (SWMM).Journal of Hydrology, 329, 1-2, 294-305, 2006.

Peterson, J.R., and Hamlett, J.M.: Hydrologic calibration of the SWAT model in a basin containing fragipan soils. JAWRA Journal of the American Water Resources Association. doi: 10.1111/j.1752-1688.1998.tb00952.x, 1998.

Petrie, R., Denvil, S., Ames, S.,et al.: Coordinating an operational data distribution network for CMIP6 data, Geosci. Model Dev., 14, 629–644.
<https://doi.org/10.5194/gmd-14-629-2021>, 2021.

Qin, J.G., and Jiang, Y.P.: A review of numerical simulation methods for CFP pipeline flow. Groundwater. 3, 98-100, 2014.

Reimann, T., Melissa, E., and Hill.: Modflow-cfp: a new conduit flow process for modflow–2005. Ground Water,47(3),321-325. doi:10.1111/j.1745-6584.2009.00561.x, 2009.

Ren, Q.W.: Water Quantity Evaluation Methodology Based on Modified SWAT Hydrological Modeling in Southwest Karst Area, China University of Geoscience, Wuhan, China, 2006.

Shoemaker, W.B., Cunningham, K.J., and Kuniatsky, E.L.: Effects of turbulence on hydraulic heads and parameter sensitivities in preferential groundwater flow layers. Water Resources Research, 44, 34-50. doi: 10.1029/2007WR006601, 2008.

Suo, L.T., Wan, J.W., and Lu, X.W.: Improvement and application of TOPMODEL in karst region. Carsologica Sinica, 26(1), 67-70, 2007.

Teixeiraparente, M., Bittner, D., Mattis, S.A., Chiogna, G , and Wohlmuth, B.:
 Bayesian calibration and sensitivity analysis for a karst aquifer model using active
 subspaces. *Water Resources Research*, 55, 342-356. doi: [10.1029/2019WR024739](https://doi.org/10.1029/2019WR024739),
 2019.

White, W.B.: Karst hydrology: recent developments and open questions. *Eng. Geol.* 65,
 85–105, 2002.

Williams, P.W.: The role of the epikarst in karst and cave hydrogeology: a review. *Int. J.*
Speleol. 37, 1–10, 2008.

Williams, P. W.: Book Review: *Methods in Karst Hydrogeology*, Nico Goldscheider and
 David Drew (eds). *Hydrogeology Journal*, 17,1025-1025, 2009.

Worthington, S., Ford, D., and Beddows, P.: Porosity and permeability enhancement in
 unconfined carbonate aquifers as a result of solution. *Speleogenesis: evolution of karst*
aquifers, 2000.

Yang, P. H., Luo, J.Y., Peng, W., Xia, K.S., and Lin, Y.S.: Application of online technique in
 tracer test-A case in Qingmuguan subterranean river system, Chongqing, China.
CARSOLOGICA SINICA, 27(3),215-220, 2008.

Yu, D., Yin, J., Wilby, R.L., Stuart, N. L., Jeroen, C., Lin, N., Liu, M., Yuan, H., Chen, J.,
 Christel, P., Guan, M., Avinoam, B., Charlie, W. D., Tang, X., Yu, L., and Xu, S.:
 Disruption of emergency response to vulnerable populations during floods. *Nature*
Sustainability, 3, 728–736. <https://doi.org/10.1038/s41893-020-0516-7>, 2020.

Yu, Q., Yang, P.H., Yu, Z.L., Chen, X.B., and Wu, H.: Dominant factors controlling
 hydrochemical variation of karst underground river in different period,
 Qingmuguan,Chongqing. *CARSOLOGICA SINICA*, 35(2),134-143, 2016.

Zhang, Q.: Assesment on the intrinsic vulnerability of karst groundwater source in the
 Qingmuguan karst valley. *CARSOLOGICA SINICA*, 31(1),67-73, 2012.

Zhu, C., and Li, Y.: Long-Term Hydrological Impacts of Land Use/Land Cover Change
 From 1984 to 2010 in the Little River Basin, Tennessee. *International Soil and Water*

979 Conservation Research, 2(2), 11-21, 2014.

980 **Tables**

981 Table 1 Parameters of the QMG model.

Parameters	Variable name	Physical property
Infiltration coefficient	I_c	Meteorology
Evaporation coefficient	λ	Vegetation cover
Soil thickness	h	Karst aquifer
Soil coefficient	S_b	Soil type
Saturated water content	S_c	Soil type
Rock porosity	R_p	Karst aquifer
Field capacity	F_c	Soil type
Permeability coefficient	K	Karst aquifer
Flow direction	F_d	Landform
Slope	S_0	Landform
Specific yield	S_y	Karst aquifer
Channel roughness	n	Landform

982 Table 2 Parametric sensitivity results in QMG model.

I_c	λ	h	S_b	S_c	S_y	F_d	S_0	R_p	F_c	K	n
0.92	0.24	0.71	0.58	0.8	0.83	0.74	0.68	0.86	0.78	0.89	0.36

983 Table 3 Flood simulation evaluation index through parametric optimization.

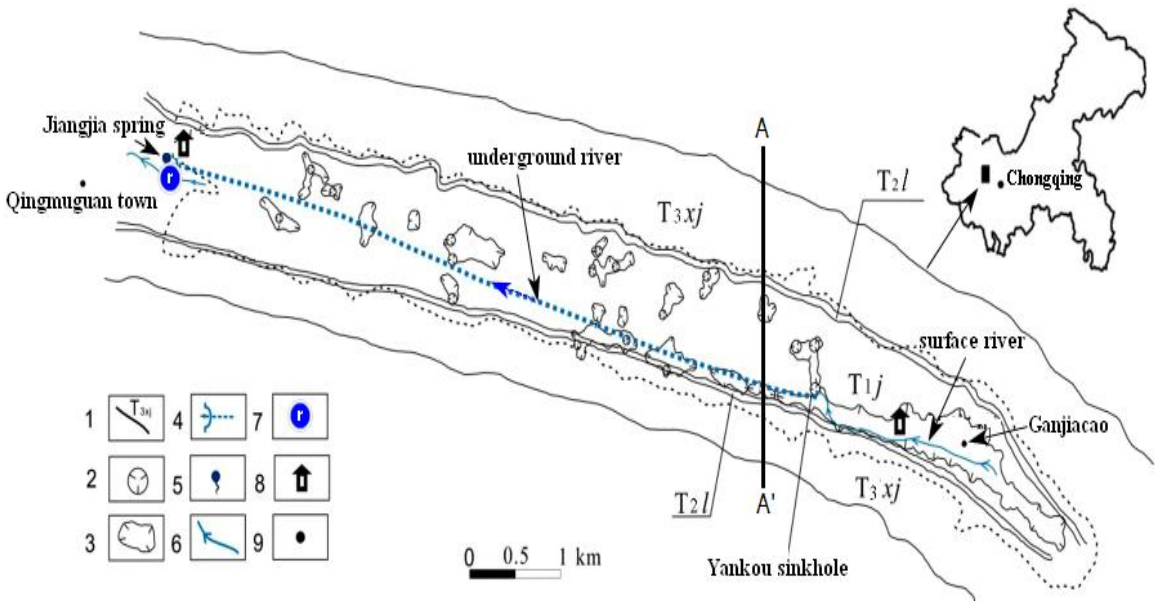
Parameter optimization	Parameter types	Nash coefficient	Correlation coefficient	Relative flow process error/%	Flood peak error/%	Water balance coefficient	Peak time error (hours)
calibration	initial	0.82	0.77	24	29	0.82	4
periods	optimized	0.91	0.94	14	12	0.95	2
validation	initial	0.79	0.71	29	32	0.77	6
periods	optimized	0.88	0.87	18	16	0.92	3
average	initial	0.81	0.74	27	31	0.8	5
value	optimized	0.9	0.91	16	14	0.94	3

984 Table 4 Flood simulation indices for model validation.

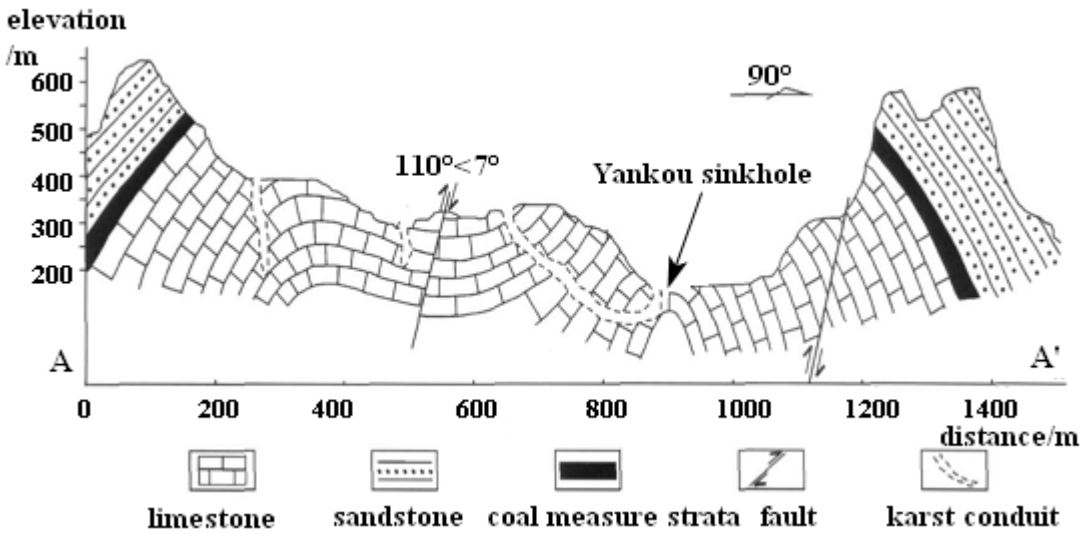
Floods	Parameter types	Nash coefficient	Correlation coefficient	Relative flow process error/%	Flood peak error/%	Water balance coefficient	Peak time error/ (hours)
2017042408	initial	0.77	0.7	28	29	0.71	-5
	optimized	0.95	0.89	11	15	0.88	-2
2017050816	initial	0.78	0.71	19	19	0.76	-4
	optimized	0.92	0.88	11	9	0.94	-2
2017061518	initial	0.76	0.6	25	32	0.63	-5

	optimized	0.91	0.93	12	11	0.95	-3
2017071015	initial	0.78	0.82	25	37	0.64	-4
	optimized	0.92	0.87	8	7	0.94	-2
2017091512	initial	0.81	0.62	21	16	0.78	-5
	optimized	0.9	0.92	13	10	0.9	-4
2017100815	initial	0.75	0.68	30	26	0.62	-2
	optimized	0.94	0.86	11	15	0.92	-1
2018052016	initial	0.78	0.68	25	21	0.67	5
	optimized	0.91	0.93	10	13	0.94	2
2018060815	initial	0.82	0.79	27	22	0.69	-6
	optimized	0.9	0.92	11	12	0.93	-4
2018071212	initial	0.84	0.75	26	24	0.61	5
	optimized	0.91	0.88	8	15	0.92	3
2018081512	initial	0.71	0.78	26	24	0.78	-4
	optimized	0.89	0.94	12	11	0.89	-3
2018090516	initial	0.85	0.68	28	23	0.68	-5
	optimized	0.93	0.87	12	10	0.92	-2
2018092514	initial	0.79	0.78	23	19	0.59	5
	optimized	0.88	0.88	9	11	0.89	2
2018101208	initial	0.78	0.81	28	25	0.63	5
	optimized	0.92	0.94	11	10	0.94	2
2018111208	initial	0.79	0.81	25	24	0.65	-6
	optimized	0.94	0.86	13	12	0.92	-2
2019042512	initial	0.78	0.8	26	36	0.8	5
	optimized	0.89	0.94	9	16	0.93	2
2019051513	initial	0.84	0.77	32	27	0.79	4
	optimized	0.91	0.88	9	13	0.95	2
2019052516	initial	0.74	0.75	29	26	0.63	-5
	optimized	0.92	0.86	7	15	0.96	-2
2019060518	initial	0.85	0.83	28	25	0.78	-4
	optimized	0.95	0.96	10	12	0.92	-2
average	initial	0.79	0.74	26	25	0.69	5
value	optimized	0.92	0.9	10	11	0.92	2

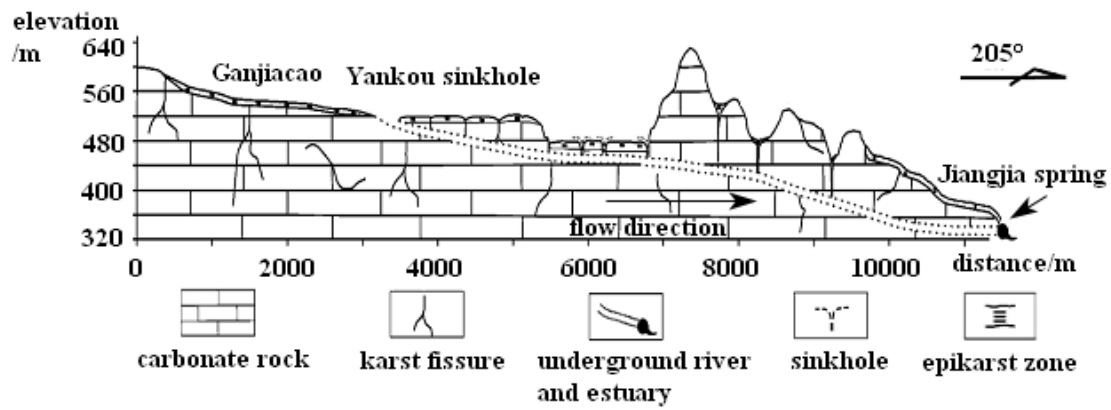
Figures



1- stratigraphic boundary, 2-sinkhole, 3- karst depression, 4- underground river, 5- karst spring, 6-surface river, 7-river gauge, 8- rain gauge, and 9- geographical name
a. Qingmuguan karst basin (modified from Yu et al.,2016)



b. Lithologic cross section of Yankou sinkhole/AA'(modified from Zhang,2012)



c. Longitudinal profile of the study area (modified from Yang et al.,2008)

Figure 1 The Qingmuguan karst basin.

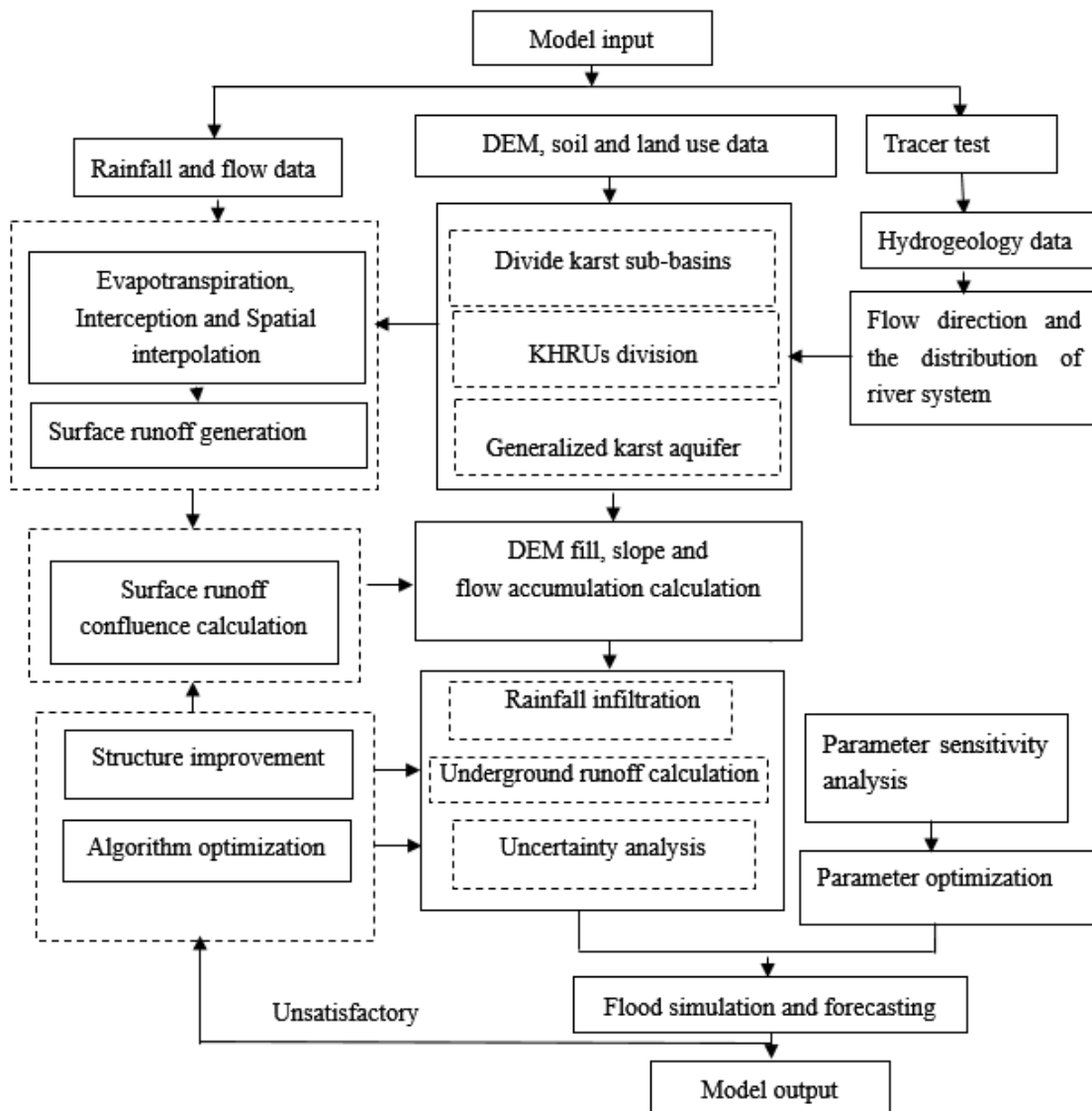


Figure 2 Modeling flow chart of QMG (Qingmuguan) model.

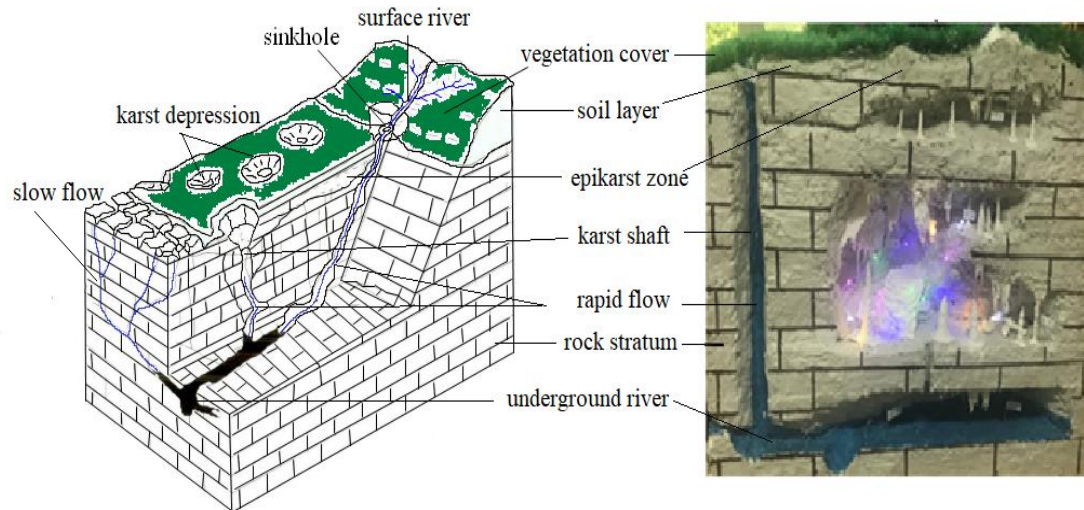
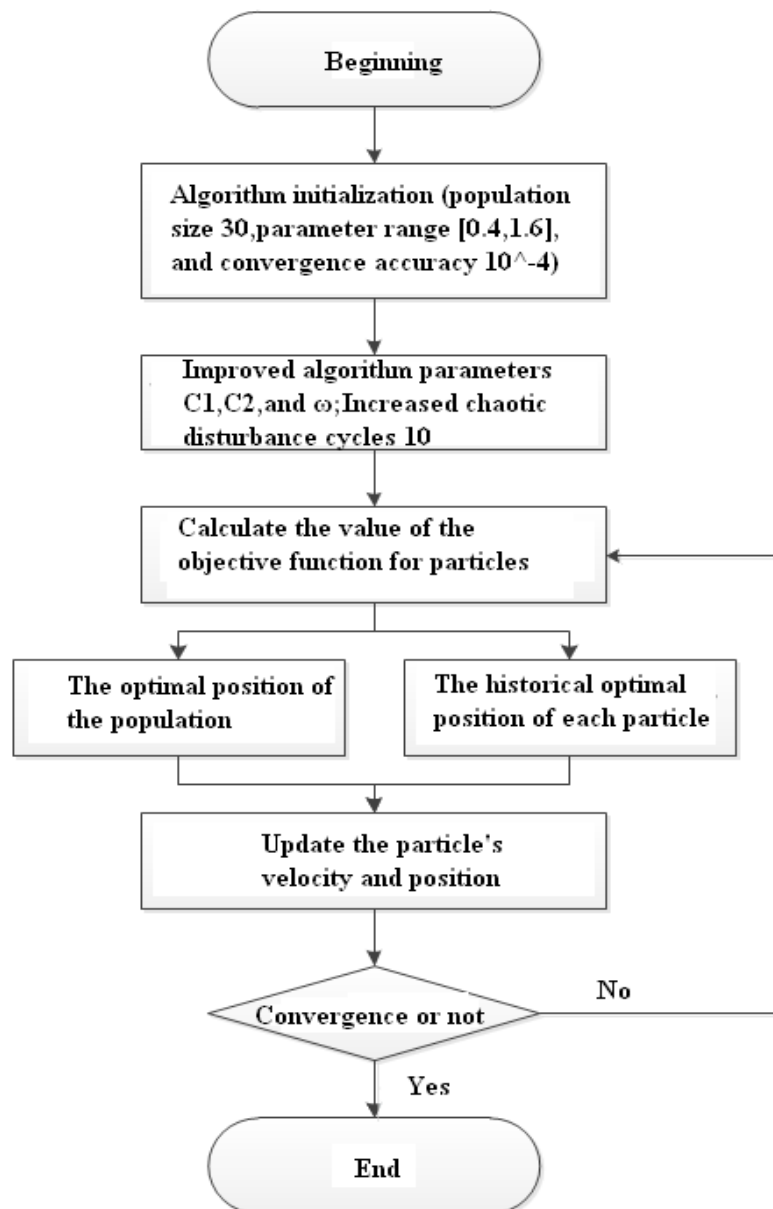
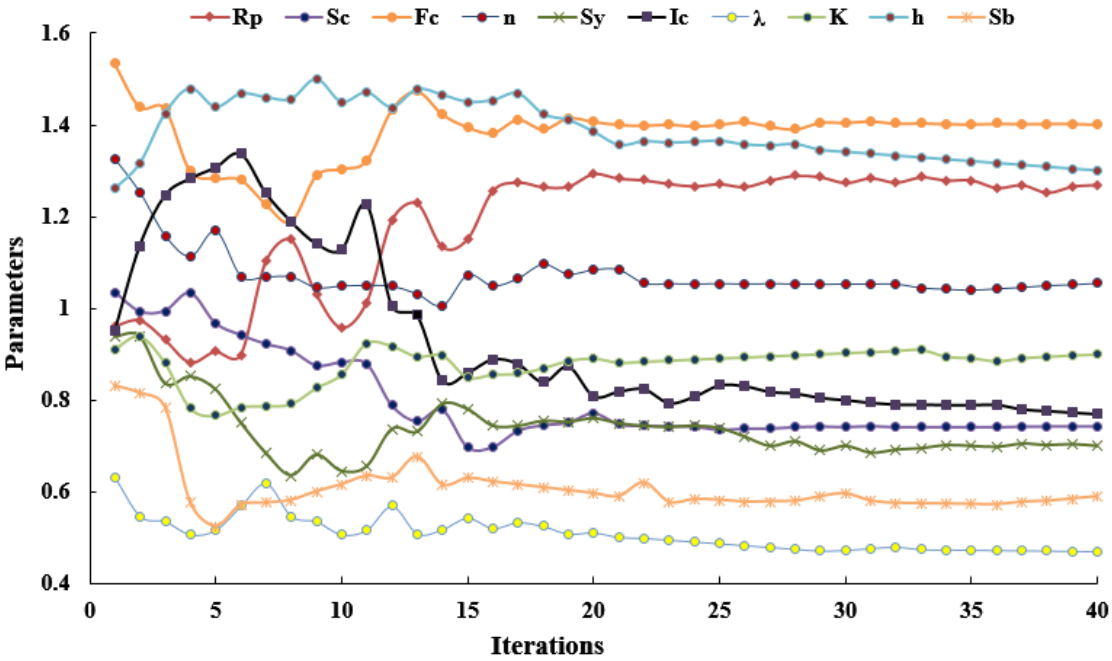


Figure 3 Spatial structure of the KHRUs (Li et al.,2021).



1000

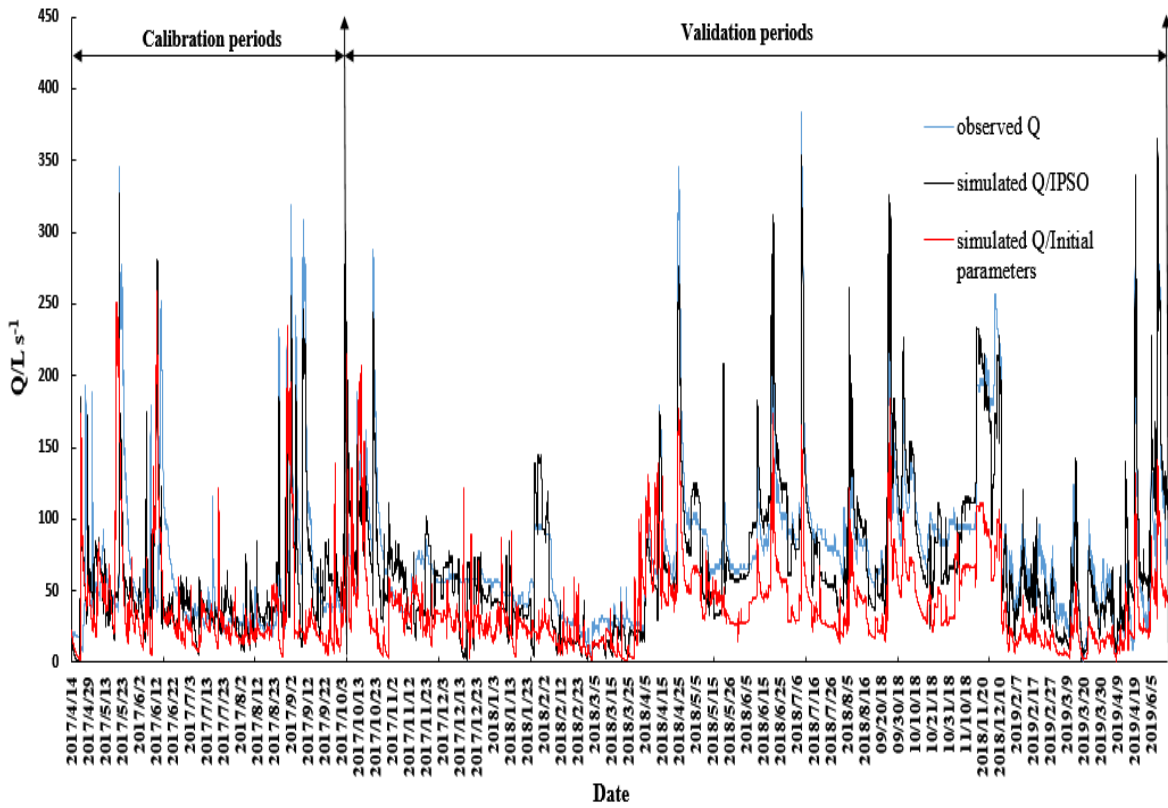
Figure 4 Algorithm flow chart of the IPSO.



1001

1002

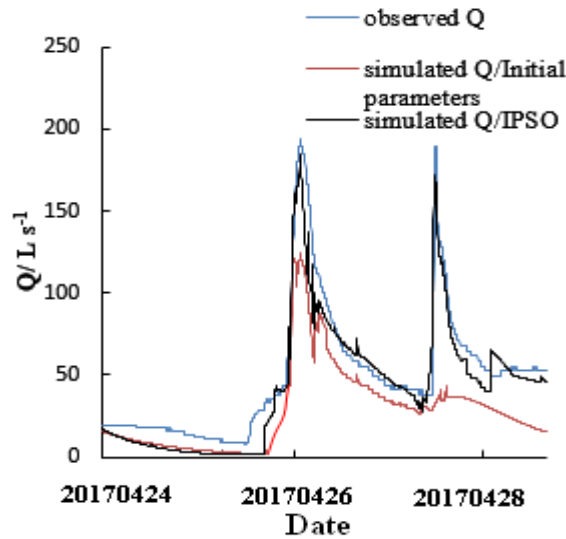
Figure 5 Iteration process of parametric optimization.



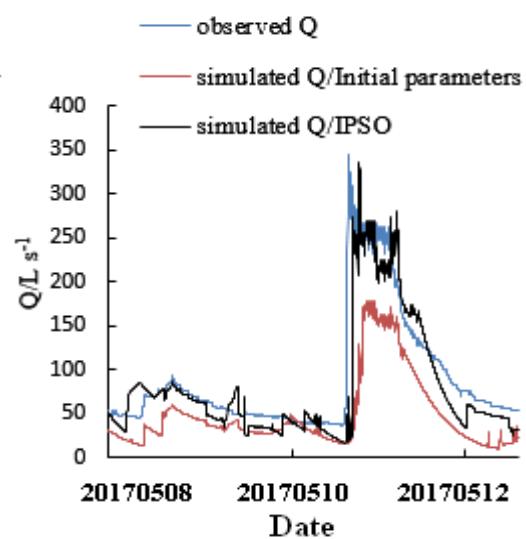
1003

1004

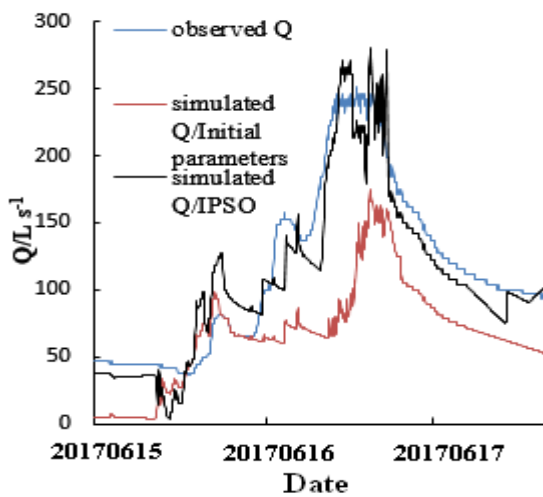
Figure 6 Flow simulation results of QMG model based on parameter optimization.



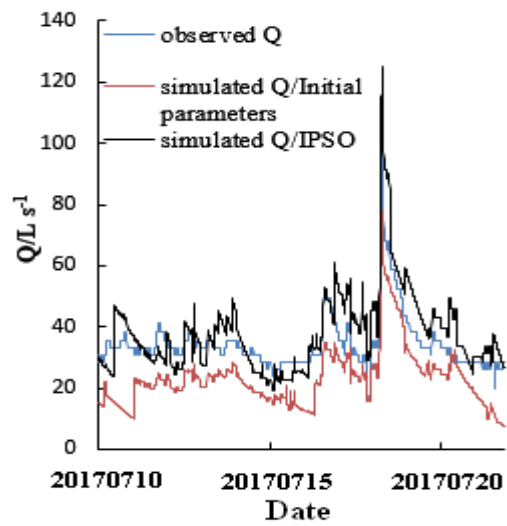
a. flood 201704240800



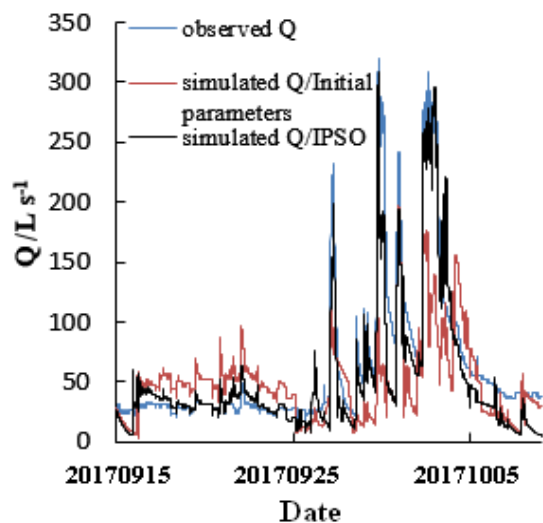
b. flood 201705081600



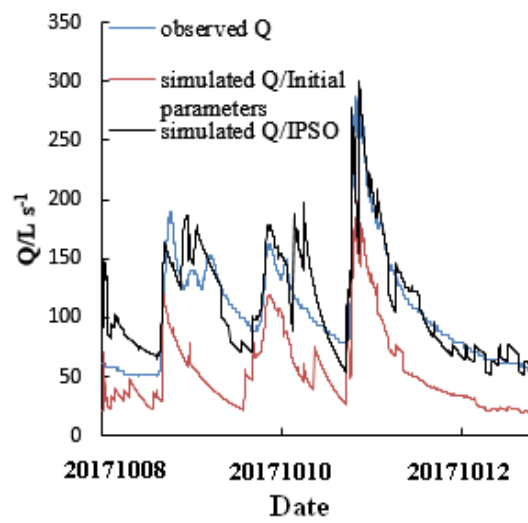
c. flood 201706151800



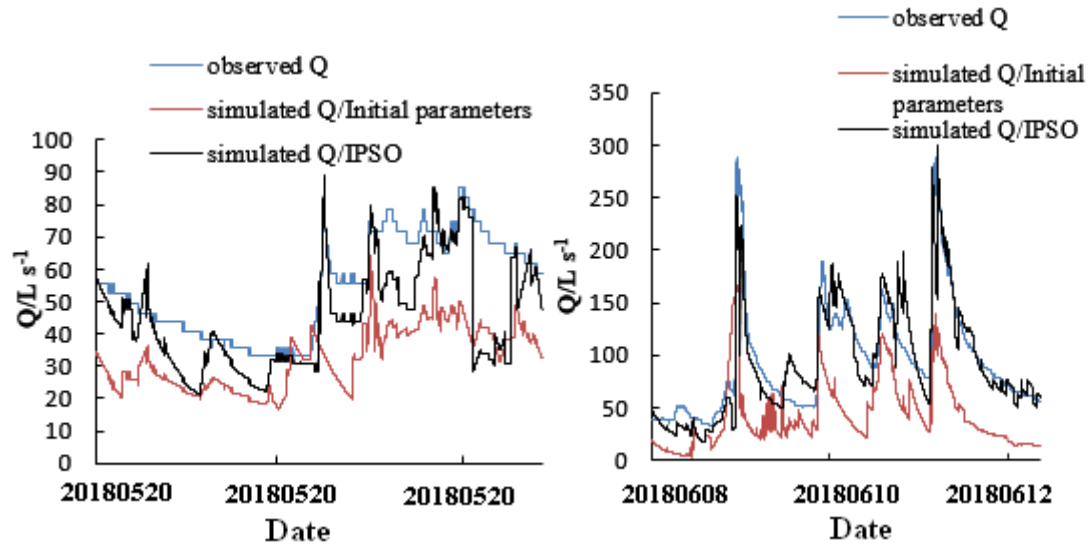
d. flood 201707101530



e. flood 201709151200

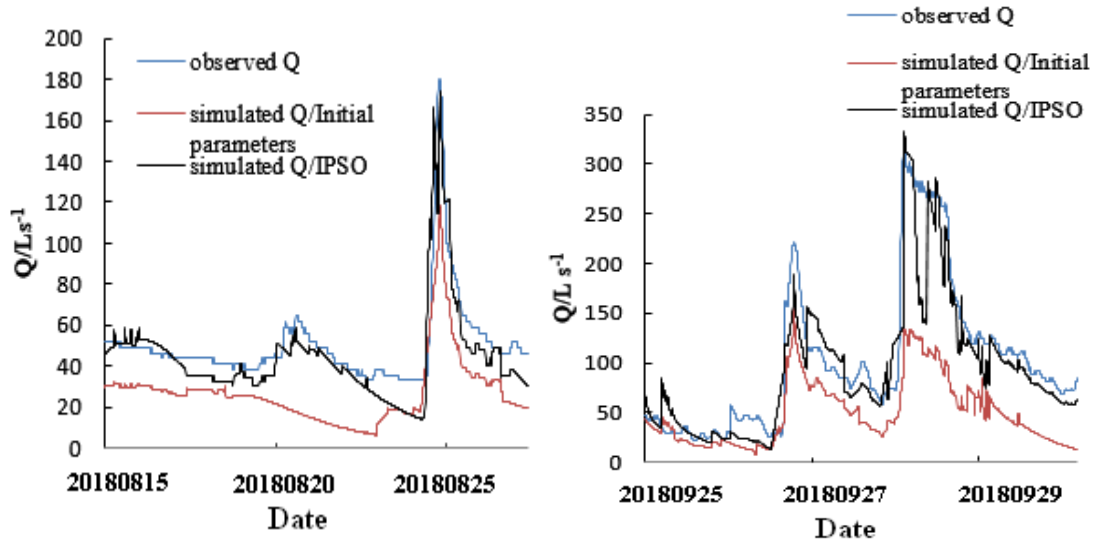


f. flood 201710081500



g.flood 201805201600

h.flood 201806081500



i.flood 201808151200

j.flood 201905251600

Figure 7 Flood simulation effects based on initial and optimized parameters.