

ISWfoam: A numerical model for internal solitary wave simulation in continuously stratified fluids

Jingyuan Li¹, Qinghe Zhang¹, Tongqing Chen¹

¹State Key Laboratory of Hydraulic Engineering Simulation and Safety, Tianjin University, Tianjin 300072, China

Correspondence to: Qinghe Zhang (qhzhang@tju.edu.cn)

Abstract. A numerical model, ISWfoam, for simulating internal solitary waves (ISWs) in continuously stratified, incompressible, viscous fluids is developed based on a fully three-dimensional (3D) Navier-Stokes equation using the open source code OpenFOAM. This model combines the density transport equation with the Reynolds-averaged Navier-Stokes equation with the Coriolis force, and the model discrete equation adopts the finite volume method. The $k-\omega$ SST turbulence model has also been modified accordingly to the variable density field. ISWfoam provides two initial wave generation methods to generate an ISW in continuously stratified fluids, including solving the weakly nonlinear models of the extended Korteweg–de Vries (eKdV) equation and the fully nonlinear models of the Dubreil-Jacotin-Long (DJL) equation. Grid independence tests for ISWfoam are performed, considering the accuracy and computing efficiency, the appropriate grid size of the ISW simulation is recommended to be one-hundred and fiftieth of the characteristic length and one-twenty fifth of the ISW amplitude. Model verifications are conducted through comparisons between the simulated and experimental data for ISW propagation examples over a flat bottom section, including laboratory scale and actual ocean scale, a submerged triangular ridge, a Gaussian ridge and slope. The laboratory test results, including the ISW profile, wave breaking location, ISW arrival time, and the spatial and temporal changes in the mixture region, are well reproduced by ISWfoam. The ISWfoam model with unstructured grids and local mesh refinement can effectively simulate the evolution of ISWs, the ISW breaking phenomenon, waveform inversion of ISWs, and the interaction between ISWs and complex topography.

Key words. OpenFoam, Internal solitary wave tank, Stratified fluid, the DJL equation, Grid independence.

1. Introduction

Internal solitary waves (ISWs) are commonly observed in oceans, particularly on continental shelf

29 regions, due to strong tidal current flows over large topographic features (Huthnance, 1981), such as in
30 the northern South China Sea (Alford et al., 2010; Alford et al., 2015; Cai et al., 2012). ISWs play an
31 important role in both conveying nutrients from the deep ocean to shallower layers and promoting
32 biological growth (Sandstrom et al., 1984). Additionally, ISWs are a potential threat to the ocean
33 structures of resource exploration, exploitation, and submarine navigation vehicles (Alford et al., 2010;
34 Osborne et al., 1980). A considerable number of studies, which include field measurements, remote
35 sensing, experiments, theoretical analysis and numerical simulations, have been carried out due to the
36 significance of ISWs (Vlasenko et al., 2005; Apel et al., 2006; Alford et al., 2011; Guo et al., 2014).

37 For numerically simulated ISWs, many models have been adopted, including the Euler equation,
38 the inviscid/viscid incompressible Boussinesq model, the hydrostatic model, the non-hydrostatic model,
39 and the VOF based two-phase flow model. Among these models, the representative hydrostatic models
40 include the Naval Research Laboratory Ocean Nowcast/Forecast System (ONFS) (Ko et al., 2008), the
41 Regional Hallberg Isopycnal Tide Mode (RHIMT) (Hallberg and Rhines, 1996; Hallberg, 1997), and the
42 Ostrovsky-Hunter model. The representative non-hydrostatic models include the Bergen Ocean Model
43 (BOM), the nonhydrostatic Regional Ocean Modeling System model (ROMS), the Stanford
44 Unstructured Nonhydrostatic Terrain-following Adaptive Navier-Stokes Simulator (SUNTANS), and the
45 Massachusetts Institute of Technology general circulation model (MITgcm). For example, Zhang et al
46 (2012) established a variable water depth internal wave numerical model in a continuously stratified fluid
47 system based on the Euler equation. Xu and Stastna (2020) used the viscid incompressible Boussinesq
48 model to study cross-boundary-layer transport (Boegman and Stastna, 2019) by the fissioning process of
49 shoaling ISWs. Lamb (1994) established a non-hydrostatic model, using a second-order projection
50 method developed by Bell and Marcus (1992), which is used for internal wave research including
51 boundary layer instability (Aghsaee et al., 2012), reflection (Lamb, 2009), and the interaction of the tides
52 with the topography (Lamb, 2007; Aghsaee et al., 2010). Diamessis (2005) developed a spectral
53 multidomain penalty method model and correctly reproduced the characteristic vorticity and internal
54 wave structure. Subich et al (2013) developed a spectral collocation method for the solution of the
55 Navier–Stokes equations under the Boussinesq approximation, and simulated the internal wave in
56 continuously stratified fluid. Smedstad et al (2003) employed the ONFS model to establish a global ocean
57 real-time forecasting system with an operational eddy resolution of $1/16^\circ$, which effectively tracks ocean

58 eddies, ocean currents and ocean fronts. [Simmons et al \(2004\)](#) employed the RHIMT model to carry out
59 a global numerical simulation of tidal currents, and analyzed the whole process of the conversion rate of
60 barotropic waves into baroclinic waves. [Thiem \(2011\)](#) used the Bergen Ocean Model to explore the
61 bottom boundary layer flow caused by waves beneath a propagating ISW in a two-fluid system. [Li and
62 Farmer \(2011\)](#) employed the Ostrovsky-Hunter model to study the nonlinear evolution of a
63 monochromatic internal wave. [Buijsman et al \(2010\)](#) employed ROMS model to study the asymmetry in
64 solitons to the east and west of Luzon Strait. [Zhang et al \(2011\)](#) used the nonhydrostatic SUNTANS
65 model ([Fringer et al., 2006](#)) to study the dynamics of A wave and B wave formation. [Rayson et al \(2018\)](#)
66 used the modified SUNTANS model to study the internal waves around Scott Reef and provided the
67 generation process of internal lee waves. [Vlasenko et al \(2010\)](#) employed the MITgcm model to
68 investigate the baroclinic tidal energy conversion in the area west of the Luzon Strait.

69 In summary, for continuously stratified fluids in complex ocean environments, numerical simulation
70 has become a leading method for ISW investigations. However, there are presently few versatile
71 numerical models with share code that can accurately simulate the ISW flow around complex topography
72 and submarine navigation vehicles in continuously stratified fluids. Therefore, the main objective of this
73 paper is to develop a solver, referred to as ISWFOam with a modified $k-\omega$ SST model that considers the
74 variable density field, which simulates the ISW in continuous density stratification, incompressible and
75 viscous fluids using the finite volume method with unstructured grids based on a fully three-dimensional
76 (3D) Navier-Stokes equation using the OpenFOAM library.

77 Notably, the open source field operation and manipulation code OpenFOAM®, as an object-
78 oriented C++ open source library that can be used to build a variety of solvers for computational fluid
79 problems based on the finite volume method, is becoming increasingly popular in the computational fluid
80 research community. At present, the official version of OpenFOAM® does not have a solver or boundary
81 conditions for solving the ISW in continuously stratified fluids. Although some researchers simulate
82 ISWs by modifying the OpenFOAM® code, most of these studies are based on a two-fluid system
83 without considering continuous stratification in density, such as [Meng and Zhang \(2016\)](#) and [Li et al
84 \(2017\)](#). Though recent work by [Ding et al \(2020\)](#) and [Li et al \(2021\)](#) considered continuous stratification
85 in density, their wave generation theories does not consider continuous stratification in density. To
86 extensively use of the numerical model of ISWs as a tool in the future, we will develop ISWFOam to

87 simulate the ISW in continuously stratified, incompressible and viscous fluids based on the OpenFOAM
 88 library. The turbulence model will consider the variable density field. In addition, ISWFOam will provide
 89 two initial methods to generate an ISW in continuously stratified fluids, including solving the weakly
 90 nonlinear models of the extended Korteweg-de Vries (eKdV) equation and the fully nonlinear models of
 91 the Dubreil-Jacotin-Long (DJL) equation. This approach renders the numerical model suitable for the
 92 simulation of ISW flows in complex geometries and topographies. It is worth noting that ISWFOam does
 93 not consider the generation process of ISWs, but focuses on the propagation and evolution of ISWs that
 94 have already been generated, and the interaction between ISWs and complex structures and topography
 95 on field scales.

96 The outline of the paper is described as follows. First, in Section 2, the governing equations for a
 97 continuously stratified fluid are presented, and discrete forms of these equations are derived. Then, grid
 98 independence tests of the developed ISWFOam model are described in Section 3. Subsequently, in
 99 Section 4, a series of test cases are presented to verify the model. Simulation examples at the field scale
 100 in Section 5. Finally, the conclusions are drawn in Section 6.

101 **2. ISWFOam: A three-dimensional numerical solver for ISWs in a continuously stratified fluid**

102 **2.1 Governing equations**

103 We present an ISW numerical model by solving the motion of a three-dimensional, viscous,
 104 incompressible fluid with the Boussinesq approximation and rigid lid hypothesis. The governing
 105 equations of the model are

$$106 \quad \nabla \cdot \mathbf{U} = 0, \quad (1)$$

$$107 \quad \frac{\partial \mathbf{U}}{\partial t} + (\mathbf{U} \cdot \nabla) \mathbf{U} - \nabla \cdot (v_{Eff} \nabla \mathbf{U}) = \mathbf{Q} \quad \mathbf{Q} = \frac{1}{\rho_0} \left(-\nabla p_{_rgh} - \mathbf{g} \cdot \mathbf{X} \nabla \rho - \Omega \mathbf{e}_3 \right), \quad (2)$$

$$108 \quad \frac{\partial \rho}{\partial t} + (\mathbf{U} \cdot \nabla) \rho = \nabla \cdot (k \nabla \rho), \quad (3)$$

109 where $\mathbf{U} = (u_i, u_j, u_k)$ is the velocity vector, t is time, ∇ is the gradient operator, \mathbf{Q} is the source term, ρ_0
 110 is the reference density, ρ is the density field, $p_{_rgh}$ is a modified pressure field, \mathbf{g} is the gravitational
 111 acceleration vector, and \mathbf{X} is the position vector. v_{Eff} is the effective kinematic viscosity defined as $v_{Eff} =$
 112 μ_{Eff} / ρ_0 , where μ_{Eff} is the effective dynamic viscosity including the molecular viscosity (μ_t) and turbulent
 113 viscosity (μ_t). k is the diffusion coefficient, and its value is the same as the effective dynamic

114 viscosity(μ_{eff}). Ω is the Coriolis parameter, which is the twice the speed of rotation around the vertical
 115 unit vector $\mathbf{e}_3 = (0, 0, 1)$. ISWFOam uses a modified pressure $p_{_rgh}$ instead of a total pressure p , and their
 116 relationship is given by

$$117 \quad p_{_rgh} = p - \rho \mathbf{g} \cdot \mathbf{X}, \quad \nabla p_{_rgh} = \nabla p - \rho \mathbf{g} - \mathbf{g} \cdot \mathbf{X} \nabla \rho, \quad (4)$$

118 The upper boundary ($z = H$, with H the depth of computation domain) is treated as a rigid lid, the
 119 kinematic boundary conditions for this boundary are given by

$$120 \quad u_k(x, y, H, t) = 0 \quad (5)$$

121 To close the above equations, the turbulence model needs to be employed. The two-equation k - ε
 122 model is widely used as an effective turbulence model, but it cannot capture the proper behaviour of
 123 turbulent boundary layers up to separation due to adverse pressure gradients (Wilcox, 1993). For the
 124 above boundary layers separation problem, Bardina et al. (1997) and Menter et al. (2003) suggested the
 125 use of the k - ω Shear Stress Transport (SST) model to obtain substantially more accurate results. Therefore,
 126 the turbulence model used in this paper is the k - ω SST model. Notably that in OpenFOAM, the
 127 incompressible version for turbulence models does not consider the variable density field, and instead, it
 128 treats the density as a constant, such as the k - ω SST model

$$129 \quad \frac{\partial k}{\partial t} + \nabla \cdot (\mathbf{U}k) = \nabla \cdot \left[(v_{eff} + \sigma_k v_t) \nabla k \right] + P_k^* - \beta^* \omega k \quad (6)$$

$$130 \quad \frac{\partial \omega}{\partial t} + \nabla \cdot (\mathbf{U}\omega) = \nabla \cdot \left[(v_{eff} + \sigma_\omega v_t) \nabla \omega \right] + C_\gamma \frac{\omega}{k} P_k - C_\beta \omega^2 + 2(1 - F_1) \frac{\sigma_{\omega 2}}{\omega} \nabla k \cdot \nabla \omega \quad (7)$$

$$131 \quad P_k^* = \min(P_k, c_1 C_\mu k \omega) \quad (8)$$

$$132 \quad v_t = \frac{a_1 k}{\max(a_1 \omega, \sqrt{2S_i F_2})} \quad (9)$$

133 where k is the turbulent kinetic energy, ω is the specific dissipation rate, P_k is the production term of k ,
 134 $P_k = \tau^R : \nabla \mathbf{U}$, P_k^* is related to the production term of turbulence kinetic energy P_k in the k equation, v_t
 135 is the turbulent kinematic viscosity, S_i is the mean rate of the flow strain, $S_i = 0.5(\nabla \mathbf{U} + \nabla \mathbf{U}^T)$, the model
 136 constants are assigned the values $\beta^* = 0.09$, $a_1 = 0.31$, $c_1 = 10$ and $C_\mu = 0.09$, F_1 and F_2 are blending
 137 functions, the value of σ_k , σ_ω , C_γ and C_β are blended using the equation $\Phi = F_1 \Phi_1 + (1 - F_1) \Phi_2$ in which
 138 Φ_1 and Φ_2 are given in Table 1.

139 Table 1 Default values for Φ_1 and Φ_2

Φ	σ_k	σ_ω	C_β	C_γ
Φ_1	0.85	0.5	0.075	5/9

140

141 Considering the variable density field during the solution process, it is necessary to consider the
 142 change in the density field in the turbulence model. Therefore, we modify the turbulence model to
 143 consider the change in density, and finally a modified k - ω SST model that considers the change in density
 144 is used to close the equation

$$145 \quad \frac{\partial \rho k}{\partial t} + \nabla \cdot (\rho \mathbf{U} k) = \nabla \cdot \left[\rho (v_{Eff} + \sigma_k v_t) \nabla k \right] + \rho P_k^* - \rho \beta^* \omega k \quad (10)$$

$$146 \quad \frac{\partial \rho \omega}{\partial t} + \nabla \cdot (\rho \mathbf{U} \omega) = \nabla \cdot \left[\rho (v_{Eff} + \sigma_\omega v_t) \nabla \omega \right] + C_\gamma \frac{\omega}{k} P_k - C_\beta \rho \omega^2 + 2(1 - F_1) \rho \frac{\sigma_{\omega 2}}{\omega} \nabla k \cdot \nabla \omega \quad (11)$$

147

148 2.2 Numerical discretization

149 The governing equations are numerically discretized using the finite volume method based on the
 150 C++ open source library of OpenFOAM. The finite volume method requires that Eqs. (2) and (3) are
 151 satisfied over the control volume V_P around point P in integral form:

$$152 \quad \int_{V_P} \int_{\Delta t} \left[\frac{\partial \mathbf{U}}{\partial t} + (\mathbf{U} \cdot \nabla) \mathbf{U} - \nabla \cdot (v_{Eff} \nabla \mathbf{U}) \right] dV dt = \int_{V_P} \int_{\Delta t} \mathbf{Q} dV dt, \quad (12)$$

$$153 \quad \int_{V_P} \int_{\Delta t} \left[\frac{\partial \rho}{\partial t} + (\mathbf{U} \cdot \nabla) \rho - \nabla \cdot (k \nabla \rho) \right] dV dt = 0, \quad (13)$$

154 where Δt is the time step.

155 The momentum equation in ISWFOam is solved by constructing a predicted velocity field and then
 156 using the Pressure Implicit with Splitting of Operators (PISO) algorithm (Issa, 1986) to modify it. n is
 157 defined to represent the current moment. The PISO iteration process is marked as m ; when m is equal to
 158 zero, it represents the **current time** (t^n).

159 First, only the temporal, convection and diffusion terms appear in the discrete version of the
 160 equation momentum, and the other terms are ignored. After this operation, we obtain an explicit
 161 expression for the predicted velocity field \mathbf{U}_P^r , namely,

$$162 \quad \frac{\mathbf{U}_P^r - \mathbf{U}_P^n}{\Delta t} V_P + \sum_{f \in \partial V_P} (\phi_f^n \mathbf{U}_f^r) - \sum_{f \in \partial V_P} v_{Eff} \nabla \mathbf{U}_f^r \cdot \mathbf{S}_f = 0, \quad (14)$$

163 where P represents the centre of the grid cell, $\phi_f^n = \mathbf{U}_f^n \cdot \mathbf{S}_f$ is the volume flux at the initial time n and

164 \mathbf{S}_f is the face vector.

165 The solution process requires the velocity on the surface f . Assuming the variation in \mathbf{U}_f^r between
 166 the centre P of the grid and the centre N of the adjacent grid, the face values are calculated using a mixture
 167 method (blended differencing) of the central scheme (central differencing) and the upwind scheme
 168 (upwind differencing) as follows (Jasak, 1996):

$$169 \quad \mathbf{U}_f = (1 - \lambda_U)(\mathbf{U}_f)_{UD} + \lambda_U(\mathbf{U}_f)_{CD} \quad (15)$$

170 where

$$171 \quad (\mathbf{U}_f)_{UD} = \begin{cases} \mathbf{U}_P & \text{for } \phi_f \geq 0, \\ \mathbf{U}_N & \text{for } \phi_f < 0, \end{cases} \quad \text{and} \quad (\mathbf{U}_f)_{CD} = \frac{\mathbf{U}_P + \mathbf{U}_N}{2} \quad (16)$$

172 where N represents the centre of the adjacent grid cells, $\phi_f = \mathbf{U}_f \cdot \mathbf{S}_f$ is volume flux. The limiter λ_U
 173 can be selected from several alternatives (OpenFOAM, 2019), including linear, QUICK, vanLeer, etc. In
 174 the following derivation process, the vanLeer scheme was used to calculate the velocity of the face centre

$$175 \quad \mathbf{U}_f = \frac{1}{2}(\mathbf{U}_P + \mathbf{U}_N) + \frac{1}{2}[\psi(\phi_f)(1 - \lambda_U)](\mathbf{U}_P - \mathbf{U}_N), \quad (17)$$

176 where $\psi(\phi_f)$ is a step function defined by

$$177 \quad \psi(\phi_f) = \begin{cases} 1 & \text{for } \phi_f \geq 0, \\ -1 & \text{for } \phi_f < 0, \end{cases} \quad (18)$$

178 Inserting Eq. (17) into Eq. (14) yields

$$179 \quad A_P \mathbf{U}_P^r = \sum_{f \in \partial V_P} A_N \mathbf{U}_P^m + \frac{\mathbf{U}_P^n}{\Delta t} = H(\mathbf{U}^m) \quad (19)$$

180 After some manipulation, the quantities A_P and A_N are given as

$$181 \quad A_P = \left\{ \frac{V_P}{\Delta t} + \sum_{f \in \partial V_P} \frac{\phi_f^n}{2} [1 + \psi(\phi_f)(1 - \lambda_U)] + \sum_{f \in \partial V_P} v_{Eff,f} \frac{|\mathbf{S}_f|}{|d|} \right\} \frac{1}{V_P} \quad (20)$$

$$182 \quad A_N = \left\{ -\frac{\phi_f^n}{2} [1 - \psi(\phi_f)(1 - \lambda_U)] + v_{Eff,f} \frac{|\mathbf{S}_f|}{|d|} \right\} \frac{1}{V_P} \quad (21)$$

183 Including the effect of gravity and the Coriolis force in Eq. (19)

$$184 \quad \mathbf{U}_P^r = \frac{H(\mathbf{U}^m)}{A_P} - \frac{(\mathbf{g} \cdot \mathbf{X} \nabla \rho / \rho_0)^n}{A_P} - \frac{(\Omega \mathbf{e}_3)^n}{A_P}, \quad (22)$$

185 Notably, that when m is equal to zero, it represents the initial moment n , and the value of the initial
186 moment is known. Therefore, we obtain the predicted velocity field \mathbf{U}_p^r in the first iteration. We define
187 the surface gradient operator ($\nabla_{\frac{1}{f}}$), and the type of gradient operator acting on \mathbf{U} is
188 $\nabla_{\frac{1}{f}} \mathbf{U} = (\mathbf{U}_N^m - \mathbf{U}_P^m) / |d|$, which represents the distance from the centre of the grid N to P . Similarly,
189 the surface gradient operator ($\nabla_{\frac{1}{f}}$) acting on scalar γ is $\nabla_{\frac{1}{f}} \lambda = (\lambda_N^m - \lambda_P^m) / |d|$. The associated flux
190 ($\phi_f = \mathbf{U}_f \cdot \mathbf{S}_f$) is achieved by executing an inner product with a surface vector (\mathbf{S}_f) on the left and right
191 parts of Eq. (22), giving

$$192 \quad \phi_f^r = \left(\frac{H(\mathbf{U}^m)}{A_p} \right)_f \cdot \mathbf{S}_f - \left(\left(\frac{1}{A_p} \right)_f (\mathbf{g} \cdot \mathbf{X})_f^n \left(\frac{1}{\rho_0} \nabla_{\frac{1}{f}} \rho \right) \right) |\mathbf{S}_f| - \left(\frac{(\Omega e_3)^n}{A_p} \right)_f \cdot \mathbf{S}_f, \quad (23)$$

193 Eq. (23) completed the flux calculation without considering the influence of the pressure term. The
194 pressure contribution in terms of a flux can be expressed as

$$195 \quad \left(\frac{-\nabla p_{_rgh}}{\rho_0 A_p} \right)_f \cdot \mathbf{S}_f = \left(\frac{-1}{A_p} \right)_f \left(\frac{1}{\rho_0} \nabla_{\frac{1}{f}} p_{_rgh}^{m+1} \right) |\mathbf{S}_f|, \quad (24)$$

196 Then, Eq. (24) is now added to Eq. (23) to yield

$$197 \quad \phi_f^{m+1} = \left(\frac{H(\mathbf{U}^m)}{A_p} \right)_f \cdot \mathbf{S}_f - \left(\left(\frac{1}{A_p} \right)_f (\mathbf{g} \cdot \mathbf{X})_f^n \left(\frac{1}{\rho_0} \nabla_{\frac{1}{f}} \rho \right) \right) |\mathbf{S}_f| - \left(\frac{(\Omega e_3)^n}{A_p} \right)_f \cdot \mathbf{S}_f - \left(\frac{1}{A_p} \right)_f \left(\frac{1}{\rho_0} \nabla_{\frac{1}{f}} p_{_rgh}^{m+1} \right) |\mathbf{S}_f| \quad (25)$$

198 Combined with Eq. (23), Eq. (25) is simplified and rewritten as

$$199 \quad \phi_f^{m+1} = \phi_f^r - \left(\frac{1}{A_p} \right)_f \left(\frac{1}{\rho_0} \nabla_{\frac{1}{f}} p_{_rgh}^{m+1} \right) |\mathbf{S}_f| \quad (26)$$

200 Using conservation of mass, we solve the pressure field $p_{_rgh}^{m+1}$, which results in

$$201 \quad \sum_{f \in \partial V_p} \left(\frac{1}{A_p} \right)_f \left(\frac{1}{\rho_0} \nabla_{\frac{1}{f}} p_{_rgh}^{m+1} \right) |\mathbf{S}_f| = \sum_{f \in \partial V_p} \phi_f^r \quad (27)$$

202 The preconditioned conjugate gradient method is used to solve the linear system constructed by Eq.
203 (27) (OpenFOAM, 2019). After $p_{_rgh}^{m+1}$ is obtained using Eq. (27), we calculate the volume flux using
204 Eq. (26) for each face. The cell centred velocity fields \mathbf{U}_p^{m+1} are calculated by reconstructing the face
205 velocity flux using the following expression (Deshpande, 2012)

$$206 \quad \mathbf{U}_P^{m+1} = \mathbf{U}_P^r + \left(\frac{1}{A_P} \right) \left(\sum_{f \in \partial V_P} \frac{\mathbf{S}_f \mathbf{S}_f}{|\mathbf{S}_f|} \right)^{-1} \cdot \left(\sum_{f \in \partial V_P} \left(\frac{\phi_f^{m+1} - (\mathbf{U}_P^r)_f \cdot \mathbf{S}_f}{(1/A_P)_f} \right) \frac{\mathbf{S}_f}{|\mathbf{S}_f|} \right) \quad (28)$$

207 Eq. (28) completes the velocity field calculation of the first iteration step in the PISO algorithm. By
 208 converting the identifier m to $m+1$, the next PISO iteration is completed and updating the velocity in Eq.
 209 (19) with the velocity \mathbf{U}_P^{m+1} calculated from Eq. (28), thereby updating $p_{_rgh}$, ϕ_f and \mathbf{U} . This procedure
 210 is performed M times to guarantee that the results of the velocity and pressure together conform to the
 211 continuity and momentum equations. Considering that PISO iteration levels require more than 1, but
 212 typically not more than 4 (OpenFOAM, 2019), we specify that the number of PISO iteration levels is 3
 213 in the computations presented in this paper. After completing the three iterations, the converged values
 214 are considered the result of the next time step ($n+1$), namely,

$$215 \quad \phi_f^{n+1} = \phi_f^M, \quad \mathbf{U}_P^{n+1} = \mathbf{U}_P^M, \quad p_{_rgh}^{n+1} = p_{_rgh}^M \quad (29)$$

216 We discretize the convection-diffusion equation of density (Eq. (13)) to obtain

$$217 \quad \frac{V_P}{\Delta t} (\rho_P^{n+1} - \rho_P^n) + \sum (\phi_f^{n+1} \rho_f^{n+1}) = \sum k \left[|\mathbf{S}_f| \frac{\rho_N^{n+1} - \rho_P^{n+1}}{|d|} \right], \quad (30)$$

218 At the end of the iteration procedure, we bring the results of the volume flux into Eq. (30) to
 219 calculate the density field at the next time (ρ_P^{n+1}), thereby updating the density field for the next step
 220 calculation ($\Delta t = t^{n+2} - t^{n+1}$).

221 2.3 Initialized field of ISW generation

222 ISW generation methods mainly include the gravity collapse mechanism, double push-pedals
 223 method (Fu et al., 2008), velocity-inlet method (Gao et al., 2012), mass source method (Wang et al.,
 224 2018), initialization method, and methods addressing the interaction between tidal current and
 225 topography. For example, Hsieh et al (2014) investigated the flow evolution of a depression ISW
 226 generated by the gravity collapse mechanism. Cheng et al (2020) studied the interaction between ISWs
 227 and a cylinder using the gravity collapse mechanism. The initialization method involves solving the
 228 internal solitary wave theory at the initial moment, such as the Korteweg-de Vries (KdV) equation
 229 (Grimshaw et al., 2010), the modified KdV (mKdV) equation, the extended KdV (eKdV) equation, the
 230 forced KdV equation, the Ostrovsky equation (Li and Farmer, 2011), the Miyata-Choi-Camassa (MCC)
 231 model (Miyata 1985 and 1988; Choi and Camassa, 1999), and the Dubreil-Jacotin-Long (DJL) equation

232 (Long, 1953; Turkington, 1991; Brown and Christie, 1997; Dunphy et al., 2011), to obtain the wave
 233 surface, velocity field. The method of an interacting between tidal current and terrain that stimulates
 234 ISWs is adopted by many scholars, such as Farmer and Smith (1980), Lamb et al (1994), and Shaw et al
 235 (2009).

236 In this paper, the method of initializing the field is selected to generate the ISWs. To increase the
 237 application range of the ISWfoam model, two initialization methods are provided, including solving the
 238 weakly nonlinear models of the eKdV equation (Helfrich and Melville, 2006) and the fully nonlinear
 239 models of the DJL equation for continuously stratified fluids (Turkington, 1991; Dunphy et al, 2011).
 240 The Dubreil-Jacotin-Long (DJL) equation is expressed as

$$241 \quad \nabla^2 \eta + \frac{N^2(z-\eta)}{c^2} \eta = 0, \quad \eta = 0 \quad \text{at} \quad z = 0, -H \quad (31)$$

$$\eta = 0 \quad \text{at} \quad |x| \rightarrow \infty$$

242 where η is the isopycnal displacement, H is the water depth, c is the propagation speed, N is the definition
 243 of the buoyancy frequency, and z is vertical position.

$$244 \quad N^2(z) = -g \frac{d\rho_0(z)}{dz}, \quad (32)$$

245 where $\rho_0(z)$ is the reference density, and g is the gravitational acceleration.

246 By solving the above DJL equation we can obtain η and c , and then through the relationship $\psi = \eta c$,
 247 where ψ is the stream function, we can obtain the wave-induced velocity field. We use the DJLES open
 248 source package provided by Dunphy et al (2011) to solve the DJL equations. Then we input the initial
 249 field calculated by DJLES into OpenFOAM to obtain the initial field required for OpenFOAM numerical
 250 simulation.

251 Another theory of ISWfoam model wave generation involves the weakly nonlinear models of the
 252 eKdV equation. Using the first order stream function for the DJL equation, we can obtain the well-known
 253 KdV equation and further obtain the eKdV equation. For the specific derivation, please refer to the paper
 254 by Lamb and Yan (1996). The eKdV equation (Helfrich and Melville, 2006) is

$$255 \quad \frac{\partial \zeta}{\partial t} + (c_0 + c_1 \zeta + c_3 \zeta^2) \frac{\partial \zeta}{\partial x} + c_2 \frac{\partial^3 \zeta}{\partial x^3} = 0, \quad (33)$$

$$256 \quad c_0^2 = \frac{gh_1 h_2 (\rho_2 - \rho_1)}{\rho_1 h_2 + \rho_2 h_1}, \quad (34)$$

$$257 \quad c_1 = -\frac{3c_0}{2} \frac{\rho_1 h_2^2 - \rho_2 h_1^2}{\rho_1 h_1 h_2^2 + \rho_2 h_1^2 h_2}, \quad (35)$$

$$258 \quad c_2 = \frac{c_0}{6} \frac{\rho_1 h_1^2 h_2 + \rho_2 h_1 h_2^2}{\rho_1 h_2 + \rho_2 h_1}, \quad (36)$$

$$259 \quad c_3 = \frac{3c_0}{h_1^2 h_2^2} \left[\frac{7}{8} \left(\frac{\rho_1 h_2^2 - \rho_2 h_1^2}{\rho_1 h_2 + \rho_2 h_1} \right)^2 - \frac{\rho_1 h_2^3 + \rho_2 h_1^3}{\rho_1 h_2 + \rho_2 h_1} \right], \quad (37)$$

260 where ζ is the isopycnal vertical displacement; c_0 is the linear phase speed; the coefficients c_1, c_2 and c_3
 261 are functions of the steady background stratification and shear through the linear eigenmode (vertical
 262 structure function) of interest (Helfrich and Melville, 2006); h_1 and h_2 are the mean upper and lower layer
 263 depths, respectively; ρ_1 and ρ_2 are the fluid densities of the upper and lower layers, respectively. The
 264 theoretical solution of Eq. (33) above is

$$265 \quad \zeta = \frac{a}{B + (1-B) \cosh^2 \left[\lambda_{\text{ekdV}} (x - c_{\text{ekdV}} t) \right]}, \quad (38)$$

$$266 \quad \lambda_{\text{ekdV}}^2 = \frac{a}{12c_2} \left(c_1 + \frac{1}{2} c_3 a \right), \quad (39)$$

$$267 \quad c_{\text{ekdV}} = c_0 + \frac{a}{3} \left(c_1 + \frac{1}{2} c_3 a \right), \quad (40)$$

$$268 \quad B = \frac{-ac_3}{2c_1 + ac_3}, \quad (41)$$

$$269 \quad u_1 = -c_{\text{ekdV}} \frac{\zeta}{h_1 - \zeta}, \quad u_2 = c_{\text{ekdV}} \frac{\zeta}{h_2 + \zeta}, \quad (42)$$

270 where a is the ISW amplitude, λ_{ekdV} is the wavelength, c_{ekdV} is the wave speed, B is an auxiliary parameter,
 271 and u_1 and u_2 are the speeds of the upper and lower layers of the fluid, respectively. The waveform and
 272 velocity field of the ISWs are solved at the initial moment by the developed function and then assigned
 273 to the calculation domain.

274 The vertical profile of the initial density is given by a hyperbolic tangent function profile (Aghsaee
 275 et al., 2010)

$$276 \quad \bar{\rho}(z) = \frac{\rho_1 + \rho_2}{2} - \frac{\rho_2 - \rho_1}{2} \tanh \left(\frac{z - z_{\text{pyc}}}{d_{\text{pyc}}} \right) \quad (43)$$

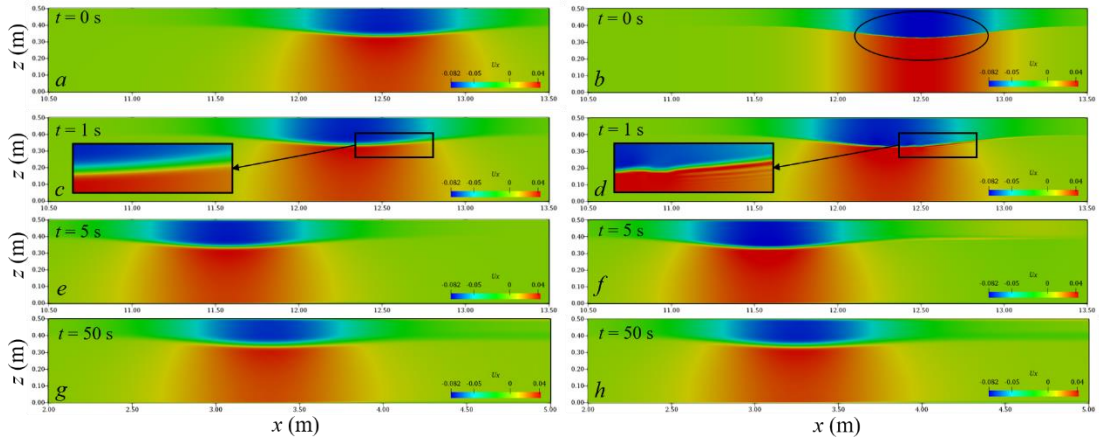
277 where z is the vertical position; ρ_1 and ρ_2 are the fluid densities of the upper and lower layers, respectively;
 278 z_{pyc} is the location of the centre of the pycnocline; and d_{pyc} is the thickness of the pycnocline. In this paper,
 279 unless otherwise specified, the form of the density profile adopts Eq. (43). The internal solitary wave

280 surface is obtained by calculating the gradient of the density field, and the absolute value of the maximum
281 value of the gradient represents the vertical position of the wave surface. Notably, the density profile of
282 the actual ocean is not always hyperbolic, so our model provides a function for users to modify the
283 density profile according to the actual situation.

284 **2.3.1 Comparison between the DJL equation and the eKdV equation**

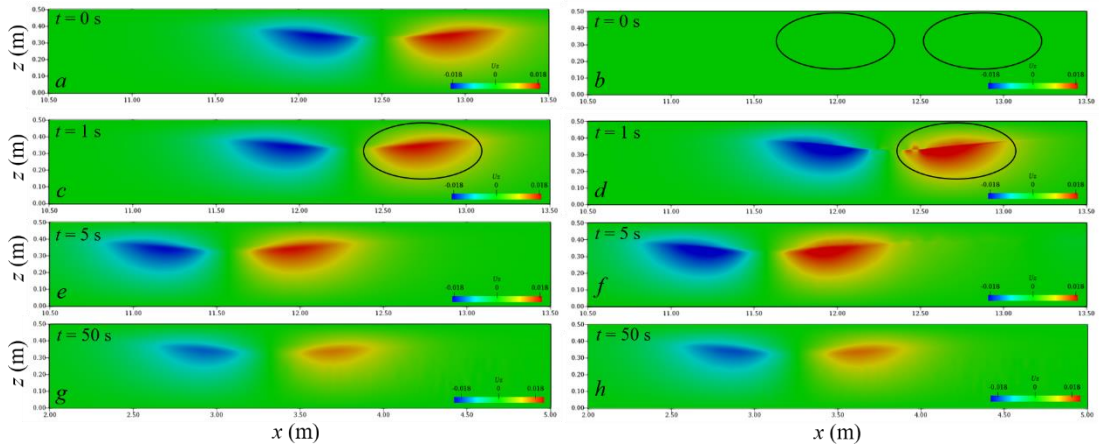
285 To compare the DJL equation and the eKdV equation, we set up a numerical simulation, which
286 includes a tank that is 15 m long, 1 m wide and has a water depth of 0.5 m. The depths of the upper (h_1)
287 and lower (h_2) layers are 0.1 m and 0.4 m, respectively, the densities of the upper and lower layers are
288 1022 kg/m^3 and 1028 kg/m^3 , respectively, the location of the centre of the pycnocline (z_{pyc}) is 0.4 m, the
289 pycnocline thickness (d_{pyc}) is 0.04 m vertically, the initial ISW amplitude (a) is 0.065 m and the location
290 of the centre of ISW is 12.5m. The ISWs propagate from right to left. The measuring point P is set at a
291 position 10m away from the initial ISW. The grid is uniform in the x -direction, y -direction and z -direction,
292 and the sizes are $\Delta x = 1 \times 10^{-2} \text{ m}$, $\Delta y = 1 \times 10^{-2} \text{ m}$ and $\Delta z = 1 \times 10^{-3} \text{ m}$, respectively. Slip boundary conditions
293 are applied to the bottom and both sides, while cyclic boundary conditions are assigned to the inlet and
294 outlet boundaries. The top boundary is a rigid lid. The boundary conditions related to the density field
295 are no-flux boundary conditions.

296 Fig. 1 shows the comparison of the horizontal velocity component field when the DJL equation and
297 the eKdV equation are used to generate ISWs. At the initial moment, the ISW generated by the eKdV
298 equation is not as smooth as the ISW generated by the DJL equation, and the horizontal velocity at the
299 interface area is discontinuous as shown in Fig. 1(a) and (b). With the propagation of ISWs, the ISWs
300 generated by the DJL equation are always smooth at the interface area, and the velocity field is always
301 continuous as shown in Fig. 1(a), (c), (e) and (g). Correspondingly, the ISW generated by the eKdV
302 equation gradually produces a gradient in the vertical direction of the horizontal velocity in the interface
303 area, thus, the interface area becomes smooth, and the velocity becomes continuous. Fig. 1(d) shows this
304 evolution process, which is basically completed in 5s as shown in Fig. 1(f). At 50s, the difference between
305 the horizontal velocity fields of the two equations is very small as shown in Fig. 1(g) and (h).



306
307 Figure 1: Comparison chart of the horizontal velocity component field: DJL equation
308 (right).

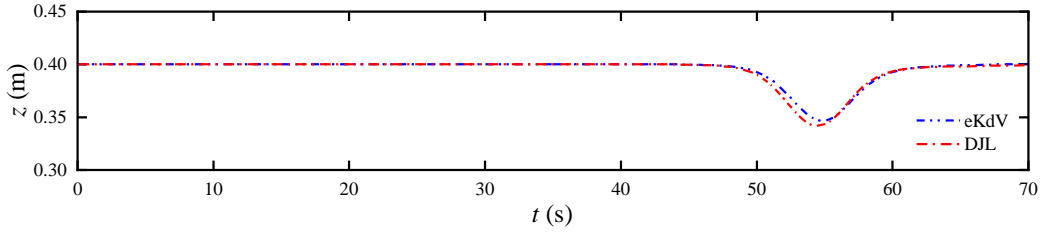
309 Fig. 2 shows the comparison of the vertical velocity component field when the DJL equation and
310 the eKdV equation are used to generate ISWs. Since the theoretical solution of the eKdV equation only
311 obtain the average horizontal velocity of the upper and lower layers of the fluid, there is no vertical
312 velocity at the initial moment, as shown in Fig. 2(b). With the propagation of ISWs, the vertical velocity
313 field will gradually be generated and finally stabilized, and the stable time occurs at 5s as shown in Fig.
314 2(b), (d), (f) and (h). At 50s, the difference between the vertical velocity fields of the two equations is
315 very small as shown in Fig. 2(g) and (h).



316
317 Figure 2: Comparison chart of the vertical velocity component field: DJL equation
318 (right).

319 The ISW propagates for 10 m, and the amplitudes of the ISWs generated by the DJL equation and
320 the eKdV equation are reduced by 9.88% and 17.96%, respectively, as shown in Fig. 3. Overall, the
321 reduction in energy leads to the attenuation of the amplitude of the ISW, which in turn reduces the wave
322 speed. Except for the difference in initial fields, the grid sizes, time step, turbulence model, and other

323 features are the same. Therefore, the initial stage of ISWs generated by the eKdV equation leads to
 324 excessive energy loss compared with those generated by the DJL equation. From the above analysis of
 325 the velocity field, we know that the method of initializing the field with the eKdV equation requires a
 326 period of movement before the jump of the velocity field develops into a field with continuous changes
 327 in velocity. In addition, the DJL equation, as a fully nonlinear model, can better reflect its superiority for
 328 internal waves with strong nonlinearity. Therefore, the wave generation of the subsequent numerical
 329 cases in this paper adopts the method of initializing the field with the DJL equation.



330
 331 Figure 3: Time series of the interface displacement. The probe was 10 m away from the initial ISW.

332 3. Grid independence of the ISW simulation

333 These grid independence tests were performed in the horizontal and vertical directions by applying
 334 meshes of different sizes. The sizes of the mesh determined in this paper are calculated based on the
 335 amplitude of the ISW and a characteristic length determined through the integration of the wave profile
 336 (Michallet and Ivey, 1999)

$$337 \quad L = \frac{1}{a} \int_{-\infty}^{\infty} \zeta(x) dx \quad (44)$$

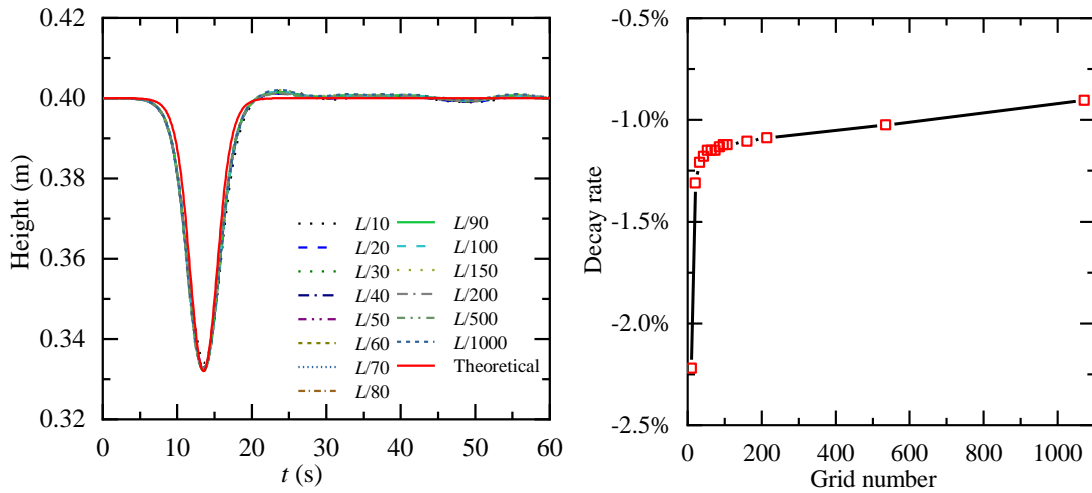
338 where ζ is the isopycnal vertical displacement and a is the ISW amplitude.

339 To determine the appropriate mesh size, the propagation of ISWs on flat bottoms is calculated, and
 340 the numerical results are compared with the DJL theoretical solution. We set up a numerical simulation,
 341 which includes a tank that is 50 m long, 0.5 m wide and has a water depth of 0.5 m. The depths of the
 342 upper (h_1) and lower (h_2) layers are 0.1 m and 0.4 m, respectively, the densities of the upper and lower
 343 layers are 1000 kg/m³ and 1030 kg/m³, respectively, the location of the centre of the pycnocline (z_{pyc}) is
 344 0.4 m, and the pycnocline thickness (d_{pyc}) is 0.05 m vertically, the ISW amplitude (a) is 0.065 m. The
 345 measuring point P is set at a position $10L$ away from the initial ISW. The sponge layer on both sides,
 346 whose length is the double wave characteristic length, has been checked to properly dissipate the
 347 reflected wave. Slip boundary conditions are applied to the bottom and both sides, while cyclic boundary

348 conditions are assigned to the inlet and outlet boundaries. The top boundary is a rigid lid. The boundary
 349 conditions related to the density field are no-flux boundary conditions.

350 3.1 Grid independence in the horizontal direction

351 First, we analyse the grid independence in the horizontal direction, with a constant cell height of Δz
 352 = $a/20$ m. Fig. 4 shows the results of the comparison of the waveform and decay rate in the horizontal
 353 direction at probe P1 with the ISWfoam using a wide range of grid configurations. The results show a
 354 negligible difference in the waveform when the mesh size is less than $L/40$, so it is difficult to accurately
 355 analyse the grid independence just by the waveform. A traditional decay rate parameter is adopted,
 356 namely $\delta = (a_{probe} - a_{initial})/a_{initial}$, where $a_{initial}$ is the ISW amplitude value at the initial moment, a_{probe} is
 357 the ISW amplitude value of the probe $10L$ away from the initial ISW. Fig. 4(b) shows the relationship
 358 between the decay rate of the ISW amplitude and the grid quantity per unit length for different mesh
 359 sizes. As shown in Fig. 4(b), the decay rate of the ISW amplitude tends to be smooth as the grid number
 360 per unit length increases to 160 ($\Delta x = L/150$), and then the increase in the grid quantity has a relatively
 361 small effect on the decay rate. Therefore, for ISWfoam developed in this paper, we suggest that the
 362 dimensions of the horizontal grid are $L/150$.

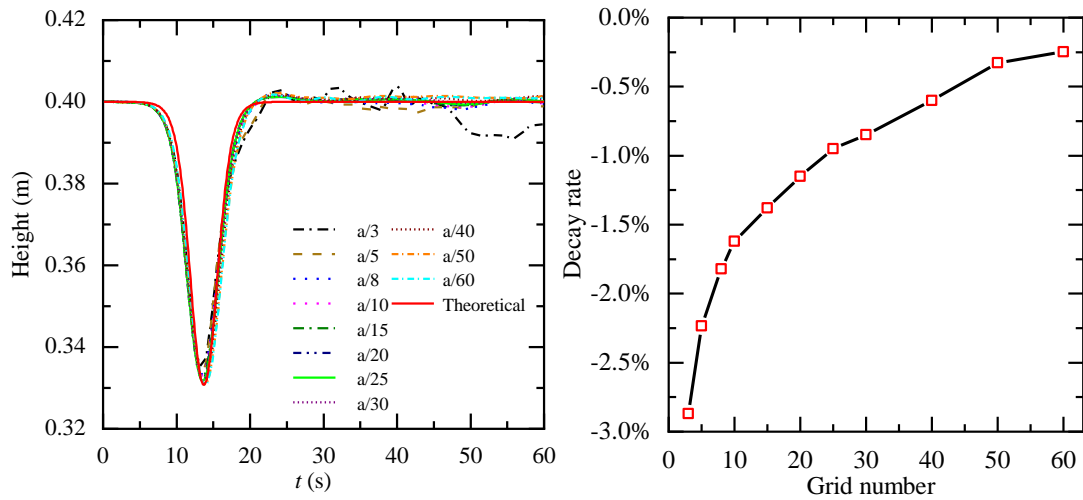


363
 364 Figure 4: Grid independence in the horizontal direction at probe P1: (a) comparison of waveform and (b) decay
 365 rate.

366 3.2 Grid independence in the vertical direction

367 Second, we analyse the grid independence in the vertical direction, with a constant cell width of Δx
 368 = $L/150$ m. Fig. 5 shows the results of a comparison of the waveform and decay rate of the ISW amplitude
 369 in the vertical direction at probe P1 with the ISWfoam using a wide range of grid configurations. The

370 results also show a negligible difference in the waveform when the mesh size is less than $a/10$, so it is
 371 difficult to accurately analyse the grid independence just by the waveform. As shown in Fig. 5(b), the
 372 decay rate of the ISW amplitude decreases as the grid quantity increases in a wave height range before
 373 the numerical oscillation occurs. Here, we assume that the grid size with the decay rate of the ISW
 374 amplitude less than one percent is the appropriate vertical grid size; namely, the vertical grid size is $a/25$
 375 m. Therefore, for ISWfoam developed in this paper, we suggest that the dimensions of the vertical grid
 376 be $a/25$.



377
 378 Figure 5: Grid independence analysis in the vertical direction at probe P1: (a) comparison of waveform and (b)
 379 decay rate.

380 Finally, for ISWfoam developed in this paper, we suggest that the dimensions of the horizontal grid
 381 are $L/150$, while the vertical grid is $a/25$.

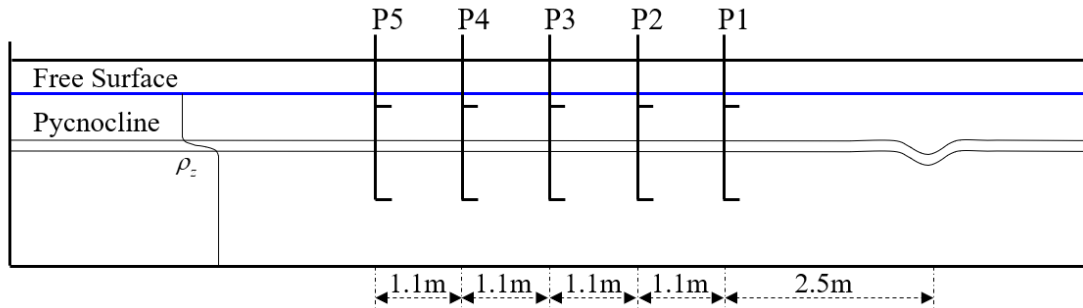
382 4. Model verification and results

383 To verify the numerical model of the ISWs, the propagation of ISWs on a flat bottom section,
 384 submerged triangular ridge and slopes is calculated, and the numerical results are compared with the
 385 corresponding experimental results. To verify the correctness of Coriolis code implantation and reflect
 386 the role of local mesh refinement, the propagation of ISWs on a flat bottom section of actual ocean scale
 387 and a Gaussian ridge is calculated.

388 4.1 ISW propagating on a flat bottom section

389 4.1.1 Experimental data used

390 In this section, ISWfoam is verified by employing ISWs propagating on a flat bottom section with
391 Case Flat_4 in the continuously stratified laboratory experiment described in Hsieh et al. (2014). The
392 physical dimensions and ultrasonic probe locations in the experiments of Hsieh et al. (2014), as shown
393 in Fig. 6, are adopted to establish the numerical computation domain. We set up a numerical tank of the
394 experiment of Hsieh and co-authors, which includes a tank that is 15 m long, 0.5 m wide and has a stable
395 water depth of 0.5 m; the fluid densities of the upper (ρ_1) and lower (ρ_2) layers are 996 kg/m³ and 1030
396 kg/m³, respectively; the ISW amplitude (a) is 0.068 m; the location of the centre of the pycnocline (z_{pyc})
397 is 0.4 m, the pycnocline thickness (d_{pyc}) is 0.04 m vertically, and the depths of the upper (h_1) and lower
398 (h_2) layers are 0.1 m and 0.4 m, respectively. The grid is uniform in the x -direction, y -direction and z -
399 direction, and the sizes are $\Delta x = 1.5 \times 10^{-2}$ m, $\Delta y = 1.5 \times 10^{-2}$ m and $\Delta z = 2.72 \times 10^{-3}$ m, respectively. The
400 sponge layer on both sides, whose length is double wave characteristic length, has been checked to
401 properly dissipate the reflected wave. Slip boundary conditions are applied to the bottom and both sides,
402 while cyclic boundary conditions are assigned to the inlet and outlet boundaries. The top boundary is a
403 rigid lid. The boundary conditions related to the density field are no-flux boundary conditions.



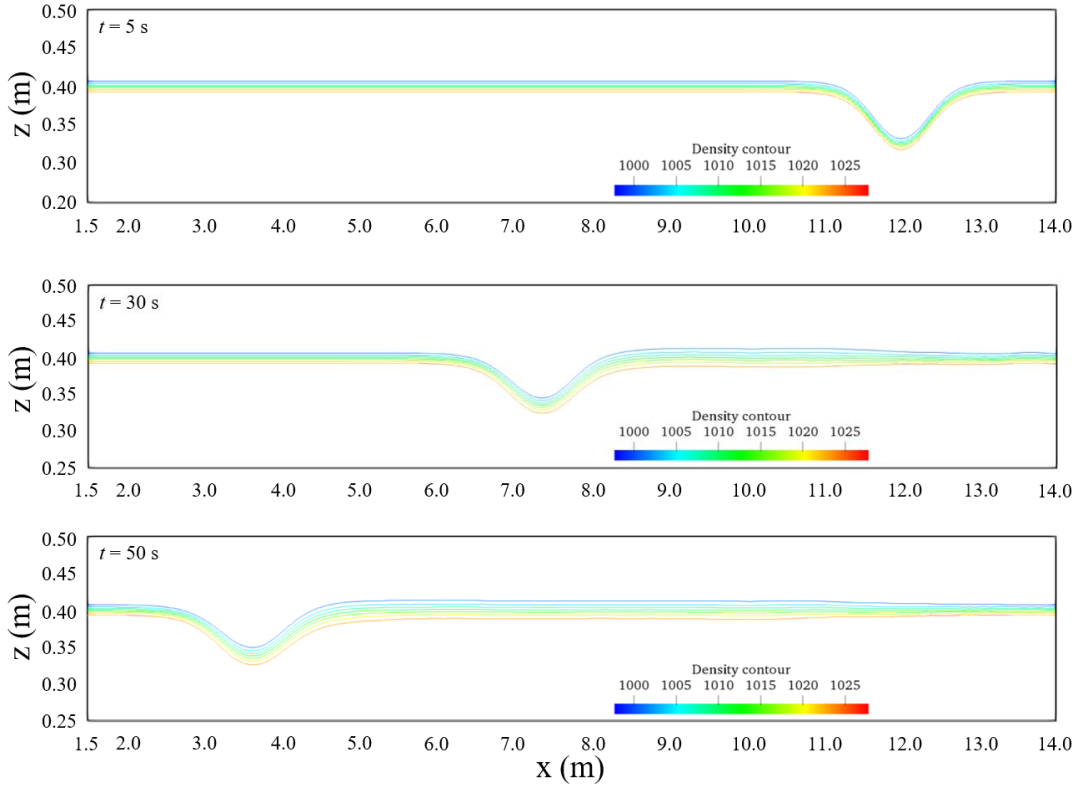
404

405

Figure 6: Schematic diagram of probe position (P1–P5) (Hsieh et al. (2014)).

406 4.1.2 Comparisons between the numerical and experimental results

407 Fig. 7 shows the density contours at three different times from Case Flat_4 in the laboratory
408 experiment of Hsieh and coworkers, showing the stable evolution of an ISW. The results also show the
409 realistic evolution of the thickening of the pycnocline after ISW propagation because of convection and
410 diffusion. At the same time, the propagation of the ISW is stable and unbroken.



411

412

413

414

Figure 7: Density contours at different moments.

415

416

417

418

419

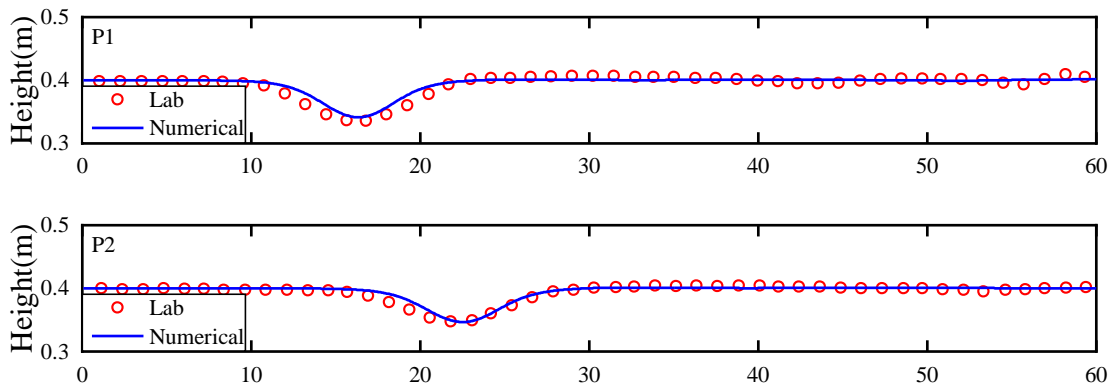
420

421

422

423

To further verify the model, the waveform is compared between the numerical simulations and the experimental measurements, and the measurement point selection is the same as the experimental setting, as shown in Fig. 6. Fig. 8 shows the comparison results between the waveform simulated by ISWFOam and the experimental results at probes P1-P5. Fig. 8 shows that the results of the numerical simulations agree with the experimental results (red circle). Notably, the laboratory wave height at the probe P1 measurement point is greater than the numerical simulation results, and the wave surface of the laboratory wave is not smooth, which is caused by the wave generation method using the gravity collapse mechanism in the laboratory. In general, the model developed in this paper can simulate the generation and evolution of ISWs in continuously stratified fluids.



424

425

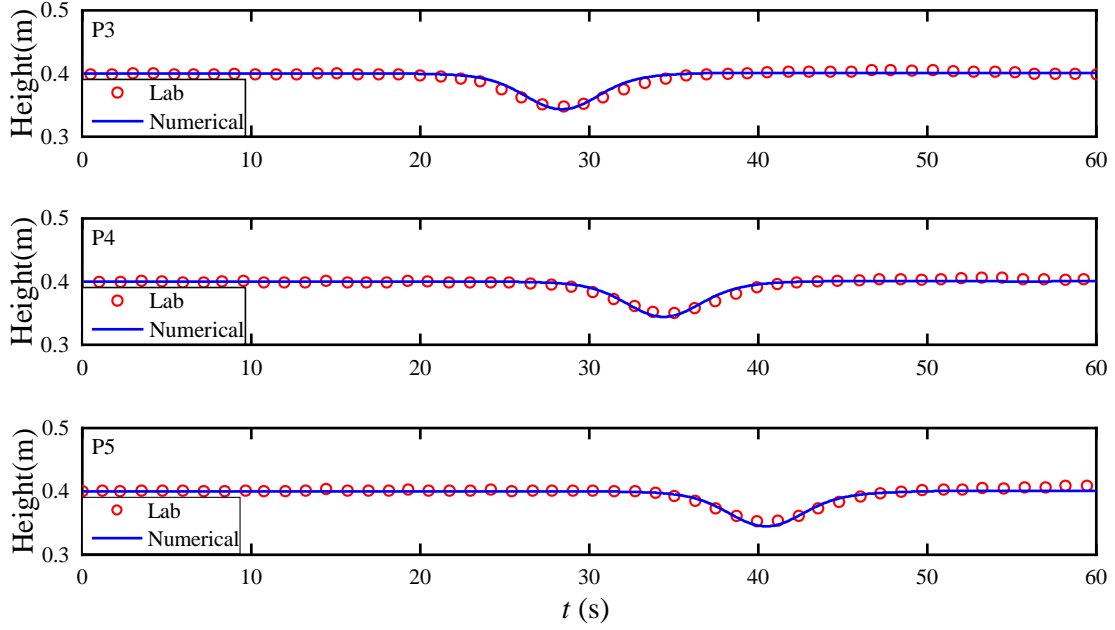
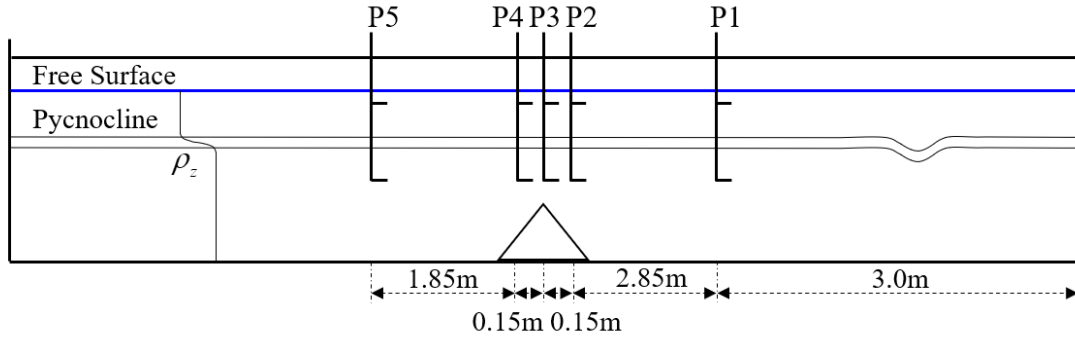


Figure 8: Comparison of the waveform between the experimental results and numerical simulation results at probes P1-P5.

4.2 ISW propagating over a submerged triangular ridge

4.2.1 Experimental data used

In this section, the validation of the numerical model is conducted through an ISW propagating over a submerged triangular ridge with the continuously stratified experiments described in [Hsieh et al. \(2015\)](#). The laboratory tank is 12 m long and has a stable water depth of 0.5 m, with which the fluid system has a finite thickness of the pycnocline. The specific experimental parameters used for validation of ISWfoam include the various depths of the upper (h_1) and lower (h_2) layers; the fluid density of the upper (ρ_1) and lower (ρ_2) layers of 996 kg/m^3 and 1030 kg/m^3 , respectively; the ISW amplitude ($\alpha = 0.056 \text{ m}$); the location of the centre of the pycnocline ($z_{pyc} = 0.4 \text{ m}$); the thickness of the pycnocline ($d_{pyc} = 0.04 \text{ m}$ vertically); the height of the isosceles triangular ridge ($h_s = 0.30 \text{ m}$ vertically); and the slope angle of the ridge for $\alpha = 45^\circ$. The physical dimensions, and ultrasonic probe locations in the experiments of [Hsieh et al. \(2015\)](#), as shown in Fig. 9, are adopted to establish the numerical computation domain.



443

444

Figure 9: Schematic illustration of the laboratory setup and the locations of the probes (Hsieh et al. (2015)).

445

4.2.2 Numerical implementation

446

447

448

449

450

451

452

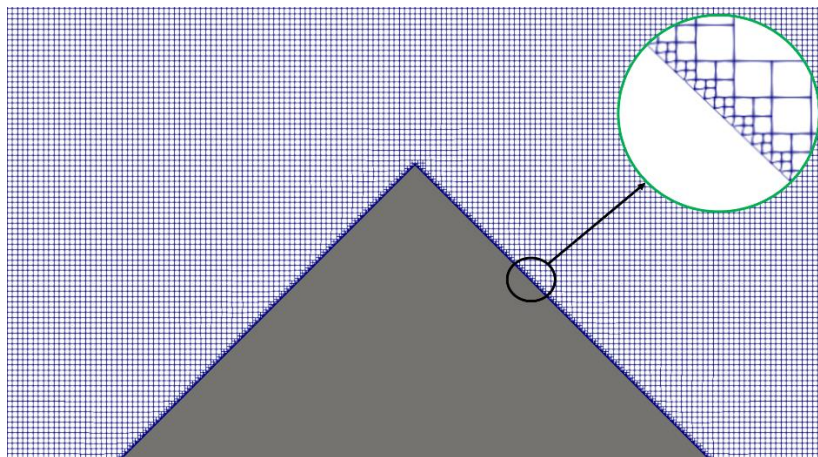
453

454

455

456

The numerical tank is designed to reproduce the experiment described in Fig. 9. The unstructured grid and local mesh refinement based on the finite volume method are used to construct the computational domain and discretize the governing equations. The grid is uniform in the x -direction, y -direction and z -direction, and the sizes are $\Delta x = 2 \times 10^{-3}$ m, $\Delta y = 2 \times 10^{-3}$ m and $\Delta z = 2 \times 10^{-3}$ m, respectively. The precise grid described triangular ridge section is $\Delta x = 2.5 \times 10^{-4}$ m, $\Delta y = 2.5 \times 10^{-4}$ m and $\Delta z = 2.5 \times 10^{-4}$ m at the slope, as shown in Fig. 10. The sponge layer on both sides, whose length is double the wave characteristic length defined through integration of the wave profile in Section 3 for this case, has been checked to absorb the reflected wave well. A rigid wall conditions is applied to both sides, while the slip and slip conditions are assigned to the bottom and the surface of the submerged ridge boundaries, respectively. The top boundary is a rigid lid. The inlet and outlet boundaries adopt cyclic boundary condition. The boundary conditions related to the density field are no-flux boundary conditions.



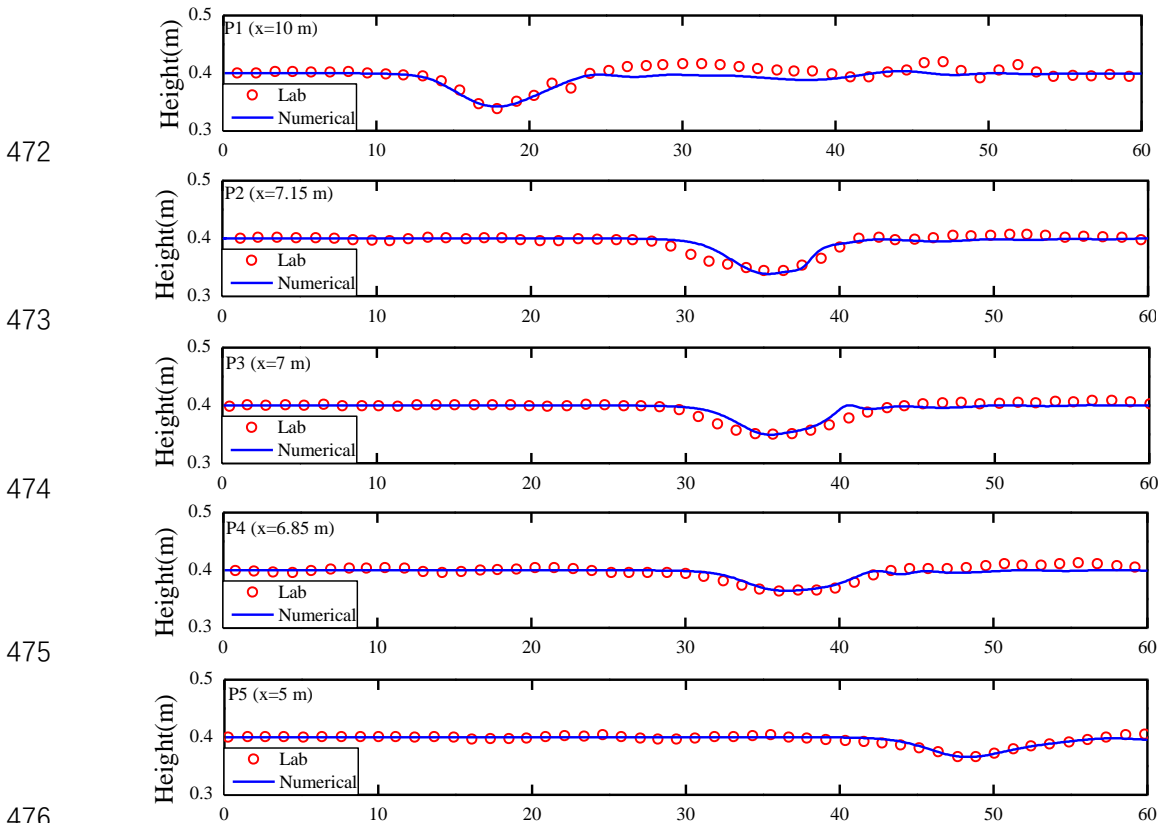
457

458

Fig. 10. Schematic of the mesh

459 **4.2.3 Comparisons between the numerical and experimental results**

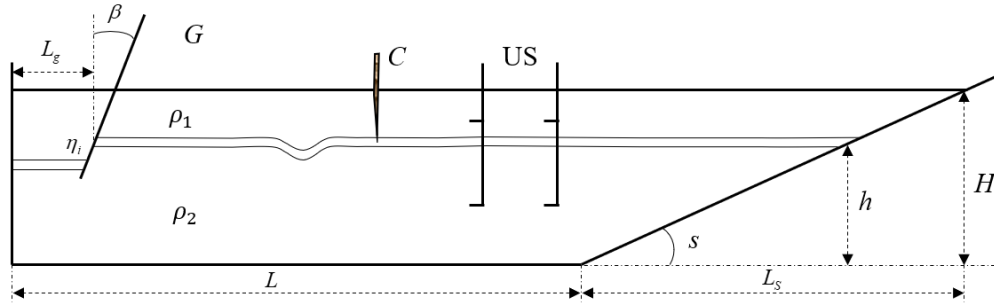
460 Fig. 11 shows the comparison results between the waveform calculated by ISWfoam and the
 461 experimental results at probes P1-P5. In each subplot, the results of the numerical simulations (blue line)
 462 are found to be in good agreement with the experimental results (red circle). From Fig. 11 (a), the
 463 numerical simulation result of the probe P1 measurement after 20 s is different from the experimental
 464 results, which is caused by the different ISW generation methods. For the experimental results, the first
 465 large leading ISW is formed via the gravity collapse mechanism, which is trailed by a train of small-
 466 amplitude mode-one waves that is generated due to shear instabilities. However, the initialization method
 467 used to generate an initial ISW for the numerical simulation in this paper is more stable than the gravity
 468 collapse mechanism, so the rear part of the ISW is relatively flat compared to the experimental results
 469 for probe P1. In Fig. 11, the waveform of the ISW gradually evolves towards a flat waveform due to the
 470 interaction between the ISW and the ridge. In general, the model developed in this paper can simulate
 471 the interaction between ISWs and structures.



472
 473
 474
 475
 476
 477 Figure 11: Comparison of the waveform between the experimental results in Hsieh et al. (2015) and numerical
 478 simulation results at probes P1-P5.

479 **4.3 ISW propagating on a slope**

480 To verify the ability and accuracy of simulating the ISW breaking of the numerical model, two
 481 continuously stratified laboratory experiments (12 and 15) of Michallet and Ivey. (1999) are chosen for
 482 the simulation in this section. The experimental setup is represented schematically in Fig. 12. We set up
 483 a numerical tank of the experiment of Michallet and Ivey. (1999), which includes a tank is $L=4.2$ m long,
 484 0.25 m wide and has a water depth of 0.15 m. The layer thickness ratio (h/H) varies from 0.60~0.91. A
 485 linear slope $s = 0.214$ starts at 0.7 m from the right end of the tank for experiments 12 and 15. The grid
 486 is uniform in the x -direction, y -direction and z -direction, and the sizes are $\Delta x = 2.5 \times 10^{-3}$ m, $\Delta y = 2.5 \times 10^{-3}$
 487 m and $\Delta z = 1.25 \times 10^{-3}$ m, respectively. The precise grid describing the slope section is $\Delta x = \Delta y = 6.25 \times 10^{-4}$
 488 m and $\Delta z = 3.125 \times 10^{-4}$ m at the slope.



489
 490 Figure 12: Schematic diagram of the laboratory setup. “C” and “US” represent the experimental device at probes.

491 The sponge layer on the left side, whose length is the double wave characteristic length, is checked
 492 to properly dissipate the reflected wave. Slip boundary conditions are applied to the bottom and both
 493 sides, while slip boundary conditions are assigned to the top boundaries. The boundary conditions related
 494 to the density field are no-flux boundary conditions.

495 The vertical profile of the initial density is given by a hyperbolic tangent function profile

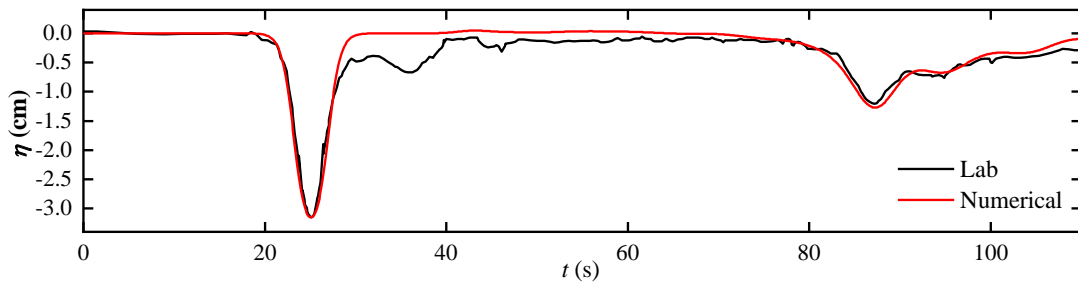
$$496 \quad \bar{\rho}(z) = \rho_1 + \frac{\Delta\rho}{2} \left\{ 1 + \tanh \left[\frac{-(z - z_{pyc})}{d_{pyc}} \right] \right\} \quad (45)$$

497 where z is the vertical position, $\rho_1 = 1 \times 10^3$ kg/m³ is the base density field, $\Delta\rho$ is the change in the density,
 498 z_{pyc} is the location of the centre of the pycnocline, and d_{pyc} is the thickness of the pycnocline.

499 **4.3.1 Case one and results**

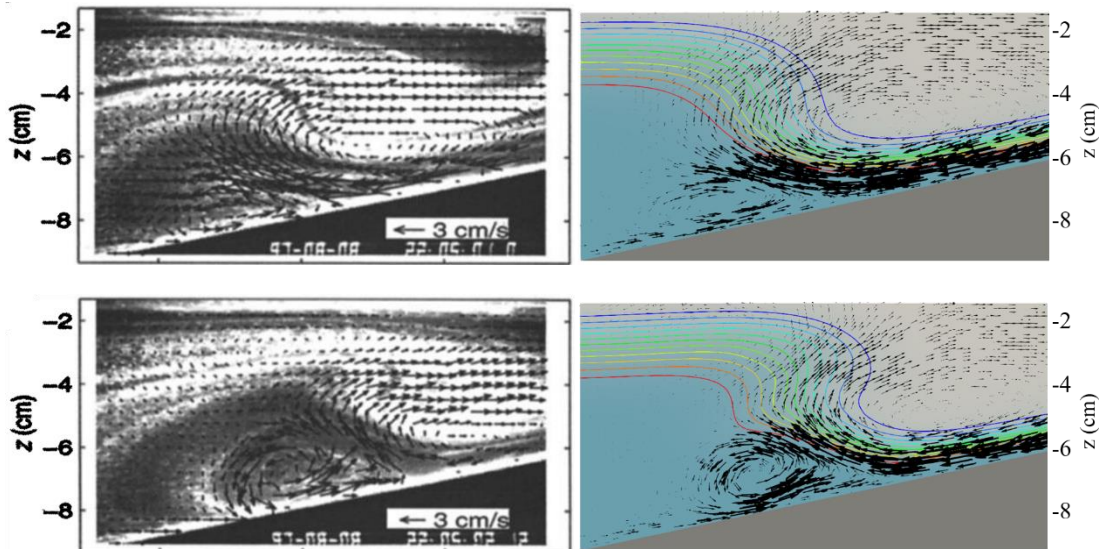
500 The first case of model verification is experiment 12 of Michallet and Ivey. (1999) in this section.
 501 The layer thickness ratio (h/H) is 0.84, and the density change ($\Delta\rho$) value is 14 kg/m³. Fig. 13 presents
 502 the time series for the interface displacement (ζ) for experiment 12 of Michallet and Ivey. (1999). The

503 results indicate reasonably good agreement between the time series of the simulated interface
 504 displacement and that of the laboratory results. The first trough centred around $t = 25$ s represents the
 505 incident ISW propagating the probe 99.8 cm away from the start of the slope. The second trough centred
 506 at approximately $t = 87$ s represents the reflected ISW at the generation side, which has a smaller
 507 amplitude and a longer wavelength than the incident ISW as the energy in the wave decreases. As shown
 508 in Fig. 13, the smooth waveform of the incident ISW of the numerical simulation indicates that the
 509 initialization method of wave generation in this paper is more stable than the experiment.



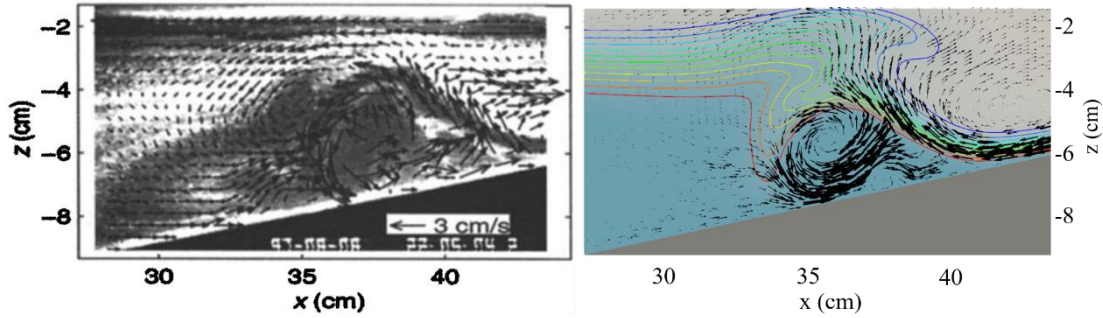
510
 511 Figure 13: Time series of the interface displacement. The probe was 99.8 cm away from the start of the slope.

512 Fig. 14 shows a comparison of ISWfoam results and the experimental observations of the velocity
 513 field associated with the ISW run-up process along the slope. The model effectively reproduces
 514 laboratory tests, such as the intensity and direction of the velocity field, the location of the vortices, and
 515 the occurrence of boundary-layer separation beneath the ISW. Therefore, the model developed in this
 516 paper can reflect the ISW breaking phenomenon during the propagation of ISWs along the slope.



517

518



519

520

Figure 14: Comparison of the velocity field between the experimental observation results in Michallet and Ivey.

521

(1999) (left) and numerical simulation results (right).

522

4.3.2 Case two and results

523

Another laboratory experiment that more clearly shows the ISW breaking phenomenon from

524

Experiment 15 of Michallet and Ivey. (1999) is used to verify the numerical model presented in this paper,

525

and the corresponding numerical case is set corresponding to it. The layer thickness ratio (h/H) is 0.77,

526

and the density change ($\Delta\rho$) value is 47 kg/m^3 . The wave amplitude and phase velocity at the slope

527

calculated by ISWfoam are $2.71 \times 10^{-3} \text{ m}$ and $10.83 \times 10^{-1} \text{ m/s}$, which fit well with the experimental results

528

of $2.7 \times 10^{-3} \text{ m}$ and $10.8 \times 10^{-1} \text{ m/s}$.

529

Fig. 15 shows the results of the numerical simulations of the ISWs propagating along the slope and

530

wave breaking using ISWfoam. As the ISW propagates to the slope, according to the conservation of

531

mass, the upper fluid forward and the downward velocity of the lower fluid increasing along the slope

532

results in the formation of a thin boundary layer, as shown in Fig. 15(a), (b), and (c). At the same time,

533

the amplitude of the ISW increases, and the rear of the ISW gradually becomes very steep but does not

534

overturn. With the development of the ISW, the rear waveform of the ISW cannot maintain its stability

535

and overturns forward, resulting in wave breaking, as shown in Fig. 15(d). After wave breaking occurs,

536

the denser lower layer flow accelerates into the less dense upper layer flow, forming a mixture region, as

537

shown in Fig. 15(e). After the lower layer flow is drawn downward from beneath the ISW, a mixing

538

region comprised of vortices is pushed upwards along the slope while the leading waveform is reflected,

539

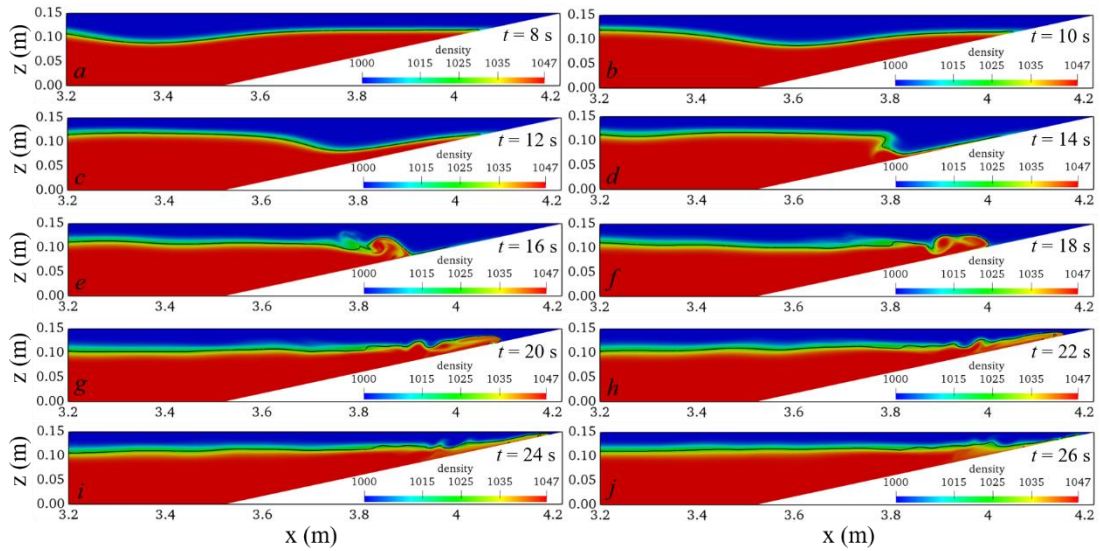
as shown in Fig. 15(f), (g), and (h). Fig. 15(i), (j) shows the falling process of ISWs. From the perspective

540

of the entire process of wave breaking, the steepening of the rear waveform in this case is the main reason

541

for wave breaking.



542

543

Figure 15: Temporal and spatial variations in the ISWs breaking calculated using ISWfoam (the black line represents the waveform).

544

545

For comparison with the flow visualization image of the experiment, a specified thickness of the pycnocline is presented, and the pycnocline ranges from 1003 kg/m^3 to 1045 kg/m^3 with dark colours as shown in Fig. 16.

547

548

Fig. 16 compares the ISWfoam results and the experimental results of Michallet and Ivey. (1999) before, during, and after ISW breaking. The results indicate that some main features of the laboratory tests are reasonably well reproduced by ISWfoam, such as the profile of ISW, the location of the wave breaking point, ISW arrival time, and spatial and temporal changes in the mixture region. Therefore, the model developed in this paper can accurately simulate the ISW breaking phenomenon during the propagation of ISWs along the slope.

549

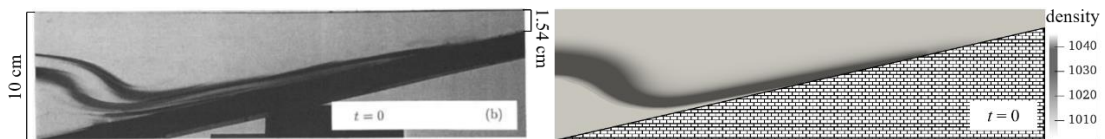
550

551

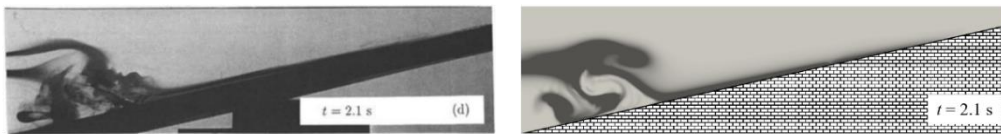
552

553

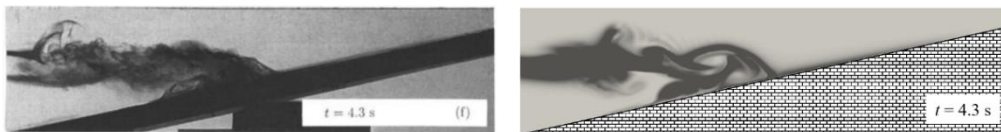
554

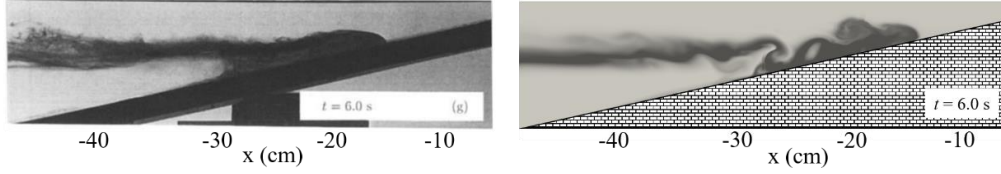


555



556





557

558

559

Figure 16: Comparison of the density fields between the experimental observation results in Michallet and Ivey (1999) (left) and the numerical simulation results (right).

560

5. Simulation examples at the field scale

561

562

563

The ISWFoam model developed in the present paper can be used as a tool to investigate the interaction between ISWs and complex structures and topography. In this section, two numerical examples are presented to show the capability of ISWFoam on field scale simulation.

564

5.1 ISW propagating over a 3D Gaussian ridge

565

566

We designed a case of an ISW propagating over a 3D Gaussian ridge. The 3D Gaussian ridge is obtained by rotating a 2D Gaussian ridge

567

$$z = ae^{-(x/l)^2} \quad (46)$$

568

569

570

where a is the ridge amplitude, and l is the standard deviation. With $a = 100$ m and $l = 10$, we can obtain a 2D Gaussian ridge with a height of 100 m and a bottom width of 40 m. Subsequently, the 3D Gaussian ridge can be obtained after a vertical rotation of 180 degrees.

571

572

573

574

575

576

577

578

579

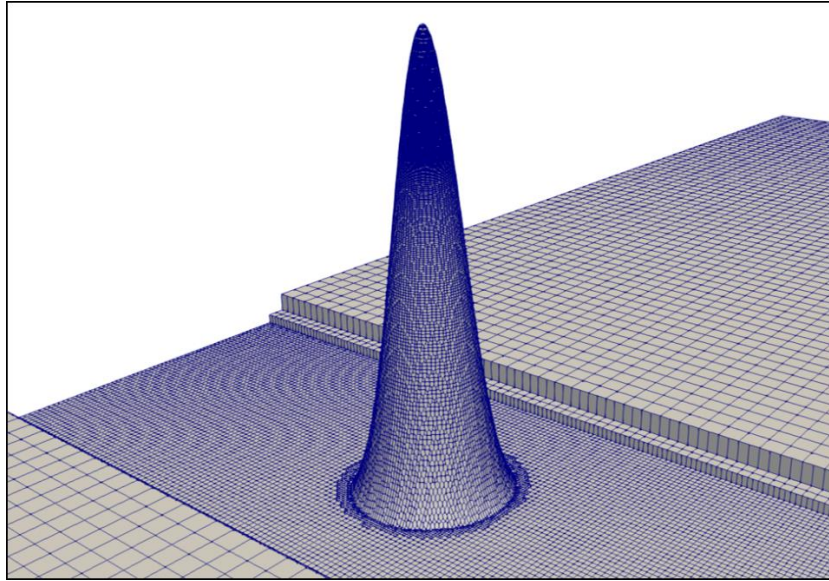
580

581

582

We set up a 3D numerical tank, which includes a tank that is 3 km long, 400 m wide (y -direction from -200 m to 200 m) and has a water depth of 120 m. The depths of the upper (h_1) and lower (h_2) layers are 20 m and 100 m, respectively, the densities of the upper and lower layers are 1000 kg/m³ and 1030 kg/m³, respectively, the location of the centre of the pycnocline (z_{pyc}) is 100 m, and the pycnocline thickness (d_{pyc}) is 1.5 m vertically, the ISW amplitude (a) is 20 m. The Gaussian ridge is located at 800 m horizontally. The grid is gradually changed from $\Delta x = 20$ m to $\Delta x = 2.5$ m in the x -direction, the grids in the y -direction are uniform with a constant cell width of $\Delta y = 2.5$ m, and the grids in the z -direction are non-uniform, with a minimum cell height of $\Delta z = 1$ m near the interface of the ISW. The precise grid described the 3D Gaussian ridge section as $\Delta x = 3.9 \times 10^{-2}$ m, $\Delta y = 3.9 \times 10^{-2}$ m and $\Delta z = 1.56 \times 10^{-2}$ m, as shown in Fig 17. The sponge layer on both sides, whose length is the double wave characteristic length, has been checked to properly dissipate the reflected wave. Slip boundary conditions are applied to the bottom and both sides, while cyclic boundary conditions are assigned to the inlet and outlet boundaries.

583 The top boundary is a rigid lid. The boundary conditions related to the density field are no-flux boundary
584 conditions.



585
586

Figure 17: Schematic of the local refinement of the grid.

587 Fig. 18. shows the temporal and spatial variations in the ISWs propagating over a 3D Gaussian
588 ridge. The ISW reaches the Gaussian ridge, causing the wave surface in front of the ridge to decrease,
589 and the wave surface behind the ridge to climb up the ridge, as shown in Fig. 18(a). Due to being
590 obstructed by the Gaussian ridge, flow around a ridge and wave surface uplift are generated on both sides
591 of the Gaussian ridge (perpendicular to the direction of wave propagation), as shown in Fig. 18(b). As
592 the ISW propagated over the Gaussian ridge, the wave surface climbed along the ridge, and at the same
593 time, low velocity was generated behind the ridge, as shown in Fig. 18(c). Since the top of the ridge is in
594 the pycnocline, there will be a low velocity area behind the ridge for a period of time after the ISW passes,
595 as shown in Fig. 18(d). In general, the ISWfoam model with unstructured grids and local mesh
596 refinement can simulate the interaction between ISWs and complex structures and topography at the field
597 scale.

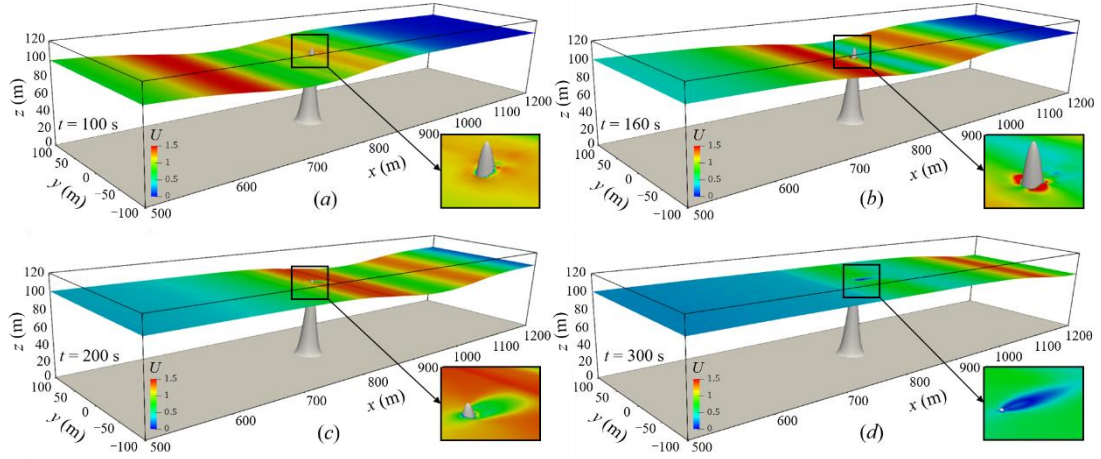


Figure 18: Temporal and spatial variation in the ISWs propagating over a 3D Gaussian ridge.

5.2 ISW propagating over a hyperbolic tangent terrain

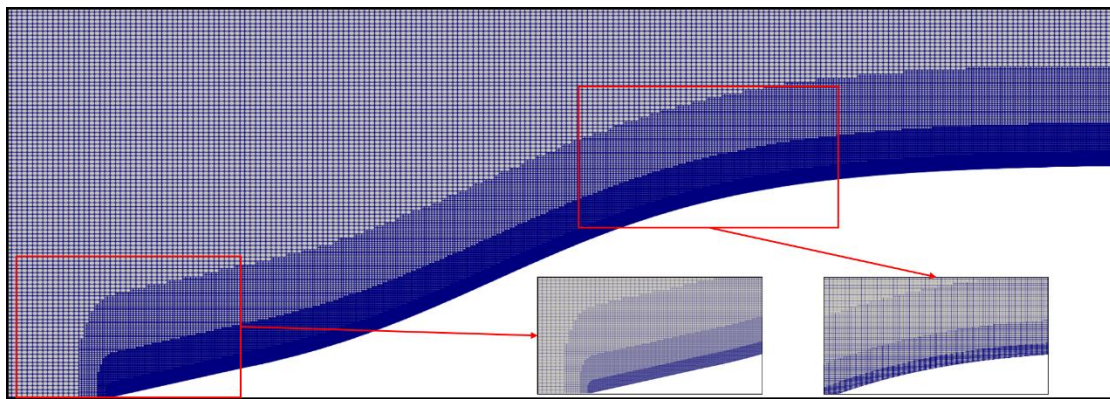
The propagation of ISWs to the shore is bound to be affected by the continental shelf, and shallow water evolution phenomena such as nonlinear evolution, breaking phenomenon and waveform inversion occur on the undulating continental shelf. For simplicity, this section simplifies the continental shelf into a hyperbolic tangent terrain, the terrain profile formula is as follows (Lamb, 2002)

$$z = \frac{a_T}{2} \left(1 + \tanh\left(\frac{x}{L}\right) \right) \quad (47)$$

where a_T is the ridge amplitude, which is 60 m, and l is the width of the continental shelf change area, which is 200 m, and x and z are the horizontal and vertical coordinate positions, respectively.

We set up a 3D numerical tank, which includes a tank that is 7.5 km long, 200 m wide (y -direction from -100 m to 100 m) and has a water depth of 100 m (z -direction from 0 m to 100 m). The depths of the upper (h_1) and lower (h_2) layers are 20 m and 80 m in the deep water, respectively, and the depths of the upper (h_1) and lower (h_2) layers are both 20 m in the shallow water. The densities of the upper and lower layers are 1000 kg/m^3 and 1012 kg/m^3 , respectively, and the pycnocline thickness (d_{pyc}) is 2 m, the location of the pycnocline (z_{pyc} centre) is at 80 m, the ISW amplitude (a) is 20 m. The starting point of the hyperbolic tangent terrain is located at 0 m horizontally, and the top of the terrain is 40 m underwater. Therefore, ISWs will gradually propagate from deep water area with a water depth of 100 m to shallow water area with a water depth of 40 m. The horizontal grid is gradually changed from 40 m at the inlet to

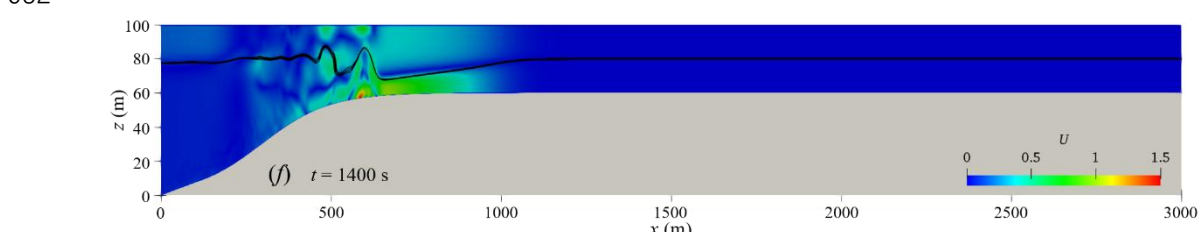
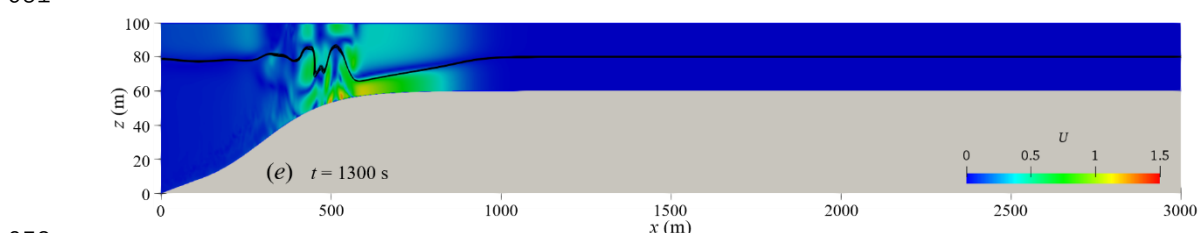
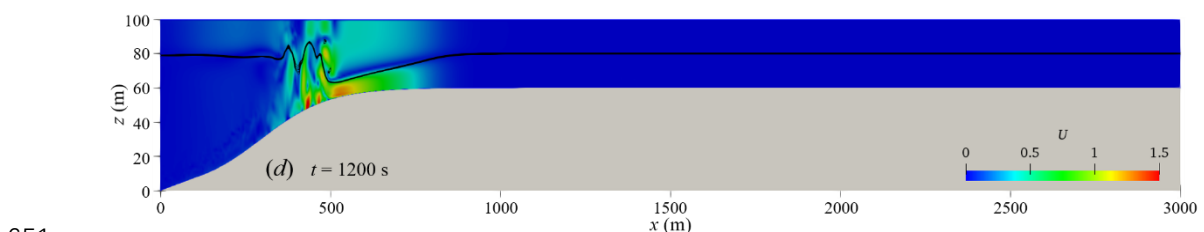
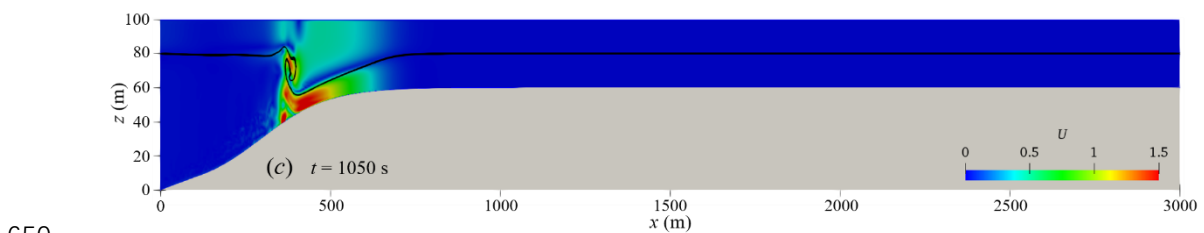
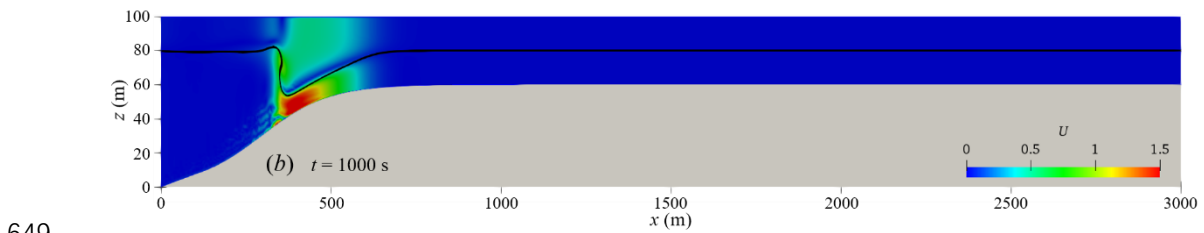
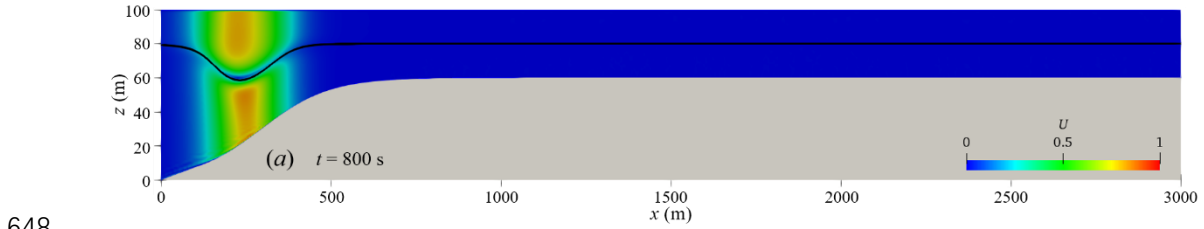
618 4 m in the study area, and then from the study area to 60 m at the outlet, the grid is uniform in the y -
 619 direction and z -direction, which are 4 m and 1 m. The hyperbolic tangent terrain is characterized by 4-
 620 level local mesh refinement, and the minimum grid size is 5 cm, as shown in Fig 19. The sponge layer
 621 on both sides, whose length is the double wave characteristic length, has been checked to properly
 622 dissipate the reflected wave. Cyclic boundary conditions are assigned to the inlet, outlet and both sides,
 623 while the slip and non-slip conditions are assigned to the bottom and the shelf topography. The top
 624 boundary is a rigid lid. The boundary conditions related to the density field are no-flux boundary
 625 conditions.



626
 627 Figure 19: Schematic of the local refinement of the grid.

628 Fig. 20. shows the waveform and velocity field when the ISW passes through the hyperbolic tangent
 629 terrain. From Fig. 20, it can be seen that the ISW breaks and has a significant waveform inversion when
 630 propagating from deep water of 100 m to shallow water of 40 m. As the ISWs propagate to the continental
 631 shelf, the water depth gradually becomes shallower, and the thickness of the lower fluid gradually
 632 decreases as shown in Fig. 2-20(a). Due to the presence of the continental slope, the nonlinearity of the
 633 ISWs becomes stronger, and the trough velocity of the ISWs is significantly lower, which causes the
 634 waveform at the rear of the ISW to become steep, as shown in Fig. 2-20(b). At the same time, the front
 635 waveform of the ISW gradually becomes flat and parallel to the shelf topography. As the waveform at
 636 the rear of the ISW becomes steeper and loses balance, the waveform at the rear of the ISW rolls forward,
 637 leading to the occurrence of ISW breaking phenomenon, as shown in Fig. 2-20(c). It is worth noting that
 638 the ISW breaking occurs at the rear of the ISW, while the front waveform does not break, but transforms
 639 into another form of wave (referred to as the head wave), and continues to propagate steadily along the
 640 continental shelf. The breaking of ISWs causes severe disturbances in the water, and excite a series of
 641 secondary waves at the tail of the head wave, represented by elevation ISWs (as shown in Fig. 2-20(d),
 642 (e), (f)), and then elevation ISWs propagate forward steadily in shallow water (as shown in Fig. 2-20(g),
 643 (h), (i)). The shelf slope of the case in this section is the same as the shelf slope of s8_c1c case studied

644 by Lamb and Xiao (2014), both of which are 0.1. The research results of Lamb and Xiao (2014) show
645 that waveform inversion of a depression ISW will occur at this shelf slope, and a series of elevation
646 ISWs will be generated and propagate stably in shallow water. The simulated results have good
647 agreement with that of Lamb and Xiao (2014).



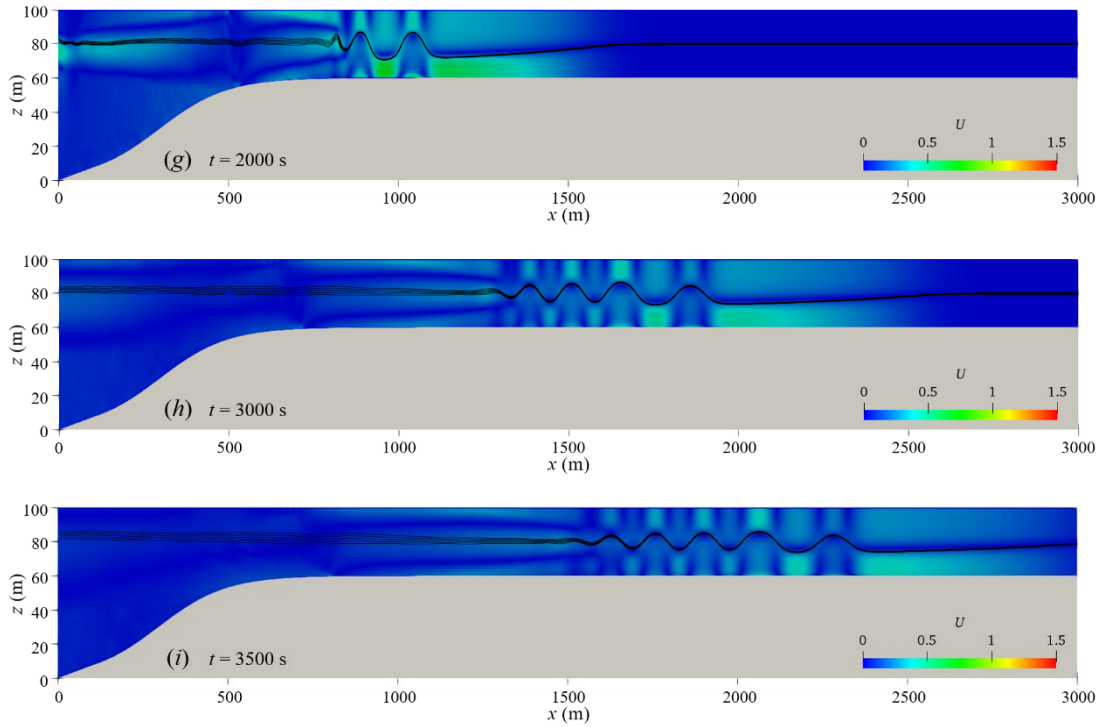
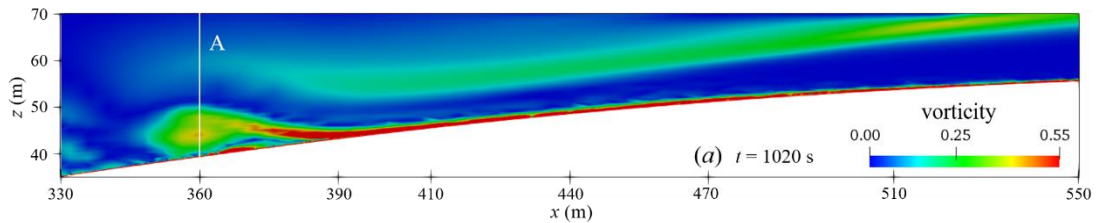
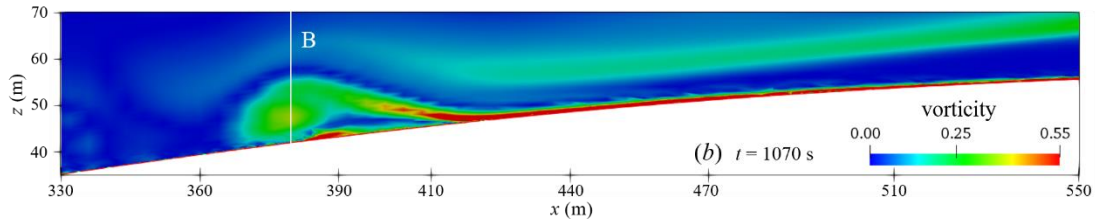


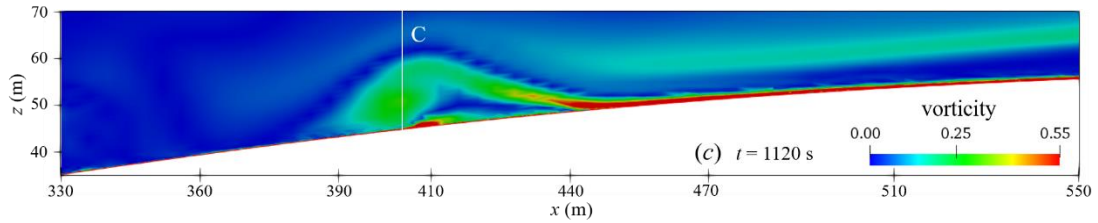
Figure 20: Velocity field diagram of ISW propagation (the black solid line is the iso-density contours).

The vortex structure has an important influence on the material transport at the bottom of the shelf, so it is very necessary to study the vortex structure when the ISW breaks. Fig. 2-21 shows the vorticity field of the ISW at the breaking stage. With the occurrence of ISW breaking, a significant counterclockwise vortex structure is generated below the waveform at the rear of the ISW, as shown in Fig. 2-21(a). With the propagation of the head wave, the vortex climbs along the shelf, and the vortex continues to develop horizontally and vertically during the upward climb, and the vertical scale is about 1/3 of the local water depth (as shown in Fig. 2-20(b), (c)). As the vortex structure continues to climb, the vorticity decays, and the vortex structure gradually disappears, as shown in Fig. 2-21(d), (e). Combined with the velocity field in Fig. 2-20, it can be seen that the vorticity before and after the ISW breaks is the largest, and the vortex structure is the most obvious. As the wave train of elevation ISWs propagates steadily, the vortex structure climbs up the shelf and gradually disappears.

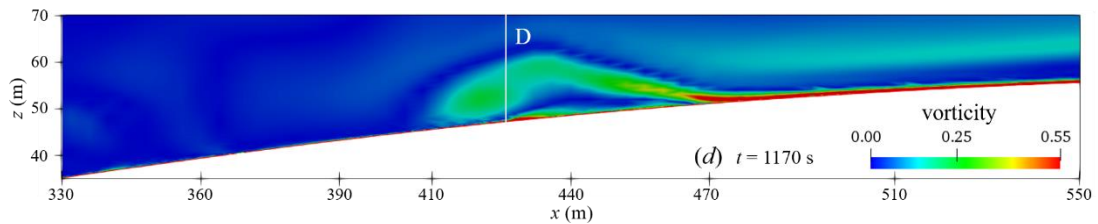




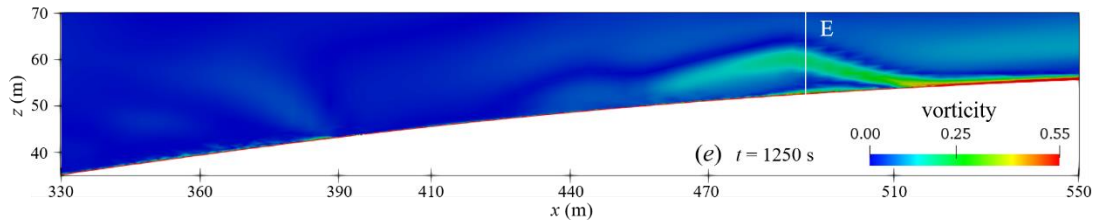
670



671



672



673

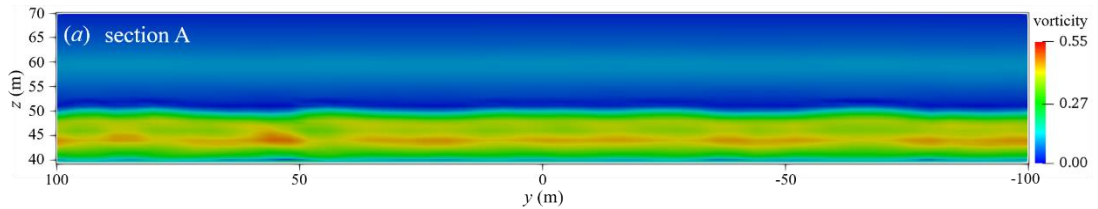
674

Figure 21: Vorticity field (A-E represents transverse section)

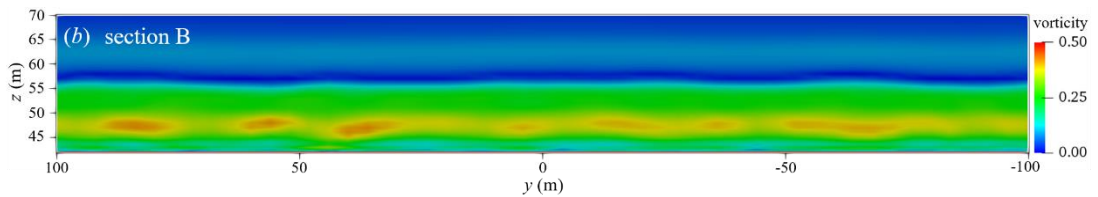
675

In order to analyze the vortex of the three-dimensional structure, Fig. 2-22 shows the vorticity field diagram on the transverse section, and the position of the transverse section corresponds to the marked section in Fig. 2-21. It can be seen from Fig. 2-22 that the vortex also evolves in the transverse section. Obviously, the bottom vortex structure generated by ISW breaking shows three-dimensional non-uniform features.

679



680



681

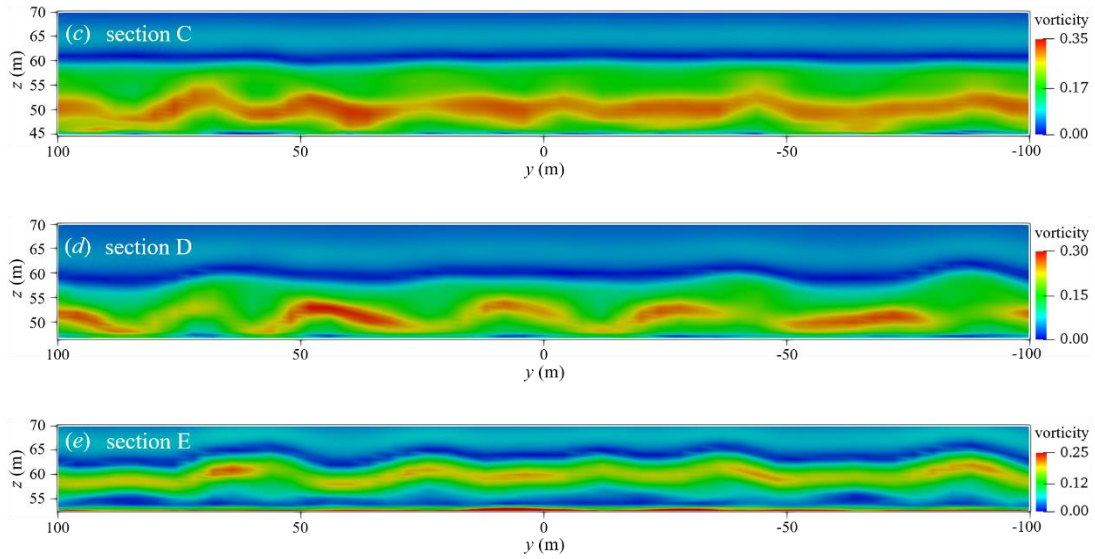
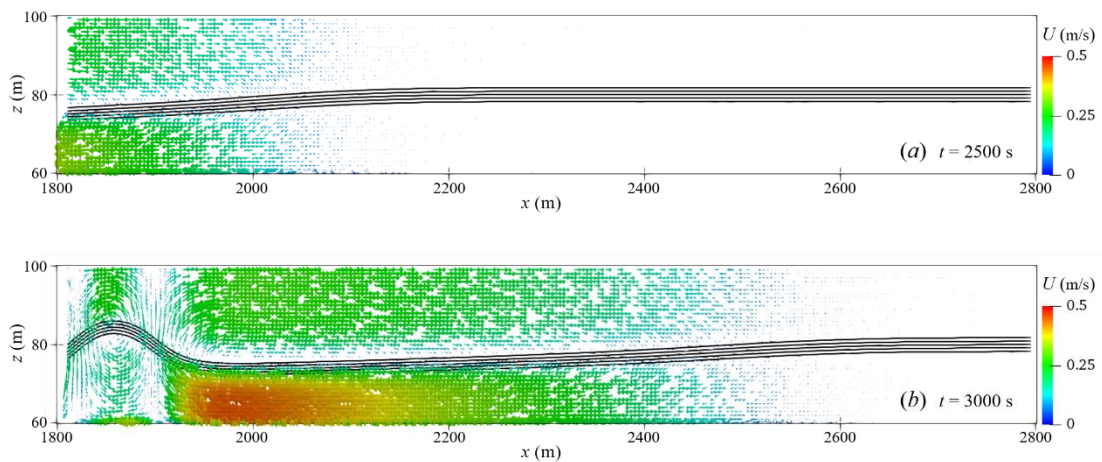
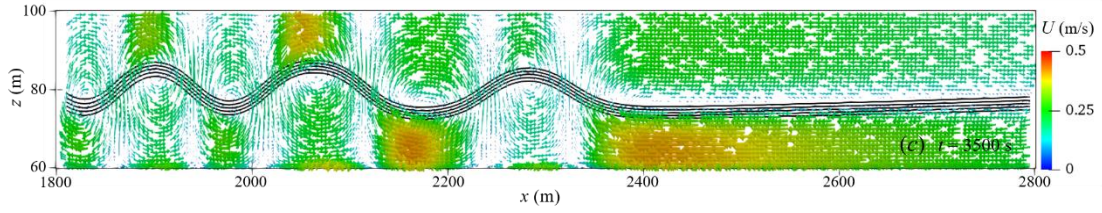


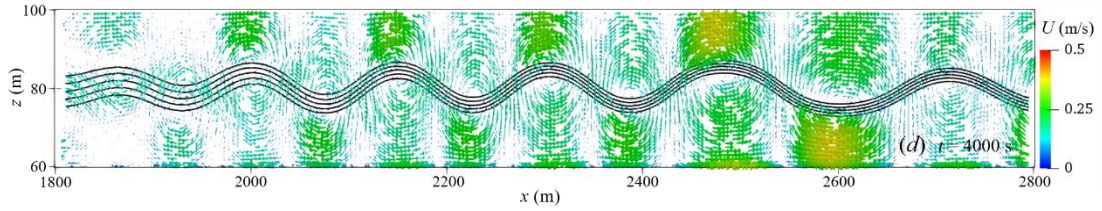
Figure 22: Vorticity field of transverse section.

The velocity vector field of the head wave and the wave train of elevation ISWs in the shallow water area are shown in Figure 2-23. The head wave generated by the breaking of the ISW loses the original wave shape of the ISW, the wave height becomes smaller, the wavelength becomes longer, and the velocity field is still in the form of upper layer forward and lower layer backward (as shown in Fig. 2-23(a), (b)). In Fig. 2-23(c), (d), the velocity field and waveform of the entire wave train following the head wave are stable, and the velocity field of each wave is backwards in the upper layer and forwards in the lower layer, and the wavelength gradually becomes longer as the wave train propagates. As the wave train propagates in shallow water, there is a large vorticity in the crest and trough areas of each wave, and it propagates forward steadily as the wave train propagates, as shown in Fig. 2-24. Generally, the waveform inversion and breaking phenomenon of ISWs is well indicated, and the propagation and evolution of the wave train generated by waveform inversion is also accurately described through ISWfoam simulation.





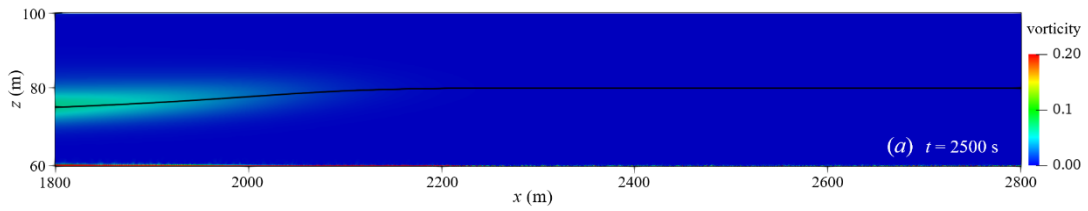
700



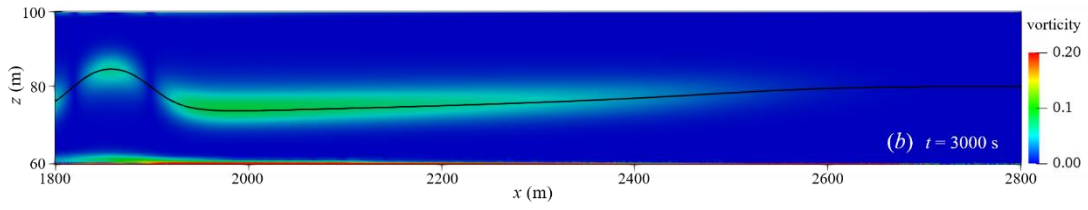
701

702

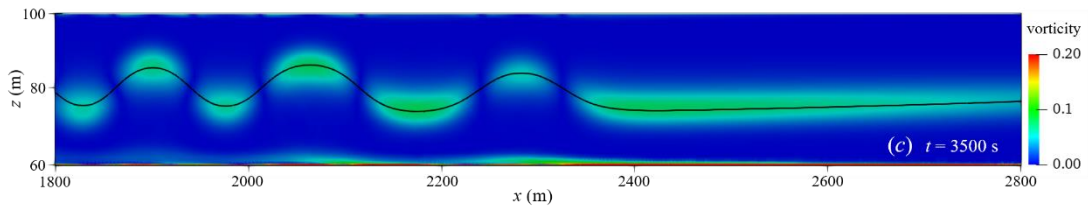
Figure 23: Velocity vector field of wave train in shallow water area.



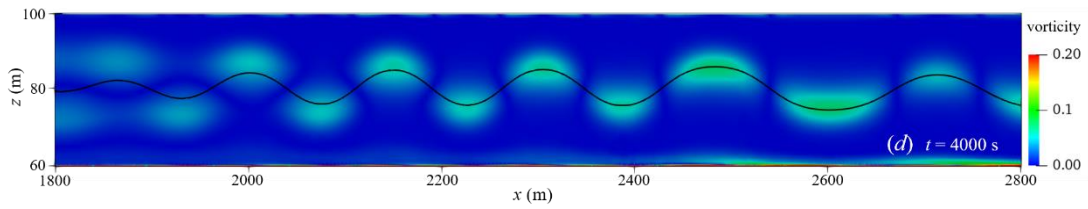
703



704



705



706

707

Figure 24: Vorticity field of wave train in shallow water (the black solid line is the waveform).

708 **6. Conclusions**

709 In this paper, a numerical model referred to as ISWFOam with a modified $k-\omega$ SST model,
 710 established by combining the density transport equation with a fully three-dimensional (3D) Navier-

711 Stokes equation, is developed to simulate ISWs in continuously stratified, incompressible, viscous fluids
712 based on the finite volume method with unstructured grids and local mesh refinement of OpenFOAM.
713 ISWfoam provides two initial wave generation methods to generate an ISW in continuously stratified
714 fluids, including solving the weakly nonlinear models of the eKdV equation and the fully nonlinear
715 models of the DJL equation. The verification process presents several applications, such as ISWs
716 propagating on flat bottoms including laboratory scale and actual ocean scale, and ISWs over a
717 submerged triangular ridge, a Gaussian ridge and slopes. The following conclusions were obtained as a
718 result of this study.

719 ISWfoam using the finite volume method with unstructured grids and local mesh refinement can
720 accurately simulate the generation and evolution of ISWs, the ISW breaking phenomenon, waveform
721 inversion of ISWs and the interaction between ISWs and complex structures and topography. The
722 method of initializing the ISW using weakly nonlinear eKdV equation models requires a period of
723 movement before the jump of the velocity field develops into a field with continuous changes in velocity.
724 The DJL equation wave generation method that considers the vertical velocity and the horizontal velocity
725 along the vertical gradient is better than the eKdV equation wave generation method that only provides
726 the horizontal average velocity. Using ISWfoam to simulate an ISW with infinite wave length, the metric
727 for the appropriate mesh size is given as follows: the dimensions of the horizontal grid are one-one
728 hundred and fiftieth of the characteristic length, while the vertical grid takes one-twenty fifth of the ISW
729 amplitude.

730

731 **Computer code availability**

732 The ISWfoam code (DOI:10.5281/zenodo.5069480.) developed in this article can be downloaded
733 for free from https://zenodo.org/record/5069480#.YU1j_GJByHs.

734 **Author contributions**

735 QZ and JL jointly developed this numerical method to calculate internal solitary waves in
736 continuously stratified fluids. JL developed the code. TC performed the computations. QZ and JL
737 jointly analysed the calculation results and wrote the paper together.

738 **Competing interest**

739 The authors of this paper declare that they have no conflicts of interest.

740 **Financial support**

741 This work is supported by grants from the National Key Research and Development Program of
742 China (2017YFC1404200), and the National Natural Science Foundation of China (51509183).

743 **Reference**

- Alford, M. H., Lien, R. C., Simmons, H., Klymak, J., Ramp, S., Yang, Y. J., Tang, D., and Chang, M. H.:
Speed and evolution of nonlinear internal waves transiting the South China Sea, *Journal of Physical
Oceanography.*, 40, 1338-1355, doi:10.1175/2010JPO4388.1, 2010.
- Alford, M. H., MacKinnon, J. A., Nash, J. D., Simmons, H., Pickering, A., Klymak, J. M., Beitzel, T.:
Energy flux and dissipation in Luzon Strait: Two tales of two ridges, *Journal of Physical
Oceanography.*, 41, 2211-2222. doi:10.1175/JPOD11073.1, 2011.
- Alford, M. H., Peacock, T., MacKinnon, J. A., Nash, J. D., Buijsman, M. C., Centurioni, L. R., Fu, K. H.:
The formation and fate of internal waves in the South China Sea, *Nature.*, 521, 65-69,
doi:10.1038/nature14399, 2015.
- Aghsaee, P., Boegman, L., Lamb, K. G.: Breaking of shoaling internal solitary waves, *Journal of Fluid
Mechanics.*, 659, 289. doi:10.1017/S002211201000248X, 2010.
- Aghsaee, P., Boegman, L., Diamessis, P. J., Lamb, K. G.: Boundary-layer-separation-driven vortex
shedding beneath internal solitary waves of depression, *Journal of Fluid Mechanics.*, 690, 321,
doi:10.1017/jfm.2011.432, 2012.
- Apel, J., Ostrovsky, L., Stepanyants, Y., Lynch, J.F.: Internal Solitons in the Ocean, Technical Report
Woods Hole Oceanographic Institution., doi:10.1575/1912/1070, 2006.
- Bardina, J.E., Coakley, T.J., and Huang, P.G.: Turbulence Modeling Validation, Testing, and
Development, NASA TM 110446, NASA Ames Research Center, Moffett Field, Calif. doi:
10.2514/6.1997-2121, 1997.
- Bell, J. B. and Marcus, D. L.: A second-order projection method for variable-density flows, *Journal of
Computational Physics.*, 101(2), 334-348, doi:10.1016/0021-9991(92)90011-M, 1992.
- Brown, D. J. and Christie, D. R.: Fully nonlinear solitary waves in continuously stratified incompressible
Boussinesq fluids, *Physics of Fluids.*, 10(10), 2569-2586, doi:10.1063/1.869771, 1998.
- Boegman, L. and Stastna, M.: Sediment resuspension and transport by internal solitary waves, *Annual
review of fluid mechanics.*, 51, 129-154, doi:10.1146/annurev-fluid-122316-045049, 2019.
- Buijsman, M. C., McWilliams, J. C., and Jackson, C. R.: East-west asymmetry in nonlinear internal
waves from Luzon Strait, *Journal of Geophysical Research: Oceans.*, 115(C10),

- doi:10.1029/2009JC006004, 2010.
- Cai, S., Xie, J., and He, J.: An overview of internal solitary waves in the South China Sea, *Surveys in Geophysics.*, 33, 927-943, doi:10.1007/s10712-012-9176-0, 2012.
- Cheng, M. H., Hwang, R. R., and Hsieh, C. M.: Numerical study on the transformation of an internal solitary wave propagating across a vertical cylinder, *Applied Ocean Research.*, 95, 102016, doi:10.1016/j.apor.2019.102016, 2020.
- Choi, W. and Camassa, R.: Fully nonlinear internal waves in a two-fluid system, *Journal of Fluid Mechanics.*, 396, 1-36, doi:10.1017/S0022112099005820, 1999
- Deshpande, S. S., Anumolu, L., and Trujillo, M. F.: Evaluating the performance of the two-phase flow solver interFoam, *Computational Science. Discovery* 5, 014016, 1-36, doi:10.1088/1749-4699/5/1/014016, 2012.
- Diamessis, P. J., Domaradzki, J. A., and Hesthaven, J. S.: A spectral multidomain penalty method model for the simulation of high Reynolds number localized incompressible stratified turbulence, *Journal of Computational Physics.*, 202(1), 298-322, doi:10.1016/j.jcp.2004.07.007, 2005.
- Ding, W., Ai, C., Jin, S., Lin, J.: Numerical investigation of an internal solitary wave interaction with horizontal cylinders, *Ocean Engineering.*, 208, 107430, doi:10.1016/j.oceaneng.2020.107430, 2020.
- Dunphy, M., Subich, C., and Stastna, M.: Spectral methods for internal waves: indistinguishable density profiles and double-humped solitary waves, *Nonlinear Processes in Geophysics.*, 18(3), 351-358, doi:10.5194/npg-18-351-2011, 2011.
- Farmer, D. M. and Smith, J. D.: Tidal interaction of stratified flow with a sill in Knight Inlet, *Deep Sea Research Part A. Oceanographic Research Papers.*, 27(3-4), 239-254, doi:10.1016/0198-0149(80)90015-1, 1980.
- Fringer, O. B., Gerritsen, M., and Street, R. L.: An unstructured-grid, finite-volume, nonhydrostatic, parallel coastal ocean simulator, *Ocean Modelling.*, 14(3-4), 139-173, doi:10.1016/j.ocemod.2006.03.006, 2006.
- Fu, D. M., You, Y. X., and Li, W.: Numerical simulation of internal solitary waves with a submerged body in a two-layer fluid, *Ocean Engineering (Haiyang Gongcheng).*, 37(3), 38-44, 2009.
- Gao, X. Y., You, Y. X., Wang, X., Li, W.: Numerical simulation for the internal solitary wave based on MCC theory, *Ocean Engineering (Haiyang Gongcheng).*, 30(4), 29-36, 2012.
- Grimshaw, R., Pelinovsky, E., Talipova, T., Kurkina, O.: Internal solitary waves: propagation, deformation and disintegration, *Nonlinear Processes in Geophysics.*, 17(6), 633-649, doi:10.5194/npg-17-633-2010, 2010.
- Guo, C. and Chen, X.: A review of internal solitary wave dynamics in the northern South China Sea, *Progress in Oceanography.*, 121, 7-23, doi:10.1016/j.pocean.2013.04.002, 2014.
- Hallberg, R. and Rhines, P.: Buoyancy-driven circulation in an ocean basin with isopycnals intersecting the sloping boundary, *Journal of Physical Oceanography.*, 26(6), 913-940, doi:10.1175/1520-0485(1996)026<0913:BDCIAO>2.0.CO;2, 1996.
- Hallberg, R.: Stable split time stepping schemes for large-scale ocean modeling, *Journal of*

- Computational Physics., 135(1), 54-65, doi:10.1006/jcph.1997.5734, 1997.
- Helfrich, K. R. and Melville, W. K.: Long nonlinear internal waves, *Annu. Rev. Fluid Mech.*, 38, 395-425, doi:10.1146/annurev.fluid.38.050304.092129, 2006.
- Hsieh, C. M., Hwang, R. R., Hsu, J. R. C., Cheng, M. H.: Flow evolution of an internal solitary wave generated by gravity collapse, *Applied Ocean Research.*, 48, 277-291, doi:10.1016/j.apor.2014.10.001, 2014.
- Hsieh, C. M., Hwang, R. R., Hsu, J. R. C., Cheng, M. H.: Numerical modeling of flow evolution for an internal solitary wave propagating over a submerged ridge, *Wave Motion.*, 55, 48-72, doi:10.1016/j.wavemoti.2014.12.008, 2015.
- Hibiya, T.: The generation of internal waves by tidal flow over Stellwagen Bank, *Journal of Geophysical Research: Oceans.*, 93, 533-542, doi:10.1029/JC093iC01p00533, 1988.
- Hu, H. C., Tong, B. and Lou, S. Y.: Nonsingular positon and complexiton solutions for the coupled KdV system, *Physics Letters A.*, 351, 403-412, doi:10.1016/j.physleta.2005.11.047, 2006.
- Huthnance, J. M.: Waves and currents near the continental shelf edge, *Progress in Oceanography.*, 10, 193-226, doi:10.1016/0079-6611(81)90004-5, 1981.
- Issa, R. I.: Solution of the implicitly discretised fluid flow equations by operator-splitting, *Journal of computational physics.*, 62(1), 40-65, doi:10.1016/0021-9991(86)90099-9, 1986.
- Jasak, H.: Error Analysis and Estimation for the Finite Volume Method with Applications to Fluid Flows, Ph.D. thesis. Imperial College London, 1996.
- Ko, D. S., Martin, P. J., Rowley, C. D., Preller, R. H.: A real-time coastal ocean prediction experiment for MREA04, *Journal of Marine Systems.*, 69(1-2), 17-28, doi:10.1016/j.jmarsys.2007.02.022, 2008.
- Kubota, T., Ko, D. R. S., and Dobbs, L. D.: Weakly-nonlinear, long internal gravity waves in stratified fluids of finite depth, *Journal of Hydronautics.*, 12, 157-165, doi:10.2514/3.63127, 1978.
- Lamb, K. G.: Numerical experiments of internal wave generation by strong tidal flow across a finite amplitude bank edge, *Journal of Geophysical Research: Oceans.*, 99, 843-864, doi:10.1029/93JC02514, 1994.
- Lamb, K. G. and Yan, L.: The evolution of internal wave undular bores: comparisons of a fully nonlinear numerical model with weakly nonlinear theory, *Journal of physical oceanography.*, 26(12), 2712-2734, doi:10.1175/1520-0485(1996)026<2712:TEOIWU>2.0.CO;2, 1996.
- Lamb, K. G.: A numerical investigation of solitary internal waves with trapped cores formed via shoaling. *Journal of Fluid Mechanics*, 451, 109-144, doi.org/10.1017/S002211200100636X, 2002.
- Lamb, K. G. and Nguyen, V. T.: Calculating energy flux in internal solitary waves with an application to reflectance, *Journal of Physical Oceanography.*, 39, 559-580, doi:10.1175/2008JPO3882.1, 2009.
- Lamb, K. G.: Energy and pseudoenergy flux in the internal wave field generated by tidal flow over topography, *Continental Shelf Research.*, 27, 1208-1232, doi:10.1016/j.csr.2007.01.020, 2007.
- Lamb K G, Xiao W.: Internal solitary waves shoaling onto a shelf: Comparisons of weakly-nonlinear and fully nonlinear models for hyperbolic-tangent stratifications, *Ocean Modelling.*, 78, 17-34,

- doi.org/10.1016/j.ocemod.2014.02.005, 2014.
- Li, J. Y., Zhang, Q. H., and Chen. T. Q.: Numerical Simulation of Internal Solitary Wave in Continuously Stratified Fluid, *Journal of Tianjin University (Science and Technology)*., 54(02), 161-170, DOI:10.11784/tdxbz202001025, 2021.
- Li, Q. and Farmer, D. M.: The generation and evolution of nonlinear internal waves in the deep basin of the South China Sea, *Journal of Physical Oceanography*., 41(7), 1345-1363, doi:10.1175/2011JPO4587.1, 2011.
- Li, Z., You, Y. U., Zhe, S., Zang, J. M., LI, Z. H., Yu, Z. B.: CFD Simulation of Internal Solitary Wave Using the Volume-of-fluid Method within OpenFOAM, *DEStech Transactions on Computer Science and Engineering*, doi:10.12783/dtcese/mmsta2017/19617, 2017 (mmsta).
- Long, R. R.: Some aspects of the flow of stratified fluids: I. A theoretical investigation, *Tellus*.,5(1), 42-58, doi:10.3402/tellusa.v5i1.8563, 1953.
- Lou, S. Y., Tong, B., Hu, H. C., Tang, X. Y.: Coupled KdV equations derived from two-layer fluids, *Journal of Physics A: Mathematical and General*., 39, 513, doi:10.1088/0305-4470/39/3/005, 2005.
- Meng, Q. and Zhang, C.: A third-order KdV solution for internal solitary waves and its application in the numerical wave tank, *Journal of Ocean Engineering and Science*., 1(2), 93-108, doi:10.1016/j.joes.2016.03.002, 2016.
- Menter, F. R., Kuntz, M., and Langtry, R.: Ten years of industrial experience with the SST turbulence model, *Turbulence, heat and mass transfer*., 4(1), 625-632, 2003.
- Michallet, H. and Ivey, G. N.: Experiments on mixing due to internal solitary waves breaking on uniform slopes, *Journal of Geophysical Research: Oceans*., 104, 13467-13477, doi:10.1029/1999JC900037, 1999.
- Miyata, M.: An internal solitary wave of large amplitude, *La Mer*. 23, 43-48, 1985.
- Miyata, M.: Long Internal Waves of Large Amplitude. Springer, Berlin, pp. 399-406. doi:10.1007/978-3-642-83331-1_44. 1988.
- OpenFOAM User Guide 2019 <http://www.openfoam:docs/>.
- OpenFOAM User Guide 2019 <http://www.openfoam.com/documentation/user-guide>.
- Osborne, A. R. and Burch, T. L.: Internal solitons in the Andaman Sea, *Science*., 208, 451-460, doi:10.1126/science.208.4443.451, 1980.
- Rayson, M. D., Ivey, G. N., Jones, N. L., Fringer, O. B.: Resolving high-frequency internal waves generated at an isolated coral atoll using an unstructured grid ocean model, *Ocean Modelling*., 122, 67-84, doi:10.1016/j.ocemod.2017.12.007, 2018.
- Sandstrom, H. and Elliott, J. A.: Internal tide and solitons on the Scotian Shelf: A nutrient pump at work, *Journal of Geophysical Research: Oceans*., 89, 6415-6426, doi:10.1029/JC089iC04p06415, 1984.
- Seadawy, A. R.: Exact solutions of a two-dimensional nonlinear Schrödinger equation, *Applied Mathematics Letters*., 25, 687-691, doi:10.1016/j.aml.2011.09.030, 2012.
- Seadawy, A. R., Lu, D., and Yue, C.: Travelling wave solutions of the generalized nonlinear fifth-order KdV water wave equations and its stability, *Journal of Taibah University for Science*., 11, 623-633,

- doi:10.1016/j.jtusci.2016.06.002, 2017.
- Shaw, P. T., Ko, D. S., and Chao, S. Y.: Internal solitary waves induced by flow over a ridge: With applications to the northern South China Sea, *Journal of Geophysical Research: Oceans.*, 114(C2), doi:10.1029/2008JC005007, 2009.
- Simmons, H. L., Hallberg, R. W., and Arbic, B. K.: Internal wave generation in a global baroclinic tide model, *Deep Sea Research Part II: Topical Studies in Oceanography.*, 51(25-26), 3043-3068, doi:10.1016/j.dsr2.2004.09.015, 2004.
- Smedstad, O. M., Hurlburt, H. E., Metzger, E. J., Rhodes, R. C., Shriver, J. F., Wallcraft, A. J., Kara, A. B.: An operational eddy resolving 1/16 global ocean nowcast/forecast system, *Journal of Marine Systems.*, 40, 341-361, doi:10.1016/S0924-7963(03)00024-1, 2003.
- Subich, C. J., Lamb, K. G., and Stastna, M.: Simulation of the Navier–Stokes equations in three dimensions with a spectral collocation method, *International Journal for Numerical Methods in Fluids.*, 73(2), 103-129, doi:10.1002/flid.3788, 2013.
- Thiem, Ø., Carr, M., Berntsen, J., Davies, P. A.: Numerical simulation of internal solitary wave-induced reverse flow and associated vortices in a shallow, two-layer fluid benthic boundary layer. *Ocean dynamics.*, 61, 857, doi:10.1007/s10236-011-0396-5, 2011.
- Turkington, B., Eydeland, A., and Wang, S.: A computational method for solitary internal waves in a continuously stratified fluid, *Studies in Applied Mathematics.*, 85, 93-127, doi:10.1002/sapm199185293, 1991.
- Vlasenko, V., Stashchuk, N., and Hutter, K.: *Baroclinic Tides: Theoretical Modeling and Observational Evidence*, Cambridge University Press., doi:10.5670/oceanog.2006.107, 2005.
- Vlasenko, V., Stashchuk, N., Guo, C., Chen, X.: Multimodal structure of baroclinic tides in the South China Sea, *Nonlinear Processes in Geophysics.*, 17(5), 529-543, doi:10.5194/npg-17-529-2010, 2010.
- Wang, X., Zhou, J. F., Wang, Z., You, Y. X.: A numerical and experimental study of internal solitary wave loads on semi-submersible platforms, *Ocean Engineering.*, 150, 298-308, doi:10.1016/j.oceaneng.2017.12.042, 2018.
- Wilcox, D. C.: Comparison of two-equation turbulence models for boundary layers with pressure gradient, *AIAA journal.*, 31(8), 1414-1421, doi:10.2514/3.11790, 1993.
- Xu, C. and Stastna, M.: Instability and cross-boundary-layer transport by shoaling internal waves over realistic slopes, *Journal of Fluid Mechanics.*, 895, doi:10.1017/jfm.2020.389, 2020.
- Yuan, G. and Xiao-Yan, T.: A coupled variable coefficient modified KdV equation arising from a two-layer fluid system, *Communications in Theoretical Physics.*, 48, 961-970, doi:10.1088/0253-6102/48/6/001, 2007.
- Zhang, Z., Fringer, O. B., and Ramp, S. R.: Three-dimensional, nonhydrostatic numerical simulation of nonlinear internal wave generation and propagation in the South China Sea, *Journal of Geophysical Research: Oceans.*, 116(C5), doi:10.1029/2010JC006424, 2011.
- Zhang, H. G., Gu J. B., Jia, H. Q., Gu, B.: A numerical model for internal wave propagation in

continuously stratified ocean, Chinese Journal of Theoretical and Applied Mechanics., 44, 896-903,
doi:10.6052/0459-1879-12-195, 2012.