

Reply to the Comments from Topical Editor

Comments to the Author:

Dear Dr. Ren and colleagues,

In concordance with the reviewers, I am excited to accept your paper for publication in GMD subject to minor grammatical and textual edits. I have attached a revision that I have done (apologies for the writing by hand, there were too many small changes to list them) which should address the reviewer's main concern about clarity in the writing. Please address these (please let me know if you can't read anything that I have added) and I'll be happy to send your paper off for type-setting.

Reply:

Dear Alex Robel,

Thanks for your efforts on grammatical and text modification which make our paper more readable. We have revised the manuscript thoroughly according to your revision point by point.

Yours sincerely,

Shihe Ren

A fully coupled Arctic sea ice-ocean-atmosphere model (ArcIOAM v1.0) based on C-Coupler2: model description and preliminary results

5 Shihe Ren¹, Xi Liang¹, Qizhen Sun¹, Hao Yu², L. Bruno Tremblay³, Bo Lin¹, Xiaoping Mai¹, Fu Zhao¹,
Ming Li¹, Na Liu¹, Zhikun Chen¹, Yunfei Zhang¹

¹Key Laboratory of Research on Marine Hazards Forecasting, National Marine Environmental Forecasting Center, Ministry of Natural Resources, Beijing, China

²Ministry of Education Key Laboratory for Earth System Modelling, Department of Earth System Science, Tsinghua University, Beijing, China

10 ³Department of Atmospheric and Oceanic Sciences, McGill University, Montreal, Canada

Correspondence to: Xi Liang (liangx@nmefc.cn)

Abstract. The Arctic regional coupled sea ice-ocean-atmosphere model (ArcIOAM) has been developed to provide **Aiming** at reliable Arctic sea ice prediction on seasonal timescale. ~~in the National Marine Environmental Forecasting Center of China, a new Arctic regional coupled sea ice-ocean-atmosphere model (ArcIOAM) has been established.~~ The description and implementation of ArcIOAM and its preliminary results ~~in~~ **for** the year of 2012 are presented in this paper. In the ArcIOAM configuration, the Community Coupler 2 (C-Coupler2) is used to couple the Arctic sea ice-oceanic configuration of the MITgcm (Massachusetts Institute of Technology general circulation model) with the Arctic atmospheric configuration of the Polar WRF (Weather Research and Forecasting) model. A scalability test is performed to investigate the parallelization of the coupled model. As the first step toward reliable Arctic seasonal sea ice prediction, ~~the simulation results in the year of 2012 of the~~ ArcIOAM implemented with two-way coupling strategy, along with one-way coupling strategy, ~~are~~ **is** evaluated with respect to available observational data and reanalysis products **for the year of 2012**. ~~Besides,~~ ~~the~~ **A** standalone MITgcm run with prescribed atmospheric forcing is performed for ~~references~~ **reference**. From the comparison, all the experiments simulate ~~rational~~ **reasonable** evolution of sea ice and ocean states in the Arctic region over a one-year simulation period. The two-way coupling ~~strategy~~ has better performance in terms of sea ice extent, concentration, **thickness and SST**, especially in summer. This result indicates that sea ice-ocean-atmosphere interaction ~~takes~~ **plays** a crucial role in controlling Arctic summertime sea ice distribution. ~~The coupled model and documentation are available at <https://doi.org/10.5281/zenodo.3742692> (last access: 9 June 2020), and the source code is maintained at https://github.com/edmpbp123/Coupled_Atmos_Ice_Oce (last access: 7 April 2020).~~

15
20
25

1 Introduction

30 It ~~has been~~is widely recognized that coupling between different earth system components (ocean, atmosphere, sea ice, and land) ~~could~~provides improved forecasts of oceanic and atmospheric states on various timescales (Neelin et al., 1994). As an essential component in the climate system, sea ice plays a crucial role in the global energy and water budget, and has a substantial impact on ~~local and remote~~atmospheric and oceanic circulations. In polar regions, strong interactions ~~between at~~ different interfaces disturb sea ice motion and affect sea ice growth-melt process (Jung et al., 2016). Due to the combined

35 ~~features physics~~ of solid and fluids, sea ice thermodynamical and dynamical representations in coupled models are complicated (Bailey et al., 2020). ~~In recent years, Due to projected increase in~~ marine traffic through the Arctic marginal seas ~~are projected to become increasingly feasible~~ as climate change continues, ~~which has there~~ is amplified the demand for reliable polar sea ice and marine environmental predictions from synoptic timescale to seasonal and interannual timescales.

In the past decades, a number of coupled models have been developed with various sea ice prediction capacities on various

40 timescales (Pellerin et al., 2004; Williams et al., 2018; Chen et al., 2010; Skachko et al., 2019). Climate models comprising phase 6 of the Coupled Model Intercomparison Project (CMIP6) ~~represent are used for~~ state-of-the-art sea ice prediction ~~and outlook~~ on seasonal to longer timescales. Recently within the GODAE (Global Ocean Data Assimilation Experiment) Oceanview community, there is an increasing interest of using coupled global models to predict sea ice on shorter timescales (Brassington et al., 2015). In Canada, a coupled global forecasting system is now operationally running at the Canadian

45 Centre for Meteorological and Environmental Prediction (Smith et al., 2018), providing global 10 days forecasts of ocean and sea ice states. The ocean-sea ice component of this system, namely the Global Ice-Ocean Prediction System (GIOPS, runs in real time since March 2014) (Smith et al., 2016), are based on the Nucleus for European Modelling of the Ocean (NEMO) and the Community Ice CodE (CICE) model. The GIOPS is coupled to an operational global deterministic medium-range weather forecasting system, namely the Global Deterministic Prediction System (GDPS) (Smith et al., 2014),

50 which is based on the Global Environmental Multiscale (GEM) atmosphere model. In the United Kingdom, Hadley Centre Global Environment Model version 3 (HadGEM3) is under development and is planning to ~~service in provide~~ seasonal sea ice prediction (Williams et al., 2018). The HadGEM3 is ~~constitute made up~~ of the UK Met Office Unified Model (UKMO UM) atmosphere model (Walters et al., 2011), the Joint UK Land Environment Simulator land-surface model (Brown et al., 2012), the NEMO model and the CICE model. In the United States, a coupled global sea ice-ocean-wave-land-atmosphere

55 prediction system providing operational daily predictions out to 10 days and weekly predictions out to 30 days is being developed by the US Navy (Brassington et al., 2015; Posey et al., 2015).

Although global coupled models are now being ~~implemented run~~ with increased horizontal resolution, higher-resolution regional coupled models can provide an affordable way to study interactive ocean-atmosphere and sea ice-atmosphere feedbacks for polar weather and sea ice processes, if properly forced by initial and boundary conditions. On the regional

60 scale, there are also a few coupled sea ice-ocean-atmosphere model systems for the Arctic climate studies and operational sea ice forecasts. The Arctic Region Climate System Model (ARCSyM) was developed to simulate coupled interactions

among the atmosphere, sea ice, ocean, and land surface of the western Arctic (Lynch et al., 1995; Rinke et al., 2000). Schrum et al. (2003) introduced a coupled sea ice-ocean-atmosphere model for the North and Baltic Seas. In their work, the regional atmospheric model REgional MOdel (REMO) was coupled to the HAMburg Shelf Ocean Model (HAMSOM) with a sea ice module. Pellerin et al. (2004) demonstrated that significant sea ice forecasting improvements occurred when implemented the two-way coupling between the Gulf of St. Lawrence model with the GEM atmosphere model. The Regional Arctic System Model (RASM) is a fully coupled, regional Earth system model covering the pan-Arctic domain (Maslowski et al., 2012; Cassano et al., 2017). The component models of RASM include the Weather Research and Forecasting (WRF) atmospheric model, the Variable Infiltration Capacity (VIC) land and hydrology model, and regionally configured versions of the ocean and sea ice models used in the Community Earth System Model (CESM): the CICE model and Parallel Ocean Program (POP). Van Pham et al. (2014) compared basin-scale climate simulation in the regional coupled model COSMO-CLM-NEMO with that in the stand-alone COSMO-CLM model for the North and Baltic Seas, and found large improvement in the simulated atmospheric low boundary temperature. As part of the Canadian Operational Network of Coupled Environmental Prediction Systems (CONCEPTS), a fully coupled sea ice-ocean-atmosphere forecasting system for the Gulf of St. Lawrence has been developed (Faucher et al., 2009) and running operationally at the Canadian Meteorological Centre since June 2011. The new model ~~developing~~-development plan is to couple a high-resolution (1/12 degree) sea ice-ocean regional model which covering the North Atlantic and Arctic Ocean (Dupont et al., 2015) to the regional weather and wave prediction system of Environment Canada and provides short-term sea ice and ocean predictions to users. Yang et al. (2020) has developed a coupled atmosphere-sea ice-ocean model configured for the pan-Arctic with the Coupled Ocean-Atmosphere-Wave-Sediment Transport modeling system (COAWST). A data assimilation system ~~of~~-using an ensemble Kalman filter is combined with this coupled model to assimilate satellite sea ice observations to improve initial sea ice conditions. Since regional models can be run at higher resolution than global models, regional models can explicitly represent mesoscale features that may not be resolved in global models. Another potential advantage of regional systems is that lateral boundary conditions can be controlled to get an optimal model input (Cassano et al., 2017). In coupled model systems, moisture, heat and momentum are often ~~accomplished~~-coupled through the use of a separate coupling software like OASIS-MCT (Craig et al., 2017) or framework like the Earth System Model Framework (ESMF) (DeLuca et al., 2012) which links component models flexibly and controls the exchange and interpolation of coupling variables. The coupler, which can handle data interpolation and data transfer between different models and different grids, is the crucial part in the coupled systems. Using the ESMF and the National United Operational Prediction Capability (NUOPC), Sun et al. (2019) introduced a regional ocean-atmosphere coupled model covering the Red Sea based on the MITgcm (Marshall et al., 1997) and the WRF model (Skamarock et al., 2008).

~~Aiming at providing~~To provide operational seasonal sea ice prediction in the National Marine Environmental Forecasting Center (NMEFC) of China, the motivation of this work is to ~~establish~~-develop a fully coupled Arctic sea ice-ocean-atmosphere model (ArcIOAM) as a new tool to perform regional sea ice simulation and operational sea ice prediction on seasonal timescale.. In our study, we use a newly developed efficient coupling framework, the Community Coupler 2 (C-

Coupler2) (Liu et al., 2018), to couple the Arctic sea ice-oceanic configuration of the MITgcm (Nguyen et al., 2011;Liang and Losch, 2018) with the Arctic atmospheric configuration of the Polar WRF model (Hines and Bromwich, 2008) model. By coupling the Polar WRF and the MITgcm for the first time in Arctic region, a series of specific procedures including data interpolation between different grids and relaxation algorithm in lateral boundaries are implemented. After ~~implementing~~ ~~describing~~ the ArcIOAM, we evaluate the model performance in ~~the year of~~ 2012 against available observational and reanalysis data. This year is selected because of the historical sea ice extent minimum record in the satellite era. To evaluate the role of sea ice-ocean-atmosphere interaction in Arctic sea ice seasonal cycle, we compare the simulation results of the two-way coupling experiment with that of the one-way coupling experiment in which the coupling variables are only transmitted from the Polar WRF to the MITgcm. ~~Besides~~Also, a stand-alone MITgcm simulation with prescribed atmospheric forcing is performed for reference~~s~~.

The paper is organized as follows. The description of the component models and coupling strategy are detailed in Section 2. In section 3, a scalability test of the coupled model is performed to investigate its parallel capability. Section 4 introduces the designs and configurations of coupling experiments. Section 5 discusses the preliminary results in the validation test. The last section concludes the paper and presents an outlook for future work.

110 **2 Model Description**

The newly developed regional coupled modeling system of ArcIOAM is introduced in this section. The descriptions of individual model components and the coupling strategy with C-Coupler2 are presented below. Detailed options of physical parameterizations and model settings for the Polar WRF, MITgcm models and C-Coupler2 are summarized in Table 1.

2.1 The Oceanic and Sea Ice Component Model

115 The ocean and sea ice component of ArcIOAM is an Arctic configuration of the MITgcm (Nguyen et al., 2011;Liang and Losch, 2018;Liang et al., 2019;Liang et al., 2020). The model has an average horizontal resolution of 18 km and covers the whole Arctic Ocean with open boundaries close to 55 °N in both the Atlantic and Pacific sectors (Losch et al., 2010). The ocean model includes 420x384 horizontal grid points and 50 vertical model layers based on Arakawa C grid and Z coordinates ~~and a time step of 1200 seconds~~. The ocean model uses curvilinear coordinates and the model grid is locally
120 orthogonal. Vertical resolution of the ocean model layers increases from 10 m near the surface to 456 m near the bottom. The K-profile parameterization (KPP) (Large et al., 1994) is used as the vertical mixing scheme. ~~Time step is 1200 seconds~~. The sea ice model shares the same horizontal grid with the ocean model and divides each model grid into two parts: ice and open ocean. In the open ocean area, ocean-atmosphere heat and momentum fluxes are calculated following the standard bulk formula (Doney et al., 1998). In the ice-covered area, the ice surface and bottom heat and momentum fluxes are calculated
125 according to viscous-plastic dynamics and zero-layer thermodynamics (Hibler, 1980;Semtner, 1976). The so-called zero-layer thermodynamic model assumes one-layer ice underneath one-layer snow and ~~assumes~~ ice does not store heat, therefore

tends to exaggerate the seasonal variability in ice thickness. Snow modifies ice surface albedo and conductivity. If enough snow accumulates on top of the ice, its weight submerges the ice and the snow is flooded. In order to parameterize a sub-grid scale distribution for sea ice thickness, the mean sea ice thickness in each grid can be split into as many as 7 thickness categories in the MITgcm sea ice model. In our coupled model for simplicity, we use 2 thickness categories: open water and sea ice.

2.2 The Atmospheric Component Model

The atmospheric component of ArcIOAM is based on ~~an Arctic configuration of~~ the Polar WRF (Bromwich et al., 2013; Hines and Bromwich, 2008) model, which is an optimized version of the WRF model (Skamarock et al., 2008) for use in polar regions. ~~The Polar WRF is developed and maintained by the Polar Meteorology Group at the Byrd Polar and Climate Research Center of the Ohio State University. Previous researchers have made several specific modifications in the Arctic configuration of the Polar WRF model, modifications~~ for polar environments, which primarily encompass the land surface model and sea ice to adapt to the particular conditions in Arctic Regions. The Noah land surface model is embedded inside the Polar WRF. The changes made in the Noah land surface model (LSM; Chen and Dudhia, 2001) include using the latent heat of sublimation for calculating latent heat flux over ice surface, increasing the snow albedo and the emissivity value for snow, adjusting snow density, modifying thermal diffusivity and snow heat capacity for the subsurface layer, changing the calculation of skin temperature, and assuming ice saturation in calculating the surface saturation mixing ratio over ice. Other modifications ~~for~~ of the Polar WRF include a fix to allow specified sea ice quantities and the land mask associated with sea ice to update during a simulation. These modifications improve model performance over the pan-Arctic for short-term forecasts.

The Arctic configuration of the Polar WRF model has been tested and evaluated by a set of simulations over several key surface categories, including large permanent ice sheets with the Greenland/North Atlantic grid and Arctic land (Hines et al., 2011; Hines and Bromwich, 2008) and the production of the Arctic System Reanalysis (ASR) (Bromwich et al., 2010). In this study, the Polar WRF model covers the Arctic regions with a horizontal resolution of 27 km. The model has 306x306 horizontal grid points and 60 vertical layers. ~~The prognostic equations in the Polar WRF model are solved with~~ and a time step of 120 seconds. The Polar WRF model employed physics options that included the Mellor Yamada-Janjic boundary layer scheme in conjunction with the Janjic-Eta Monin Obukhov surface layer scheme (Janjić, 2002), the WRF single-moment 6-class microphysics scheme for microphysics, the Grell-Devenyi scheme for clouds (Grell and Dévényi, 2002), and the new version of the rapid radiative transfer model for both shortwave and longwave radiation.

2.3 The Coupler

We have implemented the C-Coupler2 to couple the MITgcm and the Polar WRF model. ~~The C-Coupler family was initiated from 2010 in China.~~ The first version (C-Coupler1) includes features such as flexible coupling configuration and 3-D coupling capability (Liu et al., 2014). Two coupled models have been built using the C-Coupler1. The first is a coupled

climate system model version FGOALS-gc at the Institute of Atmospheric Physics, Chinese Academy of Sciences. The
160 FGOALS-gc can achieve exactly the same (bitwise identical) simulation results as same model components with different
coupler the CPL6 (Liu et al., 2014). The second is a regional coupled model FIO-AOW (Zhao et al., 2017) which includes an
atmosphere model WRF, an ocean model POM (Princeton Ocean Model), and a wave model MASNUM (Yang et al., 2005).
The second version of the C-Coupler family, the C-Coupler2 (Liu et al., 2018), is equipped with many advanced functions,
including 1) a common, flexible, user-friendly coupling configuration interface, 2) the capability of coupling within one
165 executable or the same subset of Message Passing Interface (MPI) processes, 3) flexible and automatic coupling procedure
generation for any subset of component models, 4) dynamic 3-D coupling that enables convenient coupling of field on 3-D
grids with time-evolving vertical coordinate values, 5) non-blocking data transfer, 6) ~~facilitation for~~ model nesting, 7)
~~facilitation for~~ increment coupling and 8) adaptive restart capability (Liu et al., 2018).

2.4 Coupling Strategy

170 In ~~the~~-ArcIOAM, the requested CPUs are assigned equally to the MITgcm and Polar WRF model. The C-Coupler2 is
employed as a library to achieve the two-way parallel coupling between the Polar WRF and the MITgcm (Figure 1). The
coupling interval is set to 20 minutes. The component models are running in concurrent mode (Figure 2), that is, the
component models run on mutually exclusive sets of cores, if one component model finishes earlier than the other, its
resources are idle and wait for the other component model. At each coupling time step, data transfer from the MITgcm to the
175 Polar WRF is executed when data transfer from the Polar WRF to the MITgcm is completed, and vice versa ~~for choice~~.
During coupling execution, the MITgcm sends SST, sea ice concentration, sea ice thickness, snow depth and ice surface
albedo to the coupler, and these coupling variables are used directly as the bottom boundary conditions in the Polar WRF
model. The Polar WRF model sends the atmospheric bottom boundary variables to the coupler, including downward
longwave radiation, downward shortwave radiation, 10-m wind speed, 2-m air temperature, 2-m air specific humidity, and
180 precipitation. The MITgcm uses these atmospheric variables to compute the open ocean and ice surface heat, freshwater and
momentum forcing.

Model domains of the MITgcm and the Polar WRF model are shown in Figure 3a. As the model domain and grid of the
Polar WRF and the MITgcm are generally different, several important procedures ~~have been~~are carried out in ~~conducting~~our
coupled system. The model domain of the Polar WRF is larger than that of the MITgcm, producing a non-overlapped area
185 between the MITgcm domain and the Polar WRF domain. ~~Besides~~Also, the MITgcm model only produces surface variables
over ocean, and the Polar WRF model also needs bottom boundary conditions over land. Thus, the coupling variables
received by the Polar WRF model need to be concatenated by value in the non-overlapped area and in the land area from an
external forcing file, and value in the overlapped ocean area from the MITgcm model together. To diminish the abrupt value
changes from two sources, a simple linear relax zone is designed near the open boundaries of the MITgcm model in both the
190 Atlantic and Pacific sectors (Figure 3b). The coupling variables ($VAR_{recbyWRF}$) received by the Polar WRF model can be
expressed as:

$$VAR_{recbyWRF} = (1 - \alpha)VAR_{sedbyMIT} + \alpha VAR_{extern} \quad (1)$$

where α is relaxation coefficient, which is equal to 0 in the overlapped ocean area away from the MITgcm open boundaries, and equal to 1 in the land area and in the non-overlapped area away from the MITgcm open boundaries. While in the relax zone, α increases from 0 to 1 linearly from the overlapped side to the non-overlapped side. $VAR_{sedbyMIT}$ ~~is~~ are the coupling variables which are ~~send~~ sent by the MITgcm model. VAR_{extern} ~~is~~ are the bottom boundary variables of the Polar WRF model which are read from external forcing file.

Normally in coupled models the coupler controls the exchange of heat and momentum fluxes among component models. In our model configuration, instead of coupling fluxes directly, we use the C-Coupler2 to control the exchange of fields between the Polar WRF and the MITgcm. Heat and momentum fluxes are calculated separately in each component model. Both the Polar WRF and the MITgcm use the same ~~b~~Bulk ~~f~~Formula and ~~almost same~~similar parameters in calculating fluxes, which guarantees the quasi-conservation of heat and momentum transmission between the component models. The bilinear interpolation algorithm is ~~involved in the transmission of~~ used to transform model variables between the horizontal grid of the Polar WRF and that of the MITgcm. Figure 4 shows wind stress curl derived from the Polar WRF output and the MITgcm output, as well as their difference on March 1, 2012. It can be seen that the Polar WRF and MITgcm model generate similar wind stress curl pattern, and the difference due to interpolation algorithm and momentum calculation accounts for less than 5% of the wind stress curl (Figure 4c).

3 Scalability test

In this section, the parallel efficiency of the ArcIOAM is investigated. Different numbers of CPU cores are used to evaluate the parallel speed-up of the coupled model. The CPU elapsed time spent on coupling interface of each component model in the coupled runs are detailed. Additionally, the parallel efficiency of each component model in the stand-alone runs are calculated for references. The parallel efficiency tests are performed on the High performance computing cluster at NMEFC. The High performance computing cluster is a Lenovo Blade Server system composed of 240 dual-socket compute nodes based on 14-core Intel Haswell processors running at 2.4 GHz. Each node has 128GB DDR4 memory running at 2133 MHz. Overall the system has a total of 6270 CPU cores (240 nodes x 2 x 14 CPU cores) and has a theoretical peak speed of 258 ~~teta~~flopsteraflops. The parallel efficiency of the scalability test is $N_{p0} t_{p0} / N_{pn} t_{pn}$, where N_{p0} and N_{pn} are the number of CPUs employed in the base case and the test case, respectively; t_{p0} and t_{pn} represent the CPU elapsed time in the base case and the test case. The speed-up is defined as t_{p0} / t_{pn} , which is the relative improvement of the CPU time. The scalability tests are performed by integrating 7 model days for the stand-alone Polar WRF, the stand-alone MITgcm and the coupled runs. In the ArcIOAM runs, the requested CPUs are assigned equally to the component models. The minimum CPUs we use is 28, i. e. $N_{p0} = 28$. Limited by computational resource, the maximum number of CPUs we can use is 896. The total CPU elapsed time in the coupled runs decreases from 12840 s to 1380 s when the requested CPUs increases from 28 to 896 (Table 2). When the requested CPUs are ~~not larger~~less than 448, the CPU elapsed time used for numerical integration by the MITgcm

is substantially smaller than that for numerical integration by the WRF, meaning that the efficiency of the coupled model depends on the WRF component model. When the requested CPUs are larger than 448, the efficiency of the coupled model depends on the MITgcm component model.

The parallel efficiency of the coupled model remains more than 90% when employing less than 112 cores and is still as high as 80% when using 224 cores (Figure 5). The parallel efficiency of the stand-alone MITgcm is near to that of the stand-alone Polar WRF when the requested CPUs are less than 448, while both of them are substantially lower than the coupled model. The parallel speed-up of the coupled model is higher than the stand-alone component model. The decrease in parallel efficiency results from the increase of communication time, load imbalance, and I/O (read and write) operation per CPU core (Christidis, 2015).

4 Numerical Experiments

~~The ArcIOAM will be used to conduct seasonal sea ice prediction in our future plan.~~ As a starting point, we ~~need to~~ evaluate ~~its~~ the performance of ArcIOAM on a seasonal timescale. In this work, we perform the coupled model simulations in the year ~~of 2012.~~ ~~The year of 2012 is chosen~~ because an unusually strong storm formed off the coast of Alaska on 5 August 2012, and tracked into the center of the Arctic Basin where it lingered for several days and generated stronger sea ice-ocean-atmosphere interaction (Simmonds and Rudeva, 2012). With more open ocean area ~~be~~ exposed to atmosphere, we expect that sea ice-ocean-atmosphere interaction processes are ~~relatively more intensified~~ intense in the summertime than ~~that~~ in the wintertime. In the Arctic regions, ~~demands of~~ there is also higher demand for seasonal prediction ~~for sea ice and ocean are also strong in~~ the summertime when more commercial and ~~scientific activities of~~ Arctic shipping occurs. The main aim of this paper is to assess the sea ice and ocean simulation capabilities of the coupled system. For this reason, less attention will be paid on the atmosphere simulation. Future work will emphasize atmospheric variables and seasonal sea ice prediction skill with available observations ~~be~~ assimilated.

Three experiments using different coupling strategy are performed in this study (Table 3). The first experiment which is denoted by OCNCPL, is a two-way coupled simulation ~~that where~~ the MITgcm receives the coupled variables from the Polar WRF, and the Polar WRF ~~also~~ receives the coupled variables from the MITgcm. The second experiment which is denoted by OCNDYN, is a one-way coupled simulation ~~that where~~ the MITgcm only receives the coupled variables from ~~the~~ Polar WRF, but without sending the coupled variables back to ~~the~~ Polar WRF. α in Equ. 1 is set to 1 in the OCNDYN run. The third experiment, ~~of~~ OCNSTA, represents the stand-alone MITgcm simulation with the same sea ice albedo parameters to the coupled model but prescribed atmospheric forcing to keep consistency with previous two coupling experiments. The model state deviation between these cases represents the influences of sea ice-ocean-atmosphere interaction in the Arctic Ocean.

The atmospheric initial and lateral boundary conditions, ~~as well as~~ the bottom boundary conditions in the external forcing file used in the OCNCPL and OCNDYN runs, and the prescribed atmospheric forcing used in the OCNSTA run are derived from

the 6-hourly National Centers for Environmental Prediction (NCEP) Climate Forecast System Reanalysis (CFSR) data (Saha et al., 2010). The oceanic monthly lateral boundary condition of the coupled model is derived from the Estimating the Circulation and Climate of the Ocean phase II (ECCO2): high-resolution global-ocean and sea ice data synthesis (Menemenlis et al., 2008), including potential temperature, salinity, current, and sea surface elevation. The discrepancy of atmosphere and ocean boundary condition is less of an issue since the ocean does not vary much on shorter time scale and the zones of sea ice are far away from the lateral boundary. The initial condition of ocean and sea ice on 1 January 2012 are derived from a stand-alone MITgcm simulation initialized from climatological temperature and salinity field derived from the World Ocean Atlas 2005 (WOA05) (Locarnini et al., 2006;Antonov et al., 2006) and forced by the 3-hourly Japanese 55-year Reanalysis data (JRA55) (Harada et al., 2016;Kobayashi et al., 2015) from 1979 to 2011 (Liang and Losch, 2018). After 33-year integration, the ocean and sea ice initial condition on 1 January 2012 used in the coupled model are retrieved from a quasi-equilibrium ocean-sea ice evolution period. River runoff is based on the Arctic Runoff Data Base (Nguyen et al., 2011). The model states are outputted on daily basis.

5 Preliminary Results

5.1 Sea Ice Extent and Concentration

The minimum Arctic sea ice extent ~~minimum value appeared in the summer of 2012~~ in the satellite era occurred in the summer of 2012 (Francis, 2013). ~~According to sea ice extent record derived from the Multisensor Analyzed Sea Ice Extent-North Hemisphere (MASIE-NH) (NSIDC, 2010),~~ Arctic sea ice extent grows to maximum value of 14.5 million km² in March 2012 and ~~drops~~ dropped to minimum value of 3.5 million km² in September 2012 (Figure 6a) according to the Multisensor Analyzed Sea Ice Extent-North Hemisphere (MASIE-NH) data (NSIDC, 2010) ~~in the year of 2012~~. The MASIE-NH data is provided daily by the National Ice Center Interactive Multisensor Snow and Ice Mapping System with a spatial resolution of 4 km. Compared with the OCNSTA run, results from the experiments with coupling (OCNCPL and OCNDYN) are closer to observations (Figure 6). It is noted that both the OCNCPL and OCNDYN runs simulate lower sea ice extent than the observations by a bias of 1-1.5 million km² (Figure 6a) after the first ~~half-month~~ 2 weeks of January. Because the sea ice initial ~~field~~ condition on 1 January 2012 is derived from a stand-alone MITgcm simulation which is forced by the JRA55 data, the change of atmospheric forcing data from the JRA55 to the NCEP CFSR induces a model state adjustment period which lasts about ~~half-month~~ 2 weeks. By comparing the sea ice extent evolution of the OCNCPL and OCNDYN run, it ~~seems~~ appears that sea ice-ocean-atmosphere interaction generates only a small change in ~~slight~~ sea ice extent ~~change, but~~ based on our ~~following~~ analysis ~~related to~~ sea ice spatial distribution, sea ice-ocean-atmosphere interaction plays a decisive role in summertime sea ice spatial distribution.

Figure 6b shows the modeled and observed sea ice extent anomaly. After the model state adjustment period, both the amplitudes and phase of sea ice extent seasonal cycle in the OCNCPL and OCNDYN runs are close to the observations. ~~While~~ Results of the stand-alone run shows that ~~lag of~~ sea ice melts and freezes in advance ~~compared with~~ the

observations. Nguyen et al. (2011) pointed out that optimized parameters of sea ice and snow albedo depend on selected atmospheric forcing in the MITgcm. In the sea ice model of MITgcm, the actual surface albedo changes with time and is a function of four foundational albedo parameters (dry ice, dry snow, wet ice, wet snow), as well as ice surface temperature and snow depth. A series of sensitivity experiments are performed to get an optimal combination of sea ice parameters (figures not shown). The sea ice model systematic bias could also be reduced by ~~involving assimilating~~ sea ice data ~~assimilation module~~ (Liang et al., 2019) when conducting seasonal sea ice prediction system.

The modeled sea ice concentration is compared with the observations derived from the EUMETSAT Ocean and Sea Ice Satellite Application Facility (OSISAF) (Eastwood et al., 2011). The observations are reprocessed daily sea ice concentration fields which are retrieved from the Scanning Multichannel Microwave Radiometer/Special Sensor Microwave Imager (SMMR/SSM/I) data with a spatial resolution of 10 km. Figure 6c shows the root mean square error (RMSE) evolution of the modeled sea ice concentration with respect to the OSISAF data. After 1 month of model state adjustment, three experiments shows similar patterns that RMSE is lower in winter and spring than in summer and autumn. The Arctic basin is almost fully covered by sea ice from November to May (Figure 7), thus the two coupling experiments do not produce substantial sea ice concentration differences. ~~Along With~~ with more open ocean ~~are~~ exposed to atmosphere, from June to September the sea ice concentration RMSE of the OCNCPL run is significantly lower than that of the OCNDYN run. This result indicates that sea ice-ocean-atmosphere interaction ~~takes plays~~ a crucial role in controlling Arctic summertime sea ice distribution.

~~To further clarify sea ice concentration spatial distribution, we~~ We show the modeled and observed monthly mean sea ice concentration (Figure 7) and deviation of model results and observation (Figure 8) in March, June, September and December. In March, when the Arctic Ocean is almost fully covered by sea ice, the main source of discrepancy appears in sea ice edge zones ~~in on~~ the Atlantic side (Figure 7a-c). In June, sea ice concentrations are overestimated in the Arctic marginal seas in the OCNCPL and OCNDYN runs (Figure 8d-e). The modeled sea ice concentration in the OCNSTA run is ~~more~~ closer to the observations (Figure 7f) ~~than the two coupled runs~~. In September, the modeled sea ice in the marginal sea ice zone melts out in all runs (Figure 7i-k). Compared with the satellite observations (Figure 7l), sea ice in the OCNSTA run overmelts in summertime which leads to an anomalous negative bias of sea ice concentration in the Arctic (Figure 8i), the two coupled runs overestimate sea ice concentration in the southern Beaufort Sea while underestimates sea ice concentration in the center Arctic basin (Figure 8g-h). Although the two coupled runs simulate similar sea ice extent patterns, due to ~~rational representation~~ the inclusion of sea ice-ocean-atmosphere interaction in the OCNCPL run, the modeled sea ice distribution of the OCNCPL run is closer to the observations (Figure 7i and Figure 7l). In December, the situation is similar with that in March when sea ice dominates almost ~~the~~ entire Arctic ~~region~~.

5.2 Sea Ice Volume and Thickness

~~At current stage, satellite~~ Satellite sea ice thickness data is not ~~currently~~ available in ~~melting melt~~ seasons from May to September. We compare the modeled sea ice volume with that from a widely used sea ice volume data source (Figure 9a), the Pan-Arctic Ice Ocean Modeling and Assimilation System (PIOMAS) developed at the Applied Physics Laboratory of the

University of Washington (Zhang and Rothrock, 2003). ~~The~~ PIOMAS assimilates sea ice concentration data from the National Snow and Ice Data Center (NSIDC) and SST data from NCEP/NCAR Reanalysis. The OCNSTA run simulates more ~~rational~~-realistic sea ice growth rates from January to May but systematic negative sea ice volume bias compared with the PIOMAS data. The sea ice volume in the OCNPL and OCNDYN runs shows better results than that in the OCNSTA run from June to December. However, both the two coupled runs produce less sea ice volume than the PIOMAS data in most ~~time~~-of 2012, partly ~~resulting from that~~because our model underestimates sea ice extent (Figure 6a) without assimilating ~~any~~ observations. It is notable that the sea ice volume evolution of the OCNPL run is closer to the PIOMAS data at the end of 2012.

Satellite sea ice thickness observations are usually retrieved from either ice surface brightness temperature or radar altimetric measurement of sea ice freeboard. We use three kinds of satellite sea ice thickness data to validate our model results (Figure 9b and Figure 9c). Daily sea ice thickness observations provided by the University of Hamburg are derived from the Soil Moisture Ocean Salinity (SMOS) brightness temperature combined with a sea ice thermodynamic model and a three-layer radiative transfer model (Kaleschke et al., 2012) ~~obtained from <http://icdc.cen.uni-hamburg.de/1/daten/cryosphere/13c-smos-sit.html>~~. Weekly sea ice thickness observations provided by the Alfred Wegener Institute, Helmholtz Centre for Polar and Marine Research are derived from the European Space Agency satellite mission CryoSat-2 radar altimetric data (Ricker et al., 2014) ~~obtained from <http://data.meereisportal.de/data/cryosat2/version2.0/>~~. The SMOS observations retrieved from satellite brightness temperature data ~~have promised qualities~~are more accurate in marginal sea ice zone where ice thickness is thinner than 1 m (Tian-Kunze et al., 2014) while the CryoSat-2 observations retrieved from radar altimetric data have higher accuracies in pack sea ice zone than in marginal sea ice zone (Laxon et al., 2013; Wingham et al., 2006). Taking the spatial complementarity of the SMOS and CryoSat-2 data into consideration, Ricker et al. (2017) introduced a weekly sea ice thickness product covering the entire Arctic, the CS2SMOS sea ice thickness, which is generated by merging the SMOS sea ice thickness with the CryoSat-2 sea ice thickness (Ricker et al., 2017) ~~obtained from <https://data.meereisportal.de/data/es2smos/version1.4/>~~. The CS2SMOS data with observational uncertainty is also added ~~in~~ ~~the~~to our comparison.

The weekly CryoSat-2 data ~~is constitute of~~include several banded sea ice thickness records which ~~are~~ collected in one week when polar orbital satellites ~~passes~~ the Arctic region. The SMOS data used in this study are those in thin ice (< 1 m) region. Considering spatial coverage of the observations, we compare spatial-mean sea ice thickness evolution with the CS2SMOS data (Figure 9b). Comparing with the CS2SMOS data, both coupled runs produce more ~~rational~~-realistic sea ice thickness evolution than ~~the~~ stand-alone run from January to April. However, large sea ice thickness errors between the model and the observations exist in October and November. We attribute these large errors to the ~~possibly~~-observational uncertainties induced by radar altimetric measurement errors when ~~ice surface~~sea ice starts to freeze-up. The modeled sea ice in the OCNPL run is thinner than that in the OCNDYN run, and the sea ice thickness deviations between the two runs amplify after the summer. Meanwhile, the sea ice volume and thickness of the OCNPL run are closer to the PIOMAS data and the CS2SMOS observations at the end of 2012. Day et al. (2014) pointed out that sea ice ~~behaves~~-thickness incorporates the

355 long-term memory of melting-freezing processes. Notz and Bitz (2017) indicated that summertime sea ice thickness has an important influence on sea ice state in the following spring through the ice thickness-ice growth feedback. A negative anomaly of sea-ice area in late summer induces larger heat losses in autumn and winter from the ocean to the atmosphere due to enhanced outgoing long-wave radiation and turbulent heat fluxes, this causes thinner snow and ice due to later freeze-up and hence larger heat-conduction fluxes through sea ice, eventually leading to larger ice-growth rates. We speculate that

360 in the OCNCPL run sea ice-ocean-atmosphere interaction ~~induces reasonable~~causes a more realistic sea ice thickness distribution in the summer of 2012 which preconditions the sea ice thickness evolution in the following freezing season.

The sea ice thickness RMSEs of the three runs with respect to ~~mentioned~~three kinds of satellite sea ice thickness data are shown in Figure 9c. Compared with the coupled runs, the sea ice thickness in the OCNSTA run shows larger bias in pack ice zone while smaller bias in marginal ice zone. The sea ice thickness RMSE between the OCNCPL run and the SMOS data is

365 smaller than that between the OCNDYN run and the SMOS data, indicating that sea ice-ocean-atmosphere interaction substantially improves the sea ice thickness simulation in the marginal sea ice zone in the coupled runs. The sea ice thickness RMSEs between the coupled runs and the CryoSat-2 data are generally larger than those between the coupled runs and the CS2SMOS data especially in October and November, which is partly due to the large uncertainty of radar altimetric measurement when ~~ice surface~~sea ice starts to freeze-up, and partly due to the low spatial coverage of the CryoSat-2 data.

370 Normally, satellite sea ice thickness data has large uncertainties due to limitations of the retrieval algorithm. In-situ sea ice thickness observations with higher accuracy can provide a direct reference for the model. To further evaluate the modeled sea ice thickness, we compare the time evolution of modeled and in-situ observed sea ice thickness at three locations in the Beaufort Sea in 2012 (Figure 10). The observations are derived from moored upward-looking sonar (ULS) ice draft data from the Beaufort Gyre Exploration Project (BGEP) (Proshutinsky et al., 2005). The ULS samples the ice draft with a

375 precision of 0.1 m (Melling and Riedel, 1995), and the ice draft can be converted to ice thickness ~~following the law of assuming~~ hydrostatic equilibrium (Nguyen et al., 2011). Generally speaking, at all three locations in the Beaufort Sea, when the modeled sea ice is thinner than 1 m, the sea ice thickness evolution improves in the OCNCPL run comparing with those in the OCNDYN run. This result further demonstrates that sea ice-ocean-atmosphere interaction plays an important role in marginal sea ice evolution.

380 Spatial distributions of monthly mean sea ice thickness and its bias with respect to available CS2SMOS data in March, June, September, and December are shown in Figure 11 and Figure 12. In March and December, all three runs underestimate sea ice thickness in central Arctic, while overestimating sea ice thickness in the marginal sea ice zone (Figure 12). In March, the OCNSTA run overestimates sea ice thickness in the Pacific sector of the Arctic Ocean and in the Baffin Bay (Figure 12e). The coupled runs overestimate sea ice thickness in the northern Barents Sea while underestimating sea ice thickness in the

385 western Chukchi Sea (Figure 12a and Figure 12c). In December, compared with the OCNDYN run, the modeled sea ice thickness in marginal sea ice zone in the OCNCPL run is ~~more~~closer to the CS2SMOS data (Figure 12b), partly due to the ~~rational~~more realistic sea ice distribution at the beginning of freezing season, as summertime sea ice thickness has a strong effect on preconditioning the following wintertime sea ice thickness (Day et al., 2014).

5.3 Ocean Temperature and Current

390 Sea ice states ~~are~~ **is** intimately linked to ocean states, both dynamically and thermodynamically. The modeled spatial distribution of sea ice concentration in the OCNCPL run exhibits great improvement comparing with the OCNDYN run. Since sea ice in **the** marginal ice zone is strongly affected by SST through lateral heat transport, we suspect that sea ice-ocean-atmosphere interaction should impose **a** positive influence on the modeled ocean temperature in the marginal sea ice zone.

395 The modeled SST is validated against the Group for High-Resolution SST Multi-Product Ensemble (GMPE) data ([Martin et al. 2012](#)) ~~(obtained from <http://marine.copernicus.eu/>, product identifier: [SST_GLO_SST_L4_NRT_OBSERVATIONS_010_005](#))~~. The GMPE SST data provided by the UKMO is a reanalysis daily global SST product that **is** computed as the median of a large number of SST products ~~by various institutes around the world~~. Each product contributing to the GMPE product uses different observational data sets or different retrieval algorithms. As a

400 median product of multiproduct ensemble, the GMPE SST data greatly reduces observational uncertainties. The SST RMSE of the three runs with respect to the GMPE data are shown in Figure 13. In general compared with the coupled runs, the SST RMSE in the OCNSTA run is smaller in the summertime but larger in the rest. Spatial patterns of the modeled and observed SST in March, June, September and December are shown in Figure 14. Deviation of the modeled SST and the GMPE SST observation is demonstrated in Figure 15. The GMPE SST data is available in ice-free areas (Figure 14d, Figure 14h, Figure

405 14l and Figure 14p). In March and June, the OCNSTA run produces a warmer sea surface in the Nordic Seas, which explains the positive SST bias from January to June in Figure 13 compared with the coupled runs. In September the SST RMSE in the OCNCPL run (Figure 13) arises from the strong negative bias in the southern Beaufort Sea and the Baffin Bay (Figure 15g).

Ocean current observations in the Arctic Ocean are quite sparse, **so** we evaluate the modeled ocean velocity and temperature with climatological observation generated from the 1998-2003 mooring data in Fram Strait. Under the framework of the

410 European Union projects Variability of Exchanges In the Northern Seas (VEINS) and Arctic Subarctic Ocean Fluxes - North (ASOF-N), a series of moorings in Fram Strait had been deployed to record ocean properties since September 1997 to 2004 ~~(obtained from <https://www.whoi.edu/page.do?pid=30914>)~~. The observations ~~covers~~ **include** the water column from 10 m above the seabed to about 50 m below the surface. Although the observations were conducted at least one decade earlier than

415 ~~sense~~ **apply** since the phase of the Atlantic Multidecadal Oscillation ~~does~~ **did** not reverse between 1995 and 2012. The modeled and observed northward cross-section velocity and temperature averaged between 5°E and 8°40'E at 78°50'N are listed in Table 4. ~~Basically,~~ **T**he observations show that the northward velocity of the West Spitsbergen Current (WSC) increases from July to September, and the mean temperature of the section of 78°50'N also increases from July to December. It is notable that the modeled velocity and temperature of the OCNCPL run in Fram Strait are closer to the observations

420 comparing with those of the OCNDYN run, although there are still large biases of the modeled velocity between the OCNCPL run and the observations. Vertical temperature distribution in the section averaged between July and September

shows that sea ice-ocean-atmosphere interaction induces warming of the WSC until 700 m depth accompanied with strong cooling beside the WSC (Figure 16c). The cross-section velocity deviation between the OCNCPL and OCNDYN run is characterized by enhanced northward velocity over the whole water column around 0 °E and east of 6 °E, ~~while and~~ reduced northward velocity between them (Figure 16f).
425

6 Conclusion and Discussion

This paper describes the implementation of an Arctic regional sea ice-ocean-atmosphere coupled model (ArcIOAM). To connect the component models, a newly developed coupler, C-Coupler2 is implemented to couple the Arctic sea ice-oceanic configuration of the MITgcm model with the Arctic atmospheric configuration of the Polar WRF model. ~~By coupling To~~
430 ~~couple~~ the Polar WRF and the MITgcm for the first time in Arctic region, a series of specific procedures including data interpolation between different grids and relaxation algorithm in lateral boundaries are designed. The parallel efficiency of the coupled model is also investigated.

After implementing ~~the~~ ArcIOAM, we demonstrate it ~~on~~ ~~with~~ a seasonal simulation of the Arctic sea ice and ocean states in 2012 to evaluate the model capability of seasonal prediction of sea ice. Results from the two-way coupling simulation
435 (OCNCPL), the one-way coupling simulation (OCNDYN) and stand-alone oceanic simulation (OCNSTA) are compared to a wide variety of available observational and reanalysis products. The model state deviation between the two coupled experiments represents the influences of sea ice-ocean-atmosphere interaction on the Arctic Ocean and sea ice. From the comparison, results obtained from the two-way coupling experiment ~~best~~ capture the sea ice and ocean evolution in the Arctic region over a 1-year simulation period. The two-way coupling experiment gives better results compared with the one-
440 way coupling experiment and stand-alone oceanic simulation, especially in summertime.

~~Both~~ The amplitudes of sea ice extent seasonal cycle of the two coupled runs are close to the observations. The spatial distribution of sea ice concentration in the OCNCPL run is similar to that in the OCNDYN run from January to May. From June to September the sea ice concentration RMSE of the OCNCPL run with respect to the observations is significantly lower than that of the OCNDYN run, indicating that sea ice-ocean-atmosphere interaction ~~takes~~ ~~plays~~ a crucial role in
445 controlling Arctic summertime sea ice distribution. The sea ice thickness RMSE of the OCNCPL run with respect to the SMOS data in thin ice areas is smaller than that of the OCNDYN run. Meanwhile, the evolution of the modeled and observed sea ice thickness at three locations in the Beaufort Sea show that the modeled sea ice thickness evolution improves in the OCNCPL run when the ice is thinner than 1m. This result means that sea ice-ocean-atmosphere interaction is very likely to improve the sea ice thickness simulation in the marginal sea ice zone when considering ~~feedback of~~ ocean to
450 atmosphere ~~feedbacks~~. Based on comparison with a series of mooring data in Fram Strait, the modeled velocity and temperature in the OCNCPL run are closer to the observations than those in the OCNDYN run, although large biases of the modeled velocity still exist. Comparing with the satellite data, the SST obtained in the OCNCPL run is also better than that in the OCNDYN run in summer 2012. The two-way coupling between the Polar WRF and the MITgcm provides a more

~~rational~~ realistic representation of real air-ice-ocean physical processes, which includes the important ice-albedo feedback in
455 early summer. In the MITgcm, sea ice albedo is calculated based on several variables, such as snow depth on ice, ice surface
temperature. In the OCNCPL run, albedo is a coupling variable which affects both the Polar WRF and the MITgcm. In the
OCNDYN run, albedo used in the Polar WRF is directly read from the CFSR forcing data. Due to strong sea ice-ocean-
atmosphere interaction in summertime, the two-way coupling strategy not only improves the sea ice simulation, but also
benefit the modeled ocean states.

460 The ArcIOAM is designed for seasonal sea ice prediction up to 6 months, while on longer timescale the regional model's
capacity is expected to severely depend on the lateral boundary forcing data. Global coupled models, such as those involved
in CMIP6, have innate advantages in sea ice prediction and outlook on seasonal to longer timescale because ~~that the~~
interactions between high- and mid- latitudes are considered. The ~~Land-land~~ component is ~~absolutely~~ also important to the
Arctic simulation, however at current stage, our coupled model ~~has~~ does not ~~have~~ the capacity of coupling an individual land
465 model, instead, we use the embedded land component in the Polar WRF for technical simplicity. It is noticed that the
simulation presented in this paper only covers one year, and more results for different years should be carried out to further
assess the coupled model. However, given the encouraging results in 2012, this new developed Arctic regional coupled
model ~~exhibits~~ displays ~~its~~ a potential capacity ~~of~~ for seasonal sea ice prediction and provides a reliable basis for
investigating both thermodynamic and dynamic process and forecasting applications ~~in the Arctic sea ice scope~~. Meanwhile,
470 bias in the modeled sea ice extent and summertime sea ice thickness still exist, although satellite sea thickness data normally
has large uncertainty in summertime, which partly contributes to the large sea ice thickness bias in October-November
between the model and CS2SMOS data (Figure 9b).; ~~the~~ The foundational sea ice albedo parameters in our current model
configuration seem to be underestimated, which allows more heat into the ice and causes thinner sea ice thickness, as well as
lower sea ice extent. The choice of sea ice albedo parameters also contributes to the large sea ice thickness bias in October-
475 November between the model and CS2SMOS data. ~~It is noticed that~~ Though the albedo formulation in the MITgcm sea ice
model is simple and straightforward, ~~t~~ The CICE model provides a more sophisticated scheme for sea ice albedo calculation.
~~On the way to~~ In developing operational seasonal sea ice prediction capabilities, the model physics and ~~model~~ uncertainty
~~representation~~ in the coupled model can be ~~enhanced~~ improved by using advanced techniques, such as sophisticated sea ice
albedo formulation, stochastic physics parameterizations and ensemble approaches. The regional coupled forecasting system
480 also can be improved by involving data assimilation capabilities for initializing the forecasts. Future work will involve
exploring these and other aspects for a regional coupled modeling system suited for forecasting and better understanding of
mechanism.

485 *Code and data availability.* The latest version and future updates of the source code, user guide, and examples can be
downloaded from https://github.com/cdmpbp123/Coupled_Atmos_Ice_Ocean (last access: 7 April 2020). The current version

of this coupled model (ArcIOAM v1.0) used to produce the results in this paper can be accessed via <https://doi.org/10.5281/zenodo.3742692>.

490

Author contribution. SR and HY worked on the coding tasks for coupling the Polar WRF with the MITgcm using C-Coupler2. SR and XL designed and performed the simulations for the numerical experiments. SR, HY and XM worked on the technical details for debugging the model and wrote the code documentation. XL worked on the MITgcm model setup and performed sea ice analysis and validation. QS worked on the Polar WRF model setup. ~~BL~~-XL, HY and BL worked on the scalability test. All authors contributed to the writing of the final article.

495

Competing interests. The authors declare that they have no conflict of interest.

500

Acknowledgments. This work is supported by the National Key R&D Program of China (2016YFC1402700, 2018YFC1407200) and the National Natural Science Foundation of China (41806003). The authors sincerely thank David Bailey and another anonymous reviewer for their constructive comments. The authors thank the University of Hamburg for providing the SMOS sea ice thickness data (<http://icdc.cen.uni-hamburg.de/1/daten/cryosphere/13c-smos-sit.html>), the Alfred-Wegener-Institut, Helmholtz Zentrum für Polar- und Meeresforschung for providing the CryoSat-2 (<http://data.meereisportal.de/data/cryosat2/version2.0/>), CS2SMOS sea ice thickness data (<https://data.meereisportal.de/data/cs2smos/version1.4/>) and Fram Strait mooring data (<https://www.who.edu/page.do?pid=30914>), the Norwegian Meteorological Institute for the OSISAF sea ice concentration data (<http://www.osi-saf.org/?q=content/sea-ice-products>), the University of Washington for providing the PIOMAS sea ice volume data (<http://psc.apl.uw.edu/research/projects/arctic-sea-ice-volume-anomaly/data/>), the National Snow and Ice Data Center for providing the MASIE-NH data (<http://nsidc.org/data/masie/>), the Woods Hole Oceanographic Institution for providing the BGEP ULS data (<http://www.who.edu/beaufortgyre>), and the Copernicus Marine Environment Monitoring Service for providing the GMPE SST data (<http://marine.copernicus.eu/>).

505

510

515

References

Antonov, J. I., Locarnini, R., Boyer, T., Mishonov, A., Garcia, H., and Levitus, S.: World Ocean Atlas 2005 Volume 2: Salinity, NOAA Atlas NESDIS, 62, 2006.

- Bailey, D. A., Holland, M. M., DuVivier, A. K., Hunke, E. C., and Turner, A. K.: Impact of a New Sea Ice Thermodynamic Formulation in the CESM2 Sea Ice Component, *Journal of Advances in Modeling Earth Systems*, 12, e2020MS002154, <https://doi.org/10.1029/2020MS002154>, 2020.
- Brassington, G. B., Martin, M. J., Tolman, H. L., Akella, S., Balmeseda, M., Chambers, C. R. S., Chassignet, E., Cummings, J. A., Drillet, Y., Jansen, P. A. E. M., Laloyaux, P., Lea, D., Mehra, A., Mirouze, I., Ritchie, H., Samson, G., Sandery, P. A., Smith, G. C., Suarez, M., and Todling, R.: Progress and challenges in short- to medium-range coupled prediction, *Journal of Operational Oceanography*, 8, s239-s258, 10.1080/1755876X.2015.1049875, 2015.
- Bromwich, D., Kuo, Y.-H., Serreze, M., Walsh, J., Bai, L.-S., Barlage, M., Hines, K., and Slater, A.: Arctic System Reanalysis: Call for Community Involvement, *Eos, Transactions American Geophysical Union*, 91, 13-14, 10.1029/2010EO020001, 2010.
- Bromwich, D. H., Otieno, F. O., Hines, K. M., Manning, K. W., and Shilo, E.: Comprehensive evaluation of polar weather research and forecasting model performance in the Antarctic, *Journal of Geophysical Research: Atmospheres*, 118, 274-292, 10.1029/2012JD018139, 2013.
- Brown, A., Milton, S., Cullen, M., Golding, B., Mitchell, J., and Shelly, A.: Unified Modeling and Prediction of Weather and Climate: A 25-Year Journey, *Bulletin of the American Meteorological Society*, 93, 1865-1877, 10.1175/BAMS-D-12-00018.1, 2012.
- Cassano, J. J., DuVivier, A., Roberts, A., Hughes, M., Seefeldt, M., Brunke, M., Craig, A., Fisel, B., Gutowski, W., Hamman, J., Higgins, M., Maslowski, W., Nijssen, B., Osinski, R., and Zeng, X.: Development of the Regional Arctic System Model (RASM): Near-Surface Atmospheric Climate Sensitivity, *Journal of Climate*, 30, 5729-5753, 10.1175/jcli-d-15-0775.1, 2017.
- Chen, F., and Dudhia, J.: Coupling an Advanced Land Surface–Hydrology Model with the Penn State–NCAR MM5 Modeling System. Part I: Model Implementation and Sensitivity, *Monthly Weather Review*, 129, 569-585, 10.1175/1520-0493(2001)129<0569:caalsh>2.0.co;2, 2001.
- Chen, S., Campbell, T. J., Jin, H., Gaberšek, S., Hodur, R. M., and Martin, P.: Effect of Two-Way Air–Sea Coupling in High and Low Wind Speed Regimes, *Monthly Weather Review*, 138, 3579-3602, 10.1175/2009mwr3119.1, 2010.
- Christidis, Z.: Performance and Scaling of WRF on Three Different Parallel Supercomputers, *High Performance Computing, Cham*, 2015, 514-528,
- Craig, A., Valcke, S., and Coquart, L.: Development and performance of a new version of the OASIS coupler, OASIS3-MCT_3.0, *Geosci. Model Dev.*, 10, 3297-3308, 10.5194/gmd-10-3297-2017, 2017.
- Daru, V., and Tenaud, C.: High order one-step monotonicity-preserving schemes for unsteady compressible flow calculations, *Journal of Computational Physics*, 193, 563-594, 2004.
- Day, J. J., Hawkins, E., and Tietsche, S.: Will Arctic sea ice thickness initialization improve seasonal forecast skill?, *Geophysical Research Letters*, 41, 7566-7575, <https://doi.org/10.1002/2014GL061694>, 2014.

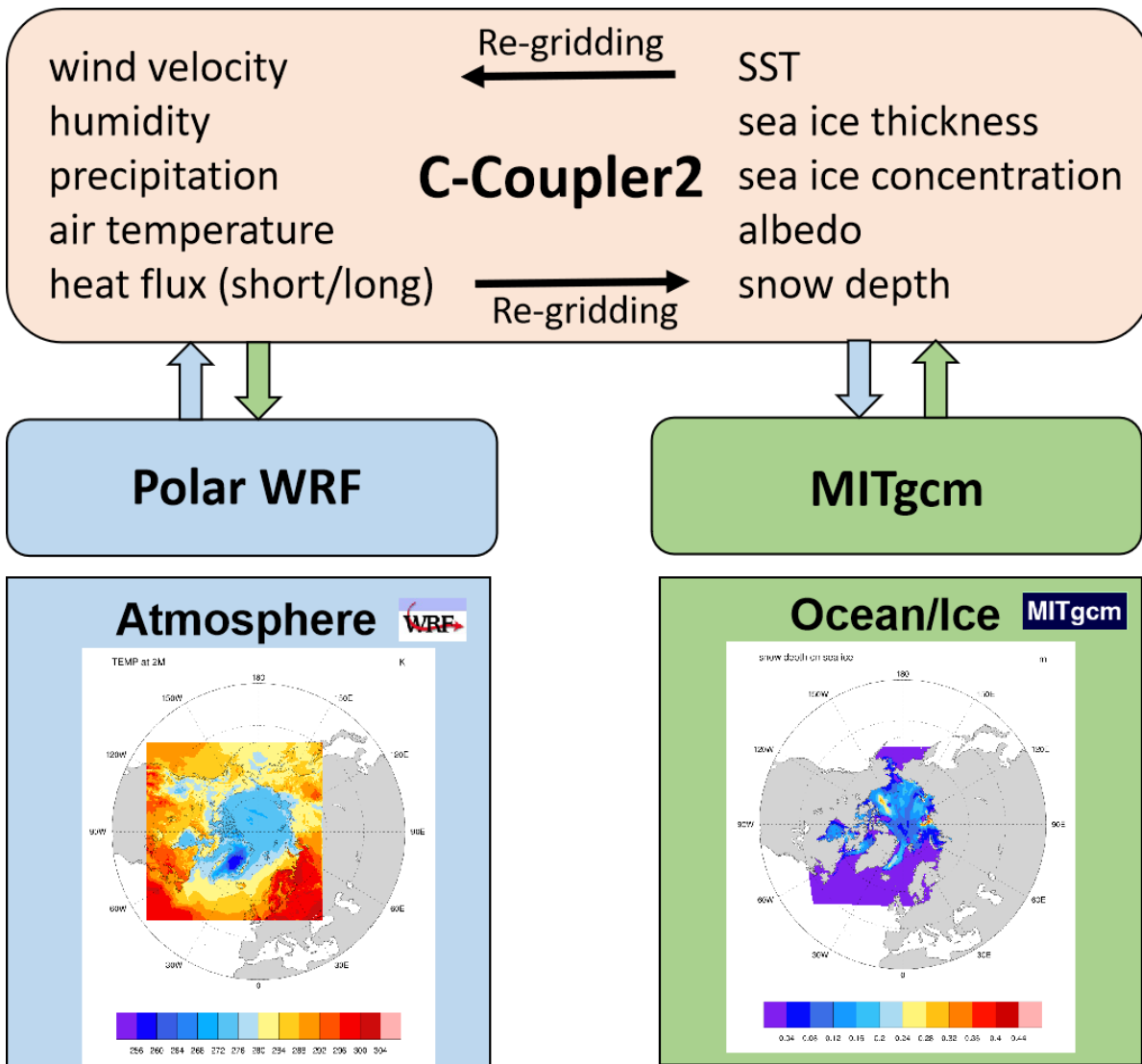
- DeLuca, C., Theurich, G., and Balaji, V.: The Earth System Modeling Framework, in: Earth System Modelling - Volume 3: Coupling Software and Strategies, edited by: Valcke, S., Redler, R., and Budich, R., Springer Berlin Heidelberg, Berlin, Heidelberg, 43-54, 2012.
- 555 Dirk Notz, and Bitz, C. M.: Sea ice in Earth system models, in: Sea Ice, 304-325, 2017.
- Doney, S. C., Large, W. G., and Bryan, F. O.: Surface Ocean Fluxes and Water-Mass Transformation Rates in the Coupled NCAR Climate System Model, *Journal of Climate*, 11, 1420-1441, 10.1175/1520-0442(1998)011<1420:sofawm>2.0.co;2, 1998.
- Dupont, F., Higginson, S., Bourdallé-Badie, R., Lu, Y., Roy, F., Smith, G. C., Lemieux, J. F., Garric, G., and Davidson, F.:
560 A high-resolution ocean and sea-ice modelling system for the Arctic and North Atlantic oceans, *Geosci. Model Dev.*, 8, 1577-1594, 10.5194/gmd-8-1577-2015, 2015.
- Eastwood, S., Larsen, K. R., Lavergne, T., Nielsen, E., and Tonboe, R.: Global sea ice concentration reprocessing Product User Manual, EUMETSAT OSISAF, 2011.
- Faucher, M., Roy, F., Desjardins, S., Fogarty, C., Pellerin, P., Ritchie, H., and Denis, B.: Operational coupled atmosphere -
565 ocean - ice forecast system for the Gulf of St. Lawrence, Canada, 9th EMS Annual Meeting, 2009,
- Francis, J. A.: The where and when of wetter and drier: disappearing Arctic sea ice plays a role, *Environmental Research Letters*, 8, 041002, 10.1088/1748-9326/8/4/041002, 2013.
- Grell, G. A., and Dévényi, D.: A generalized approach to parameterizing convection combining ensemble and data assimilation techniques, *Geophysical Research Letters*, 29, 38-31-38-34, 10.1029/2002gl015311, 2002.
- 570 Harada, Y., Kamahori, H., Kobayashi, C., Endo, H., Kobayashi, S., Ota, Y., Onoda, H., Onogi, K., Miyaoka, K., and Takahashi, K.: The JRA-55 Reanalysis: Representation of Atmospheric Circulation and Climate Variability, *Journal of the Meteorological Society of Japan. Ser. II*, 94, 269-302, 10.2151/jmsj.2016-015, 2016.
- Hibler, W. D.: Modeling a Variable Thickness Sea Ice Cover, *Monthly Weather Review*, 108, 1943-1973, 10.1175/1520-0493(1980)108<1943:MAVTSI>2.0.CO;2, 1980.
- 575 Hines, K. M., and Bromwich, D. H.: Development and Testing of Polar Weather Research and Forecasting (WRF) Model. Part I: Greenland Ice Sheet Meteorology, *Monthly Weather Review*, 136, 1971-1989, 10.1175/2007mwr2112.1, 2008.
- Hines, K. M., Bromwich, D. H., Bai, L.-S., Barlage, M., and Slater, A. G.: Development and Testing of Polar WRF. Part III: Arctic Land, *Journal of Climate*, 24, 26-48, 10.1175/2010JCLI3460.1, 2011.
- [Validation Data - WSC Moorings 2011.](#)
- 580 Jackett, D. R., and McDougall, T. J.: Minimal Adjustment of Hydrographic Profiles to Achieve Static Stability, *Journal of Atmospheric and Oceanic Technology*, 12, 381-389, 10.1175/1520-0426(1995)012<0381:MAOHPT>2.0.CO;2, 1995.
- Janjić, Z.: Nonsingular Implementation of the Mellor-Yamada Level 2.5 Scheme in the NCEP Meso model (NCEP Office Note No. 437), NCEP, Camp Springs, Md, 2002.
- Jung, T., Gordon, N. D., Bauer, P., Bromwich, D. H., Chevallier, M., Day, J. J., Dawson, J., Doblas-Reyes, F., Fairall, C.,
585 Goessling, H. F., Holland, M., Inoue, J., Iversen, T., Klebe, S., Lemke, P., Losch, M., Makshtas, A., Mills, B., Nurmi,

- P., Perovich, D., Reid, P., Renfrew, I. A., Smith, G., Svensson, G., Tolstykh, M., and Yang, Q.: Advancing Polar Prediction Capabilities on Daily to Seasonal Time Scales, *Bulletin of the American Meteorological Society*, 97, 1631-1647, 10.1175/bams-d-14-00246.1, 2016.
- 590 Kaleschke, L., Tian-Kunze, X., Maaß, N., Mäkynen, M., and Drusch, M.: Sea ice thickness retrieval from SMOS brightness temperatures during the Arctic freeze-up period, *Geophysical Research Letters*, 39, 10.1029/2012GL050916, 2012.
- Kobayashi, S., Ota, Y., Harada, Y., Ebata, A., Moriya, M., Onoda, H., Onogi, K., Kamahori, H., Kobayashi, C., Endo, H., Miyaoka, K., and Takahashi, K.: The JRA-55 Reanalysis: General Specifications and Basic Characteristics, *Journal of the Meteorological Society of Japan. Ser. II*, 93, 5-48, 10.2151/jmsj.2015-001, 2015.
- 595 Large, W. G., McWilliams, J. C., and Doney, S. C.: Oceanic vertical mixing: A review and a model with a nonlocal boundary layer parameterization, *Reviews of Geophysics*, 32, 363-403, 1994.
- Laxon, S. W., Giles, K. A., Ridout, A. L., Wingham, D. J., Willatt, R., Cullen, R., Kwok, R., Schweiger, A., Zhang, J., Haas, C., Hendricks, S., Krishfield, R., Kurtz, N., Farrell, S., and Davidson, M.: CryoSat-2 estimates of Arctic sea ice thickness and volume, *Geophysical Research Letters*, 40, 732-737, 10.1002/grl.50193, 2013.
- 600 Liang, X., and Losch, M.: On the Effects of Increased Vertical Mixing on the Arctic Ocean and Sea Ice, *Journal of Geophysical Research: Oceans*, 123, 9266-9282, 10.1029/2018jc014303, 2018.
- Liang, X., Losch, M., Nerger, L., Mu, L., Yang, Q., and Liu, C.: Using Sea Surface Temperature Observations to Constrain Upper Ocean Properties in an Arctic Sea Ice-Ocean Data Assimilation System, *Journal of Geophysical Research: Oceans*, 124, 4727-4743, 10.1029/2019jc015073, 2019.
- 605 Liang, X., ZHAO, F., Li, C., ZHANG, L., and LI, B.: Evaluation of ArcIOPS sea ice forecasting products during the ninth CHINARE-Arctic in summer 2018, *Advances in Polar ence*, v.31;No.78, 19-30, 2020.
- Liu, L., Yang, G., Wang, B., Zhang, C., Li, R., Zhang, Z., Ji, Y., and Wang, L.: C-Coupler1: a Chinese community coupler for Earth system modeling, *Geosci. Model Dev.*, 7, 2281-2302, 10.5194/gmd-7-2281-2014, 2014.
- Liu, L., Zhang, C., Li, R., Wang, B., and Yang, G.: C-Coupler2: a flexible and user-friendly community coupler for model coupling and nesting, *Geosci. Model Dev.*, 11, 3557-3586, 10.5194/gmd-11-3557-2018, 2018.
- 610 Locarnini, R. A., Mishonov, A., Antonov, J., Boyer, T., Garcia, H., and Levitus, S.: *World Ocean Atlas 2005 Volume 1: Temperature NOAA Atlas NESDIS*, 61, 2006.
- Losch, M., Menemenlis, D., Campin, J.-M., Heimbach, P., and Hill, C.: On the formulation of sea-ice models. Part 1: Effects of different solver implementations and parameterizations, *Ocean Modelling*, 33, 129-144, <https://doi.org/10.1016/j.ocemod.2009.12.008>, 2010.
- 615 Lynch, A. H., Chapman, W. L., Walsh, J. E., and Weller, G.: Development of a Regional Climate Model of the Western Arctic, *Journal of Climate*, 8, 1555-1570, 10.1175/1520-0442(1995)008<1555:doarc>2.0.co;2, 1995.
- Marshall, J., Hill, C., Perelman, L., and Adcroft, A.: Hydrostatic, quasi-hydrostatic, and nonhydrostatic ocean modeling, *Journal of Geophysical Research: Oceans*, 102, 5733-5752, 10.1029/96jc02776, 1997.

- Martin, M., Dash, P., Ignatov, A., Banzon, V., Beggs, H., Brasnett, B., Cayula, J.-F., Cummings, J., Donlon, C., Gentemann, C., Grumbine, R., Ishizaki, S., Maturi, E., Reynolds, R. W., and Roberts-Jones, J.: Group for High Resolution Sea Surface temperature (GHRSSST) analysis fields inter-comparisons. Part 1: A GHRSSST multi-product ensemble (GMPE), *Deep Sea Research Part II: Topical Studies in Oceanography*, 77-80, 21-30, <https://doi.org/10.1016/j.dsr2.2012.04.013>, 2012.
- Maslowski, W., Clement Kinney, J., Higgins, M., and Roberts, A.: The Future of Arctic Sea Ice, *Annual Review of Earth and Planetary Sciences*, 40, 625-654, 10.1146/annurev-earth-042711-105345, 2012.
- Melling, H., and Riedel, D. A.: The underside topography of sea ice over the continental shelf of the Beaufort Sea in the winter of 1990, *Journal of Geophysical Research: Oceans*, 100, 13641-13653, 10.1029/95JC00309, 1995.
- Menemenlis, D., J. M. Campin, P. Heimbach, C. Hill, T. Lee, A. Nguyen, M. Schodlok, and Zhang, H.: ECCO2: High resolution global ocean and sea ice data synthesis, *Mercator Ocean Q. Newsl.*, 31, 13-21, 2008.
- Neelin, J. D., Latif, M., and Jin, F.: Dynamics of Coupled Ocean-Atmosphere Models: The Tropical Problem, *Annual Review of Fluid Mechanics*, 26, 617-659, 10.1146/annurev.fl.26.010194.003153, 1994.
- Nguyen, A. T., Menemenlis, D., and Kwok, R.: Arctic ice-ocean simulation with optimized model parameters: Approach and assessment, *Journal of Geophysical Research: Oceans*, 116, 10.1029/2010JC006573, 2011.
- Pellerin, P., Ritchie, H., Saucier, F. J., Roy, F., Desjardins, S., Valin, M., and Lee, V.: Impact of a Two-Way Coupling between an Atmospheric and an Ocean-Ice Model over the Gulf of St. Lawrence, *Monthly Weather Review*, 132, 1379-1398, 10.1175/1520-0493(2004)132<1379:ioatcb>2.0.co;2, 2004.
- Posey, P. G., Metzger, E. J., Wallcraft, A. J., Hebert, D. A., Allard, R. A., Smedstad, O. M., Phelps, M. W., Fetterer, F., Stewart, J. S., Meier, W. N., and Helfrich, S. R.: Improving Arctic sea ice edge forecasts by assimilating high horizontal resolution sea ice concentration data into the US Navy's ice forecast systems, *The Cryosphere*, 9, 1735-1745, 10.5194/tc-9-1735-2015, 2015.
- Proshutinsky, A., Yang, J., Krishfield, R., Gerdes, R., Karcher, M., Kauker, F., Koeberle, C., Hakkinen, S., Hibler, W., Holland, D., Maqueda, M., Holloway, G., Hunke, E., Maslowski, W., Steele, M., and Zhang, J.: Arctic ocean study: Synthesis of model results and observations, *Eos, Transactions American Geophysical Union*, 86, 368-371, 10.1029/2005EO400003, 2005.
- Ricker, R., Hendricks, S., Helm, V., Skourup, H., and Davidson, M.: Sensitivity of CryoSat-2 Arctic sea-ice freeboard and thickness on radar-waveform interpretation, *The Cryosphere*, 8, 1607-1622, 10.5194/tc-8-1607-2014, 2014.
- Ricker, R., Hendricks, S., Kaleschke, L., Tian-Kunze, X., King, J., and Haas, C.: A weekly Arctic sea-ice thickness data record from merged CryoSat-2 and SMOS satellite data, *The Cryosphere*, 11, 1607-1623, 10.5194/tc-11-1607-2017, 2017.
- Rinke, A., Lynch, A. H., and Dethloff, K.: Intercomparison of Arctic regional climate simulations: Case studies of January and June 1990, *Journal of Geophysical Research: Atmospheres*, 105, 29669-29683, 10.1029/2000jd900325, 2000.

- Saha, S., Moorthi, S., Pan, H.-L., Wu, X., Wang, J., Nadiga, S., Tripp, P., Kistler, R., Woollen, J., Behringer, D., Liu, H., Stokes, D., Grumbine, R., Gayno, G., Wang, J., Hou, Y.-T., Chuang, H.-y., Juang, H.-M. H., Sela, J., Iredell, M., Treadon, R., Kleist, D., Delst, P. V., Keyser, D., Derber, J., Ek, M., Meng, J., Wei, H., Yang, R., Lord, S., Dool, H. v. d., Kumar, A., Wang, W., Long, C., Chelliah, M., Xue, Y., Huang, B., Schemm, J.-K., Ebisuzaki, W., Lin, R., Xie, P., Chen, M., Zhou, S., Higgins, W., Zou, C.-Z., Liu, Q., Chen, Y., Han, Y., Cucurull, L., Reynolds, R. W., Rutledge, G., and Goldberg, M.: The NCEP Climate Forecast System Reanalysis, *Bulletin of the American Meteorological Society*, 91, 1015-1058, 10.1175/2010bams3001.1, 2010.
- Schrum, C., Hübner, U., Jacob, D., and Podzun, R.: A coupled atmosphere/ice/ocean model for the North Sea and the Baltic Sea, *Climate Dynamics*, 21, 131-151, 10.1007/s00382-003-0322-8, 2003.
- Semtner, A. J.: A Model for the Thermodynamic Growth of Sea Ice in Numerical Investigations of Climate, *Journal of Physical Oceanography*, 6, 379-389, 10.1175/1520-0485(1976)006<0379:amfttg>2.0.co;2, 1976.
- Simmonds, I., and Rudeva, I.: The great Arctic cyclone of August 2012, *Geophysical Research Letters*, 39, 10.1029/2012gl054259, 2012.
- Skachko, S., Buehner, M., Laroche, S., Lapalme, E., Smith, G., Roy, F., Surcel-Colan, D., Bélanger, J. M., and Garand, L.: Weakly coupled atmosphere–ocean data assimilation in the Canadian global prediction system (v1), *Geosci. Model Dev.*, 12, 5097-5112, 10.5194/gmd-12-5097-2019, 2019.
- Skamarock, W. C., Klemp, J. B., Dudhia, J., Gill, D. O., Barker, D., and Duda, M. G.: A Description of the Advanced Research WRF Version 3 (No. NCAR/TN-475+STR), University Corporation for Atmospheric Research, 2008.
- Smith, G. C., Roy, F., Mann, P., Dupont, F., Brasnett, B., Lemieux, J.-F., Laroche, S., and Bélair, S.: A new atmospheric dataset for forcing ice–ocean models: Evaluation of reforecasts using the Canadian global deterministic prediction system, *Quarterly Journal of the Royal Meteorological Society*, 140, 881-894, 10.1002/qj.2194, 2014.
- Smith, G. C., Roy, F., Reszka, M., Surcel Colan, D., He, Z., Deacu, D., Belanger, J.-M., Skachko, S., Liu, Y., Dupont, F., Lemieux, J.-F., Beaudoin, C., Tranchant, B., Dréville, M., Garric, G., Testut, C.-E., Lellouche, J.-M., Pellerin, P., Ritchie, H., Lu, Y., Davidson, F., Buehner, M., Caya, A., and Lajoie, M.: Sea ice forecast verification in the Canadian Global Ice Ocean Prediction System, *Quarterly Journal of the Royal Meteorological Society*, 142, 659-671, 10.1002/qj.2555, 2016.
- Smith, G. C., Bélanger, J.-M., Roy, F., Pellerin, P., Ritchie, H., Onu, K., Roch, M., Zadra, A., Colan, D. S., Winter, B., Fontecilla, J.-S., and Deacu, D.: Impact of Coupling with an Ice–Ocean Model on Global Medium-Range NWP Forecast Skill, *Monthly Weather Review*, 146, 1157-1180, 10.1175/MWR-D-17-0157.1, 2018.
- Sun, R., Subramanian, A. C., Miller, A. J., Mazloff, M. R., Hoteit, I., and Cornuelle, B. D.: SKRIPS v1.0: a regional coupled ocean–atmosphere modeling framework (MITgcm–WRF) using ESMF/NUOPC, description and preliminary results for the Red Sea, *Geosci. Model Dev.*, 12, 4221-4244, 10.5194/gmd-12-4221-2019, 2019.

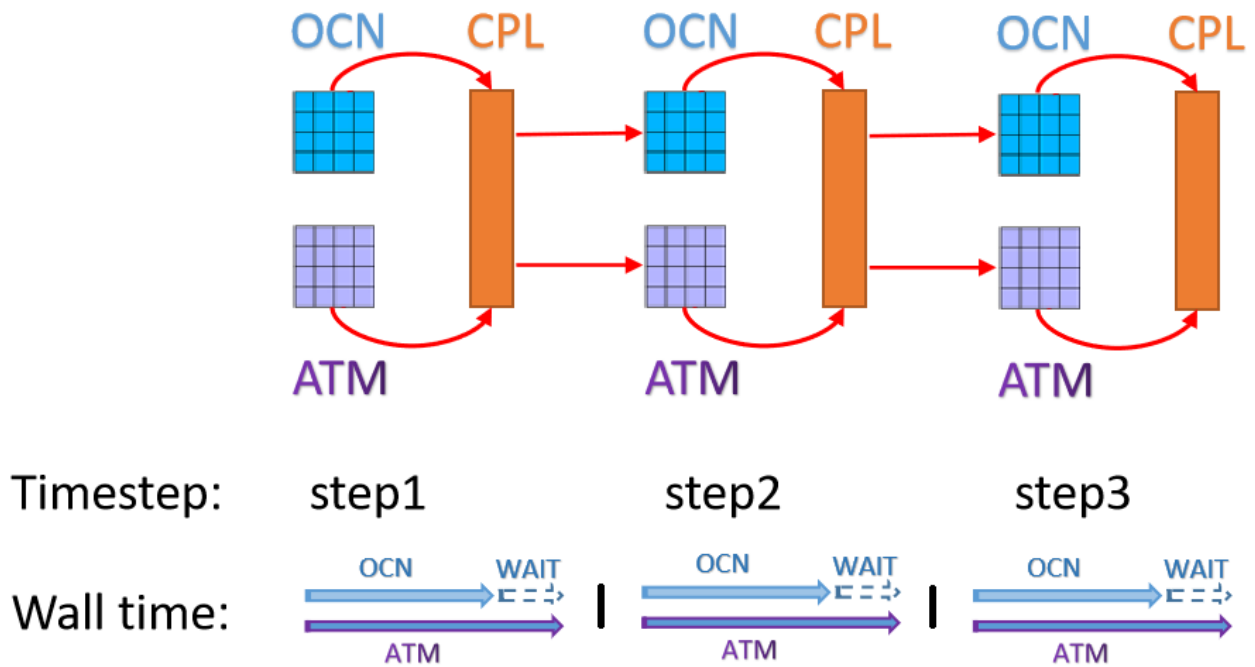
- 685 Tian-Kunze, X., Kaleschke, L., Maaß, N., Mäkynen, M., Serra, N., Drusch, M., and Krumpen, T.: SMOS-derived thin sea ice thickness: algorithm baseline, product specifications and initial verification, *The Cryosphere*, 8, 997-1018, 10.5194/tc-8-997-2014, 2014.
- Van Pham, T., Brauch, J., Dieterich, C., Frueh, B., and Ahrens, B.: New coupled atmosphere-ocean-ice system COSMO-CLM/NEMO: assessing air temperature sensitivity over the North and Baltic Seas, *Oceanologia*, 56, 167-189, <https://doi.org/10.5697/oc.56-2.167>, 2014.
- 690 Walters, D. N., Best, M. J., Bushell, A. C., Copsey, D., Edwards, J. M., Falloon, P. D., Harris, C. M., Lock, A. P., Manners, J. C., Morcrette, C. J., Roberts, M. J., Stratton, R. A., Webster, S., Wilkinson, J. M., Willett, M. R., Boutle, I. A., Earnshaw, P. D., Hill, P. G., MacLachlan, C., Martin, G. M., Moufouma-Okia, W., Palmer, M. D., Petch, J. C., Rooney, G. G., Scaife, A. A., and Williams, K. D.: The Met Office Unified Model Global Atmosphere 3.0/3.1 and JULES Global Land 3.0/3.1 configurations, *Geosci. Model Dev.*, 4, 919-941, 10.5194/gmd-4-919-2011, 2011.
- 695 Williams, K. D., Copsey, D., Blockley, E. W., Bodas-Salcedo, A., Calvert, D., Comer, R., Davis, P., Graham, T., Hewitt, H. T., Hill, R., Hyder, P., Ineson, S., Johns, T. C., Keen, A. B., Lee, R. W., Megann, A., Milton, S. F., Rae, J. G. L., Roberts, M. J., Scaife, A. A., Schiemann, R., Storkey, D., Thorpe, L., Watterson, I. G., Walters, D. N., West, A., Wood, R. A., Woollings, T., and Xavier, P. K.: The Met Office Global Coupled Model 3.0 and 3.1 (GC3.0 and GC3.1) Configurations, *Journal of Advances in Modeling Earth Systems*, 10, 357-380, 10.1002/2017ms001115, 2018.
- 700 Wingham, D. J., Francis, C. R., Baker, S., Bouzinac, C., Brockley, D., Cullen, R., de Chateau-Thierry, P., Laxon, S. W., Mallow, U., Mavrocordatos, C., Phalippou, L., Ratier, G., Rey, L., Rostan, F., Viau, P., and Wallis, D. W.: CryoSat: A mission to determine the fluctuations in Earth's land and marine ice fields, *Advances in Space Research*, 37, 841-871, <https://doi.org/10.1016/j.asr.2005.07.027>, 2006.
- Yang, C.-Y., Liu, J., and Xu, S.: Seasonal Arctic Sea Ice Prediction Using a Newly Developed Fully Coupled Regional Model With the Assimilation of Satellite Sea Ice Observations, *Journal of Advances in Modeling Earth Systems*, 12, e2019MS001938, <https://doi.org/10.1029/2019MS001938>, 2020.
- Yang, Y., Qiao, F., Zhao, W., Y., T., and Yuan, Y.: MASNUM ocean wave numerical model in spherical coordinates and its application, *Acta Oceanol. Sin.*, 27, 1-7, 2005.
- Zhang, J., and Hibler III, W. D.: On an efficient numerical method for modeling sea ice dynamics, *Journal of Geophysical Research: Oceans*, 102, 8691-8702, <https://doi.org/10.1029/96JC03744>, 1997.
- 710 Zhang, J., and Rothrock, D. A.: Modeling Global Sea Ice with a Thickness and Enthalpy Distribution Model in Generalized Curvilinear Coordinates, *Monthly Weather Review*, 131, 845-861, 10.1175/1520-0493(2003)131<0845:mgsiwa>2.0.co;2, 2003.
- Zhao, B., Qiao, F., Cavaleri, L., Wang, G., Bertotti, L., and Liu, L.: Sensitivity of typhoon modeling to surface waves and rainfall, *Journal of Geophysical Research: Oceans*, 122, 1702-1723, 10.1002/2016jc012262, 2017.
- 715



720

Figure 1: Coupling strategy of the Polar WRF-MITgcm coupled model system.

Concurrent mode



725 Figure 2: Concurrent mode of the coupled model. The small blocks under OCN or above ATM are the small subdomains in each node; the block under CPL is the coupler. The red curve arrows indicate that the component models are sending data to the coupler and the red straight arrows indicate that the component models are reading data from the coupler. The horizontal arrows in the wall time indicate the time axis of each component model and the ticks on the time axis indicate the coupling time steps.

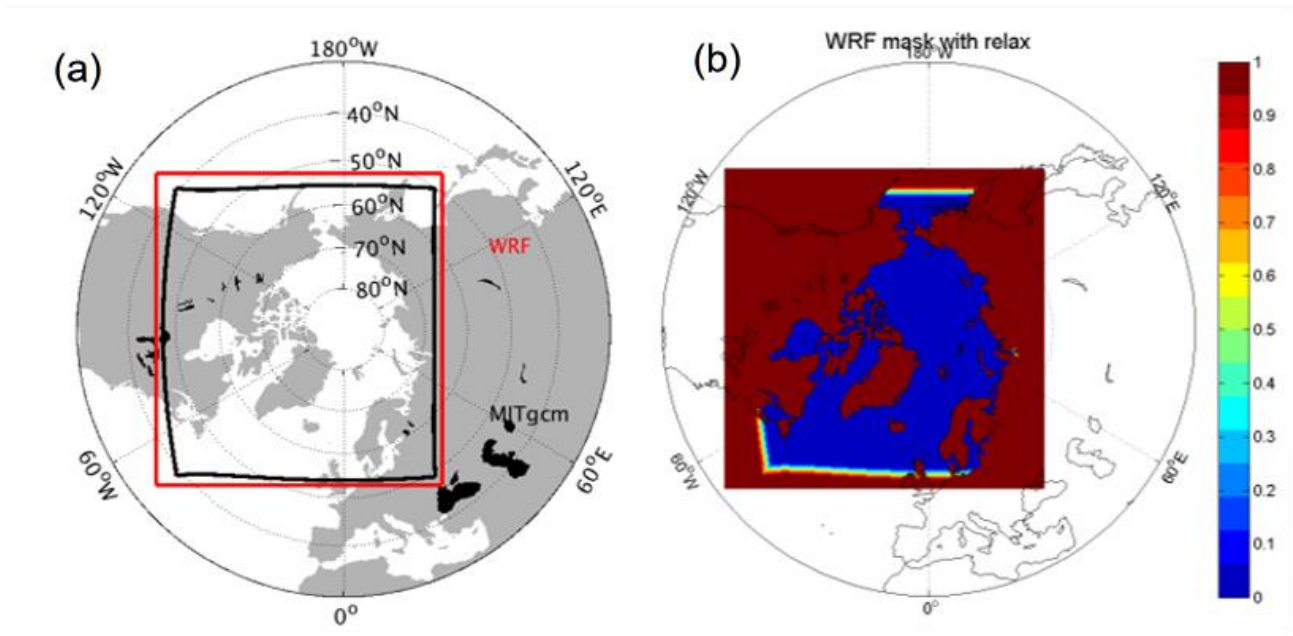


Figure 3: (a) Model domain of the MITgcm and the Polar WRF model. The red and black lines denote the boundaries of the Polar WRF and the MITgcm model, respectively. (b) Relaxation coefficient for the external forcing file of the Polar WRF bottom boundary conditions.

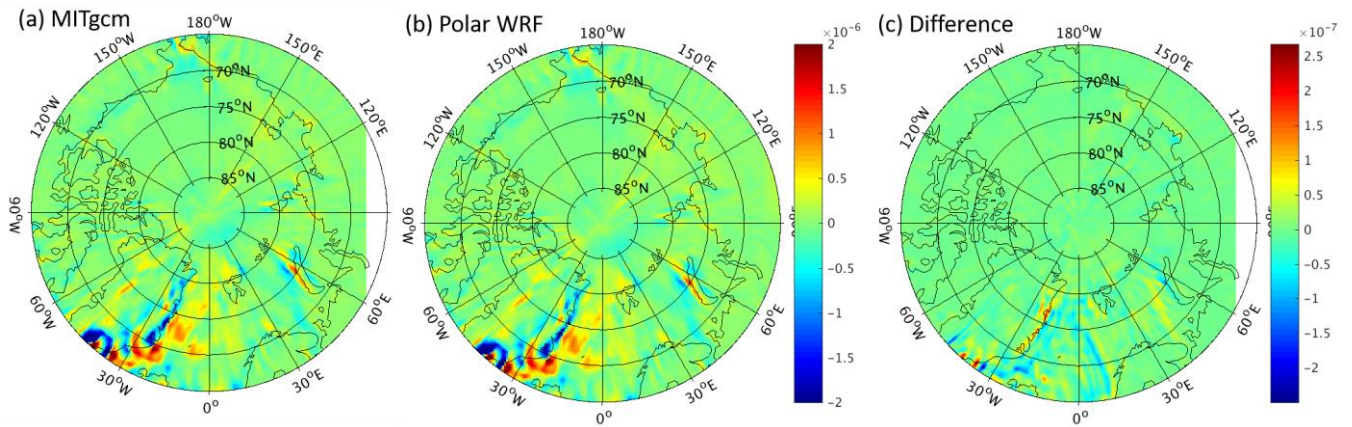


Figure 4: Wind stress curl (unit: Nm^{-2}) derived from (a) the MITgcm output, (b) the Polar WRF output, and (c) their difference on March 1, 2012. The difference of wind stress curl between the Polar WRF and MITgcm is calculated by interpolating the Polar WRF output onto the MITgcm grid.

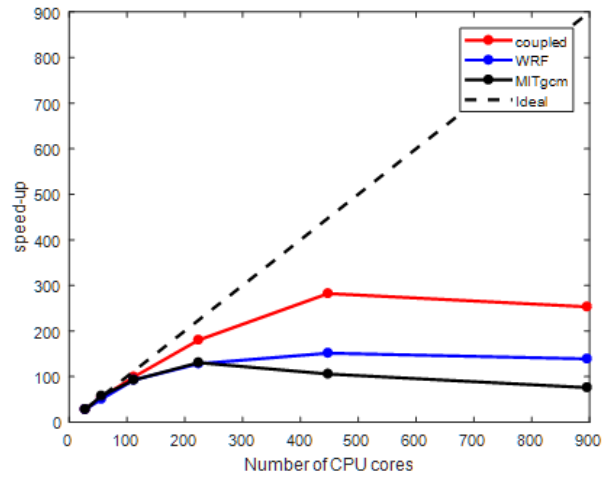
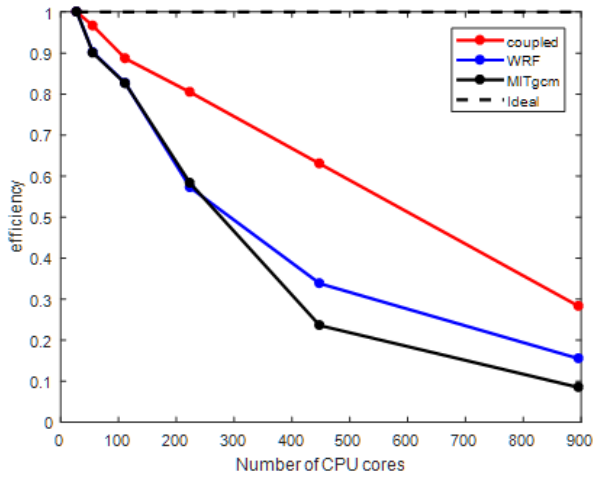


Figure 5: The parallel efficiency (left) and speed-up (right) test of the coupled model and the stand-alone component models, employing up to 896 CPU cores. The simulation using 28 CPU cores is regarded as the baseline case when computing the speed-up. The tests are performed on a Lenovo Blade Server system composed of 240 dual-socket compute nodes based on 745 14-core Intel Haswell processors.

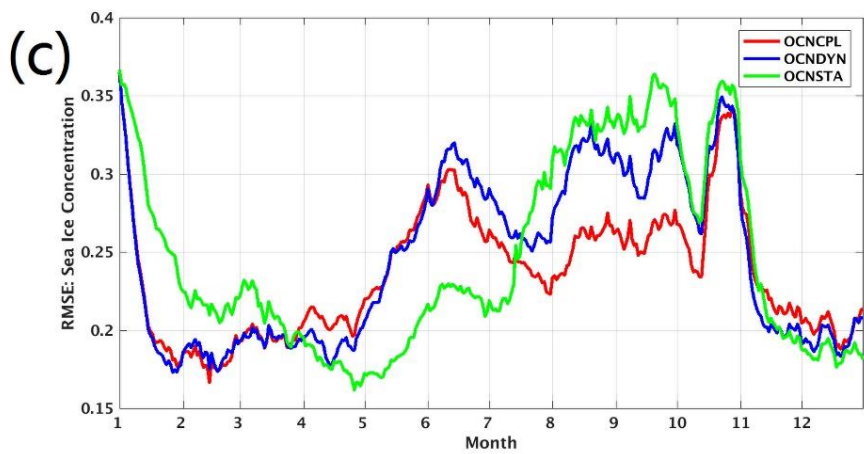
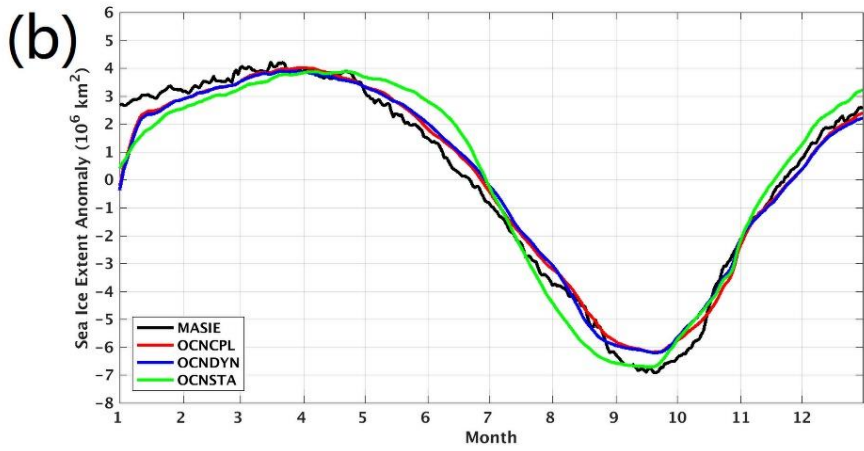
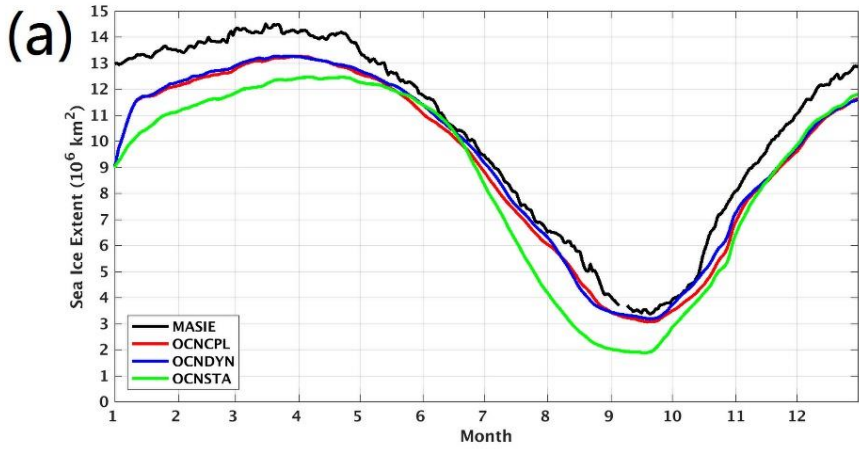


Figure 6: Time series of (a) sea ice extent, (b) sea ice extent anomaly, and (c) root mean square error (RMSE) of modeled sea
750 ice concentration with respect to the OSISAF observation in 2012. The black, red, green and blue lines in (a) denote sea ice
extent of the MASIE observation, the OCNCPL run, the OCNSTA run and the OCNDYN run, respectively. The black, red,
green and blue lines in (b) denote sea ice extent anomaly of the MASIE observation, the OCNCPL run, the OCNSTA run
and the OCNDYN run, respectively. The red, green and blue lines in (c) denote the sea ice concentration RMSE of the
755 OCNCPL run, the OCNSTA run and the OCNDYN run, respectively. MASIE = Multisensor Analyzed Sea Ice Extent;
OSISAF = Ocean and Sea Ice Satellite Application Facility.

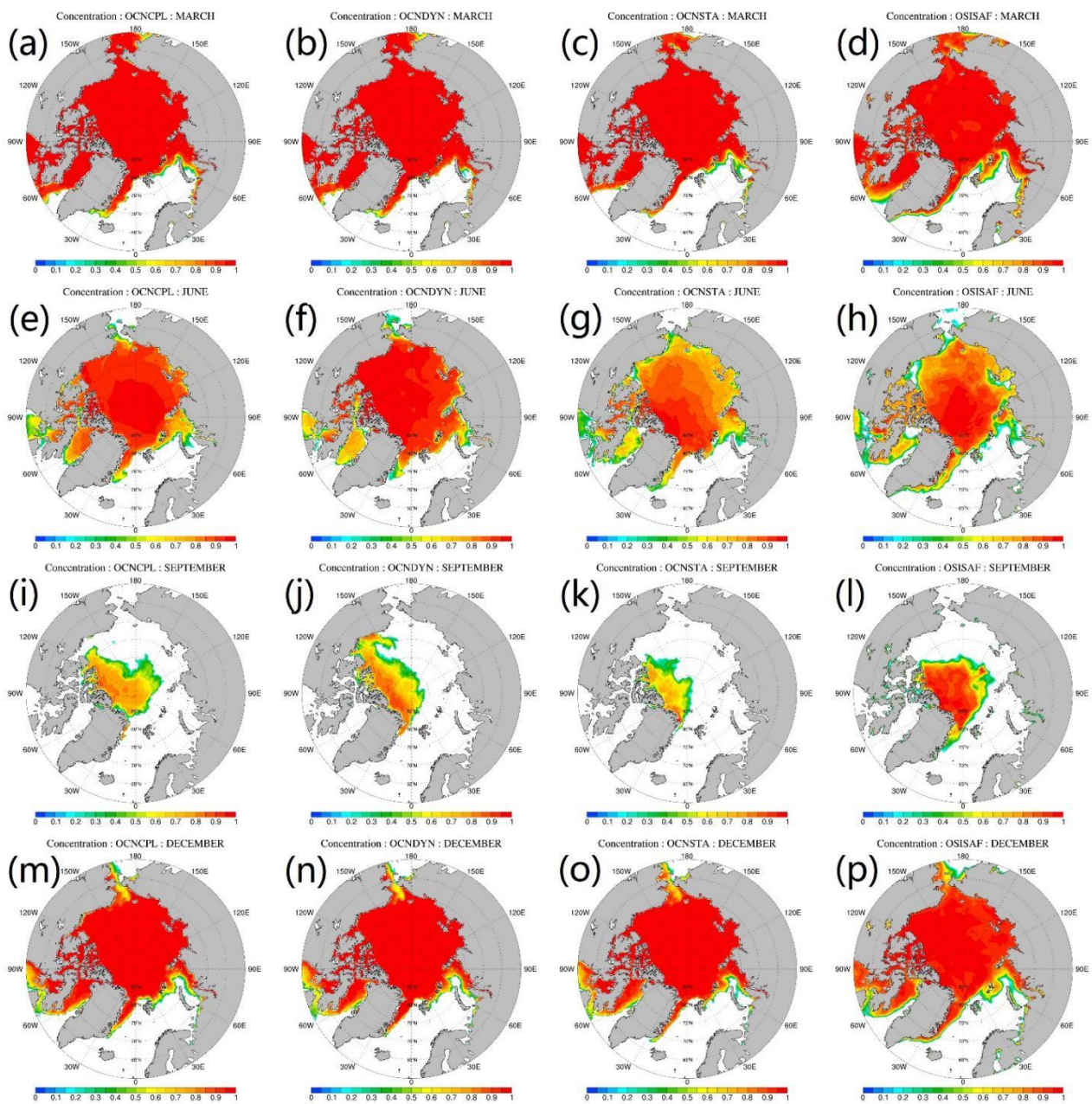
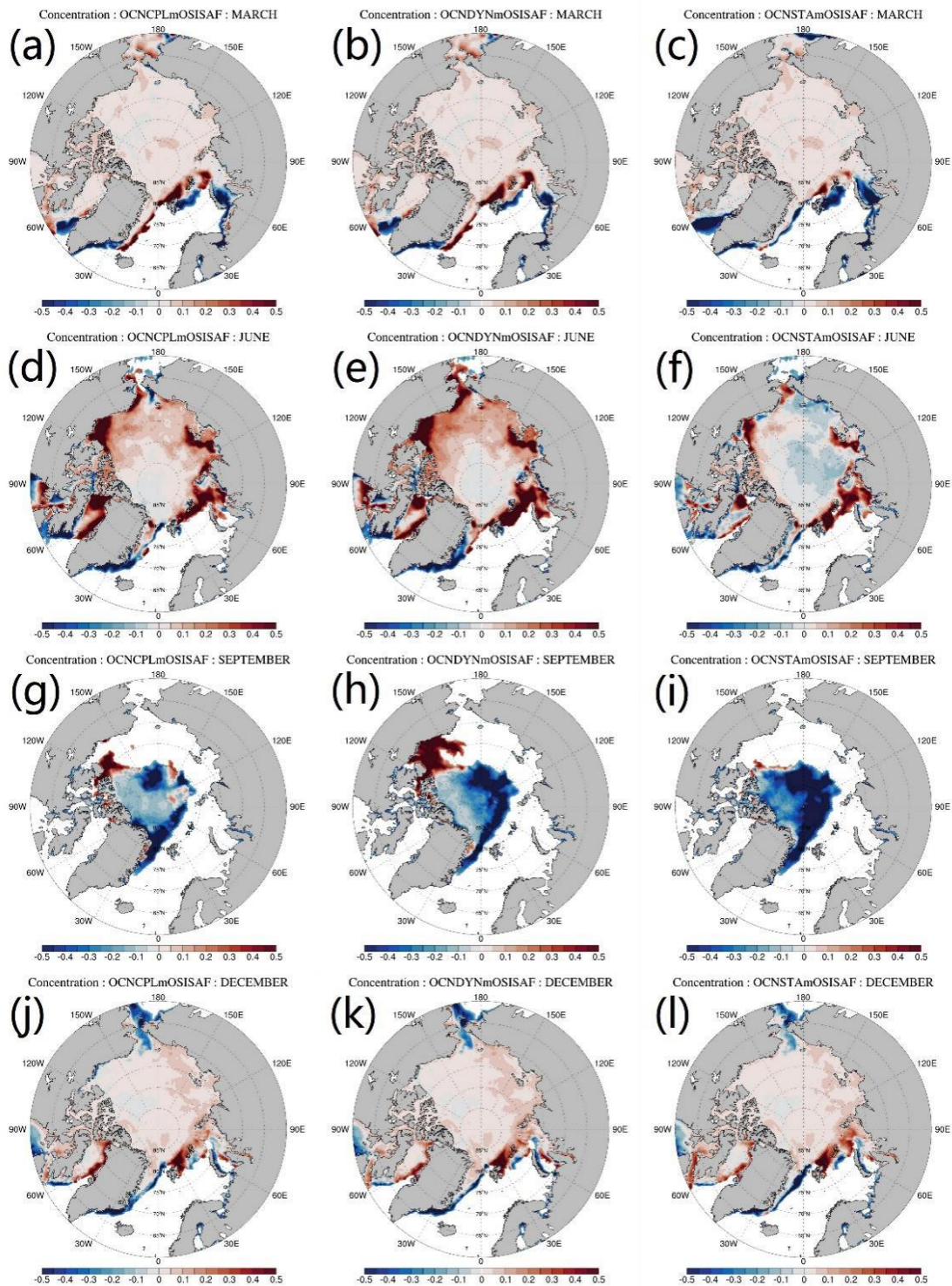


Figure 7: Modeled and observed monthly mean sea ice concentration. From top to bottom panels show the March, June, 760 September and December sea ice concentration, respectively. **From left to right** panels show sea ice concentration of the OCNCPL run, the OCNDYN run, the OCNSTA run and the OSISAF observations. OSISAF = Ocean and Sea Ice Satellite Application Facility.



765 Figure 8: Deviation between the modeled and observed monthly mean sea ice concentration. From top to bottom panels show the March, June, September and December sea ice concentration deviation respect to the OSISAF observations, respectively. The left, middle, and right panels show results of the OCNCPL run, the OCNDYN run, and the OCNSTA run. OSISAF = Ocean and Sea Ice Satellite Application Facility.

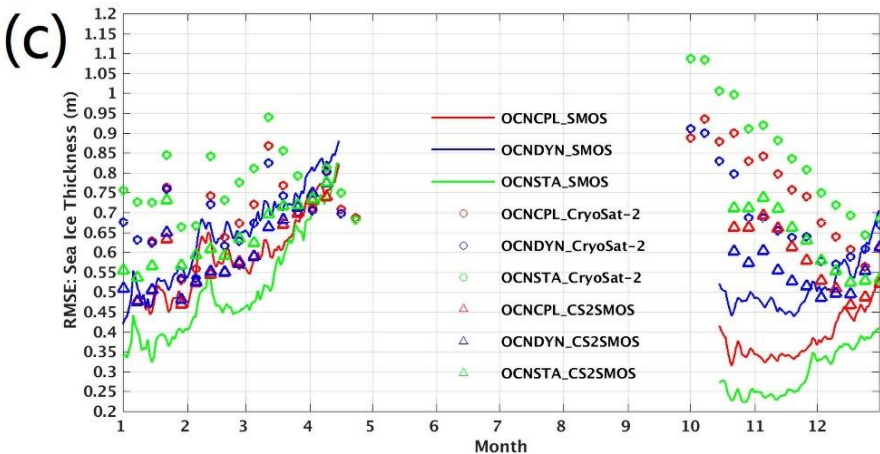
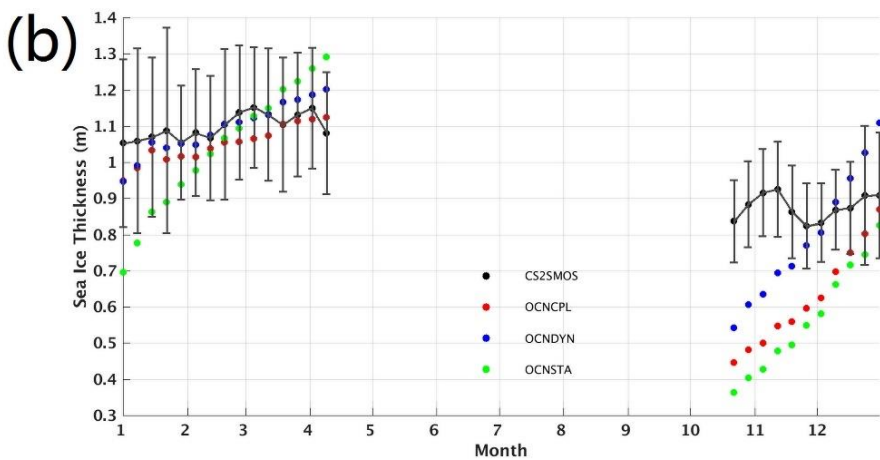
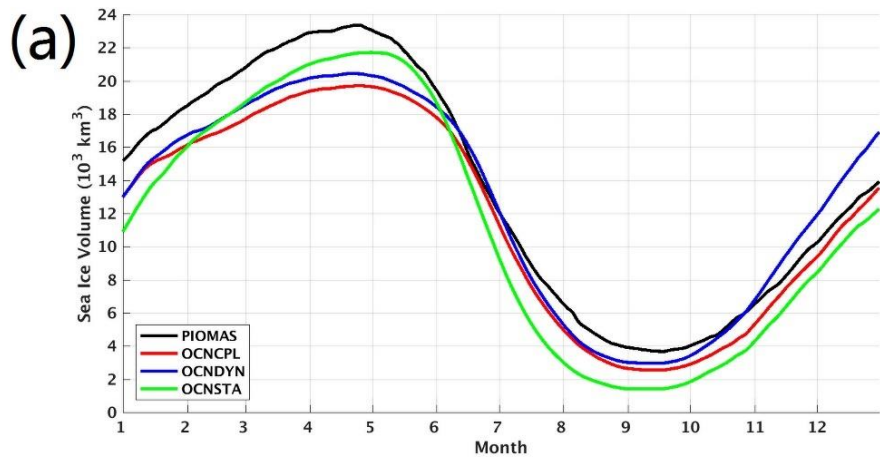
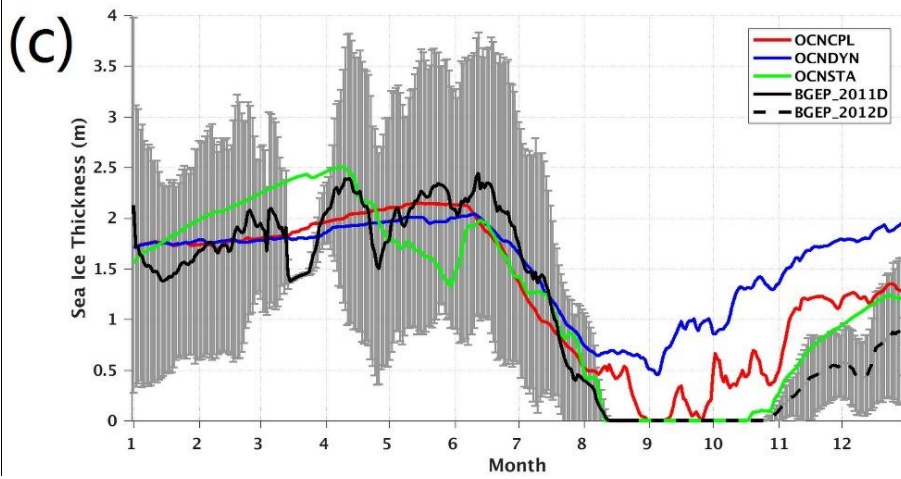
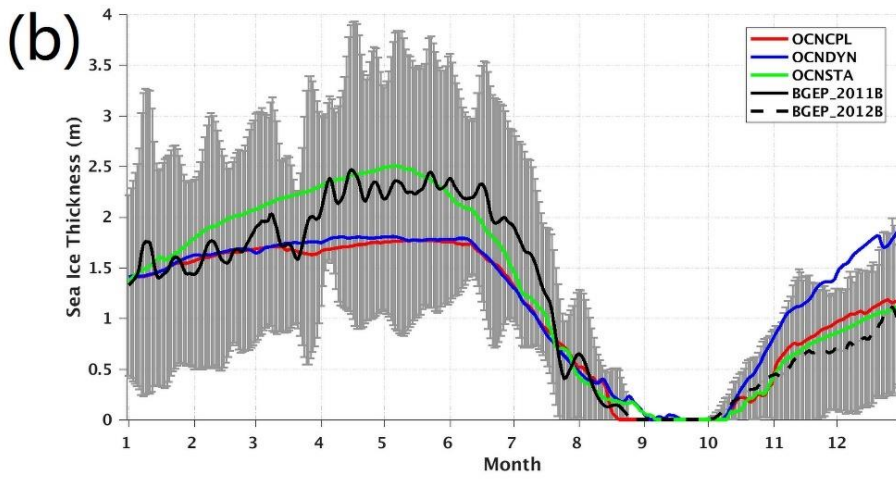
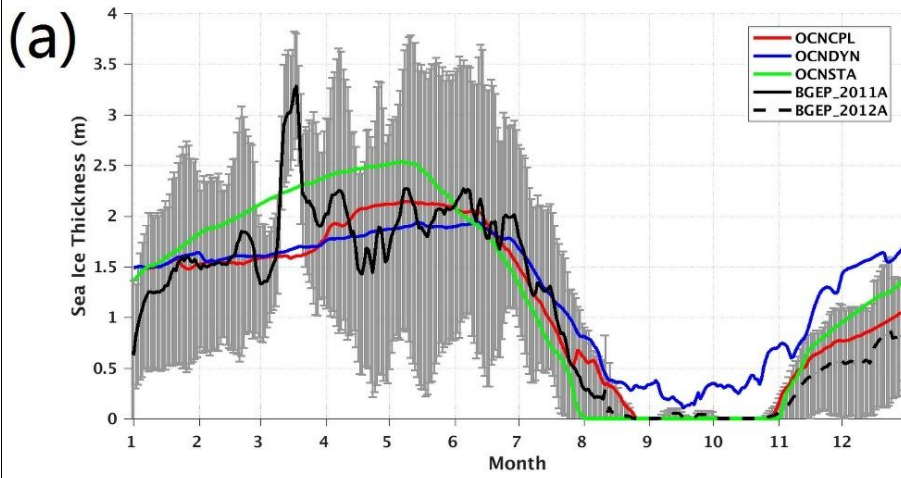
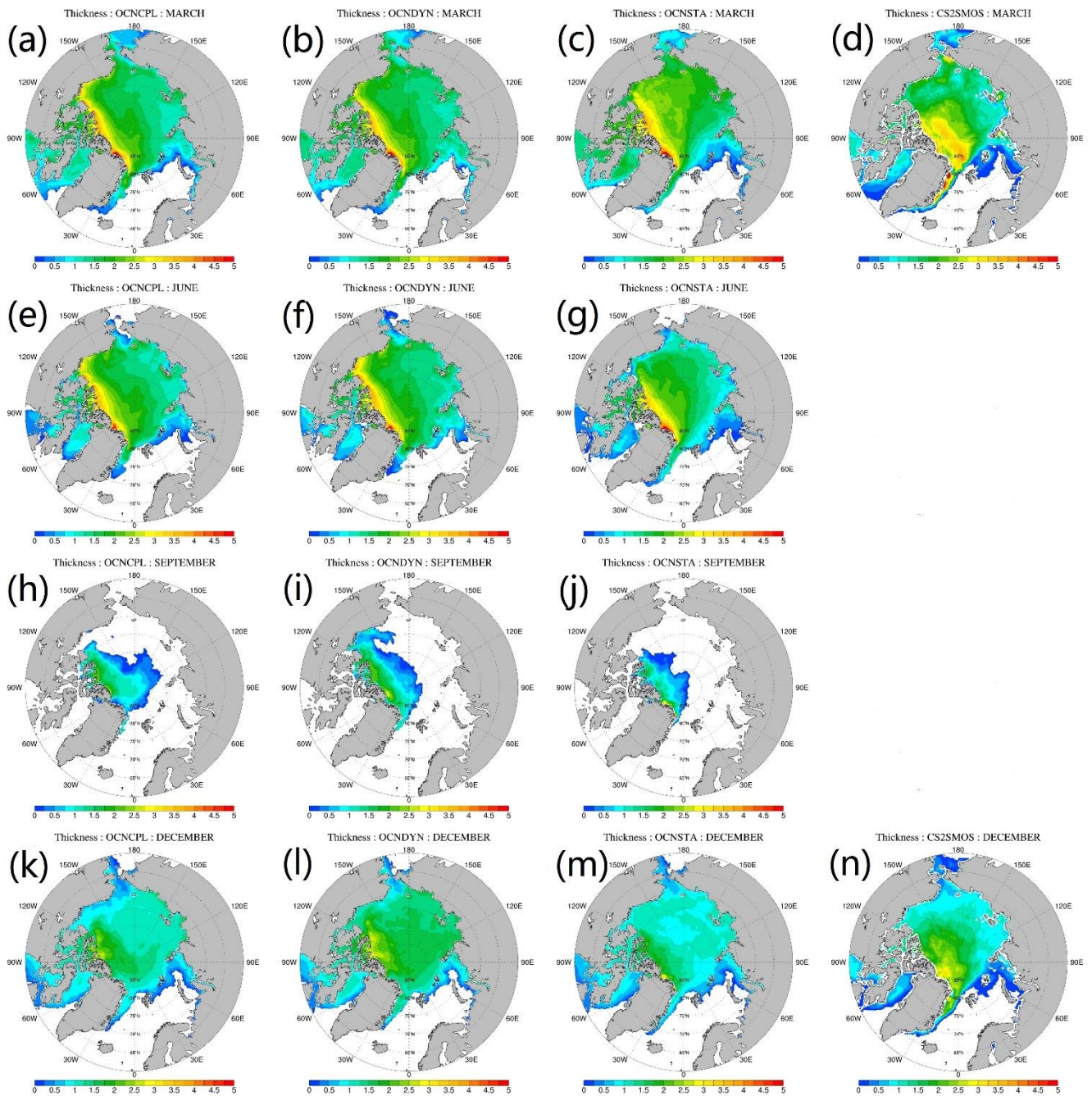


Figure 9: Time series of (a) total sea ice volume, (b) spatial mean sea ice thickness, and (c) the RMSE of sea ice thickness with respect to the satellite-retrieved observations in 2012. The black, red, green and blue lines in (a) denote total sea ice

775 volume of the PIOMAS data, the OCNCPPL run, the OCNSTA run and the OCNDYN run, respectively. The black, red, green and blue dots in (b) denote sea ice thickness of the CS2SMOS observations, the OCNCPPL run, the OCNSTA run and the OCNDYN run, respectively. The black bar in (b) represents the observational uncertainties of the CS2SMOS data. The red, green and blue masks in (c) denote sea ice thickness RMSE of the OCNCPPL run, the OCNSTA run and the OCNDYN run with respect to the SMOS observations in thin ice (< 1 m) region (line), the Cryosat-2 observations (circle), the CS2SMOS observations (triangle), respectively. Model grid points without available observations are not taken into the sea ice thickness RMSE calculation. PIOMAS = Pan-Arctic Ice Ocean Modeling and Assimilation System; SMOS = Soil Moisture Ocean Salinity.

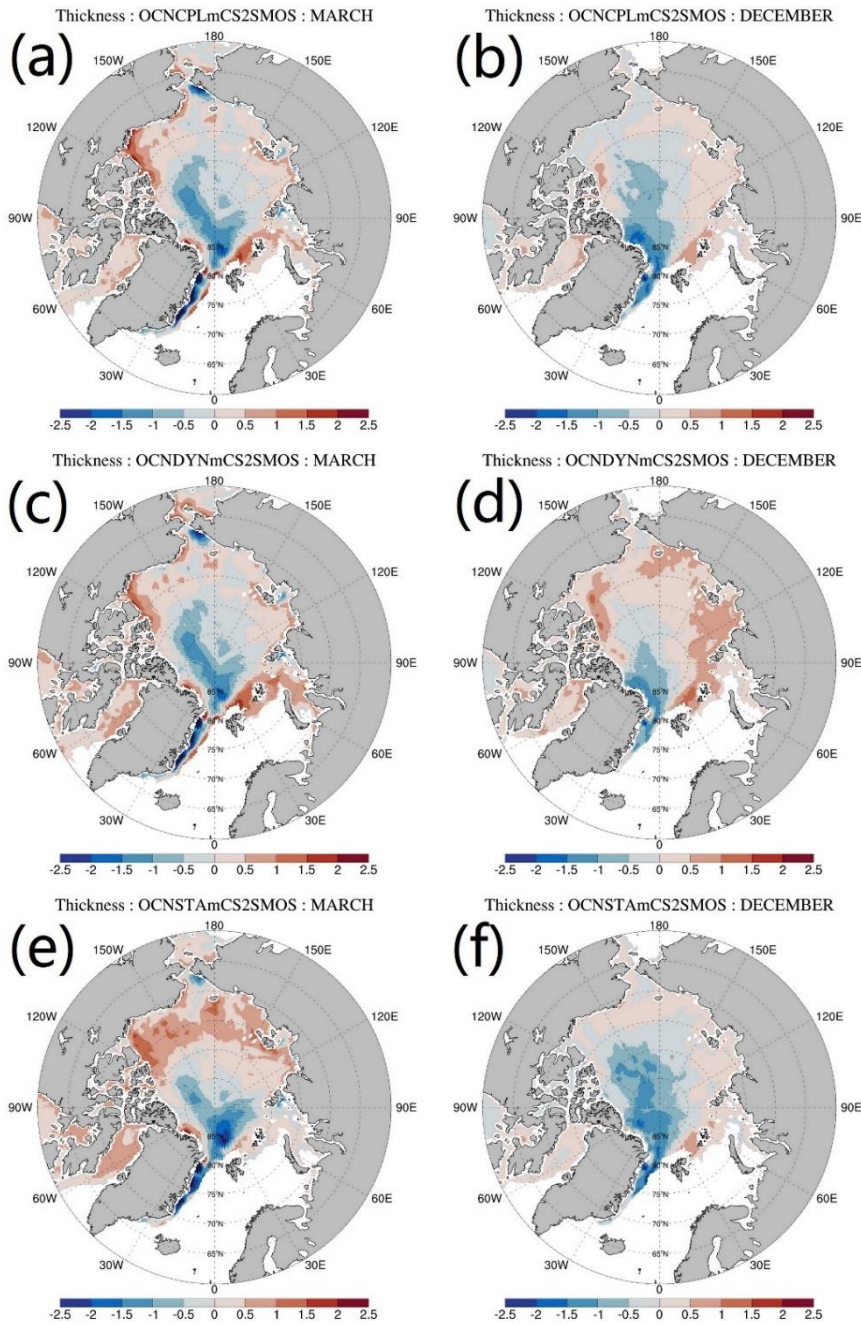


785 Figure 10: Time series of sea ice thickness at three positions: (a) (75 °N, 150 °W), (b) (78 °N, 150 °W), and (c) (74 °N, 140 °W). The red, blue and green lines denote sea ice thickness of the OCNCPL run, the OCNDYN run and the OCNSTA run, respectively. The black solid and dashed lines denote sea ice thickness observations of the BGEP ULSs, which were deployed in the summers of 2011 and 2012. The black lines of the BGEP ULS observations have been smoothed with the gray bar representing the observational uncertainties. BGEP = Beaufort Gyre Exploration Project; ULS = upward-looking sonar.

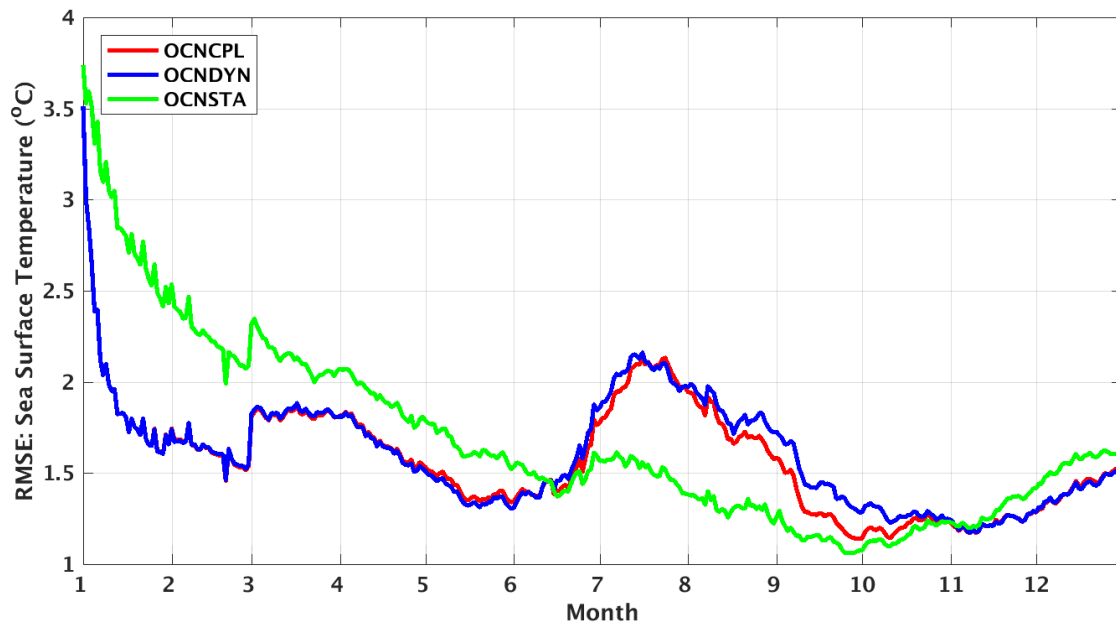


790

Figure 11: Monthly mean sea ice thickness. From top to bottom panels show the March, June, September, and December sea ice thickness, respectively. From left to right panels show sea ice thickness of the OCNCPL run, the OCNDYN run, the OCNSTA run and the CS2SMOS data.



795 Figure 12: Deviation of the modeled monthly mean sea ice thickness and the CS2SMOS data. The top, middle, and bottom panels show sea ice thickness deviation of the OCNCPm run, the OCNDYN run and the OCNSTA run, respectively. The left and right panels show results in March and December.



800

Figure 13: Time series of the RMSE of modeled SST with respect to the GMPE observations in 2012. The red, blue and green lines denote the SST RMSE of the OCNCPL run, the OCNDYN run and the OCNSTA run, respectively. GMPE = Group for High-Resolution Sea Surface Temperature Multi-Product Ensemble.

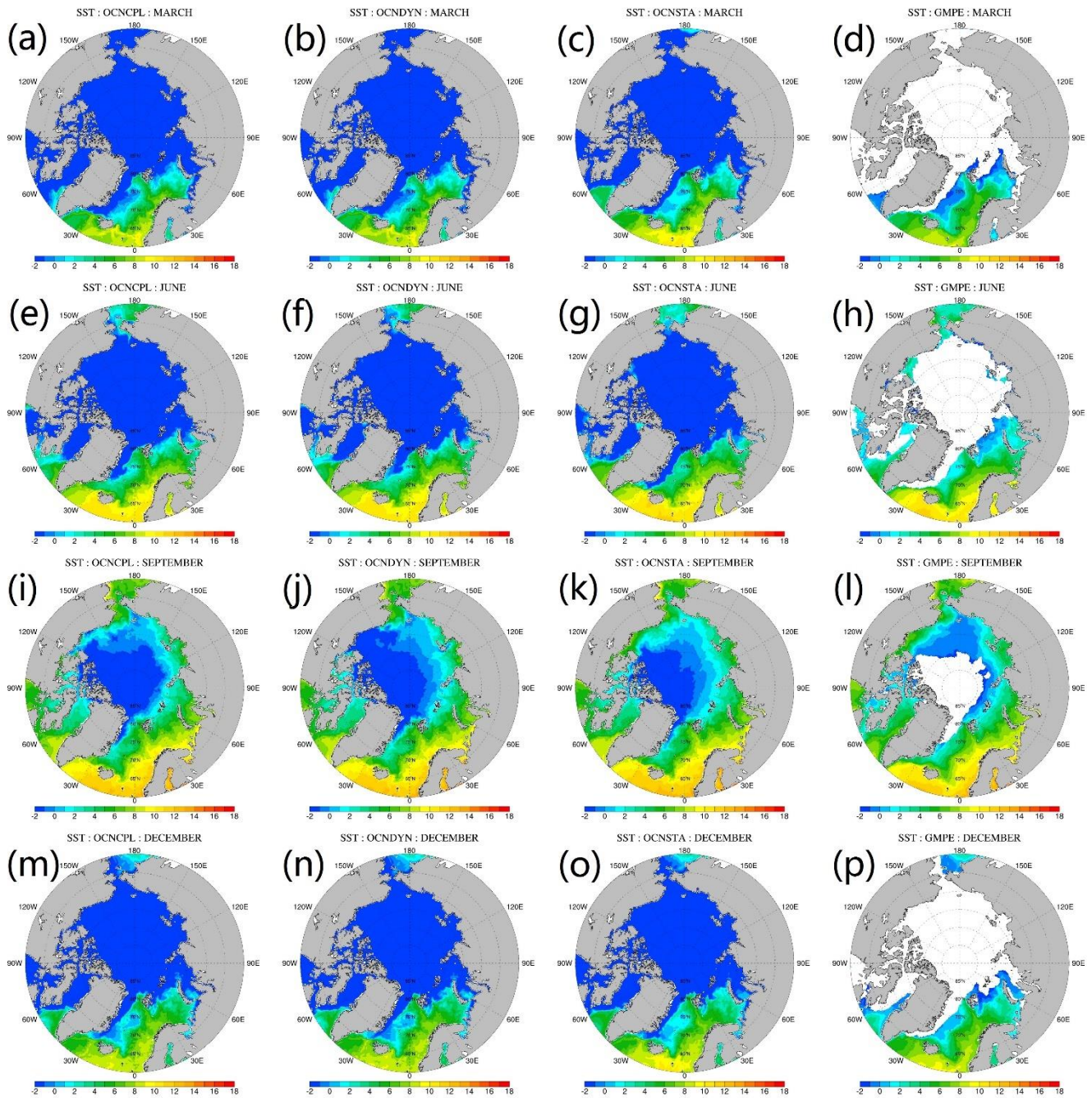
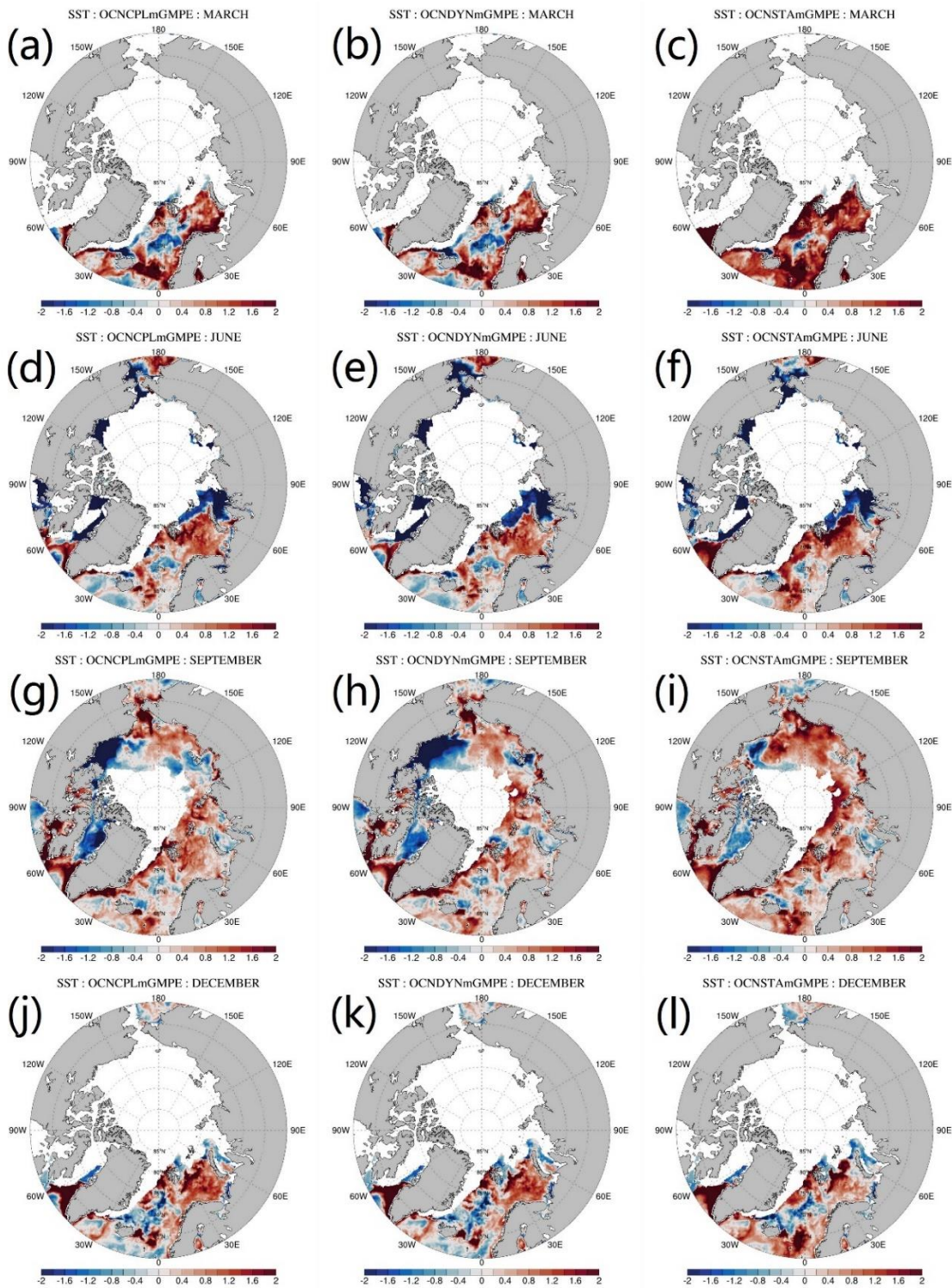
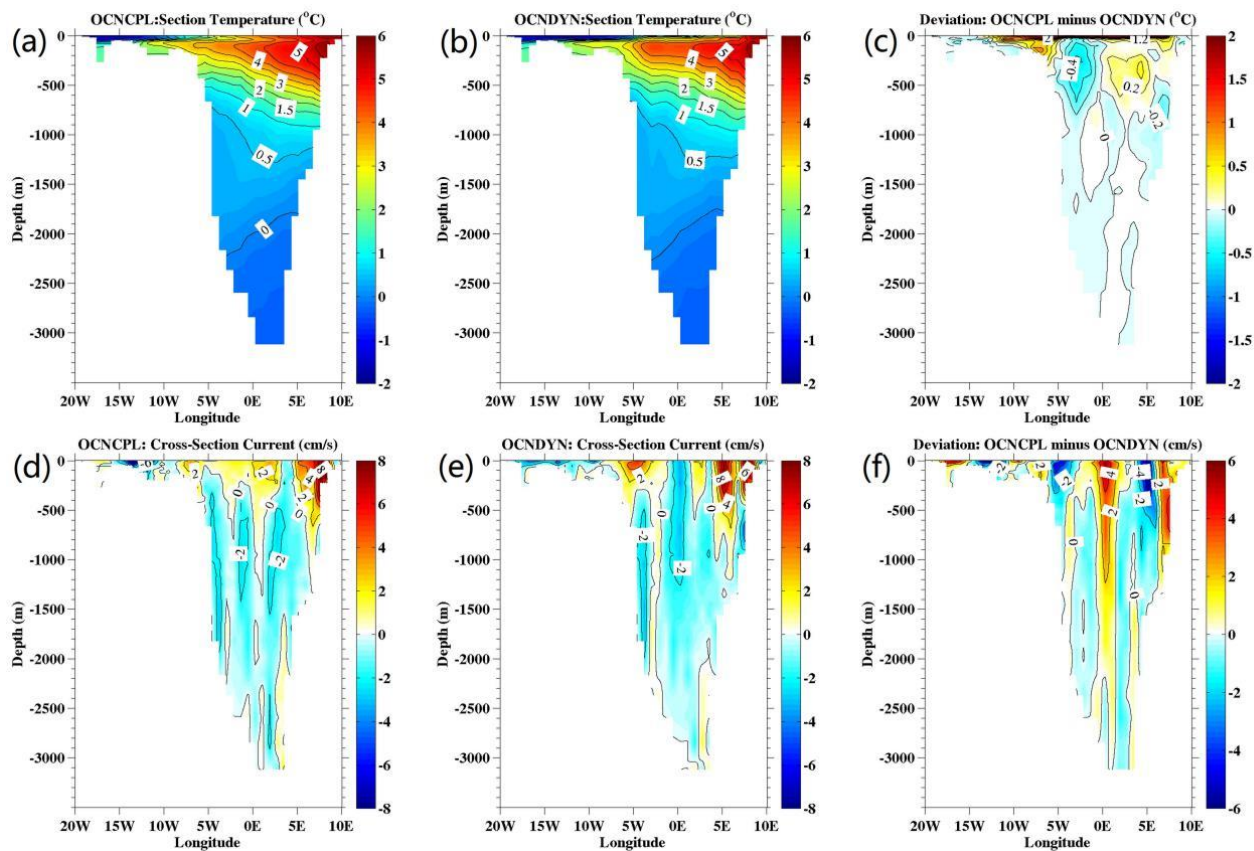


Figure 14: Modeled and observed monthly mean SST. From top to bottom panels show the March, June, September and December SST, respectively. From left to right panels show the SST of the OCNCP run, the OCNDYN run, the OCNSTA run and the GMPE observations, respectively. GMPE = Group for High-Resolution Sea Surface Temperature Multi-Product Ensemble.



815 Figure 15: Deviation of the modeled monthly mean SST and the GMPE SST data. From top to bottom panels show the March, June, September and December SST deviation, respectively. From left to right panels show the SST of the OCNCPL run, the OCNDYN run and the OCNSTA run, respectively. GMPE = Group for High-Resolution Sea Surface Temperature Multi-Product Ensemble.



820 Figure 16: July-August-September mean ocean temperature and meridional velocity section along 78 °N in Fram Strait. The top and bottom panels show the ocean temperature and meridional velocity, respectively. The left, middle, and right panels show the OCNCP run, the OCNDYN run, and the deviation between them, respectively.

Table 1: The summary of physic option and details of coupled system

Atmosphere component (Polar WRF)	
Horizontal spacing	27km
Horizontal grid points	306 x 306
Polar WRF time step	120s
Vertical layers	60
Lateral boundary conditions	CFSR
Polar WRF version	3.7.1
Cumulus parameterization	Grell-Devenyi scheme (Grell and Dévényi, 2002)
Microphysics parameterization	WRF single-moment 6-class scheme
Longwave and shortwave radiation	Rapid Radiative Transfer Model
Boundary layer	Mellor-Yamada-Janjic scheme
Land surface	Unified Noah LSM (Chen & Dudhia, 2001)
Ocean/sea ice component (MITgcm)	
Horizontal spacing	18km
Horizontal grid points	420 x 384
MITgcm time step	1200s
Vertical layers	50
Lateral boundary conditions	ECCO2
MITgcm version	checkpoint64a
Equation of sea water state	Jackett and McDougall (1995)
Vertical mixing scheme	K-profile parameterization (KPP) scheme

Horizontal advection scheme	Seventh-order monotonicity-preserving advection scheme (Daru and Tenaud, 2004)
Ice rheology	Viscous-Plastic constitutive law
Ice momentum solver	Line successive over-relaxation (Zhang and Hibler, 1997)
Ice thermodynamics	Zero-layer snow/ice thermodynamics (Semtner, 1976)
Albedo (under CFSR forcing)	dry ice: 0.65 wet ice: 0.55 dry snow: 0.8 wet snow: 0.7
Coupler component (C-Coupler)	
Coupler version	C-Coupler2
Coupling frequency	1200s
Interpolation scheme	Bilinear remapping algorithm
Coupling parameters (from MITgcm to Polar WRF)	SST, sea ice concentration, sea ice thickness, snow depth, ice surface albedo
Coupling parameters (from Polar WRF to MITgcm)	Downward longwave radiation, downward shortwave radiation, 10 m wind speed, 2 m air temperature, 2 m air specific humidity, precipitation

830 Table 2: Comparison of CPU time spent on coupled and stand-alone runs. The CPU time spent on two stand-alone simulations are presented to show the difference between coupled and stand-alone simulations. ‘total_cpu_number’ denotes the requested CPUs, ‘total_run_time’ denotes the total CPU elapsed time. ‘wrf_interface’, ‘wrf_integration’, ‘mitgcm_interface’ and ‘mitgcm_integration’ denote the CPU elapsed time used for coupling interface by the WRF, numerical integration by the WRF, coupling interface by the MITgcm, and numerical integration by the MITgcm, respectively. ‘wrf_time_alone’ denotes the CPU elapsed time of the stand-alone WRF runs. ‘mitgcm_time_alone’ denotes the CPU elapsed time of the stand-alone MITgcm runs. Each run is integrated for 7 model days.

total_cpu_number	cpu_number_on_each_component_model	total_run_time (unit: s)	wrf_interface (unit: s)	mitgcm_interface (unit: s)	wrf_integration (unit: s)	wrf_time_alone (unit: s)	mitgcm_integration (unit: s)	mitgcm_time_alone (unit: s)
28	14	12840	4.8	12131	12835.2	/	709	/
56	28	12000	4.74	11196	11995.26	7140	804	317
112	56	10440	5.16	6477	10434.84	3960	3963	154
224	112	3780	5.26	3550	3774.74	2160	230	96
448	224	2460	5.21	2116	2454.79	1560	344	68
896	448	1380	358	48	1022	1320	1332	84

835

Table 3: The initial conditions, boundary conditions and forcing terms used in the experiments.

Experiments description			
Experiment name	Description	Bottom boundary forcing for atmospheric component	Surface boundary forcing for ice/oceanic component
OCNCPL	two-way coupled simulation	MITgcm	Polar WRF
OCNDYN	one-way coupled simulation that the MITgcm only receives the variables from the Polar WRF, but without sending variables back to the Polar WRF	CFSR	Polar WRF
OCNSTA	stand-alone MITgcm simulation	Not used	CFSR

Note:

Atmospheric initial and boundary conditions: CFSR

Oceanic boundary conditions: ECCO2

Oceanic initial conditions: restart field on 1 January 2012 derived from a stand-alone MITgcm simulation initialized from climatological temperature and salinity field derived from WOA05 and forced by the 3-hourly JRA55 data from 1979 to 2011

840 Table 4: Monthly mean northward cross-section velocity (cm/s) and temperature (°C) averaged between 5°E and 8°40'E at 78°50'N in Fram Strait. A1 represents algorithm 1 that values are calculated from sea water with potential temperature higher than 1°C. A2 represents algorithm 2 that values are calculated from sea water with potential temperature higher than -0.1°C. A3 represents algorithm 3 that values are calculated from sea water with depth shallower than 700 m. The observations are averaged between 1998 and 2003. WSCOBS = West Spitsbergen Current Observation.

		July		August		September	
		V _{mean}	T _{mean}	V _{mean}	T _{mean}	V _{mean}	T _{mean}
A1: (T>1°C)	OCNCPL	3.94	3.56	4.03	3.66	4.03	4.02
	OCNDYN	3.22	3.69	2.93	3.79	2.27	3.91
	WSCOBS	6.26	2.76	6.98	2.90	7.36	3.02
A2: (T>-0.1°C)	OCNCPL	3.53	2.30	3.32	2.35	3.24	2.54
	OCNDYN	2.63	2.58	2.38	2.69	1.98	2.66
	WSCOBS	5.82	2.35	6.39	2.44	6.69	2.51
A3: (0-700 m)	OCNCPL	4.21	3.97	4.33	4.03	4.16	4.53
	OCNDYN	3.87	4.36	3.53	4.54	2.55	4.65
	WSCOBS	6.09	2.61	6.67	2.72	7.04	2.83