

Response to Reviewer 1

[Cover letter]

Dear Reviewer,

We appreciate you for spending time to review our paper and providing some valuable
5 comments. It is your valuable and insightful comments that led to possible improvements in
the current version. We have carefully considered the comments and tried our best efforts
to address every one of them. However, some revisions still cannot meet your high
standards. The authors welcome further constructive comments, if any. We provided the
point-to-point response first and will provide the updated version of the paper after
10 proofreading complete.

Below we provide the point-by-point responses. All modifications in the manuscript have
been highlighted in red.

Sincerely,

15

Li, Zhiqiang

Ph.D. in Earth System and Geo-information Science

Department of Real Estate and Construction | HKU Faculty of Architecture

Cell: +852 60608137

20 Email: paterlee@hku.hk

[General Comment] The paper addresses the importance of incoming data quality control
and presents a robust method for evaluating its impact on climate simulation results. The
authors find that the high-quality land surface input data would provide more distinct spatial
25 details in the modeling results but would not bring significant improvement to weather
prediction. This finding is a very interesting point and is critical to the model development.
The study is valuable to be published in a high impact journal.

Response: Thank you very much for your valuable comments. We are also happy that you
agree with our points of view on climate model evaluation.

30

[Comment 1] Please provide more explanation on TCSV, PSS and PDF results. For example,
what is the indication of ‘the PSS annual mean values of Case-ULSD deteriorated 2.7% in

precipitation’ while ‘the annual mean values of the specified interval of the PDFD of Case-ULSD improved 2% in precipitation’?

Response: Thank you very much for the comments. Indeed, we provided detailed explanations of the evaluation methods (TCSV, PSS, and PDF) in its companion paper - Li, Z., Zhou, Y., Wan, B., Chung, H., Huang, B., & Liu, B. (2019). Model evaluation of high-resolution urban climate simulations: using the WRF/Noah LSM/SLUCM model (Version 3.7. 1) as a case study. *Geoscientific Model Development*, 12(11), 4571-4584. Moreover, we added a note in Subsection 2.2 [Pg3, Ln17-19].

[Comment 2] The surface temperature seems very important in the modelling as shown in the Figure 11. Could you provide more explanation of the ‘surface temperature’? In addition, is the ‘surface skin temperature’ in the MODIS/Aqua product the same as the ‘surface temperature’ from the WRF model? By the way, I really like your Figure 11, a very good presentation to show the interplay among different factors.

Response: Thank you very much for the comments. In a physical meaning, the land surface temperature in MODIS/Aqua product and the surface skin temperature in WRF simulation are two different concepts. The land surface temperature is the grid-mean brightness temperature of the earth, which is calculated base on the blackbody radiation theory. The surface skin temperature is a land’s state variable in WRF, which is adjusted iteratively in each calculation base on the balance of the radiation, the sensible heat flux, the latent heat flux, and the soil heat conduction flux. The value of the surface skin temperature may diff a bit from one of the land surface temperatures in the same grid. However, these two variables are highly correlated. Therefore, we use the land surface temperature to evaluate the quality of the surface skin temperature in the WRF simulation.

We added a technical note regarding the surface skin temperature and the land surface temperature, [Pg3, Ln29 – Pg4, Ln4]. Moreover, we also corrected a mistake (Surface temperature is incorrect. The correct on is Surface skin temperature) in Figure 11.

[Comment 3] Please add TCSV figures of land surface temperature, relative humidity, precipitation and wind speed in the supplementary material.

Response: Revised accordingly: added Section S5 into the Supplementary material.

[**Comment 4**] Please provide more information for the model setting (e.g. model version, domain boundary) and data sources of input data.

Response: Thank you very much for the comments. We added Section S6 into the
5 Supplementary material for providing more information on model setting. We already
provided the information on data sources of input data in Subsection 2.3.

[**Comment 5**] Based on your findings, what are your suggestions for modeling development,
e.g. balancing incoming data quality and parameterization schemes for a better weather
10 prediction?

Response: It is a good question. Admittedly, the incoming data quality contributes to
improving the quality of modeling results. The sensitivity of land surface processes to input
land surface data are also crucial for improving the quality of modeling results. For further
steps in the atmospheric model development, we suggested improving the sensitivity of the
15 urban land surface model to the input land surface data.

We added a suggestion for modeling development in Section 4.

[**Comment 6**] Corrections: (1) Figure 4 and Figure 5: the plots and figure captions are not
consistent. (2) In the first paragraph of section 3.2, it should be 'Figure 6' instead of 'Figure
20 5'.

Response: Thank you very for the reminder. (1) Revised accordingly: Figure 4 [Pg5, Ln4],
and Figure 5 [Pg6, Ln1]. (2) Revised accordingly, [Pg6, Ln9].

25

30

[Cover letter]

Dear Reviewer,

We appreciate you for spending time to review our paper and providing some valuable comments. It is your valuable and insightful comments that led to possible improvements in the current version. We have carefully considered the comments and tried our best efforts to address every one of them. However, some revisions may still not meet your high standards. The authors welcome further constructive comments if any. We provided the point-to-point response first and will provide the updated version of the paper after proofreading complete.

Below we provide the point-by-point responses. All modifications in the manuscript have been highlighted in red.

Sincerely,

Li, Zhiqiang

Ph.D. in Earth System and Geo-information Science

Department of Real Estate and Construction | HKU Faculty of Architecture

Cell: +852 60608137

Email: paterlee@hku.hk

[General Comment] In this work, the authors examined the influence of urban land surface data accuracy on the urban climate modeling quality. They compared the modeled results from simulations using the WRF ARW/Noah LSM/SLUCM model with and without a refinement by the urban land surface dataset. They clearly showed the high-quality land surface input data influence the modeling results that provide more distinct spatial details. They also proposed some explanation of how urban land surface data accuracy affected urban climate modeling accuracy. The paper is well written. I have given my comments below. Mostly minor.

Response: Thank you very much for your valuable comments. We are delighted that you agree with the views of this paper.

[Comment 1] Abstract, “The reliability of modeling results using the developed high resolution urban land surface datasets is significantly improved compared to modeling results

using the original land surface dataset in this region.” I agree that the modeling results provide more distinct spatial details. Please elaborate what are the significant improvements in the reliability of the modeling results. This point is not clear in the abstract and main text.

Response: Thank you very much for the comments. We compared the model result with station observation and MODIS land surface temperature. We use the temporal comparison of spatial variation (TCSV), Perkins skill score (PSS), and PDF of difference (PDFD) to evaluate the model results. Most of the results show improvements in the Case-USLD. Indeed, the most significant improvement in modeling results by the incoming data quality control is that the model produced more distinct spatial details in the fine grids. Actually, urban climate modeling is a meteorological downscaling application that is employed to produce the fine-scale spatial and temporal details from the coarse resolution’s meteorological data (Hong et al., 2014). It is, therefore, the critical indicator for the urban climate to precisely construct the fine-scale details at their utmost in the interested area (Lo et al., 2008). In this study, we conducted two meteorological downscaling cases by the dynamical limited area model with the same lateral boundary condition of coarse-resolution data and two different land surface data to compare which case constructs more fine details in the interested area. From the dynamical meteorological downscaling point of view, Case-USLD has a significant improvement in the performance of modeling results than the Case-NCAR.

We added the content in the abstract and Section 4 to emphasize the points aforementioned [Pg13, Ln11-21] and changed the wording [Pg1, Ln25].

[Comment 2] Page 6, line 7, “As evidenced by Figure 5, both simulation results using the original and refined land surface data reproduced the diurnal and monthly patterns as the ones of observation.” Would it refer to Figure 6?

Response: Thank you very much for reminding us. Revised accordingly, [Pg6, Ln9].

[Comment 3] There are questions about the improvements in the model simulations.

(1)Page 6, Line 16, “Compared to Case-NCAR, the PSS annual mean values of Case-ULSD improved by 1.0%, 3.2%, and 5.5% in the 2-meters air temperature, surface temperature, and 10-meters wind speed, respectively. On the contrary, the PSS annual mean values of CaseULSD deteriorated 5.6% and 2.7% in relative humidity and precipitation, respectively, than the ones of Case-NCAR.”

(2) Page 7, line 4, “Compared to Case5 NCAR, the annual mean values of the specified interval of the PDFD of Case-ULSD improved 2% in surface temperature and precipitation.”

For the annual mean values of these factors, could the authors further elaborate what are the improvements (e.g. reliability) in their modeling results?

Response: Thank you very much for the comments. In this study, it is another interesting finding that the high-quality land surface did not make a positive effect on the modeling results. We also conducted a discussion for this finding in Section 4 [Pg12, Ln17 – Pg13, Ln10]. For responding to this question, we just changed the wording (replace “reliability” with “performance”).

[Comment 4] Page 11, “From our findings, the IDQC indeed improved the modeling results at the spatial dimension, creating substantially more spatial details in simulation results.” I agree this work provide more spatial details in simulation results. However, did the authors compare their spatial results to the measurements?

Response: Thank you very much for the comment. Yes, we spatially compared the modeling results of two cases with the observation by the PSS and PDFD, which include the wind speed, air temperature, relative humidity, precipitation, and surface skin temperature.

20

25

Incoming data quality control in high-resolution urban climate simulation: Hong Kong-Shenzhen area urban climate simulation as a case study using WRF/Noah LSM/SLUCM model (Version 3.7.1)

Zhiqiang Li¹, Bingcheng Wan², Yulun Zhou³, and Hokit Wong⁴

5 ¹Department of Real Estate and Construction, The University of Hong Kong, Hong Kong SAR, 999077, China

²Glarun Technology Co., Ltd., Nanjing, 211100, China

³Department of Geography and Resource Management, The Chinese University of Hong Kong, Hong Kong SAR, 999077, China

⁴City University of Hong Kong, Hong Kong SAR, 999097, China

10 *Correspondence to:* Zhiqiang Li (paterlee@hku.hk)

Zhiqiang Li and Bingcheng Wan contributed equally to this work and should be considered co-first authors.

Abstract. Growing computational power in recent years enabled high-resolution urban climate simulations using limited-area models to flourish. This trend empowered us to deepen our understanding of urban-scale climatology with much finer spatial-temporal details. However, these high-resolution models would also be particularly sensitive to model uncertainties, especially in urbanizing cities where natural surface texture is changed artificially into impervious surfaces with extreme rapidity. These artificial changes always lead to dramatic changes in the land surface process. While models capturing detailed meteorological processes are being refined continuously, the input data quality has been the primary source of biases in modeling results but has received inadequate attention. To address this issue, we first examine the quality of the incoming static data in two cities in China, i.e., Shenzhen and Hong Kong SAR, provided by the WRF ARW model, a widely-applied state-of-the-art mesoscale numerical weather simulation model. Shenzhen was going through an unprecedented urbanization process in the past thirty years, and Hong Kong SAR is another well-urbanized city. A significant proportion of the incoming data is outdated, highlighting the necessity of conducting incoming data quality control in the region of Shenzhen and Hong Kong SAR. Then, we proposed a sophisticated methodology to develop a high-resolution land surface dataset in this region. We conducted urban climate simulations in this region using both the developed land surface dataset and the original dataset utilizing the WRF ARW model coupled with Noah LSM/SLUCM and evaluated the **performance** of modeling results. The **performance** of modeling results using the developed high-resolution urban land surface datasets is significantly improved compared to modeling results using the original land surface dataset in this region. This result demonstrates the necessity and effectiveness of the proposed methodology. Our results provide evidence on the effects of incoming land surface data quality on the accuracy of high-resolution urban climate simulations and emphasize the importance of the incoming data quality control.

30 **1 Introduction**

With the numerical weather prediction model applied in climate study increasingly in past decades (Warner, 2011), many scientists (such as Anthes, 1983; Keyser and Uccellini, 1987; Oreskes et al., 1994; Kain et al., 2008; Warner, 2011; Teutschbein and Seibert, 2012; Hong and Kanamitsu, 2014) were arguing the best modeling practices or provided suggestions related to modeling. Warner introduced the concept of quality assurance for improving modeling practices based on the summarization of wisdom in the previous studies (Warner, 2011). In recent years, with rapidly developing computational capabilities, researchers become capable of applying high-resolution limited-area models to produce detailed meteorological scenarios. This capability empowers the studies of urban-scale climatology that require finer grid spacing. At the same time, this kind of high-resolution urban modeling also poses a significant challenge to the assurance of modeling quality. High-resolution urban climate simulation is sensitive to the quality of input of urban land surface data (Bruyère et al., 2014). An essential process that many pieces of research have been overlooked is the incoming quality control, which guarantees the quality of input data for climate modeling. The incoming data quality control

(IDQC), the procedure that ensures the accuracy of input data, is often ignored in modeling practices. In the manufacturing process, incoming quality control (IQC) is one of the quality assurance activities because it is “a proactive upstream approach that controls and manages the upstream activities to prevent problems from arising” (World Meteorological Organization, 2014). By analogy with the manufacturing process, IDQC of climate modeling resembles the incoming material quality control. It is also a proactive activity of controlling and managing the quality of the input data before the model-run rather than a “correction after problems occur” (World Meteorological Organization, 2014). Modeling practices using inaccurate input usually lead to significant modeling bias. However, sometimes, such modeling practices may still lead to seemingly correct but scientifically misleading modeling results, which like window dressing to some extent. Therefore, a more sophisticated IDQC procedure is needed, which is a critical action of quality assurance.

Urban climate modeling is notoriously sensitive to land surface characters (Chen, 2004; Sertel, 2010). The fallacious spatial distribution of the land surface data causes inaccurate values to be assigned to boundary layer variables. So the fallaciousness would be finally propagated to the modeling results, including temperature, wind fields, precipitation, and humidity (Chen, 2004). High-resolution models are more sensitive to incoming data quality for producing more refined details in finer spatial grids (Chen, 2004; Sertel, 2010).

Despite the close association between the quality of land surface dataset and the quality of modeling results, IDQC has received inadequate attention in many existing modeling practices. Many urban climate systems provide a default and elemental input land surface dataset, the quality of which varies dramatically over space and time. For example, the WRF ARW model only provides detailed urban information for some big American cities. In most areas except these big cities, not only the recording date of the default input land surface dataset for the WRF ARW model is far before 2010 but also the grid sizes of these areas are far larger than 1 km. First, respective land surface datasets need to be developed if the study period is out of the default dataset’s temporal coverage. Second, while the quality of the default dataset in these big American cities is found acceptable, the quality of the same dataset in many other parts of the world can be quite problematic, especially in the rapidly urbanizing China. In the developing world, dramatic artificial interferences change natural surface texture into impervious surfaces with extreme rapidity. A compelling example would be Shenzhen, China, a city that went through dramatic urbanization in the past thirty years.

In this study, a sensitivity test was conducted to examine the influence of urban land surface data accuracy on the urban climate modeling quality. Moreover, the article also proposed an explanation of why urban land surface data accuracy affected urban climate modeling accuracy and stated the importance of the incoming data quality control in urban climate modeling.

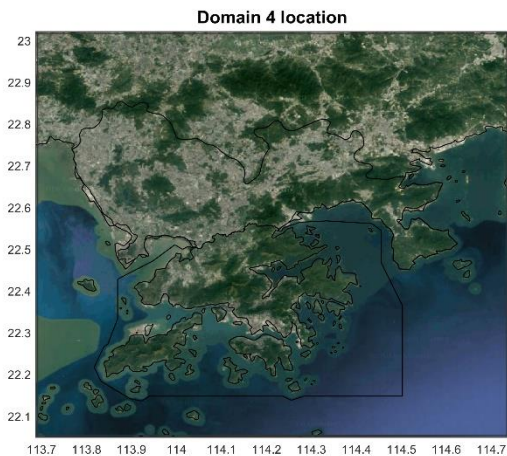
The remainder of the paper is organized as follows. Section 2 introduces the methodologies used in this paper. Section 3 presents the comparison results between the default land surface dataset and the developed high-resolution dataset and compares the corresponding modeling results. Section 4 sums up the discussions and concludes the paper.

2 Methodologies

2.1 Experimental design

In this study, we took the megacity’s region in PRD: Hong Kong-Shenzhen area as the study area and delineated it in the modeling as the inner-most domain (domain 4, Figure 2). We conduct two modeling experiments using the default land surface dataset and the developed high-resolution urban land surface dataset to examine if the IDQC improves urban climate modeling results. We compared the quality of the incoming data in the two urban climate simulation cases and the quality of the modeling results to demonstrate the effects of the incoming data quality on high-resolution urban climate modeling. In this study, two comparative urban climate simulation cases were designed for evaluating the impacts of the refinement using the urban land surface dataset on the quality of the modeled results. So, the modeled results from simulations using the WRF ARW/Noah LSM/SLUCM model with and without a refinement by the urban land surface dataset on the primary data would be compared. Case-NCAR is a one-year climate simulation using the default land surface dataset provided by NCAR, and Case-ULSD is a comparative experimental case

using the developed high-resolution urban land surface dataset. Both cases are utilizing the same lateral boundary conditions in 2010 and the same model settings.



5 **Figure 1: The study area was delineated in the modeling as the inner-most domain (domain 4), base map source: google map.**

2.2 Evaluation methods for incoming data quality

We compared the original and refined land surface dataset by analyzing its four major components – land cover, vegetation coverage, urban morphology, and anthropogenic heat fluxes. These components are meteorological variables that are involved the most in urban climate processes at the intra-urban scale.

10 We also compared the simulation results using land surface data before and after the refinement to investigate the impact of incoming data quality on the accuracy and granularity of simulation results. Typically, the quality of urban climate modeled results should be evaluated by comparing the modeled near-surface variables with its corresponding observed ones (Li et al., 2019). We extracted and compared five near-surface meteorological variables – surface temperature and near-surface air temperature, wind speed, precipitation, and relative humidity – respectively, along the spatial and temporal dimension. Moreover, these critical modeled
15 near-surface variables are also compared with its corresponding observed ones by the statistic tools suggested by Li et al. (2019), which includes a temporal comparison of spatial variation (TCSV), Perkins skill score (PSS), and PDF of difference (PDFD). **For more details of the TCSV, PSS, and PDFD, please refer to the companion paper - Model evaluation of high-resolution urban climate simulations: using the WRF/Noah LSM/SLUCM model (Version 3.7. 1) as a case study.** Furthermore, the near-surface variables of two experimental cases are compared spatially to analyze the difference between the two cases in the spatial dimension.

20 2.3 Data

The primary data includes the *Completed Dataset and the New Static Data Released With v3.7 of WRF Preprocessing System (WPS) Geographical Input Data* and the *2010 NCEP FNL (Final) Operational Global Analysis Dataset with 1-degree grid spatial resolution and the 6-hour temporal resolution*. Moreover, to demonstrate the effectiveness of the proposed methodology, we developed a high-resolution urban land surface dataset for the Hong Kong-Shenzhen area in 2010. This dataset includes six kinds
25 of data, including land cover data, vegetation coverage data, urban morphology data, artificial impervious area data, and anthropogenic heat data, respectively describing different urban land surface characters. Furthermore, the *2010 MODIS/Aqua Land Surface Temperature and Emissivity (LST/E) product* and the *2010 near-surface metrological observation data in PRD* were used for modeled results' quality evaluation. **In a physical meaning, the land surface temperature in MODIS/Aqua product and the surface skin temperature in WRF simulation are two different concepts. The land surface temperature is the grid-mean brightness
30 temperature of the earth, which is calculated based on the blackbody radiation theory. The surface skin temperature is a land's state variable in WRF, which is adjusted iteratively in each calculation based on the balance of the radiation, the sensible heat flux, the**

latent heat flux, and the soil heat conduction flux. The value of the surface skin temperature may deviate a bit from one of the land surface temperatures in the same grid. However, these two variables are highly correlated. Therefore, we use the land surface temperature to evaluate the quality of the surface skin temperature in the WRF simulation. Finally, the comparative meteorological variables are listed in Table 1.

5 **Table 1: Comparative meteorological variables.**

Modeling results	Observation
Surface Skin Temperature	2010 MODIS/Aqua Land Surface Temperature and Emissivity (LST/E) product ¹
2-meters air temperature	2010 PRD 2-Meters Air Temperature ²
10-meters wind at U direction	2010 PRD 10-Meters Wind Speed ²
10-meters wind at V direction	
Accumulated total cumulus precipitation	2010 PRD Precipitation ²
Accumulated total grid-scale precipitation	
2-meters relative humidity ²	2010 PRD Relative Humidity ²

Remarks: 1 - The data was provided by NASA EOSDIS Land Processes DAAC, USGS Earth Resources Observation and Science (EROS) Center. 2 - The data was provided by Meteorological Bureau of Shenzhen Municipality.

3 Results

3.1 Refinements in urban land surface data

10 Through the comparison between two cases, we found the default terrestrial input data missed many details in land cover (Figure 2), the vegetation coverage (Figure 3), urban morphology (Figure 4), and anthropogenic heat (Figure 5).

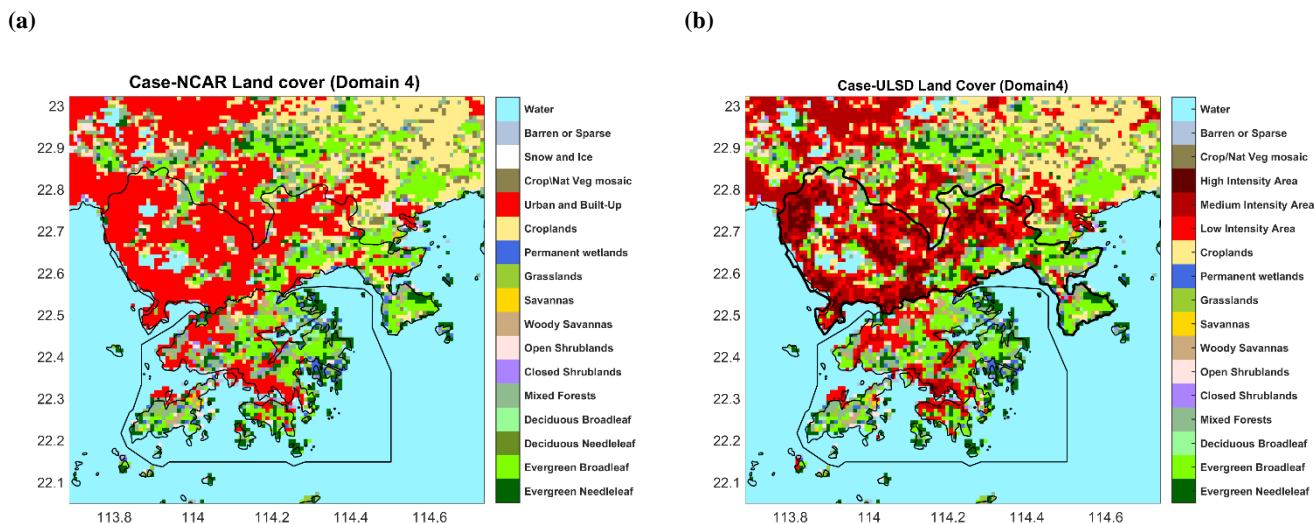


Figure 2: The land covers provided by NCAR originally (a), and the adjusted land covers based on the urban land surface dataset (b), data source: Li et al., 2019 a and b.

15 (a) (b)

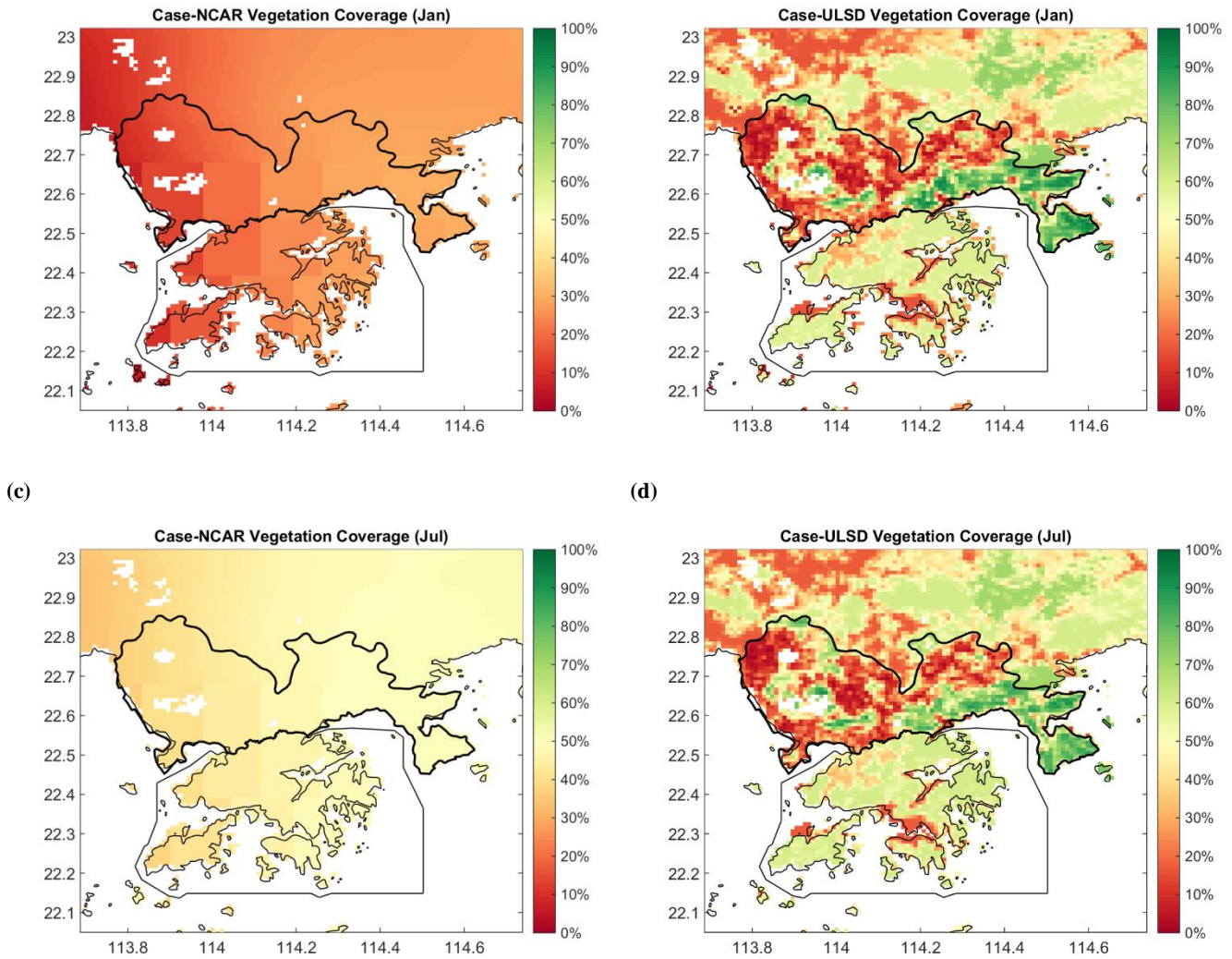


Figure 3: The original (left) and refined (right) vegetation coverage data product in January (upper, local winter) and July (lower, local summer), data source: Li et al., 2019 a and b.

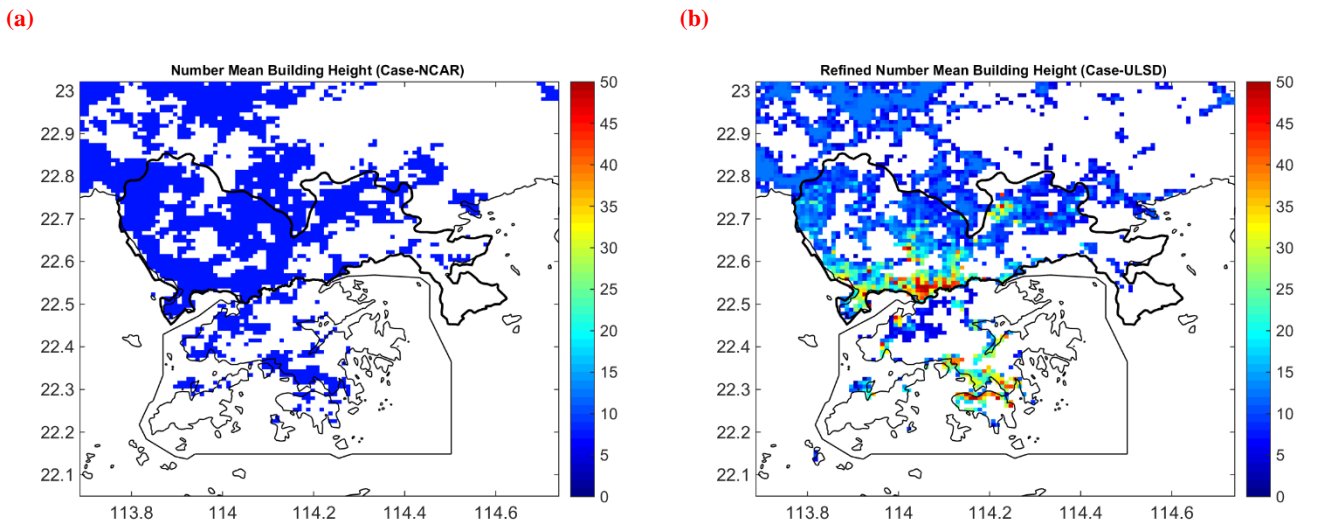
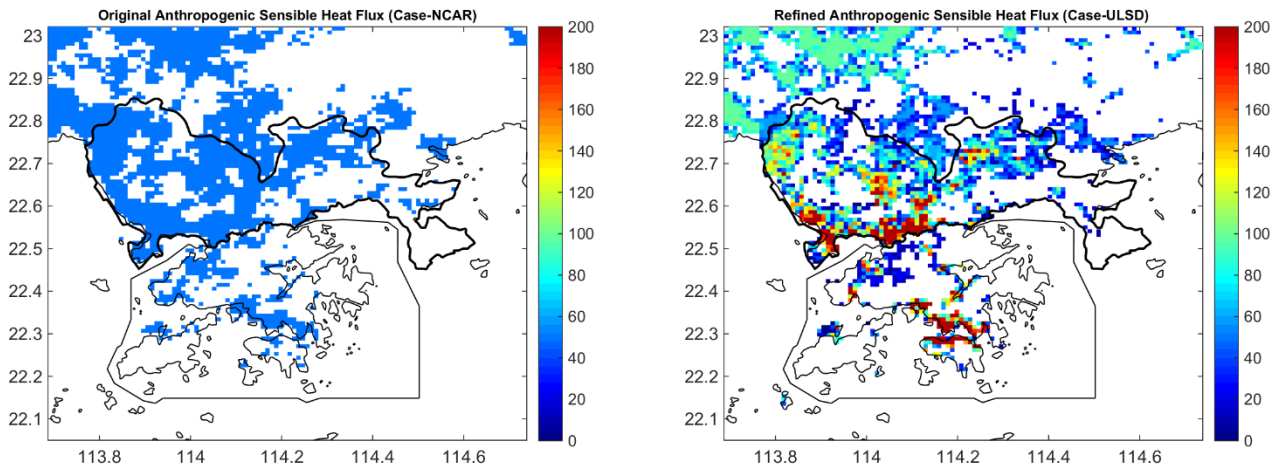


Figure 4 The number mean building height before (a) and after refinement (b), data source: Li et al., 2019 a and b. For other urban morphology indicators, please refer to Section S1 of Supplementary Material.



(c)

(d)

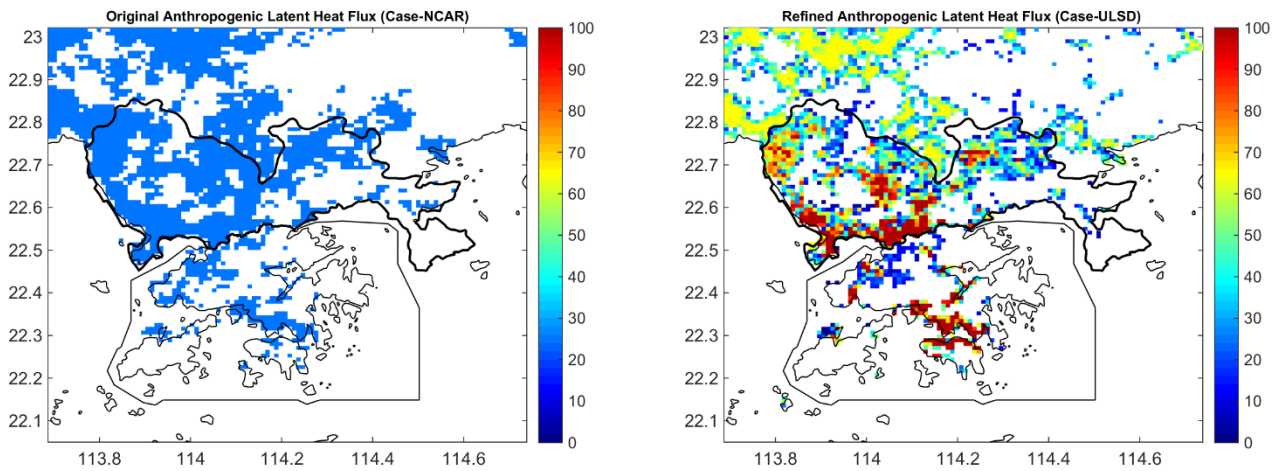


Figure 5: Maps of the anthropogenic sensible (upper) and latent (lower) heat fluxes before (left) and after (right) refinement, data source:

5 Li et al., 2019 a and b.

3.2 Quality of simulation results

With the TCSV figure, the temporal patterns of the simulation results using the land surface data before and after the refinement were examined against the temporal patterns in observations. By temporal patterns, we refer to both the diurnal and monthly variations of the selected meteorological variables. As evidenced by Figure 6, both simulation results, using the original and refined land surface data respectively, reproduced the diurnal and monthly patterns that agreed with the observed data. Other meteorological variables of both cases, such as land surface temperature and relative humidity, precipitation, and wind speed, also have similar temporal variation patterns as the corresponding observed ones.

(a)

(b)

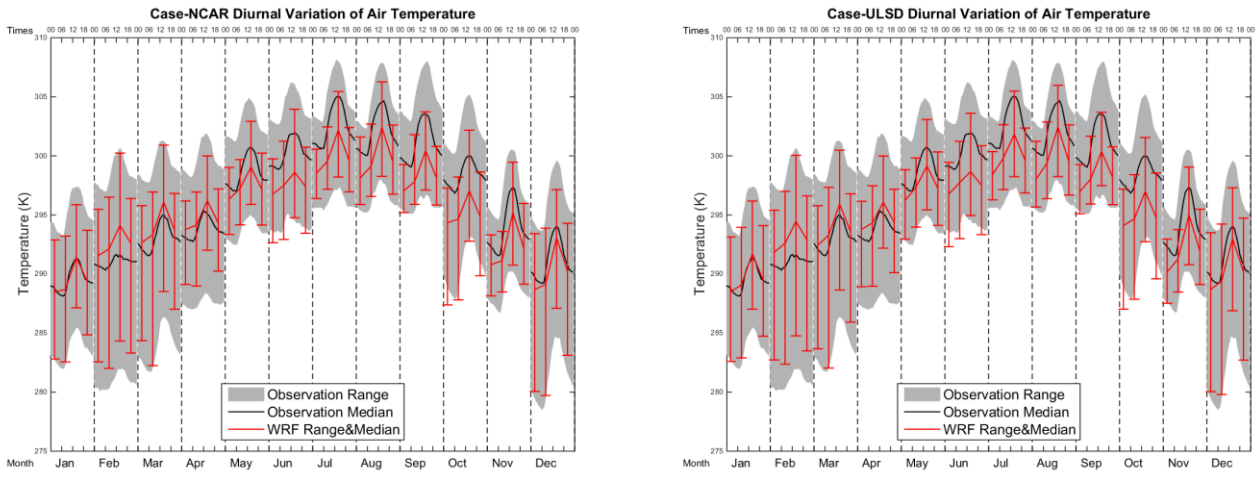


Figure 6: The annual and diurnal variation of 2-meters air temperature of Case-NCAR (a) and Case-ULSD (b, data source: Li et al., 2019 a and b).

Compared to Case-NCAR, the PSS annual mean values of Case-ULSD improved by 1.0%, 3.2%, and 5.5% in the 2-meters air temperature, surface temperature, and 10-meters wind speed, respectively. On the contrary, the PSS annual mean values of Case-ULSD deteriorated 5.6% and 2.7% in relative humidity and precipitation, respectively, than the ones of Case-NCAR. Figure 7 shows the PSS monthly variation of the 2-meters air temperature. Meanwhile, the PSS monthly variations of other meteorological variables (surface temperature, and relative humidity, precipitation, and wind speed) are shown in Section S2 of Supplementary Material.

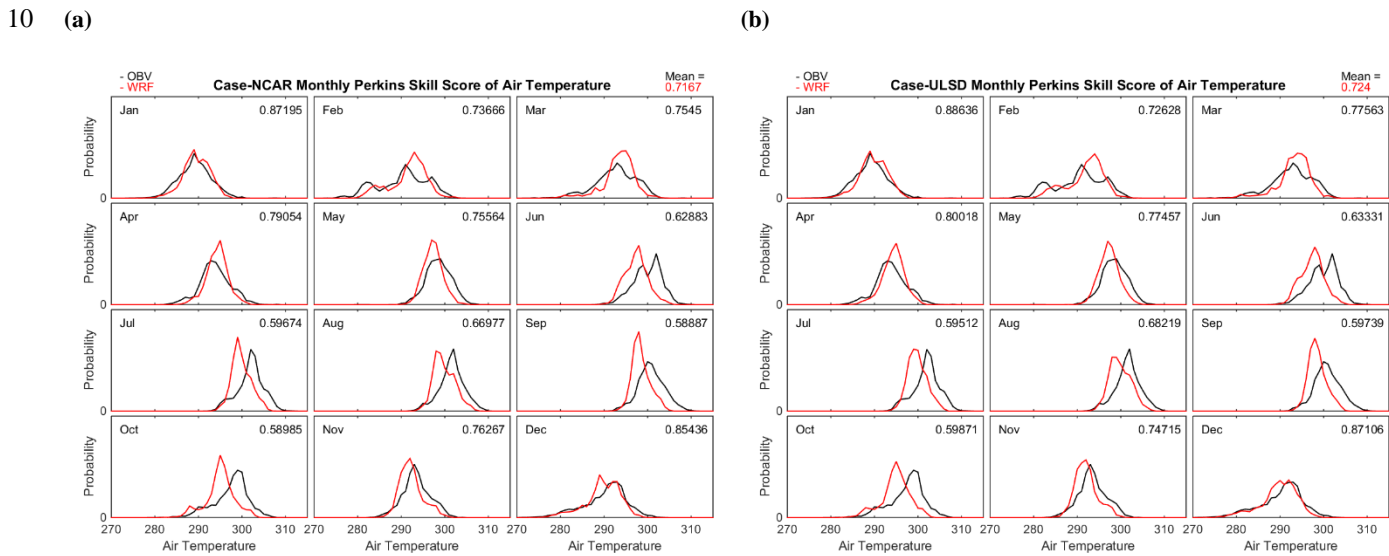


Figure 7: PSS monthly variation of 2-meters air temperature of Case-NCAR (a) and Case-ULSD (b, data source: Li et al., 2019 a and b).

Figure 8 shows the PDFD of 2-meters air temperature of two experimental cases. For the PDFD of surface temperature, relative humidity, precipitation, and 10-meters wind of two cases, please refer to Section S3 of Supplementary Material. Compared to Case-NCAR, the annual mean values of the specified interval of the PDFD of Case-ULSD improved 2% in surface temperature and precipitation. Moreover, the annual mean values of the specified interval of the PDFD of Case-ULSD are the same as its corresponding ones of Case-NCAR in 2-meters air temperature and 10-meters wind speed. Furthermore, the annual mean values of the specified interval of the PDFD of Case-ULSD decreased 1% in relative humidity than the ones of Case-NCAR.

(a) (b)

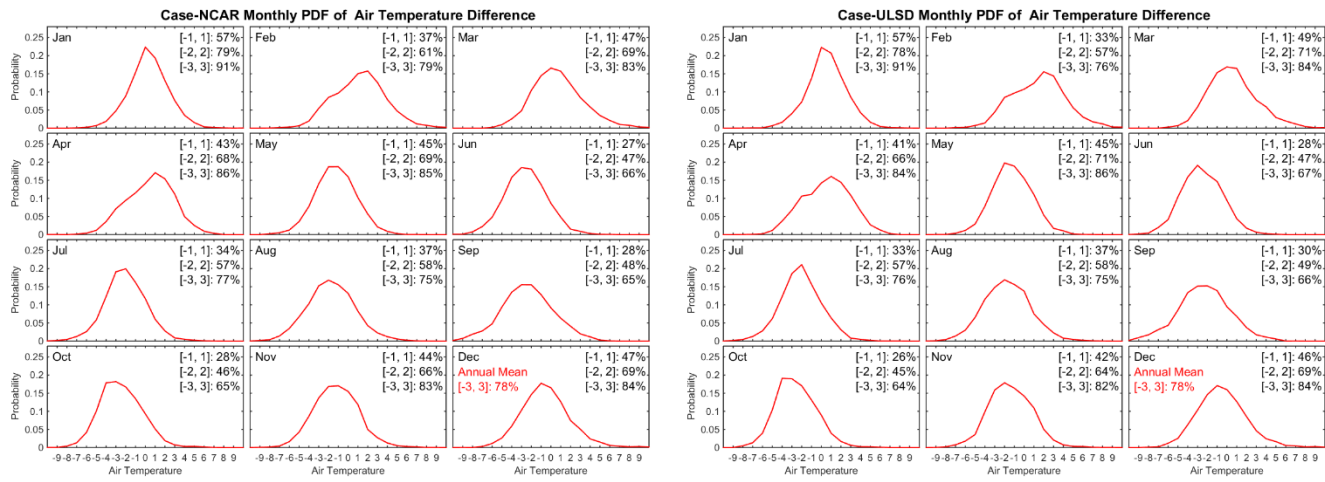
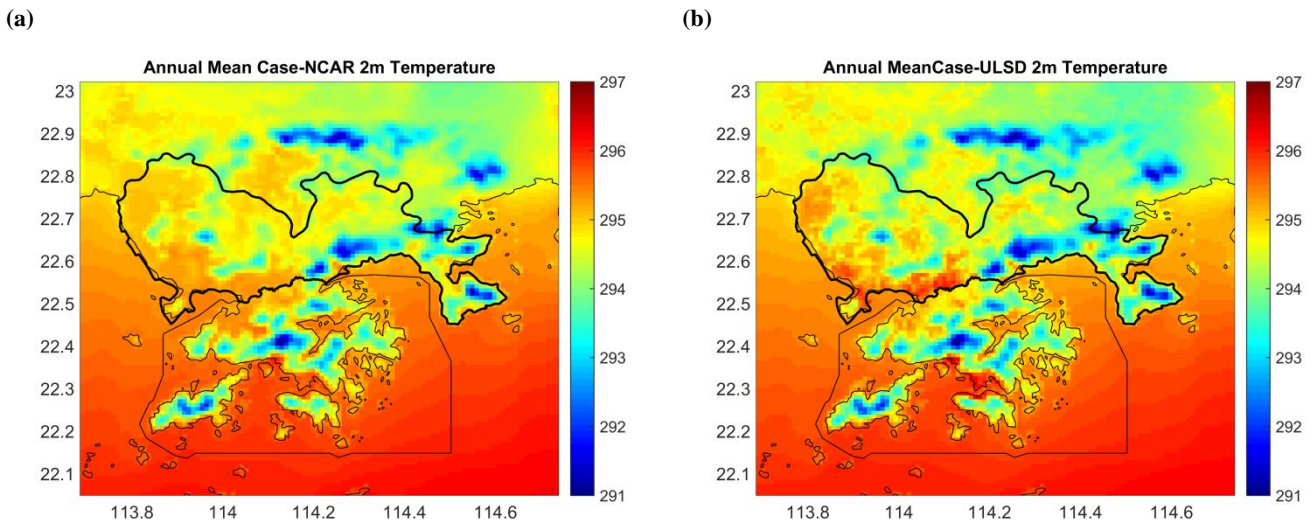


Figure 8: PDFD of 2-meters air temperature of Case-NCAR (a) and Case-ULSD (b, data source: Li et al., 2019 a and b).

To demonstrate the advantage of using the refined high-resolution land surface data, Figure 9 illustrates the spatial distributions of the annual mean values of the simulated 2-meters air temperature and surface temperature using the original and refined land surface data. For other meteorological variables (relative humidity, precipitation, and 10-meters wind) of two cases, please refer to Section S4 of Supplementary Material. For all meteorological variables, the data refinement enabled more spatial details in the simulation results – could be increased or decreased in values. Such differences were especially significant for urban centers where massive and rapid urbanization has taken place. The urban-rural differences were strengthened, especially for temperatures and the wind speed. The air temperature and surface temperature in urban areas mostly increased with the refined datasets due to the increased urban area and newly included effects of urban morphology. On the contrary, wind speed and humidity mostly decreased in urban areas.



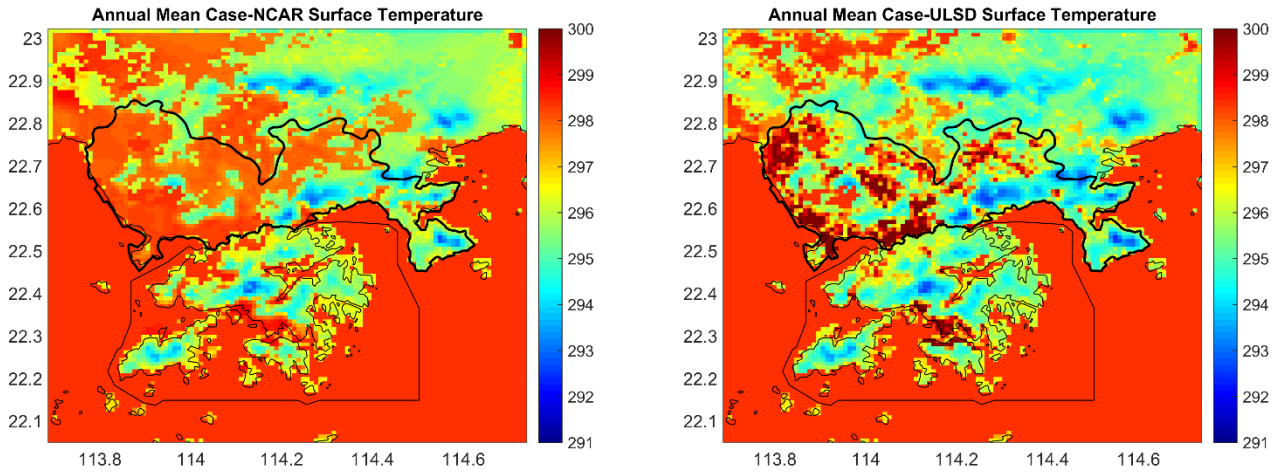


Figure 9: Spatial distribution of 2-meters air temperature and surface temperature of Case-NCAR (a) and Case-ULSD (b), data source: Li et al., 2019 a and b.

4 Discussions and conclusions

5 Undoubtedly, the high-quality land surface input data influence the modeling results that provide more distinct spatial details. Took a further step, we conducted a cause analysis of the physical mechanism of how the detailed spatial features were transferred from urban land surface to urban atmosphere. The in-homogeneity of the urban land surface affects energy and mass redistribution in the atmosphere. Atmospheric models are composed of interacting components (Figure 10), representing certain atmospheric physics principles (Dudhia, 2014). The WRF ARW model can be applied as a regional climate model, even though it was originated as a

10 numerical weather prediction (NWP) model (Dudhia, 2014). By coupling it with Noah LSM/UCM model, the near-surface atmospheric physical processes of momentum, water vapor, and the heat exchange in an urban environment are represented in the WRF ARW model, thus enabling an improvement in the results of urban climate simulation (Tewari et al., 2007). The Noah LSM Model provides the different quantities to the WRF ARW model, such as the surface sensible heat flux, surface latent heat flux, upward longwave radiation, and upward shortwave radiation, based on the different textures of the surface. In an urban area, the

15 anthropogenic heat release caused by human activities increases the surface sensible heat flux. The urban morphology also has an impact on the radiation exchange and the roughness. The UCM model captures these urban land surface characteristics to improve the accuracy of the near-surface atmospheric physical processes.

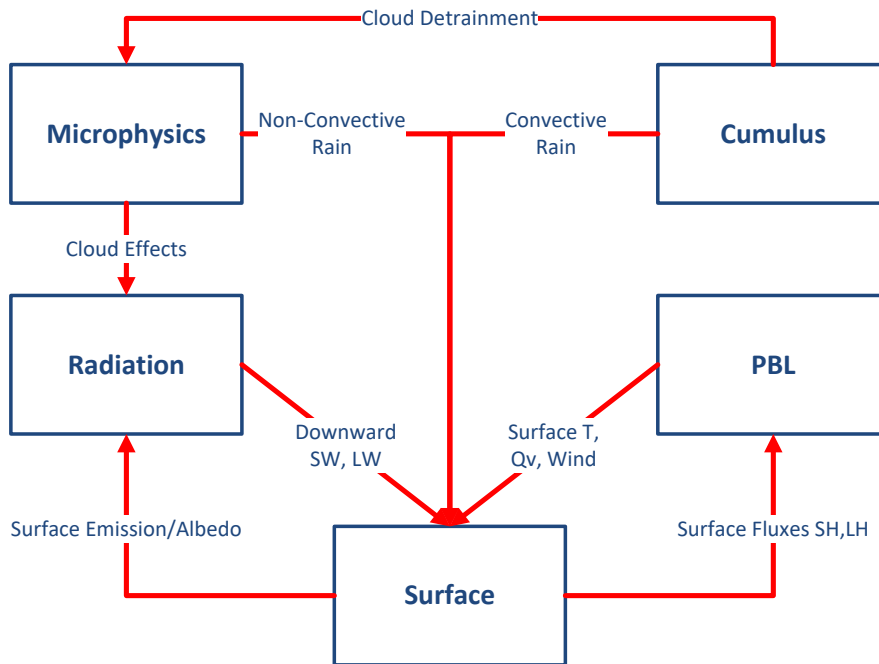


Figure 10: Schematic of physics and their interactions within a typical NWP model (Dudhia, 2014).

Moreover, when we looked inside the WRF ARW/Noah LSM/SLUCM Model, there are several physical modules. These modules interact with each other to update the state variables iteratively to propagate the land surface attributes' detail spatial features to the atmospheric variables (Figure 11). The detail spatial features in the land cover, vegetation coverage, urban morphology, and anthropogenic sensible and latent heat made effects on the 2-meters air temperature, relative humidity, precipitation and 10-meters wind speed through the intermediate variables (long and short wave radiations, surface temperature, surface sensible and latent heat).

5

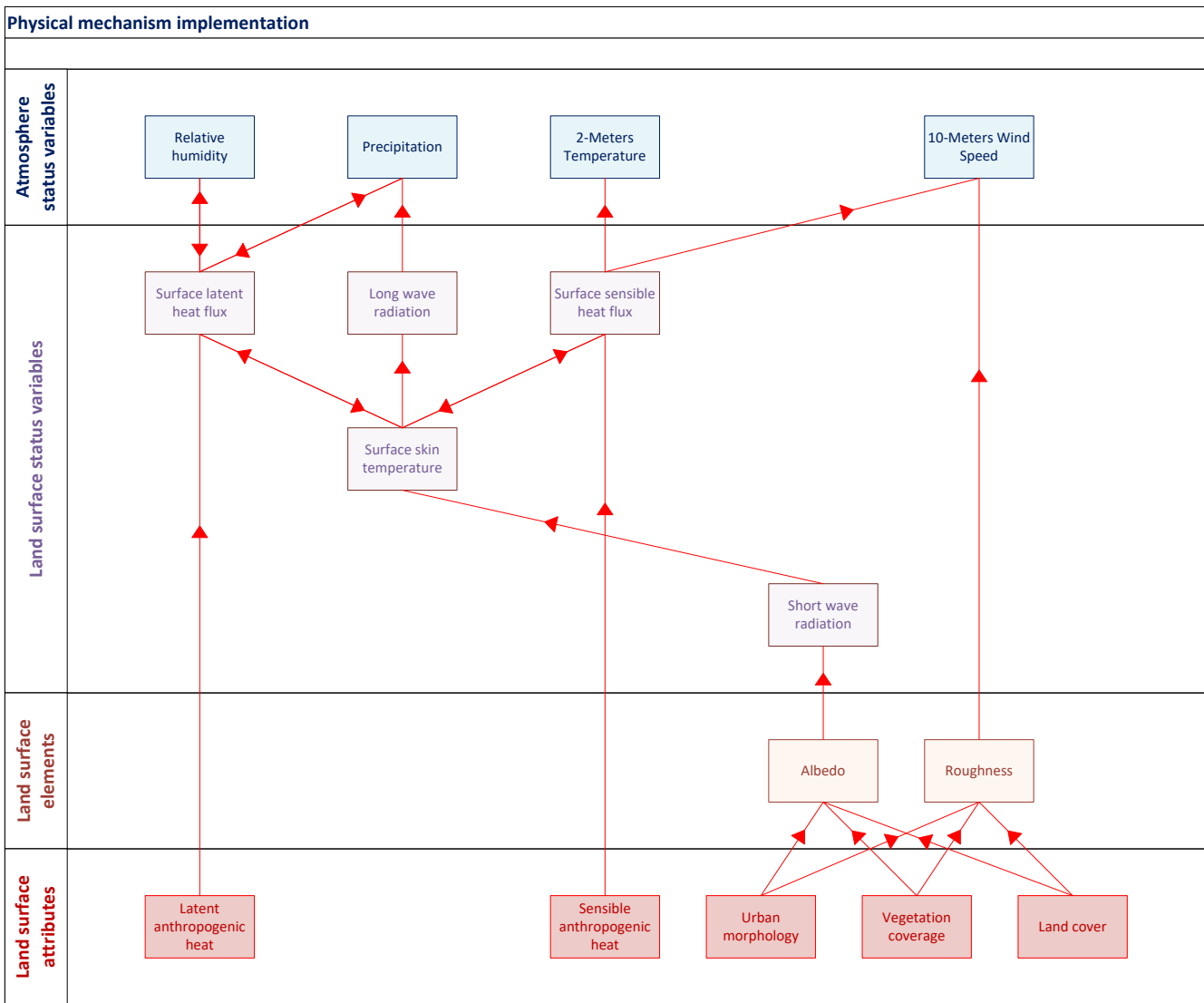
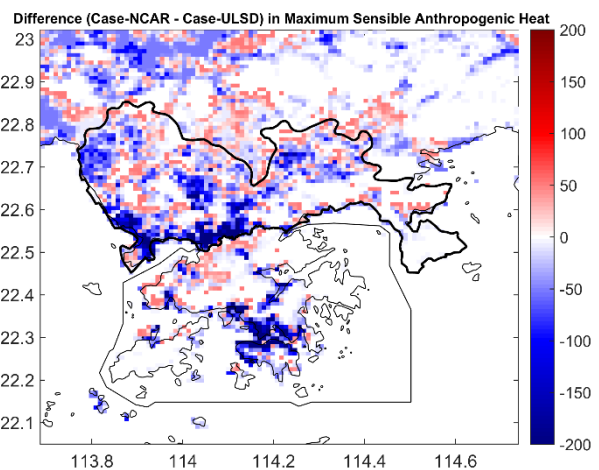
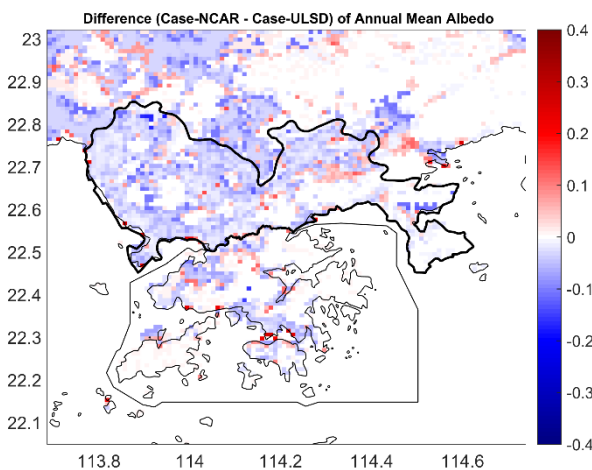


Figure 11: The mechanism in propagating the detailed spatial features from the land surface attributes to the atmospheric variables.

For example, the 2-meters air temperature has a similar spatial pattern, like the ones in the albedo and sensible anthropogenic heat, whatever in Case-NCAR and Case-ULSD. Moreover, this propagating mechanism can be seen from the transmission of the difference between the two cases in the aforementioned intermediate variables. The spatial differences in land cover, vegetation coverage between Case-NCAR, and Case-ULSD caused the spatial difference in albedo (Figure 12a). The differences in albedo and sensible anthropogenic heat (Figure 11b) led to the spatial differences in the sensible heat flux (Figure 12c). In turn, these spatial differences led to the spatial difference in 2-meters temperature (Figure 12d).

(a)

(b)



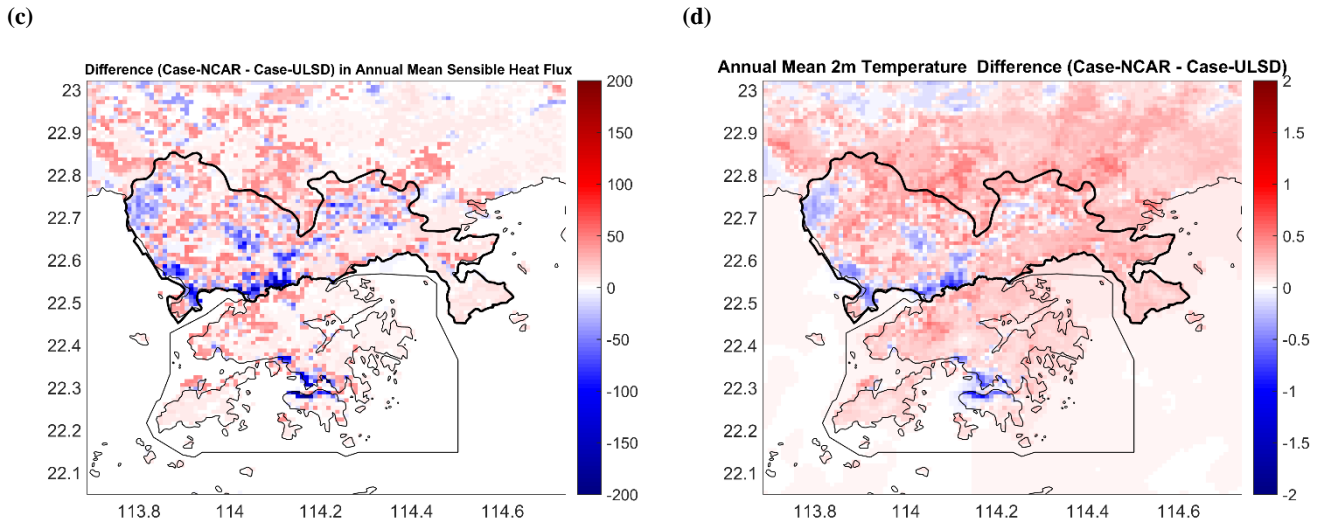


Figure 12: Differences (Case-NCAR - Case-ULSD) in the albedo (a) annual mean sensible heat (a), the annual mean 2-meters air temperature (a).

5 Distortion of modeling is nothing short of the problem in the climate modeler community. The spatial or temporal distortion in climate modeling means that the simulation result is divergent with the observation data spatially or temporally. Many scientists have addressed the problem since the 1980s and went on improving modeling practice in response to it (Warner, 2011). While improving the modeling practice, quality assurance should not be neglected in the climate modeling project (Warner, 2011), from an engineering project point of view. Quality assurance is “a part of quality management, but it is focused on providing confidence

10 that quality requirements will be fulfilled” (ISO, 2005). However, quality assurance is overlooked because the modeler has less awareness of the sensitivity of the model (Warner, 2011). As a typical case of being careless, the IDQC, which makes sure the input data are accurate, is often ignored. Incoming quality control (IQC) is a familiar concept in production, which refers to the quality checking and evaluating incoming material. In the scenario of climate modeling, IQC is the quality control in the very first stage, which refers to the quality checking and evaluating incoming data before it will be delivered to the modeling system. From our

15 findings, the IDQC indeed improved the modeling results at the spatial dimension, creating substantially more spatial details in simulation results.

On the other hand, the modeled variables of both cases have the same temporal variation behaviors as its corresponding observed ones, irrespective of the 2-meters air temperature, surface temperature, relative humidity, precipitation, or 10-meters wind speed. However, the values of PSS of 2-meters air temperature, surface temperature, and 10-meters wind speed in Case-ULSD are a little

20 bit higher than those in Case-NCAR. The differences indicate that the modeling quality of Case-ULSD does not significantly improve when comparing to that of Case-NCAR. Worse still, the values of PSS of relative humidity and precipitation in Case-ULSD are lower than those in Case-NCAR, which means the modeling quality of Case-ULSD in these variables is worse than the ones of Case-NCAR. Similarly, the annual mean values of the specified interval of the PDFD of Case-ULSD do not have a significant improvement in the modeled 2-meters air temperature, surface temperature, precipitation, and 10-meters wind speed than the ones

25 of Case-NCAR. It is even worse than the ones of Case-NCAR in the modeled relative humidity, which means the high-quality input data did not positively affect on the accuracy of the modeling results.

It is a valuable scientific question to probe why high-quality land surface data does not improve the accuracy of the modeling results. The modeled humidity and precipitation are impacted majorly by two soil variables (soil water permeability and initial relative soil moisture). We just used the default values of these two variables provided by NCAR in Case-ULSD. It would be a reason why the

30 modeled humidity and precipitation never improved. Moreover, many physical parameterization processes involved in the physics components (Cumulus Parameterization, Microphysics, Radiation Planetary Boundary Layer, Surface layer, Land Surface Model, and Urban Canopy Model) of WRF ARW Noah LSM/SLUCM model. The default parameters of these processes were set suitable for the coarse resolution land surface data to ensure overall robustness in global uses. They accordingly cannot guarantee that the

adaptability for the fine resolution land surface data. It is the main reason to the question why the quality of land surface data did not transit the positive effects on the quality of modeling results, which sheds light on the direction in urban climate model development. The land surface data will become more and more refined in the future, and the parameterization schemes of the numerical model need to adapt these more refined data. Perhaps the parameterization schemes need to be further improved and consider more physical processes involved in the model.

Also, we only focused on the IDQC in the land surface data in this study. The soil attribute and initial condition should also be considered to conduct the IDQC for improving the quality of modeling results. Moreover, the quality of FNL data is critical to the accuracy of the lateral boundary conditions. The resolution of the currently used FNL data is relatively coarse. Accordingly, further follow-up work can be considered to improve the FNL data by employing variational assimilation to improve the quality of urban climate modeling results.

The most significant improvement in modeling results by the incoming data quality control is that the model produced more distinct spatial details in the fine grids. Urban climate modeling is a meteorological downscaling application that is employed to produce the fine-scale spatial and temporal details from the coarse resolution's meteorological data (Hong et al., 2014). It is, therefore, the critical indicator for the urban climate to precisely construct the fine-scale details at their utmost in the interested area (Lo et al., 2008). In this study, we conducted two meteorological downscaling cases by the dynamical limited-area model with the same lateral boundary condition of coarse-resolution data and two different land surface data. And then, we compare which case constructs more fine details in the interested area. From the dynamical meteorological downscaling point of view, Case-USLD has a significant improvement in the performance of modeling results than the Case-NCAR. Admittedly, the incoming data quality contributes to improving modeling performance. The sensitivity of land surface processes to input land surface data is also vital for enhancing modeling performance. We suggested improving the sensitivity of the urban land surface model to the input land surface data for the further step in the atmospheric model development.

Code availability.

The source codes of the WRF ARW modeling system package (WRF Model 3.7.1 and WRF Pre-Processing System (WPS) 3.7.1) are publicly available at http://www2.mmm.ucar.edu/wrf/users/download/get_source.html.

The configuration profile of the WRF ARW modeling system (namelist.wps and namelist.input), the changes in the WRF ARW modeling system (the source codes for inputting the 2D anthropogenic sensible and latent heat), geo_data_refinement processing package and wrf_input_refinement processing package are available upon request from the corresponding author.

Data availability.

2010 NCEP FNL (Final) Operational Global Analysis Dataset is available at <https://rda.ucar.edu/datasets/ds083.2/>.

Completed Dataset of WRF Preprocessing System (WPS) Geographical Input Data is publicly available at http://www2.mmm.ucar.edu/wrf/users/download/get_sources_wps_geog.html.

2010 PRD Observation Locations, 2010 PRD Urban Land Surface Dataset, 2010 PRD 2-meter Air Temperature, 2010 PRD 10-Meters Wind Speed, 2010 PRD Precipitation, and 2010 PRD Relative Humidity are available upon request from the corresponding author.

2010 MODIS/Aqua Land Surface Temperature and Emissivity (LST/E) product is publicly available at https://lpdaac.usgs.gov/dataset_discovery/modis/modis_products_table/myd11a1_v006.

Modeling Variables for Model Evaluation (T2, TSK, U10, V10, RAINC, RAINNC, RH2, and SWDOWN) is available upon request from the corresponding author.

Author contributions. ZL, as the leading author, designed the model configuration, conducted the model run, conceived and designed the experiment and the analysis, performed the experiment and the analysis, contributed data, developed the related software

packages, and wrote the paper. BW contributed the ideas in the explanations of the physical mechanisms, designed the model configuration, collected the data, designed the analysis methods, and programmed some related software packages. YZ collected the data, performed the analysis, and critically revised the paper. HW supported the computer systems and checked the paper for language errors.

5

Competing interests. The authors declare that they have no conflict of interest.

References

- Anthes, R. A.: Regional models of the atmosphere in middle latitudes. *Monthly weather review*, 111(6), 1306-1335, 1983.
- Bruyère, C. L., Done, J. M., Holland, G. J., & Fredrick, S.: Bias corrections of global models for regional climate simulations of high-impact weather. *Climate Dynamics*, 43(7-8), 1847-1856, 2014.
- Chen, F., Kusaka, H., Tewari, M., Bao, J. W., & Hirakuchi, H.: Utilizing the coupled WRF/LSM/Urban modeling system with detailed urban classification to simulate the urban heat island phenomena over the Greater Houston area. In *Fifth Symposium on the Urban Environment* (pp. 9-11), 2004.
- Dudhia, J.: A history of mesoscale model development. *Asia-Pacific Journal of Atmospheric Sciences*, 50(1), 121-131, 2014.
- Hong, S. Y., & Kanamitsu, M.: Dynamical downscaling: fundamental issues from an NWP point of view and recommendations. *Asia-Pacific Journal of Atmospheric Sciences*, 50(1), 83-104, 2014.
- ISO, B.: 9000: 2005 Quality management systems. Fundamentals and vocabulary. British Standards Institution, 58, 2005.
- Kain, J. S., Weiss, S. J., Bright, D. R., Baldwin, M. E., Levit, J. J., Carbin, G. W., ... & Thomas, K. W.: Some practical considerations regarding horizontal resolution in the first generation of operational convection-allowing NWP. *Weather and Forecasting*, 23(5), 931-952, 2008.
- Keyser, D., & Uccellini, L. W.: Regional models: Emerging research tools for synoptic meteorologists. *Bulletin of the American Meteorological Society*, 68(4), 306-320, 1987.
- Li, Z., Zhou, Y., Wan, B., Chen, Q., Huang, B., Cui, Y., & Chung, H.: The impact of urbanization on air stagnation: Shenzhen as case study. *Science of The Total Environment*, 664, 347-362, 2019.
- Li, Z., Zhou, Y., Wan, B., Chung, H., Huang, B., & Liu, B.: Model evaluation of high-resolution urban climate simulations: using the WRF/Noah LSM/SLUCM model (Version 3.7. 1) as a case study. *Geoscientific Model Development*, 12(11), 4571-4584, 2019.
- NASA EOSDIS Land Processes DAAC/USGS Earth Resources Observation and Science (EROS) Center.: MODIS/Aqua Land Surface Temperature and Emissivity Daily L3 Global 1 km Grid SIN, 2012. Retrieved January 13, 2017 from <https://e5eil01.cr.usgs.gov/ops/esir/10960.zip>.
- National Center for Atmospheric Research.: Completed Dataset and the New Static Data Released with v3.7 of WRF Preprocessing System (WPS) Geographical Input Data. [Data file], 2016. Retrieved March 22, 2016 from http://www2.mmm.ucar.edu/wrf/users/download/get_sources_wps_geog.html.
- National Centers for Environmental Prediction/National Weather Service/NOAA/U.S. Department of Commerce.: NCEP FNL Operational Model Global Tropospheric Analyses, continuing from July 1999. [Data file], 2016. Retrieved March 22, 2016 from <https://rda.ucar.edu/datasets/ds083.2/>.
- Oreskes, N., Shrader-Frechette, K., & Belitz, K.: Verification, validation, and confirmation of numerical models in the earth sciences. *Science*, 263(5147), 641-646, 1994.
- Sertel, E., Robock, A., & Ormeci, C.: Impacts of land cover data quality on regional climate simulations. *International Journal of Climatology*, 30(13), 1942-1953, 2010.

Tewari, M., Chen, F., Kusaka, H., & Miao, S.: Coupled WRF/Unified Noah/urban-canopy modeling system. NCAR WRF Documentation. Boulder: NCAR, 1-20, 2007. Retrieved April, 9, 2015, from <http://www.ral.ucar.edu/research/land/technology/urban/WRF-LSM-Urban.pdf>.

Teutschbein, C., & Seibert, J.: Bias correction of regional climate model simulations for hydrological climate-change impact studies: Review and evaluation of different methods. *Journal of Hydrology*, 456, 12-29, 2012.

Warner, T. T.: Quality assurance in atmospheric modeling. *Bulletin of the American Meteorological Society*, 92(12), 1601, 2011.

World Meteorological Organization.: Guide to the Quality Management System for the Provision of Meteorological Service for International Air Navigation. World Meteorological Organization, 2014.

10

15

20

25

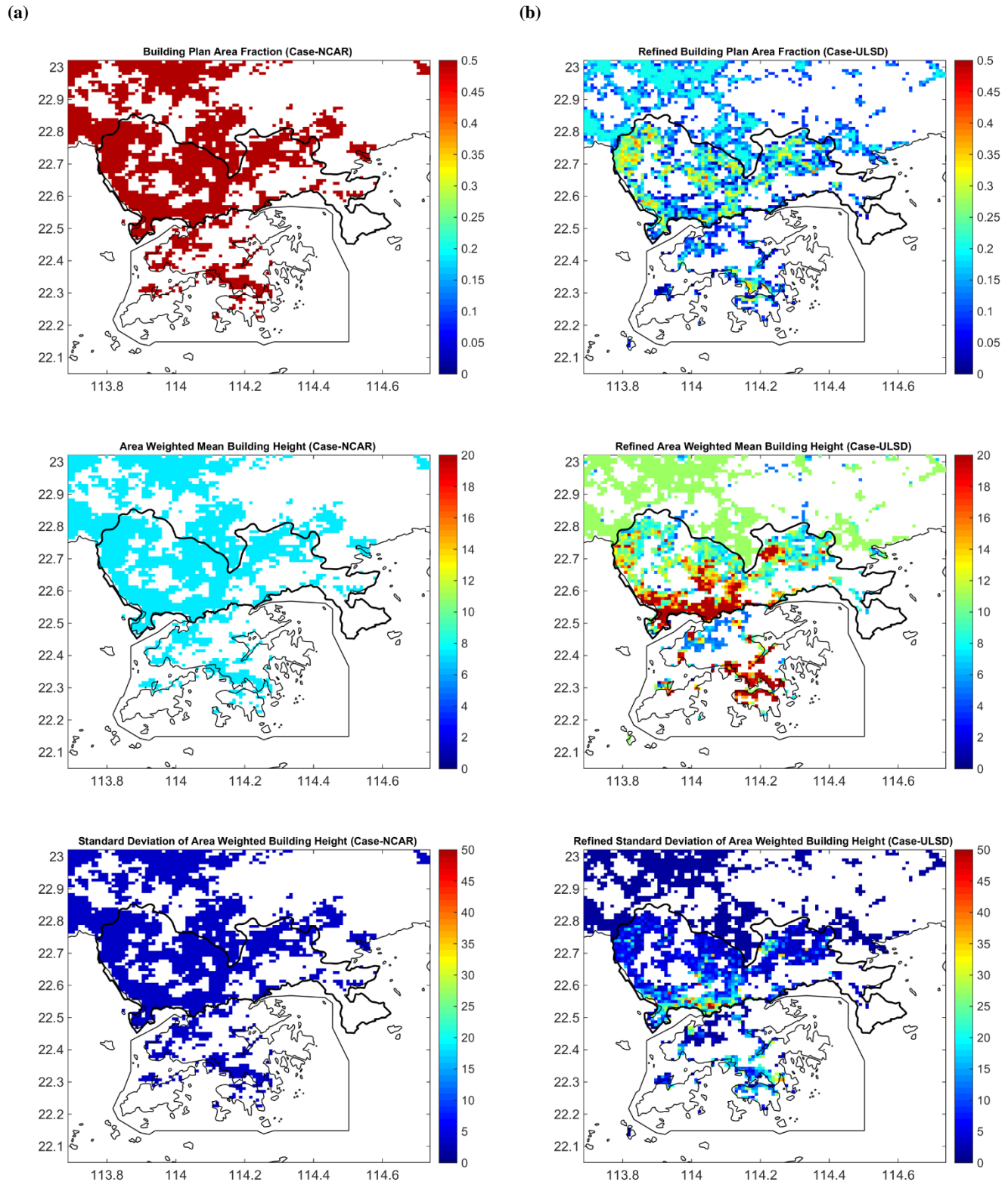
30

35

40

Supplementary Material

S1 Comparisons in the urban morphology indicators



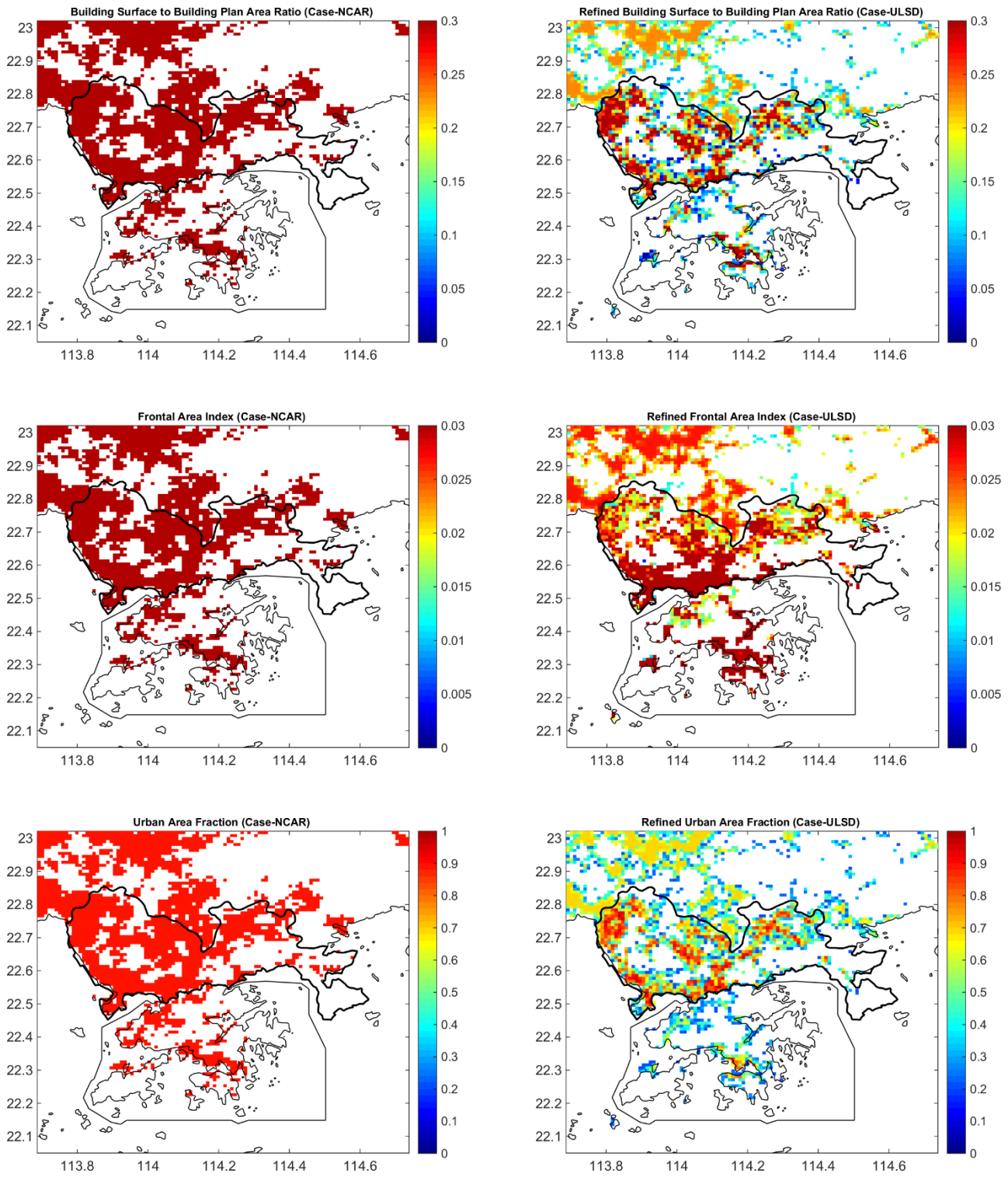
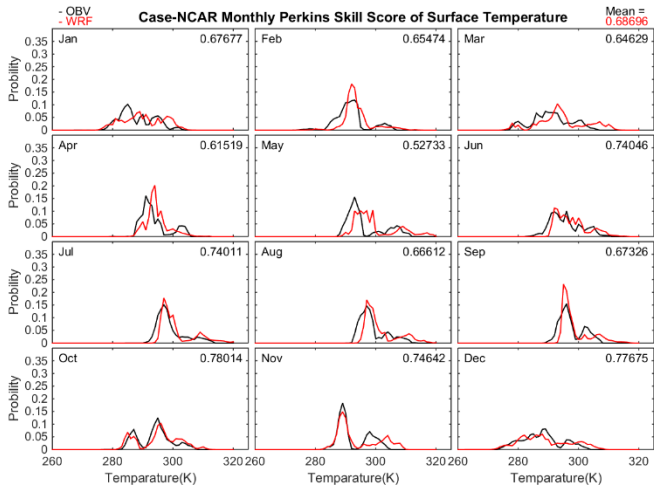


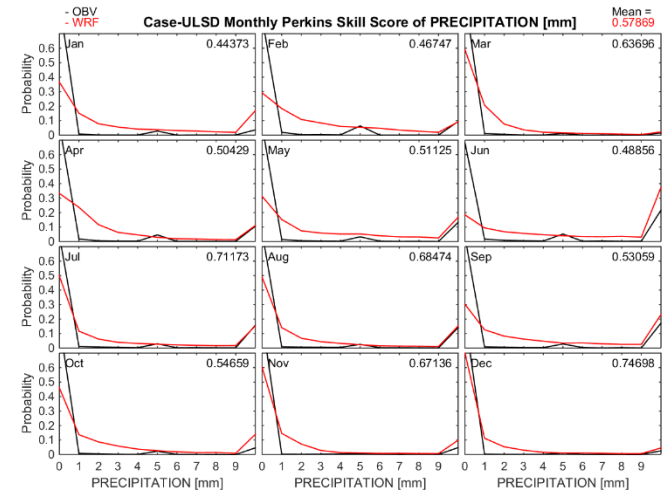
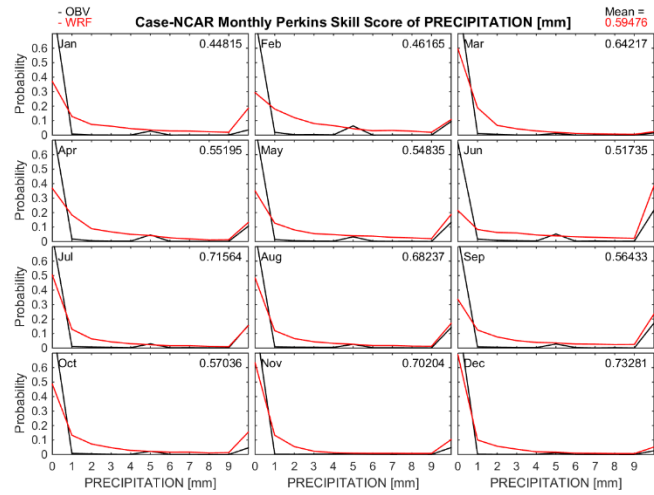
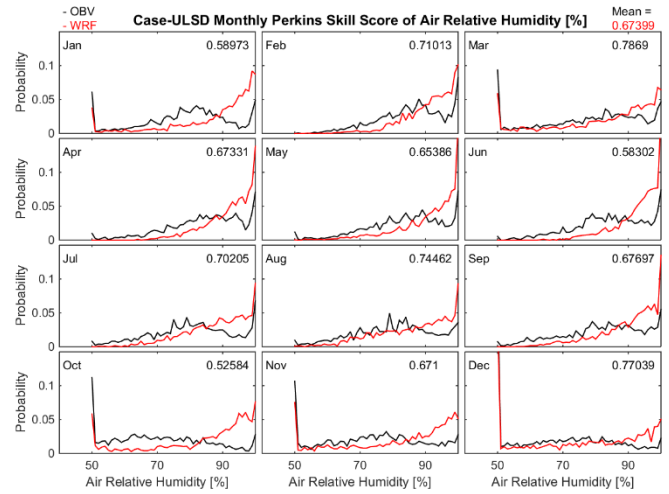
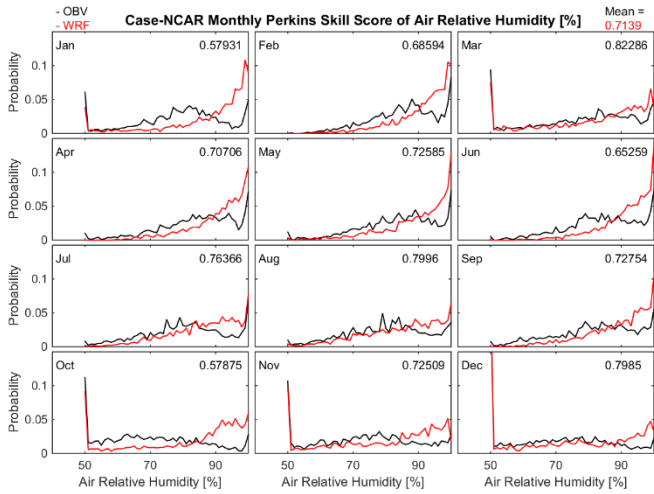
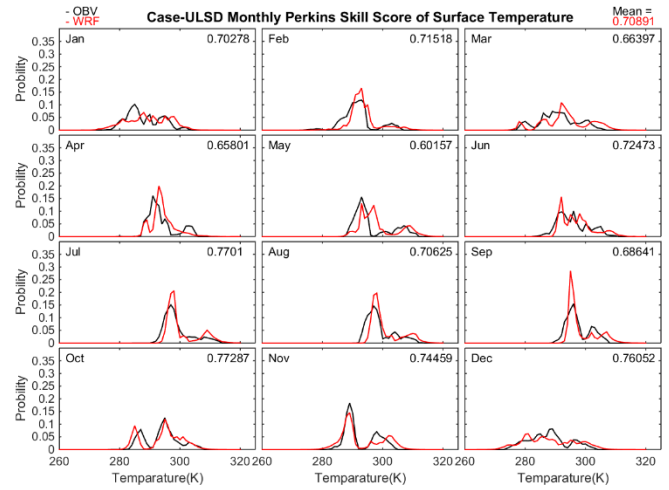
Figure S1: Case-NCAR (a) and Case-ULSD (b, data source: Li et al., 2019 a and b) building plan area fraction, area weighted mean building height, standard deviation of area weighted mean building height, building surface to building plan area ratio, frontal area index, and urban area fraction.

S2 Comparisons in the PSS monthly variations of surface temperature, relative humidity, precipitation, and wind speed

(a)



(b)



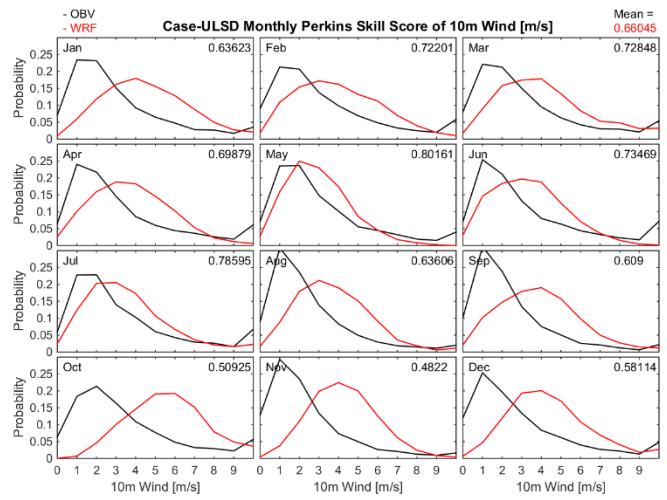
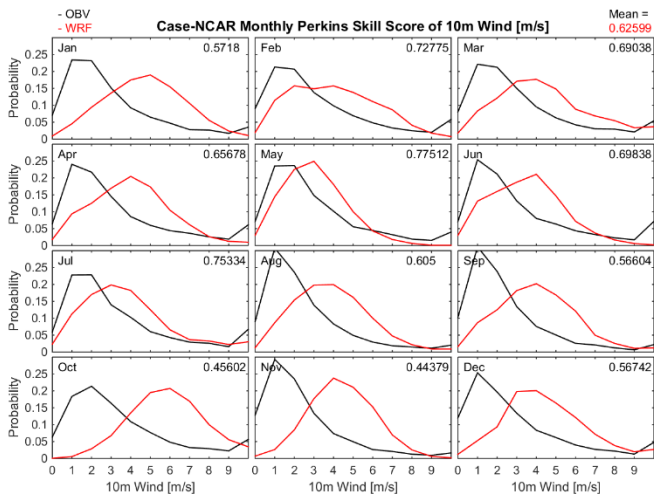
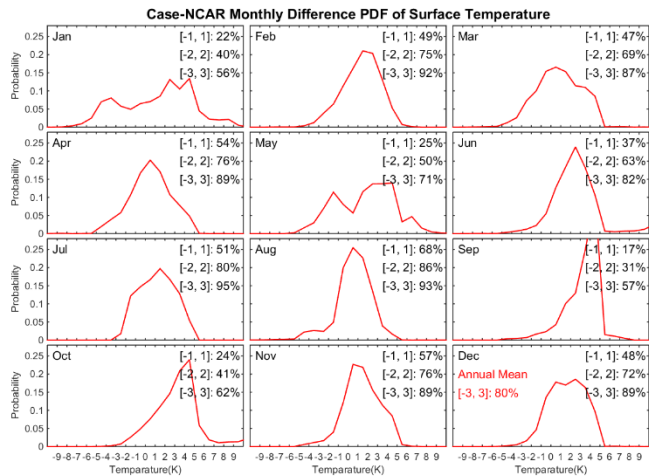


Figure S2: PSS of surface temperature, relative humidity, precipitation, and 10-meters wind of Case-NCAR (a) and Case-ULSD (b, data source: Li et al., 2019 a and b).

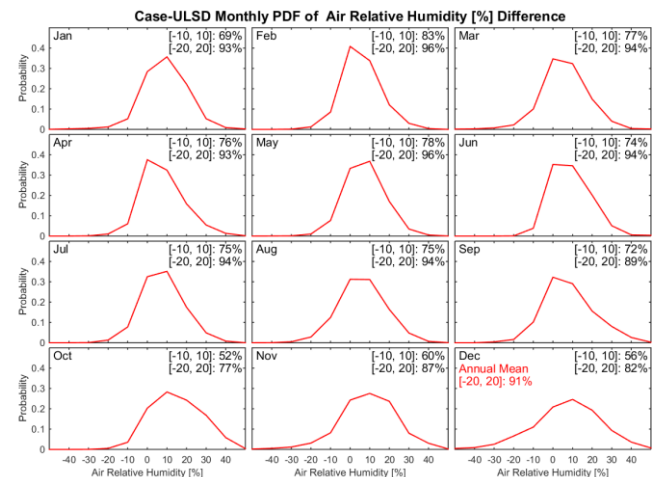
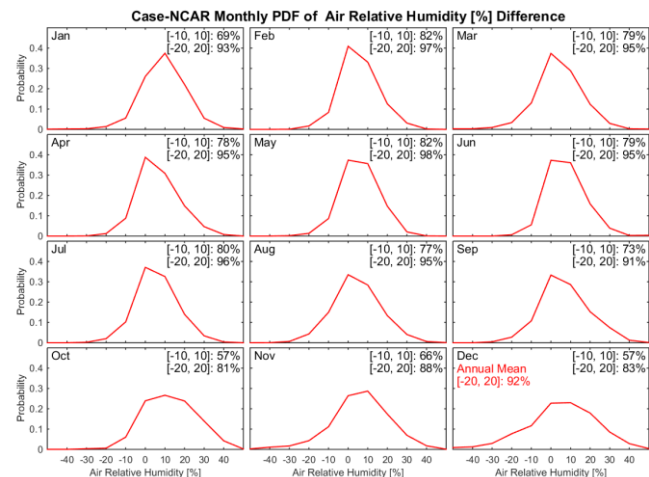
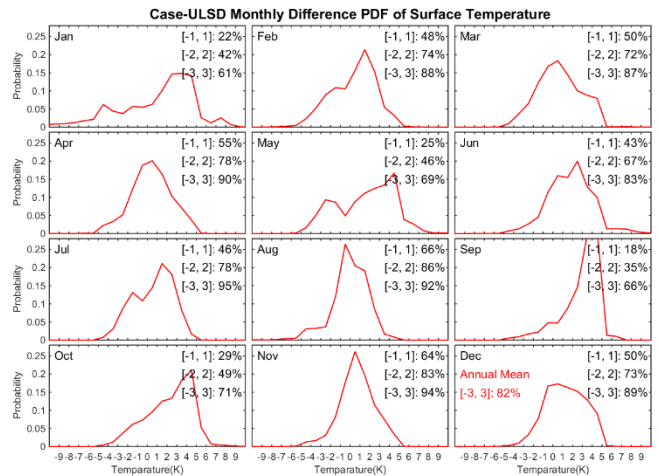
S3 Comparisons in the PDFD monthly variations of surface temperature, and relative humidity, precipitation, and wind

5 speed

(a)



(b)



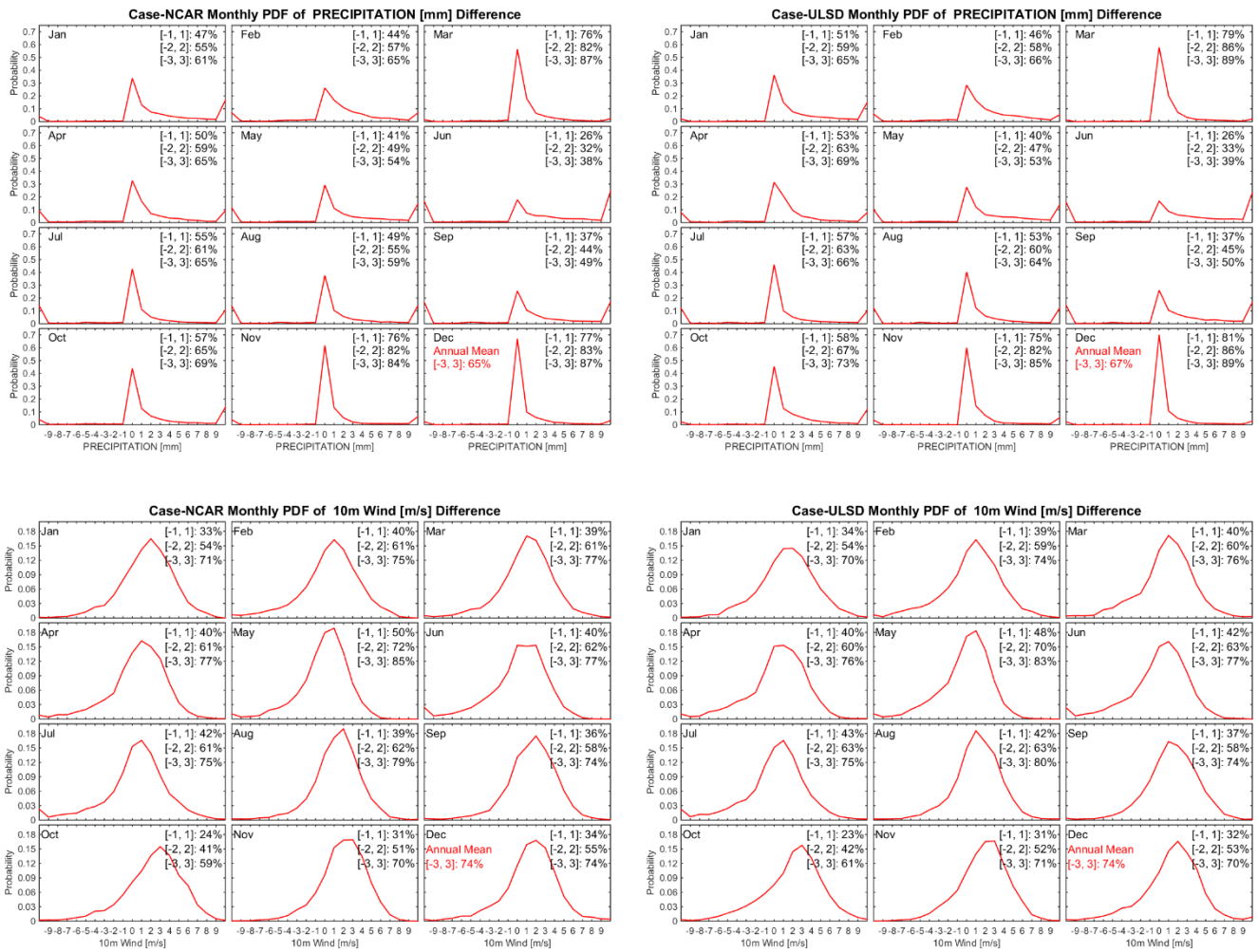
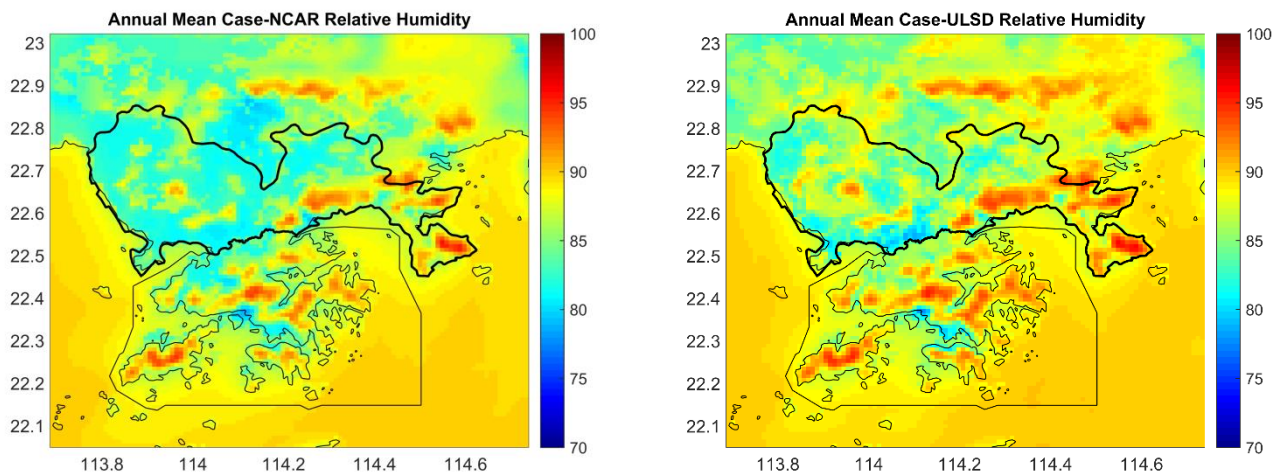


Figure S3: PDF of the difference of surface temperature, relative humidity, precipitation, and 10-meters wind of Case-NCAR (a) and Case-ULSD (b, data source: Li et al., 2019 a and b).

5 S4 Comparisons in the spatial distribution of surface temperature, relative humidity, precipitation, and wind speed



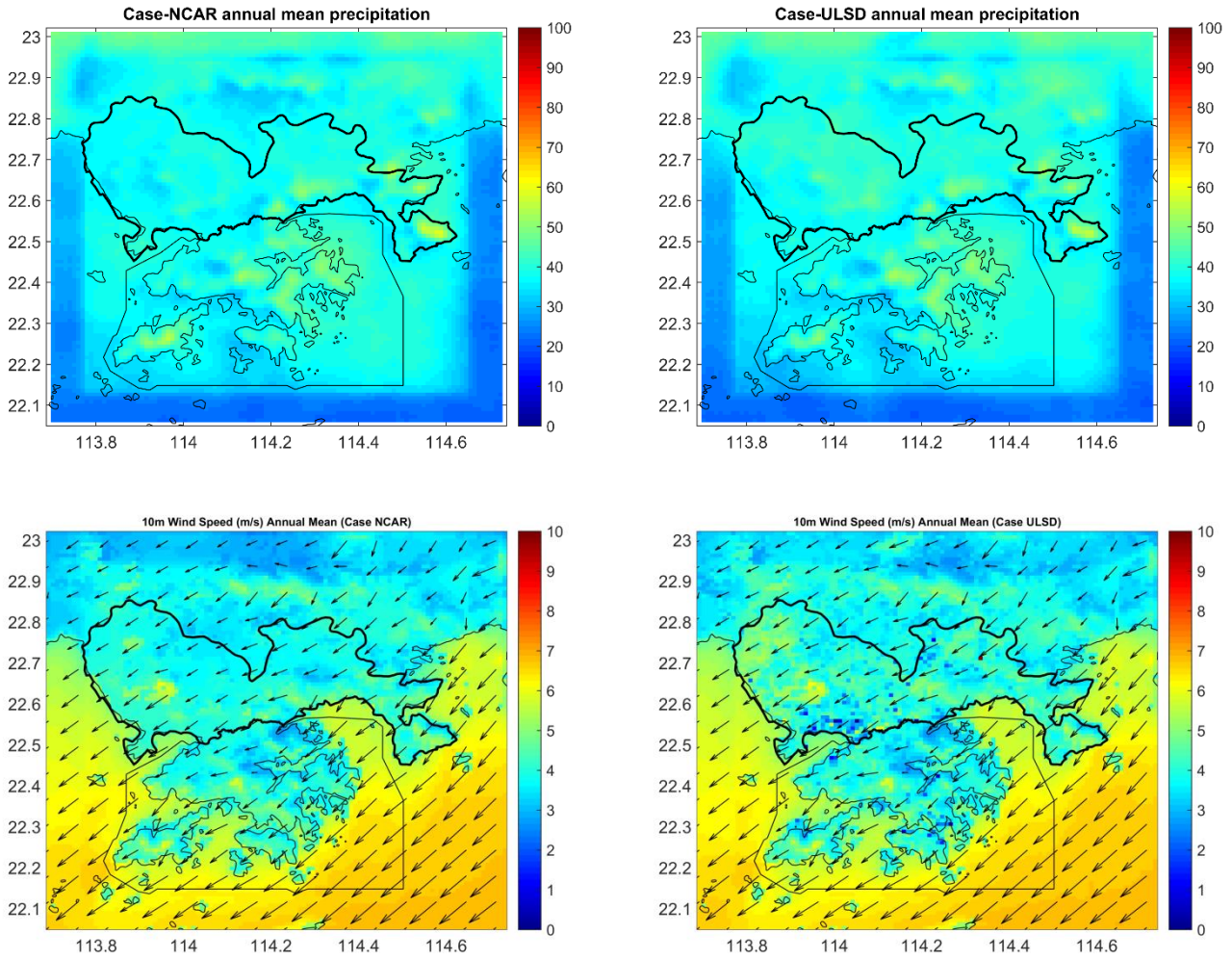
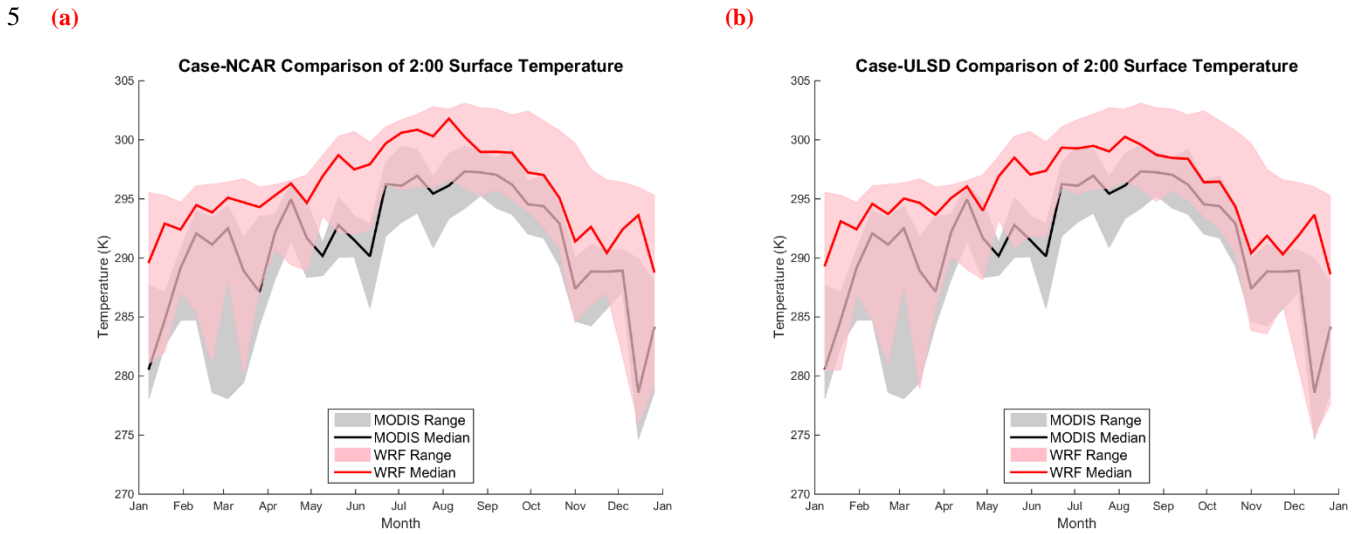


Figure S4: Spatial distribution of relative humidity, precipitation, and 10-meters wind of Case-NCAR (a) and Case-ULSD (b).

S5 Comparisons in the TCSV of surface temperature, and relative humidity, precipitation, and wind speed



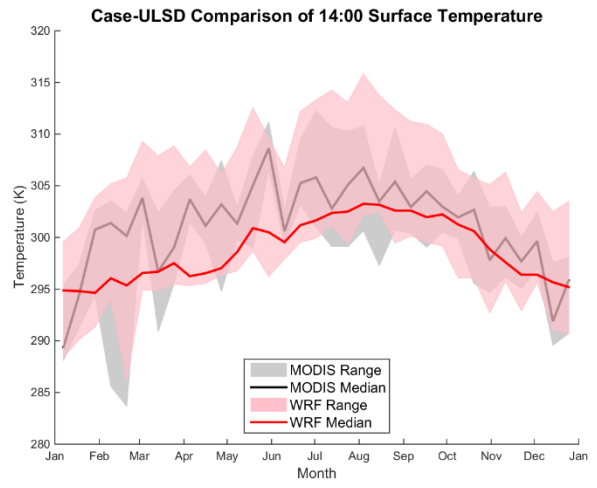
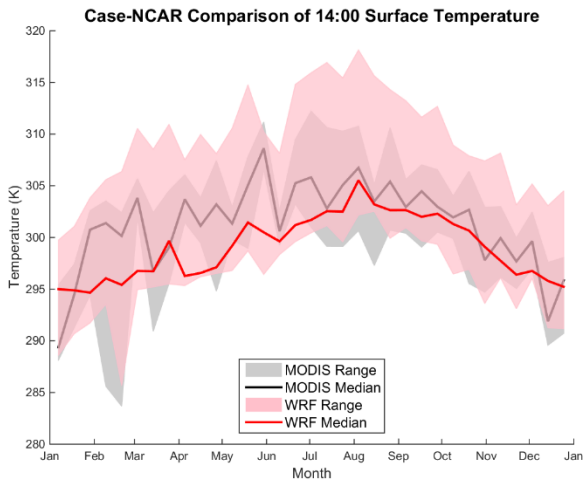
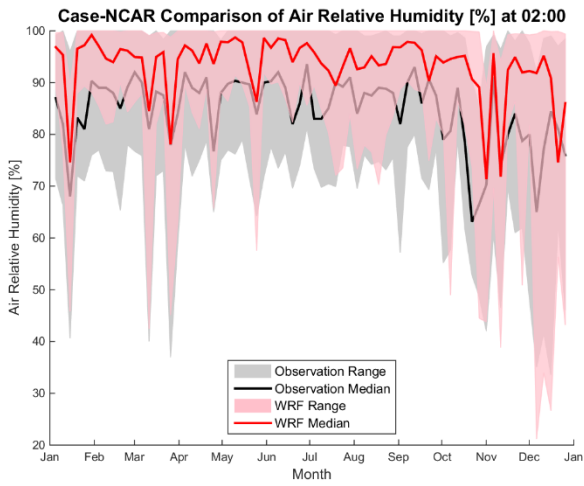
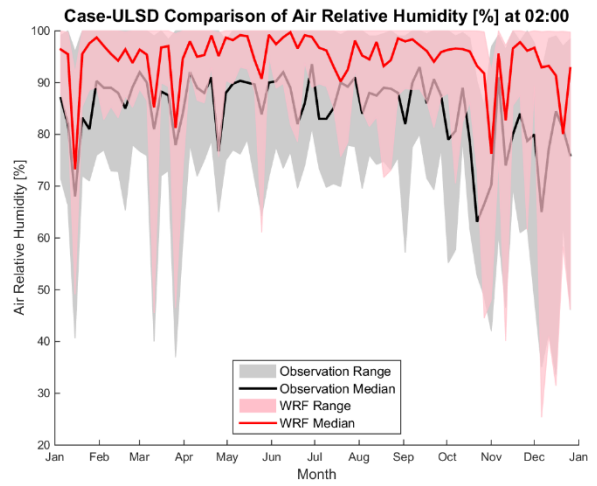


Figure S5: TCSV of the surface temperature of Case-NCAR (a) and Case-ULSD (b, data source: Li et al., 2019 b) at 2:00 and 14:00.

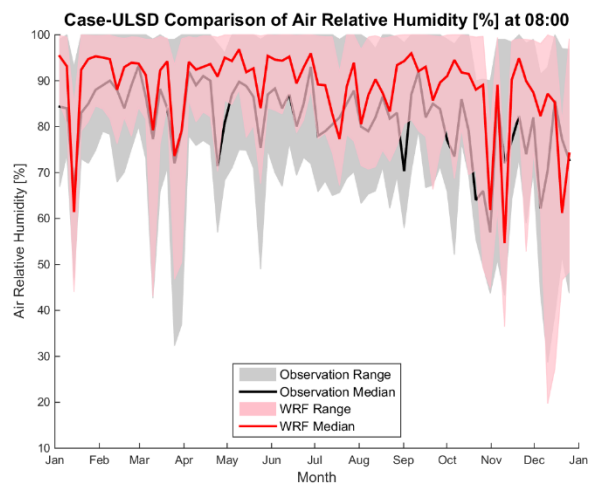
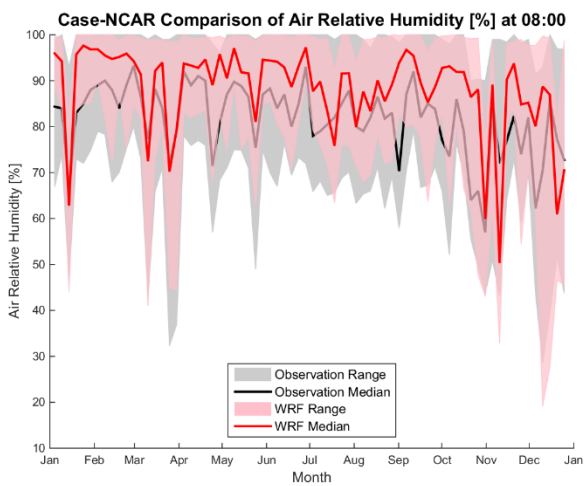
(a)

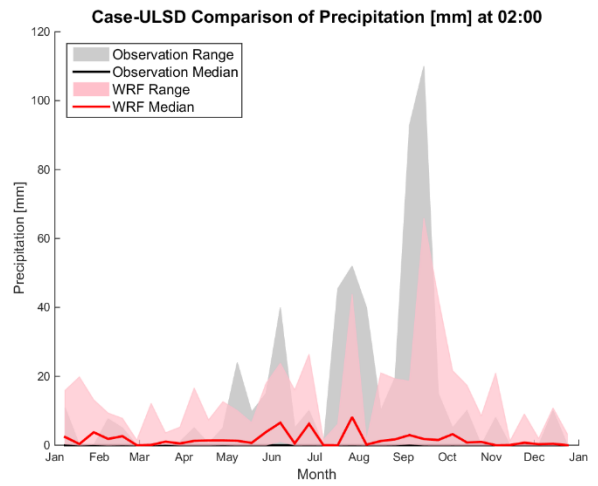
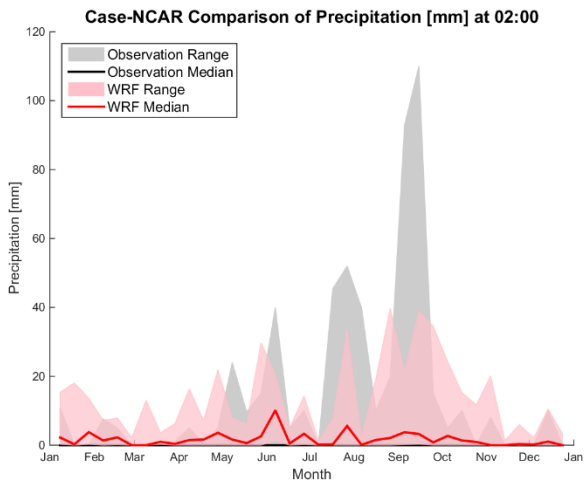
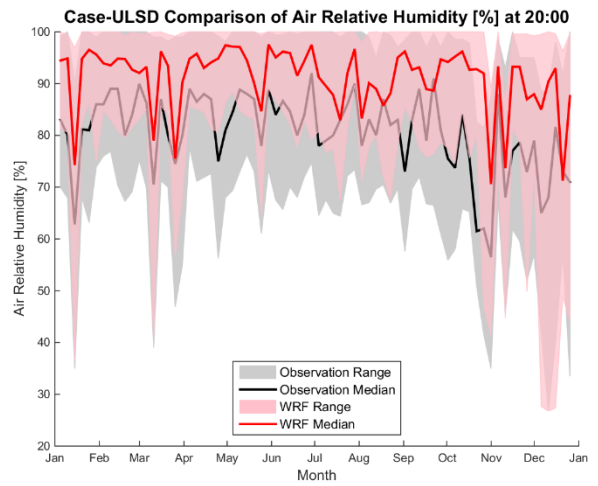
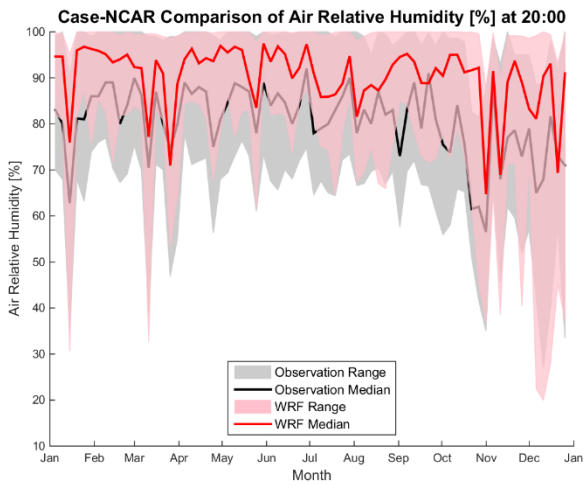
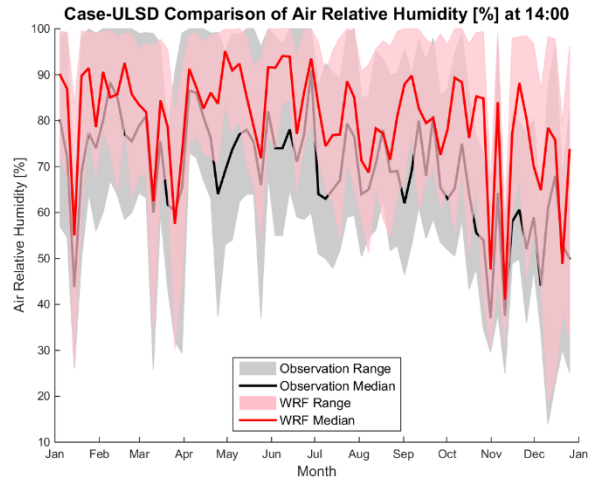
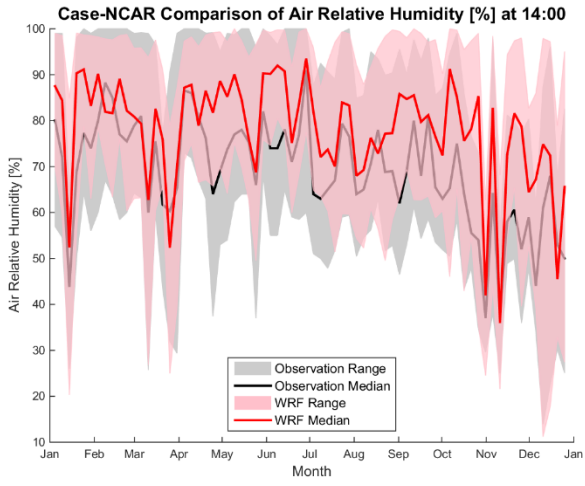


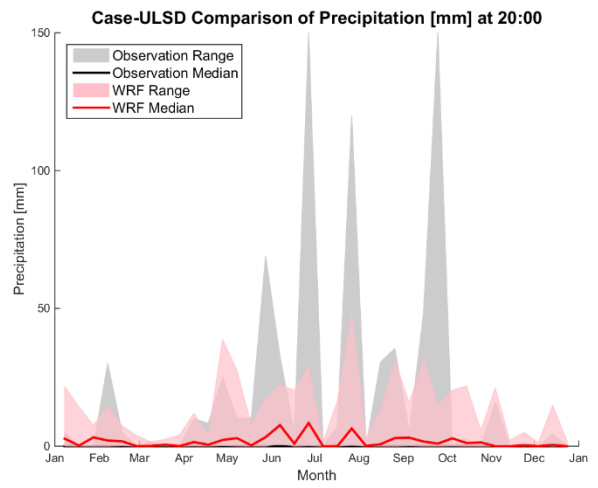
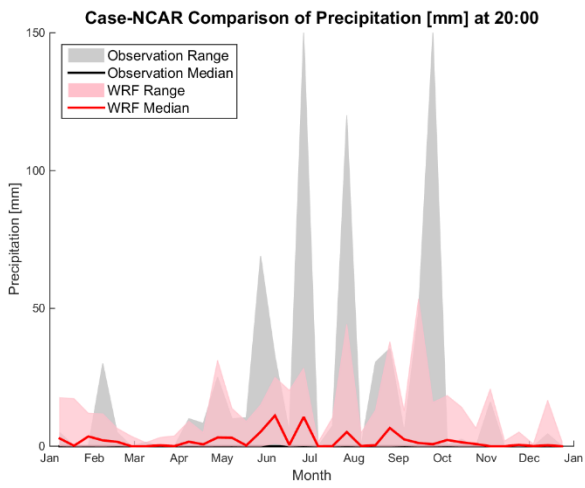
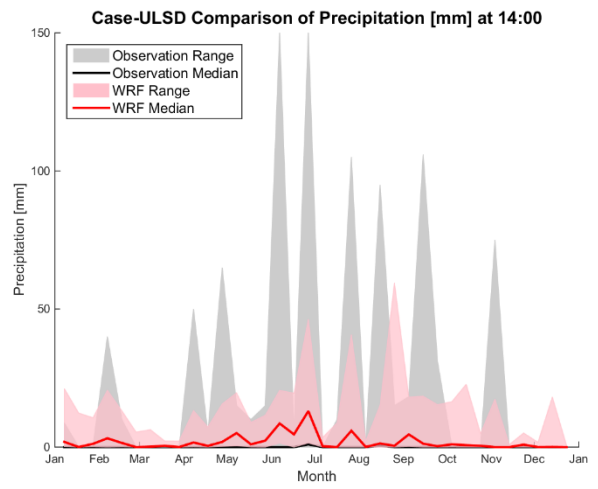
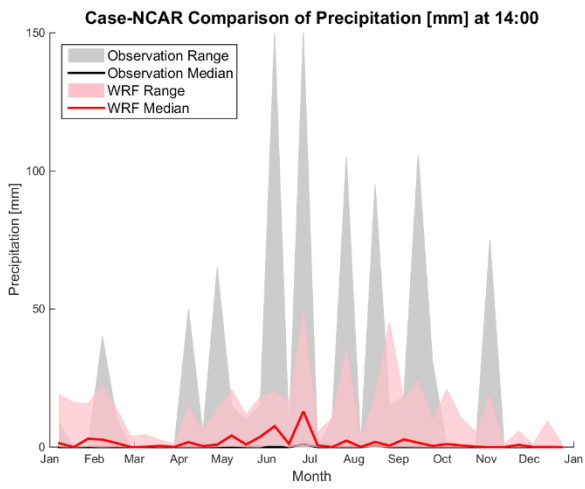
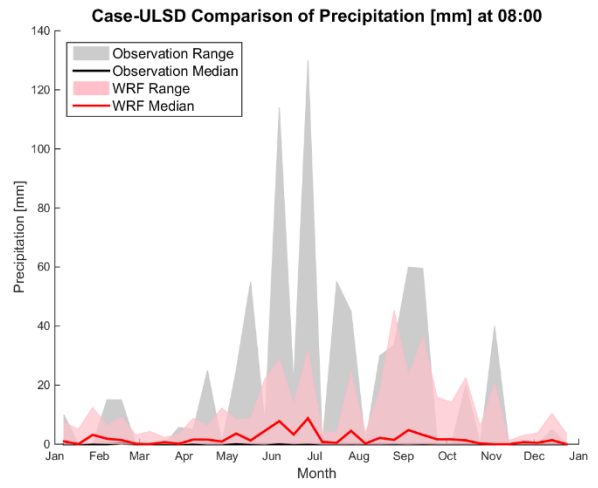
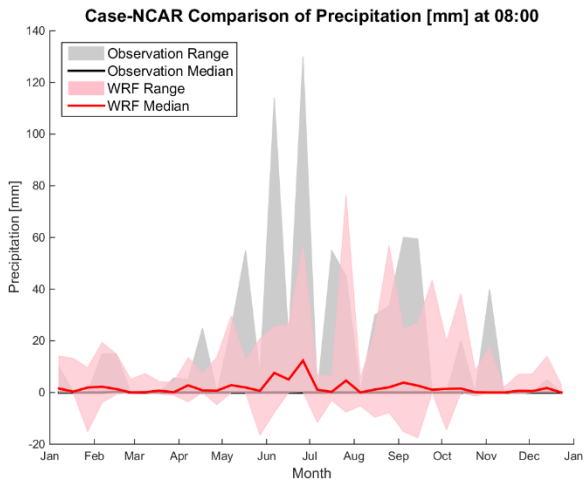
(b)

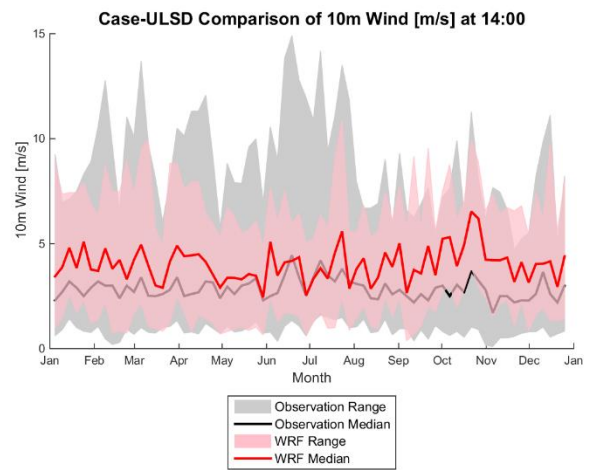
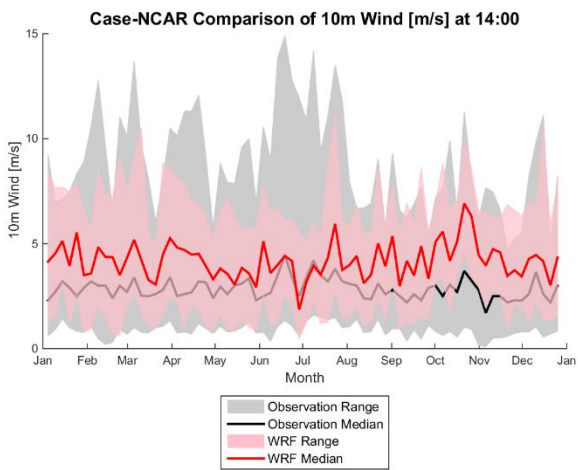
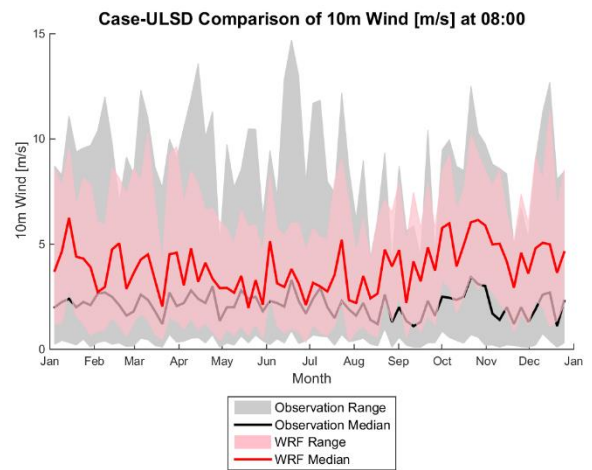
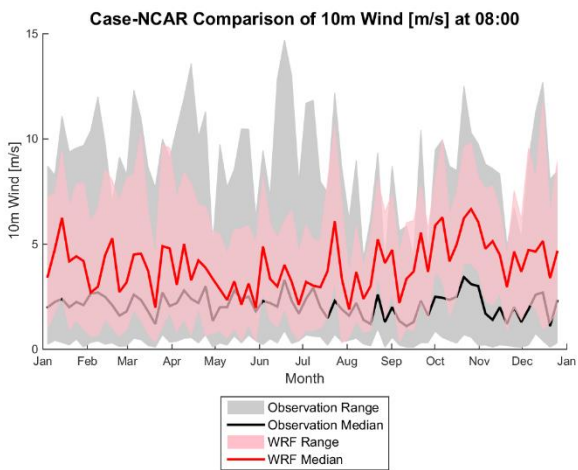
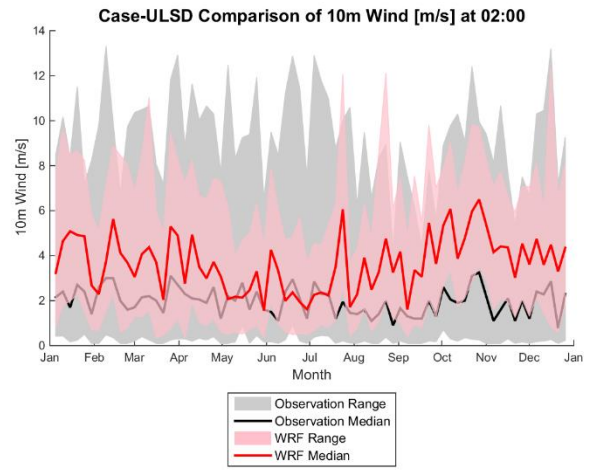
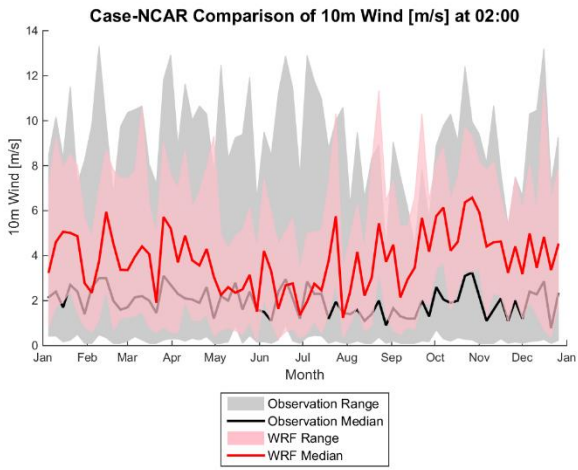


5









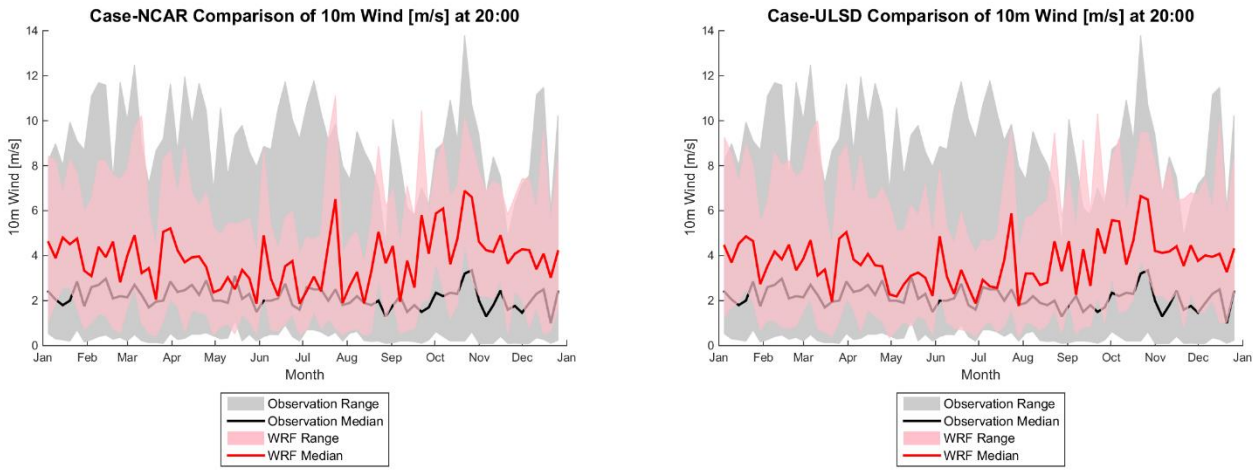


Figure S6: TCSV of relative humidity, precipitation, and 10-meters wind of Case-NCAR (a) and Case-ULSD (b, data source: Li et al., 2019 b) at 2:00, 8:00, 14:00, and 20:00.

S6 Model setting

- The model settings of both comparative urban climate simulation cases are the same as that of the companion study (Li et al., 2019 b). We set four telescoping nested domains with a center at 22°39'30" N, 114°11'30" as the horizontal domain configuration, and a set of eta level with 51 members for each horizontal domain as the vertical grid spacing configuration. Moreover, we configured the physics components with the schemes in Table S1.

Table S1: The configuration of the physics components (Li et al., 2019 b).

Component	Scheme
Cumulus	New Simplified Arakawa-Schubert
Microphysics	WDM5
Radiation	RRTMG
Planetary Boundary Layer	Bougeault–Lacarrere
Surface Layer	Revised MM5
Land Surface Model	Noah LSM
Urban Canopy Model	Single-layer