

Accounting for forest management in the estimation of forest carbon balance using the dynamic vegetation model LPJ-GUESS (v4.0, r9710): Implementation and evaluation of simulations for Europe.

Mats Lindeskog¹, Benjamin Smith^{1,2}, Fredrik Lagergren¹, Ekaterina Sycheva³, Andrej Ficko⁴, Hans Pretzsch³, and Anja Rammig³

¹Department of Physical Geography and Ecosystem Science, Lund University, Sweden.

²Hawkesbury Institute for the Environment, Western Sydney University, Penrith NSW, Australia.

³TUM School of Life Sciences Weihenstephan, Technical University of Munich, Freising, Germany.

⁴Biotechnical Faculty, University of Ljubljana, Slovenia.

Correspondence to: Mats Lindeskog (mats.lindeskog@nateko.lu.se)

Abstract. Global forests are the main component of the land carbon sink, which acts as a partial buffer to CO₂ emissions into the atmosphere. Dynamic vegetation models offer an approach to projecting the development of forest carbon sink capacity in a future climate. Forest management capabilities are important to include in dynamic vegetation models to account for the effects of age and species structure and wood harvest on carbon stocks and carbon storage potential. This article describes the implementation of a forest management module containing even-age/clear-cut and uneven-age/continuous-cover management alternatives in the dynamic vegetation model LPJ-GUESS. Different age- and species-structure initialisation strategies and harvest alternatives are introduced. The model is applied at stand- and European-scale. Different management alternatives are applied in simulations of European beech (*Fagus sylvatica*) and Norway spruce (*Picea abies*) even-aged monoculture stands in Central Europe and evaluated against above-ground standing stem volume and harvested volume data from long-term experimental plots. At European scale, an automated thinning and clear-cut strategy is applied. Modelled carbon stocks and fluxes are evaluated against reported data at the continent and country levels. Including wood harvest in regrowth forests increases the simulated total European carbon sink by 32 % in 1991-2015 and improves the fit to the reported European carbon sink, growing stock and net annual increment (NAI). Growing stock (156 m³ ha⁻¹) and NAI (5.4 m³ ha⁻¹ y⁻¹) densities in 2010 are close to reported values, while the carbon sink density in 2000-2007 (0.085 kgC m⁻² y⁻¹) equates to 63 % of reported values, most likely reflecting uncertainties in carbon fluxes from soil given the unaccounted-for forest land use history in the simulations. The fit of modelled and reported values for individual European countries vary, but NAI is generally closer to reported values when including wood harvest in simulations.

1 Introduction

Forests globally provide ecosystem services including provision of timber, fuel and water, regulation of local climate and hydrology, carbon sequestration, support of biodiversity and recreation (Bonan, 2008; Mori et al., 2017). The effects of climate change on forest productivity and biodiversity may be predicted to be negative due to increased evapotranspiration and reduced rainfall in many forested areas, an increase in extreme events like drought, wild-fires, storms and insect attacks and local or regional extinctions of plant and animal species (Easterling et al., 2000; Seidl et al., 2011; Anderegg et al., 2015; Urban, 2015). On the other hand, productivity may increase due to the fertilising effect of increased nitrogen deposition and higher atmospheric CO₂ levels (Zaehle and Dalmonech, 2011; Luyssaert et al., 2008) as well as shifts in tree species composition and longer growing seasons at high latitudes caused by higher temperatures (Sitch et al., 2015; Morin et al., 2018).

Forests make up the largest portion of the current land carbon sink, and are estimated to have absorbed 20-50 % of CO₂ emitted by fossil fuel combustion and industry during the first decade of this century (Pan et al., 2011; Le Quéré et al., 2018; Pugh et al., 2019). The suggested basis for this carbon uptake is the recent history of the drivers increasing productivity mentioned above, especially increased CO₂, and the recovery of carbon pools in regrowth forests (forests regrowing after natural or anthropogenic stand-destroying disturbances; Pugh et al., 2019). The size of the forest carbon sink has been estimated by using book-keeping methods (Pan et al., 2011; Houghton et al., 2012) and global vegetation models (Luyssaert et al., 2008; Shevliakova et al., 2009; Pugh et al., 2019) but this sink is associated with relatively large uncertainties, resulting in differing estimates using different approaches and models. Key uncertainties include the magnitude of CO₂ fertilisation — which may be limited by soil availability of nutrients such as N and P (Zaehle and Dalmonech, 2011; Jiang et al., 2020) — and the extent of shifting cultivation in the tropics (Heinimann et al., 2017). While the net atmosphere-to-land flux (F_L) is relatively well constrained by atmospheric measurements, large uncertainties in the net land-use and land-cover flux (F_{LULCC}) make the size of the residual (land) sink (F_{RL}) itself uncertain ($F_L = F_{RL} - F_{LULCC}$) (Arneth et al., 2017).

Forests cover 33 % of Europe's land area (Forest Europe, 2015) and store approximately 13 PgC in vegetation and 28 PgC in soils (Pan et al., 2011). The carbon sink of European forests in 2000-2007 has been estimated at 0.27 PgC y⁻¹ or about 12 % of the global carbon sink of established forests (Pan et al., 2011). Europe has been identified as a region where regrowth forests dominate carbon sequestration (Pugh et al., 2019) and has a history of thousands of years of human impact on forest structure and species composition (Perlin, 2005). Forest management practices of the past few hundred years are relatively well documented (McGrath et al., 2015). Depending on the region, different management strategies are applied (Cardellini et al., 2018). The preponderance of young trees and the removal of wood in managed forests influence carbon stocks and fluxes e.g. by increasing productivity and reducing self-thinning, age-related mortality and litter production compared to pristine forests (Zaehle et al., 2006). In addition to the effects on radiative forcing by atmospheric CO₂, forest management influences local climate by changing albedo, evapotranspiration and surface roughness (Luyssaert et al., 2014).

Dynamic vegetation models (DVMs) provide a potential framework for predicting the combined effects of climate and forest management scenarios on forest ecosystem structure and carbon balance. Based on such information, the potential of forest landscapes to contribute to climate change mitigation by maintaining or enhancing carbon sinks, and to climate adaptation through sustained production of forest products and other ecosystem services in the face of climate change, can be assessed. Applications of DVMs to represent climate responses of potential natural vegetation (PNV) have been shown in the past, for example as a basis for nature conservation planning (Hickler et al., 2012). Human management of land, including cropland, pasture and managed forest, has been introduced in a number of global DVMs (Bondeau et al., 2007; Bellassen et al., 2010; Lindeskog et al., 2013; Arneth et al., 2017). Key elements required to represent managed forests in a DVM framework include the ability to initialise a simulation with historical land use, to represent age/size structure of forests stands and their change over time, to account for tree species composition and to apply silvicultural treatments that modify stand composition and structure, like planting, thinning and harvesting.

LPJ-GUESS (Smith et al., 2001; Smith et al., 2014) is a second-generation DVM tailored for regional and global scale applications. It is one of few globally-applicable DVMs that incorporates a detailed representation of forest ecosystem composition and stand dynamics, suitable for the implementation of a forest management scheme. It captures the distribution of European PNV at species level and can make projections of vegetation shifts under future climate scenarios (Hickler et al., 2012). The model has been shown to represent stand-level vegetation growth and succession successfully (Smith et al., 2014). It has been used to estimate forest vulnerability to climate change (Seiler et al., 2015) and carbon mitigation potential of regrowth forests and forests under alternative management scenarios (Pugh et al., 2019; Krause et al., 2020). Earlier versions of LPJ-GUESS have been modified to enable

analysis of clear-cut forest management and the effects of wind damage and insect outbreaks (Lagergren et al., 2012; Jönsson et al., 2012). In this study, we describe the implementation of expanded forest management capabilities including even-age/clear-cut and uneven-age/continuous-cover management in LPJ-GUESS v.4.0. In addition to detailed carbon- and water-cycle processes, this version of the model incorporates a dynamic nitrogen cycle and nitrogen limitation on plant productivity (Smith et al., 2014).

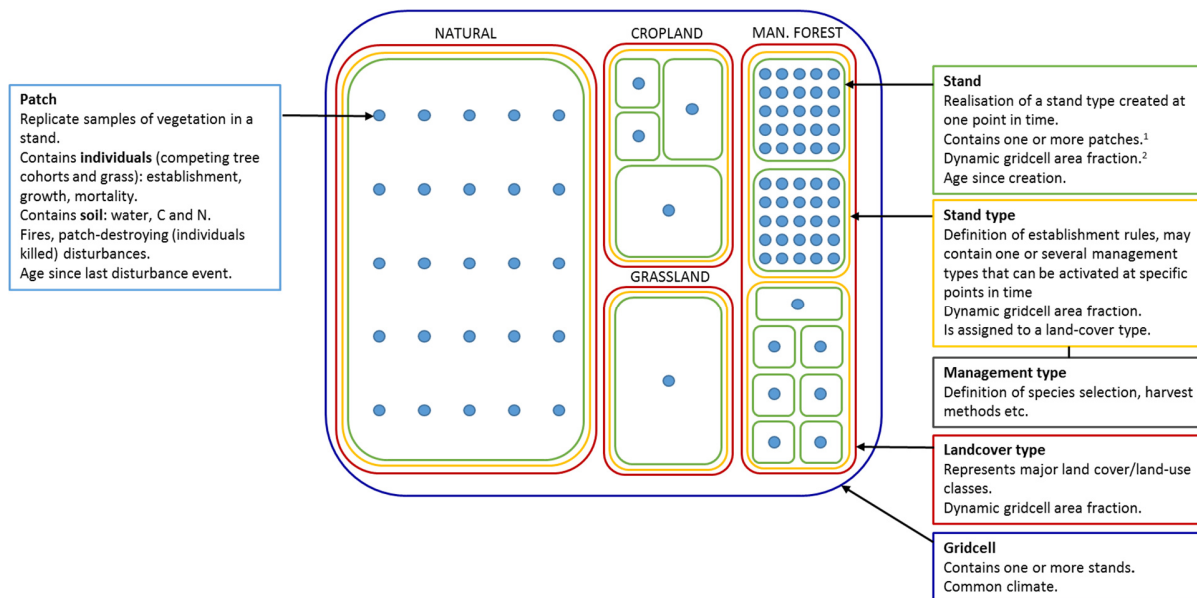
With this, forest management in LPJ-GUESS is for the first time fully integrated in a model version capable of simulating a landscape containing a mosaic of land cover types like PNV, cropland, pasture and peatland and with a sophisticated land-use and land-cover change functionality. Model alternatives for forest stand initialisation (land-use history and species- and age-distribution) and silvicultural management (detailed and automated harvest strategies) are presented in detail. Simulations using different forest management alternatives are evaluated against observations of standing volume and harvest for even-aged monospecific European beech and Norway spruce stands in Central Europe. Using an automated thinning and clear-cutting approach for European forests, we compare modelled carbon stocks and fluxes with observational data and explore the dynamic behaviour of the model under changing climate forcing.

2 Methods

2.1 General description of LPJ-GUESS and overview of simulated processes

LPJ-GUESS (Smith et al., 2001, 2014) simulates the dynamics of terrestrial vegetation and soils across a regional or global grid, forced by meteorological and land-use inputs and soil physical properties. In the absence of land use, each grid-cell encompasses a landscape of natural, climatically determined vegetation (PNV). Replicate patches, nominally 0.1 ha in size, represent disturbance-related variation in stand age across the wider landscape of a grid-cell. In each patch, age cohorts of tree plant functional types (PFTs) or species and shrub and grass PFTs compete for light, water, nitrogen and space (Fig. 1). Photosynthesis, respiration, phenology, soil carbon and nitrogen cycling and hydrology occur at a daily time step, while biomass growth allocation and turnover, establishment and mortality occur at a yearly time step. In its original version, the model only simulated PFTs that capture the major vegetation zones globally. The parameter set of these PFTs has been extended to simulate the most important tree species in north-eastern USA (Hickler et al., 2004) and Europe (Koca et al., 2006; Hickler et al., 2012) as distinct PFTs. The new functionality defined in this paper can operate equally on individual tree species or more generalised PFTs.

Hereinafter ‘species’ is thus used synonymously with ‘PFT’. The forest canopy is represented as a multi-layered structure. Leaves, fine roots and stem heartwood and sapwood are represented as dynamic pools for each age cohort of each PFT. Branches and course roots are not explicitly discriminated but are implicit in the wood biomass pool. The patches are subject to stochastic vegetation-destroying disturbance events (representing e.g. wind-storms or landslides) with a prescribed return time (e.g. 100-400 years). Disturbance results in the loss of vegetation in a patch, after which a secondary succession of grass and tree PFTs follows (Hickler et al., 2004). Establishment is affected by forest floor light conditions and is subject to PFT-specific environmental envelopes defined by bioclimatic limits. A slightly different set of bioclimatic limits govern survivorship (Table A1). Growth-efficiency-, self-thinning-, background- (age-related) and fire mortality are applied to individual cohorts. Establishment and mortality have a stochastic component. Soil carbon and nitrogen cycling are based on the CENTURY model (Parton et al., 1993) and soil hydrology on a two-layered “leaking bucket” model. A soil mineral nitrogen pool is provided by atmospheric deposition, biological nitrogen fixation and gross nitrogen mineralisation of soil organic matter. Plant nitrogen uptake is driven by the demand from photosynthesis and biomass growth, and is limited by the supply from the soil mineral nitrogen pool. The nitrogen-cycling scheme is described in detail by Smith et al. (2014).



115 **Figure 1. Data structures in LPJ-GUESS relevant for this study.** ¹ Patch number is defined separately for PNV and secondary stands. If a secondary stand is created from PNV or managed forest with intact vegetation, the patch number of the parent stand is used. ² Stands belonging to stand types with trees can only be reduced in size. Expansion of such stand types results in new stands.

120 Different land-use/land-cover types in addition to PNV are represented in the model by stand types with different management, e.g. cropland, pasture and managed forest (Lindeskog et al., 2013, Fig. 1). Transitions between different stand types may occur at any point in time, according to land-use data inputs, to recreate land-use history or effect a future land use scenario. When a potentially forested stand type area expands, new stands are created, keeping the soil history from the previous stand type intact and allowing vegetation succession to proceed from bare ground (in most cases, but cf. 2.2.1). In modelled wood harvest events 66 % of wood biomass and 30 % of leaf biomass are typically removed from the stand and the rest remains as litter. Removed leaf biomass and part of wood biomass (by default 67 %) is oxidised the same year. The remaining wood biomass is put into a product pool with a turnover rate of 4 % per year.

125 The typical forest management types covered in the model and presented in this paper are: no management (pristine forests, simulated as PNV), even-aged forestry, typically modelled by stands with prescribed ages starting from bare ground after a specified land-use history, and uneven-aged/continuous cover forestry, typically modelled by a cohort structure within a patch derived from prescribed cuttings after starting as bare ground and a regeneration phase. Alternatives to these typical setups can be used to achieve age structures at other spatial scales, e.g. landscape level and will be described below.

2.2 Forest structure initialisation routines

Forest stand age- and species distributions can be achieved in the model by utilising the structure of a previous PNV stand or by defining a new age- and species structure at various levels of detail.

135 2.2.1 Stand creation

A managed forest stand may be created in the model by two different options (Fig. 2, B1). By cloning the parent stand, the complete state with all patches intact is inherited by the secondary stand. If the origin is previous woodland (PNV or secondary forest), a cutting scheme may start with the existing tree structure, optionally cutting unwanted species. In the other alternative, tree growth starts from bare ground after an initial clear-cut or when expanding on former cropland or pasture. In this case (with an even-age

140 stand and if disturbance and fire are turned off), the secondary stand can in many cases be modelled by a smaller number of replicate patches since there is usually no random variation in the timing of management events.

2.2.2 Secondary forest age structure

Managed forest stands with an uneven age structure can be represented in the model by selecting different options, depending on the spatial context of the age-classes, i.e. whether they correspond to tree age cohorts co-occurring within local stands thereby competing with each other, or represent different fractions of a wider landscape, with no local interactions between age cohorts. An age structure may be created in individual patches by thinning (enabling regeneration by increased light at the forest floor) at defined intervals during an initialisation period, allowing for both intra- and interspecific competition (Fig. 3a). When competition between different age-classes does not apply, i.e. when the spatial context is that of a landscape, different age-classes can be modelled in separate patches. To achieve an age structure among patches within a stand, the age structure of PNV, achieved during the model initialisation or ‘spin-up’ (see Section 2.4) by patch-destroying disturbance events, may be conserved after the conversion to managed forest if the cloning functionality is used, copying the PNV stand with the semi-randomised age structure intact (Fig. B1). Alternatively, multiple patches in a secondary stand may be clear-cut successively at regular intervals during an initialisation period (Fig. 3b). In the final approach, a prescribed age structure, either representing a specific moment in time, or a historical development, may be created among stands representing a stand type, using land-cover change input data (Fig. 3c).

155 2.2.3 Secondary forest species composition

Species mixtures may be defined either at the management type level (Fig. 1), using predefined planting densities for individual species and/or later cuttings to achieve prescribed relative biomass abundances of the different species within a patch (Fig. 4a, see below), or at the landscape level, using land-cover input data to achieve predefined groundcover area-based mixtures of monocultures (Fig. 4b), or a combination of both of these options.

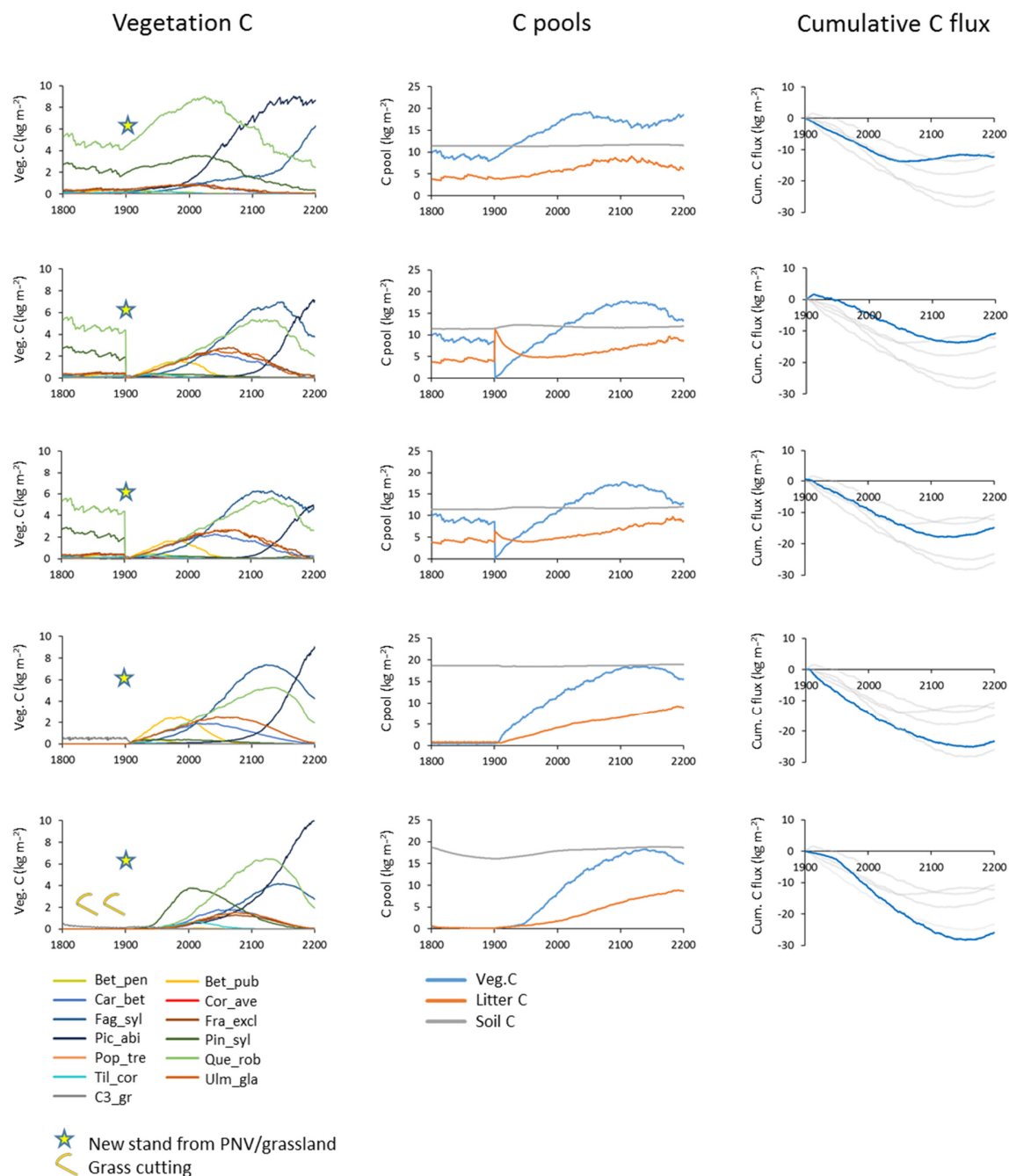


Figure 2. Examples of different histories and initialisations of modelled forest stands at a South Swedish site (13.75° E, 55.75° N) with CRU-NCEP climate (recycled 1986-2015 climate after 2015). Disturbance and fire was turned off in the managed forest stands. Vegetation carbon, carbon pools (vegetation, litter and soil), and cumulative total carbon flux (negative values correspond to an uptake from the atmosphere) are shown for forest stands created in 1901 from PNV or grassland. (a) PNV stand with 25 patches cloned, keeping age and species structure from spin-up period intact. (b) Clear-cutting of PNV stand. Harvested wood and branches left as litter. Succession from bare ground. (c) Clear-cutting of PNV stand. Harvested wood and part of branches removed. Succession from bare ground. (d) From grassland with 1 patch. (e) From intensively cut meadow with 1 patch, 100% of leaves cut each year in 1800-1900. Species/PFT abbreviations: Bet_pen *Betula pendula*, Bet_pub *Betula pubescens*, Car_bet *Carpinus betulus*, Cor_ave *Corylus avellana*, Fag_syl *Fagus sylvatica*, Fra_exc *Fraxinus excelsior*, Pic_abi *Picea abies*, Pin_syl *Pinus sylvestris*, Pop_tre *Populus tremula*, Que_rob *Quercus robur*, Til_cor *Tilia cordata*, Ulm_gla *Ulmus glabra*; C3_gr C₃ grass.

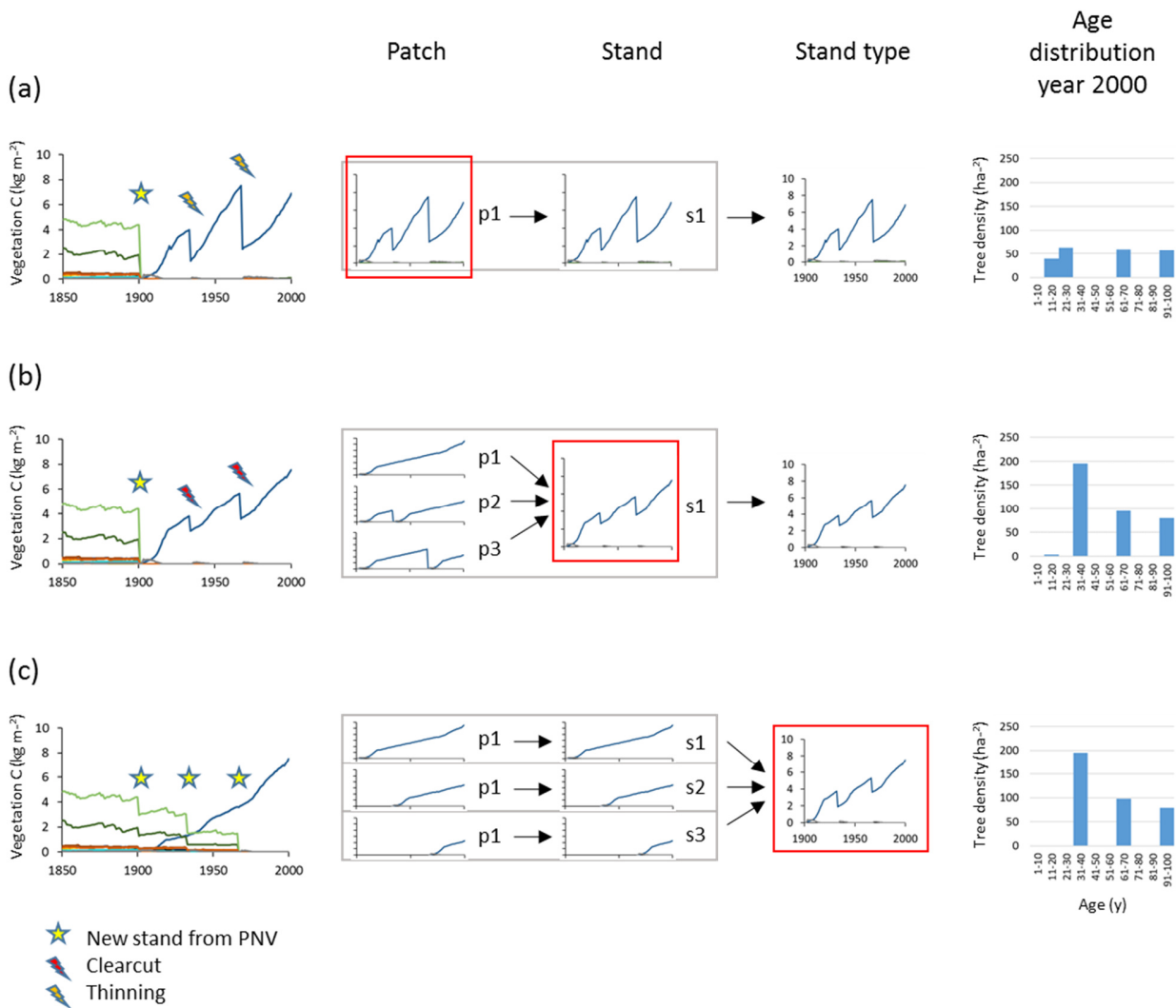


Figure 3. Examples of age structure setup at three different structural levels, patch, stand and stand type. Monocultures of European beech are created from clear-cutting of PNV. The target in year 2000 was three cohorts of 100, 67 and 33 years. (a) Within-patch. One secondary stand with 1 patch created in 1901. Thinnings in 1933 and 1967. Age structure depends on timing of increased light and subsequent re-establishment of seedlings. (b) Among-patch. One secondary stand with 3 patches created in 1901. Clear-cutting in patches 2 and 3 in 1933 and 1967 (evenly spread age distribution). (c) Among-stand. Three secondary stands with 1 patch created in 1901, 1933 and 1967. Age structure from area fraction input. Location, climate input and species in PNV as in Fig. 2.

2.3 Forest management routines

Two types of harvest systems are available in the model: clear-cutting and continuous cutting, which are used in conjunction with the even-aged and uneven-aged/continuous-cover age-structure systems, respectively (Table 1). Depending on the level of detail in historic forest management input data or, in simulations of future scenarios, whether the management should be able to adapt to a changing climate or other factors, various model alternatives are available.

Table 1. Detailed forest management options.¹

Management option		Uneven-aged forestry		Management system		
		Regeneration phase	Continuous phase	Detailed	Automated	Simplified
Planting		NA		PFT (species) selection, density		NA
Re-establishment		free/species selection/none				free
Thinnings	preference	young/old, big/small, unselected PFTs, shrubs/shade intolerant, diameter limit			young/old, big/small	NA
	intensity	fraction of biomass			self-thinning rule	NA
	timing	fraction of rotation time				NA
Rotation time		length of phase	time of harvest cycle	fixed rotation time	tree density limit	harvest demand input
Clear-cuts		NA				stand selection rules: primary/secondary, young/old
Species selection cutting		pre-defined relative species fractions		NA		
N fertilisation		N amount evenly distributed over the whole year				
Irrigation		water amount required to avoid water stress in photosynthesis added to soil				
Fire/disturbance suppression		switch off fire and/or disturbance				
Management change		change management type a specific calendar year (optionally wait for clear-cut) ¹				

¹ All management options in this table except re-establishment can be defined in separate management types (cf. Fig. 1), which may be selected in a stand type rotation scheme at pre-defined calendar years.

2.3.1 Simplified clear-cut forestry

A simplified method to represent forestry using global wood harvest input data (e.g. harvested area) is achieved by creating secondary forest stands after clear-cutting either a PNV stand or other secondary forest stands, representing cutting of primary or secondary forest, respectively. In cutting events, looping through the stands, these are cut according to stand age rules (cut oldest or youngest stands first, avoid cutting stands younger than 15 years old), allowing the allocation of wood harvest to primary forest and mature or young secondary forest. This method was used by Pugh et al. (2019) with reconstructed time series of land use from the Land Use Harmonization Project (LUH2, Hurtt et al., 2017)

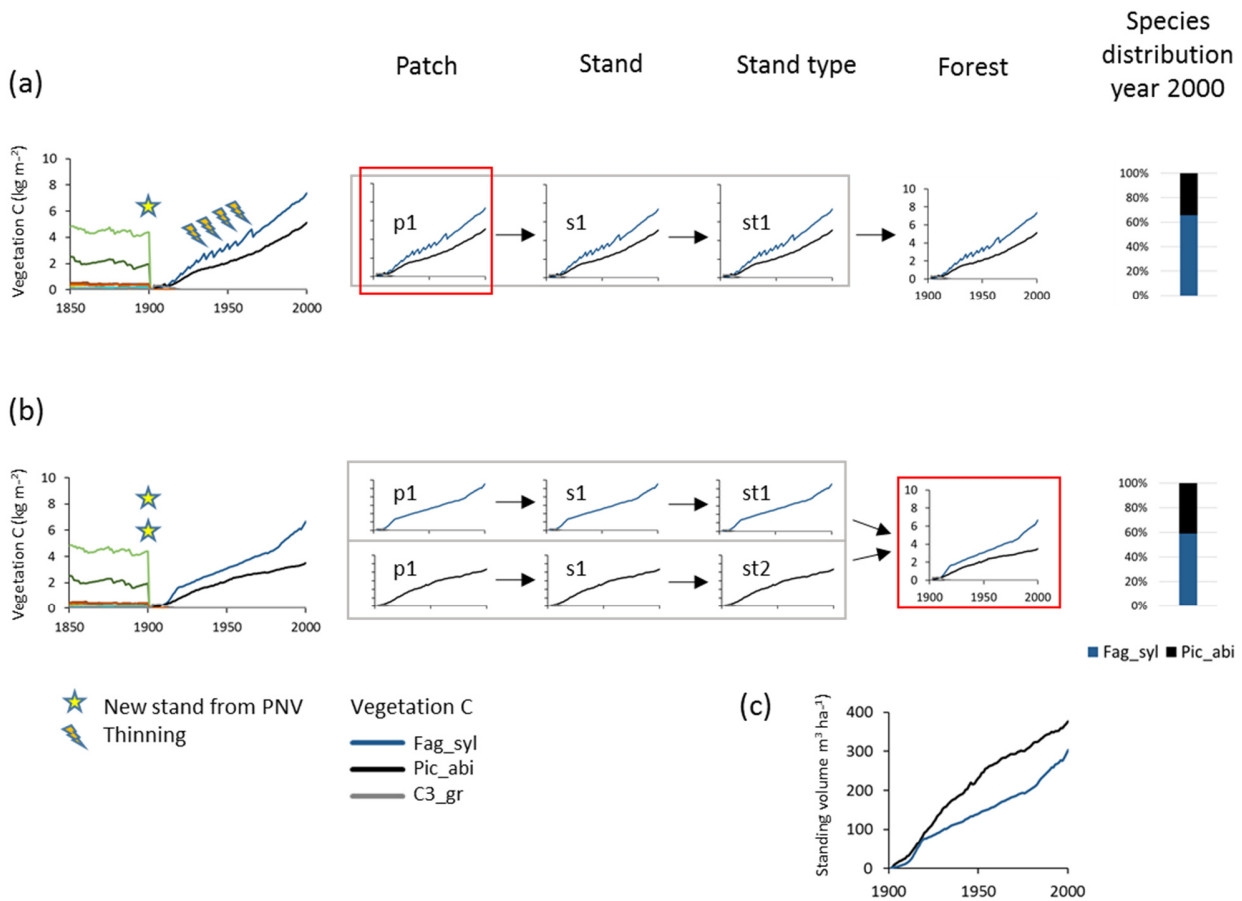


Figure 4. Examples of species structure setup at the patch and forest level. Beech-spruce 60-40 % mixes are created after clear-cutting of PNV. (a) Within-patch; One secondary stand with 1 patch created in 1901. Mixed beech-spruce with selective thinning (target cutting to a 60/40 % biomass ratio). (b) Among-stand types; Two secondary stands (beech and spruce monocultures) with 1 patch created in 1901 with 60 % and 40 % groundcover area fractions. (c) Relative development of standing volume of beech and spruce in their separate stands in (b). Species abbreviations: Fag_syl *Fagus sylvatica*, Pic_abi *Picea abies*; C3_gr C3 grass. Location, climate input and species in PNV as in Fig. 2.

2.3.2 Detailed forest management options

A number of forest management options can be selected at the stand type or management type level in the LPJ-GUESS instruction text file required to run a simulation and used with both even-aged and uneven-aged forestry (Table 1).

2.3.2.1 Species selection

A forest stand may contain a full selection of tree species (as in PNV) or a selection of species defined in the management type. After a clear-cut event, or after creating a new forest stand from bare ground/grassland, selected species may be planted at defined sapling densities with or without the additional need to fall within the envelope of the bioclimatic limits that govern PFT establishment in PNV mode (Table A1). Re-establishment can be optionally enabled or disabled for selected and unselected species. If several tree species are selected, it is possible to prescribe a target relative abundance for each species and apply cutting to regulate the mixing proportion. Relative biomass values of selected species are then monitored at 5-year intervals and if the values deviate more than 10 %, dominant species are cut to reach the target (Fig. 4a).

2.3.2.2 Clear-cutting

220 A fixed rotation period is defined, at the end of which a clear-cut takes place (Fig. 5a). Alternatively, a clear-cut may be triggered
by attainment of a prescribed stand density limit (Fig. 5b). The timing of a number of thinning events (default 5) may be defined
as fractions of the rotation period in the case of a fixed rotation period. The harvest amount (intensity) for such thinning events is
defined as a fraction of current biomass, with the option of different settings for selected and unselected species. At each thinning
event, trees may be cut using alternative strategies. Available size/age criteria are: (1) old or big trees first (“from above”); (2)
225 young or small trees first (“from below”); (3) a specified harvest amount pertaining to trees above a specified diameter limit only
 (“threshold diameter thinning”); (4) all sizes/ages cut equally. These may be combined with the following species criteria: (1)
selected species first; (2) unselected species first; (3) separately defined harvest amounts for selected and unselected species; (4)
shrubs and shade-intolerant species first; (5) all species cut equally (Fig. 5a). In (1) and (2), size overrides age settings.

230 2.3.2.3 Continuous cutting

When modelling continuous cutting, it is possible to define the same harvest parameters and cutting priority settings as described
above for the clear-cutting case, for two different periods: the first for a specified ‘regeneration’ time following a clear-cut, and
the second for a ‘continuous’ phase, in which the cutting cycle is repeated indefinitely (Fig. 5c).

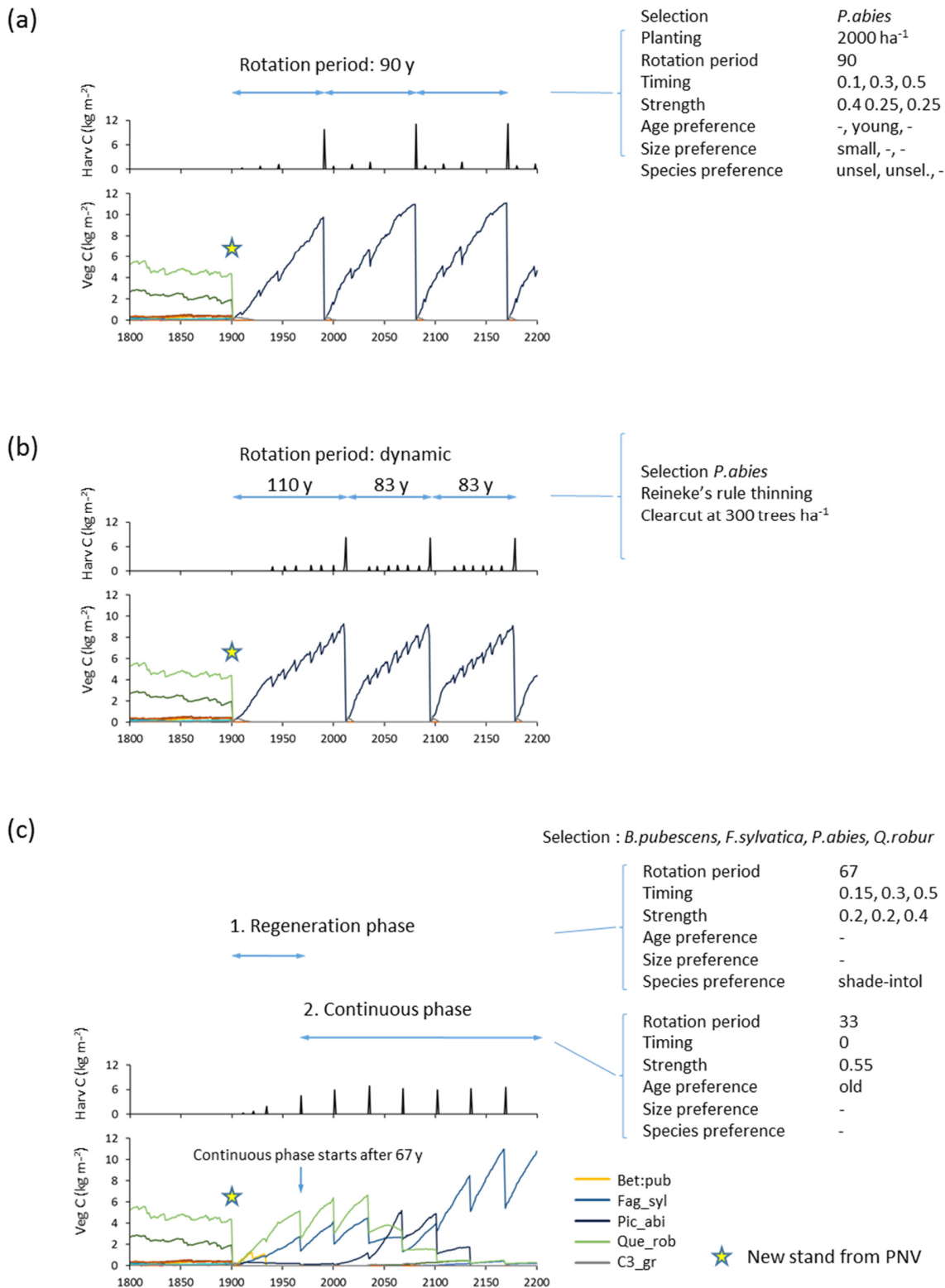


Figure 5. Examples of forest management settings. Forestry stands were created from clear-cutting of PNV in 1901. (a) Detailed clear-cut forestry. Spruce monoculture with fixed rotation period and thinning parameters. (b) Automated clear-cut forestry. Spruce monoculture with automated thinning and clear-cutting. (c) Continuous selection/shelterwood cutting. Species selection *B. pubescens*, *F. sylvatica*, *P. abies*, *Q. robur* established after clear-cutting. Later reestablishment of all species allowed. Cutting of shade-intolerant species during a regeneration phase. Continuous partial harvest of old trees every 33 years allows establishment of young cohorts while suppressing shade-intolerant species. Species/PFT abbreviations: Bet_pen *Betula pendula*, Fag_syl *Fagus sylvatica*, Pic_abi *Picea abies*, Que_rob *Quercus robur*, C3_gr C3 grass. Location, climate input and species in PNV as in Fig. 2.

2.3.2.4 Automated wood harvest

As an alternative to specifying thinning in clear-cut forestry in detail, a thinning scheme based on Reineke's self-thinning rule may be chosen (Fig. 5b). The implementation follows Bellassen et al. (2010):

$$dens_{max} = \frac{\alpha_{st}}{Dg^{\beta_{st}}}, \quad (1)$$

where $dens_{max}$ is stand maximum density before self-thinning (trees ha⁻¹), α_{st} and β_{st} are fixed parameters and Dg is the quadratic mean diameter (m),

$$Dg = \sqrt{\frac{\sum_i diam_i^2}{N}}, \quad (2)$$

where $diam_i$ is the tree diameter (m) of an individual tree and N the number of sampled trees

The parameters α_{st} and β_{st} were calibrated from log-log plots of Dg and tree density, $dens$, from LPJ-GUESS simulations of monocultures without disturbance or re-establishment, starting from bare ground after clear-cutting of PNV (Fig. C1):

$$\log Dg = \frac{\log \alpha_{st}}{\beta_{st}} - \frac{1}{\beta_{st}} * \log dens \quad (3)$$

To avoid natural tree mortality occurring due to the model's self-thinning functionality, the relative density index, rdi , is monitored

$$rdi = \frac{dens}{dens_{max}} \quad (4)$$

and kept close to a target value, rdi_{target} , by cutting when rdi reaches $(rdi_{target} + \delta rdi)$ to reach $(rdi_{target} - \delta rdi)$, where

$$\delta rdi = 0.05 + \left(0.05 * \log \left(\frac{dens}{dens_{target}} \right) / \log \left(\frac{dens_{init}}{dens_{target}} \right) \right), \quad (5)$$

where $dens_{init}$ is the initial tree density and $dens_{target}$ is the density limit for clear-cutting (see below).

As an alternative to imposing a specified rotation length in clear-cut forestry, a clear-cut may be triggered by stand density when it is below $dens_{target}$ as in Bellassen et al. (2010).

rdi_{target} and $dens_{target}$ were selected and α_{st} further adjusted to give rotation times around 100 years in the early 2000s in LPJ-GUESS simulations (Table A3).

2.3.2.5 Nitrogen fertilisation and irrigation

A specified amount of plant-available nitrogen may be applied to the soil evenly distributed over the whole year (Fig. B2). With irrigation enabled, the amount of water required to avoid water stress is calculated and applied to the soil surface every year.

2.3.2.6 Management change

To capture management changes, a new silvicultural treatment of a stand type can be prescribed any specified calendar year, changing from one specified management type to another with the next harvest event as an optional trigger (Fig. 6).

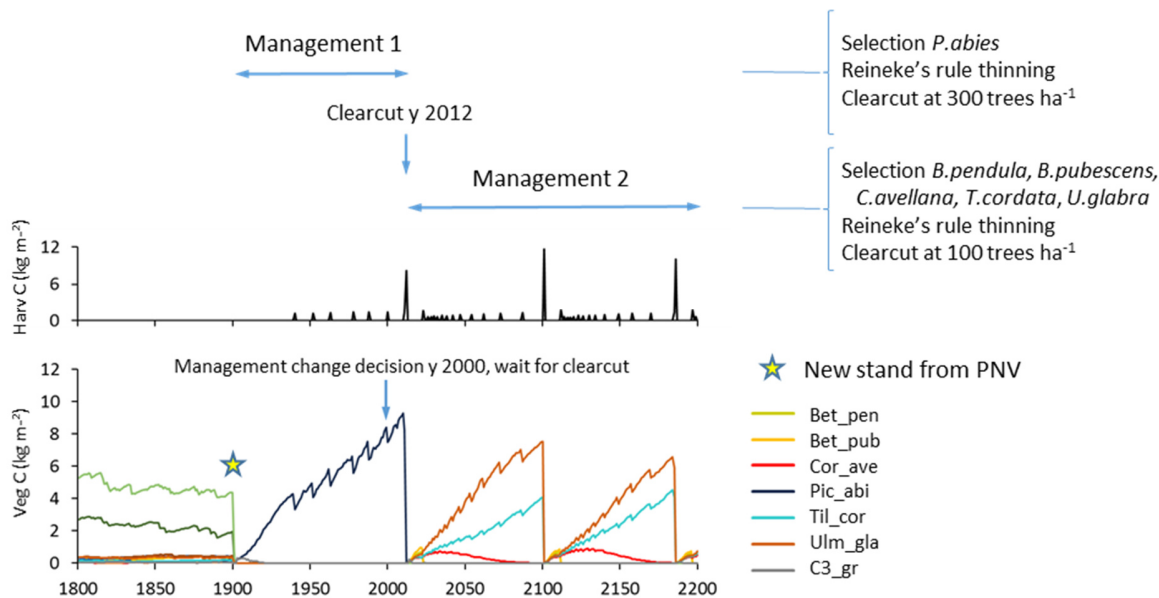


Figure 6. Example of management change during an ongoing simulation. Spruce monoculture changed to mixed broadleaved, both with automated thinning and clear-cutting. Management change is activated after first management has completed by a clear-cut event. Location, climate input and species in PNV as in Fig. 2.

2.4 Demonstration simulation protocol

To demonstrate the implemented forest management functionality and its effects on simulated stand structure, composition and productivity, we performed demonstration simulations for representative locations (grid-cells) in Europe, and across Europe as a whole. PNV stands were modelled using 25 replicate patches and a disturbance return time of 400 years. Managed forest stands contained only one patch except where explicitly stated (section 2.5), disturbance and fire were turned off and mortality was deterministic. In managed forest stands created after clearing the previous vegetation, this setup saves computational time and produces almost identical results compared to using multiple patches and adding the stochastic component to establishment and mortality. Parameters for European species were adopted from Hickler et al. (2012) with updated parameters (Table A1-A2) and with the addition of *Larix decidua* (Scherstjanoi et al., 2014), *Populus tremula* and *Ulmus glabra*.

Historic (1901-2015) monthly temperature, radiation and precipitation data at $0.5^\circ \times 0.5^\circ$ resolution were taken from the station-based CRU-NCEP climate data set (Wei et al., 2014) and atmospheric CO_2 concentration data from the global carbon project (Le Quéré et al., 2018). Nitrogen deposition data for 1850-2009 were taken from Lamarque et al. (2011). Simulations began with a 1300-year spin-up, to initialise PNV species composition and soil and plant carbon pools. Detrended 1901-1930 climate was recycled and 1901 CO_2 concentration was prescribed throughout the spin-up. Nitrogen deposition data for 1850-1859 were applied before 1860 after which the historic data were used as forcing. After 2015, the 1986-2015 climate data and the 2015 CO_2 were recycled and after 2009, the 2000-2009 nitrogen deposition rates were assumed.

In future climate scenario simulations, monthly temperature, radiation and precipitation data for 1850-2100 were adopted from the IPSLCM5A-MR (Dufresne et al., 2013) GCM projections from the CMIP5 ensemble (Taylor et al., 2011). Projections forced by the RCP 4.5 and 8.5 future radiative forcing scenarios were used. The raw GCM climate output fields were interpolated to $0.5^\circ \times 0.5^\circ$ resolution and bias-corrected on a monthly basis against the CRU-NCEP 1961-1990 observational climate, following the approach of Ahlström et al. (2012). Atmospheric CO_2 concentration data for 1850-2100 consistent with the CMIP5 GCM forcing were used. During a 1250-year spin-up, the detrended 1850-1879 climate was recycled and the 1850 CO_2 and nitrogen deposition

data (Lamarque et al., 2011) were used. After 2100, the 2071-2100 detrended climate data were recycled and the 2100 CO₂ data and the 2090-2099 nitrogen deposition data were used.

In future forest projections, either the historic environmental drivers were recycled after 2015 or future climate, CO₂ and nitrogen projections were used to demonstrate model behaviour under a time-span of several forest rotations.

2.5 Site-level simulations

A grid-cell in southern Sweden (13.75° E, 55.75° N) was selected to demonstrate forest development under different forest stand histories and initialisation and management strategies. Setup and CRU-NCEP climate was as described in 2.4, except that three patches were used in secondary forest stands when illustrating among-patch age structure setup.

Four data sets of European beech and Norway spruce monoculture stand time series (1-21 points in time) of standing volume and harvested volume in central and southern Germany (GER-Bav, GER-C, GER-CS) and northern Slovenia (SLO, beech only) (Appendix D, Table D1) were used in simulations to initialise species and age structure, assuming a landscape distribution of even-aged stands. Model setup and input climate data were as described in 2.4. Three different harvest strategies were used: no harvest, detailed harvest from observations and automated thinning and clear-cutting (2.3.2). The setup of the detailed harvest was done differently for stands from the different data collections, depending on the number of harvest data points. For the stands from the GER-Bav, GER-C and SLO data sources (3-21 data points per stand), mean harvest intensities for the time period that contained harvest data points were used during the time period prior to the first harvest data point, in the case of GER-S and GER-C converted to a 5-year harvest interval, in the case of SLO keeping the 10-year intervals used in the sampling. For the GER-CS data source (containing only one harvest data point for the whole stand lifetime prior to the standing volume sampling at a stand age of 100 years), harvests were performed at 5-year intervals during the whole simulation using the calibrated harvest intensity values required to obtain a cumulative harvest fraction equal to the reported harvest fraction for the whole 100-year period. Thinnings in the detailed harvest simulations were performed equally for the different cohorts to obtain some regeneration of saplings. The automated thinning and clear-cutting method used the parameter settings in Table A3 and thinnings from below started at a stand age of 10 years.

2.6 European simulations

2.6.1 Forcing data

To constrain European secondary forest age and species structure in the model to the actual state of the forests, we used the global forest age dataset GFAD (Poulter et al., 2019; Pugh et al., 2019), describing the 0.5° x 0.5° grid-cell fraction coverage of fourteen 10-year cohorts of the forest types needleleaf evergreen (NE), needleleaf deciduous (ND), broadleaf evergreen (BE) and broadleaf deciduous (BD) forest in year 2010. For Europe, the data were based on The European Forest Information SCENario Model (EFISCEN, European Forest Institute (EFI)) in the 2000s. European forests (excluding Russia outside of the Kaliningrad oblast, Georgia, Iceland and Cyprus in this study) consisted of 0.6 million km² old-growth forests (> 140 years; denoted as 'old-growth' forest henceforth, not implying pristine forests) and 1.8 million km² regrowth forests in 2010 according to GFAD, together making up about 43 % of the European land area. This is higher than other estimates (e.g. Forest Europe (2015), 35 %) and is a result of the construction of the GFAD database from MODIS 5.0, with the inclusion of shrubland. In GFAD, regrowth forests are the result of both natural disturbances and human interventions, but since only 0.7 % of European forests are pristine (Sabatini et al., 2018), the whole regrowth forest area was assigned to secondary forest in this study. The oldest forest class in GFAD (>140 years) contains artefacts manifested e.g. as BE occurrences in northern Europe, so the forest type information in this part of the dataset was not used.

340 The EFI Tree species map describes the spatial distribution (fraction of land area) of 20 tree species groups at 1 x 1 km resolution (Brus et al., 2011). The map is based on ICP-Forest Level-I plot data combined with National Forest Inventory (NFI) data of 18 countries. In areas with NFI data, spatial interpolation of the plot data was used, whereas in areas without NFI data, statistical relationships between tree species and covariates (soil, biogeography and bioindicators) were used (Brus et al., 2011). The EFI Tree species map was aggregated to 0.5° x 0.5° resolution in this study and was used to further refine the species distribution derived from GFAD.

345 The structure of European forests in 2010 was reconstructed by using a combination of the GFAD age database and the EFI Tree species map. For each grid-cell, the most common species or species group within the GFAD NE and BD forest types was obtained from the EFI Tree species map and these were then mapped to LPJ-GUESS tree species/species groups (Table C1, Fig. C2). In the multi-species LPJ-GUESS groups, species compete with each other for resources (cf. above, 2.1). BE was mapped to *Quercus ilex* and ND to *Larix decidua*, the only available PFTs in the model to represent these two functional tree classes.

2.6.2 Modelling current and future European managed forests

350 Secondary forest stands were created in the model from 1871 to 2010 to obtain the GFAD age (1-140 years) distribution in 2010 and species selections were planted (without climate restrictions for NE and ND stands to bypass establishment temperature limits used in PNV). The oldest forest class in GFAD (>140 years) was modelled as PNV and was not subject to any management (cf. 2.6.1). In secondary stands, automated thinning and clear-cutting (cf. 2.3.2) were implemented using the parameters in Table A3. Thinnings from below started at a stand age of 10 years and clear-cutting started after year 2010. Clear-cuts of stands that passed below the tree density limit before 2011 were distributed over the years 2011-2020. In an alternative simulation with identical stand structure setup, thinning and clear-cutting were turned off.

355 To perform a limited sensitivity test of some of the uncertainties in land-use and residue removal assumptions, additional alternative simulations were performed: a simulation where a fraction (as in standard harvest) of the biomass of killed trees in disturbance events in old-growth forests was removed from year 1871, simulating an extensive wood harvest scheme; two simulations where the leaf removal fraction in harvest events was set to 10% and 0%, respectively, instead of the standard 30% value.

360 2.6.3 Calculation of output variables

Growing stock, net annual increment (NAI) and harvested volume were calculated from vegetation carbon, net ecosystem exchange (NEE) and total carbon of harvested trees, respectively, by multiplying with expansion factors for each country, ranging from 1.1 to 3.5 (mean 2.7) m³ tC⁻¹, derived from vegetation carbon and growing stock volumes reported by Forest Europe (2015). Carbon sink (= -NEE) is defined as the difference in the sum of vegetation and soil carbon pools between two consecutive years plus the removed harvested carbon, not taking into account the fate of wood products and residues following removal from the site. Similarly, NAI is defined as the difference in growing stock volume between two consecutive years plus the removed harvested volume. Harvested carbon is not included in the total carbon pool and includes both wood products and removed wood residues. The forested area in 2010 as defined by GFAD and Forest Europe (2015) was 2.4 and 2.0 million km², respectively, excluding Georgia, Iceland, Cyprus, Malta and Russia, but including Kaliningrad oblast and European part of Turkey. The forest area available for wood supply (FAWS), for GFAD defined as the secondary forest area in 2010, was 1.8 and 1.6 million km² for GFAD and Forest Europe (2015), respectively.

3 Results

3.1 Implications of secondary forest initialisation and land-use history

Secondary forest stand initialisation and land-use history have long-term effects on the development of tree species distribution, productivity and carbon fluxes in the model (Fig. 2). When the age distribution and species composition from spin-up is retained in each patch (i.e. cloning PNV), both the warming climate in the 20th century and the prevention of fires and other disturbances result in an increase in tree biomass and a tree species shift from a *Q.robur-P.sylvestris*-dominated forest landscape to a forest increasingly dominated by the shade-tolerant species *P.abies* and *F.sylvatica* in an example forest simulated at a Southern Swedish site (Fig. 2a). Older patches contribute to an early stagnation of the carbon sink. A forest stand created after clear-cutting PNV displays a mixed broad-leaf forest with a late establishment and dominance by *P.abies* (Fig. 2b&c). Leaving harvested biomass on site results in an extended litter-induced carbon source (Fig. 2b). When the previous land-use history is grassland, the initial dominance by shade-intolerant species is more pronounced and the slow accumulation of the litter pool results in a stronger and more persistent carbon sink (Fig. 2d,e). Soil carbon and nitrogen depletion due to intensive harvest of the previous grassland influences productivity, succession of tree species and carbon sink capacity of the secondary forest: initial tree growth is delayed by several decades, the dominant shade-intolerant species is *P.sylvestris* rather than *B.pubescens*, and *Q.robur* competes more successfully than under normal soil nitrogen (Fig. 2e). Also, the long-term carbon sink is larger than in any other option. The notable differences in tree species succession and the timing and magnitude of the carbon sink using the different stand creation options illustrate the importance of land-use history for modelling secondary forest stands.

3.2 Choosing between different model age/species structure and harvest alternatives

The choice between the different age- and species structure setup options depends on whether competition between species and cohorts within patches is required or not (Fig. 3-4). Also, the desired level of detail of the age structure might decide whether to use a simplified setup or a detailed structure with many separate stands, increasing computation time. Setups using separate stands for each species-age combination offer the possibility of reflecting regional distributions based on inventory data, but will not represent competition correctly e.g. in mixed forests.

Although management changes during the course of a simulation may be prescribed, using detailed, but static, harvest methods would not reflect foresters' choice of gradual adaptation of harvest parameters under changing CO₂/climate conditions in future scenarios. In these cases, the simplified dynamic harvest methods might be a better option (Fig. 5b).

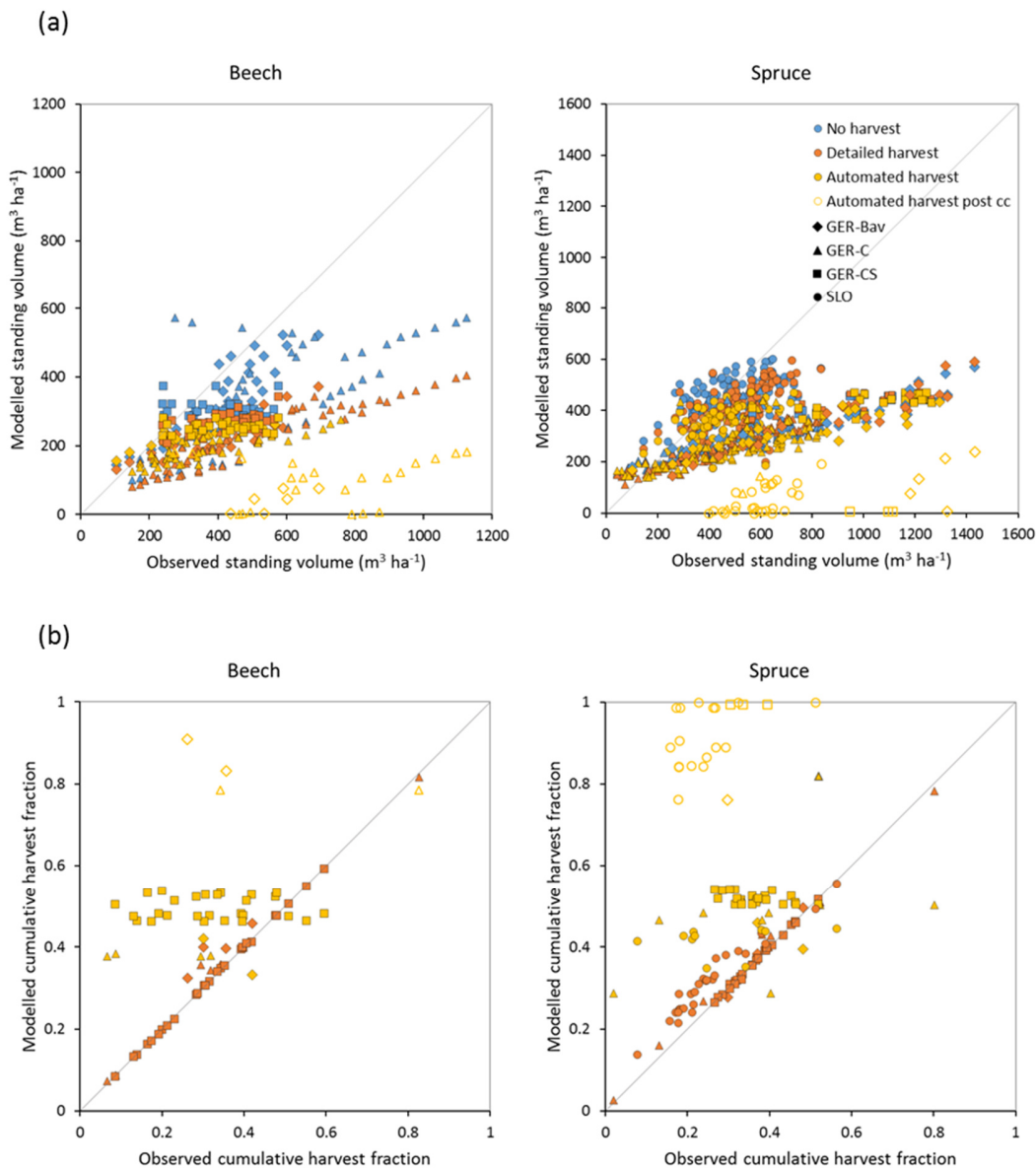


Figure 7. Modelled and observed standing volume (a) and cumulative harvest fraction during the measurement period (b) for European beech and Norway spruce stands in Germany (Bavaria: GER-Bav, central Germany: GER-C and central and southern Germany: GER-CS) and Slovenia (SLO). Simulations were performed without harvest, with detailed harvest and with automated thinning and clear-cutting. Data points from the automated harvest simulation after clear-cutting occurred are plotted with unfilled symbols (“Automated harvest post cc”).

3.3 Central European site simulations of managed forest

Central European beech and Norway spruce stands were modelled with three harvest alternatives: no harvest, detailed harvest based on reported harvested volumes and automated thinning and clear-cutting. The model was not able to reach the high productivity of beech and spruce stands in Germany. The modelled standing volume of these stands were relatively accurate at low standing volumes but about 2-3 times underestimated at high observed standing volumes (Fig. 7a). The correlation between modelled and observed German standing volume was generally good: $r^2=0.64$ and 0.86 for pooled detailed harvested beech and spruce stands, respectively, and $r^2=0.51$ and 0.79 for the corresponding unharvested stands. The Slovenian spruce standing volume levels were better represented by the model, but the correlation with observations was weaker ($r^2=0.36$ for detailed harvested stands

and 0.21 for unharvested stands). The addition of thinning in the simulations produced the largest difference in standing volume in some of the beech stands while the spruce stands were less affected. The modelled cumulative harvest intensities in the detailed harvest alternative were close to or slightly higher (due to thinning before the period with harvest data) than reported harvest intensities (Fig. 7b). Although the cumulative harvest in the automated harvest alternative was almost always more extensive over the modelled stand life time compared to the detailed harvest alternative (Fig. 7b), the standing volume was only moderately affected (Fig. 7a). The automated harvest standing volume correlations with observations were, as expected, weaker than for the detailed harvest simulations: $r^2=0.39$ and 0.76 for German beech and spruce stands, respectively, and 0.17 for Slovenian spruce stands. Both harvest alternatives increased the carbon sink at most sites and reduced mortality at all sites compared to a simulation without harvest (Fig. 8). The automated harvest led to very low levels of mortality.

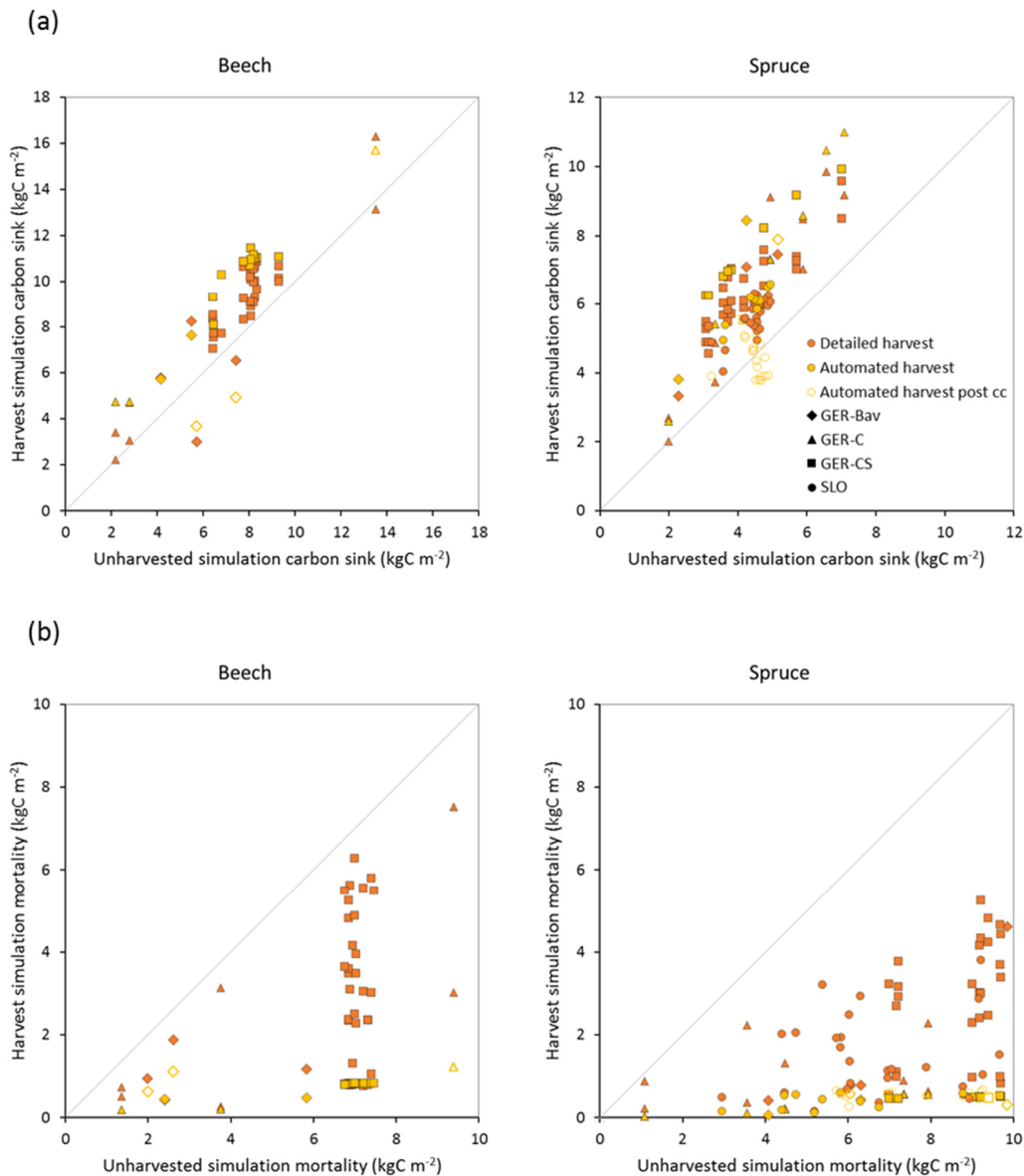


Figure 8. Modelled carbon sink (a) and cumulative mortality (b) for the same time periods as in Fig. 7b in simulations with detailed and automated harvest compared to a simulation without harvest of European beech and Norway spruce stands in Germany (Bavaria: GER-Bav, central Germany: GER-C and central and southern Germany: GER-CS) and Slovenia (SLO). Data points from the automated harvest simulation after clear-cutting occurred are plotted with unfilled symbols (“Automated harvest post cc”).

3.4 Europe-wide simulations of managed forest

Dominant tree species in managed forests based on the EFI species map differ from PNV simulations in large parts of Europe. In central and eastern Europe, broadleaved species are to a large degree replaced by needleleaved species in managed forests, especially by *P. sylvestris*, but since old-growth forest is modelled as PNV in this study because of artefacts in the >140 year data (cf. 2.6.1), the dominance by needleleaves in this region seen in the original EFI data is moderated in the total forest landscape (Fig. C3, C4).

Table 2. Modelled and observed forest vegetation carbon stock in Europe¹.

	LPJ- GUESS (this study)	Liu <i>et al.</i> 2015 ²	Pan <i>et al.</i> 2011	Forest Europe
Veg C (PgC)				
<i>Europe</i> ³				
2000	13.8 (14.3)	11.1	11.8	10.2
2007	14.1 (14.7)	11.6	13	
2010	14.3 (15.0)			11.8
2015	14.2 (15.8)			12.5
<i>EU-28 + Switzerland</i> ⁴				
2000	11.3 (11.7)			8.3
2010	11.6 (12.2)			9.4
2015	11.4 (12.9)			10.0
Veg C (kgC m⁻²)				
<i>Europe</i> ³				
2000	5.5 (5.7)	5.5	5.9	5.3
2007	5.7 (5.9)	5.7	6.4	
2010	5.7 (6.0)			5.9
2015	5.7 (6.4)			6.3
<i>EU-28 + Switzerland</i> ⁴				
2000	5.8 (6.0)			5.3
2010	5.9 (6.2)			5.9
2015	5.9 (6.6)			6.2

¹ Values in parentheses are for a simulation without wood harvest in secondary forest. ² AG biomass = 79 % of total biomass;

³ Excluding Georgia, Iceland, Cyprus, Malta and Russia. Including Kaliningrad oblast and European part of Turkey in LPJ-GUESS data. ⁴ Cyprus and Malta are excluded.

For the European continent, the modelled mean vegetation carbon density (5.7 kgC m⁻²) and growing stock (156 m³ ha⁻¹) in 2010 and NAI (5.4 m³ ha⁻¹ y⁻¹) in 2001-2010 in a simulation with thinning is close to observations (Tables 2,4). The total carbon pool (24.2-24.3 kgC m⁻²) and soil/litter pool in 2000-2010 (18.5-18.6 kgC m⁻²) is 21-64 % and 34-80 % higher than reported values, respectively, while NEE in 2000-2007 (ca. -0.08 kgC m⁻² y⁻¹) is a sink 63 % the size of reported values (Table 3). Fellings including clear-cuts of old-growth forests and thinnings in regrowth forests (5.0 m³ ha⁻¹ y⁻¹) and thinnings in regrowth forests only (3.0 m³ ha⁻¹ y⁻¹) in 2001-2010 are comparable to observed fellings (3.4 m³ ha⁻¹ y⁻¹) (Table 4). Simulated results for the EU-28 + Switzerland countries were closer to reported values than for the whole of Europe for most of the above variables (Tables 2-4).

Table 3. Modelled and observed total carbon stock, soil/litter carbon and net ecosystem exchange (NEE) in European forests¹.

	LPJ-GUESS	Pan <i>et al.</i> 2011 ²	Forest Europe ³
Total C stock (PgC)			
<i>Europe</i>			
2000	60.3 (62.3)	39.3	
2007	60.4 (62.8)	40.9	
2010 ³	60.5 (63.1)		29.3
<i>EU-28 + Switzerland</i>			
2010 ³	48.6 (50.7)		25.5
Total C stock (kgC m⁻²)			
<i>Europe</i>			
2000	24.2 (25.0)	19.7	
2007	24.2 (25.2)	20.0	
2010 ³	24.3 (25.6)		14.8
<i>EU-28 + Switzerland</i>			
2010 ³	24.9 (26.1)		15.9
Soil+Litter C stock (PgC)			
<i>Europe</i>			
2000	46.5 (48.0)	27.6	
2007	46.3 (48.1)	28.0	
2010 ³	46.2 (48.2)		17.5
<i>EU-28 + Switzerland</i>			
2010 ³	37.0 (38.6)		16.1
Soil+Litter C (kgC m⁻²)			
<i>Europe</i>			
2000	18.6 (19.2)	13.9	
2007	18.5 (19.3)	13.7	
2010 ³	18.5 (19.3)		10.3
<i>EU-28 + Switzerland</i>			
2010 ³	19.0 (19.8)		10.8
NEE (PgC y⁻¹)			
<i>Europe</i>			
1990-1999	-0.188 (-0.141)	-0.30	
2000-2007	-0.212 (-0.153)	-0.27	
NEE (kgC m⁻² y⁻¹)			
<i>Europe</i>			
1990-1999	-0.075 (-0.056)	-0.154	
2000-2007	-0.085 (-0.061)	-0.134	

¹ Values in parentheses are for a simulation without wood harvest in regrowth forest. ² Litter includes dead wood. ³ Forest Europe soil and litter carbon data missing for Bosnia, Croatia, Greece, Hungary, Macedonia, Moldova, Montenegro, Norway and Portugal. Forest Europe total carbon and soil/litter carbon data for 2000 and 2015 are excluded due to fewer countries with data. Europe area definition as in Table 2.

465

Table 4. Modelled and observed growing stock (GS) in European forests in 2010 and Net annual increment (NAI) and fellings in forests available for wood supply (FAWS) in Europe for 2001-2010¹.

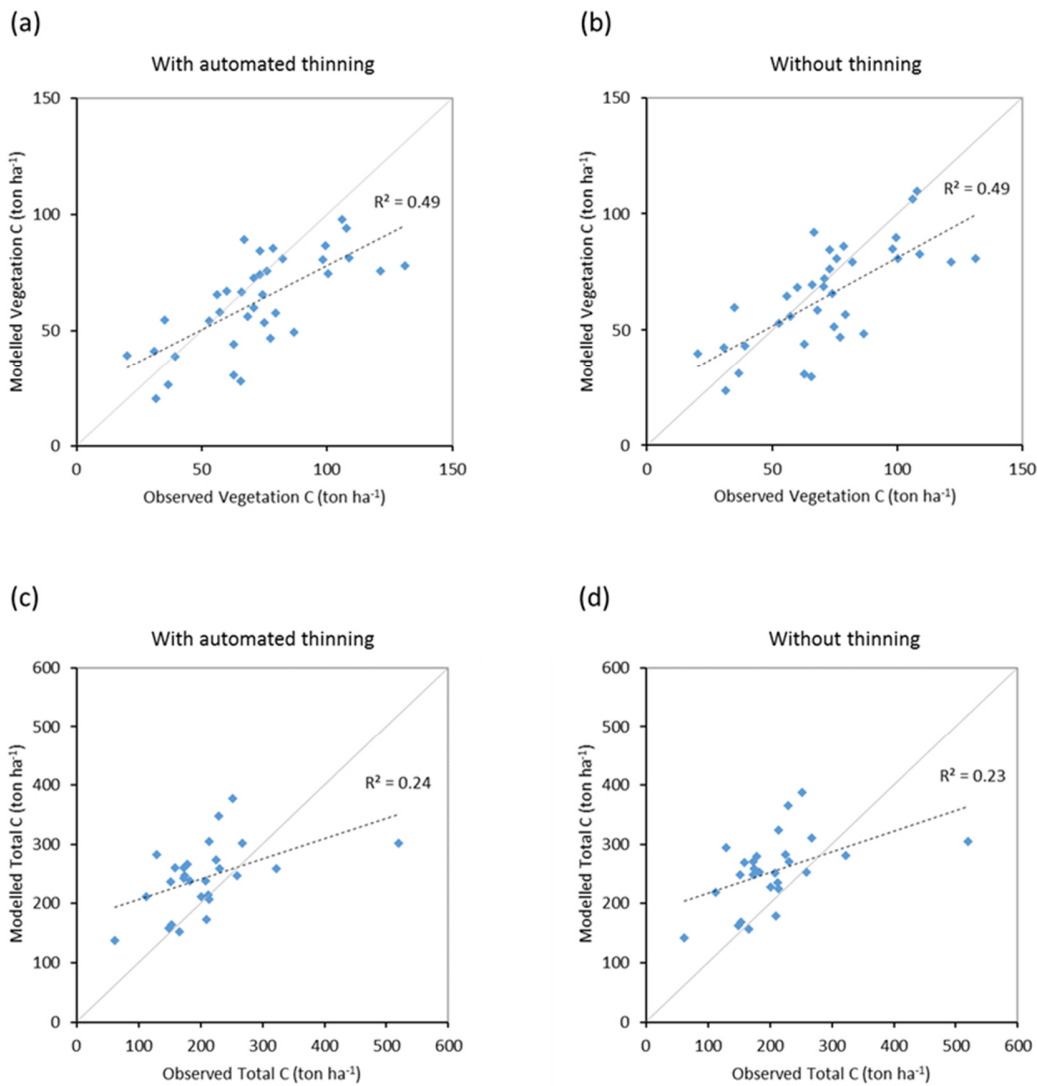
	LPJ-GUESS ²	Forest Europe ³
GS (million m³)		
<i>Europe</i>	38136 (39859)	31225
<i>EU-28 + Switzerland</i>	31794 (33385)	25357
GS (m³ ha⁻¹)		
<i>Europe</i>	156 (163)	157
<i>EU-28 + Switzerland</i>	163 (171)	158
NAI (million m³ y⁻¹)		
<i>Europe</i>	966 (484)	841
<i>EU-28 + Switzerland</i>	781 (401)	732
NAI (m³ ha⁻¹ y⁻¹)		
<i>Europe</i>	5.4 (2.7)	5.1
<i>EU-28 + Switzerland</i>	5.4 (2.8)	5.4
Fellings (million m³ y⁻¹)		
<i>Europe</i>	896 (380)	562
<i>EU-28 + Switzerland</i>	746 (333)	527
Fellings (m³ ha⁻¹ y⁻¹)		
<i>Europe</i>	5.0 (2.0)	3.4
<i>EU-28 + Switzerland</i>	5.2 (2.3)	3.9

¹ Values in parentheses are for a simulation without wood harvest in regrowth forest. As FAWS, secondary forest in 2010 is considered in LPJ-GUESS simulations. ² Mean of the years 2001-2010, AG biomass = 80 % of total biomass for Europe, using AG fractions from Forest Europe data for EU-28+Switzerland, values in brackets are for a simulation without wood harvest in regrowth forest. ³ Mean of the years 2000, 2005 and 2010, or for the available data for these years, except for Greece (1990 value). Europe area definition as in Table 2.

470

Modelled vegetation carbon, total carbon pool, growing stock, NAI and fellings for individual European countries show varying levels of agreement with reported values, with the best fit for vegetation carbon and growing stock ($r^2=0.49$ and 0.72 , respectively) and the least for NAI ($r^2=0.06$) (Fig. 9-11, Fig. E1-E5). Modelled mean European total thinning fractions of produced wood over the whole rotation period in stands clear-cut in 2011-2020 were 0.4 for BD and 0.5 for NE (not shown). Total thinning fractions of NAI for individual countries in 2001-2010 were between 0.35 and 0.6, with a total European mean of 0.53 (Fig. E4-E5). The corresponding annual thinning fractions of growing stocks were 0.8 % to 3.3 %, with a mean of 1.9 % (Fig. E3, E5).

475



480 **Figure 9.** Modelled and observed (Forest Europe 2015) values for individual European countries, excluding Georgia, Iceland, Cyprus, Malta and Russia, in 2010. Vegetation carbon: (a) Simulation with automated thinning. (b) Simulation without thinning. Total carbon pool: (c) Simulation with automated thinning. (d) Simulation without thinning. In (c) and (d), also countries missing Forest Europe soil data, Bosnia, Croatia, Greece, Hungary, Macedonia, Moldova, Montenegro, Norway and Portugal, are excluded.

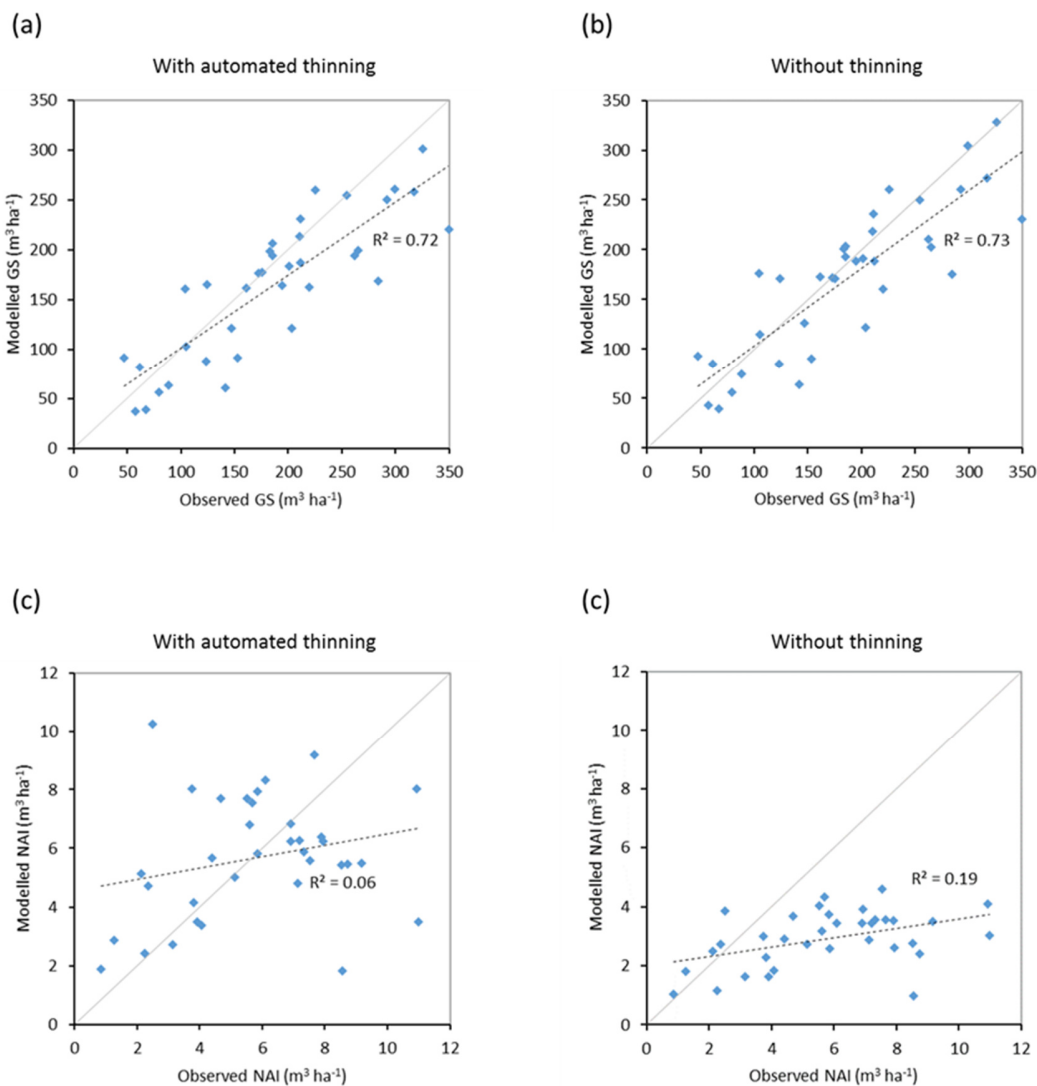


Figure 10. Modelled and observed (Forest Europe 2015) values for individual European countries. Growing stock (GS) in 2010: (a) simulation with automated thinning. (b) simulation without thinning. Net annual increment (NAI) in 2001-2010: (c) simulation with automated thinning. (d) simulation without thinning. Included countries as in Fig. 9a.

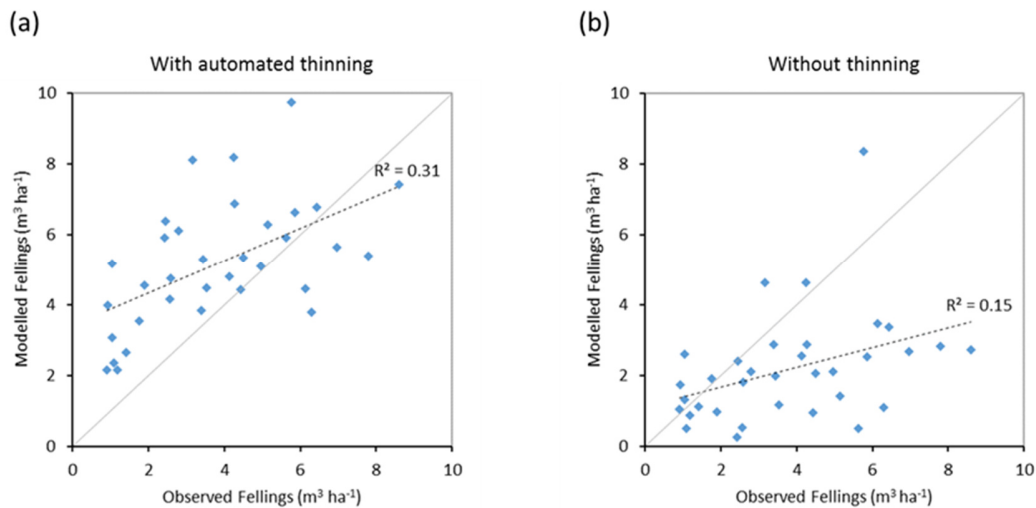


Figure 11. Modelled and observed (Forest Europe 2015) yearly fellings for individual European countries in 2001-2010. (a) Simulation with automated thinning. (b) Simulation without thinning (clear-cutting at creation of secondary forest). Included countries as in Fig. 9a.

Carbon pools and fluxes were partitioned into old-growth and regrowth forest components (modelled as PNV and secondary forest stands, respectively) (Fig. 12, Tables 5-6). Modelled European old-growth and regrowth forests have about equally sized vegetation carbon pools in 2000 (about 7 PgC each), but with a downward trend for old-growth forests in 2001-2010 driven by a reduction in area. The vegetation carbon density in old-growth forests, increasing from 8.5 to 9.2 kgC m⁻² between 2000 and 2015, is about twice the value in regrowth forests, increasing from 4.0 to 4.5 kgC m⁻² between 2000 and 2015. This vegetation carbon difference is reflected in the difference between old-growth and regrowth forest total carbon pool density (ca. 27 and 23 kgC m⁻², respectively), while the soil/litter carbon is slightly higher (1.5 %) in regrowth forests (Table 5). The modelled forest carbon sink (= -NEE) (2001-2010: 0.23 PgC y⁻¹) is dominated by regrowth forests (0.20 PgC y⁻¹ or 0.12 kgC m⁻² y⁻¹), compared to 0.03 PgC y⁻¹ or 0.04 kgC m⁻² y⁻¹ in old-growth forests (Table 6).

For the European continent, including thinning in the simulation reduced total forest vegetation carbon, soil/litter carbon, total carbon pool and growing stock in 2010 by 3-5 %, increased the magnitude of NEE in 2000-2007 by 39 % and increased NAI in 2001-2010 by 100 % compared to a simulation without thinning (Fig. 13-14, Tables 2-4). In regrowth forests, including thinning reduced vegetation carbon by 6-7 %, soil/litter carbon and the total carbon pool by 5-6 % in 2000-2010 and increased the magnitude of NEE in 1991-2010 by 41 % (Tables 5-6). The average thinning rate on regrowth forest land was 1.9 % of wood biomass/year in 2001-2010. Including thinning generally improved the match of simulations with observed data. The increased regrowth forest carbon sink seen in a simulation with thinning (0.12 kgC m⁻² y⁻¹) (Fig. 12) is associated with a strong reduction of natural mortality (-80 % in 1991-2015) in regrowth forest stands, induced by thinning and, after 2010, rejuvenation of regrowth forest stands resulting from clear-cutting (Fig. E6). The reduced natural mortality following thinning results in a lower soil respiration (Fig. E7). In a simulation with removal of biomass during disturbance events in the old-growth stands (not shown), the carbon sink in this forest class increased to 0.04 PgC y⁻¹ or 0.05 kgC m⁻² y⁻¹ in 2001-2010 compared to a standard simulation, increasing the total forest carbon sink in the same period by 7% to 0.25 PgC y⁻¹. Soil/litter carbon in the old-growth forest was reduced by 2.4% in 2010 and by 0.7% in the regrowth forest, reducing the total soil/litter pool by 1.3%. Total vegetation carbon increased by 0.24% in 2010.

Simulations with alternative settings of leaf removal fractions during harvests of 10% or 0%, instead of 30% in the standard simulation (not shown), decreased the total carbon sink in 2001-2010 by 0.9% and 1.3%, respectively, resulting from an increased soil respiration of 0.3% and 0.4% respectively, partially offset by an increase in NPP by 0.06% and 0.09%, respectively. Vegetation carbon increased by 0.08% and 0.13% and soil/litter carbon increased by 0.07% and 0.10% in these simulations.

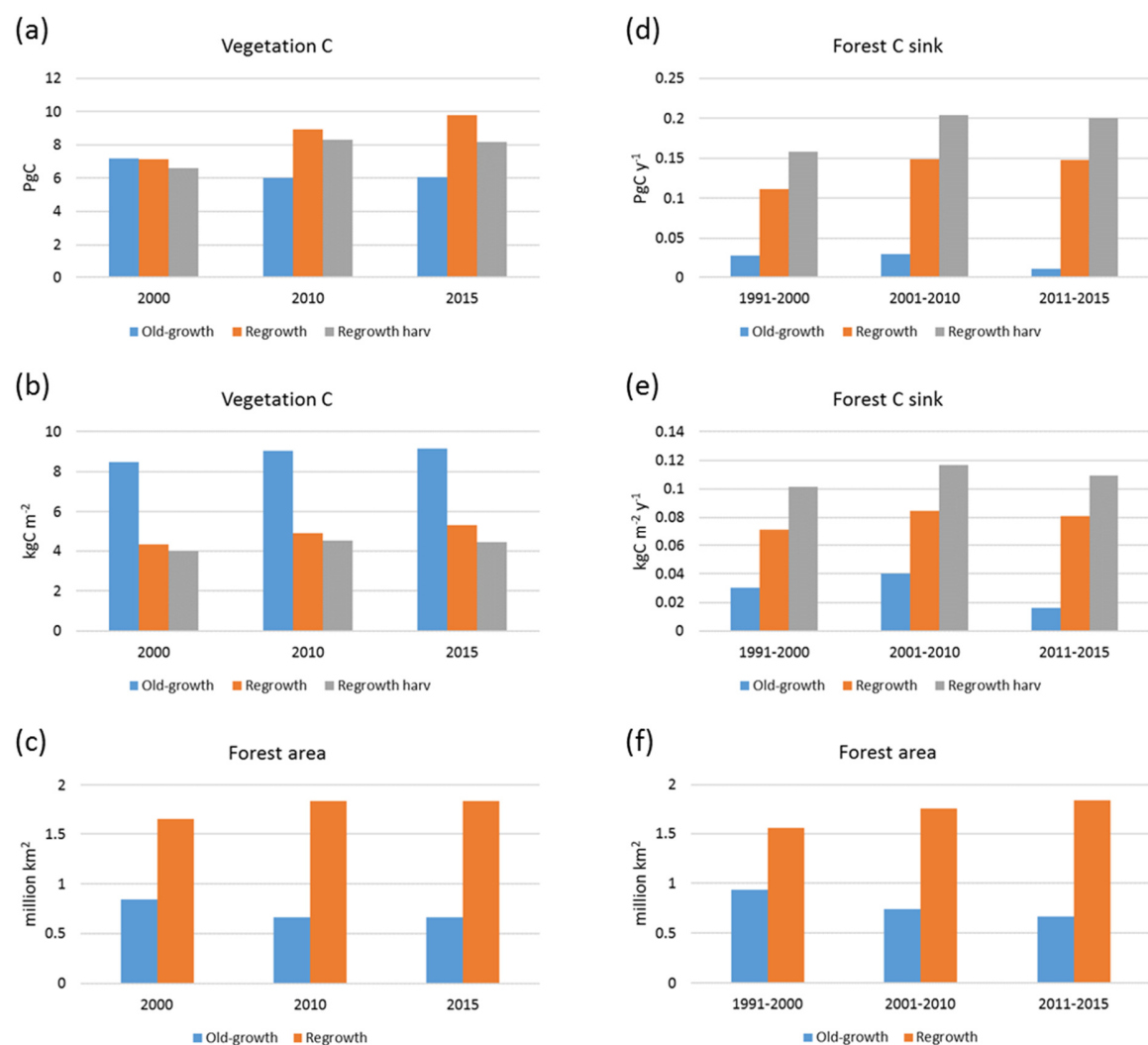


Figure 12. Modelled European forest vegetation carbon for 2000, 2010 and 2015 and carbon sink (= -NEE) for the periods 1991-2000, 2001-2010 and 2011-2015, separated into old-growth and regrowth forest (with and without wood harvest in regrowth forest). (a) Vegetation carbon. (b) Vegetation carbon per area. (c) Old-growth and regrowth forest area in 2000, 2010 and 2015. (d) Total forest carbon sink. (e) Mean forest carbon sink per area. (f) Old-growth and regrowth forest area in 1991-2000, 2001-2010 and 2011-2015.

Table 5. Vegetation carbon and total carbon stock in European forests¹, separated into regrowth and old-growth forest.

	Total forest	Regrowth forest	Old-growth forest
Veg C (Pg)			
2000	13.8 (14.3)	6.6 (7.1)	7.2
2007	14.1 (14.7)	7.8 (8.3)	6.4
2010	14.3 (15.0)	8.3 (9.0)	6.0
2015	14.2 (15.8)	8.2 (9.8)	6.1
Veg C (kg m⁻²)			
2000	5.5 (5.7)	4.0 (4.3)	8.5
2007	5.7 (5.9)	4.4 (4.7)	8.8
2010	5.7 (6.0)	4.5 (4.9)	9.1
2015	5.7 (6.4)	4.5 (5.3)	9.2
Soil+Litter C (Pg)			
2000	46.5 (47.6)	30.9 (32.4)	15.6
2007	46.3 (48.1)	33.1 (34.9)	13.2
2010	46.2 (48.2)	34.0 (36.0)	12.2
2015	46.1 (48.1)	34.0 (35.9)	12.2
Soil+Litter (kg m⁻²)			
2000	18.6 (19.2)	18.8 (19.6)	18.4
2007	18.5 (19.3)	18.6 (19.6)	18.3
2010	18.5 (19.3)	18.6 (19.7)	18.3
2015	18.5 (19.3)	18.6 (19.6)	18.3
Total C stock (Pg)			
2000	60.3 (62.3)	37.5 (39.5)	22.7
2007	60.4 (62.8)	40.9 (43.2)	19.5
2010	60.5 (63.1)	42.3 (45.0)	18.2
2015	60.6 (64.0)	42.1 (45.7)	18.2
Total C stock (kg m⁻²)			
2000	24.2 (25.0)	22.8 (24.0)	26.9
2007	24.2 (25.2)	23.0 (24.3)	27.2
2010	24.3 (25.3)	23.1 (24.6)	27.4
2015	24.3 (25.6)	23.0 (25.0)	27.5

¹ Values in parentheses are for a simulation without wood harvest in regrowth forest. Harvest products were not included in the calculations of total carbon. Total Europe area definition as in Table 2.

540

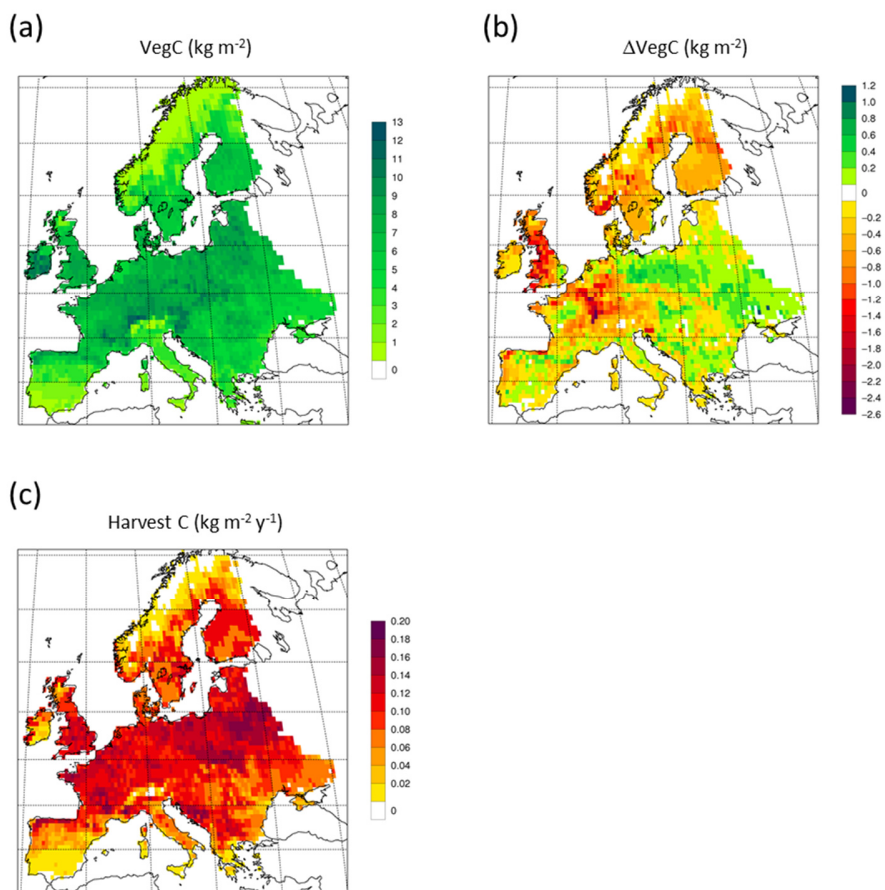
545

550

Table 6. Net ecosystem exchange (NEE), harvested carbon and natural mortality in European forests¹, separated into regrowth and old-growth forest.

	Total forest	Regrowth forest	Old-growth forest
NEE (PgC y⁻¹)			
<i>1991-2000</i>	-0.187 (-0.140)	-0.158 (-0.111)	-0.028
<i>2000-2007</i>	-0.212 (-0.153)	-0.188 (-0.129)	-0.024
<i>2001-2010</i>	-0.234 (-0.178)	-0.204 (-0.148)	-0.030
<i>2011-2015</i>	-0.211 (-0.159)	-0.200 (-0.148)	-0.011
NEE (kgC m⁻² y⁻¹)			
<i>1991-2000</i>	-0.075 (-0.056)	-0.106 (-0.072)	-0.030
<i>2000-2007</i>	-0.085 (-0.061)	-0.110 (-0.075)	-0.031
<i>2001-2010</i>	-0.094 (-0.071)	-0.117 (-0.085)	-0.040
<i>2011-2015</i>	-0.085 (-0.064)	-0.109 (-0.081)	-0.016
Harvest (PgC y⁻¹)			
<i>1991-2000</i>	0.196 (0.102)	0.094 (0)	0.102
<i>2001-2010</i>	0.210 (0.093)	0.117 (0)	0.093
<i>2011-2015</i>	0.241 (0)	0.241 (0)	0
Harvest (kgC m⁻² y⁻¹)			
<i>1991-2000</i>	0.079 (0.041)	0.061 (0)	0.109
<i>2001-2010</i>	0.084 (0.037)	0.067 (0)	0.125
<i>2011-2015</i>	0.097 (0)	0.132 (0)	0
Mortality (PgC y⁻¹)			
<i>1991-2000</i>	0.104 (0.201)	0.025 (0.123)	0.079
<i>2001-2010</i>	0.099 (0.227)	0.032 (0.159)	0.067
<i>2011-2015</i>	0.100 (0.240)	0.035 (0.176)	0.064
Mortality (kgC m⁻² y⁻¹)			
<i>1991-2000</i>	0.042 (0.081)	0.016 (0.079)	0.084
<i>2001-2010</i>	0.040 (0.091)	0.018 (0.091)	0.090
<i>2011-2015</i>	0.040 (0.096)	0.019 (0.096)	0.096

¹ Values in parentheses are for a simulation without wood harvest in regrowth forest. Total Europe area definition as in Table 2.



555 **Figure 13.** Simulated forest (a) vegetation carbon 2010 in a simulation with thinning, (b) vegetation carbon 2010 difference between simulations with and without wood harvest in regrowth forest. (c) Mean 2001-2010 harvested carbon during thinning on secondary forest.

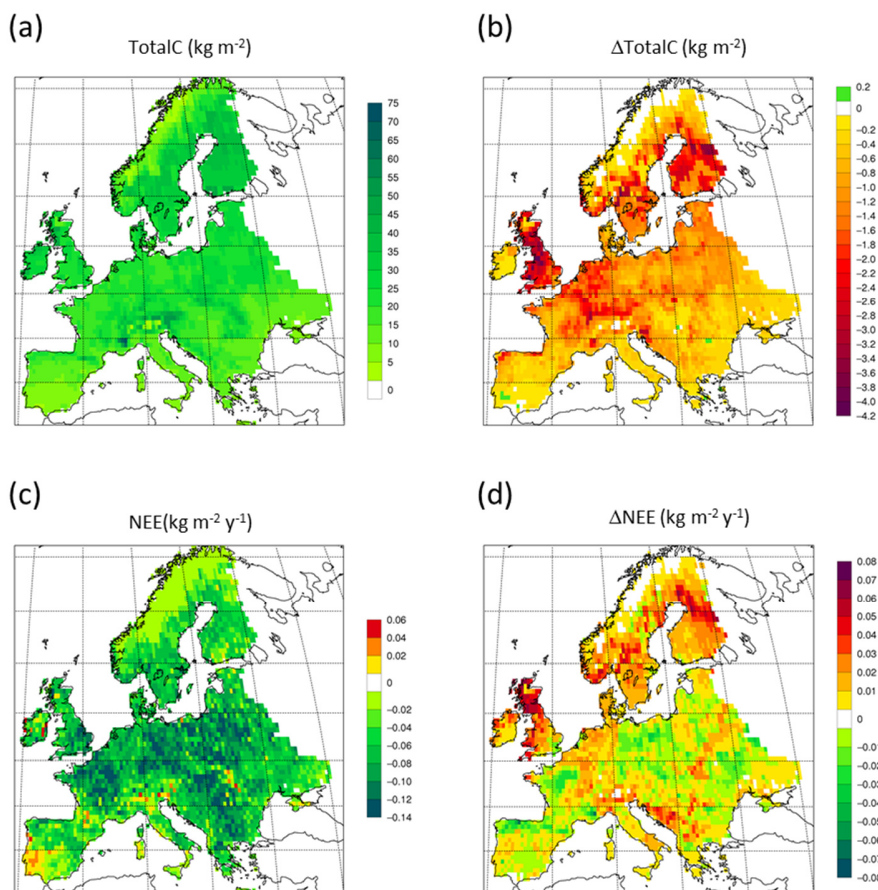


Figure 14. Simulated forest (a) total carbon pool 2010 in a simulation with thinning, (b) total carbon pool 2010 difference between simulations with and without wood harvest in regrowth forest, (c) Mean 2001-2010 NEE in a simulation with thinning, (d) Mean 2001-2010 NEE difference between simulations with and without thinning.

3.5 Robustness of automated harvest methods under future climates

To demonstrate the automated harvest methods, in which thinning intensity and rotation times are adjusted to maintain standing stock when stand productivity changes in response to forcing conditions, we used CO₂/climate projections in extended simulations with an otherwise identical setup as in the European-wide historic simulations. A significant modelled increase in NAI is accompanied by shorter rotation periods (Fig. E8), while a stable vegetation pool in managed forest is maintained (Fig. E9). The mean thinning fraction of the total harvest over the rotation for NE and BD stands increased over the 21st and 22nd centuries from 0.50 to 0.53 and 0.40 to 0.46, respectively, for both the RCP4.5 and RCP8.5 simulations (not shown).

4 Discussion

LPI-GUESS representations of unmanaged forest have previously been shown to compare favourably with observed forest vegetation succession, growth, stand structure, biomass and regrowth timescales (Smith et al., 2001, 2014; Pugh et al., 2019) and land use and land-cover change (LULCC) functionality has been included in the model since version 4.0 (Lindeskog et al., 2013). In a recent global study that used the model to analyse the carbon stocks of old-growth and regrowth forests (modelled as primary and secondary forest stands, respectively), without applying wood harvest (Pugh et al., 2019), the total forest carbon sink was

found to be about 50 % of values reported by Pan et al. (2011) based on upscaled inventory data. Disregarding wood harvest has been identified as causing under-estimation of carbon sinks in vegetation models (Zaehle et al., 2006; Ciais et al., 2008). In an effort to improve the ability to simulate carbon pools and fluxes on managed land, we introduced new forest management options into LPJ-GUESS v4.0 and provide a comprehensive description of forest initialisation and wood harvest alternatives. The

580 initialisation and harvest alternatives in the model are tailored to enable available forest inventory data and harvest information to be used to initialise and guide simulations. Ideally, both age and species structure as well as land-use history and current wood harvest strategy should be taken into account, but this is not always possible for simulations with a large spatial extent because of limited data availability. To demonstrate a possible workaround, we used an automated thinning and clear-cutting alternative to represent European regrowth forests, initialised on the basis of inventory-based age- and species data, but without wood harvest-

585 or LULCC data input. In simulations of central European beech and spruce stands, the automated thinning method was shown to result in similar modelled standing volume but often in a higher carbon sink compared to a more detailed harvest scheme based on reported harvest intensities (Fig. 7). The harvested volume was generally substantially higher in the automated thinning simulations, as the optimum harvested volume required to completely avoid self-thinning may not be realised in real managed forest stands. Ideally, automated thinning should be just enough to avoid self-thinning mortality in the model, so the biomass

590 should not be severely reduced, but in old beech stands, self-thinning is very low in the model (Fig. C1), so in these stands, both detailed and automated harvest results in a relatively large reduction in biomass compared to unharvested stands (Fig. 7).

The modelled mean vegetation carbon density in European forests in 2000-2010 is close to observations from several published sources (Pan et al., 2011; Liu et al., 2015; FOREST EUROPE, 2015). Including thinning in the simulation has a rather small impact on vegetation carbon (<5 %), but after clear-cutting starts in regrowth stands after 2010, simulations with and without harvest in

595 regrowth stands diverge strongly (Fig. E7). Also, the modelled mean European growing stock is close to observations. Modelled carbon sink density (= -NEE) for European forests in a simulation without thinning in the present study is about 46 % of the 2000-2007 value reported by Pan et al. (2011). This is similar to the global carbon sink predicted by a simulation with a similar setup without thinning, which is 49 % of the global value from the Pan et al. study. The difference in modelled carbon sink in 2001-2010 between old-growth forest ($0.04 \text{ kgC m}^{-2} \text{ y}^{-1}$) and regrowth forest without thinning ($0.085 \text{ kgC m}^{-2} \text{ y}^{-1}$), is similar to the difference

600 reported for global old-growth and regrowth forests by Pugh et al. (2019). Adding thinning to the European regrowth forest setup increases the carbon sink, by 38 % for the total forest area and by 46 % for the regrowth forest area, reaching 64 % and 82 %, respectively, of the Pan et al. (2011) value. Thinning reduces natural mortality due to relaxed competition between trees, and since a large part of harvested biomass is removed from forest stands, litter input to the soil, and the resulting heterotrophic respiration, is also reduced (Fig. E6-E7), increasing the carbon sink.

605 Details in the simplified European setup might explain the remainder of the ‘missing’ carbon sink, relative to reported values. One potential cause is that old-growth (>140 year) forests in this study are represented by unmanaged PNV (with a low carbon sink, cf. Table 6), as in Pugh et al. (2019), missing effects of land-use history in Europe, but preferred by us to the alternative of introducing arbitrary assumptions of age structure. Furthermore, the GFAD >140 year forest type data contain artefacts manifested in the BE distribution. Including a basic extensive wood harvest method in old-growth forests increased the total carbon sink by only 4 %,

610 resulting in a value of 66 % of the Pan et al. (2011) value. Wildfires also contribute to a lower carbon sink in modelled PNV. A further likely cause of the discrepancy between the modelled and reported carbon balance is that secondary forests are created from PNV stands, without taking land-use history into account. Reforestation of cropland, which generally has a much lower soil carbon content than forests in Europe (Guo et al., 2002), has a higher carbon storage potential than regrowth after clearing of existing forests. Also, soils of existing European forests have been depleted of carbon historically because of higher harvest rates, fuel-

615 wood collection and litter raking (Ciais et al., 2008; McGrath et al., 2015). Higher initial soil carbon pools will increase the release

of CO₂ in regrowth forests, especially under rising temperatures. Alternative methods to initialise secondary forests (fate of cleared wood, land-use history) have large implications for simulated carbon pools and fluxes as seen in the example Swedish site in this study, e.g. a mean carbon sink over 150 years spanning from 0.078 to 0.188 kgC m⁻² y⁻¹ (Fig. 2). This has also been shown at the global scale (Pugh et al., 2019). The high value of modelled European soil carbon density in 2000-2010 (34-80 % higher than reported values) supports the possibility that the lack of consideration of LULCC history is a main source of the missing carbon sink in this study. The similarity of the modelled mean NAI of European forests in a simulation with thinning to observed values (a 100 % increase compared to a simulation without thinning), also suggests that the missing carbon sink component could be found in heterotrophic respiration, not in vegetation productivity.

The automated thinning/clear-cutting modelling strategy applied in the model in the present study is intended as an example for demonstrating the new forest management capabilities and an improvement on the age-structure setup of Pugh et al. (2019) and does not include all available possibilities in the model. In addition to the shortcomings in the setup already noted concerning land-use history, many central European forests are managed by continuous wood harvest and not by clear-cutting and also consist of species mixes (Pretzsch et al., 2021). Estimating the effect of such different wood harvest strategies and monoculture/mixed-species alternatives on carbon stocks and fluxes is now possible and will be done in further studies. The self-thinning and tree density-based harvest method is less successful in the northernmost and southernmost parts of Europe, where productivity is strongly limited by temperature and precipitation, respectively, and the self-thinning relationship between biomass and tree density in the model is weaker. The low simulated productivity of forests in the Mediterranean points to the need for a review of the parameterisation of tree species to reflect Mediterranean managed forests or the introduction of tree species that are not currently represented in the model (Fig. E8). While the model shows good skills to reproduce reported mean values for Europe's vegetation carbon and productivity, the correlation between modelled results and observations for the individual countries show a large spread with no simple pattern for the deviations (Fig. E1-E5). However, it is obvious that countries in the Balkans, except Albania and Greece, have modelled thinning fractions higher than the reported total harvest fractions. These countries also show a poorer fit to observed NAI values in a simulation with thinning compared to a simulation without thinning. In any case, including thinning in simulations improves the fit to observed national NAI values in most other countries.

Our simulation results using LPJ-GUESS exhibit similarity with results from the ORCHIDEE DVM, which was applied with the same automated thinning method at a central European site (Bellassen et al., 2010). The ORCHIDEE simulation with automated thinning, compared to a simulation without thinning, gave a similar vegetation reduction (7 %), thinning fraction (0.55), reduced heterotrophic respiration (ca. 20 %) and carbon sink increase (67 %). The forest NPP reduction over time in ORCHIDEE simulations (ca. 10 %) is also seen in the average value for unharvested regrowth forests in European simulations with LPJ-GUESS (Fig. E7b). The decline of NPP directly after thinnings in ORCHIDEE is not simulated by LPJ-GUESS, but both models display a short-lived increase in heterotrophic respiration after thinnings (not shown). The recovery time after a clear-cut (when the stand turns into a carbon sink) is 6 years in the example south Swedish site with a standard harvest removal, but 18 years if the harvested biomass is left on site (Fig. 2). This is similar to the ORCHIDEE results with a stand recovery time of 10-20 years after a clear-cut. A similar recovery time, 7-11 years, after clear-cutting has been diagnosed based on CO₂ flux measurements in Sweden (Lindroth et al., 2009).

Responses of soil carbon and nitrogen cycling to harvest and fertilisation can be complex and qualitatively different in clear-cut and continuous-harvest systems (Parolari et al. 2016). The coupled carbon-nitrogen cycling in LPJ-GUESS (Smith et al. 2014) should enable the investigation of the effect of different management practices on forest productivity and sustainability at both stand and regional scale in future studies. Nitrogen depletion of the soil in previous land-use history reduces forest productivity and causes a shift in species succession in the model (Fig. 2c). At the European scale, removing a smaller fraction of residues (0 %

of leaves rather than 30 %) makes a small positive impact on productivity (0.1%, cf. 3.4). However, since many European forests receive large amounts of atmospheric nitrogen deposition, other nutrients such as Ca, Mg, K and P may be more important for limiting productivity, and acidification of the soil by N and S deposition may further decrease the availability of these nutrients (Sverdrup et al. 2006.). Especially Ca is close to or below the limit of sustainability in current forest management systems in southern Sweden (Sverdrup et al. 2006). Thus, ongoing development of limitation and cycling of additional nutrient species into LPJ-GUESS may be beneficial for capturing the full effects of different harvest regimes. Also relevant to achieving a better model of nutrient uptake is an improved representation of the soil profile.

While mean productivity of European forests is captured well by the model (Table 4) and productivity of forests in individual European countries reasonably well (Fig. 10, Fig. E4), the inability to reproduce observed productivity levels in high-productivity beech and spruce stands in Germany (Fig. 7) highlights the need for allowing a wider range of productivities.

The emergent competition between PFT:s with similar shade tolerance values in the model, e.g. beech and spruce, can deviate from actual dynamics, as seen in the poor performance of spruce compared to beech in a succession at the example site in southern Sweden (Fig. 5).

The management systems covered by the new forest management functionality in LPJ-GUESS include the most important features required for the improvement of modelling carbon pools and fluxes as well as the development of forest stands under future climates, but a few important additions will be desirable to include in the future. These include e.g. automated continuous wood harvesting and coppice management. For a good representation of coppicing, the model should also be improved to include plant carbohydrate storage. For better representations of European forests, land-use history, including litter raking, should be included to generate more realistic soil carbon pools, by adapting functionality already available in the model.

Appendix A: Supplementary model parameterisation tables.

Table A1 PFT parameters used in this study. Values in bold cursive text are updated compared to Hickler *et al* (2012).

Species/PFT	Phenology	Geographic range ¹	Shade tolerance ¹	Growth form ¹	Tc _{min}	Tc _{max}	Tw _{min}	GDD ₅
<i>Abies alba</i>	EG	temperate	tolerant	tree	-6.5(-7.5)	2	6	1600
<i>Betula pendula</i>	SG	temperate	intolerant	tree	-30	7	5	700
<i>Betula pubescens</i>	SG	boreal	intolerant	tree	-30	3	5	350
<i>Carpinus betulus</i>	SG	temperate	intermediate	tree	-8	5	5	1200
<i>Corylus avellana</i>	SG	temperate	intermediate	tree	-11	7	5	800
<i>Fagus sylvatica</i>	SG	temperate	tolerant	tree	-6(-8)	6	5	1500
<i>Fraxinus excelsior</i>	SG	temperate	intermediate	tree	-16	6	5	1100
<i>Juniperus oxycedrus</i>	EG	temperate	intolerant	tree	1(0)	-	-	2200
<i>Larix decidua</i>	SG	boreal	intermediate	tree	-30	-2	5	300
<i>Picea abies</i>	EG	boreal	tolerant	tree	-30	-1.5	5	600
<i>Pinus halepensis</i>	EG	temperate	intolerant	tree	3	9	21	3000
<i>Pinus sylvestris</i>	EG	boreal	intermediate	tree	-30	-1	5	500
<i>Populus tremula</i>	SG	temperate	intolerant	tree	-30(-31)	6	-	500
<i>Quercus coccifera</i>	EG	temperate	intermediate	shrub	0	11	21	2200
<i>Quercus ilex</i>	EG	temperate	intolerant	tree	3	7	5	1800
<i>Quercus pubescens</i>	SG	temperate	intermediate	tree	-5	6	-	1900
<i>Quercus robur</i>	SG	temperate	intermediate	tree	-9(-10)	6	5	1100
<i>Tilia cordata</i>	SG	temperate	intermediate	tree	-11(-12)	5	5	1100
<i>Ulmus glabra</i>	SG	temperate	intermediate	tree	-9.5(-10.5)	6	5	850
<i>Boreal evergreen shrub</i>	EG	boreal	intolerant*	shrub	-	-1	-	200
<i>Mediterranean raingreen shrub</i>	RG	temperate	intolerant	shrub	1(0)	-	-	2200
<i>C3 grass</i>	SG/RG	temp-boreal	-	herb	-	-	-	-

¹See group parameter table A2; Phenology: evergreen(EG); summergreen(SG), raingreen(RG); Tc_{min}, Tc_{max} = minimum and maximum temperature of the coldest month for establishment, value in brackets are minimum temperature for survival, if different from value for establishment; Tw_{min} = minimum warmest month mean temperature for establishment; GDD₅ = minimum degree-day sum above 5°C for establishment;

710

Table A1 cont.

Species/PFT	k _{allom1}	k _{la:sa}	gmin (mm s ⁻¹)	Chilling requirement ¹	fAWC	CA _{max} (m ²)	z _l	r _{fire}	α _{leaf} (y)	α _{ind} (y)	fnstorage
<i>Abies alba</i>	150	4000	0.3	-	0.35	40	0.6	0.1	3	350	0.05
<i>Betula pendula</i>	250	5000	0.5	intermediate	0.42	40	0.6	0.1	0.5	200	0.15
<i>Betula pubescens</i>	250	5000	0.5	intermediate	0.5	40	0.6	0.1	0.5	200	0.15
<i>Carpinus betulus</i>	250	5000	0.5	high	0.33	40	0.6	0.1	0.5	350	0.15
<i>Corylus avellana</i>	250	4000	0.5	intermediate	0.3	40	0.6	0.1	0.5	100	0.15
<i>Fagus sylvatica</i>	250	5000	0.5	high	0.3	40	0.6	0.1	0.5	500	0.15
<i>Fraxinus excelsior</i>	250	5000	0.5	low	0.4	40	0.6	0.1	0.5	350	0.15
<i>Juniperus oxycedrus</i>	150	1500	0.5	-	0.01	10	0.5	0.4	1.5	200	0.05
<i>Larix decidua</i>	150	5000	0.3	low	0.3	40	0.6	0.2	1	500	0.05
<i>Picea abies</i>	150	4000	0.3	-	0.43	40	0.8	0.1	3	500	0.05
<i>Pinus halepensis</i>	150	3000	0.3	-	0.05	40	0.6	0.2	2	350	0.05
<i>Pinus sylvestris</i>	150	3000	0.3	-	0.25	40	0.6	0.2	2	350	0.05
<i>Populus tremula</i>	250	5000	0.5	intermediate	0.4	40	0.7	0.2	0.5	160	0.15
<i>Quercus coccifera</i>	100	2500	0.5	-	0.1	10	0.5	0.3	1.5	350	0.3
<i>Quercus ilex</i>	250	3000	0.5	-	0.1	40	0.5	0.3	2	350	0.05
<i>Quercus pubescens</i>	250	5000	0.5	low	0.2	40	0.6	0.2	0.5	500	0.15
<i>Quercus robur</i>	250	5000	0.5	low	0.25	40	0.6	0.2	0.5	500	0.15
<i>Tilia cordata</i>	250	5000	0.5	high	0.33	40	0.8	0.1	0.5	350	0.15
<i>Ulmus glabra</i>	250	5000	0.5	low	0.4	40	0.6	0.1	0.5	350	0.15
<i>Boreal evergreen shrub</i>	20	500	0.3	-	0.25	3	0.8	0.1	2	50	0.3
<i>Mediterranean raingreen shrub</i>	100	1500	0.5	-	0.01	10	0.9	0.3	0.5	100	0.3
<i>C3 grass</i>	-	-	0.03	-	0.01	-	0.9	0.5	0.5	-	0.3

¹See group parameter table 2; k_{allom1} = constant in allometry equations (Smith *et al.*, 2001); k_{la:sa} = leaf area to sapwood cross-sectional area ratio; gmin = minimum canopy conductance; fAWC = minimum growing-season (daily temperature > 5°C) fraction of available soil water holding capacity in the first soil layer; CA_{max} = maximum woody crown area; z_l = fraction of roots in first soil layer; r_{fire} = fraction of individuals surviving fire; α_{leaf} = leaf longevity; α_{ind} = maximum, non-stressed longevity; fnstorage: fraction of sapwood (root for herbaceous PFTs) that can be used as a nitrogen long-term storage scalar

715

720

725

730

Table A2. Common PFT parameters for shade tolerance, geographic range, growth form and chilling requirement categories in Table A1. Values in bold cursive text are updated compared to Hickler *et al* 2012.

Shade tolerance	tolerant	intermediate	intolerant
Sapwood to heartwood conversion rate (year ⁻¹)*	0.05	<i>0.075</i>	<i>0.1</i>
Growth efficiency parameter (kg C m ⁻² year ⁻¹)	0.04	<i>0.06</i>	<i>0.08</i>
Max. establishment rate (saplings year ⁻¹ m ⁻²)	0.05	<i>0.15</i>	0.2
Min. PAR at forest floor for establishment (MJ m ⁻² day ⁻¹)	<i>0.35</i>	2.0	2.5
Recruitment shape parameter	<i>3</i>	<i>7</i>	10
*Boreal evergreen shrub: 0.05			
Geographic range	boreal	temperate	temperate-boreal grass
Base respiration rate at 10°C (gC gN ⁻¹ day ⁻¹)	<i>1</i>	1	1
Optimum temperature range for photosynthesis (°C)	10-25	15-25	10-30
pstemp_min	-4	-2	-5
pstemp_max	38	38	45
Growth form	tree	shrub	herbaceous
k _{allom2} (allometric parameter)	40	5	-
wooddens	200	250	-
lr _{max} Non water-stressed leaf to fine root mass ratio	1	1	0.5
Fine root turnover rate (year ⁻¹)	0.7	0.7	0.7
Chilling requirement	low	intermediate	high
k_chilla	0	0	0
k_chillb	100	350	600
k_chillk	0.05	0.05	0.05

735

Table A3. Parameters for automated thinning and clear-cutting.

	α_{st} (trees ha ⁻¹)	β_{st} log(trees ha ⁻¹) (log m) ⁻¹	rdi_{target}	$dens_{target}$ (trees ha ⁻¹)
Needleleaf (NL)	65	1.6	0.7	250
Broadleaf (BL)	40	1.6	0.85	100

740

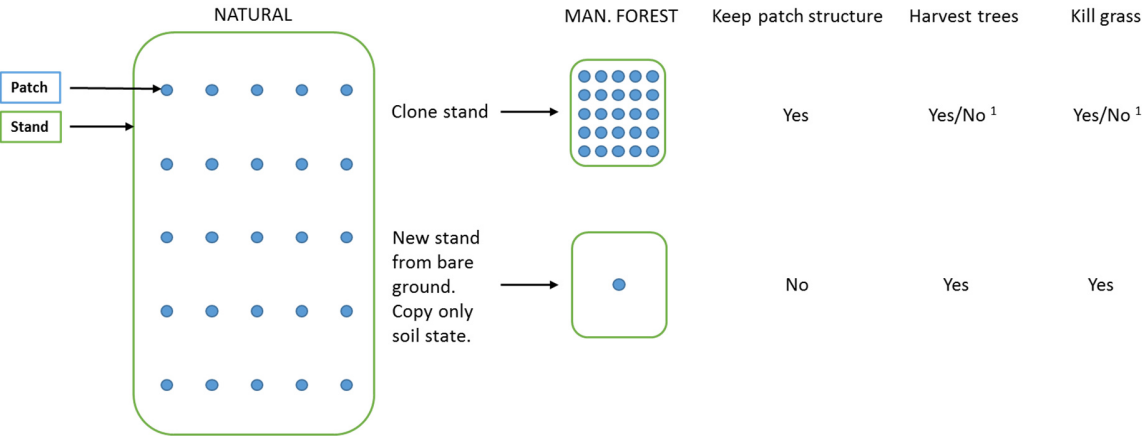


Figure B1. Options when creating managed forest stands from PNV. ¹ For the cloning alternative, tree harvest and grass killing is optional.

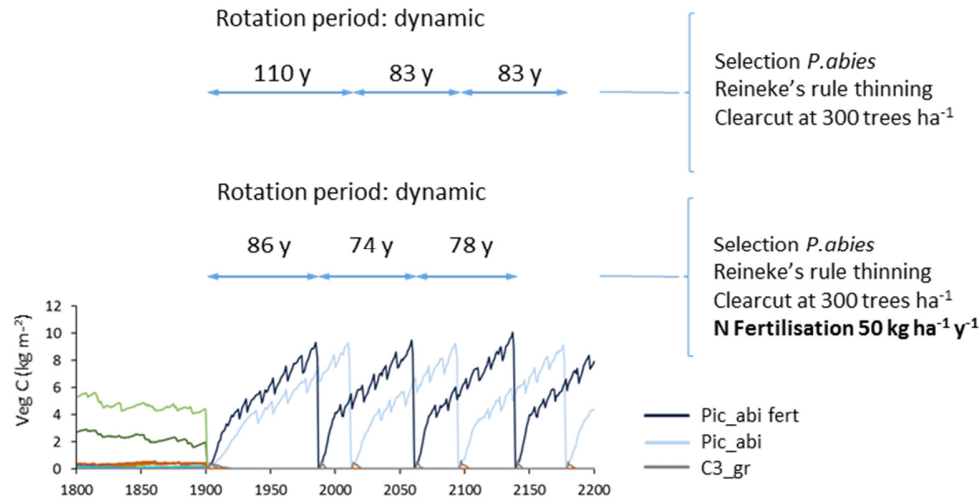


Figure B2. Effect of nitrogen fertilisation (50 kg ha⁻¹ y⁻¹) on modelled productivity and rotation length in spruce monoculture with automated thinning and clear-cutting. Abbreviations: Pic_abi fert: *Picea abies* with N fertilisation, Pic_abi: *Picea abies* without N fertilisation, C3_gr: C₃ grass. Forestry stands were created from clear-cutting of PNV in 1901. Location, climate input and species in PNV as in Fig. 2.

Appendix C: Supplementary European simulation setup tables and figures.

765 Table C1. Mapping of EFI tree groups to LPJ-GUESS species selections¹.

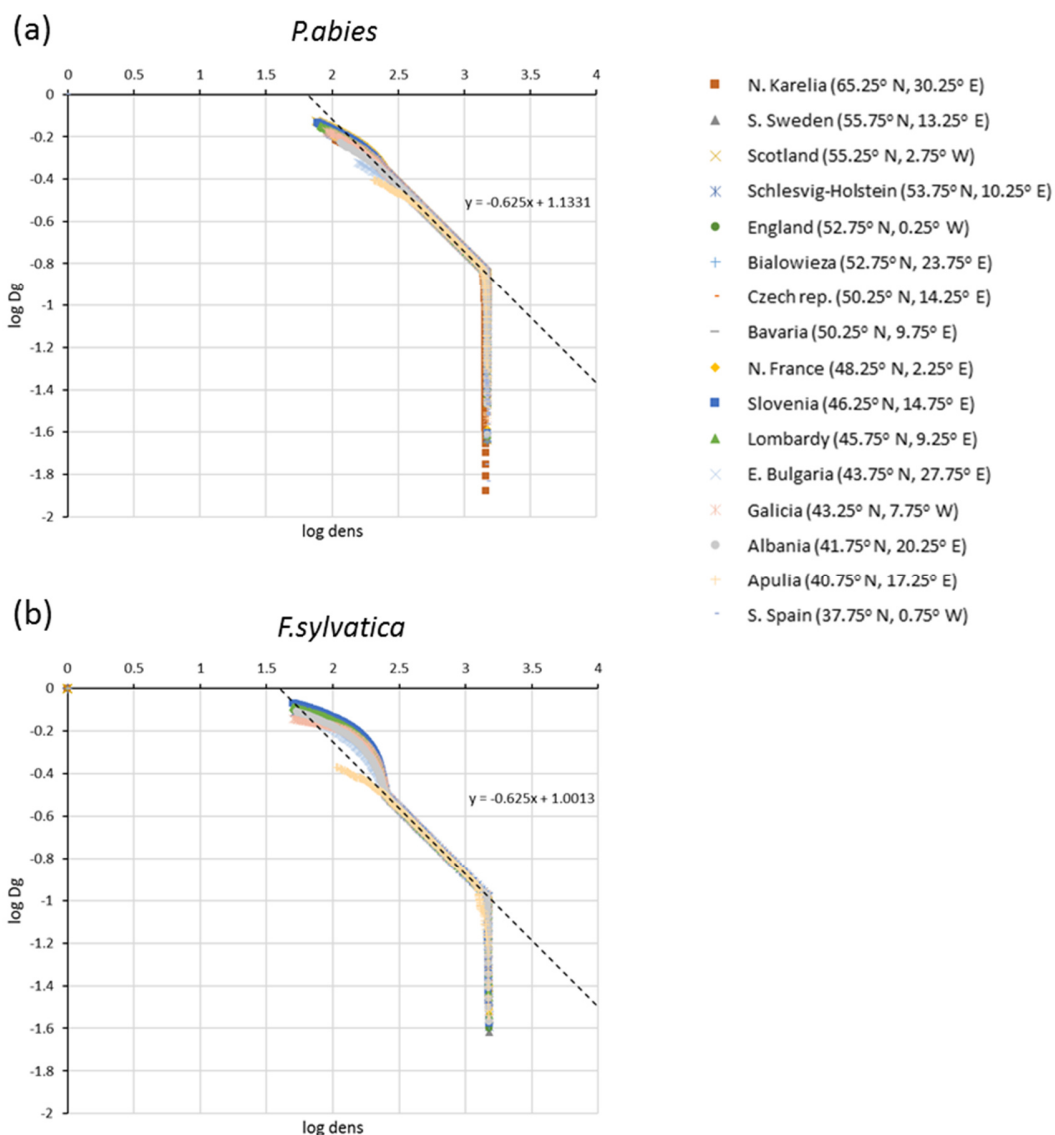
EFI species group	LPJ-GUESS selection
Broadleaf deciduous (BD)	
Alnus, Betula	<i>B. pendula</i> , <i>B. pubescens</i>
BroadleafMisc, Castanea, Robinia	<i>B. pendula</i> , <i>B. pubescens</i> , <i>C. avellana</i> , <i>Q. pubescens</i> , <i>T. cordata</i> , <i>U. glabra</i>
Carpinus	<i>C. betulus</i>
Fagus	<i>F. sylvatica</i>
Fraxinus	<i>F. excelsior</i>
Populus	<i>P. tremula</i>
QuercusRobPet	<i>Q. robur</i>
None ²	<i>B. pubescens</i> , <i>F. sylvatica</i> , <i>Q. robur</i> , <i>C. avellana</i>
Undet. ³	<i>B. pendula</i> , <i>B. pubescens</i> , <i>C. betulus</i> , <i>C. avellana</i> , <i>F. sylvatica</i> , <i>F. excelsior</i> , <i>P. tremula</i> , <i>Q. pubescens</i> , <i>Q. robur</i> , <i>T. cordata</i> , <i>U. glabra</i>
Broadleaf evergreen (BE)	
QuercusMisc, Eucalyptus	<i>Q. ilex</i>
Needleleaf deciduous (ND)	
Larix	<i>L. decidua</i>
Needleleaf evergreen (NE)	
Abies	<i>A. alba</i>
Conifers, Pseudotsuga	<i>P. abies</i> , <i>P. sylvestris</i> , <i>P. halepensis</i>
Picea	<i>P. abies</i>
PinusSylv	<i>P. sylvestris</i>
PinusMisc, PinusPin	<i>P. sylvestris</i> , <i>P. halepensis</i>
None ²	<i>P. abies</i> , <i>P. sylvestris</i>
Undet. ³	<i>A. alba</i> , <i>P. abies</i> , <i>P. sylvestris</i>

¹ Abbreviations of EFI species/species groups: Abies (*Abies* spp.), Alnus (*Alnus* spp.), BroadleafMisc (Other broadleaves), Betula (*Betula* spp.), Carpinus (*Carpinus* spp.), Castanea (*Castanea* spp.), Conifers (Other conifers), Eucalyptus (*Eucalyptus* spp.), Fagus (*Fagus* spp.), Fraxinus (*Fraxinus* spp.), Larix (*Larix* spp.), Picea (*Picea* spp.), PinusPin (*P. pinaster*), PinusSylv (*P. sylvatica*), PinusMisc (*Pinus* spp., other than *P. pinaster* and *P. sylvestris*), Populus (*Populus* spp.), Pseudotsuga (*P. menziesii*), QuercusRobPet (*Q. robur*, *Q. petraea*), Robinia (*Robinia* spp.).

² Grid-cells without EFI forest

³ Undetermined, equal fractions of all EFI tree groups

770



775 **Figure C1.** Self-thinning log-log plots of quadratic mean diameter (Dg) and tree density (dens) for simulations of (a) *Picea abies* and (b) *Fagus sylvatica* monoculture at 16 European sites used for automated thinning in the model.

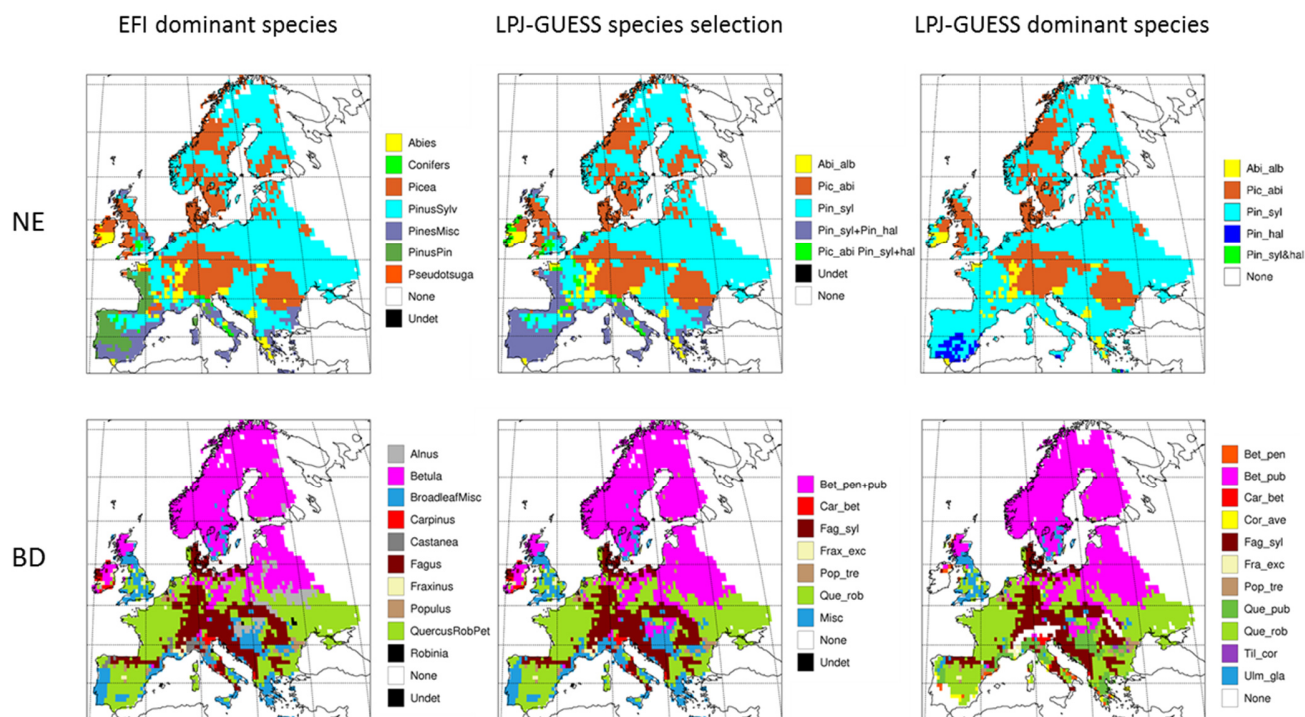


Figure C2. Mapping of dominant EFI tree species groups in the needleleaf evergreen (NE) and broadleaf deciduous (BD) GFAD forest classes to LPJ-GUESS species selections and the resulting dominant species (LAI) in 1986-2015 in an LPJ-GUESS simulation with automated thinning. Abbreviations of EFI species/species groups: Abies (*Abies* spp.), Alnus (*Alnus* spp.), BroadleafMisc (Other broadleaves), Betula (*Betula* spp.), Carpinus (*Carpinus* spp.), Castanea (*Castanea* spp.), Conifers (Other conifers), Eucalyptus (*Eucalyptus* spp.), Fagus (*Fagus* spp.), Fraxinus (*Fraxinus* spp.), Larix (*Larix* spp.), Picea (*Picea* spp.), PinusPin (*P. pinaster*), PinusSylv (*P. sylvestica*), PinusMisc (*Pinus* spp., other than *P. pinaster* and *P. sylvestris*), Populus (*Populus* spp.), Pseudotsuga (*P. menziesii*), QuercusRobPet (*Q. robur*, *Q. petraea*), Robinia (*Robinia* spp.). Abbreviations of LPJ-GUESS species/species groups: Abi_alb (*A. alba*), Pic_abi (*P. abies*), Pin_syl (*P. sylvestris*), Pin_hal (*P. halipensis*), Pin_syl+hal (*P. sylvestris*+*P. halipensis*), Bet_pen (*B. pendula*), Bet_pub (*B. pubescens*), Bet_pen+pub (*B. pendula*+*B. pubescens*), Car_bet (*C. betulus*), Cor_ave (*C. avellana*), Fag_syl (*F. sylvestris*), Frax_exc (*F. excelsior*), Pop_tre (*P. tremula*), Que_rob (*Q. robur*), Que_pub (*Q. pubescens*), Til_cor (*T. cordata*), Ulm_gla (*U. glabra*). The EFI groups BroadleafMisc, Castanea and Robinia are mapped to the LPJ-GUESS selection "Misc": *B. pendula*, *B. pubescens*, *C. avellana*, *Q. pubescens*, *T. cordata* and *U. glabra*. For the mapping of the EFI groups None and Undet, see Table C1.

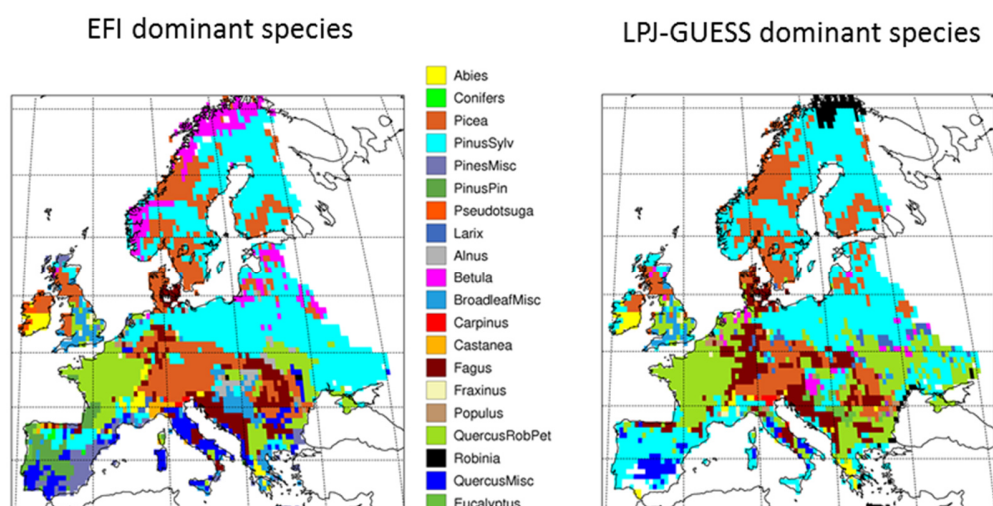


Figure C3. Comparison of dominant EFI tree species groups (area) and modelled LPJ-GUESS managed forest dominant tree species (LAI) in 1986-2015 in an LPJ-GUESS simulation with automated thinning. Abbreviations of LPJ-GUESS species as in Fig. C2.

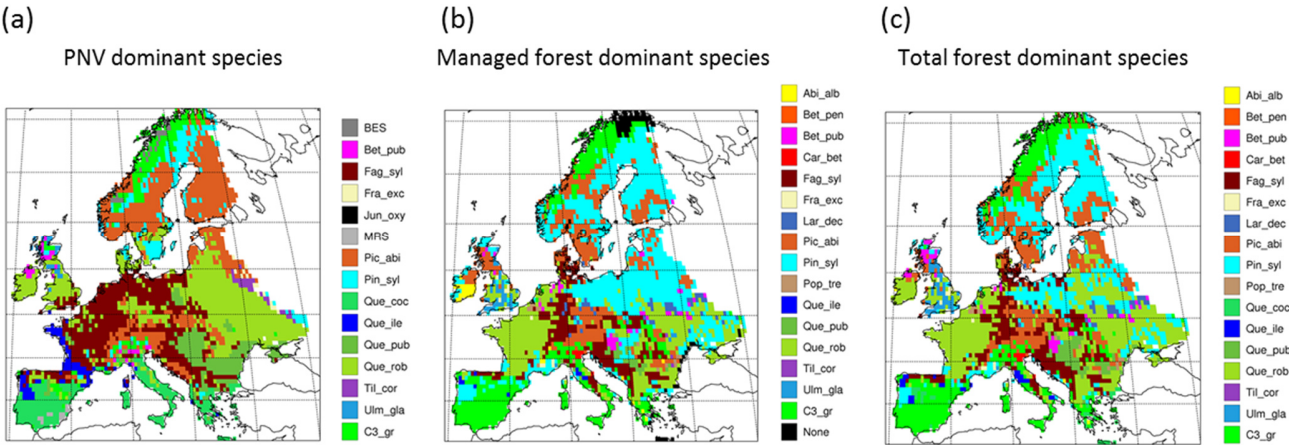


Figure C4. Modelled LPJ-GUESS dominant species (LAI) (including grass) in A. Primary forest (modelled as PNV), B. secondary forest (managed with automated thinning) and C. total forest landscape in 1986-2015. Abbreviations of LPJ-GUESS tree species as in Fig. C2, BES (Boreal evergreen shrub), MRS (Mediterranean raingreen shrub), C3_gr (C3 grass).

Appendix D: Supplementary Central European site information.

Table D1

<i>Dataset</i>	<i>Location</i>	<i>Source</i>	<i>No. stands</i>	<i>No. sites</i>	<i>Stand age (y)</i>	<i>Last sampling year</i>	<i>No. samplings</i>	<i>Mean sampling interval (y)</i>	<i>Repl-icate stands¹</i>	<i>Mean harvest intensity¹</i>
Beech										
GER-Bav	Bavaria	This paper	4	3	44-139	2012-2014	5-10	5-7	1-2	0.05-0.154
GER-C	Central Germany	Nagel, pers.com.	6	3	35-169	2014-2015	6-21	5-6	2	0.014-0.033, 0.098-0.134
GER-CS	Central & South Germany	Pretzsch 2005	27	9	100	1905-1995	1	100	3	0.086-0.213, 0.294-0.392, 0.396-0.595
Spruce										
GER-Bav	Bavaria	This paper	3	3	30-105	2013-2016	7-11	5-7	1	0.075-0.152
GER-C	Central Germany	Nagel, pers.com.	9	5	23-124	2005-2018	4-19	5	1-2	0.006-0.038, 0.063-0.149
GER-CS	Central & South Germany	Pretzsch 2005	26	9	100	1947-1986	1	100	2-3	0.265-0.357, 0.303-0.433, 0.316-0.518
SLO	Slovenia	This paper	27	1	24-145	2015	4(3) ²	10	1	0.039-0.249

¹Mean harvest intensity range of one, two or three different thinning intensities in replicate stands during a sampling interval.
²Harvest reported for the three last observations only.

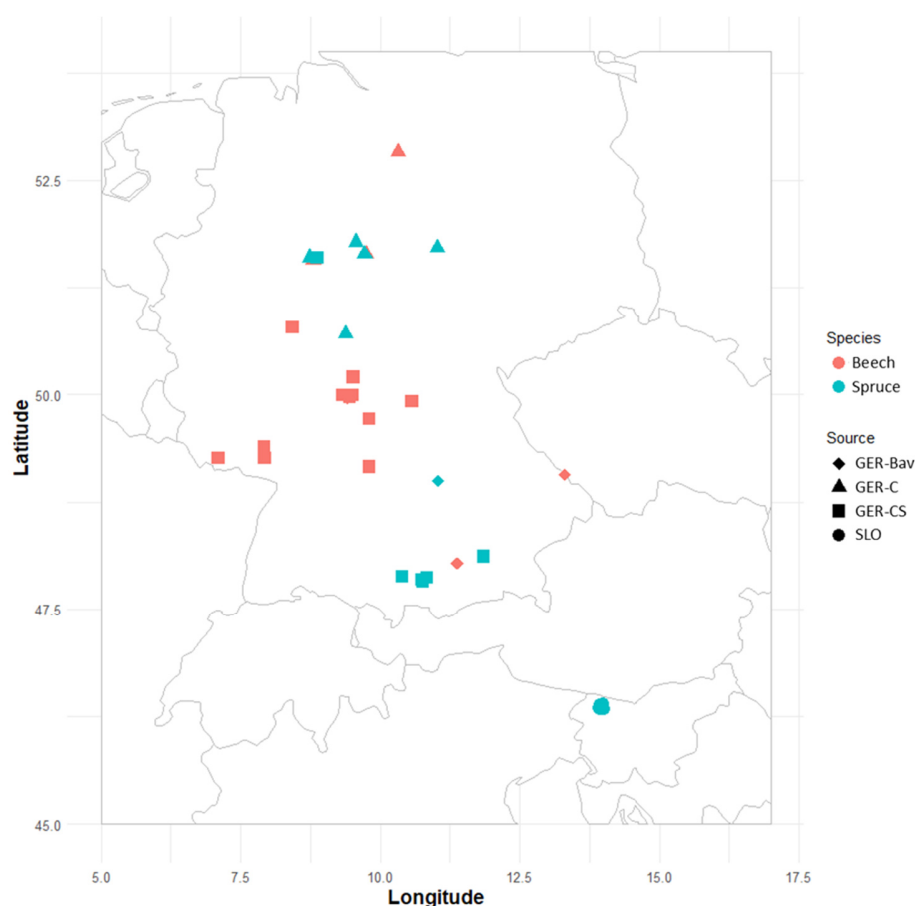


Figure D1. Location of the beech and spruce sites for the four stand data sets.

The GER-Bav dataset contains pure European beech (3 sites) and pure Norway spruce (3 sites) and comes from the Database of Chair of Forest Growth and Yield Science TUM School of Life Sciences Technical University of Munich. Mean annual temperature is 6-7.7 °C, mean annual precipitation is 800-1200 mm and elevation is 400-820 m.a.s.l.. Site quality is average to very good. Applied management is light, moderate or heavy thinning.

The GER-C dataset contains pure European beech stands (3 sites) and pure Norway spruce stands (5 sites) and comes from the Database of Long term research plots from Nordwestdeutsche Forstliche Versuchsanstalt, Abteilung Waldwachstum. Site quality is from average to above average, mean annual temperature is 6.5-8.5 °C, mean annual precipitation is 730-1100 mm and elevation is 310-610 metres above sea level (m.a.s.l.). Thinning methods were: thinning from above, thinning from below (light, moderate and heavy) and selective thinning.

The GER-CS dataset (Pretzsch 2005, Pretzsch and Biber 2005) is derived from long-term thinning experiments in pure stands of Norway spruce (8 sites) and European beech (9 sites), mostly in the lowlands or sub-alpine parts of Southern and Central Germany. Plot sizes were 0.25-0.5 ha. The spruce plots were concentrated on the South German pleistocene in the natural habitat of Norway spruce and were artificially established in re-forestation after clear-cutting or afforestation of cropland and pastures. The site fertility was excellent (class I and II). The plots were subjected to light, moderate and heavy thinning as for the GER-Bav data set. The beech plots represented sites with average to very good fertility on red marl and red sandstone soils in Central Germany and were the result of natural regeneration following cutting according to a compartment shelterwood system, resulting in consistently

even-aged stands despite natural regeneration. For the beech plots, mean annual temperature is 6.5-8.8 °C, mean annual precipitation is 660-1080 mm and elevation is 310-610 m.a.s.l.. For the spruce plots, mean annual temperature is 6.2-8 °C, mean sum of annual precipitation is 1010-1200 mm and the elevation is 340-840 m.a.s.l.. The main thinning method was thinning from below with thinning intensities A, B and C grades which correspond to light, moderate and heavy thinning and defined according to the Association of German Forest Research Stations (Verein Deutscher Forstlicher Versuchsanstalten, 1902) and is described by Pretzsch (2005).

The SLO dataset consisted of 27 forest sub-compartments of an average size of 25.6 ha from the high karst plateau Pokljuka in the Alps (46.35 °N, 13.96 °E, Slovenia,1312 m.a.s.l.). The area is characterized by pure Norway spruce even-aged stands in the timber phase (on average 120 ± 20 years old and with the growing stock of 568 ± 118 m3/ha). Climate is alpine with the annual range of precipitation 1900 to 2300 mm and mean annual temperature 3 °C. Site productivity is around 8 m³ ha⁻¹. The forests are now parts of the Triglav National Park but were intensively harvested in the 18th and 19th centuries for the iron industry with the clear-cutting and shelterwood systems. The current forest management system is a combination of various shelterwood and group selection systems. In the last 30 years mean decadal harvesting intensities in the selected sub-compartments were 14 % of the growing stock.

Appendix E: Supplementary European simulation evaluation figures.

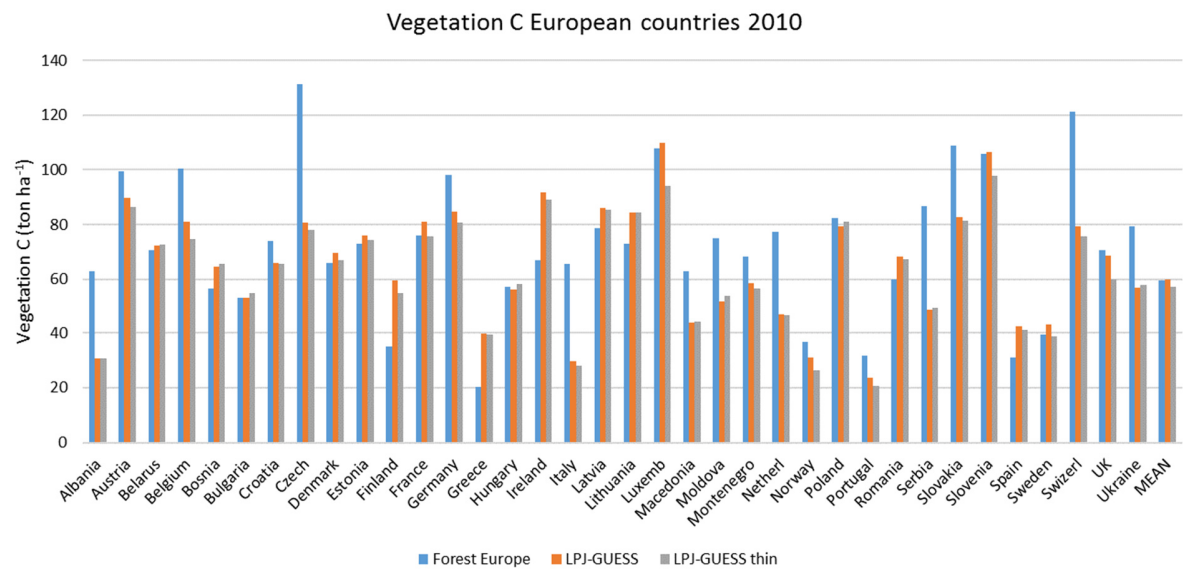


Figure E1. Modelled and observed (Forest Europe 2015) vegetation carbon for individual countries in 2001-2010. LPJ-GUESS: simulation without thinning, LPJ-GUESS thin: simulation with automated thinning.

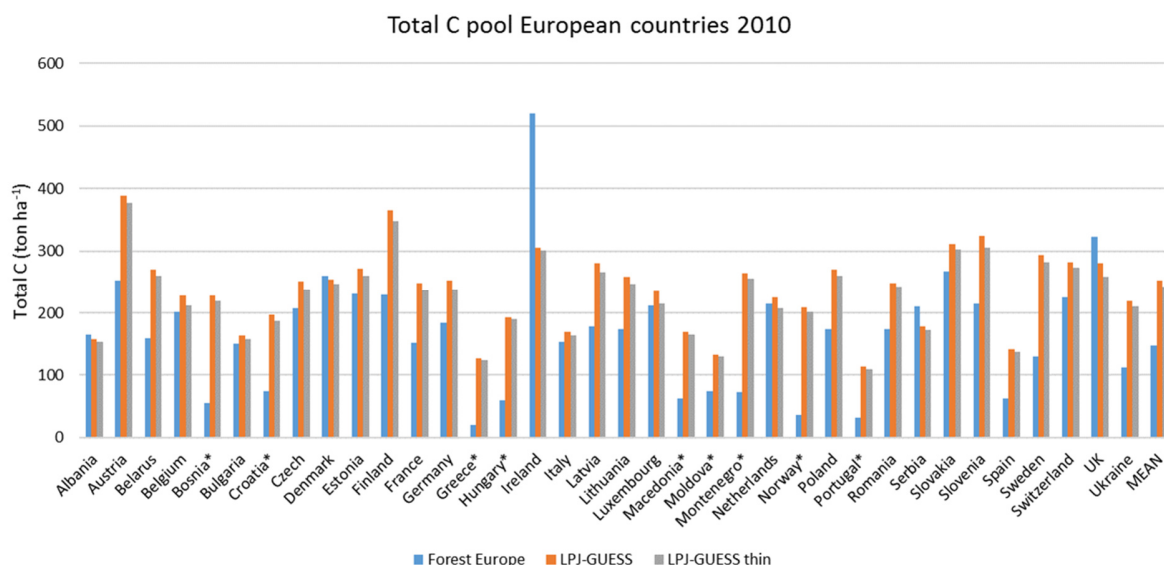


Figure E2. Modelled and observed (Forest Europe 2015) total carbon pool for individual countries in 2001-2010. LPJ-GUESS: simulation without thinning, LPJ-GUESS thin: simulation with automated thinning. *Soil and litter carbon data missing for Bosnia, Croatia, Greece, Hungary, Macedonia, Moldova, Montenegro, Norway and Portugal.

850

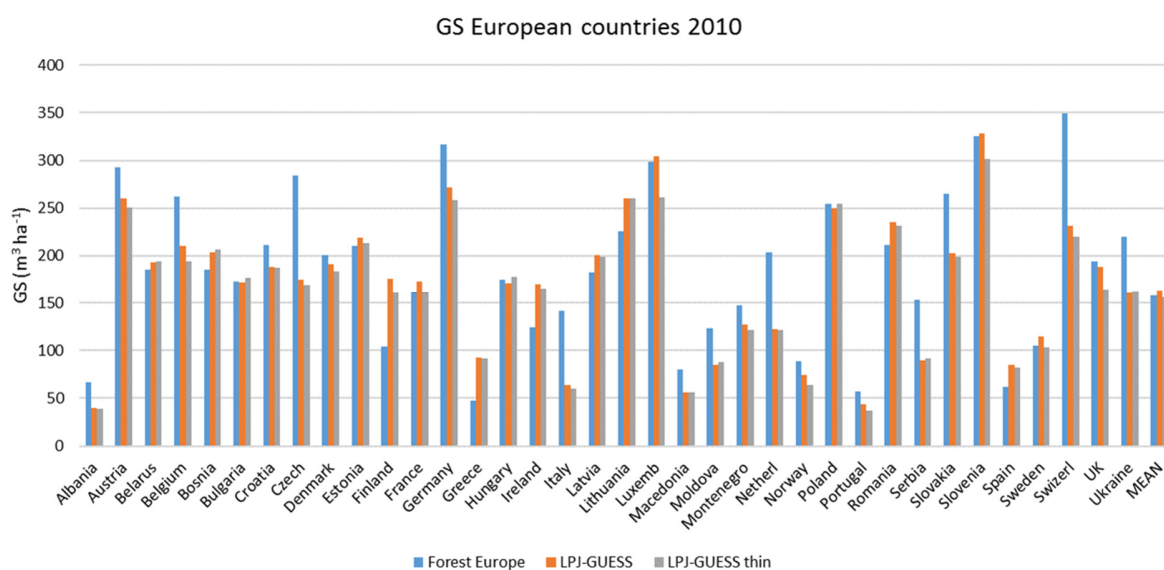
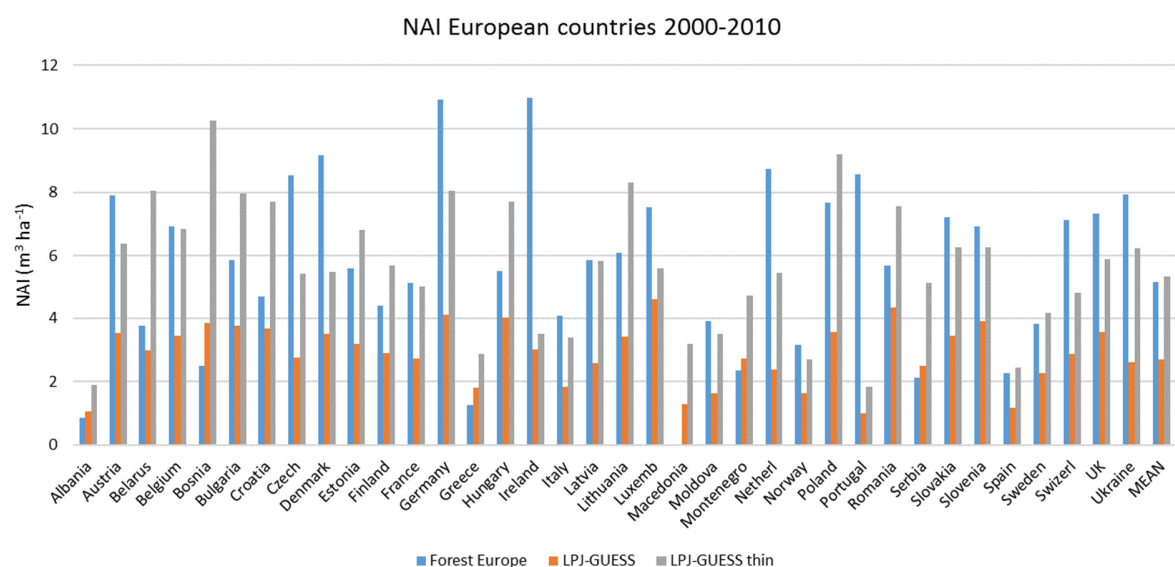
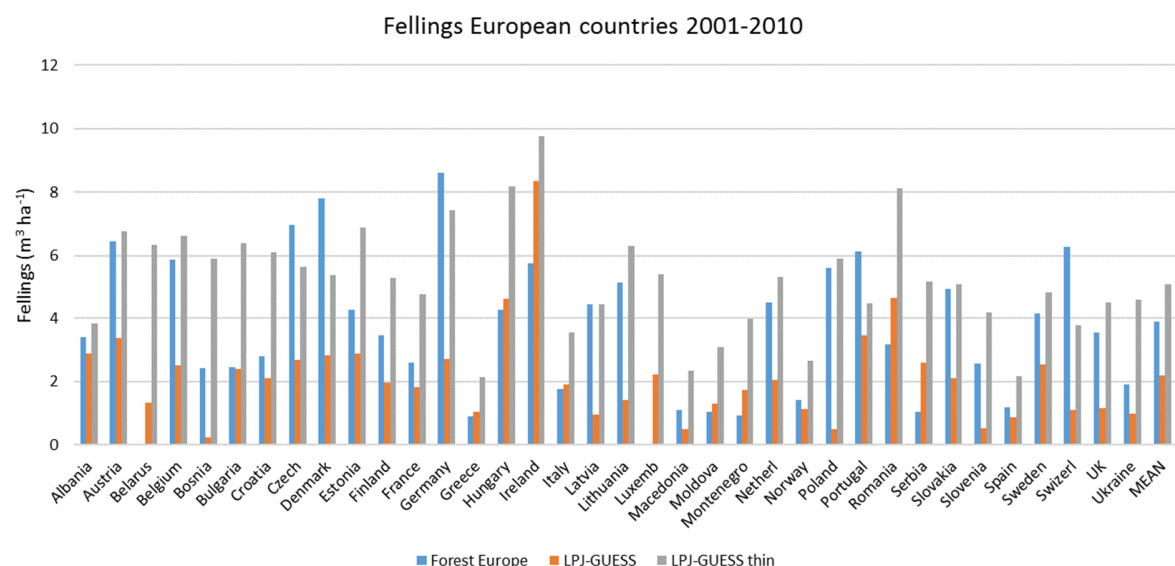


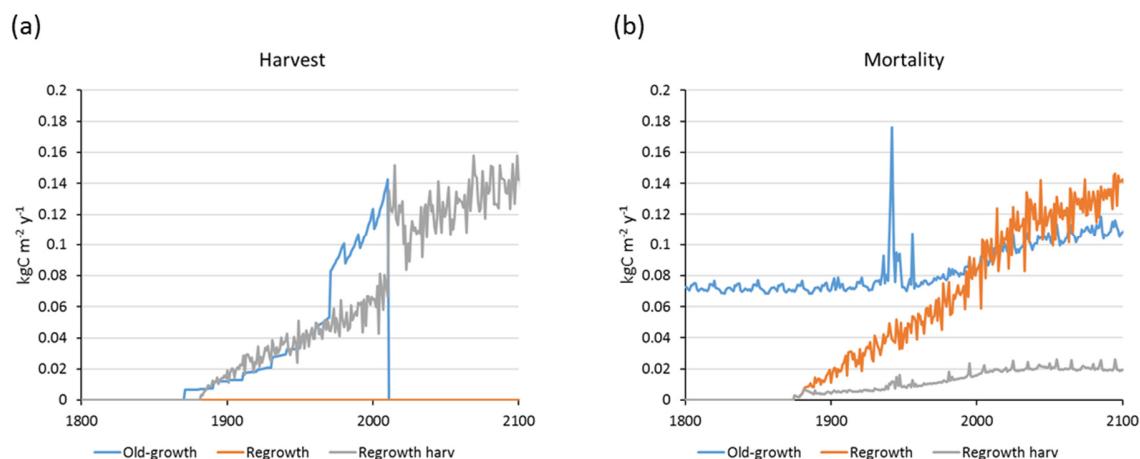
Figure E3. Modelled and observed (Forest Europe 2015) growing stock (GS) for individual countries in 2001-2010. LPJ-GUESS: simulation without thinning, LPJ-GUESS thin: simulation with automated thinning.



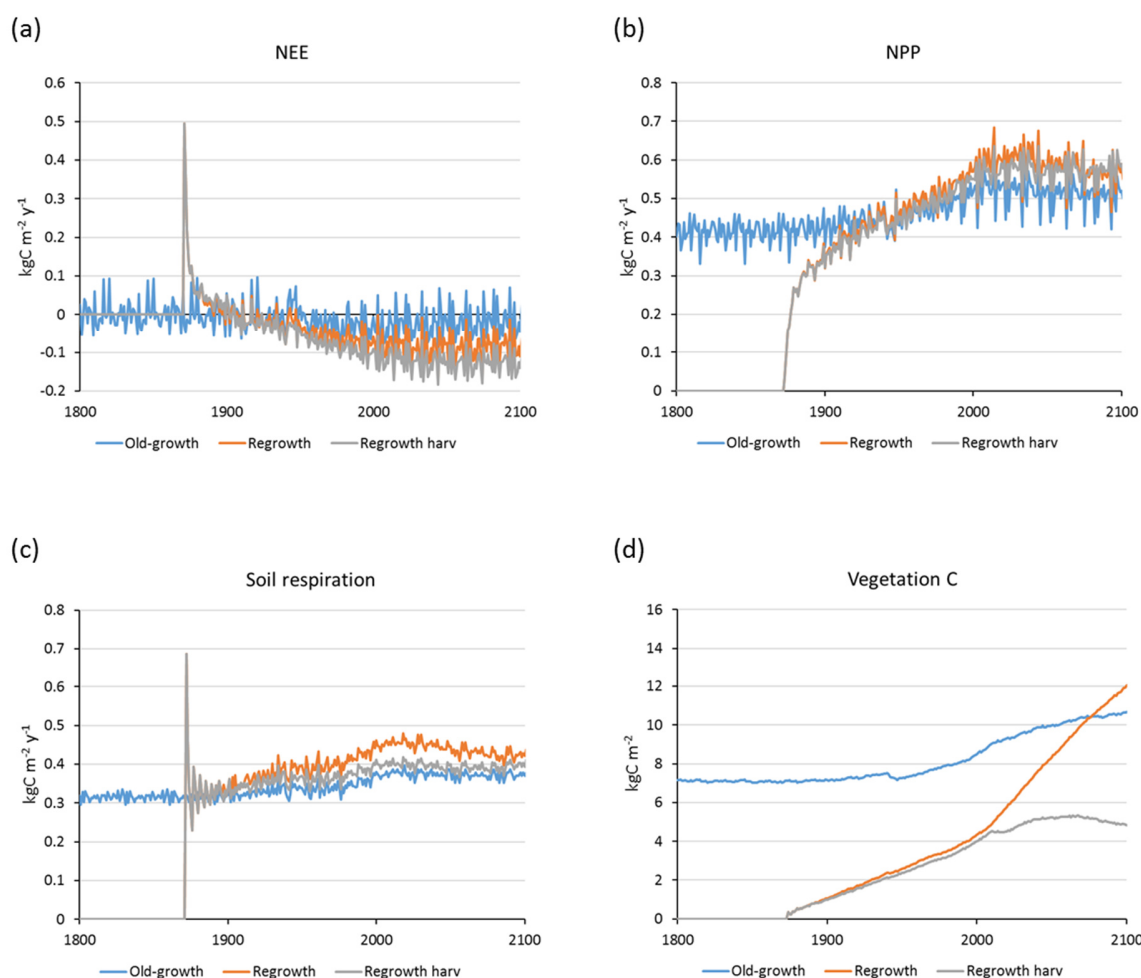
855 **Figure E4. Modelled and observed (Forest Europe 2015) net annual increment (NAI) for individual countries in 2001-2010. LPJ-GUESS: simulation without thinning, LPJ-GUESS thin: simulation with automated thinning.**



860 **Figure E5. Modelled and reported (Forest Europe 2015) yearly fellings for individual countries in 2001-2010. LPJ-GUESS: simulation without thinning (clear-cutting at creation of secondary forest), LPJ-GUESS thin: simulation with automated thinning. Reported values are missing for Belarus and Luxembourg.**



865 **Figure E6. Simulation of European old-growth and regrowth forests with (Regrowth harv) and without (Regrowth) wood harvest in regrowth forests using historic CRU-NCEP climate, recycling the last 30 data years after 2015. (a) Harvested carbon. Old-growth harvests are clear-cuttings at the creation of secondary (regrowth) stands in the period 1870-2010. The spike in regrowth forest harvest in 2011-2020 is due to delayed clear-cutting of stands passing the tree density limit for clear-cutting before 2010. (b) Vegetation carbon lost in natural mortality.**



870 **Figure E7. Simulation of European old-growth and regrowth forests with and without wood harvest in regrowth forests using historic CRU-NCEP climate, recycling the last 30 data years after 2015. (a) Net ecosystem exchange (NEE). (b) Net primary productivity (NPP). (c) Soil heterotrophic respiration. (d). Vegetation carbon. Some NEE components are not shown, e.g. carbon allocated to reproduction and fire in old-growth forest.**

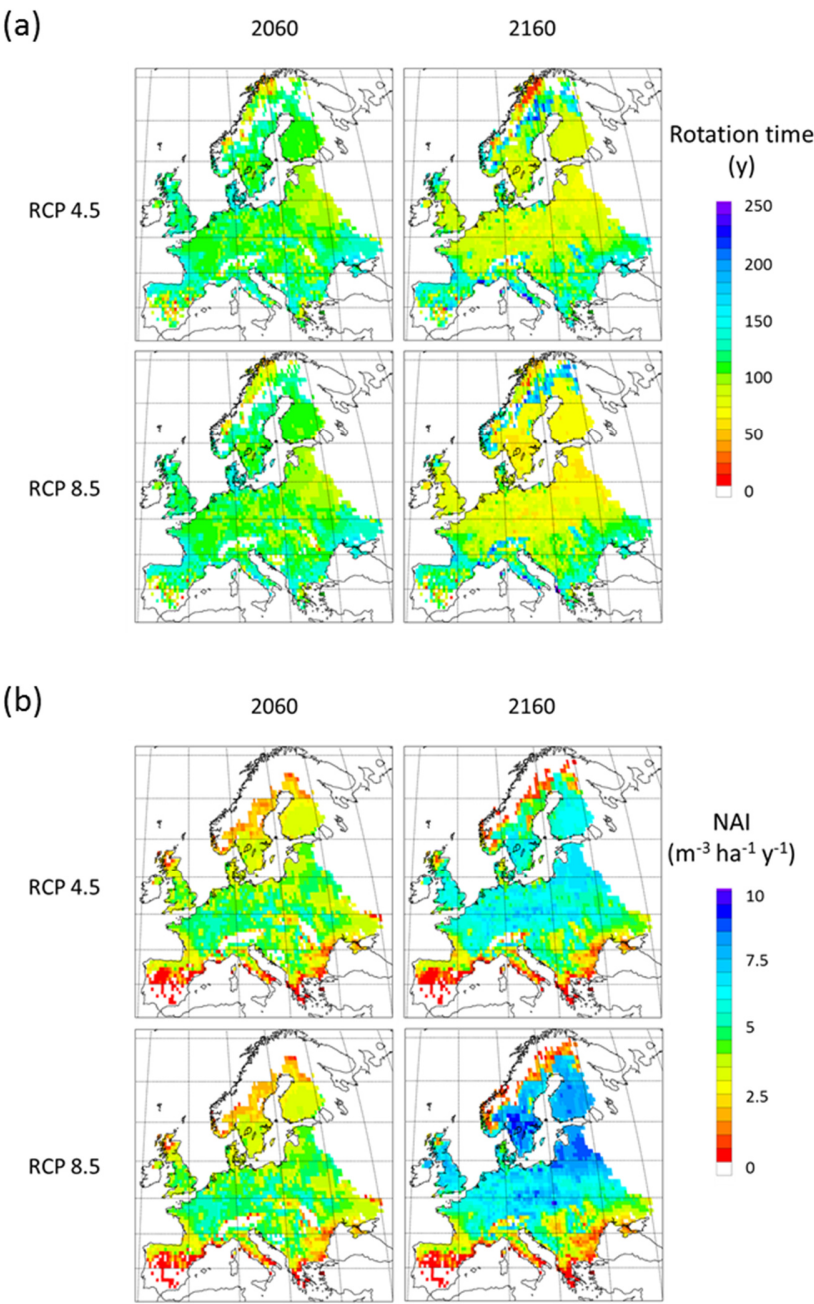


Figure E8. Simulations of broadleaf forests using automated thinning and clear-cutting under RCP 4.5 and RCP 8.5 CO₂/climate, recycling the last 30 climate data years after 2100. (a) Mean rotation time for the latest clear-cut events in each stand in 2060 and 2160. (b) Mean net annual increment (NAI) during the latest rotations in each stand in 2060 and 2160. For the expansion from total vegetation carbon to wood volume, a wood volume/vegetation carbon ratio of 2.7 m³ tC⁻¹ was used.

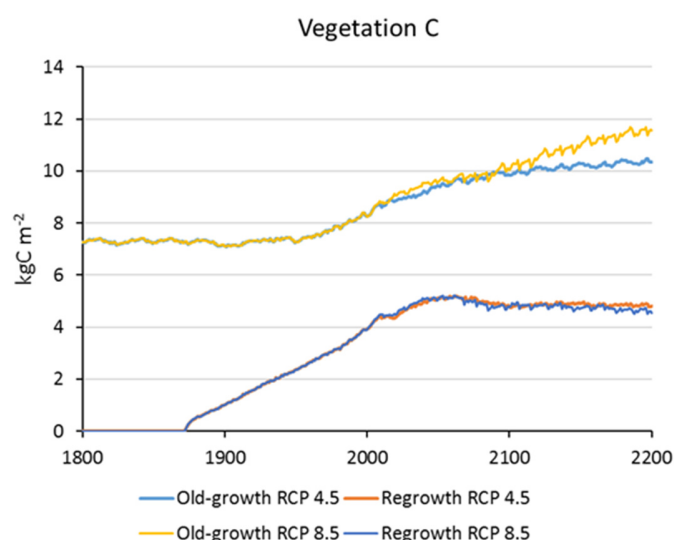


Figure E9. Simulations of European forests using automated thinning and clear-cutting in regrowth forests under RCP4.5 and RCP8.5 CO₂/climate, recycling the last 30 data years after 2100. Vegetation carbon in old-growth and regrowth forests. Old-growth forests are simulated as PNV.

Code availability. LPJ-GUESS development is managed and the code maintained in a permanent repository at Lund University, Sweden. Source code is normally made available on request to research users. Conditions apply in the case of model versions still under active development. The model version presented in this paper is identified by the permanent revision number r9710 in the code repository. There is no DOI associated with the code.

Author contributions. ML and FL developed the forestry model code. ML and AR designed the simulations. ML performed the simulations and designed and performed the analyses. HP provided the GER-Bav site data. AF provided the SLO site data. ES contributed to the forest site data simulation setup and analysis. All authors contributed to the manuscript.

Competing interests. The authors declare that they have no conflict of interest.

Acknowledgements. This study was funded by the Swedish Research Council Formas through the ERA-Net SUMFOREST project Forests and extreme weather events: Solutions for risk resilient management in a changing climate (FOREXCLIM) (dnr. 2016-02110) and the project Land Use, Carbon Sinks and Negative Emissions for Climate Targets (dnr. 2016-01201), by the German Federal Office for Agriculture and Food (BLE) through the FOREXCLIM project, and by the Slovenian Ministry of Agriculture, Forestry and Food (MKGP) through the FOREXCLIM project (# 2330-17-000077). The study also contributes to the Strategic Research Areas BECC and MERGE. AR acknowledges funding from the Bavarian Ministry of Science and the Arts (grant no. BayKliF). AF acknowledges funding from the Slovenian Research Agency, Research Programme P4-0059 Forest, forestry and renewable forest resources. The computations were enabled by resources provided by the Swedish National Infrastructure for Computing (SNIC) at LUNARC, Lund University, partially funded by the Swedish Research Council through grant agreement no. 2019/3-592. We thank Gerhard Schütze, Martin Nickel and Leonhard Steinacker for providing measurement data from Bavaria. Further we thank the Bayerische Staatsforsten (BaySF) for providing the observational plots and the Bavarian State Ministry of Food, Agriculture, and Forestry for permanent support of the project W 07 "Long-term experimental plots for forest growth and

yield research" (#7831-26625-2017). We thank Ralf Nagel and the Nordwestdeutsche Forstliche Versuchsanstalt, Göttingen, for
910 providing the measurement data from Central Germany. We thank Thomas Pugh for helpful discussions.

References

- Ahlström, A., Schurgers, G., Arneth, A., and Smith, B.: Robustness and uncertainty in terrestrial ecosystem carbon response to CMIP5 climate change projections, *Environ. Res. Lett.*, 7, 044008, TS9, doi:10.1088/1748-9326/7/4/044008, 2012.
- Anderegg, W. R. L., Kane, J. M., and Anderegg, L. D. L.: Consequences of widespread tree mortality triggered by drought and temperature stress, *Nat. Clim. Change*, 3, 30–36, doi:10.1038/nclimate1635, 2013.
915
- Bellassen, V., Le Maire, G., Dhôte, J.F., and Viovy, N.: Modelling forest management within a global vegetation model – Part 1: Model Structure and general behaviour, *Ecol. Model.*, 221, 2458–2474. doi:10.1016/j.ecolmodel.2010.07.008, 2010.
- Bonan, G.B.: Forests and climate change: forcings, feedbacks and the climate benefits of forests, *Science*, 320, 1444–1449, doi:10.1126/science.1155121, 2008.
- 920 Brus, D.J., Hengeveld, G.M., Walvoort, D.J.J., Goedhart, P.W., Heidema, A.H., Nabuurs, G.J., Gunia, K.: Statistical mapping of tree species over Europe, *Eur. J. Forest Res.*, 131, 145–157, doi:10.1007/s10342-011-0513-5, 2011.
- Cardellini, G., Valada, T., Cornillier, C., Vial, E., Dragoi, M., Goudiaby, V., Mues, V., Lasserre, B., Gruchala, A., Rorstad, P.K., Neumann, M., Svoboda, M., Sirgents, R., Näsärö, O.-P., Mohren, F., Achten, W.M.J., Vranken, L. and Muys, B.: EFO-LCI: A New Life Cycle Inventory Database of Forestry Operations in Europe, *Environ. Manage.*, 61, 1031–1047. doi:10.1007/s00267-018-1024-7, 2018.
925
- Ciais, P., Schelhaas, M., Zaehle, S., Piao, S.L., Cescatti, A., Liski, J., Luyssaert, S., Le-Maire, G., Schulze, E.-D., Bouriaud, O., Freibauer, A., Valentini, R. and Nabuurs, G.J.: Carbon accumulation in European forests, *Nature Geosci.* 1, 425–429, doi:10.1038/ngeo233, 2008.
- Dufresne, J. L. et al.: Climate change projections using the IPSL-CM5 Earth System Model: from CMIP3 to CMIP5, *Clim. Dynam.*, 40, 2123–2165, doi:10.1007/s00382-012-1636-1, 2013.
930
- Easterling, D. R., Meehl, G. A., Parmesan, C., Changnon, S. A., Karl, T. R., and Mearns, L. O.: Climate extremes: Observations, modeling, and impacts, *Science*, 289, 2068–2074, doi:10.1126/science.289.5487.2068, 2000.
- FOREST EUROPE: State of Europe’s Forests 2015. Ministerial Conference on the Protection of Forests in Europe, Forest Europe, Liaison Unit Madrid, Madrid. Spain. <http://foresteurope.org/state-europes-forests-2015-report/>, 2015.
- 935 Guo, L. B. and Gifford, R. M.: Soil carbon stocks and land use change: a meta analysis, *Glob. Change Biol.*, 8, 345–360. doi:10.1046/j.1354-1013.2002.00486.x, 2002.
- Heinimann A., Mertz O., Frolking S., Egelund Christensen A., Hurni K., Sedano F., et al.: A global view of shifting cultivation: Recent, current, and future extent, *PLoS ONE*, 12, e0184479, doi:10.1371/journal.pone.0184479, 2017.
- Hickler, T., Smith, B., Sykes, M. T., Davis, M. B., Walker, K., and Sugita, S.: Using a Generalized Vegetation Model to Simulate Vegetation Dynamics in Northeastern USA, *Ecology*, 85, 519–530, doi:10.1890/02-0344, 2004.
940
- Hickler, T., Vohland, K., Feehan, J., Miller, P.A., Smith, B., Costa, L., Giesecke, T., Fronzek, S., Carter, T.R., Cramer, W., Kühn, I., and Sykes, M.T.: Projecting the future distribution of European potential natural vegetation zones with a generalized, tree species-based dynamic vegetation model, *Global Ecol. Biogeogr.*, 21, 50–63, doi:10.1111/j.1466-8238.2010.00613.x, 2012.
- Houghton, R. A., House, J. I., Pongratz, J., van der Werf, G. R., DeFries, R. S., Hansen, M. C., Le Quéré, C., and Ramankutty, N.:
945 Carbon emissions from land use and land-cover change, *Biogeosciences*, 9, 5125–5142. doi:10.5194/bg-9-5125-2012, 2012.

- Hurt, G., Chini, L., Sahajpal, R., and Frohling, S.: Harmonization of global land-use change and management for the period 850-2100. Available at luh.umd.edu/data.shtml, 2017
- Jiang, M., Medlyn, B.E., Drake, J.E. et al.: The fate of carbon in a mature forest under carbon dioxide enrichment, *Nature*, 580, 227–231, doi:10.1038/s41586-020-2128-9, 2020.
- 950 Jönsson, A.-M., Schroeder, L.M., Lagergren, F., Anderbrant, O. and Smith, B.: Guess the impact of *Ips typographus* – An ecosystem modelling approach for simulating bark beetle outbreaks, *Agr. Forest Meteorol.*, 166-167, 188-200, doi: 10.1016/j.agrformet.2012.07.012, 2012.
- Krause, A., Knoke, T. and Rammig, A.: A regional assessment of land-based carbon mitigation potentials: bioenergy, BECCS, reforestation, and forest management, *Glob. Change Biol. Bioenergy*, 12, 346-360, 2020.
- 955 Lagergren, F., Jönsson, A.-M., Blennow, K. and Smith, B.: Implementing storm damage in a dynamic vegetation model for regional applications in Sweden, *Ecol. Model.*, 247, 71-82, doi:10.1111/gcbb.12675, 2012.
- Le Quéré C, et al.: Global carbon budget 2017, *Earth Syst. Sci. Data*, 10, 405–448, doi:10.5194/essd-10-405-2018, 2018.
- Lindeskog, M., Arneeth, A., Bondeau, A., Waha, K., Seaquist, J., Olin, S., and Smith, B.: Implications of accounting for land use in simulations of ecosystem carbon cycling in Africa, *Earth Syst. Dyn.*, 4, 385–407, doi:10.5194/esd-4-385-2013, 2013.
- 960 Lindroth, A., F. Lagergren, A. Grelle, L. Klemetsson, O. Langvall, P. Weslien, and Tuulik, J.: Storms can cause Europe-wide reduction in carbon sink, *Glob. Change Biol.*, 15, 346-355, doi:10.1111/j.1365-2486.2008.01719.x, 2009.
- Liu, Y.Y., van Dijk, A.I.J.M., de Jeu, R.A.M., Canadell, J.G., McCabe, M.F., Evans, J.P. and Wang, G.: Recent reversal in loss of global terrestrial biomass, *Nat. Clim Change*, 5, 470–474, doi:10.1038/NCLIMATE2581, 2015.
- Luyssaert, S., Schulze, E.-D., Börner, A., Knohl, A., Hessenmöller, D., Law, B.E., Ciais, P. and Grace, J.: Old-growth forests as global carbon sinks, *Nature*, 455, 213–215, doi:10.1038/nature07276, 2008.
- 965 Luyssaert, S., Jarnmet, M., Stoy, P. ..., Dolman, A.J.: Land management and land-cover change have impacts of similar magnitude on surface temperature, *Nat. Clim. Change*, 4, 389–393, doi:10.1038/nclimate2196, 2014.
- Mori A.S., Lertzman K.P. and Gustafsson L.: Biodiversity and ecosystem services in forest ecosystems: a research agenda for applied forest ecology, *J. Appl. Ecol.*, 54, 12–27, doi:10.1111/1365-2664.12669, 2017.
- 970 Morin, X., Fahse, L., Jactel, H. Scherer-Lorentzen, M., Garcia-Valdés, R. and Bugmann, H.: Long-term response of forest productivity to climate change is mostly driven by change in tree species composition. *Sci. Rep.*, 8, 5627, doi:10.1038/s41598-018-23763-y, 2018.
- Pan, Y. D., Birdsey, R. A., Fang, J. Y., Houghton, R., Kauppi, P.E., Kurz, W. A., Phillips, O. L., Shvidenko, A., Lewis, S. L., Canadell, J. G., Ciais, P., Jackson, R. B., Pacala, S.W., McGuire, A. D., Piao, S. L., Rautiainen, A., Sitch, S., and Hayes, D.: A large and persistent carbon sink in the world's forests, *Science*, 333, 988–993, doi:10.1126/science.1201609, 2011.
- 975 Parolari, A.J., and Porporato, A.: Forest soil carbon and nitrogen cycles under biomass harvest: Stability, transient response, and feedback, *Ecol. Modelling*, 329, 64-76, 2016.
- Perlin, J.: A forest journey: the story of wood and civilization, The Countryman Press, Vermont, 2005.
- Poulter B., et al.: The Global Forest Age dataset and its uncertainties (GFADv1.1), Link to NetCDF File. Available at <https://doi.pangaea.de/10.1594/PANGAEA.897392>, Accessed May 14, 2018, 2019.
- 980 Pretzsch, H.: Stand density and growth of Norway spruce (*Picea abies* (L.) Karst.) and European beech (*Fagus sylvatica* L.): evidence from long-term experimental plots, *Eur. J. Forest Res.*, 124, 193–205. doi:10.1007/s10342-005-0068-4, 2005.
- Pretzsch, H. and Biber, P.: A Re-Evaluation of Reineke's Rule and Stand Density Index, *For. Sci.* 51, 304-320, doi: 10.1093/forestscience/51.4.304, 2005.

- 985 Pretzsch, H., Poschenrieder, W., Uhl, E., Brazaitis, G., Makrickiene, E., and Calama, R.: Silvicultural prescriptions for mixed-species forest stands. A review and perspective, *Eur. J. For. Res.*, doi:10.1007/s10342-021-01388-7, 2021.
- Pugh, T.A.M., Lindeskog, M., Smith, B., Poulter, B., Arneth, A., Haverd, V., and Calle, L.: Role of forest regrowth in global carbon sink dynamics, *PNAS*, 116, 4382–4387, doi:10.1073/pnas.1810512116, 2019.
- 990 Sabatini, F.M., Burrascano, S., Keeton, W.S., Levers, C., Lindner, M., Pötzschner, F., ..., Kuemmerle, T.: Where are Europe's last primary forests?, *Divers. Distrib.*, 24, 1426–1439, doi:10.1111/ddi.12778, 2018.
- Scherstjanoi, M., Kaplan, J.O., and Lischke, H.: Application of a computationally efficient method to approximate gap model results with a probabilistic approach, *Geosci. Model Dev.*, 7, 1543–1571, doi:10.5194/gmd-7-1543-2014, 2014.
- Seidl, R., Schelhaas, M.-J. and Lexer, M.J.: Unraveling the drivers of intensifying forest disturbance regimes in Europe, *Glob. Change Biol.*, 17, 2842–2852, doi: 10.1111/j.1365-2486.2011.02452.x, 2011.
- 995 Seiler, C., Hutjes, R., Kruijt, B. and Hickler, T.: The sensitivity of wet and dry tropical forests to climate change in Bolivia, *J. Geophys. Res. Biogeosci.*, 120. doi: 10.1002/2014JG002749, 2015.
- Shevliakova, E., Pacala, S. W., Malyshev, S., Hurtt, G. C., Milly, P. C. D., Caspersen, J. P., Sentman, L. T., Fisk, J. P., Wirth, C., and Crevoisier, C.: Carbon cycling under 300 years of land use change: Importance of the secondary vegetation sink, *Global Biogeochem. Cy.*, 23, GB2022. doi:10.1029/2007gb003176, 2009.
- 1000 Sitch, S., Friedlingstein, P., Gruber, N., Jones, S. D., Murray-Tortarolo, G., Ahlström, A., Doney, S. C., Graven, H., Heinze, C., Huntingford, C., Levis, S., Levy, P. E., Lomas, M., Poulter, B., Viovy, N., Zaehle, S., Zeng, N., Arneth, A., Bonan, G., Bopp, L., Canadell, J. G., Chevallier, F., Ciais, P., Ellis, R., Gloor, M., Peylin, P., Piao, S. L., Le Quéré, C., Smith, B., Zhu, Z., and Myneni, R.: Recent trends and drivers of regional sources and sinks of carbon dioxide, *Biogeosciences*, 12, 653–679, doi:10.5194/bg-12-653-2015, 2015.
- 1005 Smith, B., Prentice, C., and Sykes, M. T.: Representation of vegetation dynamics in the modelling of terrestrial ecosystems: comparing two contrasting approaches within European climate space, *Global Ecol. Biogeogr.*, 10, 621–637, doi:10.1046/j.1466-822X.2001.t01-1-00256.x, 2001.
- Smith, B., Wårlind, D., Arneth, A., Hickler, T., Leadley, P., Siltberg, J., and Zaehle, S.: Implications of incorporating N cycling and N limitations on primary production in an individual-based dynamic vegetation model, *Biogeosciences*, 11, 2027–2054, doi:10.5194/bg-11-2027-2014, 2014.
- 1010 Sverdrup, H., Thelin, G., Robles, M., Stjernquist, I., and Sörensen, J.: Assessing nutrient sustainability of forest production for different tree species considering Ca, Mg, K, N and P at Björnstorp Estate, Sweden, *Biogeochemistry*, 81, 219–238, 2006.
- Verein Deutscher Forstlicher Versuchsanstalten, Beratungen der vom Vereine Deutscher Forstlicher Versuchsanstalten eingesetzten Kommission zur Feststellung des neuen Arbeitsplanes für Durchforstungs- und Lichtungsversuche, *Allg Forst Jagdztg*, 78, 180–184, 1902.
- 1015 Urban, M. C.: Accelerating extinction risk from climate change, *Science*, 348, 571–573, doi:10.1126/science.aaa4984, 2015.
- Wei, Y., Liu, S., Huntzinger, D. N., Michalak, A. M., Viovy, N., Post, W. M., Schwalm, C. R., et al.: The North American Carbon Program Multi-Scale Synthesis and Terrestrial Model Intercomparison Project – Part 2: Environmental Driver Data, *Geosci. Model Dev.*, 7, 2875–2893, doi:10.5194/gmd-7-2875-2014, 2014.
- 1020 Zaehle, S., Sitch, S., Prentice, I. C., Liski, J., Cramer, W., Erhard, M., Hickler, T., Smith, B.: The importance of age-related decline in forest NPP for modeling regional carbon balances, *Ecol. Appl.*, 16, 1555–1574, doi:10.1890/1051-0761(2006)016[1555:TIOADI]2.0.CO;2, 2006.
- Zaehle, S. and Dalmonech, D.: Carbon-nitrogen interactions on land at global scales: Current understanding in modelling climate biosphere feedbacks, *Curr. Opin. Environ. Sustain.*, 3, 311–320, doi:10.1016/j.cosust.2011.08.008, 2011.