

# Convolutional conditional neural processes for local climate downscaling

Anna Vaughan<sup>1</sup>, Will Tebbutt<sup>1</sup>, J. Scott Hosking<sup>2,3</sup>, and Richard E. Turner<sup>1</sup>

<sup>1</sup>University of Cambridge, Cambridge, UK

<sup>2</sup>British Antarctic Survey, Cambridge, UK

<sup>3</sup>The Alan Turing Institute, UK

**Correspondence:** Anna Vaughan (av555@cam.ac.uk)

## Abstract.

A new model is presented for multisite statistical downscaling of temperature and precipitation using convolutional conditional neural processes (convCNPs). ConvCNPs are a recently developed class of models that allow deep learning techniques to be applied to off-the-grid spatio-temporal data. In contrast to existing methods which map from low-resolution model output to high resolution predictions at a discrete set of locations, this model outputs a stochastic process which can be queried at an arbitrary latitude-longitude coordinate. The convCNP model is shown to outperform an ensemble of existing downscaling techniques over Europe for both temperature and precipitation taken from the VALUE intercomparison project. The model also outperforms an approach that uses Gaussian processes to interpolate single-site downscaling models at unseen locations. Importantly, substantial improvement is seen in the representation of extreme precipitation events. These results indicate that the convCNP is a robust downscaling model suitable for generating localised projections for use in climate impact studies.

## 1 Introduction

Statistical downscaling methods are vital tools in translating global and regional climate model output to actionable guidance for climate impact studies. General circulation models (GCMs) and regional climate models (RCMs) are used to provide projections of future climate scenarios, however coarse resolution and systematic biases result in unrealistic behaviour, particularly for extreme events (Allen et al., 2016; Maraun et al., 2017). In recognition of these limitations, downscaling is routinely performed to correct raw GCM and RCM outputs. This is achieved either by dynamical downscaling, running a nested high-resolution simulation, or statistical methods. Comparisons of statistical and dynamical downscaling suggest that neither group of methods is clearly superior (Ayar et al., 2016; Casanueva et al., 2016), however in practice computationally cheaper statistical methods are widely used.

Major classes of statistical downscaling methods are model output statistics (MOS) and perfect prognosis (PP; Maraun et al., 2010). MOS methods explicitly adjust the simulated distribution of a given variable to the observed distribution, using variations of quantile mapping (Teutschbein and Seibert, 2012; Piani et al., 2010; Cannon et al., 2020). Though these methods are widely applied in impact studies, they struggle to downscale extreme values and artificially alter trends (Maraun, 2013;

Maraun et al., 2017). In contrast, in PP downscaling, the aim is to learn a transfer function  $f$  such that

$$\hat{y} = f(x, Z) \tag{1}$$

Where  $\hat{y}$  is the downscaled prediction of a given climate variable whose true value is  $y$  at location  $x$  and  $Z$  is a set of predictors from the climate model (Maraun and Widmann, 2018). This is based on the assumption that while sub-grid-scale and parameterised processes are poorly represented in GCMs, the large scale flow is generally better resolved (Maraun and Widmann, 2018).

Multiple different models have been trialled for parameterising  $f$ . Traditional statistical methods used for this purpose include multiple linear regression (Gutiérrez et al., 2013; Hertig and Jacobeit, 2013), generalised linear models (San-Martín et al., 2017) and analog techniques (Hatfield and Prueger, 2015; Ayar et al., 2016). More recently, there has been considerable interest in applying advances in machine learning to this problem, including relevance vector machines (Ghosh and Mujumdar, 2008), artificial neural networks (Sachindra et al., 2018), autoencoders (Vandal et al., 2019), recurrent neural networks (Bhardwaj et al., 2018; Misra et al., 2018), generative adversarial networks (White et al., 2019) and convolutional neural networks (Vandal et al., 2017, 2018; Pan et al., 2019; Baño-Medina et al., 2020; Höhlelein et al., 2020; Liu et al., 2020). These models are trained in a supervised framework by learning a mapping from low-resolution predictors to downscaled values at a particular set of locations for which observations are available. Unsupervised downscaling using normalising flows has also been proposed (Groenke et al., 2020).

Limitations remain in these models. In many climate applications it is desirable to make projections that are both (i) consistent over multiple locations and (ii) specific to an arbitrary locality. The problem of multi-site downscaling has been widely studied, with two classes of approaches emerging. Traditional methods take analogues or principal components of the coarse-resolution field as predictors. The spatial dependence is then explicitly modelled for a given set of sites, using observations at those locations to train the model (Maraun and Widmann, 2018; Cannon, 2008; Bevacqua et al., 2017; Mehrotra and Sharma, 2005). More recent work has sought to leverage advances in machine learning, for example CNNs, for feature extraction (Vandal et al., 2017; Bhardwaj et al., 2018; Misra et al., 2018; Baño-Medina et al., 2020; Höhlelein et al., 2020). These methods take in a grid of low-resolution predictors and output downscaled predictions either on a fixed grid or at a pre-determined list of sites. The question naturally arises as to how we can generate predictions at new locations at test time. Models trained in one location can be applied in another using transfer learning (Wang et al., 2021). In this case, however, the output predictions are still at the resolution or list of sites determined at training time (i.e a CNN model trained on 0.1 degree resolution will output 0.1 degree resolution predictions, regardless of where it is applied). To make predictions on a grid with different resolution or at a new set of locations requires interpolation of model predictions or taking the closest location.

In this study we propose a new approach to statistical downscaling using a convolutional conditional neural process model (convCNP; Gordon et al., 2019), a state of the art probabilistic machine learning method combining ideas from Gaussian Processes (GPs) and deep neural networks. This model learns a mapping between a gridded set of low-resolution predictors and a continuous stochastic process over longitude and latitude representing the downscaled prediction of the required variable. In contrast to previous work where discrete predictions are made at a list of locations determined at training time, the stochastic

process output from the convCNP can be queried at any location where a prediction is required. Although to our knowledge this is the first application of such a model in downscaling, similar work has demonstrated the advantages of learning a mapping from discrete input data to continuous prediction fields in modelling idealised fluid flow (Li et al., 2020a, b; Lu et al., 2019).

The specific aims of this study are as follows:

1. Develop a new statistical model for downscaling GCM output capable of generating a stochastic process as a prediction which can be queried at an arbitrary site.
2. Compare the performance of the statistical model to existing strong baselines.
3. Compare the performance of the statistical model at locations outside of the training set to existing interpolation methods.
4. Quantify the impact of including sub-grid-scale topography on model predictions.

Section 2 outlines the development of the downscaling model, and presents the experimental setup used to address aims 2-4. Section 3 compares the performance of the statistical model to an ensemble of baselines. Sections 4 and 5 explore model performance at unseen locations and the impact of including local topographic data. Finally, Section 6 presents a discussion of these results and suggestions for further applications.

## 2 Datasets and methodology

We first outline the development of the statistical downscaling model, followed by a description of three validation experiments.

### 2.1 The downscaling model

Our aim is to approximate the function  $f$  in equation 1 to predict the value of a downscaled climate variable  $y$  at locations  $\mathbf{x}$  given a set of coarse-scale predictors  $Z$ . In order to take the local topography into account, we assume that this function also depends on the local topography at each target point, denoted  $\mathbf{e}$ , i.e

$$\hat{y} = f(\mathbf{x}, Z, \mathbf{e})$$

In this study,  $f$  is modelled as a convCNP (Gordon et al., 2019), a member of the conditional neural process family (Garnelo et al., 2018). A neural process model is a deep learning model which parameterises a mapping from a discrete input set to a posterior stochastic process as a neural network. This is implemented as an encoder, which maps the input set to a latent representation, followed by a decoder which takes the latent representation and a target location as input and outputs the predictive distribution at that location (Dubois et al., 2020). In the context of this downscaling problem, the input set is the low-resolution predictors, the mapping a neural network and the output a stochastic process over temperature or precipitation which can be queried at an arbitrary spatial location to generate the downscaled predictions. For spatial problems such as downscaling, a desirable inductive bias in a model is that it is translation equivariant, that is the model makes identical predictions if the input data are spatially translated. The convCNP model applied here builds this equivariance into the conditional neural process.

Using the convCNP model, we take a probabilistic approach to specifying  $f$  where we include a noise model, so that

$$p(y|\mathbf{x}, Z, \mathbf{e}) = p(y|\theta(\mathbf{x}, Z, \mathbf{e}))$$

Deterministic predictions are made from this by using, for example, the predictive mean

$$90 \quad \hat{y} = \int yp(y|\mathbf{x}, Z, \mathbf{e})dy$$

In this model  $\theta$  is parameterised as

$$\theta(\mathbf{x}, Z, \mathbf{e}) = \psi_{MLP}[\phi_c(h = CNN(Z), \mathbf{x}), \mathbf{e}]$$

Here  $\theta$  is a vector of parameters of a distribution for the climate variable at prediction locations  $\mathbf{x}$ . Consistent with previous stochastic downscaling studies (Cannon, 2008; Wilks, 2012), this is assumed to be Gaussian for maximum temperature and a Gamma-Bernoulli mixture for precipitation. We note that this is an extension of existing conditional and convolutional conditional neural process models where the predictive distribution is assumed to be Gaussian (Garnelo et al., 2018; Gordon et al., 2019).  $\mathbf{e}$  is a vector of sub-grid-scale topographic information at each of the prediction locations,  $\psi_{MLP}$  is a multi-layer perceptron,  $\phi_c$  is a kernel function with learnable length scale and CNN is a convolutional neural network. Each component of this is described below, with a schematic of the model shown in Figure 1.

100 **1. Convolutional neural network** In the first step, daily gridded reanalysis predictor data  $Z$  for a single timestep are fed into the model. These grids are used as input to a convolutional neural network to extract relevant features. This is implemented as a 6-block Resnet architecture (He et al., 2016) with depthwise separable convolutions (Chollet, 2017). The output from this step is a prediction of the relevant parameters for each variable at each grid point in the predictor set, i.e

$$105 \quad \mathbf{h}_{nm} = CNN(Z)$$

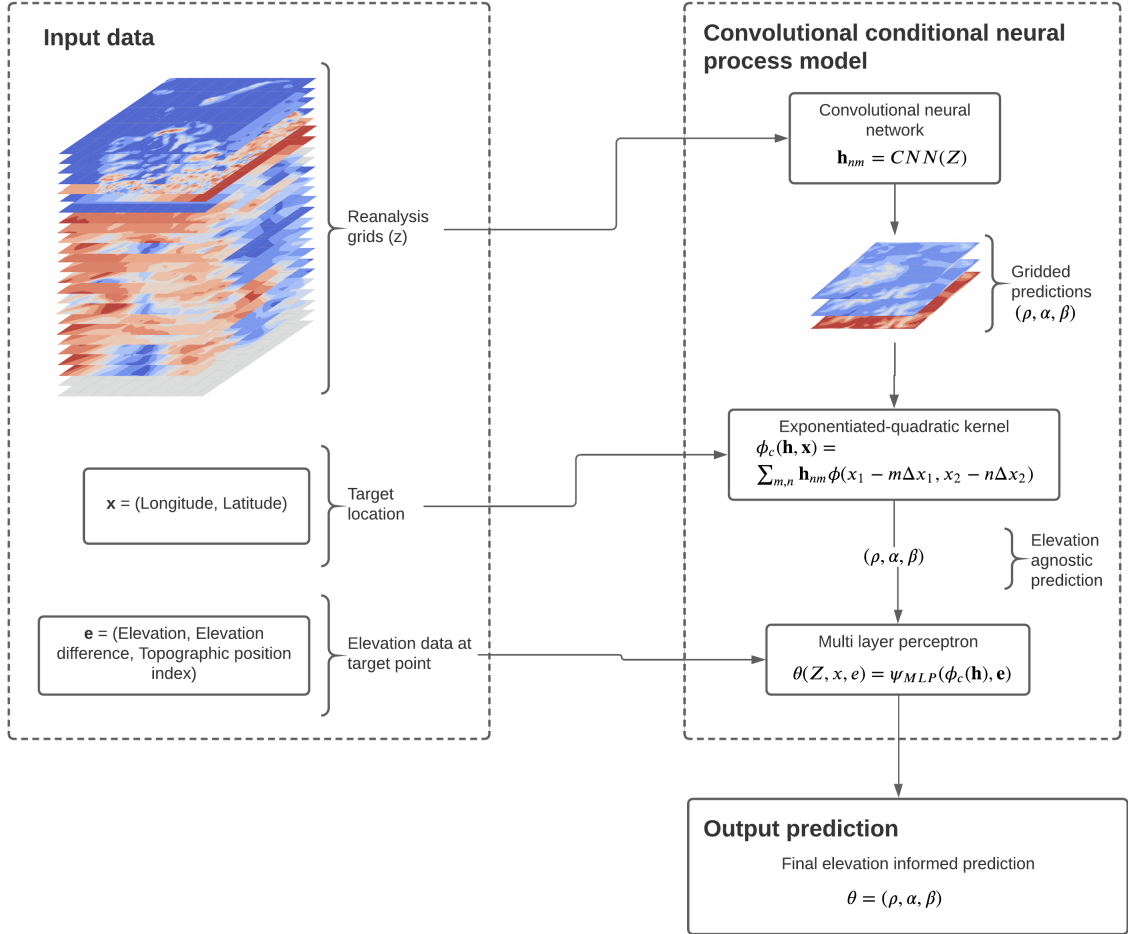
Where  $\mathbf{h}_{nm}$  is the vector-valued output at latitude  $m\Delta x_1$  and longitude  $n\Delta x_2$  and  $m, n \in \mathbb{Z}^+$  with  $\Delta x_i$  indicating the grid spacing where the grid consists of  $M$  points in the longitude direction and  $N$  points in the latitude direction.

**2. Translation to off-the-grid predictions** These gridded predictions are translated to the off-the-grid target locations  $\mathbf{x}$  using outputs from step 1 as weights for an exponentiated-quadratic (EQ) kernel  $\phi$ , i.e

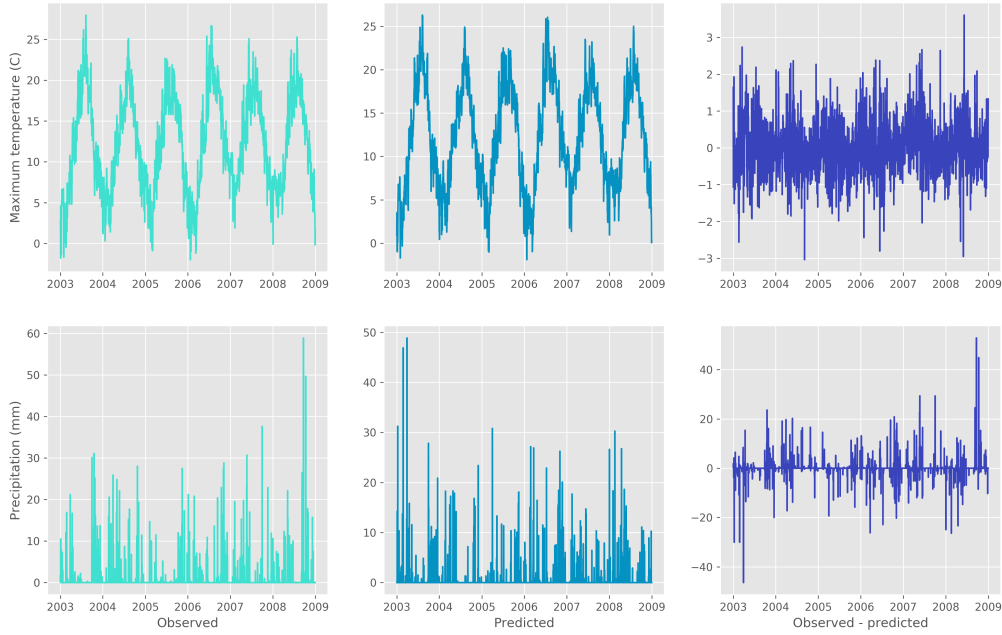
$$110 \quad \phi_c(\mathbf{h}, \mathbf{x}) = \sum_{m=1}^M \sum_{n=1}^N \mathbf{h}_{nm} \phi(x_1 - m\Delta x_1, x_2 - n\Delta x_2) = \sum_{m=1}^M \sum_{n=1}^N \mathbf{h}_{nm} e^{-\frac{1}{2l_1^2}(x_1 - m\Delta x_1)^2 - \frac{1}{2l_2^2}(x_2 - n\Delta x_2)^2}$$

This outputs predictions of the relevant distributional parameters,  $\theta$ , at each target location. An EQ kernel is chosen here as it ensures that the predictions are approximately translation equivariant.

**3. Inclusion of sub-grid scale topography**



**Figure 1.** Schematic of the convCNP model for downscaling precipitation demonstrating the flow of data in predicting precipitation for a given day at target locations  $\mathbf{x}$ . Gridded coarse resolution data for each predictor is fed into the CNN, producing predictions of  $\theta = (\rho, \alpha, \beta)$  at each grid point. These gridded predictions are then transformed to a prediction at the target location using an exponentiated-quadratic kernel. Finally, these elevation agnostic predictions are fed into a multi-layer perceptron together with topographic data  $\mathbf{e}$  to produce a final prediction of the parameters.



**Figure 2.** Examples of convCNP model predictions compared to observations for (top) maximum temperature in Helgoland, Germany and (bottom) precipitation in Madrid, Spain.

115 By design, the predictions from the previous step only model variation on the scale of the context grid spacing. This elevation agnostic output is post-processed using a multi-layer perceptron (MLP). This takes the parameter predictions from the EQ kernel as input together with a vector of topographic data  $\mathbf{e}$  at each target location.

$$\theta(\mathbf{x}, Z, \mathbf{e}) = \psi_{MLP}(\phi_c(\mathbf{h}, \mathbf{x}), \mathbf{e})$$

The vector  $\mathbf{e}$  consists of three measurements at each target point:

- (a) True elevation
- 120 (b) Difference between the true and grid-scale elevation.
- (c) Multi-scale topographic position index (mTPI), measuring the topographic prominence of the location, (i.e. quantifying whether the point is in a valley or on a ridge).

This MLP outputs the final prediction of the distributional parameters  $\theta$  at each target location.

125 Figure 2 shows a concrete example of temperature and precipitation time-series produced using this model by sampling from the output distributions. Maximum temperature is shown for Helgoland, Germany, and precipitation for Madrid, Spain. For both variables the model produces qualitatively realistic time-series.

### 2.1.1 Training

The convCNP models are trained by minimising the average negative log-likelihood. For temperature, this is given by

$$NLL_{temp} = -\frac{1}{N} \sum_{i=1}^N \ln[\mathcal{N}(y_i | \mu_i(\mathbf{x}_i, Z, \mathbf{e}_i), \sigma_i(\mathbf{x}_i, Z, \mathbf{e}_i))]$$

130 where  $y_i$  is the observed value,  $\mathcal{N}(y_i; \mu_i, \sigma_i)$  denotes a Gaussian distribution over  $y$  with mean  $\mu_i$  and variance  $\sigma_i^2$ . These parameters  $\theta(\mathbf{x}_i, Z, \mathbf{e}_i) = \{\mu_i(\mathbf{x}_i, Z, \mathbf{e}_i), \sigma_i^2(\mathbf{x}_i, Z, \mathbf{e}_i)\}$  are generated by the model at each location  $\mathbf{x}_i$  and use topography  $\mathbf{e}_i$ .  $N$  is the total number of target locations. For precipitation, the negative log likelihood is given by

$$NLL_{precip} = -\frac{1}{N} \sum_{i=1}^N [r_i(\ln(\rho_i(\mathbf{x}_i, Z, \mathbf{e}_i)) + \ln(\Gamma(y_i | \alpha_i(\mathbf{x}_i, Z, \mathbf{e}_i), \beta_i(\mathbf{x}_i, Z, \mathbf{e}_i))) + (1 - r_i) \ln(1 - \rho_i(\mathbf{x}_i, Z, \mathbf{e}_i))]$$

135 where  $r_i$  is a Bernoulli random variable describing whether precipitation was observed at the  $i^{th}$  target location,  $y_i$  is the observed precipitation,  $\rho_i$  parameterises the predicted Bernoulli distribution and  $\Gamma(y_i; \alpha_i, \beta_i)$  is a Gamma distribution with shape parameter  $\alpha_i$  and scale parameter  $\beta_i$ . Here  $\theta(\mathbf{x}_i, Z, \mathbf{e}_i) = \{\rho_i(\mathbf{x}_i, Z, \mathbf{e}_i), \alpha_i(\mathbf{x}_i, Z, \mathbf{e}_i), \beta_i(\mathbf{x}_i, Z, \mathbf{e}_i)\}$ .

Weights are optimised using Adam (Kingma and Ba, 2014), with the learning rate set to  $5 \times 10^{-4}$ . Each model is trained for 100 epochs on 456 batches of 16 days each, using early stopping with a patience of 10 epochs.

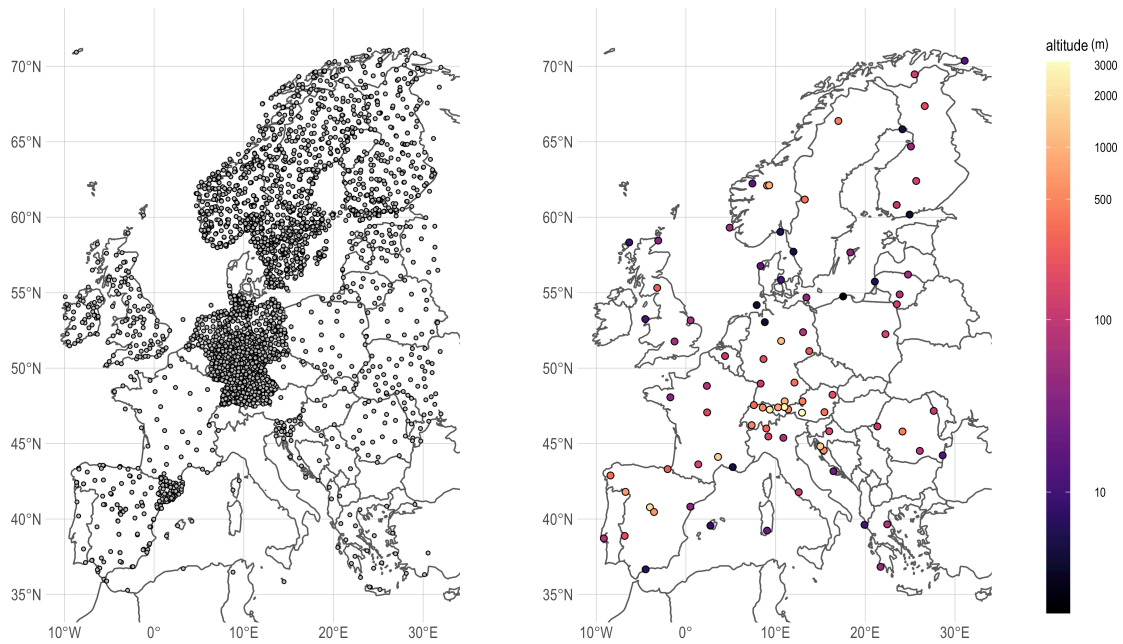
## 2.2 Experiments and datasets

140 Having addressed the first aim in developing the convCNP model, we next evaluate model performance via three experiments. The first experiment compares the convCNP model to an ensemble of existing downscaling methods following a standardised experimental protocol. In contrast to the convCNP model, these methods are unable to make predictions at locations where training data are not available. In the second experiment, we assess the performance of the convCNP model at these unseen locations compared to a baseline constructed by interpolating single-site models. Finally, ablation experiments are performed  
145 to quantify the impact of including sub-grid scale topographic information on performance.

### 2.2.1 Experiment 1 - baseline comparison

ConvCNP model performance is first compared to strong baseline methods taken from the VALUE experimental protocol. VALUE (Maraun et al., 2015) provides a standardised suite of experiments to evaluate new downscaling methods, together with data benchmarking the performance of existing methods. In the VALUE 1a experiment, each downscaling method predicts the  
150 maximum temperature and daily precipitation at 86 stations across Europe (Figure 2), given gridded data from the ERA-Interim reanalysis (Dee et al., 2011). These stations are chosen as they offer continuous, high fidelity data over the training and held out test periods and represent multiple different climate regimes (Gutiérrez et al., 2019). Data is taken from 1979-2008, with five-fold cross validation used over six-year intervals to produce a 30 year time-series.

155 The convCNPs are trained to predict maximum temperature and precipitation at these 86 VALUE stations given the ERA Interim grids over Europe. Station data are taken from the European Climate Assessment Dataset (Klein Tank et al., 2002).



**Figure 3.** Locations of ECA&D (left) and VALUE (right) stations, with altitude shaded.

These grids are restricted to points between 35 and 72 degrees latitude and -15 to 40 degrees longitude. The VALUE experiment protocol does not specify which predictors are used in each downscaling model (i.e which gridded variables are included in  $Z$ ), with different predictors chosen for each member of the baseline ensemble, as detailed in Gutiérrez et al. (2019). It is emphasised that in the VALUE baselines a separate model is trained for every location, hence topographic predictors are not required.

Based on the predictors used by methods in the baseline ensemble, winds, humidity and temperature are included at multiple levels together with time, latitude, longitude and invariant fields. Predictors are summarised in Table 1.

For the sub-grid scale information for input into the final MLP, the point measurement of three products is provided at each station. True station elevation is taken from the Global Multi-resolution Terrain Elevation Dataset (USGS, 2010). This is provided to the model together with the difference between the ERA-Interim gridscale resolution elevation and true elevation. Finally, topographic prominence is quantified using the ALOS Global mTPI (Theobald et al., 2015).

Results of the convCNP model are compared to all available PP models in the VALUE ensemble, a total of 16 statistical models for precipitation and 23 for maximum temperature. These models comprise a range of techniques including analogs, multiple linear regression, generalised multiple linear regression and genetic programming. For a complete description of all models included in the comparison, see Appendix A.



Predictor	Level	Description
Surface		
TMAX	surface	Maximum temperature
TMEAN	surface	Mean temperature
U10	surface	Northward wind
V10	surface	Eastward wind
Pr	surface	Accumulated precipitation
Upper level		
Q	850hPa, 700hPa, 500hPa	Specific humidity
TA	850hPa, 700hPa, 500hPa	Temperature
UA	850hPa, 700hPa, 500hPa	Northward wind
VA	850hPa, 700hPa, 500hPa	Eastward wind
Invariant		
ASO	surface	Angle of sub-gridscale orography
ANSO	surface	Anisotropy of sub-grid scale orography
FSO	surface	Standard deviation of filtered subgrid orography
SDO	surface	Standard deviation of orography
GSFC	surface	Geopotential
LAT	surface	Latitude
LON	surface	Longitude
Temporal		
Time	-	Day of year, transformed as $(\cos(time), \sin(time))$

**Table 1.** Gridded predictors from ERA-Interim reanalysis included in  $Z$ .

### 2.2.2 Experiment 2 - performance at unseen locations

We next quantify model performance at unseen locations compared to an interpolation baseline. The convCNP models are retrained using station data from the European Climate Assessment Dataset (ECA&D), comprising 3010 stations for precipitation and 3047 stations for maximum temperature (Figure 2). The 86 VALUE stations are held out as the validation set, testing the model performance at both unseen times and locations.

As existing downscaling models are unable to handle unseen locations, it is necessary to construct a new baseline. A natural baseline for this problem is to construct individual models for each station using the training set, use these to make predictions at future times, and then interpolate to get predictions at the held out locations. For the single-station models, predictors are taken from ERA-Interim data at the closest gridbox, similar to Gutiérrez et al. (2013). Multiple linear regression is used for maximum temperature. For precipitation, occurrence is modelled using logistic regression, and accumulation using a generalised linear

Means		
Metric	Variables	Description
mb	$T_{max}$ , Precip	mean bias
sp	$T_{max}$ , Precip	Spearman correlation between observed and predicted timeseries
MAE	$T_{max}$ , Precip	Mean absolute error
R01	Precip	Relative wet day frequency (predicted precipitation days: observed precipitation days).
SDII	Precip	Mean wet day precipitation
Extremes		
Metric	Variables	Description
98P	$T_{max}$ , precip	Bias in the 98th percentile.
R10	Precip	Relative frequency of days with precipitation greater than 10mm

**Table 2.** Evaluation metrics.

model with gamma error distribution, similar to San-Martín et al. (2017). These methods are chosen as they are amongst the best-performing methods of the VALUE ensemble for each variable (Gutiérrez et al., 2019).

185 Following techniques used to convert station observations to gridded datasets (Haylock et al., 2008), predictions at these known stations in the future time period are made by first interpolating monthly means (totals) for temperature (precipitation) using a thin-plate spline, then using a GP to interpolate the anomalies (fraction of the total value). All interpolation is three dimensional over longitude, latitude and elevation. Throughout the results section, this model is referred to as the GP-baseline.

### 2.2.3 Experiment 3 - topography ablation

190 Finally, the impact of topography on predictions is quantified. Experiment 2 is repeated three times with different combinations of topographic data fed into the final MLP (step 3 in Figure 1): no topographic data, elevation and elevation difference only and mTPI only.

## 2.3 Evaluation metrics

A selection of standard climate metrics are chosen to assess model performance over the evaluation period, quantifying the representation of mean properties and extreme events (Table 2). Metrics are chosen based on those reported for the VALUE baseline ensemble (Gutiérrez et al., 2019; Widmann et al., 2019; Maraun et al., 2019; Hertig et al., 2019).

195 Comparison to these metrics requires generating a timeseries of values from the distributions predicted by the convCNP model. For temperature, this is generated by taking the mean of the predicted distribution for mean metrics, and sampling is used to complete the extreme metrics. For precipitation, a day is first classified as wet if  $\rho \geq 0.5$  or dry if  $\rho < 0.5$ . For wet days, accumulations are generated by taking the mean of the gamma distribution for mean metrics or sampling for extreme metrics.

### 3 Results: baseline comparison (experiment 1)

200 The convCNP model outperforms all VALUE baselines on median mean absolute error (MAE) and Spearman correlation for both maximum temperature and precipitation. Comparisons of convCNP model performance at the 86 VALUE stations to each model in the VALUE baseline ensemble are shown in Figure 4. The low MAE and high Spearman correlation indicate that the model performs well at capturing day-to-day variability.

For maximum temperature, the mean bias is larger than baseline models at many stations, with interquartile range -0.02C to 0.08C. This is a direct consequence of training a global model as opposed to individual models to each station which will trivially correct the mean (Maraun and Widmann, 2018). Though larger than baseline models, this error is still small for a majority of stations. Similarly for precipitation, though mean biases are larger than many of the VALUE models, the interquartile range is just -0.07mm to 0.12mm. For precipitation, the bias in convCNP relative wet day frequency (R01) and mean wet day precipitation (SDII) are comparable to the best models in the VALUE ensemble (not shown).

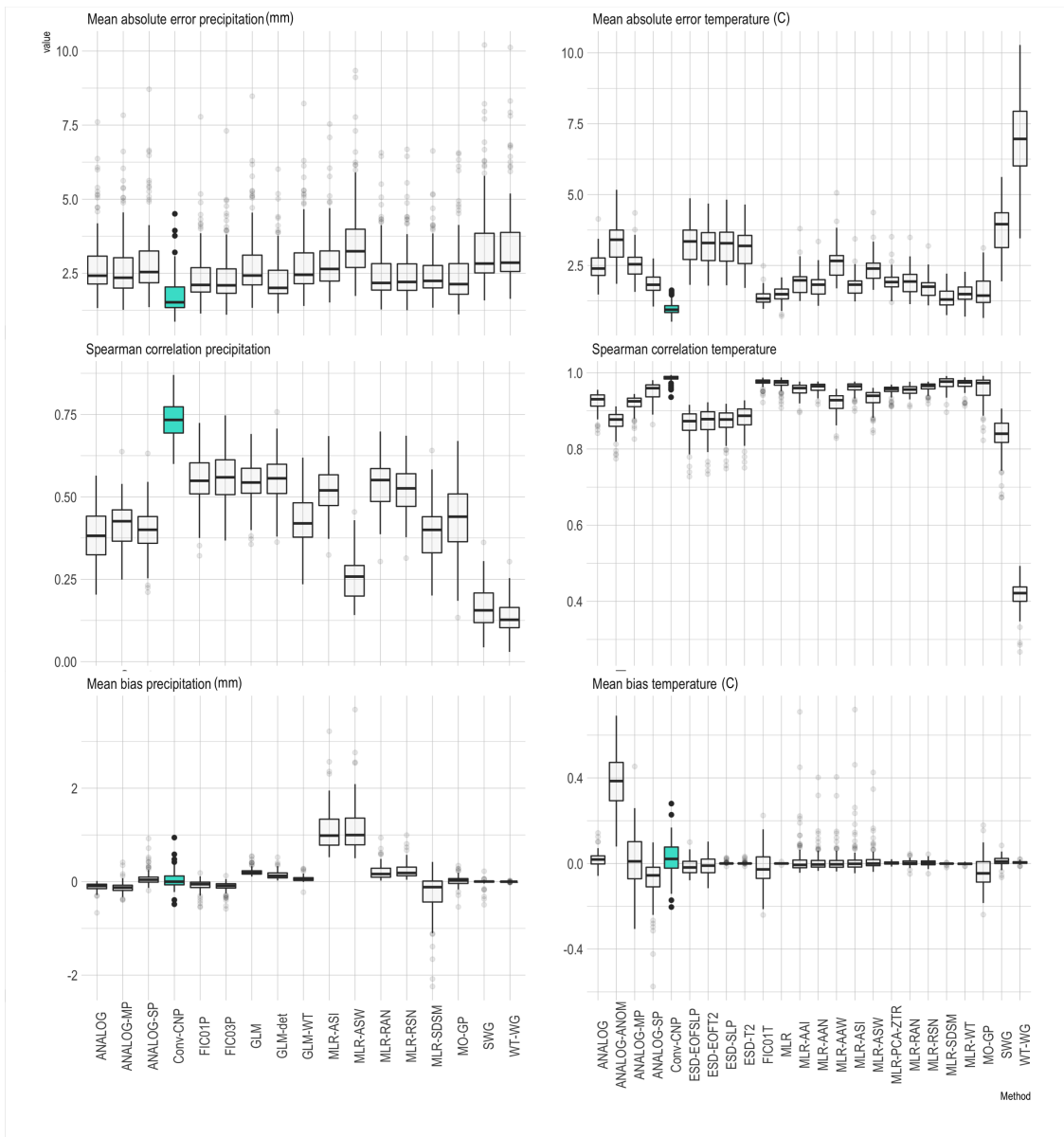
210 When downscaling GCM output for impact studies, it is of particular importance to accurately reproduce extreme events (Katz and Brown, 1992). In line with previous work comparing the VALUE baselines (Hertig et al., 2019), an extreme event is defined to be a value greater than the 98th percentile of observations. Comparisons of biases in the 98th percentile of maximum temperature and precipitation are shown in Figure 5. The convCNP performs similarly to the best baselines, with a median bias of -0.02C for temperature and -2.04mm for precipitation across the VALUE stations. R10 biases are comparable to baselines, 215 with a median bias of just -0.003mm.

### 4 Results: performance at unseen locations (experiment 2)

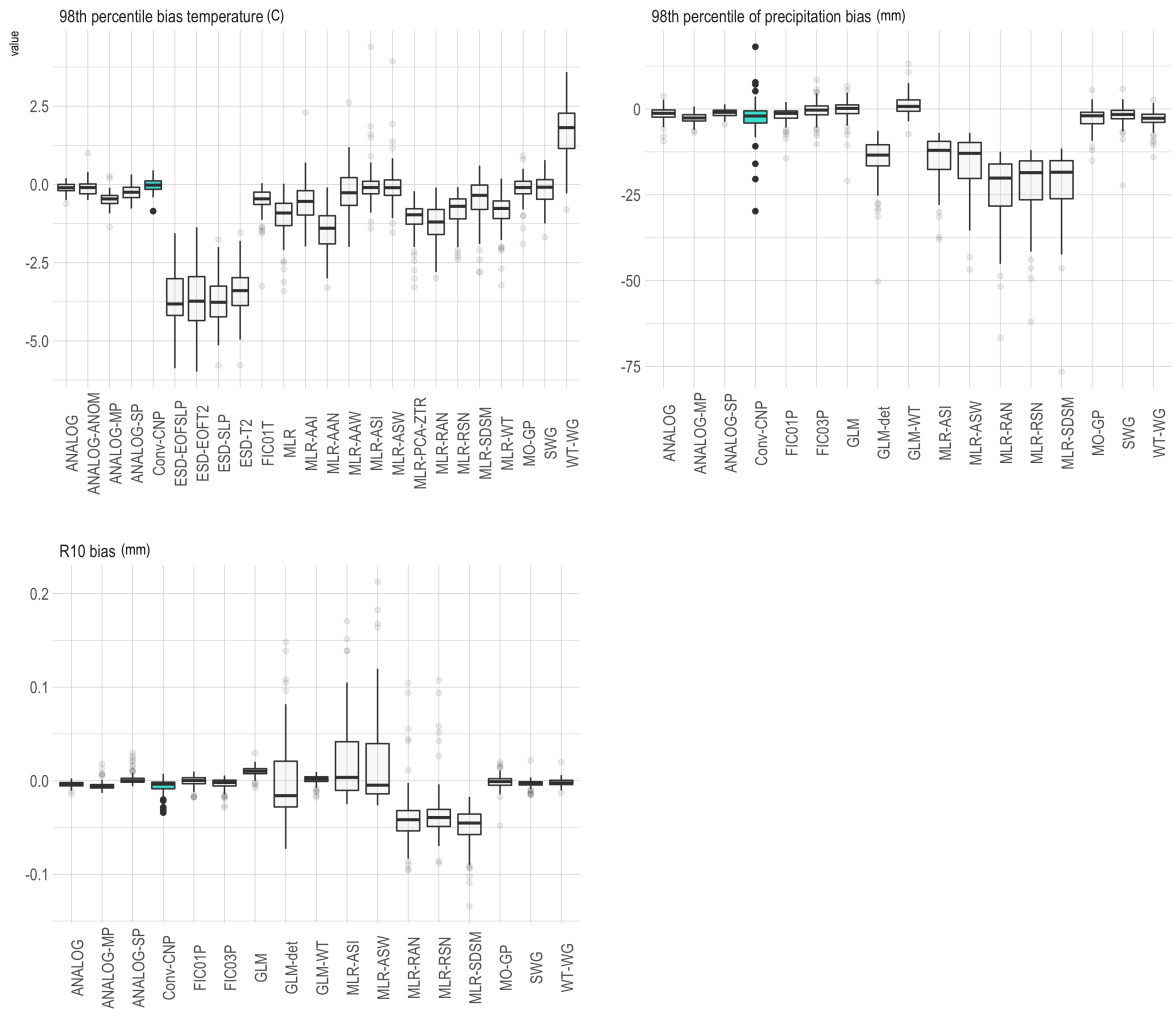
The convCNP model outperforms the GP-baseline at unseen stations. Results for MAE, Spearman correlation and mean bias are shown in Figure 6. For maximum temperature, the convCNP model gives small improvements over the baseline model, with Spearman correlations of 0.99 (0.98) and MAE of 1.19C (1.35C) for the convCNP (GP baseline). Importantly, large 220 outliers ( $>10C$ ) in the baseline MAE are not observed in the convCNP predictions. Figure 7 shows the spatial distribution of MAE for the convCNP and GP-baseline together with the difference in MAE between the two models. This demonstrates that stations with high MAE in the convCNP model are primarily concentrated in the complex topography of the European Alps. The GP-baseline model displays large MAE not only in the Alps, but also at other locations for example in Spain and France. The convCNP improves predictions at 82 out of the 86 stations.

225 Repeating this analysis for precipitation, the convCNP model gives substantial improvement over the baseline for MAE and Spearman correlation. Spearman correlations are 0.57 (0.20) and MAE 2.10mm (2.71mm) for convCNP (GP-baseline). In contrast to maximum temperature, there is no clear link between topography and MAE, though again convCNP predictions have large MAE for multiple stations located in the Alps. The convCNP model improves on baseline predictions at 80 out of 86 stations.

230 Comparisons between models for extreme metrics are shown in Figure 8. For maximum temperature, the convCNP has slightly lower absolute 98th percentile bias than the baseline. For precipitation, errors are substantially lower, with median

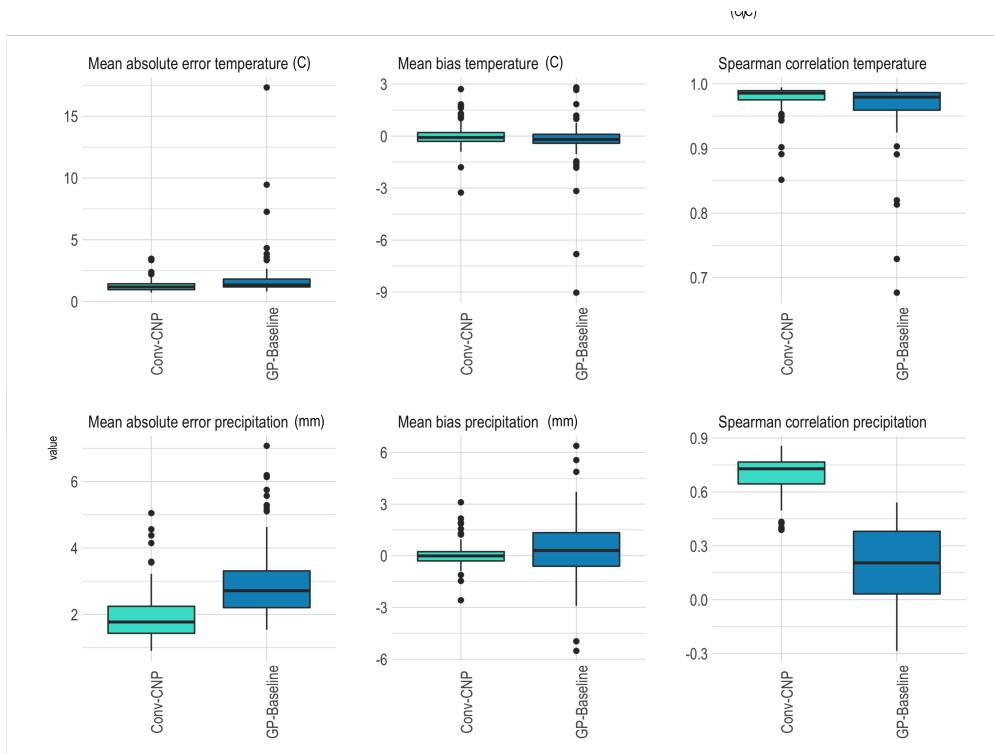


**Figure 4.** Comparison of the convCNP model to VALUE ensemble baselines for mean metrics, with the convCNP model shaded in blue. Each box summarises performance for one model in the ensemble over the 86 training stations on the held out validation data.



Method

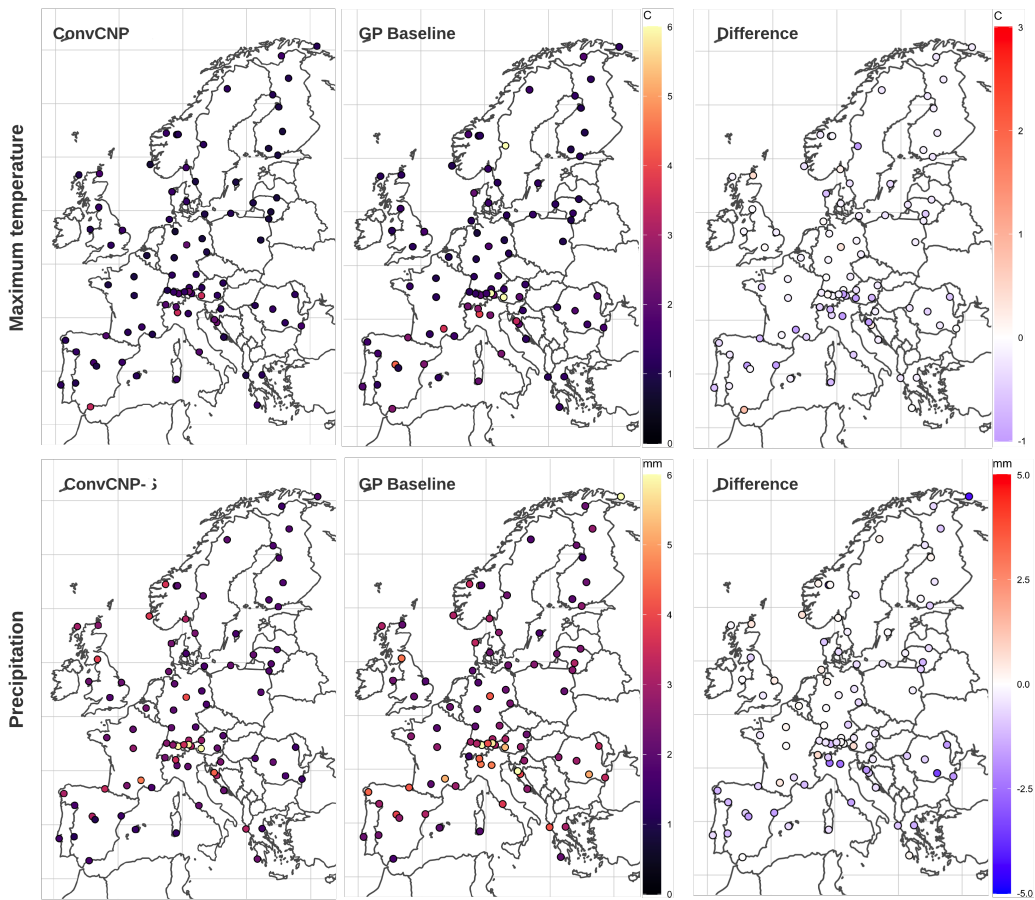
**Figure 5.** As for Figure 4, but for extreme metrics.



**Figure 6.** Comparison of the convCNP model to the GP-baseline. Boxes summarise model performance over the 86 held out VALUE stations for maximum temperature (top) and precipitation (bottom) for each of the mean metrics.

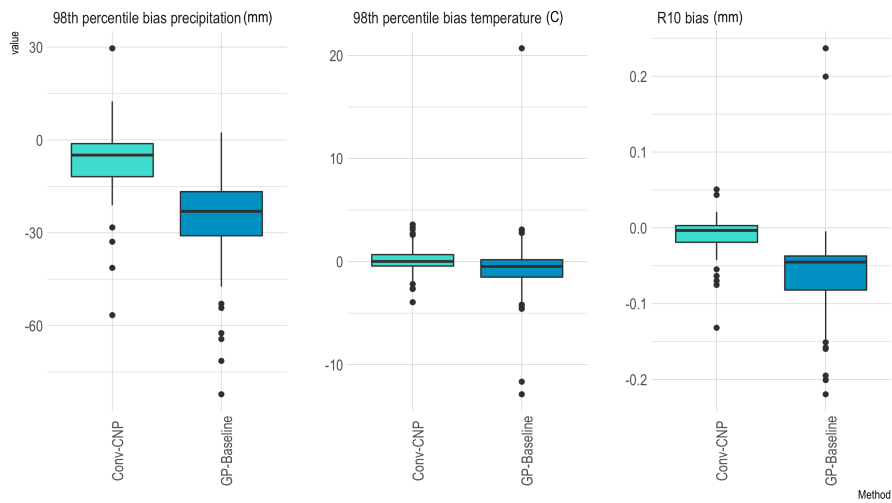
absolute 98th percentile bias of 4.90mm for convCNP compared to 22.92mm for the GP-baseline. The spatial distributions of 98th percentile bias for maximum temperature and precipitation predictions together with the difference in absolute bias are shown in Figure 9. For maximum temperature, the convCNP does not improve on the baseline at all stations. The GP-baseline exhibits uniformly positive biases, while the convCNP model has both positive and negative biases. Improvements are seen through central and eastern Europe, while the convCNP performs comparatively poorly in Southern Europe and the British Isles. For precipitation, predictions have low biases across much of Europe for the convCNP, with the exception of in the complex terrain of the Alps. GP-baseline biases are negative throughout the domain. For this case, convCNP predictions have lower bias at 84 of the 86 validation stations.

A limitation to the analysis of the standard climate metrics in Table 2 is that these only assess certain aspects of the predicted distribution. To assess the calibration of the models, we next examine the probability integral transform (PIT) values. The PIT value for a given prediction is defined as the CDF of the distribution predicted by the convCNP model evaluated at the true observed value. These values can be used to determine whether the model is calibrated by evaluating the PIT for every model prediction at the true observation, and plotting their distribution. If the model is properly calibrated, it is both necessary and sufficient for this distribution to be uniform (Gneiting et al., 2007). PIT distributions for maximum temperature and wet-day



**Figure 7.** Spatial distribution of mean absolute error for convCNP (right), GP baseline (centre) and convCNP - GP baseline (left). Maximum temperature (precipitation) is shown on the top (bottom) row. All panels show results for each of the 86 held out VALUE stations.

precipitation are shown in Figure 10. For temperature, the model is well calibrated overall, although the predicted distributions are often too narrow, as demonstrated by the peaks around zero and one indicating that the observed value falls outside the predicted normal distribution. Calibration of the precipitation model is poorer overall. The peak in PIT mass around zero indicates that this model often over predicts rainfall accumulation. Performance varies between individual stations for both temperature and precipitation, with examples of PIT distributions for both well- and poorly-calibrated stations shown in Figure 10.



**Figure 8.** As for Figure 6, but for P98 and R10 biases.

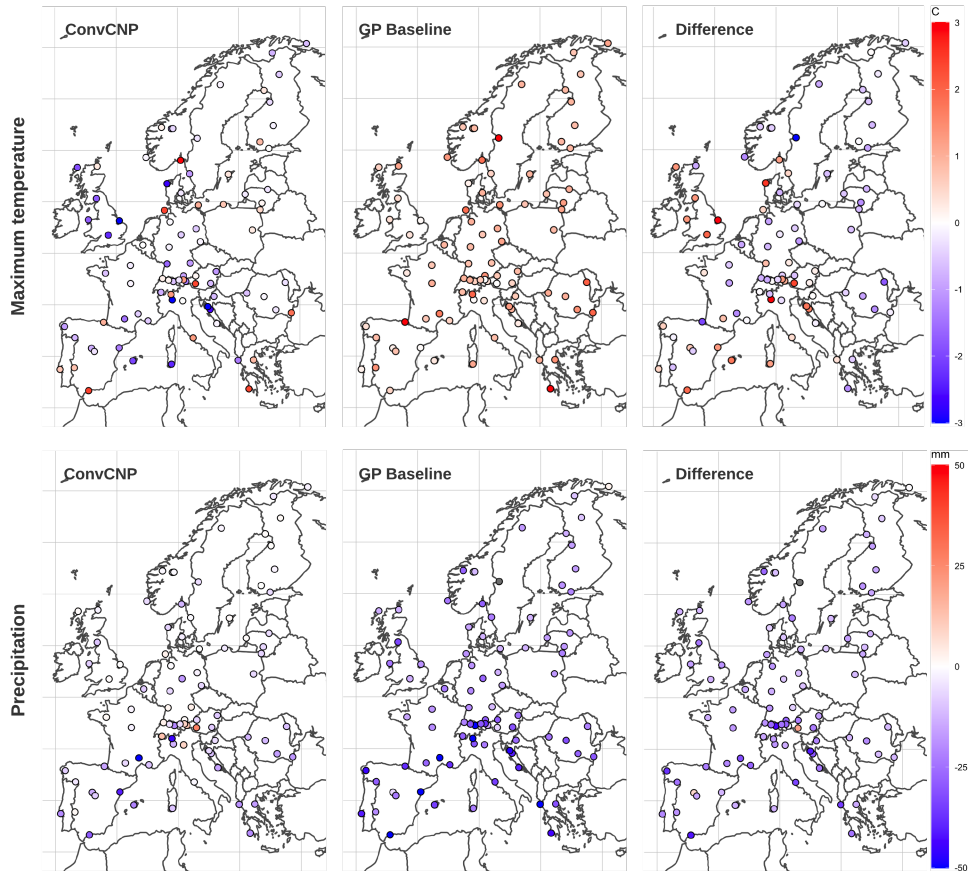
### 5 Results: topography ablation (experiment 3)

Results of the topography ablation experiment are shown in Figure 11 (mean metrics) and Figure 12 (extreme metrics). These figures compare the performance on each metric between the convCNP model with all topographic predictors, and convCNP models trained with no topography, elevation and elevation difference only and mTPI only.

For maximum temperature, inclusion of topographic information improves MAE, mean bias and Spearman correlation. Models including only mTPI or no topographic predictors have a number of stations with very large MAE, exceeding 10C at several stations. Unsurprisingly, these stations are found to be located in areas of complex topography in the Alps (not shown). Including elevation both decreases the median MAE and corrects errors at these outliers, with further improvement observed with mTPI added. A similar pattern is seen for mean bias. More modest improvements are seen for precipitation, though inclusion of topographic data does result in slightly improved performance.

For maximum temperature, inclusion of topographic data results in reduced 98th percentile bias. This is primarily as a result of including elevation and elevation difference data, with limited benefit derived from the inclusion of mTPI. In contrast, for precipitation, models with topographic correction perform worse than the elevation agnostic model for both 98th percentile and R10 biases. This reduced performance for precipitation may result from overfitting.

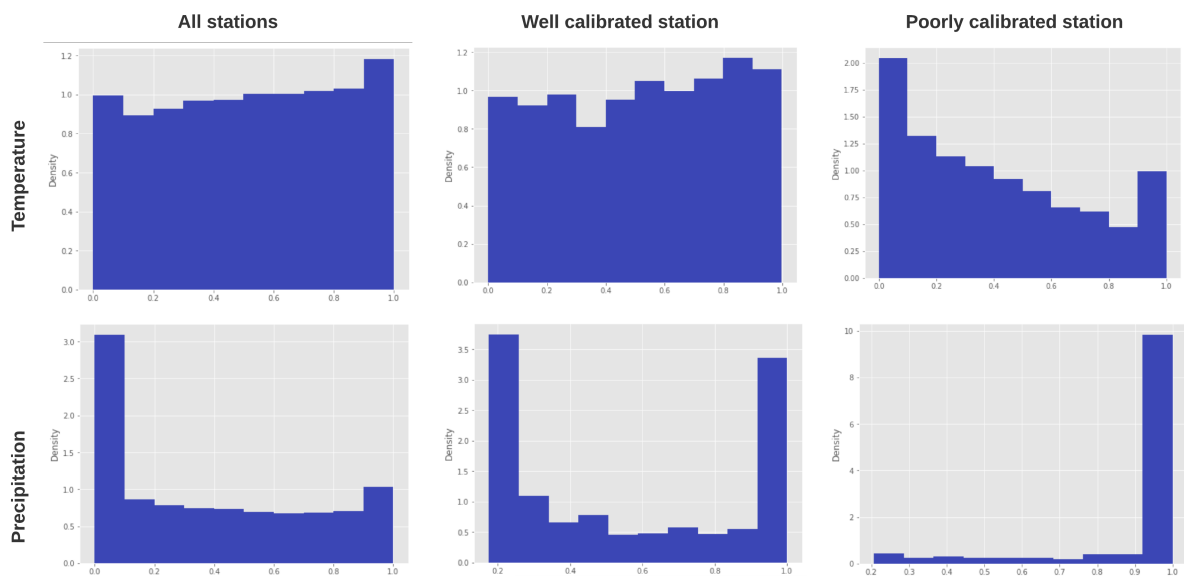




**Figure 9.** As for Figure 7, but for P98 biases. Here, the difference panels quantify the difference in absolute bias  $|P98_{convCNP}| - |P98_{GP-Baseline}|$ . Negative (positive) values indicate that the convCNP (GP-Baseline) has better performance.

## 6 Discussion and conclusion

This study demonstrated the successful application of convCNPs to statistical downscaling of temperature and precipitation. The convCNP model performs well compared to strong baselines from the VALUE ensemble on both mean and extreme metrics. For both variables the convCNP model outperforms an interpolation based baseline. Inclusion of sub-grid-scale topographic information is shown to improve model performance for mean and extreme metrics for maximum temperature, and mean metrics for precipitation. The convCNP model has a significant advantage over these baselines in that the output prediction is a continuous function, allowing predictions to be made at an arbitrary (longitude, latitude, elevation) location. Although only temperature and precipitation are considered in this study, the model is easily applied to any climate variable with available station observations, for example windspeed.

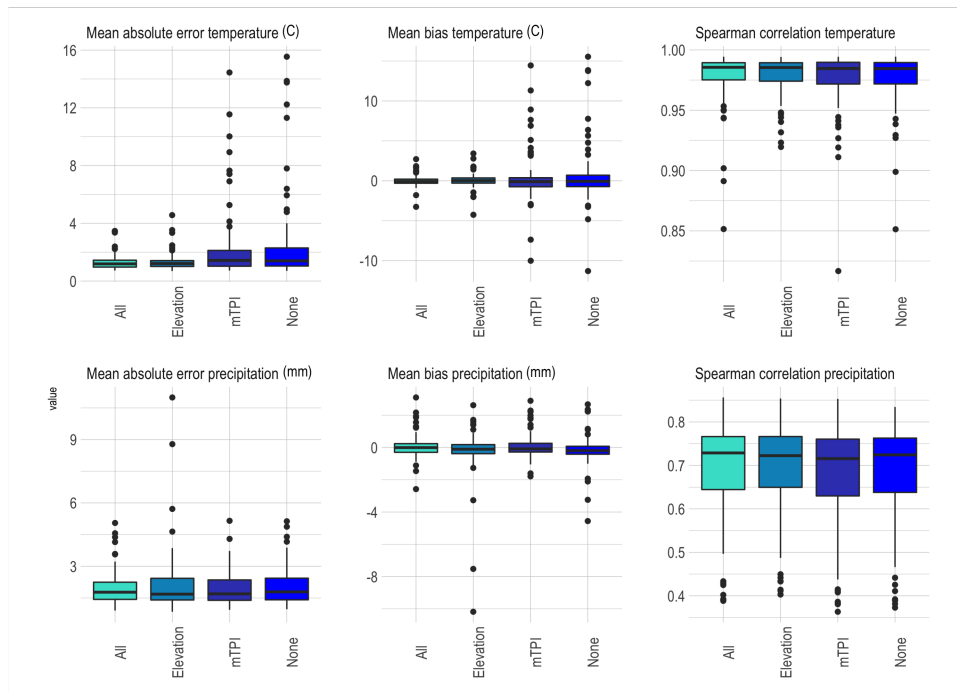


**Figure 10.** Histograms showing probability integral transforms for model predictions compared to a uniform distribution to assess calibration for temperature (top) and precipitation (bottom). For temperature PIT plots are shown for all values (left), a station where the model is well calibrated (Braganca, Portugal; centre) and a station where the model is poorly calibrated (Gospic, Croatia; right). Similarly for precipitation, PIT plots are shown for all values (left), a station where the model is well calibrated (Stornoway, UK; centre) and a station where the model is poorly calibrated (Sondankyla, Finland; right).

275 Several areas remain for future work, both within the convCNP model and in comparison to other downscaling methods. In the convCNP predictions, representation of certain metrics, notably precipitation extremes requires further improvement, particularly in areas with complex topography. The topography ablation experiments demonstrate that the convCNP P98 bias increases in regions with complex topography. Dynamically, this is likely due to local flow effects such as Föhn winds (Gaffin, 2007; Basist et al., 1994), which depend on the incident angle of the background flow. A possible explanation for this is that the

280 MLP is insufficient to model these effects. Further experimentation with adding a second CNN to capture the sub-grid-scale processes, and possibly conditioning predictions of this model on local flow is left as a topic for future research. Another avenue for improving model performance would be to change the distribution predicted by the convCNP. Model calibration results presented in Section 4 indicate that the temperature downscaling model could be improved using a distribution with heavier tails. Precipitation model calibration requires improvement, with the model frequently under-predicting wet day accumulations.

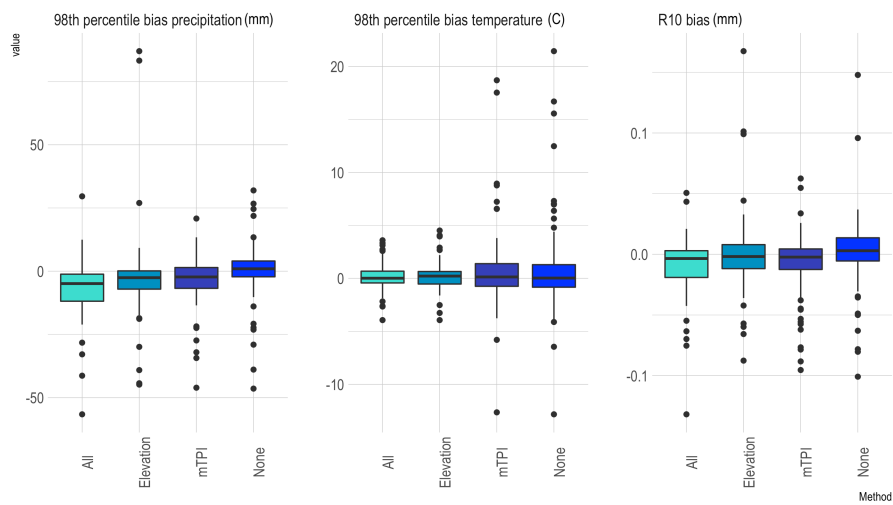
285 A possible explanation for this is that the left hand tail of the gamma distribution decays rapidly. For cases where the mode of the predicted distribution is greater than zero, small observed accumulations are therefore heavily penalised. Previous work has acknowledged that the Bernoulli-Gamma distribution used in this study is not realistic for all sites (Viček and Huth, 2009), and suggested that representation of precipitation extremes can be improved using a Bernoulli-Gamma-Generalised



**Figure 11.** Comparison of model performance in the topography ablation experiment. The complete model (All) is compared to models with no topographic data (None), elevation and elevation difference only (Elevation) and mTPI only (mTPI). Boxes summarise model performance over the 86 held out VALUE stations for maximum temperature (top) and precipitation (bottom) for each of the mean metrics.

Pareto distribution (Ben Alaya et al., 2015; Volosciuk et al., 2017). Future work will explore improving the calibration of the downscaling models using mixture distributions and normalising flows (Rezende and Mohamed, 2015) to improve the calibration of the model. A further possibility for extending the convCNP model would be to explicitly incorporate time by building recurrence into the model (Qin et al., 2019; Singh et al., 2019).

Future work will also focus on developing a standardised framework to compare the convCNP model to a variety of deep learning baselines, building on the work of (Vandal et al., 2019). Although some studies have indicated that in certain cases deep learning models offer little advantage over widely used statistical methods such as those included in the VALUE ensemble (Baño-Medina et al., 2020; Vandal et al., 2019), others suggest that deep learning methods offer improved performance (White et al., 2019; Vandal et al., 2017; Höhle et al., 2020; Liu et al., 2020; Sachindra et al., 2018; Misra et al., 2018). Further work is required both to rigorously compare the convCNP model to other machine learning models for downscaling and to generate a standardised intercomparison of models more broadly. Examination of a larger set of metrics, particularly for precipitation, would also be beneficial.



**Figure 12.** As for Figure 11, but for extreme metrics.

The final aspect to consider is extending these promising results downscaling reanalysis data to apply to future climate simulations from GCMs. An in depth analysis of the convCNP model performance on seasonal and annual metrics would be beneficial in informing application to impact scenarios. A limitation in all PP downscaling techniques is that applying a transfer function trained on reanalysis data to a GCM makes the assumption that the predictors included in the context set are realistically simulated in the GCM (Maraun and Widmann, 2018). Future work will aim to address this issue through training a convCNP model directly on RCM or GCM hindcasts available through projects such as EURO-CORDEX (Jacob et al., 2014).

*Code availability.* Model code is available at <https://github.com/anna-184702/convCNPClimate> DOI:10.5281/zenodo.4554603).

*Author contributions.* AV implemented the code, conducted the experiments and wrote the first draft. All authors designed the study and contributed to the analysis of results and final version of the paper.

*Competing interests.* The authors declare that they have no conflict of interest.

*Acknowledgements.* Anna Vaughan acknowledges the UKRI Centre for Doctoral Training in the Application of Artificial Intelligence to the study of Environmental Risks (AI4ER), led by the University of Cambridge and British Antarctic Survey, and studentship funding from Google DeepMind. Will Tebbutt is supported by Google DeepMind.

## References

- 315 Allen, S., Boschung, J., Nauels, A., Xia, Y., Bex, V., and Midgley, P.: Climate change 2013: the physical science basis. Contribution of working group I to the fifth assessment report of the Intergovernmental Panel on Climate Change, 2016.
- Ayar, P. V., Vrac, M., Bastin, S., Carreau, J., Déqué, M., and Gallardo, C.: Intercomparison of statistical and dynamical downscaling models under the EURO-and MED-CORDEX initiative framework: present climate evaluations, *Climate Dynamics*, 46, 1301–1329, 2016.
- Baño-Medina, J. L., García Manzananas, R., Gutiérrez Llorente, J. M., et al.: Configuration and intercomparison of deep learning neural models  
320 for statistical downscaling, 2020.
- Basist, A., Bell, G. D., and Meentemeyer, V.: Statistical relationships between topography and precipitation patterns, *Journal of climate*, 7, 1305–1315, 1994.
- Ben Alaya, M. A., Chebana, F., and Ouarda, T. B.: Probabilistic multisite statistical downscaling for daily precipitation using a Bernoulli–generalized pareto multivariate autoregressive model, *Journal of Climate*, 28, 2349–2364, 2015.
- 325 Benestad, R. E., Chen, D., Mezghani, A., Fan, L., and Parding, K.: On using principal components to represent stations in empirical–statistical downscaling, *Tellus A: Dynamic Meteorology and Oceanography*, 67, 283–26, 2015.
- Bevacqua, E., Maraun, D., Hobæk Haff, I., Widmann, M., and Vrac, M.: Multivariate statistical modelling of compound events via pair-copula constructions: analysis of floods in Ravenna (Italy), *Hydrology and Earth System Sciences*, 21, 2701–2723, 2017.
- Bhardwaj, A., Misra, V., Mishra, A., Wootten, A., Boyles, R., Bowden, J., and Terando, A. J.: Downscaling future climate change projections  
330 over Puerto Rico using a non-hydrostatic atmospheric model, *Climatic Change*, 147, 133–147, 2018.
- Cannon, A. J.: Probabilistic multisite precipitation downscaling by an expanded Bernoulli–Gamma density network, *Journal of Hydrometeorology*, 9, 1284–1300, 2008.
- Cannon, A. J., Piani, C., and Sippel, S.: Bias correction of climate model output for impact models, Elsevier, 2020.
- Casanueva, A., Herrera, S., Fernández, J., and Gutiérrez, J. M.: Towards a fair comparison of statistical and dynamical downscaling in the  
335 framework of the EURO-CORDEX initiative, *Climatic Change*, 137, 411–426, 2016.
- Chollet, F.: Xception: Deep learning with depthwise separable convolutions, in: *Proceedings of the IEEE conference on computer vision and pattern recognition*, pp. 1251–1258, 2017.
- Dee, D. P., Uppala, S. M., Simmons, A., Berrisford, P., Poli, P., Kobayashi, S., Andrae, U., Balmaseda, M., Balsamo, G., Bauer, d. P., et al.:  
340 The ERA-Interim reanalysis: Configuration and performance of the data assimilation system, *Quarterly Journal of the royal meteorological society*, 137, 553–597, 2011.
- Dubois, Y., Gordon, J., and Foong, A. Y.: Neural Process Family, <http://yanndubs.github.io/Neural-Process-Family/>, 2020.
- Gaffin, D. M.: Foehn winds that produced large temperature differences near the southern Appalachian Mountains, *Weather and forecasting*, 22, 145–159, 2007.
- Garnelo, M., Rosenbaum, D., Maddison, C. J., Ramalho, T., Saxton, D., Shanahan, M., Teh, Y. W., Rezende, D. J., and Eslami, S.: Conditional  
345 neural processes, *arXiv preprint arXiv:1807.01613*, 2018.
- Ghosh, S. and Mujumdar, P. P.: Statistical downscaling of GCM simulations to streamflow using relevance vector machine, *Advances in water resources*, 31, 132–146, 2008.
- Gneiting, T., Balabdaoui, F., and Raftery, A. E.: Probabilistic forecasts, calibration and sharpness, *Journal of the Royal Statistical Society: Series B (Statistical Methodology)*, 69, 243–268, 2007.

- 350 Gordon, J., Bruinsma, W. P., Foong, A. Y., Requeima, J., Dubois, Y., and Turner, R. E.: Convolutional conditional neural processes, arXiv preprint arXiv:1910.13556, 2019.
- Groenke, B., Madaus, L., and Monteleoni, C.: ClimAlign: Unsupervised statistical downscaling of climate variables via normalizing flows, in: Proceedings of the 10th International Conference on Climate Informatics, pp. 60–66, 2020.
- Gutiérrez, J. M., San-Martín, D., Brands, S., Manzanar, R., and Herrera, S.: Reassessing statistical downscaling techniques for their robust  
355 application under climate change conditions, *Journal of Climate*, 26, 171–188, 2013.
- Gutiérrez, J. M., Maraun, D., Widmann, M., Huth, R., Hertig, E., Benestad, R., Rössler, O., Wibig, J., Wilcke, R., Kotlarski, S., et al.: An intercomparison of a large ensemble of statistical downscaling methods over Europe: Results from the VALUE perfect predictor cross-validation experiment, *International journal of climatology*, 39, 3750–3785, 2019.
- Hatfield, J. L. and Prueger, J. H.: Temperature extremes: Effect on plant growth and development, *Weather and climate extremes*, 10, 4–10,  
360 2015.
- Haylock, M., Hofstra, N., Klein Tank, A., Klok, E., Jones, P., and New, M.: A European daily high-resolution gridded data set of surface temperature and precipitation for 1950–2006, *Journal of Geophysical Research: Atmospheres*, 113, 2008.
- He, K., Zhang, X., Ren, S., and Sun, J.: Deep residual learning for image recognition, in: Proceedings of the IEEE conference on computer vision and pattern recognition, pp. 770–778, 2016.
- 365 Hertig, E. and Jacobeit, J.: A novel approach to statistical downscaling considering nonstationarities: application to daily precipitation in the Mediterranean area, *Journal of Geophysical Research: Atmospheres*, 118, 520–533, 2013.
- Hertig, E., Maraun, D., Bartholy, J., Pongracz, R., Vrac, M., Mares, I., Gutiérrez, J. M., Wibig, J., Casanueva, A., and Soares, P. M.: Comparison of statistical downscaling methods with respect to extreme events over Europe: Validation results from the perfect predictor experiment of the COST Action VALUE, *International Journal of Climatology*, 39, 3846–3867, 2019.
- 370 Hühlein, K., Kern, M., Hewson, T., and Westermann, R.: A Comparative Study of Convolutional Neural Network Models for Wind Field Downscaling, arXiv preprint arXiv:2008.12257, 2020.
- Huth, R., Mikšovský, J., Štěpánek, P., Belda, M., Farda, A., Chládková, Z., and Pišoft, P.: Comparative validation of statistical and dynamical downscaling models on a dense grid in central Europe: temperature, *Theoretical and Applied Climatology*, 120, 533–553, 2015.
- Jacob, D., Petersen, J., Eggert, B., Alias, A., Christensen, O. B., Bouwer, L. M., Braun, A., Colette, A., Déqué, M., Georgievski, G., et al.:  
375 EURO-CORDEX: new high-resolution climate change projections for European impact research, *Regional environmental change*, 14, 563–578, 2014.
- Jacobeit, J., Hertig, E., Seubert, S., and Lutz, K.: Statistical downscaling for climate change projections in the Mediterranean region: methods and results, *Regional environmental change*, 14, 1891–1906, 2014.
- Katz, R. W. and Brown, B. G.: Extreme events in a changing climate: variability is more important than averages, *Climatic change*, 21,  
380 289–302, 1992.
- Kingma, D. P. and Ba, J.: Adam: A method for stochastic optimization, arXiv preprint arXiv:1412.6980, 2014.
- Klein Tank, A., Wijngaard, J., Können, G., Böhm, R., Demarée, G., Gocheva, A., Mileta, M., Pashiardis, S., Hejkrlik, L., Kern-Hansen, C., et al.: Daily dataset of 20th-century surface air temperature and precipitation series for the European Climate Assessment, *International Journal of Climatology: A Journal of the Royal Meteorological Society*, 22, 1441–1453, 2002.
- 385 Li, Z., Kovachki, N., Aizzadenesheli, K., Liu, B., Bhattacharya, K., Stuart, A., and Anandkumar, A.: Neural operator: Graph kernel network for partial differential equations, arXiv preprint arXiv:2003.03485, 2020a.

- Li, Z., Kovachki, N., Azizzadenesheli, K., Liu, B., Bhattacharya, K., Stuart, A., and Anandkumar, A.: Fourier neural operator for parametric partial differential equations, arXiv preprint arXiv:2010.08895, 2020b.
- Liu, Y., Ganguly, A. R., and Dy, J.: Climate Downscaling Using YNet: A Deep Convolutional Network with Skip Connections and Fusion, 390 in: Proceedings of the 26th ACM SIGKDD International Conference on Knowledge Discovery & Data Mining, pp. 3145–3153, 2020.
- Lu, L., Jin, P., and Karniadakis, G. E.: Deeponet: Learning nonlinear operators for identifying differential equations based on the universal approximation theorem of operators, arXiv preprint arXiv:1910.03193, 2019.
- Maraun, D.: Bias correction, quantile mapping, and downscaling: Revisiting the inflation issue, *Journal of Climate*, 26, 2137–2143, 2013.
- Maraun, D. and Widmann, M.: Statistical downscaling and bias correction for climate research, Cambridge University Press, 2018.
- 395 Maraun, D., Wetterhall, F., Ireson, A., Chandler, R., Kendon, E., Widmann, M., Brienen, S., Rust, H., Sauter, T., Themeßl, M., et al.: Precipitation downscaling under climate change: Recent developments to bridge the gap between dynamical models and the end user, *Reviews of geophysics*, 48, 2010.
- Maraun, D., Widmann, M., Gutiérrez, J. M., Kotlarski, S., Chandler, R. E., Hertig, E., Wibig, J., Huth, R., and Wilcke, R. A.: VALUE: A framework to validate downscaling approaches for climate change studies, *Earth’s Future*, 3, 1–14, 2015.
- 400 Maraun, D., Shepherd, T. G., Widmann, M., Zappa, G., Walton, D., Gutiérrez, J. M., Hagemann, S., Richter, I., Soares, P. M., Hall, A., et al.: Towards process-informed bias correction of climate change simulations, *Nature Climate Change*, 7, 764–773, 2017.
- Maraun, D., Huth, R., Gutiérrez, J. M., Martín, D. S., Dubrovsky, M., Fischer, A., Hertig, E., Soares, P. M., Bartholy, J., Pongrácz, R., et al.: The VALUE perfect predictor experiment: evaluation of temporal variability, *International Journal of Climatology*, 39, 3786–3818, 2019.
- Mehrotra, R. and Sharma, A.: A nonparametric nonhomogeneous hidden Markov model for downscaling of multisite daily rainfall occur- 405 rences, *Journal of Geophysical Research: Atmospheres*, 110, 2005.
- Misra, S., Sarkar, S., and Mitra, P.: Statistical downscaling of precipitation using long short-term memory recurrent neural networks, *Theoretical and applied climatology*, 134, 1179–1196, 2018.
- Pan, B., Hsu, K., AghaKouchak, A., and Sorooshian, S.: Improving precipitation estimation using convolutional neural network, *Water Resources Research*, 55, 2301–2321, 2019.
- 410 Piani, C., Haerter, J., and Coppola, E.: Statistical bias correction for daily precipitation in regional climate models over Europe, *Theoretical and Applied Climatology*, 99, 187–192, 2010.
- Qin, S., Zhu, J., Qin, J., Wang, W., and Zhao, D.: Recurrent attentive neural process for sequential data, arXiv preprint arXiv:1910.09323, 2019.
- Raynaud, D., Hingray, B., Zin, I., Anquetin, S., Debionne, S., and Vautard, R.: Atmospheric analogues for physically consistent scenarios of 415 surface weather in Europe and Maghreb, *International Journal of Climatology*, 37, 2160–2176, 2017.
- Rezende, D. J. and Mohamed, S.: Variational inference with normalizing flows, arXiv preprint arXiv:1505.05770, 2015.
- Ribalaygua, J., Torres, L., Pórtolos, J., Monjo, R., Gaitán, E., and Pino, M.: Description and validation of a two-step analogue/regression downscaling method, *Theoretical and Applied Climatology*, 114, 253–269, 2013.
- Sachindra, D., Ahmed, K., Rashid, M. M., Shahid, S., and Perera, B.: Statistical downscaling of precipitation using machine learning tech- 420 niques, *Atmospheric research*, 212, 240–258, 2018.
- San-Martín, D., Manzananas, R., Brands, S., Herrera, S., and Gutiérrez, J. M.: Reassessing model uncertainty for regional projections of precipitation with an ensemble of statistical downscaling methods, *Journal of Climate*, 30, 203–223, 2017.
- Singh, G., Yoon, J., Son, Y., and Ahn, S.: Sequential Neural Processes, in: Advances in Neural Information Processing Systems, pp. 10 254–10 264, 2019.



- 425 Teutschbein, C. and Seibert, J.: Bias correction of regional climate model simulations for hydrological climate-change impact studies: Review and evaluation of different methods, *Journal of hydrology*, 456, 12–29, 2012.
- Theobald, D. M., Harrison-Atlas, D., Monahan, W. B., and Albano, C. M.: Ecologically-relevant maps of landforms and physiographic diversity for climate adaptation planning, *PLoS One*, 10, e0143619, 2015.
- USGS: Global Multi-resolution Terrain Elevation Data, 2010.
- 430 Vandal, T., Kodra, E., Ganguly, S., Michaelis, A., Nemani, R., and Ganguly, A. R.: DeepSD: Generating high resolution climate change projections through single image super-resolution, in: *Proceedings of the 23rd ACM SIGKDD International Conference on Knowledge Discovery and Data Mining*, pp. 1663–1672, 2017.
- Vandal, T., Kodra, E., Dy, J., Ganguly, S., Nemani, R., and Ganguly, A. R.: Quantifying uncertainty in discrete-continuous and skewed data with Bayesian deep learning, in: *Proceedings of the 24th ACM SIGKDD International Conference on Knowledge Discovery & Data Mining*, pp. 2377–2386, 2018.
- 435 Vandal, T., Kodra, E., and Ganguly, A. R.: Intercomparison of machine learning methods for statistical downscaling: the case of daily and extreme precipitation, *Theoretical and Applied Climatology*, 137, 557–570, 2019.
- Vlček, O. and Huth, R.: Is daily precipitation Gamma-distributed?: Adverse effects of an incorrect use of the Kolmogorov–Smirnov test, *Atmospheric Research*, 93, 759–766, 2009.
- 440 Volosciuk, C. D., Maraun, D., Vrac, M., and Widmann, M.: A combined statistical bias correction and stochastic downscaling method for precipitation, *Hydrology and Earth System Sciences*, 21, 1693–1719, 2017.
- Wang, F., Tian, D., Lowe, L., Kalin, L., and Lehrter, J.: Deep Learning for Daily Precipitation and Temperature Downscaling, *Water Resources Research*, 57, e2020WR029308, 2021.
- White, B., Singh, A., and Albert, A.: Downscaling Numerical Weather Models with GANs, in: *AGU Fall Meeting Abstracts*, vol. 2019, pp. GC43D–1357, 2019.
- 445 Widmann, M., Bedia, J., Gutiérrez, J. M., Bosshard, T., Hertig, E., Maraun, D., Casado, M. J., Ramos, P., Cardoso, R. M., Soares, P. M., et al.: Validation of spatial variability in downscaling results from the VALUE perfect predictor experiment, *International Journal of Climatology*, 39, 3819–3845, 2019.
- Wilby, R. L., Dawson, C. W., and Barrow, E. M.: SDSM—a decision support tool for the assessment of regional climate change impacts, *Environmental Modelling & Software*, 17, 145–157, 2002.
- 450 Wilks, D. S.: Stochastic weather generators for climate-change downscaling, part II: multivariable and spatially coherent multisite downscaling, *Wiley Interdisciplinary Reviews: Climate Change*, 3, 267–278, 2012.
- Zerener, T., Venema, V., Friederichs, P., and Simmer, C.: Downscaling near-surface atmospheric fields with multi-objective Genetic Programming, *Environmental Modelling & Software*, 84, 85–98, 2016.

## 455 **Appendix A: VALUE ensemble methods**

Table 3 summarises the baseline methods in the VALUE ensemble. This information is adapted from (Gutiérrez et al., 2019).

Model	Variables	Description
ANALOG	$T_{max}$ , precip	Standard analog, no seasonal component (Gutiérrez et al., 2013)
ANALOG-ANOM	$T_{max}$	Analog with seasonal component (Ayar et al., 2016)
ANALOG-MP	$T_{max}$ , precip	Analog method with seasonal component (Raynaud et al., 2017)
ANALOG-SP	$T_{max}$ , precip	Analog method with seasonal component (Raynaud et al., 2017)
ESD-EOFSLP	$T_{max}$	Multiple linear regression (Benestad et al., 2015)
ESD-SLP	$T_{max}$	Multiple linear regression (Benestad et al., 2015)
ESD-T2	$T_{max}$	Multiple linear regression (Benestad et al., 2015)
FIC01P	$T_{max}$ , precip	Two step analog method (Ribalaygua et al., 2013)
FIC03P	precip	Two step analog method (Ribalaygua et al., 2013)
GLM	precip	Generalised linear Model with log-canonical link function (San-Martín et al., 2017). Bernoulli error distribution for occurrence and gamma error distribution for accumulation. Predictions sampled from output distribution.
GLM-det	precip	As for GLM, predictions given as mean of output distribution (San-Martín et al., 2017).
GLM-WT	precip	As for GLM, conditioned on 12 weather types identified by k-means clustering (San-Martín et al., 2017).
MLR	$T_{max}$	Multiple linear regression using PCA for predictors (Gutiérrez et al., 2013).
MLR-AAI	$T_{max}$ , precip	Multiple linear regression, annual training, anomaly data, inflation variance correction (Huth et al., 2015).
MLR-AAN	$T_{max}$ , precip	Multiple linear regression, annual training, anomaly data, white-noise variance correction (Huth et al., 2015).
MLR-AAW	$T_{max}$ , precip	Multiple linear regression, annual training, anomaly data, white-noise variance correction (Huth et al., 2015).
MLR-ASI	$T_{max}$ , precip	Multiple linear regression, seasonal training, anomaly data, inflation variance correction (Huth et al., 2015).
MLR-ASW	$T_{max}$ , precip	Multiple linear regression, seasonal training, anomaly data, white-noise variance correction (Huth et al., 2015).
MLR-PCA-ZTR	$T_{max}$	Multiple linear regression with s-mode principal component predictors (Jacobeit et al., 2014).
MLR-RAN	$T_{max}$ , precip	Multiple linear regression, seasonal training, raw data, no variance correction (Huth et al., 2015).
MLR-RSN	$T_{max}$ , precip	Multiple linear regression, seasonal training, raw data, no variance correction (Huth et al., 2015).
MLR-SDSM	$T_{max}$ , precip	Single-site multiple linear regression using the statistical downscaling method (Wilby et al., 2002).
MLR-WT	$T_{max}$	As for MLR, but conditioned on weather types defined using k-means clustering (Gutiérrez et al., 2013).
MO-GP	$T_{max}$ , precip	Multi-objective genetic programming (Zerenner et al., 2016).
SWG	$T_{max}$ , precip	Two-step vectorised generalised linear models (Ayar et al., 2016).
WT-WG	$T_{max}$ , precip	Distributional fitting based on weather types selected using k-means clustering (Gutiérrez et al., 2013).

**Table A1.** Summary of models included in the VALUE ensemble.