

Efficient Bayesian inference for large chaotic dynamical systems

Sebastian Springer^{1,2}, Heikki Haario^{1,3}, Jouni Susiluoto^{1,3,4}, Aleksandr Bibov^{1,6}, Andrew Davis^{4,5}, and Youssef Marzouk⁴

¹Department of Computational and Process Engineering, Lappeenranta University of Technology, Lappeenranta, FI

²Research unit of Mathematical Sciences, University of Oulu, Oulu, FI

³Finnish Meteorological Institute, Helsinki, Finland

⁴Department of Aeronautics and Astronautics, Massachusetts Institute of Technology, Cambridge, MA

⁵Courant Institute of Mathematical Sciences, New York University, New York, NY

⁶Varjo Technologies Oy, Helsinki, FI

Correspondence: Sebastian Springer (sebastian.springer@lut.fi)

Abstract.

Estimating parameters of chaotic geophysical models is challenging due to their inherent unpredictability. These models cannot be calibrated with standard least squares or filtering methods if observations are temporally sparse. Obvious remedies, such as averaging over temporal and spatial data to characterize the mean behavior, do not capture the subtleties of the underlying dynamics. We perform Bayesian inference of parameters in high-dimensional and computationally demanding chaotic dynamical systems by combining two approaches: (i) measuring model-data mismatch by comparing chaotic attractors, and (ii) mitigating the computational cost of inference by using surrogate models. Specifically, we construct a likelihood function suited to chaotic models by evaluating a distribution over *distances* between points in the phase space; this distribution defines a summary statistic that depends on the geometry of the attractor, rather than on pointwise matching of trajectories. This statistic is computationally expensive to simulate, compounding the usual challenges of Bayesian computation with physical models. Thus we develop an inexpensive surrogate for the log-likelihood with the Local Approximation Markov chain Monte Carlo method, which in our simulations reduces the time required for accurate inference by orders of magnitude. We investigate

15 the behavior of the resulting algorithm with two smaller-scale problems, and then use a quasi-geostrophic model to demonstrate its large-scale application.

Copyright statement. TEXT

1 Introduction

~~Parameter-~~

20 Time evolution of many geophysical dynamical systems is chaotic. Chaoticity means that state of a system sufficiently far in the future cannot be predicted even if we know the dynamics and the initial conditions very precisely. Commonly used examples of chaotic systems include climate, weather, and the Solar System.

That a system is chaotic does not mean that it is random: the dynamics of models of chaotic systems
25 are still determined by parameters, which may be either deterministic or random (Gelman et al., 2013). For example, Monte Carlo methods may be used to simulate future climate variability, but the distribution of possible climates will depend on the parameters of the climate model, and using the wrong model parameter distribution will result in potentially biased results with inaccurate uncertainties. For this reason parameter estimation in chaotic models is an important problem for a range of geophysical applications,~~with weather~~
30 ~~prediction and climate modelling the most typical examples.~~ This paper focuses on Bayesian approaches to parameter inference in ~~these settings~~, settings where a) model dynamics are chaotic, and b) sequential observations of the system are obtained so rarely, that the model behavior has become unpredictable. Given
~~observational data, the parameters-~~

Parameters of a dynamical system model are ~~typically most commonly~~ inferred by minimizing a cost
35 function that captures model-observation mismatch (Tarantola, 2005). In the Bayesian setting ~~, a statistical characterization of this mismatch~~ (Gelman et al., 2013), modeling this mismatch probabilistically yields a likelihood function, ~~which enables maximum likelihood estimation~~ which enables maximum likelihood estimation or fully Bayesian inference. ~~The latter is typically~~ In fully Bayesian inference the problem is

40 further regularized by prescribing a *prior distribution* on the model state. In practice Bayesian inference is often realized via Markov chain Monte Carlo (MCMC) methods (Robert and Casella, 2004). Yet common mismatch functions (Gamerman, 1997; Robert and Casella, 2004).

This straightforward strategy — for instance, using the squared Euclidean distance between model outputs and data — are to construct a Gaussian likelihood — is, however, inadequate for chaotic models, where small changes in parameters, or even in the tolerances used for numerical solvers, can lead to arbitrarily large differences in model outputs at a given time (Rougier, 2013). We therefore adapt the mismatch function proposed in Haario et al. (2015) to define a likelihood that can be used in point estimation or Bayesian inference. Our focus here is on the Bayesian approach, which offers a natural means of uncertainty quantification in the parameters. Characterizing the posterior distribution associated with the proposed Bayesian formulation, however, can be computationally prohibitive. Thus we combine our new likelihood with the *local approximation MCMC* methodology introduced in Conrad et al. (2016, 2018); Davis (2018); Davis et al. (2020), which constructs and iteratively refines a surrogate model for the posterior density during MCMC sampling (Rougier, 2013). Furthermore, modeling dynamical systems is often computationally very demanding, which makes sample generation time-consuming. Since successful application of MCMC generally requires large numbers of model evaluations, performing Bayesian inference with MCMC is often not possible.

55 The present work combines two recent methods to tackle these problems due to model chaoticity and computational cost. Chaoticity is tamed by using *correlation integral likelihood* (CIL) (Haario et al., 2015), which is able to constrain the parameters of chaotic dynamical systems. We couple CIL with *local approximation MCMC* (LA-MCMC) (Conrad et al., 2016), which is a surrogate modeling technique that makes asymptotically exact posterior characterization feasible for computationally expensive models. We show how combining these methods enables a Bayesian approach to infer the parameters of chaotic high-dimensional models and quantify their uncertainties in situations previously discussed as intractable (Rougier, 2013). Moreover, we introduce several computational improvements to further enhance the applicability of the approach.

65 The CIL method is based on the concept of fractal dimension from mathematical physics, which broadly speaking characterizes the space-filling properties of the trajectory of a dynamical system. Earlier work (e.g. Cencini et al., 2010) describes a number of different approaches for estimating the fractal dimension. Our previous work extends this concept: instead of computing the fractal dimension of a single trajectory,

a similar computation measures the distance between different model trajectories (Haario et al., 2015), based on which a specific summary statistic, called *feature vector*, is computed. The modification provides a normally distributed statistic of the data, which is sensitive to changes in the underlying attractor from which the data was sampled. Statistics that are sensitive to changes in the attractor yield likelihood functions that can better constrain the model parameters, and therefore also result in more meaningful parameter posterior distributions.

~~Now we provide some background relevant to our proposed approach-~~

The LA-MCMC method (Conrad et al., 2016, 2018) approximates the computationally expensive log-likelihood function using local polynomial regression. In this method, the MCMC sampler directly uses the approximation of the log-likelihood to construct proposals and evaluate the Metropolis acceptance probability. Infrequently but regularly adding “full” likelihood evaluations to the point set used to construct the local polynomial regression continually improves the approximation, however. Expensive full likelihood evaluations are thus used only to construct the approximation or “surrogate” model. ~~Traditional methods for estimating parameters in chaotic models constrain the problem to shorter time intervals, avoiding~~ Conrad et al. (2016) show that, given an appropriate mechanism for triggering likelihood evaluations, the resulting Markov chain converges to the true posterior distribution while reducing the number of expensive likelihood evaluations (and hence forward model simulations) by orders of magnitude. Davis et al. (2020) show that LA-MCMC converges with approximately the expected $1/\sqrt{T}$ error decay rate after a finite number of steps T , and Davis (2018) introduces a numerical parameter that ensures convergence even if only noisy estimates of the target density are available. This modification is useful for the chaotic systems studied here.

The rest of this paper is organized as follows. Section 2 reviews some additional background literature and related work and Sect. 3 describes the methodologies used in this work, including the CIL, the stochastic LA-MCMC algorithm, and the merging of these two approaches. Section 4 is dedicated to numerical experiments, where the CIL / LA-MCMC approach is applied to several, progressively more demanding examples. These examples are followed by a concluding discussion in Section 5.

2 Background and related work

Traditional parameter estimation methods, which directly utilize the model-observation mismatch, constrain the modeling to limited time intervals when the model is chaotic. This avoids the eventual divergence of nearby orbits due to the intrinsic dynamics of the system. (chaotic behavior) of orbits that are initially close to each other. A classical example is variational data assimilation for weather prediction, where the initial states of the model are estimated using observational data and algorithms such as 4DVar, after which a short-time forecast can be simulated (Asch et al., 2016).

Sequential data assimilation methods, such as the Kalman filter (KF) (Law et al., 2015), allow us to recursively update parameter estimation by recursively updating both the model state and the model parameters by conditioning them on observational data obtained over sufficiently short time scales. Here, ensemble filtering methods provide a useful alternative to the extended Kalman filter or variational methods; see Houtekamer and Zhang (2016) for a recent review of various ensemble variants. With methods such as state augmentation, model parameters can be updated as part of the filtering problem (Liu and West, 2001). Alternatively, the state values can be “integrated out” integrated out to obtain the marginal likelihood over the model parameters ; see Durbin and Koopman (2012). In Hakkarainen et al. (2012), this so-called filter likelihood approach was used (Durbin and Koopman, 2012). Hakkarainen et al. (2012) use this filter likelihood approach to estimate parameters of chaotic systems. Yet essentially all filtering-based approaches For models with strongly non-linear dynamics, ensemble filtering methods provide a useful alternative to the extended Kalman filter or variational methods; see Houtekamer and Zhang (2016) for a recent review of various ensemble variants.

Filtering-based approaches generally introduce additional tuning parameters, such as the length of the assimilation time window, the model error covariance matrix, and covariance inflation parameters. These choices have an impact on model parameter estimation and may introduce bias. Indeed, as discussed in Hakkarainen et al. (2013), changing the filtering method requires updating the parameters of the dynamical model. Operational Alternatives to KF-based parameter estimation methods that do not require ensemble filtering include operational ensemble prediction systems (EPS) can be used even in the absence of ensemble filtering. Parameter calibration methods such as those in Jarvinen et al. (2011); Laine et al. (2011); for example ensemble parameter calibration methods by Jarvinen et al. (2011) and Laine et al. (2011) have been applied to the Integrated Forecast System (IFS) weather models (Ollinaho et al., 2012, 2013, 2014) at

European Centre for Medium-Range Weather Forecasts (ECMWF). However, these approaches are heuristic and again limited to relatively short predictive windows.

~~Previous work (for example, Roeckner et al. (2003); ECMWF (2013); Stevens et al. (2013)) calibrates parameters of climate models~~ Climate model parameters have in previous studies (e.g. Roeckner et al., 2003; ECMWF, 2013; Stevens et al., 2013) been calibrated by matching summary statistics of quantities of interest, such as top-of-atmosphere radiation, with the corresponding summary statistics from re-analysis data or output from competing models.

The vast majority of these approaches produce only point estimates. ~~Järvinen et al. (2010) infers the~~ A fully Bayesian parameter inversion was performed by Järvinen et al. (2010), who inferred closure parameters of a large-scale computationally intensive climate model, ECHAM5, using a Bayesian approach based on several summary statistics and realized via MCMC. MCMC and several different summary statistics.

~~However, computational~~ Computational limitations make applying algorithms such as MCMC challenging. ~~Even for weather and climate models. Generating even very~~ short MCMC chains of roughly 2000 iterations may require methods such as parallel sampling and early rejection for tractability (Solonen et al., 2012). Moreover, even if these computational challenges can be overcome, finding statistics that actually constrain the parameters is difficult, and inference results can be thus be inconclusive. The failure of the summary statistic approach in Järvinen et al. (2010) can be explained intuitively: the chosen statistics average out too much information, and therefore fail to characterize the geometry of the underlying chaotic attractor in a meaningful way.

~~The present work develops two recent methods to tackle such problems. The correlation integral likelihood (CIL) (Haario et al., 2015) is able to constrain the parameters of chaotic dynamical systems, and the local approximation MCMC (LA-MCMC) method for posterior sampling (Conrad et al., 2016) makes asymptotically exact posterior characterization feasible for computationally expensive models. We show how a combination of these methods enable a Bayesian approach to inference and uncertainty quantification for the parameters of chaotic high-dimensional models, in situations previously discussed as intractable (Rougier, 2013). Moreover, several computational improvements are introduced to further enhance the applicability of the approach.~~

The CIL method is based on the concept of fractal dimension from mathematical physics, which, broadly speaking, characterizes the space-filling properties of the trajectory of a dynamical system. Earlier work

(e.g., Cencini et al. (2010)) describes a number of different approaches for estimating the fractal dimension. Our previous work extends this concept: instead of computing the fractal dimension of a single trajectory, a similar computation measures the distance between different model trajectories (Haario et al., 2015). The modification provides a normally distributed summary statistic of the data, which is sensitive to changes in the underlying attractor from which the data was sampled. Statistics that better describe the attractor yield likelihood functions that can better constrain the model parameters and, therefore, more meaningful parameter posterior distributions.

A related approach, discussed in the context of intractable likelihoods, Several Monte Carlo methods have been presented to tackle expensive or intractable likelihoods, see e.g. Luego et al. (2020) for a recent comprehensive literature review. Two notable such methods are Approximate Bayesian Computation (ABC) (Beaumont et al., 2002) and pseudomarginal sampling (Andrieu and Roberts, 2009). The approach that is most closely related to the one presented in this paper is Bayesian inference using synthetic likelihoods, which was proposed as an alternative to approximate Bayesian computation (ABC); see Wood (2010) and Price et al. (2018). The method we present here uses a different summary statistic. Moreover, the synthetic likelihood approach involves re-creating the likelihood for every new model parameter value, which would require excessive CPU times in our setting ABC (Wood, 2010; Price et al., 2018). Recent work by Morzfeld et al. (2018) describes another feature-vector feature vector approach for data assimilation. For more details and comparisons among these approaches, see the discussion below in Section 3.1.

The LA-MCMC method (Conrad et al., 2016, 2018) approximates the computationally expensive log-likelihood function using local polynomial regression. In this method, In this work we employ a different summary statistic, where the observations are considered as samples from the underlying attractor. Due to the nature of the MCMC sampler directly uses the approximation of the log-likelihood to construct proposals and evaluate the Metropolis acceptance probability. Infrequently but regularly adding “full” likelihood evaluations to the point set used to construct the local polynomial regression continually improves the approximation, however. Expensive full likelihood evaluations are thus used only to construct the approximation or “surrogate” model. Conrad et al. (2016) show that, given an appropriate mechanism for triggering likelihood evaluations, the resulting Markov chain converges to the true posterior distribution while reducing the number of expensive likelihood evaluations (and hence forward model simulations) by orders of magnitude.

Davis et al. (2020) show that LA-MCMC converges with approximately the expected $1/\sqrt{T}$ error decay rate after a finite number of steps T , and Davis (2018) introduces a numerical parameter that ensures convergence even if only noisy estimates of the target density are available. This modification is useful for the chaotic systems studied here.

The rest of this paper is organized as follows. Section 3 describes the methodologies used in this work, including the CIL, the stochastic LA-MCMC algorithm, and the merging of these two approaches. Section 4 is dedicated to numerical experiments. The approach is first verified by comparing results in cases where the parameter posteriors can also be obtained with standard sampling methods. Further modifications to reduce computational demand of evaluating the CIL are presented. A fine-grid version of the quasi-geostrophic (QG) model is then used to demonstrate that model identification is possible in long-range simulations, beyond reach of standard methods. These examples are followed by a concluding discussion in Section 5. summary statistic used in CIL, the observation time stamps are not explicitly used. This allows arbitrarily sparse observation time series, and consecutive observations may be farther than any window where the system remains predictable. To the best of our knowledge parameter estimation in this setting has not been discussed in the literature. Another difference to the synthetic likelihood approach is that it involves re-generating data for computing the likelihood at every new model parameter value, which would be computationally unfeasible in our setting.

3 Methods

3.1 Correlation Integral Likelihood

We first construct a likelihood function that models the observations by comparing certain summary statistics of the observations to the corresponding statistics of a trajectory simulated from the chaotic model. As a source of statistics, we will choose the correlation integral, which depends on the fractal dimension of the chaotic attractor. Unlike other statistics—such as the ergodic averages of a trajectory—the correlation integral is able to constrain the parameters of a chaotic model (Haario et al., 2015).

Let us denote by

$$\frac{d\mathbf{u}}{dt} = f(\mathbf{u}, \theta), \quad \mathbf{u}(t=0) = \mathbf{u}_0, \quad (1)$$

a dynamical system with state $\mathbf{u}(t) \in \mathbb{R}^n$, initial state $\mathbf{u}_0 \in \mathbb{R}^n$, and parameters $\theta \in \mathbb{R}^q$. The time-discretized system, with time steps $t_i \in \{t_1, \dots, t_\tau\}$ denoting selected observation points, can be written as

$$205 \quad \mathbf{u}_i \equiv \mathbf{u}(t_i) = F(t_i; \mathbf{u}_0, \theta). \quad (2)$$

Either the full state $\mathbf{u}_i \in \mathbb{R}^n$ or a subset $\mathbf{s}_i \in \mathbb{R}^{d \leq n}$ of the state components are observed. We will use $\mathbf{S} = \{\mathbf{s}_1, \dots, \mathbf{s}_\tau\}$ to denote a collection of these observables at successive times.

Using the model–observation mismatch at a collection of times t_i to constrain the value of the parameters θ is not suitable when the system (1) has chaotic dynamics, since the state vector values \mathbf{s}_i are unpredictable after a finite time interval. Though long-time trajectories $\mathbf{s}(t)$ of chaotic systems are not predictable in the time domain, they do, however, represent samples from an underlying attractor in the phase space. The states are generated deterministically, but the model’s chaotic nature allows us to interpret the states as samples from a particular θ -dependent distribution. Yet obvious choices for summary statistics T that depend on the observed states \mathbf{S} , such as ergodic averages, ignore important aspects of the dynamics and are thus unable to constrain the model parameters. For example, the statistic $T(\mathbf{S}) = \frac{1}{\tau} \sum_{i=1}^{\tau} \mathbf{s}_i$ is easy to compute and is normally distributed in the limit $\tau \rightarrow \infty$ (under appropriate conditions), but this ergodic mean says very little about the shape of the chaotic attractor.

Instead, we need a summary statistic that retains information relevant for parameter estimation, but still defines a computationally tractable likelihood. To this end, Haario et al. (2015) devised the correlation integral likelihood (CIL), which retains enough information about the attractor to constrain the model parameters. We first review the CIL and then discuss how to make evaluation of the likelihood tractable.

We will use the CIL to evaluate the “difference” between two chaotic attractors. For this purpose, we will first describe how to statistically characterize the geometry of a *given* attractor, given suitable observations \mathbf{S} . In particular, constructing the CIL likelihood will require three steps: (i) computing distances between observables sampled from a given attractor; (ii) evaluating the empirical cumulative distribution function (ECDF) of these distances and deriving certain summary statistics T from the ECDF; and (iii) estimating

the mean and covariance of T by repeating steps (i) and (ii). Intuitively, the CIL thus interprets observations of a chaotic trajectory as samples from a fixed distribution over phase space. It allows the time between observations to be arbitrarily large—importantly, much longer than the system’s non-chaotic prediction window.

Now we describe the CIL construction in detail. Suppose that we have collected a data set \mathbf{S} comprising observations of the dynamical system of interest. Let \mathbf{S} be split into n_{epo} different subsets called *epochs*. The epochs can, in principle, be any subsets of length N from the reference data set \mathbf{S} . In this paper, however, we restrict the epochs to be time-consecutive intervals of N evenly spaced observations. Let $\mathbf{s}^k = \{\mathbf{s}_i^k\}_{i=1}^N$ and $\mathbf{s}^l = \{\mathbf{s}_j^l\}_{j=1}^N$, with $1 \leq k, l \leq n_{\text{epo}}$ and $k \neq l$, be two such disjoint epochs. The individual observable vectors $\mathbf{s}_i^k \in \mathbb{R}^d$ and $\mathbf{s}_j^l \in \mathbb{R}^d$ comprising each epoch come from time intervals $[t_{kN+1}, t_{(k+1)N}]$ and $[t_{lN+1}, t_{(l+1)N}]$, respectively. In other words, superscripts refer to different epochs and subscripts refer to the time points within those epochs. Haario et al. (2015) then define the *modified correlation integral sum* $C(R, N, \mathbf{s}^k, \mathbf{s}^l)$ by counting all pairs of observations that are less than a distance $R > 0$ from each other:

$$C(R, N, \mathbf{s}^k, \mathbf{s}^l) = \frac{1}{N^2} \sum_{i,j \leq N} \mathbb{1}_{[0,R]}(\|\mathbf{s}_i^k - \mathbf{s}_j^l\|), \quad (3)$$

where $\mathbb{1}$ denotes the indicator function and $\|\cdot\|$ is the Euclidean norm on \mathbb{R}^d . In the physics literature, evaluating Eq. (3) in the limit $R \rightarrow 0$, with $k = l$ and $i \neq j$, numerically approximates the fractal dimension of the attractor that produced $\mathbf{s}^k = \mathbf{s}^l$ (Grassberger and Procaccia, 1983a, b). Here, we instead use Eq. (3) to characterize the distribution of distances between \mathbf{s}^k and \mathbf{s}^l at all relevant scales. We assume that the state space is bounded; therefore, an R_0 covering all pairwise distances in Eq. (3) exists. For a prescribed set of radii $R_m = R_0 b^{-m}$, with $b > 1$ and $m = 0, \dots, M$, Eq. (3) defines a discretization of the empirical CDF of the distances $\|\mathbf{s}_i^k - \mathbf{s}_j^l\|$, with discretization boundaries given by the numbers R_m .

Now we define $y_m^{k,l} = C(R_m, N, \mathbf{s}^k, \mathbf{s}^l)$ as components of a *statistic* $T(\mathbf{s}^k, \mathbf{s}^l) = \mathbf{y}^{k,l} := (y_0^{k,l}, \dots, y_M^{k,l})$. This statistic is also called the *feature vector*. According to Borovkova et al. (2001); Neumeyer (2004), the vectors $\mathbf{y}^{k,l}$ are normally distributed, and the estimates of the mean and covariance converge at the rate $\sqrt{n_{\text{epo}}}$ to their limit points. This is a generalization of the classical result of Donsker (1951), which applies to i.i.d. samples from a scalar-valued distribution. We characterize this normal distribution by subsampling

the full data set \mathbf{S} . Specifically, we approximate the mean μ and covariance Σ of T by the sample mean
255 and sample covariance of the set $\{\mathbf{y}^{k,l} : 1 \leq k, l \leq n_{\text{epo}}, k \neq l\}$, evaluated for all $\frac{1}{2}n_{\text{epo}}(n_{\text{epo}} - 1)$ pairs of
epochs $(\mathbf{s}^k, \mathbf{s}^l)$ using fixed values of R_0 , b , M , and N .

The Gaussian distribution of T effectively characterizes the geometry of the attractor represented in the
data set \mathbf{S} . Now we wish to use this distribution to infer the parameters θ . Given a candidate parameter
value $\tilde{\theta}$, we use the model to generate states $\mathbf{s}^*(\tilde{\theta}) = \{\mathbf{s}_i^*(\tilde{\theta})\}_{i=1}^N$ for the length of a single epoch. We
260 then evaluate the statistics $y_m^{k,*} = C(R_m, N, \mathbf{s}^k, \mathbf{s}^*(\tilde{\theta}))$ as in Eq. (3), by computing the distances between
elements of $\mathbf{s}^*(\tilde{\theta})$ and the states of an epoch \mathbf{s}^k selected from the data \mathbf{S} . Combining these statistics into a
feature vector $\mathbf{y}^{k,*}(\tilde{\theta}) = (y_m^{k,*})_{m=0}^M$, we can write a noisy estimate of the log-likelihood function:

$$\log p(\tilde{\theta}|\mathbf{s}^k) = -\frac{1}{2} \left(\mathbf{y}^{k,*}(\tilde{\theta}) - \mu \right)^\top \Sigma^{-1} \left(\mathbf{y}^{k,*}(\tilde{\theta}) - \mu \right) + \text{constant} \quad (4)$$

Comparing $\mathbf{s}^*(\tilde{\theta})$ with other epochs drawn from the data set \mathbf{S} , however, will produce different realizations
265 of the feature vector. We thus average the resulting log-likelihoods over *all* epochs,

$$\log p(\tilde{\theta}|\mathbf{S}) = \frac{1}{n_{\text{epo}}} \sum_{k=1}^{n_{\text{epo}}} \log p(\tilde{\theta}|\mathbf{s}^k). \quad (5)$$

This averaging, which involves evaluating Eq. (4) n_{epo} times, involves only new distance computations and
is thus relatively cheap relative to time integration of the dynamical model.

Because the feature vectors $\mathbf{y}^{k,*}$ are random for any finite N , and because the number of epochs n_{epo} is
270 also finite, the log-likelihood in Eq. (5) is necessarily random. It is then useful to view Eq. (5) as estimate
of an underlying *true* log-likelihood. We are therefore in a setting where cannot evaluate the unnormalized
posterior density exactly; we only have access to a noisy approximation of it. Previous work (Springer et al.,
2019) has demonstrated that derivative-free optimizers such as the differential evolution (DE) algorithm can
successfully identify the posterior mode in this setting, yielding a point estimate of θ . In the fully Bayesian
275 setting, one could characterize the posterior $p(\theta|\mathbf{S})$ using pseudo-marginal MCMC methods (Andrieu and
Roberts, 2009), but at significant computational expense. Below, we will use a surrogate model constructed
adaptively during MCMC sampling to reduce this computational burden.

Note that the CIL approach described above already reduces the computational cost of inference by only
requiring simulation of the (potentially expensive) chaotic model for a single epoch. We compare *each*

epoch of the data to the same single-epoch model output. Each of these comparisons results in an estimate of the log-likelihood, which we then average over data epochs. A larger data set \mathbf{S} can reduce the variance of this average, but does not require additional simulations of the dynamical model. Also, we do not require any knowledge about the initial conditions of the model; we omit an initial time interval before extracting $\mathbf{s}^*(\tilde{\theta})$, to ensure that the observed trajectory is on the chaotic attractor.

Moreover, the initial values are randomized for all simulations and sampling is started only after the model has integrated beyond the initial, predictable, time window. The independence of the sampled parameter posteriors from the initial values was verified both here and in earlier works by repeated experiments.

Our approach is broadly similar to the synthetic likelihood method (e.g., Wood (2010); Price et al. (2018)), but differs in two key respects: (i) we use a novel summary statistic that is able to characterize chaotic attractors, and (ii) we only need to evaluate the forward model for a single epoch. Comparatively, synthetic likelihoods typically use summary statistics such as auto-covariances at a given lag or regression coefficients. These methods also require long-time integration of the forward model for each candidate parameter value θ , rather than integration for only one epoch. Morzfeld et al. (2018) also discuss several ways of using feature vectors for inference in geophysics. A distinction of the present work is that we use an ECDF-based summary statistic that is provably Gaussian, and we perform extensive Bayesian analysis of the parameter posteriors via novel MCMC methods. These methods are described next.

3.2 Local Approximation MCMC

Even with the developments described above, estimating the correlation integral likelihood (CIL) at each candidate parameter value $\tilde{\theta}$ is computationally intensive. We thus use local approximation MCMC (LA-MCMC) (Conrad et al., 2016, 2018; Davis et al., 2020)—a surrogate modeling method that replaces many of these CIL evaluations with an inexpensive approximation. Replacing expensive density evaluations with a surrogate was first introduced by [Sacks et al. \(1989\)](#); [Kennedy and O’Hagan \(2001\)](#) [Sacks et al. \(1989\)](#) and [Kennedy and O’Hagan \(2001\)](#). LA-MCMC extends these ideas by continually refining the surrogate during sampling, which guarantees convergence.

First introduced in Conrad et al. (2016), LA-MCMC builds local surrogate models for the log-likelihood while *simultaneously* sampling the posterior. The surrogate is incrementally and infinitely refined during sampling and thus tailored to the problem—i.e., made more accurate in regions of high posterior probability. Specifically, the surrogate model is a local polynomial computed by fitting nearby evaluations of the “true” log-likelihood. We emphasize that the approximation itself is not locally supported. At each point $\tilde{\theta}$, we locally construct a polynomial approximation, which globally defines a piecewise polynomial surrogate model. This is an important distinction because the piecewise polynomial approximation is not necessarily a probability density function. In fact, the surrogate function may not even be integrable. Despite this challenge, Davis et al. (2020) devise a refinement strategy that ensures convergence and bounds the error after a *finite* number of samples. In particular, Davis et al. (2020) shows that the error in the approximate Markov chain computed with the local surrogate model decays at approximately the expected $1/\sqrt{T}$ rate, where T is the number of MCMC steps. Davis (2018) demonstrated that noisy estimates of the likelihood are sufficient to construct the surrogate model and still retain asymptotic convergence. Empirical studies (Conrad et al., 2016, 2018; Davis et al., 2020) on problems of moderate parameter dimension showed that the number of expensive likelihood evaluations per MCMC step can be reduced by orders of magnitude, with no discernable loss of accuracy in posterior expectations.

Here we briefly summarize one step of the LA-MCMC construction, and refer to Davis et al. (2020) for details. Each LA-MCMC step consists of four stages: (i) *possibly* refine the local polynomial approximation of the log-likelihood, (ii) propose a new candidate MCMC state, (iii) compute the acceptance probability, and (iv) accept or reject the proposed state. The major distinction between this algorithm and standard Metropolis-Hastings MCMC is that the acceptance probability in stage (iii) is computed only using the *approximation* or surrogate model of the log-likelihood, at both the current and proposed states. This introduces an error, relative to computation of the acceptance probability with exact likelihood evaluations, but stage (i) of the algorithm is designed to control and incrementally reduce this error at the appropriate rate. “Refinement” in stage (i) consists of adding a computationally intensive log-likelihood evaluation at some parameter value θ_i , denoted by $\mathcal{L}(\theta_i)$, to the *evaluated set* $\{(\theta_i, \mathcal{L}(\theta_i))\}_{i=1}^K$. These K pairs are used to construct the local approximation via a kernel-weighted local polynomial regression (Kohler, 2002). The values $\{\theta_i\}_{i=1}^K$ are called “support points” in this paper. Details on the regression formulation are in Davis

et al. (2020); Conrad et al. (2016). As the support points cover the regions of high posterior probability
 335 more densely, the accuracy of the local polynomial surrogate will increase. This error is well understood
 (Kohler, 2002; Conn et al., 2009) and, crucially, takes advantage of smoothness in the underlying true
 log-likelihood function. This smoothness ultimately allows the cardinality of the evaluated set to be much
 smaller than the number of MCMC steps.

Intuitively, if the surrogate converges to the true log-likelihood, then the samples generated with LA-
 340 MCMC will (asymptotically) be drawn from the true posterior distribution. After any finite number of
 steps, however, the surrogate error introduces a bias into the sampling algorithm. The refinement strategy
 must therefore ensure that this bias is not the dominant source of error. At the same time, refinements
 must occur infrequently, to ensure that LA-MCMC is computationally cheaper than using the true log-
 likelihood. Davis et al. (2020) analyzes the trade-off between surrogate-induced bias and MCMC variance
 345 and proposes a rate-optimal refinement strategy. We use a similar algorithm, only adding an isotropic ℓ^2
 penalty on the polynomial coefficients. More specifically, we rescale the variables so the max/min values
 are ± 1 —often called coded units—then regularize the regression by a penalty parameter (in our cases, the
 value $\alpha = 1$ was found sufficient). This penalty term modifies the ordinary least squares problem into local
ridge regression, which improves performance with noisy likelihoods.

Our examples use an adaptive proposal density Haario et al. (2006). This choice deviates slightly from
 350 the theory in Davis et al. (2020), which assumes a constant-in-time proposal density. However, this does
 not necessarily imply that adaptive or gradient-based methods will not converge. In particular, Conrad
 et al. (2016) show asymptotic convergence using an adaptive proposal density and Conrad et al. (2018)
 strengthen this result by showing that the Metropolis adjusted Langevin algorithm, which is a gradient
 355 based MCMC method, is asymptotically exact when using a continually refined local polynomial approx-
 imation. These results require some additional assumptions about the target density’s tail behavior and
 the stronger rate optimal result from Davis et al. (2020) has not been shown for such algorithms. How-
 ever, in practice we see that adaptive methods still work well in our applications. Exploring the theoretical
 implications of this is interesting and merits further discussion but is beyond the scope of this paper.

360 The parameters of the algorithm are fixed as given in Davis et al. (2020), for all the examples discussed
 here: (i) initial error threshold $\gamma_0 = 1$; (ii) error threshold decay rate $\gamma_1 = 1$; (iii) maximum poisedness

constant $\bar{\Lambda} = 100$; (iv) tail-correction parameter $\eta = 0$ (no tail correction); (v) local polynomial degree $p = 2$. The number of nearest neighbors k used to construct each local polynomial surrogate is chosen to be $k = k_0 + (K - k_0)^{1/3}$ where $k_0 = \sqrt{q}D$, q is the dimension of the parameters $\theta \in \mathbb{R}^q$, and D is the number of coefficients in the local polynomial approximation of total degree $p = 2$, i.e., $D = (q + 2)(q + 1)/2$. If we had $k = D$, the approximation would be an interpolant. Instead we over-sample by a factor \sqrt{q} , as suggested in Conrad et al. (2016), and allow k to grow slowly with the size K of the evaluated set as in Davis (2018). All these details together with example runs can be found in the Matlab implementation available in the supporting material.

370 4 Numerical experiments

This section contains numerical experiments to illustrate the methods introduced in the previous sections. As a large-scale example, we characterize the posterior distribution of parameters in the two-layer quasi-geostrophic (QG) model. The computations needed to characterize the posterior distribution with standard MCMC methods in this example would be prohibitive without massive computational resources and are therefore omitted. In contrast, we will show that the LA-MCMC method is able to simulate from the parameter posterior distribution.

Before presenting this example we first demonstrate that the posteriors produced by LA-MCMC agree with those obtained via exact MCMC sampling methods in cases where the latter are computationally tractable using two examples: the classical Lorenz-63 system and the higher-dimensional Kuramoto–Shivashinsky (KS) model. In both examples we quantify the computational savings due to LA-MCMC, and in the second we introduce additional ways to speed up computation using parallel (GPU) integration.

Let Δ_t denote the time difference between consecutive observations; one epoch thus contains the times in the interval $[iN\Delta_t, (i + 1)N\Delta_t)$. The number of data points in one epoch N varies between 1000 and 2000, depending on the example. The training set \mathbf{S} consists of a collection of n_{epo} such intervals. In all the examples we choose Δ_t to be relatively large, beyond the predictable window. This is more for demonstration purposes than a necessity; the background theory from U-statistics allows that the subsequent state vectors are weakly dependent. Numerically, a set of observations that is chosen too densely results in the

χ^2 test failing, and for this reason we recommended to always check for normality before starting the parameter estimation.

390 For numerical tests one can either use one long time series or integrate a shorter time interval several times using different initial values to create the training set for the likelihood. For these experiments the latter method was used with $n_{\text{epo}} = 64$, yielding $\binom{n_{\text{epo}}}{2} = 2016$ different pairs $(\mathbf{s}^k, \mathbf{s}^l)$, each of which resulted in an ECDF constructed from N^2 pairwise distances. According to tests performed while calibrating the algorithm, these values of N and n_{epo} are sufficient to obtain robust posterior estimates. With less data, 395 the parameter posteriors will be less precise.

The range of the bin radii R_m , $m = 0, \dots, M$ is selected by examining the distances within the training set, keeping in mind that a positive variance is needed for every bin to avoid a singular covariance matrix. So the largest radius R_0 can be obtained from

$$R_0 = \min_{k \neq l} \left\{ \max_{i,j} \|s_i^k - s_j^l\| \right\} \quad (6)$$

400 over the disjoint subsets of the samples \mathbf{s}^k and \mathbf{s}^l of length N . The smallest radius is selected by requiring that for all the possible pairs $(\mathbf{s}^k, \mathbf{s}^l)$, it holds that $\mathcal{B}_{R_M}(\mathbf{s}_i^k) \cap \mathbf{s}^l \neq \emptyset$, where $\mathcal{B}_{R_M}(\mathbf{s}_i^k)$ is the ball of radius R_M centered at \mathbf{s}_i^k . That is,

$$R_M = \max_{k \neq l} \left\{ \min_{i,j} \|s_i^k - s_j^l\| \right\} \quad (7)$$

The base value b is obtained by $R_M = R_0 b^{-M}$ and using this value we fix all the other radii R_m .

405 As always with histograms, the number of bins M must be selected first. Too small an M loses information, while too large values yield noisy histograms, and this noisiness can be seen also in the empirical CDFs. However, numerical experiments show that the final results—the parameter posteriors—are not too sensitive to the specific value of M . For instance for the Lorenz 63 case below the range of M was varied between 5 and 40 and only a minor decrease of the size of the parameter posteriors was noticed for increasing M . Any slight increase of accuracy comes with a computational cost: higher values of M increase the 410 stochasticity of the likelihood evaluations, which leads to smaller acceptance rates in the MCMC sampling, e.g., from 0.36 to 0.17 to 0.03 for $M = 5, 15, 40$, respectively, when using the standard adaptive Metropolis

sampler. In the examples presented in this section, the length M of the feature vector is fixed to 14 for the Lorenz-63 model and 32 for the higher-dimensional KS and QG models.

415 To balance the possibly different magnitudes of the components of the state vector, each component is scaled and shifted to the range $[-1, 1]$ before computing the distances. While this scaling could also be performed in other ways, this method worked well in practice for the models considered. The normality of the ensemble of feature vectors is ascertained by comparing the histograms of the quadratic forms in Eq. (4) visually to the appropriate χ^2 distribution.

420 In all the three experiments we create MCMC chains of length 10^5 . However, due to the use of the LA-MCMC approach, the number of full forward model evaluations is much lower, around 1000 or less; we will report these values more specifically below.

The Lorenz 63 model was integrated with a standard Runge-Kutta solver. The numerical solution of the KS-model is based on our in-house FFT-based solver, which runs on the GPU-side and is built around
425 NVIDIA CUDA toolchain and cuFFT library (which is a part of the CUDA ecosystem). The Quasi-Geostrophic model employs semi-Lagrangian solver and runs entirely on CPU, but the code has been significantly optimized with performance-critical parts, such as advection operator, compiled using ISPC with support of AVX2 vectorization.

4.1 Lorenz 63

430 We use the classical three-dimensional Lorenz 63 system (Lorenz, 1963) as a simple first example to demonstrate how LA-MCMC can be successfully paired with the CIL and the Adaptive Metropolis (AM) algorithm (Haario et al., 2001, 2006) to obtain the posterior distribution for chaotic systems at a greatly reduced computational cost, compared to AM without the local approximation. The time evolution of the state vector $\mathbf{s} = (X, Y, Z)$ is given by

$$\begin{aligned} 435 \quad \dot{X} &= \sigma(Y - X), \\ \dot{Y} &= X(\rho - Z) - Y, \\ \dot{Z} &= XY - \beta Z. \end{aligned} \tag{8}$$

This system of equations is often said to describe an extreme simplification of a weather model.

The reference data were generated with parameter values $\sigma = 10$, $\rho = 28$, and $\beta = \frac{8}{3}$ by performing
 440 $n_{\text{epo}} = 64$ distinct model simulations, with observations made at 2000 evenly distributed times between
 [10, 20000]. These observations were perturbed with 5% multiplicative Gaussian noise. The length of the
 predictable time window is roughly 7, which is less than the time between consecutive observations. The
 parameters of the CIL method were obtained as described at the start of Section 4, with values $M = 14$,
 $R_0 = 2.85$, and $b = 1.51$.

445 The set of vectors $\{\mathbf{y}^{k,l} | k, l \leq n_{\text{epo}}\}$ is shown in Fig. 1 in the log-log scale. The figure shows how the
 variability of these vectors is quite small. Figure 1 validates the normality assumption for feature vectors.

Pairwise two-dimensional marginals of the parameter posterior are shown in Fig. 2, both from sampling
 the posterior with full forward model simulations (AM) and with using the surrogate sampling approach
 for generating the chain. These two posteriors are almost perfectly superimposed. Indeed, the difference is
 450 at the same level as that between repetitions of the standard AM sampling alone.

To get an idea of the computational savings achieved with LA-MCMC, the computation of the MCMC
 chains of length 10^5 was repeated 10 times. The cumulative number of full likelihood evaluations is pre-
 sented in Fig. 3. At the end of the chains, the number of full likelihood evaluations varied between 955 and
 1016. Thus by using LA-MCMC in this setting, remarkable computational savings of up to two orders of
 455 magnitude are achieved.

4.2 The Kuramoto–Sivashinsky model

The second example is the 256-dimensional Kuramoto–Sivashinsky (KS) PDE system. The purpose of
 this example is to introduce ways to improve the computational efficiency by a piecewise parallel integra-
 tion over the time interval of given data. Also, we demonstrate how decreasing the number of observed
 460 components impacts the accuracy of parameter estimation. Even though the posterior evaluation proves
 to be relatively expensive, direct verification of the results with those obtained by using standard adaptive
 MCMC is still possible. The Kuramoto–Sivashinsky model is given by the fourth-order PDE

$$s_t = -ss_x - \frac{1}{\eta}s_{xx} - \gamma s_{xxx}, \quad (9)$$

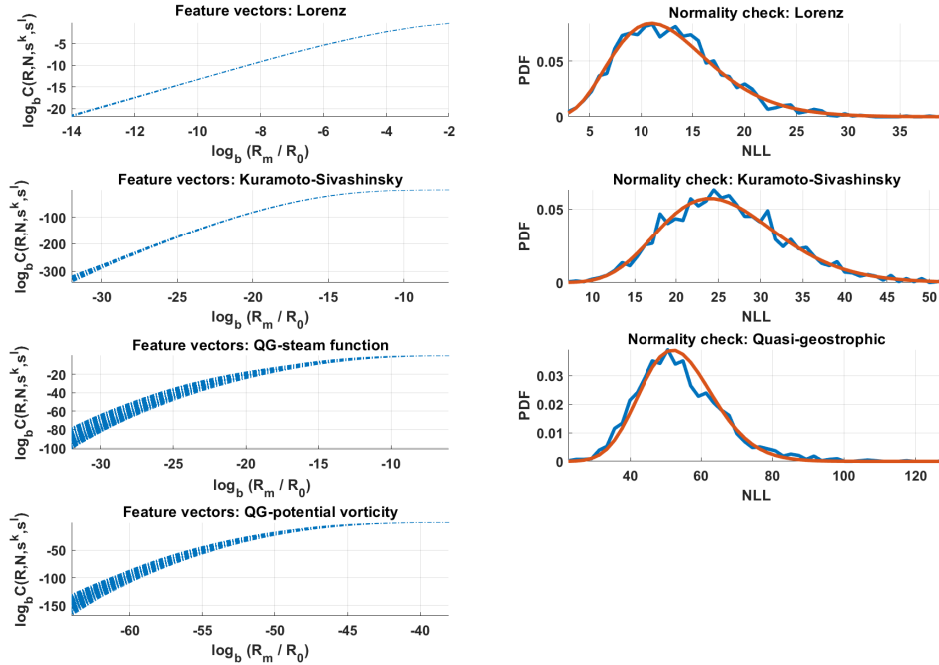


Figure 1. Left: for all combinations of k and l , the feature vectors for Lorenz-63 and Kuramoto-Sivashinsky, along with concatenated feature vectors for the quasi-geostrophic system are shown. Right: normality check; the χ^2 density function versus the histograms of the respective negative log-likelihood (NLL) values; see Eq. (4).

where $s = s(x, t)$ is a real function of $x \in \mathbb{R}$ and $t \in \mathbb{R}_+$. In addition it is assumed that s is spatially
465 periodical with period of L , i.e. $s(x + L, t) = s(x, t)$. This experiment uses the parametrization from (Yiorgos Smyrlis, 1996) that maps the spatial domain $[-\frac{L}{2}, \frac{L}{2}]$ to $[-\pi, \pi]$ by setting $\tilde{x} = \frac{2\pi}{L}x$ and $\tilde{t} = (\frac{2\pi}{L})^2 t$. With $L = 100$, the true value of parameter γ is $(\pi/50)^2 \approx 0.0039$, and the true value of η becomes $\frac{1}{2}$. These two parameters are the ones that are then estimated with the LA-MCMC method. This system was derived by Kuramoto et al. in (Kuramoto and Yamada, 1976; Kuramoto, 1978) as a model for phase turbu-

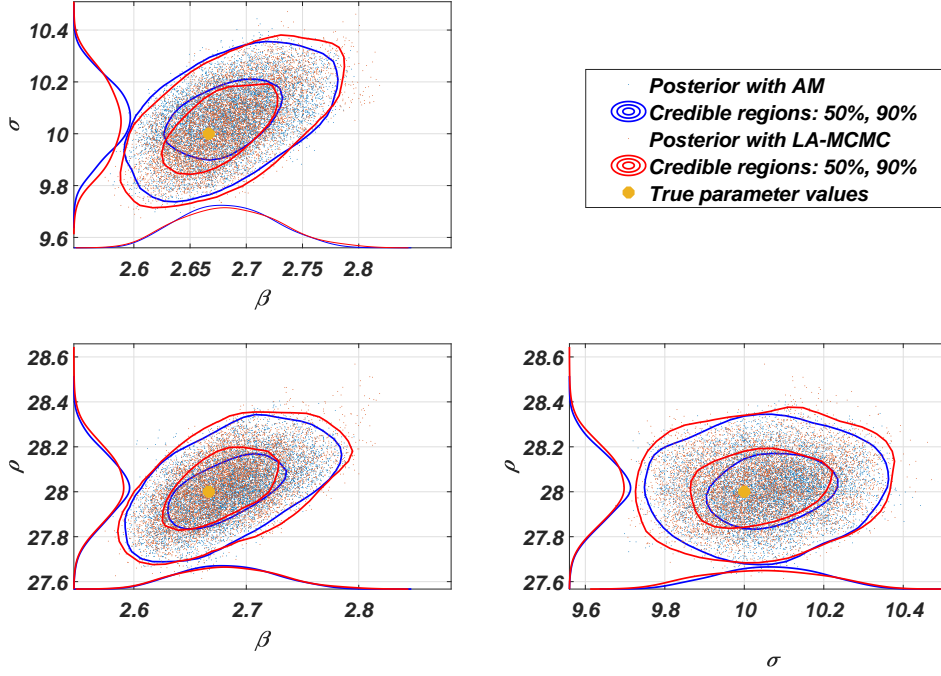


Figure 2. Two-dimensional posterior marginal distributions of the parameters of the Lorenz 63 model obtained with LA-MCMC and AM.

470 lence in reaction-diffusion systems. (Sivashinsky, 1977) used the same system for describing instabilities of laminar flames.

Assume that the solution for this problem can be represented by a truncation of the Fourier series

$$s(x, t) = \sum_{j=0}^{\infty} \left[A_j(t) \sin \left(\frac{2\pi}{L} jx \right) + B_j(t) \cos \left(\frac{2\pi}{L} jx \right) \right]. \quad (10)$$

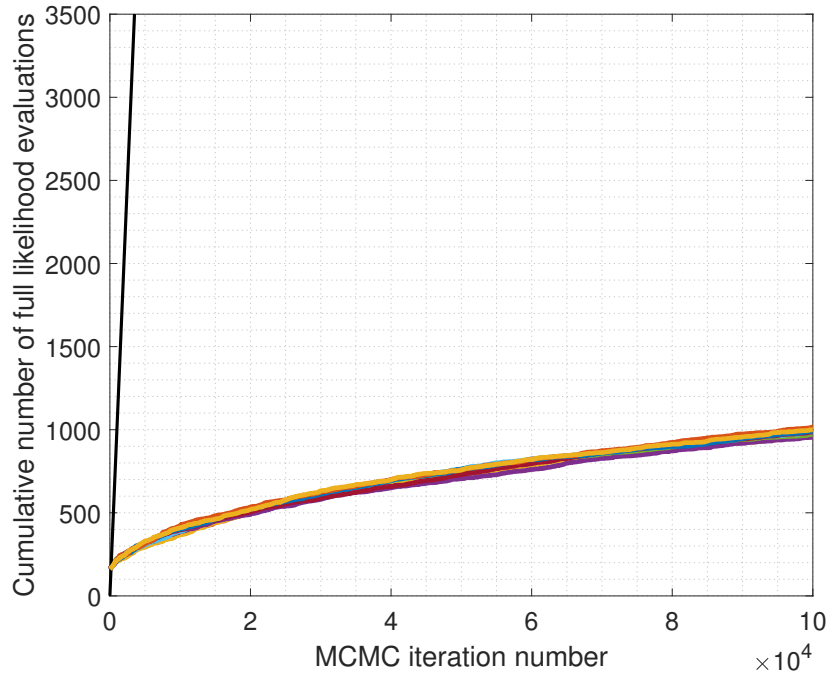


Figure 3. Comparison of the cumulative number of full likelihood evaluations while using AM (black line) and LA-MCMC (colored lines). Every colored line correspond to a different chain obtained with LA-MCMC by using the same likelihood.

Using this form reduces Eq. (9) to a system of ordinary differential equations for the unknown coefficients

475 $A_j(t)$ and $B_j(t)$,

$$\dot{A}_j(t) = \alpha_1 j^2 A_j(t) + \alpha_2 j^4 A_j(t) + F_1(A(t)) \quad (11)$$

$$\dot{B}_j(t) = \beta_1 j^2 B_j(t) + \beta_2 j^4 B_j(t) + F_2(B(t)), \quad (12)$$

where the terms $F_1(\cdot)$ and $F_2(\cdot)$ are polynomials of the vectors A and B . For details, see (Huttunen et al., 2018). The solution can be effectively computed on graphics processors in parallel, and if computational

Table 1. Parameter values of the four parameter vectors used in the forward KS model simulation examples in Fig. 5. The parameter vector in the first column labeled 1 are the true parameters, and the second one resides inside the posterior. The last two are outside the posterior. These parameters correspond to points shown in the posterior distribution shown in Fig. 4.

	Case 1	Case 2	Case 3	Case 4
η	0.50000	0.47820	0.49500	0.52000
γ	0.00395	0.00467	0.00350	0.00500

resources allow, several instances of Eq. (9) can be solved in parallel. Even on fast consumer-level laptops, several thousand simulations can be performed in parallel when the discretization of the x -dimension contains around 500 points.

A total of 64 epochs of the 256-dimensional KS model are integrated over the time interval $[0, 150000]$, and as in the case of the Lorenz-63 model, the initial predictable time window is discarded and 1024 equidistant measurements from $[500, 150000]$ are selected, with $\Delta_t \approx 146$. The parameters used for the CIL method were $R_0 = 1801.7$, $M = 32$, and $b = 1.025$.

The time needed to integrate the model up to $t = 150000$ is approximately 103 seconds with the Nvidia 1070 GPU, implying that generating an MCMC chain with 100000 samples with standard MCMC algorithms would take almost four months. The use of LA-MCMC alone again shortens the time needed by a factor of 100, to around 28 hours. However, the calculations can yet be considerably enhanced by parallel computing. In practice this translates the problem of generating a candidate trajectory of length 150000 into generating observations from several shorter time intervals. In our example, an efficient division is to perform 128 parallel calculations each of length 4500, with randomized initial values close to the values selected from the training set. Discarding the predictable interval $[0, 500]$ and taking 8 observations at intervals of 500 yields the same number 1024 of observations as in the initial setting. While the total integration time increases, this reduces the wall clock time needed for computation of a single candidate simulation from 103 s to 2.5 s. The full MCMC chain can be then be generated in 70 hours without the surrogate model, and in 42 minutes using LA-MCMC.

Parameter posterior distributions from the KS system, produced with MCMC both with and without
500 the local approximation surrogate, are shown in Fig. 4. Repeating the calculations several times yielded
no meaningful differences in the results. In this experiment, the number of forward model evaluations
LA-MCMC needed for generating a chain of length 100000 was in the range [1131, 1221].

Model trajectories from simulations with four different parameter vectors are shown in Fig. 5. These
parameter values were 1) the “true” value which was used to generate training data, 2) another parameter
505 from inside the posterior distribution, and 3-4) two other parameters from outside the posterior distribution.
These parameters are also shown in Fig. 4. Visually inspecting the outputs, Cases 1–3 look similar, while
results using parameter vector 4, furthest away from the posterior, are markedly different. Even though the
third parameter vector is outside the posterior, the resulting trajectory is not easily distinguishable from 1
and 2, indicating that the CIL method differentiates between the trajectories more efficiently.

510 Additional experiments were performed to evaluate the stability of the method when not all of the model
states were observed. Keeping the setup otherwise fixed, the number of elements of the state vectors ob-
served was reduced from the full 256 step by step to 128, 64, and 32. The resulting MCMC chains are
presented in Fig. 6, and as expected, when less is observed, the size of the posterior distribution grows.

4.3 The quasi-geostrophic model

515 The methodology is here applied to a computationally intensive model, where a brute-force parameter
posterior estimation would be too time-consuming. We employ the well-known quasi-geostrophic model
((Fandry and Leslie, 1984) and (Pedlosky, 1987)) using a dense grid to achieve complex chaotic dynamics
in high dimensions. The wall-clock time for one long-time forward model simulation is roughly 10 minutes,
so a naïve calculation of a posterior sample of size 100000 would take around two years. We demonstrate
520 how the application of the methods verified in the two previous examples reduces this time to a few hours.

The QG model approximates the behavior on a latitudinal “stripe” at two given atmospheric heights, pro-
jected onto a two-layered cylinder. The model geometry implies periodic boundary conditions, seamlessly
stitching together the extreme eastern and western parts of the rectangular spatial domain with coordinates
 x and y . For the northern and southern edges, user-specified time-independent Dirichlet boundary condi-
525 tions are used. In addition to these conditions and the topographic constraints, the model parameters include

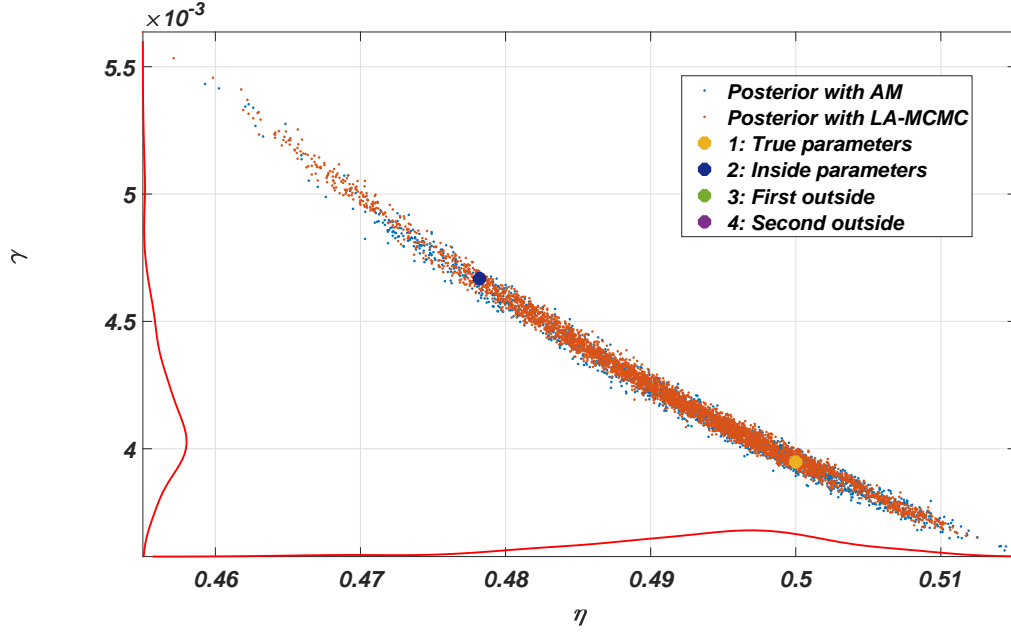


Figure 4. Posterior distribution of the parameters of the KS system. The parameter values are shown in Table 1, while examples of the respective integrated trajectories are given in Fig. 5.

the mean thicknesses of the two interacting atmospheric layers, denoted by H_1 and H_2 . The QG-model also accounts for the Coriolis force. An example of the two-layer geometry is presented in Fig. 7.

In a non-dimensional form the QG system can be written as

$$q_1 = \Delta\psi_1 - F_1(\psi_1 - \psi_2) + \beta y, \quad (13)$$

$$530 \quad q_2 = \Delta\psi_2 - F_2(\psi_2 - \psi_1) + \beta y + R_s, \quad (14)$$

where q_i are potential vorticities, and ψ_i are stream functions with indexes $i = 1, 2$ for the upper and the lower layers, respectively. Both the q_i and ψ_i are functions of time t and spatial coordinates x , and y . The coefficients $F_i = \frac{f_0^2 L^2}{g H_i}$ control how much the model layers interact, and $\beta = \beta_0 L / U$ gives a nondimensional version of β_0 , the northward gradient of the Coriolis force that gives rise to faster cyclonic flows closer to

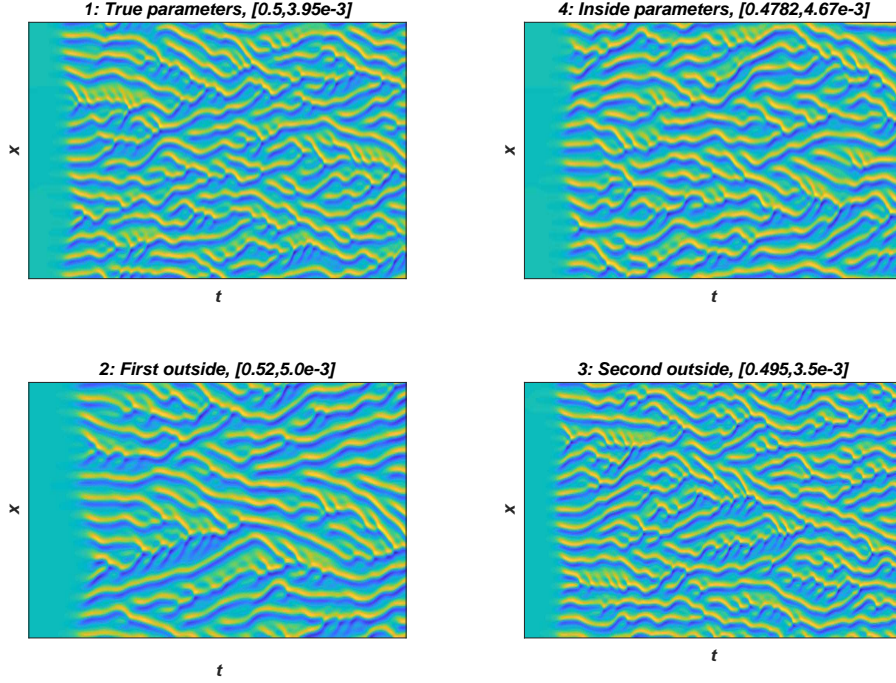


Figure 5. Example model trajectories from the KS system. Figure 1) shows simulation using the true parameters, the parameters used for figure 4) are inside the posterior distribution, and figures 2) and 3) are generated from simulations with parameters outside the posterior distribution, shown in Fig. 4. The values of the parameter vectors 1, 2, 3 and 4 are given in Table 1. The y -axis shows the 256-dimensional state vector, and the x -axis the time evolution of the system.

535 the poles. The Coriolis parameter is given by $f_0 = 2W \sin(\ell)$, where W is the angular speed of Earth and ℓ is the latitude of interest. L and U give the length and speed scales, respectively, and \hat{g} is a gravity constant. Finally, $R_s(x, y) = \frac{S(x, y)}{\eta H_2}$ defines the topography for the lower layer where $\eta = \frac{U}{f_0 L}$ is the Rossby number of the system. For further details, see (Fandry and Leslie, 1984) and (Pedlosky, 1987).

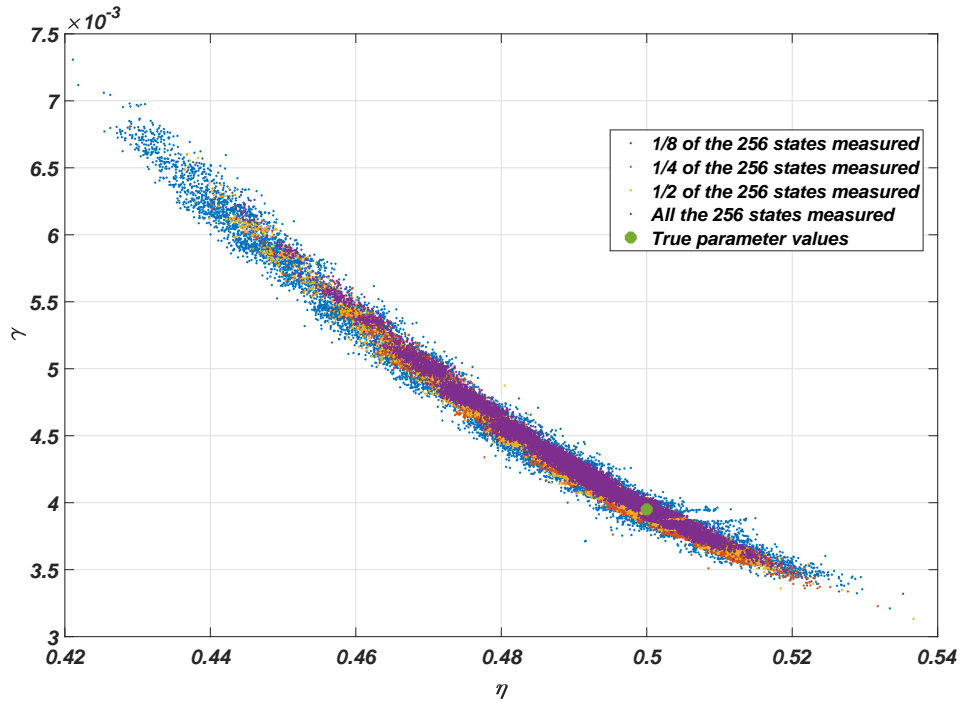


Figure 6. Comparison between the KS system's posterior distribution in cases where all or only a part of the states are observed.

It is assumed that the motion determined by the model is geostrophic, essentially meaning that potential
 540 vorticity of the flow is preserved on both layers:

$$\frac{\partial q_i}{\partial t} + u_i \frac{\partial q_i}{\partial x} + v_i \frac{\partial q_i}{\partial y} = 0. \quad (15)$$

Here u_i and v_i are velocity fields, which are functions of both space and time. They are obtained from the stream functions ψ_i via

$$u_i = -\frac{\partial \psi_i}{\partial y}, \quad v_i = \frac{\partial \psi_i}{\partial x}. \quad (16)$$

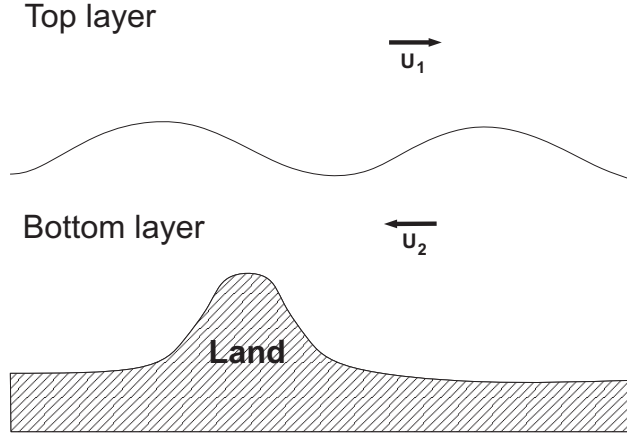


Figure 7. An example of the layer structure of the two-layer quasi-geostrophic model. The terms U_1 and U_2 denote mean zonal flows respectively in the top and the bottom layer.

545 Equations (13)–(16) define the spatio-temporal evolution of the quantities $q_i, \psi_i, i = 1, 2$.

The numerical integration of this system is carried out using the semi-Lagrangian scheme, where the potential vorticities q_i are computed according to Eq. (15) for given velocities u_i and v_i . With these q_i the stream functions can then be obtained from Eq. (13) and (14) with a two-stage finite difference scheme. Finally, the velocity field is updated by Eq. (16) for the next iteration round.

550 For estimating model parameters from synthetic data, a reference data set is created with 64 epochs each containing $N = 1000$ observations. These data are sampled from the model trajectory with $\Delta_t = 8$ (where a time step of length 1 corresponds to 6h) in the time interval $[192, 8192]$, that amounts to a long-range integration of roughly 5–6 years of a climate model. The spatial domain is discretized into a 55×55 grid, which results in consistent chaotic behavior and more complex dynamics than with the often-used 20×40 grid. This is reflected in higher variability in the feature vectors, as seen in the Fig. 1. A snapshot of the
555 6050-dimensional trajectory of the QG system is displayed in Figure 8.

The model state is characterized by two distinct fields, the vorticities and stream functions, that naturally are dependent on each other. As shown in (Haario et al., 2015), it is useful to construct separate feature

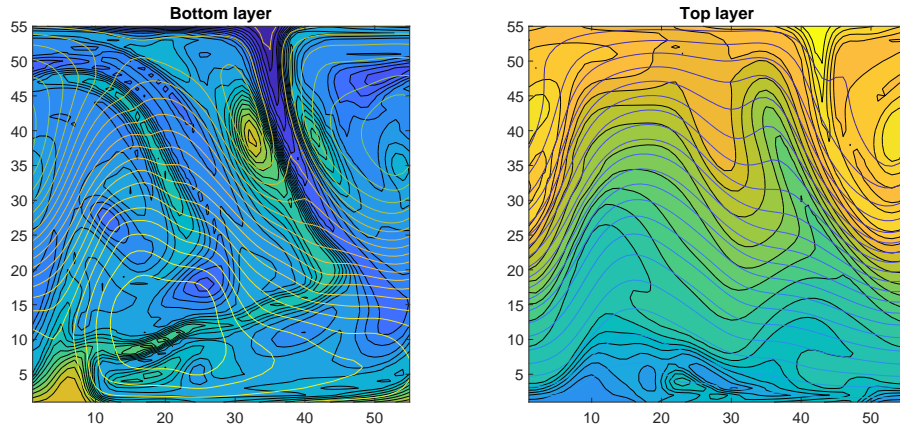


Figure 8. An example of the 6050-dimensional state of the quasi-geostrophic model. The contour lines for both the stream function and potential vorticity are shown for both layers. Note the cylindrical boundary conditions.

vectors to characterize the dynamics in such situations. For this reason, two separate feature vectors are
 560 constructed – one for the potential vorticity on both layers and the other for the stream function.

The Gaussian likelihood of the state is created by stacking these two feature vectors one after another. The normality of the resulting $2(M + 1)$ -dimensional vector may again be verified as shown in Fig. 1. The number of bins was set to 32, leading to parameter values $R_0 = 55$ and $b = 1,075$ for potential vorticity, and $R_0 = 31$, and $b = 1.046$ for the stream function.

565 For parameter estimation, inferring the layer heights from synthetic data is considered. The reference data set with $n_{\text{epo}} = 64$ integrations is produced using the values $H_1 = 5500$ and $H_2 = 4500$. A single forward model evaluation takes 10 minutes on a fast laptop, and therefore generating MCMC chains of length 10^5 with brute force would take around 2 years to run. As previously, using LA-MCMC again reduces the computation time by a factor of 100.

570 In the experiments performed, the number of forward model evaluations needed was ranging in the interval $[682, 762]$, which translates to around one week of computing time. As verified with Kuramoto-Sivashinsky example, the forward model integration can be split to segments computed in parallel, which

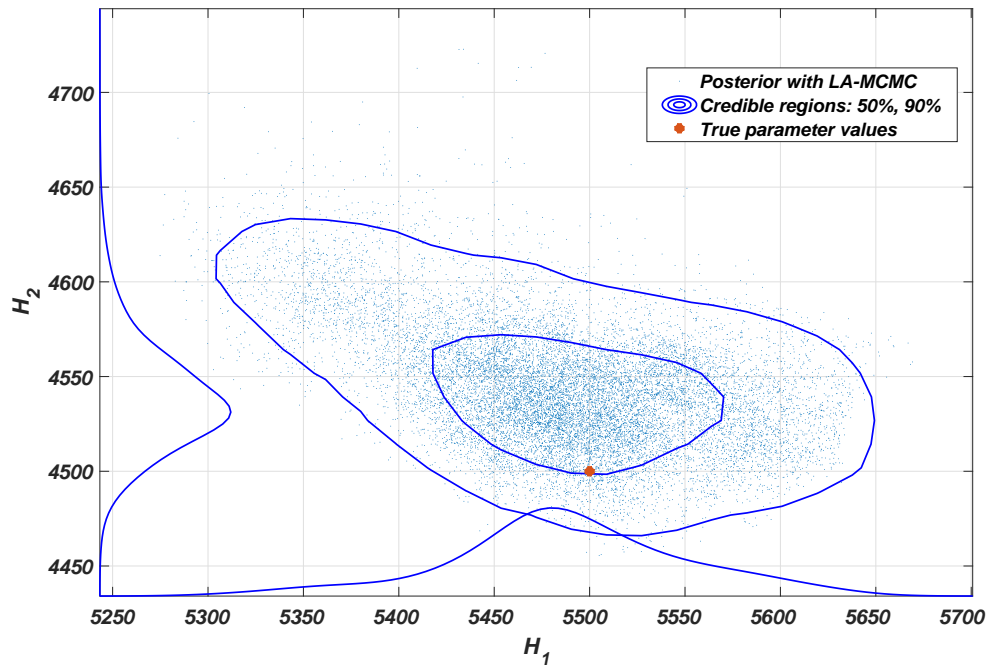


Figure 9. The clearly non-Gaussian posterior distribution of the H_1 and H_2 -parameters of the quasi-geostrophic system shows how these parameters anticorrelate with each other.

reduced time required to generate data for computing the likelihood further with a factor around 50, corresponding to around 3 h for generating the MCMC chain. The pairwise distances for generating the feature
575 vectors were computed on a GPU and therefore the required computation time for doing this was negligible compared to the model integration time. The posterior distribution of the two parameters is presented in Fig. 9.

5 Conclusions and future work

Bayesian parameter estimation with computationally demanding computer models is highly non-trivial. The associated computational challenges often become insurmountable when the model dynamics are chaotic. In this work we showed it is possible to overcome these challenges by combining the correlation integral likelihood (CIL) with an MCMC method based on local surrogates of the log-likelihood function (LA-MCMC). The CIL captures changes in the geometry of the underlying attractor of the chaotic system, while local approximation MCMC makes generating long MCMC chains based on this likelihood tractable, with computational savings of roughly two orders of magnitude ~~in the experiments shown~~, as shown in Table 2. Our methods were verified by sampling the parameter posteriors of the Lorenz-63 and the Kuramoto–Sivashinsky models, where an (expensive) comparison to exact MCMC with the CIL was still feasible. Then we applied our approach to the quasi-geostrophic model with a deliberately extended grid size. Without CIL, parameter estimation would not have been possible with chaotic models such as these; without LA-MCMC, the generation of long MCMC and sufficiently accurate chains for the higher-resolution QG model parameters would have been computationally intractable. We note that the computational demands of the QG model already get quite close to those of weather models at coarse resolutions. We believe that the approach developed here can provide ways to solve problems such as the climate model closure parameter estimation investigated in Järvinen et al. (2010) or long-time assimilation problems with uncertain model parameters, discussed in (Rougier, 2013) as unsolved and intractable.

There are many potential directions for extension of this work. First, it should be feasible to run *parallel* LA-MCMC chains that share model evaluations in a single evaluated set; doing so can accelerate the construction of accurate local surrogate models, as demonstrated in Conrad et al. (2018), and is a useful way of harnessing parallel computational resources within surrogate-based MCMC. Extending this approach to higher-dimensional parameters is also of interest. While LA-MCMC has been successfully applied to chains of dimension up to $q = 12$ (Conrad et al., 2018), future work should explore sparsity and other truncations of the local polynomial approximation to improve scaling with dimension. From the CIL perspective, calibrating more complex models, such as weather models, often requires choosing the part of the state vector from which the feature vectors are computed. While computing the likelihood from the full

Table 2. Summary of results. This table shows the speed-up due to the CIL / LA-MCMC combination. Since running the Quasi-Geostrophic model 100,000 times was not possible, the nominal length of the MCMC chain and the speed-up due to LA-MCMC are reported in parentheses in the last column. The numbers of forward model evaluations with LA-MCMC (second row) are rough averages over several MCMC simulations.

	<u>L63</u>	<u>KS</u>	<u>QG</u>
<u>Model evaluations, AM</u>	<u>100,000</u>	<u>100,000</u>	<u>(100,000)</u>
<u>Model evaluations, LA-MCMC</u>	<u>1,000</u>	<u>1,000</u>	<u>700</u>
<u>Speed-up factor</u>	<u>100</u>	<u>100</u>	<u>(143)</u>

high-dimensional state is computationally feasible, Haario et al. (2015) showed that carefully choosing a subset of the state for the feature vectors performs better. Also, the epochs may need to be chosen sufficiently long to include potential rare events, so that changes in rare event patterns can be identified. This, naturally, will increase the computational cost if one wants to be confident of the inclusion of such events.

While answering these questions will require further work, we believe the research presented in this paper provides a promising and reasonable step towards estimating parameters in the context of expensive operational models.

Code availability. The MATLAB code that documents the CIL and LA-MCMC approaches is available as a supplement. Forward model code for performing model simulations (Lorenz, Kuramoto-Sivashinsky, and Quasi-Geostrophic model) is also available in the supplement.

Author contributions. HH and YM designed the study with input from all authors. SS, HH, AD, and JS combined the CIL and LA-MCMC methods for carrying out the research. AB wrote and provided implementations of the KS and QG models for GPUs, including custom numerics and testing. SS wrote the CIL code and the version of LA-MCMC

used (based on earlier work by Dr. Antti Solonen), and carried out the simulations. All authors discussed the results and shared the responsibility of writing the manuscript. SS prepared the figures.

620 *Competing interests.* The authors declare that they have no conflict of interest

Acknowledgements. This work was supported by the Centre of Excellence of Inverse Modelling and Imaging (CoE), Academy of Finland, decision number 312 122. SS was supported by the Academy of Finland, project number 334 817. YM and AD were supported by the US Department of Energy, Office of Advanced Scientific Computing Research (ASCR), SciDAC program, as part of the FASTMath Institute.

625 **References**

- Andrieu, C. and Roberts, G. O.: The pseudo-marginal approach for efficient Monte Carlo computations, *Ann. Statist.*, 37, 697–725, <https://doi.org/10.1214/07-AOS574>, 2009.
- Asch, M., Bocquet, M., and Nodet, M.: *Data Assimilation: Methods, Algorithms, and Applications*, SIAM, 2016.
- Beaumont, M. A., Zhang, W., and Balding, D. J.: Approximate Bayesian Computation in Population Genetics, *Genet-*
630 *ics*, 162, 2025–2035, <https://www.genetics.org/content/162/4/2025>, 2002.
- Borovkova, S., Burton, R., and Dehling, H.: Limit theorems for functionals of mixing processes with applications to U -statistics and dimension estimation, *Transactions of the American Mathematical Society*, 353, 4261–4318, <https://doi.org/10.1090/S0002-9947-01-02819-7>, 2001.
- Cencini, M., Cecconi, F., and Vulpiani, A.: *Chaos: From Simple Models to Complex Systems*, World Scientific:Series
635 on advances in statistical mechanics, 2010.
- Conn, A. R., Scheinberg, K., and Vicente, L. N.: *Introduction to derivative-free optimization*, MPS-SIAM, 2009.
- Conrad, P. R., Marzouk, Y. M., Pillai, N. S., and Smith, A.: Accelerating asymptotically exact MCMC for computation-ally intensive models via local approximations, *Journal of the American Statistical Association*, 111, 1591–1607, <https://doi.org/10.1080/01621459.2015.1096787>, 2016.
- 640 Conrad, P. R., Davis, A. D., Marzouk, Y. M., Pillai, N. S., and Smith, A.: Parallel local approximation MCMC for expensive models, *SIAM/ASA Journal on Uncertainty Quantification*, 6, 339–373, <https://doi.org/10.1137/16M1084080>, 2018.
- Davis, A., Marzouk, Y., Smith, A., and Pillai, N.: Rate-optimal refinement strategies for local approximation MCMC, *arXiv:2006.00032*, 2020.
- 645 Davis, A. D.: *Prediction under uncertainty: from models for marine-terminating glaciers to Bayesian computation*, PhD thesis, Massachusetts Institute of Technology, 2018.
- Donsker, M. D.: An invariance principle for certain probability limit theorems, *Memoirs of the American Mathematical Society*, 6, 1951.
- Durbin, J. and Koopman, S. J.: *Time Series Analysis by State Space Methods*, Oxford University Press, 2012.
- 650 ECMWF: IFS Documentation – Cy40r1, Tech. Rep. 349, European Centre for Medium-Range Weather Forecasts, Reading, England, <https://www.ecmwf.int/sites/default/files/elibrary/2014/9203-part-iii-dynamics-and-numerical-procedures.pdf>, 2013.

- Fandry, C. B. and Leslie, L. M.: A Two-Layer Quasi-Geostrophic Model of Summer Trough Formation in the Australian Subtropical Easterlies, *Journal of the Atmospheric Sciences*, 41, 807–818, [https://doi.org/10.1175/1520-0469\(1984\)041<0807:ATLQGM>2.0.CO;2](https://doi.org/10.1175/1520-0469(1984)041<0807:ATLQGM>2.0.CO;2), 1984.
- Gamerman, D.: *Markov Chain Monte Carlo: Stochastic Simulation for Bayesian Inference*, Chapman & Hall/CRC Texts in Statistical Science, Taylor & Francis, 1997.
- Gelman, A., Carlin, J., Stern, H., Dunson, D., Vehtari, A., and Rubin, D.: *Bayesian Data Analysis*, Chapman and Hall/CRC, 3rd edn., 2013.
- Grassberger, P. and Procaccia, I.: Procaccia, I.: Estimation of the Kolmogorov entropy from a chaotic signal. *Phys. Rev. A* 28, 2591–2593, *Physical Review A - PHYS REV A*, 28, 2591–2593, <https://doi.org/10.1103/PhysRevA.28.2591>, 1983a.
- Grassberger, P. and Procaccia, I.: Measuring the strangeness of strange attractors, *Physica D: Nonlinear Phenomena*, 9, 189 – 208, [https://doi.org/https://doi.org/10.1016/0167-2789\(83\)90298-1](https://doi.org/https://doi.org/10.1016/0167-2789(83)90298-1), 1983b.
- Haario, H., Saksman, E., and Tamminen, J.: An adaptive Metropolis algorithm, *Bernoulli*, 7, 223–242, <https://projecteuclid.org:443/euclid.bj/1080222083>, 2001.
- Haario, H., Laine, M., Mira, A., and Saksman, E.: DRAM: Efficient adaptive MCMC, *Statistics and Computing*, 16, 339–354, <https://doi.org/10.1007/s11222-006-9438-0>, 2006.
- Haario, H., Kalachev, L., and Hakkarainen, J.: Generalized correlation integral vectors: A distance concept for chaotic dynamical systems, *Chaos: An Interdisciplinary Journal of Nonlinear Science*, 25, 063 102, <https://doi.org/10.1063/1.4921939>, 2015.
- Hakkarainen, J., Ilin, A., Solonen, A., Laine, M., Haario, H., Tamminen, J., Oja, E., and Järvinen, H.: On closure parameter estimation in chaotic systems, *Nonlinear Processes in Geophysics*, 19, 127–143, <https://doi.org/10.5194/npg-19-127-2012>, 2012.
- Hakkarainen, J., Solonen, A., Ilin, A., Susiluoto, J., Laine, M., Haario, H., and Järvinen, H.: A dilemma of the uniqueness of weather and climate model closure parameters, *Tellus A: Dynamic Meteorology and Oceanography*, 65, 20 147, <https://doi.org/10.3402/tellusa.v65i0.20147>, 2013.
- Houtekamer, P. L. and Zhang, F.: Review of the Ensemble Kalman Filter for Atmospheric Data Assimilation, *Monthly Weather Review*, 144, 4489–4532, <https://doi.org/10.1175/MWR-D-15-0440.1>, 2016.
- Huttunen, J., Kaipio, J., and Haario, H.: Approximation error approach in spatiotemporally chaotic models with application to Kuramoto–Sivashinsky equation, *Computational Statistics & Data Analysis*, 123, 13 – 31, <https://doi.org/https://doi.org/10.1016/j.csda.2018.01.015>, 2018.

- Järvinen, H., Räisänen, P., Laine, M., Tamminen, J., Ilin, A., Oja, E., Solonen, A., and Haario, H.: Estimation of ECHAM5 climate model closure parameters with adaptive MCMC, *Atmospheric Chemistry and Physics*, 10, 9993–10 002, <https://doi.org/10.5194/acp-10-9993-2010>, 2010.
- 685 Jarvinen, H., Laine, M., Solonen, A., and Haario, H.: Ensemble prediction and parameter estimation system: the concept, *Quarterly Journal of the Royal Meteorological Society*, 138, 281–288, <https://doi.org/10.1002/qj.923>, 2011.
- Kennedy, M. C. and O’Hagan, A.: Bayesian calibration of computer models, *Journal of the Royal Statistical Society: Series B (Statistical Methodology)*, 63, 425–464, <https://doi.org/10.1111/1467-9868.00294>, 2001.
- 690 Kohler, M.: Universal consistency of local polynomial kernel regression estimates, *Annals of the Institute of Statistical Mathematics*, 54, 879–899, 2002.
- Kuramoto, Y.: Diffusion-Induced Chaos in Reaction Systems, *Progress of Theoretical Physics Supplement*, 64, 346–367, <https://doi.org/10.1143/PTPS.64.346>, 1978.
- Kuramoto, Y. and Yamada, T.: Turbulent State in Chemical Reactions, *Progress of Theoretical Physics*, 56, 679–681, <https://doi.org/10.1143/PTP.56.679>, 1976.
- 695 Laine, M., Solonen, A., Haario, H., and Jarvinen, H.: Ensemble prediction and parameter estimation system: the method, *Quarterly Journal of the Royal Meteorological Society*, 138, 289–297, <https://doi.org/10.1002/qj.922>, 2011.
- Law, K., Stuart, A., and Zygalakis, K.: *Data Assimilation*, Springer International Publishing, 2015.
- Liu, J. and West, M.: *Combined Parameter and State Estimation in Simulation-Based Filtering*, pp. 197–223, Springer New York, New York, NY, https://doi.org/10.1007/978-1-4757-3437-9_10, 2001.
- 700 Lorenz, E. N.: Deterministic Nonperiodic Flow, *Journal of the Atmospheric Sciences*, 20, 130–141, [https://doi.org/10.1175/1520-0469\(1963\)020<0130:DNF>2.0.CO;2](https://doi.org/10.1175/1520-0469(1963)020<0130:DNF>2.0.CO;2), 1963.
- Luego, D., Martino, L., Elvira, V., and Särkkä, S.: A survey of Monte Carlo methods for parameter estimation, *EURASIP Journal on Advances in Signal Processing*, <https://doi.org/10.1186/s13634-020-00675-6>, 2020.
- 705 Morzfeld, M., Adams, J., Lunderman, S., and Orozco, R.: Feature-based data assimilation in geophysics, *Nonlinear Processes in Geophysics*, 25, 355–374, <https://doi.org/10.5194/npg-25-355-2018>, 2018.
- Neumeyer, N.: A central limit theorem for two-sample U-processes, *Statistics & Probability Letters*, 67, 73 – 85, <https://doi.org/10.1016/j.spl.2002.12.001>, 2004.
- Ollinaho, P., Laine, M., Solonen, A., Haario, H., and Järvinen, H.: NWP model forecast skill optimization via closure parameter variations, *Quarterly Journal of the Royal Meteorological Society*, 139, 1520–1532, <https://doi.org/10.1002/qj.2044>, 2012.
- 710

- Ollinaho, P., Bechtold, P., Leutbecher, M., Laine, M., Solonen, A., Haario, H., and Järvinen, H.: Parameter variations in prediction skill optimization at ECMWF, *Nonlinear Processes in Geophysics*, 20, 1001–1010, <https://doi.org/10.5194/npg-20-1001-2013>, 2013.
- 715 Ollinaho, P., Järvinen, H., Bauer, P., Laine, M., Bechtold, P., Susiluoto, J., and Haario, H.: Optimization of NWP model closure parameters using total energy norm of forecast error as a target, *Geoscientific Model Development*, 7, 1889–1900, <https://doi.org/10.5194/gmd-7-1889-2014>, 2014.
- Pedlosky, J.: *Geophysical Fluid Dynamics*, 22-57, Springer-Verlag, New York, 1987.
- Price, L. F., Drovandi, C. C., Lee, A., and Nott, D. J.: Bayesian Synthetic Likelihood, *Journal of Computational and*
 720 *Graphical Statistics*, 27, 1–11, <https://doi.org/10.1080/10618600.2017.1302882>, 2018.
- Robert, C. and Casella, G.: *Monte Carlo Statistical Methods*, Springer, 2004.
- Roeckner, E., Bauml, G., Bonaventura, L., Brokopf, R., Esch, M., and et al., M. G.: The atmospheric general circulation model ECHAM 5. PART I: Model description, *Report / MPI fur Meteorologie*, 349, 2003.
- Rougier, J.: ‘Intractable and unsolved’: some thoughts on statistical data assimilation with uncertain static parameters, *Philosophical Transactions of the Royal Society of London A: Mathematical, Physical and Engineering Sciences*,
 725 371, <https://doi.org/10.1098/rsta.2012.0297>, 2013.
- Sacks, J., Welch, W. J., Mitchell, T. J., and Wynn, H. P.: Design and Analysis of Computer Experiments, *Statistical Science*, 4, 409–423, <http://www.jstor.org/stable/2245858>, 1989.
- Sivashinsky, G.: Nonlinear analysis of hydrodynamic instability in laminar flames—I. Derivation of basic equations, *Acta Astronautica*, 4, 1177 – 1206, [https://doi.org/https://doi.org/10.1016/0094-5765\(77\)90096-0](https://doi.org/https://doi.org/10.1016/0094-5765(77)90096-0), 1977.
- 730 Solonen, A., Ollinaho, P., Laine, M., Haario, H., Tamminen, J., and Järvinen, H.: Efficient MCMC for Climate Model Parameter Estimation: Parallel Adaptive Chains and Early Rejection, *Bayesian Anal.*, 7, 715–736, <https://doi.org/10.1214/12-BA724>, 2012.
- Springer, S., Haario, H., Shemyakin, V., Kalachev, L., and Shchepakina, D.: Robust parameter estimation of chaotic
 735 systems, <https://doi.org/10.3934/ipi.2019053>, 2019.
- Stevens, B., Giorgetta, M., Esch, M., Mauritsen, T., Crueger, T., Rast, S., Salzmann, M., Schmidt, H., Bader, J., Block, K., Brokopf, R., Fast, I., Kinne, S., Kornbluh, L., Lohmann, U., Pincus, R., Reichler, T., and Roeckner, E.: Atmospheric component of the MPI-M Earth System Model: ECHAM6, *Journal of Advances in Modeling Earth Systems*, 5, 146–172, <https://doi.org/10.1002/jame.20015>, 2013.
- 740 Tarantola, A.: *Inverse Problem Theory and Methods for Model Parameter Estimation*, Society for Industrial and Applied Mathematics, 2005.

Wood, S.: Statistical inference for noisy nonlinear ecological dynamic systems, *Nature*, 466,1102, 2010.

Yiorgos Smyrlis, D. P.: Computational study of chaotic and ordered solutions of the Kuramoto-Shivashinsky equation, NASA Contractor Report 198283, 96-12, 1996.