

SCARLET-1.0: SpheriCal Approximation for viRtual aggrEgates

Eduardo Rossi¹, Costanza Bonadonna¹

¹Department of Earth Sciences, University of Geneva, Geneva, 1205, Switzerland

Correspondence to: Eduardo Rossi (Eduardo.Rossi@unige.ch)

5 Abstract.

Aggregation of particles occurs in a large variety of settings, and, therefore, it is the focus of many disciplines, e.g. earth and environmental sciences, astronomy, meteorology, pharmacy, food industry. In particular, in volcanology, ash aggregation deeply influences the sedimentation of volcanic particles in the atmosphere during and after a volcanic eruption, affecting the accuracy of model predictions and the evaluation of hazard and risk assessments. It is thus very important to provide an exhaustive description of the outcome of an aggregation process, starting from its basic geometrical features such as the position in space of its components and the overall porosity of the final object. Here we present SCARLET-1.0, a MATLAB package specifically created to provide a 3D virtual reconstruction for volcanic ash aggregates generated in central collisions processes. In central oriented collisions, aggregates build up their own structure around the first particle (*the core*) acting as a seed. This is appropriate for aggregates generated in turbulent flows in which particles show different degrees of coupling with respect to the turbulent eddies. SCARLET-1.0 belongs to the class of *sphere-composite algorithms*, a family of algorithms that approximate 3D complex shapes in terms of a set of sphere-composite not-overlapping spheres. The conversion of a 3D surface in its equivalent sphere-composite structure then allows for an analytical detection of the intersections between different objects that aggregate together. Thus, provided a list of colliding sizes and shapes, SCARLET-1.0 places each element in the vector around the core, minimizing the distances between their centers of mass. The user can play with different parameters that control the minimization process. Among them the most important ones are the cone of investigation (Ω), the number of rays per cone (N_r), and the number of orientations of the object (N_o). All the 3D shapes are described using the STL format, the nowadays standard for 3D printing. This is one of the key features of SCARLET-1.0, which results in an unlimited range of application of the package. The main outcome of the code is the virtual representation of the object, its size, porosity, density and the associated STL file. In addition, the object can be potentially 3D printed. As an example, SCARLET-1.0 has been applied here to the investigation of ellipsoid-ellipsoid collisions and to a more specific analysis of volcanic ash aggregation. In the first application we show that the final porosity of two colliding ellipsoids is less than 20% if flatness and elongation are greater than or equal to 0.5. Higher values of porosities (up to 40-50%) can be, instead, found for ellipsoids with needle-like or extremely flat shapes. In the second application, we reconstruct the evolution in time of the porosity of two different aggregates characterized by different inner structures. We find that aggregates whose population of particles is characterized by a narrow distribution of sizes tend to rapidly reach a plateau in the porosity. In addition, to reproduce the observed densities,

almost no compaction is necessary in SCARLET-1.0; a result that suggests how ash aggregates are not well described in terms of the maximum packing condition.

1 Introduction

35 The formation of aggregates from an initial set of individual monomers is a common topic in science, such as in planetary formation, granulation processes, food industry, meteorology, pollution, and Earth sciences (Brauer et al., 2001; Dominik et al., 2006; Poon et al., 2008; Brown et al., 2012; Cuq et al., 2013; Shi, 2015; Dacanal et al., 2016; Pumir and Wilkinson, 2016; Imaeda and Ebisuzaki, 2017; Ohno et al., 2020;). In volcanology, aggregation plays a key role in affecting the sedimentation processes of ash in the atmosphere during and after a volcanic eruption with deep consequences on the accuracy of the dispersal
40 forecasting and hazard assessment (Durant, 2015).

The study of aggregation with experimental setups or direct observations in natural environments is often a challenging - if not impossible – task (Karrer et al., 2020). For this reason, the use of virtual reality has been considered a valuable alternative to the direct investigation (Lumme and Rahola, 1994; Filippov, 2000; Min et al., 2007).

Several algorithms have been dedicated to the numerical solution of theoretical problems concerning aggregation phenomena,
45 such as the study of the maximum packing of geometrical shapes within fixed boundary condition (Conway and Sloane, 1998; Weaire and Aste, 2000; Williams and Jia, 2003; Donev et al., 2004; Hales, 2005; Man et al., 2005); other codes have been specifically written for the investigation of aggregation in natural contexts; among them, we only mention those algorithms aimed at studying aggregates in protoplanetary disks (Ormel et al, 2007; Yurkin and Hoekstra, 2011), ice formation and snowflakes aggregation (Kessler et al., 1984; Westbrook et al., 2004; Maruyama and Fujiyoshi, 2005; Reiter, 2005; Ning and
50 Reiter, 2007; Tyynela and von Lerber, 2019; Ori et a Karrer et al., 2020) and in other environmental applications, such as water treatment (Chopard et al., 2006). Several codes treat aggregation as a fractal process such as in the Diffusion Limited Aggregation (DLA), in which the characteristic length of the aggregate, R , can be related to the number of monomers involved, N_p and the fractal dimension D_f by means of the power law $N_p \propto R^{D_f}$ (Nguyen et al., 2003; 2004; Jacobson, 2005).

Another important aspect concerning aggregation algorithms is the capability of accurately describing the shapes of the
55 particles involved. In some circumstances the morphology of the colliding objects is sufficiently well described in terms of equivalent spheres. In other cases, a more accurate description is needed, as for example in the study of particle packing (Man et al., 2005) or in all those cases where particle interlocking plays a key role, such as in snowflakes formation.

In volcanology, despite the importance attributed to ash aggregation, no specific code has been designed so far for the study of particle packing geometries or, in general, the dependency of aggregate densities with respect to their structural
60 configuration. Several types of different aggregate geometries have been described in literature, from Particle Clusters (PC) to Accretionary Pellets (AP) (see Brown et al., (2012) for a complete review). In particular, recent field observations have revealed how PC3 objects have a key role in ash sedimentation (Bagheri et al., 2016; Gabellini et al., 2020). PC3 are roughly

spherically symmetrical in shape and they are composed of a big particle of about 200-1000 μm (the core) at the center of the structure, and many smaller particles (typically $< 100 \mu\text{m}$) around it (the coating).

65 The physical explanation of the formation of PC type aggregates involves the theoretical description of a polydisperse particle population within a highly turbulent flow, such as it is the case for a volcanic plume or cloud (Kieffer and Sturtevant, 1984). In presence of a cascade of turbulent eddies and grains of different sizes, particles will show different degrees of coupling with the turbulent flow (Volk et al., 1980). This will produce a wide spectrum of relative velocities (Ormel and Cuzzi, 2007). In the limiting case of particles with a negligible velocity correlation with respect to the others (i.e. the kinetic theory limit), the
70 object will aggregate following an inertial aggregation mechanism (Textor and Ernst, 2004). This is typical of large particles that will cross from one eddy to another with a poor correlation with the dynamics of the eddies. In their path across the turbulent flow these objects will encounter smaller particles that, on the contrary, do show a high correlation with the eddies. This process can be modelled as a central collisional process in which the big particle is the target of random collisions coming from random directions.

75 All these aspects motivated us to create SCARLET-1.0 (*SpheriCal Approximation for viRtuaL aggrEgates*), a MATLAB package designed for the study of volcanic ash aggregation generated by central collisional processes of particles with arbitrary 3D shapes. SCARLET-1.0 simulates the binary and sequential collision between the core and a vector of N_p particles. The algorithm follows a Monte Carlo approach to investigate the final positions of the i -th particle and the already placed aggregate, minimizing the distance between the center of mass of the two bodies. Once that the i -th particle has been placed, it is
80 considered fixed within the aggregate.

One of the main problems related to the aggregation of objects with complex surfaces is the detection of the intersections between them. SCARLET-1.0 belongs to the so-called *sphere-composite algorithms* (Evans and Ferrar, 1989; Nolan and Kavanagh, 1995), in which each single shape is seen as the superposition of N_{sp} not-overlapping spheres. Describing a given shape in terms of a set of spheres leads to a pure analytical solution when searching for intersections between multiple shapes.

85 On the other hand, a large number of spheres is required for those collisions where a high degree of accuracy is needed (Jia and Williams, 2001).

The most innovative aspect of SCARLET-1.0 is the use of the *Standard Triangulation Language* (STL) to describe the 3D shapes involved in the collisions. STL is nowadays one of the most common formats for 3D printing, 3D scanning and design (Szilvasi-Nagy and Matyasi, 2003). This guarantees a great flexibility to create virtual aggregates with SCARLET-1.0 starting

90 from a set of completely arbitrary shapes. As a demonstration of this, in the main body of the paper and in the appendix we show virtual aggregates made of a great variety of shapes: from scientific ones, such as volcanic particles, snowflakes, cones, ellipsoids and spheres, to the most creative ones. It is important to evidence that SCARLET-1.0 also produces as output the STL file of the final aggregate: this means that the virtual aggregate can be potentially 3D printed. This makes an innovative link between simulations in the virtual reality and experiences in the real world, such as laboratory investigations of the drag
95 force exerted on complex aggregates (McCorquodale and Westbrook, 2021).

The manuscript is structured as follows: in section 2 we described the model, with a focus on the functions *fromStlToSpheres* and *mainSCARLET*; in section 3.1 the algorithm is tested for what concerns the calculation of porosity problems; in section 3.2 we present an application of SCARLET-1.0 to both the study of generic ellipsoids and to the study of the evolution in time of volcanic ash aggregates; in section 4 a short discussion of the pros and cons of the package is presented.

100 **2 Model description**

2.1 Physical description of the aggregation process and model design

SCARLET-1.0 is written in MATLAB (tested for MATLAB R2015b) and it has been motivated by the need of a better understanding of the geometrical packing of volcanic ash aggregates observed during volcanic eruptions (Taddeucci et al., 2011; Brown et al., 2012; Bagheri et al., 2016; Gabellini et al., 2020). It simulates the random collisions encountered by the
105 core in its path across an environment where N_p particles of arbitrary sizes and shapes are present. This happens in nature when particles with different dynamical properties are released in a turbulent flow. In this case the complex interaction of a cascade of turbulent eddies and the presence of particles with different sizes and masses produce a wide spectrum of particle Stokes numbers and thus a complete set of different degrees of coupling with the flow (Ormel and Cuzzi, 2007). The limiting cases for the situation under analysis are described in literature as the Saffman-Turner limit (Saffman and Turner, 1956), for
110 particles fully coupled with the fluid and with a size smaller than the Kolmogorov scale, and the kinetic theory limit (Abrahamson, 1975; Textor and Ernst, 2004), in which large particles are poorly coupled with smaller eddies. The final result of the process is a population of large particles with uncorrelated relative velocities, that are higher as the decoupling with the flow is more pronounced (Volk et al., 1980). This is for example what happens in the case of coarse ash within a turbulent volcanic plume or cloud (Textor and Ernst, 2004), and also for dust grains in protoplanetary disks (Ormel et al., 2007; Okuzumi
115 et al., 2009). The presence of a relative velocity between the core (or the aggregate) and the colliding particle creates a relative kinetic energy that must be dissipated in order to have a successful sticking. In SCARLET-1.0 we do not focus on the dissipation mechanisms, which require a full understanding and constraint on non-trivial quantities such as the presence of viscoelastic forces, water layers, electrostatic charges, plastic deformations, etc. Since we are mostly interested in the final geometrical packing, we simply assume that after the collision the i -th particle will dissipate the relative kinetic energy
120 available and it will stick to the central structure.

In summary, within the limit of the kinetic theory limit the large core shows a negligible correlation with the velocity of the surrounding particles and it acts a central pole of accretion for the colliding particles in its path across the turbulent eddies if a Lagrangian perspective is assumed. Moreover, considering that the core can indeed rotate, and that the turbulence is usually assumed isotropic in the theoretical descriptions (Volks et al., 1980), the angles of collisions respect to the central body are
125 assumed to occur at random orientations.

In SCARLET-1.0 we fix the System Of Reference (SOR) at the Center of Mass (CM) of the core in a purely Lagrangian description of the motion. The core, of arbitrary shape, is the target for the collisions and the population of particles encountered as the aggregation process evolves is defined as a vector of particles with different sizes and arbitrary shapes. According to the

physical process that we want to describe, collisions happen at random angles around the central structure and the collision cone is centered in the CM of the core. This is the main mode of operation of the code and the motivation that lead us to create it according to what has been recently observed in volcanic eruptions (Bagheri et., 2016; Gabellini et al., 2020). However, it is worth anticipating here that SCARLET-1.0 allows relaxing some of these constraints, if needed by the user. For example, collisions can occur following a fixed direction of collision and the collision cone can be centered in alternative locations with respect to the CM of the core.

The main steps in which the aggregation process is modelled in SCARLET-1.0 are summarized here:

1. *Definition of the shapes involved in the aggregation process*: every different shape used in the simulation must be already present in the folder as an STL file. STL files can be generated by means of specific CAD software, they can be downloaded from the internet or simply obtained by 3D scanners. The use of binary STL files is preferred with respect to the ASCII format.
2. *The sphere-composite representation of each STL file*: SCARLET-1.0 uses a dedicated script named “fromStlToSpheres” to construct the sphere composite representation of the original shape (see section 2.1). STL files are defined by a set of points and facets. The script takes advantage of the MATLAB function *inpolyhedron* (Sven, 2021) to generate random points within the surface. Once the point is created within the STL shape and outside an already existing sphere, it generates a new sphere (see sec 2.2). Each single shape that the user wants to involve in the simulation must be pre-processed by “fromStlToSpheres”.
3. *Generation of the monomer’s distribution*: the grain-size distribution of the coating is defined a priori by the user who defines a vector of particle sizes with a length equal to the number of particles involved (N_p). Each element of the vector indicates the maximum length d_{max}^i of the i -th particle (in arbitrary units). The shape attributed to the i -th particle is randomly selected within those available for the coating (see sec.2.1). The core size d_{max}^{core} is defined by the user and it corresponds to its maximum length (in arbitrary units a.u.). The shape attributed to the core is by definition the first element of the structure generated by the pre-processing function “fromStlToSpheres”.
4. *Selection of the particles that will collide*: particles are selected sequentially from the previously defined vector of sizes. Therefore, the contemporary deposition of two particles is forbidden (i.e. only binary collisions are treated).
5. *Collision trajectory*: in order to place the i -th particle, a cone is generated with its center in the CM of the core (or, alternatively, in one of the spheres that form the sphere-composite representation of the aggregate). N_r random rays are uniformly generated within the cone and the shape associated with the i -th particle – scaled to its actual size – is randomly rotated N_o times along each ray, following the ZXZ convention on the Euler’s angles. Each rotated object is by default placed outside the aggregate. Then a coarse inward movement along the ray is performed until the overlapping of the sphere-composite representations of the aggregate and the i -th particle happens. At this stage a finer outward movement along the ray is done until there is overlapping between the spheres. The two steps process guarantees faster movements when the objects are far away and a fine tuning when they overlap.

6. *Contact dynamics*: the contact dynamic assumes an instantaneous sticking when the intersection of the spheres is no longer present (see step 5). This means to assume that the relative kinetic energy is completely dissipated at the moment of the impact, with no rearrangement of the already existing structure. For each i -th particle a total of $N_r \times N_o$ configurations are tested but we only take the one that minimizes the distances between the CM of the aggregate and the particle. This is equivalent to assume that among the $N_r \times N_o$ configurations the inward force and the torque oriented the particle in such a way to minimize this distance.

2.2 General overview of the code

In the following we present a general description of the two main functions *fromStlToSpheres* and *mainSCARLET* which are respectively responsible of creating the sphere-composite representation of the single shapes and to build the virtual aggregate. For further details on how to use the code we wish to direct the interested reader to the dedicated user guide that is present at the Github link <https://github.com/EduardoRossiScience/SCARLET> (and also at the Zenodo repository <https://doi.org/10.5281/zenodo.4675770>). In Table 3 we summarized the main parameters used in the code.

2.2.1 The preprocessing code *fromStlToSpheres*

The preprocessing code *fromStlToSpheres* translates a given 3D STL volume into a random set of non-overlapping spheres. The STL standard describes any closed surface with a triangulation of *vertices* and *faces*. *Vertices* are expressed as a matrix with three columns and a number of rows equal to the number of vertices N_v . The N_v vertices are points distributed along the surface of the STL shape (Fig.3a, 3d). *Faces* are instead described by a matrix of three columns and $\frac{N_v}{3}$ rows, where each row contains three integers reporting the corresponding vertices involved in the creation of the face.

fromStlToSpheres generates a random point P_r inside the 3D surface using the function *inpolyhedron*. This operation is repeated until P_r is generated outside an existing sphere. Then we find the closest point P_n among all the vertices of the triangles (see Fig.3a, 3d) and the centers of already placed spheres. If $P_n \in N_v$, the radius of the new sphere is $\overline{P_r P_n}$; on the contrary if P_n is one of the already placed spheres, the radius is $\overline{P_r P_n}$ minus the radius of the sphere whose center is P_n . In conclusion, the new placed sphere will be tangent or to the STL surface or to another sphere.

In Fig.3 *fromStlToSpheres* is applied to two different volcanic particles: Figures 3a and 3d illustrate the vertices of the triangles of the STL volume. In Figures 3b and 3e, both volcanic particles have been filled with $N_{sph} = 300$ spheres. In Figures 3c and 3f the reduction of the spheres obtained by setting $O_{ext} = 1$, a Boolean variable that allows eliminating the internal spheres.

Fig. 4 shows some applications of the pre-processing routine to different shapes, each of them characterized by a different degree of complexity, such as convexity of the shape/volume. The scaling of the object produced by *fromStlToSpheres* is the

same as the one contained in the original STL file (expressed in a.u.). No modification is done at this stage. The function *mainSCARLET* will rescale the core and the coating according to vector defined by the user (i.e. d_{max}^{core} and d_{max}^i).

As an example, let's assume that we want to create a virtual aggregate made of three different shapes: a T-Rex shape for the core, a cone and an ellipse for the coating (see Fig.2). The preprocessing code must be executed three times, one for each STL file. In the MATLAB command window we type:

```
[core_spheres, core_fv] = fromStlToSpheres('volcanic_particle.stl', 300, 3, 0, 1);  
[coating1_spheres, coating1_fv] = fromStlToSpheres('ellipse.stl', 300, 3, 0, 1);  
[coating2_spheres, coating2_fv] = fromStlToSpheres('cone.stl', 300, 3, 0, 1);
```

200

Each time that *fromStlToSpheres* is executed two distinct structures are produced as output in the *workspace*. In “*core_spheres*”, “*coating1_spheres*”, “*coating2_spheres*”, it is stored the information relative to the spheres. In “*core_fv*”, “*coating1_fv*”, “*coating2_fv*”, the information relative to the triangulation of the STL surface (i.e. faces and the vertices). This operation needs to be done only once for each shape: all the structures can be saved for further simulations.

205 The input structure for *mainSCARLET* (“*input_struct*” in the example), must be assembled at this stage, simply typing in the command window:

```
input_struct(1).fv = core_fv;  
input_struct(1).sphere_struct = core_spheres;  
input_struct(2).fv = coating1_fv;  
input_struct(2).sphere_struct = coating1_spheres;  
input_struct(3).fv = coating2_fv;  
input_struct(3).sphere_struct = coating2_spheres;
```

210

The first element of *input_struct* will be assigned to the central core. The other shapes will be assigned randomly to the coating particles. The structure *input_struct* is the unique external input required by *mainSCARLET* that is now ready to be used.

215

2.2.2 *mainSCARLET*

mainSCARLET is the function that creates virtual aggregates from the available set of shapes contained in the input structure described in sec. 2.2.1. It is composed of two distinct blocks (Fig.5): the first one assigns a 3D shape to the *i*-th object of the vector of N_p coating particles; then it scales the shape and the inner spheres in order to make the maximum size of the STL of the *i*-th object to be equivalent to d_{max}^i . The second block places the *i*-th object around the inner core, whose Center of Mass (CM) is coincident with the origin of the axes. The first shape of the input structure is assigned by default to the core and it is scaled to have the maximum length of the STL equivalent to d_{max}^{core} .

220

The algorithm for particle placing is based on five main loops:

- 225 - *Loop 1* (for $i=1$ to N_p): for each coating particle the code generates a cone of aperture Ω respect to the unit vector \hat{v} , which is randomly and uniformly oriented on the surface of a unitary sphere. The center of the cone can be placed at the CM of the core or at the center of one of the spheres of the sphere-composite representation of the aggregate, according to the user specifications. In case of a central core whose CM is outside the STL file, the second option is activated by default. The angle Ω is measured in degrees with respect to the central axis of the cone (i.e. $\Omega = 0^\circ$ coincides with \hat{v}). Large values produce a wider exploration of the surface of the aggregate before placing the coating particle; on the contrary, small values of Ω generally produce loose aggregates. The user can also fix a preferred direction for the cone for all the cases in which collisions occur along a preferential direction. We will not make this assumption in the rest of the paper, assuming that the collisions described comes from a fully isotropic turbulence with random angles of collisions.
- 230
- 235 - *Loop 2* (for $j=1$ to N_r): N_r rays are generated within the i -th cone. The code computes the most external intersection point P_e of each ray with the spheres already placed in the aggregate.
- *Loop 3* (parallelized, for $k=1$ to N_o): the shape is randomly rotated N_o times in the space along three angles $[\varphi, \theta, \psi]$, according to the Euler rotation matrix (Z-X-Z convention). This loop is parallelized using *parfor*.
- *Loop 4*: while loop that moves inwards the i -th particle starting from the position $P_e + 1.1 \cdot D_i$ along the direction of the j -th ray. It stops when at least one intersection is counted between the spheres of the coating particle and the aggregate. The inward motion is a coarse and fast displacement of the particle. The step-size of this movement is defined as a fraction f_{c1} of the particle size (suggested values $f_{c1} = [0.01 - 0.001]$).
- 240
- *Loop 5*: while loop that moves outwards the particle from the last location reached in loop 4. It stops when it is empty the intersection of the spheres belonging to the aggregate and the coating particle. The step-size f_{c2} of the outward movement is finer than f_{c1} (suggested values $f_{c2} = [0.01 - 0.0005]$).
- 245

For a given ray within the cone, SCARLET-1.0 determines the rotated particle that has the minimum distance between the CM of the coating particle and the aggregate (Fig.8). Finally, it selects the coating particle that among all the rays has the minimum distance respect to the CM of the aggregate. Therefore, the i -th coating particle will be placed after two minimization processes: the first one over all the rotations per each ray; the second one over all the rays.

250 *mainSCARLET* produces two types of outputs: i) three figures showing respectively the 3D image of the final aggregate, the external volume V_{ext} used for the calculation of the porosity and the points used to determine the external volume itself; ii) output structures that contain the of mass, density, porosity, size, the external volume and the sum of the inner volumes of its components V_{int}^i . Finally, *mainSCARLET* generates in the root folder the STL file of the aggregate structure.

255 The calculation of the aggregate porosity requires some additional clarification here because it can vary according to the definition of V_{ext} . In SCARLET-1.0 the determination the aggregate porosity is done under the assumption that the V_{ext} is the convex hull formed by the most outer points of its sphere-composite representation. This choice is a compromise between

what has been observed in nature for PC3 aggregates (Bagheri et al., 2016; Gabellini et al., 2020) and the aim for a reduced complexity in the algorithm. All the V_{int}^i are directly calculated from the surface of the scaled STL shape, using the divergence theorem (Suresh, 2021). A unique density ρ_p is assigned to the monomers. The particle packing τ is evaluated according to Eq.1:

$$\tau = \frac{\sum_{i=1}^{N_p+1} V_{int}^i}{V_{ext}} \quad (\text{Eq. 1})$$

The aggregate porosity ϕ_{agg} and density ρ_{agg} can then be easily quantified as:

$$\phi_{agg} = 1 - \tau \quad (\text{Eq. 2})$$

$$\rho_{agg} = \rho_p \cdot (1 - \phi_{agg}) \quad (\text{Eq. 3})$$

Finally, the characteristic size D_{agg} assigned to the aggregate is the *sphere-equivalent diameter*, calculated as the diameter of a sphere with the same external volume of the aggregate (Eq.4).

$$D_{agg} = \left(\frac{6}{\pi} \cdot V_{ext}\right)^{1/3} \quad (\text{Eq. 4})$$

The algorithm takes advantage of the MATLAB built-in function *convexHull*, which is applied to the set of most external points among those describing the sphere-composition representation of the aggregate. Using points that belong to the sphere composite representation, instead of the STL file, is a consequence of the need of increasing the number of points generally used to define the external surface of objects involved in the aggregate. For a single STL characterized by a large number of facets and points, the use of a sphere-composite representation can lead to larger approximations in the determination of the porosity (or density). However, the code has not been designed for single particles and the error gets relatively less important for aggregates. In fact, in these cases, what matters is how well the convex surface assumption describes the actual overall bulk volume of the object, more than the error on the single component. In any case, a proper use of *fromStlToSpheres* is always preferred to obtain the desired sphere-composite representation of the irregular shape.

3 Results

3.1 Testing the model

3.1.1 Porosity evaluation using the convex hull approximation: a comparison with analytical results

As outlined in section 2, the porosity of an aggregate is always dependent on the surface that is used to define the external volume of the object. In SCARLET-1.0 the use of the convex-hull approximation is suitable for central collisional processes that result in roughly spherical aggregates, such as the PC1 and PC3 recently observed in the field (Bagheri et al., 2016;

285 Gabellini et al., 2020). However, it can lead to an overestimation of the porosity for structures that are poorly approximated by a convex geometry, such as fractal-like aggregates. In all these cases the porosity should be considered as an upper-bound limit.

In order to investigate the accuracy, we compared the porosity computed by the algorithm with those belonging to particular aggregate configurations or single objects for which analytical results are given in literature. In Fig.9a and Fig.9b the comparison is made with respect to a classical configuration of sphere packing (e.g. the cannonball problem (Lucas, 1883)). For these convex shapes the porosity difference is about 7%-12%, with a dependency on the number of inner spheres used to describe the shapes. In general, the higher the number of spheres, the higher the evaluated porosity. This is a consequence of a more accurate representation of the original structure. However, for a fixed number of spheres, the approximation is also dependent on how many points define the STL triangulation and from N_{iter} (i.e. how large are the spheres). In Fig.9c and Fig.9d we calculate the porosity of the fractal shape known as “Menger’s sponge”, respectively obtained with $n=2$ and $n=3$ recursive iterations with Openscad (Hellweg et al., 2013), for which the porosity can be calculated as a function of the recursive step n (Sergeyev, 2009): $\phi_n = 1 - \left(\frac{20}{27}\right)^n$. For $n=2$ and $n=3$ the theoretical value are $\phi_2 = 45.1\%$ and $\phi_3 = 59.4\%$. In our test we overestimated ϕ_2 and ϕ_3 respectively of about 14% and 4% .

Lastly, Fig.9e shows a non-convex L-shaped aggregate made of 8 spheres. If the user-defined external volume is the one related to the void filling the space between two close spheres, this is equal to Fig.9a (i.e. 48%). In this case SCARLET-1.0 considers the convex surface that contains the spheres, which is close to the one defined by the triangular surface as base and one sphere diameter as height.

3.1.2 Porosity for aggregates made of spheres and ellipsoids and comparison with the maximum packing

305 The research of the maximum packing has always played an interest in mathematics and other practical applications (Hales, 2005; Man et al., 2005; Farr and Groot, 2009). As it is evident from Eq. 1, porosity and packing are oppositely related: a larger packing will reduce the porosity of the aggregate, and vice versa. Even if SCARLET-1.0 has not been specifically designed for the research of maximum packing, it is somehow interesting to test the algorithm with respect to this branch of investigation, for which analytical limits are provided according to the shape of the single components under analysis. In this paragraph we will evaluate the packing τ of spheres and ellipsoids with principal axes ratios of ($a_1= 1.25$: $a_2= 1$: $a_3= 0.8$), for which the theoretical values of the maximum packing τ are available in literature (see Fig.2 of Man et al., 2005). This particular choice of the principal axes constrains the value of flatness $f = \frac{a_3}{a_2} = 0.8$ and elongation $e = \frac{a_2}{a_1} = 0.8$. In our simulations we fix $a_1 = 10$ a.u. (arbitrary units) and we derive a_2 and a_3 from f and e (e.g. $a_2 = 8$ a.u. and $a_3 = 6.4$ a.u.). The average radius of the ellipsoid is defined as $\bar{a} = (a_1 \cdot a_2 \cdot a_3)^{1/3}$ and with R we indicate the radius of a sphere with same external volume of the overall aggregate. The goal of the test is to relate the computed values of τ with the initial setup adopted in each simulation for solid angles, number of rays and number of rotations respectively, i.e. (Ω , N_r , N_o). Virtual aggregates created in this test are made of identical particles with the same size. Packing is displayed in Fig.10 as a function of the dimensionless parameter

$\gamma = \frac{\bar{a}}{R}$. A variable number of particles, comprised between a minimum of 10 and a maximum of 1000, has been used in all the simulations in order to achieve different values of γ . The results presented in Fig.10 show that the condition of maximum packing for ellipsoids can be easily reached only for values of $\gamma > 0.3$. For values of $\gamma < 0.3$ a larger number of rays must be adopted to reach the same degree of packing. For spheres and for the conditions analyzed in this example, the maximum packing is reached for $\gamma > 0.1$. As expected and it is clearly shown for spheres, the increase in number of rays is not linearly related neither to the decrease of γ nor the increase of τ . In the search of the maximum packing, it seems that a large number of rays can have larger benefits with respect to the increase of the number of rotations, at least for the shape analyzed in this example. In addition, we notice that for spheres the minimum value for packing τ is about 20%; a value that corresponds to a maximum porosity of 80% (see Eq.1). This threshold can be considered as a good estimation of the maximum value for porosity reachable by means of the SCARLET-1.0 algorithm.

3.2 Application of SCARLET-1.0 to packing problems

In this section two examples of possible applications of SCARLET-1.0 to different scientific problems are discussed. In the first example the attention is focused on the study of binary collisions of generic ellipsoids, i.e. aggregates made of just two particles. In particular, the goal here is to derive how the porosity of the final product depends on the flatness and elongation of the ellipsoids and their relative sizes. Ellipsoids are often used to approximate complex shapes; this application is, thus, of general interest for different scientific topics, such as particle sedimentation, particulate transport, etc. In the second example, SCARLET-1.0 is instead applied to the investigation of how the porosity evolves in time for volcanic ash aggregates. In this application, parameters of real volcanic aggregates are used to constrain the free parameters of the algorithm (Ω , N_r , N_o) and to draw important conclusions on the evolution of these objects.

3.2.1 Porosity for particle-particle collision of two generic ellipsoids

A collision of two distinct bodies is always the initial seed for binary aggregation processes (Jacobson, 2005). The aggregate will then evolve in time building up its own structure collision after collision, particle by particle. It is thus worth understanding the details of this initial stage, especially for what concerns how the 3D space is filled respectively by matter and voids. SCARLET-1.0 can be easily adapted to this problem and an arbitrary number of colliding shapes can be investigated in theory. However, in this section we limit our attention to particle-particle collisions of ellipsoids, due to their vast application in science as an approximation of much more irregular shapes (Bagheri et al., 2015). In this application we are interested in studying how the porosity ϕ_{agg} changes as a function of particle size ratios and their orientation in space. Here, as in the rest of the paper, the external volume for the calculation of ϕ_{agg} is defined by the convex-hull surface that bounds the two ellipsoids involved in the collision (Fig. 11b, 11c). This is equivalent to study the maximum porosity that can exist between two single and not-vesiculated ellipsoids.

An ellipsoid is fully characterized by the knowledge of its three principal axes L, I, S (where $L \geq I \geq S$). Here we describe the intermediate and smallest axes, I and S respectively, in terms of flatness f and elongation e ($I = L \cdot e$ and $S = L \cdot e \cdot f$). This formalism allows describing the shape of any given ellipsoid as a single point in the “flatness-elongation plane” (FE-plane), as shown in Fig. 11, where 16 different ellipsoids have been created with OpenSCAD (<https://www.openscad.org/>) to map the FE-plane. When two ellipsoids collide, the resulting porosity ϕ_{agg} is also affected by the relative dimensions of the two objects, i.e. the *size ratio* r_L , here described in terms of the ratio between the major principal axes ($r_L = \frac{L_c}{L_p}$), where the subscript letters c and p indicate the central object and the colliding particle respectively. It is worth noticing that in general r_L is related to the ratio of the equivalent diameters $d_{eq} = (L I S)^{1/3}$ as follows: $r_d = \frac{d_{c,eq}}{d_{p,eq}} = r_L \cdot \left(\frac{e_c^2 f_c}{e_p^2 f_p} \right)^{1/3}$, that simplifies to $r_d = r_L$ in case of particles with the same flatness and elongation.

In this section we limit our attention to collisions of ellipsoids with the same shape but different size ratios r_L . Two different packings have been investigated for five times: a loose packing, *setup 1*, for which ($\Omega = 1^\circ, N_r = 1, N_o = 1$) (Fig. 12); a much denser packing, *setup 2*, for which ($\Omega = 90^\circ, N_r = 30, N_o = 10$) (Fig. 13). In Fig. 12 and Fig. 13 the pair of numbers in brackets refer to the red labels in Fig. 11, used to identify the shapes involved in the collisions.

Few comments can be made on the results reported in Fig. 12 and Fig. 13. Firstly, the loose packing generally shows significantly more variability than the dense one (shadow areas in the figures), as it is expected given that *setup 1* completely depends on the initial random orientations of the bodies and the initial direction of collisions. Increasing the size ratios of the two objects or reaching the limiting case of a sphere ($f \rightarrow 1, e \rightarrow 1$), the variability goes to zero. Secondly, we notice that for collisions of particles of the same size ratio, where $f \geq 0.5$ and $e \geq 0.5$, the final porosity of the aggregate approaches $\phi_{agg} \approx 20\%$, which corresponds to the analytical solution of two contacting spheres of the same size (as also confirmed by the simulations (16;16)).

Interestingly, if the shape of the objects is not characterized by extreme low values of elongation or flatness (e.g. less than 0.5) the threshold of 20% represents a maximum value for porosities, regardless of the size ratios involved in the collision, as clearly shown in Fig. 12 and Fig. 13. Scenarios become more complicated if flatness or elongation (or both) are less than 0.5 (i.e. needle-like or extremely flat objects): in all these cases we notice a dependence from the initial setups used in SCARLET-1.0 and, in general, higher values of the porosities with respect to the previous cases. As an example, for shapes labelled as (1;1) and $r_L = 1$, the setup 1 gives a porosity of $\phi_{agg} = 0.52 \pm 0.13$, compared to $\phi_{agg} = 0.42 \pm 0.09$ of setup 2. This last value is consistent with $\phi_{agg} = 0.44 \pm 0.08$ obtained averaging 30 runs with the setup ($\Omega = 90^\circ, N_r = 60, N_o = 30$).

375

3.2.2 Porosity of volcanic ash aggregates as a function of the aggregation stage

The term *volcanic ash aggregation* refers to the formation in the atmosphere or within a volcanic plume or cloud of agglomerates from 10s of μm to a few mm in size due to the collision of smaller particles with a diameter generally less than

100 μm (Brown et al., 2012). As recently observed during the 2010 Eyjafjallajökull eruption (Iceland), volcanic ash
380 aggregation plays a major role in ash sedimentation, as it affects the particle residence time in the atmosphere and it potentially
leads to an overestimation of ash concentrations in the atmosphere if it is underestimated in the forecast models (e.g.
Bonadonna et al., 2011, Durant, 2015). Unfortunately, despite its importance, many questions still remain open due to the
complexity of the processes involved (Durant, 2015). A key factor is, for example, the porosity of volcanic ash aggregates,
that strongly affects the sedimentation process and the residence time in the atmosphere. This parameter can be derived from
385 field observations of the terminal velocity of the object before the impact on the ground. However, field observations are
difficult to obtain, and, in any case, they can only provide the porosity of the final structure of the aggregate, with no
information about its evolution in time. In this section we apply SCARLET-1.0 to study the porosity evolution of volcanic ash
aggregates, expressed as a function of time, shapes and the grainsize distributions involved in the process.

Here we apply our algorithm to the reconstruction of two specific aggregates associated with two different eruptions: the
390 sample labelled as *27Sk21* belongs to the eruption occurred on 3rd of August 2013 at Sakurajima volcano, (Japan) (Bagheri et
al, 2016); the sample *EJ15* belongs to the eruption occurred on 5th of May 2010 at Eyjafjallajökull volcano (Iceland)
(Bonadonna et al., 2011). Sample *27Sk21* was observed with a High-Speed camera and was collected on an adhesive tape later
analyzed with a Scanning Electron Microscope (SEM); as a result, size and density could be derived before the impact on the
adhesive tape from High-Speed videos, while the grainsize distribution could be derived from image analysis of the material
395 collected on the adhesive tape (Bagheri et al, 2016). On the other hand, no High-Speed video is available for aggregate *EJ15*;
as a result, only the grainsize distribution and a rough estimation of its size (about 200 μm) could be derived from the material
left on the adhesive tape (Bonadonna et al., 2011).

The aggregates *27Sk21* and *EJ15* were characterized as cored cluster (i.e. Particle Cluster 3 – PC3) and ash cluster (i.e. Particle
Cluster 1 – PC1), respectively (Bagheri et al., 2016; Bonadonna et al., 2011). PC1 are clusters of ash particles with roughly all
400 the same sizes of about 20-50 μm (Brown et al., 2012), whereas PC3 are characterized by the presence of an inner single object
larger than 200 μm that has been coated by hundreds of smaller ash particles (Bagheri et al., 2016).

SCARLET-1.0 requires a vector of sizes as an input to locate the coating particles around the core, i.e. the detailed grainsize
distribution forming the aggregate to be reconstructed. However, large uncertainties are expected to affect the measured
grainsize distribution, due to i) the mass lost in the air after the impact of the aggregate with the adhesive tape; ii) the mass lost
405 during the transport of the samples from the field location to the laboratory; iii) the overlapping of particles in the SEM images
of the coating, which lead to a loss of information deriving from the 2D representation of a 3D structure.

For aggregate *27Sk21*, for which a constraint about size and density is available from the High-Speed video, we make the
assumption that all the losses in material only affect the total mass contained in the original coating population, but not the
relative proportion of particles in each size-bin. This is equivalent to consider the measured grainsize distribution as fully
410 equivalent to the original one, normalized for an unknown constant. The normalization constant is then derived matching the
size and density of the virtual aggregate with those derived from field observations.

Volcanic ash particles are characterized by a variety of irregular shapes for which the STL representation of the surfaces is usually not available (an example of an aggregate made of real 3D scanned volcanic particles is presented in Fig.A1 of the Appendix). Here, in the absence of the actual shape of the single particles in the coating, we decided to approximate particles
415 as ellipsoids. This choice is related to the observation that the drag of irregular particles can be sufficiently well described in terms of equivalent ellipsoids (Bagheri and Bonadonna, 2016). Moreover, we follow the simplified approach of classifying the coating population as two distinct classes, i.e. coarse (between 63 μm and 2000 μm) and fine (≤ 63 μm) ash, each of them characterized by a single specific ellipsoid as displayed in Fig. 14.

The two ellipsoids for coarse and fine ash are defined in terms of the three principal axes, derived averaging the L, I, S values
420 of particles with size ≤ 63 μm and between 63 μm and 2000 μm from ash samples of the 2010 Eyjafjallajökull (Iceland) (Table 2). These ellipsoids are used here to represent coarse and fine ash for both samples EJ15 and 27sk21. The actual size of the i -th particle, $d_{eq}^i = (L_i I_i S_i)^{1/3}$, is used to scale the STL shape and to calculate the maximum length of the i -th ellipsoid $L = \alpha \beta d_{eq}^i$ (where $\alpha = L/I$ and $\beta = L/S$) as required by SCARLET-1.0 (see section 2.3).

In this virtual reconstruction we aim to reproduce the observed diameter of the aggregate (675 μm) and its final density (310
425 kg/m^3) (Table 1), under the assumption that the measured grainsize of Fig.15b can be replicated N_A times in order to compensate for the expected mass loss. Single particles are assumed to have a density of 2500 kg/m^3 (Bagheri et al., 2016). In our reconstruction particles below 32 μm in size are not taken into account in order to optimize the computational efficiency without affecting the final result. As a matter of fact, given that the volume scales as the third power of diameter, smaller particles add second order contributions to the final packing. Several combinations of the solid angle Ω , number of rays N_r ,
430 and number of Euler rotations N_o have been tested. However, only a loose packing (e.g. $\Omega = 1^\circ$, $N_r = 1$, $N_o \leq 5$) and $N_A = 6$ can approximately reproduce the observed features, characterized by a porosity larger than 80% and an aggregate to core ratio of ≈ 3 (see table 1). In Fig. 16 the variation of aggregate porosity is displayed as a function of collisions, for four different scenarios: ellipsoids whose sizes are randomly picked from the grainsize distribution (i.e. random displacement; blue line); ellipsoids sequentially located from the largest size to the smallest one (i.e. sequential displacement; red line); spheres whose
435 sizes are randomly picked from the grainsize distribution (black line); spheres sequentially located from the largest size to the smallest one (i.e. sequential displacement; green line). Each line is the average of 5 repetitions and the final size of the virtual aggregate is ≈ 600 μm .

The second object to be reconstructed is the PC1 aggregate EJ15, that was collected on an adhesive tape during the 2010 Eyjafjallajökull eruption (Iceland) (Bonadonna et al. 2011). The reconstruction is strongly affected by the lack of High-Speed
440 video that does not allow to characterize the aggregate size and density before the impact with the adhesive paper. Therefore, in this application we simply focus on the time evolution of the porosity for different configurations of Ω, N_r, N_o , keeping the grainsize distribution equivalent to the one observed by Bonadonna et al., (2011) (i.e. no assumption has been made on the mass loss). In addition, the same ellipsoids reported in Table 2 have been used also for this application. The results of different

simulations are reported in Fig.17, together with the 3D visualization provided by SCARLET-1.0. In the following we refer to
445 the setup ($\Omega = 50^\circ$, $N_r = 30$, $N_o = 10$) as “tight packing” and to the setup ($\Omega = 1^\circ$, $N_r = 1$, $N_o = 1$) as “loose packing”.
The range of final porosities spans from a maximum value of about 73-76% for the loosest packing down to 30% for the tight
packing with $\Omega = 50^\circ$, $N_r = 30$, $N_o = 10$. If we compare the curves of Fig.17 with values of porosities reported in literature
for PC1 aggregates, comprised between ≈ 80 -97% (Brown et al., 2012; Gabellini et al., 2020; Table 1), we can deduce that
only the loose packing can realistically reproduce the observed features, such is the case for PC3 aggregate.
450 Finally, it is important to notice how the plateau in porosity for EJ15 is reached roughly after the same number of collisions
(≈ 50 -70 collisions) both for the tight and loose packing.

4. Discussion

4.1 SCARLET-1.0: general comments on the operational use

455 SCARLET-1.0 has been specifically designed for the simulation of aggregation of complex shapes. In order to treat the
intersection problem between colliding objects, the algorithm takes advantage of the sphere composite representation of a
body. This means that if a given shape is described in terms of N_{sp} spheres and if N_p particles collide, the final aggregate will
be described as $N_{sp} \times N_p$ spheres. Given that the intersection is evaluated for each step in the inward and outward movement
before placing each single particle (see Fig.5), the use of a large number of spheres combined with a large number of particles
460 can significantly increase the computational time of the package. As a general advice, we recommend an appropriate use of
the preprocessing code *fromStlToSpheres* and the Boolean variable O_{ext} to find a good balance between an accurate description
of the shape and a reduced number of spheres, i.e. faster computational times.

An important point that the user should always consider is how the parallelization of the algorithm works. The parallelization
of the code is based on the execution of simultaneous for-loop iterations on the different available threads using *parfor*.
465 However, MATLAB does not allow for nested parallel loops, which results in a parallelization that can only be performed at
one level. As shown in Fig.5 in the present release of SCARLET-1.0 this occurs inside the loop dedicated to describing particle
rotations along a single ray. This means that if few rotations are set in the simulation the parallelization will not substantially
speed up the code.

As outlined in the introduction, SCARLET-1.0 has been created to simulate central collisional processes, in which particles
470 collide from random directions and find their final location after spanning a given solid angle Ω . This occurs in different natural
phenomena as the ones discussed in the previous examples and in the introduction. According to the setup imposed by the
external user, the package can simulate various degrees of packing by simply changing the solid angle of investigation (Ω),
the number of rays (N_r) and the number of rotations (N_o). For what concerns the maximum packing, Fig. 10 shows that objects
characterized by a particle-to-aggregate size smaller than 0.17-0.25 require more computational efforts to match the maximum
475 packing condition than aggregates with smaller sizes or larger components (at least for the shapes investigated). In these cases,
the use of multiple processors allows having a large number of rotations tested, which can finally result in a better packing of

the object in a lower computational time. However, in several applications of interest, such as the one reported in section 3.2.2, the maximum packing is not the final aim of the virtual reconstruction and a much less dense packing is required to correctly mimic the phenomenon under analysis.

480

4.2 SCARLET-1.0 applied to the study of porosity for volcanic ash aggregates

In section 3.2.2 we presented SCARLET-1.0 applied to the study of porosity in volcanic ash aggregates. This is an interesting example of how the algorithm can provide answers not only about the packing of shapes but also on its evolution in time, an information that is usually missing in field or lab observations. The study has been focused on the virtual reconstruction of two specific aggregate structures: PC3 type (aggregate 27sk21), made of a central object five to ten times larger than the
485 particle sizes present in the coating; PC1 type (aggregate EJ15), made of particles with roughly the same size.

The reconstruction of the PC3 aggregate (Fig.16) has shown that the modelled aggregate porosity ($\approx 73\%$) is almost 10% smaller than the observed one, for the same size of the aggregate. This discrepancy can be due to the approximations made in the description of particle shapes. An alternative explanation can suggest the presence of liquid bridges in the original structure that alter the contact condition between particles and finally creates a looser packing of the coating than (Gilbert and Lane,
490 1994). The setup used in the simulation that corresponds to *loose packing* (e.g. $\Omega = 1^\circ$, $N_r = 1$, $N_o \leq 5$) describes a particle coming from a random direction, randomly oriented, that it is going to be located on the surface of the core immediately after the first contact. In this configuration no minimization is done on the packing of the aggregate and it should thus reproduce a condition of maximum porosity for the object. However, the fact that the observed porosity is even larger than the simulated
495 one could be interpreted as a violation of the contact condition among particles as assumed by SCARLET-1.0. This violation is theoretically possible if liquid bonds act as a sticking medium between particles.

The importance of loose packing for the typologies under analysis is also confirmed by the PC1 sample (EJ15), for which the computed porosity of 73-76% for the loosest configuration matches with the lower bound of porosity reported in literature (e.g. 80%). This work thus suggests that the condition of maximum packing should not be seen as the natural tendency in the
500 context of volcanic ash aggregation, at least for PC1 and PC3 types.

A second important observation concerning the virtual reconstruction of sample 27sk21 is the use of $N_A = 6$ to reproduce the observed features of the aggregate. This practically means that the number of particles analyzed at the SEM is underestimated of about 1/6 with respect to the original coating. This implies that a realistic quantification of the number of particles stuck over the surface of the PC3 aggregate under analysis was probably of the order of a few thousands.

505 For what concerns the differences between random or sequential displacement of particles, we notice from Fig. 16 and Fig. 17 that random displacement initially produces lower porosities with respect to a sequential displacement of particles from large to small sizes. This can be explained thinking of the large number of voids that is created when particles of similar sizes are packed together. On the contrary, smaller particles can easily fill the voids resulting in lower porosities. However, a non-trivial observation from Fig. 16 and Fig. 17 is that the final value of the aggregate porosity weakly depends on the “*history*” of the

510 packing, as long as the number of coating particles is wide enough. In addition, Fig. 16 suggests that the use of ellipsoids does not produce remarkable differences in the packing with respect to spheres (about $\approx 5\%$ in the porosity). As expected, in case of a loose packing (i.e. $\Omega = 1^\circ$, $N_r = 1$, $N_o \leq 5$) the use of ellipsoids produces slightly higher porosities with respect to spheres.

An interesting result emerges when both PC1 and PC3 aggregates are compared on the same plot for the same configuration of Ω , N_r , N_o (Fig.18). It is evident how the PC1 aggregate reaches the plateau in porosity much faster than the PC3 one. This can be explained noticing that the presence of a large core inside the PC3 somehow slows down the increase in porosity of the object, which takes more time and more collisions to reach comparable levels of densities. The consequence of this observation is not only that PC1 objects can reach low densities faster than PC3 aggregates, but that if there are enough time and collisions to let a PC3 aggregate grow, its final density can be as low as a PC1. In other words, the contribution to the density of an inner large particle (the core) at its center is diluted in time by the increasing coating, that finally drops the overall density down to much lower values than that of the core.

A final aspect that is worth discussing is that in case of a sequential deposition of the coating, after reaching the plateau, the porosity of the aggregate starts decreasing. This can be explained by the fact that adding fine ash after coarse ash will not significantly alter the total volume of the aggregate, but this process increases the mass of the aggregate and reduces the voids. This leads to the observed decrease in porosity.

4.3 Caveats

4.3.1 Porosity calculation

The determination of the aggregate porosity is based on the assumption that the external surface that circumscribes the inner components is convex. This choice is motivated by the aggregate morphology associated to PC type aggregates in volcanology. This can be the case also in other applications, but the user must be aware of this a-priori. In fact, this approach may lead to an overestimation of the porosity in case, for example, of fractal-like aggregates for which the overall fractal dimension is less than three. In those cases, the convex hull approximation can be seen as an upper limit for the maximum porosity, which converges to the actual porosity for aggregates that are well described by a convex geometry.

535

4.3.2 Computational efficiency

The computational efficiency of the package in the release v1 is mostly dependent on four main factors: i) the step-size used to detect the single collision; ii) the number of particles in the coating; iii) the number of spheres used in the sphere-composite representation; iv) the number of cores available for the parallelization of the rotations. The tests performed using a laptop with processor i7-4600U CPU @ 2.10 GHz x4 (2 threads in MATLAB *parfor*) revealed that among all the above-mentioned factors the most critical parameter is f_{c2} , that controls the outward movement of the i -th particle. It shows a non-linear increase of the computation time in reducing the iteration step. On the other hand, the computational time increases linearly with respect

540

to the number of spheres used in the sphere-composite representation of the STL, the number of rays in the investigation cone and the number of rotations.

545

4.3.3 Warnings related use of STL files

1. When the center of mass of the core is placed outside the STL file, SCARLET-1.0 automatically places the center of the investigation cone at the center of one of the spheres that form its sphere composite representation.

2. The preprocessing function *fromStlToSpheres* generates spheres inside the STL starting from the vertexes of the triangulation. Some geometrical shapes just need a reduced number of vertexes to be fully described such as cubes, cylinders or tetrahedrons. In these cases, the user must increase the numbers of points on the surface of the object before running *fromStlToSpheres*. This is not always easy to be done and it requires some skills in programming.

3. SCARLET-1.0 generates the STL file of the virtual aggregate. This format can *potentially* be used for 3D printing. Here we say “*potentially*” because the success of the procedure depends on many conditions: the shape of the aggregate, the degree of overlapping of its components, the stability of the structure and the characteristics of the 3D printer. In some cases, the user should decrease the tolerances used in the calculation of the intersection between spheres in order to have a more solid structure suitable for 3D printing. Further tests will be conducted on this and in the GitHub page of the software new releases and notes will be posted on this in the future.

560 5. Conclusions

In this work we presented SCARLET-1.0, a MATLAB package aimed at simulating volcanic ash aggregates that derive from central collision processes, starting from an arbitrary population of sizes and shapes. 3D bodies are approximated by a set of not-overlapping spheres, resulting in an analytical description of their intersections. The code has been designed to investigate the geometric packing of ash aggregates produced in volcanic plumes or clouds. However it can reasonably be applied in all those applications where the collision dynamic is the same as in a volcanic plume (i.e. polydisperse population in isotropic turbulent flow). The main output of the code is the final porosity of the aggregate, calculated as the ratio of the inner voids and the external volume of the agglomerate and the STL file of the structure.

In terms of novelty of the code we can conclude that:

1) One of the most appealing features of the code is the use of the STL format to import 3D shapes. The STL standard is nowadays one of the most widespread formats in the community, due to its strong connection to the world of 3D printing. This results in a large availability of software to design arbitrary shapes and in the possibility to import 3D scanned surfaces from real samples.

2) An interesting aspect of the package is the production as an output of the STL file on the modelled virtual aggregate. This practically means that the final object can be 3D printed and used in real contexts, such as laboratory investigations.

575

- 3) The external user can easily control the basic aspects of the algorithm simply playing on few parameters, such as (Ω , N_r , N_o) for the minimization process or Boolean quantities for the computation of porosity in time.
- 4) The algorithm can be easily modified to the study of different problems, such as the study of aggregate-aggregate collision.

580

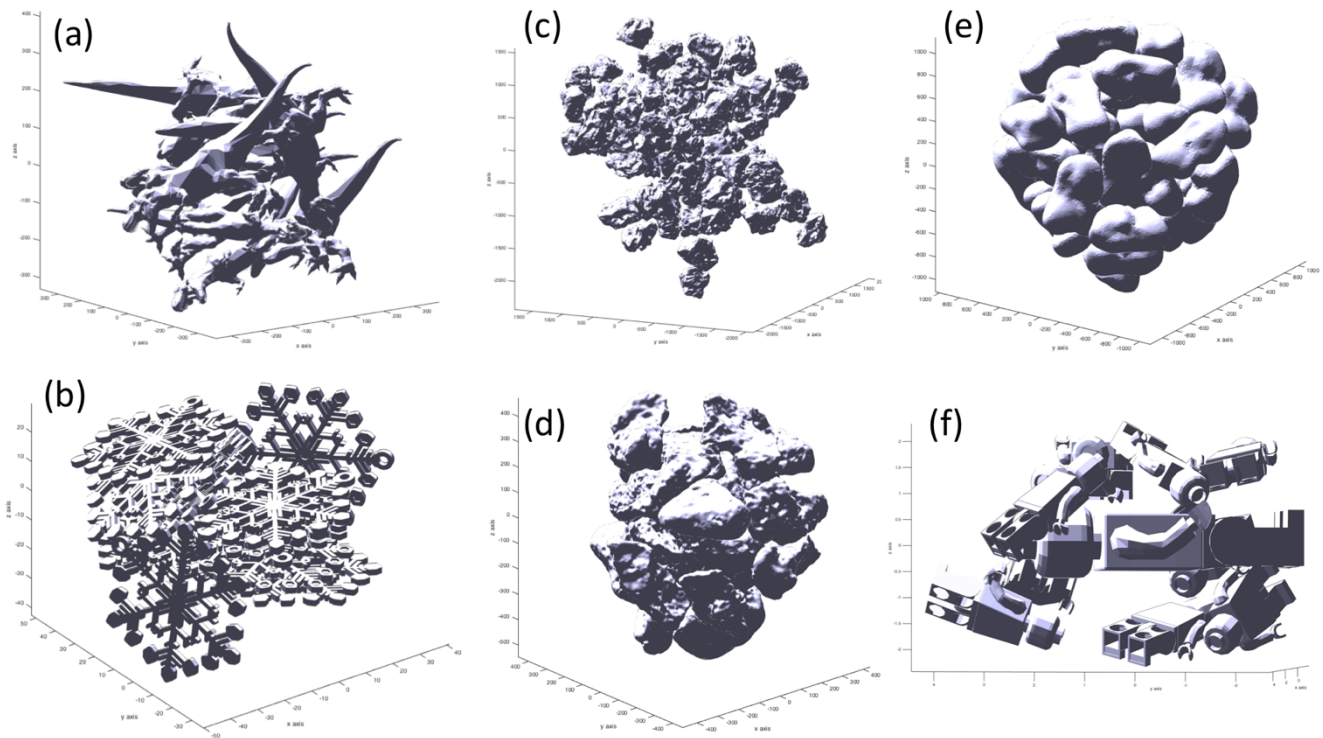
The examples analyzed in the manuscript show the versatility of the code and its potentials. In terms of the two specific applications of the code to aggregation processes we can conclude that:

- 1) The resulting porosity of an ellipsoid-ellipsoid collision has a maximum of 20% for objects of the same size and with flatness and elongation larger or equal to 0.5. Needle-like or flat bodies characterized by flatness and elongation less than 0.5 can result in higher porosities.
- 2) The virtual reconstruction of volcanic ash aggregates shows how PC1 and PC3 types are better represented in terms of a loose packing in which particles stop their relative motion after touching. This can be explained by a very efficient binding mechanism or a reduced impact velocities of the colliding objects.
- 3) PC1 aggregates can reach high porosities faster than PC3, i.e. after a lower number of collisions. However, if a large number of particles can stick on the central object to form a thick coating, the final porosity of PC3 type tends to be similar to the PC1 sample.
- 4) Random and sequential packing produce differences of about 10% in the porosity in the analyzed samples.

585

590

Examples of virtual aggregates created with SCARLET-1.0 with different shapes. The goal is to show the potential use of the algorithm to a large variety of cases.



600 **Figure A1.** Virtual aggregates made of different initial STL files. (a) aggregate made from a STL file of a t-rex; (b) aggregate made
 605 from a STL file of snowflakes; (c) aggregate made of real volcanic particles, scanned with a 3D laser scanning machine (loose
 packing); (d) the same shapes and objects of (c) but with a more tight packing; (e) aggregate made using as a STL file the asteroid
 Castalia; (f) aggregate made of toy characters.

605

610

615 **Author contribution**

- Eduardo Rossi: he developed the algorithm and wrote the first version of the paper and the user guide
- Costanza Bonadonna: she provided the dataset for section 3.2.2 and 4.2, revised the manuscript and improved the writing of the manuscript

620

Code availability

The code has been developed for scientific purposes and it can be freely used if the user has a MATLAB license. The code is made available at the following Zenodo link for the revision process of GMD (<https://doi.org/10.5281/zenodo.4675770>).

625 In future, new updates of the code will be released at the Github page <https://github.com/EduardoRossiScience/SCARLET>.

Competing interests

The authors declare that they have no conflict of interest.

630 **Acknowledgements**

We would like to thank Marco Pistolesi and Raffaello Cioni for their help in reconstructing the grain size distribution of the aggregate EJ15. This work was supported by the Swiss National Science Foundation (Grant No. 200021_156255).

References

- 635 Abrahamson, J.: Collision rates of small particles in a vigorously turbulent fluid, *Chem. Eng. Sci.*, 30, 1371-1379, 1975.
- Ormel, C. W. and Cuzzi, J. N.: Closed-form expressions for particle relative velocities induced by turbulence (Research Note), *Astronomy & Astrophysics*, 466, 413-420, 2007.
- Bagheri, G. H., Bonadonna, C., Manzella, I., and Vonlanthen, P.: On the characterization of size and shape of irregular
640 particles, *Powder Technol.*, 270, 141-153, 2015.
- Bagheri, G. and Bonadonna, C.: On the drag of freely falling non-spherical particles, *Powder Technol.*, 301, 526-544, 2016.
- Bagheri, G., Rossi, E., Biass, S., and Bonadonna, C.: Timing and nature of volcanic particle clusters based on field and
645 numerical investigations, *J. Volcanol. Geotherm. Res.*, 327, 520-530, 2016.

Bonadonna, C., Genco, R., Gouhier, M., Pistolesi, M., Cioni, R., Alfano, F., Hoskuldsson, A., and Ripepe, M.: Tephra sedimentation during the 2010 Eyjafjallajökull eruption (Iceland) from deposit, radar, and satellite observations, *J. Geophys. Res.-Solid Earth*, 116, 20, 2011.

650

Brauer, M., Avila-Casado, C., Fortoul, T. I., Vedal, S., Stevens, B., and Churg, A.: Air pollution and retained particles in the lung, *Environ. Health Perspect.*, 109, 1039-1043, 2001.

Brown, R. J., Bonadonna, C., and Durant, A. J.: A review of volcanic ash aggregation, *Phys. Chem. Earth*, 45-46, 65-78, 2012.

655

Burns, F. A., Bonadonna, C., Pioli, L., Cole, P. D., and Stinton, A.: Ash aggregation during the 11 February 2010 partial dome collapse of the Soufriere Hills Volcano, Montserrat, *J. Volcanol. Geotherm. Res.*, 335, 92-112, 2017.

Chopard, B., Nguyen, H., and Stoll, S.: A lattice Boltzmann study of the hydrodynamic properties of 3D fractal aggregates, *Math. Comput. Simul.*, 72, 103-107, 2006.

660

Conway, J. and Sloane, N.J.A., *Sphere Packings, Lattices and Groups*, Springer New York, 1998.

Cuq, B., Mandato S., Jeantet R., Saleh K., Ruiz T., *Agglomeration/granulation in food powder production*, Woodhead Publishing, 150-177, 2013

665

Dacanal, G. C., Feltre, G., Thomazi, M. G., and Menegalli, F. C.: Effects of pulsating air flow in fluid bed agglomeration of starch particles, *J. Food Eng.*, 181, 67-83, 2016.

670 Dominik, C., Blum, J., Cuzzi, J., and Wurm, G.: Growth of Dust as the Initial Step Toward Planet Formation, 2006.

Donev, A., Cisse, I., Sachs, D., Varniano, E., Stillinger, F. H., Connelly, R., Torquato, S., and Chaikin, P. M.: Improving the density of jammed disordered packings using ellipsoids, *Science*, 303, 990-993, 2004.

675 Durant, A. J.: Toward a realistic formulation of fine-ash lifetime in volcanic clouds, *Geology*, 43, 271-272, 2015.

Evans, K. E. and Ferrar, M. D. A. A.: The packing of thick fibres, *Journal of Physics D Applied Physics*, 22, 354, 1989.

Farr, R. S. and Groot, R. D.: Close packing density of polydisperse hard spheres, *J. Chem. Phys.*, 131, 7, 2009.

680

- Filippov, A. V., Zurita, M., and Rosner, D. E.: Fractal-like aggregates: Relation between morphology and physical properties, *J. Colloid Interface Sci.*, 229, 261-273, 2000.
- 685 Gabellini P., Rossi E., Bonadonna C., Pistolesi M., Bagheri G., Cioni R., Physical and aerodynamic characterization of particle clusters at Sakurajima volcano (Japan). *Frontiers in Earth Science*, doi: 10.3389, 2020
- Gilbert, J. S. and Lane, S. J.: The origin of accretionary lapilli, *Bulletin of Volcanology*, 56, 398-411, 1994.
- Gravner, J. and Griffeath, D.: Modeling snow-crystal growth: A three-dimensional mesoscopic approach, *Phys. Rev. E*, 79, 690 18, 2009.
- Hales, T. C.: A proof of the Kepler conjecture, *Ann. Math.*, 162, 1065-1185, 2005.
- Hellweg N., Lalish E., Kintel M., <https://files.openscad.org/examples/Advanced/fractal.html>, 2013
- 695 Imaeda, Y. and Ebisuzaki, T.: Tandem planet formation for solar system-like planetary systems, *Geosci. Front.*, 8, 223-231, 2017.
- Ishizaka, M. (1993). An accurate measurement of densities of snowflakes using 3-D microphotographs. *Annals of Glaciology*, 700 18, 92-96. doi:10.3189/S0260305500011319
- Jacobson, M. Z. U.: *Fundamentals of Atmospheric Modeling*, Cambridge University Press, 2005.
- James, M. R., Lane, S. J., and Gilbert, J. S.: Density, construction, and drag coefficient of electrostatic volcanic ash aggregates, 705 *J. Geophys. Res.-Solid Earth*, 108, 12, 2003.
- Jia, X. and Williams, R. A.: A packing algorithm for particles of arbitrary shapes, *Powder Technol.*, 120, 175-186, 2001.
- Karrer, M., Seifert, A., Siewert, C., Ori, D., von Lerber, A., and Kneifel, S.: Ice Particle Properties Inferred From Aggregation 710 Modelling. *J. Adv. Model. Earth Syst.*, 12, 26, 2020.
- Kessler, D. A., Koplik, J., and Levine, H.: Numerical simulation of two dimensional snowflake, *Phys. Rev. A*, 30, 2820-2823, 1984.

- 715 Kieffer, S. W. and Sturtevant, B.: Laboratory studies of volcanic jets, *Journal of Geophysical Research*, 89, 8253-8268, 1984.
- Lucas E., *Recherches sur l'Analyse Indeterminée*, Moulins, p. 90, 1873.
- Lumme, K. and Rahola, J.: Light scattering by porous dust particles in the discrete-dipole approximation, *Astrophys. J.*, 425,
720 653-667, 1994.
- Man, W. N., Donev, A., Stillinger, F. H., Sullivan, M. T., Russel, W. B., Heeger, D., Inati, S., Torquato, S., and Chaikin, P. M.: Experiments on random packings of ellipsoids, *Phys. Rev. Lett.*, 94, 4, 2005.
- 725 Maruyama, K. and Fujiyoshi, Y.: Monte Carlo simulation of the formation of snowflakes, *J. Atmos. Sci.*, 62, 1529-1544, 2005.
- McCorquodale, M. W. and Westbrook, C. D.: TRAIL part 2: A comprehensive assessment of ice particle fall speed parametrisations, *Q. J. R. Meteorol. Soc.*, 147, 605-626, 2021.
- 730 Min, M., Waters, L., de Koter, A., Hovenier, J. W., Keller, L. P., and Markwick-Kemper, F.: The shape and composition of interstellar silicate grains, *Astronomy & Astrophysics*, 462, 667-676, 2007.
- Nguyen, H. P., Chopard, B., and Stoll, S.: Lattice Boltzmann method to study hydrodynamic properties of 2D fractal aggregates. In: *Computational Science - Iccs 2003, Pt I, Proceedings*, Sloot, M. A. P., Abramson, D., Bogdanov, A. V.,
735 Dongarra, J. J., Zomaya, A. Y., and Gorbachev, Y. E. (Eds.), *Lecture Notes in Computer Science*, Springer-Verlag Berlin, Berlin, 2003.
- Nguyen, H. P., Chopard, B., and Stoll, S.: Hydrodynamic properties of fractal aggregates in 2D using Lattice Boltzmann simulation, *Futur. Gener. Comp. Syst.*, 20, 981-991, 2004.
- 740 Ning, C. and Reiter, C. A.: A cellular model for three-dimensional snow crystallization, *Comput. Graph.-UK*, 31, 668-677, 2007.
- Nolan, G. T. and Kavanagh, P. E.: Random packing of nonspherical, *Powder Technol.*, 84, 199-205, 1995.
- 745 Ohno, K., Okuzumi, S., and Tazaki, R.: Clouds of Fluffy Aggregates: How They Form in Exoplanetary Atmospheres and Influence Transmission Spectra, *Astrophys. J.*, 891, 19, 2020.

- 750 Ori, D., Maestri, T., Rizzi, R., Cimini, D., Montopoli, M., and Marzano, F. S.: Scattering properties of modeled complex snowflakes and mixed-phase particles at microwave and millimeter frequencies, *J. Geophys. Res.-Atmos.*, 119, 9931-9947, 2014.
- 755 Ormel, C. W., Spaans, M., and Tielens, A.: Dust coagulation in protoplanetary disks: porosity matters, *Astronomy & Astrophysics*, 461, 215-232, 2007.
- Poon, J. M. H., Immanuel, C. D., Doyle, F. J., and Litster, J. D.: A three-dimensional population balance model of granulation with a mechanistic representation of the nucleation and aggregation phenomena, *Chem. Eng. Sci.*, 63, 1315-1329, 2008.
- 760 Pumir, A. and Wilkinson, M.: Collisional Aggregation Due to Turbulence. In: Annual Review of Condensed Matter Physics, Vol 7, Marchetti, M. C. and Sachdev, S. (Eds.), Annual Review of Condensed Matter Physics, Annual Reviews, Palo Alto, 2016.
- Reiter, C. A.: A local cellular model for snow crystal growth, *Chaos Solitons Fractals*, 23, 1111-1119, 2005.
- 765 Sergeyev, Y. D.: Evaluating the exact infinitesimal values of area of Sierpinski's carpet and volume of Menger's sponge, *Chaos Solitons Fractals*, 42, 3042-3046, 2009.
- Shi, Y. Y., Ji, Y. F., Sun, H., Hui, F., Hu, J. C., Wu, Y. X., Fang, J. L., Lin, H., Wang, J. X., Duan, H. L., and Lanza, M.: Nanoscale characterization of PM2.5 airborne pollutants reveals high adhesiveness and aggregation capability of soot particles, *Sci Rep*, 5, 10, 2015.
- 770 Suresh K., Volume of a surface triangulation (<https://www.mathworks.com/matlabcentral/fileexchange/26982-volume-of-a-surface-triangulation>), MATLAB Central File Exchange. Retrieved April 8, 2021.
- 775 Sven, inpolyhedron: are points inside a triangulated volume?, MATLAB Central File Exchange. Retrieved June 15, 2021. (<https://www.mathworks.com/matlabcentral/fileexchange/37856-inpolyhedron-are-points-inside-a-triangulated-volume>),
- Szilvasi-Nagy, M. and Matyasi, G.: Analysis of STL files, *Math. Comput. Model.*, 38, 945-960, 2003.
- 780 Textor, C. and Ernst, G. G. J.: Comment on "Particle aggregation in volcanic eruption columns" by Graham Veitch and Andrew W. Woods, *J. Geophys. Res.-Solid Earth*, 109, 6, 2004.

Tyynela, J. and von Lerber, A.: Validation of Microphysical Snow Models Using In Situ, Multifrequency, and Dual-Polarization Radar Measurements in Finland, *J. Geophys. Res.-Atmos.*, 124, 13273-13290, 2019.

785

Volk, H. J., Jones, F. C., Morfill, G. E., and Roser, S.: Collisions between grains in a turbulent gas, *Astronomy & Astrophysics*, 85, 316-325, 1980.

Weaire, D. and Aste: *The Pursuit of Perfect Packing*, CRC Press, 2000.

790

Westbrook, C. D., Ball, R. C., Field, P. R., and Heymsfield, A. J.: Universality in snowflake aggregation, *Geophysical Research Letters*, 31, 3, 2004.

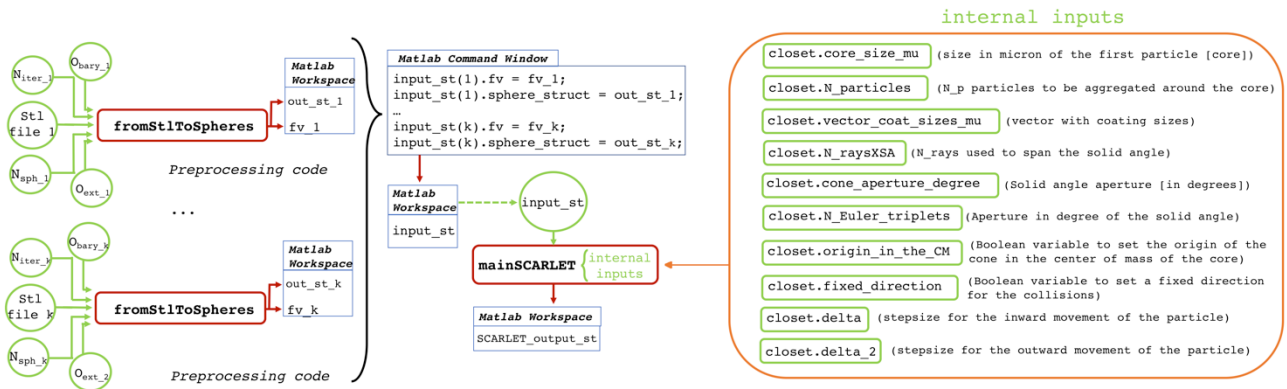
Williams, R. A. and Jia, X. D.: A new method for prediction of bulk particle packing behavior for arbitrary-shaped particles in containers of any shape, *Part. Sci. Technol.*, 21, 195-205, 2003.

795

Yurkin, M. A. and Hoekstra, A. G.: The discrete-dipole-approximation code ADDA: Capabilities and known limitations, *J. Quant. Spectrosc. Radiat. Transf.*, 112, 2234-2247, 2011.

800

Figures



805

Figure 1. General scheme of SCARLET-1.0: on the left, the preprocessing code “*fromStlToSpheres*”. On the right and in the center, the main function “*mainSCARLET*”. The preprocessing code is needed to convert each 3D shape into a set of not-overlapping spheres. The function *fromStlToSpheres* produces two output structures for each STL file, *out_st* and *fv*, which must be assembled into a new structure, *input_st*, as shown here. *input_st* represents the unique external input for *mainSCARLET*. A set of internal inputs control the details of each simulation, such as the number of coating particles involved, their sizes and the degree of packing.

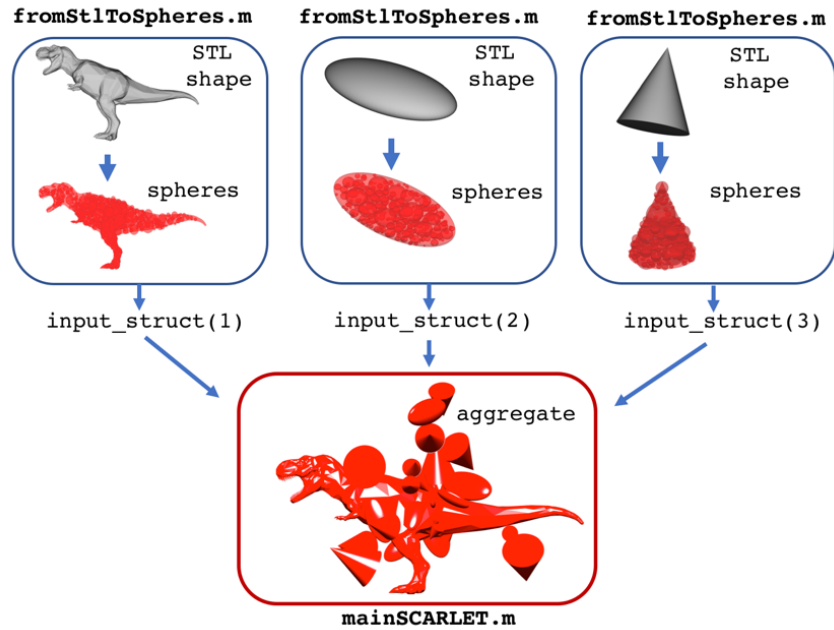
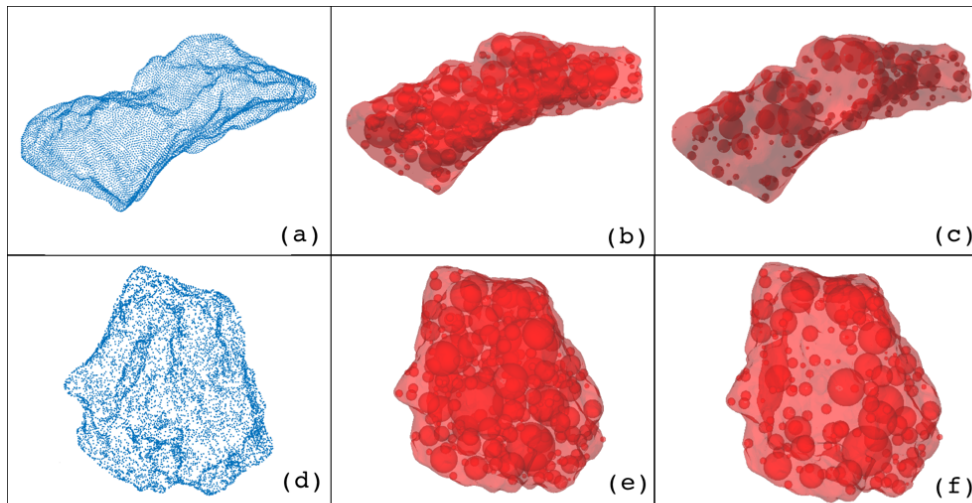
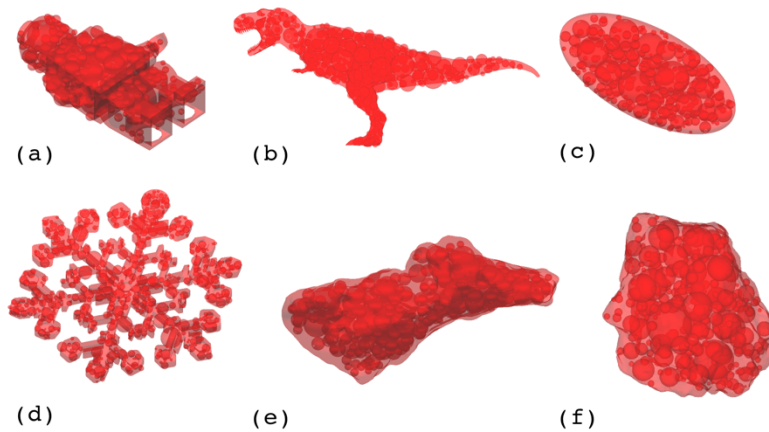


Figure 2. Example showing how SCARLET-1.0 creates a loosely packed aggregate made of 20 ellipsoids and cones of different sizes around a central object (a T-rex).

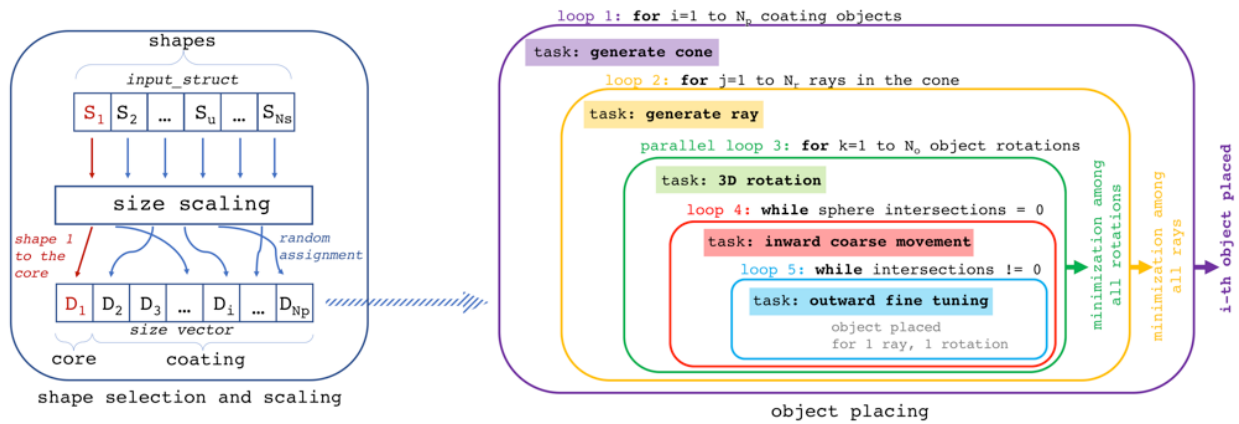


820 **Figure 3.** Application of the pre-processing routine *fromStlToSpheres* to two different volcanic particles. Blue points in (a) and (d) represent the vertices of the triangles used to define the 3D surfaces, as present in the original STL files. (b) and (e) illustrate the final process of filling the volumes with 300 spheres, placed randomly inside the objects. (c) and (f) show the most external spheres obtained using the built-in MATLAB function *boundary*.

825

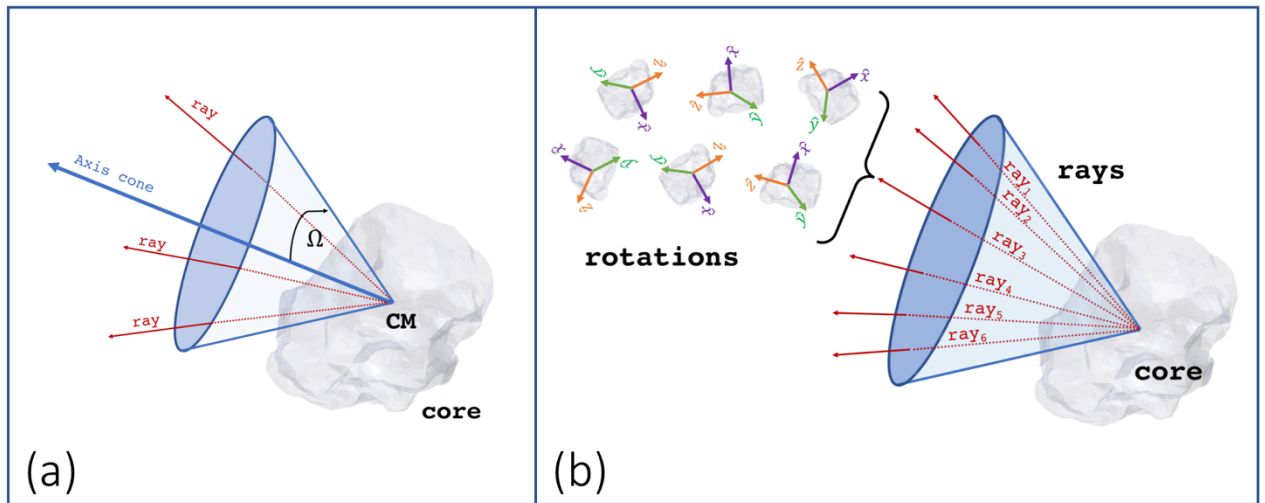


830 **Figure 4.** Application of the pre-processing routine *fromStlToSpheres* to objects characterized by different surfaces (i.e. convex hulls or not) that will be used in this paper. In (a) a toy character, in (b) a T-rex, in (c) an ellipsoid, in (d) a snowflake, in (e) and (f) two different volcanic particles. No scale has been reported for this image since it is not important for the pre-processing. In fact, all the objects will be rescaled by the main SCARLET function.

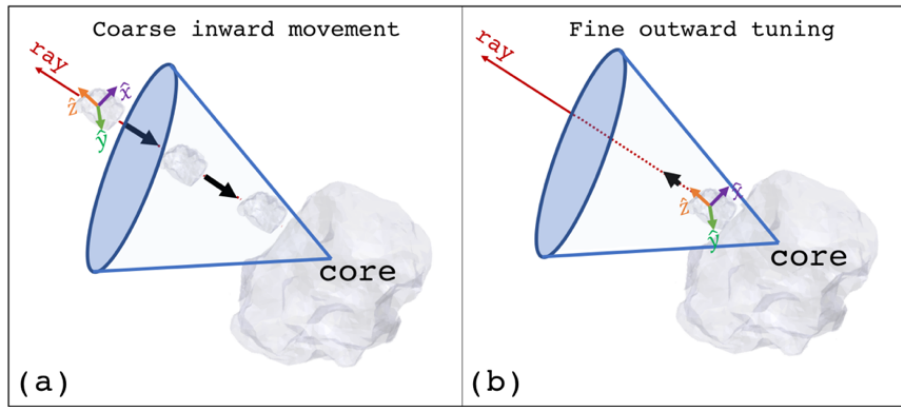


835 Figure 5. Scheme followed by SCARLET-1.0 for particle placing. On the left, the first part of the algorithm where shapes are randomly assigned to each coating particle and scaled to the actual particle size is shown. On the right, the series of five nested loops that control the particle placing are presented.

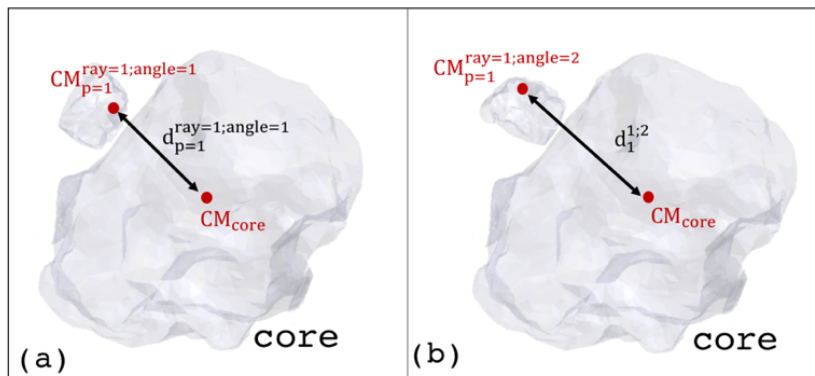
840



845 Figure 6. (a) Definition of the cone of exploration. The Ω angle (degrees) is zero along the central axis of the cone. (b) Cone, rays and rotations associated with the placing of one single coating particle. In the figure, the cone is coincident with the center of mass of the core. However, the user can modify the Boolean variable *closest_origin_in_the_CM* in order to make the center of the cone coincident with one of the spheres of the sphere-composite representation of the STL file.

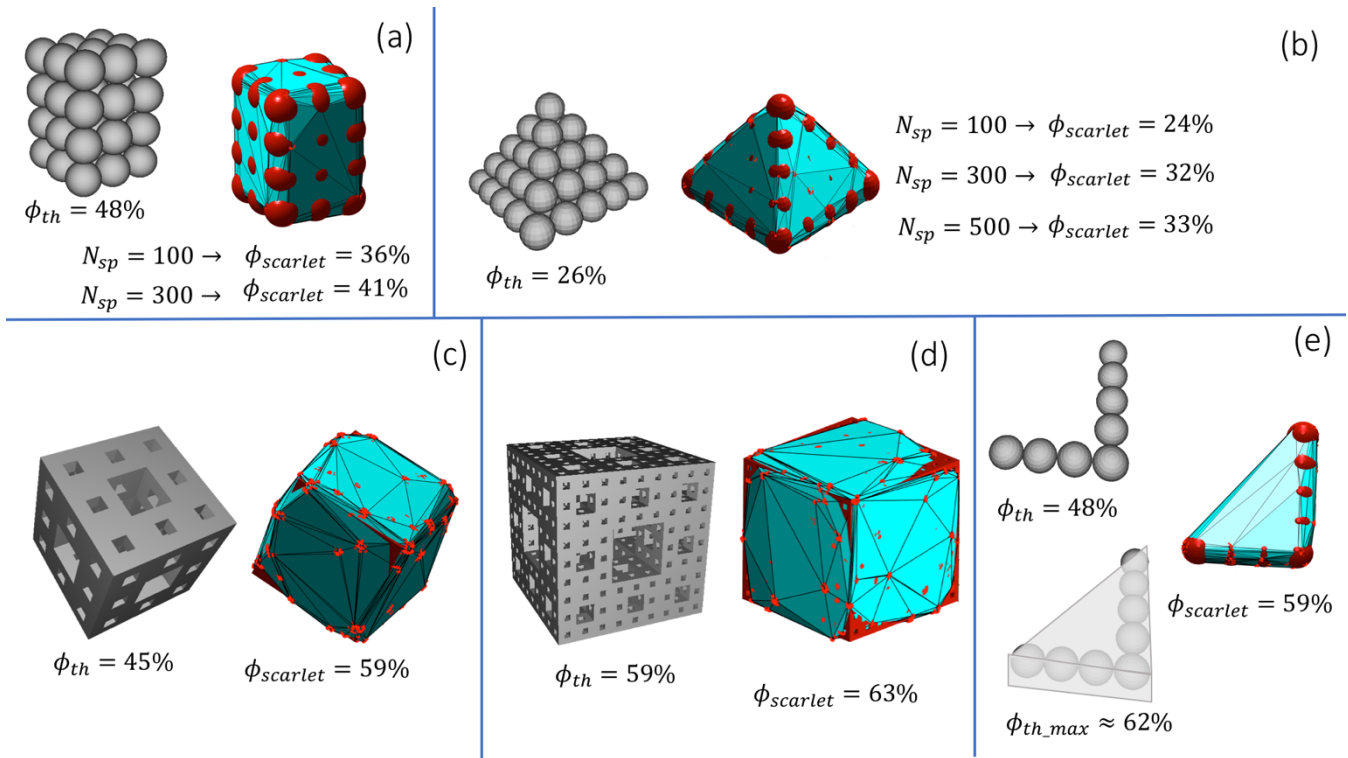


850 **Figure 7.** Coarse inward movement and fine outward tuning associated with loop 4 and loop 5, respectively.



855

Figure 8. Example of minimization process over two rotated particles. The selected particle is the one with minimum distance with respect to the center of mass of the core.



860 **Figure 9** Evaluation of the accuracy in the determination of the porosity using the convex-hull surface of the most external points of the sphere-composite representation of structures for which the porosity is given. (a) Spheres packed with a theoretical 48% of porosity; (b) Spheres packed with a 26% of theoretical porosity; (c) – (d) Examples of Menger's sponge obtained respectively with 2 and 3 recursive processes; (e) L-shaped deposition of spheres for which the porosity is the same as in (a). The maximum theoretical porosity is evaluated considering the solid whose base is the L-shaped rectangular triangle and the height one sphere diameter.

865

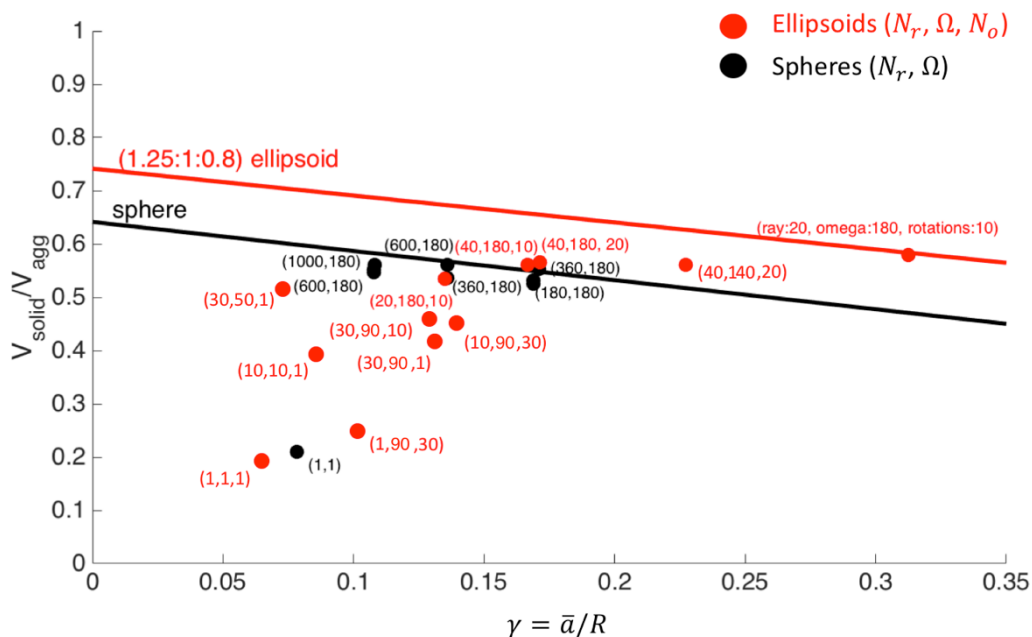
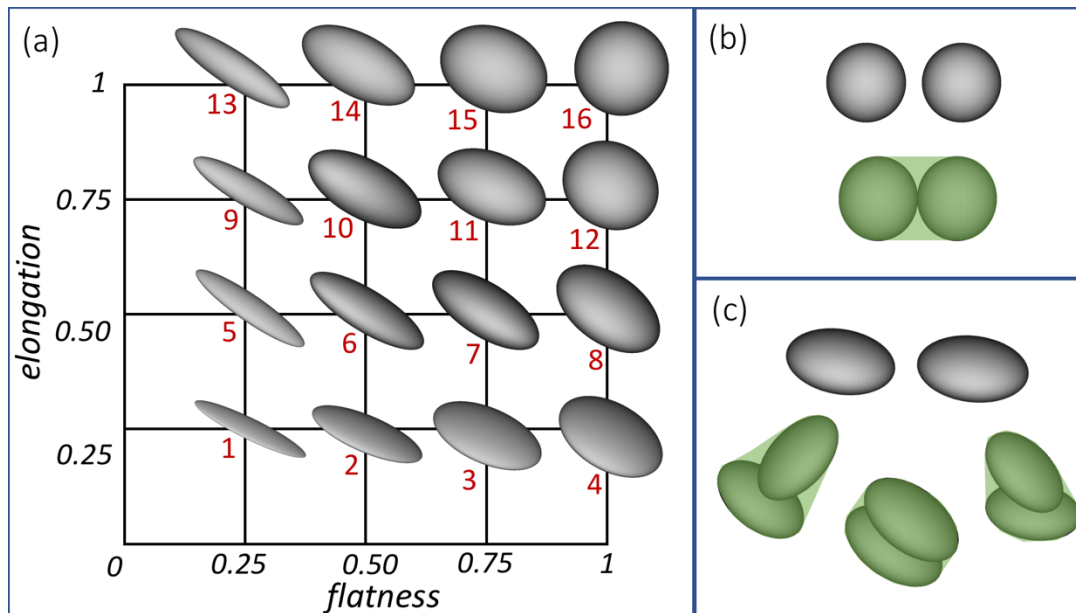


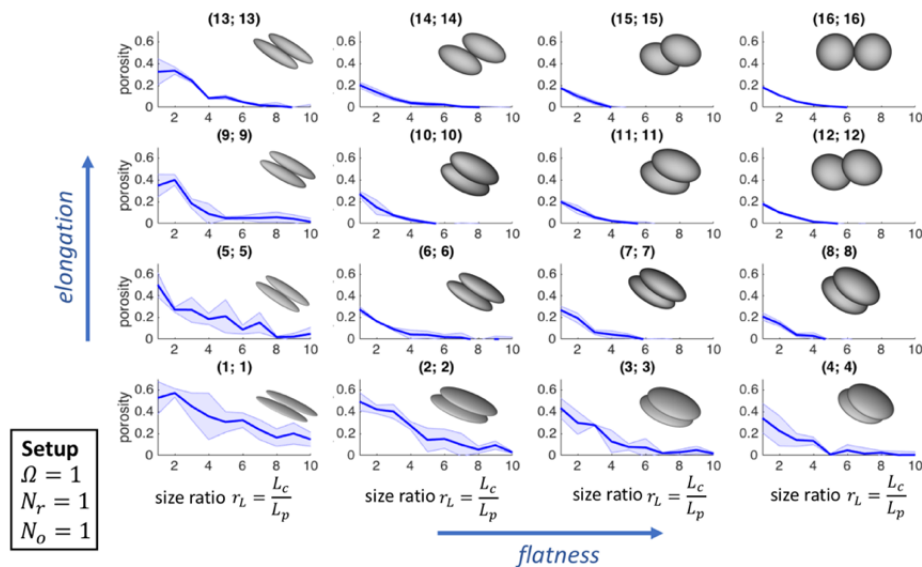
Figure 10. Packing τ of spheres and ellipsoids for different values of solid angles, number of rays and number of rotations respectively, i.e. (N_r, Ω, N_o) . The red line indicates the maximum packing for ellipsoids with axes with a ratio of (1.25:1:0.8). The black line indicates the maximum theoretical packing for spheres. The number of monomers used in the test varied from 10 to 1000. Red dots are simulations made for ellipsoids, black dots for spheres. The red brackets show the values of (N_r, Ω, N_o) used for a single simulation; the black brackets show the values of (N_r, Ω) , since no rotation of the shape is investigated for spheres. All the values are expressed as a function of a/R , where a is the average radius of the ellipsoid/sphere and R is the radius of the sphere with same external volume of the aggregate.

870

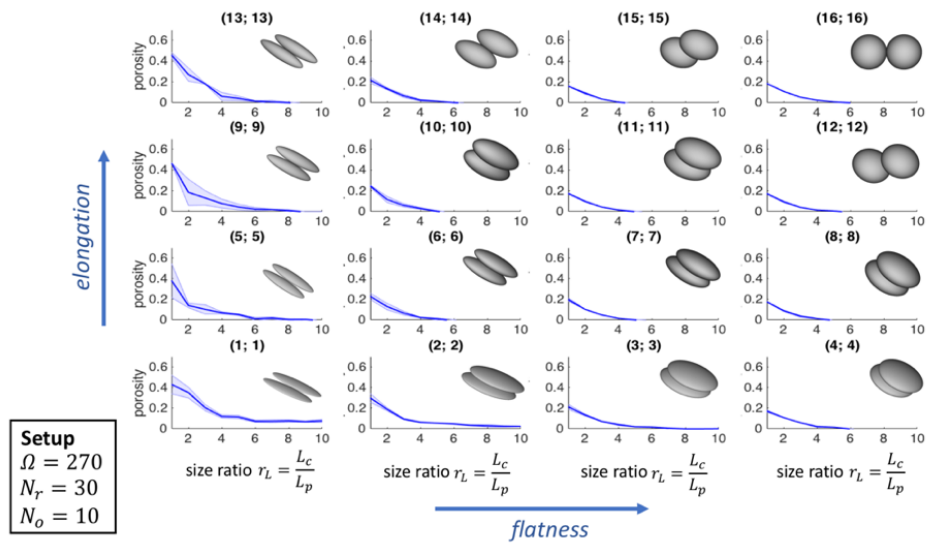
875



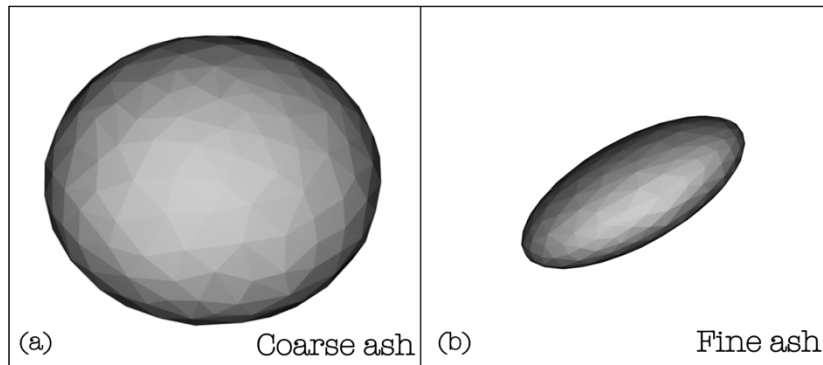
880 **Figure 11** (a) The *flatness-elongation plane* (FE-plane) and the associated shape of the investigated ellipsoid. The red labels in the figure are introduced to characterize each particle-particle collision univocally. In (b) and (c) some examples of how the external volume is defined in this application (i.e. the convex-hull volume that contains the two objects).



885 **Figure 12** Porosity of two colliding ellipsoids of same shape as a function of the size ratio r_L . The setup used in SCARLET-1.0 for these simulations is ($\Omega = 1^\circ$, $N_r = 1$, $N_o = 1$). The pair of numbers in the brackets refer to the shapes labelled in Fig. 10 The shadowed area is the outcome of five simulations.

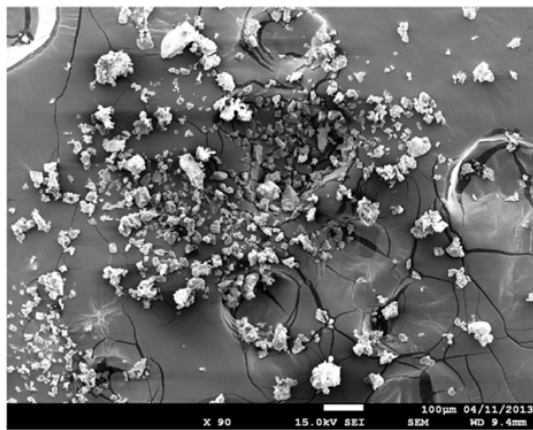


890 **Figure 13** Porosity of two colliding ellipsoids of same shape as a function of the size ratio r_L . The setup used in SCARLET-1.0 for these simulations is ($\Omega = 90^\circ$, $N_r = 30$, $N_o = 10$). The pair of numbers in the brackets refer to the shapes labelled in Fig. 10 The shadowed area is the outcome of five simulations.

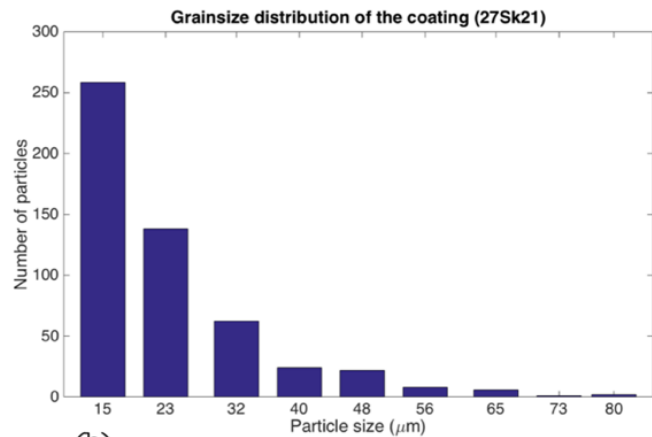


895

Figure 14. Ellipsoids used to characterize coarse (a) and fine (b) ash in the virtual reconstructions.



(a)

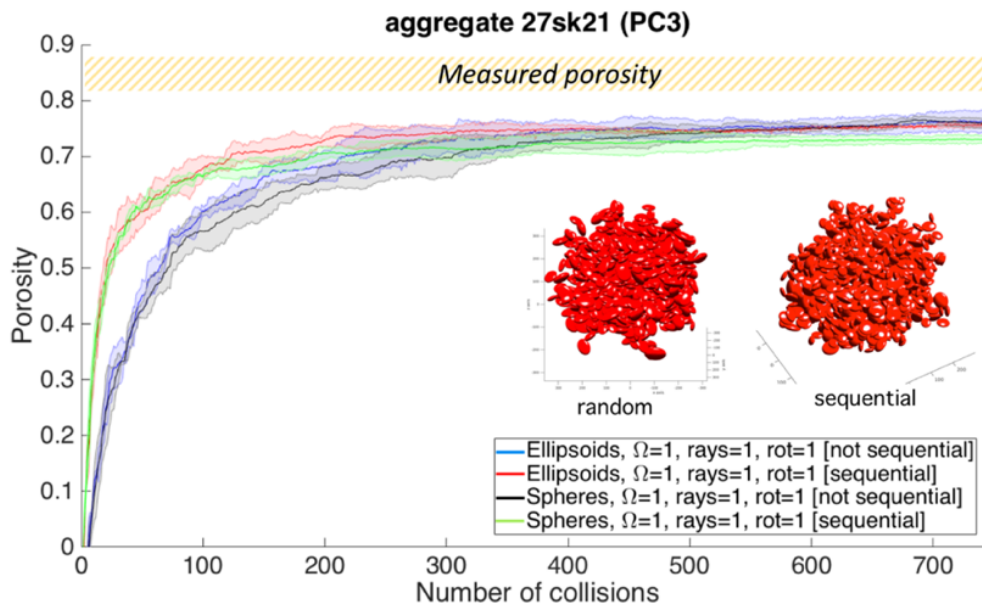


(b)

900

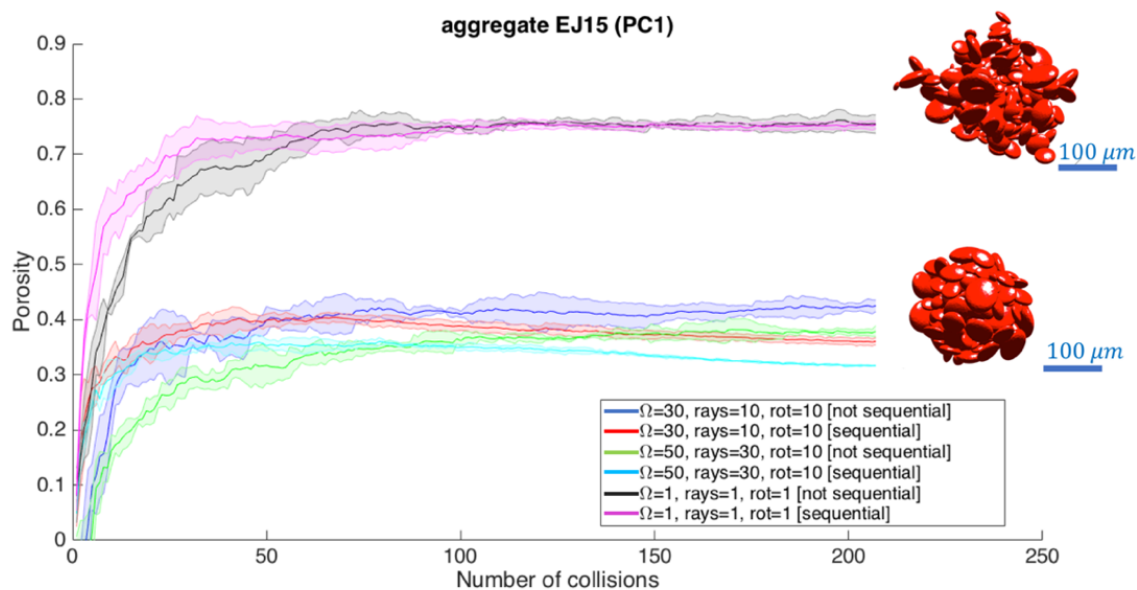
Figure 15. (a) SEM image of the coating particles relative to the aggregate 27sk21 (the big core escaped from the tape); (b) Grainsize distribution derived from the SEM image (Bagheri et al. 2016). In the present work we did not use particles below 32 µm in size: these allows optimizing the computational efficiency without affecting the final result (since the volume scales as the third power of diameter, smaller particles add second order contributions to the final volume).

905

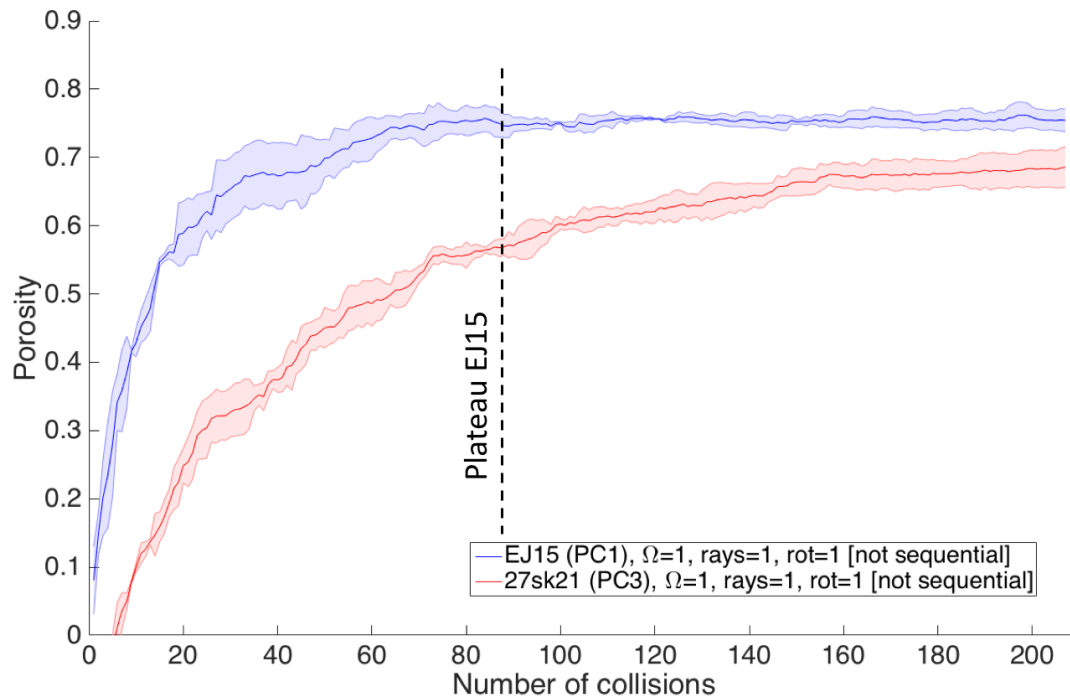


910

Figure 16. Evolution in time of the porosity for the aggregate 27Sk21, classified as PC3 from field observations and High-Speed videos (Bagheri et al. 2016). The final reconstruction of the aggregate is reported in red within the frame of the figure, both for a sequential and a random displacement of the coating particles. The core size – not visible in the figure – is 270 µm wide. The final size of the object matches the observed one (≈670 µm). The shaded area represents the 68% of confidence around the mean over five repetitions. The angle Ω is expressed in degrees.



920 **Figure 17** Time evolution of the porosity for aggregate EJ15 (PC1), collected during the 2010 Eyjafjallajökull eruption (Iceland) (Bonadonna et al. 2011). The virtual reconstructions are based on the same ellipsoids of Fig.13. The shaded areas represent the 68% of confidence around the mean over five repetitions. The angle Ω is expressed in degrees.



925 **Figure 18** Evolution of the porosity for aggregates EJ15 (PC1) and 27sk21 (PC3) for the same configuration of SCARLET-1.0 ($\Omega = 1$, $N_r = 1$, $N_o = 1$). The shaded area represents the 68% of confidence around the mean over five repetitions.

930

935

940

Tables

Aggregate name	Aggregate Type	Aggregate size (μm)	Seed size (i.e. the core) (μm)	Aggregate density (kg/m^3)	Core density (kg/m^3)	Aggregate porosity	Grainsize distribution
<i>27Sk21</i>	PC3	635 ± 50	270	310 ± 50	2500	0.86 ± 0.04	Yes
<i>EJ15</i>	PC1	≈ 200	≈ 40	60-500 (from literature)	2528	0.80-0.97	Yes

945 **Table 1.** Observed features for aggregates 27Sk21 (Sakurajima, Japan) and EJ15 (Eyjafjallajökull, Iceland). For the
 27Sk21 sample, aggregate and core size are observed from high-speed video, the aggregate density is derived based on
 settling velocity and size from high-speed video, aggregate porosity is estimated based on measured particle density
 and derived aggregate density, core density is measured with a water pycnometer and grainsize distribution is derived
 from analysis of SEM images (Bagheri et al. 2016). For sample EJ15, the aggregate size, core size and grainsize
 950 distribution are derived from analysis of SEM images (Bonadonna et al. 2011), while the aggregate density and porosity
 are assumed based on literature (Brown et al., 2012; Gabellini et al., 2020), and the core density is estimated based on
 a combination of helium pycnometer and a theoretical relation with size (the reported value is the average for sizes less
 than $40 \mu\text{m}$; Bonadonna et al. 2011).

955

	L axis (μm)	I axis (μm)	S axis (μm)	$\alpha = \frac{L}{I}$	$\beta = \frac{L}{S}$
<i>Coarse ash ellipsoid</i>	158.0	138.7	116.4	1.1	1.4
<i>Fine ash ellipsoid</i>	28.9	24.0	11.1	1.2	2.6

Table 2. Geometrical features of the ellipsoids used to simulate fine and coarse ash. L, I, S are the average of 2010
 Eyjafjallajökull (Iceland) samples for particles with size $\leq 63 \mu\text{m}$ (fine ash) and between $63 \mu\text{m}$ and $2000 \mu\text{m}$ (coarse
 960 ash).

Variable name	Name of the input variable in SCARLET-1.0	Function where it is used	Description
d_{max}^i	closet.vector_coat_sizes_mu	<i>mainSCARLET</i>	Maximum length of the i -th particle
d_{max}^{core}	closet.core_size_mu	<i>mainSCARLET</i>	Maximum length of the core
N_p	closet.N_particles	<i>mainSCARLET</i>	Number of particles in the coating
N_r	closet.N_raysXSA	<i>mainSCARLET</i>	Number of rays within the cone
Ω	closet.cone_aperture_degree	<i>mainSCARLET</i>	Angle of aperture of the cone respect to the central axis (in degrees)
N_o	closet.N_Euler_triplets	<i>mainSCARLET</i>	Number of rotations investigated for each ray
N_v	-	<i>fromStlToSpheres</i>	Number of vertices in the triangulation
N_{sp}	N_spheres	<i>fromStlToSpheres</i>	Number of spheres used in the sphere-composite representation of the STL
P_n	-	<i>fromStlToSpheres</i>	Closest point to the random generated one in the STL among the centers of the existing spheres and the vertices of the STL
P_r	-	<i>fromStlToSpheres</i>	Random generated point in the STL
P_e	-	<i>fromStlToSpheres</i>	Starting point for the inward movement
V_{ext}	-	<i>mainSCARLET</i>	Volume of the external envelope used to calculate the aggregate porosity
V_{int}^i	-	<i>mainSCARLET</i>	Volume of the i -th particle
τ	-	<i>mainSCARLET</i>	Particle packing
D_{agg}	-	<i>mainSCARLET</i>	Diameter of a sphere with volume V_{ext}
ρ_p	closet.core_density	<i>mainSCARLET</i>	Density of the monomers (a.u)
ρ_{agg}	-	<i>mainSCARLET</i>	Density of the aggregate (a.u.)
ϕ_{agg}	-	<i>mainSCARLET</i>	Aggregate porosity

Table 3. Main parameters used in the paper and their counterparts in the code