

# The latest improvements with SURFEX v8.0 of the Safran-Isba-Modcou hydrometeorological model for France

Patrick Le Moigne<sup>1</sup>, François Besson<sup>2</sup>, Eric Martin<sup>1,3</sup>, Julien Boé<sup>4</sup>, Aaron Boone<sup>1</sup>, Bertrand Decharme<sup>1</sup>, Pierre Etchevers<sup>2</sup>, Stéphanie Faroux<sup>1</sup>, Florence Habets<sup>5</sup>, Matthieu Lafaysse<sup>6</sup>, Delphine Leroux<sup>1</sup>, Fabienne Rousset-Regimbeau<sup>2</sup>

<sup>1</sup> CNRM, Université de Toulouse, Météo-France, CNRS, Toulouse, France

<sup>2</sup> Direction de la Climatologie et des Services Climatiques, Météo-France, Toulouse, France

<sup>3</sup> Irstea, Université d'Aix Marseille, RECOVER, Aix-en-Provence, France

<sup>4</sup> CECI, Université de Toulouse, CERFACS, CNRS, Toulouse, France

<sup>5</sup> CNRS UMR 8538, Laboratoire de Géologie, Ecole Normale Supérieure, PSL Research University, 24 rue Lhomond, 75005 Paris, France

<sup>6</sup> CNRM, Université de Grenoble, Météo-France, CNRS, Grenoble, France

Correspondence to: Patrick Le Moigne ([patrick.lemoigne@meteo.fr](mailto:patrick.lemoigne@meteo.fr))

**Abstract.** This paper describes the impact of the various changes made on the Safran-Isba-Modcou hydrometeorological system (SIM), and demonstrates that the new version of the model performs better than the previous one by making comparisons with observations of daily river flows and snow depths. SIM was developed and put into operational service at Météo-France in the early 2000s. The SIM application is dedicated to the monitoring of water resources, and can therefore help in drought monitoring or flood risk forecasting on French territory. This complex system combines three models: SAFRAN which analyses meteorological variables close to the surface, ISBA land surface model which aims to calculate surface fluxes at the interface with the atmosphere and ground variables, and finally MODCOU a hydrogeological model which calculates river flows and changes in groundwater levels. The SIM model has been improved first by reducing the infrared radiation bias of SAFRAN, and then by using the more advanced ISBA multi-layer surface diffusion scheme to have a more physical representation of surface and ground processes. In addition, more accurate and recent databases of vegetation, soil texture and orography were used. Finally, in mountainous areas, a sub-grid orography representation using elevation bands was adopted, as well as the possibility of adding a reservoir to represent the effect of aquifers in mountainous areas. The numerical simulations carried out with the SIM model covered the period from 1958 to 2018, thereby providing an extensive historical analysis of the water resources over France.

## 1 Introduction

The coupling of hydrogeological models and land surface models (LSMs) aims to represent the water cycle by considering as many physical processes as possible. Thus, in LSMs, precipitation that reaches the ground contributes to water storage, evaporation, surface runoff and infiltration into the soil. In addition to the water balance, LSMs simulate the surface energy balance, which is closely related to the water balance in terms of evaporation. In such a coupled system, surface runoff is

Commented [PLM1]: RC2

collected by the surface river system while deep infiltration of the soil contributes to aquifer recharge. Such systems have been used for decades to study water resources and predict their evolution. Land surface models (LSMs), whether or not coupled to hydrology, have been the subject of numerous studies that have improved them over time and have led to a better description and understanding of the key processes governing exchanges at the interface between the surface and the atmosphere and the surface and the subsurface. These studies have made it possible to evaluate surface models, and even certain parameterizations, by comparing simulation results with different types of observations such as in situ measurements, reanalyses or satellite products. Over time, a number of international measurement campaigns have been organized to evaluate the performance of the models by comparing them with in situ measurements. Simulations were carried out offline, i.e. decoupled from the atmosphere, to avoid introducing atmospheric biases into the surface schemes. The first international model intercomparison projects were the Project of Intercomparison of Land surface Parametrization Schemes (PILPS), described in Henderson-Sellers et al. (1996), which began with forcing from atmospheric simulations (Pitman et al., 1993) and, in a second stage, forcing from local observations (Chen et al., 1997). The successive phases also focused on different issues, such as snow and frost parameterization (Schlosser et al., 2000), river flow assessment (Wood et al., 1998; Bowling et al., 2003). In the spirit of PILPS, GSWP (Global Soil Wetness Project, Dirmeyer, 2011) was initiated with global scale simulations. The results of this project are the first global offline multi-model simulations of LSMs. Other more specific intercomparison projects have been carried out such as SnowMIP (Etchevers et al., 2004) to study snow-related processes, ALMIP (Boone et al., 2009), focusing on critical surface processes in West Africa at regional scale, or Rhône-AGGrégation (Boone et al., 2004) to study coupling with hydrology. More recently, the PLUMBER project (Best et al., 2015) has attempted to identify how LSMs behave in relation to certain benchmarks and to define performance criteria that LSMs should be able to achieve according to the information available in atmospheric forcing, thus avoiding direct comparison with observations.

In many of these intercomparison studies, the surface models were validated at the local scale and used average parameters that were known fairly accurately. However, these models sometimes have strongly non-linear components, such as the link between root zone moisture and transpiration when the soil dries out (Sellers et al., 1997), so it is necessary to develop sub-grid parameterizations to compensate for the lack of representativeness of the mean parameters. Overgaard et al. (2006) conducted a review of surface models based on energy balance and used for hydrological purposes. They stressed the need to validate the models at the local scale, but also showed the interest of using remote sensing data to evaluate the models. Indeed, the validation of LSMs using river flows alone does not prove that surface fluxes, for example, are well simulated by the model and that there is no error compensation. Furthermore, estimating surface fluxes by remote sensing is not straightforward and requires certain assumptions that are not always valid, and inversion models are used to translate the remote sensing measurement into a model variable equivalent. However, using surface fluxes to validate surface models is also subject to questioning since the energy balance measured at the surface is generally not closed (Foken, 2008) whereas it is an imposed constraint in surface models. The use of international measurement networks such as FLUXNET (El Mayaar et al., 2008; Napoly et al., 2017) is also widely used to evaluate surface models at the point scale. Remote sensing provides a

70 means of observing hydrological state variables over large areas (Schmugge et al., 2002) and can be useful in the case of  
LSMs coupled to hydrological models, in particular in order to assess evaporation (Kalma et al., 2008; Long et al., 2014;  
Wang et al., 2015) or soil moisture (Goward et al., 2000; Albergel et al., 2012; Fang et al., 2016). It should be noted that  
these remote sensing data can be assimilated to correct the model state variables at the initial time as well as during the  
hindcast (Albergel, et al., 2017).

Commented [PLM2]: RC1 and RC2

75 In addition, climate models have been evaluated at both global and regional scales through hydrology. Indeed, the coupling  
between their land surface model and hydrology allows a quantitative assessment to be made, through comparisons to  
variables such as river flow, groundwater levels and snow depth. This is the case of river flows simulated by hydrogeological  
models, which can be compared with in situ measurements from gauging stations (Habets et al., 2008; Decharme et al.,  
2013; Alkama et al., 2010; Barthel and Banzhaf, 2015; Decharme et al. 2019). The coupling between LSMs and  
hydrogeological models in water resource studies is an appropriate tool for answering scientific questions such as the  
importance of climate change on these resources (Vidal et al., 2010; Dayon et al., 2018; Bonnet et al., 2018) or how human  
80 activity influences these resources (Martin et al., 2016; Biancamaria et al., 2019). Recent initiatives to study the impact of  
anthropization on water availability, such as those supported by the Global Energy and Water Exchanges (GEWEX) project  
(Harding et al., 2015), where the contribution of LSMs to modelling appears to be important, show that irrigation needs to be  
considered in the models (Boone et al., 2019).

Commented [PLM3]: RC2

85 At Météo-France, the SIM system was first designed to study the water cycle in major French basins such as the Rhône basin  
(Etchevers et al., 2000), the Adour basin (Habets et al., 1998), the Garonne basin (Voirin et al., 2002) and finally all of  
France (Habets et al., 2008). This system has been shown to be very useful for many applications. For example, since 2003,  
the SIM system has been used operationally at Météo-France for drought monitoring, this is done using hindcast simulations,  
in addition to near real-time applications. These applications in France were based on an LSM using the Force-Restore  
approach (Noilhan and Planton, 1989; Noilhan and Mahfouf, 1996) for heat and water transfer in the soil. However, this  
90 method has some limitations in terms of the realism of certain physical parameterizations, which are detailed in section 2.2.  
These limitations concern the representation of snow, the interactions between snow and ground freezing which are not  
always well represented, the description of the vertical profile of roots in the soil, or the composite approach to represent  
vegetation, mixing different types of vegetation into one, with aggregated characteristics. Although this method has proven,  
over the last decades, to be suitable for addressing scientific issues related to water resources, a more physical approach,  
95 based on the diffusion of heat and moisture in the soil (Decharme et al., 2011), has been developed to consider more  
sophisticated numerical schemes and improve system performance.

Commented [PLM4]: RC2

00 The objective of this paper is to show how the development of new parameterizations and better atmospheric forcing  
prescription have improved the performance of the system. The current study, based on numerical simulations covering the  
period 1958-2018, shows how improvements in atmospheric forcing, land surface model physics and subgrid orography and  
hydrology improve the modelled river flow and snow depth of the SIM system. It also aims to describe how the model  
results are affected by each change separately and finally to demonstrate that the new model configuration performs better

than the previous one in terms of river flow extremes, and when simulated snow depth or average river flow is compared to observed data.

Commented [PLM5]: RC2

05 Section 2 describes the original SIM configuration and its recent updates. Section 3 presents climate data and evaluation datasets, and the offline experiments used to demonstrate the advantages of the new SIM system. In section 4 the results of the new system are presented and finally they are discussed in the last section.

## 2. SIM hydrometeorological model

### 2.1 Overview of the 2008 version of the model

10 The SIM hydrometeorological model (Habets et al., 2008) combines the three models SAFRAN, ISBA and MODCOU. SAFRAN (Durand et al., 1993; Quintana Segui et al., 2008) performs a 6-hourly analysis of near-surface meteorological variables such as temperature and relative humidity at 2 metres, wind speed, cloud cover and a daily analysis of 24-hour accumulated precipitation. The analysis is carried out over geographical areas covering a few hundred square kilometres (Le Moigne, 2002), and the analysed fields are interpolated to hourly time steps. Direct and diffuse solar radiation and infrared radiation are calculated from the analysis of cloud, temperature and humidity profiles using a radiative transfer model (Ritter and Geleyn, 1992). A spatial interpolation is then performed on a regular horizontal 8 km grid to provide the ISBA land surface model (Noilhan and Planton, 1989; Noilhan and Mahfouf, 1996) with the necessary climate information. The grid is composed of 9892 cells (Fig. 1, left panel) covering France and is extended beyond the borders to include the upstream part of the catchment basins.

15 The ISBA model uses SAFRAN analysis as input and calculates the surface energy and water budgets over the vegetated areas. The water budget in ISBA ensures that soil moisture results from the balance between water input from incoming precipitation and water losses due to surface evaporation, surface runoff and infiltration into the soil. These last two components are fed into the hydrogeological model MODCOU (Ledoux et al., 1989; Habets et al., 1998) in order to calculate the temporal evolution of river flows for a given set of gauging stations and groundwater head where aquifers are simulated, i.e. on the Seine and Rhône basins only (delimited by the yellow zones in Fig. 1, right panel). The original SIM system differs in many respects from the version described in this document.

20

25

Commented [PLM6]: RC2

Commented [PLM7]: RC2

### 2.2 Improvements to the land surface model in SURFEX v8.0

In the original SIM system, heat and water transfers in the soil were based on the Force-Restore method (Noilhan and Planton, 1989; Noilhan and Mahfouf, 1996; Decharme et al., 2011) which has been widely used in research for decades and is still operationally used in the French global numerical weather prediction model ARPEGE (Courtier and Geleyn, 1988) and the mesoscale model AROME (Seity et al., 2011). In the Force-Restore method, the soil is divided into two layers for

30

35 temperature and three layers for moisture (Boone et al., 1999). However, such a method has shown some limitations in the representation of surface and soil processes such as the interaction between snow and soil freezing (Luo et al., 1998) due to vertical discretization or the inability to correctly represent the vertical profile of roots in the soil (Braud et al., 2005) and thus the vertical transfers of moisture and heat. The alternative of using the Force-Restore method was developed by Boone et al. (1999) and revisited by Decharme et al. (2011) who proposed to use diffusive equations to solve both heat and water transfer equations in the soil, based on Fourier and Darcy laws, respectively. Such a method proposes a discretization of the soil into 14 layers, resulting in a total depth of 12 meters, with a fine description of the subsurface layers to capture the diurnal cycle. The vertical discretization (bottom depth of each layer in metres) is as follows: 0.01 m, 0.04 m, 0.1 m, 0.2 m, 0.4 m, 0.6 m, 0.8 m, 1 m, 1.5 m, 2 m, 3 m, 5 m, 8 m, 12 m, as described in Decharme et al. (2013). Heat transfer is resolved over the total depth, while moisture transfer is resolved only over the depth of the roots, which depends on the type of vegetation and its geographical location: a maximum of 1.5 m for type C3 crops and 2.5 m for forests in France. In such a model, soil temperatures and soil moisture are calculated at the same nodes, which is necessary to correctly represent soil freezing for example. Another notable improvement concerns snow modelling. The original three-layer snow scheme developed by Boone and Etchevers (2001) aimed to represent the physical processes in the snow as realistically as possible, and for this purpose some processes had been adapted from the Crocus snow model (Vionnet et al., 2012) for snow avalanche forecasting. The main new features recently developed and introduced into the ISBA snow model are described in detail in Decharme et al. (2016) and concern (i) snow stratification with an increase in the number of layers close to the surface in contact with the air, but also with the ground to better represent the diurnal cycle and heat transfer at the interface with air and ground, respectively, (ii) snow compaction due to changes in viscosity (Brun et al., 1989) and wind-driven densification at the surface (Brun et al., 1997), and (iii) snow absorption of solar radiation as a function of 3-band spectral albedo.

55 Second, the representation of vegetation in the model has also evolved from the original version, where vegetation types within a grid cell were aggregated with averaged surface parameters (Noilhan and Lacarrere, 1995), whereas the new system uses 12 separate vegetation types, each with its own set of parameters (Masson et al., 2003; Faroux et al., 2013). The classification distinguishes three non-vegetated types: rocks, bare soil and permanent snow and ice, and nine vegetated types: temperate deciduous forest, boreal conifers, tropical conifers, C3 crops, C4 crops, irrigated crops, grasslands, tropical meadows, and peatlands, parks and gardens. Although this approach is more computationally intensive time because the model must be run for each vegetation type, the realism of ISBA simulations is increased because the parameters better characterize the contrasting surface properties. In addition, the explicit use of 12 vegetation types is mandatory when using ISBA-A-gs, the simplified photosynthesis module of ISBA (Calvet et al., 1998) aimed at representing a realistic photosynthesis of the different biomes. In the new version, the drought avoidance or drought tolerance response is adopted (Calvet et al., 2004).

Commented [PLM8]: RC1

Commented [PLM9]: RC1

Hydrological processes are obviously important in a system for calculating the water budget of natural surfaces and simulating river flows. The old parameterization of drainage, developed by Mahfouf and Noilhan (1996) for the Force-Restore scheme, has been replaced by a method of diffusing water into the soil. In ISBA, surface runoff occurs over saturated areas (Dunne and Black, 1970). Habets et al. (1998) proposed sub-grid parameterization to generate surface runoff over grids of several square kilometres before the entire grid is saturated, in order to consider some regional heterogeneities in infiltration arising from orographic variability or precipitation spatial inhomogeneity. In this approach based on sub-grid variability of topography, and used in the VIC model (Liang et al., 1994; Dümenil and Todini, 1992), the fraction of the saturated zone varies as a function of the water content of the soil and a curvature term  $b$  that must be calibrated. In the original system  $b$  is equal to 0.5, a very high value compared to other studies at the watershed scale. Indeed, a more realistic value should be around 0.2 (Lohman et al., 1997; Ducharme et al., 1998). However, the Force-Restore scheme is known to be too dry in terms of soil moisture (Decharme et al., 2011, 2019) and a steep slope (therefore a fairly large curvature term) in the grid mesh is required to generate sufficient runoff in certain regions. The use of the diffusion scheme has removed this constraint of a high  $b$ -factor and in the new SIM application, a value of 0.25 is now used on zones without aquifers where it is set at 0.01 corresponding to the absence of sub-grid runoff. Dümenil and Todini (1992) have parameterized the fraction of saturated zone  $A$  as a function of soil moisture  $A(w_2) = 1 - \left(1 - \frac{w_2}{w_{sat}}\right)^{b/(b+1)}$ , where  $w_2$  is the volumetric water content of the soil in the rooting zone and  $w_{sat}$  its value at saturation, and for a loamy zone ( $w_{sat} = 0.45 \text{ m}^3/\text{m}^3$ ) of wet soil ( $w_2 = 0.4 \text{ m}^3/\text{m}^3$ ), the presence of an aquifer ( $b = 0.01$ ) is characterized by a small area of saturated fraction of about 2%.

Commented [PLM10]: RC2

### 2.3 Use of more precise parameters for the land surface

In addition to the changes in model physics described above, the land cover and topography databases have been updated to improve the realism of the external parameters of the ISBA model. The hydrogeological database representing the aquifer and the routing network was unchanged. In addition, the soil texture database for France is unchanged. In the former SIM system, the soil texture was based on a soil map provided by the Institut National de Recherches Agronomiques (INRA - King et al., 1995) at a resolution of 1 km. In the new SIM system, texture is defined by the Harmonized World Soil Database (HWSD - Nachtergaele et al., 2012) which is a soil map at 1 km resolution that combines several data sets available worldwide. In particular for France, the INRA soil map mentioned above has been integrated into the HWSD dataset (used in other applications using SURFEX outside France), so this change does not affect the SIM simulations.

The topography, derived from the 30 arc second global elevation data (GTOPO30, [http://eros.usgs.gov/#/Find\\_Data/Products\\_and\\_Data\\_Available/gtopo30\\_info](http://eros.usgs.gov/#/Find_Data/Products_and_Data_Available/gtopo30_info)), has been replaced by that of the "Shuttle Radar Topography Mission" (SRTM90, <https://cgiarcsi.community/data/srtm-90m-digital-elevation-database-v4-1/>) at a 90 m resolution (Figure 1, left panel). Note that the impact of using SRTM90 is rather limited because the target grid resolution for SIM applications over France is 8 km, which implies that small scale differences between the orography data is averaged at such a resolution (thus the SIM topography is similar, whether GTOPO30 or SRTM90 is used).

Commented [PLM11]: RC2

The last modification of the input database is the vegetation map which provides the fraction of each ecosystem. The global 1 km resolution map ECOCLIMAP1 (Masson et al., 2002) was originally used in the SIM application for France. Subsequently, a new classification algorithm was developed over Europe, the ECOCLIMAP2 land-use map (Faroux et al., 2013), in order to use more accurate and recent satellite information as input and for a longer period. Among the differences to note, ECOCLIMAP1 used, for example, AVHRR satellite data from 1992-1993 whereas ECOCLIMAP2 uses SPOT/VEGETATION data from 1999-2005. The impacts of modifying the vegetation fraction input to the ISBA model are multiple and will not be described here in detail (for a detailed comparison, see Faroux et al., 2013). ECOCLIMAP2 has definite advantages, the effects of which are directly reflected in the ISBA model. For example, ECOCLIMAP2 covers a larger time period than the previous version and therefore allows a better representation of the variability of surface parameters. Also, it distinguishes different types of crops that can be modelled separately, and therefore more accurately, with ISBA. The sensors on board satellites have better accuracy and the uncertainty of the measurement is reduced. The vegetation fraction in particular is improved and with it the roughness length of the vegetation which impacts the surface wind by the obstacle effect on near-surface flows. The leaf area index is also improved and its increase leads to a better description of the evaporative fraction, which is key for the energy partitioning in the model. The more realistic surface albedo developed by Carrer et al. (2014) was also used, as Decharme et al. (2013) showed that it improved results at the global scale.

Commented [PLM12]: RC2

#### 2.4 Evolution of downward infrared radiation

Commented [PLM13]: RC2

SAFRAN radiation has been corrected to compensate for a radiation deficit already identified in several studies (Le Moigne et al., 2002; Carrer et al., 2012; Decharme et al., 2013) although observations of this variable are very rare. Radiation in SAFRAN is simulated (Ritter and Geleyn, 1992) from an analysis of cloud cover based on analyses of temperature and humidity profiles from the French global atmospheric model ARPEGE. Le Moigne (2002) and Carrer et al. (2012) showed that SAFRAN's infrared radiation was weakly biased, and Decharme et al. (2013) increased overall infrared radiation over France by 5% in their off-line simulations. The bias is likely due to a problem in the analysis and in the radiative transfer (RT) model. The cloud cover analysis is computed using temperature and humidity profiles from a large-scale atmospheric model that contains biases. Moreover, the model used to solve the RT is an old model, with a rather low vertical resolution and therefore probably sub-optimal, but which was state-of-the-art in the 1990s. For example, Le Moigne (2002) showed that infrared and solar radiation were too low at the Col de Porte site in the Alps and proposed a correction for cloud cover and altitude which was successfully applied to the Rhône basin in the Rhône-AGG intercomparison experiment (Boone et al., 2004). In this study, only the infrared correction is considered and applied over the whole French territory. The infrared correction, described in Appendix A, was established by comparing the SAFRAN analysis and the infrared measurements of two meteorological stations, Carpentras and Col de Porte, which are reference stations for infrared measurements monitored by Météo-France and located in the south-east of France and in the Alps, respectively. Carpentras is located in the plains while the Col de Porte, an experimental measurement site of the Centre d'Etudes de la Neige, is located in the French Alps at

Commented [PLM14]: RC2

30 an altitude of 1340 m (Morin et al., 2012; Lejeune et al., 2018). The correction is only applied below 1340 m, as a positive bias is found at the Saint-Sorlin site (Queno et al., 2017). Figure 2 shows the annual average over the 60-year period initial infrared radiation (left panel) and the amount of energy supplied when the correction is applied (right panel).

Commented [PLM15]: RC2

## 2.5 Altitudinal subgrid variability in mountainous areas

35 In SAFRAN, the analysis is performed on homogeneous zones of several hundred square kilometres and the vertical component is explicitly considered with a 300-metre slicing along the vertical. For each grid cell  $i$ , the analysed variables  $X^a(i)$  are then interpolated on an 8 km horizontal grid, considering the average altitude of each grid cell. The analysed variables are then used as input to the ISBA surface model. At this resolution, the 9892 grids cover all of France as well as some border areas for hydrological purposes. However, this resolution is still too coarse to accurately capture the variability of certain variables, particularly in the mountains. Lafaysse et al. (2011) demonstrated in the Durance basin that the use of altitude bands was an efficient method to better describe the spatial variability of the snow cover and its impacts on river flows, at a numerical cost much lower than increasing the horizontal resolution. A similar approach was therefore defined for the entire French territory and can be summarized as follows: for a given mesh  $i$ , the SAFRAN analysis is performed every 300 m and the  $X^a(i, k)$  are the  $k$  sets of analysed variables corresponding to each of the  $k$  altitude bands. For each  $i$ , if the vertical sub-grid variability is sufficiently large, a complementary set of  $k'$  elevation bands is defined for different elevations in order to represent this variability. Vertical interpolation is then performed on the atmospheric forcing at each  $k'$  band. For each  $k'$  band, ISBA simulates surface runoff and soil infiltration which are used to calculate the total surface runoff and soil infiltration for grid point  $i$ . Of the 9892 grid points, 1044 are above 500 m and have a high variability in sub-grid topography. Using a vertical discretization of 300 m at each grid point to represent topographic variability was ideal but too costly. A solution based on the distribution of elevations in each grid cell into five bands represented by the quintiles q20, q40, q60 and q80 was adopted. For each of the 1044 grid points, the vertical discretization varies and is at least equal to 300m. In the end this gives a total of 3878 grid points involved in the calculations of the mountain simulation. Figure 1 (right panel) shows the elevation of the 1044 grid points where the elevation band method is applied.

Commented [PLM16]: RC2

Commented [PLM17]: RC1

Commented [PLM18]: RC2

55 In addition, to compensate for the inability of the SIM system to simulate low flows when aquifers are not explicitly considered, subgrid drainage parameterization was used in the original SIM system. This subgrid drainage is controlled by a parameter calibrated for both lowland and mountain areas, but such a calibration does not work very well because the water used to support low flows is taken from the rooting zone and not from the aquifer. In the new system, this parameterization is removed, and a parameterization has been added to mimic the behaviour of a deep reservoir to support low flows and to limit peak flooding due to snowmelt (Lafaysse et al., 2011). Retaining water due to snowmelt and releasing it during the dry season made it possible to simulate peak flooding, but summer low flows are still underestimated.



### 3. Design of experiments and data sets

#### 3.1 Offline simulations

The SIM system is an off-line application where the ISBA land surface model is driven by climate data and there is no feedback from the surface to the atmosphere. Different SIM configurations were designed to highlight the improvements achieved, with each simulation being equilibrated using a two-year spinup.

The first configuration refers to the old SIM system (SIM\_REF below, as described in 2.1), i.e. before any changes described above. An additional reference simulation (SIM\_REF2 below) is based on SIM\_REF where subgrid drainage is removed.

The first experiment (SIM\_PHY hereafter) consists in modifying the physics and input databases. SIM\_PHY uses the diffusion scheme with 14 layers in the soil, the improved snow scheme with 12 layers, a tile approach based on 12 vegetation types, and a runoff parameterization where the high constraint on the coefficient  $b$  ( $b=0.5$  in the runoff parameterization in SIM\_REF) has been lowered to 0.25. Also, in SIM\_PHY, updated databases are used for a better representation of soil texture, orography and vegetation. The correction of SAFRAN infrared radiation according to cloud cover is then introduced in the SIM\_FRC experiment (based on SIM\_PHY). Then SIM\_TOP (based on SIM\_FRC) uses the representation of subgrid orography in mountains, and finally SIM\_NEW (based on SIM\_TOP) considers a drainage reservoir in mountains. Table 1 summarizes the main characteristics of the experiments.

In the SIM system, climatic data are provided by the SAFRAN analysis. In this study, SAFRAN covers a 60-year period, from August 1, 1958 to July 31, 2018. In SAFRAN, the guess of the analysis used is ERA-40 until 2002 and the ECMWF operational analysis thereafter. In France, the density of the observation network is very high, because a network dedicated to climatology completes the less-dense synoptic network. There are therefore practically no regions with poor coverage, especially for precipitation, which is essential for hydrology, and the coarse resolution of the analysis first guess is not an issue. The analysed variables are then interpolated every hour on the SIM grid at a resolution of 8 km and this complete set of near-surface variables is then used to conduct off-line simulations. The averages of the fields analysed or reconstructed by SAFRAN over the entire period over France, used as input data for off-line experiments, are shown in Figure 3, while the annual averages of these quantities are shown in Figure 4.

#### 3.2 Data sets and validation tools

Various datasets were used to evaluate the performance of the SIM model throughout the validation process to ensure that an improvement in the input climate data or physics simultaneously improved the surface or ground variables and river flows. The Land Surface Analysis Satellite Applications Facility (LSAF) project disseminates products based on data from the Meteosat second generation geostationary satellites, and, in particular, downwelling infrared radiation (LSA SAF; Trigo et al., 2011; <http://lsa-saf.eumetsat.int>). LSAF data covering the period from August 1, 2010 to July 31, 2015 are used here to assess the quality of SAFRAN's infrared radiation.

Commented [PLM19]: RC2

Commented [PLM20]: RC2

In addition to the infrared radiation data from Carpentras and Col de Porte already mentioned in section 2.4, in situ data from the French GLACIOCLIM observation service (<https://glacioclim.osug.fr>) stations at Saint-Sorlin (2620 m) and Argenti re (1900 m) were also used to assess SAFRAN's infrared radiation at altitude. The period covered runs from December 2005 to December 2015.

95 River flow observations are taken from the French national database Banque Hydro (<http://hydro.eaufrance.fr/>) from 1958 to 2018. Daily and monthly flow data from 470 selected gauging stations were used to evaluate river flows simulated by the MODCOU hydrogeological model. Only gauging stations with observations for at least half of the days over the total period were kept. The efficiency of Nash Sutcliffe (NSE, Nash and Sutcliffe, 1970) was used to evaluate the performance of the model, and in addition the flow ratio between SIM simulations and observations was calculated to assess the bias of the  
00 system. The complementary cumulative distribution function (CCDF, below) of the NSE, which calculates the probability that the NSE is greater than a threshold, averaged over the number of gauging stations in France, is also used as a measure to evaluate the NSE.

Observed snow depth is another independent data set (i.e. not assimilated in the reanalysis process) used to evaluate the system. Measurements from 185 stations in the Alps, the Pyrenees and Corsica at altitudes between 600 and 3000 m above  
05 sea level are used. They include 26 ultrasonic sensors (located mainly in high-altitude areas: the Nivose network) and 161 stations operated by M t o-France partners, mainly in ski resorts which are manual measurements using snow sticks. The daily total snow depth is used to calculate the bias and root mean square errors for the SIM\_REF and SIM\_NEW simulations over the period 1984-2016 between October and June. Note that most stations do not provide complete data for the entire period. The length of the measurement series and the number of seasons that stations are open are sources of variability in  
10 the scores. However, since very few series are complete, the choice was made to evaluate the performance of the model by considering as many stations as possible rather than trying to homogenize the length of the series.

The SAFRAN analysis is performed on homogeneous zones in terms of horizontal gradients, and the analysed fields are spatially interpolated to a regular 8 km grid taking altitude into account. Thus, the comparison of infrared radiation (IR) is made between the SAFRAN analysis interpolated at 8 km and the local observation. The horizontal variability of IR  
15 radiation at 8 km is small enough to allow a direct comparison with in situ observations. Moreover, the ISBA model outputs of ground temperature and snow depth profiles are relatively sparse and only a direct comparison between the model outputs and the observations is possible. Finally, with respect to river flows, the MODCOU model grid varies in the range of 8 km to 1 km near the riverbed, and the comparison between the model output and the observed flow is made by considering the flow at the river outlet and the corresponding model grid point in the 1 km hydrological network grid. This way of locally  
20 validating models by comparing the observation to the corresponding model grid point is not new and has been used in many studies in France and elsewhere (Habets et al., 2008; Decharme et al., 2013; Lafaysse et al., 2011; Vergnes et al., 2014).

Commented [PLM21]: RC1

Commented [PLM22]: RC2

Commented [PLM23]: RC1

## 4. Results

### 4.1 Description of climate data

Figure 4 shows the annual averages of atmospheric forcing from 1958 to 2018. The 2-metre air temperature (Fig. 4a) and specific humidity (Fig. 4b) show natural interannual variability and a tendency to increase over time by about 1.4 K and 0.6 g Kg<sup>-1</sup> (linear regression of the time series of annual means), respectively. The abrupt change in temperature in 1987/1988, referred to by Brulebois et al (2015), is not so obvious to explain. The 10-metre wind speed (Fig. 4c) at the beginning and end of the analysis period is of the same order with an amplitude of 2.8 m s<sup>-1</sup>, but with a significant decrease of 0.5 m s<sup>-1</sup> between 1983 and 1995, followed by a steady increase until 2018. The interannual variability is greater for precipitation than for the other variables, but shows no trend on average. Incident radiation also shows a remarkable change around 1988 with about +15 W m<sup>-2</sup> for direct solar radiation and +5 W m<sup>-2</sup> for infrared radiation between the periods before and after 1988. At the same time, diffuse solar radiation decreases by 10 W m<sup>-2</sup> from 1988 onwards. On average, the total amount of solar and infrared energy received by the surface increases by about 10 W m<sup>-2</sup>. This behaviour is consistent with the discussion of Brulebois et al (2015) and the analysis of Boé (2016) and may be caused by several reasons. It can be argued that a decrease in aerosols and the increase in greenhouse gases in the atmosphere have significantly increased incident radiation as shown by climate studies (Wild 2012). In addition to this physical reason, a more technical reason is the change in the large-scale analysis used as boundary conditions to the ERA-40 reanalysis (Uppala et al., 2005), with a priori small changes in the analysed fields. During the production of the ERA-40 reanalysis, the ECMWF operational data assimilation system has evolved considerably and switched to a 4D-var variational method compared to the 3D-var method previously used. This new system has proven to be more accurate and the assimilation of a much larger number of satellite observations has led to a significant improvement in analysis and forecasting, in particular, for the vertical profiles of temperature and relative humidity. The comparison in terms of bias and root mean square error (RMSE) at the four weather stations measuring infrared radiation is summarized in Table 2. With the exception of the Carpentras station, where the LSAF IR radiation is almost unbiased and the error is the smallest compared to SAFRAN, the scores are better for the high-altitude stations with SAFRAN when the correction is applied. Due to their high altitude, no correction was applied at Argentière or Saint-Sorlin. At the Argentière station, the bias and root mean square error are lower with SAFRAN than with LSAF. At Saint-Sorlin, the bias is higher with SAFRAN but the RMSE is of the same order of magnitude as LSAF.

### 4.2 Impact of new model configurations

The first comparison concerns the SIM\_REF2 experiment where river flow is slightly underestimated compared to SIM\_REF (not shown), and the underestimation is corrected by calibrating the subgrid drainage term. In the SIM\_REF simulation, the ratio of simulated to observed flow is centered around 1 and the daily efficiency range (NSE below) characterized by its CCDF is larger for all stations. SIM\_PHY does not consider any parameterization of the subgrid drainage and is therefore closer to the SIM\_REF2 simulation in terms of subgrid hydrology. Figure 5 shows the comparison

Commented [PLM24]: RC2

of each SIM simulation with the observed river flow for the 470 gauging stations. SIM\_PHY tends to overestimate flows, as indicated by the average ratio between simulated and observed flows. SIM\_PHY shows slightly poorer results for NSE, ranging from 0.5 to 0 (about 40% of the stations), but in this case both models do not perform very well. Most of the stations affected by deterioration in the lower part of the NSE CCDF have an NSE below 0.55 and represent about 57% of the total number of stations. Part of the explanation comes from the calibration of the subgrid drainage in SIM\_REF which is not done in SIM\_PHY. However, NSE's CCDF shows that SIM\_PHY outperforms SIM\_REF (and also SIM\_REF2, but not shown) for NSEs greater than 0.56, which corresponds to half the total number of stations, and highlights the added value of physics associated with a better description of vegetation types and the use of other, more accurate databases. Figure 5 shows how the scores are improved for experiments with corrected infrared radiation (SIM\_FRC), subgrid orography (SIM\_TOP) and hydrology (SIM\_NEW), both in terms of NSE's CCDF and flow ratio. The bias in river flow is significantly reduced when infrared radiation is increased due to higher total evaporation, resulting in less water available in rivers. However, a positive bias remains, which is expected, since SIM simulates natural runoff and river flow, i.e. without abstraction or diversion, while some basins are influenced by human activity. In some basins, the human footprint on the landscape is characterized by an increase in urban and agricultural areas and the presence of dams. In the model, urban areas have been replaced by rocks, a type of natural surface, to represent the presence of urban areas that enhance surface runoff. However, the model does not explicitly represent irrigation or the impact of the presence of dams on river flow. The basins impacted by human activity are of great interest for the evaluation as they allow quantifying errors in the system and proposing improvements. The SIM\_FRC and SIM\_TOP NSE scores are very close and better than SIM\_PHY for all stations and SIM\_REF for about 75% of the stations with NSE greater than 0.4. Finally, SIM\_NEW and SIM\_TOP tend to overestimate river flow, but their NSEs are significantly better than SIM\_REF for all NSE ranges.

Commented [PLM25]: RC2

Figure 6 presents a map of the differences in mean annual NSEs (for stations with positive NSEs) between the different configurations. Over the entire reanalysis period, in Figure 6a, it is first confirmed that SIM\_PHY alone does not improve the flow simulations everywhere in France but only for the gauging stations that were already reasonably represented (with NSEs above 0.56). Second, the new IR forcing improves the scores almost everywhere except in two isolated stations in the Seine basin (Fig. 6b). As expected, SIM\_TOP only has an impact on mountains and especially over the Alps (Fig. 6c). Finally, the comparison between SIM\_NEW and SIM\_TOP highlights the advantages of using an underground mountain reservoir for snow (Fig. 6d). It should be noted that the number of stations is reduced in Fig. 6c and Fig. 6d because these experiments do not encompass the entire territory. In Fig. 7, SIM\_NEW is compared with SIM\_REF so that it reveals the advantages of all the changes. The SIM\_NEW NSE map indicates that the model explains a large part of the flow variance at most stations (brown to green colours), but some stations still have average (red) to low (blue) NSE values. In particular, the gauging stations in the northern of France are not well simulated, in addition to the Alpine region which is known to have significant anthropogenic influences on the flow regime.

Commented [PLM26]: RC1

### 4.3 Seasonal river flows

To complement the previous results and to demonstrate the successive improvements in simulated flows, seasonal scores were displayed over the 60-year simulation period using Taylor plots, which have been recognized to be a useful tool for graphically summarizing how a set of simulations compares to observations (Taylor, 2001). A set of experiments can be analysed in terms of correlation, centred root mean square (RMSD) difference and the magnitude of their variation represented by the normalized standard deviation. These scores are calculated from all daily observations and simulations. Seasonal Taylor plots (DJF, MAM, JJA, SON for winter, spring, summer and fall respectively) of the different experiments are presented in Fig. 8. As a result, regardless of the season, the SIM\_NEW simulation has the highest correlation and the lowest RMSD, except perhaps for JJA, the season with the highest normalized standard deviation. For DJF, the scores are very good with relatively little spread, while for JJA, the scores are still tightly clustered but the RMSD is higher. MAM and SON confirm the interest of using an underground reservoir to conserve water in the mountains before releasing it in the spring.

### 4.4 Extremes river flows

The previous results showed how SIM\_NEW behaved, on average, over the 60-year simulation period. In order to assess the ability of the new system to correctly simulate extreme river flows and thus to distinguish between high and low flow periods, the deciles of daily river flows were calculated and special attention was paid to decile Q10 corresponding to low flow states and decile Q90, the threshold above which a flow is considered to be decadal (here defined as a flood). As shown in Fig. 9, Q10 and Q90 first indicate that in very dry periods (flows less than or equal to Q10), all the simulations except SIM\_NEW underestimates the amplitude of the variations. Furthermore, for the SIM\_NEW experiment, the correlation, the RMSD and the normalized standard deviation are the best. The variability in terms of normalized standard deviation is reversed when considering floods (Q90) versus dry periods (Q10). Again, SIM\_NEW has the smallest RMSD value and all simulation correlations are greater than 0.99. Figure 10 compares the observed and simulated monthly flows of the Garonne River at Lamagistère with SIM\_NEW and confirms the model's ability to simulate low flows during the summer seasons fairly accurately and its tendency to overestimate flood peaks.

### 4.5 Snow height

To complement the previous results with respect to flows, a comparison of the snow depths between SIM\_REF and SIM\_NEW was carried out using the 185 stations described in section 3.2. In Fig. 11, the spatial variability of scores is presented as a function of elevation with notched boxplots where the boxes represent the interquartile range, the whiskers the 10th and 90th percentiles, and the notch represents the 90% confidence interval of the median estimated by a bootstrap sampling technique among the available stations. The SIM\_REF simulation has a positive median bias at the lowest

elevations and a negative median bias between 2000 and 2400 m, while the SIM\_NEW simulation is unbiased at any elevation. The variability of the bias between stations is also reduced in the SIM\_NEW simulation. Consistently, a significant reduction in MSE is obtained at the lowest and highest altitudes with SIM\_NEW, as well as a reduction in the 90th percentile MSE at all altitudes. These results are consistent with the improvement in altitude resolution in mountainous areas, which reduces the altitude differences between the simulated grid cells and the observation stations. Slight improvements in SIM\_NEW scores can also be obtained by linear interpolation at station altitudes of the simulated snow heights at the two closest altitude bands. It should also be noted that improvements in the snow parameterization should also explain some of the improvement in scores (Decharme et al., 2016).

#### 4.6 Changes in the simulated water and energy budgets

This section compares the climatology of the SIM system before and after the changes made. The aim is to qualitatively identify the impact of the new model on the distribution of energy fluxes, which is important for certain hydrological or agriculture-related applications. Maps of the Bowen ratio and the evaporation to precipitation ratio are shown in Fig. 12. The areas with the highest Bowen ratio are located in the mountains where snowfall limits evaporation, along the Mediterranean coast where annual precipitation is lower in quantity and incident radiation rather strong, and in a large area covering the Garonne basin and part of the Loire and Seine basins, characterised by high vegetation fractions. The evaporation to precipitation ratio is also highest in the lowland areas where the Bowen ratio is high. On the mountains, heavy precipitation and limited evaporation due to snow lead to the lowest evaporation to precipitation ratio. These results are comparable to those obtained by Habets et al. (2008) for another period, except that in SIM\_NEW, the Landes forest (southwestern France, on the Atlantic coast) has a higher Bowen ratio. The first reason comes from the difference in the parameterization of photosynthesis and more precisely the parameterization of leaf conductance used in SIM\_REF based on Jarvis (1976) and SIM\_NEW based on ISBA-A-gs (Calvet et al., 1998) which explicitly models photosynthesis (thus the canopy resistance is more physically based) and it models plant stress in a more detailed manner which considerably reduces evaporation over vegetated areas. Thus, the surface energy budget tends to increase the sensible heat flux. The second reason is related to the increase in incoming infrared radiation, which increases the sensible heat flux and decreases the latent heat flux, which generally occurs on dry soils with low evaporation capacity. The interannual variability of the evaporation to precipitation (E/P hereafter) ratio and the Bowen ratio are presented in Fig. 13, for SIM\_REF, SIM\_PHY and SIM\_NEW to first characterize the old system relative to the new one and to highlight the impact of changes from SIM\_PHY to SIM\_NEW on the energy budget. E/P is greater in SIM\_REF than in the other two simulations each year, and E/P in SIM\_NEW is closer to SIM\_REF than in SIM\_PHY. Total precipitation is very similar but slightly lower in SIM\_REF and in SIM\_PHY or SIM\_NEW, due to the higher resolution orography and the representation of sub-grid orography in the mountains. Therefore, higher E/P corresponds to higher total evaporation. In SIM\_NEW, the ratio of simulated to observed flow is in excess whereas it is better simulated in SIM\_REF with a peak centred around 1. This result is consistent with an evaporation deficit in SIM\_NEW compared to SIM\_REF. The Bowen ratio is lowest for SIM\_REF, increases in SIM\_PHY, and is highest in

Commented [PLM28]: RC1

Commented [PLM29]: RC1

Commented [PLM30]: RC2

50 SIM\_NEW, which already tends to evaporate more than SIM\_PHY. [This result shows that the sensible heat flux in SIM\_NEW is much higher than in SIM\_PHY, mainly due to the increased incoming infrared radiation, which partially compensates for the evaporation deficit.]

Commented [PLM31]: RC2

## 5. Discussion

### 5.1 Climatic data

55 As shown in Fig. 4, there is heterogeneity in the forcing data, particularly with respect to radiation. There are two possible reasons for the break in the time series, the first is due to the large-scale analysis used to reconstruct temperature, humidity and cloudiness profiles. [As explained in Section 4.1, the calculations of these profiles have varied over time as a result of improvements in the global data assimilation systems used in the ERA-40 reanalysis production.] The second reason is the variation in the observation density network over time. Indeed, from 1958 to the present, substantial changes have been observed in the deployment of new weather stations. The combination of these two changes means that the SAFRAN reanalysis is not homogeneous over time and it seems important to understand how the Optimal Interpolation results are influenced by these changes when analysing the simulation results. However, an abrupt change may also be due to the darkening / lightening effect (Wild 2012, Brulebois et al., 2015, Boé 2016).

Commented [PLM32]: RC2

60 As already mentioned, the uncertainty in SAFRAN's IR radiation is significant. The ability to observe the IR in the plains and mountains allowed a fair comparison between LSAF and SAFRAN products without correction (SIM\_PHY) and with correction (SIM\_FRC). The impact of this variable is very important, especially over snow (Quéno et al, 2017, Sauter and Obleitner, 2015), therefore, an extension of the in situ observation network would allow a better understanding of its spatial variability and the potential improvement of model simulations. The extension of the correction to the entire French territory is debatable, but this decision was guided by the positive bias of river flows and also by the desire to have a more realistic energy input in mid-mountain areas (i.e. below 1500 m) in order to better model the evolution of the snowpack.

70 [We also compared the simulated soil temperatures to the observations made over France. The IR correction on soil temperature has a positive impact and significantly reduces biases and RMSEs (not shown). The results are consistent and of the same order of magnitude as those obtained by Decharme et al (2013).]

Commented [PLM33]: RC2

### 5.2 River flows

75 The results show that SIM\_REF simulates the correct ratio between modelled and observed river flow (centred around 1) whereas in SIM\_PHY, this ratio is overestimated. However, in SIM\_PHY, as explained in the model description, more complexity has been added to the model based on a better representation of physics. In addition, errors in the forcing data show that errors compensate for each other in SIM\_REF, since despite a radiative deficit, river flow is rather well simulated. In SIM\_PHY, the calculations performed on each of the vegetation types use the A-gs photosynthesis parameterization, which tends to produce less evaporation on the vegetation, leading to more water available in the rivers. On the other hand, it

has already been mentioned that radiative forcing is underestimated. The combination of more water available in the soil and less radiative energy to evaporate it leads to an overestimation of river flows. This is the case of the more physical SIM\_PHY model, which is more penalized by errors in forcing. By correcting for IR radiation, the SIM\_FRC simulation shows a clear improvement in river flow scores, with a peak of the modelled to observed ratio closer to 1, and an improved daily efficiency range in almost all cases, except perhaps for NSEs below 0.4, but in this case the difference with SIM\_REF is very small. The implementation of the subgrid topography with the use of elevation bands (SIM\_TOP) and the subgrid hydrology with the inclusion of a snow reservoir (SIM\_NEW) essentially impacts the hydrology in the mountains, and thus the snow and river flows that are affected by snowmelt.

Commented [PLM34]: RC2

### 5.3 Snow depth

For the evaluation of the snow depth, the comparison can only be made on the 9892 cells, which corresponds to the SIM\_REF grid. The snow depth in SIM\_FRC, SIM\_TOP and SIM\_NEW is the same because these experiments use the same IR correction and sub-grid processes related to topography or hydrology which are not considered in the evaluation. In terms of snow depth, only SIM\_PHY would be different from the other three simulations if the IR correction were to be applied below 1340 m, which limits the interest of such a comparison.

Commented [PLM35]: RC2

### 5.4 Subgrid hydrology

This method showed that the hydrology of mountainous areas was improved because the analysed precipitation rate and phase were better represented for each altitude band than when averaged vertically, resulting, in the case of the Durance River (Lafayssse et al., 2011), in a decrease in the overestimated spring peak flow associated with a better phase between the observed monthly flow and the simulated flow. However, summer and winter peak flows were still significantly underestimated by the model. During long periods of drought without precipitation or snowmelt, river flows are controlled by subsurface drainage. In the framework of the AQUI-FR project (<https://www.meteo.fr/~aqui-fr/>) aimed at developing a platform with multiple regionally-specialized hydrogeological models over France to simulate flows and water table heights, aquifers are explicitly simulated and the water flows of SURFEX (Masson et al., 2013) used as inputs should not be impacted by an empirical representation of aquifers. Moreover, in AQUI-FR, some hydrogeological applications have been calibrated using SURFEX runoff and infiltration water flows as inputs (Vergnes et al., 2019).

## 6. Conclusions and outlook

This study illustrates how developments over the last ten years are improving the SIM hydrometeorological system. Several important changes have been made, particularly in the soil physics of the ISBA model where the force-restore method has been abandoned and replaced by the multi-layer soil diffusion method. At the same time, as described in section 2, the snow



model has been revised to improve vertical layering, snow compaction and solar energy transmission within the snowpack through the use of spectral albedo, as is done in more advanced models. The model was run according to the vegetation tiling approach, with each of the 12 vegetation types characterized by its own set of parameters, in contrast to the single vegetation type approach where the parameters are aggregated. Then, more accurate databases for soil, orography and land use were used. A more precise infrared forcing significantly improved the results as well as the use of a groundwater reservoir in mountains associated with a specific vertical discretization of the massifs. The new configuration of the model, including all the new or updated functionalities mentioned above, proved to be more efficient than the old system and was therefore better adapted to water resource studies. Comparisons with independent observations of daily total snow depth and river flows were made and confirmed that the scores were improved. In addition, the new SIM system better represented river flow extremes for both low and high flow periods.

Some perspectives can be proposed to improve the SIM system. The first is to improve the description of climate. It was found that SAFRAN worked well in most cases, but some shortcomings remained. A new near-surface reanalysis system is being developed at Météo-France to replace SAFRAN. It includes a new surface analysis of air temperature, relative humidity at 2 meters and daily precipitation, and uses high-resolution model outputs as first guess of the analysis. In addition, as part of the Copernicus program, a 5.5 km high-resolution reanalysis will be produced over Europe, and will be an interesting product to compare with SAFRAN over France.

The second is to improve the representation of surfaces in the model. Indeed, the ecosystem database is representative of the 1999-2006 period. For more recent simulations, or quasi-real-time applications, it would be interesting to study the contribution of new high-resolution satellite products, such as the land cover product of the European Space Agency and the Climate Change Initiative, or certain other parameters derived from Copernicus products, such as albedo for example, which allow a better description of surface types.

The third concerns improving the physics of the model and more specifically the use of the multi-energy balance (MEB) scheme (Boone et al., 2017; Napoly et al., 2017) to enable explicit calculation of the interactions of the canopy with the air and the ground. The MEB model showed some modest gains within the SIM\_REF simulation, owing to a better temporal partitioning between bare soil evaporation and transpiration (Napoly, 2016). Moreover, the MEB model demonstrated that the use of litter in forests improved surface flux results.

Secondly, considering anthropisation, in particular irrigation and the presence of dams, could benefit the SIM system to improve its realism and allow more accurate comparisons with gauging stations in anthropized basins. Irrigation is currently developed in the ISBA model and the integration of dams is a longer-term project. Finally, a better representation of groundwater and its characteristics in France is another challenge to be taken up.

*Code availability.* The SURFEX v8.0 source code, including the ISBA code, used in this study is available in the supplement, as well as the SAFRAN code. The post-processing codes, including the *scores* package from the open source *snowtools* project, are also available in the supplement.

45

*Data availability.* The results of all the models examined here and the R and Python programs for plotting the results are available in the supplement.

*Supplement.* The supplement for this article is available online at <http://doi.org/10.5281/zenodo.3689560>.

50

*Author's contribution.* Model developments were performed by PLM and EM for the SAFRAN analysis on France, SF for SURFEX and BD and AB for the diffusive version of SURFEX/ISBA, and FH for MODCOU. PLM and FB designed the experiments and carried them out. ML carried out the comparison of the results on snow. DL provided valuable Python scripts for the figures. JB and ML first tested the model for their own research. PE, FB and FR are responsible for the SIM operational suite at Météo-France. PLM prepared the manuscript with the help of all co-authors.

## Appendix A

55

The principle of the infrared correction

This correction was proposed to compensate for a deficit in long-wave radiation analysed by SAFRAN compared with infrared measurements from two reference meteorological stations, Carpentras and Col de Porte, located respectively in south-eastern France and the Alps. The correction is applied below 1340 m. The comparison was made for measurements collected between August 1993 and August 1994 every three hours.

60

The correction is written as follows:

$$\varepsilon(\sigma) = (-5.42 + 1.14\sigma - 0.11\sigma^2) * 10^{-2} \quad (A1)$$

$$LWD_{cor} = LWD_{ref} / [1 + \varepsilon(\sigma)] \quad (A2)$$

Where  $\sigma$  is the cloudiness analysed in octas,  $LWD_{ref}$  the SAFRAN longwave downward radiation, and  $LWD_{cor}$  the longwave downward radiation when the correction is applied, i.e. when it is divided by  $1 + \varepsilon(\sigma)$ . Figure A1 shows the magnitude of the correction as a function of cloudiness. The increase in radiation is highest under clear sky conditions and decreases with cloudiness up to 5 octas and increases again for cloudier skies.

65

## References

70

Albergel, C., Munier, S., Leroux, D. J., Dewaele, H., Fairbairn, D., Barbu, A. L., Gelati, E., Dorigo, W., Faroux, S., Meurey, C., Le Moigne, P., Decharme, B., Mahfouf, J.-F., and Calvet, J.-C.: Sequential assimilation of satellite-derived vegetation and soil moisture products using SURFEX\_v8.0: LDAS-Monde assessment over the Euro-Mediterranean area, *Geosci. Model Dev.*, 10, 3889–3912, <https://doi.org/10.5194/gmd-10-3889-2017>, 2017.

Commented [PLM37]: RCI

- Albergel, C., de Rosnay, P., Gruhier, C., Muñoz-Sabater, J., Hasenauer, S., Isaksen, L., Kerr, Y., and Wagner, W.: Evaluation of remotely sensed and modelled soil moisture products using global ground-based in situ observations. *Remote Sensing of Environment*, Volume 118, Pages 215–226, 2012.
- Alkama, R., Decharme, B., Douville, H., Becker, M., Cazenave, A., Sheffield, J., Voldoire, A., Tyteca, S., and Le Moigne, P.: Global evaluation of the ISBA-TRIP continental hydrological system. Part I: Comparison to GRACE terrestrial water storage estimates and in situ river discharges, *Journal of Hydrometeorology*, 11(3). <https://doi.org/10.1175/2010JHM1211.1>, 2010.
- Artinyan, E., Habets, F., Noilhan, J., Ledoux, E., Dimitrov, D. et al.: Modelling the water budget and the riverflows of the Maritsa basin in Bulgaria. *Hydrology and Earth System Sciences Discussions*, European Geosciences Union, 2008, 12 (1), pp.21-37. hal-00330873, 2008.
- Barthel, R., and Banzhaf, S.: Groundwater and surface water interaction at the regional-scale—a review with focus on regional integrated models. *Water resources management*, 30(1), 1-32, 2016.
- Best, M., Abramowitz, G., Johnson, H., Pitman, A., Balsamo, G., Boone, A., Cuntz, M., Decharme, B., Dirmeyer, P., Dong, J., et al. (2015). The plumbing of land surface models: benchmarking model performance. *J. Hydrometeor.*, 16(3):1425–1442, 2015.
- Biancamaria S., Mballo, M., Le Moigne, P., Sánchez Pérez, J.-M., Espitalier-Noël, G., Grusson, Y., Cakir, R., Häfliger, V., Barathieu, F., Trasmonte, M., Boone, A., Martin, E., and Sauvage, S.: Total water storage variability from GRACE mission and hydrological models for a 50,000 km<sup>2</sup> temperate watershed: the Garonne River basin (France), *Journal of hydrology: regional studies*, Vol. 24, <https://doi.org/10.1016/j.ejrh.2019.100609>, 2019.
- Boé, J.: Modulation of the summer hydrological cycle evolution over western Europe by anthropogenic aerosols and soil-atmosphere interactions, *Geophys. Res. Lett.*, 43, doi:10.1002/2016GL069394, 2016.
- Bonnet R., J. Boé, G. Dayon, and E. Martin: 20th century hydro-meteorological reconstructions to study the multi-decadal variations of the water cycle over France. *Water Resources Research*, 53, 8366–8382, 2017.
- Boone A., Best, M., Cuxart, J., Polcher, J., Quintana, P., Bellvert, J., Brooke, J., Canut-Rocafort, G., and Price, J.: Land Surface Interactions with the Atmosphere over the Iberian Semi-Arid Environment (LIAISE), *GEWEX Newsletter*, Vol. 29 No 1, Quarter 1, 2019.
- Boone, A., De Rosnay, P., Balsamo, G., Beljaars, A., Chopin, F., Decharme, B., Delire, C., Ducharme, A., Gascoin, S., Grippa, M., et al. (2009). The amma land surface model intercomparison project (almip). *Bulletin of the American Meteorological Society*, 90(12):1865, 2009.
- Boone, A., Habets, F., Noilhan, J., Clark, D., Dirmeyer, P., Fox, S., Gusev, Y., Haddeland, I., Koster, R., Lohmann, D., et al.: The rhone-aggregation land surface scheme intercomparison project: An overview. *Journal of Climate*, 17(1):187–208, 2004.

Commented [PLM38]: RCI

Commented [PLM39]: RCI

Commented [PLM40]: RCI

Commented [PLM41]: RCI

- 05 Boone, A., and Etchevers, P. (2001). An Intercomparison of Three Snow Schemes of Varying Complexity Coupled to the Same Land Surface Model: Local-Scale Evaluation at an Alpine Site. *Journal of Hydrometeorology*, [https://doi.org/10.1175/1525-7541\(2001\)002<0374:AIOTSS>2.0.CO;2](https://doi.org/10.1175/1525-7541(2001)002<0374:AIOTSS>2.0.CO;2), 2001.
- Boone, A., Calvet, J.-C., and Noilhan, J.: Inclusion of a Third Soil Layer in a Land Surface Scheme Using the Force–Restore Method. *Journal of Applied Meteorology*, 38(11):1611-1630, 1999.
- 10 Bowling, L. C., Kane, D. L., Gieck, R. E., Hinzman, L. D., and Lettenmaier, D. P. (2003). The role of surface storage in a low-gradient arctic watershed. *Water Resources Research*, 39(4), 2003.
- Braud I., Varado N., Olioso A.: Comparison of root water uptake modules using either the surface energy balance or potential transpiration. *Journal of Hydrology*, 301 (1-4), 267-286. ISSN 0022-1694, 2005.
- Brulebois, E., Castel, T., Richard, Y., Chateau-Smith, C., & Amiotte-Suchet, P.: Hydrological response to an abrupt shift in surface air temperature over France in 1987/88. *Journal of Hydrology*, 531, 892-901, 2015.
- 15 Brun E., Martin E., Spiridonov V.: The coupling of a multi-layered snow model with a GCM, *Ann. Glaciol.*, 25, 66-72, 1997.
- Brun, E., P. David, M. Sudul, and G. Brunot: A numerical model to simulate snow-cover stratigraphy for operational avalanche forecasting. *J. Glaciol.*, 38, 13–22, 1992.
- 20 Calvet, J.-C., V. Rivalland, C. Picon-Cochard, and J. M. Guehl, Modelling forest transpiration and co2 fluxes - response to soil moisture stress, *Agric. and For. Meteorol.*, 124(3-4):143–156, August 2004.
- Calvet, J.-C., J. Noilhan, J.-L. Roujean, P. Bessemoulin, M. Cabelguenne, A. Olioso and J.-P. Wigneron, An interactive vegetation SVAT model tested against data from six contrasting sites, *Agricultural and Forest Meteorology*, Vol. 92, pp. 73-95, 1998.
- 25 Carrer, D., Meurey, C., Ceamanos, X., Roujean, J.-L., Calvet, J.-C., and Liu, S.: Dynamic mapping of snow-free vegetation and bare soil albedos at global 1km scale from 10- year analysis of MODIS satellite products, *Remote Sensing of Environment*, Vol. 140, pp. 420-432, 2014.
- Carrer, D., S. Lafont, J.-L. Roujean, J.-C. Calvet, C. Meurey, P. Le Moigne, and I. F. Trigo, Incoming solar and infrared radiation derived from METEOSAT: Impact on the modeled land water and energy budget over France, *J. Hydrometeorol.*, 13, 504–520, doi:10.1175/JHM-D-11-059.1, 2012.
- 30 Chen, T. H., Henderson-Sellers, A., Milly, P., Pitman, A., Beljaars, A., Polcher, J., Abramopoulos, F., Boone, A., Chang, S., Chen, F., et al.: Cabauw experimental results from the project for intercomparison of land-surface parameterization schemes. *Journal of Climate*, 10(6):1194–1215, 1997.
- Courtier, P and J-F Geleyn: A global spectral model with variable resolution - application to the shallow-water equations. *Q J R Meteorol Soc*, 114, 1321-1346, 1988.
- 35 Dayon G., J. Boé, E. Martin, J. Gailhard: Impacts of climate change on the hydrological cycle over France and associated uncertainties, *Comptes Rendus Geoscience*, Volume 350, Issue 4, Pages 141-153, <https://doi.org/10.1016/j.crte.2018.03.001>, 2018.

Commented [PLM42]: RCI

Commented [PLM43]: RCI

- Decharme, B., Delire, C., Minvielle, M., Colin, J., Vergnes, J.-P., Alias, A., et al.: Recent changes in the ISBA-CTRIP land surface system for use in the CNRM-CM6 climate model and in global off-line hydrological applications, *Journal of Advances in Modeling Earth Systems*, 11. <https://doi.org/10.1029/2018MS001545>, 2019.
- Decharme, B., Brun, E., Boone, A., Delire, C., Le Moigne, P., and Morin, S.: Impacts of snow and organic soils parameterization on northern Eurasian soil temperature profiles simulated by the ISBA land surface model. *The Cryosphere*, 10(2). <https://doi.org/10.5194/tc-10-853-2016>, 2016.
- Decharme, B., Martin, E., and Faroux, S.: Reconciling soil thermal and hydrological lower boundary conditions in land surface models, *Journal of Geophysical Research Atmospheres*, 118(14). <https://doi.org/10.1002/jgrd.50631>, 2013.
- Decharme, B., Boone, A., Delire, C., and Noilhan, J.: Local evaluation of the Interaction between Soil Biosphere Atmosphere soil multilayer diffusion scheme using four pedotransfer functions, *Journal of Geophysical Research Atmospheres*, 116(20), <https://doi.org/10.1029/2011JD016002>, 2011.
- Dirmeyer, P. A.: A history and review of the global soil wetness project (gswp). *Journal of Hydrometeorology*, 12(5):729–749, 2011.
- Ducharme A, Laval K, Polcher J: Sensitivity of the hydrological cycle to the parameterization of soil hydrology in a GCM, *Climate Dynamics*, 14: 307-327, 1998.
- Dumenil, L. and Todini, E.: A rainfall-runoff scheme for use in the Hamburg climate model. J.P. O’Kane (Ed.), *Advances in Theoretical Hydrology, A Tribute to James Dooge*, Eur. Geophys. Soc. Ser. Hydrol. Sci., 1, Elsevier, Amsterdam (1992), pp. 129-157, 1992.
- Durand Yves, Brun Eric, Méridol Laurent, Guyomarc’h Gilbert, Lesaffre Bernard and Eric Martin: A meteorological estimation of relevant parameters for snow models, *A. of Glaciol.*, 18, 65-71, 1993.
- El Maayar, M., Chen, J. M., Price, D. T.: On the use of field measurements of energy fluxes to evaluate land surface models. *ecological modelling*, Volume 214, pages 293–304, 2008.
- Etchevers, P., Martin, E., Brown, R., Fierz, C., Lejeune, Y., Bazile, E., Boone, A., Dai, Y.-J., Essery, R., Fernandez, A., et al. (2004). Validation of the energy budget of an alpine snowpack simulated by several snow models (snowmip project). *Annals of Glaciology*, 38(1):150–158, 2004.
- Etchevers P: Modélisation de la phase continentale du cycle de l’eau à l’échelle régionale. Impact de la modélisation de la neige sur l’hydrologie du Rhône. Thesis, Université Paul Sabatier, Toulouse, France, 2000.
- Fang, L., Hain, C. R., Zhan, X., and Anderson, M. C.: An inter-comparison of soil moisture data products from satellite remote sensing and a land surface model. *International Journal of Applied Earth Observation and Geoinformation*, Volume 48, Pages 37-50, 2016.
- Faroux, S., Kaptué Tchuenté, A. T., Roujean, J.-L., Masson, V., Martin, E., and Le Moigne, P.: ECOCLIMAP-II/Europe: a twofold database of ecosystems and surface parameters at 1 km resolution based on satellite information for use in land surface, meteorological and climate models, *Geosci. Model Dev*, 6, 563–582. <https://doi.org/10.5194/gmd-6-563-2013>, 2013.

Commented [PLM44]: RCI

Commented [PLM45]: RCI

Commented [PLM46]: RCI

Commented [PLM47]: RCI

- Foken T.: The energy balance closure: an overview. *Ecological Society of America*, Volume 18, Issue 6, pages 1351-1367. <https://doi.org/10.1890/06-0922.1>, 2008.
- 75 Goward, S. N., Xue, Y., and Czajkowski, K. P.: Evaluating land surface moisture conditions from the remotely sensed temperature/vegetation index measurements. An exploration with the simplified simple biosphere model. *Remote Sensing of Environment*, Volume 79, Pages 225–242, 2000.
- Habets, F., Boone, A., Champeaux, J. L., Etchevers, P., Franchistéguy, L., Leblois, E., Ledoux, E., Le Moigne, P., Martin, E., Morel, S., Noilhan, J., Quintana Segui, P., Rousset-Regimbeau, F., and Viennot, P.: The SAFRAN-ISBA-MODCOU hydrometeorological model applied over France. *Journal of Geophysical Research Atmospheres*, <https://doi.org/10.1029/2007JD008548>, 2008.
- 80 Habets F : Modélisation du cycle continental de l’eau à l’échelle régionale : application aux bassins versants de l’Adour et du Rhône. Thèse, Université Paul Sabatier, Toulouse, France, 1998.
- Harding, R., J. Polcher, A. Boone, M. Ek, H. Wheeler, and A. Nazemi, 2015: Anthropogenic Influences on the Global Water Cycle - Challenges for the GEWEX Community. *GEWEX News*, 27(4), 6-8.
- 85 Henderson-Sellers, A., McGuffie, K. & Pitman, A. The Project for Intercomparison of Land-surface Parametrization Schemes (PILPS): 1992 to 1995. *Climate Dynamics* 12, 849–859 (1996). <https://doi.org/10.1007/s003820050147>, 1996.
- Jarvis, P.G.: The interpretation of leaf water potential and stomatal conductance found in canopies in the field. *Phil. Trans. R. Soc. London B*, 273, 593±610, 1976.
- 90 Kalma, J. D., McVicar, T. R., and McCabe, M. F.: Estimating Land Surface Evaporation: A Review of Methods Using Remotely Sensed Surface Temperature Data. *Surv Geophys*, 29:421–469, <https://doi.org/10.1007/s10712-008-9037-z>, 2008.
- King D., Burrill, A., Daroussin, J., Le Bas, C., Tavernier, R., and Van Ranst, E.: The EU soil geographic database. In *European Land Information Systems for Agro-environmental Monitoring* (Eds King, Jones and Thomasson), JRC European Commission, ISPRA, 43-60, 1995.
- 95 Lafaysse, M., Hingray, B., Etchevers, P., Martin, E., & Obled, C. (2011). Influence of spatial discretization, underground water storage and glacier melt on a physically-based hydrological model of the Upper Durance River basin. *Journal of Hydrology*. <https://doi.org/10.1016/j.jhydrol.2011.03.046>, 2011.
- Le Moigne, P.: Description de l’analyse des champs de surface sur la France par le système SAFRAN, Tech. Note, 30 pp., 77, Meteo- France/CNRM, Toulouse, France, 2002.
- 00 Le Moigne, P.: Supplement of gmd-2020-31 [Data set]. Zenodo. <http://doi.org/10.5281/zenodo.3689560>, 2020.
- Ledoux E., Girard G., De Marsily G., Deschenes J.: Spatially distributed modelling: Conceptual approach, coupling surface water and ground-water, *Unsaturated flow hydrologic modeling: theory and practice*, H. J. Morel-Seytoux (ed.), p 434-454, NATO Sciences Service, 1989.
- Liang, X.: A Two-Layer Variable Infiltration Capacity Land Surface Representation for General Circulation Models, *Water Resour. Series*, TR140, 208 pp, 1994.
- 05

Commented [PLM48]: RCI

Commented [PLM49]: RCI

Commented [PLM50]: RCI

Commented [PLM51]: RCI

- Lohmann, D., E. Raschke, B. Nijssen, D.P. Lettenmaier, Regional scale hydrology, Part II: Application of the VIC-2L model to the Weser River, Germany, *Hydrological Sciences Journal*, Vol.43(1) p. 143-158, 1998a.
- Long, D., Longuevergne, L., and Scanlon, B. R.: Uncertainty in evapotranspiration from land surface modeling, remote sensing, and GRACE satellites. *Water Resources Research*. Volume 50, Issue 2, pages 1131-1151, <https://doi.org/10.1002/2013WR014581>, 2014.
- Luo, L., A. Robock, K. Vinnikov., C. A. Schlosser, A. Slater, A. Boone, H. Braden, P. Cox, P. de Rosnay, R. Dickinson, Y.-J. Dai, Q. Duan, P. Etchevers, A. Henderson-Sellers, N. Gedney, Y. Gusev, F. Habets, J. Kim, E. Kowalczyk, K. Mitchell, O. Nasonova, J. Noilhan, A. Pitman, J. Schaake, A. Shmakin, T. Smirnova, P. Wetzel, Y. Xue, Z.-L. Yang, Q.-C. Zeng, Effects of frozen soil on soil temperature, spring infiltration, and runoff: Results from the PILPS 2(d) experiment at Valdai, Russia, *J. Hydrometeorology*, 2003.
- Mahfouf, J.-F. and Noilhan, J.: Inclusion of gravitational drainage in a land surface scheme based on the force-restore method, *J. Appl. Meteorol.*, 35, 987–992, 1996.
- Martin E., Gascoin, S., Grusson, Y., Murgue, C., Bardeau, M., Anctil, F., Ferrant, S., Lardy, R., Le Moigne, P., Leenhardt, D., Rivalland, V., Sánchez Pérez, J.-M., Sauvage, S., and Therond, O.: On the Use of Hydrological Models and Satellite Data to Study the Water Budget of River Basins Affected by Human Activities: Examples from the Garonne Basin of France, *Surveys in Geophysics*, Springer Verlag (Germany), 2016, 37 (2), pp.223-247. 10.1007/s10712-016-9366-2, hal-01529147, 2016.
- Masson, V., Le Moigne, P., Martin, E., Faroux, S., et al.: The SURFEXv7.2 land and ocean surface platform for coupled or offline simulation of earth surface variables and fluxes, *Geoscientific Model Development*, 6(4). <https://doi.org/10.5194/gmd-6-929-2013>, 2013.
- Masson, V., J.L. Champeaux, F. Chauvin, C. Meriguet, and R. Lacaze: A global data base of land surface parameters at 1 km resolution in meteorological and climate models, *J. of Climate*, 16, 1261-1282, 2003.
- Nachtergaele F., Velthuisen H., Verelst L., & Wiberg D.: Harmonized World Soil Database Version 1.2.
- Nash, J.E. and Sutcliffe, J.V. (1970) River Flow Forecasting through Conceptual Model. Part 1A Discussion of Principles, *Journal of Hydrology*, 10, 282-290. [http://dx.doi.org/10.1016/0022-1694\(70\)90255-6](http://dx.doi.org/10.1016/0022-1694(70)90255-6), 2012.
- Napoly A: Apport de paramétrisations avancées des processus liés à la végétation dans les modèles de surface pour la simulation des flux atmosphériques et hydrologiques. Thesis, Université Paul Sabatier, Toulouse, France, 2016.
- Napoly, A., Boone, A., Samuelsson, P., Gollvik, S., Martin, E., Seferian, R., Carrer, D., Decharme, B., and Jarlan, L.: The interactions between soil–biosphere–atmosphere (ISBA) land surface model multi-energy balance (MEB) option in SURFEXv8 – Part 2: Introduction of a litter formulation and model evaluation for local-scale forest sites, *Geosci. Model Dev.*, 10, 1621–1644, <https://doi.org/10.5194/gmd-10-1621-2017>, 2017.
- Noilhan, J. and J.-F. Mahfouf: The ISBA land surface parameterization scheme. *Global and Planetary Change*, 13, 145-159, 1996.
- Noilhan, J. and Lacarrere, P.: GCM grid-scale evaporation from mesoscale modeling, *Journal of Climate*, 1995.

Commented [PLM52]: RCI

Commented [PLM53]: RCI

- 40 Noilhan, J. and Planton, S.: A Simple Parameterization of Land Surface Processes for Meteorological Models, *Monthly Weather Review*, 1989.
- Overgaard, J., Rosbjerg, D., and Butts, M. B.: Land-surface modelling in hydrological perspective – a review. *Biogeosciences*, European Geosciences Union, 2006, 3 (2), pp.229-241. hal-00297556, 2006.
- 45 Pitman, A., Henderson-Sellers, A., Abramopoulos, F., Avissar, R., Bonan, G., Boone, A., Cogley, J., Dickinson, R., Ek, M., Entekhabi, D., et al. (1993). Project for intercomparison of land-surface parameterization schemes (pilps): results from off-line control simulations (phase 1a). *Inter GEWEX Project Office Publ.*, 7., 1993.
- Quéno, L., Karbou, F., Vionnet, V., and Dombrowski-Etchevers, I.: Satellite products of incoming solar and longwave radiations used for snowpack modelling in mountainous terrain, *Hydrol. Earth Syst. Sci. Discuss.*, <https://doi.org/10.5194/hess-2017-563>, in review, 2017.
- 50 Quintana-Seguí, P., P. Le Moigne, Y. Durand, E. Martin, F. Habets, M. Baillon, C. Canellas, L. Franchisteguy, and S. Morel: Analysis of Near-Surface Atmospheric Variables: Validation of the SAFRAN Analysis over France, *J. Appl. Meteor. Climatol.*, 47, 92-107, 2008.
- Ritter B. and Geleyn J.-F., 1992: A comprehensive radiation scheme for numerical weather prediction models with potential applications in climate simulations, *Mon. Weather Rev.* 120: 303 – 325, 1992.
- 55 Sauter, T. and Obleitner, F.: Assessing the uncertainty of glacier mass-balance simulations in 936 the European Arctic based on variance decomposition, *Geosci. Model Dev.*, 8, 3911-3928, 937 doi :10.5194/gmd-8-3911-2015, 2015.
- Seity Y., Brousseau, P., Malardel, S., Hello, G., Bénard, P., Bouttier, F., Lac, C., and Masson, V.: The AROME-France Convective-Scale Operational Model, *Mon. Wea. Rev.*, 139, 976-99, [doi:10.1175/2010MWR3425.1](https://doi.org/10.1175/2010MWR3425.1), 2011.
- Sellers, P., Dickinson, R., Randall, D., Betts, A., Hall, F., Berry, J., Collatz, G., Denning, A., Mooney, H., Nobre, C., et al.: Modeling the exchanges of energy, water, and carbon between continents and the atmosphere. *Science*, 275(5299):502–509, 1997.
- 60 Schlosser, C. A., Slater, A. G., Robock, A., Pitman, A. J., Vinnikov, K. Y., Henderson-Sellers, A., Speranskaya, N. A., and Mitchell, K.: Simulations of a boreal grassland hydrology at valdai, russia: Pilps phase 2 (d). *Monthly Weather Review*, 128(2):301–321, 2000.
- 65 Schmugge, T. J., Kustas, W. P., Ritchie J. C., Jackson, T. J., and Rango, A.: Remote sensing in hydrology. *Advances in water resources*. Volue 25, Issue 8-12, pages 1367-1385, 2002.
- Trigo, I. F., C. C. DaCamara, P. Viterbo, J.-L. Roujean, F. Olesen, C. Barroso, F. Camacho-de Coca, D. Carrer, S. C. Freitas, J. García-Haro, B. Geiger, F. Gellens-Meulenberghs, N. Ghilain, J. Meliá, L. Pessanha, N. Siljamo, and A. Arboleda: The Satellite Application Facility on Land Surface Analysis, *Int. J. Remote Sens.*, 32, 2725-2744, doi: 10.1080/01431161003743199, 2011.
- 70 Taylor, K.E.: Summarizing multiple aspects of model performance in a single diagram, *J. Geophys. Res.*, 106, 7183-7192, 2001.

Commented [PLM54]: RCI

Commented [PLM55]: RCI

Commented [PLM56]: RCI

Commented [PLM57]: RCI

Commented [PLM58]: RCI



Uppala SM, Kållberg PW, Simmons AJ, Andrae U, Da Costa Bechtold V, Fiorino M, Gibson JK, Haseler J, Hernandez A, Kelly GA, Li X, Onogi K, Saarinen S, Sokka N, Allan RP, Andersson E, Arpe K, Balmaseda MA, Beljaars ACM, Van De Berg L, Bidlot J, Bormann N, Caïres S, Chevallier F, Dethof A, Dragosavac M, Fisher M, Fuentes M, Hagemann S, Hólm E, Hoskins BJ, Isaksen I, Janssen PAEM, Jenne R, McNally AP, Mahfouf JF, Morcrette J-J, Rayner NA, Saunders RW, Simon P, Sterl A, Trenberth KE, Untch A, Vasiljevic D, Viterbo P, Woollen J. 2005. The ERA-40 re-analysis. *Q. J. R. Meteorol. Soc.* 131: 2961–3012, 2005.

Vergnes, J.-P., Roux, N., Habets, F., Ackerer, P., Amraoui, N., Besson, F., Caballero, Y., Courtois, Q., de Dreuz, J.-R., Etchevers, P., Gallois, N., Leroux, D.J., Longuevergne, L., Le Moigne, P., Morel, T., Munier, S., Regimbeau, F., Thiéry, D., and Viennot, P.: The AquifR hydrometeorological modelling platform as a tool for improving groundwater resource monitoring over France: evaluation over a 60 year period, 2019, HESS, <https://doi.org/10.5194/hess-2019-166>, 2019.

Vergnes, J.-P., Decharme, B., & Habets, F. (2014). Introduction of groundwater capillary rises using subgrid spatial variability of topography into the ISBA land surface model. *Journal of Geophysical Research: Atmospheres*, 119(19), 11,065–11,086. <https://doi.org/10.1002/2014JD021573>, 2014.

Vidal, J.-P., Martin, E., Franchistéguy, L., Habets, F., Soubeyroux, J.-M., Blanchard, M., and Baillon, M.: Multilevel and multiscale drought reanalysis over France with the Safran-Isba-Modcou hydrometeorological suite, *Hydrol. Earth Syst. Sci.*, 14, 459–478, <https://doi.org/10.5194/hess-14-459-2010>, 2010.

Voirin, S., Calvet, J.-C., Habets, F., and Noilhan, J.: Interactive vegetation modeling at a regional scale: application to the Adour basin, *Pys. Chem. Earth (B)*, Vol. 26, No. 5-6, pp. 479–484, 2001.

Wang, S., Pan, M., Mu, Q., Shi, X., Mao, J., Brümmer, C., Jassal, R. S., Krishnan, P., Li, J., and Black, T. A.: Comparing Evapotranspiration from Eddy Covariance Measurements, Water Budgets, Remote Sensing, and Land Surface Models over Canada. *Journal of Hydrometeorology*, Volume 16, 1540–1560, 2015.

Wild, M.: Enlightening global dimming and brightening. *Bulletin of the American Meteorological Society*, 93(1), 27–37, 2012.

Wood, E. F., Lettenmaier, D. P., Liang, X., Lohmann, D., Boone, A., Chang, S., Chen, F., Dai, Y., Dickinson, R. E., Duan, Q., et al.: The project for intercomparison of land-surface parameterization schemes (pils) phase 2 (c) red–arkansas river basin experiment: 1. experiment description and summary intercomparisons. *Global and Planetary Change*, 19(1):115–135, 1998.

Commented [PLM59]: RC2

Commented [PLM60]: RC1

Commented [PLM61]: RC1

10

15

Table 1: main characteristics and differences in experiments.

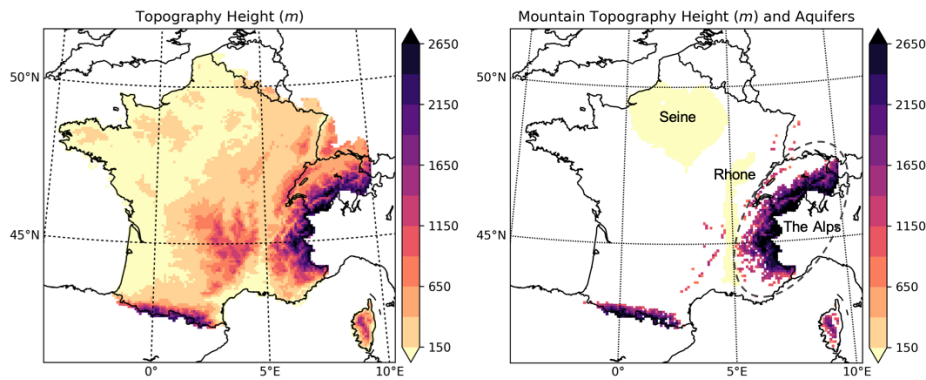
	<i>SIM_REF</i>	<i>SIM_REF2</i>	<i>SIM_PHY</i>	<i>SIM_FRC</i>	<i>SIM_TOP</i>	<i>SIM_NEW</i>
<b>Land Surface Model</b>						
Soil transfers	Force-restore	Force-restore		Diffusion		
Soil layers	2 or 3	2 or 3		14 soil layers		
Snow layers	3	3		12 snow layers		
Photosynthesis	No	No		A-gs module		
Vegetation types	1	1		12		
	b=0.5	b=0.5		b=0.25		
	Calibrated	Forced to 0.		No		
<b>Hydrology</b>						
Subgrid runoff	ECOCLIMAP	ECOCLIMAP		ECOCLIMAP2		
Subgrid drainage	1	1		HWSD		
<b>Databases</b>				SRTM90		
Vegetation	INRA	INRA				
Soil	GTOPO30	GTOPO30				
Topography						
<b>Infrared radiation</b>						
Correction	Off	Off	Off	On	On	On
<b>Mountain specificity</b>						
Subgrid topography	Off	Off	Off	Off	On	On
Drainage reservoir	Off	Off	Off	Off	Off	On

20

Table 2: Annual mean BIAS and RMSE of LSAF, SAFRAN and corrected SAFRAN infrared radiations at Carpentras (95 m), Col de Porte (1340 m), Argentière (1900 m), and Saint-Sorlin (2620 m).

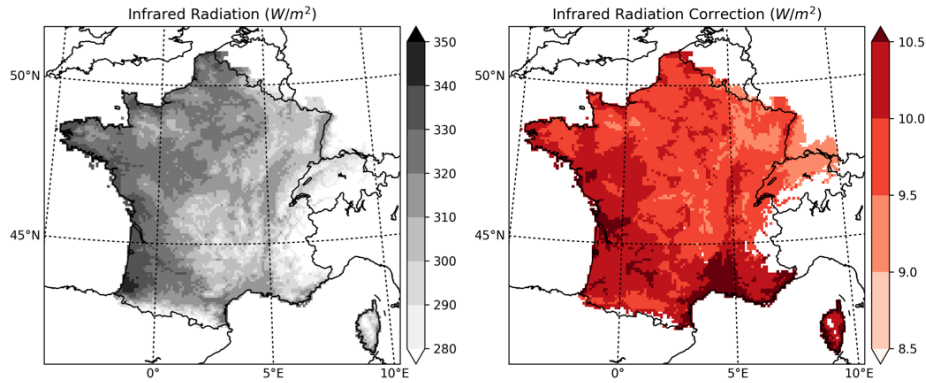
	LSAF IR radiation <i>W m<sup>-2</sup></i>	SAFRAN IR radiation without correction <i>W m<sup>-2</sup></i>	SAFRAN IR radiation with correction <i>W m<sup>-2</sup></i>
--	--	---	--

	<i>BIAS</i>	<i>RMSE</i>	<i>BIAS</i>	<i>RMSE</i>	<i>BIAS</i>	<i>RMSE</i>
<b>Carpentras</b>	1.3	10.2	-8.4	21.5	3.1	20.3
<b>Col de Porte</b>	-10.3	20.2	-14.4	20.4	-9.3	17.5
<b>Argentière</b>	-18.8	32.6	-3.6	18.5	-3.6	18.5
<b>Saint-Sorlin</b>	0.1	27.8	10.5	25.3	10.5	25.3



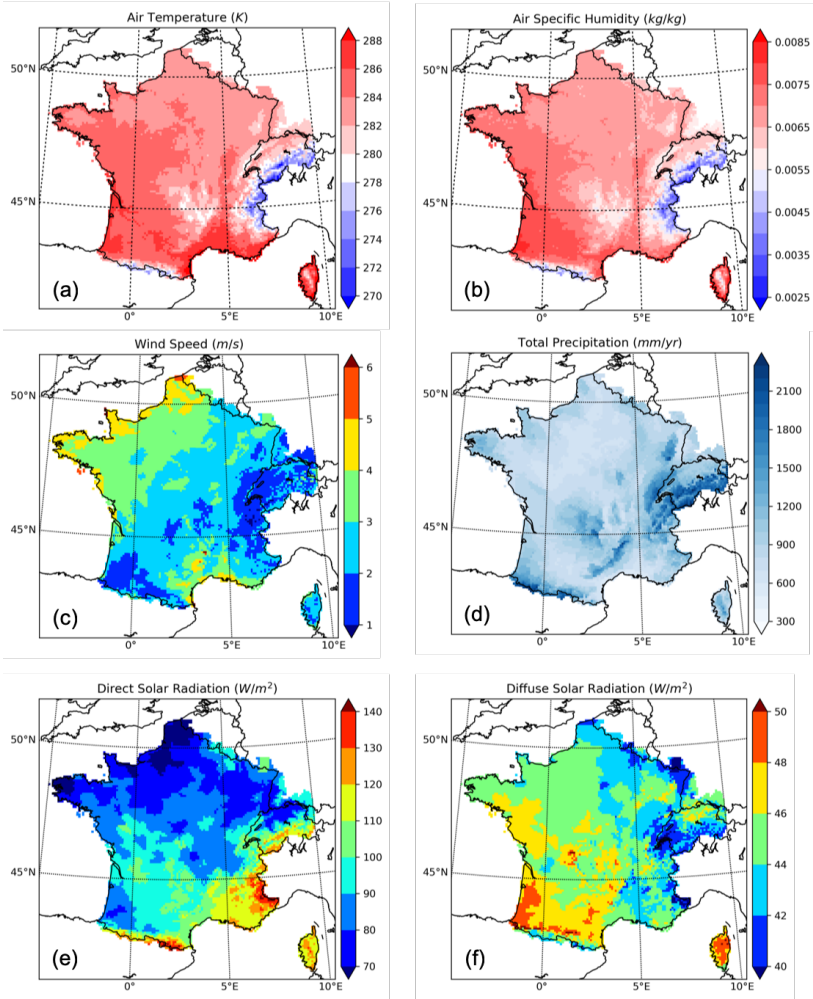
25 **Figure 1:** Height of the topography of the 9892 cells of the SIM grid (left) and the 3878 cells of the mountain SIM grid (right). The cells of the mountain grid correspond to the 1044 points having an altitude greater than 500 m and described vertically by several layers. Zones in yellow correspond to the Seine and Rhone aquifers. The dotted line delimits the Alps mountain.

Commented [PLM62]: RC2



30

Figure 2: Annual average of uncorrected (left) and corrected (right) downward longwave infrared radiation from SAFRAN analysis.



Commented [PLM63]: RC2

Figure 3: Maps of annual average of the SAFRAN analysis for the period 1958-2018 of (a) air temperature at 2 meters, (b) specific air humidity at 2 meters, (c) wind speed at 10 meters, (d) total annual precipitation, (e) direct solar radiation, and (f) diffuse solar radiation.

Commented [PLM64]: RC2

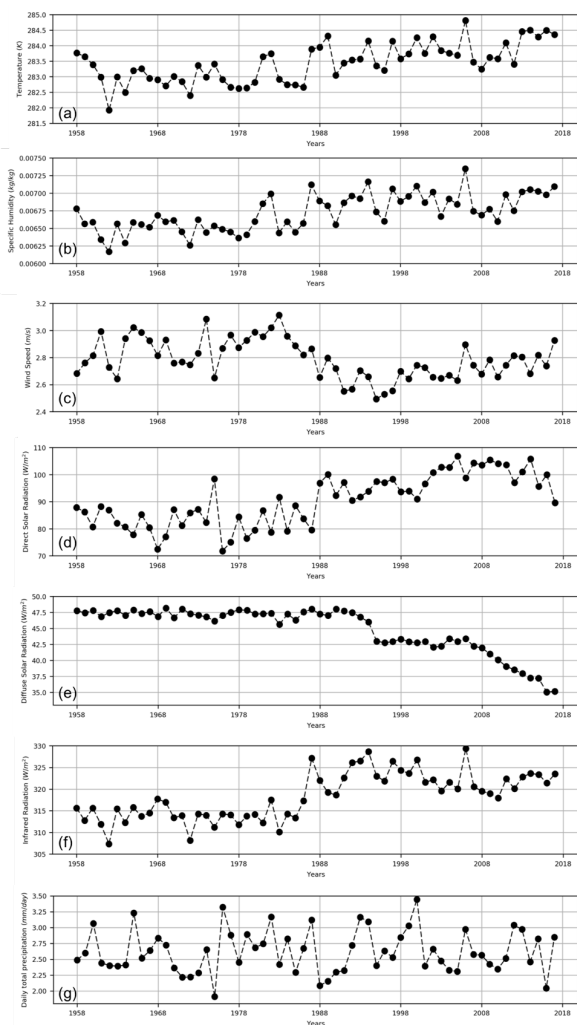


Figure 4: Annual average of the SAFRAN analysis of (a) air temperature at 2 meters, (b) specific air humidity at 2 meters, (c) wind speed at 10 meters, (d) direct solar radiation, (e) diffuse solar radiation, (f) infrared radiation, and (e) total precipitation rate.

Commented [PLM65]: RC2

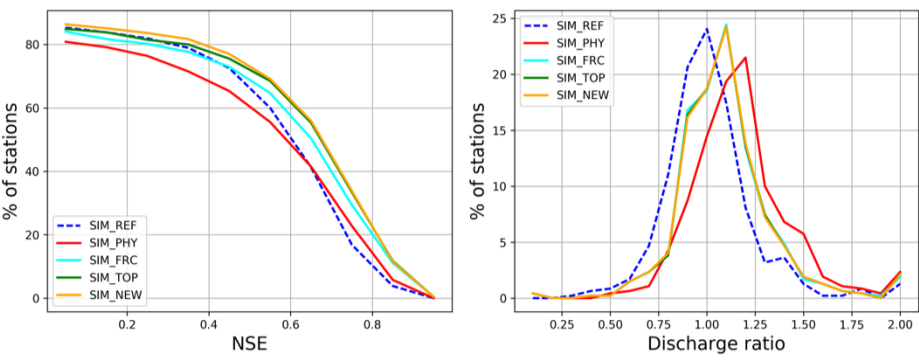


Figure 5: Comparison of the NSE CCDF (left panel) and the simulated to observed flow ratio (right panel) for SIM\_REF (dashed blue line), SIM\_PHY (solid red line), SIM\_FRC (solid cyan line), SIM\_TOP (solid green line), and SIM\_NEW (solid orange line).

Commented [PLM66]: RC2

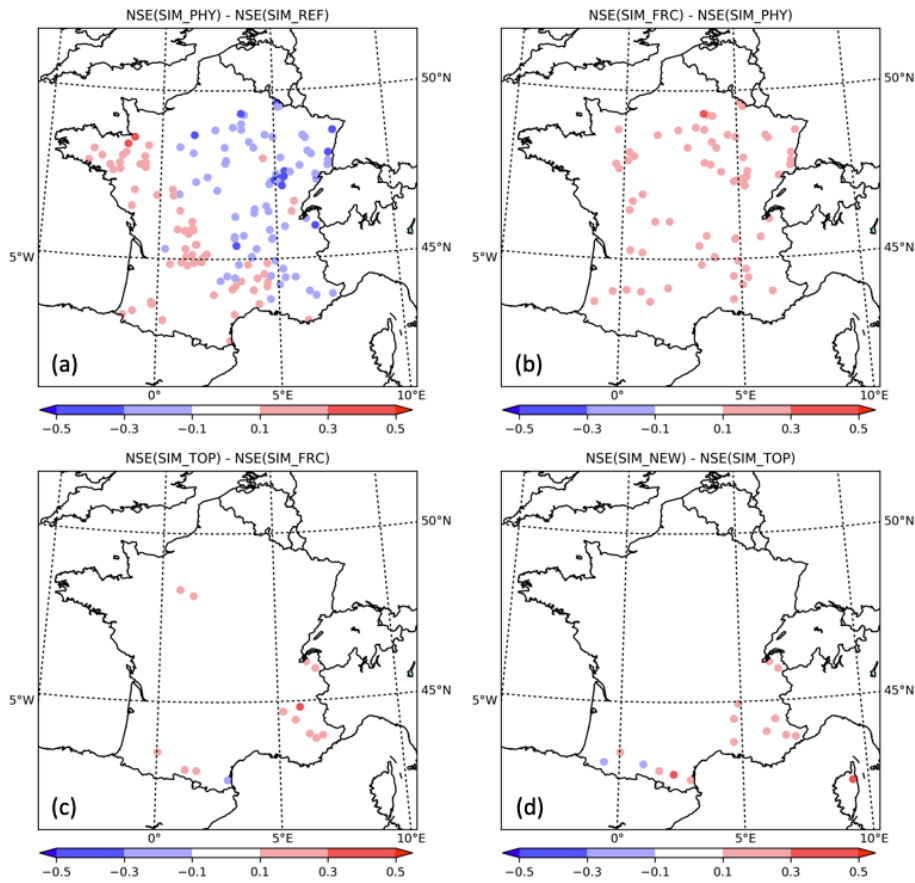


Figure 6: Maps of the difference in mean NSE for  $NSE > 0$  between simulations: (a) SIM\_PHY and SIM\_REF, (b) SIM\_FRC and SIM\_PHY, (c) SIM\_TOP and SIM\_FRC, (d) SIM\_NEW and SIM\_TOP.

Commented [PLM67]: RC2



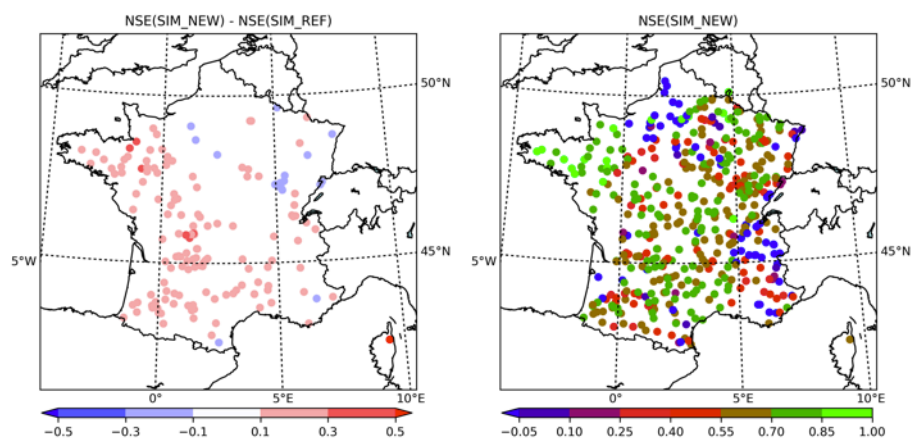
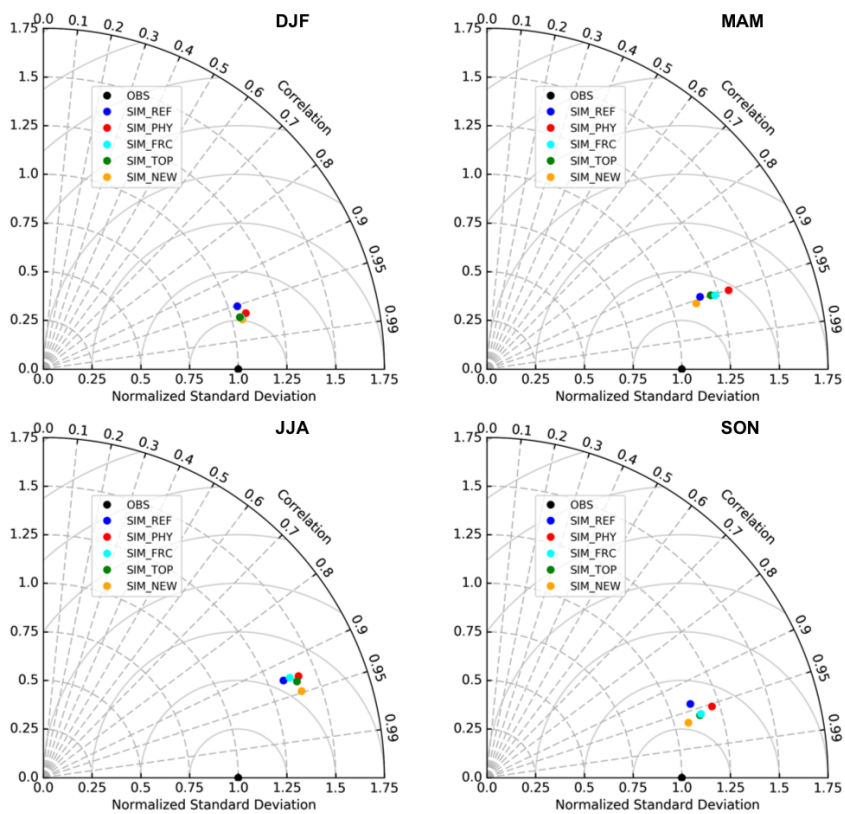


Figure 7: Map of the difference in mean NSE for NSE>0 between SIM\_NEW and SIM\_REF (left panel), and SIM\_NEW NSE map (right panel).

Commented [PLM68]: RC2



50 Figure 8: Taylor diagrams of seasonal river flows for the different experiments over the period 1958-2018.

Commented [PLM69]: RC2

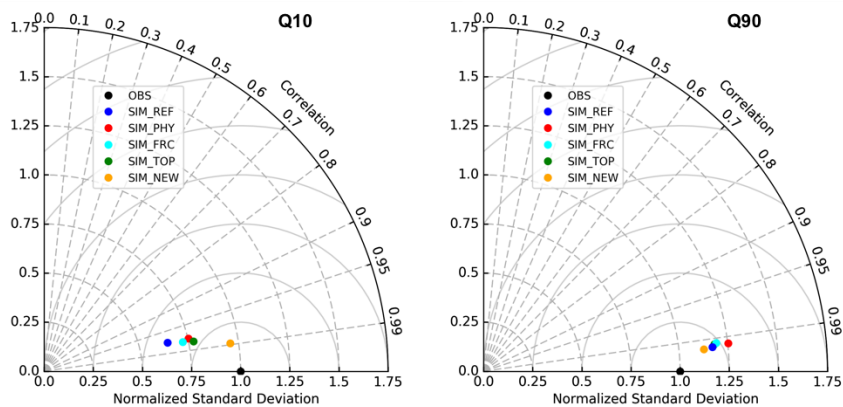


Figure 9: Taylor diagram of Q10 and Q90 deciles of river flows over the period 1958-2018.

Commented [PLM70]: RC2

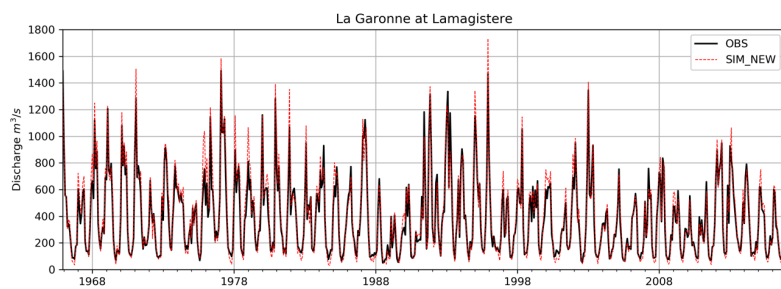


Figure 10: Comparison of monthly river flows with SIM\_NEW for the Garonne at Lamagistère over the period 1958-2018.

Commented [PLM71]: RC2

55

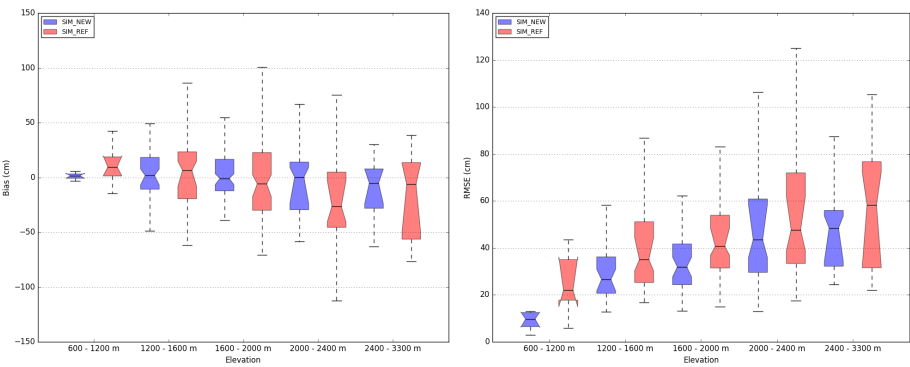


Figure 11: Bias and RMSE of daily total snow depth for SIM\_NEW (blue) and SIM\_REF (red) simulations, as a function of elevation. The scores are computed for 185 stations over the period 1984-2016 for months between October and June. The boxes represent the interquartile interval, the whiskers the 10<sup>th</sup> and 90<sup>th</sup> percentiles, and the notch represents the 90% confidence interval of the median estimated by a bootstrap sampling technique among the available stations.

60

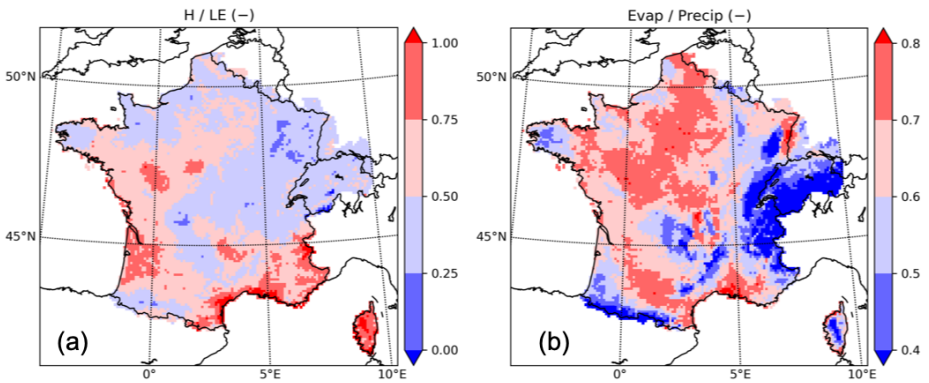


Figure 12: Maps of mean annual Bowen ratio (a) and evaporation to precipitation ratio (b) for SIM\_NEW on average over period 1958-2018.

Commented [PLM72]: RC2

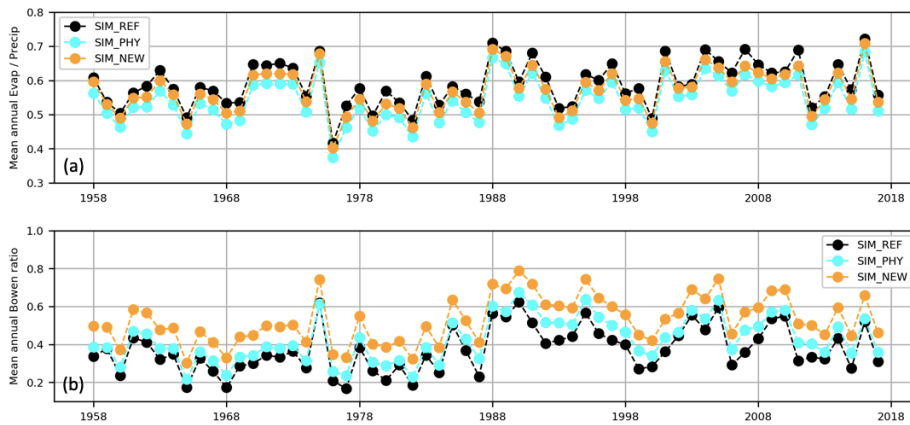


Figure 13: Mean annual evaporation to precipitation ratio (a), and Bowen ratio (b), for experiments SIM\_REF, SIM\_PHY, and SIM\_NEW.

Commented [PLM73]: RC2

## ***Interactive comment on “The Latest Improvements in SURFEX v8.0 of the Safran-Isba-Modcou Hydrometeorological Model over France” by Patrick Le Moigne et al.***

**Anonymous Referee #1**

Received and published: 10 March 2020

- 1 - The colour black is used for the reviewer questions/remarks.  
2 - The colour orange is used to answer questions raised by the reviewer.  
3 - The colour blue is used for the text added to the manuscript.

This paper presents an analysis of a number of improvements to a land surface model. I do appreciate the amount of work the authors have performed, but at this point I also have a number of major comments to the paper.

1 - A first problem is the quality of the writing. There are a large number of grammatical errors that many times make the paper very hard to read. This renders the paper unacceptable for publication.

2 - The manuscript was completely revised and corrected by a native English speaker.

1 - Top of page 2: There is a vast amount of literature on the evaluation of land surface models at various spatial scales using Bowen ratio or eddy covariance data (latent and sensible heat fluxes), ground heat flux data, soil temperature and moisture profiles, infiltration data, ground water levels, etc. Similar comparisons have been performed using remote sensing data. Stating that models have been evaluated using discharge data and ground water levels is blatantly ignoring an enormous amount of literature.

2 - It was not intended to state that the models were evaluated using only flow and groundwater level data in general, but only in this study. However, the authors would like to thank the reviewer for this remark, which shows a lack of references to studies that have been conducted in the past and still are conducted today to evaluate LSMs with different data sets.

The introduction of the manuscript has been modified and the following paragraph has been added (top of page 2 to top of page 3, i.e. lines 35-71):

3 – Land surface models (LSMs), whether or not coupled to hydrology, have been the subject of numerous studies that have improved them over time and have led to a better description and

understanding of the key processes governing exchanges at the interface between the surface and the atmosphere and the surface and the subsurface. These studies have made it possible to evaluate surface models, and even certain parameterizations, by comparing simulation results with different types of observations such as in situ measurements, reanalyses or satellite products. Over time, a number of international measurement campaigns have been organized to evaluate the performance of the models by comparing them with in situ measurements. Simulations were carried out offline, i.e. decoupled from the atmosphere, to avoid introducing atmospheric biases into the surface schemes. The first international model intercomparison projects were the Project of Intercomparison of Land surface Parametrization Schemes (PILPS), described in Henderson-Sellers et al. (1996), which began with forcing from atmospheric simulations (Pitman et al., 1993) and, in a second stage, forcing from local observations (Chen et al., 1997). The successive phases also focused on different issues, such as snow and frost parameterization (Schlosser et al., 2000), river flow assessment (Wood et al., 1998; Bowling et al., 2003). In the spirit of PILPS, GSWP (Global Soil Wetness Project, Dirmeyer, 2011) was initiated with global scale simulations. The results of this project are the first global offline multi-model simulations of LSMs. Other more specific intercomparison projects have been carried out such as SnowMIP (Etchevers et al., 2004) to study snow-related processes, ALMIP (Boone et al., 2009), focusing on critical surface processes in West Africa at regional scale, or Rhône-AGGrégation (Boone et al., 2004) to study coupling with hydrology. More recently, the PLUMBER project (Best et al., 2015) has attempted to identify how LSMs behave in relation to certain benchmarks and to define performance criteria that LSMs should be able to achieve according to the information available in atmospheric forcing, thus avoiding direct comparison with observations.

In many of these intercomparison studies, the surface models were validated at the local scale and used average parameters that were known fairly accurately. However, these models sometimes have strongly non-linear components, such as the link between root zone moisture and transpiration when the soil dries out (Sellers et al., 1997), so it is necessary to develop sub-grid parameterizations to compensate for the lack of representativeness of the mean parameters. Overgaard et al. (2006) conducted a review of surface models based on energy balance and used for hydrological purposes. They stressed the need to validate the models at the local scale, but also showed the interest of using remote sensing data to evaluate the models. Indeed, the validation of LSMs using river flows alone does not prove that surface fluxes, for example, are well simulated by the model and that there is no error compensation. Furthermore, estimating surface fluxes by remote sensing is not straightforward and requires certain assumptions that are not always valid, and inversion models are used to translate the remote sensing measurement into a model variable equivalent. However, using surface fluxes to validate surface models is also subject to questioning since the energy balance measured at the surface is generally not closed (Foken, 2008) whereas it is an imposed constraint in surface models. The use of international measurement networks such as FLUXNET (El Mayar et al., 2008; Napoly et al., 2017) is also widely used to evaluate surface models at the point scale. Remote sensing provides a means of observing hydrological state variables over large areas (Schmugge et al., 2002) and can be useful in the case of LSMs coupled to hydrological models, in particular in order to assess evaporation (Kalma et al., 2008; Long et al., 2014; Wang et al., 2015) or soil moisture (Goward et al., 2000; Albergel et al., 2012; Fang et al., 2016). It should be noted that these remote sensing data can be assimilated to correct the model state variables at the initial time as well as during the hindcast (Albergel, et al., 2017).

The list of references has been modified and the following references added:

Henderson-Sellers, A., McGuffie, K. & Pitman, A. The Project for Intercomparison of Land-surface Parametrization Schemes (PILPS): 1992 to 1995. *Climate Dynamics* **12**, 849–859 (1996).  
<https://doi.org/10.1007/s003820050147>

Pitman, A., Henderson-Sellers, A., Abramopoulos, F., Avissar, R., Bonan, G., Boone, A., Cogley, J., Dickinson, R., Ek, M., Entekhabi, D., et al. (1993). Project for intercomparison of land-surface parameterization schemes (pilps): results from off-line control simulations (phase 1a). *Inter GEWEX Project Office Publ*, 7.

Chen, T. H., Henderson-Sellers, A., Milly, P., Pitman, A., Beljaars, A., Polcher, J., Abramopoulos, F., Boone, A., Chang, S., Chen, F., et al. (1997). Cabauw experimental results from the project for intercomparison of land-surface parameterization schemes. *Journal of Climate*, 10(6):1194–1215.

Schlosser, C. A., Slater, A. G., Robock, A., Pitman, A. J., Vinnikov, K. Y., Henderson-Sellers, A., Speranskaya, N. A., and Mitchell, K. (2000). Simulations of a boreal grassland hydrology at valdai, russia: Pilps phase 2 (d). *Monthly Weather Review*, 128(2):301–321.

Wood, E. F., Lettenmaier, D. P., Liang, X., Lohmann, D., Boone, A., Chang, S., Chen, F., Dai, Y., Dickinson, R. E., Duan, Q., et al. (1998). The project for intercomparison of land-surface parameterization schemes (pilps) phase 2 (c) red-arkansas river basin experiment: 1. experiment description and summary intercomparisons. *Global and Planetary Change*, 19(1):115–135.

Bowling, L. C., Kane, D. L., Gieck, R. E., Hinzman, L. D., and Lettenmaier, D. P. (2003). The role of surface storage in a low-gradient arctic watershed. *Water Resources Research*, 39(4).

Dirmeyer, P. A. (2011). A history and review of the global soil wetness project (gswp). *Journal of Hydrometeorology*, 12(5):729–749.

Etchevers, P., Martin, E., Brown, R., Fierz, C., Lejeune, Y., Bazile, E., Boone, A., Dai, Y.-J., Essery, R., Fernandez, A., et al. (2004). Validation of the energy budget of an alpine snowpack simulated by several snow models (snowmip project). *Annals of Glaciology*, 38(1):150–158.

Boone, A., De Rosnay, P., Balsamo, G., Beljaars, A., Chopin, F., Decharme, B., Delire, C., Ducharne, A., Gascoin, S., Grippa, M., et al. (2009). The alps land surface model intercomparison project (almp). *Bulletin of the American Meteorological Society*, 90(12):1865.

Boone, A., Habets, F., Noilhan, J., Clark, D., Dirmeyer, P., Fox, S., Gusev, Y., Haddeland, I., Koster, R., Lohmann, D., et al. (2004). The rhone-aggregation land surface scheme intercomparison project: An overview. *Journal of Climate*, 17(1):187–208.



Best, M., Abramowitz, G., Johnson, H., Pitman, A., Balsamo, G., Boone, A., Cuntz, M., Decharme, B., Dirmeyer, P., Dong, J., et al. (2015). The plumbing of land surface models: benchmarking model performance. *J. Hydrometeorol.*, 16(3):1425–1442.

Sellers, P., Dickinson, R., Randall, D., Betts, A., Hall, F., Berry, J., Collatz, G., Denning, A., Mooney, H., Nobre, C., et al. (1997). Modeling the exchanges of energy, water, and carbon between continents and the atmosphere. *Science*, 275(5299):502–509.

Overgaard, J., Rosbjerg, D., and Butts, M. B.: Land-surface modelling in hydrological perspective – a review. *Biogeosciences*, European Geosciences Union, 2006, 3 (2), pp.229-241. hal-00297556

Foken T. (2008). THE ENERGY BALANCE CLOSURE PROBLEM: AN OVERVIEW. *Ecological Society of America*, Volume 18, Issue 6, pages 1351-1367. <https://doi.org/10.1890/06-0922.1>

El Maayar, M., Chen, J. M., Price, D. T.: On the use of field measurements of energy fluxes to evaluate land surface models. *ecological modelling*, Volume 214, pages 293–304, 2008.

Napoly, A., Boone, A., Samuelsson, P., Gollvik, S., Martin, E., Seferian, R., Carrer, D., Decharme, B., and Jarlan, L.: The interactions between soil–biosphere–atmosphere (ISBA) land surface model multi-energy balance (MEB) option in SURFEXv8 – Part 2: Introduction of a litter formulation and model evaluation for local-scale forest sites, *Geosci. Model Dev.*, 10, 1621–1644, <https://doi.org/10.5194/gmd-10-1621-2017>, 2017.

Schmugge, T. J., Kustas, W. P., Ritchie J. C., Jackson, T. J., and Rango, A.: Remote sensing in hydrology. *Advances in water resources*. Volue 25, Issue 8-12, pages 1367-1385, 2002.

Kalma, J. D., McVicar, T. R., and McCabe, M. F.: Estimating Land Surface Evaporation: A Review of Methods Using Remotely Sensed Surface Temperature Data. *Surv Geophys*, 29:421–469, <https://doi.org/10.1007/s10712-008-9037-z>, 2008.

Long, D., Longuevergne, L., and Scanlon, B. R.: Uncertainty in evapotranspiration from land surface modeling, remote sensing, and GRACE satellites. *Water Resources Research*. Volume 50, Issue 2, pages 1131-1151, <https://doi.org/10.1002/2013WR014581>, 2014.

Wang, S., Pan, M., Mu, Q., Shi, X., Mao, J., Brümmer, C., Jassal, R. S., Krishnan, P., Li, J., and Black, T. A.: Comparing Evapotranspiration from Eddy Covariance Measurements, Water Budgets, Remote Sensing, and Land Surface Models over Canada. *Journal of Hydrometeorology*, Volume 16, 1540-1560, 2015.

Goward, S. N., Xue, Y., and Czajkowski, K. P.: Evaluating land surface moisture conditions from the remotely sensed temperature/vegetation index measurements. An exploration with the simplified simple biosphere model. *Remote Sensing of Environment*, Volume 79, Pages 225–242, 2000.

Albergel, C., de Rosnay, P., Gruhier, C., Muñoz-Sabater, J., Hasenauer, S., Isaksen, L., Kerr, Y., and Wagner, W.: Evaluation of remotely sensed and modelled soil moisture products using global ground-based in situ observations. *Remote Sensing of Environment*, Volume 118, Pages 215–226, 2012.

Fang, L., Hain, C. R., Zhan, X., and Anderson, M. C.: An inter-comparison of soil moisture data products from satellite remote sensing and a land surface model. *International Journal of Applied Earth Observation and Geoinformation*, Volume 48, Pages 37–50, 2016.

Albergel, C., Munier, S., Leroux, D. J., Dewaele, H., Fairbairn, D., Barbu, A. L., Gelati, E., Dorigo, W., Faroux, S., Meurey, C., Le Moigne, P., Decharme, B., Mahfouf, J.-F., and Calvet, J.-C.: Sequential assimilation of satellite-derived vegetation and soil moisture products using SURFEX\_v8.0: LDAS-Monde assessment over the Euro-Mediterranean area, *Geosci. Model Dev.*, 10, 3889–3912, <https://doi.org/10.5194/gmd-10-3889-2017>, 2017.

1 - We need more information on how the point data were upscaled to allow comparisons with the model grid results. Comparing point data to spatially averaged model results does not make much sense. Furthermore, some grids may contain more stations than others. This will impact the results of the comparison, and needs to be explained better.

2 - It is not clear what data the reviewer is referring to. In any case, the answer we propose is valid for all types of observations used in the study. First, the model results are not spatially averaged when compared to point data. Rather, the reverse is true, since it is a downscaling from a resolution of a few tens of kilometres to a finer resolution of 8 km for the surface model and up to 1 km for the hydrogeological model. The method is as follows: the SAFRAN analysis is performed on homogeneous zones in terms of horizontal gradients. The analysed fields are then spatially interpolated to a regular 8 km grid taking altitude into account. Thus, the comparison of IR radiation is made between the SAFRAN analysis interpolated at 8km and point data (GLACIOCLIM or LSAF). The horizontal variability of IR radiation at 8 km is small enough to allow a direct comparison with in situ observations. Second, the ISBA model outputs of ground temperature and snow depth profiles are relatively sparse and only a direct comparison between the model outputs and the observations is possible. Finally, with respect to river flows, the MODCOU model grid varies in the range of 8 km to 1 km near the riverbed, and the comparison between the model output and the observed flow is made by considering the flow at the river outlet and the corresponding model grid point in the 1 km hydrological network grid.

The section 3.2 of manuscript was modified and the following paragraph was added at the end, after the description of the different datasets (lines 312–321):

3 – The SAFRAN analysis is performed on homogeneous zones in terms of horizontal gradients, and the analysed fields are spatially interpolated to a regular 8 km grid taking altitude into account. Thus, the comparison of infrared radiation (IR) is made between the SAFRAN analysis interpolated at 8 km and the local observation. The horizontal variability of IR radiation at 8 km is small enough to allow a direct comparison with in situ observations. Moreover, the ISBA model outputs of ground temperature and snow depth profiles are relatively sparse and only a direct comparison between the model outputs and the observations is possible. Finally, with respect to river flows, the MODCOU model grid varies in the range of 8 km to 1 km near the riverbed, and the comparison between the model output and the observed flow is made by considering the flow at the river outlet and the corresponding model grid point in the 1 km hydrological network grid. This way of locally validating models by comparing the observation to the corresponding model grid point is not new and has been used in many studies in France and elsewhere (Habets et al., 2008; Decharme et al., 2013; Lafaysse et al., 2011; Vergnes et al., 2014).

1 - Please make it crystal clear how the 470 discharge stations were selected. If there are more stations, why were they not used?

2 - Only discharge stations with observations for at least half of the days over the total period were kept.

The following sentence was added in section 3.2 (lines 297-298):

3 - Only gauging stations with observations for at least half of the days over the total period were kept.

1 - Line 351: some basins are anthropized. I assume this means "urbanized", because agricultural crops are now in the new vegetation classes. If basins are urbanized or semi-urbanized, and the model does not simulate this, then these basins cannot be used to evaluate the model.

2 - The term anthropized doesn't seem appropriate. It is partly urbanized as highlighted by the reviewer, which means that the presence of urbanization will affect for example the surface runoff by reinforcing the imperviousness. This effect is accounted for in the model by replacing the urban areas by rocks that will facilitate surface runoff. On the other hand, it's true that agricultural crops are part of the vegetation classes and that the model does not represent explicitly the agricultural practices such as irrigation. Moreover, the model does not account for dams whereas some rivers are highly affected by their presence. But we do think that these basins have to be part of the evaluation to identify the weaknesses of the model and put the efforts on developing methods to account for irrigation or the presence of dams.

"whereas some basins are anthropized." was changed in the manuscript section 4.2 as follows (lines 366-371):

3 – while some basins are influenced by human activity. In some basins, the human footprint on the landscape is characterized by an increase in urban and agricultural areas and the presence of dams. In

the model, urban areas have been replaced by rocks, a type of natural surface, to represent the presence of urban areas that enhance surface runoff. However, the model does not explicitly represent irrigation or the impact of the presence of dams on river flow. The basins impacted by human activity are of great interest for the evaluation as they allow quantifying errors in the system and proposing improvements.

1 - Line 417: "can probably be attributed to a deficit in the incoming shortwave radiation ... or geothermal heating". This seems speculative, it could simply be that the soil or land cover parameters are wrong.

2 - It is true that there is no evidence that geothermal heating is a source of error in the ground temperature. This was removed from the manuscript and the original sentence in section 4.6:

"As in the previous study of Decharme et al. (2013), a global cold bias (here of about -0.8 K) is observed at each depth, which can probably be attributed to a deficit in the incoming shortwave radiation at the surface and/or to the none representation of the deep earth geothermal heating."

Was changed into:

3 - "As in the previous study by Decharme et al. (2013), a cold bias (here about -0.8 K) is observed at each depth, which can probably be attributed to a deficit of incoming short-wave radiation at the surface and/or to an incorrect specification of soil physical properties or surface parameters."

1 - Section 4.7: remote sensing data could have been used to substantiate the results here. At this point, unless I am misunderstanding, no data are used to validate the conclusions.

2 - It is true that remote sensing data could have been used to consolidate the results. But the choice was first to focus on the evaluation against river discharges, snow depth and soil temperatures, and second to propose a climatological comparison of the Bowen ratio and the evaporation to precipitation ratio of the system before and after the changes. These two objectives are very important for the applications that are used downstream of the system, especially in the departments at MF in charge of hydrology and agriculture.

On the other hand, remote sensing data does not cover the entire period and a fair comparison to the model climatology is not possible.

The beginning of section 4.7 was modified as follows:

3 - This section compares the climatology of the SIM system before and after the changes made. The aim is to qualitatively identify the impact of the new model on the distribution of energy flows, which is important for certain hydrological or agriculture-related applications.

Some minor issues:

1 - Add units to the list of numbers at the bottom of page 3.

2 - The list was changed as follows:

3 - 0.01 m, 0.04 m, 0.1 m, 0.2 m, 0.4 m, 0.6 m, 0.8 m, 1 m, 1.5 m, 2 m, 3 m, 5 m, 8 m, 12 m

1 - Top of page 4: be specific, do not state "few tens of centimeters" and "a few meters".

2 - In section 2.2, the sentence "Heat transfer is resolved over the total depth, while moisture transfer is resolved only over the depth of the roots, which depends on the type of vegetation, a few tens of centimetres for crops and a few metres for forests." was changed into:

3 - Heat transfer is resolved over the total depth, while moisture transfer is resolved only over the depth of the roots, which depends on the type of vegetation and its geographical location: a maximum of 1.5 m for type C3 crops and 2.5 m for forests in France.

1 - Line 215-220: this explanation is very unclear.

2 - In section 2.5, the paragraph "In SAFRAN the analysis is performed on homogeneous areas of several hundreds of square kilometres and an explicit vertical discretization is applied so that the analysis is done every 300 meters. For each grid box  $i$ , the analysed variables  $X^a(i)$  are then interpolated on a horizontal 8 km grid, accounting for the averaged elevation of each grid box, and used as input to the ISBA model." was changed into:

3 - In SAFRAN, the analysis is performed on homogeneous zones of several hundred square kilometres and the vertical component is explicitly considered with to a 300-metre slicing along the vertical. For each grid cell  $i$ , the analysed variables  $X^a(i)$  are then interpolated on an 8 km horizontal grid, considering the average altitude of each grid cell. The analysed variables are then used as input to the ISBA surface model.

1 - Section 4.7: Bowen ration -> Bowen ratio.

2 - corrected

1 - There are 17 figures in the paper. This seems like a bit much to me. Can this perhaps be reduced?

2 - Figure 2 and Figure 7 have been deleted and Figures 16 and 17 have been grouped together.

## Anonymous Referee #2

Received and published: 10 April 2020

- 1 - The colour black is used for the reviewer questions/remarks.
- 2 - The colour orange is used to answer questions raised by the reviewer.
- 3 - The colour blue is used for the text added to the manuscript.

### Summary:

This paper describes the new developments in the Safran-Isba-Modcou (SIM) hydrometeorological model as part of SURFEX v8.0. These new developments cover different aspects of the SIM system: atmospheric forcing, climate fields, land-surface model parameterizations and water budget parameterizations. The authors evaluate the impact of the new developments in an incremental way using different types of observations. They show that the new SIM system, considering all model changes, improves the simulation of daily river discharges and snow depth over a set of catchments and sites covering the French region, compared to the previous SIM system.

The discussion of the results is clear in most of the parts and conclusions are overall justified by the results shown. However, in my opinion the authors do not fully discuss the interactions among the different model changes, therefore explaining the physical mechanisms of some of the results. Also, I found the section on the soil temperature evaluation weak compared to the others. Finally, I have few comments on the introduction and model description parts: these sections are a bit difficult to read and can be improved. All these points are discussed in the main comments below. In summary, I would recommend the acceptance of the paper after major revisions, to make the paper stronger and more attractive to readers.

### Main comments

1 - Introduction and model description: Sect. 1 and Sect. 2 are quite difficult to read. Sentences are not clear in some places, making it difficult to understand the message that the authors want to deliver. I would suggest the authors to improve the readability of these sections. Few examples are reported in the minor comments below.

2 - The manuscript has been revised to improve the English (request of the first referee), therefore the readability of all the sections of the manuscript has been improved. More comments can be found in the answers to the minor revisions.

1 - Discussion of the results: The authors performed a set of sensitivity experiments to extract the effect of each model change. However, I have the impression that they do not fully discuss the interactions

among the different model changes, and how these relate to the results of the evaluation. For instance, why the SIM\_PHY simulation deteriorate the scores in many of the presented metrics (Fig.8, Fig.9, Fig.11)? Is it because of errors in other components, like the atmospheric forcing, which then penalise a more physically complex model? If that is the case, are the other changes reducing such errors, therefore allowing to fully exploit the benefit from the new soil/snow parameterizations? Or are these unrelated? Another example is in the evaluation of the snow depth: the authors propose several hypothesis to explain the improvement of the simulation of the snow depth in SIM\_NEW. However, the comparison of all experiments would clearly quantify which processes/changes are responsible for the improvements (see also one of the minor comments below).

2 - Thank you for the interesting question. In fact, what we see in Fig. 8 for instance is that SIM\_REF is simulating the correct modelled to observed river flow (centred around 1) whereas in SIM\_PHY this ratio is overestimated. However, in SIM\_PHY, as explained in the description of the model, more complexity was added to the model based on a better representation of physics. Moreover, errors in the forcing data show that errors are compensating in SIM\_REF. In SIM\_PHY, the calculations performed on each of the vegetation type are using the A-gs parameterization of photosynthesis which tends to produce less evaporation over vegetation, leading to more water available in the rivers. On the other hand, it has already been mentioned that the radiation forcing is biased low. The combination of more water available in the soil and less radiative energy to evaporate it leads to an overestimation of the river flows. The more physically based SIM\_PHY model is penalised by errors in the forcing. When correcting the IR radiation, SIM\_FRC simulation exhibits a large improvement in the scores of river flows, with a modelled to observed ratio peak closer to 1, and a daily efficiency range improved in almost all cases, except perhaps for NSEs lower than 0.4, but the difference to SIM\_REF is very small. The implementation of the subgrid topography with the use of elevation bands and of the subgrid hydrology with including a reservoir for snow are essentially impacting hydrology in mountains, and therefore snow and river flows that may be affected by snow melt.

The following paragraph has been added (Section 5.2 of the manuscript):

3 - The results show that SIM\_REF simulates the correct ratio between modelled and observed river flow (centred around 1) whereas in SIM\_PHY, this ratio is overestimated. However, in SIM\_PHY, as explained in the model description, more complexity has been added to the model based on a better representation of physics. In addition, errors in the forcing data show that errors compensate for each other in SIM\_REF, since despite a radiative deficit, river flow is rather well simulated. In SIM\_PHY, the calculations performed on each of the vegetation types use the A-gs photosynthesis parameterization, which tends to produce less evaporation on the vegetation, leading to more water available in the rivers. On the other hand, it has already been mentioned that radiative forcing is underestimated. The combination of more water available in the soil and less radiative energy to evaporate it leads to an overestimation of river flows. This is the case of the more physical SIM\_PHY model, which is more penalized by errors in forcing. By correcting for IR radiation, the SIM\_FRC simulation shows a clear improvement in river flow scores, with a peak of the modelled to observed ratio closer to 1, and an improved daily efficiency range in almost all cases, except perhaps for NSEs

below 0.4, but in this case the difference with SIM\_REF is very small. The implementation of the subgrid topography with the use of elevation bands (SIM\_TOP) and the subgrid hydrology with the inclusion of a snow reservoir (SIM\_NEW) essentially impacts the hydrology in the mountains, and thus the snow and river flows that are affected by snowmelt.

2 - For the evaluation of the snow depth, the comparison can only be made on the 9892 cells, which corresponds to the SIM\_REF grid. The snow depth in SIM\_FRC, SIM\_TOP and SIM\_NEW is the same because these experiments use the same IR correction and sub-grid processes related to topography or hydrology are not considered in the evaluation. In terms of snow depth, only SIM\_PHY would be different from the other three simulations where the IR correction is applied below 1340m, which limits the interest of such a comparison.

The following paragraph has been added to section 5.3 of the manuscript:

3 - For the evaluation of the snow depth, the comparison can only be made on the 9892 cells, which corresponds to the SIM\_REF grid. The snow depth in SIM\_FRC, SIM\_TOP and SIM\_NEW is the same because these experiments use the same IR correction and sub-grid processes related to topography or hydrology which are not considered in the evaluation. In terms of snow depth, only SIM\_PHY would be different from the other three simulations if the IR correction were to be applied below 1340 m, which limits the interest of such a comparison.

1 - Soil temperature evaluation: I found Sect. 4.6 on the analysis of soil temperature profiles rather weak and with not enough details. The scores of the new system, without a reference, cannot be put into the context of the paper and so are not adding valuable information to the results. A comparison between the different simulations would clarify at least the impact of each change on the bias. The authors state that such biases can be associated to incoming shortwave radiation or lack of geothermal heating, but what about the soil parameterization or soil/surface properties?

2 - This remark is very relevant, and that is true that the section on the soil temperature results looks too weak. As for the snow depth comparison, the ground temperature in SIM\_FRC, SIM\_TOP, and SIM\_NEW is the same. Only SIM\_PHY is different, and exhibits larger biases and rmse at all depths. Such biases can be of course also be associated to soil parameterization and soil and surface properties. It was decided to remove the section 4.6 and to add a discussion on the ground temperature results. Also, the table 3 and the figure showing the ground temperature observation network, as well as the description of the soil observations were removed.

The following paragraph has been added to section 5.1 of the manuscript (lines 471-473):

3 - We also compared the simulated soil temperatures to the observations made over France. The IR correction on soil temperature has a positive impact and significantly reduces biases and RMSEs (not



shown). The results are consistent and of the same order of magnitude as those obtained by Decharme et al (2013).

#### Minor comments

1 - Abstract: The main scope of the paper is placed at the very end of the abstract. This could be placed earlier in the text to make clearer the main message of the paper.

2 - The abstract has been amended and the last sentence has been placed at the beginning:

3 - This paper describes the impact of the various changes made on the Safran-Isba-Modcou hydrometeorological system (SIM), and demonstrates that the new version of the model performs better than the previous one by making comparisons with observations of daily river flows and snow depths.

1 - Ln-35–40: This paragraph should be rephrased and clarified. Also references to previously published work on the evaluation of land surface and hydrological models should be introduced in the text.

2 - The introduction has been revised (following the first referee's remark) and the remark raised here has been dealt with.

1 - Ln.42: What do you mean by “independent” variable? As the authors stated few lines before, surface energy and water budgets form a coupled system. Please clarify/reformulate.

2 - The sentence was reformulated (line 72 of the revised manuscript) into:

3 - In addition, climate models have been evaluated at both global and regional scales through hydrology. Indeed, the coupling between their land surface model and hydrology allows a quantitative assessment to be made, through comparisons to variables such as river flow, groundwater levels and snow depth.

1 - Ln. 49-50: “... , where modelling contribution of SVAT . . . accounted for in models.” this sentence is not clear, please reformulate.

2 - This paragraph was reformulated (lines 80-83) as:

3 - Recent initiatives to study the impact of anthropization on water availability, such as those supported by the Global Energy and Water Exchanges (GEWEX) project (Harding et al., 2015), where the contribution of LSMs to modelling appears to be important, show that irrigation needs to be considered in the models (Boone et al., 2019).

1 - Ln.65-73: The scope of the work can be improved, to make it more precise and easier to read. For instance the authors talk about “new parameterizations” at line 66, but changes to the atmospheric

forcing (Ln. 68) are not a parameterization. Also at Ln.69 they talk about “these results”, but it is unclear which results are referring to at this point.

2 - This paragraph was reformulated (lines 97-103) as:

3 - The objective of this paper is to show how the development of new parameterizations and better atmospheric forcing prescription have improved the performance of the system. The current study, based on numerical simulations covering the period 1958-2018, shows how improvements in atmospheric forcing, land surface model physics and subgrid orography and hydrology improve the modelled river flow and snow depth of the SIM system. It also aims to describe how the model results are affected by each change separately and finally to demonstrate that the new model configuration performs better than the previous one in terms of river flow extremes, and when simulated snow depth or average river flow is compared to observed data.

1 - Ln. 83: could you be more specific on the horizontal resolution of the SAFRAN analysis?

2 - The SAFRAN analysis is performed on irregular areas of a few hundred square kilometres. In fact, the size of the area where the analysis is done varies from 400km<sup>2</sup> to 1000km<sup>2</sup>, and then as indicated in the manuscript the horizontal interpolation is done to an 8 km regular grid. In the manuscript a reference to Le Moigne (2002) has been added (line 113) because a description of these areas is given.

3 - The analysis is carried out over geographical areas covering a few hundred square kilometres (Le Moigne, 2002), and the analysed fields are interpolated to hourly time steps.

1 - Ln. 83: is the 24h precipitation analysed every 6-hours?

2 - The analysis of 24h precipitation is performed daily. Manuscript was updated accordingly (line 111-113).

3 - SAFRAN (Durand et al., 1993; Quintana Segui et al., 2008) performs a 6-hourly analysis of near-surface meteorological variables such as temperature and relative humidity at 2 metres, wind speed, cloud cover and a daily analysis of 24-hour accumulated precipitation.

1 - Ln. 154: please clarify in which sense you mean “dry”, as this can be related to various processes.

2 - The term “dry” here refers to the soil moisture. The sentence in the manuscript was changed to (line 174):

3 - However, the Force-Restore scheme is known to be too dry in terms of soil moisture

1 - Ln. 163-167: this paragraph should be simplified/clarified, to make it clearer that the soil map is not changed between the previous SIM system and the new system (as far as I understood). Ln. 166-167: please clarify that this map was the one used in the “old” version of SIM.

2 - The beginning of section 2.3 was modified to account for these 2 remarks (lines 182-189):

3 - In addition to the changes in model physics described above, the land cover and topography databases have been updated to improve the realism of the external parameters of the ISBA model. The hydrogeological database representing the aquifer and the routing network was unchanged. In addition, the soil texture database for France is unchanged. In the former SIM system, the soil texture was based on a soil map provided by the Institut National de Recherches Agronomiques (INRA - King et al., 1995) at a resolution of 1 km. In the new SIM system, texture is defined by the Harmonized World Soil Database (HWSD - Nachtergaele et al., 2012) which is a soil map at 1 km resolution that combines several data sets available worldwide. In particular for France, the INRA soil map mentioned above has been integrated into the HWSD dataset (used in other applications using SURFEX outside France), so this change does not affect the SIM simulations.

1 - Sect. 2.3: as far as I understood, the main change in the climate fields is the update to ECOCLIMAP2. Hence, I would suggest to expand the discussion of this change, for instance explaining the impacts on the ISBA model? See also next comment.

2 - The last paragraph of section 2.3 was modified as follows (lines 201-211) to expand the discussion as required and also indicate the use of a new albedo parameterization.

3 - The impacts of modifying the vegetation fraction input to the ISBA model are multiple and will not be described here in detail (for a detailed comparison, see Faroux et al., 2013). ECOCLIMAP2 has definite advantages, the effects of which are directly reflected in the ISBA model. For example, ECOCLIMAP2 covers a larger time period than the previous version and therefore allows a better representation of the variability of surface parameters. Also, it distinguishes different types of crops that can be modelled separately, and therefore more accurately, with ISBA. The sensors on board satellites have better accuracy and the uncertainty of the measurement is reduced. The vegetation fraction in particular is improved and with it the roughness length of the vegetation which impacts the surface wind by the obstacle effect on near-surface flows. The leaf area index is also improved and its increase leads to a better description of the evaporative fraction, which is key for the energy partitioning in the model. The more realistic surface albedo developed by Carrer et al. (2014) was also used, as Decharme et al. (2013) showed that it improved results at the global scale.

1 - Ln. 187-193: this sentence is very long. Could you break it in multiple sentences, better explaining the impact of this change?

2 - The answer is contained in the respond to the previous remark.

1 - Sect. 2.4, title: could you specify in the Section title that this is downward infrared radiation?

2 – Done (line 212).

3 - 2.4 Evolution of downward infrared radiation

1 - Ln. 195-198: is the bias related to a problem in the analysis (for instance cloud cover) or a RT model issue?

2 - The bias is likely due to a problem in the analysis and in the RT model. The cloud cover analysis is computed using T and q profiles from a large-scale atmospheric model that contains biases. The model used to solve the RT is an old model, with a rather low vertical resolution and therefore probably sub-optimal, but which was state-of-the-art in the 1990s.

A sentence has been added to the manuscript (line 218):

3 - The bias is likely due to a problem in the analysis and in the radiative transfer (RT) model. The cloud cover analysis is computed using temperature and humidity profiles from a large-scale atmospheric model that contains biases. Moreover, the model used to solve the RT is an old model, with a rather low vertical resolution and therefore probably sub-optimal, but which was state-of-the-art in the 1990s.

1 - Ln. 214: annual mean over which time period?

2 - Annual mean over the 60-years periods. This was added to the manuscript (end section 2.4, lines 230-231).

3 - Figure 2 shows the annual average over the 60-year period initial infrared radiation (left panel) and the amount of energy supplied when the correction is applied (right panel).

1 - Ln. 215-217: could you clarify this sentence? is the analysis done every 300m in the vertical direction?

2 - This is clarified in the manuscript (lines 233-234):

3 - In SAFRAN, the analysis is performed on homogeneous zones of several hundred square kilometres and the vertical component is explicitly considered with to a 300-metre slicing along the vertical.

1 - Ln. 233: why between 3 to 5 layers are necessary, and not more? What it is the vertical discretization between each band? Please clarify.

2 - The original attempt was to have 10 layers of 300 m from ground to 3000 m. However, this solution appeared to be too expensive and a solution based on the distribution of altitudes in each grid box in 5 classes using deciles q20, q40, q60 and q80 was adopted. The vertical discretization varies from one grid point to another, but is at least equal to 300 m.

The sentence was changed in the manuscript to explain it better (lines 247-248):

3 - Using a vertical discretization of 300 m at each grid point to represent topographic variability was ideal but too costly. A solution based on the distribution of elevations in each grid cell into five bands represented by the quintiles q20, q40, q60 and q80 was adopted. For each of the 1044 grid points, the vertical discretization varies and is at least equal to 300m. In the end this gives a total of 3878 grid points involved in the calculations of the mountain simulation. Figure 1 (right panel) shows the elevation of the 1044 grid points where the elevation band method is applied.

1 - Ln. 264: How does the relatively low horizontal resolution of the ERA-40/ERA-I data impact the simulations? The horizontal resolution of ERA-I is ~80km, that is one order of magnitude less than the one used by the SIM grid. I am thinking for instance at regions with a low coverage of surface stations used in the analysis.

2 - In fact, the SAFRAN analysis does not suffer from a coarse guess as input. SAFRAN tries to be as close as possible to the observations, for temperature, humidity, ..., precipitation. The analysis of precipitation even doesn't use large scale information as input. In France, the density of the observation network is very high, because a network dedicated to climatology complements the synoptic network which is less dense. So, there are almost no region with low coverage especially for precipitation which is key for hydrologic purposes.

The manuscript was modified as follows (lines 276-279)

3 - In France, the density of the observation network is very high, because a network dedicated to climatology completes the less-dense synoptic network. There are therefore practically no regions with poor coverage, especially for precipitation, which is essential for hydrology, and the coarse resolution of the analysis first guess is not an issue.

1 - Ln. 299-300: were the data cleaned in some way? For instance removing stations with a few number of observations? Or all data have been used to compute the statistics? The latter could introduce some artifact in the statistics. This should be better explained in the text.

2 - The length of the series is a source of variability in the scores (in particular the number of seasons the stations are open can vary from 1 to 32) but since very few series are complete, it was felt that it was nevertheless more robust to assess the performance of the model to consider as many stations as possible rather than trying to homogenize the length of the series.

The manuscript was modified (lines 308-311) as follows:

3 - The length of the measurement series and the number of seasons that stations are open are sources of variability in the scores. However, since very few series are complete, the choice was made to evaluate the performance of the model by considering as many stations as possible rather than trying to homogenize the length of the series.

1 - Ln.318-320: could you specify clearly in the text when the transition from ERA-40 to ERA-I occur in SAFRAN?

2 - The question raised here pushed the authors to verify in more details which ERA data was used. And it turned out that ERA-40 is used until 2002, then replaced by the operational ECMWF analysis. This means that ERA-I is not used, and the manuscript was corrected (line 275-276) as follows:

3 - In SAFRAN, the guess of the analysis used is ERA-40 until 2002 and the ECMWF operational analysis thereafter.

2 - And (line 336-342) as follows:

3 - In addition to this physical reason, a more technical reason is the change in the large-scale analysis used as boundary conditions to the ERA-40 reanalysis (Uppala et al., 2005), with a priori small changes in the analysed fields. During the production of the ERA-40 reanalysis, the ECMWF operational data assimilation system has evolved considerably and switched to a 4D-var variational method compared to the 3D-var method previously used. This new system has proven to be more accurate and the assimilation of a much larger number of satellite observations has led to a significant improvement in analysis and forecasting, in particular, for the vertical profiles of temperature and relative humidity.

2 - And (line 457-458) as follows:

3 - As explained in section 4.1, the calculations of these profiles have varied over time as a result of improvements in the global data assimilation systems used in the ERA-40 reanalysis production.

2 - And the reference to ERA-Interim was suppressed whereas the reference to ERA-40 was added:

3 - Uppala SM, Kållberg PW, Simmons AJ, Andrae U, Da Costa Bechtold V, Fiorino M, Gibson JK, Haseler J, Hernandez A, Kelly GA, Li X, Onogi K, Saarinen S, Sokka N, Allan RP, Andersson E, Arpe K, Balmaseda MA, Beljaars ACM, Van De Berg L, Bidlot J, Bormann N, Caires S, Chevallier F, Dethof A, Dragosavac M, Fisher M, Fuentes M, Hagemann S, Hólm E, Hoskins BJ, Isaksen L, Janssen PAEM, Jenne R, McNally AP, Mahfouf JF, Morcrette J-J, Rayner NA, Saunders RW, Simon P, Sterl A, Trenberth KE, Untch A, Vasiljevic D, Viterbo P, Woollen J. 2005. The ERA-40 re-analysis. Q. J. R. Meteorol. Soc. 131: 2961– 3012, 2005.

1 - Ln. 335-345: What is the reason for the deterioration in the lower part of the CCDF of NSE in SIM\_PHY?

2 - The answer to that question is not straightforward. Most of the stations concerned by a deterioration in the lower part of the CCDF of NSE have a NSE lower than 0.55 and represent approximately 57% of the total number of stations. One part of the explanation comes from the calibration of the subgrid drainage in SIM\_REF and not in SIM\_PHY as explained in the manuscript. Then, a NSE lower than 0.5 can be considered as a bad simulation. So, both SIM\_REF and SIM\_PHY have problems in simulating the river flow at those stations. Several reasons can be proposed, and the first one is that some basins are urbanized and this is not well represented in the model. Then as we have seen, there are compensating errors in SIM\_REF (correct Qsim to Qobs ratio and too low IR downward radiation).

The manuscript was modified to add this comment (lines 356-359):

3 - Most of the stations affected by deterioration in the lower part of the NSE CCDF have an NSE below 0.55 and represent about 57% of the total number of stations. Part of the explanation comes from the calibration of the subgrid drainage in SIM\_REF which is not done in SIM\_PHY.

1 - Sect.4.3: I would suggest to rename this subsection as it is quite vague at the moment: most of the paper regards the comparison to old SIM.

2 - The section was renamed (line 387):

3 - 4.3 Seasonal river flows

1 - Ln.405: why not adding a third box for SIM\_PHY to evaluate the effect of the new snow/soil schemes on the snow depth?

2 - As already mentioned in the response to the main comments, the comparison to observations and involving SIM\_REF can only be made over the 9892 grid boxes and is limited to those below 1340 m (elevation below which IR correction is applied). Therefore, only snow at mid-altitude would be considered and adding a third box with SIM\_PHY would not help highlighting the effect of snow and soil schemes on snow depth.

1 - Ln. 413: "baresoil"→ bare soil

2 - Section 4.6 has been removed

1 - Ln.414: At which depth the soil temperature observations are taken? Is any interpolation applied to the data?

2 - Section 4.6 has been removed (As indicated in the original manuscript, temperatures are measured at 10 cm, 20 cm, 50 cm, and 100 cm, and no interpolation was applied)

1 - Ln.440-449: It would be nice to explicitly link this discussion on the changes of Evap/Precip with the changes in the discharge mean bias.

2 - A sentence has been added to make this link (lines 447-449):

3 - In SIM\_NEW, the ratio of simulated to observed flow is in excess whereas it is better simulated in SIM\_REF with a peak centred around 1. This result is consistent with an evaporation deficit in SIM\_NEW compared to SIM\_REF.

2 - And the last sentence of the paragraph was changed to (lines 450-452):

3 - This result shows that the sensible heat flux in SIM\_NEW is much higher than in SIM\_PHY, mainly due to the increased incoming infrared radiation, which partially compensates for the evaporation deficit.

1 - Ln. 489: I would rephrase this sentence for readers not familiar with detailed snow models.

2 - Sentence rephrased to (lines 510-512):

3 - At the same time, as described in section 2, the snow model has been revised to improve vertical layering, snow compaction and solar energy transmission within the snowpack through the use of spectral albedo, as is done in more advanced models.

#### Comments on the figures

1 - Generally, the figure captions should be improved to make them more self-explanatory.

2 - The figure's captions were improved

3 -

Figure 1: Height of the topography of the 9892 cells of the SIM grid (left) and the 3878 cells of the mountain SIM grid (right). The cells of the mountain grid correspond to the 1044 points having an altitude greater than 500 m and described vertically by several layers. Zones in yellow correspond to the Seine and Rhone aquifers. The dotted line delimits the Alps mountain.

Figure 2: Annual average of uncorrected (left) and corrected (right) downward longwave infrared radiation from SAFRAN analysis.



Figure 3: Maps of annual average of the SAFRAN analysis for the period 1958-2018 of (a) air temperature at 2 meters, (b) specific air humidity at 2 meters, (c) wind speed at 10 meters, (d) total annual precipitation, (e) direct solar radiation, and (f) diffuse solar radiation.

Figure 4: Annual average of the SAFRAN analysis of (a) air temperature at 2 meters, (b) specific air humidity at 2 meters, (c) wind speed at 10 meters, (d) direct solar radiation, (e) diffuse solar radiation, (f) infrared radiation, and (g) total precipitation rate.

Figure 5: Comparison of the NSE CCDF (left panel) and the simulated to observed flow ratio (right panel) for SIM\_REF (dashed blue line), SIM\_PHY (solid red line), SIM\_FRC (solid cyan line), SIM\_TOP (solid green line), and SIM\_NEW (solid orange line).

Figure 6: Maps of the difference in mean NSE for  $NSE > 0$  between simulations: (a) SIM\_PHY and SIM\_REF, (b) SIM\_FRC and SIM\_PHY, (c) SIM\_TOP and SIM\_FRC, (d) SIM\_NEW and SIM\_TOP.

Figure 7: Map of the difference in mean NSE for  $NSE > 0$  between SIM\_NEW and SIM\_REF (left panel), and SIM\_NEW NSE map (right panel).

Figure 8: Taylor diagrams of seasonal river flows for the different experiments over the period 1958-2018.

Figure 9: Taylor diagram of Q10 and Q90 deciles of river flows over the period 1958-2018.

Figure 10: Comparison of monthly river flows with SIM\_NEW for the Garonne at Lamagistère over the period 1958-2018.

Figure 12: Maps of mean annual Bowen ratio (a) and evaporation to precipitation ratio (b) for SIM\_NEW on average over period 1958-2018.

Figure 13: Mean annual evaporation to precipitation ratio (a), and Bowen ratio (b), for experiments SIM\_REF, SIM\_PHY, and SIM\_NEW.

1 - In the caption of Figure 1, the definition of a “mountain grid cell” should be added.

2 - Done

1 - Some of the figures could be merged together, for instance Fig. 7 with Fig. 8 and Fig. 9 with Fig. 10, for conciseness.

2 - As compared to the initial manuscript, some figures have been removed (2, 6, 7) and 16 and 17 have been merged together.

