

Interactive comment on “Ensemble prediction using a new dataset of ECMWF initial states – OpenEnsemble 1.0” by Pirkka Ollinaho et al.

Pirkka Ollinaho et al.

pirkka.ollinaho@fmi.fi

Received and published: 8 February 2021

Please see our response to both Referees in the attached pdf. The new Figures now included in the manuscript are also attached.

Please also note the supplement to this comment:

<https://gmd.copernicus.org/preprints/gmd-2020-292/gmd-2020-292-AC1-supplement.pdf>

Interactive comment on Geosci. Model Dev. Discuss., <https://doi.org/10.5194/gmd-2020-292>, 2020.

Printer-friendly version

Discussion paper



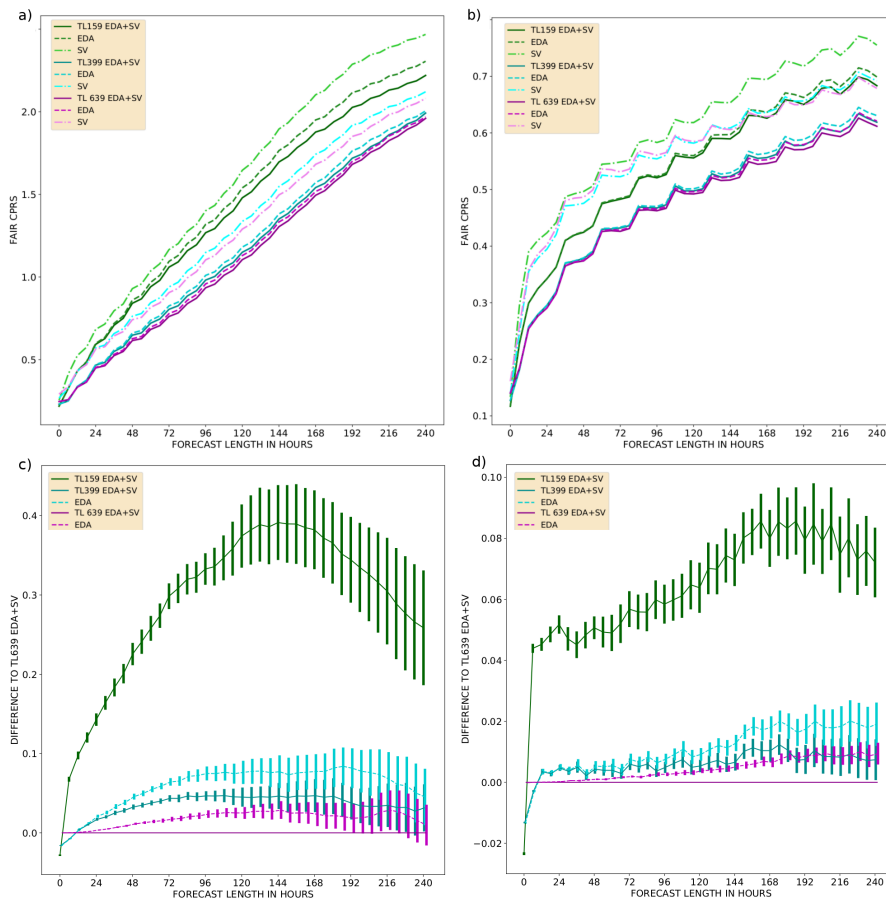


Fig. 1.

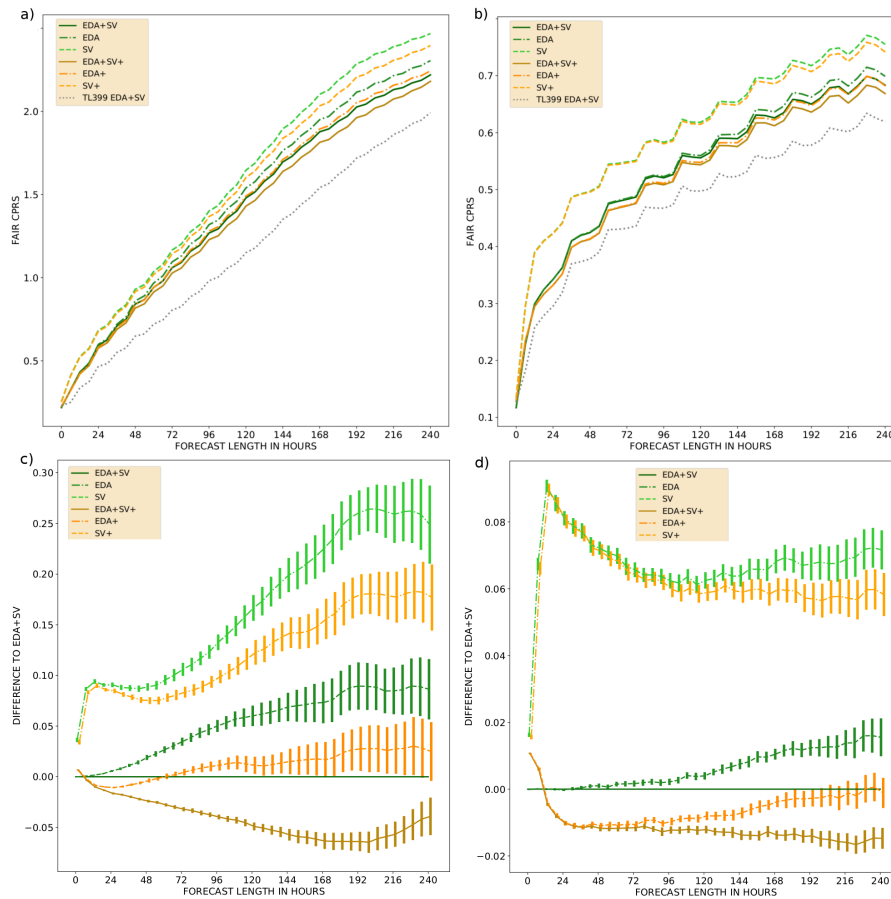


Fig. 2.