

Using the International Tree-Ring Data Bank (ITRDB) records as century-long benchmarks for global land-surface models

Jina Jeong¹, Jonathan Barichivich^{2,3}, Philippe Peylin², Vanessa Haverd⁴, Matthew J. McGrath², Nicolas Vuichard², Michael N. Evans⁵, Flurin Babst^{6,7,8} and Sebastiaan Luyssaert¹

¹ Department of Ecological Sciences, VU University, 1081HV Amsterdam, the Netherlands.

² Laboratoire des Sciences du Climat et de l'Environnement, IPSL, CNRS/CEA/UVSQ, 91191 Gif sur Yvette, France.

³ Instituto de Conservación Biodiversidad y Territorio, Universidad Austral de Chile, 5090000 Valdivia, Chile.

⁴ CSIRO Oceans and Atmosphere, Canberra, 2601, Australia.

10 ⁵ Department of Geology & ESSIC, University of Maryland, MD 20742-4211, USA.

⁶ Dendro Sciences Group, Swiss Federal Research Institute WSL, Zürcherstrasse 111, CH-8903 Birmensdorf

⁷ School of Natural Resources and the Environment, University of Arizona, Tucson, USA

⁸ Laboratory of Tree-Ring Research, University of Arizona, Tucson, USA

15 **Running head:** Tree-ring records as century-long benchmarks

Correspondence to: Jina Jeong (j.jeong@vu.nl)

Key words: forest growth, tree-ring width, diameter growth, climate sensitivity, size-dependent growth, climate change

20 **Abstract**

The search for a long-term benchmark for land-surface models (LSM) has brought tree-ring data to the attention of the land-surface community as they record growth well before human-induced environmental changes became important. The most comprehensive archive of publicly shared tree-ring data is the International Tree-ring Data Bank (ITRDB). Many records in the ITRDB, however, have been collected with a view on maximizing an environmental target signal (e.g. climate), which
25 has resulted in a biased representation of the productivity of forested sites and landscapes and thus limits its use as a data source for benchmarking. The aim of this study is to examine when and how ITRDB data can, despite its sampling biases, be used as century-long benchmarks for LSMs. Combining advances in modelling and data processing resulted in four complementary benchmarks - reflecting different usage of the information contained in the ITRDB - each described by two performance metrics rooted in statistics. Each of the four proposed benchmarks was verified by calculating it twice: (1) based
30 on an independent European tree-ring network of biomass plots that were sampled in a locally representative way and are thus not biased by big-tree tree selection, and (2) following sub-sampling of this European biomass network by only considering the 15% biggest trees. This study showed that the ITRDB data can be used with 95% confidence to benchmark annual radial growth during extreme climate years. In about 70% of the test cases, using ITRDB data would result in the same conclusions as using the European biomass network when the model is benchmarked against the annual radial growth of
35 mature trees or the size-related trend in annual radial growth. Care should be taken when using the ITRDB data to benchmark the annual radial growth of young trees, as only 50% of the test cases were consistent with the results from the European biomass network. Although the proposed benchmarks are unlikely to be exact, they may advance the field of land surface modelling by providing a much-needed large-scale constraint on changes in the simulated maximum tree diameter and annual growth increment for the transition from pre-industrial to present-day environmental conditions over the past century. Hence,
40 the proposed benchmarks open up new ways of harnessing the ITRDB archive, but at the same time, illustrate ways in which tree-ring width observations may be collected and processed to provide long-term validation tests for land surface models.

Earth system models integrate numerical models of atmospheric circulation, ocean dynamics and biogeochemistry, sea ice dynamics, and biophysical and biogeochemical processes at the land-surface. Climate projections made by Earth system models have been the corner-stone of the last five Assessment Reports of the Intergovernmental Panel on Climate Change (IPCC, 2013) and as such have made a tremendous impact on global environmental policy (Paris Agreements, 2015). The credibility of projections of the future climate from any Earth system model in part relies on the ability of each of its four submodels to accurately reproduce the past (McGuffie, 2005). Although long-term changes that date back to pre-industrial conditions (Luo et al., 2012) have been documented for vegetation distribution through pollen based reconstructions (Cao et al., 2019), land-surface models (LSMs) currently lack a long-term benchmark for forest ecosystem functioning. The absence of long-term benchmarks is thought to contribute substantial uncertainty to simulated future global carbon stocks in soil and vegetation (Friedlingstein et al., 2006; Friedlingstein et al., 2014) and as such to climate projections (Fig. 1a).

Tree-ring records provide annual information on historical tree growth and physiology in relation to environmental conditions, including the era before human activities started to affect the atmospheric CO₂ concentration (Fritts, 2012; Hemming et al., 2001). Even though trees grown in the absence of a clear annual rhythm of vegetative and dormant seasons may not develop distinct tree rings, as observed for many species from the humid tropics, tree-ring records have been proposed as a large-scale and long-term benchmark for the land surface component of Earth system models (Fig. 1b; See section 6 for more details) (Babst et al., 2014a, 2014b, 2017, 2018; Zuidema et al., 2018).

Until now, tree-ring records have often been collected to reconstruct past climate and hydrological variability from sites where trees grow near the colder or drier fringes of their distribution (Briffa et al., 2004; D'Arrigo et al., 2008). The most comprehensive archive of publicly shared tree-ring data is the International Tree-ring Data Bank (ITRDB), with more than 4,000 locations from 226 species across most forested biomes (Fig. S1) (Grissino-Mayer and Fritts, 1997; Zhao et al., 2019). However, a shortage of site metadata and the prevailing geographical, species and tree selection sampling biases resulting from targeting climate-sensitive trees has limited the use of the ITRDB archive to infer long-term changes in forest growth

70 (Bowman et al., 2013; Briffa and Melvin, 2011; Klesse et al., 2018; Zhao et al., 2019). Compared to tree-ring records that were collected for the purpose of benchmarking LSMs, such as the European tree-ring network of biomass plots (hereafter called “European biomass network”; Klesse et al., 2018) that is available through the database of the BACI project (BACI, 2020), the aforementioned issues may limit the information content of the ITRDB records. This loss in information content should, however, be balanced against the associated benefits in terms of time gain and resource savings when re-using the
75 large ITRDB dataset.

When tree rings are to be used as benchmarks for LSMs, the models must demonstrate skillful simulation of tree-ring width (TRW). In the past decades, the major physiological and ecological processes that are responsible for annual tree-ring growth became sufficiently well-understood to be formalized in mathematical models with different levels of details. The first TRW
80 models (Wilson and Howard, 1968) described processes at the cell level: cell division, cell enlargement, and cell wall thickening. Later, the carbon and water balance of trees was added (Fritts et al., 1999) as well as climatic influences on cambial activity (Vaganov et al., 2006). These models were capable of reproducing short-term radial growth at the tree level. Further developments introduced a notion of turgor and hormone regulation for cell growth (Drew et al., 2010; Hölttä et al., 2006; Leuzinger et al., 2013; De Schepper and Steppe, 2010; Steppe et al., 2006).

85
At the same time, the spatial scale of models simulating wood formation based on cell dynamics was extended to the stand level by simplifying process representation. In one such model, photosynthate availability, air temperature and soil water content were used to constrain wood cell growth and successfully reproduced observations (Deleuze and Houllier, 1998; Hayat et al., 2017; Wilkinson et al., 2015). Further simplifications were proposed by simulating the radial growth of trees
90 based solely on carbon allocation (Deleuze et al., 2004; Merganičová et al., 2019) rather than cell dynamics, the latter being computationally too expensive for large scale vegetation models (Li et al., 2014; Misson et al., 2004; Sato et al., 2007). Hence, a variety of approaches is now available to describe TRW growth in forest models, dynamic vegetation models and LSMs, but to the best of our knowledge there is yet no land-surface component of any Earth system model with such capability.

95 This study articulates an improved conceptual framework for benchmarking simulated radial growth against ITRDB tree-ring data, addressing limitations in the models, the data and the methods to compare models and data. The aims are to: (1) use current understanding of tree-ring growth to derive the minimal requirements for benchmarking LSMs against tree-ring records archived in the ITRDB; (2) review potential issues of using the ITRDB to benchmark LSMs; (3) propose solutions for a meaningful comparison of LSMs against ITRDB records; and (4) verify the proposed solutions by benchmarking a LSM
100 using a dataset that is not prone to sampling biases related to palaeoclimatological research. Dependencies between these aims and the workflow of this study are detailed in Fig. 2.

2. Background: model requirements, data limitations and benchmarks

105 2.1. Minimal requirements for land-surface models to mechanistically simulate TRW

The linear aggregate conceptual model of tree growth (Cook and Kairiukstis, 1990) considers that the observed TRW at year t (in mm) consists of five additive growth contributions (Fig. 3):

(i) Size-dependent growth is the dominant signal in raw tree-ring measurements (Cook et al., 1995). Conceptually it can be understood by considering an almost constant volume of wood due to a more or less constant primary production
110 (Hirata et al., 2007) being added to the trunks year after year (Nash, 2011). The annual diameter increment of the trees will decrease as the trunk grows wider because a given wood volume has to be distributed over an increasing surface area as both the circumference and height of the stem are increasing. In reality, however, self-thinning reduces stand density and competition for resources, implying that the remaining trees can increase their crown volume and thus increase their primary production (Oliver and Larson, 1996) which largely compensates for the size-dependent decrease in TRW and contributes to
115 the observed almost constant TRW of tall trees. Several of the common allocation schemes used in LSMs account for size-dependent growth and stand self-thinning (Franklin et al., 2012; Wolf et al., 2011).

(ii) Climate-dependent growth reflects the sensitivity of tree growth to radiation, temperature, and water availability (Fritts, 2012) and is accounted for in LSMs, as it represents the core purpose of this type of models. LSMs often rely on the

120 Farquhar model for the radiation and temperature dependency of photosynthesis (Farquhar, 1989), the McCree - de Wit -
Penning de Vries - Thornley approach for the temperature dependence of respiration (Amthor, 2000), and account for a
decoupling of photosynthesis and growth by the use of a labile carbon pool (Friend et al., 2019; Naudts et al., 2015; Zaehle
and Friend, 2010). Plant water availability is accounted for through either simple transfer functions or more recently by
accounting for the hydraulic architecture of the simulated trees (Bonan et al., 2014; Naudts et al., 2015).

125

(iii) Endogenous disturbances refer to within-stand resource competition and are being increasingly simulated in LSMs
albeit often by empirical approaches (Haverd et al., 2013; Moorcroft et al., 2001; Naudts et al., 2015). From a benchmarking
point of view, simulating individuals of different size or cohorts within a single forest is essential to reproduce the sampling
biases present in the ITRDB (see section 2.2 and 2.3 below). Chronic exogenous disturbances such as increasing atmospheric
130 CO₂ concentration (LaMarche et al., 1984) and N-deposition (Magnani et al., 2007) are well-developed as they are among
the main purposes of using LSMs. The effect of CO₂ fertilization on photosynthesis is accounted for in the photosynthetic
submodel whereas nitrogen dynamics are accounted for through static or dynamic stoichiometric approaches (Vuichard et al.,
2019; Zaehle and Friend, 2010).

135 (iv) Although abrupt disturbances such as fires, pests and storms are increasingly being simulated by LSMs (Chen et al.,
2018; Yue et al., 2014) and they leave marks in TRW (Bowman et al., 2009; Bräuning et al., 2016) (ref, brauning), e.g., fire
scars and missing rings, these functionalities are at present of limited use for benchmarking against TRW data. Abrupt
disturbances are often simulated as stand-replacing disturbances and will, therefore, not be reflected in the simulated TRWs.
Furthermore, the timing of such events largely depends on the simulated diagnostics, for example, fuel wood build-up, insect
140 population dynamics, and soil moisture, which could strongly deviate from the observed timing in decadal to century long
simulation periods. Thus simulated stand demographics, rather than secular change, might be the basis for benchmarking
against observations.

(v) The final term in the aggregate tree-growth model constitutes all processes and interactions between processes not
145 previously accounted for in the LSM, and will make up the model error.

This aggregate tree-growth model provides the conceptual basis for tree-ring standardization and climate signal extraction
methods used in dendrochronology (Briffa and Melvin, 2011; Cook and Kairiukstis, 1990), which rely on the assumptions
that the sampled trees capture the relevant common growth variability of the stand and that the contribution of each major
150 driver can be statistically identified as either signal or noise. Nevertheless, alternative ecological models have been proposed
to attribute TRW to its major drivers (Stine, 2019). In practice, observed TRW records cannot always be fully decomposed
in the absence of metadata because several drivers might not leave a unique fingerprint in growth. However, size effect and
climate sensitivity have a much larger contribution to TRW than the other processes (Hughes et al., 2011).

155 In addition to accurate process representation, the model will need to be driven by historical climate, atmospheric CO₂ con-
centrations and N-deposition. In general, commonly-used century-long climate reanalyses such as NCEP (Kalnay et al.,
1996), 20CR (Compo et al., 2011), and CERA-20C (Laloyaux et al., 2018) are based on the assimilation of instrumental
observations in climate simulations and are thus independent from climate estimates derived from tree rings or other proxy
data. Nevertheless, random and systematic error in the reanalyses increase as data availability decrease, particularly in remote
160 areas with a low density and temporal depth of meteorological stations. Given that local climate effects may have contributed
to the TRW, it might be desirable to bias-correct the reanalysis with present day site-specific climate observations where they
exist (Ols et al., 2018). When LSMs are forced by actual climate observations, reproducing the observed climate sensitivity
in tree rings would both facilitate and add credibility to the land-surface simulation – if forcing, LSM and TRW models are
all realistic and unbiased.

165 Given the above, LSMs that intend to use TRWs as a benchmark should at the minimum simulate: (1) dynamic plant
phenology, (2) size-dependent growth, (3) differently-sized trees within a stand, and (4) responses to chronic exogenous
environmental changes (Fig. 3). Whereas responses to chronic exogenous environmental changes are the reason LSMs exist

and are therefore to some extent accounted for by all current LSMs, size-dependent growth and size differentiation within a stand are at present only accounted for in few LSMs, for example, CLM (ED) (Fisher et al., 2015), ORCHIDEE (Naudts et al., 2015), and LPJ-GUESS (Smith, 2001). The ORCHIDEE model (revision 5698) meets the aforementioned minimum requirements and therefore will be used in this study.

2.2. Challenges of using ITRDB data as a long-term benchmark

A typical record in the ITRDB consists of TRW measurements of increment cores from tens of individual trees from the same site and species. Each record may have different starting and ending dates, and thus length (Fig. 4 a and b). If a core reaches the centre of the trunk (i.e., pith), annual tree diameter can be reconstructed (Bakker, 2005). Even then diameter reconstruction may come with some uncertainty because trunks are not perfectly round. If the core does not contain the centre of the trunk, which is often the case for large trees, rings near the pith will be missed adding uncertainty to the diameter and age reconstruction (Briffa and Melvin, 2011). In this case, diameter increment can still be reconstructed (by subtracting the measured TRW) if trunk diameter at the time of sampling is known, but this metadata is rarely recorded in dendroclimatic collections and it is not stored in the ITRDB.

Despite of its known biases, the ITRDB can still be used to extract information useful for LSMs. The predominant sampling design in the ITRDB targets the presumably oldest trees, which should give the longest time series and are therefore most useful to reconstruct the climate variability prior to instrumental records. The ITRDB is thus likely to overrepresent large trees (Brienen et al., 2012; Nehrbass-Ahles et al., 2014) relative to the population demographics at the time of sampling. This big-tree selection bias makes the ITRDB unsuitable to upscale growth of individual trees to larger spatial domains, i.e., stand, forest or the region (Babst et al., 2014a; Nehrbass-Ahles et al., 2014) but does not affect the value of the ITRDB archive for documenting individual tree growth as long as tree size and dominance effects are explicitly considered. Although the model-data comparison cannot -without additional data- correct for the big-tree selection bias in the ITRDB, models that simulate multiple tree diameter classes may accommodate this bias by comparing the largest simulated diameter class with the observed ITRDB tree-ring records (Fig.4a).

195 Another bias related to the ITRDB sampling design comes from the fact that the growth rate of trees within a cohort differs
between individuals (Melvin, 2004; Zuidema et al., 2011) resulting in slowly and fast-growing trees within the same cohort
(Fig. 4b). Slow-growing trees tend to live longer than fast-growing trees in the same cohort (Mencuccini et al., 2005;
Schulman, 1954). Records of TRW are thus likely to underestimate the mean tree growth of a stand in long-passed centuries
as fast-growing trees would have died off before the samples were taken (Brienen et al., 2012). Another challenge of using
200 ITRDB data comes from the difference between the observed and simulated forest structure. Tree-ring datasets are composed
by cores of individuals from different cohorts (Fig. 4b). Comparing these data against simulations requires the model to be
individual-based or to align TRW records by age (Fig. 4a).

Given the above, only part of the information contained in TRW records can be used for benchmarking if their sampling
205 protocol is poorly described or not rigorously enforced. A model-data comparison cannot correct for these biases but we
propose to enhance the consistency between modelled and observed tree-rings for a stand under study by making use of virtual
trees. Virtual trees will, however, also require careful post-processing of the ITRDB data to produce an intercomparison
between analogous simulations and observations. Later in this study we propose four different benchmarks based on the
ITRDB data, three of which make use of a virtual tree. Nevertheless, each of these benchmarks addresses a different aspect
210 of TRW, and therefore uses a different definition for its virtual tree:

(i) The average virtual tree of a stand aligned by tree age is calculated as the time series for the average ring width after
aligning the age of the individual trees (Fig. 4a). Age-aligned TRWs are widely used to calculate a statistic known as the
mean regional curve of the sampled stand (Briffa and Melvin, 2011). This assumes that common drivers regardless of time,
exceed the signal from local and individual differences in tree growth (see subsection 2.3 (i)).

215 (ii) The average virtual tree of a stand aligned by calendar year is calculated by ordering individual tree-ring series by
calendar year (Fig. 4b) and for each year the average observed diameter is calculated. Alignment by calendar year thus reflects
the real temporal evolution of the stand. This virtual tree can be used to cope with the challenge from difference in forest

structure between the simulation and the observation by compiling a representative and comparable tree with the simulated
220 tree (see subsection 2.3 (ii)).

(iii) The largest virtual tree of a stand is calculated after aligning individual trees by their age (Fig. 4c). The
recommendation to remove the age trend from tree-ring records (Cook et al., 1995) confirms the assumption underling the
alignment by age, i.e., that size dependent age exceeds the growth trends due to long-term environmental changes.
225 Subsequently, the age-aligned TRWs can be used to compile a virtual fast-growing tree which has the maximum observed
diameter of all trees for a given tree age. The virtual fast-growing tree thus gives a better idea of the true mean tree growth in
old stands. (see subsection 2.3 (iii)).

The proposed data-model comparison thus largely relies on the concept of virtual trees to account for known sampling biases
230 of the ITRDB as well as for the model definition of a forest stand. The proposed definitions and uses of virtual trees which
were partly customized to ORCHIDEE r5698, are evaluated in section 4.1. Except for LSMs with an individual tree-based
stand definition (Sato et al., 2007), benchmarking other models against ITRDB data will also have to consider the use of
virtual trees and may have to adjust the proposed definitions to the peculiarities of each model. .

235 **2.3. Benchmarks for comparing observed and simulated tree-ring widths**

If a LSM explicitly accounts for the main factors contributing to TRW, i.e., size effects and climate sensitivity (Hughes et al.,
2011), meaningful benchmarking against specific aspects of the observations becomes feasible in spite of the aforementioned
biases in the ITRDB. Our technical framework considers four complementary aspects of the observations: (i) the size-related
trend in tree-rings; (ii) diameter increment of mature trees; (iii) diameter increment of young trees; and (iv) extreme growth
240 events. Each of these aspects formed the basis of a benchmark (Table 1):

(i) *Size related diameter growth.* The size-related trend in diameter increment can be assessed by calculating the average
virtual tree for a stand aligned by tree age (Fig. 5 a, b) and subtracting its TRWs from the simulated TRWs of the largest

diameter class (Fig. 5c). Subsequently, a linear regression is used to quantify the temporal trend in the residuals (Fig. 5d). If
245 the simulations and observations have similar size-related trends, the temporal trend in the residuals will be close to zero.
Furthermore, the root mean square error (RMSE) between the simulations and observations is calculated and normalized by
the length of time series used to calculate the difference in observed and simulated growth trends. A skilled model is expected
to simultaneously show no trend in the residuals and a low RMSE across many sites.

250 (ii) *Diameter increment of mature trees.* In LSMs that account for within-stand competition, larger trees will consistently
grow faster than smaller trees due to the way competition is formalized (Bellassen et al., 2010; Haverd et al., 2013). In reality,
growing conditions can suddenly become favourable for trees that have previously been suppressed, resulting in fluctuating
growth rates. This discrepancy between simulated and observed competition can be accounted for in the benchmark by using
the observations to compile a virtual tree of the stand aligned by calendar year, taking the average tree diameter of all samples
255 to construct the virtual tree (Fig. 6 a and b). Under the assumption that the observed trees are representative of the biggest
trees from a given site, the virtual tree can be compared with the biggest diameter class from the model. Given that for the
last decades both the quick and slowly growing trees are still alive and could have been sampled, only the growth in recent
decades of the virtual tree are compared to the simulations (Fig. 6 c and d). The RMSE and trend of the residuals between the
virtual tree and the largest diameter class simulated are calculated (Fig. 6d). A skilled model is expected to simultaneously
260 show no trend in the residuals and a low RMSE across many sites.

(iii) *Diameter increment of young trees.* As mentioned above, the size-related trend in diameter increment can be assessed
by calculating the largest virtual tree of the stand. The maximum age of a virtual tree equals the shortest observed individual
TRW record for the stand, as it represents the age intersection between the TRW records for all individuals in the stand. The
265 largest virtual tree is thus clearly biased towards higher observed diameters, compensating for the loss of observed high
diameters in field sampling due to the fact that the old fast-growing trees died well before sampling took place (Fig. 7 a and
b). The first three decades of growth of the virtual tree are then compared to the simulated growth of the largest diameter
class (Fig. 7 c and d) by calculating the RMSE and trend of the residuals (Fig. 7d). The 30-year threshold is somewhat arbitrary

but reflects the observation that most of the selected time series show fast changes in tree growth at the first 30 years. When
270 benchmarking against other TRW data, this threshold could be adjusted to better fit the observed growth dynamics for other
tree species and/or other regions. A skilled model is expected to simultaneously show no trend in the residuals and a low
RMSE across many sites. By using different approaches to evaluate the growth of young (this benchmark) and mature trees
(the previous benchmark) the comparison accounts for the observation that the drivers of ring growth change as the trees
grow taller (Cook, 1985).

275

(iv) *Extreme growth events.* Even a perfect LSM cannot be expected to reproduce all year-to-year variation due to
uncertainties in forcing data, such as the reconstructed climate and N-deposition drivers. Nevertheless, well-constrained
reanalysis-based climate reconstructions can be expected to contain extreme events, and hence a skilled model driven by well-
constrained reconstructions should reproduce the statistics of the most extreme events. In this benchmark, extreme growth is
280 defined as the first and last quartiles in TRW ordered by calendar year (i.e., not aligning establishment years). Since year-to-
year variation of the simulation is more reliable after 1951 because the climate reconstructions used to drive the data rely
more on observations rather than on a climate reanalysis as is the case for the years before 1950, this benchmark only uses
TRW data that represent tree growth after 1951. As all selected stands were already 50 years or older in 1950 and TRW were
thus past their juvenile dynamic growth phases, detrending was not required. Subsequently, individual tree records from the
285 same site were averaged to obtain a single time series per site (Fig. 8a). The model skill to reproduce the absolute ring-width
amplitude regardless of timing was tested by comparing the observed and simulated 25th and 75th percentiles of TRWs for the
largest diameter class, which is the diameter class showing the strongest climate sensitivity (Fig. 8 e and f). Since other
benchmarks test for model's capability to simulate absolute TRW, these benchmarks focus on the difference between high
and low growth years. The mean TRW of the simulations or observations was subtracted to remove the effect of differences
290 in, respectively simulated or observed TRWs. Additionally, model skill for reproducing the timing of individual extreme
growth events was tested by comparing the simulated TRW for the exact years during which extreme growth was observed
(Rammig et al., 2015; Fig.7 a-d). The amplitude and value of TRWs can affect the calculation, which is not the aim of the
test; thus, TRWs were normalized by the standard deviation of the selected trees. For both the amplitude and timing of growth

extremes, the similarity between simulations and observations was calculated as the RMSE with the error being the distance
295 from the 1:1 line (Fig. 8 c-f). A skilled model is expected to simultaneously show low RMSE for both the amplitude and
timing of extreme years across many sites.

3. Materials and Methods

3.1. The land-surface model ORCHIDEE

300 ORCHIDEE (Ducoudré et al., 1993; Krinner et al., 2005) is the land-surface model of the IPSL (Institute Pierre Simon
Laplace) Earth system model (Dufrêne et al., 2005). Hence, by design, it can be coupled to an atmospheric general global
circulation model or become a component in a fully coupled Earth system model. In a coupled setup, the atmospheric
conditions affect the land-surface and the land-surface, in turn, affects the atmospheric conditions. However, when a study
focuses on changes in the land-surface rather than on the interactions with climate, it can also be run as a stand-alone land-
305 surface model. In both configurations the model receives as input atmospheric conditions such as precipitation, air
temperature, air humidity, winds, incoming solar radiation, and CO₂; this combination of inputs is known as the climate
forcing. Both configurations can cover any area ranging from global to regional domains and even down to a single grid point
for the stand-alone case.

310 Although ORCHIDEE does not enforce a spatial or temporal resolution, the model does use a predefined spatial grid and
equidistant time steps. The spatial resolution is an implicit user setting that is determined by the resolution of the climate
forcing. Although the temporal resolution is not fixed, the processes were formalized at given time steps: half-hourly (i.e.
photosynthesis and energy budget), daily (i.e. net primary production), and annually (i.e. vegetation dynamics). Hence,
meaningful simulations have a temporal resolution between 1 minute and 1 hour for the energy balance, water balance, and
315 photosynthesis calculations.

ORCHIDEE builds on the concept of meta-classes to describe vegetation distribution. By default, it distinguishes 13 meta-
classes (one for bare soil, eight for forests, two for grasslands, and two for croplands). Each meta-class can be subdivided

into an unlimited number of plant functional types (PFTs). When simulations make use of species-specific parameters and
320 age classes, several PFTs belonging to a single meta-class will be defined. Biogeochemical and biophysical variables are
calculated for each PFT or groups of PFTs (e.g. all tree PFTs in a pixel drawn from the same description of soil hydrology,
known as a soil water column).

ORCHIDEE is not an individual-based model but instead it currently represents forest stand complexity and stand dynamics
325 with diameter and age classes. Each class contains a number of individuals that represent the mean state of the class.
Therefore, each diameter class contains a single modelled tree that is replicated multiple times and distributed at random
throughout the PFT area. At the start of a simulation, each PFT contains a user-defined number of stem diameter classes. This
number is held constant throughout the simulation, whereas the diameter boundaries of the classes are adjusted to
accommodate for temporal evolution in the stand structure. By using flexible class boundaries with a fixed number of diameter
330 classes, different forest structures can be simulated. An even-aged forest, for example, is simulated with a small diameter
range between the smallest and largest classes. All classes will then effectively belong to the same stratum. An uneven-aged
forest is simulated by applying a large range between the diameter classes. Different diameter classes will therefore effectively
represent different strata. The limitations of this approach become apparent when the TRW data and simulation are compared
by calendar year as the model does not track individual trees. Although the dimensions of each model tree itself are well-
335 defined, the amount of radiation it receives (and therefore the amount of carbon produced) is determined by the statistical
distribution of all model trees in that grid cell.

Vegetation structure is then used for the calculation of the biophysical and biogeochemical processes of the model such as
photosynthesis, plant hydraulic stress, and radiative transfer model. The r5698 version of ORCHIDEE, which is the version
340 used in this study, combines the dynamic nitrogen cycle of ORCHIDEE r4999 (Vuichard et al., 2019; Zaehle and Friend,
2010) and the explicit canopy representation of ORCHIDEE r4262 (Chen et al., 2016; Naudts et al., 2015; Ryder et al., 2016).
It is one of the branches of the ORCHIDEE model and it was further developed from Naudts et al. (2015) and Vuichard et al.
(2019) (Text S1), parameterized, and tested to simulate TRW series, in order to meet the aforementioned minimum

requirements of simulating the carbon, water, energy, and nitrogen cycle, while accounting for size-dependent allocation for
345 three diameter classes within a forest stand.

In this study we use a data product for the climate forcing from a merged and homogenized gridded dataset developed for
modelling purposes over the 20th century, i.e., CRU-NCEP (Viovy, 2016), the gridded nitrogen deposition product from
CCMI (Eyring et al., 2013), and a gridded nitrogen fertilization product for N₂O (Lu and Tian, 2017) such that observed
350 TRWs for the past century can be used to evaluate the skill of the LSM ORCHIDEE r5698 to simulate radial tree growth. A
detailed overview of earlier developments (Krinner et al., 2005; Naudts et al., 2015; Vuichard et al., 2019) that resulted in the
emerging capability of ORCHIDEE r5698 to match the aggregate tree growth model (Fig. 3) is given in the supplementary
material (Text S1).

355 **3.2. Reference data of productivity-oriented TRW sampling**

The European biomass network contains TRW samples from “fixed-plot sampling”. The database was established within
multiple research projects and made publicly available through the EU Horizon-2020 project BACI (BACI, 2020). It archives
at present 48 datasets covering temperate and semi boreal climates (Fig. S1) and being collected from a variety of research
efforts in Eurasia (Klesse et al., 2018). All trees larger than 5.6 cm in diameter at breast height had to be sampled in a 10 to
360 40 m radius plot, depending on stand density, to be archived in the BACI database (Babst et al., 2014). The European biomass
network is, therefore, considered to be free from the big-tree selection bias that has plagued the ITRDB, although other known
biases (e.g. slow-grower survivorship bias; (Bowman et al., 2013)) may still be present. The records from the European
biomass network are thus suited to evaluate the validity of using virtual trees constructed from ITRDB records to cope with
the aforementioned sampling biases.

365

3.3. Simulation set-up

We selected sites from the European biomass network based on the following criteria: (1) the site had to be dominated by a
single species for enhanced compatibility with ORCHIDEE, which is monospecific by design; and (2) stand age should

370 exceed 50 years as a requirement to apply all four proposed benchmarks (Section 2.3). The benchmarks were applied to a
common evergreen and a common deciduous species. Hence, within the filtered sites, only sites dominated by *Picea Abies* or
Fagus Sylvatica were retained, resulting in 12 sites out of the total of 48 sites. CIM, a site dominated by *Fagus Sylvatica*, was
removed from the selection (decreasing the final number of sites to 11) because only one tree out of 61 trees was aged over
100 years, resulting in a diameter distribution that is not at all compatible with the default diameter distribution of the model.
The details of the selected sites are in Table S2.

375

For the simulations, the LSM ORCHIDEE r5698 was used. This model version accounts for the aforementioned minimum
requirements for LSMs to mechanistically simulate TRW (section 2.1). ORCHIDEE r5698 was run for 11 individual pixels,
each containing one of the selected sites. An observation-based time series of atmospheric CO₂ concentrations was used
(Keeling et al., 1996) and forest management followed the reported management status of the site (Table S2). During model
380 development, three global (e.g., the number of diameter classes) as well as two PFT-specific parameters (e.g. recruitment
success) were manually adjusted to jointly reproduce the TRW data of 10 ITRDB sites (aust112, cana106, chin037, finl055,
fran4, id007, japa011, mo009, nepa003, spai055, and turk027) for which the match between observations and simulations
was assessed visually. All runs in this study used the default parameter values except for the five parameters that were
manually tuned.

385

In this study, every simulation started from a 300-year long spinup required to bring the simulation to equilibrium with respect
to the slow carbon and nitrogen pools in the soil. The spinup was concluded with a clear cut such that the start year and the
length of each simulation matched the observed stand age. The model configuration distinguished five diameter classes. The
smallest diameter class contained 15% of the total number of trees, the intermediate diameter classes contained 21, 27, 21%,
390 and the largest diameter class represented 15% of the total number of trees. A more detailed description of the ORCHIDEE
model is given in the Supplementary Information (Text S2).

3.4. Verification of the benchmarks

395 The European biomass network data were used to verify, whether the big-tree selection bias that is present in the ITRDB data
invalidates its use for benchmarking LSMs. The verification checked whether changes in parameter values or model process
representation that would be required to make the model output better match the ITRDB data, would also result in a better
match between the model output and the all tree data. If this would be the case, benchmarking LSMs against ITRDB data
would result in model changes that would enhance the model's capability to simulate tree growth thus justifying the
conclusion that despite the known biases, ITRDB data can be used for LSM benchmarking.

400

The verification, therefore, used the data from the European biomass network in two different ways: 1) all trees in the
European biomass network dataset were used (hereafter called "all-tree data") to calculate the four proposed benchmarks at
the site level. The results of these benchmarks were used as the reference in the verification, and 2) only big trees were sub-
sampled from the data (hereafter called "big-tree data") and all four benchmarks were calculated against this sub-sample of
405 data. Big trees were defined as the top 15% of the trees based on their diameter, and the 15% threshold was taken to match
the diameter distribution in ORCHIDEE, where by definition the largest diameter class contains 15% of the trees.

The verification required three additional steps (Fig. 9): 1) The simulated TRW from the largest diameter class were
transformed by modifiers (see below) to minimize the two metrics of each benchmark ; 2) the same modifiers were then
410 applied to all simulated diameter classes both metrics for all four benchmarks were calculated using the all-tree data, and 3)
the actual verification tested whether for a given metric and a given benchmark the modifier improved for the big-tree sample
as well as the all-tree data. Improvement of a specific metric of a benchmark was quantified by subtracting the pre-modified
value for that metric from its post-modified value for the all-tree data. A negative value thus indicated an improvement. If
this was the case, the benchmarks of the big-tree and all-tree data were said to be consistent, implying that using this
415 benchmark in combination with the ITRDB data would reveal the same model shortcomings as benchmarking ORCHIDEE
against TRW data from all-tree networks. Across the 11 sites and for each of the four proposed benchmarks, sites where the
test improved for both datasets were counted to estimate the confidence in using ITRDB in benchmarking LSMs.

Since this study aims to propose benchmarks making use of the ITRDB study rather than improving the ORCHIDEE model, the modifiers were applied to the model output directly. This approach has the advantage to remain conceptual by staying away from the need to optimize specific model parameters or rewrite or add processes in the model code. Different modifiers were used to accommodate the differences between the metrics: 1) the RMSE or amplitude of a benchmark was minimized by multiplying the simulated TRW with a modifier (Fig. 9), 2) the slope of the residuals of a benchmark was minimized by subtracting a trend-modifier from the simulated growth trend and 3) the years of the simulated TRW were rearranged such that they match the ranked order of observed extreme TRWs.

4. Results

4.1. Verification of the concept behind benchmarking ITRDB

The verification was applied at 11 sites. Given that each benchmark consists of two metrics, each of the four proposed benchmark generated 22 test cases. Across the four benchmarks 88 test cases were thus available (Fig. 10). Despite its simplicity, the use of modifiers was found to be robust as it improved all metrics of the four proposed benchmarks at each of the eleven sites when benchmarking against the big-tree data. Applying the same modifiers to the all-tree data improved the match between the simulations and observations in 72% of the test cases (63 out of the 88 test cases; Table 2). This overall number hides large differences between tree species and individual benchmarks. The verification appeared to be more successful for beech with an overall confidence level of 84% (27 out of 32 test cases) compared to spruce with a 64% (36 out of 56 test cases) confidence level. The performance differences between the individual benchmarks are detailed in the remainder of this section.

When benchmarking the size trend, big-tree data can be used with 72% (16 out of 22) confidence for benchmarking LSMs. Given the reasoning underlying the verification, this suggests that for 72% of the cases the conclusions would be similar irrespective of whether ORCHIDEE is benchmarked against the big-tree data rather than the all-tree data. Some sites such as DEO and DVN showed marginal positive difference suggesting that simulations with ORCHIDEE r5698 matched the observed size-related growth trend reasonably well, leaving limited room for improvements. One site, SCH showed a positive

445 difference because it contained two slowly growing trees which lived roughly 40 years longer than the rest of trees but whose diameter was too small to be contained in the big-tree sample (Fig. S2). Except for this site, the size-related trend in tree growth can be derived from either the big-tree or the all-tree data.

For the mature trees benchmark, big-tree data can be used with 68% (15 out of the 22) confidence for benchmarking against LSMs. Two of the sites (HD2 and TIC) for which the all-tree data results in different benchmarking results from the big-tree data, have 36% to 44% of small trees in their size distribution, compared to an average 28% at the other nine sites. The proportion of small trees in the observation was estimated by counting trees in the smallest bin when trees are divided into 5 size classes similar to the model. On the other hand, ZOF had a bimodal size distribution, which has the biggest number of trees in the 1st and 4th bins (35% and 32% respectively). The default size distribution in ORCHIDEE has 15% of its trees in the smallest-sized class, and 21% in the 4th sized-class. At sites DEO and SOB, the average simulation matched well with the average diameter trend as shown by the calculated slope of residuals: 0.08 and 0.09 (Fig. S3 a). However, the growth rate for big trees was higher in the observations (0.95 and 0.50 for the slope of residuals) since the difference in big trees and small trees are bigger in the observations (Fig. S3 b). These results suggest that the mature trees benchmark is sensitive to the stand structure.

460 With 50% (11 out of 22) confidence in using the big-tree data in benchmarking LSMs, this benchmark appears to be the most demanding in terms of its data. At sites DEO, HD2, and SOB, inconsistencies between benchmarking the big-tree data and the all-tree data stemmed from: (1) the average simulations and observations being similar, with RMSE around 10 mm and; (2) the difference between big trees and small trees growths being larger in the observations (Fig. S4). The site labelled as SCH contained two extremely fast-growing young trees resulting in a very fast-growing virtual tree in the optimized model output (Fig. S5). For SOR the difficulties may have come from the model itself more specifically difficulties with the carbon allocation (Fig. S6). These results suggest that a variety of issues decreases the confidence in using big-tree data for benchmarking.

For the extreme growth benchmark, big-tree data can be used with 95% (21 out of the 22) confidence for benchmarking
470 LSMs. The observed consistency between benchmarking the big-tree data and the all-tree data suggests that extreme growth
happens in the same years, irrespective of which dataset is being used. The site (DVN) showed the smallest RMSE for
amplitude when it is calculated with the all-tree data (0.02) but the site has the biggest ratio of big-trees to all-trees for
amplitudes compared to simulation (1.30, Fig. S7). In other words, if the simulation is adjusted to the big trees in the
observation, since the difference between sub-sampled big-tree and all-tree is larger in the observations, the average
475 simulation becomes bigger than the average observation as shown in Fig. S3 and S4. This result suggests that the extreme
growth benchmark is the least demanding benchmark in terms of the sampling-design.

5. Discussion

5.1. Benchmarking LSM against tree-ring width

480 The wealth of approaches available for modelling tree-ring growth has been largely overlooked by the global land-surface
community. Until now, benchmarking LSMs against ring-width records still relies mostly on interannual variation in the
simulated net primary productivity as a proxy for TRW (Klesse et al., 2018; Kolus et al., 2019; Rammig et al., 2015; Zhang
et al., 2018). Although such an indirect approach is valid to certain extent to benchmark the capability of LSMs to simulate
interannual variability, the observations will need to be detrended to remove the size-related growth signal, adding
485 considerable uncertainty to the benchmark (Bunde et al., 2013; Cedro, 2016; Nicklen et al., 2019; Stine, 2019). Moving
beyond the net primary production proxy by explicitly simulating stem radial growth and TRW enriches the benchmark since
correcting for potentially confounding factors including climate responses, forest structure, age and size trends (Alexander et
al., 2018; Nickless et al., 2011), as well as sampling biases (Babst et al., 2014a), can be performed. Whereas previous studies
had to rely on a single qualitative benchmark, i.e., interannual variability, our method shows that at least four benchmarks,
490 each of them defined by two metrics, are available for models that meet the minimal requirements to simulate TRW
determined by Cook's conceptual model of aggregate tree growth (Fig. 3). Given that tree-ring width is largely explained by
phenology (Shen et al., 2020), tree size (Jiang et al., 2018), climate sensitivity (Klesse et al., 2018), and atmospheric CO₂
concentrations (Zuidema et al., 2020), LSMs that intend to use it as a benchmark should at least simulate tree phenology,

size-dependent growth, differently-sized trees within a stand, and responses to changes in temperature, precipitation and
495 atmospheric CO₂ concentrations (Li et al., 2014; Rollinson et al., 2017).

Irrespective of the model approach, the largest archive of tree-ring records that is freely available to the land-surface
community, i.e., the ITRDB, is prone to sampling biases (Klesse et al., 2018; Zhao et al., 2019). Although it may be difficult
to correct the data for these biases, we propose two solutions for comparing LSM output to biased observations. Simulating
500 a size-structured population of trees enables comparing the observations relative to a benchmark for a tall simulated tree,
which compensates for the tendency of dendroclimatic sampling to select the oldest trees in a stand (which often turn out to
be the larger trees). Although the ITRDB does not contain the site metadata that would be required to make this comparison
exact, i.e., the diameter and true age distribution of the sampled stand, it protects against comparing extreme samples to mean
simulations. The second solution relies on the observation that the variation due to size-related growth by far exceeds the
505 variation due to environmental changes and helps to constrain the survivor bias which is derived from the growth of young
fast-growing trees that died a long time ago and are therefore absent from records made from present day sampling of old
growth forests (Brienen et al., 2017). The benchmarks proposed here provide a tool to start using TRWs as a much-needed
large-scale constraint on the maximum tree diameter and annual growth for the transition from pre-industrial to present-day
environmental conditions.

510

Combining these two solutions with targeted processes resulted in four benchmarks, each of them defined by two
complementary metrics (Table 1):

(i) The size-trend benchmark targets the long-term trend in TRW. This trend contains information about ontogenetic
growth during establishment and endogenous competition from canopy closure (Cook and Kairiukstis, 1990). Although this
515 trend is removed in many dendrochronological studies to amplify the climate signal contained in TRW (Briffa and Melvin,
2011), we suggest to test the skill of the model in reproducing it because it is important to constrain biomass production.
Benchmarking a suitable LSM against observed size-related trends in TRW may help to develop, evaluate or parameterize
allometric relationships and changes in stand density.

520 (ii) The mature trees benchmark tests the capability of the model in simulating annual growth of mature forest. Since this benchmark aligns the observations by calendar year, it may reflect the effects of long-term environmental changes if there were any and the record is long enough as to experience them (Hess et al., 2018; Panthi et al., 2020). As a skilled LSM is expected to reproduce plant responses to the long-term environmental changes, this benchmark could be used to develop, evaluate and parameterize the processes that simulate endogenous disturbances and plant responses to, e.g., increasing atmospheric CO₂ concentrations, atmospheric N deposition and warming.

530 (iii) Tree growth during stand establishment can be tested with the young trees benchmark. The growth of establishing trees differs from that of mature canopy trees, and this difference has been accounted for by using separate benchmarks for young and mature stands. This benchmark could be used to develop, evaluate or parameterize allometric growth of young trees as well as tree mortality prior to canopy closure.

535 (iv) The extreme growth benchmark tests the occurrence and range of extreme growth events. Previously, interannual variability in TRW has been used to evaluate the climate sensitivity of LSMs. Inter-annual variability has a limitation because we cannot expect the model to simulate the timing of either endogenous nor every exogenous disturbance such as fire, pest and disease outbreak or dead of big trees leading to sudden growth releases in adjacent trees. Following this reasoning, it was decided to benchmark only 25% and 75% extreme growth. This benchmark could be used to develop, evaluate or parameterize the plant water stress and the temperature dependency of plant growth in the model.

540 The metrics of the first three benchmarks are RSME and slope. RMSE examines if the model reproduces the absolute values of TRWs. However, even though a model might reproduce well the value of TRWs, it is still expected to simulate the long-term trend in TRW that comes from climate changes or endogenous competition. This latter aspect is quantified by the slope-metric. For the large-scale models such as a LSM and for sites with little high-quality site information, correctly simulating growth trends should be prioritized over matching the endpoints in tree diameter.

545 **5.2. Verification of the benchmarks**

Even when the ITRDB data with a big-tree bias are used, the model improvements and parameter adjustments should improve the growth of all simulated trees, not only the big-trees contained in the ITRDB data. Our verification approach estimated the level of confidence for each benchmark. This level confidence quantified the number of cases where improving the model or adjusting its parameters based on benchmarking against big-trees would result in improving the model performance for all trees.

550 The results of the verification test show that the four proposed benchmarks are independent in terms of their information content and that combining them would result in a rich and rather refined description that may reveal some of the remaining model deficiencies. The conclusion is supported by the verification (Table 2) where, except at site GIU, each site showed different weaknesses and strengths. The novel benchmarks proposed here thus provide new targets for evaluating LSMs' performance as each of the eight metrics could be used in the objective function of any data assimilation technique (Peylin et al., 2016) to rigorously account for the information contained in TRW records .

560 If the ITRDB is to be used, the number of benchmarks and the circumstances that can be used with confidence becomes more limited. The verification results (Table 2) show that if the output of ORCHIDEE is benchmarked against data with a big-tree bias as the ITRDB, there is 70% confidence that the benchmark will come to the same conclusions as whether a data free from the big-tree selection bias would have been used. This level of confidence, i.e., 70%, is sufficient to support benchmarking a LSM against tens to hundreds of ITRDB sites at the same time. The same level of confidence is likely too low to benchmark a LSM (or an ecosystem model) against a single ITRDB data series as there is a 30% chance that parameter tuning or model improvements following the benchmarking will not improve the model. Given the spatial extent of European biomass network, the levels of confidence represent temperate and hemi-boreal forests (Fig. S1) and the validity of the use of the ITRDB data from boreal and tropical forest will need to be verified when suitable data become available.

Higher chances for beech (87%) compared to spruce (64%) suggest that the validity of the assumptions underlying the use of ITRDB data, partly depend on tree species. In this study, the variety in species was too limited to generalize this results in terms of plant functional types. Across species, benchmarking against extreme events, mature trees, and the size-related trend appeared to be the least demanding in terms of the biases present in the data used for benchmarking. Benchmarking against young trees will benefit most from using data free from the big-tree selection bias.

The validity of benchmarking TRW of young trees against ITRDB data is questionable for sites where the default diameter distribution of ORCHIDEE poorly describes the observed diameter distribution (Fig S2 to S4). This finding limits the use of the ITRDB data for the young tree benchmarks. Because the true diameter distribution is not contained in this database, it is neither possible to select only ITRDB sites for which the actual diameter distribution matches the ORCHIDEE's distribution nor to adjust the diameter distribution in ORCHIDEE to the observed distribution. Matching observed and simulated distributions appears to be essential when benchmarking the growth of young trees. The same finding suggests, however, that forest inventory data for which the diameter distribution is known but only a few big trees were cored would be a reliable data source for benchmarking LSM.

Benchmarking, even against ITRDB data is useful, irrespective of the proposed benchmark when the simulated TRWs differ substantially from the observed TRWs. For example, at the GIU site, where the simulated TRW is much smaller than the observed (Fig. S8 a), the simulation could be improved for all metrics of all four benchmarks despite the difference in simulated and observed stand structure (Fig. S8 b). However, as shown above, inconsistencies between benchmarking the big-tree data and the all-tree data start to appear when the simulated TRWs are better approaching the observations (Fig. S 2-5). This implies that: 1) ITRDB can be used as a first approximation to benchmark the growth of young and mature trees in LSMs, 2) as the model improves, the need for unbiased datasets will increase as biases in stand structure and growth rates could hamper the use of especially these benchmarks.

6. Outlook

595 Tree-ring records could complement well-established but short-term benchmarks for LSMs (Randerson et al., 2009), such as forest inventory data (Bellassen et al., 2010; Naudts et al., 2015), FLUXNET sites (Blyth et al., 2010; Williams et al., 2009), Free Air CO₂ Enrichment experiments (De Kauwe et al., 2013) and satellite observations of vegetation activity (Chen et al., 2011; Demarty et al., 2007). The value of tree-ring records can be further enriched by: (i) developing new and unbiased networks to complement the ITRDB, such as the European biomass network, (ii) adding their stable isotope ratios as
600 benchmarks (Levesque et al., 2019; Barichivich et al. in prep) and (iii) combining their use with high-frequency but short-term eddy covariance measurements (Pappas et al., 2020; Teets et al., 2018), experimental data from plant growth under pre-industrial CO₂ concentrations (Temme et al., 2015), and proxies of atmospheric composition (Campbell et al., 2017).

7. Code and data availability

605 In line with GMD requirements, the model code has been archived and made accessible: <https://doi.org/10.14768/20200228001.1>. The scripts required for reproducing the figures, the ORCHIDEE simulations and intermediate results are available at https://github.com/j-jeong/J.Jeong_GMD_2020. BACI dataset is freely available in online: <http://www.baci-h202i0.eu/> but requires registration by email.

8. Competing interest

610

The authors declare that they have no conflict of interest.

9. Author contribution

Proposed benchmarks are the outcome of discussions between JJ, JB, PP, VH, and SL. JJ ran the model, analysed the output
615 and prepared figures. FB collected the BACI data. JJ and SL wrote the manuscript, all authors contributed to revising and editing the different versions of the manuscript.

10. Acknowledgements

JJ, PP, MJM and SL were funded by the VERIFY project under the European Union’s Horizon 2020 research and innovation programme under grant agreement No. 776810. JB was supported by the Centre National de la Recherche Scientifique (CNRS) of France through the program “Make Our Planet Great Again”. VH acknowledges support from the Earth Systems and Climate Change Hub, funded by the Australian Government’s National Environmental Science Program. SL would like to thank Antonio Lara (Universidad Austral de Chile) for early discussions on the topic. MNE was supported by NSF/AGS1903626 and the University of Maryland, and acknowledges insights arising from work with the PAGES/Data Assimilation and Proxy System Modeling Working Group. F.B. acknowledges funding from the project “Inside out” (#POIR.04.04.00-00-5F85/18-00) funded by the HOMING programme of the Foundation for Polish Science co-financed by the European Union under the European Regional Development Fund. Stefan Klesse co-developed the European biomass network and provided management information.

Tables

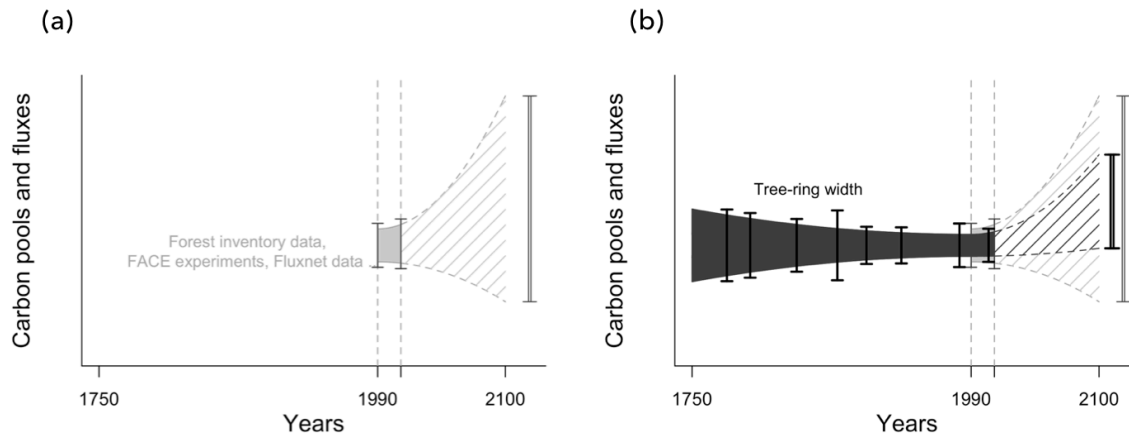
630 **Table 1.** Characteristics of the proposed benchmarks. These benchmarks were designed to better constrain physiological and ecological processes in land-surface models. Given their intended use with ITRDB data, the benchmarks had to propose solutions for well-known issues of the ITRDB (Table S2).

Benchmark	Metrics	Targeted process understanding	Solutions for meaningful comparison with ITRDB	model Figure
Size dependent growth	<ul style="list-style-type: none"> · RMSE · Slope of the residuals 	<ul style="list-style-type: none"> · Long-term size-related growth · Within-stand competition 	<ul style="list-style-type: none"> · Select the biggest tree of the simulation · Construct an average virtual tree aligned by tree age 	Fig. 5
Diameter increment of mature trees	<ul style="list-style-type: none"> · RMSE · Slope of the residuals 	<ul style="list-style-type: none"> · Long-term tree growth after establishment · Within-stand competition 	<ul style="list-style-type: none"> · Select the biggest tree of the simulation · Construct an average virtual tree aligned by calendar year 	Fig. 6
Diameter increment of young trees	<ul style="list-style-type: none"> · RMSE · Slope of the residuals 	<ul style="list-style-type: none"> · Short-term (i.e. 30-year) tree growth during establishment · Size-related growth 	<ul style="list-style-type: none"> · Select the biggest tree of the simulation · Construct a fast-growing virtual tree 	Fig. 7
Extreme growth	<ul style="list-style-type: none"> · Extreme events · Amplitude 	<ul style="list-style-type: none"> · Yearly climate sensitivity 	<ul style="list-style-type: none"> · Select the biggest tree of the simulation · Define extreme growth using 25% smallest and 75% largest observations 	Fig. 8

635 **Table 2.** Verification of the benchmarks and their metrics. Each cell represents the result from a single site. The values show the difference for each metric before and after optimization. Bold cells show the cases where the optimization for the all-tree data was consistent with the optimisation result of the big-tree data.

Benchmark	Size dependent growth		Diameter increment of mature trees		Diameter increment of young trees		Extreme growth	
	RMSE (mm)	Slope of residuals (mm/yr)	RMSE (mm)	Slope of residuals (mm/yr)	RMSE (mm)	Slope of residuals (mm/yr)	Amplitude (mm)	Extreme growth (scaled)
<i>Picea Abies</i>	DEO (-0.005)	DEO (0.000)	DEO (-75.97)	DEO (0.78)	DEO (8.11)	DEO (1.47)	DEO (-0.04)	DEO (-0.60)
	DVN (-0.182)	DVN (0.000)	DVN (-161.69)	DVN (-0.70)	DVN (-11.68)	DVN (-0.43)	DVN (0.02)	DVN (-0.77)
	GIU (-0.600)	GIU (-0.007)	GIU (-131.25)	GIU (-0.68)	GIU (-39.70)	GIU (-1.30)	GIU (-0.32)	GIU (-0.96)
	HD2 (0.009)	HD2 (-0.002)	HD2 (15.60)	HD2 (0.53)	HD2 (1.95)	HD2 (0.56)	HD2 (-0.04)	HD2 (-0.97)
	SCH (0.029)	SCH (-0.004)	SCH (-182.46)	SCH (-0.96)	SCH (57.56)	SCH (5.49)	SCH (-0.15)	SCH (-1.29)
	SOB (-0.008)	SOB (0.001)	SOB (-20.22)	SOB (0.50)	SOB (9.32)	SOB (1.29)	SOB (-0.08)	SOB (-1.54)
	TIC (-0.151)	TIC (-0.001)	TIC (24.47)	TIC (1.52)	TIC (-10.33)	TIC (-0.27)	TIC (-0.19)	TIC (-1.63)
<i>Fagus sylvatica</i>	CAN (-0.046)	CAN (-0.003)	CAN (-74.03)	CAN (-1.27)	CAN (-5.81)	CAN (0.16)	CAN (-0.07)	CAN (-1.17)
	SOR (0.007)	SOR (-0.004)	SOR (-116.26)	SOR (-1.62)	SOR (2.69)	SOR (-1.13)	SOR (-0.04)	SOR (-1.00)
	TER (-0.06)	TER (-0.000)	TER (-3.73)	TER (-0.08)	TER (-15.93)	TER (0.26)	TER (-0.07)	TER (-0.99)
	ZOF (-0.183)	ZOF (-0.000)	ZOF (-42.72)	ZOF (0.02)	ZOF (-11.98)	ZOF (-0.05)	ZOF (-0.17)	ZOF (-1.11)

Figures



640

Figure 1. Conceptual illustration of the expected reduction in model uncertainty following the use of tree-ring width records to

benchmark land-surface models. Note that the anticipated uncertainty reduction assumes that a large part of the model uncertainty comes

from the model formulation and its parameters rather than from the initial conditions and drivers. (a) Observational constraints (grey vertical bars) from short-term benchmarks such as forest inventory data, FACE experiments, and FLUXNET data, have been used to parameterize

645

and evaluate the response of ecosystems to environmental changes (light-grey coloured area). When used in projecting the present-day to future carbon pools and fluxes, uncertainty in ecosystem response to climate change is propagated through the model resulting in

unacceptably large uncertainties (light-grey hatched area). (b) Tree-ring records going back to pre-industrial times (black vertical bars) are expected to better constrain the response of ecosystems to environmental changes (dark-grey coloured area) which should result in smaller

uncertainties when used to project future ecosystem responses (dark-grey hatched area).

650

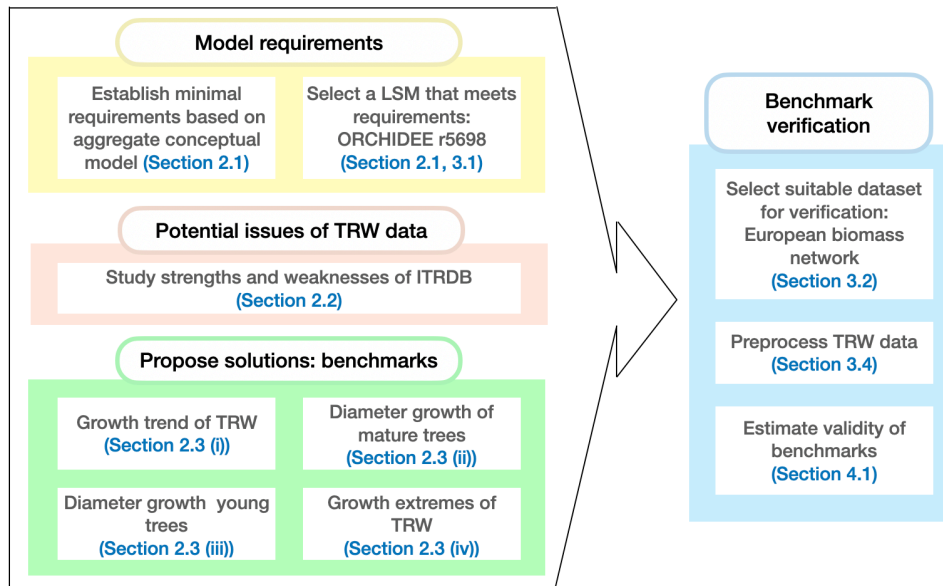
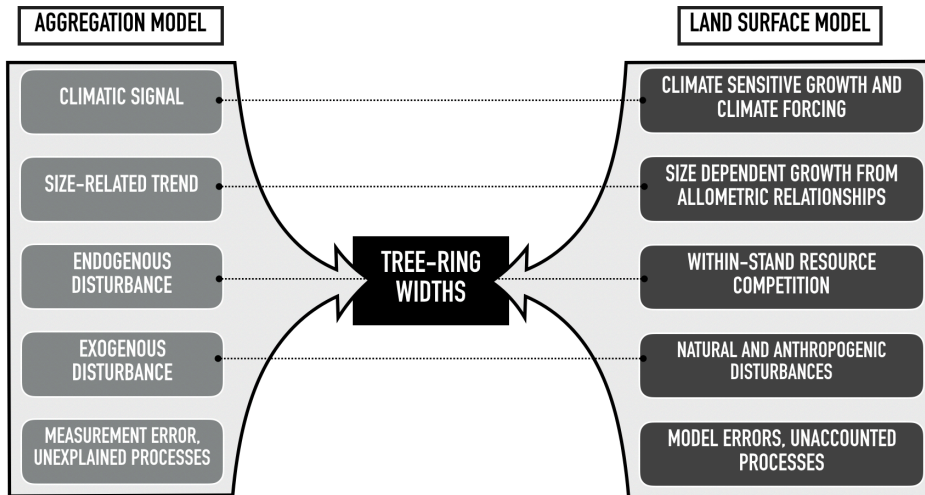
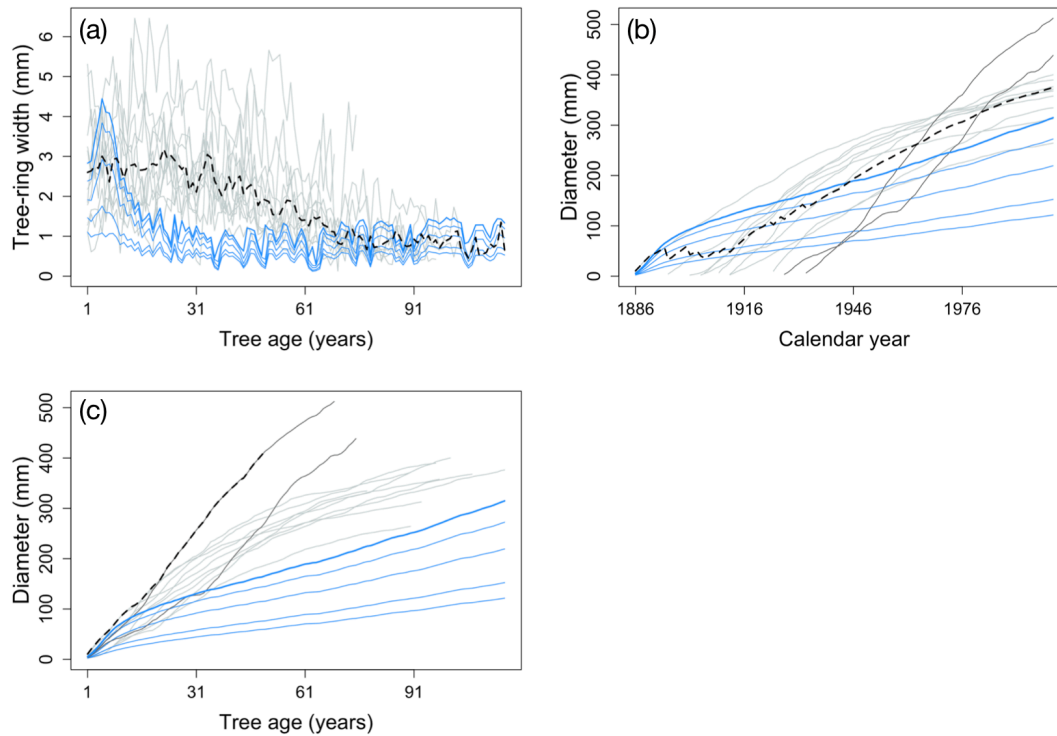


Figure 2. Workflow of the study and dependencies between the different sections. Each colour represents a different aim of the study. The arrow shows how the outcomes of the first three aims are combined to achieve the final aim, i.e., verify the proposed benchmarks.



655

Figure 3. Main drivers of the linear aggregate conceptual model of tree-ring growth and the equivalent processes in land-surface models. The dotted lines connect the related components. Note that both the aggregation and the land-surface model come with errors, uncertainties and unaccounted processes which are not explicitly modelled.



660 **Figure 4. Solutions and virtual trees to account for challenges to use ITRDB datasets when evaluating land-surface models against**
ITRDB tree-ring data. (a) Data-model comparison may overcome the big-tree selection bias by comparing only the simulated biggest
diameter class (bold blue line) for evaluation rather than all diameter classes (thin blue lines), with the compiled virtual tree (black dotted
line). Grey lines represent individual trees from observations. (b) The observed tree-ring records are a mixture of relatively slowly-growing
trees (light-grey lines) and fast-growing trees (dark-grey lines). Fast-growing trees don't attain the same age as slowly-growing trees because
665 they tend to die earlier. Without further consideration this would lead to underestimating tree growth at the time of stand establishment and
thus result in a flawed test when compared against simulated tree growth (blue line) as the virtual tree (black dotted line) is much smaller
during stand establishment. (c) Aligning observations by the age of individual trees better reconstructs tree growth during stand
establishment, facilitating data-model comparison. Note the change in the label of the X-axis between panels (b) and (c). Observations taken
from a French oak forest archived as germ214 (NOAA, 2020c) (Table S2).

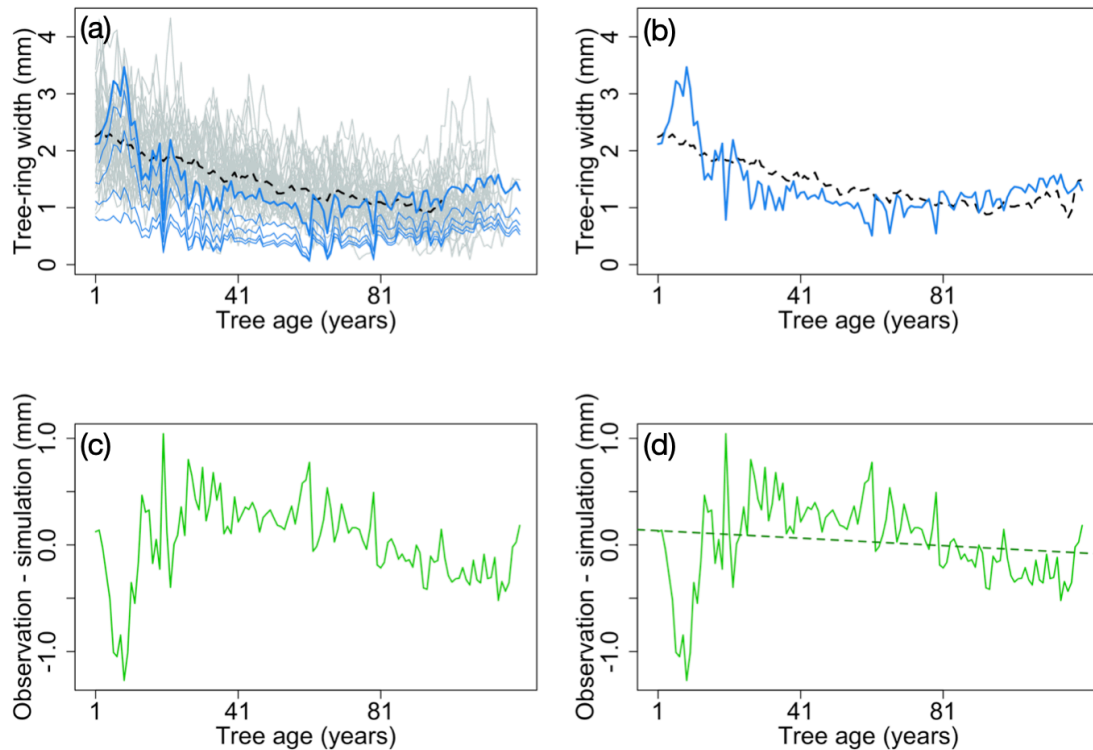


Figure 5. Example of the major steps for calculating the metrics of the benchmark for the size-related trend in diameter increment.

The size-related trend in diameter increment can be assessed by calculating a time series for the average ring width after aligning the age of the individual trees (a, b). Observations are shown as grey lines and simulation as blue lines. The biggest class is presented by the bold line.

675 The black dotted lines represent the virtual tree based on the observations. The TRWs of this virtual tree are then subtracted from the simulated TRWs of the largest diameter class. (c) Subsequently, a linear regression is used to quantify the temporal trend in the residuals (d). The green line denotes the model residuals and the green dotted line is the linear regression of the model residuals. Furthermore, the root mean square error (RMSE) between the simulations and observations is calculated (b) and normalized by the length of time series to calculate the difference in observed and simulated growth trends. Observations and simulation are from site finl052 (NOAA, 2020b). For this example, 680 calculated RMSE is 0.39 (mm), and the slope of residuals is -0.002 (mm/yr).

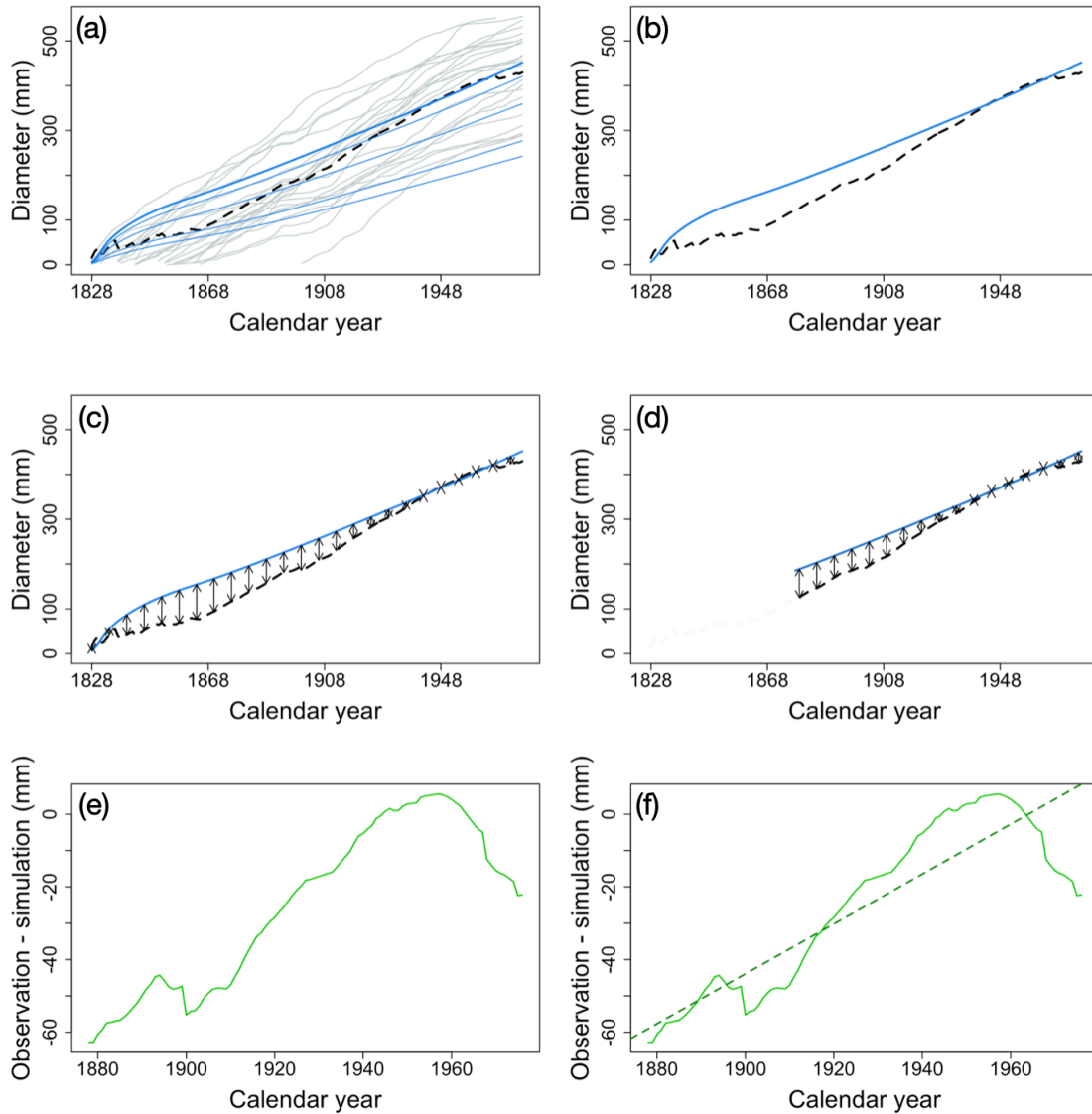


Figure 6. Example of the major steps in calculating the metrics of the benchmark for the diameter increment in mature trees.

Individual tree records are ordered by calendar year and for each year the average observed diameter is calculated (a). Observations are shown as grey lines and simulation as blue lines. The biggest class is presented by the bold line. Black dotted lines represent the yearly average of observations. Note that X-axis in Fig. 6 is different from Fig. 5. Under the assumption that the observed trees are the biggest trees from a given site, the virtual tree is compared with the biggest diameter class from the model (b) and the RMSE is calculated (c). Given that for the most recent decades both the fast and slow growing trees are still alive and could have been sampled, only the recent decades of the virtual tree growth are compared to the simulations. The RMSE (grey arrows) and trend of the residuals between the virtual tree and the

690 largest diameter class simulated are calculated (e, f). The x-axes of e, f zooms in on the selected period. The green line denotes the residuals and the green dotted line is the linear regression of the model residuals. Observations and simulation are from site brit021 (NOAA, 2020a). In this case, RMSE and the slope of residuals were calculated as 33.65 (mm) and 0.68 (mm/yr), respectively.

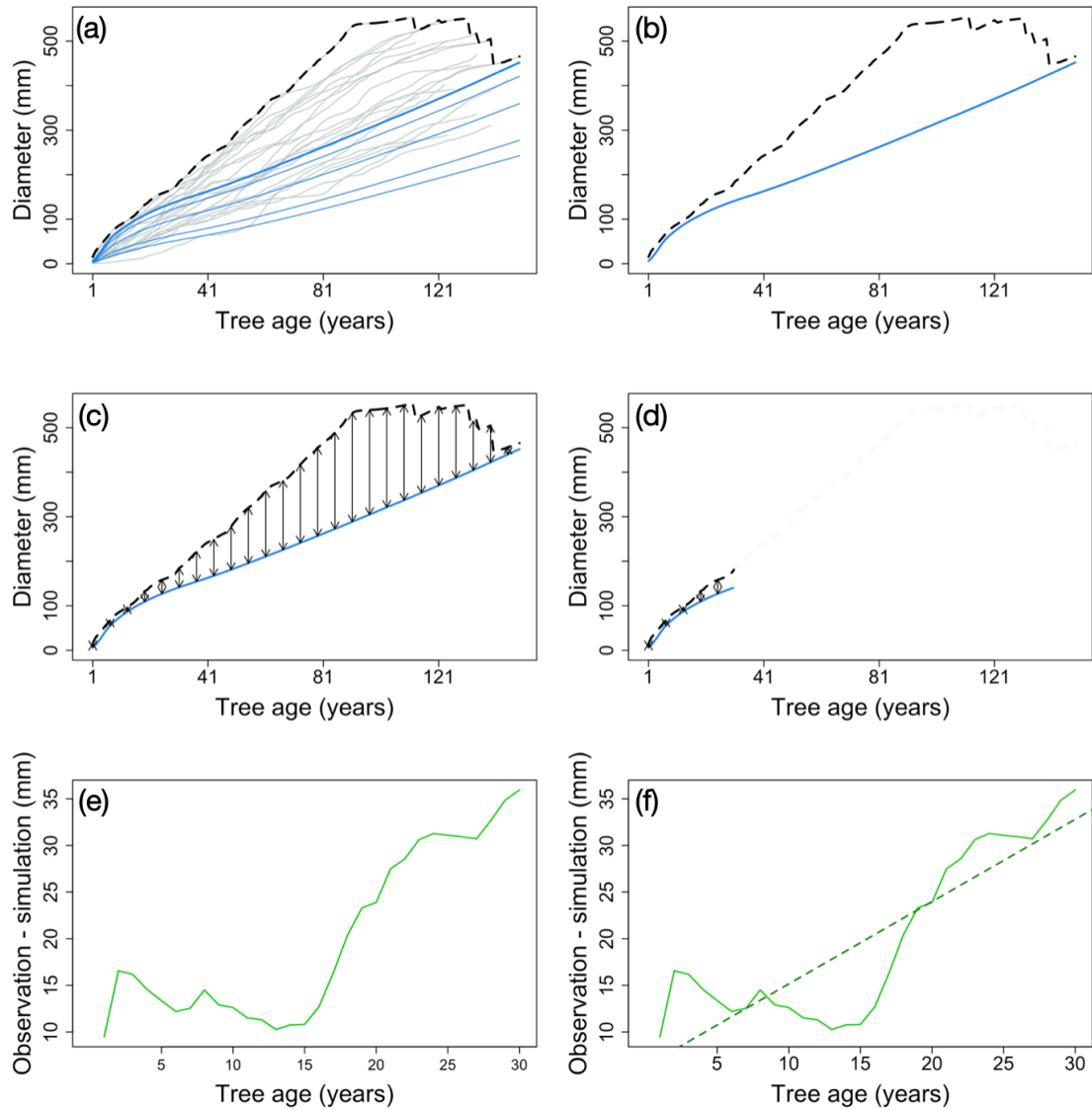
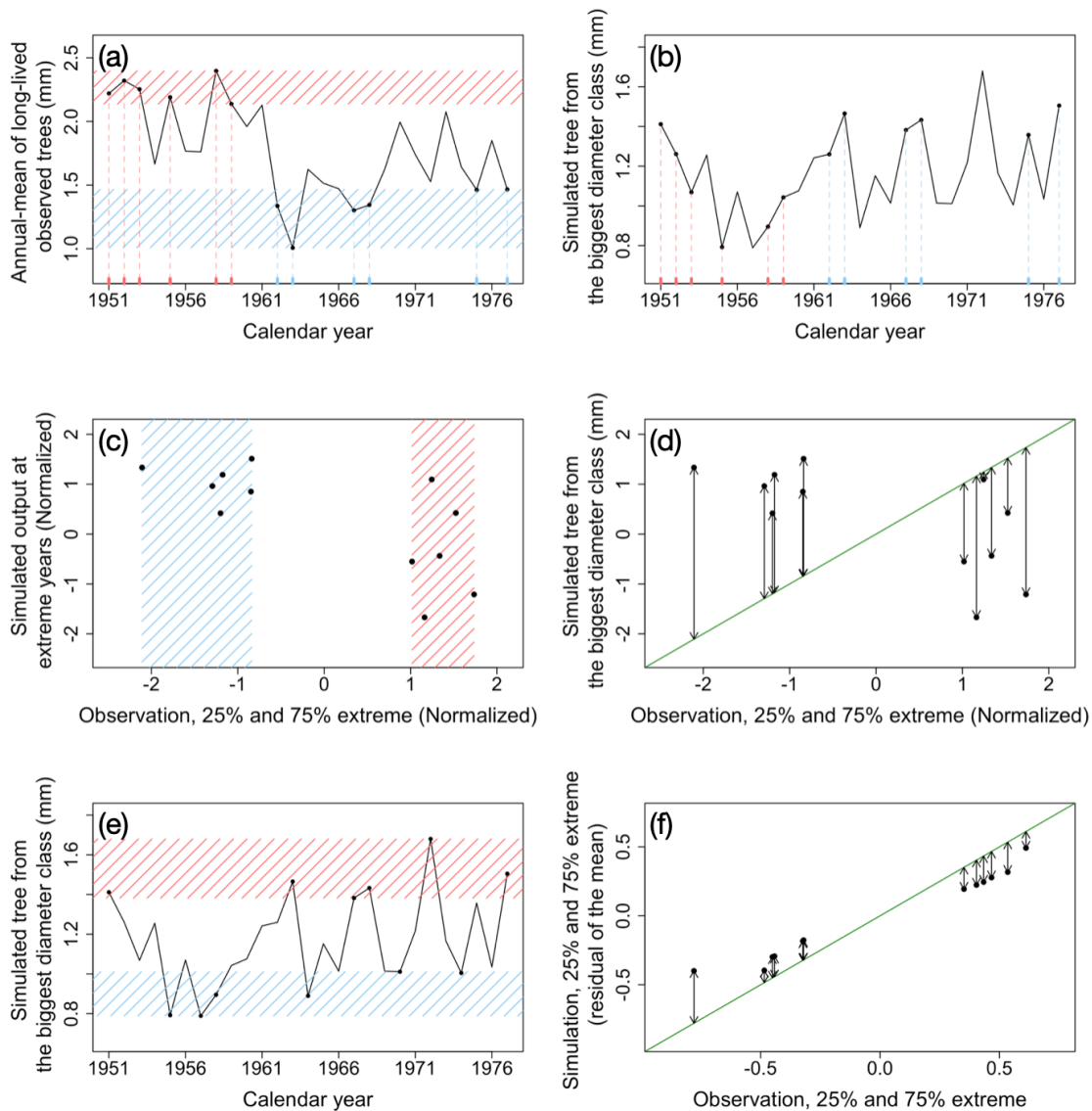


Figure 7. Example of the major steps in calculating the metrics of the benchmark for diameter increment in young trees. After aligning the TRW records of the individual trees by their age, a virtual tree is constructed by taking the maximum observed diameter of all trees for each year (a). Observations are shown as grey lines and simulation as blue lines. The biggest class is presented by the bold line. Black dotted lines represent the yearly maximum of the observations. The growth of the virtual tree is then compared to the simulated growth of the largest diameter class (b) by calculating the RMSE (c) and trend of the residuals (e, f). The x-axes of e, f zooms in on the selected period, and the green line denotes the model residuals and the green dotted line is the linear regression of the model residuals. These calculations are limited to the first decades of the time series (d) to compensate for the bias caused by the fact that the old fast-growing trees

died well before sampling took place. By using different approaches to evaluate the growth of young (this benchmark) and mature trees (the previous benchmark) the comparison accounts for the observation that the drivers of ring growth change when the trees grow taller (Cook, 1985). Observations and simulation are from site brit021 (NOAA, 2020a). The calculated RMSE was 21.86 (mm) and the slope of residuals was 0.88 (mm/yr) for this example.

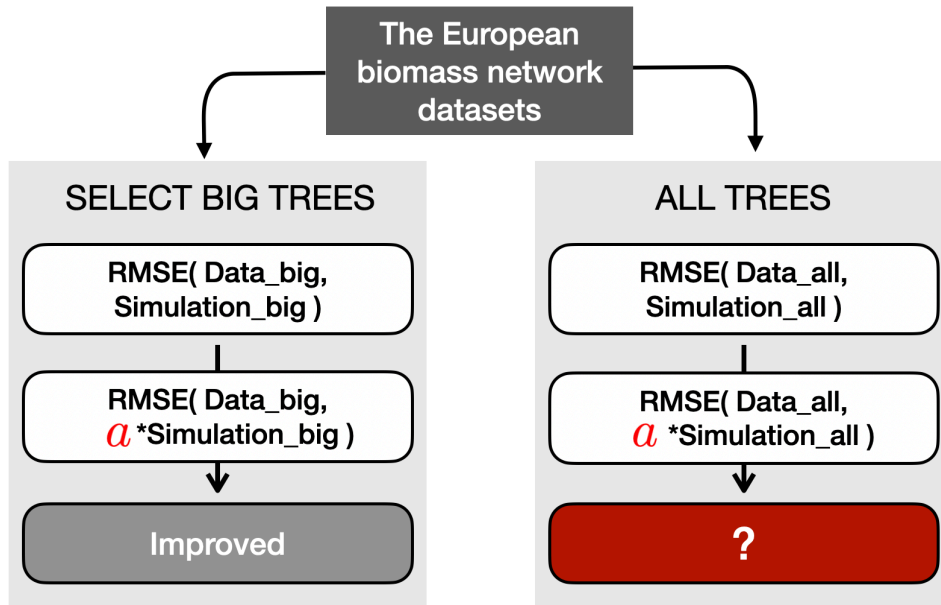


705

Figure 8. Example of the major steps in calculating the metrics of the benchmark for extreme growth events. In this benchmark, extreme growth is defined as the first and last quartiles in TRW ordered by calendar year and averaged over the individual trees records (a). Red shaded area and ticks represent observations exceeding the 75 percentile and blue shaded area and ticks represents observation below the 25 percentile (a). The TRW simulated for the largest diameter class are then extracted for the years identified in a (b). Both observations and simulations were normalized to remove the difference in the range of values between configurations. These normalized values correspond to the X and Y axis in (c) and (d) for observation and simulation, respectively. Subsequently, the similarity between simulations and observations was tested by calculating the distance from the 1:1 line (shown in green in d), which is equivalent to the RMSE for years

710

with extreme growth (d). An additional metric is calculated in a similar way but by using both the 25% and 75% extreme values of the simulation and observation regardless of the year (e, f). This test identifies if the simulation can reproduce the amplitude of TRW. The observations and simulations were not normalized to assess the absolute amplitude. Possible uncertainties from using reconstructed climate forcing, were avoided by limiting the calculations of both metrics to the past five decades for which climate observations are available. Observations and simulation are from site spai006 (NOAA, 2020d). In this test case, RMSE for extreme years was 0.57 (mm) and RMSE for extreme growth was 0.03 (scaled).



720

Figure 9. Schematic representation of the verification process for the RMSE-metric. Before the verification, two types of datasets were prepared: big-tree data (limited to the 15% biggest trees) and all-tree data. In this example, the simulated TRW was multiplied with a verified modifier such that it minimized the RMSE between the simulated and observed TRW for the 15% biggest trees (see section 3.4 for details). The same multiplier was then applied to the all-tree data and the RMSE was calculated. Finally the decrease or increase in RMSE with the multiplier was compared to the RMSE obtained without the multiplier. The other two modifiers which are detailed in section 3.4 follow a similar approach.

725

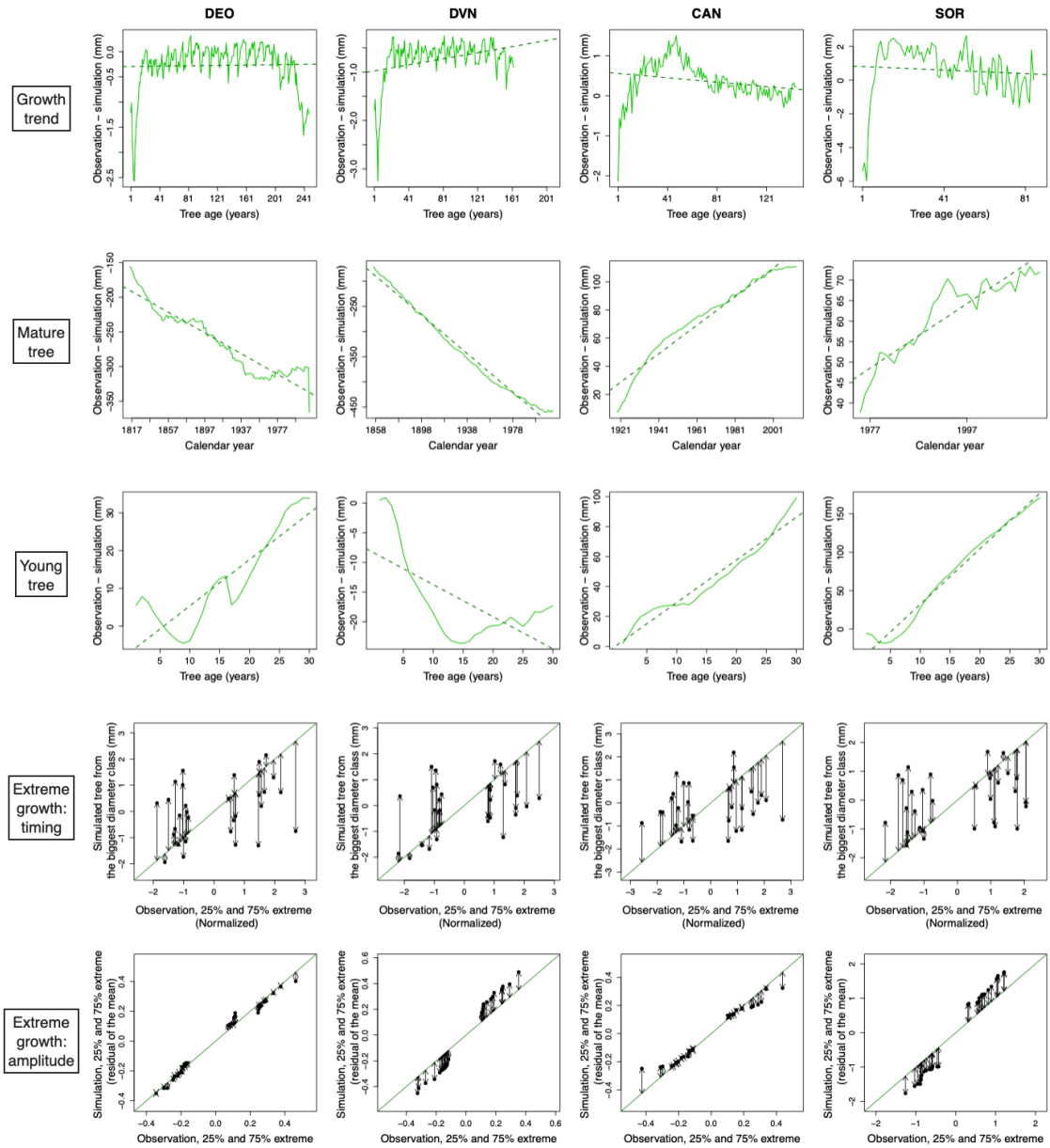


Figure 10. Details of the four benchmarks for four out of the 11 sites selected from the European biomass network. Each column denotes a single site. The DEO and DVN represent Norway spruce forests. The CAN and SOR sites are Beech forest. Each row denotes a different benchmark. The first row corresponds to the benchmark explained in Fig. 5 (d), the second row to Fig. 6 (f), the third row to Fig. 7 (f), and the fourth and fifth rows to Fig. 8 (d) and (f), respectively.

References

- 735 Alexander, M. R., Rollinson, C. R., Babst, F., Trouet, V. and Moore, D. J. P.: Relative influences of multiple sources of uncertainty on cumulative and incremental tree-ring-derived aboveground biomass estimates, *Trees*, 32(1), 265–276, doi:10.1007/s00468-017-1629-0, 2018.
- Amthor, J. S.: The McCree–de Wit–Penning de Vries–Thornley Respiration Paradigms: 30 Years Later, *Ann. Bot.*, 86(1), 1–20, doi:10.1006/anbo.2000.1175, 2000.
- 740 Babst, F., Alexander, M. R., Szejner, P., Bouriaud, O., Klesse, S., Roden, J., Ciais, P., Poulter, B., Frank, D., Moore, D. J. and Trouet, V.: A tree-ring perspective on the terrestrial carbon cycle, *Oecologia*, 176(2), 307–322, doi:10.1007/s00442-014-3031-6, 2014a.
- Babst, F., Bouriaud, O., Alexander, R., Trouet, V. and Frank, D.: Toward consistent measurements of carbon accumulation: A multi-site assessment of biomass and basal area increment across Europe, *Dendrochronologia*, 32(2), 153–161, doi:https://doi.org/10.1016/j.dendro.2014.01.002, 2014b.
- 745 Babst, F., Poulter, B., Bodesheim, P., Mahecha, M. D. and Frank, D. C.: Improved tree-ring archives will support earth-system science, *Nat Ecol Evol*, 1(2), 8, doi:10.1038/s41559-016-0008, 2017.
- Babst, F., Bodesheim, P., Charney, N., Friend, A. D., Girardin, M. P., Klesse, S., Moore, D. J. P., Seftigen, K., Björklund, J. and Bouriaud, O.: When tree rings go global: challenges and opportunities for retro-and prospective insight, *Quat. Sci. Rev.*, 750 197, 1–20, 2018.
- BACI: BACI, , <http://www.baci-h2020.eu>, 2020.
- Bakker, J. D.: A new, proportional method for reconstructing historical tree diameters, *Can. J. For. Res.*, 35(10), 2515–2520, doi:10.1139/x05-136, 2005.
- Bellassen, V., Le Maire, G., Dhôte, J. F., Ciais, P. and Viovy, N.: Modelling forest management within a global vegetation 755 model—Part 1: Model structure and general behaviour, *Ecol. Modell.*, 221(20), 2458–2474, doi:10.1016/j.ecolmodel.2010.07.008, 2010.
- Blyth, E., Gash, J., Lloyd, A., Pryor, M., Weedon, G. P. and Shuttleworth, J.: Evaluating the JULES Land Surface Model

- Energy Fluxes Using FLUXNET Data, *J. Hydrometeorol.*, 11(2), 509–519, doi:10.1175/2009JHM1183.1, 2010.
- 760 Bonan, G. B., Williams, M., Fisher, R. A. and Oleson, K. W.: Modeling stomatal conductance in the earth system: linking leaf water-use efficiency and water transport along the soil–plant–atmosphere continuum, *Geosci. Model Dev.*, 7(5), 2193–2222, doi:10.5194/gmd-7-2193-2014, 2014.
- Bowman, D. M. J. S., Balch, J. K., Artaxo, P., Bond, W. J., Carlson, J. M., Cochrane, M. A., D’Antonio, C. M., DeFries, R. S., Doyle, J. C., Harrison, S. P., Johnston, F. H., Keeley, J. E., Krawchuk, M. A., Kull, C. A., Marston, J. B., Moritz, M. A., Prentice, I. C., Roos, C. I., Scott, A. C., Swetnam, T. W., van der Werf, G. R. and Pyne, S. J.: Fire in the Earth System, *Science* (80-.), 324(5926), 481–484, doi:10.1126/science.1163886, 2009.
- 765 Bowman, D. M. J. S., Brien, R. J. W., Gloor, E., Phillips, O. L. and Prior, L. D.: Detecting trends in tree growth: not so simple, *Trends Plant Sci.*, 18(1), 11–17, doi:10.1016/j.tplants.2012.08.005, 2013.
- Bräuning, A., De Ridder, M., Zafirov, N., García-González, I., Dimitrov, D. P. and Gärtner, H.: TREE-RING FEATURES: INDICATORS of EXTREME EVENT IMPACTS, *IAWA J.*, 37(2), 206–231, doi:10.1163/22941932-20160131, 2016.
- 770 Brien, R. J. W., Gloor, E. and Zuidema, P. A.: Detecting evidence for CO₂ fertilization from tree ring studies: The potential role of sampling biases, *Global Biogeochem. Cycles*, 26(1), n/a-n/a, doi:10.1029/2011GB004143, 2012.
- Brien, R. J. W. W., Gloor, M. and Ziv, G.: Tree demography dominates long-term growth trends inferred from tree rings, *Glob. Chang. Biol.*, 23(2), 474–484, doi:10.1111/gcb.13410, 2017.
- Briffa, K. R. and Melvin, T. M.: A Closer Look at Regional Curve Standardization of Tree-Ring Records: Justification of the Need, a Warning of Some Pitfalls, and Suggested Improvements in Its Application, in *Dendroclimatology*, pp. 113–145, Springer., 2011.
- 775 Briffa, K. R., Osborn, T. J. and Schweingruber, F. H.: Large-scale temperature inferences from tree rings: a review, *Glob. Planet. Change*, 40(1), 11–26, doi:https://doi.org/10.1016/S0921-8181(03)00095-X, 2004.
- Bunde, A., Büntgen, U., Ludescher, J., Luterbacher, J. and von Storch, H.: Is there memory in precipitation?, *Nat. Clim. Chang.*, 3(3), 174–175, doi:10.1038/nclimate1830, 2013.
- 780 Campbell, J. E., Berry, J. A., Seibt, U., Smith, S. J., Montzka, S. A., Launois, T., Belviso, S., Bopp, L. and Laine, M.: Large historical growth in global terrestrial gross primary production, *Nature*, 544(7648), 84–87, doi:10.1038/nature22030, 2017.

- Cao, X., Tian, F., Li, F., Gaillard, M.-J., Rudaya, N., Xu, Q. and Herzschuh, U.: Pollen-based quantitative land-cover reconstruction for northern Asia covering the last 40 ka cal BP, *Clim. Past*, 15(4), 785 1503–1536, doi:10.5194/cp-15-1503-2019, 2019.
- Cedro, A.: Growth-climate relationships of wild service trees on the easternmost range boundary in Poland, *STR16/04*, 24, doi:10.2312/GFZ.b103-16042, 2016.
- Chen, Y.-Y., Gardiner, B., Pasztor, F., Blennow, K., Ryder, J., Valade, A., Naudts, K., Otto, J., McGrath, M. J., Planque, C. and Luysaert, S.: Simulating damage for wind storms in the land surface model ORCHIDEE-CAN (revision 4262), *Geosci. Model Dev.*, 11(2), 771–791, doi:10.5194/gmd-11-771-2018, 2018.
- Chen, Y., Yang, K., He, J., Qin, J., Shi, J., Du, J. and He, Q.: Improving land surface temperature modeling for dry land of China, *J. Geophys. Res. Atmos.*, 116(D20), doi:10.1029/2011JD015921, 2011.
- Chen, Y., Ryder, J., Bastrikov, V., McGrath, M. J., Naudts, K., Otto, J., Otlé, C., Peylin, P., Polcher, J., Valade, A., Black, A., Elbers, J. A., Moors, E., Foken, T., van Gorsel, E., Haverd, V., Heinesch, B., Tiedemann, F., Knohl, A., Launiainen, S., 795 Loustau, D., Ogée, J., Vesala, T. and Luysaert, S.: Evaluating the performance of the land surface model ORCHIDEE-CAN on water and energy flux estimation with a single- and a multi- layer energy budget scheme, *Geosci. Model Dev. Discuss.*, 1–35, doi:10.5194/gmd-2016-26, 2016.
- Compo, G. P., Whitaker, J. S., Sardeshmukh, P. D., Matsui, N., Allan, R. J., Yin, X., Gleason, B. E., Vose, R. S., Rutledge, G., Bessemoulin, P., Brönnimann, S., Brunet, M., Crouthamel, R. I., Grant, A. N., Groisman, P. Y., Jones, P. D., Kruk, M. C., 800 Kruger, A. C., Marshall, G. J., Mauerer, M., Mok, H. Y., Nordli, Ø., Ross, T. F., Trigo, R. M., Wang, X. L., Woodruff, S. D. and Worley, S. J.: The Twentieth Century Reanalysis Project, *Q. J. R. Meteorol. Soc.*, 137(654), 1–28, doi:10.1002/qj.776, 2011.
- Cook, E. R.: A time series analysis approach to tree ring standardization, 1985.
- Cook, E. R. and Kairiukstis, L. A.: *Methods of Dendrochronology*, edited by E. R. Cook and L. A. Kairiukstis, Springer 805 Netherlands, Dordrecht., 1990.
- Cook, E. R., Briffa, K. R., Meko, D. M., Graybill, D. A. and Funkhouser, G.: The “segment length curse” in long tree-ring chronology development for palaeoclimatic studies, *The Holocene*, 5(2), 229–237, doi:10.1177/095968369500500211, 1995.

- D'Arrigo, R., Wilson, R., Liepert, B. and Cherubini, P.: On the 'Divergence Problem' in Northern Forests: A review of the tree-ring evidence and possible causes, *Glob. Planet. Change*, 60(3), 289–305, doi:<https://doi.org/10.1016/j.gloplacha.2007.03.004>, 2008.
- 810 Deleuze, C. and Houllier, F.: Simple process-based xylem growth model for describing wood microdensitometric profiles, *J. Theor. Biol.*, 193(1), 99–113, doi:10.1006/jtbi.1998.0689, 1998.
- Deleuze, C., Pain, O., Dhôte, J.-F. and Hervé, J.-C.: A flexible radial increment model for individual trees in pure even-aged stands, *Ann. For. Sci.*, 61(4), 327–335, doi:10.1051/forest:2004026, 2004.
- 815 Demarty, J., Chevallier, F., Friend, A. D., Viovy, N., Piao, S. and Ciais, P.: Assimilation of global MODIS leaf area index retrievals within a terrestrial biosphere model, *Geophys. Res. Lett.*, 34(15), doi:10.1029/2007GL030014, 2007.
- Drew, D. M., Downes, G. M. and Battaglia, M.: CAMBIUM, a process-based model of daily xylem development in Eucalyptus, *J. Theor. Biol.*, 264(2), 395–406, doi:10.1016/j.jtbi.2010.02.013, 2010.
- Ducoudré, N. I., Laval, K. and Perrier, A.: SECHIBA, a New Set of Parameterizations of the Hydrologic Exchanges at the Land-Atmosphere Interface within the LMD Atmospheric General Circulation Model, *J. Clim.*, 6(2), 248–273, doi:10.1175/1520-0442(1993)006<0248:SANSOP>2.0.CO;2, 1993.
- 820 Dufrêne, E., Davi, H., François, C., Le Maire, G., Le Dantec, V. and Granier, A.: Modelling carbon and water cycles in a beech forest. Part I: Model description and uncertainty analysis on modelled NEE, *Ecol. Modell.*, 185(2–4), 407–436, doi:10.1016/j.ecolmodel.2005.01.004, 2005.
- 825 Eyring, V., Lamarque, J.-F., Hess, P., Arfeuille, F., Bowman, K., Chipperfield, M. P., Duncan, B., Fiore, A., Gettelman, A. and Giorgetta, M. A.: Overview of IGAC/SPARC Chemistry-Climate Model Initiative (CCMI) community simulations in support of upcoming ozone and climate assessments, *SPARC Newsl.*, 40(Januar), 48–66, 2013.
- Farquhar, G. D.: Models of Integrated Photosynthesis of Cells and Leaves, *Philos. Trans. R. Soc. B Biol. Sci.*, 323(1216), 357–367, doi:10.1098/rstb.1989.0016, 1989.
- 830 Fisher, R. A., Muszala, S., Versteinstein, M., Lawrence, P., Xu, C., McDowell, N. G., Knox, R. G., Koven, C., Holm, J., Rogers, B. M., Spessa, A., Lawrence, D. and Bonan, G.: Taking off the training wheels: the properties of a dynamic vegetation model without climate envelopes, *CLM4.5(ED)*, *Geosci. Model Dev.*, 8(11), 3593–3619, doi:10.5194/gmd-8-3593-2015, 2015.

- Franklin, O., Johansson, J., Dewar, R. C., Dieckmann, U., McMurtrie, R. E., Brännström, Å. and Dybzinski, R.: Modeling carbon allocation in trees: a search for principles, *Tree Physiol.*, 32(6), 648–666, doi:10.1093/treephys/tpr138, 2012.
- 835 Friedlingstein, P., Cox, P., Betts, R., Bopp, L., Von Bloh, W., Brovkin, V., Cadule, P., Doney, S., Eby, M., Fung, I., Bala, G., John, J., Jones, C., Joos, F., Kato, T., Kawamiya, M., Knorr, W., Lindsay, K., Matthews, H. D., Raddatz, T., Rayner, P., Reick, C., Roeckner, E., Schnitzler, K. G., Schnur, R., Strassmann, K., Weaver, A. J., Yoshikawa, C. and Zeng, N.: Climate-carbon cycle feedback analysis: Results from the (CMIP)-M-4 model intercomparison, *J. Clim.*, 19(14), 3337–3353, doi:10.1175/jcli3800.1, 2006.
- 840 Friedlingstein, P., Meinshausen, M., Arora, V. K., Jones, C. D., Anav, A., Liddicoat, S. K. and Knutti, R.: Uncertainties in CMIP5 climate projections due to carbon cycle feedbacks, *J. Clim.*, 27(2), 511–526, doi:10.1175/JCLI-D-12-00579.1, 2014.
- Friend, A. D., Eckes-Shephard, A. H., Fonti, P., Rademacher, T. T., Rathgeber, C. B. K., Richardson, A. D. and Turton, R. H.: On the need to consider wood formation processes in global vegetation models and a suggested approach, *Ann. For. Sci.*, 76(2), doi:10.1007/s13595-019-0819-x, 2019.
- 845 Fritts, H. C.: *Tree rings and climate*, Elsevier., 2012.
- Fritts, H. C., Shashkin, A. and Downes, G. M.: A simulation model of conifer ring growth and cell structure, *Tree-ring Anal. Biol. Methodol. Environ. Asp. CABI Publ. Wallingford, UK*, (January 1999), 3–32, 1999.
- Grissino-Mayer, H. D. and Fritts, H. C.: The International Tree-Ring Data Bank: an enhanced global database serving the global scientific community, *The Holocene*, 7(2), 235–238, doi:10.1177/095968369700700212, 1997.
- 850 Haverd, V., Smith, B., Cook, G. D., Briggs, P. R., Nieradzik, L., Roxburgh, S. H., Liedloff, A., Meyer, C. P. and Canadell, J. G.: A stand-alone tree demography and landscape structure module for Earth system models, *Geophys. Res. Lett.*, 40(19), 5234–5239, doi:10.1002/grl.50972, 2013.
- Hayat, A., Hacket-Pain, A. J., Pretzsch, H., Rademacher, T. T. and Friend, A. D.: Modeling Tree Growth Taking into Account Carbon Source and Sink Limitations, *Front. Plant Sci.*, 8, doi:10.3389/fpls.2017.00182, 2017.
- 855 Hemming, D., Fritts, H., Leavitt, S. W., Wright, W., Long, A. and Shashkin, A.: Modelling tree-ring $\delta^{13}C$, *Dendrochronologia*, 19(1), 23–38, 2001.
- Hess, C., Niemeyer, T., Fichtner, A., Jansen, K., Kunz, M., Maneke, M., von Wehrden, H., Quante, M., Walmsley, D., von

- Oheimb, G. and Härdtle, W.: Anthropogenic nitrogen deposition alters growth responses of European beech (*Fagus sylvatica* L.) to climate change, *Environ. Pollut.*, 233, 92–98, doi:10.1016/j.envpol.2017.10.024, 2018.
- 860 Hirata, R., Hirano, T., Saigusa, N., Fujinuma, Y., Inukai, K., Kitamori, Y., Takahashi, Y. and Yamamoto, S.: Seasonal and interannual variations in carbon dioxide exchange of a temperate larch forest, *Agric. For. Meteorol.*, 147(3), 110–124, doi:https://doi.org/10.1016/j.agrformet.2007.07.005, 2007.
- Hölttä, T., Vesala, T., Sevanto, S., Perämäki, M. and Nikinmaa, E.: Modeling xylem and phloem water flows in trees according to cohesion theory and Münch hypothesis, *Trees*, 20(1), 67–78, doi:10.1007/s00468-005-0014-6, 2006.
- 865 Hughes, M. K., Swetnam, T. W. and Diaz, H. F.: *Dendroclimatology*, edited by M. K. Hughes, T. W. Swetnam, and H. F. Diaz, Springer Netherlands, Dordrecht., 2011.
- IPCC: Annex VI: Expert Reviewers of the IPCC WGI Fifth Assessment Report, in *Climate Change 2013: The Physical Science Basis. Contribution of Working Group I to the Fifth Assessment Report of the Intergovernmental Panel on Climate Change*, edited by T. F. Stocker, D. Qin, G.-K. Plattner, M. Tignor, S. K. Allen, J. Boschung, A. Nauels, Y. Xia, V. Bex, and P. M. Midgley, pp. 1497–1522, Cambridge University Press, Cambridge, United Kingdom and New York, NY, USA., 2013.
- 870 Jiang, X., Huang, J.-G., Cheng, J., Dawson, A., Stadt, K. J., Comeau, P. G. and Chen, H. Y. H.: Interspecific variation in growth responses to tree size, competition and climate of western Canadian boreal mixed forests, *Sci. Total Environ.*, 631–632, 1070–1078, doi:10.1016/j.scitotenv.2018.03.099, 2018.
- Kalnay, E., Kanamitsu, M., Kistler, R., Collins, W., Deaven, D., Gandin, L., Iredell, M., Saha, S., White, G., Woollen, J., Zhu, Y., Leetmaa, A., Reynolds, R., Chelliah, M., Ebisuzaki, W., Higgins, W., Janowiak, J., Mo, K. C., Ropelewski, C., Wang, J., Jenne, R. and Joseph, D.: The NCEP/NCAR 40-Year Reanalysis Project, *Bull. Am. Meteorol. Soc.*, 77(3), 437–471, doi:10.1175/1520-0477(1996)077<0437:TNYRP>2.0.CO;2, 1996.
- De Kauwe, M. G., Medlyn, B. E., Zaehle, S., Walker, A. P., Dietze, M. C., Hickler, T., Jain, A. K., Luo, Y., Parton, W. J., Prentice, I. C., Smith, B., Thornton, P. E., Wang, S., Wang, Y.-P., Wårlind, D., Weng, E., Crous, K. Y., Ellsworth, D. S.,
- 880 Hanson, P. J., Seok Kim, H.-, Warren, J. M., Oren, R. and Norby, R. J.: Forest water use and water use efficiency at elevated CO₂: a model-data intercomparison at two contrasting temperate forest FACE sites, *Glob. Chang. Biol.*, 19(6), 1759–1779, doi:10.1111/gcb.12164, 2013.

- Keeling, C. D., Chin, J. F. S. and Whorf, T. P.: Increased activity of northern vegetation inferred from atmospheric CO₂ measurements, *Nature*, 382(6587), 146–149, doi:10.1038/382146a0, 1996.
- 885 Klesse, S., Babst, F., Lienert, S., Spahni, R., Joos, F., Bouriaud, O., Carrer, M., Di Filippo, A., Poulter, B., Trotsiuk, V., Wilson, R. and Frank, D. C.: A Combined Tree Ring and Vegetation Model Assessment of European Forest Growth Sensitivity to Interannual Climate Variability, *Global Biogeochem. Cycles*, 32(8), 1226–1240, doi:10.1029/2017GB005856, 2018.
- Kolus, H. R., Huntzinger, D. N., Schwalm, C. R., Fisher, J. B., McKay, N., Fang, Y., Michalak, A. M., Schaefer, K., Wei, Y., Poulter, B., Mao, J., Parazoo, N. C. and Shi, X.: Land carbon models underestimate the severity and duration of drought's
890 impact on plant productivity, *Sci. Rep.*, 9(1), 2758, doi:10.1038/s41598-019-39373-1, 2019.
- Krinner, G., Viovy, N., de Noblet-Ducoudré, N., Ogée, J., Polcher, J., Friedlingstein, P., Ciais, P., Sitch, S. and Prentice, I. C.: A dynamic global vegetation model for studies of the coupled atmosphere-biosphere system, *Global Biogeochem. Cycles*, 19(1), doi:10.1029/2003GB002199, 2005.
- Laloyaux, P., de Boisseson, E., Balmaseda, M., Bidlot, J.-R., Broennimann, S., Buizza, R., Dalhgren, P., Dee, D., Haimberger,
895 L., Hersbach, H., Kosaka, Y., Martin, M., Poli, P., Rayner, N., Rustemeier, E. and Schepers, D.: CERA-20C: A Coupled Reanalysis of the Twentieth Century, *J. Adv. Model. Earth Syst.*, 10(5), 1172–1195, doi:10.1029/2018MS001273, 2018.
- LaMarche, V. C., Graybill, D. A., Fritts, H. C. and ROSE, M. R.: Increasing Atmospheric Carbon Dioxide: Tree Ring Evidence for Growth Enhancement in Natural Vegetation, *Science (80-.)*, 225(4666), 1019–1021, doi:10.1126/science.225.4666.1019, 1984.
- 900 Leuzinger, S., Manusch, C., Bugmann, H. and Wolf, A.: A sink-limited growth model improves biomass estimation along boreal and alpine tree lines, *Glob. Ecol. Biogeogr.*, 22(8), 924–932, doi:10.1111/geb.12047, 2013.
- Levesque, M., Andreu-Hayles, L., Smith, W. K., Williams, A. P., Hobi, M. L., Allred, B. W. and Pederson, N.: Tree-ring isotopes capture interannual vegetation productivity dynamics at the biome scale, *Nat. Commun.*, 10(1), 742, doi:10.1038/s41467-019-08634-y, 2019.
- 905 Li, G., Harrison, S. P., Prentice, I. C. and Falster, D.: Simulation of tree-ring widths with a model for primary production, carbon allocation, and growth, *Biogeosciences*, 11(23), 6711–6724, doi:10.5194/bg-11-6711-2014, 2014.
- Lu, C. and Tian, H.: Global nitrogen and phosphorus fertilizer use for agriculture production in the past half century: shifted

- hot spots and nutrient imbalance, *Earth Syst. Sci. Data*, 9(1), 181–192, doi:10.5194/essd-9-181-2017, 2017.
- Luo, Y. Q., Randerson, J. T., Friedlingstein, P., Hibbard, K., Hoffman, F., Huntzinger, D., Jones, C. D., Koven, C., Lawrence,
910 D., Li, D. J., Abramowitz, G., Bacour, C., Blyth, E., Carvalhais, N., Ciais, P., Dalmonech, D., Fisher, J. B., Fisher, R.,
Friedlingstein, P., Hibbard, K., Hoffman, F., Huntzinger, D., Jones, C. D., Koven, C., Lawrence, D., Li, D. J., Mahecha, M.,
Niu, S. L., Norby, R., Piao, S. L., Qi, X., Peylin, P., Prentice, I. C., Riley, W., Reichstein, M., Schwalm, C., Wang, Y. P., Xia,
J. Y., Zaehle, S. and Zhou, X. H.: A framework for benchmarking land models, *Biogeosciences*, 9(10), 3857–3874,
doi:10.5194/bg-9-3857-2012, 2012.
- 915 Magnani, F., Mencuccini, M., Borghetti, M., Berbigier, P., Berninger, F., Delzon, S., Grelle, A., Hari, P., Jarvis, P. G., Kolar,
P., Kowalski, A. S., Lankreijer, H., Law, B. E., Lindroth, A., Loustau, D., Manca, G., Moncrieff, J. B., Rayment, M., Tedeschi,
V., Valentini, R. and Grace, J.: The human footprint in the carbon cycle of temperate and boreal forests, *Nature*, 447(7146),
849–851, doi:10.1038/nature05847, 2007.
- McGuffie A., K. and H.: *Practical Climate Modelling*, in *A Climate Modelling Primer*, 2005.
- 920 Melvin, T.: *Historical growth rates and changing climatic sensitivity of boreal conifers*, University of East Anglia, 2004.
- Mencuccini, M., Martínez-Vilalta, J., Vanderklein, D., Hamid, H. A., Korakaki, E., Lee, S., Michiels, B., Martínez-Vilalta, J.,
Vanderklein, D., Hamid, H. A., Korakaki, E., Lee, S. and Michiels, B.: Size-mediated ageing reduces vigour in trees, *Ecol.*
Lett., 8(11), 1183–1190, doi:10.1111/j.1461-0248.2005.00819.x, 2005.
- Merganičová, K., Merganič, J., Lehtonen, A., Vacchiano, G., Sever, M. Z. O., Augustynczyk, A. L. D., Grote, R., Kyselová,
925 I., Mäkelä, A., Yousefpour, R., Krejza, J., Collalti, A. and Reyer, C. P. O.: Forest carbon allocation modelling under climate
change, *Tree Physiol.*, doi:10.1093/treephys/tpz105, 2019.
- Misson, L., Rathgeber, C. and Guiot, J.: Dendroecological analysis of climatic effects on *Quercus petraea* and *Pinus halepensis*
radial growth using the process-based MAIDEN model, *Can. J. For. Res.*, 34(4), 888–898, doi:10.1139/x03-253, 2004.
- Moorcroft, P. R., Hurtt, G. C. and Pacala, S. W.: A Method for Scaling Vegetation Dynamics: The Ecosystem Demography
930 Model (ED), *Ecol. Monogr.*, 71(4), 557–585, doi:10.2307/3100036, 2001.
- Nash, S. E.: Fundamentals of tree-ring research. James H. Speer., *Geoarchaeology*, 26(3), 453–455, doi:10.1002/gea.20357,
2011.

- Naudts, K., Ryder, J., McGrath, M. J., Otto, J., Chen, Y., Valade, A., Bellasen, V., Berhongaray, G., Bönisch, G., Campioli, M., Ghattas, J., De Groote, T., Haverd, V., Kattge, J., MacBean, N., Maignan, F., Merilä, P., Penuelas, J., Peylin, P., Pinty, B.,
935 Pretzsch, H., Schulze, E. D., Solyga, D., Vuichard, N., Yan, Y. and Luysaert, S.: A vertically discretised canopy description for ORCHIDEE (SVN r2290) and the modifications to the energy, water and carbon fluxes, *Geosci. Model Dev.*, 8(7), 2035–2065, doi:10.5194/gmd-8-2035-2015, 2015.
- Nehrbass-Ahles, C., Babst, F., Klesse, S., Nötzli, M., Bouriaud, O., Neukom, R., Dobbertin, M. and Frank, D.: The influence of sampling design on tree-ring-based quantification of forest growth, *Glob. Chang. Biol.*, 20(9), 2867–2885,
940 doi:10.1111/gcb.12599, 2014.
- Nicklen, E. F., Roland, C. A., Csank, A. Z., Wilmking, M., Ruess, R. W. and Muldoon, L. A.: Stand basal area and solar radiation amplify white spruce climate sensitivity in interior Alaska: Evidence from carbon isotopes and tree rings, *Glob. Chang. Biol.*, 25(3), 911–926, doi:10.1111/gcb.14511, 2019.
- Nickless, A., Scholes, R. J. and Archibald, S.: A method for calculating the variance and confidence intervals for tree biomass
945 estimates obtained from allometric equations, *S. Afr. J. Sci.*, 107(5/6), 86–95, doi:10.4102/sajs.v107i5/6.356, 2011.
- NOAA: brit021, NOAA/WDS for Paleoclimatology, <https://www.ncdc.noaa.gov/paleo/study/4418>, 2020a.
- NOAA: finl052, NOAA/WDS for Paleoclimatology, <https://www.ncdc.noaa.gov/paleo/study/3998>, 2020b.
- NOAA: germ214, NOAA/WDS for Paleoclimatology, <https://www.ncdc.noaa.gov/paleo/study/16747>, 2020c.
- NOAA: spai006, NOAA/WDS for Paleoclimatology, <https://www.ncdc.noaa.gov/paleo/study/4405>, 2020d.
- 950 Oliver, C. D. and Larson, B. C.: *Forest stand dynamics*, Wiley New York., 1996.
- Ols, C., Girardin, M. P., Hofgaard, A., Bergeron, Y. and Drobyshev, I.: Monitoring Climate Sensitivity Shifts in Tree-Rings of Eastern Boreal North America Using Model-Data Comparison, *Ecosystems*, 21(5), 1042–1057, doi:10.1007/s10021-017-0203-3, 2018.
- Panthi, S., Fan, Z.-X., van der Sleen, P. and Zuidema, P. A.: Long-term physiological and growth responses of Himalayan fir
955 to environmental change are mediated by mean climate, *Glob. Chang. Biol.*, 26(3), 1778–1794, doi:10.1111/gcb.14910, 2020.
- Pappas, C., Maillet, J., Rakowski, S., Baltzer, J. L., Barr, A. G., Black, T. A., Fatichi, S., Laroque, C. P., Matheny, A. M., Roy, A., Sonnentag, O. and Zha, T.: Aboveground tree growth is a minor and decoupled fraction of boreal forest carbon input,

- Agric. For. Meteorol., 290(April), 108030, doi:10.1016/j.agrformet.2020.108030, 2020.
- Paris Agreements: Paris agreement, in Report of the Conference of the Parties to the United Nations Framework Convention
960 on Climate Change (21st Session, 2015: Paris). Retrived December, vol. 4, p. 2017, HeinOnline., 2015.
- Peylin, P., Bacour, C., MacBean, N., Leonard, S., Rayner, P., Kuppel, S., Koffi, E., Kane, A., Maignan, F., Chevallier, F.,
Ciais, P. and Prunet, P.: A new stepwise carbon cycle data assimilation system using multiple data streams to constrain the
simulated land surface carbon cycle, *Geosci. Model Dev.*, 9(9), 3321–3346, doi:10.5194/gmd-9-3321-2016, 2016.
- Rammig, A., Wiedermann, M., Donges, J. F., Babst, F., Von Bloh, W., Frank, D., Thonicke, K. and Mahecha, M. D.:
965 Coincidences of climate extremes and anomalous vegetation responses: comparing tree ring patterns to simulated productivity,
Biogeosciences, 12(2), 373–385, doi:10.5194/bg-12-373-2015, 2015.
- Randerson, J. T., Hoffman, F. M., Thorton, P. E., Mahowald, N. M., Lindsay, K., Lee, Y., Nevison, C. D., Doney, S. C.,
Bonan, G., Stöckli, R., Covey, C., Running, S. W. and Fung, I. Y.: Systematic assessment of terrestrial biogeochemistry in
coupled climate-carbon models, *Glob. Chang. Biol.*, 15(10), 2462–2484, doi:10.1111/j.1365-2486.2009.01912.x, 2009.
- 970 Rollinson, C. R., Liu, Y., Raiho, A., Moore, D. J. P., McLachlan, J., Bishop, D. A., Dye, A., Matthes, J. H., Hessel, A., Hickler,
T., Pederson, N., Poulter, B., Quaipe, T., Schaefer, K., Steinkamp, J. and Dietze, M. C.: Emergent climate and CO₂ sensitivities
of net primary productivity in ecosystem models do not agree with empirical data in temperate forests of eastern North
America, *Glob. Chang. Biol.*, 23(7), 2755–2767, doi:10.1111/gcb.13626, 2017.
- Ryder, J., Polcher, J., Peylin, P., Ottlé, C., Chen, Y., van Gorsel, E., Haverd, V., McGrath, M. J., Naudts, K., Otto, J., Valade,
975 A. and Luyssaert, S.: A multi-layer land surface energy budget model for implicit coupling with global atmospheric
simulations, *Geosci. Model Dev.*, 9(1), 223–245, doi:10.5194/gmd-9-223-2016, 2016.
- Sato, H., Itoh, A. and Kohyama, T.: SEIB–DGVM: A new Dynamic Global Vegetation Model using a spatially explicit
individual-based approach, *Ecol. Modell.*, 200(3–4), 279–307, doi:10.1016/j.ecolmodel.2006.09.006, 2007.
- De Schepper, V. and Steppe, K.: Development and verification of a water and sugar transport model using measured stem
980 diameter variations, *J. Exp. Bot.*, 61(8), 2083–2099, doi:10.1093/jxb/erq018, 2010.
- Schulman, E.: Longevity under Adversity in Conifersca, *Science* (80-.), 119(3091), 396–399 [online] Available from:
<http://www.jstor.org/stable/1682970>, 1954.

- Shen, Y., Fukatsu, E., Muraoka, H., Saitoh, T. M., Hirano, Y. and Yasue, K.: Climate responses of ring widths and radial growth phenology of *Betula ermanii*, *Fagus crenata* and *Quercus crispula* in a cool temperate forest in central Japan, *Trees*, 985 doi:10.1007/s00468-019-01948-w, 2020.
- Smith, B.: LPJ-GUESS-an ecosystem modelling framework, *Dep. Phys. Geogr. Ecosyst. Anal. INES, Sölvegatan*, 12, 22362, 2001.
- Steppe, K., De Pauw, D. J. W., Lemeur, R. and Vanrolleghem, P. A.: A mathematical model linking tree sap flow dynamics to daily stem diameter fluctuations and radial stem growth, *Tree Physiol.*, 26(3), 257–273, doi:10.1093/treephys/26.3.257, 990 2006.
- Stine, A. R.: Global demonstration of local Liebig's law behavior for tree-ring reconstructions of climate, *Paleoceanogr. Paleoclimatology*, 34, doi:https://doi.org/10.1029/2018PA003449, 2019.
- Teets, A., Fraver, S., Weiskittel, A. R. and Hollinger, D. Y.: Quantifying climate–growth relationships at the stand level in a mature mixed-species conifer forest, *Glob. Chang. Biol.*, 24(8), 3587–3602, 2018.
- 995 Temme, A. A., Liu, J. C., Cornwell, W. K., Cornelissen, J. H. C. and Aerts, R.: Winners always win: growth of a wide range of plant species from low to future high CO₂, *Ecol. Evol.*, 5(21), 4949–4961, doi:10.1002/ece3.1687, 2015.
- Vaganov, E. A., Hughes, M. K. and Shashkin, A. V.: Growth dynamics of conifer tree rings: images of past and future environments, edited by M. K. Hughes, T. W. Swetnam, and H. F. Diaz, Springer, New York., 2006.
- Viovy, N.: CRUNCEP data set, 2016.
- 1000 Vuichard, N., Messina, P., Luyssaert, S., Guenet, B., Zaehle, S., Ghattas, J., Bastrikov, V. and Peylin, P.: Accounting for carbon and nitrogen interactions in the global terrestrial ecosystem model ORCHIDEE (trunk version, rev 4999): multi-scale evaluation of gross primary production, *Geosci. Model Dev.*, 12(11), 4751–4779, doi:10.5194/gmd-12-4751-2019, 2019.
- Wilkinson, S., Ogée, J. J., Domec, J.-C. C., Rayment, M. and Wingate, L.: Biophysical modelling of intra-ring variations in tracheid features and wood density of *Pinus pinaster* trees exposed to seasonal droughts, *Tree Physiol.*, 35(3), 305–318, 1005 doi:10.1093/treephys/tpv010, 2015.
- Williams, M., Richardson, A. D., Reichstein, M., Stoy, P. C., Peylin, P., Verbeek, H., Carvalhais, N., Jung, M., Hollinger, D. Y., Kattge, J., Leuning, R., Luo, Y., Tomelleri, E., Trudinger, C. M. and Wang, Y.-P.: Improving land surface models with

- FLUXNET data, *Biogeosciences*, 6(7), 1341–1359, doi:10.5194/bg-6-1341-2009, 2009.
- Wilson, B. F. and Howard, R. A.: A computer model for cambial activity, *For. Sci.*, 14(1), 77–90,
1010 doi:10.1093/forestscience/14.1.77, 1968.
- Wolf, A., Ciais, P., Bellassen, V., Delbart, N., Field, C. B. and Berry, J. A.: Forest biomass allometry in global land surface models, *Global Biogeochem. Cycles*, 25(3), doi:10.1029/2010GB003917, 2011.
- Yue, C., Ciais, P., Cadule, P., Thonicke, K., Archibald, S., Poulter, B., Hao, W. M., Hantson, S., Mouillot, F., Friedlingstein, P., Maignan, F. and Viovy, N.: Modelling the role of fires in the terrestrial carbon balance by incorporating SPITFIRE into the
1015 global vegetation model ORCHIDEE – Part 1: simulating historical global burned area and fire regimes, *Geosci. Model Dev.*, 7(6), 2747–2767, doi:10.5194/gmd-7-2747-2014, 2014.
- Zaehle, S. and Friend, A. D.: Carbon and nitrogen cycle dynamics in the O-CN land surface model: 1. Model description, site-scale evaluation, and sensitivity to parameter estimates, *Global Biogeochem. Cycles*, 24(1), doi:10.1029/2009GB003521, 2010.
- 1020 Zhang, Z., Babst, F., Bellassen, V., Frank, D., Launois, T., Tan, K., Ciais, P. and Poulter, B.: Converging Climate Sensitivities of European Forests Between Observed Radial Tree Growth and Vegetation Models, *Ecosystems*, 21(3), 410–425, doi:10.1007/s10021-017-0157-5, 2018.
- Zhao, S., Pederson, N., D’Orangeville, L., HilleRisLambers, J., Boose, E., Penone, C., Bauer, B., Jiang, Y. and Manzanedo, R. D.: The International Tree-Ring Data Bank (ITRDB) revisited: Data availability and global ecological representativity, *J.*
1025 *Biogeogr.*, 46(2), 355–368, doi:10.1111/jbi.13488, 2019.
- Zuidema, P. A., Vlam, M. and Chien, P. D.: Ages and long-term growth patterns of four threatened Vietnamese tree species, *Trees*, 25(1 LB-Zuidema2011), 29–38, doi:10.1007/s00468-010-0473-2, 2011.
- Zuidema, P. A., Poulter, B. and Frank, D. C.: A Wood Biology Agenda to Support Global Vegetation Modelling, *Trends Plant Sci.*, 23(11), 1006–1015, doi:10.1016/j.tplants.2018.08.003, 2018.
- 1030 Zuidema, P. A., Heinrich, I., Rahman, M., Vlam, M., Zwartsenberg, S. A. and Sleen, P.: Recent CO₂ rise has modified the sensitivity of tropical tree growth to rainfall and temperature, *Glob. Chang. Biol.*, 26(7), 4028–4041, doi:10.1111/gcb.15092, 2020.

