

Improvement of modelling plant responses to low soil moisture in JULESv4.9 and evaluation against flux tower measurements

Anna B. Harper^{1,2}, Karina E. Williams^{2,3}, Patrick C. McGuire^{4,5}, Maria Carolina Duran Rojas¹, Debbie Hemming^{3,6}, Anne Verhoef⁵, Chris Huntingford⁷, Lucy Rowland⁸, Toby Marthews⁷, Cleiton Breder Eller⁹, Camilla Mathison³, Rodolfo L.B. Nobrega¹⁰, Nicola Gedney¹¹, Pier Luigi Vidale⁴, Fred Otu-Larbi¹², Divya Pandey¹³, Sebastien Garrigues¹⁴, Azin Wright⁵, Darren Slevin¹⁵, Martin G. De Kauwe^{16,17,18}, Eleanor Blyth⁷, Jonas Ardö¹⁹, Andrew Black^{3,3}, Damien Bonal²⁰, Nina Buchmann²¹, Benoit Burban^{22,23}, Kathrin Fuchs^{21,24}, Agnès de Grandcourt^{25,26}, Ivan Mammarella²⁷, Lutz Merbold²⁸, Leonardo Montagnani²⁹, Yann Nouvellon^{25,26}, Natalia Restrepo-Coupe^{30,31}, Georg Wohlfahrt³²

Formatted: Superscript

¹ College of Engineering, Mathematics, and Physical Sciences, University of Exeter, Exeter, UK

² Global Systems Institute, University of Exeter, Exeter, UK

³ UK Met Office, Fitzroy Road, Exeter, UK

⁴ ~~College of Life and Environmental Sciences, University of Exeter, Exeter, UK~~

⁵ Department of Meteorology and National Centre for Atmospheric Science, University of Reading, Reading RG-6 6-BB, UK,

⁶ Department of Geography & Environmental Science, University of Reading, Reading RG-6 6-BB, UK

⁷ Birmingham Institute of Forest Research, University of Birmingham, Birmingham, UK

⁸ UK Centre for Ecology and Hydrology, Wallingford, OX10 8BB, UK

⁹ ~~College of Life and Environmental Sciences, University of Exeter, Exeter, UK~~

¹⁰ ~~Department of Plant Biology, University of Campinas, Campinas 13083-862, Brazil~~

¹¹ Department of Life Sciences, Imperial College London, Silwood Park Campus, Ascot, Berkshire, SL5 7PY, UK

¹² Met Office Hadley Centre, Joint Centre for Hydrometeorological Research, Maclean Building, Wallingford OX10 8BB, United Kingdom

¹³ Lancaster Environment Centre, Lancaster University, LA1 4YQ, UK

¹⁴ Stockholm Environment Institute at York, University of York, York, UK

¹⁵ ECMWF, Copernicus Atmospheric Monitoring Service, Reading, UK

¹⁶ Forest Research, Northern Research Station, Roslin, Midlothian, EH25 9SY, UK

¹⁷ ARC Centre of Excellence for Climate Extremes, Sydney, NSW 2052, Australia.

¹⁸ Climate Change Research Centre, University of New South Wales, Sydney, NSW 2052, Australia.

¹⁹ Evolution & Ecology Research Centre, University of New South Wales, Sydney, NSW 2052, Australia.

²⁰ Department of Physical Geography and Ecosystem Science, Lund University Sölvegatan 12 S-223 62 Lund Sweden

²¹ Université de Lorraine, AgroParisTech, INRAE, UMR Silva, 54000 Nancy, France

²² Department of Environmental Systems Science, ETH Zurich, Zurich, Switzerland

²³ INRAE, AgroParisTech, CIRAD,

²⁴ CNRS, Université de Guyane, Université des Antilles, UMR Ecofog, Campus Agronomique, 97387 Kourou, Guyane Française, France

²⁵ Institute of Meteorology and Climate Research - Atmospheric Environmental Research, Karlsruhe Institute of Technology (KIT Campus Alpin), 82467 Garmisch-Partenkirchen, Germany

²⁶ CRDPI, BP 1291 Pointe Noire, Republic of Congo

²⁷ CIRAD, UMR Eco&Sols, Ecologie Fonctionnelle & Biogéochimie des Sols & Agro-écosystèmes, F-34060 Montpellier, France

²⁸ Institute for Atmospheric and Earth System Research/Physics, Faculty of Science, University of Helsinki, Finland

²⁹ International Livestock Research Institute (ILRI), Mazingira Centre, PO Box 30709, 00100 Nairobi, Kenya

³⁰ Faculty of Science and Technology, Free University of Bolzano, Bolzano, Italy; Forest Services, Autonomous Province of Bolzano, Bolzano, Italy

³⁰ Department of Ecology and Evolutionary Biology, University of Arizona, Tucson, AZ, 85721 USA

³¹ School of Life Science, University of Technology Sydney, Sydney, NSW, 2006 Australia

³² Department of Ecology, University of Innsbruck, Sternwartestr. 15, 6020 Innsbruck, AUSTRIA

50 ³³ Faculty of Land and Food Systems, University of British Columbia, Vancouver, British Columbia, Canada

Correspondence to: Karina E. Williams (karina.williams.metoffice.gov.uk) and Anna B. Harper (a.harper@exeter.ac.uk)

Abstract

55 Drought is predicted to increase in the future due to climate change, bringing with it a myriad of impacts on ecosystems. Plants respond to drier soils by reducing stomatal conductance, in order to conserve water and avoid hydraulic damage. Despite the importance of plant drought responses for the global carbon cycle and local/regional climate feedbacks, land surface models are unable to capture observed plant responses to soil moisture stress. We assessed the impact of soil moisture stress on simulated gross primary productivity (GPP) and latent energy flux (LE) in the Joint UK Land Environment Simulator (JULES) vn4.9 on seasonal and annual timescales, and evaluated ten different representations of soil moisture stress in the model. For the default configuration, GPP was more realistic in temperate biome sites than in the tropics or high latitudes/cold region sites, while LE was best simulated in temperate and high latitude/cold sites. Errors not due to soil moisture stress, possibly linked to phenology, contributed to model biases for GPP in tropical ~~savannahs~~savanna and deciduous forest sites. We found that three alternative approaches to calculating soil moisture stress produced more realistic results than the default parameterization for most biomes and climates. All of these involved increasing the number of soil layers from 4 to 14, and the soil depth from 3.0 m to 10.8 m. In addition, we found improvements when soil matric potential replaced volumetric water content in the stress equation (~~the 'soil14_psi' experiments~~), when the ~~onset-of-stress was delayed~~critical threshold value for inducing soil moisture stress was reduced ('soil14_p0'), and ~~when when-roots extended deeper into the soil~~plants were able to access soil moisture in deeper soil layers ('soil14_dr*2'). For LE, the biases were highest in the default configuration in temperate mixed forests, with overestimation occurring during most of the year. At these sites, reducing soil moisture stress (with the new parameterizations mentioned above) increased LE and ~~increased model biases, but improved the simulated seasonal cycle and brought the monthly variance closer to the measured variance of LE~~made the simulation worse. Further evaluation ~~into-of~~ the reason for the high bias in LE at many of the sites would enable improvements in both carbon and energy fluxes with new parameterizations for soil moisture stress. ~~Increasing the soil depth and plant access to deep soil moisture improved many aspects of the simulations, and we recommend these settings in future work using JULES, or as a general way to improve land surface carbon and water fluxes in other models. In addition, using soil matric potential presents the opportunity to include plant functional type-specific parameters to further improve modelled fluxes.~~

Formatted: Font: Not Bold

1 Introduction

80 Drought has a range of impacts on terrestrial ecosystems (Allen et al., 2010; Choat et al., 2012), plays a role in feedbacks on
the weather and climate systems across scales (Seneviratne et al., 2013; Lemordant et al., 2016; Miralles et al., 2019; Lian et
al., 2020) and affects the global carbon cycle (Green et al., 2017; Humphrey et al., 2018; Peters et al., 2018). These impacts
and feedbacks have the potential to affect society, either directly through moisture availability effects on crops, or indirectly
by adjusting near-surface temperatures, or forcing large-scale variations to the climate system. Roughly 40% of the vegetated
85 land surface is limited by seasonal water deficits (Nemani et al., 2003; Beer et al., 2010), which are a major control on gross
primary productivity (GPP) in sub-humid, semi-arid, and arid regions (Stocker et al., 2018). In the future, soil moisture stress
for ecosystems is predicted to increase over large regions (Berg et al., 2016; Ukkola et al., 2020). (In this paper, we define
“soil moisture stress” ~~to mean~~ the physiological stress experienced by vegetation due to its interactions with ~~unusually-dry~~
~~soils.~~) ~~Feedbacks from water-limited ecosystems on the global carbon cycle may make it more difficult to stabilize the~~
90 ~~climate system at global warming thresholds such as two degrees.~~ For these reasons, accurate process-based models of plant
response to soil moisture stress are needed in coupled land-atmosphere climate models. However, the models used to
represent biogeophysical and biogeochemical processes in Earth System Models (ESMs) are often unable to properly capture
observed responses to soil moisture stress (e.g.-(Beer et al., 2010; Powell et al., 2013; Medlyn et al., 2016; Restrepo-Coupe
et al., 2017; De Kauwe et al., 2017; Peters et al., 2018; Paschalis et al., 2020).

95 Plants respond to reductions in soil moisture content (SMC) through a range of drought tolerance and prevention strategies.
Commonly, plants respond to low SMC by reducing their stomatal aperture to conserve water and protect the xylem from
damage (Field and Holbrook, 1989; Sparks and Black, 1999). ~~Cavitation and embolism is caused by low soil and/or leaf~~
~~water potential due to dry climatic conditions, and it causes water tension inside the plant to increase enough to drive the~~
~~formation of air bubbles within the xylem vessels -usually happened when the plant is under water stress and the water~~
100 ~~potential in the xylem is low enough to fill the xylem with water vapor and/or air instead of water~~-(Lambers et al., 2008;
Choat et al., 2012). Embolized xylem is unable to transport water, and for some vegetation types, this is a dominant cause of
plant mortality under drought conditions (e.g.-(Brodribb and Cochard, 2009; Choat et al., 2018). To avoid this, many plants
limit water loss by reducing their stomatal conductance when soil moisture levels reach a certain threshold (Tyree and
Sperry, 1989; Sperry et al., 1998; Choat et al., 2012) or by shedding leaves (Wolfe et al., 2016). High atmospheric vapor
105 pressure deficits (VPD), which sometimes occur in conjunction with meteorological drought, may also result in stomatal
closure. The reduced stomatal conductance triggers a cascade of other responses, beginning with reduced rates of
photosynthesis (Ball et al., 1987), which reduce carbon uptake and possibly growth, ~~and change allocation between above-~~
~~and below-ground stocks~~ (Merbold et al., 2009b; Doughty et al., 2015). ~~The L~~ower stomatal conductance will reduce
transpiration, which causes more surface available energy to be converted into sensible heat. This transference of latent to
110 sensible heat can contribute to ~~further desiccation of soils~~, increased land surface temperature, and amplification of heat
waves (Seneviratne et al., 2010). Over the long term, droughts can lead to changes in plant species composition (Liu et al.,

2018) or large-scale forest mortality (Mcdowell et al., 2008), sometimes causing a transient situation where large ecosystems switch from being a sink of carbon dioxide to a source (Ciais et al., 2005; Gatti et al., 2015).

115 There is a spectrum of mechanisms through which species tolerate or acclimate to drought, meaning a “one-size-fits-all” approach to modelling can be inadequate. Explicit model representations of the xylem hydraulics are complex and difficult to parameterize globally. The emergence of plant trait databases has enabled early models to represent the hydraulic properties of the soil-plant-atmosphere continuum (e.g., (Sperry et al., 2016; Eller et al., 2018; De Kauwe et al., 2020; Eller et al., 2020; Sabot et al., 2020). Also, new approaches are emerging that focus on ‘plant profit maximisation’, where photosynthetic uptake of CO₂ is optimally traded against plant hydraulic function, as an alternative to the empirical functions commonly used in models to regulate gas exchange during periods of water stress (Sperry et al., 2017; Sabot et al., 2020).

120 More often, for now, land surface models (LSMs) represent the regulation of stomatal conductance as a simple generic function of SMC, generally expressed in terms of volumetric water content (θ , m³ m⁻³). This simple generic function is the so-called “beta” function, where β is a factor between zero and one that limits photosynthesis in some way (depending on the model, See Methods). Above a critical SMC, there is no stress ($\beta=1$), and below the critical ~~point~~threshold value, stress increases as SMC decreases, until the wilting point is reached ($\beta=0$). Alternative, yet related, expressions are available whereby stomatal regulation occurs through changes in the soil matric potential (ψ , expressed in pressure units, such as MPa); θ and matric potential (a measure of “how tightly the water is held in the soil pores”, thereby affecting ~~root~~water uptake by the roots) are closely related via the water retention curve. However, using one function for all plant responses to drying soils can result in errors, for example, and especially in the extreme cases, for example, by underestimating stress in wet ecosystems and overestimating stress in dry ecosystems. In fact, the parameters describing plant and soil hydraulic responses to soil moisture may change in time (Robinson et al., 2019), and can vary between ecosystem types (Teuling et al., 2010). Such variation may be in response to climate change, or evolving vegetation and soil properties, and their structure.

135 In this study, we focus on the effects of droughts on vegetation that occur due to low SMC. Although droughts are often associated with changes beyond low precipitation levels, including high air temperatures and VPD, these climate drivers have their own set of impacts on vegetation, adding to the effects of low SMC, that will not be addressed here. We explore different ways in which soil moisture stress can be represented in a widely used model of the terrestrial biosphere, the Joint UK Land Environment Simulator (JULES) (Best et al., 2011; Clark et al., 2011). JULES is a community model, and is used in coupled or standalone mode, forced by meteorological variables. Its applications are on timescales ranging from weather forecasting to climate projections, and the model is the terrestrial component of the UK Earth System Model and the HadGEM family of models (Martin et al., 2011). The spatial scales are similarly diverse. Studies range from single-point modelling of crop yield at one site (Williams et al., 2017), which requires detailed knowledge of one crop variety under carefully controlled conditions, to global predictions of land sources and sinks of CO₂ for the annually updated Global Carbon Project (Friedlingstein et al., 2019), which requires reliable performance for all vegetation types across the globe.

145 The aim of this study is to find an improved general model equation and parameters for global applications of JULES.

Soil moisture stress has been identified as a key driver of variability in JULES projections (Blyth et al., 2011). [Verhoef and Egea \(2014\)](#) showed that the standard β function in JULES, and similar LSMs, needs urgent attention, as to whether it is the most appropriate functional form, and/or if parameterized correctly. [For example, JULES calculates \$\beta\$ based on \$\theta\$, but using soil matric potential instead results in a curvilinear increase in stress as soils dry, which may be more realistic \(Fig. 1; Verhoef and Egea, 2014\).](#) In an evaluation of the model across ten flux tower sites, [Blyth et al. \(2011\)](#) showed that the “dry-down” of the sites in semi-arid areas was too quick and the seasonal variation of evaporation in the tropics was too great, possibly due to the roots being modelled as too shallow (Blyth et al., 2011) [or due to modelled stress beginning when soils were still relatively wet.](#) ~~This was later supported by~~ [Other studies that have found](#) ~~suggested~~ that the root depths of LSMs were too shallow (Teuling et al., 2006; Wang and Dickinson, 2012). Indeed, some LSMs (CLM, SiB3, TERRA-ML) were able to improve model performance by representing deeper (e.g. 10_m) and more efficient roots (Baker et al., 2008; Akkermans et al., 2012; Liu et al., 2020).

Evaluating the impact of simulated soil moisture stress on vegetation requires that other model errors that also affect CO₂ and water fluxes are minimized. For instance, it is possible that the rapid drying found in [Blyth et al. \(2011\)](#) was due to over-estimation of soil evaporation. The fact that land surface models in general over-estimate evapotranspiration during wet periods is well documented (Blyth et al., 2011; Mueller and Seneviratne, 2014; Martínez-De La Torre et al., 2019) and leads to unrealistically low soil moisture after long dry periods (Ukkola et al., 2016). The high evaporation (and subsequent low SMC) could be due to errors in factors not being ~~studied-addressed~~ in this study, such as radiation absorption or turbulent exchanges with the atmosphere. Leaf area index (LAI) also strongly affects the magnitude and seasonality of fluxes coming from vegetation and soil (via variations in shading).

This study aimed to evaluate the simulation of GPP and LE for a range of biomes and climates, to diagnose sites and seasons when soil moisture stress affects the results, and to evaluate different methods for representing soil moisture stress in JULES [as a first step in improving the simulated plant responses to low SMC in global applications of JULES.](#) To do this, we chose a subset of sites in the FLUXNET2015 database and from the Large Scale Biosphere-Atmosphere Experiment in Amazonia (LBA) experiment based on availability of data. Where possible we prescribed soil moisture and LAI from site measurements, to differentiate the roles of SMC, the β parameterization, or modelled phenology in model biases. We used the GPP calculated before soil moisture stress is applied to understand seasons and locations where the β parameterization was contributing to model errors. We also reviewed other commonly used approaches for modelling soil moisture stress, presented in Section 2.2, to motivate the representations evaluated in the remainder of the paper. This work is one of the first published results from a JULES community-wide focus group (called a JULES Process Evaluation Group, or JPEG) on understanding soil moisture stress impacts on vegetation, which began in 2016.

2 Methods

2.1 Photosynthesis and stomatal conductance in JULES

The Joint UK Land Environment Simulator (JULES) (Best et al., 2011; Clark et al., 2011) is a process-based model that simulates the fluxes of carbon, water, energy and momentum between the land surface and the atmosphere. JULES treats each vegetation type as existing on a separate tile within a grid box. Energy and carbon flux calculations are performed separately for each tile, depending on Plant Functional Type (PFT)-dependent parameters. ~~The tiles share a common soil column.~~ Leaf-level net photosynthesis (A) is integrated over the canopy, according to the canopy radiation scheme specified. In the present study, we used 10 canopy layers of equal LAI (in JULES this is ‘canopy radiation model 6’), although another option in JULES is to use a ‘big leaf’ approach (Clark et al., 2011). Potential (non-stressed) photosynthesis is calculated based on three limiting rates: W_c (a RuBisCO limited rate), W_l (a light-limited rate), and W_e (a transport limited rate for C_3 plants and a PEPCase limitation for C_4 plants). For full details on the photosynthesis scheme in JULES see (Clark et al., 2011; Harper et al., 2016).

Stomatal conductance to water vapour g_s (in m s^{-1}) is related to net photosynthesis A (in $\text{molCO}_2 \text{ m}^{-2} \text{ s}^{-1}$) through:

$$g_s = -1.6A \frac{RT^*}{c_i - c_a}, \quad (1)$$

where c_a and c_i are the atmospheric and intercellular CO_2 concentrations, respectively, in Pa, and 1.6 is the molar diffusivity ratio of CO_2 to H_2O in air (e.g. (Guerrieri et al., 2019)). R is the universal gas constant ($8.314 \text{ J K}^{-1} \text{ mol}^{-1}$) and T^* is the leaf temperature (K). Vapour deficit at the leaf surface (D , kg kg^{-1}) affects stomatal conductance through the gradient between c_a and c_i :

$$\frac{c_i - \Gamma^*}{c_a - \Gamma^*} = f_0 \left(1 - \frac{D}{D_{\text{crit}}} \right) \quad (2)$$

Here, Γ^* is the photorespiration compensation point (Pa), D is the humidity deficit at the leaf surface (g kg^{-1}), and D_{crit} and f_0 are PFT-dependent parameters (Cox et al., 1998; Best et al., 2011).

2.2 Soil moisture stress in JULES and other terrestrial biosphere models

Many land surface, terrestrial biosphere, and crop models include a β function to represent the effect of soil moisture stress on vegetation. ~~The stress factor can be applied in various places, with~~ The implementation of the stress factor ~~can~~ generally be split into two categories: stomatal and biochemical limitation (Bonan et al., 2014; De Kauwe et al., 2015). JULES falls under the latter category, with potential leaf-level carbon assimilation, A_p , being converted to the water-limited net leaf photosynthesis through multiplication with the stress factor:

$$A = A_p \beta \quad (3)$$

Other land surface models apply biochemical limitation through reducing RuBisCO or reducing electron transport (e.g. ORCHIDEE, (Krinner et al., 2005)). CABLE applies limits to both the stomata (via reducing g_s) and A (De Kauwe et al., 2015).

Formatted: Subscript

In JULES, soil moisture stress (β , unitless) for each soil layer k is a function of volumetric water content (θ) in each layer (θ_k , $\text{m}^3 \text{m}^{-3}$) using:

$$\beta_k = \begin{cases} 1 & \theta_k \geq \theta_{upp,k} \\ \frac{\theta_k - \theta_{wilt,k}}{\theta_{upp,k} - \theta_{wilt,k}} & \theta_{wilt,k} \leq \theta_k \leq \theta_{upp,k} \\ 0 & \theta_k \leq \theta_{wilt,k} \end{cases}, \quad (4)$$

210 where θ_{wilt} and θ_{upp} are the water contents at the wilting point and at which the plant starts to become water stressed, respectively (Cox et al., 1998). θ_{upp} is a function of θ_{crit} , the critical water content (usually defined as the field capacity), and p_0 , a PFT-dependent parameter:

$$\theta_{upp} = \theta_{wilt} + (\theta_{crit} - \theta_{wilt})(1 - p_0) \quad (5)$$

215 The parameter p_0 was ~~recently~~ added to JULES_ (in version 4.6) to allow $\beta=1$ for $\theta < \theta_{crit}$, in other words delaying the critical threshold value for inducing stress onset of stress as soils initially dry below the field capacity. In the default configuration, p_0 is set to 0 (meaning $\theta_{upp} = \theta_{crit}$), and θ_{wilt} and θ_{crit} correspond to matric soil water matric potentials of -1.5 MPa and -0.033 MPa, respectively. Equation 4 means that, for each soil layer, soil moisture stress completely limits root water extraction from that layer if θ_k is at or below the wilting point ($\beta_k=0$), and-while there is no soil moisture stress ($\beta_k=1$) if θ_k is at or above $\theta_{upp,k}$. In between these points, there is a linear increase in stress (decrease in β_k) as water content decreases (blue line in Fig. 1). An effective root fraction per layer (r_k) is used to calculate ~~The overall soil moisture stress factor is calculated based on the water in each soil layer and the fraction of root mass in that soil layer r_k (as the latter co-determines root water extraction, see Eq. 7):~~

$$\beta = \sum_k^{n_{soil}} r_k \beta_k \quad (6)$$

Where

$$225 \quad r_k = e^{z/d_r} \quad (7)$$

In Eq. 7, z is the depth of each soil layer, and d_r is a PFT-specific parameter that weighs the effective root fraction within each layer (Fig. 2). r_k is an effective root fraction and is not the same as the actual root mass distribution, as it accounts for other traits and processes not present in JULES such as the surface area of roots, conductivity, and hydraulic redistribution. JULES has four soil layers ($n_{soil} = 4$) that together extend to 3 meters depth. The smaller the d_r , the more emphasis is given to shallow layers; while deeper layers are emphasized with a larger d_r . As a specific example: with JULES default soil depth of 3 m, 87% of the root water extraction is from the top 1 m for C_3 and C_4 grasses ($d_r=0.5$), compared to 45% in the top 1 m for tropical broadleaf evergreen trees ($d_r=3.0$). As Fig. 2 shows, d_r is not the root depth because roots are present in every soil layer, even though the fraction of roots is very small towards the bottom of the column for small values of d_r .

230 JULES has four soil layers ($n_{soil} = 4$) that together extend to 3 meters depth. The root mass distribution is assumed to decay exponentially with depth z , i.e. e^{-z/d_r} where d_r is a PFT specific parameter that gives the e-folding depth of root (Fig. 2). The stress factor is also applied to leaf maintenance respiration (and optionally to stem and root maintenance respiration). The

Formatted: Subscript

Formatted: Subscript

effective root distribution and stress factor also, and affects the fraction of total plant transpiration extracted from each soil layer, ϵ_k :

$$\epsilon_k^0 = \frac{r_k \beta_k}{\beta} \quad (78)$$

240 Although not used in this study, it is worth noting that many land surface and terrestrial biosphere models apply soil
moisture stress through limiting stomatal conductance (the 'stomatal' grouping from Bonan et al. 2014) (Egea et al., 2011;
Fatichi et al., 2012; De Kauwe et al., 2015). These include JSBACH and DLEM (Raddatz et al., 2007; Tian et al., 2010).
For example, CABLE uses β to modify the slope of the relationship between stomatal conductance and net photosynthesis
245 (De Kauwe et al., 2015). In other models (e.g. crop model WOFOST), they interact through allowing the actual or potential
evapotranspiration to impact the soil moisture threshold for unstressed vegetation (Tardieu and Davies, 1993). Models with
that limit stomatal limitations conductance from soil moisture stress can include the explicit consideration of the plant/soil
hydraulics (Williams et al., 1996; Zhou et al., 2013; Bonan et al., 2014; Mirfenderesgi et al., 2016; Eller et al., 2018;
Kennedy et al., 2019; De Kauwe et al., 2020) and/or chemical signalling, such as the abscisic acid (ABA) concentration in
the xylem sap (Tardieu and Davies, 1993; Dewar, 2002; Verhoef and Egea, 2014; Huntingford et al., 2015; Takahashi et al.,
250 2018). In other models, β can affect root growth and leaf senescence (e.g. (Arora and Boer, 2005; Song et al., 2013; Wang et
al., 2016)), or reduce mesophyll conductance (Keenan et al., 2010).

Field Code Changed

Field Code Changed

Field Code Changed

Field Code Changed

Field Code Changed

2.3.2 Alternative representations of soil moisture stress

In this study, we evaluated JULES GPP and LE using alternative parameterizations for β , based on a review of methods
255 found in the literature and supported by measurements. The ten experiments are summarized in Tables 1 and 2, including
settings in the default configuration. To summarize, these experiments aim to capture the impact of:

1. deeper soils and roots ('soil14' and 'soil14_dr*2' experiments, Sect 2.3.1);
2. reducing the critical soil moisture content below which stress begins to increase ('p0' experiments, Sect. 2.3.2);
3. using soil matric potential rather than θ to calculate soil moisture stress ('psi' experiments, Sect. 2.3.3);
- 260 4. emphasizing deep roots that may have small fraction of total root biomass, but can extract large amounts of soil water
('mod1' experiments, Sect. 2.3.4);
5. assuming a strong decay rate of root functioning for all PFTs ('soil14_dr0.5', Sect. 2.3.5).

Formatted: Font: Italic

2.3.2.1 Deeper soil column and roots (soil14 and soil14_deeprrootssoil14_dr*2)

265 Several studies have found that deep roots are an essential part of modelling plant drought responses (e.g. (Canadell et al.,
1996; Teuling et al., 2006; Baker et al., 2008; Akkermans et al., 2012; Wang and Dickinson, 2012). Canadell et al. (1996)
found that the global average maximum root depth is 7 ± 1.2 m for trees and 2.6 ± 0.1 m for herbaceous plants. We evaluated
the impact of deeper soils by using a 14-layer soil, extending to 10.8 m depth, which has been used in JULES to study soil

Formatted: Font: Not Bold

freeze/thaw dynamics in permafrost regions (Chadburn et al., 2015). In the 'soil14' experiments, n_{soil} increased from 4 to 14, and the thickness of each soil layer (dz_{soil}) was changed as in Table 1, to give a total depth of 10.8 m. This also increased the vertical resolution of layers in the top 2.8 meters of soil, which more accurate for solving the nonlinear Richards' equation (Mu et al., 2021). The parameter d_r remained unchanged, giving the effective root profiles shown in the colored lines in the middle panel of Fig. 2. As a result, for C_3 and C_6 grasses ($d_r = 0.5$), 99% of root water extraction was from the top 2.4 m, while for tropical broadleaf evergreen trees ($d_r = 3$) 95% of root water extraction was from the top 7.8 m. These numbers compare well to the observed maximum rooting depths (Canadell et al., 1996).

To evaluate the impact of placing more emphasis on deeper soil layers (in Eqs. 6 and 8), we doubled d_r in an additional experiment ('soil14_dr*2'). In these experiments, 99% of root water extraction was from the top 4.8 m for C_3/C_6 grasses ($d_r = 1$), and for tropical evergreen trees ($d_r = 6$), 87% of root water extraction was from the top 7.8 m. In 'soil14_deeproots', we doubled d_r , which gave more emphasis to deeper layers in Eqs. 6 and 7.

2.2.3.2 Delayed onset of stress (p0 and soil14_p0)

Measurements of transpiration rates show that plants do not limit transpiration until intermediate levels of soil dryness occur (Fig. 1) (Verhoef and Egea, 2014). In JULES, a delay of stress having no stress until soils dry below field capacity can be represented with the parameter p_0 (Eq. 5), where a value of 0.4-0.5 for p_0 would capture the range of responses found in Verhoef and Egea (2014). In the 'p0' experiments, we used $p_0 = 0.4$ to capture the delayed onset. This was done with both the 4 layer (p0) and 14 layer (soil14_p0) soils.

2.2.3.3 Curvilinear response (psi and soil14_psi)

While Eq. 4 assumes a linear increase in stress as water content decreases, some models assume a curvilinear increase in stress (Sinclair, 2005; Oleson et al., 2010; Egea et al., 2011), or an S-shaped curve (Tardieu and Davies, 1993; De Kauwe et al., 2015). Nonlinear responses can be represented by a parameter to induce curvature (Egea et al., 2011) or through using the soil matric potential ψ , rather than θ :

$$\beta_{\psi,k} = \frac{\psi_k - \psi_{close}}{\psi_{open} - \psi_{close}} \quad (89)$$

Here, ψ_{open} is the soil matric potential above which $\beta = 1$, and ψ_{close} is the soil matric potential below which $\beta = 0$. We set ψ_{open} and ψ_{close} to -0.033 and -1.5 MPa, respectively, which are typical values for field capacity and wilting point. Models that use soil water potential include (Verhoef and Egea, 2014; Fatichi et al., 2012; Manzoni et al., 2013; Lawrence et al., 2019), while other models use leaf water potential (e.g. (Tuzet et al., 2003; Christina et al., 2017)). In the 'psi' experiments, we replaced Eq. 4 with Eq. 89, and set ψ_{open} and ψ_{close} to -0.033 and -1.5 MPa, respectively. This was done with both the 4 layer (psi) and 14 layer (soil14_psi) soils.

2.2.3.4 Remove root-weighted access to soil moisture (mod1 and soil14_mod1)

~~Consideration of root distribution and thickness of soil layers, and related depth of soil profile, also varies across models.~~

The measure of water availability for β can be a function of each layer's water content (Eq. 6), or water in the wettest layer (Martens et al., 2017), or the contribution of the water in each layer can be weighted by the root density or plant and soil

Formatted: Subscript

Formatted: Subscript

Formatted: Subscript

Formatted: Subscript

hydraulics (Oleson et al., 2010; Christina et al., 2017). Another approach is to use a function of water in the whole root column (θ), rather than layer-by-layer, which is equivalent to assuming that plants can access water anywhere in the soil column, ~~as long as if~~ there are roots present (Baker et al., 2008; Harper et al., 2013):

$$\beta_{mod1} = \frac{\theta - \theta_{wilt}}{\theta_{upp} - \theta_{wilt}} \quad (109)$$

In this approach, root water extraction per layer is weighted by layer thickness (dz_{soil}) rather than by beta:

$$\epsilon_k^0 = dz_{soil}(\theta_k - \theta_{wilt}) \quad (1011)$$

In the 'mod1' experiments, Eqs. 4 and 6 were replaced with Eq. 910; and Eq. 7-8 was replaced with Eq. 4011. In addition, d_r was implemented as the maximum root depth instead of the e-folding depth and was double its default value (with a maximum depth of 3 m). ~~The effective r~~Root fraction in each soil layer was set equal to the ~~proportional layer~~thickness of each layer, up to the maximum depth of roots. In 'soil14_mod1', d_r was double its default value (Table 2), but without enforcing a maximum depth of 3m, ~~resulting in root profile given by the dashed line in Fig. 2 (middle panel). With the default interpretation of d_r , roots are present in every layer, but in these experiments plants could not access water at depths below the parameter d_r . Therefore, this approach should benefit deep-rooted PFTs, as they could access more of the soil column than shallow-rooted grasses and shrubs.~~

2.2.3.5 Exponential decline of roots with depth (soil14_realrootssoil14_dr0.5)

The ~~effective~~ root profile from grasses with $n_{soil}=14$ and depth of 10.8_m more closely resembles the ~~often~~ observed rapid decay of root biomass with depth than the profiles for other PFTs (Zeng, 2001) (Fig. 2, right panel). We evaluated the impact of using more realistic root distributions by setting d_r to 0.5 for all PFTs in the 'soil14_realrootssoil14_dr0.5' experiment.

Essentially, this gave more emphasis to shallow layers in calculating root water extraction and β , and ~~was as~~ an opposite approach of the 'mod1' experiments, which gave more emphasis to the thickest soil layers.

2.2.6 Stomatal limitation

~~Although not used in this study, it is worth noting that many land surface and terrestrial biosphere models apply soil moisture stress through limiting stomatal conductance (Egea et al., 2011; Fatichi et al., 2012; De Kauwe et al., 2015). These include JSBACH and DLEM (Raddatz et al., 2007; Tian et al., 2010). For example, CABLE uses β to modify the slope of the relationship between stomatal conductance and net photosynthesis (De Kauwe et al., 2015). In other models (e.g. crop model WOFOST), they interact through allowing the actual or potential evapotranspiration to impact the soil moisture threshold for unstressed vegetation (Tardieu and Davies, 1993). Models with stomatal limitations from soil moisture can include the explicit consideration of the plant/soil hydraulics (Williams et al., 1996; Zhou et al., 2013; Bonan et al., 2014; Mirfenderesgi et al., 2016; Eller et al., 2018; Kennedy et al., 2019; De Kauwe et al., 2020) and/or chemical signalling, such as the abscisic acid (ABA) concentration in the xylem sap (Tardieu and Davies, 1993; Dewar, 2002; Verhoef and Egea, 2014; Huntingford et al., 2015; Takahashi et al., 2018). In other models, β can affect root growth and leaf senescence (e.g. Arora and Boer, 2005; Song et al., 2013; Wang et al., 2016), or reduce mesophyll conductance (Keenan et al., 2010).~~

Field Code Changed

Field Code Changed

Field Code Changed

Field Code Changed

Field Code Changed

2.3.4 Model set up and evaluation

335 We evaluated JULES at 42-40 sites covering eight general biome types from the tropics to the Arctic (Fig. 3, SM Table 1).
Each JULES simulation was run with meteorological measurements taken at each site (i.e. point-scale runs rather than
simulating the entire gridbox). The meteorological and flux tower observations were obtained from the LBA Model
Intercomparison Project (sites with 'LBA' in the name) or FLUXNET2015 dataset (Pastorello et al., 2020). We selected sites
with soil moisture measurements at the time of our original data request (July 26, 2016). At each site, we extracted
340 temperature, precipitation, wind speed, surface pressure, specific humidity, longwave and shortwave radiation for running
JULES at either half-hourly or hourly resolution, depending on the data available. We then used measured LE and calculated
GPP as supplied in both datasets (for the FLUXNET2015 data, these are variables LE_F_MDS and GPP_NT_VUT_REF,
respectively). Details of the data pre-processing are provided in the SM. The FLUXNET2015 data was filtered for periods
with low u^* based on the variable Ustar threshold (VUT) method. NEE was partitioned into GPP and Reco based on the
345 nighttime method of Reichstein et al. (2005). All fluxes and meteorological variables were previously gap-filled following
the MDS method in Reichstein et al. (2005). The LBA data was also gap-filled and u^* filtered using site-specific u^*
thresholds (Restrepo-Coupe et al., 2013). In the FLUXNET2015 data, a relationship between Reco and T_a was
parameterized based on nighttime data and applied to the whole dataset to partition NEE into GPP and Reco (Reichstein et
al., 2005), while in the LBA dataset Reco was derived based on the u^* filtered nighttime NEE (not including temperature
350 which was not observed to correlate with NEE at night, for details see (Restrepo-Coupe et al., 2013).

For sites with soil moisture data, we individually contacted site PIs to gather details on the depth of the measurements and
other details on soil texture, physical properties, and root depth. This resulted in a subset of 21 sites with soil moisture
measurements. We also collected data from site PIs on LAI. Fourteen sites had both LAI and SM data. Often the time period
of LAI/SM measurements was shorter than the full record, and we only ran JULES for the time periods with the most data to
355 avoid the need for gap-filling. The time periods of the simulations and soil layers for prescribing data are provided in Table
SM1.

The default plant parameter set was taken from Harper et al. (2016). When LAI was not prescribed, we used the JULES
phenology scheme to predict LAI. This scheme predicts leaf growth and senescence based on temperature alone. The
fractions of each PFT (or bare soil) present at the site were determined from the vegetation class (Tables SM1, SM2). We
360 calculated soil properties from information supplied by site PIs where possible; otherwise, we used the gridbox sand, silt,
clay fractions of the Met Office Central Ancillary Program (CAP) high resolution input file (Dharssi et al. 2009) to derive
the Brooks and Corey (1964) parameters, along with the approximations of the parameters (via pedotransfer function)
required for the soil hydraulic properties as detailed in Cosby et al. (1984) (Table SM3). The soil properties are available
with the files used to run JULES (see data availability). Each simulation began with a 50-year spin-up of the soil moisture
365 using recycled meteorology.

This evaluation focused on seasonal and annual timescales of fluxes. We started with daily measurements from the sites, then masked any modelled outputs on days when measurements were not available and calculated monthly means when >50% of the data was present. To evaluate the model performance, we used four metrics: normalized absolute error (NAE), variance ratio (VR), correlation coefficient (r), and root mean squared error (RMSE). The NAE compares flux estimates to measured values averaged over the entire simulation period gives an indication of the average model-data mismatch:

$$NAE = \frac{\overline{X_{obs} - X_{mod}}}{\overline{X_{obs}}} \quad (11)$$

where X_{obs} is the observed flux, X_{mod} is the modelled flux, and the overbar denotes an average taken over the entire simulation period. The other metrics were calculated from monthly mean fluxes. The VR is the ratio of variance in the simulations to the observations. For a perfect fit, the VR would be 1: lower values mean the model variance is too low, and vice versa (Carvalho et al., 2008). R is the Pearson's correlation coefficient and it gives an indication of model-data agreement on both a seasonal and year-to-year timescale. For the soil moisture stress experiments, we used Taylor diagrams and RMSE based on annual-monthly mean fluxes to evaluate the best fit, along with RMSE from fluxes averaged over daily and monthly periods, and VR and correlation calculated from monthly fluxes.

3. Results

3.1 Simulated GPP and ET

On average, JULES matched the pattern of observed seasonal cycle of GPP well for sites in non-agricultural biomes in temperate and cold climates (mean $r > 0.8079$) (Fig. 4, Table 3). The correlation was fairly good (mean $r > 0.60$) for sites in tropical grasslands and savannahs savannas (mean $r > 0.70$), and cropland ($r = 0.67$). However, the seasonal cycle was not well represented for sites in tropical dry forests (mean $r = 0.43$) or tropical evergreen forests (mean $r = -0.10$).

In terms of model biases, the NAE was lowest (mean < 0.2) for GPP at tropical evergreen forest, cropland, temperate grassland, and temperate woody savannahs savanna sites, while NAE was highest in tropical grassland, tropical savanna, and cold grassland sites (mean > 0.50) (Fig. 5). The variance ratio (VR) indicates the amount of simulated variability in comparison to observations. On average, VR was between $0.55 - 0.92 + 5$ for sites in tropical savannahs savannas, temperate non-agricultural biomes, and boreal forest. A low VR indicates that simulated variability (either magnitude of seasonal cycle or interannual variability) was too low – this was the case for sites in cold grasslands and cropland (average VR of 0.35 and 0.21, respectively). Conversely, a high VR indicates that simulated variability was higher than observed, and this was seen for sites in tropical dry and evergreen forests and tropical grasslands had an average VR of 4.8, 5.5, and 4.8, respectively. In this case, the error was due to a higher than observed and overestimated seasonal cycle (ie LBA-K67 in Fig. 56).

Certain patterns emerged with regards to the skill of the JULES model to predict observed GPP within the biomes which occur in multiple climates (evergreen needle-leaf forests, grasslands, and savannahs), indicating that the model tends to perform best in temperate midlatitude climates. First, the average bias-NAE was higher and the correlation (r) was lower at

400 the sites with a Mediterranean climate (e.g. IT-CA1) compared to the other temperate mixed forest sites for temperate forest sites was 0.15 and 0.92, compared to 0.51 and 0.75 for the three sites in a Mediterranean climate (IT-CA1, IT-Ren, and IT-Col). Second, sites in temperate grasslands had an average NAE of 0.35 and were better simulated than those in cold and tropical grasslands (The NAE values were more than three and six times as high for sites in cold and tropical grasslands NAE = 0.50 and 0.99, respectively), compared to those in temperate grasslands. Third, NAE also was significantly higher for sites in tropical savannahs (NAE=0.79) compared to those in more temperate savannahs sites in the US (NAE=0.14).

405 The model performance was also more related to climate than biome for LE. On average, the seasonal cycle of LE was well simulated for sites outside of the tropics (mean r per biome > 0.84), and for sites in tropical savannahs (r=0.79) (Table 4, Fig. SM1). However, in tropical dry and evergreen forests and tropical grasslands, the seasonal cycle was overestimated, as indicated by low correlations (mean r=0.52, 0.29, 0.35, respectively) and high variance ratios (mean VR=1.9, 3.8, 5.2, respectively). Model variance was close to observed for the tropical savanna sites (VR=0.99). With the largest biases occurring for sites in the tropics like for GPP, the highest NAE occurred in temperate mixed forests (NAE=0.55) (Fig. SM2). On average, the seasonal cycle of LE was well simulated for sites outside of the tropics (mean r per biome > 0.8), and for sites in tropical savannahs (r=0.79). The NAE was lowest for the cropland sites in temperate grasslands and croplands (NAE=0.03<0.05), followed by tropical evergreen and dry forest sites (NAE=0.13 for both), and tropical savannah sites. Model variance was close to observed for the tropical savannah sites, but it was too high for the other tropical biome sites.

3.2 Role of soil moisture stress in GPP errors

415 Based on the above analysis, on average the model performance is poorest for At the sites with the poorest model performance for GPP (evergreen broadleaf sites, Mediterranean climates, cold and tropical grasslands, and tropical savannahs savannas, W), we compared the GPP that JULES would calculate if there was no soil moisture stress to the actual simulated GPP (Fig. 56, Fig SM5SM3), to elucidate the role of soil moisture stress in generating model bias from 3.1. This was possible through a new diagnostic added to the model, which output GPP prior to multiplication by β . At the tropical forest sites (GF-Guy, LBA-K34, LBA-K67, LBA-K83, and LBA-BAN), simulated GPP (standard approach) decreased during the dry season, while the unstressed GPP and observed GPP remained high or even increased during dry seasons (Figs. SM3-4), which indicates that the model was over-estimating soil moisture stress during the dry season. At the tropical grassland and savannahs savanna sites (AU-Fog, CG-Tch, LBA-PDG, LBA-K77, and LBA-FNS), the modelled GPP (standard approach) was often too high, and the unstressed GPP was even higher. An exception was ZA-Kru, where the observed GPP was somewhere in between simulated GPP and unstressed GPP. There were mixed results for the sites with a Mediterranean climate (IT-CA1 deciduous broadleaf forest, US-Ton woody savanna, and US-Var grassland); stress was impacting the GPP but other processes were also affecting the simulation. For example, at IT-CA1 the modelled GPP was very close to measured values when observed soil moisture and LAI were used, indicating that errors in soil hydrology and

phenology were important at this site. At other semi-arid sites (IT-Col deciduous broadleaf forest, US-Ton, and US-Var), the bias occurred during the peak growing season, when JULES GPP was lower than observed but unstressed GPP was closer to observations, indicating that soil moisture stress was impacting results at these sites. In the cold grassland sites, soil moisture stress sometimes resulted in too low underestimated GPP (e.g. RU-Che), potentially because plants could not access frozen soil moisture, possibly due to JULES not simulating enough unfrozen soil moisture at these sites. Conversely, at two temperate climate grasslands (AT-Neu and CH-Cha), the simulated GPP was too low even with soil moisture stress removed. Other sites where JULES showed a large improvement with the unstressed GPP were the Aspen-aspen site in Canada (CA-Oas), Tharandt evergreen needleleaf forest in Germany (DE-Tha), the deciduous broadleaf forest in Belgium (BE-Vie), and the cropland site (US-Ne1). This analysis gives a list of sites that are useful for further exploring the role of soil moisture status in vegetation functioning: all sites with a Mediterranean climate or in tropical forests, as well as ZA-Kru, RU-Che, CA-~~Oas~~Oas, DE-Tha, BE-Vie, and US-Ne1.

When prescribing soil moisture and LAI (see Sect. 2.3), the general trends in model performance were similar to prior simulations the same as before, although often the simulated GPP was less realistic with more prescribed data. This could be due to compensating other errors within JULES (i.e. with regards to the soil physical parameterizations related to infiltration or soil evaporation, see also (Van Den Hoof et al., 2013)). The simulations at the tropical evergreen forest sites still did not resemble the measured GPP (as indicated by very low or negative correlations), even with prescribed LAI and soil moisture.

It is possible that soil layers below those typically measured are influencing the forests soil water balance and canopy exchange processes, so more data are needed to accurately prescribe the full soil moisture profile. Only 14 sites had enough data to prescribe both soil moisture and LAI from site observations (Sect. 2.3.4), and often the time resolution of data was monthly which for soil moisture could miss impact of extremely wet or dry periods. However, most often adding the LAI data resulted in an improved simulation of GPP, indicating biases resulting from the JULES phenology scheme. The improvements with incorporation of prescribed LAI were particularly large for the cropland sites, and at LBA-RJA, which is a seasonally dry tropical forest.

We categorize the sites depending on the impact of soil moisture stress on their simulation of GPP with the most available prescribed data (for example, in the simulation with soil moisture and LAI prescribed at LBA-BAN, and for the simulation with soil moisture only at CN-HaM). The four categories are:

- 1. Sites with *underestimated* GPP: Simulated GPP was lower than observed. However, β was often 1, and removing soil moisture stress had a small effect on the simulation, indicating the importance of other processes in regulating GPP at these sites. Two tropical (LBA-K34, LBA-RJA) and two temperate grasslands (AT-Neu, CH-Cha) sites fall into this category
- 2. Sites with *overestimated* GPP: Simulated GPP was higher than observed, so removing soil moisture stress increased GPP and made the simulation worse. This category includes one tundra site (CN-HaM), a Mediterranean woodland (IT-CA1), two coniferous evergreen forests in Finland and Italy (FI-Hyy and IT-Ren), an arid grassland (US-SRG) and two tropical savannah savanna sites (CG-Tch, SD-Dem).

Formatted: List Paragraph, Numbered + Level: 1 +
Numbering Style: 1, 2, 3, ... + Start at: 1 + Alignment: Left +
Aligned at: 1.27 cm + Indent at: 1.9 cm

465 •3. *Soil moisture stressed* sites: As in the first set of sites, there was a low bias in GPP, but removing soil moisture stress improved the simulation. The “stressed” sites includes three temperate mixed forests (BE-Vie, DE-Tha, and US-UMB), a Mediterranean deciduous forest (IT-Col), a boreal Aspen-aspen forest (CA-Oas), a tropical evergreen forest (GF-Guy), and a cropland site (US-Ne1).

470 •4. *Stressed sites plus other errors*: At several sites, removing soil moisture stress made the simulation slightly better, but apparently other missing processes also affect the simulation. The difference between this category and the *soil moisture stressed sites* is the fact that there would still be a large bias even without soil moisture stress. Sites in this category include tropical forests (LBA-Ban, LBA-K83, LBA-K67), cropland (US-Ne2, US-Ne3), two savannahsavanna sites (ZA-Kru and US-SRM), and a tundra site (RU-Che).

475 The challenge is to determine a representation of soil moisture stress which improves the simulations at sites falling into categories 3 and 4 without degrading the simulation at the other sites. Clearly, we do not want to completely remove soil moisture stress as this plays an important role in regulating seasonal cycles in many ecosystems. In the remainder of the paper, we will focus on examples of changes at some of these sites.

3.3 New treatments of soil moisture stress

480 We ran the ten experiments (Section 2.23, Table 1) at a subset of 11 sites that span the categories listed in Section 3.2. This included four sites where soil moisture stress leads to large was the main contributor to model biases: (soil moisture stressed sites GF-Guy, BE-Vie, DE-Tha, and CA-Oas), sites with a Mediterranean climate (IT-Col, US-Var, US-Ton), and sites with soil moisture stress plus other errors (LBA-K67, LBA-BAN, ZA-Kru, and RU-Che). Because some experiments focused on extending the soils far below the deepest soil moisture measurements available, we were unable to use prescribed data for these experiments. Taylor diagrams for GPP and LE for all sites are shown in Figs. SM5 and SM7, respectively; and seasonal cycles of GPP, simulated β , and LE are shown in Figs. SM6 and SM8.-

3.3.1 Soil moisture stressed sites

485 At these sites, there was an improvement when the 14 layer soil is-was combined with model settings p_0 , psi, or deeproots dr*2 (representing, respectively, setting p_0 in Eq. 3 to 0.4; using Eq. 89, that depends on the soil matric potential, to represent β ; and having a deeper root profile doubling the parameter d_i). Monthly RMSE decreased from 2.230 gC m⁻² d⁻¹ on average to 1.5947, 1.5444, and 1.7357 gC m⁻² d⁻¹, respectively in the soil14_p0, soil14_psi, and soil14_deeprootssoil14_dr*2 experiments, averaged across the four sites. There was also an improvement in the VR (from >2 for the default simulation to 0.92-1.0 for the above-listed experiments) and the correlation coefficient (from 0.74 to 0.86-0.88)(Table 5). The VR reduced from 2.15 in the default simulation to nearly 1 in the soil14, soil14_p0, and soil14_mod1 experiments. For LE, the RMSE was slightly higher in these experiments (22.3457, 22.2249, and 20.4477 W m⁻², respectively for soil14_p0, soil14_psi, and soil14_deeprootssoil14_dr*2) compared to the default experiment (19.5378 W m⁻²), and the correlation coefficient was

Formatted: Font: Bold

495 >0.8281 (Table SM4). Taylor diagrams for GPP and LE for all sites are shown in Figs. SM8 and SM11; and seasonal cycles of fluxes and simulated β are shown in Figs. SM9, 10, and 11.

For example, At the tropical forest site (GF-Guy), experiments with default 3 m soil depth s had correlation coefficients $r < 0.4$, and an exaggerated seasonal cycle, as indicated by the high normalized standard deviation in the Taylor diagrams (Fig. 67). In the soil14_p0, soil14_psi, and soil14_deeprootssoil14_dr*2 experiments, the correlation r was > 0.7 (compared to 0.2 in the default configuration), and the standard deviation was closer to observed. The GF-Guy site experienced the lowest amount of soil moisture stress in the soil14_p0 and soil14_psi experiments, which led to a more realistic simulation of GPP at this site (Fig. 78). Giving the model a more realistic Using a shallower effective root profile that decayed exponentially with depth (setting d_r to 0.5*soil14_realroots²) produced the worst results, and β was very low during the dry season at the tropical forest sites in the 'soil14_dr0.5' experiments (Fig. 8). In the 'soil14_realrootssoil14_dr0.5' simulation, β was still weighted by root distribution, so the dry top soil layers had a relatively large impact on the stress experienced by the plants. This is further illustrated in Figure SM7 at the LBA-K67 site, which plots β against soil moisture in the top 1 m. When $d_r = 0.5$ m (as in 'soil14_realroots'), there were proportionally more roots in the top soil layers, and as these dried out, there was a sharp decline in β . In comparison, with $d_r = 3$ m (the default value) the trees were able to access water from deeper layers, so β did not decline as rapidly. As a result, β was very low during the dry season at the tropical forest sites in the 'soil14_realroots' experiments (Fig. 7). Another site in the 'soil moisture stressed' category was DE-Tha, where most simulations yielded reasonable results ($r > 0.9$) (Fig. 7). Only the default and 'soil14_realrootssoil14_dr0.5' simulations produced results outside the standard deviation of measured GPP (Fig. 8). Variability (denoted by standard deviation in the Taylor diagram as well as VR close to 1) was best in the soil14_p0, p0, soil14_psi, and psi simulations.

3.3.2 Mediterranean climate sites

At the sites with a Mediterranean climate (IT-Col, US-Var, US-Ton), soil14_psi and soil14_p0 removed the most stress, but p0 and psi with the default soil depth also produced a good fit for GPP (Figs. SM5b, SM6b, Table 6). However the RMSE for LE was significantly higher in these four experiments (RMSE=22.55, 23.59, 25.52, and 26.09 W m⁻² for the p0, psi, soil14_p0 and soil14_psi experiments, respectively, compared to 19.67 W m⁻² in the default simulation), while the correlation coefficient was high for these four experiments ($r = 0.85$ – 0.87 compared to 0.88 in the default) (Fig. SM7b, Table SM5). US-Var and US-Ton are dominated by grass and shrubs, which have an effective root depth d_r of 0.5 m and 1 m, respectively. At these sites, the 'soil14_mod1' experiments had $\beta < 0.5$, and GPP was underestimated during the growing season (Fig. SM6b). (In these experiments, access to soil moisture was not weighted by effective root fractions, d_r was double its default value, and it was interpreted as the maximum root depth.) This meant that grasses and shrubs could not access water below 1 m and 2 m depth, respectively, resulting in the strong soil moisture stress seen at the US-Ton and US-Var sites.

3.3.3 Sites with soil moisture stress and other errors

Formatted: Font: Bold

Formatted: Font: Bold

At the sites with *soil moisture stress plus other errors*, there were fewer improvements although RMSE decreased from 2.81 gC m⁻² d⁻¹ in the default simulation to 2.08, 2.14, and 2.17 gC m⁻² d⁻¹ in the soil14_psi, soil14_p0, and soil14_deeprootssoil14_dr*2 simulations, respectively (Figs. SM5c, SM6c, Table 7). These sites are LBA-K67, LBA-BAN, ZA-Kru, and RU-Che. The VR was best captured in the soil14_deeprootssoil14_dr*2 simulations, while the correlation coefficient was highest in the default simulation and in the soil14_realrootssoil14_dr0.5 simulation. At LBA-K67 (a tropical forest site), soil14_psi and soil14_p0 had the lowest RMSE and seasonal variation in GPP, although for all experiments the correlation coefficient was negative (Fig. SM5c). When $d_r=0.5$ m (as in 'soil14_dr0.5'), there were proportionally more roots in the top soil layers, and as these dried out, there was a sharp decline in β . This is further illustrated in Figure SM9 at the LBA-K67 site, which plots β against soil moisture in the top 1 m. In comparison, with $d_r=3$ m (the default value) the trees were able to access water from deeper layers, so β did not decline as rapidly. At ZA-Kru, all results were within the range of the measurements, although the growing season GPP was underestimated (Fig. SM6c). At LBA-BAN, soil14_deeprootssoil14_dr*2, soil14_psi, and soil14_p0 gave lowest RMSE, but VR was very high (>3) and the correlation coefficient was low ($r<0.4$) for all simulations. There was very little difference between any of the simulations at RU-Che, and β was <0.25 year-round for all experiments. For LE, there was a significant reduction in RMSE from 22.54 W m⁻² to <18 W m⁻² for all experiments with 14-layer soil (except for 'soil14_realroots') at these sites (Table SM6). The correlation coefficient was also significantly improved in these experiments (from 0.48 in the default simulation to >0.67). The exception to these improvements was the 'soil14_dr0.5' experiment, where the RMSE increased to 25.17 W m⁻² and correlation coefficient decreased to 0.35.

3.3.4 Average response across sites

Averaging across the ten-11 sites where we performed additional experiments, the lowest RMSE for GPP occurred in the soil14_p0, soil14_psi, and soil14_deeprootssoil14_dr*2 experiments (on both daily and monthly timescales). The variability was best captured by the soil14, soil14_p0, and soil14_psi experiments (as denoted by VR close to 1 of 1.06, 1.06, and 0.98, respectively). The mean correlation coefficient was similar across all experiments (0.50–0.5657). All of the experiments were an improvement compared to the default configuration, except for the p0, mod1, and soil14_dr0.5 experiments.

For LE, averaged across all sites, the daily and monthly RMSE was similar across experiments lowest for the soil14 experiment, and this was the only experiment with RMSE lower than the default configuration. There was an improvement in the VR for the soil14, soil14_p0, soil14_psi, soil14_mod1, and soil14_dr*2 experiments, compared to the default (with VR between 1.26–1.44 compared to 1.58 in the default), but VR was closest to 1 in the soil14 and soil14_deeproots experiments. The correlation was highest ($r=0.7574$ –0.76 compared to default $r=0.70$) for all experiments with a 14-layer soil, except for the 'realroots' experiments soil14_dr0.5.

4. Discussion and Conclusions

4.1 Default model configuration

Formatted: Font: Bold

Formatted: Font: Bold

Tables 3-4 summarize some of the key findings from this study pertaining to the default configuration. JULES simulated GPP was more realistic in temperate biome sites than in the tropics or high latitudes/cold region sites, as indicated by three statistics to measure annual biases (NAE), seasonal cycles (r), and variability (VR). LE was best simulated in temperate and high latitude/cold sites based on the same statistics (except for temperate mixed forests). For sites in the tropics, the default β parameterization contributed to an exaggerated seasonal cycle of GPP compared to the measurements, especially in tropical evergreen forests. Although the ~~absolute error~~NAE was low in tropical evergreen forest sites (e.g. LBA sites K34, K83, K67, and BAN ~~for example~~), the seasonal cycle was overestimated (despite LAI being nearly constant all year), as indicated by high VR and low correlation coefficients. A similar result was observed with LE in most tropical sites: the seasonal cycle was incorrect and the VR was high. For example, at LBA-K67, the measurements show an increasing trend in GPP from August to October (coinciding with the dry season), while JULES predicted a decreasing trend during this time. Even with soil moisture and LAI prescribed for the four tropical evergreen forest sites, the correlation coefficients were negative. At these sites, it is possible that including a seasonally varying photosynthetic capacity would improve the results, as in (Wu et al., 2017). The dry season is often accompanied by enhanced carbon uptake in Amazon forests, due to a combination of fewer clouds and increased incoming solar radiation (Saleska et al., 2003; Restrepo-Coupe et al., 2013; Von Randow et al., 2013; Zeri et al., 2014) and seasonal leaf flushing (Wu et al., 2016). The observed seasonality in GPP is enabled by deep roots that can access ample soil moisture, and by the relatively high photosynthetic capacity of new leaves (Wu et al., 2017), a process not yet represented in JULES.

Other errors, possibly linked to phenology, also contributed to model biases in tropical ~~savannah~~savanna and deciduous forest sites. The improvements seen when LAI was prescribed at LBA-RJA (a seasonally dry tropical forest site) further suggest that JULES' lack of a moisture-driven phenology scheme could be affecting the results at this site. LBA-RJA serves as interesting comparison to LBA-K67: RJA receives a similar amount of annual rainfall, but the dry season is more intense, with about half as much rainfall during the dry season compared to K67 (Restrepo-Coupe et al., 2013). The bedrock is relatively shallow at RJA (2–3 m) (Christoffersen et al., 2014) ~~Christoffersen et al. (2014)~~, therefore deep soil moisture is not present. At this site, measured GPP drops steadily from January until reaching a minimum in the middle of the dry season. JULES captured this seasonal cycle very well, although the amplitude was slightly dampened with predicted GPP being higher than observed during most of the year (with prescribed LAI and soil moisture).

In cold grassland sites, JULES underpredicted the variability of GPP and had high annual biases. The biases were due to very little GPP being simulated, with β being low year-round. At RU-Che, giving more emphasis to deeper layers (~~in the 'mod1' experiment or~~ with 'soil14_deeprootssoil14_dr*2') did not increase GPP – which is not unexpected due to the presence of frozen soils both in the simulations and in reality at this site (Merbold et al., 2009a). The C_3 grass PFT at this site has most roots in the top 0.5m, which indicates that evaporation or sublimation could be drying the soils too much in the layers with the most roots and unfrozen soil moisture content.

[4.2 Overview of alternative approaches for representing soil moisture stress](#)

Formatted: Subscript

We found that three alternative approaches to calculating soil moisture stress produced more realistic results than the default parameterization for most biomes and climates: 14-layer soil with a curvilinear stress response function ('soil14_psi', Eq 89), 14-layer soil with delayed induction of stress ('soil14_p0', Eq. 3), and 14-layer soil with deeper roots ('soil14_deeprootssoil14_dr*2'). ~~Within the default configuration, LE biases were greatest~~For LE, the biases were highest ~~in the default configuration~~ in temperate mixed forests, with overestimation occurring during Spring-Autumn. At these sites, reducing soil moisture stress (i.e. with soil14_psi, soil14_p0, and ~~soil14_deeprootssoil14_dr*2~~) increased LE and ~~made the simulation worse~~increased RMSE, but improved the simulated seasonal cycle and variance. Further evaluation into the reason for the high bias in LE at many of the sites would enable improvements in both carbon and energy fluxes with new parameterizations for β .

There is ample justification for having deeper soils and roots in JULES. Total soil column depth and root distribution determine the total amount of water and nutrients available to plants. Deep roots can access soil moisture at depth (Christina et al., 2017) and potentially the water table, and hence contribute to tree transpiration during dry periods, e.g. for GF-Guy where many canopy trees are not impacted by dry season droughts (Stahl et al., 2013a; Stahl et al., 2013b). Deep roots have been found to be important for many vegetation types and ecosystems (Canadell et al., 1996; Pierret et al., 2016; Germon et al., 2020); for multiple tree species in tropical forests (~~e.g.~~(Nepstad et al., 1994; Jipp et al., 1998; Strey et al., 2017; Brum et al., 2019), for Acacias in semi-arid ~~savannahs~~savannas such as SD-Dem (Ardö et al., 2008), and for fast-growing Eucalypt and Acacia mangium plantations in Brazil (Christina et al., 2011; Laclau et al., 2013; Germon et al., 2018), to name a few examples. In particular, in tropical forests, the global average maximum rooting depth is approximately 7 m (Canadell et al. 1996). These examples contrast with the shallow soils (3 meters) in the default JULES simulations. In addition, weighting root water uptake or soil moisture stress by fraction of roots in each layer could produce too much stress, if the shallow layers (with the most roots) dry out too quickly. Deep roots are very efficient at moving water, for example, specific hydraulic conductivities (K_s) of deep roots can be as much as 15 times higher than K_s of superficial roots for *Banksia* sp (Pate et al., 1995), and deep roots can redistribute water from deep to shallow layers (Caldwell et al., 1998; Burgess et al., 2001; Oliveira et al., 2005). However, not all plants rely on deep roots during a drought (Prechsl et al., 2015; Brinkmann et al., 2019), and ~~at sites dominated by grasses and shrubs there were high biases in the 'soil14_mod1' experiments (-we did not find consistent improvements when-weighting the contribution of each layer's β ; by the thickness of that layer (the 'mod1' experiments)-rather than by the effective root fraction of roots-in that layer).~~ Studies with other land surface models have drawn similar conclusions. This approach was similar to results from (Baker et al., 2008), where they found that increasing the soil column from 3.5_m to 10_m and allowing roots to access this entire reservoir improved the fit of the SiB3 model to observations at the LBA-K83 site (Baker et al., 2008). Similarly, the ability of the G'Day ~~process-based~~model to accurately simulate wood production in fast-growing sub-tropical plantations was considerably improved by accounting for tree ability to uptake water in deep soil layers (Marsden et al., 2013). On the other hand, using the default calculation for β with ~~a more realistic root distribution parameterised by an e-folding~~ depth $d=0.5$ _m emphasized shallow layers, and the ~~increased~~ overall

Formatted: Font: Italic

625 soil moisture stress increased at most sites ~~and, produced resulting in~~ a poor fit to measured GPP and LE in the
'soil14_dr0.5' experiments.

4.3 Outlook for modelling soil moisture stress in JULES and other land surface models

In this study, we used flux tower observations and detailed site information when possible. Working with site researchers enabled us to narrow down reasons for model biases by prescribing soil moisture and LAI at some sites, and to better
630 understand mechanisms of drought responses at others. These are invaluable benefits of working with site-level data. However, there is potential to extract even more information from available datasets to improve the representation of soil moisture-vegetation interactions (Gentine et al., 2019). This includes better utilisation of satellite data, and one particular opportunity is to consider soil moisture measurements in parallel with those of solar-induced fluorescence, which is used to estimate photosynthesis (Lee et al., 2013). Satellite records have large spatial coverage, and modern machine learning
635 algorithms could be used to characterise Earth Observationed datasets of drought conditions (Huntingford et al., 2019). Such methods could address the difficulty in modelling the high complexity and geographical diversity of plant adaptive responses to soil moisture deficits that exist in nature.

Future work should build upon these results to further evaluate JULES response with these parameterizations, focusing on deeper soils and either using a non-zero p_0 (we used 0.4 in this study), or ~~replacing Eqs. 4–5 with Eq. 8~~ using the soil matrix potential (ψ) rather than volumetric water content for calculating β . (e.g., Wright et al in prep; Otu-Larbi et al in prep). We note that such alternative parameterizations are not a replacement for improved representations of the soil-plant hydraulic system that have been developed for many models (Bonan et al., 2014; Christoffersen et al., 2016; Kennedy et al., 2019) ~~(Bonan et al. 2014; Christoffersen et al. 2016; Kennedy et al. 2019)~~ including JULES (Eller et al. 2020). Instead, they provide a practical, alternative way to represent some aspects of the soil-plant hydraulic system, including hydraulic differences between PFTs through the parameters ψ_{open} and ψ_{close} (Eq. 89), which can be adopted by any model that use the β function to represent vegetation responses to soil moisture. Several other land surface models use soil water potential (e.g. CLM Oleson et al. 2010; Lawrence et al. 2019) for calculating soil moisture stress, and a further benefit of this approach is the ability to set PFT-specific values for ψ_{open} and ψ_{close} (Eq. 9), with measured turgor loss points serving as a starting point for ψ_{close} (Bartlett et al., 2012). Whereas our new parametrization generally improves JULES skill to simulate GPP and LE it remains to be tested if similar results would be achieved by other models, including models that apply the β function at different parts of their photosynthesis and stomatal conductance schemes (e.g. Keenan et al., 2010; De Kauwe et al., 2015). Currently, t~~The land is currently providing a partially offsetting offsets anthropogenic CO₂ of~~ emissions by CO₂ photosynthetic drawdown, but this could be reversed if droughts increase in frequency or intensity in the future. Feedbacks from the land surface can amplify and lock-in existing drought conditions (Morillas et al., 2017), and land surface responses to regional drought can affect precipitation and circulation in other regions (Harper et al., 2013; Lian et al., 2020). Improving responses of vegetation to drought in land surface models such as JULES would have far-reaching implications for global
655 climate ~~modelling, and modelling and~~ are therefore of utmost importance.

Formatted: Font: Italic

Code Availability

Both the model code and the files for running it are available from the Met Office Science Repository Service:
660 <https://code.metoffice.gov.uk/>. Registration is required and code is freely available subject to completion of a software
licence. The results presented in this paper were obtained from running JULES branch
https://code.metoffice.gov.uk/trac/jules/browser/main/branches/dev/karinawilliams/r9227_add_gpp_unstressed_diagnostic,
which is a branch of JULESv4.9 with the additional unstressed GPP diagnostic added. The runs were completed with the
Rose suite <https://code.metoffice.gov.uk/trac/roses-u/browser/a/1/7/5/2/u-al752-jpegpaper>, which also includes python scripts
665 for creating the plots.

Data Availability

The FLUXNET2015 data used to run JULES is available for download from: <https://fluxnet.org/>.

Author Contributions

This study is the result of a large community effort within the JULES community to better understand soil moisture stress
670 and simulated responses to soil moisture deficits. All co-authors contributed at some point to writing or improving the
manuscript. Flux tower researchers provided particular insight into their sites: L.Montagnani (IT-Ren); I. M. (FI-Hyy); D.B.
(GF-Guy); A.G. and Y.N. (CG-Tch); G.W. (AT-Neu); N.B., L. Merbold, K.F. (CH-Cha), L. Merbold (RU-Che, Za-Kru).

Competing Interests

The authors declare no competing interests.

675 Acknowledgements

Flux tower measurements used in this study are from FLUXNET2015 and the LBA project. LBA data was provided with
support from National Aeronautics and Space Administration (NASA) LBA investigation CD-32, NASA LBA-DMIP
project (# NNX09AL52G), and the Gordon and Betty Moore Foundation “Simulations from the Interactions between
Climate, Forests, and Land Use in the Amazon Basin: Modeling and Mitigating Large Scale Savannization” project. Several
680 site PIs contributed data for the soil moisture and LAI prescribed runs, we gratefully acknowledge their contribution here:
Simone Sabbatini (IT-CA1), Sabina Keller (CH-Cha), Todd Schimelfenig, David Scoby, and Tim Arkebauer (US-Ne1, US-
Ne2, US-Ne3), Caroline Vincke (BE-Vie), Chris Gough (US-UMB), Tanguy Manise (BE-Vie), Pasi Kolari (FI-Hyy), Russ
Scott (US-SRG and US-SRM, US-Whs, US-Wkg), and Alessandro Araujo (LBA). The JULES soil moisture stress group
gratefully acknowledges Colin Prentice for input along the way. The authors also acknowledge the following funding:
685 EPSRC Living with Environmental Change Fellowship EP/N030141/1 (A.B.H.); the Met Office Hadley Centre Climate

Programme (HCCP) funded by BEIS and Defra (K.W., D.H., C.M.); NERC IMPETUS Project (NE/L010488/1) (A.V., A.W.); Newton Fund through the Met Office Climate Science for Service Partnership Brazil (CSSP Brazil) (K.W., N.G., C.M.; A.B.H., L.R.); the Research Endowment Trust Fund of the University of Reading (P.C.M.); National Aeronautics and Space Administration (NASA) LBA investigation CD-32, NASA LBA-DMIP project (# NNX09AL52G) (N. R-C);

690 Province of South Tyrol “Cycling of carbon and water in mountain ecosystems under changing climate and land use (CYCLAMEN)” (G.W.); EU project SUPER-G (contract no. 774124) and the SNF project M4P (40FA40_154245) (N.B.); ERC under the EU’s Horizon 2020 research and innovation programme (grant agreement no. 787203 REALM) (R.N.); European project “Quantification, understanding and prediction of carbon cycle, and other GHG gases, in Sub-Saharan Africa” (CarboAfrica, STREP-CT-037132) (Y.N.); and the Newton/NERC/FAPESP Nordeste project: NE/N012488/1 (R.N.,

695 A.V.). The GF-Guy site is supported by an Investissement d’Avenir grant from the Agence Nationale de la Recherche (CEBA: ANR-10-LABX-0025; ARBRE, ANR-11-LABX-0002-01). [CA-Oas is part of the Fluxnet Canada network, supported by the Natural Science and Engineering Research Council of Canada \(NSERC\) and the Canadian Foundation for Climate and Atmospheric Science \(CFCAS\).LBA data was provided with support from National Aeronautics and Space Administration \(NASA\) LBA investigation CD 32, NASA LBA DMIP project \(# NNX09AL52G\),and the Gordon and Betty Moore Foundation “Simulations from the Interactions between Climate, Forests, and Land Use in the Amazon Basin: Modeling and Mitigating Large Scale Savannization” project.](#)

700

References

- 705 Akkermans, T., Lauwaet, D., Demuzere, M., Vogel, G., Nouvellon, Y., Ardö, J., Caquet, B., De Grandcourt, A., Merbold, L., Kutsch, W., and Van Lipzig, N.: Validation and comparison of two soil-vegetation-atmosphere transfer models for tropical Africa, *Journal of Geophysical Research: Biogeosciences*, 117, 10.1029/2011JG001802, 2012.
- Allen, C. D., Macalady, A. K., Chenchouni, H., Bachelet, D., McDowell, N., Vennetier, M., Kitzberger, T., Rigling, A., Breshears, D. D., Hogg, E. H., Gonzalez, P., Fensham, R., Zhang, Z., Castro, J., Demidova, N., Lim, J.-H., Allard, G.,
- 710 Running, S. W., Semerci, A., and Cobb, N.: A global overview of drought and heat-induced tree mortality reveals emerging climate change risks for forests, *Forest Ecology and Management*, 259, 660-684, <https://doi.org/10.1016/j.foreco.2009.09.001>, 2010.
- Ardö, J., Mölder, M., El-Tahir, B. A., and <div style="">Elkhidir, H. A. M.: Seasonal variation of carbon fluxes in a sparse savanna in semi arid Sudan, *Carbon Balance and Management*, 3, 10.1186/1750-0680-3-7, 2008.
- 715 Arora, V. K. and Boer, G. J.: A parameterization of leaf phenology for the terrestrial ecosystem component of climate models, *Global Change Biology*, 11, 39-59, 10.1111/j.1365-2486.2004.00890.x, 2005.

- Baker, I. T., Prihodko, L., Denning, A. S., Goulden, M., Miller, S., and da Rocha, H. R.: Seasonal drought stress in the Amazon: Reconciling models and observations, *Journal of Geophysical Research-Biogeosciences*, 113, 10.1029/2007jg000644, 2008.
- 720 Ball, J. T., Woodrow, I. E., and Berry, J. A.: A Model Predicting Stomatal Conductance and its Contribution to the Control of Photosynthesis under Different Environmental Conditions, in: *Progress in Photosynthesis Research*, edited by: J., B., Springer, Dordrecht, 10.1007/978-94-017-0519-6_48, 1987.
- Bartlett, M. K., Scoffoni, C., and Sack, L.: The determinants of leaf turgor loss point and prediction of drought tolerance of species and biomes: a global meta-analysis, *Ecology Letters*, 15, 393-405, <https://doi.org/10.1111/j.1461-0248.2012.01751.x>, 2012.
- 725 Beer, C., Reichstein, M., Tomelleri, E., Ciais, P., Jung, M., Carvalhais, N., Rödenbeck, C., Arain, M. A., Baldocchi, D., Bonan, G. B., Bondeau, A., Cescatti, A., Lasslop, G., Lindroth, A., Lomas, M., Luysaert, S., Margolis, H., Oleson, K. W., Rouspard, O., Veenendaal, E., Viovy, N., Williams, C., Woodward, F. I., and Papale, D.: Terrestrial Gross Carbon Dioxide Uptake: Global Distribution and Covariation with Climate, *Science*, 329, 834, 10.1126/science.1184984, 2010.
- 730 Berg, A., Findell, K., Lintner, B., Giannini, A., Seneviratne, S. I., van den Hurk, B., Lorenz, R., Pitman, A., Hagemann, S., Meier, A., Cheruy, F., Ducharne, A., Malyshev, S., and Milly, P. C. D.: Land-atmosphere feedbacks amplify aridity increase over land under global warming, *Nature Climate Change*, 6, 869-874, 10.1038/nclimate3029, 2016.
- Best, M. J., Pryor, M., Clark, D. B., Rooney, G. G., Essery, R. L. H., Ménard, C. B., Edwards, J. M., Hendry, M. A., Porson, A., Gedney, N., Mercado, L. M., Sitch, S., Blyth, E., Boucher, O., Cox, P. M., Grimmond, C. S. B., and Harding, R. J.: The Joint UK Land Environment Simulator (JULES), model description – Part 1: Energy and water fluxes, *Geosci. Model Dev.*, 4, 677-699, 10.5194/gmd-4-677-2011, 2011.
- 735 Blyth, E., Clark, D. B., Ellis, R., Huntingford, C., Los, S., Pryor, M., Best, M., and Sitch, S.: A comprehensive set of benchmark tests for a land surface model of simultaneous fluxes of water and carbon at both the global and seasonal scale, *Geosci. Model Dev.*, 4, 255-269, 10.5194/gmd-4-255-2011, 2011.
- 740 Bonan, G. B., Williams, M., Fisher, R. A., and Oleson, K. W.: Modeling stomatal conductance in the earth system: linking leaf water-use efficiency and water transport along the soil-plant-atmosphere continuum, *Geosci. Model Dev.*, 7, 2193-2222, 10.5194/gmd-7-2193-2014, 2014.
- Brinkmann, N., Eugster, W., Buchmann, N., and Kahmen, A.: Species-specific differences in water uptake depth of mature temperate trees vary with water availability in the soil, *Plant Biology*, 21, 71-81, 10.1111/plb.12907, 2019.
- 745 Brodrribb, T. J. and Cochard, H.: Hydraulic Failure Defines the Recovery and Point of Death in Water-Stressed Conifers, *Plant Physiology*, 149, 575, 10.1104/pp.108.129783, 2009.
- Brum, M., Vadeboncoeur, M. A., Ivanov, V., Asbjornsen, H., Saleska, S., Alves, L. F., Penha, D., Dias, J. D., Aragão, L. E. O. C., Barros, F., Bittencourt, P., Pereira, L., and Oliveira, R. S.: Hydrological niche segregation defines forest structure and drought tolerance strategies in a seasonal Amazon forest, *Journal of Ecology*, 107, 318-333, <https://doi.org/10.1111/1365-2745.13022>, 2019.
- 750

- Burgess, S. S. O., Adams, M. A., Turner, N. C., White, D. A., and Ong, C. K.: Tree roots: conduits for deep recharge of soil water, *Oecologia*, 126, 158-165, 10.1007/s004420000501, 2001.
- Caldwell, M. M., Dawson, T. E., and Richards, J. H.: Hydraulic lift: consequences of water efflux from the roots of plants, *Oecologia*, 113, 151-161, 10.1007/s004420050363, 1998.
- 755 Canadell, J., Jackson, R. B., Ehleringer, J. B., Mooney, H. A., Sala, O. E., and Schulze, E. D.: Maximum rooting depth of vegetation types at the global scale, *Oecologia*, 108, 583-595, 10.1007/BF00329030, 1996.
- Carvalho, N., Reichstein, M., Seixas, J., Collatz, G. J., Pereira, J. S., Berbigier, P., Carrara, A., Granier, A., Montagnani, L., Papale, D., Rambal, S., Sanz, M. J., and Valentini, R.: Implications of the carbon cycle steady state assumption for biogeochemical modeling performance and inverse parameter retrieval, *Global Biogeochemical Cycles*, 22, 10.1029/2007gb003033, 2008.
- 760 Chadburn, S., Burke, E., Essery, R., Boike, J., Langer, M., Heikenfeld, M., Cox, P., and Friedlingstein, P.: An improved representation of physical permafrost dynamics in the JULES land-surface model, *Geosci. Model Dev.*, 8, 1493-1508, 10.5194/gmd-8-1493-2015, 2015.
- Choat, B., Brodribb, T. J., Brodersen, C. R., Duursma, R. A., López, R., and Medlyn, B. E.: Triggers of tree mortality under drought, *Nature*, 558, 531-539, 10.1038/s41586-018-0240-x, 2018.
- 765 Choat, B., Jansen, S., Brodribb, T. J., Cochard, H., Delzon, S., Bhaskar, R., Bucci, S. J., Feild, T. S., Gleason, S. M., Hacke, U. G., Jacobsen, A. L., Lens, F., Maherali, H., Martínez-Vilalta, J., Mayr, S., Mencuccini, M., Mitchell, P. J., Nardini, A., Pittermann, J., Pratt, R. B., Sperry, J. S., Westoby, M., Wright, I. J., and Zanne, A. E.: Global convergence in the vulnerability of forests to drought, *Nature*, 491, 752-755, 10.1038/nature11688, 2012.
- 770 Christina, M., Laclau, J. P., Gonçalves, J. L. M., Jourdan, C., Nouvellon, Y., and Bouillet, J. P.: Almost symmetrical vertical growth rates above and below ground in one of the world's most productive forests, *Ecosphere*, 2, 2011.
- Christina, M., Nouvellon, Y., Laclau, J. P., Stape, J. L., Bouillet, J. P., Lambais, G. R., and le Maire, G.: Importance of deep water uptake in tropical eucalypt forest, *Functional Ecology*, 31, 2017.
- Christoffersen, B. O., Gloor, M., Fauser, S., Fyllas, N. M., Galbraith, D. R., Baker, T. R., Kruijt, B., Rowland, L., Fisher, R. A., Binks, O. J., Sevanto, S., Xu, C., Jansen, S., Choat, B., Mencuccini, M., McDowell, N. G., and Meir, P.: Linking hydraulic traits to tropical forest function in a size-structured and trait-driven model (TFS v.1-Hydro), *Geosci. Model Dev.*, 9, 4227-4255, 10.5194/gmd-9-4227-2016, 2016.
- 775 Christoffersen, B. O., Restrepo-Coupe, N., Arain, M. A., Baker, I. T., Cestaro, B. P., Ciais, P., Fisher, J. B., Galbraith, D., Guan, X., Gulden, L., van den Hurk, B., Ichii, K., Imbuzeiro, H., Jain, A., Levine, N., Miguez-Macho, G., Poulter, B., Roberti, D. R., Sakaguchi, K., Sahoo, A., Schaefer, K., Shi, M., Verbeeck, H., Yang, Z.-L., Araújo, A. C., Kruijt, B., Manzi, A. O., da Rocha, H. R., von Randow, C., Muza, M. N., Borak, J., Costa, M. H., Gonçalves de Gonçalves, L. G., Zeng, X., and Saleska, S. R.: Mechanisms of water supply and vegetation demand govern the seasonality and magnitude of evapotranspiration in Amazonia and Cerrado, *Agric. For. Meteorol.*, 191, 33-50, <https://doi.org/10.1016/j.agrformet.2014.02.008>, 2014.

- 785 Ciaies, P., Reichstein, M., Viovy, N., Granier, A., Ogée, J., Allard, V., Aubinet, M., Buchmann, N., Bernhofer, C., Carrara, A., Chevallier, F., De Noblet, N., Friend, A. D., Friedlingstein, P., Grünwald, T., Heinesch, B., Keronen, P., Knohl, A., Krinner, G., Loustau, D., Manca, G., Matteucci, G., Miglietta, F., Ourcival, J. M., Papale, D., Pilegaard, K., Rambal, S., Seufert, G., Soussana, J. F., Sanz, M. J., Schulze, E. D., Vesala, T., and Valentini, R.: Europe-wide reduction in primary productivity caused by the heat and drought in 2003, *Nature*, 437, 529-533, 10.1038/nature03972, 2005.
- 790 Clark, D., Mercado, L., Sitch, S., Jones, C., Gedney, N., Best, M., Pryor, M., Rooney, G., Essery, R., Blyth, E., Boucher, O., Harding, R., Huntingford, C., and Cox, P.: The Joint UK Land Environment Simulator (JULES), model description - Part 2: Carbon fluxes and vegetation dynamics, *Geoscientific Model Development*, 4, 701-722, 10.5194/gmd-4-701-2011, 2011.
- Cox, P. M., Huntingford, C., and Harding, R. J.: A canopy conductance and photosynthesis model for use in a GCM land surface scheme, *Journal of Hydrology*, 212-213, 79-94, 10.1016/S0022-1694(98)00203-0, 1998.
- 795 De Kauwe, M. G., Zhou, S. X., Medlyn, B. E., Pitman, A. J., Wang, Y. P., Duursma, R. A., and Prentice, I. C.: Do land surface models need to include differential plant species responses to drought? Examining model predictions across a mesic-xeric gradient in Europe, *Biogeosciences*, 12, 7503-7518, 10.5194/bg-12-7503-2015, 2015.
- De Kauwe, M. G., Medlyn, B. E., Ukkola, A. M., Mu, M., Sabot, M. E. B., Pitman, A. J., Meir, P., Cernusak, L., Rifai, S. W., Choat, B., Tissue, D. T., Blackman, C. J., Li, X., Roderick, M., and Briggs, P. R.: Identifying areas at risk of drought-induced tree mortality across South-Eastern Australia, *Global Change Biology*, n/a, 10.1111/gcb.15215, 2020.
- 800 De Kauwe, M. G., Medlyn, B. E., Walker, A. P., Zaehle, S., Asao, S., Guenet, B., Harper, A. B., Hickler, T., Jain, A. K., Luo, Y., Lu, X., Luus, K., Parton, W. J., Shu, S., Wang, Y.-P., Werner, C., Xia, J., Pendall, E., Morgan, J. A., Ryan, E. M., Carrillo, Y., Dijkstra, F. A., Zelikova, T. J., and Norby, R. J.: Challenging terrestrial biosphere models with data from the long-term multifactor Prairie Heating and CO₂ Enrichment experiment, *Global Change Biology*, 23, 3623-3645, 10.1111/gcb.13643, 2017.
- 805 Dewar, R. C.: The Ball-Berry-Leuning and Tardieu-Davies stomatal models: synthesis and extension within a spatially aggregated picture of guard cell function, *Plant, Cell & Environment*, 25, 1383-1398, 10.1046/j.1365-3040.2002.00909.x, 2002.
- Doughty, C. E., Metcalfe, D. B., Girardin, C. A. J., Amézquita, F. F., Cabrera, D. G., Huasco, W. H., Silva-Espejo, J. E., 810 Araujo-Murakami, A., da Costa, M. C., Rocha, W., Feldpausch, T. R., Mendoza, A. L. M., da Costa, A. C. L., Meir, P., Phillips, O. L., and Malhi, Y.: Drought impact on forest carbon dynamics and fluxes in Amazonia, *Nature*, 519, 78-82, 10.1038/nature14213, 2015.
- Egea, G., Verhoef, A., and Vidale, P.: Towards an improved and more flexible representation of water stress in coupled photosynthesis-stomatal conductance models, *Agricultural and Forest Meteorology*, 151, 1370-1384, 10.1016/j.agrformet.2011.05.019, 2011.
- 815 Eller, C. B., Rowland, L., Oliveira, R. S., Bittencourt, P. R. L., Barros, F. V., da Costa, A. C. L., Meir, P., Friend, A. D., Mencuccini, M., Sitch, S., and Cox, P.: Modelling tropical forest responses to drought and El Niño with a stomatal

- optimization model based on xylem hydraulics, *Philosophical Transactions of the Royal Society B: Biological Sciences*, 373, 20170315, 10.1098/rstb.2017.0315, 2018.
- 820 Eller, C. B., Rowland, L., Mencuccini, M., Rosas, T., Williams, K., Harper, A., Medlyn, B. E., Wagner, Y., Klein, T., Teodoro, G. S., Oliveira, R. S., Matos, I. S., Rosado, B. H. P., Fuchs, K., Wohlfahrt, G., Montagnani, L., Meir, P., Sitch, S., and Cox, P. M.: Stomatal optimization based on xylem hydraulics (SOX) improves land surface model simulation of vegetation responses to climate, *New Phytologist*, 226, 1622-1637, 10.1111/nph.16419, 2020.
- Fatchi, S., Ivanov, V. Y., and Caporali, E.: A mechanistic ecohydrological model to investigate complex interactions in cold
825 and warm water-controlled environments: 1. Theoretical framework and plot-scale analysis, *Journal of Advances in Modeling Earth Systems*, 4, 10.1029/2011MS000086, 2012.
- Field, C. B. and Holbrook, N. M.: Catastrophic xylem failure: Tree life at the brink, *Trends in Ecology & Evolution*, 4, 124-126, 10.1016/0169-5347(89)90209-7, 1989.
- Friedlingstein, P., Jones, M. W., O'Sullivan, M., Andrew, R. M., Hauck, J., Peters, G. P., Peters, W., Pongratz, J., Sitch, S.,
830 Le Quéré, C., Bakker, D. C. E., Canadell, J. G., Ciais, P., Jackson, R. B., Anthoni, P., Barbero, L., Bastos, A., Bastrikov, V., Becker, M., Bopp, L., Buitenhuis, E., Chandra, N., Chevallier, F., Chini, L. P., Currie, K. I., Feely, R. A., Gehlen, M., Gilfillan, D., Gkritzalis, T., Goll, D. S., Gruber, N., Gutekunst, S., Harris, I., Haverd, V., Houghton, R. A., Hurtt, G., Ilyina, T., Jain, A. K., Joetzjer, E., Kaplan, J. O., Kato, E., Klein Goldewijk, K., Korsbakken, J. I., Landschützer, P., Lauvset, S. K., Lefèvre, N., Lenton, A., Lienert, S., Lombardozi, D., Marland, G., McGuire, P. C., Melton, J. R., Metzl, N., Munro, D. R.,
835 Nabel, J. E. M. S., Nakaoka, S. I., Neill, C., Omar, A. M., Ono, T., Peregon, A., Pierrot, D., Poulter, B., Rehder, G., Resplandy, L., Robertson, E., Rödenbeck, C., Séférian, R., Schwinger, J., Smith, N., Tans, P. P., Tian, H., Tilbrook, B., Tubiello, F. N., van der Werf, G. R., Wiltshire, A. J., and Zaehle, S.: Global Carbon Budget 2019, *Earth Syst. Sci. Data*, 11, 1783-1838, 10.5194/essd-11-1783-2019, 2019.
- Gatti, R. C., Castaldi, S., Lindsell, J. A., Coomes, D. A., Marchetti, M., Maesano, M., Di Paola, A., Paparella, F., and
840 Valentini, R.: The impact of selective logging and clearcutting on forest structure, tree diversity and above-ground biomass of African tropical forests, *Ecological Research*, 30, 119-132, 10.1007/s11284-014-1217-3, 2015.
- Gentine, P., Green, J. K., Guerin, M., Humphrey, V., Seneviratne, S. I., Zhang, Y., and Zhou, S.: Coupling between the terrestrial carbon and water cycles-a review, *Environmental Research Letters*, 14, 10.1088/1748-9326/ab22d6, 2019.
- Germon, A., Laclau, J. P., Robin, A., and Jourdan, C.: Tamm Review: Deep fine roots in forest ecosystems: Why dig
845 deeper?, *Forest Ecology and Management*, 466, 10.1016/j.foreco.2020.118135, 2020.
- Germon, A., Guerrini, I. A., Bordron, B., Bouillet, J. P., Nouvellon, Y., de Moraes Gonçalves, J. L., Jourdan, C., Paula, R. R., and Laclau, J. P.: Consequences of mixing *Acacia mangium* and *Eucalyptus grandis* trees on soil exploration by fine-roots down to a depth of 17 m, *Plant and Soil*, 424, 2018.
- Green, J. K., Konings, A. G., Alemohammad, S. H., Berry, J., Entekhabi, D., Kolassa, J., Lee, J.-E., and Gentine, P.:
850 Regionally strong feedbacks between the atmosphere and terrestrial biosphere, *Nature Geoscience*, 10, 410-414, 10.1038/ngeo2957, 2017.

- Guerrieri, R., Belmecheri, S., Ollinger, S. V., Asbjornsen, H., Jennings, K., Xiao, J., Stocker, B. D., Martin, M., Hollinger, D. Y., Bracho-Garrillo, R., Clark, K., Dore, S., Kolb, T., Munger, J. W., Novick, K., and Richardson, A. D.: Disentangling the role of photosynthesis and stomatal conductance on rising forest water-use efficiency, *Proceedings of the National Academy of Sciences*, 116, 16909-16914, 10.1073/pnas.1905912116, 2019.
- 855 Harper, A., Baker, I. T., Denning, A. S., Randall, D. A., Dazlich, D., and Branson, M.: Impact of evapotranspiration on dry season climate in the Amazon forest, *J. Climate*, 2013.
- Harper, A. B., Cox, P. M., Friedlingstein, P., Wiltshire, A. J., Jones, C. D., Sitch, S., Mercado, L. M., Groenendijk, M., Robertson, E., Kattge, J., Bönisch, G., Atkin, O. K., Bahn, M., Cornelissen, J., Niinemets, Ü., Onipchenko, V., Peñuelas, J.,
- 860 Poorter, L., Reich, P. B., Soudzilovskaia, N. A., and Bodegom, P. V.: Improved representation of plant functional types and physiology in the Joint UK Land Environment Simulator (JULES v4.2) using plant trait information, *Geosci. Model Dev.*, 9, 2415-2440, doi.org/10.5194/gmd-9-2415-2016, 2016.
- Humphrey, V., Zscheischler, J., Ciais, P., Gudmundsson, L., Sitch, S., and Seneviratne, S. I.: Sensitivity of atmospheric CO₂ growth rate to observed changes in terrestrial water storage, *Nature*, 560, 628-631, 10.1038/s41586-018-0424-4, 2018.
- 865 Huntingford, C., Jeffers, E. S., Bonsall, M. B., Christensen, H. M., Lees, T., and Yang, H.: Machine learning and artificial intelligence to aid climate change research and preparedness, *Environmental Research Letters*, 14, 14, 10.1088/1748-9326/ab4e55, 2019.
- Huntingford, C., Smith, D. M., Davies, W. J., Falk, R., Sitch, S., and Mercado, L. M.: Combining the [ABA] and net photosynthesis-based model equations of stomatal conductance, *Ecological Modelling*, 300, 81-88,
- 870 <https://doi.org/10.1016/j.ecolmodel.2015.01.005>, 2015.
- Jipp, P. H., Nepstad, D. C., Cassel, D. K., and De Carvalho, C. R.: Deep soil moisture storage and transpiration in forests and pastures of seasonally-dry amazonia, *Climatic Change*, 39, 10.1023/a:1005308930871, 1998.
- Keenan, T., Sabate, S., and Gracia, C.: The importance of mesophyll conductance in regulating forest ecosystem productivity during drought periods, *Global Change Biology*, 16, 1019-1034, 10.1111/j.1365-2486.2009.02017.x, 2010.
- 875 Kennedy, D., Swenson, S., Oleson, K. W., Lawrence, D. M., Fisher, R., Lola da Costa, A. C., and Gentine, P.: Implementing Plant Hydraulics in the Community Land Model, Version 5, *Journal of Advances in Modeling Earth Systems*, 11, 485-513, 10.1029/2018MS001500, 2019.
- Krinner, G., Viovy, N., de Noblet-Ducoudré, N., Ogée, J., Polcher, J., Friedlingstein, P., Ciais, P., Sitch, S., and Prentice, I. C.: A dynamic global vegetation model for studies of the coupled atmosphere-biosphere system, *Global Biogeochemical*
- 880 *Cycles*, 19, 10.1029/2003gb002199, 2005.
- Laclau, J.-P., Silva, E., Rodrigues Lambais, G., Bernoux, M., le Maire, G., Stape, J. L., Bouillet, J.-P., Gonçalves, J. I., Jourdan, C., and Nouvellon, Y.: Dynamics of soil exploration by fine roots down to a depth of 10 m throughout the entire rotation in *Eucalyptus grandis* plantations, *Frontiers in Plant Science*, 4, 10.3389/fpls.2013.00243, 2013.
- Lambers, H., Chapin, H., Stuart, F., and Pons, T. L.: *Plant Physiological Ecology*, Springer-Verlag New York, XXIX, 605
- 885 pp., 10.1007/978-0-387-78341-3, 2008.

- Lawrence, D. M., Fisher, R. A., Koven, C. D., Oleson, K. W., Swenson, S. C., Bonan, G., Collier, N., Ghimire, B., van Kampenhou, L., Kennedy, D., Kluzek, E., Lawrence, P. J., Li, F., Li, H., Lombardozzi, D., Riley, W. J., Sacks, W. J., Shi, M., Vertenstein, M., Wieder, W. R., Xu, C., Ali, A. A., Badger, A. M., Bisht, G., van den Broeke, M., Brunke, M. A., Burns, S. P., Buzan, J., Clark, M., Craig, A., Dahlin, K., Drewniak, B., Fisher, J. B., Flanner, M., Fox, A. M., Gentine, P., Hoffman, F., Keppel-Aleks, G., Knox, R., Kumar, S., Lenaerts, J., Leung, L. R., Lipscomb, W. H., Lu, Y., Pandey, A., Pelletier, J. D., Perket, J., Randerson, J. T., Ricciuto, D. M., Sanderson, B. M., Slater, A., Subin, Z. M., Tang, J., Thomas, R. Q., Val Martin, M., and Zeng, X.: The Community Land Model Version 5: Description of New Features, Benchmarking, and Impact of Forcing Uncertainty, *Journal of Advances in Modeling Earth Systems*, 11, 4245-4287, 10.1029/2018MS001583, 2019.
- 890 Lee, J.-E., Frankenberg, C., van der Tol, C., Berry, J. A., Guanter, L., Boyce, C. K., Fisher, J. B., Morrow, E., Worden, J. R., Asefi, S., Badgley, G., and Saatchi, S.: Forest productivity and water stress in Amazonia: observations from GOSAT chlorophyll fluorescence, *Proceedings of the Royal Society - Biological Sciences*, 280, 10.1098/rspb.2013.0171, 2013.
- 895 Lemordant, L., Gentine, P., Stéfanon, M., Drobinski, P., and Fatichi, S.: Modification of land-atmosphere interactions by CO₂ effects: Implications for summer dryness and heat wave amplitude, *Geophysical Research Letters*, 43, 10,240-210,248, 10.1002/2016GL069896, 2016.
- 900 Lian, X., Piao, S., Li, L. Z. X., Li, Y., Huntingford, C., Ciais, P., Cescatti, A., Janssens, I. A., Peñuelas, J., Buermann, W., Chen, A., Li, X., Myneni, R. B., Wang, X., Wang, Y., Yang, Y., Zeng, Z., Zhang, Y., and McVicar, T. R.: Summer soil drying exacerbated by earlier spring greening of northern vegetation, *Science Advances*, 6, eaax0255, 10.1126/sciadv.aax0255, 2020.
- 905 Liu, H., Mi, Z., Lin, L., Wang, Y., Zhang, Z., Zhang, F., Wang, H., Liu, L., Zhu, B., Cao, G., Zhao, X., Sanders, N. J., Classen, A. T., Reich, P. B., and He, J.-S.: Shifting plant species composition in response to climate change stabilizes grassland primary production, *Proceedings of the National Academy of Sciences*, 115, 4051-4056, 10.1073/pnas.1700299114, 2018.
- Liu, X., Chen, F., Barlage, M., and Niyogi, D.: Implementing Dynamic Rooting Depth for Improved Simulation of Soil Moisture and Land Surface Feedbacks in Noah-MP-Crop, *Journal of Advances in Modeling Earth Systems*, 12, e2019MS001786, 10.1029/2019MS001786, 2020.
- 910 Manzoni, S., Vico, G., Palmroth, S., Porporato, A., and Katul, G.: Optimization of stomatal conductance for maximum carbon gain under dynamic soil moisture, *Advances in Water Resources*, 62, 90-105, <https://doi.org/10.1016/j.advwatres.2013.09.020>, 2013.
- Marsden, C., Nouvellon, Y., Laclau, J.-P., Corbeels, M., McMurtrie, R. E., Stape, J. L., Epron, D., and le Maire, G.: Modifying the G'DAY process-based model to simulate the spatial variability of Eucalyptus plantation growth on deep tropical soils, *Forest Ecology and Management*, 301, <https://doi.org/10.1016/j.foreco.2012.10.039>, 2013.
- Martens, B., Miralles, D. G., Lievens, H., van der Schalie, R., de Jeu, R. A. M., Fernández-Prieto, D., Beck, H. E., Dorigo, W. A., and Verhoest, N. E. C.: GLEAM v3: satellite-based land evaporation and root-zone soil moisture, *Geosci. Model Dev.*, 10, 1903-1925, 10.5194/gmd-10-1903-2017, 2017.

- 920 Martin, G. M., Bellouin, N., Collins, W. J., Culverwell, I. D., Halloran, P. R., Hardiman, S. C., Hinton, T. J., Jones, C. D.,
McDonald, R. E., McLaren, A. J., O'Connor, F. M., Roberts, M. J., Rodriguez, J. M., Woodward, S., Best, M. J., Brooks, M.
E., Brown, A. R., Butchart, N., Dearden, C., Derbyshire, S. H., Dharssi, I., Doutriaux-Boucher, M., Edwards, J. M., Falloon,
P. D., Gedney, N., Gray, L. J., Hewitt, H. T., Hobson, M., Huddleston, M. R., Hughes, J., Ineson, S., Ingram, W. J., James,
P. M., Johns, T. C., Johnson, C. E., Jones, A., Jones, C. P., Joshi, M. M., Keen, A. B., Liddicoat, S., Lock, A. P., Maidens, A.
- 925 V., Manners, J. C., Milton, S. F., Rae, J. G. L., Ridley, J. K., Sellar, A., Senior, C. A., Totterdell, I. J., Verhoef, A., Vidale, P.
L., and Wiltshire, A.: The HadGEM2 family of Met Office Unified Model climate configurations, *Geosci. Model Dev.*, 4,
723-757, 10.5194/gmd-4-723-2011, 2011.
- Martínez-de la Torre, A., Blyth, E. M., and Robinson, E. L.: Evaluation of Drydown Processes in Global Land Surface and
Hydrological Models Using Flux Tower Evapotranspiration, *Water*, 11, 2019.
- 930 McDowell, N., Pockman, W. T., Allen, C. D., Breshears, D. D., Cobb, N., Kolb, T., Plaut, J., Sperry, J., West, A., Williams,
D. G., and Yezpe, E. A.: Mechanisms of plant survival and mortality during drought: why do some plants survive while
others succumb to drought?, *New Phytologist*, 178, 719-739, 10.1111/j.1469-8137.2008.02436.x, 2008.
- Medlyn, B. E., De Kauwe, M. G., Zaehle, S., Walker, A. P., Duursma, R. A., Luus, K., Mishurov, M., Pak, B., Smith, B.,
Wang, Y.-P., Yang, X., Crous, K. Y., Drake, J. E., Gimeno, T. E., Macdonald, C. A., Norby, R. J., Power, S. A., Tjoelker,
- 935 M. G., and Ellsworth, D. S.: Using models to guide field experiments: a priori predictions for the CO₂ response of a nutrient-
and water-limited native Eucalypt woodland, *Global Change Biology*, 22, 2834-2851, 10.1111/gcb.13268, 2016.
- Merbold, L., Kutsch, W. L., Corradi, C., Kolle, O., Rebmann, C., Stoy, P. C., Zimov, S. A., and Schulze, E.-D.: Artificial
drainage and associated carbon fluxes (CO₂/CH₄) in a tundra ecosystem, *Global Change Biology*, 15, 2599-2614,
10.1111/j.1365-2486.2009.01962.x, 2009a.
- 940 Merbold, L., Ardö, J., Arneft, A., Scholes, R. J., Nouvellon, Y., de Grandcourt, A., Archibald, S., Bonnefond, J. M.,
Boulain, N., Brueggemann, N., Bruemmer, C., Cappelaere, B., Ceschia, E., El-Khidir, H. A. M., El-Tahir, B. A., Falk, U.,
Lloyd, J., Kergoat, L., Le Dantec, V., Mougou, E., Muchinda, M., Mukelabai, M. M., Ramier, D., Rouspard, O., Timouk, F.,
Veenendaal, E. M., and Kutsch, W. L.: Precipitation as driver of carbon fluxes in 11 African ecosystems, *Biogeosciences*, 6,
1027-1041, 10.5194/bg-6-1027-2009, 2009b.
- 945 Miralles, D. G., Gentine, P., Seneviratne, S. I., and Teuling, A. J.: Land-atmospheric feedbacks during droughts and
heatwaves: state of the science and current challenges, *Annals of the New York Academy of Sciences*, 1436, 19-35,
10.1111/nyas.13912, 2019.
- Mirfenderesgi, G., Bohrer, G., Matheny, A. M., Faticchi, S., de Moraes Frasson, R. P., and Schäfer, K. V. R.: Tree level
hydrodynamic approach for resolving aboveground water storage and stomatal conductance and modeling the effects of tree
hydraulic strategy, *Journal of Geophysical Research: Biogeosciences*, 121, 1792-1813, 10.1002/2016JG003467, 2016.
- 950 Morillas, L., Pangle, R. E., Maurer, G. E., Pockman, W. T., McDowell, N., Huang, C.-W., Krofcheck, D. J., Fox, A. M.,
Sinsabaugh, R. L., Rahn, T. A., and Litvak, M. E.: Tree Mortality Decreases Water Availability and Ecosystem Resilience to

- Drought in Piñon-Juniper Woodlands in the Southwestern U.S, *Journal of Geophysical Research: Biogeosciences*, 122, 3343-3361, 10.1002/2017jg004095, 2017.
- 955 Mu, M., De Kauwe, M. G., Ukkola, A. M., Pitman, A. J., Gimeno, T. E., Medlyn, B. E., Or, D., Yang, J., and Ellsworth, D. S.: Evaluating a land surface model at a water-limited site: implications for land surface contributions to droughts and heatwaves, *Hydrol. Earth Syst. Sci.*, 25, 447-471, 10.5194/hess-25-447-2021, 2021.
- Mueller, B. and Seneviratne, S. I.: Systematic land climate and evapotranspiration biases in CMIP5 simulations, *Geophysical Research Letters*, 41, 128-134, <https://doi.org/10.1002/2013GL058055>, 2014.
- 960 Nemani, R. R., Keeling, C. D., Hashimoto, H., Jolly, W. M., Piper, S. C., Tucker, C. J., Myneni, R. B., and Running, S. W.: Climate-Driven Increases in Global Terrestrial Net Primary Production from 1982 to 1999, *Science*, 300, 1560, 10.1126/science.1082750, 2003.
- Nepstad, D. C., Decarvalho, C. R., Davidson, E. A., Jipp, P. H., Lefebvre, P. A., Negreiros, G. H., Dasilva, E. D., Stone, T. A., Trumbore, S. E., and Vieira, S.: The role of deep roots in the hydrological and carbon cycles of Amazonian forests and pastures, *Nature*, 372, 10.1038/372666a0, 1994.
- 965 Oleson, K. W., Lawrence, D. M., Bonan, G. B., Flanner, M. G., Kluzek, E., Lawrence, P. J., Levis, S., Swenson, S. C., Thornton, P. E., Dai, A., Decker, M., Dickinson, R., Feddema, J., Heald, C. L., Hoffman, F., Lamarque, J.-F., Mahowald, N., Niu, G.-Y., Qian, T., Randerson, J., Running, S., Sakaguchi, K., Slater, A., Stockli, R., Wang, A., Yang, Z.-L., Zeng, X., and Zeng, X.: Technical Description of version 4.0 of the Community Land Model (CLM), NCAR478, <http://dx.doi.org/10.5065/D6FB50WZ>, 2010.
- 970 Oliveira, R. S., Dawson, T. E., Burgess, S. S. O., and Nepstad, D. C.: Hydraulic redistribution in three Amazonian trees, *Oecologia*, 145, 10.1007/s00442-005-0108-2, 2005.
- Paschalis, A., Faticchi, S., Zscheischler, J., Ciais, P., Bahn, M., Boysen, L., Chang, J., De Kauwe, M., Estiarte, M., Goll, D., Hanson, P. J., Harper, A. B., Hou, E., Kigel, J., Knapp, A. K., Larsen, K. S., Li, W., Lienert, S., Luo, Y., Meir, P., Nabel, J.
- 975 E. M. S., Ogaya, R., Parolari, A. J., Peng, C., Peñuelas, J., Pongratz, J., Rambal, S., Schmidt, I. K., Shi, H., Sternberg, M., Tian, H., Tschumi, E., Ukkola, A., Vicca, S., Viovy, N., Wang, Y.-P., Wang, Z., Williams, K., Wu, D., and Zhu, Q.: Rainfall manipulation experiments as simulated by terrestrial biosphere models: Where do we stand?, *Global Change Biology*, 26, 3336-3355, 10.1111/gcb.15024, 2020.
- Pastorello, G., Trotta, C., Canfora, E., Chu, H., Christianson, D., Cheah, Y.-W., Poindexter, C., Chen, J., Elbashandy, A., Humphrey, M., Isaac, P., Polidori, D., Ribeca, A., van Ingen, C., Zhang, L., Amiro, B., Ammann, C., Arain, M. A., Ardö, J., Arkebauer, T., Arndt, S. K., Arriga, N., Aubinet, M., Aurela, M., Baldocchi, D., Barr, A., Beamesderfer, E., Marchesini, L. B., Bergeron, O., Beringer, J., Bernhofer, C., Berveiller, D., Billesbach, D., Black, T. A., Blanken, P. D., Bohrer, G., Boike, J., Bolstad, P. V., Bonal, D., Bonnefond, J.-M., Bowling, D. R., Bracho, R., Brodeur, J., Brümmer, C., Buchmann, N., Burban, B., Burns, S. P., Buysse, P., Cale, P., Cavagna, M., Cellier, P., Chen, S., Chini, I., Christensen, T. R., Cleverly, J.,
- 980 Collalti, A., Consalvo, C., Cook, B. D., Cook, D., Coursolle, C., Cremonese, E., Curtis, P. S., D'Andrea, E., da Rocha, H., Dai, X., Davis, K. J., De Cinti, B., de Grandcourt, A., De Ligne, A., De Oliveira, R. C., Delpierre, N., Desai, A. R., Di Bella,

- C. M., di Tommasi, P., Dolman, H., Domingo, F., Dong, G., Dore, S., Duce, P., Dufrêne, E., Dunn, A., Dušek, J., Eamus, D., Eichelmann, U., ElKhidir, H. A. M., Eugster, W., Ewenz, C. M., Ewers, B., Famulari, D., Fares, S., Feigenwinter, I., Feitz, A., Fensholt, R., Filippa, G., Fischer, M., Frank, J., Galvagno, M., Gharun, M., Gianelle, D., Gielen, B., Gioli, B., Gitelson, A., Goded, I., Goeckede, M., Goldstein, A. H., Gough, C. M., Goulden, M. L., Graf, A., Griebel, A., Gruening, C., Grünwald, T., Hammerle, A., Han, S., Han, X., Hansen, B. U., Hanson, C., Hatakka, J., He, Y., Hehn, M., Heinesch, B., Hinko-Najera, N., Hörtnagl, L., Hutley, L., Ibrom, A., Ikawa, H., Jackowicz-Korczynski, M., Janouš, D., Jans, W., Jassal, R., Jiang, S., Kato, T., Khomik, M., Klatt, J., Knohl, A., Knox, S., Kobayashi, H., Koerber, G., Kolle, O., Kosugi, Y., Kotani, A., Kowalski, A., Kruijt, B., Kurbatova, J., Kutsch, W. L., Kwon, H., Launiainen, S., Laurila, T., Law, B., Leuning, R., Li, Y., Liddell, M., Limousin, J.-M., Lion, M., Liska, A. J., Lohila, A., López-Ballesteros, A., López-Blanco, E., Loubet, B., Loustau, D., Lucas-Moffat, A., Lüers, J., Ma, S., Macfarlane, C., Magliulo, V., Maier, R., Mammarella, I., Manca, G., Marcolla, B., Margolis, H. A., Marras, S., Massman, W., Mastepanov, M., Matamala, R., Matthes, J. H., Mazzenga, F., McCaughey, H., McHugh, I., McMillan, A. M. S., Merbold, L., Meyer, W., Meyers, T., Miller, S. D., Minerbi, S., Moderow, U., Monson, R. K., Montagnani, L., Moore, C. E., Moors, E., Moreaux, V., Moureaux, C., Munger, J. W., Nakai, T., Neiryneck, J., Nestic, Z., Nicolini, G., Noormets, A., Northwood, M., Nosetto, M., Nouvellon, Y., Novick, K., Oechel, W., Olesen, J. E., Ourcival, J.-M., Papuga, S. A., Parmentier, F.-J., Paul-Limoges, E., Pavelka, M., Peichl, M., Pendall, E., Phillips, R. P., Pilegaard, K., Pirk, N., Posse, G., Powell, T., Prasse, H., Prober, S. M., Rambal, S., Rannik, Ü., Raz-Yaseef, N., Reed, D., de Dios, V. R., Restrepo-Coupe, N., Reverter, B. R., Roland, M., Sabbatini, S., Sachs, T., Saleska, S. R., Sánchez-Cañete, E. P., Sanchez-Mejia, Z. M., Schmid, H. P., Schmidt, M., Schneider, K., Schrader, F., Schroder, I., Scott, R. L., Sedláč, P., Serrano-Ortiz, P., Shao, C., Shi, P., Shironya, I., Siebicke, L., Šigut, L., Silberstein, R., Sirca, C., Spano, D., Steinbrecher, R., Stevens, R. M., Sturtevant, C., Suyker, A., Tagesson, T., Takanashi, S., Tang, Y., Tapper, N., Thom, J., Tiedemann, F., Tomassucci, M., Tuovinen, J.-P., Urbanski, S., Valentini, R., van der Molen, M., van Gorsel, E., van Huissteden, K., Varlagin, A., Verfaillie, J., Vesala, T., Vincke, C., Vitale, D., Vygodskaya, N., Walker, J. P., Walter-Shea, E., Wang, H., Weber, R., Westermann, S., Wille, C., Wofsy, S., Wohlfahrt, G., Wolf, S., Woodgate, W., Li, Y., Zampedri, R., Zhang, J., Zhou, G., Zona, D., Agarwal, D., Biraud, S., Torn, M., and Papale, D.: The FLUXNET2015 dataset and the ONEFlux processing pipeline for eddy covariance data, *Scientific Data*, 7, 225, 10.1038/s41597-020-0534-3, 2020.
- Pate, J. S., Jeschke, W. D., and Aylward, M. J.: Hydraulic architecture and xylem structure of the dimorphic root systems of South-West Australian species of Proteaceae, 46, 907-915, 1995.
- Peters, W., van der Velde, I. R., van Schaik, E., Miller, J. B., Ciais, P., Duarte, H. F., van der Laan-Luijckx, I. T., van der Molen, M. K., Scholze, M., Schaefer, K., Vidale, P. L., Verhoef, A., Wårlind, D., Zhu, D., Tans, P. P., Vaughn, B., and White, J. W. C.: Increased water-use efficiency and reduced CO₂ uptake by plants during droughts at a continental scale, *Nature Geoscience*, 11, 744-748, 10.1038/s41561-018-0212-7, 2018.
- Pierret, A., Maeght, J.-L., Clément, C., Montoro, J.-P., Hartmann, C., and Gonkhamdee, S.: Understanding deep roots and their functions in ecosystems: an advocacy for more unconventional research, *Annals of Botany*, 118, 621-635, 10.1093/aob/mcw130, 2016.

- Powell, T. L., Galbraith, D. R., Christoffersen, B. O., Harper, A., Imbuzeiro, H. M. A., Rowland, L., Almeida, S., Brando, P. M., da Costa, A. C. L., Costa, M. H., Levine, N. M., Malhi, Y., Saleska, S. R., Sotta, E., Williams, M., Meir, P., and Moorcroft, P. R.: Confronting model predictions of carbon fluxes with measurements of Amazon forests subjected to experimental drought, *New Phytologist*, accepted, 2013.
- 1025 Prechsl, U. E., Burri, S., Gilgen, A. K., Kahmen, A., and Buchmann, N.: No shift to a deeper water uptake depth in response to summer drought of two lowland and sub-alpine C₃-grasslands in Switzerland. , *Oecologia*, 177, 97-111, 10.1007/s00442-014-3092-6, 2015.
- Raddatz, T. J., Reick, C. H., Knorr, W., Kattge, J., Roeckner, E., Schnur, R., Schnitzler, K. G., Wetzol, P., and Jungclaus, J.: Will the tropical land biosphere dominate the climate–carbon cycle feedback during the twenty-first century?, *Climate Dynamics*, 29, 565-574, 10.1007/s00382-007-0247-8, 2007.
- 1030 Restrepo-Coupe, N., Levine, N. M., Christoffersen, B. O., Albert, L. P., Wu, J., Costa, M. H., Galbraith, D., Imbuzeiro, H., Martins, G., da Araujo, A. C., Malhi, Y. S., Zeng, X., Moorcroft, P., and Saleska, S. R.: Do dynamic global vegetation models capture the seasonality of carbon fluxes in the Amazon basin? A data–model intercomparison, *Global Change Biology*, 23, 191-208, 10.1111/gcb.13442, 2017.
- 1035 Restrepo-Coupe, N., da Rocha, H. R., Hutrya, L. R., da Araujo, A. C., Borma, L. S., Christoffersen, B., Cabral, O. M. R., de Camargo, P. B., Cardoso, F. L., da Costa, A. C. L., Fitzjarrald, D. R., Goulden, M. L., Kruijt, B., Maia, J. M. F., Malhi, Y. S., Manzi, A. O., Miller, S. D., Nobre, A. D., von Randow, C., Sá, L. D. A., Sakai, R. K., Tota, J., Wofsy, S. C., Zanchi, F. B., and Saleska, S. R.: What drives the seasonality of photosynthesis across the Amazon basin? A cross-site analysis of eddy flux tower measurements from the Brasil flux network, *Agricultural and Forest Meteorology*, 182-183, 128-144, 1040 <https://doi.org/10.1016/j.agrformet.2013.04.031>, 2013.
- Robinson, D. A., Hopmans, J. W., Filipovic, V., van der Ploeg, M., Lebron, I., Jones, S. B., Reinsch, S., Jarvis, N., and Tuller, M.: Global environmental changes impact soil hydraulic functions through biophysical feedbacks, *Global Change Biology*, 25, 1895-1904, 10.1111/gcb.14626, 2019.
- Sabot, M. E. B., De Kauwe, M. G., Pitman, A. J., Medlyn, B. E., Verhoef, A., Ukkola, A. M., and Abramowitz, G.: Plant profit maximization improves predictions of European forest responses to drought, *New Phytologist*, 226, 1638-1655, 1045 10.1111/nph.16376, 2020.
- Saleska, S. R., Miller, S. D., Matross, D. M., Goulden, M. L., Wofsy, S. C., da Rocha, H. R., de Camargo, P. B., Crill, P., Daube, B. C., de Freitas, H. C., Hutrya, L., Keller, M., Kirchhoff, V., Menton, M., Munger, J. W., Pyle, E. H., Rice, A. H., and Silva, H.: Carbon in amazon forests: Unexpected seasonal fluxes and disturbance-induced losses, *Science*, 302, 1050 10.1126/science.1091165, 2003.
- Seneviratne, S. I., Corti, T., Davin, E. L., Hirschi, M., Jaeger, E. B., Lehner, I., Orlowsky, B., and Teuling, A. J.: Investigating soil moisture–climate interactions in a changing climate: A review, *Earth-Science Reviews*, 99, 125-161, <https://doi.org/10.1016/j.earscirev.2010.02.004>, 2010.

- Seneviratne, S. I., Wilhelm, M., Stanelle, T., van den Hurk, B., Hagemann, S., Berg, A., Cheruy, F., Higgins, M. E., Meier, A., Brovkin, V., Claussen, M., Ducharne, A., Dufresne, J.-L., Findell, K. L., Ghattas, J., Lawrence, D. M., Malyshev, S., Rummukainen, M., and Smith, B.: Impact of soil moisture-climate feedbacks on CMIP5 projections: First results from the GLACE-CMIP5 experiment, *Geophysical Research Letters*, 40, 5212-5217, 10.1002/grl.50956, 2013.
- Sinclair, T. R.: Theoretical Analysis of Soil and Plant Traits Influencing Daily Plant Water Flux on Drying Soils, *Agronomy Journal*, 97, 1148-1152, 10.2134/agronj2004.0286, 2005.
- 1060 Song, Y., Jain, A. K., and McIsaac, G. F.: Implementation of dynamic crop growth processes into a land surface model: evaluation of energy, water and carbon fluxes under corn and soybean rotation, *Biogeosciences*, 10, 8039-8066, 10.5194/bg-10-8039-2013, 2013.
- Sparks, J. P. and Black, R. A.: Regulation of water loss in populations of *Populus trichocarpa*: the role of stomatal control in preventing xylem cavitation, *Tree physiology*, 19, 453-459, 10.1093/treephys/19.7.453, 1999.
- 1065 Sperry, J. S., Adler, F. R., Campbell, G. S., and Comstock, J. P.: Limitation of plant water use by rhizosphere and xylem conductance: results from a model, *Plant, Cell & Environment*, 21, 347-359, 10.1046/j.1365-3040.1998.00287.x, 1998.
- Sperry, J. S., Venturas, M. D., Anderegg, W. R. L., Mencuccini, M., Mackay, D. S., Wang, Y., and Love, D. M.: Predicting stomatal responses to the environment from the optimization of photosynthetic gain and hydraulic cost, *Plant, Cell & Environment*, 40, 816-830, <https://doi.org/10.1111/pce.12852>, 2017.
- 1070 Sperry, J. S., Wang, Y., Wolfe, B. T., Mackay, D. S., Anderegg, W. R. L., McDowell, N. G., and Pockman, W. T.: Pragmatic hydraulic theory predicts stomatal responses to climatic water deficits, *New Phytologist*, 212, 577-589, 10.1111/nph.14059, 2016.
- Stahl, C., Burban, B., Wagner, F., Goret, J.-Y., Bompoy, F., and Bonal, D.: Influence of Seasonal Variations in Soil Water Availability on Gas Exchange of Tropical Canopy Trees, *Biotropica*, 45, 155-164, 10.1111/j.1744-7429.2012.00902.x, 2013a.
- 1075 Stahl, C., Hérault, B., Rossi, V., Burban, B., Bréchet, C., and Bonal, D.: Depth of soil water uptake by tropical rainforest trees during dry periods: does tree dimension matter?, *Oecologia*, 173, 1191-1201, 10.1007/s00442-013-2724-6, 2013b.
- Stocker, B. D., Zscheischler, J., Keenan, T. F., Prentice, I. C., Peñuelas, J., and Seneviratne, S. I.: Quantifying soil moisture impacts on light use efficiency across biomes, *New Phytologist*, 218, 1430-1449, 10.1111/nph.15123, 2018.
- 1080 Strey, S., Boy, J., Strey, R., Welpelo, A., Schönenberg, R., Schumann, C., and Guggenberger, G.: Digging deeper: The value of deep soil carbon for potential REDD+ projects in tropical forest communities in Amazonia, *Erkundung*, 71, 231-239, 10.3112/erdkunde.2017.03.05, 2017.
- Takahashi, F., Suzuki, T., Osakabe, Y., Betsuyaku, S., Kondo, Y., Dohmae, N., Fukuda, H., Yamaguchi-Shinozaki, K., and Shinozaki, K.: A small peptide modulates stomatal control via abscisic acid in long-distance signalling, *Nature*, 556, 235-238, 10.1038/s41586-018-0009-2, 2018.
- 1085

- Tardieu, F. and Davies, W.: Root-shoot communication and whole-plant regulation of water flux, in: Water deficits: plant responses from cell to community, edited by: Griffiths, H., and Smith, J. A. C., Bios Scientific Publishers, Oxford, 147-162, 1993.
- 1090 Teuling, A. J., Uijlenhoet, R., Hupet, F., and Troch, P. A.: Impact of plant water uptake strategy on soil moisture and evapotranspiration dynamics during drydown, *Geophysical Research Letters*, 33, 10.1029/2005GL025019, 2006.
- Teuling, A. J., Seneviratne, S. I., Stöckli, R., Reichstein, M., Moors, E., Ciais, P., Luyssaert, S., van den Hurk, B., Ammann, C., Bernhofer, C., Dellwik, E., Gianelle, D., Gielen, B., Grünwald, T., Klumpp, K., Montagnani, L., Moureaux, C., Sottocornola, M., and Wohlfahrt, G.: Contrasting response of European forest and grassland energy exchange to heatwaves, *Nature Geoscience*, 3, 722-727, 10.1038/ngeo950, 2010.
- 1095 Tian, H., Chen, G., Liu, M., Zhang, C., Sun, G., Lu, C., Xu, X., Ren, W., Pan, S., and Chappelka, A.: Model estimates of net primary productivity, evapotranspiration, and water use efficiency in the terrestrial ecosystems of the southern United States during 1895–2007, *Forest Ecology and Management*, 259, 1311-1327, <https://doi.org/10.1016/j.foreco.2009.10.009>, 2010.
- Tuzet, A., Perrier, A., and Leuning, R.: A coupled model of stomatal conductance, photosynthesis and transpiration, *Plant, Cell & Environment*, 26, 1097-1116, 10.1046/j.1365-3040.2003.01035.x, 2003.
- 1100 Tyree, M. T. and Sperry, J. S.: Vulnerability of Xylem to Cavitation and Embolism, *Annual Review of Plant Physiology and Plant Molecular Biology*, 40, 19-36, 10.1146/annurev.pp.40.060189.000315, 1989.
- Ukkola, A. M., De Kauwe, M. G., Roderick, M. L., Abramowitz, G., and Pitman, A. J.: Robust Future Changes in Meteorological Drought in CMIP6 Projections Despite Uncertainty in Precipitation, *Geophysical Research Letters*, 47, e2020GL087820, 10.1029/2020GL087820, 2020.
- 1105 Ukkola, A. M., De Kauwe, M. G., Pitman, A. J., Best, M. J., Abramowitz, G., Haverd, V., Decker, M., and Houghton, N.: Land surface models systematically overestimate the intensity, duration and magnitude of seasonal-scale evaporative droughts, *Environmental Research Letters*, 11, 104012, 10.1088/1748-9326/11/10/104012, 2016.
- Van den Hoof, C., Vidale, P. L., Verhoef, A., and Vincke, C.: Improved evaporative flux partitioning and carbon flux in the land surface model JULES: Impact on the simulation of land surface processes in temperate Europe, *Agricultural and Forest Meteorology*, 181, 108-124, <https://doi.org/10.1016/j.agrformet.2013.07.011>, 2013.
- 1110 Verhoef, A. and Egea, G.: Modeling plant transpiration under limited soil water: Comparison of different plant and soil hydraulic parameterizations and preliminary implications for their use in land surface models, *Agricultural and Forest Meteorology*, 191, 22-32, <https://doi.org/10.1016/j.agrformet.2014.02.009>, 2014.
- von Randow, C., Zeri, M., Restrepo-Coupe, N., Muza, M. N., de Gonçalves, L. G. G., Costa, M. H., Araujo, A. C., Manzi, A. O., da Rocha, H. R., Saleska, S. R., Arain, M. A., Baker, I. T., Cestaro, B. P., Christoffersen, B., Ciais, P., Fisher, J. B., Galbraith, D., Guan, X., van den Hurk, B., Ichii, K., Imbuzeiro, H., Jain, A., Levine, N., Miguez-Macho, G., Poulter, B., Roberti, D. R., Sahoo, A., Schaefer, K., Shi, M., Tian, H., Verbeeck, H., and Yang, Z.-L.: Inter-annual variability of carbon and water fluxes in Amazonian forest, Cerrado and pasture sites, as simulated by terrestrial biosphere models, *Agricultural and Forest Meteorology*, 182–183, 145-155, <http://dx.doi.org/10.1016/j.agrformet.2013.05.015>, 2013.

- 1120 Wang, K. and Dickinson, R. E.: A review of global terrestrial evapotranspiration: Observation, modeling, climatology, and climatic variability, *Reviews of Geophysics*, 50, 10.1029/2011RG000373, 2012.
- Wang, Y., Xie, Z., and Jia, B.: Incorporation of a dynamic root distribution into CLM4.5: Evaluation of carbon and water fluxes over the Amazon, *Advances in Atmospheric Sciences*, 33, 1047-1060, 10.1007/s00376-016-5226-8, 2016.
- Williams, K., Gornall, J., Harper, A., Wiltshire, A., Hemming, D., Quaife, T., Arkebauer, T., and Scooby, D.: Evaluation of
1125 JULES-crop performance against site observations of irrigated maize from Mead, Nebraska, *Geosci. Model Dev.*, 10, 1291-1320, 10.5194/gmd-10-1291-2017, 2017.
- Williams, M., Rastetter, E. B., Fernandes, D. N., Goulden, M. L., Wofsy, S. C., Shaver, G. R., Melillo, J. M., Munger, J. W., Fan, S. M., and Nadelhoffer, K. J.: Modelling the soil-plant-atmosphere continuum in a Quercus–Acer stand at Harvard Forest: the regulation of stomatal conductance by light, nitrogen and soil/plant hydraulic properties, *Plant, Cell &*
1130 *Environment*, 19, 911-927, 10.1111/j.1365-3040.1996.tb00456.x, 1996.
- Wolfe, B. T., Sperry, J. S., and Kursar, T. A.: Does leaf shedding protect stems from cavitation during seasonal droughts? A test of the hydraulic fuse hypothesis, *New Phytologist*, 212, 1007-1018, 2016.
- Wu, J., Serbin, S. P., Xu, X., Albert, L. P., Chen, M., Meng, R., Saleska, S. R., and Rogers, A.: The phenology of leaf quality and its within-canopy variation is essential for accurate modeling of photosynthesis in tropical evergreen forests, *Global*
1135 *Change Biology*, 23, 4814-4827, 10.1111/gcb.13725, 2017.
- Wu, J., Albert, L. P., Lopes, A. P., Restrepo-Coupe, N., Hayek, M., Wiedemann, K. T., Guan, K., Stark, S. C., Christoffersen, B., Prohaska, N., Tavares, J. V., Marostica, S., Kobayashi, H., Ferreira, M. L., Campos, K. S., da Silva, R., Brando, P. M., Dye, D. G., Huxman, T. E., Huete, A. R., Nelson, B. W., and Saleska, S. R.: Leaf development and demography explain photosynthetic seasonality in Amazon evergreen forests, *Science*, 351, 972-976,
1140 10.1126/science.aad5068, 2016.
- Zeng, X.: Global Vegetation Root Distribution for Land Modeling, *Journal of Hydrometeorology*, 2, 525-530, 10.1175/1525-7541(2001)002<0525:GVRDFL>2.0.CO;2, 2001.
- Zeri, M., Sá, L. D. A., Manzi, A. O., Araújo, A. C., Aguiar, R. G., von Randow, C., Sampaio, G., Cardoso, F. L., and Nobre, C. A.: Variability of Carbon and Water Fluxes Following Climate Extremes over a Tropical Forest in Southwestern
1145 Amazonia, *PLOS ONE*, 9, 10.1371/journal.pone.0088130, 2014.
- Zhou, S., Duursma, R. A., Medlyn, B. E., Kelly, J. W. G., and Prentice, I. C.: How should we model plant responses to drought? An analysis of stomatal and non-stomatal responses to water stress, *Agricultural and Forest Meteorology*, 182-183, 204-214, <https://doi.org/10.1016/j.agrformet.2013.05.009>, 2013.

1150

Table 1: Summary of the 10 JULES model experiments, related to the treatment of soil moisture stress.

Experiment Name	Summary of change
default	Eq. 4 used for β . 4 layer soil to 3 m depth. Root profile in left panel of Fig. 2.
psi	Use matric –soil <u>matric</u> potential (Eq. 8) rather than volumetric water content (Eq. 4) to calculate β ; induces a curvilinear response.
p0	Reduce the critical VWC where stress begins. $p0$ in Eq. 5 is changed from 0 to 0.4 (green dashed line in Fig. 1).
mod1	Allow plants to access all soil moisture in the column. Eq. 9 replaces Eq. 4, and Eq. 10 replaces Eq. 7. Double default d_r (max value 3). d_r is the maximum depth of roots instead of e-folding depth.
soil14	Increase soil layers to 14, 10.8 m depth, but d_r remains unchanged. Root profile in middle panel of Fig. 2.
soil14_deeproots soil14_dr*2	Increase soil layers to 14, 10.8 m depth, but double d_r (gives more emphasis to deeper layers).
soil14_psi	Combine soil14 and psi experiments.
soil14_mod1	Combine soil14 and mod1 experiments, except d_r is not capped at 3m. Root profile is the dashed line in middle panel of Fig. 2.
soil14_p0	Combine soil14 and p0 experiments.
soil14_realroots soil14_dr0.5	Increase soil layers to 14, 10.8 m depth. Set $d_r = 0.5$ m for all PFTs, gives a more realistic reduction of root density with depth (see C_3 , C_4 grass root profile in middle panel of Fig. 2).

Formatted: Subscript

Formatted: Subscript

Table 2. Default parameter settings (changed in experiments summarized in Table 1). In the JULES code, p0 is called fsmc_p0; n_{soil} is called sm_levels; d_r is called rootd; ψ_{open} is psi_open; ψ_{close} is psi_close.

JULES Parameter	Explanation	Default setting	Change in experiments
fsmc_shape	Switch that controls whether β decreases linearly with VWC θ or with soil matric potential ψ .	0	1 in psi and soil14_psi
l_use_pft_psi	Switch that controls whether β is a function of θ_{wilt} and θ_{crit} (false) or ψ_{close} and ψ_{open} (true)	false	true in psi and soil14_psi
ψ_{open}	Soil matric potential (MPa) above which β is 1. Dimension of $npft$.	None (only used when l_use_pft_psi=true)	-0.033 MPa for all PFTs in psi and soil14_psi
ψ_{close}	Soil matric potential (MPa) below which β is 0. Dimension of $npft$.	None (only used when l_use_pft_psi=true)	-1.5 MPa for all PFTs in psi and soil14_psi
p0	Threshold at which plants begin to feel stress (when l_use_pft_psi=false). Dimension of $npft$.	0	0.4 for all PFTs in p0 and soil14_p0
fsmc_mod	Switch for method of weighting the contribution that each soil layer makes to the total β . Dimension of $npft$.	0	1 for all PFTs in mod1 and soil14_mod1
d_r	If fsmc_mod=0, d_r is the e-folding depth of roots assuming an exponential root distribution with depth. If fsmc_mod=1, d_r is the total depth of the root zone. Dimension of $npft$.	Tropical broadleaf evergreen trees = 3m Other broadleaf trees and deciduous needleleaf trees = 2m Evergreen needleleaf trees = 1.8m C ₃ and C ₄ grasses = 0.5m Shrubs = 1m	10.8 for all PFTs in soil14_mod1 0.5 for all PFTs in soil14_realrootssoil14_dr0.5
n_{soil}	Number of soil layers	4	14 in all soil14 experiments
dz _{soil}	Soil layer depths in meters, starting with the uppermost layer.	0.1, 0.25, 0.65, 2.0 (total depth = 3m)	0.1, 0.2, 0.2, 0.2, 0.3, 0.3, 0.3, 0.4, 0.4, 0.4, 1.0, 1.0, 3.0, 3.0 (total depth =

Formatted: Subscript

Formatted: Subscript

			10.8m) in all soil14 experiments
--	--	--	-------------------------------------

Table 3. Summary of model performance for GPP with no prescribed data. Ranking of seasonal cycle is based on the statistics are averages for each biome; the average Pearson's correlation coefficient for each biome (r), \pm Good ($r \geq 0.80$); Fair ($0.80 > r \geq 0.60$); Poor ($r < 0.60$); Very poor ($r \leq 0$). Ranking of absolute error is based on the average normalized absolute annual error (NAE) for each biome, and variance ratio (VR), \pm Low (NAE < 20%); Medium (NAE < 50%); High (NAE < 100%); and Very High (NAE > 100%).

Climate	Biome	Seasonal Cycle Correlation coefficient (r)	Normalized Absolute Error (NAE) (annual)	Variance Ratio (VR)	Diagnosed source of error
Tropics	Evergreen forests	Very poor -0.10	Low 0.12	Too high 5.5	Soil moisture stress during the dry season, or other phenological controls on GPP
	Deciduous forests	Poor 0.43	Medium 0.26	Too high 4.8	—GPP too high except during dry to wet season transition
	Grasslands	Fair 0.75	High 0.99	Too high 4.8	GPP is too high all year
	Woody savannas	Fair 0.70	Medium 0.79	Fair 0.79	—GPP is too high all year
Temperate	Mixed forests	0.87 Good	Medium 0.28	Fair 0.92	Soil moisture stress during growing season
	Grasslands	Good 0.85	Low 0.35	Fair 0.57	GPP underestimated at wetter sites—
	Woody savannas	Good 0.82	Low 0.14	Fair 0.64	Multiple factors (soil moisture stress, hydrology, and phenology)
	Cropland	Fair 0.67	Medium 0.24	Too low 0.21	—Phenology and soil moisture stress
High latitude or altitude	Boreal forests	Good 0.90	Medium 0.43	Fair 0.55	Underestimated GPP during summer months—
	Grasslands	Good 0.79	High 0.50	Too low 0.35	Frozen soils

Formatted Table

Table 4. Summary of model performance for LE with no prescribed data. The statistics are averages for each biome: Pearson's correlation coefficient (r), normalized absolute annual error (NAE), and variance ration (VR). Ranking of seasonal cycle is based on the average Pearson's correlation coefficient for each biome: Good = $r > 0.80$; Fair = $r > 0.60$; Poor = $r < 0.60$; Very poor = $r < 0$. Ranking of absolute error is based on the average normalized absolute annual error (NAE) for each biome: Low = $NAE < 20\%$; Medium = $NAE < 50\%$; High = $NAE < 100\%$; and Very High = $NAE > 100\%$.

Climate	Biome	Correlation coefficient (r) Seasonal Cycle	Normalized Absolute Error (NAE) Absolute error (annual)	Variance Ratio (VR) Variability
Tropics	Evergreen forests	Poor 0.29	Low 0.13	Very poor (too high) 3.83
	Deciduous forests	Poor 0.52	Low 0.13	Poor (too high) 1.90
	Grasslands	Poor 0.35	Medium 0.31	Very poor (too high) 5.24
	Woody savannas Savannas	Fair 0.79	Low 0.34	Good 0.99
Temperate	Mixed forests Forests	Good 0.88	High 0.55	1.47 Fair
	Grasslands	Good 0.94	Low 0.23	Poor (too high) 1.15
	Woody savannas savannas	Good 0.91	Medium 0.32	Fair 1.34
	Cropland	Good 0.84	Low 0.03	Fair 0.70
High latitude or altitude	Boreal forests	Good 0.89	Medium 0.26	Fair 1.25
	Grasslands	Good 0.84	Medium 0.42	Fair 0.64

Table 5. Average results of soil moisture stress experiments for GPP at the soil moisture stressed sites GF-Guv, BE-Vie, DE-Tha, and CA-Oas.

Experiment	RMSE (monthly)	RMSE (daily)	NAE	VR	r
Default	2.30	2.59	0.28	2.15	0.75
p0	1.92	2.33	0.21	2.33	0.78
Psi	1.83	2.24	0.20	2.00	0.79
Mod1	2.33	2.63	0.29	2.20	0.74
Soil14	1.84	2.22	0.25	0.95	0.85
Soil14_p0	1.59	2.07	0.21	0.97	0.88
Soil14_psi	1.54	2.03	0.20	0.90	0.89
Soil14_mod1	1.79	2.21	0.23	0.96	0.86

- Formatted: Font: Bold
- Formatted: Font: Bold
- Formatted: Font: Bold, Italic
- Formatted: Font: Bold
- Formatted: Font: Bold, Not Italic
- Formatted: Font: Bold
- Formatted Table

Soil14_dr0.5	2.57	2.88	0.31	2.61	0.69
Soil14_dr*2	1.73	2.17	0.23	0.85	0.89

1180

Table 6. Average results of soil moisture stress experiments for GPP at the sites with Mediterranean climate (IT-Col, US-Var, and US-Ton).

Experiment	RMSE (monthly)	RMSE (daily)	NAE	VR	r
Default	2.14	2.41	0.29	0.45	0.82
P0	1.94	2.26	0.26	0.83	0.82
Psi	1.93	2.26	0.26	0.88	0.82
Mod1	2.10	2.38	0.28	0.48	0.82
Soil14	1.97	2.27	0.26	0.53	0.82
Soil14_p0	1.94	2.27	0.25	0.89	0.82
Soil14_psi	1.98	2.32	0.27	0.90	0.82
Soil14_mod1	2.31	2.57	0.20	0.47	0.68
Soil14_dr0.5	2.28	2.56	0.34	0.40	0.82
Soil14_dr*2	2.01	2.30	0.25	0.56	0.80

Formatted: Font: Bold

Formatted Table

Table 7. Average results of soil moisture stress experiments for GPP at sites with soil moisture stress plus other errors (LBA-K67, LBA-BAN, RU-Che, ZA-Kru).

Experiment	RMSE (monthly)	RMSE (daily)	NAE	VR	r
Default	2.81	3.07	0.43	3.22	0.24
P0	2.77	3.06	0.34	3.32	0.19
Psi	2.69	3.00	0.31	3.02	0.16
Mod1	2.86	3.13	0.43	3.33	0.22
Soil14	2.30	2.58	0.38	1.81	0.22
Soil14_p0	2.14	2.44	0.34	1.51	0.21
Soil14_psi	2.08	2.39	0.32	1.33	0.20
Soil14_mod1	2.45	2.71	0.42	2.67	0.05
Soil14_dr0.5	2.82	3.13	0.45	3.49	0.33
Soil14_dr*2	2.17	2.44	0.39	1.06	0.22

185

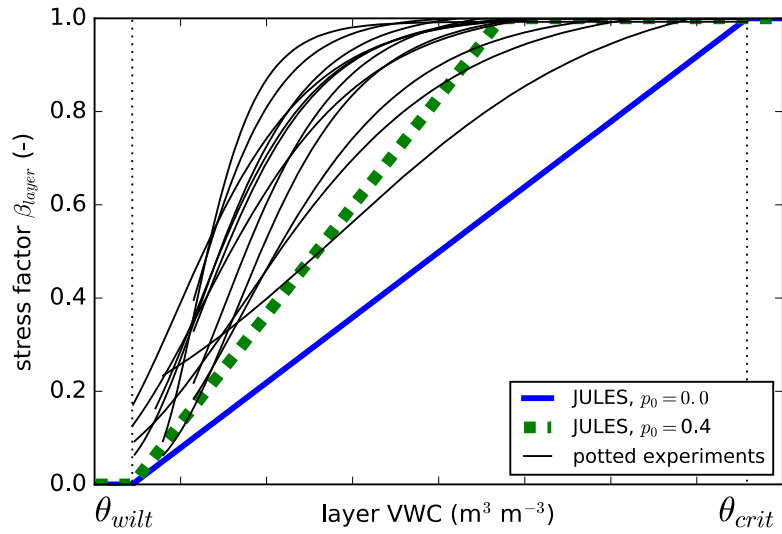


Figure 1: Comparison of JULES soil moisture stress factor (β) to measurements from various potted experiments from Verhoef and Egea (2014). β is calculated from Eq. 4. Two different values of p_0 (Eq. 5) are shown: $p_0=0.4$ was used for the 'soil14_p0' and 'p0' soil moisture stress experiments.

1190

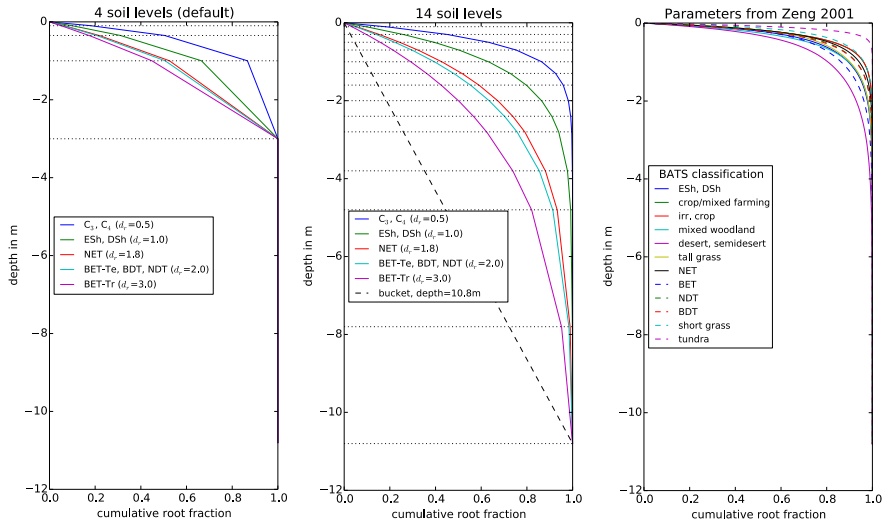
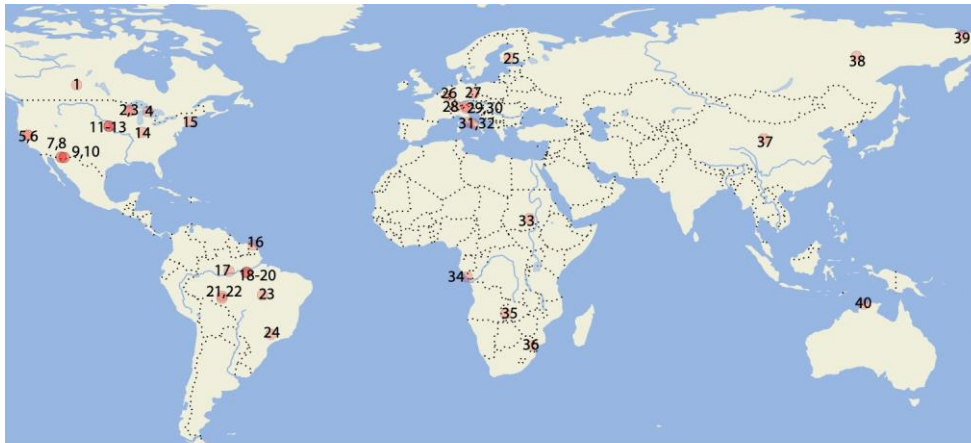


Figure 2: Effective root water extraction profiles Root distributions for JULES with the default four layer soil (maximum depth of 3 m; left panel), with an updated 14 layer soil (maximum depth of 10.8 m; middle panel), and compared to parameters-root fractions from Zeng (2001) (right panel), where distributions were calculated based on available measurements of root profiles. The parameter d_r in JULES is the e-folding depth for weighing root water extraction and soil moisture stress.root-depth. The plant functional types are: C_3, C_4 grasses; evergreen and deciduous shrubs (ESH, DSh); needleleaf evergreen trees (NET), temperate broadleaf evergreen trees (BET-Te), broadleaf deciduous trees (BDT), needleleaf deciduous trees (NDT), tropical broadleaf evergreen trees (BET-Tr).

Formatted: Subscript

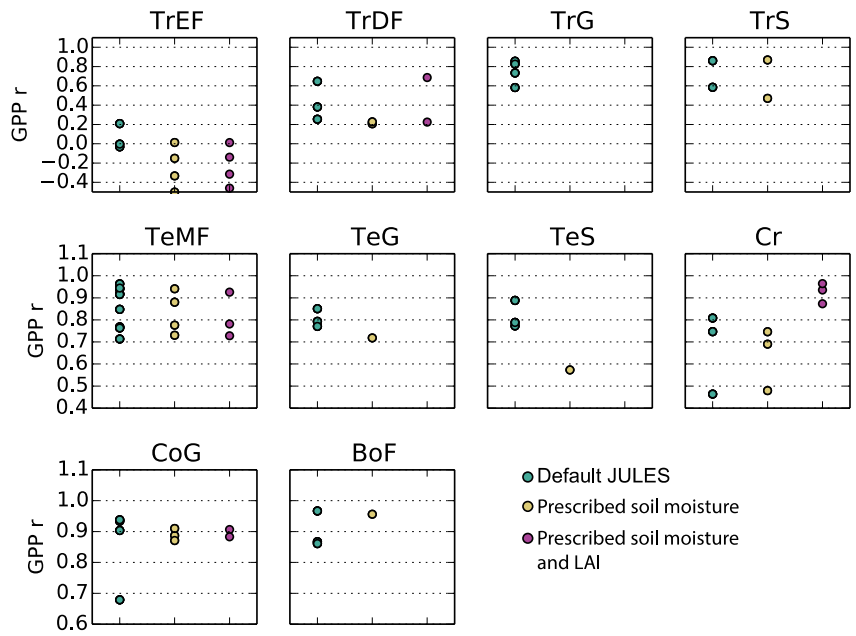
Formatted: Subscript

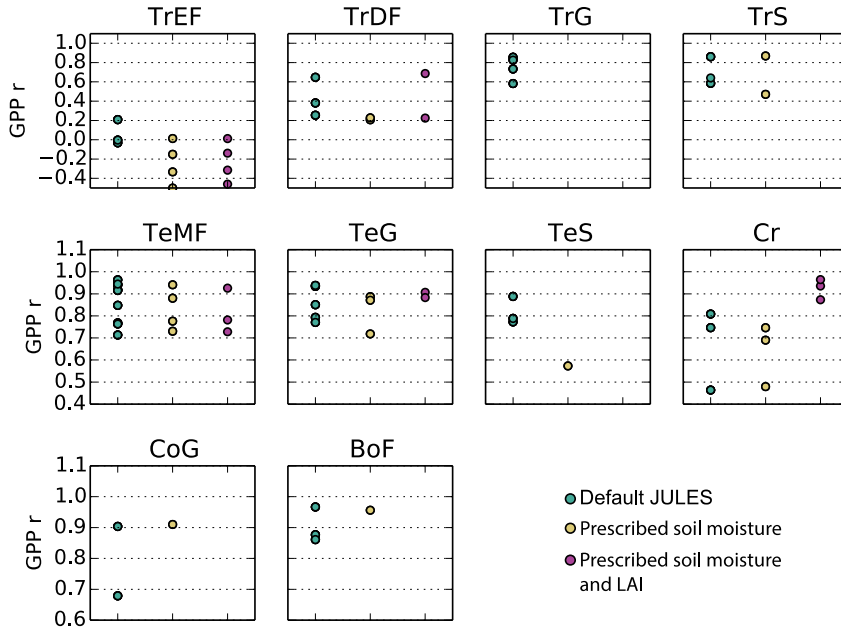


- | | | | |
|------------|-------------|-------------|------------|
| 1. CA-Oas | 11. US-Ne1 | 21. LBA-FNS | 31. IT-CA1 |
| 2. US-PFa | 12. US-Ne2 | 22. LBA-RJA | 32. IT-Col |
| 3. US-WCr | 13. US-Ne3 | 23. LBA-BAN | 33. SD-Dem |
| 4. US-UMB | 14. US-MMS | 24. LBA-PDG | 34. CG-Tch |
| 5. US-Ton | 15. US-Ha1 | 25. FI-Hyy | 35. ZM-Mon |
| 6. US-Var | 16. GF-Guy | 26. BE-Vie | 36. ZA-Kru |
| 7. US-SRM | 17. LBA-K34 | 27. DE-Tha | 37. CN-HaM |
| 8. US-SRG | 18. LBA-K67 | 28. CH-Cha | 38. RU-SkP |
| 9. US-Whs | 19. LBA-K77 | 29. AT-Neu | 39. RU-Che |
| 10. US-Wkg | 20. LBA-K83 | 30. IT-Ren | 40. AU-Fog |

Figure 3. Location of sites used in this study. Details on site characteristics are provided in the Supplemental [Material](#).

Formatted: Font: 10 pt

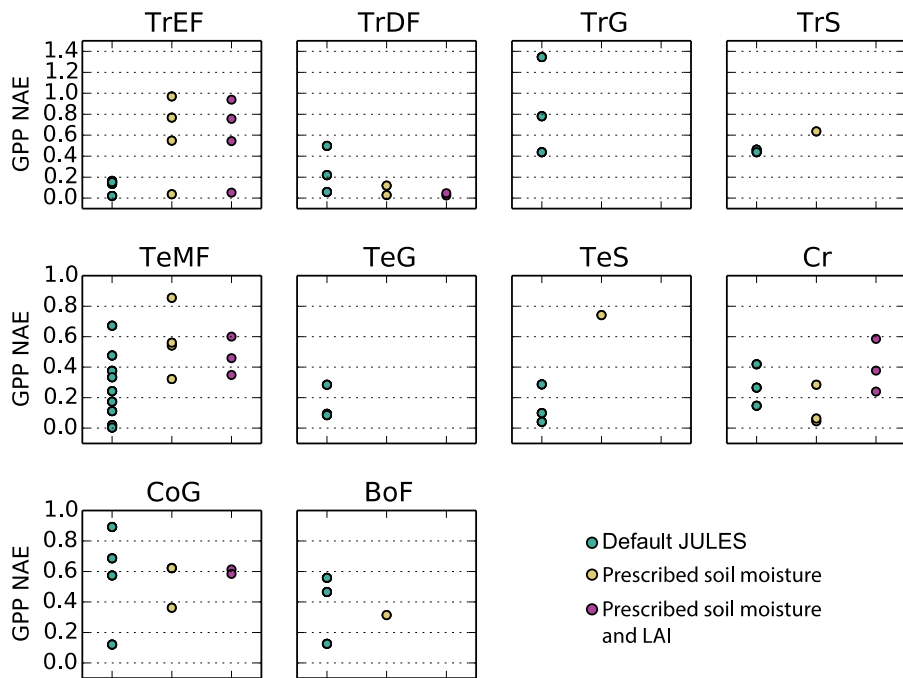




1210

Figure 34. Correlation coefficient for simulated monthly mean GPP at Fluxnet sites for ten biomes: TrEF=Tropical Evergreen Forests; TrDF= Tropical Deciduous Forests; TrG = Tropical Grasslands; TrS=Tropical SavannahSavanna; TeMF = Temperate Mixed Forests; TeG=Temperate Grasslands; TeS=Temperate SavannahSavanna; Cr=Cropland; CoG=Continental/High altitude grasslands; BoF=Boreal Forests. The sites that fall into each category are listed in the Supplemental Material.

1215



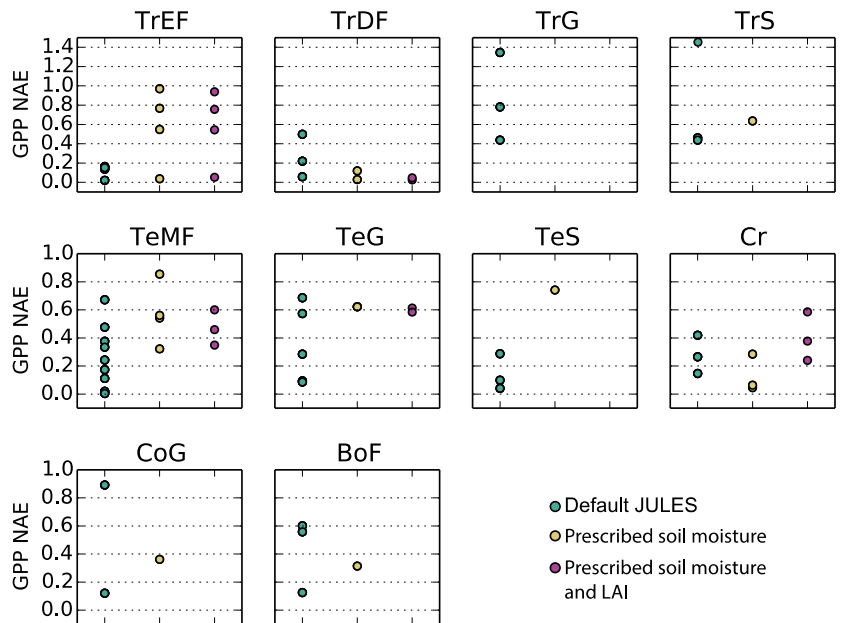
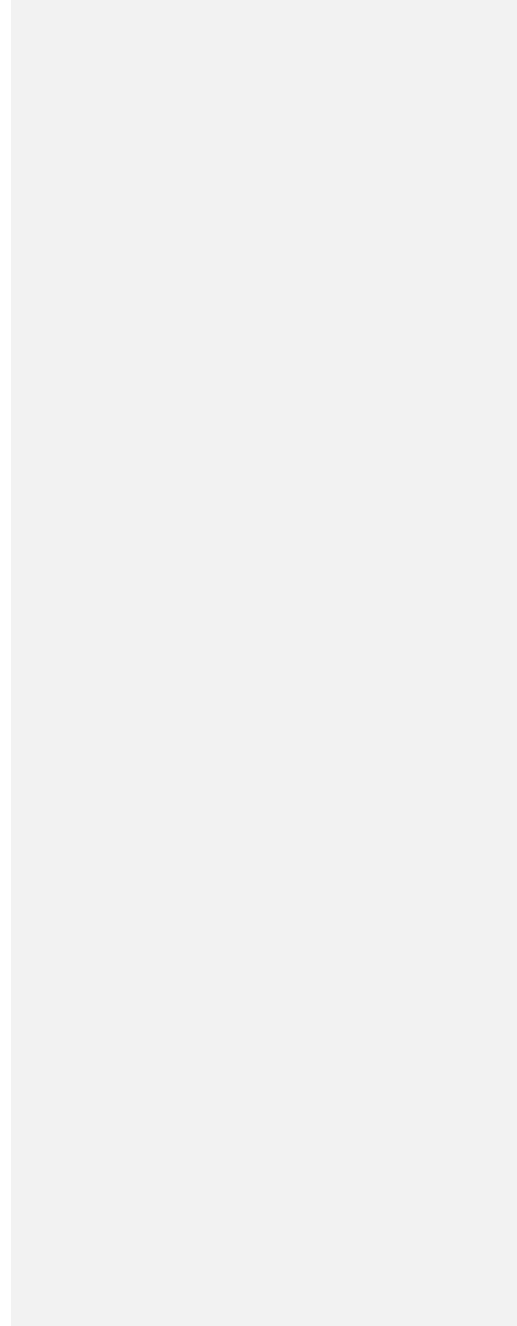
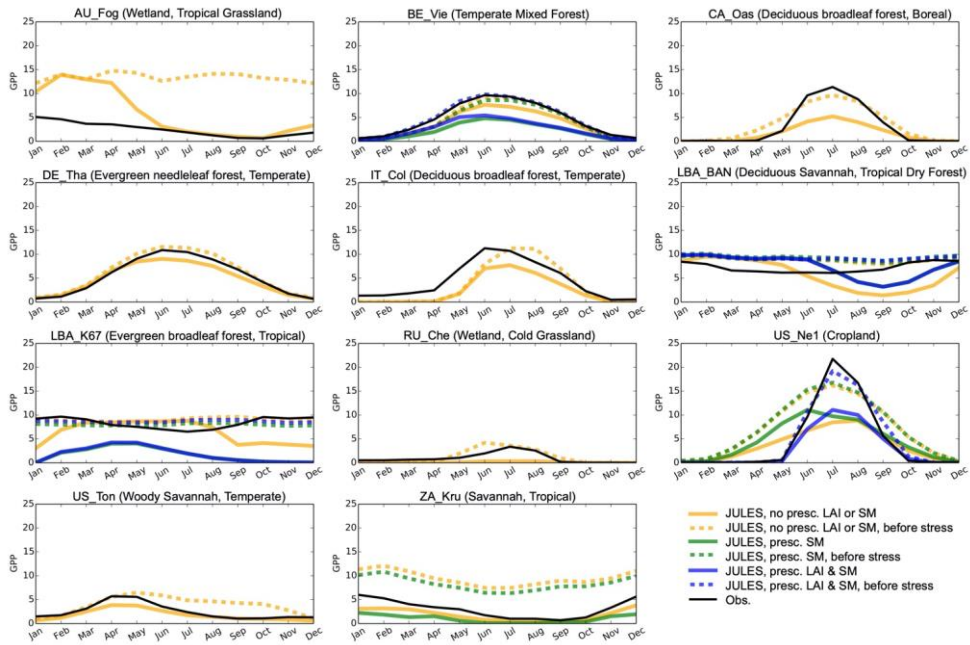


Figure 45. Normalized Absolute Errors for simulated GPP at Fluxnet sites for ten biomes: TrEF=Tropical Evergreen Forests; TrDF= Tropical Deciduous Forests; TrG = Tropical Grasslands; TrS=Tropical ~~Savannah~~Savannas; TeMF = Temperate Mixed Forests; TeG=Temperate Grasslands; TeS=Temperate ~~Savannah~~Savannas; Cr=Cropland; CoG=Continental/High altitude grasslands; BoF=Boreal Forests. The sites that fall into each category are listed in the Supplemental Material.

225





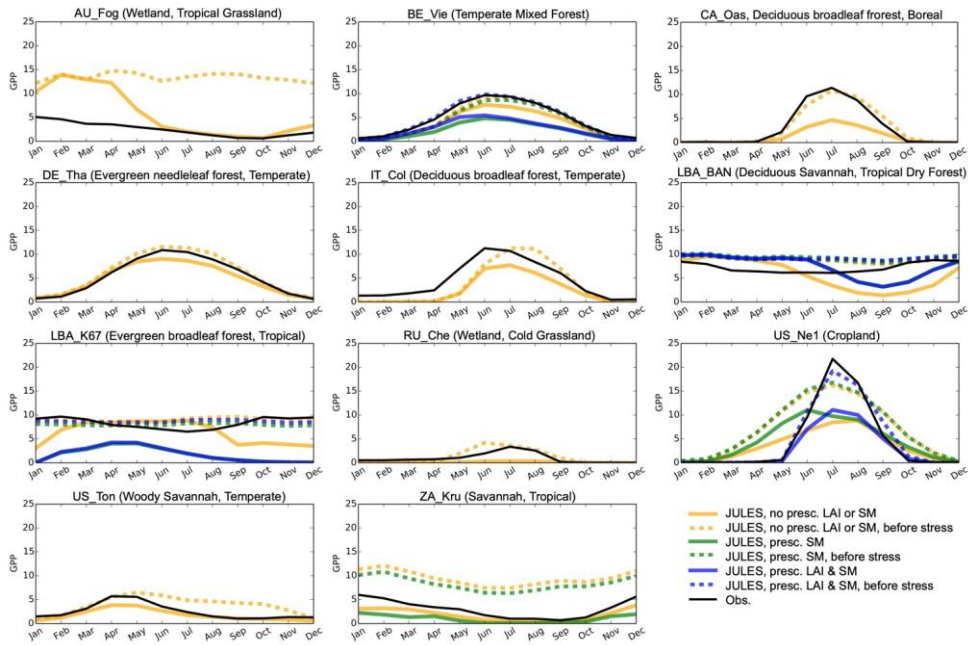


Figure 56: Average seasonal cycle of GPP ($\text{gC m}^{-2} \text{d}^{-1}$) for representative sites in biomes with large biases. Full dates of simulations are provided in the Supplemental Material, here we give the years included: AU-Fog (2006-2008); BE-Vie (1996-2006); CA-Oas (1996-2010); DE-Tha (1996-2014); IT-Col (1996-2014); LBA-BAN (2004-2006); LBA-K67 (2002-2003); RU-Che (2002-2005); US-Ne1 (2001-2012); US-Ton (2001-2014); ZA-Kru (2000-2013).

1235

1240

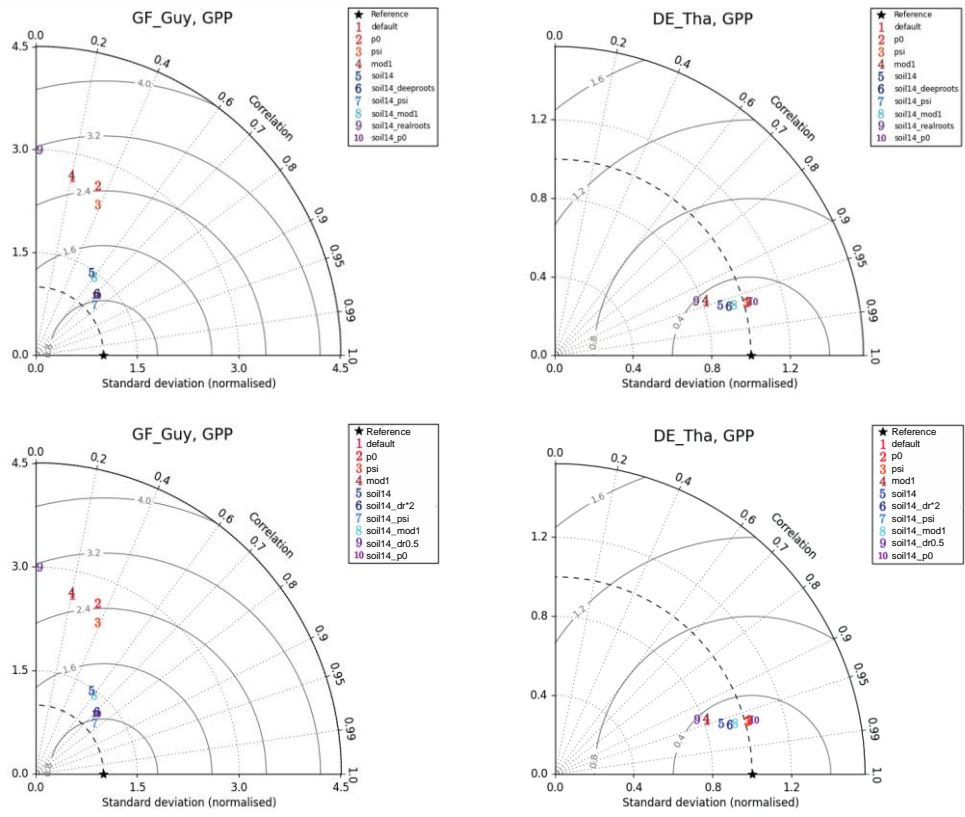
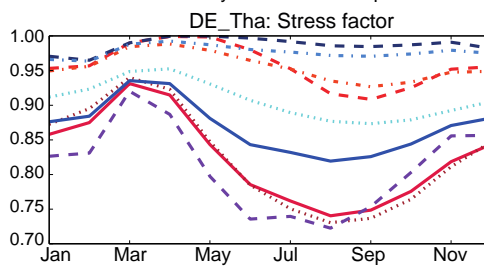
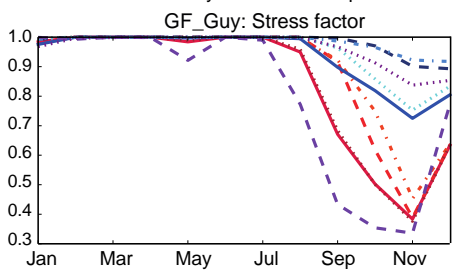
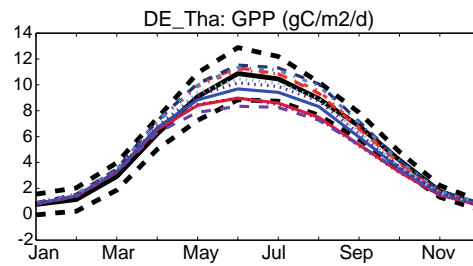
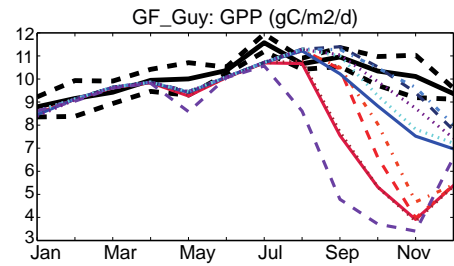


Figure 67: Example of impacts of soil moisture stress representations on GPP model skill for two *soil moisture stressed* sites: GF-Guy (Tropical evergreen forest), and DE-Tha (Temperate evergreen needleleaf forest). The GF-Guy simulations included years 2007-2009; and the DE-Tha simulations included years 1996-2014. Details of the simulations are provided in Sect. 2.3 and Tables 1-2.

1245



- Obs
- Default
- - - p0
- · · psi
- · · mod1
- - - soil14_p0
- - - soil14_realroots
- · · soil14_psi
- · · soil14_deeproots
- · · soil14_mod1

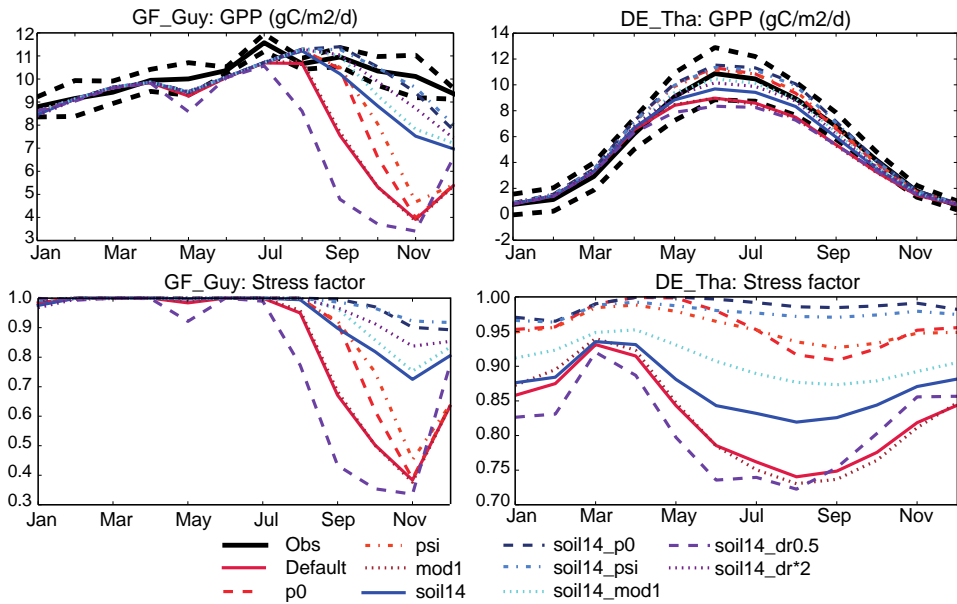


Figure 78: Example of impacts of various soil moisture stress-related changes (see Table 1) on simulated seasonal cycle of GPP at two *soil moisture stressed* sites (see Section 3.3; similar figures for BE-Vie and CA-Oas are in Fig. SM9a). The GF-Guy simulations included years 2007-2009; and the DE-Tha simulations included years 1996-2014. GF-Guy is a tropical evergreen broadleaf forest and DE-Tha is an evergreen needle-leaf forest. Details of the simulations are provided in Sect. 2.3 and Tables 1-2.