

Supplementary Material: Ecosystem age-class dynamics and distribution in the LPJ-wsl v2.0 global ecosystem model

Leonardo Calle^{1,2} and Benjamin Poulter³

Correspondence to: Leonardo Calle (leonardo.calle@umontana.edu)

1 University of Montana, Department of Forest Management, WA Franke College of Forestry and Conservation, Missoula, MT 59812

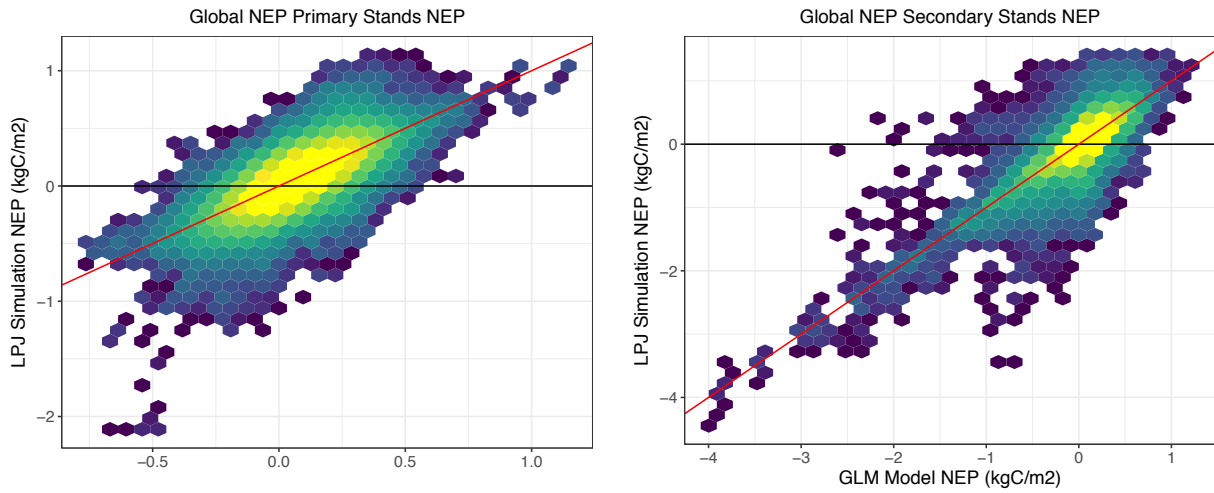
2 Montana State University, Department of Ecology, Bozeman, Montana 59717, USA

3 NASA Goddard Space Flight Center, Biospheric Science Laboratory, Greenbelt, Maryland 20771, USA

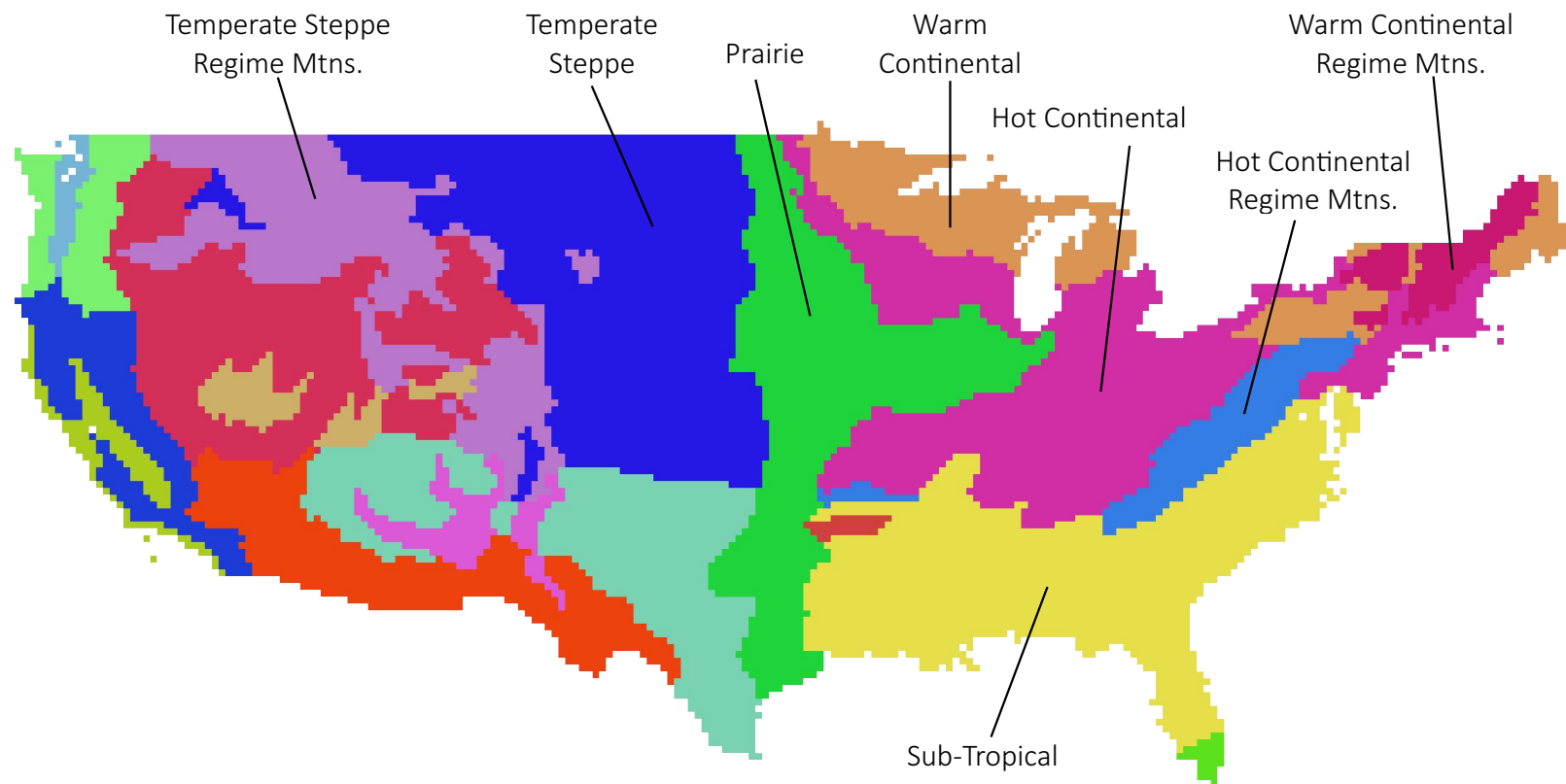
Correspondence to: Leonardo Calle (leonardo.calle@umontana.edu)

SM Table 1. LPJ-wsl Plant Functional Types (PFTs) phenology parameters and bioclimatic limits. Growing Degree Day (GDD) base is the temperature at which annual GDD sums begin. GDDmin is the minimum GDD required for establishment. GDDramp is the number of days required for full leaf out. Tmin and Tmax are the minimum and maximum annual temperatures for establishment, respectively. Trangemin is the minimum annual temperature range for establishment, and only relevant for the BoNS PFT.

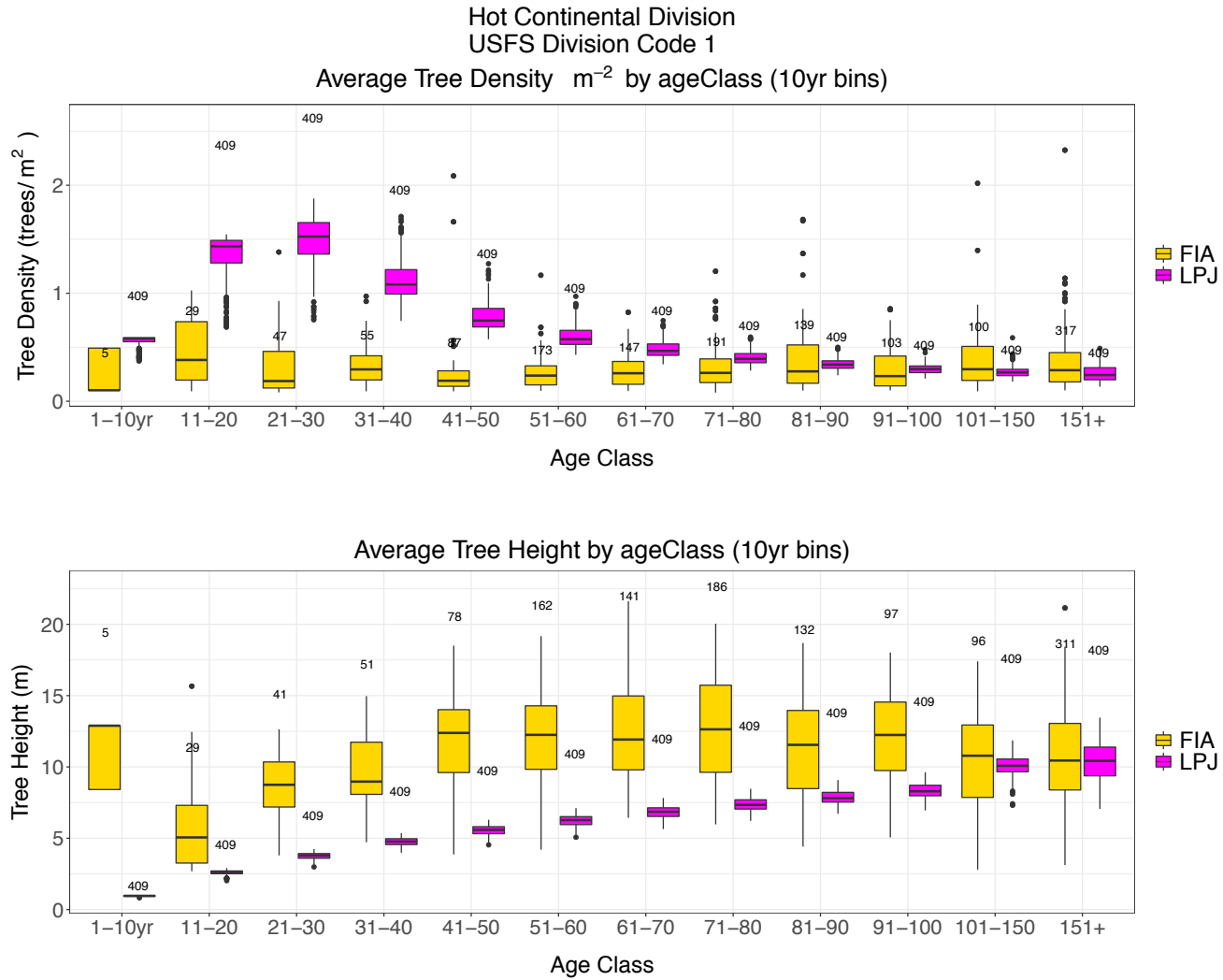
Code	name	Habit	GDDbase	GDDmin	GDDramp	Tmin	Tmax	Trangemin
TrBE	Tropical Broadleaf Evergreen Tree	Evergreen	0.0	0	1000	15.5	1000.0	NA
TrBR	Tropical Broadleaf Raingreen Tree	Deciduous	5.0	0	1000	15.5	1000.0	NA
TeNE	Temperate Needleleaf Evergreen	Evergreen	5.0	900	1000	-2.0	20.0	NA
TeBE	Temperate Broadleaf Evergreen	Evergreen	5.0	1200	1000	3.0	18.8	NA
TeBS	Temperate Broadleaf Summergreen	Deciduous	5.0	1200	300	-17.0	15.5	NA
BoNE	Boreal Needleleaf Evergreen	Evergreen	5.0	600	1000	-32.5	-2.0	NA
BoBS	Boreal Broadleaf Summergreen	Deciduous	5.0	350	200	-1000.0	-2.0	NA
BoNS	Boreal Needleleaf Summergreen	Deciduous	2.0	350	100	-1000.0	-2.0	43
C3GR	C3 Perennial Grass		5.0	0	100	-1000.0	15.5	NA
C4GR	C4 Perennial Grass		5.0	0	100	15.5	1000.0	NA



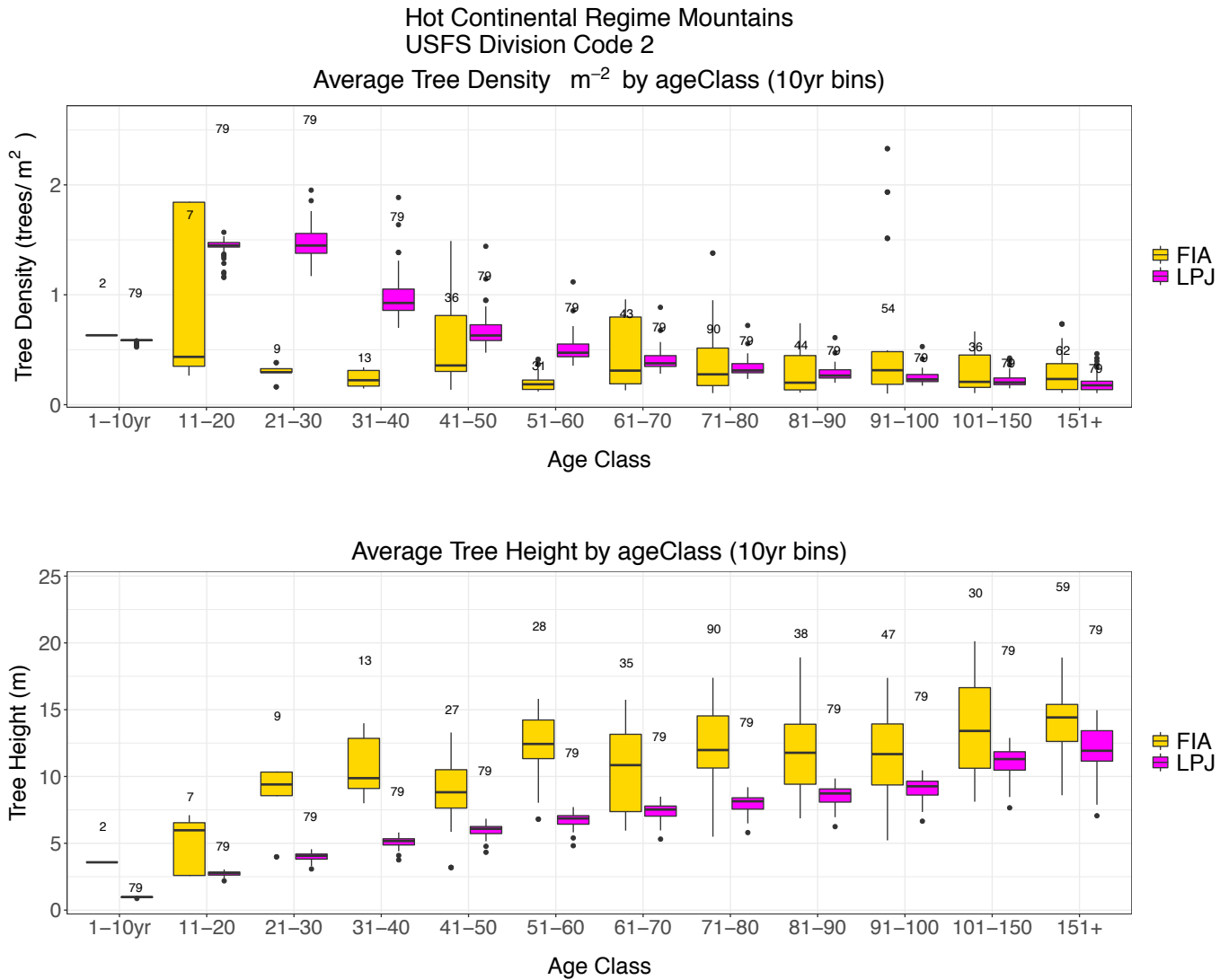
SM Figure 1. Annual (2000-2017) NEP fluxes from LPJ-wsl simulations versus predictions of LPJ-wsl fluxes based on a generalized linear model (flux = precipitation + temperature + age-class); coefficients were allowed to vary by grid-cell, in essence, reducing the effect of variation in plant composition, soil texture and hydrology. Coloring is by density of grid-cells on a log scale; diagonal red line is the 1:1 correspondence line. For primary stands, $R^2 = 0.60$, and for secondary stands, $R^2 = 0.65$.



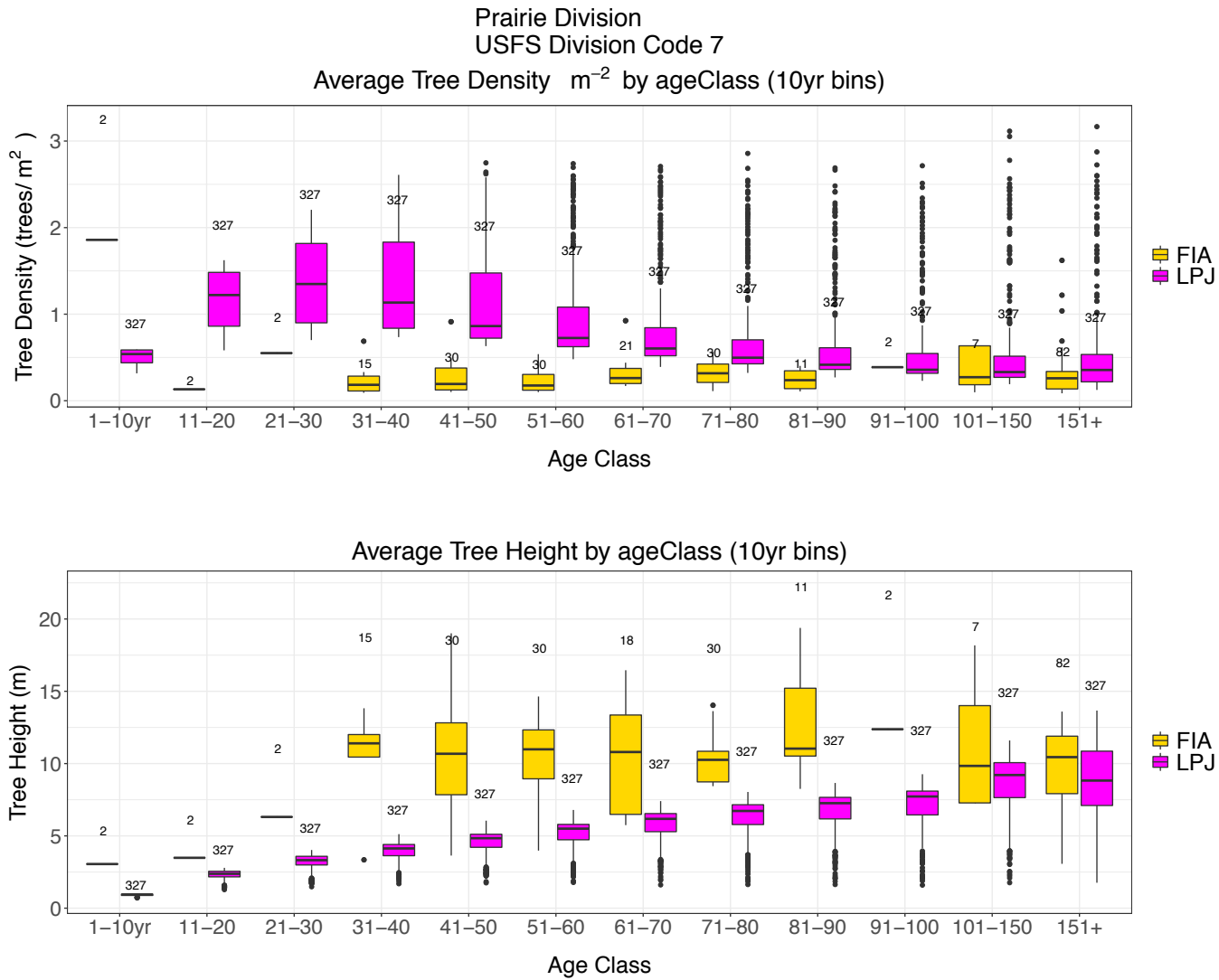
SM Figure 2. U.S. Forest Service Divisions used to aggregate FIA data for comparison against LPJ simulations. Divisions are delineated based on precipitation levels and patterns as well as temperature.



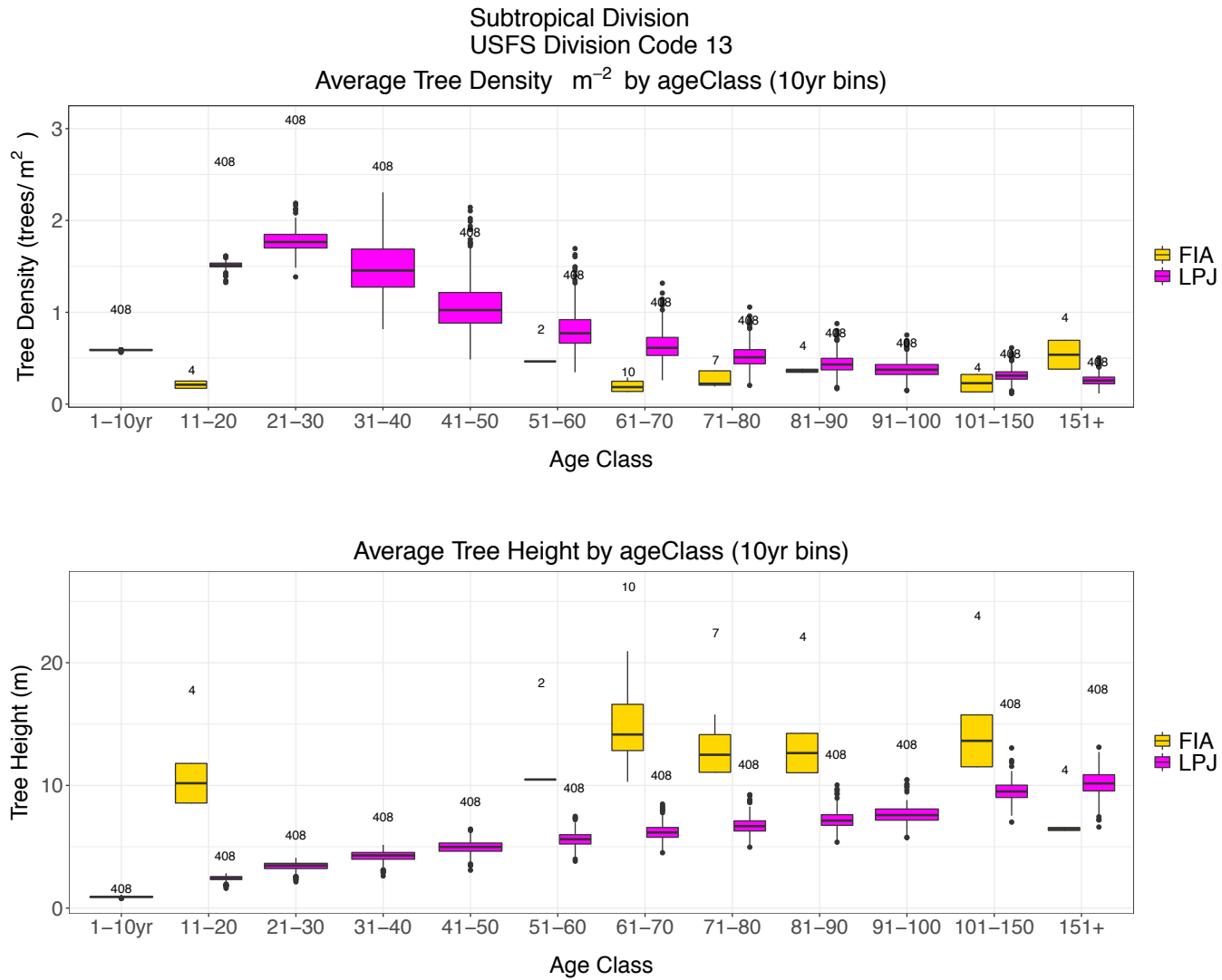
SM Figure 3. Average stem density (top) and tree height (bottom) by age-class for US Forest Inventory Analysis data and LPJ model simulations for the Hot Continental Division (USFS Division code 1).



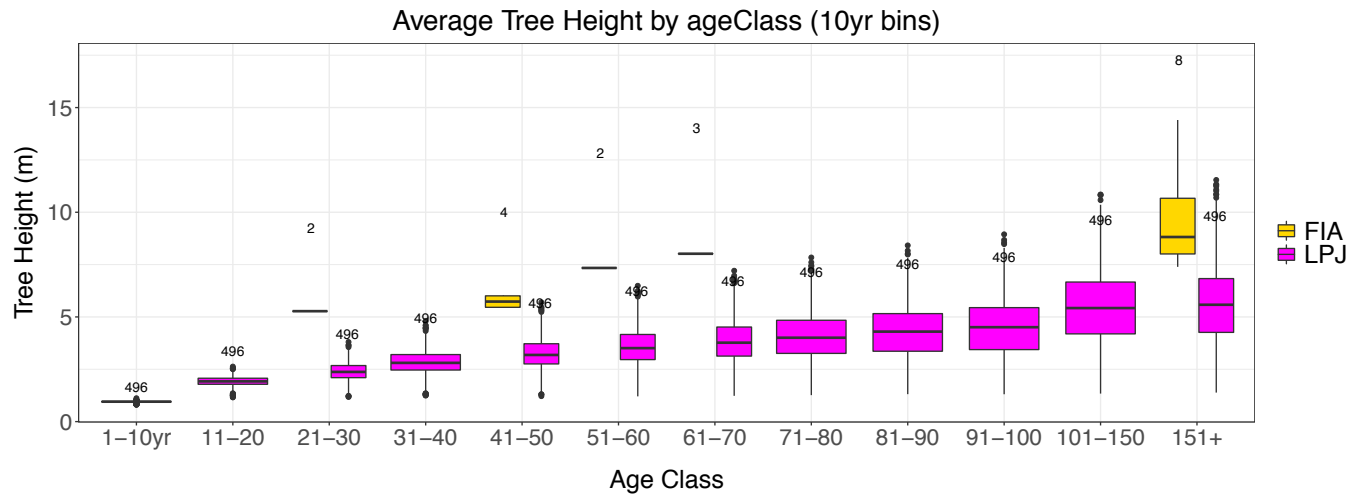
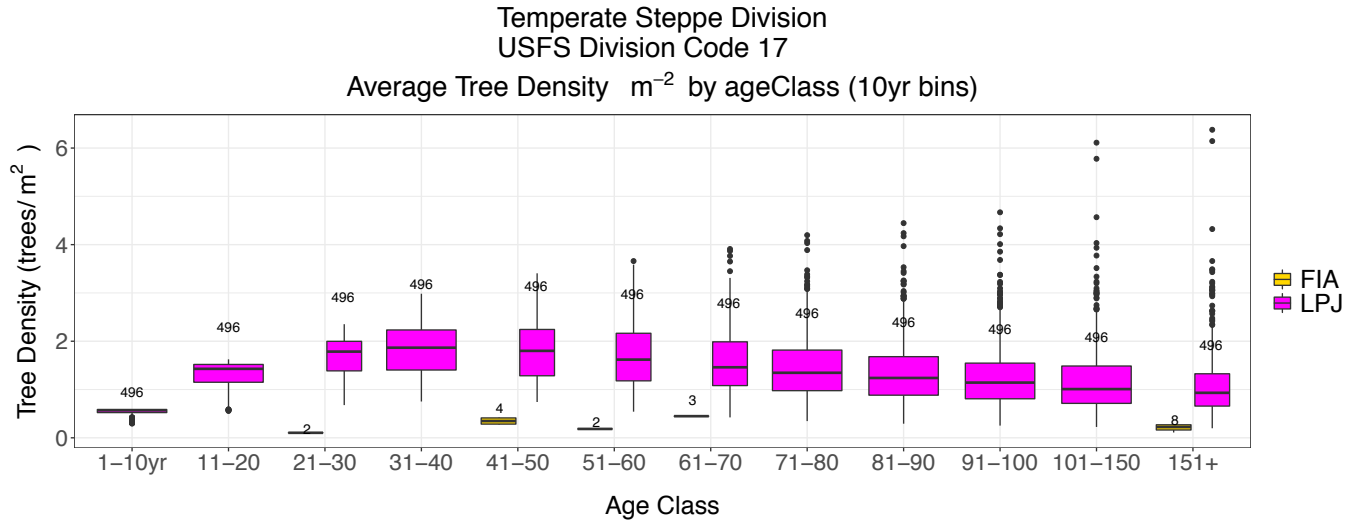
SM Figure 4. Average stem density (top) and tree height (bottom) by age-class for US Forest Inventory Analysis data and LPJ model simulations for the Hot Continental Regime Mountains Division (USFS Division code 2).



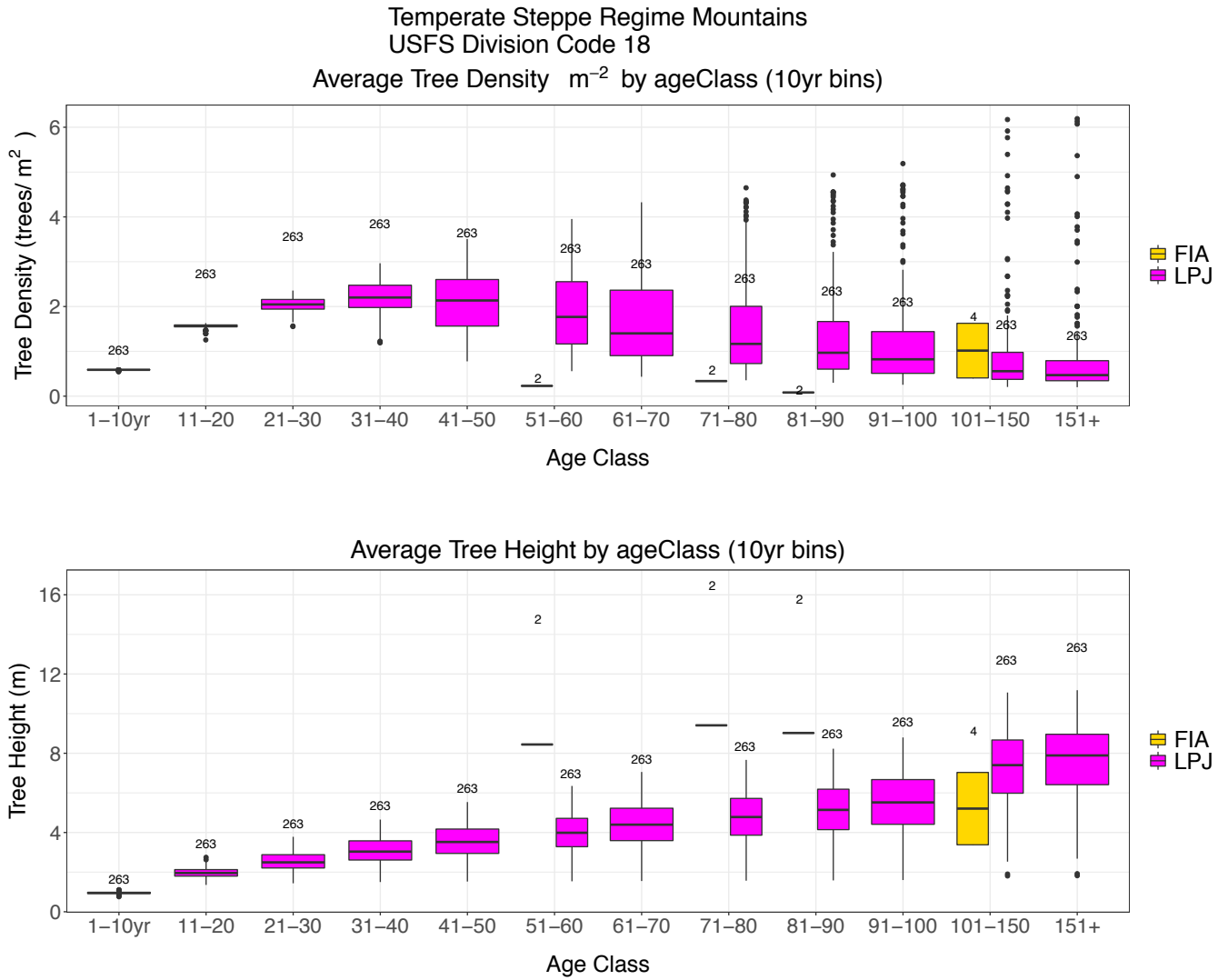
SM Figure 5. Average stem density (top) and tree height (bottom) by age-class for US Forest Inventory Analysis data and LPJ model simulations for the Prairie Division (USFS Division code 7).



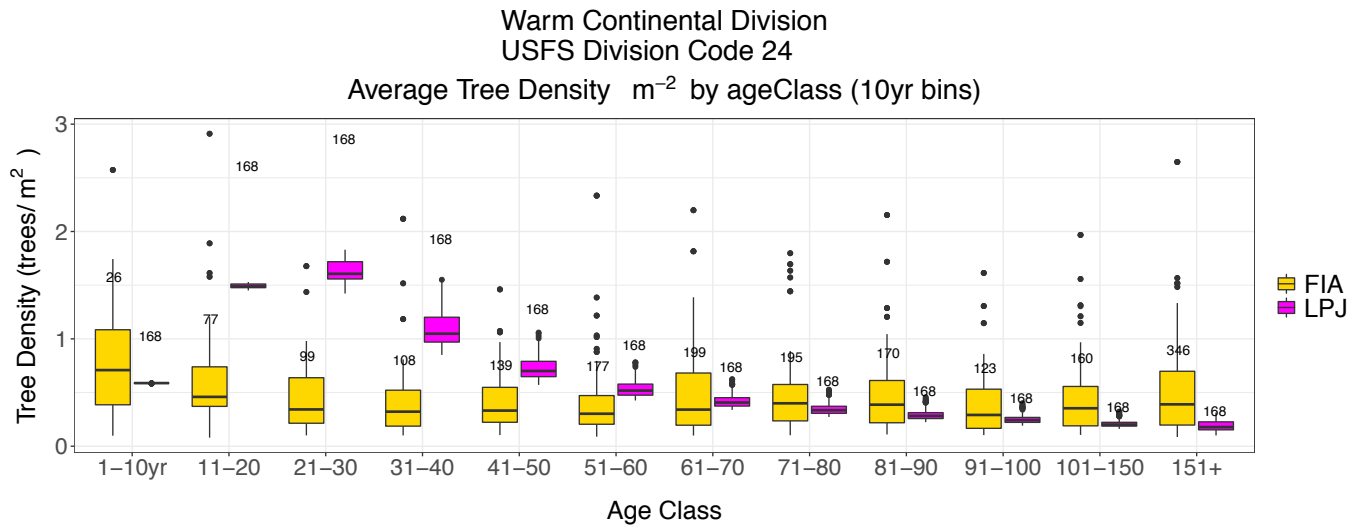
SM Figure 6. Average stem density (top) and tree height (bottom) by age-class for US Forest Inventory Analysis data and LPJ model simulations for the Subtropical Division (USFS Division code 13).



SM Figure 7. Average stem density (top) and tree height (bottom) by age-class for US Forest Inventory Analysis data and LPJ model simulations for the Temperate Steppe Division (USFS Division code 17).

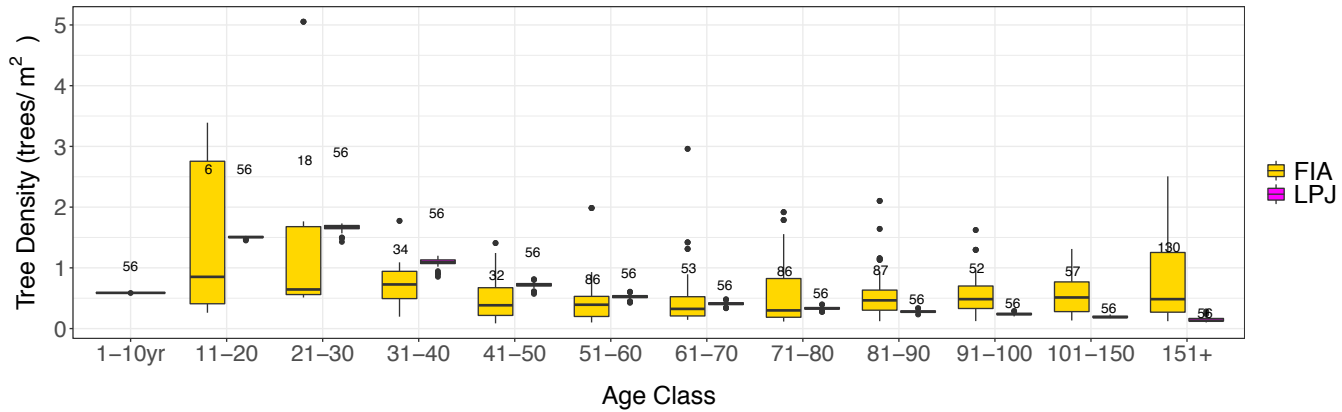


SM Figure 8. Average stem density (top) and tree height (bottom) by age-class for US Forest Inventory Analysis data and LPJ model simulations for the Temperate Steppe Regime Mountains Division (USFS Division code 18).

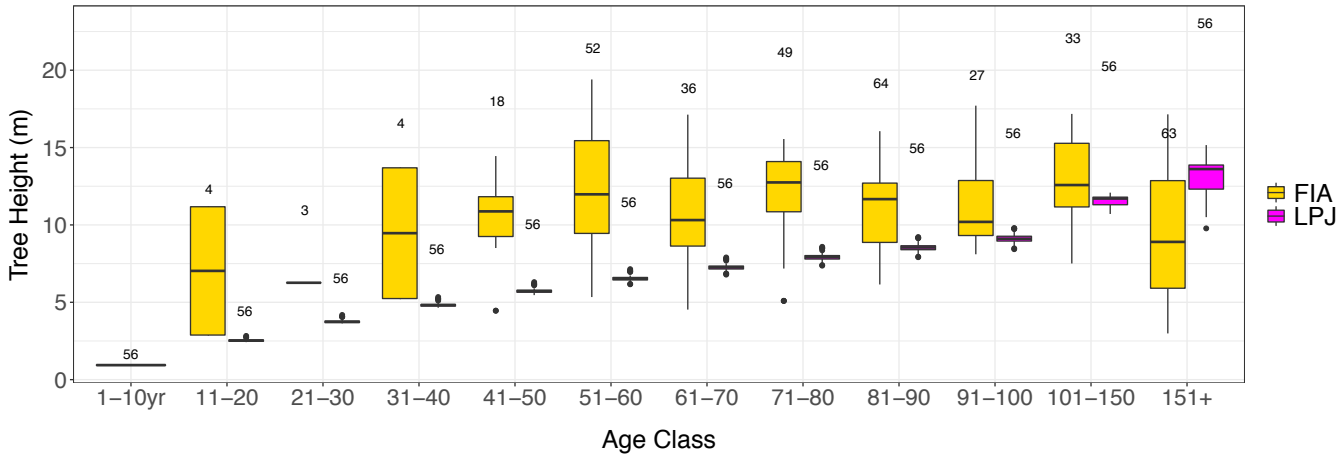


SM Figure 9. Average stem density (top) and tree height (bottom) by age-class for US Forest Inventory Analysis data and LPJ model simulations for the Warm Continental Division (USFS Division code 24).

Warm Continental Regime Mountains
 USFS Division Code 25
 Average Tree Density m^{-2} by ageClass (10yr bins)



Average Tree Height by ageClass (10yr bins)



SM Figure 10. Average stem density (top) and tree height (bottom) by age-class for US Forest Inventory Analysis data and LPJ model simulations for the Warm Continental Regime Mountains Division (USFS Division code 25).