

JULES-CN: a coupled terrestrial Carbon-Nitrogen Scheme (JULES vn5.1)

Andrew J. Wiltshire^{1,2}, Eleanor J. Burke¹, Sarah E. Chadburn³, Chris D. Jones¹, Peter M. Cox³, Taraka Davies-Barnard³, Pierre Friedlingstein³, Anna B. Harper³, Spencer Liddicoat¹, Stephen Sitch², and Sönke Zaehle⁴

¹Met Office Hadley Centre, Exeter, Devon, UK EX1 3PB

²College of Life and Environmental Sciences, University of Exeter, Exeter, EX4 4RJ

³College of Engineering, Mathematics, and Physical Sciences, University of Exeter, Exeter, EX4 4QE

⁴Biogeochemical Signals Department, Max Planck Institute for Biogeochemistry, 07745 Jena, Germany

Correspondence to: Andrew Wiltshire (andy.wiltshire@metoffice.gov.uk)

Abstract. Understanding future changes in the terrestrial carbon cycle is important for reliable projections of climate change and impacts on ecosystems. It is well known that nitrogen (N) could limit plants' response to increased atmospheric carbon dioxide and is therefore important to include a representation of the N cycle in Earth System Models. Here we present the implementation of the terrestrial nitrogen cycle in the Joint UK Land Environment Simulator (JULES) - the land surface scheme of the UK Earth System Model (UKESM). Two configurations are discussed - the first one (JULES-CN) has a bulk soil biogeochemical model and the second one is a development configuration which resolves the soil biogeochemistry with depth (JULES-CN_{layer}). In JULES the nitrogen (N) cycle is based on the existing carbon (C) cycle and represents all the key terrestrial N processes in a parsimonious way. Biological N fixation is dependent on ~~productivity, with N deposition net~~ primary productivity, and N deposition is specified as an external input. Nitrogen leaves the vegetation and soil system via leaching and a bulk gas loss ~~parameterisation~~term. Nutrient limitation reduces carbon-use efficiency (CUE - ratio of net to gross primary productivity) and can slow soil decomposition. We show that ecosystem level N limitation of net primary productivity (quantified in the model by the ratio of the potential amount of C that can be allocated to growth and spreading of the vegetation compared with the actual amount achieved in its natural state) falls at the lower end of the observational estimates in forests (approximately 1.0 in the model compared with 1.01 to 1.38 in the observations). The model shows more N limitation in the tropical savanna and tundra ~~which falls within the range of the~~ biomes consistent with the available observations. Simulated C and N pools and fluxes are comparable to the limited available observations and model derived estimates. The introduction of a N cycle improves the representation of interannual variability of global net

ecosystem exchange which was ~~much too more~~ pronounced in the C cycle only versions of JULES (JULES-C) than shown in estimates from the Global Carbon Project. It also reduces the present-day CUE from a global mean value of 0.45 for JULES-C to 0.41 for JULES-CN and 0.40 for JULES-CN_{layer} all of which fall within the observational range. The N cycle also alters the response of the C fluxes over the twentieth century and limits the CO₂-fertilisation effect, such that the simulated ~~current day current-day~~ land C sink is reduced by about 0.5 Pg C yr⁻¹ ~~compared to the version with no N limitation~~. JULES-CN_{layer} additionally improves the representation of soil biogeochemistry including turnover times in the northern high latitudes. The inclusion of a prognostic land N scheme marks a step forward in functionality and realism for the JULES and UKESM models.

1 Introduction

Terrestrial ecosystems absorb around 25% of anthropogenic carbon emissions (~~Le Quéré et al., 2018; Friedlingstein et al., 2019~~) (Le Quéré et al., 2018; Friedlingstein et al., 2020), and changes in the future land carbon (C) sink will feedback to climate via the proportion of the emissions remaining in the atmosphere. Under projected climate change, the primary mechanism for increased terrestrial sequestration is an increase in plant productivity and biomass, which relies on sufficient availability of nitrogen (N) within the soil-plant system. Therefore the availability of N impacts the land C sink, both in the present and in a higher atmospheric carbon dioxide (CO₂) future.

Nitrogen exists in the terrestrial system in organic and inorganic forms and is continually cycled. In a stable climate the external inputs to the coupled vegetation and soil system—biological N fixation and N deposition—are balanced by the losses from this system—N leaching and N gas loss associated primarily with denitrification processes. Depending on the nutrient status of the vegetation and soil, changes in the balance of the inputs and outputs of N can drive adjustments in vegetation biomass and soil organic matter. Within the system organic N is transferred from the vegetation to the soil through the production of litter and disturbance. The litter decomposes into soil organic matter and in turn is mineralised into inorganic N. Both inorganic and organic N may become available for plant uptake, although the amount of organic N uptake by plants is small and typically not included in models (Weintraub and Schimel, 2005).

~~In a changing climate, rising~~ Any increase in atmospheric CO₂ drives an increase in the land C uptake and hence an increase in the gross primary productivity (GPP). This results in an extra demand for N which could potentially limit the increase in future C stocks. For example, Zaehle (2013a) suggest that, in some areas, N could limit ~~future C uptake any future C sink~~ by up to 70%. N cycling also tends to reduce the sensitivity of land C uptake to temperature. Warmer conditions lead to increased plant respiration and soil respiration, which tends to reduce the land C sink. However,

the increased soil respiration also leads to accelerated N mineralisation and increased N availability to plants, which may provide a counteracting increase in GPP. This latter effect is absent from models that do not include a N cycle. As a result of neglecting these important effects, land-surface models without an interactive N cycle tend to overestimate both CO₂ and temperature effects on the land C sink (Wenzel et al., 2016; Cox et al., 2013). In addition, climate projections assessed by IPCC using CMIP5 Earth System Models that lacked terrestrial carbon cycle Ciais et al. (2014) have been shown to exhibit a major and systematic bias in their future projection of land carbon sink Zaehle et al. (2015); Wieder et al. (2015b). An increasing number of land surface and climate models now include constraints on the land C sink caused by N limitation (Zaehle et al., 2014; Wania et al., 2012; Smith et al., 2014). In fact, recent simulations have generated a range of estimates for the sensitivity of the C cycle to N availability (Meyerholt et al., 2020a; Davies-Barnard et al., 2020; Arora et al., 2019). For example, Meyerholt et al. (2020a) used a perturbed model ensemble to show that N limitation reduces both the projected future increase in land C store due to CO₂ fertilisation and the projected loss in land C caused by climate change. The inclusion of nitrogen cycle processes in many CMIP6 models has been a major advance Arora et al. (2019). Jones and Friedlingstein (2020) show how CMIP6 models have a much reduced spread in their simulation of airborne fraction than in CMIP5 and this is attributable to the inclusion of N-cycle in about half of these latest generation models. But process understanding and evaluation of these model is still in its infancy (Davies-Barnard et al., 2020).

The purpose of this paper is to describe and evaluate the implementation of a coupled C and N cycle within the Joint UK Land-Environment Simulator (Best et al., 2011; Clark et al., 2011) (JULES at vn5.1 - http://jules-lsm.github.io/vn5.1/release_notes/JULES5.1.html). JULES is the land surface component of the ~~later-generation-of-Hadley-Centre-climate-models-including-the~~ UK Earth System Model (UKESM) (Sellar et al., 2019). The addition of the N cycle to JULES described in this paper was carried out alongside other developments such as improved plant physiology and ~~extended~~ an extended number of plant functional types (Harper et al., 2018), an enhanced representation of surface exchange and hydrology (Wiltshire et al., 2020) and a new module for land management (Robertson et al., in prep.). These separate components ~~have-been-combined~~ combine to make the land surface component of UKESM and were used for the most recent Global Carbon Budget annual assessment (~~Friedlingstein et al., 2019~~) (Friedlingstein et al., 2020).

The philosophy behind the developments described here is to produce a parsimonious model to capture the established first order emergent response of N addition on growth which translates into leaf area index (LAI) and biomass ~~without-the-complex-and-uncertain-impacts-on-leaf-physiology~~. Our approach is ~~therefore~~ to simulate the large-scale role of N limitation on vegetation C use efficiency (CUE - ratio of net to gross primary productivity) and soil C turnover. This is achieved by extending

the implicit representation of N in the existing dynamic vegetation and plant physiology modules
 95 to be fully interactive. At the core of surface exchange in JULES is a coupled stomatal conduc-
 tance photosynthesis scheme ~~parameterised in terms of the maximum rate of Rubisco carboxylation,~~
 ~~V_{cmax} ($\text{mol CO}_2 \text{m}^{-2} \text{s}^{-1}$).~~ ~~V_{cmax} has with~~ a dependency on the leaf N concentration. Similarly,
 plant maintenance respiration has a dependency on leaf, root and stem N concentration (Cox et al.,
 1998, 1999; Cox, 2001; Clark et al., 2011). Implicit within JULES, even in simulations excluding
 100 the N cycle is the parameterisation of plant tissue level N concentrations and associated allometry
 (~~Wiltshire et al., 2020~~)(~~discussed further in Section 3.1.3 and by Wiltshire et al. (2020)~~). Simulations
 with an interactive C cycle therefore assume that enough N is available to meet vegetation growth
 and turnover. Here, we simply limit growth if not enough N is available. To do this requires a full
 representation of the N cycle in the land surface including a coupled soil C and N organic and soil
 105 inorganic N scheme.

At the ecosystem level, the C and N cycles are closely coupled with each ~~exchange flux~~ of C
 associated with a corresponding flux of ~~organic N~~ ~~N linked via the C to N ratios~~. In JULES nutrient
 limitation operates through two mechanisms; ~~the available C for vegetation uptake is reduced, and~~
 110 ~~. Firstly, the vegetation cannot uptake as much C – any C that the plants cannot uptake is denoted~~
~~excess C. Secondly~~ the decomposition of litter C is slowed ~~because there is insufficient N present~~.
 This is achieved by explicitly representing the demand for N within the vegetation and soil mod-
 ules and then reducing plant net ~~C-gain~~ ~~primary productivity~~ to match available nutrients. In the soil
 module an additional decomposition rate modifier is introduced that slows ~~decomposition~~ ~~respiration~~
 115 ~~by microbes~~ to match available nutrients. The current structure of the TRIFFID dynamic vegetation
 model (Cox, 2001), in particular the fixed allometry and C allocation, is largely unchanged. As the
 aim of this scheme is to capture the impact on terrestrial C stores, N loss terms are aggregated and
 not speciated. The model's reduced uptake of vegetation C due to N limitation ~~will~~ ~~is designed to~~
 have only a minor impact on the GPP. ~~Therefore the~~ ~~The~~ emergent impact of the N scheme ~~will be~~
 120 ~~to reduce~~ ~~is modelled by reducing~~ NPP and hence the carbon use efficiency (CUE) of the vegeta-
 tion. In reality the ~~excess C~~ ~~(C the plants are unable to use because of insufficient N (defined as Ψ)~~
~~which cannot be used goes becomes~~ to non structural carbohydrates, root exudates ~~and or~~ biogenic
 volatile organic compounds (Collalti and Prentice, 2019). However, to simplify the carbon balance
 in JULES-CN, it is added to the autotrophic respiration.

125 A key assumption in the JULES representation of vegetation, and common amongst complex
 DGVMs (Meyerholt and Zaehle, 2015) is of fixed plant stoichiometry (mass ratio of C to N atoms
 or C:N ratio). The implication is that leaf-level photosynthetic capacity does not vary with available
 N. This is consistent with field experiments enhancing N fertilisation that find increases in growth
 130 but no corresponding change in photosynthetic capacity (~~Brix and Ebell, 1969; Wang et al., 2012~~)

(Brix and Ebell, 1969; Wang et al., 2012; Field and Mooney, 1986; McGuire et al., 1995). However, more recent analyses do make the link between nutrient availability and leaf level N concentrations (e.g. Mao et al. (2020)). In general, models make different assumptions about the tightness of the coupling mechanism between the C and N cycles leading to substantial uncertainty in their projections (Zaehle and Dalmonech, 2011). Within the fully coupled Earth Systems Models used in the Coupled Climate Carbon Cycle Model Intercomparison Project (C4MIP) for quantifying C feedbacks only four out of eleven models include a N cycle representation and only two include both N and dynamic vegetation of which JULES is one of them (Arora et al., 2020). The representation of the N cycle in the full complexity Earth System Models remains challenging and there is clearly a need for simple models capturing the first order responses. This is the first time a N cycle has been incorporated in JULES and it is expected to be improved and developed with time as the knowledge of how important processes can be represented in existing frameworks improves.

2 Introduction to JULES

JULES is the land surface component of the new UK community Earth System model, UKESM (Sellar et al., 2019). JULES can also be run offline forced by observed meteorology globally, regionally or at a single location. A full description of the main components of JULES is provided by Best et al. (2011) and Clark et al. (2011). In particular, JULES represents the surface energy balance, a dynamic snowpack model (one dimensional), vertical heat and water fluxes, soil freezing, large scale hydrology, and C fluxes and C storage in both vegetation and soil. Typically JULES represents four soil layers down to a total depth of 3m. Within JULES, C ~~dynamics in soils and vegetation and dynamic vegetation are provided by~~ stocks and fluxes in and between the soil and vegetation along with competition between different vegetation types are modelled by the Top-Down Representation of Interactive Foliage and Flora Including Dynamics (TRIFFID) (Cox, 2001). In this version of TRIFFID, five plant functional types (PFTs) are ~~included: broadleaf tree, needleleaf tree~~ represented: broadleaf trees, needleleaf trees, C_3 grasses, C_4 grasses and shrubs. The soil C model is based on the RothC model (Clark et al., 2011). Recently, Burke et al. (2017) and Chadburn et al. (2015) added a representation of permafrost soil processes to JULES, including a representation of the vertical distribution of soil organic C which we build upon here. JULES-C is the standard carbon cycle configuration (a configuration defines a specific set of switches and parameters) and was used in the Global Carbon Budget annual assessment in 2018 (Le Quéré et al., 2018).

What follows is a description of the extension of the C cycle ~~already-used~~ process modelled by the JULES-C configuration to include an interactive N cycle. This results in two new model configurations: JULES-CN and JULES-CN_{layer}. The soil biogeochemistry is represented by a single ~~level~~

bulk layer in JULES-CN whereas it varies as a function of depth in JULES-CN_{layer}. As standard JULES-C includes an implicit representation of N which has been extended to be fully interactive. The N cycle ~~is included within~~ processes are added to the TRIFFID dynamic vegetation and RothC soil C models. For clarity we include here a full description of the C and N cycle including the existing TRIFFID and RothC models and highlight where and how ~~they have been extended~~ their processes have been modified.

3 JULES developments

3.1 Vegetation C and N

The TRIFFID ~~Dynamic vegetation model represents~~ dynamic vegetation model provides the core of the vegetation module (Cox, 2001). TRIFFID represents the vegetation cover at each location in terms of the fractional area covered, and the leaf area index (LAI) and canopy height of each plant functional type (PFT). In JULES the C fluxes are calculated at the model timestep (typically 0.5 - 1 hour) prior to any N limitation (if configured). These fluxes are then aggregated to the timestep required for running TRIFFID (once every 10 days in the current implementation) so that allocation of C can take place. TRIFFID employs fixed allometry such that the split of vegetation carbon between leaf, root and stem ~~C are~~ is defined by a single state prognostic variable that defines the total biomass. Biomass density increases via growth and is reduced by litter production and competition with other PFTs (Clark et al., 2011). Biomass can also increase by spreading through an increase in covered area. N ~~is implemented to limit~~ limitation reduces growth and spreading such that the change in vegetation N cannot exceed the N ~~available~~ uptake rate.

This section documents the vegetation model starting with the structure of the vegetation (Section 3.1.1) including the additional complexity of labile N (Section 3.1.2). The following subsection describes how growth and spreading is limited by N availability (Section 3.1.3). The final subsection describes how vegetation C and N is turned over by disturbance and competition and aggregated from PFTs to the ~~gridbox~~ gridcell level (Section 3.1.4). Biological N fixation is input directly into the soil inorganic N pool and is described later in Section 3.3.1.

3.1.1 Vegetation Structure

~~The avail~~ The mean canopy height per PFT i is converted via allometric equations into a maximum or balanced leaf area index for each PFT ($\mathcal{L}_{b,i}$ in m^2m^{-2}). $\mathcal{L}_{b,i}$ is the prognostic variable used in JULES to describe the vegetation and is functionally the equivalent of the potential leaf area. Given $\mathcal{L}_{b,i}$, leaf, root and wood pools are diagnosed for each PFT as introduced in Cox (2001). The bal-

200 anced leaf area index is updated interactively following the C balance and is coupled to the surface exchange via surface albedo, roughness and heat capacity. This section is included to fully document the new scheme, but the equations can also be found in Clark et al. (2011).

The vegetation C density per PFT ($C_{v,i}$ in kg [C] m^{-2}) can be separated into leaf ($L_{c,i}$ in kg [C] m^{-2}),
 205 fine root ($R_{c,i}$ in kg [C] m^{-2}) and total stem plus coarse root ($W_{c,i}$ in kg [C] m^{-2}) pools, each of which is related allometrically to the balanced leaf area ($\mathcal{L}_{b,i}$). Each component is then related to $\mathcal{L}_{b,i}$. Root C is set equal to leaf C, which is itself a linear function of $\mathcal{L}_{b,i}$, and total stem C is related to $\mathcal{L}_{b,i}$ by a power law (Enquist et al., 1998):

$$C_{v,i} = L_{c,i} + R_{c,i} + W_{c,i} \quad (1)$$

210

$$L_{c,i} = \sigma_{l,i} \mathcal{L}_{b,i} \quad (2)$$

$$R_{c,i} = L_{c,i} \quad (3)$$

$$215 \quad W_{c,i} = a_{wl,i} (\mathcal{L}_{b,i})^{b_{wl,i}} \quad (4)$$

Where $\sigma_{l,i}$ (kg [C] m^{-2}), $a_{wl,i}$ (kg [C] m^{-2}) and $b_{wl,i}$ (dimensionless) are PFT dependent allometric parameters defined in Table 1. By definition $\mathcal{L}_{b,i}$ does not have an explicit seasonal cycle but responds to changes in the vegetation C on both short (seasonal) and long (centennial) timescales. A high $\mathcal{L}_{b,i}$ is related to a high C density and tall canopies. It should be noted that leaf seasonality is
 220 represented by a separate phenology model and is not directly affected by N availability. TRIFFID combines Equation 4 with a "pipe model" approach (Shinozaki et al., 1964a, b) to obtain the canopy height for PFT i (h_i in m):

$$h_i = \frac{W_{c,i}}{a_{wl,i} \eta_{sl,i}} \left(\frac{a_{wl,i}}{W_{c,i}} \right)^{1/b_{wl,i}} \quad (5)$$

where $\eta_{sl,i}$ (kg [C] m^{-2} per unit LAI) relates respiring stem to leaf C (Table 1) and $a_{ws,i}$ is the
 225 ratio of total stem C to respiring stem C. We can combine equations Equations 4 and 5 to relate ($\mathcal{L}_{b,i}$) to canopy height (h_i) and these two variables can be used interchangeably to describe the state of the vegetation. During a simulation the C pools are updated interactively and the canopy height and balanced leaf area diagnosed for each PFT. This representation allows changes in vegetation C to feedback to surface exchange.

230

The root and total stem N pools are defined using stoichiometric relationships as a function of the C pools. These stoichiometric functions already exist in the model and are used in the calculation of plant maintenance respiration (Clark et al., 2011). We extend their use to explicitly define N pools as part of the new scheme:

$$R_{n,i} = \mu_{rl,i} n_{l0,i} R_{c,i} \quad (6)$$

$$W_{n,i} = \mu_{sl,i} n_{l0,i} W_{c,i} \quad (7)$$

where $\mu_{rl,i}$ and $\mu_{sl,i}$ are dimensionless stoichiometric parameters linking the top leaf N concentration ($n_{l0,i}$ in $\text{kg [N] kg [C]}^{-1}$) to the total stem and root N pools ($W_{n,i}$ and $R_{n,i}$ respectively in kg [N] m^{-2}) concentration via $n_{l0,i}$. The leaf N pool ($L_{n,i}$ in kg [N] m^{-2}) has an additional dependency on phenological state (Section 3.1.2) and assumed distribution of N in the canopy. Following Equation 1 the total vegetation N store per PFT ($N_{v,i}$ in kg [N] m^{-2}) is given by:

$$N_{v,i} = L_{n,i} + R_{n,i} + W_{n,i} \quad (8)$$

The C:N ratio of the root and stem pools are fixed in time and leaf pool C:N ratio only varies with phenological state. However, the relative proportions of each pool vary with total biomass resulting in the whole plant C:N ratio increasing with total vegetation C for woody PFTs (Figure 1). This is due to the relatively greater proportion of stem C at higher biomass. Grasses show less variation with biomass due to their comparatively small amount of structural C relative to leaf area, which also results in woody PFTs having higher C:N ratios. The Equations 1-8 show that the total vegetation N increases with canopy height and biomass (Figure 2).

3.1.2 Labile C and N: Phenology and Mobilisation

The total leaf C pool per PFT ($L_{c,i}$, Equation 2) varies allometrically with the vegetation C state on both short (seasonal) and long (centennial) timescales but not with changes in phenological state. Implicit within TRIFFID is a labile leaf C pool that acts as a reserve of C during spring and a store during fall. $L_{c,i}$ therefore includes a labile pool from which C can be mobilised during leaf out plus an allocated pool representing the actual LAI. The labile pool is zero at full leaf out and at the allometrically defined maximum during the no leaf period. As part of the N coupling we introduce the ability for plants to retranslocate some of the allocated N to the labile N pool according to the phenology. The new parameterisation of retranslocation and labile N is therefore dependent on the leaf phenological state as well as the fixed stoichiometry. In JULES, leaf phenology is controlled by a second state variable (p_i) which relates the LAI (\mathcal{L}_i) at any moment in time to the balanced leaf area index ($\mathcal{L}_{b,i}$).

$$\mathcal{L}_i = p \mathcal{L}_{b,i} \quad (9)$$

Table 1. Default values of PFT-specific parameters for allometry, allocation and vegetation N and C stoichiometry in the JULES-CN and JULES-CN_{layer} configurations. The subscript (*i*) is present to show that it is a PFT-specific value. $n_{l0,i}$ is the N concentration at the top of the canopy but is shown here as $1/n_{l0,i}$ so that it is comparable to expected C:N ratios from the literature.

Symbol (units)	Definition	Broadleaf tree	Needleleaf tree	C ₃ grass	C ₄ grass	Shrub
$\sigma_{l,i}$ (kg [C] m ⁻²)	Specific density of leaf C	0.0375	0.1000	0.0250	0.0500	0.0500
$a_{wl,i}$ (kg [C] m ⁻²)	Allometric coefficient	0.65	0.65	0.005	0.005	0.10
$a_{ws,i}$ (-)	Ratio total C to respiring stem C	10.0	10.0	1.0	1.0	10.0
$b_{wl,i}$ (-)	Allometric exponent	1.667	1.667	1.667	1.667	1.667
$\eta_{sl,i}$ (kg [C] m ⁻² per unit LAI)	Live stemwood coefficient	0.01	0.01	0.01	0.01	0.01
$\mu_{rl,i}$ (-)	Ratio root N to top leaf N	1.0	1.0	1.0	1.0	1.0
$\mu_{sl,i}$ (-)	Ratio stem N to top leaf N	0.1	0.1	1.0	1.0	0.1
$1/n_{l0,i}$ ((kg [C])(kg [N]) ⁻¹)	C:N ratio at canopy top	21.7	30.3	13.7	16.67	16.67
$k_{n,i}$ (-)	N profile coefficient	0.78	0.78	0.78	0.78	0.78
$\lambda_{r,i} \kappa_{r,i}$ (-)	Root N retranslocation coef.	0.2	0.2	0.2	0.2	0.2
$\lambda_{l,i} \kappa_{l,i}$ (-)	Leaf N retranslocation coef.	0.5	0.5	0.5	0.5	0.5
$\mathcal{L}_{min,i}$ (-)	Minimum balanced LAI	3.0	3.0	1.0	1.0	1.0
$\mathcal{L}_{max,i}$ (-)	Maximum balanced LAI	9.0	9.0	4.0	4.0	4.0
$f_{DPM,i}$ (-)	Decomposable litter fraction	0.25	0.25	0.67	0.67	0.33

where p_i is a scalar between 0 and 1 that describes the phenological state of the system (Clark et al., 2011). For evergreen plants p_i is a constant of 1. The two state variables $\mathcal{L}_{b,i}$ and p_i combine to define the vegetation phenological state for each PFT i . Using the phenological state we extend the equivalent approach to leaf C such that the leaf N pool ($L_{n,i}$) has fixed allometry dependent on the phenological state and the magnitude of leaf retranslocation. We introduce this simple parameterisation under the assumption that higher leaf retranslocation during autumn implies a higher labile N store. The leaf N pool therefore becomes:

$$L_{n,i} = p_i n_{lc,i} L_{c,i} + (1 - p_i) \left(\frac{1 + \lambda_{l,i}}{2} \frac{1 + \kappa_{l,i}}{2} \right) n_{lc,i} L_{c,i} \quad (10)$$

where $\lambda_{l,i} \kappa_{l,i}$ is the dimensionless leaf N retranslocation coefficient and $n_{lc,i}$ is the mean canopy N content (Equation 11 concentration (defined in Equation 11 in kg [N] kg [C]⁻¹). Here $\lambda_{l,i} \kappa_{l,i}$ is set to 0.5 for all PFTs (Zachle and Friend, 2010). The formulation of the labile pool, in this configuration, means that around half of the N required for full leaf-out is taken from leaf retranslocation with a further quarter acquired during the dormant phase while the rest is acquired during the active

leaf-out period.

JULES assumes a process-based scaling-up of leaf level photosynthesis to the the canopy level. In both the JULES-CN and JULES-CN_{layer} configurations, to be consistent with the JULES-C model, we assume a multi-level canopy with leaf N decreasing exponentially through the canopy (*CanRad-Mod 5*). The plant physiology routines uses this assumed distribution to calculate penetration through the canopy and photosynthesis on individual layers before scaling back to the canopy (Clark et al., 2011). In the application here, we use this distribution to be fully consistent with the physiology. The vertical distribution of leaf N ~~content in~~ concentration ($n_{lc,i}(d)$ in kg [N] kg [C]⁻¹) in the canopy is described by (Mercado et al., 2007):

$$n_{lc,i}(d) = n_{l0,i} \exp(-k_{n,i}d) e^{-k_{n,i}d} \quad (11)$$

where $k_{n,i}$ is a constant representing the profile of N density and d represents the fraction of canopy above the layer. Based on observed N profiles in the Amazon basin (Carswell et al., 2000), a value of 0.78 for $k_{n,i}$ was found (Mercado et al., 2007). Equation 11 is independent of leaf area and therefore equates to a constant of proportionality relating PFT-specific top leaf N to the mean canopy N concentration. ~~The mean canopy leaf C:N ratio is consequently ~44% higher than the top leaf ratio.~~

3.1.3 Vegetation Growth and Allocation

The previous section describe how the vegetation C ($C_{v,i}$, Equation 1) and vegetation N ($N_{v,i}$, Equation 8) for each PFT vary with vegetation size and phenological state. This section describes how growth and spreading are limited by available N. Growth is the increase in C density and spreading is the increase in vegetation cover from recruitment and reproduction.

300

Net Primary Productivity (NPP) in JULES-C is simply the difference between GPP and autotrophic respiration (R_a). In JULES-CN the potential NPP or NPP_{pot} is defined in the same way as the NPP in JULES-C before the explicit N cycle was included, i.e. the potential amount of C that can be allocated to growth (g) and spreading by TRIFFID. In JULES-CN and in order for the NPP to achieve its potential it needs to be able to uptake sufficient inorganic N. If not enough inorganic N is available, the system is N limited and an additional term is required in the C balance representing ~~excess~~ C which cannot be assimilated into the plant due to lack of available N (Ψ in kg [C] m⁻²). A positive Ψ results in a reduction of carbon use efficiency (CUE).

310 The C balance per PFT i is given by:

$$\frac{dC_{v,i}}{dt} = (1 - \lambda_i) \Pi_{c,ii} - \Lambda_{lc,ic,i} - \Psi_{g,i} \quad (12)$$

where $H_{c,i}$ is the potential NPP per unit area of PFT i in $(\text{kg [C]} \text{m}^{-2} \text{s}^{-1})$ (prior to nutrient limitation) and $A_{lc,i}$ ($\text{kg [C]} \text{m}^{-2} \text{s}^{-1}$) is the PFT specific litterfall rate (Section 3.1.4). Any excess C from growth ($\Psi_{g,i}$) is considered an additional plant respiration term and at the end of the TRIFFID timestep is used to reduce the potential NPP for each PFT to its actual value. λ_i is the coefficient for partitioning the NPP between growth and spreading. λ_i is utilised in increasing the fractional coverage of the vegetation and $(1 - \lambda_i)$ increases the C content of the existing vegetated area. λ_i is a function of the vegetation C which itself is a function of the balanced LAI for PFT i ($\mathcal{L}_{b,i}$):

$$\lambda_i = \begin{cases} 1 & \mathcal{L}_{b,i} > \mathcal{L}_{max,i} \\ \frac{\mathcal{L}_{b,i} - \mathcal{L}_{min,i}}{\mathcal{L}_{max,i} - \mathcal{L}_{min,i}} & \mathcal{L}_{min,i} < \mathcal{L}_{b,i} \leq \mathcal{L}_{max,i} \\ 0 & \mathcal{L}_{b,i} \leq \mathcal{L}_{min,i} \end{cases} \quad (13)$$

The equivalent N balance per PFT is given by:

$$\frac{dN_{v,i}}{dt} = (1 - \lambda_i)\Phi_i - \Lambda_{ln,i} \quad (14)$$

where Φ_i ($\text{kg [N]} \text{m}^{-2} \text{s}^{-1}$) is the PFT specific N uptake (see Equation 19) and $(1 - \lambda_i)\Phi_i$ is equal to $\Phi_{g,i}$, the N uptake available for growth. $\Lambda_{ln,i}$ is the PFT N litter flux after taking into account the retranslocation of N from leaves and/or roots. The N available for spreading is a fraction λ_i of the total available N with a fraction $(1 - \lambda_i)$ available for growth.

Litter is produced by the turnover of the leaf, wood and root pools for each PFT, defined as

$$\Lambda_{lc,i} = \gamma_{l,i}L_{c,i} + \gamma_{r,i}R_{c,i} + \gamma_{w,i}W_{c,i} \quad (15)$$

and

$$\Lambda_{ln,i} = (1 - \lambda_{l,i})\gamma_{l,i}L_{n,i} + (1 - \lambda_{r,i})\gamma_{r,i}R_{n,i} + \gamma_{w,i}W_{n,i} \quad (16)$$

for litter C ($A_{lc,i}$ in $\text{kg [C]} \text{m}^{-2} \text{s}^{-1}$) and litter N ($\Lambda_{ln,i}$ in $\text{kg [N]} \text{m}^{-2} \text{s}^{-1}$) respectively. $\gamma_{r,i}$ and $\gamma_{w,i}$ are turnover rates in s^{-1} (Table 6 of Clark et al. (2011)). The leaf turnover rate ($\gamma_{l,i}$) is a temperature dependent turnover rate consistent with the phenological state and defined in Clark et al. (2011). The equivalent term for N allows for retranslocation of N from leaves into the labile store and a reduced N cost of maintaining fine roots. $\lambda_{l,i}$ and $\lambda_{r,i}$ are the dimensionless coefficients for the retranslocation of leaf and root N shown in Table 1 (Zachle and Friend, 2010).

In JULES-CN the N available for plant uptake for each PFT i ($N_{avail,i}$ in $\text{kg [N]} \text{m}^{-2}$) is the the inorganic soil N pool (N_{in} in $\text{kg [N]} \text{m}^{-2}$) split equitably between the PFTs assuming there is no differential ability between PFTs to acquire N and the whole pool is available for uptake during the model timestep. The available N in JULES-CN_{layer} is more complicated and takes into account the

soil profile. This is discussed in Section 3.3.2.

Equations 12 and 14 have two remaining unknowns for each PFT: the plant N uptake for growth ($\Phi_{g,i}$) and the excess C from growth ($\Psi_{g,i}$). The litter fluxes are functions of the total vegetation pool and therefore can be solved at the same time. Solving for the case where $\Psi_{g,i} = 0.0$ gives the total vegetation N demand for growth. If the N demand is less than ~~that available~~ (the available N in a given timestep (Δt)) ($\Phi_{g,i} < (1-\lambda_i) \frac{N_{avail,i}}{\Delta t}$) then growth is unlimited and the fluxes can be updated accordingly. Where N is limiting, growth N uptake is set equal to the available N ($\Phi_{g,i} = (1-\lambda_i) \frac{N_{avail,i}}{\Delta t}$) and the excess ~~assimilate C for growth~~ $\Psi_{g,i}$ solved for can be derived. Following the solution of $\frac{dN_{v,i}}{dt}$ the C store and balanced LAI ($\mathcal{L}_{b,i}$) are updated and the leaf, root and wood pools for each PFT can be derived following the allometric equations (Equations 2-4).

~~In JULES-CN, on a PFT basis, the N available for plant uptake ($N_{avail,i}$) is the inorganic soil N pool (N_{in}) split equitably between the PFTs assuming there is no differential ability between PFTs to acquire N. The available N in JULES-CN_{layer} is more complicated taking into account the soil profile and is discussed in Section 3.3.2.~~

The remaining proportion (λ_i) of NPP and N is allocated to spreading. The N demand for spreading is equal to the C allocated to spreading scaled by the whole plant stoichiometry:

$$\Phi_{s,i} = \frac{N_{v,i}}{C_{v,i}} \left(\Pi_{c,i} - \frac{dC_{v,i}}{dt} - \Psi_{s,i} \right) \quad (17)$$

where $\Psi_{s,i}$ (or $\lambda_i \Psi_i$) is the excess C term from spreading and $\frac{N_{v,i}}{C_{v,i}}$ is the inverse of the the whole plant C:N ratio. As with growth limitation, ~~equation~~ Equation 17 is first solved to find the N demand for spreading ($\Psi_{s,i} = 0.0$). If the arising demand is less than the available N ($\Phi_{s,i} < \lambda_i \frac{N_{avail,i}}{\Delta t}$) spreading is unlimited. If N demand is in excess of that available, the uptake is set equal to the available N flux ($\Phi_{s,i} = \lambda_i \frac{N_{avail,i}}{\Delta t}$) and the excess ($\Psi_{s,i}$) ~~assimilate~~ solved for.

Total excess C per PFT i (Ψ_i) is therefore the combination of that from growth plus spreading:

$$\Psi_i = \Psi_{s,i} + \Psi_{g,i} \quad (18)$$

Similarly total N uptake per PFT i (Φ_i) is therefore the combination of N uptake ~~from-used for~~ growth plus N uptake from-used for spreading:

$$\Phi_i = \Phi_{s,i} + \Phi_{g,i} \quad (19)$$

The PFT level N uptake and excess C are weighted by the ~~PFT fraction~~ fraction of coverage of each PFT in a grid cell (v_i) and summed to get the ~~totals~~ grid averaged values:

$$\Phi = \sum_i v_i \Phi_i \quad (20)$$

$$\Psi = \sum_i v_i \Psi_i \quad (21)$$

This excess C (Ψ) is considered an additional plant respiration term and at the end of the TRIFFID timestep is used to reduce the potential NPP to its actual value.

380

The C and N allocated to spreading allow the vegetation to expand onto bare ground. Where space is limiting the ~~vegetation competes for space with some C and N being turned over as litter~~ PFTs compete for space. The competition is handled in the Lotka-Volterra competition routines (see Clark et al. (2011) for full details). N only indirectly affects competition through the PFT specific allometric relationships. The competition code subsequently updates the ~~vegetation fractions~~ fractional coverage of model PFTs (v_i).

385

3.1.4 Vegetation Turnover and Total Litter Production

The previous sections describe how N interacts to limit both growth and spreading of vegetation in the dynamic vegetation model. This final section describes the turnover of C and N through large-scale disturbance and competition.

390

Turnover is aggregated across PFTs to provide a grid box mean litter flux term to the soil biogeochemistry ~~which acts on an aggregated tile processes which acts at a grid box level~~. Total litter C (Λ_c , kg [C] m⁻² s⁻¹) is made-up of the area-weighted sum of the litter C from each PFT (~~$\Lambda_{lc,i}$~~ $\Lambda_{c,i}$), along with large-scale PFT-dependent disturbance rate, and a density dependent component from intra-PFT competition for space. Large-scale disturbance is implemented in TRIFFID as a constant disturbance rate per PFT and captures processes such as wind-throw and other mortality events. Density dependent litter production arises through competition for space with increased turnover when space is limiting and plants are competing for space and light.

400

$$\Lambda_c = \sum_i v_i \left(\Lambda_{\underline{lc,i}} + \gamma_{v,i} C_{v,i} + (\Pi_i - \Psi_i) \sum_j c_{i,j} v_j \right) \quad (22)$$

where $c_{i,j}$ are the competition coefficients describing the effect of PFT i on PFT j , $\gamma_{v,i}$ is a large scale disturbance term of PFT ~~i~~ i and v_i is the vegetation fraction of PFT i , Π_i is defined in Equation 12 and Ψ_i in Equation 18. The effect of N limitation on the litter C flux is captured in the excess C term per PFT (Ψ_i). Similarly to the total litter C, total litter N (Λ_n , kg [N] m⁻² s⁻¹) is given by:

405

$$\Lambda_n = \sum_i v_i \left(\Lambda_{\underline{ln,i}} + \gamma_{v,i} N_{v,i} + \Phi_i \sum_j c_{i,j} v_j \right) \quad (23)$$

Both Λ_c and Λ_n vary according to the vegetation type and the ~~pool~~ relative amount of stem, leaves and roots being turned over. This means that the C:N ratio also varies in time and space.

410

3.2 Soil Biogeochemistry

~~The soil biogeochemistry in JULES-CN operates on aggregated tiles and follows the Roth-C soil C model (Jenkinson et al., 1990; Jenkinson and Coleman, 1999) used in JULES-C on the TRIFFID timestep, with the~~ Here we describe the addition of a prognostic soil N model ~~.The soil N model~~
 415 ~~simulates immobilisation and mineralisation in the four pools and, if N is limiting, slows the decomposition rate of litter into soil organic matter (SOM) for JULES-CN that extends the Roth-C soil C model used in JULES-C (Jenkinson et al., 1990; Jenkinson and Coleman, 1999).~~

The original Roth-C soil C model ~~comprises~~ represents four C pools (p) for each grid box. Plant
 420 litter input is split between two C pools of decomposable (DPM) and resistant (RPM) plant material, with the fraction that goes to each depending on the overlying vegetation ~~type~~ PFT and parameterised via $f_{DPM,i}$. Grasses provide a higher fraction of decomposable litter input and trees provide a higher fraction of resistant litter input. The other two C pools are microbial biomass (BIO) and long-lived humified (HUM) pools. The DPM and RPM pools can be characterised as represent-
 425 ing litter and BIO and HUM as representing soil organic matter. C from decomposition of all of the pools is partly released to the atmosphere, and the remaining fraction (β_R) enters the BIO and HUM pools. The C pools are updated according to:

$$\frac{dC_{DPM}}{dt} = \sum_i (v_i f_{DPM,i} \Lambda_{c,i}) - R_{DPM} \quad (24)$$

$$\frac{dC_{RPM}}{dt} = \sum_i (v_i (1 - f_{DPM,i}) \Lambda_{c,i}) - R_{RPM} \quad (25)$$

430
$$\frac{dC_{BIO}}{dt} = 0.46 \beta_R R_{tot} - R_{BIO} \quad (26)$$

$$\frac{dC_{HUM}}{dt} = 0.54 \beta_R R_{tot} - R_{HUM} \quad (27)$$

where t is the time in s; C_p are the C pools in kg [C] m^{-2} (where p is one of DPM , RPM , BIO , HUM); $\Lambda_{c,i}$ is the litter input for PFT i in $\text{kg [C] m}^{-2} \text{ s}^{-1}$ (term in brackets in Equation 22); $f_{DPM,i}$ represents the fraction of litter from each PFT i that goes into DPM with the rest

435 $(1 - f_{DPM,i})$ going into the RPM pool (dependent on amount of woody vegetation); and R_{tot} is the total turnover in $\text{kg [C] m}^{-2} \text{ s}^{-1}$, where the R_p represent the ~~turnovers~~ turnover of each C pool:

$$R_{tot} = R_{DPM} + R_{RPM} + R_{BIO} + R_{HUM} \quad (28)$$

The soil respiration to the atmosphere (r_h in $\text{kg [C] m}^{-2} \text{ s}^{-1}$) is given by:

$$r_h = (1 - \beta_R) R_{tot} \quad (29)$$

440 where β_R depends on soil clay content ($clay$ in %) and ranges from 0.25 for a soil with no clay content to 0.15 for a clay soil:

$$\beta_R = \frac{1}{4.09 + 2.67e^{(-0.079clay)}} \quad (30)$$

445 ~~The N pools follow~~ For each C pool there is an equivalent N pool with the N pools following a similar structure to the C pools:

$$\frac{dN_{DPM}}{dt} = \sum_i (v_i f_{DPM,i} \Lambda_{n,i}) - M_{DPM} \quad (31)$$

$$\frac{dN_{RPM}}{dt} = \sum_i (v_i (1 - f_{DPM,i}) \Lambda_{n,i}) - M_{RPM} \quad (32)$$

$$\frac{dN_{BIO}}{dt} = 0.46 I_{tot} - M_{BIO} \quad (33)$$

450 $\frac{dN_{HUM}}{dt} = 0.54 I_{tot} - M_{HUM} \quad (34)$

Inputs into the litter pools (DPM , RPM) are from the litter N flux ($\Lambda_{n,i}$ in $\text{kg [N] m}^{-2} \text{ s}^{-1}$, Equation 23) and losses are determined by the pool specific mineralisation of organic N into inorganic N (M_p in $\text{kg [N] m}^{-2} \text{ s}^{-1}$). Following the framework of the ~~RothC~~ Roth-C model, input into both the BIO and HUM N pools is from the total immobilisation of inorganic N into organic N

455 (I_{tot} in $\text{kg [N] m}^{-2} \text{ s}^{-1}$):

$$I_{tot} = I_{DPM} + I_{RPM} + I_{BIO} + I_{HUM} \quad (35)$$

For each soil C pool (p), the potential turnover - i.e. the turnover rate when the N in the system is not limiting - is given by ($R_{p,pot}$):

$$R_{p,pot} = k_p C_p F_T(T_{soil}) F_\theta(\theta) F_v(v) \quad (36)$$

where the k_p are fixed constants in s^{-1} (Clark et al., 2011). The functions of temperature ($F_T(T_{soil})$) and moisture ($F_\theta(\theta)$) depend on the temperature (T_{soil}) and moisture content (θ) near the soil surface. The function $F_v(v)$ depends on the vegetation cover fraction (v) (Clark et al., 2011). The potential mineralisation of organic N when the system is not N limited ($M_{p,pot}$) is related to the potential turnover rates by the C to N ratio of each pool (CN_p):

$$M_{p,pot} = \frac{R_{p,pot}}{CN_p} \quad (37)$$

Similarly, the potential immobilisation of inorganic N into the organic N pools ($I_{p,pot}$) is related to pool potential turnover ($R_{p,pot}$), the retained fraction of respiration (β_R), and the C to N ratio of the destination pool in the decomposition chain:

$$I_{p,pot} = \beta_R \frac{R_{p,pot}}{CN_{soil}} \quad (38)$$

Where CN_{soil} is a model parameter that fixes the C to N ratios of the two destination soil organic pools (*HUM* and *BIO*) and has a default value of 10. The C to N ratio of the *DPM* and *RPM* litter pools is a function of litter quality and varies temporally and spatially depending on the contributions of the different PFTs within the grid cell. Potential mineralisation (M_p) and potential immobilisation (I_p) fluxes are defined before any N limitation is applied and take values that maintain the constant C:N ratio for the *HUM* and *BIO* pools.

When N is limiting, the turnover of the two litter pools (*DPM* and *RPM*) into the soil organic matter pools is additionally limited by the availability of N:

$$R_p = k_p C_p F_T(T_{soil}) F_\theta(\theta) F_v(v) F_N \quad (39)$$

where p is one of *RPM* or *DPM*. The nitrogen limited mineralisation and immobilisation of the *DPM* and *RPM* pools (Equations 41 and 37) are now effectively a function of R_p .

F_N is the litter decomposition rate modifier and is given by the ratio of the N available in the soil to the N required by decomposition (Equation 40). F_N is limited to a range of 0.0 to 1.0. When F_N is equal to 1, the decomposition, mineralisation and immobilisation take place at the potential rate and the system is not N limited. Where F_N is less than 1, the availability of N limits the decomposition of litter into soil organic matter. This limitation is because respiration is carried out by microbes who require sufficient N to convert the *RPM* and *DPM* pools into *BIO* and *HUM* pools. F_N is given by:

$$F_N = \frac{(M_{BIO} + M_{HUM} - I_{BIO} - I_{HUM} + N_{in})}{(D_{DPM} + D_{RPM})} \frac{(M_{BIO} + M_{HUM} - I_{BIO} - I_{HUM})\Delta t + N_{in}}{(D_{DPM} + D_{RPM})\Delta t} \quad (40)$$

where N_{in} is the total soil inorganic N pool in kg [N] m^{-2} (discussed in Section 3.3 and defined in Equation 51) and Δt is the time step. D_{DPM} and D_{RPM} are the net demand associated with
 495 decomposition of each of the litter pools:

$$D_p = I_{p,pot} - M_{p,pot} \quad (41)$$

where p is one of RPM or DPM . This demand is always positive because the C to N ratio of soil is very much less than the C to N ratio of the DPM and RPM pools. When the net demand is in excess of the available inorganic N, the system is N limited and $F_N < 1.0$. This available N is
 500 mainly the net mineralised N from the turnover of BIO and HUM pools but also from the inorganic N pool. N limitation reduces the soil respiration, mineralisation and immobilisation of the two litter pools (RPM and DPM). The C:N ratio of these two pools are variable in time and are represented as prognostic variables. The other two organic matter pools (BIO and HUM) always respire and are mineralised and immobilised at the potential rate (so F_N is effectively 1.0).

505

If the net mineralisation is positive some of the N is emitted as gas, according to:

$$N_{gas} = f_{gas}(M_{tot} - I_{tot}) \quad (42)$$

where N_{gas} is one component of the gas emission in $\text{kg [N] m}^{-2} \text{s}^{-1}$, f_{gas} is a parameter that sets the fraction of the N flux that is emitted as gas to the atmosphere. Following Thomas et al. (2013a),
 510 it is assumed that 1% of net mineralisation is emitted as gas (f_{gas} is set to 0.01). M_{tot} is the the total mineralisation flux in $\text{kg [N] m}^{-2} \text{s}^{-1}$:

$$M_{tot} = M_{DPM} + M_{RPM} + M_{BIO} + M_{HUM} \quad (43)$$

If pool sizes become too small N_{gas} could become negative to ensure N is conserved.

3.2.1 Vertical discretisation

515 The vertical discretisation of the soil C and N follows Burke et al. (2017). There is a set of four soil C and N pools (DPM , RPM , BIO , HUM) in every soil model layer. As in Burke et al. (2017) the turnover rate is determined for each soil layer depending on the temperature, moisture conditions and N availability in that layer. An extra reduction of turnover with depth (z) is included to account for factors that are currently missing in the model such as priming effects, anoxia, soil mineral surface
 520 and aggregate stabilisation. The potential turnover of each layer is given by:

$$R_{p,pot}(z) = k_p C_p(z) F_T(T_{soil}(z)) F_\theta(\theta(z)) F_v(v) \exp(-\tau_{resp} z) \quad (44)$$

$F_T(T_{soil}(z))$, $F_\theta(\theta(z))$ and $C_p(z)$ are now all dependent on depth. $T_{soil}(z)$ and $\theta(z)$ are the simulated layered soil temperature and soil moisture content and $C_p(z)$ is the simulated soil C content for each layer and pool p . The additional reduction of turnover with depth is exponential, with τ_{resp}

525 ξ_{resp} an empirical parameter (in m^{-1}) that controls the magnitude of the reduction (Burke et al., 2017). The larger the value of $\tau_{resp}\xi_{resp}$, the more inhibited the respiration is with increasing depth. Here $\tau_{resp}\xi_{resp}$ was tuned to give a realistic estimate of soil C in a vertically resolved version of JULES-C as in Burke et al. (2017). When N is limiting, the respiration of the *DPM* and *RPM* pools are reduced by a factor of $F_N(z)$ which is also now a function of depth and dependent on the
530 available N in the relevant layer. M_p and I_p are also calculated as a function of depth based on their relationship with respiration.

The vertical mixing of each soil N pool follows that of the soil C pools:

$$\frac{\partial N_{DPM}(z)}{\partial t} = \frac{\partial}{\partial z} \left(D(z) \frac{\partial N_{DPM}(z)}{\partial z} \right) + \sum_i (v_i f_{DPM,i} \Lambda_{n,i} f_{lit}(z)) - M_{DPM}(z) \quad (45)$$

$$\frac{\partial N_{RPM}(z)}{\partial t} = \frac{\partial}{\partial z} \left(D(z) \frac{\partial N_{RPM}(z)}{\partial z} \right) + \sum_i (v_i (1 - f_{DPM,i}) \Lambda_{n,i} f_{lit}(z)) - M_{RPM}(z) \quad (46)$$

535
$$\frac{\partial N_{BIO}(z)}{\partial t} = \frac{\partial}{\partial z} \left(D(z) \frac{\partial N_{BIO}(z)}{\partial z} \right) + 0.46 I_{tot}(z) - M_{BIO}(z) \quad (47)$$

$$\frac{\partial N_{HUM}(z)}{\partial t} = \frac{\partial}{\partial z} \left(D(z) \frac{\partial N_{HUM}(z)}{\partial z} \right) + 0.54 I_{tot}(z) - M_{HUM}(z) \quad (48)$$

$I_{tot}(z)$ is the total immobilisation in $kg [N] m^{-2} s^{-1}$ in each layer (following Equation 35). $D(z)$ is the diffusivity in $m^2 s^{-1}$ and varies both spatially and with depth (z) (Burke et al., 2017):

$$D(z) = \begin{cases} D_o & ; & z \leq 1m \\ \frac{D_o}{2}(3-z) & ; & 1m < z < 3m \\ 0.0 & ; & z \geq 3m \end{cases} \quad (49)$$

540 ~~Without permafrost, D_o ($m^2 s^{-1}$) is given by~~ varies spatially depending on the freeze/thaw state of the soil. In regions without permafrost, D_o represents a bioturbation mixing rate equivalent to $1 cm^2 year^{-1}$. When permafrost is present, ~~the mixing D_o~~ represents cryoturbation and ~~D_o~~ increases to a value equivalent to $5 cm^2 year^{-1}$. ~~This~~ The parameterisation of $D(z)$ in Equation 49 means that the soil organic pools can transfer between the active layer and the permanently frozen soils in a steady
545 state climate albeit at a relatively slow rate. The PFT dependent litter inputs ($f_{lit}(z) \Lambda_{n,i}$ for litter N) are distributed so that they decline exponentially with ~~depth, with an e-folding depth of 0.2 m. This~~ profile increasing depth. Here $f_{lit}(z)$ is independent of the PFT type and hence the root distribution:

$$\sum_{z=0}^{z_{max}} e^{-\xi_{lit} z} dz$$

550

(50)

Where τ_{lit} is a parameter to reduce the litter input with increasing depth and is set to 0.2 m or 5 m⁻¹ and z is the mid-point of each layer.

555

The mineralised gas emissions are now a function of depth ($N_{gas}(z)$) and are calculated by repeating Equation 42) for each soil layer. Similarly, the litter decomposition rate modifier (F_N) is calculated by repeating a slightly modified version of Equation 40 for each soil layer. In the vertically resolved version of Equation 40, if the soil layer is frozen N_{in} is not available so effectively zero.

560

3.3 Inorganic Nitrogen

The changes in the inorganic N pool is the sum of result from deposition, fixation, immobilisation losses, mineralisation inputs, gridbox mean plant uptake and inorganic N losses through leaching and gaseous emission. For the bulk layer case (JULES-CN), these terms are simply added together:

565

$$\frac{dN_{in}}{dt} = N_{dep} + \sum_i v_i BNF_i - \sum_i v_i \Phi_i + M_{net} - N_{leach} - N_{gasI} \quad (51)$$

where N_{in} is the inorganic N in kg [N] m⁻², N_{dep} is prescribed N deposition in kg [N] m⁻² s⁻¹ and v_i the fractional cover of each PFT i . The biological N fixation (BNF_i) for each PFT i is described in Section 3.3.1 below and plant uptake (Φ_i) for each PFT i is described in Section 3.1.3. M_{net} is the net mineralisation which is the difference between M_{tot} (Equation 43) and I_{tot} (Equation 35) reduced by N_{gas} (Equation 42). The loss of N from the system via the inorganic pool is the sum of leaching (N_{leach} in kg [N] m⁻² s⁻¹) plus an additional gas loss to the atmosphere (N_{gasI} in kg [N] m⁻² s⁻¹):

570

$$N_{gasI} = \gamma_n N_{in} \quad (52)$$

where γ_n is a tunable parameter (in s⁻¹). The total N gas loss is the sum of N_{gasI} above and N_{gas} from Equation 42 with N_{gasI} representing approximately 90% of the total gas loss. This additional gas loss term (N_{gasI}) represents missing processes relating to the gaseous loss of inorganic N and limits the effective mineral N pool size. Including N_{gasI} ensures that available N does not increase excessively, potentially due to excessive biological N fixation in regions where the NPP is very close or equal to the NPP_{pot} . In the current model configuration γ_n is set to 0.0028 day⁻¹ such that the

580

whole pool turns over once every model year.

The leaching of N (N_{leach} in $\text{kg [N] m}^{-2} \text{ s}^{-1}$) through the profile is assumed to be a function of the net flux of moisture through the soil profile, the concentration of inorganic N, and a parameter (α , dimensionless) representing the effective solubility of N. α is assumed to have a value of 0.1 and in JULES-CN represents the combined sorption of all inorganic N species (Wania et al., 2012).

$$N_{leach} = \alpha(N_{in}/\theta_{1m})Q_{subs} \quad (53)$$

where θ_{1m} is the soil water content in the top 1m of soil in kg m^{-2} (so the inorganic N is assumed to occupy the top 1m of soil), and Q_{subs} is the total subsurface runoff in $\text{kg m}^{-2} \text{ s}^{-1}$.

3.3.1 Biological Nitrogen Fixation (BNF)

Biological nitrogen fixation (BNF) is the largest natural supplier of N to the terrestrial ecosystem. Following the secondary model of Cleveland et al. (1999), N fixation is determined as a linear proportion of the net primary production before N limitation of each PFT i ($NPP_{pot,i}$):

$$BNF_i = \zeta NPP_{pot,i} \quad (54)$$

$NPP_{pot,i}$ is defined in the same way as the net primary productivity in JULES before the explicit N cycle was included, i.e. before the excess carbon (Ψ) is removed. BNF as a function of NPP is an established method used and assessed in other models (Meyerholt et al., 2016; Wieder et al., 2015a; Thomas et al., 2013b). While some models utilise more complex BNF representations (Fisher et al., 2010), a lightweight approach is preferred here while the benefits of extra computational expense on BNF are not yet established, and evidence is lacking that a different simple representation (e.g. evapotranspiration) would perform better (Davies-Barnard and Friedlingstein, 2020). However, changes in NPP may not accurately reflect changes in BNF with forcings such as elevated atmospheric carbon dioxide (Liang et al., 2016) or additional N (Thomas et al., 2013b; Ochoa-Hueso et al., 2013).

The rate of fixation (ζ) is set such that global present day net primary productivity of approximately 60 Pg C yr^{-1} results in approximately 100 Tg N yr^{-1} fixation ($0.0016 \text{ kg [N] kg C}^{-1}$), within the range of recent global observation-based estimates of BNF (Davies-Barnard and Friedlingstein, 2020; Vitousek et al., 2013). The parameterisation based on NPP results in a latitudinal gradient with the highest rates of fixation in the tropics and lowest in boreal forests and arctic tundra which is consistent with some estimates of BNF (Houlton et al., 2008; Cleveland et al., 1999) though not recent observational meta-analyses (Davies-Barnard and Friedlingstein, 2020).

615 In JULES-CN which has a bulk soil biogeochemistry parameterisation the BNF is directly transferred into the single inorganic soil N pool and becomes available as inorganic N. However, in JULES-CN_{layer} the BNF is distributed vertically in the soil depending on the fraction of roots in each layer. If a soil layer is frozen there is no BNF into that layer. If the whole soil is frozen, fixed N goes into the inorganic N pool in the top layer.

620

3.3.2 Vertical discretisation of inorganic nitrogen

In JULES-CN_{layer} there is an inorganic N pool in each soil layer. The dynamics are very similar to Equation 51, but most of the components now vary with depth:

$$\frac{dN_{in}(z)}{dt} = \sum_i v_i BNF_i f_{R,i}(z) - \sum_i v_i \Phi_i f_{I,i}(z) + M_{net}(z) - N_{flux}(z) - N_{gasI}(z) \quad (55)$$

625 Any N deposition (N_{dep}) is added to the top layer of the soil only. The modifications to each term to ensure they vary appropriately with depth are discussed below. The additional parameters in Equation 55 are $f_{R,i}(z)$ - the fraction of roots in each layer for PFT i (Equation 56); $f_{I,i}(z)$ - the fraction of available inorganic N in each layer for PFT i (Equation 60) and $N_{flux}(z)$ - the transport of inorganic N through the layer by the soil water fluxes (Equation 61).

630

As in Equation 51 the net mineralisation flux ($M_{net}(z)$) is the difference between $M_{tot}(z)$ and $I_{tot}(z)$ reduced by $N_{gas}(z)$ for each layer (see Section 3.2.1). ~~N deposition (N_{dep}) is only added to the uppermost soil layer.~~ Inputs from biological N fixation from PFT i are distributed according to the root profile of the PFT under consideration ($f_{R,i}(z)$):

$$635 \quad f_{R,i}(z) = \frac{f_{root,i}(z)}{\int_0^{z_{max}} f_{root,i}(z) dz} \frac{f_{root,i}(z)}{\sum_{z=0}^{z_{max}} f_{root,i}(z) dz} \quad (56)$$

where $f_{root,i}(z)$ is the volumetric root fraction of PFT i at a given soil level and z_{max} is the maximum depth of the soil in m. Gas loss from the inorganic N ($N_{gasI}(z)$) occurs in each layer, but with an additional exponential decay term which is a function of depth (similar to that used in Equation 44 for the soil decomposition). This term empirically represents the factors that reduce soil

640 activity with depth. The additional gas loss term thus becomes:

$$N_{gasI}(z) = \gamma_n N_{in}(z) \exp(-\tau_{resp} z) e^{-\xi_{resp} z} \quad (57)$$

This leaves two terms in Equation 55: the plant uptake term ($\sum_i v_i \Phi_i f_{I,i}(z)$) which is PFT dependent and the $N_{flux}(z)$ term, which replaces the leaching term from Equation 51. These have a more process-based representation in the layered case. When calculating the plant uptake term we assume

645 that plants cannot access all the inorganic N. Firstly, if a soil layer is frozen then plants cannot uptake

any of the N in that layer. Secondly, we assume that they only have direct access to a certain fraction of the soil, according to their root fraction, $f_{root,i}(z)$ (which reduces with depth). So for each PFT, i , ~~there is an 'available'~~ the available amount of the inorganic N pool ($N_{avail,i}(z)$) ~~), which at equilibrium is as follows: in kg [N] m⁻²)~~ at equilibrium that could potentially be extracted by the
 650 vegetation is given by:

$$N_{avail,i}(z) = f_{root,i}(z)N_{in}(z)T(z) \quad (58)$$

Where $T(z)$ is zero when the soil temperature is 0°C or colder and 1 when it is above 0°C . However, the system is not necessarily in equilibrium - as N is taken up from ~~the available~~ this available pool around the roots, there will be a delay in this volume getting 're-filled'. We assume that
 655 the inorganic N is constantly diffusing back to the equilibrium state where the concentration is constant both horizontally and vertically within each layer, and thus after the extraction ~~on a particular of inorganic N by the plants on each~~ TRIFFID timestep we additionally update the available N pool according to:

$$\frac{dN_{avail,i}(z)}{dt} = \gamma_{dif}(f_{root,i}(z)N_{in}(z) - N_{avail,i}(z)) \quad (59)$$

660 where γ_{dif} is the rate of diffusion back to the equilibrium, set by default to 0.28 day^{-1} or approximately 100 year^{-1} . $N_{avail,i}(z)$ is then multiplied by $T(z)$ to incorporate the frozen soil effect. Any biological N fixation goes directly into the available pool. Plant uptake is extracted entirely from the available N pool, and the dependence on depth is according to the same profile as the available N, i.e.

$$665 \quad f_{I,i}(z) = \frac{N_{avail,i}(z)}{\int_0^{z_{max}} N_{avail,i}(z) dz} \quad (60)$$

All of the other fluxes are simply added in such a manner so as to maintain the ratio of the available to total inorganic N pools that would be present if the available and total pools were in equilibrium. Therefore the only two processes which take the available and total pools out of equilibrium are biological N fixation and uptake.

670 Leaching is now done in a process-based manner, where the inorganic N is transported through the soil profile by the soil water fluxes. For any given soil layer of thickness δz , the inorganic N flux (N_{flux}) is given by:

$$N_{flux}(z) = \alpha \delta z \frac{d}{dz} \left(W_{flux}(z) \frac{N_{in}(z)}{\theta(z)} \right) \quad (61)$$

where $\theta(z)$ is the soil water content of the layer in kg m^{-2} and $W_{flux}(z)$ is the flow rate of the water
 675 through the layer in $\text{kg m}^{-2} \text{ s}^{-1}$. Multiplying by δz gives the change in N content for each layer. The total leaching is then the sum of all N that leaves the soil both laterally from each layer or from

Variable	Value	Description	Equation
Bulk soil nitrogen			
ζ	$0.0016 \text{ kg [N] kg [C]}^{-1}$	Rate of <i>BNF</i>	Equation 54
CN_{soil}	$10 \text{ kg [C] kg [N]}^{-1}$	CN ratio of <i>BIO</i> and <i>HUM</i> pools	Equation 41
f_{gas}	0.01 (proportion)	Fraction of net mineralisation emitted as gas to atmosphere	Equation 42
γ_n	$3.215\text{e-}08 \text{ s}^{-1}$	Imposed turnover coefficient to determine N_{gasI} release from N_{in}	Equation 52
α	0.1 (proportion)	Effective solubility of nitrogen in water	Equation 53
Vertically resolved soil carbon			
$\tau_{resp} \xi_{resp}$	0.8 m^{-1}	Parameter to control reduction of respiration with depth	Equation 44
D_o	bioturbation - $0.001 \text{ m}^2 \text{ s}^{-1}$ cryoturbation - $0.005 \text{ m}^2 \text{ s}^{-1}$	Soil carbon and nitrogen mixing rate	Equation 49
$\tau_{lit} \xi_{lit}$	5 m^{-1}	Parameter to control reduction of litter input with depth	Equation 50
Vertically resolved soil carbon and nitrogen			
γ_{dif}	100 per 360 days	Rate of diffusion transferring the inorganic nitrogen from N_{in} to N_{avail}	Equation 59

Table 2. A summary of the extra parameters required for the soil biogeochemistry component of JULES-CN and JULES-CN_{layer}.

the bottom of the soil profile.

Table 3.3.2 summarises the extra parameters required for the soil biogeochemistry component of JULES-CN and JULES-CN_{layer} alongside their values.

4 Historical simulations

Global transient simulations were carried out following the protocol for the S2 experiments in TRENDY (Sitch et al., 2015). ~~Forcing consisted of time-varying which include time varying climate,~~ CO₂, and N deposition but pre-industrial land use. Time-varying CO₂, and climate from the were from the from the CRU-NCEP data-set (v4, 1901-2012, Viovy N. 2011 CRU-NCEPv4. CRUNCEP dataset). The fraction of agriculture in each grid cell (~~Hurtt et al., 2011~~) was set to the pre-industrial value defined by (Hurtt et al., 2011). N deposition was ~~time-varying and was~~ taken from a ACCMIP

multi-model data set interpolated to annual fields (Lamarque et al., 2013). The model resolution was

690 N96 (1.875° longitude x 1.25° latitude).

Results from three different JULES model configurations are presented here:

- JULES-CN includes the newly developed soil and vegetation coupled C and N cycle.
- JULES-C is shown for comparison purposes and represents the soil and vegetation C cycle as
695 used in Le Quéré et al. (2018).
- JULES-CN_{layer} is a version of JULES-CN which has identical above ground processes to JULES-CN but additionally includes vertically discretised soil biochemistry.

In each case five PFTs were used: broadleaf trees, needleleaf trees, C3 and C4 grass and shrubs. Plant competition was allowed, with TRIFFID updating vegetation fractions on a 10 day time step.

700 These three configurations of JULES adopt the standard 4 layer soils with a maximum depth of 3 m. However it should be noted that Burke et al. (2017) and Chadburn et al. (2015) adopt a configuration which increases both the maximum soil depth and number of soil layers - a configuration which is recommended for detailed scientific study of northern high latitudes. The sole difference between JULES-C and JULES-CN is the inclusion of the N cycle. JULES-CN_{layer} additionally has
705 vertically discretised soil biogeochemistry. There are no differences in any of the shared model parameters which were initially tuned for the JULES-C configuration. This enables a direct comparison between the different configurations.

The simulations were initialised using pre-industrial conditions. The models were spun up by
710 using the meteorological data for the period 1860-1879 repeatedly until the change in the carbon stocks was less than 0.01 % decade⁻¹ globally. The soil C distribution in JULES-CN_{layer} is particularly slow to reach equilibrium. Therefore the ‘modified accelerated decomposition’ technique (modified-AD) described by Koven et al. (2013) was used to spin the soil C in these versions up to an initial pre-industrial equilibrium distribution (Burke et al., 2017). Further spin up was then carried
715 out for these layered models using repeated pre-industrial conditions until the change in soil C was again less than 0.01 % decade⁻¹ globally. It should be noted that neither transient land-use change or fertiliser were included in any of these simulations.

5 Results

This paper mainly focuses on the differences in JULES output when including the N cycle in the
720 model configuration. When available, we additionally use any observational based estimates to evaluate the quality of the simulations. First a broad-brush comparison between JULES-CN, JULES-C and JULES-CN_{layer} is made. This is followed by a more complete discussion of the impact of the

N cycle on the carbon stocks and fluxes and their changes over time. Then we show ~~more details~~ spatial distributions and time series of the N stocks and fluxes. Finally the extra processes ~~supplied~~ by modelled in JULES-CN_{layer} are assessed. For completeness figures often include both JULES-CN and JULES-CN_{layer} but JULES-CN_{layer} is only discussed at the end of the results.

It should be noted that the addition of the N cycle in JULES is only one component of the recent developments. In ~~future configurations of JULES~~ the UKESM configuration of JULES Sellar et al. (2019) the N cycle ~~will be~~ was combined with a new competition scheme Harper et al. (2018) ~~which will~~ and additional PFTs both of which modify the global vegetation distribution. Therefore we are most interested in the changes in the vegetation distribution between the different versions which will be caused by the N cycle. Figure 3 shows the total area covered by each type of vegetation. The ~~CCI~~ Climate Change Initiative (CCI) land cover observations Hartley et al. (2017) are added for completeness. In general, the models all tend to over-estimate the shrubs and underestimate the grass. However, Sellar et al. (2019) shows that once the additional PFTs and new competition scheme are included the model does a good job of representing the vegetation distribution.

As expected the configurations with the N cycle have more bare soil and less vegetation than JULES-C. This is mainly observed as a decrease in the shrub and grass regions in JULES-CN. As we shall see later (Figure 10) this is because the tropical forests dominate the tree region and their growth is not limited by N in the model. JULES-CN_{layer} has a reduction in trees compared to JULES-CN, which is focused in the boreal region where it is more likely to simulate grass or shrubs.

5.1 Summary of C and N stocks and fluxes

Figure 4 provides an overview of the stocks and fluxes of C and N in JULES-CN and JULES-CN_{layer} and compares them with JULES-C. As expected for a present-day simulation, the majority of C stocks and fluxes are very similar for JULES-C and JULES-CN. The main difference is the present-day NPP which is ~12% higher in JULES-C than in JULES-CN. There is also a small reduction in the GPP of ~4% caused by some differences in the vegetation fractional cover distribution (Figure 3) and indirectly resulting from the N limitation.

Soil organic N and vegetation N are both consistent with the available observation-based estimates of stocks. The biological N fixation is tuned to be approximately 100 Tg N year⁻¹ in the present day and the N deposition is prescribed. The majority of N losses from the land surface occur via the gaseous pathway with total losses of 111 Tg N year⁻¹ for JULES-CN. Leaching is fairly low at 7 Tg N year⁻¹ compared to estimates of leaching, which are as high as ~25 - 55% of N inputs in European forests (Dise et al., 2009) and range between 59 and 118 Tg N year⁻¹ in the available observations (Boyer et al., 2006; Galloway et al., 2004). There is no N fertilizer applied in the model

which might partially explain why the leaching is so low. In reality there is ~200 Tg N applied annually as either manure or fertilizer Potter et al. (2010), a proportion of this will be leached resulting in an increase of global leaching. N uptake and net N mineralisation are relatively high and are fairly comparable in magnitude implying a largely closed cycling of nutrients between vegetation and soil. These N stocks and fluxes are also consistent with results from other models such as: Xu-Ri and Prentice (2008), Smith et al. (2014), Zaehle (2013b) and von Bloh et al. (2018).

5.2 Comparing C stocks and fluxes

~~The zonal total soil and vegetation C stocks are shown in Figure 6. The vegetation C is very similar for both JULES-C and JULES-CN as expected from Figure 4 and is consistent with the available observations. There are some differences in the soil C in the northern high latitudes with JULES-CN having slightly less soil C than JULES-C. This is a consequence of the higher N limitation on JULES-CN leading to less litter fall and subsequently less soil C. The corresponding N limitation induced reduction in soil decomposition is not strong enough to offset the decrease in C input leading to a smaller pool size.~~

Carbon use efficiency (CUE) is defined as the ratio of net C gain to gross C assimilation during a given period (NPP/GPP). Plants with a higher CUE have a lower autotrophic respiration and allocate more C from photosynthesis to the terrestrial biomass and vice-versa. In JULES-CN there is less C available to be allocated because it is constrained by the amount of N present. This reduces the C use efficiency. Figure 5 shows the zonal total GPP and NPP for JULES-CN and JULES-C. As expected from Figure 4 the NPP and GPP have very similar latitudinal profiles for the two model configurations. Both JULES-C and JULES-CN have a higher GPP in the tropics than the observations but they are more comparable in the extra-tropical latitudes where the GPP tends to be smaller. The NPP in JULES-CN is less than JULES-C and generally closer to the MODIS observations particularly in the tropics. Figure 5 also shows the zonal mean CUE. JULES-CN has a lower CUE than JULES-C for all latitudes. On average it is 0.44 for JULES-CN and 0.49 for JULES-C. JULES-CN is consistently low compared to the Kim et al. (2018) observation-based data set with a bias of ~0.09. This bias is relatively constant with latitude. However, considerable uncertainties remain in these estimates.

Figure 5 also shows the changes in these C fluxes for the period 1860-2007 with respect to the multi-annual mean period of 1860-1899. Changes over time are shown to enable the differences between the two different model configurations to be more easily compared. Apparently small differences between JULES-C and JULES-CN in the NPP and GPP become more noticeable in the CUE. The small differences between JULES-C and JULES-CN in GPP are mainly caused by small changes in the vegetation distribution and a slight increase in bare soil in JULES-CN. In the case of NPP - JULES-C increases quicker than JULES-CN because JULES-CN becomes progressively

more N limited. The change in CUE shows the impact of the N cycle on the uptake of C by the vegetation in JULES-CN over the twentieth century. There is an increase in CUE in both configurations, mainly caused by CO₂ fertilisation, but this is limited by N in the JULES-CN configuration.

The zonal total soil and vegetation C stocks are shown in Figure 6. The vegetation C is very similar for both JULES-C and JULES-CN as expected from Figure 4 and is consistent with the available observations. There are some differences in the soil C in the northern high latitudes with JULES-CN having slightly less soil C than JULES-C. This is a consequence of the higher N limitation on JULES-CN leading to less litter fall and subsequently less soil C. The corresponding N limitation induced reduction in soil organic matter decomposition is not strong enough to offset the decrease in C input leading to a smaller pool size.

5.2.1 Net ecosystem exchange

A key measure of a land C cycle model is how well it simulates the temporal variation of the land C sink, which is the difference between Net Ecosystem Exchange (NEE) and the flux of C to the atmosphere from land-use change. The interannual variability in the sink is dominated by the variability of NEE, which is itself correlated with the magnitude of the temperature-carbon cycle feedback in the tropics (Cox et al., 2013). As a result, simulation of NEE variability is highly relevant to climate-carbon cycle projections (Wenzel et al., 2016).

Figure 7 compares global annual mean values of Net ecosystem exchange (NEE; defined as NPP - heterotrophic respiration) for JULES-C and JULES-CN to observation-based estimates from the Global Carbon Project. We specifically focus on the years from 1960 to 2009, which is the maximum overlap period between the model simulations and the GCP annual budget data (Friedlingstein et al., 2019) (Friedlingstein et al., 2020). To avoid the circularity of using GCP estimates of NEE which are themselves derived from land-surface models, we instead calculate the GCP estimates of NEE as the residual of the best estimates of the total emissions from fossil fuel (FF) plus land-use change (LU), and the rate of increase of the carbon content of the atmosphere (F_a) plus the ocean (F_o):

$$NEE_{gcp} = FF + LU - F_a - F_o \quad (62)$$

The observations and both of the models show an upward trend in NEE but with very significant interannual variability (Figure 7). Due to N limitations on CO₂ fertilization, mean NEE in JULES-CN (1.66 Pg C year⁻¹) is lower than in JULES-C (2.06 Pg C year⁻¹), and also lower than the estimate from GCP (2.11 Pg C year⁻¹). This absolute value will be sensitive to the vegetation cover which is much improved by including the height-based competition as has been done in UKESM1 Sellar et al. (2019). However, JULES-CN outperforms JULES-C on all of the other key metrics

	Mean (Pg C year ⁻¹)	Trend (Pg C year ⁻¹ year ⁻¹)	IAV (Pg C year ⁻¹)	r
JULES-CN	1.66	0.025	0.86	0.71
JULES-C	2.06	0.034	1.31	0.63
JULES-CN _{layer}	1.75	0.026	0.83	0.64
GCP(residual)	2.11	0.027	1.01	

Table 3. Statistics of NEE from JULES-CN, JULES-C, JULES-CN_{layer}, and the GCP observation-based estimates (Friedlingstein et al., 2019)(Friedlingstein et al., 2020), over the period from 1960 to 2009 inclusive. Columns 2-4 show respectively the mean, linear trend, and the interannual variability (standard deviation) around that trend. Column 5 shows the correlation coefficient between each model NEE timeseries and the GCP timeseries.

of the NEE variation. JULES-CN produces a smaller but much more realistic trend in NEE, and a smaller and more realistic interannual variability about that trend (see Table 5.2.1). The correlation coefficient for NEE between the JULES-CN and GCP estimates ($r=0.71$) is also improved compared to JULES-C ($r=0.63$). There remains a significant underestimate of NEE in the years following the Pinatubo volcanic eruption in 1991, most likely due to the neglect of diffuse-radiation fertilization in these versions of JULES (Mercado et al., 2009). However, it is especially notable that JULES-CN significantly reduces the systematic overestimate of NEE seen in JULES-C during extended La Nina periods, such as the years centred around 1974 and 2000 (Figure 7).

5.2.2 Residence times

In general, ~~arbon-carbon~~ residence times of the soil and ecosystem are given by the stocks divided by the fluxes. These are emergent properties of the model and thus a valuable metric to evaluate. Figure 8 shows the ecosystem residence time and the soil C residence times for different biomes. Here, the land surface is split into biomes based on the 14 World Wildlife Fund terrestrial ecoregions (Olson et al., 2001) and characterised by Harper et al. (2018). The ecosystem residence time defined as the total ecosystem C divided by the GPP is shown in Figure 8(a). These residence times have been estimated from a multi-annual mean on a grid cell by grid cell basis and then aggregated to biomes. The observational values were derived in a similar way using spatial data from Carvalhais et al. (2014). In general the ecosystem residence times are slightly reduced in JULES-CN compared with JULES-C, both of which are ~~slightly-generally~~ lower than in the observations. The largest difference between observed and modelled ecosystem residence time occurs in the tundra and boreal regions and the grasslands where the observed residence times are much longer than either JULES-C or JULES-CN. The soil carbon residence time is shorter than the observational-based measure in the tundra and the boreal regions but longer in the grassland regions. Overall, this leads to the the global soil carbon residence time in the model being too short. When vertical discretisation, including additional per-

mafrost processes, is added in JULES-CN_{layer} the residence times in the boreal and tundra increase notably (see Section 3.2.1 for further discussion).

855

5.3 Impact of N limitation

IN JULES-CN and JULES-CN_{layer} the N limitation mainly acts through reducing the NPP. This can be quantified using the response ratio which is defined as the ratio of the potential amount of C that can be allocated to growth and spreading of the vegetation (NPP_{pot}) compared with the
860 actual amount achieved in the natural state (NPP). Both of these diagnostics are output from the JULES simulations. Figure 9 shows the spatial distribution of the model simulated response ratio. Green areas are not very N limited with a response ratio close to 1.0 and yellow areas are more N limited with a larger response ratio. There are distinct regions of N limitation - in Australia and south Africa, the Sahel, western Europe and parts of Siberia. However much of the global land sur-
865 face, particularly the forested regions has relatively weak N limitation. Figure 9(c) also shows the JULES-CN response ratio has obvious inter-annual variability superimposed on an increasing trend over the twentieth century, indicating increasing N limitation which will limit the increase in carbon use efficiency shown in Figure 5(f).

870 Figure 10 shows the biome-based response ratio of net primary productivity. All biomes have a response ratio of greater than 1 in both the model and observations which means that adding extra N to the system will enhance the NPP achieved. Globally the response ratio is lower than the observations but for the majority of the biomes including the tropical forests and the tundra the model response ratios fall within the range of uncertainties of the observations. However, LeBauer and
875 Treseder (2008) suggests the tropical forest is somewhat N limited, whereas in JULES-CN tropical forest is not a N limited biome. Phosphorus has long been considered as the most limiting nutrient in tropical regions (Yang et al., 2014), therefore we expect JULES to simulate a larger response ratio in the future once a phosphorus cycle is added.

880 In the model the soil C decomposition can be limited when the N available in the soil is less than the N required by decomposition. This process does not play a major role in our simulations.

5.4 Nitrogen stocks and fluxes

The zonal profile of soil organic nitrogen (Figure 11) shows a similar distribution to the soil organic
885 C (Figure 6) reflecting the relatively consistent C to N ratio of the soil within the model. CN_{soil} - the C to N ratio of the HUM and BIO pools - is a spatially constant parameter set to 10 in these simulations. The observed soil N content is slightly higher at all latitudes than simulated by JULES-CN

particularly in the northern tundra region. ~~This is likely caused by the turnover times of the soil being too fast (Figure 8) leading to not enough soil N. In addition the C to N ratios in JULES-CN are too small for the northern high latitudes (mean of ~ 14) whereas up to 25% of soils in tundra regions are peat with C to N ratios of around 30 (Hugelius et al., 2020).~~ In contrast to the zonal distribution of soil organic nitrogen, the soil inorganic nitrogen in JULES-CN is larger in the tropics than in the northern high latitudes (Figure 11). Figure 12 shows the net soil N mineralisation fluxes are large in the tropics and smaller in the northern regions. This is reflected in the spatial distribution of the N uptake. As might be expected the spatial distribution of the N uptake as a fraction of N demand is similar to the N limitation shown in Figure 9. Biological N fixation and N gas losses are an order of magnitude smaller than the N uptake and net N mineralisation. However, again the spatial patterns are very comparable. N leaching is generally very small except in parts of south America and south-east Asia. Figure 13 shows a slight increase in the N demand and N uptake over the twentieth century associated with the increase in vegetation growth (Figure 5). Similarly there is an increase in the BNF which is parameterised such that it is proportional to the NPP.

5.5 Impact of vertical discretisation of soil biochemistry

This section discusses the differences between JULES-CN and JULES-CN_{layer}. In general over the tropics and southern latitudes, JULES-CN_{layer} is very comparable to JULES-CN. The majority of the differences occur in the northern regions where there is soil freezing—either permafrost or seasonally frozen soils. The reduction in global mean tree covered area seen in Figure 3 is caused by a reduction in the boreal regions which have a larger proportion of shrubs and grasses in JULES-CN_{layer}. In the higher latitudes the soil in JULES-CN_{layer} also has more organic C (Figure 6). This increase in soil organic C represents a store of permafrost carbon more comparable to the carbon found by Batjes (2014) and Carvalhais et al. (2014). This build up of carbon in JULES-CN_{layer} occurs because the decomposition deeper in the soil is reduced with the lower soil temperatures at depth - the soil C in JULES-CN only respond to the soil temperatures near the surface which are warmer. This also causes an increase in the residence time of the soil carbon shown in Figure 8(b). The modelled soil C residence time in JULES-CN_{layer} is now much longer and more comparable to that observed.

The spatial distributions of N fluxes in JULES-CN_{layer} (not shown) are very similar to those of JULES-CN. In addition, the time series of changes in N fluxes over the twentieth century are also comparable (Figure 13). The main differences are in the N gas loss which is larger in JULES-CN_{layer} and the N leaching which is larger in JULES-CN. Figure 11 shows an increase in both organic and inorganic N in JULES-CN_{layer} over that in JULES-CN in the northern high latitude similar to that seen in the organic C. As is the case for soil organic C, in the colder regions the soil N builds up

within the frozen soil because of the limitation of the decomposition rates by cold temperatures, therefore larger pools deeper in the soil are maintained in an equilibrium climate. The parameterisation of the vertically resolved soil biogeochemistry means that, once JULES-CN_{layer} is spun-up there is inorganic N within the soil profile which cannot be taken up by the vegetation, either because the soil is frozen or because the roots cannot readily access it. This means that the extra inorganic N in JULES-CN_{layer} (Figure 11) is mainly stored deeper in the soil profile and within the permafrost itself and is typically ~~inaaccessible~~ inavailable in the current climate. This improved representation of the soil biogeochemistry will have implications for simulations of climate change feedbacks from the northern high latitudes.

6 Discussion

This study presents the first implementation of nutrient cycles into the UK land and earth system models. The scheme is parsimonious in that it captures the first order and large scale effects of interacting carbon and nitrogen on the land surface in the simplest way possible. One important assumption is that of fixed plant stoichiometry and that a plant strives to achieve stoichiometric homeostasis to maintain ecosystem structure, function and stability under change environments (Sturner and Elser, 2002). This assumption has some support in the literature (e.g Brix and Ebell (1969); Wang et al. (2012)) and is a common approach amongst complex DGVMs (Meyerholt and Zaehle, 2015). However, recent meta analyses of field observations show a distinct increase in foliar N to additional N availability (Mao et al., 2020) and a modelling study found that assuming fixed C : N ratios and/or scaling leaf N concentration changes to other tissues, as employed here, were not supported by available evaluation data (Meyerholt and Zaehle, 2015). Employing flexible stoichiometry has the potential to significantly affect the modelled biogeochemical feedbacks. For instance, nutrient limitation tends to limit productivity and thus the production of litter, the input to soil organic matter, leading to a reduction in soil carbon that the nutrient limitation in soil turnover is too weak to oppose. Allowing for flexible stoichiometry may lead to a lower litter quality but a ~~similar~~ total under limitation, where the comparable amount of litter. This reduction in litter quality will strengthen the soil turnover response possibly leading to an overall increase in soil organic matter. Plant stoichiometric relationships are therefore a key uncertainty in assessing the carbon cycle feedbacks to climate change. Future versions of this model will explore the use of plant trait information (Harper et al., 2016) to parameterise leaf, root and wood C:N ratios for individual PFTs, and further developments to allow for flexible stoichiometry.

While the total BNF in JULES-CN is in the range of Davies-Barnard et al. (2020) and Vitousek et al. (2013), the spatial distribution of BNF more heavily favours the tropics than recent obser-

960 variations suggest (Sullivan et al., 2014; Davies-Barnard et al., 2020). The response of BNF to the multiple factors likely to occur in future varies between factor (e.g. warming, elevated atmospheric carbon dioxide, drought, N deposition, etc.), biome, and BNF type (nodulating, bryophyte, litter, etc.) (Zheng et al., 2020). Therefore how BNF will change is spatially variable and not controlled by a single factor. A move from an empirical to a process driven BNF function may provide better fit to present day BNF distribution and more robust future projections.

965 Further work is required to explore the impact of a spatially varying soil C to N ratio which can vary widely depending on the amount and decomposition of organic matter within the soil. For example, peat soils have relatively high C to N ratios up to 30-40 Hugelius et al. (2020). This type of soil is not yet included within JULES. In addition, N leaching is very low in the model, notwithstanding the lack of N fertiliser. One reason for this could be that too much mineral N is assumed to be sorbed within the soil. This requires further evaluation and potential modifications to the scheme.

975 In this paper we have not explicitly separated the impact of CO₂ fertilization from climate change or from the impact of N deposition. However, this was explored by Davies-Barnard et al. (2020) who put the response of JULES in context by comparing it with the responses from 4 additional land surface models and a meta-analysis of site observations. Davies-Barnard et al. (2020) used a slightly different configuration of JULES (JULES-ES) which is the configuration used in UKESM1 with a bulk soil biogeochemistry (Sellar et al., 2019). They found that JULES-ES has a relatively small increase in NPP caused by the addition extra N in the form of deposition compared with both the meta-analyses and CLM / LPJ-GUESS. However, it is comparable to that found in JSBACH. This small response is, in part, caused by the smaller initial N limitation in JULES-ES. However, JULES' increase in NPP in response to CO₂ fertilisation is aligned with the majority of the models and the meta-analyses.

985 7 Conclusions

990 In this paper we have documented a model to quantify the impact of coupling the nitrogen cycle with the carbon cycle in a fully dynamic vegetation model. In the model, N limitation affects NPP and how much C is allocated but it only indirectly affects the photosynthesis via leaf area development. This enables the carbon use efficiency (ratio of net carbon gain to gross carbon assimilation) to respond to changing N availability. Since the CUE affects the ability of the land surface to uptake carbon in a changing climate, this will impact carbon budgets under future projections of climate change. This scheme (based on JULES-CN) is only one of the new components of JULES that has been included within UKESM1 (Sellar et al., 2019). Relevant additions to the JULES-ES configu-

ration used in UKESM1 includes more plant functional types with improved plant physiology and
995 vegetation dynamics (Harper et al., 2016) plus a new land use module (Robertson et al., in prep.).

Overall the N enabled configuration of JULES – JULES-CN – produces a more realistic trend
in the net ecosystem exchange (NEE) and the interannual variability of NEE about that trend. It
also produces an improved estimate of NPP in the northern high latitudes. For other regions and
1000 diagnostics the simulation of present-day state and behaviour is not substantially different between
JULES-C and the N-enabled configuration, JULES-CN. This is largely because JULES-C has been
tuned to replicate observed carbon stores and fluxes and therefore implicitly includes a level of N
availability. What JULES-C lacks is a mechanism for this to change substantially in time – either un-
der more limiting conditions as elevated CO₂ outpaces demand for nutrients (e.g. Zaehle (2013b)),
1005 or under conditions of increased N availability due to anthropogenic deposition or accelerated soil
decomposition caused by climate change leading to increased mineralisation rates (Meyerholt et al.,
2020b; Zaehle and Dalmonech, 2011). The response of the N cycle in JULES under changes in
climate and CO₂ conditions—which will be affected by nutrient limitations—will be quantified and
assessed in subsequent work.

1010

An extended version of the nitrogen-enabled model additionally includes the vertical discretisa-
tion of the soil biogeochemistry model. This configuration improves the ecosystem residence times
in the tundra and boreal regions. This more detailed representation of permafrost biogeochemistry
in the northern high latitudes will be used to understand the impact of the coupled carbon and nitrogen
1015 cycle on the permafrost carbon feedback.

Code Availability

The JULES code used in these simulations is available from the Met Office Science Repository
Service (registration required) at <https://code.metoffice.gov.uk/trac/jules>. To access the code a freely
1020 available non-commercial research licence is required (<https://jules-lsm.github.io/>). The suites re-
quired for running JULES are available here: <https://code.metoffice.gov.uk/trac/roses-u>. JULES-CN
is u-ah896, JULES-C is u-ah932 and JULES-CN_{layer} is u-ai571.

Competing Interests

The authors declare that they have no conflict of interest.

1025 *Author contributions.* Andy Wiltshire designed the model in collaboration with the rest of the co-authors and
wrote the first draft of the text. Eleanor Burke and Sarah Chadburn added the layered soil biogeochemistry.

Peter Cox performed the analysis of inter-annual variability. All authors reviewed the paper and proposed improvements.

Acknowledgements. This work has received funding from the European Union's Horizon 2020 research and innovation programme under grant agreement No 641816 Coordinated Research in Earth Systems and Climate: Experiments, kNowledge, Dissemination and Outreach (CRESCENDO). Andy Wiltshire and Eleanor Burke were also supported by the Joint UK BEIS/Defra Met Office Hadley Centre Climate Programme (GA01101). Sarah Chadburn was supported by the Natural Environment Research Council (grant no. NE/M01990X/1 and NE/R015791/1). Peter Cox was supported by the European Research Council (ERC) ECCLES project, grant agreement number 742472. Sönke Zaehle was also supported by the European Research Council (ERC) under the European Union's Horizon 2020 research and innovation programme (grant agreement No 647204).

References

- Arora, V. K., Katavouta, A., Williams, R. G., Jones, C. D., Brovkin, V., Friedlingstein, P., Schwinger, J., Bopp, L., Boucher, O., Cadule, P., et al.: Carbon-concentration and carbon-climate feedbacks in CMIP6 models, and their comparison to CMIP5 models, *Biogeosciences Discussions*, pp. 1–124, 2019.
- Arora, V. K., Katavouta, A., Williams, R. G., Jones, C. D., Brovkin, V., Friedlingstein, P., Schwinger, J., Bopp, L., Boucher, O., Cadule, P., Chamberlain, M. A., Christian, J. R., Delire, C., Fisher, R. A., Hajima, T., Ilyina, T., Joetjzer, E., Kawamiya, M., Koven, C. D., Krasting, J. P., Law, R. M., Lawrence, D. M., Lenton, A., Lindsay, K., Pongratz, J., Raddatz, T., Séférian, R., Tachiiri, K., Tjiputra, J. F., Wiltshire, A., Wu, T., and Ziehn, T.: Carbon-concentration and carbon-climate feedbacks in CMIP6 models and their comparison to CMIP5 models, *Biogeosciences*, 17, 4173–4222, doi:10.5194/bg-17-4173-2020, <https://bg.copernicus.org/articles/17/4173/2020/>, 2020.
- Avitabile, V., Herold, M., Heuvelink, G. B., Lewis, S. L., Phillips, O. L., Asner, G. P., Armston, J., Ashton, P. S., Banin, L., Bayol, N., et al.: An integrated pan-tropical biomass map using multiple reference datasets, *Global change biology*, 22, 1406–1420, 2016.
- Ballantyne, A., Smith, W., Anderegg, W., Kauppi, P., Sarmiento, J., Tans, P., Shevliakova, E., Pan, Y., Poulter, B., Anav, A., et al.: Accelerating net terrestrial carbon uptake during the warming hiatus due to reduced respiration, *Nature Climate Change*, 7, 148, 2017.
- Batjes, N.: Total carbon and nitrogen in the soils of the world, *European Journal of Soil Science*, 65, 10–21, 2014.
- Batjes, N. H.: Harmonized soil property values for broad-scale modelling (WISE30sec) with estimates of global soil carbon stocks, *Geoderma*, 269, 61–68, 2016.
- Best, M. J., Pryor, M., Clark, D. B., Rooney, G. G., Essery, R. L. H., Ménard, C. B., Edwards, J. M., Hendry, M. A., Porson, A., Gedney, N., Mercado, L. M., Sitch, S., Blyth, E., Boucher, O., Cox, P. M., Grimmond, C. S. B., and Harding, R. J.: The Joint UK Land Environment Simulator (JULES), model description – Part 1: Energy and water fluxes, *Geoscientific Model Development*, 4, 677–699, doi:10.5194/gmd-4-677-2011, <http://www.geosci-model-dev.net/4/677/2011/>, 2011.
- Boyer, E. W., Howarth, R. W., Galloway, J. N., Dentener, F. J., Green, P. A., and Vöörsmarty, C. J.: Riverine nitrogen export from the continents to the coasts, *Global Biogeochemical Cycles*, 20, 2006.
- Brix, H. and Ebell, L.: Effects of nitrogen fertilization on growth, leaf area, and photosynthesis rate in Douglas-fir, *Forest Science*, 15, 189–196, 1969.
- Burke, E. J., Chadburn, S. E., and Ekici, A.: A vertical representation of soil carbon in the JULES land surface scheme (vn4.3_permafrost) with a focus on permafrost regions, *Geoscientific Model Development*, 10, 959–975, doi:10.5194/gmd-10-959-2017, <http://www.geosci-model-dev.net/10/959/2017/>, 2017.
- Carswell, F., Meir, P., Wandelli, E., Bonates, L., Kruijt, B., Barbosa, E., Nobre, A., Grace, J., and Jarvis, P.: Photosynthetic capacity in a central Amazonian rain forest, *Tree Physiology*, 20, 179–186, 2000.
- Carvalhais, N., Forkel, M., Khomik, M., Bellarby, J., Jung, M., Migliavacca, M., Mu, M., Saatchi, S., Santoro, M., Thurner, M., et al.: Global covariation of carbon turnover times with climate in terrestrial ecosystems, *Nature*, 514, 213–217, 2014.
- Chadburn, S., Burke, E., Essery, R., Boike, J., Langer, M., Heikenfeld, M., Cox, P., and Friedlingstein, P.: An improved representation of physical permafrost dynamics in the JULES land-surface model, *Geoscientific*

tific Model Development, 8, 1493–1508, doi:10.5194/gmd-8-1493-2015, <http://www.geosci-model-dev.net/8/1493/2015/>, 2015.

- 1080 Ciais, P., Sabine, C., Bala, G., Bopp, L., Brovkin, V., Canadell, J., Chhabra, A., DeFries, R., Galloway, J.,
Heimann, M., et al.: Carbon and other biogeochemical cycles, in: *Climate change 2013: the physical science
basis. Contribution of Working Group I to the Fifth Assessment Report of the Intergovernmental Panel on
Climate Change*, pp. 465–570, Cambridge University Press, 2014.
- 1085 Clark, D. B., Mercado, L. M., Sitch, S., Jones, C. D., Gedney, N., Best, M. J., Pryor, M., Rooney, G. G., Es-
sery, R. L. H., Blyth, E., Boucher, O., Harding, R. J., Huntingford, C., and Cox, P. M.: The Joint UK Land
Environment Simulator (JULES), model description Part 2: Carbon fluxes and vegetation dynamics, *Geosci-
entific Model Development*, 4, 701–722, doi:10.5194/gmd-4-701-2011, <http://www.geosci-model-dev.net/4/701/2011/>, 2011.
- 1090 Cleveland, C. C., Townsend, A. R., Schimel, D. S., Fisher, H., Howarth, R. W., Hedin, L. O., Perakis, S. S.,
Latty, E. F., Von Fischer, J. C., Elseroad, A., et al.: Global patterns of terrestrial biological nitrogen (N₂)
fixation in natural ecosystems, *Global biogeochemical cycles*, 13, 623–645, 1999.
- Collalti, A. and Prentice, I.: Is NPP proportional to GPP? Waring’s hypothesis 20 years on, *Tree physiology*,
39, 1473–1483, 2019.
- Cox, P., Huntingford, C., and Harding, R.: A canopy conductance and photosynthesis model for use in a GCM
land surface scheme, *Journal of Hydrology*, 212, 79–94, 1998.
- 1095 Cox, P., Betts, R., Bunton, C., Essery, R., Rowntree, P., and Smith, J.: The impact of new land surface physics
on the GCM simulation of climate and climate sensitivity, *Climate Dynamics*, 15, 183–203, 1999.
- Cox, P. M.: Description of the TRIFFID dynamic global vegetation model, Tech. rep., Met Office Hadley Centre,
Exeter, UK, http://www.metoffice.gov.uk/media/pdf/9/h/HCTN_24.pdf, 2001.
- 1100 Cox, P. M., Pearson, D., Booth, B. B., Friedlingstein, P., Huntingford, C., Jones, C. D., and Luke, C. M.:
Sensitivity of tropical carbon to climate change constrained by carbon dioxide variability, *Nature*, 494, 341–
344, 2013.
- Davies-Barnard, T. and Friedlingstein, P.: The Global Distribution of Biological Nitrogen Fixa-
tion in Terrestrial Natural Ecosystems, *Global Biogeochemical Cycles*, 34, e2019GB006387,
doi:10.1029/2019GB006387, <https://agupubs.onlinelibrary.wiley.com/doi/abs/10.1029/2019GB006387>,
1105 e2019GB006387 2019GB006387, 2020.
- Davies-Barnard, T., Meyerholt, J., Zaehle, S., Friedlingstein, P., Brovkin, V., Fan, Y., Fisher, R. A., Jones,
C. D., Lee, H., Peano, D., Smith, B., Wårlind, D., and Wiltshire, A.: Nitrogen Cycling in CMIP6 Land
Surface Models: Progress and Limitations, *Biogeosciences Discussions*, 2020, 1–32, doi:10.5194/bg-2019-
513, <https://www.biogeosciences-discuss.net/bg-2019-513/>, 2020.
- 1110 Dise, N. B., Rothwell, J. J., Gauci, V., van der Salm, C., and de Vries, W.: Predicting dissolved inorganic
nitrogen leaching in European forests using two independent databases, *Science of The Total Environ-
ment*, 407, 1798–1808, doi:10.1016/j.scitotenv.2008.11.003, [http://www.sciencedirect.com/science/article/
pii/S0048969708011261](http://www.sciencedirect.com/science/article/pii/S0048969708011261), 2009.
- 1115 Enquist, B. J., Brown, J. H., and West, G. B.: Allometric scaling of plant energetics and population density,
Nature, 395, 163–165, 1998.
- Field, C. and Mooney, H.: The photosynthesis-nitrogen relationship in wild plants, pp. 25–55, 1986.

Fisher, J. B., Sitch, S., Malhi, Y., Fisher, R. A., Huntingford, C., and Tan, S.-Y.: Carbon cost of plant nitrogen acquisition: A mechanistic, globally applicable model of plant nitrogen uptake, retranslocation, and fixation, *Global Biogeochemical Cycles*, 24, GB1014, doi:10.1029/2009GB003621, <http://onlinelibrary.wiley.com/doi/10.1029/2009GB003621/abstract>, 2010.

Friedlingstein, P., Jones, M., O'Sullivan, M., Andrew, R., Hauck, J., Peters, G., Peters, W., Pongratz, J., Sitch, S., Le Quéré, C., et al.: Global carbon budget 2019, *Earth System Science Data*, 11, 1783–1838, 2019.

Friedlingstein, P., O'Sullivan, M., Jones, M. W., Andrew, R. M., Hauck, J., Olsen, A., Peters, G. P., Peters, W., Pongratz, J., Sitch, S., et al.: Global carbon budget 2020, *Earth System Science Data*, 12, 3269–3340, 2020.

Galloway, J. N., Dentener, F. J., Capone, D. G., Boyer, E. W., Howarth, R. W., Seitzinger, S. P., Asner, G. P., Cleveland, C. C., Green, P., Holland, E. A., et al.: Nitrogen cycles: past, present, and future, *Biogeochemistry*, 70, 153–226, 2004.

Group, G. S. D. T.: Global Gridded Surfaces of Selected Soil Characteristics (IGBP-DIS).[Global Gridded Surfaces of Selected Soil Characteristics (International Geosphere-Biosphere Programme-Data and Information System)], 2000.

Gruber, N. and Galloway, J. N.: An Earth-system perspective of the global nitrogen cycle, *Nature*, 451, 293, 2008.

Harper, A. B., Cox, P. M., Friedlingstein, P., Wiltshire, A. J., Jones, C. D., Sitch, S., Mercado, L. M., Groenendijk, M., Reich, P. B., et al.: Improved representation of plant functional types and physiology in the Joint UK Land Environment Simulator (JULES v4. 2) using plant trait information, *Geoscientific Model Development*, 9, 2415–2440, 2016.

Harper, A. B., Wiltshire, A. J., Cox, P. M., Friedlingstein, P., Jones, C. D., Mercado, L. M., Sitch, S., Williams, K., and Duran-Rojas, C.: Vegetation distribution and terrestrial carbon cycle in a carbon-cycle configuration of JULES4. 6 with new plant functional types, *Geosci. Model Dev. Discuss.*, <https://doi.org/10.5194/gmd-2017-311>, 2018.

Hartley, A., MacBean, N., Georgievski, G., and Bontemps, S.: Uncertainty in plant functional type distributions and its impact on land surface models, *Remote Sensing of Environment*, 203, 71–89, 2017.

Hashimoto, S., Carvalhais, N., Ito, A., Migliavacca, M., Nishina, K., and Reichstein, M.: Global spatiotemporal distribution of soil respiration modeled using a global database, *Biogeosciences*, 12, 4121–4132, 2015.

Houlton, B. Z., Wang, Y.-P., Vitousek, P. M., and Field, C. B.: A unifying framework for dinitrogen fixation in the terrestrial biosphere, *Nature*, 454, 327–330, 2008.

Hugelius, G., Loisel, J., Chadburn, S., Jackson, R. B., Jones, M., MacDonald, G., Marushchak, M., Olefeldt, D., Packalen, M., Siewert, M. B., et al.: Large stocks of peatland carbon and nitrogen are vulnerable to permafrost thaw, *Proceedings of the National Academy of Sciences*, 117, 20438–20446, 2020.

Hurt, G. C., Chini, L. P., Frolking, S., Betts, R., Feddema, J., Fischer, G., Fisk, J., Hibbard, K., Houghton, R., Janetos, A., et al.: Harmonization of land-use scenarios for the period 1500–2100: 600 years of global gridded annual land-use transitions, wood harvest, and resulting secondary lands, *Climatic change*, 109, 117–161, 2011.

Jenkinson, D. and Coleman, K.: A model for the turnover of carbon in soil—Model description and windows user guide, Rothamsted Research, Harpenden, UK, 1999.

- Jenkinson, D. S., Andrew, S. P. S., Lynch, J. M., Goss, M. J., and Tinker, P. B.: The Turnover of Organic Carbon and Nitrogen in Soil [and Discussion], *Philosophical Transactions: Biological Sciences*, 329, 361–368, <http://www.jstor.org/stable/76840>, 1990.
- Jones, C. D. and Friedlingstein, P.: Quantifying process-level uncertainty contributions to TCRE and Carbon Budgets for meeting Paris Agreement climate targets, *Environmental Research Letters*, 2020.
- 1160 Jung, M., Reichstein, M., Margolis, H. A., Cescatti, A., Richardson, A. D., Arain, M. A., Arneth, A., Bernhofer, C., Bonal, D., Chen, J., Gianelle, D., Gobron, N., Kiely, G., Kutsch, W., Lasslop, G., Law, B. E., Lindroth, A., Merbold, L., Montagnani, L., Moors, E. J., Papale, D., Sottocornola, M., Vaccari, F., and Williams, C.: Global patterns of land-atmosphere fluxes of carbon dioxide, latent heat, and sensible heat derived from eddy covariance, satellite, and meteorological observations, *Journal of Geophysical Research: Biogeosciences*, 116, n/a–n/a, doi:10.1029/2010JG001566, <http://dx.doi.org/10.1029/2010JG001566>, g00J07, 2011.
- 1165 Kim, D., Lee, M.-I., Jeong, S.-J., Im, J., Cha, D. H., and Lee, S.: Intercomparison of Terrestrial Carbon Fluxes and Carbon Use Efficiency Simulated by CMIP5 Earth System Models, *Asia-Pacific Journal of Atmospheric Sciences*, 54, 145–163, 2018.
- 1170 Koven, C. D., Riley, W. J., Subin, Z. M., Tang, J. Y., Torn, M. S., Collins, W. D., Bonan, G. B., Lawrence, D. M., and Swenson, S. C.: The effect of vertically resolved soil biogeochemistry and alternate soil C and N models on C dynamics of CLM4, *Biogeosciences*, 10, 7109–7131, doi:10.5194/bg-10-7109-2013, <http://www.biogeosciences.net/10/7109/2013/>, 2013.
- Lamarque, J.-F., Shindell, D. T., Josse, B., Young, P. J., Cionni, I., Eyring, V., Bergmann, D., Cameron-Smith, P., Collins, W. J., Doherty, R., Dalsoren, S., Faluvegi, G., Folberth, G., Ghan, S. J., Horowitz, L. W., Lee, Y. H., MacKenzie, I. A., Nagashima, T., Naik, V., Plummer, D., Righi, M., Rumbold, S. T., Schulz, M., Skeie, R. B., Stevenson, D. S., Strode, S., Sudo, K., Szopa, S., Voulgarakis, A., and Zeng, G.: The Atmospheric Chemistry and Climate Model Intercomparison Project (ACCMIP): overview and description of models, simulations and climate diagnostics, *Geoscientific Model Development*, 6, 179–206, doi:10.5194/gmd-6-179-2013, <https://www.geosci-model-dev.net/6/179/2013/>, 2013.
- 1175 1180 Le Quéré, C., Andrew, R. M., Friedlingstein, P., Sitch, S., Hauck, J., Pongratz, J., Pickers, P. A., Korsbakken, J. I., Peters, G. P., Canadell, J. G., et al.: Global carbon budget 2018, *Earth System Science Data (Online)*, 10, 2018.
- LeBauer, D. S. and Treseder, K. K.: Nitrogen limitation of net primary productivity in terrestrial ecosystems is globally distributed, *Ecology*, 89, 371–379, doi:10.1890/06-2057.1, <http://dx.doi.org/10.1890/06-2057.1>, 2008.
- Li, W., Ciais, P., Wang, Y., Yin, Y., Peng, S., Zhu, Z., Bastos, A., Yue, C., Ballantyne, A. P., Broquet, G., et al.: Recent changes in global photosynthesis and terrestrial ecosystem respiration constrained from multiple observations, *Geophysical Research Letters*, 2018.
- 1190 Liang, J., Qi, X., Souza, L., and Luo, Y.: Processes regulating progressive nitrogen limitation under elevated carbon dioxide: a meta-analysis, *Biogeosciences*, 13, 2689–2699, doi:<https://doi.org/10.5194/bg-13-2689-2016>, <https://www.biogeosciences.net/13/2689/2016/bg-13-2689-2016.html>, 2016.
- Mao, J., Mao, Q., Zheng, M., and Mo, J.: Responses of Foliar Nutrient Status and Stoichiometry to Nitrogen Addition in Different Ecosystems: A Meta-analysis, *Journal of Geophysical Research: Biogeosciences*,

- 1195 125, e2019JG005347, doi:<https://doi.org/10.1029/2019JG005347>, <https://agupubs.onlinelibrary.wiley.com/doi/abs/10.1029/2019JG005347>, e2019JG005347 2019JG005347, 2020.
- McGuire, A. D., Melillo, J. M., and Joyce, L. A.: The role of nitrogen in the response of forest net primary production to elevated atmospheric carbon dioxide, *Annual Review of Ecology and systematics*, 26, 473–503, 1995.
- 1200 Mercado, L. M., Huntingford, C., Gash, J. H., Cox, P. M., and Jogireddy, V.: Improving the representation of radiation interception and photosynthesis for climate model applications, *Tellus B*, 59, 553–565, 2007.
- Mercado, L. M., Bellouin, N., Sitch, S., Boucher, O., Huntingford, C., Wild, M., and Cox, P. M.: Impact of changes in diffuse radiation on the global land carbon sink, *Nature*, 458, 1014–1017, 2009.
- Meyerholt, J. and Zaehle, S.: The role of stoichiometric flexibility in modelling forest ecosystem responses to nitrogen fertilization, *New Phytologist*, 208, 1042–1055, 2015.
- 1205 Meyerholt, J., Zaehle, S., and Smith, M. J.: Variability of projected terrestrial biosphere responses to elevated levels of atmospheric CO₂ due to uncertainty in biological nitrogen fixation, *Biogeosciences*, 13, 1491–1518, doi:<https://doi.org/10.5194/bg-13-1491-2016>, <https://www.biogeosciences.net/13/1491/2016/bg-13-1491-2016.html>, 2016.
- 1210 Meyerholt, J., Sickel, K., and Zaehle, S.: Ensemble projections elucidate effects of uncertainty in terrestrial nitrogen limitation on future carbon uptake, *Global Change Biology*, n/a, doi:10.1111/gcb.15114, <https://onlinelibrary.wiley.com/doi/abs/10.1111/gcb.15114>, 2020a.
- Meyerholt, J., Sickel, K., and Zaehle, S.: Ensemble projections elucidate effects of uncertainty in terrestrial nitrogen limitation on future carbon uptake, *Global Change Biology*, 2020b.
- 1215 Ochoa-Hueso, R., Maestre, F. T., de los Ríos, A., Valea, S., Theobald, M. R., Vivanco, M. G., Manrique, E., and Bowker, M. A.: Nitrogen deposition alters nitrogen cycling and reduces soil carbon content in low-productivity semiarid Mediterranean ecosystems, *Environmental Pollution*, 179, 185–193, doi:10.1016/j.envpol.2013.03.060, <http://www.sciencedirect.com/science/article/pii/S0269749113001930>, 2013.
- 1220 Olson, D. M., Dinerstein, E., Wikramanayake, E. D., Burgess, N. D., Powell, G. V., Underwood, E. C., D’Amico, J. A., Itoua, I., Strand, H. E., Morrison, J. C., et al.: Terrestrial Ecoregions of the World: A New Map of Life on Earth A new global map of terrestrial ecoregions provides an innovative tool for conserving biodiversity, *BioScience*, 51, 933–938, 2001.
- Potter, P., Ramankutty, N., Bennett, E. M., and Donner, S. D.: Characterizing the spatial patterns of global fertilizer application and manure production, *Earth Interactions*, 14, 1–22, 2010.
- 1225 Poulter, B., MacBean, N., Hartley, A., Khlystova, I., Arino, O., Betts, R., Bontemps, S., Boettcher, M., Brockmann, C., Defourny, P., et al.: Plant functional type classification for earth system models: results from the European Space Agency’s Land Cover Climate Change Initiative, *Geoscientific Model Development*, 8, 2315–2328, 2015.
- 1230 Robertson, E., Wiltshire, A., and Liddicoat, S.: A New Representation of Land-use in the JULES Land Surface Model, in prep.
- Ruesch, A. and Gibb, H. K.: New IPCC Tier-1 Global Biomass Carbon Map For the Year 2000, http://cdiac.ornl.gov/epubs/ndp/global_carbon/carbon_documentation.html.

- Saatchi, S. S., Harris, N. L., Brown, S., Lefsky, M., Mitchard, E. T., Salas, W., Zutta, B. R., Buermann, W.,
 1235 Lewis, S. L., Hagen, S., et al.: Benchmark map of forest carbon stocks in tropical regions across three
 continents, *Proceedings of the national academy of sciences*, 108, 9899–9904, 2011.
- Schlesinger, W. H.: *Biogeochemistry: An Analysis of Global Change*, Academic Press, San Diego, 2nd Edn.,
 1997.
- Sellar, A. A., Jones, C. G., Mulcahy, J. P., Tang, Y., Yool, A., Wiltshire, A., O'Connor, F. M., Stringer, M.,
 1240 Hill, R., Palmieri, J., Woodward, S., de Mora, L., Kuhlbrodt, T., Rumbold, S. T., Kelley, D. I., Ellis, R.,
 Johnson, C. E., Walton, J., Abraham, N. L., Andrews, M. B., Andrews, T., Archibald, A. T., Berthou, S.,
 Burke, E., Blockley, E., Carslaw, K., Dalvi, M., Edwards, J., Folberth, G. A., Gedney, N., Griffiths, P. T.,
 Harper, A. B., Hendry, M. A., Hewitt, A. J., Johnson, B., Jones, A., Jones, C. D., Keeble, J., Liddicoat, S.,
 Morgenstern, O., Parker, R. J., Predoi, V., Robertson, E., Siahann, A., Smith, R. S., Swaminathan, R., Wood-
 1245 house, M. T., Zeng, G., and Zerroukat, M.: UKESM1: Description and Evaluation of the U.K. Earth Sys-
 tem Model, *Journal of Advances in Modeling Earth Systems*, 11, 4513–4558, doi:10.1029/2019MS001739,
<https://agupubs.onlinelibrary.wiley.com/doi/abs/10.1029/2019MS001739>, 2019.
- Shinozaki, K., Yoda, K., Hozumi, K., and Kira, T.: A quantitative analysis of plant form-the pipe model theory:
 I. Basic analyses, *Japanese Journal of ecology*, 14, 97–105, 1964a.
- 1250 Shinozaki, K., Yoda, K., Hozumi, K., and Kira, T.: A quantitative analysis of plant form-the pipe model theory:
 II. Further evidence of the theory and its application in forest ecology, *Japanese Journal of Ecology*, 14,
 133–139, 1964b.
- Sitch, S., Friedlingstein, P., Gruber, N., Jones, S., Murray-Tortarolo, G., Ahlström, A., Doney, S. C., Graven,
 H., Heinze, C., Huntingford, C., et al.: Recent trends and drivers of regional sources and sinks of carbon
 1255 dioxide, *Biogeosciences*, 12, 653–679, 2015.
- Smith, B., Warlind, D., Arneth, A., Hickler, T., Leadley, P., Siltberg, J., and Zaehle, S.: Implications of incorpo-
 rating N cycling and N limitations on primary production in an individual-based dynamic vegetation model,
Biogeosciences, 11, 2027–2054, 2014.
- Sterner, R. W. and Elser, J. J.: *Ecological stoichiometry: the biology of elements from molecules to the bio-*
 1260 *sphere*, Princeton university press, 2002.
- Sullivan, B. W., Smith, W. K., Townsend, A. R., Nasto, M. K., Reed, S. C., Chazdon, R. L., and Cleve-
 land, C. C.: Spatially robust estimates of biological nitrogen (N) fixation imply substantial human al-
 teration of the tropical N cycle, *Proceedings of the National Academy of Sciences*, 111, 8101–8106,
 doi:10.1073/pnas.1320646111, <http://www.pnas.org/content/111/22/8101>, 2014.
- 1265 Thomas, R., Bonan, G., and Goodale, C.: Insights into mechanisms governing forest carbon response to nitrogen
 deposition: a model–data comparison using observed responses to nitrogen addition, *Biogeosciences*, 10,
 3869–3887, 2013a.
- Thomas, R. Q., Zaehle, S., Templer, P. H., and Goodale, C. L.: Global patterns of nitrogen lim-
 itation: confronting two global biogeochemical models with observations, *Global Change Biology*,
 1270 19, 2986–2998, doi:10.1111/gcb.12281, <https://onlinelibrary.wiley.com/doi/abs/10.1111/gcb.12281>, _eprint:
<https://onlinelibrary.wiley.com/doi/pdf/10.1111/gcb.12281>, 2013b.

- Vitousek, P. M., Menge, D. N., Reed, S. C., and Cleveland, C. C.: Biological nitrogen fixation: rates, patterns and ecological controls in terrestrial ecosystems, *Philosophical Transactions of the Royal Society of London B: Biological Sciences*, 368, 20130 119, 2013.
- 1275 von Bloh, W., Schaphoff, S., Müller, C., Rolinski, S., Waha, K., and Zaehle, S.: Implementing the Nitrogen cycle into the dynamic global vegetation, hydrology and crop growth model LPJmL (version 5), *Geoscientific Model Development*, 2018.
- Wang, D., Maughan, M. W., Sun, J., Feng, X., Miguez, F., Lee, D., and Dietze, M. C.: Impact of nitrogen allocation on growth and photosynthesis of *Miscanthus* (*Miscanthus* × *giganteus*), *Gcb Bioenergy*, 4, 688–
- 1280 697, 2012.
- Wania, R., Meissner, K., Eby, M., Arora, V., Ross, I., and Weaver, A.: Carbon-nitrogen feedbacks in the UVic ESCM, *Geoscientific Model Development*, 5, 1137–1160, 2012.
- Weintraub, M. N. and Schimel, J. P.: Nitrogen Cycling and the Spread of Shrubs Control Changes in the Carbon Balance of Arctic Tundra Ecosystems, *BioScience*, 55, 408–415, doi:10.1641/0006-3568(2005)055[0408:NCATSO]2.0.CO;2, [https://doi.org/10.1641/0006-3568\(2005\)055\[0408:NCATSO\]2.0.CO;2](https://doi.org/10.1641/0006-3568(2005)055[0408:NCATSO]2.0.CO;2), 2005.
- 1285 Wenzel, S., Cox, P. M., Eyring, V., and Friedlingstein, P.: Projected land photosynthesis constrained by changes in the seasonal cycle of atmospheric CO₂, *Nature*, 538, 499–501, 2016.
- Wieder, W. R., Cleveland, C. C., Lawrence, D. M., and Bonan, G. B.: Effects of model structural uncertainty on carbon cycle projections: biological nitrogen fixation as a case study, *Environmental Research Letters*, 10, 044 016, doi:10.1088/1748-9326/10/4/044016, <http://stacks.iop.org/1748-9326/10/i=4/a=044016>, 2015a.
- 1290 Wieder, W. R., Cleveland, C. C., Smith, W. K., and Todd-Brown, K.: Future productivity and carbon storage limited by terrestrial nutrient availability, *Nature Geoscience*, 8, 441–444, 2015b.
- Wiltshire, A. J., Duran Rojas, M. C., Edwards, J. M., Gedney, N., Harper, A. B., Hartley, A. J., Hendry, M. A., Robertson, E., and Smout-Day, K.: JULES-GL7: the Global Land configuration of the Joint UK Land Environment Simulator version 7.0 and 7.2, *Geoscientific Model Development*, 13, 483–505, doi:10.5194/gmd-13-483-2020, <https://www.geosci-model-dev.net/13/483/2020/>, 2020.
- 1295 Xu-Ri and Prentice, I. C.: Terrestrial nitrogen cycle simulation with a dynamic global vegetation model, *Global Change Biology*, 14, 1745–1764, doi:10.1111/j.1365-2486.2008.01625.x, <http://dx.doi.org/10.1111/j.1365-2486.2008.01625.x>, 2008.
- 1300 Yang, X., Thornton, P., Ricciuto, D., and Post, W.: The role of phosphorus dynamics in tropical forests—a modeling study using CLM-CNP, *Biogeosciences*, 11, 2014.
- Zaehle, S.: Terrestrial nitrogen–carbon cycle interactions at the global scale, *Philosophical Transactions of the Royal Society of London B: Biological Sciences*, 368, doi:10.1098/rstb.2013.0125, <http://rstb.royalsocietypublishing.org/content/368/1621/20130125>, 2013a.
- 1305 Zaehle, S.: Terrestrial nitrogen–carbon cycle interactions at the global scale, *Philosophical Transactions of the Royal Society B: Biological Sciences*, 368, 20130 125, 2013b.
- Zaehle, S. and Dalmonech, D.: Carbon–nitrogen interactions on land at global scales: current understanding in modelling climate biosphere feedbacks, *Current Opinion in Environmental Sustainability*, 3, 311–320, 2011.

- 1310 Zaehle, S. and Friend, A.: Carbon and nitrogen cycle dynamics in the O-CN land surface model: 1. Model description, site-scale evaluation, and sensitivity to parameter estimates, *Global Biogeochemical Cycles*, 24, 2010.
- Zaehle, S., Friend, A., Friedlingstein, P., Dentener, F., Peylin, P., and Schulz, M.: Carbon and nitrogen cycle dynamics in the O-CN land surface model: 2. Role of the nitrogen cycle in the historical terrestrial carbon balance, *Global Biogeochemical Cycles*, 24, 2010.
- 1315 Zaehle, S., Medlyn, B. E., De Kauwe, M. G., Walker, A. P., Dietze, M. C., Hickler, T., Luo, Y., Wang, Y.-P., El-Masri, B., Thornton, P., Jain, A., Wang, S., Warlind, D., Weng, E., Parton, W., Iversen, C. M., Gallet-Budynnek, A., McCarthy, H., Finzi, A., Hanson, P. J., Prentice, I. C., Oren, R., and Norby, R. J.: Evaluation of 11 terrestrial carbon–nitrogen cycle models against observations from two temperate Free-Air CO₂ Enrichment studies, *New Phytologist*, 202, 803–822, doi:10.1111/nph.12697, <http://dx.doi.org/10.1111/nph.12697>, 2013-16358, 2014.
- 1320 Zaehle, S., Jones, C. D., Houlton, B., Lamarque, J.-F., and Robertson, E.: Nitrogen availability reduces CMIP5 projections of twenty-first-century land carbon uptake, *Journal of Climate*, 28, 2494–2511, 2015.
- Zhao, M. and Running, S. W.: Drought-induced reduction in global terrestrial net primary production from 2000 through 2009, *science*, 329, 940–943, 2010.
- 1325 Zheng, M., Zhou, Z., Zhao, P., Luo, Y., Ye, Q., Zhang, K., Song, L., and Mo, J.: Effects of human disturbance activities and environmental change factors on terrestrial nitrogen fixation, *Global Change Biology*, 26, 6203–6217, doi:10.1111/gcb.15328, <https://onlinelibrary.wiley.com/doi/abs/10.1111/gcb.15328>, [_eprint: https://onlinelibrary.wiley.com/doi/pdf/10.1111/gcb.15328](https://onlinelibrary.wiley.com/doi/pdf/10.1111/gcb.15328), 2020.

1330 **Figures**

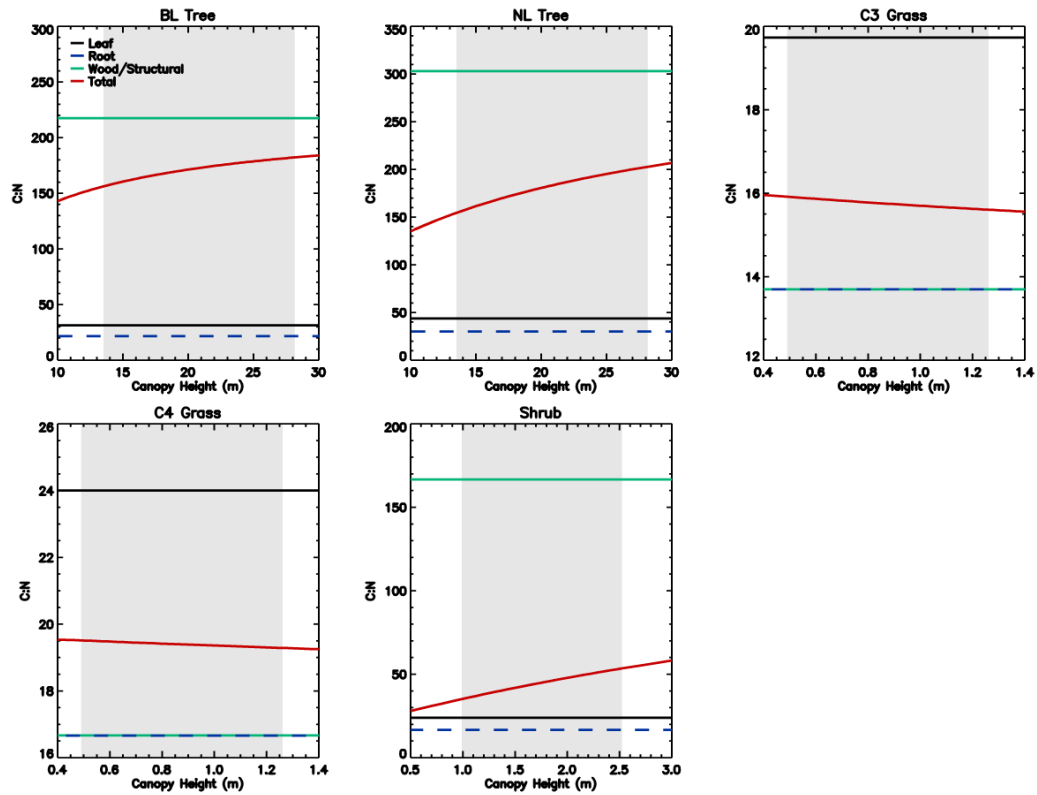


Figure 1. Stoichiometry of the vegetation nitrogen pools as a function of canopy height for individual PFTs at full leaf. Leaf N concentration are defined at the canopy level and are higher than those for the top leaf. The grey region shows the defined range of canopy height within the model. Note: both the x- and y-scales are very different for each PFT.

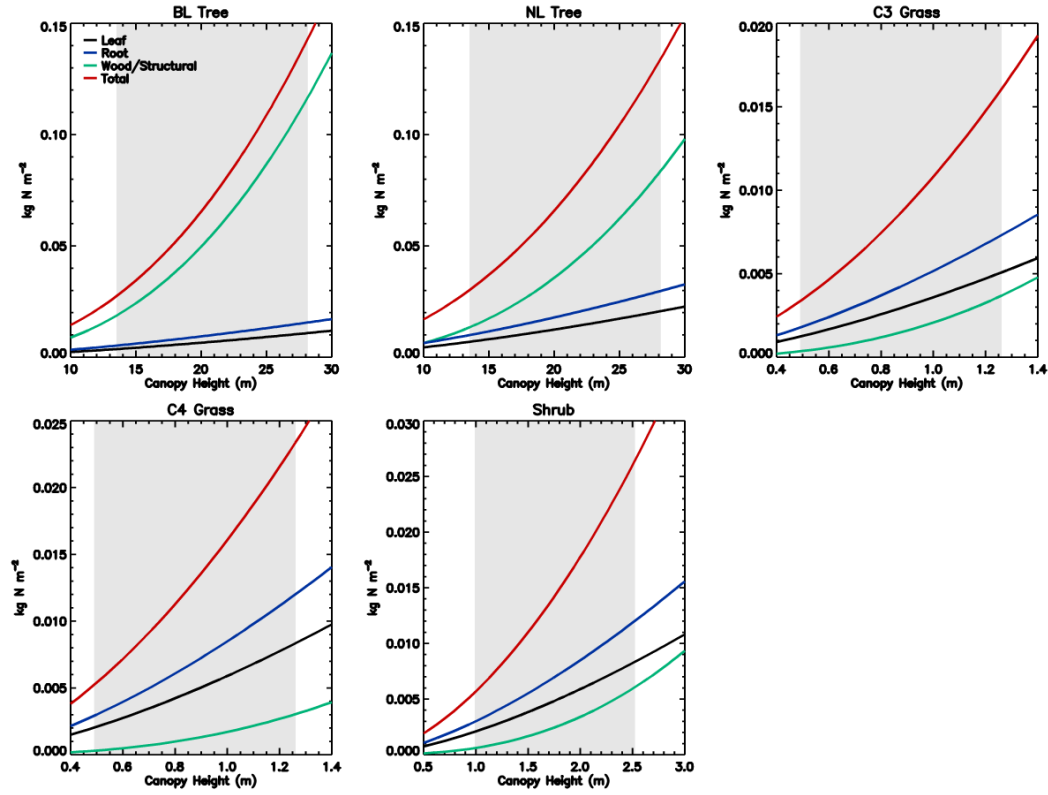


Figure 2. Total vegetation N along with N pools of leaf, root and wood as a function of canopy height for individual PFTs at full leaf. The grey region shows the defined range of canopy height within the model. Note: both the x- and y-scales are very different for each PFT.

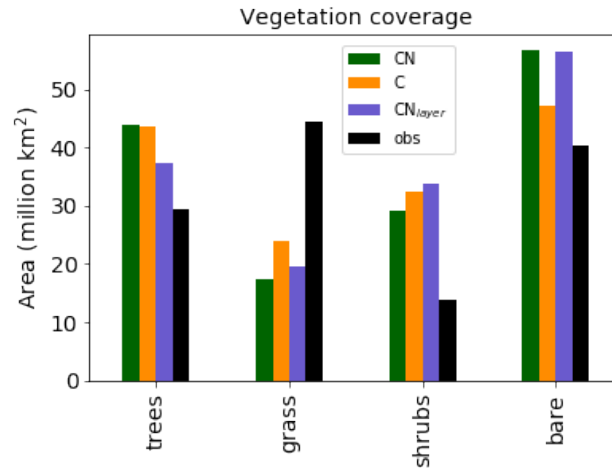


Figure 3. Total area covered by each vegetation type for the three different JULES configurations. The observations are derived from the European Space Agency (ESA) Climate Change Initiative (CCI) Land Cover data for 2010 Poulter et al. (2015) converted to JULES PFTs by Hartley et al. (2017).

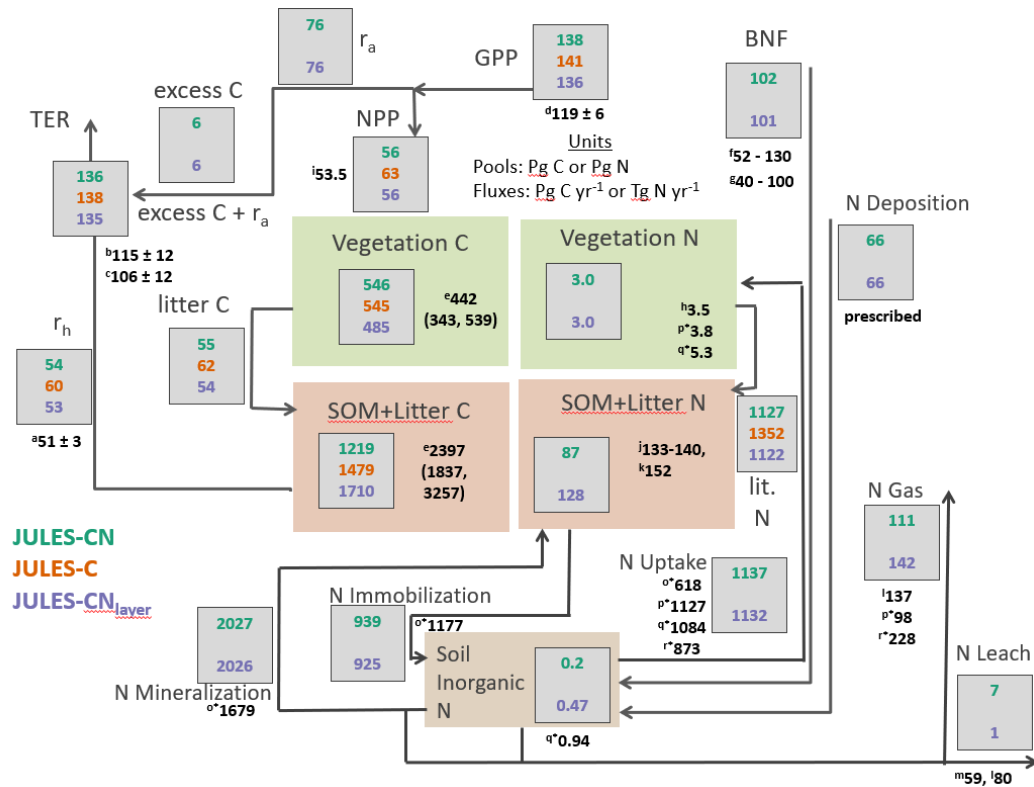


Figure 4. Carbon and nitrogen stocks and fluxes for JULES-CN, JULES-C, and JULES-CN_{layer} for the period 1996-2005 (after Davies-Barnard et al. (2020)). C = Carbon; N = Nitrogen; r_h = Heterotrophic respiration; r_a = Autotrophic respiration; TER = Total ecosystem respiration; GPP = Gross primary productivity; NPP= Net primary productivity; SOM = Soil organic matter; BNF = Biological N fixation; N gas is the sum of N_{gas} and N_{gasI} with N_{gasI} representing approximately 90 % of the total gas loss. The black numbers are the observational-constrained values from the literature, where observational-based values are not available JULES is compared with other global models. (a) Heterotrophic respiration: Hashimoto et al. (2015); (b) TER: Li et al. (2018); (c) TER: Ballantyne et al. (2017); (d) GPP: Jung et al. (2011); (e) Vegetation carbon and SOM+litter carbon: Carvalhais et al. (2014); (f) BNF Davies-Barnard and Friedlingstein (2020); (g) BNF Vitousek et al. (2013); (h) Vegetation nitrogen: Schlesinger (1997); (i) NPP: Zhao and Running (2010); (j) soil organic nitrogen: Batjes (2014); (k) soil organic nitrogen: Group (2000); (l) nitrogen losses including nitrogen leaching: Gruber and Galloway (2008); (m) nitrogen leaching: Boyer et al. (2006); (n) nitrogen leaching: Galloway et al. (2004); (o*) organic nitrogen immobilisation and mineralisation and plant uptake von Bloh et al. (2018); (p*) nitrogen uptake, vegetation nitrogen and nitrogen emissions Zaehle et al. (2010); (q*) nitrogen uptake and inorganic nitrogen content Xu-Ri and Prentice (2008); and (r*) nitrogen uptake and total nitrogen emissions Wania et al. (2012). (o*), (p*), (q*) and (r*) are model derived estimates.

Zonal total values of (a) vegetation and (b) soil C for JULES-C, JULES-CN and JULES-CN_{layer} simulations for the period 1996-2005 in Pg C / degree latitude. For the vegetation C the observational-based constraints are Saatchi: Saatchi et al. (2011); GEOCARB: Avitabile et al. (2016); and Biomass: ?. The observational-based constraints for the soil carbon are IGBP-DIS: Group (2000); WISE: Batjes (2016); and Carvahlais: Carvalhais et al. (2014).

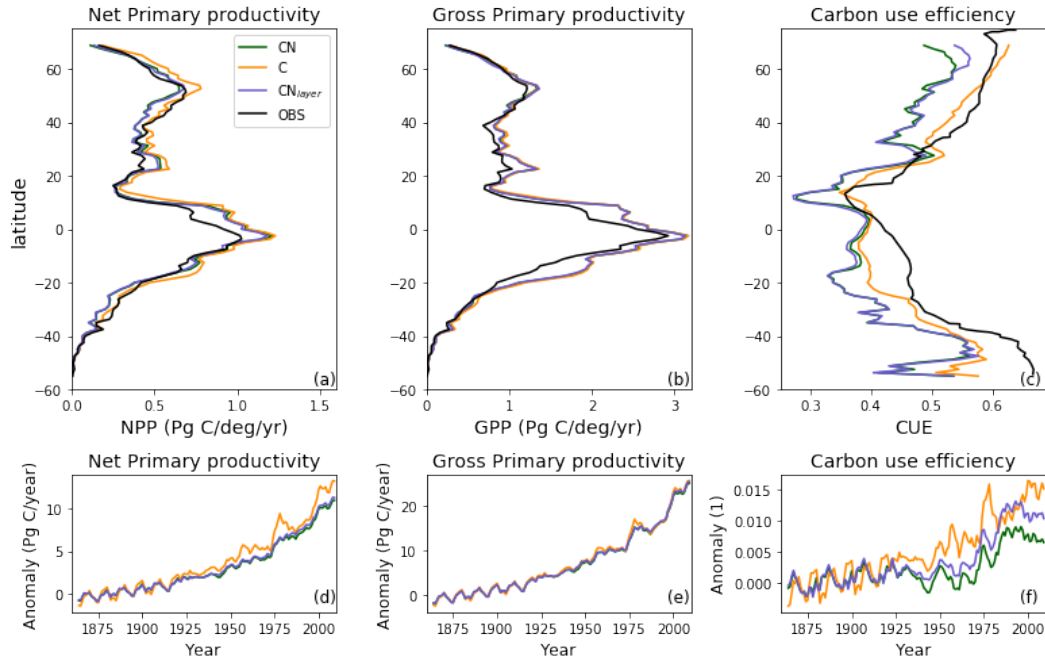


Figure 5. Zonal total values of (a) net primary productivity (NPP) and (b) gross primary productivity (GPP) for JULES-C, JULES-CN and JULES-CN_{layer} simulations for the period 1996-2005 in Pg C / degree latitude / year. The observational-constraint for NPP is from MODIS (Zhao and Running, 2010) and that for GPP is from Jung et al. (2011). The zonal mean carbon use efficiency (CUE = NPP/GPP) is shown in (c). The CUE observational constraint was digitised from Kim et al. (2018). Also shown are changes in (d) NPP, (e) GPP and (f) CUE over the historical period with respect to the multi-annual mean period of 1860-1899.

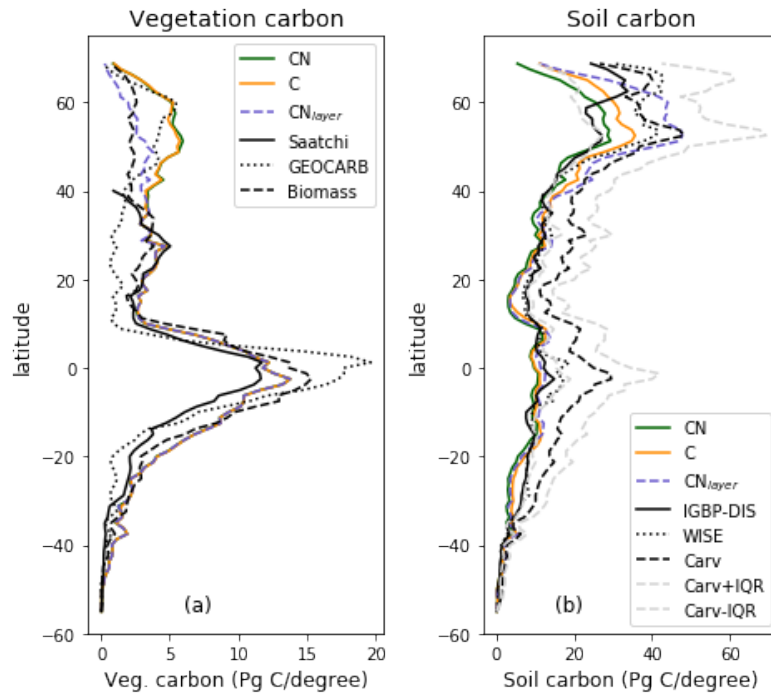


Figure 6. Zonal total values of (a) vegetation and (b) soil C for JULES-C, JULES-CN and JULES-CN_{layer} simulations for the period 1996-2005 in Pg C / degree latitude. For the vegetation C the observational-based constraints are Saatchi: Saatchi et al. (2011); GEOCARB: Avitabile et al. (2016); and Biomass: Ruesch and Gibb. The observational-based constraints for the soil carbon are IGBP-DIS: Group (2000); WISE: Batjes (2016); and Carvahlais: Carvahlais et al. (2014).

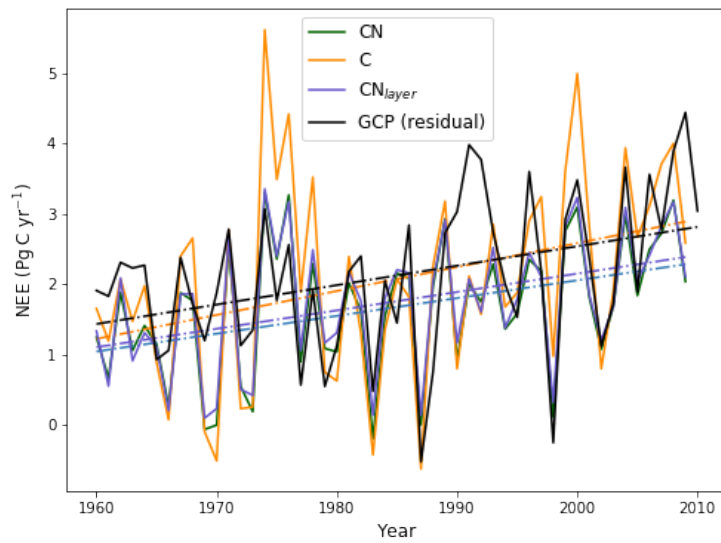


Figure 7. Evaluation of global annual mean NEE from JULES-CN, JULES-C and JULES-CN_{layer} compared with observations based on estimates from GCP ([Friedlingstein et al., 2019](#)) ([Friedlingstein et al., 2020](#)) over the period from 1960 to 2009 inclusive. Positive values represent the land surface as a net sink of carbon. The solid lines are the data and the dashed-dotted lines represent a linear fit of the data against time.

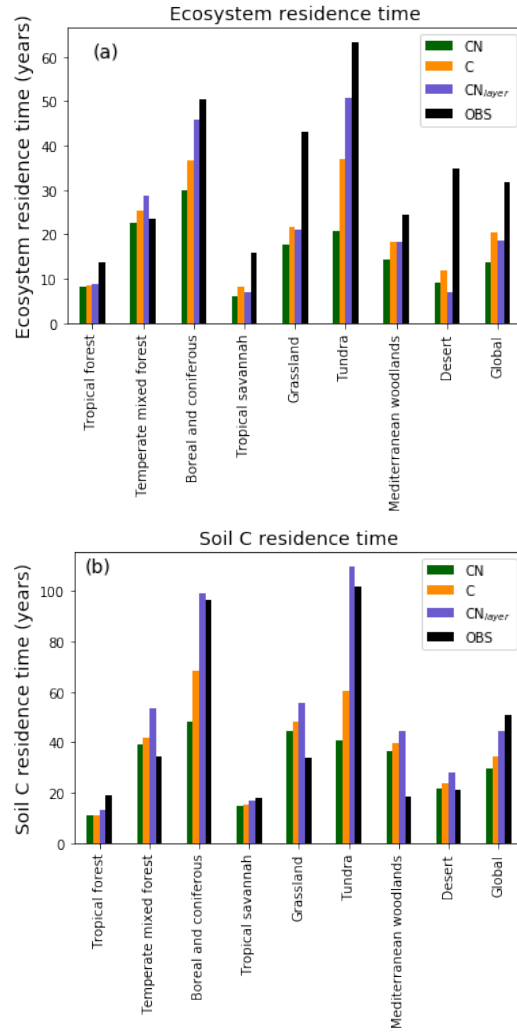


Figure 8. Biome-based (a) ecosystem turnover times and (b) soil carbon turnover times calculated on a grid-cell by grid-cell basis then aggregated temporally to biome level. JULES-C, JULES-CN and JULES-CN_{layer} are shown for the period 1996-2005. The land surface is split into biomes based on the 14 World Wildlife Fund terrestrial ecoregions (Olson et al., 2001) and characterised by Harper et al. (2018). The observed ecosystem residence times are derived from the Carvalhais et al. (2014) global data set and the observed soil residence times are from the WISE: Batjes (2016) soil carbon combined with the Hashimoto et al. (2015) soil respiration.

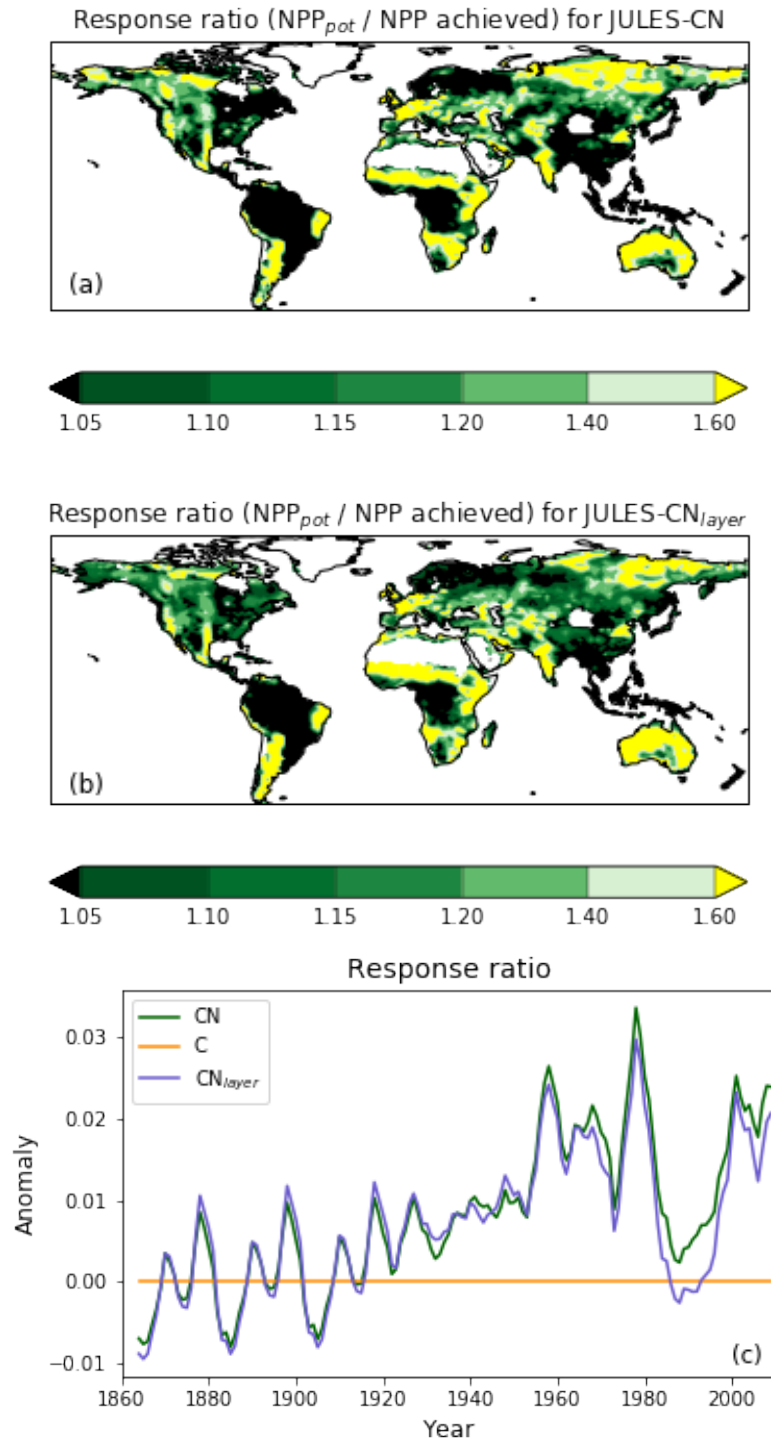


Figure 9. The spatial distribution of the response ratio defined as the potential amount of carbon that can be allocated to growth and spreading of the vegetation (NPP_{pot}) as a fraction of the NPP achieved in the natural state for (a) JULES-CN, and (b) JULES-CN_{layer}. A value greater than one means that the addition of nitrogen will enhance NPP. Any grid cells with an annual NPP of less than $0.016 \text{ g [C] m}^{-2}$ are set to missing. This is the spatial distribution of the metric shown in Figure 10. (c) shows the change in the response ratio over the historical period with respect to the multi-annual mean from the period of 1860-1899.

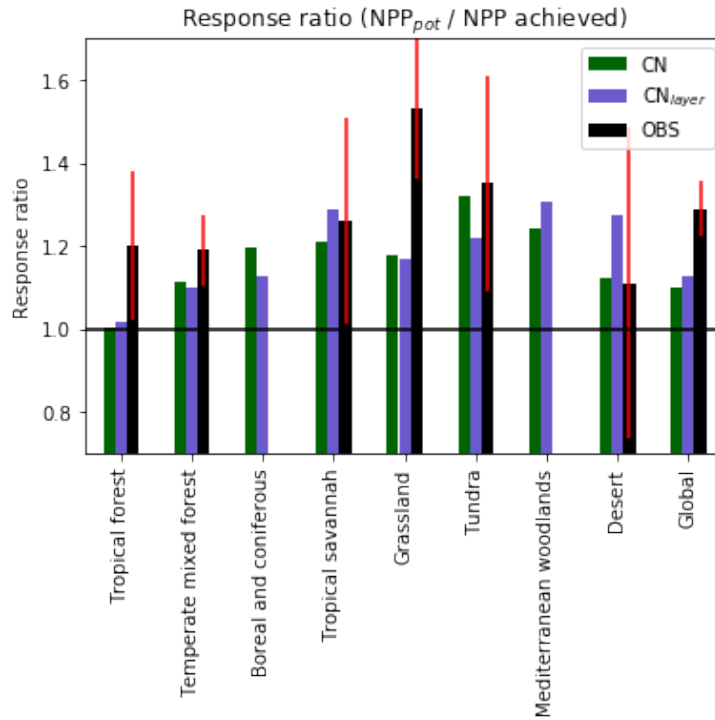


Figure 10. The response ratio is the ratio of the potential amount of carbon that can be allocated to growth and spreading of the vegetation (NPP_{pot}) compared with the actual amount achieved in the natural state (NPP). As in Figure 9, any grid cells with an annual NPP of less than $0.016 \text{ g [C] m}^{-2}$ are set to missing. The median of JULES-CN and JULES-CN_{layer} are shown for each biome for the period 1996-2005. The biomes are discussed in more detail in Figure 8. The observational constraint is taken from Table 1 in LeBauer and Treseder (2008) which summarises a meta analysis of nitrogen addition experiments. The black bars show the mean of the observations and the red lines the uncertainty.

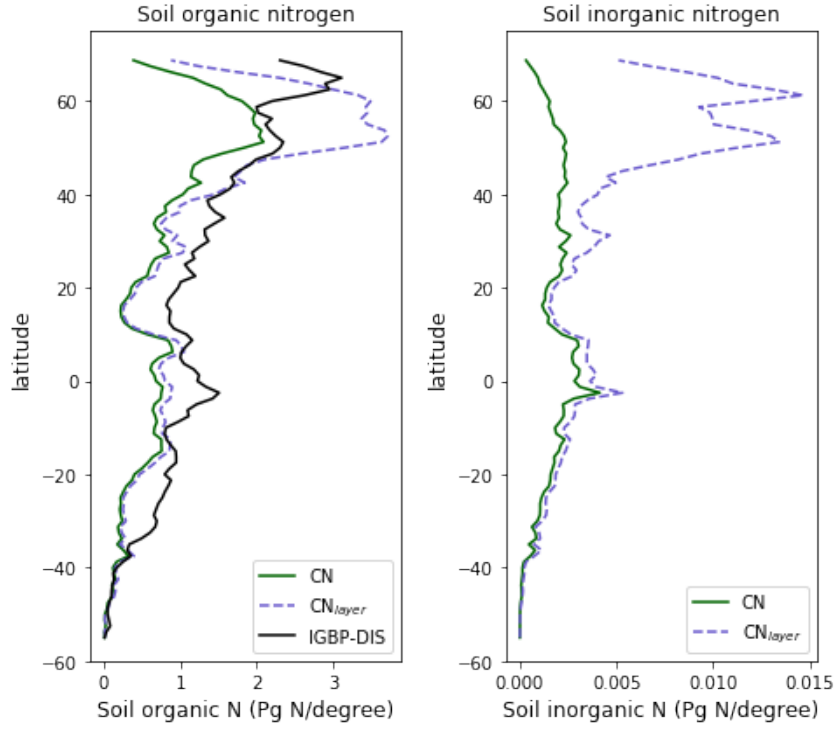


Figure 11. The zonal total soil organic and inorganic nitrogen stocks in Pg N / degree of latitude. JULES- CN_{layer} shows the stocks for the top 1 m of soil. The observations of nitrogen stocks are from Group (2000).

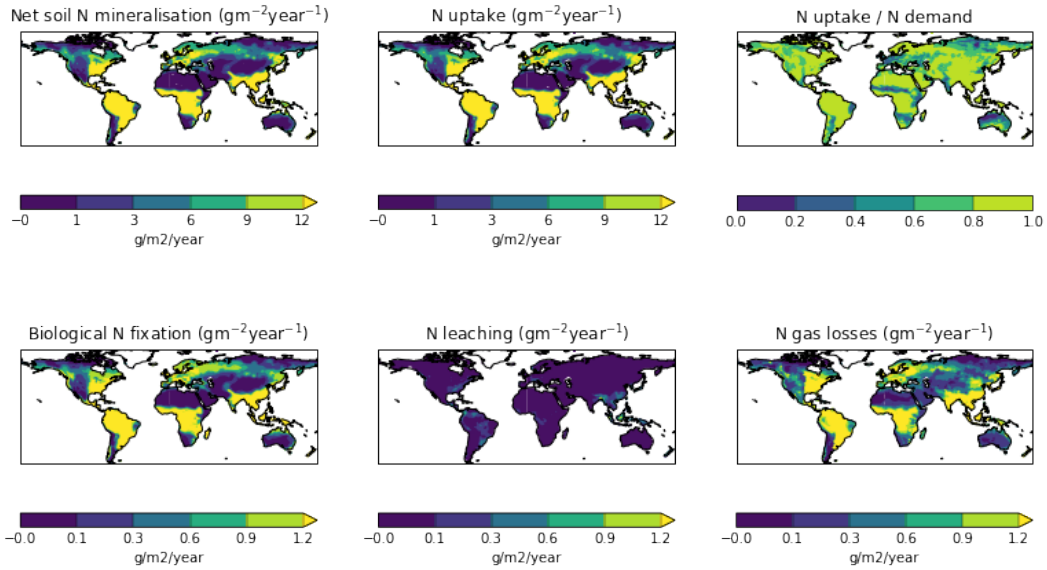


Figure 12. Spatial distribution of N fluxes for JULES-CN for the period 1996-2005. JULES- CN_{layer} is not shown because the spatial patterns are very similar to those for JULES-CN.

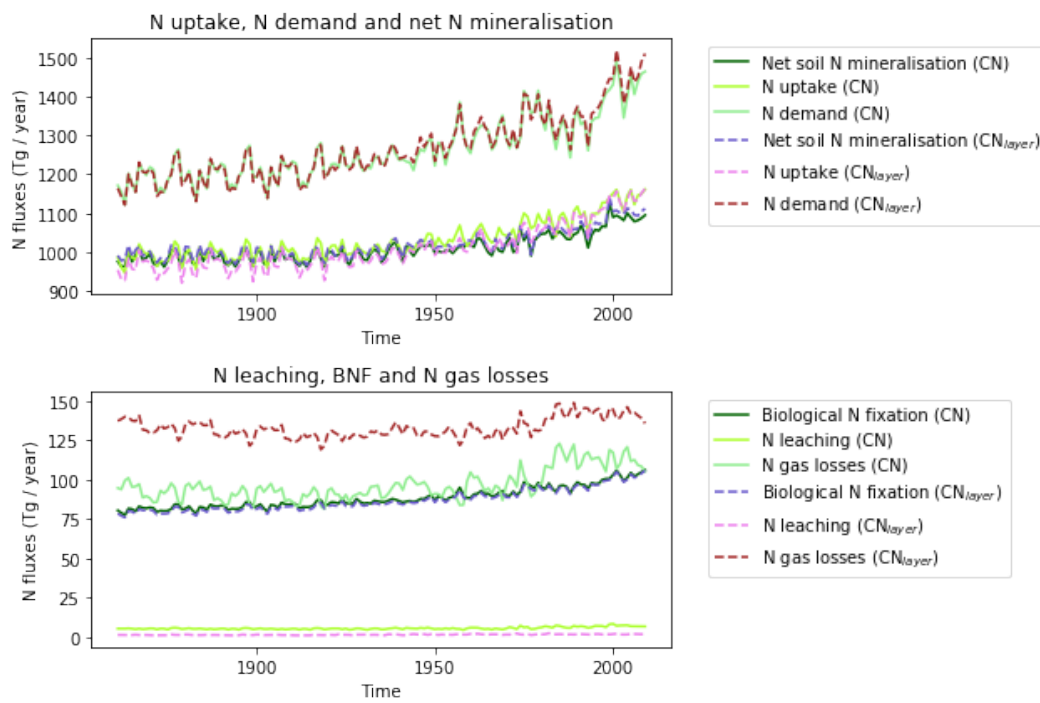


Figure 13. N fluxes for JULES-CN and JULES-CN_{layer} over the historical period.