

# **Response to the reviewers comments for the manuscript “Multi-layer coupling between SURFEX-TEB-V9.0 and Meso-NH-v5.3 for modelling the urban climate of high-rise cities”**

## **Referee #1**

### General comments:

The paper 'Multi-layer coupling between SURFEX-TEB-V9.0 and Meso-NH-v5.3 for modelling the urban climate of high-rise cities' describes the implementation of an updated multi-layer SURFEX-TEB land-surface scheme into the Meso-NH model. The multi-layer SURFEX-TEB is evaluated against in-situ observations in the city of Hong Kong and compared to the previous single-layer version of the SURFEX-TEB. The paper highlights the importance of accounting for building drag and horizontal advection within the urban canopy for the correct estimation of temperature, humidity and wind speed in urban areas. Overall, the quality of the paper is good and it investigates a very important topic. The current model development, presented in this paper, will be a step towards better weather prediction in urban areas. Yet, I still have a series of minor comments/questions (see below).

Thank you for taking the time to provide such a careful review of our submission. Following your suggestions, we have investigated the surface energy balance (SEB) at two of the stations (King's Park and Hong Kong Park) and found only small differences for the different coupling approaches. The large differences in the near-surface meteorological variables for the different approaches are therefore due to the way SURFEX-TEB is coupled to Meso-NH and not due to differences in the SEB. Furthermore, we now provide more information on the urban turbulent mixing length and we also conducted an additional simulation to test a different formulation of the mixing length. Results from this additional simulation are however not that different from the CLASSICAL simulation presented in detail in the manuscript. This finding, together with the other simulations and budget analysis indicates that the largest issue with the single-layer coupling is the lack of horizontal advection in the urban canopy layer. We give the detailed answers to your comments below and provide a version of the manuscript with highlighted modifications.

### Specific comments:

#### Section 2

Lines 114-115. Have the authors tested the effect of vertical discretization of the wall surfaces on the temperature and wind within urban canopy in the multi-layer SURFEX-TEB? I can imagine that using a vertical discretization for the wall facet will allow for the calculation of wall heat fluxes that vary with height within the canopy. This might be particularly useful for reproducing accurate atmospheric stability conditions and vertical mixing in urban canyons. Would the benefits of implementing the vertical discretization outweigh the additional computational costs?

We cannot test the vertical discretization of the wall surfaces since this would require major additional model developments. In the case, the wall temperature is vertically discrete, the

calculation of radiative exchange between the walls and other facets (opposite wall, impervious, vegetation) becomes far more complex than in the current version. These developments are out of the scope of the present study. Along with the comment of Reviewer #2, we have included a point on the neglect of the vertical discretization of the wall in Section 2.3.

Lines 168-169. The roughness length for the roof in this study (0.15 m) is larger than that used in different urban surface schemes (i.e. WRF-BEP use 0.01 m by default). Is there any particular reason for using the 0.15 m roughness length and does this have any implication for the exchange of heat and momentum above the roof? Is a similar roughness length (0.15 m) used for road surfaces as well?

The aerodynamic roughness length for the roofs of 0.15 m shall not only represent the flat tiles/concrete on the roof for which 0.01 m would be justified, but also potential chimneys, air conditioning systems, and other small constructions that are usually present on the roofs. The value of the aerodynamic roughness length for the roads is 0.05 m. We now point this out in the manuscript.

Is the anthropogenic heat flux deposited at the first atmospheric model level or is a different approach used (i.e. uniformly distributed in the canyon etc.)?

We did not describe with sufficient detail how the anthropogenic heat flux is injected in the model. It depends on the source of the anthropogenic heat flux. The heat flux due to traffic and industrial activities is injected at the first atmospheric model level for both single- and multi-layer coupling. The anthropogenic heat flux due to building heating, electrical appliances, cooking, lighting is injected inside the building. It reaches the atmosphere indirectly in two ways: 1) heat conduction through the building envelope and subsequent infrared radiation and turbulent sensible heat exchange between the building facets (walls, roofs, windows) and the atmosphere as well as 2) air exchange due to infiltration, natural and mechanical ventilation. For buildings with a heating system based on combustion inside the building (e.g. gas, fuel, or wood burning), the waste heat and moisture fluxes are directly injected into the atmosphere at roof level (chimneys). The roof level is the SBL level (atmospheric level) intersecting the roof for the single-layer (multi-layer) coupling. The waste heat and moisture fluxes due to air conditioning can be injected at wall level for wall split air conditioning systems or roof level for cooling tower based air conditioning systems. The wall level fluxes are distributed evenly over the SBL levels (atmospheric model levels) intersecting the walls for the single-layer (multi-layer) coupling. The roof level fluxes are injected at roof level. These details are now provided in the manuscript (Section 3.2).

### Section 3

Lines 267-270: The authors decided to use two heatwave periods (1 to 8 September 2009 and 17 to 31 May 2018) to evaluate the performance of the multi-layer SURFEX-TEB scheme. The selection of a heatwave period is certainly justified, as accurate model performance during heat waves is crucial for the estimation of heat stress. However, since the new scheme is to be employed for weather prediction it is essential to know whether the multi-layer scheme (NEW) offers an improvement over the single-layer scheme (CLASSICAL) during

different atmospheric conditions (i.e. rainy, cloudy days) and seasons (i.e. winter). Have the authors compared the performance of the NEW and CLASSICAL model setups under different atmospheric conditions?

No, currently the multi-layer coupling has not been tested for various meteorological situations, different seasons, and a variety of cities. This is planned in subsequent studies but out of the scope of the present study. We now mention the need for further testing of the multi-layer coupling in the conclusions and outlook section. We furthermore speculate that the benefit from the multi-layer coupling will be lower for meteorological situations with higher wind speed and cloudy conditions, since for such situations the urban heat island intensity is lower than for situations with clear sky and low wind speed. Furthermore, the difference between the single- and multi-layer coupling can also be expected to be smaller for low to mid-rise cities than for the high-rise city of Hong Kong.

Lines 317-320 How many of these measurement stations are located within urban canyons? Is there any relation between the location of the measurement stations and the model bias in temperature, wind speed and relative humidity?

None of the measurement stations is directly located in an urban canyon. This is an important point since studies based on obstacle-resolving models developing formulations, e.g. for the urban turbulent mixing length scale are made for areas representative of the space in between the buildings. For a fully rigorous evaluation of such formulations in real cities, also observations representative of such areas would be needed, which is rarely the case. We already point this out in the discussion (Section 5.4) and in the penultimate paragraph of the conclusion and outlook section. Concerning the relation between the model performance and the location of the stations, the most relevant outcomes are discussed in Section 4.1.2. Model performance for the single-layer coupling is worst for those stations surrounded by high-rise buildings and the stations located in a very heterogeneous urban environment. For these stations, the model improvement for the multi-layer coupling is also largest. For the SURFFLUX coupling approach (multi-layer coupling, but heat and moisture fluxes released at the surface), the model performance is only deteriorated compared to the NEW coupling approach for stations in the vicinity of buildings higher than 40 m.

#### Section 4

Have the authors tested the differences in the modeled surface energy balance and turbulent heat fluxes between the 3 model setups (CLASSICAL, NEW and SURFFLUX) at any of the measurement stations?

In the new Section 5.3, we now analyse the simulated surface energy balance (SEB) for the 3 coupling approaches (CLASSICAL, NEW and SURFFLUX) in a 1 km x 1 km box centred on the stations KP and HKP. The SEB does not differ in a relevant way between the different coupling approaches. This shows that the large differences in the near-surface meteorological variables between the NEW (multi-layer) and CLASSICAL (single-layer) coupling approach are not due to changes in the SEB, but due to the different way the surface fluxes are coupled with the atmospheric model.

Lines 384-386. Why is the in-depth evaluation of the model performance in the KP and HKP measurement stations done for D4, when both stations are located also within D5? I understand that for a consistent bias comparison between all measurement stations (section 4.1.2) D4 is used, as it contains all of them. Yet since KP and HKP are located within D5, I would expect their evaluation to be done at the highest resolution domain. Have the authors tested the model performance at the KP and HKP stations in both D4 and D5? If so, does the analysis in section 4.1.1 lead to similar conclusions if it is done for D5 instead of D4?

The in-depth evaluation in Section 4.1.1 is indeed done for D4 such that the model performance can be directly compared with the summary plots with all stations in D4 in Section 4.1.2. The summary plots for D5 are given in the Appendix Figures B1 and B2. Overall, the results for D5 are very similar to those for D4. For single stations and meteorological variables they can be a bit different, which is probably due to the changing representativeness of the model grid cell between 250 m x 250 m and 125 m x 125 m. We mentioned the Figures B1 and B2 at the beginning of Section 4.1.2, but we missed to describe them, which we now do briefly at the end of this section. The detailed analysis in Section 4.1.1 for the stations KP and HKP would lead to similar conclusions if it would be done for D5.

Lines 393-395. Have the authors verified the use of 0.1 AOD (i.e. using aeronet stations or satellite AOD products) during both periods? During the 2018HW the assumption of 0.1 AOD seems reasonable, but during the 2009HW period there seems to be substantial difference between the observed and modeled incoming shortwave radiation, especially during the later days of the 2009HW (Figure 5).

Based on the reviewers suggestion, we investigate the AOD from TERRA/MODIS ([https://neo.sci.gsfc.nasa.gov/view.php?datasetId=MODAL2\\_M\\_AER\\_OD](https://neo.sci.gsfc.nasa.gov/view.php?datasetId=MODAL2_M_AER_OD)).

It is generally challenging to determine representative values for the area of Hong Kong since it lies in transition zone between typically very high AOD values over continental China and much cleaner air over the South China Sea. During the two selected heat waves, the mesoscale wind direction is east and south-west for HW2009 and HW2018 respectively, with therefore advection from the South China Sea.

For HW2009, the TERRA/MODIS AOD values over the sea close to Hong Kong lie in between 0.2 and 0.4, thus larger than the value used in the model. They can reach up to 1.0 over continental China. For HW2018, the AOD values lie between 0.0 to 0.2 over the sea close to Hong Kong. Apart from potential local aerosol emissions, the air was therefore quite clean during HW2018.

The analysis of the AOD values from TERRA/MODIS thus confirms the reviewer's suspicion that AOD values of 0.1 used in the simulations are good for HW2018, but too low for HW2009. We therefore modulate the discussion in Section 4.1.1.

Lines 515-516. The SBL scheme in the CLASSICAL model setup seems to produce extremely high temperature near the surface during noon (14 local time, Figure 11). Considering also the very low wind speed within the canyon, there seems to be insufficient mixing near the surface in the SBL scheme. What mixing length does the SBL scheme use to calculate temperature and wind speed within the urban canopy? Does this have an effect on

the vertical mixing? Have the authors tested whether a modification in the mixing length leads to better results for the temperature, wind speed and relative humidity in the CLASSICAL model setup?

We agree that more attention needs to be paid to the turbulent mixing length in the urban SBL scheme. For the CLASSICAL experiment described in the present manuscript, the urban mixing length is calculated following Santiago and Martilli (2010). We now provide this information in the description of the CLASSICAL experiment (Section 3.4). Furthermore, we conducted an additional simulation modifying the mixing length in the urban SBL scheme to be equal to the distance from the surface, as it is in the atmospheric model. The results, which are very similar to those obtained for the CLASSICAL experiment are briefly discussed in Section 5.4.

Technical corrections:

Lines 448-449 The definition of acceptable quality regarding the rmse error for temperature and relative humidity is rather arbitrary and no measure of acceptable quality is proposed for wind speed. I would suggest that the authors remove/replace the terms "acceptable/unacceptable" as they do not add anything significant to the model evaluation. The rmse values are enough to show the improvement in model performance for the new multi-layer scheme.

Done.

## Referee #2

The manuscript by Schoetter et al. presented a recent development of SURFEX-TEB for coupling with Meso-NH by introducing a multi-layer approach and evaluated the performance of the coupled system in Hong Kong. The manuscript is well written and easy to follow, which thus merits to be published after a minor revision. The only moderate concern is the lack of comparison in surface energy fluxes between the new and classical schemes. Besides, a few details need to be clarified before publication, which can be found as follows: Thank you for taking the time to provide such a careful review of our submission. We have added the comparison of the surface energy fluxes at the stations KP and HKP for the different coupling approaches (new Section 5.3) and conducted a simulation with the single-layer coupling and another formulation for the turbulent mixing length in the SBL scheme as suggested by Reviewer #1. We give the detailed answers to your comments below and provide a version of the manuscript with highlighted modifications.

- Section 2.3: Please discuss the implication of uniform wall surface temperature with respect to uncertainties.

Done.

- L295: please add Kwok et al. (2020) to the reference list.

This article is now published online and we add the correct reference.

- L339: Clarify if this all goes into sensible heating.

In Section 3.3.2, we describe how we spatially disaggregate the monthly energy consumption to calculate the inventory-based anthropogenic heat flux. The values calculated in this Section are not directly used in the model since it calculates the building energy consumption for air conditioning based on the prevailing meteorological conditions, the characteristics of the building envelope, and the setpoint temperature of air conditioning given in Kwok et al. (2020). The anthropogenic heat flux calculated by the model contains a sensible and a latent part. For the internal heat release it is considered that a part of it is latent (e.g. cooking, domestic hot water). The latent fraction of the internal heat release is specified as a function of the building type and is 0.05 for schools, 0.1 for university buildings, 0.2 for shopping malls, industrial buildings, and office buildings, and 0.3 for residential and public health buildings. For the energy consumption due to air conditioning, it is considered that there might be evaporative cooling towers on the building roofs. The fraction of buildings equipped with such cooling towers is specified as a function of the building type and is 0 for most buildings, except for schools and other Government, Institutional, and Community buildings (0.1), commercial and public health buildings (0.2), and office buildings (0.5). We now provide this information in Section 3.2.

- L357: Please clarify how zero-plane displacement is calculated as well.

We now provide the equation for the zero-plane displacement height (Equation 25) together with the more detailed description of the urban turbulent mixing length in Section 3.4.

- L359: Are the other four levels evenly spaced?

No, the depth of the SBL levels increases with height. This is now stated in the manuscript.

- L378: Please explain why this won't be viable when using larger time steps.

The reason is that the temperature and moisture increments would become too larger. We now mention this in the manuscript.

- L606: Please provide the prognostic equation, which can go into appendix.

We now provide the prognostic equation for potential temperature in the appendix.

Other technical comments:

- Figure 1: Better to align the basement levels of two approaches at the level: it is understandable that the new approach would apply for grids with much higher buildings. We prefer to not align the basement levels of the two approaches since we want to highlight that, with the single-layer coupling, the urban canopy layer is located below the physical and atmospheric model surface. We change the figure and the caption slightly to make this more clear.

- Equation 3: Correct the less than or equal sign to " $\leq$ " here and other occurrences.

The proper Latex `\leq` command is now used in all equations.

- L181: please use scientific notation for the numbers.

Done.

- L185: "explicated" -> "explicitly given"

Done.

- Figure 4: Use dots to represent observations for better contrast and easier legibility.

We now use dots to represent the observations in all time series plots.

- Figure 13: correct the unit in y label to be consistent with main text.

Done.

# Multi-layer coupling between SURFEX-TEB-V9.0 and Meso-NH-v5.3 for modelling the urban climate of high-rise cities

Robert Schoetter<sup>1</sup>, Yu Ting Kwok<sup>2</sup>, Cécile de Munck<sup>1</sup>, Kevin Ka Lun Lau<sup>3</sup>, Wai Kin Wong<sup>4</sup>, and Valéry Masson<sup>1</sup>

<sup>1</sup>CNRM, Université de Toulouse, Météo-France, CNRS, 42 avenue Gaspard Coriolis, 31057, Cedex 1, Toulouse, France

<sup>2</sup>School of Architecture, The Chinese University of Hong Kong, Hong Kong, China

<sup>3</sup>Institute of Future Cities, The Chinese University of Hong Kong, Hong Kong, China

<sup>4</sup>Hong Kong Observatory, Hong Kong, China

**Correspondence:** Robert Schoetter (robert.schoetter@meteo.fr)

**Abstract.** Urban Canopy Models (UCMs) represent the exchange of momentum, heat, and moisture between cities and the atmosphere. Single-layer UCMs interact with the lowest atmospheric model level and are suited for low- to mid-rise cities whereas multi-layer UCMs interact with multiple levels and can also be employed for high-rise cities. The present study describes the multi-layer coupling between the UCM Town Energy Balance (TEB) included in the land surface model SURFEX and the mesoscale atmospheric model Meso-NH. This is a step towards better high-resolution weather prediction for urban areas in the future and studies quantifying the impact of climate change adaptation measures in high-rise cities. The effect of the buildings on the wind is considered using a drag force and a production term in the prognostic equation for turbulent kinetic energy. The heat and moisture fluxes from the walls and the roofs to the atmosphere are released at the model levels intersecting these urban facets. No variety of building height at grid point scale is considered to remain the consistency between the modification of the Meso-NH equations and the geometric assumptions of TEB. The multi-layer coupling is evaluated for the heterogeneous high-rise high-density city of Hong Kong. It leads to a strong improvement of model results for near-surface air temperature and relative humidity, which is due to better consideration of the process of horizontal advection in the urban canopy layer. For wind speed, model results are improved on average by the multi-layer coupling, but not for all stations. Future developments of the multi-layer SURFEX-TEB will focus on improving the calculation of radiative exchanges, which will allow a variety of building heights at grid point scale to be taken into account.

## 1 Introduction

### 1.1 Background

Atmospheric models need to account for the influence of surfaces with very different physical characteristics like forests, deserts, oceans, glaciers, or urban areas on the atmosphere. Land Surface Models (LSMs) have been developed (Koster et al. 2006, Guo et al. 2006) to calculate the surface fluxes of momentum, energy, water, and substances based on the prognostic variables of the atmospheric models and the physical, chemical, or biological processes relevant for the surface-atmosphere



exchanges (Best et al., 2004). LSMs are frequently subdivided into tiles to better represent the variety of surface types at grid point scale (Giorgi and Avissar, 1997). The prognostic surface equations are solved separately for each tile and the fluxes towards the atmospheric model are aggregated. Examples of such LSMs are the Noah LSM (Chen and Dudhia, 2001), the  
25 Community Land Model (Oleson et al., 2010), and the Externalised Surface (SURFEX, Masson et al. 2013).

Urban surface energy balance models have been developed to represent the specific surface-atmosphere exchange in urban areas. The 3D building geometry directly influences the atmospheric flow (Moonen et al., 2012) in the urban roughness sub-layer whose depth is about 2-5 times the characteristic building height (Roth, 2000). It also leads to the interception of solar radiation and the trapping of infrared radiation. The latent heat flux in urban areas is usually lower than in rural areas owing to  
30 less daytime evapotranspiration by vegetation, while the storage heat flux has a larger daily amplitude due to the high heat storage in construction materials. Human activities within urban areas serve as an additional source of heat and moisture (Sailor, 2011). These differences in the surface balances between urban and rural areas are responsible for the specific urban climate characterised by higher (nocturnal) air temperature (Arnfield, 2003), modified humidity (Unger, 1999), or altered precipitation (Shepherd, 2005).

35 Given the high relevance of the urban climate for the meteorological and climatological impact on humans and infrastructures, a variety of urban surface energy balance models has been developed (Masson 2006, Garuma 2018). Masson (2006) identified different categories: The empirical models are calibrated using observations; The modified vegetation models represent the specifics of urban areas by altering the physical properties of the flat surface; The single-layer and multi-layer Urban Canopy Models (UCMs) consider the 3D geometry of the buildings in a simplified way and solve the surface energy balance for the  
40 roof, walls, and ground by taking into account their different physical characteristics, orientation and position. For the single-layer UCMs (Masson 2000, Kusaka et al. 2001), the first atmospheric model level is placed at the top of the urban roughness sublayer. The buildings receive the meteorological forcing from the first atmospheric model level only. The surface of the atmospheric model is located at roof level, the air volume below the characteristic building height (urban canopy layer) is therefore located below the surface of the atmospheric model. This way, only the lowest level of the atmospheric model is  
45 directly influenced by the urban surface fluxes. For the multi-layer UCMs (Kondo and Liu 1998, ~~?, ?,~~ [Vu et al. 1999, 2002,](#) [Martilli et al. 2002](#)), the buildings are immersed in the atmospheric model and receive the meteorological forcing from several atmospheric model levels. The effect of the buildings is taken into account in the atmospheric model by a drag force reducing the wind speed, a term representing the production of turbulent kinetic energy due to the buildings, a change in the turbulent mixing and dissipation length scale, and sometimes even considering explicitly the volume occupied by the buildings.

50 The single-layer UCMs are easier to couple with atmospheric models than the multi-layer UCMs since only minor modifications of the atmospheric model equations are required. The use of single-layer UCMs is justified for the historical European low- to mid-rise cities and at model resolutions down to 1 km (Trusilova et al., 2016). This is the resolution of the current operational limited area Numerical Weather Prediction (NWP) models. The new generation of NWP models shall be able to operate at down to 100 m horizontal resolution (Barlow et al., 2017) and take into account a larger variety of urban morphologies such as the high-rise Asian megacities. Increasing the vertical resolution can be useful to obtain more reliable near-surface  
55 diagnostics like air temperature and humidity at 2 m a.g.l., which could be calculated based on the prognostic model variables

instead of interpolating the simulated values between the first atmospheric level and the surface. Hamdi and Masson (2008) introduced a 1D column model in the UCM Town Energy Balance (TEB) to calculate the vertical profiles of the meteorological variables in the urban canopy layer, hereafter denoted with Surface Boundary Layer (SBL) scheme. This is a step towards better  
60 near-surface diagnostics and obtaining more precise meteorological forcing for the walls, the impervious urban surfaces on the ground, and the urban vegetation. However, such an SBL scheme cannot take into account the process of advection in the urban canopy layer (e.g. from an urban park towards an adjacent densely built area). This deficiency has a larger effect for high-rise and heterogeneous cities than for homogeneous low- to mid-rise cities. A notable previous work to make up for this deficiency is the one of Chen et al. (2011), who coupled the multi-layer Building Effect parametrisation (BEP) to the Weather Research  
65 and Forecasting model WRF (Skamarock et al., 2008), but this strategy is yet an exception in the world of LSM-UCMs.

## 1.2 Present study

The present study introduces a multi-layer coupling between the TEB, which is included in the LSM SURFEX and the research mesoscale atmospheric model Meso-NH (Lafore et al. 1998, Lac et al. 2018). SURFEX uses a tile-approach and distinguishes the four main surface types oceans (Voltaire et al., 2017), lakes (Salgado and Le Moigne, 2010), natural land surfaces (Noilhan  
70 and Planton, 1989), and urban areas (Masson, 2000). SURFEX is the LSM used by various European NWP models like AROME (Seity et al., 2011), ALARO and ALADIN (Termonia et al., 2018), and the CNRM Earth System Model (S  f  rian et al., 2019). Given the previous areas of application of SURFEX-TEB in European cities, it is justifiable that it has been applied as a single-layer UCM only. The multi-layer coupling is developed here to prepare for the higher resolution NWP, and to enable the application of studies to quantify the benefit of climate change mitigation and adaptation measures for high-rise  
75 cities.

The new (multi-layer) and old (single-layer) coupling is tested for the city of Hong Kong. The unique high-rise high-density urban environment, as well as the heterogeneous land cover and complex topography of this city have attracted much interest from the urban climate modelling community. Using the Fifth-Generation NCAR/PSU Mesoscale Model (MM5) and a simple bulk urban parametrisation, such as the Noah LSM (Chen and Dudhia, 2001), earlier studies focused on modelling the local  
80 circulations and air quality during high air pollution episodes (Lam et al. 2006, Lo et al. 2007). Also using MM5-Noah LSM, Lin et al. (2007, 2009) investigated the effects of rapid urbanisation in the Pearl River Delta (PRD) region including Hong Kong on the regional climate at a model resolution of 3 km. A refinement in both the representation of urban surfaces and the model resolution has been made in later studies. Wang et al. (2014) conducted a systematic analysis of the seasonal variability in meteorological conditions influenced by land-use changes by employing WRF coupled to a single-layer UCM (Kusaka  
85 et al., 2001). Recent studies adopt the more advanced multi-layer BEP (Martilli et al., 2002)-Building Energy Model (BEM; Salamanca et al. 2009) scheme coupled to WRF to better consider the urban surface-atmosphere interactions. At a spatial resolution of 500 m, Wang et al. (2017, 2018) examined how tall buildings in Hong Kong could modify the boundary layer dynamics by introducing a new formulation of the drag coefficient as a function of building plan area density and implementing different air-conditioning systems. Making use of urban categories from the World Urban Database and Access Portal Tools  
90 initiative (WUDAPT; Ching et al. 2018) and parameters derived from real building data, Wong et al. (2019) evaluated the

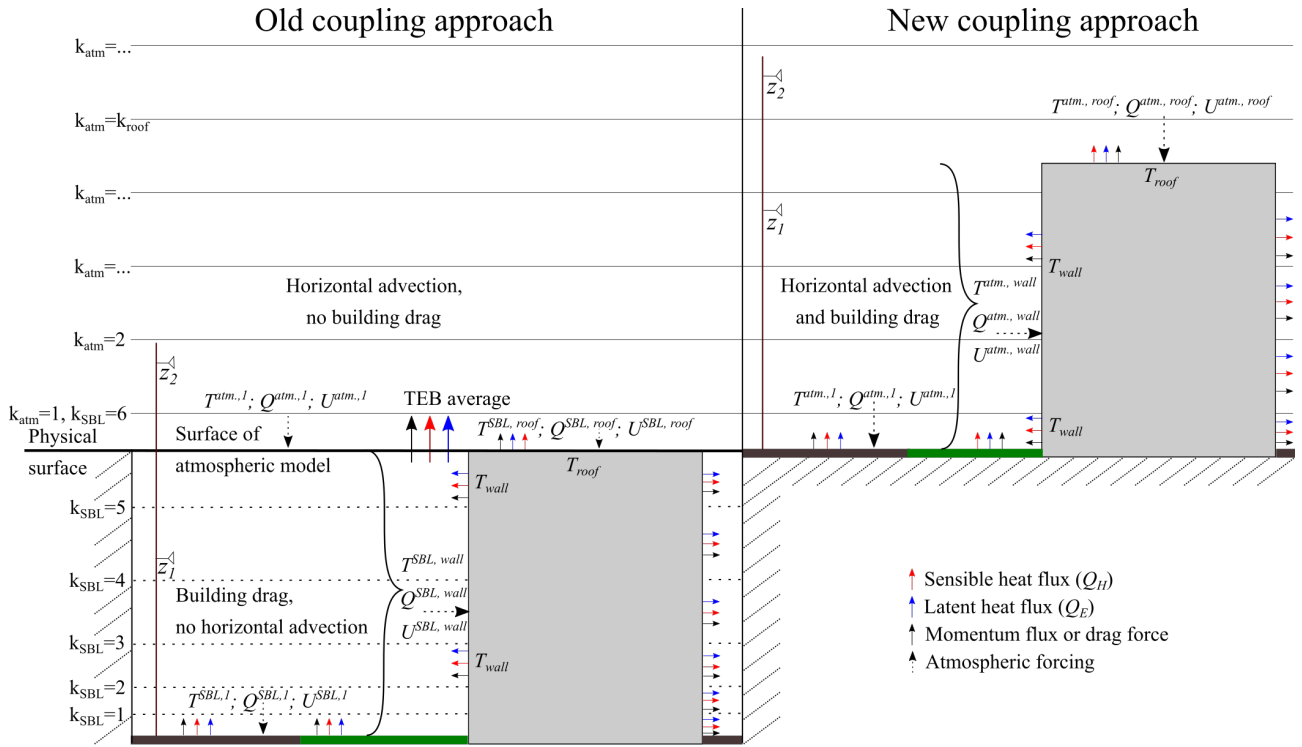
uncertainties due to different urban parameterisations and the precision of input data in urban climate simulations for Hong Kong. Instead of using an UCM, Dy et al. (2019) developed another approach to take into account the drag effects of urban surfaces at multiple atmospheric levels by modifying the Asymmetric Convective Model (ACM) planetary boundary layer scheme, which significantly improved the prediction of wind speed over the PRD region. The performance of the new multi-  
95 layer coupling between Meso-NH and SURFEX-TEB introduced in the present study will be discussed against these studies in subsequent sections.

The main objectives of the present study are to introduce the new multi-layer coupling between Meso-NH and SURFEX-TEB, and to evaluate, for the single- and multi-layer coupling, the simulated near-surface meteorological variables air temperature, relative humidity, and wind, as well as building energy consumption under heat ~~waves~~-wave conditions. The present study  
100 is structured as follows. The new approach to couple Meso-NH and SURFEX-TEB is introduced in Section 2, the model configuration and meteorological observations are presented in Section 3. Results are given in Section 4, discussion is made in Section 5, conclusions are drawn in Section 6.

## **2 New approach to couple Meso-NH and SURFEX-TEB**

### **2.1 New multi-layer coupling approach**

105 With the new multi-layer coupling approach (Figure 1), the buildings are immersed in the atmospheric model Meso-NH and it is not required anymore to employ the SBL scheme to calculate vertical profiles for the meteorological parameters in the urban canopy layer. Instead, the meteorological forcing received by different urban facets is directly taken from the prognostic Meso-NH variables. Conversely, the momentum, heat and moisture fluxes from the building walls and roofs directly influence multiple atmospheric model levels. The influence of the buildings on the wind field is represented using a drag force approach  
110 and an additional production term in the prognostic equation for turbulent kinetic energy. The heat and moisture fluxes from the walls and roofs to the atmosphere are injected at the corresponding model levels. The turbulent fluxes of momentum, sensible and latent heat from the urban impervious and pervious areas are directly influencing the lowest atmospheric model level. No change in the length scales for turbulent mixing and dissipation is made in Meso-NH. The physical equations of TEB remain unchanged. In particular, the geometric assumption of TEB that all buildings at grid point scale have the same height and are  
115 aligned along street canyons of infinite length employed for the calculation of the radiative exchanges is kept. Furthermore, the walls are not discretised in the vertical direction, i.e. there is only one value for the prognostic wall temperature. The new multi-layer version of SURFEX-TEB is therefore simpler than the multi-layer WRF-BEP coupling presented by Chen et al. (2011), which allows one to take into account a variety of building heights at grid point scale and for which the vertical discretisation of the walls is imposed by the atmospheric model's grid. The multi-layer coupling introduced here keeps the simpler geometry  
120 of TEB. The advantage of the simpler multi-layer coupling is to represent the most important effect of the city - the fact that the buildings are immersed in the atmosphere and not below the surface - while keeping the computational cost of the urban surface parametrisation low. The effect of the buildings on the prognostic Meso-NH variables is only considered between the surface and the mean building height to be consistent with the geometrical assumptions of TEB.



**Figure 1.** The old (single-layer) and new (multi-layer) approach for the coupling between Meso-NH and SURFEX-TEB. [For the single-layer coupling, the urban canopy layer is located below the surface of the atmospheric model and the Surface Boundary Layer \(SBL\) scheme is used to calculate the profiles of the meteorological variables there. For the multi-layer coupling, the buildings are immersed in and interact directly with the atmosphere.](#) The two hypothetical wind anemometers at height above ground  $z_1$  and  $z_2$  represent at which height the model results for wind speed and direction are later compared with observations.

## 2.2 Equations

### 125 2.2.1 Modification of the Meso-NH equations

Meso-NH is a mesoscale anelastic nonhydrostatic atmospheric model whose basic equations are described in Lafore et al. (1998) and the most recent developments in Lac et al. (2018). The prognostic variables are the three velocity components ( $u$ ,  $v$ ,  $w$ ), the potential temperature ( $\theta$ ), the subgrid turbulent kinetic energy ( $e$ ), the mixing ratios of water vapour ( $r_v$ ) and other species like cloud droplets, and additional passive and reactive scalars. The model is written in flux form and the basic equations are discretised on a staggered Arakawa C grid, where meteorological and scalar variables are located in the center of the grid cell and the momentum components on the faces of the cells. The coordinates follow the terrain. However, for simplification, the following equations are presented without reference to the terrain following coordinate system or the metric terms.

The friction exerted by the buildings on the horizontal wind components is taken into account using a drag force approach. The

135 theoretical basis for this approach is explained in Raupach (1992). For highly three-dimensional flow over sparse roughness  
elements (e.g. the buildings in the urban roughness sublayer), the total turbulent stress can be written as the sum of the stress  
on the roughness elements and the stress on the underlying surface. This approach assumes that the wake and drag properties  
of an isolated roughness element can be characterised by an effective shelter area and volume. This hypothesis is valid at  
low roughness density, but is unlikely to hold at high roughness density due to sheltering effects. For this reason, the drag  
140 force approach might yield uncertainties for high-density cities. The drag force approach translates into Equation 1 for the  $u$   
component (similar for the  $v$  component).

$$\frac{\partial(\rho_{d,ref} u)}{\partial t} \Big|_{build} = -\rho_{d,ref} \left( c_d^{wall} d_{wall} + c_d^{roof} d_{roof} \right) u | \mathbf{u}_{hor} | \quad (1)$$

The dry air density of the reference state is denoted with  $\rho_{d,ref}$ . The horizontal wind speed ( $| \mathbf{u}_{hor} |$ ) is calculated based on  
the prognostic  $u$  and  $v$  wind components (Equation 2).

$$145 \quad | \mathbf{u}_{hor} | = \sqrt{u^2 + v^2} \quad (2)$$

The vertical frontal wall area density ( $d_{wall}$ ) is calculated under the assumption that all buildings at grid point scale have  
the same height (Equation 3) to maintain coherence with the geometric assumption in TEB. A cylindrical building shape is  
assumed to calculate the frontal wall area density based on the wall to plan area ratio ( $\lambda_w$ ). The real shape of the buildings is  
not taken into account, since this would require the definition of a large number of additional model input maps describing the  
150 frontal area density as a function of height and wind direction.

$$d_{wall}(z_k^m) = \begin{cases} \frac{\lambda_w}{\pi H_{bld}} & \text{for } z_{k+1}^w < H_{bld} \\ \left( \frac{H_{bld} - z_k^w}{z_{k+1}^w - z_k^w} \right) \frac{\lambda_w}{\pi H_{bld}} & \text{for } z_k^w < H_{bld} \leq z_{k+1}^w \\ 0 & \text{else} \end{cases} \quad (3)$$

The grid point average building height is denoted with  $H_{bld}$ . The height above ground of the  $k^{\text{th}}$  model level is  $z_k^m$ , the height  
above ground of the interfaces between the model levels is  $z_k^w$ .

The roofs are assumed to be horizontal. The vertical density of horizontal roofs ( $d_{roof}$ ) is calculated following Equation 4.

$$155 \quad d_{roof}(z_k^m) = \begin{cases} \frac{\lambda_p}{z_{k+1}^w - z_k^w} & \text{for } z_k^w < H_{bld} \leq z_{k+1}^w \\ 0 & \text{else} \end{cases} \quad (4)$$

The drag coefficient for the vertical walls ( $c_d^{wall}$ ) is set to 0.4 since this corresponds to the value from wind tunnel studies  
reported by Raupach (1992) for cubes - a type of obstacles similar to actual buildings. This value has also been used by Martilli  
et al. (2002), Hamdi and Masson (2008), and Dy et al. (2019). The same formulation for the building drag, but different values  
for  $c_d$  have been used by Uno et al. (1989) (0.1) or Oleson et al. (2008) (0.6). Santiago and Martilli (2010) used obstacle-  
160 resolving model simulations as a reference to determine uncertain parameters for UCMs. They found that a value of 0.4 for  
 $c_d$  led to too high wind speed in the urban canopy layer and instead propose a different formulation for the building drag that

depends on the turbulent and spatial wind speed fluctuations. This new formulation performs better than  $c_d = 0.4$ , but would require the introduction of additional diagnostic variables in the model. Its potential for improvement might be tested in future studies.

165 The drag coefficient due to the roofs is calculated similar to Hamdi and Masson (2008) following Equations 5 and 6.

$$c_d^{roof} = \left( \frac{u_*^{roof}}{|\mathbf{u}_{hor}(z_{k,roof}^m)|} \right)^2 \quad (5)$$

$$u_*^{roof} = \frac{\kappa |\mathbf{u}_{hor}(z_{k,roof}^m)|}{\ln \left( \frac{(z_{k,roof}^m - H_{bld})}{z_{0,m}^{roof}} \right)} \quad (6)$$

$z_{k,roof}^m$  is the height above ground of the level, at least 0.5 m above the roof. The von Kármán constant ( $\kappa$ ) is 0.4, the momentum  
170 roughness length of the roof ( $z_{0,m}^{roof}$ ) is assumed to be 0.15 m [to represent chimneys, air conditioning systems, or other small constructions that are usually present on the roofs](#). Atmospheric stability is not taken into account in the calculation of the friction due to the roofs; it is assumed that the strong wind shear close to the roofs dominates the effects due to buoyancy.

The production of subgrid turbulent kinetic energy ( $e$ ) due to the wind shear close to the buildings walls and roofs is considered in a similar manner as in Martilli et al. (2002), Chin et al. (2005), and Hamdi and Masson (2008), following Equation 7.

$$175 \left. \frac{\partial(\rho_{d,ref} e)}{\partial t} \right|_{build} = \rho_{d,ref} \left( c_d^{wall} d_{wall} + c_d^{roof} d_{roof} \right) |\mathbf{u}_{hor}|^3 \quad (7)$$

The tendencies of potential temperature and water vapour mixing ratio due to the sensible ( $Q_H^{wall}, Q_H^{roof}, Q_b^{wall}, Q_b^{roof}$ ) and latent ( $Q_E^{wall}, Q_E^{roof}, Q_{e,w}^{wall}, Q_{e,w}^{roof}$ ) heat fluxes from the walls and the roofs towards the atmosphere are calculated following Equations 8 and 9.

$$\left. \frac{\partial(\rho_{d,ref}(z_k^m) \theta(z_k^m))}{\partial t} \right|_{build} = \begin{cases} \frac{Q_e^{wall}}{C_p H_{bld}} & \text{for } z_{k+1}^w < H_{bld} \\ \left( \frac{H_{bld} - z_k^w}{z_{k+1}^w - z_k^w} \right) \frac{Q_e^{wall}}{C_p H_{bld}} + \frac{Q_e^{roof}}{C_p (z_{k+1}^w - z_k^w)} & \text{for } z_k^w < H_{bld} \leq z_{k+1}^w \\ 0 & \text{else} \end{cases} \quad (8)$$

180

$$\left. \frac{\partial(\rho_{d,ref}(z_k^m) r_v(z_k^m))}{\partial t} \right|_{build} = \begin{cases} \frac{Q_e^{wall}}{L_i H_{bld}} & \text{for } z_{k+1}^w < H_{bld} \\ \left( \frac{H_{bld} - z_k^w}{z_{k+1}^w - z_k^w} \right) \frac{Q_e^{wall}}{L_i H_{bld}} + \frac{Q_e^{roof}}{L_i (z_{k+1}^w - z_k^w)} & \text{for } z_k^w < H_{bld} \leq z_{k+1}^w \\ 0 & \text{else} \end{cases} \quad (9)$$

Turbulent fluxes are in  $Wm^{-2}$  of total horizontal plan area of the grid point. They are calculated in the physical routines of TEB with respect to the potential temperature. The specific heat capacity of dry air ( $C_p$ ) is  $1005 Jkg^{-1}K^{-1}$ , the specific heat  $L_i$  is  $2.5008E+6$   $2.5008 \times 10^6 Jkg^{-1}$  for evaporation and  $2.8345E+6$   $2.8345 \times 10^6 Jkg^{-1}$  for sublimation .

## 185 2.2.2 Coupling between Meso-NH and SURFEX-TEB

The coupling between Meso-NH and SURFEX-TEB is technically modified such that SURFEX-TEB can receive the forcing from the first to the  $NC^{\text{th}}$  ( $1 : NC$ ) Meso-NH level. For the sake of simplicity, the horizontal dimensions of the Meso-NH variables are not ~~explicited~~ explicitly given in the equations. The horizontal wind speed ( $|\mathbf{u}_{hor}|$ ) is calculated based on the prognostic  $u$  and  $v$  wind components (Equation 10).

$$190 \quad |\mathbf{u}_{hor}(z_{1:NC}^m)| = \sqrt{u(z_{1:NC}^m)^2 + v(z_{1:NC}^m)^2} \quad (10)$$

The air temperature ( $T$ ) is calculated based on the prognostic potential temperature ( $\theta$ ) and the Exner function ( $\Phi$ ) following

$$T(z_{1:NC}^m) = \theta(z_{1:NC}^m)\Phi(z_{1:NC}^m) \quad (11)$$

$$\Phi(z_{1:NC}^m) = \left( \frac{p(z_{1:NC}^m)}{p_0} \right)^{\frac{R_d}{C_p}} \quad (12)$$

195 where  $p$  is the diagnostic absolute pressure. The specific gas constant for dry air ( $R_d$ ) is  $287.01 \text{ Jkg}^{-1}\text{K}^{-1}$ , the reference pressure ( $p_0$ ) is ~~1.0E+5~~  $1.0 \times 10^5 \text{ Pa}$ . The absolute humidity ( $q$ ) is calculated based on the prognostic mixing ratio of water vapour ( $r_v$ ) following

$$q(z_{1:NC}^m) = r_v(z_{1:NC}^m) \rho_{d,ref}(z_{1:NC}^m) \quad (13)$$

and the density of the moist air ( $\rho$ ) is given by

$$200 \quad \rho(z_{1:NC}^m) = \frac{p(z_{1:NC}^m)}{R_d T(z_{1:NC}^m)} \frac{1 + (R_d/R_v)r_v(z_{1:NC}^m)}{1 + r_v(z_{1:NC}^m)} \quad (14)$$

where the specific gas constant for water vapour ( $R_v$ ) is  $461.5 \text{ Jkg}^{-1}\text{K}^{-1}$ .

The height of the atmospheric forcing level used by SURFEX-TEB ( $z_{k,forc.}$ ) needs to be calculated based on the height of the Meso-NH levels ( $z_k^m$ ). It is ambiguous whether this forcing height should be the distance of the atmospheric level to the potentially inclined surface (inclination angle  $\alpha$ ) or the vertical height above the surface. It is assumed that for katabatic winds  
205 located in the first few meters above ground level (a.g.l.), the distance to the surface is the most relevant, whereas for the other processes it will be the vertical height above the surface. Therefore, the forcing height is defined as the shortest distance between the model level and the surface in the lowest 5 m vertical distance to the surface, and as the vertical distance at or above 20 m vertical distance to the surface (Equation 15). A linear transition is applied in between (Equations 15 and 16).

$$z_{k,forc.} = f_k z_k^m + (1 - f_k) z_k^m \cos(\alpha) \quad (15)$$

210

$$f_k = \min \left( 1.0, \frac{\max(z_k^m - 5.0, 0.0)}{15.0} \right) \quad (16)$$

### 2.2.3 Modification of the SURFEX-TEB equations

The multi-layer coupling of TEB is technically enabled by a logical switch which deactivates the prognostic equations of the SBL scheme of Hamdi and Masson (2008) and instead at each time step fills the SBL scheme's prognostic variables with the corresponding Meso-NH variables. With this implementation it is easy to switch between the single-layer and the multi-layer coupling. The meteorological forcing for the impervious surfaces such as roads (*imp.*), [which have an aerodynamic roughness length of 0.05 m](#), and the low urban vegetation (*lveg.*) is taken from the first Meso-NH level following

$$U_{forc.}^{imp./lveg.} = |\mathbf{u}_{hor}(1)|; T_{forc.}^{imp./lveg.} = T(1); Q_{forc.}^{imp./lveg.} = \frac{q(1)}{\rho(1)} \quad (17)$$

where  $Q$  denotes the specific humidity,  $U$  the wind speed, and the height of the forcing is given by

$$z_{forc.}^{imp./lveg.} = z_{1,forc.} \quad (18)$$

The meteorological forcing for the roof (Equation 19) is taken from the closest Meso-NH level, but at least 0.5 m above the roof ( $k_{roof}$ ).

$$U_{forc.}^{roof} = |\mathbf{u}_{hor}(k_{roof})|; T_{forc.}^{roof} = T(k_{roof}); Q_{forc.}^{roof} = \frac{q(k_{roof})}{\rho(k_{roof})} \quad (19)$$

The height of the forcing above the roof is

$$z_{forc.}^{roof} = z_{k_{roof},forc.} - H_{bld} \quad (20)$$

Since in TEB the walls are not vertically discretised, there is only one value for the prognostic wall temperature at grid point scale, hence the average value of the meteorological forcing variables is calculated for all Meso-NH levels intersecting the walls (Equations 21 to 23).

$$U_{for}^{wall} = \frac{1}{H_{bld}} \sum_{k=1}^{k_{roof}} \begin{cases} |\mathbf{u}_{hor}(k)| (z_{k+1}^w - z_k^w) & \text{for } z_{k+1}^w \leq H_{bld} \\ |\mathbf{u}_{hor}(k)| (H_{bld} - z_k^w) & \text{for } z_k^w < H_{bld} < z_{k+1}^w \end{cases} \quad (21)$$

230

$$T_{for}^{wall} = \frac{1}{H_{bld}} \sum_{k=1}^{k_{roof}} \begin{cases} T(k)(z_{k+1}^w - z_k^w) & \text{for } z_{k+1}^w \leq H_{bld} \\ T(k)(H_{bld} - z_k^w) & \text{for } z_k^w < H_{bld} < z_{k+1}^w \end{cases} \quad (22)$$

$$Q_{for}^{wall} = \frac{1}{H_{bld}} \sum_{k=1}^{k_{roof}} \begin{cases} \frac{q(k)}{\rho(k)}(z_{k+1}^w - z_k^w) & \text{for } z_{k+1}^w \leq H_{bld} \\ \frac{q(k)}{\rho(k)}(H_{bld} - z_k^w) & \text{for } z_k^w < H_{bld} < z_{k+1}^w \end{cases} \quad (23)$$

The sensible and latent heat fluxes from the roof, walls, impervious and pervious surfaces to the air in the street canyon are then calculated with the same formulas that are detailed in Hamdi and Masson (2008) and Lemonsu et al. (2012).

235



### 2.3 Uncertainties of the multi-layer coupling between Meso-NH and SURFEX-TEB

Various uncertainties remain in the presented multi-layer coupling, which could be addressed in future studies:

- The variation in building height at grid point scale is neglected. This might lead to too high wind speed values above the average building height and too low values below.
- 240 – [The temperature of the walls is uniform with height. This leads to uncertainties especially for very tall buildings, e.g. in the turbulent and radiative exchanges between the buildings and the atmosphere. For example the sign of the sensible heat flux from the walls towards air might change between the bottom and the top of the building, which could influence atmospheric stability in the urban canopy layer.](#)
- Building drag only depends on the local value of the frontal wall area density, which is assumed to be isotropic. The  
245 building shape and orientation, which could potentially lead to a directional variation of the drag coefficient is not taken into account. Furthermore, channelling in the streets can lead to changes of the drag coefficient (Santiago et al. 2013, and Simón-Moral et al. 2014).
- In contrast to numerous previous studies, the turbulent mixing and dissipation length scales are not modified in the urban  
250 environment. The mixing length scales for urban areas proposed by Santiago and Martilli (2010) have been tested (not shown) and lead to a deterioration of the model results. However, it cannot be excluded that alternative formulations for turbulent length scales in the urban environment might improve results.
- The potential influence of the thermal stratification on the building drag is neglected. Based on obstacle-resolving modelling, Santiago et al. (2014) and Simón-Moral et al. (2017) found that the building drag increases for unstable stratification due to the enhanced vertical mixing.
- 255 – The volume occupied by the buildings is neglected in the Meso-NH equations, i.e. the building heat and moisture fluxes are injected into the entire volume of the grid cell. This might lead to greater uncertainties, the denser the cities are.
- The turbulent surface fluxes on the horizontal urban facets like roofs and impervious surfaces are calculated using the Monin-Obukhov Similarity Theory (MOST), which is questionable since the surface characteristics and the flow are not horizontally homogeneous (Martilli et al., 2002).
- 260 – The drag force due to high urban vegetation is not considered. It could be introduced similar to Santiago et al. (2019), Redon et al. (2020), or Krayenhoff et al. (2020).
- Radiation is only coupled at the surface. It is therefore neglected that high-rise buildings might receive a considerably different amount of radiation than the surface (e.g. due to urban air pollution or fog) and that they emit longwave radiation not only into the first atmospheric model level. A more coherent treatment of radiative exchanges between the  
265 urban canopy layer and the free atmosphere will soon become possible thanks to recent developments (Hogan 2019a and Hogan 2019b), but could not be included in the present study.

- The rain and snow rate is taken from the surface level of the atmospheric model. It is therefore neglected that precipitation intercepted by high-rise buildings might be different from surface level precipitation. Furthermore, the precipitation is only intercepted by the roofs and the ground, and not by the walls.
- 270 – The mixing ratios of chemical substances and carbon dioxide are coupled only at the first atmospheric level. Multi-layer coupling may be introduced, e.g. to take into account for emissions due to high chimneys. This might improve model results especially during situations with stable atmospheric stratification.

### 3 Model setup for evaluation of different coupling approaches

#### 3.1 Selected meteorological situations

275 With relevance for heat-health impact assessment (Wang et al., 2019) and heat stress mitigation (Aflaki et al., 2017), two prolonged high temperature events – 1 to 8 September 2009 and 17 to 31 May 2018 – are selected for model evaluation in the present study. During these selected periods, the HKO recorded 8 and 15 consecutive Very Hot Days (daily maximum air temperature of 33°C or above measured at the HKO Headquarters station), respectively, with the latter breaking the record set in May 1963 by a large margin (HKO, 2018). Under the influence of a high pressure system over the northern part of the South  
280 China Sea, both periods experienced fine, sunny conditions with long duration of sunshine and a lack of precipitation. These characteristics correspond to those of the typical heat waves occurring in southern China, which are found to be attributable to the westward displacement of the western North Pacific subtropical high pressure system, causing an anomalously dry and warm anticyclonic flow (Luo and Lau, 2017). However, the synoptic wind flow over Hong Kong differs for the two selected periods, with prevailing winds from the east and southwest for the heat waves in September 2009 (HW2009) and May 2018  
285 (HW2018), respectively. The dominant south-westerly wind during HW2018 coincides with the typical summer prevailing wind direction in Hong Kong (Ng et al., 2012), making it a representative reference simulation period for the subsequent investigation of future development and mitigation scenarios.

In order to evaluate the modelled anthropogenic heat flux due to the buildings against inventory data available only on monthly time scale, a simulation using the new multi-layer coupling is also conducted for the entire month of May 2018, which was  
290 characterised by a mean monthly air temperature 2.4 K above the long-term (1981-2010) normal of 28.3°C.

#### 3.2 Model configuration

For modelling the selected meteorological situations, Meso-NH is employed to downscale the high-resolution operational forecast analyses from the European Centre for Medium-Range Weather Forecasts (ECMWF) Integrated Forecasting System via three intermediate domains (D1, D2, D3) to a domain covering major parts of Hong Kong at 250 m horizontal resolution  
295 (D4), and a 125 m resolution domain covering Hong Kong Island and Kowloon Peninsula (D5). Table 1 summarises the employed physical parameterisations; the delimitation of the model domains is displayed in Figure 2a. Only the hourly model outputs for D4 and D5 are analysed.

Meso-NH is coupled with SURFEX (Masson et al., 2013) to solve the surface energy budget; more details on the tested coupling approaches are given in Section 3.4. The urban vegetation located in the street canyon is represented with the approach of Lemonsu et al. (2012). The energy budget of a representative building at district scale is calculated by a building energy model (Buono et al. 2012, Pigeon et al. 2014). Information on the urban form and function of Hong Kong is taken from [Kwok et al. \(2020, accepted by Theoretical and Applied Climatology\)](#), [Kwok et al. \(2020\)](#). This dataset includes maps at 100 m resolution of the urban morphology parameters (e.g.  $H_{bld}$ ,  $\lambda_p$ ,  $\lambda_w$ ), and a map at 100 m resolution of the dominant building type taken from an ensemble of 18 typical buildings (archetypes) in Hong Kong defined by [Kwok et al. \(2020\)](#), [Kwok et al. \(2020\)](#). For each of the archetypes, [Kwok et al. \(2020\)](#) they provide a description of the construction materials and their physical properties, the temporal evolution of the internal heat release due to electrical appliances and domestic warm water, and of the setpoint temperature for air conditioning. The [anthropogenic heat flux building energy consumption](#) due to air conditioning is simulated by the building energy model as a function of these input data. The total simulated building-related anthropogenic heat flux is the sum of the contributions from the electrical appliances, lighting, cooking, domestic warm water, and air conditioning of buildings. [The It comprises a sensible and a latent part. The latent fraction of the internal heat release is specified as a function of the building type and is 0.05 for schools, 0.1 for university buildings, 0.2 for shopping malls, industrial buildings, and office buildings, and 0.3 for residential and public health buildings. For the energy consumption due to air conditioning, it is considered that there might be evaporative cooling towers on the building roofs. The fraction of buildings equipped with such cooling towers is specified as a function of the building type and is 0 for most buildings, except for schools and other Government, Institutional, and Community buildings \(0.1\), commercial and public health buildings \(0.2\), and office buildings \(0.5\).](#)

[The way the anthropogenic heat flux is injected into the model depends on the source of the heat flux. The heat flux due to traffic is neglected-injected at the first atmospheric model level for both single- and multi-layer coupling. The anthropogenic heat flux due to building heating \(not occurring in the present study\), electrical appliances, cooking, lighting is injected inside the building. It reaches the atmosphere indirectly in two ways: 1\) heat conduction through the building envelope and subsequent infrared radiation and turbulent sensible heat exchange between the building facets \(walls, roofs, windows\) and the atmosphere as well as 2\) air exchange due to infiltration, natural and mechanical ventilation. For buildings with a heating system based on combustion inside the building \(e.g. gas, fuel, or wood burning\), the waste heat and moisture fluxes due to the heating are directly injected into the atmosphere at roof level \(chimneys\). The roof level is the SBL level \(atmospheric level\) intersecting the roof for the single-layer \(multi-layer\) coupling. The waste heat and moisture fluxes due to air conditioning can be injected at wall level for wall split air conditioning systems or roof level for cooling tower based air conditioning systems. The wall level fluxes are distributed evenly over the SBL levels \(atmospheric model levels\) intersecting the walls for the single-layer \(multi-layer\) coupling.](#)

[The anthropogenic heat flux due to traffic is neglected in the present study,](#) since it is about a factor of four lower than the anthropogenic heat flux due to the buildings. The dataset describing Hong Kong represents the city in 2018 and is therefore optimal for the simulation of HW2018 and might slightly overestimate urbanisation in some areas for HW2009. The land cover parameters for the rural areas are taken from the 1 km resolution Ecosystem Climate Map (ECOCLIMAP-I) database (Masson

**Table 1.** Physical parameterisations employed for the Meso-NH simulations.

Domain	Horizontal resolution [km]	Time step [s]	Parametrisation of deep convection	Parameterisation of shallow convection and dry thermals	Mixing length calculation
D1	8	20	Kain and Fritsch (1990)	Pergaud et al. (2009)	Bougeault and Lacarrère (1989)
D2	2	10	None	Pergaud et al. (2009)	Bougeault and Lacarrère (1989)
D3	1	5	None	Pergaud et al. (2009)	Bougeault and Lacarrère (1989)
D4	0.25	1.7	None	None	Deardorff (1980)
D5	0.125	0.8	None	None	Deardorff (1980)

et al. 2003, Champeaux et al. 2005). Daily values of the Sea Surface Temperature (SST) have been taken from the Global Ocean 1/12° Physics Analysis and Forecast provided by the European Union Copernicus Marine Service Information. The daily SST values are interpolated linearly in time. Aerosol optical depth is set to the spatially and temporally uniform value of 0.1.

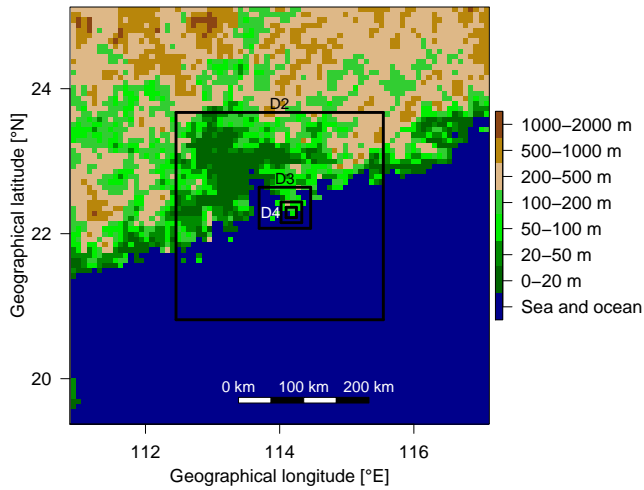
### 3.3 Meteorological observations and building anthropogenic heat flux inventory for model evaluation

#### 3.3.1 Meteorological observations

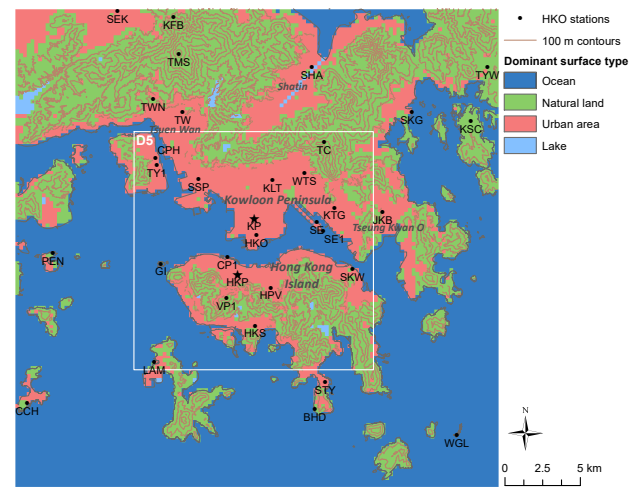
Near-surface meteorological observations obtained from the Hong Kong Observatory (HKO) are used for model evaluation. Hong Kong has a well-established network of more than 50 Automatic Weather Stations (AWS), of which 34 are located within the two innermost model domains employed in the present study (Figure 2b, HKO 2020). Hourly observations of air temperature, relative humidity, wind speed and direction, and rainfall are available at 30, 19, 20, and 19 of these stations, respectively. Solar radiation is observed at stations KP and KSC. Thermometers and hygrometers are placed in Stevenson screens around 1 m a.g.l., and wind anemometer heights vary from 9 m to 42 m a.g.l.. Due to the complex terrain and heterogeneous land cover and urban settings in Hong Kong, model evaluation is particularly challenging as AWS are situated in a diverse range of environments, including urban parks surrounded by tall buildings (e.g. KP, HKP, KTG), vegetated rural areas (e.g. TYW, KFB), piers (e.g. CP, SE1), mountain peaks (e.g. TMS, TC), outlying islands (e.g. WGL, CCH), and the rooftop of a high-rise building (CPH). Characteristics of station environments are therefore quantified in terms of artificial surface cover fractions and average building height to facilitate a systematic evaluation of model output (Table A1). However, one should also bear in mind the uncertainties introduced by the averaging of surface and morphological parameters within model grids. Moreover, the authors observed through site visits that some measurements might be heavily influenced by obstacles close to the stations, such as buildings to the windward side of the station and tree canopies above the station (Figure 3), and thus affecting the representativeness of the observations.

In addition to the fixed network of meteorological stations, radiosoundings at the station King’s Park (KP) are available for 0 and 12 UTC in September 2009 and 0, 6, 12, 18 UTC in May 2018. Meteorological data have been recorded every 2 s, which,

(a) Model domains



(b) Meteorological stations



**Figure 2.** (a) The five nested Meso-NH model domains employed for the high-resolution simulation of the urban climate of Hong Kong. (b) Meteorological stations operated by the Hong Kong Observatory that are located within the model domains D4 and D5. Model results will be presented in more detail at the starred stations KP and HKP.



**Figure 3.** Environment of the meteorological stations HKP (left) and TW (right).

for the ascent rate of 250 to 450 m/min corresponds to a vertical resolution of 8 to 15 m. The radiosoundings are used to evaluate the vertical profiles of the simulated meteorological parameters in the lower part of the urban boundary layer. Furthermore, local SST measurements are available twice a day (at 7 and 14 [local time Hong Kong Time](#)) within the harbour near the North Point Fire Station (around 3 km northwest of station SKW in Figure 2b) and hourly in the open coastal waters adjacent to station WGL.

### 3.3.2 Building anthropogenic heat flux inventory

The monthly total electricity and gas consumption for the entire Hong Kong is published for different sectors by the Hong Kong Census and Statistics Department (HKC, 2018). The energy consumption of the domestic, commercial, and industrial sectors is used, and the energy consumption of the transport sector and for street lighting is excluded. It is assumed that buildings are the only contributors to energy consumption within the selected sectors, that all the consumed energy is released into the air, and that all buildings with the same use exhibit the same volumetric energy consumption. Under these assumptions, the inventory-based anthropogenic heat flux ( $Q_{a,i}^{sec} Q_{f,i}^{sec}$ ) due to building  $i$  in sector  $sec$  in  $Wm^{-2}$  is calculated following Equation 24.

$$Q_{a,i}^{sec} = \frac{E_{monthly}^{sec}}{N A_{tot}^{sec}} \frac{V_i}{V_{mean}^{sec}} \quad (24)$$

$E_{monthly}^{sec}$  is the total monthly sector wide energy consumption in J,  $A_{tot}^{sec}$  the total building surface area of sector  $sec$  in  $m^2$ ,  $V_i$  the volume of building  $i$ ,  $V_{mean}^{sec}$  the sector mean building volume, and  $N = 2678400$  the number of seconds in May. Heat fluxes are then aggregated to the model grid resolution and Figure 12 shows the resulting map of anthropogenic heat flux due to building energy consumption in May 2018. Although this inventory is subject to uncertainties, the spatial pattern is reasonably realistic and similar to that estimated by Wong et al. (2015) using remote sensing methods, except for an underestimation in certain areas like the airport and container terminals, where energy-intensive activities do not take place within buildings.

The values of anthropogenic heat flux calculated in this Section are not used in the model since it simulates the building energy consumption for air conditioning. Instead, the simulated values will be evaluated against the inventory.

### 3.4 The tested coupling approaches

The approaches to couple Meso-NH and SURFEX-TEB tested in the present study are described. For the evaluation, the model level with the height a.g.l. closest to that of the meteorological station needs to be selected. In urban areas, this can be very different between the single- and multi-layer coupling approach, since with the single-layer coupling approach, the buildings are located below the surface of the atmospheric model, whereas with the multi-layer coupling approach the buildings are immersed in the atmosphere (Figure 1). In the horizontal dimension, for all coupling approaches, the model grid point with the shortest distance to the meteorological station is taken. The investigated coupling approaches are:

- CLASSICAL corresponds to the classical single-layer approach to couple Meso-NH and SURFEX-TEB used so far. The vertical grid of Meso-NH is relatively coarse; the first level is placed at 10 m a.g.l., the vertical atmospheric grid size near the surface is 20 m and increases by 10% every model level to a maximum of 500 m. The aerodynamic roughness length of the urban area is  $z_{0,m} = 0.1 H_{bld}$ . The SBL scheme of Hamdi and Masson (2008) is used to simulate vertical profiles of the meteorological variables in the urban canopy layer. The SBL scheme has six levels. The first two levels are always located at 0.5 m and 2 m a.g.l., the other four levels, whose depth is increasing with higher elevation, are placed such that the height a.g.l. of the sixth SBL level matches with the height a.g.l. of the first atmospheric level (Figure 1). The turbulent mixing length used in the SBL scheme is similar, but not exactly equal to the one proposed by

Santiago and Martilli (2010). First, the zero-plane displacement height  $d$  is calculated:

$$d = H_{bld} \min(0.75, \lambda_p^{0.13}) \quad (25)$$

395 In contrast to Santiago and Martilli (2010),  $d$  is limited to  $0.75 H_{bld}$ , since otherwise the model is numerically unstable.  
The vertical profile of the urban turbulent mixing length ( $l_{m,SBL}$ ) is then given by:

$$l_{m,SBL}(z) = \begin{cases} \min(z, 2.24(H_{bld} - d)) & \text{for } z \leq H_{bld} \\ 2.24(z - d) & \text{for } H_{bld} < z \leq 1.5 H_{bld} \\ 1.12(z - d_2) & \text{for } z > 1.5 H_{bld} \end{cases} \quad (26)$$

The value of  $d_2$  is specified such that  $l_{m,SBL}$  is continuous at  $z = 1.5 H_{bld}$ :

$$d_2 = -1.5 H_{bld} + 2 d \quad (27)$$

400 For the rural areas, a similar SBL scheme with six levels introduced by Masson and Seity (2009) is employed. For the evaluation of air temperature and humidity in urban and rural areas, which is observed in around 1 m a.g.l., the simulated values from the first two levels of the urban or rural SBL scheme are linearly interpolated. The wind measurements might be, depending on the height of the anemometer for each station, be located below or above the highest SBL level. If the height of the wind anemometer is below the highest SBL level, the simulated values from the two closest SBL  
405 levels are interpolated linearly. Otherwise, the Meso-NH levels are taken.

– NEW corresponds to the new multi-layer coupling. The surface of the Meso-NH model corresponds to the physical surface, including in the urban area. No SBL scheme is required to calculate vertical profiles of the meteorological parameters in the urban canopy layer. Since the drag force due to the building walls and roofs is considered directly in the atmospheric model, the aerodynamic roughness length is set to 0.05 m in urban areas to represent the roughness of  
410 the urban impervious and pervious ground surfaces. Due to the modified coupling approach, it is possible to refine the vertical grid of Meso-NH. The first scalar model level is placed at 1 m a.g.l., the vertical resolution near the surface is 2 m and increases by 15% with increasing distance to the surface to a maximum of 500 m. For the high rural vegetation (e.g. forests), the approach of Aumond et al. (2013) is used to represent the drag force it exerts on the wind. As a consequence, the rural SBL scheme is also deactivated. For all meteorological variables, the prognostic Meso-NH variables from the  
415 two model levels nearest to the station height are linearly interpolated to compare to observations.

– SURFFLUX is similar to NEW, except that the fluxes of heat and moisture from the building walls and roofs to the atmosphere are released at the surface of Meso-NH. This coupling approach is of interest since the coupling of temperature and humidity in the new coupling approach is explicit, which would not be viable when using larger time steps (e.g. in an earth system model) since the temperature and moisture increments for one time step would become too large. This  
420 experiment can give hints of whether it is worthwhile to develop an implicit coupling for heat and moisture in the future.

## 4 Results

### 4.1 Time series of near-surface meteorological variables

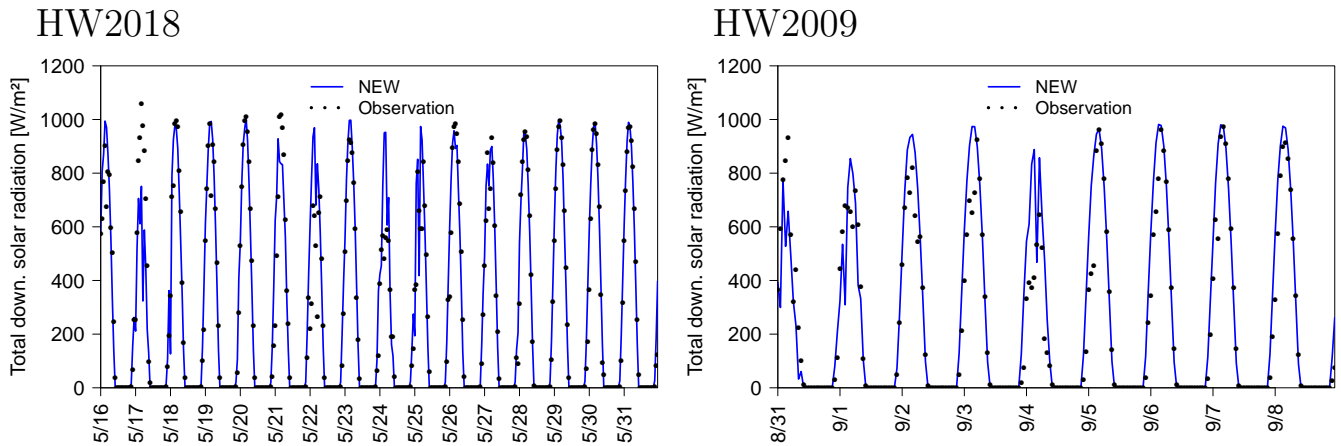
#### 4.1.1 Explorative analysis at two urban stations

The simulated time series of all relevant meteorological variables are first presented in detail for D4 at the stations King's Park (KP), the urban station with the most comprehensive observational data and Hong Kong Park (HKP) with the highest buildings in the surrounding. KP is located in an urban park (about 500 m x 500 m) on a small hill at the heart of Kowloon Peninsula surrounded by buildings with a typical height of 30 m. HKP is located in a 8 ha park amid the high-rise high-density business district on the northern coast of Hong Kong Island. The high-rise buildings surrounding HKP have a large variety in building height, with an average of 100 m (Figure 3), and a large variability in building height. KP measures all relevant meteorological parameters, HKP only near-surface air temperature.

Simulated and observed total downwelling solar radiation at station KP is displayed in Figure 4 for HW2018 and HW2009. Only the results for NEW are shown, since the different coupling approaches do not alter the simulated downwelling solar radiation in a relevant manner. Simulated solar radiation is very close to the observed on cloud-free days [for HW2018 and slightly overestimated for HW2009](#). This indicates that the selected value for the aerosol optical depth of 0.1 is appropriate for ~~the selected heat waves~~ [HW2018 and might be too low for HW2009](#). Due to the synoptic scale flow from the southwest (HW2018) and east (HW2009), ~~no air pollution is advected from China, which would have to be taken into account via a time dependent~~ [the values of the aerosol optical depth over the South China Sea in the vicinity of Hong Kong are therefore investigated. The TERRA/MODIS aerosol optical depth maps from AOD \(2020\) indicate that the values lie between 0.0 and 0.2, and between 0.2 to 0.4 for HW2018 and HW2009 respectively. Simulation results for HW2009 might therefore be](#) [improvable by using a higher value for the](#) aerosol optical depth [than in the present study](#). Larger biases in downwelling solar radiation [also](#) appear for days with observed clouds for which the model tends to overestimate the downwelling shortwave radiation (e.g. Sep. 1 to 4 2009 and May 22 to 24 2018). During HW2018 there are also two days during which too many clouds are simulated compared to the observations (May 17 and May 21). In summary, solar radiation is overestimated for both heat waves with a small bias of  $10 \text{ Wm}^{-2}$  for HW2018, and a larger bias of  $42 \text{ Wm}^{-2}$  for HW2009.

The time series of air temperature and relative humidity at 1 m a.g.l. and wind speed and direction at 25 m a.g.l. are displayed in Figure 5 (Figure 6) for HW2018 (HW2009) at KP. For HW2018, CLASSICAL leads to an overestimation of air temperature of 2 to 4 K in the daytime, which is nearly entirely corrected for NEW. The nighttime air temperature is simulated well with all coupling approaches. During the end of HW2018, both daytime and nighttime air temperature are overestimated for NEW, whereas CLASSICAL also overestimates the amplitude of daily temperature variation. The results for SURFFLUX do not differ much from those for NEW, since there are only a few mid-rise buildings in the grid cell where KP is located. The release of the heat fluxes from the walls and roofs of these buildings at the surface therefore does not deteriorate the model results. Relative humidity in the nighttime is underestimated for all coupling approaches and, similar to air temperature, does not differ much between the different approaches. Daytime relative humidity is underestimated for CLASSICAL and better simulated



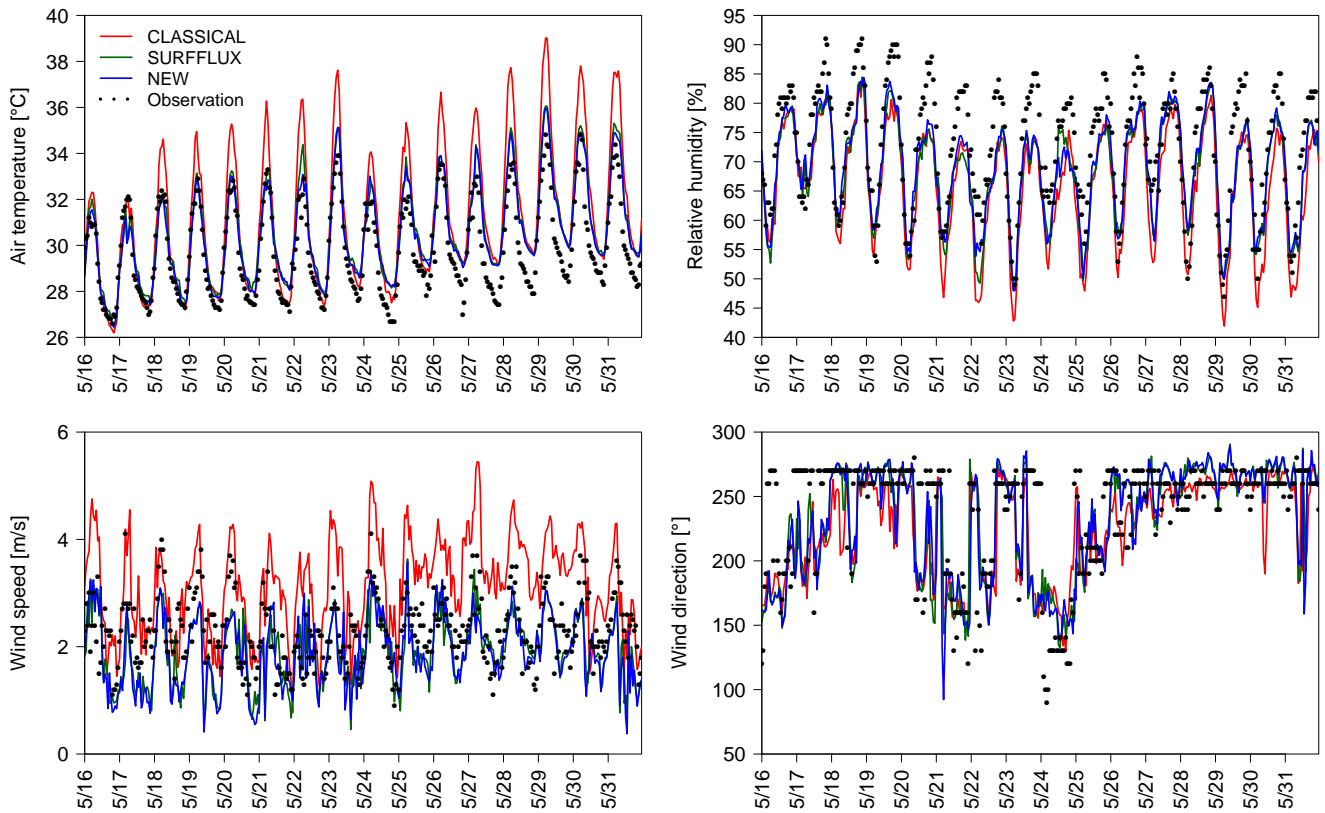


**Figure 4.** Time series (UTC) of simulated (NEW coupling approach, D4) and observed solar radiation at the station King's Park (KP).

for NEW, but the differences between the coupling approaches are not as large as for air temperature. The simulated values  
 455 of wind speed are too high for HW2018 and CLASSICAL, since the drag force due to the buildings is not considered in the  
 atmospheric model. For NEW, the simulated wind speed values are reduced and agree better with observations, although they  
 are slightly underestimated at the beginning of the heat wave. No relevant differences for wind speed are found between NEW  
 and SURFFLUX.

Results for HW2009 differ from those for HW2018. Both the CLASSICAL and the NEW coupling approach lead to an  
 460 overestimation of daytime air temperature, whereas the nighttime air temperature is well simulated. The fact that air temperature  
 is overestimated can be explained by the too high values of simulated downwelling solar radiation. NEW performs better  
 than CLASSICAL, but the differences are lower than for HW2018. This might be due to the different wind direction. For  
 HW2018, air is advected from a very densely built environment west of the station, whereas for HW2009 it is advected from  
 a less densely built area east of the station. This could explain the lower difference between the two coupling approaches for  
 465 HW2009. Relative humidity is equally underestimated for all coupling approaches, which is consistent with the overestimation  
 of air temperature. Wind speed is overestimated for CLASSICAL and underestimated for NEW.

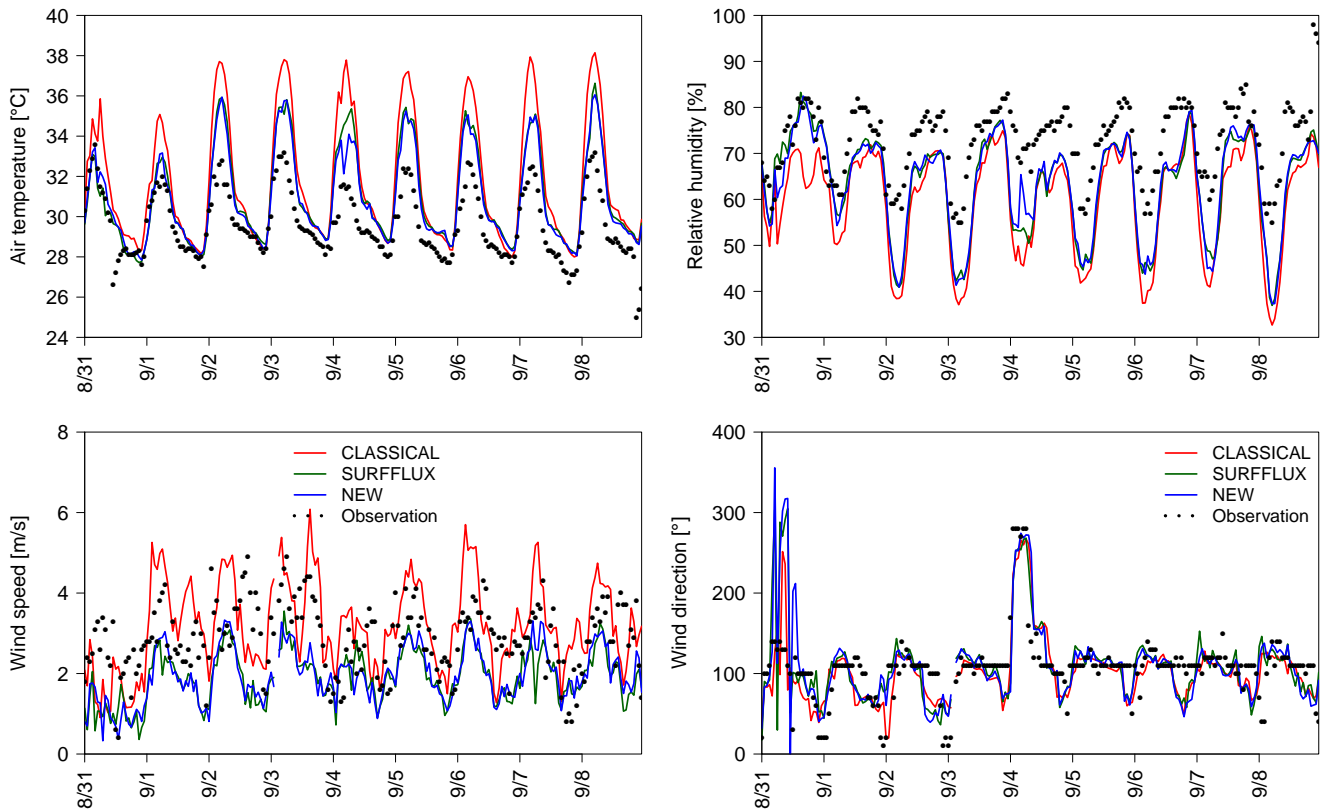
The main observed prevailing wind direction at station KP is west (east) for HW2018 (HW2009). This is very well represented  
 in the model and there are only small differences between the coupling approaches. For HW2018, the wind direction observed  
 at station KP is different from the synoptic-scale wind direction (southwest to south) due to the circulation around Hong Kong  
 470 Island in combination with sea breezes (Figure 10cd). Slight changes in the synoptic-scale wind direction from south-west to  
 south-south-east can lead to a strong change in wind direction over Kowloon Peninsula from west to east since the circulation  
 around Hong Kong Island changes direction. This takes place twice during HW2018 (May 21 and 22) and May 24, which  
 is represented by the model, with the exception that the onset of the circulation shift is 12 hours too early for May 24. The  
 easterly wind direction during HW2009 is reproduced by the model, the shift towards a westerly circulation on September 4 is



**Figure 5.** Time series (UTC) of simulated (D4) and observed meteorological variables at the station King’s Park (KP) during HW2018.

475 captured. Interestingly, both observations and model display a shift towards north-easterly wind in the late evening, although not perfectly coherent in time and magnitude. This is due to the higher elevation in the north-east of the KP station than at the station itself, which influences the local circulation in the nighttime.

The time series of air temperature at 1 m a.g.l. for the station HKP, which is surrounded by high-rise buildings, are displayed in Figure 7. The findings at this station are similar to KP, but exacerbated. The CLASSICAL coupling approach leads to an overestimation of the daytime air temperature by at least 4 K for both heat waves. The nighttime air temperature is [acceptable captured](#) at the beginning of both heat waves and overestimated by 1 to 3 K at the end. This could be due to too high heat storage in the construction materials in the course of the heat wave due to the too high values of the simulated daytime air temperature in the urban canopy layer. Simulated and observed time series agree well for NEW during both heat waves. For SURFFLUX, the simulated values are close to the observations in the nighttime, but in the daytime, the model performance is clearly worse than for NEW. The release of the large sensible heat fluxes from the building walls and roofs at the surface leads to a clear deterioration of model results in this high-rise high-density setting.



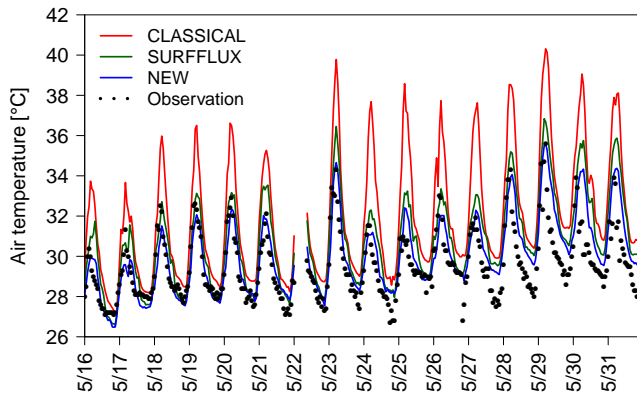
**Figure 6.** Same as Figure 5, but for HW2009.

#### 4.1.2 Model evaluation measures at all stations

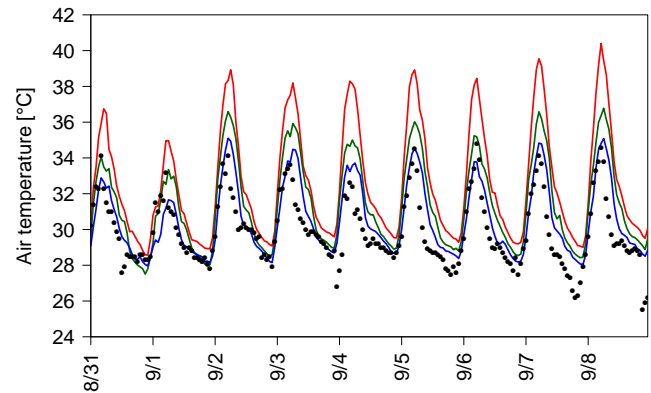
The bias and root mean square error (rmse) of the simulated hourly time series of air temperature, relative humidity, and wind speed at all available stations are displayed in Figure 8 (Figure 9) for HW2018 (HW2009) and D4; the Figures for D5 are  
 490 given in the Appendix (Figures B1 and B2). ~~Given the low value of the daily temperature amplitude of 5 K to 8 K during the simulated heat waves it is easy to obtain seemingly good values for the rmse compared to locations with continental or mid-latitude climates. It is therefore considered that values of the rmse >1.5 K denote a model result of unacceptable quality. With a similar reasoning, a rmse >10% for relative humidity is considered as an unacceptable model result.~~ In the following discussion, those stations with a building surface fraction larger than 0.1 or an average building height taller than 15 m within  
 495 a circle of radius 250 m around the station are considered as urban. The other stations are considered as rural.

For CLASSICAL, the ~~evaluation measures rmse~~ for air temperature ~~are not acceptable is larger than 1.5 K~~ for most urban stations. For HW2018, results are particularly bad at the stations HKO, HKP, HKS, JKB, STY, TWN, and TY1 with values of the rmse around or larger than 2.5 K. These are the stations located in urban parks surrounded by high-rise buildings (HKO,

## HW2018



## HW2009



**Figure 7.** Time series (UTC) of simulated (D4) and observed near-surface air temperature at the station Hong Kong Park (HKP).

HKP) and the stations in very heterogeneous areas with mid or high-rise buildings close to vegetated areas or the coast (HKS, JKB, STY, TWN, TY1). For NEW, bias and rmse are improved for all the urban stations, the rmse ranges mostly between 1 and 1.5 K, ~~which is an acceptable model result~~. The bias is positive for all urban stations, which might be due to the slight overestimation of the downwelling solar radiation or too high SST. Evaluation measures for SURFFLUX are not much worse than for NEW, except for the stations HKO, HKP, and TY1, which are surrounded by high-rise buildings. Results for HW2009 mainly corroborate those for HW2018. In contrast to HW2018, particularly bad model performance is also found for station HPV, which is located to the north-west of a high-rise high-density district. The model results for CLASSICAL may therefore be worsened due to the easterly wind direction. Model results are also bad for the stations on Kowloon Peninsula (KLT and KP). ~~However, the result at KP for D4 is in noted contrast to the result for D5, where at higher model resolution, the environment of the station is better represented.~~ NEW leads to better model results for all urban stations, except for CPH, which is located on the roof of a 62 m tall building and therefore does not suffer from the issues with the SBL scheme as the stations which measure near the surface. Even for NEW, a positive temperature bias of about 1 K prevails for the urban and rural stations, which is most probably due to the overestimation of the total downwelling solar radiation and to a lesser degree by the fact that too many buildings are in the model domain since the dataset on urban form and function represents the 2018 situation and the population of Hong Kong has increased by about 1 million since 2009. Air temperature in rural areas is also generally better simulated for NEW during both heat waves, although the improvement is not as marked as for the urban stations.

Evaluation results for relative humidity are consistent with those for air temperature. The urban stations that exhibit the largest positive bias for air temperature exhibit the largest negative bias for relative humidity. For CLASSICAL ~~, unacceptably high~~ and HW2018, values for the rmse larger than 10% are found for the stations HKO, HKS, JKB, TWN, and TY1 for HW2018. These stations also exhibit ~~unacceptable results~~ the largest rmse for air temperature. NEW improves the bias and rmse for all urban stations, but negative biases of around 5% are still found, which is consistent with the positive bias of 0 to 1 K for

520 air temperature. For HW2009, NEW results in improved bias and rmse for all urban stations, but even for NEW, the positive temperature bias leads to a negative bias of relative humidity between 5 and 10%. Evaluation measures for relative humidity are also improved in the rural areas, but not as much as in the urban areas. SURFFLUX differs in a relevant manner from NEW only at the stations HKO, TWN, and TY1, which are surrounded by high-rise buildings.

CLASSICAL leads to a positive wind speed bias in all urban stations, except station HKO for both heat waves and station  
525 HKS for HW2009. NEW leads to lower values of the average wind speed for all urban stations, except CP1 for HW2009. This improves most of the stations with a positive bias, but deteriorates results for the station HKO. The rmse of wind speed at most urban stations is considerably reduced for both heat waves, especially at the stations SHA and SEK, which measure wind speed in 10 m a.g.l. and therefore have their simulated values taken from the SBL scheme of TEB in CLASSICAL. At the station KP, where wind is measured in 25 m a.g.l., NEW reduces the wind speed too much compared to CLASSICAL, maybe because the  
530 drag force due to the buildings alters too strongly the wind speed of the station located in an urban park. The rmse for station KP is improved for HW2018, but slightly deteriorated for HW2009. Wind speed at stations SHA and SEK is also considerably improved for NEW and HW2009. At the rural stations, evaluation measures for wind speed are slightly improved for HW2018 and not consistently changed for HW2009.

NEW does not improve the evaluation measures for wind speed as much as for air temperature and relative humidity. This is  
535 due to the way the wind speed is diagnosed for CLASSICAL (Figure 1). The wind speed values from the TEB SBL levels are taken if the height of the wind anemometer is below the height of the highest SBL level. With this approach to diagnose the wind speed values, the lack of friction due to the high-rise buildings in the atmospheric model does not influence the model evaluation measures too much. However, this does not change the fact that the high-rise buildings do not directly influence multiple atmospheric model levels. In order to illustrate this, the fields of wind and air temperature at 30 m a.g.l. simulated  
540 by Meso-NH in the daytime (11 to 16 [Local-Hong Kong Time](#)) during HW2009 and HW2018 are displayed in Figure 10. For HW2009, Kowloon Peninsula is ventilated by a sea breeze from the south-east, which for CLASSICAL (Figure 10a) is not sufficiently influenced by the high-rise buildings on Kowloon Peninsula. For NEW (Figure 10b), a deflection of the sea breeze at the east of Kowloon Peninsula towards the Kai Tak area is simulated, which is not found for CLASSICAL. Furthermore, the wind direction is south to south-west on the western coast of Kowloon Peninsula for NEW, whereas it is mainly south-east  
545 for CLASSICAL. For CLASSICAL, the air penetrates easily the areas with very high buildings along the northern coast of Hong Kong Island, whereas the wind speed is considerably reduced in this region for NEW. For HW2018, the south-westerly sea-breeze appears to penetrate too efficiently the Kowloon Peninsula for CLASSICAL (Figure 10c), whereas it is considerably slowed down by the high-rise buildings there for NEW (Figure 10d). Although all these features cannot be validated by field observations in the present study, they appear physically more plausible for NEW than for CLASSICAL.

550 [The main conclusions for the stations in D5 \(Appendix Figures B1 and B2\) are similar to those for D4, although the model performance might differ for individual stations, which can be due to changed representativeness of the model grid point at higher resolution.](#)

For wind direction (not shown), the rmse increases for the NEW coupling approach at nearly all stations. This could be due

to enhanced spatio-temporal wind direction fluctuations due to the spatially heterogeneous drag force, and as a result a worse  
555 agreement with the observations than for a more homogeneous wind field.

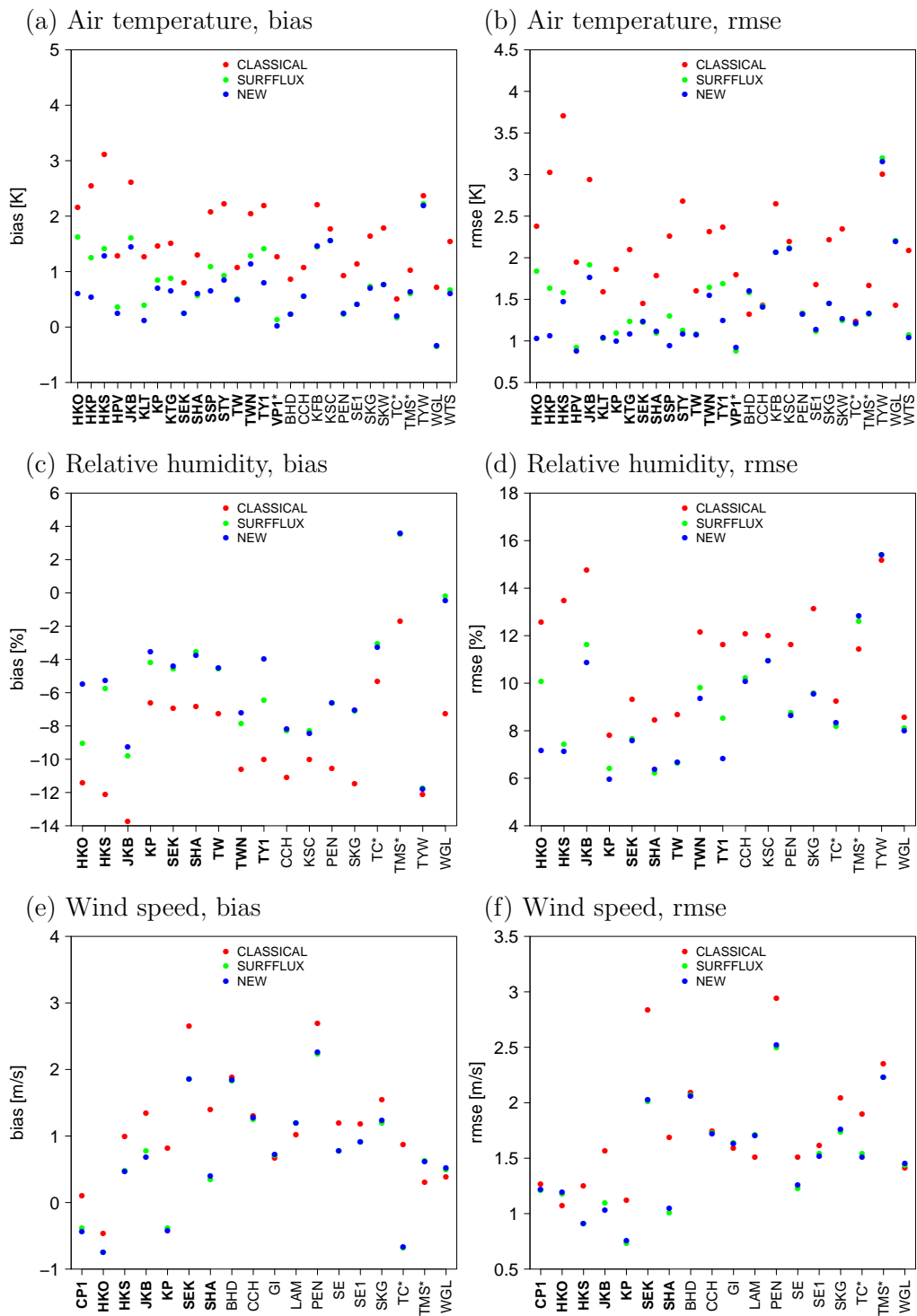
## 4.2 Vertical profiles of meteorological variables

The vertical profiles of air temperature and wind speed are evaluated with the radiosoundings made at King's Park. Since  
temporal averaging of the vertical profiles is not useful, the results are displayed as an example for May 20 2018 (Figure 11),  
a day with westerly wind (Figure 5), leading to advection of air from the dense mid- to high-rise setting west of the station.  
560 The vertical profiles are extracted only from the location of the station, neglecting the displacement of the radiosonde with the  
wind. This is a reasonable assumption since only the lowest 200 m are investigated.

At 6 UTC (14 [Local Hong Kong Time](#)), CLASSICAL strongly overestimates the air temperature at the grid points closest to the  
surface for which the SBL scheme is employed. The deviation from the radiosounding increases as it gets closer to the surface.  
The vertical profiles agree much better with the radiosounding for NEW and SURFFLUX. These results are consistent with  
565 those for the time series of near-surface air temperature for station KP (Figure 5). At 12 UTC (20 [Local Hong Kong Time](#)),  
which is after sunset in Hong Kong, the radiosounding indicates that the atmosphere has become stable at the lowest 40 m  
a.g.l.. This is understandable, since the radiosounding is made inside a small park. The model is not able to capture this, which  
is most likely because the model grid point is not free of buildings. The positive sensible heat flux from the building walls and  
roof to the air keeps the atmosphere unstable. Very high-resolution simulations would be needed to capture the environment of  
570 an urban oasis like KP correctly. The results for SURFFLUX are worse than for NEW, since for SURFFLUX the sensible heat  
flux from the walls and the roofs is coupled at the surface of the atmospheric model. For CLASSICAL, the overestimation of  
near-surface air temperature is even larger, maybe because the buildings or the ground have stored more heat during the day  
due to the strong overestimation of air temperature in the daytime. As a result, NEW improves the results even though it does  
not capture the stable layer below 40 m a.g.l.. In the nighttime (18 UTC; 2 [Local Hong Kong Time](#)), the stable layer extends  
575 up to 60 m a.g.l. with a marked inversion below. Similar to the results for 12 UTC, this cannot be captured by NEW, although  
it performs better than SURFFLUX and CLASSICAL. The vertical profiles of air temperature have been analysed for other  
days and relatively similar results are found (not shown). For 0 UTC (8 [Local Hong Kong Time](#), not shown) there is only little  
difference for air temperature for the different coupling approaches. CLASSICAL exhibits the same tendency to overestimate  
air temperature very close to the surface, but the difference from NEW is much lower than for 6 UTC.

580 For wind speed, much larger discrepancies between the simulation results and the radiosoundings are found than for air tem-  
perature. This can be due to shortcomings of the model or the lack of spatial representativeness of the radiosounding compared  
to the grid point scale model result, but also due to the turbulent fluctuations of the wind in this very heterogeneous urban  
environment. CLASSICAL overestimates the wind speed for 6, 12, and 18 UTC, most probably since there is not sufficient  
building drag. For NEW and SURFFLUX, the drag force leads to lower wind speed values, and as a result a better agreement  
585 with the radiosounding. However, the shapes of the profiles do not agree very well and visual inspection for other days reveals  
sometimes different results, e.g. CLASSICAL matches the observed profile better than NEW and SURFFLUX for some ra-  
diosoundings. For HW2018 with 60 available radiosoundings, CLASSICAL overestimates the wind speed in between the top

of the SBL and 150 m a.g.l. for 44 out of 60 radiosoundings. The wind speed profile agrees better for NEW than for CLASSICAL for 41 out of 60 radiosoundings. For HW2009, CLASSICAL overestimates the wind speed in between the top of the SBL and 150 m a.g.l. for 11 out of 16 radiosoundings and a better agreement is found for NEW for 9 out of the 16 radiosoundings. For HW2018, with a wind from the high-rise districts west of the station, the wind profiles are more frequently improved than for HW2009 with a wind from more open areas east of the station.



**Figure 8.** Model evaluation measures for hourly time series at meteorological stations in D4 and for HW2018. The urban stations are bold, the stations on mountain peaks are marked with a \*.



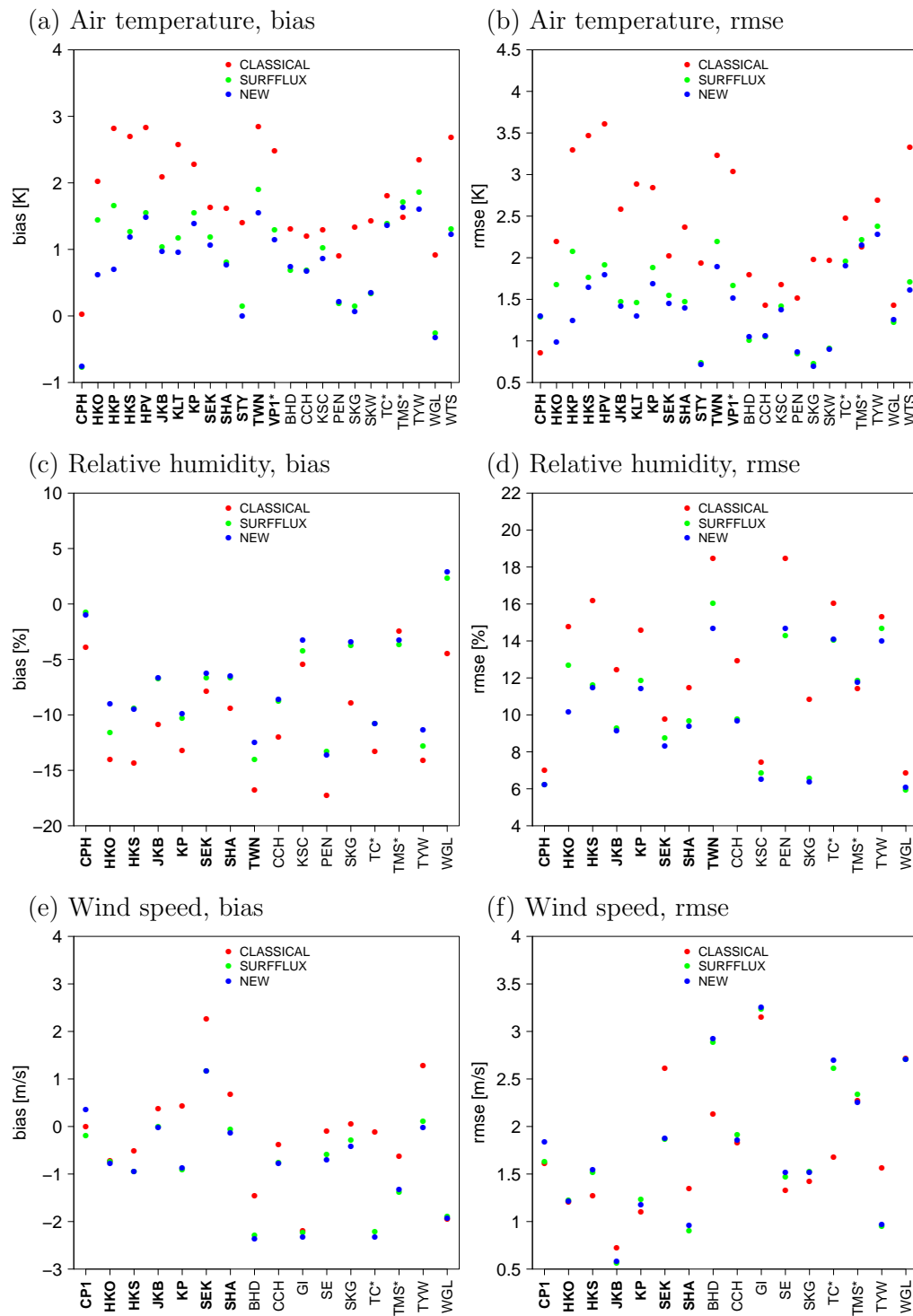
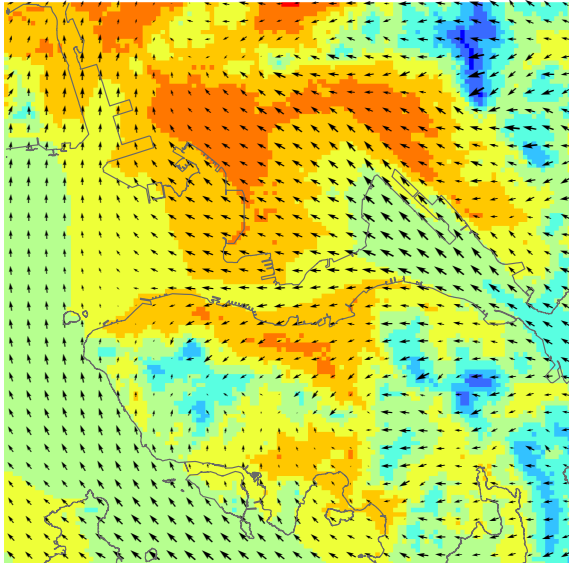
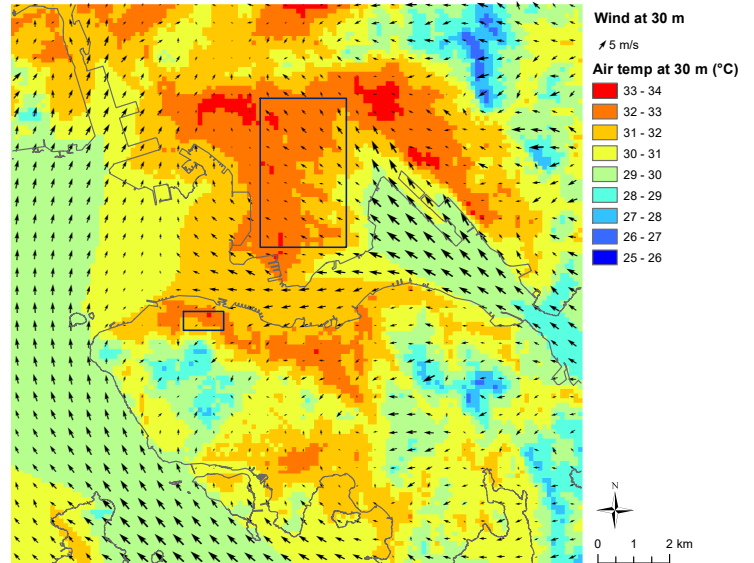


Figure 9. Same as Figure 8, but for HW2009.

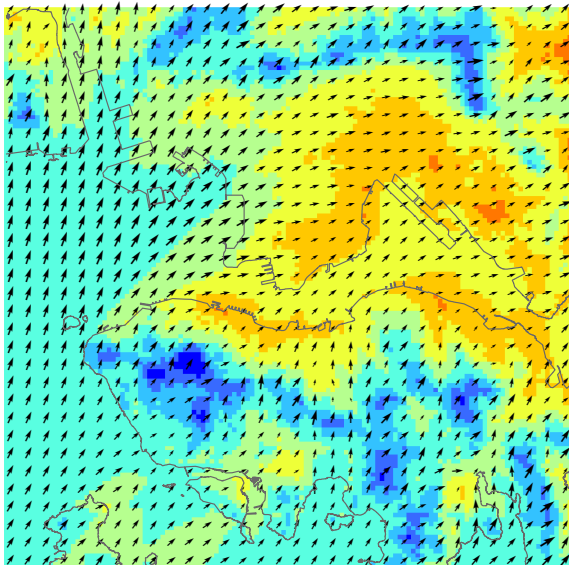
(a) CLASSICAL, Sep. 7-8 2009



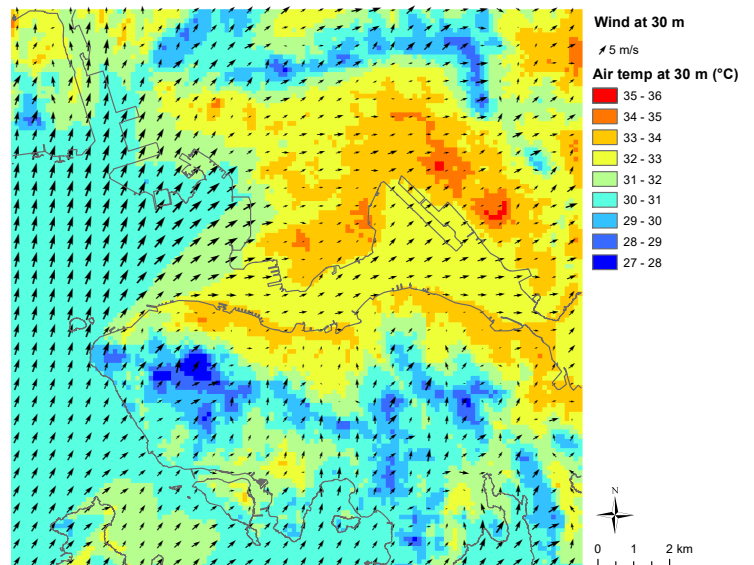
(b) NEW, Sep. 7-8 2009



(c) CLASSICAL, May 28-30 2018

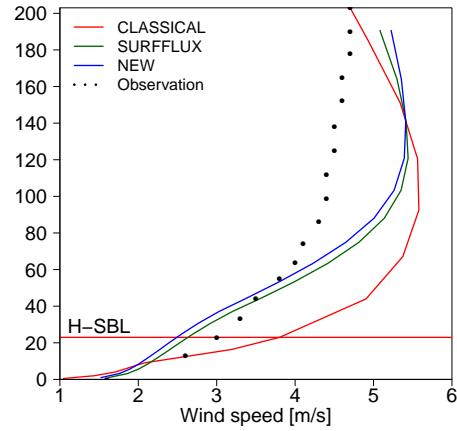
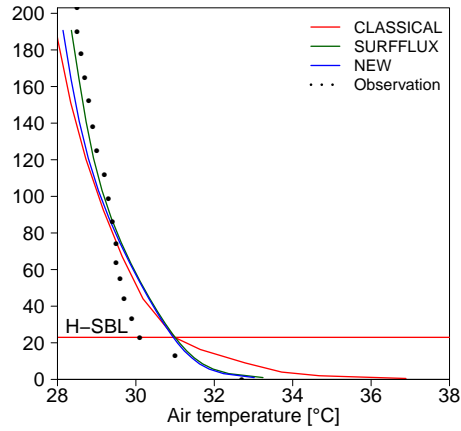


(d) NEW, May 28-30 2018

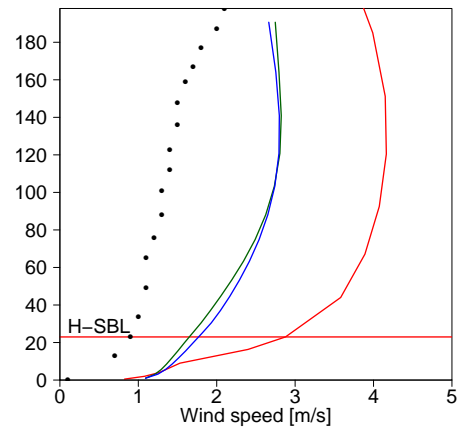
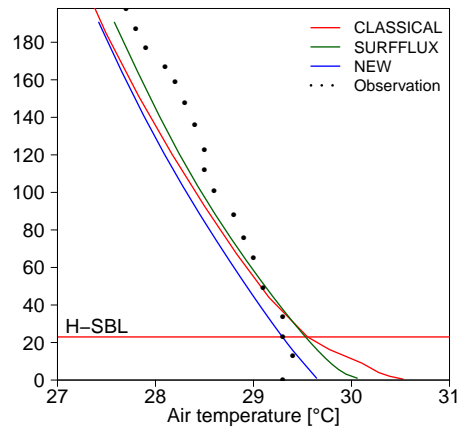


**Figure 10.** Wind field and air temperature at 30 m a.g.l. in the daytime (11 to 16 Local Hong Kong Time) for the CLASSICAL and NEW coupling approaches and two selected time periods during HW2018 and HW2009.

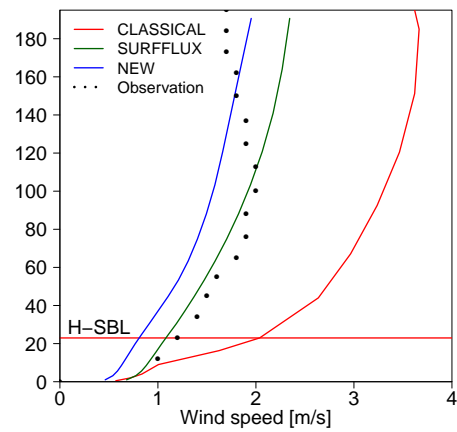
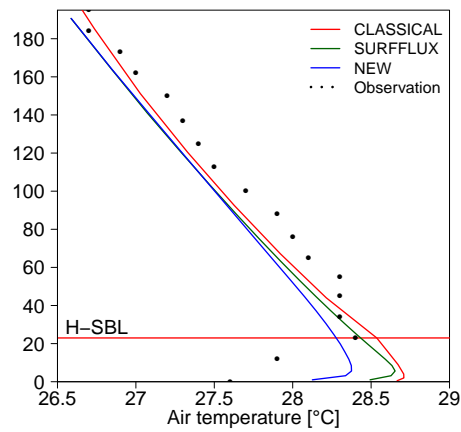
20 May 2018, 6 UTC



20 May 2018, 12 UTC



20 May 2018, 18 UTC



**Figure 11.** Vertical profiles of air temperature and wind speed at station King's Park. H-SBL indicates the height below which for CLASSICAL the meteorological variables are taken from the SBL scheme.

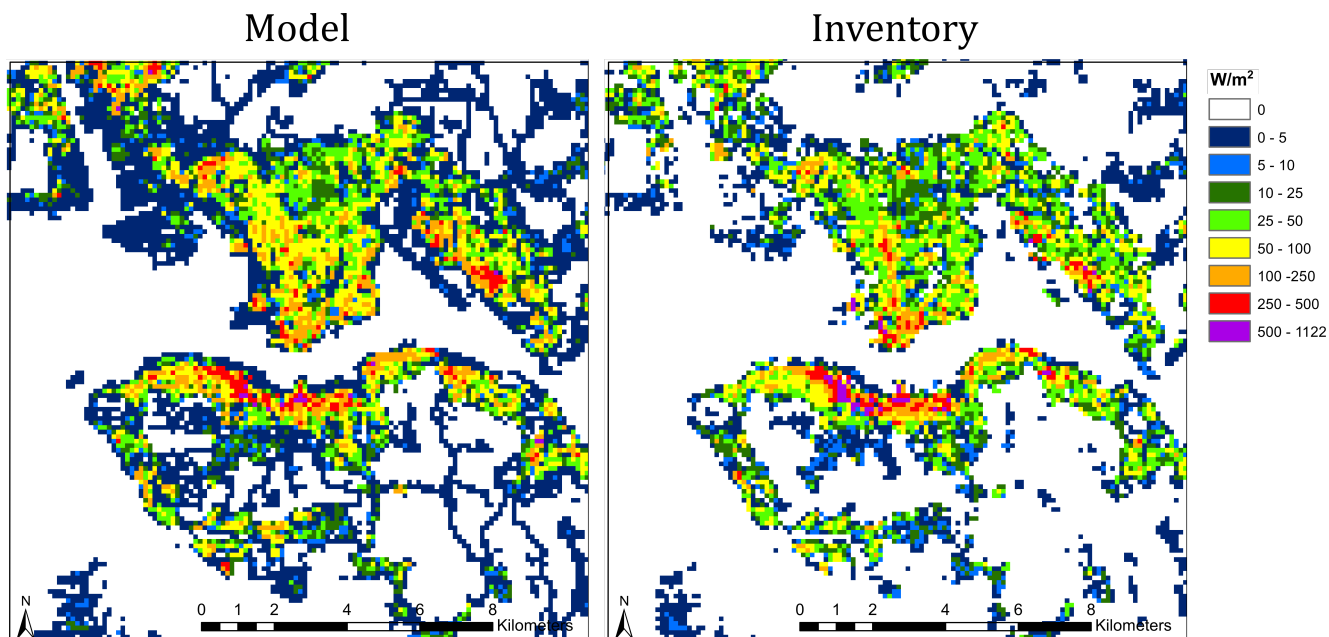
**Table 2.** Average anthropogenic heat flux due to building energy consumption ( $\overline{Q_f^{bld}}$ ) and total building energy consumption ( $E_A^{bld}, E_f^{bld}$ ).

Domain	$\overline{Q_f^{bld}}$ [ $\text{Wm}^{-2}$ ]		$E_f^{bld}$ [TJ]	
	Model	Inventory	Model	Inventory
D4	22.0	19.9	1464	1324
D5	49.6	43.8	1169	1031

### 4.3 Anthropogenic heat flux due to buildings

For the NEW coupling approach, the magnitude and spatial distribution of the monthly average anthropogenic heat flux due to buildings is evaluated for May 2018. It is assumed that buildings are the only contributors to the city's energy consumption in the domestic, industrial, and commercial sectors. Overall, there is a slight overestimation of the monthly average anthropogenic heat flux for D4 and D5 of around 11% and 13%, respectively (Table 2). Otherwise, there is generally a good agreement in the spatial distribution between the model and the inventory (Figure 12). The central business district along the northern coast of Hong Kong Island sees the highest anthropogenic heat flux of up to above  $500 \text{ Wm}^{-2}$ . Commercial and industrial areas around Tsim Sha Tsui (southern tip of Kowloon Peninsula) and Kwun Tong (east Kowloon) also have a high anthropogenic heat flux between 100 and  $500 \text{ Wm}^{-2}$ . Other highly urbanised areas in the Kowloon Peninsula, north-eastern and western coasts of Hong Kong Island, as well as the Shatin, Tsuen Wan, and Tseung Kwan O new towns exhibit relatively lower values (between 25 and  $100 \text{ Wm}^{-2}$ ).

The modelled anthropogenic heat flux is further evaluated for each building archetype (Figure 13). The model is able to capture the different magnitudes of heat fluxes for different building type and functions, but there is a considerable overestimation at grid points with the dominant building type of hotel, industrial building, and hospital. According to the authors' local knowledge, the fact that many industrial buildings in Hong Kong have been converted into storage warehouses, private workshops, retail shops, restaurants etc., which do not use as much energy nor follow the same behavioural schedules of the assumed industrial activities, may be the reason for this overestimation. As for hotels and hospitals, the building energy consumption is high owing to their 24/7 occupancy. However, the overestimation is likely caused by the grid-dominant building type approach, as not all buildings within the same model grid belong to such energy-intensive uses. The overestimation for the three private housing building types (Private Housing, Newer Private Housing, Modern Private Housing) may be attributable to too high internal heat loads and the assumed nighttime air conditioning, which may not be representative for all occupants with different financial ability, environmental awareness, and thermal comfort acceptability. On the contrary, there is an underestimation of anthropogenic heat flux for commercial buildings (Commercial Skyscraper, Old Commercial Building), probably because of uncertainties in the behaviour and occupancy settings of the buildings with office uses, as it is difficult to obtain real surveyed data for these buildings due to privacy or security issues. The underestimation of energy consumption for buildings of transport-related uses and historical monuments may be explained by the missing mechanical ventilation in the model for these building types and the mix of neighbouring buildings with other uses in the same grid not taken in account by the grid-dominant



**Figure 12.** Anthropogenic heat flux due to building energy consumption in D5.

620 building type approach. Despite the discussed uncertainties of the model and those of the inventory (Section 3.3.2), the results are encouraging and confirm the applicability of the TEB coupled to BEM in a city with complex and heterogeneous urban form and function.

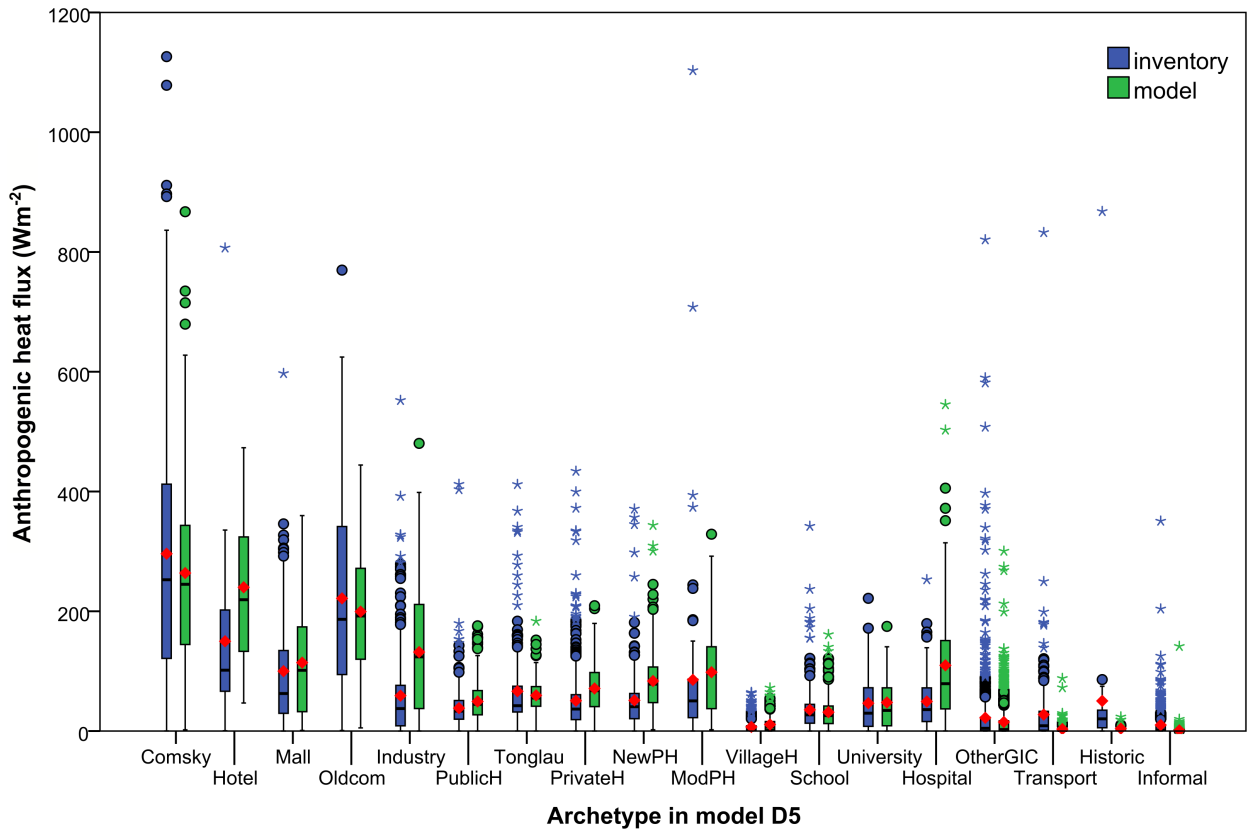
## 5 Discussion

### 5.1 Comparison with previous studies

625 Model evaluation reveals a marked improvement of the simulated near-surface air temperature and relative humidity for the new multi-layer coupling between SURFEX-TEB and Meso-NH compared to the previous single-layer coupling. The average values of the bias and rmse for air temperature and relative humidity at urban and rural stations obtained for the present and previous studies are presented in Tables 3 and 4. In the present study, stations are considered as urban if in a circle with 250 m radius centered at the station the plan area building density is above 0.1 or the average building height is above 15 m.

630 All other stations are considered as rural even though they are characterised by a large variety of environments like forests, small islands and mountain peaks. The precise definition of the urban and rural stations is not given in all previous studies, therefore a certain degree of uncertainty remains when comparing the model evaluation measures with previous studies. For the CLASSICAL single-layer coupling, the model results are ~~not of acceptable quality~~ of lower quality than obtained in previous studies focussing on Hong Kong. For the NEW multi-layer coupling, the rmse of air temperature obtained for both heat waves

635 is very similar to the values obtained for the previous WRF-BEP applications in Hong Kong. Model improvement is the



**Figure 13.** Statistical distribution of the anthropogenic heat flux due to building energy consumption in D5 as a function of the dominant building archetype at grid point scale. In the boxplots, the black line denotes the median and the red diamond the mean. Comsky denotes Commercial Skyscraper, Oldcom Old Commercial Building, PublicH (PrivateH) Public (Private) Housing, NewPH (ModPH) Newer (Modern) Private Housing, VillageH Village House, other GIC other Government, Institutional, and Community buildings, and Historic Historical Building.

largest at urban stations, which is no surprise since the most relevant changes of the coupling concern the urban environment. Interestingly, the lowest rmse of 1.0 K among all previous studies is reported by Lo et al. (2007) for a relatively coarse model resolution of 1.5 km and the simple urban parametrisation in the Noah LSM. This good performance might be due to the low values of solar radiation, and hence the low daily temperature amplitude, in their short simulation period at the end of October.

640 The present study overestimates near-surface air temperature and underestimates near-surface relative humidity. Despite this, the rmse of relative humidity for the NEW coupling approach indicates similar or slightly higher model quality compared to previous studies. Another interesting finding is that coupling the heat and moisture fluxes from the building walls and roofs at the surface deteriorates the simulation results only for those stations surrounded by buildings of at least 40 m. It might therefore be neglected during model applications at a coarser resolution.

645 Compared with previous studies, the Meso-NH-TEB results for wind speed are of similar to better quality for both the single

**Table 3.** Comparison of evaluation measures for air temperature with previous studies.  $\Delta$  is the model resolution.

Study	Period	Model	$\Delta$ [m]	Obs.	bias [K]			rmse [K]		
					urb.	zur.	all	urb.	zur.	all
Present	1-8/9/2009	MNH-TEB-CLASSICAL	250	24 HKO	2.1	1.5	1.8	2.6	2.0	2.4
Present	1-8/9/2009	MNH-TEB-NEW	250	24 HKO	0.9	0.8	0.8	1.4	1.4	1.4
Present	17-31/5/2018	MNH-TEB-CLASSICAL	250	29 HKO	1.8	1.4	1.6	2.2	1.9	2.1
Present	17-31/5/2018	MNH-TEB-NEW	250	29 HKO	0.7	0.7	0.7	1.2	1.6	1.4
Wong et al. (2019)	18-22/12/2010	WRF-NoahLSM	500	12 HKO	-0.4	-	-	1.5	-	-
Wong et al. (2019)	18-22/12/2010	WRF-BEP-BEM	500	12 HKO	-0.0	-	-	1.4	-	-
Wang et al. (2018)	23-28/6/2016	WRF-BEP-BEM	500	27 HKO	-0.1	-	0.2	-	-	1.2
Wang et al. (2017)	15-18/9/2012	WRF-BEP-BEM	500	25 HKO	-	-	0.1	-	-	1.4
Wang et al. (2017)	15-18/9/2012	WRF-BEP-BEM (new $c_d$ )	500	25 HKO	-	-	0.3	-	-	1.6
Wang et al. (2014)	entire 2008	WRF-SLUCM	4000	5 PRD	-	-	0.7	-	-	1.4
Lo et al. (2007)	30-31/10/2003	MM5-bulk	1500	33 HKO	-0.3	-0.2	-0.3	2.0	1.2	1.7
Lo et al. (2007)	30-31/10/2003	MM5-NoahLSM	1500	33 HKO	-0.2	-0.3	-0.2	1.0	1.0	1.0
Lam et al. (2006)	28/12/99-1/1/00	MM5-NoahLSM	1500	7 HKO	-	-	-	-	-	1.7

**Table 4.** Same as Table 3, but for relative humidity.

Study	Period	Model	$\Delta$ [m]	Obs.	bias [%]			rmse [%]		
					urb.	zur.	all	urb.	zur.	all
Present	1-8/9/2009	MNH-TEB-CLASSICAL	250	19 HKO	-11.3	-9.8	-10.5	13.1	12.4	12.8
Present	1-8/9/2009	MNH-TEB-NEW	250	19 HKO	-7.7	-6.4	-7.0	10.1	10.4	10.3
Present	17-31/5/2018	MNH-TEB-CLASSICAL	250	16 HKO	-9.5	-8.7	-9.1	11.0	11.7	11.3
Present	17-31/5/2018	MNH-TEB-NEW	250	16 HKO	-5.3	-5.3	-5.3	7.6	10.5	8.9
Wang et al. (2017)	15-18/9/2012	WRF-BEP-BEM	500	15 HKO	-	-	3.1	-	-	10.2
Wang et al. (2017)	15-18/9/2012	WRF-BEP-BEM (new $c_d$ )	500	15 HKO	-	-	2.9	-	-	11.0
Wang et al. (2014)	entire 2008	WRF-SLUCM	4000	5 PRD	-	-	-5.2	-	-	13.1

and multi-layer coupling. The good results for the single-layer coupling are only obtained because the simulated wind speed values from the SBL levels below the physical surface are taken. The multi-layer coupling is therefore beneficial for the simple reason that the influence of the buildings on the wind speed in the mesoscale model is better represented.

**Table 5.** Same as Table 3, but for wind speed.

Study	Period	Model	$\Delta$ [m]	Obs.	bias [ $\text{ms}^{-1}$ ]			rmse [ $\text{ms}^{-1}$ ]		
					urb.	rur.	all	urb.	rur.	all
Present	1-8/9/2009	MNH-TEB-CLASSICAL	250	16 HKO	0.4	-0.6	-0.2	1.4	2.0	1.8
Present	1-8/9/2009	MNH-TEB-NEW	250	16 HKO	-0.2	-1.4	-0.8	1.3	2.2	1.8
Present	17-31/5/2018	MNH-TEB-CLASSICAL	250	18 HKO	1.0	1.2	1.1	1.5	1.9	1.8
Present	17-31/5/2018	MNH-TEB-NEW	250	18 HKO	0.3	1.0	0.7	1.2	1.8	1.5
Dy et al. (2019)	1-31/7/2010	WRF-basic-ACM	1000	352 PRD	0.6	0.7	0.7	2.2	2.4	2.3
Dy et al. (2019)	1-31/7/2010	WRF-urban-ACM	1000	352 PRD	-0.2	0.5	0.1	1.7	2.3	2.0
Dy et al. (2019)	1-31/12/2010	WRF-basic-ACM	1000	352 PRD	1.0	1.2	1.1	2.5	3.0	2.7
Dy et al. (2019)	1-31/12/2010	WRF-urban-ACM	1000	352 PRD	0.0	0.7	0.5	1.6	2.3	1.9
Wong et al. (2019)	18-22/12/2010	WRF-NoahLSM	500	12 HKO	0.6	-	-	1.6	-	-
Wong et al. (2019)	18-22/12/2010	WRF-BEP-BEM	500	12 HKO	-0.2	-	-	1.0	-	-
Wang et al. (2017)	15-18/9/2012	WRF-BEP-BEM	500	18 HKO	-	-	0.7	-	-	2.2
Wang et al. (2017)	15-18/9/2012	WRF-BEP-BEM (new $c_d$ )	500	18 HKO	-	-	0.2	-	-	2.2
Wang et al. (2014)	entire 2008	WRF-SLUCM	4000	5 PRD	-	-	0.5	-	-	1.3
Lam et al. (2006)	28/12/99-1/1/00	MM5-NoahLSM	1500	7 HKO	-	-	-	-	-	1.7

## 5.2 The relevance of horizontal advection for near-surface air temperature

650 The benefit of the NEW coupling approach is that it allows one to take into account the horizontal advection in the urban canopy layer, e.g. from the cooler sea or forests into the warmer high-rise high-density urban environment. Theoretically, the more heterogeneous the land use and urban morphology and the larger the horizontal meteorological variable gradients, the larger the benefit of considering horizontal advection. To quantify the contribution of horizontal advection, average daily cycles of the different terms in the prognostic equation for potential temperature in Meso-NH ([Equation C1](#)) are calculated for the

655 entire HW2009 and HW2018 in the lowest 30 m of the atmosphere and the most relevant terms are displayed in [Figure 14](#) for two boxes covering Kowloon Peninsula and the high-rise district in the north-west of Hong Kong Island ([Figure 10b](#)). The results shown are for the NEW coupling approach. For the CLASSICAL coupling approach, there is no advection in the urban canopy layer, so the advection term is 0 by definition. For both heat waves and both boxes, the temporal evolution of the near-surface potential temperature is mainly governed by the warming due to the sensible heat fluxes from the buildings, and

660 the cooling due to horizontal advection and vertical diffusion. On Kowloon Peninsula, the building heat fluxes are larger in the daytime since building walls and roofs are heated by solar radiation and release a large part of the heat immediately. However, this is not the case in the high-rise district in the north-west of Hong Kong Island. The daily cycle of the building heat fluxes is less marked there, probably since in this high-rise district more heat is stored in the building materials during the day and released during the night. For Kowloon Peninsula, the advection contributes to reducing the near-surface air temperature in



665 the same order of magnitude than the vertical diffusion during the daytime and in the evening. Horizontal advection is only  
of low importance in the nighttime. For the north-west of Hong Kong Island, the horizontal advection is of high importance  
during the entire day and both heat waves, which is due to the vicinity to the coastline with channelling of the wind between  
Hong Kong Island and Kowloon Peninsula. The results of the budget analysis corroborate the finding that the NEW coupling  
670 approach leads to a reduction of near-surface air temperature in the daytime and therefore to a better agreement with the HKO  
observations. This is at least partly due to the consideration of horizontal advection in the very heterogeneous environment  
of Hong Kong. However, vertical diffusion is also important, and therefore model results will likely also be influenced by the  
choice of the turbulent mixing length. ~~A modification of the mixing length in the SBL scheme to enhance vertical mixing might  
lead to better results for the~~

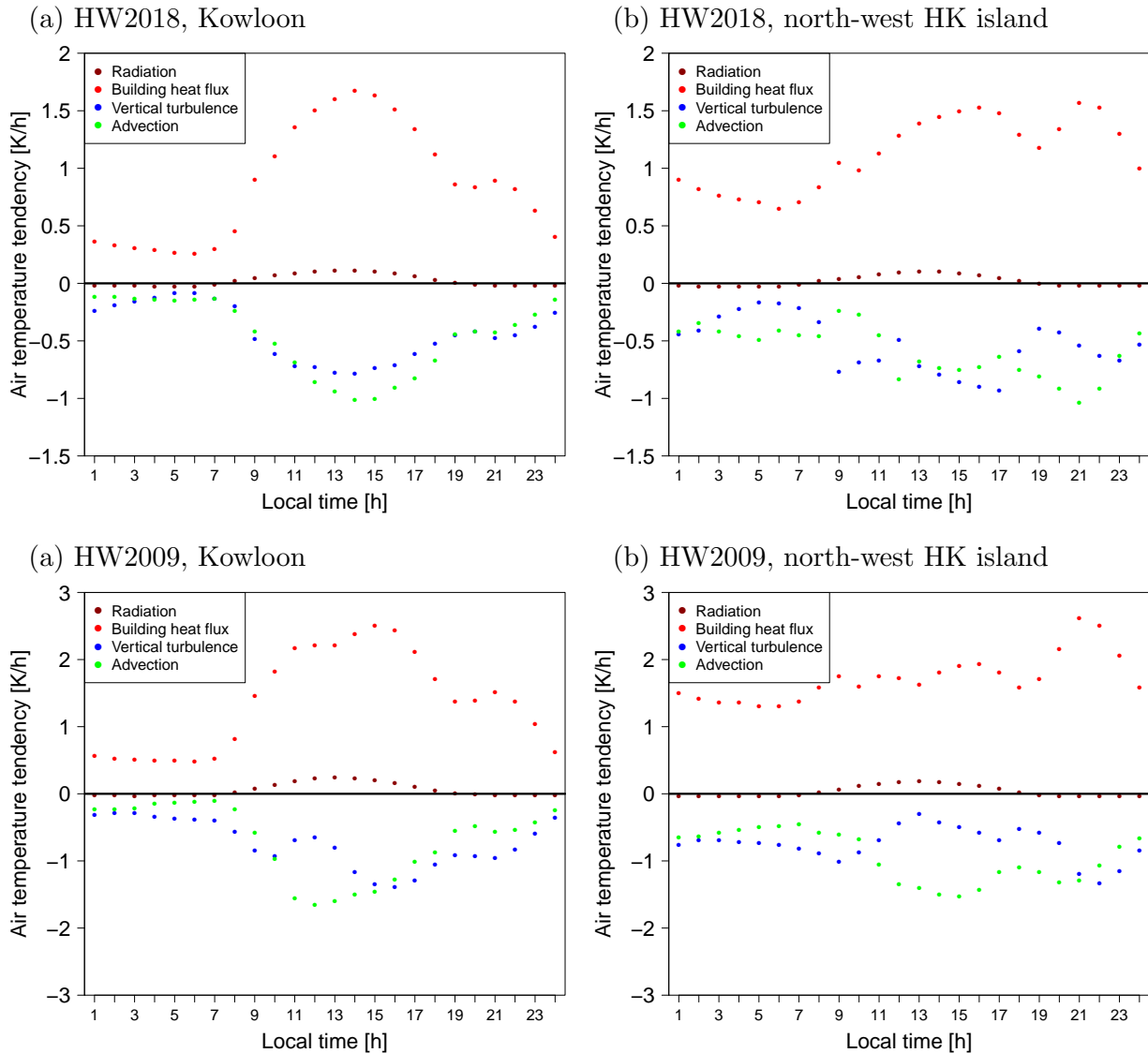
### 5.3 Surface energy balance

675 We investigate to which degree the surface energy balance (SEB) is changed for the different coupling approaches. For this  
purpose, we calculate the average daily cycle of the SEB from D4 results for HW2009 and HW2018 and two 1 km x 1 km  
boxes centred on the stations King's Park and Hong Kong Park (Figure 15). For both stations and both heat waves, the SEB  
displays typical characteristics of a strongly urbanised environment. The sensible heat flux ( $Q_h$ ) is much larger than the latent  
heat flux ( $Q_e$ ) and is strongly positive after sunset, which is due to the anthropogenic heat flux ( $Q_f$ ) and the storage heat flux  
680 ( $Q_s$ ). The differences in the SEB between the different coupling approaches are very small compared to the differences in the  
simulated near-surface air temperature at these stations (Section 4.1.1). This shows that the large differences in the near-surface  
meteorological variables between the NEW (multi-layer) and the CLASSICAL (single-layer coupling, but not necessarily for  
the right reason) coupling approaches are not due to changes in the SEB, but due to the different way the land surface and the  
atmospheric model are coupled.

### 685 5.4 Drag force approach and urban turbulent length scales

The NEW coupling approach using a drag coefficient for the walls of  $C_d = 0.4$  leads to an underestimation of the wind speed  
values at the stations in the urban parks. This is in contrast to Santiago and Martilli (2010) who found an overestimation  
for wind speed in the urban canopy with the same drag force approach and the same value of  $C_d = 0.4$  when compared to  
obstacle-resolving Computational Fluid Dynamic results. This discrepancy might be due to the fact that the HKO stations are  
690 located in small urban parks, and therefore their environment is not sufficiently resolved. The fact that there are buildings, and  
subsequently a drag force due to the walls and roofs applied at the station grid point might explain the underestimation of the  
wind speed at the urban stations. The results of the present study are also in contrast to Gutiérrez et al. (2015), who found  
an overestimation of wind speed for a WRF-BEP application to New York. However, this might be due to the use of rooftop  
stations for model evaluation by Gutiérrez et al. (2015). More observations of wind speed from inside the urban canopy layer  
695 of high-rise high-density cities are required to be able to judge whether the formulation of the drag force approach or the value  
of the drag coefficient has to be improved.

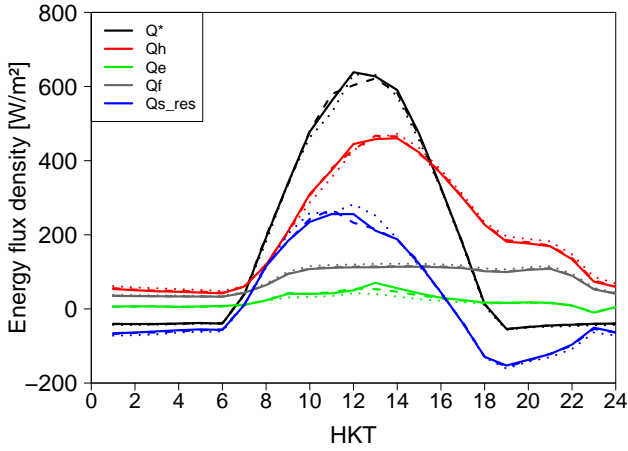
~~No~~ A relevant question is also which length scales for turbulent mixing and dissipation shall be employed in both the



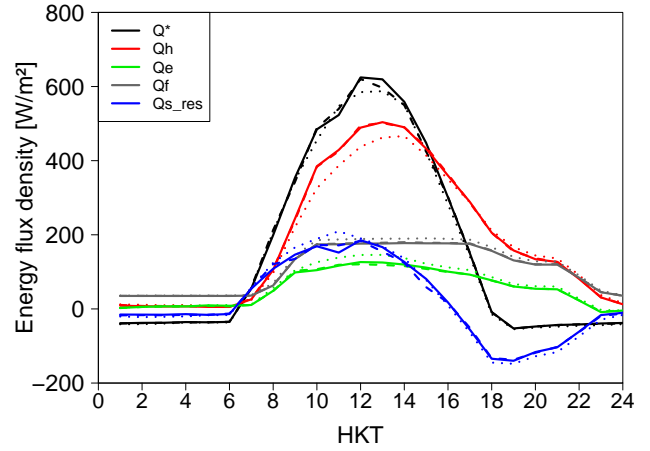
**Figure 14.** Daily cycle of the most relevant terms in the prognostic equation for the potential temperature for the NEW coupling approach in the lowest 30 m of the atmosphere for the two boxes covering Kowloon Peninsula and the north-west of Hong Kong Island displayed in Figure 10b.

atmospheric model for the multi-layer coupling and the SBL scheme for the single-layer coupling. For the simulations analysed in the present study, the following choices have been made: 1) For the NEW multi-layer coupling, no modification of the length scales for turbulent mixing and dissipation has been made. Tests have been performed is made in the atmospheric model. 2) For the CLASSICAL single-layer coupling, the urban turbulent length scale of Santiago and Martilli (2010) is used in the SBL.

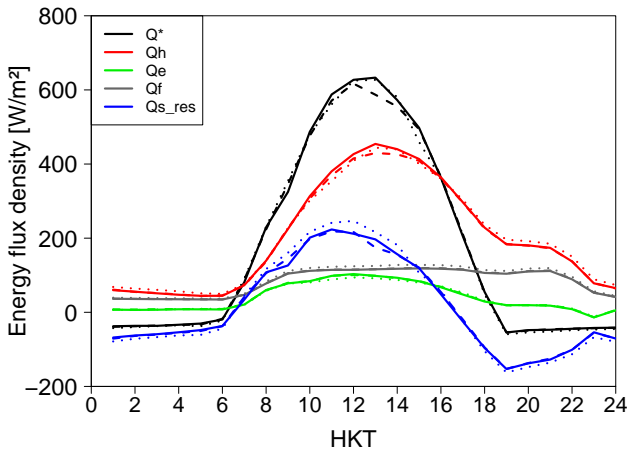
King's Park, HW2009



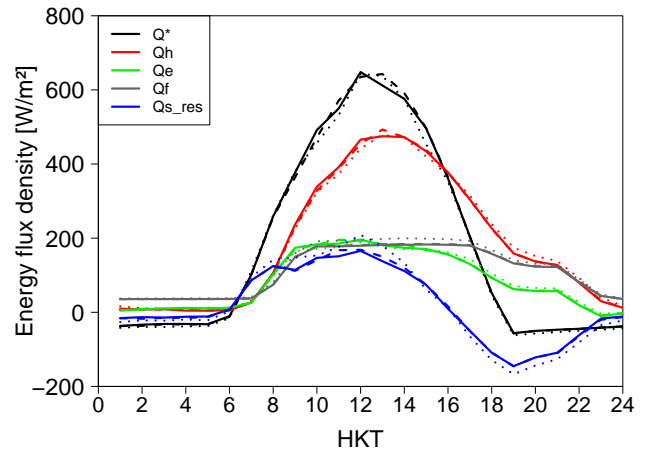
Hong Kong Park, HW2009



King's Park, HW2018



Hong Kong Park, HW2018



**Figure 15.** Daily cycle of the most relevant terms in the prognostic equation surface energy balance averaged for the potential temperature for entire duration of the NEW coupling approach in the lowest 30 heat waves and 1 m of km x 1 km boxes centred on the atmosphere for stations King's Park and Hong Kong Park.  $Q_*$  is the two-boxes-covering Kowloon Peninsula net radiation,  $Q_h$  and  $Q_e$  are the north-west-upwelling turbulent sensible and latent heat fluxes respectively,  $Q_f$  is the anthropogenic heat flux, and  $Q_s$  is the storage heat flux, which is diagnosed as the residual of the other fluxes. The continuous, dashed, and dotted lines correspond to the NEW, SURFFLUX, and CLASSICAL coupling approaches respectively. HKT denotes Hong Kong Island displayed in Figure 10b Time.

scheme (Section 3.4). Two additional simulations have been conducted to investigate the sensitivity of the presented results on these choices:

705 – A simulation similar to the NEW multi-layer coupling, but using the turbulent length scales proposed by Santiago and Martilli (2010) ~~for at~~ the Meso-NH model levels lower than two times the average building height, but not more than 40 m a.g.l. ~~This deteriorated. This deteriorates~~ model results for air temperature and relative humidity, leading to too high (low) air temperature (relative humidity) when compared to the meteorological stations. This indicates that the vertical turbulent exchange is underestimated when using the lower values of the turbulent length scales specific to the urban environment ~~. However, this deficiency from Santiago and Martilli (2010).~~

710 – A simulation similar to the CLASSICAL single-layer coupling, but modifying the mixing length in the urban SBL scheme to be equal to the distance from the surface ( $l_{m,SBL}(z) = z$ ), as it is made in the atmospheric model close to the surface. This modification slightly improves the results for air temperature compared to the CLASSICAL simulation.

Both additional simulations show that the use of the specific urban turbulent length scale from Santiago and Martilli (2010) compared to a turbulent length scale valid for the building-free boundary layer close to the surface leads to a deterioration of model results. This might be due to the fact that the length scales defined by Santiago and Martilli (2010) have been derived for very idealised urban morphologies and neutral conditions. Further studies are needed to derive urban turbulent length scales for more realistic urban morphologies and a variety of atmospheric stability regimes.

## 5.5 The relevance of the sea surface temperature

The SST values are very important for the correct simulation of the meteorological conditions in Hong Kong. For HW2018, 720 the authors noted a very strong increase (up to 4.5 K) of the SST between the beginning and the end of the heat wave reaching values that are 2 K higher than the point observation in the harbour. Therefore, one reason for the positive bias at the end of HW2018 might be the too high SST. A possible source of uncertainty for the SST in Hong Kong is a wrong estimation of the temperature and volume of the freshwater from the Pearl river in the SST analysis. Another source of uncertainty is the coarse horizontal resolution of the SST analysis of about 10 km, which might not sufficiently resolve cold upwelling close to 725 the shore. In a future study, a coupled atmosphere-ocean model might be applied to dynamically simulate the state of the sea at high resolution as a function of the meteorological conditions and the freshwater influx from the Pearl river.

## 5.6 Anthropogenic heat flux

The monthly average values of the anthropogenic heat flux due to the buildings for the city of Hong Kong are above 500  $Wm^{-2}$  in the high-rise high-density districts. These values are of similar magnitude than the solar radiation which is usually 730 the main driver of the Earth's surface energy balance. Since similar values can be expected for other, more extensive Asian megacities, it might be worth representing these heat fluxes in the new generation of very high resolution Earth system models. Meso-NH coupled with SURFEX-TEB-BEM is able to simulate the monthly average building-related anthropogenic heat flux with an overestimation of about 10%, which could be due to the positive temperature bias of 0 to 1 K at the urban stations for the simulation covering entirely May 2018. This is remarkable given the large number of uncertain input parameters related

735 to urban morphology, building construction materials, capacity and coefficient of performance of air conditioning systems,  
building use, and occupant's behaviour (Masson et al., 2020).

## 6 Conclusions

In the present study, the multi-layer coupling of the urban canopy model Town Energy Balance (TEB) included in the land  
surface model SURFEX with the mesoscale atmospheric model Meso-NH has been introduced. The main objective of the  
740 new multi-layer coupling is to better represent the interactions between high-rise cities and the atmosphere. This is a step  
towards future high-resolution weather prediction models with a horizontal resolution of about 100 m and studies quantifying  
the impact of climate change mitigation and adaptation measures implemented in high-rise high-density cities. Such high-rise  
settings are very common in the young Asian megacities and are becoming more prevalent in newly constructed urban districts  
in other parts of the world.

745 The introduced multi-layer coupling is simple. The geometric assumption in TEB that all buildings at grid point scale have the  
same height and are aligned along a street canyon of infinite length to calculate the radiative exchanges in the urban canopy  
layer is unchanged. To maintain the coherence between the calculations in TEB and Meso-NH, the effect of the buildings on  
the atmosphere is only considered up to the average building height. The effect of the buildings on the prognostic variables of  
Meso-NH is taken into account using a drag force approach which reduces the horizontal wind components representing the  
750 friction due to the building walls and roofs and increases the turbulent kinetic energy representing the production of kinetic  
energy due to the wind shear close to the buildings. The heat and moisture fluxes from the building walls and roofs are released  
at the atmospheric model levels intersecting these urban facets. No modifications of the length scales for turbulent transport  
and dissipation have been made in the present study.

The multi- and single-layer coupling approaches have been tested for two selected prolonged heat waves in the heterogeneous  
755 high-rise high-density city of Hong Kong, since for this city high-quality data on urban form and function as well as a dense  
network of meteorological stations are available. With the single-layer coupling, model results for near-surface air temperature  
and relative humidity are of poor quality, which is expected since the single-layer version of TEB was not initially developed  
for high-rise heterogeneous cities. The new multi-layer coupling leads to a strong improvement of the model results, bringing  
the model performance on par with, if not better than, the previous applications with the more complex multi-layer WRF-BEP  
760 model in Hong Kong. Evaluation of the vertical profiles in the lower boundary layer with radiosonde observations indicates  
that for the single-layer coupling approach, the deviation from the observation mainly occurs in the urban canopy layer where  
the 1D Surface Boundary Layer scheme is employed to calculate vertical profiles of the meteorological variables. This is due  
to the lack of the consideration of horizontal advection of air temperature from the cooler surrounding rural areas or the sea  
towards the warmer urban environment. For the wind speed, the model results are improved on average for the multi-layer  
765 coupling approach, but not for all stations and all situations. The effect of the buildings on the Meso-NH model levels is clearly  
underestimated with the single-layer coupling approach and this leads to considerable differences in small scale circulation  
features.

770 The [multi-layer coupling has not yet been tested for various meteorological situations, different seasons, and a variety of cities.](#)  
[The benefit from the multi-layer coupling might be lower for meteorological situations with higher wind speed and cloudy](#)  
[conditions, since for such situations the urban heat island intensity is lower than for situations with clear sky and low wind](#)  
[speed. Furthermore, the difference between the single- and multi-layer coupling can be expected to be smaller for low to](#)  
[mid-rise cities than for the high-rise city of Hong Kong. Subsequent studies could investigate the benefit-cost ratio of single-](#)  
[versus multi-layer coupling to develop recommendations which complexity of modelling is required for which city.](#)

775 [The](#) most important future enhancement of the multi-layer SURFEX-TEB will be the modification of the radiative exchange  
calculations using recent developments of Hogan (2019a) and Hogan (2019b). With these, it will be possible to consider a  
variety of building heights at grid point scale and as a consequence also for the drag force, heat and moisture fluxes in Meso-  
NH. This should improve the model results in areas not conforming to the urban canopy assumption (e.g. building clusters  
standing atop podiums) or areas with isolated high-rise buildings in otherwise low- to mid-rise settings. Such situations are not  
well represented in the current multi-layer coupling. The improved treatment of urban radiation can also allow one to take into  
780 account the effect of urban air pollution or urban fog, which will become more relevant as the number of high-rise buildings in  
a city increases.

The evaluation of the new multi-layer coupling has suffered from the lack of observations that are actually representative of the  
urban canopy layer, since in Hong Kong, even the most urban stations are actually located in small parks. Therefore, it is very  
difficult to judge based on the presented model evaluation whether the choices for the drag coefficient, or the turbulent length  
785 scales are actually justified. Further observation campaigns in high-rise high-density cities should therefore focus on obtaining  
more observations of meteorological parameters from inside the urban canopy layer.

Further work is required to derive, test, and evaluate the different drag force approaches and urban turbulent length scales.  
It needs to be determined whether it is worthwhile to also take into account the directional variations of the drag coefficient  
due to the building shape or urban morphology. This could represent processes like channelling in the streets, variations  
790 with atmospheric stability, or even a breakdown of the underlying theoretical framework for high-density cities since there  
is too much sheltering. Obstacle-resolving modelling for a large variety of idealised urban morphologies and meteorological  
situations needs to be employed to derive more robust formulations for the drag coefficients and the turbulent length scales.

*Code and data availability.* The modified source code containing routines of SURFEX-TEB and Meso-NH is provided in the Supplement.  
A short documentation explains in which routines the equations presented in the manuscript can be found. Furthermore, the simulation  
795 directories for the different coupling approaches and the two heat waves are provided. Further information is available on request. Model  
developments will be merged with the official version of SURFEX-V9.0 and Meso-NH-V5.4.

## Appendix A: Station meta data

The meta data for the meteorological station network operated by the Hong Kong Observatory are given in Table A1.

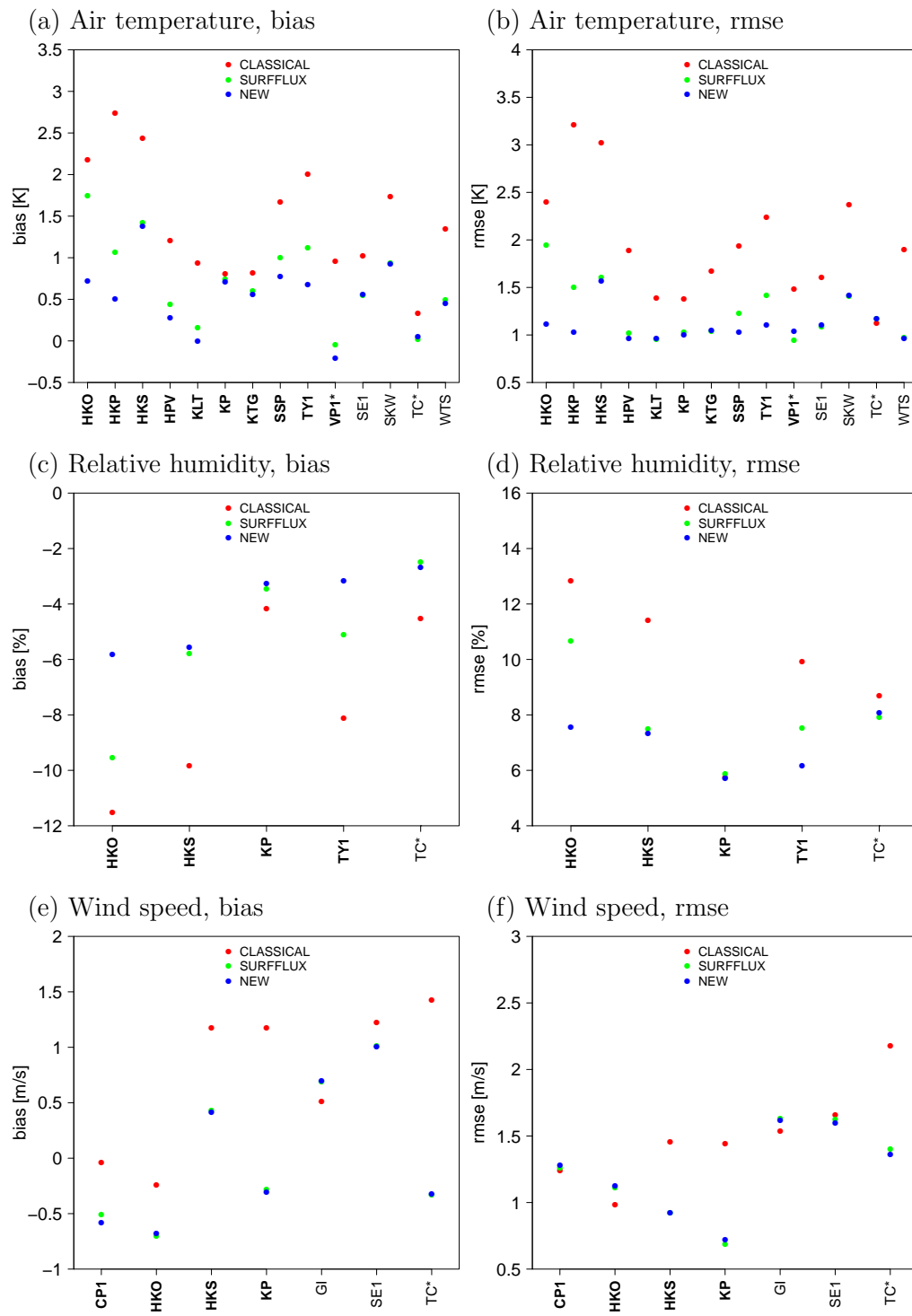
## Appendix B: Model evaluation measures for highest resolution (125 m) domain (D5)

800 Model evaluation measures for air temperature, relative humidity, and wind speed for the highest resolution (125 m) domain D5 are given in ~~Figure B1 (B2)~~ Figures B1 and B2 for HW2018 ~~(and HW2009)~~ respectively.

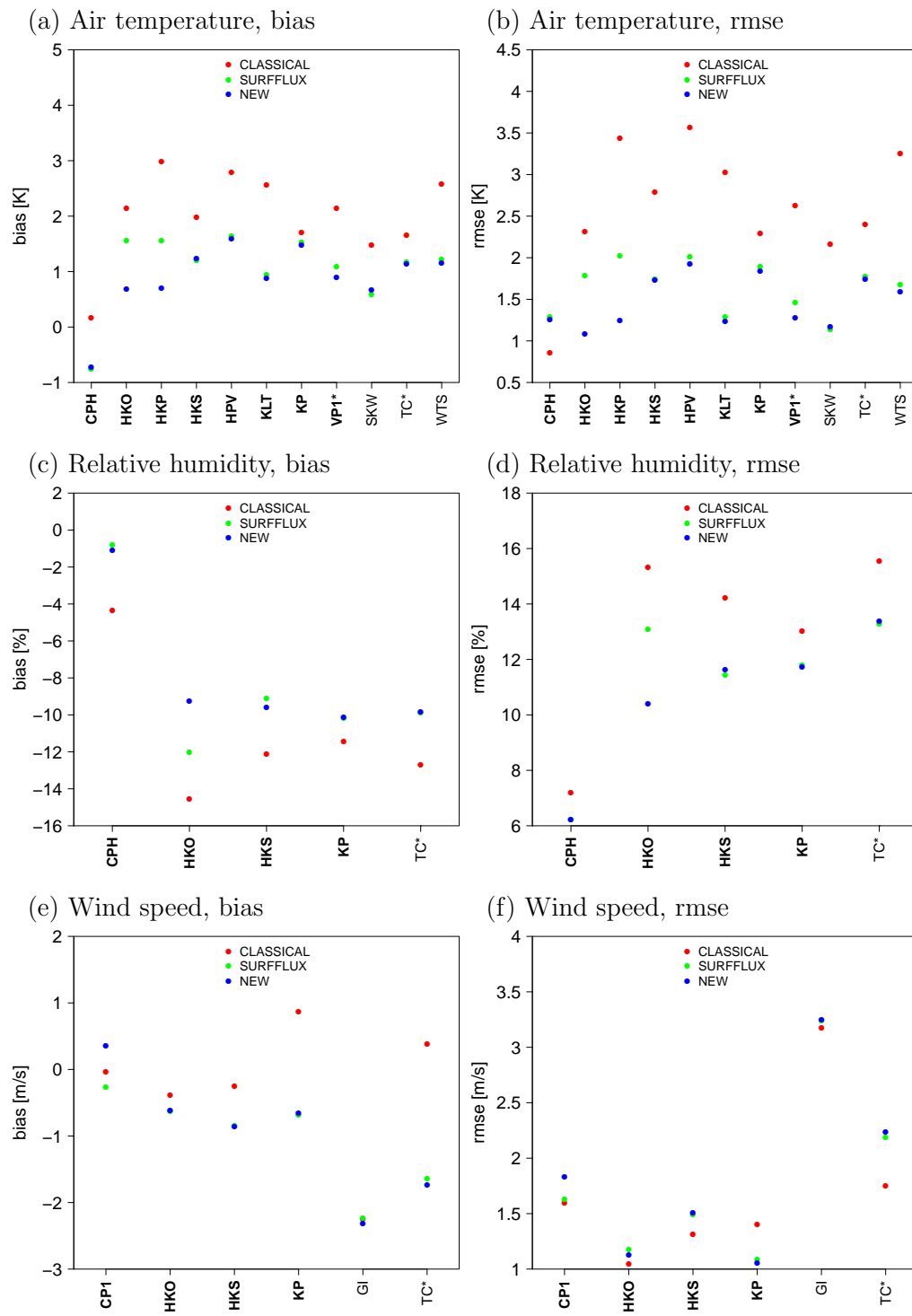
**Table A1.** Meta data concerning the station network and land cover in their surrounding.  $\lambda_p$  and  $\lambda_i$  denote the plan area building and impervious fraction respectively. The height a.g.l. of the Stevenson screen is about 1 m, except for station CPH for which it is 62 m.

Station code	Latitude [°]	Longitude [°]	Ground elevation [m]	Height of wind anemometer [m]	$\lambda_p$ (125 m)	$\lambda_i$ (125 m)	$H_{bid}$ [m] (125 m)	$\lambda_p$ (250 m)	$\lambda_i$ (250 m)	$H_{bid}$ [m] (250 m)
BHD	22.1975	114.2119	94	9	-	-	-	0.00	0	4.5
CCH	22.2011	114.0267	72	27	-	-	-	0.02	0.02	13.2
CPI	22.2889	114.1558	3	27	0.14	0.0	12.3	0.10	0.08	10.0
CPH	22.3481	114.1092	61	-	0.17	0.48	61.1	0.09	0.35	54.3
GI	22.2850	114.1128	88	19	0.03	0.0	7.2	0.01	0.00	7.4
HKO	22.3019	114.1742	32	42	0.26	0.20	29.3	0.39	0.30	40.6
HKP	22.2783	114.1622	26	-	0.12	0.07	10.2	0.16	0.25	93.4
HKS	22.2478	114.1736	5	25	0.00	0.46	3.8	0.17	0.37	16.8
HPV	22.2706	114.1836	5	-	0.01	0.05	3.0	0.07	0.21	32.7
JKB	22.3158	114.2556	38	14	-	-	-	0.11	0.10	13.5
KFB	22.4328	114.1208	307	-	-	-	-	0.01	0.12	4.5
KLT	22.3350	114.1847	92	-	0.01	0.03	3.6	0.03	0.05	15.3
KP	22.3119	114.1728	65	25	0.05	0.07	4.0	0.04	0.05	16.8
KSC	22.3703	114.3125	39	-	-	-	-	0.0	0.0	0.0
KTG	22.3186	114.2247	90	-	0.05	0.04	3.2	0.07	0.10	35.3
LAM	22.2261	114.1086	7	10	0.11	0.01	7.5	0.03	0.00	7.5
PEN	22.2911	114.0433	34	13	-	-	-	0.02	0.00	4.2
SE	22.3097	114.2133	1	15	0.03	0.00	6.2	0.01	0.05	6.2
SE1	22.3047	114.2172	4	-	0.01	0.11	5.0	0.00	0.05	5.0
SEK	22.4361	114.0847	16	10	-	-	-	0.16	0.27	7.3
SHA	22.4025	114.21	6	10	-	-	-	0.13	0.47	10.8
SKG	22.3756	114.2744	4	28	-	-	-	0.09	0.32	8.32
SKW	22.2817	114.2361	53	-	0.02	0.12	8.1	0.02	0.08	5.9
SSP	22.3358	114.1369	11	-	0.21	0.09	51.6	0.20	0.17	48.9
STY	22.2142	114.2186	31	-	-	-	-	0.18	0.33	11.9
TC	22.3578	114.2178	572	15	0.02	0.04	7.6	0.01	0.04	6.6
TMS	22.4106	114.1244	955	11	-	-	-	0.03	0.12	10.4
TW	22.3756	114.1267	35	-	-	-	-	0.11	0.22	15.7
TWN	22.3836	114.1078	142	-	-	-	-	0.04	0.08	16.0
TY1	22.3442	114.11	8	-	0.14	0.09	76.1	0.26	0.26	59.7
TYW	22.4028	114.3231	5	18	-	-	-	0.01	0.04	7.3
VP1	22.2642	114.155	406	-	0.21	0.17	8.2	0.30	0.16	17.0
WGL	22.1822	114.3033	56	27	-	-	-	0.02	0.01	6.8
WTS	22.3394	114.2053	21	-	0.07	0.22	5.9	0.09	0.26	11.1





**Figure B1.** Model evaluation measures [for hourly time series at meteorological stations](#) in D5 and [for HW2018](#). [The urban stations are bold,](#) [the stations on mountain peaks are marked with a \\*.](#)



**Figure B2.** Model evaluation measures [for hourly time series at meteorological stations](#) in D5 and [for HW2009](#). [The urban stations are bold,](#) [the stations on mountain peaks are marked with a \\*.](#)

## Appendix C: Prognostic equation for potential temperature

The prognostic equation for potential temperature  $\theta$  in Meso-NH is

$$\begin{aligned} \frac{\partial(\rho_{d,ref}\theta)}{\partial t} + \nabla \cdot (\rho_{d,ref}\theta\mathbf{u}) = & -g\rho_{d,ref}w\frac{\theta}{C_pT_{v,ref}}\left(\frac{R_d+r_vR_v}{R_d}\frac{C_p}{C_{p,v}}-1\right) \\ & + \frac{\rho_{d,ref}}{\Phi_{ref}C_{p,v}}\left(L_m\frac{D(r_i+r_s+r_g)}{Dt} - L_v\frac{D(r_v)}{Dt} + H_{rad} + H_{turb}\right) \end{aligned} \quad (C1)$$

805 where  $w$  is the vertical component of the wind vector and  $T_{v,ref}$  the virtual temperature of the reference state:

$$T_{v,ref} = T_{ref}\frac{1+r_{v,ref}\frac{R_v}{R_d}}{1+r_{v,ref}} \quad (C2)$$

The specific heat capacity of water vapour  $C_{p,v}$  is  $1846 \text{ Jkg}^{-1}\text{K}^{-1}$ ,  $\Phi_{ref}$  is the Exner function of the reference state,  $r_i$ ,  $r_s$ , and  $r_g$  are the mixing ratios of ice, snow and graupel respectively. The specific heat for melting  $L_m$  is  $3.3337 \times 10^5 \text{ Jkg}^{-1}$ , the specific heat for evaporation  $L_v$  is  $2.5008 \times 10^6 \text{ Jkg}^{-1}$ .  $H_{rad}$  and  $H_{turb}$  represent the processes of radiation and diffusion.

810 *Author contributions.* Robert Schoetter did the main part of the model development, executed the numerical simulations and wrote parts of the Introduction, Sections 2, 3.2, 3.4, 4.1, 4.2, Sections 5.2 to 5.6, and the Conclusions. Yu Ting Kwok wrote the parts of the Introduction related to past mesoscale urban climate model applications to Hong Kong, Sections 3.1, 3.3, 4.3, and 5.1. She also contributed to the testing of the NEW coupling approach. Cécile de Munck contributed to the design of the numerical model setup and the evaluation against the station observations. Kevin Ka Lun Lau contributed to the characterisation of the meteorological station environments. Wai Kin Wong provided  
815 guidance on the HKO observation data. Valéry Masson provided guidance on the model development. All authors read the entire manuscript.

*Competing interests.* The authors declare no competing interest.

*Acknowledgements.* Jeanine Payart is acknowledged for the preparation of the ECMWF high-resolution operational forecast analyses. Cindy Lebaupin Brossier is acknowledged for her advice on the SST analysis data. The Hong Kong Observatory is acknowledged for providing the meteorological station and the radiosounding observations. This work has received financial support from the Partenariat Hubert Curien  
820 Programme PROCORE-2019 for scientific exchange between France and Hong Kong for the project "The effects of urban development strategies on the urban climate of Hong Kong: An analysis based on numerical modelling" with the references 42552SL and F-CUHK403/18. It was also supported by a grant from the Research Grant Council of the Hong Kong Special Administrative Region, China (Project No. CUR4046-18F). Yu Ting Kwok received funding from the Hong Kong PhD Fellowship Scheme by the Hong Kong Research Grants Council.

## References

- 825 HKCensus, <https://www.censtatd.gov.hk/hkstat/sub/sp90.jsp>, accessed: 2020-06-30, 2018.  
HKO, <https://www.hko.gov.hk/en/Observatorys-Blog/101818/Will-2018-be-as-dry-as-1963>, accessed: 2020-06-30, 2018.  
TERRA/MODIS Aerosol Optical Thickness, [https://neo.sci.gsfc.nasa.gov/view.php?datasetId=MODAL2\\_M\\_AER\\_OD](https://neo.sci.gsfc.nasa.gov/view.php?datasetId=MODAL2_M_AER_OD), accessed: 2020-09-4, 2020.  
HKO, <https://www.hko.gov.hk/en/cis/popup.htm>, accessed: 2020-06-30, 2020.
- 830 Aflaki, A., Mirnezhad, M., Ghaffarianhoseini, A., Ghaffarianhoseini, A., Omrany, H., Wang, Z.-H., and Akbari, H.: Urban heat island mitigation strategies: A state-of-the-art review on Kuala Lumpur, Singapore and Hong Kong, *Cities*, 62, 131 – 145, <https://doi.org/https://doi.org/10.1016/j.cities.2016.09.003>, <http://www.sciencedirect.com/science/article/pii/S0264275116305303>, 2017.  
Arnfield, A. J.: Two decades of urban climate research: a review of turbulence, exchanges of energy and water, and the urban heat island, *International Journal of Climatology*, 23, 1–26, <https://doi.org/10.1002/joc.859>, <https://rmets.onlinelibrary.wiley.com/doi/abs/10.1002/joc.859>, 2003.
- 835 Aumond, P., Masson, V., Lac, C., Gauvreau, B., Dupont, S., and Berengier, M.: Including the Drag Effects of Canopies: Real Case Large-Eddy Simulation Studies, *Boundary-Layer Meteorology*, 146, 65–80, <https://doi.org/10.1007/s10546-012-9758-x>, <https://doi.org/10.1007/s10546-012-9758-x>, 2013.
- Barlow, J., Best, M., Bohnenstengel, S. I., Clark, P., Grimmond, S., Lean, H., Christen, A., Emeis, S., Haeffelin, M., Harman, I. N., Lemonsu, A., Martilli, A., Pardyjak, E., Rotach, M. W., Ballard, S., Boutle, I., Brown, A., Cai, X., Carpentieri, M., Coceal, O., Crawford, B., Di Sabatino, S., Dou, J., Drew, D. R., Edwards, J. M., Fallmann, J., Fortuniak, K., Gornall, J., Gronemeier, T., Halios, C. H., Hertwig, D., Hirano, K., Holtslag, A. A. M., Luo, Z., Mills, G., Nakayoshi, M., Pain, K., Schlünzen, K. H., Smith, S., Soulhac, L., Steeneveld, G.-J., Sun, T., Theeuwes, N. E., Thomson, D., Voogt, J. A., Ward, H. C., Xie, Z.-T., and Zhong, J.: Developing a Research Strategy to Better Understand, Observe, and Simulate Urban Atmospheric Processes at Kilometer to Subkilometer Scales, *Bulletin of the American Meteorological Society*, 98, ES261–ES264, <https://doi.org/10.1175/BAMS-D-17-0106.1>, <https://doi.org/10.1175/BAMS-D-17-0106.1>, 2017.
- 840 Best, M. J., Beljaars, A., Polcher, J., and Viterbo, P.: A Proposed Structure for Coupling Tiled Surfaces with the Planetary Boundary Layer, *Journal of Hydrometeorology*, 5, 1271–1278, <https://doi.org/10.1175/JHM-382.1>, <https://doi.org/10.1175/JHM-382.1>, 2004.
- Bougeault, P. and Lacarrère, P.: Parameterization of orographic induced turbulence in a mesobeta scale model, *Monthly Weather Review*, 117, 1872–1890, [https://doi.org/10.1175/1520-0493\(1989\)117<1872:POOITI>2.0.CO;2](https://doi.org/10.1175/1520-0493(1989)117<1872:POOITI>2.0.CO;2), 1989.
- 850 Bueno, B., Pigeon, G., Norford, L. K., Zibouche, K., and Marchadier, C.: Development and evaluation of a building energy model integrated in the TEB scheme, *Geoscientific Model Development*, 5, 433–448, <https://doi.org/10.5194/gmd-5-433-2012>, <https://www.geosci-model-dev.net/5/433/2012/>, 2012.
- Champeaux, J. L., Masson, V., and Chauvin, F.: ECOCLIMAP: a global database of land surface parameters at 1 km resolution, *Meteorological Applications*, 12, 29–32, <https://doi.org/10.1017/S1350482705001519>, <https://rmets.onlinelibrary.wiley.com/doi/abs/10.1017/S1350482705001519>, 2005.
- 855 Chen, F. and Dudhia, J.: Coupling an Advanced Land Surface–Hydrology Model with the Penn State–NCAR MM5 Modeling System. Part I: Model Implementation and Sensitivity, *Monthly Weather Review*, 129, 569–585, [https://doi.org/10.1175/1520-0493\(2001\)129<0569:CAALSH>2.0.CO;2](https://doi.org/10.1175/1520-0493(2001)129<0569:CAALSH>2.0.CO;2), [https://doi.org/10.1175/1520-0493\(2001\)129<0569:CAALSH>2.0.CO;2](https://doi.org/10.1175/1520-0493(2001)129<0569:CAALSH>2.0.CO;2), 2001.
- Chen, F., Kusaka, H., Bornstein, R., Ching, J., Grimmond, C. S. B., Grossman-Clarke, S., Loridan, T., Manning, K. W., Martilli, A., Miao, S., Sailor, D., Salamanca, F. P., Taha, H., Tewari, M., Wang, X., Wyszogrodzki, A. A., and Zhang, C.: The integrated WRF/urban modelling
- 860

- system: development, evaluation, and applications to urban environmental problems, *International Journal of Climatology*, 31, 273–288, <https://doi.org/10.1002/joc.2158>, <https://rmets.onlinelibrary.wiley.com/doi/abs/10.1002/joc.2158>, 2011.
- Chin, H.-N. S., Leach, M. J., Sugiyama, G. A., Leone, J. M., Walker, H., Nasstrom, J. S., and Brown, M. J.: Evaluation of an Urban Canopy Parameterization in a Mesoscale Model Using VTMX and URBAN 2000 Data, *Monthly Weather Review*, 133, 2043–2068, <https://doi.org/10.1175/MWR2962.1>, <https://doi.org/10.1175/MWR2962.1>, 2005.
- Ching, J., Mills, G., Bechtel, B., See, L., Feddema, J., Wang, X., Ren, C., Brousse, O., Martilli, A., Neophytou, M., Mouzourides, P., Stewart, I., Hanna, A., Ng, E., Foley, M., Alexander, P., Aliaga, D., Niyogi, D., Shreevastava, A., Bhalachandran, P., Masson, V., Hidalgo, J., Fung, J., Andrade, M., Baklanov, A., Dai, W., Milcinski, G., Demuzere, M., Brunzell, N., Pesaresi, M., Miao, S., Mu, Q., Chen, F., and Theeuwes, N.: WUDAPT: An Urban Weather, Climate, and Environmental Modeling Infrastructure for the Anthropocene, *Bulletin of the American Meteorological Society*, 99, 1907–1924, <https://doi.org/10.1175/BAMS-D-16-0236.1>, <https://doi.org/10.1175/BAMS-D-16-0236.1>, 2018.
- Deardorff, J. W.: Stratocumulus-capped mixed layers derived from a three-dimensional model, *Boundary-Layer Meteorology*, 18, 495–527, <https://doi.org/10.1007/BF00119502>, <https://doi.org/10.1007/BF00119502>, 1980.
- Dy, C. Y., Fung, J. C. H., and Pleim, J.: Momentum Drag Effect Over Urbanized Areas in the ACM2 PBL Component of the WRF model, *Journal of Geophysical Research: Atmospheres*, 124, 4460–4476, <https://doi.org/10.1029/2018JD029333>, <https://agupubs.onlinelibrary.wiley.com/doi/abs/10.1029/2018JD029333>, 2019.
- Garuma, G. F.: Review of urban surface parameterizations for numerical climate models, *Urban Climate*, 24, 830 – 851, <https://doi.org/https://doi.org/10.1016/j.uclim.2017.10.006>, <http://www.sciencedirect.com/science/article/pii/S2212095517300858>, 2018.
- Giorgi, F. and Avissar, R.: Representation of heterogeneity effects in Earth system modeling: Experience from land surface modeling, *Reviews of Geophysics*, 35, 413–437, <https://doi.org/10.1029/97RG01754>, <https://agupubs.onlinelibrary.wiley.com/doi/abs/10.1029/97RG01754>, 1997.
- Guo, Z., Dirmeyer, P. A., Koster, R. D., Sud, Y. C., Bonan, G., Oleson, K. W., Chan, E., Verseghy, D., Cox, P., Gordon, C. T., McGregor, J. L., Kanae, S., Kowalczyk, E., Lawrence, D., Liu, P., Mocko, D., Lu, C.-H., Mitchell, K., Malyshev, S., McAvaney, B., Oki, T., Yamada, T., Pitman, A., Taylor, C. M., Vasic, R., and Xue, Y.: GLACE: The Global Land–Atmosphere Coupling Experiment. Part II: Analysis, *Journal of Hydrometeorology*, 7, 611–625, <https://doi.org/10.1175/JHM511.1>, <https://doi.org/10.1175/JHM511.1>, 2006.
- Gutiérrez, E., Martilli, A., Santiago, J. L., and González, J. E.: A Mechanical Drag Coefficient Formulation and Urban Canopy Parameter Assimilation Technique for Complex Urban Environments, *Boundary-Layer Meteorology*, 157, 333–341, <https://doi.org/10.1007/s10546-015-0051-7>, <https://doi.org/10.1007/s10546-015-0051-7>, 2015.
- Hamdi, R. and Masson, V.: Inclusion of a Drag Approach in the Town Energy Balance (TEB) Scheme: Offline 1D Evaluation in a Street Canyon, *Journal of Applied Meteorology and Climatology*, 47, 2627–2644, <https://doi.org/10.1175/2008JAMC1865.1>, <https://doi.org/10.1175/2008JAMC1865.1>, 2008.
- Hogan, R. J.: An Exponential Model of Urban Geometry for Use in Radiative Transfer Applications, *Boundary-Layer Meteorology*, pp. 357–372, 2019a.
- Hogan, R. J.: Flexible Treatment of Radiative Transfer in Complex Urban Canopies for Use in Weather and Climate Models, *Boundary-Layer Meteorology*, pp. 1–26, 2019b.
- Kain, J. S. and Fritsch, J. M.: A One-Dimensional Entraining/Detraining Plume Model and Its Application in Convective Parameterization, *Journal of the Atmospheric Sciences*, 47, 2784–2802, [https://doi.org/10.1175/1520-0469\(1990\)047<2784:AODEPM>2.0.CO;2](https://doi.org/10.1175/1520-0469(1990)047<2784:AODEPM>2.0.CO;2), [https://doi.org/10.1175/1520-0469\(1990\)047<2784:AODEPM>2.0.CO;2](https://doi.org/10.1175/1520-0469(1990)047<2784:AODEPM>2.0.CO;2), 1990.

- Kondo, H. and Liu, F.: Study on the urban thermal environment obtained through one-dimensional urban canopy model, *Taiki Kankyo Gakkaishi*, 33, 1998.
- 900 Koster, R. D., Sud, Y. C., Guo, Z., Dirmeyer, P. A., Bonan, G., Oleson, K. W., Chan, E., Verseghy, D., Cox, P., Davies, H., Kowalczyk, E., Gordon, C. T., Kanae, S., Lawrence, D., Liu, P., Mocko, D., Lu, C.-H., Mitchell, K., Malyshev, S., McAvaney, B., Oki, T., Yamada, T., Pitman, A., Taylor, C. M., Vasic, R., and Xue, Y.: GLACE: The Global Land–Atmosphere Coupling Experiment. Part I: Overview, *Journal of Hydrometeorology*, 7, 590–610, <https://doi.org/10.1175/JHM510.1>, <https://doi.org/10.1175/JHM510.1>, 2006.
- 905 Krayenhoff, E. S., Jiang, T., Christen, A., Martilli, A., Oke, T. R., Bailey, B. N., Nazarian, N., Voogt, J. A., Giometto, M. G., Stastny, A., and Crawford, B. R.: A multi-layer urban canopy meteorological model with trees (BEP-Tree): Street tree impacts on pedestrian-level climate, *Urban Climate*, 32, 100590, <https://doi.org/https://doi.org/10.1016/j.uclim.2020.100590>, <http://www.sciencedirect.com/science/article/pii/S2212095519302640>, 2020.
- Kusaka, H., Kondo, H., Kikegawa, Y., and Kimura, F.: A Simple Single-Layer Urban Canopy Model For Atmospheric Models: Comparison With Multi-Layer And Slab Models, *Boundary-Layer Meteorology*, 101, 329–358, <https://doi.org/10.1023/A:1019207923078>, <https://doi.org/10.1023/A:1019207923078>, 2001.
- 910 Kwok, Y. T., De Munck, C., Schoetter, R., Ren, C., and Lau, K. K.-L.: Refined dataset to describe the complex urban environment of Hong Kong for urban climate modelling studies at the mesoscale, *Theoretical and Applied Climatology*, <https://doi.org/10.1007/s00704-020-03298-x>, 2020.
- Lac, C., Chaboureaud, J.-P., Masson, V., Pinty, J.-P., Tulet, P., Escobar, J., Leriche, M., Barthe, C., Aouizerats, B., Augros, C., Aumond, P., Auguste, F., Bechtold, P., Berthet, S., Bielli, S., Bosseur, F., Caumont, O., Cohard, J.-M., Colin, J., Couvreur, F., Cuxart, J., De-  
 915 lautier, G., Dauhut, T., Ducrocq, V., Filippi, J.-B., Gazen, D., Geoffroy, O., Gheusi, F., Honnert, R., Lafore, J.-P., Lebeaupin Brossier, C., Libois, Q., Lunet, T., Mari, C., Maric, T., Mascart, P., Mogé, M., Molinié, G., Nuissier, O., Pantillon, F., Peyrillé, P., Pergaud, J., Perraud, E., Pianezze, J., Redelsperger, J.-L., Ricard, D., Richard, E., Riette, S., Rodier, Q., Schoetter, R., Seyfried, L., Stein, J., Suhre, K., Taufour, M., Thouron, O., Turner, S., Verrelle, A., Vié, B., Visentin, F., Vionnet, V., and Wautelet, P.: Overview of the Meso-NH  
 920 model version 5.4 and its applications, *Geoscientific Model Development*, 11, 1929–1969, <https://doi.org/10.5194/gmd-11-1929-2018>, <https://www.geosci-model-dev.net/11/1929/2018/>, 2018.
- Lafore, J. P., Stein, J., Asencio, N., Bougeault, P., Ducrocq, V., Duron, J., Fischer, C., Hérelil, P., Mascart, P., Masson, V., Pinty, J. P., Redelsperger, J. L., Richard, E., and de Arellano, J. V.-G.: The Meso-NH Atmospheric Simulation System. Part I: adiabatic formula-  
 925 s00585-997-0090-6, 1998.
- Lam, J., Lau, A., and Fung, J.: Application of Refined Land-Use Categories for High Resolution Mesoscale Atmospheric Modelling, *Boundary-Layer Meteorology*, 119, 263–288, <https://doi.org/10.1007/s10546-005-9027-3>, <https://doi.org/10.1007/s10546-005-9027-3>, 2006.
- Lemonsu, A., Masson, V., Shashua-Bar, L., Erell, E., and Pearlmutter, D.: Inclusion of vegetation in the Town Energy Balance model for  
 930 modelling urban green areas, *Geoscientific Model Development*, 5, 1377–1393, <https://doi.org/10.5194/gmd-5-1377-2012>, <https://www.geosci-model-dev.net/5/1377/2012/>, 2012.
- Lin, W., Sui, C.-H., Yang, L., Wang, X., Deng, R., Fan, S., Wu, C., Wang, A., Fong, S., and Lin, H.: A numerical study of the influence of urban expansion on monthly climate in dry autumn over the Pearl River Delta, China, *Theoretical and Applied Climatology*, 89, 63–72, <https://doi.org/10.1007/s00704-006-0244-6>, <https://doi.org/10.1007/s00704-006-0244-6>, 2007.

- 935 Lin, W., Zhang, L., Du, D., Yang, L., Lin, H., Jiangnan, Y. Z., and Li: Quantification of land use/land cover changes in Pearl River Delta and its impact on regional climate in summer using numerical modeling, *Regional Environmental Change*, 9, 75–82, <https://doi.org/10.1007/s10113-008-0057-5>, <https://doi.org/10.1007/s10113-008-0057-5>, 2009.
- Lo, J. C. F., Lau, A. K. H., Chen, F., Fung, J. C. H., and Leung, K. K. M.: Urban Modification in a Mesoscale Model and the Effects on the Local Circulation in the Pearl River Delta Region, *Journal of Applied Meteorology and Climatology*, 46, 457–476, <https://doi.org/10.1175/JAM2477.1>, <https://doi.org/10.1175/JAM2477.1>, 2007.
- 940 Luo, M. and Lau, N.-C.: Heat Waves in Southern China: Synoptic Behavior, Long-Term Change, and Urbanization Effects, *Journal of Climate*, 30, 703–720, <https://doi.org/10.1175/JCLI-D-16-0269.1>, <https://doi.org/10.1175/JCLI-D-16-0269.1>, 2017.
- Martilli, A., Clappier, A., and Rotach, M. W.: An Urban Surface Exchange Parameterisation for Mesoscale Models, *Boundary-Layer Meteorology*, 104, 261–304, <https://doi.org/10.1023/A:1016099921195>, <https://doi.org/10.1023/A:1016099921195>, 2002.
- 945 Masson, V.: A Physically-Based Scheme For The Urban Energy Budget In Atmospheric Models, *Boundary-Layer Meteorology*, 94, 357–397, <https://doi.org/10.1023/A:1002463829265>, <https://doi.org/10.1023/A:1002463829265>, 2000.
- Masson, V.: Urban surface modeling and the meso-scale impact of cities, *Theoretical and Applied Climatology*, 84, 35–45, <https://doi.org/10.1007/s00704-005-0142-3>, <https://doi.org/10.1007/s00704-005-0142-3>, 2006.
- Masson, V. and Seity, Y.: Including Atmospheric Layers in Vegetation and Urban Offline Surface Schemes, *Journal of Applied Meteorology and Climatology*, 48, 1377–1397, <https://doi.org/10.1175/2009JAMC1866.1>, <https://doi.org/10.1175/2009JAMC1866.1>, 2009.
- 950 Masson, V., Champeaux, J.-L., Chauvin, F., Meriguet, C., and Lacaze, R.: A Global Database of Land Surface Parameters at 1-km Resolution in Meteorological and Climate Models, *Journal of Climate*, 16, 1261–1282, <https://doi.org/10.1175/1520-0442-16.9.1261>, <https://doi.org/10.1175/1520-0442-16.9.1261>, 2003.
- Masson, V., Le Moigne, P., Martin, E., Faroux, S., Alias, A., Alkama, R., Belamari, S., Barbu, A., Boone, A., Bouysse, F., Brousseau, P., Brun, E., Calvet, J.-C., Carrer, D., Decharme, B., Delire, C., Donier, S., Essauoui, K., Gibelin, A.-L., Giordani, H., Habets, F., Jidane, M., Kerdraon, G., Kourzeneva, E., Lafaysse, M., Lafont, S., Lebeaupin Brossier, C., Lemonsu, A., Mahfouf, J.-F., Marguinaud, P., Mokhtari, M., Morin, S., Pigeon, G., Salgado, R., Seity, Y., Taillefer, F., Tanguy, G., Tulet, P., Vincendon, B., Vionnet, V., and Voldoire, A.: The SURFEXv7.2 land and ocean surface platform for coupled or offline simulation of earth surface variables and fluxes, *Geoscientific Model Development*, 6, 929–960, <https://doi.org/10.5194/gmd-6-929-2013>, <https://www.geosci-model-dev.net/6/929/2013/>, 2013.
- 955 Masson, V., Heldens, W., Bocher, E., Bonhomme, M., Bucher, B., Burmeister, C., de Munck, C., Esch, T., Hidalgo, J., Kanani-Sühring, F., Kwok, Y.-T., Lemonsu, A., Lévy, J.-P., Maronga, B., Pavlik, D., Petit, G., See, L., Schoetter, R., Tornay, N., Votsis, A., and Zeidler, J.: City-descriptive input data for urban climate models: Model requirements, data sources and challenges, *Urban Climate*, 31, 100536, <https://doi.org/10.1016/j.uclim.2019.100536>, <http://www.sciencedirect.com/science/article/pii/S2212095518303663>, 2020.
- Moonen, P., Defraeye, T., Dorer, V., Blocken, B., and Carmeliet, J.: Urban physics : effect of the micro-climate on comfort, health and energy demand, *Frontiers of Architectural Research*, 1, 197–228, <https://doi.org/10.1016/j.foar.2012.05.002>, 2012.
- 965 Ng, Y. Y., Wong, K. S., Ho, B., Yau, R., Tse, T., and Ren, C.: Final Report and Appendices, *Urban Climatic Map and Standards for Wind Environment – Feasibility Study*, Technical Report for Planning Department HKSAR, p. 1685, 2012.
- Noilhan, J. and Planton, S.: A Simple Parameterization of Land Surface Processes for Meteorological Models, *Monthly Weather Review*, 117, 536–549, [https://doi.org/10.1175/1520-0493\(1989\)117<0536:ASPOLS>2.0.CO;2](https://doi.org/10.1175/1520-0493(1989)117<0536:ASPOLS>2.0.CO;2), [https://doi.org/10.1175/1520-0493\(1989\)117<0536:ASPOLS>2.0.CO;2](https://doi.org/10.1175/1520-0493(1989)117<0536:ASPOLS>2.0.CO;2), 1989.
- 970

- Oleson, K. W., Bonan, G. B., Feddema, J., Vertenstein, M., and Grimmond, C. S. B.: An Urban Parameterization for a Global Climate Model. Part I: Formulation and Evaluation for Two Cities, *Journal of Applied Meteorology and Climatology*, 47, 1038–1060, <https://doi.org/10.1175/2007JAMC1597.1>, <https://doi.org/10.1175/2007JAMC1597.1>, 2008.
- Oleson, K. W., Lawrence, D. M., B, G., Flanner, M. G., Kluzek, E., J, P., Levis, S., Swenson, S. C., Thornton, E., Feddema, J., Heald, 975 C. L., francois Lamarque, J., yue Niu, G., Qian, T., Running, S., Sakaguchi, K., Yang, L., Zeng, X., Zeng, X., and Decker, M.: Technical Description of version 4.0 of the Community Land Model (CLM), 2010.
- Pergaud, J., Masson, V., Malardel, S., and Couvreur, F.: A Parameterization of Dry Thermals and Shallow Cumuli for Mesoscale Numerical Weather Prediction, *Boundary-Layer Meteorology*, 132, 83, <https://doi.org/10.1007/s10546-009-9388-0>, <https://doi.org/10.1007/s10546-009-9388-0>, 2009.
- 980 Pigeon, G., Zibouche, K., Bueno, B., Bras, J. L., and Masson, V.: Improving the capabilities of the Town Energy Balance model with up-to-date building energy simulation algorithms: an application to a set of representative buildings in Paris, *Energy and Buildings*, 76, 1 – 14, <https://doi.org/https://doi.org/10.1016/j.enbuild.2013.10.038>, <http://www.sciencedirect.com/science/article/pii/S0378778814001340>, 2014.
- Raupach, R.: Drag and drag partition on rough surfaces, *Boundary-Layer Meteorology*, 60, 375–395, <https://doi.org/10.1007/BF00155203>, 985 <https://doi.org/10.1007/BF00155203>, 1992.
- Redon, E., Lemonsu, A., and Masson, V.: An urban trees parameterization for modeling microclimatic variables and thermal comfort conditions at street level with the Town Energy Balance model (TEB-SURFEX v8.0), *Geoscientific Model Development*, 13, 385–399, <https://doi.org/10.5194/gmd-13-385-2020>, <https://www.geosci-model-dev.net/13/385/2020/>, 2020.
- Roth, M.: Review of atmospheric turbulence over cities, *Quarterly Journal of the Royal Meteorological Society*, 126, 941–990, 990 <https://doi.org/10.1002/qj.49712656409>, <https://rmets.onlinelibrary.wiley.com/doi/abs/10.1002/qj.49712656409>, 2000.
- Sailor, D. J.: A review of methods for estimating anthropogenic heat and moisture emissions in the urban environment, *International Journal of Climatology*, 31, 189–199, 2011.
- Salamanca, F., Krpo, A., Martilli, A., and Clappier, A.: A new building energy model coupled with an urban canopy parameterization for urban climate simulations—part I. formulation, verification, and sensitivity analysis of the model, *Theoretical and Applied Climatology*, 99, 331, <https://doi.org/10.1007/s00704-009-0142-9>, <http://dx.doi.org/10.1007/s00704-009-0142-9>, 2009. 995
- Salgado, R. and Le Moigne, P.: Coupling of the FLake model to the Surfex externalized surface model, *Boreal Environment Research*, 15, 231–244, <http://hdl.handle.net/10138/233088>, 2010.
- Santiago, J. and Martilli, A.: A Dynamic Urban Canopy Parameterization for Mesoscale Models Based on Computational Fluid Dynamics Reynolds-Averaged Navier–Stokes Microscale Simulations, *Boundary-Layer Meteorology*, 137, 417–439, 1000 <https://doi.org/10.1007/s10546-010-9538-4>, <https://doi.org/10.1007/s10546-010-9538-4>, 2010.
- Santiago, J., Coceal, O., and Martilli, A.: How to Parametrize Urban-Canopy Drag to Reproduce Wind-Direction Effects Within the Canopy, *Boundary-Layer Meteorology*, 149, 43–63, <https://doi.org/10.1007/s10546-013-9833-y>, <https://doi.org/10.1007/s10546-013-9833-y>, 2013.
- Santiago, J., Krayenhoff, E., and Martilli, A.: Flow simulations for simplified urban configurations with microscale distributions of surface thermal forcing, *Urban Climate*, 9, 115 – 133, <https://doi.org/https://doi.org/10.1016/j.uclim.2014.07.008>, <http://www.sciencedirect.com/science/article/pii/S221209551400056X>, 2014. 1005
- Santiago, J.-L., Buccolieri, R., Rivas, E., Calvete-Sogo, H., Sanchez, B., Martilli, A., Alonso, R., Elustondo, D., Santamaría, J. M., and Martin, F.: CFD modelling of vegetation barrier effects on the reduction of traffic-related pollutant concentration in an avenue of Pamplona,



- Spain, *Sustainable Cities and Society*, 48, 101559, <https://doi.org/https://doi.org/10.1016/j.scs.2019.101559>, <http://www.sciencedirect.com/science/article/pii/S2210670718321292>, 2019.
- 1010 Seity, Y., Brousseau, P., Malardel, S., Hello, G., Bénard, P., Bouttier, F., Lac, C., and Masson, V.: The AROME-France Convective-Scale Operational Model, *Monthly Weather Review*, 139, 976–991, <https://doi.org/10.1175/2010MWR3425.1>, <https://doi.org/10.1175/2010MWR3425.1>, 2011.
- Shepherd, J. M.: A Review of Current Investigations of Urban-Induced Rainfall and Recommendations for the Future, *Earth Interactions*, 9, 1–27, <https://doi.org/10.1175/EI156.1>, <https://doi.org/10.1175/EI156.1>, 2005.
- 1015 Simón-Moral, A., Santiago, J., Krayenhoff, E., and Martilli, A.: Streamwise Versus Spanwise Spacing of Obstacle Arrays: Parametrization of the Effects on Drag and Turbulence, *Boundary-Layer Meteorology*, 151, 579–596, <https://doi.org/10.1007/s10546-013-9901-3>, <https://doi.org/10.1007/s10546-013-9901-3>, 2014.
- Simón-Moral, A., Santiago, J., and Martilli, A.: Effects of Unstable Thermal Stratification on Vertical Fluxes of Heat and Momentum in Urban Areas, *Boundary-Layer Meteorology*, 163, 103–121, <https://doi.org/10.1007/s10546-016-0211-4>, <https://doi.org/10.1007/s10546-016-0211-4>, 2017.
- 1020 Skamarock, W. C., Klemp, J. B., Dudhia, J., Gill, D. O., Barker, D. M., Duda, M. G., Huang, X.-Y., Wang, W., and Powers, J. G.: A Description of the Advanced Research WRF Version 3, Tech. rep., National Center for Atmospheric Research Boulder, Colorado, USA, 2008.
- 1025 Séférian, R., Nabat, P., Michou, M., Saint-Martin, D., Voldoire, A., Colin, J., Decharme, B., Delire, C., Berthet, S., Chevallier, M., Sénési, S., Franchisteguy, L., Vial, J., Mallet, M., Joetzer, E., Geoffroy, O., Guérémy, J.-F., Moine, M.-P., Msadek, R., Ribes, A., Rocher, M., Roehrig, R., Salas-y Mélia, D., Sanchez, E., Terray, L., Valcke, S., Waldman, R., Aumont, O., Bopp, L., Deshayes, J., Éthé, C., and Madec, G.: Evaluation of CNRM Earth System Model, CNRM-ESM2-1: Role of Earth System Processes in Present-Day and Future Climate, *Journal of Advances in Modeling Earth Systems*, 11, 4182–4227, <https://doi.org/10.1029/2019MS001791>, <https://agupubs.onlinelibrary.wiley.com/doi/abs/10.1029/2019MS001791>, 2019.
- 1030 Termonia, P., Fischer, C., Bazile, E., Bouyssel, F., Brožková, R., Bénard, P., Bochenek, B., Degrauwe, D., Derková, M., El Khatib, R., Hamdi, R., Mašek, J., Pottier, P., Pristov, N., Seity, Y., Smolíková, P., Španiel, O., Tudor, M., Wang, Y., Wittmann, C., and Joly, A.: The ALADIN System and its canonical model configurations AROME CY41T1 and ALARO CY40T1, *Geoscientific Model Development*, 11, 257–281, <https://doi.org/10.5194/gmd-11-257-2018>, <https://www.geosci-model-dev.net/11/257/2018/>, 2018.
- 1035 Trusilova, K., Schubert, S., Wouters, H., Früh, B., Grossman-Clarke, S., Demuzere, M., and Becker, P.: The urban land use in the COSMO-CLM model: a comparison of three parameterizations for Berlin, *Meteorologische Zeitschrift*, 25, 231–244, <https://doi.org/10.1127/metz/2015/0587>, <http://dx.doi.org/10.1127/metz/2015/0587>, 2016.
- Unger, J.: Urban-rural air humidity differences in Szeged, Hungary, *International Journal of Climatology*, 19, 1509–1515, 1999.
- 1040 Uno, I., Ueda, H., and Wakamatsu, S.: Numerical modeling of the nocturnal urban boundary layer, *Boundary-Layer Meteorology*, 49, 77–98, <https://doi.org/10.1007/BF00116406>, <https://doi.org/10.1007/BF00116406>, 1989.
- Voldoire, A., Decharme, B., Pianezze, J., Lebeaupin Brossier, C., Sevault, F., Seyfried, L., Garnier, V., Bielli, S., Valcke, S., Alias, A., Accensi, M., Arduin, F., Bouin, M.-N., Ducrocq, V., Faroux, S., Giordani, H., Léger, F., Marsaleix, P., Rainaud, R., Redelsperger, J.-L., Richard, E., and Riette, S.: SURFEX v8.0 interface with OASIS3-MCT to couple atmosphere with hydrology, ocean, waves and sea-ice models, from coastal
- 1045 to global scales, *Geoscientific Model Development*, 10, 4207–4227, <https://doi.org/10.5194/gmd-10-4207-2017>, <https://www.geosci-model-dev.net/10/4207/2017/>, 2017.

- Vu, C. T., Asaeda, T., and Ashie, Y.: Development of a numerical model for the evaluation of the urban thermal environment, *Journal of Wind Engineering and Industrial Aerodynamics*, 81, 181 – 196, [https://doi.org/https://doi.org/10.1016/S0167-6105\(99\)00016-1](https://doi.org/https://doi.org/10.1016/S0167-6105(99)00016-1), <http://www.sciencedirect.com/science/article/pii/S0167610599000161>, 1999.
- 1050 Vu, C. T., Asaeda, T., and Ashie, Y.: A  $k$ - $\epsilon$  Turbulence Closure Model For The Atmospheric Boundary Layer Including Urban Canopy, *Boundary-Layer Meteorology*, 102, 459–490, <https://doi.org/10.1023/A:1013878907309>, <https://doi.org/10.1023/A:1013878907309>, 2002.
- Wang, D., Lau, K. K.-L., Ren, C., Goggins, W. B. I., Shi, Y., Ho, H. C., Lee, T.-C., Lee, L.-S., Woo, J., and Ng, E.: The impact of extremely hot weather events on all-cause mortality in a highly urbanized and densely populated subtropical city: A 10-year time-series study (2006–2015), *Science of The Total Environment*, 690, 923 – 931, <https://doi.org/https://doi.org/10.1016/j.scitotenv.2019.07.039>, <http://www.sciencedirect.com/science/article/pii/S0048969719331523>, 2019.
- 1055 Wang, X., Liao, J., Zhang, J., Shen, C., Chen, W., Xia, B., and Wang, T.: A Numeric Study of Regional Climate Change Induced by Urban Expansion in the Pearl River Delta, China, *Journal of Applied Meteorology and Climatology*, 53, 346–362, <https://doi.org/10.1175/JAMC-D-13-054.1>, <https://doi.org/10.1175/JAMC-D-13-054.1>, 2014.
- 1060 Wang, Y., Di Sabatino, S., Martilli, A., Li, Y., Wong, M. S., Gutiérrez, E., and Chan, P. W.: Impact of land surface heterogeneity on urban heat island circulation and sea-land breeze circulation in Hong Kong, *Journal of Geophysical Research: Atmospheres*, 122, 4332–4352, <https://doi.org/10.1002/2017JD026702>, <https://agupubs.onlinelibrary.wiley.com/doi/abs/10.1002/2017JD026702>, 2017.
- Wang, Y., Li, Y., Sabatino, S. D., Martilli, A., and Chan, P. W.: Effects of anthropogenic heat due to air-conditioning systems on an extreme high temperature event in Hong Kong, *Environmental Research Letters*, 13, 034015, <https://doi.org/10.1088/1748-9326/aaa848>, <https://doi.org/10.1088%2F1748-9326%2Faaa848>, 2018.
- 1065 //doi.org/10.1088%2F1748-9326%2Faaa848, 2018.
- Wong, M. M. F., Fung, J. C. H., Ching, J., Yeung, P. P. S., Tse, J. W. P., Ren, C., Wang, R., and Cai, M.: Evaluation of uWRF performance and modeling guidance based on WUDAPT and NUDAPT UCP datasets for Hong Kong, *Urban Climate*, 28, 100460, <https://doi.org/https://doi.org/10.1016/j.uclim.2019.100460>, <http://www.sciencedirect.com/science/article/pii/S2212095519301294>, 2019.
- 1070 Wong, M. S., Yang, J., Nichol, J., Weng, Q., Menenti, M., and Chan, P.: Modeling of Anthropogenic Heat Flux Using HJ-1B Chinese Small Satellite Image: A Study of Heterogeneous Urbanized Areas in Hong Kong, *IEEE Geoscience and Remote Sensing Letters*, 12, 1466–1470, <https://doi.org/10.1109/LGRS.2015.2409111>, 2015.