

Using the anomaly forcing Community Land Model (CLM 4.5) for crop yield projections

Yaqiong Lu^{1,2*} and Xianyu Yang³

¹Institute of Mountain Hazards and Environment, Chinese Academy of Sciences, Chengdu
610040, China

²National Center for Atmospheric Research, Boulder, CO 80305, USA

³Chengdu University of Information Technology, Chengdu, 610225, China

*Corresponding author: Yaqiong Lu, yaqiong@imde.ac.cn, 8602861158015, #.9, Block 4,
Renminnanlu Road, Chengdu 610041, China

Abstract

Crop growth in land surface models normally requires high temporal resolution climate data (3-hourly or 6-hourly), but such high temporal resolution climate data are not provided by many climate model simulations due to expensive storage, which limits modeling choice if there is an interest in a particular climate simulation that only saved monthly outputs. The Community Land Surface Model (CLM) has proposed an alternative approach for utilizing monthly climate outputs as forcing data since version 4.5, and it is called the anomaly forcing CLM. However, such an approach has never been validated for crop yield projections. In our work, we created anomaly forcing datasets for three climate scenarios (1.5 °C warming, 2.0 °C warming, and RCP4.5) and validated crop yields against the standard CLM forcing with the same climate scenarios using 3-hourly data. We found that the anomaly forcing CLM could not produce crop yields identical to the standard CLM due to the different submonthly variations, and crop yields were underestimated by 5-8% across the three scenarios (1.5 °C, 2.0 °C, and RCP4.5) for the global average, and 28-41% of cropland showed significantly different yields. However, the anomaly forcing CLM effectively captured the relative changes between scenarios and over time, as well as regional crop yield variations. We recommend that such an approach be used for qualitative analysis of crop yields when only monthly outputs are available. Our approach can be adopted by other land surface models to expand their capabilities for utilizing monthly climate data.

Key words: Community Land Model; Crop yields; Anomaly forcing

Introduction

Increasing numbers of future climate scenarios exhibit large uncertainties for crop yield projections. Crop yields may increase or decrease depending on which climate projection is used (Lobell et al., 2008; Rosenzweig et al., 2014; Urban et al., 2012). Ensemble future climate projections, such as CMIP5, showed a large range of future climate projections, even for one emission scenario (Knutti and Sedlacek, 2013). Using all future climate projections is not realistic not only because of the computational expense but also because many of these future climate projections only save monthly climate outputs that are not suitable for crop models that require high temporal resolution forcing data. Some standalone process-based crop models run in daily time steps, and some crop models embedded in land surface models need at least 6-hour climate data as the forcing data to represent diurnal cycles. Only a small portion of the CMIP5

47 (Coupled Model Intercomparison Project 5) simulations (<25%) can be used as the forcing data
48 for crop models, leaving little room for crop modelers to choose a particular climate model
49 projection that is of interest.

50
51 The Community Land Model (CLM) (Oleson et al., 2013) is a state-of-the-art land surface model
52 that simulates biogeophysical (radiation transfer, vegetation-soil-hydrology, surface energy
53 fluxes, etc.) and biogeochemical (soil carbon and nitrogen cycle, vegetation photosynthesis,
54 dynamic vegetation growth, etc.) processes. CLM is the default land model in the Community
55 Earth System Model (CESM) (Hurrell et al., 2013), and it can be run either online coupled with
56 the rest of CESM (atmosphere and ocean) or offline (the land model only, forced with climate
57 datasets) for multiple spatial extents (site, regional, and global) and at different resolutions. The
58 crop model derived from AgrolIBIS (Kucharik, 2003) was introduced to CLM4.0 by Levis et al.
59 (2012), and it is responsible for crop growth phenology (temperature determined), carbon
60 allocation algorithms, and crop management (e.g., irrigation). The crop model in CLM runs
61 when the soil biogeochemical component is active, and it was tested with the CLM-CN in
62 version 4.0 and tested with CLM-BGC in version 4.5, where CLM-CN and CLM-BGC are
63 officially supported soil biogeochemical components in CLM4.0 and CLM4.5 respectively.
64 Since their introduction, crop models in the CLM have been developed to represent more crop
65 types and processes, such as soybean nitrogen fixation (Drewniak et al., 2013), ozone impacts on
66 yields (Lombardozi et al., 2015), winter wheat growth responses to cold hazards (Lu et al.,
67 2017), and maize growth responses to heat stress (Peng et al., 2018). CLM simulates nine crop
68 types, accounting for 54% of global total crop production (other production is represented by the
69 most similar crop type): maize, soybean, spring wheat, winter wheat, cotton, rice, sugarcane,
70 tropical maize, and tropical soybean. In this study, we used CLM version 4.5 (Oleson et al.,
71 2013).

72
73 Since version 4.5, CLM offers a built-in function that indirectly uses monthly climate outputs as
74 the forcing data, and is called the anomaly forcing CLM (Lawrence et al., 2015). Anomaly
75 forcing CLM reconstructs new subdaily forcing data by applying the precalculated future
76 monthly anomaly signals to user-defined historical subdaily forcing data, referred to as the
77 reference data. The future monthly anomaly signals are calculated by the future monthly climate
78 outputs and by use of historical monthly outputs. The choice of reference data is arbitrary. Any
79 existing subdaily forcing data (e.g., CRUNCEP (Viovy, 2018), QIAN (Qian et al., 2006)) for
80 CLM can be used as the reference data. The historical monthly outputs are recommended to be
81 multiyear averaged to represent the historical means and avoid affecting the monthly anomaly
82 signal by rare, extreme events in a particular year. Such an arbitrary choice is because the goal of
83 the original anomaly forcing CLM is not to reconstruct future forcing that is identical to the
84 actual future forcing when the high temporal resolution data were saved. Rather, the original goal
85 of the anomaly forcing CLM is to understand the influences due to the anomaly signal by
86 comparing the simulation with the anomaly forcing CLM to the simulation run with the reference
87 data. The differences between the two simulations are due to the anomaly signals.

88
89 In our study, we modified the anomaly forcing CLM to fit our goals to understand whether we
90 could simply use the anomaly forcing CLM for crop yield projections when only monthly
91 climate data were available. We carefully chose the historical monthly data and the reference
92 data so that the reconstructed future anomaly forcing had nearly identical monthly means as the

Deleted: compset

Deleted: compset

Deleted: .

96 desired subdaily future forcing, but we used different submonthly variations. We created
97 anomaly forcing datasets for three future scenarios (1.5 °C warming, 2.0 °C warming, and
98 RCP4.5) for 2006-2075 for which both the subdaily and monthly climate outputs were available
99 from three CESM simulations. With the three paired CLM simulations, we validated the
100 anomaly forcing CLM by comparing it to the standard CLM.

101
102 Methods

103
104 The original anomaly forcing CLM has been [available](#) since CLM4.5. This approach reconstructs
105 the subdaily (3-hourly or 6-hourly) forcing data by applying the monthly anomaly signal to user
106 selected subdaily reference data; therefore, it indirectly uses the monthly atmospheric outputs as
107 the forcing data for CLM. This approach does not change any of the scientific code in CLM; it
108 only adds code that reads the monthly anomaly signals and automatically applies these to the
109 reference data while the CLM is running. There were two monthly anomaly signals for RCP4.5
110 and RCP8.5 that were generated using the CESM future projections and were ready for use. It is
111 the user's choice to select which subdaily reference (e.g., CRUNCEP or CLMQIAN) and which
112 years to use. By simply modifying user_nl_cpl namelist and adding data streams of the anomaly
113 forcing variables (see the appendix for the detailed usage), the anomaly forcing CLM will
114 automatically read the monthly anomaly signal and apply the signal to each time step of the
115 reference data within a month. When the reference data period is less than the anomaly signal
116 period, the anomaly forcing CLM will cycle the same reference data until the simulation is
117 complete. Because the different selections of reference data can generate different forcings, even
118 with the same monthly anomaly signals, one should not use the simulation from the anomaly
119 forcing CLM to represent the actual simulation. Rather, the original goal of the anomaly forcing
120 CLM is to compare the simulation with the anomaly forcing and simulation with the reference
121 forcing data to understand the effects of the monthly anomaly signals on land surface variables.

122
123 The goal of this work is to test how well crop yield projections from the anomaly forcing CLM
124 compare to the projections from the standard forcing CLM, given that anomaly forcing has the
125 same monthly average as standard forcing. We selected three future scenarios for CESM
126 simulations that saved both monthly outputs and 3-hourly outputs, where the 3-hourly outputs
127 were directly used in the standard forcing CLM, and the monthly outputs were indirectly used in
128 the anomaly forcing CLM. We calculated the anomaly forcing signals using the monthly CESM
129 outputs and the monthly average of reference data, so that when applying the anomaly signals to
130 the reference data, it is expected to generate identical monthly means as does regular forcing.
131 However, due to a limit in calculations of precipitation anomalies (precipitation anomaly ratio
132 less than 5 times) and how the CLM treats snow and rainfall, the anomaly forcing CLM did not
133 show identical snow and rainfall monthly averages and introduced bias in the crop yield
134 simulations (see the results section).

135
136 Table 1. A summary of the original anomaly forcing CLM and the modifications in this work

| | Original anomaly forcing CLM | Modifications in this work |
|------------------------|------------------------------|--|
| 3 h/6 h reference data | User choice | 6 h Community Atmosphere Model outputs from one historical low warming |

Deleted: in function

Deleted: AM

| | | |
|-------------------------|---|---|
| | | ensemble simulation 1996-2005 |
| Monthly anomaly signals | Existing for RCP4.5 and RCP8.5 | <ul style="list-style-type: none"> Anomalies between future scenarios and monthly means of reference data Three future scenarios: 1.5 °C, 2.0 °C, and RCP4.5 Each scenario had monthly outputs and 3 h outputs |
| Goals | Climate impact due to anomaly signals when comparing the anomaly run with the reference run | Given that anomaly forcing has the same monthly mean as <u>the standard CLM forcing</u> , can we use it for crop yield projections? |

Deleted: MOAR

We randomly chose the 6-hourly reference data (1996-2005) from one of the 11 historical low warming ensemble CESM simulations. Additionally, we selected three CESM future simulations for the 1.5 °C warming, 2.0 °C warming, and RCP4.5 scenarios, where all the three simulations saved both the monthly outputs and the 3-hourly outputs. We then calculated the monthly anomaly signal at each grid cell for each scenario (1.5, 2.0, and RCP45) from 2006-2075. The monthly anomaly signals are differences for temperature, specific humidity, wind, and air pressure and are ratios for solar radiation and precipitation between the monthly outputs of each scenario and the 1996-2005 averaged monthly values of the reference data. The anomaly forcing signal has both spatial and monthly variations. When running the anomaly forcing simulation for 2006-2070, CLM repeatedly uses the 10-year reference period and applies the anomaly signal of a month to all subdaily reference forcing in this month. For example, an anomaly forcing simulation for 2006 January uses the 1996 January reference data plus or multiplied by (if the anomaly signal is a ratio) the 2006 January anomaly signal. If the 2006 January temperature anomaly is 1 K for a grid cell, then all 1996 January reference data will be increased by 1 K for the grid cell.

Deleted: multiplies

The monthly anomaly signal is calculated at each grid cell (i,j). For temperature, pressure, wind, and humidity, the anomaly signal is the difference between the future monthly data and the historical monthly average (equation 1). For solar radiation, longwave radiation, and precipitation, the anomaly signal is the ratio between the future monthly data and the historical monthly average (equation 2). We set the maximum ratio for precipitation to 5 to avoid unrealistic extreme precipitation, which also introduced biases in precipitation (discussed in the discussion section).

$$af_{i,j,m} = fut_{i,j,m} - hist_{i,j,m} \quad (1)$$

Deleted: $var_{i,j,m}$

Deleted: $var_{i,j,m}$

Deleted: $hist_{var_{i,j,m}}$

$$af_{i,j,m} = fut_{i,j,m} / hist_{i,j,m} \quad (2)$$

Where $af_{i,j,m}$ is anomaly forcing signal at a location i and j in a month m , $fut_{i,j,m}$ is the averaged future value and $hist_{i,j,m}$ is the averaged historical value at a location i and j in a month m .

We set up global CLM crop simulations (compset CLM45BGCCROP) at 1.9 by 2.5 in latitude and longitude, respectively, using the anomaly forcing CLM and the regular forcing CLM for the 1.5 °C warming, 2.0 °C warming, and RCP4.5 scenarios. All simulations used the default nitrogen fertilization rates and a constant CO₂ level of 359.8 ppm. For each scenario, we validate the crop yield in the anomaly forcing CLM to the regular forcing CLM to determine if we can use the anomaly forcing CLM for future crop yield projections. We also studied whether the anomaly forcing CLM has a similar crop growth response to transient CO₂ and nitrogen fertilization. The transient CO₂ and nitrogen fertilization did not add extra computational cost compared to the constant CO₂ and nitrogen fertilization simulation. However, due to our limited computational resources could not afford more experiments, we only tested such responses for the RCP4.5 scenario. The transient CO₂ levels in the RCP4.5 scenario gradually increased from 379 ppm in 2006 to 530 ppm in 2070. To test the nitrogen fertilization effects, we simply added a zero nitrogen fertilization simulation here. For the crop yield analysis, we aggregated the individual crop yield into an integrated crop yield by area weighted mean based on the crop area map MAPSPAM (<https://www.mapspam.info/>) 2005 crop area. The regional crop yield was simply the regional averaged crop yield at 9 regions defined in Ren et al., (2018).

We adopted the two-sample Kolmogorov-Smirnov test (KS test) to test the statistical significance of differences between the anomaly forcing CLM and the standard CLM for atmospheric forcing data and yield. We used the KS test because some variables at some grid cells did not necessarily follow normal distributions. The KS test is a nonparametric test that detects differences in the empirical probability distributions between two samples, and the two samples do not need to have normal distributions (Justel et al., 1997; Marozzi, 2013). When repeated using the ten-year reference data, we expected that the ten year averaged monthly anomaly forcing would show no significant differences from the regular forcing. Thus, for the atmospheric forcing data, we tested probability distribution differences between anomaly forcing and regular forcing for every ten-year averaged monthly dataset (sample size was 7x12=84). For crop yields, we used the every ten-year averaged annual yields (sample size was 7). We used linear regression coefficient (R^2), bias (equation 3), percentage differences (equation 4) in our evaluations.

$$bias = CLM_{anomaly\ forcing} - CLM_{standard} \quad (3)$$

$$\%differences = 100 * (\frac{CLM_{anomaly\ forcing}}{CLM_{standard}} - 1) \quad (4)$$

Results

We aimed to generate an anomaly forcing that produced identical monthly averages as its counterpart regular forcing (the desirable 3-hourly forcing data for CLM) but with different submonthly variations. All atmospheric forcing variables achieved this goal except for precipitation and its liquid and ice components, rain and snow. The linear regression coefficients

Deleted: $var_{i,j,m}$

Deleted: $var_{i,j,m}$

Deleted: $hist_var_{i,j,m}$

Formatted: Subscript

Formatted: Subscript

Formatted: Superscript

219 (R²) between anomaly forcing and standard forcing for the monthly means of incoming solar
220 radiation, bottom layer atmosphere temperatures (sigma vertical coordinate, $\sigma=0.9925$),
221 pressures, humidities, and winds all showed R² values above 0.99, and there were also no
222 significant differences for these variables for all grid cells. However, for rain and snow, the R²
223 values were 0.63-0.87 and 0.88-0.96 across the three scenarios, respectively (Figure 1a).
224 Statistically significant differences were also found for rain and snow in many regions in the
225 Northern Hemisphere (Figure 2). We used monthly variances as a measure of the submonthly
226 variations. We calculated the variation for twelve months in each decade, so we have 7 decades
227 and 12 months variance and the sample size is 84 when setting up the regression. R² for
228 variances of forcing were low for most variables except for incoming solar radiation (Figure 1b).
229 Such lower R² values indicated that anomaly forcing could not represent the submonthly
230 variations as well as the regular forcing.

232 There were two error sources for precipitation. First, there was overall average lower
233 precipitation in the anomaly forcing by 0.02 mm/day, 0.03 mm/day, and 0.2 mm/day in the
234 1.5 °C, 2.0 °C, and RCP45 scenarios, respectively. Such slightly lower precipitation was because
235 we set the maximum precipitation anomaly ratio to 5 to avoid unrealistically extreme
236 precipitation levels. Ratio 5 was suggested by NCAR scientists David Lawrence and Sean
237 Swenson, who are core developers of CLM and wrote the initial anomaly forcing code in CLM.
238 Most of unrealistic extreme precipitation ratio are actually due to the nearly zero historical
239 precipitation (the denominator of equation 2). The cap for the precipitation anomaly ratio is use
240 to avoid such situation. Second, the CLM used the temperature in each time step to determine if
241 the given precipitation was rain or snow. Precipitation was rain when temperature was above
242 273.15 K, otherwise it was snow. Therefore, the different submonthly variations in temperature
243 resulted in different submonthly variations for snow and rain. Due to this problem, the lower
244 precipitation did not evenly distribute to the rain and snow bias, for which rain was
245 underestimated by 0.08-0.3 mm/day, and snow was overestimated by 0.06-0.11 mm/day across
246 the three scenarios. The significantly different regions were mainly in the Northern Hemisphere
247 and the Antarctic, and most regions in the Southern Hemisphere did not show significant
248 differences in rain or snow. How the rain and snow biases affected yield projections will be
249 discussed.

Formatted: Normal (Web), Pattern: Clear (White)

Formatted: Font color: Auto

Formatted: Font color: Auto

Formatted: Font color: Blue

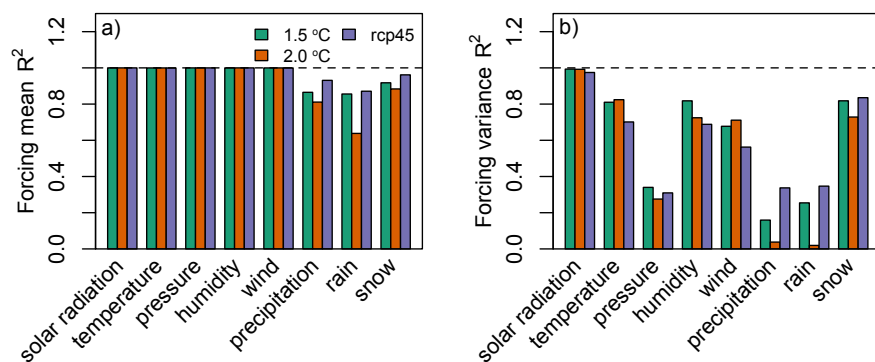


Figure 1. Linear regression coefficients (R^2) between a) decade-averaged monthly mean (sample size = 12 months x 7 decades = 84) between anomaly forcing and regular forcing and b) every ten year-averaged monthly variance between anomaly forcing and regular forcing.

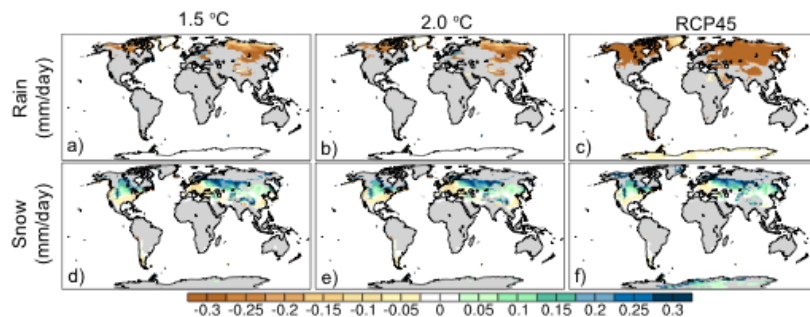


Figure 2. 70-year averaged differences between anomaly forcing and regular forcing for rain (a-c) and snow (d-f) for the 1.5°C, 2.0°C, and RCP4.5 scenarios. All differences shown here are statistically significant differences tested by the Kolmogorov-Smirnov test with a sample size of 84. The gray areas are regions that did not show significant differences.

When compared to crop yield simulations in the standard CLM, the anomaly forcing CLM underestimated crop yields by 5-8% across the three scenarios for the global average, and 28-41% of cropland showed statistically significant differences in yields. The rainfed crop yield differences across the three scenarios showed largely similar spatial distributions: overestimation in the northern US and Europe and underestimation in the Southern Hemisphere and in East Asia

Deleted: pt

Formatted: Superscript

Deleted: pt

Deleted: ↵

(Figure 3d-f). The overestimated rainfed crop yield (mainly for maize and wheat) in the anomaly forcing CLM is due to higher water availability in these regions, which is a result of higher snow in the anomaly forcing CLM. For irrigated crops, such overestimations in the northern US and Europe disappear (Figure 3g-i) because sufficient irrigation was added to the irrigated soil column in the standard CLM, which removed the plant water stress that was seen for rainfed crops. However, the underestimations in the Southern Hemisphere and East Asia were persistent, because water availability does not cause yield differences for irrigated crops; we suspect such underestimations were caused by the other error in forcing data: the different submonthly variations in the forcing data.

Deleted: ; as long as there is

Deleted: plant water stress which removed water availability impacts on crop yields

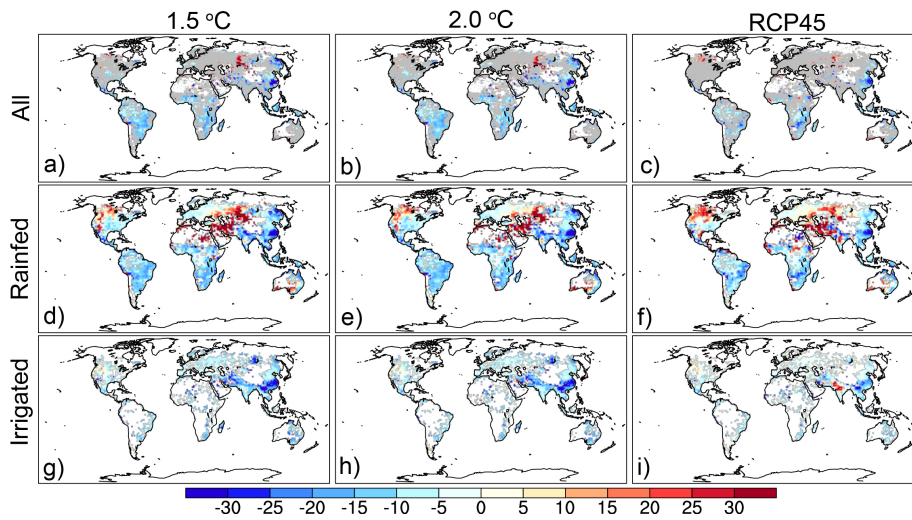


Figure 3. The percentage differences of 70-year integrated yields between the anomaly forcing CLM and the standard CLM for all crops (a-c), rainfed crops (d-f), and irrigated crops (g-i) for the 1.5 °C, 2.0 °C, and RCP45 scenarios. The white regions are where no crops grow based on the historical crop map in 2005 (MAPSPAM 2005; <https://www.mapspam.info/>). For plots a-c, we showed only the significant differences as determined by the by Kolmogorov-Smirnov test with a sample size of 7. The regions with insignificant differences are masked as gray in a-c. For plots d-i, we did not mask the insignificant differences to show an overall bias.

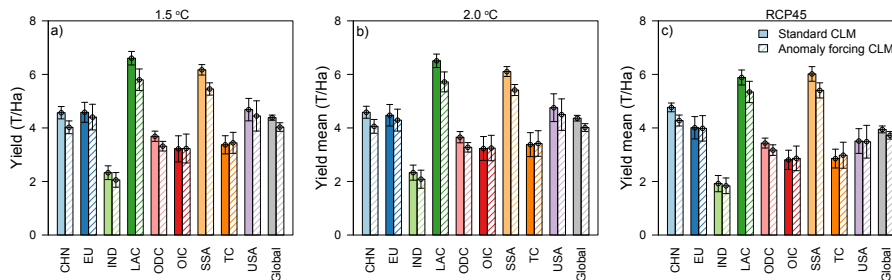


Figure 4. Regional comparisons of the 70-year integrated mean yields and yield standard deviations between the anomaly forcing CLM and the standard CLM. The error bars indicate 70-year yield standard deviations. CHN: China; EU: European Union; IND: India; LAC: Latin America; ODC: Other Developing Countries; OIC: Other Industrialized Countries; SSA: Sub-Saharan Africa; TC: Transition Countries; USA: United States

The global 70-year averaged yields \pm standard deviation in the standard CLM (Ren et al., 2018) and in the anomaly forcing CLM are 4.38 ± 0.09 and 4.03 ± 0.16 t/ha, respectively, in the 1.5 °C scenario, 4.36 ± 0.11 and 4.01 ± 0.14 t/ha, respectively, in the 2.0 °C scenario, 3.95 ± 0.13 and 3.72 ± 0.14 , respectively, in the RCP45 scenario (Figure 4). The anomaly forcing CLM captured the regional yield variations. Latin America (LAC) showed the highest yield while India (IND) showed the lowest yields for both the anomaly forcing CLM and the standard CLM across the three scenarios.

Although the crop yields were underestimated, the anomaly forcing CLM could qualitatively represent the spatial yield differences between two climate scenarios. Comparing 2.0 °C to 1.5 °C, there was a 4-8% yield increase in the northern U.S. and a 0-4% yield decrease in (Figure 5a) in the southeast U.S. When comparing the RCP45 to the 1.5 °C scenario, crop yields in the U.S. were largely reduced (up to 50%). The anomaly forcing CLM clearly captured these yield differences (Figure 5b and 5d).

Deleted: ←

←

←

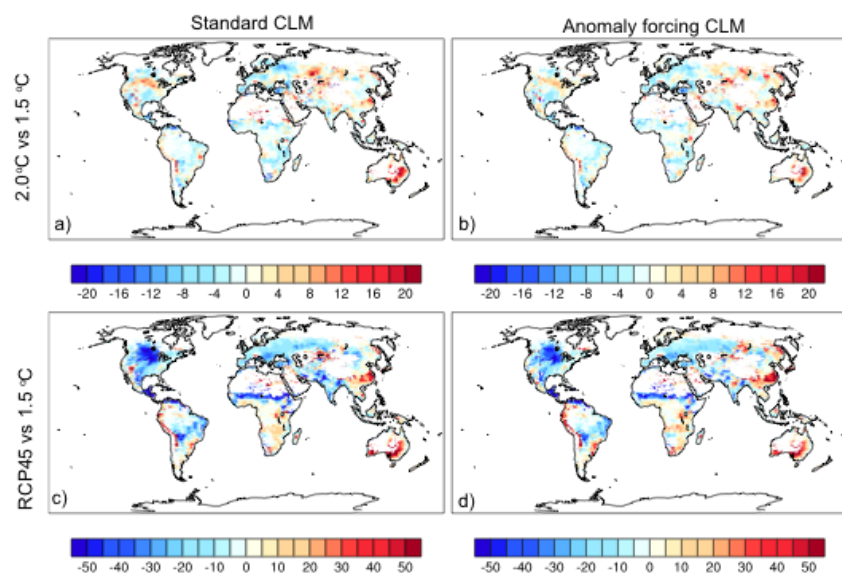


Figure 5. The percentage of 70-year integrated yield differences between 2.0 °C and 1.5 °C (top panel) RCP45 to 1.5 (bottom panel) in the standard CLM and the anomaly forcing CLM

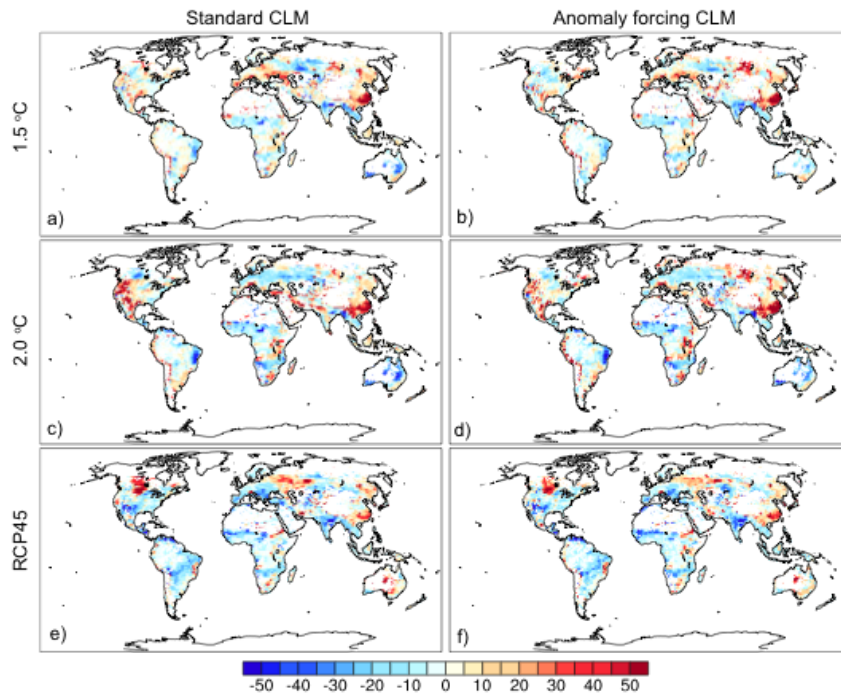


Figure 6. The percentage yield difference from 2006-2015 to 2066-2075 in the standard CLM and anomaly forcing CLM across the three scenarios

The anomaly forcing CLM also captured yield changes over time for each climate scenario. The three scenarios showed some similarities in yield changes from 2006-2015 to 2066-2075. For example, crop yields increased in Southeast China and decreased in Sub-Saharan Africa. There were also yield changes that were unique to each scenario that were also found in the anomaly forcing CLM. For example, crop yields increased in Europe for the 1.5 °C scenario (Figure 6a-b), while they decreased in Europe for the 2.0 °C and RCP45 scenarios (Figure 6c-f), and crop yields declined in the U.S. for the RCP45 scenario (Figure 6e-f) while they increased for the 1.5 °C and 2.0 °C scenarios (Figure 6a-d).

All simulations in the above evaluations adopted a constant CO₂ level (359.8 ppm) and crop types dependent fixed nitrogen fertilization (25-500 kg N/ ha), so whether the anomaly forcing CLM simulated a similar or different crop growth response to CO₂ or nitrogen fertilization is unknown. Due to limited computational resources, we tested crop responses to transient CO₂ and nitrogen fertilization only for the RCP45 scenario and assumed that the other scenarios would show the same differences as the RCP45 scenario. The transient CO₂ in the RCP45 scenario gradually increased from 379 ppm in 2006 to 530 ppm in 2075. To test the effects of nitrogen

fertilization, we simply added a zero nitrogen fertilization simulation. Although all grid cells had the same amounts of CO₂ increase in a given year (no spatial variation), crop yields had spatial variations in response to transient CO₂. Most regions showed a 5-10% yield increase, but some regions showed much higher yield increases, such as northern India, the southern edge of the Sahara, and Australia (Figure 7a). Such crop yield responses to transient CO₂ spatial patterns were also captured by the anomaly forcing CLM (Figure 7b). Similar for the crop yield responses to nitrogen fertilization, the anomaly forcing CLM simulated crop yield increase spatial patterns (Figure 7c-d), in which the Southern Hemisphere and Asia had greater yield increases in response to nitrogen fertilization.

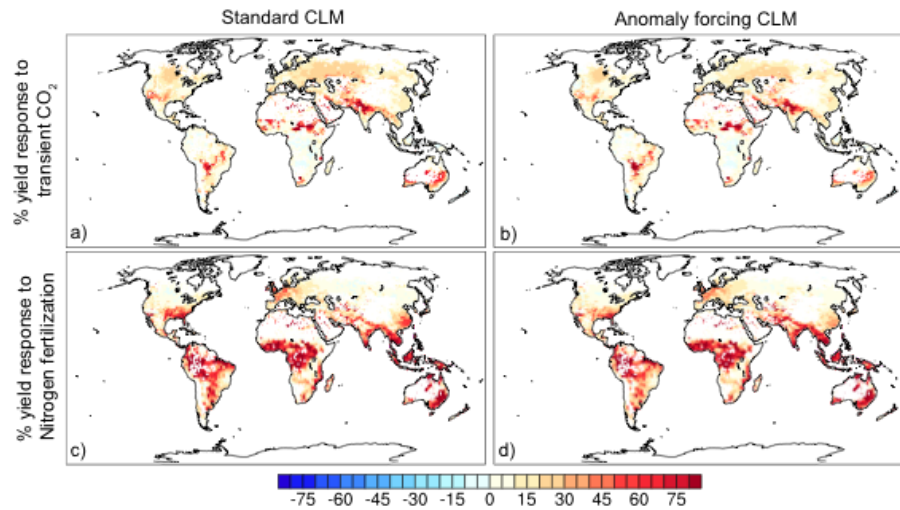


Figure 7. 70-year averaged integrated crop yield response to transient CO₂ and to no nitrogen fertilization in the anomaly forcing CLM (a and b) and in the standard CLM (c and d) for the RCP45 scenario.

Discussion

In this work, we created anomaly forcing datasets for three future climate scenarios, and we validated the crop yields in the anomaly forcing CLM by comparison with the crop yields in the standard CLM. The differences between the anomaly forcing CLM and standard CLM were due only to differences in forcing data, for which the standard CLM used regular forcing (three-hourly forcing) and the anomaly forcing CLM used anomaly forcing. We found that the anomaly forcing CLM underestimated crop yields but identified the regional yield variations, as well as yield differences between two climate scenarios and yield changes over time. The anomaly forcing CLM could not generate the exact same crop yields as the standard CLM due to errors in

precipitation and in the submonthly variations. However, it could be used for qualitative analysis of relative crop yield changes among different scenarios and over time.

The overall underestimation of crop yields may be due to differences in phenology that resulted from different submonthly variations. Some of the low yields in the anomaly forcing CLM may be explained by shorter grain fill periods. For example, the lower rice yields in southeast China are due to a 5-10 day shorter grain fill period in the anomaly forcing CLM (Figure S1; a-c); maize and soybean in the Southern Hemisphere also showed a 1-5 day shorter grain fill period that may account for the lower yields (Figure S1; d-i). In addition to the low yields, the anomaly forcing CLM also simulated lower GPP and LAI compared to the standard CLM (Figure S2; a1-b3), and the spatial distributions of GPP and LAI differences were very similar to the yield differences.

Some regions in the Northern Hemisphere showed higher rainfed crop yields in the anomaly forcing CLM, which is due to higher soil moistures at planting that resulted from higher snow levels in the Northern Hemisphere. Crop growth in CLM is very sensitive to the soil moisture at planting, and higher soil moisture (Figure S2; c1-c3) results in unstressed crop growth and hence produces higher yields. When adequate irrigation is applied, both the anomaly forcing and the standard CLM models have sufficient water for crop growth, and the overestimations disappeared. Therefore, the anomaly forcing may not be appropriate for estimating the actual future irrigation demands but is able to distinguish the relative differences in irrigation demand across different climate scenarios.

The energy fluxes in the anomaly forcing CLM and in the standard CLM were different due to different crop growth rates and differences in forcing data. The higher snow cover in the Northern Hemisphere creates higher albedo and lowers absorbed solar radiation and hence lower surface energy fluxes. The higher LAI increased the summer latent heat flux up to 5 W.m^{-2} (Figure S3), while the annual latent heat flux showed 5-10 W.m^{-2} (Figure S2; d1-d3) lower values in the anomaly forcing CLM due to the lower net radiation. In the Southern Hemisphere, lower LAI (Figure S2; a1-a3) resulted in lower latent heat fluxes (Figure S2; d1-d3) and higher sensible heat fluxes (Figure S2; e1-e3).

The regional yield comparisons indicate that the anomaly forcing CLM effectively captured regional yield variations but with slightly lower yield biases. We want to point out that the very high crop yields in Latin America and in Sub-Saharan Africa, and the very low crop yields in India in both the anomaly forcing CLM and the standard CLM approaches are not realistic when compared to the UNFAO yields (<http://www.fao.org/statistics/en/>). Such biases in the CLM have been discussed by Levis et al. (2018), and the low yields in India are due to incorrect crop phenology when crops entered the grain fill during the dry season. The high yields in Latin American and in Sub-Saharan Africa were due to the nitrogen fertilization amounts based on US levels, which are too high for these regions.

The crop model in the most recent version of CLM5.0 includes new features as reported in Lombardozzi et al., (2020). For example CLM5.0 uses time-varying spatial distributions of major crop types and has updated fertilization and irrigation schemes. These updates of crop model in CLM5.0 may improve the crop yield simulations for both standard CLM and anomaly forcing CLM compared to crop yield in reality. The anomaly forcing method in CLM5.0 remains

Deleted: is due

Deleted: not shown),

Deleted:

Formatted: Font color: Text 1

Formatted: Font color: Text 1

Formatted: Font color: Text 1

unchanged so we speculate the bias due to anomaly forcing may still exist in CLM5.0. For example, CLM5.0 uses the same threshold to differ rain and snow, so the bias due to higher snow cover in the Northern Hemisphere may still exists in CLM5.0. However, how will the magnitude of the bias change is unclear. We suggest that the anomaly forcing of CLM5.0 to be tested if the research interest is in absolute yield or in qualitative difference.

Our approach can be adopted by other land surface models to expand their capabilities for utilizing monthly climate data. The source code of the anomaly forcing CLM is available at the repository website Zenodo <https://doi.org/10.5281/zenodo.3900671>. The path is post4.5crop_slevis/models/lnd/clm/src/cpl/lnd_import_export.F90 when unzip post4.5crop_slevis_codeforGMD.tar.gz. The Fortran code could be transplanted to other land surface models which use NetCDF format atmospheric forcing.

Conclusions

The Community Land Surface model offers an alternative way in utilize the monthly climate as the forcing data. Such an approach could expand user choice of forcing data when high temporal resolution climate data are not available. In this work, we created anomaly forcing data for three climate scenarios (1.5 °C warming, 2.0 °C warming, and RCP4.5) and validated crop yield projections in the anomaly forcing CLM against the standard CLM. The anomaly forcing CLM underestimated crop yields by 5-8%, which was largely due to the differences in phenology and photosynthesis that resulted from the different submonthly variations. How CLM treated precipitation as rain or snow also introduced biases in crop yields and in the energy flux simulations. Although the anomaly forcing CLM could not generate crop yields identical to the standard CLM, it could be used for qualitative analysis of crop yield changes across various scenarios over time.

Code availability

The CLM source code used in our study is available at repository website Zenodo: <https://doi.org/10.5281/zenodo.3900671>

Author contribution

Yaqiong Lu designed and performed the simulations. Yaqiong Lu and Xianyu Yang analyzed the results and wrote the manuscript.

Acknowledgments

We thank the tropical editor Christoph Müller and two anonymous reviewers for their great comments that largely improved our manuscript. We also thank Sean Swenson and David Lawrence for instruction of using the anomaly forcing approach. This work was supported by the National Science Foundation under Grant Number AGS-1243095 and the National Natural Science Foundation of China (No. 41975135). We would like to acknowledge high-performance computing support from Yellowstone (ark:/85065/d7wd3xhc), provided by NCAR's

Deleted: (2020)

Formatted: Font color: Text 1

Formatted: Font color: Text 1

Formatted: Font color: Text 1

Formatted: Font color: Text 1

Formatted: Font color: Text 1

Formatted: Font color: Text 1

Formatted: Font color: Text 1

Formatted: Font color: Text 1

Formatted: Font color: Text 1

Formatted: Font color: Text 1

470 Computational and Information Systems Laboratory, sponsored by the National Science
471 Foundation.
472
473
474 Appendix: a user guide for using anomaly forcing CLM
475
476 Running the anomaly forcing CLM is similar to the standard CLM but with several additional
477 steps. First, the monthly anomaly data are prepared as described in the method section. Then, the
478 user needs to modify user_nl_cpl and user_nl_datm to specify which forcing variables to add to
479 the anomaly signals. There are seven anomaly forcing variables (Table A2), and the user can
480 specify one, or two, or all variables in the two namelists (user_nl_cpl and user_nl_datm). The
481 final step is to add the corresponding anomaly forcing data streams depending on which anomaly
482 forcing variables were specified in user_nl_cpl and user_nl_datm.
483
484
485 1. Modify user_nl_cpl and user_nl_datm
486
487 The user may add part or all of the following text to user_nl_cpl.
488
489 cplflds_custom = 'Sa_prec_af->a2x', 'Sa_prec_af->x2l', 'Sa_tbot_af->a2x',
490 'Sa_tbot_af->x2l', 'Sa_pbot_af->a2x', 'Sa_pbot_af->x2l', 'Sa_shum_af->a2x',
491 'Sa_shum_af->x2l', 'Sa_u_af->a2x', 'Sa_u_af->x2l', 'Sa_v_af->a2x',
492 'Sa_v_af->x2l', 'Sa_swdn_af->a2x', 'Sa_swdn_af->x2l', 'Sa_lwdn_af->a2x', 'Sa_lwdn_af->x2l'
493
494 Add part or all of the following text into user_nl_datm:
495
496 anomaly_forcing=
497 'Anomaly.Forcing.Precip','Anomaly.Forcing.Temperature','Anomaly.Forcing.Pressure','Anomaly
498 .Forcing.Humidity','Anomaly.Forcing.Uwind','Anomaly.Forcing.Vwind','Anomaly.Forcing.Short
499 wave','Anomaly.Forcing.Longwave'
500
501 Also attach the anomaly forcing data streams in user_nl_datm:
502
503 streams = "datm.streams.txt.CLMCRUNCEP.Solar 1996 1996 2005",
504 "datm.streams.txt.CLMCRUNCEP.Precip 1996 1996 2005",
505 "datm.streams.txt.CLMCRUNCEP.TPQW 1996 1996 2005",
506 "datm.streams.txt.presaero.clim_2000 1 1 1",
507 "datm.streams.txt.Anomaly.Forcing.Precip 2006 2006 2075",
508 "datm.streams.txt.Anomaly.Forcing.Temperature 2006 2006 2075",
509 "datm.streams.txt.Anomaly.Forcing.Pressure 2006 2006 2075",
510 "datm.streams.txt.Anomaly.Forcing.Humidity 2006 2006 2075",
511 "datm.streams.txt.Anomaly.Forcing.Uwind 2006 2006 2075",
512 "datm.streams.txt.Anomaly.Forcing.Vwind 2006 2006 2075",
513 "datm.streams.txt.Anomaly.Forcing.Shortwave 2006 2006 2075",
514 "datm.streams.txt.Anomaly.Forcing.Longwave 2006 2006 2075",
515 "/glade/p/work/yaqiong/inputdata/atm/datm7/co2.1pt5degC.streams.txt 1901 1901 2075"

```

516
517 mapalgo = 'bilinear', 'bilinear', 'bilinear', 'bilinear', 'bilinear', 'bilinear', 'bilinear', 'bilinear',
518 'bilinear',
519 'bilinear', 'bilinear', 'bilinear', 'nn'
520 tintalgo = 'coszen', 'nearest', 'linear', 'linear', 'nearest', 'nearest', 'nearest', 'nearest', 'nearest',
521 'nearest',
522 'nearest', 'nearest', 'linear'
523

```

524 Any combination or subset of anomaly forcing variables can be used. For example,
525 cplflds_custom = 'Sa_prec_af->a2x', 'Sa_prec_af->x2l' (in user_nl_cpl)
526 anomaly_forcing='Anomaly.Forcing.Precip' (in user_nl_datm)
527 will only adjust precipitation. The reference data and period are defined in env_run.xml.
528

529 2. Add the anomaly forcing data stream
530 The anomaly forcing data stream is where to specify the data path of the monthly anomaly
531 forcing signal and to tell the code which variable to retrieve. A list of all anomaly forcing data
532 stream file names and the variables in the anomaly forcing data and the code are given in Table
533 2. An example of the content in user_datm.streams.txt.Anomaly.Forcing.Humidity is also
534 attached. The user only needs to add the corresponding variable data streams that are defined in
535 user_nl_cpl.
536

537 Table A2. A list of the anomaly forcing data streams and the corresponding variables in the
538 anomaly forcing data and the code

| Data stream file names | Vars in data | Vars in code |
|---|--------------|--------------|
| user_datm.streams.txt.Anomaly.Forcing.Humidity ¹ | huss | shum_af |
| user_datm.streams.txt.Anomaly.Forcing.Precip | pr | prec_af |
| user_datm.streams.txt.Anomaly.Forcing.Pressure | ps | pbot_af |
| user_datm.streams.txt.Anomaly.Forcing.Shortwave | rsds | swdn_af |
| user_datm.streams.txt.Anomaly.Forcing.Temperature | tas | tbot_af |
| user_datm.streams.txt.Anomaly.Forcing.Uwind | uas | u_af |
| user_datm.streams.txt.Anomaly.Forcing.Vwind | vas | v_af |
| user_datm.streams.txt.Anomaly.Forcing.Longwave | rlds | lwdn_af |

539 ¹An example of the content in the data stream was given below:

```

540 <dataSource>
541   GENERIC
542 </dataSource>
543 <domainInfo>
544   <variableNames>
545     time
546     xc   lon
547     yc   lat
548     area
549     mask
550   </variableNames>
551   <filePath>
552     /glade/p/cesmdata/cseg/inputdata/share/domains

```

```

553     </filePath>
554     <fileNames>
555         domain.lnd.fv0.9x1.25_gx1v6.090309.nc
556     </fileNames>
557 </domainInfo>
558 <fieldInfo>
559     <variableNames>
560         huss shum_af
561     </variableNames>
562     <filePath>
563         THE ANOMALY FORCING SIGNAL DATA PATH
564     </filePath>
565     <fileNames>
566         THE ANOMALY FORCING SIGNAL DATA NAME
567     </fileNames>
568     <offset>
569         0
570     </offset>
571 </fieldInfo>

```

574 Reference:

```

575
576 Drewniak, B., Song, J., Prell, J., Kotamarthi, V. R., and Jacob, R.: Modeling agriculture in the Community Land Model,
577 Geosci Model Dev, 6, 495-515, 2013.
578 Hurrell, J. W., Holland, M. M., Gent, P. R., Ghan, S., Kay, J. E., Kushner, P. J., Lamarque, J. F., Large, W. G., Lawrence,
579 D., Lindsay, K., Lipscomb, W. H., Long, M. C., Mahowald, N., Marsh, D. R., Neale, R. B., Rasch, P., Vavrus, S.,
580 Vertenstein, M., Bader, D., Collins, W. D., Hack, J. J., Kiehl, J., and Marshall, S.: The Community Earth System Model
581 A Framework for Collaborative Research, B Am Meteorol Soc, 94, 1339-1360, 2013.
582 Justel, A., Pena, D., and Zamar, R.: A multivariate Kolmogorov-Smirnov test of goodness of fit, Stat Probabil Lett, 35,
583 251-259, 1997.
584 Knutti, R. and Sedlacek, J.: Robustness and uncertainties in the new CMIP5 climate model projections, Nat Clim
585 Change, 3, 369-373, 2013.
586 Kucharik, C. J.: Evaluation of a Process-Based Agro-Ecosystem Model (Agro-IBIS) across the US Corn Belt:
587 Simulations of the Interannual Variability in Maize Yield. In: Earth Interact, 2003.
588 Lawrence, D. M., Koven, C. D., Swenson, S. C., Riley, W. J., and Slater, A. G.: Permafrost thaw and resulting soil
589 moisture changes regulate projected high-latitude CO2 and CH4 emissions, Environ Res Lett, 10, 2015.
590 Levis, S., Badger, A., Drewniak, B., Nevison, C., and Ren, X. L.: CLMcrop yields and water requirements: avoided
591 impacts by choosing RCP 4.5 over 8.5, Climatic Change, 146, 501-515, 2018.
592 Levis, S., Bonan, G. B., Kluzek, E., Thornton, P. E., Jones, A., Sacks, W. J., and Kucharik, C. J.: Interactive Crop
593 Management in the Community Earth System Model (CESM1): Seasonal Influences on Land-Atmosphere Fluxes, J
594 Climate, 25, 4839-4859, 2012.
595 Lobell, D. B., Burke, M. B., Tebaldi, C., Mastrandrea, M. D., Falcon, W. P., and Naylor, R. L.: Prioritizing climate
596 change adaptation needs for food security in 2030, Science, 319, 607-610, 2008.
597 Lombardozzi, D., Levis, S., Bonan, G., Hess, P. G., and Sparks, J. P.: The Influence of Chronic Ozone Exposure on
598 Global Carbon and Water Cycles, J Climate, 28, 292-305, 2015.
599 Lombardozzi, D. L., Lu, Y. Q., Lawrence, P. J., Lawrence, D. M., Swenson, S., Oleson, K. W., Wieder, W. R., and
600 Ainsworth, E. A.: Simulating Agriculture in the Community Land Model Version 5, J Geophys Res-Bioge, 125, 2020.
601 Lu, Y. Q., Williams, I. N., Bagley, J. E., Torn, M. S., and Kueppers, L. M.: Representing winter wheat in the
602 Community Land Model (version 4.5), Geosci Model Dev, 10, 1873-1888, 2017.
603 Marozzi, M.: Nonparametric Simultaneous Tests for Location and Scale Testing: A Comparison of Several Methods,

```

Commun Stat-Simul C, 42, 1298-1317, 2013.

Oleson, K., Lawrence, D., Bonan, G., Drewniak, B., Huang, M., Koven, C., Levis, S., Li, F., Riley, W., Subin, Z., Swenson, S., and Thornton, P.: Technical Description of version 4.5 of the Community Land Model (CLM), National Center for Atmospheric Research, Boulder, CO, NCAR/TN-503+STR, 434 pp., 2013.

Peng, B., Guan, K. Y., Chen, M., Lawrence, D. M., Pokhrel, Y., Suyker, A., Arkebauer, T., and Lu, Y. Q.: Improving maize growth processes in the community land model: Implementation and evaluation, *Agr Forest Meteorol*, 250, 64-89, 2018.

Qian, T., Dai, A., Ternberth, K. E., and Olseon, K. W.: Simulation of Global Land Surface Conditions from 1948 to 2004. Part I: Forcing Data and Evaluations, *Journal of Hydrometeorology*, 7, 953-975, 2006.

Ren, X., Lu, Y., O'Neill, B. C., and Weitzel, M.: Economic and biophysical impacts on agriculture under 1.5 °C and 2 °C warming, *Environ Res Lett*, 13, 2018.

Rosenzweig, C., Elliott, J., Deryng, D., Ruane, A. C., Muller, C., Arneth, A., Boote, K. J., Folberth, C., Glotter, M., Khabarov, N., Neumann, K., Piontek, F., Pugh, T. A. M., Schmid, E., Stehfest, E., Yang, H., and Jones, J. W.: Assessing agricultural risks of climate change in the 21st century in a global gridded crop model intercomparison, *P Natl Acad Sci USA*, 111, 3268-3273, 2014.

Urban, D., Roberts, M. J., Schlenker, W., and Lobell, D. B.: Projected temperature changes indicate significant increase in interannual variability of U.S. maize yields, *Climatic Change*, 112, 525-533, 2012.

Viovy, N.: CRUNCEP Version 7 - Atmospheric Forcing Data for the Community Land Model. <https://doi.org/10.5065/PZ8F-F017>, Research Data Archive at the National Center for Atmospheric Research, Computational and Information Systems Laboratory, 2018.