

Authors response to referee comments: IntelliO3-ts v1.0: A neural network approach to predict near-surface ozone concentrations in Germany

Felix Kleinert^{1,2}, Lukas H. Leufen^{1,2}, and Martin G. Schultz¹

¹Forschungszentrum Jülich, Jülich Supercomputing Center, Wilhelm-Johnen-Straße 52428 Jülich

²Rheinische Friedrich-Wilhelms-Universität Bonn, Institute of Geosciences, Germany

Correspondence: Felix Kleinert (f.kleinert@fz-juelich.de)

1 General statement

We are grateful to the anonymous reviewers for the constructive review and encouraging comments. In the following we are going to address all comments point by point, while using **blue** for comments of **Reviewer #1** and **red** for **Reviewer #2**. Additional changes not explicitly stated by the reviewers, are highlighted in **magenta**. We used the same colours for changes in
5 the manuscript.

2 Answer to Anonymous Referee #1

"Kleinert et al. present a machine learning (ML) method to predict surface ozone concentrations up to four days in advance. The method uses convolutional neural networks(CNN) trained on an extensive set of historical data (10 years) to forecast the daily maximum 8-hour average ozone concentration at more than 300 background measurement sites across Germany. Based
10 on only a few input variables (concentrations of ozone and nitrogen oxides (NO_x) and six meteorological variables), the ML ozone forecasts show good skills for the first two days but don't perform better than reference forecasts over longer time windows. This is a very nice paper that is well written and easy to follow. Minor comments are given below."

– "My only major comment is the issue with trends in the input data. Presumably, the 10-year training data of ozone and NO_x – and possibly temperature – show a long-term trend? I would expect this to create issues for the CNN since this
15 trend is imprinted in the training data (even after normalizing around the interannual mean and standard deviation). Further, given the long-term trends in both ozone and NO_x, the test samples (2010-2015) might represent a different 'environmental regime' that the CNN was not trained on. The authors should discuss this in the revised version of the manuscript."

Reviewer #1 points to a very crucial point here. Schultz et al. (2020, accepted) suggest multiple different techniques to
20 generate the training, validation and test sets, respectively, which might be subject of a separate study or even better of a model intercomparison study. We added the following paragraph (focusing on the applied data split) as a new section

Limitations and additional remarks.

By splitting the data into three consecutive, non-overlapping sets, we ensure that the data sets are as independent as possible. On the other hand, this independence comes at the cost, that changes of trends in the input variables may not be captured, especially as our input data are not de-trended. Indeed, at European non-urban measurement sites, several ozone metrics related to high concentrations (e.g. 4th highest daily maximum 8-hour (4MDA8) or the 95%-percentile of hourly concentrations) show a significant decrease during our study period (1997 to 2015) (Fleming et al., 2018; Yan et al., 2018). Our data splitting method for evaluating the generalisation capability is conservative in the sense that we evaluate the model on the test set, which has the largest possible distance to the training set. If our research model shall be transformed into an operational system we suggest to apply online learning and use the latest available data for subsequent training cycles (see for example Sayeed et al. (2020)).

(Same answer to rev #2)

– "Minor comments":

– "Table 1: I suggest you include the study by Seltzer et al. (2020)"

We added Seltzer et al. (2020) and the following sentences on page 3 line 52: "Seltzer et al. (2020) used 3557 measurement sites across six measurement networks to analyse long term ozone exposure trends in North America by applying a fully connected neural network. They mainly focused on metrics related to human health and crop loss."

– "Section 2.1.: (Variable selection): using the daily maximum 8-hour average for NO and NO2 seems like an odd choice to me. From a chemical perspective, one would rather want to use the 24-hour average or maximum one-hour concentration?"

While we agree with the reviewer that the choice of metrics for NO and NO2 may seem strange, this was indeed done on purpose. We now added the following text to explain our rationale for this decision:

"The choice of using the dma8eu metrics for NO and NO2 was motivated by the idea to sample all chemical quantities during the same time periods and with similar averaging times. While the dma8eu metrics is calculated based on data starting at 5pm on the previous day, the daily mean/max values for example would be calculated based on data starting from the current day. To test the impact of using different metrics for ozone precursors we also trained the model from scratch with either mean or maximum concentrations of NO and NO2 as inputs. The results of these runs were hardly distinguishable from the results presented below."

(Same answer to rev #2)

– "Section 4.1 (Joint Distributions): While interesting it's not clear why this section is in the manuscript. It doesn't seem to have much relevance for understanding the paper?"

We agree, that this section is not mandatory to understand the figures of joint distributions. We therefore moved this subsection to the appendix as we also explicitly refer to the calibration refinement factorisation in other sections.

55 – "Section 5.2. (Comparison with competitive models): please add reference to Figure 6."

We added the reference to Fig. 6

"References: Seltzer, K. M., Shindell, D. T., Kasibhatla, P., and Malley, C. S.: Magnitude, trends, and impacts of ambient long-term ozone exposure in the United States from 2000 to 2015, *Atmos. Chem. Phys.*, 20, 1757–1775, <https://doi.org/10.5194/acp-20-1757-2020>, 2020."

60 3 Answer to Anonymous Referee #2

"The authors present a data-driven forecast model for maximum daily 8-hour ozone (mda8O3) concentrations based on multiple convolutional neural layers and apply it to the network of rural ozone monitoring sites in Germany. The manuscript is well written, and the model presented and its application make a valuable contribution to the field. I ask the authors for a few clarifications and specifications detailed in my specific comments below."

65 "Specific comments:"

1. "The authors include several meteorological variables as input but not radiation. This is a little odd given the importance of radiation for photochemistry and thus ozone formation. Cloud-cover is used by the authors together with temperature as a proxy, however I am not surprised that this surrogate variable shows limited influence on mda8O3. It seems also that direct and diffuse irradiance are available at various time steps (https://reanalysis.meteo.uni-bonn.de/?Download_Data___COSMO-REA6) although otherwise stated on page p4, L93."

The COSMO-REA6 indeed contains radiative variables, however those variables are unfortunately not available through the JOIN-REST-API on <https://join.fz-juelich.de> which we used to access the TOAR-database for this study. Re-processing of the additional variables would have been a major effort, which could not be done during the time this study was conducted. We therefore used the mentioned variables as proxy.

75

2. "Related to my previous comment I am a bit puzzled that all meteorological covariates show such limited added skill. Have the authors assessed simple brute-force correlations between meteorological covariates and mda8O3, are they as low as the skill score would suggest? Also I wonder if the limited influence stems from the joint consideration of all seasons and if a cleaner picture would emerge on seasonal or monthly basis."

80

We did not calculate correlations between meteorological covariates and ozone concentrations, but also Otero et al. (2016) report, that the ozone concentration itself, followed by temperature are the main drivers in their correlation analysis. In general, instead of using the bootstrapped variables as inputs for the trained model, it would also be possible to use those bootstrapped inputs to train the model for each redrawn variable from scratch, resulting in nine different models (one per variable). In this case, the network would be forced to extract more information from variables which are not redrawn. This method, however, would deliver information on the influence of variables during different training

85

cycles and not the influence of variables on the originally trained model. Our method, however, underestimates the influence of specific input variables in case of strongly correlated input variables as the majority of information is extracted by the most dominant feature (here ozone). As ozone dominates Manuscript-Figure 8, we split the variables into two groups and show their skill scores on different scales.

To make this point even more explicit, we added the following half-sentence to page 12, line 330: ", because in such cases the network will focus on the dominant feature (here: ozone)."

3. "Along these lines, I am wondering if pooling of observations in the samples might cause some spurious effects. Given the relatively low VOC abundances during fall-early spring pooling might explain to some degree the relative low skill obtained for NO and NO2."

We use all seasons to train one specific model which should be applicable to any (German) collection of time-series containing the required nine input variables. This generalisation comes with the cost that the network has to learn the seasonality first, before focusing on variational patterns.

4. "On p.5., L103 the authors state that they include stations if they have at least one year of valid data in one of the sets. I wonder if an unequal inclusion of observations from different time periods affects the robustness of the training and tuning. How much would the sample reduce if a more stringent criterion would be applied say e.g., more than 80% or 50% coverage over the considered time period, or a high fraction of available data per month, season and year?"

We only include a station into a corresponding data set, if at least one year of valid data is available in the set's time period. We expanded Manuscript-Figure 2 and show the total amount of samples available for each day. As additional information to the reviewer, we here also provide Fig. 1 (here) showing the number of stations (y-axis) as a function of valid data points (x-axis).

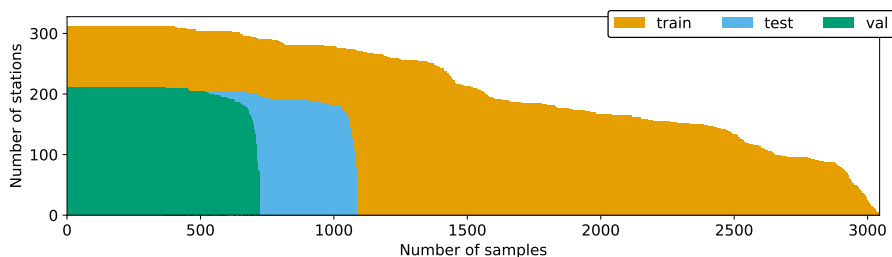


Figure 1. Number of stations having at least a given number of samples.

Furthermore, we extended Manuscript-Table 4, which now also reports the mean and standard deviation as well as selected percentiles. On average each station in the validation set contains ~ 690 samples (std. ~ 60 samples), while each station in the testing set contains on average ~ 1040 samples (std. ~ 90 samples). Thus, a more stringent criterion would not lead to a significant reduction of stations in the validation and testing sets. Within the training data set roughly

two thirds (~ 200) of all stations contain at least 1500 samples and approximately 120 stations have more than 2500 samples.

5. "Also O3 and NO and NO2 show substantial changes and trends in Europe over the time period considered. The authors do not address this in their manuscript, thus I assume the data has not been detrended before use in model training and validation? What magnitude of effect would we expect by considering non-stationary time series training of a CNN model?"

Indeed, we did not detrend any time-series. We added the following paragraph as a separate section:

By splitting the data into three consecutive, non-overlapping sets, we ensure that the data sets are as independent as possible. On the other hand, this independence comes at the cost, that changes of trends in the input variables may not be captured, especially as our input data are not de-trended. Indeed, at European non-urban measurement sites, several ozone metrics related to high concentrations (e.g. 4th highest daily maximum 8-hour (4MDA8) or the 95%-percentile of hourly concentrations) show a significant decrease during our study period (1997 to 2015) (Fleming et al., 2018; Yan et al., 2018). Our data splitting method for evaluating the generalisation capability is conservative in the sense that we evaluate the model on the test set, which has the largest possible distance to the training set. If our research model shall be transformed into an operational system we suggest to apply online learning and use the latest available data for subsequent training cycles (see for example Sayeed et al. (2020)).

(Same answer to rev #1)

We expect that the change of trend is more important than the trend itself as the change of trend might not be captured in the different sets. As the ozone metrics related to high concentrations are decreasing, the network does not need to predict values outside the learned/trained concentration range in our specific application.

6. "The authors use dma8 for NO and NO2. What is the motivation to use here dma8 instead of the daily mean or maximum value, which would be the more common quantities?"

While we agree with the reviewer that the choice of metrics for NO and NO2 may seem strange, this was indeed done on purpose. We now added the following text to explain our rationale for this decision:

"The choice of using the dma8eu metrics for NO and NO2 was motivated by the idea to sample all chemical quantities during the same time periods and with similar averaging times. While the dma8eu metrics is calculated based on data starting at 5pm on the previous day, the daily mean/max values for example would be calculated based on data starting from the current day. To test the impact of using different metrics for ozone precursors we also trained the model from scratch with either mean or maximum concentrations of NO and NO2 as inputs. The results of these runs were hardly distinguishable from the results presented below."

(Same answer to rev #1)

7. P6, L135, a batch size of 512 samples is used, how do the authors derive this number?

We tested various batch sizes and found no significant differences in the results. We now added the following explanation

145 in the text on page 6, line 134: "[We selected a batch size of 512 samples (Algorithm 1, line 10)], because this size is a good compromise between minimising the loss-function and optimising computing time per trained epoch. Experiments with larger and smaller batch sizes did not yield significantly different results."

"Minor comments:"

1. "I suggest to use 'training set' instead of 'train set' throughout the manuscript."
150 Thank you for the suggestion, we changed all 'train set' to 'training set'
2. "I suggest grouping several figures to multi-panel figures to increase accessibility (7a-d, A3a-d, A4a-d, A5a-d, A6a-d)."
Done.
3. "Figure A2 is incredibly hard to read even when zooming in to 400%"
We replaced this figure (now A2 and A3) and used a different tool for visualisation of the neural network architecture.
155 We removed manuscript Fig. 3, as the new representation of Figure A2 transports the same content. We adjusted the references on page 6 line 144.
4. "Axis labels of Figure A2 are hard to read."
We assume you mean Figure A1; we increased the font size.
5. "P7, L174 a reference for the Adam optimizer is missing"
160 Reference is Kingma and Ba (2014)
6. "I was wondering if the section on joint distributions and skill scores could not be moved to the Appendix"
We moved the section on joint distributios to the appendix. We would like to keep the section on skill scores in the main text as two figures show that skill score on the y-axis (Manuscript Fig. 5, Fig 6).

"Spelling and typos":

- 165 – "P6, L118: hyperparameters"
We replaced 'hyperparameetrs' with 'hyperparameters'
- "P9L226: replace 'model with 'models'"
We replaced 'model' with 'models'
- "P10, L235: replace 'observation' with 'observations'"
170 We replaced 'observation' with 'observations'
- "P10, L237: replace 'multi-valued' with 'multi-value' and check throughout the text"
We replaced 'multi-valued' with 'multi-value' throughout the manuscript
- "P11, L295: therefore more credible"
We added 'more'

- 175 – "P11, 297: replace 'the network under-forecasts' with 'the forecast is underestimating'"
We replaced 'the network under-forecasts' with 'the forecast is underestimating'

4 Additional Changes

1. We added the unit to Manuscript-Figure 4
- 180 2. We added the following sentence on page 3 line 57: "We evaluate the performance on 204 stations, which have data during the 2010 to 2015 period by looking at skill scores, the joint distribution of forecasts and observations, as well as the influence of input variables."
3. The correct number of stations used in the training set is 312, we corrected this in the manuscript.
4. We updated the Acknowledgements

5 References

- 185 – Fleming, Z. L., Doherty, R. M., Von Schneidmesser, E., Malley, C. S., Cooper, O. R., Pinto, J. P., Colette, A., Xu, X., Simpson, D., Schultz, M. G., Lefohn, A. S., Hamad, S., Moolla, R., Solberg, S., and Feng, Z.: Tropospheric Ozone Assessment Report: Present-day ozone distribution and trends relevant to human health, *Elem Sci Anth*, 6, 12, <https://doi.org/10.1525/elementa.273>, <https://www.elementascience.org/article/10.1525/elementa.273/>, 2018
- 190 – Kingma, D. P. and Ba, J.: Adam: A Method for Stochastic Optimization, arXiv:1412.6980 [cs], <http://arxiv.org/abs/1412.6980>, arXiv:1412.6980, 2014.
- Otero, N., Sillmann, J., Schnell, J. L., Rust, H. W., and Butler, T.: Synoptic and meteorological drivers of extreme ozone concentrations over Europe, *Environmental Research Letters*, 11, 024 005, <https://doi.org/10.1088/1748-9326/11/2/024005>, <https://iopscience.iop.org/article/10.1088/1748-9326/11/2/024005>, 2016.
- 195 – Sayeed, A., Choi, Y., Eslami, E., Lops, Y., Roy, A., and Jung, J.: Using a deep convolutional neural network to predict 2017 ozone concentrations, 24 hours in advance, *Neural Networks*, 121, 396–408, <https://doi.org/10.1016/j.neunet.2019.09.033>, <https://linkinghub.elsevier.com/retrieve/pii/S0893608019303156>, 2020.
- Schultz, M. G., Betancourt, C., Gong, B., Kleinert, F., Langguth, M., Leufen, L. H., Mozaffari, A., and Stadtler, S.: Can deep learning beat numerical weather prediction?, *Philosophical Transactions A*, accepted, 2020.
- 200 – Seltzer, K. M., Shindell, D. T., Kasibhatla, P., and Malley, C. S.: Magnitude, trends, and impacts of ambient long-term ozone exposure in the United States from 2000 to 2015, *Atmospheric Chemistry and Physics*, 20, 1757–1775,

<https://doi.org/10.5194/acp-20-1757-2020>,

<https://acp.copernicus.org/articles/20/1757/2020/>, 2020.

- 205 – Yan, Y., Pozzer, A., Ojha, N., Lin, J., and Lelieveld, J.: Analysis of European ozone trends in the period 1995–2014, *Atmospheric Chemistry and Physics*, 18, 5589–5605, <https://doi.org/10.5194/acp-18-5589-2018>, <https://acp.copernicus.org/articles/18/5589/2018/>, 2018.

IntelliO3-ts v1.0: A neural network approach to predict near-surface ozone concentrations in Germany

Felix Kleinert^{1,2}, Lukas H. Leufen^{1,2}, and Martin G. Schultz¹

¹Forschungszentrum Jülich, Jülich Supercomputing Center, Wilhelm-Johnen-Straße 52428 Jülich

²Rheinische Friedrich-Wilhelms-Universität Bonn, Institute of Geosciences, Germany

Correspondence: Felix Kleinert (f.kleinert@fz-juelich.de)

Abstract.

The prediction of near-surface ozone concentrations is important to support regulatory procedures for the protection of humans from high exposure to air pollution. In this study, we introduce a data-driven forecasting model named ‘IntelliO3-ts’, which consists of multiple convolutional neural layers (CNN), grouped together as inception blocks. The model is trained with measured multi-year ozone and nitrogen oxides concentrations of more than 300 German measurement stations in rural environments, and six meteorological variables from the meteorological COSMO reanalysis. This is by far the most extensive dataset used for time series predictions based on neural networks so far. IntelliO3-ts allows predicting daily maximum 8-hour average (dma8eu) ozone concentrations for a lead time of up to four days, and we show that the model outperforms standard reference models like persistence. Moreover, we demonstrate that IntelliO3-ts outperforms climatological reference models for the first two days, while it does not add any genuine value for longer lead times. We attribute this to the limited deterministic information that is contained in the single station time series training data. We applied a bootstrapping technique to analyse the influence of different input variables and found, that the previous day ozone concentrations are of major importance, followed by 2m temperature. As we did not use any geographic information to train IntelliO3-ts in its current version and included no relation between stations, the influence of the horizontal wind components on the model performance is minimal. We expect that the inclusion of advection-diffusion terms in the model could improve results in future versions of our model.

1 Introduction

Exposure to ambient air pollutants such as ozone (O_3) is harmful for living beings (WHO, 2013; Bell et al., 2014; Lefohn et al., 2017; Fleming et al., 2018) and certain crops (Avnery et al., 2011; Mills et al., 2018). Therefore, the prediction of ozone concentrations is of major importance to issue warnings for the public if high ozone concentrations are foreseeable. As tropo-
20 spheric ozone is a secondary air pollutant, there is nearly no source of directly emitted ozone. Instead, it is formed in chemical reactions of several precursors like nitrogen oxides (NO_x) or volatile organic compounds (VOCs). Weather conditions (tem-
perature, irradiation, humidity, and winds) have a major influence on the rates of ozone formation and destruction. Ozone has a "chemical lifetime" in the lower atmosphere of several days and can, therefore, be transported over distances of several hundred kilometres.

25 Ozone concentrations can be forecasted by various numerical methods. Chemical transport models (CTMs) solve chemical and physical equations explicitly (for example Collins et al., 1997; Wang et al., 1998a,b; Horowitz et al., 2003; von Kuhlmann et al., 2003; Grell et al., 2005; Donner et al., 2011). These numerical models predict concentrations for grid cells, which are assumed to be representative for a given area. Therefore, local fluctuations which are below model resolution cannot be simulated. Moreover, CTMs often have a bias in concentrations, turnover rates or meteorological properties which have a direct
30 influence on chemical processes (Vautard, 2012; Brunner et al., 2015).

This makes CTMs unsuited for regulatory purposes, which by law are bound to station measurements, except if so-called model output statistics are applied to the numerical modelling results (Fuentes and Raftery, 2005). As an alternative to CTMs, regression models are often used to generate point forecasts (c.f. Olszyna et al., 1997; Thompson et al., 2001; Abdul-Wahab et al., 2005). Regression models are pure statistical models, which are based on empirical relations among different variables.
35 They usually describe a linear functional relationship between various factors (precursor concentrations, meteorological, and site information) and the air pollutant in question.

Since the late nineties machine learning techniques in the form of neural networks have also been applied as a regression technique to forecast ozone concentrations or threshold value exceedances (see Table 1). As the computational power was limited in the early days of those approaches, many of these early studies focused on a small number of measurement stations
40 and used a fully connected (FC) network architecture. More recent studies explored the use of more advanced network architectures like convolutional neural networks (CNN) or Long-Short-Term Memory networks (LSTM). These networks were also applied to a larger number of stations compared to the earlier studies and some studies have tried to generalise, i.e. to train one neural network for all stations instead of training individual networks for individual stations (Table 1). Although the total amount of studies focusing on air quality or explicit near-surface ozone is already quite substantial, there are only few studies
45 which applied advanced deep learning approaches on a larger number of stations or on longer time series. Eslami et al. (2019) applied a CNN on time series of 25 measurement stations in Seoul, South Korea to predict hourly ozone concentrations for the next 24 hours. Ma et al. (2020) trained a bidirectional LSTM on 19 measurement sites over a period of roughly 9 months, and afterwards used that model to retrain individually for 48 previously not used measurement stations (transfer learning).

Sayeed et al. (2020) applied a deep CNN on data from 21 different measurement stations over a period of four years. They used three years (2014 to 2016) to train their model and evaluated the generalisation capability on the fourth year (2017). Zhang et al. (2020) developed a hybrid CNN-LSTM model to predict gridded air quality concentrations (O_3 , NO_2 , CO , $PM_{2.5}$, PM_{10}). Seltzer et al. (2020) used 3557 measurement sites across six measurement networks to analyse long term ozone exposure trends in North America by applying a fully connected neural network. They mainly focused on metrics related to human health and crop loss.

The current study extends these previous works and introduces a new deep learning model for the prediction of daily maximum 8-hour average O_3 concentrations (dma8eu, see Sect. 2.1) for a lead time of up to four days. The network architecture is based on several stacks of convolutional neural networks. We trained our network with data from 312 313 background measurement stations in Germany (date range from 1997 to 2007), tuned hyperparameters on data from 212 stations (data range from 2008 to 2009). We evaluate the performance on 204 stations, which have data during the 2010 to 2015 period looking at skill scores, the joint distribution of forecasts and observations, as well as the influence of input variables.

This article is structured as follows: In Sect. 2 we explain our variable selection and present our preprocessing steps. In Sect. 3, we introduce our forecasting model IntelliO3-ts, version 1.0. Sect. 4 introduces the statistical tools and reference models, which were used for verification. In Sect. 5 we present and discuss the results and analyse the influence of different input variables on the model performance. Finally, Sect. 7 provides conclusions.

2 Variable selection and data processing

2.1 Variable selection

Tropospheric ozone (O_3) is a greenhouse gas formed in the atmosphere by chemical reactions of other directly emitted pollutants (ozone precursors) and therefore referred to as a secondary air pollutant.

The continuity equation of near surface ozone in a specific volume of air can be written as (Jacobson, 2005, p.74f):

$$70 \quad \frac{\partial N_q}{\partial t} + \nabla \cdot (\mathbf{v} N_q) = (\nabla \cdot \mathbf{K}_h \nabla) N_q + R_{\text{depg}} + R_{\text{chemg}}, \quad (1)$$

where $\frac{\partial N_q}{\partial t}$ is the partial derivative of the ozone number concentration with respect to time, \mathbf{v} is the vector wind velocity, \mathbf{K}_h is the eddy diffusion tensor for energy, while R_{depg} and R_{chemg} are the rates of dry deposition to the ground, and photo-chemical production or loss, respectively.

Tropospheric ozone is formed under sunlit conditions in gas-phase chemical reactions of peroxy radicals and nitrogen oxides (Seinfeld and Pandis, 2016). The peroxy radicals are themselves oxidation products of volatile organic compounds. The nitrogen oxides undergo a rapid catalytic cycle:





where NO and O₃ are converted to NO₂ and back within minutes (M is an arbitrary molecule which is needed to take up excess energy, denoted by the asterisk). As a consequence, ozone concentrations in urban areas with high levels of NO_x from combustive emissions are extremely variable. In this study, we therefore focus on background stations, which are less affected by the rapid chemical inter-conversion.

From a chemical perspective, the prediction of ozone concentrations would require concentration data of NO, NO₂, speciated VOC, and O₃ itself. However, since speciated VOC measurements are only available from very few measurement sites, the chemical input variables of our model are limited to NO, NO₂, and O₃.

Besides the trace gas concentrations, ozone levels also depend on meteorological variables. Due to the scarcity of reported meteorological measurements at the air quality monitoring sites, we extracted time series of meteorological variables from the 6 km resolution COSMO-Reanalysis (Bollmeyer et al., 2015, COSMO-REA6) and treat those as observations.

All data used in this study were retrieved from the Tropospheric Ozone Assessment Report (TOAR) database (Schultz et al., 2017) via the Representational State Transfer (REST) Application Programming Interface (API) at <https://join.fz-juelich.de>. The air quality measurements were provided by the German Umweltbundesamt, while the meteorological data were extracted from the COSMO-REA6 reanalysis as described above. These reanalysis data cover the period from 1995 to 2015 with some gaps due to incompleteness in the TOAR database. As discussed in the US EPA guidelines on air quality forecasting (Dye, 2003), ozone concentrations typically depend on temperature, irradiation, humidity, wind speed and wind direction. The vertical structure of the lowest portion of the atmosphere (i.e. the planetary boundary layer) also plays an important role, because it determines the rate of mixing between fresh pollution and background air. Since irradiation data were not available from the REST interface, we used cloud-cover together with temperature as proxy variables.

Table 2 shows the list of input variables used in this study, and Table 3 describes the daily statistics that were applied to the hourly data of each variable. *The choice of using the dma8eu metrics for NO and NO₂ was motivated by the idea to sample all chemical quantities during the same time periods and with similar averaging times. While the dma8eu metrics is calculated based on data starting at 5pm on the previous day, the daily mean/max values for example would be calculated based on data starting from the current day. To test the impact of using different metrics for ozone precursors we also trained the model from scratch with either mean or maximum concentrations of NO and NO₂ as inputs. The results of these runs were hardly distinguishable from the results presented below.*

As described above, ozone concentrations are less variable at stations, which are further away from primary pollutant emission sources. We therefore selected those stations from the German air quality monitoring network, which are labelled as "background" stations according to the European Environmental Agency (EEA), Airbase classification.

2.2 Data processing

We split the individual station time series into three non-overlapping time periods for training, validation and testing which we will refer by *set* from now on (see Fig. 2). We only used stations which at least have one year of valid data in one set. Firstly, the time span of the training data set is ranging from Jan 1st, 1997 to Dec 31st, 2007. Secondly, the validation set is ranging from Jan 1st, 2008 to Dec 31st, 2009. Thirdly, the test set ranges from Jan 1st, 2010 to Dec 31st, 2015.

Due to changes in the measurement network over time, the number of stations in the three datasets differ: training data comprises 312313 stations, validation data 212 stations, and testing 204 stations. This is by far the largest air quality time series dataset that has been used in a machine learning study so far (see Table 1).

Supervised learning techniques require input data (\mathbf{X}) and a corresponding label (\mathbf{y}) which we create for each station of the three sets as depicted in Algorithm 1.

Algorithm 1 Data preprocessing

- 1: Standardise time series to approximately mean zero and unit variance (approximation for z-transformation)
 - 2: Linearly interpolate missing data (maximally one missing data point between valid samples)
 - 3: **for all** Stations: Create samples (from standardised time series) **do**
 - 4: Create inputs \mathbf{X} with variables of seven days ($-6d$) to ($0d$).
 Shape of \mathbf{X} : 7 by 1 by 9 (number of days, 1, number of variables)
 - 5: Create labels \mathbf{y} with ozone (dma8eu) concentrations for the next four days (1d to 4d).
 Shape of \mathbf{y} : 1 by 4 (1, lead time)
 - 6: **end for**
 - 7: Remove all \mathbf{X}, \mathbf{y} pairs which include any missing value
 - 8: In the training set duplicate extremes (samples, where $y_i < -3$ or $y_i > 3$)
 - 9: Permute samples in the training set (and only in the training set)
 - 10: Create batches (collection of samples) of size 512
-

Samples within the same data set (train, validation, test) can overlap which means that one missing data point would appear up to seven times in the inputs \mathbf{X} and up to four times in the labels \mathbf{y} . Consequently, one missing value will cause the removal of eleven samples (Algorithm 1, line 7). As we want to keep the number of samples as high as possible, we decided to linearly interpolate (Algorithm 1, line 2) the time series if only one consecutive value is missing. Table 4 shows the number of stations per data set (train, val, test) and the corresponding amount of samples (pairs of inputs \mathbf{X} and labels \mathbf{y}) per data set. Moreover, Table A1 summarises all samples per station individually. Figure 1 shows a map of all station locations.

We trained the neural network (details on the network architecture are given in Sect. 3) with data of the training set and tuned hyperparameters exclusively on the validation data set. For the final analysis and model evaluation, we use the independent test data set, which was neither used for training the models parameters, nor for tuning the hyperparameters. Random sampling, as is often done in other machine learning applications, and occasionally even in other air quality or weather applications of machine learning, would lead to overly optimistic results due to the multi-day auto-correlation of air quality and meteorological time

series. Horowitz and Barakat (1979) already pointed to this issue when dealing with statistical tests. Likewise, the alternative
130 split of the dataset into spatially segregated data could lead to the undesired effect that two or more neighbouring stations
with high correlation between several paired variables fall into different data sets. Again, this would result in overly optimistic
model results.

By applying a temporal split, we ensure that the training data do not directly influence the validation and test data sets.
Therefore, the final results reflect the true generalisation capability of our forecasting model.

135 In accordance with other studies, our initial deep learning experiments with a subset of this data have shown that neural
networks, just as other classical regression techniques, have a tendency to focus on the mean of the distribution and perform
poorly on the extremes. However, especially the high concentration events are crucial in the air quality context due to their
strong impact on human health and the adverse crop effects. Extreme values occur relatively seldomly in the dataset, and it is
therefore difficult for the model to learn their associated patterns correctly. To increase the total number of values on the tails of
140 the distribution during training, we append all samples where the standardised label (i.e. the normalised ozone concentration)
is < -3 or > 3 for a second time on the training data set (Algorithm 1, line 8).

We selected a batch size of 512 samples (Algorithm 1, line 10) , because this size is a good compromise between minimising
the loss-function and optimising computing time per trained epoch. Experiments with larger and smaller batch sizes did not
yield significantly different results. Before creating the different training batches, we permute the ordering of samples per
145 station in the training set, to ensure that the distribution of each batch is similar to those of the full training data set (Algorithm
1, line 9). Otherwise, each batch would have an underrepresented season and consequently would lead to undesired looping
during training (e.g. no winter values in the first batch, no autumn values in the second batch, etc.).

3 Model setup

Our machine learning model is based on a convolutional layer neural network (LeCun et al., 1998), which was initially designed
150 for pattern recognition in computer vision applications. It has been shown that such model architectures work equally well on
time series data as other neural network architectures, which have been especially designed for this purpose, such as recurrent
neural networks or LSTMs (Dauphin et al., 2017; Bai et al., 2018). Schmidhuber (2015) provides a historical review on different
deep learning methods, while Ismail Fawaz et al. (2019) focus especially on deep neural networks for time series.

Our neural network named IntelliO3-ts, version 1.0, primarily consists of two inception blocks (Szegedy et al., 2015), which
155 combine multiple convolutions, execute them in parallel, and concatenate all outputs in the last layer of each block. Figure
A2 Figure-3 depicts one inception block including the first input layer, while Figures A2 and Figure A3 together shows the
entire model architecture including the first input layers and final flat and output layers. We treat each input variable (see Table
2) as an individual channel (like R, G, B in images) and use time as the first dimension (this would correspond to the width
axis of an image). Inputs (\mathbf{X}) consist of the variable values from 7 days (-6d to 0d). Outputs are ozone concentration forecasts
160 (dma8eu) for lead times up to 4 days (1d to 4d). Therefore, we change the kernel sizes in the inception blocks from 1×1 ,
 3×3 , and 5×5 , as originally proposed by Szegedy et al. (2015), to 1×1 , 3×1 , and 5×1 . This allows the network to focus

on different temporal relations. The 1×1 convolutions are also used for information compression (reduction of the number of filters), before larger convolutional kernels are applied (see Szegedy et al. (2015)). This decreases the computational costs for training and evaluating the network. In order to conserve the initial input shape of the first dimension (time), we apply symmetric padding to minimise the introduction of artefacts related to the borders.

While the original proposed concept of inception blocks has one max-pooling tower alongside the different convolution stacks, we added a second pooling tower, which calculates the average on a kernel size of 3×1 . Thus, one inception block consists of three convolutional towers and two pooling (mean, and max) towers. A tower is defined as a collection or stack of successive layers. The outputs of these towers are concatenated in the last layer of an inception block (see Fig. A2 3). Between individual inception blocks, we added dropout layers (Srivastava et al., 2014) with a dropout rate of 0.35 to improve the network’s generalisation capability and prevent overfitting.

Moreover, we use batch normalisation layers (Ioffe and Szegedy, 2015) between each main convolution and activation layer to accelerate the training process (Fig. A2 3). Those normalisations ensure that for each batch the mean activation is zero with standard deviation of one. As proposed in Szegedy et al. (2015), the network has an additional minor tail which helps to eliminate the vanishing gradient problem. Additionally, the minor tail helps to spread the internal representation of data as it strongly penalises large errors.

The loss function for the main tail is the mean squared error:

$$L_{\text{main}} = \frac{1}{n} \sum_i (y_{i,\text{true}} - y_{i,\text{pred}})^2, \quad (2)$$

while the loss function of the minor tail is:

$$L_{\text{minor}} = \frac{1}{n} \sum_i (|y_{i,\text{true}} - y_{i,\text{pred}}|)^4. \quad (3)$$

All activation functions are exponential linear units (ELU) (Clevert et al., 2016), only the final output activations are linear (minor and main tail).

The network is built with Keras 2.2.4 (Chollet, 2015) and uses TensorFlow 1.13.1 (Martín Abadi et al., 2015) as backend. We use Adam (Kingma and Ba, 2014) as optimiser and apply an initial learning rate of 10^{-4} (see also Sect. A5).

We train the model for 300 epochs on the HPC system ‘Jülich Wizard for European Leadership Science’ (JUWELS, Jülich Supercomputing Centre (2019)) which is operated by the Jülich Supercomputing Centre (see also A4 for further details regarding the software and hardware configurations).

4 Evaluation metrics and reference models

In general, one can interpret a supervised machine learning approach as an attempt to find an unknown function φ which maps an input pattern (\mathbf{X}) to the corresponding labels or the ground truth (\mathbf{y}). The machine learning model is consequently an estimator ($\hat{\varphi}$) which maps \mathbf{X} to an estimate $\hat{\mathbf{y}}$ of the ground truth. The goodness of the estimate is quantified by an error

function, which the network tries to minimise during training. As the network is only an estimator of the true function, the mapping generally differs:

$$\varphi(\mathbf{X}) = \mathbf{y} \neq \hat{\mathbf{y}} = \hat{\varphi}(\mathbf{X}). \quad (4)$$

195 To evaluate the genuine added value of any meteorological or air quality forecasting model, it is essential to apply proper statistical metrics. The following section describes the verification tools, which are used in this study. We provide additional information on joint distributions as introduced by Murphy and Winkler (1987) in Section A2.

4.1 Joint Distributions

200 Forecasts and observations are treated as random variables. Let $p(m, o)$ represent the joint distribution of a model's forecast m and an observation o , which contains information on the forecast, the observation and the relationship between both of them (Murphy and Winkler, 1987). To access specific pieces of information, we factorise the joint distribution into a conditional and a marginal distribution in two ways. The first factorisation is called *calibration-refinement* and reads-

$$p(m, o) = p(o|m)p(m);$$

205 where $p(o|m)$ is the conditional distribution of observing o given the forecast m and $p(m)$ is the marginal distribution which indicates how often different forecast values are used (Murphy and Winkler, 1987; Murphy and Winkler, 2006). A continuous forecast is perfectly calibrated if-

$$E(o|m) = m$$

210 holds, where $E(o|m)$ is the expected value of o given the forecast m . The marginal distribution $p(m)$ is a measure of how often different forecasts are made and is therefore also called *refinement* or *sharpness*. Both distributions are important to evaluate a model's performance. Murphy and Winkler (1987) pointed out that a perfectly calibrated forecast is worth nothing if it lacks refinement. The second factorisation is called *likelihood-base-rate* and consequently is given by-

$$p(m, o) = p(m|o)p(o);$$

215 where $p(m|o)$ is the conditional distribution of forecast m given that o was observed. $p(o)$ is the marginal distribution which only contains information about the underlying rate of occurrence of observed values and is therefore also called *sample climatological distribution* (Wilks, 2006).

4.1 Scores and Skill Scores

To quantify a model's informational content, *scores* like the mean squared error (Eq. (5)) are defined to provide an absolute performance measure, while *skill scores* provide a relative performance measure related to a reference forecast (Eq. (6)).

$$MSE(\mathbf{m}, \mathbf{o}) = \frac{1}{N} \sum_{i=1}^N (m_i - o_i)^2 \geq 0, \quad (5)$$

220 Here, N is the number of forecast-observation pairs, \mathbf{m} is a vector containing all model forecasts, and \mathbf{o} is a vector containing the observations (Murphy, 1988).

A skill score S may be interpreted as the percentage of improvement of A over the reference A_{ref} . Its general form is

$$S = \frac{A - A_{\text{ref}}}{A_{\text{perf}} - A_{\text{ref}}}. \quad (6)$$

Here, A represents a general score, A_{ref} is the reference score, and A_{perf} the perfect score.

225 For $A = A_{\text{ref}}$ S becomes zero, indicating that the forecast of interest has no improvements over the reference forecast. A value of $S > 0$ indicates an improvement over the reference, while $S < 0$ indicates a deterioration. The informative value of a skill score strongly depends on the selected reference forecast. In case of the mean squared error (Eq. (5)) the perfect score is equal to zero and Eq. (6) reduces to

$$S(\mathbf{m}, \mathbf{r}, \mathbf{o}) = 1 - \frac{MSE(\mathbf{m}, \mathbf{o})}{MSE(\mathbf{r}, \mathbf{o})}, \quad (7)$$

230 where \mathbf{r} is a vector containing the reference forecast.

4.2 Reference models

We used three different reference models: persistence, climatology, and an ordinary least square model (linear regression). For the climatological reference we create four sub-reference models (see Sect. 4.2.2). In the following we introduce our basic reference models.

235 4.2.1 Persistence Model

One of the most straightforward models to build, which in general has good forecast skills on short lead times, is a persistence model. Today's observation of ozone concentration is also the prediction for the next four days. Obviously, the skill of persistence decreases with increasing lead time. The good performance on short lead times is mainly due to the facts that weather conditions influencing ozone concentrations generally do not change rapidly, and that the chemical lifetime of ozone is long enough.

4.2.2 Climatological reference models

We create four different climatological reference models (CASE I to CASE IV), which are based on the climatology of observations by following Murphy (1988) (also with respect to their terminology, which means that the reference score A_{ref} is calculated by using the reference forecast \mathbf{r}).

245 The first reference forecast ($A_{\text{ref}} : \mathbf{r} = \bar{o}$, CASE I) is the internal single value climatology which is the mean of all observations during the test period. This unique value is then applied as reference for all forecasts. As this forecast has only one constant value which is the expectation value, this reference model is well calibrated but not refined at all.

The second reference ($A_{\text{ref}} : \mathbf{r} = \mathbf{o}^*$, CASE II) is an internal multi-value climatology. Here, we calculate twelve arithmetic means, where each of the means is the monthly mean over all years in the test set (e.g. one mean for all Januaries from 2012 to

250 2015, one for all Februaries, etc.). The corresponding monthly mean is applied as reference. Therefore, CASE II allows testing if the model has skill in reproducing the seasonal cycle of the observations.

The third reference ($A_{\text{ref}} : r = \bar{\mu}$, CASE III) is an external single value climatology which is the mean of all available observations during the training and validation periods. This reference does not include any direct information on the test set. Therefore, one can access the information if the forecast of interest captures features which are not directly present in the training and validation set.

255 Finally, the fourth reference ($A_{\text{ref}} : r = \mu^*$, CASE IV) is an external multi-valued climatology. A tabular summary explaining the individual formulae and terms following Murphy (1988) is given in Appendix A3. The last two references are calculated on a much longer time series than the first ones.

4.2.3 OLS reference model

260 The third reference model is an ordinary least square model. We train the OLS model by using the statsmodels package v0.10 (Seabold and Perktold, 2010). The OLS model is trained on the same data as the neural network (training set) and serves as a linear competitor.

5 Results

As described in Sect. 3 we split our data into three subsets (training, validation, and test set). We only used the independent test data set to evaluate the forecasting capabilities of the IntelliO3-ts network. During training and hyperparameter optimisation, only the training and validation sets were used, respectively. Therefore, the following results reflect the true generalisation capability of IntelliO3-ts. Before discussing the results in detail below, we would like to point out again, that this is the first time that one neural network has been trained to forecast data from an entire national air quality monitoring station network. Also, the network has been trained exclusively with time series data from air pollutant measurements and a meteorological reanalysis. No additional information, such as geographic coordinates, or other hints that could be used by the network to perform a station classification task, have been used. The impact of such extra information will be the subject of another study.

5.1 Forecasting results

275 Figure 3 shows the observed monthly $\text{O}_3\text{-dma8eu}$ distribution (green) and the corresponding network predictions for a lead time of up to four days (dark to light blue) summarised for all 204 stations in the test set. The network clearly captures the seasonal cycle. Nonetheless, the arithmetic mean (black triangles) and the median tend to shift towards their respective annual mean with increasing lead time (see also Fig. 6a to 6d). In spring and autumn, the observed and forecasted distributions match well, while in summer and wintertime the network underestimates the interquartile range (IQR) and does not reproduce the extremes values (for example, the maxima in July/August or the minima in December/January/February).

5.2 Comparison with competitive models

280 The skill scores based on the mean squared error (MSE) evaluated over all stations in the test set are summarised in Fig. 4. In the left and center groups of boxes and whiskers, the IntelliO3-ts model (labelled "CNN") and the OLS model are compared against persistence as reference. The right group of boxes and whiskers shows the comparison between IntelliO3-ts and OLS. The mean skill score for IntelliO3-ts against persistence is positive and increases with time. The OLS forecast shows similar behaviour in terms of its temporal evolution, but exhibits a slightly lower skill score throughout the 4-day forecasting period.

285 The increases in skill score in both cases is mainly due to the decreased score of the persistence model (see also Sect. 4.2.1). Consequently, IntelliO3-ts shows a positive skill score when the OLS model is used as a reference, indicating a small genuine added value over the OLS model.

In comparison with climatological reference forecasts as introduced in Sect. 4.1 and summarised in TableA2, the skill scores are high for the first lead time (1d) and decrease with increasing lead time (Fig. 5). Both cases with a single value as reference (internal CASE I, external CASE III) maintain a skill score above 0.4 over the four days. These high skill scores are a direct result of the fact that IntelliO3-ts captures the seasonal cycle as shown in Fig. 3, while the reference forecasts only report the overall mean as a single value prediction.

290

If the reference includes the seasonal variation (CASE II and CASE IV), the IntelliO3-ts skill score is still better than 0.4 for the first day (1d), but then it decreases rapidly and even becomes negative on day 4 for CASE II. The skill scores for CASE II are lower than for CASE IV as the reference climatology (i.e. the monthly mean values) is calculated on the test set itself. These results show that, for the vast majority of stations, our model performs much better than a seasonal climatology for a one-day forecast, and it is still substantially better than the climatology after two days. However, there are some stations, which yield a negative skill score even on day 2 in the CASE II comparison. Longer-term forecasts with this model set-up do not add value compared to the computationally much cheaper monthly mean climatological forecast.

295

300 5.3 Analysis of joint distributions

The full joint distribution in terms of calibration refinement factorisation (Sect. A2) is shown in Fig. 6a (first lead time; 1d) to Fig. 6d (last lead time; 4d). The marginal distribution (refinement) is shown as histogram (light grey; sample size), while the conditional distribution (calibration) is presented by specific percentiles in different line styles. If the median (.5th quantile, solid line) is below the reference, the network exhibits a high-bias with respect to the observations and vice versa. Obviously, quantiles in value regions with many data samples are more robust and therefore more credible than quantiles in data-sparse concentration regimes (Murphy et al., 1989). On the first lead time (d1, Fig. 6), the IntelliO3-ts network has a tendency to slightly over-predict concentrations $\lesssim 30$ ppb. On the other hand, the the forecast is underestimating concentrations above $\gtrsim 70$ ppb.

305

Both, very high, and very low forecasts are rare (note the logarithmic axis for the sample size). Therefore, the results in these regimes have to be treated with caution. Further detail is provided in Fig. A1, where the conditional biases are shown (terms BI, BII, BIV in Sect. A3). and decrease the maximal climatological potential skill score (term AI, see also TableA2).

310

With increasing lead time the model loses its capability to predict concentrations close to zero and high concentrations above 80 ppb. The marginal distribution develops a pronounced bimodal shape which is directly linked to the conditional biases. The number of high (extreme) ozone concentrations is relatively low, resulting in few training examples. The network
315 tries to optimise the loss function with respect to the most common values. As a result, predictions of concentrations near the mean value of the distribution are generally more correct than predictions of values from the fringes of the distribution. Moreover, this also explains, why the model does not perform substantially better than the monthly mean climatology forecasts (CASE II, CASE IV). This problem also becomes apparent in other studies. For example, Sayeed et al. (2020) focus their
320 'moderate' (AQI 51 to 100), instead of the legal threshold value of 70 ppbv (U.S. Environmental Protection Agency, 2016, Table 5, therein), as the model shows better skills in this regime.

To shed more light on the factors influencing the forecast quality, we analyse the network performance individually for each season (DJF, MAM, JJA, and SON). Conditional quantile plots for individual seasons can be found in the supplementary material (A6). As mentioned above, the bimodal shape of the marginal distribution is mainly caused by the network's weakness
325 to predict very high and low ozone concentrations. Moreover, the seasonal decomposition shows that the left mode is caused by the fall (SON) and winter (DJF) seasons (Fig. A7a to A7d and A4a to A4d). In both seasons, the most common values fall into the same concentration range, while the right tail of SON is much more pronounced than for DJF with higher values occurring primarily in September. In the summer season (JJA, Fig. A6a to A6d) the most frequently predicted values correspond to the location of the right mode of Fig. 6a to 6d. During DJF, MAM, and JJA the model has a stronger tendency of under-forecasting
330 with increasing lead time (median line moves above the reference line).

5.4 Relevance of input variables

To analyse the impact of individual input variables on the forecast results, we apply a bootstrapping technique as follows: we take the original input of one station, keep eight of the nine variables unaltered, and randomly draw (with replacement) the missing variable (20 times per variable per station). This destroys the temporal structure of this specific variable so that the
335 network will no longer be able to use this information for forecasting. Compared to alternative approaches, such as re-training the model with fewer input variables, setting all variable values to zero, etc., this method has two main advantages: (i) the model does not need to be re-trained and thus the evaluation occurs with the exact same weights that were learned from the full dataset, and (ii) the distribution of the input variable remains unchanged so that adverse effects, for example due to correlated input variables, are excluded. However, we note, that this method may underestimate the impact of a specific variable in case
340 of correlated input data, **because in such cases the network will focus on the dominant feature (here: ozone)**. Also, this analyses only evaluates the behaviour of the deep learning model and does not evaluate the impact of these variables on actual ozone formation in the atmosphere.

After the randomisation of one variable, we apply the trained model on this modified input data and compare the new prediction with the original one. For comparison, we apply the skill score (Eq. (6)) based on the MSE where we use the
345 original forecast as reference. Consequently, the skill score will be negative if the bootstrapped variable has a significant

impact on model performance. Figure 7 shows the skill scores for all variables (x-axis) and lead times (dark (1d) to light blue (4d) boxplots). Ozone is the most crucial input variable, as it has by far the lowest skill score for all lead times. With increasing lead time, the skill score increases but stays lower than for any other variable. In contrast, the model does not derive much skill from the variables nitrogen oxide, nitrogen dioxide, and the planetary boundary layer height. In other words, the network does not perform worse, when randomly drawn values replace one of those original time series. Relative humidity, temperature and the wind's u-component have an impact on the model performance. With increasing lead time, these influences decrease.

6 Limitations and additional remarks

Even though IntelliO3-ts v1.0 generalises well on an unseen testing set (see Sect. 5), it still has some limitations related to the applied data split.

By splitting the data into three consecutive, non-overlapping sets, we ensure that the data sets are as independent as possible. On the other hand, this independence comes at the cost, that changes of trends in the input variables may not be captured, especially as our input data are not de-trended. Indeed, at European non-urban measurement sites, several ozone metrics related to high concentrations (e.g. 4th highest daily maximum 8-hour (4MDA8) or the 95%-percentile of hourly concentrations) show a significant decrease during our study period (1997 to 2015) (Fleming et al., 2018; Yan et al., 2018). Our data splitting method for evaluating the generalisation capability is conservative in the sense that we evaluate the model on the test set, which has the largest possible distance to the training set. If our research model shall be transformed into an operational system we suggest to apply online learning and use the latest available data for subsequent training cycles (see for example Sayeed et al. (2020)).

7 Conclusions

In this study, we developed and evaluated IntelliO3-ts, a deep learning forecasting model for daily near-surface ozone concentrations (dma8eu) at arbitrary air quality monitoring stations in Germany. The model uses chemical (O₃, NO, NO₂) and meteorological time-series of the previous six days to create forecasts for up to four days into the future. IntelliO3-ts is based on convolutional inception blocks, which allow to calculate concurrent convolutions with different kernel sizes. The model has been trained on 10 years of data from 312343 background stations in Germany. Hyperparameter tuning and model evaluation were done with independent data sets of 2 and 6 years length, respectively.

The model generalises well and generates good quality forecasts for lead times up to two days. These forecasts are superior compared to the reference models persistence, ordinary least squares, annual and seasonal climatology. After 2 days, the forecast quality degrades, and the forecast adds no value compared to a monthly mean climatology of dma8eu ozone levels. We could primarily attribute this to the network's tendency to converge to the mean monthly value. The model does not have any spatial context information which could counteract this tendency. Near-surface ozone concentrations at background stations are highly influenced by air mass advection, but the IntelliO3-ts network yet has no way to take upwind information into account. We will investigate spatial context approaches in a forthcoming study.

We observed, that the model loses refinement with increasing lead time which results in unsatisfactory predictions on the tails of the observed ozone concentration. We were able to attribute this weakness to the under-representation of extreme (either very small or high) levels in the training data set. This is a general problem for machine learning applications and regression methods. The machine learning community is investigating possible solutions to lessen the impact of such data imbalances, but their adaptation is beyond the scope of this paper as proposed techniques are not directly applicable to those time series (auto-correlation time).

Bootstrapping individual time series of the input data to analyse the importance of those variables on the predictive skill showed, that the model mainly focused on the previous ozone concentrations. Temperature and relative humidity only have a small effect on the model performance, while the time series of NO, NO₂, and PBL have no impact.

The IntelliO3-ts network extends previous work by using a new network architecture, and training one model on a much larger set of measurement station data and longer time periods. In light of Rasp and Lerch (2018) who used several neural networks to postprocess ensemble weather forecasts, we applied meteorological evaluation metrices to perform a point-by-point comparison, which is not common in the field of deep learning. We hope that the forecast quality of IntelliO3-ts can be further improved if we take spatial context information into account so that the advection of background ozone and ozone precursors can be learned by the model.

Code and data availability. The current version of IntelliO3-ts is available from the project website: https://gitlab.version.fz-juelich.de/toar/machinelearningtools/-/tree/IntelliO3-ts-v1.0_initial-submit under the MIT licence (<http://opensource.org/licenses/mit-license.php>). The exact version of the model and data used to produce the results in this paper are archived on b2share (Kleinert et al., 2020).

Appendix A

A1 Information on used stations

Table A1 lists all measurement stations which we used in this study. The table also shows the number of samples (\mathbf{X} , \mathbf{y}) for each of the three data sets (train, validation, test)

A2 Joint Distributions

Forecasts and observations are treated as random variables. Let $p(m, o)$ represent the joint distribution of a model's forecast m and an observation o , which contains information on the forecast, the observation and the relationship between both of them (Murphy and Winkler, 1987). To access specific pieces of information, we factorise the joint distribution into a conditional and a marginal distribution in two ways. The first factorisation is called *calibration-refinement* and reads

$$p(m, o) = p(o|m)p(m), \tag{A1}$$

405 where $p(o|m)$ is the conditional distribution of observing o given the forecast m and $p(m)$ is the marginal distribution which indicates how often different forecast values are used (Murphy and Winkler, 1987; Wilks, 2006). A continuous forecast is perfectly calibrated if

$$E(o|m) = m \tag{A2}$$

holds, where $E(o|m)$ is the expected value of o given the forecast m . The marginal distribution $p(m)$ is a measure of how often
 410 different forecasts are made and is therefore also called refinement or sharpness. Both distributions are important to evaluate a model's performance. Murphy and Winkler (1987) pointed out that a perfectly calibrated forecast is worth nothing if it lacks refinement.

The second factorisation is called *likelihood-base rate* and consequently is given by

$$p(m, o) = p(m|o)p(o), \tag{A3}$$

415 where $p(m|o)$ is the conditional distribution of forecast m given that o was observed. $p(o)$ is the marginal distribution which only contains information about the underlying rate of occurrence of observed values and is therefore also called *sample climatological distribution* (Wilks, 2006).

A3 Mean Squared Error Decomposition (Murphy, 1988)

This section provides additional information about the MSE decomposition introduced by Murphy (1988). The MSE decom-
 420 position is performed as

$$MSE(\mathbf{m}, \mathbf{o}) = \frac{1}{n} \sum_{i=1}^n ((m_i - \bar{m}) - (o_i - \bar{o}) + (\bar{m} - \bar{o}))^2 \tag{A4}$$

$$= (\bar{m} - \bar{o})^2 + \sigma_m^2 + \sigma_o^2 - 2\sigma_{mo} \tag{A5}$$

$$= (\bar{m} - \bar{o})^2 + \sigma_m^2 + \sigma_o^2 - 2\sigma_m\sigma_o\rho_{mo}. \tag{A6}$$

Here σ_m (σ_o) is the sample variance of the forecasts (observations) and σ_{mo} is the sample covariance of the forecasts and
 425 observations, which is given by $\sigma_{mo} = \frac{1}{n} \sum_{i=1}^n (m_i - \bar{m})(o_i - \bar{o})$. ρ_{mo} is the sample coefficient of correlation between forecast and observation.

CASE I:

$$S(m, \bar{o}, o) = \underbrace{\rho_{mo}^2}_{\text{AI}} - \underbrace{\left(\rho_{mo} - \frac{\sigma_m}{\sigma_o}\right)^2}_{\text{BI}} - \underbrace{\left(\frac{\bar{m} - \bar{o}}{\sigma_o}\right)^2}_{\text{CI}} \quad (\text{A7})$$

430

CASE II:

$$S(m, o^*, o) = \frac{\text{AI} - \text{BI} - \text{CI} - \rho_{o^*o}^2 + \left(\rho_{o^*o} - \frac{\sigma_{o^*}}{\sigma_o}\right)^2}{1 - \underbrace{\rho_{o^*o}^2}_{\text{AII}} + \underbrace{\left(\rho_{o^*o} - \frac{\sigma_{o^*}}{\sigma_o}\right)^2}_{\text{BII}}} \quad (\text{A8})$$

435 CASE III:

$$S(m, \bar{\mu}, o) = \frac{\text{AI} - \text{BI} - \text{CI} + \left(\frac{\bar{\mu} - \bar{o}}{\sigma_o}\right)^2}{1 + \underbrace{\left(\frac{\bar{\mu} - \bar{o}}{\sigma_o}\right)^2}_{\text{AIII}}} \quad (\text{A9})$$

CASE IV:

$$440 \quad S(m, \mu, o) = \frac{\text{AI} - \text{BI} - \text{CI} - \rho_{\mu o}^2 + \left(\rho_{\mu o}^2 - \frac{\sigma_\mu}{\sigma_o}\right)^2 + \left(\frac{\bar{\mu} - \bar{o}}{\sigma_o}\right)^2}{1 - \underbrace{\rho_{\mu o}^2}_{\text{AIV}} + \underbrace{\left(\rho_{\mu o}^2 - \frac{\sigma_\mu}{\sigma_o}\right)^2}_{\text{BIV}} + \underbrace{\left(\frac{\bar{\mu} - \bar{o}}{\sigma_o}\right)^2}_{\text{CIV}}} \quad (\text{A10})$$

The term AI is the square of the sample correlation coefficient and might be interpreted as the strength of linear relationship between the forecast and the observation. This term ranges from zero (no correlation) to one (perfect correlation). Term BI includes the square of the differences between the sample correlation coefficient and the ratio of standard deviation of the forecast and observation. Therefore, BI is a measure of the conditional bias of the forecast which is always positive due to the square and tends to decrease skill as it is a subtrahend. The last term, which is included in all cases I-IV, is CI and contains the square of the difference of the mean forecast and mean observation divided by the variance of the observation. Therefore, CI is

a measure of the unconditional bias in the forecast and, again, tends to decrease the skill as it is a subtrahend which is always greater or equal to zero.

450 In case of multi-value internal climatology (Case II Eq. (A8)), two additional terms appear in the dominator as well as the numerator which tend to decrease skill in general and only vanish if $2\rho_{o^*o} = \sigma_\mu/\sigma_o$. In Case III, the additional term AIII appears that includes the square of the difference between the mean external and the internal climatology divided by the variance of the observation. AIII leads to an increase of skill for any difference in the means of external and internal climatologies.

455 Three additional terms (AIV, BIV and CIV) appear if Eq. (7) is decomposed by using a multi-valued external climatology as reference forecast (Case IV). These terms only vanish if $2\rho_{\mu o} = \sigma_\mu/\sigma_o$ and $\bar{\mu} = \bar{o}$. A summary of all four cases and all terms included is given in TableA2

Figure A1 also includes all individual terms as described above.

A4 Additional information on JUWELS

460 Each node on JUWELS (Jülich Supercomputing Centre, 2019) which is part of the graphical processor unit (GPU) partition is equipped with four NVIDIA Volta V100 GPUs. The user guide for JUWELS is available from <https://apps.fz-juelich.de/jsc/hps/juwels/index.html>.

A5 Detailed model settings

Figure A23 and A3 shows the full architecture of IntelliO3-ts including all individual layers and tails. Table A3 lists the specific
465 compile options per keyword of keras' compile method. Table A4 summarises additional settings for the specific architecture

A6 Seasonal decomposition of conditional quantiles

The following section contains all conditional quantile plots decompoed for all seasons (DJF: Fig. A4a to Fig. A4d, MAM: Fig. A5a to Fig. A5d, JJA: Fig. A6a to Fig. A6d, and SON: Fig. A7a to Fig. A7d)

Author contributions. FK and MGS developed the concept of the study. All authors jointly developed the concept of the machine learning
470 model. FK implemented the neural network and performed the experiment. FK had the lead in writing the manuscript with contributions from LHL and MGS. LHL had the technical lead in code development and workflow design. All authors revised the final manuscript and accepted to submit to GMD.

Competing interests. The authors declare that they have no conflict of interest.

Acknowledgements. We are thankful to all air quality data providers which made their data available in the TOAR database. Moreover, we
475 thank the meteorological section of the Institute of Geosciences at the University of Bonn, which provided the COSMO Reanalysis data. We
thank Sabine Schröder for the help to access data through the JOIN interface and Jenia Jitsev for helpful discussions.

The authors gratefully acknowledge the Gauss Centre for Supercomputing e.V. (www.gauss-centre.eu) for funding this project by providing computing time through the John von Neumann Institute for Computing (NIC) on the GCS Supercomputer JUWELS at Jülich Supercomputing Centre (JSC). *We are grateful to the anonymous reviewers for the constructive review and encouraging comments.*

480 References

- Abdul Aziz, F. A. B., Abd. Rahman, N., and Mohd Ali, J.: Tropospheric Ozone Formation Estimation in Urban City, Bangi, Using Artificial Neural Network (ANN), *Computational Intelligence and Neuroscience*, 2019, 1–10, <https://doi.org/10.1155/2019/6252983>, <https://www.hindawi.com/journals/cin/2019/6252983/>, 2019.
- Abdul-Wahab, S. A., Bakheit, C. S., and Al-Alawi, S. M.: Principal component and multiple regression analysis in modelling of ground-level ozone and factors affecting its concentrations, *Environmental Modelling & Software*, 20, 1263 – 1271, <https://doi.org/10.1016/j.envsoft.2004.09.001>, <http://www.sciencedirect.com/science/article/pii/S1364815204002129>, 2005.
- Avnery, S., Mauzerall, D. L., Liu, J., and Horowitz, L. W.: Global crop yield reductions due to surface ozone exposure: 1. Year 2000 crop production losses and economic damage, *Atmospheric Environment*, 45, 2284–2296, <https://doi.org/10.1016/j.atmosenv.2010.11.045>, <https://linkinghub.elsevier.com/retrieve/pii/S1352231010010137>, 2011.
- 490 Bai, S., Kolter, J. Z., and Koltun, V.: An Empirical Evaluation of Generic Convolutional and Recurrent Networks for Sequence Modeling, arXiv:1803.01271 [cs], <http://arxiv.org/abs/1803.01271>, arXiv: 1803.01271, 2018.
- Bell, M. L., Zanobetti, A., and Dominici, F.: Who is More Affected by Ozone Pollution? A Systematic Review and Meta-Analysis, *American Journal of Epidemiology*, 180, 15–28, <https://doi.org/10.1093/aje/kwu115>, <https://academic.oup.com/aje/article/180/1/15/2739254>, 2014.
- Bollmeyer, C., Keller, J. D., Ohlwein, C., Wahl, S., Crewell, S., Friederichs, P., Hense, A., Keune, J., Kneifel, S., Pscheidt, I., Redl, S., and 495 Steinke, S.: Towards a high-resolution regional reanalysis for the European CORDEX domain, *Quarterly Journal of the Royal Meteorological Society*, 141, 1–15, <https://doi.org/10.1002/qj.2486>, <http://dx.doi.org/10.1002/qj.2486>, 2015.
- Brunner, D., Savage, N., Jorba, O., Eder, B., Giordano, L., Badia, A., Balzarini, A., Baró, R., Bianconi, R., Chemel, C., Curci, G., Forkel, R., Jiménez-Guerrero, P., Hirtl, M., Hodzic, A., Honzak, L., Im, U., Knote, C., Makar, P., Manders-Groot, A., van Meijgaard, E., Neal, L., Pérez, J. L., Pirovano, G., San Jose, R., Schröder, W., Sokhi, R. S., Syrakov, D., Torian, A., Tuccella, P., Werhahn, J., Wolke, R., Yahya, K., Zabkar, R., Zhang, Y., Hogrefe, C., and Galmarini, S.: Comparative analysis of meteorological performance of coupled chemistry-meteorology models in the context of AQMEII phase 2, *Atmospheric Environment*, 115, 470–498, <https://doi.org/10.1016/j.atmosenv.2014.12.032>, <https://linkinghub.elsevier.com/retrieve/pii/S1352231014009807>, 2015.
- 500 Chollet, F.: Keras, <https://keras.io>, 2015.
- Clevert, D.-A., Unterthiner, T., and Hochreiter, S.: Fast and Accurate Deep Network Learning by Exponential Linear Units (ELUs), arXiv:1511.07289 [cs], <http://arxiv.org/abs/1511.07289>, arXiv: 1511.07289, 2016.
- 505 Cobourn, W. G., Dolcine, L., French, M., and Hubbard, M. C.: A Comparison of Nonlinear Regression and Neural Network Models for Ground-Level Ozone Forecasting, *Journal of the Air & Waste Management Association*, 50, 1999–2009, <https://doi.org/10.1080/10473289.2000.10464228>, <https://doi.org/10.1080/10473289.2000.10464228>, 2000.
- Collins, W. J., Stevenson, D. S., Johnson, C. E., and Derwent, R. G.: Tropospheric Ozone in a Global-Scale Three- 510 Dimensional Lagrangian Model and Its Response to NOX Emission Controls, *Journal of Atmospheric Chemistry*, 26, 223–274, <https://doi.org/10.1023/A:1005836531979>, <https://doi.org/10.1023/A:1005836531979>, 1997.
- Comrie, A. C.: Comparing Neural Networks and Regression Models for Ozone Forecasting, *Journal of the Air & Waste Management Association*, 47, 653–663, <https://doi.org/10.1080/10473289.1997.10463925>, <http://dx.doi.org/10.1080/10473289.1997.10463925>, 1997.
- Dauphin, Y. N., Fan, A., Auli, M., and Grangier, D.: Language Modeling with Gated Convolutional Networks, arXiv:1612.08083 [cs], 515 <http://arxiv.org/abs/1612.08083>, arXiv: 1612.08083, 2017.

- Donner, L. J., Wyman, B. L., Hemler, R. S., Horowitz, L. W., Ming, Y., Zhao, M., Golaz, J.-C., Ginoux, P., Lin, S.-J., Schwarzkopf, M. D., Austin, J., Alaka, G., Cooke, W. F., Delworth, T. L., Freidenreich, S. M., Gordon, C. T., Griffies, S. M., Held, I. M., Hurlin, W. J., Klein, S. A., Knutson, T. R., Langenhorst, A. R., Lee, H.-C., Lin, Y., Magi, B. I., Malyshev, S. L., Milly, P. C. D., Naik, V., Nath, M. J., Pincus, R., Ploshay, J. J., Ramaswamy, V., Seman, C. J., Shevliakova, E., Sirutis, J. J., Stern, W. F., Stouffer, R. J., Wilson, R. J., Winton, M., Wittenberg, A. T., and Zeng, F.: The Dynamical Core, Physical Parameterizations, and Basic Simulation Characteristics of the Atmospheric Component AM3 of the GFDL Global Coupled Model CM3, *Journal of Climate*, 24, 3484–3519, <https://doi.org/10.1175/2011JCLI3955.1>, <https://doi.org/10.1175/2011JCLI3955.1>, 2011.
- 520 Dye, T. S., ed.: Guidelines for developing an air quality (ozone and PM_{2.5}) forecasting program, U.S. Environmental Protection Agency, Office of Air Quality Planning and Standards, Information Transfer and Program Integration Division, AIRNow Program., Research Triangle Park, N.C. :, <https://nepis.epa.gov/Exe/ZyPURL.cgi?Dockey=2000F0ZT.txt>, ePA-456/R-03-002., 2003.
- 525 Eslami, E., Choi, Y., Lops, Y., and Sayeed, A.: A real-time hourly ozone prediction system using deep convolutional neural network, *Neural Computing and Applications*, <https://doi.org/10.1007/s00521-019-04282-x>, <http://link.springer.com/10.1007/s00521-019-04282-x>, 2019.
- Fleming, Z. L., Doherty, R. M., Von Schneidmesser, E., Malley, C. S., Cooper, O. R., Pinto, J. P., Colette, A., Xu, X., Simpson, D., Schultz, M. G., Lefohn, A. S., Hamad, S., Moolla, R., Solberg, S., and Feng, Z.: Tropospheric Ozone Assessment Report: Present-day ozone distribution and trends relevant to human health, *Elem Sci Anth*, 6, 12, <https://doi.org/10.1525/elementa.273>, <https://www.elementascience.org/article/10.1525/elementa.273/>, 2018.
- 530 Fuentes, M. and Raftery, A. E.: Model Evaluation and Spatial Interpolation by Bayesian Combination of Observations with Outputs from Numerical Models, *Biometrics*, 61, 36–45, <https://doi.org/10.1111/j.0006-341X.2005.030821.x>, <http://doi.wiley.com/10.1111/j.0006-341X.2005.030821.x>, 2005.
- 535 Gardner, M. and Dorling, S.: Artificial Neural Network-Derived Trends in Daily Maximum Surface Ozone Concentrations, *Journal of the Air & Waste Management Association*, 51, 1202–1210, <https://doi.org/10.1080/10473289.2001.10464338>, <http://dx.doi.org/10.1080/10473289.2001.10464338>, 2001.
- Grell, G. A., Peckham, S. E., Schmitz, R., McKeen, S. A., Frost, G., Skamarock, W. C., and Eder, B.: Fully coupled “online” chemistry within the WRF model, *Atmospheric Environment*, 39, 6957 – 6975, <https://doi.org/10.1016/j.atmosenv.2005.04.027>, <http://www.sciencedirect.com/science/article/pii/S1352231005003560>, 2005.
- 540 Horowitz, J. and Barakat, S.: Statistical analysis of the maximum concentration of an air pollutant: Effects of autocorrelation and non-stationarity, *Atmospheric Environment (1967)*, 13, 811–818, [https://doi.org/10.1016/0004-6981\(79\)90272-5](https://doi.org/10.1016/0004-6981(79)90272-5), <https://linkinghub.elsevier.com/retrieve/pii/0004698179902725>, 1979.
- Horowitz, L. W., Stacy, W., Mauzerall, D. L., Emmons, L. K., Rasch, P. J., Granier, C., Tie, X., Lamarque, J., Schultz, M. G., Tyndall, G. S., Orlando, J. J., and Brasseur, G. P.: A global simulation of tropospheric ozone and related tracers: Description and evaluation of MOZART, version 2, *Journal of Geophysical Research: Atmospheres*, 108, <https://doi.org/10.1029/2002JD002853>, <https://agupubs.onlinelibrary.wiley.com/doi/abs/10.1029/2002JD002853>, 2003.
- 545 Ioffe, S. and Szegedy, C.: Batch Normalization: Accelerating Deep Network Training by Reducing Internal Covariate Shift, [arXiv:1502.03167 \[cs\]](https://arxiv.org/abs/1502.03167), <http://arxiv.org/abs/1502.03167>, arXiv: 1502.03167, 2015.
- 550 Ismail Fawaz, H., Forestier, G., Weber, J., Idoumghar, L., and Muller, P.-A.: Deep learning for time series classification: a review, *Data Mining and Knowledge Discovery*, 33, 917–963, <https://doi.org/10.1007/s10618-019-00619-1>, <http://link.springer.com/10.1007/s10618-019-00619-1>, 2019.

- Jacobson, M. Z.: *Fundamentals of Atmospheric Modeling*, Cambridge University Press, Cambridge, 2 edn., <http://www.dca.ufcg.edu.br/mna/jacobson.pdf>, 10.1017/CBO9781139165389, 2005.
- 555 Jülich Supercomputing Centre: JUWELS: Modular Tier-0/1 Supercomputer at Jülich Supercomputing Centre, *Journal of large-scale research facilities JLSRF*, 5, <https://doi.org/10.17815/jlsrf-5-171>, <http://jlsrf.org/index.php/lrf/article/view/171>, 2019.
- Kingma, D. P. and Ba, J.: Adam: A Method for Stochastic Optimization, arXiv:1412.6980 [cs], <http://arxiv.org/abs/1412.6980>, arXiv: 1412.6980, 2014.
- Kleinert, F., Leufen, L. H., and Schultz, M. G.: IntelliO3-ts: Data, <https://doi.org/10.34730/c5dae21fac954aa6bdb4e86172221526>, <https://doi.org/10.34730/c5dae21fac954aa6bdb4e86172221526>, 2020.
- 560 LeCun, Y., Bottou, L., Bengio, Y., and Haffner, P.: Gradient-based learning applied to document recognition, *Proceedings of the IEEE*, 86, 2278–2324, <https://doi.org/10.1109/5.726791>, 1998.
- Lefohn, A. S., Malley, C. S., Simon, H., Wells, B., Xu, X., Zhang, L., and Wang, T.: Responses of human health and vegetation exposure metrics to changes in ozone concentration distributions in the European Union, United States, and China, *Atmospheric Environment*, 152, 123–145, <https://doi.org/10.1016/j.atmosenv.2016.12.025>, <https://linkinghub.elsevier.com/retrieve/pii/S1352231016309931>, 2017.
- 565 Liu, B., Yan, S., Li, J., Qu, G., Li, Y., Lang, J., and Gu, R.: A Sequence-to-Sequence Air Quality Predictor Based on the n-Step Recurrent Prediction, *IEEE Access*, 7, 43 331–43 345, <https://doi.org/10.1109/ACCESS.2019.2908081>, <https://ieeexplore.ieee.org/document/8675934/>, 2019.
- Ma, J., Li, Z., Cheng, j. C., Ding, Y., Lin, C., and Xu, Z.: Air quality prediction at new stations using spatially transferred bi-directional long short-term memory network, *Science of The Total Environment*, 705, <https://doi.org/10.1016/j.scitotenv.2019.135771>, 2020.
- 570 Maleki, H., Sorooshian, A., Goudarzi, G., Baboli, Z., Tahmasebi Birgani, Y., and Rahmati, M.: Air pollution prediction by using an artificial neural network model, *Clean Technologies and Environmental Policy*, 21, 1341–1352, <https://doi.org/10.1007/s10098-019-01709-w>, <http://link.springer.com/10.1007/s10098-019-01709-w>, 2019.
- Martín Abadi, Ashish Agarwal, Paul Barham, Eugene Brevdo, Zhifeng Chen, Craig Citro, Greg S. Corrado, Andy Davis, Jeffrey Dean, Matthieu Devin, Sanjay Ghemawat, Ian Goodfellow, Andrew Harp, Geoffrey Irving, Michael Isard, Jia, Y., Rafal Jozefowicz, Lukasz Kaiser, Manjunath Kudlur, Josh Levenberg, Dandelion Mané, Rajat Monga, Sherry Moore, Derek Murray, Chris Olah, Mike Schuster, Jonathon Shlens, Benoit Steiner, Ilya Sutskever, Kunal Talwar, Paul Tucker, Vincent Vanhoucke, Vijay Vasudevan, Fernanda Viégas, Oriol Vinyals, Pete Warden, Martin Wattenberg, Martin Wicke, Yuan Yu, and Xiaoqiang Zheng: TensorFlow: Large-Scale Machine Learning on Heterogeneous Systems, <https://www.tensorflow.org/>, 2015.
- 575 Mills, G., Sharps, K., Simpson, D., Pleijel, H., Broberg, M., Uddling, J., Jaramillo, F., Davies, W. J., Dentener, F., Van den Berg, M., Agrawal, M., Agrawal, S., Ainsworth, E. A., Büker, P., Emberson, L., Feng, Z., Harmens, H., Hayes, F., Kobayashi, K., Paoletti, E., and Van Dingenen, R.: Ozone pollution will compromise efforts to increase global wheat production, *Global Change Biology*, 24, 3560–3574, <https://doi.org/10.1111/gcb.14157>, <http://doi.wiley.com/10.1111/gcb.14157>, 2018.
- 580 Murphy, A. H.: Skill Scores Based on the Mean Square Error and Their Relationships to the Correlation Coefficient, *Monthly Weather Review*, 116, 2417–2424, [https://doi.org/10.1175/1520-0493\(1988\)116<2417:SSBOTM>2.0.CO;2](https://doi.org/10.1175/1520-0493(1988)116<2417:SSBOTM>2.0.CO;2), [https://doi.org/10.1175/1520-0493\(1988\)116<2417:SSBOTM>2.0.CO;2](https://doi.org/10.1175/1520-0493(1988)116<2417:SSBOTM>2.0.CO;2), 1988.
- 585 Murphy, A. H. and Winkler, R. L.: A General Framework for Forecast Verification, *Monthly Weather Review*, 115, 1330–1338, [https://doi.org/10.1175/1520-0493\(1987\)115<1330:AGFFFV>2.0.CO;2](https://doi.org/10.1175/1520-0493(1987)115<1330:AGFFFV>2.0.CO;2), [http://dx.doi.org/10.1175/1520-0493\(1987\)115<1330:AGFFFV>2.0.CO;2](http://dx.doi.org/10.1175/1520-0493(1987)115<1330:AGFFFV>2.0.CO;2), 1987.

- 590 Murphy, A. H., Brown, B. G., and Chen, Y.-S.: Diagnostic Verification of Temperature Forecasts, *Weather and Forecasting*, 4, 485–501, [https://doi.org/10.1175/1520-0434\(1989\)004<0485:DVOTF>2.0.CO;2](https://doi.org/10.1175/1520-0434(1989)004<0485:DVOTF>2.0.CO;2), [https://doi.org/10.1175/1520-0434\(1989\)004<0485:DVOTF>2.0.CO;2](https://doi.org/10.1175/1520-0434(1989)004<0485:DVOTF>2.0.CO;2), 1989.
- Olszyna, K., Luria, M., and Meagher, J.: The correlation of temperature and rural ozone levels in southeastern U.S.A., *Atmospheric Environment*, 31, 3011 – 3022, [https://doi.org/10.1016/S1352-2310\(97\)00097-6](https://doi.org/10.1016/S1352-2310(97)00097-6), <http://www.sciencedirect.com/science/article/pii/S1352231097000976>, 1997.
- 595 Pawlak, I. and Jarosławski, J.: Forecasting of Surface Ozone Concentration by Using Artificial Neural Networks in Rural and Urban Areas in Central Poland, *Atmosphere*, 10, 52, <https://doi.org/10.3390/atmos10020052>, <http://www.mdpi.com/2073-4433/10/2/52>, 2019.
- Prybutok, V. R., Yi, J., and Mitchell, D.: Comparison of neural network models with ARIMA and regression models for prediction of Houston’s daily maximum ozone concentrations, *European Journal of Operational Research*, 122, 31 – 40, [https://doi.org/10.1016/S0377-2217\(99\)00069-7](https://doi.org/10.1016/S0377-2217(99)00069-7), <http://www.sciencedirect.com/science/article/pii/S0377221799000697>, 2000.
- 600 Rasp, S. and Lerch, S.: Neural Networks for Postprocessing Ensemble Weather Forecasts, *Monthly Weather Review*, 146, 3885–3900, <https://doi.org/10.1175/MWR-D-18-0187.1>, <http://journals.ametsoc.org/doi/10.1175/MWR-D-18-0187.1>, 2018.
- Sayeed, A., Choi, Y., Eslami, E., Lops, Y., Roy, A., and Jung, J.: Using a deep convolutional neural network to predict 2017 ozone concentrations, 24 hours in advance, *Neural Networks*, 121, 396–408, <https://doi.org/10.1016/j.neunet.2019.09.033>, <https://linkinghub.elsevier.com/retrieve/pii/S0893608019303156>, 2020.
- 605 Schmidhuber, J.: Deep learning in neural networks: An overview, *Neural Networks*, 61, 85–117, <https://doi.org/10.1016/j.neunet.2014.09.003>, <http://dx.doi.org/10.1016/j.neunet.2014.09.003>, 2015.
- Schultz, M. G., Schröder, S., Lyapina, O., Cooper, O., Galbally, I., Petropavlovskikh, I., Von Schneidemesser, E., Tanimoto, H., Elshorbany, Y., Naja, M., Seguel, R., Dauert, U., Eckhardt, P., Feigenspahn, S., Fiebig, M., Hjellbrekke, A.-G., Hong, Y.-D., Christian Kjeld, P., Koide, H., Lear, G., Tarasick, D., Ueno, M., Wallasch, M., Baumgardner, D., Chuang, M.-T., Gillett, R., Lee, M., Molloy, S., Moolla, R., Wang, T., Sharps, K., Adame, J. A., Ancellet, G., Apadula, F., Artaxo, P., Barlasina, M., Bogucka, M., Bonasoni, P., Chang, L., Colomb, A., Cuevas, E., Cupeiro, M., Degorska, A., Ding, A., Fröhlich, M., Frolova, M., Gadhavi, H., Gheusi, F., Gilge, S., Gonzalez, M. Y., Gros, V., Hamad, S. H., Helmig, D., Henriques, D., Hermansen, O., Holla, R., Huber, J., Im, U., Jaffe, D. A., Komala, N., Kubistin, D., Lam, K.-S., Laurila, T., Lee, H., Levy, I., Mazzoleni, C., Mazzoleni, L., McClure-Begley, A., Mohamad, M., Murovic, M., Navarro-Comas, M., Nicodim, F., Parrish, D., Read, K. A., Reid, N., Ries, L., Saxena, P., Schwab, J. J., Scorgie, Y., Senik, I., Simmonds, P., Sinha, V., Skorokhod, A., Spain, G., Spangl, W., Spoor, R., Springston, S. R., Steer, K., Steinbacher, M., Suharguniyawan, E., Torre, P., Trickl, T., Weili, L., Weller, R., Xu, X., Xue, L., and Zhiqiang, M.: Tropospheric Ozone Assessment Report: Database and Metrics Data of Global Surface Ozone Observations, *Elementa: Science of the Anthropocene*, 5, 58, <https://doi.org/10.1525/elementa.244>, <http://www.elementascience.org/article/10.1525/elementa.244>, 2017.
- 610 Seabold, S. and Perktold, J.: *Statsmodels: Econometric and statistical modeling with python*, in: 9th Python in Science Conference, 2010.
- Seinfeld, J. H. and Pandis, S. N.: *Atmospheric Chemistry and Physics: From Air Pollution to Climate Change*, ISBN: 978-1-118-94740-1, Wiley, Hoboken, New Jersey, 3rd edition edn., 2016.
- Seltzer, K. M., Shindell, D. T., Kasibhatla, P., and Malley, C. S.: Magnitude, trends, and impacts of ambient long-term ozone exposure in the United States from 2000 to 2015, *Atmospheric Chemistry and Physics*, 20, 1757–1775, <https://doi.org/10.5194/acp-20-1757-2020>, <https://acp.copernicus.org/articles/20/1757/2020/>, 2020.
- 625

- Silva, S. J., Heald, C. L., Ravela, S., Mammarella, I., and Munger, J. W.: A Deep Learning Parameterization for Ozone Dry Deposition Velocities, *Geophysical Research Letters*, 46, 983–989, <https://doi.org/10.1029/2018GL081049>, <http://doi.wiley.com/10.1029/2018GL081049>, 2019.
- 630 Srivastava, N., Hinton, G., Krizhevsky, A., Sutskever, I., and Salakhutdinov, R.: Dropout: a simple way to prevent neural networks from overfitting, *The journal of machine learning research*, 15, 1929–1958, <http://jmlr.org/papers/volume15/srivastava14a.old/srivastava14a.pdf>, 2014.
- Szegedy, C., Wei Liu, Yangqing Jia, Sermanet, P., Reed, S., Anguelov, D., Erhan, D., Vanhoucke, V., and Rabinovich, A.: Going deeper with convolutions, in: 2015 IEEE Conference on Computer Vision and Pattern Recognition (CVPR), pp. 1–9, IEEE, Boston, MA, USA, <https://doi.org/10.1109/CVPR.2015.7298594>, <http://ieeexplore.ieee.org/document/7298594/>, 2015.
- 635 Thompson, M. L., Reynolds, J., Cox, L. H., Guttorp, P., and Sampson, P. D.: A review of statistical methods for the meteorological adjustment of tropospheric ozone, *Atmospheric Environment*, 35, 617 – 630, [https://doi.org/10.1016/S1352-2310\(00\)00261-2](https://doi.org/10.1016/S1352-2310(00)00261-2), <http://www.sciencedirect.com/science/article/pii/S1352231000002612>, 2001.
- U.S. Environmental Protection Agency: Technical Assistance Document for the Reporting of Daily Air Quality - the Air Quality Index (AQI), <https://www.airnow.gov/sites/default/files/2018-05/aqi-technical-assistance-document-may2016.pdf>, ePA-454/B-16-002, 2016.
- 640 Vautard, R.: Evaluation of the meteorological forcing used for the Air Quality Model Evaluation International Initiative (AQMEII) air quality simulations, *Atmospheric Environment*, 53, 15–37, <https://doi.org/https://doi.org/10.1016/j.atmosenv.2011.10.065>, <http://www.sciencedirect.com/science/article/pii/S1352231011011605>, 2012.
- von Kuhlmann, R., Lawrence, M. G., Crutzen, P. J., and Rasch, P. J.: A model for studies of tropospheric ozone and nonmethane hydrocarbons: Model description and ozone results, *Journal of Geophysical Research: Atmospheres*, 108, <https://doi.org/10.1029/2002JD002893>, <http://doi.wiley.com/10.1029/2002JD002893>, 2003.
- 645 Wang, Y., Jacob, D. J., and Logan, J. A.: Global simulation of tropospheric O₃-NO_x-hydrocarbon chemistry: 1. Model formulation, *Journal of Geophysical Research: Atmospheres*, 103, 10 713–10 725, <https://doi.org/10.1029/98JD00158>, <http://dx.doi.org/10.1029/98JD00158>, 1998a.
- Wang, Y., Logan, J. A., and Jacob, D. J.: Global simulation of tropospheric O₃-NO_x-hydrocarbon chemistry: 2. Model evaluation and global ozone budget, *Journal of Geophysical Research: Atmospheres*, 103, 10 727–10 755, <https://doi.org/10.1029/98JD00157>, <http://dx.doi.org/10.1029/98JD00157>, 1998b.
- 650 WHO: Health risks of air pollution in Europe – HRAPIE project. Recommendations for concentration–response functions for cost–benefit analysis of particulate matter, ozone and nitrogen dioxide, Tech. rep., WHO Regional Office for Europe, UN City, Marmorvej 51 DK-2100 Copenhagen Ø, Denmark, http://www.euro.who.int/__data/assets/pdf_file/0006/238956/Health_risks_air_pollution_HRAPIE_project.pdf?ua=1, 2013.
- 655 Wilks, D. S.: Statistical methods in the atmospheric sciences, vol. 91 of *International Geophysics Series*, Elsevier, second edition edn., 2006.
- Yan, Y., Pozzer, A., Ojha, N., Lin, J., and Lelieveld, J.: Analysis of European ozone trends in the period 1995–2014, *Atmospheric Chemistry and Physics*, 18, 5589–5605, <https://doi.org/10.5194/acp-18-5589-2018>, <https://acp.copernicus.org/articles/18/5589/2018/>, 2018.
- Zhang, Q., Lam, J. C., Li, V. O., and Han, Y.: Deep-AIR: A Hybrid CNN-LSTM Framework for Fine-Grained Air Pollution Forecast, [arXiv:2001.11957 \[eess\]](https://arxiv.org/abs/2001.11957), <http://arxiv.org/abs/2001.11957>, arXiv: 2001.11957, 2020.
- 660

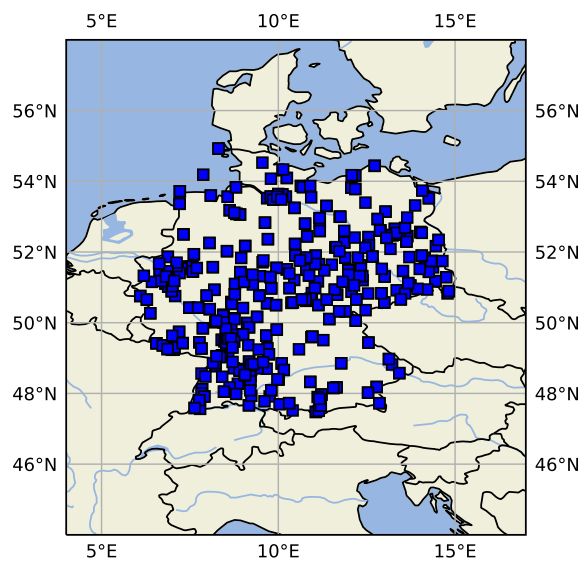


Figure 1. Map of central Europe showing the location of German measurement sites used in this study.

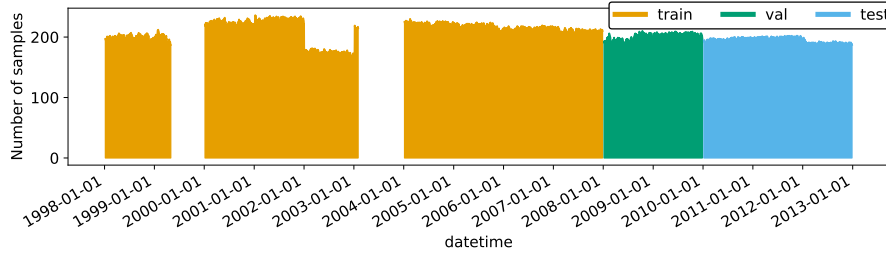


Figure 2. Data availability diagram combined for all variables and all stations. The training set is coloured in orange, the validation set in green, and the test set in blue. Gaps in 1999 and 2003 are caused by missing model data in the TOAR database.

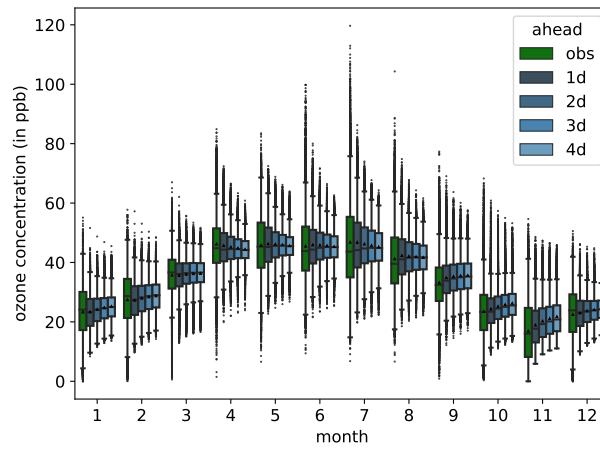


Figure 3. Monthly dma8eu ozone concentrations for all test-stations as boxplots. Measurements are denoted by "orig" (green), while the forecasts are denoted by "1d" (dark blue) to "4d" (light blue). Whiskers have a maximal length of one interquartile range. The black triangles denote the arithmetic means.

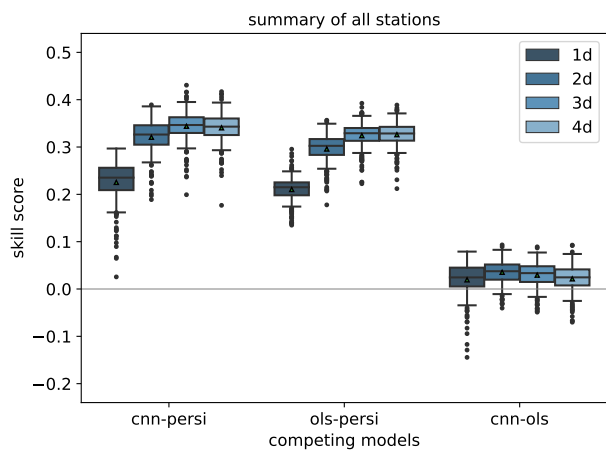


Figure 4. Skill scores of the IntelliO3-ts (cnn) versus the two reference models persistence (persi) and, ordinary least square (ols) based on the mean squared error; separated for all lead times (1d (dark blue) to 4d (light blue)). Positive values denote that the first mentioned prediction model performs better than the reference model (mentioned as second). The triangles denote the arithmetic means.

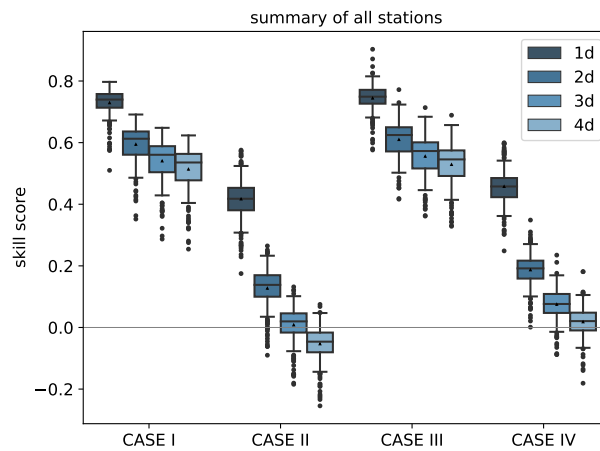


Figure 5. Skill scores of IntelliO3-ts with respect to climatological reference forecasts: with internal single value reference (CASE I), internal multi value (monthly) reference (CASE II), external single (CASE III) and external multi (monthly) reference (CASE IV) for all lead times from 1d (dark blue) to 4d (light blue). Triangles denote the arithmetic means.

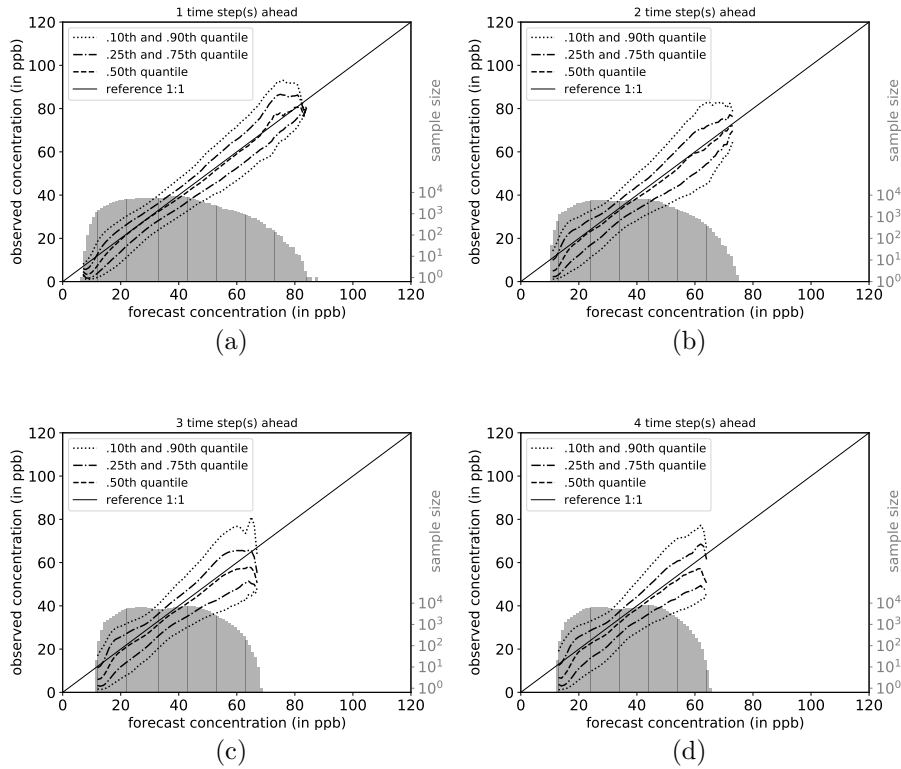


Figure 6. Conditional quantile plot for all IntelliO3-ts predictions for a lead time of one day (a), two days (b), three days (c), and four days (d). Conditional percentiles (.10th and .90th, .25th and .75th and .50th) from the conditional distribution $f(o_j|m_i)$ are shown as lines in different styles. The reference line indicates a hypothetic perfect forecast. The marginal distribution of the forecast $f(m_i)$ is shown as log-histogram (right axis, light grey). All calculations are done by using a bin size of 1ppb. Quantiles are smoothed by using a rolling mean of window size three. (Original design by Murphy et al. (1989))

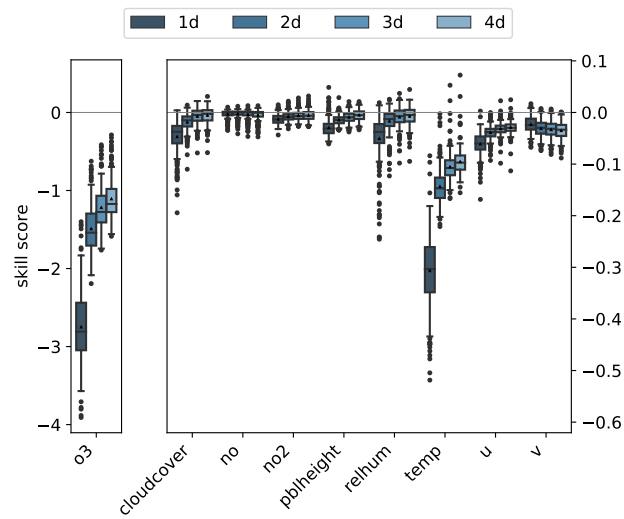


Figure 7. Skill scores of bootstrapped model predictions having the original forecast as the reference model are shown as boxplots for all lead times from 1d (dark blue) to 4d (light blue). The skill score for ozone is shown on the left y-axis, while the skill score of the other variables is shown on the right y-axis. Skill scores of bootstrapped model predictions having the original forecast as the reference model are shown as boxplots for all lead times from 1d (dark blue) to 4d (light blue).

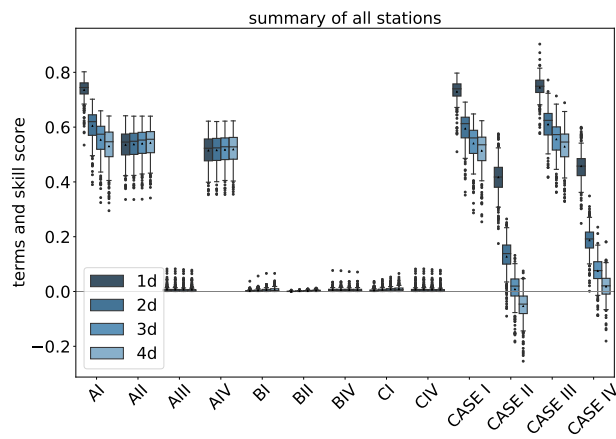


Figure A1. Skill scores of IntelliO3-ts with respect to climatological reference forecast; with internal single value reference (CASE I), internal multi value (monthly) reference (CASE II), external single (CASE III) and external multi (monthly) reference (CASE IV) for all lead times from 1d (dark blue) to 4d (light blue). All terms are described in Sect. A3 Triangles denote the arithmetic means.

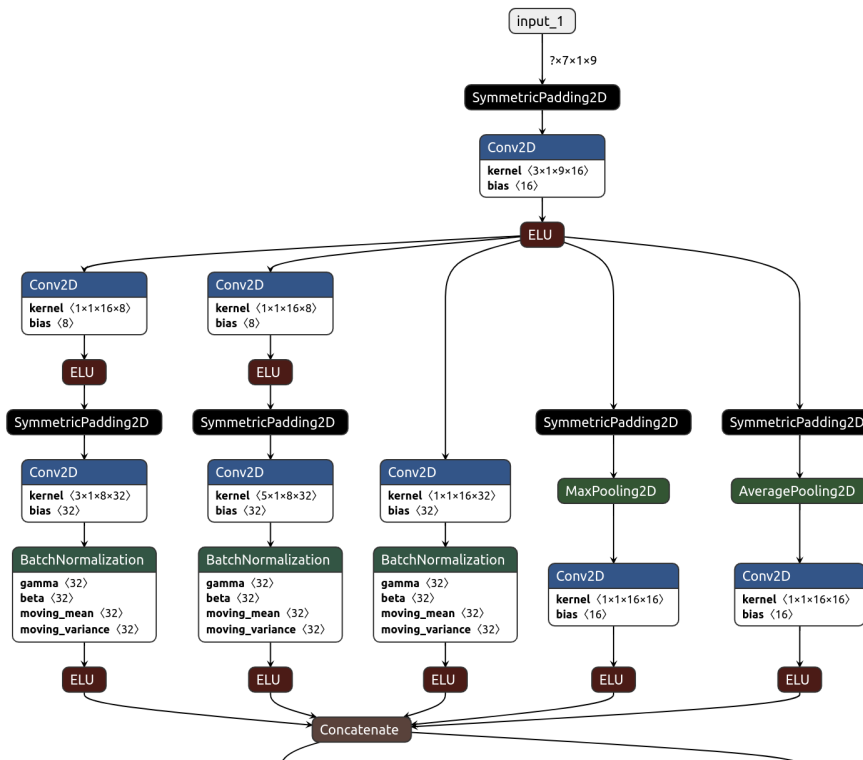


Figure A2. First part of the network showing the input, the first padding, convolution and activation, and the first inception block. Network architecture containing all inception blocks, heads, and the additional average pooling layer.

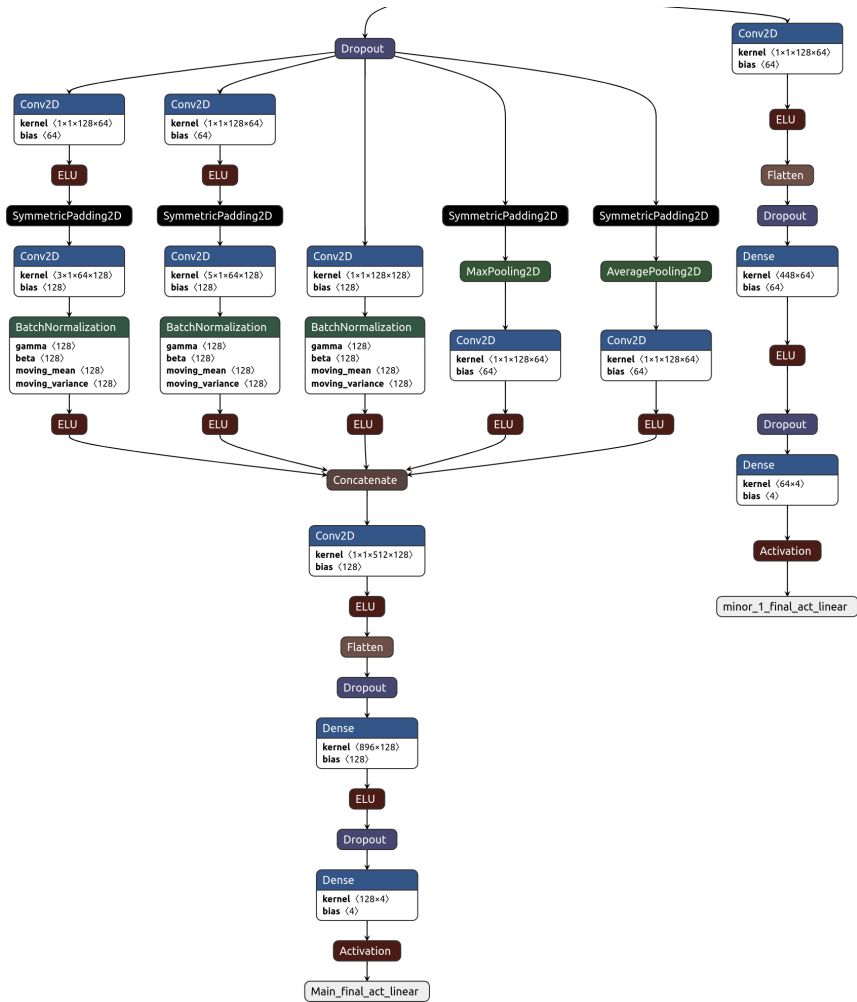


Figure A3. Second part of the network after the 'Concatenate' layer in Fig. A2, showing the minor output branch, the second inception block, and the main output branch.

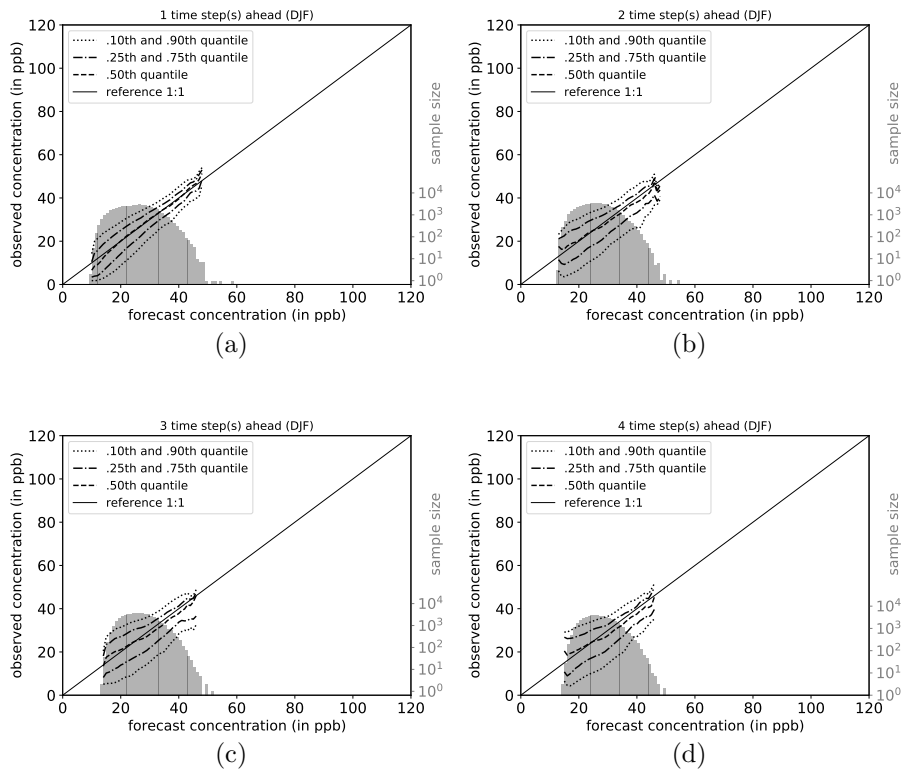


Figure A4. Same as Fig. 6 but for DJF

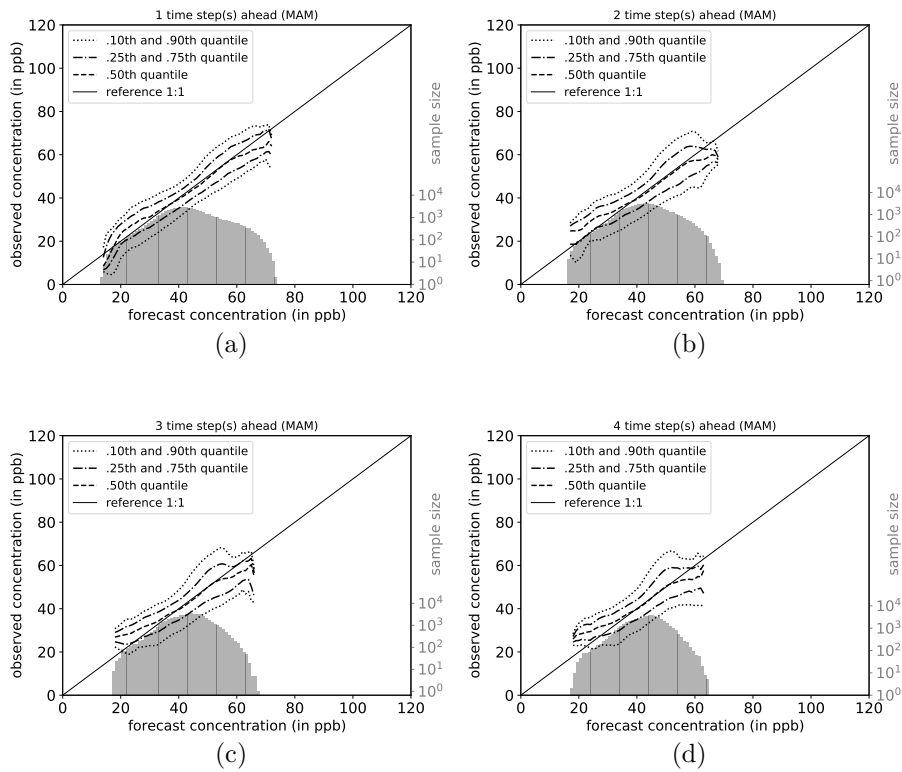


Figure A5. Same as Fig. 6 but for MAM

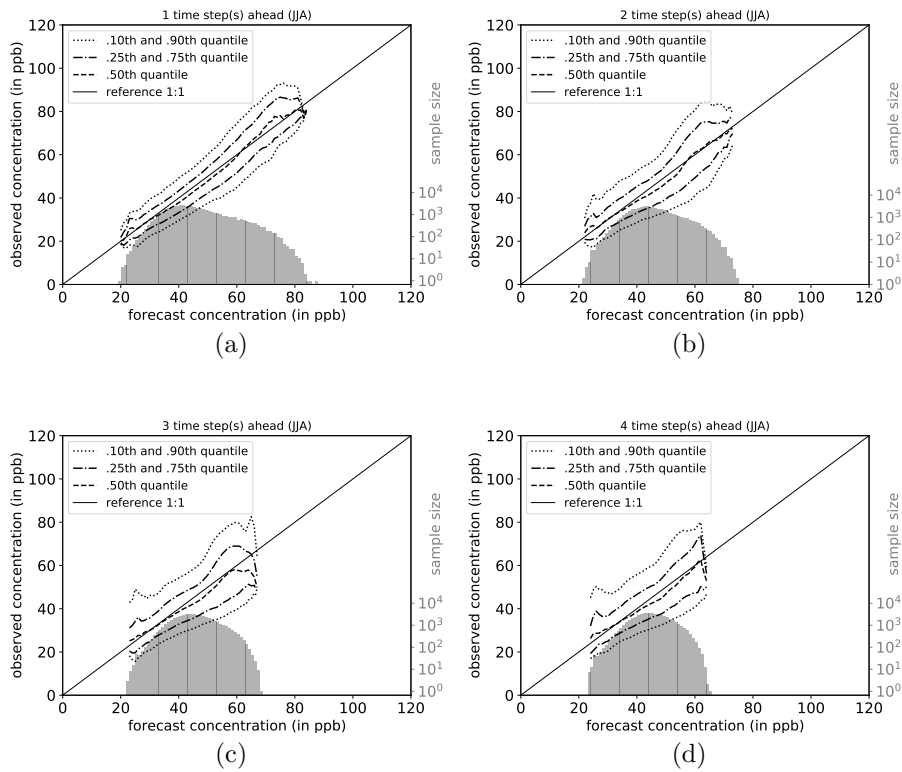


Figure A6. Same as Fig. 6 but for JJA

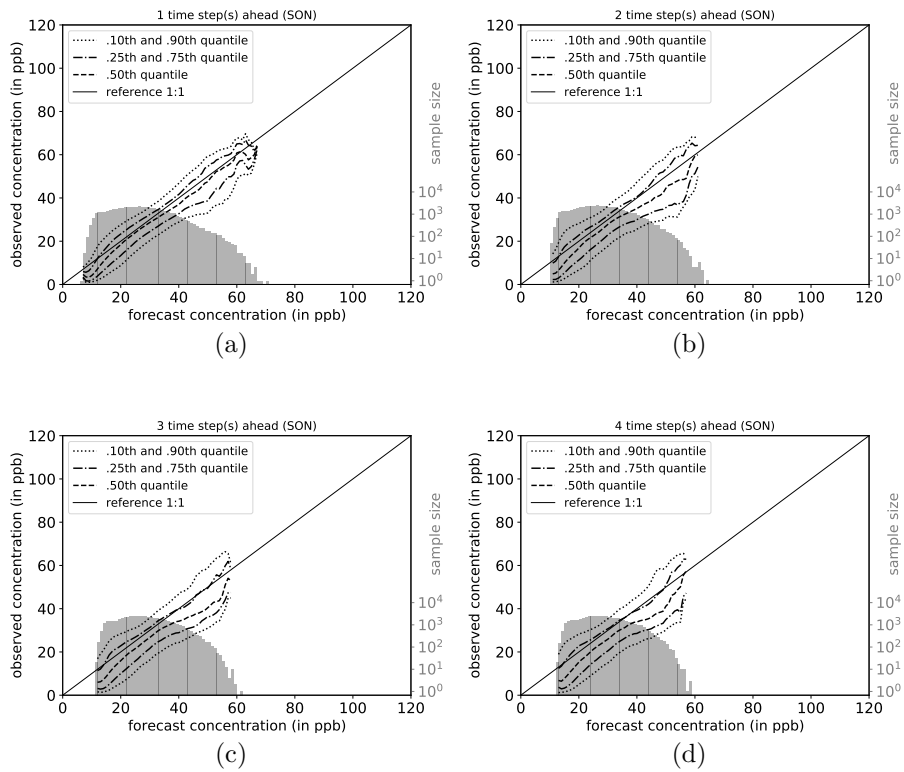


Figure A7. Same as Fig. 6 but for SON

Table 1. Overview of the literature on ozone forecasts with neural networks. Machine learning (ML) types are abbreviated as FC for fully connected, CNN for convolutional neural networks, RNN for recurrent neural networks, and LSTM for long-short term memories. We use the following abbreviations for time periods : yr for years and m for month.

Citation	ML type	Total number of stations	Stations for training	Time period	comments
Comrie (1997)	FC	8	8	5yr	random split for train, val
Cobourn et al. (2000)	FC	7	7	5yr (train)+ 1yr (val)+1yr(test)	
Prybutok et al. (2000)	FC	1		4m + 1m	
Gardner and Dorling (2001)	FC	6	6	12yr	
Eslami et al. (2019)	CNN	25	25	3yr train 1yr test	random split
Liu et al. (2019)	attention RNN	2	2	10m (train), 7 days (test)	Analysis for PM _{2.5}
Maleki et al. (2019)	FC	4	4	1yr	random split for train, val, test
Silva et al. (2019)	FC	2	1	13yr (train, val test); 14yr (test on second station)	dry deposition of O ₃ ; random split on first station
Abdul Aziz et al. (2019)	FC	1	1	7days	individual measurements for study
Pawlak and Jarosławski (2019)	FC	2	2	6m (train) + 6m (test)	Individual network per station
Seltzer et al. (2020)	FC	3557	3557	15yr	focus on trends
Ma et al. (2020)	Bidir.- LSTM	19 (standard) + 48 (transfer)	19 (standard) + 48 (transfer)	9m	exploration of transfer learning
Sayeed et al. (2020)	CNN	21	21	3yr (train) + 1yr (test / retrain)	retrain model for each prediction
Zhang et al. (2020)	CNN- LSTM	35	35	19m	Gridded forecast
this study	inception blocks	329	312343	18 yr	

Table 2. Input variables and applied daily statistics according to Table 3.

Variable	daily statistics
NO	dma8eu
NO ₂	dma8eu
O ₃	dma8eu
cloudcover	average
planetary boundary layer height	maximum
relative humidity	average
temperature	maximum
wind's u-component	average
wind's v-component	average

Table 3. Definitions of statistical metrics in TOAR analysis relevant for this study. Adopted from Schultz et al. (2017, Supplement 1, Table 6, therein)

Name	Description
data_capture	Fraction of valid (hourly) values available in the aggregation period.
average_values	Daily [...] average value. No data capture criterion is applied, i.e. a daily average is valid if at least one hourly value of the day is present.
dma8eu	As dma8epa, but using the EU definition of the daily 8-hour window starting from 17 h of the previous day. (dma8epa: Daily maximum 8-hour average statistics according to the US EPA definition. 8-hour averages are calculated for 24 bins starting at 0 h local time. The 8-h running mean for a particular hour is calculated on the concentration for that hour plus the following 7 hours. If less than 75% of data are present (i.e. less than 6 hours), the average is considered missing. Note that in contrast to the official EPA definition, a daily value is considered valid if at least one 8-hour average is valid.)
maximum	Daily maximum value. No data capture criterion is applied, i.e. a daily maximum is valid if at least one hourly value of the day is present.

Table 4. Number of stations, total number of samples (pairs of \mathbf{X} and \mathbf{y}), and various statistics of number of samples per station in the training, validation and test data sets. The number of stations per set varies as not all stations have data through the full period (see Table A1 for details). ~~Number of stations and total number of samples (pairs of \mathbf{X} and \mathbf{y}) used in the training (train), validation (val), and test (test) data sets, respectively. The number of stations per set varies as not all stations have data through the full period (see Table A1 for details).~~

	no. stations	no. samples	mean	std	min	5%	10%	25%	50%	75%	90%	95%	max
training	312	643788	2063	802	369	668	939	1426	2191	2902	2989	3011	3045
validation	211	145030	687	61	370	532	625	690	710	721	721	721	721
test	203	212093	1044	92	466	759	983	1056	1075	1086	1086	1086	1086

Table A1. Number of samples (input and output pairs) per station separated by training (train), validation (val), and test data set. "—" denotes no samples in a set.

	training	val	test
stat. ID			
DEBB001	1104	—	—
DEBB006	1455	—	—
DEBB007	—	721	1086
DEBB009	1438	—	—
DEBB021	2512	705	1052
DEBB024	2592	—	—
DEBB028	1353	—	—
DEBB031	2577	—	—
DEBB036	1008	—	—
DEBB038	1245	—	—
DEBB040	760	—	—
DEBB042	2902	721	1086
DEBB043	2194	—	—
DEBB048	2473	721	1075
DEBB050	2510	721	—
DEBB051	1006	—	—
DEBB053	2115	706	1086
DEBB055	1887	721	1053
DEBB063	1392	721	1086
DEBB064	1480	721	1086
DEBB065	1411	699	1086
DEBB066	1451	721	1086
DEBB067	1073	721	1086
DEBB075	—	721	1079
DEBB082	—	622	1086
DEBB083	—	—	1086
DEBE010	1372	707	1035
DEBE032	2441	690	1060
DEBE034	2506	671	1031
DEBE051	2433	694	1053

Table A1. Continued.

	training	val	test
stat. ID			
DEBE056	2481	678	1055
DEBE062	1941	677	1069
DEBW004	1440	721	1086
DEBW006	1451	721	1086
DEBW007	1440	699	—
DEBW008	656	—	—
DEBW010	3041	708	1086
DEBW013	1432	710	1079
DEBW019	2962	710	1078
DEBW020	1520	—	—
DEBW021	1579	—	—
DEBW023	1430	721	1078
DEBW024	3011	713	1086
DEBW025	1530	—	—
DEBW026	3005	721	—
DEBW027	3005	699	1075
DEBW028	1510	—	—
DEBW029	3012	721	1086
DEBW030	2966	—	—
DEBW031	2970	711	1069
DEBW032	2648	—	—
DEBW034	3045	707	—
DEBW035	2281	—	—
DEBW036	1183	—	—
DEBW037	3023	721	—
DEBW039	2999	710	1086
DEBW041	1581	—	—
DEBW042	2617	708	1067
DEBW044	1571	—	—
DEBW045	656	—	—

Table A1. Continued.

	training	val	test
stat. ID			
DEBW046	2990	699	1086
DEBW047	1563	—	—
DEBW049	646	—	—
DEBW050	1556	—	—
DEBW052	2652	721	1078
DEBW053	1574	—	—
DEBW054	1566	—	—
DEBW056	2938	721	1086
DEBW057	644	—	—
DEBW059	2974	721	1086
DEBW060	1571	—	—
DEBW065	1540	—	—
DEBW072	480	—	—
DEBW076	3035	721	708
DEBW081	2654	721	1079
DEBW084	1444	721	1042
DEBW087	3043	713	1086
DEBW094	2188	—	—
DEBW102	1122	—	—
DEBW103	2525	721	—
DEBW107	1801	714	1086
DEBW110	1107	721	—
DEBW111	1083	703	—
DEBW112	651	721	1079
DEBW113	678	—	—
DEBY002	2924	721	747
DEBY004	2917	707	1028
DEBY005	2959	714	1086
DEBY013	1412	652	980
DEBY017	1250	—	—

Table A1. Continued.

	training	val	test
stat. ID			
DEBY020	2976	721	1013
DEBY031	2927	678	1072
DEBY032	2975	721	711
DEBY034	1555	—	—
DEBY039	2554	721	1067
DEBY047	1895	721	754
DEBY049	2918	693	1066
DEBY052	2929	708	1035
DEBY062	1411	704	748
DEBY072	2907	690	1055
DEBY077	1409	721	724
DEBY079	2878	721	671
DEBY081	2932	523	713
DEBY082	1592	—	—
DEBY088	2986	713	1062
DEBY089	2644	721	1086
DEBY092	616	—	—
DEBY099	1828	703	725
DEBY109	1310	713	1071
DEBY113	1347	706	1086
DEBY118	937	705	727
DEBY122	—	—	877
DEHB001	2567	710	953
DEHB002	2287	702	1053
DEHB003	2546	695	—
DEHB004	1428	708	1037
DEHB005	2518	683	1066
DEHE001	1451	721	1086
DEHE008	2447	707	1075
DEHE010	1600	—	—

Table A1. Continued.

	training	val	test
stat. ID			
DEHE013	—	721	1086
DEHE017	1562	—	—
DEHE018	3016	721	1086
DEHE019	1958	—	—
DEHE022	2643	721	1086
DEHE023	2966	708	466
DEHE024	2935	710	1086
DEHE025	1554	—	—
DEHE026	2877	697	1086
DEHE027	1536	—	—
DEHE028	2946	710	1068
DEHE030	3028	721	1086
DEHE032	2926	714	1075
DEHE033	1835	—	—
DEHE034	1880	—	—
DEHE039	—	—	812
DEHE042	2966	721	1079
DEHE043	3004	721	1074
DEHE044	2543	721	1086
DEHE045	2535	699	1086
DEHE046	2513	714	1086
DEHE048	1043	—	—
DEHE050	1014	—	—
DEHE051	2331	721	1086
DEHE052	2078	713	1086
DEHE058	789	721	1086
DEHE060	704	672	1086
DEHH008	1439	721	1086
DEHH021	2624	710	1086
DEHH033	2148	682	1067

Table A1. Continued.

	training	val	test
stat. ID			
DEHH047	2175	696	1086
DEHH049	2150	721	1075
DEHH050	2131	721	1069
DEMV001	794	—	—
DEMV004	2908	721	1058
DEMV007	2986	721	1053
DEMV012	2885	710	1086
DEMV017	2507	708	1086
DEMV018	2113	710	—
DEMV019	1429	706	1086
DEMV021	600	688	1072
DEMV024	—	—	908
DENI011	2611	452	1086
DENI016	3034	627	1051
DENI019	2919	—	—
DENI020	2984	667	1086
DENI028	2927	516	1086
DENI029	2903	692	1086
DENI031	1410	451	1079
DENI038	2599	573	1083
DENI041	2935	525	1086
DENI042	2939	553	1072
DENI043	2941	606	1086
DENI051	2976	—	1072
DENI052	2910	529	1086
DENI054	2997	596	1086
DENI058	2398	—	1086
DENI059	2408	451	1079
DENI060	2386	677	1086
DENI062	2482	625	1080

Table A1. Continued.

	training	val	test
stat. ID			
DENI063	2385	460	1073
DENI077	—	—	1079
DENW004	1148	—	—
DENW006	1367	694	1026
DENW008	2511	701	1064
DENW010	1397	—	—
DENW013	1830	—	—
DENW015	1451	—	—
DENW018	1196	—	—
DENW028	1655	—	—
DENW029	2530	—	—
DENW030	2785	630	998
DENW036	1314	—	—
DENW038	2598	652	1079
DENW042	1185	—	—
DENW047	1350	—	—
DENW050	2488	—	—
DENW051	1206	—	—
DENW053	1795	678	1051
DENW059	1777	648	980
DENW062	1078	—	—
DENW063	2816	—	—
DENW064	2887	589	1052
DENW065	2877	550	1045
DENW066	2865	—	—
DENW067	2473	686	1079
DENW068	2892	447	1009
DENW071	1827	713	1071
DENW078	1382	681	1078
DENW079	2040	706	1086

Table A1. Continued.

	training	val	test
stat. ID			
DENW080	2147	689	1043
DENW081	2422	646	1058
DENW094	1980	627	1058
DENW095	1981	681	1071
DENW096	700	—	—
DENW179	766	699	1079
DENW247	—	572	1066
DERP001	1421	721	1068
DERP007	2652	721	1077
DERP013	2883	708	1067
DERP014	2967	703	1061
DERP015	2810	710	1047
DERP016	2962	721	1086
DERP017	2955	721	1055
DERP019	1413	708	1041
DERP021	2996	713	1025
DERP022	2989	701	1059
DERP025	2918	691	1086
DERP028	2802	678	1026
DESH005	962	—	—
DESH006	614	—	—
DESH008	3031	721	1053
DESH016	2635	698	—
DESH021	1107	—	—
DESH023	1700	721	1066
DESH033	—	721	1072
DESL003	1393	713	1086
DESL008	1371	—	—
DESL011	2776	710	1086
DESL012	—	—	1086

Table A1. Continued.

	training	val	test
stat. ID			
DESL017	2785	714	1086
DESL018	1656	710	1086
DESL019	1371	472	1057
DESN001	2925	689	1072
DESN004	3011	705	1086
DESN005	1166	—	—
DESN011	2613	694	1073
DESN012	2995	721	—
DESN014	2256	—	—
DESN017	3028	704	—
DESN019	2934	721	—
DESN024	3017	721	—
DESN028	401	—	—
DESN036	810	—	—
DESN045	2913	721	1064
DESN050	2939	710	—
DESN051	1451	685	1075
DESN057	1535	—	—
DESN059	2533	714	1078
DESN074	2534	702	1062
DESN076	2489	717	1075
DESN079	—	—	1071
DESN085	713	—	—
DESN092	—	536	1057
DEST002	3020	721	1075
DEST005	802	—	—
DEST011	2924	713	1075
DEST014	996	—	—
DEST022	805	—	—
DEST025	480	—	—

Table A1. Continued.

	training	val	test
stat. ID			
DEST028	2694	—	—
DEST030	2282	—	—
DEST031	796	—	—
DEST032	447	—	—
DEST039	2971	676	1069
DEST044	2923	709	1086
DEST050	2672	706	1075
DEST052	1484	—	—
DEST061	814	—	—
DEST063	1241	—	—
DEST066	2991	659	1086
DEST069	2589	707	—
DEST070	1488	—	—
DEST071	462	—	—
DEST072	2641	703	—
DEST077	1611	663	1086
DEST078	3042	709	—
DEST089	2467	710	1048
DEST098	1422	649	1086
DEST104	—	—	1061
DETH005	3030	721	1075
DETH009	2995	721	1086
DETH013	2945	710	1086
DETH016	1937	—	—
DETH018	3027	721	1086
DETH020	3002	721	1086
DETH024	1193	—	—
DETH025	2542	370	—
DETH026	1474	721	1072
DETH027	1444	705	1086

Table A1. Continued.

	training	val	test
stat. ID			
DETH036	2996	721	1086
DETH040	2926	721	1078
DETH041	3003	710	1043
DETH042	2993	697	1086
DETH060	2519	721	1086
DETH061	2465	721	1063
DETH095	—	—	1059
DETH096	—	—	898
DEUB001	1202	721	1075
DEUB003	1436	—	—
DEUB004	2746	721	932
DEUB005	1422	721	974
DEUB013	414	—	—
DEUB021	369	—	—
DEUB026	1768	—	—
DEUB028	2602	603	1086
DEUB029	2834	721	1062
DEUB030	2893	710	947
DEUB031	1845	—	—
DEUB032	1629	—	—
DEUB033	2034	—	—
DEUB034	1434	—	—
DEUB035	1977	—	—
DEUB036	411	—	—
DEUB038	1628	—	—
DEUB039	1676	—	—
DEUB040	1549	—	—
DEUB041	781	—	—
DEUB042	687	—	—
Tot. stations	312343	212	204
Tot. samples	643788	145030	212093

Table A2. Summarised skill scores $S(\mathbf{m}, \mathbf{r}, \mathbf{o})$ based on the MSE (CASE I - IV) and relating terms (AI - CIV) as described in Sect. A3. \mathbf{m} denotes the prediction model, \mathbf{r} is the reference and \mathbf{o} denotes the observation. The '×' sign marks if a term (AI to CIV) appears in the different factorisations. The following abbreviations are used: corr. for correlation, obs. for observation, ref. reference (forecast), cond. for conditional, int. for internal, and ext. for external.

Term	CASE I	CASE II	CASE III	CASE IV	Formula	Meaning
\mathbf{r} :	\bar{o}	\mathbf{o}^*	$\bar{\mu}$	$\boldsymbol{\mu}$		reference
	int. single	int. multi	ext. single	ext. multi		
AI	×	×	×	×	ρ_{mo}^2	potential skill
AII		×			$\rho_{o^*o}^2$	corr. obs.-ref.
AIII			×		$\left(\frac{\bar{\mu}-\bar{o}}{\sigma_o}\right)^2$	trend
AIV				×	$\rho_{\mu o}^2$	corr. obs.-ref.
BI	×	×	×	×	$\left(\rho_{mo} - \frac{\sigma_m}{\sigma_o}\right)^2$	cond. bias
BII		×			$\left(\rho_{o^*o} - \frac{\sigma_{o^*}}{\sigma_o}\right)^2$	cond. bias
BIV				×	$\left(\rho_{\mu o}^2 - \frac{\sigma_{\mu}}{\sigma_o}\right)^2$	cond. bias
CI	×	×	×	×	$\left(\frac{\bar{m}-\bar{o}}{\sigma_o}\right)^2$	uncond. bias
CIV				×	$\left(\frac{\bar{\mu}-\bar{o}}{\sigma_o}\right)^2$	trend
Eq.	(A7)	(A8)	(A9)	(A10)		

Table A3. Specific compile options passed to keras' compile method. Other keywords which are not listed in this table are left with default values.

keyword	value
optimizer	adam(lr=0.001, amsgrad=True)
loss	Eq. (3), Eq. (2)
loss_weight	0.01, 0.99

Table A4. Specific information and rates used to setup the model architecture

Setting	value
dropout rate	0.35
reguralizer	keras.regularizers.l2(0.01)
epochs	300
activation (all without last layer)	ELU
activation (output layers)	linear
padding	symmetric padding