

1. Input and output features distributions

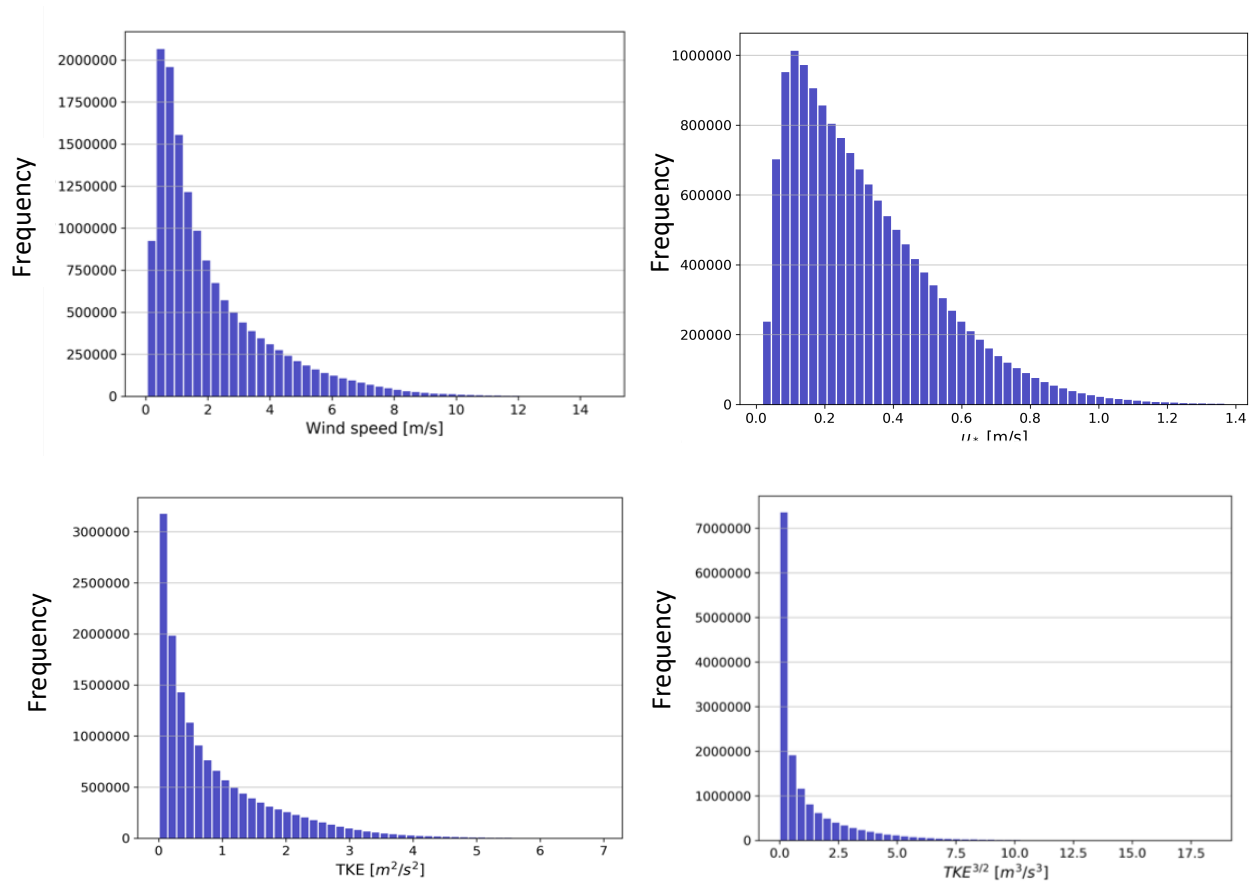


Figure S1: Distributions of wind speed, TKE, $TKE^{3/2}$, u_* from the sonic anemometers at Perdigão.

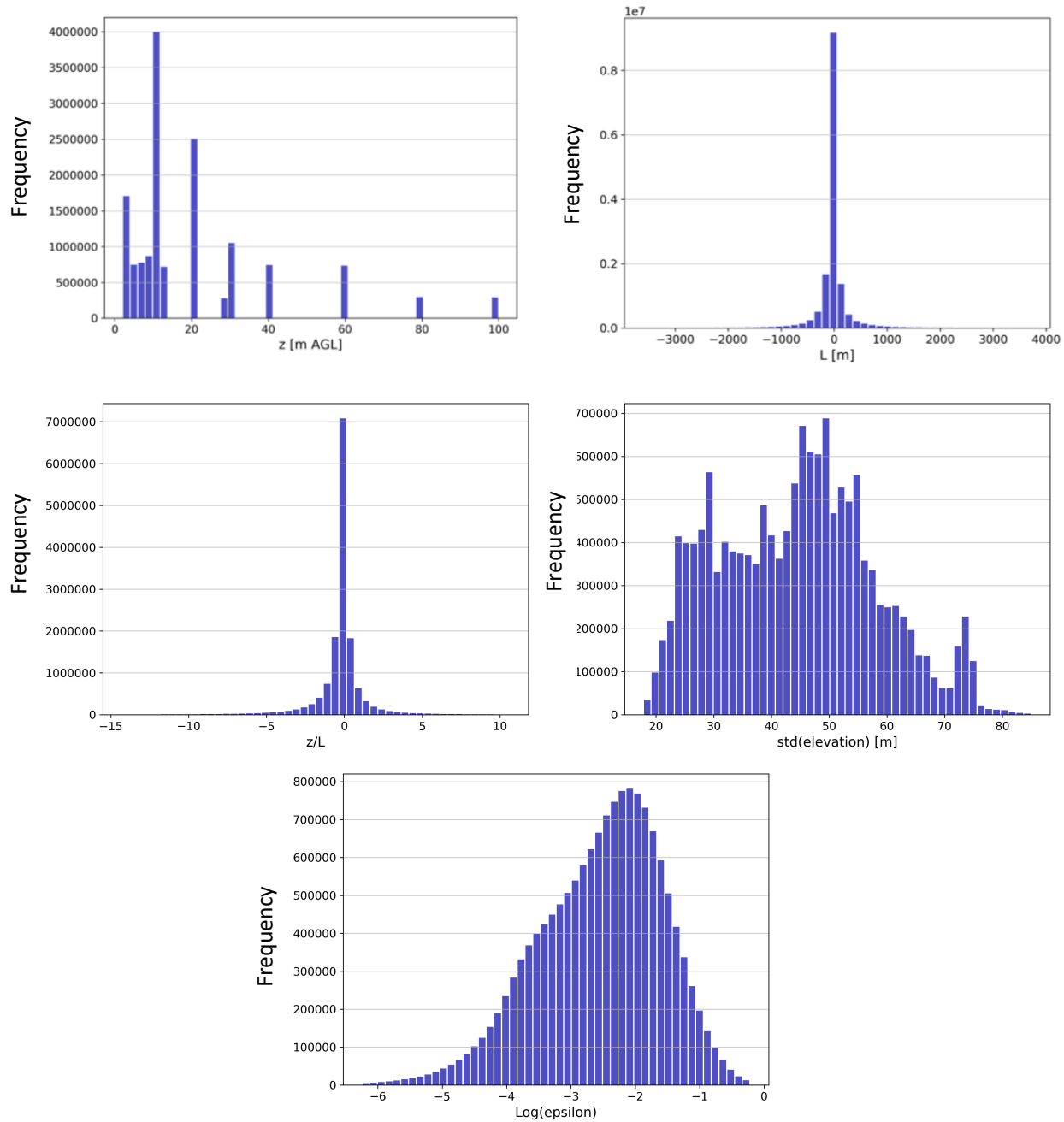


Figure S2: Distributions of z_{son} , L , z_{son}/L , $\sigma(z_{terr})$, and $\log \epsilon$ from the sonic anemometers at Perdigão.