

Sensitivity analysis of the PALM model system 6.0 in the urban environment

Michal Belda¹, Jaroslav Resler², Jan Geletič², Pavel Krč², Björn Maronga³, Matthias Sühling³, Mona Kurppa⁶, Farah Kanani-Sühling^{3,4}, Vladimír Fuka¹, Kryštof Eben², Nina Benešová⁵, and Mikko Auvinen⁶

¹Department of Atmospheric Physics, Faculty of Mathematics and Physics, Charles University, Prague, Czech Republic

²Institute of Computer Science, Czech Academy of Sciences, Prague, Czech Republic

³Institute of Meteorology and Climatology, Leibniz University Hannover, Hannover, Germany

⁴Harzenergie GmbH & Co. KG, Goslar, Germany

⁵Czech Hydrometeorological Institute, Prague, Czech Republic

⁶Atmospheric Composition Research, Finnish Meteorological Institute, Helsinki, Finland

Correspondence: Michal Belda (michal.belda@mff.cuni.cz)

Abstract. Sensitivity of the PALM model 6.0 with respect to land-surface and building properties is tested in a real urban environment in the vicinity of a typical crossroad in a densely built-up residential area in Prague, Czech Republic. The turbulence resolving PALM is able to simulate the urban boundary layer flow for realistic setups. Beside an accurate representation of the relevant physical processes, the model performance depends also on the input data describing the urban setup, namely the building and land-surface properties. Two types of scenarios are employed. First are the synthetic scenarios altering mainly surface and material parameters such as albedo, emissivity or wall conductivity, testing sensitivity of the model simulations to potentially erroneous input data. Second, real-life type scenarios are analyzed, in which commonly considered urban heat island mitigation measures are applied, such as greening of the streets or changing surface materials. For the synthetic scenarios, surface parameters used in radiation balance equations are found to be the most sensitive overall followed by the volumetric heat capacity and thermal conductivity of walls. Other parameters show limited average effect, however, some can still be significant in some parts of the day, such as surface roughness in the morning hours. Second type, the real-life mitigation scenarios, show urban vegetation to be the most effective measure, especially when considering both physical and biophysical temperature indicators. Influence of both type scenarios was also tested for air quality, specifically PM_{2.5} dispersion which generally shows behaviour opposite to thermal indicators, i.e., improved thermal comfort brings deterioration of PM_{2.5} concentrations.

15 *Copyright statement.* TEXT

1 Introduction

Investigation of the urban climate, and especially that of the urban heat island (UHI) phenomenon, still faces new challenges, despite decades of intensive research (Oke, 1982; Arnfield, 2003; Souch and Grimmond, 2006; Mills, 2014). Even with in-

creasing computing capabilities and geographic information systems (GIS), there is a need for standardized research methods.

20 Furthermore, research output should be applicable in practise. (Stewart, 2011; Mills, 2014). Microscale meteorological and climate models have been increasingly used for simulations of real urban city environments and especially the impacts of changes in the city structure on the environmental conditions that affect the inhabitants. For a long time, cities have been known to strongly modify the surface energy balance and atmospheric conditions by trapping the energy in the city causing the UHI (Oke, 1982). In addition to that, global changes of climate, especially global temperature increase, are expected to have a

25 worldwide influence on human society and other natural ecosystems with potential severe impacts (IPCC, 2014a).

The increase of heat load in urban areas has been reported to have a substantially harmful effect on public health (Patz et al., 2005; Haines et al., 2006; Ebi, 2011) with an increase of mortality rates (Kovats and Hajat, 2008; Zanobetti et al., 2012). On the other hand, when appropriate adaptation measures are applied, these negative consequences can be mitigated (Gill et al., 2007; Hunt and Watkiss, 2011; Müller et al, 2013; IPCC, 2014b). In this context, various UHI mitigation measures are

30 being considered, with greening of the environment as a typical example. Application of these measures, however, needs some prior information about their potential effectiveness. For that, it is important to know how sensitive the environment is to the city layout (e.g., building height or street width) and the material-specific parameters used to describe urban surfaces (e.g., reflectivity or roughness).

As the public and the administrative authorities are becoming aware of the problem, so grows the demand for scientifically-

35 based urban climate studies, particularly model-based studies that can provide reliable projections on city or street-level scale. Beside an accurate representation of the relevant physical processes in urban climate models, their performance also depends on the accuracy of the input data that define the urban environment, for example the building heights and building-physical properties, the location of trees, their shape and leaf-area density, land-surface parameters, etc. However, many model or physical parameters describing the city environment are only known approximately or are not available at all. Therefore, it is

40 important to know the sensitivity of the model results to the uncertainties in the input data, in order to assess the spread of potential deviations in model simulations or, in planning stages, which parameters are to be gathered with higher priority in data collection campaigns.

In practice, different model types are being used for urban studies, ranging from radiation models (SOLWEIG, RayMan), atmospheric kilometre-scale NWP/climate models with integrated urban parameterizations to detailed street-scale models.

45 Considering their respective approach and resolutions, different model groups can give quite different answers to the potential users. Regional climate models, for example, typically use idealized street canyon schemes which can be useful for simulations of city quarters or entire cities, but given their relatively low resolution, can do so on long time scales and for large regions or even continents. On the other side of the spectrum are very high-resolution metre-scale models that can give quite a detailed picture of individual streets and buildings, but due to computational requirements are usually limited in their spatial and

50 temporal coverage. Our study uses the latter approach, so we limit the following state-of-the-art summary to the street-scale models.

Parameter sensitivity studies for urban flow models based on computational fluid dynamics (CFD) are rare and typically deal with parameters such as grid size/resolution or the type of turbulence model included (e.g., Ai et al., 2014, Ramponi

and Blocken, 2012, Crank et al., 2018). More common are studies that consider the effect of potential changes in urban development, such as tree planting, green roofs or changes of certain surface materials, typically increasing reflectivity. For example, Ashie and Kono (2010) evaluate the impact of a redevelopment plan in two districts of Tokyo using a RANS-based (Reynolds-averaged Navier-Stokes) CFD model and Gross (2012) considers the effects of various green design elements, such as green facades, green roofs, lawns and trees also using a RANS-based CFD code. Many previous studies have also applied the RANS code called ENVI-met, though the focus has been on a small number of specific changes, instead of a systematic model sensitivity study (e.g., Su et al., 2014; Emmanuel and Loconsole, 2015; Lobaccaro and Acero, 2015). For an extensive review of available studies with description of the ENVI-met model we refer to Gál and Kantor (2020), for a comprehensive metastudy comparing methodologies and results of microscale and mesoscale models, please see Krayenhoff et al. (2021).

Large-eddy simulation (LES) is a branch of CFD in which the large turbulent eddies are explicitly resolved and simulated, unlike RANS where all turbulent eddies are modelled. The LES method has been shown to perform better in resolving instantaneous turbulence structures in a complex urban environment (García-Sánchez et al., 2018; Salim et al., 2011). However, to the best of our knowledge, comprehensive sensitivity studies on how LES results for urban environments depend on the input data accuracy are non-existent to date.

This paper presents a systematic sensitivity analysis of the LES-based PALM model system 6.0 (Maronga et al., 2015, 2020) during a heat-wave period. The selected area of interest is based in a real urban district in Prague, Czech Republic. Our interest concentrates on the sensitivity of the air temperature, surface temperature, and $PM_{2.5}$ (particulate matter less than $2.5 \mu m$ in aerodynamic diameter) concentration to the parameters describing the properties of the urban surfaces. The purpose of this study is two-fold. First, to evaluate potential errors of model simulations introduced by erroneous setting of material parameters in the model (e.g., if the parameters are not measured correctly, with enough detail, or only roughly estimated). Second, to show a potential of various idealized measures considered for urban heat island mitigation.

The paper is organized as follows: Sect. 2 describes the LES model, the numerical setup, and gives an overview of the sensitivity simulations. The results of the sensitivity analysis and mitigation measures are presented in Sect. 3. A summary and discussion of the results is given in Sect. 4.

2 Experiment setup

2.1 Model description

The PALM model system 6.0 (revision 4093) (Maronga et al., 2015, 2020) consists of the PALM model core, several embedded modules, and PALM-4U (short for PALM for urban applications) components which have been specifically developed for modelling the urban environment. PALM model core resolves the non-hydrostatic, filtered, incompressible Navier-Stokes equations for wind (u, v, w) and scalar quantities (potential temperature, water vapor mixing ratio, passive scalar) on a staggered Cartesian grid in Boussinesq-approximated form. The sub-grid scale terms that arise from filtering are parameterized using a 1.5-order closure by Deardorff (1980), with modifications after Moeng and Wyngaard (1988) and Saiki et al. (2000).

One of the assets of PALM is its excellent scalability for massively parallel computer architectures (up to 50,000 processor cores, see Maronga et al., 2015).

This study applies several modules embedded in PALM, namely the land surface (LSM; Gehrke et al., 2020), plant canopy (PCM) and radiation model. The radiation model applies the Rapid Radiation Transfer Model for Global Models (RRTMG), which has been used as an external library. Furthermore, the following PALM-4U components are applied: the Cartesian topog-
90 raphy, building surface model (BSM, formerly USM, see Resler et al., 2017), model of radiation interaction with surfaces and plant canopy so called radiative transfer model (RTM, see Krč et al., 2020), and human biometeorology and online chemistry modules.

Additionally, both self- and offline nesting features of PALM-4U are utilised. In self-nesting a domain with a finer resolution
95 can be defined inside a larger domain and this subdomain (child domain) receives its boundary conditions from the coarse-resolution parent domain at every model timestep (Hellsten et al., 2020). In offline nesting, the initial and boundary conditions for the mean flow of the parent domain are provided from, e.g., a mesoscale model using a dynamic driver, while the child domain receives all information from its parent (Kadasch et al., 2020). As offline nesting is usually used for coupling to a large-scale or mesoscale model that does not resolve turbulence, it is triggered at the model boundaries using a synthetic
100 turbulence generator (STG), which imposes spatially and temporally correlated perturbations every time-step onto the velocity components at the lateral boundaries.

Two modelling domains were connected with the one-way online nesting feature of PALM-4U (see 2.3 for more details). The initial and boundary conditions of the parent domain were taken from a WRF model simulation using the offline nesting feature of PALM-4U; the boundary conditions were updated at every model time step (2.2.2).

105 For overview of the PALM model, embedded modules and the PALM-4U components, see Maronga et al. (2020) and for details the companion papers in this special issue.

2.2 PALM-4U model set-up

2.2.1 General model configuration

The dynamic core of the PALM-4U model was configured with the Wicker and Skamarock 5th order advection scheme (Wicker
110 and Skamarock, 2002) and the multigrid pressure solver (Hackbusch, 1985; Maronga et al., 2015). The radiative fluxes were simulated by RRTMG and their interactions with the urban canopy layer were modelled by RTM (Krč et al., 2020). The surface energy balance for the individual surfaces (vegetation, pavement, buildings, water) was calculated by the LSM and BSM components (Maronga et al., 2020). The dynamic and energy processes caused by resolved trees and shrubs were modelled by PCM. The chemistry module was configured for NO_x, PM₁₀ and PM_{2.5} species without chemical reactions and boundary
115 conditions set to zero to simulate purely the passive transport of the emitted pollutants and consequently to simplify attribution of the sensitivity tests to local features.

To initialise temperatures of walls, grounds, and roofs, a 48-hour spin-up simulation for the BSM and LSM was conducted. During this spin-up run, the model solves only simplified energy processes while the effects of the airflow on the energy balance

were held constant (see Maronga et al., 2020). The simplifications also include a simple radiation model instead of RRTMG and switching off the window model. The spin-up allows to establish reasonable initial temperatures inside the ground, wall, and roof material layers while keeping the computational demands within an acceptable range.

2.2.2 WRF model configuration

Initial and boundary conditions for the parent domain of the PALM-4U simulations were obtained from a WRF model simulation. WRF (version 3.8.1) was run on two nested domains with horizontal resolution of 9 and 3 km, and 49 vertical levels. The dimensions of the inner domain were 187×121 grid points. The configuration was standard: NOAH LSM, RRTMG radiation and Yonsei University scheme for the planetary boundary layer (PBL). According to preliminary tests no urban parameterization has been used in the WRF model and the settings arising from the MODIS land use categories have not been altered. The WRF output data have been collected from overlapping runs of 12-hour length, initialized from the GFS operational analyses and predictions. The first six hours of each run served as a spin-up and the following hours (7–12) have been used for generation of boundary conditions for the offline nesting.

WRF outputs were postprocessed into the PALM dynamic driver. The data were transformed between coordinate systems and a horizontal and vertical interpolation was applied including terrain matching procedures. The interpolated airflow was adjusted to enforce mass conservation. The Python code used for processing the WRF data into the PALM dynamic driver file has been included in the official PALM distribution and published in the PALM SVN repository since revision 4766 in the directory trunk/UTIL/WRF_interface. The description of this process is given in (Resler et al., 2020).

2.2.3 Surface and material parameters

For solving the energy balance equations, BSM and LSM require using detailed and precise input parameters describing the surface materials (e.g., albedo, emissivity, roughness length, thermal conductivity, capacity of the skin layer, thermal capacity and volumetric thermal conductivity). Urban and land surfaces and materials become very heterogeneous in a real urban environment when going to very fine spatial resolution. Any bulk parameterization for the whole domain would be inadequate. For our study, a very detailed setting of the parameters was supplied everywhere possible. In order to obtain the data, an extensive on-site campaign was performed which provided a detailed database of geospatial data including information on wall, ground, and roof materials and colours for the estimating surface and material properties (Resler et al., 2017). The original geo-database was extended with information about neighbouring streets and updated with new modifications (see section 2.3 for detailed description).

Surfaces are described by their respective material category and albedo. Parameters other than albedo are estimated and assigned to each category based on surface and subsurface material composition and thickness. The parameters of all subsurface layers of the respective material were set to the same value. The skin layer heat capacity C_0 and heat conductivity between the skin layer and the first material layer Λ (see Equations 1 and 2 in Resler et al., 2017) were inferred from the properties of the near-surface material, which may be different in the rest of the volume. Parameter settings of the categories used in this study are given in supplements as Table S01. Trees in the analyzed domain were described by their respective position,

diameter, trunk parameters and vertically stratified leaf area density. Prague 3D model available from the Prague Institute of Planning and Development was used to obtain the building height database. The Prague 3D model is based on photogrammetric (aerial) mapping and is freely available on Prague OpenData portal (<https://www.geoportalpraha.cz/cs/data/metadata/44EE8B0A-641A-45E8-8DC9-CF209ED00897> - only available in Czech). Data are provided in CAD (DWG or DGN) or ESRI (polygon or multipatch) format. Original product accuracy in 2012 was 0.5m, but model is yearly updated and current accuracy is around 0.2m. Description and properties of surfaces and materials were assembled into standard GIS formats and subsequently transformed into the PALM input NetCDF files corresponding to the PALM Input Data Standard (PIDS) (Heldens et al., 2020).

160 2.3 Study domain description

The study domain in Prague-Holešovice was adapted from Resler et al. (2017), covering the vicinity of a crossroad of Dělnická street and Komunardů street in a densely built-up area in Prague, Czech Republic (50°06.195' N, 14°27.000' E). The area is well suited for this type of study as it represents a typical Prague residential area in a rather topographically flat (terrain elevation ~180 m a.s.l.) part of the city with a variety of urban components, including old and new residential buildings, backyards and parking spaces. The two streets run north to south (Komunardů) and west to east (Dělnická), and have the width of roughly 25 and 17 m, respectively. The buildings in the area range approximately from 10 to 35 m in height. There is not much vegetation in the area and the majority of the trees is located in the courtyards. The surrounding neighbourhood is very similar to the study area (Fig. 1).

A few minor modifications were made to the study domain from the previous analysis of Resler et al. (2017). Firstly, the horizontal extent of the domain was extended from the original 376 m × 226 m to 400 m × 256 m. This was important for the domain multiplication in a synthetic domain setup (see section 2.4); the new domain ends in the middle of streets in all directions. Secondly, the central part of the intersection, where a small asphalt polygon (~11 m²) in the real street was partially replaced by cobblestones (~7 m² of cobblestones and ~4 m² of asphalt), was modified in the input data accordingly. Last minor change from the previous analysis is the height of the highest building which was physically rebuilt and is now 35 m high. The domain covers the area of 102,400 m², of which 48,356 m² is the total building footprint, 48,356 m² (~22.9% of total domain surface area) are impervious surfaces and 5,593 m² (~2.7%) are pervious surfaces (e.g., grass). Each building has three levels – lower, often markets and shops; upper, typically residential; and roof. Lower level is covered by 9,933 m² (~4.7%) of windows and 20,837 m² (~9.9%) of walls, upper level is covered by 22,861 m² (~10.8%) of windows and 52,169 m² (~24.7%) of walls. Roof area is 51,044 m² (~24.2%). Total area of all surfaces in the domain is 210,793 m². In the time of this study, 158 trees are planted in the area of which 4 are coniferous and 154 are broad-leaved.

2.4 Synthetic modelling domains

The study domain described above is too small for realistic large-eddy simulations, because the largest turbulent eddies are of size of the boundary layer height, which in Europe can reach up to 2.5 km in summertime (e.g., Seidel et al., 2012 or Zhang et al., 2013). In order to resolve the turbulent transport of these eddies, the horizontal model domain size must be at

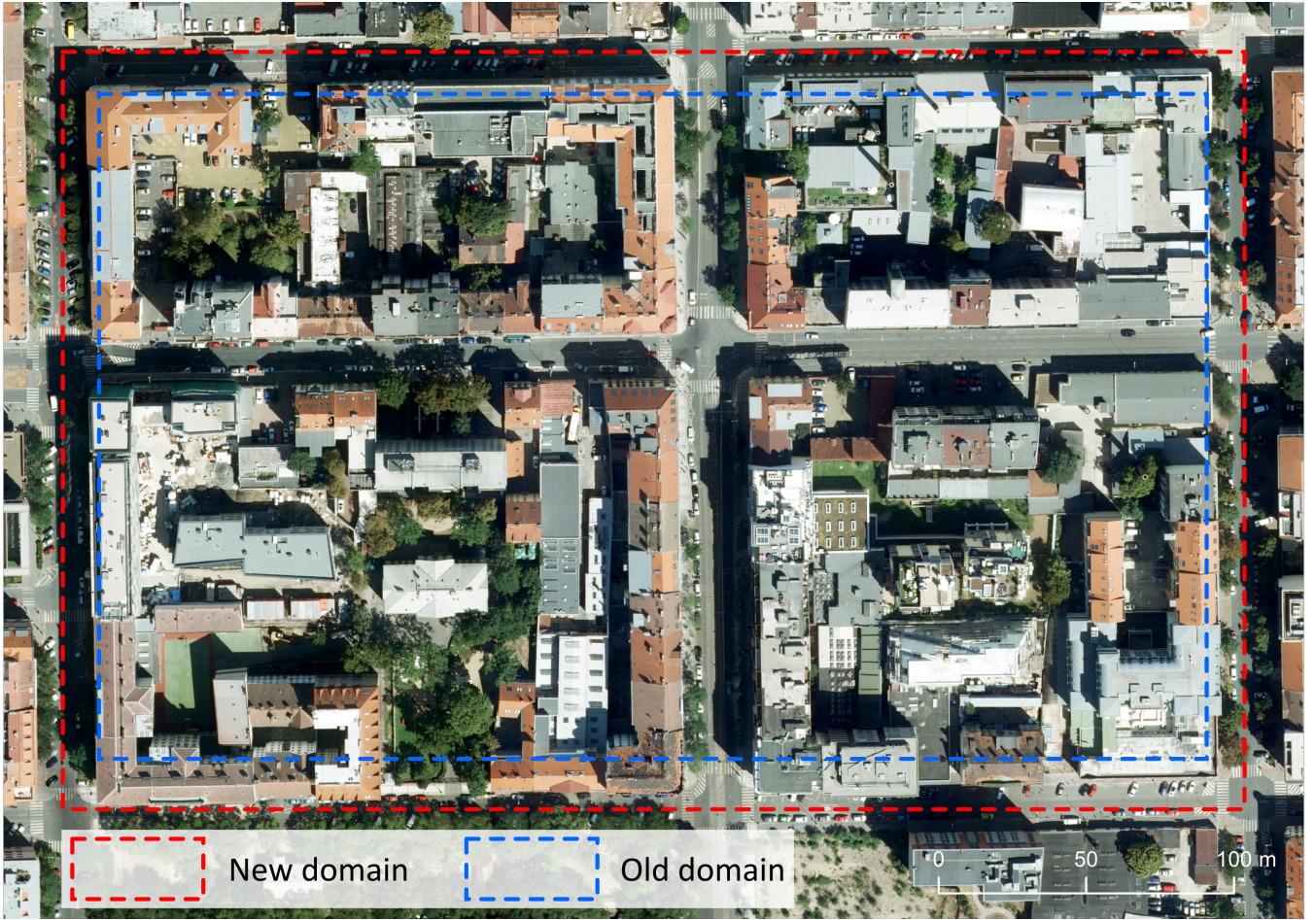


Figure 1. Domain in Prague-Holešovice with the old (blue; Resler et al. (2017)) and new (red) extended domain (EPSG: 32633, orthophoto source: Institute of Prague Development)

185 least 2–3 times the boundary layer height and thus be in the order of several square kilometres, which is much larger than
the employed model domain in the present study (Resler et al., 2017). Moreover, to allow simulations of real meteorological
conditions, non-cyclic boundary conditions with offline nesting were considered, using the meteorological model WRF and a
synthetic turbulence generator. This setting, however, requires a sufficient horizontal extent of the domain to allow development
of the correct turbulent flow. For this purpose, a nested two domain setup with one-way online nesting was utilized as described
190 in section 2.1 and synthetic domains were generated by horizontal multiplying of the original domain.

The parent domain had a horizontal grid spacing of 8 m and was created by seven repetitions of the original domain in
west-east direction and eleven repetitions in south-north direction. Moreover, an additional flat buffer zone was added on all
sides of the domain. The width of this buffer was 25 grid cells at the west and east boundaries and 24 grid cells at the south and
north boundaries. Thus, the extent of the complete parent domain is 400×400 grid cells (3200 m × 3200 m) in both directions.

195 The domain was configured with 120 vertical layers using the layer stretching approach so that the vertical grid spacing of 8 m was stretched above 120 m by a factor of 1.08 until a grid spacing of 24 m was reached. The resulting domain top was at 2.5 km.

The nested fine resolution domain (hereafter child domain) was configured with a refinement ratio of 4, having a 2m grid resolution in all directions and it consisted of four original domains; two in west-east direction and two in south-north direction.

200 The extent of the domain was 400×256×40 grid cells (800 m × 512 m × 80 m). The child domain was located asymmetrically in the left part of the parent domain and the evaluation was done on the south-west part of it (see Fig. 2). This configuration was selected due to an easterly wind flow during the modelled episode.

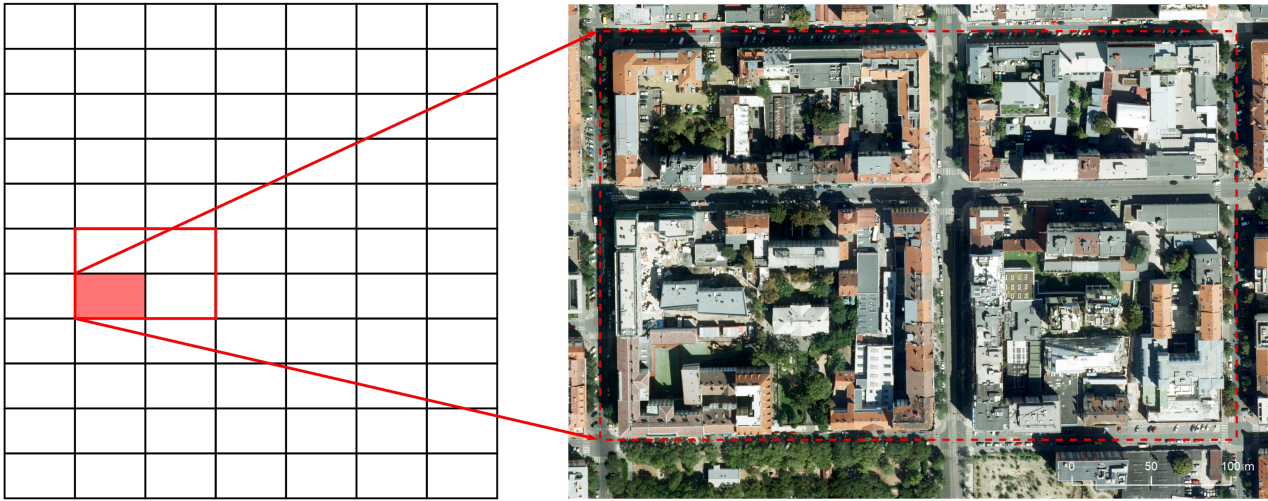


Figure 2. Design of model domains; black-bordered rectangles representing the parent domain, red-bordered rectangle representing the child domain. Solid red rectangle represents one unique domain with the real environment before multiplication. EPSG: 32633, orthophoto source: Institute of Prague Development.

2.5 The modelled heatwave episode

This study focuses on modelling the thermal comfort and therefore a heatwave episode on 2–3 July 2015 was chosen for these simulations. One advantage of this choice is that the previous version of the model was also validated on this period (see Resler et al., 2017). A detailed description of the weather during the modelled period is also provided in Resler et al. (2017). The weather was characterized by a high-pressure system centred above the Baltic Sea with mostly clear skies and the daily maximum temperature exceeding 30 °C while the minimum not falling below 20 °C (tropical night). Relative humidity values ranged from 30% during the day to 65% at night. Easterly winds were observed with values mostly below 2.5 m.s⁻¹ above the roof level. Maximum wind speed of 3–4 m.s⁻¹ in 10 m height was observed at the Karlov station (WMO 11519; around 4km

205

210

south from the modeled domain) in the afternoon of 2 July 2015, during the spin-up, and at the end of 3 July 2015. According to the atmospheric sounding, a low-level jet from the south and south-east was observed during the night, with a maximum wind speed of 10 m.s^{-1} at 640 m a.s.l. (950 hPa). At night, a south/south-east low-level jet was observed in the atmospheric soundings, with a 10 m.s^{-1} maximum wind speed at 640 m a.s.l. (950 hPa). The time of the sunset was 19:15 UTC on 2 July 2015, sunrise at 2:58 UTC and solar noon at 11:06 UTC on 3 July 2015.

2.6 Air pollution and emissions

Air pollution sources in the modelling domain are dominated by the local road traffic. Based on the Czech national emission database, the mobile sources represent approximately 60% of total emissions for Prague for particulate matter and 75% for NO_x (CHMI, n.d.). Considering those ratios and the fact that there is no major point source in the area, we decided to include only the traffic sources to the analysis. The emission fluxes are estimated based on the daily traffic intensities, which are available from annual traffic census data, for all streets in both directions. Emission factors, taken from a local Czech database (MEFA, 2013), give pollutant release per vehicle per meter of travel, based on vehicle and fuel type. For our study area, the assumption was that all vehicles are passenger cars, which is reasonable for this residential neighbourhood. The traffic-related emissions are spatially uniformly distributed into traffic lanes and temporally distributed using prescribed hourly factors also derived from available annual traffic census data (see Fig. 3 for daily spatial distribution). Magnitudes of emission fluxes range from 0.03 to $0.34 \text{ g.day}^{-1}.\text{m}^{-2}$ for NO_x , from 6 to $58 \cdot 10^{-3} \text{ g.day}^{-1}.\text{m}^{-2}$ for PM_{10} and from 3 to $32 \cdot 10^{-3} \text{ g.day}^{-1}.\text{m}^{-2}$ for $\text{PM}_{2.5}$. We chose the $\text{PM}_{2.5}$ to be the pollutant of interest, however considering the emission creation methodology and the fact that all chemical reactions are omitted in our simulations, the pollutants differ only in magnitudes while having same spatial and temporal distribution. Thus, the conclusions (in a relative sense) would be the same for other pollutants.

2.7 Sensitivity tests

For evaluating the influence of the parameter changes, a *baseline* simulation was performed in which the parameters tested were set to "real" values, that is, values measured or estimated based on materials used in reality. The scenario simulations, divided into two groups, synthetic and real-life, then changed one or more of these parameters as described in the following two sections.

2.7.1 Synthetic scenarios - sensitivity to the setting of material parameters

For the first group of sensitivity tests, a suite of synthetic scenarios was selected based on the most important variables in the street environment. These scenarios target potential biases in the model outputs connected to the erroneous setting of material and building input parameters such as albedo or roughness. These parameters are notoriously difficult to obtain with a sufficient resolution and are thus usually set in a very general way and sometimes even tuned to the model results. As model errors can stem from many different sources, such as model deficiencies, chaotic behavior or imperfect input data, we aim to quantify which part of the error can be attributed to the setting of these parameters.



Figure 3. $\text{PM}_{2.5}$ emitted by the cars along their trajectories in Prague-Holešovice. Concentrations were summarized in $\text{g.day}^{-1}.\text{m}^{-2}$ and disaggregated to 1-hour time steps. EPSG: 32633, orthophoto source: Institute of Prague Development.

Since the analysis by Resler et al. (2017), the PALM modelling system has been extended with new features. According to the new functionalities, window and wall fractions were mapped for each building in USM and more detailed plant canopy parameters were included in PCM. In total 21 scenarios were prepared that each changes one specific parameter of the surfaces
 245 (and/or plant canopy) from the baseline simulation (hereafter “SA” scenarios). Table 1 summarizes the parameter changes for the SA scenarios, the surfaces affected by the change and the fraction of the total surface area affected in the respective scenario.

2.7.2 Real-life scenarios - sensitivity to urban heat island mitigation measures

The second group of scenarios was designed more from the urban planners’ point of view, i.e., assessing the influence of
 250 (in)appropriate urban planning actions to improve thermal comfort and air quality. These scenarios present several measures

Table 1. Scenarios testing model sensitivity to changes of material parameters with fraction of affected domain surface area (column Surf. fraction). Detailed description of surfaces is in section 2.3.

Scenario	Description	Surfaces	Surf. fraction (%)
SA01	Albedo increase +20%	Walls, roofs, surfaces	100.0
SA02	Albedo decrease -20%	Walls, roofs, surfaces	100.0
SA03	Emissivity set to the average for each group of surfaces	Land cover: 0.8922; Lower walls: 0.9263; Upper walls: 0.9278; Roofs: 0.7233	100.0
SA04	Average SA03 emissivity +20%	Average = SA03, max. 1.0	100.0
SA05	Average SA03 emissivity -20%	Average = SA03	100.0
SA06	Roughness increase +20%	Walls, roofs, surfaces	100.0
SA07	Roughness decrease -20%	Walls, roofs, surfaces	100.0
SA08	Thickness increase +20%	Walls, roofs, surfaces	100.0
SA09	Thickness decrease -20%	Walls, roofs, surfaces	100.0
SA10	Transmissivity of windows increase +20%	Walls (windows only)	15.6
SA11	Transmissivity of windows decrease -20%	Walls (windows only)	15.6
SA12	Thermal conductivity inside of wall increase +20%	Walls	34.6
SA13	Thermal conductivity inside of wall decrease -20%	Walls	34.6
SA14	Volumetric heat capacity increase +20%	Walls, roofs, surfaces	100.0
SA15	Volumetric heat capacity decrease -20%	Walls, roofs, surfaces	100.0
SA16	Window fraction increase +20%	Walls	18.7
SA17	Window fraction decrease -20%	Walls	12.5
SA18	Leaf area density increase +20%	Trees	
SA19	Leaf area density decrease -20%	Trees	
SA20	Soil moisture increase +20%	Pervious surfaces only	2.7
SA21	Soil moisture decrease -20%	Pervious surfaces only	2.7

Table 2. Scenarios testing sensitivity of the model results to UHI mitigation measures

Scenario	Description	Note
SB01	Building height increase +20%	Street canyon ratio
SB02	Building height decrease -20%	Street canyon ratio
SB03	All surfaces (pavement) changed to asphalt	Land cover
SB04	All surfaces (pavement) changed to concrete	Land cover
SB05	All surfaces (pavement) changed to cobblestones	Land cover
SB06	All surfaces (pavement) changed to white cobblestones	Land cover
SB07	Tram green line	Land cover
SB08*	<i>All surfaces insulated</i>	<i>Walls only</i>
SB09	Water channel instead of tram line, roads were changed to grass	Land cover, no changes in emissions
SB10	Green areas changed to asphalt, trees were deleted	Grey city 1
SB11	Asphalt except main roads and pavements changed to grass, all trees deleted	Grey city 2
SB12	Planted trees on each possible place; placed 128 acer platanoides	Green city
SB13	New tree alley: Dělnická, center-line position	Acer platanoides
SB14	New tree alley: Dělnická, both-side position	Acer platanoides
SB15	New tree alley: both streets, both-side position	Acer platanoides
SB16	All trees coniferous	More dense crown
SB17	Include anthropogenic heat flux	A/Cs, heating etc.

* Scenario SB08 was removed from further analysis, because results were significantly affected by numerical instability solved in PALM SVN revision 4240.

typically taken into account when dealing with the UHI effect, such as greening or changes in the surface materials, simplified to distinguish individual influence (e.g., when changing roads to grass the emissions are not changed). Detailed description of this group of scenarios (hereafter denoted by the “SB” prefix) is included in Table 2.

3 Results

255 Due to a different nature of the two sets of scenarios, the analysis of the model results will be performed separately for the synthetic SA scenarios and real-life SB scenarios. However, some aspects of the analysis are common for both. Chaotic nature of the turbulent flow in the domain requires an application of time averaging which needs to be sufficiently long to smooth out turbulent fluctuations, yet short enough to capture the diurnal variability. In the time series plots, we opted to show 10-minute averaged values together with hourly moving averages. Summary tables (Table S02 in the supplement), on the other hand, 260 show three-hour averages along with daily averages, minima and maxima. One important aspect of the modelling setup which

must be kept in mind when analyzing the results is that the model spin-up period uses a constant dynamic and simplified energy model (see section 2.2.1) and thus the initial thermal conditions (grounds, walls, and roofs temperatures) are not in total agreement with temperatures that would have been obtained by a full model run. This can impose differences of the simulation behaviour in the first hours from standard behaviour in the following hours when this initial effect vanishes, which may limit the applicability of the results in the first few hours of the simulation after the spin up. However, as most of the differences between respective simulations begin to appear after sunrise, this influence can be neglected.

Spatial variability is analysed by averaging over the whole domain as well as separately over several selected domain parts. A particular focus is on the two crossing streets and courtyards. For maps with point positions and area selections, see the supplemental material (Fig. S01-S09). The most important variables for the end users were chosen as primary indicators. They include surface temperature, air temperature, $PM_{2.5}$ concentrations and two biophysical temperature characteristics: mean radiant temperature (MRT) and physiological equivalent temperature (PET) all in the height of the human body represented by the first 2m high layer (for definitions and information about the implementation of MRT and PET in PALM see Frölich and Matzarakis, 2020 and Krč et al., 2020).

All scenario simulations are analyzed with respect to the baseline simulation (a model run with the original parameter values). Fig. 4 shows spatial distribution of basic variables in the domain for the baseline simulation.

3.1 Sensitivity to material parameters

In the first part of the assessment, we analyze the model sensitivity to the setting of building and material parameters such as albedo or roughness (SA scenarios). Table S02 in supplementary files summarizes all five analyzed variables showing absolute values and differences (plus relative difference) of each SA scenario from the baseline. Results are averaged for several areas: domain, east-west street (Dělnická), south-north street (Komunardů), both streets (Streets) and courtyards.

In general, the following four parameters show the highest sensitivity in temperature in the following settings: albedo (SA01, SA02), emissivity (SA03–05), thermal conductivity of walls (SA12, SA13) and volumetric heat capacity (SA14, SA15) with average response up to ± 0.1 K and maximum response reaching up to ± 0.18 K in three-hour averages and up to ± 0.4 K in 10-minute averages for some parameters during the day. Overall, the albedo setting (SA01, SA02) shows the highest sensitivity of all parameters in this group. The lowest sensitivity is observed for wall thickness (SA08, SA09), transmissivity of windows (SA10, SA11) and soil moisture (SA20, SA21). However, the reason for the low sensitivity to the changes of the soil moisture lies mainly in a low percentage of the green areas in the domain. Small areas covered with or in direct vicinity of vegetation are influenced significantly (Fig. 5).

The daily cycle of air temperature also has an imprint in the relative importance of respective parameters throughout the day. Parameters used in incoming radiation routines (namely albedo; SA01, SA02) are the most sensitive ones in the middle of the day, when the radiative balance is governed mostly by incoming shortwave radiation. During the night, emissivity (SA03–05) and heat capacity of walls (SA14, SA15) play a major role (see Table S02), thus sensitivity to these parameters is higher then. Some parameters show quite high sensitivity only in short periods during the day. For example window fraction shows low sensitivity in the morning hours, after which it increases around 9–12 UTC (11–14 local time) and peaks in the early evening

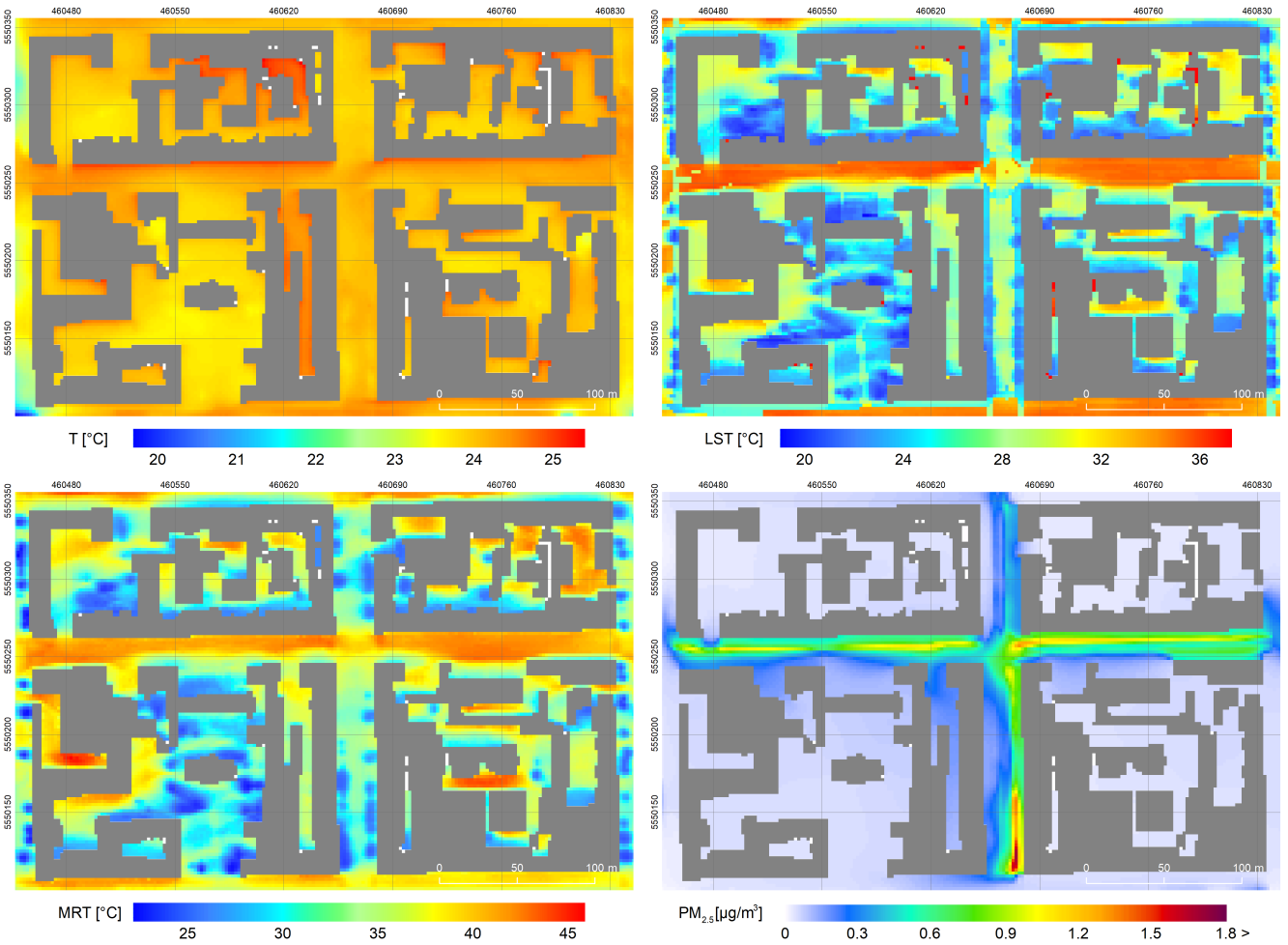


Figure 4. Daily average spatial variability of air temperature (top left), surface temperature (top right), mean radiant temperature – MRT (bottom left) and $PM_{2.5}$ concentrations (bottom right) for the baseline simulation. EPSG: 32633, layer with roofs is own data source.

around 18–21 UTC (see SA16–17 in Table S02). In this particular case, given that the response to lower window fraction is an increase of temperatures and vice versa, the most likely explanation is the difference in heat storage between windows (very low) and walls (higher), which has a prevalent influence in low-sun periods of the day.

Air temperature, though fundamental for physical evaluation, is not necessarily the best quantity for evaluating biophysical properties, namely thermal comfort. For this purpose, MRT and PET variables combining other relevant physical variables (radiation, humidity, air flow, etc) are used. Given the combination of various influences, MRT and PET often show reverse sensitivity than the air temperature with higher absolute values. As a demonstration we show this on the two most prominent scenarios SA01 and SA02. In SA01, the albedo is increased by 20%, which results in the decrease of daily surface temperatures by 0.5 K and a decrease of around 0.1 K for air temperature. On the other hand, by increasing reflection at the surfaces, this

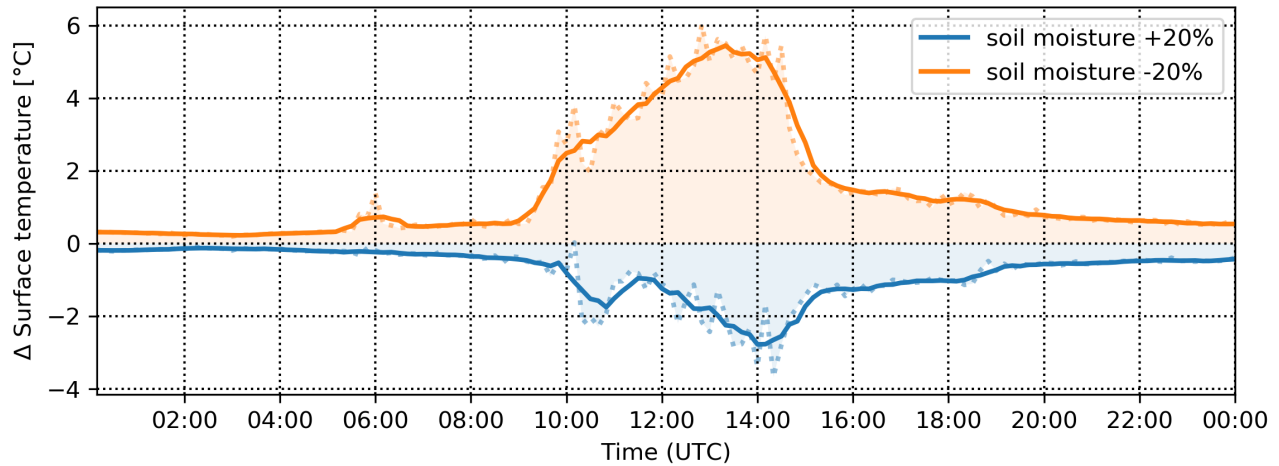


Figure 5. Soil moisture sensitivity of surface temperature difference for scenario SA20 (blue line) and SA21 (orange line) at point F03.

change increases both MRT and PET by 0.6 K and 0.3 K respectively. In daily maxima, the increase of both biometeorological variables is even more prominent and reaches up to 1.7 K and 1.6 K respectively. Decreasing albedo by 20% in SA02 has a similar effect in absolute numbers with the opposite sign.

Influence on air quality, represented here by changes of $PM_{2.5}$ concentrations at the first model layer, originating from emission from local transportation, is much less significant. For the dominant parameters, such as albedo or emissivity, we still observe a similar general tendency to increase (decrease) $PM_{2.5}$ values with increased (decreased) albedo (emissivity). This behaviour is opposite to the surface and air temperatures and it is likely primarily caused by connected changes in the flow regime as illustrated in Fig. 6 and 7 by decrease (increase) of wind speed with increased (decreased) albedo (also discussed in e.g. Žák et al., 2016). Long-term average changes are generally small and with the exception of a singular peak (Fig. 8) lying within $\pm 5\%$ in most of the domain.

The parameters we analyse influence the results mainly by changing the energy balance of the horizontal and vertical surfaces in the model domain. Air temperature changes are then mainly driven by the transfer of heat between these surfaces and air. In this context, we will now focus on the effect on surface temperatures. The highest sensitivity of surface temperature is observed in the same scenarios as for air temperature; albedo SA01, SA02 (Fig. 9), emissivity SA03–05, thermal conductivity SA12, SA13 and volumetric heat capacity SA14, SA15. The average response reaches up to ± 0.5 K and the 3-hour maxima up to ± 0.9 K with albedo changes (SA01, SA02) and decreased emissivity (SA05).

The model response to the surface parameters is also dependent on the location. This stems mainly from the differences in the radiation budget during the day caused by positioning of urban elements (buildings and trees). At individual points, the differences of surface temperature with respect to the base case reach up to ± 4 K in shorter periods in the albedo change scenarios SA01 and SA02 (e.g., points C02, C05, D05; Fig. 9).

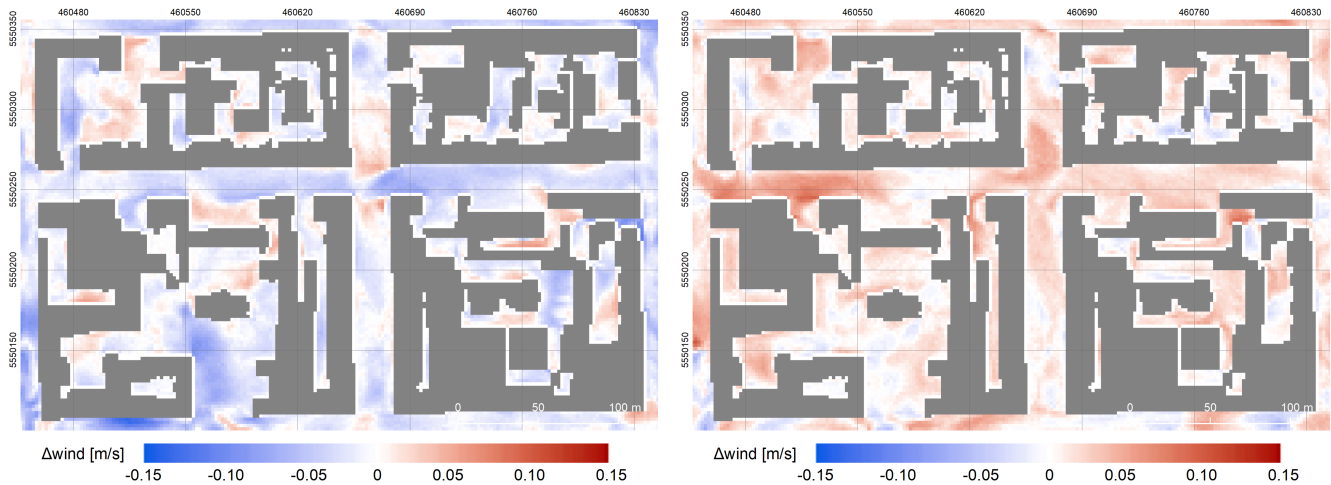


Figure 6. Daily average sensitivity of horizontal wind speed (1m) expressed as the difference between scenario and baseline. Left: scenario SA01 (albedo increased by 20%); right: scenario SA02 (albedo decreased by 20%). EPSG: 32633, layer with roofs is own data source.

In some parts of the domain, the typical daily cycle of the differences is even reversed in certain periods of the day. A typical example of this behaviour is the sensitivity of surface temperature to albedo changes (Fig. 9). While most surfaces show an expected increase (decrease) of temperature with the decrease (increase) of albedo, some analysis points (eg. A02, A04, B04, B06, D13, D14) show reverse influence. In other words, higher (lower) albedo results in higher (lower) surface temperatures in some parts of the day, when presumably increased (decreased) reflection from other surfaces brings more (less) SW radiation at these points compared to the base case (Fig. 10).

High spatial variability is also evident from other scenarios and shows the added value of using very high resolution models for local studies. As can be seen from e.g. figures for the emissivity changing scenarios SA03-SA05 (in the additional outputs, see Code and data availability section for URL), while the spatially averaged response shows mostly a simple daily cycle with maximum change around noon, some individual points (eg. A02, A04) show maxima in the morning and afternoon hours, while around noon the effect diminishes. Depending on the individual surface radiation budget given by the incoming solar radiation and reflections from other surface, some points experience a delayed peak in the afternoon hours with an inverse response, i.e. increased emissivity leads to increase of temperatures (C04, D02).

3.2 Sensitivity to urban heat island mitigation measures

The second part of the sensitivity analysis focuses on the real-life scenarios. These scenarios include UHI mitigation measures, which planners and decision makers might apply to improve the bioclimatic situation in the city during high temperature conditions, especially heatwaves. Typically considered measures include planting trees or changing surface materials (Table S02). As a contrast to SA scenarios, SB scenarios usually require changing more than one parameter at once. For instance, replacing concrete with grass results in changes in albedo, emissivity, roughness as well as other parameters.

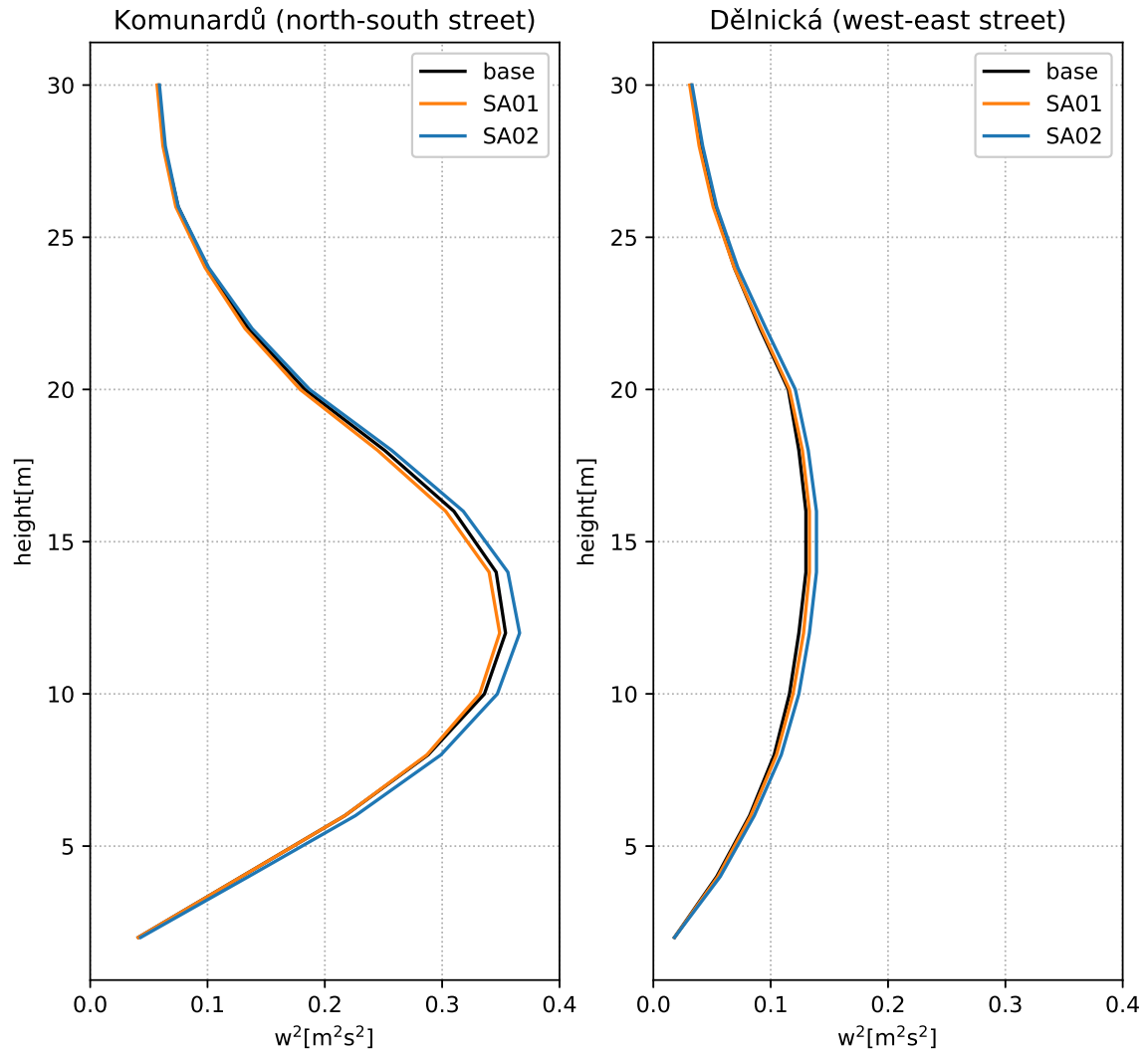


Figure 7. Daily average profiles of w^2 averaged over the two main streets: the north-south oriented Komunardů (left) and the west-east oriented Dělnická (right).

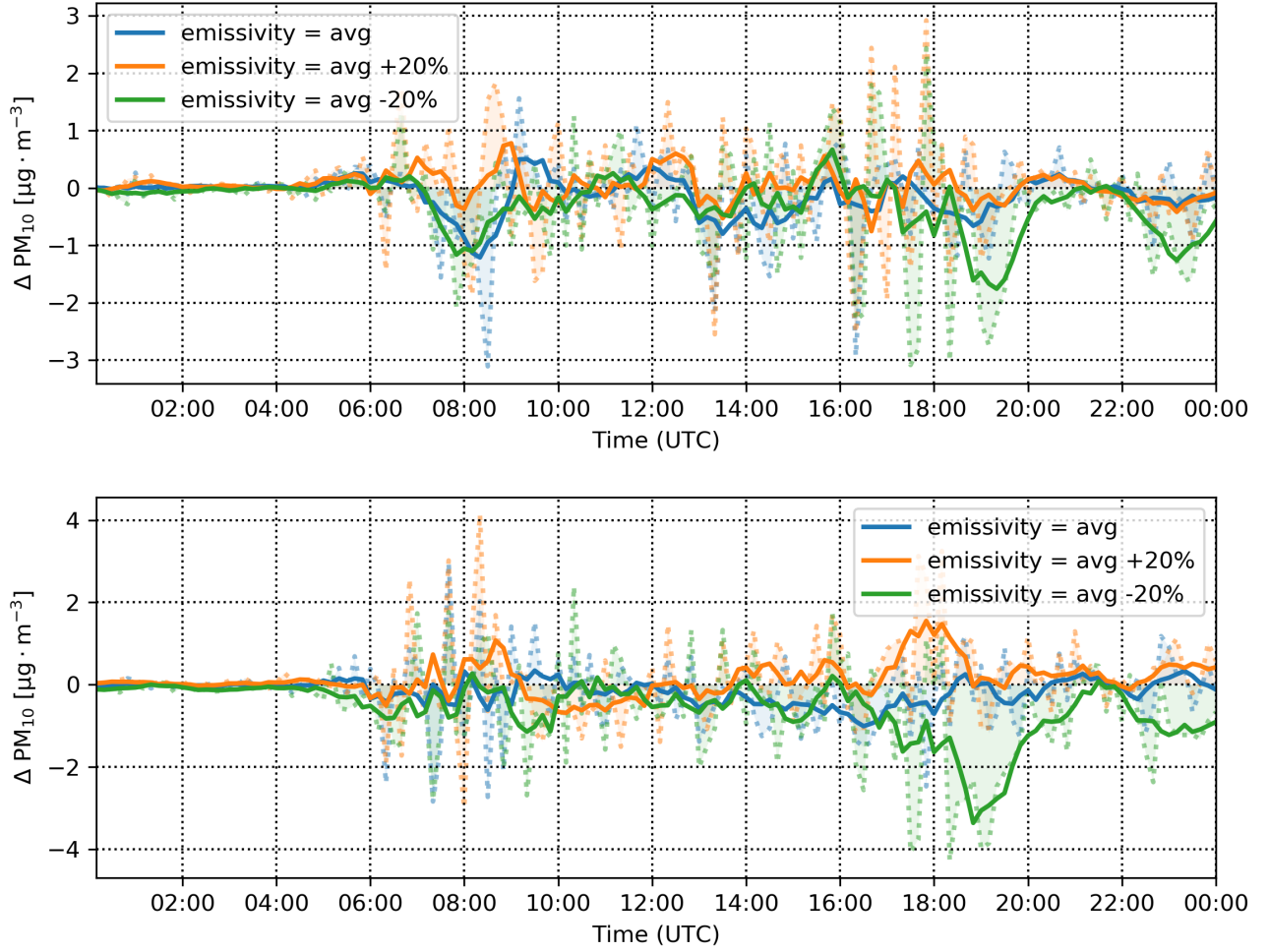


Figure 8. Emissivity scenario for north-west courtyard (top) and domain average (bottom) for scenarios SA03 (blue), SA04 (orange) and SA05 (green)

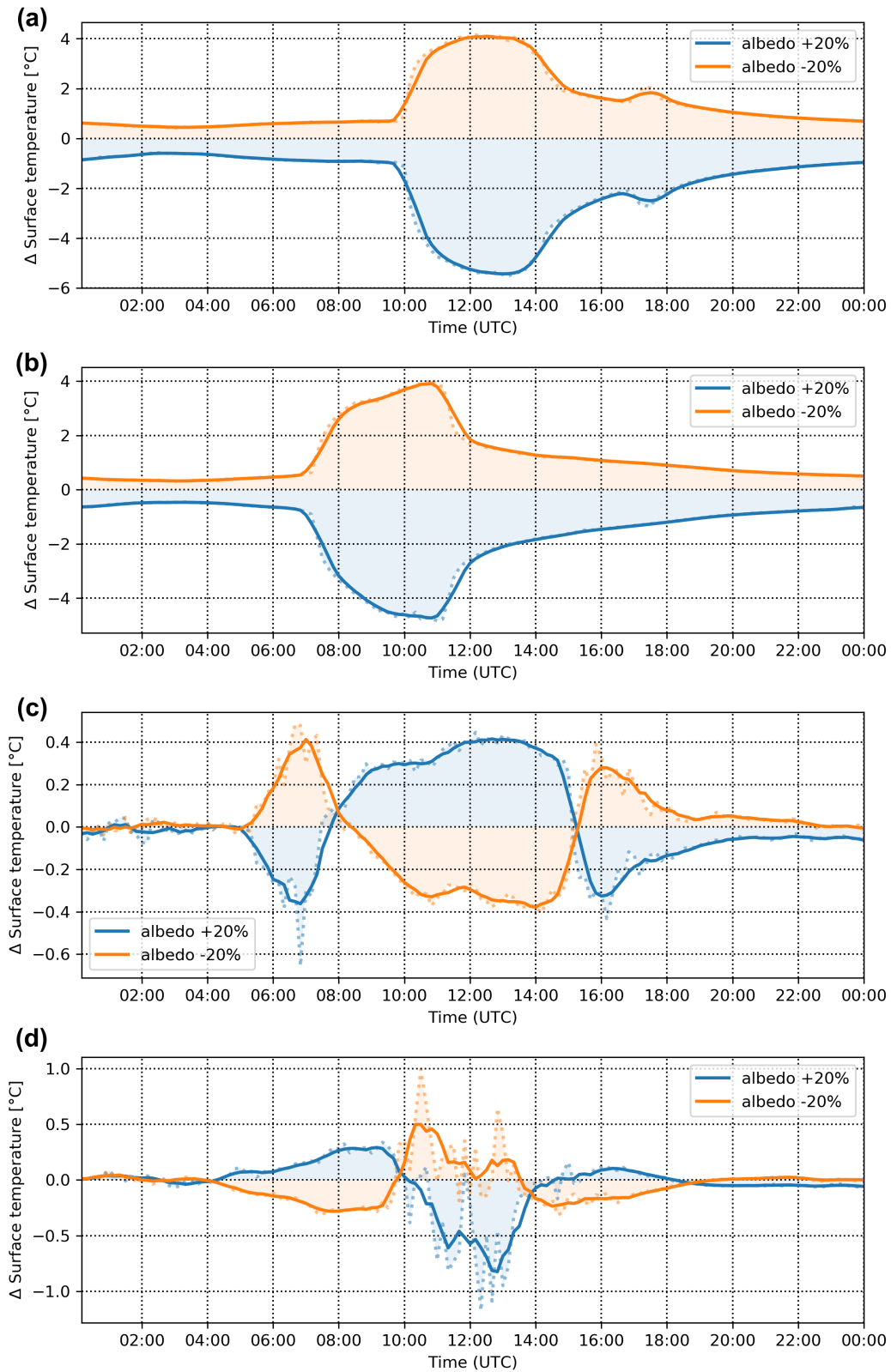


Figure 9. Differences in surface temperature in point C02 (a), C05 (b), A02 (c) and D14 (d) for albedo changing scenarios SA01 (blue) and SA02 (orange).

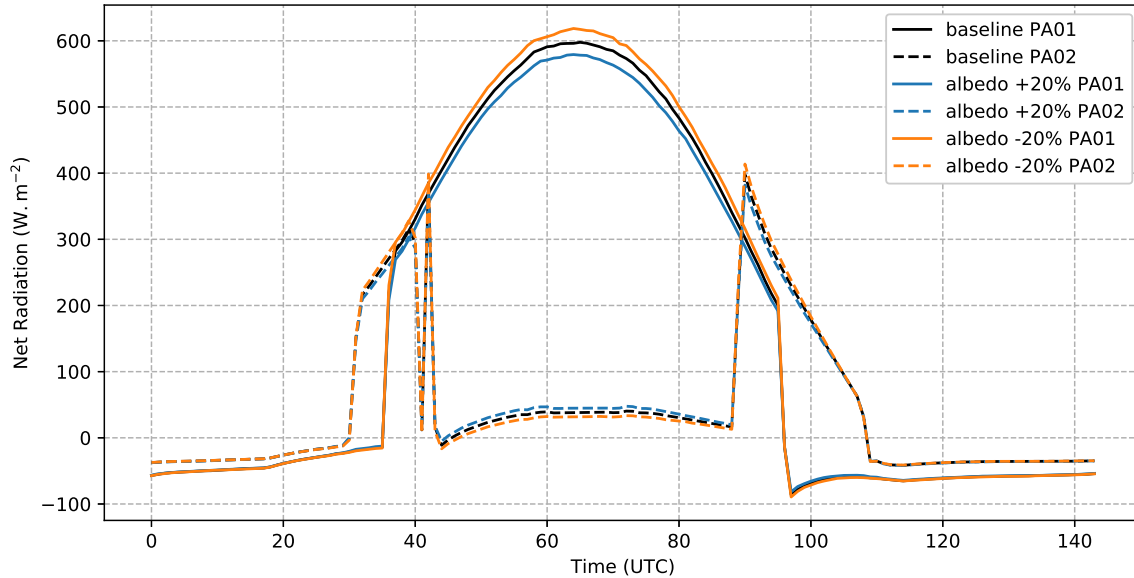


Figure 10. Net radiation at points A01 and A02 in scenarios with increased/decreased albedo compared to the baseline.

Sensitivity of the model response to SB scenarios is also summarized in Table S02. The most significant changes in surface temperature are observed in scenarios SB09 (land cover changes), SB10 (green city 1), SB11 (green city 2), while for air temperatures, SB09–11, SB12 (green city with many planted trees), SB14 (new tree alley with both-side position on Dělnická street) and SB15 (new tree alley with both-side position on both streets) show the strongest sensitivity. Scenario SB09, in which grass replaces roads and a tram line is replaced with a water channel, shows a decrease of surface temperatures by up to 3.0 K and up to 0.3 K for air temperature. Grey city scenarios SB10 and SB11 (Fig. 11), on the other hand, tend to increase temperatures significantly with 3-hour maximum differences exceeding 2 K on the horizontal surfaces, whereas for air temperatures an increase by 0.3 K and 0.1 K, respectively, is found. However, this difference between the two scenarios is dependent on the area of interest. For example, in the north-south street (Komunardů), the change in air temperatures is much more consistent between the scenarios with maxima reaching +0.5 K in the late afternoon (Table S02 in supplement).

Scenario SB12 (green city with many planted trees) appears the most effective in decreasing temperature during the day with surface temperature cooler by up to 4.0 K and air temperature by almost 0.5 K (Fig. 12). The effect is smaller during the nighttime, when the decrease in temperature is 0.8 K and 0.12 K, respectively. Instead, scenario SB09 and even SB11 (removing trees but increasing grass covered area) show decreases of more than 1.0 K and 0.15 K in the surface and air temperatures.

In terms of thermal comfort, the two analyzed characteristics (MRT and PET) show a behaviour qualitatively similar to the physical temperatures. Again, the SB12 scenario (green city with many planted trees) shows the most effective reduction with maximum decrease around 9 K in MRT and 4 K in PET in the entire domain. However, the effect varies considerably in space.

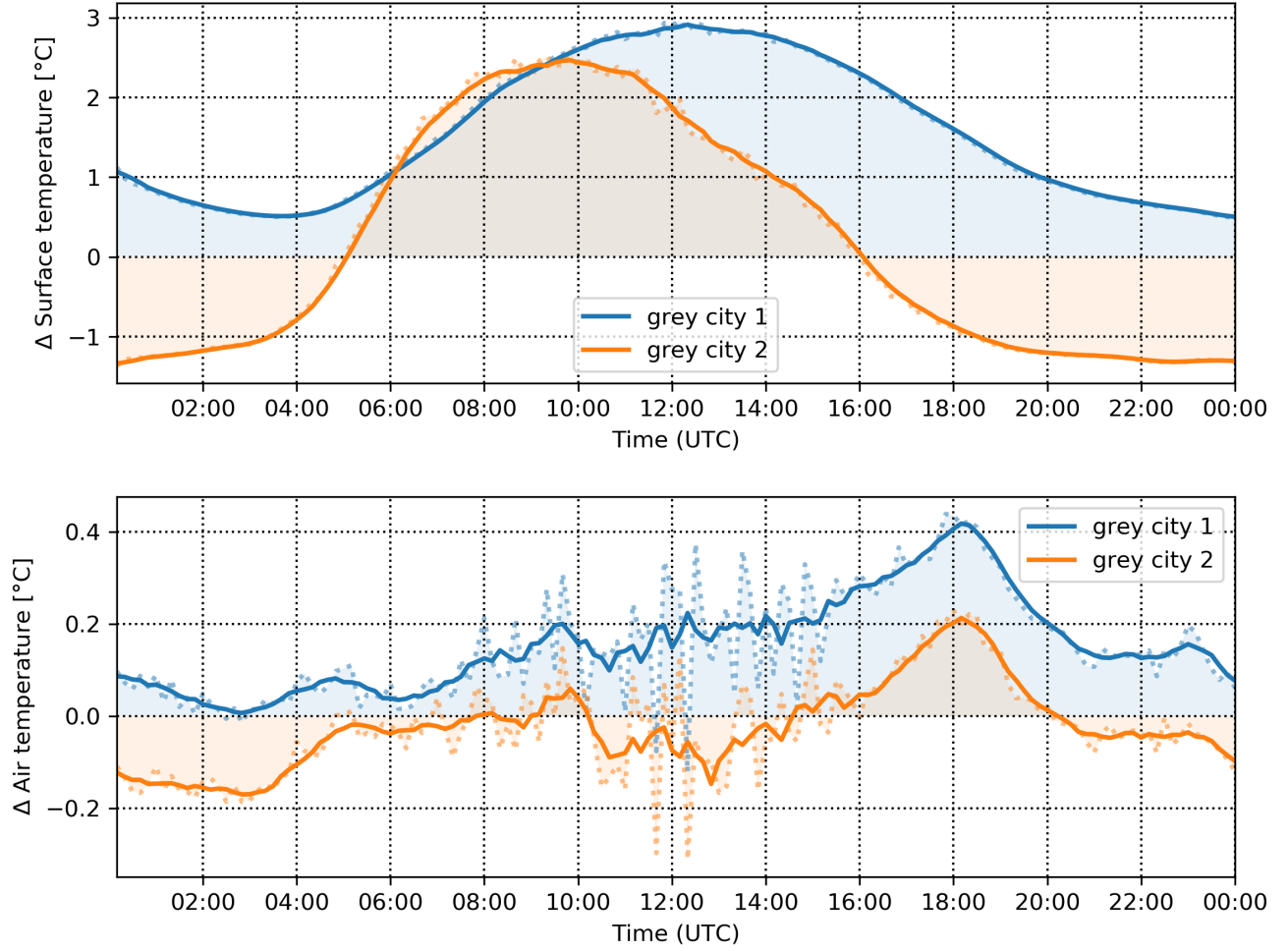


Figure 11. Domain-averaged differences in the surface temperature (top) and air temperature (bottom) for grey city scenarios SB10 (blue) and SB11 (orange).

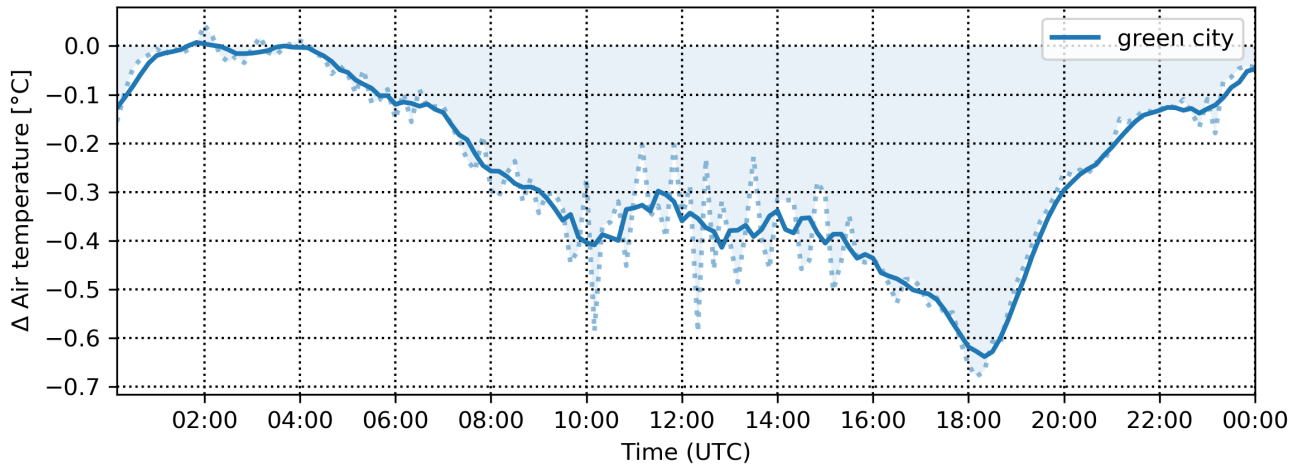


Figure 12. Domain-averaged differences in the air temperature for a green city scenario SB12 (blue)

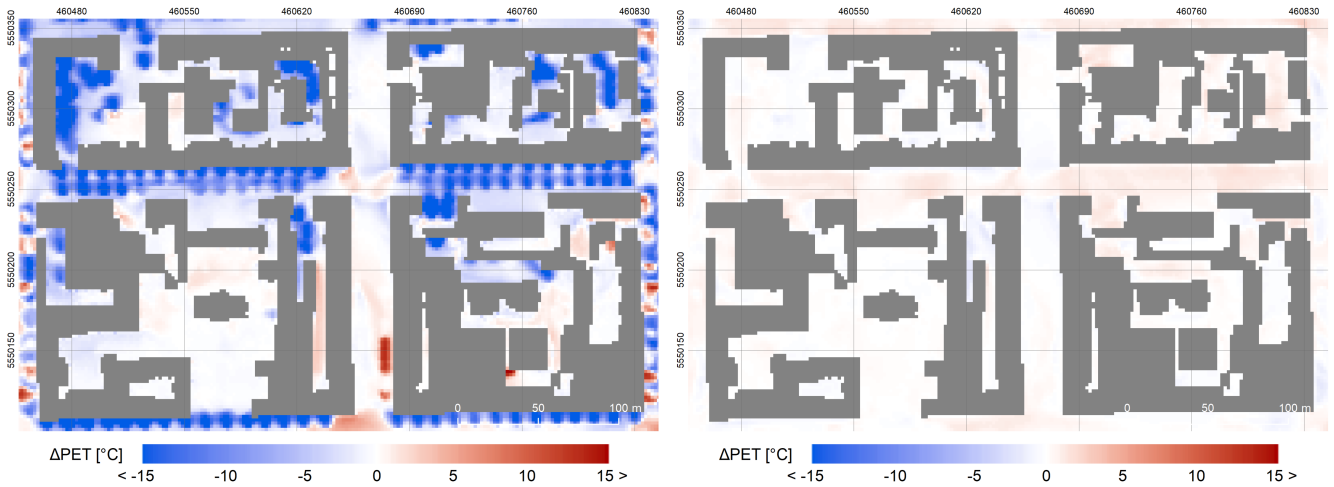


Figure 13. Example of spatio-temporal variability of 3-hour PET differences for a green city scenario SB12 at 09:00-12:00 UTC (left) and 21:00-24:00 UTC (right). EPSG: 32633, layer with roofs is own data source.

360 The strongest change is observed in the west-east oriented Dělnická street while the north-south oriented Komunardů street shows a much smaller decrease of 0.0–1.2 K (Fig. 13). This difference can be partly attributed to the geometric orientation of the streets and consequent differences of insolation during the day, but also to the actual number of trees added with respect to the base case, in which more trees already grow in Komunardů st. Similar behaviour is shown in SB13–SB15 scenarios (new tree alley(s) scenarios) with decreases up to 4.0 K in MRT and 1.6 K in PET on average.

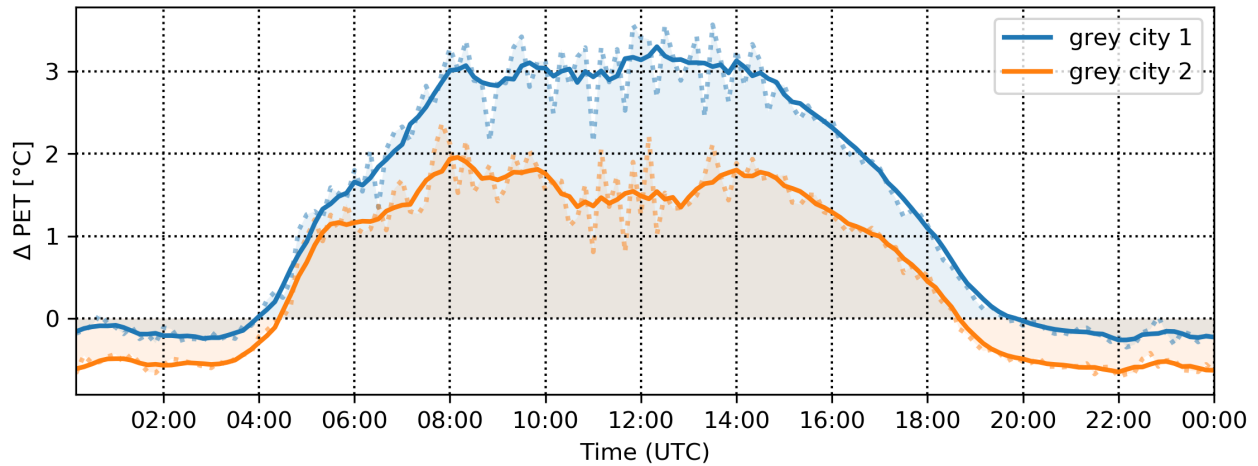


Figure 14. Domain-averaged differences in PET for a grey city scenarios SB10 (blue) and SB11 (orange)

On the other hand, SB10 and SB11 scenarios (grey city 1 and 2) show a significant increase of both biophysical properties. The MRT is increased by 8 K (5 K) and PET by 3 K (1.6 K; see Fig. 14) around noon in the entire domain in SB10 (SB11). Similarly to the previous comparison, there is a marked spatial difference throughout the domain. However, the effect is strongest in the Komunardů street, with an increase of over 12 K (MRT) and 3 K (PET), and courtyards (over 9 K/4 K), while in the Dělnická street, the increase is only around 3 K in MRT and 1 K in PET.

Unlike for the sensitivity cases SA, $PM_{2.5}$ shows a significant dependence on the measures applied. However, the influence is almost universally inverse to the one for temperature. Generally, decreasing surface/air temperature increases $PM_{2.5}$ concentrations by suppressing ventilation and turbulent mixing. On average the strongest effect is observed in SB12 (green city with many planted trees) and SB15 (planting the most amount of trees) scenarios (Fig. 15), which show an increase of 24% and 21% in $PM_{2.5}$ with maxima over 30% in the late afternoon hours. Scenarios that simulate planting trees only in the Dělnická street, SB13 (one tree alley in the center) and SB14 (tree alleys on both sides of the street), show similar responses in terms of the shape of the daily cycle, but with a lower overall increase (Fig. 15): on average, these scenarios show an increase of 5–14% in $PM_{2.5}$ concentrations, with maxima reaching almost 20% for SB14 and 10% for SB13 scenario (Fig. 15). Interestingly, over the perpendicular Komunardů street with no new trees planted, the concentrations tend to decrease throughout most of the day, although this decrease is mostly concentrated in the crossroad; for the street sections north and south further away from the crossroad no significant changes are modelled. The effect is connected to spatial changes and intensification of the street canyon eddy induced by the tree-obstructed Dělnická street which acts effectively as a part of the street canyon (not shown). The grey city scenarios SB10 and SB11 conversely show decreased $PM_{2.5}$ concentrations of around 20% in the afternoon and evening. Considering the spatial differences, the highest decrease is observed in the Komunardů street (over 50%; see Fig. 16).

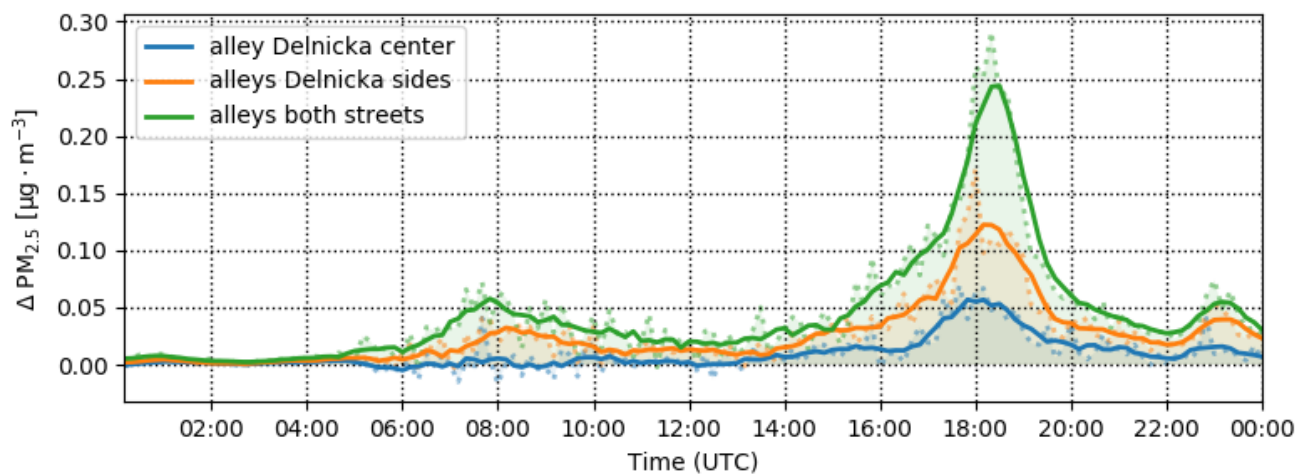


Figure 15. Domain-averaged differences in $PM_{2.5}$ for a new tree alley scenarios SB13 (blue), SB14 (orange) and SB15 (green)

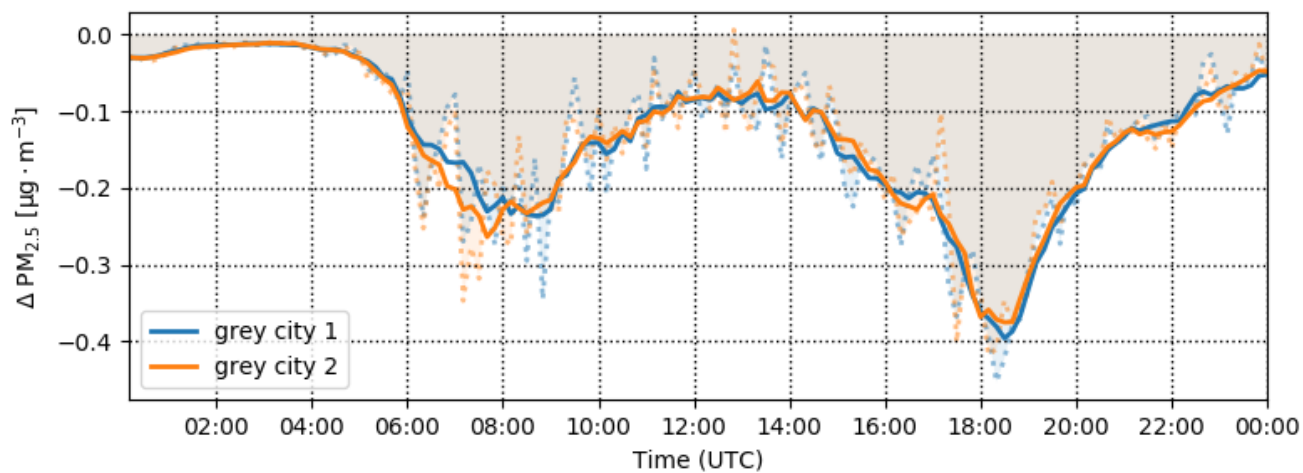


Figure 16. Differences in $PM_{2.5}$ in Komunardû street for a grey city scenarios SB10 (blue) and SB11 (orange)

4 Discussion and conclusions

385 In this work, we assessed the sensitivity of air and surface temperature, MRT, PET and $PM_{2.5}$ within the PALM model system 6.0 as a response to the modification of basic surface material parameters as well as to common UHI mitigation strategies. For this we performed a set of semi-idealized model simulations for a diurnal cycle in a city quarter in Prague.

The first set of scenarios, designed to examine the sensitivity to the parameter settings, shows the importance of the correct setting of the radiation parameters albedo and emissivity. This can be expected as the solar radiation is the main source of
390 energy in the surface energy budget. Additionally, unlike some other parameters, radiation parameters are changed for all surfaces.

In addition to albedo and emissivity, thermal conductivity of walls and volumetric heat capacity of the materials play an important role. Other parameters show a limited average effect on the diurnal timescale, which, however, can be quite significant in some parts of the day, such as surface roughness in the morning hours and window fraction in the evening. Changing soil
395 moisture by 20% is shown to be negligible overall in the context of the chosen domain, with only a small percentage of the surface covered by vegetation (see Table 1) except for surface temperature in the high-sun part of the day. Individual parts of the domain with larger coverage of vegetation show greater influence. Note that we investigated only the short-term response of the urban canopy on the outlined modifications. The trends might be more prominent if long-term storage of energy in the materials was considered, i.e., when simulating a full heat wave.

400 The second part of the sensitivity analysis focused on the UHI mitigation measures. One of the commonly considered measures is to paint surfaces white to increase surface albedo. However, our results indicate that this is only effective for lowering the surface and air temperature. In contrast, the biophysical indicators MRT and PET tend to be negatively affected, i.e., thermal comfort in the street is deteriorated due to increasing the amount of reflected radiation (note that the effect can be different on purely horizontal surfaces such as roofs). Improving both physical and biophysical temperature indicators requires
405 application of other measures, such as urban greening at the same time. Similar findings have also been reported in e.g., a meta-analysis of 52 ENVI-met simulations by Tsoka et al. (2018), Yang et al. (2015) who stress the need for precaution when adopting high-reflectivity surfaces or Aflaki et al. (2017) who found low-albedo vegetation effective for reducing mean radiant temperature.

Urban vegetation is found to be the most effective measure when considering reduction of both physical and biophysical
410 temperature indicators. Conversely, grey city scenarios that reduce the amount of urban vegetation show significant worsening of the thermal comfort. Urban greenery is very often found an effective mitigation tool for UHI, for example a recent study by McRae et al. (2020) reports vegetation-induced cooling of more than 3°C in an ENVI-met simulation. However, some studies (e.g., Wang et al., 2016, Tsoka et al., 2018 or Makido et al., 2019) show that for the best effect it is necessary to combine several measures and also to consider that different parts of the city may need different measures.

415 One of the most important results of our analysis is that there is an opposite behaviour of thermal comfort and air quality indicators (see example in Fig. 17). Observed in both types of scenarios, the $PM_{2.5}$ concentrations typically increase with decreasing temperatures and vice versa. The main reason for this behaviour is decreased ventilation in the street canyon due

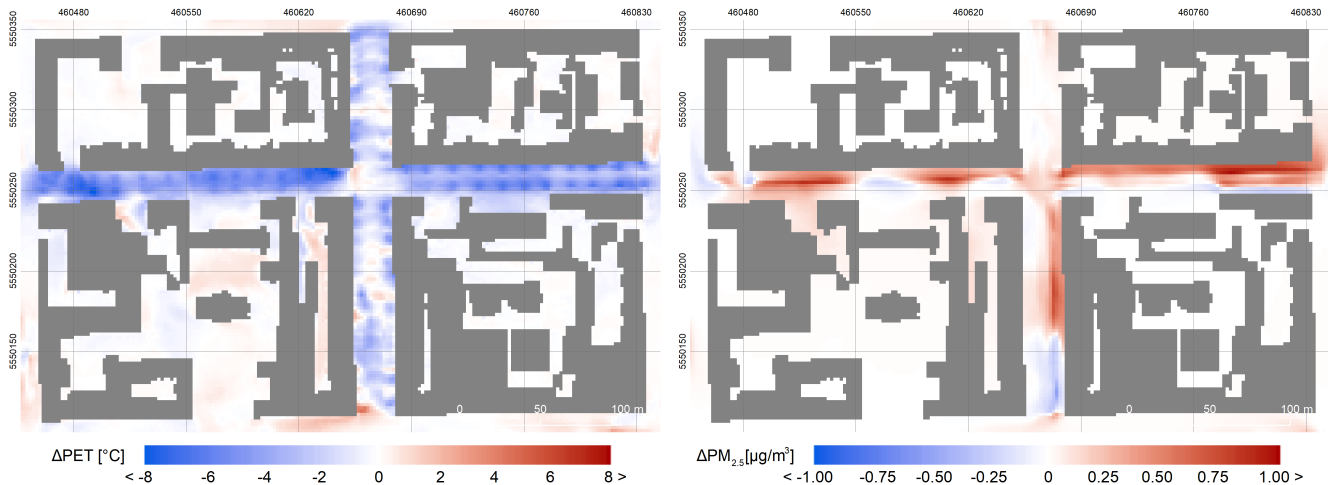


Figure 17. Example of opposite behaviour of thermal comfort and air quality indicators represented by average daily difference in PET and $PM_{2.5}$ for a new alley scenario SB15

to air flow blocking. The decreased vertical turbulent transport due to reduced urban canopy temperatures and thus buoyancy can play a role too, as shown by Huszár et al. (2018b, 2020) who found significant PM decreases due to urban canopy induced vertical eddy diffusion. However, in these simulations, only aerosols passive transfer was taken into account and thus the results may be different for other air quality indicators, e.g. when considering the influence of changing reaction coefficients and decrease of solar radiation for ozone chemistry (Huszár et al., 2018b).

The $PM_{2.5}$ concentrations in Fig. 17 also show an important added value of the high-resolution CFD models for urban modelling compared to parameterized urban schemes in NWP/climate models or radiation models. In this case it is the spatial variability within the streets. As can be seen, the combined radiative and dynamical effects manifest in quite a heterogeneous response where (in this particular case) the increase of concentrations is most prominent on the northern half of the Dělnická street, while in some parts on the southern side the models shows decrease of concentrations. In the Komunardů street, the response shows very small changes in the upper section of the street while in the lower section the model shows almost a see-saw response with increased concentrations in the upper half and decrease in the lower half of the section.

In conclusion, this analysis shows that the proper setting of urban surface parameters is crucial for high-resolution LES models of the urban environment and that collecting this large amount of data is an essential part of the modelling technique. High temporal and spatial variability also shows the importance of using truly local information for each area of interest. Altogether, the LES method proves to be an asset thanks to its capability to fully resolve the flow and to consider heterogeneity in the modelling domain. Hence, LES modelling results can be really applied to support urban planning when aiming to mitigate UHI in urban neighbourhoods.

4.1 Model limitations

This study applied the PALM model revision 4093. The model itself and its configuration have some limitations, with the following being the most important ones in our case:

- The model is configured without the PALM-4U building energy model (BEM) and the building inner temperature is considered constant (300 K) during the simulation. The impacts of the absence of a more complex indoor model differ in summer and winter seasons. In winter, assuming that the rooms are heated to the exact prescribed temperature by either direct local heat sources or by long-distance heating with the heating plant being outside the modelled domain, the model adds correct heat fluxes to the insides of the buildings, albeit not providing the amount of heating energy consumed among its outputs. In summer, the constant indoor temperature can be seen as a simplification for buildings without air conditioning where the wall insulation and wall heat capacity dampen most of the daily temperature difference, as long as the inner temperature is realistic and the daily total net heat flux is near zero. Buildings with air conditioning need a more complex indoor model with correctly placed heat exchangers (windows for individual A/C units and roofs for central A/C systems). For the simulated domain, there was no information available about the amount and placement of A/C systems, with the majority of the buildings being old apartment houses with presumably no central A/C systems and no visible individual A/C units at windows. For long term simulations, missing waste heat which could be provided by PALM's indoor model will be important. Given the short time scale of the present study simulations, the indoor model should not affect the outcome, though. The outer wall layers react very fast to changes in the surface energy balance, but the inner wall layers have large inertia so that nothing is likely to change if the indoor temperature changes in time.
- The model sensitivities are tested only during meteorological conditions of heat wave episodes as the main focus is on simulation of the UHI mitigation measures. Only the short-term response of the urban canopy was investigated. The behaviour, including long-term response, during other seasons and weather conditions can and probably will differ from presented results.
- The simulations do not consider any chemical reactions or aerosol dynamic processes of air pollutants, only the dispersion of traffic-related PM_{2.5} is considered. Moreover, the boundary conditions of the chemical species on the parent domain were set to zero. This experiment design was selected as the focus of the study is on the sensitivity of the concentrations on the local conditions. The time needed for secondary organic aerosol (SOA) formation is much longer than the typical time the chemical species spent in the studied domain (e.g., Du et al., 2018 or Tang et al., 2018). The consequence is that the SOA concentration field is almost constant over the studied domain. It means that even though the SOA constitutes an important part of the PM_{2.5}, their omission does not change the differences of PM_{2.5} between particular scenarios.
- This version initiates the building wall properties through the `building_2d` property in the model static driver, i.e., the wall properties are set to the roof grid cell over the wall (i.e. border grid cells of the roof). This leads to two simplifications:

– The properties of the wall can be set only in two height zones and the corner grid cells set the properties of two surface grid cells corresponding to different walls.

– The roof properties in the border grid cells are initialized to the wall properties. This limitation leads to artefacts in roof and wall surface temperature and heat fluxes. This drawback was removed in later versions (model revision 4240 and later) by implementation of reading separate properties for individual surface cells from the new static driver variable `building_surface_pars`.

– The ventilation of very tight areas surrounded by high buildings is underestimated by the model and the temperatures and concentrations of pollutants become unrealistically high in some circumstances. It is known that higher concentrations can be expected in enclosed spaces due to low turbulence (Gronemeier and Sühling, 2019). This problem was addressed in the model revision 4110. For the purpose of this analysis, these small areas were excluded from the evaluation.

Code and data availability. The PALM model system is freely available from <http://palm-model.org> (last access: 30 March 2020) and distributed under the GNU General Public Licence v3 (<http://www.gnu.org/copyleft/gpl.html>), last access: 30 March 2020). The model source code of version 6.0 in revision r4093, used in this article is also available via <https://doi.org/10.25835/0068421> (Geletic et al., 2020). Input data and additional outputs are available at <http://hdl.handle.net/11104/0309669>.

Appendix A

A1

Author contributions. MB was the main coordinator of manuscript proceedings and responsible for the general topic of paper and the analysis of results. All co-authors contributed to the manuscript text. KE configured and processed WRF simulations used for preparation of boundary conditions, JG was involved in geodata preprocessing, result postprocessing and data mining. JR and PK were strongly involved in PALM model setup and processed the PALM simulations, JR also participated in the experiment design. VF, FKS, MS and BM participated with the general topic, discussion and text preparation. NB, MA and MK are specialists in air quality modelling and participated in this field of study.

Competing interests. The authors declare that they have no conflict of interest.

Acknowledgements. The simulations were partly performed in the supercomputing centre IT4I which was supported by The Ministry of Education, Youth and Sports from the Large Infrastructures for Research, Experimental Development and Innovations project “IT4Innovations National Supercomputing Center – LM2015070” and partly on the HPC infrastructure of Institute of Computer Science supported by the long-term strategic development financing of the Institute of Computer Science (RVO:67985807).

495 Financial support was provided by the *Operational Program Prague – Growth Pole of the Czech Republic* project “Urbanization of weather forecast, air-quality prediction and climate scenarios for Prague” (CZ.07.1.02/0.0/0.0/16_040/0000383) which is co-financed by EU. Coauthors BM, FK-S, and MS were supported by the Federal German Ministry of Education and Research (Germany) (grant no. 01LP1601A).

References

- 500 Aflaki, A., Mirnezhad, M., Ghaffarianhoseini, A., Ghaffarianhoseini, A., Omrany, H., Wang, Z., Akbari, H.: Urban heat island mitigation strategies: A state-of-the-art review on Kuala Lumpur, Singapore and Hong Kong. *Cities*, 62, 131–145, <https://doi.org/10.1016/j.cities.2016.09.003>, 2017.
- Ai, Z. T., Mak, C. M.: Modeling of coupled urban wind flow and indoor air flow on a high-density near-wall mesh: Sensitivity analyses and case study for single-sided ventilation. *Environmental Modelling & Software*, 60, 57–68, <https://doi.org/10.1016/j.envsoft.2014.06.010>,
505 2014.
- Arnfield, A. J.: Two decades of urban climate research: a review of turbulence, exchanges of energy and water, and the urban heat island. *International Journal of Climatology: a Journal of the Royal Meteorological Society*, 23, 1, 1–26, <https://doi.org/10.1002/joc.859>, 2003.
- Ashie, Y., Kono, T.: Urban-scale CFD analysis in support of a climate-sensitive design for the Tokyo Bay area. *International Journal of Climatology*, 31, 174–188, <https://doi.org/10.1002/joc.2226>, 2010.
- 510 CHMI, Table: Emission balance of the Czech Republic, <http://pr-asu.chmi.cz:8080/EmisBalanceView/faces/viewBalance.xhtml>. Last accessed on 25.01.2021.
- Crank, P.J., Sailor, D.J., Ban-Weiss, G., Taleghani, M.: Evaluating the ENVI-met microscale model for suitability in analysis of targeted urban heat mitigation strategies, *Urban Climate*, 26, 188–197, <https://doi.org/10.1016/j.uclim.2018.09.002>, 2018.
- Deardorff, J. W.: Stratocumulus-capped mixed layers derived from a three-dimensional model, *Boundary-Layer Meteorol.*, 18, 495–527,
515 1980.
- Du, Z., Hu, M., Peng, J., Zhang, W., Zheng, J., Gu, F., Qin, Y., Yang, Y., Li, M., Wu, Y., Shao, M., and Shuai, S.: Comparison of primary aerosol emission and secondary aerosol formation from gasoline direct injection and port fuel injection vehicles, *Atmos. Chem. Phys.*, 18, 9011–9023, <https://doi.org/10.5194/acp-18-9011-2018>, 2018.
- Ebi, K.: Climate change and health risks: assessing and responding to them through "adaptive management". *Health Affairs*, 30, 5, 924–930,
520 <https://doi.org/10.1377/hlthaff.2011.0071>, 2011.
- Emmanuel, R., Loconsole, A.: Green infrastructure as an adaptation approach to tackling urban overheating in the Glasgow Clyde Valley Region, UK. *Landscape and Urban Planning*, 138, 71–86, <https://doi.org/10.1016/j.landurbplan.2015.02.012>, 2015.
- Fröhlich, D., Matzarakis, A.: Calculating human thermal comfort and thermal stress in the PALM model system 6.0. *Geosci. Model Dev.*, 13, 3055–3065, <https://doi.org/10.5194/gmd-13-3055-2020>, 2020.
- 525 Gál, C.V., Kántor, N.: Modeling mean radiant temperature in outdoor spaces, A comparative numerical simulation and validation study. *Urban Climate*, 32, <https://doi.org/10.1016/j.uclim.2019.100571>, 2020.
- García-Sánchez, C., van Beeck, J., Gorlé, C.: Predictive large eddy simulations for urban flows: Challenges and opportunities. *Building and Environment*, 139, 146–156, <https://doi.org/10.1016/j.buildenv.2018.05.007>, 2018.
- Gehrke, K. F., Sühling, M., and Maronga, B.: Modeling of land-surface interactions in the PALM model system 6.0: Land surface
530 model description, first evaluation, and sensitivity to model parameters, *Geosci. Model Dev. Discuss. [preprint]*, <https://doi.org/10.5194/gmd-2020-197>, in review, 2020.
- Geletic, J. et al.: Dataset: PALM 6.0 r4093. <https://doi.org/10.25835/0068421>, 2020.
- Gill, S., Handley, J., Ennos, A., and Pauleit, S.: Adapting cities for climate change: the role of the green infrastructure. *Built Environment*, 33, 1, 115–133, <https://doi.org/10.2148/benv.33.1.115>, 2007.

- 535 Gronemeier, T. and Sühling, M.: On the Effects of Lateral Openings on Courtyard Ventilation and Pollution—A Large-Eddy Simulation Study, *Atmosphere* 10(2), 63, <https://doi.org/10.3390/atmos10020063>, 2019.
- Gross, G.: Effects of different vegetation on temperature in an urban building environment. *Micro-scale numerical experiments. Meteorologische Zeitschrift*, 21, 4, 399–412(14), <https://doi.org/10.1127/0941-2948/2012/0363>, 2012.
- Hackbusch, W.: *Multi-Grid Methods and Applications*. Springer, Berlin, Heidelberg, 2nd printing, [https://doi.org/10.1007/](https://doi.org/10.1007/978-3-662-02427-0)
540 978-3-662-02427-0, 1985.
- Haines, A., Kovats, R. S., Campbell-Lendrum, D., and Corvalan, C.: Climate change and human health: impacts, vulnerability and public health. *Public Health*, 120, 7, 585-596, <https://doi.org/10.1016/j.puhe.2006.01.002>, 2006.
- Heldens, W., Burmeister, C., Kanani-Sühling, F., Maronga, B., Pavlik, D., Sühling, M., Zeidler, J., and Esch, T.: Geospatial input data for the PALM model system 6.0: model requirements, data sources, and processing, *Geosci. Model Dev. Discuss.*, [https://doi.org/10.5194/](https://doi.org/10.5194/gmd-2019-355)
545 gmd-2019-355, in review, 2020.
- Hellsten, A., Ketelsen, K., Sühling, M., Auvinen, M., Maronga, B., Knigge, C., Barmpas, F., Tsegas, G., Moussiopoulos, N., and Raasch, S.: A Nested Multi-Scale System Implemented in the Large-Eddy Simulation Model PALM model system 6.0, *Geosci. Model Dev. Discuss.* [preprint], <https://doi.org/10.5194/gmd-2020-222>, in review, 2020.
- Hunt, A., and Watkiss, P.: Climate change impacts and adaptation in cities: a review of the literature. *Climatic Change*, 104, 1, 13–49, <https://doi.org/10.1007/s10584-010-9975-6>, 2011.
550
- Huszár, P., Karlický, J., Belda, M., Halenka, T. and Pišoft, P.: The impact of urban canopy meteorological forcing on summer photochemistry, *Atmos. Environ.*, 176, 209-228, <https://doi.org/10.1016/j.atmosenv.2017.12.037>, 2018a.
- Huszár, P., Belda, M., Karlický, J., Bardachova, T., Halenka, T., and Pišoft, P.: Impact of urban canopy meteorological forcing on aerosol concentrations, *Atmos. Chem. Phys.*, 18, 14059-14078, <https://doi.org/10.5194/acp-18-14059-2018>, 2018b.
- 555 Huszár, P., Karlický, J., Ďoubalová, J., Šindelářová, K., Nováková, T., Belda, M., Halenka, T., Žák, M., and Pišoft, P.: Urban canopy meteorological forcing and its impact on ozone and PM_{2.5}: role of vertical turbulent transport, *Atmos. Chem. Phys.*, 20, 1977–2016, <https://doi.org/10.5194/acp-20-1977-2020>, 2020.
- IPCC: Climate Change 2014: Impacts, Adaptation, and Vulnerability. Part A: Global and Sectoral Aspects. Contribution of Working Group II to the Fifth Assessment Report of the Intergovernmental Panel on Climate Change, edited by: Field, C. B., Barros, V. R., Dokken, D. J., Mach, K. J., Mastrandrea, M. D., Bilir, T. E., Chatterjee, M., Ebi, K. L., Estrada, Y. O., Genova, R. C., Girma, B., Kissel, E. S., Levy, A. N., MacCracken, S., Mastrandrea, P. R., and White, L. L., Cambridge University Press, Cambridge, United Kingdom and New York, NY, USA, 1132 pp., <https://doi.org/10.1017/CBO9781107415379>, 2014a.
560
- IPCC: Climate Change 2014: Mitigation of Climate Change. Contribution of Working Group III to the Fifth Assessment Report of the Intergovernmental Panel on Climate Change, edited by: Edenhofer, O., Pichs-Madruga, R., Sokona, Y., Farahani, E., Kadner, S., Seyboth, K., Adler, A., Baum, I., Brunner, S., Eickemeier, P., Kriemann, B., Savolainen, J., Schlömer, S., von Stechow, C., Zwickel, T., and Minx, J. C., Cambridge University Press, Cambridge, United Kingdom and New York, NY, USA, <https://doi.org/10.1017/CBO9781107415416>, 2014b.
565
- Kadasch, E., Sühling, M., Gronemeier, T., and Raasch, S.: Mesoscale nesting interface of the PALM model system 6.0, *Geosci. Model Dev. Discuss.* [preprint], <https://doi.org/10.5194/gmd-2020-285>, in review, 2020.
- 570 Kovats, R. S., and Hajat, S.: Heat stress and public health: a critical review. *Annual Review of Public Health*, 29, 41–55, <https://doi.org/10.1146/annurev.publhealth.29.020907.090843>, 2008.

- Krč, P., Resler, J., Sühling, M., Schubert, S., Salim, M. H., and Fuka, V.: Radiative Transfer Model 3.0 integrated into the PALM model system 6.0, *Geosci. Model Dev. Discuss.* [preprint], <https://doi.org/10.5194/gmd-2020-168>, in review, 2020.
- Krayenhoff, E.S., Broadbent, A.M., Zhao, L., Georgescu, M., Middel, A., Voogt, J.A., Martilli, A., Sailor, D.J., Erell, E.: Cooling hot cities: A systematic and critical review of the numerical modelling literature, *Environ. Res. Lett.* in press <https://doi.org/10.1088/1748-9326/abdcf1>, 2021.
- Lobaccaro, G., Acero, J. A.: Comparative analysis of green actions to improve outdoor thermal comfort inside typical urban street canyons. *Urban Climate*, 14, 2, 251–267, <https://doi.org/10.1016/j.uclim.2015.10.002>, 2015.
- Makido, Y., Hellman, D., Shandas, V.: Nature-Based Designs to Mitigate Urban Heat: The Efficacy of Green Infrastructure Treatments in Portland, Oregon. *Atmosphere*, 10, 282, <https://doi.org/10.3390/atmos10050282>, 2019.
- Maronga, B., Banzhaf, S., Burmeister, C., Esch, T., Forkel, R., Fröhlich, D., Fuka, V., Gehrke, K. F., Geletič, J., Giersch, S., Gronemeier, T., Groß, G., Heldens, W., Hellsten, A., Hoffmann, F., Inagaki, A., Kadasch, E., Kanani-Sühling, F., Ketelsen, K., Khan, B. A., Knigge, C., Knoop, H., Krč, P., Kurppa, M., Maamari, H., Matzarakis, A., Mauder, M., Pallasch, M., Pavlik, D., Pfafferott, J., Resler, J., Rissmann, S., Russo, E., Salim, M., Schrempf, M., Schwenkel, J., Seckmeyer, G., Schubert, S., Sühling, M., von Tils, R., Vollmer, L., Ward, S., Witha, B., Wurps, H., Zeidler, J., and Raasch, S.: Overview of the PALM model system 6.0, *Geosci. Model Dev.*, 13, 1335–1372, <https://doi.org/10.5194/gmd-13-1335-2020>, 2020.
- Maronga, B., Gryschka, M., Heinze, R., Hoffmann, F., Kanani-Sühling, F., Keck, M., Ketelsen, K., Letzel, M. O., Sühling, M., and Raasch, S.: The Parallelized Large-Eddy Simulation Model (PALM) version 4.0 for atmospheric and oceanic flows: model formulation, recent developments, and future perspectives, *Geosci. Model Dev.*, 8, 2515–2551, <https://doi.org/10.5194/gmd-8-2515-2015>, 2015.
- McRae, I., Freedman, F., Rivera, A., Li, X., Dou, J., Cruz, I., Ren, C., Dronova, I., Fraker, H., Bornstein, R.: Integration of the WUDAPT, WRF, and ENVI-met models to simulate extreme daytime temperature mitigation strategies in San Jose, California. *Building and Environment*, 184, <https://doi.org/10.1016/j.buildenv.2020.107180>, 2020.
- MEFA 13, User guide, Prague, May 2013, downloadable from http://www.atem.cz/ke_stazeni.php (software and user guide documentation in Czech language only). Accessed on 21.03.2020.
- Mills, G.: Urban climatology: History, status and prospects. *Urban Climate*, 10, 3, 479–489, <https://doi.org/10.1016/j.uclim.2014.06.004>, 2014.
- Moeng, C.-H. and Wyngaard, J. C.: Spectral analysis of large-eddy simulations of the convective boundary layer, *Journal of the Atmospheric Sciences*, 45, 3573–3587, [https://doi.org/10.1175/1520-0469\(1988\)045<3573:SAOLES>2.0.CO;2](https://doi.org/10.1175/1520-0469(1988)045<3573:SAOLES>2.0.CO;2), 1988.
- Müller, N., Kuttler, W., and Barlag, A. B.: Counteracting urban climate change: adaptation measures and their effect on thermal comfort. *Theoretical and Applied Climatology*, 115, 243–257, <https://doi.org/10.1007/s00704-013-0890-4>, 2013.
- Oke, T. R.: The energetic basis of the urban heat island. *Q. J. Roy. Meteor. Soc.*, 108, 1–24, <https://doi.org/10.1002/qj.49710845502>, 1982.
- Patz, J. A., Campbell-Lendrum, D., Holloway, T., and Foley, J. A.: Impact of regional climate change on human health. *Nature*, 438, 7066, 310–317, <https://doi.org/10.1038/nature04188>, 2005.
- Ramponi, R., Blocken, B.: CFD simulation of cross-ventilation for a generic isolated building: Impact of computational parameters. *Building and Environment*, 53, 34–48, <https://doi.org/10.1016/j.buildenv.2012.01.004>, 2012.
- Resler, J., Krč, P., Belda, M., Juruš, P., Benešová, N., Lopata, J., Vlček, O., Damašková, D., Eben, K., Derbek, P., Maronga, B., and Kanani-Sühling, F.: PALM-USM v1.0: A new urban surface model integrated into the PALM large-eddy simulation model. *Geosci. Model Dev.*, 10, 3635–3659, <https://doi.org/10.5194/gmd-10-3635-2017>, 2017.

- Resler, J., Eben, K., Geletič, J., Krč, P., Rosecký, M., Sührling, M., Belda, M., Fuka, V., Halenka, T., Huszár, P., Karlický, J., Benešová, N.,
610 Ďoubalová, J., Honzákova, K., Keder, J., Nápravníková, Š., and Vlček, O.: Validation of the PALM model system 6.0 in real urban environment; case study of Prague-Dejvice, Czech Republic, *Geosci. Model Dev. Discuss.* [preprint], <https://doi.org/10.5194/gmd-2020-175>, in review, 2020.
- Salim M. S., Buccolieri, R., Chan, A., Di Sabatino, S.: Numerical simulation of atmospheric pollutant dispersion in an urban street canyon: Comparison between RANS and LES. *Journal of Wind Engineering and Industrial Aerodynamics*, 99, 2-3, 103-113, <https://doi.org/10.1016/j.jweia.2010.12.002>, 2011.
615
- Saiki, E. M., Moeng, C.-H., and Sullivan, P. P.: Large-eddy simulation of the stably stratified planetary boundary layer, *Bound. Lay.-Meteorol.*, 95, 1–30, <https://doi.org/10.1023/A:1002428223156>, 2000.
- Seidel, D.J., Zhang, Y., Beljaars, A., Golaz, J., Jacobson, A.R., Medeiros, B.: Climatology of the planetary boundary layer over the continental United States and Europe. *J. Geophys. Res.*, 117, D17106, <https://doi.org/10.1029/2012JD018143>, 2012.
- 620 Souch, C., and Grimmond, S.: Applied climatology: urban climate. *Progress in Physical Geography*, 30, 2, 270-279, <https://doi.org/10.1191/0309133306pp484pr>, 2006.
- Stewart, I. D.: A systematic review and scientific critique of methodology in modern urban heat island literature. *International Journal of Climatology*, 31, 2, 200–217, <https://doi.org/10.1002/joc.2141>, 2011.
- Su, W., Zhang, Y., Yang, Y., Ye, G.: Examining the Impact of Greenspace Patterns on Land Surface Temperature by Coupling LiDAR Data
625 with a CFD Model. *Sustainability*, 6, 10, 6799–6814, <https://doi.org/10.3390/su6106799>, 2014.
- Tang, R., Wu, Z., Li, X., Wang, Y., Shang, D., Xiao, Y., Li, M., Zeng, L., Wu, Z., Hallquist, M., Hu, M., and Guo, S.: Primary and secondary organic aerosols in summer 2016 in Beijing, *Atmos. Chem. Phys.*, 18, 4055–4068, <https://doi.org/10.5194/acp-18-4055-2018>, 2018.
- Tsoka, S., Tsikaloudaki, A., Theodosiou, T.: Analyzing the ENVI-met microclimate model's performance and assessing cool materials and urban vegetation applications—A review. *Sustainable Cities and Society*, 43, 55-76, <https://doi.org/10.1016/j.scs.2018.08.009>, 2018.
- 630 Wang, Y., Berardi, U., Akbari, H.: Comparing the effects of urban heat island mitigation strategies for Toronto, Canada. *Energy and Buildings*, 114, 2–19, <https://doi.org/10.1016/j.enbuild.2015.06.046>, 2016.
- Wicker, L. J., and Skamarock, W. C.: Time-Splitting Methods for Elastic Models Using Forward Time Schemes. *Monthly Weather Review*, 130, 2088–2097, [https://doi.org/10.1175/1520-0493\(2002\)130<2088:TSMFEM>2.0.CO;2](https://doi.org/10.1175/1520-0493(2002)130<2088:TSMFEM>2.0.CO;2), 2002.
- Yang, J., Wang, Z., Kaloush, K. E.: Environmental impacts of reflective materials: Is high albedo a ‘silver bullet’ for mitigating urban heat
635 island? *Renewable and Sustainable Energy Reviews*, 47, 830–843, <https://doi.org/10.1016/j.rser.2015.03.092>, 2015.
- Zanobetti, A., O'Neill, M. S., Gronlund, C. J., and Schwartz, J. D.: Summer temperature variability and long-term survival among elderly people with chronic disease. *Proceedings of the National Academy of Sciences of the United States of America*, 109, 17, 6608–6613, <https://doi.org/10.1073/pnas.1113070109>, 2012.
- Žák, M., Zahradníček, P., Skalák, P., Halenka, T., Aleš, D., Fuka, V., Kazmuková, M., Zemánek, O., Flegl, J., Kiesel, K., Jareš, R., Resler,
640 J., Huszár, P.: Pilot Actions in European Cities – Prague. In: Musco F. (eds) *Counteracting Urban Heat Island Effects in a Global Climate Change Scenario*. Springer, Cham, 373–400, https://doi.org/10.1007/978-3-319-10425-6_14, 2016
- Zhang, Y., Seidel, D.J., Zhang, S.: Trends in Planetary Boundary Layer Height over Europe. *Journal of Climate*, 26(24), 10071–10076, <https://doi.org/10.1175/JCLI-D-13-00108.1>, 2013.