

Dear Reviewer #1,

Thank you again for taking the time to read through and comment on our manuscript. We responded to your greatest criticism in a previous reply. In this comment, we give a point-by-point response to all your comments and detail our proposed changes to the manuscript.

R: Reviewer's comment

A: Author's response

C: Proposed changes to the manuscript; text changes in blue

[All references that we cite herein can be found in the reference list of the modified manuscript.]

R: This paper by Pringle et al. presents recent developments of the circulation model ADCIRC that allow simulating efficiently tides and storm surges at global scale. The paper is well-written and organized, the figures are clear and the topic addressed fits well the scope of the journal. However, while storm surge predictions are rather good for a global model, tidal predictions are locally weak compared to other well-established global tidal models. Thus, in the Bay of Biscay, the RMSE on M2 reaches 0.12-0.15 m, that is more than 10% once normalized by the amplitude of this constituent. Over the Patagonian Shelf, RMSE on M2 reaches 0.25 m, which again represents errors over 10 %. In these regions, other global models have errors of a few % in these areas, see for instance a paper describing the hydrodynamic version of FES2014 (i.e. without assimilation) under discussion in Ocean Science (Lyard et al., 2020). For this reason, I think that the paper cannot be considered further for publication until the authors explain why the model is locally not reproducing tides correctly or better, improve their results. Indeed, only discussing the improvements compared to the previous version of global ADCIRC is not sufficient as tidal predictions from this version of the model were really bad (i.e. errors on M2 locally > 20%).

A: Thank you for your positive comments regarding the general organization and presentation of this manuscript. As per our previous response, we highlight that the major point of our paper is not to present a model with the lowest tidal errors possible. Instead, it is to; 1) highlight improvements to the treatment of the governing equations and implicit time-integration in the new version of ADCIRC (v55), and 2) explore the effects of unstructured mesh design on storm tide solutions. In the previous response we also highlighted that modeled tidal solutions are dictated by the three major mechanisms: bathymetry, internal tide wave drag, and bottom friction/bed stress. Analysis of these solution controlling mechanisms have been detailed in previous studies (Lyard et al., 2020; Pringle et al., 2018), and in this study we specifically avoided the excessive tuning of the model through these three controls. The previous response also provides an example figure of the M2 tidal solution errors (errors are generally smaller than presented in this manuscript) of a more tuned version of the model used in this study. In the next paragraph we detail our proposed changes to the manuscript to “explain why the model is locally not reproducing tides correctly” and state our aims and decisions more clearly.

C:

1) We explicitly state the aims of the study at the end of “Section 1: Introduction”, Lines 56-58:

Section 3.3 summarizes the timing results with ADCIRC v55, highlighting its computational efficiency using a semi-implicit time-integration scheme. In summary, this study aims to: 1) highlight improvements to the treatment of the governing equations and implicit time-integration in the new version of ADCIRC (v55), and 2) explore the effects of unstructured mesh design on storm tide solutions.

2) In “Section 2.4: Datasets and Model Setup”. At the end of the first paragraph which specified the bathymetric data used as well as other data use in the model setup, we propose to add the following sentences that outline how we specified the bottom friction and the internal wave drag coefficients and the reasons for this (Lines 193-201):

We note here that the accuracy of global tidal solutions strongly depends on the quality of the bathymetric data, the internal wave drag tensor, and the bottom stress term which can all be tuned to minimize tidal errors (Pringle et al., 2018a, Lyard et al., 2020). Since this study is focused on the effects of mesh design and the improvements to the governing

equations in the new version of the ADCIRC model, we deliberately avoided excessive tuning of the model with the aim to minimize tidal solution errors. Instead we chose to use a global constant value of C_{it} which gives the same available potential tidal energy as compared to the TPX09-Atlas, and employ a global constant C_f of 0.0025 except in the Indian Ocean and Western Pacific Ocean where it is spatially varying per the specifications by a previous study of ours (Pringle et al., 2018a) (see Sect. S2 for additional details of model specifications).

3) We included additional details on the model properties that affect tide solutions into “Section 4: Discussion”:

Lines 378-380:

Indeed, a recent study conducts a 432-member ensemble of perturbations to bathymetric depths, and bottom friction and internal wave drag coefficients to obtain smaller tidal errors than this study, particularly in shallow water (Lyard et al, 2020).

Lines 402-407:

Last, it is widely recognized that sensitivities to local high resolution bathymetry datasets, internal tide wave drag, and spatially varying bottom friction and surface ice friction are important (Lefevre et al., 2000; Le Bars et al., 2010; Zaron, 2017; Pringle et al., 2018a; Zaron, 2019; Lyard et al., 2020) likely more so than the mesh resolution effects that we concentrate on here. We aim to develop a unified framework for globally calibrating spatially varying internal tide wave drag and bottom friction coefficients with improved local high resolution bathymetric datasets in future work. Doing so should result in smaller storm tide elevation discrepancies especially in shallow water (e.g., Lyard et al., 2020).

R: -L35: I would indicate somewhere that all these studies neglected the contribution of short waves, although this process can drive a “regional setup” (i.e. a storm surge extending outside surf zone) reaching 0.5 m (e.g. Fortunato et al., 2017).

A: We added the following sentence following the citation to these previous studies on extreme sea levels.

C: Line 35-37: *Note that these previous studies neglected the contributions to extreme sea levels by short waves that can drive a significant regional setup (e.g., Fortunato et al., 2017).*

R: -L73: as the model is used to compute storm surges, you should explain how C_d is computed/which bulk formula is used.

A: We define C_d on Line 84 (old L83) so we added the drag law formulation information to that line.

C: Line 87 (old L83): ... *computed using the Garratt (1977) drag law.*

R: -L100: please explain how much larger

A: This information (Courant number = 5-22 with 120 s time step) is contained within “Section 3.3 Computational Performance” so we modified the sentence to refer the reader to this section for details.

C: Lines 105-107 (old L100): *With a semi-implicit time integration scheme, the computational time step permitted is larger than the CFL constraint and as a result facilitates computationally efficient global simulations (see Sect. 3.3 for details).*

R: -L106: “obtain” rather than facilitate?

C: Line 111 (old L106): changed to *obtain*

R: -L157: Gulf of Mexico rather than Western North Atlantic?

A: The Western North Atlantic here refers to one of the basins where tropical cyclones form and we are including the Gulf of Mexico within that definition of Western North Atlantic. Therefore, we decided not to edit this.

R: -Table 3: please compare with Figure 12 in Lyard et al. (2020), where FES2014 yields errors on $M_2 < 0.5$ cm in deep water and <4 cm on the shelf, that is about one order of magnitude smaller than here.

A: We agree to compare with hydrodynamic FES2014 (Lyard et al., 2020) here but we take numbers from Table 1 in Lyard et al. (2020) which gives the overall RMS of the vector difference which we can compare to our numbers shown in the Table 3 (the errors are

greater than the reviewer states). We also realize that the Ngodock et al. (2016); Schindelegger et al. (2018); Lyard et al. (2020) are computing errors only for latitudes equatorward of $\pm 66^\circ$, so we included our result for within these latitudes as well (results are not that different). We also add some two sentences to “Section 3.1.1: Validation of the Reference Mesh” commenting on the comparison to the FES2014 results.

C:

1) New Table 3:

Table 3. $\overline{\text{RMSE}}_t$ [cm] (c.f., Appendix A) values for simulated tidal results using ADCIRC v55 (upgrade) and ADCIRC v54 in deep ($h > 1$ km) and shallow ($h < 1$ km) waters on the Ref mesh. Results from other forward barotropic tidal models (Stammer et al., 2014; Ngodock et al., 2016; Schindelegger et al., 2018; Lyard et al., 2020) are included for comparison where known.

Model	Latitudes	$M_2 \overline{\text{RMSE}}_t$ [cm]		$\overline{\text{RMSE}}_{t tot}$ [cm]	
		Deep water	Shallow water	Deep water	Shallow water
ADCIRC v54	All	6.5	18.5	7.92	22.1
ADCIRC v55	All	2.87	13.9	3.89	17.2
ADCIRC v55	$\leq \pm 66^\circ$	2.85	14.7	3.81	18.2
Stammer et al. (2014)*	All	5.25-7.76	18.6-27.9	-	-
Ngodock et al. (2016)*#	$\leq \pm 66^\circ$	2.6-3.2	-	-	-
Schindelegger et al. (2018)*	$\leq \pm 66^\circ$	4.4	14.6	-	-
Lyard et al. (2020)**	$\leq \pm 66^\circ$	1.53	6.44	-	-

*: $\overline{\text{RMSE}}_t$ is computed against TPXO8-Atlas rather than TPXO9-Atlas.

#: Uses state ensemble Kalman Filter (perturbed data assimilation).

** : $\overline{\text{RMSE}}_t$ results for hydrodynamic FES2014 computed against satellite cross-over points.

2) Modified Lines 225-234 (end of Section 3.1.1): **The deep ocean M_2 RMSEt = 2.87 cm** (Table 3) is smaller than for the majority of previously non-assimilated barotropic tidal models (Stammer et al., 2014; Schindelegger et al., 2018), and within the range of errors computed for solutions obtained by embedding a state ensemble Kalman Filter (perturbed data assimilation) into a forward ocean circulation model (Ngodock et al., 2016). The recent study by Lyard et al. (2020) carefully tunes local bathymetric data and dissipation parameters (Cf and Cit) to obtain smaller errors (M_2 RMSEt = 1.53 cm) than presented here. As noted in Sect. 2.4, in this study we deliberately avoided excessive tuning of the model with the aim to minimize tidal solution errors. Nevertheless, the 5-constituent total tidal error, $\text{RMSEt}|_{tot}$, is less than 4 cm in the deep ocean. In shallow regions, the M_2 RMSEt is 13.9 cm, which is essentially the same as presented in Schindelegger et al. (2018), but significantly greater than in Lyard et al. (2020). The total tidal error in shallow water, $\text{RMSEt}|_{tot}$ is 17.2 cm, but note that the area-weighted median value of shallow water $\text{RMSEt}|_{tot}$ (c.f. Appendix A) is just 6.63 cm.

R: -L249: as shown by several studies (e.g. Townend and Pethick, 2002) and synthesized in Idier et al., (2019), representing flooding in storm surge models results in lower water levels seaward compared to simulations where the flooding is not represented.

Therefore, I expect that water levels in the present simulations are biased high due to this process, possibly by 0.5 to 1.0 m considering previous studies on the topic.

A: We agree with the point that you raised regarding that including inundation in the simulation would result in lower water levels seaward. In other words, the maximum coastal water levels shown in Figure 9 are likely biased high. However, here we are comparing to high water marks (HWM) measured on land using the closest modeled wet point. Runup onto the land can amplify the water levels beyond those recorded seaward, but since our simulated results at the coast are likely biased high there is a degree of cancellation involved. Nevertheless, we noted that our closest wet point results might only follow the lower envelope of HWMs as noted by Mori et al. (2014) since the amplification could be greater than the low bias due to not simulating inundation especially in the presence of steep topography.

C: Added to the end of Lines 267-268 (old L249): ... (although ignoring inundation in our simulations is expected to overestimate the seaward maximum storm tide heights (Idier et al., 2019) that likely cancels out some of the otherwise low bias when compared to HWMs).

R: -L256: please refer to Bricker and Roeber (2015) who showed that Haiyan also drove very large infragravity waves, which could explain the large scatter on HWMs observed.

A: Thank you, it is a good idea to point out the large scatter in the HWM measurements and this potentially being related to infragravity wave generation over reefs.

C: Added to end of paragraph on Lines 274-276 (after old L256): [The large scatter present in the HWM measurements \(SD \$\approx\$ 1.3 m for all MinEle\) could be related to the generation of infragravity waves over fringing reefs in the region leading to amplified coastal runup \(Roeber and Bricker, 2015\).](#)

R: -Figure 11: for Katrina, the model displays a 0.5 m negative bias before the surge peak, could the authors comment on the possible causes? Could it be related to the 2DH approach which only allows for a crude representation of Ekman transport?

A: On lines 261-264 of the original manuscript we noted that this negative bias could have been due to the neglect of the regional wave setup since a previous ADCIRC-based study that coupled to short waves better matched the time series before the surge peak (Roberts and Cobell, 2017). However, after subsequent simulations by our group on separate but related research, we do not think that this bias is mostly attributable to the insufficient generation of the surge forerunner (e.g., Kennedy et al., 2011). This fact indeed arises from the crude representation of Ekman transport by the 2DH approach as the reviewer surmises, but the negative effect can be mitigated by setting the bottom friction coefficient to a very small value on the shelf. The previous studies by Bunya et al. (2010) and Roberts and Cobell (2017) used a Manning's formulation for the bottom friction coefficient (where $n \sim 0.02$ in the ocean) which leads to very small values of the C_f on the continental shelf (~ 50 -200 m deep).

C: Changed the old lines 261-264 to the following (new Lines 283-289): [We think that this negative bias is mostly attributable to the insufficient generation of the surge forerunner and partly also to the omission of regional wave setup. The surge forerunner is generated through the Ekman setup process \(Kennedy et al., 2011\) which is crudely represented by the depth-averaged model used here. Previous depth-averaged ADCIRC-based studies that used a Manning's bottom friction formulation so that \$C_f\$ becomes very small on the continental shelf appear to be better able to generate the surge forerunner, as well as employing wind wave-coupling that generates wave setup, indeed show better agreement with the time series prior to the peak storm tide \(Bunya et al., 2010; Roberts and Cobell, 2017\).](#)

R: -L357: please correct "are be able"

C: Line 398 (old L357): ... [are able to](#) ...

R: -L376: I'm not sure that this conclusion is very robust based on a model that does not represent flooding (see my previous comment).

A: We agree with your comment that when including inundation in the simulation the seaward maximum storm tide heights would be decreased. So, we modified parts of paragraph in paragraph 4 of "Section 4: Discussion" in addition to this line in "Section 5: Conclusions" to comment on this potential effect, noting that the coarser models would have a greater coastal flooding potential.

C:

1) Lines 389-393: [In practice, higher peak storm tide heights in coarser models translates to greater coastal flooding potential. Including inundation in the model would decrease the storm tide elevations along the coast \(Idier et al., 2019\) perhaps leading to more similar coastal storm tide elevations between the different mesh resolutions since more flooding may occur in the coarser model. Overall, the impacts of mesh resolution on the HWM errors were relatively small, especially for Super Typhoon Haiyan. However, the ...](#)

2) Line 419 (Old L376): We found that in general, peak storm tide elevations along the open coast are decreased [\(therefore the coastal flooding potential is decreased\)](#) ...

Dear Reviewer #2,

Thank you for taking the time to read through and comment on our manuscript. Here, we give a point-by-point response to all your comments and detail our proposed changes to the manuscript.

R: Reviewer's comment

A: Author's response

C: Proposed changes to the manuscript; text changes in blue

[All references that we cite herein can be found in the reference list of the modified manuscript.]

R: This paper presents the performance of a new version of ADCIRC on simulating global tides and storm surges, highlighting a mesh design with key parameters identified through experiments, capability of local refinements for extreme events, and improved efficiency brought by updated numerical treatment. The paper is well organized, and the topic is in line with the scope of GMD. The clear improvement over earlier versions of ADCIRC is surely of interest to existing and potential ADCIRC users. The conclusions and recommendations drawn from the experiments on mesh design and local mesh refinement are valuable for unstructured-grid modelers in general. There are a few items to be clarified and issues to be addressed (listed below), and my recommendation is "minor revisions"

A: Thank you for your positive comments. We aim to fully address each of your identified issues as detailed below.

R: Stability constraint:

The paragraph starting from Line 303 mentions that smaller time steps are required for locally refined meshes used in the Katrina and Haiyan simulations. How did you decide on an appropriate dt for each simulation? For ADCIRC users, what is an effective way to find the optimal dt for a mesh with local refinements?

Clearly defining the stability condition is generally difficult for complex models, but the users may need a bit more guidance and reference in choosing the time step. If you have additional benchmark tests or applications (done by ADCIRC v55) besides the three configurations mentioned on Line 305-307, please list their grid resolutions and time steps in a table (maybe in the supplemental materials).

Also, consider mentioning the typical grid resolution for global simulations on Line 101. Mention the typical resolution of the refined meshes on Line 384.

A: We agree that it would be very helpful to know what the "optimal" dt would be for a certain mesh. In the supplementary we conducted the stability analysis to determine what is the stability constraint under the linear 1-D conditions (Sect. S1.5). However, this only provides us knowledge of the maximum value of the product of dt and the numerical parameter, tau0 (for linear stability). Thus, the dt we set for each of the tropical cyclone simulations was actually found by trial-and-error while keeping the ratio of dt and tau0 constant (see Sect. S2.1).

The reason that higher resolution meshes may need a smaller time step could be related to the CFL condition based on the fluid velocity (instead of the gravity wave speed).

Considering the maximum fluid velocity *a priori* is not obvious but if we back out the results and consider Cr = 1 to be the stability criteria then for the two tropical cyclone tests we have (note that the values of dx listed are the actual minimum element edgelengths of the mesh while MinEle is the nominal minimum resolution. The stable dt for each mesh is listed in the Sect. S2.1):

$$Cr = U * dt / dx = > U = Cr * dx / dt:$$

- MinEle = 1.5 km (both) : $U = 1 * 300 \text{ m} / 120 \text{ s} = 2.5 \text{ m/s}$
- MinEle = 500 m (Haiyan) : $U = 1 * 98.4 \text{ m} / 80 \text{ s} = 1.3 \text{ m/s}$
- MinEle = 500 m (Katrina) : $U = 1 * 135 \text{ m} / 120 \text{ s} = 1.1 \text{ m/s}$
- MinEle = 150 m (Haiyan) : $U = 1 * 64.2 \text{ m} / 30 \text{ s} = 2.2 \text{ m/s}$
- MinEle = 150 m (Katrina) : $U = 1 * 91.1 \text{ m} / 50 \text{ s} = 1.8 \text{ m/s}$

The value of U to use in the CFL condition varies by around a factor of 2 between the meshes but this is at least superior to an order of magnitude estimate. Based on the results of these tests, setting $U \approx 2.5 \text{ m/s}$ in the CFL condition may be a reasonable guideline to determining a stable dt for ADCIRC simulations using the semi-implicit time

integration. However, this is only a guideline and surely does not guarantee stability. It is also unclear how well this will translate into simulations with more wetting-drying.

C:

1) We added this information on velocity-based CFL criteria listed above into the supplementary Sect. S2.1, lines 199-211:

5. dt is set to approximately the largest value that enables reliably stable simulations based on experience and trial-and-error. Although the linear CFL condition is satisfied unconditionally, nonlinear terms introduce instabilities on finer meshes in shallow depths, and could be related to the CFL condition based on the fluid velocity (instead of the gravity wave speed), i.e., $Cr = U_{max} * dt / dx$. dt = 120 s was used for all simulations on the global mesh without local refinement, while the stable dt was generally smaller for the storm tide simulations on the meshes with local refinement. Hurricane Katrina: dt = 120 s on the MinEle = 500-m mesh, and dt = 50 s on the MinEle = 150-m mesh. Super Typhoon Haiyan: dt = 80 s on the MinEle = 500-m mesh, and dt = 30 s on the MinEle = 150-m mesh. Based on these results and rearranging the CFL condition for the maximum fluid velocity, U_{max} with Cr set to 1 as the stability criteria and using the actual minimum element edgelengths of the mesh (rather than the nominal minimum resolution, MinEle) we obtain $U_{max} = 1.1-2.5$ m/s. Therefore, setting U_{max} to 2.5 m/s in the fluid velocity-based CFL condition could be used as a guideline for determining a stable dt for ADCIRC simulations using the semi-implicit time integration. However, this is only a guideline and does not guarantee stability. The corresponding ADCIRC 'fort.15' control file parameter for dt is DTDP (<https://wiki.adcirc.org/wiki/DTDP>).

2) We modified Lines 382-383 (old line 349) to add the reference to Sect. S2.1:

Nevertheless, we found that the numerically stable time step decreases as coastal mesh resolution becomes finer (see Sect. S2.1 for details on setting the time step), which increases computational time.

2) Lines 105-107 (old line 101): With a semi-implicit time integration scheme, the computational time step permitted is larger than the CFL constraint and as a result facilitates computationally efficient global simulations on meshes that have nominal minimum resolutions of 150 m-1.5 km (see Sect 3.3 for details).

3) Line 427 (old line 384): (nominal minimum resolution of 500 m and 150 m)

R: Solution variability with time step:

When model simulations are stable, is there any solution variability with time step? For example, if two simulations are conducted on a same locally refined mesh, one with dt=90 s and another with dt=25 s (values chosen from the suggested range on Line 384), would there be any noticeable difference in the model results (e.g., the timing and elevation of the simulated storm peak)? If not, please add one or two sentences where appropriate to note this.

A: From a limited additional test set we do not see noticeable differences between solutions using different time steps since even the larger 120 s time step is still much smaller than the period of the shallow water waves. We also verified that ADCIRC temporal discretization errors are much smaller than spatial discretization errors in Roberts et al. (2019b) [Section 3.5.2 of that paper]. Variations due to the time step could nevertheless become more apparent when significant wetting-drying occurs since the methodology used in ADCIRC assumes that only one dry element adjacent to a wet element can become wet (and vice-versa for drying) per computational time step.

C: Added this note in paragraph 4 of "Section 4: Discussion" Lines 383-386: [Note that additional tests \(not shown\) were conducted, and these demonstrated that the computational time step used for the same mesh had a negligible effect on storm tide elevation solutions. However, this may not transfer as well for simulations where there is significant wetting-drying due to the one element per time step wetting-drying logic used.](#)

R: Solution variability with mesh resolution:

The effect of mesh resolution on peak elevation and timing is mentioned multiple times in the paper ("Abstract", Section 3.2.2, and "Conclusion"). Do you have any hypothesis on the mechanism behind this? Could it be that the wave speeds are slightly different due to the difference in model bathymetry (because the resolutions of the mesh are different); or the numerical scheme behaves differently under different Courant numbers?

A: We think that this is primarily related to the bathymetry and the geometric representation of shoreline boundary (physical approximation errors) which results in the

slightly different wave speeds and wave transformation as the reviewer mentions. Our previous work presented in Roberts et al. (2019b) details these effects. For instance, we showed that the error of the polygonal area of the mesh increases geometrically as the minimum shoreline resolution is coarsened [Figure 4 of Roberts et al. (2019b)]. Similarly, we also showed that the volumetric error of the mesh increases geometrically with mesh coarsening [Figure 7 of Roberts et al. (2019b)]. Section 3.5.2 of Roberts et al. (2019b) discusses the relative make-up of numerical discretization errors versus the aforementioned physical approximation errors for astronomical tide solutions. The findings concluded that ADCIRC numerical discretization errors are non-trivial but generally less significant than the physical approximation errors associated with mesh refinement/coarsening along shorelines and topographic gradients.

C: We added a small note on this to “Section 4: Discussion” on Lines 386-389: [The impact of mesh refinement clearly tends to decrease open ocean storm tide elevations in open ocean areas and the timing of the peak occurs later. This could be attributed to larger physical approximation errors of the shoreline geometry and bathymetry with mesh coarsening \(c.f. Roberts et al., 2019b\) leading to slightly different wave speeds and wave transformation.](#)

R: Improved accuracy compared to the prior version:

The “Discussion” section focuses on mesh configuration but does not explain the clear improvement between the two model versions on a same ref mesh (Fig. 6ab). Among the numerical improvements from v54 to v55, how does each of them contribute to the improved accuracy (mentioned in Section 3.1.1)? Which one is the main factor? Please add a few sentences or a paragraph to discuss this.

A: The reason for the improvement is due to the changes to the governing equations which is discussed in detail in supplementary Sect. S1.2. To summarize, the form of the equations (particularly the continuity equation) solved in the old version of ADCIRC did not correctly consider the curvature on the spherical Earth, so it was technically only valid for “small” domains.

C: We added a paragraph to the beginning of “Section 4: Discussion” to make this clear (Lines 345-351): [The new version of ADCIRC \(v55\) demonstrated improved tidal solutions compared to the previous versions of ADCIRC \(denoted as ADCIRC v54\). This is because ADCIRC v54 does not solve the correct form of the governing equations in Spherical coordinates and is thus technically valid only for sufficiently small regional domains \(see Sect. S1.2 for more details on this comparison\). For instance, this old form of the governing equations appears to be sufficient for the western North Atlantic Ocean regional domain, which has been thoroughly validated using ADCIRC since Westerink et al. \(1994\). The changes made in ADCIRC v55 make it suitable for simulating larger domains, in particular the global domains that we investigated in this study.](#)

R: Local model error:

I agree with Anonymous Referee #1 on that the large local errors (especially those nearshore) need to be discussed and explained, so that the readers/users can have a good understanding of the limitation of this model.

A: Please refer to our first reply to Anonymous Referee #1 for a detailed response to this comment. In essence, we do not think that the presence of some larger local errors is a result of a structural error of the model. Instead, such errors are predominantly related to a combination of imperfect bathymetric data and dissipation approximations that can be “tuned” in a way to further reduce the error. We also added some lines throughout the manuscript to address this as detailed in our second reply to Anonymous Referee #1.

R: Technical corrections:

Line 29: “FMV” should be “FVM”.

Line 252: “match”.

Line 357: “are able to”.

C: Made these corrections.

Global Storm Tide Modeling with ADCIRC v55: Unstructured Mesh Design and Performance

William J. Pringle¹, Damrongsak Wirasaet¹, Keith J. Roberts², and Joannes J. Westerink¹

¹Department of Civil and Environmental Engineering and Earth Sciences, University of Notre Dame, IN, USA

²School of Marine and Atmospheric Science, Stony Brook University, NY, USA.

Correspondence: William J. Pringle (wpringle@nd.edu)

Abstract. This paper details and tests numerical improvements to ADCIRC, a widely used finite element method shallow water equation solver, to more accurately and efficiently model global storm tides with seamless local mesh refinement in storm landfall locations. The sensitivity to global unstructured mesh design was investigated using automatically generated triangular meshes with a global minimum element size (MinEle) that ranged from 1.5 km to 6 km. We demonstrate that refining resolution based on topographic seabed gradients and employing a MinEle less than 3 km is important for the global accuracy of the simulated astronomical tide. Our recommended global mesh design (MinEle = 1.5 km) based on these results was locally refined down to two separate MinEle (500 m and 150 m) at the coastal landfall locations of two intense storms (Hurricane Katrina and Super Typhon Haiyan) to demonstrate the model's capability for coastal storm tide simulations and to test the sensitivity to local mesh refinement. Simulated maximum storm tide elevations closely follow the lower envelope of observed high water marks (HWMs) measured near the coast. In general, peak storm tide elevations along the open coast are decreased and the timing of the peak occurs later with local coastal mesh refinement. However, this mesh refinement only has a significant positive impact on HWM errors in straits and inlets narrower than the MinEle, and in bays and lakes separated from the ocean by these passages. Lastly, we demonstrate that the computational performance of the new numerical treatment is one-to-two orders of magnitude faster than studies using previous ADCIRC versions because gravity-wave based stability constraints are removed allowing for larger computational time steps.

1 Introduction

Extreme coastal sea levels and flooding driven by storms and tsunamis can be accurately modeled by the shallow water equations (SWEs). The SWEs are often numerically solved by discretizing the continuous equations using unstructured meshes with either finite volume methods (FVM) or finite element methods (FEM). These unstructured meshes can efficiently model the large range in lengthscales associated with physical processes that occur in the deep ocean to the nearshore region (e.g. Chen et al., 2003; Westerink et al., 2008; Zhang et al., 2016; Le Bars et al., 2016; Fringer et al., 2019), although many difficulties for large-scale ocean general circulation modeling remain (Danilov, 2013). However, for barotropic flows that are largely responsible for extreme coastal sea levels, the capability to model the global scale concurrently with local coastal scales resolved in sufficient detail so that emergency planning and engineering decisions can be made is well within reach. Further-

25 more, barotropic global storm tide models can be used as components of Earth System Models to analyze risks posed by the long-term response of extreme sea level and coastal flooding to climate change in far greater detail than currently possible (Bouwer, 2018; Vousdoukas et al., 2018).

A key practical advantage of ocean models discretized using FEM as compared to FVM is that they are usually less sensitive to mesh quality (e.g., element skewness). Specifically, ocean models discretized using ~~FMV~~-FVM often use staggered C-
30 grid arrangements (e.g., Delft-FM) that have strict grid orthogonality requirements for numerical accuracy (Danilov, 2013; Fringer et al., 2019). The orthogonal requirement makes mesh generation over wide areas with fractal shoreline boundaries an arduous task and is difficult to automate, although progress has been made (Herzfeld et al., 2020; Hoch et al., 2020). Despite the difficulties, the FVM Delft-FM (Flexible Mesh) based Global Tide and Surge model (GTSM) (Verlaan et al., 2015), has been meticulously developed and widely used to generate reanalysis datasets, describe historical trends, and make projections
35 of extreme sea levels (Muis et al., 2016; Vousdoukas et al., 2018; Muis et al., 2019; Dullaart et al., 2019). Note that these previous studies neglected the contributions to extreme sea levels by short waves that can drive a significant regional setup (e.g., Fortunato et al., 2017). The minimum (coastal) resolution of GTSM has been historically limited to ~5 km but recently upgraded to 2.5 km (1.25 km in Europe) (Dullaart et al., 2019).

In the absence of constraints on orthogonality or element skewness, automatically generating unstructured triangular meshes
40 on the spherical Earth that accurately conform to the coastline and cover a wide-range of spatial scales [O(10 m)-O(10 km)] is completely realisable (Legrand et al., 2000; Gorman et al., 2006; Lambrechts et al., 2008; Roberts et al., 2019a). In one study, automatically generated ocean basin-scale meshes with variable element sizes (50 m to 10 km) were used to conduct dozens of numerically stable FEM simulation experiments without mesh hand-edits or numerical limiters (Roberts et al., 2019b). The ability of FEM models to handle rapid transitions in mesh element sizes combined with the ease of mesh generation with
45 modern technologies (e.g., Roberts et al., 2019a) enables the application of seamless local refinement directly into the global mesh where required, potentially on-the-fly based on atmospheric and ocean conditions that indicate a risk of coastal flooding.

This study conducts a systematic analysis of unstructured mesh design in order to assess and demonstrate the capabilities of global storm tide modeling using FEMs across multi-resolution scales spanning from the deep ocean to the nearshore coastal ocean environment. One outcome of this study is a recommendation of unstructured triangular-element mesh design of the
50 global ocean that represents the barotropic physics with high fidelity using relatively few elements (Sect. 3.1). Moreover, we test the added benefit of seamless local refinement in storm landfall regions to the simulation of storm tides (Sect. 3.2). Mesh generation is handled by the OceanMesh2D toolbox (Roberts et al., 2019a) which provides the tools to explore the effects of mesh design in a systematic way. For simulation we use the ADvanced CIRCulation (ADCIRC) model (Luettich and Westerink, 2004), which has been updated in this study for efficiency and to correctly model the SWEs on the sphere (Sect. 2.1); set for
55 release as version 55. Section 3.3 summarizes the timing results with ADCIRC v55, highlighting its computational efficiency -using a semi-implicit time-integration scheme. In summary, this study aims to: 1) highlight improvements to the treatment of the governing equations and implicit time-integration in the new version of ADCIRC (v55), and 2) explore the effects of unstructured mesh design on storm tide solutions.

2 Methods and Experiment

60 2.1 Global Finite Element Storm Tide Model

The ADCIRC storm tide model used in this study is a FEM solver that has been extensively used for detailed hurricane inundation studies at local or regional scales (e.g., Westerink et al., 2008; Bunya et al., 2010; Hope et al., 2013), and as an operational storm tide forecast model run by the U.S. National Oceanic and Atmospheric Administration (NOAA) (Funakoshi et al., 2011; Vinogradov et al., 2017). ADCIRC solves the SWEs that are composed of primitive continuity and non-conservative
65 depth-averaged momentum equations under astronomical and atmospheric forcing. After neglecting radial velocity terms, we formulate these equations in spherical coordinates as follows (Kolar et al., 1994),

$$\frac{\partial \zeta}{\partial t} = -\frac{1}{R \cos \phi} \left[\frac{\partial(UH)}{\partial \lambda} + \frac{\partial(VH \cos \phi)}{\partial \phi} \right] \quad (1)$$

$$\begin{aligned} \frac{\partial U}{\partial t} + \frac{g}{R \cos \phi} \frac{\partial \zeta}{\partial \lambda} = & -\frac{U}{R \cos \phi} \frac{\partial U}{\partial \lambda} - \frac{V}{R} \frac{\partial U}{\partial \phi} - \frac{1}{R \cos \phi} \frac{\partial \Psi}{\partial \lambda} - (\mathcal{C}_{\lambda\phi} - f')V + \frac{\tau_w U_w}{\rho_0 H} - \left(\frac{\tau_b}{\rho_0 H} + \mathcal{C}_{\lambda\lambda} \right) U \\ & + \frac{1}{RH} \left[\frac{1}{\cos \phi} \frac{\partial \tau_{\lambda\lambda}}{\partial \lambda} + \frac{\partial \tau_{\lambda\phi}}{\partial \phi} - \tan \phi (\tau_{\lambda\phi} + \tau_{\phi\lambda}) \right] \end{aligned} \quad (2)$$

$$\begin{aligned} 70 \quad \frac{\partial V}{\partial t} + \frac{g}{R} \frac{\partial \zeta}{\partial \phi} = & -\frac{U}{R \cos \phi} \frac{\partial V}{\partial \lambda} - \frac{V}{R} \frac{\partial V}{\partial \phi} - \frac{1}{R} \frac{\partial \Psi}{\partial \phi} - (\mathcal{C}_{\phi\lambda} + f')U + \frac{\tau_w V_w}{\rho_0 H} - \left(\frac{\tau_b}{\rho_0 H} + \mathcal{C}_{\phi\phi} \right) V \\ & + \frac{1}{RH} \left[\frac{\partial \tau_{\phi\phi}}{\partial \phi} + \frac{1}{\cos \phi} \frac{\partial \tau_{\phi\lambda}}{\partial \lambda} + \tan \phi (\tau_{\lambda\lambda} - \tau_{\phi\phi}) \right] \end{aligned} \quad (3)$$

where ζ is the free surface, U and V are the depth-averaged zonal and meridional velocities respectively, H is the total water depth, t is time, λ is longitude, ϕ is latitude, R is the radius of the Earth, and ρ_0 is the reference density of water. Additional terms are defined as follows,

$$75 \quad \Psi = \frac{p_s}{\rho_0} - g\eta \quad : \text{external pressure and astronomical forcing}$$

$$f' = 2\Omega \sin \phi + \frac{\tan \phi}{R} U \quad : \text{Coriolis + component of advection expanded in spherical coordinates}$$

$$\tau_w = \rho_s C_D \sqrt{U_w^2 + V_w^2} \quad : \text{quadratic surface stress due to winds}$$

$$\tau_b = \rho_0 C_f \sqrt{U^2 + V^2} \quad : \text{quadratic bottom stress due to friction}$$

$$\mathcal{C} = \begin{pmatrix} \mathcal{C}_{\lambda\lambda} & \mathcal{C}_{\lambda\phi} \\ \mathcal{C}_{\phi\lambda} & \mathcal{C}_{\phi\phi} \end{pmatrix} \quad : \text{internal wave drag tensor}$$

$$80 \quad = C_{it} \frac{[(N_b^2 - \omega^2)(N_m^2 - \omega^2)]^{1/2}}{4\pi\omega} \begin{pmatrix} (\nabla h_\lambda)^2 & \nabla h_\lambda \nabla h_\phi \\ \nabla h_\lambda \nabla h_\phi & (\nabla h_\phi)^2 \end{pmatrix} \quad [\text{local generation formulation}]$$

$$\tau = \begin{pmatrix} \tau_{\lambda\lambda} & \tau_{\lambda\phi} \\ \tau_{\phi\lambda} & \tau_{\phi\phi} \end{pmatrix} : \text{lateral stress tensor}$$

$$= \begin{pmatrix} 2\nu_t H \frac{1}{R \cos\phi} \frac{\partial U}{\partial \lambda} & \nu_t H \frac{1}{R \cos\phi} \frac{\partial V}{\partial \lambda} \text{ or } \nu_t H \left[\frac{1}{R} \frac{\partial U}{\partial \phi} + \frac{1}{R \cos\phi} \frac{\partial V}{\partial \lambda} \right] \\ \nu_t H \frac{1}{R} \frac{\partial U}{\partial \phi} \text{ or } \nu_t H \left[\frac{1}{R} \frac{\partial U}{\partial \phi} + \frac{1}{R \cos\phi} \frac{\partial V}{\partial \lambda} \right] & 2\nu_t H \frac{1}{R} \frac{\partial V}{\partial \phi} \end{pmatrix}$$

85 where p_s is the surface air pressure, g is the gravitational acceleration, η is the summation of the equilibrium tidal potential and self-attraction and loading (SAL) tide (Ray, 1998), Ω is the angular speed of the Earth, R is the radius of the spherical Earth, C_D is the quadratic wind drag coefficient [computed using the Garratt \(1977\) drag law](#), ρ_s is the density of air at the ocean surface, U_w and V_w are the zonal and meridional 10-m wind velocities respectively, and C_f is the quadratic bottom friction coefficient. \mathcal{C} is the internal wave drag tensor that accounts for the energy conversion from barotropic to baroclinic

90 modes through internal tide generation in the deep ocean (Garrett and Kunze, 2007). Here, the local generation formulation is used (cf. Pringle et al., 2018a, b), in which C_{it} is a global tuning coefficient, N_b and N_m are the seabed and depth-averaged buoyancy frequencies respectively, ω is set to the angular frequency of the M_2 tide, and ∇h_λ , ∇h_ϕ are the zonal and meridional topographic gradients respectively. Last, τ denotes the lateral stress tensor with ν_t denoting the lateral mixing coefficient. The components $\tau_{\lambda\phi}$ and $\tau_{\phi\lambda}$ can be chosen to be either symmetric or non-symmetric as desired (Dresback et al., 2005). For this

95 study we choose the symmetric option.

To properly compute the governing equations on the spherical Earth in the FEM framework used by ADCIRC, we have upgraded the model formulation and code as detailed in Sect. S1 of the supplementary document. This involves rotating the Earth so that the pole singularity is removed (Sect. S1.3) before applying a rectilinear mapping projection to transform the governing equations into a Cartesian form with spherical-based corrections to the spatial derivatives (Sect. S1.1). Here, the

100 continuity equation is multiplied by a factor dependent on the choice of cylindrical projection used (e.g., Mercator) to produce a conservative form that leads to discrete mass conservation and stability (cf. Hervouet, 2007; Castro et al., 2018) (Sect. S1.2). The stability of the ADCIRC solution scheme (Sect. S1.4) was analyzed in one-dimensional linear form (Sect. S1.5) to provide guidelines for the choice of numerical parameters that can be chosen to remove the gravity-wave based (CFL) constraint. The validity of this analysis in the 2D nonlinear form has been demonstrated through the numerical simulations presented

105 in this paper. With a semi-implicit time integration scheme, ~~computational time steps (up to 120s) permitted are much the~~ [computational time step permitted is](#) larger than the CFL constraint and as a result ~~facilitate~~ [facilitates](#) computationally efficient global simulations ~~-on meshes that have nominal minimum resolutions of 150 m-1.5 km (see Sect. 3.3 for details)~~. Hereafter, the updated code in this study refers to the new release, ADCIRC v55. Solutions using the uncorrected model formulation are referred to by the previous version, ADCIRC v54.

110 2.2 Unstructured Triangular Mesh Generation on the Earth

The global unstructured meshes in this study are generated automatically using scripts with Version 3.0.0 of OceanMesh2D (Roberts et al., 2019a; Pringle and Roberts, 2020). No post-processing hand-edits of any mesh were necessary to [facilitate](#)

Table 1. The mesh size functions used to spatially distribute element resolution, E_R . The variable parameter in each function is indicated by α .

Code	Long Name	Function Expression
MinEle	Nominal minimum element size bound	$E_R \geq \alpha$
D	Nearest distance-to-shoreline	$E_R = \text{MinEle} + \alpha d_s$
WL	Wavelength-to-element size ratio	$E_R = \frac{T_{M_2}}{\alpha} \sqrt{gh}$
TLS	Topographic-length-scale (using filtered topographic gradients)	$E_R = \frac{2\pi}{\alpha} \frac{h}{ \nabla h^* }$
FL	Low-pass filter length (fraction of barotropic Rossby radius)	$h^* = \mathcal{F}_{lp}(L) * h, \quad L = \alpha \frac{\sqrt{gh}}{f}$
G	Nominal element-to-element gradation limit on resolution	$\Rightarrow \nabla E_R < \alpha$
MaxEle	Nominal maximum element size bound	$E_R \leq \alpha$

d_s : shortest distance to the shoreline, T_{M_2} : period of the M_2 tidal wave, h : still-water depth,

h^* : low-pass filtered h , in which $\mathcal{F}_{lp}(L)$ is the low-pass filter with cutoff length, L .

[obtain](#) numerically stable simulations. Meshes are built in the stereographic projection centered at the North Pole to maintain angle conformity on the sphere and have the elements wrap around the Earth seamlessly including an element placed
115 over the North Pole (Lambrechts et al., 2008). Interested readers can execute “Example_7_Global.m” contained within the OceanMesh2D package to generate their own global mesh in a similar fashion.

Mesh design is handled through mesh size (resolution distribution) functions that are defined on a regular structured grid, usually that of the topo-bathymetric digital elevation model (DEM). In this study we use functions based on distance-to-shoreline, bathymetric depths, and topographic gradients (see Table 1 for definitions). The final mesh size function is found by
120 taking the minimum of all individual functions, and applying nominal minimum and maximum mesh resolution bounds and an element-to-element gradation limiter to bound the transition rate (Roberts et al., 2019a). The effects of the individual mesh size functions and bounds on barotropic tides in a regional model have been previously detailed in Roberts et al. (2019b), which we use to guide our experiments exploring mesh design.

Additionally, this study makes use of the OceanMesh2D “plus” function which seamlessly merges two arbitrary meshes
125 together keeping the finer resolution in the overlapping region. We use this function to apply local mesh refinement to a global mesh in storm-affected coastal regions to better resolve semi-enclosed bays and lakes, inlets, backbays, channels, and other small-scale shoreline geometries.

2.3 Experimental Design

The experimental design we pursue is composed of two distinct steps, both with the purpose to maximize model efficiency
130 while maintaining a threshold of accuracy. First, we begin with a mesh design that we assume is a highly-refined discretization of the Earth in a global sense, and systematically relax the mesh size parameters to reduce the total number of mesh vertices while trying to minimize any negative impacts on global model accuracy. Second, we take the resulting recommended global

Table 2. Summary of the global mesh designs. Each row is separate and made up of three mesh designs for each variable mesh size function parameter, in addition to the Ref mesh design which is the same for each row.

Variable Mesh Size Function Parameter	Design Code				Other Mesh Size Function Parameter Values
	Ref	A	B	C	
MinEle	1.5 km	2.25 km	3 km	6 km	MaxEle = 25 km, WL = 30, D = G = 0.35, TLS = 20, FL = 0
TLS	20	10	5	0 [not used]	MinEle = 1.5 km, MaxEle = 25 km, WL = 30, D = G = 0.35, FL = 0
FL	0 [not used]	1/80	1/20	1/5	MinEle = 1.5 km, MaxEle = 25 km, WL = 30, D = G = 0.35, TLS = 20

mesh design from the previous step, and apply local mesh refinement to increase the coastal resolution in the storm landfalling region and potentially improve local model accuracy.

135 2.3.1 Step 1: Global Mesh Design

In this step, three mesh size function parameters (MinEle, TLS, and FL) are systematically relaxed to coarsen an initially highly-refined discretization of the Earth, termed the reference (Ref) mesh design (c.f., Table 2). In the Ref design, MinEle is set to 1.5 km mainly due to practical constraints (e.g., computer memory usage when generating a global mesh in OceanMesh2D), and MaxEle is set to 25 km because common global meteorological products are defined on ~ 25 km grids (aliasing errors in
140 interpolation of the meteorological input data becomes an issue when a coarser grid is considered). The parameters WL, D, and G are considered fixed for all mesh designs based on prior knowledge that ~ 30 elements per wavelength (WL) is sufficient for global ocean tides (Greenberg et al., 2007), and an element-to-element gradation limit/distance expansion rate (G and D) as high as 0.35 is tolerable as long as the TLS mesh size function is applied (Roberts et al., 2019b). As a note, the FL parameter is used in the construction of the TLS mesh size function to filter out small-scale topographic features (c.f., Table 1) that are
145 potentially unimportant to the local barotropic physics, thus disregarding those features for the application of higher resolution. This study is the first to test the effect of the FL parameter in detail. In each mesh design perturbation, only one of the three parameters is changed while the other parameters are kept identical to those used in the Ref design. For illustration, the spatial distribution of resolution of the Ref design compared to the TLS-B design is shown in Fig. 1.

To assess the effect on the global model accuracy as the mesh designs are coarsened, we compare simulated astronomical
150 tidal solutions to the data-assimilated TPXO9-Atlas. We focus on astronomical tides in this step because they can be reduced to a series of harmonic constituents of well-defined frequencies to make systematic global comparisons (Roberts et al., 2019b; Pringle et al., 2018a). The TPXO9-Atlas is the latest release of the TPXO satellite-assimilated tidal model (Egbert and Erofeeva, 2002). According to Egbert and Erofeeva (2019), the mean M_2 $RMSE_t$ (tidal root-mean-square error, see Appendix A for definition) is 0.5 cm versus Stammer et al. (2014) deep ocean tide gauges and ~ 3 cm versus Stammer et al. (2014) shallow
155 water tide gauges. The metric of comparison between mesh designs is based on the area-weighted empirical cumulative distribution function (ECDF) of the 5-constituent total tidal root-mean-square error, $RMSE_{t|tot}$ (c.f., Appendix A). The two-sample

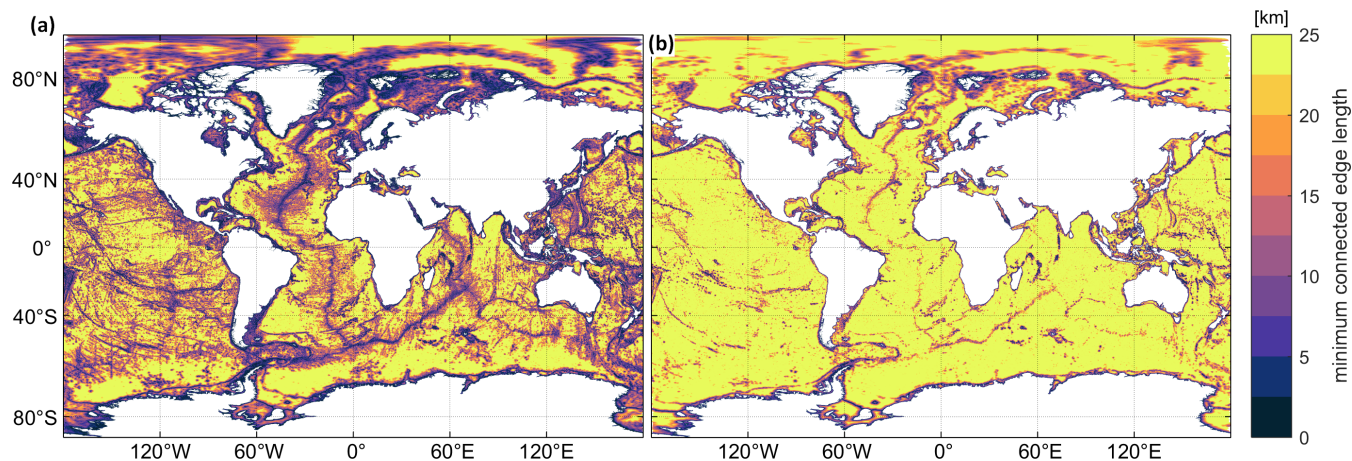


Figure 1. Mesh resolution distribution (defined as the minimum connected element edge length for a mesh vertex) for two global mesh designs. (a) Ref, (b) TLS-B (c.f., Table 2).

Kolmogorov-Smirnov test statistic, K (c.f., Appendix A) is used to provide a single metric of comparison between two ECDF curves.

2.3.2 Step 2: Local Mesh Refinement

160 In this step, the recommended global mesh design from Step 1 (Sect. 2.3.1) is used but with additional patches of high resolution (local mesh refinement) near the landfall location of two storm events. We choose to focus on a particularly significant historical storm event from each of the Atlantic and Pacific ocean basins where tropical cyclones most commonly occur:

1. Western North Atlantic – Hurricane Katrina, August 23-31, 2005. The most severe impact of storm tide induced coastal flooding occurred in the Louisiana/Mississippi region of USA in the northern Gulf of Mexico (URS Group Inc, 2006a, 165 b).
2. Western Pacific – Super Typhoon Haiyan, November 3-11, 2013. The most severe impact of storm tide induced coastal flooding occurred in and around Tacloban, Philippines at the back end of the Leyte Gulf (Mori et al., 2014).

Local mesh refinement is achieved by using OceanMesh2D to automatically merge a locally generated mesh for each landfall region (Louisiana/Mississippi: Fig. 2, Leyte Gulf: Fig. 3) into the global mesh. Two local meshes are generated for each region: 170 one with $\text{MinEle} = 500$ m and another with $\text{MinEle} = 150$ m. The other mesh size function parameters are kept the same as the global mesh design, except that G and D are reduced to 0.25 because the mesh quality generated in the local domain was considered too low with a value of 0.35. Furthermore, the locally refined meshes only add an additional 0.5-3% to the total mesh vertex count compared to the original global mesh design, thus there is limited motivation to use higher values of G and D to try and save on mesh vertices in the local refinement region.

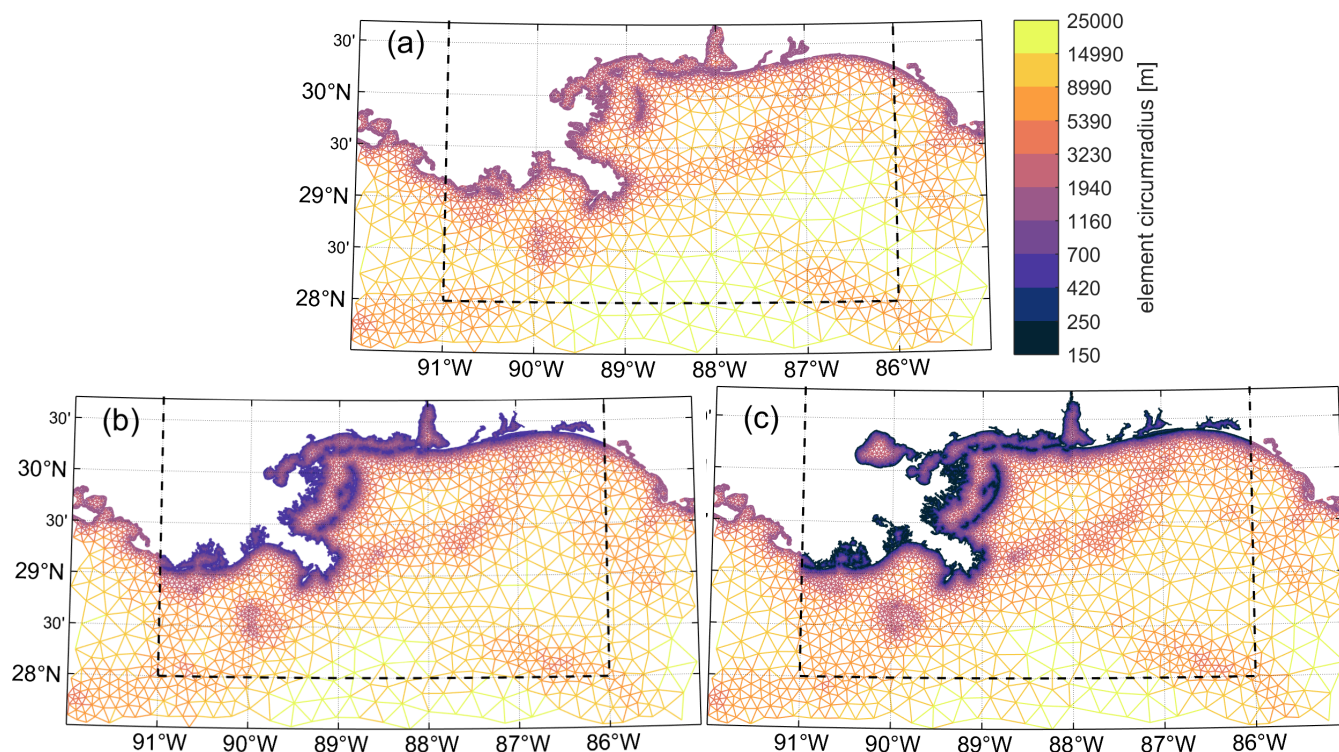


Figure 2. Comparisons of mesh triangulation and resolution (defined as the element circumradius on a Lambert conformal conic projection) in the Hurricane Katrina landfall region around Louisiana/Mississippi, USA. (a) MinEle = 1.5 km (default TLS-B global mesh design), (b) MinEle = 500 m local mesh refinement, (c) MinEle = 150 m local mesh refinement. The black dashed boxes indicate where the local mesh refinement was applied.

175 To assess the accuracy and inter-compare mesh designs, we primarily use the output of the maximum simulated storm tide elevation from each event. For validation we compare to surveys of high-water marks (HWMs) in the landfall regions that are located close to the coast (within 1.5 km of the nearest 150-m locally refined mesh vertex) and attributed primarily to surge for both Katrina (URS Group Inc, 2006a, b) and Haiyan (Mori et al., 2014). Note that for Katrina we add a value of 0.23 m to the simulated storm tide elevations to account for a steric offset and the conversion to NAVD88 vertical datum from local mean sea level (Bunya et al., 2010). No adjustment is made for Haiyan. The standard RMSE, the mean absolute error (MAE) and its standard deviation (SD) are reported. In addition, for Katrina we plot the storm tide time series signal at three coastal NOAA tide gauges with available historical data (IDs: 8735180, 8743281, 8761724). For Haiyan, no reliable time series observations of the main event are available (Mori et al., 2014), so we compare to the astronomical tide reconstructed from TPXO9-Atlas constituents at three selected locations for reference. The geographical location of the HWMs, tide gauges, and selected locations are shown with the results in Sect. 3.2.

180
185

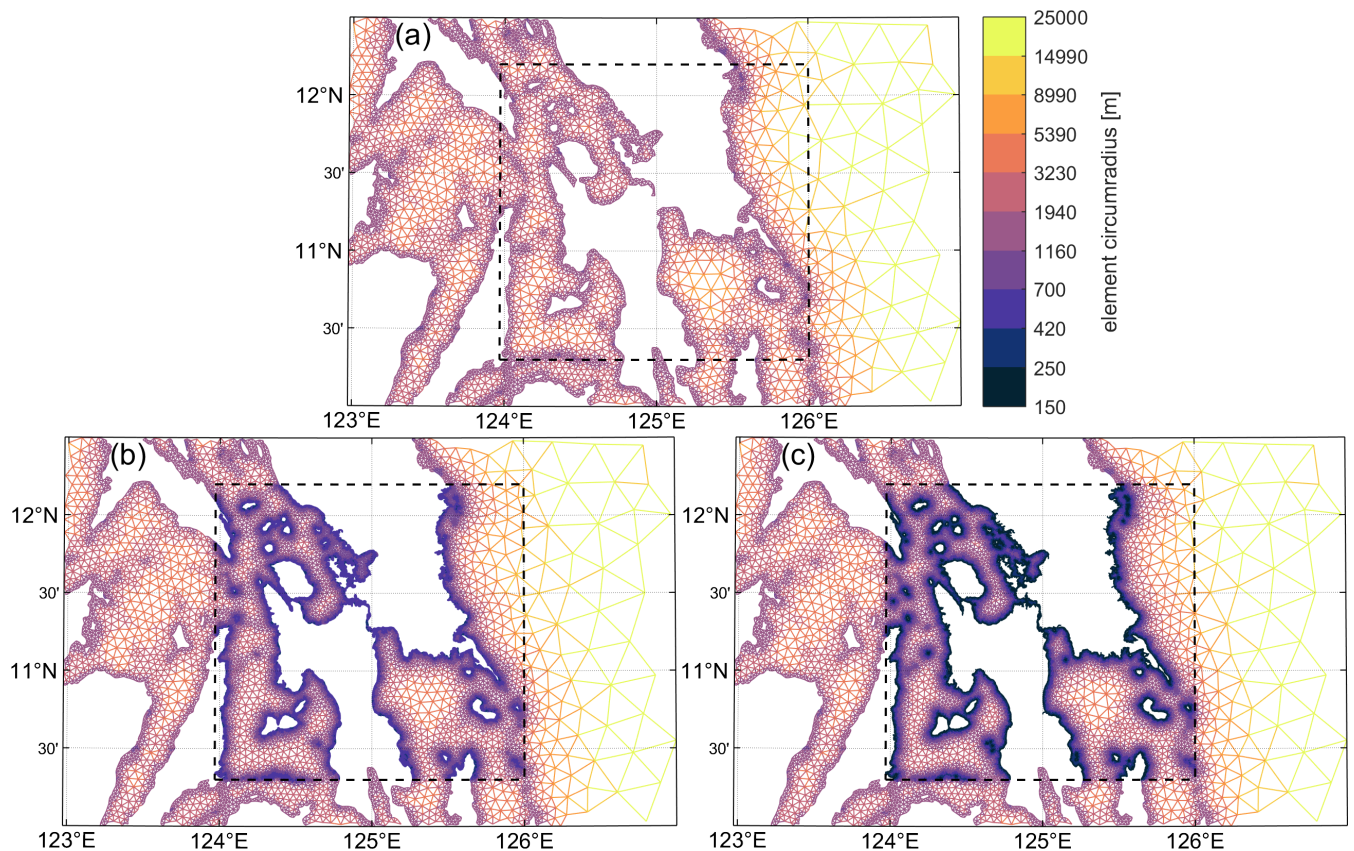


Figure 3. Comparisons of mesh triangulation and resolution (defined as the element circumradius on a Lambert conformal conic projection) in the Super Typhoon Haiyan landfall region around Leyte and Samar Island, Philippines. (a) MinEle = 1.5 km (default TLS-B global mesh design), (b) MinEle = 500 m local mesh refinement, (c) MinEle = 150 m local mesh refinement. The black dashed boxes indicate where the local mesh refinement was applied.

2.4 Datasets and Model Setup

The full-resolution Global Self-consistent Hierarchical High-resolution Shorelines (GSHHS) dataset (Wessel and Smith, 1996) is used to define the shoreline boundary when making the mesh. The most recent global bathymetry DEM, GEBCO_2019 (GEBCO Compilation Group, 2019), which has an equatorial resolution of ~ 500 m, is used to prescribe the bathymetry for the model (Sect. S2.2). Underneath Antarctica ice shelves, the RTopo-2 DEM (Schaffer et al., 2016), which has an equatorial resolution of ~ 1 km, is used to prescribe ocean depths taking into account the ice shelf thickness. The SAL tide is specified from the FES2014 (Lyard et al., 2006) data assimilated tidal solutions (Sect. S2.4). The buoyancy frequency data required to compute the internal wave drag tensor, \mathcal{C} (Sect. S2.6) is calculated from the 2005-2017 decadal average of salinity and temperature data taken from the World Ocean Atlas 2018 (Locarnini et al., 2019; Zweng et al., 2019). We note here that the accuracy of global tidal solutions strongly depends on the quality of the bathymetric data, the internal wave drag tensor, and

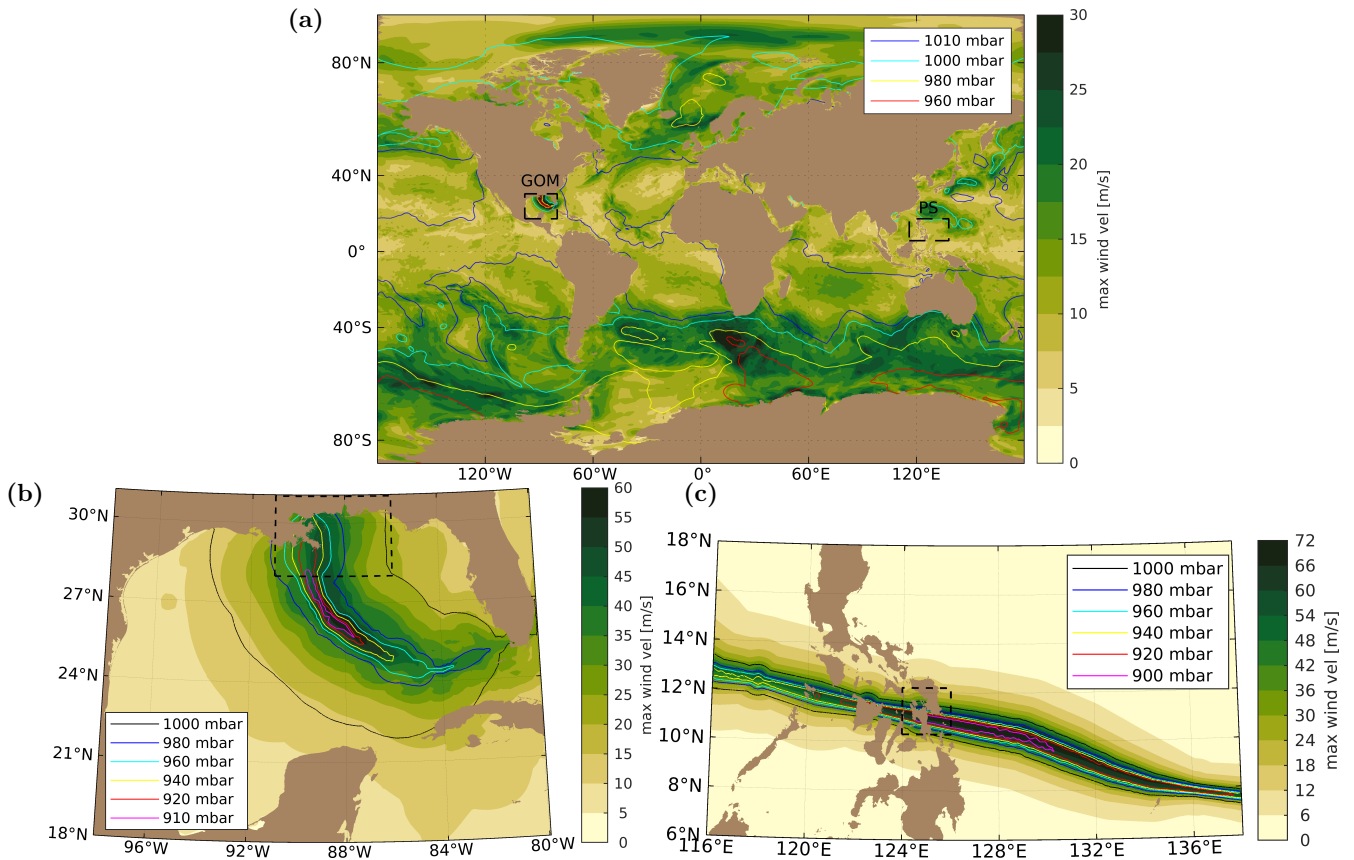


Figure 4. Maximum 10-m wind velocities and minimum pressure contours over the ocean for Hurricane Katrina (August 25-31, 2005) and Super Typhoon Haiyan (November 4-10, 2013). (a) Global view displaying CFSR reanalysis data during Katrina except in the Gulf of Mexico region [indicated by the black dashed box labeled GOM]; (b) Gulf of Mexico region displaying OWI reanalysis data of Katrina; (c) Philippine Sea region [indicated by the black dashed box labeled PS in (a)] displaying the best-track Holland parametric vortex model of Haiyan. Black dashed boxes in (b) and (c) indicate the landfall regions where the mesh is locally refined for each storm.

the bottom stress term which can all be tuned to minimize tidal errors (e.g., Pringle et al., 2018a; Lyard et al., 2020). Since this study is focused on the effects of mesh design and the improvements to the governing equations in the new version of the ADCIRC model, we deliberately avoided excessive tuning of the model that aims to minimize tidal solution errors. Instead we chose to use a global constant value of C_{it} which gives the same available potential tidal energy as compared to the TPXO9-Atlas, and employ a global constant C_f of 0.0025 except in the Indian Ocean and Western Pacific Ocean where it is spatially varying per the specifications by a previous study of ours (Pringle et al., 2018a) (see Sect. S2 for additional details of model specifications).

200

Atmospheric forcings are derived from three different sources in this study (see Sect. S2.5 for details on how to use each source in ADCIRC v55). Hourly global reanalysis datasets, 0.313° CFSR (Saha et al., 2010) for Katrina and 0.205° CFSv2

205 (Saha et al., 2014) for Haiyan, are used outside of the local storm regions (Fig. 4a). Locally in the Gulf of Mexico region, Hurricane Katrina is forced by 15-min 0.050° OceanWeather Inc. (OWI) atmospheric reanalysis data (Bunya et al., 2010) from August 25 to August 31 (Fig. 4b). Super Typhoon Haiyan meteorology is described by the best-track Holland parametric vortex model (Holland, 1980) from November 4 to November 10 (Fig. 4c).

When only astronomical tides are simulated, we force the model with only astronomical forcing (η) for the five leading
210 astronomical tidal constituents (M_2 , S_2 , N_2 , K_1 , O_1), and analyze for the corresponding constituent amplitude and phases using a 28-day harmonic analysis. These five constituents are chosen so that we can use a relatively short 28-day harmonic analysis period (Ngodock et al., 2016), which would otherwise need to be extended to around 180 days if other constituents are included because of the closeness in their frequencies (e.g., K_1 and P_1) (Pringle et al., 2018a). When simulating storm tides, both atmospheric (τ_w and p_s) and astronomical forcings are invoked, this time using the following ten tidal potential-generating
215 constituents to obtain a more complete tidal signal: M_2 , S_2 , N_2 , K_2 , O_1 , P_1 , K_1 , Q_1 , MF, MM. In both cases the model is spun-up from a quiescent state for approximately four weeks to make sure that global tides are in relative equilibrium. Complete specification details to setup the ADCIRC v55 model simulations in this study are detailed in Sect. S2 of the supplementary document.

3 Results

220 3.1 Global Mesh Design

3.1.1 Validation of the Reference Mesh

When simulating on the Ref mesh using ADCIRC v55, significant improvements to the prediction of astronomical tidal constituents were measured compared to ADCIRC v54. In particular, M_2 amphidromes in the high latitude regions are largely corrected such that any disparities between TPXO9-Atlas and our updated model solutions are qualitatively hard to discern
225 from a global perspective (Fig. 5). Moreover, M_2 $\overline{\text{RMSE}}_t$ is less than 2.5 cm over most of the ocean with the largest remaining deep ocean hotspot in the North Atlantic (Fig. 6). ~~Indeed, The~~ deep ocean M_2 $\overline{\text{RMSE}}_t = 2.87$ cm (Table 3) ~~,-which~~ is smaller than ~~those previously computed for for the majority of previously~~ non-assimilated barotropic tidal models (Stammer et al., 2014; Schindelegger et al., 2018), and within the range of errors computed for solutions obtained by embedding a state ensemble Kalman Filter (perturbed data assimilation) into a forward ocean circulation model (Ngodock et al., 2016). ~~Furthermore, the~~
230 The recent study by Lyard et al. (2020) carefully tunes local bathymetric data and dissipation parameters (C_f and C_{it}) to obtain smaller errors (M_2 $\overline{\text{RMSE}}_t = 1.53$ cm) than presented here. As noted in Sect. 2.4, in this study we deliberately avoided excessive tuning of the model with the aim to minimize tidal solution errors. Nevertheless, the 5-constituent total tidal error, $\overline{\text{RMSE}}_{t|tot}$, is less than 4 cm in the deep ocean. In shallow regions, the M_2 $\overline{\text{RMSE}}_t$ is 13.9 cm, which is ~~slightly smaller than obtained essentially the same as presented~~ in Schindelegger et al. (2018), ~~and-but significantly greater than in Lyard et al. (2020). The~~
235 total tidal error in shallow water, $\overline{\text{RMSE}}_{t|tot}$ is 17.2 cm. ~~Note, but note~~ that the area-weighted median value of $\overline{\text{RMSE}}_{t|tot}$ (c.f., Appendix A) in shallow water is just 6.63 cm.

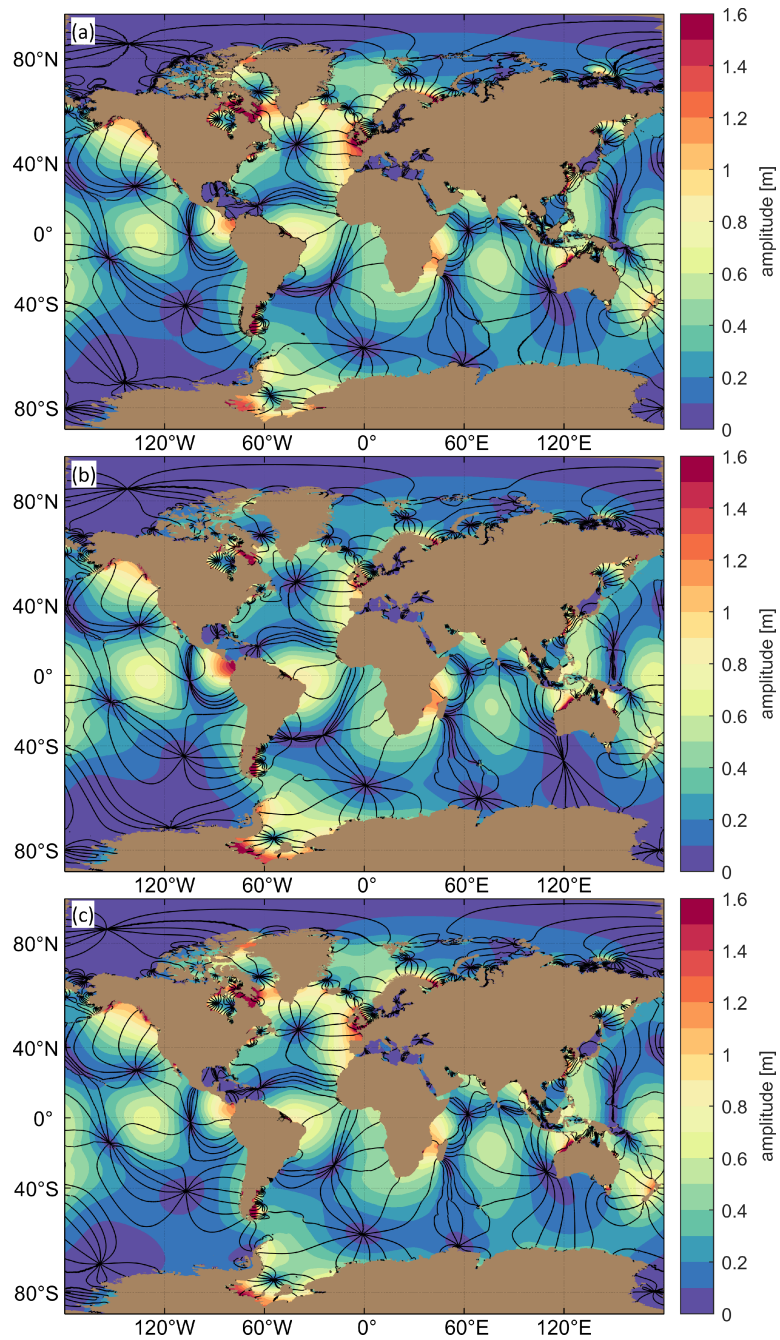


Figure 5. Global M_2 tidal amplitude and phase (cotidal lines are drawn in 30° increments) plots for (a) TPXO9-Atlas, (b) ADCIRC v54 on the Ref mesh, and (c) ADCIRC v55 upgrade on the Ref mesh.

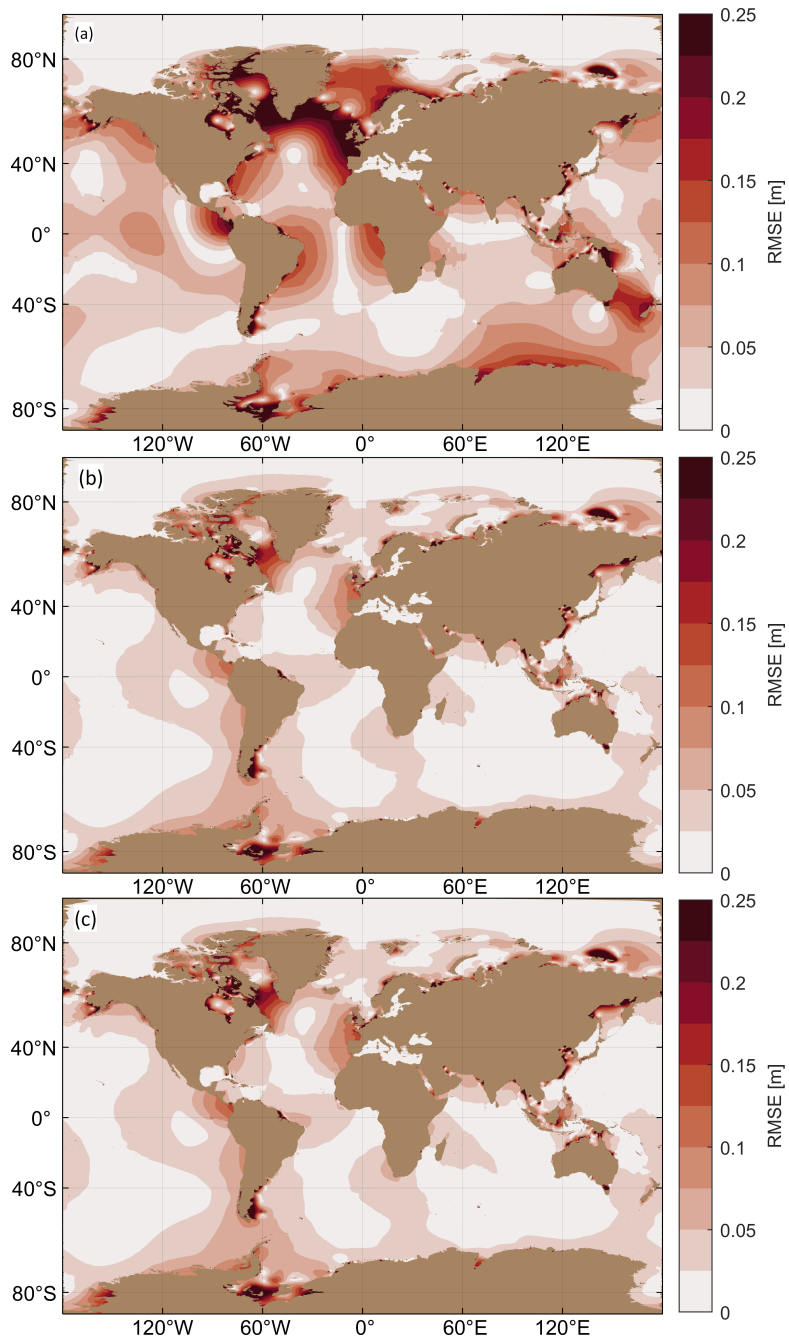


Figure 6. Global M_2 $RMSE_t$ computed against the TPX09-Atlas for; (a) ADCIRC v54 on the Ref mesh, (b) ADCIRC v55 upgrade on the Ref mesh, and (c) ADCIRC v55 upgrade on the TLS-B mesh.

Table 3. $\overline{\text{RMSE}}_t$ [cm] (c.f., Appendix A) values for simulated tidal results using ADCIRC v55 (up-grade) and ADCIRC v54 in deep ($h > 1$ km) and shallow ($h < 1$ km) waters on the Ref mesh. Results from other forward barotropic tidal models ([Stammer et al., 2014](#); [Ngodock et al., 2016](#); [Schindelegger et al., 2018](#)) ([Stammer et al., 2014](#); [Ngodock et al., 2016](#); [Schindelegger et al., 2018](#); [Lyard et al., 2020](#)) are included for comparison where known.

Model	Latitudes	$M_2 \overline{\text{RMSE}}_t$ [cm]		$\overline{\text{RMSE}}_{t tot}$ [cm]	
		Deep water	Shallow water	Deep water	Shallow water
ADCIRC v54	6-5-All	6.50	18.5	7.92	22.1
ADCIRC v55	All	2.87	13.9	3.89	17.2
ADCIRC v55	≤ ± 66° 	2.85	14.7	3.81	18.2
Stammer et al. (2014)*	All	5.25-7.76	18.6-27.9	-	-
Ngodock et al. (2016)*#	≤ ± 66° 	2.6-3.2	-	-	-
Schindelegger et al. (2018)*	≤ ± 66° 	4.4	14.6	-	-
Lyard et al. (2020)					

*: $\overline{\text{RMSE}}_t$ is computed against TPXO8-Atlas rather than TPXO9-Atlas.

#: Uses state ensemble Kalman Filter (perturbed data assimilation).

**[: \$\overline{\text{RMSE}}_t\$ results for hydrodynamic FES2014 computed against satellite cross-over points.](#)

3.1.2 Solution Variability with Global Mesh Design Parameters

The distribution (ECDF curves) of $\text{RMSE}_{t|tot}$ degrades as the mesh size function parameters are relaxed (Fig. 7). Most of this degradation occurs in the body of the distribution rather than the tails. This characteristic implies that the K test statistic is a good metric of disparity between mesh designs (Fig. 8) because it measures the greatest vertical distance between ECDF curves which has a greater chance of being larger in the body. K is positive for all mesh designs indicating that the Ref mesh is indeed statistically the best performing mesh.

Increasing MinEle has a clear but gradual degenerative effect on the solution as it is increased from 1.5 km to 3 km. The disparities in the ECDF curves noticeably grow as MinEle is increased to 6 km; the value of K increases from 0.057 for 3 km to 0.175 for 6 km. In comparison, the ECDF curves and the value of K is changed comparatively little as the TLS parameter is decreased from 20 to 5 (K is just 0.032 for TLS = 5). In fact, the solutions are close to identical for TLS values of 10 and 20. However, as the TLS function is turned off (TLS = 0), the solution is severely degraded and the value of K is the greatest for any mesh design (= 0.257). The effect of using the FL function and relaxing the parameter on the ECDF curves is fairly gradual overall, however the magnitude of this change is not trivial; K is increased to 0.070 for FL = 1/5.

In summary, the results demonstrate that decreasing the TLS parameter from 20 through to 5 substantially decreases the number of vertices while it has a relatively small effect on the tidal solution compared to the other experiments. On the other hand, increasing the FL parameter has a comparatively small impact on vertex count reduction, while increasing MinEle has a relatively large impact on the solution. The final choice of mesh design is dependent on one's tolerance for error, but in general it is preferable to choose a mesh that is plotted close to bottom-left corner of the graph in Fig. 8. Following this logic,

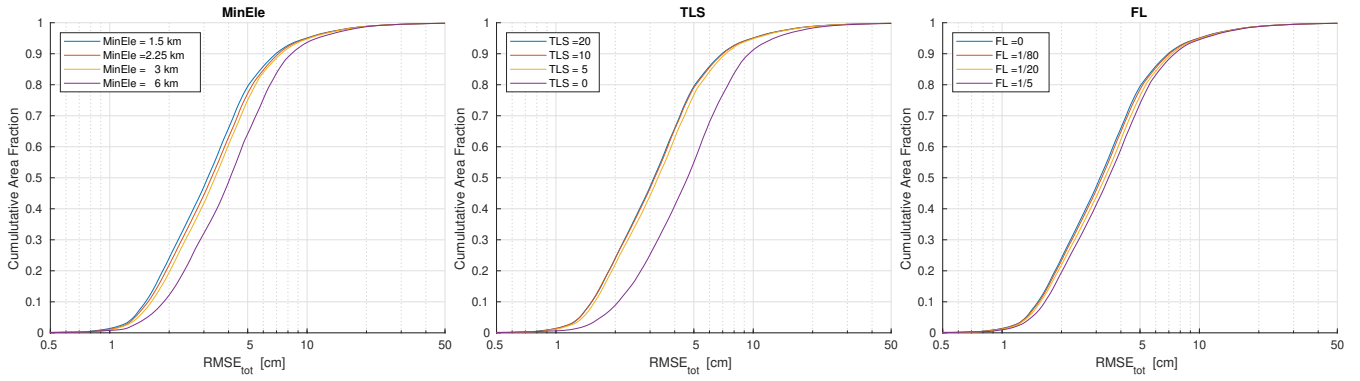


Figure 7. Area-weighted ECDF curves of $RMSE_{t|tot}$ for the global mesh designs varying MinEle, TLS, and FL (left-to-right). See Table 2 for mesh design details.

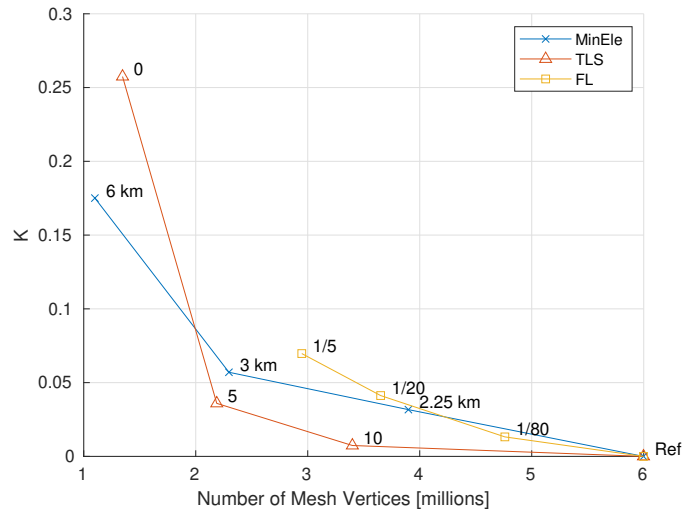


Figure 8. The two-sample Kolmogorov-Smirnov test statistic, K versus the total number of mesh vertices. K is computed as the largest vertical distance between the $RMSE_{t|tot}$ ECDF curve of the Ref mesh design and the ECDF curve of the coarsened mesh designs (varying MinEle, TLS, and FL; Table 2).

255 the TLS-B mesh design (MinEle = 1.5 km, TLS = 5, FL = 0) appears to be the most efficient one tested (see Fig. 6 for the spatial distribution of M_2 RMSE_t on this mesh). The results also suggest that combinations of MinEle larger than 1.5 km (~2.25-3 km) and a TLS parameter smaller than 20 (~5-10) could be employed to potentially lead to an efficient mesh design. Nevertheless, using a small MinEle is in and of itself useful to provide extra coastal resolution, which may be more important as we consider local storm tide accuracy. Thus, TLS-B is chosen as the base mesh design in Sect. 3.2.

260 3.2 Local Mesh Refinement

3.2.1 Validation on the 150-m Locally-Refined Meshes

The maximum storm tide elevation due to Hurricane Katrina approaches 8 m in the Hancock and Harrison Counties of Mississippi (Fig. 9a), comparable to previously conducted high-fidelity simulation results (Dietrich et al., 2009). For Super Typhoon Haiyan, the maximum storm tide elevation exceeds 6 m near Tacloban due to local amplification in the Leyte Gulf (Fig. 9b),
265 similar to previous simulation results (Mori et al., 2014). Qualitatively good agreement with the plotted HWMs is demonstrated for both storms with a few exceptions.

As pointed out by Mori et al. (2014), since inundation is not simulated and the effects of wave setup are ignored in these simulations we expect the maximum storm tide height to match the lower envelope of observed HWMs due to the amplification by topography (although ignoring inundation in our simulations is expected to overestimate the seaward maximum storm tide heights (Idier et al., 2019) that likely cancels out some of the otherwise low bias when compared to HWMs).
270 By numbering the HWMs starting at the most southwest point and following the shoreline clockwise, it is indeed illustrated that the simulation results tend to ~~match~~ the lower envelope of observed HWMs quite closely (Fig. 10). For Katrina, the MAE = 1.06 m (SD = 0.66 m) (see Fig. 10 legend for error statistics) from 138 HWMs is larger than the MAE = 0.36 m (SD = 0.44 m) based on 193 HWMs in Bunya et al. (2010). However, their simulations included wave setup, river flows, levees, and dynamic inundation
275 so our results can be considered quite reasonable in comparison. For Haiyan, the RMSE = 1.45 m from 145 HWMs closely matches the RMSE range of 1.29-1.45 m based on 60 HWMs in Mori et al. (2014). The large scatter present in the HWM measurements (SD ≈ 1.3 m for all MinEle) could be related to the generation of infragravity waves over fringing reefs in the region leading to amplified coastal runoff (Roeber and Bricker, 2015).

Time series of Hurricane Katrina at NOAA tide gauges show that the timing of the peak storm tide elevation and the
280 amplitude and phase of the tide signal prior to landfall are well represented by the model (Fig. 11). The modeled peak is underestimated by ~0.4 m at gauge 8735180, and at gauge 8743281 where the largest peak storm tide occurred, tide gauge recording was interrupted as the storm was making landfall, but the simulation closely follows the observations up until this point. A roughly constant discrepancy of ~0.4-0.5 m between the simulation and observation develops at the gauges following the last high tide prior to storm landfall, likely explaining the underestimate at gauge 8735180 (by this logic the peak may
285 be overestimated at 8761724). ~~Comparing to time series of simulations with wind~~ We think that this negative bias is mostly attributable to the insufficient generation of the surge forerunner and partly also to the omission of regional wave setup. The surge forerunner is generated through the Ekman setup process (Kennedy et al., 2011) which is crudely represented by

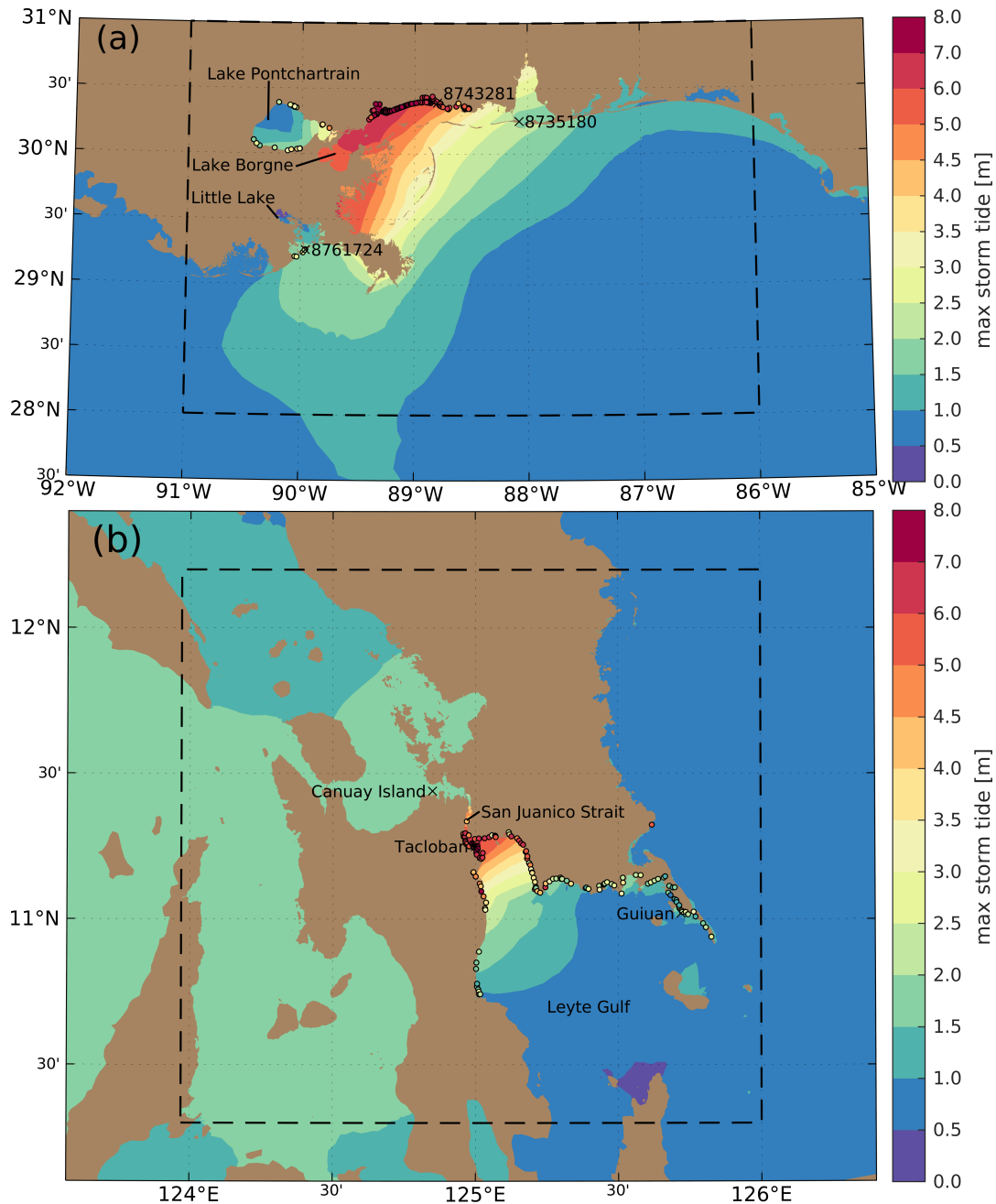


Figure 9. Maximum simulated storm tide elevations on the MinEle = 150 m local refinement meshes compared to coastal surge attributed high water marks that are located within 1.5 km of the mesh coastline (filled circles). Black annotated crosses indicate the locations where storm tide time series are plotted. (a) Maximum simulated elevations due to Hurricane Katrina in the Louisiana/Mississippi landfall region. A value of 0.23 m has been added to account for a steric offset and the conversion to NAVD88 vertical datum from local mean sea level; (b) Maximum simulated elevations due to Super Typhoon Haiyan in the Leyte and Samar Island, Philippines landfall region.

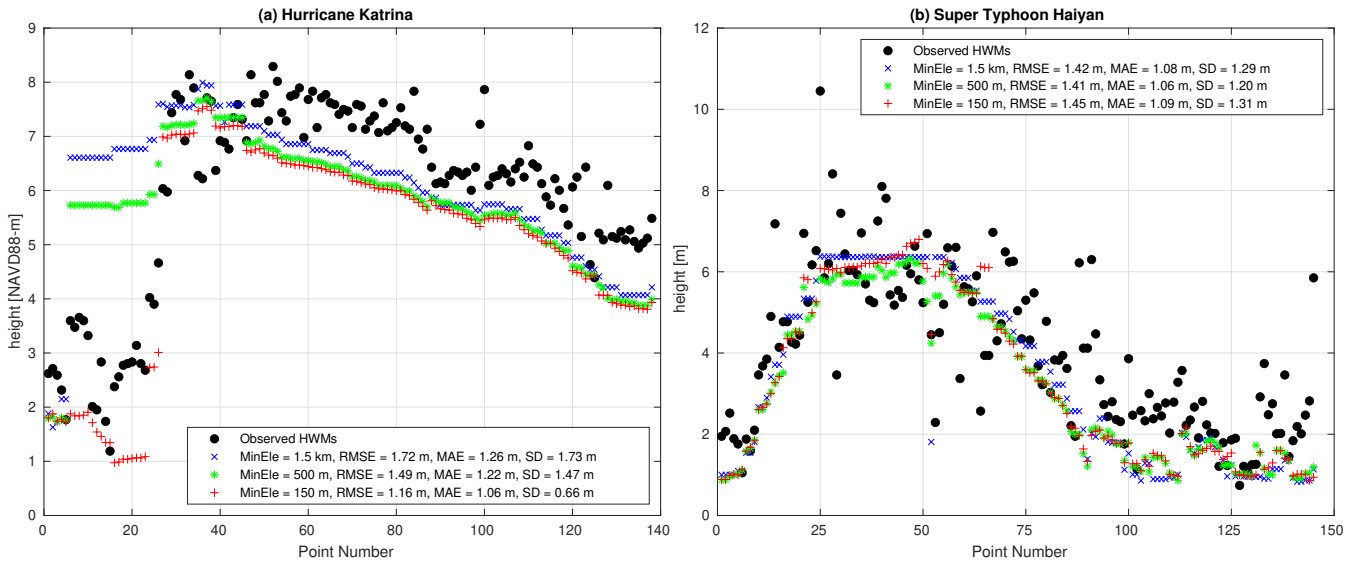


Figure 10. Comparisons of the observed HWMs to the simulated maximum storm tide height at the nearest vertex on meshes with different local MinEle (1.5 km, 500 m, 150 m). (a) Hurricane Katrina (0.23 m has been added to simulated results) and (b) Super Typhoon Haiyan. Points are numbered by starting from the most southwest point and following the shoreline clockwise around.

the depth-averaged model used here. Previous depth-averaged ADCIRC-based studies that used a Manning’s bottom friction formulation so that C_f becomes very small on the continental shelf appear to be better able to generate the surge forerunner, as well as employing wind wave-coupling (Roberts and Cobell, 2017), it appears that this discrepancy can be attributed to wave setup effects that are ignored here that generates wave setup, indeed show better agreement with the time series prior to the peak storm tide (Bunya et al., 2010; Roberts and Cobell, 2017). Time series of Super Typhoon Haiyan also show that the amplitude and phasing of the tide at the selected locations are fairly well represented as compared to the TPXO9-Atlas (Fig. 11). Storm tide heights at Tacloban are dominated by the short and intense surge event but the duration of surge is likely underestimated because the parametric vortex model lacks background winds. Due to the timing of the storm landfall during the lower high tide, peak storm tides exceeded the higher high tide by just 0.5 m at Guiuan. In fact for Guiuan and Canuay Island the minimum storm tide levels were more severe than the peak levels.

3.2.2 Solution Variability with Local Mesh Refinement

Our results indicate that there is a tendency for the coarser resolution meshes to have larger storm tide elevations in the open coastal areas of the landfall region. In the case of the Katrina, this is most clearly seen in Lake Borgne where maximum storm tide elevations are at least 0.6 m larger on the MinEle = 1.5 km mesh than those on the MinEle = 500 m mesh, and approximately 0.2 m larger on MinEle = 500 m mesh than the MinEle = 150 m mesh (Fig. 12). Interestingly, neither the MinEle = 1.5 km mesh or the MinEle = 500 m mesh includes Lake Pontchartrain, while the MinEle = 150 mesh does (Fig. 2). This is because the Rigolets strait connecting Lake Pontchartrain to Lake Borgne is approximately 500 m at its narrowest, thus the MinEle

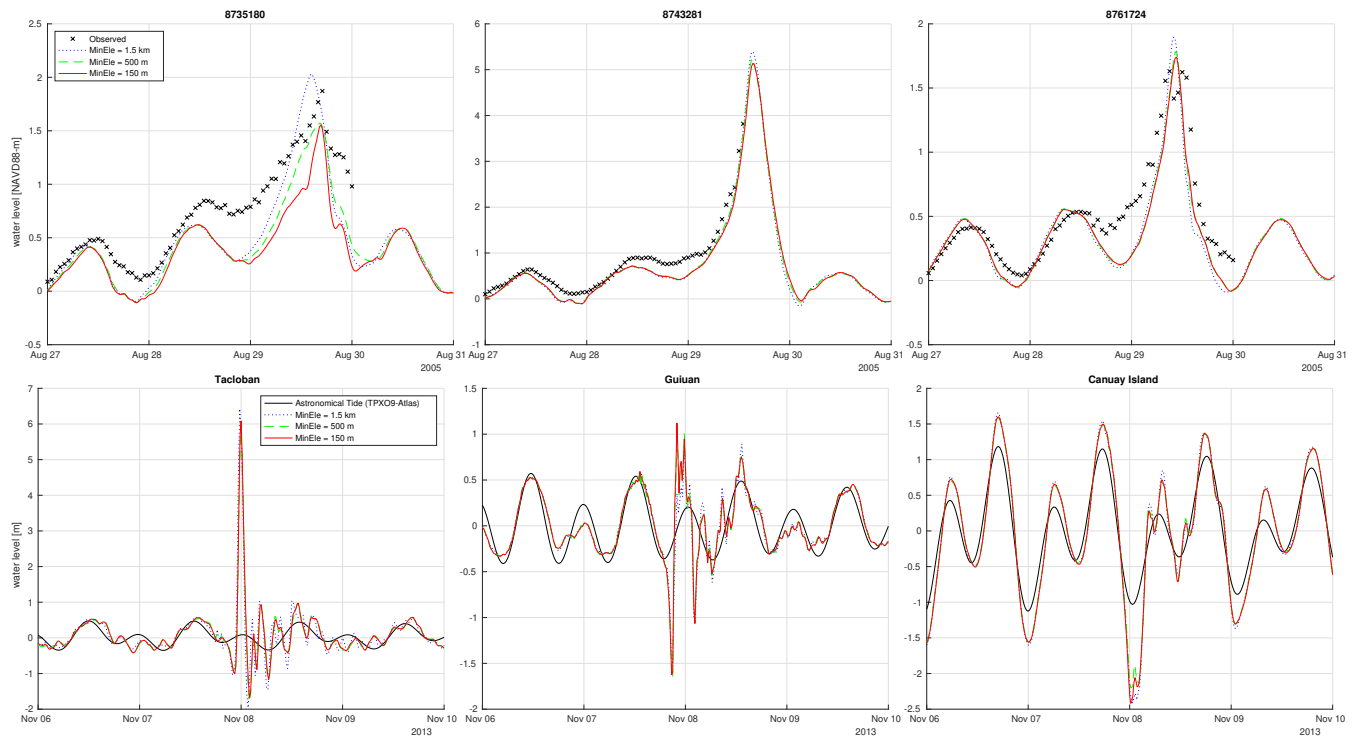


Figure 11. Comparisons of simulated storm tide elevation time series on meshes with different local MinEle (1.5 km, 500 m, 150 m) at the point locations shown in Fig 9. Top row: Hurricane Katrina compared to NOAA tide gauge observations (0.23 m has been added to simulated results). Bottom row: Super Typhoon Haiyan compared to the astronomical tide reconstructed from the TPXO9-Atlas.

305 = 500 m mesh is at the cutoff point for meshing the strait and providing hydraulic connectivity between the two lakes. Yet, the maximum elevation difference from Lake Borgne across to Mobile Bay between MinEle = 1.5 km and MinEle = 500 m is still much greater than between MinEle = 500 m and MinEle = 150 m (refer time series at gauges 8735180 and 8743281 in Fig. 11 in addition to Fig. 12). Nevertheless, since the MinEle = 150 m is the only mesh to resolve Lake Pontchartrain, the HWMs surrounding the lake (point numbers 7-23) can only be reasonably estimated by simulations on this mesh, resulting in
 310 the smallest HWM error statistics (Fig. 10a).

In the case of the Haiyan, the predominant maximum storm tide elevation difference (~ 0.4 - 0.6 m) is located at the back of Leyte Gulf near Tacloban between the MinEle = 1.5 km and MinEle = 500 m meshes (Figs. 11 and 13). The decrease in elevations in the MinEle = 1.5 km mesh might be explained by the omission of the San Juanico Strait (~ 800 m wide at its narrowest, Figure 3). In contrast, the elevations near Tacloban and in the strait increase by up to 0.6 m as the MinEle = 500 m mesh is refined to MinEle = 150 m. There is also a reduction in the elevations (by up to 0.2 m) just offshore of the Leyte Gulf along the shelf break for the coarser meshes, which is better represented in the higher resolution renditions. Overall, the choice of local MinEle has a small effect on the representation of HWMs for Haiyan (Fig. 10b). The only major noticeable impact is for the HWMs near Tacloban in the San Juanico Strait (point numbers 25-63) on the MinEle = 1.5 km mesh. Since this mesh
 315

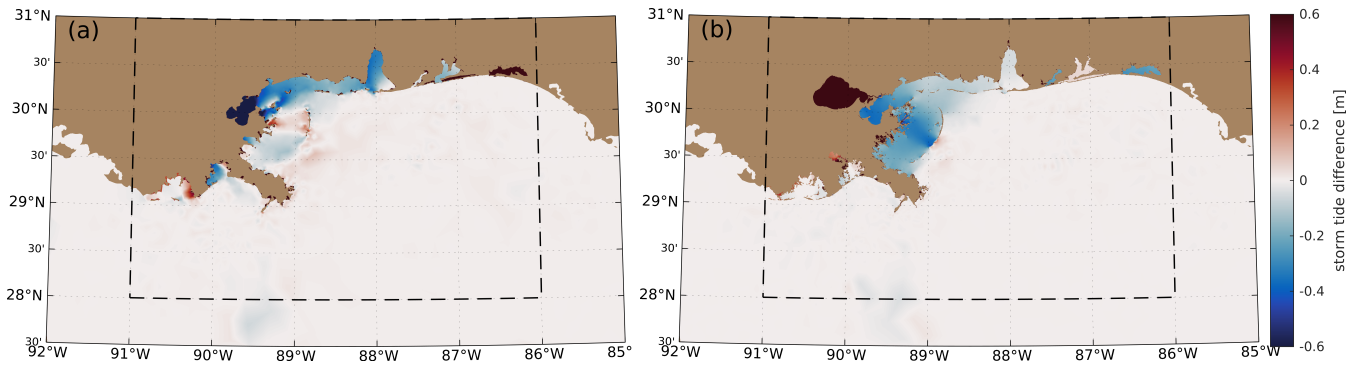


Figure 12. Mesh resolution induced differences in the simulated maximum storm tide elevations due to Hurricane Katrina in the Louisiana/Mississippi landfall region. (a) Elevations on MinEle = 500 m local refinement mesh minus elevations on the TLS-B global mesh (MinEle = 1.5 km); (b) Elevations on MinEle = 150 m local refinement mesh minus elevations on the MinEle = 500 m local refinement mesh. In areas where the coarser resolution mesh does not exist the value shown is just the maximum storm tide elevation on the higher resolution mesh.

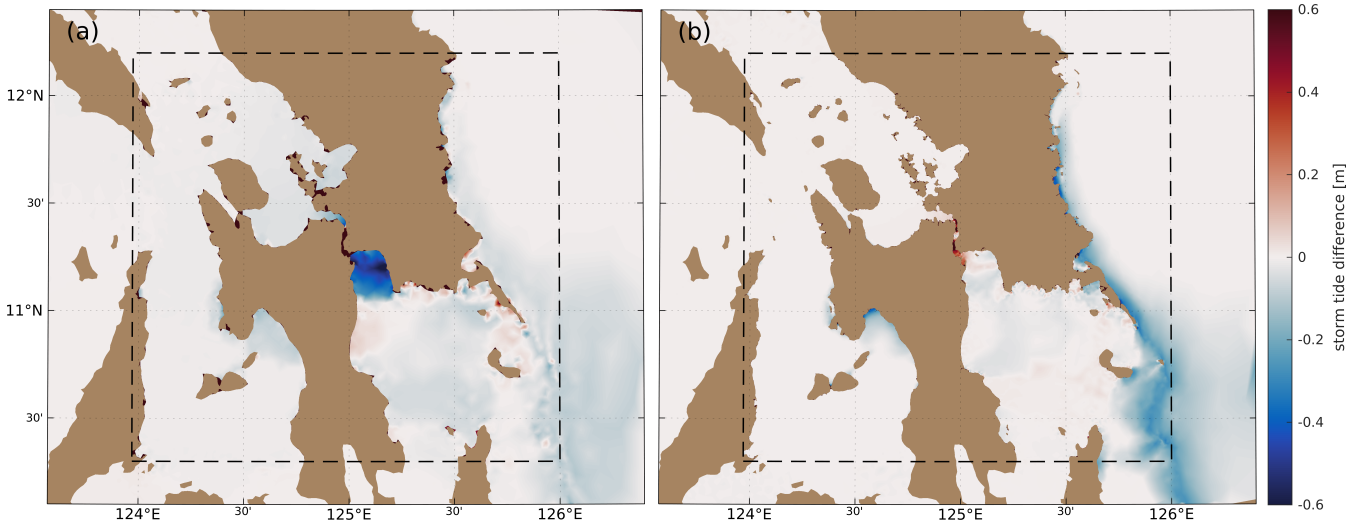


Figure 13. Mesh resolution induced differences in the simulated maximum storm tide elevations due to Super Typhoon Haiyan in the Leyte and Samar Island, Philippines landfall region. (a) Elevations on MinEle = 500 m local refinement mesh minus elevations on the TLS-B global mesh (MinEle = 1.5 km); (b) Elevations on MinEle = 150 m local refinement mesh minus elevations on the MinEle = 500 m local refinement mesh. In areas where the coarser resolution mesh does not exist the value shown is just the maximum storm tide elevation on the higher resolution mesh.

320 does not resolve the strait, the simulated estimate of the HWMs here are all taken from the same or nearby mesh vertices at the back of the gulf.

Lastly, we mention two additional general observations. First, for both storms the far-field effects of local mesh refinement were found to be negligible. Second, storm tide elevation time series show that the not only does the peak elevation tend to decrease as mesh refinement is made, but the timing of the peak also tends to occur later (Fig. 11) – most clearly illustrated for gauge 8735180.

325 3.3 Computational Performance

For all astronomical tide simulations performed in the global mesh design experiments (Sect. 3.1) the time step, Δt , was set to 120 s, which is equivalent to a Courant (CFL) number of 5-22 on the global mesh designs used in this study (see Sect. S1.5 for model stability details). The resulting computational wallclock times for the astronomical tide simulations ranged from 5 s to 30 s per simulation day depending on the total vertex count of the mesh (Fig. 14). All simulations were computed on 480
330 Haswell processors with a Mellanox FDR Infiniband network connection.

For the storm tide simulations performed in the local mesh refinement experiments (Sect. 3.2) the time step had to be reduced for finer meshes due to model instability related to nonlinear terms that are treated explicitly which become more significant as element sizes nearshore (in shallow depths) are reduced. For Katrina, the time step for the MinEle = 150 m mesh had to be reduced to 40 s. For Haiyan, the time step had to be reduced for both the MinEle = 500 m ($\Delta t = 90$ s) and the MinEle
335 = 150 m ($\Delta t = 25$ s) mesh. The resulting computational wallclock times were increased for the smaller time steps (Fig. 14). However, the simulations on the MinEle = 150 m meshes were proportionally around two times faster per Δt compared to the coarser meshes. This is attributed to the heavy I/O related to reading meteorological data during the simulation that limits computational speed-up as time steps are increased beyond a certain value. In fact, for the same Δt , wallclock times for the storm tide simulations were 2-3 times longer than the astronomical tide runs which require I/O only at the very beginning and
340 end of the simulation. Furthermore, the Haiyan simulations were slightly slower than Katrina simulations because of the higher resolution of the reanalysis meteorology (c.f., Sect. 2.4).

In addition, the computational performance of our Katrina simulations are compared to previous ADCIRC model ones (Bunya et al., 2010; Dietrich et al., 2011), which employed $\Delta t = 1$ s leading to wallclock times one-to-two orders of magnitude greater than those in this study (Fig. 14). We remark that the Bunya et al. (2010); Dietrich et al. (2011) studies used finer
345 mesh sizes (MinEle = 50 m) and included the floodplain leading to more wetting-drying, which can be a source of numerical instability. Our results nonetheless indicate the potential for substantial computational speed-up on suitably designed meshes.

4 Discussion

The new version of ADCIRC (v55) demonstrated improved tidal solutions compared to the previous versions of ADCIRC (denoted as ADCIRC v54). This is because ADCIRC v54 does not solve the correct form of the governing equations in Spherical coordinates and is thus technically valid only for sufficiently small regional domains (see Sect. S1.2 for more details on this comparison). For instance, this old form of the governing equations appears to be sufficient for the western North Atlantic Ocean regional domain, which has been thoroughly validated using ADCIRC since Westerink et al. (1994).
350

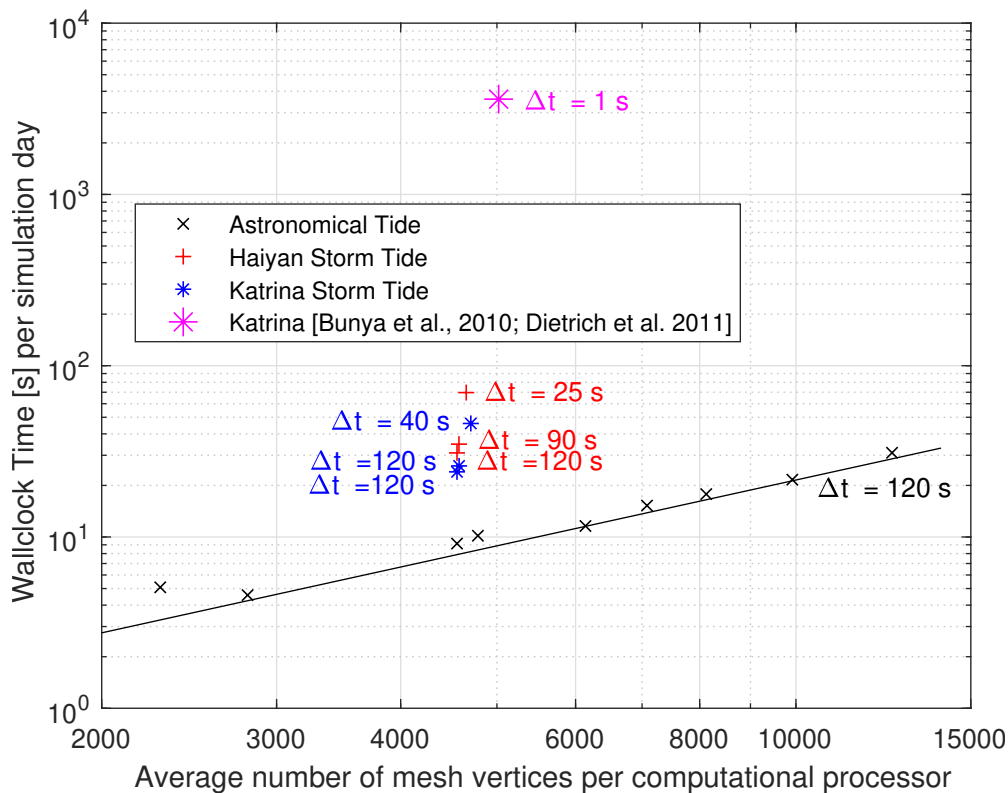


Figure 14. Computational wallclock times for the various mesh designs and experiments versus the average number of mesh vertices per computational processor. All simulations were computed on 480 computational processors (i.e., the variation in vertices per processor comes from the variation in the total number of vertices for each mesh design). The computational performance in this study using ADCIRC v55 is contrasted with previous ADCIRC model Katrina storm tide simulations (Bunya et al., 2010; Dietrich et al., 2011) that required very small time steps ($\Delta t = 1$ s).

[The changes made in ADCIRC v55 make it suitable for simulating larger domains, in particular the global domains that we investigated in this study.](#)

355 Results from the global mesh design experiments echo those found previously for a regional mesh of the Western North Atlantic Ocean (Roberts et al., 2019b). Namely, that when employing a relatively large element-to-element gradation limit (G) of 35% used here, the TLS function is critical to ensure that water elevation solutions remain accurate by adequately resolving topographic features of importance. The relatively high value of G ensures that the mesh size rapidly enlarges in areas where no topographic gradient features exist to help avoid excessive mesh vertex counts. An interesting point of difference that we
 360 note in this study is the interplay between MinEle and TLS. MinEle not only controls the minimum coastal resolution but it also controls the minimum resolution that can be applied along topographic gradient features in the TLS function. Here, the MinEle ranged between 1.5 km and 6 km which affected the strength of the TLS function in these mesh designs. Nevertheless, the MinEle-C design (MinEle = 6 km) was still superior to the TLS-C one (TLS = 0). There may be additional sensitivity to

the TLS function at MinEle less than 1.5 km although it is likely quite small. In Roberts et al. (2019b), MinEle = 1 km was used along the outer shelf and shelf break and this appeared to be sufficient.

The results also show that the use of the barotropic Rossby radius-based low-pass filter (FL) in the TLS function is able to reduce mesh vertices without substantially degrading the solution. However, our results suggest that it is more efficient to simply reduce the TLS value to 5 compared to using TLS = 20 with FL. Combinations of TLS values between 5-10 with FL (=1/80-1/20) could also be applied depending on the tolerance to the solution accuracy. Using the FL parameter in more highly resolved local domains may also provide benefits to avoid over-resolving topographic slopes in shallow depths. However, it must also be recognized that length scales of importance transition from Rossby radius scaling in the open ocean to those of shoreline features nearshore (LeBlond, 1991). Therefore, a more intelligent low-pass filter may be necessary for such applications.

The astronomical tide solution differences between global mesh designs were shown to be predominantly in the body of the area-weighted ECDF curves while the tails were almost identical. This implies that simulated tides over most of the area of the ocean are affected by mesh resolution. However, in regions where the tidal range and error is large, which inevitably occurs on shallow shelves, all of the mesh designs have similarly large errors. This perhaps explains why a 1/12° tidal model (Schindelegger et al., 2018) could obtain a similar $M_2 \overline{RMSE}_t$ in shallow waters to our more highly resolved reference mesh (14.6 cm compared to 13.9 cm). There is likely an inherent uncertainty in the bathymetry and dissipation which prevents further decrease to the shallow water \overline{RMSE}_t which can be dominated by large errors (in shallow water the area-weighted median $RMSE_{t|tot}$ is much smaller than \overline{RMSE}_t). Indeed, ~~the deep ocean $M_2 \overline{RMSE}_t$ was 4.4 cm in Schindelegger et al. (2018), 53% larger than the 2.87 cm on our Ref mesh.~~ a recent study conducts a 432-member ensemble of perturbations to bathymetric depths, and bottom friction and internal wave drag coefficients to obtain smaller tidal errors than this study, particularly in shallow water (Lyard et al., 2020).

The local mesh refinement technique was demonstrated to be a useful tool to provide high refinement with a trivial addition to the total vertex count. Nevertheless, we found that the numerically stable time step often has to be reduced ~~decreases~~ as coastal mesh resolution becomes finer (see Sect. S2.1 for details on setting the time step), which increases computational time. Note that additional tests (not shown) were conducted, and these demonstrated that the computational time step used for the same mesh had a negligible effect on storm tide elevation solutions. However, this may not transfer as well for simulations where there is significant wetting-drying due to the one element per time step wetting-drying logic used. The impact of mesh refinement clearly tends to decrease open ocean storm tide elevations in open ocean areas ~~, but overall the impacts to the and the timing of the peak occurs later.~~ This could be attributed to larger physical approximation errors of the shoreline geometry and bathymetry with mesh coarsening (c.f. Roberts et al., 2019b) leading to slightly different wave speeds and wave transformation. In practice, higher peak storm tide heights in coarser models translates to greater coastal flooding potential. Including inundation in the model would decrease the storm tide elevations along the coast (Idier et al., 2019), perhaps leading to more similar coastal storm tide elevations between the different mesh resolutions since more flooding may occur in the coarser model. Overall, the impacts of mesh resolution on the HWM errors were relatively small, especially for Super Typhoon Haiyan. ~~The~~ However, the presence of more inland lakes and semi-enclosed bays separated by narrow inlets in the Louisiana

region meant that simulated Hurricane Katrina HWM estimates in these features were poor unless the MinEle was sufficient
400 to resolve these narrow passages and provide hydraulic connectivity. A recent study using the GTSM global model with ~ 5
km coastal refinement (MinEle = 5 km) was used to characterize the spatiotemporal variability of storm-driven surges along
western North Atlantic coasts including surge due to Hurricane Katrina (Muis et al., 2019). Our results would suggest that
coarser resolution meshes are ~~be~~ able to reproduce the broader features of surge along open coastal areas quite well. However,
such a model cannot be used to predict storm tide levels within the semi-enclosed bays and lakes in the Louisiana region.
405 Furthermore, MinEle = 5 km is above the limit where global astronomical tide solutions appear to diverge noticeably from
MinEle = 1.5 km meshes.

Last, it is widely recognized that sensitivities to local high resolution bathymetry datasets, [internal tide wave drag](#), and spa-
tially varying bottom friction and surface ice friction are important ([Lefevre et al., 2000](#); [Le Bars et al., 2010](#); [Zaron, 2017](#); [Pringle et al., 2018a](#);
[Lefevre et al., 2000](#); [Le Bars et al., 2010](#); [Zaron, 2017](#); [Pringle et al., 2018a](#); [Zaron, 2019](#); [Lyard et al., 2020](#)), likely more so
410 than the mesh resolution effects that we concentrate on here. We aim to develop a unified framework for ~~calibrating bottom~~
~~friction globally~~ [globally calibrating spatially varying internal tide wave drag and bottom friction coefficients](#) with improved
local high resolution bathymetric datasets in future work. [Doing so should result in smaller storm tide elevation discrepancies](#)
[especially in shallow water \(e.g., Lyard et al., 2020\)](#). Moreover, we did not simulate inundation in this study, but it will be a
crucial future step so that we can forecast and assess coastal flood risks for all of Earth's coasts.

415 5 Conclusions

Important upgrades to the FEM SWE solver, ADCIRC, have been presented to improve accuracy and efficiency for global storm
tide modeling across multi-resolution unstructured meshes. We systemically tested the new model's (ADCIRC v55) sensitivity
to mesh design in the simulation of global astronomical tides and storm tides. These mesh design results are expected to be
broadly applicable to other SWE solvers that correctly handle solutions on the sphere.

420 Based on the results for global mesh design we recommend to aim for a minimum element size less than 3 km and to use the
TLS function to resolve topographic gradient features with a TLS value of 5-10. Paired with the OceanMesh2D software, the
ability to seamlessly apply local refinement allows the user to provide fine coastal resolution in the region of interest (e.g., the
storm landfall region) without large increases to the total mesh vertex count (increase of 0.5-3% in this study). We found that
in general, peak storm tide elevations along the open coast are decreased ([therefore the coastal flooding potential is decreased](#))
425 and the timing of the peak occurs later with local coastal mesh refinement. When validated against observed high water marks
measured near the coast, coastal mesh refinement only has a significant positive impact on errors in narrow straits and inlets,
and in bays and lakes separated from the ocean by these passages.

The new ADCIRC v55 code capable of accurate global storm tide modeling with fine coastal resolution is computationally
efficient. For global meshes with [nominal](#) minimum resolution as fine as 1.5 km, the computational wallclock time ranged from
430 5 s to 30 s per simulation day on 480 computational processors for astronomical tide simulations. Some improvements that
we made to the numerical stability of the algorithm facilitated the application of relatively large 120 s time steps to achieve

this efficiency. However, we found that the locally refined meshes ([nominal minimum resolution of 500 m and 150 m](#)) often required smaller time steps (25 s-90 s). Nevertheless, these are still much larger than time steps used in previous studies with older versions of ADCIRC, resulting in one-to-two orders of magnitude shorter computational times.

435 *Code and data availability.* The official release version of ADCIRC is available from the project website: <http://adcirc.org/> under the terms stipulated there and is free for research or educational purposes. The exact version of the model used to produce the results used in this paper is archived on Zenodo (Pringle, 2020) along with the simulated tidal harmonic constituents on the various mesh designs and the simulated storm tide results with the corresponding model setup (Pringle, 2020).

The current version of OceanMesh2D is available from the project website: <https://github.com/CHLNDDEV/OceanMesh2D> under the
440 GPL-3.0 license. The exact version of the model (V3.0.0) used to generate the meshes in this study is archived on Zenodo (Pringle and Roberts, 2020).

An application of the presented ADCIRC v55 model (on the TLS-B mesh design) providing 5-day forecasts of global storm surge is currently running in real-time and maximum surge elevations are available to view at <https://wpringle.github.io/GLOCOFFS/>. The forecast is automatically updated every 6-hours based on GFS weather forecast schedules. Simulation wallclock time is approximately 10 min on 72
445 computational processors. Images are automatically archived by GitHub.

Appendix A: Error Metrics

The $RMSE_t$ for a single constituent at a point is defined as (Wang et al., 2012):

$$RMSE_t = (0.5 [A_o^2 + A_m^2 - 2A_o A_m \cos(\theta_o - \theta_m)])^{1/2} \quad (A1)$$

where A is the tidal amplitude and θ is the tidal phase lag, and the subscripts ‘ o ’ and ‘ m ’ refer to the observed (in this case
450 TPXO9-Atlas) and modeled values respectively. To get the $RMSE_t$ of the total 5-constituent signal, $RMSE_{t|tot}$, we use the approximation (Wang et al., 2012):

$$RMSE_{t|tot} = \left(\frac{1}{2} \sum_{k=1}^5 \underline{0.5} [A_{o_k}^2 + A_{m_k}^2 - 2A_{o_k} A_{m_k} \cos(\theta_{o_k} - \theta_{m_k})] \right)^{1/2} \quad (A2)$$

where k indicates the arbitrary constituent number from the five leading tidal constituents (M_2 , S_2 , N_2 , K_1 , O_1).

The area-weighted ECDF curves of $RMSE_{t|tot}$ are computed through MATLAB’s “ecdf” function with the ‘frequency’ input
455 set equal to the elemental area [m^2]. With this construction, the area-weighted median value of $RMSE_{t|tot}$ is defined as the point of intersection of the ECDF curve with the 50% probability. Comparisons between ECDF curves can be made by taking the largest vertical distance between them to obtain K . We compute K one-sided in that it will be positive if the base (Ref) design is statistically superior and negative otherwise.

To obtain a single number to compare the solutions globally or in certain depths or regions, it is common to use the area-
460 weighted root-mean square error of the RMSE_t (Arbic et al., 2004),

$$\overline{\text{RMSE}}_t = \sqrt{\frac{\iint \text{RMSE}^2 dA}{\iint dA}} \quad (\text{A3})$$

where $\iint dA$ indicates an area integral. $\overline{\text{RMSE}}_t$ can be computed for a single constituent or for the 5-constituent total signal
(= $\overline{\text{RMSE}}_{t|tot}$).

Author contributions. WP prepared the manuscript, designed and implemented the coding upgrades into ADCIRC v55, designed and per-
465 formed the experiments, and conducted the stability analysis. DW mathematically formulated and initially implemented most of the ADCIRC
coding upgrades. KR and WP equally contributed to the coding and development of the OceanMesh2D software integral to this study, and
KR provided critical feedback to improve the manuscript design. JW provided the research and computing resources and funding necessary
to conduct this study.

Competing interests. No competing interests.

470 *Acknowledgements.* This work was supported by the U.S. Alaska/Integrated Ocean Observing System (AOOS/IOOS) subaward for the U.S.
National Oceanic and Atmospheric Administration (NOAA) grant #NA16NOS0120027; the IOOS Ocean Technology Transition Project
NOAA grant #NA18NOS0120164; and the NOAA Office of Weather and Air Quality, Joint Technology Transfer Initiative NOAA grant
#NA18OAR4590377.

References

- 475 Arbic, B. K., Garner, S. T., Hallberg, R. W., and Simmons, H. L.: The accuracy of surface elevations in forward global barotropic and baroclinic tide models, *Deep Sea Research Part II: Topical Studies in Oceanography*, 51, 3069–3101, <https://doi.org/10.1016/j.dsr2.2004.09.014>, 2004.
- Bouwer, L. M.: Next-generation coastal risk models, *Nature Climate Change*, 8, 7–8, <https://doi.org/10.1038/s41558-018-0262-2>, 2018.
- Bunya, S., Dietrich, J. C., Westerink, J. J., Ebersole, B. A., Smith, J. M., Atkinson, J. H., Jensen, R., Resio, D. T., Luettich, R. A., Dawson, C., Cardone, V. J., Cox, A. T., Powell, M. D., Westerink, H. J., and Roberts, H. J.: A High-Resolution Coupled Riverine Flow, Tide, Wind, Wind Wave, and Storm Surge Model for Southern Louisiana and Mississippi. Part I: Model Development and Validation, *Monthly Weather Review*, 138, 345–377, <https://doi.org/10.1175/2009MWR2906.1>, <http://journals.ametsoc.org/doi/abs/10.1175/2009MWR2906.1>, 2010.
- 480 Castro, M. J., Ortega, S., and Parés, C.: Reprint of: Well-balanced methods for the shallow water equations in spherical coordinates, *Computers and Fluids*, 169, 129–140, <https://doi.org/10.1016/j.compfluid.2018.03.052>, <https://doi.org/10.1016/j.compfluid.2017.08.035>, 2018.
- 485 Chen, C., Liu, H., and Beardsley, R. C.: An unstructured grid, finite-volume, three-dimensional, primitive equations ocean model: Application to coastal ocean and estuaries, *Journal of Atmospheric and Oceanic Technology*, 20, 159–186, [https://doi.org/10.1175/1520-0426\(2003\)020<0159:AUGFVT>2.0.CO;2](https://doi.org/10.1175/1520-0426(2003)020<0159:AUGFVT>2.0.CO;2), 2003.
- Danilov, S.: Ocean modeling on unstructured meshes, *Ocean Modelling*, 69, 195–210, <https://doi.org/10.1016/j.ocemod.2013.05.005>, <http://dx.doi.org/10.1016/j.ocemod.2013.05.005>, 2013.
- 490 Dietrich, J., Zijlema, M., Westerink, J., Holthuijsen, L., Dawson, C., Luettich, R., Jensen, R., Smith, J., Stelling, G., and Stone, G.: Modeling hurricane waves and storm surge using integrally-coupled, scalable computations, *Coastal Engineering*, 58, 45–65, <https://doi.org/10.1016/j.coastaleng.2010.08.001>, <http://linkinghub.elsevier.com/retrieve/pii/S0378383910001250>, 2011.
- Dietrich, J. C., Bunya, S., Westerink, J. J., Ebersole, B. A., Smith, J. M., Atkinson, J. H., Jensen, R., Resio, D. T., Luettich, R. A., Dawson, C., Cardone, V. J., Cox, A. T., Powell, M. D., Westerink, H. J., and Roberts, H. J.: A High-Resolution Coupled Riverine Flow, Tide, Wind, Wind Wave, and Storm Surge Model for Southern Louisiana and Mississippi. Part II: Synoptic Description and Analysis of Hurricanes Katrina and Rita, *Monthly Weather Review*, 138, 378–404, <https://doi.org/10.1175/2009mwr2907.1>, 2009.
- 495 Dresback, K. M., Kolar, R. L., and Luettich, R. A.: On the Form of the Momentum Equation and Lateral Stress Closure Law in Shallow Water Modeling, in: *Estuarine and Coastal Modeling*, pp. 399–418, American Society of Civil Engineers, Reston, VA, [https://doi.org/10.1061/40876\(209\)23](https://doi.org/10.1061/40876(209)23), [http://ascelibrary.org/doi/abs/10.1061/40876\(209\)23](http://ascelibrary.org/doi/abs/10.1061/40876(209)23), 2005.
- 500 Dullaart, J. C., Muis, S., Bloemendaal, N., and Aerts, J. C.: Advancing global storm surge modelling using the new ERA5 climate reanalysis, *Climate Dynamics*, <https://doi.org/10.1007/s00382-019-05044-0>, <https://doi.org/10.1007/s00382-019-05044-0>, 2019.
- Egbert, G. D. and Erofeeva, S. Y.: Efficient Inverse Modeling of Barotropic Ocean Tides, *Journal of Atmospheric and Oceanic Technology*, 19, 183–204, [https://doi.org/10.1175/1520-0426\(2002\)019<0183:EIMOBO>2.0.CO;2](https://doi.org/10.1175/1520-0426(2002)019<0183:EIMOBO>2.0.CO;2), [http://journals.ametsoc.org/doi/abs/10.1175/1520-0426\(2002\)019<0183:EIMOBO>2.0.CO;2](http://journals.ametsoc.org/doi/abs/10.1175/1520-0426(2002)019<0183:EIMOBO>2.0.CO;2), 2002.
- 505 Egbert, G. D. and Erofeeva, S. Y.: TPXO9-Atlas, [http://volkov.oce.orst.edu/tides/tpxo9\[_\]atlas.html](http://volkov.oce.orst.edu/tides/tpxo9[_]atlas.html), 2019.
- Fortunato, A. B., Freire, P., Bertin, X., Rodrigues, M., Ferreira, J., and Liberato, M. L.: A numerical study of the February 15, 1941 storm in the Tagus estuary, *Continental Shelf Research*, 144, 50–64, <https://doi.org/10.1016/j.csr.2017.06.023>, <http://dx.doi.org/10.1016/j.csr.2017.06.023>, 2017.

- 510 Fringer, O. B., Dawson, C. N., He, R., Ralston, D. K., and Zhang, Y. J.: The future of coastal and estuarine modeling: Findings from a workshop, *Ocean Modelling*, 143, 101–145, <https://doi.org/https://doi.org/10.1016/j.ocemod.2019.101458>, <http://www.sciencedirect.com/science/article/pii/S1463500319301015>, 2019.
- Funakoshi, Y., Feyen, J. C., Aikman, F., Tolman, H. L., van der Westhuysen, A. J., Chawla, A., Rivin, I., and Taylor, A.: Development of Extratropical Surge and Tide Operational Forecast System (ESTOFS), in: 12th International Conference on Estuarine and Coastal Modeling, pp. 201–212, St. Augustine, Florida, 2011.
- 515 Garratt, J. R.: Review of drag coefficients over oceans and continents, *Mon. Weather Rev.*, 105, 915–929, 1977.
- Garrett, C. and Kunze, E.: Internal Tide Generation in the Deep Ocean, *Annual Review of Fluid Mechanics*, 39, 57–87, <https://doi.org/10.1146/annurev.fluid.39.050905.110227>, <http://www.annualreviews.org/doi/10.1146/annurev.fluid.39.050905.110227>, 2007.
- GEBCO Compilation Group: GEBCO 2019 Grid, <https://doi.org/10.5285/836f016a-33be-6ddc-e053-6c86abc0788e>, 2019.
- 520 Gorman, G. J., Piggott, M. D., Pain, C. C., de Oliveira, C. R., Umpleby, A. P., and Goddard, A. J.: Optimisation based bathymetry approximation through constrained unstructured mesh adaptivity, *Ocean Modelling*, <https://doi.org/10.1016/j.ocemod.2005.09.004>, 2006.
- Greenberg, D. A., Dupont, F., Lyard, F. H., Lynch, D. R., and Werner, F. E.: Resolution issues in numerical models of oceanic and coastal circulation, *Continental Shelf Research*, 27, 1317–1343, <https://doi.org/10.1016/j.csr.2007.01.023>, 2007.
- Hervouet, J.-M.: Equations of free surface hydrodynamics, in: *Hydrodynamics of Free Surface Flows: Modelling with the Finite Element Method*, chap. 2, pp. 5–75, John Wiley & Sons, Ltd, <https://doi.org/10.1002/9780470319628.ch2>, <https://onlinelibrary.wiley.com/doi/abs/10.1002/9780470319628.ch2>, 2007.
- 525 Herzfeld, M., Engwirda, D., and Rizwi, F.: A coastal unstructured model using Voronoi meshes and C-grid staggering, *Ocean Modelling*, 148, 101–159, <https://doi.org/10.1016/j.ocemod.2020.101599>, 2020.
- Hoch, K. E., Petersen, M. R., Brus, S. R., Engwirda, D., Roberts, A. F., Rosa, K. L., and Wolfram, P. J.: MPAS-Ocean Simulation Quality for Variable-Resolution North American Coastal Meshes, *Journal of Advances in Modeling Earth Systems*, <https://doi.org/10.1029/2019MS001848>, <http://doi.wiley.com/10.1029/2019MS001848>, 2020.
- Holland, G. J.: An analytical model of the wind and pressure profiles in hurricanes, *Mon. Weather Rev.*, 108, 1212–1218, 1980.
- Hope, M. E., Westerink, J. J., Kennedy, A. B., Kerr, P. C., Dietrich, J. C., Dawson, C., Bender, C. J., Smith, J. M., Jensen, R. E., Zijlema, M., Holthuijsen, L. H., Luettich, R. A., Powell, M. D., Cardone, V. J., Cox, A. T., Pourtaheri, H., Roberts, H. J., Atkinson, J. H., Tanaka, S., Westerink, H. J., and Westerink, L. G.: Hindcast and validation of Hurricane Ike (2008) waves, forerunner, and storm surge, *Journal of Geophysical Research: Oceans*, 118, 4424–4460, <https://doi.org/10.1002/jgrc.20314>, <http://doi.wiley.com/10.1002/jgrc.20314>, 2013.
- 535 Idier, D., Bertin, X., Thompson, P., and Pickering, M. D.: Interactions Between Mean Sea Level, Tide, Surge, Waves and Flooding: Mechanisms and Contributions to Sea Level Variations at the Coast, *Surveys in Geophysics*, 40, 1603–1630, <https://doi.org/10.1007/s10712-019-09549-5>, <https://doi.org/10.1007/s10712-019-09549-5>, 2019.
- 540 Kennedy, A. B., Gravois, U., Zachry, B. C., Westerink, J. J., Hope, M. E., Dietrich, J. C., Powell, M. D., Cox, A. T., Luettich, R. A., and Dean, R. G.: Origin of the Hurricane Ike forerunner surge, *Geophysical Research Letters*, 38, n/a–n/a, <https://doi.org/10.1029/2011GL047090>, <http://doi.wiley.com/10.1029/2011GL047090>, 2011.
- Kolar, R. L., Gray, W. G., Westerink, J. J., and Luettich, R. A.: Shallow water modeling in spherical coordinates: Equation formulation, numerical implementation, and application: Modélisation des équations de saint-venant, en coordonnées sphériques: Formulation, résolution numérique et application, *Journal of Hydraulic Research*, 32, 3–24, <https://doi.org/10.1080/00221689409498786>, 1994.
- 545

- Lambrechts, J., Comblen, R., Legat, V., Geuzaine, C., and Remacle, J.-F.: Multiscale mesh generation on the sphere, *Ocean Dynamics*, 58, 461–473, <https://doi.org/10.1007/s10236-008-0148-3>, <http://link.springer.com/10.1007/s10236-008-0148-3>, 2008.
- Le Bars, Y., Lyard, F., Jeandel, C., and Dardengo, L.: The AMANDES tidal model for the Amazon estuary and shelf, *Ocean Modelling*, 31, 132–149, <https://doi.org/10.1016/j.ocemod.2009.11.001>, <http://dx.doi.org/10.1016/j.ocemod.2009.11.001>, 2010.
- 550 Le Bars, Y., Vallaey, V., Deleersnijder, É., Hanert, E., Carrere, L., and Channelière, C.: Unstructured-mesh modeling of the Congo river-to-sea continuum, *Ocean Dynamics*, 66, 589–603, <https://doi.org/10.1007/s10236-016-0939-x>, 2016.
- LeBlond, P. H.: Tides and their Interactions with Other Oceanographic Phenomena in Shallow Water (Review), in: *Tidal hydrodynamics*, edited by Parker, B. B., pp. 357–378, John Wiley & Sons, Ltd., New York, USA, 1991.
- Lefevre, F., Provost, C. L., and Lyard, F. H.: How can we improve a global ocean tide model at a region scale? A test on the Yellow Sea and the East China Sea, *Journal of Geophysical Research: Oceans*, 105, 8707–8725, <https://doi.org/10.1029/1999JC900281>, 2000.
- 555 Legrand, S., Legat, V., and Deleersnijder, E.: Delaunay mesh generation for an unstructured-grid ocean general circulation model, *Ocean Modelling*, 2, 17–28, [https://doi.org/10.1016/s1463-5003\(00\)00005-6](https://doi.org/10.1016/s1463-5003(00)00005-6), 2000.
- Locarnini, R. A., Mishonov, A. V., Baranova, O. K., Boyer, T. P., Zweng, M. M., Garcia, H. E., Reagan, J. R., Seidov, D., Weathers, K., Paver, C. R., and Smolyar, I. V.: *World Ocean Atlas 2018. Volume 1: Temperature*, Tech. rep., NOAA Atlas NESDIS 81, <http://www.nodc.noaa.gov/OC5/indprod.html>, 2019.
- 560 Luetlich, R. A. and Westerink, J. J.: Formulation and Numerical Implementation of the 2D/3D ADCIRC Finite Element Model Version 44.XX, Tech. rep., University of North Carolina at Chapel Hill & University of Notre Dame, 2004.
- Lyard, F., Lefevre, F., Letellier, T., and Francis, O.: Modelling the global ocean tides: modern insights from FES2004, *Ocean Dynamics*, 56, 394–415, <https://doi.org/10.1007/s10236-006-0086-x>, <http://link.springer.com/10.1007/s10236-006-0086-x>, 2006.
- 565 Lyard, F. H., Damien, A. J., Cancet, M., Carrère, L., and Picot, N.: FES2014 global ocean tides atlas: design and performances, *Ocean Science Discussions*, p. in review, <https://doi.org/10.5194/os-2020-96>, 2020.
- Mori, N., Kato, M., Kim, S., Mase, H., Shibutani, Y., Takemi, T., Tsuboki, K., and Yasuda, T.: Local amplification of storm surge by Super Typhoon Haiyan in Leyte Gulf, *Geophysical Research Letters*, 41, 5106–5113, <https://doi.org/10.1002/2014GL060689>, <http://doi.wiley.com/10.1002/2014GL060689>, 2014.
- 570 Muis, S., Verlaan, M., Winsemius, H. C., Aerts, J. C., and Ward, P. J.: A global reanalysis of storm surges and extreme sea levels, *Nature Communications*, 7, 1–11, <https://doi.org/10.1038/ncomms11969>, <http://dx.doi.org/10.1038/ncomms11969>, 2016.
- Muis, S., Lin, N., Verlaan, M., Winsemius, H. C., Ward, P. J., and Aerts, J. C.: Spatiotemporal patterns of extreme sea levels along the western North-Atlantic coasts, *Scientific Reports*, 9, 3391, <https://doi.org/10.1038/s41598-019-40157-w>, <http://www.nature.com/articles/s41598-019-40157-w>, 2019.
- 575 Ngodock, H. E., Souopgui, I., Wallcraft, A. J., Richman, J. G., Shriver, J. F., and Arbic, B. K.: On improving the accuracy of the M2 barotropic tides embedded in a high-resolution global ocean circulation model, *Ocean Modelling*, 97, 16–26, <https://doi.org/10.1016/j.ocemod.2015.10.011>, 2016.
- Pringle, W. J.: *Global Storm Tide Modeling on Unstructured Meshes with ADCIRC v55 - Simulation Results and Model Setup*, <https://doi.org/10.5281/zenodo.3911282>, 2020.
- 580 Pringle, W. J. and Roberts, K. J.: CHLNDDEV/OceanMesh2D: OceanMesh2D V3.0.0, <https://doi.org/10.5281/zenodo.3721137>, 2020.
- Pringle, W. J., Wirasaet, D., Suhardjo, A., Meixner, J., Westerink, J. J., Kennedy, A. B., and Nong, S.: Finite-Element Barotropic Model for the Indian and Western Pacific Oceans: Tidal Model-Data Comparisons and Sensitivities, *Ocean Modelling*, 129, 13–38, <https://doi.org/10.1016/j.ocemod.2018.07.003>, <https://linkinghub.elsevier.com/retrieve/pii/S146350031830026X>, 2018a.

- Pringle, W. J., Wirasaet, D., and Westerink, J. J.: Modifications to Internal Tide Conversion Parameterizations and Implementation into
585 Barotropic Ocean Models, EarthArXiv, p. 9, <https://doi.org/10.31223/osf.io/84w53>, 2018b.
- Ray, R. D.: Ocean self-attraction and loading in numerical tidal models, *Marine Geodesy*, 21, 181–192, <https://doi.org/10.1080/01490419809388134>, <http://www.tandfonline.com/doi/abs/10.1080/01490419809388134>, 1998.
- Roberts, H. and Cobell, Z.: 2017 Coastal Master Plan. Attachment C3-25.1: Storm Surge, Tech. rep., Coastal Protection and Restoration Authority, Baton Rouge, LA, <http://coastal.la.gov/wp-content/uploads/2017/04/Attachment-C3-25.1{ }FINAL{ }04.05.2017.pdf>, 2017.
- 590 Roberts, K. J., Pringle, W. J., and Westerink, J. J.: OceanMesh2D 1.0: MATLAB-based software for two-dimensional unstructured mesh generation in coastal ocean modeling, *Geoscientific Model Development*, 12, 1847–1868, <https://doi.org/10.5194/gmd-12-1847-2019>, 2019a.
- Roberts, K. J., Pringle, W. J., Westerink, J. J., Contreras, M. T., and Wirasaet, D.: On the automatic and a priori design of unstructured mesh resolution for coastal ocean circulation models, *Ocean Modelling*, 144, 101–150, <https://doi.org/10.1016/j.ocemod.2019.101509>, 2019b.
- 595 Roeber, V. and Bricker, J. D.: Destructive tsunami-like wave generated by surf beat over a coral reef during Typhoon Haiyan, *Nature Communications*, 6, <https://doi.org/10.1038/ncomms8854>, 2015.
- Saha, S., Moorthi, S., Pan, H.-L., Wu, X., Wang, J., Nadiga, S., Tripp, P., Kistler, R., Woollen, J., Behringer, D., Liu, H., Stokes, D., Grumbine, R., Gayno, G., Wang, J., Hou, Y.-T., Chuang, H.-y., Juang, H.-M. H., Sela, J., Iredell, M., Treadon, R., Kleist, D., Van Delst, P., Keyser, D., Derber, J., Ek, M., Meng, J., Wei, H., Yang, R., Lord, S., van den Dool, H., Kumar, A., Wang, W., Long, C., Chelliah, M., Xue, Y., Huang, B., Schemm, J.-K., Ebisuzaki, W., Lin, R., Xie, P., Chen, M., Zhou, S., Higgins, W., Zou, C.-Z., Liu, Q., Chen, Y., Han, Y., Cucurull, L., Reynolds, R. W., Rutledge, G., and Goldberg, M.: The NCEP Climate Forecast System Reanalysis, *Bulletin of the American Meteorological Society*, 91, 1015–1058, <https://doi.org/10.1175/2010BAMS3001.1>, <http://journals.ametsoc.org/doi/10.1175/2010BAMS3001.1>, 2010.
- 600 Saha, S., Moorthi, S., Wu, X., Wang, J., Nadiga, S., Tripp, P., Behringer, D., Hou, Y. T., Chuang, H. Y., Iredell, M., Ek, M., Meng, J., Yang, R., Mendez, M. P., Van Den Dool, H., Zhang, Q., Wang, W., Chen, M., and Becker, E.: The NCEP climate forecast system version 2, *Journal of Climate*, 27, 2185–2208, <https://doi.org/10.1175/JCLI-D-12-00823.1>, 2014.
- Schaffer, J., Timmermann, R., Erik Arndt, J., Savstrup Kristensen, S., Mayer, C., Morlighem, M., and Steinhage, D.: A global, high-resolution data set of ice sheet topography, cavity geometry, and ocean bathymetry, *Earth System Science Data*, 8, 543–557, <https://doi.org/10.5194/essd-8-543-2016>, 2016.
- 610 Schindelegger, M., Green, J. A., Wilmes, S. B., and Haigh, I. D.: Can We Model the Effect of Observed Sea Level Rise on Tides?, *Journal of Geophysical Research: Oceans*, 123, 4593–4609, <https://doi.org/10.1029/2018JC013959>, 2018.
- Stammer, D., Ray, R. D., Andersen, O. B., Arbic, B. K., Bosch, W., Carrère, L., Cheng, Y., Chinn, D. S., Dushaw, B. D., Egbert, G. D., Erofeeva, S. Y., Fok, H. S., Green, J. A. M., Griffiths, S., King, M. A., Lapin, V., Lemoine, F. G., Luthcke, S. B., Lyard, F., Morison, J., Müller, M., Padman, L., Richman, J. G., Shriver, J. F., Shum, C. K., Taguchi, E., and Yi, Y.: Accuracy assessment of global barotropic ocean tide models, *Reviews of Geophysics*, 52, 243–282, <https://doi.org/10.1002/2014RG000450>, <http://doi.wiley.com/10.1002/2014RG000450>, 2014.
- 615 URS Group Inc: Final Coastal and Riverine High Water Mark Collection for Hurricane Katrina in Mississippi. FEMA-1604-DR-MS, Task Orders 413 and 420, Tech. rep., Federal Emergency Management Agency, Washington D.C., <https://www.fema.gov/pdf/hazard/flood/recoverydata/katrina/katrina{ }ms{ }hwm{ }public.pdf>, 2006a.

- 620 URS Group Inc: High Water Mark Collection for Hurricane Katrina in Louisiana. FEMA-1603-DR-LA, Task Orders 412 and 419, Tech. rep., Federal Emergency Management Agency, Washington D.C., https://www.fema.gov/pdf/hazard/flood/recoverydata/katrina/katrina{}_la{}_hwm{}_public.pdf, 2006b.
- Verlaan, M., De Kleermaeker, S., and Buckman, L.: GLOSSIS: Global storm surge forecasting and information system, in: Australasian Coasts & Ports Conference 2015: 22nd Australasian Coastal and Ocean Engineering Conference and the 15th Australasian Port and Harbour Conference, pp. 229–234, Auckland, New Zealand, 2015.
- 625 Vinogradov, S. V., Myers, E., Funakoshi, Y., and Kuang, L.: Development and Validation of Operational Storm Surge Model Guidance, in: 15th Symposium on the Coastal Environment at the 97th AMS Annual Meeting, Seattle, Washington, 2017.
- Vousdoukas, M. I., Mentaschi, L., Voukouvalas, E., Verlaan, M., Jevrejeva, S., Jackson, L. P., and Feyen, L.: Global probabilistic projections of extreme sea levels show intensification of coastal flood hazard, *Nature Communications*, 9, 1–12, [https://doi.org/10.1038/s41467-018-](https://doi.org/10.1038/s41467-018-04692-w)
- 630 04692-w, 2018.
- Wang, X., Chao, Y., Shum, C. K., Yi, Y., and Fok, H. S.: Comparison of two methods to assess ocean tide models, *Journal of Atmospheric and Oceanic Technology*, 29, 1159–1167, <https://doi.org/10.1175/JTECH-D-11-00166.1>, <http://journals.ametsoc.org/doi/abs/10.1175/JTECH-D-11-00166.1>, 2012.
- Wessel, P. and Smith, W. H. F.: A global, self-consistent, hierarchical, high-resolution shoreline database, *Journal of Geophysical Research: Solid Earth*, 101, 8741–8743, <https://doi.org/10.1029/96JB00104>, <http://doi.wiley.com/10.1029/96JB00104>, 1996.
- 635 Westerink, J. J., Luettich, R. A., and Muccino, J. C.: Modelling tides in the western North Atlantic using unstructured graded grids, *Tellus A*, 46, 178–199, <https://doi.org/10.1034/j.1600-0870.1994.00007.x>, 1994.
- Westerink, J. J., Luettich, R. A., Feyen, J. C., Atkinson, J. H., Dawson, C., Roberts, H. J., Powell, M. D., Dunion, J. P., Kubatko, E. J., and Pourtaheri, H.: A Basin- to Channel-Scale Unstructured Grid Hurricane Storm Surge Model Applied to Southern Louisiana, *Monthly*
- 640 *Weather Review*, 136, 833–864, <https://doi.org/10.1175/2007MWR1946.1>, <http://journals.ametsoc.org/doi/abs/10.1175/2007MWR1946.1>, 2008.
- Zaron, E. D.: Topographic and frictional controls on tides in the Sea of Okhotsk, *Ocean Modelling*, 117, 1–11, <https://doi.org/10.1016/j.ocemod.2017.06.011>, <http://linkinghub.elsevier.com/retrieve/pii/S1463500317301002>, 2017.
- Zaron, E. D.: Simultaneous Estimation of Ocean Tides and Underwater Topography in the Weddell Sea, *Journal of Geophysical Research: Oceans*, 124, 3125–3148, <https://doi.org/10.1029/2019JC015037>, 2019.
- 645 Zhang, Y. J., Ye, F., Stanev, E. V., and Grashorn, S.: Seamless cross-scale modeling with SCHISM, *Ocean Modelling*, 102, 64–81, <https://doi.org/10.1016/j.ocemod.2016.05.002>, 2016.
- Zweng, M. M., Reagan, J. R., Seidov, D., Boyer, T. P., Locarnini, R. A., Garcia, H. E., Mishonov, A. V., Baranova, O. K., Weathers, K., Paver, C. R., and Smolyar, I. V.: World Ocean Atlas 2018. Volume 2: Salinity, Tech. rep., NOAA Atlas NESDIS 81, [http://www.nodc.noaa.gov/](http://www.nodc.noaa.gov/OC5/indprod.html)
- 650 OC5/indprod.html, 2019.