

Supplementary material

Effects of spatial resolution on WRF v3.8.1 simulated meteorology over the central Himalaya

Jaydeep Singh¹, Narendra Singh^{1*}, Narendra Ojha², Amit Sharma^{3, a}, Andrea Pozzer^{4, 5*}, Nadimpally Kiran Kumar⁶, Kunjukrishnapillai Rajeev⁶, Sachin S. Gunthe³, V. Rao Kotamarthi⁷

¹Aryabhata Research Institute of Observational Sciences, Nainital, India

²Physical Research Laboratory, Ahmedabad, India

³EWRE Division, Department of Civil Engineering, Indian Institute of Technology Madras, Chennai, India

⁴Department of Atmospheric Chemistry, Max Planck Institute for Chemistry, Mainz, Germany

⁵Earth System Physics Section, International Centre for Theoretical Physics, Trieste, Italy

⁶Space Physics Laboratory, Vikram Sarabhai Space Centre, Thiruvananthapuram, India

⁷Environmental Science Division, Argonne National Laboratory, Argonne, Illinois, USA

^aNow at Laboratory for Atmospheric Research, Washington State University, Pullman, WA, USA

Correspondence: Narendra Singh (narendra@aries.res.in) and Andrea Pozzer (andrea.pozzer@mpic.de)

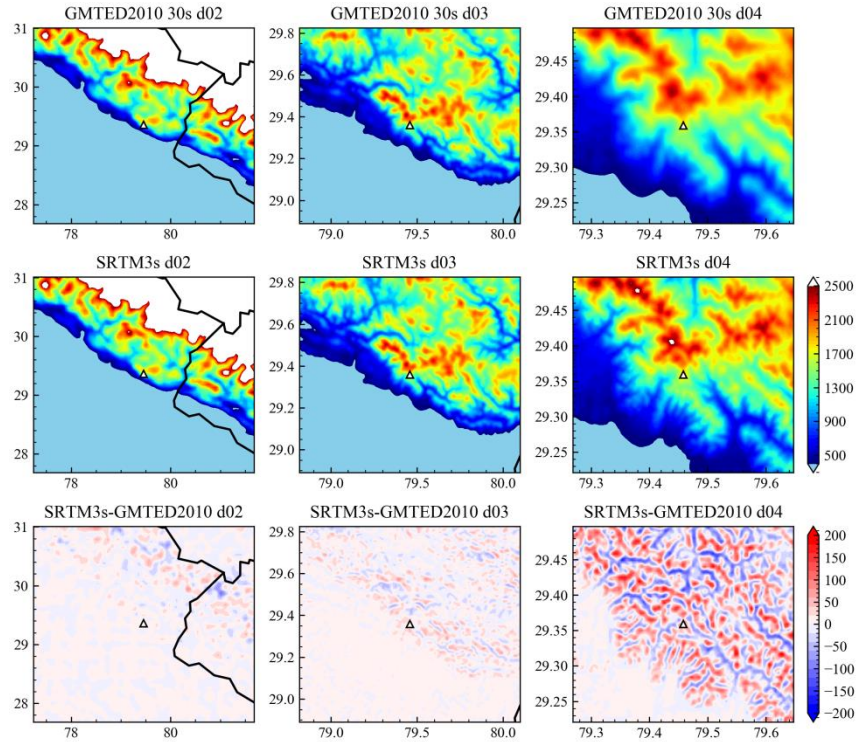


Figure S1: The topography from GMTED2010 (first row) at 30s and SRTM (second row) at 3s in three different domain d02, d03 and d04 while third row shows the difference between SRTM and GMTED2010.

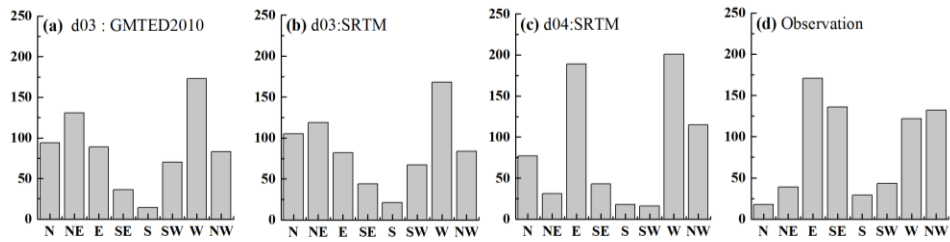


Figure S2: Frequency distribution of wind direction