

Interactive comment on “An urban trees parameterization for modelling microclimatic variables and thermal comfort conditions at street level with the Town Energy Balance model (TEB-SURFEX v8.0)” by Emilie Redon et al.

Emilie Redon et al.

aude.lemonsu@meteo.fr

Received and published: 1 October 2019

The comment was uploaded in the form of a supplement:
<https://www.geosci-model-dev-discuss.net/gmd-2019-77/gmd-2019-77-AC1-supplement.pdf>

Interactive comment on Geosci. Model Dev. Discuss., <https://doi.org/10.5194/gmd-2019-77>, 2019.

Printer-friendly version

Discussion paper



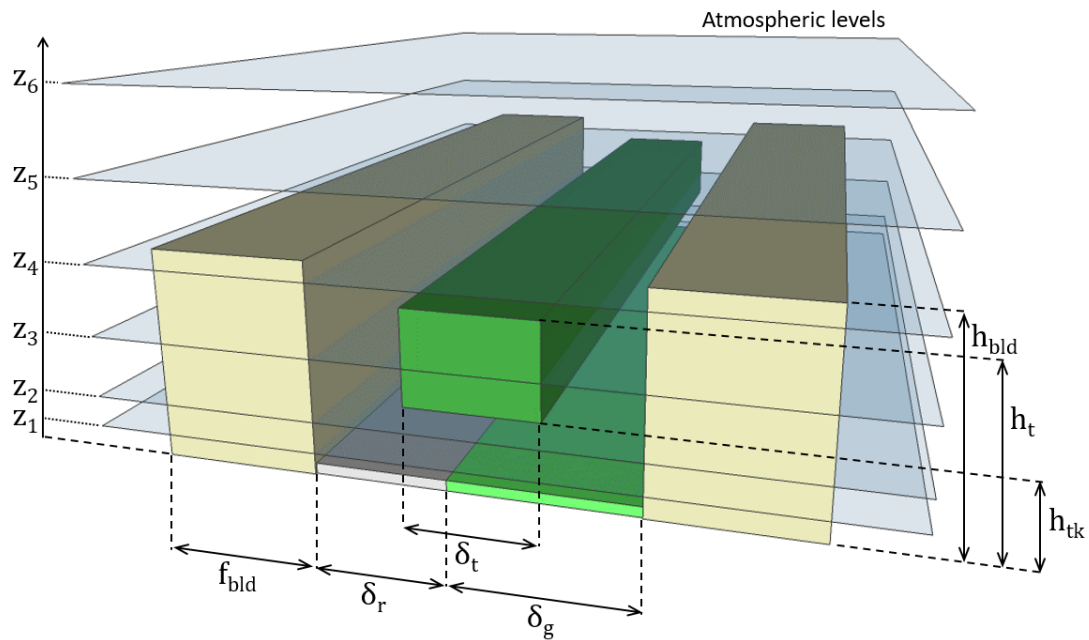


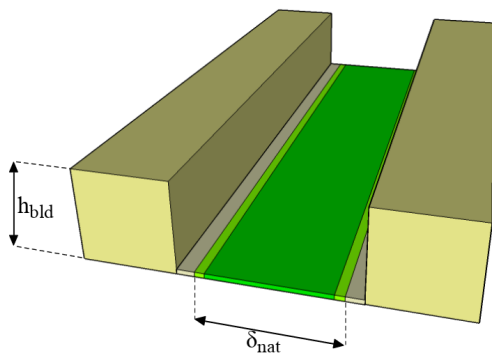
Fig. 1.

Printer-friendly version

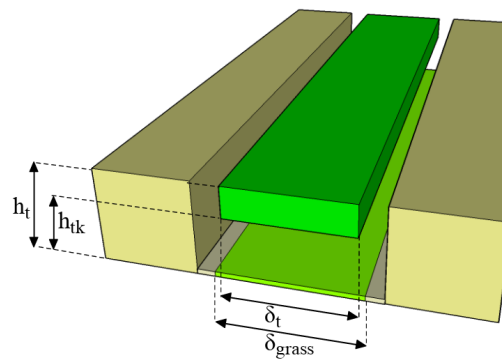
Discussion paper



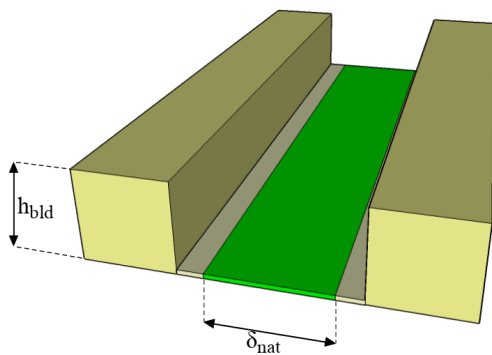
(a) TREE-GRASS with TEB-Ref



(b) TREE-GRASS with TEB-Tree



(c) TREE-BARE with TEB-Ref



(d) TREE-BARE with TEB-Tree

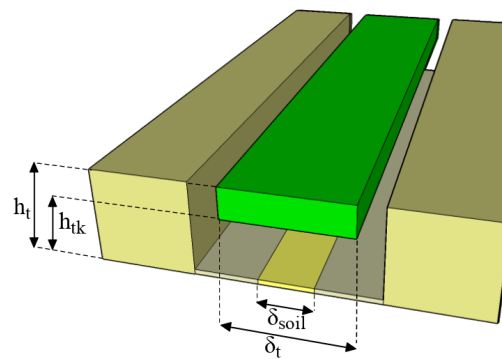


Fig. 2.

Printer-friendly version

Discussion paper



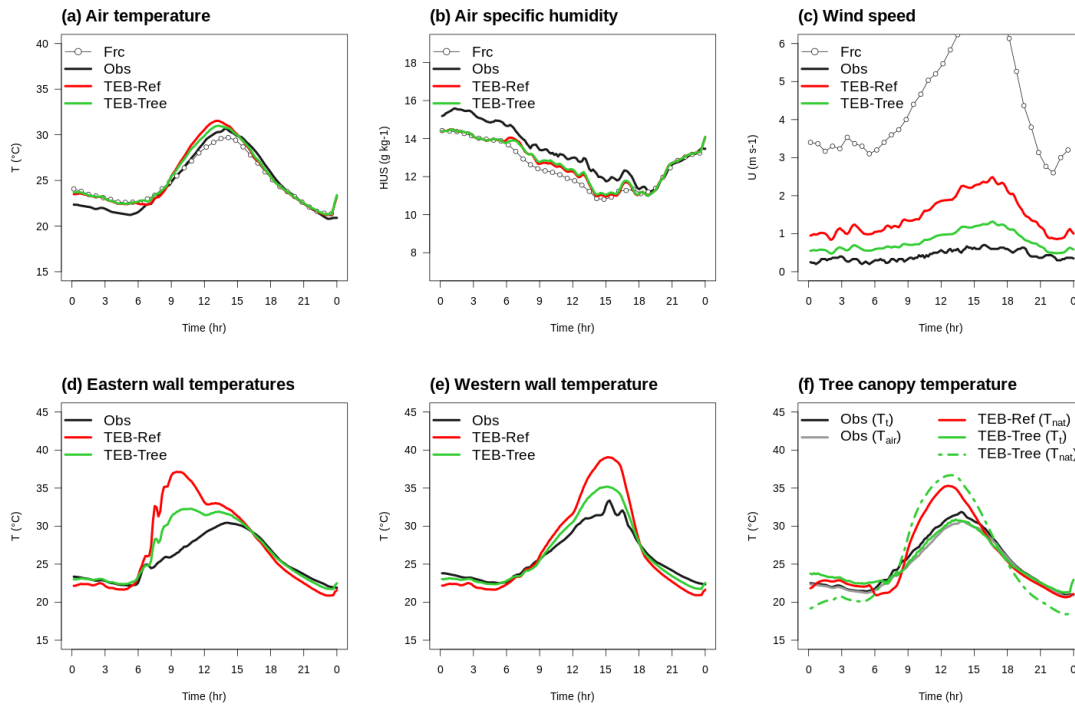


Fig. 3.

Printer-friendly version

Discussion paper



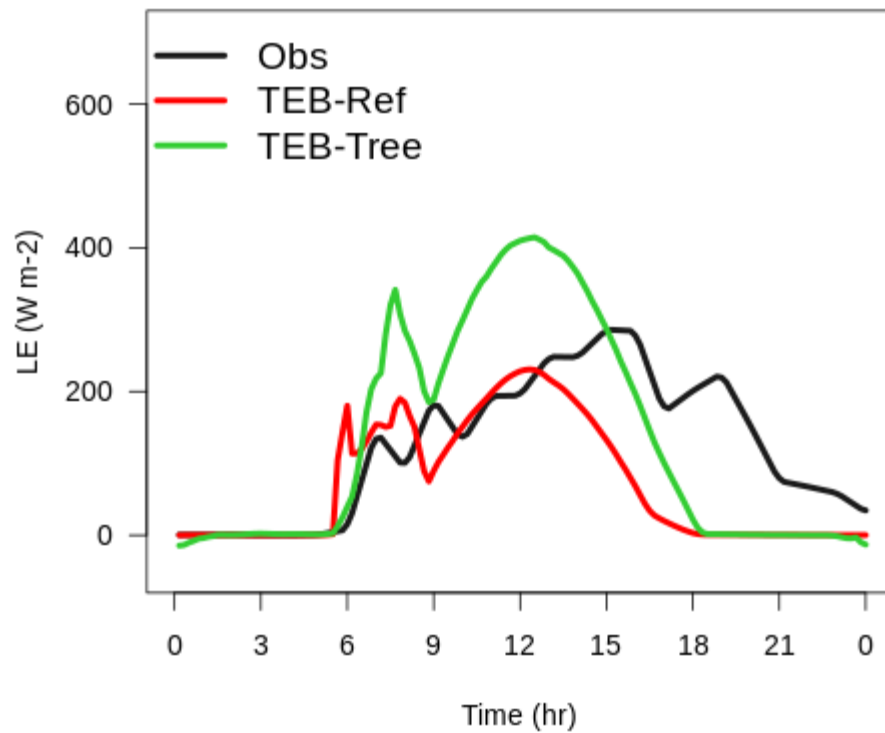


Fig. 4.

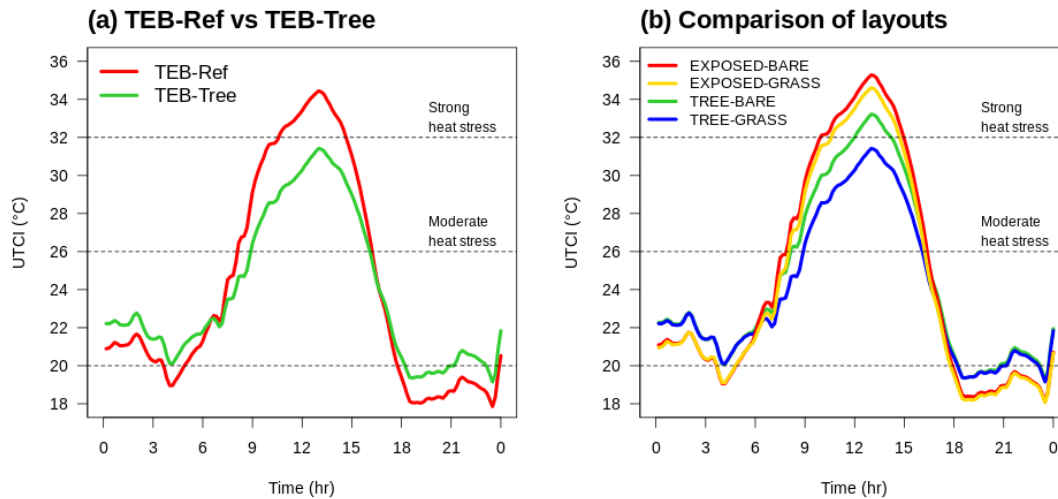


Fig. 5.