

## ***Interactive comment on “An urban trees parameterization for modelling microclimatic variables and thermal comfort conditions at street level with the Town Energy Balance model (TEB-SURFEX v8.0)” by Emilie Redon et al.***

**Emilie Redon et al.**

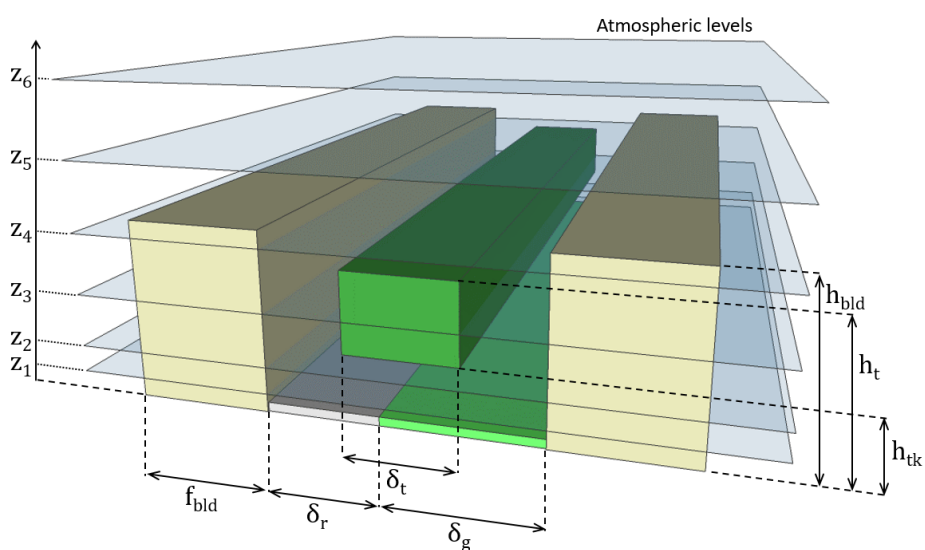
aude.lemonsu@meteo.fr

Received and published: 1 October 2019

The comment was uploaded in the form of a supplement:  
<https://www.geosci-model-dev-discuss.net/gmd-2019-77/gmd-2019-77-AC1-supplement.pdf>

Interactive comment on Geosci. Model Dev. Discuss., <https://doi.org/10.5194/gmd-2019-77>, 2019.

C1



**Fig. 1.**

C2

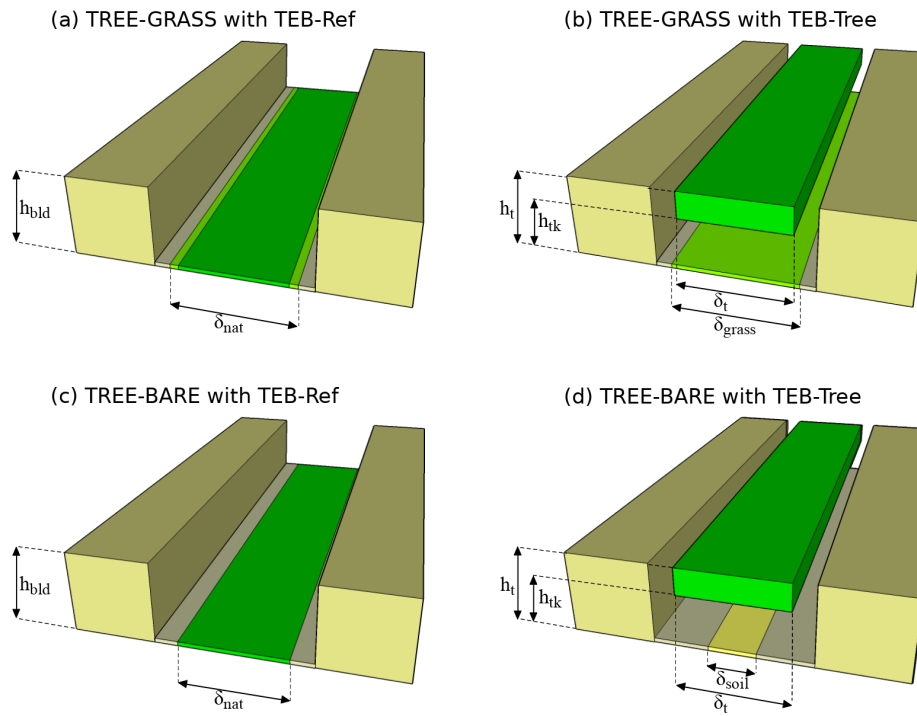


Fig. 2.

C3

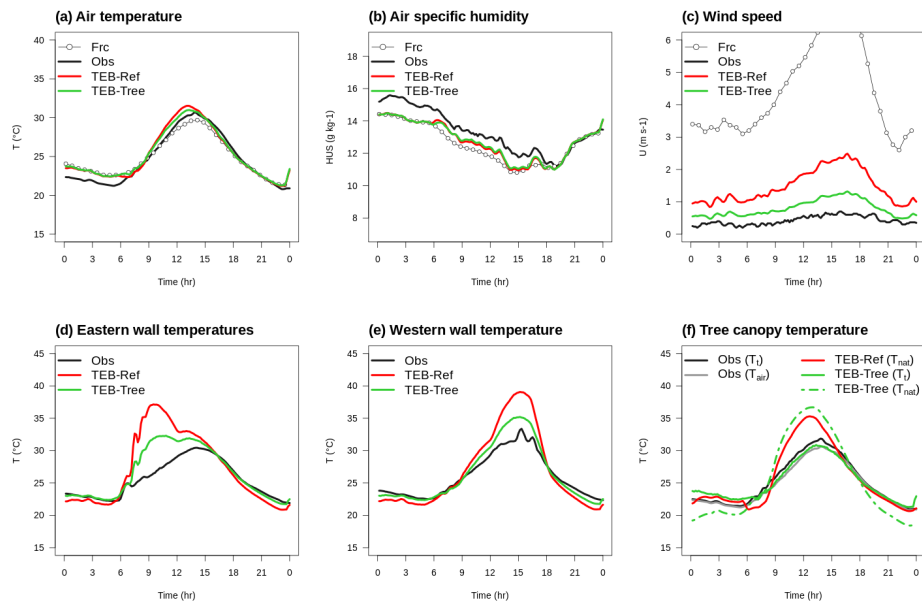


Fig. 3.

C4

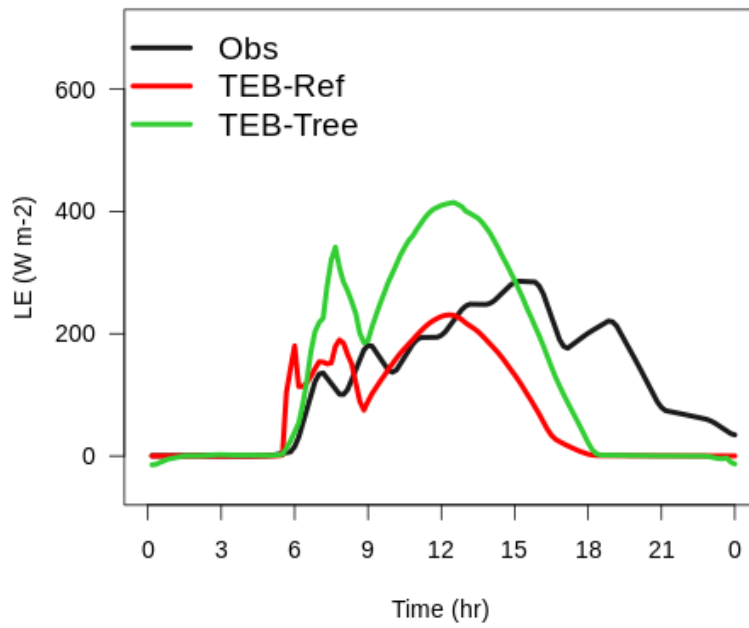


Fig. 4.

C5

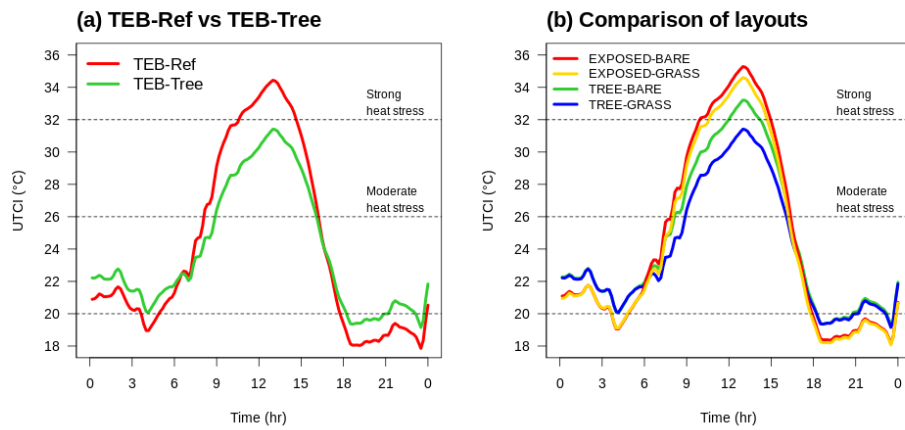


Fig. 5.

C6