

Response to Reviewer 1

General Comments:

The paper presents a Python-enhanced version of SUEWS model; the original SUEWS model being one of the commonly used urban land surface model in the urban climate research community. The enhanced version SuPy contains quite substantial technical improvement of the original model, including interfacing and pre- and post-processing. The interaction with external models, in particular the incorporation of anthropogenic heat, is also a plus. Overall, the paper is well presented with adequately detailed model structure, documentation, and tutorial demonstration. Minor revisions are needed for some clarification as well as correction of typos and some wordings (listed below). The English writing still need a bit more polish; I leave it for the authors and editor to decide.

Response: We appreciate the recognition of our work.

Specific Comments:

1) *p5, line 16, “From similarity theory (Monin and Obukhov, 1954) we estimate”, it should be clarified that Eqs. (1)-(3) follows Monin-Obukhov Similarity theory that represents one specific class of similarity theory. The phrase here sounds like MOST is the only similarity theory.*

Response: We agree with the reviewer but as Reviewer 2 suggest we remove this part from this paper, it no longer appears. We will take this suggestion into consideration for future text.

2) *p13, section 4.2, “Impacts of the urban area on urban climate”, the wording is awkward. Consider revision.*

Response: Changed to “Impacts of urban surfaces on local climate”

3) *p15, Figure 5, why the changes of temperature and albedo follow a linear (bi-linear in the case of maximum temperature) manner?*

Response: Note it is not necessarily as the range shows (although the mean suggesting that is the case).

Here the albedo changes $K \uparrow$ but longwave radiation is not modified because the forcing data are held constant in the simulation. The storage heat flux ΔQ_s is modified (but not linearly). Q_F is not modified because the forcing data are held constant. The surface conductances will be partially modified (but not fully because the forcing data is being held constant). There will be a nonlinear variation that changes with time as the soil moisture will be modified because of Q_E variations. Thus, there will be a change in Q_H which is used to determine the 2 m air temperature. But the air density and atmospheric stability are using the local scale values in this simulation so are not responding.

Thus the linear relation only holds in this particular case and we would expect this simple simulation to become more non-linear with time. The simulation is holding many things constant at the same time and thus cannot be regarded as being a complete “science” simulation to evaluate this. However, with other feedbacks permitted in the runs their roles could be explored. Some of this become apparent in the later Q_F tutorial.

4) *p16, line 15, “high dependent” should be “highly dependent”.*

Response: Corrected as suggested.

5) *p17, Figure 7, the notations of threshold temperature T_H and T_C should be made consistent with those in Eq. (6): both in either capital H & C or lower case h & c.*

Response: Changed to upper cases for consistency as suggested.

6) *p18, Figure 8, the legend “season” is redundant; “summer” and “winter” alone should suffice.*

Response: Removed as suggested.

Responses to Reviewer 2

General Comments:

This paper describes the development of a F2PY version of the land surface model SUEWS and it demonstrates the potential benefits of using F2PY to facilitate usage of the model. It is well written manuscript but some clarifications and adjustments would improve the paper further.

Response: We appreciate the recognition of our work.

Specific Comments:

- 1) *It is un-clear what the actual capabilities of SuPy that are available for the user, e.g. is there possibilities for data preparation from surface data in SuPy? I recommend to add a list of the available functions (methods) that is included in SuPy, maybe not in the actual text but as a appendix, depending on the extent of all functions available*

Response: The capacities of SuPy include:

- a. loading existing SUEWS files as SuPy input.
- b. running SUEWS simulations.
- c. saving SuPy results as text files.
- d. visualising SuPy input and output (SUEWS standalone version does not have this capability. Although, the UMEP/SUEWS version does).

A list of supy functions is added in Appendix A as suggested.

- 2) *On page five new model capabilities area presented where pedestrian model output is added. I recommend that this section is removed as this has nothing to do with the SuPy model per se. If the authors still want this in they should include evaluation of the new features as well, or have a very good reason why this is included here. The three variables (T2, q2 and U10) make use of similarity theory and are estimated within the building canopy layer (close to the ground surface) where this theory should be questioned. Therefore, a detailed evaluation should be added in conjunction with such a model development.*

Response: Removed as suggested.

- 3) *There is no reference to the code repository of SuPy in the text. Please add. I found it eventually (<https://github.com/sunt05/SuPy>) and found that the actual SUEWS source code is not included. Why is this not available as open source from the repository? Most other similar models (WRF, PALM4U, GFDL AM3, SURFEX etc.) have their source code available. Please state why the whole system, both SuPy and SUEWS is not available for other users/developers to be able to contribute to the system. One page 7, line 10, the authors state that using the Python utilities bug-fixing etc. is available. However, since the source code is close I cannot see that this is actually available. Please clarify, or release the full code to the public.*

Response:

- a. Inline citations of supy code have been added as suggested.
- b. We thank the reviewer for their proposal that contribution to SUEWS/SuPy should be allowed, which is actually what we've been conducting, however, in a different manner from other similar models (e.g., WRF). For SuPy, it is fully open source at GitHub; whereas for SUEWS, we are working on the publication of it as an open source software as well, but at the moment the collaboration needs to be requested upon contact with SG (c.s.grimmond@reading.ac.uk).
- 4) *Figure 1. Swap around so that it happens in the correct order from a user perspective, i.e. SuPy to the left.*

Response: Changed as suggested.

- 5) *Page 8, line 25. What does 'mobile' mean in this context, cell phone? Why would anyone like to run SuPy on a cell phone? If so, how to use it with other datasets that the one available through SampleData?*

Response: Yes, we meant mobile devices (e.g., cell phones, iPad, etc) that have Internet connections to a remote server running Jupyter services. Also, we would note this feature is NOT implemented by SuPy *per se* but allowed by the Jupyter environment where python 3 is supported. The reason for running SuPy (and many other python applications) on a mobile device (e.g., cell phone) is simple: working seamlessly across different devices is a natural need.

As a discussion on the possibilities allowed by mobile devices is far beyond the scope of this paper, we provide an example: often, we would like to answer *if-so-then-what* questions by changing parameter values inspired by ideas (e.g. classroom, planning). With SuPy, this can be quickly done with a mobile phone (e.g. students in a classroom, practitioner at a site).

To import datasets other than the sample one shipped by SuPy on mobile devices, we would suggest users to try out the following two options:

- a. **Google Colab:** a customised free Jupyter notebook service that has coherent integration with google drive, which thus allows personal files stored on google drive (i.e., SUEWS input files) to be used by SuPy online. Input files other than the sample ones can be uploaded onto Google Drive and thus imported to SuPy under the Google Colab environment.
- b. **GitHub and other online Jupyter services:** setting up a repository with Jupyter Notebooks and data files in junction with online Jupyter services (e.g., [binder](#), [CoCalc](#), etc.) provides a more generic approach to integrate the desktop and mobile workflows conducting SuPy simulations. Notably on iOS, the app [Juno](#) provides mobile adaptive interfaces to facilitate the online computing (e.g., SuPy simulations) with Jupyter Notebooks and can incorporate personal files via GitHub repos.

The above comments have been incorporated into the revised manuscript.

- 6) *Page 8, line 25-30. There is a lot of "up-talk" of the system, e.g. "great shearability". This is unnecessary. You are not selling anything. Please go through the text for similar expressions.*

Response: We have removed these.

- 7) *All tables need formatting. Use right instead of justify alignment.*

Response: Changed as suggested.

- 8) *How is SuPy connected to stand-alone Fortran code of SUEWS. Can the same input data be used in both system. Can SuPy write out data in the same format as the Fortran version of SUEWS? If not, please add this feature so that other systems easily can be used for both Supy and Fortran SUEWS.*

Response: Such functionalities have been added in version 2019.5 and a summary of SuPy functions is provided in Appendix A.

A Python-enhanced urban land surface model SuPy (SUEWS in Python, v2019.2): development, deployment and demonstration

Ting Sun¹ and Sue Grimmond¹

5 ¹ Department of Meteorology, University of Reading, Reading, RG6 6BB, UK

Correspondence to: Ting Sun (ting.sun@reading.ac.uk); Sue Grimmond (c.s.grimmond@reading.ac.uk)

Abstract. Accurate and agile modelling of cities weather, climate, hydrology and air quality is essential for integrated urban climate-services. The Surface Urban Energy and Water balance Scheme (SUEWS) is a state-of-the-art, widely used, urban land surface model (ULSM) which simulates urban-atmospheric interactions by quantifying the energy, water and mass fluxes. Using SUEWS as the computation kernel, SuPy (SUEWS in Python), stands on thewith a Python-based data stack to streamline the pre-processing, computation and post-processing that are involved in the common modelling-centred urban climate studies. This paper documents the development of SuPy, which includesincluding: the SUEWS interface modification, F2PY (Fortran to Python) configuration and Python frontend implementation. In addition, the deployment of SuPy via PyPI (Python Package Index) is introduced along with the automated workflow for cross-platform compilation. This makes SuPy available for all mainstream operating systems (Windows, Linux, and macOS). Furthermore, threeThree online tutorials in Jupyter notebooks are provided to users of different levels to become familiar with SuPy urban climate modelling. The SuPy package represents a significant enhancement that supports existing and new model applications, reproducibility, and enhanced functionality.

1 Introduction

Cities need to be resilient to weather, climate, hydrological, and air quality hazards given their large and ever-increasing populations (Baklanov et al. 2018). One prerequisite to building resilience is information at various spatio-temporal scales, for example to understand: energy partitioning over urban surfaces (Li et al., 2015b; Sun et al., 2017; Wang et al., 2015; Ward and Grimmond, 2017; Zhao et al., 2014), pedestrian level meteorology to diagnose thermal comfort (Bar et al., 2011; Erell et al., 2013; Krayenhoff et al., 2018; Sun et al., 2016; Tan et al., 2009), or ambient radiation and wind conditions to assist building design (Chen, 2004; Jentsch et al., 2013; Li et al., 2015a; Lindberg and Grimmond, 2011; Reinhart and Cerezo Davila, 2016; Santamouris et al., 2001). To obtain such information, accurate and agile modelling capacity of the urban weather and climate are essential.

Urban land surface models (ULSM) are widely used to simulate urban-atmosphericatmosphere interactions by quantifying the energy, water and mass fluxes between the surface and urban atmosphere (Best and Grimmond, 2015; Chen et al., 2011; Wang

et al., 2012). These models require information on urban morphology (e.g., heights, spacings of buildings, etc) and anthropogenic dynamics (e.g., building-operation-related heat release, emissions of heat by traffic) to be included.

One widely used, and tested ULSM, the Surface Urban Energy and Water balance Scheme (SUEWS) (Table 1), requires basic meteorological data and surface information to characterise essential urban features (i.e., urban surface heterogeneity and anthropogenic dynamics). SUEWS enables long-term urban climate simulations without specialised computing facilities (Järvi et al., 2011; 2014a; Ward et al., 2016) (Järvi et al., 2011, 2014; Ward et al., 2016). SUEWS is regularly enhanced (Grimmond et al., 1991, 1986; Grimmond and Oke, 1986; 1991; Grimmond et al., 1991; Järvi et al., 2011, 2014, 2019; Offerle et al., 2003; Järvi et al., 2011; Loidan Ward et al., 2011; Järvi et al., 2014; Ward et al., 2016; Järvi et al., 2019, 2016) and tested in cities under a range of climates worldwide (Table 1). Although operationally simple and scientifically robust, SUEWS still requires some skill for application (e.g., computing environment setup, parameter configuration, etc.), which may limit uptake for broader applications in urban planning and design.

Table 1: Recent studies using SUEWS. D&E – development and evaluation

Topic	City	Reference
<u>Impact of haze on the urban water balance</u>	<u>Beijing, China</u>	Kokkonen et al. (2019)
CO ₂ emissions <u>emissions</u> module development : <u>D&E</u>	Helsinki, Finland	Järvi et al. (2019)
<u>Impact of precipitation forcing on the urban water balance</u>	<u>London</u>	<u>Ward et al. (2018)</u>
Impacts of anthropogenic heat and irrigation on surface energy balance	Shanghai, China	Ao et al. (2018)
Sensitivity of SUEWS to forcing variables	Vancouver, London	Kokkonen et al. (2018)
SUEWS a core processor of the UMEP system	(N/A)	Lindberg et al. (2018)
Impacts of changes in surface cover, human behaviour and climate on energy partitioning	London, UK	Ward and Grimmond (2017)
Offline evaluation of SUEWS driven by WRF output	Porto, Portugal	Rafael et al. (2017)
Implications of warming to cold climate cities	High latitudes cities	Järvi et al. (2017)
Evaluation in Singapore and comparison with other urban land surface models	Singapore	Demuzere et al. (2017)
Evaluation in four cities with different climates	Dublin, Ireland Hamburg, Germany Melbourne, Australia Phoenix, USA	Alexander et al. (2016)
Evaluation of SUEWS in two UK cities	London, UK	Ward et al. (2016)

Evaluation of radiation flux in Shanghai	Swindon, UK Shanghai, China	Ao et al. (2016)
Boundary layer modelling and coupling with SUEWS	Sacramento, USA	Onomura et al. (2015)
Evaluation with Local Climate Zone information as surface characteristics	Dublin, Ireland	Alexander et al. (2015)
Model inter-comparison for sensible and latent heat fluxes	Helsinki, Finland	Karsisto et al. (2015)
Snow melt model D&E	Helsinki, Finland Montreal, Canada	Järvi et al. (2014)
SUEWS D&E	Vancouver, Canada Los Angeles, USA	Järvi et al. (2011)

Reproducibility and open science principles are increasingly important (Peng, 2011). Although climate scientists by convention publish detailed model configurations used in their research, minor inconsistencies or lack of transparency of code often hampers efforts to reproduce simulation results. In addition, new users may lack prerequisite knowledge in low-level compilation and scripting to undertake initial model runs and interpretation of simulation results (Lin, 2012).

5 [Today Python is used extensively by the atmospheric sciences community for data analyses and numerical modelling \(Lin, 2012; Perkel, 2015\) thanks to its simplicity and the large scientific Python ecosystem \(e.g., PyData community: <https://pydata.org>\). Recent Python-based endeavours include global climate system models \(Monteiro et al., 2018\), stochastic geological models \(Varga et al., 2019\), hydrological models \(Hamman et al., 2018\), to cite just a few.](#)

10 In this paper, we present a Python-enhanced urban climate system based on the popular Fortran-coded SUEWS - SuPy (SUEWS in Python). The development of SuPy (Section 2), the essential workflow in its cross-platform deployment (Section 3), and three demonstrations tutorials for users of different levels (Section 4) are presented.

2 Development

The following are considered within the design process of SuPy:

- 1) *Data preparation*: Climate simulations typically require extensive pre-processing of data (loading input data, reformatting to conform with standards, etc.) and post-processing (conversion of output, graphical and cartographic plotting, etc.). Python has a vast array of utilities to support this; notably, NumPy (the fundamental package for scientific computing with Python, <https://www.numpy.org>) and pandas (a tabular-format-centred data analysis tool) are two cornerstone libraries in Python-based scientific computing.
- 2) *Performance*: Python, as a scripting language, has poorer performance than compiled languages (e.g., C, Fortran) (Kouatchou, 2018). For this reason, Fortran is used extensively for weather and climate related software (e.g., WRF

(Skamarock and Klemp, 2008), GFDL AM3 (Donner et al., 2011), etc). Therefore, by using different languages their strengths can be utilised.

- 3) *Cross-platform ability*: Given the range of computer environments, it is important that software can be easily used across operating systems (OS) with ease. Python and Fortran both are easily used on most OS. However, for performance reasons as noted, it is preferable to have a compiled backend for intensive simulations, where platform specific compilations are mandatory. Thus, we adopt the Microsoft Azure Pipelines to allow cross-platform ability for SuPy (Section 3.1).
- 4) *Extendibility*: It is desirable, possibly even essential, for the scientific model to interact with other models and data sources to extend the overall capacity and to explore urban climate related questions beyond the climate science.

To address these four considerations, SuPy’s architecture uses Python’s data processing and Fortran’s computational efficiency. SuPy consist of three parts (Figure 1):

- 1) *SuPy*: a Python-based frontend processor based on the pandas **DataFrame** with functionality for data analysis and simulation management (Appendix A).
- 2) *SuPy_driver*: calculation kernel compiled by F2PY (Fortran to Python, part of the NumPy package) (Peterson, 2009) to facilitate the transfer of SUEWS Fortran modelling ability to Python and guarantee the computational performance.
- 3) *SUEWS*: a Fortran-coded local scale urban land surface model of moderate complexity that can simulate the urban surface energy balance in combination with the complete urban hydrological cycle, considering irrigation and runoff processes (Grimmond and Oke, 1986, 1991; Järvi et al., 2011, 2014; Offerle et al., 2003; Ward et al., 2016).

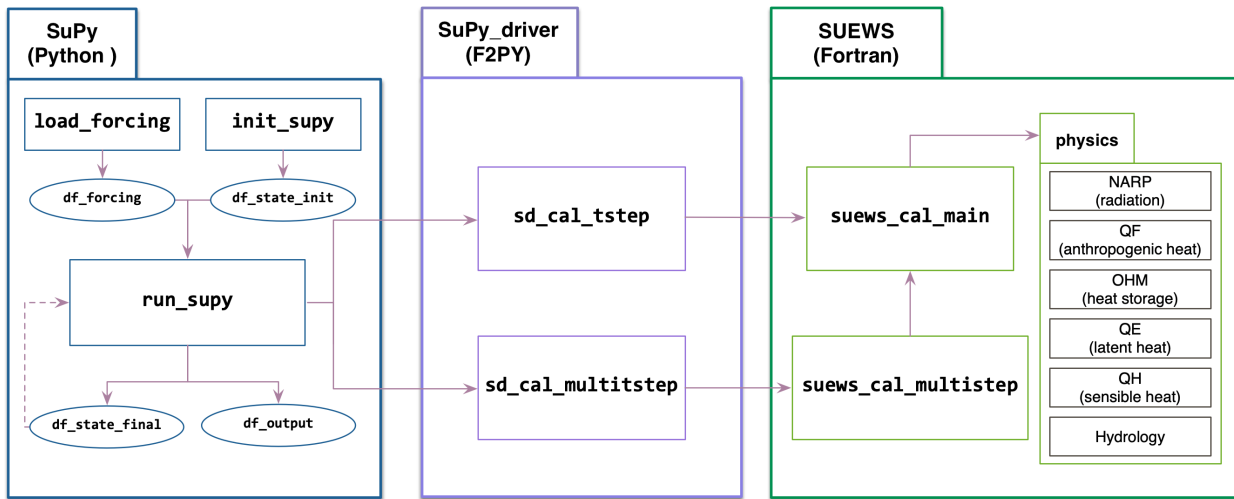


Figure 1: SuPy’s three major components (left to right): a) SuPy, a Python-based frontend processor; b) SuPy_driver, the calculation kernel compiled by F2PY; c) SUEWS, a Fortran-coded local scale urban land surface model Note not all physics are listed.

Development of SuPy (Sun, 2019) started with SUEWS v2017b (Ward and Grimmond, 2017). SUEWS has three distinct group of subroutines: model physics, input and output (I/O). To help generalize coupling, the use of Fortran modules to pass

variables and parameters has been reduced there has been a return to more use of Fortran subroutine arguments with explicitly stated intent (e.g. in, out). The modified physics subroutines are called from two subroutines **suews_cal_main** and **suews_cal_multistep** (Figure 1a) depending on the model timestep (single or multi). This structure constitutes the SUEWS ~~v2018b~~v2018c calculation kernel (Figure 1a) and enables efficient communication between SUEWS and other models (e.g., WRF) through an explicit and unified interface.

Enhancements to SUEWS modelling capability in v2018b includes the surface diagnostics module to produce pedestrian level meteorological variables (T_z : air temperature at 2 m above ground level (agl), q_z : specific humidity at 2 m agl, and U_{10} : wind speed at 10 agl). These variables are particularly useful for urban climate service applications given their widespread use for indicating climate state (Tan et al., 2009). From similarity theory (Monin and Obukhov, 1954) we estimate:

$$T_z = T_s - \frac{Q_H}{k u_* \rho C_p} \left[\ln \left(\frac{z - d_G}{z_{0M}} \right) - \Psi_H \left(\frac{z - d_G}{L} \right) + \Psi_H \left(\frac{z_{0M}}{L} \right) \right] \quad (1)$$

$$q_z = q_s - \frac{Q_E}{k u_* \rho L_v} \left[\ln \left(\frac{z - d_G}{z_{0M}} \right) - \Psi_v \left(\frac{z - d_G}{L} \right) + \Psi_H \left(\frac{z_{0M}}{L} \right) \right] \quad (2)$$

$$U_{10} = \frac{u_*}{k} \left[\ln \left(\frac{z - d_G}{z_G} \right) - \Psi_m \left(\frac{z - d_G}{L} \right) + \Psi_m \left(\frac{z_G}{L} \right) \right] \quad (3)$$

where T_s (q_s) is surface temperature (humidity), Q_H (Q_E) the sensible (latent) heat flux, k the von Karman constant (0.4), u_* the friction velocity, ρ the air density, C_p the air heat capacity, L_v the latent heat of vapourization, z the diagnostic height, z_0 (z_{0M}/z_{0v}) the surface roughness length for momentum (heat/vapour), d_0 the zero plane displacement, and Ψ_m (Ψ_H/Ψ_v) the integral form of stability correction function for momentum (heat/vapour), the chosen forms are the same as in previous versions of SUEWS (Järvi et al., 2011).

The SUEWS ~~v2018b~~ kernel The SUEWS kernel (v2018c) is compiled by F2PY to generate the Python-compliant **SuPy_driver** package. Using the two subroutines allows better computational performance. The **SuPy_driver** calls the two subroutines depending on timestep simulation type: single (**sd_cal_tstep**) or multi-timestep (**sd_cal_multitstep**, Figure_1b). The former is useful in flexible manipulation of SuPy runtime behaviours (application in Section 4.3), while the latter has much better performance because of the much lower computational overheads with the F2PY wrapper. Therefore, **sd_cal_multitstep** is the default executer in **run_supy**, the SuPy core processor performing simulations, for regular runs without runtime manipulation.

In addition to **run_supy**, SuPy uses pandas DataFrame as the central data structure to simplify the pre- and post-processing as required by the original SUEWS. [The overall data structures used in SuPy are described in the documentation](#)

(<https://supy.readthedocs.io/en/latest/data-structure/supy-io.html>). The pre-processor is designed to load existing SUEWS input files, which consists of: ([Appendix A](#)):

- 1) **init_supy**: This loads surface characteristics (e.g., albedo, emissivity, land cover fractions; full details given in the SUEWS documentation: https://suews-docs.readthedocs.io/en/latest/input_files/SUEWS_SiteInfo/SUEWS_SiteInfo.html) and model configurations (e.g., stability correction option chosen; https://suews-docs.readthedocs.io/en/latest/input_files/RunControl/RunControl.html). The data go into **df_state_init** (a pandas DataFrame, https://supy.readthedocs.io/en/latest/data-structure/df_state.html). Two auxiliary **json** files are used with the look-up hierarchies for loading this information from SUEWS library files (https://suews-docs.readthedocs.io/en/latest/input_files/input_files.html) in a consistent file-code-variable way.
- 2) **load_forcing**: Meteorological and other external forcing information are loaded into **df_forcing** (a pandas DataFrame, https://supy.readthedocs.io/en/latest/data-structure/df_forcing.html) to drive the SuPy simulations with timestep size inferred from its DatetimeIndex (i.e., the **freq** attribute). SUEWS should be run at short timesteps (e.g. 5 mins) as precipitation or irrigation runoff from impervious surfaces becomes too large if the water arrives as one large hourly (or longer) amount (Grimmond and Oke, 1991; Ward et al., 2018). As such, load_forcing is implemented with the ability to downscale the raw forcing data to finer timesteps (5 min by default). The temporal resolution of raw forcing data can be between 5 and 360 min, with 30-60 being the most common.

Detailed guidance is provided in SUEWS documentation for preparing input files (https://suews-docs.readthedocs.io/en/latest/input_files/input_files.html) and in the UMEP documentation (<https://umep-docs.readthedocs.io/en/latest/pre-processor/SUEWS%20Prepare.html>). SUEWS uses multiple ascii text and namelist files (https://suews-docs.readthedocs.io/en/latest/input_files/input_files.html), and UMEP (Lindberg et al. 2018) provides a QGIS/Python interface that is designed to aid the derivation of the spatial parameters from geo-data. As SuPy can use the files prepared properly, in particular for by the other two approaches, existing SUEWS files are usable via the **init_supy** and **load_forcing** functions for SuPy.

For new users, ~~To ease the preparation of the input file without experience of other versions,~~ a helper function **load_SampleData** is provided in SuPy to get the sample input DataFrames (i.e., **df_state_init** and **df_forcing**) ready for running to run simulations. ~~These Once users understand the SUEWS/SuPy variables, the sample DataFrames can also be used as templates to prepare input data for SuPy without wrestling provide a template to work with multiple input files, which can be useful for both existing and new users to SUEWS/SuPy to meet their next specific needs.~~ Examples for using the sample datasets are provided as tutorials (~~section~~[Section 4](#)).

As the F2PY-compiled kernel `SuPy_driver` relies on NumPy `ndarray` for data input and output, two SuPy post-processors `pack_state` and `pack_output` are embedded in `run_supy` to pack the (1) `ndarray` output of model final states ~~and simulation results to~~ `df_state_final` (a pandas DataFrame, https://supy.readthedocs.io/en/latest/data-structure/df_state.html) and (2) simulation results to `df_output` (a pandas DataFrame, https://supy.readthedocs.io/en/latest/data-structure/df_output.html).
5 ~~To facilitate reuse of model runs (e.g. for model spinup) df_state_final is designed to have~~ `df_state_final` ~~is designed to have~~ has the same data structure as `df_state_init` ~~to allow its reuse as the initial conditions for other SuPy simulations~~ (dashed line, SuPy panel Figure_1).

3 Deployment

To achieve cross-platform compatibility, SuPy has two parts:

- 10 1) `SuPy_driver` (calculation kernel): the F2PY generated binaries of SUEWS are platform-dependent because of compilation being necessary for assurance of performance.
- ~~2) 1) SuPy (frontend processor): this platform-independent Python code allows rapid iteration in functionality enhancement and bug-fixing thanks to the powerful ecosystem of Python utilities.~~

15 As software compilation can be frustrating and/or prone to operator errors, this procedure is automated using two online services: Microsoft Azure Pipeline (<https://azure.microsoft.com/en-us/services/devops/pipelines/>) for continuous integration (CI) and PyPI (<https://pypi.org>) for distribution. Microsoft Azure Pipeline has good cross-platform support (<https://docs.microsoft.com/en-gb/azure/devops/pipelines/agents/>) and easy connection with code repositories (e.g., GitHub: <https://github.com>, Bitbucket: <https://bitbucket.com>) and supports automated compilation for different platforms. The Azure
20 Pipeline build workflow permits a variety of functionalities to facilitate compilation and publishing to other online services (e.g., PyPI, GitHub pages, etc.). Currently, this is ~~setupset up~~ for three major platforms (Windows, macOS and Linux) with three Python 3 configurations (3.5, 3.6 and 3.7) to conduct automated compilation of SuPy backend files: SUEWS binaries and `SuPy_driver`, the product of which is directly pushed to PyPI and released in real time.

25 To build the `SuPy_driver` two crucial steps to allow cross-platform deployment (full details refer to configuration file `setup.py` in `SuPy_driver`) are:

- 1) *Static linking*: to eliminate the issue of missing dynamic libraries the calculation kernels are pre-built using static linking and therefore run directly after downloading.

- 2) **manylinux tagging**: Given the many Linux distributions and their different runtime libraries that often require distribution-specific compilation, we use the **manylinux** docker image (for details refer to <https://github.com/pypa/manylinux>) to compile SuPy_driver.

In addition to the cross-platform compilation, to guarantee delivery quality we perform automatic code tests of four pre-set configurations for every build:

- 1) *Connectivity between SuPy and SuPy_driver*: checks if the frontend processor and backend calculation core can communicate with correct input and output.
- 2) *Success in single-timestep mode*: checks SuPy can produce correct simulation results in the single-timestep mode.
- 3) *Success in multi-timestep mode*: checks SuPy can produce correct simulation results in the multi-timestep mode and does a quick benchmark of computation speed.
- 4) *Compare simulation results between single- and multi-timesteps modes*: checks SuPy can produce identical simulation results as designed.

All build and test output is logged in detail (see all logs here: https://dev.azure.com/sunt05/SuPy/_build) and the results are reported to developers in real time. This feature is used for all code and underpins a commitment for timely support to SuPy development.

The Python Package Index (PyPI: <https://pypi.org>) is the official third-party software repository for Python. As it is supported by the pip toolchain it provides Python users easy worldwide access to packages and frees Python developers from maintaining indexing and distribution servers. By using the PyPI channel, SuPy can be easily installed by users with a one-line input in command line tool on any desktop/server system (Listing 1).

Listing 1: Command line code for SuPy installation using pip. Note 64 bit Python 3.5+ is required for SuPy installation.

```
python3 -m pip install supy -U
```

4 Demonstration: SuPy Tutorials

To familiarise users with SuPy urban climate modelling and to demonstrate the functionality of SuPy, we provide three tutorials (Table 2, access at: <https://supy.readthedocs.io/en/latest/tutorial/tutorial.html>) in Jupyter notebooks (<https://jupyter.org/>).

Table 2: Three SuPy tutorials. Note the website links are directed to online Jupyter notebooks for SuPy simulation without any configuration by users.

Name	Aim	Audience
Quickstart of SuPy	Essential workflow to conduct SuPy simulations	New users, students
Impact studies using SuPy in parallel mode	Impacts on urban climate from varying surface characteristics and forcing conditions	Urban climate researchers with experience in land surface simulations

Interaction between SuPy and external models	Couple SuPy and external models for agile development	Model developers with background in climate modelling
--	---	---

They can run in browsers ([e.g. desktop](#), [mobiletablet](#)) either by ~~easy~~ local configuration or on remote servers with pre-set environments (e.g., Google Colaboratory: <https://colab.research.google.com>, Microsoft Azure Notebooks: <https://notebooks.azure.com>). As Jupyter notebooks allow source code to be incorporated with detailed notes, users can organise their analyses (Shen, 2014). Jupyter notebooks can be installed with pip on any desktop/server system and open .ipynb notebook files locally (Listing 2). We note running SuPy in browsers is NOT implemented by SuPy *per se* but allowed by the Jupyter environment where python 3 is supported. The reason for running SuPy (and many other python applications) on mobile devices (e.g., cell phone, tablet) is simple: working seamlessly across different devices is a natural need.

Listing 2: Command line code for installing Jupyter notebook with pip and open an existing local .ipynb notebook file (i.e., path_to_your_notebook)

```
python3 -m pip install jupyter -U
jupyter-notebook path_to_your_notebook
```

These are made available to SUEWS by calling the `load_SampleData` function. This produces pandas DataFrames with the initial model state (`df_state_init`) and the forcing variables (`df_forcing`). These are used in all the three tutorials.

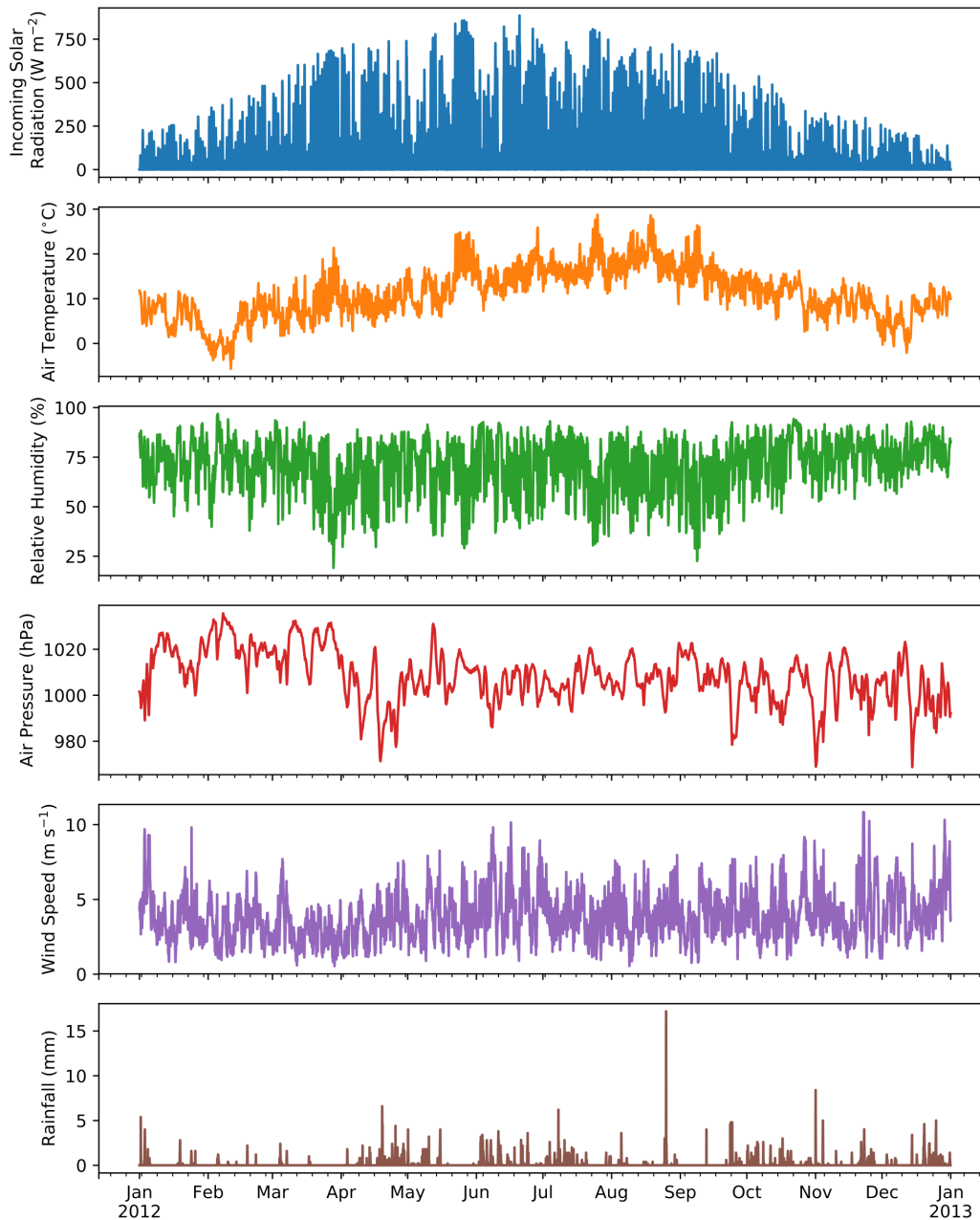


Figure 2: Intra-annual (2012) variation of forcing variables in the sample dataset (from top to bottom): incoming solar radiation, air temperature, relative humidity, air pressure, rainfall and wind speed in central London All variables are hourly averages except for total hourly rainfall (source of data: Kotthaus and Grimmond (2014), gap filled: Ward et al. (2016)).

5

Table 3: Default settings in the sample dataset provided with SuPy for a) physics scheme and b) basic site characteristics. Full SuPy variable setting details refer to online documentation: https://supy.readthedocs.io/en/latest/data-structure/df_state.html

a) Basic site characteristics	SuPy variable (unit)	Value
-------------------------------	----------------------	-------

Land cover fractions for surfaces: building, paved, evergreen tree, deciduous tree, grass, bare soil and water	sfr (-)	[0.43, 0.38, 0.001, 0.019, 0.029, 0.001, 0.14]
Building height	bldgh (m)	22.0
Evergreen tree height	evetreeh (m)	13.1
Deciduous tree height	dectreeh (m)	13.1

b) Physics scheme	SuPy variable	Code	Remark
Radiation	radiationmethod	3	Net all-wave radiation modelled with incoming longwave radiation modelled using air temperature and relative humidity (Loridan et al., 2011)
Heat storage	storageheatmethod	1	OHM model (Grimmond et al., 1991)
Anthropogenic heat	emissionsmethod	2	Anthropogenic heat model responding to temperature, population density, time of day and day of week (Järvi et al., 2011)
Snow	snowuse	1	Snow module to model snowpack and related thermal and hydrological dynamics (Järvi et al., 2014)
Roughness length for momentum	roughlenmommethod	2	Momentum roughness length determined using Grimmond and Oke (1999)
Roughness length for heat	roughlenheatmethod	2	Thermal roughness length determined using Kawai et al. (2009)
Atmospheric stability	stabilitymethod	3	Atmospheric stability correction function (Campbell and Norman, 1998)

4.1 SuPy Quickstart

In this tutorial, we demonstrate the key steps in using SuPy to undertake the core task to simulate energy and water balance in an urban context using SUEWS. Here the runs are for a central London area in 2012.

5 The urban surface energy balance (SEB) can be expressed as:

$$Q^* + Q_F = Q_H + Q_E + \Delta Q_S \quad (1)$$

where the flux densities (W m^{-2}) are Q^* net all-wave radiation, Q_F anthropogenic heat, Q_H turbulent sensible heat, Q_E latent heat, and ΔQ_S the net storage heat flux. Through Q_E , the SEB characteristics can be linked to the water balance:

$$P + I = E + R + \Delta S \quad (2)$$

where each term is a depth of water per unit of time (e.g. mm d⁻¹). P is precipitation, I irrigation, E evapotranspiration ($= Q_E/L_v$ where L_v is the latent heat of vaporisation), R runoff, and ΔS the net change in water storage.

5 The fundamental steps to use SuPy after the software environment has been installed (see Listing 1, 2) are: (1) load input, (2) run a simulation and (3) examine the results. With everything ready, three lines of python code are needed.

Listing 3: Python code for a minimal example of SuPy simulation with comments (green)

```
# import supy package
import supy as sp
# import sample data
10 df_state_init, df_forcing = sp.load_SampleData()
# run supy simulation
df_output, df_state_final = sp.run_supy(df_forcing, df_state_init)
```

15 SuPy is run by calling **run_supy** after **df_state_init** and **df_forcing** have been loaded. After the simulation the two DataFrames provide major SUEWS outputs (**df_output**) and the model state (**df_state_final**) at the end of the run. The latter can be used as initial conditions for other SuPy runs.

The post-processing uses pandas functions to resample, plot and write out the model output. The default output DataFrame of 5 min resolution can be upscaled to the month for an overview of intra-annual dynamics of surface energy and water balances (Figure 3).

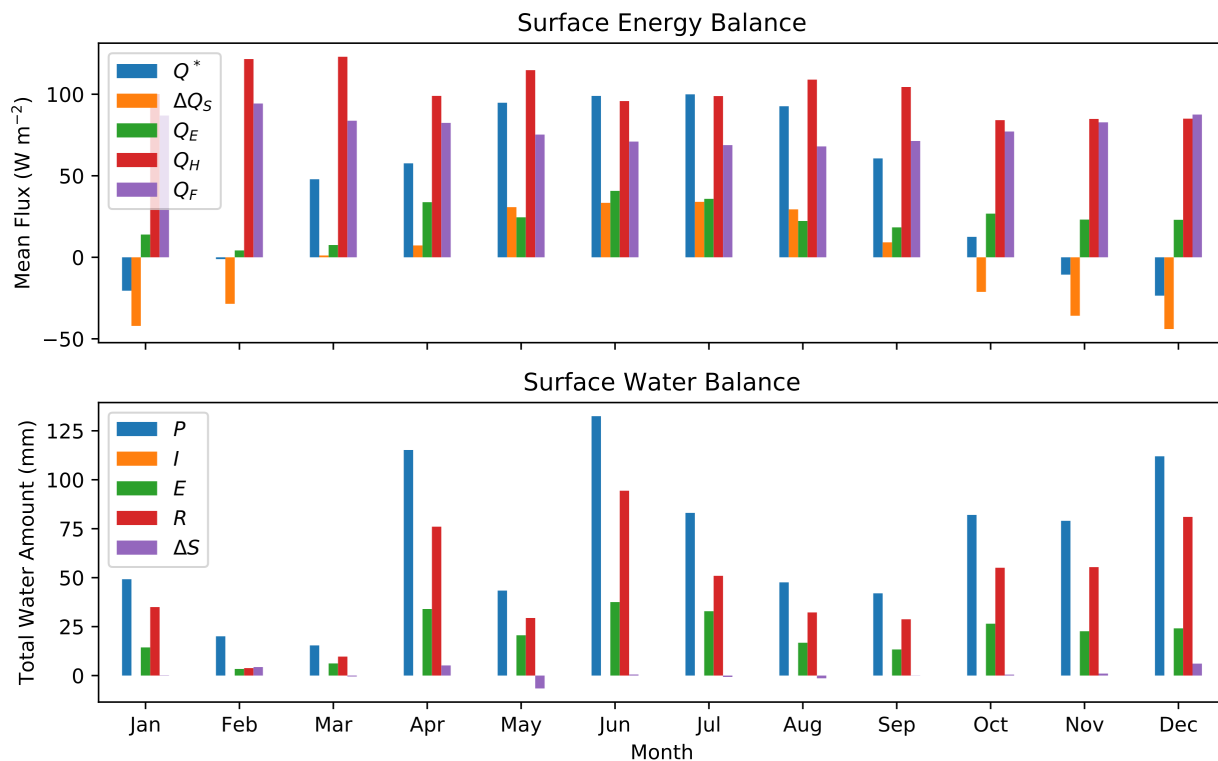


Figure 3: SuPy simulated monthly (top) surface energy and (bottom) water balance for London 2012. Assuming no irrigation.

This workflow using SuPy for urban climate modelling can be easily adapted to existing SUEWS tutorials under the UMEP framework (<https://tutorial-docs.readthedocs.io>) by replacing the conventional SUEWS binary executable with the python SuPy package. Given the central role of Python in the UMEP framework, it is expected the adoption of SuPy will further streamline the workflows for urban climate simulations in UMEP.

4.2 Impacts of the urban area on urban local climate

A major application of urban climate models is to study the impacts on urban climate from design scenarios that change surface characteristics or the climate (atmospheric forcing). In this tutorial both scenario types are explored: we provide one example of modification of albedo for surface characteristics, while another of air temperature alteration for climate conditions.

Technically, this requires several configuration files to be prepared for a suite of independent model runs. These could be run consecutively (i.e. no interactions between runs are needed) or in parallel, so-called “embarrassingly parallel computation” (Bailey et al., 1991), with multiple independent runs with sufficient CPUs. In this tutorial, we first demonstrate how SuPy can be easily setup to efficiently complete multiple simulations in parallel.

We use **dask** (<https://dask.org>) to parallelise the SuPy simulations given its close coherence with numpy and pandas, in particular its almost identical DataFrame interfaces as pandas. Specifically, we use the apply method of **dask.DataFrame** to improve the simulation performance by distributing the SuPy computations across different configurations. Compared with the serial mode, the **dask**-based parallel mode takes only ~30% of the execution time of the serial mode for simulations longer than 1000 days for 12 grids (Figure 4). The parallel configuration for running SuPy, **run_supy_mgrids**, is then used in the following two cases for more efficient parallel simulations.

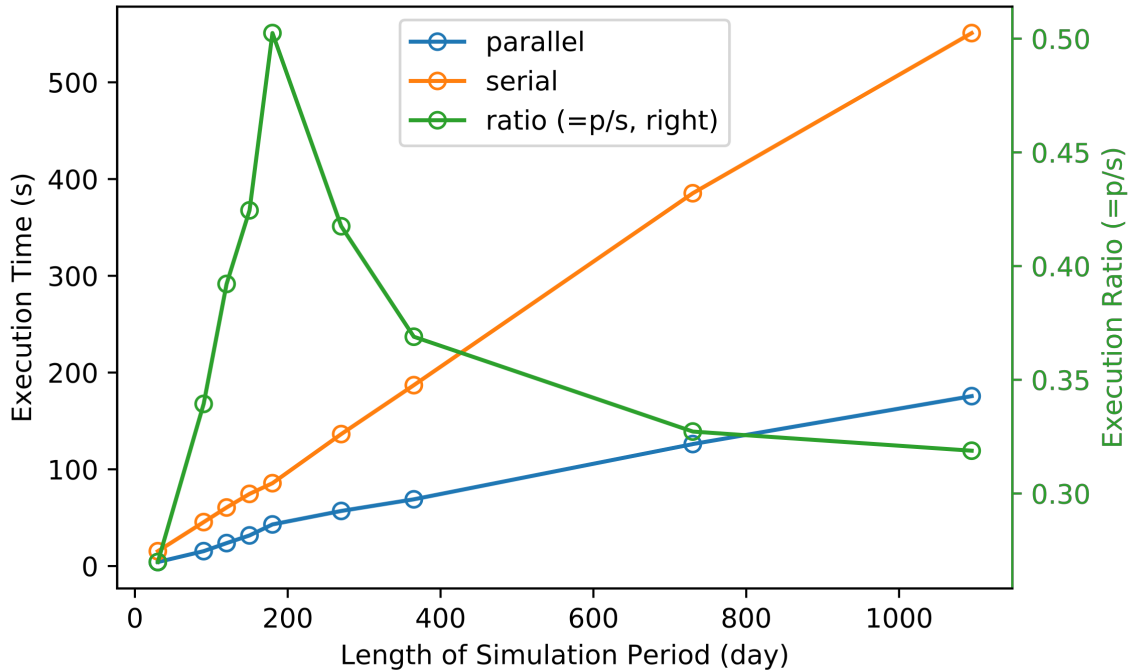


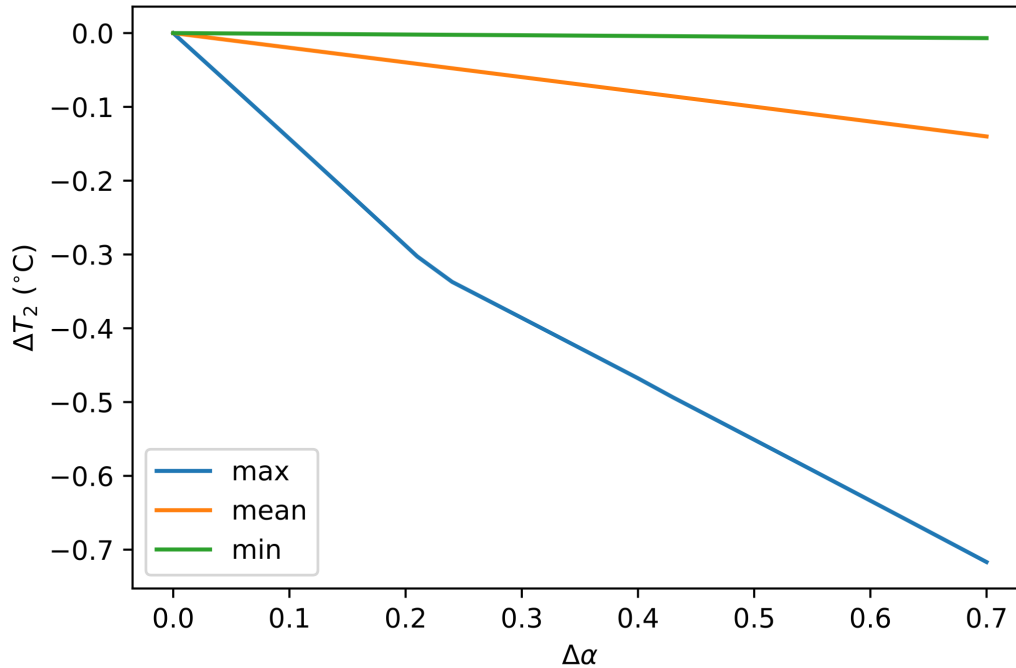
Figure 4: Comparison of execution times (s) between serial and parallel modes when 12 grids are simulated for different periods (days): 30, 90, 120, 150, 180, 270, 365, 730 and 1095. Simulations performed with macOS 10.14.3 running on 2.9 GHz Intel Core i9 with 32 GB memory. The model configuration is the same as Tutorial 1 (Table 2).

10

To explore the effect of changes to surface properties, the DataFrame **df_state_init** needs to be modified. The surface albedo of different materials impacts the outgoing shortwave (solar) radiation and thus the surface energy balance fluxes and other atmospheric variables. Modifying roof albedo has been suggested extensively as a method to cool urban areas (e.g., Santamouris et al., 2011; Li et al., 2014; Ramamurthy et al., 2015). In the example, we conduct simulations from January 2012 to July 2012 with the first 6 months as the spin-up period. The building roof albedo is incrementally increased from 0.1 to 0.8 (e.g. a change from a very dark to a very light surface). The near surface temperature T_2 , an indicator of thermal state at pedestrian level, are analysed using the monthly maximum, mean and minimum (Figure 5). It would be expected that the maximum and mean values of T_2 are greatly reduced as they are directly influenced by the altered net solar radiation while impacts on the minimum T_2 might be expected to be minimal.

15

In this tutorial we demonstrate some starting cases rather than a complete research cycle. Notably, limitations are imposed in the configuration used (e.g. length of the model run, spin-up period, feedbacks permitted) and thus the relations shown should be interpreted with caution.



5 **Figure 5: Impacts of increasing building roof albedo α (from 0.1) on near surface temperature T_2 considering monthly maximum, mean and minimum temperatures at 2 m for July 2012 based on 5 min output.**

To explore changes in atmospheric forcing, the DataFrame `df_forcing` is modified. In this example, we investigate the impact of increased local-scale (constant flux layer) air temperature T_a on the near surface air temperature T_2 . Air temperature T_a is increased over 24 runs from 0 (no change) to +2 °C. The upper limit (+2 °C) represents a highly possible average global warming scenario for the near future (IPCC, 2014). The SuPy simulations are conducted January to July 2012 and July data analysed. The T_2 results indicate the increased T_a has different impacts on the T_2 metrics (minimum, mean and maximum) but all increase linearly with T_a . The maximum T_2 has the stronger response compared to the other metrics (Figure 6).

This tutorial demonstrates the simplicity of using SuPy to conduct impact studies of both surface characteristics and background climates. These can be easily adapted by users to their specific application interests. [Thus, as various effects are combined the net impacts becomes more realistic.](#)

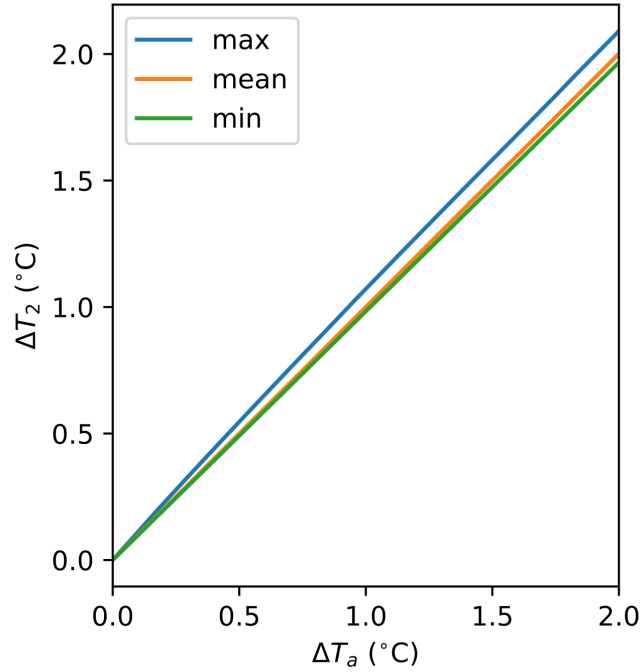


Figure 6: Impacts of increasing background (constant flux layer) air temperature T_a on near surface maximum, mean and minimum (same methods as Figure 5) temperatures at 2 m T_2 . Albedo is 0.1 and land cover characteristics are as Table 2b. Note in this example only one variable is modified.

5 4.3 Interaction between SuPy and external models

SUEWS can be coupled to other models that provide or require forcing data using the SuPy single timestep running mode (Section 2). We demonstrate this feature with a simple online anthropogenic heat flux model.

Anthropogenic heat flux (Q_F) is an additional term to the surface energy balance in urban areas associated with human activities (Gabey et al., 2018; Grimmond, 1992; Nie et al., 2014, 2016; Sailor, 2011). In most cities, the largest emission source is from buildings (Hamilton et al., 2009; Iamarino et al., 2011; Sailor, 2011) and is highly dependent on outdoor ambient air temperature. For demonstration purposes we have created a very simple model instead of using the SUEWS Q_F (Järvi et al., 2011) with feedback from outdoor air temperature (Figure 7). The simple Q_F model considers only building heating and cooling:

$$Q_F = \begin{cases} (T_2 - T_C) \times C_B, & T_2 > T_C \\ (T_H - T_2) \times H_B, & T_2 < T_H, \\ Q_{F0} & \end{cases} \quad (3)$$

where T_C (T_H) is the cooling (heating) threshold temperature of buildings, C_B (H_B) is the building cooling (heating) rate, and Q_{F0} is the baseline anthropogenic heat. The parameters used are: T_C (T_H) set as 20 °C (10 °C), C_B (H_B) set as 1.5 W m⁻² K⁻¹

($3 \text{ W m}^{-2} \text{ K}^{-1}$) and Q_{F0} is set as 0 W m^{-2} , implying other building activities (e.g. lightning, water heating, computers) are zero and therefore do not change the temperature or change with temperature.

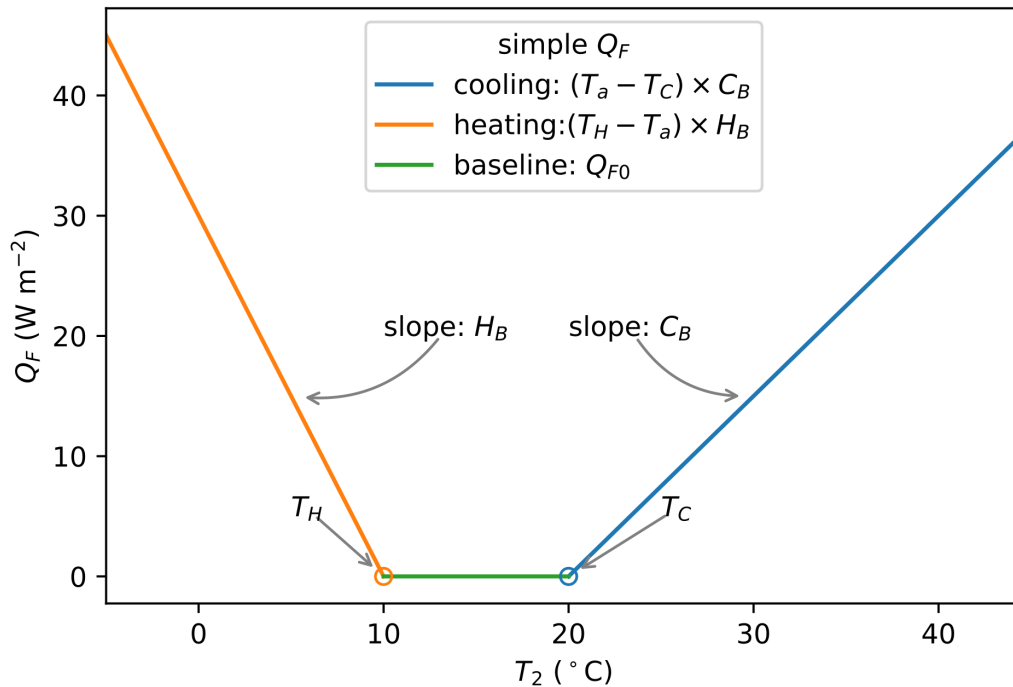


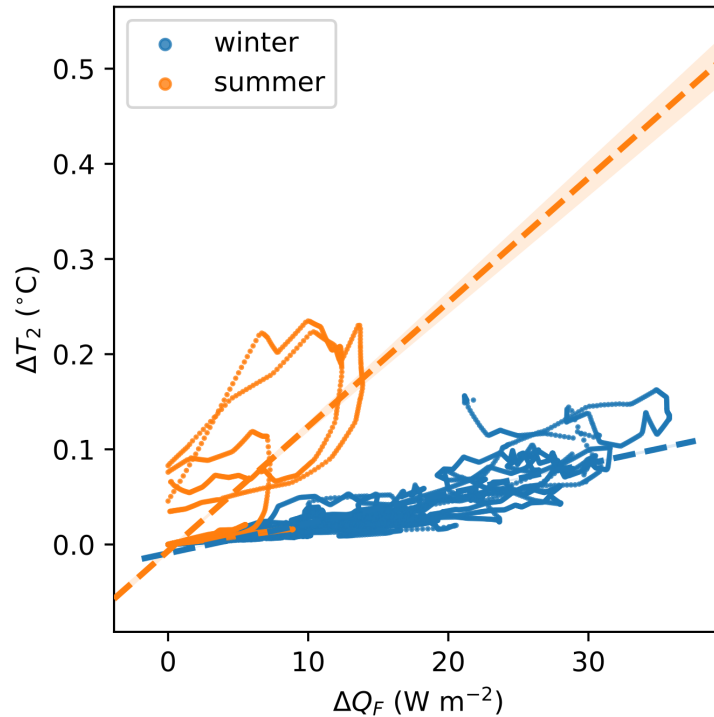
Figure 7: A simple anthropogenic heat flux (Q_F) model as a linear function of air temperature T_2 .

- 5 The coupling between the simple Q_F model and SuPy is done via the low-level function `suews_cal_tstep`, which is an interface function in charge of communications between SuPy frontend and the calculation kernel. By setting SuPy to receive external Q_F as forcing, at each timestep, the simple Q_F model is driven by the SuPy output T_2 and provides SuPy with Q_F , which thus forms a two-way coupled loop.

10 Here we replace the SUEWS Q_F (Table 2) with the simpler Q_F model (Figure 7, Equation 3) to explore the question of the impact of Q_F on T_2 and its feedback on Q_F . The simulation using SuPy coupled is performed for London 2012. The data analysed are a summer (July) and a winter (December) month. Initially, Q_F is 0 W m^{-2} the T_2 is determined and used to determine $Q_{F[1]}$ which in turn modifies $T_{2[1]}$ and therefore modifies $Q_{F[2]}$ and the diagnosed $T_{2[2]}$. Results indicate a positive feedback, as Q_F is increases T_2 is elevated but with different magnitudes (Figure 8). Of particular note is the positive feedback loop under warm air temperatures: the anthropogenic heat emissions increase which in turn elevates the outdoor air temperature causing yet more anthropogenic heat release (Figure 8). Note that London is relatively cool (cf. [air temperature in Figure 2](#)) so

15 the enhancement is much less than it would be in warmer cities.

In this case the anthropogenic heat flux model is simple, but a more complex model could be coupled to SUEWS in the same way. This can facilitate development of climate services tools that are both agile and responsive.



5 **Figure 8: Impacts of Q_F produced by an external simple anthropogenic heat model on the near surface air temperature T_2 for two months: summer (July 2012, orange) and winter (December 2012, blue). Linear regression lines (dashed lines) show the overall seasonal trends. $\Delta Q_F = Q_{F[2]} - Q_{F[1]}$ see text for definitions and the corresponding temperatures $\Delta T_2 = T_{2[2]} - T_{2[1]}$.**

5 Concluding remarks

The development and delivery of a Python-enhanced urban climate model SuPy is introduced, with tutorials (Table 2) to demonstrate typical applications and some new SUEWS features (e.g., surface diagnostics calculation). The Python code and tutorials are freely and openly available online ([see Appendix B](#)). Users are encouraged to explore more intriguing urban climate related questions with [the enhanced functionalities SuPy. Notable features](#) of SuPy (e.g., flexible configurations, fine control of simulations, etc.):include:

- 1) *version consistency via PyPI*: SuPy is distributed via the well managed Python package repository PyPI with all history versions stored. This allows for clear version consistency for reproducing simulation results.
- 15 2) *simplicity in input/output sharing*: SuPy uses pandas DataFrame as its core data structure and thus draws on a powerful data analysis toolchain, which can facilitate the ease with which urban climate research outcomes can be communicated.

- 3) *ease of scientific development*: Given the importance of meteorological forcing data in running climate simulations, SuPy will shortly be equipped with the ability to retrieve forcing variables from global reanalysis datasets. We anticipate data analyses and model development will be added more conveniently within the Python data ecosystem.
- 4) *an open source tool*: We welcome all kinds of contributions, for example, incorporation of new feature (pull requests), submission of issues, development of new tutorials.

In addition to the SuPy in data analysis and communication features, the computation kernel is SUEWS, so all physics schemes development will remain in the Fortran stack for computational performance and compatibility with a large cohort of scientific code. In one application software, UMEP (Lindberg et al. 2018) written in Python, the SUEWS binary executable will shortly be updated to SuPy for better connectivity to other UMEP components.

- 10 We expect SuPy will help guide future development of SUEWS (and similar urban climate models) and enable new applications of the model. For example, the parallel set up of SuPy will allow large scale simulations of urban climate across larger domains with greater surface heterogeneity. Moreover, the improvement in SUEWS model structure and deployment process introduced by the development of SuPy paved the way to a more robust workflow of SUEWS for its sustainable success.

15 **Appendix A: SuPy functions**

The utility of the six SuPy functions are:

- **init supy**: Initialise SuPy by loading initial model states.
- **load forcing grid**: Load forcing data for a specific grid included in the index of **df state init**.
- **run supy**: Perform SuPy simulation.
- 20 • **save supy**: Save SuPy run results to files
- **load SampleData**: Load sample data for quickly starting a demo run.
- **show version**: print **supy** and **supy driver** version information.

For detailed usage of the included functions see: <https://supy.readthedocs.io/en/latest/api.html#top-level-functions>.

Appendix B: SuPy model source code and documentation

25 **Code repository**

- Name: GitHub
- Identifier: <https://github.com/sunt05/SuPy>

- License: GNU GPL v3.0
- Date published: 10 February 2019

Versioned documentation

- Name: ReadTheDocs
- 5 -• Identifier: <https://supy.readthedocs.io>
- License: GNU GPL v3.0
- Date published: 10 February 2019

Code availability

10 Appendix [B](#) describes the locations and license information for the SuPy source code and documentation. The source code of calculation kernel SUEWS is available upon request from SG (c.s.grimmond@reading.ac.uk).

Author contributions:

TS led the development of SuPy and core enhancements of SUEWS since v2017b. SG provided overall oversight of the SUEWS development. TS and SG wrote the paper.

Financial support

15 Support from NERC Independent Research Fellowship (NE/P018637/1; TS); Newton Fund/Met Office CSSP China (SG, TS), RS Newton Mobility funding (SG, TS), and EPSRC LoHCool (EP/N009797/1) (SG, TS). Field observations have been funded by grants from NERC, EUf7, H2020, EPSRC, KCL, Belmont Forum, Newton Fund and Met Office.

Acknowledgements

20 We thank the two anonymous reviewers and the editor Dr Tim Butler for their constructive comments. We appreciate the numerous people who have and continue to contribute to the development of SUEWS and the users who identify issues. We thank all those who have contributed to the field observations maintenance, analysis, provided sites, access and funding.

References

- Alexander, P. J., Bechtel, B., Chow, W. T. L., Fealy, R. and Mills, G.: Linking urban climate classification with an urban energy and water budget model: Multi-site and multi-seasonal evaluation, *Urban Climate*, 17, 196–215, doi:[10.1016/j.uclim.2016.08.003](https://doi.org/10.1016/j.uclim.2016.08.003), 2016.
- 5 Ao, X., Grimmond, C., Chang, Y., Liu, D., Tang, Y., Hu, P., Wang, Y., ZOU, J. and Tan, J.: Heat, water and carbon exchanges in the tall megacity of Shanghai: challenges and results, *International Journal of Climatology*, 36(14), 4608–4624, doi:[10.1002/joc.4657](https://doi.org/10.1002/joc.4657), 2016.
- Ao, X., Grimmond, C., Ward, H. C., Gabey, A. M., Tan, J., Yang, X.-Q., Liu, D., Zhi, X., Liu, H. and Zhang, N.: Evaluation of the Surface Urban Energy and Water balance Scheme (SUEWS) at a dense urban site in Shanghai: Sensitivity to anthropogenic heat and irrigation, *Journal of Hydrometeorology*, JHM-D-18-0057.1, doi:[10.1175/JHM-D-18-0057.1](https://doi.org/10.1175/JHM-D-18-0057.1), 2018.
- 10 Bailey, D. H., Barszcz, E., Barton, J. T., Browning, D. S., Carter, R. L., Dagum, L., Fatoohi, R. A., Frederickson, P. O., Lasinski, T. A., Schreiber, R. S., Simon, H. D., Venkatakrishnan, V. and Weeratunga, S. K.: The Nas Parallel Benchmarks, *The International Journal of Supercomputing Applications*, 5(3), 63–73, doi:[10.1177/109434209100500306](https://doi.org/10.1177/109434209100500306), 1991.
- Bar, L. S., Pearlmutter, D. and Erell, E.: The influence of trees and grass on outdoor thermal comfort in a hot-arid environment, *International Journal of Climatology*, 31(10), 1498–1506, doi:[10.1002/joc.2177](https://doi.org/10.1002/joc.2177), 2011.
- 15 Best, M. J. and Grimmond, C.: Key Conclusions of the First International Urban Land Surface Model Comparison Project, *Bull. Amer. Meteor. Soc.*, 96(5), 805–819, doi:[10.1175/BAMS-D-14-00122.1](https://doi.org/10.1175/BAMS-D-14-00122.1), 2015.
- Campbell, G. S. and Norman, J. M.: *An Introduction to Environmental Biophysics*, Springer New York, New York, NY., 1998.
- Chen, F., Kusaka, H., Bornstein, R., Ching, J., Grimmond, C., Grossman-Clarke, S., Loridan, T., Manning, K. W., Martilli, A., Miao, S., Sailor, D. J., Salamanca, F. P., Taha, H., Tewari, M., Wang, X., Wyszogrodzki, A. A. and Zhang, C.: The integrated WRF/urban modelling system: development, evaluation, and applications to urban environmental problems, *International Journal of Climatology*, 31(2), 273–288, doi:[10.1002/joc.2158](https://doi.org/10.1002/joc.2158), 2011.
- 20 Chen, Q. Y.: Using computational tools to factor wind into architectural environment design, *Energy and Buildings*, 36(12), 1197–1209, doi:[10.1016/j.enbuild.2003.10.013](https://doi.org/10.1016/j.enbuild.2003.10.013), 2004.
- 25 Demuzere, M., Harshan, S., Järvi, L., Roth, M., Grimmond, C., Masson, V., Oleson, K. W., Velasco, E. and Wouters, H.: Impact of urban canopy models and external parameters on the modelled urban energy balance in a tropical city, *Quarterly Journal of the Royal Meteorological Society*, doi:[10.1002/qj.3028](https://doi.org/10.1002/qj.3028), 2017.
- Donner, L. J., Wyman, B. L., Hemler, R. S., Horowitz, L. W., Ming, Y., Zhao, M., Golaz, J.-C., Ginoux, P., Lin, S. J., Schwarzkopf, M. D., Austin, J., Alaka, G., Cooke, W. F., Delworth, T. L., Freidenreich, S. M., Gordon, C. T., Griffies, S. M., Held, I. M., Hurlin, W. J., Klein, S. A., Knutson, T. R., Langenhorst, A. R., Lee, H.-C., Lin, Y., Magi, B. I., Malyshev, S. L., Milly, P. C. D., Naik, V., Nath, M. J., Pincus, R., Ploshay, J. J., Ramaswamy, V., Seman, C. J., Shevliakova, E., Sirutis, J. J., Stern, W. F., Stouffer, R. J., Wilson, R. J., Winton, M., Wittenberg, A. T. and Zeng, F.: The Dynamical Core, Physical Parameterizations, and Basic Simulation Characteristics of the Atmospheric Component AM3 of the GFDL Global Coupled Model CM3, *Journal of Climate*, 24(13), 3484–3519, doi:[10.1175/2011JCLI3955.1](https://doi.org/10.1175/2011JCLI3955.1), 2011.
- 30 Erell, E., Pearlmutter, D., Boneh, D. and Kutiel, P. B.: Effect of high-albedo materials on pedestrian heat stress in urban street canyons, *Urban Climate*, doi:[10.1016/j.uclim.2013.10.005](https://doi.org/10.1016/j.uclim.2013.10.005), 2013.
- 35

- Gabey, A. M., Grimmond, C. and Capel-Timms, I.: Anthropogenic heat flux: advisable spatial resolutions when input data are scarce, *Theoretical and applied climatology*, 31(13), 1–17, doi:[10.1007/s00704-018-2367-y](https://doi.org/10.1007/s00704-018-2367-y), 2018.
- Grimmond, C.: The suburban energy balance: Methodological considerations and results for a mid-latitude west coast city under winter and spring conditions, *International Journal of Climatology*, 12(5), 481–497, doi:[10.1002/joc.3370120506](https://doi.org/10.1002/joc.3370120506), 1992.
- 5 Grimmond, C. and Oke, T. R.: Urban Water Balance: 2. Results From a Suburb of Vancouver, British Columbia, *Water Resources Research*, 22(10), 1404–1412, doi:[10.1029/WR022i010p01404](https://doi.org/10.1029/WR022i010p01404), 1986.
- Grimmond, C. and Oke, T. R.: An evapotranspiration-interception model for urban areas, *Water Resources Research*, 27(7), 1739–1755, doi:[10.1029/91WR00557](https://doi.org/10.1029/91WR00557), 1991.
- 10 Grimmond, C. and Oke, T. R.: Aerodynamic properties of urban areas derived, from analysis of surface form, *Journal of Applied Meteorology and Climatology*, 38(9), 1262–1292, doi:[10.1175/1520-0450\(1999\)038<1262:APOUAD>2.0.CO;2](https://doi.org/10.1175/1520-0450(1999)038<1262:APOUAD>2.0.CO;2), 1999.
- Grimmond, C., Oke, T. R. and Steyn, D. G.: Urban Water Balance: 1. A Model for Daily Totals, *Water Resources Research*, 22(10), 1397–1403, doi:[10.1029/WR022i010p01397](https://doi.org/10.1029/WR022i010p01397), 1986.
- 15 Grimmond, C., Cleugh, H. A. and Oke, T. R.: An objective urban heat storage model and its comparison with other schemes, *Atmospheric Environment. Part B. Urban Atmosphere*, 25(3), 311–326, doi:[10.1016/0957-1272\(91\)90003-W](https://doi.org/10.1016/0957-1272(91)90003-W), 1991.
- Hamilton, I. G., Davies, M., Steadman, P., Stone, A., Ridley, I. and Evans, S.: The significance of the anthropogenic heat emissions of London’s buildings: A comparison against captured shortwave solar radiation, *Building and Environment*, 44(4), 807–817, doi:[10.1016/j.buildenv.2008.05.024](https://doi.org/10.1016/j.buildenv.2008.05.024), 2009.
- 20 Hamman, J. J., Nijssen, B., Bohn, T. J., Gergel, D. R. and Mao, Y.: The Variable Infiltration Capacity model version 5 (VIC-5): infrastructure improvements for new applications and reproducibility, *Geoscientific Model Development*, 11(8), 3481–3496, doi:[10.5194/gmd-11-3481-2018](https://doi.org/10.5194/gmd-11-3481-2018), 2018.
- Iamarino, M., Beevers, S. and Grimmond, C.: High-resolution (space, time) anthropogenic heat emissions: London 1970–2025, *International Journal of Climatology*, 32(11), 1754–1767, doi:[10.1002/joc.2390](https://doi.org/10.1002/joc.2390), 2011.
- IPCC: *Climate Change 2013: The Physical Science Basis*, Cambridge University Press., 2014.
- 25 Järvi, L., Grimmond, C. and Christen, A.: The Surface Urban Energy and Water Balance Scheme (SUEWS): Evaluation in Los Angeles and Vancouver, *Journal of Hydrology*, 411(3-4), 219–237, doi:[10.1016/j.jhydrol.2011.10.001](https://doi.org/10.1016/j.jhydrol.2011.10.001), 2011.
- Järvi, L., Grimmond, C., Taka, M., Nordbo, A., Setälä, H. and Strachan, I. B.: Development of the Surface Urban Energy and Water Balance Scheme (SUEWS) for cold climate cities, *Geoscientific Model Development*, 7(4), 1691–1711, doi:[10.5194/gmd-7-1691-2014](https://doi.org/10.5194/gmd-7-1691-2014), 2014.
- 30 Järvi, L., Grimmond, C., McFadden, J. P., Christen, A., Strachan, I. B., Taka, M., Warsta, L. and Heimann, M.: Warming effects on the urban hydrology in cold climate regions, *Scientific Reports*, 7(1), 216, doi:[10.1038/s41598-017-05733-y](https://doi.org/10.1038/s41598-017-05733-y), 2017.
- Järvi, L., Havu, M., Ward, H., Bellucco, V., McFadden, J., Toivonen, T., Heikinheimo, V. and Grimmond, C.: Spatial modelling of biogenic 20 and anthropogenic carbon dioxide emissions in Helsinki, *Journal of Geographical Research-Atmospheres*, 2019.

- Jentsch, M. F., James, P. A. B., Bourikas, L. and Bahaj, A. S.: Transforming existing weather data for worldwide locations to enable energy and building performance simulation under future climates, *Renewable Energy*, 55, 514–524, doi:[10.1016/j.renene.2012.12.049](https://doi.org/10.1016/j.renene.2012.12.049), 2013.
- 5 Karsisto, P., Fortelius, C., Demuzere, M., Grimmond, C., Oleson, K. W., Kouznetsov, R., Masson, V. and Järvi, L.: Seasonal surface urban energy balance and wintertime stability simulated using three land-surface models in the high-latitude city Helsinki, *Quarterly Journal of the Royal Meteorological Society*, 142(694), 401–417, doi:[10.1002/qj.2659](https://doi.org/10.1002/qj.2659), 2015.
- Kawai, T., Ridwan, M. K. and Kanda, M.: Evaluation of the Simple Urban Energy Balance Model Using Selected Data from 1-yr Flux Observations at Two Cities, *Journal of Applied Meteorology and Climatology*, 48(4), 693–715, doi:[10.1175/2008JAMC1891.1](https://doi.org/10.1175/2008JAMC1891.1), 2009.
- 10 Kokkonen, T. V., Grimmond, C., Christen, A., Oke, T. R. and Järvi, L.: Changes to the Water Balance Over a Century of Urban Development in Two Neighborhoods: Vancouver, Canada, *Water Resources Research*, 54(9), 6625–6642, doi:[10.1029/2017WR022445](https://doi.org/10.1029/2017WR022445), 2018.
- Kotthaus, S. and Grimmond, C.: Energy exchange in a dense urban environment Part I: Temporal variability of long-term observations in central London, *Urban Climate*, 10, 261–280, doi:[10.1016/j.uclim.2013.10.002](https://doi.org/10.1016/j.uclim.2013.10.002), 2014.
- 15 Kouatchou, J.: NASA Modeling Guru: Basic Comparison of Python, Julia, Matlab, IDL and Java (2018 Edition), [online] Available from: <https://modelingguru.nasa.gov/docs/DOC-2676>, 2018.
- Krayenhoff, E. S., Moustauoi, M., Broadbent, A. M., Gupta, V. and Georgescu, M.: Diurnal interaction between urban expansion, climate change and adaptation in US cities, *Nature Climate Change*, 8(12), 1097–1103, doi:[10.1038/s41558-018-0320-9](https://doi.org/10.1038/s41558-018-0320-9), 2018.
- 20 Li, B., Luo, Z., Sandberg, M. and Liu, J.: Revisiting the ‘Venturi effect’ in passage ventilation between two non-parallel buildings, *Building and Environment*, 94, 714–722, doi:[10.1016/j.buildenv.2015.10.023](https://doi.org/10.1016/j.buildenv.2015.10.023), 2015a.
- Li, D., Bou-Zeid, E. and Oppenheimer, M.: The effectiveness of cool and green roofs as urban heat island mitigation strategies, *Environmental Research Letters*, 9(5), 055002, doi:[10.1088/1748-9326/9/5/055002](https://doi.org/10.1088/1748-9326/9/5/055002), 2014.
- 25 Li, D., Sun, T., Liu, M., Yang, L., Wang, L. and Gao, Z.: Contrasting responses of urban and rural surface energy budgets to heat waves explain synergies between urban heat islands and heat waves, *Environmental Research Letters*, 10(5), 054009, doi:[10.1088/1748-9326/10/5/054009](https://doi.org/10.1088/1748-9326/10/5/054009), 2015b.
- Lin, J. W.-B.: Why Python Is the Next Wave in Earth Sciences Computing, *Bull. Amer. Meteor. Soc.*, 93(12), 1823–1824, doi:[10.1175/BAMS-D-12-00148.1](https://doi.org/10.1175/BAMS-D-12-00148.1), 2012.
- 30 Lindberg, F. and Grimmond, C.: The influence of vegetation and building morphology on shadow patterns and mean radiant temperatures in urban areas: model development and evaluation, *Theoretical and applied climatology*, 105(3-4), 311–323, doi:[10.1007/s00704-010-0382-8](https://doi.org/10.1007/s00704-010-0382-8), 2011.
- Lindberg, F., Grimmond, C., Gabey, A., Huang, B., Kent, C. W., Sun, T., Theeuwes, N. E., Järvi, L., Ward, H. C., Capel-Timms, I., Chang, Y., Jonsson, P., Krave, N., Liu, D., Meyer, D., Olofson, K. F. G., Tan, J., Wästberg, D., Xue, L. and Zhang, Z.: Urban Multi-scale Environmental Predictor (UMEP): An integrated tool for city-based climate services, *Environmental Modelling & Software*, 99, 70–87, doi:[10.1016/j.envsoft.2017.09.020](https://doi.org/10.1016/j.envsoft.2017.09.020), 2018.
- 35

- Loridan, T., Grimmond, C., Offerle, B. D., Young, D. T., Smith, T. E. L., Järvi, L. and Lindberg, F.: Local-Scale Urban Meteorological Parameterization Scheme (LUMPS): Longwave Radiation Parameterization and Seasonality-Related Developments, *J. Appl. Meteor. Climatol.*, 50(1), 185–202, doi:[10.1175/2010JAMC2474.1](https://doi.org/10.1175/2010JAMC2474.1), 2011.
- 5 Monteiro, J. M., McGibbon, J. and Caballero, R.: sympl (v. 0.4.0) and climt (v. 0.15.3) towards a flexible framework for building model hierarchies in Python, *Geoscientific Model Development*, 11(9), 3781–3794, doi:[10.5194/gmd-11-3781-2018](https://doi.org/10.5194/gmd-11-3781-2018), 2018.
- Nie, W.-S., Sun, T. and Ni, G.-H.: Spatiotemporal characteristics of anthropogenic heat in an urban environment: A case study of Tsinghua Campus, *Building and Environment*, 82, 675–686, doi:[10.1016/j.buildenv.2014.10.011](https://doi.org/10.1016/j.buildenv.2014.10.011), 2014.
- 10 Nie, W.-S., Zaitchik, B. F., Ni, G.-H. and Sun, T.: Impacts of Anthropogenic Heat on Summertime Rainfall in Beijing, *Journal of Hydrometeorology*, 18(3), 693–712, doi:[10.1175/JHM-D-16-0173.1](https://doi.org/10.1175/JHM-D-16-0173.1), 2016.
- Offerle, B. D., Grimmond, C. and Oke, T. R.: Parameterization of net all-wave radiation for urban areas, *Journal of Applied Meteorology and Climatology*, 42(8), 1157–1173, doi:[10.1175/1520-0450\(2003\)042<1157:PONARF>2.0.CO;2](https://doi.org/10.1175/1520-0450(2003)042<1157:PONARF>2.0.CO;2), 2003.
- 15 Onomura, S., Grimmond, C., Lindberg, F., Holmer, B. and Thorsson, S.: Meteorological forcing data for urban outdoor thermal comfort models from a coupled convective boundary layer and surface energy balance scheme, *Urban Climate*, 11, 1–23, doi:[10.1016/j.uclim.2014.11.001](https://doi.org/10.1016/j.uclim.2014.11.001), 2015.
- Peng, R. D.: Reproducible Research in Computational Science, *Science*, 334(6060), 1226–1227, doi:[10.1126/science.1213847](https://doi.org/10.1126/science.1213847), 2011.
- Perkel, J. M.: Programming: Pick up Python, *Nature News*, 518(7537), 125–126, doi:[10.1038/518125a](https://doi.org/10.1038/518125a), 2015.
- 20 Peterson, P.: F2PY: a tool for connecting Fortran and Python programs, *International Journal of Computational Science and Engineering*, 4(4), 296, doi:[10.1504/IJCSE.2009.029165](https://doi.org/10.1504/IJCSE.2009.029165), 2009.
- Rafael, S., Martins, H., Marta-Almeida, M., Sá, E., Coelho, S., Rocha, A., Borrego, C. and Lopes, M.: Quantification and mapping of urban fluxes under climate change: Application of WRF-SUEWS model to Greater Porto area (Portugal), *Environmental Research*, 155, 321–334, doi:[10.1016/j.envres.2017.02.033](https://doi.org/10.1016/j.envres.2017.02.033), 2017.
- 25 Ramamurthy, P., Sun, T., Rule, K. and Bou-Zeid, E.: The joint influence of albedo and insulation on roof performance: A modeling study, *Energy and Buildings*, 102, 317–327, doi:[10.1016/j.enbuild.2015.06.005](https://doi.org/10.1016/j.enbuild.2015.06.005), 2015.
- Reinhart, C. F. and Cerezo Davila, C.: Urban building energy modeling A review of a nascent field, *Building and Environment*, 97, 196–202, doi:[10.1016/j.buildenv.2015.12.001](https://doi.org/10.1016/j.buildenv.2015.12.001), 2016.
- Sailor, D. J.: A review of methods for estimating anthropogenic heat and moisture emissions in the urban environment, *International Journal of Climatology*, 31(2), 189–199, doi:[10.1002/joc.2106](https://doi.org/10.1002/joc.2106), 2011.
- 30 Santamouris, M., Papanikolaou, N., LIVADA, I., Koronakis, I., Georgakis, C., Argiriou, A. and Assimakopoulos, D. N.: On the impact of urban climate on the energy consumption of buildings, *Solar Energy*, 70(3), 201–216, doi:[10.1016/S0038-092X\(00\)00095-5](https://doi.org/10.1016/S0038-092X(00)00095-5), 2001.
- Santamouris, M., Synnefa, A. and Karlessi, T.: Using advanced cool materials in the urban built environment to mitigate heat islands and improve thermal comfort conditions, *Solar Energy*, 85(12), 3085–3102, doi:[10.1016/j.solener.2010.12.023](https://doi.org/10.1016/j.solener.2010.12.023), 2011.

- Skamarock, W. C. and Klemp, J. B.: A time-split nonhydrostatic atmospheric model for weather research and forecasting applications, *Journal of Computational Physics*, 227(7), 3465–3485, doi:[10.1016/j.jcp.2007.01.037](https://doi.org/10.1016/j.jcp.2007.01.037), 2008.
- Sun, T.: SuPy (SUEWS in Python): 2019.2 Release, doi:[10.5281/zenodo.2574405](https://doi.org/10.5281/zenodo.2574405), 2019.
- 5 Sun, T., Grimmond, C. and Ni, G.-H.: How do green roofs mitigate urban thermal stress under heat waves?, *Journal of Geophysical Research-Atmospheres*, 121(10), 5320–5335, doi:[10.1002/2016JD024873](https://doi.org/10.1002/2016JD024873), 2016.
- Sun, T., Kotthaus, S., Li, D., Ward, H. C., Gao, Z., Ni, G.-H. and Grimmond, C.: Attribution and mitigation of heat wave-induced urban heat storage change, *Environmental Research Letters*, 12(11), 114007, doi:[10.1088/1748-9326/aa922a](https://doi.org/10.1088/1748-9326/aa922a), 2017.
- 10 Tan, J., Zheng, Y., Tang, X., Guo, C., Li, L., Song, G., Zhen, X., Yuan, D., Kalkstein, A. J., Li, F. and Chen, H.: The urban heat island and its impact on heat waves and human health in Shanghai, *International Journal of Biometeorology*, 54(1), 75–84, doi:[10.1007/s00484-009-0256-x](https://doi.org/10.1007/s00484-009-0256-x), 2009.
- Varga, M. de la, Schaaf, A. and Wellmann, F.: GemPy 1.0: open-source stochastic geological modeling and inversion, *Geoscientific Model Development*, 12(1), 1–32, doi:[10.5194/gmd-12-1-2019](https://doi.org/10.5194/gmd-12-1-2019), 2019.
- 15 Wang, L., Gao, Z., Miao, S., Guo, X., Sun, T., Liu, M. and Li, D.: Contrasting characteristics of the surface energy balance between the urban and rural areas of Beijing, *Advances in Atmospheric Sciences*, 32(4), 505–514, doi:[10.1007/s00376-014-3222-4](https://doi.org/10.1007/s00376-014-3222-4), 2015.
- Wang, Z.-H., Bou-Zeid, E. and Smith, J. A.: A coupled energy transport and hydrological model for urban canopies evaluated using a wireless sensor network, *Quarterly Journal of the Royal Meteorological Society*, 139(675), 1643–1657, doi:[10.1002/qj.2032](https://doi.org/10.1002/qj.2032), 2012.
- 20 Ward, H. C. and Grimmond, C.: Assessing the impact of changes in surface cover, human behaviour and climate on energy partitioning across Greater London, *Landscape and Urban Planning*, 165, 142–161, doi:[10.1016/j.landurbplan.2017.04.001](https://doi.org/10.1016/j.landurbplan.2017.04.001), 2017.
- Ward, H. C., Kotthaus, S., Järvi, L. and Grimmond, C.: Surface Urban Energy and Water Balance Scheme (SUEWS): Development and evaluation at two UK sites, *Urban Climate*, 18, 1–32, doi:[10.1016/j.uclim.2016.05.001](https://doi.org/10.1016/j.uclim.2016.05.001), 2016.
- 25 Ward, H. C., Tan, Y. S., Gabey, A. M., Kotthaus, S. and Grimmond, C.: Impact of temporal resolution of precipitation forcing data on modelled urban-atmosphere exchanges and surface conditions, *International Journal of Climatology*, 38(2), 649–662, doi:[10.1002/joc.5200](https://doi.org/10.1002/joc.5200), 2018.
- Zhao, L., Lee, X., Smith, R. B. and Oleson, K.: Strong contributions of local background climate to urban heat islands, *Nature*, 511(7508), 216–219, doi:[10.1038/nature13462](https://doi.org/10.1038/nature13462), 2014.