

Dear editor

Please find my answers to the points you raised

1. Firstly, “code must be published on a persistent public archive with a unique identifier for the exact model version described in the paper or uploaded to the supplement, unless this is impossible for reasons beyond the control of authors. “

This has now been included:

“Code availability. The NorESM2 code can be downloaded from <https://doi.org/doi:10.5281/zenodo.3905091> (Seland et al., 2020)”

2. Model outputs on ESGF is very good practice. However the reader has no way of actually finding them! ESGF provides the correct data citation for each piece of data on the corresponding catalogue page and precise instructions for citing CMIP6 data, for example, are here:
https://docs.google.com/document/d/1SnwBL9MJQNEU1_nJ661SN3-SSxR0j1mAYan6-WXfaSU/edit

References to the data have now been added

“The NorESM2-LM data (Seland et al., 2019) and NorESM2-MM data (Bentsen et al., 2019) can be accessed through the Earth System Grid Federation (ESGF) decentralized database (<https://esgf-node.llnl.gov>). The NorESM1-Happi data (Seland, 2020) can be accessed from the NIRD Research Data Archive (<https://archive.sigma2.no>)”

3. The model input files required to reproduce the simulations are not referred to. These should also be publicly and persistently archived otherwise the results are not reproducible.

Information about how to obtain the input data have been added

“The input data for the experiments can be found at <https://noresm.org/inputdata/>. Local copies of relevant files are automatically downloaded when creating and compiling the experiments. “

In addition to the changes given above there has been some minor corrections in the reference list and an additional project has been added to the acknowledgements.

Overview of the Norwegian Earth System Model, NorESM2, and Key Climate Response of CMIP6 DECK, Historical, and Scenario Simulations

Øyvind Seland¹, Mats Bentsen², Dirk Olivié¹, Thomas Toniazzo^{2,6}, Ada Gjermundsen¹, Lise Seland Graff¹, Jens Boldingh Debernard¹, Alok Kumar Gupta², Yan-Chun³, Alf Kirkevåg¹, Jörg Schwinger², Jerry Tjiputra², Kjetil Schanke Aas⁴, Ingo Bethke⁵, Yuanchao Fan², Jan Griesfeller¹, Alf Grini¹, Chuncheng Guo², Mehmet Ilicak^{7,2}, Inger Helene Hafsahl Karset⁴, Oskar Landgren¹, Johan Liakka³, Kine Onsum Moseid¹, Aleksi Nummelin², Clemens Spensberger⁵, Hui Tang⁴, Zhongshi Zhang², Christoph Heinze⁵, Trond Iversen^{1,4}, and Michael Schulz^{1,4}

¹Norwegian Meteorological Institute, Oslo, Norway

²NORCE Norwegian Research Centre AS and Bjerknes Centre for Climate Research, Bergen, Norway

³Nansen Environmental and Remote Sensing Center, Bergen, Norway

⁴University of Oslo, Department of Geosciences, Oslo, Norway

⁵Geophysical Institute, University in Bergen, and Bjerknes Centre for Climate Research, Bergen, Norway

⁶Stockholm University, Department of Meteorology, Stockholm, Sweden

⁷Eurasia Institute of Earth Sciences, Istanbul Technical University, Istanbul, Turkey

Correspondence: Øyvind Seland (oyvindse@met.no)

Abstract. The second version of the coupled Norwegian Earth System Model (NorESM2) is presented and evaluated. NorESM2 is based on the second version of the Community Earth System Model (CESM2), and shares with CESM2 the computer code infrastructure and many earth system model components. However, NorESM2 employs entirely different ocean and ocean biogeochemistry models. The atmosphere component of NorESM2, CAM-Nor, includes a different module for aerosol physics and chemistry, including interactions with cloud and radiation; additionally, CAM-Nor includes improvements in the formulation of local dry and moist energy conservation, in local and global angular momentum conservation, and in the computations for deep convection and air-sea fluxes. The surface components of NorESM2 have minor changes in the albedo calculations and to land and sea-ice models.

We present results from simulations with NorESM2 that were carried out for the sixth phase of the Coupled Model Intercomparison Project (CMIP6). Two versions of the model are used, one with lower ($\sim 2^\circ$) atmosphere/land resolution, and one with medium ($\sim 1^\circ$) atmosphere/land resolution. The stability of the pre-industrial climate and the sensitivity of the model to abrupt and gradual quadrupling of CO_2 is assessed, along with the ability of the model to simulate the historical climate under the CMIP6 forcings. Compared to observations and reanalyses, NorESM2 represents an improvement over previous versions of NorESM in most aspects. NorESM2 appears less sensitive to greenhouse gas forcing than its predecessors, with an estimated equilibrium climate sensitivity of 2.5 K in both resolutions on a 150 year time frame; however, this estimate increases with the time window and the climate sensitivity at equilibration is much higher. We also consider the model response to future scenar-

ios as defined by selected shared socioeconomic pathways (SSPs) from the Scenario Model Intercomparison Project defined under CMIP6. Under the four scenarios SSP1-2.6, SSP2-4.5, SSP3-7.0, and SSP5-8.5, the warming in the period 2090–2099 compared to 1850–1879 reaches 1.3, 2.2, 3.0, and 3.9 K in NorESM2-LM, and 1.3, 2.1, 3.1, and 3.9 K in NorESM-MM, robustly similar in both resolutions. NorESM2-LM shows a rather satisfactory evolution of recent sea-ice area. In NorESM2-LM an ice-free Arctic Ocean is only avoided in the SSP1-2.6 scenario.

1 Introduction

The Norwegian Earth System Model version 2 (NorESM2) is the second generation of the coupled Earth System Model (ESM) developed by the Norwegian Climate Center, and is the successor of NorESM1 (Bentsen et al., 2013; Iversen et al., 2013; Kirkevåg et al., 2013; Tjiputra et al., 2013) which was used in the 5th phase of the Coupled Model Intercomparison Project (CMIP5; Taylor et al., 2012), and for the evaluation of potential climate impacts between the 1.5 and 2 °C warming targets of "the 21st Conference of Parties" (COP21) (Graff et al., 2019). NorESM2 is based on the Community Earth System Model CESM2.1 (Danabasoglu et al., 2020). Although large parts of NorESM are similar to CESM, there are several important differences. NorESM uses the Bergen Layered Ocean Model (BLOM; Bentsen et al., in prep.) coupled with the iHAMOCC model for ocean biogeochemistry (Tjiputra et al., 2020). It also uses a different atmospheric aerosol module (OsloAero6; Kirkevåg et al., 2018; Olivié et al., in prep.). Additionally, NorESM2 features specific modifications and tunings of the physics and dynamics of the atmosphere component (Toniazzi et al., 2020; Toniazzi et al., in prep.).

Many changes have contributed to the development of NorESM1 into NorESM2. The model has benefited from the evolution of the parent model Community Climate System Model version 4 (CCSM4.0) into CESM2.1, comprising the change of the atmosphere component from CAM4 to CAM6 (Lenaerts et al., 2020; Bogenschütz et al., 2018, see also the supplementary information in Gettelman et al., 2019a), the land component from Community Land Model (CLM)4 to CLM5 (Lawrence et al., 2019), and the sea ice component from Community Ice Code (CICE)4 to CICE5 (Hunke et al., 2015). Also, NorESM-specific developments have been implemented in the description of aerosols and their coupling to clouds and radiation (Kirkevåg et al., 2018), in addition to harmonizing the implementation of the aerosol scheme with the standard aerosol schemes in CESM. To extend the capabilities of NorESM as an ESM, a strong focus has been put on the interactive description of natural emissions of aerosols and their precursors, and tightening the coupling between the different earth system components. Finally, the ocean model (Bentsen et al., in prep.) and the ocean biogeochemistry module (Schwinger et al., 2016; Tjiputra et al., 2020) have been further developed.

This manuscript gives a description of NorESM2 and a basic evaluation against observations of the simulation of the atmosphere, sea ice, and ocean in a small set of baseline long-duration experiments with the new model. It focuses on such aspects as the simulated climatology, stability and internal variability, and also on the response under historical and enhanced-greenhouse gas scenario forcings.

Currently, NorESM2 exists in three versions. The two versions presented here are NorESM2-LM and NorESM2-MM: they differ in the horizontal resolution of the atmosphere and land component (approximately 2° for LM and 1° in MM), but share

the same horizontal resolution of 1° for the ocean and sea ice components. These versions are otherwise identical, except for a very limited number of parameter settings in the atmosphere component, and the parameterisation used to diagnose the fraction of ice clouds. A third version of the model is the CO₂-emission driven NorESM2-LME (as opposed to concentration driven), which can be used for interactive carbon-cycle studies, but is identical to NorESM2-LM in all other aspects.

55 A range of climate models and model versions participate in the sixth phase of the Coupled Model Intercomparison Project (CMIP6; Eyring et al., 2016). NorESM2 has been used to contribute to CMIP6, and all the data generated by the participating models, including NorESM2, can be downloaded from the CMIP6 multi-model data archive.

An overview of the model which highlights the differences since previous versions and from CESM2 is given in Sect. 2, and a short summary of model initialization and tuning is presented in Sect. 3. A short description of the CMIP6 experiments
60 considered in this paper is provided in Sect. 4 along with results documenting model stability, climate sensitivity, and the time evolution of selected climate variables during the historical period and future scenarios. Section 5 documents the climatological mean state of the model and atmospheric circulation patterns, with emphasis on ocean temperatures, salinity, Sea Level Anomalies (SLA; Sect. 5.1), sea ice (Sect. 5.2), atmospheric temperature and zonal winds (Sect. 5.3), extratropical storm tracks (Sect. 5.4), precipitation and the fresh water cycle (Sect. 5.6), Northern Hemisphere blocking (Sect. 5.7), the Madden-Julian
65 Oscillation (Sect. 5.8), and the El Niño Southern Oscillation (ENSO; Sect. 5.9). A summary and conclusion is provided at the end in Sect. 6.

2 From CESM2 and NorESM1 to NorESM2: description and updates

As described in the introduction, NorESM2 is built on the structure and many of the components of CESM2 (Danabasoglu et al., 2020), but with several modifications. An overview of the model components can be found in Fig. 1.

70 Compared to the Community Atmosphere Model version 6 (CAM6; Bogenschutz et al., 2018) of CESM2, the atmospheric component of NorESM2, CAM6-Nor, incorporates a number of modifications. These involve the independently developed module for the life-cycle of particulate aerosols, and the representation of aerosol-radiation-cloud interactions (Kirkevåg et al., 2013, 2018); changes in the moist convection scheme and the local moist energy formulation (Toniazzi et al., in prep.); global conservation of rotational momentum (Toniazzi et al., 2020); and an updated parametrisation of the surface flux layer for the
75 computation of air-sea fluxes. (The last two of these modifications have recently been included in the CESM CAM6 code repositories and are available as namelist options.) A summary of these changes is given in the atmospheric model section (Sect. 2.2).

The ocean model BLOM is an updated version of the Miami Isopycnic Coordinate Ocean Model (MICOM) used in NorESM1 (Bentsen et al., 2013). BLOM is coupled to the isopycnic coordinate Hamburg Ocean Carbon Cycle Model (iHAMOCC;
80 Tjiputra et al., 2020), an updated version of the carbon-cycle model found in NorESM1 (Tjiputra et al., 2013). Brief descriptions of the ocean and ocean biochemistry models are given in Sect. 2.3 and 2.4.

The sea ice model, version 5.1.2 of the Los Alamos Sea Ice Model (CICE5.1.2; Hunke et al., 2015), and the land-model, the Community Land Model version 5 (CLM5; Lawrence et al., 2019), only differ from the versions used in CESM2.1 by

minor changes which are summarised in Sect. 2.5 and 2.6. The river model is the Model for Scale Adaptive River Transport (MOSART; Li et al., 2013) and is identical to the version found in CESM2.1 and hence is not described here. The coupler structure is retained as in CESM2.1 but with changes in flux and albedo calculations summarized below.

The interactive land-ice (the Community Ice Sheet Model; CISM; Lipscomb et al., 2019) and ocean surface wave components included in CESM2 were not activated in NorESM2 for the CMIP6 model integrations. Our tests with an interactive ice-sheet model over Greenland show that the model does not maintain a realistic mass balance, indicating that further development is needed. For CESM, specific tuning was carried out in order to achieve a better Greenland ice-sheet mass balance. Although NorESM2 inherited such tunings, its warmer regional climate would have required additional, dedicated effort. Due to resource limitations we have postponed this until after CMIP6.

2.1 Model versions and the coupled model system

In view of the comparatively high computational cost of the model, two different versions of NorESM2 with different computational cost are presented. The two versions differ by the horizontal resolution of the atmosphere and land components. The "medium-resolution" (M) version has a grid spacing of $1.25^\circ \times 0.9375^\circ$ in these components, like CESM2 (Gettelman et al., 2019a). The "low-resolution" (L) version uses half that resolution in the atmosphere and land components. The ocean and sea ice components are run with "medium" (M) (1°) resolution in both versions. To facilitate distinguishing between the different resolutions when discussing set-up and results, a two letter suffix is added to NorESM2, "LM" for low-resolution atmosphere/land and medium resolution ocean/sea ice and "MM" for medium resolution of both atmosphere/land and ocean/sea ice. NorESM2-LM is used for most of the CMIP6 simulations, while NorESM2-MM is only used for a limited number of experiments.

2.2 Atmosphere model, CAM6-Nor

The atmosphere model component of NorESM2 is built on the CAM6 version from CESM2.1, using the hydrostatic finite-volume dynamical core on a regular latitude-longitude grid at the two horizontal resolutions mentioned above. In the vertical, both versions use the same discretisation as CAM6, with 32 hybrid-pressure layers and a "rigid" lid at 3.6 hPa (40 km). As in CAM6, a 30 minute physics timestep is used, with four-fold and eight-fold dynamics substepping for LM and MM, respectively. CAM6-Nor employs parametrisations for particulate aerosols and for aerosol-radiation-cloud interactions from NorESM1 and NorESM1.2 as described by Kirkevåg et al. (2013, 2018). NorESM2-specific changes to model physics and dynamics which are not aerosol related, are described by Toniazzo et al. (2020) and Toniazzo et al. (in prep.).

The latest updates in the aerosol modules (that is, the changes between NorESM1.2 and NorESM2) are described by Olivie et al. (in prep.). Very briefly these can be summarized as follows

The CMIP6 forcing input files now replace the corresponding CMIP5 files in NorESM2. These changes involve a large number of parameters: (i) Greenhouse gas concentrations of carbon dioxide (CO_2), methane (CH_4), nitrous oxide (N_2O), equivalent trichlorofluoromethane (CFC-11), and dichlorodifluoromethane (CFC-12) follow Meinshausen et al. (2017). (ii) Solar forcing is prescribed according to Matthes et al. (2017). (iii) Emissions of aerosols and aerosol precursors that are not

calculated online by the model have been updated. Anthropogenic emissions of black carbon (BC), organic matter (OM), and sulfur dioxide (SO₂) are prescribed according to Hoesly et al. (2018), and biomass burning emission strengths follow van Marle et al. (2017) applying a vertical distribution according to Dentener et al. (2006). As in NorESM1, continuous tropospheric outgassing of SO₂ by volcanoes is taken into account, but we have also added the tropospheric contribution of explosive volcanoes (Dentener et al., 2006). As in NorESM1, an OM/OC ratio of 1.4 is taken for fossil fuel emissions and 2.6 for biomass burning emissions, and sulphur emissions are assumed to be 97.5 % SO₂ and 2.5 % SO₄. Nitrate aerosol is not included. (iv) The impact of stratospheric aerosol in NorESM1 was taken into account by prescribing volcanic aerosol mass concentrations. In NorESM2, prescribed optical properties from CMIP6 are instead used, and are integrated in the calculation of total optical parameters for use in the radiation module together with other aerosols. The monthly distributions of stratospheric sulfate aerosols follow now the CMIP6 recommendations (Thomason et al., 2018). (v) For oxidant concentrations (hydroxyl radical (OH), nitrate radical (NO₃), hydroperoxy radical (HO₂) and ozone (O₃)) needed for the description of secondary aerosol formation, we use the same fields as used in CESM2(CAM6) (Danabasoglu et al., 2020), which originate from pre-industrial control, historical, and scenario simulations of CESM2(WACCM6) (Gettelman et al., 2019b). The oxidant fields are 3-dimensional monthly varying fields, and are provided at a decadal frequency for the historical and scenario simulations (Danabasoglu et al., 2020). (vi) For ozone concentrations used in the radiative transfer calculations we also use fields from CESM2(WACCM6). They are zonally averaged 5-daily varying fields. (vii) Production rates of H₂O from CH₄ oxidation (mainly playing a role in the stratosphere) are also prescribed monthly climatologies based on CESM2(WACCM6) simulations, again with a decadal frequency.

In NorESM2, oceanic dimethyl sulfide (DMS) emission is prognostically simulated by the ocean biogeochemistry component (Sect. 2.4), hence allowing for a direct biogeochemical climate feedback in coupled simulations. The DMS air-sea flux is simulated as a function of upper-ocean biological production following the formulation of Six and Maier-Reimer (1996) and was first tested in the NorESM model framework by Schwinger et al. (2017). Currently the atmospheric deposition into the ocean is decoupled. The ocean biogeochemistry uses the monthly climatological aerial dust (iron) deposition of Mahowald et al. (2005). The dust parametrisation has undergone two important changes with respect to NorESM1. First, dust emissions were effectively halved by reducing a scaling coefficient for the emission flux of prognostic dust. This brings CAM6-Nor better in line with CAM6. Second, the assumed complex refractive index of mineral dust for wavelengths below 15 μ m has furthermore been changed according to more recent research (for details, see Olivié et al. (in prep.) and references therein), compared to the values applied in NorESM1.2.

The aerosol nucleation formulation described by Kirkevåg et al. (2018) has been updated by allowing all pre-existing particles to act as coagulation sinks for freshly nucleated particles (Sporre et al., 2019). This results in a more realistic rate of survival for these 2 nm nucleation particles into the smallest explicitly modeled mode/mixture of co-nucleated sulfate and secondary organic aerosols. In NorESM1 only the fine mode of co-nucleated sulfate and SOA (mixture no. 1) acted as a coagulation sink for the 2 nm particles. This reduces the number concentrations of fine-mode particles, while increasing their size, which in effect yields increased cloud condensation nuclei and cloud droplet concentrations. In NorESM1.2 the survival rates in the lower troposphere changed from typically 20 - 80% to 1 - 20% (zonally and annually averaged). Kuang et al. (2009) inferred

survival probabilities from size distribution measurements and found that at least 80% of the nucleated particles measured at Atlanta, GA and Boulder, CO were lost by coagulation before the nucleation mode reached CCN sizes, even during days with high growth rates.

155 The equation for sea-salt emissions has been modified by changing their dependence on 10-meter wind speed. NorESM2 adopts the value recommended by Salter et al. (2015), 3.74, for the exponential factor, instead of 3.41 in NorESM1. This change was partly justified as an early tuning prior to the start of the spin-up simulations, in order to reduce the large positive top of the model radiative imbalance of the model before temperature equilibration. Even with the lower exponential factor however the model already produced excessive sea-salt aerosol optical depth (Gliß et al., 2020) and surface mass concentrations (Olivie
160 et al., in prep.) compared to in-situ observations. Thus the change results in an even larger overestimate. “The sea-salt emission changes were tested in a predecessor model version, NorESM1.2 (Kirkevåg et al., 2018). Annual and globally averaged, this lead to increases from 99.5 to 228.3 ng s^{-1} (129%) in sea-salt emissions, from 7.8 to 17.2 mg m^{-2} (121%) in sea-salt column burdens, with corresponding changes in total clear-sky AOD from 0.086 to 0.119 (38%), and cloud droplet numbers at top of the cloud (using the method of Kirkevåg et al., 2018) changed from 31.3 to 32.7 cm^{-3} (4.5%). Since the emission flux
165 of oceanic primary organic aerosols is proportional to that of fine sea-salt aerosols (Kirkevåg et al., 2018), this specific change also has an impact on the natural oceanic organic matter emissions.

CAM-Nor computes the effects of hygroscopic growth of aerosols on water uptake and optical properties by means of look-up tables that take relative humidity as an input. In NorESM1, the grid-point average relative humidity was used. In CAM6-Nor we instead use the mean cloud-free relative humidity, in line with CAM6 and a number of other atmospheric models (Textor
170 et al., 2006; Kirkevåg et al., 2018; Gliß et al., 2020). The cloud-free relative humidity (RH) is calculated assuming 100 percent RH in the cloudy volume.

The other differences of CAM6-Nor relative to CAM6 are summarised as follows. A correction to the zonal wind increments due to the Lin and Rood (1997) dynamical core is introduced in order to achieve global conservation of atmospheric angular momentum along the Earth’s axis of rotation, as described and discussed in Toniazzo et al. (2020). The local energy update of
175 the model is also modified by including a missing term (the hydrostatic pressure work) related with changes in atmospheric water vapour and thus achieves better local energy conservation. Finally, a set of modifications to the deep convection scheme is introduced which eliminate most of the resolution dependence of the scheme, and mitigate the cold tropospheric bias of CAM6. The energy and convection changes (which are not available in the CAM6 code repository) are described in Toniazzo et al. (in prep.).

180 2.3 Ocean model

The ocean component BLOM is based on the version of MICOM used in NorESM1 and shares the use of near-isopycnic interior layers and variable density layers in the surface well-mixed boundary layer. The dynamical core is also very similar but with notable differences in physical parameterisations and coupling. For vertical shear-induced mixing a second-order turbulence closure (Umlauf and Burchard, 2005; Ilicak et al., 2008) using a one equation closure within the family of $k - \epsilon$ models has
185 replaced a parameterisation using the local gradient Richardson number according to Large et al. (1994). Parameterised eddy-

induced transport is modified to more closely follow the Gent and McWilliams (1990) parameterisation with the main impact of increased upper ocean stratification and reduced mixed layer depths. As for NorESM1-MICOM, the estimation of diffusivity for eddy-induced transport and isopycnic eddy diffusion of tracers is based on the Eden et al. (2009) implementation of Eden and Greatbatch (2008) with their diagnostic equation for the eddy length scale, but modified to give a spatially smoother and generally reduced diffusivity. Hourly exchange of state and flux variables with other components is now used compared to daily ocean coupling in NorESM1. The sub-diurnal coupling allows for the parameterisation of additional upper ocean mixing processes. Representation of mixed layer processes is modified to work well with the higher frequency coupling and in general to mitigate a deep mixed layer bias found in NorESM1 simulations. The penetration profile of shortwave radiation is modified, leading to a shallower absorption in NorESM2 compared to NorESM1. With respect to coupling to the sea ice model, BLOM and CICE now use a consistent salinity dependent seawater freezing temperature (Assur, 1958). Selective damping of external inertia-gravity waves in shallow regions is enabled to mitigate an issue with unphysical oceanic variability in high latitude shelf regions, causing excessive sea ice formation due to breakup and ridging in CMIP5 versions of NorESM1.

For the CMIP6 contribution, BLOM uses identical parameters and configuration in coupled ocean-sea ice OMIP (Ocean Model Intercomparison Project; Griffies et al., 2016) experiments and fully coupled NorESM2-LM and NorESM2-MM experiments, except for sea surface salinity restoring in OMIP experiments. As for NorESM1, 53 model layers are used with two non-isopycnic surface layers and the same layer reference potential densities for the layers below. A tripolar grid is used instead of the bipolar grid in CMIP5 versions of NorESM1, allowing for approximately a doubling of the model time step. At the equator the grid resolution is 1° zonally and $1/4^\circ$ meridionally, gradually approaching more isotropic grid cells at higher latitudes. The model bathymetry is found by averaging the S2004 (Marks and Smith, 2006) data points contained in each model grid cell with additional editing of sills and passages to their actual depths. The metric scale factors are edited to the realistic width of the Strait of Gibraltar so that strong velocity shears can be formed, enabling realistic mixing of Mediterranean water entering the Atlantic Ocean.

OMIP provides protocols for two different forcing datasets, OMIP1 (Large and Yeager, 2009) and OMIP2 (Tsujino et al., 2018). Tsujino et al. (2020) is a model intercomparison evaluating OMIP1 and OMIP2 experiments, including BLOM/CICE of NorESM2. Further details on the BLOM model and its performance in OMIP coupled ocean-sea ice simulations can be found in Bentsen et al. (in prep.).

2.4 Ocean biogeochemistry

The ocean biogeochemistry component iHAMOCC (isopycnic coordinate HAMBurg Ocean Carbon Cycle model) is an updated version of the ocean biogeochemistry module used in NorESM1. The model includes prognostic inorganic carbon chemistry following Dickson et al. (2007). A Nutrient Phytoplankton Zooplankton Detritus (NPZD) type ecosystem model (Six and Maier-Reimer, 1996) represents the lower trophic biological productivity in the upper ocean. The updated version includes riverine inputs of biogeochemical constituents to the coastal ocean. Atmospheric nitrogen deposition is prescribed according to the data provided by CMIP6. The parameterisations of the particulate organic carbon sinking scheme, dissolved iron sources and sinks, nitrogen fixation, and other nutrient cycling have been updated as well. NorESM2 also simulates preformed and

220 natural inorganic carbon tracers, which can be used to facilitate a more detailed diagnostic of interior ocean biogeochemical dynamics. Due to the identical ocean component between NorESM2-LM and NorESM2-MM, the performance in ocean biogeochemistry is very similar in both model versions. Compared to NorESM1, the climatological interior concentrations of oxygen, nutrients, and dissolved inorganic carbon have improved considerably in NorESM2. This is mainly due to the improvement in the particulate organic carbon sinking scheme, allowing more efficient transport and remineralization of organic materials in the deep ocean. The seasonal cycle of air-sea gas exchange and biological production at extratropical regions was improved through tuning of the ecosystem parameterizations. The simulated long-term mean of sea-air CO₂ fluxes under the pre-industrial condition in NorESM2-LM is $-0.126 \pm 0.067 \text{ Pg C yr}^{-1}$. Under the transient historical simulation, the ocean carbon sink increases to 1.80 and 2.04 Pg C yr⁻¹ in the 1980s and 1990s, which is well within the present day estimates. Details on the updates and improvements of the ocean biogeochemical component of NorESM2 are provided in Tjiputra et al. (2020).

2.5 Sea ice

The sea ice model component is based upon version 5.1.2 of the CICE sea ice model of Hunke et al. (2015). A NorESM2-specific feature however is to include the effect of wind drift of snow into ocean following Lecomte et al. (2013), as described in Bentsen et al. (in prep).

235 The CICE model uses a prognostic ice thickness distribution (ITD) with five thickness categories. The standard CICE elastic-viscous-plastic (EVP) rheology is used for ice dynamics (Hunke et al., 2015). The model uses mushy-layer thermodynamics with prognostic sea ice salinity from Turner and Hunke (2015). Radiation is calculated using the Delta-Eddington scheme of Briegleb and Light (2007), with melt ponds modeled on level, undeformed ice, as in Hunke et al. (2013).

CICE is discretised on the same horizontal grid as the ocean model (Sect. 2.3), and is configured with 8 layers of ice and 3 layers of snow.

2.6 Land

The NorESM2 land model is CLM5 (Lawrence et al., 2019) with one minor modification described below. A general description of the model will therefore not be presented here. It should however be noted that CLM5 has a new treatment of nitrogen-carbon limitation, which is very important for the carbon cycle in NorESM2 and has increased the land carbon uptake substantially relative to NorESM1 (Arora et al., 2019). An overview of gross primary productivity (GPP) and soil and vegetation carbon pools are provided in Table 3, showing a substantially better agreement with observations for both resolutions of NorESM2 than NorESM1. There is consistency between observations and model simulations at different resolutions for GPP and vegetation carbon, whereas both NorESM2 versions produce a negative bias in soil carbon. These results broadly agree with results from offline (land only) simulations with CLM described by Lawrence et al. (2019), who also describe the individual model updates from CLM4 (used in NorESM1) to CLM5.

In NorESM2, one specific modification was made to the surface water treatment in CLM. The surface water pool is a new feature replacing the wetland land unit in earlier versions of CLM (introduced in CLM4.5). This water pool does not have a

frozen state, but is added to the snow-pack when frozen. To avoid water being looped between surface water and snow during alternating cold and warm periods, we remove infiltration excess water as runoff if the temperature of the surface water pool is below freezing. This was done to mitigate a positive snow bias and an artificial snow depth increase found in some Arctic locations during melting conditions.

2.7 Coupler

The state and flux exchanges between model components and software infrastructure for configuring, building and execution of model experiments is handled by the CESM2 coupler Common Infrastructure for Modeling the Earth (CIME; Danabasoglu et al., 2020). The coupler computes the turbulent air-sea fluxes of heat and momentum and in NorESM2 this is implemented as a version of the COARE-3 (Fairall et al., 2003) scheme, replacing the calculation based on Large and Yeager (2004) in CESM2. State and flux exchanges via the coupler between atmosphere, land and sea ice components occur half-hourly, aligned with the atmosphere time step, while the ocean exchanges with the coupler every hour. CIME also provides common utility functions and among these are estimation of solar zenith angle. In NorESM2, this utility function is modified with associated changes in atmosphere, land and sea ice components, ensuring that all albedo calculations use zenith angle averaged over the components time-step instead of instantaneous angles.

3 NorESM2 initialisation and tuning

Most of the general development of the model as described in Sect. 2 was tested in configurations with reduced number of interactive components. CAM6-Nor was tuned in Atmospheric Model Intercomparison Project (AMIP) configuration with mean climatological radiative forcings and boundary conditions (sea-surface temperatures – hereafter "SST"s – and sea-ice) derived from observations over the period 1990-2010. Similarly, BLOM and iHAMOCC were primarily tuned with prescribed atmosphere and runoff forcing of the OMIP1 protocol. The scope of these separate experiments was to test improved representations of the physical processes in the simulations, with the twin aims of mitigating model systematic biases when compared to the observed climate, and to achieve a net radiative flux imbalance at the top of the model atmosphere (hereafter RESTOM; defined as positive inward, i.e. warming the climate) more in line with satellite-based estimates, given the observed SSTs.

The first coupled version of NorESM2 included all changes described in Sect. 2. This version was heavily tested in a pre-industrial setting (as defined in Sect. 4).

This initial version of the coupled model was initialized using a hybrid of observational estimates and earlier model simulations. The ocean model was initialised with zero velocities and temperature and salinity fields from the Polar science center Hydrographic Climatology (PHC) 3.0 (updated from Steele et al., 2001). Following the OMIP protocol (Orr et al., 2017), the nutrients (phosphate, nitrate, and silicate) and oxygen fields in NorESM2 were initialized with the gridded climatological fields of the World Ocean Atlas database (Garcia et al., 2014a, b). For dissolved inorganic carbon and total alkalinity, we used the pre-industrial and climatological values from the Global Ocean Data Analysis Project (GLODAPv2) database (Lauvset et al., 2016). Other biogeochemical tracers are initialized using values close to zero. CAM and CLM were initialized using the files

285 included in the CESM2 release. Aerosols and aerosol precursors were initialised to near zero values. As there were no low-resolution pre-industrial initial files for the land model available this was replaced by an interpolation of the 1° initial file from CESM2. At a later stage in the coupled spin-up, the land surface fields were re-initialised from a long (approximately 1400 years) stand-alone CLM spin-up simulation driven by repeating 50 years of coupling exchange fields obtained from the earlier coupled run.

290 Similar to CESM, NorESM2 adjusted towards its own coupled climatology with an initial phase of strong cooling in the high latitudes of the northern hemisphere, after which an intensification of ocean heat advection stabilised the simulation. After that point, the climatology tended to settle towards a steady-state. During major tuning steps, the coupled model had to be restarted from the initial state several times. In order to save computer resources, minor tuning, especially towards reducing RESTOM, was performed on the best-candidate simulation after this initial, large adjustment. Alongside the final tuning, the CESM
295 components were updated to the versions found in CESM2.1. The changes from CESM2.0 to CESM2.1 are mostly technical but also include minor bug fixes and updated forcing fields (Danabasoglu et al., 2020). The update was done after an initial adjustment, but early in both spin-ups, approximately 1000 model years before the start of the control, at both resolutions. The impact on the global fields are quite small as can be seen in Fig. S1 and Fig. S2 in the supplement. In this second phase of coupled spin-up, it was found that the sensitivity of some aspects of the simulated coupled climatology to small changes in
300 parameters or parametrisations could be different than that found in stand-alone simulations of the individual components with prescribed boundary conditions. The coupled response could be both amplified or damped with respect to single-component simulations. As a result, some of the final parameter tuning of the model had to be performed in coupled mode. No tuning was performed during the pre-industrial control simulation as described in Sect. 4.1

The main goal of the coupled tuning process was to create an energy balanced pre-industrial control simulation with a rea-
305 sonably stable, adjusted equilibrium state. The simulation can produce a steady climatology only if the time-average radiative imbalance on the top of the model vanishes. In practice, a commonly used target is to bring RESTOM to within $\pm 0.1 \text{ W m}^{-2}$ while maintaining values of mean atmospheric and ocean temperatures close to observations. To achieve this, each change in the coupled model was tested in parallel in atmosphere-only (AMIP) and ocean-only (OMIP) mode. As ocean heat gain and tropospheric air temperature, humidity and cloudiness are strongly associated with the fluxes at the top of the atmosphere,
310 improving the state in the coupled simulation, and reducing RESTOM and drift in AMIP and OMIP simulations, are closely connected goals. On the other hand, fine tuning of the coupled state should not significantly degrade important climatological variables such as temperature, precipitation, clouds, or the main mode of coupled variability, i.e. the El-Niño Southern Oscillation (ENSO). Our parallel testing procedure ensured that the model simulation maintained a degree of consistency both with the present-day, observed climatology, and with a steady pre-industrial climate. Where available, notably in SST and sea-ice,
315 observational estimates of the state of Earth's pre-industrial climate were also considered against the coupled integrations. Each tuning step was performed in isolation, and an effort was made to ensure the greatest possible similarities in the two model configurations LM and MM. No tuning was performed that attempted to target other modes of variability beside ENSO, or a particular climate response to external forcings, e.g. from changes in greenhouse gas concentration, anthropogenic aerosol emissions, or volcanic or solar forcing.

320 Similar to CESM2 (Danabasoglu et al., 2020), NorESM2 tended to develop excessive sea ice cover in the Labrador Sea (LS) region, although the temporal development in NorESM2 differed from CESM2. For any tested combination of parameter choices, NorESM2 developed excessive LS sea ice cover starting around year 60 after model initialisation. This was however only a temporary model state and in all experiments the sea ice returned close to observed state in the LS region after additional 60–80 model years of simulation.

325 One of the most common methods to tune RESTOM is to change the amount and thickness of low clouds. The main parameter used for tuning the low clouds in the Cloud Layers Unified By Binormals (CLUBB) scheme is the "gamma" parameter, which controls the skewness of the assumed Gaussian probability density function for subgrid vertical velocities. A low gamma implies weaker entrainment at the top of the clouds, in particular for marine stratocumulus. This increases the amount of low clouds and results in a higher short-wave cloud forcing.

330 Given the same gamma values, the RESTOM was higher in the low resolution version of the model. In addition the sensitivity to the change of the gamma parameter was different in the two model resolutions, so a different choice of gamma was needed for the two resolutions. The final parameter values are well within the gamma range of 0.1–0.5 tested by Zhang et al. (2018), although smaller than the values used in CESM2 at the same resolution. A small gamma pushes up short-wave cloud radiative forcing (SWCF), which led to a high bias in SWCF in NorESM2-LM. This bias was somewhat off-set by regulating the
335 parameter dcs (autoconversion size threshold for cloud ice to snow), with a small impact on the tropospheric temperature bias.

While the amount of change in SWCF could be estimated by running the atmosphere and land model in a stand-alone configuration, the change in RESTOM in coupled set-up was small compared to the change in cloud forcing. Further attempts at reducing positive RESTOM by tuning the boundary layer stability were neutralised by SST adjustment, while worsening the tropospheric cold bias. A more effective tuning of low cloud radiative effects was achieved by modifying air-sea fluxes of
340 DMS. Compared to Schwinger et al. (2017), the parameter controlling DMS production by diatoms was doubled in NorESM2, which allowed to maintain high DMS concentration at high latitudes during spring and summer seasons in both hemispheres, as in observations (Lana et al., 2011). This tuning compensates for the reduced primary production simulated in NorESM2 compared to that in NorESM1 (Tjiputra et al., 2020).

RESTOM was decisively reduced, both in stand-alone (AMIP) and in coupled simulations (before SST adjustment), by
345 increasing outgoing long-wave radiation. This was achieved in three ways. First, alterations were made to the Zhang and McFarlane (1995) convection scheme, as described in Toniazzo et al. (in prep.), aimed at increasing mid- and high-altitude latent heating of the atmosphere for a given amount of precipitation. Second, positive cloud radiative forcing in the terrestrial radiation spectrum was reduced by intervening on the parameterisation of ice cloud fraction. Finally, higher sea-surface temperatures in coupled simulations were achieved by reducing the value of the parameter controlling background vertical mixing
350 in the ocean back to that used in NorESM1. Initial optimisation in stand-alone configurations had led to increase the value of this parameter by about 50%.

A remarkable sensitivity of the model climatology on the parametrisation of the ice cloud fraction was found. This purely empirical part of the cloud parametrisation of CESM2 is rather ad-hoc and poorly constrained by observations. Several namelist-controlled options for ice-cloud fraction are provided in CESM. Initial tuning of the parameters of the CESM2 default option

355 appeared promising, but coupled adjustment again tended to neutralise the effect on model radiative imbalance. In NorESM2-LM, an effective reduction in the high- and mid-level cloud cover could only be achieved by switching to a different parameterisation option, in which there is no direct functional dependence of ice cloud fraction on environmental relative humidity (this is option number 4 in CESM). By contrast, in NorESM2-MM the CESM default scheme (option number 5, with explicit RH dependence) could be modified by allowing a continuous narrowing of the range of cloud sensitivity to environmental RH. This
360 modification thus constitutes a continuous switch between the two parameterisation options. A target for future development might be to represent ice clouds in a way better rooted in physical processes.

We give a concise summary of the parameters that were used for tuning NorESM2, with their final value and a comparison with CESM2, in Table 2.

4 Control simulations and model response to forcing

365 This section presents a basic description of the climatology simulated in CMIP6 experiments with the two versions of the model, NorESM2-LM and NorESM2-MM (Sect. 2.1). We consider the time evolution of temperature in historical and enhanced greenhouse gas future climate scenarios, along with aspects of the ocean circulation and sea ice. We validate the historical coupled simulations against observational estimates and reanalyses, and compare them with results from simulations with previous versions of NorESM (Sect. 5): NorESM1-M (Bentsen et al., 2013; Iversen et al., 2013; Kirkevåg et al., 2013)
370 used in CMIP5 and NorESM1-Happi (Graff et al., 2019) used for HAPPI (Half a degree Additional warming Prognosis and Projected Impacts; Mitchell et al., 2017) and a set of CMIP5 experiments carried out for model evaluation purposes (Graff et al., 2019). NorESM1-Happi is an upgraded version of NorESM1-M with differences including doubled horizontal resolution in the atmosphere and land components (1° in NorESM1-Happi and 2° in NorESM1-M) and improved treatment of sea ice. The motivation for including NorESM1-Happi in the present paper is to present results from a low-resolution (-M) and
375 medium-resolution version (-Happi) of NorESM1 alongside the results from the low-resolution (-LM) and medium-resolution versions (-MM) of NorESM2.

We consider three sets of experiments that are important for documentation and application of CMIP6 models: the DECK experiments (Eyring et al., 2016), the CMIP6 Historical experiment (Eyring et al., 2016), and the Tier 1 experiments of the ScenarioMIP (O'Neill et al., 2016). A brief description of the set-up of these experiments is given in Sect. 4.1.

380 The analysis is divided into three parts. Section 4.2 focuses on the stability of the pre-industrial control simulation. In Sect. 4.3, we consider the simulated climate sensitivity to abrupt and gradual quadrupling of CO_2 . A brief analysis of the warming, sea ice, AMOC, and the transport through the Drake Passage in the historical simulations and the scenarios is given in Sect. 4.4.

4.1 Experiment set-up

385 As described by Eyring et al. (2016), a set of common experiments known as DECK (Diagnostic, Evaluation, and Characterization of Klima) has been defined to better coordinate different model intercomparisons and provide continuity for model

development and model progress studies. The DECK consists of the following four baseline experiments: (1) the Historical Atmospheric Model Intercomparison Project (AMIP) experiment; (2) the pre-industrial control (piControl) experiment defined by estimated forcings from 1850, started from initial conditions obtained from a spin-up with the same, constant forcings
390 during which the coupled model climatology stabilises towards a stationary statistics; (3) an experiment otherwise identical to piControl, except that the CO₂ concentrations are set to four times the piControl concentrations, from piControl initial conditions (abrupt-4xCO₂); (4) an experiment otherwise identical to piControl, but where the CO₂ concentrations are gradually increased by 1% per year starting from piControl concentrations and initial conditions (1pctCO₂). Both abrupt-4xCO₂ and 1pctCO₂ were started from year 1 of the control.

395 The DECK was produced with both versions of the model (NorESM2-LM and NorESM2-MM) and here we consider results from the pre-industrial control and the abrupt-4xCO₂ and 1pctCO₂ (Sect. 4.2–4.3). As this paper focuses on the coupled aspect of NorESM2, the AMIP runs are not included here, but are described in Olivié et al. (in prep.) and Toniazzo et al. (in prep.).

Another qualifying experiment required for entry in CMIP6, and important for model evaluation with respect to observations, is the historical experiment. In this experiment, time-dependent forcings are specified to reflect observational estimates valid
400 for the so-called historical period, viz. 1850–2014. Following CMIP6 guidelines, for this experiment we carried out a small ensemble of integrations, consisting of 3 members. This helps isolate the forced signal from internal climate variability. The three model integrations of the ensemble differ only in their initial conditions, which were obtained from model states late in the spin-up at intervals of 30 model years apart. This is analogous to the historical ensemble of NorESM1 produced for CMIP5.

Beyond the DECK, one of the most important applications for ESMs is to provide estimates of future climate change. This is
405 typically done using scenarios which specify future anthropogenic forcing of the climate that include changes in land-use (such as deforestation) and the addition of greenhouse gases and other pollutants to the atmosphere. The latter can be prescribed either directly as atmospheric concentrations (as a function of time), or as time-evolving in emissions into the atmosphere (which then interact with ocean and land biogeochemical processes before yielding atmospheric concentrations). The design of scenarios are based on a combination of socioeconomic and technological development, named the Shared Socioeconomic Pathways (SSPs), with future climate radiative forcing (RF) pathways, Representative Concentration Pathways. (RCPs) in a scenario
410 matrix architecture (Gidden et al., 2019).

The simulations included in this paper are the Tier 1 experiments of the ScenarioMIP (O'Neill et al., 2016): SSP1-2.6, SSP2-4.5, SSP3-7.0, and SSP5-8.5. The forcing fields for all the experiments are generally the same as used in CESM2.1. This includes solar forcing, prescribed oxidants used for describing secondary aerosol formation, greenhouse gas concentrations,
415 stratospheric H₂O production from CH₄ oxidation, ozone used in the radiative transfer calculations, and land-use. While the experiments in this paper use prescribed greenhouse gas concentrations, NorESM2 can also be run with CO₂ emissions as described by Tjiputra et al. (2020).

NorESM2 lacks a physical representation of the stratosphere; instead, appropriate upper-boundary conditions need to be specified. Accordingly, stratospheric aerosols and emissions of aerosols and aerosol precursors were prescribed based on
420 the data provided by the input4mips website: <https://esgf-node.llnl.gov/projects/input4mips/>. In addition, sulphur from tropospheric volcanoes was included similarly to Kirkevåg et al. (2018), see Sect 2.2.

4.2 Simulated control climatology and residual drift

After tuning and an initial spin-up, both NorESM2-LM and NorESM2-MM were integrated for 500 years with steady pre-industrial forcings to produce the piControl experiments. Below, we present a basic analysis of the general state and drift of important parameters of the simulated climatology.

During the control integration the forcings as well as the parameter choices were kept constant. There should be no long-term drift in the model state variables or their partial tendencies (hence, a fortiori, in radiative fluxes). More precisely, any residual drift of the simulated control climatology should be negligibly small compared with the signal resulting from the response to changes in climate forcings as prescribed in the historical, enhanced-greenhouse gas, and scenario experiments. In practice, a reasonable target is to maintain the RESTOM of piControl within $\pm 0.1 \text{ W m}^{-2}$ in the time mean. Any small imbalance in RESTOM is typically reflected in a small trend in ocean temperature. A time-series of the Atlantic Meridional Overturning Circulation (AMOC) can give an indication of the stability of the general ocean circulation.

Figure 2 shows time-series of related global-means in the piControl simulations from NorESM2-LM and NorESM2-MM. As can be seen in the figure the drift is generally small and comparable for the two model versions. The top-of-the-atmosphere radiative imbalance is -0.057 W m^{-2} for NorESM2-LM and -0.065 W m^{-2} for NorESM2-MM. The ocean volume temperature change of 0.03 K over 500 years is much smaller than the rate of warming observed during the last 50 years. Similarly, there are positive trends in global mean ocean salinity of $2.6 \times 10^{-5} \text{ g kg}^{-1}$ and $4.7 \times 10^{-5} \text{ g kg}^{-1}$ over 500 years for NorESM2-LM and NorESM2-MM, respectively, that we consider small since for NorESM2-MM this is equivalent to an average surface freshwater loss of $2.9 \times 10^{-5} \text{ mm day}^{-1}$. The remaining trends are not significantly different from 0 at the 95% confidence level, as estimated from a t -test. We found however a slight decrease in DMS sea-to-air flux of 2% over the 500 year control period, reflecting a residual drift in ocean biogeochemistry. AMOC variations are reasonably small and show no significant trend.

4.3 Equilibrium climate sensitivity and transient response

The two enhanced greenhouse gas experiments of the CMIP-DECK were started at the same initial conditions as piControl (and consequently assigned the same notional model year). They are referred to as abrupt-4xCO₂ and 1pctCO₂.

Figure 3 shows the time evolution of near-surface temperature for abrupt-4xCO₂, 1pctCO₂ and piControl for both model configurations. Three commonly used metrics for the response to CO₂ forcing, based on the evolution of the simulated global-mean temperature, are the Equilibrium Climate Sensitivity (ECS), the Transient Climate Response (TCR), and the Transient Climate Response to cumulative CO₂ Emissions (TCRE). Their values are given in Table 1 for the NorESM2 experiments, and compared to those for NorESM1. The ECS is defined as the change in global near-surface temperature when a new climate equilibrium is obtained with an atmospheric CO₂ concentration that is doubled compared to the pre-industrial amount. In order to reach a new equilibrium, a model simulation of several thousand years is required (Boer and Yu, 2003). There are some examples in the literature of models for which this has been done e.g. Paynter et al. (2018) show results from simulations with GFDL-CM3 and GFDL-ESM2 run for more than 4000 years. Given certain assumptions, ECS may be estimated from

455 the relationship between surface temperature and RESTOM from the abrupt-4xCO₂ experiment using the so-called Gregory method (Gregory et al., 2004). This estimate has become a standard in CMIP6. The figures reported in Table 1 are calculated using years 1–150 from the simulations shown in Fig. 3, and are divided by 2 to get the number for CO₂ doubling instead of quadrupling. The ECS is 2.54 K for NorESM2-LM, which is slightly lower than the equivalent value for NorESM1 of 2.8 K. Both are significantly lower than the CMIP5 mean value of 3.2 K but well inside the bounds of the likely range of 1.5–4.5 K
 460 (Stocker et al., 2013). On the other hand, the ECS in NorESM2 is markedly smaller than the ECS found in CESM2 of 5.3 K by Gettelman et al. (2019a), despite sharing many of the same component models. An extensive analysis of the low ECS value in NorESM2 is given in Gjermundsen et al. (2020). Note that the aerosol forcing is not very different between NorESM2 and CESM2 and can not explain the discrepancy in ECS values. Several sensitivity experiments have been conducted and are reported in Gjermundsen et al. (2020) in order to investigate the importance of different ice cloud schemes, CLUBB and
 465 interactive DMS. However, these NorESM2 experiments exhibit similar ECS values. The main reason for the low ECS in NorESM2 compared to CESM2 is how the ocean models respond to GHG forcing. The behaviour of the BLOM ocean model (compared to the POP ocean model used in CESM2), contributes to a slower surface warming in NorESM2 compared to CESM2. Using the Gregory et al. (2004) method on the first 150 years leads to an ECS estimate which is considerably lower than for CESM2. However, if 500 years are included in the analysis, NorESM2 shows a sustained warming similar to CESM2.
 470 This suggests that the actual equilibrium temperature response to a large GHG forcing (the value one finds when the model is run for many hundred years) in NorESM2 and CESM2 is not very different, but that the Gregory et al. (2004) method based on the first 150 years does not give a good estimate of ECS for models.

The transient climate sensitivity (TCR) is defined as the global-mean surface temperature change at the time of CO₂ doubling, and accordingly it was calculated from the temperature difference between the 1pctCO₂ experiment averaged over years 60–80
 475 after initialisation and piControl. The TCR is 1.48 K and 1.33 K for NorESM2-LM and NorESM2-MM, respectively. As for ECS, these values fall in the lower part of the distribution obtained from the CMIP5 ensemble (Forster et al., 2013), similar to those obtained for NorESM1. The TCR of both NorESM2-LM and NorESM2-MM are lower than the value of 2.0 K found for CESM2 (Danabasoglu et al., 2020). A recent observational estimate for the 90% likelihood range of TCR is 1.2–2.4 K (Schurer et al., 2018).

480 We also give an estimate of the transient climate response to cumulative carbon emissions (TCRE) calculated from TCR and the corresponding diagnosed carbon emissions. Following Gillett et al. (2013), TCRE is defined as the ratio of TCR to accumulated CO₂ emissions in units of K EgC^{−1}. As CO₂ fluxes were not calculated in NorESM1-M and NorESM1-Happi, the NorESM1 values are obtained from the carbon cycle version of NorESM1 (NorESM1-ME; Tjiputra et al., 2013). TCRE is reduced from 1.93 K EgC^{−1} in NorESM1-ME to 1.36 K EgC^{−1} and 1.21 K EgC^{−1} in NorESM2-LM and MM,
 485 respectively. Since TCR is comparable, the main difference is due to changes in carbon uptake. NorESM1, with CLM4 as the land component, had a very strong nitrogen limitation on land carbon uptake. This limitation is weaker in CLM5 (Arora et al., 2019) used in NorESM2.

4.4 Climate evolution in historical and scenario experiments

In this section we provide a very brief analysis of the response of the model to historical forcings in the three historical mem-
bers carried out in both NorESM2-LM and NorESM2-MM. We also consider the model response for the Tier 1 experiments
from ScenarioMIP (SSP1-2.6, SSP2-4.5, SSP3-7.0, and SSP5-8.5). The focus here will be on the response in global-mean
near-surface temperature, the Atlantic Meridional Overturning Circulation (AMOC), the volume transport through the Drake
Passage, and on sea ice area.

Figure 4 shows the time evolution of the surface atmospheric temperature in the historical simulations from NorESM2-LM
and NorESM2-MM along with observations. Both versions of NorESM2 follow the observations rather closely for the first
80 years. After 1930 the model displays somewhat weaker warming than the observations until around 1970. After that the
rate of the warming in the models are similar to that seen in the observations. The cooling over the period 1930–1970 in
NorESM2 is probably caused by the combination of a low climate sensitivity (see Sect. 4.3) and a strong negative aerosol
forcing. Atmosphere-only simulations with NorESM2-LM (see Oliv   et al., in prep.) show that the aerosol effective radiative
forcing (ERF) strengthens from around -0.3 W m^{-2} around 1930 to -1.5 W m^{-2} in the period 1970–1980, becoming slightly
weaker again in 2014 with a value of -1.36 W m^{-2} . On a global scale anthropogenic SO_2 emissions have risen strongly in the
period 1950–1980, and these are assumed to contribute most to the anthropogenic aerosol forcing. The ERF are quite similar
in both model versions. We find an ERF of $-1.36 \pm 0.05 \text{ W m}^{-2}$ in NorESM2-LM and $-1.26 \pm 0.05 \text{ W m}^{-2}$ in NorESM2-
MM for the year 2014 (compared to 1850). Figure S3b shows the time evolution of ERF for the first ensemble member of
NorESM2-LM. Given that the ERF is not an observable quantity, we have also included time series of aerosol optical depth
which can be related to measurements (Fig. S3a) along with a comparison of aerosol optical depth with observations (Fig. S4).
Detailed analysis of the aerosol properties is done in Oliv   et al. (in prep.). Note also that our choice of the reference period
for temperature anomaly computation (1850–1880) enhances the NorESM2 negative bias with respect to observations in the
last half of the 20th century.

Figure 5 shows again the evolution of the surface air temperature in the historical simulations (only the first ensemble member
for NorESM2-LM), followed by the temperature evolution under the four SSP scenarios for NorESM2-LM and NorESM2-
MM. Compared to the 1850–1879 period, the model shows a warming in 2005–2014 of 0.72 and 0.54 K for NorESM2-LM
and NorESM2-MM, respectively. Under the four scenarios SSP1-2.6, SSP2-4.5, SSP3-7.0, and SSP5-8.5, the warming in the
period 2090–2099 compared to 1850–1879 reaches 1.30, 2.15, 2.95, and 3.94 K in NorESM2-LM, and 1.33, 2.08, 3.06, and
3.89 K in NorESM2-MM. The absolute temperature simulated by LM is almost 1 degree warmer than MM throughout the
1850–2100 period, but anomalies are similar. For SSP1-2.6, the temperature stabilizes in the second half of the 21st century. In
NorESM1, under the scenarios RCP2.6, RCP4.5, and RCP8.5, the surface air temperature in the period 2071–2100 was 0.94,
1.65, and 3.07 K higher than in 1976–2005 (Iversen et al., 2013). For the same periods and looking at SSP1-2.6, SSP2-4.5, and
SSP5-8.5, we find rather similar (but slightly stronger) warmings of 1.06, 1.81, and 3.22 K in NorESM2-LM, and 1.11, 1.83,
and 3.26 K in NorESM2-MM.

The simulated Atlantic Meridional Overturning Circulation (AMOC) at 26.5° N shows a multi-centennial variability that is 15% of the mean in the control simulation (Fig. 2). In the historical simulations the AMOC peaks for both MM and LM in the 1990's at around 24 Sv before starting a rapid decline at around year 2000 (Fig. 6). In both versions the AMOC reaches a quasi-equilibrium by the end of the century at around 15-10 Sv depending on the scenario. Since we only have a few ensemble members, it remains unclear how fast the AMOC declines in response to the greenhouse gas forcing and which part of e.g. the initial decline is due to the multi-decadal variability. In any case, it is noteworthy that the initial AMOC decline begins already during the historical period in both versions, which is also consistent with the NorESM2 and multimodel mean response to the OMIP2 forcing (1958-2018, Tsujino et al., 2020).

In addition to the AMOC, also the Antarctic Circumpolar Current (ACC) strength, as measured in the Drake Passage, shows multi-centennial variability that is about 3% of the mean (Fig. 7). Similar variability in the ACC has been linked to convection within the Weddell and Ross seas in the CMIP5 ensemble (Behrens et al., 2016). Also in our simulations the Weddel Sea convection has similar long term variability as the ACC. Unlike the AMOC, there is no clear trend emerging from the scenario simulations, but rather the multidecadal variability continues throughout the 21st century. Again, a larger number of ensemble members could help identify the forced signal.

The time evolution of Northern Hemisphere sea ice area (March and September) through the historical and scenario periods is shown in Fig. 8. Both model versions are compared with the sea ice area from OSISAF (OSI-V2.0) reprocessed climate data record (Lavergne et al., 2019) for the years 1979–2019. The total sea ice area from NorESM2-LM compares rather well with the observations, while NorESM2-MM has too much ice, especially during summer. The trend in sea ice area found in the observations during summer is also rather well captured by NorESM2-LM, while this trend is too small in NorESM2-MM. Both models have a reasonable March sea ice area compared to observations. However, the negative trends in winter sea ice area are small compared to observed trends.

During the scenario period both models show a strong reduction in summer sea ice area. The Arctic Ocean is often considered ice free when the total sea ice area drops below 1 million square km. This threshold is denoted by dotted gray lines in Fig. 8. NorESM2-LM loses summer ice shortly after year 2050. This occurs first in the SSP5-8.5 scenario, but also the SSP2-4.5 ensemble shows values close to this threshold even before 2050. SSP3-7.0 scenarios become ice free at around 2070. Any prediction of which year the Arctic Ocean first becomes ice free must therefore be considered rather uncertain due to forcing evolution uncertainty and internal variability. This is consistent with the overall assessment of sea ice evolution in CMIP6 assessed by the SIMIP Community (2020). In NorESM2-LM an ice free Arctic Ocean is only avoided in the SSP1-2.6 scenario. NorESM2-MM loses ice slower and shows the first ice free summer around 2070. In that model, also the SSP2-4.5 scenario keeps the ice area above 1 mill. square km all years before 2100. However, the SSP1-2.6 scenario stabilizes at a sea ice area comparable with present day observations, even with SSP1-2.6 warming levels present. Therefore, the sea ice area simulated by NorESM2-MM for the future Arctic seems to be unrealistically high.

5 Climatological mean state and circulation patterns compared to observations and NorESM1

5.1 Ocean state

555 In the surface ocean, the large-scale climatological biases are similar in the two NorESM2 versions (Fig. 9), but overall the MM version is closer to the observations (smaller global-mean root-mean-square error; RMSE; $\sqrt{A^2}$ in Fig. 9). In general the Southern Ocean is too warm (Fig. 9b-c), the Atlantic (and the Arctic) are too saline, but the Pacific is too fresh (Fig. 9e-f). The sea level anomaly is lower than observed in the Atlantic basin, but higher in the Indo-Pacific basin and thus the gradient between the two basins is larger than in the observations (Fig. 9h-i). If we remove the global-mean biases, the two versions
560 produce even more similar mean errors, suggesting that some of the regional biases are largely independent of the atmosphere and land resolution.

Indeed, the regional patterns are common to many other models with coarse resolution ocean components (Wang et al., 2016). Both NorESM2 versions are too warm and (relatively) saline over the western boundary currents (the Gulf Stream and the Kuroshio in the Northern Hemisphere and the Brazil current and the Agulhas current in the Southern Hemisphere) and over
565 the major eastern boundary upwelling systems (Canary, Benguela, Humboldt, and California). The biases over the western boundary currents are due to the errors in the location of the currents, which are linked to the ocean model resolution (Bryan et al., 2007; Saba et al., 2016; Rackow et al., 2019). The ocean-model resolution also explains two well known biases in the North Atlantic also seen in NorESM2: the southern bias in the Gulf Stream/North Atlantic current path causes the cold (and fresh) bias in the subpolar North Atlantic (Bryan et al., 2007; Saba et al., 2016; Rackow et al., 2019), while the lack of the
570 Labrador Current waters on the east coast of North America causes a large warm and saline bias there (Saba et al., 2016).

While the above mentioned biases are mostly linked to the ocean model, in the Pacific there are biases that are not present in the ocean-only simulations (not shown). Specifically, a fresh bias over the Southern Pacific subtropical gyre and cold biases over the northern Pacific subtropical gyre and the equatorial Pacific.

The fresh bias in the Southern Pacific (Fig. 9) is linked to the co-located positive net precipitation bias as shown in Fig. 19
575 and extends throughout the surface mixed layer (Fig. 11). The salinity bias also causes a negative density bias (not shown) as it is not fully compensated by temperature, supporting an atmospheric origin. A comparison with the OMIP1 and OMIP2 simulations shows that the net precipitation bias in the LM simulation, 250 mm year^{-1} in the mean over the region where the salinity bias is larger than 1 g kg^{-1} , would be large enough to cause the simulated salinity bias (assuming mixed layer depth of 100 m and a residence time of 10 years). Therefore, we suggest that the net precipitation bias leads to accumulation of excess
580 freshwater that is spread throughout the subtropical gyre by the ocean circulation.

Most of the large-scale surface biases are also visible in the subsurface (Figs. 10–11). The upper ocean is too warm and fresh, while the deep ocean is too cold and saline. The biases are again larger in the LM version. The cold deep ocean is due to the cold bias in the Antarctic bottom water, while the warm bias in the mid-depth Atlantic (between 500–3500 m) is due to the Antarctic Intermediate Water and the North Atlantic deep water being too warm. There are also subsurface biases without a
585 large surface signature. The Mediterranean outflow and the Red Sea outflow form too warm and saline cores visible at around 20° N and 1000 m depth in the Atlantic and Indian oceans (respectively, Figs. 10–11). These biases are stronger in the LM

version and not visible or much less pronounced in the OMIP simulations (not shown), which suggests that they are due to biases in the surface heat and freshwater budgets in these semi-enclosed basins. In addition, there is a strong cold and fresh (warm and saline) bias in the Pacific (Atlantic) centered around 15° S and 200–400 m depth. These anomalies are likely linked to the biases in the tropical upwelling and the resulting thermocline depth that is too shallow (deep) in the Pacific (Atlantic).

Overall, many of such sub-surface ocean biases are similar in the ocean-only simulations and may be linked to coarse ocean resolution and shortcomings in parameterised processes. In some regions, air-sea coupling tends to act to reinforce biases that may be generated in either atmosphere or ocean model components separately. The biases over the upwelling systems for example have generally a complex cause rooted in both local (including mesoscale) and remote (including equatorial) biases in both atmosphere and ocean model components (Toniazzi and Woolnough, 2014; Zuidema et al., 2016; Stammer et al., 2019). For NorESM2 the biases in the coupled simulations have a similar pattern as, but approximately twice the magnitude of the biases in the OMIP simulations (not shown). The cold bias in the northern subtropical Pacific has a contribution from weak oceanic mixing as there is a large warm bias just below the surface (Fig. 10), but may be amplified by increased atmospheric stability and correspondingly enhanced boundary-layer clouds. Excessively negative short-wave cloud forcing is seen in that region, in contrast to AMIP simulations which show no such regional bias. In the central and eastern equatorial Pacific NorESM2 displays a characteristic "cold tongue" bias with cold SSTs and easterly wind stress bias. An equatorial easterly bias is present in the NorESM2 AMIP simulations. Shonk et al. (2017) show that off-equatorial net precipitation biases alone can initiate a feedback leading to an equatorial Pacific cold tongue in coupled simulations, and CAM6-Nor tends to develop such a bias. Finally, the near-surface ocean temperature bias pattern in OMIP1 simulations is cold along the equator, and warm on each side, which may further enhance off-equatorial precipitation. It should be noted that OMIP2 simulations with BLOM/CICE have a warm bias along the equator (Tsujino et al., 2020). The cold equatorial bias can affect ENSO variability and teleconnections. These are discussed further below.

5.2 Sea ice

The geographic distribution of sea ice in March and September, compared with observations are shown in Fig. 12 for NorESM2-LM (12e-h), and NorESM2-MM (12i-l). In common for both models for the Northern Hemisphere (Fig. 12e,f,i,j) are too large sea ice extents in the Barents Sea and Greenland Sea and a too small extent in the Labrador Sea, Bering Sea, and Sea of Okhotsk during winter. The total areas are quite close to the observations as shown in Fig. 8. These regional biases are most likely due to persistent biases in the oceanic and atmospheric circulation.

During summer, the distribution of sea ice in NorESM2-LM (Fig. 12f) seems to be more variable. Apart from the persistent, positive bias in the East Greenland Current, the regional biases within the Arctic Ocean are more likely due to inter-annual variability, and the effect that the observations show a larger downward trend than the model.

NorESM2-MM (Fig. 12j) shows too much sea ice in the central Arctic in September. In general, the model is colder in the Arctic than NorESM2-LM (Fig. 14), and it has thicker sea ice in the Arctic Ocean. The Northern Hemisphere sea ice volume in NorESM2-MM is 21% (36%) larger in March (September) compared with the NorESM2-LM (not shown). The smaller seasonal cycle in ice area (Fig. 13) and volume is consistent with a thicker sea ice cover in NorESM2-MM, both due

to less winter growth because of increased insulation, and less summer melt due to higher albedo. The situation encountered in NorESM2-MM is similar to the results from NorESM1-M (Bentsen et al., 2013) and NorESM1-Happi (Graff et al., 2019). These models simulate ice cover that is too thick, with the reduction in the Northern Hemisphere summer ice area being too slow.

625 The winter sea ice area and extent is too low in the Southern Ocean in NorESM2 as seen in Fig. 13 and Fig. 12(g-h,k-l). Winter area in September is around 4 million square km too small. The largest bias is found in the Atlantic-Indian sector. This bias seems to be associated with the warm bias in the ocean model, and the too warm Antarctic Intermediate Water (AAIW). The exact reason for this problem is not known, but the warm bias in AAIW is also evident in the OMIP simulations (not shown). However, these uncoupled simulations have a reasonable representation of the upper ocean temperature and the
630 winter sea ice extent that are most likely due to the inherent relaxation towards observed atmospheric temperatures in those experiments. With the interactive atmosphere these problems increase.

5.3 Atmospheric temperature and winds

In terms of mean surface temperatures, NorESM2 is a warmer model than its preceding versions. The global-mean near-surface temperature (Fig. 14) in NorESM1-M and NorESM1-Happi is generally too low with global-mean biases of -0.76 K
635 and -1.08 K (see legends above panels in Fig. 14). NorESM2-MM is closer to the reanalysis with a global-mean bias of -0.19 K. Regionally, cold biases are mostly found in the polar regions and over the sub-tropical oceans. Warm biases are found over the Southern Ocean, North American continent and in central Eurasia. NorESM2-LM (panel a) is warmer still, and overestimates the near-surface temperatures in the Arctic and in the global-mean, with a bias of 0.43 K. NorESM2-MM has the best overall performance also in terms of the global-mean RMSE, with 1.35 K compared to 1.62 K for NorESM2-LM, and 1.83 K for
640 NorESM1-Happi, and 1.86 K for NorESM1-M (cf Fig. 14).

Temperature biases are reduced in NorESM2 compared to NorESM1, not only near the surface, but also and especially in the mid and upper troposphere (Fig. 15). Tropospheric air temperatures tend to be systematically cold in all versions of both CESM and NorESM. NorESM2 has a reduced cold bias compared to NorESM1 particularly in the tropics and sub-tropics. This is mostly a consequence of the changes made to the cumulus convection scheme (Toniazzi et al., in prep.). The higher tropical
645 SSTs in NorESM2-LM compared to NorESM2-MM lead to a reduced cold tropospheric tropical bias; however persistent cold mid- and high-latitude biases imply an excessive meridional temperature gradient. By contrast, NorESM2-MM shows improvements at all latitudes.

The stronger cool tropospheric and warm surface tropical bias of NorESM2-LM compared with NorESM2-MM is in line with the behaviour of both NorESM1 and CESM2. The systematic difference between the two atmosphere resolutions is also
650 consistent between coupled and AMIP simulations, with CAM-Nor significantly cooler at two degree resolution than at one degree resolution for the same SSTs and the same physics parameters. At the same time, tropospheric specific humidity (and, a fortiori, relative humidity) is higher. Both lead to higher corresponding RESTOM. The ultimate cause of this systematic dependence of the simulated climatology on the resolution of the atmosphere model is not known. There may be a sensitivity of the convection parametrisation to the grid-scale variability of near-surface air parameters and to boundary-layer stability.

655 Another possibility is a resolution dependence of cloud microphysics and the efficiency of stratiform precipitation. LWP and column precipitable water appear almost uniformly higher in CAM-Nor at two degree resolution than at one degree resolution.

All four of NorESM2-MM, NorESM2-LM, NorESM1-Happi and NorESM1-M tend to produce tropospheric westerly biases in zonal-mean zonal winds (Fig. 16). At tropical and sub-tropical latitudes, these are more widespread in NorESM2 than NorESM1-M and NorESM1-Happi. Surface wind biases, which by contrast tend to be easterly, are reduced. At higher latitudes, 660 all models tend to have westerly biases on the poleward side of the sub-polar surface jet (between 50° and 60°) in both hemispheres. The overestimation on the poleward flank is generally more pronounced in NorESM2 than in NorESM1. Comparing NorESM1-M to NorESM1-Happi and NorESM2-LM to NorESM2-MM, the biases in the zonal wind tend to be ameliorated with increased resolution. The differences in the tropics between NorESM2 and its predecessors are in part attributable to the enforcement of conservation of atmospheric global angular or rotational momentum in NorESM2 (Toniazzi et al., 2020). In 665 all versions, in common with CAM6/CESM2, there is accumulation of westerly momentum near the model lid, where it is insufficiently damped.

5.4 Extratropical storm tracks

Extratropical storm tracks can be defined as regions of storminess associated with cyclogenesis, cyclone development, and cyclolysis which take place in the baroclinic zones between the sub-tropics and polar regions. They are important features 670 at mid- and high latitudes as they are responsible for eddy transport of heat and momentum between low and high latitudes, and associated with potentially high-impact weather such as heavy precipitation and strong winds. Here, we diagnose storm-track activity by applying a bandpass filter to retain fluctuations in the geopotential height field at 500 hPa with periodicity corresponding to that of baroclinic waves, that is, between 2.5 and 6 days (Blackmon, 1976; Blackmon et al., 1977). The variability of the bandpass-filtered field is dominated by propagating low-pressure and high-pressure systems, and the storm 675 tracks can be defined as geographically localized maxima in bandpass-filtered variability (Blackmon, 1976; Blackmon et al., 1977; Chang et al., 2002; Graff and LaCasce, 2012).

The climatological winter storm tracks are shown as the solid black contours in Fig. 17. There are two maxima in the Northern Hemisphere, one over the North Atlantic and one over the North Pacific. The colors show the bias with respect to ERA-Interim (Dee et al., 2011). In NorESM1-M, storm-track activity is underestimated in both storm-track regions. In 680 particular, the North-Atlantic storm track is overly zonal with too little activity on the equatorward side of the climatological maximum as well as over the Norwegian and Barents Sea (Iversen et al., 2013; Graff et al., 2019). The magnitude of the bias is reduced in NorESM1-Happi compared to NorESM1-M in both storm-track regions. This is likely associated with the increased resolution in the atmosphere and land components (1° in NorESM1-Happi versus 2° in NorESM1-M).

Similar improvements are seen when comparing NorESM2-LM and NorESM2-MM. Both versions of NorESM2 are, further- 685 thermore, better able to simulate the North-Atlantic storm track with the size of the negative bias on its equatorward side being reduced. Overall, NorESM2-MM displays the smallest biases in Northern Hemisphere storm-track activity out of the four models. There remains, however, too little activity over the Norwegian Sea with extension into the Barents Sea.

In the Southern Hemisphere, the climatological winter storm track surrounds Antarctica with the largest variability occurring over the Indian Ocean (Fig. 17). Storm-track activity is generally too weak on the equatorward side, with the largest biases being located over the Indian Ocean, close to the storm-track maximum. As in the Northern Hemisphere, the largest biases are found in NorESM1-M and the smallest biases in NorESM2-MM.

While the bandpass-filter approach yields a measure of storm-track activity, it cannot be used to isolate the individual cyclone centers. To further assess the robustness of the improvements between NorESM2-LM and NorESM2-MM, we therefore also consider results from the cyclone detection algorithm described in Wernli and Schwierz (2006). The method detects cyclones as minima in the sea-level pressure fields and sets the perimeter as the outermost closed sea-level pressure contour. The storm tracks are then seen as maxima in the local frequency of occurrence of surface cyclones, i.e. the fraction of time when cyclones are present in a given point (Fig. 18a–b).

As for the bandpass-filter approach, the cyclone detection shows a clear reduction in the bias between NorESM2-LM and NorESM2-MM, which is likely to be associated with the higher horizontal resolution in the atmosphere and land components. The cyclone occurrence is underestimated on the equator-ward side of the North Pacific and Southern Hemisphere storm tracks and overestimated on the poleward side. Over the North Atlantic, the cyclone occurrence is underestimated on the equator-ward side of the storm track and over the Norwegian Sea extending into the Barents Sea, and overestimated between The British Isles and Greenland. The magnitude of the bias is clearly reduced in all regions in NorESM2-MM, with the improvement being particularly evident in the regions where the cyclone occurrence is overestimated.

Note that both the climatology and the biases should be expected to differ somewhat between the two approaches considered here because they capture different aspects of the storm tracks. The bandpass-filter approach does not distinguish between cyclones and anti-cyclones, and is dominated by growing and propagating baroclinic waves (Blackmon et al., 1977). The cyclone occurrence reflects the regions where cyclone centers are identified most frequently, and is for instance more sensitive to systems that are slowly moving or too long lived.

5.5 Clouds and forcing

Table 4 gives an overview of major forcing fluxes in NorESM2 compared to NorESM1 and observational estimates. Despite the large differences in physics and tuning, the overall numbers for top of the atmosphere fluxes and forcings are very similar to the numbers found in NorESM1-Happi and are generally within the observational range. There is however a slightly stronger negative bias in clear-sky LW flux and long wave cloud forcing. The latter is an unfortunate consequence of the tuning of high clouds in the model implemented in order to increase the outgoing long wave radiation. As seen from the upward LW flux estimate the outgoing long wave radiation is still within the estimate from satellite retrievals. SWCF values are very similar to the values of NorESM1-Happi and within the observational range. This number hides, however, a major weakness in NorESM1 stratiform cloud parameterisation which underestimated the cloud cover and compensated this by overestimating the cloud liquid water.

The major updates in cloud physics from CAM4 to CAM6 (Bogenschütz et al., 2018) improved the cloud cover, and the cloud liquid water path is now quite close to the observational estimate. The global cloud cover is still slightly lower than

observed (Table 4). This is partly connected to the tuning in NorESM2. Prior to the tuning the modelled cloud cover was higher than 70%. As seen from Fig. S5 in the supplement, the cloud cover underestimate is most pronounced in the tropics and subtropics in both hemispheres, while there is good agreement around the extra-tropical stormtrack regions and an overestimate in the high Arctic. Before the tuning (not shown) there was no bias at the low latitudes.

The modelled liquid water path seems to have a systematic bias towards low values at low latitudes and high values in the extra-tropics. Possible connections between cloud cover biases and the hydrological cycle are discussed in the next section.

5.6 Precipitation and hydrological cycle

The bias in the annual-mean total precipitation rate is shown in Fig. 19 for the two versions of NorESM1 and NorESM2 relative to data from the Global Precipitation Climatology Project (GPCP; Adler et al., 2003). While the bias of the global-mean average is not systematically reduced between NorESM1 and NorESM2, there is a reduced RMSE, indicating that there is less cancellation between positive and negative biases in the global mean.

The reduction of the RMSE is also seen when considering the four seasons separately in Fig. S6 in the supplement along with climatology from the GPCP. The evaluation of the mean bias, RMSE, and correlation included in the bottom left corner of each panel shows that RMSE and correlation have improved in NorESM2 compared to NorESM1 for all seasons. While the overall wet bias has increased slightly, mostly due to strong biases over the Pacific ocean, there are regions with a large reduction in mean bias. This is especially pronounced over Africa and equatorial Atlantic ocean. The largest improvement compared to NorESM1-M is seen for NorESM2-MM during northern hemisphere winter, when all three metrics (bias, RMSE, and correlation) consistently indicate higher skill.

As a measure of interannual variability, the standard deviation of monthly means for each season was calculated. The differences compared to GPCP are presented in Fig. S7 in the supplement. While NorESM1 slightly underestimates the precipitation variability, it is somewhat too high in NorESM2, with the magnitude of the bias being larger in all seasons. NorESM2-MM improves RMSE of precipitation variability in all seasons except northern hemisphere autumn. As also seen for the mean climatology in Fig. S6 in the supplement, the correlation has improved for all seasons in both NorESM2-LM and MM.

The hydrological cycle (or cycling of fresh water) is of major importance for the climate system. Global means of precipitation and evaporation can serve as integrated measures of the properties of many processes in an ESM. Results presented in Table 5 indicate that the intensity of hydrological cycle, as measured by evaporation, in NorESM2 is about 1.4% larger globally (4.9% over oceans) than in NorESM1-M. This is also manifested in the positive precipitation biases in Fig. 19. While the values in Table 5 for NorESM2 are higher than for GPCP, they are closer to results from ERA-Interim calculated by Trenberth et al. (2011). Although NorESM1-Happi has the highest precipitation globally, NorESM2 has the highest precipitation over ocean, suggesting a larger re-cycling of oceanic water vapor and a lower fraction transported from oceans to continents (measured by E-P over oceans). The overestimated evaporation over oceans is likely linked to the underestimated cloudiness in the tropics and subtropics (Fig. S5 in the supplement). Solar radiation over subtropical ocean regions is an important driver of evaporation. The net moisture transport from oceans to continents is nevertheless smaller in NorESM2 than in NorESM1, consistent with

755 more clouds in the extra-tropics and more marine precipitation in NorESM2. This analysis is only preliminary, however, and needs more in-depth studies which is out of scope of the present paper.

In NorESM2 a closed hydrological cycle is present, with the difference between evaporation and precipitation being close to zero in the long-term average at equilibrium. In NorESM2-MM the discrepancy is slightly improved to $0.023 \text{ km}^3/\text{year}$, whereas it is $0.027 \text{ km}^3/\text{year}$ in NorESM1-M and $0.031 \text{ km}^3/\text{year}$ in NorESM2-LM (all values are means from members 1–3).

760 5.7 Northern Hemisphere blocking

While storm tracks are closely tied to precipitation, atmospheric blocking is associated with persistent anti-cyclones that inhibit precipitation for time scales up to several weeks. To diagnose blocking, we apply the variational Tibaldi and Molteni (vTM) index (Tibaldi and Molteni, 1990; Pelly and Hoskins, 2003; Iversen et al., 2013; Graff et al., 2019). Blocks are identified when there is persistent reversal of the 500 hPa geopotential height field around a central latitude that last for at least five days
765 and cover at least 7.5 consecutive longitudes. The central longitude varies with the position of the maximum in the Northern Hemisphere climatological storm track.

The seasonal blocking frequency is mostly underestimated over the North Atlantic and in Europe in the four versions of NorESM (Fig. 20), particularly during winter (DJF). During spring (MAM), NorESM2-MM is closest to the reanalysis, while during summer (JJA) and autumn (SON), NorESM1-Happi performs best in these regions. While NorESM1 tends to overes-
770 timate the blocking frequency over the Pacific, NorESM2 generally lies closer to the reanalysis in that sector. Consider, for instance, the region between 120° E and 180° E during summer, or the region between 130° W and 90° W during winter. In summary, although the use of 30 years from ERA-Interim for verification may not be fully representative for blocking climatology, the representation of NH blocking continues to be a challenge in NorESM, and in particular over the Atlantic-European sector in winter.

775 5.8 Madden-Julian Oscillation

In the tropical atmosphere, the Madden-Julian Oscillation (MJO) is the dominant mode of variability on timescales between 30 and 90 days (Madden and Julian, 1971; Zhang, 2005). The MJO is characterized by a meridional dipole of convective precipitation anomalies along the equator, that slowly propagates eastwards and interacts with a number of other circulation features such as El Niño events (Hendon et al., 2007), the Indian summer monsoon (Annamalai and Slingo, 2001), tropical
780 cyclones (Liebmann et al., 1994), and even the North Atlantic Oscillation and extratropical variability (Cassou, 2009).

The MJO is characterised by a specific feature in wavenumber-frequency spectrum of equatorial 850 hPa zonal wind (U850) and outgoing longwave radiation (OLR; Waliser et al. (2009)), associated with wavenumbers 1–3, a maximum at wavenumber 1, and periods between 30 to 80 days. NorESM2-LM and NorESM2-MM possess this mode in U850 spectra (Fig. S8 in the supplement), but its spread in wavenumber is too narrow and its spread in frequency too wide. Furthermore, OLR variability
785 is too weak, and the mode appears preferentially as a stationary oscillation in the Indian-ocean sector, with too little zonal and meridional propagation (Fig. S9 in the supplement). The relationship between zonal winds and precipitation anomalies, with the former in quadrature with respect to the latter, are similar in the simulations and in observations. In NorESM2-MM

(Fig. S9(c) in the supplement) however the anomalies appear to be generally too weak. Composite plots of MJO events (not shown) indicate a tendency in both model versions to generate westward-propagating convective anomalies, which may weaken activity in the MJO region of the spectrum. The ability of the simulated MJO mode to propagate eastwards as observed appears to be sensitive to the distribution of tropical SSTs in both CESM2 and NorESM2 (Richard Neale, personal communication; Toniazzo et al., in prep.).

5.9 El Niño Southern Oscillation (ENSO)

The coupled model internally generates a self-sustained ENSO mode with spatial and temporal characteristics similar to observations. (The timeseries of NINO3.4 SST anomalies are shown in Fig. S10 in the supplement, alongside the observed one). The ENSO in LM and MM model versions are very similar in magnitude (Fig. 22–23), spatial pattern (Figure 23), and spectral power distribution in frequency space (Fig. 21). ENSO SST anomalies are very large compared to observations (with a NINO3.4 anomaly greater than 2.5°C in the average El-Niño event, compared with 1.5°C in observations), and they tend to peak early in the season, i.e. between November and December instead of between December and January as observed (Fig. 22a). The early peak and termination may be partly attributable to weak zonal wind-stress anomalies over the equatorial region, which also peak early, notwithstanding a robust response in equatorial precipitation (Fig. 22b,c). Such weak surface wind response may be caused by the general displacement, with respect to observations, of the maximum of climatological precipitation north of the Equator along the Pacific ITCZ. Especially in MM, precipitation anomalies also have their maximum north of the equator (Figure 23b), which tends to result in weaker equatorial anomalous westerlies. A second origin of the early simulated El-Niño SST peak may however also be found in the early rapid demise of positive thermocline depth anomalies in the NINO3 region during El-Niño events, which is seen also in OMIP1 and OMIP2 simulations forced with prescribed wind-stress (Fig. 22d). Given the weak coupled wind-stress and thermocline activity, the large SST anomalies may be partly the result of insufficient surface damping by the action of anomalous surface heat fluxes.

Correlation analysis shows that indeed over the eastern equatorial Pacific the model tends to generate positive downward net short-wave radiative flux anomalies when SST anomalies are positive, in contrast to observations. This might also explain the growth of positive SST anomalies in the NINO3.4 region early during El-Niño events even before positive 20°C isotherm depth anomalies have fully reached the area; and the long persistence of both SST and precipitation anomalies in the later stages of El-Niño events. The model climatological bias of a pronounced double ITCZ, with strong ITCZ precipitation away from the equator and a dry, cold equatorial region dominated by marine stratocumulus, rather than trade-cumulus cloud in the eastern Pacific probably contributes to this behaviour. Toniazzo et al. (in prep.) shows that changes in the convection scheme that were made in order to mitigate the tropospheric cold bias and the positive TOA net residual have contributed to this error. Off-equatorial precipitation tends to couple less effectively with eastward-propagating equatorial modes (cf. also previous section and Fig. S9). Westward propagation is also evident in the model's ENSO during the phase change from El-Niño to La-Niña. In spite of such shortcomings, ENSO-related variability in NorESM2 is generally similar to the observed one. In particular, NINO3.4 spectra in the two model versions and in observations are formally indistinguishable (Fig. 21). The simulated composite El-Niño SST, precipitation, and geopotential height anomalies have good global pattern correlations with

the observed composite El-Niño anomalies (Fig. S11 in the supplement), indicating that the simulated ENSO adds important and useful features to the climatology simulated by the model. Particularly prominent and fairly realistic are teleconnections into both hemispheres during and after ENSO peaks, with a PNA pattern that extends into the storm-track entry region of the western Atlantic, as observed. In this respect NorESM2-MM validates better than NorESM2-LM, in spite of its equivalent of slightly worse equatorial ENSO biases, probably due to a better overall sub-tropical and high-latitude atmospheric circulation.

6 Summary and conclusions

This paper presents and evaluates NorESM2 (the second version of the Norwegian Earth System Model) used for conducting experiments for CMIP6. NorESM2 is based on CESM2 (the second version of the Community Earth System Model), but with several important differences. While the land and sea ice components are largely the same as in CESM2, NorESM2 has entirely different models for the ocean and ocean biogeochemistry, namely BLOM and iHAMOCC. There are also several differences in the atmosphere model (CAM6-Nor), including a different module for aerosol life-cycle, aerosol-radiation-cloud interactions and changes related to the moist energy formulation, deep convection scheme and angular momentum conservation. Finally, the turbulent air-sea flux calculations are modified and proper time-averaging of solar zenith angle in albedo estimation implemented.

We report results from the CMIP6 DECK experiments, including the pre-industrial control, the abrupt quadrupling of CO₂ concentration levels, and 1% increase per year of CO₂ concentrations until quadrupling, along with the CMIP6 historical experiments, and the ScenarioMIP Tier 1 experiments (SSP1-2.6, SSP2-4.5, SSP3-7.0, and SSP5-8.5). The experiments were all carried out with both the atmospheric medium-resolution version of the model (NorESM2-MM) and a low-resolution version (NorESM2-LM).

The drift over the 500 year long pre-industrial control experiment is generally very small for both versions of the model. NorESM2 is slightly less sensitive than its predecessors and at the lower end of the CMIP5 and CMIP6 multi-model mean for both model resolutions (Gjermundsen et al., 2020), with the equilibrium climate sensitivity of 2.5 K estimated using the Gregory method (Gregory et al., 2004).

The historical reconstruction of surface temperatures is similar in both model versions. A significant temperature increase due to enhanced climate forcing is found late in the historical period. Both model versions reach present day warming levels to within 0.2° C of observed temperatures in 2015. Aerosol forcing may be responsible for the delayed warming in the late 20th century. Aerosol effective radiative forcing reaches levels of -1.5 W m⁻² in the period 1970–1980, becoming slightly weaker again in 2014 with a value of -1.36 W m⁻² in NorESM2-LM and -1.26 W m⁻² in NorESM2-MM.

Under the four scenarios SSP-1.26, SSP-2.45, SSP-3.70, and SSP-5.85, the warming in the period 2090–2099 compared to 1850–1879 reaches 1.3, 2.2, 3.0, and 3.9 K in NorESM2-LM, and 1.3, 2.1, 3.1, and 3.9 K in NorESM2-MM, robustly similar in both resolutions.

In particular NorESM2-LM shows a satisfactory evolution of recent sea-ice area. In NorESM2-LM, an ice-free Arctic Ocean is only avoided in the SSP1-2.6 scenario. NorESM2-MM simulates larger sea-ice area both at present and in future scenarios.

855 The pattern of some biases seen in the fully coupled simulations considered here are similar in coupled ocean-sea ice simulations carried out for OMIP and can thus be linked to the ocean model having too coarse resolution and shortcomings in parameterised processes. NorESM2-LM and MM largely share the same biases in the surface ocean, although the MM version is somewhat closer to the observations. Most of the large-scale biases in the surface ocean are also seen in the subsurface.

860 Like CESM2, NorESM2 is generally a "cold" model, with an initial deficit in atmospheric long-wave cooling that causes a positive RESTOM and leads to heat gain by the ocean and positive SST biases particularly in the tropics. NorESM2 represents an improvement in this respect compared to NorESM1. This is particularly evident in the tropical and sub-tropical troposphere (Fig. 15). In addition, the medium-resolution version of the model has more realistic upper-tropospheric meridional temperature gradients, and reduced near-surface temperature biases.

865 The extratropical storm tracks are generally better simulated in NorESM2 than in NorESM1, particularly over the North Atlantic. The storm tracks additionally improve with higher resolution, both in the Northern and Southern Hemisphere.

Several aspects of the modeled cycling of fresh water are improved in NorESM2 compared to NorESM1, including the RMSE and spatial correlation of the bias in the total precipitation rate. The intensity of the hydrological cycle as compared to the observationally-based findings of Trenberth et al. (2011) is slightly exaggerated in NorESM2, as it was in NorESM1, consistent with the underestimated cloudiness and thus overestimated solar radiation in the tropics and sub-tropics. The transport of 870 oceanic water vapor over the continents is smaller in NorESM2 than NorESM1, indicating a slightly too efficient re-cycling of oceanic water vapor associated with over-estimated oceanic precipitation and higher cloudiness in the extratropics.

The seasonal blocking frequency in the Northern Hemisphere is especially underestimated over the Atlantic - European sector during winter (DJF) by NorESM2. During spring (MAM), NorESM2-MM is closest to the reanalysis, while during summer (JJA) and autumn (SON), NorESM1-Happi performs best in these regions. While NorESM1 tends to overestimate the 875 blocking frequency over the Pacific, NorESM2 generally lies closer to the reanalysis in that sector. Although the use of 30 years from ERA-Interim for verification may not be fully representative for blocking climatology, the simulation of Northern Hemisphere blocking continues to be a challenge for NorESM.

880 The coupled model internally generates a self-sustained ENSO mode with spatial and temporal characteristics similar to observations. ENSO SST anomalies are very large compared to observations (with a NINO3.4 anomaly greater than 2.5° C in the average El-Niño event, compared with 1.5° C in observations), and they tend to peak early in the season, i.e. between November and December instead of between December and January as observed. Nevertheless many properties of the ENSO are similar to those observed, and El-Niño teleconnections are quite realistic both in the tropics and at mid- and high latitudes. Less satisfactory is the performance of the coupled model in terms of the Madden-Julian oscillation. Here the model version with low resolution in the atmosphere appears to produce more intense and more realistic sub-seasonal tropical variability than 885 the medium-resolution version.

Code availability. The ~~CMIP6 and CMIP5 data considered here is available through data archives operated and maintained by~~ NorESM2 code can be downloaded from <https://doi.org/doi:10.5281/zenodo.3905091> (Seland et al., 2020).

Data availability. The input data for the experiments can be found at <https://noresm.org/inputdata/>. Local copies of relevant files are automatically downloaded when creating and compiling the experiments. The NorESM2-LM data (Seland et al., 2019) and NorESM2-MM data (Bentsen et al., 2019) can be accessed through the Earth System Grid Federation ~~:-and-.~~ The model code is available on github, is available on request from the corresponding author and will be fully publicly available by September 2020. (ESGF) decentralized database (<https://esgf-node.llnl.gov>). The NorESM1-Happi data (Seland, 2020) can be accessed from the NIRD Research Data Archive (<https://archive.sigma2.no>).

Author contributions. ØS coordinated the writing of this article. ØS, DO, AK and TT wrote the CAM6-Nor description section. MB, AN, JS, JT wrote the ocean component description section. AN performed the evaluation of the model climatology for the oceanic variables and wrote the corresponding sections. JBD performed the evaluation and wrote the sea ice section. TT performed the evaluation and wrote the ENSO section. LSG performed the analysis of the climatological mean state of near-surface temperature, zonally averaged temperature and zonal winds, extratropical storm tracks, atmospheric blocking, and the MJO and wrote the corresponding sections with contributions from TT. CS contributed to the storm-track analysis. OL and TI performed the analysis and wrote the section on precipitation and the hydrological cycle. DO and Ada G conducted the ECS and feedback analysis. TL performed the analysis and wrote the section on future scenarios. The development of the NorESM2 model was co-ordinated by CH and TI during the first years (EVA-project), and is co-ordinated by MB and MS since fall 2017. All co-authors contributed to the model development, the modelling infrastructure, the setting up of the CMIP6 experiments, data processing and/or data distribution and gave feedback to the manuscript.

Competing interests. There are no competing interests.

Acknowledgements. We thank all the scientists, software engineers, and administrators who contributed to the development of CESM2, on which NorESM2 is based. We are particularly grateful to Cecile Hannay, M. Vertenstein, A. Gettelmann, J.F. Lamarque and others for invaluable advice on numerous scientific and technical issues when using CESM code, and the support by the CESM program directors during the NorESM2 development period. We acknowledge support from the Research Council of Norway funded projects EVA (229771), HappiEVA (261821), INES (270061), and KeyClim (295046), Horizon 2020 projects CRESCENDO (Coordinated Research in Earth Systems and Climate: Experiments, Knowledge, Dissemination and Outreach, no. 641816), APPLICATE no. 727862 and IS-ENES3 no. 824084 and FORCES no. 821205, NS Nordic project eSTICC (57001). High performance computing and storage resources were provided by the Norwegian infrastructure for computational science (through projects NN2345K, NN9560K, NN9252K, NS2345K, NS9082K, NS9560K, NS9252K, and NS9034K) and the Norwegian Meteorological Institute. The observational SLA dataset used in this work was obtained from the obs4MIPs project hosted on the Earth System Grid Federation and the original altimeter products were produced by Ssalto/Duacs and originally distributed by Aviso+, with support from CNES (<https://www.aviso.altimetry.fr>). Monthly distributions of stratospheric sulfate aerosols were adjusted for use in NorESM by Luo Beiping at ETHZ.

References

- Adler, R. F., Huffman, G. J., Chang, A., Ferraro, R., Xie, P.-P., Janowiak, J., Rudolf, B., Schneider, U., Curtis, S., Bolvin, D., Gruber, A.,
920 Susskind, J., Arkin, P., and Nelkin, E.: The Version-2 Global Precipitation Climatology Project (GPCP) Monthly Precipitation Analysis
(1979–Present), *Journal of Hydrometeorology*, 4, 1147–1167, [https://doi.org/10.1175/1525-7541\(2003\)004<1147:TVGPCP>2.0.CO;2](https://doi.org/10.1175/1525-7541(2003)004<1147:TVGPCP>2.0.CO;2),
2003.
- Annamalai, H. and Slingo, J. M.: Active/break cycles: diagnosis of the intraseasonal variability of the Asian Summer Monsoon, *Climate
Dynamics*, 18, 85–102, <https://doi.org/10.1007/s003820100161>, 2001.
- 925 Arora, V. K., Katavouta, A., Williams, R. G., Jones, C. D., Brovkin, V., Friedlingstein, P., Schwinger, J., Bopp, L., Boucher, O., Cadule, P.,
Chamberlain, M. A., Christian, J. R., Delire, C., Fisher, R. A., Hajima, T., Ilyina, T., Joetzjer, E., Kawamiya, M., Koven, C., Krasting, J.,
Law, R. M., Lawrence, D. M., Lenton, A., Lindsay, K., Pongratz, J., Raddatz, T., Séférian, R., Tachiiri, K., Tjiputra, J. F., Wiltshire, A.,
Wu, T., and Ziehn, T.: Carbon-concentration and carbon-climate feedbacks in CMIP6 models, and their comparison to CMIP5 models,
Biogeosciences Discussions, 2019, 1–124, <https://doi.org/10.5194/bg-2019-473>, <https://www.biogeosciences-discuss.net/bg-2019-473/>,
930 2019.
- Assur, A.: Composition of sea ice and its tensile strength, in: *Arctic Sea Ice*; Conference held at Easton, Maryland, February 24–27, 1958,
vol. US 598, pp. 10–138, *Publs. Natl. Res. Coun. Wash.*, Washington, DC, 1958.
- Avitabile, V., Herold, M., Heuvelink, G. B. M., Lewis, S. L., Phillips, O. L., Asner, G. P., Armston, J., Ashton, P. S., Banin, L., Bayol, N.,
Berry, N. J., Boeckx, P., de Jong, B. H. J., DeVries, B., Girardin, C. A. J., Kearsley, E., Lindsell, J. A., Lopez-Gonzalez, G., Lucas, R.,
935 Malhi, Y., Morel, A., Mitchard, E. T. A., Nagy, L., Qie, L., Quinones, M. J., Ryan, C. M., Ferry, S. J. F., Sunderland, T., Laurin, G. V.,
Gatti, R. C., Valentini, R., Verbeeck, H., Wijaya, A., and Willcock, S.: An integrated pan-tropical biomass map using multiple reference
datasets., *Global Change Biology*, 22, 1406–1420, <https://doi.org/10.1111/gcb.13139>, 2016.
- Behrens, E., Rickard, G., Morgenstern, O., Martin, T., Osprey, A., and Joshi, M.: Southern Ocean deep convection in global climate models:
A driver for variability of subpolar gyres and Drake Passage transport on decadal timescales, *Journal of Geophysical Research: Oceans*,
940 121, 3905–3925, <https://doi.org/10.1002/2015JC011286>, <https://agupubs.onlinelibrary.wiley.com/doi/abs/10.1002/2015JC011286>, 2016.
- Bentsen, M., Bethke, I., Debernard, J. B., Iversen, T., Kirkevåg, A., Seland, Ø., Drange, H., Roelandt, C., Seierstad, I. A., Hoose, C., and
Kristjánsson, J. E.: The Norwegian Earth System Model, NorESM1-M – Part 1: Description and basic evaluation of the physical climate,
Geoscientific Model Development, 6, 687–720, <https://doi.org/10.5194/gmd-6-687-2013>, <https://www.geosci-model-dev.net/6/687/2013/>,
2013.
- 945 Bentsen, M., Olivie, D. J. L., Seland, Ø., Toniazzo, T., Gjermundsen, A., Graff, L. S., Debernard, J. B., Gupta, A. K., He, Y., Kirkevåg, A.,
Schwinger, J., Tjiputra, J., Aas, K. S., Bethke, I., Fan, Y., Griesfeller, J., Grini, A., Guo, C., Ilicak, M., Karset, I. H. H., Landgren, O. A.,
Liakka, J., Moseid, K. O., Nummelin, A., Spensberger, C., Tang, H., Zhang, Z., Heinze, C., Iversen, T., and Schulz, M.: NCC NorESM2-
MM model output prepared for CMIP6 CMIP, <https://doi.org/10.22033/ESGF/CMIP6.506>, <https://doi.org/10.22033/ESGF/CMIP6.506>,
2019.
- 950 Blackmon, M. L.: A Climatological Spectral Study of the 500 mb Geopotential Height of the Northern Hemisphere, *Journal of the Atmo-
spheric Sciences*, 33, 1607–1623, [https://doi.org/10.1175/1520-0469\(1976\)033<1607:ACSSOT>2.0.CO;2](https://doi.org/10.1175/1520-0469(1976)033<1607:ACSSOT>2.0.CO;2), 1976.
- Blackmon, M. L., Wallace, J. M., Lau, N.-C., and Mullen, S. L.: An Observational Study of the Northern Hemisphere Wintertime Circulation,
Journal of the Atmospheric Sciences, 34, 1040–1053, [https://doi.org/10.1175/1520-0469\(1977\)034<1040:AOSOTN>2.0.CO;2](https://doi.org/10.1175/1520-0469(1977)034<1040:AOSOTN>2.0.CO;2), 1977.

- Boer, G. J. and Yu, B.: Dynamical aspects of climate sensitivity, *Geophysical Research Letters*, 30, <https://doi.org/10.1029/2002GL016549>,
955 <https://agupubs.onlinelibrary.wiley.com/doi/abs/10.1029/2002GL016549>, 2003.
- Bogenschutz, P. A., Gettelman, A., Hannay, C., Larson, V. E., Neale, R. B., Craig, C., and Chen, C.-C.: The path to CAM6: coupled simulations with CAM5.4 and CAM5.5, *Geoscientific Model Development*, 11, 235–255, <https://doi.org/10.5194/gmd-11-235-2018>,
<https://www.geosci-model-dev.net/11/235/2018/>, 2018.
- Briegleb, B. P. and Light, B.: A Delta-Eddington Multiple Scattering Parameterization for Solar Radiation in the Sea Ice Component of the
960 Community Climate System Model, Tech. Rep. (No. NCAR/TN-472+STR), University Corporation for Atmospheric Research, Boulder, Colorado, USA, <https://doi.org/https://dx.doi.org/10.5065/D6B27S71>, 2007.
- Bryan, F. O., Hecht, M. W., and Smith, R. D.: Resolution convergence and sensitivity studies with North Atlantic circulation models. Part I: The western boundary current system, *Ocean Modelling*, 16, 141 – 159, <https://doi.org/https://doi.org/10.1016/j.ocemod.2006.08.005>,
<http://www.sciencedirect.com/science/article/pii/S1463500306000904>, 2007.
- 965 Cassou, C.: Intraseasonal interaction between the Madden–Julian Oscillation and the North Atlantic Oscillation, *Nature*, 455, 523–527, <https://doi.org/10.1038/nature07286>, 2009.
- Chang, E. K. M., Lee, S., and Swanson, K. L.: Storm Track Dynamics, *Journal of Climate*, 15, 2163–2183, [https://doi.org/10.1175/1520-0442\(2002\)015<02163:STD>2.0.CO;2](https://doi.org/10.1175/1520-0442(2002)015<02163:STD>2.0.CO;2), 2002.
- Collins, W. D., Rasch, P. J., Boville, B. A., Hack, J. J., McCaa, J. R., Williamson, D. L., and Briegleb, B. P.: The Formulation and Atmospheric
970 Simulation of the Community Atmosphere Model Version 3 (CAM3), *J. Climate*, 19, 2144–2161, 2006.
- Danabasoglu, G., Lamarque, J.-F., Bacmeister, J., Bailey, D. A., DuVivier, A. K., Edwards, J., Emmons, L. K., Fasullo, J., Garcia, R., Gettelman, A., Hannay, C., Holland, M. M., Large, W. G., Lauritzen, P. H., Lawrence, D. M., Lenaerts, J. T. M., Lindsay, K., Lipscomb, W. H., Mills, M. J., Neale, R., Oleson, K. W., Otto-Bliesner, B., Phillips, A. S., Sacks, W., Tilmes, S., van Kampenhout, L. and Vertenstein, M., Bertini, A., Dennis, J., Deser, C., Fischer, C., Fox-Kemper, B., Kay, J. E., Kinnison, D., Kushner, P. J., Larson, V. E., Long, M. C.,
975 Mickelson, S., Moore, J. K., Nienhouse, E., Polvani, L., Rasch, P. J., and Strand, W. G.: The Community Earth System Model Version 2 (CESM2), *Journal of Advances in Modeling Earth Systems*, 12, e2019MS001916, <https://doi.org/10.1029/2019MS001916>, 2020.
- Dee, D. P., Uppala, S. M., Simmons, A. J., Berrisford, P., Poli, P., Kobayashi, S., Andrae, U., Balmaseda, M. A., Balsamo, G., Bauer, P., Bechtold, P., Beljaars, A. C. M., van de Berg, L., Bidlot, J., Bormann, N., Delsol, C., Dragani, R., Fuentes, M., Geer, A. J., Haimberger, L., Healy, S. B., Hersbach, H., Hólm, E. V., Isaksen, I., Kållberg, P., Köhler, M., Matricardi, M., McNally, A. P., Monge-Sanz, B. M., Morcrette, J.-J., Park, B.-K., Peubey, C., de Rosnay, P., Tavolato, C., Thépaut, J.-N., and Vitart, F.: The ERA-Interim reanalysis: configuration and performance of the data assimilation system, *Quarterly Journal of the Royal Meteorological Society*, 137, 553–597,
980 <https://doi.org/10.1002/qj.828>, 2011.
- Dentener, F., Kinne, S., Bond, T., Boucher, O., Cofala, J., Generoso, S., Ginoux, P., Gong, S., Hoelzemann, J. J., Ito, A., Marelli, L., Penner, J. E., Putaud, J.-P., Textor, C., Schulz, M., van der Werf, G. R., and Wilson, J.: Emissions of primary aerosol and precursor gases in the years 2000 and 1750 prescribed data-sets for AeroCom, *Atmospheric Chemistry and Physics*, 6, 4321–4344, <https://doi.org/10.5194/acp-6-4321-2006>, <https://www.atmos-chem-phys.net/6/4321/2006/>, 2006.
- 985 Dickson, A., Sabine, C., and Christian, J.: Guide to best practices for ocean CO₂ measurements, PICES special publication 3, North Pacific Marine Science Organization (PICES), Sidney, British Columbia, Canada, 2007.
- Eden, C. and Greatbatch, R. J.: Towards a mesoscale eddy closure, *Ocean Modelling*, 20, 223–239,
990 <https://doi.org/10.1016/j.ocemod.2007.09.002>, 2008.

- Eden, C., Jochum, M., and Danabasoglu, G.: Effects of different closures for thickness diffusivity, *Ocean Modelling*, 26, 47–59, <https://doi.org/10.1016/j.ocemod.2008.08.004>, 2009.
- Eyring, V., Bony, S., Meehl, G. A., Senior, C. A., Stevens, B., Stouffer, R. J., and Taylor, K. E.: Overview of the Coupled Model Intercomparison Project Phase 6 (CMIP6) experimental design and organization, *Geoscientific Model Development*, 9, 1937–1958, <https://doi.org/10.5194/gmd-9-1937-2016>, <https://www.geosci-model-dev.net/9/1937/2016/>, 2016.
- Fairall, C. W., Bradley, E. F., Hare, J. E., Grachev, A. A., and Edson, J. B.: Bulk parametrization of Air-Sea Fluxes: Updates and Verification for the COARE Algorithm, *J. Clim.*, 16, 571–591, 2003.
- Forster, P. M., Andrews, T., Good, P., Gregory, J. M., Jackson, L. S., and Zelinka, M.: Evaluating adjusted forcing and model spread for historical and future scenarios in the CMIP5 generation of climate models, *Journal of Geophysical Research: Atmospheres*, 118, 1139–1150, <https://doi.org/10.1002/jgrd.50174>, <https://agupubs.onlinelibrary.wiley.com/doi/abs/10.1002/jgrd.50174>, 2013.
- Garcia, H. E., Locarnini, R. A., Boyer, T. P., Antonov, J. I., Baranova, O., Zweng, M., Reagan, J., and Johnson, D.: World Ocean Atlas 2013, Volume 3: Dissolved Oxygen, Apparent Oxygen Utilization, and Oxygen Saturation, in: NOAA Atlas NESDIS 75, edited by Levitus, S. and Mishonov, A., 27 pp, 2014a.
- Garcia, H. E., Locarnini, R. A., Boyer, T. P., Antonov, J. I., Baranova, O., Zweng, M., Reagan, J., and Johnson, D.: World Ocean Atlas 2013, Volume 4: Dissolved Inorganic Nutrients (phosphate, nitrate, silicate), in: NOAA Atlas NESDIS 76, edited by Levitus, S. and Mishonov, A., 25 pp, 2014b.
- Gent, P. R. and McWilliams, J. C.: Isopycnal Mixing in Ocean Circulation Models, *J. Phys. Oceanogr.*, 20, 150–155, 1990.
- Gettelman, A., Hannay, C., Bacmeister, J. T., Neale, R. B., Pendergrass, A. G., Danabasoglu, G., Lamarque, J.-F., Fasullo, J. T., Bailey, D. A., Lawrence, D. M., and Mills, M. J.: High Climate Sensitivity in the Community Earth System Model Version 2 (CESM2), *Geophysical Research Letters*, 46, 8329–8337, <https://doi.org/10.1029/2019GL083978>, 2019a.
- Gettelman, A., Mills, M. J., Kinnison, D. E., Garcia, R. R., Smith, A. K., Marsh, D. R., Tilmes, S., Vitt, F., Bardeen, C. G., McInerney, J., Liu, H.-L., Solomon, S. C., Polvani, L. M., Emmons, L. K., Lamarque, J.-F., Richter, J. H., Glanville, A. S., Bacmeister, J. T., Phillips, A. S., Neale, R. B., Simpson, I. R., DuVivier, A. K., Hodzic, A., and Randel, W. J.: The Whole Atmosphere Community Climate Model Version 6 (WACCM6), *Journal of Geophysical Research: Atmospheres*, <https://doi.org/10.1029/2019JD030943>, 2019b.
- Gidden, M. J., Riahi, K., Smith, S. J., Fujimori, S., Luderer, G., Kriegler, E., van Vuuren, D. P., van den Berg, M., Feng, L., Klein, D., Calvin, K., Doelman, J. C., Frank, S., Fricko, O., Harmsen, M., Hasegawa, T., Havlik, P., Hilaire, J., Hoesly, R., Horing, J., Popp, A., Stehfest, E., and Takahashi, K.: Global emissions pathways under different socioeconomic scenarios for use in CMIP6: a dataset of harmonized emissions trajectories through the end of the century, *Geoscientific Model Development*, 12, 1443–1475, <https://doi.org/10.5194/gmd-12-1443-2019>, 2019.
- Gillett, N. P., Arora, V. K., Matthews, D., and Allen, M. R.: Constraining the Ratio of Global Warming to Cumulative CO2 Emissions Using CMIP5 Simulations, *Journal of Climate*, 26, 6844–6858, <https://doi.org/10.1175/JCLI-D-12-00476.1>, <https://doi.org/10.1175/JCLI-D-12-00476.1>, 2013.
- Gjermundsen, A., Nummelin, A., Olivié, Bentsen, M., Seland, Ø., and M., S.: Southern Ocean convection shutdown controls potential for long-term climate warming by greenhouse gases, under revision, *Nature. Geosci.*, 2020.
- Gliß, J., Mortier, A., Schulz, M., Andrews, E., Balkanski, Y., Bauer, S. E., Benedictow, A. M. K., Bian, H., Checa-Garcia, R., Chin, M., Ginoux, P., Griesfeller, J. J., Heckel, A., Kipling, Z., Kirkevåg, A., Kokkola, H., Laj, P., Le Sager, P., Lund, M. T., Lund Myhre, C., Matsui, H., Myhre, G., Neubauer, D., van Noije, T., North, P., Olivié, D. J. L., Sogacheva, L., Takemura, T., Tsigaridis, K., and Tsyro, S. G.: Multi-model evaluation of aerosol optical properties in the AeroCom phase III Control experiment, using ground and space based

- columnar observations from AERONET, MODIS, AATSR and a merged satellite product as well as surface in-situ observations from GAW sites, *Atmospheric Chemistry and Physics Discussions*, 2020, 1–62, <https://doi.org/10.5194/acp-2019-1214>, 2020.
- 1030 Graff, L. S. and LaCasce, J. H.: Changes in the Extratropical Storm Tracks in Response to Changes in SST in an AGCM, *Journal of Climate*, 25, 1854–1870, <https://doi.org/10.1175/JCLI-D-11-00174.1>, 2012.
- Graff, L. S., Iversen, T., Bethke, I., Debernard, J. B., Seland, Ø., Bentsen, M., Kirkevåg, A., Li, C., and Olivié, D. J. L.: Arctic amplification under global warming of 1.5 and 2 °C in NorESM1-Happi, *Earth System Dynamics*, 10, 569–598, [https://doi.org/10.5194/esd-10-569-](https://doi.org/10.5194/esd-10-569-2019)
- 1035 2019, <https://www.earth-syst-dynam.net/10/569/2019/>, 2019.
- Gregory, J. M., Ingram, W. J., Palmer, M. A., Jones, G. S., Stott, P. A., Thorpe, R. B., Lowe, J. A., Johns, T. C., and Williams, K. D.: A new method for diagnosing radiative forcing and climate sensitivity, *Geophysical Research Letters*, 31, <https://doi.org/10.1029/2003GL018747>, 2004.
- Griffies, S. M., Danabasoglu, G., Durack, P. J., Adcroft, A. J., Balaji, V., Böning, C. W., Chassignet, E. P., Curchitser, E., Deshayes, J., Drange, H., Fox-Kemper, B., Gleckler, P. J., Gregory, J. M., Haak, H., Hallberg, R. W., Heimbach, P., Hewitt, H. T., Holland, D. M., Ilyina, T., Jungclaus, J. H., Komuro, Y., Krasting, J. P., Large, W. G., Marsland, S. J., Masina, S., McDougall, T. J., Nurser, A. J. G., Orr, J. C., Pirani, A., Qiao, F., Stouffer, R. J., Taylor, K. E., Treguier, A. M., Tsujino, H., Uotila, P., Valdivieso, M., Wang, Q., Winton, M., and Yeager, S. G.: OMIP contribution to CMIP6: experimental and diagnostic protocol for the physical component of the Ocean Model Intercomparison Project, *Geosci. Model Dev.*, 9, 3231–3296, <https://doi.org/10.5194/gmd-9-3231-2016>, 2016.
- 1040 Guinehut, S. C., Coatanoan, A.-L., Dhomps, P.-Y., and Larnicol, G.: On the use of satellite altimeter data in Argo quality control, *Journal of Atmospheric and Oceanic Technology*, 26, 395–402, <https://doi.org/10.1175/2008JTECHO648.1>, 2009.
- Harrison, E. F., Minnis, P., Barkstrom, B. R., Ramanathan, V., Cess, R. D., and Gibson, G. G.: Seasonal variation of cloud radiative forcing derived from the Earth Radiation Budget Experiment, *Journal of Geophysical Research: Atmospheres*, 95, 18 687–18 703, <https://doi.org/10.1029/JD095iD11p18687>, 1990.
- 1050 Hendon, H. H., Wheeler, M. C., and Zhang, C.: Seasonal Dependence of the MJO–ENSO Relationship, *Journal of Climate*, 20, 531–543, <https://doi.org/10.1175/JCLI4003.1>, 2007.
- Hoesly, R. M., Smith, S. J., Feng, L., Klimont, Z., Janssens-Maenhout, G., Pitkanen, T., Seibert, J. J., Vu, L., Andres, R. J., Bolt, R. M., Bond, T. C., Dawidowski, L., Kholod, N., Kurokawa, J.-I., Li, M., Liu, L., Lu, Z., Moura, M. C. P., O’Rourke, P. R., and Zhang, Q.: Historical (1750–2014) anthropogenic emissions of reactive gases and aerosols from the Community Emissions Data System (CEDS), *Geoscientific Model Development*, 11, 369–408, <https://doi.org/10.5194/gmd-11-369-2018>, <https://www.geosci-model-dev.net/11/369/2018/>, 2018.
- 1055 Hunke, E. C., Hebert, D. A., and Lecomte, O.: Level-ice melt ponds in the Los Alamos sea ice model, CICE, *Ocean Modelling*, 71, 26 – 42, <https://doi.org/https://doi.org/10.1016/j.ocemod.2012.11.008>, <http://www.sciencedirect.com/science/article/pii/S1463500312001680>, arctic Ocean, 2013.
- Hunke, E. C., Lipscomb, W. H., Turner, A. K., Jeffery, N., and Elliott, S.: CICE: the Los Alamos Sea Ice Model Documentation and Software User’s Manual Version 5.1, Tech. Rep. LA-CC-06-012, Los Alamos National Laboratory, Los Alamos, New Mexico, USA, <https://github.com/CICE-Consortium/CICE-svn-trunk/releases/tag/cice-5.1.2>, 2015.
- 1060 Ilicak, M., Özgökmen, T. M., Peters, H., Baumert, H. Z., and Iskandarani, M.: Performance of two-equation turbulence closures in three-dimensional simulations of the Red Sea overflow, *Ocean Modelling*, 24, 122–139, <https://doi.org/10.1016/j.ocemod.2008.06.001>, 2008.
- Iversen, T., Bentsen, M., Bethke, I., Debernard, J. B., Kirkevåg, A., Seland, Ø., Drange, H., Kristjansson, J. E., Medhaug, I., Sand, M., and Seierstad, I. A.: The Norwegian Earth System Model, NorESM1-M – Part 2: Climate response and scenario projections, *Geoscientific Model Development*, 6, 389–415, <https://doi.org/10.5194/gmd-6-389-2013>, 2013.
- 1065

- Jung, M., Reichstein, M., Margolis, H. A., Cescatti, A., Richardson, A. D., Arain, M. A., Arneth, A., Bernhofer, C., Bonal, D., Chen, J., Gianelle, D., Gobron, N., Kiely, G., Kutsch, W., Lasslop, G., Law, B. E., Lindroth, A., Merbold, L., Montagnani, L., Moors, E. J., Papale, D., Sottocornola, M., Vaccari, F., and Williams, C.: Global patterns of land-atmosphere fluxes of carbon dioxide, latent heat, and sensible heat derived from eddy covariance, satellite, and meteorological observations., *Journal of Geophysical Research*, 116, G00J07, <https://doi.org/10.1029/2010jg001566>, 2011.
- Kanamitsu, M., Ebisuzaki, W., Woollen, J., Yang, S.-K., Hnilo, J. J., Fiorino, M., and Potter, G. L.: NCEP–DOE AMIP-II Reanalysis (R-2), *Bulletin of the American Meteorological Society*, 83, 1631–1644, <https://doi.org/10.1175/BAMS-83-11-1631>, 2002.
- Kiehl, J. T. and Trenberth, K. E.: Earth's Annual Global Mean Energy Budget, *Bulletin of the American Meteorological Society*, 78, 197–208, [https://doi.org/10.1175/1520-0477\(1997\)078<0197:EAGMEB>2.0.CO;2](https://doi.org/10.1175/1520-0477(1997)078<0197:EAGMEB>2.0.CO;2), 1997.
- Kirkevåg, A., Iversen, T., Seland, Ø., Hoose, C., Kristjánsson, J. E., Struthers, H., Ekman, A. M. L., Ghan, S., Griesfeller, J., Nilsson, E. D., and Schulz, M.: Aerosol–climate interactions in the Norwegian Earth System Model – NorESM1-M, *Geoscientific Model Development*, 6, 207–244, <https://doi.org/10.5194/gmd-6-207-2013>, 2013.
- Kirkevåg, A., Grini, A., Olivie, D., Seland, Ø., Alterskjær, K., Hummel, M., Karset, I. H. H., Lewinschal, A., Liu, X., Makkonen, R., Bethke, I., Griesfeller, J., Schulz, M., and Iversen, T.: A production-tagged aerosol module for Earth system models, OsloAero5.3 – extensions and updates for CAM5.3-Oslo, *Geoscientific Model Development*, 11, 3945–3982, <https://doi.org/10.5194/gmd-11-3945-2018>, 2018.
- Kuang, C., McMurry, P. H., and McCormick, A. V.: Determination of cloud condensation nuclei production from measured new particle formation events, *Geophysical Research Letters*, 36, <https://doi.org/10.1029/2009GL037584>, 2009.
- Lana, A., Bell, T. G., Simó, R., Vallina, S. M., Ballabrera-Poy, J., Kettle, A. J., Dachs, J., Bopp, L., Saltzman, E. S., Stefels, J., Johnson, J. E., and Liss, P. S.: An updated climatology of surface dimethylsulfide concentrations and emission fluxes in the global ocean, *Global Biogeochemical Cycles*, 25, <https://doi.org/10.1029/2010GB003850>, 2011.
- Large, W. G. and Yeager, S.: Diurnal to decadal global forcing for ocean and sea-ice models: the data sets and flux climatologies, Tech. Rep. NCAR/TN-460+STR, National Center for Atmospheric Research, Boulder, Colorado, USA, 2004.
- Large, W. G. and Yeager, S. G.: The global climatology of an interannually varying air-sea flux data set, *Clim. Dyn.*, 33, 341–364, <https://doi.org/10.1007/s00382-008-0441-3>, 2009.
- Large, W. G., McWilliams, J. C., and Doney, S. C.: Ocean vertical mixing: a review and a model with a nonlocal boundary layer parameterization, *Rev. Geophys.*, 32, 363–403, 1994.
- Lauvset, S. K., Key, R. M., Olsen, A., van Heuven, S., Velo, A., Lin, X., Schirnack, C., Kozyr, A., Tanhua, T., Hoppema, M., Jutterström, S., Steinfeldt, R., Jeansson, E., Ishii, M., Perez, F. F., Suzuki, T., and Watelet, S.: A new global interior ocean mapped climatology: the $1^\circ \times 1^\circ$ GLODAP version 2, *Earth System Science Data*, 8, 325–340, <https://doi.org/10.5194/essd-8-325-2016>, <https://www.earth-syst-sci-data.net/8/325/2016/>, 2016.
- Lavergne, T., Sørensen, A. M., Kern, S., Tonboe, R., Notz, D., Aaboe, S., Bell, L., Dybkjær, G., Eastwood, S., Gabarro, C., Heygster, G., Killie, M. A., Brandt Kreiner, M., Lavelle, J., Saldo, R., Sandven, S., and Pedersen, L. T.: Version 2 of the EUMETSAT OSI SAF and ESA CCI sea-ice concentration climate data records, *The Cryosphere*, 13, 49–78, <https://doi.org/10.5194/tc-13-49-2019>, 2019.
- Lawrence, D. M., Fisher, R. A., Koven, C. D., Oleson, K. W., Swenson, S. C., Bonan, G., Collier, N., Ghimire, B., van Kampenhout, L., Kennedy, D., Kluzek, E., Lawrence, P. J., Li, F., Li, H., Lombardozzi, D., Riley, W. J., Sacks, W. J., Shi, M., Vertenstein, M., Wieder, W. R., Xu, C., Ali, A. A., Badger, A. M., Bisht, G., van den Broeke, M., Brunke, M. A., Burns, S. P., Buzan, J., Clark, M., Craig, A., Dahlin, K., Drewniak, B., Fisher, J. B., Flanner, M., Fox, A. M., Gentine, P., Hoffman, F., Keppel-Aleks, G., Knox, R., Kumar, S., Lenaerts, J., Leung, L. R., Lipscomb, W. H., Lu, Y., Pandey, A., Pelletier, J. D., Perket, J., Randerson, J. T., Ricciuto, D. M., Sander-

- 1105 son, B. M., Slater, A., Subin, Z. M., Tang, J., Thomas, R. Q., Val Martin, M., and Zeng, X.: The Community Land Model Version 5: Description of New Features, Benchmarking, and Impact of Forcing Uncertainty, *Journal of Advances in Modeling Earth Systems*, n/a, <https://doi.org/10.1029/2018MS001583>, <https://agupubs.onlinelibrary.wiley.com/doi/abs/10.1029/2018MS001583>, 2019.
- Lecomte, O., Fichet, T., Vancoppenolle, M., Domine, F., Massonnet, F., Mathiot, P., Morin, S., and Barriat, P. Y.: On the formulation of snow thermal conductivity in large-scale sea ice models, *Journal of Advances in Modeling Earth Systems*, 5, 542–557, <https://doi.org/10.1002/jame.20039>, <https://agupubs.onlinelibrary.wiley.com/doi/abs/10.1002/jame.20039>, 2013.
- 1110 L'Ecuyer, T. S., Wood, N. B., Haladay, T., Stephens, G. L., and Stackhouse Jr., P. W.: Impact of clouds on atmospheric heating based on the R04 CloudSat fluxes and heating rates data set, *Journal of Geophysical Research: Atmospheres*, 113, <https://doi.org/10.1029/2008JD009951>, 2008.
- Lenaerts, J. T. M., Gettelman, A., Van Tricht, K., van Kampenhout, L., and Miller, N. B.: Impact of cloud physics on the Greenland Ice Sheet near-surface climate: a study with the Community Atmosphere Model., *Journal Geophysical Research: Atmospheres*, 125, <https://doi.org/10.1029/2019JD031470>, 2020.
- 1115 Li, H., Wigmosta, M. S., Wu, H., Huang, M., Ke, Y., Coleman, A. M., and Leung, L. R.: A Physically Based Runoff Routing Model for Land Surface and Earth System Models, *Journal of Hydrometeorology*, 14, 808–828, <https://doi.org/10.1175/JHM-D-12-015.1>, <https://doi.org/10.1175/JHM-D-12-015.1>, 2013.
- 1120 Liebmann, B., Hendon, H. H., and Glick, J. D.: The Relationship Between Tropical Cyclones of the Western Pacific and Indian Oceans and the Madden-Julian Oscillation, *Journal of the Meteorological Society of Japan. Ser. II*, 72, 401–412, https://doi.org/10.2151/jmsj1965.72.3_401, 1994.
- Lin, S.-J. and Rood, R. B.: An explicit flux-form semi-Lagrangian shallow-water model on the sphere, *Q. J. R. Meteorol. Soc.*, 123, 2477–2498, 1997.
- 1125 Lipscomb, W. H., Price, S. F., Hoffman, M. J., Leguy, G. R., Bennett, A. R., Bradley, S. L., Evans, K. J., Fyke, J. G., Kennedy, J. H., Perego, M., Ranken, D. M., Sacks, W. J., Salinger, A. G., Vargo, L. J., and Worley, P. H.: Description and evaluation of the Community Ice Sheet Model (CISM) v2.1, *Geoscientific Model Development*, 12, 387–424, <https://doi.org/10.5194/gmd-12-387-2019>, <https://www.geosci-model-dev.net/12/387/2019/>, 2019.
- Locarnini, R. A., Mishonov, A. V., Baranova, O. K., Boyer, T. P., Zweng, M. M., Garcia, H. E., Reagan, J. R., Seidov, D., Weathers, K., 1130 Paver, C. R., , and Smolyar, I.: World Ocean Atlas 2018, Volume 1: Temperature, in: NOAA Atlas NESDIS 81, edited by Mishonov, A., 52 pp, 2018.
- Loeb, N. G., Kato, S., Loukachine, K., and Manalo-Smith, N.: Angular Distribution Models for Top-of-Atmosphere Radiative Flux Estimation from the Clouds and the Earth's Radiant Energy System Instrument on the Terra Satellite. Part I: Methodology, *Journal of Atmospheric and Oceanic Technology*, 22, 338–351, <https://doi.org/10.1175/JTECH1712.1>, 2005.
- 1135 Loeb, N. G., Wielicki, B. A., Doelling, D. R., Smith, G. L., Keyes, D. F., Kato, S., Manalo-Smith, N., and Wong, T.: Toward Optimal Closure of the Earth's Top-of-Atmosphere Radiation Budget, *Journal of Climate*, 22, 748–766, <https://doi.org/10.1175/2008JCLI2637.1>, 2009.
- Loeb, N. G., Lyman, J. M., Johnson, G. C., Allan, R. P., Doelling, D. R., Wong, T., Soden, B. J., and Stephens, G. L.: Observed changes in top-of-the-atmosphere radiation and upper-ocean heating consistent within uncertainty, *Nature Geoscience*, 5, 110–113, <https://doi.org/10.1038/ngeo1375>, 2012.
- 1140 Madden, R. A. and Julian, P. R.: Detection of a 40–50 Day Oscillation in the Zonal Wind in the Tropical Pacific, *Journal of the Atmospheric Sciences*, 28, 702–708, [https://doi.org/10.1175/1520-0469\(1971\)028<0702:DOADOI>2.0.CO;2](https://doi.org/10.1175/1520-0469(1971)028<0702:DOADOI>2.0.CO;2), [https://doi.org/10.1175/1520-0469\(1971\)028<0702:DOADOI>2.0.CO;2](https://doi.org/10.1175/1520-0469(1971)028<0702:DOADOI>2.0.CO;2), 1971.

- Mahowald, N., Baker, A., Bergametti, G., Brooks, N., Duce, R., Jickells, T., Kubilay, N., Prospero, J., and Tegen, I.: Atmospheric global dust cycle and iron inputs to the ocean, *Global Biogeochemical Cycles*, 19, <https://doi.org/https://doi.org/10.1029/2004GB002402>, 2005.
- 1145 Marks, K. and Smith, W.: An Evaluation of Publicly Available Global Bathymetry Grids, *Mar. Geophys. Res.*, 27, 19–34, <https://doi.org/10.1007/s11001-005-2095-4>, 2006.
- Matthes, K., Funke, B., Andersson, M. E., Barnard, L., Beer, J., Charbonneau, P., Clilverd, M. A., Dudok de Wit, T., Haberreiter, M., Hendry, A., Jackman, C. H., Kretzschmar, M., Kruschke, T., Kunze, M., Langematz, U., Marsh, D. R., Maycock, A. C., Misios, S., Rodger, C. J., Scaife, A. A., Seppälä, A., Shanguan, M., Sinnhuber, M., Tourpali, K., Usoskin, I., van de Kamp, M., Verronen, P. T., and
- 1150 Versick, S.: Solar forcing for CMIP6 (v3.2), *Geoscientific Model Development*, 10, 2247–2302, <https://doi.org/10.5194/gmd-10-2247-2017>, <https://www.geosci-model-dev.net/10/2247/2017/>, 2017.
- Meinshausen, M., Vogel, E., Nauels, A., Lorbacher, K., Meinshausen, N., Etheridge, D. M., Fraser, P. J., Montzka, S. A., Rayner, P. J., Trudinger, C. M., Krummel, P. B., Beyerle, U., Canadell, J. G., Daniel, J. S., Enting, I. G., Law, R. M., Lunder, C. R., O'Doherty, S., Prinn, R. G., Reimann, S., Rubino, M., Velders, G. J. M., Vollmer, M. K., Wang, R. H. J., and Weiss, R.: Historical greenhouse gas
- 1155 concentrations for climate modelling (CMIP6), *Geoscientific Model Development*, 10, 2057–2116, <https://doi.org/10.5194/gmd-10-2057-2017>, <https://www.geosci-model-dev.net/10/2057/2017/>, 2017.
- Mitchell, D., AchutaRao, K., Allen, M., Bethke, I., Beyerle, U., Ciavarella, A., Forster, P. M., Fuglestad, J., Gillett, N., Hausteine, K., Ingram, W., Iversen, T., Kharin, V., Klingaman, N., Massey, N., Fischer, E., Schleussner, C.-F., Scinocca, J., Seland, Ø., Shioyama, H., Shuckburgh, E., Sparrow, S., Stone, D., Uhe, P., Wallom, D., Wehner, M., and Zaaoul, R.: Half a degree additional warming, prognosis and projected
- 1160 impacts (HAPPI): background and experimental design, *Geoscientific Model Development*, 10, 571–583, <https://doi.org/10.5194/gmd-10-571-2017>, 2017.
- Morice, C. P., Kennedy, J. J., Rayner, N. A., and Jones, P. D.: Quantifying uncertainties in global and regional temperature change using an ensemble of observational estimates: The HadCRUT4 dataset, *Journal of Geophysical Research*, 117, D08101, <https://doi.org/10.1029/2011JD017187>, 2012.
- 1165 O'Neill, B. C., Tebaldi, C., van Vuuren, D. P., Eyring, V., Friedlingstein, P., Hurtt, G., Knutti, R., Kriegler, E., Lamarque, J.-F., Lowe, J., Meehl, G. A., Moss, R., Riahi, K., and Sanderson, B. M.: The Scenario Model Intercomparison Project (ScenarioMIP) for CMIP6, *Geoscientific Model Development*, 9, 3461–3482, <https://doi.org/10.5194/gmd-9-3461-2016>, <https://www.geosci-model-dev.net/9/3461/2016/>, 2016.
- Onogi, K., Tustui, J., Koide, H., Sakamoto, M., Kokayaski, S., Hatsushika, H., Matsumoto, T., Yamazaki, N., Kamahori, H., Takahashi, K., Kadokura, S., Wada, K., Kato, K., Oyama, R., Ose, T., Mannoji, N., and Taira, R.: The JRA-25 Reanalysis, *Journal of the Meteorological Society of Japan. Ser. II*, 85, 369–432, <https://doi.org/10.2151/jmsj.85.369>, 2007.
- 1170 Orr, J. C., Najjar, R. G., Aumont, O., Bopp, L., Bullister, J. L., Danabasoglu, G., Doney, S. C., Dunne, J. P., Dutay, J.-C., Graven, H., Griffies, S. M., John, J. G., Joos, F., Levin, I., Lindsay, K., Matear, R. J., McKinley, G. A., Mouchet, A., Oschlies, A., Romanou, A., Schlitzer, R., Tagliabue, A., Tanhua, T., and Yool, A.: Biogeochemical protocols and diagnostics for the CMIP6 Ocean Model Intercomparison Project (OMIP), *Geoscientific Model Development*, 10, 2169–2199, <https://doi.org/10.5194/gmd-10-2169-2017>, 2017.
- O'Dell, C. W., Wentz, F. J., and Bennartz, R.: Cloud Liquid Water Path from Satellite-Based Passive Microwave Observations: A New Climatology over the Global Oceans, *Journal of Climate*, 21, 1721–1739, <https://doi.org/10.1175/2007JCLI1958.1>, 2008.
- Paynter, D., Frölicher, T. L., Horowitz, L. W., and Silvers, L. G.: Equilibrium Climate Sensitivity Obtained From Multimillennial Runs of Two GFDL Climate Models, *Journal of Geophysical Research: Atmospheres*, 123, 1921–1941, <https://doi.org/10.1002/2017JD027885>,
- 1180 <https://agupubs.onlinelibrary.wiley.com/doi/abs/10.1002/2017JD027885>, 2018.

- Pelly, J. L. and Hoskins, B. J.: A New Perspective on Blocking, *Journal of the Atmospheric Sciences*, 60, 743–755, [https://doi.org/10.1175/1520-0469\(2003\)060<0743:ANPOB>2.0.CO;2](https://doi.org/10.1175/1520-0469(2003)060<0743:ANPOB>2.0.CO;2), 2003.
- Praveen Kumar, B., Vialard, J., Lengaigne, M., Murty, V. S. N., and McPhaden, M. J.: TropFlux: air-sea fluxes for the global tropical oceans – description and evaluation, *Clim. Dyn.*, 38, 1521–1543, <https://doi.org/10.1001/s00382-011-1115-0>, 2012.
- 1185 Rackow, T., Sein, D. V., Semmler, T., Danilov, S., Koldunov, N. V., Sidorenko, D., Wang, Q., and Jung, T.: Sensitivity of deep ocean biases to horizontal resolution in prototype CMIP6 simulations with AWI-CM1.0, *Geoscientific Model Development*, 12, 2635–2656, <https://doi.org/10.5194/gmd-12-2635-2019>, <https://www.geosci-model-dev.net/12/2635/2019/>, 2019.
- Rayner, N. A., Parker, D. E., Horton, E. B., Folland, C. K., Alexander, L. V., Rowell, D. P., Kent, E. C., and Kaplan, A.: Global analyses of sea surface temperature, sea ice, and night marine air temperature since the late nineteenth century, *Journal of Geophysical Research: Atmospheres*, 108, <https://doi.org/10.1029/2002JD002670>, <https://agupubs.onlinelibrary.wiley.com/doi/abs/10.1029/2002JD002670>, 2003.
- 1190 Rossow, W. B. and Dueñas, E. N.: The International Satellite Cloud Climatology Project (ISCCP) web site: an online resource for research, *Bull. Amer. Meteor. Soc.*, 85, 167–172, <https://doi.org/10.1175/BAMS-85-2-167>, 2004.
- Rossow, W. B. and Schiffer, R. A.: Advances in Understanding Clouds from ISCCP, *Bulletin of the American Meteorological Society*, 80, 2261–2288, [https://doi.org/10.1175/1520-0477\(1999\)080<2261:AIUCFI>2.0.CO;2](https://doi.org/10.1175/1520-0477(1999)080<2261:AIUCFI>2.0.CO;2), 1999.
- 1195 Saba, V. S., Griffies, S. M., Anderson, W. G., Winton, M., Alexander, M. A., Delworth, T. L., Hare, J. A., Harrison, M. J., Rosati, A., Vecchi, G. A., and Zhang, R.: Enhanced warming of the Northwest Atlantic Ocean under climate change, *Journal of Geophysical Research: Oceans*, 121, 118–132, <https://doi.org/10.1002/2015JC011346>, <https://agupubs.onlinelibrary.wiley.com/doi/abs/10.1002/2015JC011346>, 2016.
- Salter, M. E., Zieger, P., Acosta Navarro, J. C., Grythe, H., Kirkevåg, A., Rosati, B., Riipinen, I., and Nilsson, E. D.: An empirically derived inorganic sea spray source function incorporating sea surface temperature, *Atmospheric Chemistry and Physics*, 15, 11 047–11 066, <https://doi.org/10.5194/acp-15-11047-2015>, <https://www.atmos-chem-phys.net/15/11047/2015/>, 2015.
- 1200 Santoro, M., Beaudoin, A., Beer, C., Cartus, O., Fransson, J. B. S., Hall, R. J., Pathe, C., Schmullius, C., Schepaschenko, D., Shvidenko, A., Thurner, M., and Wegmüller, U.: Forest growing stock volume of the northern hemisphere: Spatially explicit estimates for 2010 derived from Envisat ASAR., *Remote Sensing of Environment*, 168, 316–334, <https://doi.org/10.1016/j.rse.2015.07.005>, 2015.
- 1205 Schurer, A., Hegerl, G., Ribes, A., Polson, D., Morice, C., and Tett, S.: Estimating the Transient Climate Response from Observed Warming, *Journal of Climate*, 31, 8645–8663, <https://doi.org/10.1175/JCLI-D-17-0717.1>, <https://doi.org/10.1175/JCLI-D-17-0717.1>, 2018.
- Schwinger, J., Goris, N., Tjiputra, J. F., Kriest, I., Bentsen, M., Bethke, I., Ilicak, M., Assmann, K. M., and Heinze, C.: Evaluation of NorESM-OC (versions 1 and 1.2), the ocean carbon-cycle stand-alone configuration of the Norwegian Earth System Model (NorESM1), *Geoscientific Model Development*, 9, 2589–2622, <https://doi.org/10.5194/gmd-9-2589-2016>, [https://www.geosci-model-dev.net/9/2589/](https://www.geosci-model-dev.net/9/2589/2016/) 2016/
- 1210 2016/
- Schwinger, J., Tjiputra, J., Goris, N., Six, K. D., Kirkevåg, A., Seland, Ø., Heinze, C., and Ilyina, T.: Amplification of global warming through pH dependence of DMS production simulated with a fully coupled Earth system model, *Biogeosciences*, 14, 3633–3648, <https://doi.org/10.5194/bg-14-3633-2017>, <https://www.biogeosciences.net/14/3633/2017/>, 2017.
- Seland, O.: NorESM1 1 degree resolution coupled simulations for HapptEVA project, <https://doi.org/10.11582/2020.00021>, [https://archive.](https://archive.sigma2.no/pages/public/datasetDetail.jsf?id=10.11582/2020.00021)
- 1215 [sigma2.no/pages/public/datasetDetail.jsf?id=10.11582/2020.00021](https://archive.sigma2.no/pages/public/datasetDetail.jsf?id=10.11582/2020.00021), 2020.
- Seland, Ø., Bentsen, M., Olivie, D. J. L., Toniazzo, T., Gjermundsen, A., Graff, L. S., Debernard, J. B., Gupta, A. K., He, Y., Kirkevåg, A., Schwinger, J., Tjiputra, J., Aas, K. S., Bethke, I., Fan, Y., Griesfeller, J., Grini, A., Guo, C., Ilicak, M., Karset, I. H. H., Landgren, O. A., Liakka, J., Moseid, K. O., Nummelin, A., Spensberger, C., Tang, H., Zhang, Z., Heinze, C., Iversen, T., and Schulz, M.: NCC NorESM2-

LM model output prepared for CMIP6 CMIP, <https://doi.org/10.22033/ESGF/CMIP6.502>, <https://doi.org/10.22033/ESGF/CMIP6.502>, 2019.

Seland, Ø., Bentsen, M., Olivié, D., Toniazzi, T., Gjermundsen, A., Graff, L. S., Debernard, J. B., Gupta, A. K., He, Y., Kirkevåg, A., Schwinger, J., Tjiputra, J., Aas, K. S., Bethke, I., Fan, Y., Gao, S., Griesfeller, J., Grini, A., Guo, C., Ilicak, M., Karset, I. H. H., Landgren, O., Liakka, J., Moree, A., Moseid, K. O., Nummelin, A., Spensberger, C., Tang, H., Zhang, Z., Heinze, C., Iversen, T., and Schulz, M.: NorESM2 source code as used for CMIP6 simulations (includes additional experimental setups, extended model documentation, automated inputdata download, restructuring of BLOM/iHAMOCC input data), <https://doi.org/10.5281/zenodo.3905091>, <https://doi.org/10.5281/zenodo.3905091>, 2020.

Shonk, J. K. P., Guylardi, E., Toniazzi, T., Woolnough, S. J., and Stockdale, T.: Identifying causes of western Pacific ITCZ drift in ECMWF System 4 hindcasts, *Climate Dynamics*, <https://doi.org/10.1007/s00382-017-3650-9>, 2017.

SIMIP Community: Arctic Sea Ice in CMIP6, *Geophysical Research Letters*, 47, e2019GL086749, <https://doi.org/10.1029/2019GL086749>, 2020.

Six, K. D. and Maier-Reimer, E.: Effects of plankton dynamics on seasonal carbon fluxes in an ocean general circulation model, *Global Biogeochem. Cycles*, 10, 559–583, 1996.

Sporre, M. K., Blichner, S. M., Karset, I. H. H., Makkonen, R., and Berntsen, T. K.: BVOC–aerosol–climate feedbacks investigated using NorESM, *Atmospheric Chemistry and Physics*, 19, 4763–4782, <https://doi.org/10.5194/acp-19-4763-2019>, <https://www.atmos-chem-phys.net/19/4763/2019/>, 2019.

Stammer, D., Bracco, A., AchutaRao, K., Beal, L., Bindoff, N. L., Braconnot, P., Cai, W., Chen, D., Collins, M., Danabasoglu, G., Dewitte, B., Farneti, R., Fox-Kemper, B., Fyfe, J., Griffies, S. M., Jayne, S. R., Lazar, A., Lengaigne, M., Lin, X., Marsland, S., Minobe, S., Monteiro, P. M. S., Robinson, W., Roxy, M. K., Rykaczewski, R. R., Speich, S., Smith, I. J., Solomon, A., Storto, A., Takahashi, K., Toniazzi, T., and Vialard, J.: Ocean climate observing requirements in support of climate research and climate information, *Front. Mar. Sci.*, 6, <https://doi.org/10.3389/mars.2019.00444>, 2019.

Steele, M., Morley, R., and Ermold, W.: PHC: A Global Ocean Hydrography with a High-Quality Arctic Ocean, *J. Climate*, 14, 2079–2087, 2001.

Stocker, T. F., Qin, D., Plattner, G.-K., Tignor, M., Allen, S. K., Boschung, J., Nauels, A., Xia, Y., Bex, V., and Midgley, P., eds.: *Climate change 2013: the physical science basis. Contribution of working group I to the fifth assessment report of the intergovernmental panel on climate change*, Cambridge University Press, Cambridge, United Kingdom and New York, NY, USA, 1535 pp., 2013.

Taylor, K. E., Stouffer, R. J., and Meehl, G. A.: An Overview of CMIP5 and the Experiment Design, *Bulletin of the American Meteorological Society*, 93, 485–498, <https://doi.org/10.1175/BAMS-D-11-00094.1>, <https://doi.org/10.1175/BAMS-D-11-00094.1>, 2012.

Textor, C., Schulz, M., Guibert, S., Kinne, S., Balkanski, Y., Bauer, S., Berntsen, T., Berglen, T., Boucher, O., Chin, M., Dentener, F., Diehl, T., Easter, R., Feichter, H., Fillmore, D., Ghan, S., Ginoux, P., Gong, S., Grini, A., Hendricks, J., Horowitz, L., Huang, P., Isaksen, I., Iversen, I., Kloster, S., Koch, D., Kirkevåg, A., Kristjansson, J. E., Krol, M., Lauer, A., Lamarque, J. F., Liu, X., Montanaro, V., Myhre, G., Penner, J., Pitari, G., Reddy, S., Seland, Ø., Stier, P., Takemura, T., and Tie, X.: Analysis and quantification of the diversities of aerosol life cycles within AeroCom, *Atmospheric Chemistry and Physics*, 6, 1777–1813, <https://doi.org/10.5194/acp-6-1777-2006>, <https://www.atmos-chem-phys.net/6/1777/2006/>, 2006.

Thomason, L. W., Ernest, N., Millán, L., Rieger, L., Bourassa, A., Vernier, J.-P., Manney, G., Luo, B., Arfeuille, F., and Peter, T.: A global space-based stratospheric aerosol climatology: 1979–2016, *Earth System Science Data*, 10, 469–492, <https://doi.org/10.5194/essd-10-469-2018>, <https://essd.copernicus.org/articles/10/469/2018/>, 2018.

- Tibaldi, S. and Molteni, F.: On the operational predictability of blocking, *Tellus A*, 42, 343–365, <https://doi.org/10.1034/j.1600-0870.1990.t01-2-00003.x>, 1990.
- 1260 Tjiputra, J. F., Roelandt, C., Bentsen, M., Lawrence, D. M., Lorentzen, T., Schwinger, J., Seland, Ø., and Heinze, C.: Evaluation of the carbon cycle components in the Norwegian Earth System Model (NorESM), *Geoscientific Model Development*, 6, 301–325, <https://doi.org/10.5194/gmd-6-301-2013>, <https://www.geosci-model-dev.net/6/301/2013/>, 2013.
- Tjiputra, J. F., Schwinger, J., Bentsen, M., Morée, A. L., Gao, S., Bethke, I., Heinze, C., Goris, N., Gupta, A., He, Y.-C., Olivie, D., Seland, Ø., and Schulz, M.: Ocean biogeochemistry in the Norwegian Earth System Model version 2 (NorESM2), *Geoscientific Model Development*, 13, 2393–2431, <https://doi.org/10.5194/gmd-13-2393-2020>, 2020.
- 1265 Toniazzo, T. and Woolnough, S.: Development of warm SST errors in the southern tropical Atlantic in decadal hindcasts, *Climate Dynamics*, 43, 2889–2913, <https://doi.org/10.1007/s00382-013-1691-2>, 2014.
- Toniazzo, T., Bentsen, M., Craig, C., Eaton, B. E., Edwards, J., Goldhaber, S., Jablonowski, C., and Lauritzen, P. H.: Enforcing conservation of axial angular momentum in the atmospheric general circulation model CAM6, *Geosc. Model Devel.*, 13, 685–705, <https://doi.org/10.5194/gmd-13-685-2020>, 2020.
- 1270 Trenberth, K. E., Fasullo, J. T., and Mackaro, J.: Atmospheric Moisture Transports from Ocean to Land and Global Energy Flows in Reanalyses, *Journal of Climate*, 24, 4907–4924, <https://doi.org/10.1175/2011JCLI4171.1>, 2011.
- Tsujino, H., Urakawa, S., Nakano, H., Small, R. J., Kim, W. M., Yeager, S. G., Danabasoglu, G., Suzuki, T., Bamber, J. L., Bentsen, M., Böning, C. W., Bozec, A., Chassignet, E. P., Curchitser, E., Dias, F. B., Durack, P. J., Griffies, S. M., Harada, Y., Ilicak, M., Josey, S. A., Kobayashi, C., Kobayashi, S., Komuro, Y., Large, W. G., Sommer, J. L., Marsland, S. J., Masina, S., Scheinert, M., Tomita, H., Valdivieso, M., and Yamazaki, D.: JRA-55 based surface dataset for driving ocean–sea-ice models (JRA55-do), *Ocean Modelling*, 130, 79–139, <https://doi.org/10.1016/j.ocemod.2018.07.002>, 2018.
- 1275 Tsujino, H., Urakawa, L. S., Griffies, S. M., Danabasoglu, G., Adcroft, A. J., Amaral, A. E., Arsouze, T., Bentsen, M., Bernardello, R., Böning, C. W., Bozec, A., Chassignet, E. P., Danilov, S., Dussin, R., Exarchou, E., Fogli, P. G., Fox-Kemper, B., Guo, C., Ilicak, M., Iovino, D., Kim, W. M., Koldunov, N., Lapin, V., Li, Y., Lin, P., Lindsay, K., Liu, H., Long, M. C., Komuro, Y., Marsland, S. J., Masina, S., Nummelin, A., Rieck, J. K., Ruprich-Robert, Y., Scheinert, M., Sicardi, V., Sidorenko, D., Suzuki, T., Tatebe, H., Wang, Q., Yeager, S. G., , and Yu, Z.: Evaluation of global ocean–sea-ice model simulations based on the experimental protocols of the Ocean Model Intercomparison Project phase 2 (OMIP-2), *Geosci. Model Dev. Discuss.*, 13, 1–65, <https://doi.org/10.5194/gmd-13-1-2020>, 2020.
- 1280 Turner, A. K. and Hunke, E. C.: Impacts of a mushy-layer thermodynamic approach in global sea-ice simulations using the CICE sea-ice model, *Journal of Geophysical Research: Oceans*, 120, 1253–1275, <https://doi.org/10.1002/2014JC010358>, <https://agupubs.onlinelibrary.wiley.com/doi/abs/10.1002/2014JC010358>, 2015.
- 1285 Umlauf, L. and Burchard, H.: Second-order turbulence closure models for geophysical boundary layers. A review of recent work, *Cont. Shelf Res.*, 25, 795–827, <https://doi.org/10.1016/j.csr.2004.08.004>, 2005.
- Uppala, S. M., Kållberg, P. W., Simmons, A. J., Andrae, U., Bechtold, V. D. C., Fiorino, M., Gibson, J. K., Haseler, J., Hernandez, A., Kelly, G. A., Li, X., Onogi, K., Saarinen, S., Sokka, N., Allan, R. P., Andersson, E., Arpe, K., Balmaseda, M. A., Beljaars, A. C. M., Berg, L. V. D., Bidlot, J., Bormann, N., Caires, S., Chevallier, F., Dethof, A., Dragosavac, M., Fisher, M., Fuentes, M., Hagemann, S., Hólm, E., Hoskins, B. J., Isaksen, I., Janssen, P. A. E. M., Jenne, R., McNally, A. P., Mahfouf, J.-F., Morcrette, J.-J., Rayner, N. A., Saunders, R. W., Simon, P., Sterl, A., Trenberth, K. E., Untch, A., Vasiljevic, D., Viterbo, P., and Woollen, J.: The ERA-40 re-analysis, *Quarterly Journal of the Royal Meteorological Society*, 131, 2961–3012, <https://doi.org/10.1256/qj.04.176>, 2005.
- 1290

- van Marle, M. J. E., Kloster, S., Magi, B. I., Marlon, J. R., Daniau, A.-L., Field, R. D., Arneth, A., Forrest, M., Hantson, S., Kehrwald, N. M.,
1295 Knorr, W., Lasslop, G., Li, F., Mangeon, S., Yue, C., Kaiser, J. W., and van der Werf, G. R.: Historic global biomass burning emissions for
CMIP6 (BB4CMIP) based on merging satellite observations with proxies and fire models (1750–2015), *Geoscientific Model Development*,
10, 3329–3357, <https://doi.org/10.5194/gmd-10-3329-2017>, <https://www.geosci-model-dev.net/10/3329/2017/>, 2017.
- Waliser, D., Sperber, K., Hendon, H., Kim, D., Wheeler, M., Weickmann, K., Zhang, C., Donner, L., Gottschalck, J., Higgins, W., Kang,
I. S., Legler, D., Moncrieff, M., Vitart, F., Wang, B., Wang, W., Woolnough, S., Maloney, E., Schubert, S., and Stern, W.: MJO Simulation
1300 Diagnostics, *Journal of Climate*, 22, 3006–3030, <https://doi.org/10.1175/2008JCLI2731.1>, <https://doi.org/10.1175/2008JCLI2731.1>, 2009.
- Wang, C., Zhang, L., Lee, S.-K., Wu, L., and Mechoso, C. R.: A global perspective on CMIP5 climate model biases, *Nature Climate Change*,
4, 201–205, <https://doi.org/10.1038/nclimate2118>, <https://doi.org/10.1038/nclimate2118>, 2016.
- Wernli, H. and Schwierz, C.: Surface Cyclones in the ERA-40 Dataset (1958–2001). Part I: Novel Identification Method and Global Clima-
tology, *Journal of the Atmospheric Sciences*, 63, 2486–2507, <https://doi.org/10.1175/JAS3766.1>, 2006.
- 1305 Xie, P. and Arkin, P. A.: Global precipitation: A 17-year monthly analysis based on gauge observations, satellite estimates, and numeri-
cal model outputs, *Bull. Amer. Meteor. Soc.*, 78, 2539–2558, [https://doi.org/10.1145/1520-0477\(1997\)078<2539:GPAYAMA>2.0.CO;2](https://doi.org/10.1145/1520-0477(1997)078<2539:GPAYAMA>2.0.CO;2),
1997.
- Yu, L. and Weller, R. A.: Objectively Analyzed Air–Sea Heat Fluxes for the Global Ice-Free Oceans (1981–2005), *Bulletin of the American
Meteorological Society*, 88, 527–540, <https://doi.org/10.1175/BAMS-88-4-527>, 2007.
- 1310 Yu, L., Jin, X., and Weller, R. A.: Multidecade Global Flux Datasets from the Objectively Analyzed Air-sea Fluxes (OAFlux) Project:
Latent and sensible heat fluxes, ocean evaporation, and related surface meteorological variables, Tech. Rep. OA-2008-01, Woods Hole
Oceanographic Institution, Woods Hole, Massachusetts, USA, 2008.
- Zhang, C.: Madden-Julian Oscillation, *Reviews of Geophysics*, 43, <https://doi.org/10.1029/2004RG000158>, 2005.
- Zhang, G. J. and McFarlane, N. A.: Sensitivity of climate simulations to the parameterization of cumulus convection in the Canadian Climate
1315 Centre general circulation model, *Atmosphere-Ocean*, 33, 407–446, 1995.
- Zhang, H., Wang, M., Guo, Z., Zhou, C., Zhou, T., Qian, Y., Larson, V. E., Ghan, S., Ovchinnikov, M., Bogenschutz, P. A., and Gettelman,
A.: Low-Cloud Feedback in CAM5-CLUBB: Physical Mechanisms and Parameter Sensitivity Analysis, *Journal of Advances in Mod-
eling Earth Systems*, 10, 2844–2864, <https://doi.org/10.1029/2018MS001423>, <https://agupubs.onlinelibrary.wiley.com/doi/abs/10.1029/2018MS001423>, 2018.
- 1320 Zuidema, P., Chang, P., Medeiros, B., Kirtman, B. P., Mechoso, R., Schneider, E. K., Toniazzo, T., Richter, I., Small, R. J., Bellomo, K.,
Brandt, P., de Szoeke, S., Farrar, J. T., Jung, E., Kato, S., Li, M., Patricola, C., Wang, Z., Wood, R., and Xu, Z.: Challenges and prospects
for reducing coupled climate model SST biases in the eastern tropical Atlantic and Pacific oceans, *BAMS*, [https://doi.org/10.1175/BAMS-](https://doi.org/10.1175/BAMS-D-15-00274.1)
D-15-00274.1, 2016.
- Zweng, M. M., Reagan, J. R., Seidov, D., Boyer, T. P., Locarnini, R. A., Garcia, H. E., Mishonov, A. V., Baranova, O. K., Weathers, K.,
1325 Paver, C. R., and Smolyar, I.: World Ocean Atlas 2018, Volume 2: Salinity, in: NOAA Atlas NESDIS 82, edited by Mishonov, A., 50 pp,
2018.

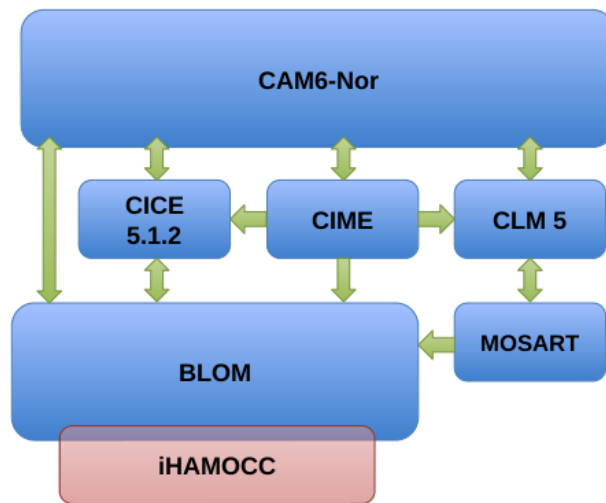


Figure 1. Overview of the different components in NorESM2 and their interactions (CIME: configuration handler; CAM6-Nor: atmosphere and aerosol; CICE5.1.2: sea ice ; CLM5: land and vegetation, MOSART: river transport; BLOM: ocean; iHAMOCC: ocean carbon cycle).

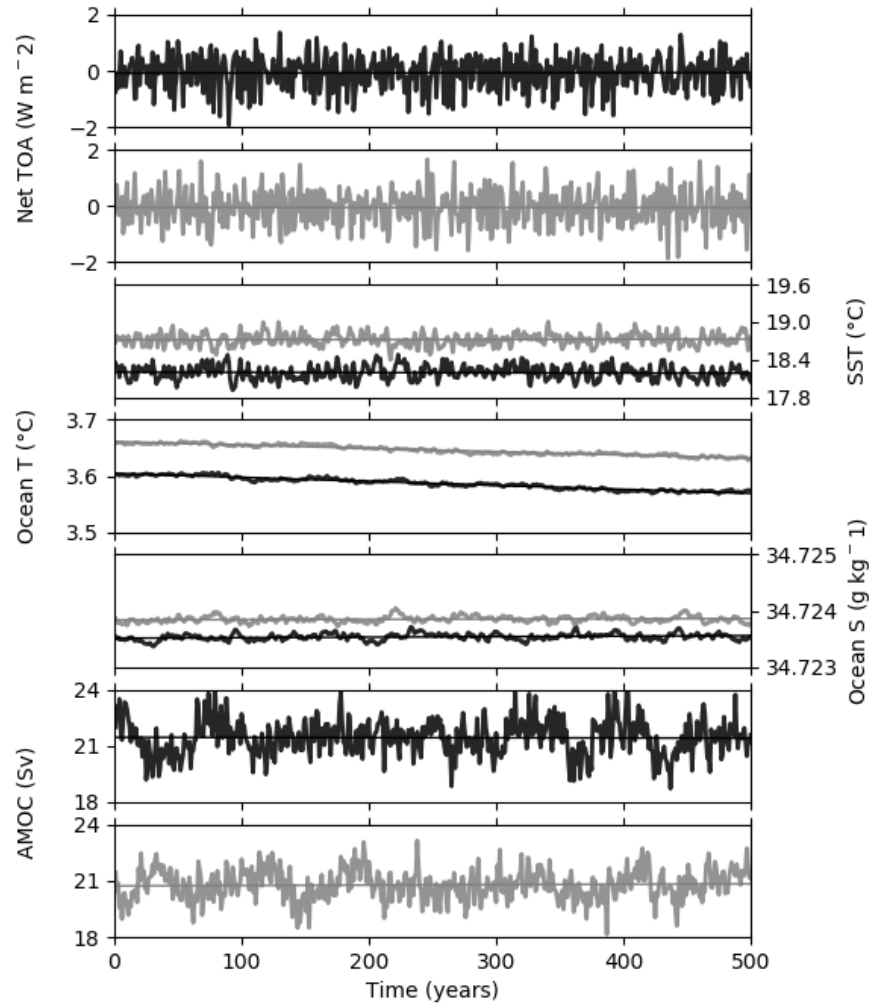


Figure 2. Pre-industrial control experiment characteristics for NorESM2-LM (black lines) and NorESM2-MM (grey lines). Time evolution of globally averaged top-of-the-atmosphere (TOA) net radiative balance (first and second panel from top), sea surface temperature (SST) (third panel), ocean temperature (fourth panel), ocean salinity (fifth panel), and Atlantic meridional overturning circulation (AMOC) at 26.5°N (bottom two panels) for model years 0–500.

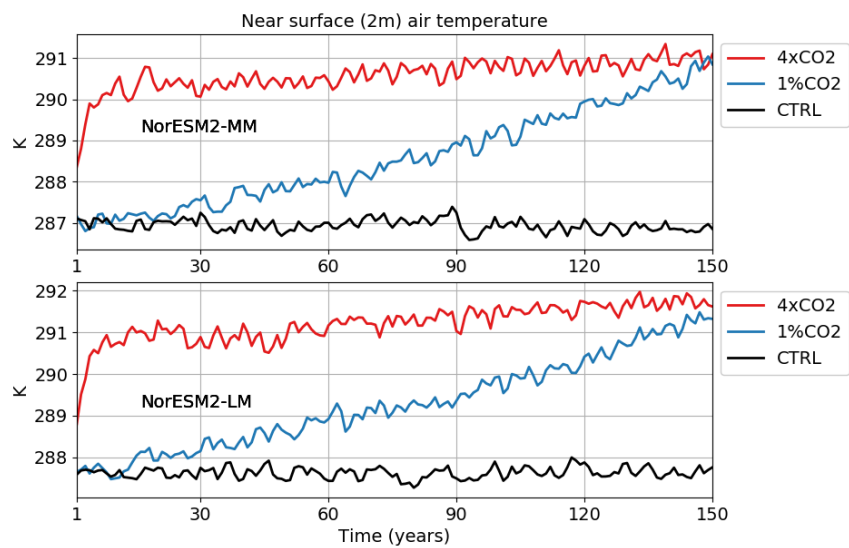


Figure 3. Time evolution of globally averaged near-surface temperature in NorESM2-MM (top) and NorESM2-LM (bottom) for the pre-industrial control simulation, the abrupt-4xCO₂ experiment, and the gradual increase 1pctCO₂ experiment for model years 1–150.

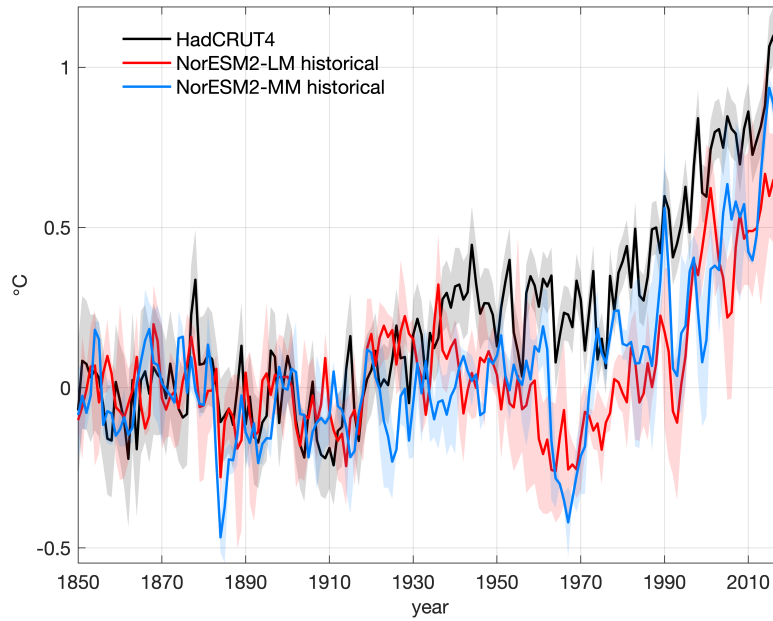


Figure 4. Time evolution of globally averaged surface temperature in the historical simulations of NorESM2-LM (red line) and NorESM2-MM (blue line) shown with the observations (black line) from HadCRUT4 (Morice et al., 2012) updated to version HadCRUT.4.6.0.0. Temperatures are computed as anomalies from the time-mean over years 1850–1880. For NorESM2-LM and NorESM2-MM, the solid lines show the mean and the shading of corresponding colour the spread from three ensemble members. For HadCRUT4, the solid black line shows the median and the grey shading indicates the lower and upper bounds of the 95% confidence interval of the combined effects of all the uncertainties described in the HadCRUT4 error model (measurement and sampling, bias, and coverage uncertainties).

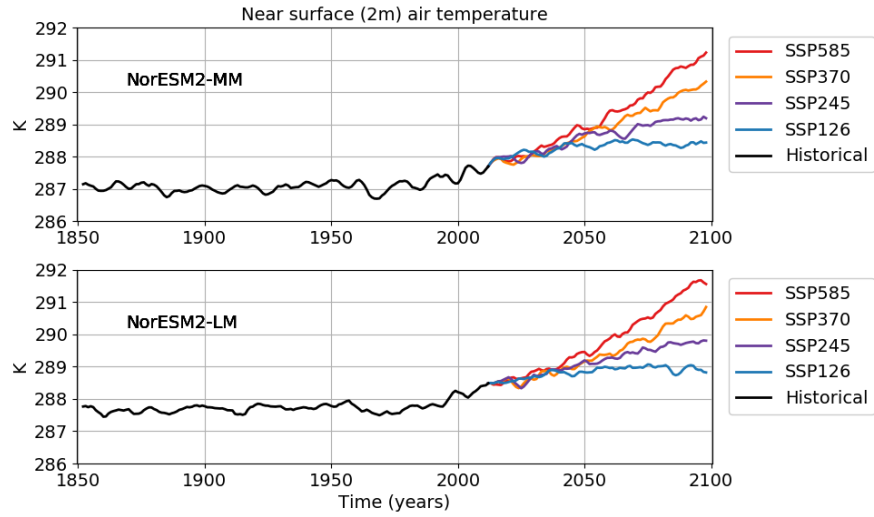


Figure 5. Time evolution of globally averaged surface air temperature in NorESM2-MM and NorESM2-LM from the historical simulations (black lines) and CMIP6 scenario experiments SSP1-2.6 , SSP2-4.5, SSP3-7.0 , and SSP5-8.5 (colored lines). A five-year moving average is used.

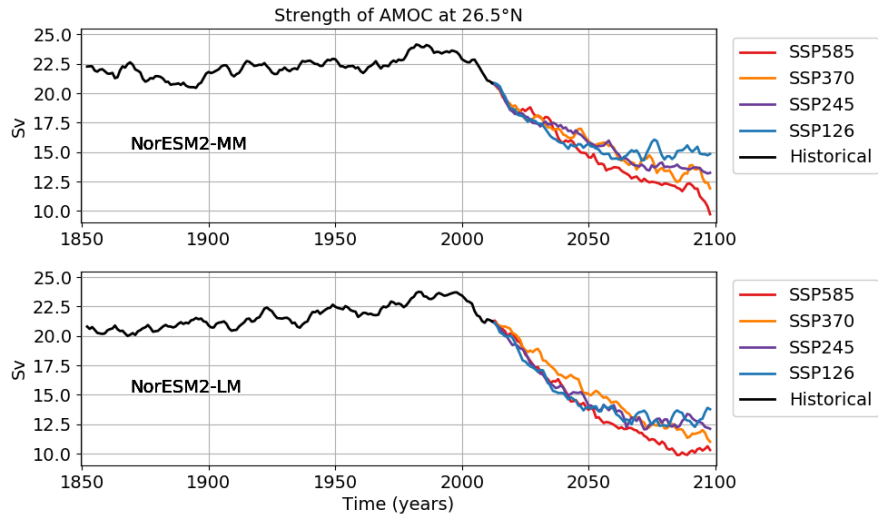


Figure 6. Curves as in figure 5, but for the time evolution of Atlantic meridional overturning circulation (AMOC).

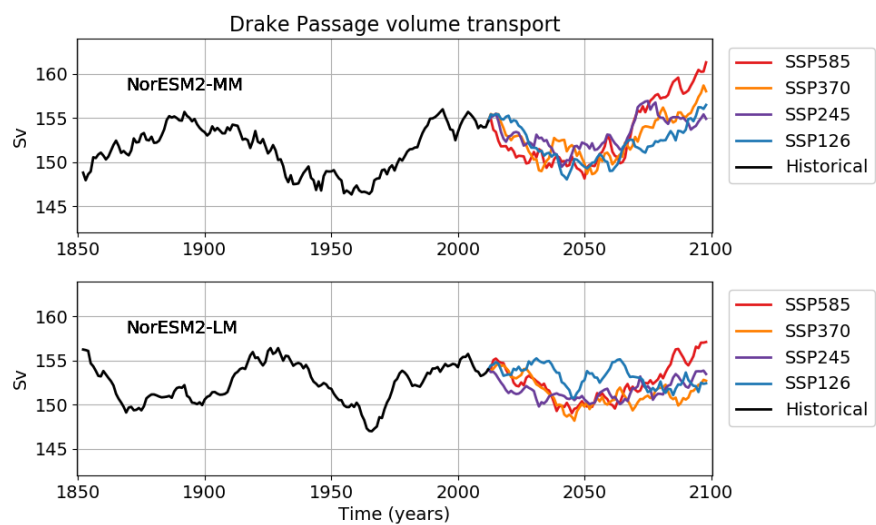


Figure 7. As in Fig. 5 and 6, but for the time evolution of transport due to the Antarctic circumpolar current through the Drake Passage.

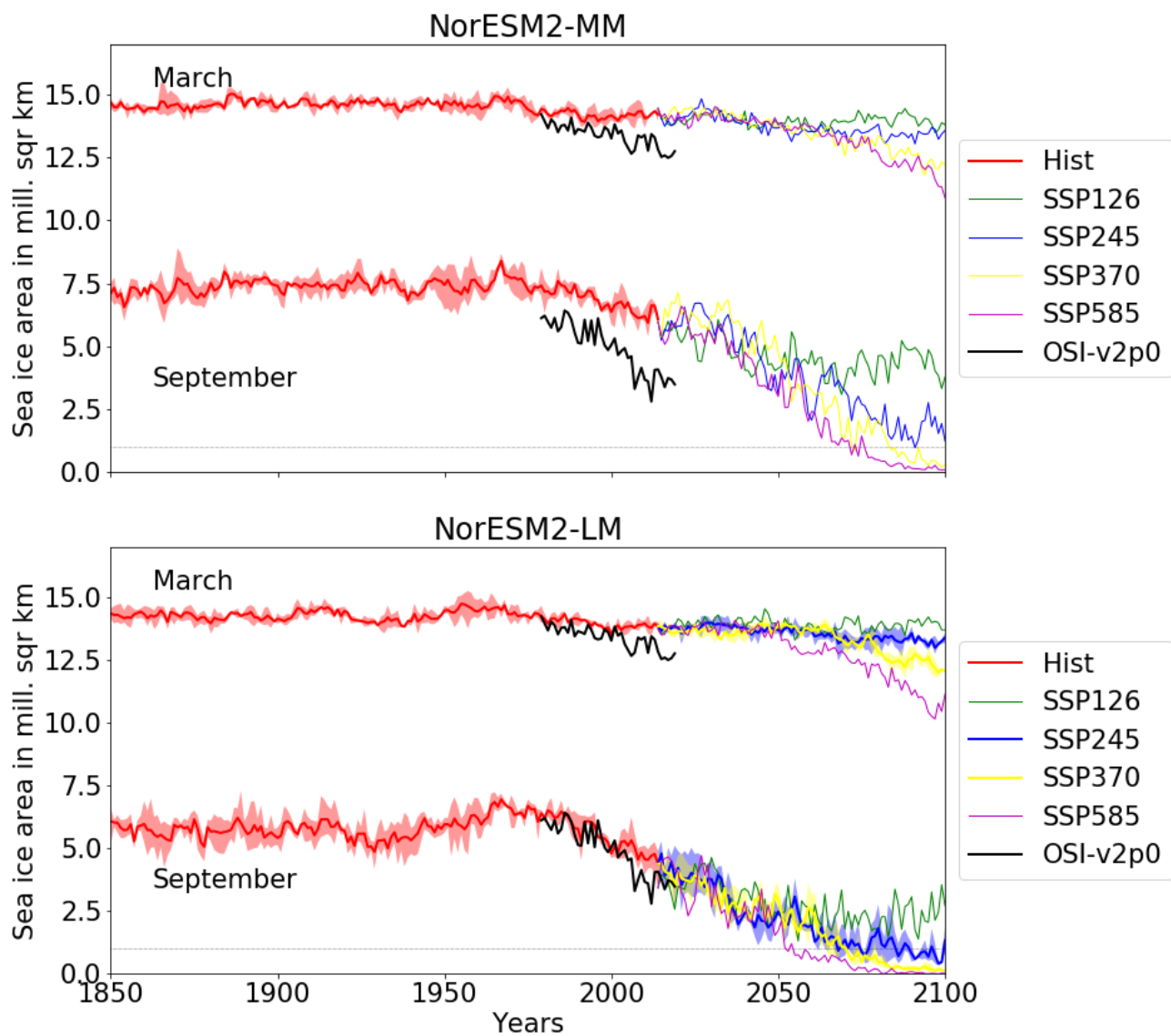


Figure 8. Northern Hemisphere sea ice area for March and September for historical and scenario experiments. Upper panel for NorESM2-MM and lower for NorESM2-LM. Black lines show observations from OSISAF (Lavergne et al., 2019) for the years 1979–2019. Ensemble means, with shades for ensemble range are shown for both model configurations for the historical (1850–2014), and for the SSP245 (2015–2100) and SSP370 (2015–2100) scenarios from NorESM2-LM. The rest of the lines denotes only one realization.

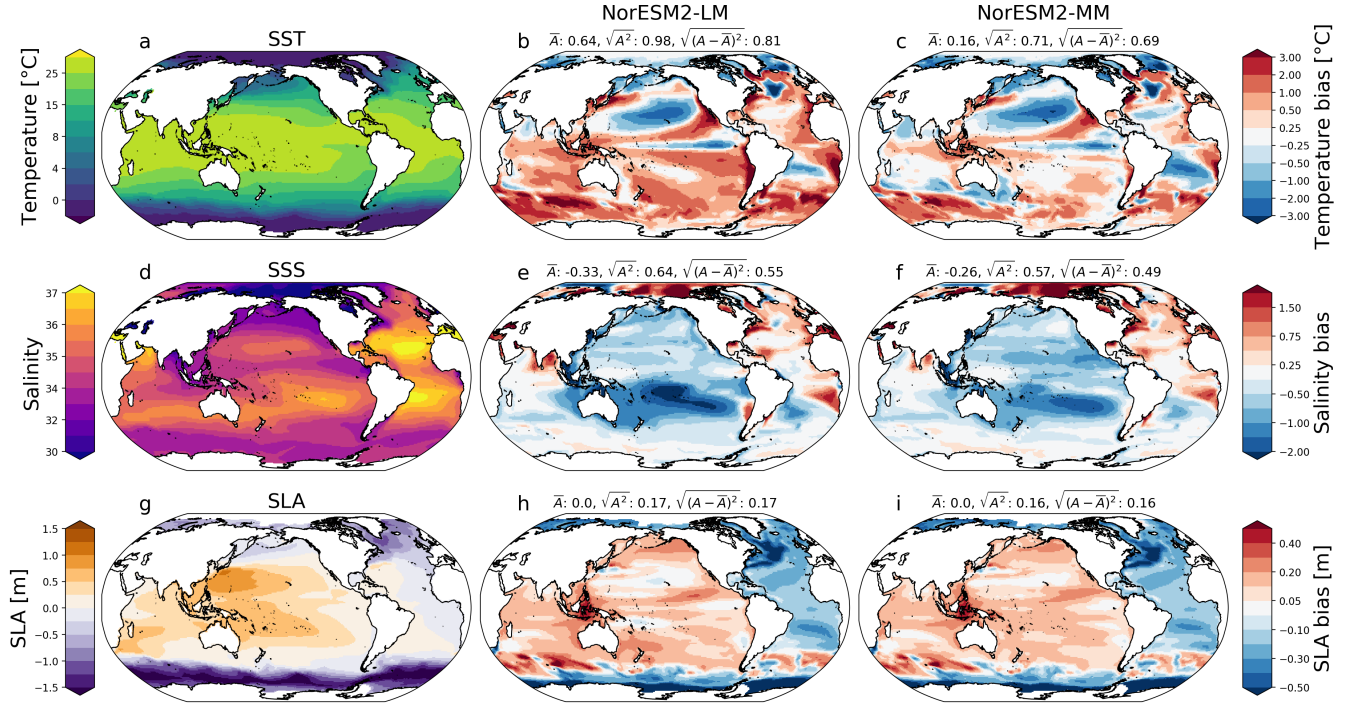


Figure 9. Observed climatologies (left column) and biases for NorESM2-LM (middle column) and NorESM2-MM (right column) for sea surface temperature (SST), sea surface salinity (SSS), and sea level anomalies (SLA). SST and SSS are compared to the World Ocean Atlas climatology (Locarnini et al., 2018; Zweng et al., 2018) between 1981–2010, whereas SLA is compared to AVISO altimetry between 1993–2010. For the model biases, we show the ensemble-mean bias using three historical members. Note that A is the anomaly between the model and the observation, and we report the global mean bias (\bar{A}), global mean RMSE (root-mean-square error; $\sqrt{A^2}$), and global mean RMSE with the mean bias first removed ($\sqrt{(A-\bar{A})^2}$). SLA is re-defined to have zero mean over the ice-free region in the observational dataset (thus \bar{A} is 0 by definition).

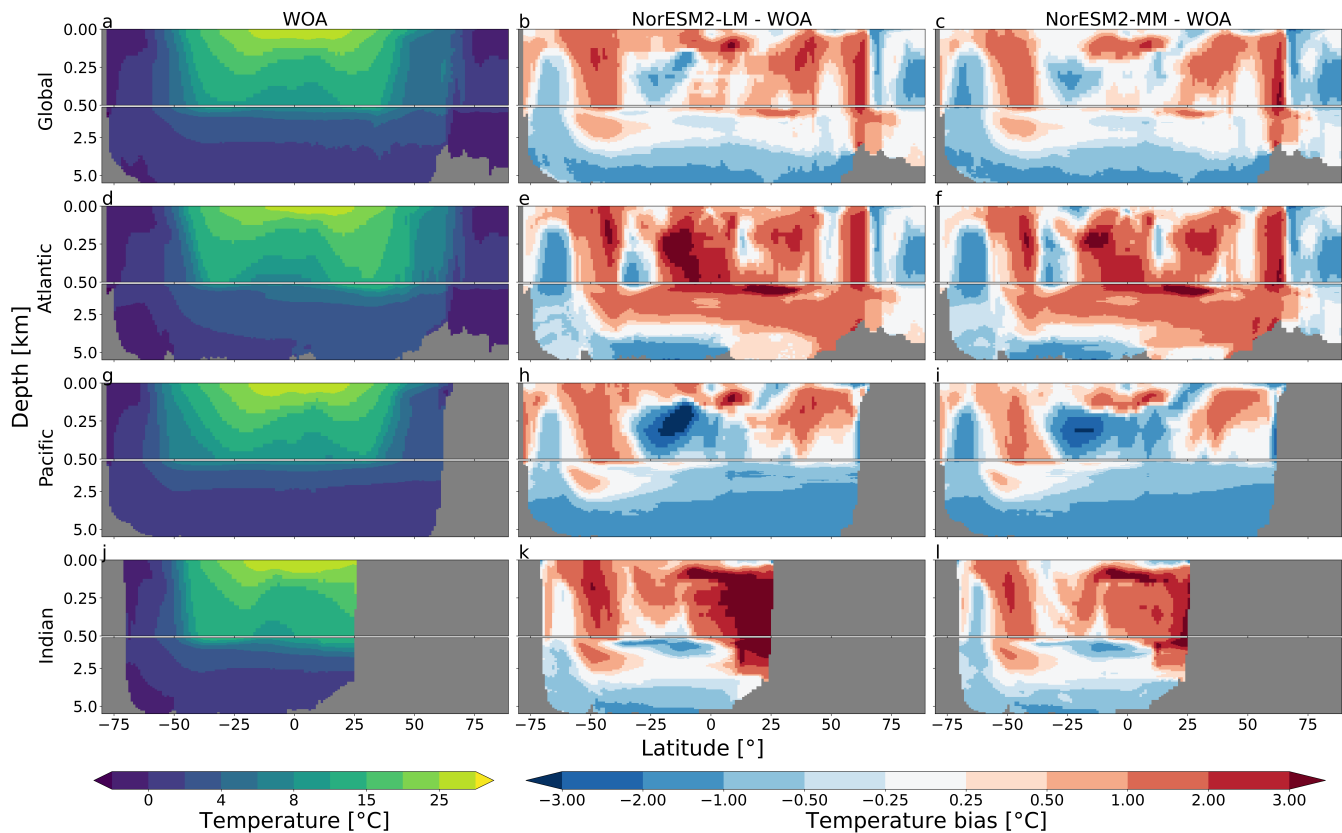


Figure 10. Zonal-mean bias in potential temperature for NorESM2-LM and NorESM2-MM. The bias is taken relative to World Ocean Atlas climatology (Locarnini et al., 2018; Zweng et al., 2018) using years 1981–2010 in the main ocean basins. Note the change in the vertical scale between the upper 500 meters and the lower 4500 meters. For the model biases, we show the ensemble-mean bias using three historical members.

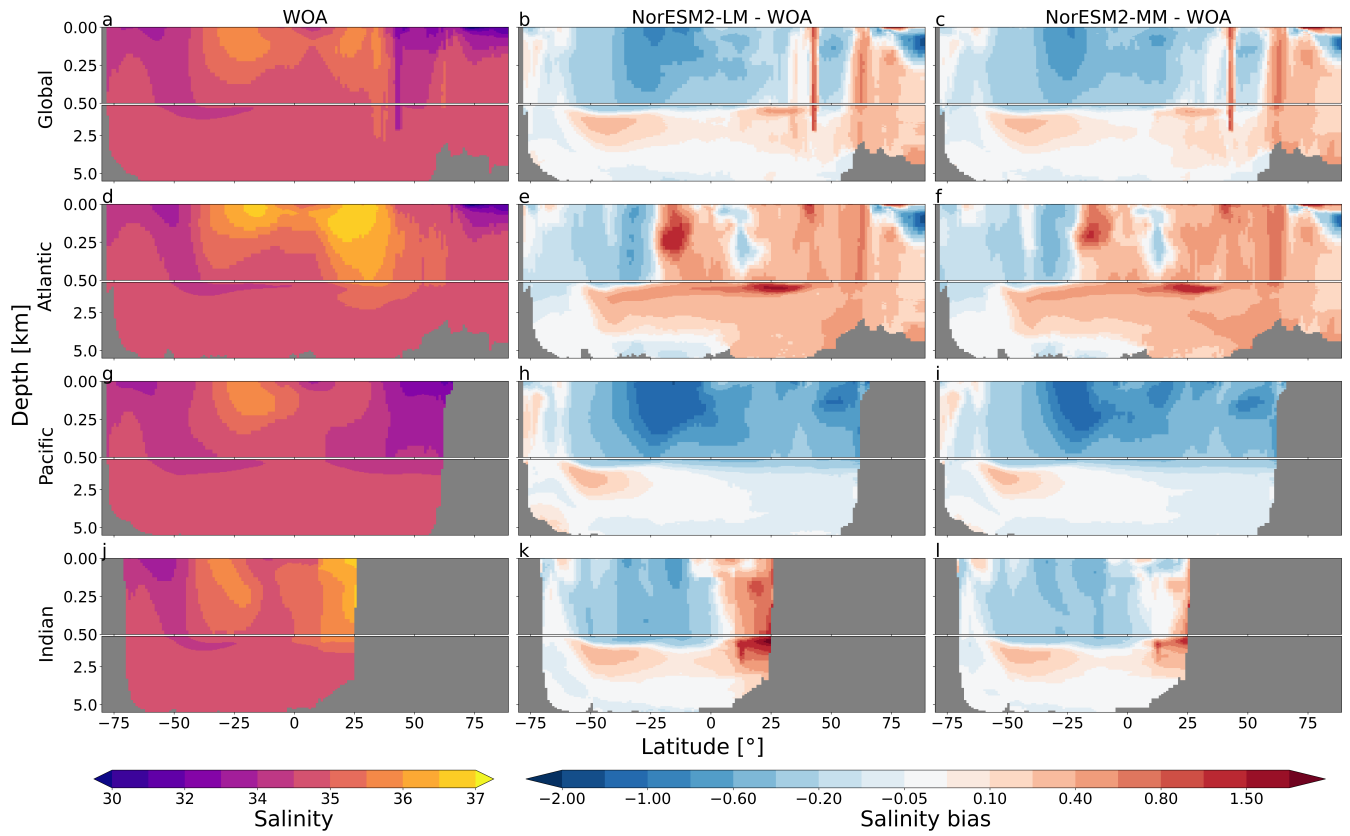


Figure 11. As in Fig. 10, but for the zonal-mean bias in salinity.

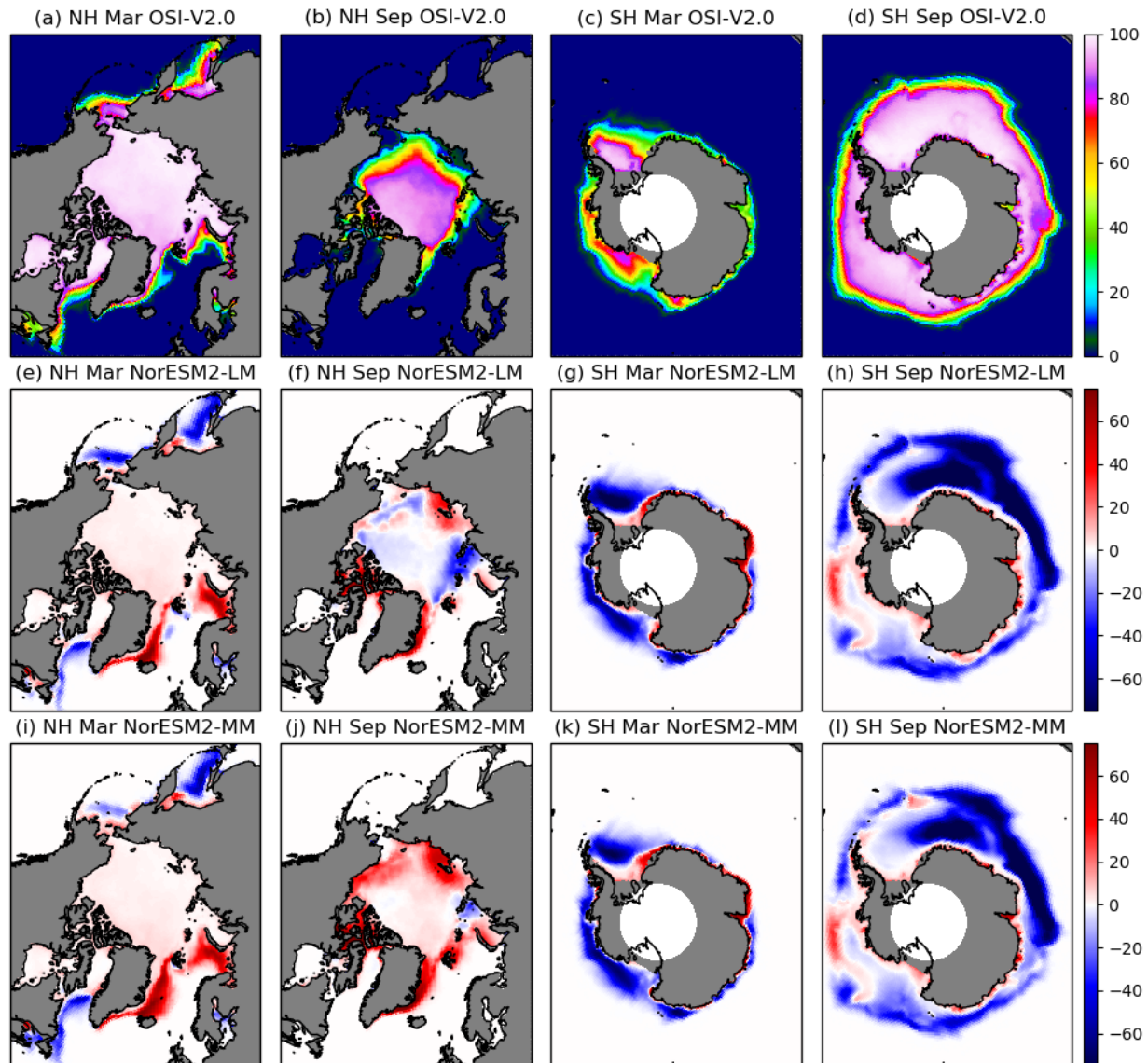


Figure 12. Sea ice concentration from OSISAF observations (OSI-V2.0; Laverne et al., 2019) in March (a,c) and September (b,d) for Northern (a,b) and Southern (c,d) hemispheres. Differences between model ensemble means and observations for the respective hemisphere and months are shown for NorESM2-LM (e-h), and NorESM2-MM (i-l). Model and observations are monthly means for the period 1980–2009. Unit is [%].

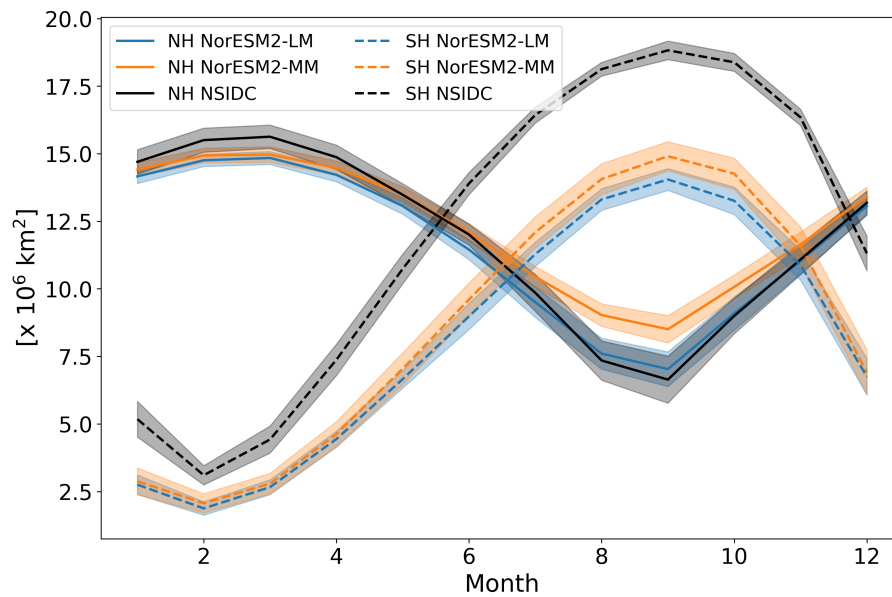


Figure 13. Northern hemisphere (NH) and southern hemisphere (SH) seasonal cycles of sea ice extent in the first historical member from NorESM2-LM and from NorESM2-MM averaged over years 1980–2009 and compared to observations from NSIDC. Shaded areas show interannual variation as standard deviation. Units are 10^6 km^2 .

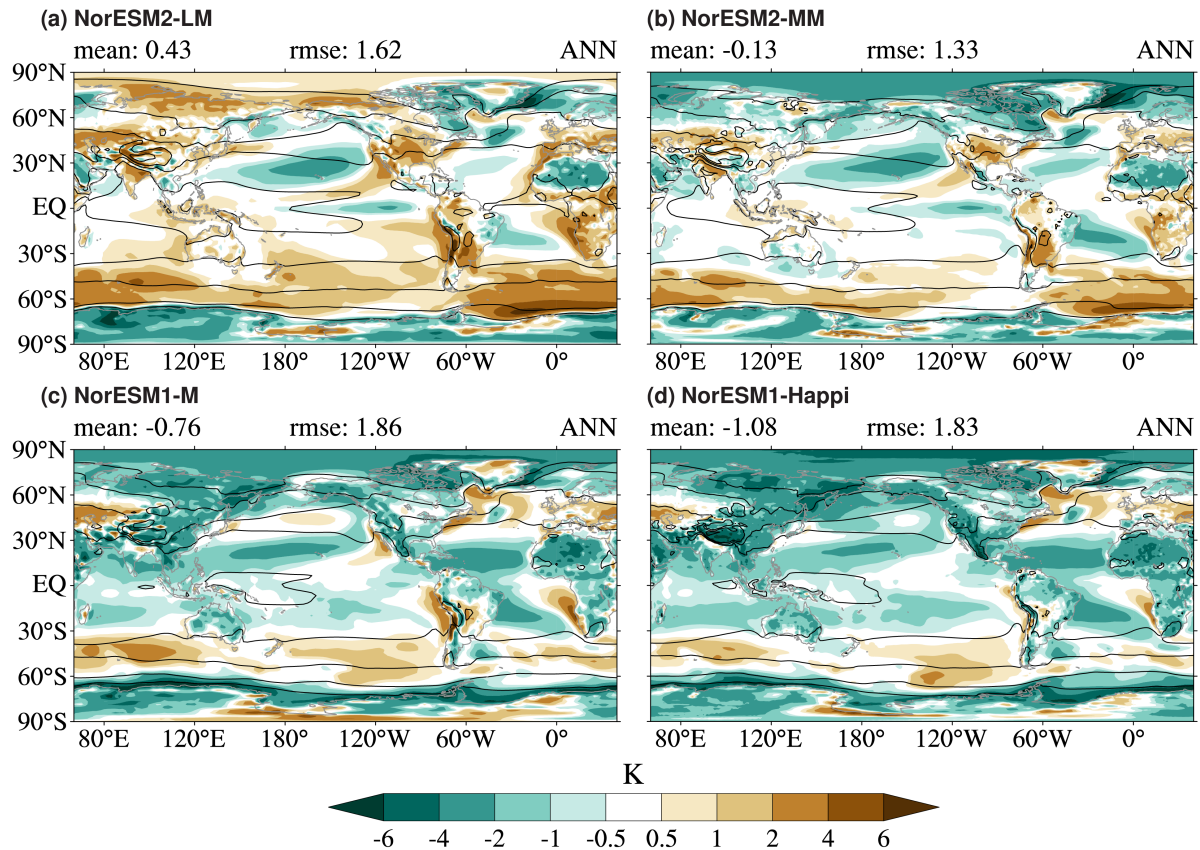


Figure 14. Annual-mean ensemble-mean model bias for near-surface temperature (colors) shown with the present-day model climatology (solid black contours; values from 260 K to 300 K by 10 K) from NorESM2-LM (a; years 1980–2009), NorESM2-MM (b; years 1980–2009), NorESM1-M (c; years 1976–2005), and NorESM1-Happi (d; years 1976–2005). The bias is taken with respect to ERA-Interim (years 1979–2008 for NorESM1-M/Happi and 1980–2009 for NorESM2-LM/MM). Units are K.

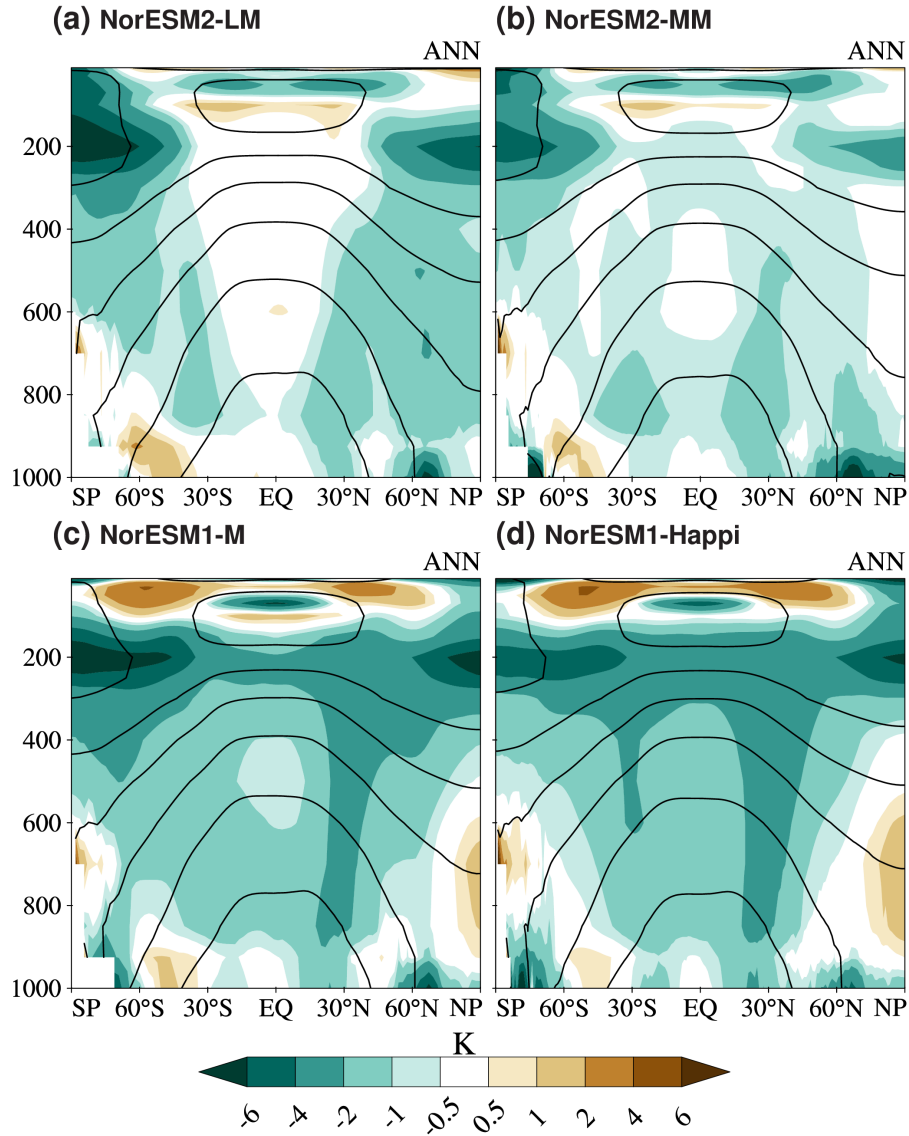


Figure 15. Annual-mean ensemble-mean model bias for temperature (colors) shown with the present-day model climatology (solid black contours; values from 210 K to 285 K by 15 K) from NorESM2-LM (a; years 1980–2009), NorESM2-MM (b; years 1980–2009), NorESM1-M (c; years 1976–2005), and NorESM1-Happi (d; years 1976–2005). Three ensemble members are used for all model versions. The bias is taken with respect to ERA-Interim (years 1979–2008 for NorESM1-M/Happi and 1980–2009 for NorESM2-LM/MM). Units are K.

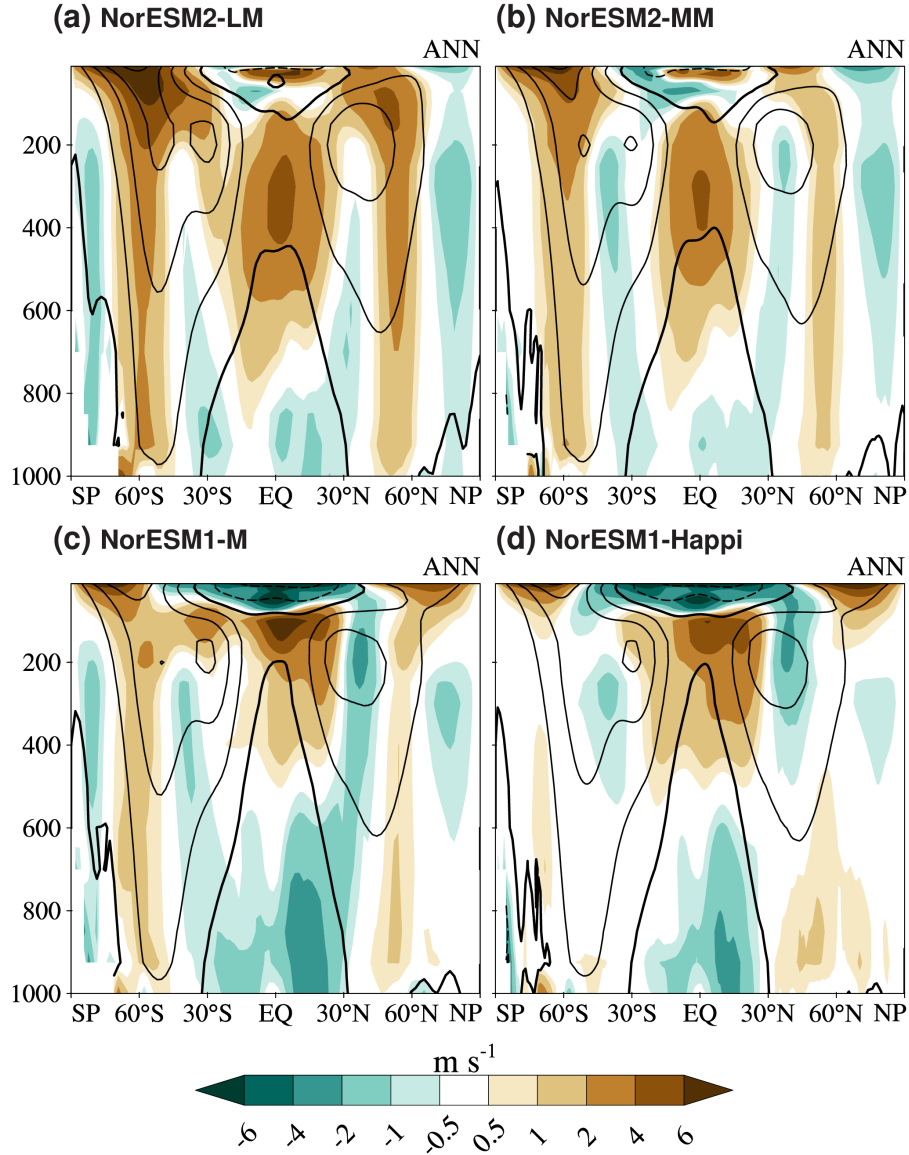


Figure 16. Annual-mean ensemble-mean model bias for the zonal wind (colors) shown with the present-day model climatology (black solid contours show positive values and dashed negative values; contour interval is 10 m s^{-1} ; zero contour is extra thick) from NorESM2-LM (a; years 1980–2009), NorESM2-MM (b; years 1980–2009), NorESM1-M (c; years 1976–2005), and NorESM1-Happi (d; years 1976–2005). Three ensemble members are used for all model versions. The bias is taken with respect to ERA-Interim (years 1979–2008 for NorESM1-M/Happi and 1980–2009 for NorESM2-LM/MM). Units are m s^{-1} .

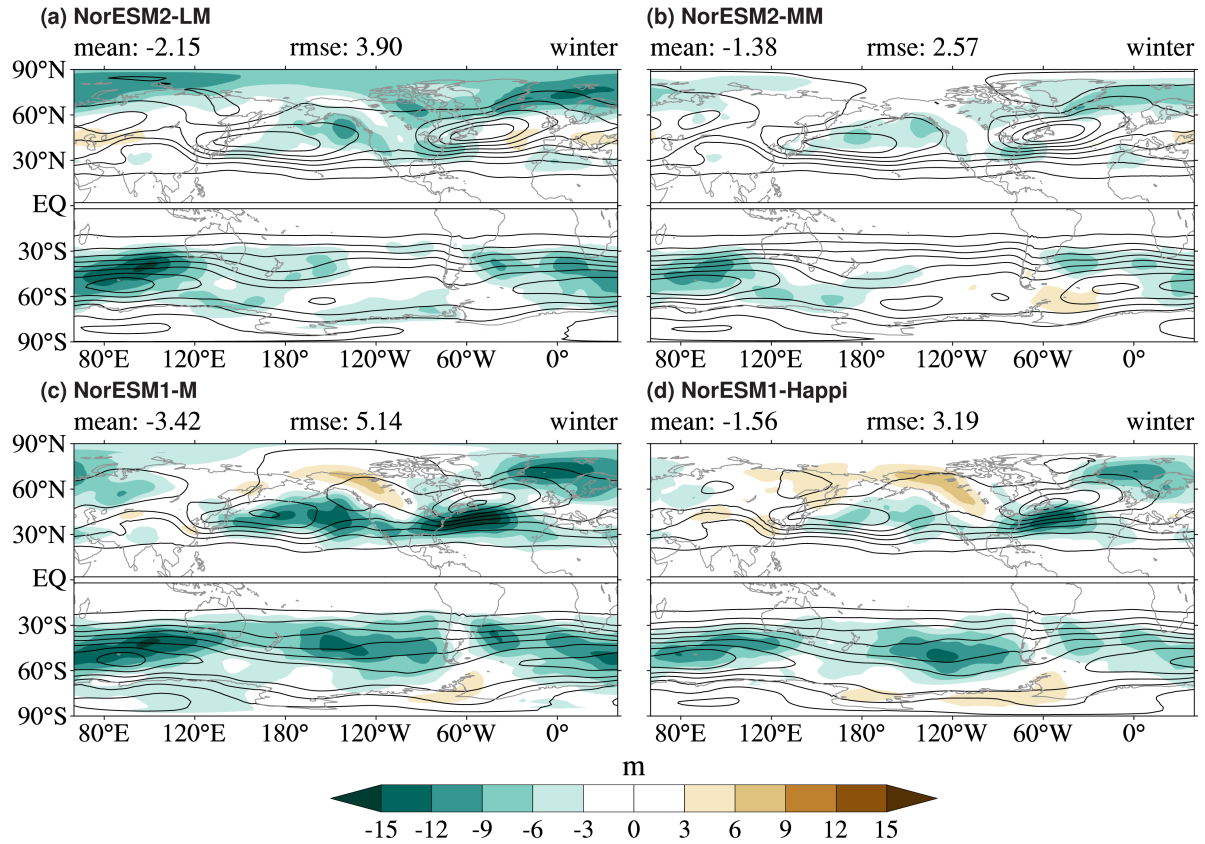


Figure 17. Ensemble-mean model bias for the extratropical storm tracks in terms of bandpass-filtered variability (colors) shown with the present-day model climatology (solid black contours; values from 8 m with intervals of 8 m) for NorESM2-LM (a), NorESM2-MM (b), NorESM1-M (c), and NorESM1-Happi (d). Panels show the winter season for both hemispheres (DJF for the NH and JJA for the SH). The storm tracks are plotted in terms of the standard deviation of the bandpass-filtered geopotential height field at 500 hPa (Z500). The model data is taken from the CMIP6 historical members for NorESM2-LM (three members) and NorESM2-MM (three members) for years 1980–2009 and from the CMIP5 historical members for NorESM1-M (three members) and NorESM1-Happi (three members) for years 1976–2005. The bias is taken with respect to ERA-Interim (years 1980–2009 for NorESM2-LM/MM and 1979–2008 for NorESM1-M/Happi). Units are m.

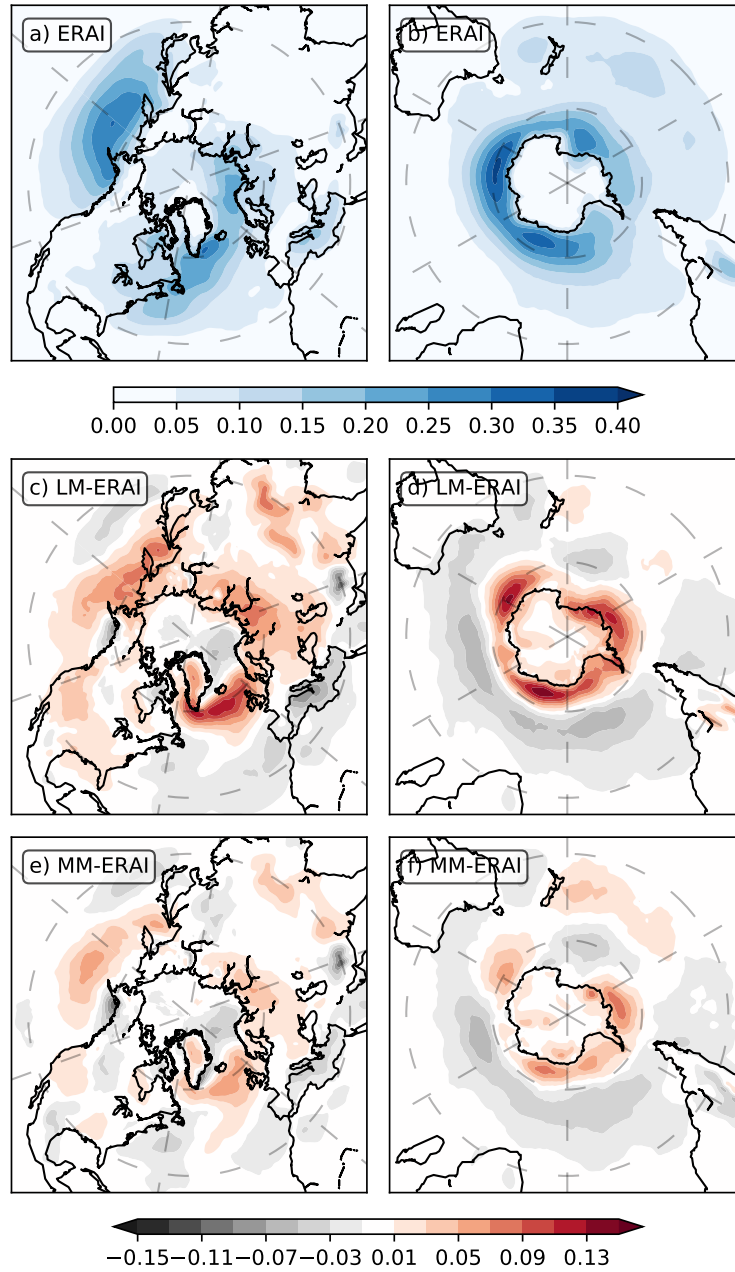


Figure 18. Frequency of occurrence (the unitless numbers give the fraction of the time when cyclones are present) of extratropical surface cyclones for the Northern Hemisphere (a, c, e) and Southern Hemisphere (b, d, f) storm tracks during the respective winter seasons (DJF in the Northern Hemisphere and JJA in the Southern Hemisphere). The figure shows the ERA-Interim climatology (a–b) and the ensemble-mean bias with respect to ERA-Interim for NorESM2-LM (c–d) and NorESM2-MM (e–f). The data is taken from years 1980–2009. Three members are used for both versions of NorESM.

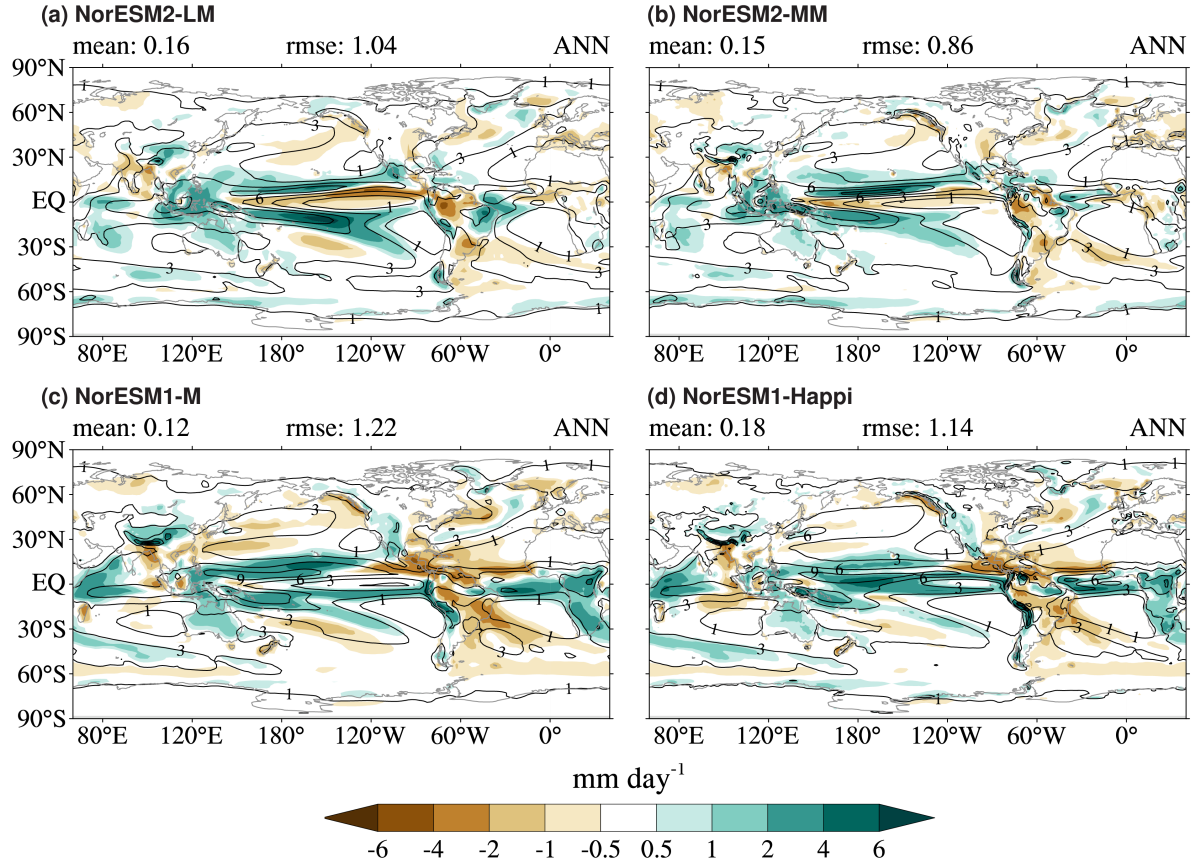


Figure 19. Annual-mean ensemble-mean model bias for total precipitation rate (colors) shown with the present-day model climatology (solid black contours; values from 1 mm day⁻¹ by 2 mm day⁻¹) from NorESM2-LM (a; years 1980–2009), NorESM2-MM (b; years 1980–2009), NorESM1-M (c; years 1976–2005), and NorESM1-Happi (d; years 1976–2005). Three ensemble members are used for all model versions. The bias is taken with respect to GPCP (years 1979–2008 for NorESM1-M/Happi and 1980–2009 for NorESM2-LM/MM). Units are mm day⁻¹.

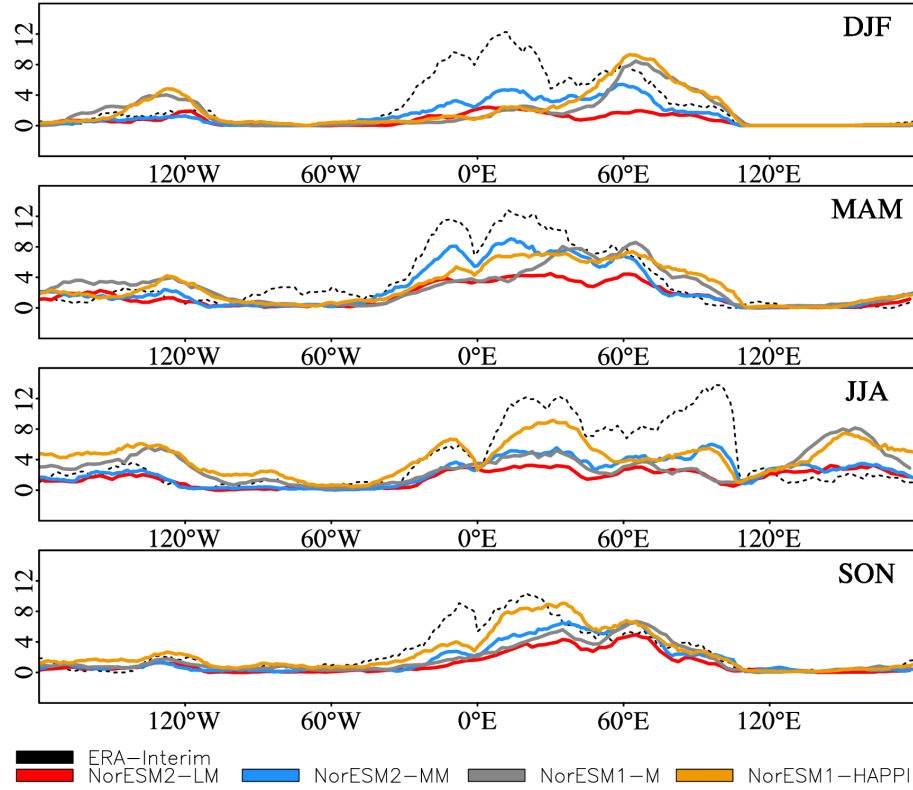


Figure 20. Ensemble-mean seasonal blocking frequency in the Northern Hemisphere for ERA-Interim (stippled black line; years 1980–2009), NorESM2-LM (red solid line; years 1980–2009), NorESM2-MM (blue line; years 1980–2009), NorESM1-M (grey line; years 1976–2005), and NorESM1-Happi (yellow line; years 1976–2005). The model data is taken from the CMIP6 historical members for NorESM2-LM (three members) and NorESM2-MM (three members) and from the CMIP5 historical members for NorESM1-M (three members) and NorESM1-Happi (three members). The blocking frequency is computed using the variational Tibaldi and Molteni (vTM) index (Tibaldi and Molteni, 1990; Pelly and Hoskins, 2003; Iversen et al., 2013; Graff et al., 2019). Units are percent.

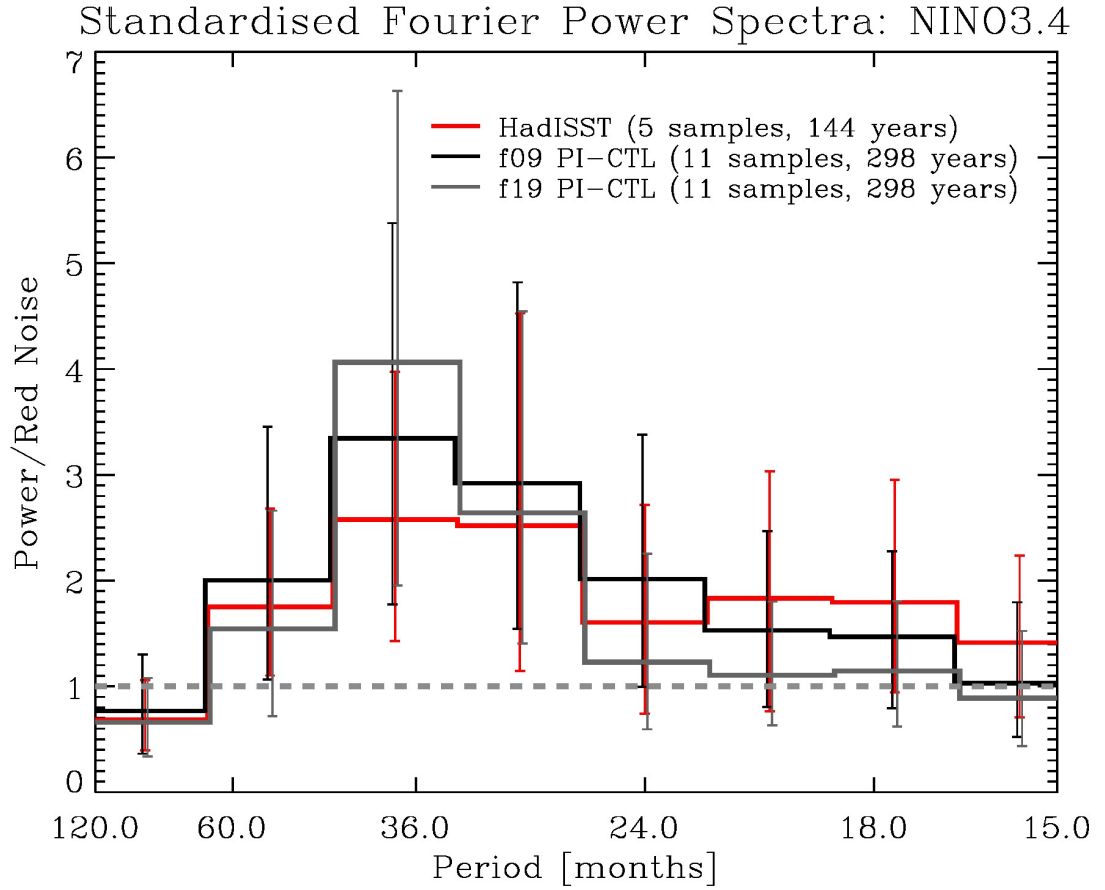


Figure 21. Frequency analysis of El Niño events in NorESM2-MM (f09) and NorESM2-LM (f19) and HadISST v1.1 (Rayner et al., 2003) observed data. Fourier power spectra of NINO3.4 anomalies, normalized to AR1 red-noise model for each (using bootstrapping, 1000 samples).

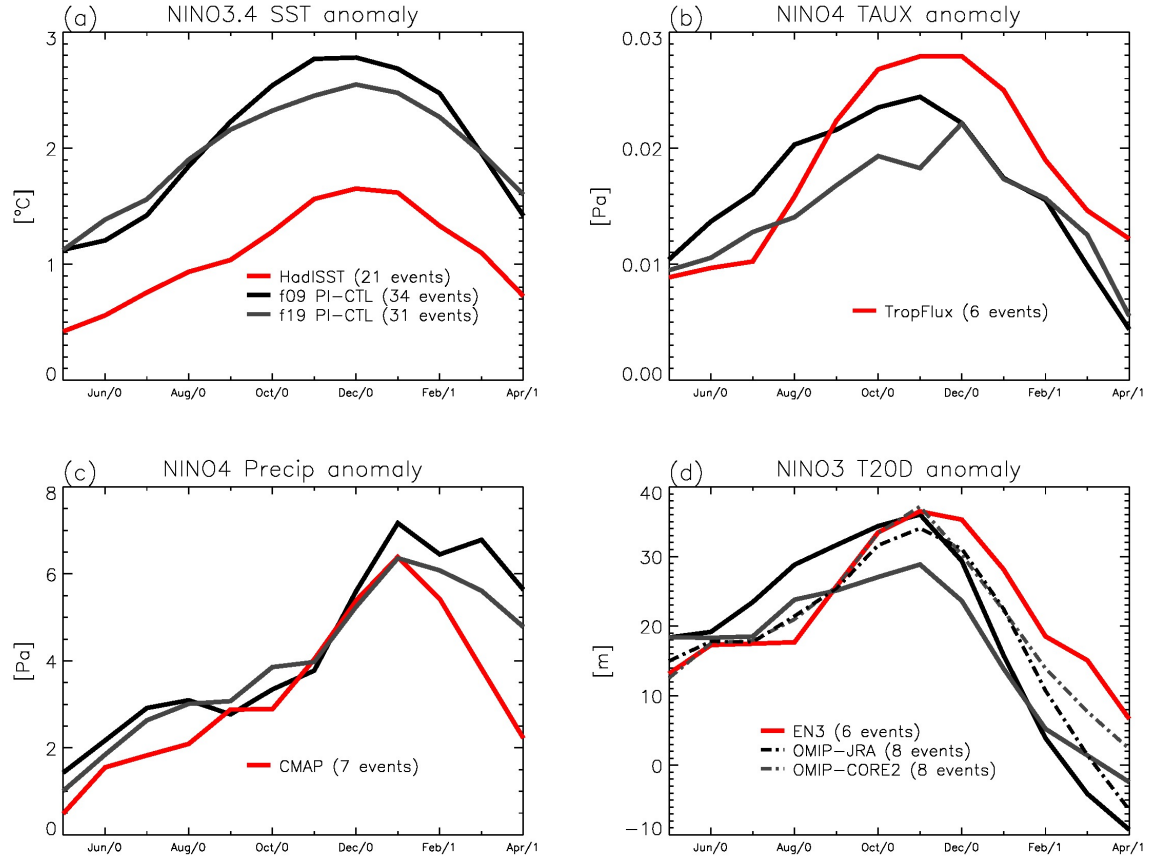


Figure 22. El-Niño monthly-mean composite anomalies averaged over NINOx regions (cf legend at the top of each panel) for SST, zonal wind-stress, precipitation, and 20° C isotherm depth in the Equatorial Pacific. The composite El Niño event is obtained by averaging a number of years during which the occurrence of El Niño is diagnosed based on NINO3.4 anomalies. The selection criteria are on magnitude (1.5 standard deviations), duration (three months), seasonality (peak between November and January), and phase (no preceding El Niño, and a following La Niña). Year 0 indicates the year during which the event develops. For the observations, SST are HadISST (Rayner et al., 2003), wind-stress from TropFlux (Praveen Kumar et al., 2012), precipitation from CMAP (Xie and Arkin, 1997), and the 20° C isotherm depth is obtained from the EN3 dataset (Guinehut et al., 2009).

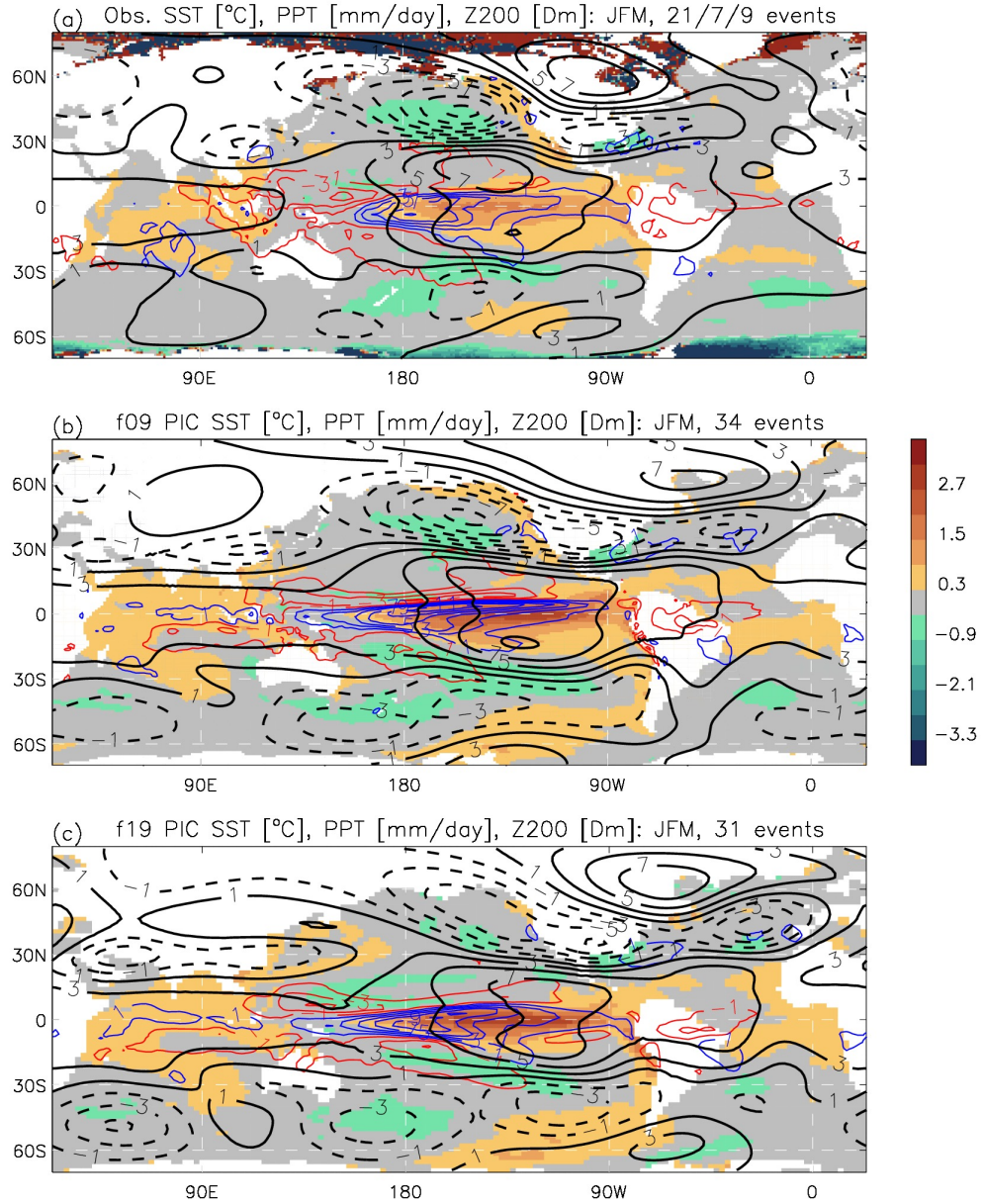


Figure 23. El-Nino JFM composite anomalies from observations (panel (a)), NorESM2-MM (panel (b)), and NorESM2-LM (panel (c)). colour-filled contour levels denote SST anomalies (contour levels indicated in the legend on the right of panel (b)), precipitation anomalies (coloured line contours, red for negative values and blue for positive values; interval 2 mm day⁻¹), and geopotential height anomalies at 200 hPa (black and white contour lines, solid for positive and stippled for negative values; interval 20 metres). The composites are defined as for Fig. 22 (cf caption to that Figure).

Table 1. Climate sensitivities of NorESM2-LM and NorESM2-MM compared to NorESM1 model versions (Equilibrium climate sensitivity (ECS), transient climate sensitivity (TCR) and transient climate response to cumulative carbon emissions (TCRE)).

Model version	ECS [K]	TCR [K]	TCRE [K EgC ⁻¹]	Model Cost pe hours per simulated year ^a
NorESM2-MM	2.50	1.33	1.21	4000
NorESM2-LM	2.54	1.48	1.36	1500
NorESM1-Happi	2.82	1.52	N/A	1000
NorESM1-ME	2.99	1.56	1.93	300
NorESM1-M	2.86	1.39	N/A	300

^aIntel compiler with -O2 and -xAVX option, 1024 pes, single-threaded, MPI on Lenovo NeXtScale M5 cluster, 32-way nodes, dual 16-core Xeon E5-2683@2.10GHz, 64 GiB per node. Timing is system and compiler dependent, and approximate only.

Table 2. Tuning parameters of NorESM2-LM and NorESM2-MM. Compared to CESM2 (Danabasoglu et al., 2020) where applicable.

Tuning target	parametrisation / parameter (option)	direct effect (incr. value)	net effect (incr. value)	CESM2 (LM / MM)	NorESM2 (LM / MM)
SW radiation	CLUBB <i>gamma</i>	increase PBL-top en- trainment	reduce low stratiform cloud	0.280 / 0.308	0.264 / 0.286
LW radiation	ZM <i>c0</i> (land,sea)	increase convective cloud autoconversion	reduce TOA LW	7.5e-3 / 0.03	0.02 / 0.02
LW radiation	ZM <i>ke</i> (land,sea)	increase rain re- evaporation	increase TOA LW and moisture in lower tro- posphere	5e-6 / 1e-5	8e-6 / 8e-6
Cloud forcing	MG <i>dcs</i>	increase conversion from cloud ice to snow	reduce SW/LW TOA CF ratio	2e-4 / 5e-4	5.5e-4 / 5.0e-4
Cloud fraction	CLDFRC2M option	ambient RH depen- dence of ice cloud fraction (4: off; 5: on)	increase ice cloud frac- tion	5	4 / 5
Cloud fraction	CLDFRC2M <i>rhmini</i>	RH threshold for ice cloud formation	reduce fraction of thin high cloud	0.8	N.A. / 0.9
Cloud fraction	CLDFRC2M <i>qist_min,qist_max</i>	elevate ice concen- trations at which to increase/saturate ice-cloud fraction	reduce high cloud	1e-7 / 5e-3	N.A. / 2e-5, 2.5e-4
Ocean tempera- ture	background ocean vertical diffusivity	increase ocean diapyc- nal mixing	warmer ocean water be- low thermocline, cooler surface	$1.6 \times 10^{-5} \text{m}^2 \text{s}^{-1}$	$1.0 \times 10^{-5} \text{m}^2 \text{s}^{-1} /$ $1.0 \times 10^{-5} \text{m}^2 \text{s}^{-1}$

Table 3. Summary of Carbon fluxes and stocks. Fluxes of gross primary production (GPP; Pg C/year), and soil and vegetation carbon stocks (Pg C). Data are averaged over the period 1995-2014 for NorESM2 (MM and LM) and 1982-2005 for NorESM1 (~~Tjiputra et al., 2013~~)([Tjiputra et al., 2013](#)). Observational data for GPP are from FLUXNET-MTE (~~Jung et al., 2011~~)([Jung et al., 2011](#)), for soil C from Harmonized ~~World~~[World](#) Soil Database (Fao/Iiasa/Isric/Isscas/Irc, 2012) and Veg C from GEOCARBON project (~~Avitabile et al., 2016~~)([Avitabile et al., 2016](#)); ~~Santoro et al., 2015~~)([Santoro et al., 2015](#)), all available from ILAMB.org.

Data source	GPP	Soil C (top meter*)	Veg. C
Observations	118 ± 0	1330 ± 0	451 ± 0
NorESM1	130	537*	551
NorESM2-LM	114	994	486
NorESM2-MM	112	868	478

*except for NorESM1, where soil carbon includes the full soil column.

Table 4. Global and annual means from the historical (years 1980–2009) simulations for NorESM2-MM and NorESM2-LM (3 member ensemble average). Values from re-analysis data or observations (references in the last column). The NorESM values are adjusted to compensate for the slight deviation between the top of the model atmosphere (abbreviated to TOA) and the top of the atmosphere as seen from satellites (Collins et al., 2006; TOA_{SAT} in this table).

Variable	NorESM1-M	NorESM1-Happi	NorESM2-LM	NorESM2-MM	Observation
TOA _{SAT} net SW flux (W m ⁻²)	234.9	240.2	237.3	238.2	240.6 ^a 244.7 ^b 234.0 ^c
TOA _{SAT} net clear-sky SW flux (W m ⁻²)	289.5	289.4	287.4	287.2	287.6 ^a 294.7 ^b 289.3 ^c
TOA _{SAT} upward LW flux (W m ⁻²)	232.4	237.6	237.6	236.7	239.6 ^a 239.0 ^b 233.9 ^c
TOA _{SAT} clear-sky upward LW flux (W m ⁻²)	262.3	263.5	261.5	262.0	266.1 ^a 266.9 ^b 264.4 ^c
TOA _{SAT} LW cloud forcing (W m ⁻²)	29.9	25.8	24.7	24.4	26.5 ^a 27.2 ^b 30.3 ^c
TOA _{SAT} SW cloud forcing (W m ⁻²)	-54.6	-49.2	-50.3	-49.0	-47.1 ^a -48.6 ^b -54.2 ^c
Cloud cover (%)	53.8	46.4	61.8	62.7	66.8 ^d 66.8 ^e
Cloud liquid water path (g m ⁻²)	125.3	121.3	84.0	82.7	86.9 ^f
Surface sensible heat flux (W m ⁻²)	17.8	18.0	21.5	22.0	19.4 ^g 15.8 ^h 13.2 ⁱ
Surface latent heat flux (W m ⁻²)	81.7	83.7	83.2	83.1	87.9 ^g 84.9 ^j 82.4 ^k 89.1 ^l

^aCRES-EBAF (Loeb et al., 2005, 2009, 2012), ^bCRES (Loeb et al., 2005, 2009, 2012), ^cERBE (Harrison et al., 1990; Kiehl and Trenberth, 1997), ^dISCCP (Rossow and Schiffer, 1999; Rossow and Dueñas, 2004), ^eCLOUDSAT (L'Ecuyer et al., 2008), ^f(O'Dell et al., 2008), ^gJRA25 (Onogi et al., 2007), ^hNCEP (Kanamitsu et al., 2002), ⁱLARYEA (Large and Yeager, 2004), ^jECMWF (Trenberth et al., 2011), ^kERA40 (Uppala et al., 2005), ^lWHOI (Yu and Weller, 2007; Yu et al., 2008)

Table 5. Evaporation (E) and precipitation (P) for different historical NorESM simulations and reference datasets. Units are thousand km³ water per year. The years used are 1980–2009, except for NorESM1-Happi (1976–2005) which is from Graff et al. (2019), and the last two lines (2002–2008) which are from Trenberth et al. (2011).

Simulation	E _{global}	P _{global}	(E-P) _{global}	E _{ocean}	P _{ocean}	(E-P) _{ocean}
NorESM1-M r1	522.8	522.8	0.035	438.3	398.7	39.6
r2	522.7	522.7	0.020	437.9	397.8	40.2
r3	521.9	521.8	0.026	437.6	398.1	39.5
NorESM1-Happi		533.5		451.7	406.5	45.2
NorESM2-LM r1	530.3	530.3	0.053	459.8	416.2	43.6
r2	529.8	529.8	0.019	459.6	415.5	44.0
r3	530.1	530.1	0.022	459.7	415.4	44.3
NorESM2-MM r1	528.9	528.8	0.020	459.0	412.2	46.8
r2	529.4	529.4	0.025	459.5	413.3	46.3
r3	529.9	529.8	0.024	460.0	413.8	46.2
Observation synthesis	500	500	0	426	386	40
ERA-Interim	538	531	7	456	412	44