

Supplemental materials for:

**Ocean biogeochemistry in the Norwegian Earth System Model version 2 (NorESM2)**

J. F. Tjiputra<sup>1\*</sup>, J. Schwinger<sup>1</sup>, M. Bentsen<sup>1</sup>, A. Morée<sup>2</sup>, S. Gao<sup>3</sup>, I. Bethke<sup>2</sup>, N. Goris<sup>2</sup>, A. Gupta<sup>1</sup>, Y. He<sup>4</sup>, C. Heinze<sup>2</sup>, and M. Schulz<sup>5</sup>

<sup>1</sup>NORCE Climate, Bjerknes Centre for Climate Research, Bergen, Norway

<sup>2</sup>Geophysical Institute, University of Bergen and Bjerknes Centre for Climate Research, Bergen, Norway

<sup>3</sup>Institute of Marine Research, Bergen, Norway

<sup>4</sup>Nansen Environmental and Remote Sensing Centre, Bergen, Norway

<sup>5</sup>Norwegian Meteorological Institute, Oslo, Norway

## 1 Content descriptions

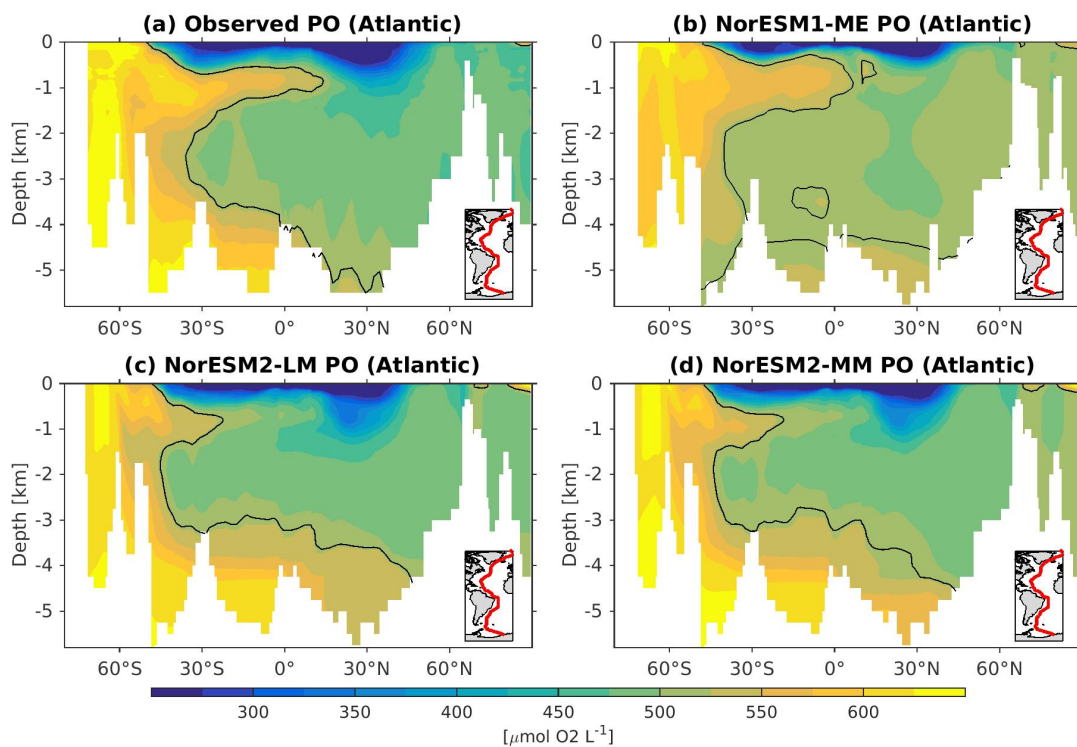
This supplementary materials contains plots of quasi-conservative climatology PO (phosphate-oxygen) tracer for the Atlantic section from observations and NorESM models. In addition, plots of climatology fields similar to that in the main document, but from NorESM2-LM model version are presented.

---

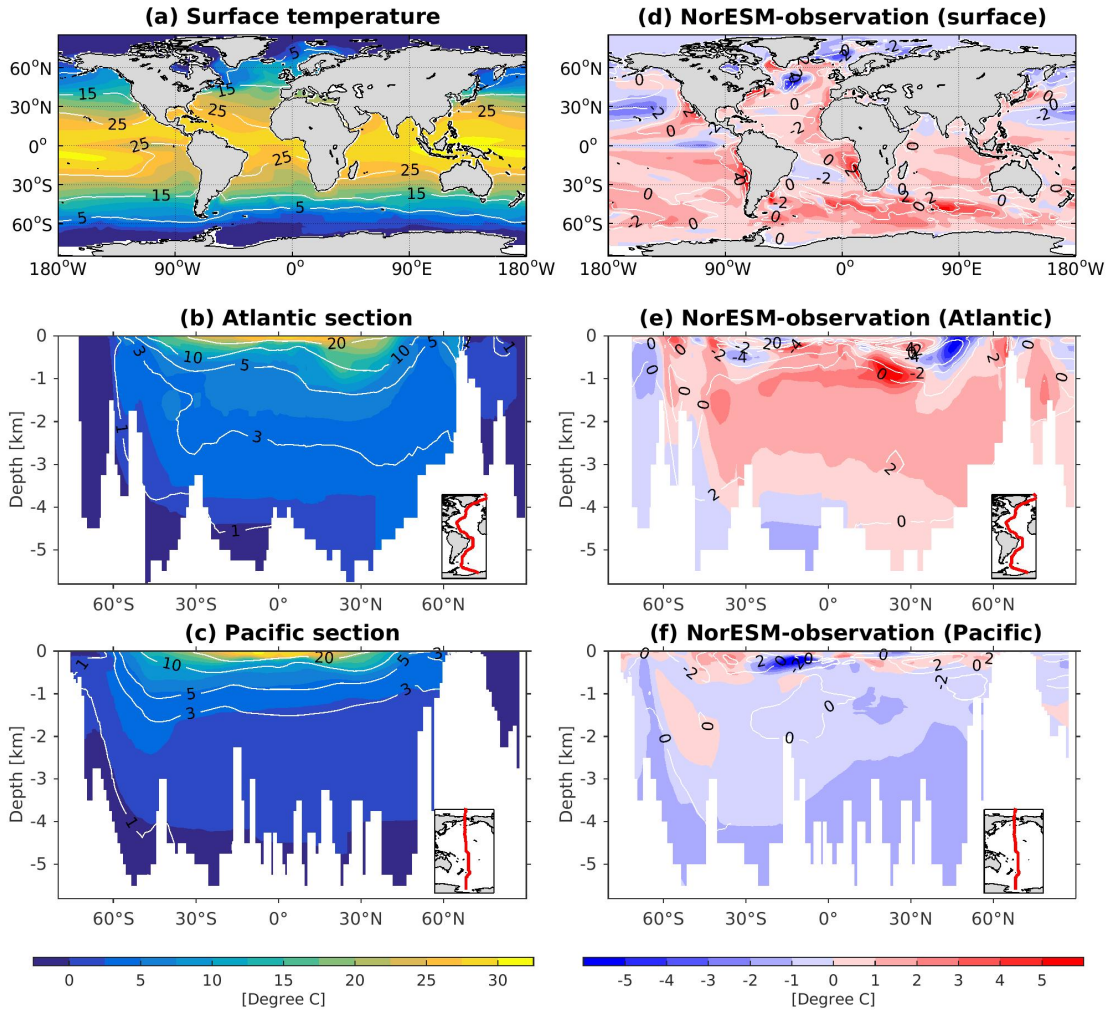
\*Corresponding author

Email: [jerry.tjiputra@norceresearch.no](mailto:jerry.tjiputra@norceresearch.no)

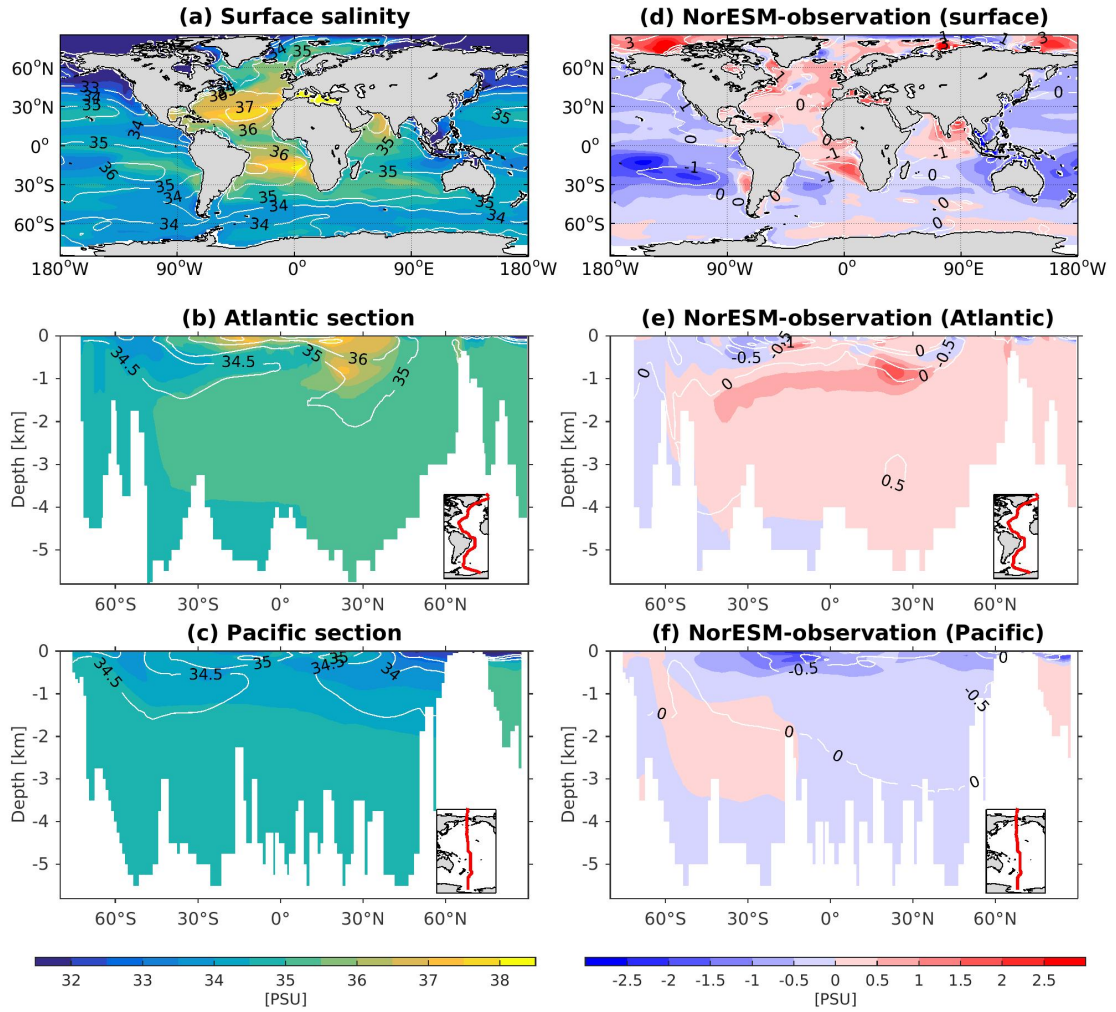
## 2 Figures



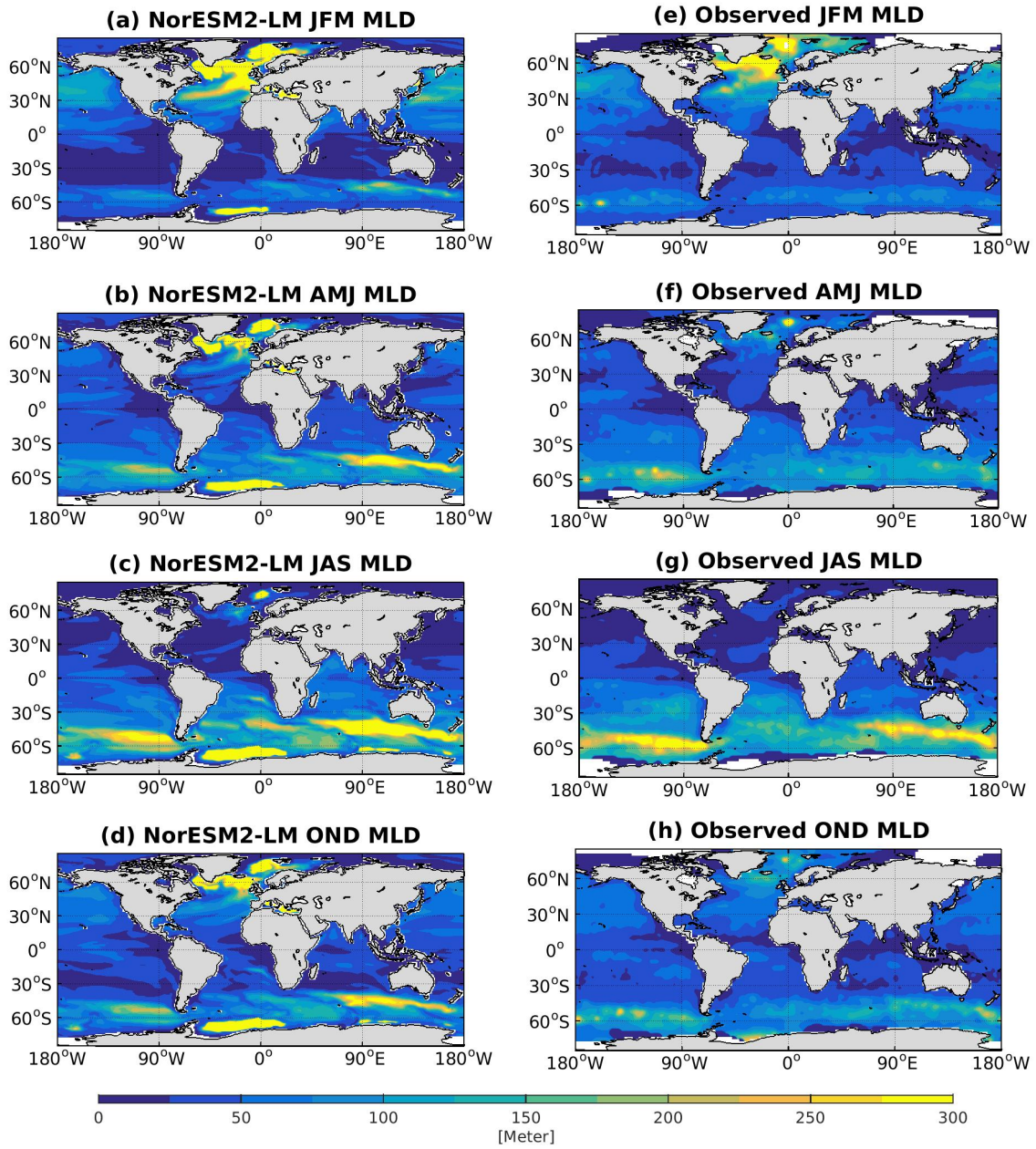
**Supplemental Figure S1.** Atlantic section plot of PO (phosphate-oxygen) tracer from observations and different NorESM model versions. Black contour lines depict value of  $520 \mu\text{mol O}_2 \text{ L}^{-1}$ , which approximately illustrate the boundary separating the northern source water and the southern source water in the interior.



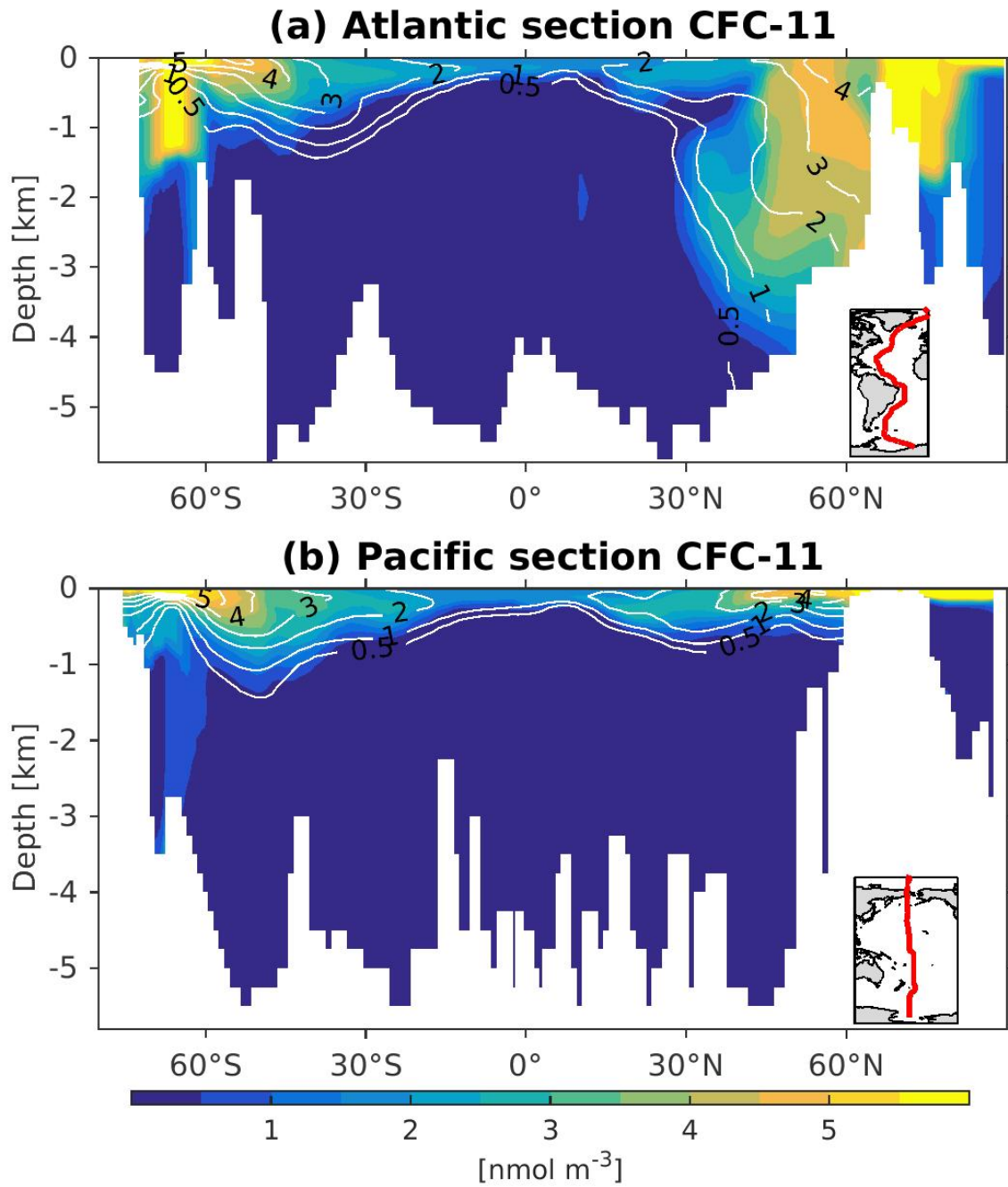
**Supplemental Figure S2.** Climatology temperature values at the (a) surface and across the vertical sections of (b) Atlantic and (c) Pacific from NorESM2-LM (color-shadings) and observations (contour lines). Difference between NorESM2 (NorESM1) and observations are shown in color-shadings (contour-lines) in panels (d)-(f).



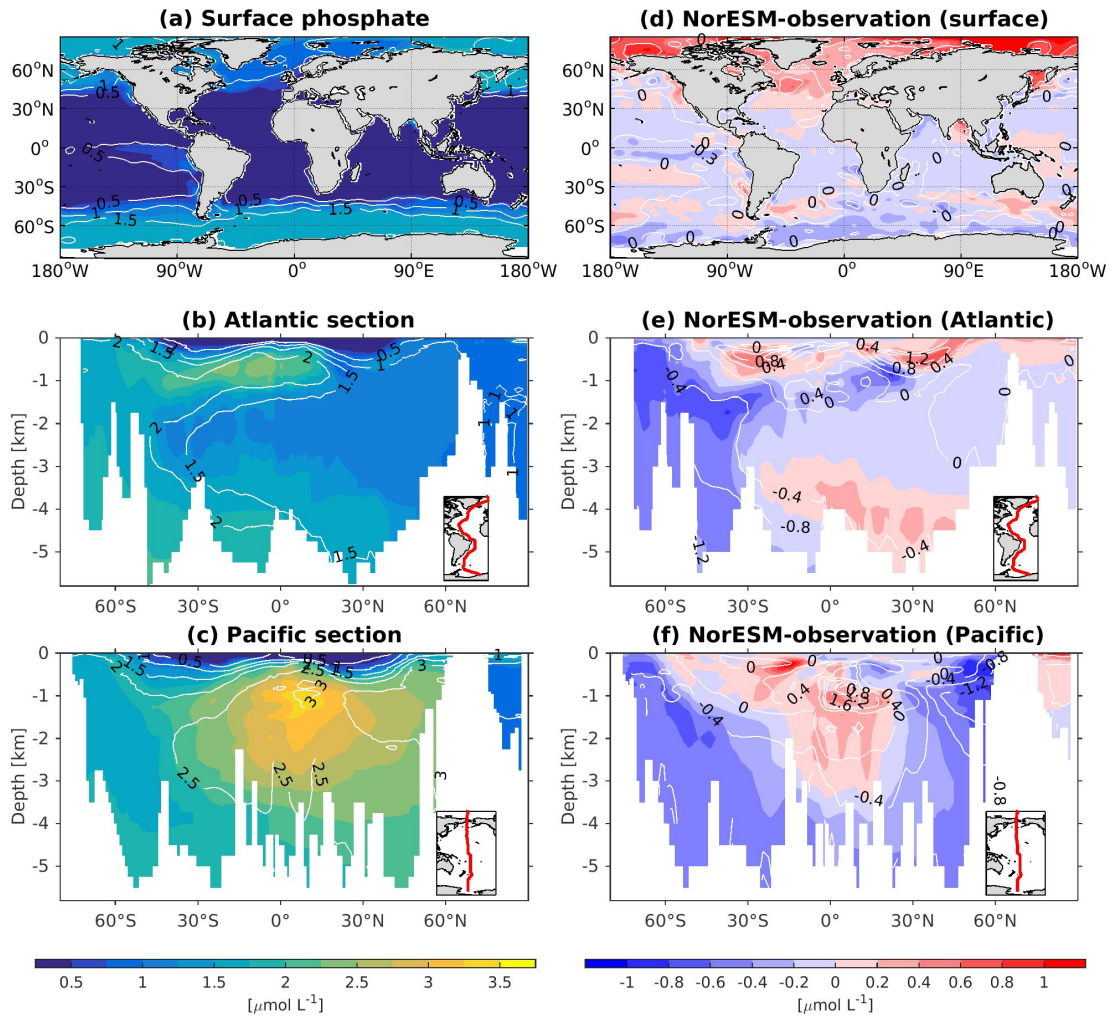
Supplemental Figure S3. Same as Fig. S2 but for salinity.



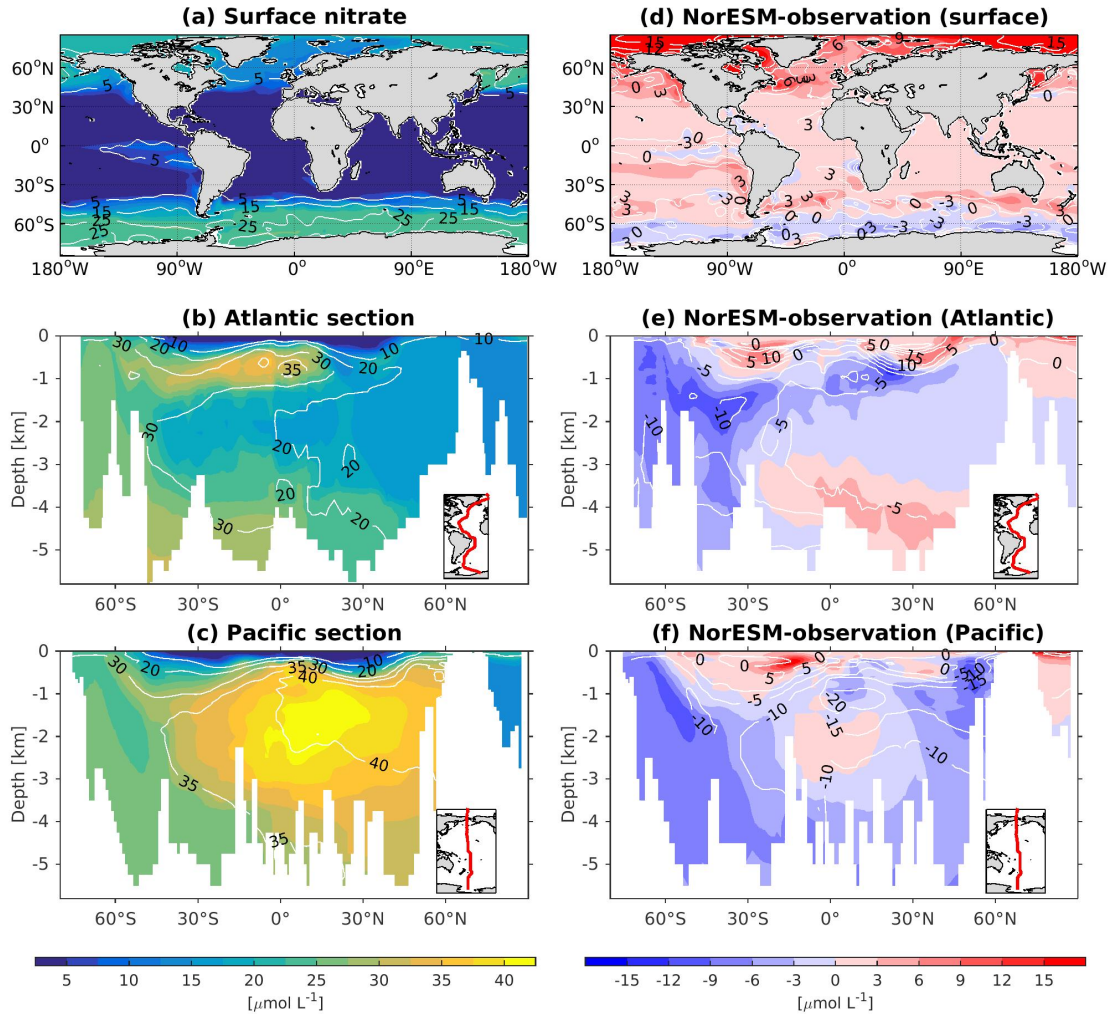
**Supplemental Figure S4.** Climatology seasonal mixed layer depth as (left-column) simulated in NorESM2-LM and (right-column) estimated from from observations.



Supplemental Figure S5. Same as Fig. S2 but for CFC-11 tracer.

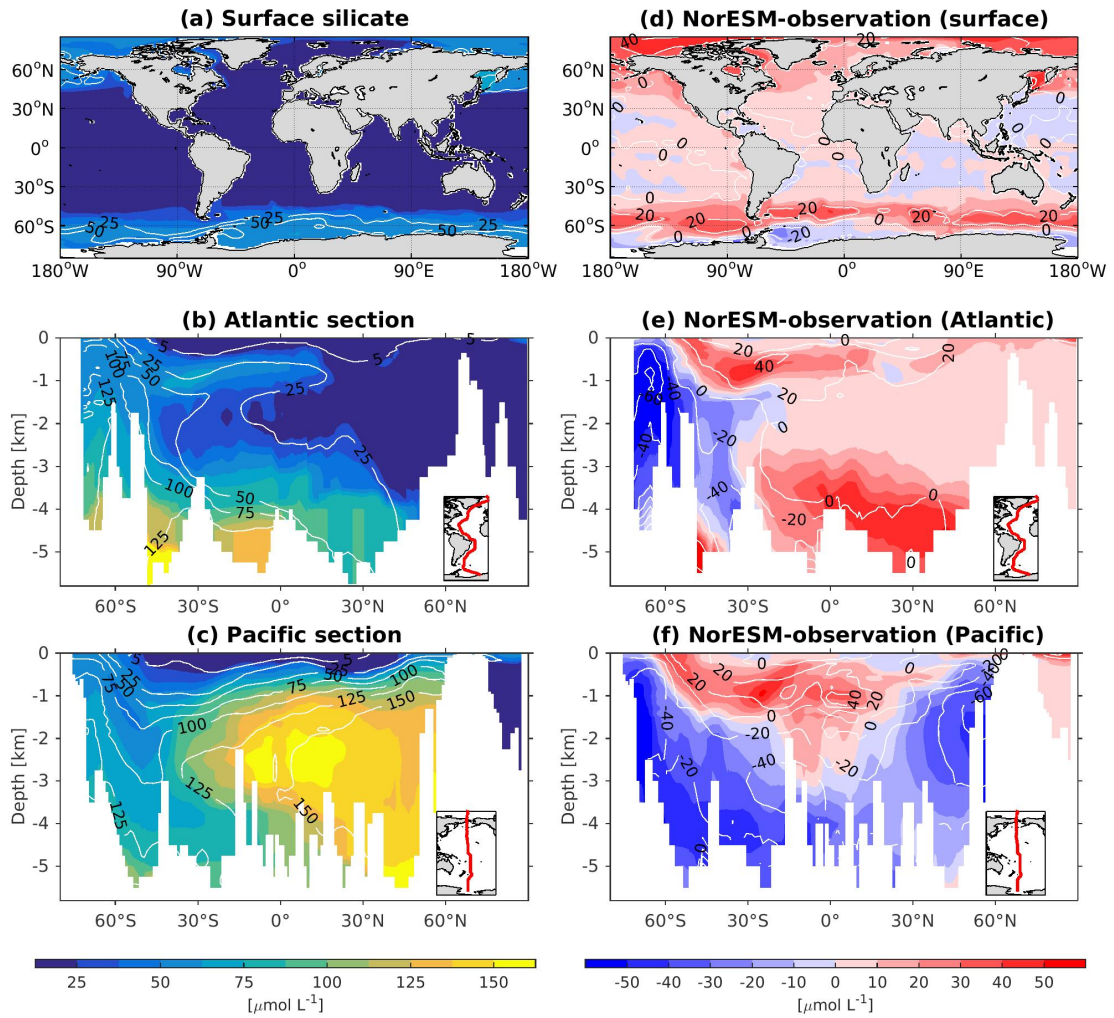


Supplemental Figure S6. Same as Fig. S2 but for phosphate concentrations.

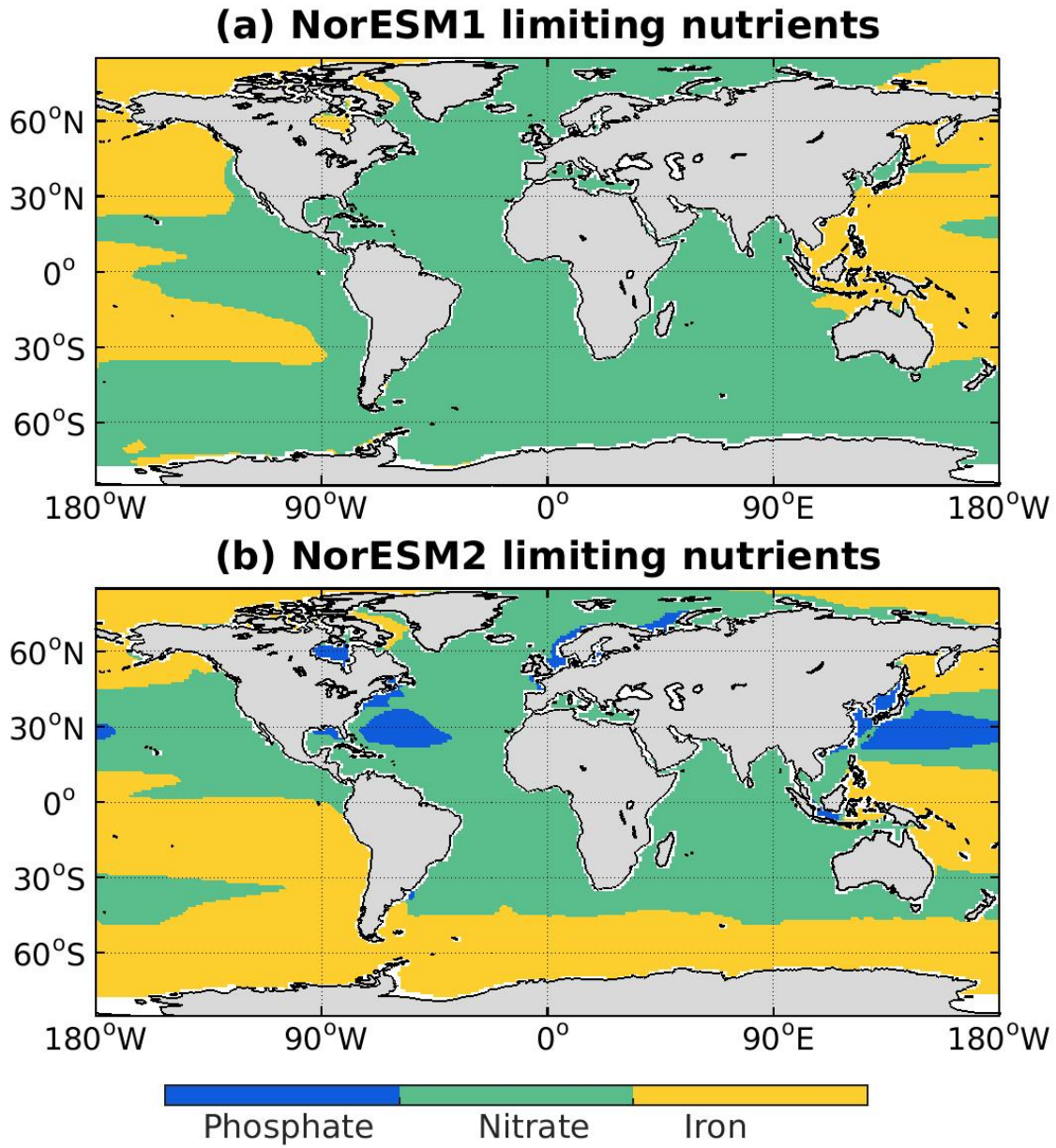


Supplemental Figure S7. Same as Fig. S2 but for nitrate concentrations.

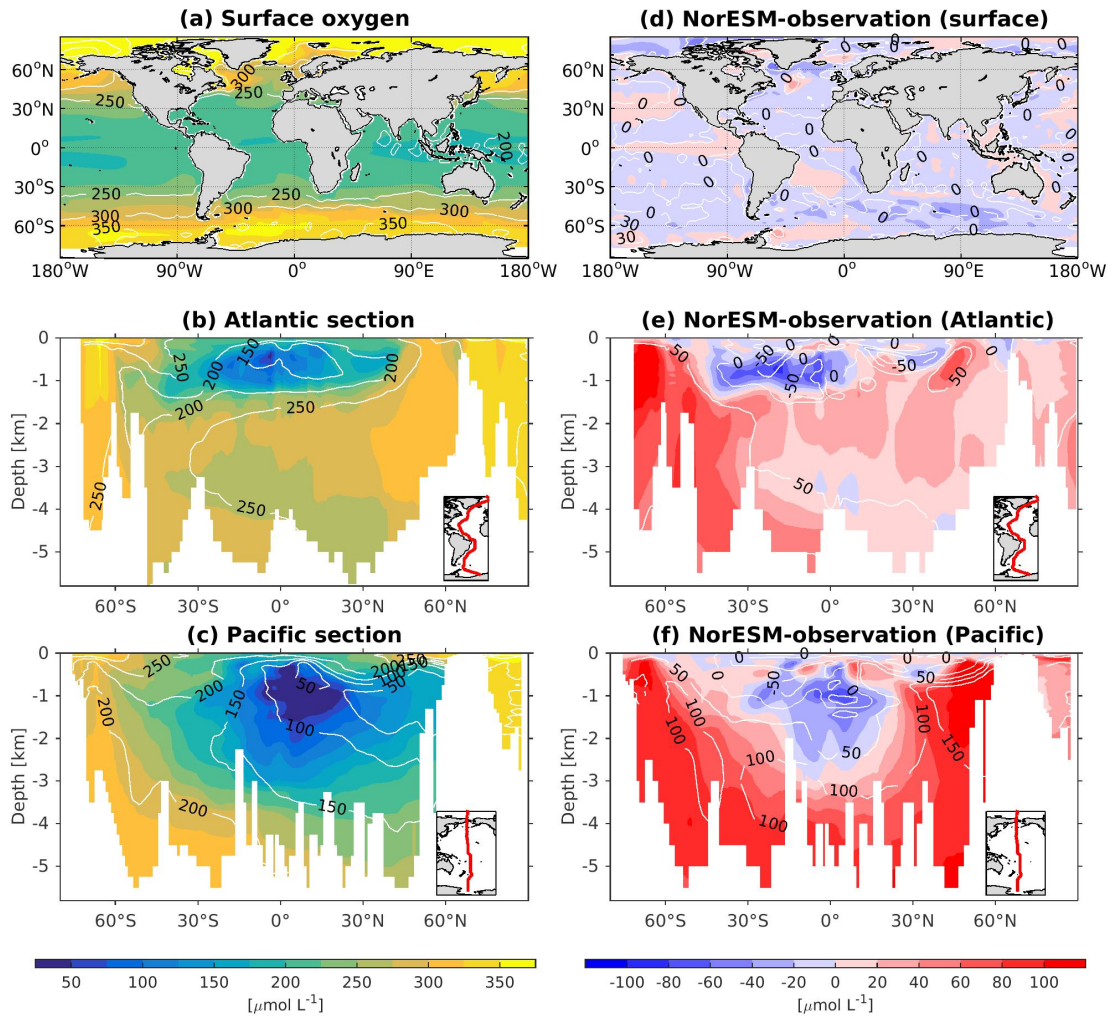




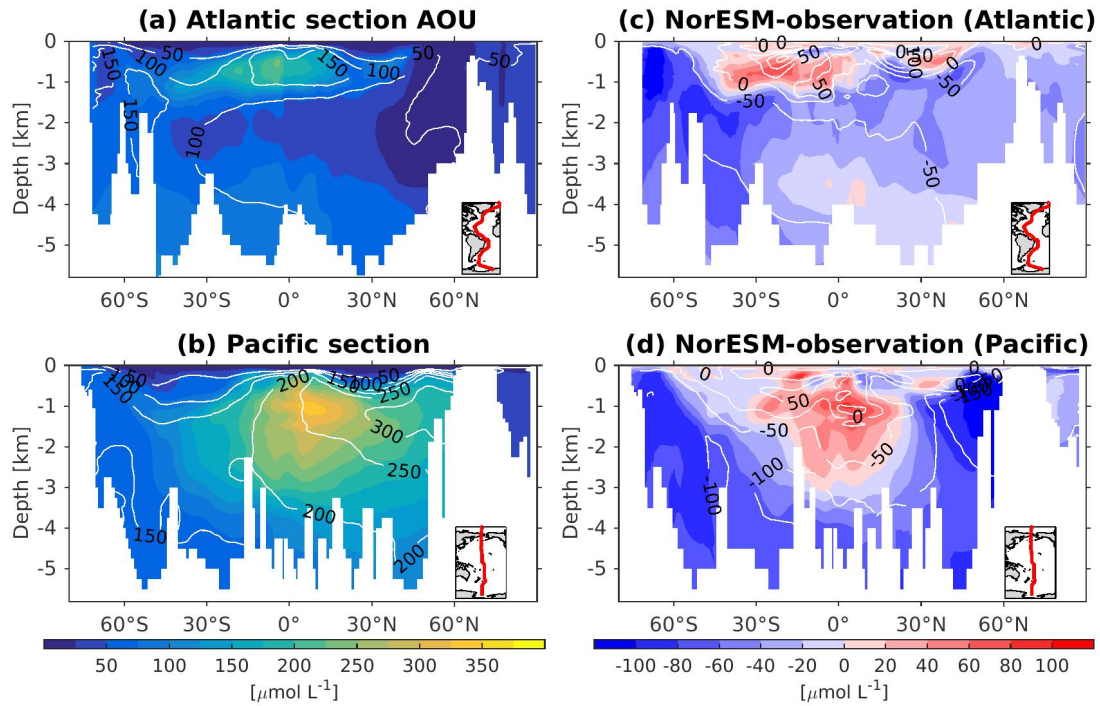
**Supplemental Figure S8.** Same as Fig. S2 but for silicate concentrations.



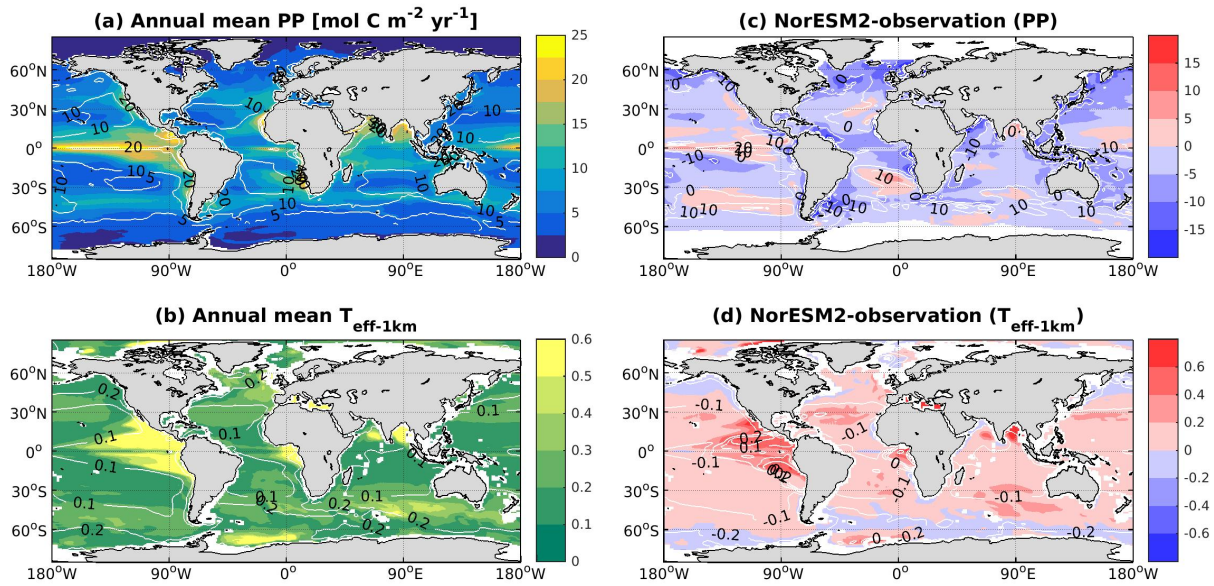
**Supplemental Figure S9.** Maps of limiting nutrients for biological productivity as simulated in (a) NorESM1-ME and (b) NorESM2-LM.



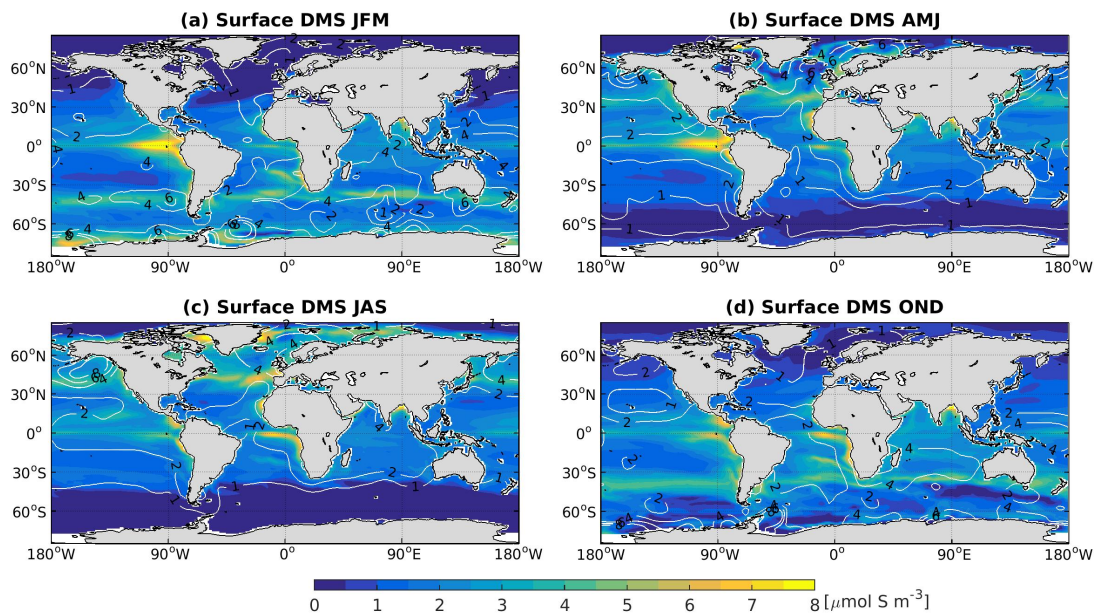
Supplemental Figure S10. Same as Fig. S2 but for dissolved oxygen concentrations.



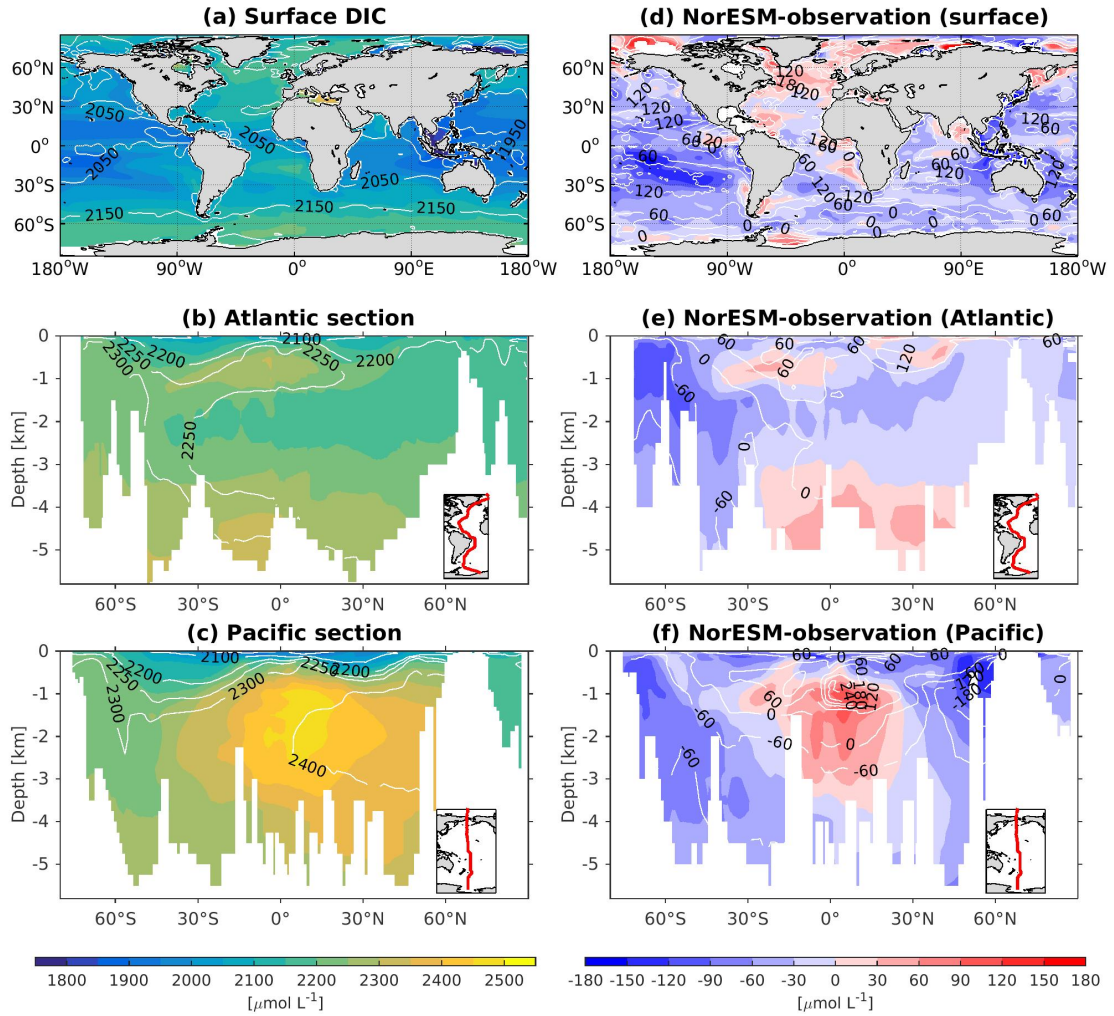
**Supplemental Figure S11.** Climatology apparent oxygen utilization (AOU) values across the vertical sections of (a) Atlantic and (b) Pacific from NorESM2-LM (color-shadings) and observations (contour lines). Difference between NorESM2-LM (NorESM1-ME) and observations are shown in color-shadings (contour-lines) in panels (c)-(d).



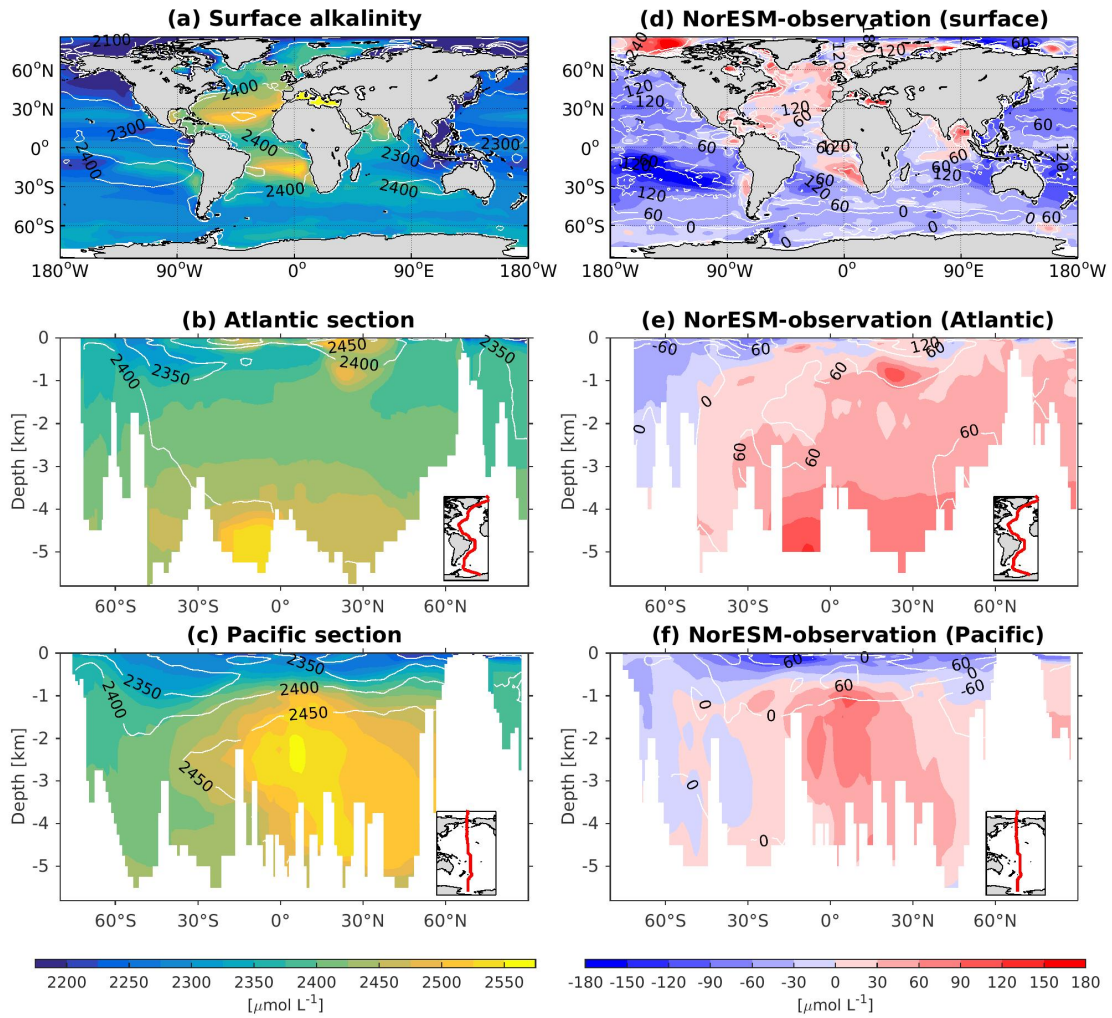
**Supplemental Figure S12.** Annual mean (a) vertically-integrated contemporary primary production and (b) transfer efficient ( $T_{eff-1km}$ ) as simulated in NorESM2-LM (color-shadings) and from observations (contour-lines). Respective difference between NorESM2 (NorESM1) and observations are shown in color-shadings (contour-lines) in panels (c)-(d).



**Supplemental Figure S13.** Seasonally-averaged surface concentration of DMS as simulated in NorESM2-OC (color-shadings) and from observations (contour-lines).

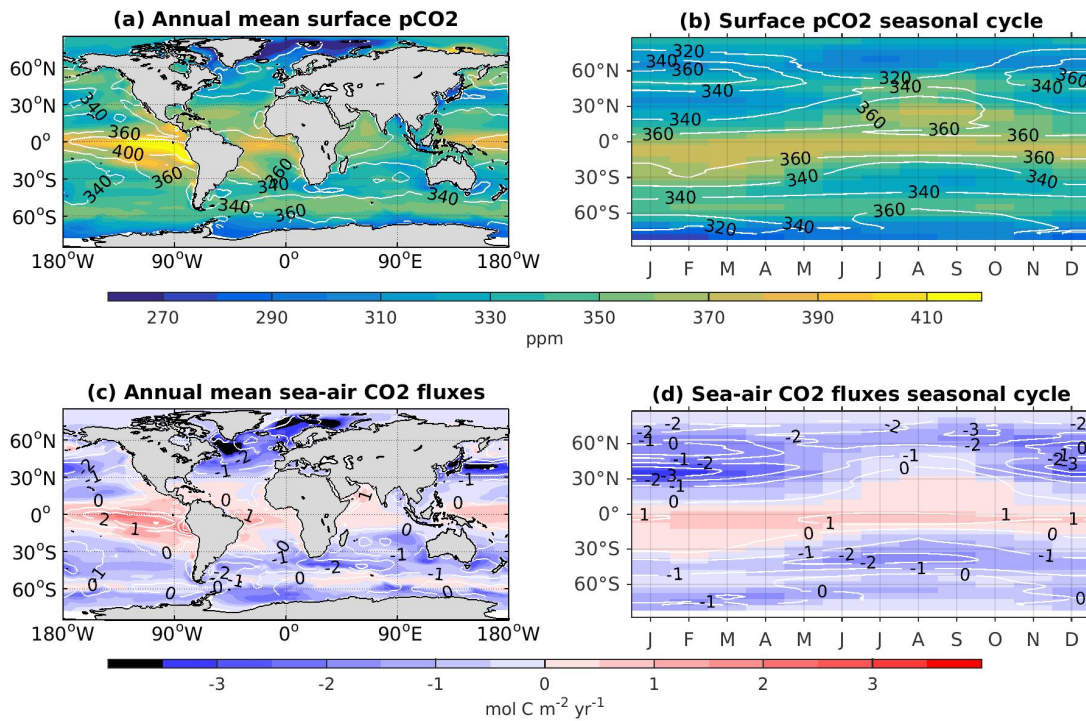


Supplemental Figure S14. Same as Fig. S2 but for dissolved inorganic carbon concentrations.



Supplemental Figure S15. Same as Fig. S2 but for total alkalinity concentrations.





**Supplemental Figure S16.** Surface climatology maps of (a) partial pressure of CO<sub>2</sub> and (c) sea-air CO<sub>2</sub> fluxes together with Hovmöller plots of zonally-averaged seasonal cycle of (b) surface pCO<sub>2</sub> and (d) sea-air CO<sub>2</sub> fluxes as simulated in NorESM2-LM (color-shadings) and from observations (contour-lines).