

FALL3D-8.0: a computational model for atmospheric transport and deposition of particles, aerosols and radionuclides. Part I: model physics and numerics

Arnau Folch¹, Leonardo Mingari¹, Natalia Gutierrez¹, Mauricio Hanzich¹, Giovanni Macedonio², and Antonio Costa³

¹CASE Department, Barcelona Supercomputing Center, Barcelona, Spain

²Istituto Nazionale di Geofisica e Vulcanologia, Osservatorio Vesuviano, Napoli, Italy

³Istituto Nazionale di Geofisica e Vulcanologia, Sezione di Bologna, Bologna, Italy

Correspondence: Arnau Folch (afolch@bsc.es)

Abstract. This manuscript presents *FALL3D-8.0*, the last version release of an open-source code with 15+ years of track record and a growing number of users in the volcanological and atmospheric communities. The code has been redesigned and rewritten from scratch in the framework of the EU Center of Excellence for Exascale in Solid Earth (*ChESEE*) in order to overcome legacy issues and allow for successive optimisations ~~that are already planned~~ in the preparation of the code towards extreme-scale computing. However, this baseline version already contains substantial improvements in terms of model physics, solving algorithms, and code accuracy and performance. The code, originally conceived for atmospheric dispersal and deposition of tephra particles, has been extended to model other types of particles, aerosols and radionuclides. The solving strategy has also been changed, replacing the former central-differences scheme for a high-resolution central-upwind scheme derived from finite volumes, which minimises numerical diffusion even in presence of sharp concentration gradients and discontinuities. The parallelisation strategy, Input/Output (*I/O*), model pre-process workflows and memory management have also been reconsidered, leading to substantial improvements on code scalability, efficiency, and overall capability to handle much larger problems. [All these new features and improvements have implications on operational model performance and allow, among other, adding data assimilation and ensemble forecast in future releases.](#) This paper details the *FALL3D-8.0* model physics and the numerical implementation of the code.

15 1 Introduction

FALL3D is an open-source off-line Eulerian model for atmospheric passive transport and deposition based on the so-called Advection-Diffusion-Sedimentation (ADS) equation. The model, originally developed for inert volcanic particles (tephra), has a track record of 50+ publications on different model applications and code validation, as well as an ever-growing community of users worldwide, including academia, private, research, and several institutions tasked with operational forecast of volcanic ash clouds. The first versions of *FALL3D* (v1.x series) appeared back in 2003 (Costa and Macedonio, 2004), at that time the code being serial and written in FORTRAN-77. Code improvements at different levels have been continuously incorporated

since then, including relevant milestones leading to code version upgrades, *e.g.* the coupling with 1D Buoyant Plume Theory (BPT) models to define eruption column sources (versions v2.x, 2004), the introduction of the Lax-Wendorff (LW) central differences scheme for solving the ADS equation (v3.x, 2005) and other algorithmic improvements (Costa et al., 2006), full code rewriting in FORTRAN-90 and distributed memory parallelisation by means of Message Passing Interface (MPI) (v5.x, 25 2007), first implementations of operational workflows to forecast ash cloud dispersal and fallout (Folch et al., 2008, 2009), and several other improvements (*e.g.* de la Cruz et al., 2016) until v7.3.4 release in 2018.

Along these 15+ years, *FALL3D* has been used in multiple applications (*e.g.* Folch, 2012) including, among others, assessment of hazard from tephra fallout at different volcanoes (*e.g.* Scaini et al., 2012; Selva et al., 2014; Sandri et al., 2016), impacts of ash cloud dispersal on civil aviation (*e.g.* Sulpizio et al., 2012; Bonasia et al., 2013; Biass et al., 2014; Scaini et al., 2014), 30 obtaining relevant eruption source parameters (*e.g.* Folch et al., 2012; Parra et al., 2016; Poret et al., 2017), impacts of past super-eruptions on climate, environment, and humans (*e.g.* Costa et al., 2012, 2014; Martí et al., 2016), operational forecast of ash clouds and tephra fallout (*e.g.* Bear-Crozier et al., 2012; Collini et al., 2013; Poulidis et al., 2019), modelling of ash resuspension events (*e.g.* Folch et al., 2014; Mingari et al., 2017), or model validation (*e.g.* Scollo et al., 2010; Corradini et al., 35 2011; Osoreo et al., 2013). However, as occurs in other long-lived community codes, code legacy limitations have appeared with time on, *e.g.*, lack of code performance and poor scalability on hundreds/thousands of cores, constrains on portability and adaption to emerging hardware architectures, difficulties for code refactoring that is needed in order to widen the spectrum of model applications, etc. With time, ~~the proper address of~~ properly addressing these aspects required of substantial code refactoring or even code rewriting, a substantially time-consuming task in terms of human effort. This has recently been possible in 40 the frame of the European Center of Excellence for Exascale in Solid Earth (*ChEESSE*), which includes *FALL3D* as one of its flagship codes.

This paper describes *FALL3D-8.0*, a new model version upgrade in which the code has been completely written from scratch, mostly in FORTRAN-90 but mixed with some FORTRAN-2003 functionalities. In addition to dramatic improvements on different levels (extended model physics and applications, numerical algorithmic and code performance), v8.0 ~~provides also~~ provides 45 provides with a baseline that will allow the incorporation of developments and optimisations. However, the heterogeneity of model users has been considered when rewriting the code, which can still run on platforms spanning from a laptop to a large supercomputer.

This manuscript starts first outlining what's new in *FALL3D-8.0* (Sec. 2) with respect to the previous code release (v7.3.4) and then describes the physical model and related governing equations and parameterisations (Sec. 3). The next section focuses on the numerical implementation (Sec. 4), including coordinate mappings and scaling, spatial discretisation, and a new solving strategy based on the Kurganov-Tadmor scheme (Kurganov and Tadmor, 2000) that can be combined either with a fourth-order Runge-Kutta or with a first-order Euler to integrate explicitly in time. These two solver options allow users to choose, respectively, between better solver accuracy or higher computational efficiency. In any case, it will be shown how the Kurganov-Tadmor finite-volume-like formulation is much less diffusive than the previous scheme implemented in v7.x, 55 an important feature when one aims at modelling substances encompassing sharp gradients of concentration. Sections 5 and 6 focus, respectively, on the (pre-process) model workflow and on the new code parallelisation strategy and related memory

optimisations, including a comparison on model performance and scalability with respect to v7.x. This paper shows only one illustrative example of *FALL3D-8.0* model results for ash dispersal from the 2011 Cordón Caulle eruption. A companion paper (Prata et al., 2019) contains the second part, including a detailed *FALL3D-8.0* model validation for several simulations that are part of the new benchmark suite of the code. Finally, Section 7 wraps the conclusions of the manuscript and outlines which will be the next steps for further model optimisation.

2 New features in v8.0

FALL3D-8.0 introduces substantial improvements at different levels. From the point of view of model physics:

- The code has been generalised to deal with species different from tephra, including other kinds of particles, aerosols and radionuclides. Different types of species have been defined and can be simulated using independent sets of bins.
- Weibull and bi-Weibull particle Total Grain Size Distributions (TGSDs) can now be generated in addition to Lognormal distributions. On the other hand, *FALL3D-8.0* can estimate TGSDs of tephra particles directly from magma viscosity (magma composition) and eruption column height following the fit proposed by Costa et al. (2016a).
- An "effective bin" flag has been introduced. For a given specie, only those bins having this flag "on" are actually simulated, whereas bins tagged as "off" are frozen in terms of transport and used only for source term characterisation. This option has been added because ~~several model parameterisations for the emission (source) term~~ [volcanic plume source parameterisations](#) depend on the whole granulometric spectrum of particles but, at the same time, model users are often interested only on a subset of the particle spectra (*e.g.* fine volcanic ash for long-range tephra dispersal simulations).
- For the specie "tephra", several classes of particle aggregates can now be defined in certain aggregation options, differently than the single-class aggregation option available in v7.x.
- Model parameterisations for physics have been revised to include more recent studies. Meteorological drivers have also been updated to add recent datasets (*e.g.* ERA-5) and to remove deprecated options.
- Periodic boundary conditions are now possible, permitting simulations on domains spanning from local to semi-global (pole singularities still remain).
- For some species, the initial model condition can be furnished from satellite retrievals. This "data insertion" option is a preliminary step towards a full model data assimilation using ensembles.

From the point of view of numerics and code performance:

- The solving strategy has been changed to a high-resolution central-upwind scheme (Kurganov and Tadmor, 2000), optionally combined with a 4th-order Runge-Kutta explicit scheme. This replaces the former Lax-Wendorff (LW) central-difference scheme, which was known to be over-diffusive in case of sharp concentration gradients or discontinuities.

- New coordinate mappings have been added. These include a new vertical σ -coordinate system with linear decay that smooths ~~low-level~~ numerical oscillations over complex terrains ([Schar et al., 2002](#)).
- A new parallelisation strategy exists based on a full 3D domain decomposition. The former trivial parallelisation on particle bins in v7.x has been removed because, in case of interaction among bins, it yielded to unnecessary communication penalties, resulting on poor code scalability.
- A much more efficient memory management exists to exploit contiguous cache memory positions along each spatial dimension. In some model configurations, this can imply a substantial gain on computing time.
- Parallel model I/O using ~~netCDF-Par~~[netCDF](#) and parallel model pre-process. In addition, all the pre-process auxiliary programs have been embedded within the main code (a single multipurpose executable exists in v8.0). The code can now be run to perform different tasks individually or sequentially through a single parallel workflow. As a result, all the pre-process, modelling and post-process workflows can now run as a single execution concatenating all tasks and without needing to write/read intermediate files to/from disk. In large problems, this saves substantial disk space and I/O time because the required model input data (*e.g.* interpolated meteorological fields) are already stored in each processor memory when running the *FALL3D* model task.
- A hierarchy of MPI communicators has been defined. This is actually not active yet in v8.0 but gives flexibility to extend some code functionalities in a near future with little refactoring effort. For example, plans for future versions include ensemble modelling using the Parallel Data Assimilation Framework (PDAF) or model nesting. These will require of teams of processors associated to different ensemble members or model grids respectively.

3 Physical model

105 3.1 Model governing equations

In continuum mechanics, the general form describing the passive transport of a substance mixed within a fluid (air) in a domain Ω derives from mass conservation which, in conservative flux-form and using the Eulerian specification, reads ([see Tables 1 and 2 for list of symbols](#)):

$$\frac{\partial c}{\partial t} + \nabla \cdot \mathbf{F} + \nabla \cdot \mathbf{G} + \nabla \cdot \mathbf{H} = S - I \quad \text{in} \quad \Omega \quad (1)$$

- 110 where $\mathbf{F} = c \mathbf{u}$ is the advective flux, $\mathbf{G} = c \mathbf{u}_s$ is the sedimentation flux, $\mathbf{H} = -\mathbb{K} \nabla c$ is the diffusive flux, and S and I are the source and sink terms respectively. In the expressions above, t denotes time, c is concentration (in kg m^{-3}), \mathbf{u} is the fluid velocity vector (*i.e.* wind velocity), \mathbf{u}_s is the terminal settling velocity of the substance, and \mathbb{K} is the diffusion tensor (in $\text{m}^2 \text{s}^{-1}$). Note that the definition of the diffusive flux \mathbf{H} explicitly assumes the Fick's first law of diffusion.

Boundary conditions are imposed at the Dirichlet Γ_D (inflow), Neumann Γ_N (outflow), and Robin Γ_R (ground) parts of the

115 boundary of the computational domain Γ (with $\Gamma = \Gamma_D \cup \Gamma_N \cup \Gamma_R$ and $\Gamma_D \cap \Gamma_N \cap \Gamma_R = 0$) as:

$$\begin{cases} c = \bar{c} & \text{at } \Gamma_D; \\ \mathbf{n} \cdot \mathbf{H} = 0 & \text{at } \Gamma_N; \\ \mathbf{n} \cdot (\mathbf{H} + \mathbf{G}) = \mathbf{n} \cdot \mathbf{D} & \text{at } \Gamma_R \end{cases} \quad (2)$$

where \bar{c} is the concentration prescribed at inflow (typically $\bar{c} = 0$), \mathbf{n} is the outwards unit normal vector, and $\mathbf{D} = c \mathbf{u}_d$ is the ground deposition flux (\mathbf{u}_d is the ground deposition velocity). Note that when the deposition flux \mathbf{D} coincides with the sedimentation flux \mathbf{G} (*i.e.* when $\mathbf{u}_s = \mathbf{u}_d$), the boundary condition at ground reduces to the standard free flow condition imposed at Γ_N .

Equation (1) is the so-called Advection-Diffusion-Sedimentation (ADS) equation and, in *FALL3D-8.0*, has been extended to handle ~~passive transport of~~ other substances different from tephra. Note that the passive transport equation (1) neglects inertial terms and, consequently, assumes a low (< 1) particle Stokes number. In a general sense, substances in *FALL3D-8.0* are grouped in 3 broad categories: particles, aerosols, and radionuclides. The category "particles" includes any inert substance characterised by a sedimentation velocity. ~~The~~ In the context of in *FALL3D-8.0* the category "aerosol" refers ~~in~~ to substances potentially non-inert (*i.e.* with chemical or phase changes mechanisms) and having a negligible sedimentation velocity. Finally, the category "radionuclides" refers to isotope particles subject to radioactive decay. Each of these categories admits, in turn, different sub-categories or "species", defined internally as structures of data that inherit the parent category properties (see Table 3). For example, particles can be subdivided into tephra or mineral dust; aerosol species can include H_2O , SO_2 , etc.; and radionuclides can include several isotope species. Finally, each sub-category of species is tagged with an attribute name that is used for descriptive purposes only.

Depending on the specie(s) under consideration, the mass source S and sink I terms in (1) can be decomposed as:

$$\begin{aligned} S &= S^e + S^a + S^r + S^c \\ I &= I^w + I^a + I^r + I^c \end{aligned} \quad (3)$$

135 where the superscripts denote emission source terms (S^e ; see Sec. 3.2.3), wet deposition sinks (I^w ; see Sec. 3.2.4), particle aggregation source and sinks (S^a and I^a respectively; see Sec. 3.2.6), radioactive decay source and sinks (S^r and I^r respectively; see Sec. 3.2.7), and chemical reactions source and sinks (S^c and I^c). Note that *FALL3D-8.0* does not account for aerosol chemistry yet. However, the code has been designed to allow incorporating this functionality in future versions in a straightforward manner.

140 When the ADS equation (1) is discretised, species in the mixture are binned in n_b discrete "classes" or bins, so that the total concentration c at any point of the domain decomposes as the sum of bin concentrations, *i.e.*, $c = \sum_{i=1}^{n_b} c_i$. Substitution of bin discretisation in (1) yields to n_b equations (one per discrete bin), each formally identical to (1):

$$\frac{\partial c_i}{\partial t} + \nabla \cdot \mathbf{F}_i + \nabla \cdot \mathbf{G}_i + \nabla \cdot \mathbf{H}_i = S_i - I_i \quad i = 1 : n_b \quad (4)$$

Note that the n_b equations for bins can be coupled by means of the source and sink terms, which define the eventual transfer of mass among different bins, *e.g.* in case of particle aggregation/disaggregation, chemical reactions, formation of child radionu-

clides, etc.

3.2 Model parameterisations

Parameterisations in *FALL3D* have been revised and updated, removing deprecated options and adding new options available from more recent studies. Table 4 shows the parameterisations implemented in *FALL3D-8.0* that described in the following subsections.

3.2.1 Diffusion tensor

The atmospheric flow is characterised by large horizontal to vertical aspect ratios of wind velocities and length scales, as well as by an anisotropic momentum diffusion with the horizontal diffusion coefficient being typically much larger than the vertical one (e.g. Schaefer-Rolffs and Becker, 2013). For this reason, model diffusion that accounts for sub-grid scale atmospheric eddies is typically assumed anisotropic, with two distinct eddy diffusion coefficients along the horizontal and vertical dimensions:

$$\mathbb{K} = \begin{pmatrix} k_h & 0 & 0 \\ 0 & k_h & 0 \\ 0 & 0 & k_v \end{pmatrix} \quad (5)$$

In the case of *FALL3D-8.0*, the horizontal coefficient k_h can be either assumed constant or parameterised as in Byun and Schere (2006):

$$\frac{1}{k_h} = \frac{1}{k_{ht}} + \frac{1}{k_{hn}} \quad (6)$$

where:

$$\begin{aligned} k_{ht} &= 2 \alpha^2 \Delta_g^2 \sqrt{S_\Gamma^2 + S_\Lambda^2} \\ &= \alpha^2 \Delta_g^2 \sqrt{\left(\frac{\partial u}{\partial x} - \frac{\partial v}{\partial y}\right)^2 + \left(\frac{\partial u}{\partial x} + \frac{\partial v}{\partial y}\right)^2} \end{aligned} \quad (7)$$

$$k_{hn} = k_{ref} \left(\frac{\Delta_{ref}}{\Delta_g} \right) \quad (8)$$

In the equations above, Δ_g is a characteristic grid cell measure ([e.g. the equivalent area length](#)), $\alpha \cong 0.28$ denotes the Smagorinsky constant, S_Γ and S_Λ are the stretching and shear strength (*i.e.* the two components of the bi-dimensional wind deformation), and k_{ref} is a reference horizontal diffusion for a reference grid cell size Δ_{ref} (*FALL3D-8.0* considers $k_{ref} = 8000 \text{ m}^2 \text{ s}^{-1} \text{ m}$ for $\Delta_{ref} = 4 \text{ km}$). Equation (6) was proposed by Byun and Schere (2006) to overcome the dependency of horizontal diffusion on grid resolution, and combines a Smagorinsky sub-grid scale (SGS) model giving the diffusion by transport (k_{ht}) with a formula that counteracts numerical over-diffusion in coarse discretisations (k_{hn}) so that the smaller between k_{ht} and k_{hn}

dominates. In this way, the effect of the transportive diffusion is minimised for coarse grids, whereas for fine discretisations the numerical diffusion term is reduced.

The vertical diffusion coefficient k_v can also be either assumed constant or parameterised according to the similarity theory and distinguishing among surface layer, Atmospheric Boundary Layer (ABL), and free atmosphere (e.g. Neale et al., 2010):

$$k_v = \begin{cases} \frac{\kappa z u_*}{\phi_h} & \text{for } z \ll h_p \\ \frac{\kappa z u_*}{\phi_h} \left(1 - \frac{z}{h}\right)^2 & \text{for } z < h_p \\ l_c^2 \left| \frac{\partial u_h}{\partial z} \right| F_c(Ri) & \text{for } z > h_p \end{cases} \quad (9)$$

where κ is the von Karman constant ($\kappa = 0.4$), z is the distance from the ground, u_* is wind friction velocity, ϕ_h is the atmospheric stability function for temperature, h_p is the ABL height, l_c is a characteristic length scale, u_h is the horizontal wind velocity modulus, and F_c is a stability function which depends on the Richardson number Ri . For l_c and F_c , *FALL3D-8.0* adopts the relationships used by the CAM-4.0 model (Neale et al., 2010):

$$l_c = \left(\frac{1}{\kappa z} + \frac{1}{\lambda_c} \right)^{-1} \quad (10)$$

$$F_c(Ri) = \begin{cases} \frac{1}{1 + 10Ri(1 + 8Ri)} & \text{stable } (Ri > 0) \\ \sqrt{1 - 18Ri} & \text{unstable } (Ri < 0) \end{cases} \quad (11)$$

where λ_c is the so-called asymptotic length scale ($\lambda_c \approx 30\text{m}$). The atmospheric stability function for temperature ϕ_h is calculated as:

$$\phi_h = \begin{cases} \beta_h + \frac{z}{L} & z/L > 1 \quad \text{stable atmosphere} \\ 1 + \beta_h \frac{z}{L} & 0 \leq z/L \leq 1 \quad \text{nearly neutral} \\ \left(1 - \gamma_h \frac{z}{L}\right)^{-1/2} & z/L < 0 \quad \text{unstable atmosphere} \end{cases} \quad (12)$$

where $\beta_h = 5$, $\gamma_h = 15$, and L is the Monin-Obukhov length, defined as:

$$L = \frac{u_*^2 \bar{\theta}_v}{\kappa g \theta_*} \quad (13)$$

with g denoting gravity, $\bar{\theta}_v$ the mean potential virtual temperature, and θ_* the potential temperature scale. The parameters in (13) (i.e. L or u_*/θ_*) are ideally furnished by the driving meteorological model. If not and alternatively, *FALL3D-8.0* estimates the friction velocity u_* and the potential temperature scale θ_* from the potential virtual temperature θ_v and the Richardson bulk number Ri_b as (Louis, 1979; Jacobson, 1999):

$$Ri_b = \frac{g[\theta_v(z_r) - \theta_v(z_o)](z_r - z_o)}{\bar{\theta}_v u_h(z_r)^2} \quad (14)$$

where z_r and z_o denote the reference and the ground roughness heights, and $\bar{\theta}_v$ the average between the two vertical levels.

195 Given Ri_b , one can estimate u_* and θ_* as:

$$u_* \approx \frac{\kappa u_h(z_r)}{\ln(z_r/z_o)} \sqrt{G_m(Ri_b)} \quad (15)$$

$$\theta_* \approx \frac{\kappa^2 u_h [\theta_v(z_r) - \theta_v(z_o)]}{u_* Pr_t \ln^2(z_r/z_o)} \sqrt{G_h(Ri_b)} \quad (16)$$

where Pr_t is the turbulent Prandtl number ($Pr_t \approx 1$) and the stability functions G_m and G_h are given by (Louis, 1979;

200 Jacobson, 1999):

$$G_m = \begin{cases} 1 - \frac{9.4 Ri_b}{1 + 70 \kappa^2 (|Ri_b| z_r/z_o)^{0.5} / \ln^2(z_r/z_o)} & Ri_b \leq 0 \\ \frac{1}{(1 + 4.7 Ri_b)^2} & Ri_b > 0 \end{cases} \quad (17)$$

$$G_h = \begin{cases} 1 - \frac{9.4 Ri_b}{1 + 50 \kappa^2 (|Ri_b| z_r/z_o)^{0.5} / \ln^2(z_r/z_o)} & Ri_b \leq 0 \\ \frac{1}{(1 + 4.7 Ri_b)^2} & Ri_b > 0 \end{cases} \quad (18)$$

3.2.2 Sedimentation velocity

205 Particle bins in the model are assumed to settle down with a sedimentation velocity $\mathbf{u}_s = (0, 0, -w_s)$ equal to its terminal velocity:

$$w_s = \sqrt{\frac{4g (\rho_p - \rho_a) d}{3 C_d \rho_a}} \quad (19)$$

where ρ_a and ρ_p denote air and particle density, d is the particle equivalent diameter, and C_d is the drag coefficient that depends on the Reynolds number, $Re = d u_s / \nu_a$ ($\nu_a = \mu_a / \rho_a$ being the kinematic viscosity of air and μ_a its dynamic viscosity). For

210 irregular particles, the drag coefficient C_d has to be obtained from experimental measurements. *FALL3D-8.0* includes several parameterisations derived from laboratory results using natural and synthetic particles and that cover a wide range of particle sizes and shapes (characterised by sphericity, by circularity, or by some other model shape factor). Model options for the drag coefficient C_d include:

1. The *GANSER* model (Ganser, 1993):

$$215 \quad C_d = \frac{24}{Re K_1} \left\{ 1 + 0.1118 (Re K_1 K_2)^{0.6567} \right\} + \frac{0.4305 K_2}{1 + \frac{3305}{Re K_1 K_2}} \quad (20)$$

220 where $K_1 = 3/[(d_n/d) + 2\Psi^{-0.5}]$ and $K_2 = 10^{1.8148(-\text{Log}\Psi)^{0.5743}}$ are two shape factors, d_n is the average between the minimum and the maximum axis, and Ψ is the particle sphericity ($\Psi = 1$ for spheres). For calculating the sphericity, is practical to use the concepts of “operational” and “working sphericity”, Ψ_{work} introduced by Wadell (1933) and Aschenbrenner (1956), which are based on the determination of the volume and of the three dimensions of a particle respectively:

$$\Psi_{work} = 12.8 \frac{(P^2Q)^{1/3}}{1 + P(1+Q) + 6\sqrt{1+P^2(1+Q^2)}} \quad (21)$$

with $P = S/I, Q = I/L$, where $L = d_3/d_2, Q = d_2/d_1$, where d_1 is the longest particle dimension, $I = d_2$ is the longest dimension perpendicular to L , and $S = d_1$, and d_3 is the dimension perpendicular to both L and I and d_2 .

225 2. The *PFEIFFER* model (Pfeiffer et al., 2005), based on the interpolation of previous relationships by Walker et al. (1971) and Wilson and Huang (1979):

$$C_d = \begin{cases} \frac{24}{Re} \varphi^{-0.828} + 2\sqrt{1-\varphi} & Re \leq 10^2 \\ 1 - \frac{1 - C_d|_{Re=10^2}}{900} (10^3 - Re) & 10^2 \leq Re \leq 10^3 \\ 1 & Re \geq 10^3 \end{cases} \quad (22)$$

where $\varphi = (b+c)/2a$ is the particle aspect ratio ($a \geq b \geq c$ denote the particle semi-axes).

3. The *DIOGUARDI* model (Dioguardi et al., 2018):

$$230 \quad C_d = \frac{24}{Re} \left(\frac{1-\xi}{Re} + 1 \right)^{0.25} + \frac{24}{Re} (0.1806 Re^{0.6459}) \xi^{-Re^{0.08}} \frac{0.4251}{1 + \frac{6880.95}{Re^2} \xi^{5.05}} \quad (23)$$

where ξ is a particle shape factor (sphericity to circularity ratio), for which Dioguardi et al. (2018) suggested an empirical correlation with sphericity Ψ as $\xi = 0.83\Psi$.

Note that, in any case, the terminal velocity w_s is defined by a triplet (d, ρ_p, Ψ) . As a result, particles with similar values of the three parameters can be grouped within the same model bin.

3.2.3 Emissions

The emission source term for the i -th bin (S_i^e term in the bin equations (4)) gives the mass per unit of time and volume (units of $\text{kg m}^{-3} \text{s}^{-1}$) released at each point (cell) of the computational domain. *FALL3D-8.0* can generate and handle multiple types of emission sources, internally defined as a data structure made of n_p discrete points, each "tagged" with a time-varying position and bin emission rate (source strength) M_{ip} (in kg s^{-1}). As a result, S_i^e in a model grid cell results from summing emissions from all point sources laying within the cell volume V :

$$S_i^e = \sum_{p=1}^{n_p} M_{ip}/V \quad (24)$$

The total source strength M_o results from summing over all source points and bins, *i.e.*:

$$M_o = \sum_{i=1}^{n_b} \sum_{p=1}^{n_p} M_{ip} = \sum_{i=1}^{n_b} M_i \quad (25)$$

245 Table 5 summarises the different (exclusive) options available in *FALL3D-8.0* for the emission term and related source strength. In detail:

1. The *POINT* option assumes that all mass is emitted from a single point ($n_p = 1$) located at height z_t above ground level:

$$M_{iip} = \begin{cases} f_i M_o & z = z_t \\ 0 & z \neq z_t \end{cases} \quad (26)$$

250 where f_i is the i -th bin mass fraction.

2. The *HAT* option defines a uniform vertical line of n_p source points spanning in height from z_b (bottom) to z_t (top) above the ground (*i.e.* with thickness $z_t - z_b$):

$$M_{iip} = \begin{cases} \frac{f_i M_o}{n_p} & z_b \leq z \leq z_t \\ 0 & \text{otherwise} \end{cases} \quad (27)$$

Note that this option includes as end-members the *POINT* option (if $z_b = z_t$) and a vertically uniform emission from ground to top (if $z_b = 0$).

3. The *SUZUKI* option (Suzuki, 1983; Pfeiffer et al., 2005) assumes a mushroom-like vertical distribution of n_p emission points depending on two dimensionless parameters A and λ_s :

$$M_{iip} = \frac{f_i M_o}{n_p} \left[\left(1 - \frac{z}{z_t} \right) e^{\frac{A(z}{z_t} - 1) A_s \left(\frac{z}{z_t} - 1 \right)} \right]^{\lambda_s} \quad 0 \leq z \leq z_t \quad (28)$$

260 The Suzuki parameter A controls the vertical location of the maximum of the emission profile, whereas the parameter λ_s controls the distribution of the emitted mass around the maximum.

When any of the previous source options is defined for volcanic plumes, it is useful to prescribe the total source strength (eruption mass flow rate) M_o in terms of the eruption column height H because this parameter is easier to be obtained from direct observations. To this purpose, *FALL3D-8.0* includes two relationships that correlate M_o with H based on empirical observations and on 1D plume model simulations respectively. The first and simplest case considers the fit proposed by Mastin et al. (2009):

$$M_o = aH^{4.15} \quad (29)$$

where $a = 140.8$ is a constant and H is the eruption column height expressed in km above the eruptive vent. Alternatively, the 1D model fit by Woodhouse et al. (2016) can also be used to provide M_o depending on the surrounding

atmospheric conditions:

$$270 \quad M_o = c_o N^3 H^4 f(\underline{W}\overline{W}) \quad (30)$$

where N is the Brunt-Väisälä frequency, c_o is a constant, and f is a function of the parameter $\underline{W} = 1.44\dot{\gamma}/N$ $\overline{W} = 1.44\overline{\gamma}/N$ given by:

$$f(\underline{W}\overline{W}) = \left(\frac{1 + b\underline{W} + c\underline{W}^2}{1 + a\underline{W}} \frac{1 + b\overline{W} + c\overline{W}^2}{1 + a\overline{W}} \right)^4 \quad (31)$$

275 with the coefficients $a = 0.87 + 0.05\beta/\alpha$, $b = 1.09 + 0.32\beta/\alpha$, and $c = 0.06 + 0.03\beta/\alpha$, being α and β $a = 0.87 + 0.05\beta_e/\alpha_e$, $b = 1.09 + 0.32\beta_e/\alpha_e$, and $c = 0.06 + 0.03\beta_e/\alpha_e$, being α_e and β_e the radial and cross-wind plume entrainment coefficients (Costa et al., 2016b) and $\dot{\gamma}$ $\overline{\gamma}$ the mean shear rate of wind. The constant c_o in (30) depends on the conditions at the vent:

$$c_o = \frac{0.35 \alpha_e^2 \rho_a C_a T_a}{g [(C_v n_o + C_s (1 - n_o)) T_o - C_a T_a]} \quad (32)$$

280 being C_s , C_v and C_a the specific heat capacities at constant pressure of the solid pyroclasts, gas phase, and air respectively, T_a and T_o the air and vent magma mixture temperatures, and n_o the mass-gas-gas mass fraction.

4. The *PLUME* option, valid only for volcanic plumes, uses the *FPLUME-1.0* model (Folch et al., 2016) embedded in *FALL3D-8.0*. *FPLUME-1.0* is a steady-state 1D cross-section-averaged eruption column model based on the buoyant plume theory (BPT). The model accounts for plume bending by wind, entrainment of ambient moisture, effects of water phase changes, particle fallout and re-entrainment, and a model for wet aggregation of ash particles in the presence of liquid water or ice. As opposed to the previous cases, the *PLUME* source option automatically determines a bin-dependent vertical distribution of mass and computes height from M_o or vice-versa by solving an inverse problem.
- 285
5. The *RESUSPENSION* option considers the remobilisation and resuspension by wind of soil particles (e.g. mineral dust or volcanic ash previously deposited on the ground). Up to 3 different emission schemes are available in *FALL3D-8.0* to obtain the vertical flux of suspended particles, from which M_o is obtained by multiplying by the associated surface cell area (see Folch et al., 2014, for details). Typically, the emission schemes for mineral dust are formulated in terms of the friction velocity. For example, emission scheme 1 (Westphal et al., 1987) considers:
- 290

$$F_V = \begin{cases} 0 & u_* < u_{*t} \\ 10^{-5} u_*^4 & u_* \geq u_{*t} \end{cases} \quad (33)$$

where F_V is the vertical flux (in $\text{kg m}^{-2} \text{s}^{-1}$), occurring only above a (constant) threshold friction velocity u_{*t} (u_* given in ms^{-1}). An important limitation of (33) is that the vertical flux does not depend neither on particle size nor soil moisture. However, despite its simplicity, this parameterisation can be useful when information on soil characteristics

295

(e.g. particle sizes and densities, moisture, roughness, etc.) is unavailable or poorly constrained. Emission scheme 2 (Marticorena and Bergametti, 1995; Marticorena et al., 1997) considers:

$$F_V = \begin{cases} 0 & u_* < u_{*t} \\ S_c \frac{\rho_a}{g} u_*^3 \left(1 - \frac{u_{*t}^2}{u_*^2}\right) \left(1 + \frac{u_{*t}}{u_*}\right) & u_* \geq u_{*t} \end{cases} \quad (34)$$

where the experimental coefficient S_c (in cm^{-1}) depends on the amount of available fine particles in the soil, and the threshold friction velocity is given by:

$$u_{*t} = \begin{cases} \frac{0.129K}{(1.928Re^{0.092} - 1)^{0.5}} & 0.03 < Re \leq 10 \\ 0.129K(1 - 0.0858e^{-0.0617(Re-10)}) & Re > 10 \end{cases} \quad (35)$$

with $K = \sqrt{\frac{\rho_p g d}{\rho_a} \left(1 + \frac{0.006}{\rho_p g d^{2.5}}\right)}$ and $Re = 1331 \times d^{1.56}$ (the lower bound of the fit corresponds to particles of $\approx 10\mu\text{m}$ in size). Note that in (35), ρ_p and ρ_a are particle and air densities (expressed in g/cm^3), g is gravity (in cm/s^2), d is the particle size (in cm), Re is the Reynolds number parameterised as a function of the particle size, and u_{*t} is given in cm/s .

Finally, emission scheme 3 (Shao et al., 1993; Shao and Leslie, 1997; Shao and Lu, 2000) considers that the uplift from surface of the fine fraction of soil particles is controlled by the bombardment of saltating particles of larger sizes ($\geq 63 \mu\text{m}$), which breaks the cohesive forces of smaller particles. Based on theoretical and experimental results, Shao et al. (1993) found an expression for the vertical flux of dust particles of size d ejected by the impact of saltating particles of size d_s :

$$F_V(d, d_s) = \frac{\alpha(d, d_s)}{u_{*t}^2(d)} \frac{\alpha_s(d, d_s)}{u_{*t}^2(d)} F_H(d_s) \quad (36)$$

where α_s (in m s^{-2}) is the coefficient of sandblasting efficiency determined experimentally (Shao and Leslie, 1997) and F_H is the horizontal flux (in $\text{kg m}^{-1} \text{s}^{-1}$) of saltating particles:

$$F_H(d_s) = \begin{cases} 0 & u_* < u_{*t}(d_s) \\ c_o \frac{\rho_a u_*^3}{g} \left(1 - \frac{u_{*t}^2(d_s)}{u_*^2}\right) & u_* \geq u_{*t}(d_s) \end{cases} \quad (37)$$

where c_o is an empirical dimensionless constant close to 1. In this scheme, the threshold friction velocity $u_{*t}(d)$ is given by:

$$u_{*ts} = \sqrt{0.0123 \left(\frac{\rho_p g d}{\rho_a} + \frac{\gamma}{\rho_a d} \right)} \quad (38)$$

where γ is an experimental parameter ranging between 1.65×10^{-4} and $5 \times 10^{-4} \text{ kg s}^2$ (a value of $3 \times 10^{-4} \text{ kg s}^2$ is assumed in *FALL3D-8.0*).

320 3.2.4 Deposition mechanisms

In *FALL3D-8.0*, dry and wet deposition mechanisms can be activated for any type of bin below a certain particle/aerosol size. Dry deposition on the ground is imposed prescribing the deposition velocity through a Robin boundary condition in (2). *FALL3D-8.0* admits two dry deposition parameterisations, which describe the vertical depositional fluxes by Brownian diffusion and inertial impaction, parameterised through the Schmidt and the Stokes number respectively. The first option considers

325 the mass-consistent formulation proposed by Venkatram and Pleim (1999):

$$\underline{u_d}|\mathbf{u_d}| = w_s + \frac{w_s}{1 - e^{-(r_a+r_b)w_s}} \approx w_s + \frac{1}{r_a + r_b} \quad (39)$$

where r_a describes the effects of aerodynamic resistance and r_b the quasi-laminar resistance (e.g. Brandt et al., 2002, and references therein). The aerodynamic resistance r_a can be calculated as:

$$r_a = \frac{1}{k u_*} \left[\ln \left(\frac{z}{z_o} \right) - \phi_h \left(\frac{z}{L} \right) \right] \quad (40)$$

330 with z_o denoting the ground roughness height and ϕ_h the atmospheric stability function for temperature given by (12). The quasi-laminar resistance r_b can be expressed in terms of the Schmidt number $Sc = \nu/D$ and Stokes number $St = w_s u_*^2 / (g\nu)$ (with ν kinematic viscosity of air, and D molecular diffusivity of particles) (e.g. Brandt et al., 2002):

$$r_b = \frac{1}{u_* (Sc^{-2/3} + 10^{-3}/St)} \quad (41)$$

The second option is that proposed by Feng (2008), which essentially differs from (39) in the estimation of r_b :

$$335 \underline{u_d}|\mathbf{u_d}| = w_s + \frac{1}{r_a + 1 / (u_* c_1 e^{-0.5[(Re^* - c_2)/c_3]^2} + a u_*^b)} \quad (42)$$

where $c_1 = 0.0226$, $c_2 = 40300$ and $c_3 = 15330$ are dimensionless parameterisation constants, Re^* is the Reynolds number (computed with the friction velocity u_*), and a and b are coefficients that depend on the particle size and surface characteristics. Note that Feng (2008) gives a and b best-fit values for 7 land use categories and 4 aerosol size modes: nuclei (up to 0.1 μm), accumulation (up to 2.5 μm), coarse (up to 10 μm), and giant (up to 100 μm). A cut-off is assumed above this size because the

340 sedimentation velocity term w_s dominates and therefore the dry deposition contribution can be neglected.

Wet deposition mechanisms in *FALL3D-8.0* are assumed to occur only within the Atmospheric Boundary Layer (ABL) and the corresponding sink term in (3) is parameterised as:

$$I^w = \Lambda c \quad (43)$$

where Λ differs for in-cloud (ic) and below-cloud (bc) sinks. For below-cloud scavenging (precipitation), Λ_{bc} is estimated from

345 the total precipitation rate as (e.g. Brandt et al., 2002; Jung and Shao, 2006):

$$\Lambda_{bc} = a P^b \quad (44)$$

where P is the precipitation rate (in mm h^{-1}), and $a = 8.4 \times 10^{-5}$ and $b = 0.79$ are two empirical constants. For in-cloud scavenging (rainout), the model considers a parameterisation based on the atmospheric relative humidity RH (in %) as in Brandt et al. (2002):

$$350 \quad \Lambda_{ic} = \begin{cases} 0 & \text{for } RH < RH_t \\ A_{RH} \frac{RH - RH_t}{RH_s - RH_t} & \text{for } RH \geq RH_t \end{cases} \quad (45)$$

with $A_{RH} = 3.5 \times 10^{-5}$, $RH_t = 80\%$ (threshold value), and $RH_s = 100\%$ (saturation value). Two critical particle cut-off sizes of 100 and 1 μm are assumed for below and in-cloud scavenging respectively.

3.2.5 Gravity spreading of the umbrella region

Large explosive volcanic eruptions can generate gravity-driven transport mechanisms that dominate over passive transport close to the vent and cause a radial spreading of the cloud (e.g. Woods and Kienle, 1994; Sparks et al., 1997). In order to simulate this mechanism, *FALL3D-8.0* includes a gravity current model (see Costa et al., 2013, and the Erratum published in June 2019). This option consists on adding a radial velocity field to the background wind, so that contributions from both passive and density-driven mechanisms are accounted for. The added radial wind is centred above the eruptive vent in the umbrella region, and extended up to a radius R given by:

$$360 \quad R = \left(\frac{3\lambda N q}{2\pi} \frac{3\lambda_g N q}{2\pi} \right)^{1/3} t^{2/3} \quad (46)$$

where t is time since eruption onset, λ_g is an empirical constant constrained to ≈ 0.2 from Direct Numerical Simulations (Suzuki and Koyaguchi, 2009), N is the Brunt-Väisälä frequency, and q is the volumetric flow rate into the umbrella region, estimated as (Morton et al., 1956; Suzuki and Koyaguchi, 2009; Costa et al., 2013, as correct in Erratum 2019):

$$q = \frac{c k^{1/2} M_o^{3/4}}{N^{5/4}} \frac{c k_e^{1/2} M_o^{3/4}}{N^{5/4}} \quad (47)$$

365 where M_o is the total source strength (i.e. mass eruption rate), k_e is the air entrainment coefficient, and c a constant that from varies from tropical to mid-latitude/polar locations:

$$c = \begin{cases} 0.43 & \text{m}^3 \text{kg}^{-3/4} \text{s}^{-3/2} \text{ for tropical} \\ 0.87 & \text{m}^3 \text{kg}^{-3/4} \text{s}^{-3/2} \text{ mid-latitude/polar} \end{cases} \quad (48)$$

Given the radius R , the radial velocity field as a function of distance r is calculated as (Costa et al., 2013):

$$u_r(r) = \frac{3}{4} u_r(R) \frac{R}{r} \left(1 + \frac{1}{3} \frac{r^2}{R^2} \right) \quad (0 \leq r \leq R) \quad (49)$$

370 where $u_r(R)$ is the front velocity:

$$u_r(R) = \left(\frac{2\lambda N q}{3\pi} \frac{2\lambda_g N q}{3\pi} \right)^{1/2} \frac{1}{\sqrt{R}} \quad (50)$$

In order to avoid sudden jumps at the gravity current front, *FALL3D-8.0* interpolates the front velocity $u_r(R)$ with far field wind velocity using an exponential decay function of the cloud thickness h_c as:

$$\exp[-d/(4h)] \exp[-r/(4h_c)] \quad (51)$$

375 where d_r is the distance from current front.

3.2.6 Aggregation

Aggregation of tephra particles can occur inside the eruptive columns or even downwind in ash clouds during atmospheric dispersion, thereby affecting the sedimentation dynamics and deposition of volcanic ash. *FALL3D-8.0* includes some simple a-priori aggregation options and a wet aggregation model (Costa et al., 2010; Folch et al., 2010) that can be activated for
 380 tephra bins. The a-priori options consist on user-defined or empirically-based pre-defined fractions of aggregating classes being transferred to one or more class of aggregates at the source points (*i.e.* aggregation is performed before transport). In contrast, in the wet aggregation model, ash particles aggregate on a single effective class of diameter d_A , *i.e.* aggregation only affects tephra bins with diameter smaller than d_A , typically in the range 100-300 μm . This option can run embedded in *FPLUME-1.0* or as stand-alone. Consider a tephra grain size distribution in which k particle bins can aggregate. Then, the
 385 aggregation model defines the source (S^a) and sink (I^a) bin terms for the corresponding $k + 1$ bins as:

$$\begin{cases} S_{k+1}^a = \sum_{j=1}^k I_j^a \\ I_j^a = \frac{\pi d_j \rho_j}{6} \dot{n}_j \quad j = 1 : k \end{cases} \quad (52)$$

where $d_j (< d_A)$ and ρ_j are, respectively, the diameter and density of particles in bin j , and \dot{n}_j is the number of particles per unit volume and time that aggregate. The model assumes that this is proportional to the total particle decay per unit volume
 and time \dot{n}_{tot} , *i.e.*:

$$390 \quad \dot{n}_j \approx \frac{N_j}{\sum_{i=1}^k N_i} \dot{n}_{tot} \quad (53)$$

where

$$N_j = k_f \left(\frac{d_A}{d_j} \right)^{d_f} \quad (54)$$

is the number of primary particles of diameter d_j in an aggregate of diameter d_A , k_f is a fractal pre-factor ($k_f \approx 1$), and D_f is the fractal exponent ($D_f \leq 3$). The model estimates the total particle decay per unit time \dot{n}_{tot} integrating the coagulation
 395 kernel over all particle sizes, depending on the sticking efficiency times a collision frequency function which accounts for Brownian motion, collision due to turbulence as a result of inertial effects, laminar and turbulent fluid shear, and differential sedimentation (see Costa et al., 2010; Folch et al., 2016, for details).

3.2.7 Radioactive decay

FALL3D-8.0 can handle the fate of radioactive material dispersed from accidental releases (e.g., Brandt et al., 2002; Leelössya et al., 2018). Five common species of radionuclides have been implemented, Cesium ^{134}Cs , ^{137}Cs and Iodine ^{131}I , which decay to stable isotopes, and ^{90}Sr , which decays to the unstable isotope ^{90}Y (see Table 6).

Radionuclide species need to specify the source (S_n^r) and the sink (I_n^r) terms in (3), associated to the radioactive production or decay of the isotope n respectively. The radioactive decay term indicates the mass per unit volume of the isotopes of type n that decays per unit time:

$$I_n^r = k_r c_n \quad (55)$$

where c_n is concentration (expressed in kg m^{-3}) and k_r a constant specific of each isotope (decay rate) that can be calculated from the radioactive element half life $t_{1/2}$ as $k_r = \ln(2)/t_{1/2}$. Values of $t_{1/2}$ and k_r for common radionuclides are reported in Table 6. Note that the decay term is more relevant for isotopes with short half lives, e.g. for ^{131}I , which has $t_{1/2} \simeq 8$ days (Brandt et al., 2002; Leelössya et al., 2018).

The radioactive decay term of the isotope n constitutes a sink I_n^r for the isotope itself. However, the decay of the isotope m , father of isotope n , constitutes a source S_n^r for the isotope n :

$$S_n^r = p_{mn} I_m^r \quad (56)$$

where p_{mn} is the the relative probability of decay of the isotope m to the isotope n . If the isotope m has only one child n , the relative probability of the branch $m \mapsto n$ is $p_{mn} = 1$. Note from Table 6 that ^{134}Cs , ^{137}Cs and ^{131}I , decay to stable isotopes, whereas ^{90}Sr decays to ^{90}Y which, in turn, is unstable and decays to the stable isotope ^{90}Zr . The production rate S_n^r of ^{90}Y is therefore equivalent to the decay rate of ^{90}Sr .

In *FALL3D-8.0* the radioactive decay is implemented by firstly transporting the radionuclides for a time step Δt , and then by evaluating the decay during the same time step. For radionuclides that decay to a stable isotope (^{134}Cs , ^{137}Cs and ^{131}I) it is considered that after a time step Δt the concentration decreases as:

$$c(t + \Delta t) = c(t) e^{-k_r \Delta t} \quad (57)$$

wheres for decay to an unstable isotope (Yttrium) the concentration varies as:

$$c_Y(t + \Delta t) = [c_{Sr}(t)(1 - e^{-k_{Sr}\Delta t}) + c_Y(t)] e^{-k_Y \Delta t} \quad (58)$$

where c_Y and c_{Sr} are, respectively, the concentrations of ^{90}Y and ^{90}Sr and k_Y and k_{Sr} are the corresponding decay rates.

3.3 Data Insertion

Instrumentation onboard the new generation of geostationary satellites provides with an unprecedented level of spatial resolution and temporal frequency (2 to 4 km pixel size and 10 to 15 min observation period; see Table 7), yielding a quasi-global

coverage considering the overlap of different existing platforms. This is very suitable for high-resolution model data assimilation and related uncertainty quantification, as well as to implement ensemble-based dispersal forecast systems. These aspects
 430 are still under development and hopefully will be part of next *FALL3D* model distributions. However, *FALL3D-8.0* already includes the possibility of initialising a model run from satellite retrievals. This option, known as data insertion, is typically used in dispersal of volcanic ash and aerosols (mainly SO_2) in order to reduce model uncertainties coming from the eruption source term.

Satellite retrievals giving cloud column mass of fine volcanic ash and aerosols can be furnished to the model together with values of cloud thickness, the later needed in order to compute initial concentration (in $kg\ m^{-3}$) from column mass (in $kg\ m^{-2}$).
 435 In the model initialisation step, gridded satellite data is interpolated into the model grid imposing conservation of mass when concentration values are computed for each model grid cell; *i.e.* ensuring that the resulting column mass in the model (computed concentration times cloud thickness) equals that of satellite data over the same cell area. Examples showing how data insertion improves model accuracy are given in the companion paper (Prata et al., 2019).

440 4 Numerical Implementation

4.1 Coordinate mappings and scaling

Consider the ADS equation (1) written in a Cartesian system of coordinates (x, y, z) assuming a diffusion tensor as in (5) and a sedimentation velocity $\mathbf{u}_s = (0, 0, -w_s)$ aligned with the vertical coordinate z :

$$\begin{aligned} & \frac{\partial c}{\partial t} + \frac{\partial(cu)}{\partial x} + \frac{\partial(cv)}{\partial y} + \frac{\partial(cw)}{\partial z} - \frac{\partial(cw_s)}{\partial z} \\ & - \frac{\partial}{\partial x} \left(k_h \frac{\partial c}{\partial x} \right) - \frac{\partial}{\partial y} \left(k_h \frac{\partial c}{\partial y} \right) - \frac{\partial}{\partial z} \left(k_v \frac{\partial c}{\partial z} \right) = S - I \end{aligned} \quad (59)$$

445 It is straightforward to discretise the above equation in a "brick-like" computational domain Ω_c using a structured regular (*i.e.* equally-spaced) mesh, although the regularity condition is typically relaxed across the vertical direction so that the vertical grid resolution increases close to ground, where higher gradients are expected. In order to use other coordinate systems, equation (59) can be written on a generalised orthogonal system of coordinates (X_1, X_2, X_3) (e.g. Toon et al., 1988; Byun and Schere, 2005):

$$\begin{aligned} & \frac{\partial C}{\partial t} + \frac{\partial(CU)}{\partial X_1} + \frac{\partial(CV)}{\partial X_2} + \frac{\partial(CW)}{\partial X_3} - \frac{\partial(CW_s)}{\partial X_3} \\ & - \frac{\partial}{\partial X_1} \left(K_1 \frac{\partial C}{\partial X_1} \right) - \frac{\partial}{\partial X_2} \left(K_2 \frac{\partial C}{\partial X_2} \right) - \frac{\partial}{\partial X_3} \left(K_3 \frac{\partial C}{\partial X_3} \right) \\ & = S^* - I^* \end{aligned} \quad (60)$$

where C is the scaled concentration, (U, V, W) are the scaled wind components, (K_1, K_2, K_3) are the scaled diffusion coefficients, and S^* and I^* are the scaled source and sink terms. The implementation of a generalised equation like (60) presents two major advantages. On one hand, the generalised equation reads formally equal to that in Cartesian coordinates, so that little

computational penalty exists to map physical domains (*e.g.* accounting for Earth's curvature and topography) to a "brick-like" computational domain (see Figure 1) by using coordinate-dependent horizontal and vertical mappings. On the other hand, a generalised form simplifies the structure and implementation of the code because the model can be solved on various horizontal (cartesian, spherical, Mercator, polar stereographic, etc.) and vertical (terrain following, σ -coordinates, etc.) coordinate systems using only one solving routine. To this purpose, one needs first to scale the model coordinates and some terms in the equation using adequate mapping and scaling factors, then solve for the scaled concentration C in the regular computational domain Ω_c (as in Cartesian coordinates) and, finally, transform the scaled concentration back to the original one.

In general and given two orthogonal coordinate systems (x_1, x_2, x_3) and (X_1, X_2, X_3) , coordinate mapping factors are given by the terms m_{ij} of the Jacobian transformation matrix \mathbf{M} :

$$m_{ij} = \frac{\partial x_i}{\partial X_j} \quad (61)$$

but, for the transformations considered here, \mathbf{M} will always be diagonal with three non-zero components m_1 , m_2 and m_3 . For example, in the horizontal transformation to spherical Earth surface coordinates (λ, ϕ) one has:

$$\begin{aligned} x &= R_e \sin \gamma \lambda \equiv \sin \gamma X_1 \\ y &= R_e \phi \equiv X_2 \end{aligned} \quad (62)$$

where R_e is the radius of the Earth and λ , ϕ and γ are the longitude, latitude and colatitude respectively (in Rad). Trivially, this transformation yields to $m_1 = \sin \gamma$ and $m_2 = 1$. Table 8 gives horizontal mapping factors for different coordinate systems (Toon et al., 1988). In most practical cases, *FALL3D-8.0* simulations only consider spherical coordinates, but other options are in principle possible. For vertical transformations, *FALL3D-8.0* incorporates a new σ -coordinate system with linear decay (Gal-Chen and Somerville, 1975) in which:

$$z = \frac{H-h}{H} \frac{H_T-h}{H_T} X_3 + h \quad x_3 \in [0, H_T] \quad (63)$$

where $h(x, y)$ is the terrain height and H_T the height of the top of the computational domain. In the σ -coordinate system the influence of the terrain decreases linearly with height, from terrain-following at the surface ($X_3 = 0$) to a rigid lid at the top of the computational domain ($X_3 = H_T$). This option has been added to partially correct numerical oscillations in the previous terrain-following model mapping ($z = X_3 + h$), which can appear near the surface in case of flows over mountain ranges and propagate upwards (Schar et al., 2002).

Table 9 gives the vertical mapping factors for the different coordinate systems available in *FALL3D-8.0*. Once defined, these coordinate mapping factors are used to scale the variables and parameters that appear in the generalised equation (60). The scaling of scalar quantities is straightforward since it only involves the Jacobian determinant of the transformation, *e.g.* $C = |\mathbf{M}| c = m_1 m_2 m_3 c$ for concentration and so on. Note that for a volume one has $dV = m_1 m_2 m_3 dv$, so that the mass comprised in a cell $dX_1 dX_2 dX_3$ of the computational domain is equal to that in the transformed

cell of the physical domain. The horizontal velocity components are trivially scaled as:

$$\begin{cases} U = \frac{dX_1}{dt} = u \frac{\partial X_1}{\partial x} + v \frac{\partial X_1}{\partial y} + w \frac{\partial X_1}{\partial z} = u/m_1 \\ V = \frac{dX_2}{dt} = u \frac{\partial X_2}{\partial x} + v \frac{\partial X_2}{\partial y} + w \frac{\partial X_2}{\partial z} = v/m_2 \end{cases} \quad (64)$$

485 whereas for the vertical component one has to consider that, in terrain following coordinate systems, the coordinate X_3 depends also on (x, y) through the terrain elevation $h(x, y)$:

$$W = \frac{dX_3}{dt} = u \frac{\partial X_3}{\partial x} + v \frac{\partial X_3}{\partial y} + w \frac{\partial X_3}{\partial z} \quad (65)$$

$$= u \frac{\partial h}{\partial x} \frac{\partial X_3}{\partial h} + v \frac{\partial h}{\partial y} \frac{\partial X_3}{\partial h} + w/m_3 \quad (66)$$

Basic algebra manipulation yields to the scaling factors shown in Table 10 for the different vertical coordinate systems. Note
490 that the expression above implicitly contains the correction for topography in the vertical velocity. Finally, scaling factors for diffusion coefficients can also be obtained after some manipulation (Toon et al., 1988; Byun and Schere, 2006).

4.2 Discretisation and solving algorithm

FALL3D solves for each model bin the 3D generalised equation (60) using a fractional step method, which splits the equation along each spatial direction (Folch et al., 2009):

$$\begin{aligned} \frac{\partial C}{\partial t} &= S^* - I^* \\ \frac{\partial C}{\partial t} + \frac{\partial(CU)}{\partial X_1} - \frac{\partial}{\partial X_1} \left(K_1 \frac{\partial C}{\partial X_1} \right) &= 0 \\ \frac{\partial C}{\partial t} + \frac{\partial(CV)}{\partial X_2} - \frac{\partial}{\partial X_2} \left(K_2 \frac{\partial C}{\partial X_2} \right) &= 0 \\ \frac{\partial C}{\partial t} + \frac{\partial[C(W - W_s)]}{\partial X_3} - \frac{\partial}{\partial X_3} \left(K_3 \frac{\partial C}{\partial X_3} \right) &= 0 \end{aligned} \quad (67)$$

with the solving order of each resulting one-dimensional ADS equation being permuted in each successive time step in order to avoid any privileged direction. One advantage of this splitting strategy is that, even if each one-dimensional equation is solved explicitly in time, the result is a semi-implicit scheme that adds stability.

In *FALL3D-8.0*, the "brick-like" computational domain is discretised using a variation of the staggered Arakawa D-grid, in
500 which the wind velocity components are evaluated at the respective cell faces and the rest of scalar quantities at the cell centres (Fig. 2). Note that this configuration is very convenient for solving the 3D equation in a fractional manner because, when solving each one-dimensional case, wind velocities are already aligned with the boundaries of the corresponding one-dimensional cells. The previous versions of *FALL3D* used the classical Lax-Wendorff (LW) central differences scheme for solving the resulting one-dimensional ADS equations in (67), combined with a slope-limiter to reduce numerical over/under

505 shootings near discontinuities. This resulted on a second-order accuracy except near sharp concentration gradients where, nonetheless, accuracy remained higher than in a first order upwind method. The main advantage of using the LW scheme was its simplicity but, in contrast, it is well known that it introduces numerical dissipation that prevents accurate resolution of discontinuities, leading to over-diffusive results. In order to circumvent this drawback, *FALL3D-8.0* uses instead a high-resolution Kurganov-Tadmor (KT) scheme that can be combined either with a fourth-order explicit Runge-Kutta or with a
510 first-order Euler time-marching method. The later option, even if less accurate, is still supported for computational efficiency reasons because it implies 4 times less solver calculations.

Consider the general one-dimensional advection-diffusion equation for a scalar variable $c(x, t)$ on its conservative form:

$$\frac{\partial c}{\partial t} + \frac{\partial}{\partial x} F(c) = \frac{\partial}{\partial x} G \left(c, \frac{\partial c}{\partial x} \right) \quad (68)$$

where, in our particular case, $F = c u$ is the advective flux and $G = k \partial c / \partial x$ is the diffusive flux (as already introduced, $u(x, t)$
515 and $k(x, t)$ are the velocity and diffusivity respectively). Consider also a 1D computational domain discretised as in Figure 2, where c is computed at cell centres ("mass" points) and u is stored at staggered cell boundaries, which do not need to be equally spaced. The semi-discrete form of the KT scheme can be written at centre of each cell i in terms of fluxes at boundaries $i \pm 1/2$ as (Kurganov and Tadmor, 2000):

$$\begin{aligned} \frac{\partial c_i}{\partial t} &= -\frac{1}{\Delta \bar{x}_i} \left[F_{i+1/2}^* - F_{i-1/2}^* \right] + \frac{1}{\Delta \bar{x}_i} \left[G_{i+1/2}^* - G_{i-1/2}^* \right] \\ 520 \quad &= f(t, c) \end{aligned} \quad (69)$$

where $\Delta \bar{x}_i$ is the i -th cell width and:

$$\begin{aligned} F_{i+1/2}^* &= \frac{1}{2} \left[F \left(c_{i+1/2}^r \right) + F \left(c_{i+1/2}^l \right) \right] \\ &\quad - \frac{1}{2} a_{i+1/2} \left(c_{i+1/2}^r - c_{i+1/2}^l \right) \\ F_{i-1/2}^* &= \frac{1}{2} \left[F \left(c_{i-1/2}^r \right) + F \left(c_{i-1/2}^l \right) \right] \\ 525 \quad &\quad - \frac{1}{2} a_{i-1/2} \left(c_{i-1/2}^r - c_{i-1/2}^l \right) \end{aligned} \quad (70)$$

$$\begin{aligned} G_{i+1/2}^* &= \frac{1}{2} \left[G \left(c_i, \frac{c_{i+1} - c_i}{\Delta x_i} \right) + G \left(c_{i+1}, \frac{c_{i+1} - c_i}{\Delta x_i} \right) \right] \\ &= G \left(\frac{c_{i+1} - c_i}{\Delta x_i} \right) \\ G_{i-1/2}^* &= \frac{1}{2} \left[G \left(c_{i-1}, \frac{c_i - c_{i-1}}{\Delta x_{i-1}} \right) + G \left(c_i, \frac{c_i - c_{i-1}}{\Delta x_{i-1}} \right) \right] \\ 530 \quad &= G \left(\frac{c_i - c_{i-1}}{\Delta x_{i-1}} \right) \end{aligned} \quad (71)$$

Note that, in the expression above, the last equality holds because our flux G depends only on the gradient of c , *i.e.* $G = G(\partial c / \partial x)$. In (70), $a_{i \pm 1/2}$ is the maximum absolute value of the eigenvalue of the Jacobian matrix of F (in our particular case,

it reduces to $a_{i\pm 1/2} = |u_{i\pm 1/2}|$, and c^r and c^l are, respectively, right and left values at a cell boundary, computed as:

$$c_{i+1/2}^r = c_{i+1} - 0.5\phi(r_{i+1})(c_{i+1} - c_i) \quad (72)$$

$$535 \quad c_{i-1/2}^r = c_i - 0.5\phi(r_i)(c_{i+1} - c_i)$$

$$c_{i+1/2}^l = c_i + 0.5\phi(r_i)(c_i - c_{i-1})$$

$$c_{i-1/2}^l = c_{i-1} + 0.5\phi(r_{i-1})(c_i - c_{i-1})$$

where

$$r_i = \frac{c_i - c_{i-1}}{c_{i+1} - c_i} \quad (73)$$

540 and $\phi(r)$ is a flux limiter function (e.g. Sweby, 1984). Options available in *FALL3D-8.0* are the well-known superbee $\phi_s(r)$ and minmod $\phi_m(r)$ (Roe, 1986):

$$\phi_s(r) = \max(0, \min(1, 2r), \min(2, r))$$

$$\phi_m(r) = \max(0, \min(1, r)) \quad (74)$$

Note that c is needed at two extra mass points in order to evaluate $c_{i-1/2}^l$ and $c_{i+1/2}^r$ at the left/right cell boundaries respectively.

545 In other words, the "stencil" of the KT scheme needs two ghost nodes at the boundaries of the computational domain or a two-point halo for internal domains in case of parallel domain decomposition. Note also that the solving strategy derives from a one-dimensional finite-volume formulation that, in our one-dimensional case, is also in practice equivalent to use linear finite elements.

Time marching from t^n to $t^{n+1} = t^n + \Delta t$ in (69) can be performed with the explicit first-order in time Euler method (EU1):

$$550 \quad c^{n+1} = c^n + \Delta t f(t^n, c^n) \quad (75)$$

or, alternatively, using the classical fourth-order Runge-Kutta method (RK4), in which:

$$c^{n+1} = c^n + \frac{\Delta t}{6}(k_1 + 2k_2 + 2k_3 + k_4) \quad (76)$$

with:

$$k_1 = f(t^n, c^n) \quad (77)$$

$$555 \quad k_2 = f\left(t^n + \frac{\Delta t}{2}, c^n + \frac{\Delta t}{2}k_1\right)$$

$$k_3 = f\left(t^n + \frac{\Delta t}{2}, c^n + \frac{\Delta t}{2}k_2\right)$$

$$k_4 = f(t^n + \Delta t, c^n + \Delta tk_3) \quad (78)$$

where the function $f(t, c)$ is given by the RHS of (69). In any case, the Courant-Friedrichs-Lewy (CFL) condition can be imposed to guarantee convergence in time integration (e.g. Hindmarsh et al., 1984) along each one-dimensional problem:

$$560 \quad \Delta t \leq \min\left(\frac{1}{\frac{2k_x}{\Delta x^2} + \frac{u}{\Delta y}}, \frac{1}{\frac{2k_y}{\Delta y^2} + \frac{v}{\Delta x}}, \frac{1}{\frac{2k_z}{\Delta z^2} + \frac{w}{\Delta z}}\right) \quad (79)$$

multiplied by a user-defined safety factor. This factor should theoretically be lower than 1 in fully explicit cases but, given the semi-implicit nature of the splitting algorithm, slightly larger values can also yield to stability.

4.3 Algorithm benchmarks

Three benchmark cases serve us to illustrate the gains of the KT+RK4 numerical scheme with respect the former LW+EU1
565 implemented in the previous versions of the code.

Example 1 considers the pure advection ($k = 0$) of a step-like discontinuity. Consider a 1D domain $x \in [-1, 1]$ with an initial concentration of:

$$\begin{cases} c(t=0) = 1 & |x| \leq 0.5 \\ c(t=0) = 0 & |x| > 0.5 \end{cases} \quad (80)$$

that is advected by a uniform velocity field $u = 1$. Periodic conditions are imposed at the boundaries, so that "mass" leaving
570 the computational domain at $x = 1$ is re-injected at $x = -1$. As a result, the initial condition is periodically recovered after each cycle with a period $t = 2$. Results are shown in Figure 3. Note how, as opposed to LW, the KT scheme adds almost no numerical diffusion and preserves discontinuities. In addition, because of its higher order in time, the KT+RK4 scheme preserves the solution whereas for LW+EU1 accuracy deteriorates with time (compare the accuracy of the LW+EU1 solutions after 1 and 10 cycles in Figure 3).

575 **Example 2** considers the classical 1D advection-diffusion problem for the onset of numerical instability in a domain $x \in [-1, 1]$ subject to the boundary conditions $c = 0$ at $x = -1$ and $c = 1$ at $x = 1$. The problem has a steady-state analytic solution given by:

$$c(t \rightarrow \infty) = \left(e^{Pe(x+1)} - 1 \right) / \left(e^{2Pe} - 1 \right) \quad (81)$$

where $Pe = ul/2k = u/k$ is the Péclet number. Figure 4 shows the steady-state solutions for different Péclet numbers, illus-
580 trating also how KT+RK4 outperforms LW+EU1 as the Péclet number increases.

Example 3 considers a case with pure advection ($k = 0$) on a 2D domain $(x, y) \in [-1, 1] \times [-1, 1]$ with an initial condition at $t = 0$ given by a conic concentration distribution with a unit ($c = 1$) peak concentration centred at $(x_c, y_c) = (0, 0.695)$ and having a radius $r = 0.1$ (Figure 5a). The cone is advected by a rotating clock-wise velocity field centered at $(0, 0)$:

$$\begin{aligned} u &= \Omega y \\ 585 \quad v &= -\Omega x \end{aligned} \quad (82)$$

with an angular velocity $\Omega = \pi$ (in Rad s^{-1}), so that each cycle is repeated with a period of $t = 2$. Concentration profiles along two transects A ($y = y_c$) and B ($x = 0$) after 2 cycles (*i.e.* at $t = 4$) are shown in Figure 5b and 5c respectively. Note again the substantial improvement in the KT+RK4 scheme, which performs well even in this numerically challenging test.

5 Model execution workflow

590 In *FALL3D-8.0*, the pre-process auxiliary programs have been parallelised and embedded in the code, so that a single executable file exists for all the pre-process steps and execution workflow (see Figure 6). These formerly independent programs can still be run individually as model tasks (specified by a program call argument) or, alternatively, concatenated with the model in a single execution. In the first case, pre-process tasks generate output files that are later given as inputs to the model task. This is similar to what occurred in the previous *v7.x* but with the difference of a parallel pre-process. In contrast, the second option
595 does not require intermediate file writing/reading and, therefore, saves disk space and overall computing time. In any case, all tasks share a unique model input file and generate its own log file to track execution and report eventual warnings and errors. Possible task options are summarised in Table 11 and include:

1. Task *SetTgsd*. This task can generate Gaussian and Bi-Gaussian particle grain size distributions in Φ (log-normal in diameter) or, alternatively, Weibull and Bi-Weibull distributions (Costa et al., 2016a), and assumes a linear variation of
600 density and particle shape factor between two specified cut-offs. For other kind of grain size distributions, the user must provide a total grain size distribution file (name.tgsd).
2. Task *SetDbs*. This task interpolates all the required meteorological data from the original grid of the driving meteorological models to the computational domain. Table 12 summarises the different meteorological drivers available in *FALL3D-8.0*. Global datasets include ERA-5, the new reanalysis from the ECMWF (Hersbach and Dee, 2016), the
605 NCEP Global Forecast System (GFS), and Global Data Assimilation System (GDAS) final analysis. Regional models supported include the Advanced Research WRF (ARW) core of the Weather Research and Forecasting (WRF) model (Skamarock et al., 2008), the mesoscale models HARMONIE-AROME (Bengtsson et al., 2017) and the COSMO-LAMI, run by the Italian Regional Environmental Protection Agency (ARPA). Note that some former datasets options have been deprecated in *v8.x*. The *FALL3D-8.0* distribution package provides a set of utilities to download and pre-process meteorological data for the *SetDbs* model task. Python scripts are provided to download and crop the variables required
610 by the model. ERA-5 can be obtained on either model levels (137 vertical levels) or pressure levels (37 vertical levels) via the Climate Data Store (CDS) infrastructure. GFS datasets can be accessed using the online archive of real-time weather model output from the National Operational Model Archive and Distribution System (NOMADS) (Rutledge et al., 2006). The NCEP FNL (Final) operational global analysis and forecast data from the Global Data Assimilation System (GDAS) can be accessed using the OPeNDAP protocol through the THREDDS Data Server (TDS) offered by
615 the NCAR Research Data Archive (RDA).
3. Task *SetSrc*. This task generates different emission source terms (see Sec. 3.2.3 and Table 4), including the *PLUME* option based on the *FPLUME-1.0* model (Folch et al., 2016). If necessary, it also performs a-priori tephra particle aggregation (Sec 3.2.6) and a TGSD cut-off in order to select the effective bins considered in the atmospheric transport.
- 620 4. Task *FALL3D*. This task runs the *FALL3D-8.0* model itself.
5. Task *All*. Finally, this task runs all previous tasks consecutively as a single parallel execution.

6 Parallelisation and performance

Parallelisation in *FALL3D-8.0* considers a 3D domain decomposition, with freedom for user to choose the number of processors along each direction. In contrast, previous versions considered two different levels of parallelisation, one on particle bins and another on domain but only along the vertical dimension. Parallelisation on bins was convenient in v7.x because no interaction among bins existed, but such a form of trivial parallelism has been deprecated given that it would now yield to unnecessary communication penalties. Note also that the full 3D domain decomposition allows solving on much larger grid sizes before reaching hardware memory limits.

In terms of run time performance, it is important to recall that the splitting algorithm combined with the RK4 time marching implies solving 4 times a series 1D equations along each spatial dimension, contrasting with the 1 single solution for the EU1 case. In other words, each time integration step of (67) using the RK4 scheme along X_1 implies solving 4 times $n_y \times n_z$ one-dimensional problems, the solution along X_2 implies solving 4 times $n_x \times n_z$ problems and so on. In order to minimise the number of communications between neighboring processors, it is more convenient to compute first each of the 4 partial increments in (78) for all the 1D problems on a given dimension. This optimises swapping communications among domain partitions because a single swapping request (*i.e.* one MPI send/receive call) communicates all the data necessary to compute the next RK4 increment for the whole mesh. In contrast, if all partial increments in (78) were computed for each 1D problem, it would require as many swapping requests as 1D problems involved. Clearly, this solving approach is convenient but it presents two drawbacks. Firstly, it obviously increases the amount of memory required and, secondly, it poses an issue on memory data access, with potential increase of cache memory misses given the more frequent access to data. Moreover, when one solves for the dimensions stored on array lowest axes, memory data access is scattered and therefore less efficient. This issue has been addressed in *FALL3D-8.0* by re-arranging the components of the velocity and diffusion arrays, with the dimension to solve being stored always in the fastest axis, and also by transposing the concentration array that has to be updated at the first partial increment. Such a memory management strategy allows exploiting always contiguous cache memory positions on any spatial dimension.

All the aspects discussed above have improved substantially the performance and scalability of the code. As an example of strong scaling (*i.e.* time to solution for a fixed problem size), let us consider a real-case ash dispersal simulation from the 2011 Cordón Caulle eruption (e.g. Collini et al., 2013). The model was configured as shown in Table 13 and solved on a typical grid size of $500 \times 500 \times 100$ computational cells (horizontal model resolution of $\approx 0.03^\circ$). For illustrative purposes, Figure 7 shows model snapshots of ash cloud column mass at two different times. Figure 8a shows strong scaling results (speed up) up to 2.048 processors obtained on the MareNostrum-IV supercomputer, composed by general-purpose nodes with 48 Intel Xeon Platinum processors interconnected by a 100Gb Intel Omni-Path Full-Fat Tree. For comparison, this Figure shows also the strong scaling curve obtained with latest code version v7.3.4, in this case limited to 64 processors (larger values were not possible on this grid using v7.3.4 given the former one-dimensional domain decomposition along z). Figure 8b plots the corresponding parallel efficiencies, defined as:

$$PE = 100 \times \frac{t_1}{N t_N} \quad (83)$$

where t_1 is the total computing time with 1 processing unit, and t_N the time with N processing units. Note that ideal strong scaling implies a parallel efficiency of 100%. Clearly, v8.x improves notably the scalability of the code, with a trend close to that of perfect scaling up to ≈ 100 processors (parallel efficiency $\geq 90\%$). Depending on the time integration scheme, values of parallel efficiency above 50% are obtained with up to 512 and 1024 processors for EU1 and RK4 respectively. This is in striking contrast with version v7.3.4, for which parallel efficiency already drops below 50% with only 16 processors (Fig. 8b). A much better v8.x code performance is also observed not only in terms of code scalability but also in terms of total computing time. Figure 9 shows the computing time ratio (total elapsed time) between v7.3.4 and v8 depending on the number of processors and the time integration scheme. The EU1 case (*i.e.* equal order of accuracy in time that in v7.3.4), shows a similar serial performance, only only with an insignificant computation overhead probably due to algorithmic differences. However, this overhead is rapidly balanced with only 4 processors, and v8.x with EU1 is already up to 4x faster than v7.3.4 with 64 processors. The RK4 case (*i.e.* 4-th order of accuracy in time) is around 4x slower than v7.3.4 for the serial execution. This is a logical result given that the RK4 scheme needs to iterate 4 times more to solve in time. However, this penalty is also rapidly balanced as the number of processors increases, and RK4 already outperforms v7.3.4 in absolute terms with only a few teens of processors. In summary, v8.x clearly shows a much better scalability and performance (absolute computing time to solution for a given problem and computational resources) than v7.3.4. The companion paper (Prata et al., 2019) contains a detailed model validation and shows that this is also true in terms of model accuracy.

7 Conclusions

After 15+ years, the atmospheric transport model *FALL3D* has been completely rewritten and modernised to overcome legacy constraints in the former release versions v7.x that precluded the introduction of new functionalities and seriously limited the scalability and performance of the code on hundreds or thousands of processors. With this, *FALL3D-8.0* can be considered as a baseline for the successive optimisations and preparation for Exascale computing. However, as detailed in the paper, version v8.x already contains remarkable improvements and updates on model physics, numerics, and performance. In particular, the code has been prepared to deal also with particles different from tephra, aerosols and radionuclides, includes new coordinate mapping options, a more efficient and less diffusive solving algorithm (KT) that can be combined with a high-order in time solver (RK4), and a better memory management and parallelisation strategy based on a full 3D domain decomposition. Strong scaling results have shown perfect scaling with few hundreds of processors and a parallel efficiency above 50% with 1024 processors. This remarkable improvement is also true in terms of performance (total computing time), with v8.x outperforming the previous release by a factor of 4x with only 64 processors.

Further expected improvements in the preparation towards Exascale include memory optimisation, introduction of thread parallelism (OpenMP), code vectorisation, porting to accelerators (GPUs), performance portability, load balance, asynchronous I/O, and preparation for emerging heterogeneous architectures (Exascale hardware prototypes).

8 Code and data availability

FALL3D is available under the version 3 of the GNU General Public License (GPL) at <https://gitlab.com/fall3d-distribution>

690 *Author contributions.* AF and LM have written the bulk of *FALL3D-8.0* with contributions from NG and GM. AC revised and updated all physical parameterisations implemented in the code. NG and MH have performed optimisations and the performance and scalability analysis. AF and AC wrote the manuscript with the input of all coauthors.

Competing interests. The authors declare no competing interests.

695 *Acknowledgements.* This work has been funded by the H2020 Center of Excellence for Exascale in Solid Earth (ChEESE) under the Grant Agreement 823844. AC and GM acknowledge the European project EUROVOLC (grant agreement number 731070) and the Ministero dell'Istruzione, dell'Università e della ricerca (MIUR, Roma, Italy) Ash-RESILIENCE project (grant agreement number 805 FOE 2015). The authors thank Andrew Prata (BSC) for providing satellite retrievals of ash column mass [and Fabio Dioguardi and an anonymous reviewer for their constructive comments.](#)

References

- Aschenbrenner, B. C.: A new method of expressing particle sphericity, *J. Sediment. Petrol.*, 26, 15–31, 1956.
- 700 Bear-Crozier, A., Kartadinata, N., Heriwaseso, A., and Møller Nielsen, O.: Development of python-FALL3D: a modified procedure for modelling volcanic ash dispersal in the Asia-Pacific region, *Natural Hazards*, 64, 821–838, 2012.
- Bengtsson, L., Andrae, U., Aspelien, T., Batrak, Y., Calvo, J., de Rooy, W., Gleeson, E., Hansen-Sass, B., Homleid, M., Hortal, M., Ivarsson, K.-I., Lenderink, G., Niemela, S., Nielsen, K., Onvlee, J., Rontu, L., Samuelsson, P., Munoz, D., Subias, A., Tijm, S., Toll, V., Yang, X., and Koltzow, M.: The HARMONIE-AROME Model Configuration in the ALADIN-HIRLAM NWP System, *Monthly Weather Review*, 705 145, 1919–1935, <https://doi.org/10.1175/MWR-D-16-0417.1>, 2017.
- Biass, S., Scaini, C., Bonadonna, C., Folch, A., Smith, K., and Höskuldsson, A.: A multi-scale risk assessment for tephra fallout and airborne concentration from multiple Icelandic volcanoes. Part 1: Hazard assessment, *Natural Hazards and Earth System Sciences*, 14, 2265–2287, <https://doi.org/10.5194/nhess-14-2265-2014>, <https://www.nat-hazards-earth-syst-sci.net/14/2265/2014/>, 2014.
- Bonasia, R., Scaini, C., Capra, L., Nathenson, M., Siebe, C., Arana-Salinas, L., and Folch, A.: Long-range hazard assessment of volcanic ash 710 dispersal for a Plinian eruptive scenario at Popocatepetl volcano (Mexico): implications for civil aviation safety, *Bulletin of Volcanology*, 76, 789, <https://doi.org/10.1007/s00445-013-0789-z>, <https://doi.org/10.1007/s00445-013-0789-z>, 2013.
- Brandt, J., Christensen, J. H., and Frohn, L.: Modelling transport and deposition of caesium and iodine from the Chernobyl accident using the DREAM model, *Atm. Chem. Phys.*, 2, 397–417, 2002.
- Byun, D. and Schere, K.: Review of the Governing Equations, Computational Algorithms, and Other Components of the Models-3 Community Multiscale Air Quality (CMAQ) Modeling System, *Applied Mechanics Reviews*, 59, 51, <https://doi.org/10.1115/1.2128636>, <https://doi.org/10.1115/1.2128636>, 2006.
- Byun, W. and Schere, K.: Review of the Governing Equations, Computational Algorithms and Other Components of the Models-3 Community Multiscale Air Quality (CMAQ) Modeling System, *Applied Mechanics Review*, 59, 51–78, 2005.
- Collini, E., Osoreo, S., Folch, A., Viramonte, J., Villarosa, G., and Salmuni, G.: Volcanic ash forecast during the June 2011 Cordón Caulle 720 eruption, *Natural Hazards*, 66, 389–412, <https://doi.org/10.1007/s11069-012-0492-y>, <https://doi.org/10.1007/s11069-012-0492-y>, 2013.
- Corradini, S., Merucci, L., and Folch, A.: Volcanic Ash Cloud Properties: Comparison Between MODIS Satellite Retrievals and FALL3D Transport Model, *IEEE Geoscience and Remote Sensing Letters*, 8, 248–252, <https://doi.org/10.1109/LGRS.2010.2064156>, 2011.
- Costa, A. and Macedonio, G.: A new 3D model for volcanic ash dispersion and deposition, in: *Geophysical Research Abstract*, EGU General Assembly, Nice, France, 2004.
- 725 Costa, A., Macedonio, G., and Folch, A.: A three-dimensional Eulerian model for transport and deposition of volcanic ashes, *Earth and Planetary Science Letters*, 241, 634 – 647, <https://doi.org/http://dx.doi.org/10.1016/j.epsl.2005.11.019>, 2006.
- Costa, A., Folch, A., and Macedonio, G.: A model for wet aggregation of ash particles in volcanic plumes and clouds: I. Theoretical formulation, *Journal of Geophysical Research*, 115, <https://doi.org/10.1029/2009JB007175>, 2010.
- Costa, A., Folch, A., Macedonio, G., Giaccio, B., Isaia, R., and Smith, V. C.: Quantifying volcanic ash dispersal and impact of the Campanian 730 Ignimbrite super-eruption, *Geophysical Research Letters*, 39, <https://doi.org/10.1029/2012GL051605>, <https://agupubs.onlinelibrary.wiley.com/doi/abs/10.1029/2012GL051605>, 2012.
- Costa, A., Folch, A., and Macedonio, G.: Density-driven transport in the umbrella region of volcanic clouds: Implications for tephra dispersion models, *Geophys. Res. Lett.*, 40, 1–5, <https://doi.org/10.1002/grl.50942>, corrected on 17 June 2019, 2013.

- Costa, A., Smith, V., Macedonio, G., and Matthews, N. E.: The magnitude and impact of the Youngest Toba Tuff super-eruption, *Frontiers in Earth Science*, 2, 16, <https://doi.org/10.3389/feart.2014.00016>, <https://www.frontiersin.org/article/10.3389/feart.2014.00016>, 2014.
- 735 Costa, A., Pioli, L., and Bonadonna, C.: Assessing tephra total grain-size distribution: Insights from field data analysis, *Earth and Planetary Science Letters*, 443, 90–107, iD: unige:82762, 2016a.
- Costa, A., Suzuki, Y. J., Cerminara, M., Devenish, B. J., Esposti Ongaro, T., Herzog, M., Van Eaton, A. R., Denby, L. C., Bursik, M., de' Michieli Vitturi, M., Engwell, S., Neri, A., Barsotti, S., Folch, A., Macedonio, G., Girault, F., Carazzo, G., Tait, S., Kaminski, E., Mastin, L. G., Woodhouse, M. J., Phillips, J. C., Hogg, A. J., Degruyter, W., and Bonadonna, C.: Results of the eruption column model inter-comparison study, *J. Volcanol. Geotherm. Res.*, <https://doi.org/10.1016/j.jvolgeores.2016.01.017>, 2016b.
- 740 de la Cruz, R., Folch, A., Farre, P., Cabezas, J., Navarro, N., and Cela, J.: Optimization of atmospheric transport models on HPC platforms, *Computers and Geosciences*, 97, 30–39, <https://doi.org/10.1016/j.cageo.2016.08.019>, 2016.
- Dioguardi, F., Mele, D., and Dellino, P.: A new one-equation model of fluid drag for irregularly shaped particles valid over a wide range of Reynolds number, *Journal of Geophysical Research*, 123, 144–156, <https://doi.org/10.1002/2017JB014926>, 2018.
- 745 Feng, J.: A size-resolved model and a four-mode parameterization of dry deposition of atmospheric aerosols, *Journal of Geophysical Research*, 113, <https://doi.org/10.1029/2007JD009004>, 2008.
- Folch, A.: A review of tephra transport and dispersal models: Evolution, current status, and future perspectives, *J. Volcanol. Geotherm. Res.*, 235–236, 96–115, <https://doi.org/10.1016/j.jvolgeores.2012.05.020>, 2012.
- 750 Folch, A., Cavazzoni, C., Costa, A., and Macedonio, G.: An automatic procedure to forecast tephra fallout, *J. Volcanol. Geotherm. Res.*, 177, 767–777, 2008.
- Folch, A., Costa, A., and Macedonio, G.: FALL3D: A Computational Model for Transport and Deposition of Volcanic Ash, *Comput. Geosci.*, 35, 1334–1342, <https://doi.org/10.1016/j.cageo.2008.08.008>, 2009.
- Folch, A., Costa, A., Durant, A., and Macedonio, G.: A model for wet aggregation of ash particles in volcanic plumes and clouds: II. Model application, *Journal of Geophysical Research*, 115, <https://doi.org/10.1029/2009JB007176>, 2010.
- 755 Folch, A., Costa, A., and Basart, S.: Validation of the FALL3D ash dispersion model using observations of the 2010 Eyjafjallajokull volcanic ash clouds, *Atmospheric Environment*, 48, 165–183, <https://doi.org/https://doi.org/10.1016/j.atmosenv.2011.06.072>, <http://www.sciencedirect.com/science/article/pii/S1352231011006960>, volcanic ash over Europe during the eruption of Eyjafjallajokull on Iceland, April-May 2010, 2012.
- 760 Folch, A., Mingari, L., Osoreo, M. S., and Collini, E.: Modeling volcanic ash resuspension - application to the 14-18 October 2011 outbreak episode in Central Patagonia, Argentina, *Nat. Hazards Earth Syst. Sci.*, 14, 119–133, <https://doi.org/10.5194/nhess-14-119-2014>, 2014.
- Folch, A., Costa, A., and Macedonio, G.: FPLUME-1.0: An integral volcanic plume model accounting for ash aggregation, *Geosci. Model Dev.*, 9, 431–450, <https://doi.org/10.5194/gmd-9-431-2016>, 2016.
- Gal-Chen, T. and Somerville, R. C.: On the use of a coordinate transformation for the solution of the Navier-Stokes equations, *Journal of Computational Physics*, 17, 209 – 228, [https://doi.org/https://doi.org/10.1016/0021-9991\(75\)90037-6](https://doi.org/https://doi.org/10.1016/0021-9991(75)90037-6), <http://www.sciencedirect.com/science/article/pii/0021999175900376>, 1975.
- 765 Ganser, G. H.: A rational approach to drag prediction of spherical and nonspherical particles, *Powder Technol.*, 77, 143–152, [https://doi.org/10.1016/0032-5910\(93\)80051-B](https://doi.org/10.1016/0032-5910(93)80051-B), 1993.
- Hersbach, H. and Dee, D.: ERA5 reanalysis is in production, *ECMWF newsletter*, 147, 5–6, 2016.

- 770 Hindmarsh, A. C., Gresho, P. M., and Griffiths, D. F.: The stability of explicit Euler time-integration for certain finite difference approximations of the multi-dimensional advection-diffusion equation, *International Journal for Numerical Methods in Fluids*, 4, 853–897, <https://doi.org/10.1002/flid.1650040905>, 1984.
- Jacobson, M. Z.: *Fundamentals of atmospheric modelling*, Cambridge University Press, New York, first edn., 1999.
- Jung, E. and Shao, Y.: An intercomparison of four wet deposition schemes used in dust transport modeling, *Global and Planetary Change*, 775 52, 248–260, 2006.
- Kurganov, A. and Tadmor, E.: New High-Resolution Central Schemes for Nonlinear Conservation Laws and Convection-Diffusion Equations, *J Comp Phys*, 160, 241–282, <https://doi.org/http://dx.doi.org/10.1006/jcph.2000.6459>, 2000.
- Leelössya, A., Lagzib, I., Kovács, A., and Mészáros, R.: A review of numerical models to predict the atmospheric dispersion of radionuclides, *J. Environ. Radioactiv.*, 182, 20–33, <https://doi.org/10.1016/j.jenvrad.2017.11.009>, 2018.
- 780 Louis, J. F.: A parametric model of vertical eddy fluxes in the atmosphere, *Boundary Layer Meteorology*, 17, 187–202, 1979.
- Martí, A., Folch, A., Costa, A., and Engwell, S.: Reconstructing the phases of the Campanian Ignimbrite super-eruption, *Nature Scientific Reports*, 6, <https://doi.org/10.1038/srep21220>, 2016.
- Marticorena, B. and Bergametti, G.: Modeling the atmospheric dust cycle: 1. Design of a soil-derived dust emission scheme, *J. Geophys. Res.*, 100, 16 415–16 430, <https://doi.org/10.1029/95JD00690>, 1995.
- 785 Marticorena, B., Bergametti, G., Aumont, B., Callot, Y., N'Doumé, C., and Legrand, M.: Modeling the atmospheric dust cycle 2. Simulation of Saharan dust sources, *J. Geophys. Res.*, 102, 4387–4404, <https://doi.org/10.1029/96JD02964>, 1997.
- Mastin, L. G., Guffanti, M., Servranckx, R., Webley, P., Barsotti, S., Dean, K., Durant, A., Ewert, J. W., Neri, A., Rose, W. I., Schneider, D., Siebert, L., Stunder, B., Swanson, G., Tupper, A., Volentik, A., and Waythomas, C. F.: A multidisciplinary effort to assign realistic source parameters to models of volcanic ash-cloud transport and dispersion during eruptions, *J. Volcanol. Geotherm. Res.*, 186, 10–21, 790 <https://doi.org/10.1016/j.jvolgeores.2009.01.008>, 2009.
- Mingari, L. A., Collini, E. A., Folch, A., Báez, W., Bustos, E., Osores, M. S., Reckziegel, F., Alexander, P., and Viramonte, J. G.: Numerical simulations of windblown dust over complex terrain: the Fiambalá Basin episode in June 2015, *Atmospheric Chemistry and Physics*, 17, 6759–6778, <https://doi.org/10.5194/acp-17-6759-2017>, <https://www.atmos-chem-phys.net/17/6759/2017/>, 2017.
- Morton, B. R., Taylor, G., and Turner, J. S.: Turbulent gravitational convection from maintained and instantaneous sources, *Proc. Roy. Soc. London, Ser. A*, 234, 1–23, 1956.
- 795 Neale, R., Jadwiga, H. R., Andrew, J. C., Sungsu, P., Peter, H. L., Gettelman, A., Williamson, D., Rasch, P., Vavrus, S., Taylor, M., Collins, W., Zhang, M., and Lin, S.: Description of the NCAR Community Atmosphere Model (CAM 4.0), Technical Report NCAR/TN-485+STR, National Center for Atmospheric Research, Boulder, Colorado, 2010.
- Osores, M., Folch, A., Collini, E., Villarosa, G., Durant, A., Pujol, G., and Viramonte, J.: Validation of the FALL3D model for the 2008 800 Chaiten eruption using field, laboratory and satellite data., *Andean Geology*, 40, 262–276, <https://doi.org/10.5027/andgeoV40n2-a05>, 2013.
- Parra, R., Bernard, B., Narvaez, D., Le Pennec, J.-L., Hasselle, N., and Folch, A.: Eruption Source Parameters for forecasting ash dispersion and deposition from vulcanian eruptions at Tungurahua volcano: Insights from field data from the July 2013 eruption, *Journal of Volcanology and Geothermal Research*, 309, 1 – 13, <https://doi.org/https://doi.org/10.1016/j.jvolgeores.2015.11.001>, <http://www.sciencedirect.com/science/article/pii/S0377027315003674>, 2016.
- 805 Pfeiffer, T., Costa, A., and Macedonio, G.: A model for the numerical simulation of tephra fall deposits, *J. Volcanol. Geotherm. Res.*, 140, 273–294, <https://doi.org/10.1016/j.jvolgeores.2004.09.001>, 2005.

- Poret, M., Costa, A., Folch, A., and Martí, A.: Modelling tephra dispersal and ash aggregation: The 26th April 1979 eruption, La Soufriere St. Vincent, *Journal of Volcanology and Geothermal Research*, 347, 207 – 220, <https://doi.org/https://doi.org/10.1016/j.jvolgeores.2017.09.012>, 2017.
- 810 Poulidis, A., Takemi, T., and Iguchi, M.: Experimental High-Resolution Forecasting of Volcanic Ash Hazard at Sakurajima, Japan, *Journal of Disaster Research*, 14, 786–797, <https://doi.org/10.20965/jdr.2019.p0786>, 2019.
- Prata, A., Folch, A., Mingari, L., Macedonio, G., and Costa, A.: FALL3D-8.0: a computational model for atmospheric transport and deposition of particles, aerosols and radionuclides. Part II: model validation, *Geosci. Model Dev.*, <https://doi.org/this issue>, 2019.
- 815 Roe, P.: Characteristic-Based Schemes for the Euler Equations, *Annual Review of Fluid Mechanics*, 18, 337–365, <https://doi.org/10.1146/annurev.fl.18.010186.002005>, 1986.
- Rutledge, G. K., Alpert, J., and Ebisuzaki, W.: NOMADS: A Climate and Weather Model Archive at the National Oceanic and Atmospheric Administration, *Bulletin of the American Meteorological Society*, 87, 327–342, <https://doi.org/10.1175/BAMS-87-3-327>, 2006.
- Sandri, L., Costa, A., Selva, J., Tonini, R., Macedonio, G., Folch, A., and Sulpizio, R.: Beyond eruptive scenarios: assessing tephra fallout hazard from Neapolitan volcanoes, *Scientific Reports*, 6, <https://doi.org/10.1038/srep24271>, 2016.
- 820 Scaini, C., Folch, A., and Navarro, M.: Tephra hazard assessment at Concepción Volcano, Nicaragua, *Journal of Volcanology and Geothermal Research*, 219, 41–51, <https://doi.org/10.1016/j.jvolgeores.2012.01.007>, 2012.
- Scaini, C., Biass, S., Galderisi, A., Bonadonna, C., Folch, A., Smith, K., and Höskuldsson, A.: A multi-scale risk assessment for tephra fallout and airborne concentration from multiple Icelandic volcanoes. Part 2: Vulnerability and impact, *Natural Hazards and Earth System Sciences*, 14, 2289–2312, <https://doi.org/10.5194/nhess-14-2289-2014>, <https://www.nat-hazards-earth-syst-sci.net/14/2289/2014/>, 2014.
- 825 Schaefer-Rolffs, U. and Becker, E.: Horizontal Momentum Diffusion in GCMs Using the Dynamic Smagorinsky Model, *Monthly Weather Review*, 141, 887–899, <https://doi.org/10.1175/MWR-D-12-00101.1>, 2013.
- Schar, C., Leuenberger, D., Fuhrer, O., Luthi, D., and Girard, C.: A New Terrain-Following Vertical Coordinate Formulation for Atmospheric Prediction Models, *Monthly Weather Review*, 130, 2459–2480, [https://doi.org/10.1175/1520-0493\(2002\)130<2459:ANTFVC>2.0.CO;2](https://doi.org/10.1175/1520-0493(2002)130<2459:ANTFVC>2.0.CO;2),
- 830 2002.
- Scollo, S., Folch, A., Coltelli, M., and Realmuto, V. J.: Three-dimensional volcanic aerosol dispersal: A comparison between Multi-angle Imaging Spectroradiometer (MISR) data and numerical simulations, *Journal of Geophysical Research: Atmospheres*, 115, <https://doi.org/10.1029/2009JD013162>, <https://agupubs.onlinelibrary.wiley.com/doi/abs/10.1029/2009JD013162>, 2010.
- Selva, J., Costa, A., Sandri, L., Macedonio, G., and Marzocchi, W.: Probabilistic short-term volcanic hazard in phases of unrest: A case study for tephra fallout, *Journal of Geophysical Research: Solid Earth*, 119, 8805–8826, <https://doi.org/10.1002/2014JB011252>, <https://agupubs.onlinelibrary.wiley.com/doi/abs/10.1002/2014JB011252>, 2014.
- 835 Shao, Y. and Leslie, L. M.: Wind erosion prediction over the Australian continent, *J. Geophys. Res.*, 102, 30,091–30,105, 1997.
- Shao, Y. and Lu, H.: A simple expression for wind erosion threshold friction velocity, *J. Geophys. Res.*, 105, 22 437–22 443, <https://doi.org/10.1029/2000JD900304>, 2000.
- 840 Shao, Y., Raupach, M. R., and Findlater, P. A.: Effect of saltation bombardment on the entrainment of dust by wind, *J. Geophys. Res.*, 98, 12,719–12,726, <https://doi.org/10.1029/93JD00396>, 1993.
- Skamarock, W. C., Klemp, J. B., Dudhia, J., Gill, D. O., Barker, D. M., Duda, M. G., Huang, X.-Y., Wang, W., and Powers, J. G.: A description of the Advanced Research WRF Version 3, Tech. rep., National Center for Atmospheric Research, Boulder, Colorado, USA, NCAR Technical Note, NCAR/TN-475+STR, 2008.

- 845 Sparks, R. S. J., Bursik, M. I., Carey, S. N., Gilbert, J. S., Glaze, L. S., Sigurdsson, H., and Woods, A. W.: Volcanic Plumes, John Wiley & Sons Ltd., Chichester, U.K., 1997.
- Sulpizio, R., Folch, A., Costa, A., Scaini, C., and Dellino, P.: Hazard assessment of far-range volcanic ash dispersal from a violent Strombolian eruption at Somma-Vesuvius volcano, Naples, Italy: implications on civil aviation, *Bulletin of Volcanology*, 74, 2205–2218, <https://doi.org/10.1007/s00445-012-0656-3>, 2012.
- 850 Suzuki, T.: A theoretical model for dispersion of tephra, in: *Arc Volcanism: Physics and Tectonics*, edited by Shimozuru, D. and Yokoyama, I., pp. 93–113, Terra Scientific Publishing Company (TERRAPUB), Tokyo, 1983.
- Suzuki, Y. and Koyaguchi, T.: A three-dimensional numerical simulation of spreading umbrella clouds, *J. Geophys. Res.*, 114, B03 209, <https://doi.org/10.1029/2007JB005369>, 2009.
- Sweby, P.: High Resolution Schemes Using Flux Limiters for Hyperbolic Conservation Laws, *SIAM Journal on Numerical Analysis*, 21, 995–1011, <https://doi.org/10.1137/0721062>, 1984.
- 855 Toon, O. B., Turco, R. P., D., W., Malone, R., and Liu, M.: A multidimensional model for aerosols: Description of computer analogs, *J. Atm. Sci.*, 45, 2123–2143, 1988.
- Venkatram, A. and Pleim, J.: The electrical analogy does not apply to modelling dry deposition of particles, *Atm. Env.*, 33, 3075–3076, 1999.
- Wadell, H.: Sphericity and roundness of rock particles, *J. Geol.*, 41, 310–331, 1933.
- 860 Walker, G. P. L., Wilson, L., and Howell, E. L. G.: Explosive volcanic eruptions I. Rate of fall of pyroclasts, *Geophys. J. Roy. Astron. Soc.*, 22, 377–383, 1971.
- Westphal, D. L., Toon, O. B., and Carlson, T. N.: A two-dimensional numerical investigation of the dynamics and microphysics of Saharan dust storms, *J. Geophys. Res.*, 92, 3027–3049, 1987.
- Wilson, L. and Huang, T. C.: The influence of shape on the atmospheric settling velocity of volcanic ash particles, *Earth Planet. Sci. Lett.*, 44, 311–324, [https://doi.org/10.1016/0012-821X\(79\)90179-1](https://doi.org/10.1016/0012-821X(79)90179-1), 1979.
- 865 Woodhouse, M. J., Hogg, A. J., and Phillips, J. C.: A global sensitivity analysis of the PlumeRise model of volcanic plumes, *J. Volcanol. Geotherm. Res.*, 3219, 54–76, <https://doi.org/10.1016/j.jvolgeores.2016.02.019>, 2016.
- Woods, A. W. and Kienle, J.: The dynamics and thermodynamics of volcanic clouds: Theory and observations from the April 15 and April 21, 1990 eruptions of Redoubt Volcano, Alaska, *J. Volcanol. Geotherm. Res.*, 62, 273–299, 1994.

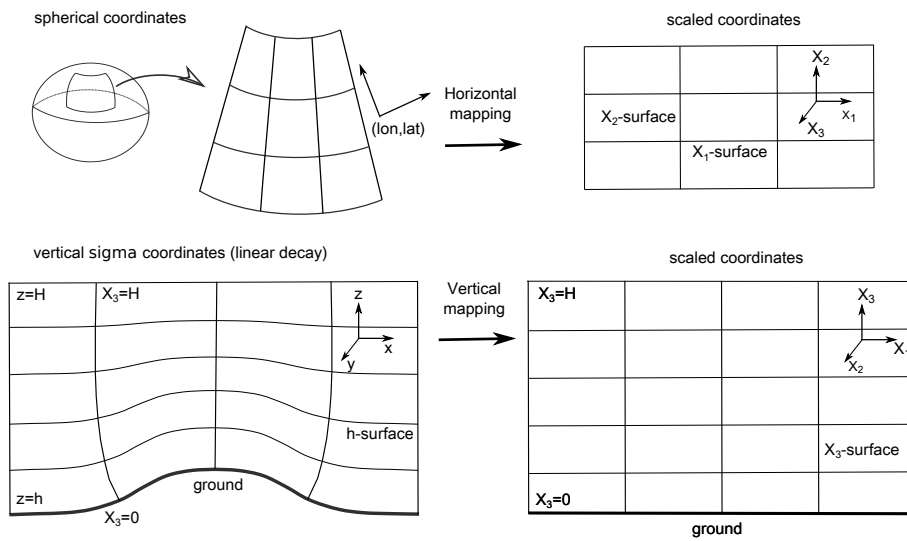


Figure 1. Mapping of coordinates from the physical domain (left) to a brick-like (right) computational domain along the horizontal and vertical dimensions. Horizontal mapping corrects for Earth’s curvature, vertical mapping accounts for topography.

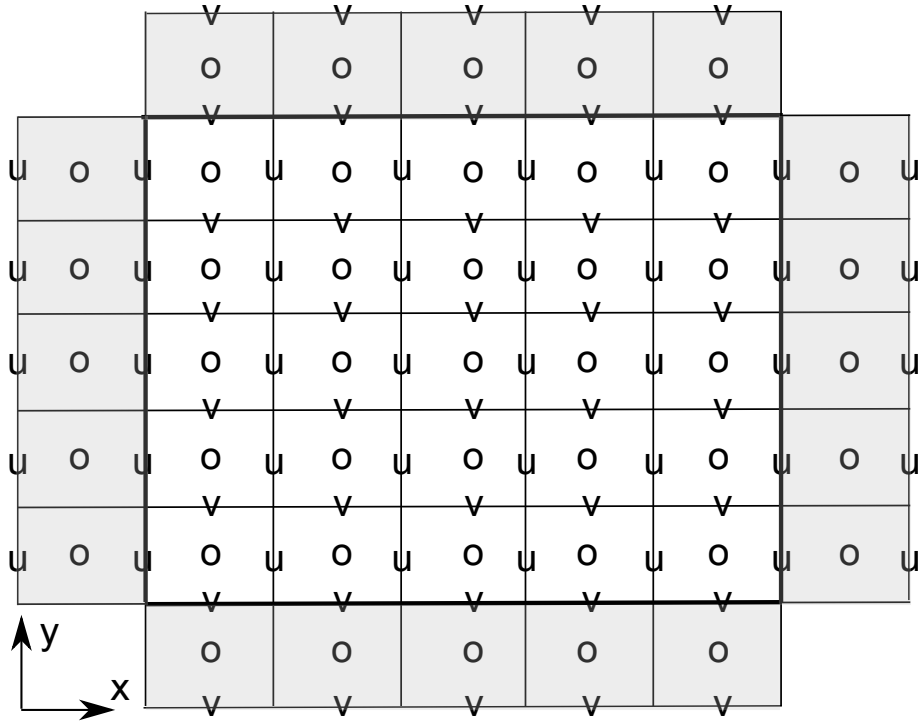


Figure 2. Arakawa D-grid on a 2D computational domain limited by the bold line. Scalar quantities are stored/computed at the centre of the cells (empty circles), whereas the u and v velocity components are staggered at its respective cell faces. One row of ghost cells is shown in grey for reference, the actual number of ghost cells needed depends on the numerical stencil (order of the solving algorithm). The 3D grid is formed as a succession of 2D layers, with the w velocity components at the bottom/top faces of the cell.

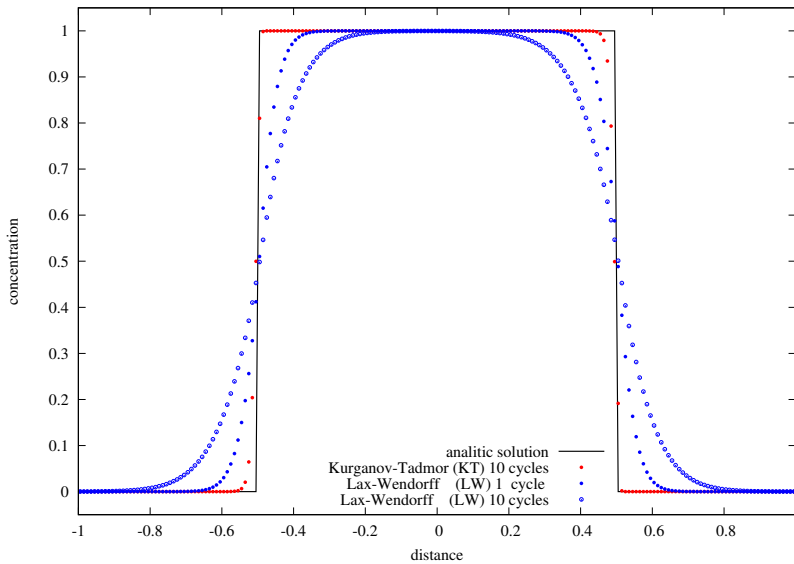


Figure 3. Benchmark 1 results. Step-like discontinuity given by (80) moving right at constant velocity $u = 1$ and without diffusion $k = 0$ on a domain $x \in [-1, 1]$ with periodic boundary conditions. The black solid line shows the analytic solution after each periodic cycle, which coincides with the initial condition ($t = 0$). Red dots show the KT+RK4 numerical solution after simulating 10 cycles (at $t = 20$). Blue dots and blue circles show the LW+EU1 results after 1 cycle ($t = 2$) and 10 cycles ($t = 20$) respectively. Note that mass (area below curves) is conserved in all the cases, but the KT+RK4 scheme adds almost no numerical diffusion and preserves discontinuities. Results using 200 equally-spaced grid cells.

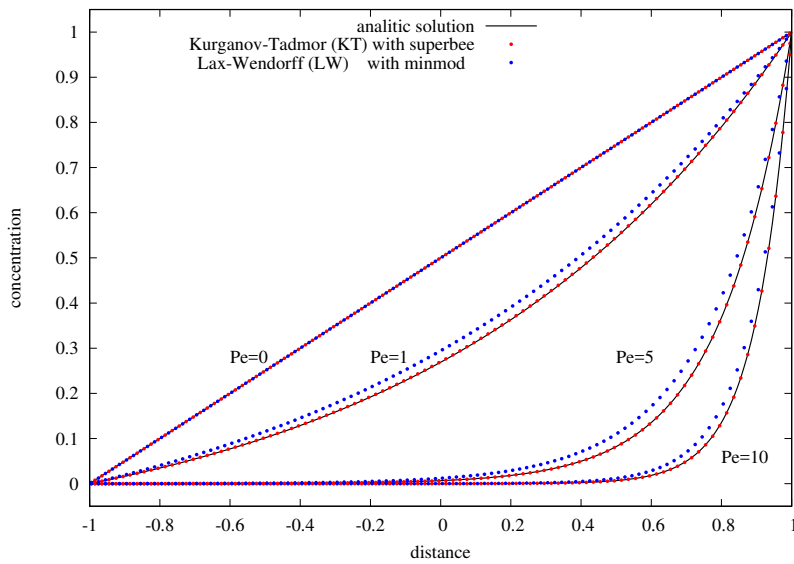


Figure 4. Benchmark 2 results. Steady-state solutions for different Péclet numbers (Pe) on a domain $x \in [-1, 1]$ with boundary conditions $c = 0$ at $x = -1$ and $c = 1$ at $x = 1$. Black lines show the respective analytic solutions given by (81). Red and blue dots show, respectively, the KT+RK4 and LW+EU1 numerical solutions. The case $Pe = 0$ (pure diffusion problem) has a linear solution and is exactly matched by both schemes. For the rest of cases KT+RK4 outperforms LW+EU1. Results using 200 equally-spaced grid cells.

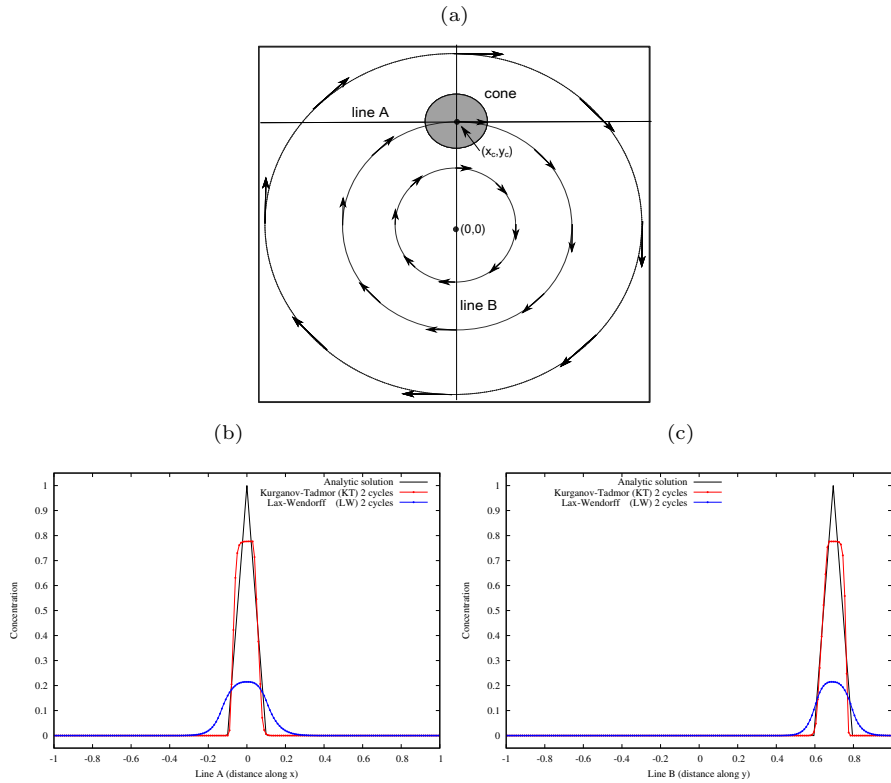


Figure 5. Benchmark 3 results. (a) A cone centred at $(x_c, y_c) = (0, 0.695)$ with radius $r = 0.1$ (shaded circle) is advected by a rotating velocity field with angular velocity $\Omega = \pi$ in a computational domain $(x, y) \in [-1, 1] \times [-1, 1]$. Plots (b) and (c) show concentration profiles after 2 cycles along lines A ($y = y_c$) and B ($x = 0$). The black solid line shows the analytic solution after each cycle. Red and blue dots show the KT+RK4 and LW+EU1 numerical solutions respectively. Results using 200 equally-spaced cells along each direction

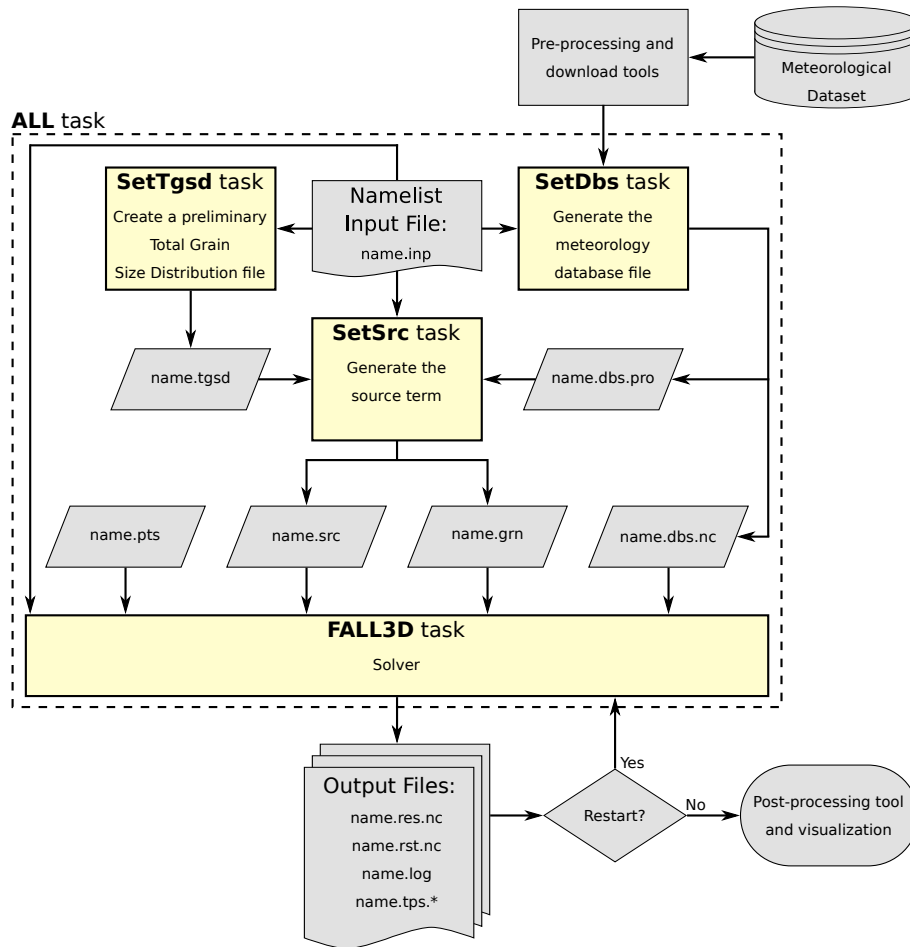


Figure 6. Pre-process and execution workflow and associated model tasks. Task "All" runs all tasks in a single (parallel) execution. In this case, the write/read of the intermediate files can be omitted. All tasks share a unique model input file (name.inp).

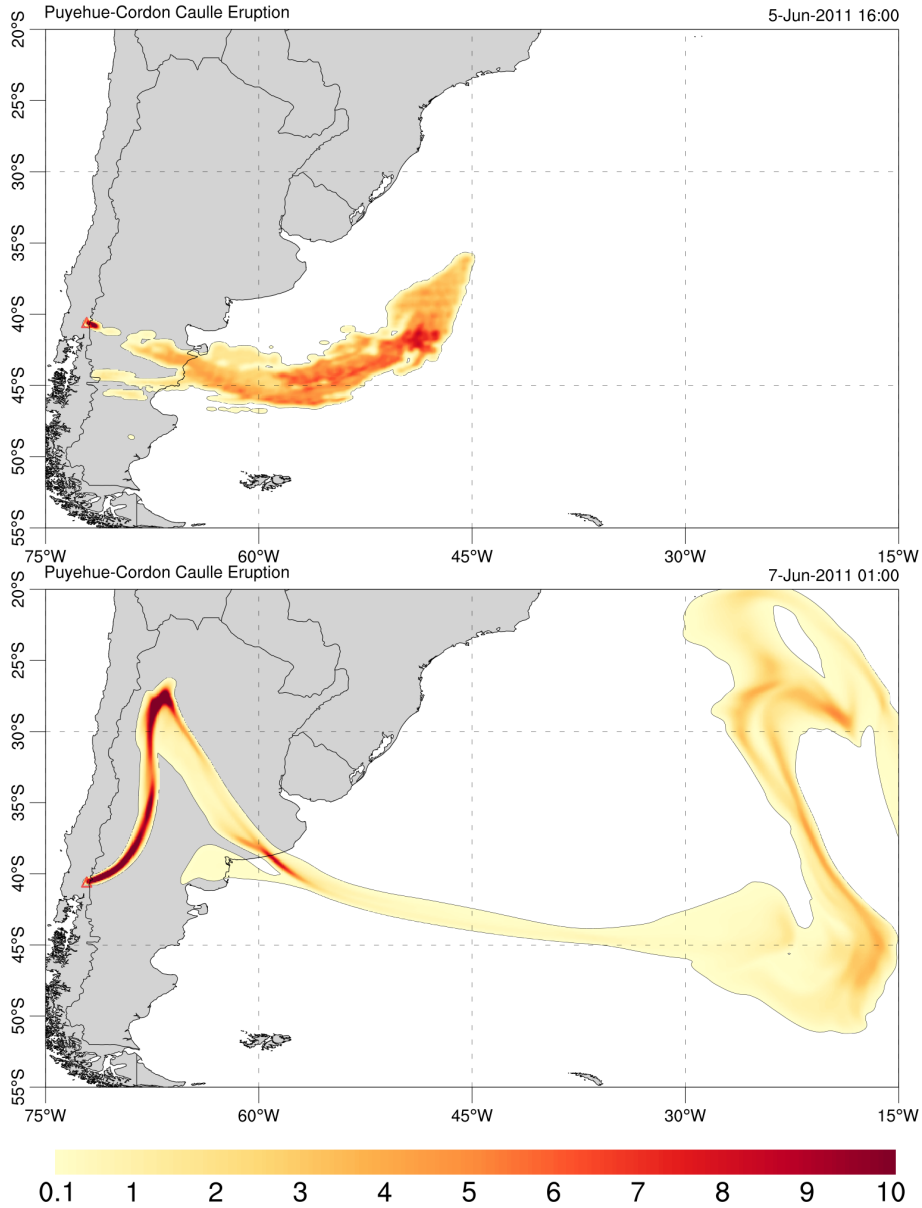


Figure 7. Simulation results for the 2011 Cordón Caulle eruption. The model was configured as shown in Table 13 and solved on the $500 \times 500 \times 100$ grid cells used in Section 6 for the scalability analysis. (a) PM10 ash cloud column mass contours (in kg m^{-2}) on 5 June 2011 at 16:00 UTC, just after satellite data insertion. (b) same on 7 June 2011 at 01:00 UTC after model evolution assuming a constant column height of 10 km a.v.l.

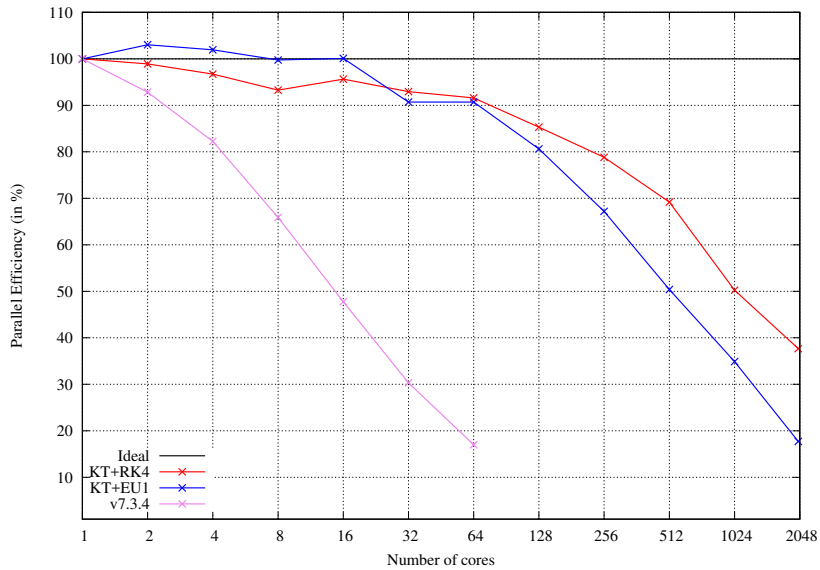
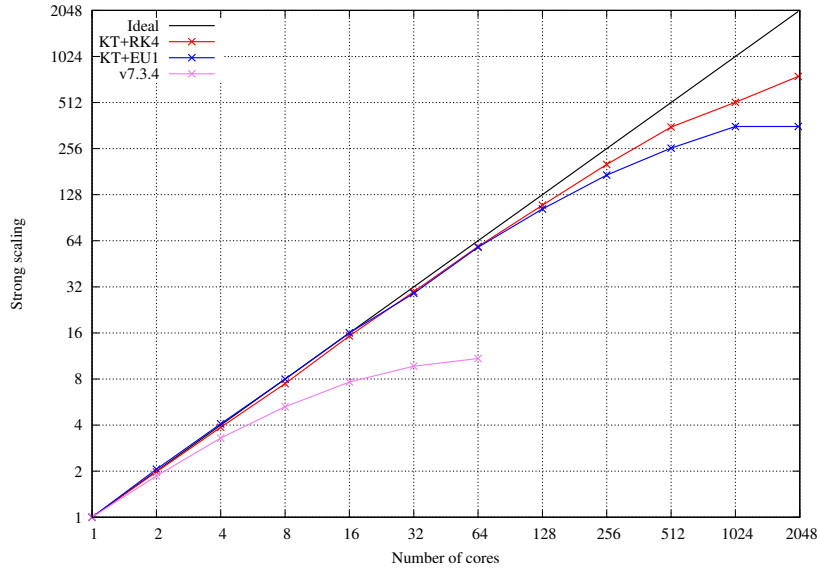


Figure 8. Strong scaling results on MareNostrum-IV supercomputer for the Cordón Caulle simulation using a $500 \times 500 \times 100$ cells grid. (a) scaling curves up to 2048 processors for the RK4 (red) and EU1 (blue) time integration schemes. Results using code version v.7.3.4 are also shown up to 64 processors only (pink). Ideal strong scaling behaviour is indicated by the solid black line. Note that the scaling curves refer to the total computing time and therefore include I/O operations, not just computing time. (b) Parallel efficiency (83) depending on the number of computation units.

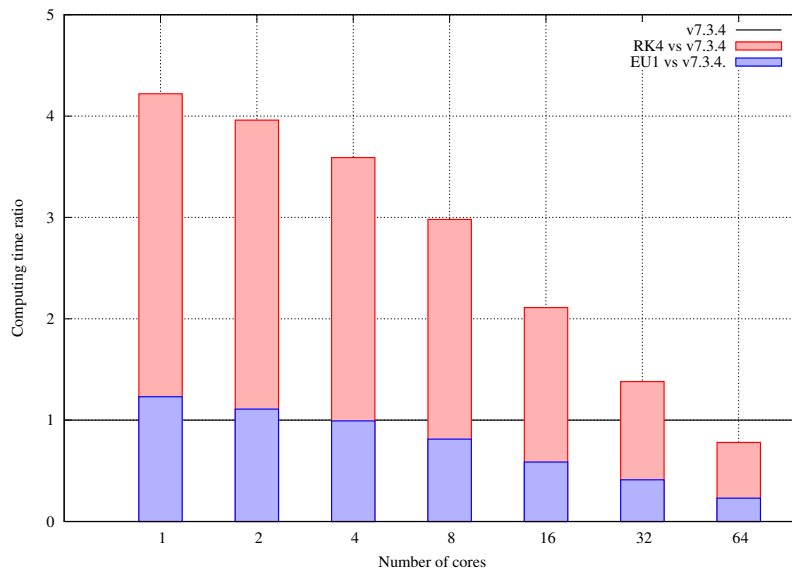


Figure 9. Computing time ratio between code version v7.3.4 and v.8 depending on the number of processors. Results for EU1 (blue bars) and RK4 (red bars) including I/O operations.

Table 1. List of Latin symbols. Bold and doubled-lined fonts indicate vector and tensor quantities respectively.

| <u>symbol</u> | <u>units</u> | <u>definition</u> |
|--------------------------|----------------------------------|--|
| $\underline{A_s}$ | - | <u>Suzuki parameter (controls the vertical location of the maximum of the emission)</u> |
| \underline{C} | kg m^{-3} | <u>scaled concentration (c)</u> |
| $\underline{C_a}$ | $\text{J kg}^{-1} \text{K}^{-1}$ | <u>air specific heat capacity at constant pressure</u> |
| $\underline{C_d}$ | - | <u>particle drag coefficient</u> |
| $\underline{C_s}$ | $\text{J kg}^{-1} \text{K}^{-1}$ | <u>solid (particles) specific heat capacity at constant pressure</u> |
| $\underline{C_v}$ | $\text{J kg}^{-1} \text{K}^{-1}$ | <u>gas specific heat capacity at constant pressure</u> |
| \underline{c} | kg m^{-3} | <u>mass concentration of a substance mixed within a fluid (air)</u> |
| \underline{D} | $\text{kg m}^{-2} \text{s}^{-1}$ | <u>ground deposition mass flux ($\underline{D} = c \underline{u}_d$)</u> |
| $\underline{D_f}$ | - | <u>fractal exponent</u> |
| \underline{d} | m | <u>particle sphere equivalent diameter</u> |
| $\underline{d_A}$ | m | <u>diameter of particle aggregates</u> |
| $\underline{d_n}$ | m | <u>average between particle minimum (d_3) and the maximum (d_1) dimensions</u> |
| $\underline{d_s}$ | m | <u>equivalent diameter of saltating particles</u> |
| \underline{F} | $\text{kg m}^{-2} \text{s}^{-1}$ | <u>advective mass flux ($\underline{F} = c \underline{u}$)</u> |
| $\underline{F_V}$ | $\text{kg m}^{-2} \text{s}^{-1}$ | <u>vertical resuspension emission flux</u> |
| $\underline{F_H}$ | $\text{kg m}^{-2} \text{s}^{-1}$ | <u>horizontal flux of saltating particles</u> |
| $\underline{f_i}$ | - | <u>mass fraction of the i-th bin</u> |
| \underline{G} | $\text{kg m}^{-2} \text{s}^{-1}$ | <u>sedimentation mass flux ($\underline{G} = c \underline{u}_s$)</u> |
| $\underline{G_b}$ | - | <u>stability function (see eq. (18))</u> |
| $\underline{G_m}$ | - | <u>stability function (see eq. (17))</u> |
| \underline{g} | m s^{-2} | <u>gravity acceleration modulus</u> |
| \underline{H} | $\text{kg m}^{-2} \text{s}^{-1}$ | <u>diffusive mass flux ($\underline{H} = -\mathbb{K}\nabla c$)</u> |
| \underline{H} | m | <u>eruption column height</u> |
| $\underline{H_T}$ | m | <u>top of the computational domain</u> |
| \underline{h} | m | <u>terrain height (topography)</u> |
| $\underline{h_c}$ | m | <u>cloud thickness</u> |
| $\underline{h_p}$ | m | <u>height of the Atmospheric Boundary Layer (ABL)</u> |
| \underline{I} | $\text{kg m}^{-3} \text{s}^{-1}$ | <u>mass sink term per unit time and volume</u> |
| $\underline{\mathbb{K}}$ | $\text{m}^2 \text{s}^{-1}$ | <u>diffusion tensor.</u> |
| $\underline{k_f}$ | - | <u>fractal pre-factor</u> |
| $\underline{k_h}$ | $\text{m}^2 \text{s}^{-1}$ | <u>horizontal component of the diffusion tensor</u> |
| $\underline{k_{ht}}$ | $\text{m}^2 \text{s}^{-1}$ | <u>horizontal diffusion by transport (see eq. (??))</u> |
| $\underline{k_{hv}}$ | $\text{m}^2 \text{s}^{-1}$ | <u>horizontal numerical diffusion (see eq. (8))</u> |
| $\underline{k_x}$ | s^{-1} | <u>isotope decay rate</u> |
| $\underline{k_v}$ | $\text{m}^2 \text{s}^{-1}$ | <u>vertical component of the diffusion tensor</u> |
| \underline{L} | m | <u>Monin-Obukhov length</u> |
| $\underline{l_c}$ | m | <u>characteristic length scale</u> 41 |

| | | |
|-------------------|----------------------------------|--|
| \underline{n} | - | <u>outwards unit normal vector</u> |
| \underline{M} | - | <u>Jacobian transformation matrix (components m_{ij})</u> |
| M_{ip} | kg s^{-1} | <u>emission rate for bin i at source point p</u> |
| M_e | kg s^{-1} | <u>total emission rate (source strength)</u> |
| m_i | - | <u>mapping factors (m_1, m_2, m_3) (diagonal terms of Jacobian matrix)</u> |
| N | s^{-1} | <u>Brunt-Väisälä frequency</u> |
| n_b | - | <u>number of species discrete bins</u> |
| n_e | - | <u>gas mass fraction</u> |
| n_p | - | <u>number of point sources in emission schemes</u> |
| \dot{n}_{tot} | $\text{m}^{-3}\text{s}^{-1}$ | <u>total particle decay per unit volume and time</u> |
| Pr_t | - | <u>turbulent Prandtl number</u> |
| p_{mn} | - | <u>relative probability of decay of the isotope m to the isotope n</u> |
| q | $\text{m}^3 \text{s}^{-1}$ | <u>volumetric flow rate into the plume umbrella region</u> |
| R | m | <u>radius of gravity current</u> |
| R_e | m | <u>radius of the Earth</u> |
| r_a | s m^{-1} | <u>aerodynamic resistance</u> |
| r_b | s m^{-1} | <u>quasi-laminar resistance</u> |
| Re | - | <u>Reynolds number</u> |
| Ri | - | <u>Richardson number</u> |
| Rib | - | <u>Richardson bulk number</u> |
| S | $\text{kg m}^{-3} \text{s}^{-1}$ | <u>mass source term per unit time and volume</u> |
| Sc_e | - | <u>Schmidt number</u> |
| St | - | <u>Stokes number of particles</u> |
| t | s | <u>time</u> |
| $t_{1/2}$ | s | <u>radioactive element half live</u> |
| T_a | K | <u>air temperature</u> |
| T_o | K | <u>magma (mixture) temperature at the vent</u> |
| \underline{U} | m s^{-1} | <u>scaled velocity $\underline{U} = (U, V, W)$</u> |
| \underline{u} | m s^{-1} | <u>fluid velocity vector (wind velocity) $\underline{u} = (u, v, w)$</u> |
| $\underline{u_d}$ | m s^{-1} | <u>ground deposition velocity vector</u> |
| $\underline{u_s}$ | m s^{-1} | <u>settling (terminal) velocity vector $\underline{u_s} = (0, 0, -w_s)$</u> |
| u_h | m s^{-1} | <u>horizontal wind velocity modulus</u> |
| u_r | m s^{-1} | <u>radial velocity</u> |
| u_* | m s^{-1} | <u>friction velocity</u> |
| u_{*t} | m s^{-1} | <u>threshold friction velocity</u> |
| V | m^3 | <u>volume (of a computational grid cell)</u> |
| \underline{X} | m | <u>scaled coordinates $\underline{X} = (X_1, X_2, X_3)$</u> |
| z | m | <u>vertical coordinate; distance from the ground</u> |
| z_b | m | <u>top bottom height (above terrain)</u> |
| z_o | m | <u>ground roughness height</u> |
| z_t | m | <u>emission top height (above terrain)</u> |

Table 2. List of Greek symbols.

| <u>symbol</u> | <u>units</u> | <u>definition</u> |
|----------------|--------------------|--|
| α | - | constant of Smagorinsky |
| α_e | - | radial plume entrainment coefficients |
| α_s | m s^{-2} | sandblasting efficiency coefficient |
| β_e | - | cross-wind plume entrainment coefficients |
| φ | - | particle aspect ratio (see eq. (22)) |
| ϕ | Rad | latitude |
| ϕ | - | flux limiter function |
| ϕ_b | - | atmospheric stability function for temperature |
| Δ_g | m | characteristic grid cell measure |
| Δt | s | time increment (step) |
| Γ | - | boundary of the computational domain (divided in Dirichlet Γ_D , Neumann Γ_N , and Robin Γ_R parts) |
| γ | Rad | colatitude |
| $\bar{\gamma}$ | s^{-1} | mean shear rate of wind |
| Λ | s^{-1} | wet deposition scavenging coefficient |
| λ | Rad | longitude |
| λ_s | - | Suzuki parameter (controls the distribution of the emitted mass around the maximum) |
| λ_c | m | asymptotic length scale ($\lambda_c=30\text{m}$ assumed) |
| λ_g | - | empirical constant in plume gravity currents ($\lambda_g=0.2$ assumed) |
| κ | - | von Karman constant ($\kappa=0.4$ assumed) |
| Ψ | - | particle sphericity |
| ρ_a | kg m^{-3} | fluid (air) density |
| ρ_p | kg m^{-3} | particle density |
| θ | K | potential temperature |
| θ_* | K | potential temperature scale |
| θ_v | K | potential virtual temperature |
| ν_a | Pa s | fluid (air) kinematic viscosity |
| ξ | - | particle shape factor (sphericity to circularity ratio) |

Table 3. Types of categories and related sub-categories of species in *FALL3D-8.0*.

| category | sub-category (species) | name (tag) | bins (number) | comments |
|---------------|---------------------------|---------------|-----------------------------|--|
| particles | tephra | lapilli | user defined ⁽¹⁾ | tephra with $\Phi^{(2)} < -1$ |
| | | coarse-ash | user defined | tephra with $-1 \leq \Phi \leq 4$ |
| | | fine-ash | user defined | tephra with $\Phi > 4$ |
| | | aggregate | 1 or more | aggregation model dependent |
| | mineral dust | dust | user defined ⁽¹⁾ | |
| aerosols | H_2O | H2O | 1 | water vapour |
| | SO_2 | SO2 | 1 | sulphur dioxide only ⁽³⁾ |
| radionuclides | ^{134}Cs | CS-134 | user defined ⁽¹⁾ | cesium 134, decays to a stable isotope |
| | ^{137}Cs | CS-137 | user defined | cesium 137, decays to a stable isotope |
| | ^{131}I | I-131 | user defined | iodium 131, decays to a stable isotope |
| | ^{90}Sr | SR-90 | user defined | stroncium 90, decays to yttrium 90 |
| | ^{90}Y | Y-90 | user defined | yttrium 90, decays to a stable isotope |

(1) For any specie in the category particles or radionuclides, users can specify the number of effective bins from a grain size distribution;

(2) for tephra, the Φ number is defined as $d = 2^{-\Phi}$, where d is the particle diameter in mm; (3) SO_2 chemistry not included yet in v8.0.

Table 4. Parameterisations available in *FALL3D-8.0* depending on each category and related sub-category (species). Note that, except for radioactive decay, all physical phenomena were already included in v7.x. However, several parameterisations have been updated to account for more recent developments.

| Category | Sub-category (species) | particles | | aerosols | radionuclides |
|-------------------------------------|-------------------------------|-----------|------|------------------|---------------|
| | | tephra | dust | (all species) | (all species) |
| Diffusion (Sec. 3.2.1) | | ✓ | ✓ | ✓ | ✓ |
| Particle sedimentation (Sec. 3.2.2) | | ✓ | ✓ | | ✓ |
| Emissions (Sec. 3.2.3) | <i>POINT</i> | ✓ | | ✓ | ✓ |
| | <i>HAT</i> | ✓ | | ✓ | ✓ |
| | <i>SUZUKI</i> | ✓ | | ✓ ⁽¹⁾ | ✓ |
| | <i>PLUME</i> | ✓ | | ✓ ⁽¹⁾ | |
| | <i>RESUSPENSION</i> | ✓ | ✓ | | |
| Deposition mechanisms (Sec. 3.2.4) | dry deposition ⁽²⁾ | ✓ | ✓ | ✓ | ✓ |
| | wet deposition ⁽³⁾ | ✓ | ✓ | ✓ | ✓ |
| Gravity current (Sec. 3.2.5) | | ✓ | | ✓ ⁽¹⁾ | |
| Aggregation (Sec. 3.2.6) | | ✓ | | | |
| Radioactive decay (Sec. 3.2.7) | | | | | ✓ |
| Chemical reactions | | | | ✓ ⁽⁴⁾ | |

(1) only for volcanic aerosols, (2) applies only to particles/aerosols smaller than 100 μm , (3) cut-off at 100 and 1 μm assumed for below and in-cloud scavenging respectively, (4) not included yet in v8.0.

Table 5. Options available in *FALL3D-8.0* for vertical distribution of mass and total source strength depending on the type of emission source S^e .

| Type of source | Vertical distribution of mass | Total source strength M_o options | Comments |
|---|---|--|---|
| <i>POINT</i> <i>HAT</i> <i>SUZUKI</i> | Prescribed (same for all bins) | (i) Prescribed; (ii) Given by (29); (iii) Given by (30) | Vertical distributions valid for any type of bin but source strength options (ii) and (iii) are for volcanic particles only |
| <i>PLUME</i> | Computed by the <i>FPLUME-1.0</i> model (bin dependent) | (i) Prescribed; (ii) computed by <i>FPLUME-1.0</i> model from eruption column height (inverse problem) | Only for volcanic particles/aerosols |
| <i>RESUSPENSION</i> | Distributed linearly within the ABL or assigned to the first vertical model layer (bin dependent) | Computed from surface cell area and vertical flux using emission schemes (33), (34), or (36) | Only for resuspended particles (ash and dust) |

Table 6. List of radionuclides implemented in the model. Table shows half life, decay rate (in s^{-1}) and resulting child product.

| Radionuclide | $t_{1/2}$ | $t_{1/2}$ (s) | k_r (s^{-1}) | Product |
|-------------------|-------------|--------------------|------------------------|----------------------------|
| ^{134}Cs | 2.065 years | 6.51×10^7 | 1.06×10^{-8} | ^{134}Ba (stable) |
| ^{137}Cs | 30.17 years | 9.51×10^8 | 7.29×10^{-10} | ^{137}Ba (stable) |
| ^{131}I | 8.0197 days | 6.93×10^5 | 1.00×10^{-6} | ^{131}Xe (stable) |
| ^{90}Sr | 28.79 years | 9.08×10^8 | 7.63×10^{-10} | ^{90}Y (unstable) |
| ^{90}Y | 2.69 days | 2.33×10^5 | 2.98×10^{-6} | ^{90}Zr (stable) |

Table 7. Characteristics of sensors for ash and SO_2 detection onboard new generation of geostationary satellites. Table courtesy from Andrew Prata.

| Satellite | Sensor | Coverage | Spatial res.(km) | Temporal res.(min) | Ash/SO2 bands (μm) | Lifetime |
|-------------|--------|---------------------|------------------|--------------------|---------------------------------|-----------|
| Meteosat-11 | SEVIRI | Europe and Africa | 3 | 15 | 7.35, 8.7, 10.8, 12 | 2015-2022 |
| FY-4A | AGRI | S. Asia and Oceania | 4 | 15 | 8.5, 10.7, 12 | 2016-2021 |
| Himawari-8 | AHI | S. Asia and Oceania | 2 | 10 | 7.35, 8.6, 10.45, 11.2, 12.35 | 2014-2029 |
| GOES-17 | ABI | W. America | 2 | 10 | 7.4, 8.5, 10.3, 11.2, 12.3 | 2018-2029 |
| GOES-16 | ABI | E. America | 2 | 10 | 7.4, 8.5, 10.3, 11.2, 12.3 | 2016-2027 |

Table 8. Horizontal mapping factors $(x, y) \leftarrow (X_1, X_2)$ for different coordinate systems where λ is longitude, ϕ latitude, R the radius of the Earth, γ colatitude, and ϕ_o the latitude at which the projection is true. Mercator and polar stereographic projections use cartesian coordinates projected into the Earth surface, *i.e.* account for curvature. Regular Cartesian coordinates should be used only for local domains, where the Earth's curvature can be neglected.

| Coordinate system | | m_1 | m_2 |
|------------------------------|----------------------------------|---|-------|
| Regular (x, y) | $X_1 = x$ $X_2 = y$ | 1 | 1 |
| Mercator (x, y) | $X_1 = x$ $X_2 = y$ | $\frac{\cos \phi}{\cos \phi_o}$ | m_1 |
| Polar stereographic (x, y) | $X_1 = x$ $X_2 = y$ | $\frac{1 + \sin \phi}{1 + \sin \phi_o}$ | m_1 |
| Spherical (λ, ϕ) | $X_1 = R \lambda$ $X_2 = R \phi$ | $\sin \gamma$ | 1 |

Table 9. Vertical mapping factors $z \leftarrow X_3$ for different coordinate systems where $h(x, y)$ is topography and H the top of the computational domain.

| Coordinate system | | m_3 |
|------------------------|-------------------------------|-------------------|
| Regular | $X_3 = z$ | 1 |
| Full terrain following | $X_3 = z - h$ | 1 |
| σ linear decay | $X_3 = \frac{z - h}{H - h} H$ | $\frac{H - h}{H}$ |

Table 10. Scaling factors for the different terms in the generalised coordinates ADS equation (60).

| Variable/parameter | scaling |
|-----------------------------------|--|
| Horizontal velocities | $U = u/m_1 \quad V = u/m_2$ |
| Vertical (and settling) velocity | |
| Regular | $W = w/m_3$ |
| Full terrain following | $W = \left[-u \frac{\partial h}{\partial x} - v \frac{\partial h}{\partial y} + w \right] / m_3$ |
| σ linear decay | $W = \left[-u \left(1 - \frac{X_3}{H} \right) \frac{\partial h}{\partial x} - v \left(1 - \frac{X_3}{H} \right) \frac{\partial h}{\partial y} + w \right] / m_3$ |
| Horizontal diffusion coefficients | $K_1 = k_h/m_1^2 \quad K_2 = k_h/m_2^2$ |
| Vertical diffusion coefficient | |
| Regular | $K_3 = k_v/m_3^2$ |
| Full terrain following | $K_3 = \left[k_h \left(\frac{\partial h}{\partial x} \right)^2 + k_h \left(\frac{\partial h}{\partial y} \right)^2 + k_v \right] / m_3^2$ |
| σ linear decay | $K_3 = \left[k_h \left(1 - \frac{X_3}{H} \right)^2 \left(\frac{\partial h}{\partial x} \right)^2 + k_h \left(1 - \frac{X_3}{H} \right)^2 \left(\frac{\partial h}{\partial y} \right)^2 + k_v \right] / m_3^2$ |
| Concentration and source/sink | $C = m_1 m_2 m_3 c \quad S^* = m_1 m_2 m_3 S \quad I^* = m_1 m_2 m_3 I$ |

Table 11. Summary of the *FALL3D-8.0* model tasks.

| Task | Task call arguments | Comments |
|---------|--|---|
| SetTgsd | Fall3d.x SetTgsd <i>problemname.inp</i> ⁽¹⁾ | Runs the SetTgsd pre-process utility |
| SetDbs | Fall3d.x SetDbs <i>problemname.inp</i> [<i>npz npy npz</i>] ⁽²⁾ | Runs the SetDbs pre-process utility |
| SetSrc | Fall3d.x SetSrc <i>problemname.inp</i> [<i>npz npy npz</i>] | Runs the SetSrc pre-process utility |
| Fall3d | Fall3d.x Fall3d <i>problemname.inp</i> <i>npz npy npz</i> | Runs <i>FALL3D-8.0</i> |
| All | Fall3d.x All <i>problemname.inp</i> <i>npz npy npz</i> | Runs all previous tasks in a single execution |

(1) model input file (same for all tasks), (2) number of processors along each spatial dimension in domain decomposition. If not given, the execution is serial.

Table 12. Summary of the meteorological drivers available in *FALL3D-8.0*.

| ID | Map Projection | H. Res. | Time Res. | Vertical Coord. | Vertical Levels | Period | Format |
|---|---------------------|--------------|--------------|--------------------|-----------------|--------------|-----------------|
| <i>Global model forecasts</i> | | | | | | | |
| GFS (NCEP) | Regular lat-lon | 0.25° | 1h | Isobaric | 34 | +384h | GRIB2 |
| | | 0.5° | 3h | | 50 | +384h | |
| | | 1.0° | 3h | | 34 | +384h | |
| <i>Global model final analyses and reanalyses</i> | | | | | | | |
| GDAS (NCEP) | Regular lat-lon | 0.25° | 6h | Isobaric | 31 | 2012-present | GRIB2 |
| ERA5 | Regular lat-lon | >0.25° | 1h | Isobaric | 37 | 1979-present | netCDF or GRIB1 |
| ERA5ML | Regular lat-lon | >0.25° | 1h | Hybrid | 137 | 1979-present | netCDF or GRIB2 |
| <i>Mesoscale models</i> | | | | | | | |
| WRF | Regular lat-lon | user-defined | user-defined | Terrain following/ | user-defined | user-defined | netCDF |
| | Lambert Conformal | | | Hybrid | | | |
| | Mercator | | | | | | |
| | Polar stereographic | | | | | | |
| HARMONIE-AROME | Lambert Conformal | 2.5 km | 1h | Hybrid | 65 | user-defined | GRIB |
| COSMO-LAMI (ARPA) | Mercator | user-defined | 3h | Isobaric | 14 | user-defined | GRIB |

Table 13. *FALL3D-8.0* model configuration for the Cordón Cauille simulation example shown in Section 6

| Variable/parameter | Configuration |
|-----------------------------|---|
| Computational domain | 500 × 500 × 100 grid cells with top at 15 km a.s.l. |
| Coordinate mappings | spherical and σ linear decay |
| Horizontal resolution | $\approx 0.03^\circ$ |
| Vertical resolution | 150 m (in the mapped computational domain) |
| Run start time | 5 June 2011 at 15:00 UTC |
| Initial condition | Data insertion from GOES at 2 km spatial resolution |
| Driving meteorological data | ERA-5 reanalysis (pressure levels) |
| TGSD | Estimated from column height as in Costa et al. (2016a) |
| Ash bins | 5 effective bins with cut-off at $\Phi = 5$ ($32\mu m$ effective diameter) |
| Ash aggregation | None |
| Column height | 10 km a.v.l. (sustained from data insertion onwards) |
| Emission source | <i>SUZUKI</i> option with $A=4$ and $\lambda=1$, $A_s=4$ and $\lambda_s=1$ |
| Terminal velocity model | <i>GANSER</i> option |
| Turbulent diffusion | As in Byun and Schere (2006) (horizontal) and similarity theory (vertical) |
| Deposition mechanisms | None |