

Evaluating integrated surface/subsurface permafrost thermal hydrology models in ATS (v0.88) against observations from a polygonal tundra site

Ahmad Jan¹, Ethan Coon¹, and Scott L. Painter¹

¹Climate Change Science Institute and Environmental Sciences Division, Oak Ridge National Laboratory, Oak Ridge, Tennessee, USA

Correspondence: Scott Painter (paintersl@ornl.gov)

Abstract. Numerical simulations are essential tools for understanding the complex hydrologic response of Arctic regions to a warming climate. However, strong coupling among thermal and hydrological processes on the surface and in the subsurface and the significant role that subtle variations in surface topography have in regulating flow direction and surface storage lead to significant uncertainties. Careful model evaluation against field observations is thus important to build confidence.

5 We evaluate the integrated surface/subsurface permafrost thermal hydrology models in the Advanced Terrestrial Simulator (ATS) against field observations from polygonal tundra at the Barrow Environmental Observatory. ATS couples a multiphase, three-dimensional representation of subsurface thermal hydrology with representations of overland nonisothermal flows, snow processes, and surface energy balance. We simulated thermal hydrology of a three-dimensional ice-wedge polygon with geometry that is abstracted but broadly consistent with the surface microtopography at our study site. The simulations were forced by meteorological data and observed water table elevations in ice-wedge polygon troughs. With limited calibration of parameters appearing in the soil evaporation model, the three-year simulations agreed reasonably well with snow depth, summer water table elevations in the polygon center, and high-frequency soil temperature measurements at several depths in the trough, rim, and center of the polygon. Upscaled evaporation is in good agreement with flux tower observations. The simulations were found to be sensitive to parameters in the bare soil evaporation model, snowpack, and the lateral saturated hydraulic conductivity. Timing of fall freeze-up was found to be sensitive to initial snow density, illustrating the importance of including snow aging effects. The study provides new support for an emerging class of integrated surface/subsurface permafrost simulators.

10
15

Copyright statement. This paper has been authored by UT-Battelle, LLC under contract no. DE-AC05-00OR22725 with the US Department of Energy. The United States Government retains and the publisher, by accepting the article for publication, acknowledges that the United States Government retains a non-exclusive, paid-up, irrevocable, worldwide license to publish or reproduce the published form of this paper, or allow others to do so, for United States Government purposes. The Department of Energy will provide public access to these results of federally sponsored research in accordance with the DOE Public Access Plan (<http://energy.gov/downloads/doe-public-access-plan>).

20

1 Introduction

Permafrost soils underlie approximately one quarter (~ 15 million km²) of the land surface in the Northern Hemisphere (Brown et al., 1997; Jorgenson et al., 2001), and store a vast amount of frozen organic carbon (Hugelius et al., 2014; Schuur et al., 2015). Warming in Arctic regions is expected to lead to permafrost thawing, as has been observed from field data during the past several decades (Lachenbruch and Marshall, 1986; Romanovsky et al., 2002; Osterkamp, 2003; Hinzman et al., 2005; Osterkamp, 2007; Wu and Zhang, 2008; Batir et al., 2017; Farquharson et al., 2019). For example, a very recent field study in the Canadian High Arctic, a cold permafrost region, reported the observed active-layer thickness (ALT, annual maximum thaw depth) already exceeds the ALT projected for 2090 under RCP 4.5 (Representative Concentration Pathways) (Farquharson et al., 2019). The thermal stability of these regions is a primary control over the fate of the stored organic matter. Since most of this organic carbon is stored in the upper 4 m of the soil (Tarnocai et al., 2009), degradation of permafrost can result in the decomposition of large carbon stocks, potentially releasing this carbon to the atmosphere (Koven et al., 2011). Warming and permafrost degradation can also contribute to hydrological changes in the northern latitudes (Osterkamp, 1983; Walvoord and Striegl, 2007; Lyon et al., 2009; Yang et al., 2010; Pachauri et al., 2014), causing substantial impact on the Arctic ecosystem. As climate models generally indicate accelerating warming in the 21st century, there is an urgent need to understand these impacts.

Process-based models are essential tools for understanding the complex hydrological environment of the Arctic. One-dimensional models of subsurface water and energy transport that incorporate freezing phenomena have a long history; comprehensive reviews are provided by (Kurylyk et al., 2014; Kurylyk and Watanabe, 2013; Walvoord and Kurylyk, 2016). Those one-dimensional models have been adapted to model the impacts of climate warming on permafrost thaw and the associated hydrological changes at regional and pan-Arctic scales (Jafarov et al., 2012; Slater and Lawrence, 2013; Koven et al., 2013; Gisl ns et al., 2013; Chadburn et al., 2015; Wang et al., 2016; Guimberteau et al., 2018; Wang et al., 2019; Tao et al., 2018; Yi et al., 2019). At the smaller scales and higher spatial resolutions required to assess local impacts, processes that can be neglected at larger scales come into play creating additional modeling challenges (Painter et al., 2013). Those challenges include strong coupling among the hydrothermal processes on the surface and in the subsurface, the important role of lateral surface and subsurface flows, and in some situations the role of surface microtopography (Liljedahl et al., 2012; Jan et al., 2018a) in regulating flow direction and surface water storage.

In recent years, cryohydrogeological simulation tools capable of more detailed three-dimensional (3D) representations of subsurface processes have been developed (McKenzie et al., 2007; Rowland et al., 2011; Tan et al., 2011; Dall'Amico et al., 2011; Painter, 2011; Karra et al., 2014). Cryohydrogeological tools typically couple Richards equation for variably saturated 3D subsurface flow with 3D heat transport models using either empirical soil freezing curves (McKenzie et al., 2007; Rowland et al., 2011) or physics-based constitutive relationships (Tan et al., 2011; Dall'Amico et al., 2011; Painter, 2011; Karra et al., 2014). The physics-based constitutive relationships among temperature, liquid pressure, gas and liquid saturation indices are deduced from unfrozen water characteristic curves, capillary theory and the Clapyeron equation (Koopmans and Miller, 1966; Spaans and Baker, 1996; Painter and Karra, 2014). Notably, models with physics-based constitutive relationships have been

quite successful at reproducing laboratory freezing soil experiments, in some cases (Painter, 2011; Painter and Karra, 2014; Karra et al., 2014) without recourse to empirical impedance functions in the relative permeability model. This class of models and similar approaches implemented in proprietary flow solvers have been used to gain insights into permafrost dynamics in saturated conditions with no gas phase (Walvoord and Striegl, 2007; Bense et al., 2009; Walvoord et al., 2012; Ge et al., 2011; 60 Bense et al., 2012; Wellman et al., 2013; Grenier et al., 2013; Kurylyk et al., 2016) and in variably saturated conditions with a dynamic unsaturated zone (Frampton et al., 2011; Sjöberg et al., 2013; Frampton et al., 2013; Kumar et al., 2016; Schuh et al., 2017; Evans and Ge, 2017; Evans et al., 2018).

Cryohydrogeologic models only represent the subsurface and must be driven by land surface boundary conditions on infiltration, evapotranspiration, and surface temperature. The typical approach in applications is to use empirical correlation to 65 meteorological conditions to set those boundary conditions. Given the strong coupling between surface and subsurface flow systems when the ground is frozen and the key role that surface energy balance and snowpack conditions play in determining subsurface thermal conditions, the lack of a prognostic model for surface flow and surface energy balance introduces additional uncertainties when used in projections to assess hydrological impacts of climate change.

Notably, integrated surface/subsurface models of permafrost thermal hydrology have recently started to appear. The GeoTop 70 2.0 (Endrizzi et al., 2014) and the Advanced Terrestrial Simulation (Coon et al., 2016; Painter et al., 2016) models couple 3D cryogeohydrological subsurface models with models for overland flow; snow accumulation, redistribution, aging, and melt; and surface energy balance including turbulent and radiative fluxes and the insulating effects of the snowpack. Nitzbon et al. (2019) recently extended the thermal-only simulator Cryogrid 3 (Westermann et al., 2016) to include a simplified hydrology scheme that avoids solving the computationally demanding Richards equation. All of these models remove the requirement for 75 imposing surface conditions and as such offer the potential for advancing understanding of permafrost thermal hydrology as an integrated surface/subsurface system (Harp et al., 2015; Atchley et al., 2016; Pan et al., 2016; Sjöberg et al., 2016; Jafarov et al., 2018; Abolt et al., 2018; Nitzbon et al., 2019).

Despite the advances in integrated thermal hydrology of permafrost, model evaluation against field observations remains a major challenge (Walvoord and Kurylyk, 2016). After successful code verification, the next question becomes how well these 80 process-based models can reproduce the current state of the permafrost at the scale of field observations. That model evaluation against field observation is important to build confidence in process-based models. Once carefully evaluated, models can then provide insight into recent changes (such as thermokarst development and talik formation) and future evolution under different climate scenarios at watershed scales. To date, model evaluation has largely been restricted to soil temperature data (Endrizzi et al., 2014; Atchley et al., 2015; Harp et al., 2015; Sjöberg et al., 2016; Abolt et al., 2018; Nitzbon et al., 2019). Those 85 comparisons to soil temperature measurements are an important first step in building confidence in recently developed process-rich permafrost thermal hydrological models. However, temperature data alone have been shown to be a weak constraint on model parameters (Harp et al., 2015) and do not adequately test representations of many important physical processes such as lateral water flows, advective heat transfer, wind-driven snow distribution, and microtopography-induced preferential flow paths and water storage.

90 In this paper, we evaluate integrated surface/subsurface permafrost thermal hydrology models implemented in the Advanced Terrestrial Simulator (ATS) v0.88 using soil temperature (Romanovsky et al., 2017; Garayshin et al., 2019), water level (Liljedahl and Wilson., 2016; Liljedahl et al., 2016), snowpack depth (Romanovsky et al., 2017), and evapotranspiration (Dengel et al., 2019; Raz-Yaseef et al., 2017) data collected over several years at the Next Generation Ecosystem Experiment-Arctic (NGEE-Arctic) study site in polygonal tundra near Utqiagvik (formerly Barrow), Alaska. Simulations are driven by observed
95 meteorological data (air temperature, snow precipitation, rain precipitation, wind speed, relative humidity, incoming longwave radiations, and incoming shortwave radiations) and observed water table elevations in polygon troughs. Simulated results are compared with multiyear observations of water table in the polygon center, soil temperatures at several depths (0-1.5 meters) across three microtopographic positions (rim, center, trough), evaporation, and snowpack depth in the polygon center, rim, and trough. The simulations explore the sensitivity of the results to the saturated hydraulic conductivity, snowpack representation, and the soil evaporation model. The objectives of this study are to evaluate the potential of the emerging integrated
100 surface/subsurface thermal hydrology models as tools for advancing our understanding of permafrost dynamics, build confidence in the model representations, and identify a set of model parameters that can be used in future simulations projecting permafrost thaw and degradation.

2 Field site and data description

105 Observations for our model evaluation came from the field site of the Next Generation Ecosystem Experiment (NGEE) Arctic project (<https://ngee-arctic.ornl.gov>) located within the Barrow Environmental Observatory (BEO) near Utqiagvik (formerly Barrow), Alaska (see Figure 1). The BEO is located in lowland polygonal tundra. These patterned grounds developed by repeated freezing and thawing of the ground over hundreds of thousands of years, which results in subsurface ice-wedges arranged in polygonal patterns (de Koven Leffingwell, 1919; Lachenbruch, 1962; Greene, 1963; Mackay, 1990; Jorgenson
110 et al., 2006). Typically, ice-wedge polygons are classified into high-, intermediate-, low-, and flat-centered polygons based on microtopographic relief (Black, 1982; Oechel et al., 1995; Liljedahl et al., 2012). We used observations from a low-centered and an intermediate-centered polygon from study Area C; see Figure 1 (bottom right). More details about polygons characteristics at the NGEE Arctic field sites can be found in Kumar et al. (2016).

Meteorological data for the study area were compiled from a variety of sources by Atchley et al. (2015). Temperature and
115 precipitation for the time period of interest are shown in supplemental material (Figure S1). The annual average air temperature is -10.8, -10.4, and -9.9 °C, and total annual average precipitation is 302, 427, 308 mm for years 2012-2014, respectively. The snow precipitation includes a 30% adjustment for undercatch (Atchley et al., 2015). We applied the undercatch adjustment to the snow precipitation uniformly in time and space. As described in Section 3.2 below, ATS then distributes incoming snow precipitation nonuniformly using a phenomenological algorithm that preferentially fills microtopographic depressions first.

120 NGEE-Arctic scientists conducted field campaigns to collect 1) water level data in centers and troughs of the polygons during the summers of 2012-2014 (Liljedahl et al., 2016); 2) soil temperature data at several depths (from 5 cm to 150 cm) in troughs, rims, and centers of the polygons from September 2012 to October 2015 (Garayshin et al., 2019); and 3) summer

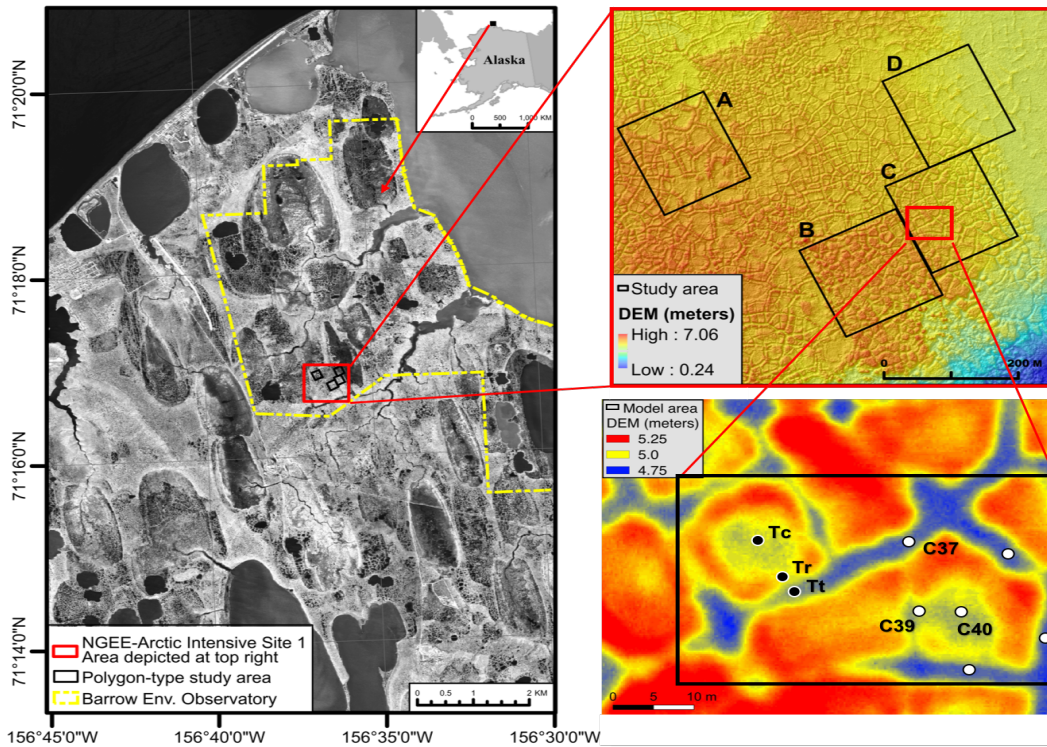


Figure 1. Next Generation Ecosystem Experiments – Arctic field sites at the Barrow Environmental Observatory. The model area lies in Area C outlined in black (lower right). Wells and thermistor probe locations are highlighted in white and black, respectively. Data from wells and temperature probes used for model evaluation are labelled as: C37 (trough), C39 (center), C40 (center), and vertical thermistor probes Tt (trough), Tc (center), and Tr (rim). The Digital Elevation Model (DEM) in the left two panels as derived from LiDAR measurements (Wilson and Altmann, 2017).

evapotranspiration measurements from 2012 (Raz-Yaseef et al., 2017). The water level and soil temperature measurements were recorded at 15 and 60 minutes intervals, respectively. We used data from three shallow wells (C37, C39 and C40) and from three vertical thermistor probes located in a polygon center, rim, and trough and denoted Tc, Tr, and Tt, respectively (see Figure 1, bottom right panel). The datasets are publicly available at the NGEA Arctic data portal (Romanovsky et al., 2017; Liljedahl and Wilson., 2016; Dengel et al., 2019).

3 Methods

3.1 Mesh construction

130 The objective of this study is to evaluate the integrated surface/subsurface models in ATS against multiple types of field observations. As described in Section 2, the temperature and water level observations are not co-located, but were obtained in two

neighboring ice wedge polygons. Rather than build faithful representations of each polygon and evaluate against temperature and water level data independently, we chose as our modeling domain a single polygon that is an abstraction of the two actual polygons. Using that abstracted geometry allows our models to be evaluated against both types of measurements simultaneously. Evaluating against multiple data types and use of a slightly abstracted but broadly representative geometry is consistent with our overarching motivation, which is to construct models that are broadly representative of the BEO site and of polygonal tundra in general.

In building the abstracted ice-wedge polygon, we imposed several constraints. For reproducing the water levels measured at wells C39 and C40, which represent polygon center locations, it is important that the surface elevation match that of the measurement location. Moreover, to adequately represent overland and shallow subsurface flow, it is important to honor rim height, as Liljedahl et al. (2016) have demonstrated and we have confirmed by exploratory sensitivity simulations undertaken for this study (results not shown). We thus match the low point in the rim elevation, as that determines the spill point for surface and shallow subsurface flow between the center and trough. When comparing to soil temperature measurements it is necessary to match the surface elevation of those locations because thermal conditions are sensitive to snow depth and soil water content (Atchley et al., 2016), which both depend on rim elevation relative to the center and trough. Based on those constraints, we constructed a 3D mesh comprising 6 equal-sized wedges (Figure 2). The surface elevation in one wedge has trough and rim elevations corresponding to that of the thermistor probes T_t and T_r , respectively. The opposite wedge matches the trough and rim surface elevation for the polygon containing the water-level observations wells. The center elevation was set by averaging the surface elevation at the two observations wells C39 and C40, which are taken to be representative of water level dynamics in the polygon center. After those two wedges were constructed, interpolation determined the surface elevation of the 4 remaining wedges.

Given that surface elevation map, we then extruded in the vertical to create a 3D mesh. The subsurface was divided into moss, peat and mineral soil layers. Because moss is an important control on the transfer of surface energy to the permafrost (e.g., Beringer et al. (2001)), we explicitly represented it as a porous medium. That 2 cm moss layer sits atop a 8 cm layer of peat. Regions below the peat were represented as mineral soil. The moss and peat thicknesses are broadly consistent with observations at the BEO site. For simplicity, we neglected spatial variability and modeled the moss and peat layers as having spatially constant thicknesses.

3.2 Model description

We used the Advanced Terrestrial Simulator (ATS) Coon et al. (2019) configured for integrated surface/subsurface permafrost thermal hydrology (Painter et al., 2016). ATS leverages a parallel unstructured-mesh computer code for flow and transport called Amanzi (Moulton et al., 2012) and uses a multiphysics management tool known as Arcos (Coon et al., 2016) to manage coupling and data dependencies among the represented physical processes, which are encapsulated in process kernels. Arcos allows ATS to configure a complex hierarchy of mathematical models at runtime. ATS's permafrost configuration (Painter et al., 2016) solves fully coupled surface energy balance (Atchley et al., 2015), surface/subsurface thermal hydrology with freeze/thaw dynamics, and snow distribution models. ATS represents important physical process such as lateral surface and

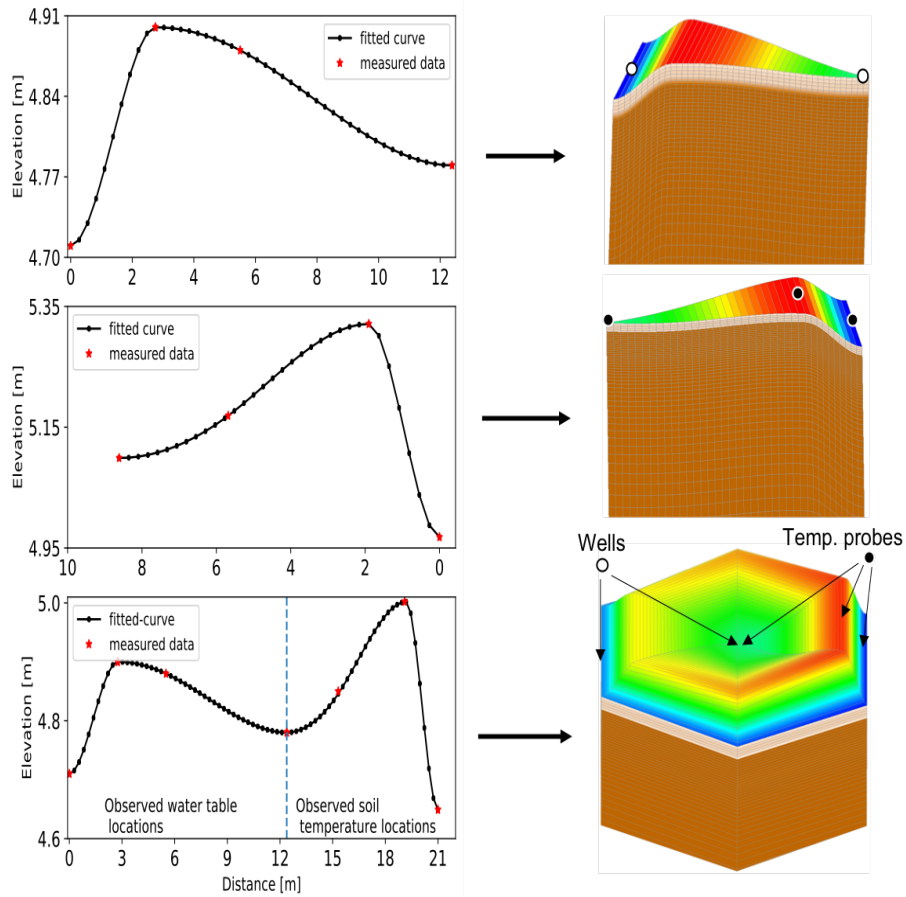


Figure 2. Construction of generic meshes from the observed elevations at the microtopographic locations (trough, rim, and center). Red asterisks represent measured elevation, black dots show spatial resolution (~ 25 cm), and black solid lines correspond to a spline fit to the measured elevation with zero slope at the locations trough, rim and center. The bottom left combines the transects where the water level (left) and soil temperature (right) measurements were made. First a 2D surface is constructed from transect representing generic surface topography and then extended to 50 m below the surface using variable vertical resolution (lower right). Wells and thermistor probe locations are highlighted in white and black dots, respectively. The color palette in the right panel correspond to the elevation in the plots on the left side and different than the color range provided in the upper and lower right panel in Figure 1.

subsurface flows, advective heat transport, cryosuction, and coupled surface energy balance, and has been used successfully in previous studies to simulate integrated soil thermal hydrology of permafrost landscapes (Jafarov et al., 2018; Abolt et al., 2018; Sjöberg et al., 2016; Atchley et al., 2015, 2016; Schuh et al., 2017; Harp et al., 2015). Note that ATS does not require an empirical soil freezing curve to determine the unfrozen water content versus temperature. Instead, partitioning between ice, liquid, and gas is dynamically calculated from temperature and liquid pressure using the soil water characteristic curve (SWCC) in unfrozen conditions, a Clapeyron equation, and capillary theory, as described by Painter and Karra (2014). We use van Genuchten's model (van Genuchten, 1980) here. Similarly, the relative permeability in frozen or unfrozen conditions is obtained directly from the SWCC and the model of Mualem (1976) using the calculated unfrozen water content. That is, no additional empirical impedance term is introduced in the relative permeability function. The underlying soil physics models have been carefully compared (Painter, 2011; Painter and Karra, 2014; Karra et al., 2014) to published results from soil freezing experiments. ATS's surface system includes overland flow and advective heat transport with phase change of ponded water; evaporation from ponded water and bare soil; surface energy balance; a snow thermal models that accounts for aging/compaction and optionally the formation of a low conductivity depth hoar layer (enabled in our simulations); and a heuristic snow distribution model that preferentially deposits incoming snow precipitation into microtopographic depressions until those depressions are filled. The integrated surface/subsurface models have been compared successfully to soil temperature measurements (Atchley et al., 2015; Harp et al., 2015; Sjöberg et al., 2016). ATS's integrated surface/subsurface flow capabilities without freezing have been compared to other hydrological models as part of the integrated hydrologic model intercomparison project, IH-MIP2 (Kollet et al., 2017).

The ATS permafrost thermal hydrology models we are evaluating here were first implemented in ATS v0.86 and described in detail in Painter et al. (2016). The surface energy balance equation was presented by Atchley et al. (2015) and first implemented in ATS v0.83. We used ATS v0.88 here. The permafrost thermal hydrology physics and model structure were unchanged between versions 0.86 and 0.88, although there were some minor changes in input formats. ATS v0.88 has additional intermediate-scale modeling capabilities (Jan et al., 2018b, a) that are especially useful and efficient for watershed-scale simulations. The intermediate-scale variant also has dynamic topography caused by melting of massive ground ice using an algorithm proposed by Painter et al. (2013). The intermediate-scale capabilities are not exercised here.

3.3 Simulation description

3.3.1 Boundary conditions

Model evaluation was performed for years 2012-2014, due to the availability of the observation data during this period. The 3D simulations use no-flow boundary conditions in the subsurface on the vertical sides of the domain, based on an assumption of symmetry at the trough thalweg. The bottom boundary (50 m deep) is subject to -6.0°C constant temperature (Romanovsky et al., 2010). The surface system was driven by observed air temperature, relative humidity, wind speed, rain/snow precipitation, and shortwave and longwave radiations. Snow precipitation was increased by 30% to account for undercatch (Atchley et al., 2015). The surface flow system used observed water level from C37 as a time-varying Dirichlet boundary condition for water

pressure at the ice-wedge polygon troughs. Water levels in the three unlabeled wells in Figure 1, which are also in the troughs, are almost identical to those of C37. We thus applied the C37 water levels along the entire perimeter of the 2D surface flow system. Subsurface hydraulic and thermal properties in our reference case (Table 1) are taken from Hinzman et al. (1991) and Abolt et al. (2018).

3.3.2 Model initialization

To reduce the computational burden in the model initialization process, we used a multistep model spin-up process. We started with an unfrozen 1D column with water table close to the surface, then froze that column from below to steady state. That 1D frozen column was then used as an initial condition for 1D integrated surface/subsurface simulations, which were forced by site meteorological data from year 2010 repeated 100 times to establish a cyclic steady state. The resulting 1D state was then mapped to the 3D model domain, which was forced by 2010 and 2011 meteorological data, completing the spinup process.

3.3.3 Simulations performed

A number of simulations are performed in the study, as summarized in Table 1. The basecase subsurface physical properties are provided in Table 2. We examine sensitivity of our model to three important model parameters: 1) the snow undercatch factor, 2) saturated hydraulic conductivities, and 3) the desiccated soil thickness parameter, d_i , which regulates evaporative flux from dry soils. Sensitivity to the representation of snow compaction/aging and its effects on thermal conductivity is also examined. We also demonstrate that the evaporation model parameters and the saturated hydraulic conductivity can be varied simultaneously in a way that leaves the water level in the polygon center approximately unchanged, indicating the existence of a null space in the parameter space. Simulations using no-flow and seepage face (free-boundary) boundary conditions in the trough are conducted to demonstrate the role of lateral fluxes between the polygon trough and center.

3.3.4 Efficiency metrics

We use the Nash-Sutcliffe efficiency (NSE), root mean squared error (RMSE), and coefficient of determination (R^2) as performance metrics. We focus on the NSE because it is scaled by variability of the observed data. It is computed as the squared difference between the observed and simulated data normalized by the variance of the observed data and subtracted from 1 (Nash and Sutcliffe, 1970). Mathematically,

$$\text{NSE} = 1 - \frac{\sum_{i=1}^n (O_i - S_i)^2}{\sum_{i=1}^n (O_i - \bar{O})^2} \quad (1)$$

Here O and S denote observed and simulated data, respectively, and \bar{O} is the observed mean value. The NSE ranges between 1 and $-\infty$, where the value 1 indicates a perfect match between the observed and simulated data, and the value 0 indicates the model is only as informative as the mean of the observations.

Table 1. Overview of simulations conducted in the study. The parameters used in the basecase are provided in Table 2. The parameter k in the intrinsic permeability and d_l is bare soil evaporation model parameter. The \times denotes multiplication of the basecase value by the value in the column. The values in parenthesis correspond to different simulations for sensitivity studies.

No.	Simulation description	Corresponding figure(s)	$k \times$	$d_l \times$
1	Basecase	4, 5, 6, 7	1	1
2	Sensitivity of soil temperature to snow undercatch	8	1	1
3	Sensitivity of water table in the polygon center to bare soil evaporation model parameter study	9(top)	1	(0.5, 2)
4	Sensitivity of water table in the polygon center to saturated hydraulic conductivity	9(middle)	(2, 0.5)	1
5	Existence of null space between saturated hydraulic conductivity and d_l	9(bottom)	(2, 0.5)	(0.5, 2)
6	Lateral water fluxes between the polygon trough and center study	10	(2, 0.5)	1
7	Sensitivity of soil temperature to snow aging model study	11	1	1
8	Sensitivity of water table in the polygon center to hydrological boundary conditions in the trough	S1	1	1

Table 2. Subsurface physical properties used in the model. Notations S_{uf} and S_f denote saturated unfrozen and frozen. Note ATS takes intrinsic permeability as input instead of hydraulic conductivity because hydraulic conductivity is temperature dependent. For reference, we also include hydraulic conductivity at 25 °C.

Parameter	Moss	Peat	Mineral
Porosity [-]	0.90	0.87	0.56
Intrinsic permeability [m^2]	1.7×10^{-11}	9.38×10^{-12}	6.0×10^{-13}
Hydraulic conductivity [m/s]	18.73×10^{-5}	10.34×10^{-5}	0.67×10^{-5}
Residual water content [-]	0.0	0.0	0.2
van Genuchten alpha α [1/m]	2.3×10^{-3}	5.1×10^{-4}	3.3×10^{-4}
van Genuchten m [-]	2.57×10^{-1}	1.9×10^{-1}	2.48×10^{-1}
Thermal conductivity (S_{uf}) [W/m K]	0.75	0.75	1.1
Thermal conductivity (S_f) [W/m K]	1.3	1.3	1.5
Thermal conductivity (dry) [W/m K]	0.1	0.1	0.3
Bare soil evaporation model parameter d_l [m]	0.1	0.1	0.1

4 Numerical results

This section is divided into two main subsections. First, we present a comparison of simulated snow depth, water table, soil temperatures, and evaporation against field observations for multiple years. Next, we demonstrate sensitivity of soil temperatures to snow aging model and to snow undercatch adjustment, and sensitivity of water table to hydraulic conductivity and bare

soil evaporation model parameter. Finally, we showcase the presence of a null space between hydraulic conductivity and bare soil evaporation model parameter.

4.1 Evaluation against field observations

235 4.1.1 Comparison to snow sensor data

Comparisons of simulated and observed snow elevation at the rim, center, and trough location are shown for the 2012-2013 and 2013-2014 winters in Figure 3. As described above, a 30% undercatch correction estimated (Atchley et al., 2015) for the 2013-2014 winter was applied. We applied the undercatch correction uniformly in space and time to the incoming precipitation. ATS then distributes the snow on the 2D surface according to the algorithm described by Painter et al. (2016). Snow depth and
240 snow water equivalent is dynamically tracked while accounting for compaction, sublimation, and melt.

The simulations overpredict the snow depth by about 5-10 cm in the 2013-2014 winter and underpredict snow depth by a smaller amount in the 2012-2013 winter. Given the parsimonious nature of the snow models in ATS, with no explicit representation of snow density dependence on environmental conditions, further calibration to obtain better fits to the snow depth is not a meaningful exercise. Importantly, timing of snowpack appearance and snowmelt are well represented. Significantly, distribution among the center, rim, and trough locations also agrees well with the observations. These results indicate that the ATS
245 models for snowpack dynamics and snow distribution are reasonably representative. However, it is important to note that the snow distribution model is phenomenological, specific to distributing snow in microtopography of otherwise flat landscapes, and not applicable to hilly or mountainous regions.

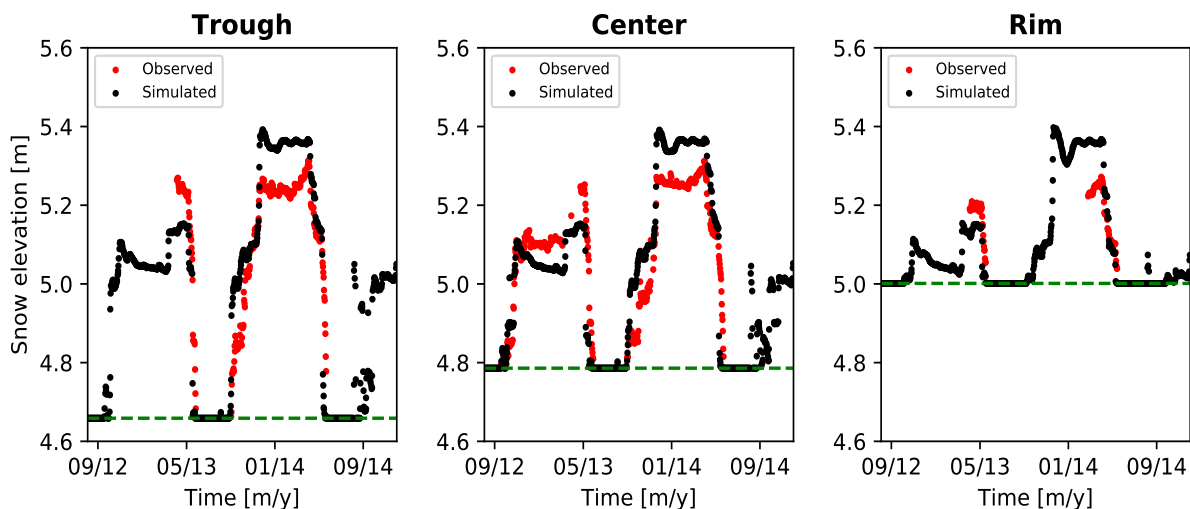


Figure 3. Observed and simulated snow elevation for the 2012-2013 and 2013-2014 winters at trough, center, and rim locations.

4.1.2 Comparison to observed temperature data

250 Comparisons of simulated and observed soil temperatures are shown in Figure 4 at depths of 5 cm (near surface), 50 cm (near active layer thickness), and 150 cm (shallow permafrost). Each column corresponds to a microtopographic location, left column (trough), middle column (center), and right column (rim). Observed data is plotted in the red solid lines, simulated is the black dashed curves, and the green dashed horizontal line represents 0 °C. Simulated temperatures are in good agreement with the measured throughout the 2+ year period, with the largest discrepancy occurring in center during the winter of 2012-2013. In
255 general, timing of snowmelt, freeze-up, and depth of the active layer are well represented across the polygon. Note that snow cover and spatial distribution of organic matter within a polygon have great influence on the soil thermal regime due to their distinct hydrothermal properties. We have not attempted to optimize the soil organic matter thickness and only considered uniform organic matter thickness across the polygon, despite its importance in determining the temperature at depth, because our focus here is on generic simulations that can be applied without detailed site-specific characterization data.

260 Garayshin et al. (2019) modeled the same temperature data using a nonlinear heat-conduction model that presumes a saturated soil and neglects hydrological processes. Their simulations generally match the observed temperature at shallow depths in terms of both amplitude and phase of the seasonal signal. Their results also generally match the amplitude of the seasonal signals at depth, but show a significant phase shift at depth with the model results lagging the observations. That lag is most pronounced during the spring of 2014 where consistent error across all microtopographic positions and depths were seen.
265 That our simulations with a more complete representation of the thermal hydrological processes are free from those artifacts is encouraging, especially considering that we have abstracted the ice-wedge polygon geometry, microtopography, and soil structure and have not undertaken a formal calibration/parameter estimation procedure. The Nash-Sutcliffe coefficient (NSE) and root mean squared error (RMSE) of the simulated soil temperature at several depths for years 2012-2014 in comparison with the observed data are presented in Table S1 (supplemental document). The coefficient of determination (R^2) and model
270 bias are also presented. The warm (or cold) bias in the model is represented by positive (or negative) bias. The NSE in all cases is greater than 0.94, which indicates an excellent match between the measured and simulated data.

4.1.3 Comparison to observed water levels

Figure 5 shows simulated water table compared to the observed water table from snowmelt to freeze-up period for years 2012-2014. Figure 5(left) shows the observed water level imposed as a Dirichlet boundary condition and the simulation result in the
275 center of computation grid cell adjacent to the boundary. The boundary condition acts as a run-off (outflow) or run-on (inflow) boundary condition as the observed water level in the trough drops below or rises above the simulated water level, respectively. The trough water level matches the imposed boundary conditions closely except during the 2012 summer when the water level was below the surface. We imposed a no-flow boundary condition during that period.

Figure 5(right) shows the simulated results compared with the observed in the polygon center. The observation for year 2012
280 is the average of the water levels for wells C39 and C40 (due to the mid-summer measurement gap at well C39), however, observation data for years 2013 and 2014 is for well C39 only. Water depths in those two closely spaced wells have only

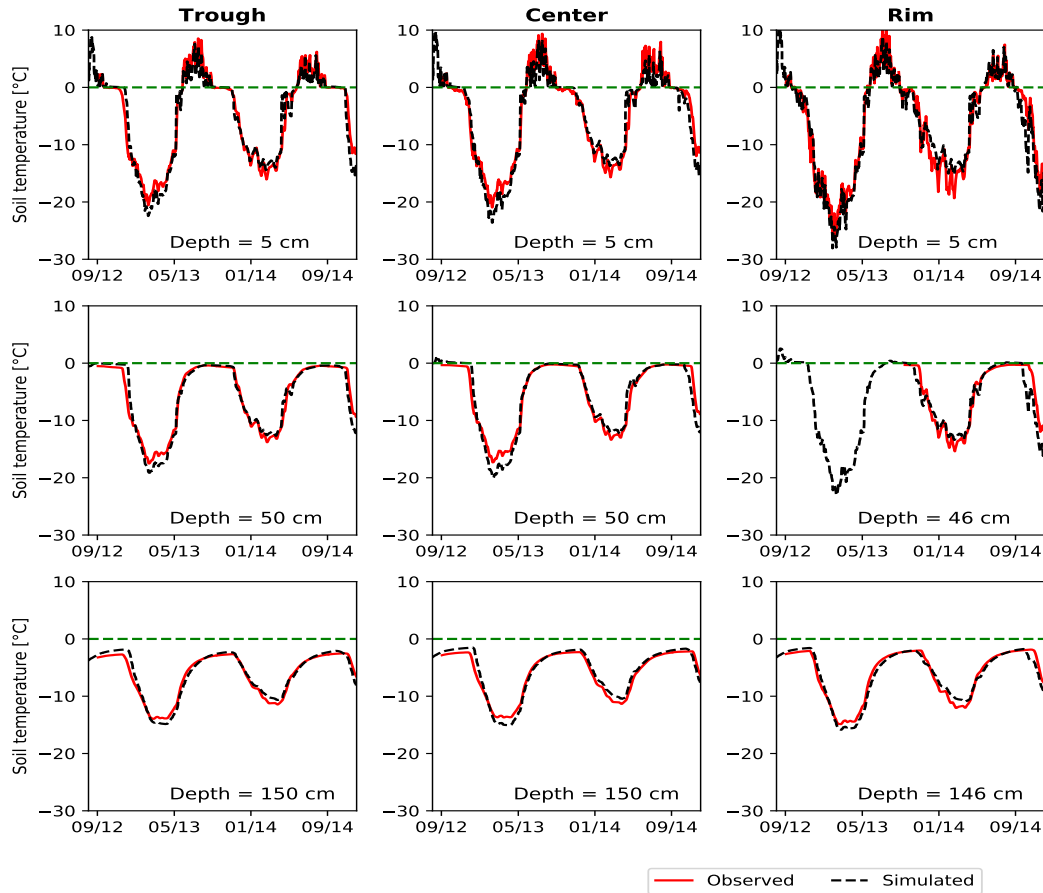


Figure 4. Comparison of simulated and observed soil temperatures in the trough (left column), in the center (middle column), and rim (right column) for years 2012-1014 at several depths. Rows correspond to the depth from the ground surface and display measurement and simulated soil temperatures in the organic matter layer (top row), near the depth of the active layer (middle row), and in the 150 cm deep mineral (last row).

small differences, but the surface elevations are different by 10 cm. Because the datum (surface elevation) of well C39 is more aligned with the topography, we used only well C37 in years 2013 and 2014 for comparison with the simulated water table. The uncertainty band width is 5 cm, and is based partly on the difference in the water depths for wells C39 and C40 and partly on an estimate of uncertainty in the elevation of the wells (Liljedahl and Wilson., 2016). The simulations are generally within or close to the uncertainty band around the observations except for an approximately 2 week period during the late summer of 2012, when the simulated water level is approximately 10-15 cm below the observed. That discrepancy may be caused in part by our inability to control the trough boundary condition in the dry period prior, when the trough dries out (upper left panel in 5). When troughs stay inundated throughout the summers in 2013 and 2014, simulated results show better agreement. That is late-summer drawdown is within or close to the range of uncertainty of the measured data. The NSE value for water level for years 2012-2014 is 0.56 and the RMSE is 0.07 cm, with bias of -1.3 cm.

Given the multiphysics nature of the simulations, model uncertainties associated with abstraction of the geometry, neglect of subsurface heterogeneity, potential preferential subsurface flow paths, the phenomenological nature of the bare-soil evaporation model (discussed below), and uncertainties associated with various model parameters, the agreement is reasonably good. We discuss sensitivity of the water level to parameters and model assumptions in subsection 4.2.

4.1.4 Comparison to observed evaporation data

Simulated evaporation versus time for centers, rims, and troughs can be found in Figure S2 (supplemental document). Transpiration is minor compared to evaporation at this site (Young-Robertson et al., 2018; Liljedahl et al., 2012) and is not simulated here. The simulated evaporation is not restricted by availability of water at the trough location and is largely energy limited. The same is true for the center location in the 2013 and 2014 summers. However, drying in the center location during the 2012 summer (see Figure 5) results in a desiccated soil which inhibits evaporation in that dry period. Similarly, the simulated evaporation in the rim locations is significantly lower than the trough and center in all three summers. Reduced evaporation on microtopographic highs compared with wet polygon centers and troughs is consistent with trends observed in the chamber-based evapotranspiration measurements of Raz-Yaseef et al. (2017).

Spatially resolved evapotranspiration measurements are not available at the same locations as the water level and soil temperature measurements. However, evapotranspiration measurements are available from an eddy-covariance flux tower located approximately 250 meters to the west in similar polygonal tundra (Raz-Yaseef et al., 2017). The footprint of that tower is estimated to cover approximately 2000 m² and includes wet microtopographic lows and drier microtopographic highs. Raz-Yaseef et al. (2017) estimate 37% of the footprint is standing water, 15% is wet moss, and 48% is drier microtopographic highs. To compare with the flux tower estimates, we upscale the simulated trough, center, and rim evaporation results (Figure S2 in supplemental document) using those area fractions, equating centers to wet moss, troughs to standing water, and rims to microtopographic highs. Upscaled evaporation flux obtained this way, again neglecting the contribution from transpiration, is shown versus the flux tower observations of Raz-Yaseef et al. (2017) in Figure 6. Simulated results are in good agreement with the observations for the 2013 summer. The simulated and upscaled evaporation fluxes are slightly larger than the observations

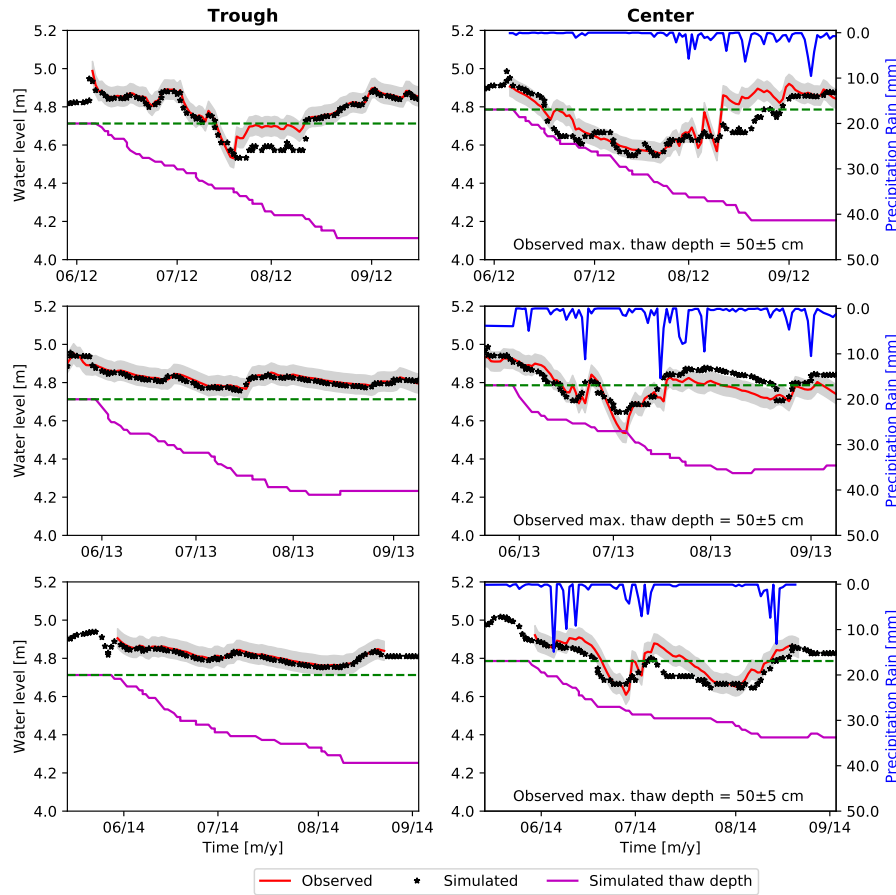


Figure 5. Comparison of simulated and observed water table in the trough (left column) and in the center (right column) for the summers of years 2012 to 2014. Rows correspond to different years. Blue lines (right column) is the rain precipitation.

315 in 2014, but reproduce the general trend. These results combined with the generally good agreement for the observed water levels provides additional support for the integrated surface/subsurface models in ATS.

4.2 Sensitivity analysis

4.2.1 Sensitivity of soil temperature to snow undercatch

320 Figure 7 illustrates the importance of snow undercatch adjustment. The soil temperature time-series in the trough at depths 5 cm, 50 cm, and 150 cm shown in red, blue, and black correspond to measured, simulated with no undercatch snow adjustment, and simulated with 30% snow undercatch adjustment, respectively. Simulated temperatures with no undercatch correction are about 2-4 degrees colder than the observed temperatures during mid-winter. The negative bias in the simulated winter temperatures is consistent across years and independent of the depth and microtopographic location. Summer temperature

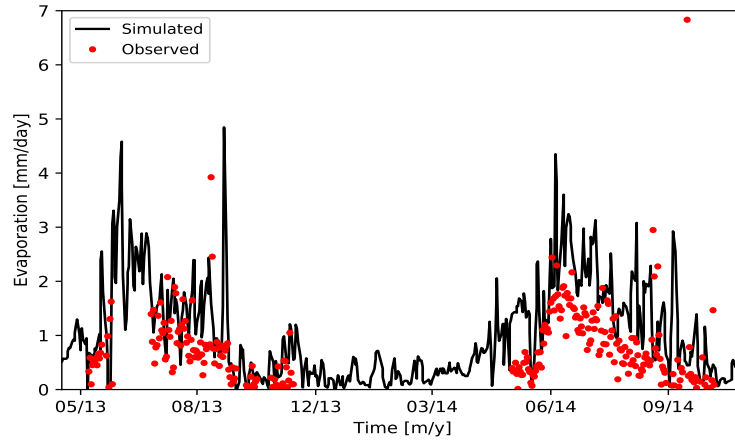


Figure 6. Simulated evaporation after upscaling versus observations from eddy covariance flux tower (Dengel et al., 2019; Raz-Yaseef et al., 2017).

and ALT are not affected by the snow undercatch adjustment factor and match well with the observed. The winter mismatch
 325 between the simulated and observed temperatures is significantly improved by making a 30 % correction to the reported snow
 precipitation (reference case).

4.2.2 Sensitivity of water table to saturated hydraulic conductivity and bare soil evaporation model parameter

Because troughs remain inundated most of the summer, flow from troughs to centers is a potentially important process for
 keeping the polygon centers from drying in summer. We performed simulations in which the saturated hydraulic conductivities
 330 of both organic matter and mineral soil were increased/decreased by a factor of 2 (see Figure 8(top)). Increasing the saturated
 hydraulic conductivity enhances lateral flow from trough to center, leading to smaller drawdown than observed. Conversely,
 decreasing the saturated hydraulic conductivity generally leads to drier conditions during periods of low rainfall. That the water
 levels in the center is responsive to saturated hydraulic conductivity shows that lateral flow from trough to center is playing a
 role in keeping the soils in the center of the polygons wet. It also demonstrates that water table measurements are informative
 335 of the lateral saturated hydraulic conductivity as long as evapotranspiration can be independently constrained.

ATS's surface energy and water balance model includes a model for bare-soil evaporation (Sakaguchi and Zeng, 2009) that
 uses a soil resistance based on vapor diffusion across a near-surface desiccated zone when the soil is dry. The maximum extent
 of the desiccated zone, the parameter d_1 in Eq. B17 of Atchley et al. (2015), is the principal parameter in that model. Numerical
 results indicate sensitivity of the water table to the bare-soil evaporation model parameter. We tested a range of values between 1
 340 cm and 20 cm. The reference case shown in the previous section used 10 cm. Simulations show unrealistically large drawdown
 of the water table during dry periods of the summer for smaller values of d_1 . Results for $d_1 = 5$ and 20 cm are shown in Figure
 8(middle). Note the case with $d_1 = 5$ cm and reference saturated hydraulic conductivity is similar to the case $d_1 = 10$ cm and
 reduced saturated hydraulic conductivity shown in Figure 8(middle). That is, halving the parameter d_1 has a similar effect

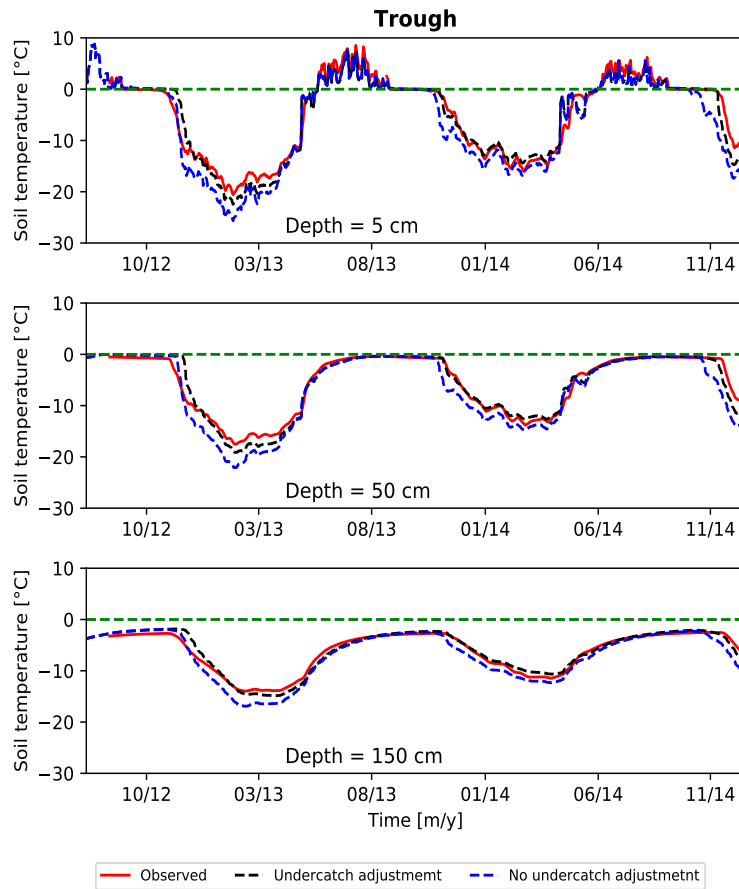


Figure 7. Sensitivity of the simulated soil temperatures to the snow precipitation undercatch adjustment. Smaller snowpack enhances heat escape from the soil due to the reduced insulating effect of the snowpack.

to halving the saturated hydraulic conductivity as far as drawdown during summer dry periods is concerned. That similarity
 345 indicates the existence of a null space involving the saturated hydraulic conductivities and the parameter d_l . In other words,
 these parameters can be varied simultaneously in a way that does not significantly alter the simulated water table Figure
 8(bottom). However, soil temperatures show minimal-to-no sensitivity to parameter d_l (results not shown here).

Simulated water fluxes between polygon center and trough through a 50 cm deep vertical slice at the right and left rims of
 polygon are displayed in Figure 9. In Figure 9, negative fluxes indicate inward flow (i.e., flow from trough to center). Water
 350 flow is generally from center to the trough in the early part of the summer as melt water drains through the partially thawed
 rim. Note that flow through the right side is small during this period because the thaw depth beneath the higher rim on that side
 has not reached a spill-point depth that allows water to flow through the rim. Around the end of July, flow reverses to be from
 trough to center and is similar in magnitude on the two sides. Increasing the hydraulic conductivity increases water flux from
 trough to center. This highlights the important role of lateral water fluxes between polygon center and trough.

355 For the purposes of model evaluation, we imposed a time-dependent water level on the trough from measured data. As a
result, water is free to enter the model domain both as runoff and run-on, depending on the specified boundary condition and
simulated water levels inside the model domain. Results for alternative choices of the surface water boundary condition are
included in Supplemental Material (Figure S3) including spill-point boundary and closed boundaries on the surface domain.
A spill-point boundary allows water out when the simulated water level reaches the spill point elevation, simulating runoff but
360 no run-on, whereas the closed boundary eliminates both run-on and runoff. Unsurprisingly, both of the alternative boundary
conditions result in poorer match to the observed water levels in the center as compared to our reference case boundary
condition. In applications that seek to understand permafrost dynamics in a changing climate, surface water flows over larger
domains will need to be simulated capture the dynamics of run-on and runoff, as in ATS's intermediate-scale variant (Jan et al.,
2018b).

365 4.2.3 Sensitivity of soil temperature to snow aging model

The snow thermal model in ATS accounts for snow compaction/aging and the effect of that aging on thermal conductivity. New
snow is introduced at density of 100 kg/m^3 and thermal conductivity of 0.029 W/m K . As a packet of snow ages, its density
and thermal conductivity increase using the model described by Atchley et al. (2015). Sensitivity to the snow thermal model
was tested by running an alternative model where new snow was introduced at the aged density and thermal conductivity.
370 Temperature results from fall 2013 to end of 2015 at three depths with and without the snow aging model are shown versus
observed soil temperature in Figure 10. Neglecting snow aging causes the ground to freeze about 1 month sooner than observed
in fall of 2014 and by about two weeks in 2013. However, subsurface temperatures from the middle of winter until end
of summer are unaffected by the snow model. These results show it is important to account for snow compaction/aging by
introducing snow as lower density, lower thermal conductivity fresh snow, as in our reference case.

375 5 Conclusions

Individual components of recently developed integrated surface/subsurface permafrost models have been evaluated previously
against laboratory measurements and field observations of temperatures. However, simultaneous evaluation against multiple
types of observations is necessary to adequately test coupling between surface and subsurface systems and between thermal and
hydrological processes. Those evaluations of the integrated system have been hindered by lack of co-located field observations.
380 In this work, we took advantage of recently available multiyear, high-frequency observations of soil temperature, water levels,
snow depth, and evapotranspiration to evaluate the integrated surface/subsurface thermal hydrological models implemented in
the ATS code.

Because the water level and temperature data were not strictly co-located, we used an abstraction of the geometries of the two
neighboring ice wedge polygons where the measurements were made. The resulting three-dimensional radially asymmetric ice-
385 wedge polygon shares geometric features of the surface microtopography of the actual polygons that are understood to control
surface and shallow subsurface flow. Using site meteorological data as forcing data and observed water table elevations in

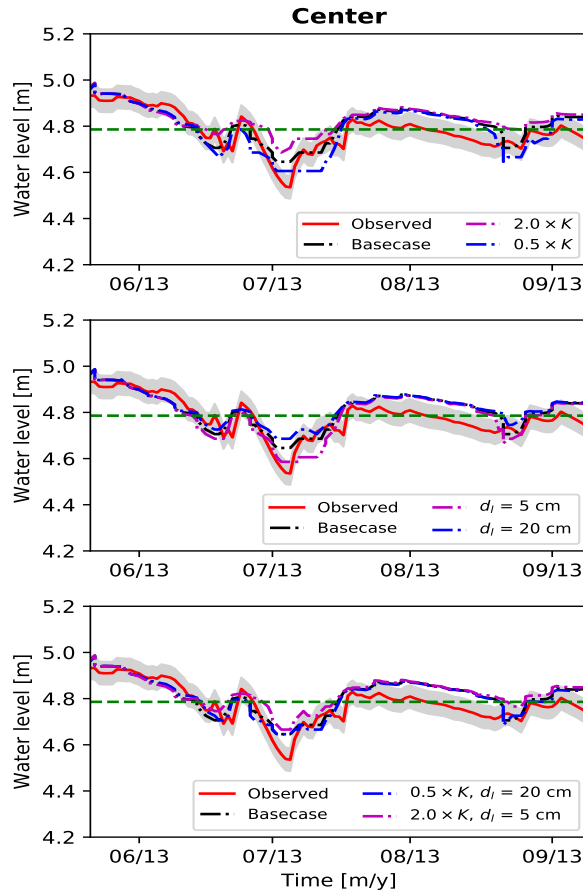


Figure 8. Observed water level at polygon center versus time in the summer of year 2013 showing sensitivity of the simulated water level to the bare soil evaporation model parameter (top) and saturated hydraulic conductivities (middle). Enhanced drawdown are seen in the top row when the soil evaporation parameter d_i is set to smaller values. Existence of a null space between saturated hydraulic conductivity and the parameter d_i is shown in the bottom row. Basecase refers to the results in Figure 5.

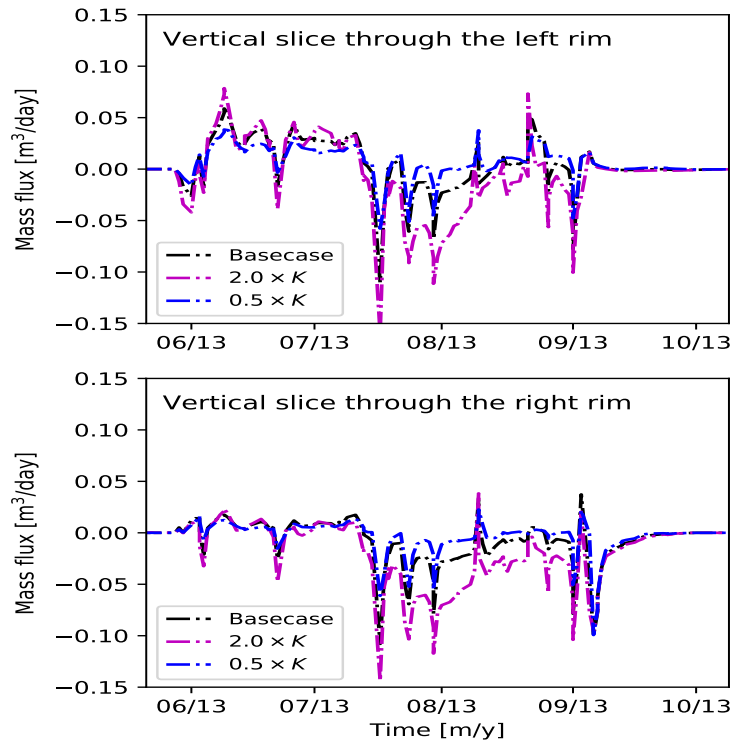


Figure 9. A time series of simulated lateral water fluxes between polygon center and trough through a 50 cm (the maximum thaw depth) deep vertical slice at the left and right rims of the polygon. Negative flux indicates inward flow (trough to center).

390 polygon troughs as a time-dependent boundary condition, we simulated water table in the polygon center and soil temperatures at several depths at three microtopographic positions (trough, rim and center). The simulations agree well with observations over three years after adjusting parameters controlling soil resistance in the bare-soil evaporation model. Other parameters were set from literature values or independently determined.

395 Soil temperature results were found to be sensitive to snow precipitation undercatch adjustment, consistent with the well-known thermal insulating properties of the snow pack. Timing of the fall freeze up was found to be sensitive to how the snow aging is represented. In particular, soil freezing occurred too early when snow density was assumed to be constant in time. That result demonstrates the importance of including the effects of snow aging and the formation of a depth hoar layer on thermal insulating properties of snow.

400 Water levels in the polygon center were found to be sensitive to the maximum extent of the soil desiccated layer, a parameter appearing in the model for soil resistance to evaporation. Water levels were also sensitive to the soil saturated hydraulic conductivity. It is important to note that the evaporation model parameters and the saturated hydraulic conductivity can be varied simultaneously in a way that leaves the water level in the polygon center approximately unchanged, indicating the existence of a null space in the parameter space. Thus, independent measurements are needed to provide additional constraints.

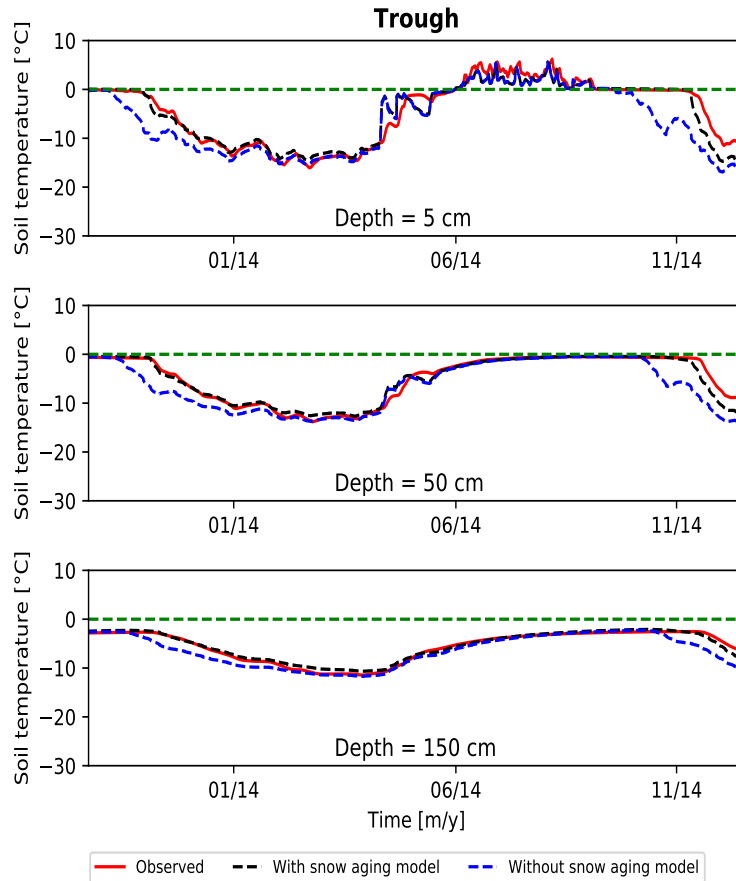


Figure 10. Simulated temperature versus time with and without the snow aging model compared to observed temperatures.

We used literature values to constrain the saturated hydraulic conductivity. Because those saturated hydraulic conductivity are uncertain, we took the additional step of upscaling our simulated evaporation to compare against flux tower observations, taking advantage of the fact that evaporation is dominant over transpiration at the BEO (Young-Robertson et al., 2018). Although the upscaling process has some uncertainty, the reasonably good agreement increases confidence in our representation of permafrost thermal-hydrological processes at this site. These results also demonstrate how observations of the supra-permafrost water table elevations can help constrain evapotranspiration models.

That the water levels in the polygon centers were sensitive to lateral saturated hydraulic conductivity of the subsurface underscores the role played by lateral trough-to-center subsurface flow in keeping ice wedge polygon centers from drying out in the Arctic summer.

These comparisons to multiple types of observation data represent a unique test of recently developed process-explicit models for integrated surface/subsurface permafrost thermal hydrology. The overall good match to water levels, soil temperatures, snow depths, and evaporation over the three-year observation period represents significant new support for this emerging class

of models as useful representations of polygonal tundra thermal hydrology. An obvious next step is to use this model configuration in simulations of permafrost evolution at watershed scales with large numbers of polygons represented using, for
415 example, ATS's intermediate-scale variant (Jan et al., 2018b).

Finally, that the observations were relatively well matched by simulations that used an abstraction of the ice-wedge polygon geometry provides support for simplified geometric representations of the polygonal landscapes, which have been proposed previously (e.g. Liljedahl et al. (2012); Nitzbon et al. (2019)). In particular, we were able to obtain good results using a regular polygon parameterized by a small number of microtopographic and soil structural parameters. Different polygon morphologies
420 (e.g. high- versus low-center) can be represented with this parameterization by appropriate choice of those geometric quantities. In this study, we selected those parameters to represent the study site of interest. Of course, the microtopographic representation and choice of process-model parameter values are site-specific and should be evaluated for the site studied.

Code and data availability. The Advanced Terrestrial Simulator (ATS) Coon et al. (2019) is open source under the BSD 3-clause license, and is publicly available at <https://github.com/amanzi/ats>. Simulations were conducted using version 0.88. The ATS version 0.88 is permanently stored at <https://doi.org/10.5281/zenodo.3727209>. Forcing data, model input files, jupyter notebooks used to generate figures,
425 meshes along with jupyter notebooks used to generate the meshes are publicly available at <https://doi.org/10.5440/1545603>. Data products used in the model comparisons are publicly available through the NGEE-Arctic long-term data archive <https://doi.org/10.5440/1416559>. The observed water level can be accessed at <https://doi.org/10.5440/1183767> (Liljedahl and Wilson. (2016)), the soil temperature data at <https://doi.org/10.5440/1126515> (Romanovsky et al. (2017)), and the evapotranspiration data at <https://doi.org/10.5440/1362279> (Dengel
430 et al. (2019), respectively.)

Author contributions. Numerical simulations were performed by AJ with guidance from SLP and ETC. All authors contributed to design of the research and to the manuscript preparation.

Competing interests. The authors declare that they have no conflict of interest.

Acknowledgements. The authors are grateful to Vladimir Romanovsky, Anna Liljedahl, Cathy Wilson, Sigrid Dengel and Margaret Torn
435 for the BEO field data used here. The authors also thank Fengming Yuan for careful review of this manuscript. This work was supported by the Next-Generation Ecosystem Experiment—Arctic (NGEE-Arctic) project. The NGEE-Arctic project is supported by the Office of Biological and Environmental Research in the U.S. Department of Energy's Office of Science. Oak Ridge National Laboratory is managed by UT-Battelle, LLC, for DOE under contract DE-AC05-00OR22725. This research used resources of the Compute and Data Environment for Science (CADES) at the Oak Ridge National Laboratory, which is supported by the Office of Science of the U.S. Department of Energy
440 under Contract No. DE-AC05-00OR22725.

References

- Abolt, C. J., Young, M. H., Atchley, A. L., and Harp, D. R.: Microtopographic control on the ground thermal regime in ice wedge polygons, *The Cryosphere*, 12, 1957–1968, 2018.
- Atchley, A. L., Painter, S. L., Harp, D. R., Coon, E. T., Wilson, C. J., Liljedahl, A. K., and Romanovsky, V. E.: Using field observations to
445 inform thermal hydrology models of permafrost dynamics with ATS (v0.83), *Geoscientific Model Development*, 8, 2701–2722, 2015.
- Atchley, A. L., Coon, E. T., Painter, S. L., Harp, D. R., and Wilson, C. J.: Influences and interactions of inundation, peat, and snow on active layer thickness, *Geophysical Research Letters*, 43, 5116–5123, 2016.
- Batir, J. F., Hornbach, M. J., and Blackwell, D. D.: Ten years of measurements and modeling of soil temperature changes and their effects on permafrost in Northwestern Alaska, *Global and Planetary Change*, 148, 55–71, 2017.
- 450 Bense, V., Ferguson, G., and Kooi, H.: Evolution of shallow groundwater flow systems in areas of degrading permafrost, *Geophysical Research Letters*, 36, 2009.
- Bense, V. F., Kooi, H., Ferguson, G., and Read, T.: Permafrost degradation as a control on hydrogeological regime shifts in a warming climate, *Journal of Geophysical Research: Earth Surface*, 117, 2012.
- Beringer, J., Lynch, A. H., Chapin III, F. S., Mack, M., and Bonan, G. B.: The representation of arctic soils in the land surface model: the
455 importance of mosses, *Journal of Climate*, 14, 3324–3335, 2001.
- Black, R. F.: Ice-wedge polygons of northern Alaska, in: *Glacial geomorphology*, pp. 247–275, Springer, 1982.
- Brown, J., Ferrians Jr, O., Heginbottom, J., and Melnikov, E.: *Circum-Arctic map of permafrost and ground-ice conditions*, US Geological Survey Reston, VA, 1997.
- Chadburn, S. E., Burke, E. J., Essery, R. L. H., Boike, J., Langer, M., Heikenfeld, M., Cox, P. M., and Friedlingstein, P.: Impact of model
460 developments on present and future simulations of permafrost in a global land-surface model, *The Cryosphere*, 9, 1505–1521, 2015.
- Coon, E., Berndt, M., Jan, A., Svyatsky, D., Atchley, A., Kikinzon, E., Harp, D., Manzini, G., Shelef, E., Lipnikov, K., Garimella, R., Xu, C., Moulton, D., Karra, S., Painter, S., Jafarov, E., and Molins, S.: *Advanced Terrestrial Simulator. Next Generation Ecosystem Experiments Arctic Data Collection*, Oak Ridge National Laboratory, U.S. Department of Energy, Oak Ridge, Tennessee, USA. Version 0.88, <https://doi.org/10.11578/dc.20190911.1>, 2019.
- 465 Coon, E. T., Moulton, J. D., and Painter, S. L.: Managing complexity in simulations of land surface and near-surface processes, *Environmental Modelling & Software*, 78, 134–149, 2016.
- Dall’Amico, M., Endrizzi, S., Gruber, S., and Rigon, R.: A robust and energy-conserving model of freezing variably-saturated soil, *The Cryosphere*, 5, 469–484, 2011.
- de Koven Leffingwell, E.: *The Canning River region, northern Alaska*, 109, US Government Printing Office, 1919.
- 470 Dengel, S., Billesbach, D., and Torn, M.: *NGEE Arctic CO₂, CH₄ and Energy Eddy-Covariance (EC) Flux Tower and Auxiliary Measurements, Barrow, Alaska, Beginning 2012*. Next Generation Ecosystem Experiments Arctic Data Collection, Oak Ridge National Laboratory, U.S. Department of Energy, Oak Ridge, Tennessee, USA. Dataset accessed on July 18, 2019 at <https://doi.org/10.5440/1362279>, 2019.
- Endrizzi, S., Gruber, S., Dall’Amico, M., and Rigon, R.: *GEOtop 2.0: simulating the combined energy and water balance at and below the land surface accounting for soil freezing, snow cover and terrain effects*, *Geoscientific Model Development*, 7, 2831–2857, 2014.
- 475 Evans, S. G. and Ge, S.: Contrasting hydrogeologic responses to warming in permafrost and seasonally frozen ground hillslopes, *Geophysical Research Letters*, 44, 1803–1813, 2017.

- Evans, S. G., Ge, S., Voss, C. I., and Molotch, N. P.: The Role of Frozen Soil in Groundwater Discharge Predictions for Warming Alpine Watersheds, *Water Resources Research*, 54, 1599–1615, 2018.
- Farquharson, L. M., Romanovsky, V. E., Cable, W. L., Walker, D. A., Kokelj, S., and Nicolsky, D.: Climate change drives widespread and rapid thermokarst development in very cold permafrost in the Canadian High Arctic, *Geophysical Research Letters*, 2019.
- 480 Frampton, A., Painter, S., Lyon, S. W., and Destouni, G.: Non-isothermal, three-phase simulations of near-surface flows in a model permafrost system under seasonal variability and climate change, *Journal of Hydrology*, 403, 352–359, 2011.
- Frampton, A., Painter, S. L., and Destouni, G.: Permafrost degradation and subsurface-flow changes caused by surface warming trends, *Hydrogeology Journal*, 21, 271–280, 2013.
- 485 Garayshin, V., Nicolsky, D., and Romanovsky, V.: Numerical modeling of two-dimensional temperature field dynamics across non-deforming ice-wedge polygons, *Cold Regions Science and Technology*, 161, 115–128, 2019.
- Ge, S., McKenzie, J., Voss, C., and Wu, Q.: Exchange of groundwater and surface-water mediated by permafrost response to seasonal and long term air temperature variation, *Geophysical Research Letters*, 38, 2011.
- Gisnås, K., Etzelmüller, B., Farbrot, H., Schuler, T. V., and Westermann, S.: CryoGRID 1.0: Permafrost Distribution in Norway estimated by a Spatial Numerical Model, *Permafrost and Periglacial Processes*, 24, 2–19, 2013.
- 490 Greene, G. W.: Contraction theory of ice-wedge polygons: A qualitative discussion, in: *Permafrost international conference: proceedings*, pp. 11–15, 1963.
- Grenier, C., Régnier, D., Mouche, E., Benabderrahmane, H., Costard, F., and Davy, P.: Impact of permafrost development on groundwater flow patterns: A numerical study considering freezing cycles on a two-dimensional vertical cut through a generic river-plain system, *Hydrogeology Journal*, 21, 2013.
- 495 Guimberteau, M., Zhu, D., Maignan, F., Huang, Y., Yue, C., Dantec-Nédélec, S., Otlé, C., Jornet-Puig, A., Bastos, A., Laurent, P., Goll, D., Bowring, S., Chang, J., Guenet, B., Tifafi, M., Peng, S., Krinner, G., Ducharne, A., Wang, F., Wang, T., Wang, X., Wang, Y., Yin, Z., Lauerwald, R., Joetzier, E., Qiu, C., Kim, H., and Ciais, P.: ORCHIDEE-MICT (v8.4.1), a land surface model for the high latitudes: model description and validation, *Geoscientific Model Development*, 11, 121–163, 2018.
- 500 Harp, D. R., Atchley, A. L., Painter, S. L., Coon, E. T., Wilson, C. J., Romanovsky, V. E., and Rowland, J. C.: Effect of soil property uncertainties on permafrost thaw projections: a calibration-constrained analysis, *The Cryosphere Discussions*, 9, 2015.
- Hinzman, L., Kane, D., Gieck, R., and Everett, K.: Hydrologic and thermal properties of the active layer in the Alaskan Arctic, *Cold Regions Science and Technology*, 19, 95–110, 1991.
- Hinzman, L. D., Bettez, N. D., Bolton, W. R., Chapin, F. S., Dyurgerov, M. B., Fastie, C. L., Griffith, B., Hollister, R. D., Hope, A., 505 Huntington, H. P., et al.: Evidence and implications of recent climate change in northern Alaska and other arctic regions, *Climatic Change*, 72, 251–298, 2005.
- Hugelius, G., Strauss, J., Zubrzycki, S., Harden, J. W., Schuur, E. A. G., Ping, C.-L., Schirrmeister, L., Grosse, G., Michaelson, G. J., Koven, C. D., O'Donnell, J. A., Elberling, B., Mishra, U., Camill, P., Yu, Z., Palmtag, J., and Kuhry, P.: Estimated stocks of circumpolar permafrost carbon with quantified uncertainty ranges and identified data gaps, *Biogeosciences*, 11, 6573–6593, 2014.
- 510 Jafarov, E. E., Marchenko, S. S., and Romanovsky, V. E.: Numerical modeling of permafrost dynamics in Alaska using a high spatial resolution dataset, *The Cryosphere*, 6, 613–624, 2012.
- Jafarov, E. E., Coon, E. T., Harp, D. R., Wilson, C. J., Painter, S. L., Atchley, A. L., and Romanovsky, V. E.: Modeling the role of preferential snow accumulation in through talik development and hillslope groundwater flow in a transitional permafrost landscape, *Environmental Research Letters*, 13, 105 006, 2018.

- 515 Jan, A., Coon, E. T., Graham, J. D., and Painter, S. L.: A Subgrid Approach for Modeling Microtopography Effects on Overland Flow, *Water Resources Research*, 54, 6153–6167, 2018a.
- Jan, A., Coon, E. T., Painter, S. L., Garimella, R., and Moulton, J. D.: An intermediate-scale model for thermal hydrology in low-relief permafrost-affected landscapes, *Computational Geosciences*, 22, 163–177, 2018b.
- Jorgenson, M. T., Racine, C. H., Walters, J. C., and Osterkamp, T. E.: Permafrost degradation and ecological changes associated with a
520 warmingclimate in central Alaska, *Climatic change*, 48, 551–579, 2001.
- Jorgenson, M. T., Shur, Y. L., and Pullman, E. R.: Abrupt increase in permafrost degradation in Arctic Alaska, *Geophysical Research Letters*, 33, 2006.
- Karra, S., Painter, S. L., and Lichtner, P. C.: Three-phase numerical model for subsurface hydrology in permafrost-affected regions (PFLOTRAN-ICE v1.0), *The Cryosphere*, 8, 1935–1950, 2014.
- 525 Kollet, S., Sulis, M., Maxwell, R. M., Paniconi, C., Putti, M., Bertoldi, G., Coon, E. T., Cordano, E., Endrizzi, S., Kikinzon, E., et al.: The integrated hydrologic model intercomparison project, IH-MIP2: A second set of benchmark results to diagnose integrated hydrology and feedbacks, *Water Resources Research*, 53, 867–890, 2017.
- Koopmans, R. W. R. and Miller, R. D.: Soil Freezing and Soil Water Characteristic Curves, *Soil Science Society of America Journal*, 60, 13–19, 1966.
- 530 Koven, C. D., Ringeval, B., Friedlingstein, P., Ciais, P., Cadule, P., Khvorostyanov, D., Krinner, G., and Tarnocai, C.: Permafrost carbon-climate feedbacks accelerate global warming, *Proceedings of the National Academy of Sciences*, 108, 14 769–14 774, 2011.
- Koven, C. D., Riley, W. J., and Stern, A.: Analysis of permafrost thermal dynamics and response to climate change in the CMIP5 Earth System Models, *Journal of Climate*, 26, 1877–1900, 2013.
- Kumar, J., Collier, N., Bisht, G., Mills, R. T., Thornton, P. E., Iversen, C. M., and Romanovsky, V.: Modeling the spatiotemporal variability
535 in subsurface thermal regimes across a low-relief polygonal tundra landscape, *The Cryosphere*, 10, 2241–2274, 2016.
- Kurylyk, B. L. and Watanabe, K.: The mathematical representation of freezing and thawing processes in variably-saturated, non-deformable soils, *Advances in Water Resources*, 60, 160–177, 2013.
- Kurylyk, B. L., MacQuarrie, K. T., and McKenzie, J. M.: Climate change impacts on groundwater and soil temperatures in cold and temperate regions: Implications, mathematical theory, and emerging simulation tools, *Earth-Science Reviews*, 138, 313–334, 2014.
- 540 Kurylyk, B. L., Hayashi, M., Quinton, W. L., McKenzie, J. M., and Voss, C. I.: Influence of vertical and lateral heat transfer on permafrost thaw, peatland landscape transition, and groundwater flow, *Water Resources Research*, 52, 1286–1305, 2016.
- Lachenbruch, A. H.: Mechanics of thermal contraction cracks and ice-wedge polygons in permafrost, *Geological Society of America Special Papers*, 70, 1–66, 1962.
- Lachenbruch, A. H. and Marshall, B. V.: Changing climate: geothermal evidence from permafrost in the Alaskan Arctic, *Science*, 234,
545 689–696, 1986.
- Liljedahl, A. and Wilson, C.: Ground Water Levels for NGEE Areas A, B, C and D, Barrow, Alaska, 2012-2014. Next Generation Ecosystem Experiments Arctic Data Collection, Oak Ridge National Laboratory, U.S. Department of Energy, Oak Ridge, Tennessee, USA. Dataset accessed on September, 2018 at <https://doi.org/10.5440/1183767>, 2016.
- Liljedahl, A., Hinzman, L., and Schulla, J.: Ice-wedge polygon type controls low-gradient watershed-scale hydrology, in: *Proceedings of the*
550 *Tenth International Conference on Permafrost*, vol. 1, pp. 231–236, 2012.
- Liljedahl, A. K., Boike, J., Daanen, R. P., Fedorov, A. N., Frost, G. V., Grosse, G., Hinzman, L. D., Iijma, Y., Jorgenson, J. C., Matveyeva, N., et al.: Pan-Arctic ice-wedge degradation in warming permafrost and its influence on tundra hydrology, *Nature Geoscience*, 2016.

- Lyon, S., Destouni, G., Giesler, R., Humborg, C., Mörth, C.-M., Seibert, J., Karlsson, J., and Troch, P.: Estimation of permafrost thawing rates in a sub-arctic catchment using recession flow analysis, *Hydrology and Earth System Sciences*, 13, 595–604, 2009.
- 555 Mackay, J. R.: Some observations on the growth and deformation of epigenetic, syngenetic and anti-syngenetic ice wedges, *Permafrost and Periglacial Processes*, 1, 15–29, 1990.
- McKenzie, J. M., Voss, C. I., and Siegel, D. I.: Groundwater flow with energy transport and water–ice phase change: numerical simulations, benchmarks, and application to freezing in peat bogs, *Advances in water resources*, 30, 966–983, 2007.
- Moulton, J. D., Berndt, M., Garimella, R., Prichett-Sheats, L., Hammond, G., Day, M., and Meza, J.: High-level design of Amanzi, the multi-
560 process high performance computing simulator, Office of Environmental Management, United States Department of Energy, Washington DC, 2012.
- Mualem, Y.: A new model for predicting the hydraulic conductivity of unsaturated porous media, *Water Resources Research*, 12, 513–522, 1976.
- Nash, J. and Sutcliffe, J.: River flow forecasting through conceptual models part I — A discussion of principles, *Journal of Hydrology*, 10,
565 282–290, 1970.
- Nitzbon, J., Langer, M., Westermann, S., Martin, L., Aas, K. S., and Boike, J.: Pathways of ice-wedge degradation in polygonal tundra under different hydrological conditions, *The Cryosphere*, 13, 1089–1123, <https://doi.org/10.5194/tc-13-1089-2019>, <https://www.the-cryosphere.net/13/1089/2019/>, 2019.
- Oechel, W. C., Vourlitis, G. L., Hastings, S. J., and Bochkarev, S. A.: Change in Arctic CO₂Flux over two decades: Effects of climate change
570 at Barrow, Alaska, *Ecological Applications*, 5, 846–855, 1995.
- Osterkamp, T.: Response of Alaskan permafrost to climate, in: *Fourth International Conference on Permafrost*, Fairbanks, Alaska, pp. 17–22, 1983.
- Osterkamp, T.: A thermal history of permafrost in Alaska, in: *Proceedings of the 8th International Conference on Permafrost*, vol. 2, pp. 863–868, AA Balkema Publishers, 2003.
- 575 Osterkamp, T.: Characteristics of the recent warming of permafrost in Alaska, *Journal of Geophysical Research: Earth Surface*, 112, 2007.
- Pachauri, R. K., Allen, M., Barros, V., Broome, J., Cramer, W., Christ, R., Church, J., Clarke, L., Dahe, Q., Dasgupta, P., et al.: *Climate Change 2014: Synthesis Report. Contribution of Working Groups I, II and III to the Fifth Assessment Report of the Intergovernmental Panel on Climate Change*, 2014.
- Painter, S. L.: Three-phase numerical model of water migration in partially frozen geological media: model formulation, validation, and
580 applications, *Computational Geosciences*, 15, 69–85, 2011.
- Painter, S. L. and Karra, S.: Constitutive Model for Unfrozen Water Content in Subfreezing Unsaturated Soils, *Vadose Zone Journal*, 13, 2014.
- Painter, S. L., Moulton, J. D., and Wilson, C.: Modeling challenges for predicting hydrologic response to degrading permafrost, *Hydrogeology Journal*, 21, 221–224, 2013.
- 585 Painter, S. L., Coon, E. T., Atchley, A. L., Berndt, M., Garimella, R., Moulton, J. D., Svyatskiy, D., and Wilson, C. J.: Integrated surface/subsurface permafrost thermal hydrology: Model formulation and proof-of-concept simulations, *Water Resources Research*, 52, 6062–6077, 2016.
- Pan, X., Li, Y., Yu, Q., Shi, X., Yang, D., and Roth, K.: Effects of stratified active layers on high-altitude permafrost warming: a case study on the Qinghai–Tibet Plateau, *The Cryosphere*, 10, 1591–1603, 2016.

- 590 Raz-Yaseef, N., Young-Robertson, J., Rahn, T., Sloan, V., Newman, B., Wilson, C., Wullschleger, S. D., and Torn, M. S.: Evapotranspiration across plant types and geomorphological units in polygonal Arctic tundra, *Journal of Hydrology*, 553, 816–825, 2017.
- Romanovsky, V., Burgess, M., Smith, S., Yoshikawa, K., and Brown, J.: Permafrost temperature records: Indicators of climate change, *EOS, Transactions American Geophysical Union*, 83, 589–594, 2002.
- Romanovsky, V., Cable, W., and Dolgikh, K.: Subsurface Temperature, Moisture, Thermal Conductivity and Heat Flux, Barrow, Area A, B, C, D. Next Generation Ecosystem Experiments Arctic Data Collection, Oak Ridge National Laboratory, U.S. Department of Energy, Oak Ridge, Tennessee, USA. Dataset accessed on September, 2018 at <https://doi.org/10.5440/1126515>., 2017.
- 595 Romanovsky, V. E., Smith, S. L., and Christiansen, H. H.: Permafrost thermal state in the polar Northern Hemisphere during the international polar year 2007–2009: a synthesis, *Permafrost and Periglacial Processes*, 21, 106–116, 2010.
- Rowland, J. C., Travis, B. J., and Wilson, C. J.: The role of advective heat transport in talik development beneath lakes and ponds in discontinuous permafrost, *Geophysical Research Letters*, 38, 2011.
- 600 Sakaguchi, K. and Zeng, X.: Effects of soil wetness, plant litter, and under-canopy atmospheric stability on ground evaporation in the Community Land Model (CLM3.5), *Journal of Geophysical Research: Atmospheres*, 114, 2009.
- Schuh, C., Frampton, A., and Christiansen, H. H.: Soil moisture redistribution and its effect on inter-annual active layer temperature and thickness variations in a dry loess terrace in Adventdalen, Svalbard, *The Cryosphere*, 11, 635–651, 2017.
- 605 Schuur, E. A. G., McGuire, A. D., Schaedel, C., Grosse, G., Harden, J. W., Hayes, D. J., Hugelius, G., Koven, C. D., Kuhry, P., Lawrence, D. M., Natali, S. M., Olefeldt, D., Romanovsky, V. E., Schaefer, K., Turetsky, M. R., Treat, C. C., and Vonk, J. E.: Climate change and the permafrost carbon feedback, *Nature*, 520, 171–179, 2015.
- Sjöberg, Y., Frampton, A., and Lyon, S. W.: Using streamflow characteristics to explore permafrost thawing in northern Swedish catchments, *Hydrogeology Journal*, 21, 121–131, 2013.
- 610 Sjöberg, Y., Coon, E., Sannel, A. B. K., Pannetier, R., Harp, D., Frampton, A., Painter, S. L., and Lyon, S. W.: Thermal effects of groundwater flow through subarctic fens: A case study based on field observations and numerical modeling, *Water Resources Research*, 52, 1591–1606, 2016.
- Slater, A. G. and Lawrence, D. M.: Diagnosing present and future permafrost from climate models, *Journal of Climate*, 26, 5608–5623, 2013.
- Spaans, E. and Baker, J.: The Soil Freezing Characteristic: Its Measurement and Similarity to the Soil Moisture Characteristic, *Soil Science Society of America Journal*, 60, 13, 1996.
- 615 Tan, X., Chen, W., Tian, H., and Cao, J.: Water flow and heat transport including ice/water phase change in porous media: Numerical simulation and application, *Cold Regions Science and Technology*, 68, 74 – 84, 2011.
- Tao, J., Koster, R. D., Reichle, R. H., Forman, B. A., Xue, Y., Chen, R. H., and Moghaddam, M.: Permafrost Variability over the Northern Hemisphere Based on the MERRA-2 Reanalysis, *The Cryosphere Discussions*, 2018, 1–41, 2018.
- 620 Tarnocai, C., Canadell, J., Schuur, E., Kuhry, P., Mazhitova, G., and Zimov, S.: Soil organic carbon pools in the northern circumpolar permafrost region, *Global biogeochemical cycles*, 23, 2009.
- van Genuchten, M. T.: A Closed-form Equation for Predicting the Hydraulic Conductivity of Unsaturated Soils¹, *Soil Science Society of America Journal*, 44, 892–898, 1980.
- Walvoord, M. A. and Kurylyk, B. L.: Hydrologic impacts of thawing permafrost—A review, *Vadose Zone Journal*, 15, 2016.
- 625 Walvoord, M. A. and Striegl, R. G.: Increased groundwater to stream discharge from permafrost thawing in the Yukon River basin: Potential impacts on lateral export of carbon and nitrogen, *Geophysical Research Letters*, 34, 2007.

- Walvoord, M. A., Voss, C. I., and Wellman, T. P.: Influence of permafrost distribution on groundwater flow in the context of climate-driven permafrost thaw: Example from Yukon Flats Basin, Alaska, United States, *Water Resources Research*, 48, 2012.
- 630 Wang, C., Wang, Z., Kong, Y., Zhang, F., Yang, K., and Zhang, T.: Most of the Northern Hemisphere Permafrost Remains under Climate Change, *Scientific reports*, 9, 3295, 2019.
- Wang, W., Rinke, A., Moore, J. C., Cui, X., Ji, D., Li, Q., Zhang, N., Wang, C., Zhang, S., Lawrence, D. M., McGuire, A. D., Zhang, W., Delire, C., Koven, C., Saito, K., MacDougall, A., Burke, E., and Decharme, B.: Diagnostic and model dependent uncertainty of simulated Tibetan permafrost area, *The Cryosphere*, 10, 287–306, 2016.
- Wellman, T. P., Voss, C. I., and Walvoord, M. A.: Impacts of climate, lake size, and supra- and sub-permafrost groundwater flow on lake-talik evolution, Yukon Flats, Alaska (USA), *Hydrogeology Journal*, 21, 281–298, 2013.
- 635 Westermann, S., Langer, M., Boike, J., Heikenfeld, M., Peter, M., Eitzelmüller, B., and Krinner, G.: Simulating the thermal regime and thaw processes of ice-rich permafrost ground with the land-surface model CryoGrid 3, *Geoscientific Model Development*, 9, 523–546, 2016.
- Wilson, C. and Altmann, G.: Digital Elevation Model, 0.25 m, Barrow Environmental Observatory, Alaska, 2013. Next Generation Ecosystem Experiments Arctic Data Collection, Oak Ridge National Laboratory, U.S. Department of Energy, Oak Ridge, Tennessee, USA. Dataset
640 accessed on July 2019 at <https://doi.org/10.5440/1224720>, 2017.
- Wu, Q. and Zhang, T.: Recent permafrost warming on the Qinghai-Tibetan Plateau, *Journal of Geophysical Research: Atmospheres*, 113, 2008.
- Yang, M., Nelson, F. E., Shiklomanov, N. I., Guo, D., and Wan, G.: Permafrost degradation and its environmental effects on the Tibetan Plateau: A review of recent research, *Earth-Science Reviews*, 103, 31–44, 2010.
- 645 Yi, Y., Kimball, J. S., Chen, R. H., Moghaddam, M., and Miller, C. E.: Sensitivity of active-layer freezing process to snow cover in Arctic Alaska, *The Cryosphere*, 13, 197, 2019.
- Young-Robertson, J. M., Raz-Yaseef, N., Cohen, L. R., Newman, B., Rahn, T., Sloan, V., Wilson, C., and Wullschleger, S. D.: Evaporation dominates evapotranspiration on Alaska's Arctic Coastal Plain, *Arctic, Antarctic, and Alpine Research*, 50, e1435 931, 2018.