

Response to Reviewer 1 Comments

We thank the reviewer for the positive and constructive suggestions. Our responses are organized by reviewer comment. Italicized text are quotations from the reviews.

It is also worth mentioning that ATS is a participant in projects comparing hydrological models, in particular, Kollet, S., et al. (2017) "The integrated hydrologic model intercomparison project, IH-MIP2.

Response:

We agree with this suggestion and have included a sentence to note this at the end of the next to last paragraph in Section 3.2

In Fig. 3, the right column: is the color palette similar to the upper right panel of Fig. 1? It might be a good idea to add a colorbar to it or to provide a relevant description in the figure caption for Fig. 3.

Response: As suggested, we modified the caption and added "The color palette in the right panel correspond to the elevation in the plots on the left side and different than the color range provided in the upper and lower right panel in Figure 1."

In Fig. 6, the authors present the thaw depths for two locations (lowland and center) for the years 2012-2014. Unfortunately, it is not quite clear from the legend and the caption if these are simulated or observed depths of thawing. If the presented depths are the results of numerical simulations, then it can be good to also show relevant observational data for comparison, or at least add maximum values for this period (50 cm depth of the zero isotherm (see Fig. 5)) that are in good agreement with modeling results.

Response:

Thanks for pointing this out. We have modified Figure 6 now. The time series of the thaw depth shown is from simulations. In addition, we provide observed maximum thaw depth (text in plots) on each left side plot (center of the polygon where observed thaw depth is known). Time evolution of the thaw depth is not directly available from the observations.

In Fig. 10, the legend does not indicate observational data (red line), similar to Fig. 6.

Response: Legend has been changed to indicate observational data too.

For greater convenience, the tick labels could be presented in classical format: month/year or day/year (Julian Date) as, for example, in Atchley, A.L. et al (2015) "Using field obser-

vations to inform thermal hydrology models of permafrost dynamics with ATS (v0.83).

Response: In view of this suggestion, all figures have been modified (redrawn) to present x-labels in month/day format and in the plots showing temperature the unit Kelvin [K] is changed to Celsius. Italicized text are quotations from the reviews. (C).

Response to Reviewer 2 Comments

We are grateful to the reviewer for the detailed and constructive suggestions. We have revised the manuscript significantly to address most of these and are confident the paper has improved as a result.

Our responses are organized by comment. Italicized text are quotations from the reviews.

The assumption that the abstracted geometry of mixed polygon types is simultaneously representative for polygons of different types and polygonal tundra in general, is not supported by any evidence. There is evidence from other studies (e.g. Liljedahl et al. (2012)) that different polygon morphologies affect lateral hydrology in a non-linear way. It is thus not a trivial step to assume that a linear mixing of different morphologies in a single radially asymmetric polygon is representative for all these morphologies at the same time. This is particularly problematic because one of the findings of the study - the strong coupling between water tables in troughs and centers might not hold true for other types of polygons. For example, in polygons with (radially symmetric) high elevated rims, the centers and troughs would be hydrologically disconnected until the thaw depth in the rims reaches down to the elevation of the water table. Proving that the abstracted, radially asymmetric polygon geometry is indeed representative for several polygon morphologies at a time, could instead become an objective of the study. This would, however, require complementary simulations for radially symmetric geometries of both types (high and low rims). If no further evidence for the representativeness of the abstracted geometry can be provided, the limitations of this setup and the validity of the conclusions should be discussed more clearly.

Response: In our comparison to measured data, we used an abstracted geometry to represent two adjacent polygons where the measurements were made. These polygons have similar morphology with well-defined troughs and rims. We are not mixing polygon types, make no claim that this representation is “simultaneously representative of polygons of different types”, and agree with the reviewer that such an abstraction that mixes types would need careful evaluation and is likely to be unsuccessful as a modeling strategy. It is important to note that ATS is a spatially explicit code and that large numbers of ice wedge polygons would be represented in typical applications that model over larger areas. In this model evaluation paper, we focus on small scales that were intensively monitored.

In the original manuscript, we provided physics-based justifications for our abstraction of the modeling domain, with an eye toward generalization and a wariness of overfitting due to the uniqueness-of-place challenge. We buttressed those arguments in the revised manuscript. The revised manuscript now reads “In building the abstracted ice-wedge polygon, we imposed

several constraints. For reproducing the water levels measured at wells C39 and C40, which represent polygon center locations, it is important that the surface elevation match that of the measurement location. Moreover, to adequately represent overland and shallow subsurface flow, it is important to honor rim height, as Liljedahl et al., 2012 have demonstrated. We thus match the low point in the rim elevation, as that determines the spill point for surface and shallow subsurface flow between the center and trough. When comparing to soil temperature measurements it is necessary to match the surface elevation of those locations because thermal conditions are sensitive to snow depth and soil water content (Atchley et al., 2016), which both depend on rim elevation relative to the center and trough.”

Ultimately, however, the success of our abstraction can only be judged after the fact: how successful was it in reproducing observations? Readers are free to evaluate the results, which are shown in Figures 3 to 6 for multiple years and multiple types of measurements. Although there is always room for improvement, we believe that given the complexity of these systems, this is a successful comparison that provides confidence in this emerging class of multiphysics models.

In addition, we revised the final paragraphs to clarify that we are not advocating for a single polygon geometry as representative of the entire landscape. The relevant text reads:

“These comparisons to multiple types of observation data represent a unique test of recently developed process-explicit models for integrated surface/subsurface permafrost thermal hydrology. The overall good match to water levels, soil temperatures, snow depths, and evaporation over the three-year observation period represents significant new support for this emerging class of models as useful representations of polygonal tundra thermal hydrology. An obvious next step is to use this model configuration in simulations of permafrost evolution at watershed scales with large numbers of polygons represented using, for example, ATS’s intermediate-scale variant (Jan et al. 2018).

Finally, that the observations were relatively well matched by simulations that used an abstraction of the ice-wedge polygon geometry provides support for simplified geometric representations of the polygonal landscapes, which have been proposed previously (e.g. Liljedahl et al. 2012; Nitzbon et al. 2019). In particular, we were able to obtain good results using a regular polygon parameterized by a small number of microtopographic and soil structural parameters. Different polygon morphologies (e.g. high- versus low-center) can be represented with this parameterization by appropriate choice of those geometric quantities. In this study, we selected those parameters to represent the study site of interest. Of course, the microtopographic representation and choice of process-model parameter values are site-specific and should be evaluated for the site studied. ”

Using measured water tables in polygon troughs as a forcing at the lateral boundary of the surface model domain seems rather unconventional, as such data are typically not provided by other models (as it is the case for the meteorological forcing data). In my view, the dynamic evolution of the water table throughout the thawing season is a variable a permafrost hydrology model seeks to predict based on the meteorological forcing, and the thermal and hydrological processes in the surface/subsurface system. If the elevation of the water table above the surface is, however, prescribed at the model boundary, as it is the case in the present study, the good agreement with measured water levels in the center is not very surprising, at least for

low-elevated rims (see also previous comment). This procedure thus clearly limits the transferability and scalability of the approach.

Response: It is important to acknowledge the scope and goals of this study. We are taking advantage of measurements from a well-characterized site to evaluate process representations and process couplings in our process-explicit multiphysics code, consistent with the scope of a model evaluation paper in GMD. Our choice of surface water boundary condition at the polygon trough is appropriate for this model evaluation study as it eliminates uncertainty in runoff/run-on allowing us to focus on the processes of interest here. Of course trough water levels response to meteorological forcing and are of interest in a many modeling applications, but that is a completely different study suitable for a different journal.

We disagree with the assertion that a good match to the center water table is to be expected. Indeed we show in the manuscript that water table in the polygon center is sensitive to subsurface saturated hydraulic conductivity and to how bare soil evaporation is represented. Poor choice of those parameters results in a poor match to the center water table.

Based on these simulations the authors find a good agreement between simulated and observed water tables in the polygon centers, suggesting an important role of lateral water fluxes between troughs and centers (p. 19 l. 351ff). This conclusion would become stronger if a further simulation with more simple hydrological boundary conditions for the surface (e.g., no-flow, seepage face, or a spill point at a fixed elevation) would be conducted and included for comparison. In this respect, it might also be interesting to provide data on simulated lateral water fluxes between polygon centers and troughs (either as a time series or as net fluxes), and to assess the contribution of these fluxes to the water balance of the centers.

Response: We agree and have added a new figure (Figure 10 in the revised version) to quantify the lateral fluxes between polygon center and trough and include a discussion of those fluxes in the revised text. As expected, the fluxes change from center-to-trough during snowmelt to trough-to-center during dry periods. The results correspond to the basecase and 0.5 times permeability and 2 times permeability. We also provide in supplemental material (Figure S3) results from different boundary conditions (no flow and spill point). Although those BCs are not useful for our model evaluation, they do demonstrate that run-off is important during snowmelt and run-on to the polygon is important during dry summer periods. In addition to the new figure, we include the following new text at the end of Section 4.2.2:

“Simulated water fluxes between polygon center and trough through a 50 cm deep vertical slice at the right and left rims of polygon are displayed in Figure 10. In Figure 10, negative fluxes indicate inward flow (i.e., flow from trough to center). Water flow is generally from center to the trough in the early part of the summer as melt water drains through the partially thawed rim. Note that flow through the right side is small during this period because the thaw depth beneath the higher rim on that side has not reached a spill-point depth that allows water to flow through the rim. Around the end of July, flow reverses to be from trough to center and is similar in magnitude on the two sides. Increasing the hydraulic conductivity increases water flux from trough to center. This highlights the important role of lateral water fluxes between polygon center and trough.

For the purposes of model evaluation, we imposed a time-dependent water level on the trough from measured data. As a result, water is free to enter the model domain both as runoff and run-on, depending on the specified boundary condition and simulated water levels inside the model domain. Results for alternative choices of the surface water boundary condition are included in Supplemental Material (Figure S3) including spill-point boundary and closed boundaries on the surface domain. A spill-point boundary allows water out when the simulated water level reaches the spill point elevation, simulating runoff but no run-on, whereas the closed boundary eliminates both run-on and runoff. Unsurprisingly, both of the alternative boundary conditions result in poorer match to the observed water levels in the center as compared to our reference case boundary condition. In applications that seek to understand permafrost dynamics in a changing climate, surface water flows over larger domains will need to be simulated capture the dynamics of run-on and runoff, as in ATS's intermediate-scale variant Jan2018intermediate. ”

The evaluation of the modeling results is mostly limited to a visual comparison between simulations and observations. For the scope of a model evaluation paper it would be desirable to provide also more quantitative measures of model performance such as RMSE, R2 , and/or bias. This would also facilitate the comparison with other studies that provide such numbers (e.g., Kumar et al. (2016), Abolt et al. (2018), Nitzbon et al. (2019)).

Response: In the revised, we include the Nash-Sutcliffe model efficiency (NSE) and RSME as performance metrics (Table S1 in supplemental material). We also revised the manuscript main text to introduce NSE as our performance metric in new section 3.3 and to provide that result in the appropriate sections. We prefer NSE in this context because it is scaled by variability.

As the active layer thickness is a key quantity for permafrost ecosystems, it would be desirable if the authors could also provide an evaluation of the temporal evolution of thaw depth, and its spatial heterogeneity between the different parts (center, rim, trough) of the polygon (provided that suitable observational data exist for BEO).

Response: Observations are not available for time evolution of the thaw depth, but we do have observed maximum thaw depth. As suggested by reviewer one also, we revised Figure 6 to include the observed maximum thaw depth (text on plots) on each left side plot.

The presented evaluation of the simulated evaporation is not very convincing. Figure 7 shows only simulation data and is thus not helpful in terms of comparison with observations. Providing the accumulated net evaporation (in [mm]) for the micro-topographic units (centers, rims, troughs), as well as providing the corresponding measured values of Raz-Yaseef et al. (2017) would be more insightful. Fig. 7 could then either be merged with Figure 8, moved to the appendix, or just left away. The time series of upscaled evaporation in Figure 8 is not suitable for a quantitative comparison between observations and simulations. It would be more insightful to provide accumulated values of net evaporation over those periods for which both measured and simulated data are available. Discussing the net evaporation together with

precipitation and lateral runoff, i.e. putting it into context with the full water balance of the site, might add further relevance to the study.

Response: As we described in the original manuscript, measured ET fluxes are from an eddy covariance system with flux footprint of a few hundred meters, which averages over rims, centers, and troughs. ET fluxes resolved by rim, center, and trough are not available for comparison. We believe Figure 7 (in the original version) is useful to understand that modeled evaporative flux varies by microtopographic position. Thus we keep the figure but have moved it to supplemental material as the reviewer suggested. We evaluated the option of plotting cumulative flux, but feel it is less informative than the original Figure 8, which more clearly shows seasonal variation as well as modeled evaporation when the flux tower is not operating. We are sympathetic to the suggestion of discussing the site water balance. To that end, importance of run-on and run-off can be assessed from the new results in Figure S3. However, these will be different for different positions in the catchment. Given the goals of this model evaluation paper and the small size of the modeling domain, we feel a detailed discussion of water balance would be distraction and more appropriate for another type of journal.

The additional simulations conducted for the sensitivity analyses are not described in the Methods section, but rather in the Results section. The respective paragraphs should be moved to the Methods section. Making use of subsections in section 3.3 might improve readability.

Response: The paragraph has been moved to the Methods section, and Methods section is divided into subsections to improve readability as suggested.

The claimed existence of a null space, i.e. an opposing effect of saturated hydraulic conductivity and the parameter dl (p. 16, l. 309ff), is not sufficiently supported by the provided results, since only one parameter is varied at a time. Showing that a covariation of the parameters (e.g. decreasing dl while increasing K) does not affect the results significantly, would strengthen this point. However, it might still be valid only for the considered polygon morphology and is not necessarily a general relation between the parameters.

Response: We agree with this suggestion and have modified Figure 10 (Figure 8 in the revised) to demonstrate the existence of the null space. In particular, dl and K are varied simultaneously in the new Figure 8c. The results are not significantly different from the base case, thus demonstrating the existence of a null space

In general, the results of the sensitivity study could be explained and discussed in more detail. For example, it is a very interesting result that the initial snow density dynamics is crucial for accurately simulating accurately the duration of the zero curtain. Such insights are valuable for other modelers and could thus be elaborated more prominently.

Response: The original manuscript does highlight this result in the conclusion section. In addition, we added the following: “That result demonstrates the importance of including snow-aging effects and the formation of a depth hoar layer.” The following was added to the

abstract “Timing of fall freeze-up was found to be sensitive to initial snow density, illustrating the importance of including snow aging effects.” Given the appropriate scope for a GMD model evaluation paper, we are constrained from going too deep into discussion of geoscience (see, e.g., GMD editors’ guidance to authors).

The limitations of the model setup should be discussed more extensively, particularly if the model is supposed to be used for projections of permafrost dynamics in a warming climate. One of these limitations is the static surface topography of the polygonal terrain, which cannot change in response to melting of massive ground ice.

Response: Dynamic topography is not relevant for this model evaluation, as significant subsidence did not occur in the 3-year study period. However, ATS does include the capability to simulate subsidence caused by melting of massive ground ice. In response to this comment, we changed the last sentence in Section 3.2 to the following: “ATS v0.88 has additional intermediate-scale modeling capabilities (Jan et al., 2018a, 2018b) that are especially useful and efficient for watershed-scale simulations. The intermediate-scale variant also has dynamic topography caused by melting of massive ground ice using an algorithm proposed by Painter et al., 2013. The intermediate-scale capabilities are not exercised here.”

It might be considered to restructure the Results section into two parts, one for the comparison with measurements, and one for the sensitivity analyses, but each with appropriate subsections.

Response: We have taken this suggestions in the revised manuscript.

The lower right panel of Fig. 1 lacks a legend with a colorbar as it seems to be different from the one in the upper right panel.

Response: Lower right panel has been updated to include a legend with a color bar.

In Fig. 3, the right column: is the color palette similar to the upper right panel of Fig. 1? It might be a good idea to add a colorbar to it or to provide a relevant description in the figure caption for Fig. 3.

Response: We modified the caption and added “The color palette in the right panel correspond to the elevation in the plots on the left side and different than the color range provided in the upper right column in Figure 1.”

The information provided in Fig. 2 are not essential for the main text and could thus be moved to the appendix. Instead, it would be sufficient to provide annual or seasonal averages for the temperature and the precipitation in the main text. It would also be interesting to provide longer-term climatological characteristics for the study area.

Response: We have moved the figure to the supplemental material and include annual averages in the main text, as suggested

The figure and axis labels in Fig. 3 should be increased and a colorbar added to the panels on the right.

Response: The figure and axes labels are increased as suggested. Also, text has been added to the description of the figure regarding color palette. The surface elevation (colors) correspond to the elevation provided in the left panel.

Presentation of temperature data (Figs. 2, 5, 9, 11) is much more convenient in degree Celsius instead of degree Kelvin, and would thus facilitate easier comparison with the results of other studies.

Response: In view of this suggestion, all figures have been modified (redrawn) to present x-labels in month/day format and in the plots showing temperature the unit Kelvin [K] is changed to Celsius [C].

The labels of the time axes should be presented in a more convenient format, e.g. mm/yyyy, instead of decimal years.

Response: Agreed. See above comment.

The legends of Figs. 6 (right panels) and 10 are incomplete.

Response: All figures have been modified (replotted) and this has been corrected.

Table 1 should be complemented by the values for saturated hydraulic comparison in order to facilitate comparability with other models or field sites.

Response: Because saturated hydraulic conductivity is temperature dependent through the viscosity, absolute permeability is the more convenient parameter for nonisothermal applications. For readers who prefer saturated hydraulic conductivity, we include the saturated hydraulic conductivity at 25 C in the table .

- It would be nice to provide an overview over the settings of all conducted simulations, including the sensitivity analysis, e.g. in form of an additional table.

Response: We added a new Table 1 to summarize all simulations. The previous Table 1 is now Table 2.

P. 8, l. 175: not clear whether the mentioned depth hoar option is enabled or disabled for the presented simulations.

Response: It has been made clear in the same line that the depth hoar option is turned on in our simulations.

P. 9, l. 194 from literature: Provide further references if not all values are taken from Hinzmänn et al. (1991).

Response: Text has been modified and one more reference has been added.

P. 9, l.199 100-200 times. How many exactly? Or, why is there a range?

Response: It should be 100. Corrected.

P. 9, l.205-208 As described ... sublimation, and melt.. The same information were provided already in the Methods section (where they belong) and can be left out here.

Response: We believe it is useful for readability purposes to keep this sentence here.

P. 12, l. 249: "." missing

Response: Corrected

P. 15, l.294 Fig. 10(left): Should be "Fig. 10(right)", correct?

Response: Corrected

Evaluating integrated surface/subsurface permafrost thermal hydrology models in ATS (v0.88) against observations from a polygonal tundra site

Ahmad Jan¹, Ethan Coon¹, and Scott L. Painter¹

¹Climate Change Science Institute and Environmental Sciences Division, Oak Ridge National Laboratory, Oak Ridge, Tennessee, USA

Correspondence: Scott Painter (paintersl@ornl.gov)

Abstract. Numerical simulations are essential tools for understanding the complex hydrologic response of Arctic regions to a warming climate. However, strong coupling among thermal and hydrological processes on the surface and in the subsurface and the significant role that subtle variations in surface topography have in regulating flow direction and surface storage lead to significant uncertainties. Careful model evaluation against field observations is thus important to build confidence.

5 We evaluate the integrated surface/subsurface permafrost thermal hydrology models in the Advanced Terrestrial Simulator (ATS) against field observations from polygonal tundra at the Barrow Environmental Observatory. ATS couples a multiphase, three-dimensional representation of subsurface thermal hydrology with representations of overland nonisothermal flows, snow processes, and surface energy balance. We simulated thermal hydrology of [a three-dimensional ice-wedge polygons with generic but broadly representative surface microtopography polygon with geometry that is abstracted but broadly consistent with the surface microtopography at our study site](#). The simulations were forced by meteorological data and observed water table elevations in ice-wedge polygon troughs. With limited calibration of parameters appearing in the soil evaporation model, the three-year simulations agreed reasonably well with snow depth, summer water table elevations in the polygon center, and high-frequency soil temperature measurements at several depths in the trough, rim, and center of the polygon. Upscaled evaporation is in good agreement with flux tower observations. The simulations were found to be sensitive to parameters in 15 the bare soil evaporation model, snowpack, and the lateral saturated hydraulic conductivity. [Timing of fall freeze-up was found to be sensitive to initial snow density, illustrating the importance of including snow aging effects](#). The study provides new support for an emerging class of integrated surface/subsurface permafrost simulators, ~~and provides an optimized set of model parameters for use in watershed-scale projections of permafrost dynamics in a warming climate.~~

Copyright statement. This paper has been authored by UT-Battelle, LLC under contract no. DE-AC05-00OR22725 with the US Department of Energy. The United States Government retains and the publisher, by accepting the article for publication, acknowledges that the United States Government retains a non-exclusive, paid-up, irrevocable, worldwide license to publish or reproduce the published form of this paper, or allow others to do so, for United States Government purposes. The Department of Energy will provide public access to these results of federally sponsored research in accordance with the DOE Public Access Plan (<http://energy.gov/downloads/doe-public-access-plan>).

1 Introduction

25 Permafrost soils underlie approximately one quarter (~ 15 million km²) of the land surface in the Northern Hemisphere (Brown et al., 1997; Jorgenson et al., 2001), and store a vast amount of frozen organic carbon (Hugelius et al., 2014; Schuur et al., 2015). Warming in Arctic regions is expected to lead to permafrost thawing, as has been observed from field data during the past several decades (Lachenbruch and Marshall, 1986; Romanovsky et al., 2002; Osterkamp, 2003; Hinzman et al., 2005; Osterkamp, 2007; Wu and Zhang, 2008; Batir et al., 2017; Farquharson et al., 2019). For example, a very recent field study in
30 the Canadian High Arctic, a cold permafrost region, reported the observed active-layer thickness (ALT, annual maximum thaw depth) already exceeds the ALT projected for 2090 under RCP 4.5 (Representative Concentration Pathways) (Farquharson et al., 2019). The thermal stability of these regions is a primary control over the fate of the stored organic matter. Since most of this organic carbon is stored in the upper 4 m of the soil (Tarnocai et al., 2009), degradation of permafrost can result in the decomposition of large carbon stocks, potentially releasing this carbon to the atmosphere (Koven et al., 2011). Warming and
35 permafrost degradation can also contribute to hydrological changes in the northern latitudes (Osterkamp, 1983; Walvoord and Striegl, 2007; Lyon et al., 2009; Yang et al., 2010; Pachauri et al., 2014), causing substantial impact on the Arctic ecosystem. As climate models generally indicate accelerating warming in the 21st century, there is an urgent need to understand these impacts.

Process-based models are essential tools for understanding the complex hydrological environment of the Arctic. One-
40 dimensional models of subsurface water and energy transport that incorporate freezing phenomena have a long history; comprehensive reviews are provided by (Kurylyk et al., 2014; Kurylyk and Watanabe, 2013; Walvoord and Kurylyk, 2016). Those one-dimensional models have been adapted to model the impacts of climate warming on permafrost thaw and the associated hydrological changes at regional and pan-Arctic scales (Jafarov et al., 2012; Slater and Lawrence, 2013; Koven et al., 2013; Gisl ns et al., 2013; Chadburn et al., 2015; Wang et al., 2016; Guimberteau et al., 2018; Wang et al., 2019; Tao et al., 2018;
45 Yi et al., 2019). At the smaller scales and higher spatial resolutions required to assess local impacts, processes that can be neglected at larger scales come into play creating additional modeling challenges (Painter et al., 2013). Those challenges include strong coupling among the hydrothermal processes on the surface and in the subsurface, the important role of lateral surface and subsurface flows, and in some situations the role of surface microtopography (Liljedahl et al., 2012; Jan et al., 2018a) in regulating flow direction and surface water storage.

50 In recent years, cryohydrogeological simulation tools capable of more detailed three-dimensional (3D) representations of subsurface processes have been developed (McKenzie et al., 2007; Rowland et al., 2011; Tan et al., 2011; Dall'Amico et al., 2011; Painter, 2011; Karra et al., 2014). Cryohydrogeological tools typically couple Richards equation for variably saturated 3D subsurface flow with 3D heat transport models using either empirical soil freezing curves (McKenzie et al., 2007; Rowland et al., 2011) or physics-based constitutive relationships (Tan et al., 2011; Dall'Amico et al., 2011; Painter, 2011; Karra et al.,
55 2014). The physics-based constitutive relationships among temperature, liquid pressure, gas and liquid saturation indices are deduced from unfrozen water characteristic curves, capillary theory and the Clapyeron equation (Koopmans and Miller, 1966; Spaans and Baker, 1996; Painter and Karra, 2014). Notably, models with physics-based constitutive relationships have been

quite successful at reproducing laboratory freezing soil experiments, in some cases (Painter, 2011; Painter and Karra, 2014; Karra et al., 2014) without recourse to empirical impedance functions in the relative permeability model. This class of models and similar approaches implemented in proprietary flow solvers have been used to gain insights into permafrost dynamics in saturated conditions with no gas phase (Walvoord and Striegl, 2007; Bense et al., 2009; Walvoord et al., 2012; Ge et al., 2011; Bense et al., 2012; Wellman et al., 2013; Grenier et al., 2013; Kurylyk et al., 2016) and in variably saturated conditions with a dynamic unsaturated zone (Frampton et al., 2011; Sjöberg et al., 2013; Frampton et al., 2013; Kumar et al., 2016; Schuh et al., 2017; Evans and Ge, 2017; Evans et al., 2018).

Cryohydrogeologic models only represent the subsurface and must be driven by land surface boundary conditions on infiltration, evapotranspiration, and surface temperature. The typical approach in applications is to use empirical correlation to meteorological conditions to set those boundary conditions. Given the strong coupling between surface and subsurface flow systems when the ground is frozen and the key role that surface energy balance and snowpack conditions play in determining subsurface thermal conditions, the lack of a prognostic model for surface flow and surface energy balance introduces additional uncertainties when used in projections to assess hydrological impacts of climate change.

Notably, integrated surface/subsurface models of permafrost thermal hydrology have recently started to appear. The GeoTop 2.0 (Endrizzi et al., 2014) and the Advanced Terrestrial Simulation (Coon et al., 2016; Painter et al., 2016) models couple 3D cryogeohydrological subsurface models with models for overland flow; snow accumulation, redistribution, aging, and melt; and surface energy balance including turbulent and radiative fluxes and the insulating effects of the snowpack. Nitzbon et al. (2019) recently extended the thermal-only simulator Cryogrid 3 (Westermann et al., 2016) to include a simplified hydrology scheme that avoids solving the computationally demanding Richards equation. All of these models remove the requirement for imposing surface conditions and as such offer the potential for advancing understanding of permafrost thermal hydrology as an integrated surface/subsurface system (Harp et al., 2015; Atchley et al., 2016; Pan et al., 2016; Sjöberg et al., 2016; Jafarov et al., 2018; Abolt et al., 2018; Nitzbon et al., 2019).

Despite the advances in integrated thermal hydrology of permafrost, model evaluation against field observations remains a major challenge (Walvoord and Kurylyk, 2016). After successful code verification, the next question becomes how well these process-based models can reproduce the current state of the permafrost at the scale of field observations. That model evaluation against field observation is important to build confidence in process-based models. Once carefully evaluated, models can then provide insight into recent changes (such as thermokarst development and talik formation) and future evolution under different climate scenarios at watershed scales. To date, model evaluation has largely been restricted to soil temperature data (Endrizzi et al., 2014; Atchley et al., 2015; Harp et al., 2015; Sjöberg et al., 2016; Abolt et al., 2018; Nitzbon et al., 2019). Those comparisons to soil temperature measurements are an important first step in building confidence in recently developed process-rich permafrost thermal hydrological models. However, temperature data alone have been shown to be a weak constraint on model parameters (Harp et al., 2015) and do not adequately test representations of many important physical processes such as lateral water flows, advective heat transfer, wind-driven snow distribution, and microtopography-induced preferential flow paths and water storage.

In this paper, we evaluate integrated surface/subsurface permafrost thermal hydrology models implemented in the Advanced Terrestrial Simulator (ATS) v0.88 using soil temperature (Romanovsky et al., 2017; Garayshin et al., 2019), water level (Liljedahl and Wilson., 2016; Liljedahl et al., 2016), snowpack depth (Romanovsky et al., 2017), and evapotranspiration (Dengel et al., 2019; Raz-Yaseef et al., 2017) data collected over several years at the Next Generation Ecosystem Experiment-Arctic (NGEE-Arctic) study site in polygonal tundra near Utqiagvik (formerly Barrow), Alaska. Simulations are driven by observed meteorological data (air temperature, snow precipitation, rain precipitation, wind speed, [relative humidity](#), incoming longwave radiations, and incoming shortwave radiations) and observed water table elevations in polygon troughs. Simulated results are compared with multiyear observations of water table in the polygon center, soil temperatures at several depths (0-1.5 meters) across three microtopographic positions (rim, center, trough), evaporation, and snowpack depth in the polygon center, rim, and trough. The simulations explore the sensitivity of the results to the saturated hydraulic conductivity, snowpack representation, and the soil evaporation model. The objectives of this study are to evaluate the potential of the emerging integrated surface/subsurface thermal hydrology models as tools for advancing our understanding of permafrost dynamics, build confidence in the model representations, and identify a set of model parameters that can be used in future simulations projecting permafrost thaw and degradation ~~at watershed scales~~.

2 Field site and data description

Observations for our model evaluation came from the field site of the Next Generation Ecosystem Experiment (NGEE) Arctic project (<https://ngee-arctic.ornl.gov>) located within the Barrow Environmental Observatory (BEO) near Utqiagvik (formerly Barrow), Alaska (see Figure 1). The BEO is located in lowland polygonal tundra. These patterned grounds developed by repeated freezing and thawing of the ground over hundreds of thousands of years, which results in subsurface ice-wedges arranged in polygonal patterns (de Koven Leffingwell, 1919; Lachenbruch, 1962; Greene, 1963; Mackay, 1990; Jorgenson et al., 2006). Typically, ice-wedge polygons are classified into high-, intermediate-, low-, and flat-centered polygons based on microtopographic relief (Black, 1982; Oechel et al., 1995; Liljedahl et al., 2012). We used observations from a low-centered and an intermediate-centered polygon from study Area C; see Figure 1 (bottom right). More details about polygons characteristics at the NGEE Arctic field sites can be found in Kumar et al. (2016).

Meteorological data for the study area were compiled from a variety of sources by Atchley et al. (2015). Temperature and precipitation for the time period of interest are shown in ~~Figure ??~~. [The supplemental material \(Figure S1\). The annual average air temperature is -10.8, -10.4, and -9.9 °C, and total annual average precipitation is 302, 427, 308 mm for years 2012-2014, respectively. The snow precipitation includes a 30% adjustment for undercatch \(Atchley et al., 2015\). We applied the undercatch adjustment to the snow precipitation uniformly in time and space. As described in Section 3.2 below, ATS then distributes incoming snow precipitation nonuniformly using a phenomenological algorithm that preferentially fills microtopographic depressions first.](#) ~~-1.cm Daily averaged air temperature and precipitation at the study area for years 2012-2015-~~

NGEE-Arctic scientists conducted field campaigns to collect 1) water level data in centers and troughs of the polygons during the summers of 2012-2014 (Liljedahl et al., 2016); 2) soil temperature data at several depths (from 5 cm to 150 cm)

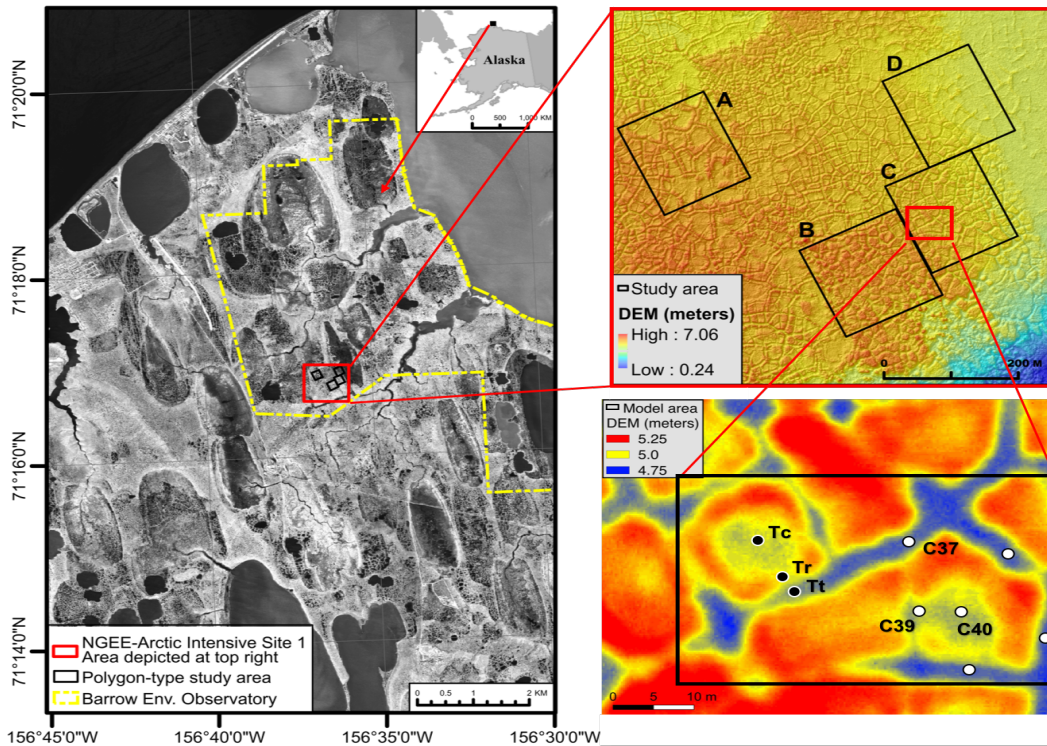


Figure 1. Next Generation Ecosystem Experiments – Arctic field sites at the Barrow Environmental Observatory. The model area lies in Area C outlined in black (lower right). Wells and thermistor probe locations are highlighted in white and black, respectively. Data from wells and temperature probes used for model evaluation are labelled as: C37 (trough), C39 (center), C40 (center), and vertical thermistor probes Tt (trough), Tc (center), and Tr (rim). The Digital Elevation Model (DEM) in the left two panels as derived from LiDAR measurements (Wilson and Altmann, 2017).

125 in troughs, rims, and centers of the polygons from September 2012 to October 2015 (Garayshin et al., 2019); and 3) summer
 evapotranspiration measurements from 2012 (Raz-Yaseef et al., 2017). The water level and soil temperature measurements
 were recorded at 15 and 60 minutes intervals, respectively. We used data from three shallow wells (C37, C39 and C40) and
 from three vertical thermistor probes located in a polygon center, rim, and trough and denoted Tc, Tr, and Tt, respectively (see
 Figure 1, bottom right panel). The datasets are publicly available at the NGEA Arctic data portal (Romanovsky et al., 2017;
 130 Liljedahl and Wilson., 2016; Dengel et al., 2019).

3 Methods

3.1 Mesh construction

The objective of this study is to evaluate the integrated surface/subsurface models in ATS against multiple types of field observations. As described in Section 2, the temperature and water level observations are not co-located, but were obtained in two neighboring ice wedge polygons. Rather than build faithful representations of each polygon and evaluate against temperature and water level data independently, we chose as our modeling domain a single polygon that is an abstraction of the two actual polygons. Using that abstracted geometry allows our models to be evaluated against both types of measurements simultaneously. Evaluating against multiple data types and use of a slightly abstracted but broadly representative geometry is consistent with our overarching motivation, which is to construct models that are broadly representative of the BEO site and of polygonal tundra in general.

In building the abstracted ice-wedge polygon, we imposed several constraints. For reproducing the water levels measured at wells C39 and C40, which represent polygon center locations, it is important that the surface elevation match that of the measurement location. Moreover, to adequately represent overland and shallow subsurface flow, it is important to honor rim height, as Liljedahl et al. (2016) have demonstrated and we have confirmed by exploratory sensitivity simulations undertaken for this study (results not shown). We thus match the low point in the rim elevation, as that determines the spill point for surface and shallow subsurface flow between the center and trough. When comparing to soil temperature measurements it is necessary to match the surface elevation of those locations because thermal ~~conductivity of the soil is sensitive to water content, which will vary with position above the trough elevation~~conditions are sensitive to snow depth and soil water content (Atchley et al., 2016), which both depend on rim elevation relative to the center and trough. Based on those constraints, we constructed a 3D mesh comprising 6 equal-sized wedges (Figure 2). The surface elevation in one wedge has trough and rim elevations corresponding to that of the thermistor probes Tt and Tr, respectively. The opposite wedge matches the trough and rim surface elevation for the polygon containing the water-level observations wells. The center elevation was set by averaging the surface elevation at the two observations wells C39 and C40, which are taken to be representative of water level dynamics in the polygon center. After those two wedges were constructed, interpolation determined the surface elevation of the 4 remaining wedges.

Given that surface elevation map, we then extruded in the vertical to create a 3D mesh. The subsurface was divided into moss, peat and mineral soil layers. Because moss is an important control on the transfer of surface energy to the permafrost (e.g., ~~(Beringer et al., 2001)~~Beringer et al. (2001)), we explicitly represented it as a porous medium. That 2 cm moss layer sits atop a 8 cm layer of peat. Regions below the peat were represented as mineral soil. The moss and peat thicknesses are broadly consistent with observations at the BEO site. For simplicity, we neglected spatial variability and modeled the moss and peat layers as having spatially constant thicknesses.

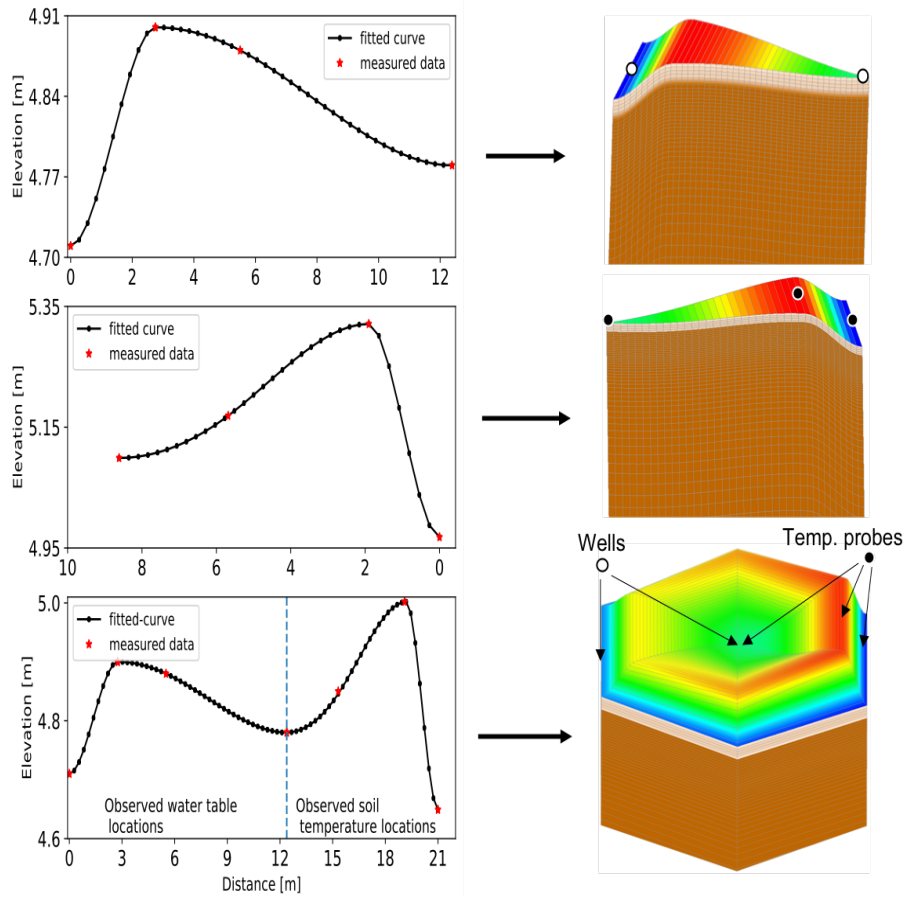


Figure 2. Construction of generic meshes from the observed elevations at the microtopographic locations (trough, rim, and center). Red asterisks represent measured elevation, black dots show spatial resolution (~ 25 cm), and black solid lines correspond to a spline fit to the measured elevation with zero slope at the locations trough, rim and center. The bottom left combines the transects where the water level (left) and soil temperature (right) measurements were made. First a 2D surface is constructed from transect representing generic surface topography and then extended to 50 m below the surface using variable vertical resolution (lower right). Wells and thermistor probe locations are highlighted in white and black dots, respectively. [The color palette in the right panel correspond to the elevation in the plots on the left side and different than the color range provided in the upper and lower right panel in Figure 1.](#)

3.2 Model description

We used the Advanced Terrestrial Simulator (ATS) Coon et al. (2019) configured for integrated surface/subsurface permafrost thermal hydrology (Painter et al., 2016). ATS leverages a parallel unstructured-mesh computer code for flow and transport called Amanzi (Moulton et al., 2012) and uses a multiphysics management tool known as Arcos (Coon et al., 2016) to manage coupling and data dependencies among the represented physical processes, which are encapsulated in process kernels. Arcos allows ATS to configure a complex hierarchy of mathematical models at runtime. ATS's permafrost configuration (Painter et al., 2016) solves fully coupled surface energy balance (Atchley et al., 2015), surface/subsurface thermal hydrology with freeze/thaw dynamics, and snow distribution models. ATS represents important physical process such as lateral surface and subsurface flows, advective heat transport, cryosuction, and coupled surface energy balance, and has been used successfully in previous studies to simulate integrated soil thermal hydrology of permafrost landscapes (Jafarov et al., 2018; Abolt et al., 2018; Sjöberg et al., 2016; Atchley et al., 2015, 2016; Schuh et al., 2017; Harp et al., 2015). Note that ATS does not require an empirical soil freezing curve to determine the unfrozen water content versus temperature. Instead, partitioning between ice, liquid, and gas is dynamically calculated from temperature and liquid pressure using the soil water characteristic curve (SWCC) in unfrozen conditions, a Clapeyron equation, and capillary theory, as described by Painter and Karra (2014). We use van Genuchten's model (van Genuchten, 1980) here. Similarly, the relative permeability in frozen or unfrozen conditions is obtained directly from the SWCC and the model of Mualem (1976) using the calculated unfrozen water content. That is, no additional empirical impedance term is introduced in the relative permeability function. The underlying soil physics models have been carefully compared (Painter, 2011; Painter and Karra, 2014; Karra et al., 2014) to published results from soil freezing experiments. ATS's surface system includes overland flow and advective heat transport with phase change of ponded water; evaporation from ponded water and bare soil; surface energy balance; a snow thermal models that accounts for aging/compaction and optionally the formation of a low conductivity depth hoar layer ([enabled in our simulations](#)); and a heuristic snow distribution model that preferentially deposits incoming snow precipitation into microtopographic depressions until those depressions are filled. The integrated surface/subsurface models have been compared successfully to soil temperature measurements (Atchley et al., 2015; Harp et al., 2015; Sjöberg et al., 2016). [ATS's integrated surface/subsurface flow capabilities without freezing have been compared to other hydrological models as part of the integrated hydrologic model intercomparison project, IH-MIP2 \(Kollet et al., 2017\).](#)

The ATS permafrost thermal hydrology models we are evaluating here were first implemented in ATS v0.86 and described in detail in Painter et al. (2016). The surface energy balance equation was presented by Atchley et al. (2015) and first implemented in ATS v0.83. We used ATS v0.88 here. The permafrost thermal hydrology physics and model structure were unchanged between versions 0.86 and 0.88, although there were some minor changes in input formats. ATS v0.88 has additional [intermediate-scale](#) modeling capabilities (Jan et al., 2018b, a) that are especially useful and efficient for watershed-scale simulations ~~but~~. [The intermediate-scale variant also has dynamic topography caused by melting of massive ground ice using an algorithm proposed by Painter et al. \(2013\). The intermediate-scale capabilities](#) are not exercised here.

195 ~~Subsurface physical properties used in the model. Notations S_{ur} and S_r denote saturated unfrozen and frozen. Parameter Moss Peat Mineral Porosity 0.90 0.87 0.56 Intrinsic permeability m^2 1.7×10^{-11} 9.38×10^{-12} 6.0×10^{-13} Residual water content 0.0 0.0 0.2 van Genuchten alpha α 1/m 2.3×10^{-3} 5.1×10^{-4} 3.3×10^{-4} van Genuchten m 2.57×10^{-1} 1.9×10^{-1} 2.48×10^{-1} Thermal conductivity (S_{ur}) W/m K 0.75 0.75 1.1 Thermal conductivity (S_r) W/m K 1.3 1.3 1.5 Thermal conductivity (dry) W/m K 0.10 0.1 0.3 Bare soil evaporation model parameter d_f m 0.1 0.1 0.1~~

200 3.3 Simulation description

3.3.1 Boundary conditions

Model evaluation was performed for years 2012-2014, due to the availability of the observation data during this period. The 3D simulations use no-flow boundary conditions in the subsurface on the vertical sides of the domain, based on an assumption of symmetry at the trough thalweg. The bottom boundary (50 m deep) is subject to -6.0 °C constant temperature (Romanovsky et al., 2010). The surface system was driven by observed air temperature, relative humidity, wind speed, rain/snow precipitation, and shortwave and longwave radiations. Snow precipitation was increased by 30% to account for undercatch (Atchley et al., 2015). The surface flow system used observed water level from C37 as a time-varying Dirichlet boundary condition for water pressure at the ice-wedge polygon troughs. Water levels in the three unlabeled wells in Figure 1, which are also in the troughs, are almost identical to those of C37. We thus applied the C37 water levels along the entire perimeter of the 2D surface flow system. Subsurface hydraulic and thermal properties in our reference case (Table 1) are taken from ~~literature and within the range of those provided in Hinzman et al. (1991)~~ Hinzman et al. (1991) and Abolt et al. (2018).

3.3.2 Model initialization

To reduce the computational burden in the model initialization process, we used a multistep model spin-up process. We started with an unfrozen 1D column with water table close to the surface, then froze that column from below to steady state. That 1D frozen column was then used as an initial condition for 1D integrated surface/subsurface simulations, which were forced by site meteorological data from year 2010 repeated ~~100-200~~ 100 times to establish a cyclic steady state. The resulting 1D state was then mapped to the 3D model domain, which was forced by 2010 and 2011 meteorological data, completing the spinup process.

3.3.3 Simulations performed

220 A number of simulations are performed in the study, as summarized in Table 1. The basecase subsurface physical properties are provided in Table 2. We examine sensitivity of our model to three important model parameters: 1) the snow undercatch factor, 2) saturated hydraulic conductivities, and 3) the desiccated soil thickness parameter, d_f , which regulates evaporative flux from dry soils. Sensitivity to the representation of snow compaction/aging and its effects on thermal conductivity is also examined. We also demonstrate that the evaporation model parameters and the saturated hydraulic conductivity can be varied
225 simultaneously in a way that leaves the water level in the polygon center approximately unchanged, indicating the existence of

a null space in the parameter space. Simulations using no-flow and seepage face (free-boundary) boundary conditions in the trough are conducted to demonstrate the role of lateral fluxes between the polygon trough and center.

3.3.4 Efficiency metrics

230 We use the Nash-Sutcliffe efficiency (NSE), root mean squared error (RMSE), and coefficient of determination (R^2) as performance metrics. We focus on the NSE because it is scaled by variability of the observed data. It is computed as the squared difference between the observed and simulated data normalized by the variance of the observed data and subtracted from 1 (Nash and Sutcliffe, 1970). Mathematically,

$$\sum_{i=1}^n (O_i - \bar{O})^2$$

235

(1)

Here O and S denote observed and simulated data, respectively, and \bar{O} is the observed mean value. The NSE ranges between 1 and $-\infty$, where the value 1 indicates a perfect match between the observed and simulated data, and the value 0 indicates the model is only as informative as the mean of the observations.

240

4 Numerical results

4.1 ~~Comparison to snow sensor data~~

This section is divided into two main subsections. First, we present a comparison of simulated snow depth, water table, soil temperatures, and evaporation against field observations for multiple years. Next, we demonstrate sensitivity of soil temperatures to snow aging model and to snow undercatch adjustment, and sensitivity of water table to hydraulic conductivity and bare soil evaporation model parameter. Finally, we showcase the presence of a null space between hydraulic conductivity and bare soil evaporation model parameter.

245

4.1 Evaluation against field observations

4.1.1 Comparison to snow sensor data

250 Comparisons of simulated and observed snow elevation at the rim, center, and trough location are shown for the 2012-2013 and 2013-2014 winters in Figure 3. As described above, a 30% undercatch correction estimated (Atchley et al., 2015) for the

Table 1. Overview of simulations conducted in the study. The parameters used in the basecase are provided in Table 2. The parameter k in the intrinsic permeability and d_t is bare soil evaporation model parameter. The \times denotes multiplication of the basecase value by the value in the column. The values in parenthesis correspond to different simulations for sensitivity studies.

No.	Simulation description	Corresponding figure(s)	$k \times$	$d_t \times$
1	Basecase	4, 5, 6, 7	1	1
2	Sensitivity of soil temperature to snow undercatch	8	1	1
3	Sensitivity of water table in the polygon center to bare soil evaporation model parameter study	9(top)	1	(0.5, 2)
4	Sensitivity of water table in the polygon center to saturated hydraulic conductivity	9(middle)	(2, 0.5)	1
5	Existence of null space between saturated hydraulic conductivity and d_t	9(bottom)	(2, 0.5)	(0.5, 2)
6	Lateral water fluxes between the polygon trough and center study	10	(2, 0.5)	1
7	Sensitivity of soil temperature to snow aging model study	11	1	1
8	Sensitivity of water table in the polygon center to hydrological boundary conditions in the trough	S1	1	1

2013-2014 winter was applied. We applied the undercatch correction uniformly in space and time to the incoming precipitation. ATS then distributes the snow on the 2D surface according to the algorithm described by Painter et al. (2016). Snow depth and snow water equivalent is dynamically tracked while accounting for compaction, sublimation, and melt.

255 The simulations overpredict the snow depth by about 5-10 cm in the 2013-2014 winter and underpredict snow depth by a smaller amount in the 2012-2013 winter. Given the parsimonious nature of the snow models in ATS, with no explicit representation of snow density dependence on environmental conditions, further calibration to obtain better fits to the snow depth is not a meaningful exercise. Importantly, timing of snowpack appearance and snowmelt are well represented. Significantly, distribution among the center, rim, and trough locations also agrees well with the observations. These results indicate that the ATS
260 models for snowpack dynamics and snow distribution are reasonably representative. However, it is important to note that the snow distribution model is phenomenological, specific to distributing snow in microtopography of otherwise flat landscapes, and not applicable to hilly or mountainous regions.

Table 2. Subsurface physical properties used in the model. Notations S_{uf} and S_f denote saturated unfrozen and frozen. Note ATS takes intrinsic permeability as input instead of hydraulic conductivity because hydraulic conductivity is temperature dependent. For reference, we also include hydraulic conductivity at 25 °C.

<u>Parameter</u>	<u>Moss</u>	<u>Peat</u>	<u>Mineral</u>
<u>Porosity [-]</u>	<u>0.90</u>	<u>0.87</u>	<u>0.56</u>
<u>Intrinsic permeability [m²]</u>	<u>1.7×10^{-11}</u>	<u>9.38×10^{-12}</u>	<u>6.0×10^{-13}</u>
<u>Hydraulic conductivity [m/s]</u>	<u>18.73×10^{-5}</u>	<u>10.34×10^{-5}</u>	<u>0.67×10^{-5}</u>
<u>Residual water content [-]</u>	<u>0.0</u>	<u>0.0</u>	<u>0.2</u>
<u>van Genuchten alpha α [1/m]</u>	<u>2.3×10^{-3}</u>	<u>5.1×10^{-4}</u>	<u>3.3×10^{-4}</u>
<u>van Genuchten m [-]</u>	<u>2.57×10^{-1}</u>	<u>1.9×10^{-1}</u>	<u>2.48×10^{-1}</u>
<u>Thermal conductivity (S_{uf}) [W/m K]</u>	<u>0.75</u>	<u>0.75</u>	<u>1.1</u>
<u>Thermal conductivity (S_f) [W/m K]</u>	<u>1.3</u>	<u>1.3</u>	<u>1.5</u>
<u>Thermal conductivity (dry) [W/m K]</u>	<u>0.1</u>	<u>0.1</u>	<u>0.3</u>
<u>Bare soil evaporation model parameter d_l [m]</u>	<u>0.1</u>	<u>0.1</u>	<u>0.1</u>

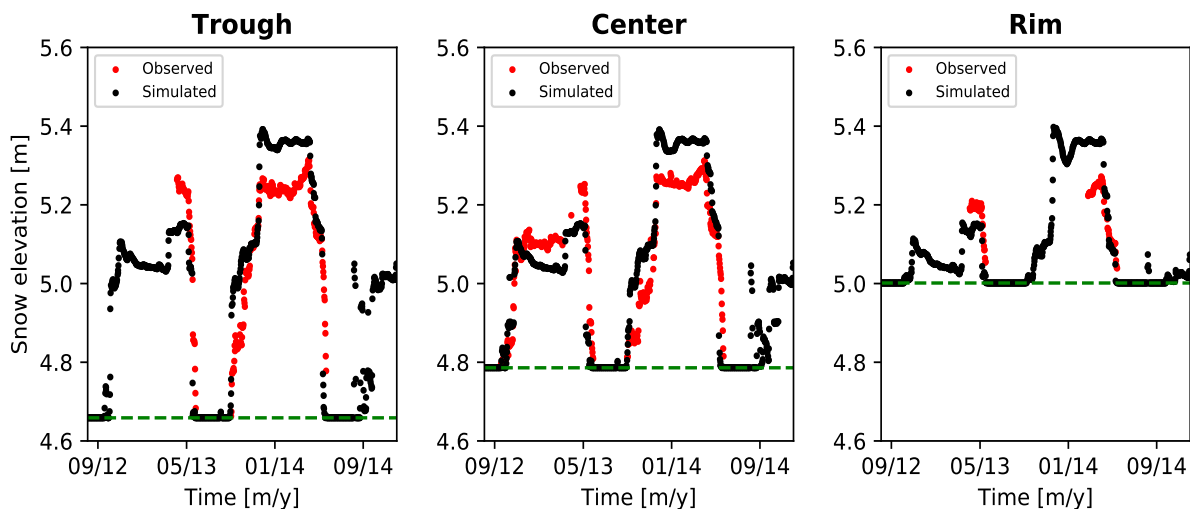


Figure 3. Observed and simulated snow elevation for the 2012-2013 and 2013-2014 winters at trough, center, and rim locations.

4.2 Comparison to observed temperature data

4.1.1 Comparison to observed temperature data

265 Comparisons of simulated and observed soil temperatures are shown in Figure 4 at depths of 5 cm (near surface), 50 cm (near
active layer thickness), and 150 cm (shallow permafrost). Each column corresponds to a microtopographic location, left column
(trough), middle column (center), and right column (rim). Observed data is plotted in the red solid lines, simulated is the black
dashed curves, and the green dashed horizontal line represents 0 °C. Simulated temperatures are in good agreement with the
measured throughout the 2+ year period, with the largest discrepancy occurring in center during the winter of 2012-2013. In
270 general, timing of snowmelt, freeze-up, and depth of the active layer are well represented across the polygon. Note that snow
cover and spatial distribution of organic matter within a polygon have great influence on the soil thermal regime due to their
distinct hydrothermal properties. We have not attempted to optimize the soil organic matter thickness and only considered
uniform organic matter thickness across the polygon, despite its importance in determining the temperature at depth, because
our focus here is on generic simulations that can be applied without detailed site-specific characterization data.

275 Garayshin et al. (2019) modeled the same temperature data using a nonlinear heat-conduction model that presumes a satu-
rated soil and neglects hydrological processes. Their simulations generally match the observed temperature at shallow depths
in terms of both amplitude and phase of the seasonal signal. Their results also generally match the amplitude of the seasonal
signals at depth, but show a significant phase shift at depth with the model results lagging the observations. That lag is most
pronounced during the spring of 2014 where consistent error across all microtopographic positions and depths were seen.
280 That our simulations with a more complete representation of the thermal hydrological processes are free from those artifacts
is encouraging, especially considering that we have abstracted the ice-wedge polygon geometry, microtopography, and soil
structure and have not undertaken a formal calibration/parameter estimation procedure. The Nash-Sutcliffe coefficient (NSE)
and root mean squared error (RMSE) of the simulated soil temperature at several depths for years 2012-2014 in comparison
with the observed data are presented in Table S1 (supplemental document). The coefficient of determination (R^2) and model
285 bias are also presented. The warm (or cold) bias in the model is represented by positive (or negative) bias. The NSE in all cases
is greater than 0.94, which indicates an excellent match between the measured and simulated data.

4.2 Comparison to observed water levels

4.1.1 Comparison to observed water levels

Figure 5 shows simulated water table compared to the observed water table from snowmelt to freeze-up period for years 2012-
290 2014. Figure 5(left) shows the observed water level imposed as a Dirichlet boundary condition and the simulation result in the
center of computation grid cell adjacent to the boundary. The boundary condition acts as a run-off (outflow) or run-on (inflow)
boundary condition as the observed water level in the trough drops below or rises above the simulated water level, respectively.
The trough water level matches the imposed boundary conditions closely except during the 2012 summer when the water level
was below the surface. We imposed a no-flow boundary condition during that period.

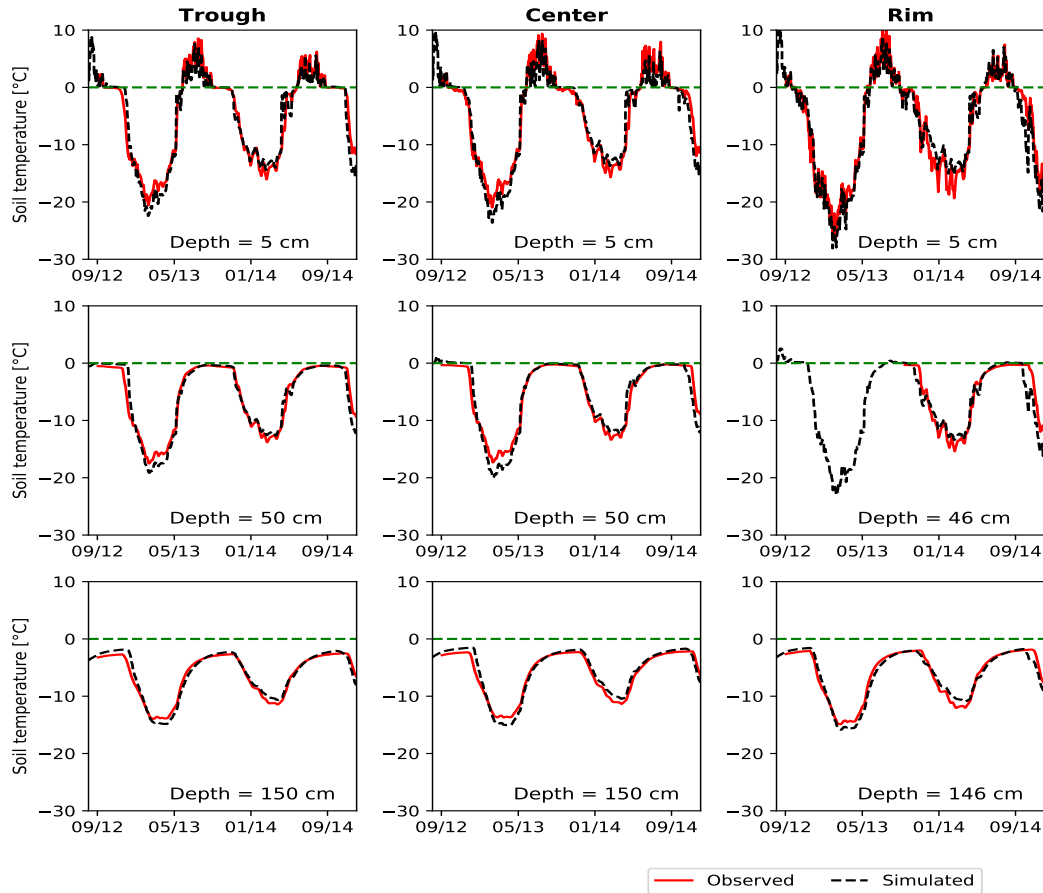


Figure 4. Comparison of simulated and observed soil temperatures in the trough (left column), in the center (middle column), and rim (right column) for years 2012-1014 at several depths. Rows correspond to the depth from the ground surface and display measurement and simulated soil temperatures in the organic matter layer (top row), near the depth of the active layer (middle row), and in the 150 cm deep mineral (last row).

295 Figure 5(right) shows the simulated results compared with the observed in the polygon center. The observation for year 2012 is the average of the water levels for wells C39 and C40 (due to the mid-summer measurement gap at well C39), however, observation data for years 2013 and 2014 is for well C39 only. Water depths in those two closely spaced wells have only small differences, but the surface elevations are different by 10 cm. Because the datum (surface elevation) of well C39 is more aligned with the topography, we used only well C37 in years 2013 and 2014 for comparison with the simulated water table.
300 The uncertainty band width is 5 cm, and is based partly on the difference in the water depths for wells C39 and C40 and partly on an estimate of uncertainty in the elevation of the wells (Liljedahl and Wilson., 2016). The simulations are generally within or close to the uncertainty band around the observations except for an approximately 2 week period during the late summer of 2012, when the simulated water level is approximately 10-15 cm below the observed. That discrepancy may be caused in part by our inability to control the trough boundary condition in the dry period prior, when the trough dries out (upper left panel in
305 5). When troughs stay inundated throughout the summers in 2013 and 2014, simulated results show better agreement. That is late-summer drawdown is within or close to the range of uncertainty of the measured data. The NSE value for water level for years 2012-2014 is 0.56 and the RMSE is 0.07 cm, with bias of -1.3 cm.

Given the multiphysics nature of the simulations, model uncertainties associated with abstraction of the geometry, neglect of subsurface heterogeneity, potential preferential subsurface flow paths, the phenomenological nature of the bare-soil evaporation
310 model (discussed below), and uncertainties associated with various model parameters, the agreement is reasonably good. We discuss sensitivity of the water level to parameters and model assumptions in Subsection 4.5subsubsection 4.2.

4.2 ~~Comparison to observed evaporation data~~

4.1.1 Comparison to observed evaporation data

Simulated evaporation ~~is shown versus time in Fig. ??~~ versus time for centers, rims, and troughs can be found in Figure S2
315 (supplemental document). Transpiration is minor compared to evaporation at this site (Young-Robertson et al., 2018; Liljedahl et al., 2012) and is not simulated here. The simulated evaporation is not restricted by availability of water at the trough location and is largely energy limited. The same is true for the center location in the 2013 and 2014 summers. However, drying in the center location during the 2012 summer (see ~~Fig-~~ Figure 5) results in a desiccated soil which inhibits evaporation in that dry period. Similarly, the simulated evaporation in the rim locations is significantly lower than the trough and center in all three
320 summers. Reduced evaporation on microtopographic highs compared with wet polygon centers and troughs is consistent with trends observed in the chamber-based evapotranspiration measurements of Raz-Yaseef et al. (2017).

Spatially resolved evapotranspiration measurements are not available at the same locations as the water level and soil temperature measurements. However, evapotranspiration measurements are available from an eddy-covariance flux tower located approximately 250 meters to the west in similar polygonal tundra (Raz-Yaseef et al., 2017). The footprint of that tower is estimated to cover approximately 2000 m² and includes wet microtopographic lows and drier microtopographic highs. Raz-Yaseef et al. (2017) estimate 37% of the footprint is standing water, 15% is wet moss, and 48% is drier microtopographic highs. To
325 compare with the flux tower estimates, we upscale the simulated trough, center, and rim evaporation results ~~in Fig. ??~~ (Figure

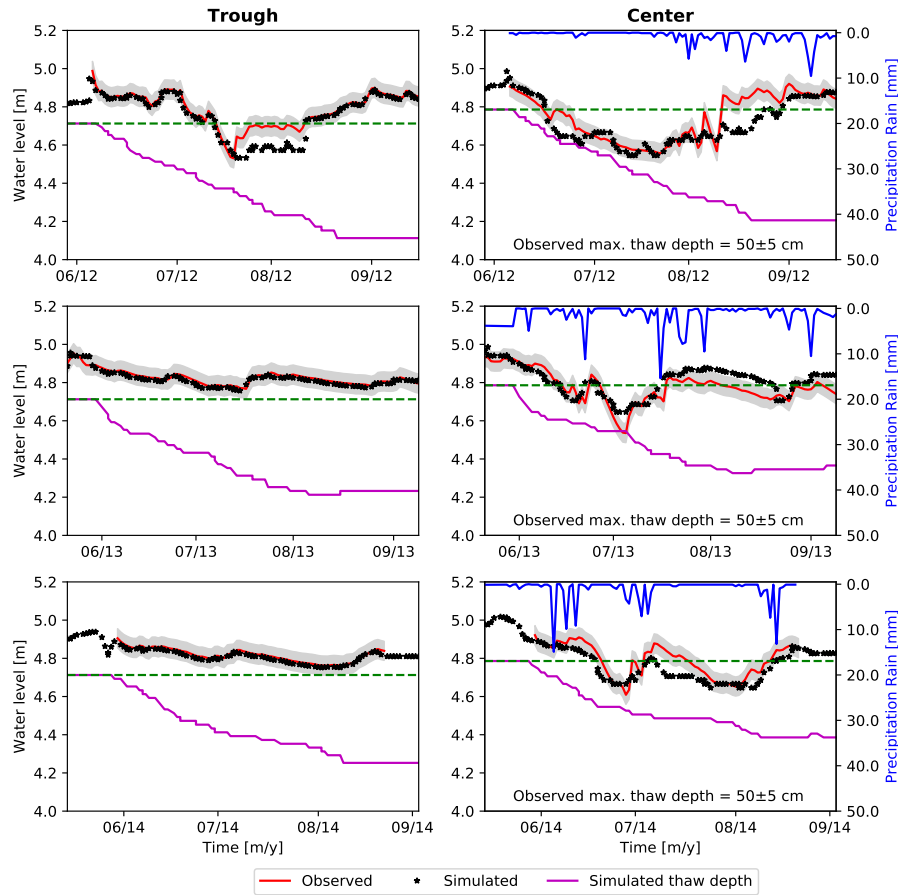
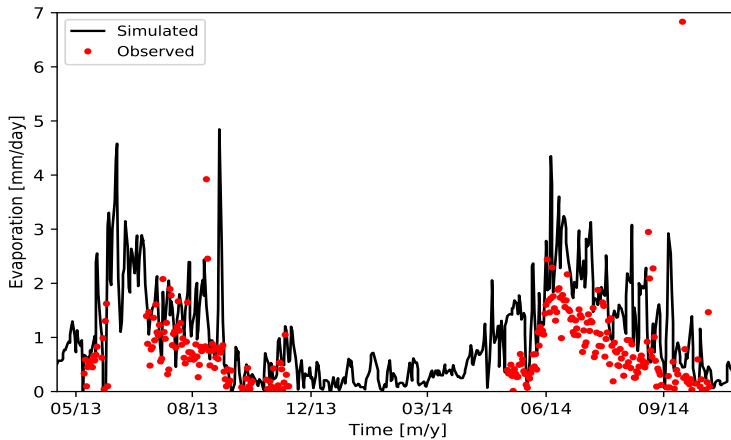


Figure 5. Comparison of simulated and observed water table in the trough (left column) and in the center (right column) for the summers of years 2012 to 2014. Rows correspond to different years. Blue lines (right column) is the rain precipitation.

[S2 in supplemental document](#)) using those area fractions, equating centers to wet moss, troughs to standing water, and rims to microtopographic highs. Upscaled evaporation flux obtained this way, again neglecting the contribution from transpiration, is shown versus the flux tower observations of Raz-Yaseef et al. (2017) in [Fig-Figure 6](#). Simulated results are in good agreement with the observations for the 2013 summer. The simulated and upscaled evaporation fluxes are slightly larger than the observations in 2014, but reproduce the general trend. These results combined with the generally good agreement for the observed water levels provides additional support for the integrated surface/subsurface models in ATS.

4.2 Sensitivity analysis



Simulated evaporation versus time for trough, center, and rim
microtopographic positions:
-1.cm-

Figure 6. Simulated evaporation after upscaling versus observations from eddy covariance flux tower (Dengel et al., 2019; Raz-Yaseef et al., 2017).

335 Here we examine sensitivity of our model to three important model parameters: 1) the snow undercatch factor, 2) saturated hydraulic conductivities, and 3) the desiccated soil thickness parameter, d_I , which regulates evaporative flux from dry soils. Sensitivity to the representation of snow compaction/aging and its effects on thermal conductivity is also examined.

4.2.1 Sensitivity of soil temperature to snow undercatch

Figure 7 illustrates the importance of snow undercatch adjustment. The soil temperature time-series in the trough at depths 5
340 cm, 50 cm, and 150 cm shown in red, blue, and black correspond to measured, simulated with no undercatch snow adjustment, and simulated with 30% snow undercatch adjustment, respectively. Simulated temperatures with no undercatch correction are about 2-4 degrees colder than the observed temperatures during mid-winter. The negative bias in the simulated winter temperatures is consistent across years and independent of the depth and microtopographic location. Summer temperature and ALT are not affected by the snow undercatch adjustment factor and match well with the observed. The winter mismatch
345 between the simulated and observed temperatures is significantly improved by making a 30 % correction to the reported snow precipitation (reference case).

4.2.2 Sensitivity of water table to saturated hydraulic conductivity and bare soil evaporation model parameter

Because troughs remain inundated most of the summer, flow from troughs to centers is a potentially important process for keeping the polygon centers from drying in summer. We performed simulations in which the saturated hydraulic conductivities
350 of both organic matter and mineral soil were increased/decreased by a factor of 2 (see Fig. 8(left)Figure 8(top)). Increasing the saturated hydraulic conductivity enhances lateral flow from trough to center, leading to smaller drawdown than observed.

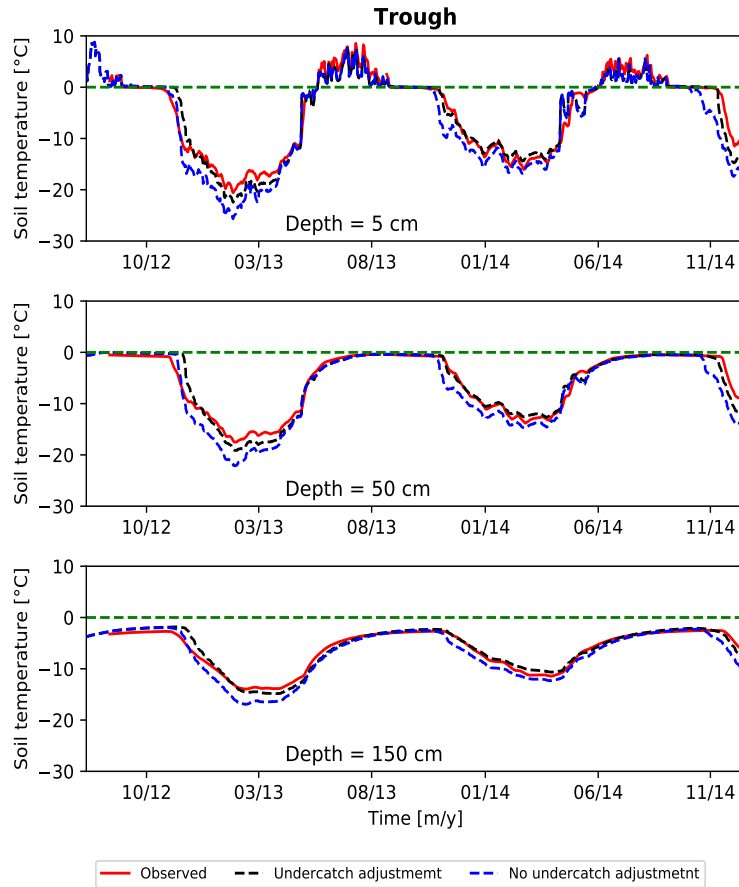


Figure 7. Sensitivity of the simulated soil temperatures to the snow precipitation undercatch adjustment. Smaller snowpack enhances heat escape from the soil due to the reduced insulating effect of the snowpack.

Conversely, decreasing the saturated hydraulic conductivity generally leads to drier conditions during periods of low rainfall. That the water levels in the center is responsive to saturated hydraulic conductivity shows that lateral flow from trough to center is playing a role in keeping the soils in the center of the polygons wet. It also demonstrates that water table measurements are
 355 informative of the lateral saturated hydraulic conductivity as long as evapotranspiration can be independently constrained.

ATS's surface energy and water balance model includes a model for bare-soil evaporation (Sakaguchi and Zeng, 2009) that uses a soil resistance based on vapor diffusion across a near-surface desiccated zone when the soil is dry. The maximum extent of the desiccated zone, the parameter d_l in Eq. B17 of Atchley et al. (2015), is the principal parameter in that model. Numerical results indicate sensitivity of the water table to the bare-soil evaporation model parameter. We tested a range of
 360 values between 1 cm and 20 cm. The reference case shown in the previous section used 10 cm. Simulations show unrealistically large drawdown of the water table during dry periods of the summer for smaller values of d_l . Results for $d_l = 5$ and 20 cm are shown in [Fig-8\(left\)](#)-[Figure 8\(middle\)](#). Note the case with $d_l = 5$ cm and reference saturated hydraulic conductivity is

similar to the case $d_1 = 10$ cm and reduced saturated hydraulic conductivity shown in [Fig. 8\(rightFigure 8\(middle\)\)](#). That is, halving the parameter d_1 has a similar effect to halving the saturated hydraulic conductivity as far as drawdown during summer dry periods is concerned. That similarity indicates the existence of a null space involving the saturated hydraulic conductivities and the parameter d_l . In other words, these parameters can be varied simultaneously in a way that does not significantly alter the simulated water table [Figure 8\(bottom\)](#). However, soil temperatures show minimal-to-no sensitivity to parameter d_l (results not shown here).

[Simulated water fluxes between polygon center and trough through a 50 cm deep vertical slice at the right and left rims of polygon are displayed in Figure 9. In Figure 9, negative fluxes indicate inward flow \(i.e., flow from trough to center\). Water flow is generally from center to the trough in the early part of the summer as melt water drains through the partially thawed rim. Note that flow through the right side is small during this period because the thaw depth beneath the higher rim on that side has not reached a spill-point depth that allows water to flow through the rim. Around the end of July, flow reverses to be from trough to center and is similar in magnitude on the two sides. Increasing the hydraulic conductivity increases water flux from trough to center. This highlights the important role of lateral water fluxes between polygon center and trough.](#)

[For the purposes of model evaluation, we imposed a time-dependent water level on the trough from measured data. As a result, water is free to enter the model domain both as runoff and run-on, depending on the specified boundary condition and simulated water levels inside the model domain. Results for alternative choices of the surface water boundary condition are included in Supplemental Material \(Figure S3\) including spill-point boundary and closed boundaries on the surface domain. A spill-point boundary allows water out when the simulated water level reaches the spill point elevation, simulating runoff but no run-on, whereas the closed boundary eliminates both run-on and runoff. Unsurprisingly, both of the alternative boundary conditions result in poorer match to the observed water levels in the center as compared to our reference case boundary condition. In applications that seek to understand permafrost dynamics in a changing climate, surface water flows over larger domains will need to be simulated capture the dynamics of run-on and runoff, as in ATS's intermediate-scale variant \(Jan et al., 2018b\).](#)

[4.2.3 Sensitivity of soil temperature to snow aging model](#)

The snow thermal model in ATS accounts for snow compaction/aging and the effect of that aging on thermal conductivity. New snow is introduced at density of 100 kg/m^3 and thermal conductivity of 0.029 W/m K . As a packet of snow ages, its density and thermal conductivity increase using the model described by Atchley et al. (2015). Sensitivity to the snow thermal model was tested by running an alternative model where new snow was introduced at the aged density and thermal conductivity. Temperature results from fall 2013 to end of 2015 at three depths with and without the snow aging model are shown versus observed soil temperature in [Fig-Figure 10](#). Neglecting snow aging causes the ground to freeze about 1 month sooner than observed in fall of 2014 and by about two weeks in 2013. However, subsurface temperatures from the middle of winter until end of summer are unaffected by the snow model. These results show it is important to account for snow compaction/aging by introducing snow as lower density, lower thermal conductivity fresh snow, as in our reference case.

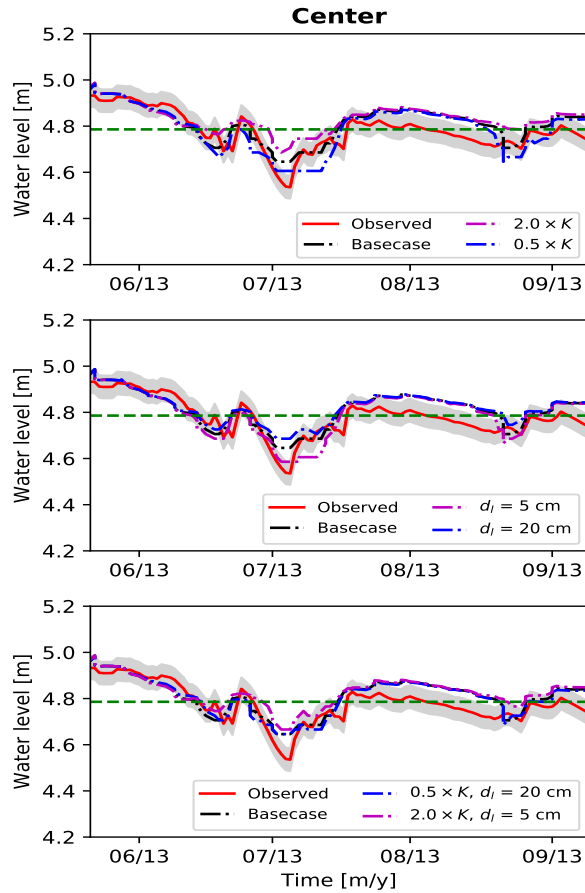
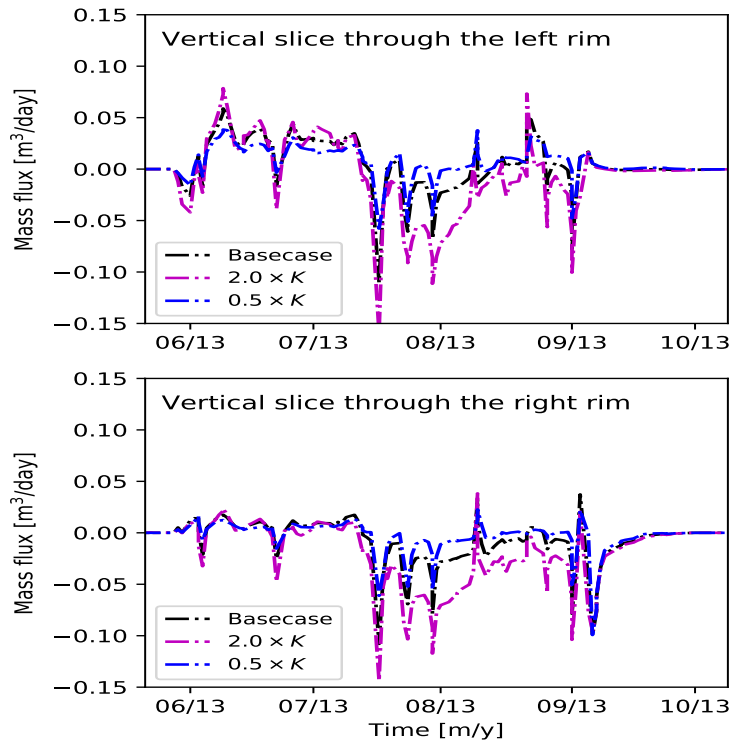


Figure 8. Observed water level at polygon center versus time in the summer of year 2013 showing sensitivity of the simulated water level to the bare soil evaporation model parameter (top) and saturated hydraulic conductivities (middle). Enhanced drawdown are seen in the top row when the soil evaporation parameter d_i is set to smaller values. Existence of a null space between saturated hydraulic conductivity and the parameter d_i is shown in the bottom row. Basecase refers to the results in Figure 5.



0.2m-1.cm

Figure 9. Observed water level at polygon center versus a time in the summer series of year 2013 showing sensitivity of the simulated lateral water level to the bare soil evaporation model parameter (left) fluxes between polygon center and saturated hydraulic conductivities through a 50 cm (right the maximum thaw depth). Enhanced drawdown are seen in deep vertical slice at the left panel when and right rims of the soil evaporation parameter d_t is set to smaller values polygon. Basecase refers Negative flux indicates inward flow (trough to the results in Figure 5 center).

5 Conclusions

Individual components of recently developed integrated surface/subsurface permafrost models have been evaluated previously against laboratory measurements and field observations of temperatures. However, simultaneous evaluation against multiple types of observations is necessary to adequately test coupling between surface and subsurface systems and between thermal and hydrological processes. Those evaluations of the integrated system have been hindered by lack of co-located field observations. In this work, we took advantage of recently available multiyear, high-frequency observations of soil temperature, water levels, snow depth, and evapotranspiration to evaluate the integrated surface/subsurface thermal hydrological models implemented in the ATS code.

Because the water level and temperature data were not strictly co-located, we used an abstraction of the geometries of the two neighboring ice wedge polygons where the measurements were made. The resulting three-dimensional radially asymmetric ice-wedge polygon shares geometric features of the surface microtopography of the actual polygons that are understood to control

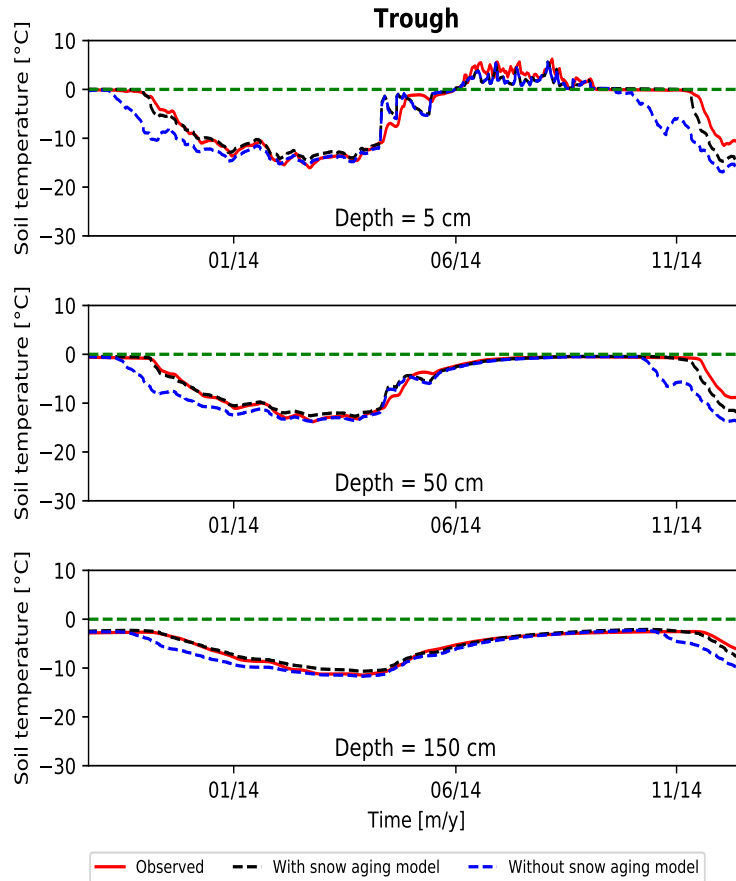


Figure 10. Simulated temperature versus time with and without the snow aging model compared to observed temperatures.

surface and shallow subsurface flow. Using site meteorological data as forcing data and observed water table elevations in polygon troughs as a time-dependent boundary condition, we simulated water table in the polygon center and soil temperatures at several depths at three microtopographic positions (trough, rim and center). The simulations agree well with observations
 410 over three years after adjusting parameters controlling soil resistance in the bare-soil evaporation model. Other parameters were set from literature values or independently determined.

Soil temperature results were found to be sensitive to snow precipitation undercatch adjustment, consistent with the well-known thermal insulating properties of the snow pack. Timing of the fall freeze up was found to be sensitive to how the snow aging is represented. In particular, soil freezing occurred too early when snow density was assumed to be constant in time. [That result demonstrates the importance of including the effects of snow aging and the formation of a depth hoar layer on thermal insulating properties of snow.](#)
 415

Water levels in the polygon center were found to be sensitive to the maximum extent of the soil desiccated layer, a parameter appearing in the model for soil resistance to evaporation. Water levels were also sensitive to the soil saturated hydraulic

conductivity. It is important to note that the evaporation model parameters and the saturated hydraulic conductivity can be
420 varied simultaneously in a way that leaves the water level in the polygon center approximately unchanged, indicating the
existence of a null space in the parameter space. Thus, independent measurements are needed to provide additional constraints.
We used literature values to constrain the saturated hydraulic conductivity. Because those saturated hydraulic conductivity are
uncertain, we took the additional step of upscaling our simulated evaporation to compare against flux tower observations, taking
425 the upscaling process has some uncertainty, the reasonably good agreement increases confidence in our representation of
permafrost thermal-hydrological processes at this site. These results also demonstrate how observations of the supra-permafrost
water table elevations can help constrain evapotranspiration models.

That the water levels in the polygon centers were sensitive to lateral saturated hydraulic conductivity of the subsurface
underscores the role played by lateral trough-to-center subsurface flow in keeping ice wedge polygon centers from drying out
430 in the Arctic summer.

These comparisons to multiple types of observation data represent a unique test of recently developed process-explicit mod-
els for integrated surface/subsurface permafrost thermal hydrology. The overall good match to water levels, soil temperatures,
snow depths, and evaporation over the three-year observation period represents significant new support for this emerging class
of models ~~Moreover, that the simulation results were obtained using as useful representations of polygonal tundra thermal~~
435 ~~hydrology. An obvious next step is to use this model configuration in simulations of permafrost evolution at watershed scales~~
~~with large numbers of polygons represented using, for example, ATS's intermediate-scale variant (Jan et al., 2018b).~~

~~Finally, that the observations were relatively well matched by simulations that used~~ an abstraction of the ice-wedge polygon
geometry provides ~~new confidence in the viability of process-explicit models as useful representations of polygonal tundra~~
~~more broadly. In addition, these results provide a set of model parameters for use in watershed-scale models (Jan et al., 2018b) to~~
440 ~~study the evolution of polygonal tundra in a changing climate~~ support for ~~simplified geometric representations of the polygonal~~
~~landscapes, which have been proposed previously (e.g. Liljedahl et al. (2012); Nitzbon et al. (2019)). In particular, we were~~
~~able to obtain good results using a regular polygon parameterized by a small number of microtopographic and soil structural~~
~~parameters. Different polygon morphologies (e.g. high- versus low-center) can be represented with this parameterization by~~
~~appropriate choice of those geometric quantities. In this study, we selected those parameters to represent the study site of~~
445 ~~interest. Of course, the microtopographic representation and choice of process-model parameter values are site-specific and~~
~~should be evaluated for the site studied.~~

Code and data availability. The Advanced Terrestrial Simulator (ATS) Coon et al. (2019) is open source under the BSD 3-clause license,
and is publicly available at <https://github.com/amanzi/ats>. Simulations were conducted using version 0.88. Forcing data, model input files,
jupyter notebooks used to generate figures, meshes along with jupyter notebooks used to generate the meshes are publicly available at
450 <https://doi.org/10.5440/1545603>. Data products used in the model comparisons are publicly available through the NGEE-Arctic long-term
data archive <https://doi.org/10.5440/1416559>. The observed water level can be accessed at <https://doi.org/10.5440/1183767> (Liljedahl and

Wilson. (2016)), the soil temperature data at <https://doi.org/10.5440/1126515> (Romanovsky et al. (2017)), and the evapotranspiration data at <https://doi.org/10.5440/1362279> (Dengel et al. (2019), respectively.)

Author contributions. Numerical simulations were performed by AJ with guidance from SLP and ETC. All authors contributed to design of
455 the research and to the manuscript preparation.

Competing interests. The authors declare that they have no conflict of interest.

Acknowledgements. The authors are grateful to Vladimir Romanovsky, Anna Liljedahl, Cathy Wilson, Sigrid Dengel and Margaret Torn for the BEO field data used here. The authors also thank Fengming Yuan for careful review of this manuscript. This work was supported by the Next-Generation Ecosystem Experiment—Arctic (NGEE-Arctic) project. The NGEE-Arctic project is supported by the Office of
460 Biological and Environmental Research in the U.S. Department of Energy’s Office of Science. Oak Ridge National Laboratory is managed by UT-Battelle, LLC, for DOE under contract DE-AC05-00OR22725. This research used resources of the Compute and Data Environment for Science (CADES) at the Oak Ridge National Laboratory, which is supported by the Office of Science of the U.S. Department of Energy under Contract No. DE-AC05-00OR22725.

References

- 465 Abolt, C. J., Young, M. H., Atchley, A. L., and Harp, D. R.: Microtopographic control on the ground thermal regime in ice wedge polygons, *The Cryosphere*, 12, 1957–1968, 2018.
- Atchley, A. L., Painter, S. L., Harp, D. R., Coon, E. T., Wilson, C. J., Liljedahl, A. K., and Romanovsky, V. E.: Using field observations to inform thermal hydrology models of permafrost dynamics with ATS (v0.83), *Geoscientific Model Development*, 8, 2701–2722, 2015.
- Atchley, A. L., Coon, E. T., Painter, S. L., Harp, D. R., and Wilson, C. J.: Influences and interactions of inundation, peat, and snow on active
470 layer thickness, *Geophysical Research Letters*, 43, 5116–5123, 2016.
- Batir, J. F., Hornbach, M. J., and Blackwell, D. D.: Ten years of measurements and modeling of soil temperature changes and their effects on permafrost in Northwestern Alaska, *Global and Planetary Change*, 148, 55–71, 2017.
- Bense, V., Ferguson, G., and Kooi, H.: Evolution of shallow groundwater flow systems in areas of degrading permafrost, *Geophysical Research Letters*, 36, 2009.
- 475 Bense, V. F., Kooi, H., Ferguson, G., and Read, T.: Permafrost degradation as a control on hydrogeological regime shifts in a warming climate, *Journal of Geophysical Research: Earth Surface*, 117, 2012.
- Beringer, J., Lynch, A. H., Chapin III, F. S., Mack, M., and Bonan, G. B.: The representation of arctic soils in the land surface model: the importance of mosses, *Journal of Climate*, 14, 3324–3335, 2001.
- Black, R. F.: Ice-wedge polygons of northern Alaska, in: *Glacial geomorphology*, pp. 247–275, Springer, 1982.
- 480 Brown, J., Ferrians Jr, O., Heginbottom, J., and Melnikov, E.: *Circum-Arctic map of permafrost and ground-ice conditions*, US Geological Survey Reston, VA, 1997.
- Chadburn, S. E., Burke, E. J., Essery, R. L. H., Boike, J., Langer, M., Heikenfeld, M., Cox, P. M., and Friedlingstein, P.: Impact of model developments on present and future simulations of permafrost in a global land-surface model, *The Cryosphere*, 9, 1505–1521, 2015.
- Coon, E., Berndt, M., Jan, A., Svyatsky, D., Atchley, A., Kikinzon, E., Harp, D., Manzini, G., Shelef, E., Lipnikov, K., Garimella, R.,
485 Xu, C., Moulton, D., Karra, S., Painter, S., Jafarov, E., and Molins, S.: *Advanced Terrestrial Simulator. Next Generation Ecosystem Experiments Arctic Data Collection*, Oak Ridge National Laboratory, U.S. Department of Energy, Oak Ridge, Tennessee, USA. Version 0.88, <https://doi.org/10.11578/dc.20190911.1>, 2019.
- Coon, E. T., Moulton, J. D., and Painter, S. L.: Managing complexity in simulations of land surface and near-surface processes, *Environmental Modelling & Software*, 78, 134–149, 2016.
- 490 Dall’Amico, M., Endrizzi, S., Gruber, S., and Rigon, R.: A robust and energy-conserving model of freezing variably-saturated soil, *The Cryosphere*, 5, 469–484, 2011.
- de Koven Leffingwell, E.: *The Canning River region, northern Alaska*, 109, US Government Printing Office, 1919.
- Dengel, S., Billesbach, D., and Torn, M.: *NGEE Arctic CO₂, CH₄ and Energy Eddy-Covariance (EC) Flux Tower and Auxiliary Measurements, Barrow, Alaska, Beginning 2012*. Next Generation Ecosystem Experiments Arctic Data Collection, Oak Ridge National Laboratory,
495 U.S. Department of Energy, Oak Ridge, Tennessee, USA. Dataset accessed on July 18, 2019 at <https://doi.org/10.5440/1362279>, 2019.
- Endrizzi, S., Gruber, S., Dall’Amico, M., and Rigon, R.: *GEOtop 2.0: simulating the combined energy and water balance at and below the land surface accounting for soil freezing, snow cover and terrain effects*, *Geoscientific Model Development*, 7, 2831–2857, 2014.
- Evans, S. G. and Ge, S.: Contrasting hydrogeologic responses to warming in permafrost and seasonally frozen ground hillslopes, *Geophysical Research Letters*, 44, 1803–1813, 2017.

- 500 Evans, S. G., Ge, S., Voss, C. I., and Molotch, N. P.: The Role of Frozen Soil in Groundwater Discharge Predictions for Warming Alpine Watersheds, *Water Resources Research*, 54, 1599–1615, 2018.
- Farquharson, L. M., Romanovsky, V. E., Cable, W. L., Walker, D. A., Kokelj, S., and Nicolsky, D.: Climate change drives widespread and rapid thermokarst development in very cold permafrost in the Canadian High Arctic, *Geophysical Research Letters*, 2019.
- Frampton, A., Painter, S., Lyon, S. W., and Destouni, G.: Non-isothermal, three-phase simulations of near-surface flows in a model permafrost system under seasonal variability and climate change, *Journal of Hydrology*, 403, 352–359, 2011.
- 505 Frampton, A., Painter, S. L., and Destouni, G.: Permafrost degradation and subsurface-flow changes caused by surface warming trends, *Hydrogeology Journal*, 21, 271–280, 2013.
- Garayshin, V., Nicolsky, D., and Romanovsky, V.: Numerical modeling of two-dimensional temperature field dynamics across non-deforming ice-wedge polygons, *Cold Regions Science and Technology*, 161, 115–128, 2019.
- 510 Ge, S., McKenzie, J., Voss, C., and Wu, Q.: Exchange of groundwater and surface-water mediated by permafrost response to seasonal and long term air temperature variation, *Geophysical Research Letters*, 38, 2011.
- Gisnås, K., Etzelmüller, B., Farbrot, H., Schuler, T. V., and Westermann, S.: CryoGRID 1.0: Permafrost Distribution in Norway estimated by a Spatial Numerical Model, *Permafrost and Periglacial Processes*, 24, 2–19, 2013.
- Greene, G. W.: Contraction theory of ice-wedge polygons: A qualitative discussion, in: *Permafrost international conference: proceedings*, pp. 11–15, 1963.
- 515 Grenier, C., Régnier, D., Mouche, E., Benabderrahmane, H., Costard, F., and Davy, P.: Impact of permafrost development on groundwater flow patterns: A numerical study considering freezing cycles on a two-dimensional vertical cut through a generic river-plain system, *Hydrogeology Journal*, 21, 2013.
- Guimberteau, M., Zhu, D., Maignan, F., Huang, Y., Yue, C., Dantec-Nédélec, S., Otlé, C., Jornet-Puig, A., Bastos, A., Laurent, P., Goll, D., Bowring, S., Chang, J., Guenet, B., Tifafi, M., Peng, S., Krinner, G., Ducharne, A., Wang, F., Wang, T., Wang, X., Wang, Y., Yin, Z., Lauerwald, R., Joetzer, E., Qiu, C., Kim, H., and Ciais, P.: ORCHIDEE-MICT (v8.4.1), a land surface model for the high latitudes: model description and validation, *Geoscientific Model Development*, 11, 121–163, 2018.
- 520 Harp, D. R., Atchley, A. L., Painter, S. L., Coon, E. T., Wilson, C. J., Romanovsky, V. E., and Rowland, J. C.: Effect of soil property uncertainties on permafrost thaw projections: a calibration-constrained analysis, *The Cryosphere Discussions*, 9, 2015.
- 525 Hinzman, L., Kane, D., Gieck, R., and Everett, K.: Hydrologic and thermal properties of the active layer in the Alaskan Arctic, *Cold Regions Science and Technology*, 19, 95–110, 1991.
- Hinzman, L. D., Bettez, N. D., Bolton, W. R., Chapin, F. S., Dyurgerov, M. B., Fastie, C. L., Griffith, B., Hollister, R. D., Hope, A., Huntington, H. P., et al.: Evidence and implications of recent climate change in northern Alaska and other arctic regions, *Climatic Change*, 72, 251–298, 2005.
- 530 Hugelius, G., Strauss, J., Zubrzycki, S., Harden, J. W., Schuur, E. A. G., Ping, C.-L., Schirrmeister, L., Grosse, G., Michaelson, G. J., Koven, C. D., O'Donnell, J. A., Elberling, B., Mishra, U., Camill, P., Yu, Z., Palmtag, J., and Kuhry, P.: Estimated stocks of circumpolar permafrost carbon with quantified uncertainty ranges and identified data gaps, *Biogeosciences*, 11, 6573–6593, 2014.
- Jafarov, E. E., Marchenko, S. S., and Romanovsky, V. E.: Numerical modeling of permafrost dynamics in Alaska using a high spatial resolution dataset, *The Cryosphere*, 6, 613–624, 2012.
- 535 Jafarov, E. E., Coon, E. T., Harp, D. R., Wilson, C. J., Painter, S. L., Atchley, A. L., and Romanovsky, V. E.: Modeling the role of preferential snow accumulation in through talik development and hillslope groundwater flow in a transitional permafrost landscape, *Environmental Research Letters*, 13, 105 006, 2018.

- Jan, A., Coon, E. T., Graham, J. D., and Painter, S. L.: A Subgrid Approach for Modeling Microtopography Effects on Overland Flow, *Water Resources Research*, 54, 6153–6167, 2018a.
- 540 Jan, A., Coon, E. T., Painter, S. L., Garimella, R., and Moulton, J. D.: An intermediate-scale model for thermal hydrology in low-relief permafrost-affected landscapes, *Computational Geosciences*, 22, 163–177, 2018b.
- Jorgenson, M. T., Racine, C. H., Walters, J. C., and Osterkamp, T. E.: Permafrost degradation and ecological changes associated with a warming climate in central Alaska, *Climatic change*, 48, 551–579, 2001.
- Jorgenson, M. T., Shur, Y. L., and Pullman, E. R.: Abrupt increase in permafrost degradation in Arctic Alaska, *Geophysical Research Letters*,
545 33, 2006.
- Karra, S., Painter, S. L., and Lichtner, P. C.: Three-phase numerical model for subsurface hydrology in permafrost-affected regions (PFLOTRAN-ICE v1.0), *The Cryosphere*, 8, 1935–1950, 2014.
- [Kollet, S., Sulis, M., Maxwell, R. M., Paniconi, C., Putti, M., Bertoldi, G., Coon, E. T., Cordano, E., Endrizzi, S., Kikinzon, E., et al.: The integrated hydrologic model intercomparison project, IH-MIP2: A second set of benchmark results to diagnose integrated hydrology and
550 \[feedbacks\]\(#\), *Water Resources Research*, 53, 867–890, 2017.](#)
- Koopmans, R. W. R. and Miller, R. D.: Soil Freezing and Soil Water Characteristic Curves, *Soil Science Society of America Journal*, 60, 13–19, 1966.
- Koven, C. D., Ringeval, B., Friedlingstein, P., Ciais, P., Cadule, P., Khvorostyanov, D., Krinner, G., and Tarnocai, C.: Permafrost carbon-climate feedbacks accelerate global warming, *Proceedings of the National Academy of Sciences*, 108, 14 769–14 774, 2011.
- 555 Koven, C. D., Riley, W. J., and Stern, A.: Analysis of permafrost thermal dynamics and response to climate change in the CMIP5 Earth System Models, *Journal of Climate*, 26, 1877–1900, 2013.
- Kumar, J., Collier, N., Bisht, G., Mills, R. T., Thornton, P. E., Iversen, C. M., and Romanovsky, V.: Modeling the spatiotemporal variability in subsurface thermal regimes across a low-relief polygonal tundra landscape, *The Cryosphere*, 10, 2241–2274, 2016.
- Kurylyk, B. L. and Watanabe, K.: The mathematical representation of freezing and thawing processes in variably-saturated, non-deformable
560 soils, *Advances in Water Resources*, 60, 160–177, 2013.
- Kurylyk, B. L., MacQuarrie, K. T., and McKenzie, J. M.: Climate change impacts on groundwater and soil temperatures in cold and temperate regions: Implications, mathematical theory, and emerging simulation tools, *Earth-Science Reviews*, 138, 313–334, 2014.
- Kurylyk, B. L., Hayashi, M., Quinton, W. L., McKenzie, J. M., and Voss, C. I.: Influence of vertical and lateral heat transfer on permafrost thaw, peatland landscape transition, and groundwater flow, *Water Resources Research*, 52, 1286–1305, 2016.
- 565 Lachenbruch, A. H.: Mechanics of thermal contraction cracks and ice-wedge polygons in permafrost, *Geological Society of America Special Papers*, 70, 1–66, 1962.
- Lachenbruch, A. H. and Marshall, B. V.: Changing climate: geothermal evidence from permafrost in the Alaskan Arctic, *Science*, 234, 689–696, 1986.
- Liljedahl, A. and Wilson, C.: Ground Water Levels for NGEE Areas A, B, C and D, Barrow, Alaska, 2012-2014. Next Generation Ecosystem
570 Experiments Arctic Data Collection, Oak Ridge National Laboratory, U.S. Department of Energy, Oak Ridge, Tennessee, USA. Dataset accessed on September, 2018 at <https://doi.org/10.5440/1183767>, 2016.
- Liljedahl, A., Hinzman, L., and Schulla, J.: Ice-wedge polygon type controls low-gradient watershed-scale hydrology, in: *Proceedings of the Tenth International Conference on Permafrost*, vol. 1, pp. 231–236, 2012.
- Liljedahl, A. K., Boike, J., Daanen, R. P., Fedorov, A. N., Frost, G. V., Grosse, G., Hinzman, L. D., Iijma, Y., Jorgenson, J. C., Matveyeva,
575 N., et al.: Pan-Arctic ice-wedge degradation in warming permafrost and its influence on tundra hydrology, *Nature Geoscience*, 2016.

- Lyon, S., Destouni, G., Giesler, R., Humborg, C., Mörth, C.-M., Seibert, J., Karlsson, J., and Troch, P.: Estimation of permafrost thawing rates in a sub-arctic catchment using recession flow analysis, *Hydrology and Earth System Sciences*, 13, 595–604, 2009.
- Mackay, J. R.: Some observations on the growth and deformation of epigenetic, syngenetic and anti-syngenetic ice wedges, *Permafrost and Periglacial Processes*, 1, 15–29, 1990.
- 580 McKenzie, J. M., Voss, C. I., and Siegel, D. I.: Groundwater flow with energy transport and water–ice phase change: numerical simulations, benchmarks, and application to freezing in peat bogs, *Advances in water resources*, 30, 966–983, 2007.
- Moulton, J. D., Berndt, M., Garimella, R., Prichett-Sheats, L., Hammond, G., Day, M., and Meza, J.: High-level design of Amanzi, the multi-process high performance computing simulator, Office of Environmental Management, United States Department of Energy, Washington DC, 2012.
- 585 Mualem, Y.: A new model for predicting the hydraulic conductivity of unsaturated porous media, *Water Resources Research*, 12, 513–522, 1976.
- [Nash, J. and Sutcliffe, J.: River flow forecasting through conceptual models part I — A discussion of principles, *Journal of Hydrology*, 10, 282–290, 1970.](#)
- Nitzbon, J., Langer, M., Westermann, S., Martin, L., Aas, K. S., and Boike, J.: Pathways of ice-wedge degradation in polygonal tundra under different hydrological conditions, *The Cryosphere*, 13, 1089–1123, <https://doi.org/10.5194/tc-13-1089-2019>, <https://www.the-cryosphere.net/13/1089/2019/>, 2019.
- 590 Oechel, W. C., Vourlitis, G. L., Hastings, S. J., and Bochkarev, S. A.: Change in Arctic CO₂Flux over two decades: Effects of climate change at Barrow, Alaska, *Ecological Applications*, 5, 846–855, 1995.
- Osterkamp, T.: Response of Alaskan permafrost to climate, in: Fourth International Conference on Permafrost, Fairbanks, Alaska, pp. 17–22, 595 1983.
- Osterkamp, T.: A thermal history of permafrost in Alaska, in: Proceedings of the 8th International Conference on Permafrost, vol. 2, pp. 863–868, AA Balkema Publishers, 2003.
- Osterkamp, T.: Characteristics of the recent warming of permafrost in Alaska, *Journal of Geophysical Research: Earth Surface*, 112, 2007.
- Pachauri, R. K., Allen, M., Barros, V., Broome, J., Cramer, W., Christ, R., Church, J., Clarke, L., Dahe, Q., Dasgupta, P., et al.: Climate Change 2014: Synthesis Report. Contribution of Working Groups I, II and III to the Fifth Assessment Report of the Intergovernmental Panel on Climate Change, 2014.
- 600 Painter, S. L.: Three-phase numerical model of water migration in partially frozen geological media: model formulation, validation, and applications, *Computational Geosciences*, 15, 69–85, 2011.
- Painter, S. L. and Karra, S.: Constitutive Model for Unfrozen Water Content in Subfreezing Unsaturated Soils, *Vadose Zone Journal*, 13, 605 2014.
- Painter, S. L., Moulton, J. D., and Wilson, C.: Modeling challenges for predicting hydrologic response to degrading permafrost, *Hydrogeology Journal*, 21, 221–224, 2013.
- Painter, S. L., Coon, E. T., Atchley, A. L., Berndt, M., Garimella, R., Moulton, J. D., Svyatskiy, D., and Wilson, C. J.: Integrated surface/subsurface permafrost thermal hydrology: Model formulation and proof-of-concept simulations, *Water Resources Research*, 52, 610 6062–6077, 2016.
- Pan, X., Li, Y., Yu, Q., Shi, X., Yang, D., and Roth, K.: Effects of stratified active layers on high-altitude permafrost warming: a case study on the Qinghai–Tibet Plateau, *The Cryosphere*, 10, 1591–1603, 2016.

- Raz-Yaseef, N., Young-Robertson, J., Rahn, T., Sloan, V., Newman, B., Wilson, C., Wullschleger, S. D., and Torn, M. S.: Evapotranspiration across plant types and geomorphological units in polygonal Arctic tundra, *Journal of Hydrology*, 553, 816–825, 2017.
- 615 Romanovsky, V., Burgess, M., Smith, S., Yoshikawa, K., and Brown, J.: Permafrost temperature records: Indicators of climate change, *EOS, Transactions American Geophysical Union*, 83, 589–594, 2002.
- Romanovsky, V., Cable, W., and Dolgikh, K.: Subsurface Temperature, Moisture, Thermal Conductivity and Heat Flux, Barrow, Area A, B, C, D. Next Generation Ecosystem Experiments Arctic Data Collection, Oak Ridge National Laboratory, U.S. Department of Energy, Oak Ridge, Tennessee, USA. Dataset accessed on September, 2018 at <https://doi.org/10.5440/1126515>., 2017.
- 620 Romanovsky, V. E., Smith, S. L., and Christiansen, H. H.: Permafrost thermal state in the polar Northern Hemisphere during the international polar year 2007–2009: a synthesis, *Permafrost and Periglacial Processes*, 21, 106–116, 2010.
- Rowland, J. C., Travis, B. J., and Wilson, C. J.: The role of advective heat transport in talik development beneath lakes and ponds in discontinuous permafrost, *Geophysical Research Letters*, 38, 2011.
- Sakaguchi, K. and Zeng, X.: Effects of soil wetness, plant litter, and under-canopy atmospheric stability on ground evaporation in the
625 Community Land Model (CLM3.5), *Journal of Geophysical Research: Atmospheres*, 114, 2009.
- Schuh, C., Frampton, A., and Christiansen, H. H.: Soil moisture redistribution and its effect on inter-annual active layer temperature and thickness variations in a dry loess terrace in Adventdalen, Svalbard, *The Cryosphere*, 11, 635–651, 2017.
- Schuur, E. A. G., McGuire, A. D., Schaedel, C., Grosse, G., Harden, J. W., Hayes, D. J., Hugelius, G., Koven, C. D., Kuhry, P., Lawrence, D. M., Natali, S. M., Olefeldt, D., Romanovsky, V. E., Schaefer, K., Turetsky, M. R., Treat, C. C., and Vonk, J. E.: Climate change and the
630 permafrost carbon feedback, *Nature*, 520, 171–179, 2015.
- Sjöberg, Y., Frampton, A., and Lyon, S. W.: Using streamflow characteristics to explore permafrost thawing in northern Swedish catchments, *Hydrogeology Journal*, 21, 121–131, 2013.
- Sjöberg, Y., Coon, E., Sannel, A. B. K., Pannetier, R., Harp, D., Frampton, A., Painter, S. L., and Lyon, S. W.: Thermal effects of groundwater flow through subarctic fens: A case study based on field observations and numerical modeling, *Water Resources Research*, 52, 1591–1606,
635 2016.
- Slater, A. G. and Lawrence, D. M.: Diagnosing present and future permafrost from climate models, *Journal of Climate*, 26, 5608–5623, 2013.
- Spaans, E. and Baker, J.: The Soil Freezing Characteristic: Its Measurement and Similarity to the Soil Moisture Characteristic, *Soil Science Society of America Journal*, 60, 13, 1996.
- Tan, X., Chen, W., Tian, H., and Cao, J.: Water flow and heat transport including ice/water phase change in porous media: Numerical
640 simulation and application, *Cold Regions Science and Technology*, 68, 74 – 84, 2011.
- Tao, J., Koster, R. D., Reichle, R. H., Forman, B. A., Xue, Y., Chen, R. H., and Moghaddam, M.: Permafrost Variability over the Northern Hemisphere Based on the MERRA-2 Reanalysis, *The Cryosphere Discussions*, 2018, 1–41, 2018.
- Tarnocai, C., Canadell, J., Schuur, E., Kuhry, P., Mazhitova, G., and Zimov, S.: Soil organic carbon pools in the northern circumpolar permafrost region, *Global biogeochemical cycles*, 23, 2009.
- 645 van Genuchten, M. T.: A Closed-form Equation for Predicting the Hydraulic Conductivity of Unsaturated Soils¹, *Soil Science Society of America Journal*, 44, 892–898, 1980.
- Walvoord, M. A. and Kurylyk, B. L.: Hydrologic impacts of thawing permafrost—A review, *Vadose Zone Journal*, 15, 2016.
- Walvoord, M. A. and Striegl, R. G.: Increased groundwater to stream discharge from permafrost thawing in the Yukon River basin: Potential impacts on lateral export of carbon and nitrogen, *Geophysical Research Letters*, 34, 2007.

- 650 Walvoord, M. A., Voss, C. I., and Wellman, T. P.: Influence of permafrost distribution on groundwater flow in the context of climate-driven permafrost thaw: Example from Yukon Flats Basin, Alaska, United States, *Water Resources Research*, 48, 2012.
- Wang, C., Wang, Z., Kong, Y., Zhang, F., Yang, K., and Zhang, T.: Most of the Northern Hemisphere Permafrost Remains under Climate Change, *Scientific reports*, 9, 3295, 2019.
- Wang, W., Rinke, A., Moore, J. C., Cui, X., Ji, D., Li, Q., Zhang, N., Wang, C., Zhang, S., Lawrence, D. M., McGuire, A. D., Zhang, W.,
655 Delire, C., Koven, C., Saito, K., MacDougall, A., Burke, E., and Decharme, B.: Diagnostic and model dependent uncertainty of simulated Tibetan permafrost area, *The Cryosphere*, 10, 287–306, 2016.
- Wellman, T. P., Voss, C. I., and Walvoord, M. A.: Impacts of climate, lake size, and supra- and sub-permafrost groundwater flow on lake-talik evolution, Yukon Flats, Alaska (USA), *Hydrogeology Journal*, 21, 281–298, 2013.
- Westermann, S., Langer, M., Boike, J., Heikenfeld, M., Peter, M., Etzelmüller, B., and Krinner, G.: Simulating the thermal regime and thaw
660 processes of ice-rich permafrost ground with the land-surface model CryoGrid 3, *Geoscientific Model Development*, 9, 523–546, 2016.
- Wilson, C. and Altmann, G.: Digital Elevation Model, 0.25 m, Barrow Environmental Observatory, Alaska, 2013. Next Generation Ecosystem Experiments Arctic Data Collection, Oak Ridge National Laboratory, U.S. Department of Energy, Oak Ridge, Tennessee, USA. Dataset accessed on July 2019 at <https://doi.org/10.5440/1224720>, 2017.
- Wu, Q. and Zhang, T.: Recent permafrost warming on the Qinghai-Tibetan Plateau, *Journal of Geophysical Research: Atmospheres*, 113,
665 2008.
- Yang, M., Nelson, F. E., Shiklomanov, N. I., Guo, D., and Wan, G.: Permafrost degradation and its environmental effects on the Tibetan Plateau: A review of recent research, *Earth-Science Reviews*, 103, 31–44, 2010.
- Yi, Y., Kimball, J. S., Chen, R. H., Moghaddam, M., and Miller, C. E.: Sensitivity of active-layer freezing process to snow cover in Arctic Alaska, *The Cryosphere*, 13, 197, 2019.
- 670 Young-Robertson, J. M., Raz-Yaseef, N., Cohen, L. R., Newman, B., Rahn, T., Sloan, V., Wilson, C., and Wullschleger, S. D.: Evaporation dominates evapotranspiration on Alaska's Arctic Coastal Plain, *Arctic, Antarctic, and Alpine Research*, 50, e1435 931, 2018.