

Interactive comment on “Retrieving monthly and interannual pH_T on the East China Sea shelf using an artificial neural network: ANN- pH_T -v1” by Xiaoshuang Li et al.

Xiaoshuang Li et al.

18717822550@163.com

Received and published: 17 June 2020

The comment was uploaded in the form of a supplement

Please also note the supplement to this comment:

<https://www.geosci-model-dev-discuss.net/gmd-2019-236/gmd-2019-236-AC1-supplement.pdf>

Interactive comment on Geosci. Model Dev. Discuss., <https://doi.org/10.5194/gmd-2019-236>, 2019.

C1

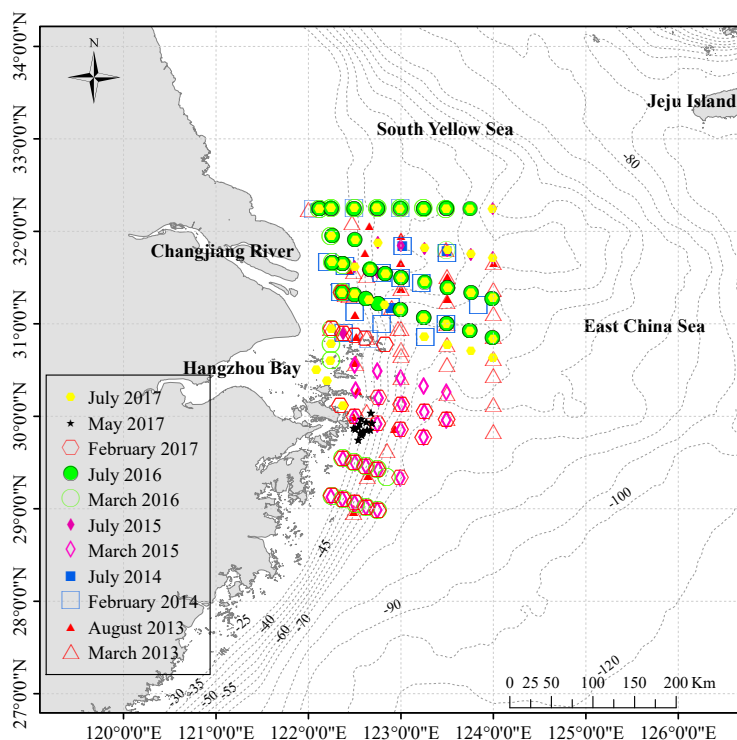


Fig. 1. Figure 1 (revised): Sampling stations during 11 cruises (as confirmatory dataset) from 2013 to 2017 on the East China Sea shelf.

C2

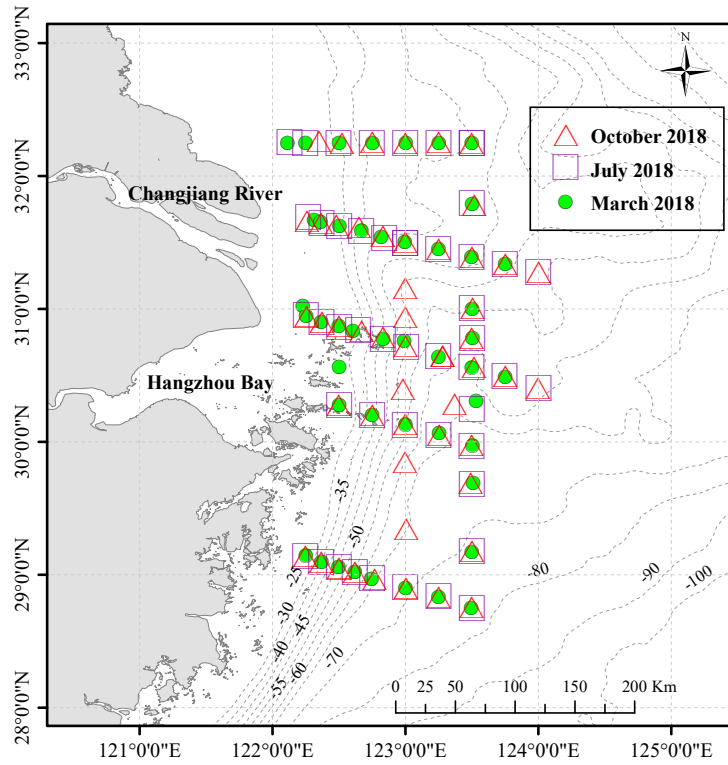


Fig. 2. Figure 2 (revised): Sampling stations for three cruises (as exploratory dataset) used to extend the utility of the ANN model. The green circles represent March 2018, the purple squares represent July