

Answer to the reviewer:

The editor told us that, if accepted, the manuscript will undergo professional review in the copy-editing process. This should help improve the sentence structure and readability of the manuscript. Also, the manuscript has been reviewed by the second author (native English speaker).

We answered the reviewer's comments in the manuscript and applied all the changes. A tracked version is uploaded.

Evaluation of three new surface irrigation parameterizations in the WRF-ARW v3.8.1 model: the Po Valley (Italy) case study

Arianna Valmassoi^{1,2}, Jimmy Dudhia², Silvana Di Sabatino³, and Francesco Pilla¹

¹School of Architecture, Planning and Environmental Policy, University College Dublin, UCD Richview, Dublin, Ireland

²National Center for Atmospheric Research, Boulder, Colorado, United States

³Department of Physics and Astronomy, University of Bologna, Bologna, Italy

Correspondence: Arianna Valmassoi (arianna.valmassoi@ucdconnect.ie)

Abstract. Irrigation is a method of land management that can affect the local climate. Recent literature shows that it affects mostly the near-surface variables and it is associated with an irrigation cooling effect. However, there is no common parameterization that also accounts for a realistic water amount, and this factor could ~~be ascribed a one cause of~~ ascribe one cause to the different impacts found in previous studies. This work aims to introduce three new surface irrigation parameterizations within the WRF-ARW model (V3.8.1) that consider different evaporative processes. The parameterizations are tested on one of the regions where global studies disagree on the signal of irrigation: the Mediterranean area, and in particular the Po Valley. Three sets of experiments are performed using the same irrigation water amount of 5.7 mm/d, derived from Eurostat data. Two complementary validations are performed for July 2015: monthly mean, minimum and maximum temperature with ground stations, and potential evapotranspiration with the MODIS product. All tests show that for both mean and maximum temperature, as well as potential evapotranspiration, simulated fields approximate observation-based values better when using the irrigation parameterizations. This study addresses the sensitivity of the results to the parameterizations' human-decision assumptions: start time, length and frequency. The main impact of irrigation on surface variables such as soil moisture is due to the parameterization choice itself affecting evaporation, rather than the timing. Moreover, on average, the atmosphere and soil variables are not very sensitive to the parameterizations assumptions for realistic timing and length.

1 Introduction

Irrigation has a crucial role in increasing food production: while less than 20% of cultivated land is irrigated, it accounts for 40% of the global agricultural output (Bin Abdullah, 2006; Siebert and Döll, 2010). Irrigation is also responsible of 70% of the global water withdrawal and 80-90% of the consumption (Jägermeyr et al., 2015). In the context of increase in population and reaching sustainable living, food production must increase to both sustain the current levels and ensure a fair distribution (Bin Abdullah, 2006). However, only expanding the arable land is an unrealistic solution as the loss rate to urbanization, salinization and desertification is already faster than the addition rate (Nair et al., 2013). Moreover, in the context of the rapidly changing climate, a shift in productions and cultivars has been already observed throughout the world (IPCC, 2014; Wada et al., 2013; Lobell et al., 2008b; Zampieri et al., 2019, e.g). Anthropogenic influence on local climate is not only related to

25 greenhouse emissions or changes in land cover, but also to land management practices. The practice that has the largest impact is irrigation (Kueppers et al., 2007; Sacks et al., 2009; Wei et al., 2013; Cook et al., 2015). This is extensively used in semi-arid regions (Sridhar, 2013), such as the Mediterranean region (Giorgi and Lionello, 2008), and particularly during the summer growing period when possible.

Recent literature shows that irrigation mostly affects near-surface atmospheric parameters, such as air temperature (Kueppers et al., 2007; Lobell et al., 2008a; Boucher et al., 2004; Sacks et al., 2009; Aegerter et al., 2017; Ozdogan et al., 2009; Sorooshian et al., 2014; Guimberteau et al., 2012, e.g.). The majority of the studies found that irrigation has a local cooling effect, between 0.05 K and 8 K, which does not clearly impact the global annual scale (Sacks et al., 2009; Boucher et al., 2004; Lobell et al., 2006; Guimberteau et al., 2012). Kueppers et al. (2007), Puma and Cook (2010) and Qian et al. (2013) found that the irrigation signal has a strong seasonal variability, with a maximum impact during the dry seasons of dry regions. However, in some specific regions, such as Southern Europe and India, the response to irrigation is less clear: Boucher et al. (2004) obtain an induced warming and Sacks et al. (2009) a cooling. However, it should be mentioned that a study with a later version (with respect to Sacks et al. (2009)) of the CESM model by Thiery et al. (2017) found that the cooling is predominantly caused by an increase in evaporative fraction, with only a minor influence of reduced net radiation to the surface. This discrepancy in the causes was ascribed to the fact that, in the previous version of the atmospheric model (CAM3), convection was very sensitive to the surface latent heat changes (Thiery et al., 2017). Irrigation's effects go beyond the surface cooling, as it affects the surface energy partition (Cook et al., 2015, e.g.), thus the atmospheric dynamics (Guimberteau et al., 2012; Saeed et al., 2009; Tuinenburg and de Vries, 2017; Douglas et al., 2009; Saeed et al., 2009; Lee et al., 2011), water vapor content (Boucher et al., 2004, e.g.), and finally precipitation (Pielke and Zeng, 1989; Deangelis et al., 2010; Bonfils and Lobell, 2007; Puma and Cook, 2010). Some of the regional studies did not find a significant change in the cloud cover (Kueppers et al., 2007, 2008; Sorooshian et al., 2011; Qian et al., 2013), while others did (Aegerter et al., 2017; Krakauer et al., 2016). In fact, most of the variation is caused by the different surface energy balance partition between sensible and latent heat flux (Seneviratne and Stöckli, 2008) by increasing the supply of soil moisture available (Cook et al., 2010). Kueppers et al. (2007) found an inland irrigation-induced circulation pattern due to the contrast between the relatively cool, moist irrigated areas and adjacent warm, dry natural vegetation. Qian et al. (2013) found an impact of irrigation on the thermodynamic air mass properties, which might increase the probability of shallow cloud formation.

As mentioned, both global and regional modeling studies disagree on the magnitude and spatial pattern of these effects (Harding et al., 2015; Kueppers et al., 2007; Sacks et al., 2009; Lobell et al., 2006). Several studies ascribe the different impacts modeled to both the irrigation modeling (Leng et al., 2017) and/or the amount of water used (Sorooshian et al., 2011; Wei et al., 2013; Sacks et al., 2009; Lobell et al., 2009). The parameterizations vary depending on the study goal and model land surface process representation, but can be divided into: (i) irrigation as column soil moisture change, (ii) surface application. The first group includes the studies based on Kueppers et al. (2007) and Qian et al. (2013), where the soil is maintained at the saturation point during the growing season. Also Lobell et al. (2008a) keep the soil moisture at field capacity for the whole irrigated simulation period, while Tuinenburg and de Vries (2017) keeps it at 90%. Both Sorooshian et al. (2011) and Aegerter et al. (2017) do not saturate the soil column, but use a certain percentage of the field capacity of the root-zone, respectively ~~90-25~~25-90%

60 (depending on the cultivar) and 80% (sprinkler scheme). Thiery et al. (2017) uses the CLM irrigation scheme from Oleson et al. (2013), which applies water to the soil to a specified depth until it reaches the target value (for more information refer to the two studies). The second group ~~group~~ includes Kioutsioukis et al. (2016), where the irrigation is the amount of water requested by the difference between evapotranspiration and precipitation, with no information about timing. Also in Sacks et al. (2009) and Cook et al. (2010) the irrigation water is applied to the surface directly, thus it is an input to the land surface

65 model, which then partitions it between evapotranspiration and runoff. Another method by Aegerter et al. (2017) (flood) applies water, without specifying how at the surface, until the top layer is saturated for 30 minutes. While all these different ways to parameterize irrigation might be representative under the proper assumptions, none is yet implemented in the more widely used regional models, such as WRF. Most importantly, the schemes mentioned do not account explicitly for irrigation water amount as an input, and none of the studies described determined a posteriori the water used, so that it's possible to compare

70 it with realistic estimations. It should be mentioned that CESM (in the CLM component), allows calibrating ~~the F-parameter to matching one parameter to match~~ empirically the annual irrigation amount to the observed gross irrigation water usage for a specific period (Oleson et al., 2013; Thiery et al., 2017; Leng et al., 2017). However, this irrigation implementation accounts only for evaporation from the soil, as it is applied by increasing the soil moisture. Leng et al. (2017) point out that irrigation amount and its parameterization are crucial to assess, understand and quantify the irrigation signal at the regional scale. Most of

75 the global study irrigation schemes are within a closed hydrological cycle, which means that the water is extracted from other components simulated within the model (de Vrese and Hagemann, 2018; Oleson et al., 2013; Leng et al., 2017; Cook et al., 2010, e.g.). However, this is not true for the limited area models (Kueppers et al., 2007; Lawston et al., 2015; Aegerter et al., 2017, e.g.). The main reason could be that regional models (and some of the GCMs) often do not have a complex hydrological model within the land surface scheme, and rarely include any groundwater process.

80 This study aims to provide a parameterization methodology for irrigation within a limited area model which considers different evaporation processes. This parameterization allows a choice for timing parameters to account for different regions' irrigation management. In particular, we focus on one of the aforementioned regions where global circulation models have an uncertain irrigation impact: Southern Europe, the Mediterranean area. Irrigation methods and water used in the Mediterranean region depend on several factors such as cultivar type, climatic conditions and also water availability (Daccache et al., 2014). Only

85 one sub region of the area is chosen due to the different conditions: northern Italy and in particular the Po Valley (shown later in Fig.3). In this area, the majority of the water used to irrigate comes from surface water, the percentage varies depending on the source from 71% (Fader et al. (2016)) to 95% (Ministero delle Politiche agricole alimentari e forestali (2009)). The remaining water is extracted from groundwater sources. Different methods are employed to irrigate the cultivars and for historical reasons the most common one used is the "channel method": 52% of overall methods (Ministero delle Politiche agricole alimentari e

90 forestali, 2009) or 61% (Fader et al., 2016). This method is common in this area due to its double function of irrigation and reclaiming. In fact, water is distributed by gravity-fed open channels and flows directly to the soil via siphons or gated valves into furrows, basins or border strips (Van Alfen, 2014). The same channels are used to drain excess water when necessary. The second most common method is irrigation through "sprinklers", both pivot and rain-like (Ministero delle Politiche agricole alimentari e forestali, 2009), for which the percentage varies from 24 to 25% depending on the source. Fader et al. (2016)

95 includes also the “drip method”, with a usage of 14% of the total, which is not included in the report from the Italian Ministry of Agriculture and Forest. Most of the water extraction for irrigation does not happen directly from the Po River, but from the secondary rivers within the same basin (Ministero delle Politiche agricole alimentari e forestali, 2009).

This work continues from previous studies’ considerations of the impact of irrigation during dry growing seasons and the concerns of common irrigation parameterization methods, which have tuning parameters. Firstly here, irrigation parameterizations
100 are developed for the widely-used Weather Research and Forecasting (WRF) model. The parameterizations are then tested separately with the aforementioned irrigation methods currently deployed in the region constraining the water use. Consequently, the impact of irrigation on atmospheric and soil components is discussed for the chosen area and simulation period.

This study does not address any effect of irrigation on the canopy, which is one of the main phenological impacts. In fact, irrigation increases the Leaf Area Index, especially during stress period, allowing high values despite the lack of precipitation
105 (Aegerter et al., 2017), but here we use a seasonally varying vegetation-type based Leaf Area Index from the land-surface model.

2 Irrigation Parameterization Development

Irrigation processes are complex since they involve both a human decision component and physical forcing. The work here aims to develop and implement an approach that allows the model to account for both the human management dimension and the
110 physical response to the forcing. As irrigation method definitions differ when different geographical areas are considered (Leng et al., 2017), the study here will characterize the different parameterizations by their water loss. This can occur during both the transport system and the application. The first part can be related to numerical weather prediction models only when the transport is performed through open/close channels, which leads to water loss due to evaporation and/or infiltration. To account for such a component, the model must have the capability of representing river processes, which WRF has not. Therefore, only
115 the second component of the efficiency, the water loss in the application, is considered for these parameterizations (similar to Leng et al. (2017)). As previous studies pointed out, depending on the irrigation techniques different physical processes have to be accounted for (Bavi et al., 2009; Uddin et al., 2010; Brouwer et al., 1990). For example, the sprinkler system loses water due to droplet evaporation and drift, as well as vegetation interception (Uddin et al., 2010; Brouwer et al., 1990). However, depending on the geographical area the techniques themselves vary (Leng et al., 2017). In fact, for some regions sprinklers
120 are associated with systems that apply the water right above the canopy, so the water loss due droplet evaporation is minimal. Other regions’ most used sprinkler system may be the centre-pivot, which might need to consider droplet processes if the irrigated field radius is big enough. Therefore, the parameterizations are defined based on the processes considered to account for different regional interpretations. Specific names are used for simplicity to differentiate the schemes within the model itself and for testing. However, they are not necessarily intended as resembling techniques used in real cases.

125 The methods presented in the next paragraphs consider an increasing amount of evaporation processes after the water leaves the irrigation system. In particular, the main process considered are represented in the scheme in Fig. 1. In this framework, it should be noted that the water is introduced from a source that is considered not connected to the hydrological system. While

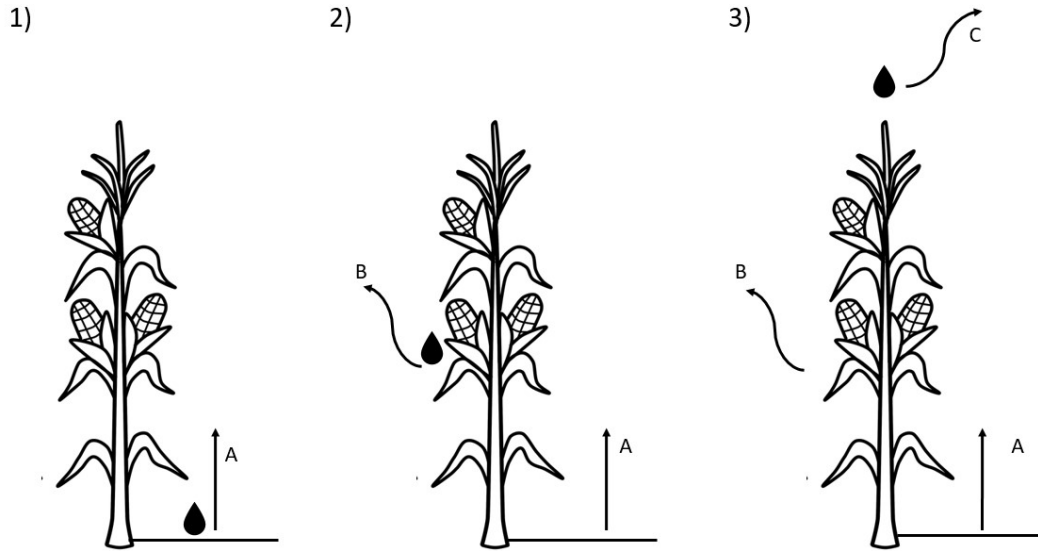


Figure 1. Irrigation schemes (1-3) with increasing evaporative processes considered (A-C): A is the evaporation from the water at the soil level, B is the canopy interception and C is the drop evaporation and drift. This framework accounts only for surface water application, and not sub-surface.

the withdrawal source was found to have a key role from a theoretical perspective (Leng et al., 2017), WRF was not run with a hydrological component.

130 The implementation of the schemes within the WRF model are described in detail in the following part. The naming convention resembles the actual techniques for Opt.1 and 3, respectively CHANNEL and SPRINKLER. To avoid misrepresentation with Opt.2, the naming is chosen to recall the specifics as **DRip** on leaves as **Precipitation** or **DRIP**.

2.1 Option 1: CHANNEL

This method accounts only for evaporation from the soil and water at the surface (process A of Fig. 1), and the equations
135 describing it are defined by the chosen land surface model. The irrigation water is added in the surface rainfall variable, and it is given to the land model as an input parameter. Therefore, this modification does not affect the atmospheric and vegetation parameterizations and equations directly, but only indirectly.

For simplicity, the water used for the irrigation is defined, from an input, as an average daily amount expressed in millimeters (*irr_daily_amount*: V_I in mm/d, which is then converted to mm/s). Moreover, irrigation is set to start at the UTC-time defined
140 from *irr_start_hour* and it is partitioned equally during the consecutive *irr_num_hours*-hours (h_I , converted in seconds). To

conform with precipitation, W_I [mm/s] is expressed as:

$$W_I = \frac{V_I}{h_I} T_I \quad (1)$$

The obtained amount of water W_I is then integrated in the model timestep. T_I is the irrigation interval, expressed as absolute number of days, which accounts for non-daily cases (see Sect. 2.5). This variable is used to compensate for the water quantity during the period when the irrigation method is not applied. This is the easiest way to have a fixed total amount of water for a simulation, which considers different irrigation frequencies. When the model time is in the irrigation interval defined by the start hour, h_I and T_I , W_I is constant and defined as Eq. 1. Outside this interval, W_I is set to zero. A start and end day for irrigation can be defined using the Julian day calendar representation.

The evaporation processes that irrigation water undergoes are defined only by the land surface scheme chosen. There is no canopy interception in this method, therefore the irrigation is not included in the canopy water balance.

150 2.2 Option 2 : DRIP

This representation allows also for the water interception by the canopy and the leaves (process B in Fig. 1). In particular, it considers the water as applied right above the canopy. Once on the canopy, the water can undergo evaporation from the leaves and/or drip to the ground. The specific processes included in the representation of water intercepted by the canopy depends on the land surface scheme itself.

155 This scheme uses the same approach to include irrigation, i.e. via the surface precipitation, as the previous option. However, differently from the previous one, the water undergoes all rain processes related to canopy water balances. For example, if the land surface scheme allows a partition of the rain between interception and dripping, Option 2 will include the interception, but Option 1 will not.

2.3 Option 3: SPRINKLER

160 This option includes the droplet evaporation and fall processes (process C in Fig. 1), which in WRF are described in the microphysics schemes. Here, the irrigation is considered as water sprayed into the lowest part of the atmosphere, namely the first full model level above the ground. The specific processes that the irrigated water undergoes in the microphysics depend on the choice of the scheme itself. However, all include the evaporation of the rain droplets, as well as advection and fallout. This method assumes a static input of irrigated water directly into the rain water mixing ratio (a field that is updated in all schemes) as mass within the volume-grid point. This avoids the need for any assumptions such as the falling speed or droplet size distribution. Therefore, the new rain water mixing ratio (Q_r [kg/kg]) includes the irrigation in the lowest model layer as:

$$Q_r = Q_r + Q_I \quad (2)$$

The total grid point mass rate of water (m_I [kg/m³.s]) added to the lowest mass level (Δz_{ks} [m]), per cubic meter, is:

$$m_I = \frac{W_I}{\Delta z_{ks}} \quad (3)$$

where, W_I has already been defined in Eq. 1. If Eq.3 is divided by the lowest mass level air density ($\rho(t)_{i,j,ks}$ mass per cubic meter), it leads to the irrigation mixing ratio (Q_I , in [$\frac{kg}{kg \cdot s}$]):

$$Q_I(t)_{i,j,ks} = \frac{W_I}{\Delta z_{ks} \rho(t)_{i,j,ks}} \quad (4)$$

170 This value obtained is integrated on the microphysics timestep, so it becomes kg/kg, before adding it to the rain mixing ratio. With this option, the microphysics scheme calculates the evaporation processes that irrigation water drops undergo exactly the same as rain droplets. After this, the irrigation water enters the model workflow as part of the microphysics precipitation field. Therefore, it is subject to the evaporation processes from canopy interception (process B) and the soil (process A) as they are described in the chosen schemes.

175 **2.4 Irrigation Mask Field**

The FAO's AQUASTAT database (Siebert et al., 2013) is used to increase the precision of where the irrigation takes place. This global gridded dataset combines national level census data of agricultural water usage for areas equipped for irrigation, with a resolution of 0.0833° (around 9.24 km at mid latitudes). The dataset is included in the "geogrid" WPS preprocessing as an optional field, giving the percentage of irrigated land within the volume grid cell. This allows the field to be interpolated
180 consistently with all the other geographical ones to the chosen grid resolution. The water applied for irrigation, as described in the previous methods, is weighted by the percentage of irrigated land within the grid point.

2.5 Irrigation Frequency Greater than Daily

As previously mentioned, the irrigation interval can be different than daily. This choice leads to a different behavior than having a sub-grid variability of irrigation, which would result in a lesser water amount used per grid point. In fact, it allows
185 investigation of the transition of the soil between intense irrigation states and days without any.

We can define two regimes accordingly to the interval: synchronous or not synchronous. In the case of the synchronous irrigation, the chosen method is activated for the whole domain with the timing chosen by the combination of T_I , *irr_start_hour*, *irr_num_hours*, and *irr_start_julianday*. In fact, the active day has to be a multiple of T_I counting from the irrigation starting day. In the case of non-synchronous irrigation, the grid cells have still same interval (T_I) but different phases. This allows
190 considering that, with a multi-daily interval, the whole area might not be irrigated at the same time, but on different days within the period. This leads to the possibility of having different irrigation spatial patterns, here called activation field, which is a static random field. The Fortran RANDOM_SEED function is used to create a repeatable random array that is given to calculate the activation field with the RANDOM_NUMBER Fortran function. However, this option does not ensure a reproducibility of the random field across different compilers. An additional option, reproducible across compilers, is given to create
195 a pseudo-random field as a combination of invariant fields.

3 Methods

3.1 Model Settings

The numerical weather prediction model used is the non-hydrostatic Weather Research and Forecasting (WRF) model V3.8.1 (Skamarock et al., 2008). In particular, the Advanced Research WRF (ARW, or WRF-ARW) dynamical solver it is used for this study (Skamarock et al., 2008), hereafter when referring to the model used it is implied that it is WRF with the ARW solver. In the study, WRF is used to test the parameterizations first for a 16-day period, and then for a longer one. Therefore, it is important that the domain is correctly forced by the boundary conditions in order to have a long continuous run. The forcing by the boundaries is used to keep the model on the right path where the domain of interest is sufficiently close to the outer domain boundary, so the non-linearities intrinsic in the fluid dynamics and physics are constrained and the model does not diverge much from analyses.

The initial and boundary conditions for atmosphere and soil are chosen from different model products. ERA-Interim is used for the atmosphere because it is a state of the art of atmospheric reanalysis. In particular, note that ERA-interim is an ECMWF global atmospheric multi-decade reanalysis product which uses a 6 hours 4D-Var data assimilation system with both ground and upper atmosphere data sources (Dee et al., 2011). ERA-Interim has a spatial resolution of approximately 80 km (around 0.75 degrees; it is a T255 spectral grid) on 60 vertical levels from the surface up to 0.1 hPa (Dee et al., 2011). This allows nesting directly from the boundary conditions to a 15 km resolution domain without too much disparity in resolution. The GFS 0.25° product (Gleckler et al., 2015) is used for the soil initial conditions because of its similarity to WRF's Noah LSM in the parameterization and soil level discretization (Ek, 2003). This allows a more consistent initial condition for the soil layer temperatures and moisture.

Moreover, the MODIS 15 arc-second (around 450 meters resolution) dataset is used for the land-category definition in the studied area. This is the most accurate dataset available for this region. As introduced in previous studies, WRF has the capability to nest multiple domains in the same run, reducing the total computational time and improving local climate representation. The configuration chosen is centered on the Po Valley, and it is shown on the left of Fig. 2. The outer-most domain has a 15 km resolution and covers part of the northern Mediterranean area. The nested domain, called *D02*, has 3 km resolution and covers part of Italy and the Alps. The inclusion of the Alpine region in the higher resolution domain is meant to improve the complexity of the terrain representation and atmospheric behavior.

Given the above pre-processing choices, the parameterizations used are presented. The RRTMG radiation scheme for both long wave and short wave radiation is used since it is commonly used in this area of interest (Mooney et al., 2013; Stergiou et al., 2017). The Newer Tiedtke cumulus scheme is used for the outer domain that needs a convective parameterization; this parameterization is similar to the ECMWF cumulus scheme operationally used in the model (Zhang and Wang, 2017). This allows us to have a consistent cumulus parameterization with the boundary and initial conditions. The single-moment 6-classes (WSM6) microphysics scheme (Hong et al., 2005) is used here due to its lesser computational cost with respect to others that have the same complexity. As in previous WRF studies, the YSU boundary layer parameterization is also used here (Hong et al., 2006). As mentioned before, the land surface model used for this study is Noah, which is the same model, but different

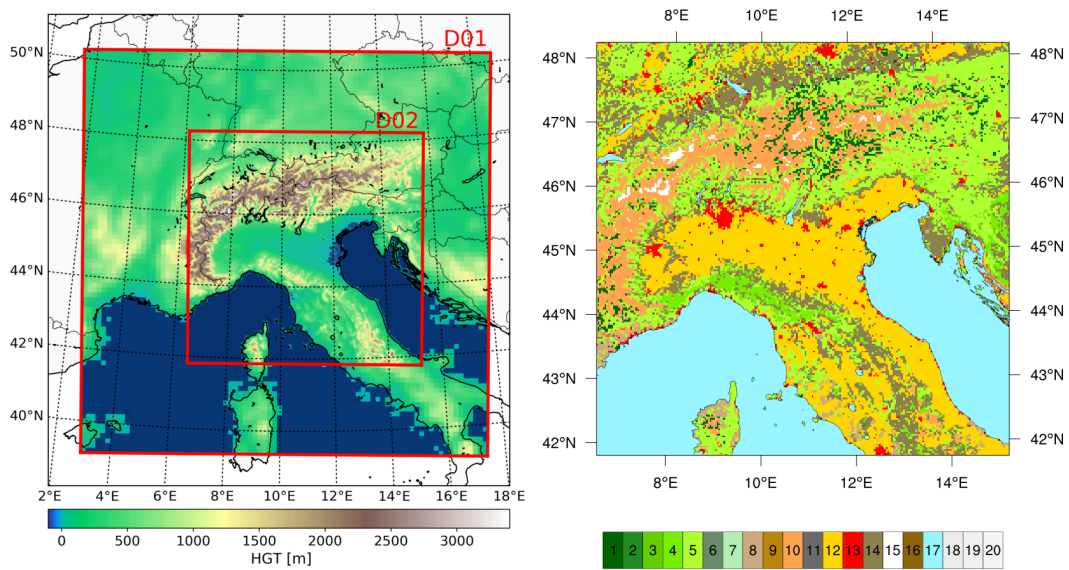


Figure 2. The left figure show both domains: the outer (D01) with 15 km grid resolution, and the inner (D02) with 3 km. The right figure shows the twenty land use categories used: number 1-5 represent different forest type, number 12 croplands and the 13 is built-up (for more information about the specific categories refer to Skamarock et al. (2008)).

230 version of the one used in GFS (Mitchell et al., 2005; Tewari et al., 2004). The timestep used for all scheme is the same as the model timestep, which for the outer domain is 60 seconds and follows the 1:5 ratio for the inner domain, being 12 seconds. The irrigation mask derived from the FAO dataset, for the Po Valley in the high resolution domain (D02) is shown in Fig. 3. As it can be seen, most of the western part of the Po Valley has more than 60% of the land irrigated. The eastern side has lower irrigated percentages.

235 3.2 Test Case: Summer 2015, Po Valley

As mentioned before, the impact of irrigation is greater in drier and warmer seasons, so that the irrigation signal is not masked by precipitation or larger scales systems. Summer 2015 was a particularly dry and warm season, with a potential soil moisture deficit due to winter precipitation anomalies. While June 2015 was an average month with respect to the period 1981-2010, July was exceptional (ARPAE, 2015a, b). In fact, for the eastern part of the Po Valley the temperature maxima were 1.8°C
240 above those measured in July 2003 during the famous heat wave (for more about 2003 heat wave refer to Della-Marta et al. (2007) or García-Herrera et al. (2010)). July 2015 registered negligible precipitation on the eastern side of the Po Valley, and the return period associated with the experienced soil moisture deficit is between 20 and 50 years (ARPAE, 2015b).

~~In the present work the different methods previously described are tested for the chosen period. The methods are related to the techniques defined by Ministero delle Politiche agricole alimentari e forestali (2009) for the chosen area. The channel method in the Po Valley releases the water onto the surface of the field, without interception of the vegetative canopy, so it resembles~~
245

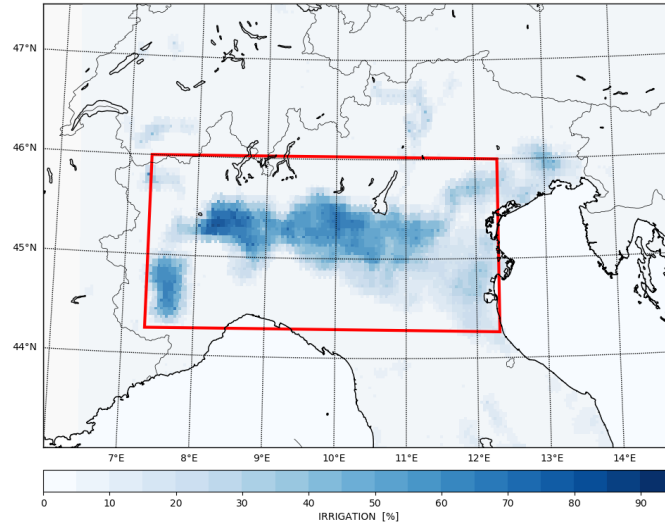


Figure 3. Percentage of irrigated area after regriding for the Po Valley. The red box highlights the averaging area used in this work.

Option 1 (CHANNEL, hereafter). Different irrigation sprinkler systems are used in the region, as both less efficient sprinkler guns are widely deployed as well as the more efficient rain-like type (Ministero delle Politiche agricole alimentari e forestali, 2009). As a matter of naming definition, option 3 that represents the least efficient option is called SPRINKLER (as originally defined in Leng et al. (2017)) later in the study. the lowest full model level is about 10 meters thick in the current model setting. Option 2, defined as the irrigation system with the water dripping over the leaves, is called DRIP¹ hereafter for brevity. The terms here defined are not to be intended as universal technique definition, but as a naming convention within this case study to quickly distinguish their effective characteristics. The irrigation water amount is derived for the area of interest shown in Fig. 3. The total amount of water used is $8.209 \cdot 10^{12}$ liters (Eurostat, 2013), which is distributed on $1.5505 \cdot 10^{10} m^2$. The area considered already accounts for the percentage of irrigated land within the grid-point as defined by FAO. It is assumed that irrigation is applied every day from 15 May to 15 August, for a total period of 92 days, to have a uniform temporal behavior. Therefore, the total amount of irrigation used in the region is $5.7 mm \cdot day^{-1}$. The total water amount used for irrigation through the experiments will be the same, since the water amount is normalized (Eq.1).

Several experiments are performed for different spatial resolutions and temporal periods to address the effect of irrigation on the local climate. Even though the periods might be different, they all include at least part of July 2015. Only runs that have the complete averaging period are included in the validation processes for averaging purposes. All the experiments are summarized in the Table 1. Each experiment is then described in detail below.

¹Remember that it does not resemble the actual drip irrigation method (defined as in (FAO, 1988)) and anyway such a technique is not deployed in this area (Ministero delle Politiche agricole alimentari e forestali, 2009).

Table 1. Table with the experiments used in this paper: the main features of them are summarized here. For further explanations refer to the main body text. “various^a” refers to the various settings that for simplicity reasons are described in Table 2.

Name [Acronym]	simulated period	Resolution [km]	Spin-up [days]	Irrigation settings		
				Start [UTC]	length [hours]	V_I [mm/d]
TR1	1-17 July	15	-	5	3	5.7
TR2	1-17 July	3	-	5	3	5.7
SR0-8	1-31 July	15	-	various ^a	various ^a	5.7
LR1	1 May - 31 July	15	15	5	3	5.7
LR2	1 May - 31 July	3	15	5	3	5.7

3.2.1 Test Run [TR]

This part of the experiment uses a subset of summer 2015, due to the high anomalies registered in the region: from 1 to 17 of July at 00 UTC. The water amount is then distributed every day from 05 UTC (7 AM local time) for 3 hours, only in the inner domain. The irrigation is applied throughout the whole simulation period, without a spin-up time, therefore the start and end day are not relevant.

Such a short period of simulation is used to test the scale dependency of the results. In fact, these settings are applied once to the outer domain (TR1) and once only to the inner domain (TR2). The TR1 is used to test the schemes at the 15 km resolution only, while TR2 has the schemes only in convection-permitting D02 domain.

3.2.2 Sensitivity with Coarse Domain [SR]

This part of the experiment is used to test the dependency of the results to the starting time and irrigation length. The sensitivity study is done with the 15 km domain and for the month of July 2015 due to computational constraints. This ensures a high number of sensitivity members for different irrigation options. Table 2 summarizes the design of 9 different settings that are applied to all three parameterizations. the chosen reference irrigation scenario, called “standard run”, is indicated With the number zero. There is also a control run with no irrigation. Therefore, the sensitivity has a total of 27 tests plus a common control simulation (CTRL SR). The starting time values are divided between early morning and late afternoon; one test is performed also for the middle of the day. More intuitive are the choices to irrigate either earlier in the morning or later in the afternoon: the water loss by evaporation and evapotranspiration is minimized, therefore the plant uptake is maximized. Combination 2 (start at 12 UTC) ensures that the representation of one of the least favorable irrigation conditions is also captured. In fact, during noon time the high temperatures in both soil and atmosphere are favorable to water evaporation. Combinations 3-6 change the length of application, varying the intensity to keep the same total amount. These sensitivity settings are also used to test the non uniform temporal feature of the parameterization implementation, which are highlighted by the second part part of table. In the first of these tests, irrigation is activated every three days (combination number 7 of Tab.2) and the second every seven days (combination number 8). Here, only the random static field approximation

Table 2. Table of number indexes used, e.g. CHAN4 is channel method fourth combination of the table here.

Combination number	starting time [UTC]	length time [hours]	interval [days]	phase
0	5	3	1	0
1	17	3	1	0
2	12	3	1	0
3	5	1	1	0
4	5	5	1	0
5	17	1	1	0
6	17	5	1	0
7	5	3	3	2
8	5	3	7	2

285 is tested since the configuration does not differ much from the pseudo-random one. As previously described, the frequency in days determines the activation field. For clarity both activation fields are shown in Fig. 4. The values represent the number of

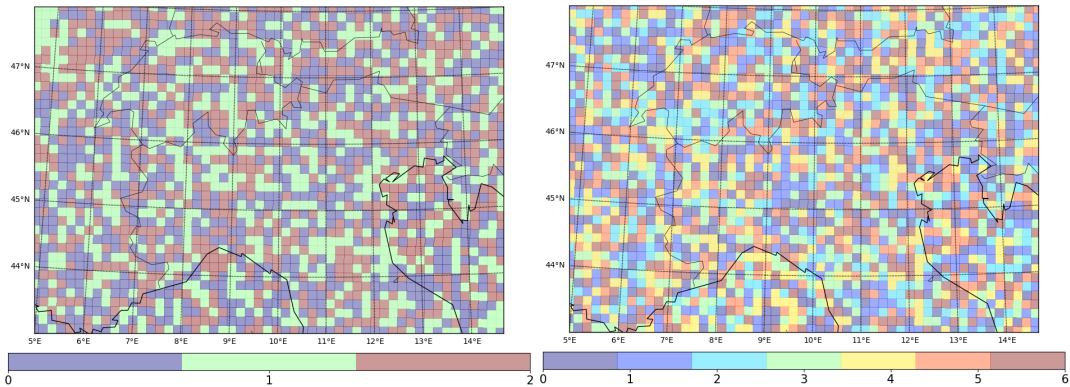


Figure 4. Activation field in days since the start of the sequence counting. Highlight of the Po Valley region.

the day within the sequence repetition in which the irrigation will be activated. For example, if a grid value is zero, it means that irrigation will happen on the first day of the interval between irrigation times.

3.2.3 Long Run [LR]

290 This set of experiments is done to address the longer term influence of the developed irrigation parameters. The period simulated started from 1 May 2015 and end 31 July 2015. This simulation set uses only the moths of June and July for the analysis, as May is considered spin-up. This means that for the control, the soil moisture has a spin-up time of 31 days. However, in the case of the irrigated runs, the first 15 days are without the schemes active, and then 16 days are for irrigation to reach

a new equilibrium. The water amount used is 5.7 mm/day, which is the same as all the other experiments. The long run
295 experiment has the so-called “standard configuration”: every day from 05 UTC for 3 hours, which was also used for the Test
Run. The aforementioned settings are used for both a high resolution simulation (LR2) and a coarse one (LR1), for all three
parameterizations and a control run.

In this study, this experimental setting is used only to validate the parameterizations. More in depth analysis of the high
resolution results is out of the scope of this paper.

300 4 Validation

The validation of the parameterizations included in WRF consists of using surface station 2-meter temperatures and satellite po-
tential evapotranspiration. The stations’ data are from the regional weather services (ARPA, from the regions Emilia-Romagna,
Lombardia, Piemonte) and have an hourly frequency. From all the available stations, only the non-urban ones are used. The
potential evapotranspiration is a product of the Moderate Resolution Imaging Spectroradiometer (MODIS) Terra dataset (Run-
305 ning et al., 2017). Both validation are performed over monthly data due to the difference frequency in the original data, as well
as the lack of diurnal information about irrigation.

4.1 Surface Network of Monitoring Weather Stations

Previous studies reported that irrigation affects the temperature~~and Kueppers et al. (2007) reported, Kueppers et al. (2007) found~~
an impact on the maximum diurnal temperature, but no clear effects on the minimum one. Therefore, this first part of the vali-
310 dation consists of comparing the ~~model output of the~~ high-resolution long run (LR2) model output to the surface data. Of the
three months in the LR2, only the last one is used for the validation: July 2015. As previous studies showed, dry months have
a stronger irrigation signal (Kueppers et al., 2008; Leng et al., 2017). Therefore, the model results ~~will be~~ are affected more
clearly by the parameterizations, and it helps to isolate the signal. ~~Differences are defined as the model results minus the station~~
~~data and are called bias hereafter.~~

315 A bi-linear interpolation is performed using the stations’ coordinates to approximate the model gridded data to their locations.
If in the interpolation the model land use category is not cropland, then the station is not used. This ensures that the model
point results are not influenced by other land use physics, such as urban. Even though this should ensure that all stations and
model points are actually in agricultural fields, the reality of the stations’ location is different. This is especially true for the
Arpa Lombardia stations, where not all are standard WMO or representative of their surrounding environment (e.g. station
320 37, as later explained). Moreover, to ensure that the stations have a sufficient number of data for the monthly average, only
stations with at least 80% of the hourly values are used. This constraint leaves 44 stations out of the 62 downloaded originally.
The mean, median and standard deviation of the biases are calculated to understand the behavior of the biases, defined as the
difference between the model run value for the location and the respective station. The results of this are shown in Tab. 3. Two
percentages are added to the aforementioned statistics indices: the stations with positive bias and the ones with a bias less than
325 $|0.5|^{\circ}C$.

Table 3. Indexes for the monthly biases of the mean T2, the mean of the daily maximum and minimum temperature, for the valid stations: mean (\bar{x}), median (\tilde{x}), standard deviation (σ), percentage of stations with positive bias (β^+) and percentage of stations (β^*) with a bias less than $|0.5|^\circ C$.

	T2					T2 _{max}					T2 _{min}				
	\bar{x}	\tilde{x}	σ	β^+	β^*	\bar{x}	\tilde{x}	σ	β^+	β^*	\bar{x}	\tilde{x}	σ	β^+	β^*
CTRL	0.75	0.50	0.88	82 %	45 %	1.46	1.21	0.94	95 %	14 %	-0.59	-1.11	1.63	27 %	18 %
CHAN	-0.06	-0.22	0.86	39 %	41 %	-0.21	-0.23	0.95	41 %	41 %	-0.34	-0.83	1.46	30 %	18 %
SPRI	-0.20	-0.40	0.87	30 %	41 %	0.11	0.15	0.99	59 %	36 %	-0.52	-1.10	1.56	27 %	18 %
DRIP	-0.19	-0.40	0.87	30 %	43 %	-0.27	-0.20	0.97	43 %	43 %	-0.47	-1.01	1.51	27 %	18 %

In addition to Table 3, the biases are plotted (in Fig. 5, 6 and 7) with a shading of the IRRIGATION field (Fig.3) to spatially visualize the impact of the parameterizations implemented. This allows for visualization of the irrigation pattern along with the bias changes caused by the [parameterizationschemes](#).

The first thing highlighted by Tab.3 is that irrigation affects the biases mostly as concerns the mean and maximum temperature, but not the minimum temperature. This finding agrees with previous works’ results, such as Kueppers et al. (2007). From Tab.3, [where](#) both the mean biases and the percentage of stations with positive bias are reduced significantly. On the other hand, the standard deviation of the biases is not strongly affected. All the methods lead to an over-decrease of the mean 2-meter mean temperature, with more stations having a negative bias than a positive one (β^+), as Fig.5 left. Despite that, the number of

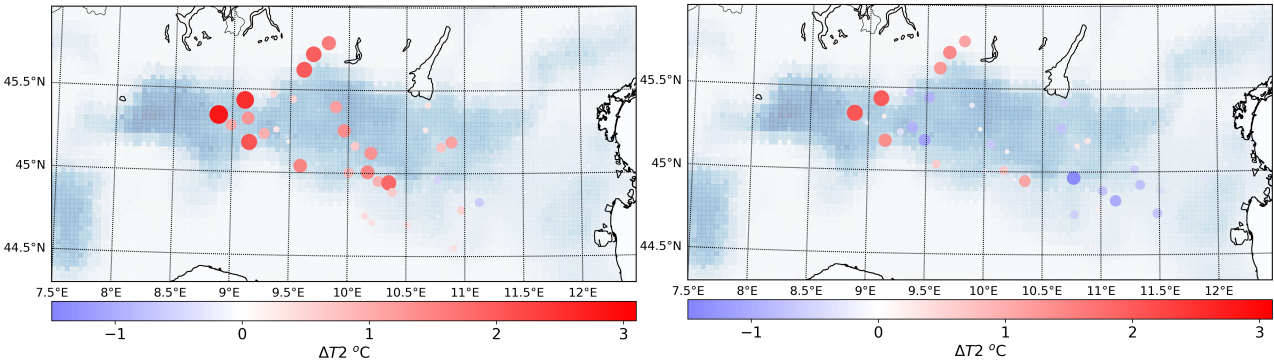


Figure 5. Monthly average for the 2-meter mean temperature differences between the control (left) or channel (Opt.1, right) run and the weather stations at their locations. This is for July 2015 from the 3-month simulation (LR2). Both dot size and color represent the bias, and they are used combined to highlight high values.

stations with a bias between $\pm 0.5^\circ C$ (β^*) decrease only slightly compared to the control run, which agrees with Fig.5. Some stations show a bias, up to $3^\circ C$, that is not strongly affected by the schemes, and they are the ARPA Lombardia stations previously mentioned. For example, the station 37 (Table A1) is located on the bridge above the Ticino river. Therefore, a strong bias is expected since the model does not have a water body in the area. The three stations (number 27,41 and 43 of Table A1) are in an Alpine valley, which can lead to [a different set of model biases issues in the model itself](#), such as the [effect representation](#)

of steep terrain [and the atmospheric dynamics](#). Despite these external issues with the stations, the irrigation parameterization still improves the biases.

Maximum daily temperature is the quantity that shows the best performance improvement. In fact, all indices show a significant improvement. The only exception is the standard deviation which is not affected by the use of the irrigation parameterization. In particular, the control run has 95% of the stations with a positive bias, and only 14% within $\pm 0.5^\circ\text{C}$ (Fig.6 top left). All the

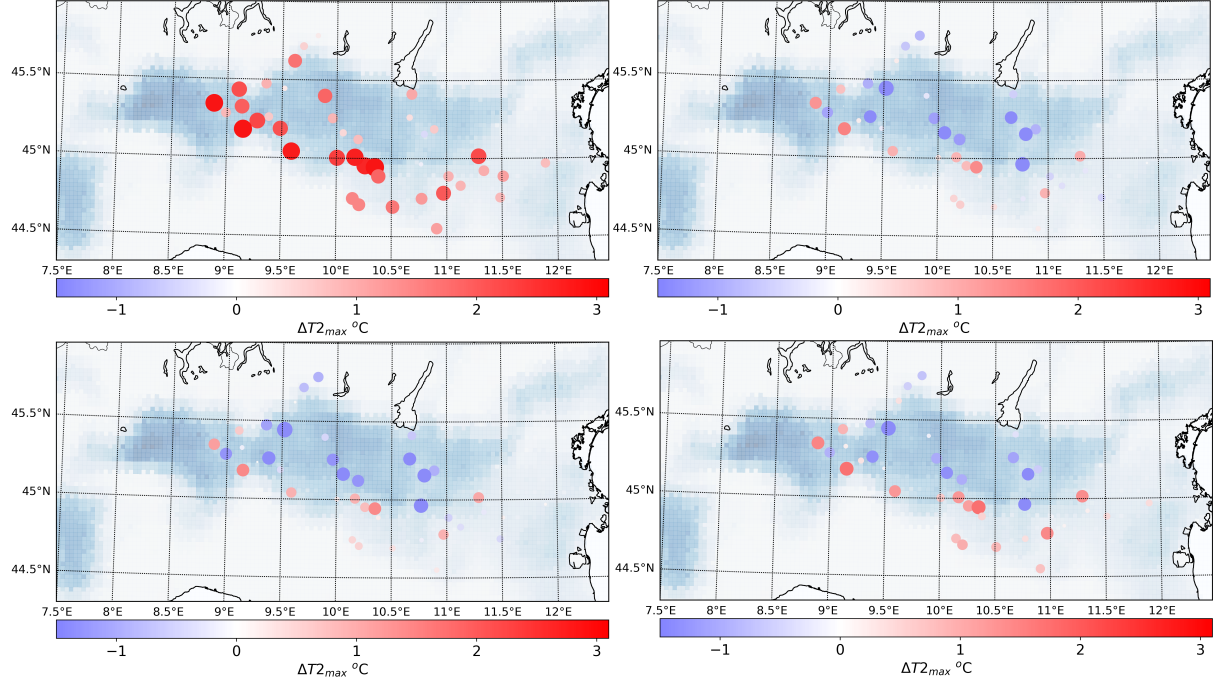


Figure 6. Monthly average for daily maximum 2-meter temperature difference between model run LR2 and the weather stations' location for the control run (top left), CHANNEL (Opt.1, top right), DRIP (Opt.2, bottom left) and SPRINKLER (Opt.3, bottom right)

irrigation parameterizations β^+ and β^* values are closer to more optimal values. Interestingly for the maximum daily temperature, the mean is similar to the medians with the irrigation parameterization, which was not the case for the control run. This implies that it seems to improve the uniformity of the distribution of the biases, even though the irrigation field is not uniform. The CHANNEL and the DRIP parameterizations show similar spatial behaviors in the bias magnitude and distribution. The SPRINKLER scheme keeps more of the positive bias being in general warmer than the other irrigation schemes.

The monthly minimum daily temperature is the quantity least affected by the irrigation scheme. In this case, the statistics indices show almost no variation for the bias distribution due to the irrigation parameterization. In fact, the underestimation (β^+) of the monthly minimum temperature does not change depending on the four runs. On the other hand, the mean and median values slightly improve with the irrigation schemes. The high standard deviation observed is caused by the ARPA Lombardia stations previously discussed, with a positive bias over 3°C in Fig.7 (which are Station number 41,42 Table A1). In particular, the CHANNEL parameterization shows a bigger improvement of the negative biases in the southern part of the region

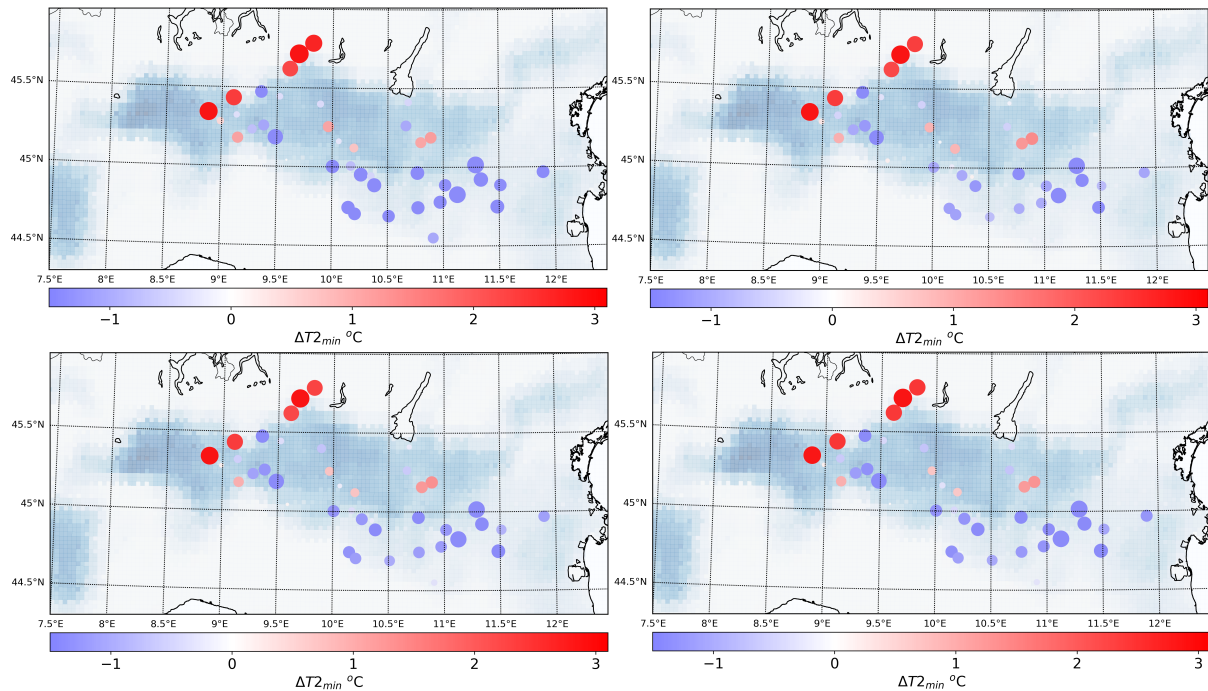


Figure 7. Monthly average for daily minimum 2-meter temperature difference between model run LR2 and the weather stations' location for the control run (top left), CHANNEL (Opt.1, top right), DRIP (Opt.2, bottom left) and SPRINKLER (Opt.3, bottom right)

observed in Fig. 7 (top right). All the schemes do not significantly affect the positive biases in the irrigated area. Moreover, the SPRINKLER and DRIP schemes have a similar impact on the biases (Fig. 7 bottom right and 7 bottom left).

4.2 Potential Evapotranspiration

The potential evapotranspiration can be considered as the evaporative demand from the atmosphere to the surface, as it is the maximum ability to evaporate under the assumption of a well-watered surface (Thornthwaite, 1948). As for satellite data, potential evapotranspiration is an indirect quantity, since it is derived from multiple measurements of satellite channels. Within the MODIS products there is also the evapotranspiration, which is the net effect between the evaporation demand and the availability. This could be a better quantity to estimate the effect of irrigation on the system. However, MODIS evapotranspiration is the result of a daily algorithm that combines both satellite measures and atmospheric models, as well as surface parameter assumptions (Running et al., 2017). Therefore, the assumptions of the evapotranspiration calculation makes the quantity not ideal for validation purposes.

The potential evapotranspiration (PET) from MODIS is an 8-day accumulated product, with a 500 m resolution, which is finer than the 15 km and 3 km resolution used in the model. Therefore, only the accumulated values for the whole irrigated area of the Po Valley are considered to compare such different scales. The potential evapotranspiration is summed for the whole

July 2015 period because of the different temporal resolution between the data. The process is applied to the MODIS data, the
 370 sensitivity run (SR) as well as the long run and the long runs (LR1 and LR2). The results of the process are shown in Fig. 8.
 The accumulated value obtained for the MODIS data is aggregated with the control run of Fig.8 and it is about 243 mm. ~~The~~

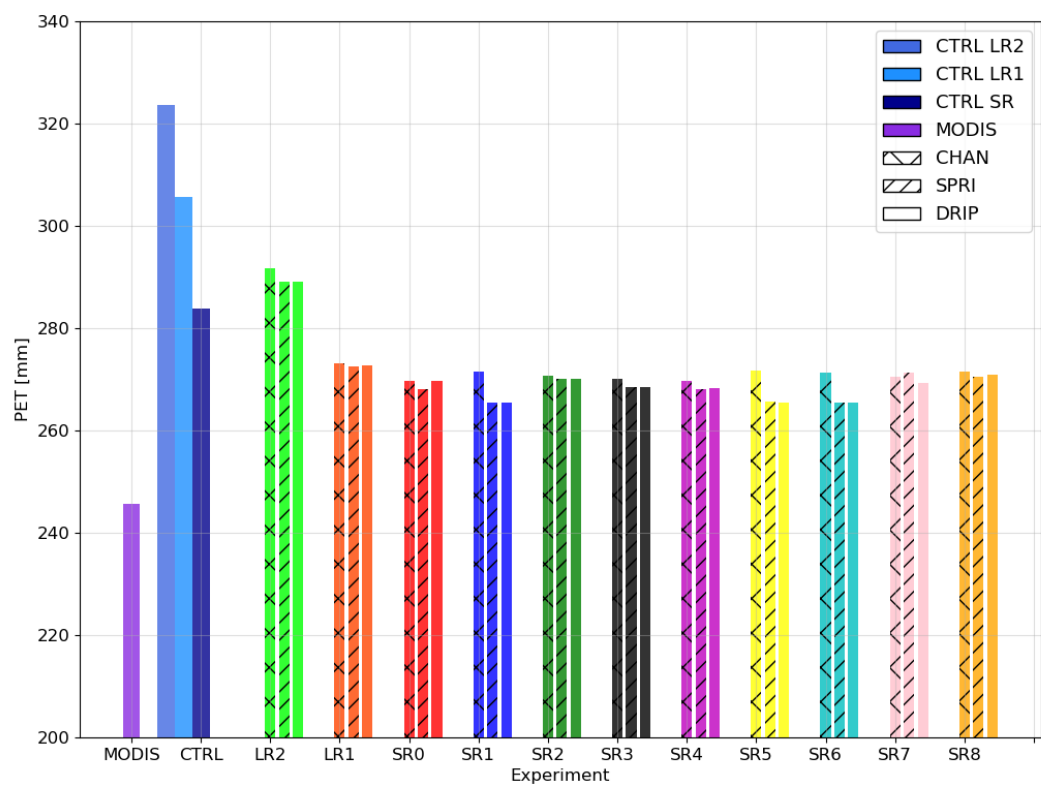


Figure 8. Monthly potential evapotranspiration accumulated for the irrigated area of the Po Valley (Fig.3)

~~measured value,~~ which is from 33% to 17% lower than PET from the control run. All irrigated runs show an improvement of
 the potential evapotranspiration, decreasing the previous bias values to 23% and 12%. The highest improvement is observed
 in the 3-months simulations LR1 and LR2, of which only the last month is used. The potential evapotranspiration in the long
 375 control run (CTRL LR1) is higher than the one in the sensitivity control run (CTRL SR). In the case of the control run, SR
 and LR differ only for the spin-up time, as SR starts on the 1st of July and LR is the three months simulation. Therefore the
 evolution to the equilibrium of variables with time scales longer than few days, such as soil moisture, is longer. Nevertheless,
 the PET values are closer to MODIS in all experiments when the irrigation parameterization is activated. In particular, the
 differences in SR and LR control run PET are not observed anymore in the irrigated case of LR1 and SR0, so the irrigated
 380 runs have less spin-up effect or more quickly reach equilibrium Moreover, the potential evapotranspiration does not seems to
 be affected significantly by the start, length and frequency of irrigation (SR experiments). There is some similarity between

the same starting time, especially considering differences in PET between the schemes when irrigation starts at 17 UTC (case 1, 5 and 6). However, such differences are very small compared to the quantities involved. Focusing on the frequency of the irrigation with the coarse domain, it is clear that it does not have an effect on the potential evapotranspiration. In fact, cases 7 and 8, respectively with frequencies of three and seven days, are similar to the cases SR0 and LR1.

There is no significant difference in the accumulated potential evaporation depending on the scheme used, only that the channel (double hatching in Fig. 8) shows slightly higher values. Nevertheless, all irrigation schemes improve the accumulated potential evapotranspiration.

5 Results and Discussion

5.1 Spatial Influence of Irrigation on Soil Moisture

Irrigation is applied to increase the water available to the plants, therefore in modeling terms it has to influence the soil moisture in the simulation. Here the spatial soil moisture changes induced by the three parameterizations are presented and discussed. Since the irrigation perturbation is applied regularly every day or every several days, and the temporal soil moisture scales usually are longer than that, we expect that some memory is retained. Point-wise differences of the fields are used to assess this quantitatively. This method allows having both temporal and spatial averages of the differences by averaging in the corresponding dimension, without losing the spatial correlation of the introduced perturbation.

Firstly, we compare the soil moisture spatial differences of the long run, LR2, in the last simulated time-step between the irrigated parameterization run and the control one (Fig. 9). All methods show a similar increase in soil moisture with respect

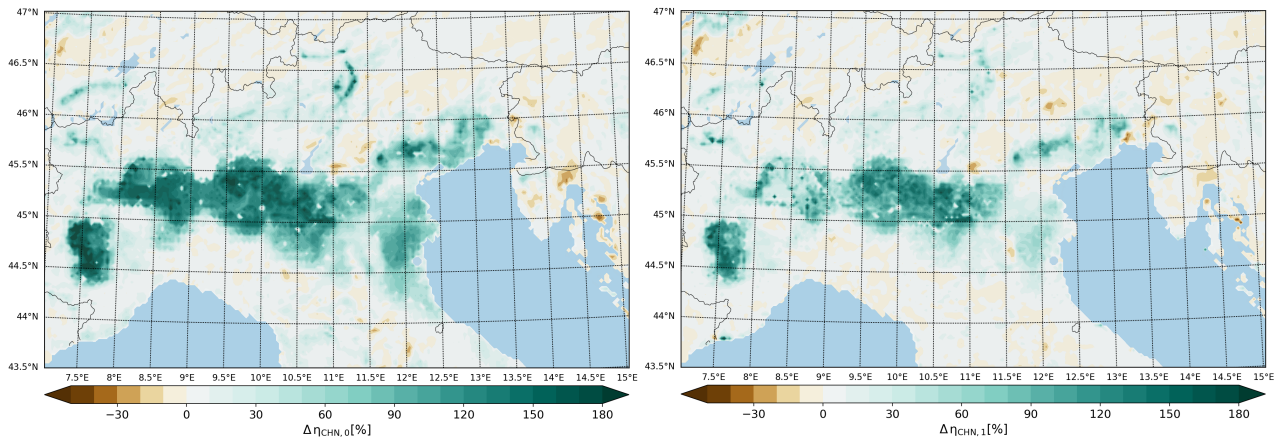


Figure 9. Last model timestep soil moisture percentage changes of the irrigated run (Opt.1, CHAN) with respect to the control (D02) for both the first soil level (left) and the second one (right).

to the control run and a spatial pattern that is clearly related to the irrigation field of Fig. 3. For agricultural purposes, all soil layers are important since the water needs to reach the roots. Therefore, in assessing the spatial impact of soil moisture (η) both

the first and second level are shown, which are respectively 10 and 30 cm thick. In irrigated agriculture, the root zone tends to be more shallow than in the non-irrigated case due the lack of competition between ground and surface water sources (Lv et al., 2010). Therefore, the first two layers are enough to capture the real root zone. As can be seen from Fig. 9 both levels show an increase in soil moisture that is over 110% for the first layer (on the left) and between 40 – 90% for the second one.

405 The different increase rate in soil moisture between the layers is caused by the difference in time scales between infiltration and loss by evaporation and/or surface runoff.

Since the main changes in soil moisture are located within the irrigated zone, most of the time series will be done for a spatial average over that area alone.

5.2 Scale Dependency of Irrigation Parameterization

410 The coarse domain is a more efficient way to run all the possible tests in terms of both computational costs and output storage, due to the high number of sensitivity combinations. However, the main variables must not vary much between different resolutions if influenced by the same irrigation methods, in order to use the coarse domain to run the sensitivity test. Therefore, the three schemes are run for both resolutions in the standard configuration as TR1 and TR2 to test the resolution dependence.

two variables are considered averaging over the irrigated area of both domains: the two meter height temperature (T2) and

415 the soil moisture. While the use of soil moisture as a diagnostic has been previously discussed, the two meter temperature is a common parameter for atmospheric studies. Moreover, from the physical perspective, this variable is influenced by both the ground state and the atmosphere. Therefore, it is an ideal parameter to consider when investigating surface perturbations.

In this part, both the time series (left side of Fig. 10) of the variables and the differences (right side of Fig. 10) between the different scales are shown. The latter are obtained as the differences between the field averages in different domains. So we

420 subtract from the convection permitting domain (D02) the value obtained in the convection parameterized one (D01). The results obtained are shown in the right column of Fig. 10. The control simulation for TR1 and TR2 is added for the soil moisture field as well. When irrigation is activated, the soil does not dry as fast as in the control. The left side of the panel in Fig.10 shows that both variables have a similar behavior, within the spatial variability, in the two different scales. Since soil moisture is strongly affected by irrigation, which is not a spatially uniform field, high standard deviations are expected. This is the

425 reason why the top right figure of Fig. 10 does not show the standard deviation of either the high resolution domain nor the coarse one. In fact, the differences in soil moisture between the resolution is at most 1% of its value, and the spatial standard deviation is around 8%. Therefore, differences in soil moisture due to resolution can be considered negligible. Regarding the temperature, it can be seen that the differences are mostly in the second part of the simulation, i.e. after the 9th of July when there was a weak frontal passage. Most of the differences between the resolutions happen during the nighttime, while daytime

430 is less affected. One reason could be the cumulus scheme activation and its influence on the atmospheric state and dynamics. Nevertheless, the average behavior of the temperature fields are coherent with each other and with the different resolutions. Therefore it is acceptable to use the coarse resolution domain to understand the sensitivity of the parameterizations' timing assumptions, which will be shown in the next section.

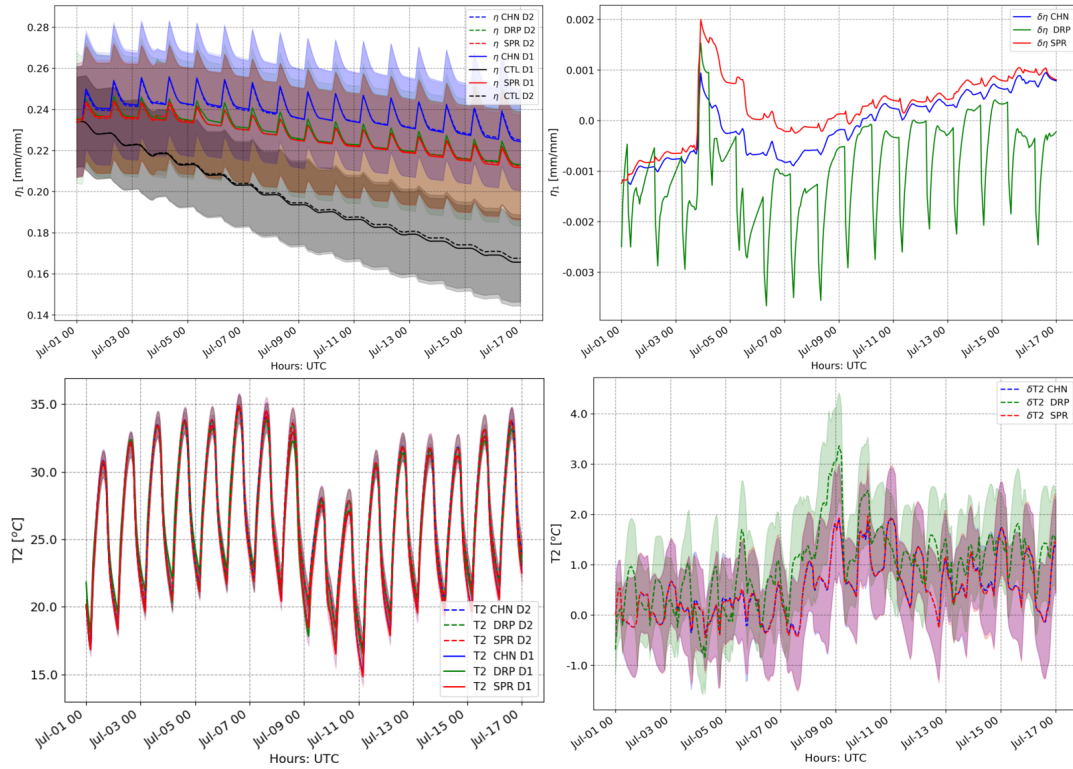


Figure 10. Time series of η (top panel) and T_2 (bottom panel) for both domains and all three parameterizations averaged over the irrigated area, with the spatial standard deviation as shading. The differences in the time series is calculated and plotted respectively in the right side of the panel to highlight the differences between the resolutions. For the right panel, the shading represents the standard deviation of the differences.

5.3 Sensitivity

435 This part of the work discusses the sensitivity of the results to some of the parameterizations' options, such as the irrigation start time and length, as well as the frequency of the irrigation. This shows only the sensitivity run (SR) experimental settings (Table 2). Therefore, the SR nomenclature is dropped for now, so the parameterization and the case can be easily highlighted.

5.3.1 Differences from the Control

440 First of all, the field time series of all the tests are shown in Fig.11 as differences from the control run (which is the non irrigated one) for both T_2 and η . All simulations increase the soil moisture content with respect to the control run. In particular, left side of Fig. 11 highlights how the major differences between the single tests is driven by the scheme type more than the timing. Clearly then, the CHANNEL method (blue lines) is the one that shows the biggest increase in soil moisture, while both SPRINKLER and DRIP do not differ greatly from each other. Therefore, regarding irrigation efficiency, the atmospheric

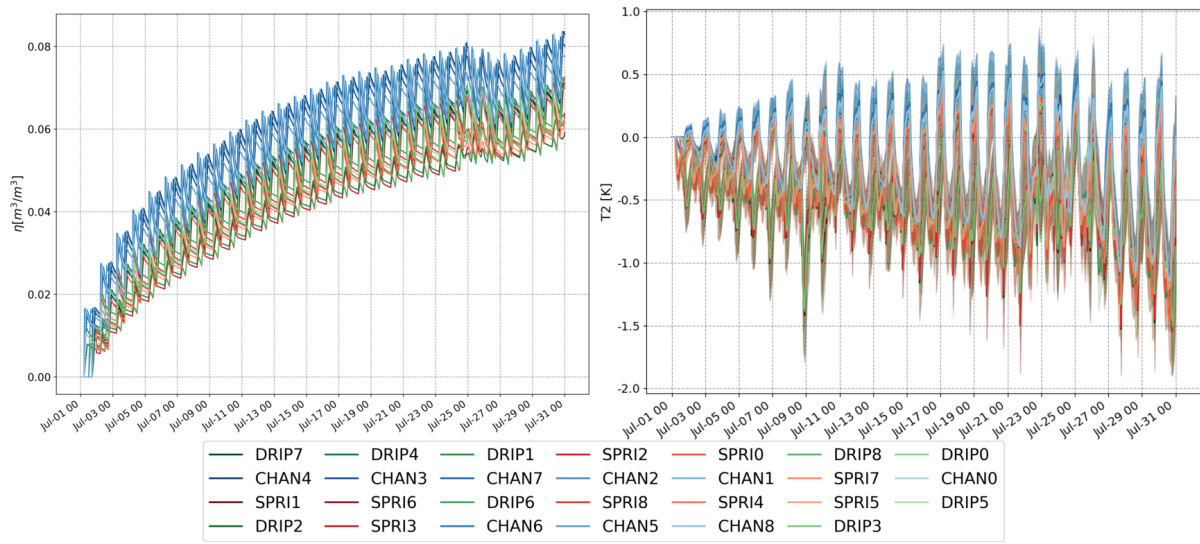


Figure 11. Time series of the differences from the control of all nine sensitivity tests averaged over the irrigated area. Soil moisture on the left and 2-meter temperature on the right. Blue colors shows the CHAN (Opt.1), green the DRIP (Opt.2) and red the SPRI (Opt.3).

evaporation in the SPRINKLER scheme is negligible if compared to the effect of the leaves and canopy interception, but the canopy interception is important in reducing the efficiency meaning that re-evaporation from the canopy provides a noticeable loss.

The effect on two meter temperature by the different assumptions is less evident than for soil moisture. In fact, most of the ΔT_2 time series on the right side of Fig. 11 show a decrease in the mean daytime temperature up to -1.5 K. It is noticeable how the nighttime temperatures of the CHANNEL parameterization are increased up to 0.7 K, while the other two are only up to 0.3 K. The time-series of the daily T_2 maximum (left) and minimum (right), for all run are considered in Fig. 12. The maximum daily T_2 is the quantity that is impacted by irrigation more clearly. For this quantity, all the SR irrigated tests behave very similarly by decreasing it with respect to the control run. The impact of the reduction of the maximum temperature is reduced outside the main heat wave period, namely during the frontal passages of July 9 and 25-27. On the other hand, the minimum temperature seems less impacted by irrigation itself as well as its timing. All the SR tests behave similarly to the control, within the spatial standard deviation. Despite the fact that most of the irrigated SR simulations have higher minimum temperatures than the control, the values are within the standard deviation (shaded area in the plot). A probable reason for the warmer night temperature is the higher soil moisture: the higher η gives the soil a larger thermal inertia since it increases the heat capacity.

In general, irrigation affects clearly the soil moisture and temperatures beyond the diurnal timescale of its application (Fig. 11). With this next part we are going to investigate if the timing itself has an influence beyond the daily application.

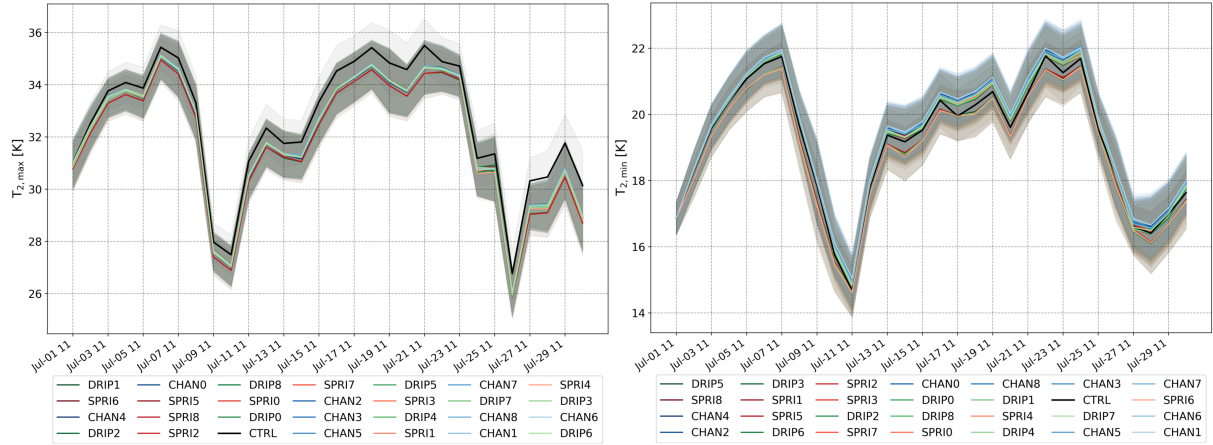


Figure 12. Time series of the daily maximum (left) and minimum (right) T_2 averaged over the irrigated area for all sensitivity tests and the control. Black color shows the CTRL run, blue the CHAN (Opt.1), green the DRIP (Opt.2) and red the SPRI (Opt.3).

5.3.2 Diurnal Cycle

Here the differences are taken with respect to the “standard” run (run 0) and not the control to analyze the effect of the parameterization’s timing options more closely. This allows isolating the effect of the specific choice on the soil and atmospheric variables. Since the effects in most of the tests have a daily frequency, the average diurnal cycle is discussed. Single days are also shown to understand the temporal variability of the perturbation on a daily basis, with the diurnal mean cycle. In this part, in addition to the previously presented T_2 and η , the heat fluxes (SH) and the upward moisture fluxes, as well as the soil temperature, are also included.

Fig.13 (upper panel) shows that soil moisture differences from the standard are influenced by the timing and length of irrigation only regarding the peak location. In Fig. 13 is shown also the time series of the three standard run as well as the control as a reference (lower panel). Firstly, it can be seen in the lower panel how the standard irrigated runs prevent the first layer of the soil from drying out, as happens in the control. While the control run soil moisture decreases from 0.24 to less than 0.16, for the irrigated runs it stays over 0.22 (on average). Also, notice that the CHANNEL parameterization soil moisture is always higher than both the SPRI and DRIP runs.

Despite having different baseline values for the standard simulation, it is possible to see that the maximum in the differences from the standard (Fig. 13 upper panel) accounts only for up to 4% of the total value. Moreover, the maxima in the differences are located according to the different irrigation starting times and lengths. Also, there is no long term differences or multi-day trend since the mean diurnal cycle agrees with the single daily cycles. On the other hand, the multi-day not in-phase irrigation is expected to have a slightly different behavior on a daily basis. Despite the fact that all grid points will be irrigated within the selected period (three days for number 7, and seven days for number 8), the percentage of irrigated land within the points is different. This will lead to having some single days with different diurnal cycle with respect to others, and it will reflect as a

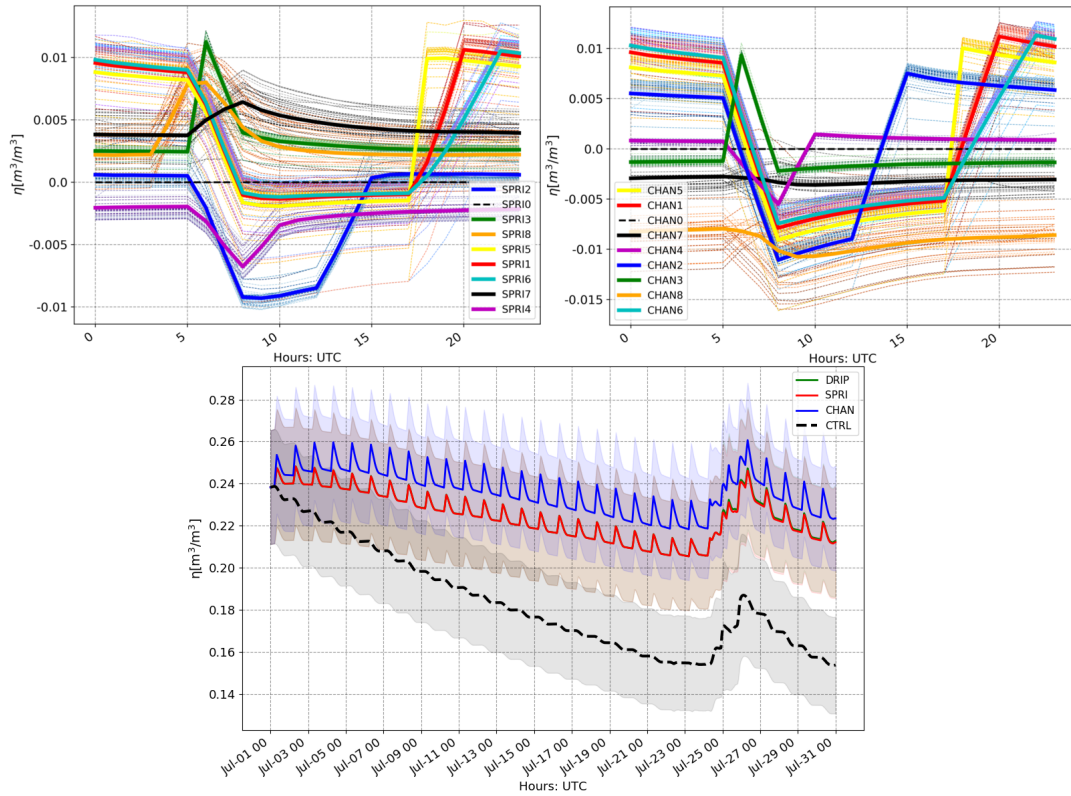


Figure 13. Upper panel: daily cycle of the mean first level soil moisture difference between the test and the standard (run 0) in solid line, the single day differences are the light-dashed lines. Only two out of the three parameterizations are shown since there is no added information. Lower panel: time series of the three standard run and the control.

larger spread observed in the daily cycles (e.g. Fig.13). Even though SR7 and SR8 have the same configuration as SR0, there is a change in the diurnal cycle. However, it is noticeable that such differences account only for less than 3% of the total soil moisture amount. Therefore, a multi-day frequency for irrigation does not seems to affect the longer term soil moisture trends. Given the expected anti-correlation between soil moisture and temperature, the opposite behavior seen in the differences of

485 T2 can be explained. However, when considering the larger scale impact, T2 could be used as an indicator of the atmospheric perturbation amplitude. Fig. 14 shows the effect of timing and length on T2 of the the SPRINKLER and the DRIP parameterization. Both parameterizations show a higher day-to-day variability relative to soil moisture, most likely due to the atmospheric state and dynamic influences. The bigger T2 differences in the DRIP scheme are mainly in the nighttime with the late-afternoon irrigation starting time (Fig. 14 right). On the other hand, the starting time at 12 UTC influences the daytime temperature more

490 strongly in the sprinkler case than the DRIP one. This behavior is expected since the sprinkler directly affects the atmospheric state via the microphysics evaporation process that would be larger in the daytime. Also, the difference between daily frequency in irrigation and the non in-phase run are almost negligible with the DRIP (Fig. 14 right) and slightly affected with the SPRI

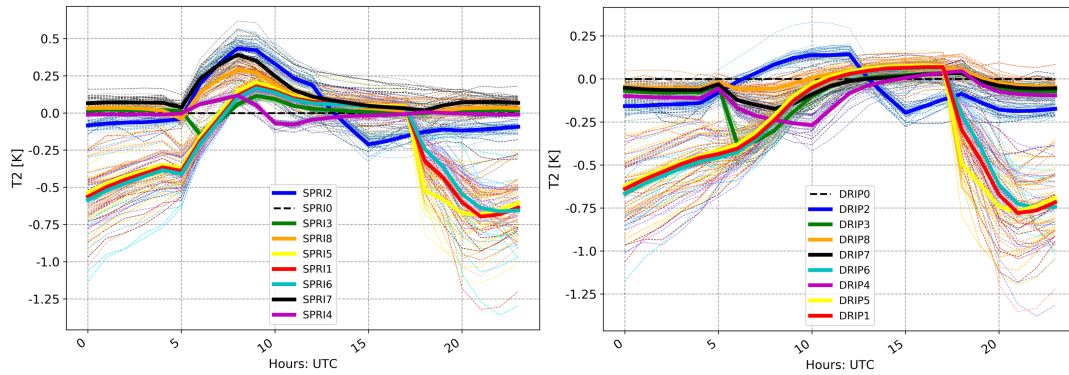


Figure 14. Same as Fig. 13 upper panel, for the two meter height temperature differences and a different set of parameterizations, for the SPRINKLER (Opt. 3) on the left and DRIP (Opt.2) on the right.

(Fig.14 left). A similar behavior to the DRIP is observed in the CHANNEL parameterization, which is not shown here, but the CHANNEL is warmer than the other two at night. While such differences in the night temperatures seem relevant for the local climate, they should be considered in the context of Fig. 12 (right). In fact, these magnitudes of 1 K are within the spatial variability of this quantity.

This will affect the energy flux partition at the surface when considering a change in the soil state. This part analyses only the DRIP, since the behavior of the differences with respect to the standard run are similar for the other parameterizations. As for the soil moisture, the fluxes differences are also strongly affected by both timing and length, but only at the diurnal scale. In fact, there is no longer term trend underlying the differences. The flux differences, Fig. 15 (upper panel), shows that the timing of irrigation impacts the fluxes mostly during the time when the parameterization is active. In particular, it is observed that the tests that differ most from the others are the ones where irrigation happens near the middle of the day (case number 4 and 2). Despite the differences from the other simulations they account for changes of 12% (*E*) and 20% (*SH*) at most (Fig.15).

In the case of the afternoon irrigation (case 5,6 and 1), an increase in evaporation during most of the nighttime and a decrease during the daytime are observed. However, such decreases are usually small compared to the integrated increase. The described behavior is reflected during the daytime, with opposite sign, in the sensible heat flux differences (Fig. 15 upper panel right). During the nighttime, on the other hand there are no significant differences between the tests, as can be observed comparing the different tests in the lower part of Fig. 15.

Considering now all the dashed lines in the presented plots it is possible to affirm that the timing does not have a great impact on the physical variables considered beyond their diurnal cycle. This affirmation is true also for the area averaged multi-diurnal application (case 7 and 8).

5.4 Evaporative loss from irrigation

The schemes account for different evaporative loss that can happen during the irrigation process after the water leaves the system used to deliver the water. As irrigation increases soil moisture, the evaporative loss is here defined in relation to the

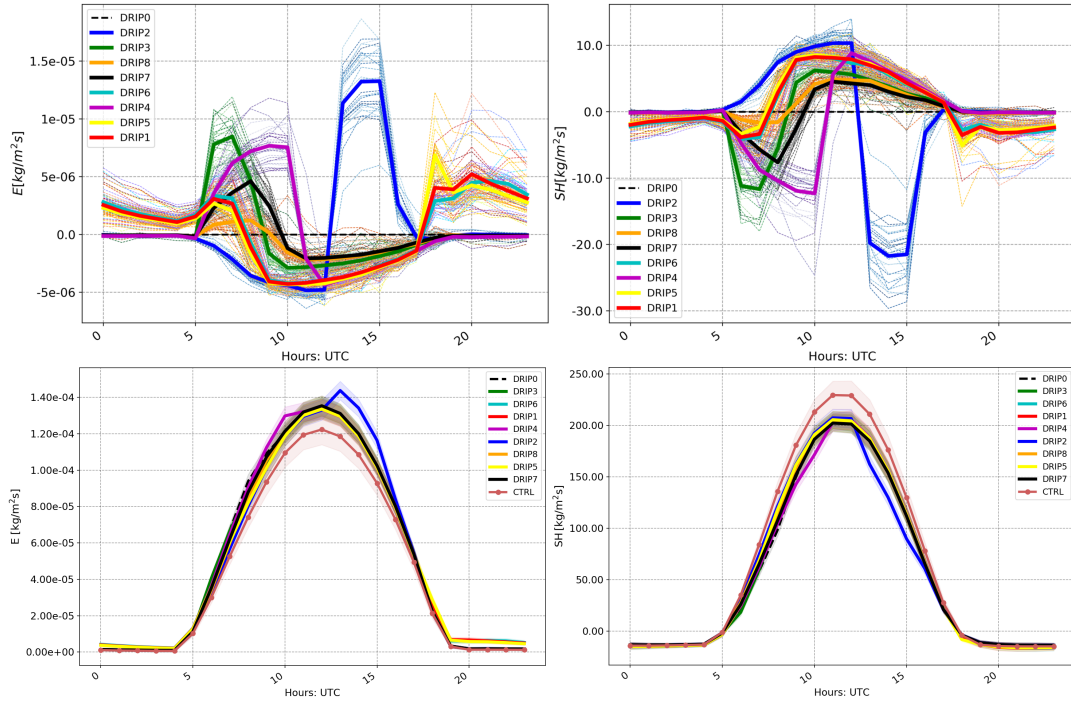


Figure 15. Same as Fig. 13; upward moisture and sensible flux for DRIP (Opt. 2), respectively on the left and right side, for the differences with respect to the standard run (upper panel) and for the absolute values of diurnal cycle monthly average (lower panel) including the control.

515 difference of soil moisture ($\Delta\eta$) with respect to the control run. The usage of the differences permits accounting for relative changes in the variables, disregarding the absolute values. Comparing the changes in the soil moisture in the different schemes allows quantifying the water loss for each method.

As the schemes account for different evaporative loss components (Fig. 1), by comparing them in pairs it is possible to isolate each term. The impact of the canopy evaporation (CANW) can be defined as the percentage change in the soil moisture field
 520 obtained with Opt. 2 (DRIP) with respect to the Opt. 1 (CHAN), and is calculated as:

$$CANW = \frac{\Delta\eta_{DRIP} - \Delta\eta_{CHAN}}{\Delta\eta_{CHAN}} \quad (5)$$

The same equation is used to calculate the impact of the microphysics processes (droplet evaporation and wind drift, EVDR) on irrigation, with the first term Opt. 3 (SPRI) and the other Opt. 2 (DRIP). This approach is valid under the assumption that irrigation is the only component of the model that affects the soil moisture field in the simulations. While it might not be true
 525 for all the time-steps, it can give a more accurate interpretation if it is applied only during the irrigated hours. The results obtained averaging over the irrigated area (Fig. 3) and for the whole of July, are shown in Tab. 4 below. The experiments show that the canopy/leaf interception effect is greater than the droplets evaporation and/or drift for all the experiments. A decrease around 4% of the soil moisture is obtained if the canopy effect is considered. The average microphysics contribution, causes

Table 4. Evaporative loss expressed as soil moisture percentage change, for the whole irrigated domain in July, due to: EVDR, the impact of microphysics process (e.g. droplet evaporation), CANW the impact of canopy and leaves interception.

Simulation experiment	EVDR [%]	CANW [%]
LR1	-0.02	-3.32
LR2	-0.09	-3.53
SR0	-0.04	-4.20
SR1	-0.02	-3.45
SR2	-0.01	-4.79
SR3	-0.06	-3.42
SR4	-0.01	-4.83
SR5	-0.06	-3.52
SR6	-0.01	-3.47
SR7	-0.02	-2.11
SR8	-0.01	-1.92

a decrease in soil moisture below 0.1% for all the experiments. However, it is noticed that the EVDR value is higher in the LR2 test, the convection-permitting long simulation. This highlights a possible stronger modification and coupling of the local conditions at smaller scales, which is investigated in a separate study. As the SR7 and SR8 represent the non-daily frequency, the averaging process includes points which are not irrigated. This is reflected by the lower impact of the CANW component, but not on the EVDR one, which might be caused by the very low values.

6 Conclusions

Agricultural land plays important economical and social roles, as well as influencing the local climate and biosphere. However, the land management change that impacts the local climate most is irrigation, if present. Recent literature shows that irrigation mostly affects the near surface variables, creating the so-called irrigation cooling effect. This local cooling found by different studies is on average of 1 K but up to 8 K, depending on the parameterization as well as the region. This study found similar cooling impact of 1 K (with 1.03 for the CHAN and 1.17 for SPRI and DRIP), for the July spatial monthly average. However, the maximum in the temperature cooling for this region reaches 4 K. Such differences with previous limited area studies can be caused by the region and/or parameterizations choices. The latter is found to be one of the uncertainty sources of the irrigation impacts on climate (Wei et al., 2013; Leng et al., 2017, e.g.). Another source is the water amount applied, as none of the studies actually account for a realistic value. Several studies discussed that the lack of a common parameterization, as well as unknown total water amount applied, is the main cause of uncertainties.

This paper aims to present three new parameterizations for irrigation within the WRF-ARW model with an explicit water amount. These parameterizations define different surface irrigation techniques based on the evaporation processes that the wa-

ter undergoes after it leaves the delivering system. Option 1 (CHANNEL) and 2 (DRIP) apply irrigation water as precipitation as an input to the land surface model. While the Option 2 allows the interception of the water by the leaves and the canopy, Opt.1 does not. Option 3 (SPRINKLER) irrigation water is affected by the microphysics processes (such as droplet evaporation or drift), and it is introduced as a rain mixing ratio in the lowest atmospheric mass-level of the model.

The current parameterizations are tested on one of the regions where global studies disagree on the signal of irrigation: the Mediterranean area. In particular, the Po Valley in northern Italy is chosen due to the dense irrigation system and the vulnerability to heat waves. For this area, summer 2015 was a good test-bed season for the agricultural months. In fact, while both summer months had positive temperature anomalies, their synoptic characterization was different. While, July 2015 was an extreme month for high temperature anomalies, lack of precipitation and water stress, June 2015 was less extreme from the hydrological cycle perspective.

In this study, for clarity, the options are called with names that recall existing techniques or the specific behavior. In fact, Opt.1 is defined as the channel method, as it resemble that historical technique. On the other hand, Opt. 3 is named as sprinkler, as the water is sprayed into the atmosphere and it uses the same assumptions of most of the irrigation studies within this discipline: the droplets might undergo evaporation and/or drift (Uddin et al., 2010; Leng et al., 2017, e.g.). Option 2 is named DRIP, as the water used for the irrigation is applied over the canopy only and then it can be intercepted and drip to the ground. The terms here defined are not to be intended as a universal terminology, but as a naming convention within this study.

Three sets of experiment, with the same irrigation water amount of 5.7 mm/d, at the convection-permitting scale (3km here) and/or parameterized (here, 15 km) are performed for this warm summer season or part of it. The 16-day test run (TR) is used to assess the grid-scale dependency of irrigation's average field response. It is found that surface variables, such as 2-meter temperature and soil moisture, do not show a different behavior depending on the model resolution. Therefore, a set of sensitivity experiments (SR) to irrigation start time, length and frequency can be performed with the coarse setting. A long run (LR) of 3 months is used to validate the parameterizations against the surface temperature ground measurements from monitoring weather stations. Previous studies found that irrigation affects temperatures in both monthly averages of daily mean and maximum. Therefore, the parameterizations are tested against these quantities, as well as the minimum temperature. On average, the use of the irrigation schemes improve the model representation of these variables reducing the biases. In fact, while for the control run the average monthly bias is 0.75 °C for the mean and 1.46°C for the maximum temperature, the irrigation run biases are reduced respectively to $(-0.15 \pm 0.06)^{\circ}\text{C}$ and $(-0.13 \pm 0.17)^{\circ}\text{C}$ averaging the three methods. The July potential evapotranspiration accumulated for the irrigated region of the Po Valley is evaluated for all nine sensitivity runs (SR0-8) and the long run (LR1 and LR2). All tests shows that the potential evapotranspiration is improved when the irrigation parameterization is used in the model.

The study addresses also the sensitivity of the results to the parameterizations' human-decision options: irrigation timing as start time (in UTC), length (in hours) and frequency (in days). The main impact of irrigation on soil moisture and 2-meter temperature with respect to the control is due to the parameterization choice itself, rather than the timing. The CHANNEL method is slightly more efficient in terms of increasing the soil moisture long-term than the other two methods, but the similarity of the other two showed that the canopy interception is more important in reducing efficiency than the evaporation from

the sprinkler process. Diurnal cycles of both atmospheric and surface variables are calculated as differences with respect to the standard configuration, namely when there is daily irrigation starting at 5 UTC and going for 3 hours. No significant impacts beyond the diurnal timescale are found due to timing for soil moisture, sensible heat and upward moisture fluxes. Assessing the impact on T2 is more complicated, as the differences observed in the diurnal cycle are comparable to the ones that are obtained with different resolutions. With this sensitivity work it is found that irrigation itself influences the physical quantities beyond the diurnal timescale of its application (so comparing the runs with the control simulation). However, the timing of irrigation does affect these atmospheric/soil variables only within the diurnal cycle (it is done ~~by comparing the irrigation timing with themselves~~using the sensitivity tests and as base the standard run, which is the combination number zero).
 The usage of an irrigation parameterization for this area improves the model representation. Moreover, on average, the atmosphere and soil variables are not very sensitive to the parameterizations' options for realistic irrigation timing and length. Therefore, the use of the standard configuration alone for the high-resolution long run is acceptably representative. Further analysis on assessing the physical and dynamical impacts of the irrigation on the atmosphere is addressed in two follow-up works.

Code and data availability. Data and code are available at <http://dx.doi.org/10.17632/t3b6rtccj9.1>, cite this dataset as: Valmassoi, Arianna (2019), “ Development of three new surface irrigation parameterizations in the WRF-ARW model: evaluation for the Po Valley (Italy) case study”, Mendeley Data, v2.

Appendix A: Surface Weather Stations Monthly Results

The values obtained for each station used in the validation section are written in Table A1. For clarity, the stations are identified with an unique number (from 0 to 43) and their geographical coordinates, and not by their name. The temperatures value refers to the value obtained from the gridded model output. The bias is obtained subtracting to the simulation value the observation from the station.

Table A1: Monthly averaged mean, maximum and minimum values obtained for each station in the Fig. 5-7.

Station number	Lon [E]	Lat [N]	Station monthly values			Control bias			CHANNEL bias		
			T2	$T2_{max}$	$T2_{min}$	T2	$T2_{max}$	$T2_{min}$	T2	$T2_{max}$	$T2_{min}$
0	11.126	44.826	27.99	34.36	21.08	-0.61	0.94	-2.73	-1.04	-0.35	-2.32
1	11.016	44.886	27.67	34.28	20.19	-0.04	0.98	-1.45	-0.71	-0.52	-1.15
2	10.147	44.743	27.80	33.36	21.67	0.40	1.56	-1.71	-0.03	0.49	-1.20
3	10.259	44.952	27.32	32.91	20.78	0.95	2.83	-1.84	0.04	0.84	-1.09
4	10.350	44.944	26.31	32.40	19.48	1.97	3.32	-0.50	1.12	1.48	0.10
5	10.773	44.743	27.55	34.17	19.97	0.02	1.28	-1.65	-0.57	-0.23	-1.05

6	10.381	44.885	27.42	33.76	20.51	0.64	1.99	-1.91	-0.24	0.11	-1.31
7	10.971	44.778	26.97	33.22	19.80	0.52	2.16	-1.64	0.17	0.95	-1.05
8	11.512	44.886	27.25	33.68	20.25	0.03	1.19	-1.47	-0.38	-0.01	-0.84
9	11.896	44.968	26.85	33.11	20.48	-0.02	0.81	-1.55	-0.30	-0.03	-1.13
10	11.126	44.826	27.99	34.36	21.08	-0.61	0.94	-2.73	-1.04	-0.35	-2.32
11	10.206	44.703	27.34	32.15	22.09	0.32	1.57	-1.54	-0.05	0.60	-1.18
12	11.483	44.749	27.01	34.21	19.34	-0.15	0.88	-1.85	-0.75	-0.53	-1.54
13	10.773	44.743	27.55	34.17	19.97	0.02	1.28	-1.65	-0.57	-0.23	-1.05
14	11.337	44.922	27.67	33.95	20.97	-0.23	1.04	-1.98	-0.76	-0.26	-1.63
15	9.590	45.041	27.21	32.68	20.61	1.58	2.99	0.02	0.58	0.99	0.15
16	10.511	44.690	27.50	33.55	20.42	0.36	1.76	-1.48	-0.23	0.35	-0.82
17	11.337	44.922	27.67	33.95	20.97	-0.23	1.04	-1.98	-0.76	-0.26	-1.63
18	10.168	45.007	26.89	32.72	20.30	1.59	2.95	-0.82	0.64	0.94	-0.21
19	10.005	45.003	27.38	33.33	20.57	0.86	2.53	-1.72	-0.21	0.26	-1.10
20	10.909	44.551	27.59	33.92	20.21	0.34	1.22	-1.10	0.09	0.22	-0.10
21	8.989	45.281	28.27	33.66	22.83	0.46	0.95	-1.51	-0.59	-1.02	-1.57
22	10.664	45.263	28.00	33.01	22.40	1.00	2.40	-0.78	-0.35	0.17	-1.08
23	10.684	45.412	27.34	34.51	19.83	1.39	0.81	0.70	0.13	-1.27	0.90
24	11.290	45.015	27.78	32.93	21.99	1.23	1.99	-0.43	-0.19	-0.28	-0.54
25	9.147	45.179	28.03	33.05	22.07	0.12	2.25	-2.32	-1.16	-0.21	-2.10
26	9.521	45.443	27.45	34.26	19.70	1.18	0.64	1.25	0.28	-0.96	1.50
27	9.612	45.621	27.59	34.23	20.47	1.47	0.91	1.15	0.12	-1.22	0.92
28	10.195	45.121	28.02	34.53	20.98	0.47	0.23	-0.39	-0.96	-2.19	-0.32
29	9.135	45.324	28.02	34.62	21.45	1.06	0.88	0.46	-0.15	-1.16	0.28
30	10.059	45.163	28.38	35.40	20.70	-0.50	-0.14	-1.80	-1.56	-2.02	-1.44
31	10.798	45.157	27.56	33.10	21.98	1.36	2.09	-0.34	0.16	0.00	-0.50
32	9.891	45.398	27.13	32.62	21.08	3.06	3.10	3.23	2.22	1.38	3.12
33	9.964	45.255	28.24	34.89	20.95	0.65	0.45	-0.27	-0.69	-1.67	-0.06
34	9.354	45.472	28.35	34.50	22.14	0.31	0.66	-1.13	-0.96	-1.51	-1.29
35	10.768	44.964	27.83	33.08	22.89	2.72	2.31	2.56	2.14	0.76	2.56
36	10.887	45.188	27.73	32.67	22.50	2.21	3.26	1.17	1.45	1.61	1.00
37	9.105	45.432	28.18	33.25	21.63	0.30	1.11	-0.48	-0.50	-0.58	-0.12
38	9.380	45.260	28.07	32.62	22.87	2.14	1.84	2.42	1.35	0.18	2.37
39	9.276	45.233	28.16	34.44	21.17	0.23	0.34	-1.07	-0.75	-1.51	-0.55
40	8.880	45.341	29.29	35.81	22.99	0.77	-0.41	1.12	0.20	-1.78	1.32

41	9.692	45.715	27.50	32.86	21.91	2.09	0.54	3.50	1.52	-0.70	3.39
42	9.487	45.186	25.88	31.06	20.73	1.71	0.21	2.88	1.14	-0.90	2.53
43	9.822	45.784	27.67	32.46	22.42	0.01	2.37	-2.77	-0.56	1.06	-2.64

Author contributions. AV and JD designed the methodology and the experiments, with the help of FP and SDS. AV developed the model code, performed the simulations and the analysis under the supervision of JD. JD provided the computational resources. AV prepared the manuscript under the supervision of JD and FP. JD, FP, and SDS reviewed the manuscript and provided the funding.

Competing interests. The authors declare that they have no conflict of interest.

Acknowledgements. The model simulations used for this study are available at <http://dx.doi.org/10.17632/t3b6rtccj9.1>. Weather stations' data and MODIS potential evapotranspiration data have to be obtained from the respective agencies, in agreement to their data policies. This work is carried out as part of the National Center for Atmospheric Research (NCAR) Advanced Study Graduate Visitor Program (ASP), the iSCAPE (Improving Smart Control of Air Pollution in Europe) project (funded by the European Union's Horizon 2020 research and innovation programme H2020-SC5-04-2015 under the Grant Agreement No. 689954) and the OPERANDUM (OPEn-air laboRatories for Nature baseD solUtions to Manage hydro-meteo risks) project (funded by the European Union's Horizon 2020 research and innovation programme under Grant Agreement No 776848). Cheyenne computational resources are provided by ASP through the Computational & Information System Lab (CISL) funded by the National Science Foundation (NSF).

The authors declare that there was no conflict of interest.

References

- NCEP GFS 0.25 Degree Global Forecast Grids Historical Archive. Research Data Archive at the National Center for Atmospheric Research, Computational and Information Systems Laboratory., Tech. rep., <https://doi.org/10.5065/D65D8PWK>, 2015.
- Aegerter, C., Wang, J., Ge, C., Irmak, S., Oglesby, R., Wardlow, B., Yang, H., You, J., Shulski, M., Aegerter, C., Wang, J., Ge, C., Irmak, S., Oglesby, R., Wardlow, B., Yang, H., You, J., and Shulski, M.: Mesoscale Modeling of the Meteorological Impacts of Irrigation during the 2012 Central Plains Drought, *Journal of Applied Meteorology and Climatology*, 56, 1259–1283, <https://doi.org/10.1175/JAMC-D-16-0292.1>, 2017.
- ARPAE: Bollettino agroclimatico mensile, Luglio 2015, Tech. rep., Arpa Servizio idro-meteo-clima, 2015a.
- ARPAE: Bollettino agroclimatico mensile, Giugno 2015, Tech. rep., Arpa Servizio idro-meteo-clima, 2015b.
- 625 Bavi, A., Kashkuli, H. A., Boroomand, S., Naseri, A., and Albaji, M.: Evaporation losses from sprinkler irrigation systems under various operating conditions, *Journal of Applied Sciences*, 9, 597–600, <https://doi.org/10.3923/jas.2009.597.600>, <https://www.sciencedirect.com/science/article/pii/S0378377484900702>, 2009.
- Bin Abdullah, K.: Use of water and land for food security and environmental sustainability, in: *Irrigation and Drainage*, vol. 55, pp. 219–222, John Wiley & Sons, Ltd, <https://doi.org/10.1002/ird.254>, <http://doi.wiley.com/10.1002/ird.254>, 2006.
- 630 Bonfils, C. and Lobell, D.: Empirical evidence for a recent slowdown in irrigation-induced cooling, *Proceedings of the National Academy of Sciences*, 104, 13 582–13 587, <https://doi.org/10.1073/pnas.0700144104>, 2007.
- Boucher, O., Myhre, G., and Myhre, A.: Direct human influence of irrigation on atmospheric water vapour and climate, *Climate Dynamics*, 22, 597–603, <https://doi.org/10.1007/s00382-004-0402-4>, 2004.
- Brouwer, C., Prins, K., Kay, M., and Heibloem, M.: Irrigation water management : irrigation methods, training manual, 5, p. 140, <http://www.fao.org/docrep/s8684e/s8684e00.HTM>, 1990.
- 635 Cook, B. I., Puma, M. J., and Krakauer, N. Y.: Irrigation induced surface cooling in the context of modern and increased greenhouse gas forcing, *Climate Dynamics*, 37, 1587–1600, <https://doi.org/10.1007/s00382-010-0932-x>, 2010.
- Cook, B. I., Shukla, S. P., Puma, M. J., and Nazarenko, L. S.: Irrigation as an historical climate forcing, *Climate Dynamics*, 44, 1715–1730, <https://doi.org/10.1007/s00382-014-2204-7>, 2015.
- 640 Daccache, A., Ciurana, J. S., Rodriguez Diaz, J. A., and Knox, J. W.: Water and energy footprint of irrigated agriculture in the Mediterranean region, *Environmental Research Letters*, 9, <https://doi.org/10.1088/1748-9326/9/12/124014>, 2014.
- de Vrese, P. and Hagemann, S.: Uncertainties in modelling the climate impact of irrigation, *Climate Dynamics*, 51, 2023–2038, <https://doi.org/10.1007/s00382-017-3996-z>, 2018.
- Deangelis, A., Dominguez, F., Fan, Y., Robock, A., Kustu, M. D., and Robinson, D.: Evidence of enhanced precipitation due to irrigation over the Great Plains of the United States, *Journal of Geophysical Research Atmospheres*, 115, D15 115, <https://doi.org/10.1029/2010JD013892>, 2010.
- 645 Dee, D. P., Uppala, S. M., Simmons, A. J., Berrisford, P., Poli, P., Kobayashi, S., Andrae, U., Balmaseda, M. A., Balsamo, G., Bauer, P., Bechtold, P., Beljaars, A. C., van de Berg, L., Bidlot, J., Bormann, N., Delsol, C., Dragani, R., Fuentes, M., Geer, A. J., Haimberger, L., Healy, S. B., Hersbach, H., Hólm, E. V., Isaksen, L., Kållberg, P., Köhler, M., Matricardi, M., McNally, A. P., Monge-Sanz, B. M., Morcrette, J. J., Park, B. K., Peubey, C., de Rosnay, P., Tavolato, C., Thépaut, J. N., and Vitart, F.: The ERA-Interim reanalysis: Configuration and performance of the data assimilation system, *Quarterly Journal of the Royal Meteorological Society*, 137, 553–597, <https://doi.org/10.1002/qj.828>, <http://doi.wiley.com/10.1002/qj.828>, 2011.

- Della-Marta, P. M., Luterbacher, J., von Weissenfluh, H., Xoplaki, E., Brunet, M., and Wanner, H.: Summer heat waves over western Europe 1880-2003, their relationship to large-scale forcings and predictability, *Climate Dynamics*, 29, 251–275, <https://doi.org/10.1007/s00382-007-0233-1>, 2007.
- Douglas, E. M., Beltrán-Przekurat, A., Niyogi, D., Pielke, R. A., and Vörösmarty, C. J.: The impact of agricultural intensification and irrigation on land-atmosphere interactions and Indian monsoon precipitation - A mesoscale modeling perspective, *Global and Planetary Change*, 67, 117–128, <https://doi.org/10.1016/j.gloplacha.2008.12.007>, 2009.
- Ek, M. B.: Implementation of Noah land surface model advances in the National Centers for Environmental Prediction operational mesoscale Eta model, *Journal of Geophysical Research*, 108, 8851, <https://doi.org/10.1029/2002JD003296>, <https://onlinelibrary.wiley.com/doi/abs/10.1029/2002JD003296><http://doi.wiley.com/10.1029/2002JD003296>, 2003.
- Eurostat: Agricultural products., <https://doi.org/10.2785/45595>, 2013.
- Fader, M., Shi, S., Von Bloh, W., Bondeau, A., and Cramer, W.: Mediterranean irrigation under climate change: More efficient irrigation needed to compensate for increases in irrigation water requirements, *Hydrology and Earth System Sciences*, 20, 953–973, <https://doi.org/10.5194/hess-20-953-2016>, 2016.
- FAO: Irrigation Water Management: Irrigation Methods, 1988.
- García-Herrera, R., Díaz, J., Trigo, R. M., Luterbacher, J., and Fischer, E. M.: A Review of the European Summer Heat Wave of 2003, *Critical Reviews in Environmental Science and Technology*, 40, 267–306, <https://doi.org/10.1080/10643380802238137>, 2010.
- Giorgi, F. and Lionello, P.: Climate change projections for the Mediterranean region, *Global and Planetary Change*, 63, 90–104, <https://doi.org/10.1016/j.gloplacha.2007.09.005>, 2008.
- Guimberteau, M., Laval, K., Perrier, A., and Polcher, J.: Global effect of irrigation and its impact on the onset of the Indian summer monsoon, *Climate Dynamics*, 39, 1329–1348, <https://doi.org/10.1007/s00382-011-1252-5>, 2012.
- Harding, K. J., Twine, T. E., and Lu, Y.: Effects of dynamic crop growth on the simulated precipitation response to irrigation, *Earth Interactions*, 19, 1–31, <https://doi.org/10.1175/EI-D-15-0030.1>, 2015.
- Hong, S.-y., Lim, K.-s., Kim, J.-h., Lim, J.-o. J., and Dudhia, J.: WRF Single-Moment 6-Class Microphysics Scheme (WSM6), *Weather*, pp. 5–6, 2005.
- Hong, S.-Y., Noh, Y., and Dudhia, J.: A New Vertical Diffusion Package with an Explicit Treatment of Entrainment Processes, *Monthly Weather Review*, 134, 2318–2341, <https://doi.org/10.1175/MWR3199.1>, 2006.
- IPCC: Climate Change 2014 Impacts, Adaptation, and Vulnerability Part A: Global and Sectoral Aspects, Working Group II Contribution to the Fifth Assessment Report of the Intergovernmental Panel on Climate Change, 2014.
- Jägermeyr, J., Gerten, D., Heinke, J., Schaphoff, S., Kummu, M., and Lucht, W.: Water savings potentials of irrigation systems: Global simulation of processes and linkages, *Hydrology and Earth System Sciences*, 19, 3073–3091, <https://doi.org/10.5194/hess-19-3073-2015>, <https://www.hydrol-earth-syst-sci.net/19/3073/2015/>, 2015.
- Kioutsioukis, I., de Meij, A., Jakobs, H., Katragkou, E., Vinuesa, J. F., and Kazantzidis, A.: High resolution WRF ensemble forecasting for irrigation: Multi-variable evaluation, *Atmospheric Research*, 167, 156–174, <https://doi.org/10.1016/j.atmosres.2015.07.015>, 2016.
- Krakauer, N. Y., Puma, M. J., Cook, B. I., Gentile, P., and Nazarenko, L.: Ocean–atmosphere interactions modulate irrigation’s climate impacts, *Earth System Dynamics*, 7, 863–876, <https://doi.org/10.5194/esd-7-863-2016>, <https://www.earth-syst-dynam.net/7/863/2016/>, 2016.
- Kueppers, L. M., Snyder, M. A., and Sloan, L. C.: Irrigation cooling effect: Regional climate forcing by land-use change, *Geophysical Research Letters*, 34, L03 703, <https://doi.org/10.1029/2006GL028679>, 2007.

- Kueppers, L. M., Snyder, M. A., Sloan, L. C., Cayan, D., Jin, J., Kanamaru, H., Kanamitsu, M., Miller, N. L., Tyree, M., Du, H., and Weare, B.: Seasonal temperature responses to land-use change in the western United States, *Global and Planetary Change*, 60, 250–264, <https://doi.org/10.1016/j.gloplacha.2007.03.005>, 2008.
- Lawston, P. M., Santanello, J. A., Zaitchik, B. F., and Rodell, M.: Impact of Irrigation Methods on Land Surface Model Spinup and Initialization of WRF Forecasts, *Journal of Hydrometeorology*, 16, 1135–1154, <https://doi.org/10.1175/jhm-d-14-0203.1>, <http://journals.ametsoc.org/doi/10.1175/JHM-D-14-0203.1>, 2015.
- Lee, E., Sacks, W. J., Chase, T. N., and Foley, J. A.: Simulated impacts of irrigation on the atmospheric circulation over Asia, *Journal of Geophysical Research Atmospheres*, 116, 1–13, <https://doi.org/10.1029/2010JD014740>, 2011.
- Leng, G., Leung, L. R., and Huang, M.: Significant impacts of irrigation water sources and methods on modeling irrigation effects in the ACME Land Model, *Journal of Advances in Modeling Earth Systems*, 9, 1665–1683, <https://doi.org/10.1002/2016MS000885>, <http://doi.wiley.com/10.1002/2016MS000885>, 2017.
- Lobell, D., Bala, G., Mirin, A., Phillips, T., Maxwell, R., and Rotman, D.: Regional differences in the influence of irrigation on climate, *Journal of Climate*, 22, 2248–2255, <https://doi.org/10.1175/2008JCLI2703.1>, 2009.
- Lobell, D. B., Bala, G., Bonfils, C., and Duffy, P. B.: Potential bias of model projected greenhouse warming in irrigated regions, *Geophysical Research Letters*, 33, L13 709, <https://doi.org/10.1029/2006GL026770>, 2006.
- Lobell, D. B., Bonfils, C. J., Kueppers, L. M., and Snyder, M. A.: Irrigation cooling effect on temperature and heat index extremes, *Geophysical Research Letters*, 35, L09 705, <https://doi.org/10.1029/2008GL034145>, 2008a.
- Lobell, D. B., Burke, M. B., Tebaldi, C., Mastrandrea, M. D., Falcon, W. P., and Naylor, R. L.: Prioritizing climate change adaptation needs for food security in 2030, *Science*, 319, 607–610, <https://doi.org/10.1126/science.1152339>, 2008b.
- Lv, G., Kang, Y., Li, L., and Wan, S.: Effect of irrigation methods on root development and profile soil water uptake in winter wheat, *Irrigation Science*, 28, 387–398, <https://doi.org/10.1007/s00271-009-0200-1>, 2010.
- Ministero delle Politiche agricole alimentari e forestali: L'agricoltura nel distretto idrografico padano, Tech. rep., Ministero delle Politiche agricole alimentari e forestali, 2009.
- Mitchell, K. E., Wei, H., Lu, S., Gayno, G., and Meng, J.: NCEP Implements Major Upgrade to Its Medium-Range Global Forecast System, Including Land-Surface Component, *GEWEX Newsletter*, 15, 2005.
- Mooney, P. A., Mulligan, F. J., and Fealy, R.: Evaluation of the sensitivity of the weather research and forecasting model to parameterization schemes for regional climates of Europe over the period 1990–95, *Journal of Climate*, 26, 1002–1017, <https://doi.org/10.1175/JCLI-D-11-00676.1>, http://eprints.maynoothuniversity.ie/4359/1/RF_Evaluation.pdf, 2013.
- Nair, S., Johnson, J., and Wang, C.: Efficiency of irrigation water use: A review from the perspectives of multiple disciplines, <https://doi.org/10.2134/agronj2012.0421>, <https://www.agronomy.org/publications/aj/abstracts/105/2/351>, 2013.
- Oleson, K. W., Lawrence, D. M., Bonan, G. B., Flanner, M. G., Kluzek, E., J. P., Levis, S., Swenson, S. C., Thornton, E., Feddes, J., Heald, C. L., Lamarque, J.-F., Niu, G.-y., Qian, T., Running, S., Sakaguchi, K., Yang, L., Zeng, X., and Zeng, X.: Technical Description of version 4.0 of the Community Land Model (CLM), <http://library.ucar.edu/research/publish-technotehttp://citeseerx.ist.psu.edu/viewdoc/summary?doi=10.1.1.172.7769>, 2013.
- Ozdogan, M., Rodell, M., Beaudoin, H. K., and Toll, D. L.: Simulating the Effects of Irrigation over the United States in a Land Surface Model Based on Satellite-Derived Agricultural Data, *Journal of Hydrometeorology*, 11, 171–184, <https://doi.org/10.1175/2009jhm1116.1>, <http://journals.ametsoc.org/doi/abs/10.1175/2009JHM1116.1>, 2009.

- Pielke, R. A. and Zeng, X.: Influence on severe storm development of irrigated land, *National Weather Digest*, 14, 16–17, <https://doi.org/10.1.1.258.5806>, 1989.
- 730 Puma, M. J. and Cook, B. I.: Effects of irrigation on global climate during the 20th century, *Journal of Geophysical Research Atmospheres*, 115, D16 120, <https://doi.org/10.1029/2010JD014122>, <http://doi.wiley.com/10.1029/2010JD014122>, 2010.
- Qian, Y., Huang, M., Yang, B., and Berg, L. K.: A Modeling Study of Irrigation Effects on Surface Fluxes and Land–Air–Cloud Interactions in the Southern Great Plains, *Journal of Hydrometeorology*, 14, 700–721, <https://doi.org/10.1175/jhm-d-12-0134.1>, <http://journals.ametsoc.org/doi/abs/10.1175/JHM-D-12-0134.1>, 2013.
- 735 Running, S., Mu, Q., and Zhao, M.: MOD16A2 MODIS/Terra Net Evapotranspiration 8-Day L4 Global 500m SIN Grid V006 [Data set], NASA EOSDIS Land Processes DAAC, <https://doi.org/10.5067/MODIS/MOD16A2.006>, 2017.
- Sacks, W. J., Cook, B. I., Buening, N., Levis, S., and Helkowski, J. H.: Effects of global irrigation on the near-surface climate, *Climate Dynamics*, 33, 159–175, <https://doi.org/10.1007/s00382-008-0445-z>, 2009.
- Saeed, F., Hagemann, S., and Jacob, D.: Impact of irrigation on the South Asian summer monsoon, *Geophysical Research Letters*, 36, 740 L20 711, <https://doi.org/10.1029/2009GL040625>, 2009.
- Seneviratne, S. I. and Stöckli, R.: *Climate Variability and Extremes during the Past 100 Years*, Springer Netherlands, Dordrecht, <https://doi.org/10.1007/978-1-4020-6766-2>, 2008.
- Siebert, S. and Döll, P.: Quantifying blue and green virtual water contents in global crop production as well as potential production losses without irrigation, *Journal of Hydrology*, 384, 198–217, <https://doi.org/10.1016/j.jhydrol.2009.07.031>, <https://linkinghub.elsevier.com/retrieve/pii/S0022169409004235>, 2010.
- 745 Siebert, S., Henrich, V., Frenken, K., and Burke, J.: *Global Map of Irrigation Areas version 5.*, Food and Agriculture Organization of the United Nations, 2013.
- Skamarock, W., Klemp, J., Dudhi, J., Gill, D., Barker, D., Duda, M., Huang, X.-Y., Wang, W., and Powers, J.: A Description of the Advanced Research WRF Version 3, Technical Report, p. 113, <https://doi.org/10.5065/D6DZ069T>, 2008.
- 750 Sorooshian, S., Li, J., Hsu, K.-I., and Gao, X.: How significant is the impact of irrigation on the local hydroclimate in California’s Central Valley? Comparison of model results with ground and remote-sensing data, *Journal of Geophysical Research*, 116, D06 102, <https://doi.org/10.1029/2010JD014775>, 2011.
- Sorooshian, S., Aghakouchak, A., and Li, J.: Influence of irrigation on land hydrological processes over California, *Journal of Geophysical Research Atmospheres*, 119, 13 137–13 152, <https://doi.org/10.1002/2014JD022232>, 2014.
- 755 Sridhar, V.: Tracking the Influence of Irrigation on Land Surface Fluxes and Boundary Layer Climatology, *Journal of Contemporary Water Research & Education*, 152, 79–93, <https://doi.org/10.1111/j.1936-704X.2013.03170.x>, <http://doi.wiley.com/10.1111/j.1936-704X.2013.03170.x>, 2013.
- Stergiou, I., Tagaris, E., and Sotiropoulou, R.-E. P.: Sensitivity Assessment of WRF Parameterizations over Europe, *Proceedings*, 1, 119, <https://doi.org/10.3390/ecas2017-04138>, <http://www.mdpi.com/2504-3900/1/5/119>, 2017.
- 760 Tewari, M., Chen, F., Wang, W., Dudhia, J., Lemone, M. A., Mitchell, K., Ek, M., Gayno, G., Wegiel, J., and Cuenca, R. H.: Implementation and verification of the Unified Noah Land surface model in the WRF model, 16th conference on numerical weather prediction, p. 11–15, 2004.
- Thiery, W., Davin, E. L., Lawrence, D. M., Hirsch, A. L., Hauser, M., and Seneviratne, S. I.: Present-day irrigation mitigates heat extremes, *Journal of Geophysical Research: Atmospheres*, 122, <https://doi.org/10.1002/2016JD025740>, 2017.

- 765 Thornthwaite, C. W.: An Approach toward a Rational Classification of Climate, *Geographical Review*, 38, 55, <https://doi.org/10.2307/210739>, 1948.
- Tuinenburg, O. A. and de Vries, J. P. R.: Irrigation Patterns Resemble ERA-Interim Reanalysis Soil Moisture Additions, *Geophysical Research Letters*, 44, 341–10, <https://doi.org/10.1002/2017GL074884>, <http://doi.wiley.com/10.1002/2017GL074884>, 2017.
- Uddin, J., Smith, R., Hancock, N., and Foley, J.: Droplet evaporation losses during sprinkler irrigation: an overview, in: *Australian Irrigation Conference and Exhibition 2010: One Water Many Futures*, pp. 1–10, <http://eprints.usq.edu.au/9004>, 2010.
- 770 Van Alfen, N. K.: *Water: advanced irrigation technologies*, Elsevier (Academic Press), 2nd edn., 2014.
- Wada, Y., Wisser, D., Eisner, S., Flörke, M., Gerten, D., Haddeland, I., Hanasaki, N., Masaki, Y., Portmann, F. T., Stacke, T., Tessler, Z., and Schewe, J.: Multimodel projections and uncertainties of irrigation water demand under climate change, *Geophysical Research Letters*, 40, 4626–4632, <https://doi.org/10.1002/grl.50686>, 2013.
- 775 Wei, J., Dirmeyer, P. A., Wisser, D., Bosilovich, M. G., and Mocko, D. M.: Where Does the Irrigation Water Go? An Estimate of the Contribution of Irrigation to Precipitation Using MERRA, *Journal of Hydrometeorology*, 14, 275–289, <https://doi.org/10.1175/JHM-D-12-079.1>, 2013.
- Zampieri, M., Ceglar, A., Dentener, F., Dosio, A., Naumann, G., Van Den Berg, M., and Toreti, A.: When will current climate extremes affecting maize production become the norm?, *Earth’s Future*, <https://doi.org/10.1029/2018EF000995>, 2019.
- 780 Zhang, C. and Wang, Y.: Projected future changes of tropical cyclone activity over the Western North and South Pacific in a 20-km-Mesh regional climate model, *Journal of Climate*, 30, 5923–5941, <https://doi.org/10.1175/JCLI-D-16-0597.1>, <http://journals.ametsoc.org/doi/10.1175/JCLI-D-16-0597.1>, 2017.