

# Development of the Community Water Model (CWatM v1.04)

## A high-resolution hydrological model for global and regional assessment of integrated water resources management

Peter Burek<sup>1</sup>, Yusuke Satoh<sup>1,2</sup>, Taher Kahil<sup>1</sup>, Ting Tang<sup>1</sup>, Peter Greve<sup>1</sup>, Mikhail Smilovic<sup>1</sup>, Luca Guillaumot<sup>3</sup> and Yoshihide Wada<sup>1,4</sup>

### Reply to reviewer 1

Thank you for your review of our paper.

In this comment we report the reviewer's comments under <>, followed by our replies.

<The manuscript is not in the scope of GMD. The model concept (section 2.1) is described on 1.5 pages, and does not provide any insight into the modular model development approach, which should be the focus in GMD. Thus, the novelty can not be assessed. >

We have now expanded upon our modular model approach in section 2.1, and have described in greater detail the modeling structure and why we think our manuscript is both relevant and worth publishing.

Changes in the manuscript:

The target audience of the model is hydrological modelers of varying levels of programming familiarity. Modelers with no experience in programming languages like Python can use simply the executable together with the settings file. Modelers with only limited experience in Python can use the platform-independent Python version with no need to adapt the source code itself. Finally, modelers with programming capacity in Python can engage with the source code and adapt the model to their specific needs. The wide adoption of Python as a programming language and the open source approach will allow for a community of developers to engage with and further develop CWatM. The code itself comes with a GNU General Public License and is hosted on GitHub (<https://github.com/CWatM/CWatM>), where every change is trackable and transparent. The source code is programmed in the modern programming language Python, with only certain computationally demanding parts written in C++, such as river routing. Each subroutine is documented for its design and purpose, and 40% of the source code lines are documentation.

CWatM follows a modular development pathway in several ways which simplify the use of the model for the different user groups. Firstly, the program is independent from the settings file, which includes all information related to data, parameters for each process, and output options. This enable the user to run the model without any understanding of Python, while still providing flexibility of input and output options to the user. Secondly, the modules for hydrological processes and data handling (e.g., reading configuration, data read and write routines, error handling) are handled separately, and further the different hydrological processes (from calculation of potential evaporation to river routing) are each handled independently.

This enables the advanced user to concentrate on adapting specific processes or developing their own hydrological modules to extend the modular structure (see figure S11 in the supplement for the CWatM modular structure). Thirdly, each module is identically composed of an initialization class and a dynamic class operating through time; this structure is motivated by the PC-Raster framework (Karssenberget al., 2010). Fourthly, CWatM keeps track of the metadata on sub routines of the source code and of the data. CWatM generally accepts netCDF, Geotiff, and PCRaster input maps and uses netCDF4 formats for outputs and to store temporal-spatial data efficiently. This also allows for meteorological forcing data to be used without the need for reformatting. NetCDF4 also has the advantage that the metadata are directly attached. Finally, to best support and reach its community, CWatM has a Google group and forum (<https://groups.google.com/d/forum/cwatm>), online documentation (<https://cwatm.iiasa.ac.at>) including model setup basics, data information, license information, and uses Sphinx (<https://www.sphinx-doc.org>) for the auto-documentation of source code.

The model is accessible and customizable to the needs of different users with varying levels of programming skill, allowing for research questions of varying spatial scales from global to local scales to be answered. This will support and enable different stakeholder groups and scientific communities beyond hydrology and of varying capacities to engage with a hydrological model and support their investigations (see section 6). We hope that that we have appropriately represented CWatM and its use of best practices in research software as stated in Wilson et al., 2014 and Jiménez et al., 2017. CWatM has already used in several scientific assessments, including Wang et al., 2019a, 2019b, He et al. 2019, Vinca et al., 2019, and Kahil et al., 2019, and has a small but growing community users in several countries around the world.

We changed section 5.6 to 6 and added this to the manuscript:

## 6 Linking and integration with other sectoral models

The modular structure of CWatM helps to link and integration with other models. The independent setting file offers possibilities to adapt the input and output to other models. For a lot of applications no intervention into the code is necessary. If code has to be customized to the linked model, the modular structure of CWatM eases to identify the point of intervention. To explore potential sustainable pathways for the Zambezi basin, an integrated assessment framework is needed.

**< The theoretical descriptions of the hydrologic processes do not contain any new theoretical development. The data sets used by the model are open and standard. The applied calibration procedure is also standard. >**

The utility and relevancy of our model is in its possible integration with other models and sectors, the capacity to model at multiple spatial scales, and its capacity to foster a community of use and development. Several hydrological processes are relatively new including preferential flow pathways, the timing of runoff concentration, and the urban extent as an independent land cover class. The hydrological processes and combination of systems are modeled according to referenced literature. The data sets are necessarily open and standard to comply with open source practices. The calibration is standard, but also flexible and adaptive. The model is thus offered as a package both immediately useable and adaptable. At the moment only WaterGAP

is calibrating their model. We see the need (shown in Fig 8) to properly calibrate the model and even go for a globally calibrated model. We appreciate the comment and have expanded the discussion section 2.1.

< The results section does not allow any conclusion about the utility of the model >

To highlight some aspects of section 5, we provide examples of where the model has been applied in conjunction with water quality and hydro-economic modeling, with case studies and results for both the extended Lake Victoria basin the Zambezi basin. Further we highlight that CWatM has been applied for different purposes (Wang et al., 2019a, Wang et al., 2019b, He et al. 2019, Vinca et al., 2019, Kahil et al. 2019). We appreciate the comment and have expanded upon the discussion by shifting section 5.5.3 into section 6 to better underline the linkage to other models and results.

Changes in the manuscript:

CWatM has already used in several scientific assessments, including Wang et al., 2019a, 2019b, He et al. 2019, Vinca et al., 2019, and Kahil et al., 2019

< The input timing for the meteorologic information for a regional model does not lend confidence in the software development approach>

We are currently using a daily timesteps with daily meteorological forcing data. The model is also using daily sub-time steps where required e.g. the percolation in the soil and the routing, as well as the lake and reservoirs module uses sub-steps.

For soil this is already in: “Therefore, the soil moisture equation has to be solved iteratively on a sub-daily time step.”

For river routing we have added in the manuscript:

As water can travel a distance greater than a cell size in one day, river routing and the lake and reservoir routines are performed on a sub-daily time step, based on the chosen spatial resolution.

The spatial scale we are using at the moment is 5 arcmin to 30 arcmin. Even models dealing with flood forecast on European level with a spatial resolution of  $5 \times 5 \text{ km}^2$  (Lisflood in the European Flood Awareness System <https://www.efas.eu/en/overview>) are using daily time steps. We are aware that if we using a spatial resolution of  $1 \text{ km}^2$  (like in our project in India <https://fuse.stanford.edu/hydrology-and-water-resources>) and dealing with flooding or even flash-flood we have to go down in timely resolution as well, but at the moment we work on water availability, water demand with daily available climate projections. Our model is running from 20 to 100+ sub-daily timestep depending on the context and application.

< The global water balance is not sufficient to demonstrate the utility of the model, There is much more information available to convince the reader of the usefulness of the proposed model. For example, Scanlon et al. (2018) posed a challenge for global hydrologic models to simulate correctly the water storage trends globally.>

We are aware that several papers and models use either observed discharge stations or GRACE to evaluate the global results of their models (see below for a list). For sure we can produce maps which shows some agreement between simulation and

measurement but: 1) exactly the paper you mention Scanlon et al. (2018) points out that the used models show a “poor agreement between models and Grace” and to show some results for a single model might be not a real prove. 2) we think that it is best practice to show the performance of a model is in the framework of an intercomparison project in comparison with other models. As our model is quite young (one reason to have this manuscript here) we are not part of the study in Scanlon et al. (2018) but we are already part of Inter-Sectoral Impact Model Intercomparison Project (ISIMIP), and upcoming publication will include results from CWatM e.g. from Yadu Pokhrel et al. on global terrestrial water storage. This includes also a fair and independent comparison of GRACE and model results from seven global hydrological models.

Further on we showed in fig 8 that especially in data sparse regions uncalibrated results from different models can be quite wrong (also CWatM) and calibration or fitting is necessary. This is shown only for a single station to illustrate that, but if necessary several other stations can be shown. This is a different view of evaluation than showing global maps of correlation or other indicators but shows also some shortcoming of global models (and of CwatM). We appreciate the comment and the reference to Scanlon et al. (2018), and we are working on further comparisons for future work. We have added this comment into the manuscript:

Some modeling papers such as Döll et al., 2014 and Sutanudjaja et al., 2018 use observed discharge stations or the Gravity Recovery and Climate Experiment (GRACE) Tapley et al., 2004 to evaluate the global results of their models. As CWatM has started to be part of the ISIMIP intercomparison project, we evaluated that it is best practice to show the performance of a model in the framework of ISIMIP by comparing it to other models like in Zhang et al., 2017 or Scanlon et al., 2018. An upcoming paper by Pokhrel, 2019 on global terrestrial water storage will include a comparison of seven global terrestrial hydrology models (including CWatM) against GRACE data.

The calibration results show that the calibration works, which would be surprising if not (are the parameters calibrated at each pixel?).

The idea of showing calibration here is to show that it works. Most scientific papers show a method and shows afterward to what extent it works. Parameter are calibrated on sub-basins (for Lake Victoria and Zambezi). We have added these lines in 5.4 to account for that:

Calibration is performed for three stations. The calibration parameters are valid for the sub-basin up to the gauging station. The upstream station is calibrated using the best fit of the downstream calibrated sub-basins.

Calibration for the Zambezi basin is performed for six stations (Lukulu, Kongola, Katima, Kafue Hook, Luangwa Road Bridge, Tete - see figure 6). The calibration parameters are valid for the sub-basin up to the gauging station. The upstream station is calibrated using the best fit of the downstream calibrated sub-basins. The parameter set is valid for the sub-basin exclusive of the downstream sub-basins which have their own parameter set.

But what about validation?

Validation of calibration results are show in the supplement. We added a line to refer to the supplement for validation.

We added this in section 5.3

Calibration and validation results are shown for each station in the supplement part 2

<While section 5.4 presents perhaps meaningful results, they are not suitable for GMD.>

<In addition, there is much more to community model development than the term and providing the code in a git plus documentation. I encourage the developers to study principles of best practices for community scientific software development and think about a software productivity and sustainability plan>

In fact there is a lot more than providing code and documentation. We take this point and show in section 2.1 that we include some more ideas based on established examples such as the Community Land Model (Lawrence et al. 2018) or the mesoscale Hydrologic Model (Samaniego et al. 2019). Several aspects of our supports the user and development, incorporating good practices for scientific software development, such as code management, documentation with a tutorial, and automated documentation. We already have users in China, Europe, Japan, India, and other countries, so there exists the demand for a model like CWatM. Some parts are still under development and can be improved like our forum on <https://cwatm.iiasa.ac.at/forum.html> where users can help each other.

The fact that we do not have a full set “software productivity and sustainability plan” is because we are at the point of establishing our model and one part of this is to publish our model at a journal which promote an open research culture like GMD. But we use this comment to extend section 2.1.

For sure there is still a lot to do to reach a high standard like improving software management by building up an automated testing, easier installation via the Python Package Index and building containers and improving the communication with the users via an improved forum.

We added this to section 7:

and 5) improving software management by building up an automated testing, easier installation via the Python Package Index and building containers and improving the communication with the users.

## Reply to reviewer 2

Thank you for your review of our paper. We are glad that you find our model valuable and that you recommend the paper for publication.

In this comment we report the reviewer's comments under <> brackets, followed by our replies.

<The full data set was available for download at <https://zenodo.org/record/3361560#.XapscehKhPY> but did not include soil data>

Thank you for testing and pointing out that we missed some data. We want to emphasize that a open source model is only useful, if the data set is also available. We looked again at the data set and uploaded a new and tested data set on <https://doi.org/10.5281/zenodo.3528098> together with a climate set for the Rhine basin for testing purpose. We also changed the link in the paper pointing to the new data set.

< I would also recommend adding more details about the climate data >

The uploaded data includes a climate forcing data set cut to the Rhine basin and the description of the database include the text in the meteo\_wfdei\_rhine\_README.txt. Several global climate forcing data are available for download on the web and no conversion is necessary because CWatM can read netcdf format.

We added a sentence to the paper in section 8:

Climate forcing data can be found on the ISI-MIP server (Frieler et al.,2016) or any other climate forcing data stored as netcdf can be used.

# Development of the Community Water Model (CWatM v1.04)

## A high-resolution hydrological model for global and regional assessment of integrated water resources management

Peter Burek<sup>1</sup>, Yusuke Satoh<sup>1,2</sup>, Taher Kahil<sup>1</sup>, Ting Tang<sup>1</sup>, Peter Greve<sup>1</sup>, Mikhail Smilovic<sup>1</sup>, Luca  
Guillaumot<sup>3</sup> and Yoshihide Wada<sup>1,4</sup>

<sup>1</sup>International Institute for Applied Systems Analysis, Laxenburg, Austria

<sup>2</sup>National Institute for Environmental Studies, Tokyo, Japan

<sup>3</sup>Univ Rennes, CNRS, Géosciences Rennes - UMR 6118, F-35000 Rennes, France

<sup>4</sup>Department of Physical Geography, Utrecht University, Utrecht, Netherlands

Correspondence to: Peter Burek (burek@iiasa.ac.at)

### Abstract

We develop a new large-scale hydrological and water resources model, the Community Water Model (CWatM), which can simulate hydrology both globally and regionally at different resolutions from 30 arc min to 30 arc sec at daily time steps. CWatM is open-source in the Python programming environment and has a modular structure. It uses global, freely available data in the netCDF4 file format for reading, storage, and production of data in a compact way. CWatM includes general surface and groundwater hydrological processes, but also takes into account human activities, such as water use and reservoir regulation, by calculating water demands, water use, and return flows. Reservoirs and lakes are included in the model scheme. CWatM is used in the framework of the Inter-Sectoral Impact Model Intercomparison Project (ISIMIP), which compares global model outputs. The flexible model structure allows dynamic interaction with hydro-economic and water quality models for the assessment and evaluation of water management options. Furthermore, the novelty of CWatM is its combination of state-of-the-art hydrological modeling, modular programming, an online user manual and automatic source code documentation, global and regional assessments at different spatial resolutions, and a potential community to add to, change, and expand the open-source project. CWatM also strives to build a community learning environment which is able to freely use an open-source hydrological model and flexible coupling possibilities to other sectoral models, such as energy and agriculture.

### 1 Introduction

In recent years, the interactions between natural water systems, climate change, socioeconomic impacts, human management of water resources, and ecosystem management have increasingly been incorporated into the processes of large-scale hydrological models (Wada et al., 2017). Examples of these models are WaterGAP (Alcamo et al., 2003;Flörke et al., 2013), H08 (Hanasaki et al., 2008, 2018), MATSIRO (Pokhrel et al., 2012), LISFLOOD (De Roo et al., 2000;Udias et al., 2016), PCR-GLOBWB (Van Beek et al., 2011;Wada et al., 2014, Sutanudjaja et al., 2018), SAFRAN-ISBA-MODCOU (Habets et

al., 2008; Decharme et al., 2019). Human intervention in hydrology and water resources is becoming essential for the realistic simulation of global and regional hydrological processes. In particular, simulations of human water demands from different sectors such as agriculture, industry, and households could have a large impact on estimated hydrological storage (e.g., groundwater) and fluxes (e.g., discharge) (Alcamo et al., 2007; Wada et al., 2016). More efforts have gone into better groundwater representation in large-scale hydrological models to realistically simulate groundwater levels and surface–groundwater interactions (Pokhrel et al., 2015; Wada, 2016; Reinecke et al., 2019; de Graaf et al., 2015, 2017; Decharme et al., 2019).

In recent years, model intercomparison projects such as the WaterMIP (Water and Global Change Water Model Intercomparison Project (Haddeland et al., 2011), Inter-Sectoral Impact Model Intercomparison Project (ISIMIP) (Warszawski et al., 2014), and the Coupled Model Intercomparison Project Phase 6 (CMIP6) (Eyring et al., 2016) led to, among other advantages, a systematic overview of models, a consistent database of spatial input data and simulation protocol and scenarios, and a shared database of results, all of which facilitate analysis across different modeling sectors (e.g., water, agriculture, energy, biome, and climate). This has also led to a better understanding of how to assess future changes in land use and climate in relation to water resource constraints under given uncertainties of the forcing drivers such as climate.

Clark et al. (2011) and Bierkens (2015) indicate that model intercomparison efforts have failed to lead to a better understanding of the origins and consequences of systematic model bias and differences, and thus to an improved outcome of model components. Bierkens (2015) argues that while there are many catchment hydrological models for specific catchments specializing into their own sophisticated model parameterizations, few global hydrological models — compared with the number of regional hydrological models — interact with these regional models and modeling groups (e.g. Siderius et al., 2018). One way of overcoming this barrier could be to implement multiple modeling or module approaches into the unifying framework suggested by Clark et al. (2015). Thus, we here develop a new large-scale hydrological and water resources model, the Community Water Model (CWatM), which has a flexible modular structure and unique global and regional spatial representations. Because of complex interactions of hydrology with food, energy and ecosystems, it is expected that hydrological models can cover these interactions as model components. To advance the move from large-scale hydrological models to better model representations of hydrological processes, we believe that it is also necessary to create a community-driven modeling environment that facilitates the exchange of ideas, components or modules, data, and results in easily communicable format. In a wider sense, a user-friendly and flexible model structure will enable more active engagement with stakeholders and associated capacity training.

Therefore, CWatM includes the features detailed below:

- Use of an open-source platform as a way to exchange ideas and develop model codes that facilitate capacity enhancement, especially in regions with limited access to high computation facilities and high-resolution data
- Scalability to allow use of the model at the regional to catchment scale and also at the continental to global scale, which facilitates learning between global and regional hydrological model applications



- Use of flexible modular structure to explore the linkages with other sectoral models such as those relating to land use, agriculture, and energy so that options and solution space could be integrated
- Existing linkages to state-of-the-art models for energy (MESSAGE) (Sullivan et al., 2013), land use and ecosystems (GLOBIOM) (Havlík et al., 2013), agriculture (IIASA-EPIC) (Balkovič et al., 2014), water quality (MARINA) (Strokal et al., 2016) and hydro-economy (ECHO) (Kahil et al., 2018)
- Linkages to the political economy and stakeholder perspectives (Tramberend et al., 2019) for example, social hydrology (Sivapalan et al., 2012; Seidl and Barthel, 2017)

A model software architecture includes the aspects below:

- A high-level programming language for easy comprehension of the code and to facilitate extensibility
- An interface to a fast computing language (e.g., C++) for time-intensive operations (e.g., river routing)
- A multi-platform to adjust the model to the users' needs and capacity (e.g., Windows, Linux, Mac and high-performance clusters and super-computers).
- A high level of modularity to be extensible for different model options to solve the same process, for example, evaporation with Hargreaves, Hamon, Penman-Monteith or for a different purpose (e.g., flood forecasting, water–food nexus, linking to hydro-economic modeling).
- Documentation of the model and the source code in a semi-automatic way to facilitate immediate documentation and comprehension of the concepts involved
- A state-of-the-art data structure for reading and writing time/spatial data to allow efficient management of data storage and facilitate the development toward high resolution models

As described above, the main novelty of CWatM lies not in providing entirely new concepts for modeling hydrological and socioeconomic processes but in combining existing good practice in various scientific communities beyond hydrology itself. CWatM has a modular model structure which is open-source and uses state-of-the-art data storage protocols as input and output data. Currently, CWatM can use different spatial resolution from 30 arc min ( $\approx 50$  km by 50 km at the equator) to 30 arc sec ( $\approx 1$  km by 1 km) enabling it to address both global and regional water management. The online user manual and automatic source code documentation make CWatM an easy-to-use tool which can be integrated and coupled to other toolsets such as land use modeling and hydro-economic modeling. CWatM also strives to build up a community which can freely use an open source hydrological model with the possibilities of coupling it to other water management models such as WEAP (Yates et al., 2005) and ECHO (Kahil et al., 2018).

This paper describes the development of the model, including its structure and modules, and gives some examples of applications. Section 2 of this paper presents a detailed description of the model development of CWatM. Section 3 describes the data used for the model. Section 4 introduces the calibration of the model. Section 5 shows results for several calibrated

catchments and two application examples. [Section 6 shows how CWatM is linked to other sectoral models.](#) Section 7 discusses the conclusions and the way forward.

2 Model description

2.1 Model concept

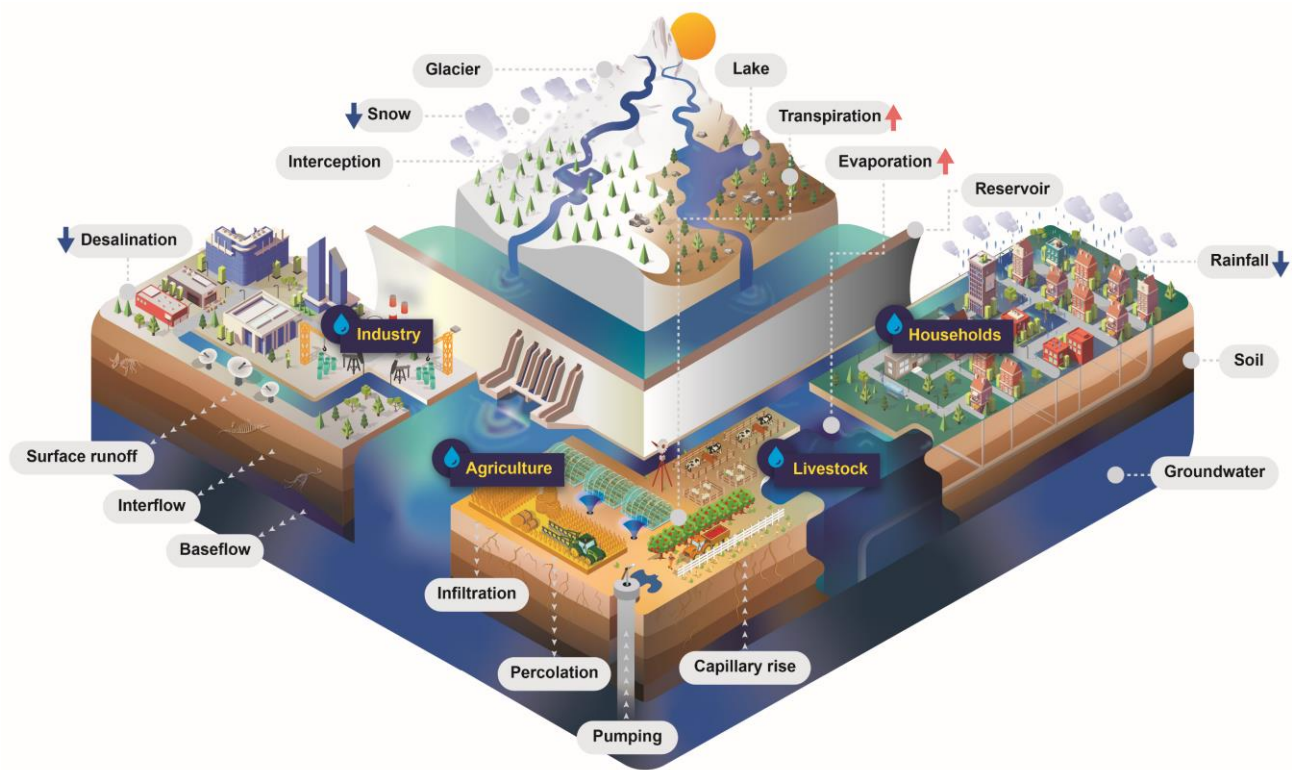


Figure 1: Schematic figure of the processes included in the CWatM

The Community Water Model (CWatM) is an integrated hydrological and channel routing model developed at the International Institute for Applied Systems Analysis (IIASA). CWatM quantifies water availability, human water use, and the effect of water infrastructure, for example, reservoirs, groundwater pumping, and irrigation, in regional water resources management. A schematic view of the processes is given in Figure 1. CWatM is a grid-based model with recent version for spatial resolution of 0.5° and 5' (with sub-grid resolution taking into account topography and land cover) at daily resolution (with sub-daily time stepping for soil, lakes and reservoirs and river routing). The model can also be applied at 30 arc sec. CWatM follows a modeling concept similar to that of large-scale hydrological models such as H08 (Hanasaki et al., 2006;2008; 2018), WaterGAP (Alcamo et al., 2003;Flörke et al., 2013), LPJmL (Bondeau et al., 2007; Rost et al., 2008), LISFLOOD (De Roo et al., 2000;Burek et al., 2013;De Roo et al., 2000), PCR-GLOBWB (Van Beek et al., 2011;Wada et al., 2014;Sutanudjaja et al.,

2018), VIC (Xu et al., 1994), MHM (Samaniego et al., 2011; Kumar et al., 2013), and HBV (Bergström and Forsman, 1973; Lindström, 1997). A comprehensive overview of existing GHMs is given in Bierkens (2015), Kauffeldt et al. (2016), Pokhrel et al. (2016), Wada et al. (2017), and in the ISI-MIP project (Frieler et al., 2016), the latter having been used for model comparison of different GHMs. Among these large-scale hydrological models, CWatM uses a model implementation similar to that of PCR-GLOBWB and LISFLOOD.

The philosophy of CWatM is the same as that described in Bergstrom (1991) for the model HBV: as complex as necessary but not more. This means that the model merges conceptual and physical modeling and is keeping a similar level of physical complexity throughout the model. If a higher detail of physical model is needed it should be introduced as add-on modules. For different tasks, different interactions to other models and different descriptions of processes are needed.

The CWatM modeling system is written in Python 3.7 with only a few Python packages (numpy, scipy, gdal, netCDF4) and can be used on different platform (Unix, Linux, Window, Mac). Excessive computational parts can be added via an interface as C++ or Fortran code. For example, runoff concentration within a grid cell or river routing using the kinematic wave equation is done in C++. With this approach the advantage of high-level languages like Python to write and understand code fast and effective and the advantage of languages like C++ for fast computing are preserved. The focus of the model development is to build a flexible model architecture and to present a full hydrological model for calculating water availability and demand. The model can handle different spatial resolution from 1 km to 50 km at a daily temporal resolution for different tasks from global to regional assessments

The target audience of the model is hydrological modelers of varying levels of programming familiarity. Modelers with no experience in programming languages like Python can use simply the executable together with the settings file. Modelers with only limited experience in Python can use the platform-independent Python version with no need to adapt the source code itself. Finally, modelers with programming capacity in Python can engage with the source code and adapt the model to their specific needs. The wide adoption of Python as a programming language and the open source approach will allow for a community of developers to engage with and further develop CWatM. The code itself comes with a GNU General Public License and is hosted on GitHub (<https://github.com/CWatM/CWatM>), where every change is trackable and transparent. The source code is programmed in the modern programming language Python, with only certain computationally demanding parts written in C++, such as river routing. Each subroutine is documented for its design and purpose, and 40% of the source code lines are documentation.

CWatM follows a modular development pathway in several ways which simplify the use of the model for the different user groups. Firstly, the program is independent from the settings file, which includes all information related to data, parameters for each process, and output options. This enable the user to run the model without any understanding of Python, while still providing flexibility of input and output options to the user. Secondly, the modules for hydrological processes and data

handling (e.g., reading configuration, data read and write routines, error handling) are handled separately, and further the different hydrological processes (from calculation of potential evaporation to river routing) are each handled independently. This enables the advanced user to concentrate on adapting specific processes or developing their own hydrological modules to extend the modular structure (see figure S11 in the supplement for the CWatM modular structure). Thirdly, each module is identically composed of an initialization class and a dynamic class operating through time; this structure is motivated by the PC-Raster framework (Karssenberg et al., 2010). Fourthly, CWatM keeps track of the metadata on sub routines of the source code and of the data. CWatM generally accepts netCDF, Geotiff, and PCRaster input maps and uses netCDF4 formats for outputs and to store temporal-spatial data efficiently. This also allows for meteorological forcing data to be used without the need for reformatting. NetCDF4 also has the advantage that the metadata are directly attached. Finally, to best support and reach its community, CWatM has a Google group and forum (<https://groups.google.com/d/forum/cwatm>), online documentation (<https://cwatm.iiasa.ac.at>) including model setup basics, data information, license information, and uses Sphinx (<https://www.sphinx-doc.org>) for the auto-documentation of source code.

The model is accessible and customizable to the needs of different users with varying levels of programming skill, allowing for research questions of varying spatial scales from global to local scales to be answered. This will support and enable different stakeholder groups and scientific communities beyond hydrology and of varying capacities to engage with a hydrological model and support their investigations (see section 6). We hope that that we have appropriately represented CWatM and its use of best practices in research software as stated in Wilson et al., 2014 and Jiménez et al., 2017. CWatM has already been used in several scientific assessments, including Wang et al., 2019a, 2019b, He et al. 2019, Vinca et al., 2019, and Kahil et al., 2019, and has a small but growing community users in several countries around the world.

## 2.2 General overview of the hydrological processes

CWatM can use different datasets of daily meteorological forcing as inputs to calculate potential evaporation with Penman-Monteith (Allen et al., 1998) as a default option, as well as other methods such as the Hargreaves (Hargreaves and Samani, 1958) and Hamon (Hamon, 1963) approaches. Elevation data on the sub-grid level and temperature are used to split precipitation into rain and snow, while the degree-day factor method (WMO, 1986) calculates snow melt.

CWatM calculates the water balance for six land cover classes separately (forest, irrigated, paddy-irrigated, water covered, sealed area and “other” land cover class). Soil processes, interception of water, and evaporation of intercepted water are calculated separately for four different land cover classes (forest, irrigated, paddy-irrigated and “other” ) and the resulting flux and storage per grid-cell is aggregated by the fraction of each land cover class in each grid-cell. Infiltration into the soil is calculated with the Xinanjiang model approach (Zhao and Liu, 1995; Todini, 1996). The model calculates preferential bypass flow which bypasses the soil layers and percolates directly to groundwater, similar to the approach of LISFLOOD (Burek et

al., 2013), VarKast (Hartmann et al., 2015) and HBV (Lindström et al., 1997). Soil moisture redistribution in three soil layers is calculated using the Van Genuchten simplification (Van Genuchten, 1980) of the Richards equation. The depth of the first soil layer is fixed at 5 cm, so that its soil moisture can be compared with products from remote sensing data. The second and  
180 third soil layer depths depend on the root zone depth of each land cover class and the total soil depth from data of the Harmonized World Soil Database 1.2 (HWSD) (FAO et al., 2012). Water uptake and transpiration by vegetation are based on an approach by Supit et al. (1994) and Supit and van der Goot (2003) where water stress reduces the maximal transpiration rate. Direct evaporation from the soil surface is calculated separately. For two more land cover classes, namely, water and sealed (impermeable) surface, evaporation and runoff are also calculated separately.

185 Groundwater storage is modeled using a linear reservoir. In the newest version of the model, a MODFLOW coupling is also available, allowing to include lateral flows between grid cells. Capillary rise from groundwater to the soil layers is included. Runoff concentration in a grid-cell is calculated using a triangular-weighting-function. CWatM applies the kinematic wave approximation of the Saint-Venant equation (Chow et al., 1998) for river routing.

Lakes and reservoirs are included in two different ways: i) a lake or reservoir has an upstream area beyond the actual grid cell  
190 and is part of the grid linking the river routing system; ii) a lake or reservoir is only a part of the regional river system within a grid cell. Reservoirs are simulated using a simple general reservoir operation scheme as used in LISFLOOD (De Roo et al., 2000, Burek et al., 2013). Lakes are simulated by using the Modified Puls approach (Chow et al., 1998, Maniak, 1997).

Water demand and consumptions are estimated for the livestock, industry, and domestic sectors using the approach of Wada  
195 et al. (2011). Water demand and consumption for irrigation and paddy irrigation are calculated within CWatM using the crop water requirement methods of Allen et al. (1998). This irrigation scheme can also dynamically link the daily surface and soil water balance with irrigation water.

With these coupled processes CWatM can facilitate assessment of the changing pattern of water supply and demand across scales under climate change at different spatial resolutions. The modular structure also makes possible the linking of CWatM  
200 with other IIASA models, for example, MESSAGE (Sullivan et al., 2013), GLOBIOM (Havlík et al., 2013), and ECHO (Kahil et al., 2018, [2019](#)) to develop an integrated assessment modeling framework for nexus issues (e.g., water–food–energy) or hydro-economic modeling for quantifying water infrastructure investment options for regional water resources management.

## 2.3 Methods

### 205 2.3.1 Meteorological forcing

CWatM is able to use different dataset of meteorological forcing for current climate, for example, MSWEP (Beck et al., 2017), WFDEI (Weedon et al., 2014), PGMFD (Sheffield et al., 2006), GSWP3 (Kim et al., 2012) or EWEMBI (Lange, 2018) or

future climate projections from different General Circulation Models (GCMs), ) (e.g., data from ISIMIP project (Frieler et al., 2016). CWatM can use the netCDF4 repositories of original meteorological forcing without reformatting.

210

Depending on the method used for calculating potential evaporation e.g., Penman-Monteith method (Allen et al., 1998), Hargreaves method (Hargreaves and Samani, 1958) or Hamon method (Hamon, 1963) different climate data are needed. As a default, the Penman-Monteith needs as inputs precipitation, humidity, long- and short-wave downward surface radiation fluxes, maximum, minimum, and average 2m temperature, 10-m wind speed, and surface pressure. Temperature data are additionally  
215 needed to distinguish between snow and rain.

### 2.3.2 Potential evaporation

. Potential reference crop evaporation rate ( $ET_0$ ) is calculated from a hypothetical reference vegetation with specific characteristics and unlimited availability of water (Allen et al., 1998). In the same way the potential evaporation of an open water surface ( $EW_0$ ) is calculated.  $ET_0$  and  $EW_0$  are treated as pure climatic variables, because for calculation purpose they  
220 are not influenced by land cover or soil properties. In reality, the potential evapotranspiration might be different to  $ET_0$  due to differences in vegetation characteristics, aerodynamic resistance, and surface reflectivity (albedo). To account for the variability of vegetation, the  $ET_0$  is multiplied by an empirical “crop coefficient” ( $k_{crop}$ ), that lumps these differences into one factor, yielding a potential crop evapotranspiration rate ( $ET_{crop}$ ). The method used here is based on work described in Allen et al. (1998) and Supit and van der Goot (2003).

### 225 2.3.3 Snow and frost

Precipitation is split into rainfall and snow, depending on the temperature. If the average temperature is below 1°C (default, but can be changed), all precipitation is assumed to be snow. For large grid cells, of, say, 0.5° or 5' resolution, there is a considerable sub-grid heterogeneity in elevation and therefore in temperature and snow accumulation and melt (Anderson, 2006). Because of this, snow accumulation and melt are modeled in up to 10 separated elevation zones on sub-grid level using  
230 different elevation zones and a fixed defined moist adiabatic lapse rate.

Snow accumulates until it melts or evaporates. The rate of snowmelt is estimated using a degree-day factor method which take into account that snowmelt increases when it is raining (Speers and Versteeg, 1979)

$$M = C_m \cdot C_{Seasonal}(1 + 0.01 \cdot R\Delta t)(T_{avg} - T_m) \cdot \Delta t \quad (1)$$

where:

235 M: snowmelt per time step [mm]  
R: rainfall intensity [mm day<sup>-1</sup>]  
Δt: time interval [days]  
T<sub>m</sub>: = 0 °C  
C<sub>m</sub>: degree-day factor [mm °C<sup>-1</sup> day<sup>-1</sup>]  
240 C<sub>Seasonal</sub>: seasonal variable melt factor

$C_{\text{Seasonal}}$  is a factor depending on the day of the year, which varies the snow melt rate. A similar factor is used in several other models (e.g., Anderson, 2006 and Viviroli et al., 2009). At high altitudes the model tends to accumulate snow without any melting loss, because temperature never exceeds 1°C. In these altitudes snow is accumulated and is converted into firn, which then is converted to ice and as glacier moved to lower regions over decades or even centuries. In the ablation area, the ice is again melted. In CWatM this process can be optionally simulated by melting the snow in higher altitudes on an annual basis over summer using a higher degree-day factor and temperature from a lower sub-grid zone.

Hydrological processes occurring near the soil surface are affected and halted, if the soil surface is frozen. To estimate whether the soil surface is frozen, A frost index  $F$  is calculated to estimate whether the soil surface is frozen based on Molnau and Bissell (1983). The frost index changes by day at a rate given by:

$$\frac{dF}{dt} = -(1 - A_f)F - T_{av} \cdot e^{-0.04 \cdot K \cdot d_s / we_s} \quad (2)$$

where:

- $dF/dt$ : [°C day<sup>-1</sup>].  
 $A_f$ : decay coefficient [day<sup>-1</sup>] (here: 0.97)  
 $K$ : snow depth reduction coefficient [cm<sup>-1</sup>] (here 0.57)  
 $d_s$ : grid-average of depth of the snow cover [mm equivalent water depth]  
 $we_s$ : snow water equivalent

For each time step the value of  $F$  [°C day<sup>-1</sup>] is updated as:

$$F(t) = F(t - 1) + \frac{dF}{dt} \Delta t \quad (3)$$

The soil is considered frozen when the frost index is above a critical threshold of 56 and every soil process in the first two layers will be stopped. Precipitation bypasses soil and is transformed into surface runoff until the frost index is again lower than 56.

### 2.3.4 Interception, evaporation from soil, open water, and sealed surface

The calculation for interception and evaporation is based on Allen et al. (1998). For each land cover class, a maximum interception storage is defined. Interception storage can be filled by rainfall and depleted by evaporation using potential evaporation from open water. The left-over interception storage is added to the water available for infiltration in the other time step. Evaporation from soil is calculated using the potential reference evapotranspiration rate multiplied by a soil crop factor (default: 0.2). Evaporation from sealed area or open water is calculated using the potential evapotranspiration for the open water rate multiplied by a factor (default: 0.2 sealed, 1.0 water).

### 2.3.5 Transpiration from plants

Potential transpiration from plants is calculated using the potential reference evapotranspiration multiplied by a crop-specific factor available as a spatially distributed data set for each land cover type for every 10 days over a year. The crop coefficient is aggregated from MIRCA2000: a global data set of monthly irrigated and rainfed crop areas (Portmann et al., 2010). The

actual transpiration rate depends on the available water and on the ability of the crop type to deal with water stress. The energy already used up for the evaporation of intercepted water is subtracted here in order to respect the overall energy balance. The  
 275 actual transpiration rate is reduced by a water stress factor which takes into account the ability of the crop to deal with water stress and an index of water stress of the soil:

$$r_{WS} = \frac{(w_1 - w_{wp1})}{(w_{crit1} - w_{wp1})} \quad (4)$$

where:

- 280  $r_{ws}$ : Reduction factor because of water stress  
 $w_I$ : soil moisture in the two upper soil layers [mm]  
 $w_{wp1}$ : soil moisture at wilting point (soil moisture potential pF 4.2)  
 $w_{crit1}$ : soil moisture below which water uptake is reduced and plants start closing their stomata

The critical amount of soil moisture is calculated as:

$$w_{crit1} = (1 - p) \cdot (w_{fc1} - w_{wp1}) + w_{wp1} \quad (5)$$

$$285 \quad p = 1 / (0.76 + 1.5 \cdot T_{max}) - 0.1 \cdot (5 \cdot Crop_{Groupnumber})$$

where:

- $p$ : soil depletion fraction  
 $w_{fc1}$ : soil moisture at field capacity  
 290  $Crop_{Groupnumber}$ : The crop group number is an indicator of adaptation to dry climate (e.g., olive groves are adapted to dry climate and can therefore extract more water from soil that is drying out than rice can.

The actual transpiration  $T_a$  is calculated:

$$T_{act} = r_{WS} \cdot T_{pot} \quad (6)$$

The procedure for estimating  $p$  and  $R_{ws}$  is described in detail in Supit and van der Goot (2003).

### 2.3.6 Infiltration into soil and preferential bypass flow

295 To estimate the infiltration capacity of the soil the approach of XinanJiang (also known as VIC/ARNO model) (Zhao and Liu, 1995 and Todini, 1996) is used. The saturated fraction of a grid cell that contributes to surface runoff is related to the overall soil moisture of a grid cell through a non-linear distribution function. The saturated fraction  $A_s$  is approximated by the following distribution function:

$$A_s = 1 - \left(1 - \frac{w_1}{w_{s1}}\right)^b \quad (7)$$

300 where:

- $w_{s1}$ ,  $w_1$ : maximum and actual soil moisture in the upper two soil layer  
 $b$ : empirical shape parameter

$$INF_{pot} = \frac{w_{s1}}{b+1} - \frac{w_{s1}}{b+1} \left[1 - \left(1 - A_s\right)^{\frac{b+1}{b}}\right] \quad (8)$$

305 To simulate the preferential bypass flow of the soil, a fraction of the water available for infiltration is passed directly to the groundwater zone. The fraction is calculated as a function of the relative saturation of the first two soil layers.



$$D_{pref,gw} = W_{av} \left( \frac{w_1}{w_{s1}} \right)^{c_{pref}} \quad (9)$$

where:

- 310  $D_{pref,gw}$ : preferential flow per time step  
 $W_{av}$ : available water for infiltration  
 $c_{pref}$ : empirical shape parameter

A preferential flow component is calculated, that lets more water bypass the soil as the soil gets wetter.

The actual infiltration  $INF_{act}$  is calculated as:

$$INF_{act} = \min(INF_{pot}, W_{av} - D_{pref,gw}) \quad (10)$$

### 315 2.3.7 Soil moisture redistribution and capillary rise

Unsaturated flow and transport processes are modeled with the 1D-Richard equation, which requires a high spatial and temporal distribution of the soil's hydraulic properties.

$$\frac{\Delta \theta}{\Delta t} = \frac{\Delta}{\Delta z} \left[ K(\theta) \left( \frac{\Delta h(\theta)}{\Delta z} \right) - 1 \right] - S(\theta) \quad (1D \text{ Richard equation}) \quad (11)$$

where:

- 320  $\theta$ : soil volumetric moisture content [L<sup>3</sup>/L<sup>3</sup>]  
 $t$ : time [T]  
 $h$ : soil water pressure head [L]  
 $K(\theta)$ : unsaturated hydraulic conductivity [L/T]  
 $z$ : vertical coordinate  
 325  $S$ : source sink term [T<sup>-1</sup>]

With a simplification, the 1D Richard equation (e.g., flow of soil moisture), is entirely gravity-driven and the matrix potential gradient is zero. This implies a flow that is always in a downward direction at a rate equal to the conductivity of the soil. The relationship can now be described with the model of (Mualem (1976) and with the Van Genuchten model equation.

$$K(\theta) = K_s \left( \frac{\theta - \theta_r}{\theta_s - \theta_r} \right)^{0.5} \left\{ 1 - \left[ 1 - \left( \frac{\theta - \theta_r}{\theta_s - \theta_r} \right)^{1/m} \right]^m \right\}^2 \quad (\text{Van Genuchten equation}) \quad (12)$$

330 where:

- $K_s$ : saturated conductivity of the soil [cm/d-1]  
 $K(\theta)$ : unsaturated conductivity  
 $\Theta, \theta_s, \theta_r$ : actual, maximum and residual amounts of moisture in the soil [mm]  
 $m$ : calculated from the pore-size index ( $\lambda$ ):  $m = \frac{\lambda}{\lambda + 1}$

335

The soil hydraulic parameters  $\Theta, \theta_s, \theta_r, \lambda$ , and  $K_s$  are needed to simulate soil water transport for the Van Genuchten model and are derived via a pedotransfer function, (e.g., model Rosetta of: Zhang and Schaap, 2017) from standard soil properties (soil texture, porosity, organic matter and bulk density).

Once the unsaturated conductivity for each soil zone is determined, the water flux to the next zone can be estimated. At a time  
 340 step of one day and high  $K(\theta)$ , the vertical flux can exceed the available soil moisture:

$$K(\theta) > \theta - \theta_r \quad (13)$$

Therefore, the soil moisture equation has to be solved iteratively on a sub-daily time step.

Capillary rise occurs only when the groundwater level is close to the surface. CWatM estimates the total fraction of the area with groundwater level of between 0m and 5m from the surface in discrete steps and calculates the flux from groundwater to the soil layer based on unsaturated conductivity and field capacity (Wada et al., 2014).

### 2.3.8 Groundwater

Groundwater storage and baseflow are modeled using a linear reservoir approach as in LISFLOOD (De Roo et al., 2000; Udias et al., 2016). The groundwater zone is filled by the water percolating from the lower soil zone and the preferential flow and is emptied by capillary rise and baseflow. The outflow from the groundwater zone is given by:

$$Q_{base} = \frac{1}{T_{base}} Storage = R_{coeff} Storage \quad (14)$$

where:

$Q_{base}$ : Baseflow or outflow from the groundwater zone

$T_{base}$ : Groundwater reservoir constant in days

Storage: Water stored in the groundwater zone

$R_{coeff}$ : Recession coefficient of groundwater zone

For considering lateral fluxes among grid cells and the explicit computation of groundwater levels over finer spatial domains, CWatM has an option to couple with MODFLOW (McDonald and Harbaugh, 1988, Harbaugh, 2005) using the FloPy Python package (Bakker et al., 2016) in a similar way to the PCR-GLOBWB (Sutanudjaja et al., 2014). The 5' resolution version of CWatM is coupled with an one-layer MODFLOW model at a finer MODFLOW resolution (from 4 km to 400 m) with the aim of integrating the small-scale topographic control. The coupling is made on a daily to weekly base water balance.

CWatM simulates the vertical soil water flow in three soil layers, while MODFLOW simulates lateral groundwater flows. The CWatM-MODFLOW is technically coupled (using the Drain package) via capillary rise from groundwater to the soil zones, groundwater recharge from the soil zones, and baseflow outflow from groundwater to the river network system. As MODFLOW resolution can be smaller than CWatM resolution, CWatM mesh is subdivided into two parts: one part where groundwater recharge occurs and one part where capillary rise from groundwater occurs. The area of each part is determined by the percentage of MODFLOW cells, where the water level reaches the lower soil layer inside a CWatM mesh. To distinguish whether the groundwater flow to the surface will be attributed to capillary rise or baseflow, a percentage of rivers is attributed to each MODFLOW cells and calculated based on a 200m resolution topographic map. Aquifer properties, like transmissivity or aquifer thickness, are estimated using the approach of de Graaf et al. (2015) and Gleeson et al. (2011). The results presented in section 5 of this work are calculated using the simplified linear reservoir approach.

### 2.3.9 Runoff concentration within a grid-cell

The process between runoff generation and river routing for each grid cell is called runoff concentration. The runoff generated from each cell is routed to the corner of each cell. Depending on land cover class, slope, and runoff group (surface, interflow, or baseflow) a concentration time (peak time) is determined. The total runoff for a grid cell is then calculated using a triangular-weighting-function:

$$Q(t) = \sum_{landcover} \sum_{runoff} \sum_i^{max} c(i) Q_{runoff}(t - i + 1) \quad (15)$$

where:

Q(t): total runoff of a grid cell of a timestep  
runoff: runoff component (surface, interflow, baseflow)  
Qrunoff: runoff of land cover class of a runoff component  
t: time (1 day)

$$c(i) = \int_{i-1}^i \frac{2}{max} - \left| u - \frac{max}{2} \right| \cdot \frac{4}{max^2} du \quad (16)$$

### 2.3.10 River routing

Flow through the river network is simulated using kinematic wave equations. The basic equations used are the equations of continuity and momentum. The continuity equation is:

$$\frac{\Delta Q}{\Delta x} + \frac{\Delta A}{\Delta t} = q \quad (17)$$

where:

Q: channel discharge [m<sup>3</sup> s<sup>-1</sup>],  
A: cross-sectional area of the flow [m<sup>2</sup>]  
q: amount of lateral inflow per unit flow length [m<sup>2</sup> s<sup>-1</sup>]

The momentum equation can also be expressed as in Chow et al. (1998):

$$A = \alpha \cdot Q^\beta \quad (18)$$

The coefficients  $\alpha$  and  $\beta$  are calculated by putting in Manning's equation. This leads to a nonlinear implicit finite-difference solution of the kinematic wave if you transform the right side:

$$\frac{\Delta t}{\Delta x} Q_{i+1}^{j+1} + \alpha (Q_{i+1}^{j+1})^\beta = \frac{\Delta t}{\Delta x} Q_i^{j+1} + \alpha (Q_i^j)^\beta + \Delta t \left( \frac{q_{i+1}^{j+1} + q_{i+1}^j}{2} \right) \quad (19)$$

where:

J: time index  
I: space index  
 $\alpha, \beta$ : coefficients

With the coefficient  $\alpha, \beta$  coefficient, the non-linear equation can be solved for each grid cell and for each time step using an iterative approach given in Chow et al. (1998). The coefficients can be calculated using Manning's equation.

$$A = \left( \frac{n \cdot P^{2/3}}{\sqrt{S_0}} \right)^{3/5} Q^{3/5} \quad (20)$$

where:

n: Manning's roughness coefficient  
P: wetted perimeter of a cross-section of the surface flow [m]  
S<sub>0</sub>: topographical gradient

Solving this for  $\alpha$  and  $\beta$  gives:

$$\alpha = \left( \frac{n P^{2/3}}{\sqrt{S_0}} \right)^\beta \text{ and } \beta = 0.6 \quad (21)$$

where:

P: wetted perimeter approximated in CWatM:  $P = \text{channel width} + 2 * \text{channel bankful depth}$   
n: Manning's coefficient  
S<sub>0</sub>: gradient (slope) of the water surface:  $S_0 = \Delta \text{ elevation} / \text{channel length}$

To calculate  $\alpha$ , CWatM uses a fixed network depending on the spatial resolution and, for each grid cell, the channel width, depth, length, gradient, and Manning's roughness have to be known. As water can travel a distance greater than a cell size in one day, river routing and the lake and reservoir routines are performed on a sub-daily time step, based on the chosen spatial resolution.

### 2.3.11 Reservoirs and lakes

Reservoirs and lakes (RL) based on the HydroLakes database (Messenger et al., 2016; Lehner et al., 2011) are simulated as part of the channel network. Using the approach of Hanasaki et al. (2018) and Wisser et al. (2010) we distinguish between global RL and local RL. Global RL are located in the main channel of a grid cell with a catchment upstream of this grid cell. Local RL are more or less situated inside one grid cell at the tributaries of the main channel and not attached to the main river. Local RL are defined in CWatM depending on the spatial resolution. All RL with an RL area of less than 200 km<sup>2</sup> at 0.5° (5 km<sup>2</sup> for 5°) or with a watershed of less than 5000 km<sup>2</sup> at 0.5° (200 km<sup>2</sup> for 5°) are defined as “global” RL. The approach to calculating water storage and outflow of RL are the same for local and global RL, but the retention effect of local RL will be calculated during the runoff concentration process within a grid cell, while the effect of global RL will be calculated during the river routing process and includes the whole river network of a catchment.

### Reservoir operation method

The method of simulating reservoir operations is taken from LISFLOOD (Burek et al., 2013). A total storage capacity  $S$  is assigned to each reservoir, and the fraction of filling of a reservoir is calculated. Three filling levels are defined: (a) the “conservative storage limit” fraction because a reservoir should never be completely empty (default set to 10% of the total storage). For prevention of damages in case of flooding a reservoir should not be filled to the full storage capacity; (b) the “flood storage limit” ( $L_f$ ) represents this maximum-allowed storage fraction (default set to 90% of the total storage); (c) the “normal storage limit” ( $L_n$ ) defines the buffering capacity and the available storage of a reservoir between  $L_n$  and  $L_f$ .

Another three parameters define how the outflow of a reservoir is regulated. (a) Each reservoir has a “minimum outflow”  $O_{min}$ . The default is set to 20% of the average discharge, for example, for ecological reasons. (b) A maximum possible outflow or the “non-damaging outflow”  $O_{nd}$  is defined which causes no problems downstream in the case of flood. The default for this outflow is set to 400% of the average discharge. (c) Between the state of flood and normal storage limit, a reservoir is managed as much as possible to deliver a constant outflow so that there is also a constant energy output from hydropower generation. “Normal outflow”  $O_{norm}$  is set as a default value to average discharge.

The outflow  $O_{res}$ , is calculated depending on the fraction of the filling of the reservoir as:

$$O_{res} = \min(O_{min}, \frac{1}{\Delta t} F \cdot S) \quad F \leq 2L_c \quad (22)$$

$$O_{res} = O_{min} + (O_{norm} - O_{min}) \left( \frac{F - 2L_c}{L_n - 2L_c} \right) \quad L_n \geq F > 2L_c \quad (23)$$

$$O_{res} = O_{norm} + \frac{(F - L_n)}{(L_f - L_n)} \cdot \max[(I_{res} - O_{norm}), (O_{nd} - O_{norm})] \quad L_f \geq F > L_n \quad (24)$$

$$O_{res} = \max\left(\frac{(F - L_f)}{\Delta t} S, O_{nd}\right) \quad F > L_f \quad (25)$$

where:

- S: Reservoir storage capacity [m<sup>3</sup>]
- F: Reservoir fill (fraction, 1 at total storage capacity) [-]
- 455 L<sub>c</sub>: Conservative storage limit [-]
- L<sub>n</sub>: Normal storage limit [-]
- L<sub>f</sub>: Flood storage limit [-]
- O<sub>min</sub>: Minimum outflow [m<sup>3</sup> s<sup>-1</sup>]
- O<sub>norm</sub>: Normal outflow [m<sup>3</sup> s<sup>-1</sup>]
- 460 O<sub>nd</sub>: Non-damaging outflow [m<sup>3</sup> s<sup>-1</sup>]
- I<sub>res</sub>: Reservoir inflow [m<sup>3</sup> s<sup>-1</sup>]

### Lake method

465 Lakes are simulated using the Modified Puls approach (Chow et al., 1998, Maniak, 1997) similar to the approach as in LISFLOOD (Burek et al., 2013). As lake inflow the channel flow upstream of the lake location is used. As lake evaporation the potential evaporation rate of an open water surface is taken. The Modified Puls approach assumes that lake retention is a special case of flood retention with horizontal water level and the equations of river channel routing (see section 2.3.10 river routing) can be written as:

$$470 \quad \frac{(Q_{In1} + Q_{In2})}{2} - \frac{(Q_{Out1} + Q_{Out2})}{2} = \frac{(S_2 + S_1)}{\Delta t} \quad (26)$$

where:

- Q<sub>In1</sub>: Inflow to lake at time 1 (t)
- Q<sub>In2</sub>: Inflow to lake at time 2 (t+Δt)
- Q<sub>Out2</sub>: Outflow from lake at time 1 (t)
- 475 Q<sub>In2</sub>: Outflow from lake at time 2 (t+Δt)

S<sub>1</sub>: Lake storage at time 1 (t)  
S<sub>2</sub>: Lake Storage at time 2 (t+Δt)

The change in storage is inflow minus outflow and open water evaporation. The equation is solved by calculating the lake storage curve as a function of sea level  $S = f(h)$  and the rating curve as a function of sea level  $Q=f(h)$ . Lake storage and discharge are linked by the water level.

The assumptions made here to simplify the equation are:

- 1.) A modification of the weir equation of Poleni from Bollrich and Preißler (1992):

$$Q = \mu cb \sqrt{2g} \cdot H^{3/2} = \alpha \cdot H^{3/2} \quad (27)$$

- 2.) If the weir does not have a rectangular form but a parabola form, the equation can be simplified to:

$$Q = \alpha \cdot H^2 \quad (28)$$

- 3.) The lake storage function is simplified to a linear relation:

$$S = A \cdot H \text{ where: } S: \text{lake storage; } A: \text{lake area; } H: \text{sea level} \quad (29)$$

### 2.3.12 Water use module

#### 490 Irrigation water demand

Irrigation is by far the biggest consumer of water at around 70% of global gross water demand (Döll et al., 2009). Irrigation water demand is calculated following the method developed in PCR-GLOBWB (Wada et al., 2011, 2014) using the crop calendar of Portmann et al. (2010) and irrigated areas from Siebert et al. (2005) to account for seasonal variability, different crops and different climatic conditions. We refer to Wada et al. (2014) for the detailed descriptions. In brief, irrigation water withdrawal and consumption are calculated separately for paddy (rice) irrigation and irrigation of other crops. To represent flooding irrigation of paddy fields, a 50 mm surface water depth is maintained until a few weeks before the harvest. Paddy irrigation demand is a function of the storage change of the surface water layer, net precipitation, infiltration to lower soil layers and open water evaporation from the surface water layer. For non-paddy irrigation, the irrigation demand is calculated using the difference between total and available water in the first two soil layers where total water is equal to the amount of water between field capacity and wilting point and available water is equal to the amount of water between current status and wilting point. Water withdrawal is calculated using the water efficiency rate of FAO (2012) and Frenken and Gillet (2012).

#### Livestock water demand

Livestock water demand is assumed to be the same as livestock water consumption and is calculated by the number of livestock in a grid cell with the daily drinking water requirement per individual livestock type (six livestock types in total) and per air temperature for seasonal change in drinking water requirement. The approach is taken from Wada et al. (2011).

#### Industrial and domestic water demand

Calculation of industrial water demand also follows the method of Shen et al. (2008), Wada et al. (2011) using the gridded industrial water demand data for 2000 from Shiklomanov (1997) and multiplying it by water use intensity. Water use intensity

is a function of gross domestic product (GDP), electricity production, energy consumption, household consumption, and a technological development rate per country. Domestic water demand is calculated by multiplying the population in a grid cell by a country-specific per capita domestic water withdrawal rate taken from FAO (2007) and Gleick et al. (2009). Adjustments for air temperature and for country-based economic and technological development are carried out based on the approach of Wada et al. (2011).

### **Water withdrawal and return flows**

The approach to calculating water withdrawal from different sources, water consumption, and return flows is based on the work of de Graaf et al. (2014), Wada et al. (2014), Sutanudjaja et al. (2018) and Hanasaki et al. (2018). Water demand can be fulfilled by surface water and groundwater. Based on the work of Siebert et al. (2010) groundwater for irrigation can be only used in areas that are equipped for irrigation. Groundwater is, at first, only abstracted from the renewable groundwater storage. Water demand that cannot be fulfilled purely from groundwater uses surface water from rivers, reservoirs, and lakes. An environmental flow cap can be set in order to sustain environmental needs for rivers, reservoirs, and lakes. If water demand still cannot be fulfilled, additional water is taken from nonrenewable groundwater. At 5' resolution, water demand cannot always be covered by surface or groundwater resources in the same grid cell; therefore, CWatM uses the approach of LISFLOOD (Burek et al., 2013) and takes water from up to five grid cells downstream moving along the local drainage direction.

Return flow and associated losses (i.e., conveyance, application) are calculated using the approaches of LPJmL (Rost et al., 2008) and H08 (Hanasaki et al., 2018). Return flow is the flow which is withdrawn from surface water or groundwater but is not consumed. For the return flow rate we follow the approach of Hanasaki et al. (2018). For irrigation the return flow is calculated using the irrigation efficiency by Döll and Siebert (2002). For domestic and industry the return rate is based on Shiklomanov (2000) (i.e., 90% for the industrial sector and 85% for the domestic sector). Fifty percent of return water from irrigation is lost to evaporation and 50% is returned to the channel network. This assumption is taken from Hanasaki et al. (2018). Domestic and industrial return flow is returned 100% to the river channel network.

## **3 Data**

### **3.1 Mask map**

CWatM can be run globally at 0.5° (30' or  $\approx 50 \times 50 \text{ km}^2$ ) or 5' ( $\approx 10 \times 10 \text{ km}^2$ ) but also at a regional scale on 30', 5', or even on 30", as long as the mask map is specified. To speed up the runs, a set of coordinates or a mask map can be defined to run CWatM locally but using a global dataset. The use of netCDF format facilitates this operation.

### 3.2 Global datasets

540 Various global datasets were used to set the framing conditions for CWatM. The model provides full global datasets for the 30' and the 5' resolution. For both resolutions, sub-grid variability is considered for certain processes; for example, for snow the sub-grid variability of elevation is used, and for the effect of land cover, the sub-grid variability of land use/cover in each grid cell is used. Table 1 gives an overview of the global datasets. Further descriptions of these datasets are given in the supplement.

**Table 1: Global dataset, source of dataset and submodule of CWatM**

Dataset	Source	Original spatial resolution	Submodule in CWatM
<b>Elevation</b>	SRTM (Jarvis et al., 2008); Hydro1k (USGS, 2002)	3'', 1km	Snow
<b>Flow direction map</b>	DDM30 (Döll and Lehner, 2002); DRT (Wu et al., 2011)	30''	Routing, lakes
<b>Lakes and reservoirs</b>	HydroLakes database (Messenger et al., 2016; Lehner et al., 2011)	Shapefile	Lakes, routing
<b>Soil</b>	Harmonized World Soil Database 1.2 (HWSD) (FAO et al., 2012)	30''	Soil
<b>Soil pedotransfer</b>	Rosetta3 (Zhang and Schaap, 2017)	-	Soil
<b>Groundwater</b>	GLHYMPS (Gleeson et al., 2011, 2014; Huscroft et al., 2018)		Groundwater
<b>Land cover</b>	Forest land cover (Hansen et al., 2013) Imperious area (Elvidge et al., 2007) Irrigated areas (Döll et al., 2002b; Siebert et al., 2005, 2010) Hyde 3.2 database (Klein Goldewijk et al., 2017)	1'' 30'' 5' 5'	Soil, land cover, water demand
<b>Crop coefficient</b>	MIRCA2000 (Portmann et al., 2010)	5'	Soil, water demand
<b>Albedo</b>	GlobAlbedo dataset (Muller et al., 2012)	3'	Pot. evaporation
<b>Discharge</b>	GRDC (Global Runoff Data Centre, 2007)	Station	Calibration
<b>Population and GDP</b>	Hyde 3.2 database (Klein Goldewijk et al., 2017) SSP Database at IIASA (Riahi et al., 2017) SSP population and GDP projections: Spatial disaggregation on 30' and 5' (Jones and O'Neill, 2016; Gao, 2017, Kумму et al., 2018 and Gidden et al., 2018)	5' Country 7.5', 30''	Water demand
<b>Livestock water demand</b>	Gridded livestock densities (FAO, 2007, Steinfeld et al., 2006) Livestock per country (FAO, 2012)	5'	Water demand
<b>Industry water demand</b>	Gridded industrial water data (Shiklomanov, 1997)	5'	Water demand
<b>Domestic water demand</b>	domestic water withdrawal per capita (FAO, 2012; Gleick et al., 2009)	5'	Water demand
<b>Meteorological forcing</b>	WFDEI.GPCC (Weedon et al., 2014) PGMFD v.2 - Princeton (Sheffield et al., 2006) GSWP3 (Kim et al., 2012)	30' 30' 30'	Almost all



	MSWEP (Beck et al., 2017)	6'	
	EWEMBI (Lange, 2018)	30'	
	For downscaling to 5' WorldClim version2 (Fick and Hijmans, 2017)	30''	

545

#### 4 Calibration

Most of the global hydrological models are uncalibrated with few exceptions, for example, WaterGAP (Müller Schmied et al., 2014). One of the main reasons for calibrating a model is the uncertainty of its input data, parameters, model assumptions, and grid cell heterogeneity, especially at low resolution as, for example, 0.5° or even 5'. Samaniego et al. (2017) gives a good overview of the main challenges to improving model parametrization. Calibrating CWatM is of major importance, as the model is developed to quantify water demand versus availability for detailed regional water resources assessments that will act as the basis for interactions with stakeholders and regional policy development. For assessments of water resources and water demand and consumption such as these, realistic simulations of water resources use and availability are necessary.

The main challenge of global calibration is not only the large uncertainty of input data, and the lack of data and validation data, but also that the hotspots of water crisis occur in data-poor regions such as Africa and parts of Asia. For CWatM, calibration uses an evolutionary computation framework in Python called DEAP (Fortin et al., 2012). DEAP implemented the evolutionary algorithm NSGA-II (Deb et al., 2002) which is used here as single objective optimization.

As objective function we used the modified version of the Kling-Gupta Efficiency (Kling et al., 2012), with  $r$  as the correlation coefficient between simulated and observed discharge (dimensionless),  $\beta$  as the bias ratio (dimensionless), and  $\gamma$  as the variability ratio.

$$KGE' = 1 - \sqrt{(r - 1)^2 + (\beta - 1)^2 + (\gamma - 1)^2} \quad (30)$$

$$\text{where: } \beta = \frac{\mu_s}{\mu_o} \text{ and } \gamma = \frac{CV_s}{CV_o} = \frac{\sigma_s/\mu_s}{\sigma_o/\mu_o}$$

where CV is the coefficient of variation,  $\mu$  is the mean streamflow [ $\text{m}^3 \text{s}^{-1}$ ], and  $\sigma$  is the standard deviation of the streamflow [ $\text{m}^3 \text{s}^{-1}$ ]. KGE',  $r$ ,  $\beta$ , and  $\gamma$  have their optimum at unity. The KGE' measures the Euclidean distance from the ideal point (unity) of the Pareto front and is therefore able to provide an optimal solution which is simultaneously good for bias, flow variability, and correlation. For a discussion of the KGE objective function and its advantages over the often used Nash–Sutcliffe Efficiency (NSE) or the related mean squared error, see Gupta et al. (2009) and Hrachowitz et al. (2013).

The calibration uses a general population size ( $\mu$ ) of 256, a recombination pool size ( $\lambda$ ) of 32. The number of generations is set to 30, which we found was sufficient to achieve convergence for stations. The calibration parameters are listed in Table 2.

**Table 2: Calibration parameters (with flexibility to adjust the number and different parameters)**

Snow:
1. Snowmelt coefficient in [m/C°/day] as a degree-day factor
Evapotranspiration:
2. Crop factor as an adjustment to crop evapotranspiration
Soil:
3. Soil depth factor: a factor for the overall soil depth of soil layer 1 and 2
4. Preferential bypass flow: empirical shape parameter of the preferential flow relation
5. Infiltration capacity parameter: empirical shape parameter b of the ARNO model
Groundwater:
6. Interflow factor: factor to adjust the amount which percolates from interflow to groundwater
7. Recession coefficient factor: factor to adjust the base flow recession constant (the contribution from groundwater to baseflow)
Routing:
8. Runoff concentration factor: a factor for the concentration time of run-off in each grid-cell
9. Channel Manning's n factor: a factor roughness in channel routing
Reservoir & lakes:
10. Normal storage limit: the fraction of storage capacity used as normal storage limit
11. Lake A factor: factor to channel width and weir coefficient as a part of the Poleni's weir equation
12. Lake and river evaporation factor: factor to adjust open water evaporation

5.1 Computational Performance of CWatM

With a daily time step, a global run of 100 years takes around 12 hours. That is 7.2 minutes per year (on a Linux single node - 2400 MHz with Intel Xeon CPU E5-2699A). For the global setting, soil processes are the most time-consuming part, taking 50% of all computing time, followed by routing with 25% and runoff concentration with 10%.

580

Table 3: Computational time for a 0.5° global run in sequence of hydrological process (rain to river) and module setup

	Process	$\Sigma$ % runtime 0.5° version
1	Read meteo. data	6.2
2	Evaporation pot.	7.6
3	Snow	8.8
4	Soil	59.4
5	Groundwater	59.5
6	Runoff concentration	70.1
7	Lakes	70.4
8	Routing	95.5
9	Output	100.0

A basin run, for example, for the Rhine basin which is 160,800 km<sup>2</sup> in size, using a mask map from the global dataset (netCDF map sets) needs 40 minutes (0.5°) and 3 hours (5°) for 100 years. That is 24 seconds per year for the 0.5° and 110 seconds per year for the 5° versions. For the Rhine basin, reading input maps takes up 79%, which is by far the most time-consuming process, followed by routing (kinematic wave) 10% and soil processes (8%).

585

Table 4: computational time for a 0.5° and 5° run – Rhine basin (same as Table 3)

	Process	$\Sigma$ % runtime 0.5° version	$\Sigma$ % runtime 5° version
1	Read meteo. data	79.4	86.4
2	Evaporation pot.	80.5	87.5
3	Snow	80.9	87.9
4	Soil	88.8	89.8
5	Groundwater	88.9	92.9
6	Runoff concentration	89.6	93.6
7	Lakes	89.8	94.8
8	Routing	99.6	99.6
9	Output	100.0	100.0

5.2 Global water balance

590 The main global water balance components are calculated for the period 1979–2016 with the standard deviation of interannual variation. The spatial extent is from 90° N to 60° S. The Global 0.5° run uses a non-calibrated global standard parameter set. The meteorological forcing uses the WFDEI data (Weedon et al., 2014). Table 5 shows the estimated global water balance components. Global average annual precipitation is around 125,000 km³/yr, which is 850 mm per year (assuming the CRU land mask and the WGS84 ellipsoid). Average runoff is 51,000 km³/year and average actual evaporation is 71,700 km³/yr.

595 This is in the range of other global hydrological models (Haddeland et al., 2011). The runoff fraction is 0.42, which is at the lower end compared to other models (Haddeland et al., 2011), but can be explained because CWatM takes into account evaporation from lakes and rivers. Groundwater recharge amounts to 19,000 km³/yr, which is higher than some of the GHMs (Mohan et al., 2018), such as WaterGAP or FAO statistics, but lower than PCR-GLOBWB2 (Sutanudjaja et al., 2018) or MATSIRO (Koirala et al., 2012). Figure 2 shows the spatial distribution of discharge and groundwater recharge which is

600 similar to the distributions shown in Koirala et al. (2012) and Mohan et al. (2018).

Table 5: Global water balance components over the period 1981-2016 simulated by CWatM

	Variable	Estimate [km³/yr] ± 1σ	Compared to other studies [km³/yr]
Water balance	Precipitation	125,100 ± 3000	
	Runoff	51,800 ± 1880	42393 <sup>1</sup> range: 42,000-66,000 <sup>4</sup>
	Evaporation	71,700 ± 1880	65754 <sup>1</sup> range: 60,000-85,000 <sup>4</sup>
	Δ water storage	1,600 ± 760	
Groundwater	Ground water recharge	19,000 ± 920	27,756 <sup>1</sup> 13,466 <sup>2</sup> range: 12,666-29,900 <sup>3</sup>
Withdrawal by sector	Agricultural	2,000 range: 1250 - 2400	2735 <sup>1</sup>
	Domestic	430 range: 270 - 590	380 <sup>1</sup>
	Industrial	900 range: 680 – 1130	798 <sup>1</sup>
	Total	3,330 range: 2200 - 4200	3,912 <sup>1</sup>
	Return flow	950 range: 750 – 1150	1546 <sup>2</sup>
Withdrawal by source	Surface water	2,650 range: 2060 – 3100	3172 <sup>1</sup>
	Groundwater	680 range: 610 - 950	737 <sup>1</sup> range: 570-952 <sup>2</sup>

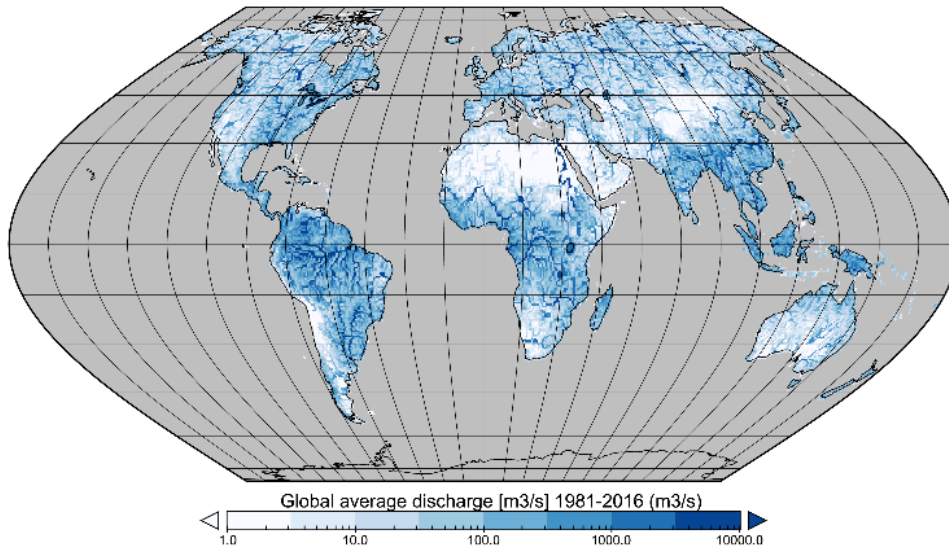
<sup>1</sup> Sutanudjaja et al., 2018

<sup>2</sup> Hanasaki et al., 2018

<sup>3</sup> Mohan et al., 2018

<sup>4</sup> Haddeland et al., 2011

Global average discharge [m<sup>3</sup>/s] 1981-2016



605 **Figure 2: Average global discharge in m<sup>3</sup>/s (1979-2016)**

It is important to note that water withdrawals from the agricultural sector (irrigation and livestock), industry, and domestic sector (households) has been increasing over the years. The range in Table 5 for domestic and industry withdrawals has been rising constantly from 1981 to 2016. Agricultural withdrawals have been increasing over time but achieved their maxima during globally warm years, for example, 2002, 2009, and 2012. Water withdrawal from either surface water and groundwater is within the range of other models. It has also been affected by the increasing water withdrawal for agriculture, industry, and households.

615 Some model papers e.g. Döll et al., 2014, Sutanudjaja et al., 2018 uses observed discharge stations or the Gravity Recovery and Climate Experiment (GRACE) Tapley et al., 2004 to evaluate the global results of their models. As CWatM has started to be part of the ISIMIP intercomparison project, we think it is best practice to show the performance of a model in the framework of ISIMIP by comparing it to other models like in Zhang et al., 2017 or Scanlon et al., 2018. An upcoming paper by Pokhrel, 2019 on global terrestrial water storage will include a comparison of seven global terrestrial hydrology models (including CWatM) against GRACE data.

### 5.3 Global calibration results

620 For calibration an evolutionary algorithm with KGE as objective function was applied and WFDEI meteorological data were used as forcing. For all stations, the calibration improved the streamflow simulations compared to the baseline simulation with a default parameter set. However, the performance varied depending on the quality of the discharge data and the meteorological forcing, as well as on the processes included in CWatM, as shown in Table 6. Calibration and validation results are shown for each station in the supplement part 2. Simulating processes such as backflow or large evaporation losses due to swamps in the

Nile and Niger basin are still challenging. But this simulation shows the suitability of CWatM for representing the major water balance components and the necessity of calibrating certain basins, especially where water availability is being compared with water withdrawal. A further step in global calibration must be performed by regionalization of model parameters, for example, by using model parameters from well-performing basins for basins with similar climate and other characteristics (Samaniego et al., 2010, 2017, Beck et al., 2016). A big challenge is the unevenly distributed observed discharge data around the world with big spatial gaps in Africa and Asia. Even if calibration with an objective function based on observed discharge is the best option, the gap might be filled with some sort of Budyko calibration (Greve et al., 2016), where at least the empirical function of actual evapotranspiration against potential evaporation is fitted or satellite-based river levels could replace discharge missing from the observations (Revilla-Romero et al., 2015, Gleason et al., 2018).

**Table 6: Calibration results for some catchments worldwide**

Continent	Catchment	Station	Calibration period*	Result for 30'	Results for 5'
Europe	Rhine	Lobith Germany Area: 160,800 km <sup>2</sup>	1995-2010 <sup>1</sup> Uncal. KGE: 0.55 (30') Uncal. KGE: 0.58 (5')	KGE: 0.91 NS: 0.84 R <sup>2</sup> : 0.94	KGE: 0.90 NS: 0.80 R <sup>2</sup> : 0.91
	Danube	Kienstock Austria Area: 95,970 km <sup>2</sup>	1995-2010 <sup>2</sup> Uncal. KGE: 0.50	KGE: 0.81 NS: 0.65 R <sup>2</sup> : 0.82	
	Danube	Zimnicea Romania Area: 658,400 km <sup>2</sup>	1995-2010 <sup>1</sup> Uncal. KGE: 0.61	KGE: 0.84 NS: 0.64 R <sup>2</sup> : 0.87	
America	Yukon	Pilot station USA Area: 831,400 km <sup>2</sup>	2001-2014 <sup>3</sup> Uncal. KGE: 0.54	KGE: 0.63 NS: 0.50 R <sup>2</sup> : 0.83	
	Sacramento River	Wilkins Slough USA Area: 33,500 km <sup>2</sup>	1991-2010 <sup>3</sup> Uncal. KGE: 0.29	KGE: 0.85 NS: 0.69 R <sup>2</sup> : 0.87	
	Amazonas	Obidos Brasilia Area: 4,680,000 km <sup>2</sup>	1985-1998 <sup>1</sup> Uncal. KGE: 0.43	KGE: 0.89 NS: 0.80 R <sup>2</sup> : 0.91	
Australia	Murray River	Wakool Junction Australia Area: 78,000 km <sup>2</sup>	2000-2012 <sup>4</sup> Uncal. KGE: -2.23	KGE: 0.70 NS: 0.32 R <sup>2</sup> : 0.74	
Africa	White Nile	Jinja Uganda Area: 263,000 km <sup>2</sup>	1996-2006 <sup>5</sup> Uncal. KGE: 0.43		KGE: 0.94 NS: 0.90 R <sup>2</sup> : 0.95
	Zambezi	Lukulu Zambia Area: 206,500 km <sup>2</sup>	1979-1989 <sup>1</sup> Uncal. KGE: 0.12		KGE: 0.87 NS: 0.79 R <sup>2</sup> : 0.89
	Zambezi	Matundo-Cais Mozambique Area: 940,000 km <sup>2</sup>	1979-1989 <sup>1</sup> Uncal. KGE: 0.33		KGE: 0.57 NS: 0.14 R <sup>2</sup> : 0.57
Asia	Olenek	7.5KM Mouth of Pur Russia Area: 198,000 km <sup>2</sup>	1991-1999 Uncal. KGE: 0.52	KGE: 0.75 NS: 0.73 R <sup>2</sup> : 0.86	

	Yangtze	Datong China Area: 1,705,400 km <sup>2</sup>	2003-2013 Uncal. KGE: 0.54	KGE: 0.84 NS: 0.69 R <sup>2</sup> : 0.87	KGE: 0.90 NS: 0.75 R <sup>2</sup> : 0.90
--	---------	--	-------------------------------	--	--

Data for calibrating discharge from:

- <sup>1</sup> GRDC, Global Runoff Data Centre, <https://www.bafg.de/GRDC>
- <sup>2</sup> viadonau, viadonau Österreichische Wasserstrassen-Gesellschaft, <http://www.viadonau.org>
- <sup>3</sup> USGS, United States Geological Survey, <https://www.usgs.gov>
- <sup>4</sup> MDBA, Murray–Darling Basin Authority, <https://riverdata.mdba.gov.au>
- <sup>5</sup> Ministry for Water and Environment, Uganda, <https://www.mwe.go.ug>

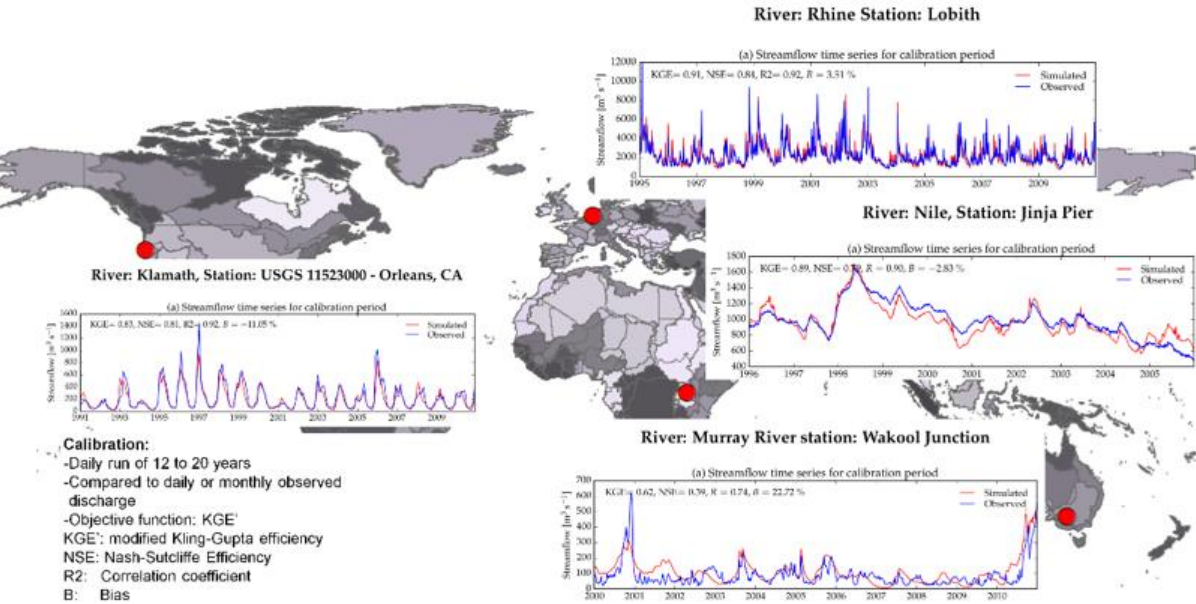


Figure 3: Calibration results for some chosen stations globally

5.4 Regional water balance: Example of East Africa

5.4.1 The extended Lake Victoria basin

The essential component of the Water Futures and Solution Initiative of IIASA (Burek et al., 2016, Wada et al., 2016) is the assessment of the balance water supply and demand for the present and into the future. With he support of the Government of Austria through the Austrian Development Agency (ADA) we aim to provide a deeper understanding of critical parameters for achieving water security in East Africa in the context of competing demands for basic water supply and sanitation, food security, economic development, and the environment. UN-Water (2013) p. 1 defines water security as:

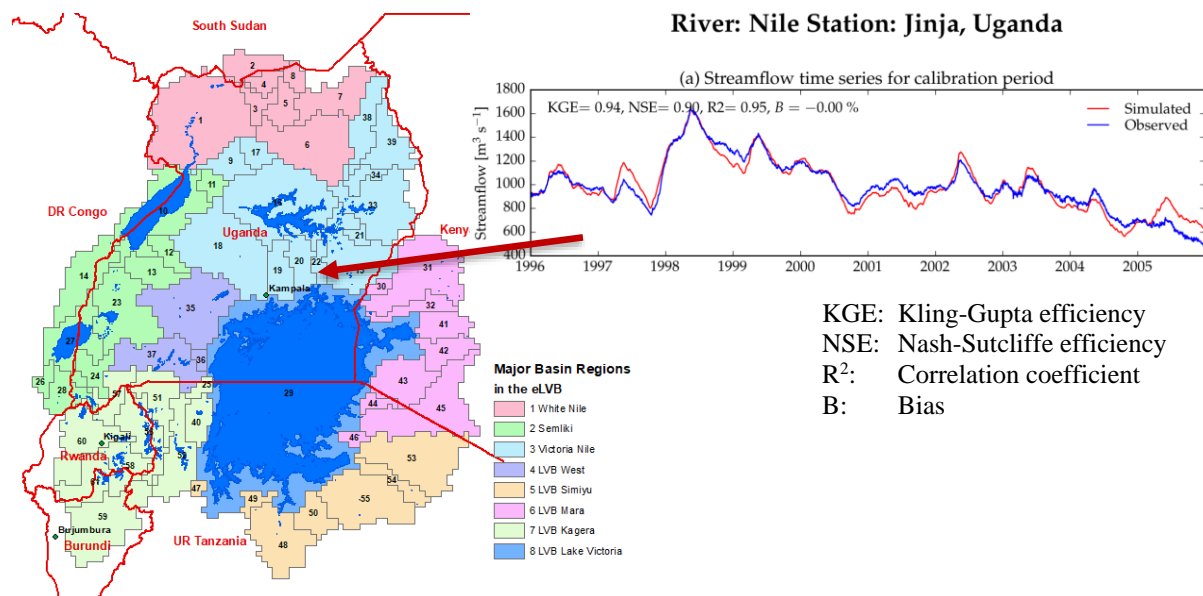
“The capacity of a population to safeguard sustainable access to adequate quantities of and acceptable quality water for sustaining livelihoods, human well-being, and socio-economic development, for ensuring protection against water-borne pollution and water-related disasters, and for preserving ecosystems in a climate of peace and political stability.”

Water security is also a key ambition expressed in the “Vision 2050” of the East African Community (EAC, 2016) as rapid growth of the economy and population, and a high rate of urbanization are expected for the region and will lead to increased water demand in all sectors as well as further pressure on the water quality status.

The examples of operational areas for CWatM in this paper are not presented with specific results in mind, nor do they reflect results from the project’s intensive stakeholder processes. They are there to demonstrate the value of a global hydrological model used in a regional case study that combines the temporal and spatial scale dependencies of water systems produced through a scenario analysis designed to include both the regional and global scales. An “East Africa Regional Vision Scenario (EA-RVS)” was developed (Tramberend et al., 2019), based on regional visions, and we used available regional scenarios and data that were developed in the context of global studies. As well as regional visions, the study also integrates into the widely applied global scenario development process of the Intergovernmental Panel on Climate Change (IPCC). It is characterized by a Scenario Matrix Architecture (van Vuuren et al., 2014) including the community-developed Shared Socioeconomic Pathways (SSPs) (Jiang and O’Neill, 2017) and the Representative Concentration Pathways (RCPs) (van Vuuren et al., 2011) for the characterization of climate change.

The study area, the extended Lake Victoria Basin (eLVB), is a transboundary basin in the tropics. It comprises the headwaters of the Nile and includes an area of over 460,000 km<sup>2</sup>. The equator crosses the region approximately in the middle of the eLVB just south of Kampala. The eLVB includes the source of the Nile, major lakes in East Africa, foremost Lake Victoria, Lake Albert, Lake Edward, and Kyoga Lake. The eLVB has been subdivided into interconnected sub-basins. According to the water flow regime, we have aggregated the 61 basins into 8 major basins (see Figure 4). The CWatM model setup uses the default global dataset on 5 arc min. Discharge data for calibrating river discharge were made available courtesy of the Ministry of Water and Environment, Uganda. Calibration is performed for three stations. The calibration parameters are valid for the sub-basin up to the gauging station. The upstream station is calibrated using the best fit of the downstream calibrated sub-basins.





**Figure 4: The 61 sub-basins of the eLVB and their aggregation to 8 major basin regions**

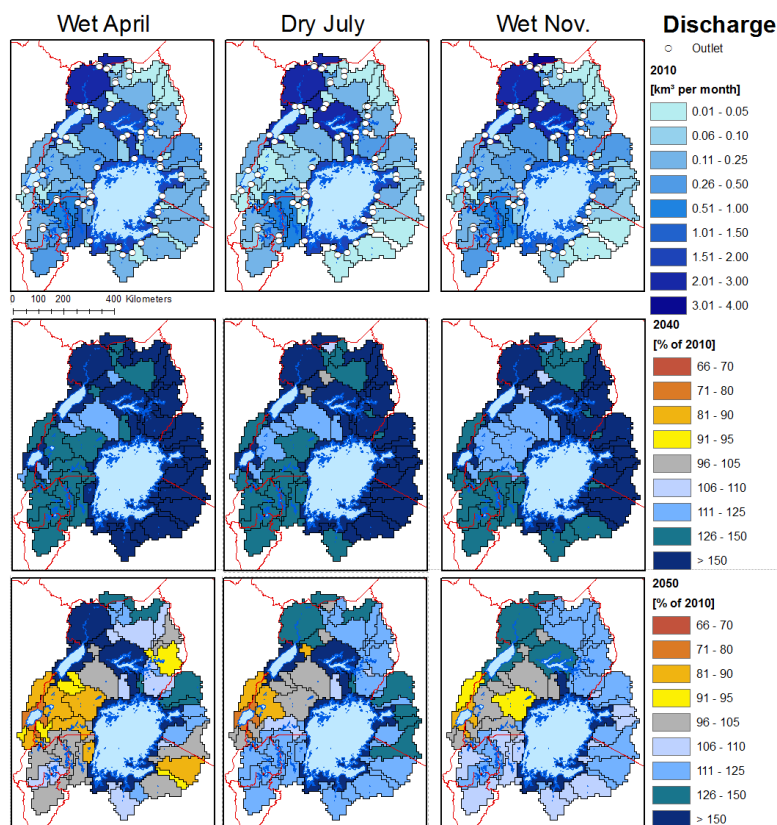
#### 5.4.2 Seasonal pattern of the discharge regime

For assessing climate change impact, RCP 6.0 was chosen as the most plausible future for East Africa by the “EAC Vision 2050” (EAC, 2016) even though it represents a rather pessimistic outlook of global temperature increases despite being published after the Paris Climate Agreement of 2015. We have chosen the two General Circulation Models (GCMs) of HadGEM2-ES and MIROC5 out of the four GCMs (see Table 7) used in ISIMIP 2b (Frieler et al., 2016) as being the most feasible for eLVB as the discharge results that were run with CWatM for the historical runs of the GCMs GFDL-ESM2M and IPSL-CM5A-LR showed a large discrepancy from historical results.

**Table 7: General Circulation Models (GCM)**

GCM	Resolution	Institute	Nation
HadGem2-ES	192 x 145	Met Office Hadley Centre	UK
IPSL-CM5A-LR	96 x 96°	Institut Pierre-Simon Laplace	France
GFDL-ESM2M	144 x 90	NOAA Geophysical Fluid Dynamics Laboratory	United States
MIROC-ESM-CHEM	Gaussian 128 x 64	JAMSTEC, AORI, University of Tokyo, NIES	Japan

Discharge is the variable which incorporates all the meteorological and hydrological processes in a basin and encompasses all the storage components in a basin (i.e., soil, groundwater, lakes and reservoirs, etc.) Especially with the large lakes in the basin, discharge in eLVB has a long memory of past conditions.



**Figure 5: Change of seasonal discharge pattern from 2010 to 2040 and 2050**

The seasonal pattern of discharge in Figure 5 shows more discharge for 2040 (10 year period 2036-2045) and 2050 (10 year period 2046-2055) in the river system from Lake Victoria, especially for the 2040 period. This is due to a wetter period of weather in the two GCMs from 2038 to 2049 and the strong memory effect of groundwater and the lakes. It also shows the big influence of inter-annual variability in the eLVB. Even if a general trend of less runoff in the 2050 period can be detected, long lasting periods of wetter conditions can nevertheless be superimposed over this trend. Because of the strong inter-annual variability in the lower latitudes, it is difficult to assess the effect of a general climate change impact towards a wetter or drier climate. But under climate change, southwestern Uganda will show generally drier conditions than the western part of the eLVB.

### 5.4.3 Water scarcity indicators

Available water resources per capita, the Water Crowding Index (WCI), also called the Falkenmark indicator, is one of the most widely used measures of water stress, (Falkenmark et al., 1989). Based on per capita water availability, the water conditions in an area can be categorized into different categories of stress expressed as m³ of water available per capita and year. Another indicator is the Water Resources Vulnerability Index (Raskin et al., 1997) also known as Water Exploitation

Index (WEI) (EEA, 2005), defined as the ratio of total annual withdrawals for human use to total available renewable surface water resources. Regions are considered as water-scarce if annual withdrawals exceed the percentage of annual supply (Alcamo et al., 2003). The thresholds for both indicators are shown in Table 8.

710

**Table 8: Water Crowding Index and Water Exploitation Index**

Category	Water Crowding Index [m <sup>3</sup> per capita per year]	Water Exploitation Index Water withdrawal / water availability [%]
no stress	> 1700	< 20
Stress	> 1000 - 1700	≥ 20
Scarcity	500 - 1000	≥ 20
absolute scarcity	≤ 500	≥ 40%

715

The WCI and WEI are mainly shown as annual indicators, but in regions with high intra-annual variability, the rainy seasons show a different picture from that of the dry season. An example, Figure 6, shows the WCI and WEI for the dry season and the most water-scarce month, July, for 61 sub-basins of the extended Lake Victoria basin, comparing the situations of 2010 and 2050. The figure shows that there is a clear increase in the WCI index. While in the current situation (2010), about half of the sub-basins are exposed to some level of water scarcity with some sub-basins indicating absolute water scarcity, in 2050 almost all sub-basins that are neither directly crossed by the River Nile nor adjacent to a lake, experience stress or scarcity, many of them absolute water stress. The water resource availability for the WEI index is also based on RCP 6.0 climate scenario and includes the effect of human consumption and effects of land use change up to 2050. Looking at this index for the month of July only, it shows that nine out of 61 sub-basins are likely to experience water scarcity and even severely water-scarce situations by 2050. Such sub-basins are mainly located at the south and southeastern shores of Lake Victoria and in densely populated areas of Rwanda and Burundi.

720

725

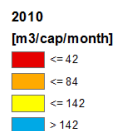
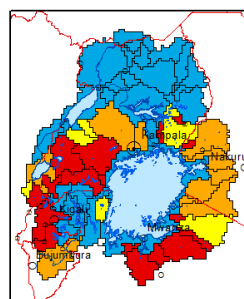
Interestingly, the WEI shows a much lower signal of water scarcity compared to the WCI. The WCI assumes that, regardless of the socioeconomic conditions, every person on the globe has the same “water demand entitlement.” The Water Exploitation Index is based on the in situ situation and on balancing changing water availability and water demand. The fact that both indices show a rather different picture might be interpreted as an indication of economic water scarcity. The situation of low economic development for the extended Lake Victoria basin may still prevail in 2050 (at least compared to the global average).

730

This is the main reason for the relatively low actual water demand compared to global averages and therefore relatively low water scarcity signal for the WEI compared to the WCI.

## Water Crowding Index

July



## Water Exploitation Index

July

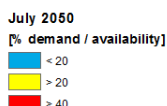
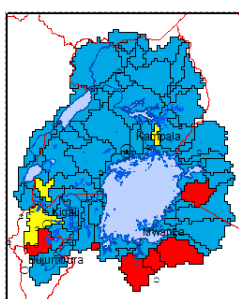
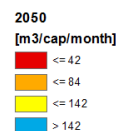
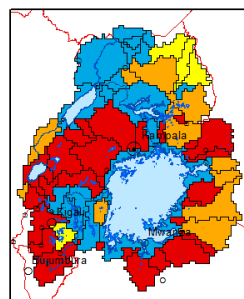
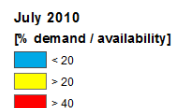
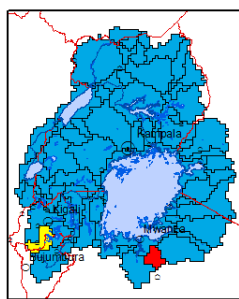


Figure 6: Water Crowding Index and Water Exploitation Index in July for extended Lake Victoria Basin

## 5.5 Regional water balance: Example of the Zambezi

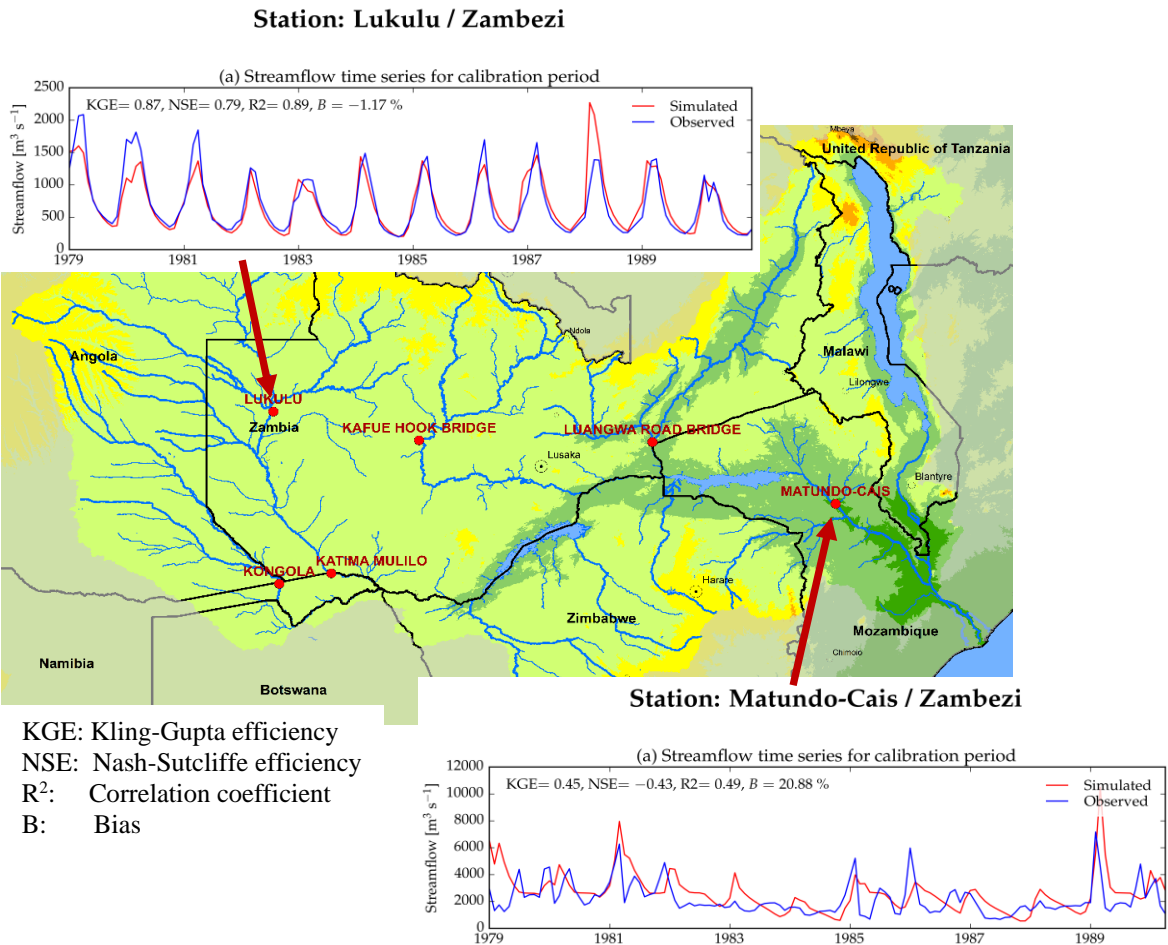
### 735 5.5.1 Calibration and comparison with other GHMs

The hydrological model CWatM is intended to be scalable and can be applied over finer spatial scales (e.g., the basin). CWatM has been calibrated for the Zambezi, using six sub-catchments and measured discharge provided by the Global Runoff Data Centre (2007). Figure 7 shows two time series of measured vs. simulated river discharge, and the comparison shows good agreement of the modeled discharge with the measured data.

740

By comparing the outputs of the hydrological model ensemble, we see that, especially for sub-Saharan Africa, there is a strong overestimation of river discharge, which indicates an erroneous picture if compared, for example, to water demands for calculating water scarcity. Figure 8 shows a comparison of discharge for the Lukulu in the Zambezi basin of different hydrological models.

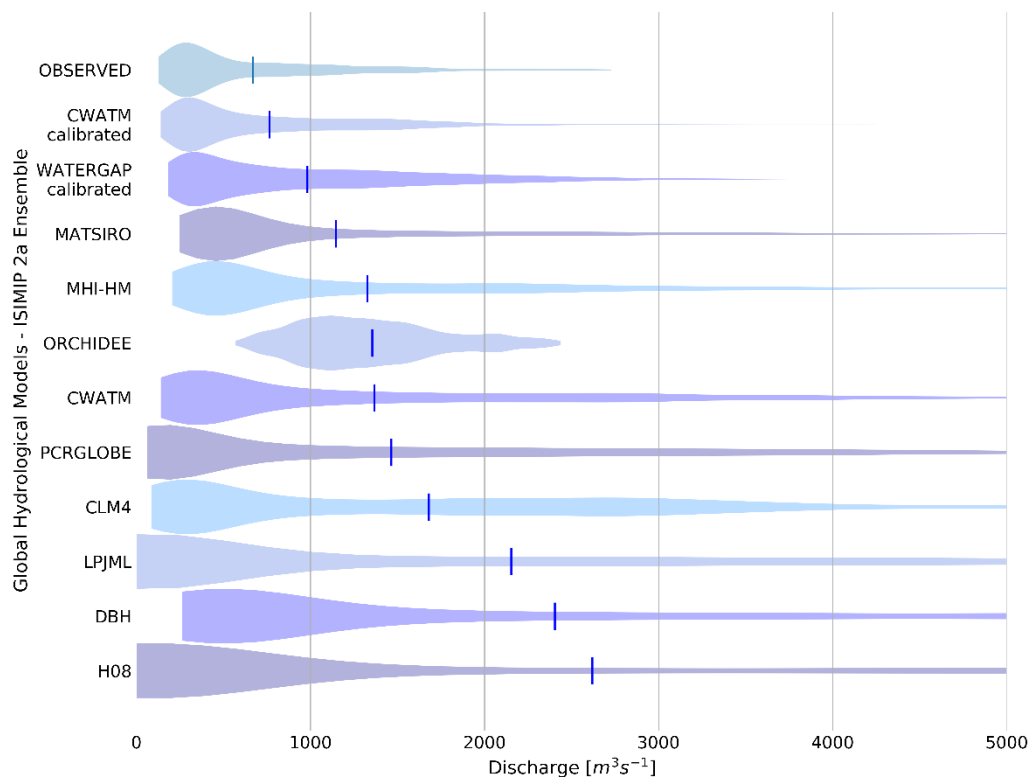
745 The GHMs in Figure 8 use the WFDEI data (Weedon et al., 2014) as forcing meteorological data from 1981 to 2004. Apart from WaterGAP and CWatM (both calibrated) one can see a strong overestimation of discharge for all other models compared to the observed discharge.



KGE: Kling-Gupta efficiency  
NSE: Nash-Sutcliffe efficiency  
R<sup>2</sup>: Correlation coefficient  
B: Bias

**Figure 7: Calibration results for two stations in the Zambezi basin**

Average discharge is overestimated for the non-calibrated models from two up to three times and maximum discharge up to seven times. This shows the need to put efforts into calibration of the hydrological model for regional applications to be in line with measured water resources and to minimize the uncertainty from hydrological modeling. Setting up model calibration has been time-consuming but inevitable for the Zambezi case study.



**Figure 8: Discharge for Lukulu/Zambezi from 1981–2004 for 11 different global hydrological models from the ISIMIP 2a ensemble compared with observed discharge. Each violin shows the probability density at different values of a GHM. The lines show the average discharge for each model**

Calibration for the Zambezi basin is performed for six stations (Lukulu, Kongola, Katima, Kafue Hook, Luangwa Road Bridge, Tete - see Figure 6). The calibration parameters are valid for the sub-basin up to the gauging station. The upstream station is calibrated using the best fit of the downstream calibrated sub-basins. The parameter set is valid for the sub-basin exclusive of the downstream sub-basins which have their own parameter set.

### 5.5.2 Assessment of water stress

In a second phase, the CWatM calibrated model is used to assess water scarcity until 2050 in the Zambezi basin. Water resources at each grid cell are dependent on climate, water management (e.g., reservoirs) and water use for irrigation, livestock, domestic, or industry.

For each cell (at 5 arc min) (see Figure 9) and for aggregated regions, water resources can be related to water demand from different sectors. Results from the distributed hydrological model CWatM are aggregated to 21 sub-basins (see Figure 10) based on regional distribution shared by the Zambezi Water Commission (<http://zamwis.wris.info>). In addition, the regions of

Kariba, Kafue, and Tete are split into, respectively, four, two, and four sub-basins, to look specifically into the more densely populated areas

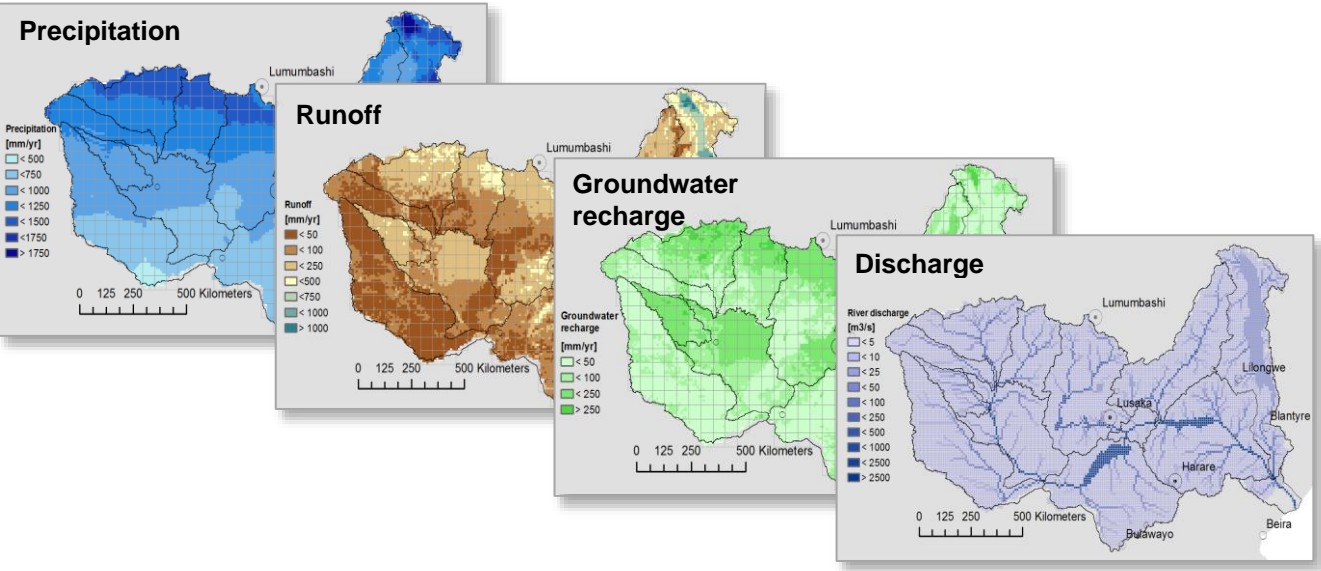


Figure 9: Parameter sets of different hydrological variables

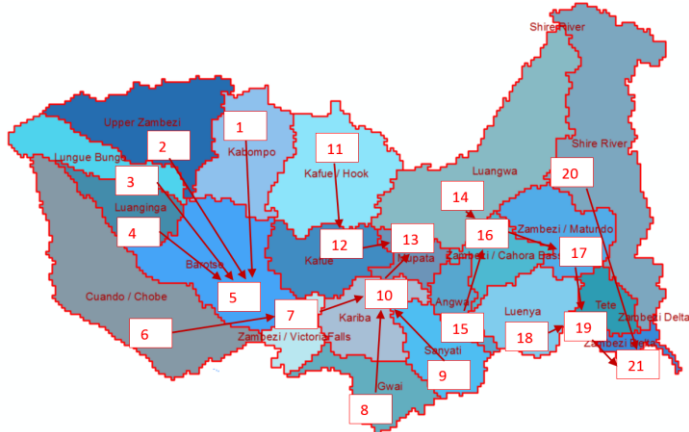


Figure 10: Sub-basins of the Zambezi basin for aggregating data from CWatM

Projection of future water resources builds on quantifications of climate scenarios CMIP5 (Distributed by the Coupled Model Intercomparison Project (CMIP), see <http://cmip-pcmdi.llnl.gov/cmip5>) based on the RCPs from the Inter-Sectoral Impact Model Intercomparison Project (ISI-MIP) (Frieler et al., 2016). We applied climate change projections from four GCMs (see Table 7) for a first setting of RCP6.0. Land use data projection is used from the GLOBIOM model (Havlík et al., 2013). Nineteen different crop types with different classes of farming intensity and eight land use classes (e.g., forest, build up classes)

of GLOBIOM output, for different RCPs and SSPs, are transformed to fit into the arrangement of six land use classes of  
780 CWatM.

Water demand for agriculture is taken from calculations within CWatM. Water demand for domestic, livestock, and industry  
is calculated within CWatM using the approach of Wada et al. (2011). The socioeconomic background needed for this approach  
785 use data and methods for spatial disaggregation for the SSP2 scenario from Jones and O'Neill (2016), Gao (2017), Klein  
Goldewijk et al. (2017), Kummu et al. (2018) and Gidden et al. (2018).

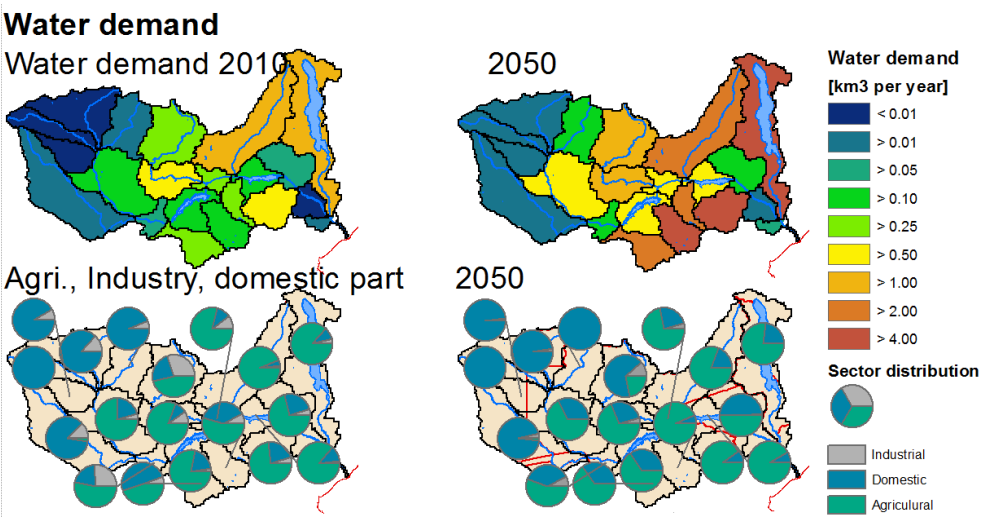


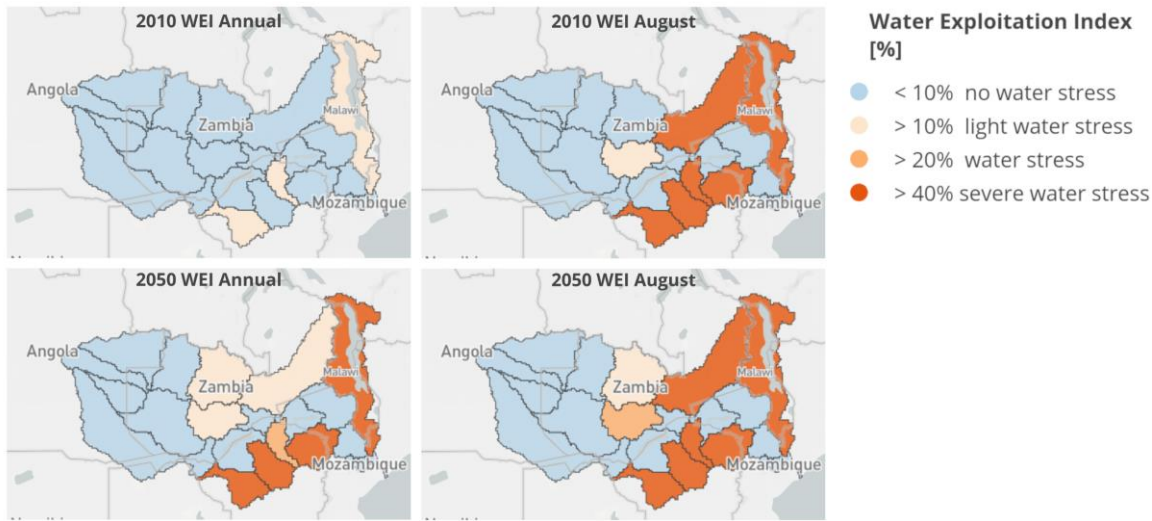
Figure 11: Water demand projection for scenario SSP2/RCP6.0 to 2050 based on population, GDP, irrigation area projections

790 **Water Exploitation Index for Zambezi**

The WEI is defined in Falkenmark et al. (1989), Falkenmark (1997) and Wada et al. (2011) as comparing blue water availability  
with net total water demand. A region is considered “severely water stressed” if the WEI exceeds 40% (Alcamo et al., 2003).  
The yearly WEI in figure12 shows no water stress for the whole basin in 2010 but water stress will intensify up to 2050 for  
the business-as-usual (BAU) scenario (composed of the SSP2 and RCP6.0 scenarios), mainly due to agricultural and domestic  
795 water demand increasing by a factor of five, as annual mean river discharge is only increasing by 6%. August is chosen for  
monthly comparison as this is the month with the highest rate of water withdrawal (WW) and a mean monthly discharge  
(MMD) that is only slightly higher than in November. The eastern part of the Zambezi basin, except for the main course of the  
Zambezi River, was already showing severe water stress in 2010. This will increase in 2050 but the western part is still not  
suffering water stress.

800



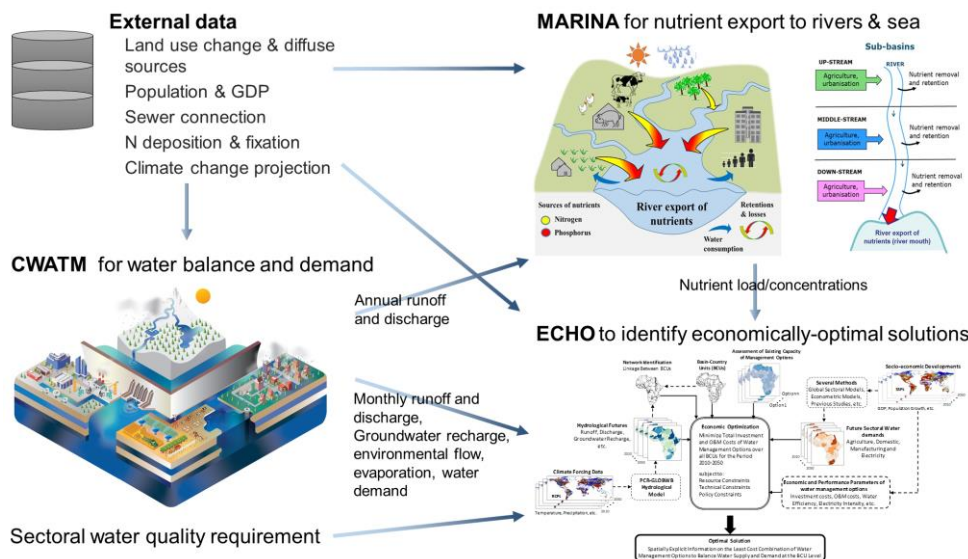


**Figure 12: Water Exploitation Index for 21 regions of the Zambezi, for 2010 and 2050 using the business-as-usual (BAU) scenario, yearly and for the month of August**

## 6 Linking and integration with other sectoral models

The modular structure of CWatM helps to link and integration with other models. The independent setting file offers possibilities to adapt the input and output to other models. For a lot of applications no intervention into the code is necessary. If code has to be customized to the linked model, the modular structure of CWatM eases to identify the point of intervention.

To explore potential sustainable pathways for the Zambezi basin, an integrated assessment framework is needed. As water stress and regional disparity is increasing in future, an integrated assessment framework is needed to explore potential sustainable pathways for the Zambezi basin. Therefore CWatM provides data on water availability (runoff and discharge) and water demand (irrigation, domestic, and industrial demands) at sub-basin level to the “Extended Continental-scale Hydroeconomic Optimization” (ECHO) model (Kahil et al., 2018) and to the water quality model “Model to Assess River Inputs of Nutrients to seas” (MARINA) (Stokal et al., 2016). Figure 13 gives an overview of the interactions between models and the data flow.



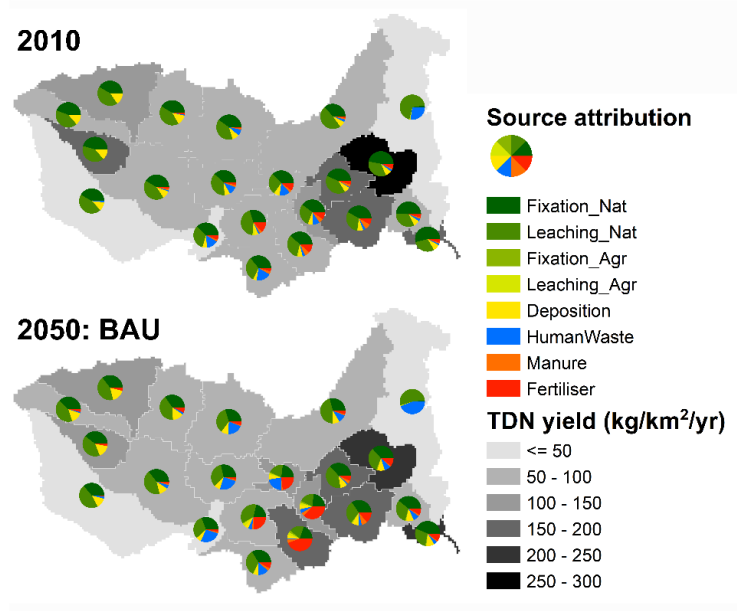
**Figure 13: Schematic view of the interaction among CWatM, Echo and MARINA**

ECHO is a hydro-economic optimization model. Its objective function minimizes the costs of water management options subject to several resource and management constraints across sub-basins within river basins over a long-term planning horizon (e.g., a decade or more). ECHO includes a wide range of supply- and demand-side water management options spanning over the water, energy, and agricultural systems. The supply options are surface water diversion, groundwater pumping, desalination, and wastewater recycling technologies. Other supply options considered in ECHO are surface water reservoirs and inter-basin transfer infrastructure. The water demand management options consist of different technologies for irrigation (flood, sprinkler, and drip), and several measures to improve crop water management in irrigation and water use efficiency in the domestic and industrial sectors (Kahil et al., 2018, 2019).

To assess the impacts of human activities on water quality, the MARINA model (Strokal et al., 2016) is used to estimate nitrogen loads and concentrations. MARINA quantifies nutrient (nitrogen and phosphorus) export to rivers and sea at the sub-basin scale. It is primarily used for long-term trend analysis and for source attribution, which could guide the identification of effective policy and management measures to reduce water pollution.

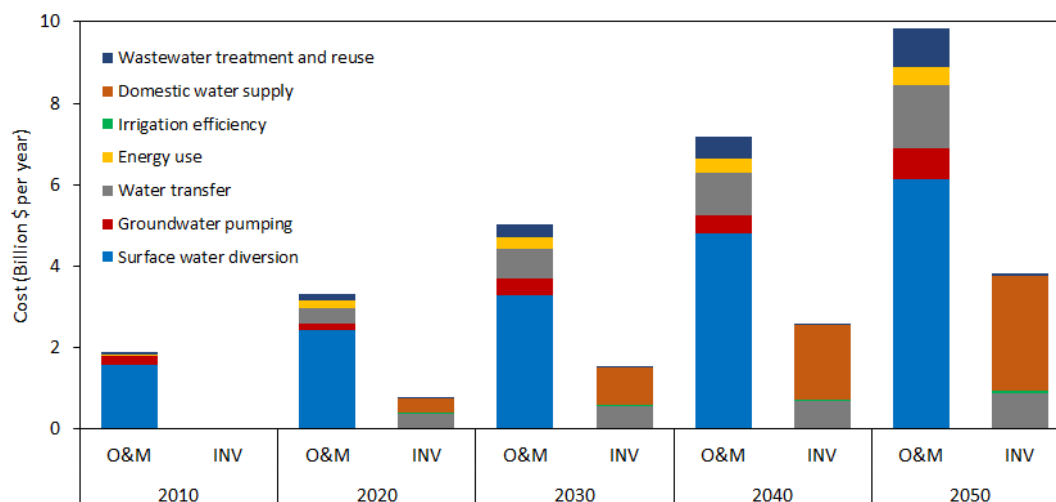
Moreover, MARINA uses data from GLOBIOM (Havlik et al., 2013) for land use and agricultural nitrogen inputs to the basin, and socioeconomic projections (population and GDP) to estimate nitrogen inputs from human waste. ECHO uses information on existing capacities of various water management options and the costs of investment in and operating these options. Nitrogen loads and concentrations calculated by MARINA are compared with nitrogen standards for different sectors to categorize the suitability of water use by different users, which can be further used by ECHO to optimize water allocation and explore economically optimal management options. The source attribution at the sub-basin scale by MARINA (Figure 13) provides prior information for ECHO to prioritize the most relevant nitrogen management options for each sub-basin, such as

sewer connections, wastewater treatment, and manure and mineral fertilizer use in agriculture. Lastly, the coupling of MARINA and ECHO with CWatM enables analysis of the impacts of climate change and variability on nutrient export, water allocation, and adaptation costs. CWatM outputs from different climate forcing could be used in MARINA and ECHO to investigate the impacts of intra-basin spatial variability and inter-annual temporal variability of runoff and discharge. Figure 14 is an example of MARINA output of total dissolved nitrogen (TDN) in  $\text{kg km}^{-2} \text{yr}^{-1}$  for the Zambezi River basin. It illustrates the increase in river export of TDN to the sea between 2010 and 2050 (BAU scenario), the increasing share of anthropogenic nitrogen sources, and high spatial variability in the Zambezi basin (Tang et al., 2019). Another example of data exchange between CWatM and MARINA is given in Wang et al. (2019a) for Lake Taihu in the Yangtze basin.



**Figure 14: Increase in river export of total dissolved nitrogen to sea between 2010 and 2050 (business-as-usual scenario)**

Figure 15 is an example of ECHO simulation results. It shows the costs for water supply and management in order to satisfy sectoral water demands (irrigation, livestock, domestic, and industrial) and environmental constraints (i.e., minimum environmental flow requirements and groundwater sustainability constraints) in the Zambezi river basin over the 2010–2050 period.



**Figure 15: Investment (INV) and operating (O&M) costs for water supply and management in the Zambezi basin between 2010 and 2050 (business-as-usual scenario)**

## 855 **6.7 Conclusion and future work**

We presented the new global hydrological model CWatM, which can be used globally and regionally at different resolutions with different datasets. The model is open-source in the Python environment and has a flexible modular structure. It uses global, freely available data in the state-of-the art format of netCDF4 files to store and produce data in a compacted way. It includes major hydrological processes but also takes human water use into account by calculating water demand, water consumption, and return flows. Reservoirs and lakes are included in the model scheme. CWatM is being developed to include a routing scheme related to reservoirs and canals to better simulate water availability in both agricultural and urban contexts. It is shown that CWatM can be used in the framework of ISIMIP as a global model and also as part of a model integration of hydrological, hydro-economic, and water quality models for assessing and evaluating water management options. This study also presented the need for a hydrological model to be calibrated to be able to estimate a detailed regional balance of water demand and water availability.

An external limitation and a source of uncertainty is the quality of meteorological forcing driving the hydrological models. As shown in Müller Schmied et al. (2014) there are still discrepancies among the CMIP5 datasets and among the datasets and observations. Using CMIP6 datasets, (Eyring et al., 2016) is expected to reduce uncertainty. Another external model limitation and source of uncertainty is the availability of gauging station data, which is generally globally decreasing, completely unavailable, or difficult to access for some parts of the world. Continuous, consistent, and long-term river discharge data as an integral parameter over the whole basin are essential for basin modeling, water resources management, and flood forecasting. Although the model represents the key hydrological processes, the groundwater model is relatively simple. But

groundwater assessments (e.g., Bierkens et al., 2019) are becoming more and more important, as also is the importance of including lateral processes that increase the resolution of the model. Some other hydrological processes representation, for example, evaporation from swamps, namely, the Sudd in the Nile basin and the Niger river swamps need to be improved. The main direction of improvement should be better representation of human activities, for example, management of reservoirs, including intra- and interbasin water transfer, and improving water demand requirements from agricultural sector by including irrigation schemes and plant phenology.

Future work will include 1) intensifying the development of a full dynamic coupling with a 2-D groundwater model, 2) developing a global calibration scheme that also takes sparse observation of discharge into account, 3) a finer resolution setting for 1 km working for the upper Bhima basin in India as part of the Food–Water–Energy for Urban Sustainable Environments project (<https://fuse.stanford.edu>) supported by the Belmont Forum, ~~and~~ 4) an interdisciplinary project aimed at better understanding the effect of certain nexus policy interventions and solution options linked to ECHO and beyond, and 5) improving software management by building up an automated testing, easier installation via the Python Package Index and building containers and improving the communication with the users.

## **7.8 Code and data availability**

CWatM is written in Python 3.7 and C++ as an open source project under the term of the GNU General Public License version 3. License and download information are on <https://cwatm.iiasa.ac.at/license.html>. The code can be used on different platforms (Unix, Linux, Window, Mac) and is provided through a GitHub repository <https://github.com/cwatm/cwatm>. It comes with the code, an executable program for Windows, a test case (River Rhine basin) and a settings file, and some tools such as the calibration routine. The version of the model used to produce the results in this paper are stored as version 1.04 in the GitHub repository and at Zenodo with the associated DOI <https://doi.org/10.5281/zenodo.3361478> (Burek et al., 2019). A global dataset on 0.5° and a dataset for the River Rhine are stored on <https://doi.org/10.5281/zenodo.3528098>. Climate forcing data can be found on the ISI-MIP server (Frieler et al., 2016) or any other climate forcing dataset stored as netcdf can be used.

Online documentation including documentation on the source code can be found on <https://cwatm.iiasa.ac.at>. Development and maintenance of the official version of CWatM is conducted by the IIASA Water Program. Contribution, ideas, and users are very welcome. Global data for 0.5° or 5' can be requested and stored on an IIASA ftp server.

## **Acknowledgments**

The authors acknowledge the Global Environment Facility (GEF) for funding the development of this research and the CWatM model development as a part of the Integrated Solutions for Water, Energy, and Land (ISWEL) project (GEF Contract Agreement: 6993) and the support of the United Nations Industrial Development Organization (UNIDO). The authors also

acknowledge the continuous support of the Asian Development Bank (ADB), the Austrian Development Agency (ADA), and the Austrian Federal Ministry of Sustainability and Tourism to the Water Futures and Solutions (WFaS) initiative at Water Program of IIASA. This study and the model development were also conducted as part of the Belmont Forum Sustainable Urbanisation Global Initiative (SUGI)/Food–Water–Energy Nexus theme for which coordination was supported by the US National Science Foundation under grant ICER/EAR-1829999 to Stanford University. We appreciate all the other open source projects which we used to collect ideas and which, on the other side, we hope to cross-fertilize with our ideas. We are very grateful to all the freely available data sets. Any opinions, findings, and conclusions or recommendations expressed in this material do not necessarily reflect the views of the funding organizations. This study is also partly supported by financial support from the Austrian Research Promotion Agency (FFG) under the FUSE project funded by the Belmont Forum (Grant Agreement: 730254), EUCP (European Climate Prediction System) project funded by the European Union under Horizon 2020 (Grant Agreement: 776613), and CO-MICC project which is part of ERA4CS, an ERA-NET initiated by JPI Climate with co-funding by the European Union and the Austrian Federal Ministry of Science, Research and Economy (BMWF).

920

**Supplement material**

- 925
1. Description of input data

2. Calibration results

3. Modular structure of CWatM

**Authors contribution**

930	Peter Burek	Writing original draft, software development
	Yusuke Satoh	Software development (water demand), data curation
	Taher Kahil	Methodology, writing (results part: linking to hydro-economic modeling), visualization
	Ting Tang	Methodology, writing (results part: linking to water quality), visualization
	Peter Greve	Software development (evaporation), visualization
935	Mikhail Smilovic	Software development (groundwater, water demand), visualization
	Luca Guillaumot	Software development (groundwater MODFLOW coupling)
	Yoshihide Wada	Conceptualization, funding acquisition, supervision, methodology, reviewing writing

**Competing interest**

940 The authors declare that they have no conflict of interest

## References

- Alcamo, J., Döll, P., Henrichs, T., Kaspar, F., Lehner, B., Rösch, T., and Siebert, S.: Development and testing of the WaterGAP 2 global model of water use and availability, *Hydrol. Sci. J.*, 48, 317-338, 10.1623/hysj.48.3.317.45290, 2003.
- 945 Alcamo, J., Flörke, M., and Märker, M.: Future long-term changes in global water resources driven by socio-economic and climatic changes, *Hydrol. Sci. J.*, 52, 247-275, 10.1623/hysj.52.2.247, 2007.
- Allen, R. G., Pereira, L. S., Raes, D., and Smith, M.: Crop evapotranspiration-Guidelines for computing crop water requirements-FAO Irrigation and drainage paper 56, FAO, Rome, 300, D05109, 1998.
- Anderson, E.: Snow Accumulation and Ablation Model – SNOW-17. Technical report, 2006.
- 950 Bakker, M., Post, V., Langevin, C. D., Hughes, J. D., White, J. T., Starn, J. J., and Fienen, M. N.: Scripting MODFLOW Model Development Using Python and FloPy, *Groundwater*, 54, 733-739, 10.1111/gwat.12413, 2016.
- Balkovič, J., van der Velde, M., Skalský, R., Xiong, W., Folberth, C., Khabarov, N., Smirnov, A., Mueller, N. D., and Obersteiner, M.: Global wheat production potentials and management flexibility under the representative concentration pathways, *Global and Planetary Change*, 122, 107-121, doi.org/10.1016/j.gloplacha.2014.08.010, 955 2014.
- Beck, H. E., van Dijk, A. I. J. M., de Roo, A., Miralles, D. G., McVicar, T. R., Schellekens, J., and Bruijnzeel, L. A.: Global-scale regionalization of hydrologic model parameters, *Water Resources Research*, 52, 3599-3622, 10.1002/2015WR018247, 2016.
- Beck, H. E., Van Dijk, A. I. J. M., Levizzani, V., Schellekens, J., Miralles, D. G., Martens, B., and De Roo, A.: MSWEP: 3-hourly 0.25° global gridded precipitation (1979-2015) by merging gauge, satellite, and reanalysis data, *Hydrol. Earth Syst. Sci.*, 21, 589-615, 10.5194/hess-21-589-2017, 2017.
- 960 Bergstrom, S.: Principles and confidence in hydrological modelling, *Nordic Hydrology*, 22, 123-136, 1991.
- Bergström, S., and Forsman, A.: Development of a conceptual deterministic rainfall-runoff model, *Nordic Hydrology*, Vol. 4 (3), 1973.
- 965 Bierkens, M. F. P.: Global hydrology 2015: State, trends, and directions, *Water Resources Research*, 51, 4923-4947, 10.1002/2015WR017173, 2015.
- Bierkens, M. F. P., Reinhard, S., de Bruijn, J. A., Veninga, W., and Wada, Y.: The Shadow Price of Irrigation Water in Major Groundwater-Depleting Countries, *Water Resources Research*, 55, 4266-4287, 10.1029/2018WR023086, 2019.
- 970 Bollrich, G., and Preißler, G.: Technische Hydromechanik - Grundlagen, Beuth Verlag GmbH Berlin, Wien, Zürich 449 pp., 1992.

- Bondeau, A., Smith, P. C., Zaehle, S., Schaphoff, S., Lucht, W., Cramer, W., Gerten, D., Lotze-campen, H., Müller, C., Reichstein, M., and Smith, B.: Modelling the role of agriculture for the 20th century global terrestrial carbon balance, *Global Change Biology*, 13, 679-706, 10.1111/j.1365-2486.2006.01305.x, 2007.
- 975 Burek, P., van der Knijff, J., and de Roo, A.: LISFLOOD Distributed Water Balance and Flood Simulation Model, European Commission, Joint Research Centre, Institute for Environment and Sustainability, Luxembourg, 2013.
- Burek, P., Satoh, Y., Fischer, G., Kahil, M. T., Scherzer, A., Tramberend, S., Nava, L. F., Wada, Y., Eisner, S., Flörke, M., Hanasaki, N., Magnuszewski, P., Cosgrove, B., Wiberg, D., and Bill Cosgrove, A. P. D. W.: Water Futures and Solution - Fast Track Initiative (Final Report), IIASA, Laxenburg, Austria, IIASA Working Paper, 2016.
- 980 Chow, V. T., Maidment, D. R., and Mays, L. W.: Applied hydrology, McGraw-Hill, New York, 1998.
- Clark, M. P., Kavetski, D., and Fenicia, F.: Pursuing the method of multiple working hypotheses for hydrological modeling, *Water Resources Research*, 47, 10.1029/2010WR009827, 2011.
- Clark, M. P., Nijssen, B., Lundquist, J. D., Kavetski, D., Rupp, D. E., Woods, R. A., Freer, J. E., Gutmann, E. D., Wood, A. W., Brekke, L. D., Arnold, J. R., Gochis, D. J., and Rasmussen, R. M.: A unified approach for process-based
- 985 hydrologic modeling: 1. Modeling concept, *Water Resources Research*, 51, 2498-2514, 10.1002/2015WR017198, 2015.
- de Graaf, I. E. M., van Beek, L. P. H., Wada, Y., and Bierkens, M. F. P.: Dynamic attribution of global water demand to surface water and groundwater resources: Effects of abstractions and return flows on river discharges, *Advances in Water Resources*, 64, 21-33, 10.1016/j.advwatres.2013.12.002, 2014.
- 990 de Graaf, I. E. M., Sutanudjaja, E. H., Van Beek, L. P. H., and Bierkens, M. F. P.: A high-resolution global-scale groundwater model, *Hydrol. Earth Syst. Sci.*, 19, 823-837, 10.5194/hess-19-823-2015, 2015.
- de Graaf, I. E. M., van Beek, R. L. P. H., Gleeson, T., Moosdorf, N., Schmitz, O., Sutanudjaja, E. H., and Bierkens, M. F. P.: A global-scale two-layer transient groundwater model: Development and application to groundwater depletion, *Advances in Water Resources*, 102, 53-67, 10.1016/j.advwatres.2017.01.011, 2017.
- 995 De Roo, A. P. J., Wesseling, C. G., and Van Deursen, W. P. A.: Physically based river basin modelling within a GIS: The LISFLOOD model, *Hydrol. Processes*, 14, 1981-1992, 2000.
- Deb, K., Pratap, A., Agarwal, S., and Meyarivan, T.: A fast and elitist multiobjective genetic algorithm: NSGA-II, *IEEE Transactions on Evolutionary Computation*, 6, 182-197, 10.1109/4235.996017, 2002.
- Decharme, B., Delire, C., Minvielle, M., Colin, J., Vergnes, J. P., Alias, A., Saint-Martin, D., Séférian, R., Sénési, S., and
- 1000 Voldoire, A.: Recent Changes in the ISBA-CTRIP Land Surface System for Use in the CNRM-CM6 Climate Model and in Global Off-Line Hydrological Applications, *Journal of Advances in Modeling Earth Systems*, 11, 1207-1252, 10.1029/2018MS001545, 2019.
- Döll, P., and Lehner, B.: Validation of a new global 30-min drainage direction map, *Journal of Hydrology*, 258, 214-231, 10.1016/S0022-1694(01)00565-0, 2002.
- 1005 Döll, P., and Siebert, S.: Global modeling of irrigation water requirements, *Water Resources Research*, 38, 81-811, 2002.



- Döll, P., Fiedler, K., and Zhang, J.: Global-scale analysis of river flow alterations due to water withdrawals and reservoirs, *Hydrol. Earth Syst. Sci.*, 13, 2413-2432, 10.5194/hess-13-2413-2009, 2009.
- Döll, P., Fritzsche, M., Eicker, A., and Müller Schmied, H.: Seasonal Water Storage Variations as Impacted by Water Abstractions: Comparing the Output of a Global Hydrological Model with GRACE and GPS Observations, *Surv. Geophys.*, 35, 1311-1331, 10.1007/s10712-014-9282-2, 2014.
- EAC: East African Community Vision 2050. Regional Vision for Socio-Economic Transformation and Development, East African Vision (EAC), Arusha, Tanzania, 2016.
- EEA: The European Environment - State and Outlook 2005, European Environment Agency, Copenhagen, 2005.
- Elvidge, C. D., Tuttle, B. T., Sutton, P. S., Baugh, K. E., Howard, A. T., Milesi, C., Bhaduri, B. L., and Nemani, R.: Global distribution and density of constructed impervious surfaces, *Sensors*, 7, 1962-1979, 10.3390/s7091962, 2007.
- Eyring, V., Bony, S., Meehl, G. A., Senior, C. A., Stevens, B., Stouffer, R. J., and Taylor, K. E.: Overview of the Coupled Model Intercomparison Project Phase 6 (CMIP6) experimental design and organization, *Geosci. Model Dev.*, 9, 1937-1958, 10.5194/gmd-9-1937-2016, 2016.
- Falkenmark, M., Lundqvist, J., and Widstrand, C.: Macro-scale water scarcity requires micro-scale approaches, *Natural resources forum*, 1989, 258-267,
- Falkenmark, M.: Meeting water requirements of an expanding world population, *Philosophical Transactions of the Royal Society B: Biological Sciences*, 352, 929-936, 10.1098/rstb.1997.0072, 1997.
- FAO: Gridded livestock of the world, Food and Agriculture Organization of the United Nations, Rome, 131, 2007.
- FAO: FAOSTAT online database, 2012.
- FAO, IIASA, ISRIC, ISSCAS, and JRC: Harmonized World Soil Database (version 1.2), 2012.
- Fick, S. E., and Hijmans, R. J.: Worldclim 2: New 1-km spatial resolution climate surfaces for global land areas., *International Journal of Climatology*, 2017.
- Flörke, M., Kynast, E., Bärlund, I., Eisner, S., Wimmer, F., and Alcamo, J.: Domestic and industrial water uses of the past 60 years as a mirror of socio-economic development: A global simulation study, *Global Environmental Change*, 23, 144-156, 2013.
- Fortin, F. A., De Rainville, F. M., Gardner, M. A., Parizeau, M., and Gagné, C.: DEAP: Evolutionary algorithms made easy, *Journal of Machine Learning Research*, 13, 2171-2175, 2012.
- Frenken, K., and Gillet, V.: Irrigation water requirement and water withdrawal by country, Rome, 2012.
- Frieler, K., Betts, R., Burke, E., Ciais, P., Denvil, S., Deryng, D., Ebi, K., Eddy, T., Emanuel, K., Elliott, J., Galbraith, E., Gosling, S. N., Halladay, K., Hattermann, F., Hickler, T., Hinkel, J., Huber, V., Jones, C., Krysanova, V., Lange, S., Lotze, H. K., Lotze-Campen, H., Mengel, M., Mouratiadou, I., Müller Schmied, H., Ostberg, S., Piontek, F., Popp, A., Reyer, C. P. O., Schewe, J., Stevanovic, M., Suzuki, T., Thonicke, K., Tian, H., Tittensor, D. P., Vautard, R., van Vliet, M., Warszawski, L., and Zhao, F.: Assessing the impacts of 1.5°C global warming – simulation protocol

of the Inter-Sectoral Impact Model Intercomparison Project (ISIMIP2b), *Geosci. Model Dev. Discuss.*, 2016, 1-59, 10.5194/gmd-2016-229, 2016.

1040 Gao, J.: Downscaling Global Spatial Population Projections from 1/8-degree to 1-km Grid Cells, National Center for Atmospheric Research, Boulder, CO, USA, 2017.

Gidden, M. J., Fujimori, S., van den Berg, M., Klein, D., Smith, S. J., van Vuuren, D. P., and Riahi, K.: A methodology and implementation of automated emissions harmonization for use in Integrated Assessment Models, *Environmental Modelling and Software*, 105, 187-200, 10.1016/j.envsoft.2018.04.002, 2018.

1045 Gleason, C. J., Wada, Y., and Wang, J.: A Hybrid of Optical Remote Sensing and Hydrological Modeling Improves Water Balance Estimation, *Journal of Advances in Modeling Earth Systems*, 10, 2-17, 10.1002/2017MS000986, 2018.

Gleeson, T., Smith, L., Moosdorf, N., Hartmann, J., Dürr, H. H., Manning, A. H., Van Beek, L. P. H., and Jellinek, A. M.: Mapping permeability over the surface of the Earth, *Geophysical Research Letters*, 38, 10.1029/2010GL045565, 2011.

1050 Gleeson, T., Moosdorf, N., Hartmann, J., and Van Beek, L. P. H.: A glimpse beneath earth's surface: GLobal HYdrogeology MaPS (GLHYMPS) of permeability and porosity, *Geophysical Research Letters*, 41, 3891-3898, 10.1002/2014GL059856, 2014.

Gleick, P. H., Cooley, H., Cohen, M. J., Morikawa, M., Morrison, J., and Palaniappan, M.: The Worlds Water 2008–2009, The Biennial Report on Freshwater Resources, DC, USA, 2009.

1055 Greve, P., Gudmundsson, L., Orlowsky, B., and Seneviratne, S. I.: A two-parameter Budyko function to represent conditions under which evapotranspiration exceeds precipitation, *Hydrol. Earth Syst. Sci.*, 20, 2195-2205, 10.5194/hess-20-2195-2016, 2016.

Gupta, H. V., Kling, H., Yilmaz, K. K., and Martinez, G. F.: Decomposition of the mean squared error and NSE performance criteria: Implications for improving hydrological modelling, *Journal of Hydrology*, 377, 80-91, 10.1016/j.jhydrol.2009.08.003, 2009.

1060 Habets, F., Boone, A., Champeaux, J. L., Etchevers, P., Franchistéguy, L., Leblois, E., Ledoux, E., Le Moigne, P., Martin, E., Morel, S., Noilhan, J., Seguí, P. Q., Rousset-Regimbeau, F., and Vienne, P.: The SAFRAN-ISBA-MODCOU hydrometeorological model applied over France, *Journal of Geophysical Research Atmospheres*, 113, 10.1029/2007JD008548, 2008.

1065 Haddeland, I., Clark, D. B., Franssen, W., Ludwig, F., Voß, F., Arnell, N. W., Bertrand, N., Best, M., Folwell, S., Gerten, D., Gomes, S., Gosling, S. N., Hagemann, S., Hanasaki, N., Harding, R., Heinke, J., Kabat, P., Koirala, S., Oki, T., Polcher, J., Stacke, T., Viterbo, P., Weedon, G. P., and Yeh, P.: Multimodel estimate of the global terrestrial water balance: Setup and first results, *Journal of Hydrometeorology*, 12, 869-884, 10.1175/2011JHM1324.1, 2011.

1070 Hamon, W.: Computation of Direct Runoff Amounts from Storm Rainfall, *IAHS Publ.*, 63, 52-62, 1963.

Hanasaki, N., Kanae, S., and Oki, T.: A reservoir operation scheme for global river routing models, *Journal of Hydrology*, 327, 22-41, 10.1016/j.jhydrol.2005.11.011, 2006.

- Hanasaki, N., Kanae, S., Oki, T., Masuda, K., Motoya, K., Shirakawa, N., Shen, Y., and Tanaka, K.: An integrated model for the assessment of global water resources – Part 1: Model description and input meteorological forcing, *Hydrol. Earth Syst. Sci.*, 12, 1007-1025, 10.5194/hess-12-1007-2008, 2008.
- Hanasaki, N., Yoshikawa, S., Pokhrel, Y., and Kanae, S.: A global hydrological simulation to specify the sources of water used by humans, *Hydrol. Earth Syst. Sci.*, 22, 789-817, 10.5194/hess-22-789-2018, 2018.
- Hansen, M. C., Potapov, P. V., Moore, R., Hancher, M., Turubanova, S. A., Tyukavina, A., Thau, D., Stehman, S. V., Goetz, S. J., Loveland, T. R., Kommareddy, A., Egorov, A., Chini, L., Justice, C. O., and Townshend, J. R. G.: High-resolution global maps of 21st-century forest cover change, *Science*, 342, 850-853, 10.1126/science.1244693, 2013.
- Harbaugh, A. W.: MODFLOW-2005, the U.S. Geological survey modular ground-water model - The ground-water flow process, 2005.
- Hargreaves, G. H., and Samani, Z. A.: Reference crop evapotranspiration from temperature, *Applied Engrg. in Agric.*, 1, 96-99, 1958.
- Hartmann, A., Gleeson, T., Rosolem, R., Pianosi, F., Wada, Y., and Wagener, T.: A large-scale simulation model to assess karstic groundwater recharge over Europe and the Mediterranean, *Geoscientific Model Development*, 8, 1729-1746, 10.5194/gmd-8-1729-2015, 2015.
- Havlík, P., Valin, H., Mosnier, A., Obersteiner, M., Baker, J. S., Herrero, M., Rufino, M. C., and Schmid, E.: Crop productivity and the global livestock sector: Implications for land use change and greenhouse gas emissions, *American Journal of Agricultural Economics*, 95, 442-448, 10.1093/ajae/aas085, 2013.
- He, X., Feng, K., Li, X., Craft, A. B., Wada, Y., Burek, P., Wood, E. F., and Sheffield, J.: Solar and wind energy enhances drought resilience and groundwater sustainability, *Nature Communications*, 10, 4893, 10.1038/s41467-019-12810-5, 2019.
- Hrachowitz, M., Savenije, H. H. G., Blöschl, G., McDonnell, J. J., Sivapalan, M., Pomeroy, J. W., Arheimer, B., Blume, T., Clark, M. P., Ehret, U., Fenicia, F., Freer, J. E., Gelfan, A., Gupta, H. V., Hughes, D. A., Hut, R. W., Montanari, A., Pande, S., Tetzlaff, D., Troch, P. A., Uhlenbrook, S., Wagener, T., Winsemius, H. C., Woods, R. A., Zehe, E., and Cudennec, C.: A decade of Predictions in Ungauged Basins (PUB)-a review, *Hydrol. Sci. J.*, 58, 1198-1255, 10.1080/02626667.2013.803183, 2013.
- Huscroft, J., Gleeson, T., Hartmann, J., and Börker, J.: Compiling and Mapping Global Permeability of the Unconsolidated and Consolidated Earth: GLobal HYdrogeology MaPS 2.0 (GLHYMPS 2.0), *Geophysical Research Letters*, 45, 1897-1904, 10.1002/2017GL075860, 2018.
- Jiang, L., and O'Neill, B. C.: Global urbanization projections for the Shared Socioeconomic Pathways, *Global Environmental Change*, 42, 193-199, 10.1016/j.gloenvcha.2015.03.008, 2017.
- Jiménez, R. C., Kuzak, M., Alhamdoosh, M., Barker, M., Batut, B., Borg, M., Capella-Gutierrez, S., Chue Hong, N., Cook, M., Corpas, M., Flannery, M., Garcia, L., Gelpí, J. L., Gladman, S., Goble, C., González Ferreiro, M., Gonzalez-Beltran, A., Griffin, P. C., Grüning, B., Hagberg, J., Holub, P., Hooft, R., Ison, J., Katz, D. S., Leskošek, B., López

- Gómez, F., Oliveira, L. J., Mellor, D., Mosbergen, R., Mulder, N., Perez-Riverol, Y., Pergl, R., Pichler, H., Pope, B., Sanz, F., Schneider, M. V., Stodden, V., Suchecki, R., Svobodová Vařeková, R., Talvik, H. A., Todorov, I., Treloar, A., Tyagi, S., van Gompel, M., Vaughan, D., Via, A., Wang, X., Watson-Haigh, N. S., and Crouch, S.: Four simple recommendations to encourage best practices in research software, *F1000Research*, 6, 10.12688/f1000research.11407.1, 2017.
- 1110 Jones, B., and O'Neill, B. C.: Spatially explicit global population scenarios consistent with the Shared Socioeconomic Pathways, *Environmental Research Letters*, 11, 084003, 2016.
- Kahil, M. T., Parkinson, S., Satoh, Y., Greve, P., Burek, P., Veldkamp, T. I. E., Burtcher, R., Byers, E., Djilali, N., Fischer, G., Krey, V., Langan, S., Riahi, K., Tramberend, S., and Wada, Y.: A Continental-Scale Hydroeconomic Model for Integrating Water-Energy-Land Nexus Solutions, *Water Resources Research*, 54, 7511-7533, 10.1029/2017WR022478, 2018.
- 1115 Kahil, T., Albiac, J., Fischer, G., Strokal, M., Tramberend, S., Greve, P., Tang, T., Burek, P., Burtcher, R., and Wada, Y.: A nexus modeling framework for assessing water scarcity solutions, *Current Opinion in Environmental Sustainability*, 40, 72-80, <https://doi.org/10.1016/j.cosust.2019.09.009>, 2019.
- 1120 Karssenber, D., Schmitz, O., Salamon, P., de Jong, K., and Bierkens, M. F. P.: A software framework for construction of process-based stochastic spatio-temporal models and data assimilation, *Environmental Modelling and Software*, 25, 489-502, 10.1016/j.envsoft.2009.10.004, 2010.
- Kauffeldt, A., Wetterhall, F., Pappenberger, F., Salamon, P., and Thielen, J.: Technical review of large-scale hydrological models for implementation in operational flood forecasting schemes on continental level, *Environmental Modelling and Software*, 75, 68-76, 10.1016/j.envsoft.2015.09.009, 2016.
- 1125 Kim, H., Watanabe, S., Chang, E.-C., Yoshimura, K., Hirabayashi, Y., Famiglietti, J., and Oki, T.: Century long observation constrained global dynamic downscaling and hydrologic implication, *American Geophysical Union, Fall Meeting 2012*, 2012.
- 1130 Klein Goldewijk, K. K., Beusen, A., Doelman, J., and Stehfest, E.: Anthropogenic land use estimates for the Holocene - HYDE 3.2, *Earth System Science Data*, 9, 927-953, 10.5194/essd-9-927-2017, 2017.
- Kling, H., Fuchs, M., and Paulin, M.: Runoff conditions in the upper Danube basin under an ensemble of climate change scenarios, *Journal of Hydrology*, 424-425, 264-277, 10.1016/j.jhydrol.2012.01.011, 2012.
- Koirala, S., Yamada, H., Yeh, P., Oki, T., Hirabayashi, Y., and Kanae, S.: Global simulation of groundwater recharge, water ta-ble depth, and low flow using a land surface model with ground-water representation, *Journal of Japan Society of Civil Engineers*, 68, 211-216, DOI: 10.2208/jscejhe.68.I\_211, 2012.
- 1135 Kumar, R., Samaniego, L., and Attinger, S.: Implications of distributed hydrologic model parameterization on water fluxes at multiple scales and locations, *Water Resources Research*, 49, 360-379, 10.1029/2012WR012195, 2013.
- Kummu, M., Taka, M., and Guillaume, J. H. A.: Gridded global datasets for Gross Domestic Product and Human Development Index over 1990-2015, *Scientific Data*, 5, 10.1038/sdata.2018.4, 2018.
- 1140

- Lange, S.: Bias correction of surface downwelling longwave and shortwave radiation for the EWEMBI dataset, *Earth Syst. Dynam.*, 9, 627-645, 10.5194/esd-9-627-2018, 2018.
- Lehner, B., Liermann, C. R., Revenga, C., Vörösmarty, C., Fekete, B., Crouzet, P., Döll, P., Endean, M., Frenken, K., Magome, J., Nilsson, C., Robertson, J. C., Rödel, R., Sindorf, N., and Wisser, D.: High-resolution mapping of the world's reservoirs and dams for sustainable river-flow management, *Frontiers in Ecology and the Environment*, 9, 494-502, 10.1890/100125, 2011.
- Lindström, G.: A simple automatic calibration routine for the HBV model, *Nordic Hydrology*, 28, 153-168, 1997.
- Lindström, G., Johansson, B., Persson, M., Gardelin, M., and Bergström, S.: Development and test of the distributed HBV-96 hydrological model, *Journal of Hydrology*, 201, 272-288, 10.1016/S0022-1694(97)00041-3, 1997.
- Maniak, U.: *Hydrologie und Wasserwirtschaft*, Springer-Verlag Berlin Heidelberg, 651 pp., 1997.
- McDonald, M., and Harbaugh, A.: *A Modular Three-Dimensional Finite-Difference Ground-Water Flow Model: Techniques of Water Resources Investigations, Book 6*, U.S. Geol. Sur, Denver, Colorado, USA, 1988.
- Messenger, M. L., Lehner, B., Grill, G., Nedeva, I., and Schmitt, O.: Estimating the volume and age of water stored in global lakes using a geo-statistical approach, 7, 13603, 10.1038/ncomms13603, 2016.
- Mohan, C., Western, A. W., Wei, Y., and Saft, M.: Predicting groundwater recharge for varying land cover and climate conditions-a global meta-study, *Hydrol. Earth Syst. Sci.*, 22, 2689-2703, 10.5194/hess-22-2689-2018, 2018.
- Molnau, M., and Bissell, V. C.: A continuous frozen ground index for flood forecasting, *Proceedings 51st Annual Meeting Western Snow Conference*, 1983, 109-119,
- Mualem, Y.: A New Model for Predicting the Hydraulic Conductivity of Unsaturated Porous Media, *Water Resources Research*, Vol. 12, 513-522, 1976.
- Muller, P. J., Lewis, P., Fischer, J., North, P., and Framer, U.: The ESA GlobAlbedo Project for mapping the Earth's land surface albedo for 15 Years from European Sensors., paper presented at IEEE Geoscience and Remote Sensing Symposium (IGARSS) IEEE Geoscience and Remote Sensing Symposium (IGARSS) 2012, Munich, Germany, , 22-27.7.12., 2012.
- Müller Schmied, H., Eisner, S., Franz, D., Wattenbach, M., Portmann, F. T., Flörke, M., and Döll, P.: Sensitivity of simulated global-scale freshwater fluxes and storages to input data, hydrological model structure, human water use and calibration, *Hydrol. Earth Syst. Sci.*, 18, 3511-3538, 10.5194/hess-18-3511-2014, 2014.
- Pokhrel, Y., Hanasaki, N., Koirala, S., Cho, J., Yeh, P. J. F., Kim, H., Kanae, S., and Oki, T.: Incorporating anthropogenic water regulation modules into a land surface model, *Journal of Hydrometeorology*, 13, 255-269, 10.1175/JHM-D-11-013.1, 2012.
- Pokhrel, Y.: Global Terrestrial Water Storage and Drought Severity under Climate Change (in preparation), 2019.**
- Pokhrel, Y. N., Koirala, S., Yeh, P. J. F., Hanasaki, N., Longuevergne, L., Kanae, S., and Oki, T.: Incorporation of groundwater pumping in a global Land Surface Model with the representation of human impacts, *Water Resources Research*, 51, 78-96, 10.1002/2014WR015602, 2015.

- 1175 Pokhrel, Y. N., Hanasaki, N., Wada, Y., and Hyungjun, K.: Recent progresses in incorporating human land–water management into global land surface models toward their integration into Earth system models, *WIREs Water*, 3, 548-574, doi: 10.1002/wat2.1150, 2016.
- Portmann, F. T., Siebert, S., and Döll, P.: MIRCA2000—Global monthly irrigated and rainfed crop areas around the year 2000: A new high-resolution data set for agricultural and hydrological modeling, *Global Biogeochemical Cycles*, 24, n/a-n/a, 10.1029/2008GB003435, 2010.
- 1180 Raskin, P., Gleick, P. H., Kirshen, P., Pontius, R. G., and Strzepek, K.: Comprehensive assessment of the freshwater resources of the world, Stockholm Environment Institute, Stockholm, Sweden, 1997.
- Reinecke, R., Foglia, L., Mehl, S., Trautmann, T., Cáceres, D., and Döll, P.: Challenges in developing a global gradient-based groundwater model (G3M v1.0) for the integration into a global hydrological model, *Geosci. Model Dev.*, 12, 2401-2418, 10.5194/gmd-12-2401-2019, 2019.
- 1185 Revilla-Romero, B., Beck, H. E., Burek, P., Salamon, P., de Roo, A., and Thielen, J.: Filling the gaps: Calibrating a rainfall-runoff model using satellite-derived surface water extent, *Remote Sens. Environ.*, 171, 118-131, 10.1016/j.rse.2015.10.022, 2015.
- Riahi, K., van Vuuren, D. P., Kriegler, E., Edmonds, J., O'Neill, B. C., Fujimori, S., Bauer, N., Calvin, K., Dellink, R., Fricko, O., Lutz, W., Popp, A., Cuaserna, J. C., Kc, S., Leimbach, M., Jiang, L., Kram, T., Rao, S., Emmerling, J., Ebi, K., Hasegawa, T., Havlik, P., Humpenöder, F., Da Silva, L. A., Smith, S., Stehfest, E., Bosetti, V., Eom, J., Gernaat, D., Masui, T., Rogelj, J., Strefler, J., Drouet, L., Krey, V., Luderer, G., Harmsen, M., Takahashi, K., Baumstark, L., Doelman, J. C., Kainuma, M., Klimont, Z., Marangoni, G., Lotze-Campen, H., Obersteiner, M., Tabeau, A., and Tavoni, M.: The Shared Socioeconomic Pathways and their energy, land use, and greenhouse gas emissions implications: An overview, *Global Environmental Change*, 42, 153-168, 10.1016/j.gloenvcha.2016.05.009, 2017.
- 1190 Rost, S., Gerten, D., Bondeau, A., Lucht, W., Rohwer, J., and Schaphoff, S.: Agricultural green and blue water consumption and its influence on the global water system, *Water Resources Research*, 44, 10.1029/2007WR006331, 2008.
- Samaniego, L., Kumar, R., and Attinger, S.: Multiscale parameter regionalization of a grid-based hydrologic model at the mesoscale, *Water Resources Research*, 46, 10.1029/2008WR007327, 2010.
- 1200 Samaniego, L., Kumar, R., and Jackisch, C.: Predictions in a data-sparse region using a regionalized grid-based hydrologic model driven by remotely sensed data, *Hydrology Research*, 42, 338-355, 10.2166/nh.2011.156, 2011.
- Samaniego, L., Kumar, R., Thober, S., Rakovec, O., Zink, M., Wanders, N., Eisner, S., Müller Schmied, H., Sutanudjaja, E., Warrach-Sagi, K., and Attinger, S.: Toward seamless hydrologic predictions across spatial scales, *Hydrol. Earth Syst. Sci.*, 21, 4323-4346, 10.5194/hess-21-4323-2017, 2017.
- 1205 Scanlon, B. R., Zhang, Z., Save, H., Sun, A. Y., Schmied, H. M., Van Beek, L. P. H., Wiese, D. N., Wada, Y., Long, D., Reedy, R. C., Longuevergne, L., Döll, P., and Bierkens, M. F. P.: Global models underestimate large decadal

declining and rising water storage trends relative to GRACE satellite data, *Proceedings of the National Academy of Sciences of the United States of America*, 115, E1080-E1089, 10.1073/pnas.1704665115, 2018.

- 1210 Seidl, R., and Barthel, R.: Linking scientific disciplines: Hydrology and social sciences, *Journal of Hydrology*, 550, 441-452, 10.1016/j.jhydrol.2017.05.008, 2017.
- Sheffield, J., Goteti, G., and Wood, E. F.: Development of a 50-year high-resolution global dataset of meteorological forcings for land surface modeling, *Journal of Climate*, 19, 3088-3111, 10.1175/JCLI3790.1, 2006.
- Shen, Y., Oki, T., Utsumi, N., Kanae, S., and Hanasaki, N.: Projection of future world water resources under SRES scenarios: Water withdrawal, *Hydrol. Sci. J.*, 53, 11-33, 10.1623/hysj.53.1.11, 2008.
- 1215 Shiklomanov, I. A.: Assessment of Water Resources and Water Availability in the World, *Comprehensive Assessment of the Freshwater Re-sources of the World*, 1997.
- Shiklomanov, I. A.: Appraisal and Assessment of world water resources, *Water International*, 25, 11-32, 10.1080/02508060008686794, 2000.
- 1220 Siderius, C., Biemans, H., Kashaigili, J. J., and Conway, D.: Going local: Evaluating and regionalizing a global hydrological model's simulation of river flows in a medium-sized East African basin, *Journal of Hydrology: Regional Studies*, 19, 349-364, 10.1016/j.ejrh.2018.10.007, 2018.
- Siebert, S., Döll, P., Hoogeveen, J., Faures, J. M., Frenken, K., and Feick, S.: Development and validation of the global map of irrigation areas, *Hydrol. Earth Syst. Sci.*, 9, 535-547, 2005.
- 1225 Siebert, S., Burke, J., Faures, J. M., Frenken, K., Hoogeveen, J., Döll, P., and Portmann, F. T.: Groundwater use for irrigation – a global inventory, *Hydrol. Earth Syst. Sci.*, 14, 1863-1880, 10.5194/hess-14-1863-2010, 2010.
- Sivapalan, M., Savenije, H. H. G., and Blöschl, G.: Socio-hydrology: A new science of people and water, *Hydrol. Processes*, 26, 1270-1276, 10.1002/hyp.8426, 2012.
- Speers, D. D., and Versteeg, J. D.: unoff forecasting for reservoir operations – the past and the future, *Proceedings 52nd Western Snow Conference*, 1979, 149-156,
- 1230 Steinfeld, H., Gerber, P., Wassenaar, T., Castel, V., Rosales, M., and de Haan, C.: Livestock's long shadow: Environmental issues and options, *Renewable Resources Journal*, 24, 15-17, 2006.
- Strokal, M., Kroeze, C., Wang, M., Bai, Z., and Ma, L.: The MARINA model (Model to Assess River Inputs of Nutrients to seAs): Model description and results for China, *Science of The Total Environment*, 562, 869-888, 10.1016/j.scitotenv.2016.04.071, 2016.
- 1235 Sullivan, P., Krey, V., and Riahi, K.: Impacts of considering electric sector variability and reliability in the MESSAGE model, *Energy Strategy Reviews*, 1, 157-163, 10.1016/j.esr.2013.01.001, 2013.
- Supit, I., Hooijer, A. A., and van Diepen, C. A.: System Description of the WOFOST 6.0 Crop Simulation Model Implemented in CGMS, Office for Official Publications of the European Communities, Luxembourg, 1994.



- 1240 Supit, I., and van der Goot, E.: Updated System Description of the WOFOST Crop Growth Simulation Model as  
Implemented in the Crop Growth Monitoring System Applied by the European Commission, Treemail, Heelsum,  
The Netherlands, 2003.
- Sutanudjaja, E. H., Van Beek, L. P. H., De Jong, S. M., Van Geer, F. C., and Bierkens, M. F. P.: Calibrating a large-extent  
high-resolution coupled groundwater-land surface model using soil moisture and discharge data, *Water Resources*  
1245 *Research*, 50, 687-705, 10.1002/2013WR013807, 2014.
- Sutanudjaja, E. H., Van Beek, R., Wanders, N., Wada, Y., Bosmans, J. H. C., Drost, N., Van Der Ent, R. J., De Graaf, I. E.  
M., Hoch, J. M., De Jong, K., Karssenberg, D., López López, P., Peßenteiner, S., Schmitz, O., Straatsma, M. W.,  
Vannamettee, E., Wisser, D., and Bierkens, M. F. P.: PCR-GLOBWB 2: A 5 arcmin global hydrological and water  
resources model, *Geoscientific Model Development*, 11, 2429-2453, 10.5194/gmd-11-2429-2018, 2018.
- 1250 Tang, T., Strokal, M., Burek, P., Kroeze, C., van Vliet, M., and Wada, Y.: Sources and export of nutrients in the Zambezi  
River basin: status and future trend, (in preparation), 2019.
- Tapley, B. D., Bettadpur, S., Watkins, M., and Reigber, C.: The gravity recovery and climate experiment: Mission overview  
and early results, *Geophysical Research Letters*, 31, L09607 09601-09604, 10.1029/2004GL019920, 2004.
- Todini, E.: The ARNO rainfall—runoff model, *Journal of Hydrology*, 175, 339-382, 1996.
- 1255 Tramberend, S., Burtscher, R., Burek, P., Kahil, T., Fischer, G., Mochizuki, J., Wada, Y., Kimwaga, R., Nyenje, P., Ondiek,  
R., Prossie, N., Hyandye, C., Sibomana, C., and Langan, S.: East Africa Future Water Scenarios to 2050, IIASA,  
Laxenburg, Austria, 2019.
- Udias, A., Gentile, A., Burek, P., De Roo, A., Bouraoui, F., Vandecasteele, I., Lavalle, C., and Bidoglio, G.: Multi-criteria  
framework to assess large scalewater resources policy measures, *Water*, 8, 10.3390/w8090370, 2016.
- 1260 UN-Water: Water Security & the Global Water Agenda, Hamilton, Canada, 2013.
- Van Beek, L., Wada, Y., and Bierkens, M. F.: Global monthly water stress: 1. Water balance and water availability, *Water*  
*Resources Research*, 47, 2011.
- Van Genuchten, M. T.: A closed-form equation for predicting the hydraulic conductivity of unsaturated soils, *Science*  
*Society of America Journal*, 44, 892-898, 1980.
- 1265 van Vuuren, D. P., Edmonds, J., Kainuma, M., Riahi, K., Thomson, A., Hibbard, K., Hurtt, G. C., Kram, T., Krey, V.,  
Lamarque, J. F., Masui, T., Meinshausen, M., Nakicenovic, N., Smith, S. J., and Rose, S. K.: The representative  
concentration pathways: An overview, *Climatic Change*, 109, 5-31, 10.1007/s10584-011-0148-z, 2011.
- van Vuuren, D. P., Kriegler, E., O'Neill, B. C., Ebi, K. L., Riahi, K., Carter, T. R., Edmonds, J., Hallegatte, S., Kram, T.,  
Mathur, R., and Winkler, H.: A new scenario framework for Climate Change Research: Scenario matrix  
1270 architecture, *Climatic Change*, 122, 373-386, 10.1007/s10584-013-0906-1, 2014.
- Vinca, A., Parkinson, S., Byers, E., Burek, P., Khan, Z., Krey, V., Diuana, F. A., Wang, Y., Ilyas, A., Köberle, A. C.,  
Staffell, I., Pfenninger, S., Muhammad, A., Rowe, A., Schaeffer, R., Rao, N. D., Wada, Y., Djilali, N., and Riahi,



K.: The Nexus Solutions Tool (NEST): An open platform for optimizing multi-scale energy-water-land system transformations, *Geosci. Model Dev. Discuss.*, 2019, 1-33, 10.5194/gmd-2019-134, 2019.

- 1275 Viviroli, D., Zappa, M., Gurtz, J., and Weingartner, R.: An introduction to the hydrological modelling system PREVAH and its pre- and post-processing-tools, *Environmental Modelling and Software*, 24, 1209-1222, 10.1016/j.envsoft.2009.04.001, 2009.
- Wada, Y., Van Beek, L., and Bierkens, M. F.: Modelling global water stress of the recent past: on the relative importance of trends in water demand and climate variability, *Hydrol. Earth Syst. Sci.*, 15, 3785-3808, 2011.
- 1280 Wada, Y., Wissler, D., and Bierkens, M. F. P.: Global modeling of withdrawal, allocation and consumptive use of surface water and groundwater resources, *Earth Syst. Dynam.*, 5, 15-40, 10.5194/esd-5-15-2014, 2014.
- Wada, Y.: Modeling Groundwater Depletion at Regional and Global Scales: Present State and Future Prospects, *Surv. Geophys.*, 37, 419-451, 10.1007/s10712-015-9347-x, 2016.
- Wada, Y., Flörke, M., Hanasaki, N., Eisner, S., Fischer, G., Tramberend, S., Satoh, Y., van Vliet, M. T. H., Yillia, P., 1285 Ringler, C., Burek, P., and Wiberg, D.: Modeling global water use for the 21st century: the Water Futures and Solutions (WFaS) initiative and its approaches, *Geoscientific Model Development*, 9, 175-222, 10.5194/gmd-9-175-2016, 2016.
- Wada, Y., Bierkens, M. F. P., de Roo, A., Dirmeyer, P. A., Famiglietti, J. S., Hanasaki, N., Konar, M., Liu, J., Müller Schmied, H., Oki, T., Pokhrel, Y., Sivapalan, M., Troy, T. J., van Dijk, A. I. J. M., van Emmerik, T., Van 1290 Huijgevoort, M. H. J., Van Lanen, H. A. J., Vörösmarty, C. J., Wanders, N., and Wheat, H.: Human–water interface in hydrological modelling: current status and future directions, *Hydrol. Earth Syst. Sci.*, 21, 4169-4193, 10.5194/hess-21-4169-2017, 2017.
- Wang, M., Stokal, M., Burek, P., Kroeze, C., Ma, L., and Janssen, A. B. G.: Excess nutrient loads to Lake Taihu: Opportunities for nutrient reduction, *Science of the Total Environment*, 664, 865-873, 10.1016/j.scitotenv.2019.02.051, 2019a.
- 1295 Wang, M., Tang, T., Burek, P., Havlík, P., Krisztin, T., Kroeze, C., Leclère, D., Stokal, M., Wada, Y., Wang, Y., and Langan, S.: Increasing nitrogen export to sea: A scenario analysis for the Indus River, *Science of The Total Environment*, 133629, 10.1016/j.scitotenv.2019.133629, 2019b.
- Warszawski, L., Frieler, K., Huber, V., Piontek, F., Serdeczny, O., and Schewe, J.: The inter-sectoral impact model 1300 intercomparison project (ISI-MIP): project framework, *Proceedings of the National Academy of Sciences*, 111, 3228-3232, 2014.
- Weedon, G. P., Balsamo, G., Bellouin, N., Gomes, S., Best, M. J., and Viterbo, P.: The WFDEI meteorological forcing data set: WATCH Forcing data methodology applied to ERA-Interim reanalysis data, *Water Resources Research*, 50, 7505-7514, 10.1002/2014WR015638, 2014.

- 1305 Wilson, G., Aruliah, D. A., Brown, C. T., Chue Hong, N. P., Davis, M., Guy, R. T., Haddock, S. H. D., Huff, K. D.,  
Mitchell, I. M., Plumbley, M. D., Waugh, B., White, E. P., and Wilson, P.: Best Practices for Scientific Computing,  
PLoS Biology, 12, 10.1371/journal.pbio.1001745, 2014.
- Wisser, D., Fekete, B. M., Vörösmarty, C. J., and Schumann, A. H.: Reconstructing 20th century global hydrography: A  
contribution to the Global Terrestrial Network- Hydrology (GTN-H), Hydrol. Earth Syst. Sci., 14, 1-24,  
1310 10.5194/hess-14-1-2010, 2010.
- WMO: Intercomparison of models of snowmelt runoff, 1986.
- Wu, H., Kimball, J. S., Mantua, N., and Stanford, J.: Automated upscaling of river networks for macroscale hydrological  
modeling, Water Resources Research, 47, 10.1029/2009WR008871, 2011.
- Xu, L., Lettenmaier, D. P., Wood, E. F., and Burges, S. J.: A simple hydrologically based model of land surface water and  
1315 energy fluxes for general circulation models, Journal of Geophysical Research, 99, 14+415-414+428, 1994.
- Yates, D., Sieber, J., Purkey, D., and Huber-Lee, A.: WEAP21 - A demand-, priority-, and preference-driven water planning  
model. Part 1: Model characteristics, Water International, 30, 487-500, 10.1080/02508060508691893, 2005.
- Zhang, L., Dobslaw, H., Stacke, T., Güntner, A., Dill, R., and Thomas, M.: Validation of terrestrial water storage variations  
as simulated by different global numerical models with GRACE satellite observations, Hydrol. Earth Syst. Sci., 21,  
1320 821-837, 10.5194/hess-21-821-2017, 2017.
- Zhang, Y., and Schaap, M. G.: Weighted recalibration of the Rosetta pedotransfer model with improved estimates of  
hydraulic parameter distributions and summary statistics (Rosetta3), Journal of Hydrology, 547, 39-53,  
10.1016/j.jhydrol.2017.01.004, 2017.
- Zhao, R. J., and Liu, X. R.: The Xinanjiang model, in: Computer Models of Watershed Hydrology, edited by: Singh, V. P.,  
1325 215-232, 1995.