

The Coastline Evolution Model 2D (CEM2D) V1.1

Chloe Leach¹, Tom Coulthard², Andrew Barkwith³, Daniel R. Parsons², Susan Manson⁴

¹School of Geography, The University of Melbourne, Parkville, Melbourne, VIC 3010, Australia

²Department of Geography, Geology and Environmental Science, University of Hull, Hull, HU6 7RX, UK

5 ³British Geological Survey, Environmental Science Centre, Keyworth, Nottingham, NG12 5GG, UK

⁴Environment Agency, Crosskill House, Mill Lane, Beverley, HU17 9JW, UK

Correspondence to: Chloe Leach (chloe.leach@unimelb.edu.au)

Abstract. Coasts are among the most intensely used environments on the planet, but they also present dynamic and unique hazards including flooding and erosion. Sea level rise and changing wave climates will alter patterns of erosion and deposition, but some existing coastline evolution models are unable to simulate these effects due to their one-dimensional representation of the systems, or of sediment transport processes. In this paper, the development and application of the Coastline Evolution Model 2D (CEM2D) is presented, that incorporates these influences. The model has been developed from the established CEM model and is capable of simulating fundamental cause-effect relationships in coastal systems. The two-dimensional storage and transport of sediment in CEM2D, which is only done in one-dimension in CEM, means it is also capable of exploring the influence of a variable water level on sediment transport and the formation and evolution of morphological features and landforms at the meso-scale, from 10 to 100 years and over 10 to 100 kilometres. The model sits between one-dimensional and three-dimensional models, with the advantage of increased complexity and detail in model outputs compared to the former, but with more efficiency and less computational expense than the latter.

20 1 Introduction

Coastal systems are amongst the most dynamic environments on the planet, with their form and evolution being highly sensitive to changes in environmental conditions, over a range of spatial and temporal scales (Wong et al., 2014). Under the context of rising global sea levels and considering the social and economic importance of many coastal locations, understanding the behaviour and potential future evolution of coastal environments is essential for the development of suitable and sustainable management (Wong et al., 2014). Numerical models are increasingly being used for this purpose, providing powerful tools that can give an insight into the complex morphodynamics and sensitivities of coastal systems (e.g. Ashton, Murray and Arnault, 2001; Nam, Larson, Hanson and Hoan, 2009; Nicholls et al., 2012).

Simulating changes in coastal geomorphology over 10 to 100 years and over 10 to 100 km areas, herein referred to as the mesoscale, is highly relevant for coastal management and also fits with our historic frame of observation for model validation and calibration (French et al., 2015; van Maanen et al., 2016). This scale sits between reduced complexity

reductionist studies and complex synthesist investigations, which have more traditionally been the focus of research into coastal behaviours (Fig. 1) (van Maanen et al., 2016).

35 Reductionist or ‘bottom-up’ models are designed to investigate small scale processes that act over relatively short timescales (Fig. 1) (van Maanen et al., 2016). They typically simulate complex behaviours by including a large range of processes that could influence the evolution of the system using more detailed calculations at higher resolutions (van Maanen et al., 2016). Using these types of models for mesoscale applications would be computationally expensive and inefficient, since there are a large number of processes that could be simulated over relatively long time scales (van Maanen et al., 2016). Decisions
40 would have to be made about which processes to include, since each process adds computational expense and additional uncertainty, which can propagate errors or inaccuracies over long simulated timescales (Hutton, 2012; Murray, 2007). Mesoscale models, like many types of model, should be parsimonious and include only fundamental processes that capture the main physical dynamics of a system, thus minimising model uncertainty (Wainwright and Mulligan, 2013).

45 Synthesist or ‘top-down’ models are designed to simulate large scale behaviours that act over longer time periods and often include only a few parameterised processes (Fig. 1) (Murray, 2007; van Maanen et al., 2016). They are intended to represent general behaviours and patterns in natural systems, rather than pertaining to spatially explicit research questions (Murray, 2007). As such, synthesist models are relatively limited in their ability to provide a level of understanding and prediction of coastal behaviours that is required for mesoscale research (Murray, 2007).

50

In the field of coastal modelling, there is a gap for a two-dimensional coastal model that can simulate features such as spits, bars and beach migration along with a dynamic nearshore bathymetry and a variable water level but is parsimonious enough to enable short run times allowing us to answer research questions about coastal evolution at meso-spatiotemporal scales. Existing models with such scope, such as CEM, COVE and GENESIS (Hanson and Kraus, 1989; Ashton et al., 2001; Hurst
55 et al., 2014), are limited to transporting sediment in one-dimension and represent the coastline simply as a line with little accommodation for the nearshore shape or bathymetry. This means the models are parsimonious and fast, but are limited in their application, for example, to investigate the effects of sea level rise on costal geomorphology. Hybrid shoreline change models such as COCOONED (Antolínez et al., 2019) and CoSMoS-COAST (Vitousek et al., 2017) calculate sediment transport in cross-shore and long-shore directions and can varying the water level in model but are transect based and do not
60 include a dynamically evolving bathymetry. The LX-Shore model (Robinet et al., 2018) is cellular-based with longshore and cross-shore sediment transport calculations but has an equilibrium beach profile as in models such as CEM and COVE. In contrast to these longer-term models, finer scale models such as Delft3D (Lesser et al., 2004) can simulate coastal hydrodynamics and sediment transport processes in two- or three-dimensions, but their complexity and long model run times means investigating sea level rise responses over meso-timescales is presently impracticable.

65

In this paper, the development and application of the Coastline Evolution Model 2D (CEM2D) is presented. This model is based on the underlying assumptions of the CEM, but with sediment transport processes that are applied over the two-dimensional grid, which allows us to represent the morphology of coastlines in more detail and incorporate sea level rise. A key aim of the model development is to create a tool to improve our understanding of the mesoscale morphodynamic behaviour of coastal systems, their sensitivities and the influence that sea level rise may have on their evolution over centennial to millennial timescales. We describe in full the model's operation and parameterisation, and compare the model outputs to the original CEM, illustrating some similarities in model outputs but also key differences that are due to the improved two-dimensional representation of the coastline and sediment transport processes.

2 The Coastline Evolution Model (CEM)

As CEM2D builds on many concepts developed in the original CEM, it is important to first understand how CEM operates. CEM is grid based, dividing a plan-view coastline into a grid of regular square cells, of a user-defined size (m). Each of these cells contains a fractional proportion of sediment (F_i) that represent its horizontal fill across the domain. The F_i values are updated according to the longshore transport of sediment and the landward or seaward migration of the shore (Ashton et al., 2001). Cells can be defined as fast or slow eroding, to represent basic lithological characteristics of a coastline.

The one-line coastline can be drawn along shoreline cells, at the interface between land and sea cells. A shoreline search technique is used to locate these shoreline cells, as illustrated in Fig. 2. The initial shoreline cell on the left side of the domain is located by iterating through the first column of cells from the top down, until a land cell is found. A clockwise search is then used around the first shoreline cell to locate the next cell. This is then repeated until all shoreline cells are found.

The sediment flux and net erosion or accretion of material in each cell determines the cross-shore movement of the shoreline and is controlled by wave-induced sediment transport calculated using the CERC formula in terms of breaking wave quantities following Eq. (1):

$$Q_s = KH_b^{\frac{5}{2}} \sin(\phi_b - \theta) \cos(\phi_b - \theta) \quad (1)$$

here, Q_s is the sediment flux (m^3/day), K is a calibration coefficient, H_b is the breaking wave height (m), ϕ_b is the breaking wave angle ($^\circ$) and θ is the local shoreline orientation ($^\circ$). Breaking wave characteristics are calculated from an offshore wave climate that is transformed over assumed shore-parallel contours, using Linear Wave Theory (Ashton et al., 2001). An arbitrary offshore water depth is iteratively reduced and the offshore wave angle and height recalculated until the waves break. The wave climate characteristics at the point of breaking are then used to compute the sediment flux between each cell and the net erosion or deposition of sediment using Eq. (2) (Ashton et al., 2001):

$$\Delta F_i = Q_{s,net} \Delta t / (W^2 D_i) \quad (2)$$

where W is the cell width and D_i the depth to which significant sediment transport occurs, known as the Depth of Closure (DoC). The DoC is defined as the location from the shore where the depth of water is greater than the depth of wave influence and therefore, the flow has a negligible impact on cross-shore sediment transport; this depth is often approximated as half the average wavelength (Hallermeier, 1978; Nicholls et al., 1997; Pinet, 2011). The assumed location of the DoC in CEM is the point where the continental shelf and the linear shoreface slope intersect (Fig. 3) (Ashton et al., 2001). The slope of the shoreface is assumed constant and does not evolve morphologically throughout simulations or vary the beach profile. Sediment is not transported out of cells that are shadowed by protruding sections of coastline, since they are protected from incoming waves (Fig. 4).

Where a shoreline cell overfills with sediment ($F_i > 1$), the excess material is deposited in the surrounding empty cells. As new cells become active land cells, the shoreline advances. This redistribution of material has no effect on the topographic profile of the coastline, but simply shifts the location of the shoreline to where cells have filled with sediment. If a greater volume of sediment is removed from a cell than it contains, the shoreline retreats. With this one-line approach, effectively the water level in the model is held constant and cannot be varied, which limits its application to studies interested in the influence of sea level change on coastal evolution.

3 The Coastline Evolution Model 2D (CEM2D)

CEM2D contains a significant number of modifications to enable it to model the evolution of coastal features including their topographic profiles and to study the influence of a variable water level. The model domain is divided into regular square cells of a user-defined size (m), as per CEM (Fig. 5(a)), however, each cell contains values for depth of sediment to the continental shelf, elevation of sediment above the water level or depth of water (Fig. 5(b)). Having these additional values enables CEM2D to represent two-dimensional coastlines with greater topographic detail compared to the original CEM, as illustrated in Fig. 5. Importantly, the two-dimensional profile allows the morphology of the beach and shoreface to evolve according to the transport of sediment, across the entire model domain. It explicitly models the slope of the continental shelf and shoreface and the morphological profile of the beach and sea floor.

In CEM2D the elevation of each cell relative to the water level is used to classify cells as either wet or dry on each model iteration. The boundary between wet and dry is used to locate the shoreline, using the same shoreline search technique as CEM (Fig. 2). As per CEM, Linear Wave Theory is used to transform the offshore wave climate and the CERC formula to calculate sediment flux between shoreline cells (Equation 1). Sediment transport is calculated using the same equation as CEM (Eq. 1) but because CEM2D represents sediment transport in two-dimensions, material eroded from a cell is distributed to the surrounding cells based on the slope between cells and an angle of repose (Fig. 6). This method is based on

the relationship between the properties of coastal material (e.g. sand, gravel) and slope angle as shown by McLean and Kirk
130 (1969). We can assume that in general, coastal profiles will maintain an average slope angle consistent with the grain size of
beach material although there are a range of factors that can cause steepening or shallowing (McLean and Kirk, 1969). To
carry out this redistribution procedure an algorithm sweeps the entire model domain and identifies where a given angle of
repose has been reached between a cell and its neighbour. The material is redistributed, taking account of the elevation and
repose angles of the orthogonal surrounding cells (Fig. 6). The sediment metrics are then updated accordingly, including the
135 total volume of material and the cell's elevation above a reference point. The rules defining the sediment redistribution are
important parameters that can significantly alter the model outcomes and have therefore been thoroughly tested. The two
most critical components are (1) the threshold angle between cells that instigates transport and (2) the frequency that the
domain is analysed for these thresholds. These values should be calibrated to allow sediment to be distributed without
inducing sediment pilling or deep depressions forming in the domain. Similar techniques are widely implemented in
140 landscape evolution models, such as SIBERIA (Willgoose et al., 1991) and GOLEM (Tucker and Slingerland, 1994)
(Coulthard, 2001). The implementation of this method in CEM2D allows the nearshore profile to evolve dynamically, rather
than assuming an even distribution across the nearshore profile and forming shore-parallel contours, as is the case in CEM
and other one-line models. In CEM2D, the ability of the simulated coast to evolve dynamically in this way provides a more
realistic representation of the morphodynamic behaviour of these systems. How sediment is distributed can affect the longer-
145 term evolution of the system and record a morphological memory of landforms which can interact with other features as they
form and mature (Thomas et al., 2016).

CEM2D's two-dimensional structure allows the water level to be varied, but by default the water level is at 0 m elevation.
There are two dynamic water level modes within the model which can be run independently or in combination that can be
150 used to represent tidal fluctuations and long-term sea level change. The increased complexity of the model domain and of
sediment transport processes in CEM2D enable it to model complex two-dimensional coastal profiles and evolve their
morphology. The features allow more complex morphodynamic processes to be explored and to investigate not only the
evolution of the one-line shore, but the surrounding beach and shoreface. The sediment storage and handling technique allow
complex landforms and features to develop and leave a morphological memory in the bathymetry as they evolve. Sea level
155 change is an important addition to this model that could be used to explore the response of coastal systems to fluctuating
water levels and the influence of fundamental climate change effects such as sea level rise.

4 Methodology: Sensitivity Analysis and Model Evaluation

To evaluate how CEM2D simulates coastal change, CEM2D was compared to CEM model outputs as well as to the
behaviour and morphology of natural coastal environments. This provides both a check that the new model is able to
160 represent natural systems as the original, but also to indicate where the added features (namely 2D operation) might change

the model outputs. As the aim of this paper is to describe and highlight the technical developments CEM2D we do not offer a full field-based comparison but the original CEM outputs (as described subsequently) have been evaluated against field data.

4.1 Initial Conditions

165 CEM and CEM2D were initially set up with a uniform gridded domain measuring 200 (cross-shore) by 600 (longshore) cells, with a cell size of 100 m by 100 m (Fig. 7). A straight planform coastline was used, with uniform undulations along its length. The coastal profile is characterised by a fixed continental shelf slope of 0.1 with a minimum imposed depth of 10 m and an average shoreface slope of 0.01. Within CEM2D, these average slopes are imposed across the two-dimensional domain including the beach and bathymetric profiles which are built to replicate an average coastal profile slope of 0.01. The
170 left and right boundaries of both model domains are governed by periodic boundary conditions, to allow a constant flux of sediment from one end to the other and conserve the volume of material in the system. No-flow conditions were set at the seaward end of the domain to again, conserve sediment and prevent any gain or loss of material. A daily model time step is used for all simulations. The models were run over a simulated period of 3,000 years, to allow time for the model to spin-up, to reduce the potential influence of initial conditions and to allow sufficient time for the coastal systems to evolve.

175 4.2 Wave Climate Conditions

An ensemble of wave climates was used to drive the model in order to explore the influence of wave conditions on the morphology and evolution of coastal systems. We use the four binned Probability Density Function (PDF) approach of Ashton and Murray (2006a) to define the proportional asymmetry (A) of waves and the proportion of high angle waves (U) approaching the coastline, according to the wave crest relative to the average shoreline orientation (Fig. 8). Twenty-five
180 simulations were completed, with A values varying between 0.5 and 0.9 in increments of 0.1 and U values that varied from 0.55 to 0.75 at 0.05 increments. The pseudo-random wave angle was generated on each iteration, according to these proportional values. The wave height and period are held constant, at 1.7 m and 8 s respectively.

4.3 Water Level

The primary purpose of this paper is to highlight the technical development of CEM2D and demonstrate its additional
185 functionalities. The simulations shown focus on how the coastal systems evolve with an unchanging water level at 0 m elevation, but results are also given for how an increasing water level at a rate of 2 m / 100 years influences the evolution of four shoreline types: cusplate, sand wave, reconnecting spit and flying spit. This rate of rise is in line with the UK Climate Projections 2009 (UKCP09) (Jenkins et al., 2009) H++ scenario of 0.93-1.9 m sea level rise by 2100 (Jenkins et al., 2009; Lowe et al., 2009).

190 4.4 CEM2D Sensitivity Analysis

A sensitivity analysis (SA) technique designed by Morris (1991), and subsequently adapted by Campolongo et al., (2007), was used to identify the relationship between model inputs and outputs by performing multiple local SAs to approximate model sensitivity across a global parameter space. The Morris Method's design of experiment uses a defined set of values for each input factor, which are discretised into equal intervals and constrained by upper and lower boundaries (Morris, 1991; 195 Ziliani et al., 2013). Each value is altered incrementally per model sensitivity simulation and the elementary effect of each factor on model outputs is calculated according to the variance of performance indices, by Eq. (3):

$$d_{ij} = \left(\frac{y(x_1 x_2 \dots x_{i-1}, x_i + \Delta_i, x_{i+1}, \dots, x_k) - y(x_1 x_2 \dots x_{i-1}, x_i, x_{i+1}, \dots, x_k)}{\Delta_i} \right) \quad (3)$$

where d_{ij} denotes the value of the j -th elementary effect ($j = 1, \dots, r$) of the i -th input factor (and where r is the number of repetitions), $y(x_1 x_2, \dots, x_k)$ is the value of the performance measure, k is the number of factors investigated and Δ is the 200 incremental step value. The main effect is then calculated according to the mean (μ) of multiple elementary effects computed randomly from the parameter space, which indicates the relative influence of each input factor on model outputs (Ziliani et al., 2013). The standard deviation (σ) is also used to determine which, if any, input factors have nonlinear effects or which have an influence on model output but in combination with other unspecified inputs (Ziliani et al., 2013).

205 The number of input factors tests and the number of repeats using the Morris Method was constrained by resource availability and computational expense. Further, as demonstrated by Skinner et al., (2018) behavioural indices can be used in the place of performance indices where there is a lack of data to populate the performance indices to drive a more qualitative assessment of model sensitivity. A total of eight key input factors were tested against four behavioural indices that represented fundamental processes in the model. The input factors were each ranked according to their relative influence on 210 model outputs and to determine which, if any, input factors have nonlinear effects or which have an influence on model output but in combination with other unspecified inputs (Ziliani et al., 2013). The factors tested are given in Table 1 and the behavioural indices in Table 2.

5 Results

5.1 CEM2D Sensitivity Analysis

215 The mean and standard deviation of each input factor on each behavioural index is given in Fig. 9. The higher the mean, the greater the influence of that factor on model outputs and the higher the standard deviation, the greater the nonlinearity; nonlinearity refers to the nonsequential effects of the given factor on model sensitivity or that it influences model behaviour through complex input-input interactions (Ziliani et al., 2013; Skinner et al., 2018). The results show the principle input factors which (1) have the greatest influence on model sensitivity (e.g. wave angle, wave height, sediment distribution 220 factors), (2) those which have a negligible influence (e.g. wave period and domain characteristics) and (3) those which show

nonlinear behaviours or interactions which can amplify variance in model outputs (those which also have the greatest influence on model behaviour, e.g. the wave angle). The results further highlight input factors that can have an influence on model outputs, but only according to specific behavioural indices (e.g. water level and domain characteristics). It is important to note that the results of the SA can be influenced by the input factors used, the range of values and the behavioural indices that are chosen to assess sensitivity.

Aggregating the results from the four behavioural indices shows that the wave angle and height have the highest-ranking influence on model behaviours, followed by sediment distribution factors and the domain set-up is considered the least influential (Fig. 9). Factors which rank highly based on the mean, also tend to show greater nonlinearity and have complex interactions with other inputs. It is also found, however, that the rankings of the various input factors differ according to the behavioural indices used to assess model sensitivity, each of which describes a different behaviour in the model. For instance, the water level shows a high influence on model behaviour when assessed against the ratio of wet to dry cells but according to the sinuosity of the shoreline, is ranked just below average. The selection of model parameters, described in methods, was driven by the results of the SA and particular attention was given to constraining optimum wave climate conditions and sediment distribution parameters through a series of further behavioural sensitivity testing.

5.2 Fundamental Shoreline Features

The ensemble plots in Fig. 10 and Fig. 11 show final coastal morphologies produced from CEM and CEM2D respectively according to the twenty-five wave climate conditions. Both models demonstrate how different planform shoreline shapes evolve according to the wave climate scenarios, as previously demonstrated by Ashton and Murray (2006a). The proportion of high angle waves influences cross-shore sediment transport and the extent to which landforms accrete seaward, whilst the wave asymmetry determines the balance of cross- to longshore transport and the planform skew of features. It is found that there is some directional bias in the source code that drives a longshore current independent of the wave climate conditions. This directional bias is more apparent in CEM2D and particularly where the wave climate is symmetrical ($A = 0.5$). It also drives some migration of the cusped landforms downdrift, but a similar rate of movement is recorded in both CEM and CEM2D at 1.6 m and 1.7 m per year respectively. The directional bias is induced by calculations in the model that process from the left to the right of the domain. In future model versions, the routines will require updating which would also necessitate that sediment transport methods be altered accordingly.

Four principle shoreline shapes evolve under the driving wave conditions including cusped forelands, alongshore sand waves, reconnecting spits and flying spits. CEM2D shows a greater sensitivity to inputs variables compared to the CEM, apparent in the development of these four feature types. In CEM2D a greater distinction is made between reconnecting and flying spits due to the increased complexity of CEM2D's sediment handling and distribution methods. Each of these four features types are compared to natural systems subsequently that are subject to comparable wave climate conditions.

5.2.1 Cuspate Forelands

255 Symmetrical wave climate conditions ($A=0.5$) are shown to form cuspate forelands in CEM and CEM2D, which compare to those found along many shorelines globally. The Carolina Capes span parts of North and South Carolina's coast in the USA and are used as a case site by Ashton and Murray (2006b) against results generated by CEM. The wave climate along this stretch of coastline is characterised by high angle waves of relative symmetry, which broadly equate to PDF values of $A = 0.55$ and $U = 0.6$ (Ashton and Murray, 2006b). Placing the Carolina Capes into the context of the results shown in Fig. 11, CEM2D would model a cuspate coastline which is slightly skewed due to the 5% dominance of left-approaching waves. The wave direction plays a significant role in the formation of the features, with the slightly stronger southerly current skewing the tips of the landforms (Park and Wells, 2005). Considering that all site-specific conditions controlling the evolution of capes are not represented in CEM2D, the model is able to predict a comparable shoreline type to that observed in this natural system.

265 5.2.2 Alongshore Sand Waves

A slight asymmetry in the wave climate (where $A = 0.6$) generates alongshore sand waves in both CEM (Figure 10) and CEM2D (Figure 11). However, CEM2D has a greater sensitivity to this parameter and the features show a greater skew down-drift. For instance, under $A=0.6$ and $U=0.75$ cuspate sand waves form along the shoreline in CEM, but in CEM2D the features skew and hooks form at the distal points. Comparing these results to the planform morphology of sand waves found in natural systems, such as Benacre Ness in the UK which has PDF values of $A=0.6$ and $U=0.8$, demonstrates the ability of CEM2D to reflect the asymmetry of landforms formed under asymmetric wave climate conditions. However, it is noted that site-specific environmental and boundary conditions play a role in the formation and evolution of Benacre Ness which are not modelled by either software and that the wave transformation equations used may not be wholly suited to this site.

5.2.3 Reconnecting and Flying Spits

275 Under high asymmetric wave climate conditions, dominated by high angle waves, spits form along the shoreline in CEM (Ashton and Murray, 2001; Ashton et al., 2006b) and CEM2D. However, CEM2D again shows a greater sensitivity to the wave climate conditions, with more distinction made between reconnecting and flying spits due to the refinement of sediment handling techniques in the model.

280 Ashton and Murray (2006b) compare results from CEM to the behaviour and development of the reconnecting Long Point Spit in Lake Erie, Canada, where the wave climate is characterised by high asymmetry ($A = 0.8-0.9$) and high angle wave dominance ($U = 0.6-0.7$) (Ashton and Murray, 2006b). Under all four potential wave climate conditions, reconnecting spit features form in CEM (Fig. 10), whereas in CEM2D (Fig. 11) either sand waves or reconnecting spits form depending on the combination of A and U values within the given ranges. Ashton and Murray (2007) suggest that the wave climate is favoured

285 towards an asymmetry (A) of 0.8 along the entire spit and under these conditions, reconnecting spits form in CEM2D (Fig. 11), as per the natural system.

Comparing model results to flying spits, Spurn Point in the UK extends off the southern end of the Holderness Coast and has a PDF wave climate of $A = 0.75$, $U = 0.35$. Following the pattern of results from CEM (Fig. 10) and CEM2D (Fig. 11),
290 where there is proportional asymmetry (A) of between 0.7 and 0.8, net longshore sediment transport forms these types of landforms. However, in CEM2D these features fluctuate between spits and sand waves owing to the strong longshore current generated by the low angle waves and high asymmetry. It is of note however that Spurn Point is a complex site which is influenced by conditions that could be having a greater impact on coastal evolution, including estuarine processes and dredging activities.

295 **5.3 Spatial Scale of Shoreline Features**

The spatial scale of shoreline features differs between results from CEM and CEM2D. Metrics from the end of each run, as shown in Figures 10 and 11, show larger features evolve in CEM2D in six of the simulations. The larger features evolve under wave climate conditions where $A = 0.6$, $U = 0.55$ - 0.65 (sand waves), where $A = 0.7$ - 0.8 , $U = 0.7$ (flying spit) and where $A = 0.9$, $U = 0.75$ (flying spit) and smaller features evolve in the remaining nineteen simulations. However, each run
300 terminates at a different timestep and a comparison of results at the earliest termination for each pair of simulations shows that in all but one of the runs ($A = 0.6$, $U = 0.55$), the features are smaller and less developed in CEM2D than the CEM (Figure 18).

The evolution of landforms is more gradual in CEM2D, likely as a result of differences in the representation of the domain
305 and in the distribution of sediment. Rather than sediment being distributed evenly across the nearshore to the depth of closure, as in CEM, CEM2D uses the sediment distribution method to route sediment along lines of steepest descent and spreads available material across the nearshore profile. This leads to both the formation of shoreline features but also to the formation of a shallow nearshore shelf (see Section 5.4).

310 Highlighted above are differences in results between CEM and CEM2D and in particular, the complexity of results generated in CEM2D due to the addition of a dynamically evolving profile. In nature, the features discussed evolve at different rates and to different spatial scales depending and in order to use CEM2D to investigate such systems, parameters in the model including the threshold and frequency of sediment distribution should be adjusted to suit the specific environment studied and the rates at which these features form.

315 **5.4 Dynamic Coastal Profile**

The novel development of CEM2D is to simulate variations in the nearshore topography. Of particular interest are the dynamics of the upper nearshore which evolves under the influence of sediment exchange with the shoreline (Fig. 12(b)). The lower nearshore profile tends to be influenced to a lesser degree (Fig. 12(c)) and consequently, is able to store remnants of morphological features as they evolve.

320

One-line models tend to assume that contours lie parallel to the shoreline, but the results in this study demonstrate that the bathymetric profile in particular is highly dynamic (Fig. 12). Whilst some of the results of CEM2D show a profile with shore-parallel contours, the majority do not exhibit this behaviour, particularly where there is a strong asymmetry in the wave climate (Fig. 12). The shoreline and bathymetry is not solely influenced by current environmental conditions but previous states and morphological residuals. Omitting or smoothing the bathymetry in the representation of coastal systems could have implications for their long-term evolution. The effect of morphological inheritances have been previously suggested by authors including Wright and Short (1984), French et al., (2015) and Thomas et al., (2016). Many of the results from CEM2D have noted the presence of remnant features or states in the coastal profile, particularly in the nearshore zone. The presence of these features is strongly attributed to the balance of cross- and long-shore sediment transport, and the rate of change. For instance, where sand waves form the rate of change is such that the longshore movement of landforms makes an impression in the profile that is significant enough to be sustained in the bathymetry as the features migrate (Fig. 13). However, where reconnecting spits form along the shoreline, the rapid rate of longshore and cross-shore sediment transport act to smooth the profile and remove evidence of predeceasing morphologies (Fig. 13). These processes could prove important for understanding the nearshore dynamics of natural coastal environments, particularly under changing environmental conditions.

335

Relative rates of morphological change and coastal dynamics differs according to the driving wave conditions (Fig. 14). This is illustrated in the volume stacks in Fig. 14 which present the change in volume of sediment across a transect ($x = 30$ km) every 30 simulated years, for four wave climate scenarios where (a) $A = 0.5$, $U = 0.55$, (b) $A = 0.6$, $U = 0.6$, (c) $A = 0.7$, $U = 0.65$ and (d) $A = 0.8$, $U = 0.7$. With increasing wave asymmetry and proportions of high angle waves, the active cross-shore zone exhibits greater dynamism and greater volumes of net longshore transport. However, the results also show that these systems have complex non-linear behaviours that emerge from the balance of longshore and cross-shore sediment transport.

340

5.5 Variable Water Level

Changing the water level against the dynamic topography allows CEM2D to explore how a rising water level might affect how coastal systems behave. The results demonstrate that a rising sea level causes landward recession of the shoreline and uplift of the profile (Figure 15), as is commonly held (Dickson et al., 2007; Bird, 2011). The rate of recession is broadly

345

within two orders of magnitude the rate of sea level rise, prescribed at 2 m / 100 years in the simulations, which is in agreement with Bruun Rule estimations (Bruun, 1962). Variations in the rate of recession and morphology of the cross-shore profile are, however, observed with different wave climate conditions that differ in the balance of cross-shore and longshore flows (Figure 15).

As in Figure 14, Figure 16 shows the change in volume of sediment across a transect ($x = 30$ km) every 30 simulated years, for four wave climate scenarios where (a-b) $A = 0.5$, $U = 0.55$, (c-d) $A = 0.6$, $U = 0.6$, (e-f) $A = 0.7$, $U = 0.65$ and (g-h) $A = 0.8$, $U = 0.7$. The figure shows a comparison of the results with a static water level (top) and with a rate of sea level rise of 2 m / 100 years (bottom). The spatial extent of morphological change is more diverse and widespread when the systems are subject to sea level rise. The principal active zone also tracks backwards as the water level rises and the shoreline recedes.

A rising sea level influences the evolution of shoreline features that evolve in the model, including cusps (a), sand waves (b), reconnecting spits (c) and flying spits (d) (Figure 17). As also shown in Figure 17, recession of the shoreline is observed in all four coastal systems as the water level rises regardless of the wave climate conditions (also shown in Figure 15). Where the wave climate is symmetrical, cusped features form under a static water level but have a slight asymmetry under sea level rise conditions, where the direction bias in the model is exaggerated. The cusps extend further offshore where the bays between the headlands are eroded, increasing wave shadowing and hence, exaggerating the effects of the directional bias. A slight asymmetry in the wave climate forms sand waves along the shoreline (Figure 17b), but submergence of these features under a rising sea level leads to the formation of a lagoon in the low-lying centre of the landform. Where the wave climate is defined by $A = 0.7$, $U = 0.65$ (Figure 17c), reconnecting spits form when the water level is static, but as the water level rises the pathways that reconnect the spit to the mainland are submerged. In Figure 17d, flying spits are shown to evolve with and without sea level rise, where the wave climate is highly symmetric. The difference between these two simulations is that under a rising water level, the flying spits cycle through submergence and reformation, as they are drowned by the rising water, but new features are able to form due to the high rate of longshore sediment transport. Remnants of the submerged spits remain in the nearshore and promote the development of spits in these areas due to the shallower water and also influence the unique plan-form morphology of the features.

6 Discussion

The purpose of this study was to provide an overview of the development and application of CEM2D and its ability to represent coastal systems better than other existing coastal evolution models of its kind. Adding two-dimensional functionality allows the model to generally reproduce the results of the original one-line CEM, simulating fundamental shoreline shapes according to the wave climate (Ashton and Murray, 2006a). Our results show the sensitivity of coastal

systems to driving environmental conditions and in particular their response to changing wave climates which supports theories of high angle wave instability.

380

Importantly, restructuring and increasing the dimensionality of sediment transport in the model allows us to explore how the profile of the coastal system changes with the shape of the shoreline. In many one-line models, the cross-shore profile of the coastline is kept constant and it is assumed that its core geometric properties are retained over meso-spatiotemporal scales. Whilst this is a well-used concept, there are advantages to modelling the topography and bathymetry of the coastline and it is necessary if we are to model the effect of a variable water level. For example, we can see that the nearshore evolves at a greater rate compared to the lower shoreface profile, supporting the theories of Stive and de Vriend (1995). The distribution of sediment across the profile is more transient towards the shore where the greatest volume of transport occurs. However, the geometry of the entire shoreface and the geometric demand for sediment distribution means that material is moved to the lower shoreface over time, but at a relatively slower rate (Stive and de Vriend, 1995). Further, the topographic profile of coastal landforms is indicative of their formation and evolution, highlighting patterns in sedimentation and drift processes. Using CEM2D to model how this profile changes over time can inform the stability and future behaviour of features.

390

The longshore sediment transport equations in CEM2D are inherited from the CEM and currently do not take into consideration the water depth, or how far from the shore the waves break. Since the water depth can now be calculated within this 2D model, future developments of CEM2D will focus on a revision of the sediment transport equation and include a more suitable calculation that can take advantage of the increased complexity and added functionalities in CEM2D.

395

A key component of CEM2D is its variable water level. If we are to explore coastal evolution over the mesoscale, being able to model the effect of rising sea levels is essential. Whilst we have not exhausted the uses of this function here, we have demonstrated its development and how it is facilitated in the model. The power of this tool is vast and will be particularly useful for coastal managers who must plan for the dynamic evolution of these system over time periods that will be highly influenced by the effects of climate change.

400

7 Conclusion

Here we have presented the development of CEM2D from its one-line origins. We have described the structure of the model, outlined the governing mathematical equations that drive the model, presented outputs from the sensitivity testing and assessed CEM2D's ability to simulate the behaviour and evolution of coastal systems. The results demonstrate the validity of the model by its ability to simulate fundamental coastal shapes as per CEM and in comparison to natural coastal systems. Using the added functionalities, we have also shown how CEM2D can be used to explore the two-dimensional behaviour and morphodynamic evolution of coastlines and depositional features, over meso-spatiotemporal scales. From the results

405

410 shown here, it is apparent that the model will enable us to conduct interesting and insightful investigations to answer research questions including how coastal systems behave under changing environmental conditions and how sea level change might influence their morphodynamic behaviour.

8 Code Availability

The current version of the Coastline Evolution Model 2D (CEM2D) is available from the project website:
415 <https://sourceforge.net/projects/coastline-evolution-model-2d/> and on Zenodo (DOI: 10.5281/zenodo.3341888) distributed under the terms of the GNU General Public License.

9 Author Contributions

All Authors contributed to writing and editing this manuscript. The research and software development was led by CL, with extensive support from TC and AB.

420 10 Competing Interests

The authors declare that they have no conflict of interest.

11 Acknowledgements

This research was funded by the UK Environment Agency, the NERC funded British Geological Survey and by the Energy and Environment Institute at the University of Hull.

425 12 References

- Antolínez, J. A. A., Méndez, F. J., Anderson, D., Ruggiero, P., and Kaminsky, G. M.: Predicting Climate-Driven Coastlines With a Simple and Efficient Multiscale Model, *Journal of Geophysical Research: Earth Surface*, 124, <https://doi.org/10.1029/2018JF004790>, 2019.
- Ashton, A., Murray, B., and Littlewood, R.: The response of spit shapes to wave-angle climates, in: *Coastal Sediments' 07*,
430 edited by: Kraus, N., and Rosati, N., American Society of Civil Engineers, New Orleans, LA., 2007.
- Ashton, A., and Murray, B.: High-angle wave instability and emergent shoreline shapes: 1. Modeling of sand waves, flying spits, and capes, *Journal of Geophysical Research*, 111(F4), F04011, doi: 10.1029/2005JF000422, 2006a.

- Ashton, A., and Murray, B.: High-angle wave instability and emergent shoreline shapes: 2. Wave climate analysis and comparisons to nature, *Journal of Geophysical Research: Earth Surface*, 111(F4), F04012, doi: 10.1029/2005JF000423, 2006b.
- Ashton, A., Murray, B., and Arnault, O.: Formation of coastline features by large-scale instabilities induced by high-angle waves, *Nature*, 414(6861), 296–300, doi: 10.1038/35104541, 2001.
- Bird, B.: *Coastal Geomorphology: An Introduction*, John Wiley & Sons, 2011.
- Campolongo, F., Cariboni, J., and Saltelli, A.: An effective screening design for sensitivity analysis of large models, *Environmental Modelling & Software*, 22(10), 1509–1518, doi: 10.1016/J.ENVSOFT.2006.10.004, 2007.
- Coulthard, T.: Landscape evolution models: a software review, *Hydrological Processes*, 15(1), 165–173. doi: 10.1002/hyp.426, 2001.
- Dickson, M. E., Walkden, M. J. A., and Hall, J. W.: Systemic impacts of climate change on an eroding coastal region over the twenty-first century, *Climatic Change*, 84(2), 141–166. <https://doi.org/10.1007/s10584-006-9200-9>, 2007.
- French, J., Payo, A., Murray, B., Orford, J., Eliot, M., and Cowell, P.: Appropriate complexity for the prediction of coastal and estuarine geomorphic behaviour at decadal to centennial scales, *Geomorphology*, 256, 3–16, doi: 10.1016/j.geomorph.2015.10.005, 2015.
- Gelfenbaum, G., and Kaminsky, G.: Large-scale coastal change in the Columbia River littoral cell: An overview, *Marine Geology*, 273(1–4), 1–10. doi: 10.1016/j.margeo.2010.02.007, 2010.
- Hallermeier, R.: Uses for a Calculated Limit Depth to Beach Erosion, *Coastal Engineering*, 1493–1512. doi: <http://dx.doi.org/10.1061/9780872621909.090>, 1978.
- Hanson, H.: GENESIS: a generalized shoreline change numerical model, *Journal of Coastal Research*, 1–27, 1989.
- Hanson, H., and Kraus, N.: GENESIS: Generalized Model for Simulating Shoreline Change. Report 1. Technical Reference, No. CERC-TR-89-19-1. Coastal Engineering Research Center Vicksburg Ms, 1989.
- Hurst, M., Barkwith, A., Thomas, C., and Ellis, M.: Vector-based one-line model for shoreline evolution: application to explore wave-climate control on bay morphology, in *In AGU Fall Meeting Abstracts*, 2014.
- Komar, P.D., Lanfredi, N., Baba, M., Dean, R.G., Dyer, K., Healy, T., Ibe, A.C., Terwindt, J.H.J. and Thom, B.G.: The response of beaches to sea-level changes - a review of predictive models, *Journal of Coastal Research*, 7(3), 895–921, 1991.
- Leach, C.: CEM2D Source Code, Zenodo, <https://doi.org/10.5281/zenodo.3341888>, 2019.
- Lesser, G., Roelvink, J., van Kester, J., and Stelling, G.: Development and validation of a three-dimensional morphological model, *Coastal Engineering*, 51(8), 883–915. doi: 10.1016/j.coastaleng.2004.07.014, 2004.
- Lowe, J.A., Howard, T.P., Pardaens, A., Tinker, J., Holt, J., Wakelin, S., Milne, G., Leake, J., Wolf, J., Horsburgh, K. and Reeder, T.: *UK Climate Projections science report: Marine and coastal projections*, Exeter, UK 2009.
- van Maanen, B., Barkwith, A., Bonaldo, D., Burningham, H., Murray, B., Payo, A., Sutherland, J., Thornhill, G., Townend, I., van der Wegen, M., and Walkden, M.: Simulating mesoscale coastal evolution for decadal coastal management: A new

- framework integrating multiple, complementary modelling approaches, *Geomorphology*, 256, 68–80. doi: 10.1016/j.geomorph.2015.10.026, 2016.
- McLean, R., and Kirk, R.: Relationships between grain size, size-sorting, and foreshore slope on mixed sand - shingle beaches, *New Zealand Journal of Geology and Geophysics*, 12(1), 138–155, doi: 10.1080/00288306.1969.10420231, 1969.
- 470 Morris, M.: Factorial sampling plans for preliminary computational experiments, *Technometrics*, 33(2), 161–174, doi: 10.1080/00401706.1991.10484804, 1991.
- Murray, B.: Reducing model complexity for explanation and prediction, *Geomorphology*, 90(3–4), 178–191, doi: 10.1016/j.geomorph.2006.10.020, 2007.
- Nam, P., Larson, M., Hanson, H., and Hoan, Le X.: A numerical model of nearshore waves, currents, and sediment transport, *Coastal Engineering*, 56(11), 1084–1096, doi: 10.1016/j.coastaleng.2009.06.007, 2009.
- 475 Nicholls, R., Bradbury, A., Burningham, H., Dix, J., Ellis, M., French, J., Hall, J., Karunarathna, H., Lawn, J., Pan, S., Reeve, D., Rogers, B., Souza, A., Stansby, P., Sutherland, J., Tarrant, O., Walkden, M., and Whitehouse, R.: iCOASST – Integrating Coastal Sediment Systems, *Coastal Engineering Proceedings*, 1(33), 100, <https://doi.org/10.9753/icce.v33.sediment.100>, 2012
- 480 Nicholls, R., Birkemeier, W., and Hallermeier, R.: Application of the depth of closure concept, *Proceedings of the Coastal Engineering Conference*, 4, 3874–3887, doi: 10.9753/icce.v25, 1997.
- Park, J.-Y., and Wells, J.: Longshore Transport at Cape Lookout, North Carolina: Shoal Evolution and the Regional Sediment Budget, *Journal of Coastal Research*, 211, 1–17, doi: 10.2112/02051.1, 2005.
- Pinet, P.: *Invitation to Oceanography*, Jones & Bartlett Publishers, 2011.
- 485 Robinet, A., Idier, D., Castelle, B., and Marieu, V.: A reduced-complexity shoreline change model combining longshore and cross-shore processes: The LX-Shore model, *Environmental Modelling and Software*, 109, 1–16. <https://doi.org/10.1016/j.envsoft.2018.08.010>, 2018.
- Skinner, C., Coulthard, T., Schwanghart, W., Van De Wiel, M., and Hancock, G.: Global Sensitivity Analysis of Parameter Uncertainty in Landscape Evolution Models, *Geoscientific Model Development*, 11(12), 4873–4888, <https://doi.org/10.5194/gmd-11-4873-2018>, 2018.
- 490 Stive, M., and de Vriend, H.: Modelling shoreface profile evolution, *Marine Geology*, 126(1–4), 235–248, doi: 10.1016/0025-3227(95)00080-I, 1995.
- Thomas, C., Murray, B., Ashton, A., Hurst, M., Barkwith, A., and Ellis, M.: Complex coastlines responding to climate change: do shoreline shapes reflect present forcing or remember the distant past?, *Earth Surface Dynamics*, 4(4), 871–884, <https://doi.org/10.5194/esurf-4-871-2016>, 2016.
- Tucker, G., and Slingerland, R.: Erosional dynamics, flexural isostasy, and long-lived escarpments: A numerical modeling study, *Journal of Geophysical Research: Solid Earth*, 99(B6), 12229–12243, doi: 10.1029/94JB00320, 1994.
- Wainwright, J., and Mulligan, M.: *Environmental Modelling: Finding Simplicity in Complexity*, Wiley-Blackwell, 2002.

- Warren, I., and Bach, H.: MIKE 21: A Modelling System for Estuaries, Coastal Waters and Seas, Environmental Software, 7(4), 229–240, doi: 10.1016/0266-9838(92)90006-P, 1992.
- Willgoose, G., Bras, R., and Rodriguez-Iturbe, I.: Results from a new model of river basin evolution', *Earth Surface Processes and Landforms*, 16(3), 237–254, doi: 10.1002/esp.3290160305, 1991.
- Wong, P., Losada, I., Gattuso, J., Hinkel, J., Khattabi, A., McInnes, K., Saito, Y., Sallenger, A., Nicholls, R., Santos, F., and Ameiz, S.: Coastal systems and low-lying areas, in: *Climate Change 2014 Impacts, Adaptation and Vulnerability: Part A: Global and Sectoral Aspects. Contribution of Working Group II to the Fifth Assessment Report of the Intergovernmental Panel on Climate Change* [Field, C.B., V.R. Barros, D.J. Dokken, K.J. Mach, M.D. Mastrandrea, T.E. Bilir, M. Chatterjee, K.L. Ebi, Y.O. Estrada, R.C. Genova, B. Girma, E.S. Kissel, A.N. Levy, S. MacCracken, P.R. Mastrandrea, and L.L. White (eds.)]. Cambridge University Press, Cambridge, United Kingdom and New York, NY, USA, 361–409, 2014.
- Vitousek, S., Barnard, P. L., Limber, P., Erikson, L., and Cole, B.: A model integrating longshore and cross-shore processes for predicting long-term shoreline response to climate change, *Journal of Geophysical Research: Earth Surface*, 122, 782–806, <https://doi.org/10.1002/2016JF004065>, 2017.
- Wright, L., and Short, A.: Morphodynamic variability of surf zones and beaches: A synthesis, *Marine Geology*, 56(1–4), 93–118, doi: 10.1016/0025-3227(84)90008-2, 1984.
- Ziliani, L., Surian, N., Coulthard, T., and Tarantola, S.: Reduced-complexity modeling of braided rivers: Assessing model performance by sensitivity analysis, calibration, and validation, *Journal of Geophysical Research: Earth Surface*, 118(4), 2243–2262. doi: 10.1002/jgrf.20154, 2013.

520 **Table 1: A table listing the eight input factors from CEM2D used in the sensitivity analysis of Morris Method.**

Code	Factor	Intervals	Minimum	Maximum	Justification
1	Wave Angle (°)	5	1	5	The wave climate is fundamental to driving sediment transport processes in CEM2D.
2	Wave Height (m)	5	1	6	
3	Wave Period (s)	5	1	14	
4	Sediment Redistribution Frequency (iterations)	5	10	50	The sediment redistribution method is a new scheme in CEM2D, governed principally by factors which defined the frequency and threshold for sediment redistribution.
5	Sediment Redistribution Threshold (%)	5	1 (%)	100 (%)	
6	Water Level Change (m)	5	0	2	The ability to induce sea level rise in the model is a new scheme that requires testing for its influence on model outputs.
7	Initial Shoreline Shape	3	1	3	The original CEM claimed to be relatively insensitive to these initial conditions. Increasing the dimensionality and complexity of sediment transport in the model warrants that their influence on CEM2D outputs be evaluated.
8	Domain Width (km)	3	1	3	

Table 2: A table showing the 4 behavioural indices used in the Morris Method and the frequency that data is recorded in each simulation.

Number	Behavioural Index	Recording Frequency
1	Longshore sediment transport rate (m ³ / 10 years)	3650 model iterations (10 simulated years)
2	Coastal sinuosity	3650 model iterations (10 simulated years)
3	The ratio of wet-dry areas	300 model iterations (300 simulated days, to align with each diffusion frequency tested)
4	Run duration (simulated years)	1095000 model iterations (3,000 simulated years)

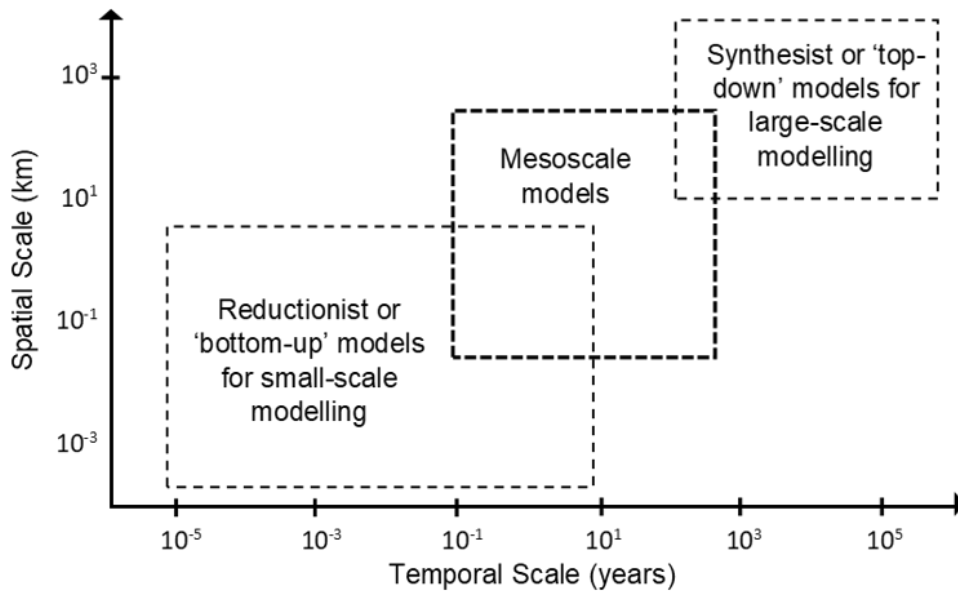


Figure 1: Spatial and temporal ranges for traditionally reductionist and synthesist models, with mesoscale models highlighted in grey within the scale appropriate for coastal management (adapted from Gelfenbaum and Kaminsky, 2010; van Maanen et al., 2016).

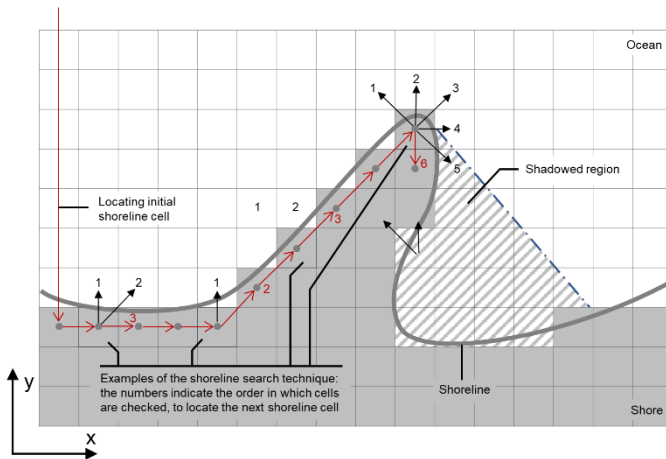


Figure 2: A schematic of the shoreline search technique used in CEM (and CEM2D) to map the X and Y location of the shoreline cells. The number in square brackets denotes the shoreline cell number that is associated with a particular X and Y value and the number on each arrow is the iteration of the clockwise search from the shoreline cell where it originates.

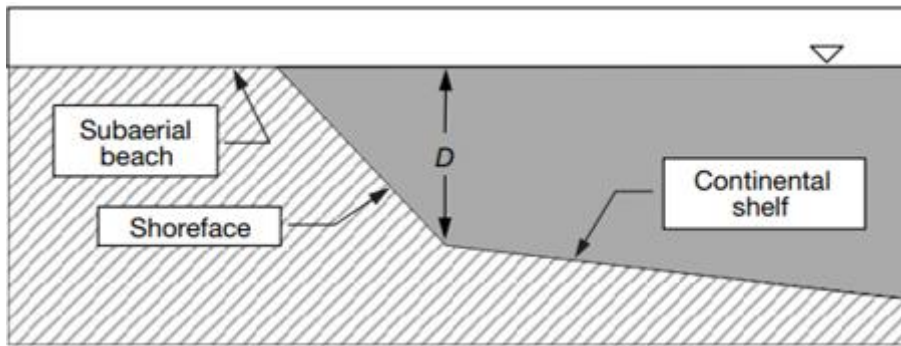


Figure 3: Cross-sectional profile of CEM showing the location of the depth of closure, where the shoreface slope intersects the continental shelf slope (after Ashton et al., 2001).

540

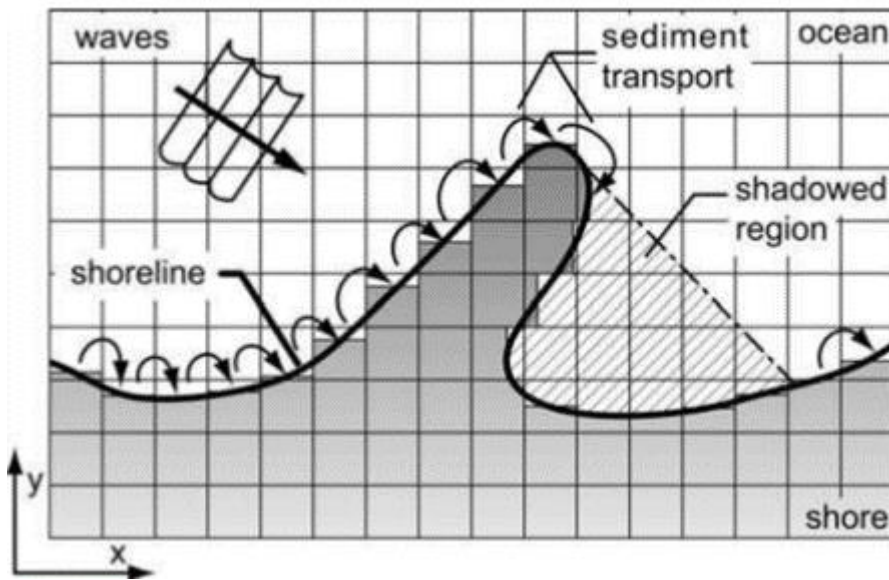


Figure 4: Plan-view schematic of CEM2D showing the shadow zone that is formed when protruding sections of coastline prevent waves from approaching the shoreline (after Ashton and Murray, 2006a).

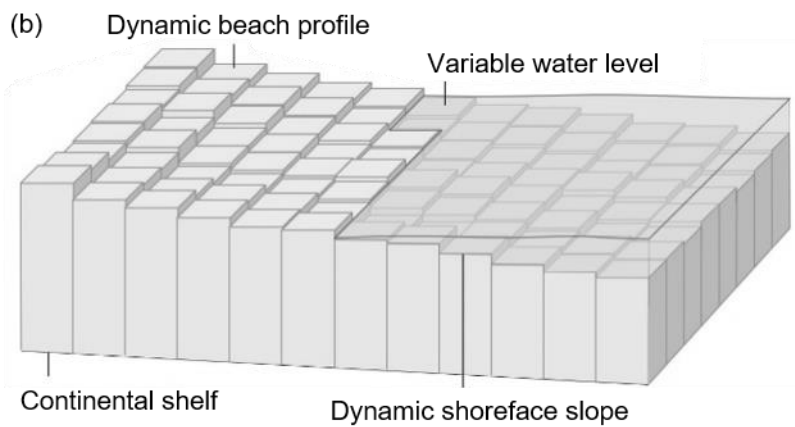
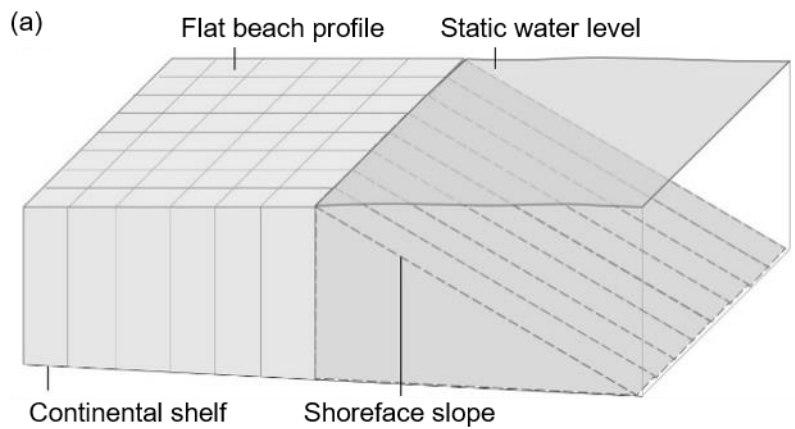
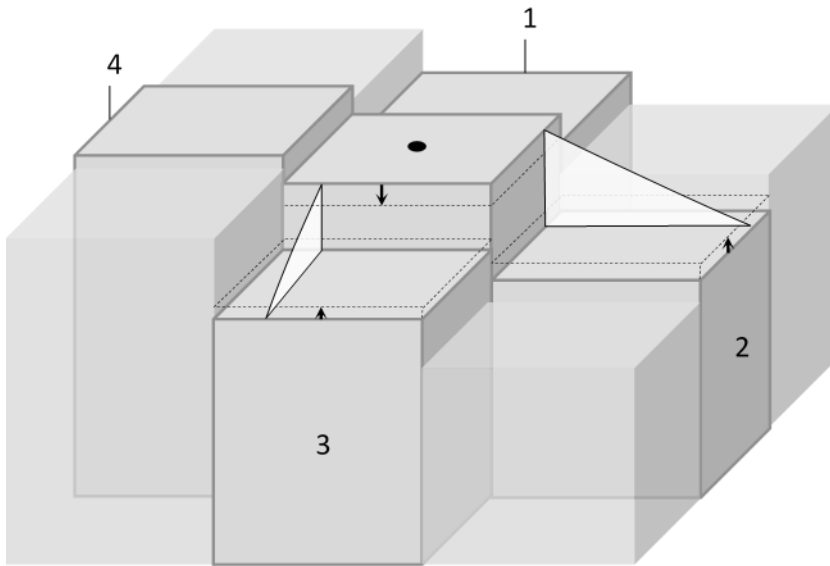


Figure 5: Schematics of CEM (a) and CEM2D's (b) profiles, illustrating the difference in structure and dimensionality of the two models.



550

Figure 6: Schematic of the sediment distribution technique used to distribute sediment to cells with lower elevations. In the example, the angle between the central cell and cells [2] and [3] exceeds the threshold for diffusion. Sediment is removed from the central cell and redistributed to these cells. Cells [1] and [4] are not readjusted in this iteration but may be in subsequent sweeps of the coastline.

555

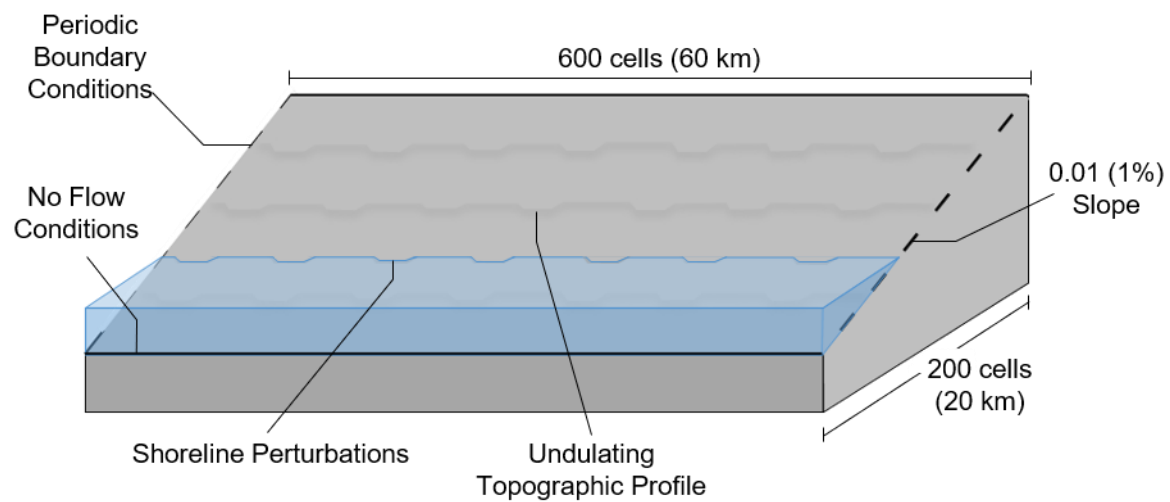


Figure 7: A schematic of CEM2D's model set-up and initial conditions used for simulations presented in this paper.

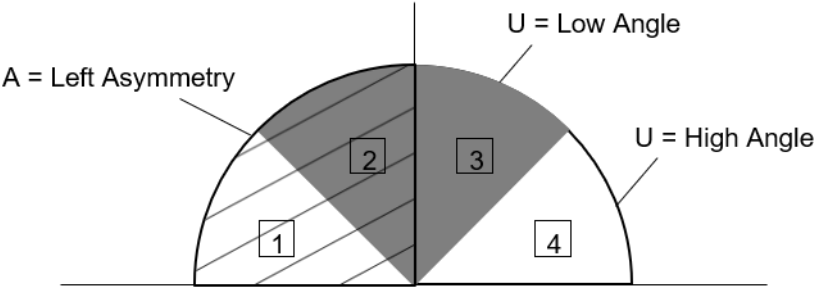
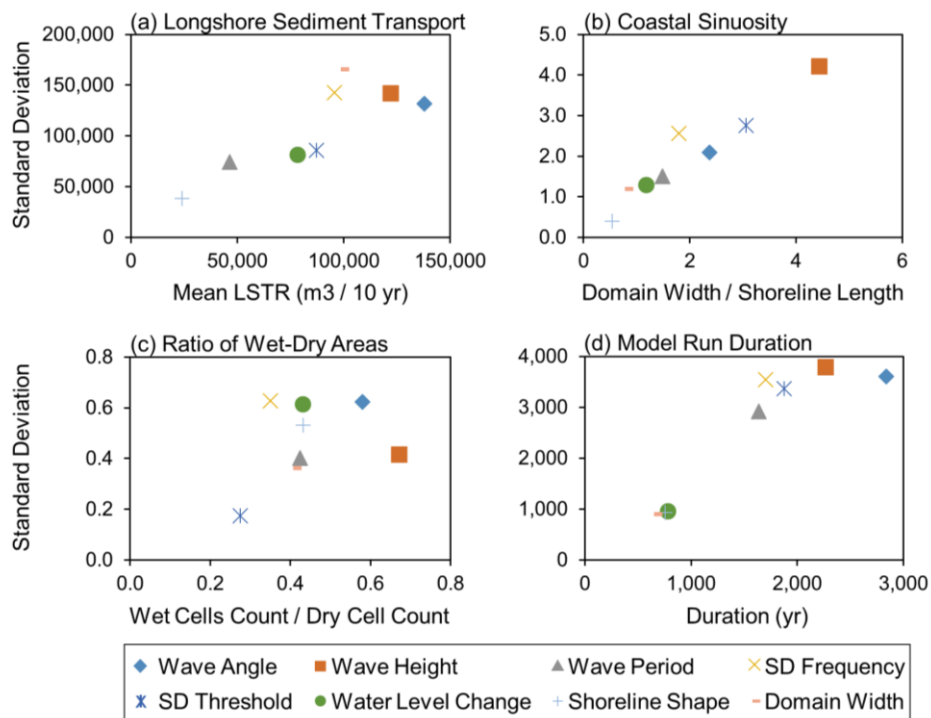


Figure 8: Schematic showing the wave angle direction, defined by the wave climate asymmetry (A) and the proportion of high to low angle waves (U) with the numbers denoting the four bins.



565

Figure 9: The mean and standard deviation of results from the input factors, according to the four behavioural indices labelled a-d.

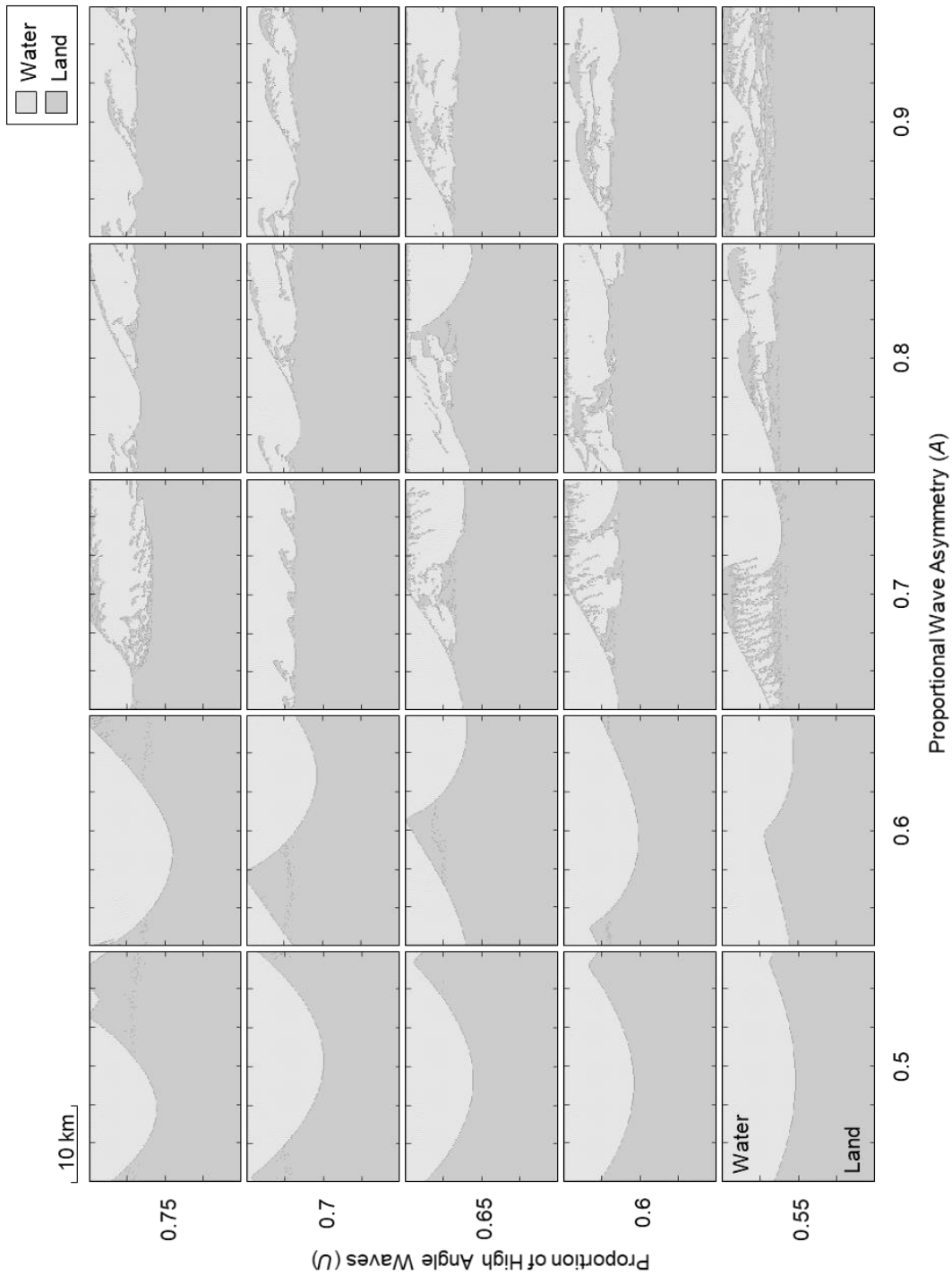


Figure 10: A matrix of results from CEM showing final shoreline morphologies as a function of the wave angle asymmetry (A) and proportion of high angle waves (U) approaching the coast relative to the local shoreline orientation. The outputs measure 20 km width and 30 km in length and are not inclusive of the periodic boundaries.

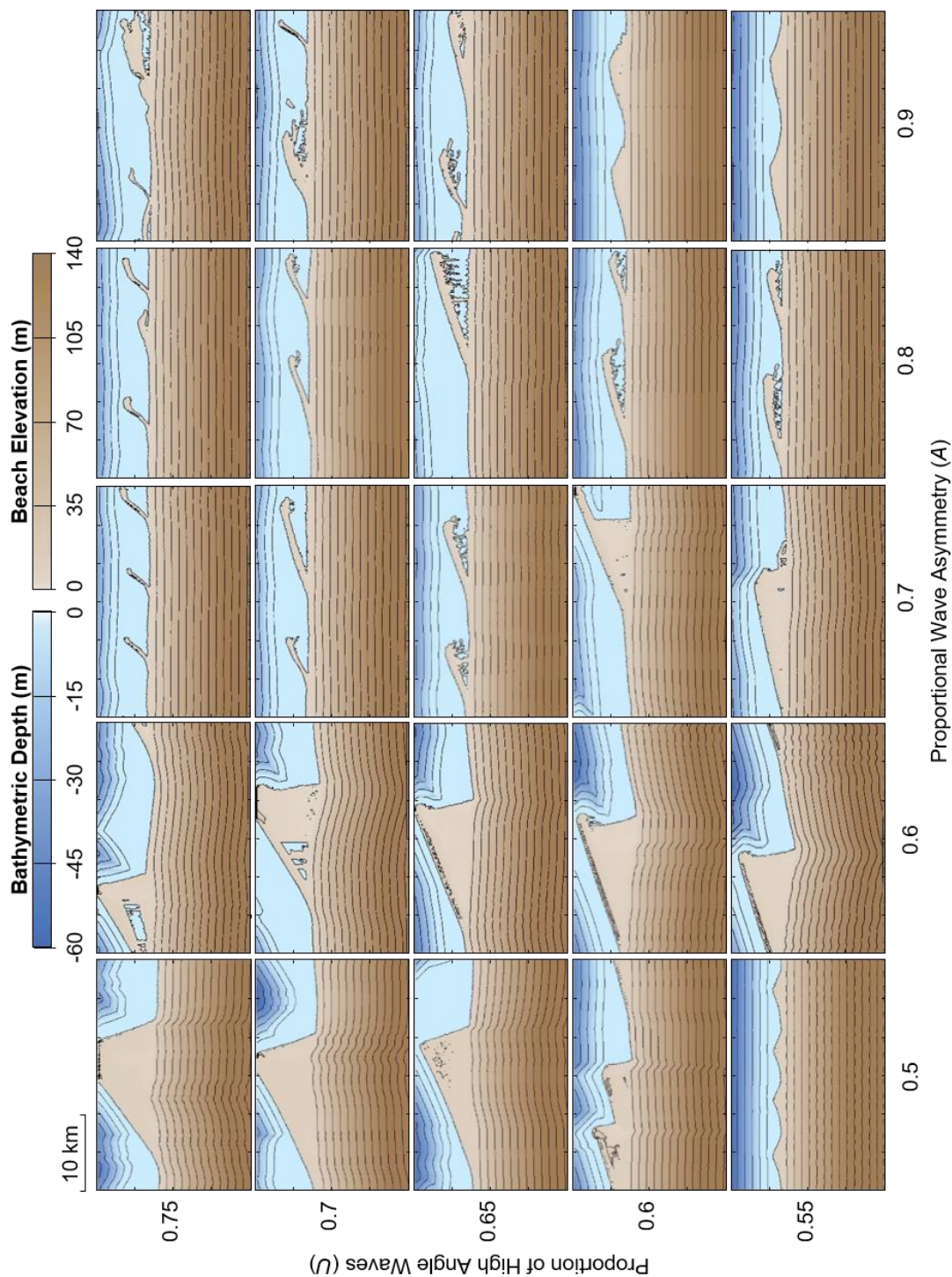


Figure 11: A matrix of results from CEM2D showing two-dimensional final shoreline morphologies as a function of the wave angle asymmetry (A) and proportion of high angle waves (U) approaching the coast relative to the local shoreline orientation. The outputs measure 20 km width and 30 km in length and are not inclusive of the periodic boundaries.

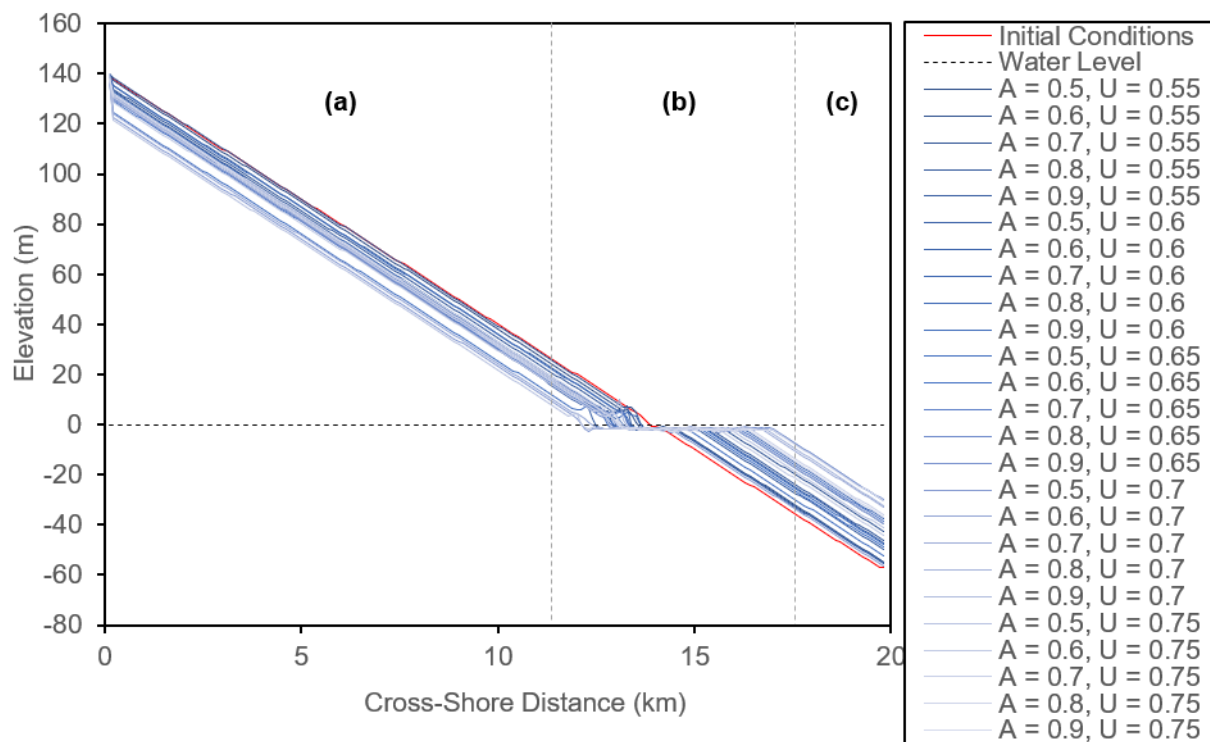


Figure 12: Cross-shore profiles taken for each of the twenty-five simulations, with water level shown as a dashed line and the initial cross-shore profile as a solid red line. Labelled are the (a) beach surface, (b) dynamic shoreline and upper nearshore and (c) the lower nearshore.

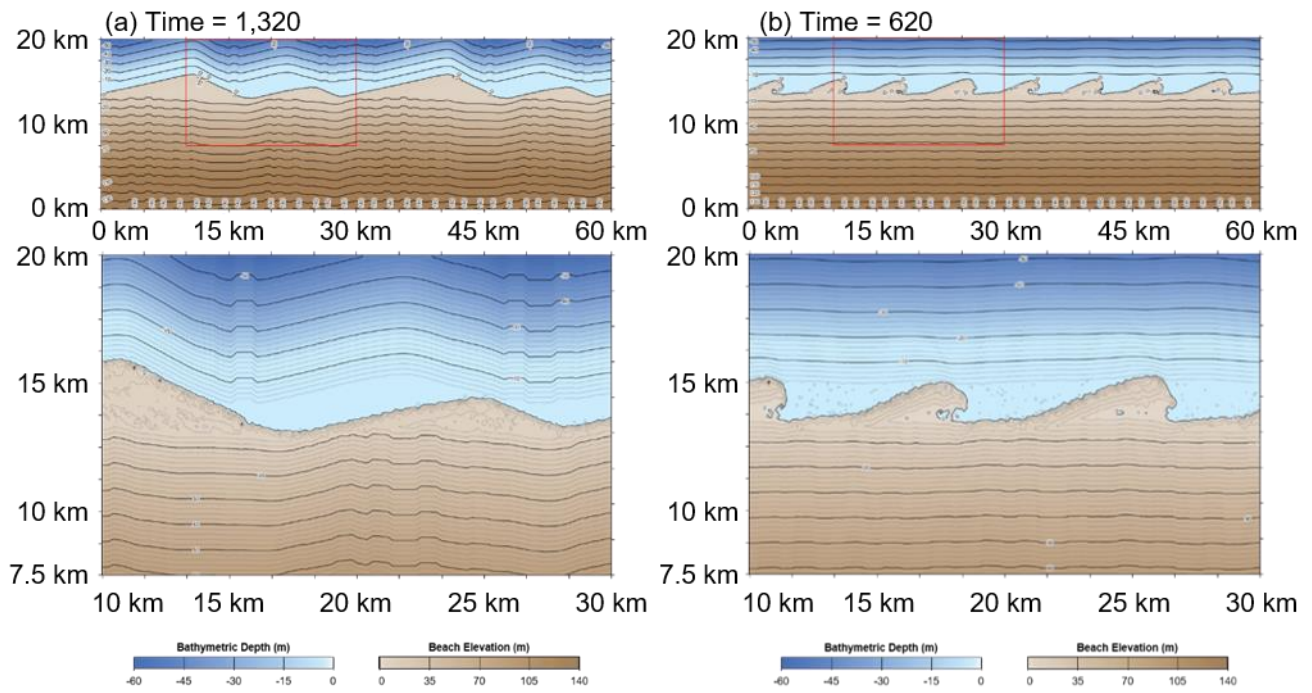


Figure 13: Morphology plots showing outputs of (a) $A = 0.6$, $U = 0.6$ at Time = 1,320 and (b) $A = 0.7$, $U = 0.65$ at Time = 620.

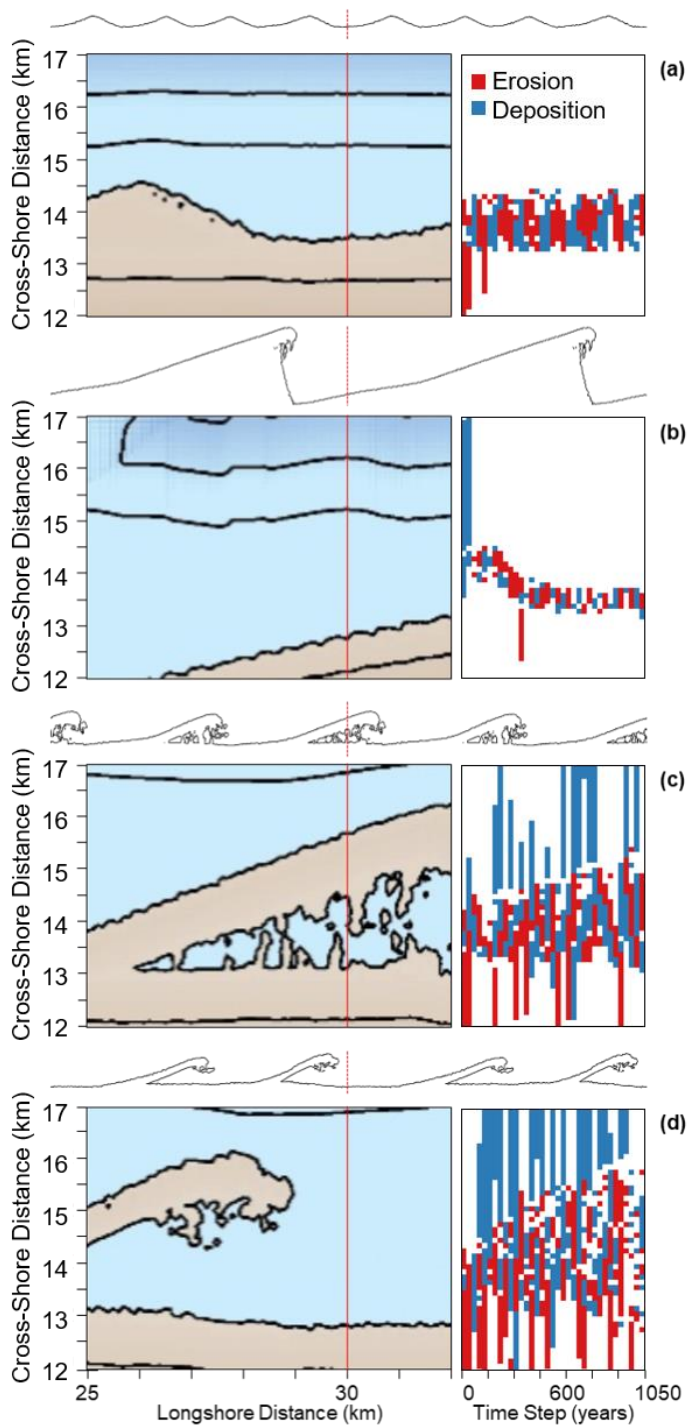
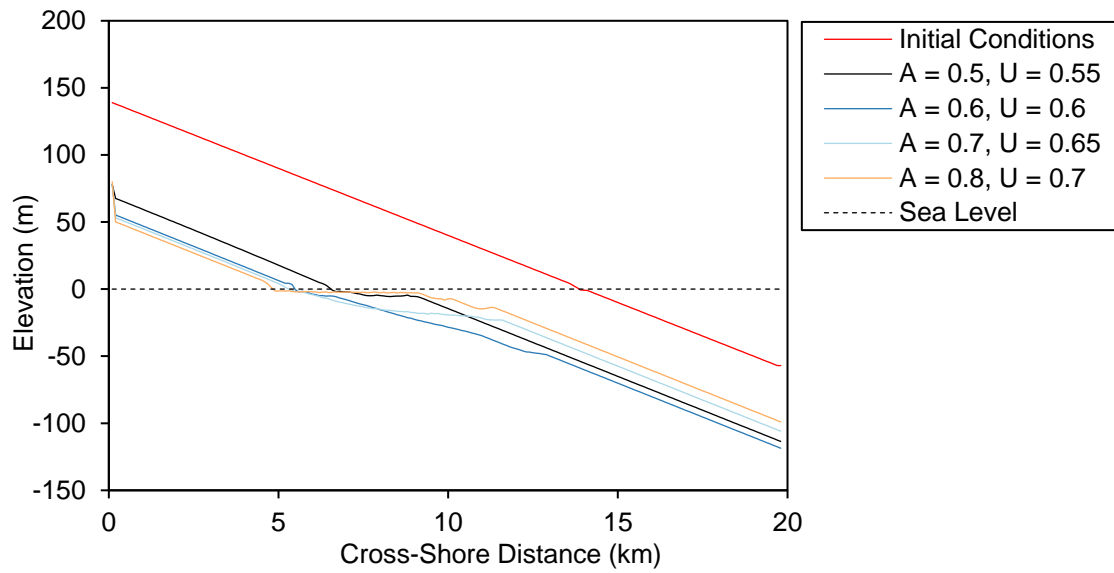
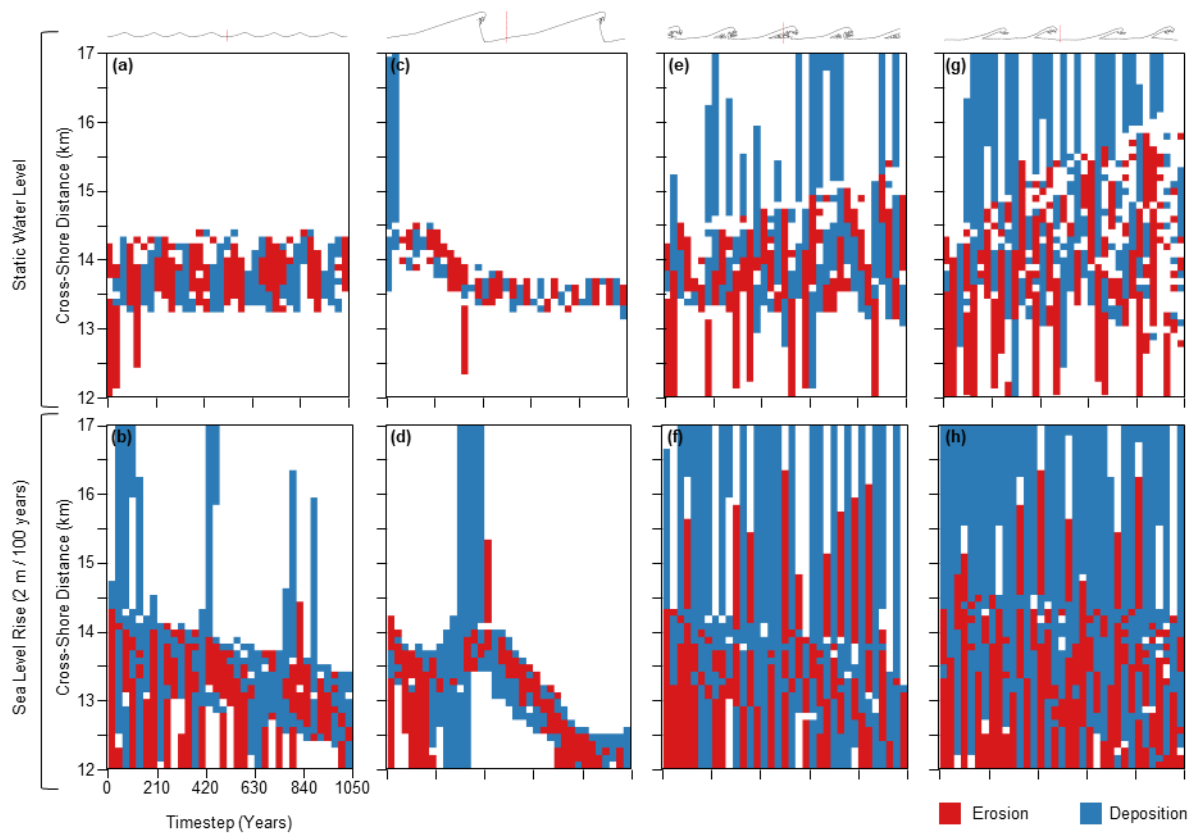


Figure 14: Shoreline Morphologies (left) and volume stacks (right) for four simulations where the wave climate is defined by (a) $A = 0.5, U = 0.55$, (b) $A = 0.6, U = 0.6$, (c) $A = 0.7, U = 0.65$ and (d) $A = 0.8, U = 0.7$. The red line marks the cross-shore transect where the change in volume at 30 year time intervals is recorded.



590 **Figure 15: Cross-shore coastal profiles for four simulations where the wave climate is defined by (a) $A = 0.5$, $U = 0.55$, (b) $A = 0.6$, $U = 0.6$, (c) $A = 0.7$, $U = 0.65$ and (d) $A = 0.8$, $U = 0.7$. The initial profile is given as a solid red line and the water level as a dashed black line.**



595 **Figure 16: Volume stacks for four wave climate conditions defined by (a-b) $A = 0.5$, $U = 0.55$, (c-d) $A = 0.6$, $U = 0.6$, (e-f) $A = 0.7$, $U = 0.65$ and (g-h) $A = 0.8$, $U = 0.7$. Results with a static water level are shown along the top row (a, c, e, g) and with sea level rise at a rate of / 100 years along the bottom row (b, d, f, h). The shoreline outlines at the top of the figure are taken from the static water level scenarios and the red line marks the cross-shore transect where the change in volume at 30 year time intervals is recorded.**

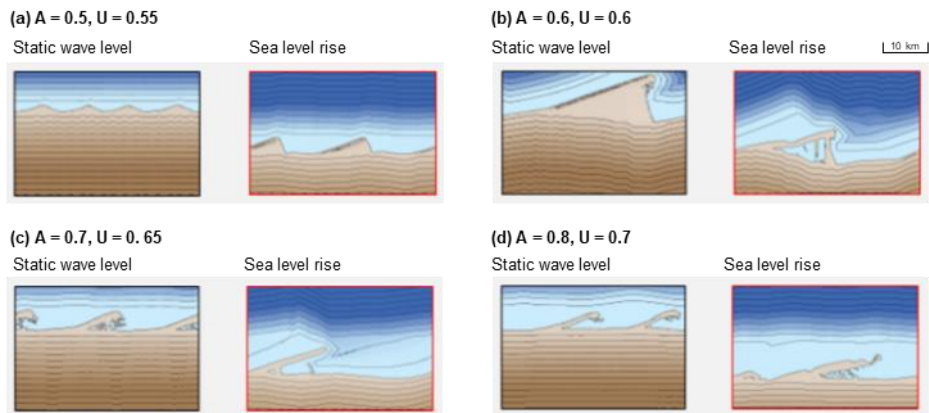


Figure 17: Coastal morphologies for four simulations where the wave climate is defined by (a) $A = 0.5$, $U = 0.55$, (b) $A = 0.6$, $U = 0.6$, (c) $A = 0.7$, $U = 0.65$ and (d) $A = 0.8$, $U = 0.7$, run with two water level scenarios including a static water level (left, black outline) and a rising sea level at a rate of 2 m / 100 years (right, red outline).

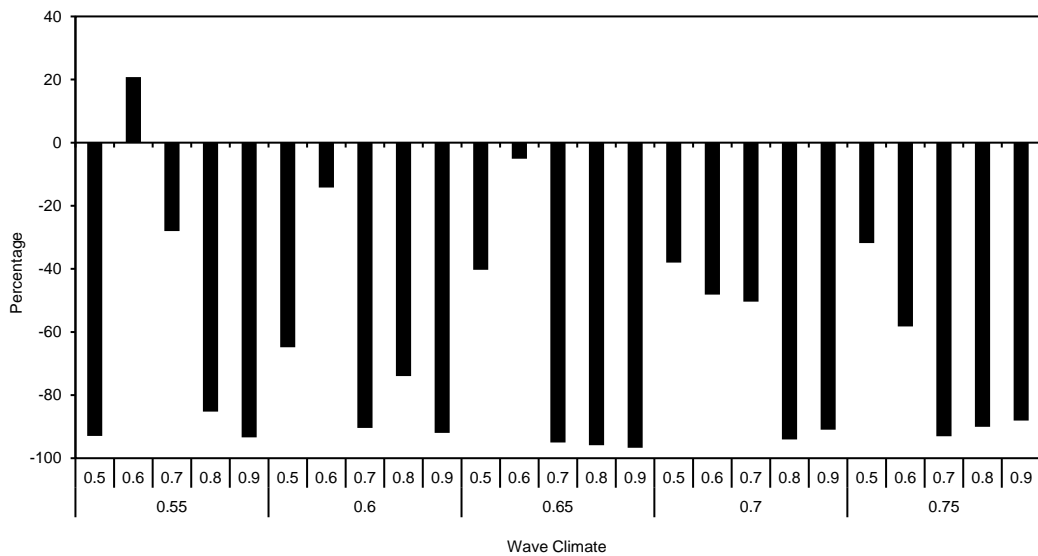


Figure 18: Percentage difference between results of CEM2D and CEM. The wave climate given along the x-axis is defined according to the wave asymmetry (top row) and the proportion of high angle waves (bottom row).