

Authors response to review number 1:

Review comments pasted in black.

Author response in blue.

IMPORTANT NOTIFICATION (in red)!

This manuscript evaluates the impact of various configurations of the embedded cloud-resolving model in the ECHAM climate model on a relatively short climate simulation when compared to various climate-relevant observations and reanalysis. Overall, this is a worthy effort and it should be published. However, I feel there are many issues (both minor technical and more significant general) that need to be addressed before the paper is accepted.

We would like to thank the reviewer for their helpful report. The manuscript has been revised according to the referees comments.

One important thing to mention is that we have found a bug (precipitation fluxes have been set to zero after CRM has been called) in almost two third of the SP-EMAC simulations and re-simulated these. Almost all results are affected, except the precipitation PDFs and diurnal cycles of rainfall in chapter 3.2 (Fig. 5 and 6). Nevertheless, most of the important features did not change. Taylor diagrams (Fig. 2) changed slightly.

Precipitation biases (Fig. 3 and 4) did not change significantly as well as cloud radiative effects (Fig. 7 and 8).

Chapter 3.3 has been rewritten, because the separation in a Sub-Ensemble A and B was caused by this error in the code. Straightaway, all (latent and sensible) heatfluxes are in agreement with NCEP reanalysis. An additional analysis has been performed in section 3.3 to evaluate the issue of CRM configuration onto the simulated cloud amount in SP-EMA.

Most of the reviewers comments concerning chapter 3.3 are referred to this bug-fix.

General comment: U.S. National Science Foundation supported the Science and Technology Center called Center for Modeling of Atmospheric Processes (CMMAP) between 2006 and 2016, see <http://saddleback.atmos.colostate.edu/cmmmap/>. There is an extensive list of publications produced by CMMAP at <http://saddleback.atmos.colostate.edu/cmmmap/research/pubs-ref.html> that the authors of the paper under review may find useful for the motivation of their investigation. I vaguely remember that some of the superparameterization (SP) tests reported in the current paper were also tried by the people involved in CMMAP (e.g., M. Khairoutdinov, M. Pritchard). Perhaps such efforts should be mentioned in the current manuscript and some of the outcomes can be compared.

Thank you for mentioning CMMAP which we have been aware of. We included some references of this project within the introduction and mentioned findings of particular publications where comparing their outcomes with ours.

Specific comments.

1. I found the title of the paper awkward. First, 15-month simulations cannot be considered long from the climate perspective. Second, the two parts of the title are poorly linked. Please revise.

We have revised the title to avoid confusion and thereby specified the main focus of this paper. The new title is: 'Superparameterised cloud effects in the GCM EMAC (v2.50) - influences of model configuration'

2. P2L23 (page 2, line 23) and in couple other places in the manuscript: it is not clear to me what is meant by "embedding an ensemble of interacting CRMs". Only a single CRM is embedded in each climate simulation, correct? And the configuration is changed in different simulations, correct? If so, referring to an ensemble of simulations is confusing. Please revise.

The term "ensemble" is misleading because it is usually applied to combine different models groups or model setups. In this instance ensemble is referring to the individual grid boxes of a single CRM which are interacting within a GCM column. To avoid any possibility of confusion the term "ensemble" in connection with the CRM has been avoided and revised throughout the manuscript.

3. P2L30: "drastically reduced". First, the cost depends on the configuration. According to M. Khaiouritdinov, the initial implementation of SAM in CAM as reported in 2001 GRL paper slowed down CAM about 200 times. For "larger" CRM (i.e., more columns or higher resolution that increase CRM effort) this number should increase. The dependence on the number of CRM columns should also be valid for the 3D CRM. That said, there are also obvious benefits of separating small-scale and large-scale dynamics, such as parallelization, what model equations to use, etc. Grabowski (JMSJ 2016,p. 327, "Towards global large eddy simulation: super-parameterization revisited") discusses some of these issues.

The cost to run a model including a superparameterisation is strongly dependent on the number of columns of the embedded CRM. Even the grid size of a single CRM grid box has an effect on the CPU time, i.e. keeping the number of CRM cells within each GCM grid box constant and lowering the resolution increase the CPU time. This is due to small instabilities, which occur more often for smaller CRM resolutions for a fixed CRM time step, within SAM which (to some degree) are automatically avoided by subsequently decreasing the CRM time step. In comparison to CAM (Khairoutdinov, 2001) EMAC has slowed down by a factor between 40 (2D orientation, 16 CRM cells, 4 km) to 120 (3D CRM, 64 cells, 1 km; depending on the CRM configuration). All in all, as stated in Grabowski (JMSJ, 2016), the conventional usage of a superparameterisation reduces the amount of computational time by approximately three orders of magnitude in comparison to global CRMs like NICAM.

4. P3L1: A reference to CMMAP would be appropriate here. A selection of papers from the CMMAP website can be used in this paragraph.

References of CMMAP have been added.

5. Fig. 1. First, it shows two timesteps, not three as stated in P5L7, correct? Second, the coupling terms shown in the figure should be shown in text with appropriate reference (e.g., Grabowski JAS 2006). Is momentum coupled as well as thermodynamic fields?

Figure 1 shows two timesteps (three points in time - corrected in the manuscript) and the coupling terms have been referenced to Grabowski, 2006 JAS. As mentioned briefly in the text (P5L15) momentum (CRM forcing for u and v) is coupled as well but CRM feedback (convective momentum transport) is only applied for 3D CRM cases (simulation number 15 to 20 in table 1). 2D CRM configurations neglect zonal/meridional convective momentum on the large-scale flow. This has been rephrased to avoid ambiguities.

6. P5L17: Why is radiation singled out here? What about surface fluxes and boundary layer transports? What about the land-surface model? Ocean SST? Please explain clearly which processes are treated by the GCM and which by CRMs.

In order to consider subgrid-scale clouds and their radiative feedback on the subgrid-scale the radiation code as well as the cloud optical properties have to be modified to run on the CRM grid. This was done after the implementation of the superparameterisation was successful. In order to account for model differences due to the usage of a superparameterisation instead of using cloud and convection parameterisations we chose to only switch these parts of the model. A further modification concerning cloud optical properties and radiative transfer would complicate the analysis to differentiate model discrepancies between SP-EMAC and CTRL. Differences could be either due to a different cloud development within the superparameterisation or cloud radiative effects considering subgrid-scale cloud fractions.

SST is prescribed and is not changed by the superparameterisation. Surface fluxes as well as boundary layer transport is done on the GCM grid based on formulations of Roeckner (2003; https://www.mpimet.mpg.de/fileadmin/publikationen/Reports/max_scirep_349.pdf).

The section the model description has been expanded to account for these processes within the description.

7. Table 1. I vaguely remember that Dr. Khairoutdinov conducted similar tests to some of those included in the table. Perhaps he can point the authors to results of some of those tests. We have modified table 1 marking all SP-EMAC configurations which have been used in previous literature. Most of these simulations are difficult to compare with ours because different vertical grid spacings or further modifications of microphysics, turbulence or radiation have been added. In addition to that, many simulations cover even shorter time periods (couple of months). Nevertheless, results are compared in the context of these simulations.

8. P6L5: “ensemble: - see 2 above.
See answer 2 above.

9. P6L9. Sending reader to the supplement is not appropriate. At least some basic features of the simulation setup should be mentioned here.

The most important characteristics for all simulations are listed within this paragraph: resolution, time period, initial conditions and parametrisations used. The supplement provides only additional information to accurately repeat the simulations. Some extra information has been added in terms of: surface fluxes, boundary layer transport, surface scheme, cloud optical properties and radiation. See answer 6 and 14.

10. P7L2. 15 months is pretty short for climate simulations. How robust are results reported in the paper?

In order to evaluate robustness of our results one SP-EMAC simulations has been elongated to provide interannual variability which will be presented in table 2.

11. P7L26. I am sure Khairoutdinov ran and reported results from small 3D CRM setup in SP CAM. Again, referring to his experience with this extremely small domain would be needed here.

These edge case scenarios covering very small CRM domain sizes within a GCM grid cell have not been reported by Dr. Khairoutdinov. An exception is the work of Parishani (JAMES, 2017), who embedded a 3D CRM but with a much higher horizontal (250m) and vertical (down to 20m) resolution. This research focused only on shallow cumulus boundary layer clouds where small domain sizes have successfully been employed (Ackermann, GRL, 2003). Domain sizes are far more restrictive for deep convection and associated high clouds, where mesoscale organization and cold pools play a crucial role for its development.

The paragraph concerning very small domain sizes has been revised.

12. P7L30. Please explain how momenta are coupled. See 5 above.

See answer 5 above.

13. Table 2. It would be great to have some error bars for all entries in the table. For the observations, annual variability can provide that, correct? The same could be done for multiyear simulations, except that the simulations are short. This is an important aspect and it requires some comment and maybe additional simulations.

Error bars for observations have been included as uncertainty in table 2. This uncertainty includes interannual variability over the observational time period as well as measurement uncertainty given within the observational descriptions. Providing interannual variability for all simulations is not possible because of too much computational time. To provide an estimate of interannual variability, two simulations are further integrated to achieve a multiyear simulation (10 years). The annual variability will be given in table 2 as well providing exact model configuration which has been chosen for the multiyear simulation.

14. P10L8. For a fair comparison between EMAC and SP-EMAC, one needs to ensure

that cloud radiative properties are prescribed as closely as possible. Please explain this element of the model setup. Is this included in the supplement? See 9 above.

Cloud radiative properties are treated in a similar manner for all simulations using the submodel CLOUDOPT (Dietmueller, GMD, 2016, section 2.4; doi:10.5194/gmd-9-2209-2016). In order to calculate cloud optical properties the following input variables are necessary: cloud cover, cloud water content, ice water content, cloud nuclei concentration whereas CNC has a fixed exponentially decreasing profile for land and ocean separately. Based upon LWC and IWC effective radii are calculated (Johnson, 1993; Moss, 1996). In order to account for cloud overlap the assumption of maximum-random overlap has been chosen.

The technical aspects and theory is described in Dietmueller, 2016. For our purpose the important aspects are:

- model resolution-dependent parameters (asymmetry factor and cloud inhomogeneity) kept fixed for all simulations based on the T42 resolution of the host GCM
- channel objects are different for CTRL and SP-EMAC:
 - for CTRL cloud water content, cloud ice content, cloud cover are large-scale variables calculated within the CLOUD submodule (Roeckner, 2006)
 - for SP-EMAC cloud cover, cloud water and ice are calculated as horizontal means over all CRM grid boxes within a GCM column. Thereby no subgrid-scale calculation of cloud optical properties (as well as radiative tendencies) is done. This method has been applied intentionally to use subgrid-scale information of CRM but condense it onto the coarse GCM grid and use the same submodels.

Our SP-EMAC simulations are equivalent to Cole, 2005 (doi: 10.1029/2004GL020945) experiment number 3. This type of experiment ensures that the only difference between CTRL and SP-EMAC is the substitution of the Tiedtke convection and large-scale cloud parameterisation with the embedded CRM as a superparameterisation.

An additional paragraph has been added to section 2.3 explaining the coupling. See answer to question 6.

15. P10L29. It is not clear to me how a 15-month simulation can be compared to the reanalysis. Perhaps it can if the setup is designed appropriately. Please explain.

The simulations are designed to represent a simulated climatological reference to prescribed SST/SIC and greenhouse gas distributions. NCEP Reanalysis is used as quasi-observations to compare atmospheric quantities at different heights (here: specific humidity) to evaluate the new model ability to capture the distribution and variability. A short sentence has been added to clarify this.

16. Figure 2 (and maybe other figures). I suggest not to use a color for CTRL, but a symbol (e.g., a star). This would allow CTRL to better stand out.

Using a different symbol for CTRL in all Taylor diagrams would be preferable. The

problem is that for some Taylor diagrams multiple quantities are shown separated via different symbols (e.g. Figure 2 - radiation, specific humidity and Figure 9) therefore it would confuse the reader to see the same symbol for CTRL indicating different quantities. Using a dark color is the best choice in our opinion.

17. P12L4. “Thereby almost no water vapor. . .”. I do not see the link between this sentence and the previous one. Either way, is this really correct?

The link between the unresolved stratospheric circulation and the transport of water vapour is the Brewer-Dobson circulation. Because the vertical resolution within the lower stratosphere and upper troposphere (as well as the uppermost model layer which is located at 10 hPa) is too coarse to explicitly resolve the large-scale Brewer-Dobson circulation no water vapor is transported from tropics to the poles. The origin of higher water vapour concentrations at the tropical UTL is mostly convectively produced via vertical transport (updrafts) of moist air from the lower troposphere.

The sentence has been rephrased.

18. Figure 5. Are the differences statistically significant? See 13 above. Also, maps in the right panel show very little variability. Are they needed?

The differences in figure 5 are statistically significant. In conjunction with figure 4, which shows only regions which are different on a significance level of 90 %, the Warm Pool region and southern ocean mid-latitudes have been chosen because they reveal the most distinct differences in precipitation rates. Even if multiyear averages (for EMAC CTRL) are taken into account these regions show significant differences in comparison with GPCP (Tost et al, 2006, ACP).

Concerning the maps in the right panel showing very little variability: This is primarily due to the range of the color bar used to produce these maps. This will be updated to a smaller range in order to better visualize the variability.

19. P14L15: “The most distinct. . .”. Looking at the figure, I am not sure what the authors have in mind here.

Looking at the PDF of monthly precipitation for the maritime continent in figure 5 it is evident that some individual SP-EMAC simulations (not shown) are very close to the GPCP data. This can be stated as a most distinct feature because the variability (grey shaded area displaying the range of all superparameterised simulations) of all SP-EMAC simulations covers almost the entire range of observed precipitation rates (purple line).

20. P15L23: A reference to Guichard et al. (QJ 2004) would be also appropriate here. Added this reference.

21. I feel one should also mention vertical resolution (both in a GCM and in CRM) as a potential factor affecting model results. This should be brought somewhere in the paper.

A paragraph concerning vertical resolution has been added within chapter 3.3 as well as in the discussion. See question 24.

22. P17 and Fig. 7. Problems with radiative fluxes over the Southern Ocean are well appreciated by the climate community. This region was targeted in recent field campaigns (e.g., SOCRATES, see https://www.eol.ucar.edu/field_projects/socrates). I think the scientific consensus is that the representation of cloud microphysical processes such as partitioning between water and ice is an important factor. Can SAM’s rather poor microphysics cope with this issue? Should this aspect be mentioned in the discussion?

This issue should be mentioned in the discussion. The simple microphysics within SAM in conjunction with the relatively low vertical resolution is an important factor controlling the CRE in these regions. Reducing this problem can be achieved by using a higher vertical resolution of the embedded CRM (Parishani, 2017, JAMES) as well as using a two-moment microphysical scheme and a higher-order turbulence scheme (Wang, 2017; <https://doi.org/10.1002/2014MS000375>).

A short paragraph has been added in the discussion.

23. P18L12: The sentence “Therefore it not appropriate. . .” comes out of nowhere! Is part of this sentence missing? Please revise or explain what specifically is meant here.

The sentence has been rephrased. —“Future studies with SP-EMAC should always look at the different cloud radiative effects to avoid misinterpretations of model results. This is necessary because not all SP-EMAC configurations are appropriate to use and addresses the need for a tuning activity for SP-EMAC in the near future.”

24. P19L14. Allowing CRMs to rotate was first applied in Grabowski (JAS 2004, p.1940). This reference should be added here. Is the model vertical resolution relevant to the problem discussed in this section? I would think so.

Reference has been added. The vertical resolution plays an important role considering boundary layer clouds especially for the stratocumulus region (Parishani, JAMES, 2017). Another point is that model layer thickness at the tropopause and within the stratosphere is very coarse to reproduce the transport of water vapor through penetrating deep convective clouds realistically. Related to that is the explicit representation of cirrus clouds which is hardly possible using a vertical resolution on the order of $\mathcal{O}(3)$ metres.

25. Figure 8. What is the reason for the noise evident in CRE_SW SP-EMAC (and leading to noise for NetCRE)? This noise is also noticeable in CTRL simulations.

The reason for the wave-like structure (“noise”) most prominent in the Pacific is due to the spectral core of the host model EMAC.

Authors response to review number 2:

Review comments pasted in black.

Author response in blue.

IMPORTANT NOTIFICATION (in red)!

General comments:

This paper systematically presents climatological simulation results of EMAC with super-parameterization with 20 various configurations, including CRMs orientation, cell size and number of cells. It is useful and impressive to see these results as in Table 2. This paper is publishable if clearer messages are provided.

We would like to thank the reviewer for their helpful report. The manuscript has been revised according to the referees comments.

One important thing to mention is that we have found a bug (precipitation fluxes have been set to zero after CRM has been called) in almost two third of the SP-EMAC simulations and re-simulated these. Almost all results are affected, except the precipitation PDFs and diurnal cycles of rainfall in chapter 3.2 (Fig. 5 and 6). Nevertheless, most of the important features did not change. Taylor diagrams (Fig. 2) changed slightly.

Precipitation biases (Fig. 3 and 4) did not change significantly as well as cloud radiative effects (Fig. 7 and 8).

Chapter 3.3 has been rewritten, because the separation in a Sub-Ensemble A and B was caused by this error in the code. Straightaway, all (latent and sensible) heatfluxes are in agreement with NCEP reanalysis. An additional analysis has been performed in section 3.3 to evaluate the issue of CRM configuration onto the simulated cloud amount in SP-EMA.

Most of the reviewers comments concerning chapter 3.3 are referred to this bug-fix.

For the current version, the readers only know from the abstract that only some aspects of tropical precipitation are better represented with the super-parameterized EMAC compared with the CTRL with a convectional convection parameterization. The other aspects depend on the choice of the CRM setup, and the super-parameterized simulations deteriorate in some cases. What the readers want to know are whether and when the super-parameterized EMAC becomes better than CTRL, and what kind of suitable setup should be chosen for CRMs.

The abstract has been modified to include the best suited setup for SP-EMAC as well as more detailed description of advantages and disadvantages using the superparameterisation.

One interesting result is that results of the super-parameterized simulations are divided into two groups (sub-ensemble A/B). More analysis is suggested to explain why this separation exists. It seems that the results do not clearly depend on the CRM setup.

Due to a bug this division in two sub-ensembles had happened (see important notification at the beginning of our response). Section 3.3. has been completely modified

to emphasize other difference of the superparameterisation due to specific configurations.

It is suggested that effects of momentum transport should be summarized in the abstract. In order to analyse the distinct effect of momentum transport further simulations are needed to allowing/preventing the momentum transport for each configuration. This issue is out of our scope but could be evaluated in a future study.

The authors also should argue about the similarities and the differences of the general behaviors of the effect of the super-parameterization with previous studies of the other groups (Khairoutdinov, W-K Tao, etc.).

The manuscript has been revised to include more comparisons with previous studies (this point has been mentioned by reviewer number 1 as well).

Specific comments:

p. 1, L11, “cloud cover”: This is ambiguous. Is this high cloud fraction or total cloud fraction? Needs a clear definition.

”cloud cover” changed to ”total cloud cover”.

p. 1, L12, “hydrological overturning is too efficient”: This is not clear and may cause confusion. What is the meaning of “efficient circulation”? The authors might want to mention precipitation efficiency. However, in this case, it is not straightforward to related cloud fraction and precipitation efficiency. Even precipitation efficiency is unchanged, cloud cover may decrease if cloud thickness decreases.

We have modified this terminology to avoid confusion. The systematic underestimation is related to the ”untuned” version of SP-EMAC. Instead of linking total cloud cover to precipitation efficiency, section 3.3 reveals in-atmosphere cloud amount to certain CRM configurations. Thereby the sensitivity of SP-EMAC configuration on total cloud cover is estimated and recommendations are provided for future studies.

p. 1, L15, “diurnal cycle of precipitation”: In general, diurnal cycle of precipitation is reasonably captured by CRMs. One may think that if “diurnal cycle of precipitation” is not properly simulated, something wrong in parameter settings of CRMs.

This is in general correct but for all superparameterised simulations the diurnal cycle (over land) shows a similar onset in precipitation during the morning hours. This feature is totally misrepresented by using a convection parameterisation. The amplitude of diurnal precipitation exposes a dependency on the number of CRM cells. This is not related to wrong parameter settings but to a prohibited cloud development because the CRM domain becomes too small when decreasing the number of CRM cells.

p. 3, L8-9, “To our knowledge this is the first attempt summarizing the effects of different configurations of the super-parameterization onto the model mean climate state.” I think that there exist similar studies on the effects of different cloud microphysics schemes on the model climate.

Of course there exists multiple publications concerning new setups of superparameter-

isation especially including different microphysical scheme. A few studies show different setups for superparameterisations (Khairoutdinov, 2005, Marchand and Ackermann, 2010, Pritchard and Somerville, 2009). We have included within table 1 which configuration has been used in previous literature. Nevertheless no study has evaluated the total impact of CRM configuration in such a manner for a simulated climatological year.

p. 9, Table 2: precipitable water should be added and discussed.

A few sentences have been added within the paragraph to integrate total precipitable water in the context of global mean values.

p. 10, L6, “observed value”: Please add a reference to this value.

The reference to the CERES data has been added as well as the reference to table 1 including the exact observational data set used for comparison.

p. 10, L19, “All simulations show shortwave and net radiative fluxes at TOA that are in close agreement to observed fields”: This is not clear whether the SP-EMAC runs are better than CTRL.

That is correct. When comparing SP-EMAC with CTRL no significant improvement of the shortwave or net radiative flux at TOA can be deduced. But globally speaking a very similar skill is achieved compared to CERES data. This paragraph has slightly been modified to specify this.

p. 10, L22-23: Any difference between “cloud cover” and “cloud amount”? Is “cloud cover” of SP-EMAC generally better than CTRL? Why?

When speaking of “cloud cover” the total cloud cover within a GCM grid column is meant, i.e. it is the two-dimensional representation of cloud coverage including cloud overlap assumptions. In-atmosphere “cloud amount” refers to the cloud cover within a GCM grid box, i.e. three-dimensional cloud cover variable. This has been changed in the manuscript.

As mentioned within the paper the total cloud cover in comparison with CTRL is improved in terms of spatial and temporal variability. In particular the northern hemisphere as well as tropical land shows an improvement for total cloud cover. Oceanic regions reflect an underestimation of total cloud cover. This is predominantly related to the too early onset on precipitation for maritime (almost pure liquid) clouds thereby removing most of the condensate from the atmosphere. In order to improve shallow boundary layer clouds a higher order microphysical scheme is needed and ultimately a finer (vertical) resolution. The improvement for continental clouds is mostly due to a better partitioning of liquid and ice clouds. This is related to the dynamical aspect of subgrid-scale cloud development within the CRM representing a better cloud evolution in terms of updrafts and downdrafts. This allows water vapour to be transported into the correct heights for condensation.

These aspects have been included within the specific sections in a new version of the paper.

p. 10, L35, “The overestimated variability of specific humidity is mainly a cause of too much water vapor transport over tropical continents and too less over tropical oceans”: Is this general behavior of SP-EMAC? Why?

This effect is not only visible in SP-EMAC. The control simulation shows a similar behavior with parametrised convection. Especially one configuration (OR2 4km 64) shows a almost perfect representation of water vapour distribution at 250 and 500 hPa (see Fig. 2, Taylor diagram for specific humidity green triangle and square). Therefore not all SP-EMAC simulations show this behaviour. In order to evaluate this aspect in more detail further sensitivity simulations are needed which is out of scope for our research.

p. 12, L11-15: From this summary paragraph, it is not clear the real advantage of the super-parameterizaion. Is this the correct message of this paper?

This paragraph should not emphasize the advantages of using SP-EMAC. Regarding global statistics of the evaluated variables it performs as good as CTRL with some improvements as well as a slight deterioration for precipitation. This efforts are achieved without the focus on tuning this model setup. Therefore it can be assumed that with additional tuning efforts SP-EMAC would outperform CTRL.

p. 13, L5-11: Related to the discussion around this paragraph, the authors should refer to Luo and Stephens (2006), “An enhanced convection-wind-evaporation feedback in a superparameterization GCM (SP-GCM) depiction of the Asian summer monsoon” (Geophys. Res. Lett., 33, L06707, doi:10.1029/2005GL025060).

The reference to Luo and Stephens 2006 has been added mentioning the importance of feedback mechanisms.

p. 14 L3-6: The logic of this paragraph is not clear. Why the super-parameterization affects land-ocean contrast?

It is the other way around. Land-ocean contrasts affect precipitation rates of the superparameterisation depending on the chosen CRM setup. Changing the orientation, size or number (all parameters for the CRM) affects precipitation rates especially above oceans and coastal regions within the ITCZ and northern and southern mid-latitudes inducing a high sensitivity for these regions. We suppose that regarding oceanic rainfall the setup should be carefully chosen because this could degrade the simulation results. For coastal regions we speculate that the orientation of the CRM has an effect because summarized effects of changes in roughness length, higher wind speeds (sea breeze) and evaporation is influencing the precipitation within the superparameterization depending on the chosen orientation.

p. 15, L15-17: It is suggested that Figure 3 should be compared with the zonal mean precipitation of global cloud-resolving models by Stevens et al. (2019, Fig. 5, <https://doi.org/10.1186/s40645-019-0304-z>).

Comparing figure 3 and GCRM zonal mean precipitation of Stevens et al. 2019 can not be easily done because the simulation period is quite different. This paper illustrate zonal means of annual averaged precipitation whereas Stevens et al. uses 30-days (of

August 2016). A possibility could be to compare only August data but this would raise the question to what extent the August of 2016 represents a more or less climatological averaged month of August. We refrain comparing our results with Stevens but include the new possibilities to compare state-of-the-art GCRMs with superparameterisations within the discussion!

p. 16, L4: Which product of TRMM is used. Refer to Sato et al. (2009), “Diurnal cycle of precipitation over the tropics simulated by a global cloud resolving model.” (J. Clim., 22, 4809-4826, doi:10.1175/2009JCLI2890.1).

The reference has been added. The TRMM data reflects a 12-year long period for the month of July (1998-2010). The reference for the data is available at figure 6 (see caption). This has been specified in the text.

p. 18, Section 3.3: Please discuss robustness of the difference between the sub-ensemble A and B. It seems that the difference is not systematically depend on the CRM configuration. Can the authors say in which cases the category of the sub-ensemble is determined. This results is obsolete due to the bug-fix mentioned in the beginning. Section 3.3 has been re-written.

p. 19, L28-29: Why the results are very different from MODIS?

The results are different from MODIS observations because of neglecting sub-grid cloud variability and the missing of COSP as a satellite simulator. As emphasized within the description of the superparameterisation setup we have adopted the modification to account for subgrid-scale cloud variability within calculation of cloud optical properties and radiation after performing all simulations. A totally fair comparison with MODIS would additionally imply the implementation of the COSP package to adapt the satellite simulator which was out of our scope. A few references and sentences to COSP and the importance of subgrid-scale cloud variability has been added to the paper (Bodas-Salcedo, 2011; Song, 2018, Swales, 2018).

Effects of model configuration for superparametrised long-term simulations – Implementation of a Superparameterised cloud resolving model effects in the GCM EMAC (v2.50) - influences of model configuration

Harald Rybka^{1,2} and Holger Tost¹

¹Institute for Atmospheric Physics, Johannes Gutenberg-University, Mainz, Germany

²German Weather Service, Offenbach am Main, Germany

Correspondence: Harald Rybka (harald.rybka@dwd.de) and Holger Tost (tosth@uni-mainz.de)

Abstract. A new module has been implemented in the ECHAM5/MESSy Atmospheric Chemistry (EMAC) Model that simulates cloud related processes on a much smaller grid. This so called superparametrisation acts as a replacement for the convection parametrisation and large-scale cloud scheme. The concept of embedding ~~an ensemble of cloud-resolving models (CRMs)~~ a cloud resolving model (CRM) inside of each grid box of a general circulation model leads to an explicit representation of cloud dynamics.

The new model component is evaluated against observations and the conventional usage of EMAC using a convection parametrisation. In particular, effects of applying different configurations of the superparametrisation are analysed in a systematical way. Consequences of changing the CRMs orientation, cell size and number of cells range from regional differences in cloud amount up to global impacts on precipitation distribution and its variability. For some edge case setups the analysed climate state of superparametrised simulations even deteriorates from the mean observed energy budget.

In the current model configuration different climate regimes can be formed that are mainly driven by some of the parameters of the CRM. Presently, the simulated total cloud cover is at the lower edge of the CMIP5 model ensemble ~~indicating that the hydrological overturning is too efficient~~. However, certain "tuning" of the current model configuration could improve the ~~currently slightly~~ underestimated cloud cover, which will result in a shift of the simulated climate.

The simulation results show that especially tropical precipitation is better represented with the ~~superparameterisation-superparameterisation~~ in the EMAC model configuration. Fur-

thermore, the diurnal cycle of precipitation is heavily affected by the choice of the CRM parameters. However, despite an improvement of the representation of the continental diurnal cycle in some configurations, other parameter choices result in a deterioration compared to the reference simulation using a conventional convection parameterisation.

The ability of the superparametrisation to represent latent and sensible heat flux climatology is ~~dependent-independent~~ on the chosen CRM setup. ~~Further interactions of the planetary boundary layer and the free troposphere can significantly influence cloud development~~ Evaluation of in-atmosphere cloud amounts depending on the chosen CRM setup shows that cloud development can significantly be influenced on the large-scale using a too small CRM domain size. Therefore a careful selection of the CRM setup is recommended using 32 or more CRM cells to compensate for computational expenses.

1 Introduction

Cloud related processes are difficult to simulate on the coarse grid of a general circulation model (GCM) and have a substantial influence on the global climate (Boucher et al., 2013). Small-scale effects like deep convection need to be parametrised in global models uncovering the problem that Earth System Models (ESMs) horizontal grid spacing requires further refinement to resolve cloud formation. Uncertainties in different atmospheric fields are primarily a consequence of using parametrisations (Zhang and McFarlane,

1995; Knutti et al., 2002), which rely on a physical basis but are mostly scale dependent including an arbitrary number of simplifications and assumptions. Nowadays, computational capabilities are suitable to perform global or large-domain simulations with resolution on the order of a few kilometres (Kajikawa et al., 2016; ?) (Kajikawa et al., 2016; Heinze et al., 2016) even sub-kilometer grid spacing (Miyamoto et al., 2013). Convective-permitting simulations have shown that these model are able to realistically represent the Madden-Julian oscillation (MJO) (Miura et al., 2007; Miyakawa et al., 2014), the diurnal cycle of precipitation (Sato et al., 2009; Yashiro et al., 2016) or the monsoon onset (Kajikawa et al., 2015). Resolving the total effects of small-scale atmospheric features can hardly be simulated by any GCM with parameterised physics. The dilemma with these global cloud-resolving models (GCRMs) is the simulation period that is limited by the computational expense to a couple of months nowadays. On that account coarser horizontal resolutions are necessary regarding long-term simulations e.g. climate projections. A pioneer high-resolution (14 km global mesh) multi-year climate simulations has been conducted by Kodama et al. (2015). In addition to that the first coordinated long-term model intercomparison of high-resolution (at least 50 km grid-size) climate simulations is underway within the High Resolution Model Intercomparison Project (HighResMIP) (Haarsma et al., 2016) of the Coupled Model Intercomparison Project 6 (CMIP6) (Eyring et al., 2016). The former examples showed that current developments and models still use resolutions that require a convection parametrisation in order to investigate climate related questions. Combining the ability to reproduce small-scale cloud dynamics by a cloud-resolving model (CRM) and perform long-term simulations with a GCM resulted in the idea of a „superparameterisation“ (Grabowski and Smolarkiewicz, 1999; Grabowski, 2001; Khairoutdinov and Randall, 2001). The concept of the superparametrisation is based on embedding an ensemble of interacting CRMs a CRM inside of each column of the GCM replacing convection and large-scale cloud parametrisations. The superparametrisation acts as a conventional parametrisation but in contrast explicitly resolving small-scale cloud dynamics on the subgrid-scale of the GCM with the exception of cloud microphysics and turbulence. The CRM domain involves periodic lateral boundary conditions and forcings of large-scale tendencies computed by the GCM are applied horizontally uniform. Finally, all small-scale effects represented by the ensemble mean of all CRMs-CRM columns within one GCM grid-box interact with larger-scale atmosphere circulations on the coarse grid of the host model. Consequently, no direct interactions between individual CRM cells across GCM grid boundaries are possible. The computational cost of performing simulations with this framework is drastically reduced in contrast to a fully global cloud-resolving model (Grabowski, 2016). Including a CRM for the representation of the multitude of different types of clouds is a major step

toward a more realistic representation of individual clouds and their interactions that are otherwise only achievable with high resolution models over huge domains.

After the first implementation of the superparametrisation several other institutes have followed the same approach (Subramanian et al., 2017; Tulich, 2015; Tao et al., 2009) and other are under way (Arakawa et al., 2011). In addition to this, the Center for Multiscale Modeling of Atmospheric Processes (CMMAP) has been created as a National Science Foundation's Science and Technology Center extensively progressing the work with superparametrisations (Randall et al., 2003; Randall, 2013; Khairoutdinov and Randall, 2006; V. Diverse modifications exist, which incorporate other processes or schemes within the embedded small-scale model, like a two-moment microphysical scheme (Morrison et al., 2009), a higher order turbulence closure or including aerosol coupling (Gustafson et al., 2008; Cheng and Xu, 2013; Wang et al., 2011a, b; Minghuai et al., 2015). These studies have mainly focused on improving selected process descriptions within the cloud-resolving model. This study presents an additional superparametrised GCM primarily focusing on the effects of different CRM model configurations onto the mean climate state. Multiple simulations spanning 15 months have been performed to statistically evaluate the effects of changing different aspects of the superparametrisation, i.e. orientation, grid spacing and cell number of the embedded CRM. To our knowledge this is the first attempt summarizing the effects of different configurations of the superparametrisation onto the model mean climate state.

This paper is organized as follows. Section 2 describes the host GCM and CRM that is used as the superparametrisation. Furthermore the coupling between the two model systems and the simulation setup is given. Section 3 examines the results of the new model system and discuss the sensitivity study comparing different superparametrised model setups. Section 4 gives a summary and conclusions.

2 Model Description

2.1 EMAC model system

Historically speaking the ECHAM/MESSy atmospheric chemistry (EMAC) model (Joeckel et al., 2010) combines the Modular Earth Submodel System (MESSy) framework with the fifth generation of the ECMWF/Hamburg (ECHAM5) climate model (Roeckner et al., 2006). Developments during the last decade have fully modularised the code into the different layers of MESSy (Joeckel et al., 2005) and split representations of atmospheric processes into their own submodels. Based on that, alternative process descriptions (e.g. convection parametrisations, Tost et al., 2006) and even diverse base models (e.g. Community Earth System Model (CESM, Baumgaertner et al., 2016) or the COSMO model, Kerkweg

and Jöckel, 2012) can be easily selected and compared for sensitivity climate simulations. EMAC has been used for various scientific applications regarding chemistry climate interactions from the surface to the mesosphere¹. A complete list of available submodels is given in Table 1 in Joeckel et al., 2010.

2.2 New submodule: CRM

As mentioned in the introduction a CRM has been implemented as a new submodel to serve as a superparametrisation (SP) for EMAC. The new coupled model system is therefore shortly named SP-EMAC. The CRM component of SP-EMAC is the System for Atmospheric Modeling (SAM; described in Khairoutdinov and Randall, 2003) that describes subgrid-scale development of moist physics in each GCM grid column. It solves the nonhydrostatic dynamical equations with the anelastic approximation. The prognostic variables are the liquid/ice water moist static energy, total precipitating water (rain + snow + graupel) and non-precipitating water (vapor + cloud water + cloud ice). An „all-or-nothing“ approach is used to diagnose cloud condensate assuming saturation with respect to water/ice. The hydrometeor partitioning is based on a temperature dependence using a single moment microphysical scheme with fixed autoconversion rates. Additional information on the CRM is described in more detail in the Appendix of Khairoutdinov and Randall (2003). The model code of the superparametrisation has been restructured to follow the MESSy coding standards. Thereby it is now possible to set specific parameters via namelist entries in order to obtain the flexibility for sensitivity analysis without recompiling the code. The main switches that can be adjusted change the configuration of the superparametrisation, i.e.:

- number of CRM grid cells inside of each GCM grid box
- grid size of CRM cells
- orientation of the CRM ensemble-columns (2D or 3D)
- top height of CRM grid box
- time step of the superparametrisation

Each grid column of the global model EMAC hosts several copies of the CRM. All configurations of the superparametrisation use periodical lateral boundaries and a time step of 20 seconds. Vertical levels (29 in total) are aligned to match the lowermost levels of the GCM. Newtonian damping is applied to all prognostic variables in the upper third of the grid to reduce gravity wave reflection and build up. Communication between CRM cells across GCM boundaries is done via large-scale tendencies thereby neglecting direct interactions of small-scale dynamics between coarse grid columns.

¹see <http://www.messy-interface.org/> for a recently updated list of publications featuring MESSy

2.3 SP-EMAC: Coupling the two model systems

Combining EMAC and the superparametrisation is based on applying the CRM forcing and CRM feedback of prognostic variables ϕ between the two models. But first and foremost vertical profiles of the coarse grid cells of EMAC are initialized in all CRM columns at the beginning of each model run. Simultaneously small temperature perturbations are added for near surface layers to obtain an individual response for each CRM column. During the simulation the CRM is called on every GCM time step and repeatedly integrating its equations while saving all subgrid-scale fields of the superparametrisation at the end of the call. A sketch of the GCM-CRM coupling is given in figure 1 displaying three-two GCM time steps (n) and their sequential phases during the model time integration. The numbers in figure 1 correspond to the following actions:

- 1 \rightarrow integration of GCM (time step of Δt_{GCM})
- 2 \rightarrow coupling: CRM large-scale forcing $\left[\frac{\partial \phi}{\partial t}\right]_{LS}$
- 3 \rightarrow integration of CRM (N -times Δt_{CRM})
- 4 \rightarrow coupling: CRM small-scale feedback $\left[\frac{\partial \phi}{\partial t}\right]_{CRM}$

5 to 8 \rightarrow repeating phases 1 to 4

The large-scale forcing $\left[\frac{\partial \phi}{\partial t}\right]_{LS}^n$ restricts the superparametrisation close to the host model fields whereas CRM feedback $\left[\frac{\partial \phi}{\partial t}\right]_{CRM}^n$ tendencies are calculated by the ensemble horizontal mean of all CRM grid boxes ($\overline{\phi^n}$) for timestep n (Grabowski, 2004b). Momentum transport was only allowed for the 3D CRM configurations applying the same relaxation terms (see figure 1) to the u and v wind field components. All 2D CRM configurations neglect zonal/meridional convective momentum on the large-scale flow, i.e. no CRM feedback. With regards to the computation of cloud optical properties and radiative fluxes two possibilities exist.

1. calculate radiative transfer with averaged cloud properties assuming a maximum-random overlap assumption obtained by averaging over the superparametrisation domain.
2. calculate radiative transfer explicitly with time-averaged CRM fields in every subgrid-scale column.

In this paper only the first possibility is chosen although including explicit cloud inhomogeneities into radiative transfer computation have a significant influence on radiative fluxes (Cole et al., 2005). The capability to consider subgrid-scale cloud-radiation interactions have been introduced after performing sensitivity simulations and will therefore not be part of the evaluation in this paper. With regard to cloud-radiation coupling all SP-EMAC simulation are equivalent to experiment 3 of Cole et al. (2005).

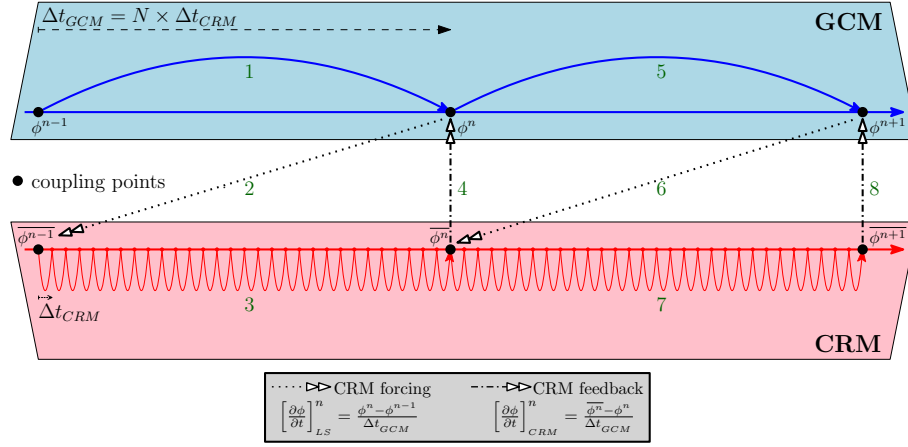


Figure 1. Sketch of model time integration when coupling a host GCM with a superparametrisation (i.e. CRM) based on their prognostic variables ϕ over a period of two time steps (n). A description of the different phases (i.e. numbers) is given in the text.

Table 1. Overview of sensitivity simulations

#	Simulation Name	Description
0	CTRL	EMAC control simulation with parametrised convection and clouds
1 ^{a,f,i}	SP-EMAC	SP-EMAC simulations with diverse configurations specified by three abbreviations:
2 ^{b,d,e,g,j}	OR1 4km 64	
3	OR1 4km 32	abbr. #1: CRM orientation
4	OR1 4km 16	
5	OR1 2km 64	OR1, OR2 or OR3
6 ^{d,i}	OR1 2km 32	
7	OR1 1km 64	OR1 = east-west orientation
8 ^{c,d}	OR1 1km 32	
9 ^h	OR2 4km 64	OR2 = north-south orientation
10	OR2 4km 32	
11	OR2 2km 64	OR3 = three dimensional (3D) CRM
12	OR2 2km 32	
13	OR2 2km 16	abbr. #2: CRM grid size
14	OR2 1km 64	
15	OR2 1km 32	4km, 2km or 1km
16 ^b	OR3 4km 64	
17	OR3 4km 32	abbr. #3: number of CRM grid cells
18	OR3 2km 64	
19	OR3 2km 32	64, 32 or 16
20	OR3 1km 64	
21 ^g	OR3 1km 32	for the 3D orientation the CRM cells are arranged as follows:
	OR3 1km 16	
		total cells = number of cells in east-west direction x number of cells in north-south direction
		64 cells = 8 x 8
		32 cells = 8 x 4
		16 cells = 4 x 4

Configurations that have been used in previous literature: ^aKhairoutdinov and Randall (2001), ^bKhairoutdinov et al. (2005), ^cKhairoutdinov et al. (2008), ^dKooperman et al. (2013), ^eKooperman et al. (2014), ^fCole et al. (2005), ^gParishani et al. (2017), ^hPritchard et al. (2014), ⁱMarchand and Ackerman (2010), ^jWang et al. (2011a)

Further coupling is not implemented in the superparametrised version of EMAC so far. All land surface fluxes and boundary layer processes are simulated on the large-scale grid only (Roeckner et al., 2003). Surface heterogeneities like soil moisture, soil type, orography etc. may be included for future research with SP-EMAC.

2.4 Simulation Setup

All simulations are performed with a horizontal GCM resolution of T42 and 31 vertical hybrid pressure levels up to 10.0 hPa. The applied setup for the control simulation (CTRL) covers the submodels for radiation (Dietmüller et al., 2016), clouds (Lohmann and Roeckner, 1996) and convection (Tiedtke, 1989) with modifications of (Nordeng, 1994).

Boundary layer and surface processes are based on ECHAM physics package and described in Roeckner et al. (2003). Sea surface temperature (SST) and sea ice content (SIC) is prescribed by climatological monthly averaged data from the AMIP database between 1987 to 2006. This simulation is used to evaluate differences between parametrised and superparametrised climate simulations of EMAC. In order to investigate the configuration effects of the CRM several SP-EMAC runs have been performed. In each SP-EMAC run ~~an ensemble of CRMs have a CRM~~ has been embedded in each of the 8192 grid columns of the GCM. Each simulation is distinguished by its configuration of the superparametrisation. Aspects that vary along the different runs are: CRM cell orientation (OR) within a GCM grid box (alignment: north-south, east-west or full 3D), the individual size of one CRM cell (4km, 2km or 1km) and the number of CRM cells within a large-scale grid box (64, 32 or 16). Each of these three attributes characterise a SP-EMAC simulation. A list of all runs is given in table 1. ~~Configurations that have been used in previous literature are marked and referenced appropriately.~~ Cloud optical properties are treated with the same submodel CLOUDOPT (Dietmüller et al., 2016) for all simulations but using different input variables for CTRL and SP-EMAC simulations. The calculation is based on liquid water content, ice water content, in-atmosphere cloud cover and cloud nuclei concentration. The latter has a fixed profile exponentially decreasing with altitude (Roeckner et al., 2003). Based upon the liquid and ice water content effective radii are computed with the assumption of treating ice as hexagonal plates (Johnson, 1993; Moss et al., 1996). All resolution-dependent cloud optical parameters (asymmetry factor and cloud inhomogeneity) kept fixed for all simulations based on the T42 GCM resolution. Regarding the control simulation, total cloud cover, liquid and ice water content are calculated within the cloud submodel (Roeckner et al., 2006). For all SP-EMAC runs these variables are calculated as domain averaged values over all CRM grid cells within a GCM column. Thereby no subgrid-scale calculation of cloud optical properties (as well as radiative tendencies) is performed. This method has been applied intentionally to use subgrid-scale information but condense it onto the coarse GCM grid using the same subsequent submodels. A further modification concerning cloud optical properties and radiative transfer would complicate the analysis to differentiate model discrepancies between SP-EMAC and CTRL. Differences could be either due to a different cloud development within the superparametrisation or cloud radiative effects considering subgrid-scale cloud fractions.

Further information on the simulations setup, `namelist settings` and the newly implemented CRM options is given in the supplement.

The simulation period spans 15 months considering the first three months of the simulation as spin-up and discarding it from the analysis. Monthly averaged data have been used for the evaluation. In total ~~20–21~~ SP-EMAC simulations have

been performed to evaluate the difference that come along when changing the configuration of the superparametrisation. It is noteworthy to mention that no tuning is done thereby allowing the simulation to react to its own dynamics and interdependencies. This is done on purpose to derive the distinct consequence of a different CRM configuration. In order to condense the information of all superparametrised runs an ensemble depictive representation is used to display the mean performance (black line) as well as the variability (grey area) of all SP-EMAC simulations. Thereby figures always show the ensemble average of all SP-EMAC runs if not mentioned otherwise.

3 Evaluation

The evaluation of SP-EMAC is divided in three parts. The first section covers a global analysis of SP-EMAC comparing mean global variables and their variability. Secondly regional aspects are investigated revealing a higher importance of the CRM setup to local fields. The last part explains issues of several configurations of the superparametrisation and their impact on a global scale.

3.1 Global aspects

The first evaluation of the new model system covers the comparison of different mean global variables and their spatial and temporal distribution of SP-EMAC with the control simulation (CTRL) and several observations. Table 2 lists global mean values of top of the atmosphere (TOA) net radiative flux (F_{net}), surface temperature over land (T_s), total cloud cover (C_{tot}), precipitation (P), liquid water path (LWP), ice water path (IWP) and the net cloud radiative effect (NetCRE) at TOA. These variables indicate the overall performance of all SP-EMAC simulations for the first time without tuning to relevant climate measures. ~~In order to classify these single-year averages, two additional multiyear simulations have been conducted using configuration OR1 4km 64 and OR2 1km 16. These simulations help to estimate the annual variability for SP-EMAC simulations. The associated standard deviations are given in Table 2.~~

Considering the radiative fluxes at TOA almost all configurations of the superparametrisation lie within a range of $\pm 4 \text{ W/m}^2$ reflecting an almost balanced radiation budget. Only ~~three–two~~ setups (OR3 ~~4km 32~~, OR3 1km 64 and OR3 1km 16) show a strong negative imbalance generated by too reflective clouds. The energy deficit for these simulations can be explained by a large negative net cloud radiative effect dominated in the shortwave and an overestimation of LWP. Additionally, it should be mentioned that the high imbalance are only seen for the 3D-setups of SP-EMAC. ~~Changing the size or number of cells in a three-dimensional CRM setup drastically changes the covered area of the~~

superparametrisation. This modification (reduction in CRM area) seems to significantly influence the CRM properties to correctly simulate the mean effects of subgrid-scale processes within a GCM cell. Another possible feedback that could degrade global statistics, affecting large-scale dynamics for all OR3 simulations, is the momentum transport. Nevertheless, these simulations are discarded from further analysis because the mean climate is highly deteriorated. Concerning the range of averaged surface temperature over land (neglecting Arctic and Antarctica) values between 289 and 292 K mirror the variability of the SP-EMAC ensemble. All simulations including the control simulations depict a higher surface temperature compared to reanalysis data. The difference is partly due to the model output variable that presents the temperature of the lowermost mode layer instead of using the 2m-temperature. More interestingly is the separation of several SP-EMAC runs into two branches divided by the criterion of an average surface temperature below 290 K (sub-ensemble A) or above 290 K (sub-ensemble B) and their annual mean precipitation of above or below 3.0 mm/d. These two subsets are analysed in more detail in section 3.3. In contrast the variability in mean global precipitation occurs small. Almost all SP-EMAC configurations are within the GPCP (Global Precipitation Climatology Project) uncertainty. In a global context the CRM configuration does not have an effect on annual mean precipitation but significant differences occur spatially depending on the chosen setup (see section 3.2). The general cloud cover for all superparameterised simulations is underestimated by 10 % with the current setup of SP-EMAC. Similar underestimations in cloud amount and overestimation in cloud optical depth (see section 3.3) has been observed in past multiscale modeling framework (MMF) studies (Marchand and Ackerman, 2010). However a cloud cover around 50 % still lies within the range (at the lower end) of current estimates of several GCMs participating in the Coupled Model Intercomparison Project Phase 3 and Phase 5 (CMIP3 and CMIP5; Probst et al. (2012); Calisto et al. (2014)). Nevertheless this deficit can be compensated by further tuning efforts as it has been done for the control simulation depicting a mean cloud cover of 60 % (Mauritsen et al., 2012). Changing the size or number of cells in a three-dimensional CRM setup drastically changes the covered area of the superparametrisation. This modification (reduction in CRM area) seems to significantly influence the CRM properties to correctly simulate the mean effects of subgrid-scale processes within a GCM cell. A similar 3D CRM configuration (in terms of CRM domain size) is applied in Parishani et al. (2017) with the exception of using a much higher horizontal (250 m) and vertical (down to 20 m) resolution. Focusing on shallow cumulus clouds this work presents improved cloud cover profiles of boundary layer clouds but an enhanced shortwave cloud radiative effect resulting in a strong global mean bright bias. The latter result is comparable to the imbalanced simulations mentioned

above. An evident cause is the restricted CRM domain size that plays a crucial role for the development of deep convection and associated high clouds by cold pools and mesoscale organization (Tompkins, 2001). Another possible feedback that could degrade global statistics, affecting large-scale dynamics for all OR3 simulations, is the momentum transport, which is different in comparison to the two dimensional CRM setups. Nevertheless, these simulations (#20 and #21 in table 1) are discarded from further analysis because the mean climate is highly deteriorated. Concerning the range of averaged surface temperature over land (neglecting Arctic and Antarctica) values between 289 and 290 K mirror the variability of the SP-EMAC ensemble. All simulations including the control simulations depict a higher surface temperature compared to reanalysis data. The difference is partly due to the model output variable that presents the temperature of the lowermost model layer instead of using the 2m-temperature. The variability in mean surface temperature over land emphasizes the influence on the planetary boundary layer due to a change in the hydrological cycle. Previous studies (Qin et al., 2018; Sun and Pritchard, 2018) have shown that land-atmosphere coupling is improved using a superparameterisation. Nevertheless, these results rely on one specific CRM setup. The one degree variability in near surface temperature suggest a not negligible effect on the hydrological and thermal coupling due to different CRM configurations.

In contrast to T_s , the variability in mean global precipitation (P) occurs small. Almost all SP-EMAC configurations display similar global averaged precipitation amounts. All superparameterised simulations show slightly overestimated precipitation rates in comparison with GPCP (Global Precipitation Climatology Project) data and its uncertainty. In a global context the CRM configuration does not have an effect on annual mean precipitation but significant differences occur spatially depending on the chosen setup (see section 3.2). The total cloud cover for all superparameterised simulations is underestimated by 5 % with the current setup of SP-EMAC. Similar underestimations in cloud amount and overestimation in cloud optical depth (see section 3.3) has been observed in past multiscale modeling framework (MMF) studies (Marchand and Ackerman, 2010; Parishani et al., 2017). However a cloud coverage around 57 % still lies within the range (at the lower end) of current estimates of several GCMs participating in the Coupled Model Intercomparison Project Phase 3 and Phase 5 (CMIP3 and CMIP5; Probst et al. (2012); Calisto et al. (2014)). Nevertheless this deficit can be compensated by further tuning efforts as it has been done for the control simulation depicting a mean total cloud cover of 60 % (Mauritsen et al., 2012). Because deficiencies in cloud amounts are closely related to the liquid and ice water path even higher differences are expected to arise. Best estimates for globally averaged LWP (IWP) based on different observational data sets expose a highly uncertain

Table 2. Overview of different global mean variables (values of T_s , LWP and IWP represent averages between 60° latitudes).

Simulation Name	F_{net} (W/m ²)	T_s (K)*	C_{tot} (%)	P (mm/d)	LWP (g/m ²)	IWP (g/m ²)	NetCRE (W/m ²)
CTRL	3.7	289.6	60.0	2.9	92	28	-22.7
OR1 4km 64	-2.1	289.4	49.7 57.2	3.2	98	52	-28.5
OR1 4km 32	-2.0 -3.7	291.8 289.3	49.2 57.6	2.9 3.2	96 105	53 54	-27.2 -30.2
OR1 4km 16	-3.1 -5.3	291.7 289.1	51.2 59.0	2.9 3.2	102 113	55 56	-28.6 -31.8
OR1 2km 64	0.6	289.5	49.9 56.8	3.1	91	56	-26.3
OR1 2km 32	0.8 -1.4	291.9 289.3	50.0 57.0	2.8 3.2	90 99	57 56	-25.0 -28.1
OR1 1km 64	2.2	289.4	49.5 56.0	3.1	89	57	-25.0
OR1 1km 32	-3.2	289.1	50.5 57.6	3.2	103	54	-29.8
OR2 4km 64	0.3	289.5	49.6 57.7	3.1	93	53	-26.4
OR2 4km 16	-1.4 -3.7	291.5 289.2	50.5 58.2	2.9 3.2	98	55	-27.1 -30.2
OR2 2km 64	2.8 1.7	292.0 289.5	48.2 56.4	2.8 3.1	82 89	54	-23.1 -25.3
OR2 2km 32	-0.1	291.8 289.4	49.0 57.0	2.9 3.2	92 96	54 56	-25.7 -26.9
OR2 2km 16	0.2 -1.9	291.7 289.5	50.5 58.0	2.9 3.2	94 104	57 58	-25.3 -28.6
OR2 1km 64	2.2	289.6	55.5	3.2	88	56	-24.7
OR2 1km 32	2.8 0.9	291.8 289.7	49.5 56.2	2.8 3.2	85 94	57	-23.0 -25.7
OR2 1km 16	-1.3	289.5	58.4	3.2	101	59	-27.8
OR3 4km 64	-0.5	289.4	49.9 57.4	3.2	94	57	-27.4
OR3 4km 32	-7.6 -2.5	291.8 289.7	54.6 57.9	2.9 3.2	110 100	52 58	-34.7 -28.9
OR3 2km 32	-0.3 -2.6	292.1 289.9	51.8 59.0	2.9 3.2	93 102	57	-27.0 -30.3
OR3 2km 16	-2.0 -4.7	291.7 289.7	55.1 62.0	2.9 3.2	100 110	60	-29.0 -32.7
OR3 1km 64	-6.8	289.9	53.1 59.2	3.1	109	51	-34.5
OR3 1km 16	-11.4	289.8	59.3 64.2	3.1	124	55	-39.5
std ⁺	0.2 / 0.3	0.2 / 0.2	0.2 / 0.4	0.1 / 0.1	0.7 / 1.1	0.3 / 2.5	0.2 / 0.3
Observations	0.8 ± 0.4 ^a	288.9 ^b	62.5 ± 4.4 ^c	2.6 ± 0.4 ^d	30 ± 10 ^e	39 ± 20 ^e	-20.9 ± 4.0 ^a

* model average surface temperature over land is represented by values of the lowermost model layer

⁺ standard deviations of two multiyear simulations each spanning 10 years. Configurations OR1 4km 64 and OR2 1km 16 have been utilized for these long runs.

^a CERES EBAF-TOA Edition 2.8 (Clouds and Earth's Radiant Energy System - Energy Balanced and Filled) - 04/2000-03/2010, Wielicki et al. (1996); Loeb et al. (2009)

^b NCEP/DOE2 Reanalysis data provided by the NOAA/OAR/ESRL PSD, Boulder, Colorado, USA, from their Web site at <https://www.esrl.noaa.gov/psd/> - 01/1979-12/2010, Kanamitsu et al. (2002)

^c CERES ISCCP-D2LIKE-MERGED - Edition 3A, NASA Langley Atmospheric Science Data Center DAAC. DOI:

10.5067/Aqua/CERES/ISCCP-D2LIKE-MERG00_L3.003A - 04/2000-03/2010, Wong, T. (2008)

^d Global Precipitation Climatology Project (GPCP) Climate Data Record (CDR), Version 2.3 (Monthly). National Centers for Environmental Information. DOI:10.7289/V56971M6 - 01/1981-12/2010, Adler et al. (2018)

^e CM SAF CLARA-A2 (The Satellite Application Facility on Climate Monitoring Cloud: Albedo And Surface Radiation dataset from AVHRR data – second edition) - 04/1986-03/2010, DOI:10.5676/EUM_SAF_CM/CLARA_AVHRR/V002, Karlsson et al. (2017)

range between 30–50 g/m² (25–70 g/m²) with an upper limit of 100 g/m² (140 g/m²) (Jiang et al., 2012). These differences are due to different satellite sensor sensitivities, attenuation limits, retrieval errors and algorithmic assumptions therefore showing no clear consensus throughout the literature (O'Dell et al., 2008; Stubenrauch et al., 2013). Comparing AVHRR (Advanced Very High Resolution Radiometer) satellite data with model results display high discrepancies in liquid and ice partitioning. Similar to the control run all SP-EMAC configurations show a comparable mean LWP around 90 to 110 g/m². These high amounts of liquid water in the atmosphere are seeming to extremely overestimate the underlying observations of CM SAF (The Satellite Application Facility on Climate Monitoring) but are on the upper range of current LWP estimates and GCM simulations (Lauer and Hamilton, 2013). The physical processes during model integration of rationing cloud water into its liquid and ice phase is a compensating effect on total cloud amount-cover and radiation.

In addition to LWP/IWP estimates, precipitable water (i.e. integrated water vapor) displays a range between 24.9 and 25.9 mm for all SP-EMAC runs (CTRL: 24.9 mm), whereas most simulations lie within 24.9 and 25.6 mm. These values lie within observational constraints and past model studies (Demory et al., 2014).

One major last aspect to consider is the net radiative effect of clouds that is affected by the total cloud cover as well as their optical thickness and vertical extent. Absorption and reflectance of solar and terrestrial radiation is influenced by the presence of clouds and the total net cloud radiative effect can be quantified as the sum of its shortwave and longwave com-

ponent:

$$\text{NetCRE} = \text{CRE}_{\text{SW}} + \text{CRE}_{\text{LW}}$$

$$\begin{aligned} \text{CRE}_{\text{SW}} &= (\text{SW}_{\text{all}}^{\downarrow} - \text{SW}_{\text{all}}^{\uparrow}) - (\text{SW}_{\text{clear}}^{\downarrow} - \text{SW}_{\text{clear}}^{\uparrow}) \\ &= \text{SW}_{\text{clear}}^{\uparrow} - \text{SW}_{\text{all}}^{\uparrow} \end{aligned}$$

$$\begin{aligned} \text{CRE}_{\text{LW}} &= (\text{LW}_{\text{all}}^{\downarrow} - \text{LW}_{\text{all}}^{\uparrow}) - (\text{LW}_{\text{clear}}^{\downarrow} - \text{LW}_{\text{clear}}^{\uparrow}) \\ &= \text{LW}_{\text{clear}}^{\uparrow} - \text{LW}_{\text{all}}^{\uparrow} \end{aligned}$$

where $\text{SW}_{\text{clear}}^{\uparrow}$ and $\text{SW}_{\text{all}}^{\uparrow}$ describe the clear-sky and all-sky reflected shortwave radiation at TOA and $\text{LW}_{\text{clear}}^{\uparrow}$ and $\text{LW}_{\text{all}}^{\uparrow}$ represent clear-sky and all-sky outgoing longwave radiation (OLR) at TOA.

The NetCRE is negative describing an overall cooling effect of clouds on the atmosphere. Concerning all simulations CTRL shows with -22.7 W/m^2 a net cloud radiative effect closest to the observed value of -20.9 W/m^2 (cf. table 2 NetCRE observed by CERES EBAF-TOA Edition 2.8). The SP-EMAC simulations cover a range between -23.0 to -29.8 to -32.7 W/m^2 which seems even more surprising because total cloud cover is highly slightly reduced in all superparametrised simulations. This change in cloud amount would usually lead to a smaller NetCRE, which is not the case. Therefore optical properties of clouds must have substantially been changed in all SP-EMAC runs indicating an increased reflection of radiation by clouds.

This is evaluated in more detail in chapter 3.3. All in all without tuning of SP-EMAC almost all CRM configurations of SP-EMAC show mean climate characteristics equivalent to the control simulation and lie within a comparable range to observational estimates.

Apart from the analysis of averaged global fields figure 2 displays normalized Taylor diagrams (Taylor, 2001) for four different quantities. These type of diagrams condense various aspects of multidimensional variables in comparison to observational data in one diagram. In total the correlation (R) given by the azimuthal angle, the standard deviation (σ) which is proportional to the radial distance from the origin and the centered root-mean-square error (RMSE) corresponding to the distance from the observational point (which is aligned at a unit distance from the origin along the x-axis) quantify the degree of agreement between modeled and observed fields. The correlation coefficient include spatial as well as temporal correlation for all variables based upon monthly averages reflecting the pattern concurrence in time and space. In order to compare observed and simulated fields all observations are remapped onto the applied model resolution ($T42 \approx 2.8^\circ$ at equator).

All simulations show shortwave and net radiative fluxes at TOA that are in close agreement to observed fields ($R \approx 0.98$). Further focusing on the shortwave and net radiative flux no significant improvement of SP-EMAC in comparison with CTRL can be deduced from the Taylor

diagram but an overall very similar global skill is achieved. Concerning longwave TOA radiative fluxes the correlation is slightly reduced ($R \approx 0.86$) and all SP-EMAC runs demonstrate a better variance than CTRL.

A significant improved performance in terms of correlation and variability is also visible for total cloud cover reducing the centered RMSE by 10 %. The latter is a direct result of an improved representation in northern hemispheric cloud amount-total cloud cover (not shown) whereas tropical and large ocean fractions show an underestimation in cloud cover for the superparametrised simulations. The improvements in radiation and cloud amount-total cloud coverage suggest a better representation of cloud-radiation processes caused by the ability to include subgrid-scale cloud dynamics.

Comparing the continental humidity distribution for four atmospheric levels interesting features appear. In order to compare all simulations reanalysis of NCEP has been used as quasi-observations on a global scale. Lower level specific humidity at 925 hPa show a high correlation ($R \geq 0.95$) and a comparable standard deviation for many SP-EMAC runs against reanalysis data. The underestimation of the variance ($\sigma < 0.9$) for a couple of SP-EMAC configurations comparing the lowermost specific humidity fields is dependent upon temperature in the boundary layer and precipitation. All simulations with T_s above 290 K and P below 3 mm/d (compare with Table 2) display a decrease in the normalized standard deviation whereas all other SP-EMAC show a better correlation and variability. All superparameterised model runs show a higher correlation than CTRL and are bundled together for the lowermost tropospheric level without an apparent spread. This behaviour reflects the importance of interactions between boundary layer processes and precipitating fields. An even bigger spread is visible for mid-level and upper troposphere humidity at 500 and 250 hPa. Two features are prevailing: a decrease in correlation with increasing altitude and a higher variance for almost all simulations. The overestimated variability of specific humidity is mainly a cause of too much water vapor transport over tropical continents and too less over tropical oceans. The decrease in the correlation coefficient expresses the difficulty to simulate the appropriate water vapor transport for higher atmospheric levels especially in the intertropical convergence zone (ITCZ). Moreover, it is obvious that different SP-EMAC configurations have a strong impact on the upper tropospheric moisture budget at 250 hPa. This is a consequence of contrasting CRM resolved strength of vertical winds. Evaluating specific humidity distribution at the tropical tropopause level near 150 hPa almost no correlation remains and variability in these heights is strongly underestimated. This uncorrelated relationship is negatively influenced by an almost unresolved stratospheric circulation because of the sparse vertical resolution in these heights. Thereby This is an indication of almost no water vapour is transported transport via the Brewer-Dobson circulation from the tropics

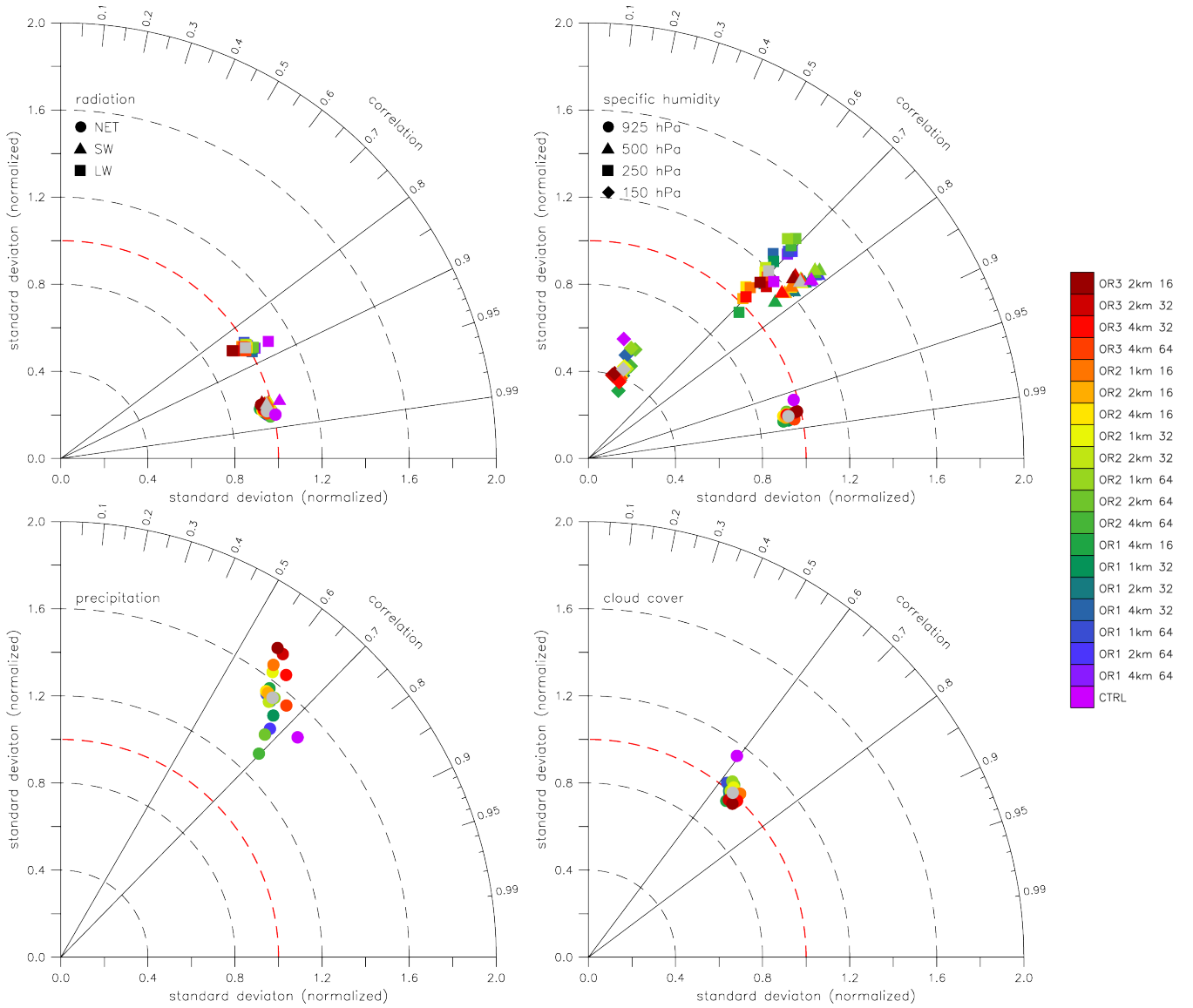


Figure 2. Taylor diagrams summarizing radiative fluxes at TOA, specific humidity on selected pressure levels, precipitation and total cloud cover. Individual simulations are color-coded whereas grey markers represent the overall SP-EMAC ensemble. The control simulation is marked in purple. Observational data for radiation at TOA, total cloud cover and precipitation is the same as indicated in table 2. For specific humidity NCEP/DOE2 Reanalysis data is used from 01/1979 to 12/2010 and evaluated only over continental points.

to the poles.

The representation of precipitation and its spatial and temporal distribution is slightly worse compared to the CTRL simulation with correlations less than 0.7. Furthermore, the configuration of SP-EMAC strongly modifies the intensity of rainfall partitioning of rainfall within the CRM columns. A much bigger spread is visible in the Taylor diagram for precipitation comparing individual SP-EMAC runs. This pinpoints the importance of the CRM configuration onto the global precipitation distribution and will be explored in more detail focusing on regional differences in the next section.

Recapitulating the evaluation of global SP-EMAC fields

several Taylor diagrams show a similar spatial and temporal correlation compared to the control simulation with parametrised convection. A slightly improvement in the longwave radiative flux and total cloud cover distribution is seen in the Taylor diagrams. The representation of precipitating fields is slightly deteriorated. Without the help of tuning efforts Accompanying tuning efforts for SP-EMAC could easily outperform the control simulation and thereby showing the advantage of resolving small-scales features and their impact onto global metrics.

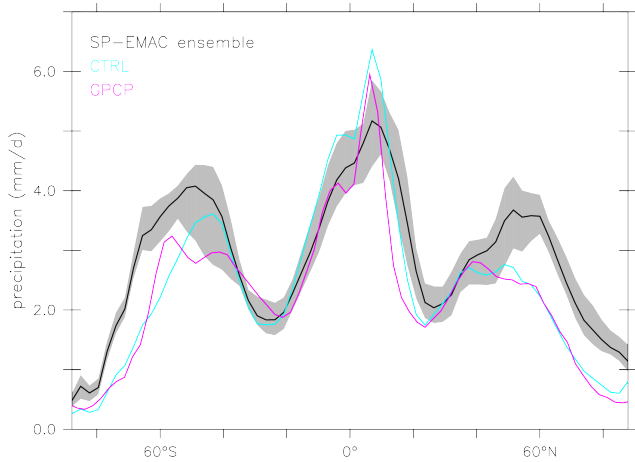


Figure 3. Zonal averaged simulated precipitation compared to GPCP data.

3.2 Influence on regional aspects

The introduction of a superparametrisation resolving cloud dynamics in a GCM explicitly implies changes of local phenomena like precipitation, cloud regimes or boundary layer characteristics. This section evaluates regional patterns of precipitation and cloud radiative effects of SP-EMAC. In addition to that, the diurnal cycle of tropical precipitation is diagnosed as well as probability density functions (PDFs) for specified regions.

As a first step, significantly different precipitating regions for all simulations are identified and compared to observations. Moreover facing current deficiencies of GCMs, two specified regions are taken into account to analyse simulated precipitation features: maritime tropics (in particular the Warm Pool region) and the southern mid-latitudes. In previous literature it has been shown that the maritime continent depicts too much precipitation for all CMIP5 models consistently (Flato et al., 2013). In addition to that, simulating the Asian summer monsoon tends to overestimate rainfall amounts by a too strong convection-wind-evaporation feedback using a convection parameterisation or a superparameterisation (Luo and Stephens, 2006). Complementary an overestimation in oceanic precipitation frequency is simulated over the southern hemisphere indicating too much drizzle (Stephens et al., 2010). Although a new study suggested that these biases originate from processes other than convection a reduction of these errors is clearly accomplished by using convection parameterisations (Maher et al., 2018). The comparison of SP-EMAC with observations and a parametrised control simulation will reveal the importance of resolving subgrid-scale dynamics in a superparametrised GCM for these regional improvements.

Figure 3 shows zonal averaged precipitation rates for SP-EMAC, CTRL and GPCP data. In correspondence figure 4 highlights regions with significant differences in

annual mean precipitation compared to observations. These regions have been identified by a couple of t-Tests on a significance level of 90%. For the control simulation one single t-Test has been carried out to emphasize important areas. Considering the analysis for SP-EMAC regions are highlighted when more than half of all superparametrised simulations show a significant difference between observed and modelled fields. The control simulation is in close agreement to the GPCP observations with the exception of enhanced tropical precipitation, which is well represented by the superparametrisation. Contrary to this an overestimation in the northern and southern mid-latitudes is visible for SP-EMAC independent of the chosen CRM configuration. This finding is in agreement with the study of Marchand et al. (2009) showing an overestimation of low-level hydrometeors in mid-latitude storm tracks using the same superparametrisation within SP-CAM (Superparametrised - Community Atmosphere Model). An improvement is given by Kooperman et al. (2016) showing no systematic biases within the mid-latitudes using a two-moment microphysical scheme linked to aerosol processes (Wang et al., 2011a). Regardless of these studies, SP-EMAC sensitivity runs suggest that formation of precipitation including the ice phase (or mixed-phase) is substantially better simulated than rainfall in almost pure liquid clouds that is often the case for maritime precipitation in the southern mid-latitudes (Matsui et al., 2016). Nevertheless, a high sensitivity in precipitation is visible within the ITCZ and the northern and southern mid-latitudes depending on the CRM configuration. Analysing this in more detail it emerges that the contribution of this variability is mostly generated above the oceans and coastal regions (not shown). That implies that simulated precipitation rates are sensitive to land-ocean contrasts. Focusing on two specific regions figure 5 displays probability density functions of monthly precipitation rates for the Warm Pool Region and the southern ocean mid-latitudes. The former is defined as an area where sea surface temperatures exceed 297 K and strong convective systems develop whereas the latter defines only oceanic regions in the southern hemisphere between 36° and 64° characteristically associated with marine boundary layer clouds (Mace, 2010; Haynes et al., 2011). Embedded maps present the spatial distribution for the chosen region as yearly averaged precipitation rates. In addition to that the non-precipitating fraction (below 1 mm/d) is shown as bars including the variability of SP-EMAC induced when choosing different configurations and the interannual variability of the observational data. Based on the overall improvement for SP-EMAC to simulate precipitation in the Warm Pool region the PDF shows important characteristics that are to some extent reproduced by the superparametrisation. The most distinct feature for the maritime continent PDF is the high variability for the SP-EMAC simulations covering almost the entire range of observed probabilities. Compared to the control simulation it is most obvious that high precipitation rates (above

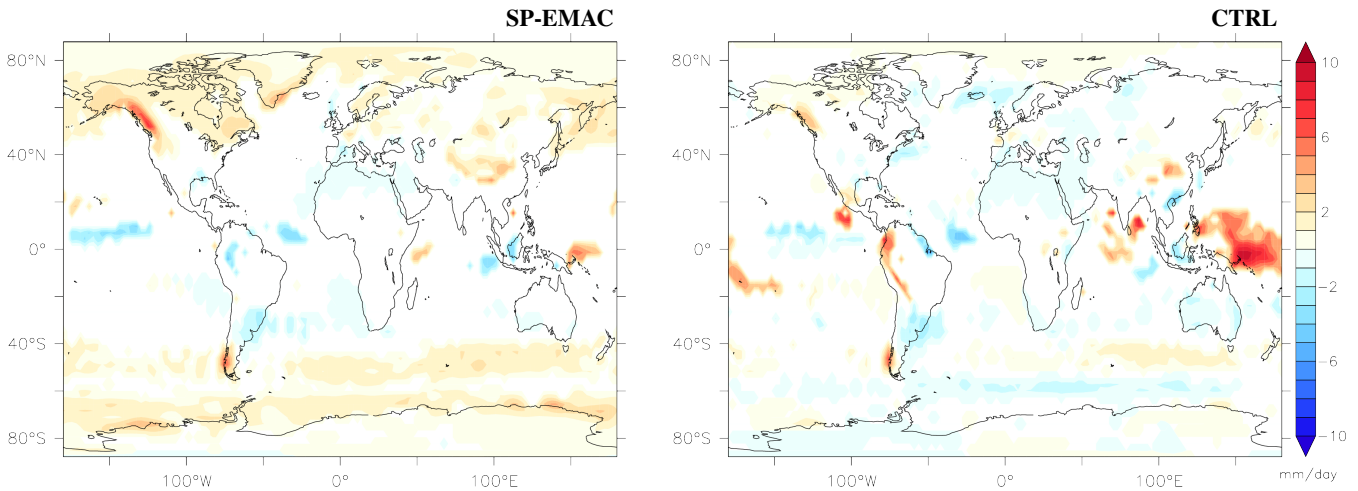


Figure 4. Differences in precipitation of SP-EMAC ensemble (left panel) and CTRL (right panel) in contrast to global observations (GPCP). Colored areas show only regions with significant differences in precipitation (analysed with t-Tests on a significance level of 90%).

10 mm/d) are better represented by the CRM. Precipitation rates between 3 and 10 mm/d are underestimated by almost all simulations. Depending on the chosen configuration it can be concluded that the configurations OR1 4km 64, OR1 2km 64, OR2 4km 64 and OR2 2km 64 produce the best estimate of precipitation in the Warm Pool region. Each of these simulations show enhanced precipitation probabilities between 5 to 10 mm/d and produce the lowest probabilities for high precipitation rates in agreement with the GPCP observations (not shown). Comparing the spatial distributions a single maximum precipitation spot is visible in the western pacific when using the convection parametrisation. This is not as prominent for the SP-EMAC simulations displaying a more widespread distribution. At last non-precipitation probabilities (comparing boxes at the right side of the plot) are in close agreement with the GPCP data but expose a huge variability for SP-EMAC reflecting the strong dependence on the chosen configuration.

The comparison of precipitation rates in the southern hemisphere mid-latitudes reveals two systematic problems of SP-EMAC: an underestimation of lower precipitation rates (between 1 to 5 mm/d) and a shift in peak precipitation rate from the observed value of 2.5 mm/d to almost 4 mm/d explaining the overestimation in figure 3. This feature is significant for all superparametrised simulations independent of the chosen CRM configuration. Furthermore the comparison of almost non-precipitating grid cells reveals a similar amount of dry days in comparison with the control simulation. This finding is in agreement with other models showing a similar behaviour between parametrised and superparametrised simulations (see Kooperman et al., 2016, supplement S2). All in all the control simulation can reproduce the peak precipitation whereas it is skewed to larger values (above 4 mm/d). Pointing out the differences in the microphysics one has to consider the different auto-

conversion rates used within the CRM cells and within the cloud scheme of the control run. The superparametrisation uses a simple fixed conversion rate (see Khairoutdinov and Randall, 2003, Appendix D) whereas the cloud scheme uses the formulation of Beheng (1994). Focusing on this aspect Suzuki et al. (2015) has shown that the distribution of precipitation categories (non-precipitating, drizzle, rain) is dependent on its expression thereby influencing the precipitation rate. Future studies with SP-EMAC should investigate the onset of precipitation for maritime clouds in more detail or should consider using a two-moment microphysical scheme and its coupling to an aerosol submodel.

Apart from the distribution of precipitation a known problem of GCMs is the incorrect representation of the diurnal cycle in precipitation within the tropics (Collier and Bowman, 2004; Dai, 2006) (Collier and Bowman, 2004; Gu). Improvements have been suggested by Bechtold et al. (2004) for convection parametrisations based on their entrainment rates. Additionally, superparametrised GCMs have been studied and show progress in representing the diurnal cycle of precipitation and its contrast between ocean and land (Khairoutdinov et al., 2005; Zhang et al., 2008; Pritchard and Somerville, 2009a, b; Tao et al., 2009). In order to analyse this process the output has been increased to produce precipitation rates on a hourly basis for one entire month (July). Instead of using the full SP-EMAC ensemble only a subset of superparametrised simulations with an annual precipitation below 3 mm/d has been chosen. These simulations have been selected because they have the smallest difference in comparison to observational data (compare with table 2). The hourly output has been compared to multi-monthly July averages of TRMM data between 1998 and 2010. Figure 6 displays the averaged diurnal precipitation transformed to local solar time for continental and oceanic grid points between 30° latitudes around the equator. Investigating

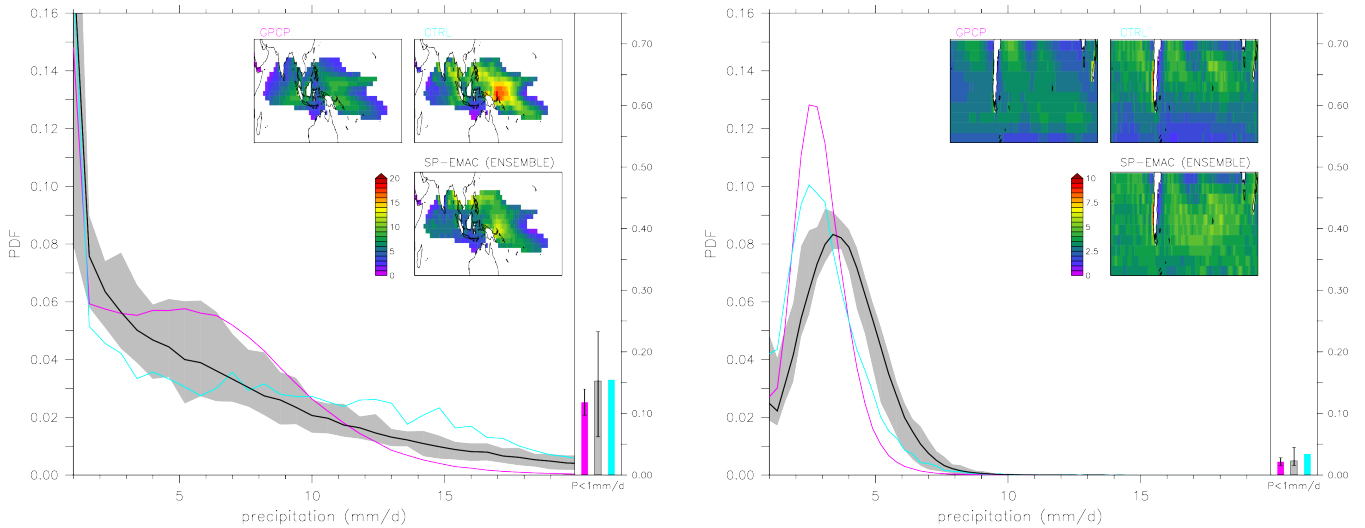


Figure 5. PDFs of monthly precipitation rates for the Warm Pool region and southern ocean mid-latitudes comparing to 30-years of GPCP data (same as in table 2). Maps show yearly averaged rates for the specified region in mm/d. On the right hand side of each figure the fraction of non-precipitating cells (below 1 mm/d) is displayed including the interannual variability for the GPCP data and the variability induced by different SP-EMAC configurations (uncertainty bars). Note: x-axis begins at 1 mm/d.

the diurnal precipitation over land observational evidence exposes a peak around 17 LT and an onset in precipitation around 9 LT. The control simulation does not reproduce any of these timings confirming the difficulty of GCMs including convection parametrisations to correctly simulate the diurnal cycle. The onset and peak of precipitation is around 3 hours too early and the amplitude is overestimated. Many aspects of this evolution can be attributed to diminishing CIN (convective inhibition) during sunrise and increasing CAPE (convective available potential energy) during the day that are the basis of triggering and sustaining the convection parametrisation. The shift of a too early precipitation onset is substantially improved using any kind of SP-EMAC simulation. Independent of the CRM configuration the timing of the onset of precipitation is almost perfectly reflected in comparison to TRMM data 12-year averaged TRMM data for the month of July (see figure 6). This indicates that cloud evolution is not only coupled to the diurnal solar insolation but follows PBL evolution. In contrast diurnal peak precipitation is completely dependent on the CRM configuration for SP-EMAC indicating values between 2.5 to 3.75 mm/d and peak time spreading from 12 LT (OR1 1km 16) to 17 LT (OR2 4km 64). Furthermore the decline in precipitation after peaking is too strong resulting in a secondary maximum during the night (between 2 to 5 LT). This secondary peak is partly visible for the TRMM data but only for spring and autumn seasons (Yang and Smith, 2006). Even if the diurnal cycle is not captured very well it has almost no influence on the global mean precipitation rate. One significant highlight corresponds to the different diurnal amplitudes, which increase with increasing number of CRM cells, whereas single simulations with 32 or 16 cells exhibit a small or

almost no diurnal cycle in precipitation.

The diurnal cycle over tropical oceans is displayed on the right side in figure 6. The observed diurnal cycle presents a peak in precipitation around 6 LT and a clear minimum in the evening hours (21 LT). A saddle point (secondary maximum) can be identified around 14 LT. The primary mechanisms to explain this cycle are: „static radiation-convection“ and „dynamic radiation-convection“ that describes the process of radiative cooling while increasing thermodynamic instability enhancing nighttime precipitation or suppressing daytime rainfall through decreased convergence into the convective region. A more detailed description and further mechanisms are given in Yang and Smith (2006).

The control simulation shows an overall overestimation of oceanic precipitation rates by 0.5 mm/d but a similar timing in peak precipitation. The simulated decline in oceanic rainfall is too steep resulting in too early minimum precipitation rate around 15 LT and an increase directly afterwards. In contrast nearly all SP-EMAC runs simulate a consistent decline as CTRL after peaking precipitation between 4 and 6 LT but remain almost constant until 21 LT. The spread in oceanic precipitation rates of the SP-EMAC ensemble is slightly lower (0.75 mm/d) compared to the diurnal cycle over land (1.25 mm/d). Analogous to the diurnal cycle over land it emerges that the amplitude of precipitation rates increases with an increasing number of CRM cells. Especially two specific configurations (OR1 2km 64 and OR2 4km 64) are in very good agreement with TRMM data. Nevertheless all simulations miss the representation of a secondary maximum around 14 LT. This effect could be due to neglected diurnal variations in prescribed SSTs thereby restraining ocean surface heating (Sui et al., 1997,

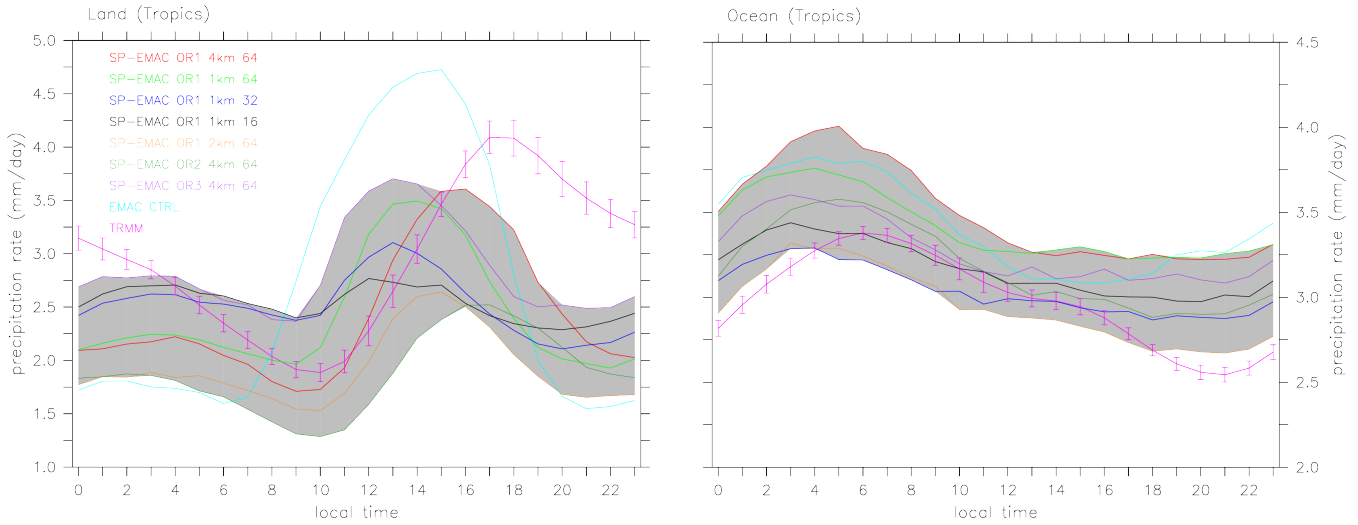


Figure 6. Comparison of diurnal tropical precipitation (30° around the equator) for land and ocean with 3-hourly TRMM data* between 1998 and 2010 for the month July. The observational standard deviation is shown by error bars indicating interannual variability in the diurnal cycle. The grey area covers the variability of all SP-EMAC configurations.

* Tropical Rainfall Measuring Mission (TRMM) (2011), TRMM (TMPA) Rainfall Estimate, L3, 3 hour, $0.25^\circ \times 0.25^\circ$, V7, Greenbelt, MD, Goddard Earth Sciences Data and Information Services Center (GES DISC), Accessed: 02/11/2018, DOI: <http://doi.org/10.5067/TRMM/TMPA/3H/7>, Huffman et al. (2007)

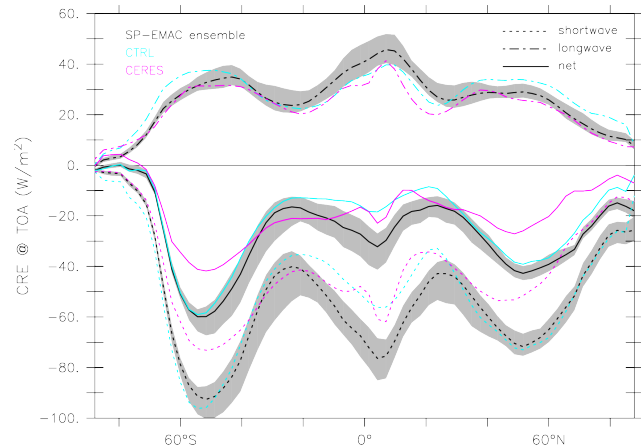


Figure 7. Zonal averaged simulated top-of-atmosphere cloud-radiative effects (CRE) compared to CERES EBAF-TOA data (2000-2010).

1998). Further investigations of 2D cloud-resolving model simulations with diurnally varying SSTs exhibit an increase in afternoon rain rates suggesting influences of ocean heating in atmospheric moistening and drying throughout the day (Cui and Li, 2009).

To complete the regional analysis of SP-EMAC cloud radiative effects at the top of the atmosphere are investigated. Ten years of satellite data of CERES are used for comparison (see table 2). CRE is divided into its longwave and shortwave component to distinguish different radiative effects. Zonal averages of cloud radiative effects are shown

in figure 7. Instead of displaying all individual SP-EMAC simulations the ensemble mean (black lines) and spread (grey area) is shown. The distribution of NetCRE shows high discrepancies in the mid-latitudes. The primary cause of this difference is induced by the shortwave component of the CRE revealing the representation of too reflective clouds in all simulations for this region. Moreover, seasonal variation for CRE_{SW} are enhanced in all SP-EMAC simulations as well as in the control run. Smaller deviations for NetCRE are visible in the ITCZ for SP-EMAC compensated by even larger differences for the individual components CRE_{SW} and CRE_{LW} . Comparing CTRL and SP-EMAC in a comprehensive sense it emerges that overall CTRL represents the zonal NetCRE distribution slightly better especially in the Tropics. This is sometimes due to compensating errors.

On a closer look many SP-EMAC configurations improve the longwave and shortwave component in the mid-latitudes. Nevertheless dependent on the CRM configuration there exists high differences even in the zonal mean distribution. To identify regions with significant differences figure 8 shows absolute differences of NetCRE, CRE_{SW} and CRE_{LW} . Similar t-Tests as for figure 4 have been performed to obtain important areas that deviate from CERES observations. Thereby non-significant differences are shown in white. Blue areas indicate regions where cloud radiative effects are stronger (higher cooling) whereas red areas specify less cooling or even a warming effect of clouds. Comparing the differences in NetCRE maps in figure 8 it is apparent that CTRL show larger areas of significant differences especially a positive bias over the oceans. The underestimation of cloud

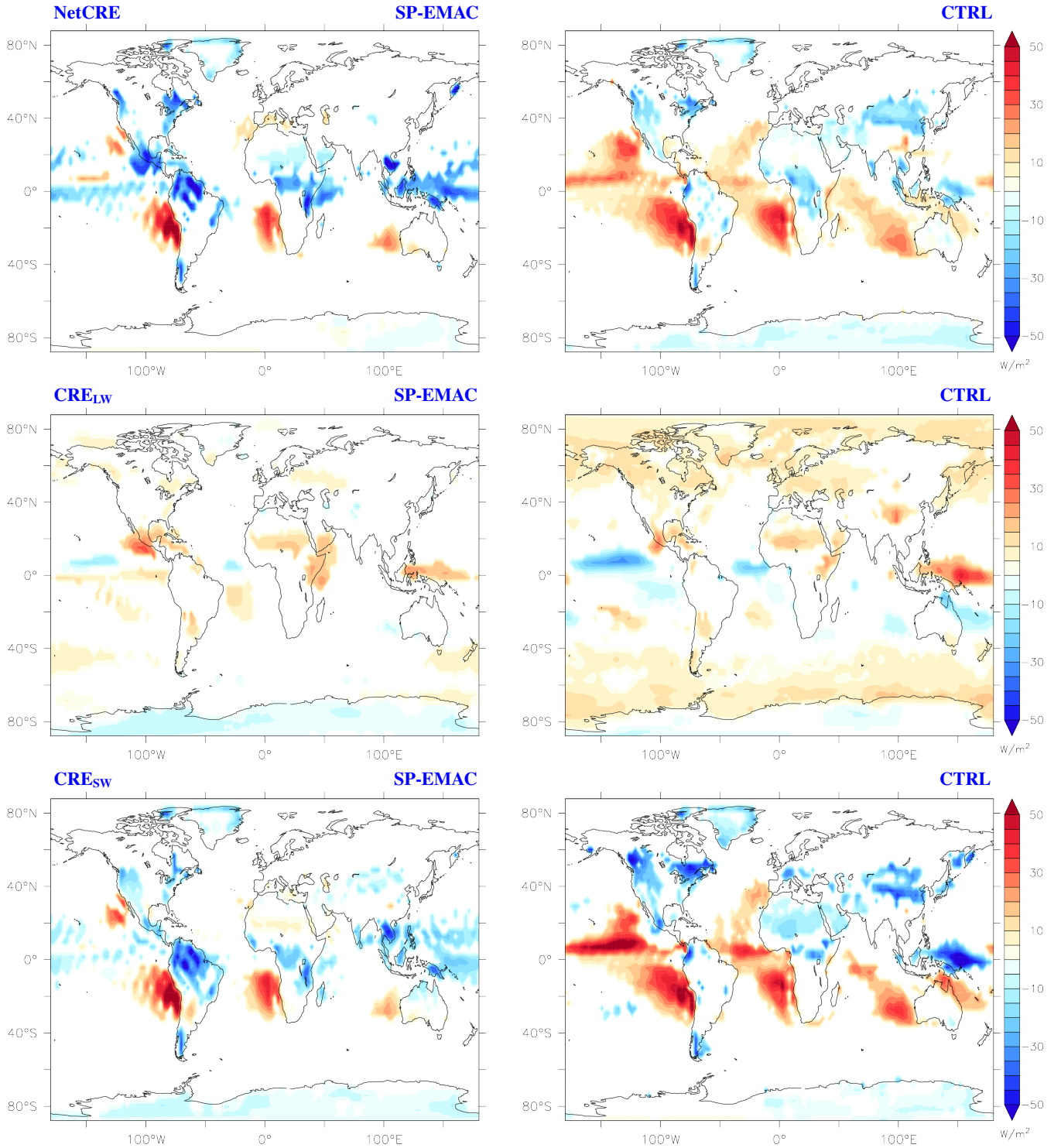


Figure 8. Differences in simulated minus observed cloud radiative effects at TOA (net - upper row, longwave - middle row, shortwave - lower row). Results for SP-EMAC ensemble (left column) and CTRL (right column) are shown comparing to global observations (CERES). Colored areas show only regions with significant differences in cloud radiative effects (analysed with t-Tests on a significance level of 90%).

radiative effects for CTRL over the oceans is because of a much higher shortwave component in these regions marking a reduced amount in low cloud cover or less reflective clouds

in the areas of stratocumulus decks. Using a superparametrisation in EMAC results in smaller discrepancies for all CRE components. In particular the formerly mentioned regions

demonstrate a better representation of radiative effects of low clouds. However a significant reduction of about 10 W/m^2 to 20 W/m^2 is visible for the Western Pacific region in many SP-EMAC simulations. Evaluating the longwave and shortwave component in these region it became apparent that deep convective clouds have an increased optical depth for many CRM configurations and concurrently a higher liquid and ice water content than the control simulation (not shown). Further important differences are visible for CRE_{LW} in the control simulation. A stronger warming over the complete southern ocean and the arctic region is apparent as a result of a too high liquid water path in these regions. Lastly, comparing all maps from top to bottom in figure 8, it is possible to easily identify regions that show almost no significant difference in NetCRE because of compensating errors in the longwave and shortwave part. Affected areas are: Central Africa, Central America and the Caribbean Sea for SP-EMAC and the Sahara, Greenland, North America, the Arctic and the Southern Ocean for CTRL. Thereby it is evident that NetCRE should not be used as a single metric to evaluate cloud radiative effects and the performance of a GCM. All in all, CRE is influenced by multiple factors: insolation, cloud amount, cloud type and surface properties (albedo). Only cloud amount and cloud type changes are relevant for explaining differences between SP-EMAC and CTRL (excluding glaciers and snow-covered areas that increase surface albedo). Even if SP-EMAC seems to reduce CRE errors, different configurations show significant different results. Therefore it is not Future studies with SP-EMAC should always look at the different cloud radiative effects to avoid misinterpretations of model results. This is necessary because not all SP-EMAC configurations are equally appropriate to use any CRM configuration as a superparametrisation in EMAC. This addresses the need for a tuning activity for SP-EMAC in the near future.

3.3 Issues due to CRM's configuration

The global evaluation of SP-EMAC in chapter 3.1 has revealed some major influences of the CRM configuration onto the mean climate state. Summarizing table 2 it can be shown that all SP-EMAC simulations can be split into two ensemble subsets depending on their mean land surface temperature and precipitation rate. This is in particular very important concerning regional aspects of clouds and precipitation. Simulations with a maximum surface temperature of 290 K and precipitation rate below 3.0 mm/d are referred to sub-ensemble A whereas all other simulations ($T_s > 290 \text{ K}$; $P < 3.0 \text{ mm/d}$) characterise sub-ensemble B. Based upon the global mean Taylor diagrams in figure 2 no clear separation of several SP-EMAC simulations in two branches is noticeable. Tracking down other differences than mean surface temperatures and precipitation rates among SP-EMAC simulations the distribution of surface

heat fluxes is observed. Figure ?? analysed. Figure 9 shows the Taylor diagram of sensible and latent heat flux over land and its mean zonal distribution. The fluxes are compared to NCEP reanalysis data (compare with table 2) between 1979 and 2010. Evaluating the Taylor diagram it is clearly visible that heat fluxes are rapidly degraded for sub-ensemble B. Especially latent heat fluxes are strongly influenced displaying a very low correlation and standard deviation compared to the reanalysis data. This deterioration is a clear consequence of lower precipitation rates over land inducing stronger surface temperature changes. The latter stabilize the temperature gradient of the troposphere creating a positive feedback in reducing the probability of deep convective clouds with heavy precipitation. The zonal distribution in figure ?? emphasize a significant global reduction of the latent heat flux for sub-ensemble B and an overestimation of the sensible heat flux. Additionally, a very similar distribution in comparison with observations is depicted by sub-ensemble A with slightly improved correlations for both heat fluxes comparing to CTRL. well reproduced and all simulations are bulked together. This clustering suggests that boundary fluxes are hardly affected even if the variability in mean global lowermost model temperature shows a not negligible range of 1 K . The analysis of heat fluxes clearly shows that a changing configuration of the superparametrisation impacts the configuration (changing the size, number and orientation of the CRM) does not impact lower tropospheric properties on a global scale representing a different kind of climate state. Focusing on sub-ensemble B and its specific configurations it is interesting to notice that mainly OR2 and OR3 orientations (north-south orientation and 3D-CRM) with CRM grid spacing mostly below 4 km are included in this subset. This could indicate that the. This independence of boundary layer fluxes on the SP-EMAC configuration is an addition to the analysis of Sun and Pritchard (2018) and Qin et al. (2018) providing a better or equal representation of the thermal and hydrologic coupling. One further modification to expand this framework could be the consideration of the large-scale directional wind speed has an impact on the simulated fields and further suggestions like allowing 2D-CRM orientations to vary with time could avoid this problem (Cheng and Xu, 2014; Jung and Arakawa, 2016). Especially only one three-dimensional setup within the CRM. All two-dimensional setup use either the zonal (OR1 cases) or meridional wind component (OR3 4km – 64) and one two-dimensional (OR2 4km – 64) setup illustrate a climate state with T_s above 290 K and P below 3.0 mm/d suggesting that all other 3D-CRM (or 2D north-to-south oriented) setups are too small to realistically represent correct lower troposphere features. Nonetheless heat fluxes are not the only aspect of the sub-ensembles that differ significantly. Because precipitation rates show a small indication of dividing the SP-EMAC simulations into two branches it is cases). Allowing the 2D-CRM to vary with time

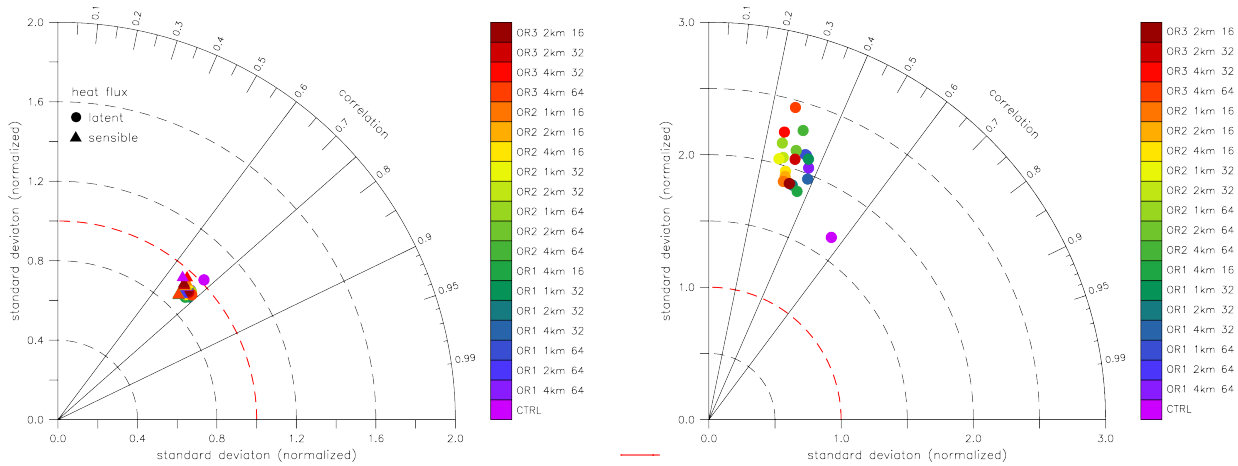


Figure 9. Global Taylor diagram (left) and zonal-plots diagrams of sensible and latent heat fluxes over land (left) and cloud optical thickness (right) over land points only. Sub-ensembles are highlighted in the Taylor diagram with blue and red circles. For comparison purposes reanalysis data of NCEP is taken to compare all simulations with respect to heat fluxes and MODIS retrievals provide estimates of cloud optical properties.

(Grabowski, 2004a; Cheng and Xu, 2014; Jung and Arakawa, 2016) complete fair comparison with MODIS would imply have an impact on the boundary layer turbulence and hence modifying the boundary layer fluxes.

Instead of analysing indirect effects like surface fluxes, global mean precipitation shows a more widely dispersed result in figure 2. In order to look at rather explicit effects of the CRM on cloud properties it is therefore straightforward to observe cloud related variables. Therefore cloud optical thickness (COT) for continental clouds is examined using satellite data from the Moderate Resolution Imaging Spectroradiometer (MODIS) collection 5.1. **Observation** Observations between 2003 and 2015 from the combined Terra and Aqua satellites are remapped onto the coarse GCM grid and used for comparison purposes. Figure ??-9 shows the Taylor diagram and zonal distribution of cloud optical thickness. **Similar to the heat fluxes the Taylor diagram for cloud optical thickness clearly separates all simulations of sub-ensemble A from sub-ensemble B. Apart from that, a better performance is indicated for the latter one because of a reduced standard deviation. The zonal distribution clarifies the improved representation for sub-ensemble B by a decline in optical thickness within** As opposed to the Taylor diagram of heat fluxes a more widespread depiction of the **ITCZ** SP-EMAC ensemble is apparent for COT. It clearly shows that cloud optical properties significantly changed within SP-EMAC in comparison to the control simulation. Generally speaking all SP-EMAC simulations display a similar distribution as CTRL in the mid-latitudes whereas tropical cloud thicknesses over land are overestimated (not shown). This increase in COT partly explains the stronger cloud radiative effects for all SP-EMAC runs compensating the overall reduced simulated cloud amount total cloud cover. However, the comparison with MODIS data shows a strongly reduced correlation.

the usage of the CFMIP Observational Simulator Package (COSP, (Bodas-Salcedo et al., 2011; Swales et al., 2018)). In addition to that the neglect of subgrid-scale cloud variability is an important aspect to consider using the simulator (Song et al., 2018). Therefore this comparison should be treated as a proxy to display the robust differences between SP-EMAC and CTRL including an observational reference for COT.

Although the representation of cloud optical thickness shows a larger spread within the SP-EMAC ensemble it is not straightforward to identify CRM characteristics regulating the behaviour of the model. For this purpose sub-ensembles are constructed to represent distinguishable results based upon the sub-ensemble typical feature. All 19 SP-EMAC simulations are described by three configurational aspects (differentiated by three different states; see Table 1). These aspects are used to create nine sub-ensembles consisting of the same state of the configurational assignment, i.e.:

- SP-EMAC OR1 consists of all simulations including the east-west orientation (simulation no. 1 to 7 in table 1)
- SP-EMAC OR2 includes sim. no. 8 to 15
- SP-EMAC OR3 covers sim. no. 16 to 19
- SP-EMAC 1km represents all simulations with a CRM grid size of 1 km (sim. no.: 6, 7, 13, 14 and 15)
- SP-EMAC 2km (sim. no.: 4, 5, 10, 11, 12, 18 and 19)
- SP-EMAC 4km (sim. no.: 1, 2, 3, 8, 9, 16 and 17)
- SP-EMAC n16 describes all simulations with 16 CRM cells (sim. no.: 3, 9, 12, 15 and 19)

- SP-EMAC n32 (sim. no.: 2, 5, 7, 11, 14, 17 and 18)
- SP-EMAC n64 (sim. no.: 1, 4, 6, 8, 10, 13 and 16)

The aforementioned sub-ensembles are compared to the full SP-EMAC ensemble in order to distinguish effects that result from a specific configuration. Because cloud related properties experience larger impacts due to a different configuration full atmosphere cloud amounts are examined in Figure 10.

Annual-averages of zonal-mean cloud amounts for CTRL and the full SP-EMAC ensemble are displayed in the top row as a reference. SP-EMAC simulates lower cloud top heights than the control simulation and more pronounced convective cloud coverage within the ITCZ. An increased coverage of boundary layer clouds in the southern mid-latitudes is visible. Despite the fact that major differences between the control simulation and SP-EMAC occur sub-ensemble are analysed and compared to the full SP-EMAC ensemble. Absolute differences are displayed in Figure 10 highlighting higher cloud amounts than the reference in red colors. The partitioning of all SP-EMAC simulations into separate sub-ensembles lead to an easy identification of significant cloud amount changes due to different CRM configurations. Sub-ensembles of SP-EMAC OR2, SP-EMAC 2km, SP-EMAC 4km and SP-EMAC n32 show only minor differences in comparison to the full SP-EMAC ensemble. Regarding the orientation cloud amounts show a slight increase in the mid-latitudes for the zonal (OR1) CRM orientation whereas the full three-dimensional orientation imprints a significant decrease for cloud amounts above 900 hPa. Additionally, an increase of boundary layer clouds in the southern hemisphere mid-latitudes of SP-EMAC OR3 expose an effect of the lower tropospheric winds on cloud amount. Regarding the CRM grid size it is clearly evident that a higher CRM resolution increase the amount of boundary layer clouds (see SP-EMAC 1km in Fig. 10) which confirms the sensitivity study of Marchand and Ackerman (2010). Furthermore a significant decrease in cloud amount is simulated for a smaller number of CRM cells (see SP-EMAC n16). Including the overall underestimation of total cloud cover for all SP-EMAC simulations, it appears that a minimum amount of 32 CRM cells is needed to provide a correct representation of cloud development within a GCM grid cell.

Overall, it should be noted that the number of ensemble members has an effect on the results because the smaller the size of the sub-ensemble the more likely it deviates from the full SP-EMAC ensemble. Another point to mention is the vertical resolution that has been fixed to 29 levels within the CRM co-located with the lowermost GCM levels starting at the surface. Regarding shallow cumulus clouds this resolution is too coarse to explicitly represent boundary layer cloud evolution leading to a decrease in cloud top height and prohibiting the existence of cumulus-under-stratocumulus decoupled boundary layers (Parishani et al., 2017). Furthermore, the vertical resolution has an impact on the low cloud feedback under a warmer

climate (Wyant et al., 2009; Blossey et al., 2009). Apart from low level clouds it is noteworthy that vertical resolution plays an important role for mid-level and cirrus clouds. Although superparameterised simulations improve these cloud characteristics (Wyant et al., 2006b, a) it should be kept in mind that most cirrus clouds are diagnosed but not explicitly represented with the applied vertical model resolution.

In summary, it has been shown that different configurations of the CRM within SP-EMAC lead to distinctive atmospheric properties demonstrated by diverse heat fluxes and cloud optical depths and full atmosphere cloud amount. These results suggest that cloud evolution and processing within the superparametrisation is influenced because of different CRM domain compositions. Global Taylor diagram (left) and zonal plots of cloud optical thickness over land (right). The performance of the sub-ensembles are highlighted in the Taylor diagram with blue and red ellipses. Observational data is taken from MODIS retrievals. Indirect effects like the influence on global surface heat fluxes plays a minor role. Even if all members of sub-ensemble A show a better performance than sub-ensemble B SP-EMAC show a similar performance than CTRL in terms of climate metrics evaluated in section 3.1 it should be noted that further tuning is necessary. In particular it is necessary to adjust cloud amount amounts and cloud optical properties. This would further improve the simulation of cloud-radiative effects and reduce the compensation of contrarily effects.

4 Conclusions and Discussion

The concept of embedding a cloud-resolving model into a GCM has been studied for over a decade and this paper introduce another climate model incorporating this idea. The superparametrisation based upon the System for Atmospheric Modeling (SAM, Khairoutdinov et al. (2008)) has been included into the EMAC model. This study focused on the effect of different model configurations of the embedded CRM (orientation, cell size, number of cells) on climate relevant variables. For the first time the influence of different aspects of the superparametrisation has been systematically evaluated in 20-21 model simulations each spanning one year. The model runs have been compared to observations and a control simulation using a conventional convection parametrisation and a large-scale cloud microphysics scheme. The analysis of global mean statistics for all superparametrised runs encompassing the net radiative flux at TOA, surface temperature, cloud amount total cloud cover, precipitation, LWP, IWP and the net cloud radiative effect show similar results compared to the control simulation. Almost all global mean results lie within the range of CMIP5 models independent of the chosen CRM configuration. Only three-two superparametrised setups cover-

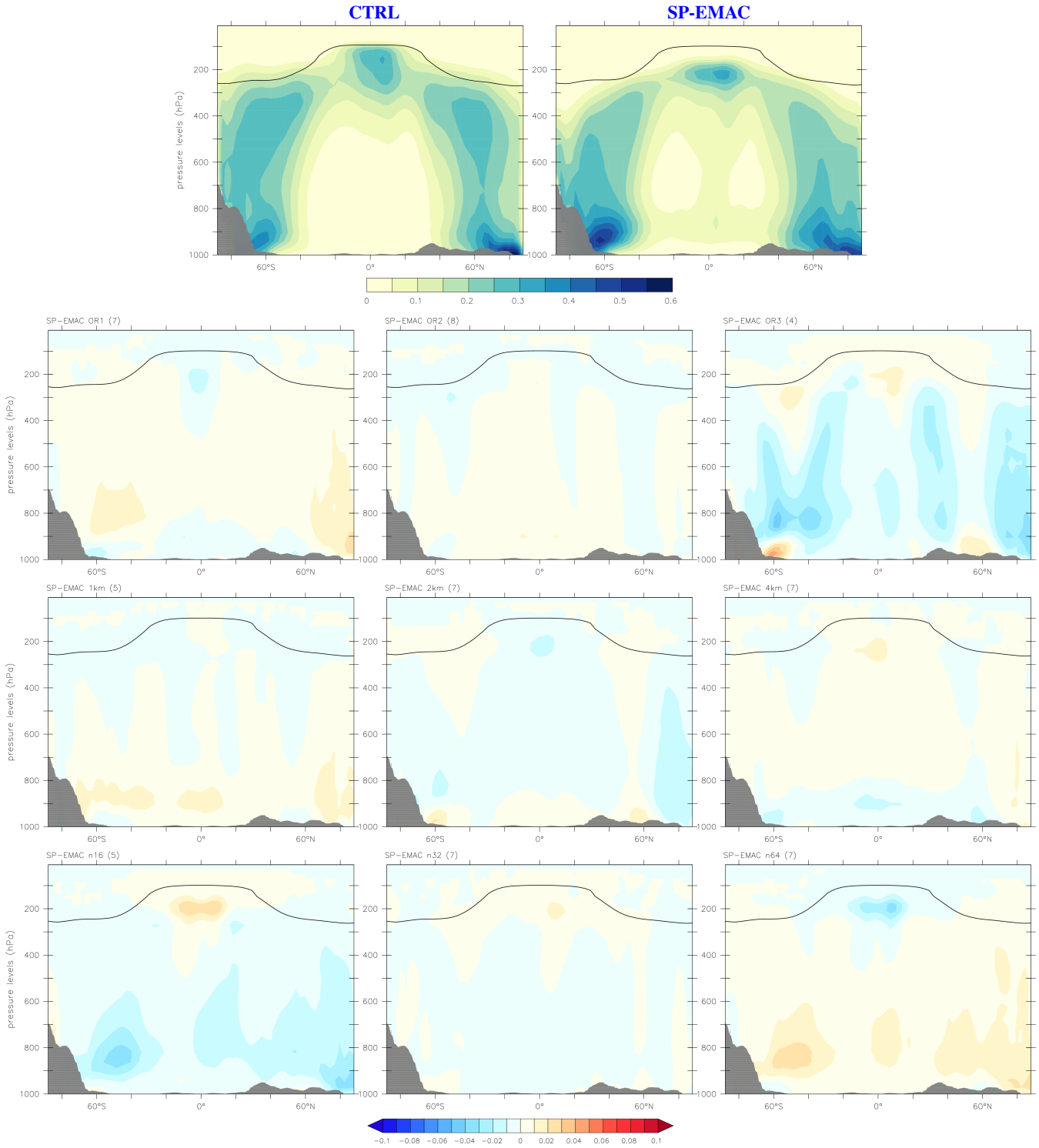


Figure 10. Top row: averaged zonal cloud amount for the SP-EMAC ensemble and the control simulation. The black line marks the tropopause height. Bottom rows display cloud amount differences of several SP-EMAC sub-ensembles in comparison to the SP-EMAC ensemble (top-right panel). The sub-ensembles are characterized by a CRM configuration feature, i.e.: SP-EMAC OR1 consists of all simulations including the east-west orientation (the number of ensemble members is given in parenthesis); OR2: sub-ensemble for north-south oriented CRM cells; OR3: sub-ensemble of full 3D CRM configurations; 1km/2km/4km: SP-EMAC simulations with CRM grid size of 1, 2 or 4 km; n16/n32/n64: SP-EMAC simulations including a total number of 16, 32, 64 CRM cells.

ing a relatively small area within the GCM grid box and a three dimensional CRM orientation simulate a high energy imbalance. This supports the assumption that a minimum ~~CRM-ensemble-size-number of CRM grid boxes~~ is necessary to represent cloud development covering all important subgrid-scales of a GCM. Taylor diagrams reveal improved representations of the longwave radiative flux at TOA, ~~total~~ cloud cover distribution and a similar distribution of atmospheric humidity using a superparametrisation in EMAC. The global distribution of precipitation rates show a degradation when comparing to GPCP data because of a too high oceanic rainfall but a better performance for the Warm Pool region. Interestingly, a rather high influence depending on the selected CRM configuration is evident concerning precipitating fields especially over the western Pacific. Related to the analysis of rainfall PDFs the amount of non-precipitating grid cells (below 1 mm/d) is highly variable indicating contrasting onsets in precipitation for different CRM configurations for the Warm Pool and southern hemisphere mid-latitude region. Nowadays state-of-the-art global cloud resolving models provide new possibilities comparing superparameterised simulations with monthly-long high resolution models (Stevens et al., 2019).

Furthermore the diurnal cycle for tropical land and oceans has been observed separately. Independent of the configuration of the superparametrisation the onset of tropical precipitation over land is in perfect agreement with TRMM data as contrasted with the control simulation. Nevertheless, the configuration of the CRM drastically changes the amplitude and peak in precipitation in the tropics. Thereby some model setups of the superparametrisation show similar precipitation peaks in the diurnal cycle as compared to the control simulation using a convection parametrisation with even diminishing amplitudes. This conclusion stands in contrast with recent literature proclaiming a great improvement in the simulation of the diurnal cycle using any kind of superparametrisation. A rather significant feature throughout the simulations is the decreasing diurnal amplitude when defining smaller sets of CRM cells for the superparametrised setup.

Regarding the cloud-radiation interaction it appears that the control simulation shows a slightly better representation of the net cloud radiative effect comparing the zonal distribution. However a regional analysis demonstrates that larger areas display significant differences in CRE contrasting the control simulation with the superparametrised runs. In comparison with CERES satellite data and the distribution of the longwave and shortwave CRE it is evident that many regions show opposing effects resulting in compensating errors in the NetCRE. Many setups of the superparametrisation show improvements especially over oceanic regions for CRE_{LW} and CRE_{SW} but this can not be stated for any kind of CRM setup. Further evaluation of radiative fluxes over the Southern Ocean with SP-EMAC should keep in mind the rather simplified microphysics within the CRM.

The partitioning of cloud ice and cloud water within a one-moment microphysical scheme can not handle the representation of supercooled liquid clouds. These seem to have a significant effect on the solar radiation budget in this region (Bodas-Salcedo et al., 2016). The option to switch the microphysical scheme to a two-moment scheme has been added in a newer version of SP-EMAC and provides new possibilities to study these effects.

A major consideration in this study has been the issues associated with changes in CRM orientation, size or the numbers of small-scale grid cells. It has been shown that global lower tropospheric features in particular surface heat fluxes are ~~primarily-hardly~~ influenced when changing CRM aspects ~~representing different kind of climate states. These differences are mainly induced by feedback mechanisms through perturbations of precipitation efficiency, atmospheric stability and surface properties. Thereby a smaller but still similar impact is visible regarding cloud optical thickness over land.~~ These results support the research of Sun and Pritchard (2018) and Qin et al. (2018) showing an improvement in thermal and hydrologic coupling using a superparameterisation in one explicit configuration. Opposed to these indirect effects of the CRM onto climate relevant variables cloud related properties display a significant spread due to different CRM configurations. Evaluation of full atmosphere cloud amounts suggests that a minimum number of 32 CRM cells is required to improve and account for a realistic cloud development within a GCM cell. Furthermore smaller CRM size increases boundary layer cloud amounts independent of the assumed orientation. These configurational dependencies are important to characterize ~~for~~ further EMAC model simulations using a similar kind of CRM setups.

The usage of superparametrised GCMs is still highly computational expensive (factor 15 to 45 increase in CPU time using 16 to 64 cells in a 2D orientation; factor 40 to 120 using the full 3D setup with 16 to 64 cells for EMAC simulations) and it is thereby desirable to use as few as possible resources without significantly modifying the model performance. ~~For the superparametrised EMAC it has been shown that using the north-south-oriented CRM it is necessary to have at least 64 cells with a 4 km cell size to obtain similar metrics as the control simulation. The same result is obtained for the 3D configuration. The east-west configuration shows a lower sensitivity when using a different kind of setup suggesting that an ensemble of 64 cells provide enough variability to reproduce a realistic mean statistical subgrid-scale feedback for CRM grid cell sizes between 1 and 4 km.~~ All in all, it is ~~therefore~~ recommended to use ~~64~~ at least 32 cells for any setup of the superparametrisation and even proportionally more if sub-kilometre CRM grid sizes are applied. Furthermore, based on the performed analysis it is assumed that increasing the GCMs resolution to grid spacing between 50 to 100 km and successively adapting the CRM domain could lead to unexpected results because CRM ~~ensemble~~-statistics

influence the mean climate state. Further research is required to fully answer the effect of changing the GCM grid size (i.e. modified CRM forcing) within a superparameterisation framework as proposed by Heinze et al. (2017b). In particular it seems that cloud evolution inside of the CRM is prevented using 32–16 or less cells thereby it is necessary to establish the communication across GCM cells (Arakawa et al., 2011; Jung and Arakawa, 2010).

This work has specifically been constructed to diagnose the horizontal configuration of the embedded CRM neglecting the possibility to adapt the vertical resolution. This issue has been demonstrated in Parishani et al. (2017) improving the representation of boundary layer clouds with increased vertical resolution. Most of the past research concerning superparameterisations have assumed that the vertical grids of the CRM and GCM are the same. Only recently a regional superparameterisation has been developed accounting different vertical grids but still focusing on shallow cumulus clouds (Jansson et al., 2019). Nevertheless more research is required in this field because most studies neglect the potential to improve mid-level cloudiness using a higher vertical resolution (Stevens et al., 2020).

In conclusion, a last point has to be taken into account that deals with the almost neglected tuning process of the superparametrised version of EMAC. In order to optimise a GCM thousands of model runs are required to cover the complete parametric space of tunable variables. In addition to that, multiple process- or target-oriented constraints should be used to achieve a best model estimate for present-day climatology (Hourdin et al., 2017). Within this study the only limitation has been the energy balance at the top of the atmosphere. Future studies should for the time being focus on tuning this version of EMAC to multiple observational data sets especially aiming attention at ~~cloud amounts~~ total cloud cover. Because of the high computational expense it would be advantageous to use shorter hindcast simulations with an automatic tuning in order to accelerate the progress of the superparametrised version of EMAC (Zhang et al., 2018).

The modular framework of MESSy provides an optimal model structure to easily couple the superparameterisation with other submodels. First steps has been taken to adapt cloud optical calculations and the radiative transfer scheme to be applied with subgrid-scale outputs of the CRM. Other future studies should deal with transporting chemical tracers within the superparameterisation. This would give new insights when evaluating the subgrid-scale transport of various trace gases and their diverse atmospheric lifetimes in comparison to GCM transport routines using parametrised mass-fluxes to describe the vertical transport.

Code availability. The Modular Earth Submodel System (MESSy) is continuously further developed and applied by a consortium of institutions. The usage of MESSy and access to the source code is licensed to all affiliates of institutions which are members of

the MESSy Consortium. Institutions can become a member of the MESSy Consortium by signing the MESSy Memorandum of Understanding. More information can be found on the MESSy Consortium Website (www.messy-interface.org).

If eligible access can be granted to the model source code under zenodo (Rybka and Tost, 2019b). The scripts to analyse the simulations and generate the same kind of figures are archived under zenodo as well (Rybka and Tost, 2019a).

The code for using the superparametrised version of EMAC used in this manuscript will be included in the next official MESSy version (v2.55).

Data availability. All presented datasets are freely available. If possible DOIs or corresponding websites have been issued containing a brief summary of the corresponding dataset and a link to the data access page.

Author contributions. HR and HT designed the experiments. HR implemented the model code, performed the simulations and analysed the data. HR wrote the manuscript with support from HT. HT supervised the project.

Competing interests. The authors declare that they have no conflict of interest.

Acknowledgements. Parts of this research were conducted using the supercomputer Mogon and/or advisory services offered by Johannes Gutenberg University Mainz (<https://hpc.uni-mainz.de>), which is a member of the AHRP (Alliance for High Performance Computing in Rhineland Palatinate, www.ahrp.info) and the Gauss Alliance e.V. The authors gratefully acknowledge the computing time granted on the supercomputer Mogon at Johannes Gutenberg University Mainz.

References

- Adler, R., Sapiiano, M., Huffman, G., Wang, J., Gu, G., Bolvin, D., Chiu, L., Schneider, U., Becker, A., Nelkin, E., Xie, P., Ferraro, R., and Shin, D.: The Global Precipitation Climatology Project (GPCP) monthly analysis (New Version 2.3) and a review of 2017 global precipitation, *Atmosphere*, 9, <https://doi.org/10.3390/atmos9040138>, 2018.
- Arakawa, A., Jung, J. H., and Wu, C. M.: Toward unification of the multiscale modeling of the atmosphere, *Atmospheric Chemistry and Physics*, 11, 3731–3742, <https://doi.org/10.5194/acp-11-3731-2011>, 2011.
- Baumgaertner, A. J. G., Joeckel, P., Kerkweg, A., Sander, R., and Tost, H.: Implementation of the Community Earth System Model (CESM) version 1.2.1 as a new base model into version 2.50 of the MESSy framework, *Geosci. Model Dev.*, 9, 125–135, <http://www.geosci-model-dev.net/9/125/2016/>, 2016.
- Bechtold, P., Chaboureaud, J. P., Beljaars, A., Betts, A. K., Kohler, M., Miller, M., and Redelsperger, J. L.: The simulation of the diurnal cycle of convective precipitation over land in a global

- model, *Quarterly Journal of the Royal Meteorological Society*, 130, 3119–3137, 2004.
- Beheng, K.: A parameterization of warm cloud microphysical conversion processes, *Atmospheric Research*, 33, 193 – 206, [https://doi.org/10.1016/0169-8095\(94\)90020-5](https://doi.org/10.1016/0169-8095(94)90020-5), 11th International Conference on Clouds and Precipitation, Part II, 1994.
- Blossey, P. N., Bretherton, C. S., and Wyant, M. C.: Subtropical Low Cloud Response to a Warmer Climate in a Superparameterized Climate Model. Part II: Column Modeling with a Cloud Resolving Model, *Journal of Advances in Modeling Earth Systems*, 1, <https://doi.org/10.3894/JAMES.2009.1.8>, 2009.
- Bodas-Salcedo, A., Webb, M. J., Bony, S., Chepfer, H., Dufresne, J.-L., Klein, S. A., Zhang, Y., Marchand, R., Haynes, J. M., Pincus, R., and John, V. O.: COSP: Satellite simulation software for model assessment, *Bulletin of the American Meteorological Society*, 92, 1023–1043, <https://doi.org/10.1175/2011BAMS2856.1>, 2011.
- Bodas-Salcedo, A., Hill, P., Furtado, K., Williams, K., Field, P., Manners, J., Hyder, P., and Kato, S.: Large Contribution of Supercooled Liquid Clouds to the Solar Radiation Budget of the Southern Ocean, *Journal of Climate*, 29, <https://doi.org/10.1175/JCLI-D-15-0564.1>, 2016.
- Boucher, O., Randall, D., Artaxo, P., Bretherton, C., Feingold, G., Forster, P., Kerminen, V.-M., Kondo, Y., Liao, H., Lohmann, U., Rasch, P., Satheesh, S., Sherwood, S., Stevens, B., and Zhang, X.: Clouds and Aerosols, book section 7, pp. 571–658, Cambridge University Press, Cambridge, United Kingdom and New York, NY, USA, <https://doi.org/10.1017/CBO9781107415324.016>, www.climatechange2013.org, 2013.
- Calisto, M., Folini, D., Wild, M., and Bengtsson, L.: Cloud radiative forcing intercomparison between fully coupled CMIP5 models and CERES satellite data, *Annales Geophysicae*, 32, 793–807, <https://doi.org/10.5194/angeo-32-793-2014>, 2014.
- Cheng, A. and Xu, K.-M.: An explicit representation of vertical momentum transport in a multiscale modeling framework through its 2-D cloud-resolving model component, *Journal of Geophysical Research: Atmospheres*, 119, 2356–2374, <https://doi.org/10.1002/2013JD021078>, 2014.
- Cheng, A. N. and Xu, K. M.: Diurnal variability of low clouds in the Southeast Pacific simulated by a multiscale modeling framework model, *Journal of Geophysical Research: Atmospheres*, 118, 9191–9208, <https://doi.org/10.1002/jgrd.50683>, 2013.
- Cole, J. N. S., Barker, H. W., Randall, D. A., Khairoutdinov, M. F., and Clothiaux, E. E.: Global consequences of interactions between clouds and radiation at scales unresolved by global climate models, *Geophysical Research Letters*, 32, L06 703, <https://doi.org/10.1029/2004GL020945>, 2005.
- Collier, J. C. and Bowman, K. P.: Diurnal cycle of tropical precipitation in a general circulation model, *Journal of Geophysical Research: Atmospheres*, 109, <https://doi.org/10.1029/2004JD004818>, d17105, 2004.
- Cui, X. and Li, X.: Diurnal responses of tropical convective and stratiform rainfall to diurnally varying sea surface temperature, *Meteorology and Atmospheric Physics*, 104, 53–61, <https://doi.org/10.1007/s00703-008-0016-1>, 2009.
- Dai, A.: Precipitation Characteristics in Eighteen Coupled Climate Models, *Journal of Climate*, 19, 4605–4630, <https://doi.org/10.1175/JCLI3884.1>, 2006.
- Demory, M.-E., Vidale, P. L., Roberts, M. J., Berrisford, P., Strachan, J., Schiemann, R., and Mizielinski, M. S.: The role of horizontal resolution in simulating drivers of the global hydrological cycle, *Climate Dynamics*, 42, 2201–2225, <https://doi.org/10.1007/s00382-013-1924-4>, 2014.
- Dietmüller, S., Jöckel, P., Tost, H., Kunze, M., Gellhorn, C., Brinkop, S., Frömming, C., Ponater, M., Steil, B., Lauer, A., and Hendricks, J.: A new radiation infrastructure for the Modular Earth Submodel System (MESSy, based on version 2.51), *Geoscientific Model Development*, 9, 2209–2222, <https://doi.org/10.5194/gmd-9-2209-2016>, 2016.
- Elliott, E. J., Yu, S., Kooperman, G. J., Morrison, H., Wang, M., and Pritchard, M. S.: Sensitivity of summer ensembles of fledgling superparameterized U.S. mesoscale convective systems to cloud resolving model microphysics and grid configuration, *Journal of Advances in Modeling Earth Systems*, 8, 634–649, <https://doi.org/10.1002/2015MS000567>, 2016.
- Eyring, V., Bony, S., Meehl, G. A., Senior, C. A., Stevens, B., Stouffer, R. J., and Taylor, K. E.: Overview of the Coupled Model Intercomparison Project Phase 6 (CMIP6) experimental design and organization, *Geoscientific Model Development*, 9, 1937–1958, <https://doi.org/10.5194/gmd-9-1937-2016>, 2016.
- Flato, G., Marotzke, J., Abiodun, B., Braconnot, P., Chou, S., Collins, W., Cox, P., Driouech, F., Emori, S., Eyring, V., Forest, C., Gleckler, P., Guilyardi, E., Jakob, C., Kattsov, V., Reason, C., and Rummukainen, M.: Evaluation of Climate Models, book section 9, p. 741–866, Cambridge University Press, Cambridge, United Kingdom and New York, NY, USA, <https://doi.org/10.1017/CBO9781107415324.020>, www.climatechange2013.org, 2013.
- Grabowski, W. W.: Coupling cloud processes with the large-scale dynamics using the Cloud-Resolving Convection Parameterization (CRCP), *Journal of the Atmospheric Sciences*, 58, 978–997, [https://doi.org/10.1175/1520-0469\(2001\)058<0978:CCPWT>2.0.CO;2](https://doi.org/10.1175/1520-0469(2001)058<0978:CCPWT>2.0.CO;2), 2001.
- Grabowski, W. W.: An improved framework for superparameterization, *Journal of the Atmospheric Sciences*, 61, 1940–1952, [https://doi.org/10.1175/1520-0469\(2004\)061<1940:AIFFS>2.0.CO;2](https://doi.org/10.1175/1520-0469(2004)061<1940:AIFFS>2.0.CO;2), 2004a.
- Grabowski, W. W.: An Improved Framework for Superparameterization, *Journal of the Atmospheric Sciences*, 61, 1940–1952, [https://doi.org/10.1175/1520-0469\(2004\)061<1940:AIFFS>2.0.CO;2](https://doi.org/10.1175/1520-0469(2004)061<1940:AIFFS>2.0.CO;2), 2004b.
- Grabowski, W. W.: Towards Global Large Eddy Simulation: Super-Parameterization Revisited, *Journal of the Meteorological Society of Japan. Ser. II*, 94, 327–344, <https://doi.org/10.2151/jmsj.2016-017>, 2016.
- Grabowski, W. W. and Smolarkiewicz, P. K.: CRCP: a Cloud Resolving Convection Parameterization for modeling the tropical convecting atmosphere, *Physica D*, 133, 171–178, [https://doi.org/10.1016/S0167-2789\(99\)00104-9](https://doi.org/10.1016/S0167-2789(99)00104-9), 1999.
- Guichard, F., Petch, J. C., Redelsperger, J.-L., Bechtold, P., Chaboureaud, J.-P., Cheinet, S., Grabowski, W., Grenier, H., Jones, C. G., Köhler, M., Piriou, J.-M., Tailleux, R., and Tomasini, M.: Modelling the diurnal cycle of deep precipitating convection over land with cloud-resolving models and single-column models, *Q.J.R. Meteorol. Soc.*, 130, 3139–3172, <http://dx.doi.org/10.1256/qj.03.145>, 2004.

- Gustafson, W. I., Berg, L. K., Easter, R. C., and Ghan, S. J.: The Explicit-Cloud Parameterized-Pollutant hybrid approach for aerosol-cloud interactions in multiscale modeling framework models: tracer transport results, *Environmental Research Letters*, 3, 025 005, 2008.
- Haarsma, R. J., Roberts, M. J., Vidale, P. L., Senior, C. A., Bellucci, A., Bao, Q., Chang, P., Corti, S., Fučkar, N. S., Guemas, V., von Hardenberg, J., Hazeleger, W., Kodama, C., Koenigk, T., Leung, L. R., Lu, J., Luo, J.-J., Mao, J., Mizielinski, M. S., Mizuta, R., Nobre, P., Satoh, M., Scoccimarro, E., Semmler, T., Small, J., and von Storch, J.-S.: High Resolution Model Intercomparison Project (HighResMIP v1.0) for CMIP6, *Geoscientific Model Development*, 9, 4185–4208, <https://doi.org/10.5194/gmd-9-4185-2016>, 2016.
- Haynes, J. M., Jakob, C., Rossow, W. B., Tselioudis, G., and Brown, J.: Major Characteristics of Southern Ocean Cloud Regimes and Their Effects on the Energy Budget, *Journal of Climate*, 24, 5061–5080, <https://doi.org/10.1175/2011JCLI4052.1>, 2011.
- Heinze, R., Dipankar, A., Henken, C. C., Moseley, C., Sourdeval, O., Trömel, S., Xie, X., Adamidis, P., Ament, F., Baars, H., Barthlott, C., Behrendt, A., Blahak, U., Bley, S., Brdar, S., Brueck, M., Crewell, S., Deneke, H., Di Girolamo, P., Evaristo, R., Fischer, J., Frank, C., Friederichs, P., Göcke, T., Gorges, K., Hande, L., Hanke, M., Hansen, A., Hege, H.-C., Hoose, C., Jahns, T., Kalthoff, N., Klocke, D., Kneifel, S., Knippertz, P., Kuhn, A., van Laar, T., Macke, A., Maurer, V., Mayer, B., Meyer, C. I., Muppa, S. K., Neggers, R. A. J., Orlandi, E., Pantillon, F., Pospichal, B., Röber, N., Scheck, L., Seifert, A., Seifert, P., Senf, F., Siligam, P., Simmer, C., Steinke, S., Stevens, B., Wapler, K., Weniger, M., Wulfmeyer, V., Zängl, G., Zhang, D., and Quaas, J.: Large-eddy simulations over Germany using ICON: a comprehensive evaluation, *Quarterly Journal of the Royal Meteorological Society*, 143, 69–100, <https://doi.org/10.1002/qj.2947>, 2017a.
- Heinze, R., Moseley, C., Böske, L. N., Muppa, S. K., Maurer, V., Raasch, S., and Stevens, B.: Evaluation of large-eddy simulations forced with mesoscale model output for a multi-week period during a measurement campaign, *Atmospheric Chemistry and Physics*, 17, 7083–7109, <https://doi.org/10.5194/acp-17-7083-2017>, 2017b.
- Hourdin, F., Mauritsen, T., Gettelman, A., Golaz, J.-C., Balaji, V., Duan, Q., Folini, D., Ji, D., Klocke, D., Qian, Y., Rauser, F., Rio, C., Tomassini, L., Watanabe, M., and Williamson, D.: The Art and Science of Climate Model Tuning, *Bulletin of the American Meteorological Society*, 98, 589–602, <https://doi.org/10.1175/BAMS-D-15-00135.1>, 2017.
- Huffman, G. J., Bolvin, D. T., Nelkin, E. J., Wolff, D. B., Adler, R. F., Gu, G., Hong, Y., Bowman, K. P., and Stocker, E. F.: The TRMM Multisatellite Precipitation Analysis (TMPA): Quasi-Global, Multiyear, Combined-Sensor Precipitation Estimates at Fine Scales, *Journal of Hydrometeorology*, 8, 38–55, <https://doi.org/10.1175/JHM560.1>, 2007.
- Jansson, F., van den Oord, G., Pelupessy, I., Grönqvist, J. H., Siebesma, A. P., and Crommelin, D.: Regional Superparameterization in a Global Circulation Model Using Large Eddy Simulations, *Journal of Advances in Modeling Earth Systems*, 11, 2958–2979, <https://doi.org/10.1029/2018MS001600>, 2019.
- Jiang, J. H., Su, H., Zhai, C. X., Perun, V. S., Del Genio, A., Nazarenko, L. S., Donner, L. J., Horowitz, L., Seman, C., Cole, J., Gettelman, A., Ringer, M. A., Rotsteyn, L., Jeffrey, S., Wu, T. W., Briant, F., Dufresne, J. L., Kawai, H., Koshiro, T., Watanabe, M., Lécuyer, T. S., Volodin, E. M., Iversen, T., Drange, H., Mesquita, M. D. S., Read, W. G., Waters, J. W., Tian, B. J., Teixeira, J., and Stephens, G. L.: Evaluation of cloud and water vapor simulations in CMIP5 climate models using NASA "A-Train" satellite observations, *Journal of Geophysical Research-atmospheres*, 117, D14 105, <https://doi.org/10.1029/2011JD017237>, 2012.
- Joekel, P., Sander, R., Kerkweg, A., Tost, H., and Lelieveld, J.: Technical Note: The Modular Earth Submodel System (MESSy) - A new approach towards Earth System Modeling, *Atmospheric Chemistry and Physics*, 5, 433–444, <https://doi.org/10.5194/acp-5-433-2005>, 2005.
- Joekel, P., Kerkweg, A., Pozzer, A., Sander, R., Tost, H., Riede, H., Baumgaertner, A., Gromov, S., and Kern, B.: Development cycle 2 of the Modular Earth Submodel System (MESSy2), *Geoscientific Model Development*, 3, 717–752, <https://doi.org/10.5194/gmd-3-717-2010>, 2010.
- Johnson, D.: Parametrization of the cloud topped boundary layer: aircraft measurements, in: Workshop on Parametrization of the Cloud Topped Boundary layer, 8–11 June 1993, pp. 77–118, ECMWF, ECMWF, Shinfield Park, Reading, 1993.
- Jung, J. H. and Arakawa, A.: Development of a Quasi-3D Multiscale Modeling Framework: Motivation, Basic Algorithm and Preliminary results, *Journal of Advances In Modeling Earth Systems*, 2, 11, <https://doi.org/10.3894/JAMES.2010.2.11>, 2010.
- Jung, J. H. and Arakawa, A.: Simulation of subgrid orographic precipitation with an embedded 2-D cloud-resolving model, *Journal of Advances In Modeling Earth Systems*, 8, 31–40, <https://doi.org/10.1002/2015MS000539>, 2016.
- Kajikawa, Y., Miyamoto, Y., Yoshida, R., Yamaura, T., Yashiro, H., and Tomita, H.: Resolution dependence of deep convections in a global simulation from over 10-kilometer to sub-kilometer grid spacing, *Progress in Earth and Planetary Science*, 3, 16, <https://doi.org/10.1186/s40645-016-0094-5>, 2016.
- Kajikawa, Y., Yamaura, T., Tomita, H., and Satoh, M.: Impact of Tropical Disturbance on the Indian Summer Monsoon Onset Simulated by a Global Cloud-System-Resolving Model, *SOLA*, 11, 80–84, <https://doi.org/10.2151/sola.2015-020>, 2015.
- Kanamitsu, M., Ebisuzaki, W., Woollen, J., Yang, S.-K., Hnilo, J. J., Fiorino, M., and Potter, G. L.: NCEP–DOE AMIP-II Reanalysis (R-2), *Bulletin of the American Meteorological Society*, 83, 1631–1643, <https://doi.org/10.1175/BAMS-83-11-1631>, 2002.
- Karlsson, K.-G., Anttila, K., Trentmann, J., Stengel, M., Fokke Meirink, J., Devasthale, A., Hanschmann, T., Kothe, S., Jääskeläinen, E., Sedlar, J., Benas, N., van Zadelhoff, G.-J., Schlundt, C., Stein, D., Finkensieper, S., Håkansson, N., and Hollmann, R.: CLARA-A2: the second edition of the CM SAF cloud and radiation data record from 34 years of global AVHRR data, *Atmos. Chem. Phys.*, 17, 5809–5828, <https://www.atmos-chem-phys.net/17/5809/2017/>, 2017.
- Kerkweg, A. and Jöckel, P.: The 1-way on-line coupled atmospheric chemistry model system MECO(n) – Part 1: Description of the limited-area atmospheric chemistry model COSMO/MESSy, *Geoscientific Model Development*, 5, 87–110, <https://doi.org/10.5194/gmd-5-87-2012>, 2012.
- Khairoutdinov, M., Randall, D., and DeMott, C.: Simulations of the atmospheric general circulation using a cloud-resolving model as a superparameterization of physical pro-

- cesses, *Journal of the Atmospheric Sciences*, 62, 2136–2154, <https://doi.org/10.1175/JAS3453.1>, 2005.
- Khairoutdinov, M., DeMott, C., and Randall, D.: Evaluation of the simulated interannual and subseasonal variability in an AMIP-Style simulation using the CSU multi-scale modeling framework, *Journal of Climate*, 21, 413–431, <https://doi.org/10.1175/2007JCLI1630.1>, 2008.
- Khairoutdinov, M. F. and Randall, D.: High-Resolution Simulation of Shallow-to-Deep Convection Transition over Land, *Journal of the Atmospheric Sciences*, 63, 3421–3436, <https://doi.org/10.1175/JAS3810.1>, 2006.
- Khairoutdinov, M. F. and Randall, D. A.: A cloud resolving model as a cloud parameterization in the NCAR Community Climate System Model: Preliminary results, *Geophysical Research Letters*, 28, 3617–3620, <https://doi.org/10.1029/2001GL013552>, 2001.
- Khairoutdinov, M. F. and Randall, D. A.: Cloud resolving modeling of the ARM summer 1997 IOP: Model formulation, results, uncertainties, and sensitivities, *Journal of the Atmospheric Sciences*, 60, 607–625, [https://doi.org/10.1175/1520-0469\(2003\)060<0607:CRMOTA>2.0.CO;2](https://doi.org/10.1175/1520-0469(2003)060<0607:CRMOTA>2.0.CO;2), 2003.
- Knutti, R., Stocker, T. F., Joos, F., and Plattner, G. K.: Constraints on radiative forcing and future climate change from observations and climate model ensembles, *Nature*, 416, 719–723, <https://doi.org/10.1038/416719a>, 2002.
- Kodama, C., Yamada, Y., Noda, A. T., Kikuchi, K., Kajikawa, Y., Nasuno, T., Tomita, T., Yamaura, T., Takahashi, H. G., Hara, M., Kawatani, Y., Satoh, M., and Sugi, M.: A 20-Year Climatology of a NICAM AMIP-Type Simulation, *Journal of the Meteorological Society of Japan. Ser. II*, 93, 393–424, <https://doi.org/10.2151/jmsj.2015-024>, 2015.
- Kooperman, G. J., Pritchard, M. S., and Somerville, R. C. J.: Robustness and sensitivities of central U.S. summer convection in the super-parameterized CAM: Multi-model intercomparison with a new regional EOF index, *Geophysical Research Letters*, 40, 3287–3291, <https://doi.org/10.1002/grl.50597>, 2013.
- Kooperman, G. J., Pritchard, M. S., and Somerville, R. C. J.: The response of US summer rainfall to quadrupled CO₂ climate change in conventional and superparameterized versions of the NCAR community atmosphere model, *Journal of Advances in Modeling Earth Systems*, 6, 859–882, <https://doi.org/10.1002/2014MS000306>, 2014.
- Kooperman, G. J., Pritchard, M. S., Burt, M. A., Branson, M. D., and Randall, D. A.: Robust effects of cloud superparameterization on simulated daily rainfall intensity statistics across multiple versions of the Community Earth System Model, *Journal of Advances in Modeling Earth Systems*, 8, 140–165, <https://doi.org/10.1002/2015MS000574>, 2016.
- Lauer, A. and Hamilton, K.: Simulating Clouds with Global Climate Models: A Comparison of CMIP5 Results with CMIP3 and Satellite Data, *Journal of Climate*, 26, 3823–3845, <https://doi.org/10.1175/JCLI-D-12-00451.1>, 2013.
- Loeb, N. G., Wielicki, B. A., Doelling, D. R., Smith, G. L., Keyes, D. F., Kato, S., Manalo-Smith, N., and Wong, T.: Toward optimal closure of the Earth's top-of-atmosphere radiation budget, *Journal of Climate*, 22, 748–766, 2009.
- Lohmann, U. and Roeckner, E.: Design and performance of a new cloud microphysics scheme developed for the ECHAM general circulation model, *Climate Dynamics*, 12, 557–572, <https://doi.org/10.1007/s003820050128>, 1996.
- Luo, Z. and Stephens, G. L.: An enhanced convection-wind-evaporation feedback in a superparameterization GCM (SP-GCM) depiction of the Asian summer monsoon, *Geophysical Research Letters*, 33, <https://doi.org/10.1029/2005GL025060>, 2006.
- Mace, G. G.: Cloud properties and radiative forcing over the maritime storm tracks of the Southern Ocean and North Atlantic derived from A-Train, *Journal of Geophysical Research: Atmospheres*, 115, <https://doi.org/10.1029/2009JD012517>, 2010.
- Maher, P., Vallis, G. K., Sherwood, S. C., Webb, M. J., and Sansom, P. G.: The Impact of Parameterized Convection on Climatological Precipitation in Atmospheric Global Climate Models, *Geophysical Research Letters*, 45, 3728–3736, <https://doi.org/10.1002/2017GL076826>, 2018.
- Marchand, R. and Ackerman, T.: An analysis of cloud cover in multiscale modeling framework global climate model simulations using 4 and 1 km horizontal grids, *Journal of Geophysical Research-atmospheres*, 115, <https://doi.org/10.1029/2009JD013423>, 2010.
- Marchand, R., Haynes, J., Mace, G. G., Ackerman, T., and Stephens, G.: A comparison of simulated cloud radar output from the multiscale modeling framework global climate model with CloudSat cloud radar observations, *Journal of Geophysical Research: Atmospheres*, 114, <https://doi.org/10.1029/2008JD009790>, 2009.
- Matsui, T., Chern, J.-D., Tao, W.-K., Lang, S., Satoh, M., Hashino, T., and Kubota, T.: On the Land–Ocean Contrast of Tropical Convection and Microphysics Statistics Derived from TRMM Satellite Signals and Global Storm-Resolving Models, *Journal of Hydrometeorology*, 17, 1425–1445, <https://doi.org/10.1175/JHM-D-15-0111.1>, 2016.
- Mauritsen, T., Stevens, B., Roeckner, E., Crueger, T., Esch, M., Giorgetta, M., Haak, H., Jungclaus, J., Klocke, D., Matei, D., Mikolajewicz, U., Notz, D., Pincus, R., Schmidt, H., and Tomassini, L.: Tuning the climate of a global model, *Journal of Advances in Modeling Earth Systems*, 4, <https://doi.org/10.1029/2012MS000154>, 2012.
- Minghui, W., E., L. V., Steven, G., Mikhail, O. P., S. D., Heng, X., Xiaohong, L., Philip, R., and Zhun, G.: A multiscale modeling framework model (superparameterized CAM5) with a higher-order turbulence closure: Model description and low-cloud simulations, *Journal of Advances in Modeling Earth Systems*, 7, 484–509, <https://doi.org/10.1002/2014MS000375>, 2015.
- Miura, H., Satoh, M., Nasuno, T., Noda, A. T., and Oouchi, K.: A Madden-Julian Oscillation Event Realistically Simulated by a Global Cloud-Resolving Model, *Science*, 318, 1763–1765, <https://doi.org/10.1126/science.1148443>, 2007.
- Miyakawa, T., Satoh, M., Miura, H., Tomita, H., Yashiro, H., Noda, A. T., Yamada, Y., Kodama, C., Kimoto, M., and Yoneyama, K.: Madden-Julian Oscillation prediction skill of a new-generation global model demonstrated using a supercomputer, *Nature Communications*, 5, 3769, <https://doi.org/10.1038/ncomms4769>, 2014.
- Miyamoto, Y., Kajikawa, Y., Yoshida, R., Yamaura, T., Yashiro, H., and Tomita, H.: Deep moist atmospheric convection in a sub-kilometer global simulation, *Geophysical Research Letters*, 40, 4922–4926, <https://doi.org/10.1002/grl.50944>, 2013.

- Morrison, H., Thompson, G., and Tatarskii, V.: Impact of Cloud Microphysics on the Development of Trailing Stratiform Precipitation in a Simulated Squall Line: Comparison of One- and Two-Moment Schemes, *Monthly Weather Review*, 137, 991–1007, <https://doi.org/10.1175/2008MWR2556.1>, 2009.
- Moss, S., Francis, P., and Johnson, D.: Calculation and parameterization of the effective radius of ice particles using aircraft data, in: *Proc. 12th Int. Conf. on Clouds and Precipitation*, pp. 1255–1258, 1996.
- Nordeng, T. E.: Extended versions of the convective parametrization scheme at ECMWF and their impact on the mean and transient activity of the model in the tropics., Technical Memorandum 206, ECMWF Research Department, European Centre for Medium Range Weather Forecasts, Reading, UK, 1994.
- O'Dell, C. W., Wentz, F. J., and Bennartz, R.: Cloud Liquid Water Path from Satellite-Based Passive Microwave Observations: A New Climatology over the Global Oceans, *Journal of Climate*, 21, 1721–1739, <https://doi.org/10.1175/2007JCLI1958.1>, 2008.
- Parishani, H., Pritchard, M. S., Bretherton, C. S., Wyant, M. C., and Khairoutdinov, M.: Toward low-cloud-permitting cloud superparameterization with explicit boundary layer turbulence, *Journal of Advances in Modeling Earth Systems*, 9, 1542–1571, <https://doi.org/10.1002/2017MS000968>, 2017.
- Pritchard, M. S. and Somerville, R. C. J.: Assessing the Diurnal Cycle of Precipitation in a Multi-Scale Climate Model, *Journal of Advances In Modeling Earth Systems*, 1, 12, 2009a.
- Pritchard, M. S. and Somerville, R. C. J.: Empirical orthogonal function analysis of the diurnal cycle of precipitation in a multi-scale climate model, *Geophysical Research Letters*, 36, <https://doi.org/10.1029/2008GL036964>, 105812, 2009b.
- Pritchard, M. S., Bretherton, C. S., and DeMott, C. A.: Restricting 32–128 km horizontal scales hardly affects the MJO in the Superparameterized Community Atmosphere Model v.3.0 but the number of cloud-resolving grid columns constrains vertical mixing, *Journal of Advances In Modeling Earth Systems*, 6, 723–739, <https://doi.org/10.1002/2014MS000340>, 2014.
- Probst, P., Rizzi, R., Tosi, E., Lucarini, V., and Maestri, T.: Total cloud cover from satellite observations and climate models, *ATMOSPHERIC RESEARCH*, 107, 161–170, <https://doi.org/10.1016/j.atmosres.2012.01.005>, 2012.
- Qin, H., Pritchard, M. S., Kooperman, G. J., and Parishani, H.: Global Effects of Superparameterization on Hydrothermal Land-Atmosphere Coupling on Multiple Timescales, *Journal of Advances in Modeling Earth Systems*, 10, 530–549, <https://doi.org/10.1002/2017MS001185>, 2018.
- Randall, D., Khairoutdinov, M. F., Arakawa, A., and Grabowski, W.: Breaking the cloud parameterization deadlock, *Bulletin of the American Meteorological Society*, 84, 1547–1564, <https://doi.org/10.1175/BAMS-84-11-1547>, 2003.
- Randall, D. A.: Beyond deadlock, *Geophysical Research Letters*, 40, 5970–5976, <https://doi.org/10.1002/2013GL057998>, 2013.
- Roeckner, E., Bäuml, G., Bonaventura, L., Brokopf, R., Esch, M., Giorgetta, M., Hagemann, S., Kirchner, I., Kornbluh, L., Manzini, E., Rhodin, A., Schlese, U., Schulzweida, U., and Tompkins, A.: The atmospheric general circulation model ECHAM 5. Part I: Model description., *Tech. Rep. 349*, Max-Planck-Institute for Meteorology, Hamburg, https://www.mpimet.mpg.de/fileadmin/publikationen/Reports/max_scirep_349.pdf, 2003.
- Roeckner, E., Brokopf, R., Esch, M., Giorgetta, M., Hagemann, S., Kornbluh, L., Manzini, E., Schlese, U., and Schulzweida, U.: Sensitivity of simulated climate to horizontal and vertical resolution in the ECHAM5 atmosphere model, *Journal of Climate*, 19, 3771–3791, <https://doi.org/10.1175/JCLI3824.1>, 2006.
- Rybka, H. and Tost, H.: SP-EMAC - analysis and plotting scripts, <https://doi.org/10.5281/zenodo.3387004>, 2019a.
- Rybka, H. and Tost, H.: SP-EMAC - model source code and input files, <https://doi.org/10.5281/zenodo.3386969>, 2019b.
- Sato, T., Miura, H., Satoh, M., Takayabu, Y. N., and Wang, Y.: Diurnal Cycle of Precipitation in the Tropics Simulated in a Global Cloud-Resolving Model, *Journal of Climate*, 22, 4809–4826, <https://doi.org/10.1175/2009JCLI2890.1>, 2009.
- Song, H., Zhang, Z., Ma, P.-L., Ghan, S., and Wang, M.: The importance of considering sub-grid cloud variability when using satellite observations to evaluate the cloud and precipitation simulations in climate models, *Geoscientific Model Development*, 11, 3147–3158, <https://doi.org/10.5194/gmd-11-3147-2018>, 2018.
- Stephens, G. L., L'Ecuyer, T., Forbes, R., Gettelmen, A., Golaz, J.-C., Bodas-Salcedo, A., Suzuki, K., Gabriel, P., and Haynes, J.: Dreary state of precipitation in global models, *Journal of Geophysical Research: Atmospheres*, 115, <https://doi.org/10.1029/2010JD014532>, 2010.
- Stevens, B., Satoh, M., Auger, L., Biercamp, J., Bretherton, C. S., Chen, X., Düben, P., Judt, F., Khairoutdinov, M., Klocke, D., Kodama, C., Kornbluh, L., Lin, S.-J., Neumann, P., Putman, W. M., Röber, N., Shibuya, R., Vanniere, B., Vidale, P. L., Wedi, N., and Zhou, L.: DYAMOND: the DYNAMics of the Atmospheric general circulation Modeled On Non-hydrostatic Domains, *Progress in Earth and Planetary Science*, 6, 61, <https://doi.org/10.1186/s40645-019-0304-z>, <https://doi.org/10.1186/s40645-019-0304-z>, 2019.
- Stevens, B., Acquistapace, C., Hansen, A., Heinze, R., Klinger, C., Klocke, D., Rybka, H., Schubotz, W., Windmiller, J., Adamidis, P., Arka, I., Barlakas, V., Biercamp, J., Brueck, M., Brune, S., Buehler, S., Burkhardt, U., Cioni, G., Costa-Surós, M., Crewell, S., Crueger, T., Deneke, H., Friederichs, P., Carbajal Henken, C., Hohenegger, C., Jacob, M., Jakub, F., Kalthoff, N., Kohler, M., Li, P., Lohnert, U., Macke, A., Madenach, N., Mayer, B., Nam, C., Naumann, A., Peters, K., Poll, S., Quaas, J., Rober, N., Rochetin, N., Scheck, L., Schemann, V., Schnitt, S., Seifert, A., Senf, F., Shapkalijevski, M., Simmer, C., Singh, S., Sourdeval, O., Spickermann, D., Strandgren, J., Tessiot, O., Laar, T. v., Vercauteren, N., Vial, J., Voigt, A., and Zangl, G.: The Added Value of Large-eddy and Storm-resolving Models for Simulating Clouds and Precipitation, *Journal of the Meteorological Society of Japan*, 98, <https://doi.org/10.2151/jmsj.2020-021>, 2020.
- Stubenrauch, C. J., Rossow, W. B., Kinne, S., Ackerman, S., Cesana, G., Chepfer, H., Di Girolamo, L., Getzewich, B., Guignard, A., Heidinger, A., Maddux, B. C., Menzel, W. P., Minnis, P., Pearl, C., Platnick, S., Poulsen, C., Riedi, J., Sun-Mack, S., Walther, A., Winker, D., Zeng, S., and Zhao, G.: Assessment of Global Cloud Datasets from Satellites: Project and Database Initiated by the GEWEX Radiation Panel, *Bulletin of the American Meteorological Society*, 94, 1031–1049, <https://doi.org/10.1175/BAMS-D-12-00117.1>, 2013.
- Subramanian, A., Weisheimer, A., Palmer, T., Vitart, F., and Bechtold, P.: Impact of stochastic physics on tropical precipitation in the coupled ECMWF model, *Quarterly Jour-*

- nal of the Royal Meteorological Society, 143, 852–865, <https://doi.org/10.1002/qj.2970>, 2017.
- Sui, C.-H., Lau, K.-M., Takayabu, Y. N., and Short, D. A.: Diurnal Variations in Tropical Oceanic Cumulus Convection during TOGA COARE, *Journal of the Atmospheric Sciences*, 54, 639–655, [https://doi.org/10.1175/1520-0469\(1997\)054<0639:DVITOC>2.0.CO;2](https://doi.org/10.1175/1520-0469(1997)054<0639:DVITOC>2.0.CO;2), 1997.
- Sui, C.-H., Li, X., and Lau, K.-M.: Radiative–Convective Processes in Simulated Diurnal Variations of Tropical Oceanic Convection, *Journal of the Atmospheric Sciences*, 55, 2345–2357, [https://doi.org/10.1175/1520-0469\(1998\)055<2345:RCPISD>2.0.CO;2](https://doi.org/10.1175/1520-0469(1998)055<2345:RCPISD>2.0.CO;2), 1998.
- Sun, J. and Pritchard, M. S.: Effects of Explicit Convection on Land Surface Air Temperature and Land–Atmosphere Coupling in the Thermal Feedback Pathway, *Journal of Advances in Modeling Earth Systems*, 10, 2376–2392, <https://doi.org/10.1029/2018MS001301>, 2018.
- Suzuki, K., Stephens, G., Bodas-Salcedo, A., Wang, M., Golaz, J.-C., Yokohata, T., and Koshiro, T.: Evaluation of the Warm Rain Formation Process in Global Models with Satellite Observations, *Journal of the Atmospheric Sciences*, 72, 3996–4014, <https://doi.org/10.1175/JAS-D-14-0265.1>, 2015.
- Swales, D. J., Pincus, R., and Bodas-Salcedo, A.: The Cloud Feedback Model Intercomparison Project Observational Simulator Package: Version 2, *Geoscientific Model Development*, 11, 77–81, <https://doi.org/10.5194/gmd-11-77-2018>, 2018.
- Tao, W. K., Chern, J. D., Atlas, R., Randall, D., Khairoutdinov, M., Li, J. L., Waliser, D. E., Hou, A., Lin, X., Peters-Lidard, C., Lau, W., Jiang, J., and Simpson, J.: A Multiscale Modeling System: Developments, Applications, and Critical Issues, *Bulletin of the American Meteorological Society*, 90, 515–534, <https://doi.org/10.1175/2008BAMS2542.1>, 2009.
- Taylor, K. E.: Summarizing multiple aspects of model performance in a single diagram., *Journal of Geophysical Research-atmospheres*, 106, 7183–7192, <https://doi.org/10.1029/2000JD900719>, 2001.
- Tiedtke, M.: A Comprehensive Mass Flux Scheme For Cumulus Parameterization In Large-scale Models, *Monthly Weather Review*, 117, 1779–1800, [https://doi.org/10.1175/1520-0493\(1989\)117<1779:ACMFSF>2.0.CO;2](https://doi.org/10.1175/1520-0493(1989)117<1779:ACMFSF>2.0.CO;2), 1989.
- Tompkins, A. M.: Organization of Tropical Convection in Low Vertical Wind Shears: The Role of Cold Pools, *Journal of the Atmospheric Sciences*, 58, 1650–1672, [https://doi.org/10.1175/1520-0469\(2001\)058<1650:OOTCIL>2.0.CO;2](https://doi.org/10.1175/1520-0469(2001)058<1650:OOTCIL>2.0.CO;2), 2001.
- Tost, H., Joeckel, P., and Lelieveld, J.: Influence of different convection parameterisations in a GCM, *Atmospheric Chemistry and Physics*, 6, 5475–5493, 2006.
- Tulich, S. N.: A strategy for representing the effects of convective momentum transport in multiscale models: Evaluation using a new superparameterized version of the Weather Research and Forecast model (SP-WRF), *Journal of Advances in Modeling Earth Systems*, 7, 938–962, <https://doi.org/10.1002/2014MS000417>, 2015.
- Wang, M., Ghan, S., Easter, R., Ovchinnikov, M., Liu, X., Kasianov, E., Qian, Y., Gustafson, W. I., Larson, V. E., Schanen, D. P., Khairoutdinov, M., and Morrison, H.: The multi-scale aerosol-climate model PNNL-MMF: model description and evaluation, *Geoscientific Model Development*, 4, 137–168, <https://doi.org/10.5194/gmd-4-137-2011>, 2011a.
- Wang, M., Ghan, S., Ovchinnikov, M., Liu, X., Easter, R., Kasianov, E., Qian, Y., and Morrison, H.: Aerosol indirect effects in a multi-scale aerosol-climate model PNNL-MMF, *Atmos. Chem. Phys.*, 11, 5431–5455, <https://www.atmos-chem-phys.net/11/5431/2011/>, 2011b.
- Wielicki, B. A., Barkstrom, B. R., Harrison, E. F., III, R. B. L., Smith, G. L., and Cooper, J. E.: Clouds and the Earth’s Radiant Energy System (CERES): An Earth Observing System Experiment, *Bulletin of the American Meteorological Society*, 77, 853–868, [https://doi.org/10.1175/1520-0477\(1996\)077<0853:CATERE>2.0.CO;2](https://doi.org/10.1175/1520-0477(1996)077<0853:CATERE>2.0.CO;2), 1996.
- Wyant, M. C., Bretherton, C. S., Bacmeister, J. T., Kiehl, J. T., Held, I. M., Zhao, M., Klein, S. A., and Soden, B. J.: A comparison of low-latitude cloud properties and their response to climate change in three AGCMs sorted into regimes using mid-tropospheric vertical velocity, *Climate Dynamics*, 27, 261–279, <https://doi.org/10.1007/s00382-006-0138-4>, 2006a.
- Wyant, M. C., Khairoutdinov, M., and Bretherton, C. S.: Climate sensitivity and cloud response of a GCM with a superparameterization, *Geophysical Research Letters*, 33, <https://doi.org/10.1029/2005GL025464>, 2006b.
- Wyant, M. C., Bretherton, C. S., and Blossey, P. N.: Subtropical Low Cloud Response to a Warmer Climate in a Superparameterized Climate Model. Part I: Regime Sorting and Physical Mechanisms, *Journal of Advances in Modeling Earth Systems*, 1, <https://doi.org/10.3894/JAMES.2009.1.7>, 2009.
- Yang, S. and Smith, E. A.: Mechanisms for Diurnal Variability of Global Tropical Rainfall Observed from TRMM, *Journal of Climate*, 19, 5190–5226, <https://doi.org/10.1175/JCLI3883.1>, 2006.
- Yashiro, H., Kajikawa, Y., Miyamoto, Y., Yamaura, T., Yoshida, R., and Tomita, H.: Resolution Dependence of the Diurnal Cycle of Precipitation Simulated by a Global Cloud-System Resolving Model, *SOLA*, 12, 272–276, <https://doi.org/10.2151/sola.2016-053>, 2016.
- Zhang, G. J. and McFarlane, N. A.: Sensitivity of Climate Simulations To the Parameterization of Cumulus Convection In the Canadian Climate Center General-circulation Model, *Atmosphere-ocean*, 33, 407–446, 1995.
- Zhang, T., Zhang, M., Lin, W., Lin, Y., Xue, W., Yu, H., He, J., Xin, X., Ma, H.-Y., Xie, S., and Zheng, W.: Automatic tuning of the Community Atmospheric Model (CAM5) by using short-term hindcasts with an improved downhill simplex optimization method, *Geoscientific Model Development*, 11, 5189–5201, <https://doi.org/10.5194/gmd-11-5189-2018>, <https://www.geosci-model-dev.net/11/5189/2018/>, 2018.
- Zhang, Y., Klein, S. A., Liu, C., Tian, B., Marchand, R. T., Haynes, J. M., McCoy, R. B., Zhang, Y., and Ackerman, T. P.: On the diurnal cycle of deep convection, high-level cloud, and upper troposphere water vapor in the Multiscale Modeling Framework, *Journal of Geophysical Research: Atmospheres*, 113, <https://doi.org/10.1029/2008JD009905>, 2008.