

# SELEN<sup>4</sup> (SELEN version 4.0): a Fortran program for solving the gravitationally and topographically self-consistent Sea Level Equation in Glacial Isostatic Adjustment modeling

Giorgio Spada<sup>a</sup> and Daniele Melini<sup>b</sup>

<sup>a</sup> Dipartimento di Scienze Pure e Applicate (DiSPeA), Università di Urbino “Carlo Bo”, Italy

<sup>b</sup> Istituto Nazionale di Geofisica e Vulcanologia, Via di Vigna Murata 605, I-00143 Rome, Italy

**Correspondence:** Giorgio Spada ([giorgio.spada@gmail.com](mailto:giorgio.spada@gmail.com))

**Abstract.** We present SELEN<sup>4</sup> (a SeaLevel Equation solver), an open-source program written in Fortran 90 that simulates the Glacial Isostatic Adjustment (GIA) process in response to the melting of the late-Pleistocene ice sheets. Using a pseudo-spectral approach complemented by a spatial discretization on an icosahedron-based spherical geodesic grid, SELEN<sup>4</sup> solves a generalised “Sea Level Equation” (SLE) for a spherically symmetric Earth with linear viscoelastic rheology, taking the migration of the shorelines and the rotational feedback on sea level into account. The approach is gravitationally and topographically self-consistent, since it considers the gravitational interactions between the solid Earth, the cryosphere and the oceans, and it accounts for the evolution of the Earth’s topography in response to changes in sea level. Program SELEN<sup>4</sup> can be employed to study a broad range of geophysical effects of GIA, including past relative sea-level variations induced by the melting of the late-Pleistocene ice sheets, the **time evolution** of paleogeography and of the ocean function since the Last Glacial Maximum, the history of the Earth’s rotational variations, present-day geodetic signals observed by Global Navigation Satellite Systems and **gravity** field variations detected by satellite gravity missions like GRACE (the Gravity Recovery and Climate Experiment). The *GIA fingerprints* constitute a standard output of SELEN<sup>4</sup>. Along with the source code, we provide a supplementary document with a full account of the theory, some numerical results obtained from a standard run, and a User guide. **Originally,** **program SELEN** was conceived by GS in 2005 as a tool for students eager to learn about GIA, **and it has been the first SLE solver made available to the community.**

## 1 Introduction

In the last few decades, GIA modeling has progressively gained a central role in the study of contemporary sea-level change. Sea-level variations observed at the tide gauges deployed along the world coastlines need to be **corrected for** the effect of GIA to enlighten **the impact of global warming**. As discussed in the review of Spada and Galassi (2012), a precise estimate of global sea-level rise has been possible only after Peltier and Tushingham (1989) first solved the SLE using an appropriate spatial resolution, building upon the seminal papers of Farrell and Clark (1976) and Clark et al. (1978). Since then, a number of GIA

models characterised by different assumptions about the Earth’s rheological profile and the history of the late-Pleistocene ice sheets have been proposed, constrained by sea-level proxies **dating since the Last Glacial Maximum (LGM, 21,000 years ago)**. **For a review of the development of GIA modelling, the reader is referred to Whitehouse (2009), Spada (2017) and Whitehouse (2018).** GIA models have provided increasingly accurate estimates of global mean secular sea-level rise (a summary is given in Table 1 of Spada and Galassi, 2012), but have also the potential of describing the patterns of future trends of sea level in a global change scenario (see *e.g.*, Bamber et al., 2009; Spada et al., 2013). Since the beginning of the “altimetry era” (1992-today) and the launch of the Gravity Recovery and Climate Experiment (GRACE, see Wahr et al., 1998) in 2002, GIA modeling has re-gained momentum, providing the tools for isolating the effects of global warming *i)* from absolute sea-level data (Nerem et al., 2010; Cazenave and Llovel, 2010) and *ii)* from the Stokes coefficients of the gravity field (see Leuliette and Miller, 2009; Cazenave et al., 2009; Chambers et al., 2010; WCRP, 2018) to infer the ocean mass variation. **Despite the GIA phenomenon is now tightly** integrated into the science of global change (Church et al., 2013b), little efforts have been paid so far to the development of open-source codes for the solution of the SLE, although several Post Glacial Rebound simulators (like *e.g.*, TABOO, see Spada et al., 2004, 2011) and Love numbers calculators have been made available to the community (Spada, 2008; Melini et al., 2015; Bevis et al., 2016; Kachuck and Cathles, 2019). As far as we know, the only publicly available and open-source **program in which the SLE is solved in its complete form** is SELEN. The SLE solver ISSM-SESAS v1.0 of Adhikari et al. (2016), being oriented to short term cryosphere and climate changes, **only accounts for the elastic deformation of the Earth. The open source SLE solver giapy (Kachuck, 2017; Martinec et al., 2018), available from <https://github.com/skachuck/giapy>, can deal with complex ice models and viscoelastic rheology but it is not taking rotational effects into account.**

SELEN was first presented to the GIA modeling community by Spada and Stocchi (2007), who numerically implemented the SLE theory reviewed in Spada and Stocchi (2006). SELEN was fully based on the classical formulation of Farrell and Clark (1976); hence, the fixed-shorelines approximation was assumed, and no account was given of rotational effects on sea-level variations. SELEN used the Love **number** calculator TABOO (see Spada et al., 2011) as a subroutine and was tied to the Generic Mapping Tools (GMT, see Wessel and Smith, 1998) for the construction of the present-day ocean function. In SELEN and in all its subsequent versions, the numerical integration of the SLE over the sphere takes advantage of the icosahedron-based pixelization by Tegmark (1996). Similarly, all the versions are based upon the pseudo-spectral method of Mitrovica and Peltier (1991) and Mitrovica et al. (1994) for the solution of the SLE. Originally, SELEN came without a User guide, and it was disseminated via email by the authors. After SELEN was first published in 2007, a number of improvements were made in terms of computational efficiency, portability and versatility, but leaving the physical ingredients of the original code unaltered. This led to a new version of the program, named SELEN 2.9 and announced by Spada et al. (2012). Since 2015, the Computational Infrastructure for Geodynamics (CIG, <http://www.geodynamics.org/>) **has hosted SELEN 2.9 in its Short-term Crustal Dynamics section** (see <http://geodynamics.org/cig/software/selen>), from where it can be freely downloaded along with a theory booklet and a fully detailed User guide (Spada and Melini, 2015). Since **the year 2012**, with the aid of Florence Colleoni and thanks to the feedback of a number of colleagues and students, GS and DM have implemented new modules aimed at solving the SLE in the presence of rotational effects and taking the migration of the shorelines into account. This has progressively led

to several *interim* versions of the program (SELEN 3.x), which have been tested intensively and validated during the years, but never officially released. We note that building upon SELEN, some colleagues have independently developed other versions of the code aimed at specific tasks, such as the study of the coupling between the SLE and ice dynamics (de Boer et al., 2017).

Taking advantage of the experience developed since SELEN was first designed, we are now publishing a new version of the code named SELEN<sup>4</sup> (**SELEN version 4.0**). With respect to previous versions, SELEN<sup>4</sup> has been improved in several aspects. *i)* The underlying SLE theory has been fully revised and now accounts both for horizontal migration of shorelines and for rotational effects, resulting in a more realistic description of the GIA processes. *ii)* The package has been streamlined and reorganized into two independent modules: a *solver*, which obtains a numerical solution of the SLE in the spectral domain, and a *post-processor*, which computes a full suite of observable quantities through a spherical harmonic synthesis. This new structure facilitates code portability, reusability and customization, enabling the adaptation of SELEN<sup>4</sup> to new use-cases. *iii)* The SELEN<sup>4</sup> modules have been completely rewritten using symbol names that are closely matching those of the variables introduced in this paper, for the ease of code readability. Particular attention has been paid to the optimization of the SLE solver, resulting in a large extent of shared-memory parallelism, which allows for an efficient scaling to high resolutions on multi-core systems. *iv)* SELEN<sup>4</sup> has been decoupled from the GMT software package, which is no longer strictly required to run a GIA simulation, thus facilitating code portability on high-performance systems where GMT may not be available. SELEN<sup>4</sup> still takes advantage of GMT (version 4) to produce various graphical outputs through plotting scripts included in the distribution package. *v)* SELEN<sup>4</sup> no longer calls the post glacial rebound solver TABOO as an internal subroutine to compute the viscoelastic loading and tidal Love numbers, which are instead supplied by the user through a data file. In this way, any set of Love numbers can be used in SELEN<sup>4</sup>, possibly overcoming some of the intrinsic limitations of existing Love numbers calculators like TABOO. *vi)* Recently, a prototype version of SELEN<sup>4</sup> has been successfully validated in a community benchmark of independently developed GIA codes (Martinec et al., 2018). **In the benchmark tests, simplified surface loads have been employed, and the rotational effects have been ignored. In a further benchmark effort, we are planning to adopt a realistic description of the surface load, and the contribution from Earth rotation.**

R1-1  
R2-1

The paper is organized into three main sections. **In Section 2**, we present **a condensed theory background for the SLE**. **In Section 3**, we describe the outputs obtained by a standard, intermediate-resolution run of SELEN<sup>4</sup>. **In Section 4**, we draw our conclusions.

## 2 Theory

Here we obtain the sea-level equation (SLE) from first principles, leaving a number of details of the theory to the supplementary material, hereafter referred to as SSM19. The focus is on the various forms **the SLE takes**, which are characterised by **increasing** complexity; the goal is to obtain a formulation suitable for a numerical discretisation, which is given and analysed in SSM19 and implemented in SELEN<sup>4</sup>. In an attempt to simplify the presentation, and to obtain compact expressions for all the quantities involved, we are not exactly following the traditional notation adopted in the literature since the seminal paper by Farrell and Clark (1976), hereafter referred to as FC76. The number of definitions and variables involved in the construction of

R2-26  
R2-27

the SLE is remarkable and some derivations are cumbersome; to facilitate the readers – especially those who are approaching the GIA problem for the first time – we refer to the synopsis presented in SSM19 (see **Table S8**). Program SELEN<sup>4</sup> is written in a plain way, adopting constants and variables names that follow the same notation employed in this theory section and in SSM19, with the aim of facilitating code readability.

## 5 2.1 Surface loads

We consider the system composed by the ice and by the water in the oceans, at a given time  $t$ . Its mass can be expressed as

$$M(t) = \int_e L dA, \quad (1)$$

where  $L(\gamma, t)$  is the *surface load*,  $\gamma$  stands for  $(\theta, \lambda)$  where  $\theta$  and  $\lambda$  are the geocentric colatitude and longitude, respectively, the integral is over the whole Earth's surface, and  $dA = a^2 \sin \theta d\theta d\lambda$  is the area element,  $a$  being the average radius of the Earth.

10 According to Eq. (1),  $L$  represents the mass per unit area distributed over the Earth's **surface**: R1-4

$$L(\gamma, t) = \frac{dM}{dA}, \quad (2)$$

**with  $M(t) = M^i + M^w$ , where  $M^i$  and  $M^w$  are the mass of the ice and of the water at time  $t$ . By obtaining explicit expressions for  $M^i$  and  $M^w$ , in SSM19 we show that  $L$  can be expressed as the sum of two contributions, which account *i*)** R1-4  
**for the load exerted by the grounded ice and *ii*) for the load of water on the oceans floors, respectively:**

$$15 \quad L(\gamma, t) = \rho^i IC + \rho^w BO, \quad (3)$$

**where  $\rho^i$  and  $\rho^w$  are the ice and ocean water densities,  $I$  is the *ice thickness*,  $B$  is *sea level* (i.e., the offset between the sea surface and the surface of the solid Earth),  $C = 1 - O$  is the *continent function* (CF), where the *ocean function* (OF) is** R1-5

$$O(\gamma, t) \equiv \begin{cases} 1, & \text{if } T + \frac{\rho^i}{\rho^w} I < 0 \\ 0, & \text{if } T + \frac{\rho^i}{\rho^w} I \geq 0, \end{cases} \quad (4)$$

**where following Kendall et al. (2005) (see their Eq. 2) we have defined bedrock topography  $T$  as the inverse of the** R1-6  
**globally defined sea level** R2-7  
R3-1

$$T(\gamma, t) = -B. \quad (5)$$

**We remark** that due to the horizontal migration of the shorelines and to the transition between floating and **grounded ice**,  $O$  **and  $C$  are**, in general, time-dependent.

**In the following, we are concerned with *time variations* of the fields involved in the SLE, which are denoted by calli-** R1-7  
**graphic capital letters. These variations are relative to a reference equilibrium state, established for  $t \leq t_0 \equiv 0$ , during** R2-10  
**which all fields have a constant value. Conventionally, time  $t = t_0$  denotes the time at which the surface load changes**



(see *e.g.*, Kendall et al. 2005). Accordingly, using Eq. (3) in (1), the *mass variation*  $\mathcal{M}(t) = M - M_0$  of the system composed by ice and water is

$$\mathcal{M}(t) = \rho^i \int_e (IC - I_0 C_0) dA + \rho^w \int_e (BO - B_0 O_0) dA, \quad (6)$$

where subscript 0 denotes reference quantities (*i.e.*, **constant values attained for  $t \leq 0$** ), and the first term on the right hand

side represents the mass variation of the grounded ice, which we denote by  $\mu(t)$ . Since mass must be conserved, we have

$$\mathcal{M}(t) = \int_e \mathcal{L} dA = 0, \quad (7)$$

where

$$\mathcal{L}(\gamma, t) \equiv L - L_0. \quad (8)$$

is the *surface load variation*. **From Eq. (7) it follows immediately that an equivalent form of the mass conservation**

**constraint is**

$$\langle \mathcal{L} \rangle^e(t) = 0 \quad (9)$$

**where  $\langle \dots \rangle^e$  indicates the average over the whole Earth surface.** Hereinafter, we shall consider only *plausible surface loads*, that we define here as those loads for which the mass is conserved. **A discussion on how these surface loads can**

**be realized is given by Bevis et al. (2016), who however have adopted *ad hoc* assumptions on how the mass lost from**

**the ice sheets is redistribute. The SLE, however, does not rely upon such assumptions, since it defines a gravitationally self-consistent and non-uniform mass distribution over the oceans.**

In SSM19, a suitable decomposition is found for  $\mathcal{L}$ , namely

$$\mathcal{L}(\gamma, t) = \mathcal{L}^a + \mathcal{L}^b + \mathcal{L}^c, \quad (10)$$

where the first term

$$\mathcal{L}^a(\gamma, t) = \rho^i C \mathcal{I} \quad (11)$$

is associated with the *ice thickness variation*

$$\mathcal{I}(\gamma, t) = I - I_0, \quad (12)$$

the second

$$\mathcal{L}^b(\gamma, t) = \rho^w O S \quad (13)$$

**is associated with *sea-level change***

R1-11

$$\mathcal{S}(\gamma, t) = B - B_0, \quad (14)$$

and the third

$$\mathcal{L}^c(\gamma, t) = \rho^r Q \mathcal{O}, \quad (15)$$

is associated with *OF variations*

$$\mathcal{O}(\gamma, t) = O - O_0, \quad (16)$$

- 5 where  $\rho^r$  is an arbitrary reference density and  $Q$  a time invariant auxiliary variable. **We note that, by the same definition of** R1-12  
**OF, its variation  $\mathcal{O}(\gamma, t)$  can only take the values  $(-1, 0, +1)$ .**

## 2.2 The Sea Level Equation

**The Sea Level Equation expresses the relationship between sea-level change, the sea surface variation, and the vertical** R1-13  
**displacement of the solid Earth. In this section, various forms of this relationship are described.**

- 10 Above, *sea level*  $B$  has been qualitatively defined as the offset between the sea surface and the surface of the solid R1-6  
**Earth. More specifically**, denoting by  $r^{ss}(\gamma, t)$  and  $r^{se}(\gamma, t)$  the radii of the sea surface and of the Earth's solid surface in a  
geocentric reference frame, respectively, sea level can be equivalently expressed as

$$B(\gamma, t) = r^{ss} - r^{se}, \quad (17)$$

and in the reference state

$$15 \quad B_0(\gamma) = r_0^{ss} - r_0^{se}. \quad (18)$$

So, introducing the *sea surface variation*

$$\mathcal{N}(\gamma, t) = r^{ss} - r_0^{ss} \quad (19)$$

and the *vertical displacement* of the solid surface of the Earth R2-28

$$\mathcal{U}(\gamma, t) = \mathbf{r}^{se} - \mathbf{r}_0^{se}, \quad (20)$$

- 20 using Eq. (14), we obtain the SLE in its most basic form

$$\mathcal{S}(\gamma, t) = \mathcal{N} - \mathcal{U}, \quad (21)$$

**expressing the variation of the height of the water column bounded by the sea surface and the ocean floor.** R1-6

The sea surface variation is tightly associated with variations in the Earth's gravity field. Indeed, FC76 have shown that

$$\mathcal{N}(\gamma, t) = \mathcal{G} + c, \quad (22)$$

- 25 where **the displacement of the geoid is obtained by Bruns formula** R1-14

$$\mathcal{G}(\gamma, t) = \frac{\Phi - \Phi_0}{g}, \quad (23)$$

(Heiskanen and Moritz, 1967), where  $\Phi$  is *gravity potential*, which includes both the effects of surface loading and those from rotational variations (Martinec and Hagedoorn, 2014),  $g$  is the reference gravity acceleration at the Earth's surface, and  $c$  is a spatially invariant term introduced by FC76 to ensure mass conservation. The  $c$  term is known within the GIA community as the FC76 constant, and its physical origin is explained in detail by Tamisiea (2011). Note that as a

consequence of Eq. (22), the change in the sea surface elevation does not coincide with the variation of the geoid elevation. Hence, using (22), the SLE (21) becomes

$$\mathcal{S}(\gamma, t) = \mathcal{R} + c, \quad (24)$$

where

$$\mathcal{R}(\gamma, t) = \mathcal{G} - \mathcal{U}, \quad (25)$$

shall be referred to as *sea-level response function*.

We now assume that the responses to surface loading and to changes in the centrifugal potential can be combined linearly. Accordingly, the SLE (24) can be further rearranged as

$$\mathcal{S}(\gamma, t) = \mathcal{R}^{sur} + c + \mathcal{R}^{rot}, \quad (26)$$

where

$$\mathcal{R}^{sur}(\gamma, t) = \mathcal{G}^{sur} - \mathcal{U}^{sur} \quad (27)$$

and

$$\mathcal{R}^{rot}(\gamma, t) = \mathcal{G}^{rot} - \mathcal{U}^{rot} \quad (28)$$

are the *surface* and the *rotation sea-level response functions*, whereas

$$\mathcal{G}(\gamma, t) = \mathcal{G}^{sur} + \mathcal{G}^{rot} \quad (29)$$

and

$$\mathcal{U}(\gamma, t) = \mathcal{U}^{sur} + \mathcal{U}^{rot} \quad (30)$$

are the *geoid* and the *vertical displacement response functions*, respectively.

By the constraint of mass conservation given by Eq. (7), the **FC76 constant** is easily determined. Using the expression found in SSM19 (see, in particular, Eq. S52), the SLE (26) becomes

$$\mathcal{S}(\gamma, t) = \mathcal{S}^{ave} + (\mathcal{R}^{sur} - \langle \mathcal{R}^{sur} \rangle^o) + (\mathcal{R}^{rot} - \langle \mathcal{R}^{rot} \rangle^o), \quad (31)$$

where  $\langle \dots \rangle^o$  indicates the average over the (time-dependent) ocean surface defined by  $O = 1$ , and

$$\mathcal{S}^{ave}(t) = \mathcal{S}^{equ} + \mathcal{S}^{ofu}, \quad (32)$$

where  $\mathcal{S}^{equ}$  and  $\mathcal{S}^{ofu}$  are two spatially invariant terms. The first, referred to as *equivalent sea-level change*, is

$$\mathcal{S}^{equ}(t) \equiv -\frac{\mu}{\rho^w A^o}, \quad (33)$$

where  $\mu$  is the mass variation of the grounded ice and  $A^o$  is the area of the oceans. The second

$$\mathcal{S}^{ofu}(t) \equiv \frac{1}{A^o} \int_e T_0 \mathcal{O} dA \quad (34)$$

- 5 depends explicitly upon variations of the OF, either due to the horizontal migration of the shorelines or to transitions from grounded to floating ice (or *vice versa*). **It is important to note that  $\mathcal{S}^{equ}(t)$  and  $\mathcal{S}^{ofu}(t)$  are both model-dependent,** R1-19 **via  $A^o$  and  $\mathcal{O}$ .** Evaluating the ocean-average of both sides of Eq. (31), and observing that  $\langle \langle \mathcal{R} \rangle^o \rangle^o = \langle \mathcal{R} \rangle^o$  and that  $\langle \mathcal{S}^{ave} \rangle^o = \mathcal{S}^{ave}$ , it is easily verified that  $\mathcal{S}^{ave}$  simply represents the ocean-averaged relative sea-level change

$$\mathcal{S}^{ave}(t) \equiv \langle \mathcal{S} \rangle^o. \quad (35)$$

- 10 In consequence of that, from Eq. (31) we see that the regional imprint of GIA on **relative sea-level change** is totally determined by the response functions  $\mathcal{R}^{sur}$  and  $\mathcal{R}^{rot}$ .

In the classical FC76 framework, a constant OF is assumed and the effects arising from Earth rotation are neglected. Hence  $\mathcal{R}^{rot} = 0$  and  $\mathcal{O} = 0$ , with the latter condition implying  $\mathcal{S}^{ofu} = 0$  because of (34). In this context, the SLE simply reduces to

$$\mathcal{S}^{FC76}(\gamma, t) = \mathcal{S}^{eus} + (\mathcal{R}^{sur} - \langle \mathcal{R}^{sur} \rangle^o), \quad (36)$$

- 15 where

$$\mathcal{S}^{eus}(t) = -\frac{\mu}{\rho^w A^{op}} \quad (37)$$

**is often referred to as *eustatic sea-level change*,** and  $A^{op}$  represents the present-day area of the surface of the oceans. Hence, for a rigid and non-gravitating Earth (for which  $\mathcal{R}^{sur} = 0$ ),  $\mathcal{S}^{eus}$  would represent the (spatially invariant) relative sea-level change. **Note that  $\mathcal{S}^{eus}$ , which only depends on the history of the past grounded ice volume (Milne and Mitro-**

- 20 **vica, 2008), should not be confused with  $\mathcal{S}^{ave}$  given by Eq. (32) since the latter is dynamically dependent upon the Earth's response through  $A^o(t)$  and  $\mathcal{O}(t)$  (e.g., Spada, 2017). We note that in the current terminology for sea level (Gregory et al., 2019) the term *barystatic* should be preferred to *eustatic*, a term originally attributed to Suess (1906) and that since then has received many qualifications (see FC76, page 648).** R1-21

- Following e.g., Milne and Mitrovica (1998), the surface response function  $\mathcal{R}^{sur}$  in (31) is obtained by a 3-D *spatio-temporal* convolution

$$\mathcal{R}^{sur}(\gamma, t) = \Gamma^s \otimes \mathcal{L}, \quad (38)$$

where  $\Gamma^s(\gamma, t)$  **is the surface sea-level Green's function.** The details of the expansion of  $\mathcal{R}^{sur}$  in series of spherical harmonics are somewhat cumbersome and **can be found in SSM19.** Here we only note that using Eq. (10) we have  $\mathcal{R}^{sur} = \mathcal{R}^a + \mathcal{R}^b + \mathcal{R}^c$ ,

where the three terms are obtained by convolving  $\Gamma^s$  with  $\mathcal{L}^a$ ,  $\mathcal{L}^b$  and  $\mathcal{L}^c$ , respectively. Contrary to  $\mathcal{R}^{sur}$ , the harmonic coefficients of the rotational response  $\mathcal{R}^{rot}(\gamma, t)$  are directly obtained by a 1-D *time* convolution

$$\mathcal{R}_{lm}^{rot}(t) = \Upsilon_l^s * \Lambda_{lm}, \quad (39)$$

where  $\Upsilon_l^s(t)$  is the *rotation sea-level Green's function* and  $\Lambda_{lm}(t)$  are the coefficients of degree  $l$  and order  $m$  of the expansion of the *variation of centrifugal potential*  $\Lambda(\gamma, t)$  associated with changes in the Earth's angular velocity (Milne and Mitrovia, 1998). In SSM19, it is shown that  $\Lambda(\gamma, t)$  is essentially a spherical harmonic function of degree  $l = 2$  and order  $m = \pm 1$ , **being the other degree  $l = 2$  terms and the degree  $l = 0$  in the expansion of  $\Lambda(\gamma, t)$  negligible** (see also Martinec and Hagedoorn 2014). R1-22

Thus, the SLE (31) can be rearranged as

$$\mathcal{S}(\gamma, t) = \mathcal{S}^{ave} + \mathcal{R}'^a + \mathcal{R}'^b + \mathcal{R}'^c + \mathcal{R}'^{rot}, \quad (40)$$

where the primed response functions are

$$\mathcal{R}'^{abc}(\gamma, t) = \mathcal{R}^{abc} - \langle \mathcal{R}^{abc} \rangle^o, \quad (41)$$

$$\mathcal{R}'^{rot}(\gamma, t) = \mathcal{R}^{rot} - \langle \mathcal{R}^{rot} \rangle^o. \quad (42)$$

We note that  $\mathcal{R}'^b$  depends on  $OS$  through the surface load variation  $\mathcal{L}^b$  (see Eq. 13); in SSM19 it is shown that this holds for  $\mathcal{R}^{rot}$  as well. Following Mitrovia and Peltier (1991), in view of the numerical solution of the SLE it is therefore convenient to transform Eq. (40) in such a **way that  $OS$  becomes** the unknown *in lieu* of  $\mathcal{S}$ . This is **accomplished by projecting** Eq. (40) on the OF (*i.e.*, multiplying both sides of the SLE by  $O$ ), which provides the final form of the SLE R2-29

$$\mathcal{Z}(\gamma, t) = \mathcal{Z}^{ave} + \mathcal{K}^a + \mathcal{K}^b(\mathcal{Z}) + \mathcal{K}^c + \mathcal{K}^{rot}(\mathcal{Z}), \quad (43)$$

where

$$\mathcal{Z}(\gamma, t) = OS, \quad (44)$$

and

$$\mathcal{Z}^{ave}(\gamma, t) = OS^{ave} = O(\mathcal{S}^{equ} + \mathcal{S}^{ofu}), \quad (45)$$

$$\mathcal{K}^{abc}(\gamma, t) = O\mathcal{R}'^{abc}, \quad (46)$$

$$\mathcal{K}^{rot}(\gamma, t) = O\mathcal{R}'^{rot}. \quad (47)$$

The dependence of  $\mathcal{K}^b$  and  $\mathcal{K}^{rot}$  upon  $\mathcal{Z}$  in Eq. (43) manifests the implicit nature of the SLE, which is a 3-D *non-linear integral equation*, similar, in some respect, to an inhomogeneous and non linear Fredholm equation of the second kind (*e.g.*, Jerri, 1999; Spada, 2017). For the spectral discretization of Eq. (43) and for a **detailed** illustration of the **scheme** adopted to solve the SLE, the reader is referred to sections S7 and S8.7 of SSM19. **Here it is only worth to mention that the SLE is**

solved by a pseudo-spectral iterative approach (Mitrovica and Peltier, 1991; Mitrovica and Milne, 2003) complemented by a spatial discretization on an icosahedron-based spherical geodesic grid (Tegmark, 1996). Two nested iterations are adopted, where the external one refines progressively the topography using the solution of the SLE obtained in the internal one.

R1-23  
R2-13

### 5 3 A test run with SELEN<sup>4</sup>

In the following, we illustrate some of the outputs of a standard SELEN<sup>4</sup> run in which the resolution of the Tegmark grid is set to  $R = 44$  (see S8.6) **while** the maximum harmonic degree of the spectral decomposition is  $l_{max} = 128$ . **Note that condition  $P \geq l_{max}^2/3$ , where  $P = 40R(R-1) + 12$  is the number of pixels in the grid for a given  $R$  value, must be necessarily met to preserve the properties of the spherical harmonics on the grid as discussed in Section S8.6 and in Tegmark (1996).** In the test run, we solve the SLE by three external and three internal iterations ( $n_{ext} = n_{int} = 3$ , see S8.7), as customarily adopted in GIA studies as in Kendall et al. (2005). Henceforth, the notation  $R44/L128/I3$  shall be employed to denote these fundamental SELEN<sup>4</sup> settings. Of course, with increasing values of parameters ( $R, l_{max}, n_{ext}, n_{int}$ ), more accurate results are expected, which however might come with a substantial increase in the computational burden. **In the SELEN<sup>4</sup> test run we account for both loading and rotational effects.**

R1-24

We assume that the user has installed and executed the program following the **indications given in the User guide of SELEN<sup>4</sup>**. Most of the program outputs discussed in this section have been obtained using the same configuration file that comes with the SELEN<sup>4</sup> package. However, some results shall be based on different settings, in order to appreciate the sensitivity of the outputs on key configuration parameters. We first describe the GIA model adopted in the test run, which consists of three elements, *i.e.*, a ice melting history, a description of the present-day global relief, and a 1-D rheological model of the Earth's mantle. Then, **browsing the output folders** of SELEN<sup>4</sup>, we illustrate and discuss two distinct output sets, pertaining to the past and to the present effects of GIA on sea-level change and on geodetic variations, respectively. The features of the test run are summarized in Table 1. For reference, on a 12-core Mid-2012 Mac Pro, the execution time of this test run of SELEN<sup>4</sup> is 1h and 15 min.

#### 3.1 GIA model

In principle, there are no restrictions on the spatial and temporal features of the ice melting history that can be employed in SELEN<sup>4</sup>, provided that the model is properly discretized according to the scheme outlined in S8.7. Similarly, any linear rheological profile is *a priori* acceptable for the mantle and for the lithosphere, as long as the Love numbers can be cast in a normal-mode multi-exponential form (Peltier, 1974). Due to its central role in the context of contemporary GIA studies, in our test run we have implemented an *ad hoc* realization of the GIA model ICE-6G\_C(VM5a), originally introduced by Peltier et al. (2015).

### 3.1.1 Ice melting history

Ice thickness data for model ICE-6G\_C have been downloaded from the home page of Prof. WR Peltier on August 2016. The data span the last 26,000 yrs and are provided on a  $1^\circ \times 1^\circ$  global cartesian latitude-longitude grid (the number of grid points is thus 64,800). In each of the grid cells, the time history of ice thickness is assumed to evolve in a piecewise linear manner, with variable increments of 1.0 or 0.5 kyrs. Thus, to fit the SELEN<sup>4</sup> default input format, we have first **mapped** the original thickness data on a spherical equal-area Tegmark grid described in S8.6 of SSM19. In doing that, we have chosen a resolution parameter  $R = 44$ , so that the grid consists of  $P = 75,692$  pixels (or cells), each with a radius of  $\sim 46$  km. The cells number is thus **a bit larger than** the number of cells in the original **cartesian grid**. In addition, we have transformed the original time history in a piecewise constant form with a uniform spacing of 0.5 kyrs, assuming no glaciation phase prior to deglaciation. Because of the adaptations we have made, the ice model so obtained is not an exact replica of ICE-6G\_C, but a particular *realization* of it. Hence, to avoid any ambiguity, in the following it shall be referred to as I6G-T05-R44. Assuming an ice density  $\rho^w = 931 \text{ kg m}^{-3}$  and that the area of the oceans is fixed to the present value, I6G-T05-R44 holds 206.5 m of equivalent sea level at 26 ka and 75.1 m at present, corresponding to a total eustatic sea-level rise of 131.4 m since the inception of melting (26 ka). The ice thickness of I6G-T05-R44 for a few time frames is shown in Figure 1.

### 3.1.2 Present day topography

In order to reconstruct the whole history of the Earth's topography and of Relative Sea Level (RSL) since the inception of deglaciation, it is necessary to impose the present relief as a *final condition* for the Sea Level Equation (see Peltier, 1994). In this test run, we have utilized the “bedrock version” of the global dataset ETOPO1 (Amante and Eakins, 2009; Eakins and Sharman, 2012) as the final condition, whereas the final condition for the ice thickness is given by the last time frame of I6G-T05-R44. ETOPO1 is distributed on a cartesian longitude-latitude grid with a resolution of 1 arc-minute ( $\frac{1}{60}^\circ$ ), so that **an interpolation of topography on the Tegmark grid has been performed. Note that in regions where small-scale topographic features are present, such as ocean trenches, interpolating a high-resolution relief model on a coarse Tegmark grid may yield inaccurate results. In this case, a different approach should be adopted for the realization of topography, based for instance on a binning algorithm.** Other choices of the final topography are of course possible. For example, in order to ensure the maximum accuracy in Antarctica, the original model ICE-6G\_C employs the *Bedmap2* data set of Fretwell et al. (2013) south of  $60^\circ\text{S}$  latitude. In SELEN<sup>4</sup>, there are no restrictions on the choice of the final relief, which is left to the user. In Figure 2 we show the realization of the modern bathymetry that we have obtained by interpolating ETOPO1 on the same Tegmark grid that we have used for the ice sheets in this test run, which shall be referred to as model ETO-R44 in the following. With SELEN<sup>4</sup>, other versions of this elevation model are made available, characterized by different spatial resolutions  $R$ .

### 3.1.3 Rheological profile

The 11-layer Maxwell rheological profile of the 1-D Earth employed in the test run is shown in Table 2. For each layer, values of density and of rigidity are obtained by volume-averaging the PREM (Preliminary Reference Earth Model) of Dziewonski

and Anderson (1981) while the viscosity profile is reproduced using the data available in the supporting information supplied with Peltier et al. (2015). The 90-km thick lithosphere is elastic and the core is fluid, homogeneous and inviscid. Note that since the original VM5a profile includes elastic compressibility and reproduces the finely layered PREM structure (Peltier et al., 2015), in the following we shall refer to the model in Table 2 as VM5i. As it includes  $N_v = 9$  Maxwell layers in the mantle, characterized by distinct properties, for any given harmonic degree  $l$ , the loading Love numbers (LLNs) and tidal Love numbers (TLNs) for model VM5i are described by a spectrum of  $4N_v = 36$  viscoelastic normal modes (see *e.g.*, Spada et al., 2011). **Since we are not aware of published, community-agreed sets of Love numbers for a multi-layered compressible viscoelastic model**, in the test run we rest on **an incompressible profile, for which agreed results have been obtained by Spada et al. (2011)**. We remark, however, that SELEN<sup>4</sup> can work with compressible or transient rheologies as well, provided that LLNs and TLNs in normal-mode form (Wu and Peltier, 1982) are accessible to the user. Figures 3a and 3b show the elastic and fluid values of the LLNs in the range of harmonic degrees  $1 \leq l \leq 1,024$  for model VM5i. The Love numbers are given in a geocentric reference frame **with the origin in the Earth’s center of mass (CM)**. **Numerical values of a few relevant LLNs and TLNs are listed in Table 3 and in its caption. They have been computed by the Love numbers calculator TABOO** (see Spada et al., 2011) in a multi-precision environment (Spada, 2008).

## 3.2 GIA in the past

This section is devoted to the description of some outputs of the SELEN<sup>4</sup> test run, concerning the effects of GIA during the whole period after the LGM. These include *i*) the predictions of the history of **RSL at specific sites**, *ii*) the **time evolution** of paleo-topography in some regions of interest, and *iii*) the excursions of the Earth’s pole of rotation forced by GIA.

### 3.2.1 Relative Sea Level curves

Figure 4 shows data (with error bars) and SELEN<sup>4</sup> predictions for a small subset of the 392 sites contained in the RSL database of Tushingham and Peltier (1993) (hereafter referred to as TP93). In view of its historical importance in the development of GIA studies (*e.g.*, Tushingham and Peltier, 1991, 1992; Melini and Spada, 2019), the TP93 database is available with the SELEN<sup>4</sup> package; however, there are no restrictions on the use of other datasets, or simply individual RSL records, if available to the user. **Note that ages given in the TP93 database included with SELEN<sup>4</sup> are expressed in radiocarbon years and have not been calibrated to calendar years. In Figure 4, three different configurations, *i.e.*, combinations of parameters  $R$ ,  $l_{max}$ ,  $n_{ext}$  and  $n_{int}$  have been adopted, always assuming  $n_{ext} = n_{int}$ . Results obtained for the three configurations are shown by different colours. The black curves have been obtained using the GIA model described in Section 3.1, characterized by the settings  $R44/L128/I3$  ( $R = 44$ ,  $l_{max} = 128$ ,  $n_{ext} = n_{int} = 3$ ). Blue curves have been obtained by configuring SELEN<sup>4</sup> with the combination of parameters  $R100/L512/I5$  *i.e.*, increasing the spatial resolution and the number of internal and external iterations in a significant way (a truncation degree  $l_{max} = 256$  is often employed in GIA modeling, see *e.g.*, Kendall et al. 2005). With this configuration, the pixel radius is reduced to  $\sim 20$  km (see S8.6 and Table S6). Of course, the execution time of SELEN<sup>4</sup> increases significantly with respect to the test run, requiring 2.5 days ( $\sim 60$  h) on a 56-core Intel Xeon E7 “Broadwell” system. It is apparent that this high-resolution case is providing results **substantially matching****



those of the standard run with *R44/L128/I3*. Minor differences can be noted in the early stages of deglaciation, which however do not exceed the typical uncertainty on the observed RSL values. These differences are likely to be caused by the significant changes that the topography undergoes in this early phase in the polar regions, which are better captured by increasing the model resolution. Finally, red curves have been obtained for a low resolution run with *R30/L64/I2*, whose execution time is 15 min on a 12-core Mid-2012 Mac Pro. The curves clearly indicate that computationally inexpensive runs can provide reliable results in the far field of the previously glaciated areas (*e.g.*, in sites 639 and **525**), but in the near field (*e.g.*, site **283**) they can diverge significantly **from both high- and intermediate-resolution results**.

R2-31

From a visual inspection of Figure 4, it is apparent that at some sites the best GIA predictions fit very well the observations, like **at sites** 101 and 283. For others, the trend of the RSL data is captured satisfactorily (see sites 155, 209 and 328) while in some others the fit is quite poor (sites 639, 525 and 570). The identification of the possible sources of the evidenced misfits, which should be measured using rigorous statistical methods **after a proper calibration of the ages**, is not the purpose of this work. We only note that they do not necessarily stem from limitations of the GIA model adopted, since it is well known that at a specific site tectonic deformations can have **an important role** (see *e.g.*, Antonioli et al., 2009, for a significant example) and these are not taken into account when solving the SLE. Similarly, in our formulation of the SLE we are neglecting the possible effects from the loads exerted by sediments (Dalca et al., 2013). Since program SELEN<sup>4</sup> is open source, the users can modify the code to account for non glacial loads and change the configuration to determine more suitable combinations of the basic ingredients of GIA modeling *i.e.*, the history of deglaciation and the rheological layering of the mantle, in order to improve the fit between model predictions and any preferred **RSL dataset**.

### 3.2.2 Paleo-topography

SELEN<sup>4</sup> allows for a **gravitationally and topographically** self-consistent description of the evolution of sea level, along the route highlighted by Peltier (1994) and Lambeck (2004). This implies that SELEN<sup>4</sup> can iteratively reconstruct the time evolution of the coastlines and of the OF, in a fashion that is consistent with the gravitational, rotational and deformational effects induced by deglaciation (for a full account of the theory, the reader is referred to SSM19). These features make the SLE an integral 3-D non-linear equation (Spada, 2017). The importance of the evolution of paleo-topography for the development of human culture since the LGM has been pointed out in a number of works (see *e.g.*, Cavalli-Sforza et al., 1993; Peltier, 1994; Lambeck, 2004; Dobson, 2014, and references therein). Recently, in the context of GIA modeling, Spada and Galassi (2017) have faced the problem of the dynamic evolution of *aquaterra*, *i.e.*, the land that has been inundated and exposed during the last glacial cycle (Dobson, 1999, 2014), using the same approach adopted in this work.

R2-32

A standard SELEN<sup>4</sup> output is shown in Figure 5, where the Earth's relief at the **LGM** is reconstructed in the post-processing phase of SELEN<sup>4</sup>, according to the solution of the SLE. Note that the figure only shows the bedrock relief at the LGM, which is not what Peltier (1994) has called *true paleo-topography* (PT), which also includes the contribution of ice elevation. The user can easily obtain maps of the full PT merging maps like that shown in Figure 5 with those of Figure 1. **Light blue areas across the polar regions covered by thick ice at the LGM correspond to places where the ice was grounded below sea level at that epoch. In SELEN<sup>4</sup>, it is also possible to visualize the full time evolution of the OF, in order to better appreciate, for**

example, the spatiotemporal distribution of the ice shelves, which cannot be seen in this paleo-topography map. At the global scale, the major land masses that were exposed at the LGM are clearly visible, as evidenced by the low elevation green areas; these include Beringia, Sundaland, Patagonia, Sahul, Doggerland, and the East Siberian shelf. Using GIA models, the time evolution of these land masses has been investigated in a number of papers, also in view of the important implications on the dispersal of modern humans. For specific case studies, the reader is referred to the works of Peltier and Drummond (2002), Lambeck (2004), Klemann et al. (2015), Spada and Galassi (2017), and to references therein.

By increasing the spatial resolution, SELEN<sup>4</sup> can also be employed to resolve the past sea-level variations on regional scale. As a specific case study, we consider the Mediterranean Sea. The history of RSL in the Mediterranean Sea has been the subject of various investigations, stimulated by the amount of high-quality geological, geomorphological and archaeological indicators in the region (see *e.g.*, Lambeck and Purcell, 2005; Antonioli et al., 2009; Evelpidou et al., 2012; Vacchi et al., 2016; Roy and Peltier, 2018, and references therein). Since on the global scale of Figure 5 the details of the paleo-topography in this area are difficult to visualize, we have used the outputs of the high-resolution run with settings *R100/L512/I5*, already exploited in Section 3.2.1. The results are shown in the map of Figure 6, where paleo-topography is shown at 26 ka. The vastly exposed continental shelf of Tunisia (Mauz et al., 2015) and the northern Adriatic Sea (Lambeck and Purcell, 2005) are now clearly visible, along with other smaller scale regions where the topography has seen significant changes during the last deglaciation (Lambeck, 2004; Purcell et al., 2007).

### 3.2.3 Polar motion

With SELEN<sup>4</sup>, three configurations are possible, in which rotational effects on GIA are dealt with in different manners. First, these effects can be simply ignored, as it is done in the classical FC76 GIA theory. However, when rotational effects are taken into consideration, this can be done in two different ways, *i.e.*, either following the *traditional rotation theory* (Milne and Mitrovica, 1998; Spada et al., 2011) or a *revised rotation theory* proposed by Mitrovica et al. (2005) and Mitrovica and Wahr (2011). The reader is referred to the literature for a detailed presentation of the two theories and to S5.2 for a brief account. **We also refer to Martinec and Hagedoorn (2014) for a general formulation dealing with rotational effects in GIA modeling.** Here it is useful to mention that in the traditional treatment the long-term response of the Earth is evaluated assuming that the lithosphere is characterized by a finite elastic strength, while in the revised theory the equilibrium rotational shape is, more realistically, only based on the viscous properties of the planet. Furthermore, the long term extra-flattening due to mantle dynamics is properly accounted for. We remark that in both cases the fast Chandler wobble component of polar motion is filtered out since the onset from the Liouville equations, **because** the time scales of GIA largely exceed the Chandler wobble period ( $\sim 14$  months, see *e.g.*, Lambeck 1980). The implications for the GIA response of the new theory are quite significant, as illustrated in detail by Mitrovica et al. (2005) and Mitrovica and Wahr (2011) **and shown in Figure 7.**

Solid curves in Figure 7 show the evolution of the polar motion components  $(m_x, m_y)$  and their rates of change  $(\dot{m}_x, \dot{m}_y)$  in response to GIA, obtained by solving the Liouville equations in the test run, in which the revised rotation theory is employed. **Dashed curves show results obtained with the traditional theory.** As the  $x$  and  $y$  components of polar motion are

conventionally measured along the Greenwich meridian and 90°E, respectively, Figure 7a indicates that since the inception of deglaciation, the displacement of the pole has been roughly in the direction of the Hudson Bay, consistent with the seminal results of Sabadini and Peltier (1981). The two theories predict similar evolutions of the pole of rotation, which according to Figure 7a has been displaced by  $\sim 18$  km on the Earth surface by the glacial readjustment process since 26 ka. We note that at the time of the rapid melting episode known as Melt Water Pulse MWP-1A (between 14.3 and 12.8 ka, see *e.g.*, Blanchon 2011) a sudden variation in the  $m_y$  component of polar motion has occurred but no changes can be observed on  $m_x$ . When the *rates* of polar motion are considered in Figure 7b, differences between the predictions of the two rotations theories are more apparent. In particular, the present-day (0 ka) **rates** of polar motion are found to be  $\sim 1$  and  $\sim 3$  deg Ma $^{-1}$  for the revised and the traditional theories, respectively, which fits the predictions of Mitrovica and Wahr (2011) and confirms that the traditional theory largely overestimates the effects of GIA on polar motion. We note also that MWP-1A has caused a remarkable acceleration of polar motion, with a variation in the rate of  $\sim 4$  deg Ma $^{-1}$  during a few centuries. As far as we know, the **possible** geophysical consequences of such sudden acceleration in the pole path have not been investigated yet.

### 3.3 GIA at present

R1-28

In this section we describe further outputs of the SELEN<sup>4</sup> test run, focussing in the effects of GIA at present time. In particular, **we consider** *i*) the global pattern of the so-called *GIA fingerprints*, *ii*) predictions of the the rate of sea-level change at tide gauges, and *iii*) the time-variations of the Stokes coefficients of the Earth's gravity field induced by GIA.

#### 3.3.1 GIA fingerprints

Figure 8 shows another standard output of SELEN<sup>4</sup>, *i.e.*, the present-day rates of variation of four fundamental quantities associated with GIA, obtained for the test run. These are **relative sea level change** ( $\dot{\mathcal{S}}$ , frame a), vertical displacement of the crust ( $\dot{\mathcal{U}}$ , frame b), absolute sea level ( $\dot{\mathcal{N}}$ , frame c) and **geoid height** ( $\dot{\mathcal{G}}$ , frame d). **Generalizing the definition of sea-level fingerprint introduced by Plag and Jüttner (2001) in the context of contemporary ice mass changes, these have been referred to as GIA fingerprints by Spada and Melini (2019). The spatial variability of the GIA fingerprints reflect the effects of deformation, gravitational attraction, and rotation within the system composed by the solid Earth, the oceans and the ice sheets (Clark et al., 1978; Mitrovica and Milne, 2002).** In view of their importance on the interpretation of ground-based (King et al., 2010) or satellite geodetic observations (Peltier, 2004) and of **tide gauge** secular trends (*e.g.*, Spada and Galassi, 2012; Wöppelmann and Marcos, 2016), their properties have been the subject of various investigations during last decade (see *e.g.*, Mitrovica et al., 2011; Tamisiea, 2011; Spada and Galassi, 2015; Spada, 2017; Husson et al., 2018; Melini and Spada, 2019; Spada and Melini, 2019).

R1-35

R1-36

It should be remarked that the four fingerprints shown in Figure 8 are not independent of one another. In particular, the SLE gives  $\dot{\mathcal{S}} = \dot{\mathcal{N}} - \dot{\mathcal{U}}$  according to Eq. (21). Furthermore,  $\dot{\mathcal{N}} = \dot{\mathcal{G}} + \dot{c}$ , where  $c$  is **the FC76 constant** (see S2.4 in SSM19). The two relationships above hold **regardless of the** particular combination of rheology and ice model employed, and the preferred rotation theory adopted. However, the patterns of the **GIA fingerprints** and the numerical value of  $\dot{c}$  are model-dependent. Other interesting results hold for the spatial averages of the fingerprints, which reflect some physical aspects of GIA (Spada,

R2-38

2017; Spada and Melini, 2019) and are useful to correct geodetic observations from the effects of deglaciation (*e.g.*, Spada and Galassi, 2015). In Table 4 we **summarize** the numerical values of whole Earth surface averages (denoted by symbol  $\langle \dots \rangle^e$ ) and ocean-averages ( $\langle \dots \rangle^o$ ) of the GIA fingerprints in the test run. In addition, we have also executed SELEN<sup>4</sup> adopting the traditional rotation theory and neglecting rotational effects, and the corresponding averages are shown in Table 4 as well. We

5 note that by virtue of mass conservation  $\langle \dot{G} \rangle^e = \langle \dot{U} \rangle^e = 0$  (see S4.3 and S6.2) **regardless of the** rotation theory adopted, R2-38 and as a consequence  $\langle \dot{S} \rangle^e = \langle \dot{N} \rangle^e = \dot{c}$ . We also note that the **numerical value** of  $\langle \dot{N} \rangle^o$ , commonly employed to correct the altimetry observations of absolute sea-level change for the effects of GIA, is in fair agreement with predictions from state-of-the-art GIA models (*e.g.*, Church et al., 2013a; Spada and Galassi, 2015; Spada, 2017). Notably,  $\langle \dot{N} \rangle^o$  is not

10 very **sensitive to** the choice of the rotation theory. Since model I6G-T05-R44 assumes that melting of the major ice sheets R2-39 ceased  $\sim 4,000$  years ago, the small value of  $\langle \dot{S} \rangle^o$  only reflects **ongoing** changes in the area of the oceans due to GIA. In the FC76 fixed-shorelines approximation,  $\langle \dot{S} \rangle^o$  would be identically zero by virtue of the mass conservation principle (see *e.g.*, Spada, 2017; Spada and Melini, 2019).

### 3.3.2 GIA at tide gauges

Estimating global mean sea-level rise in response to climate change requires **to correct tide gauge records for the effects of** R1-38

15 **GIA**. Since the late 1980s, with the awareness of global warming and the availability of numerical solutions of the SLE (Peltier and Tushingham, 1989), GIA corrections to the observed trends of sea level have been routinely applied (for a review, see Spada and Galassi, 2012; Spada et al., 2015; Wöppelmann and Marcos, 2016). However, since GIA models are progressively improved to provide a better description of reality, corrections at tide gauges are not given once and for all (Kendall et al., 2006; Tamisiea, 2011; Melini and Spada, 2019). Furthermore, new constraints from past sea level or modern geodetic observations

20 have permitted gradual refinements (either by formal inverse methods or simply by trial and error) of the two basic ingredients of GIA modeling, *i.e.*, the Earth rheological profile and the history of deglaciation since the LGM. Uncertainties in modeling are significant (Melini and Spada, 2019), which constitutes an additional motivation to improve the approach to GIA.

In Table 5, we show SELEN<sup>4</sup> predictions for  $\dot{S}$  at a few tide gauges, for the test run and other possible configurations as well. Here we only show results for the 23 sites that have been considered by Douglas (1997) in his redetermination of

25 global sea-level rise, which obey specific criteria that make **them** suitable to represent the trend of secular sea-level rise. The R1-39 sites chosen by Douglas (1997) are located in the periphery of the regions covered by thick ice sheets at the LGM, since GIA predictions at sites formerly beneath the ice sheets are expected to be more affected by uncertainties in GIA modeling. This has been recently confirmed by Melini and Spada (2019). The post-processing phase of SELEN<sup>4</sup> can be configured to handle any properly formatted input dataset with coordinates of geodetic points of interest, where all the variables considered

30 in Figure 8 can be evaluated. This can be useful, for instance, to estimate the effects of GIA on vertical movements at specific GPS points (Serpelloni et al., 2013). **Modules for the computation of horizontal displacements shall be included in future releases.** Comparing column *d*) with *b*) and *c*) (all these runs are characterized by the intermediate resolution configuration R44/L128/I3), we note that rotational effects are important at tide gauges; however from *b*) and *c*) we also note that differences between the revised and the traditional rotation theory generally do not exceed the  $0.1 \text{ mm yr}^{-1}$  level at the tide gauges

considered here. Comparing outputs in *b*) with the high-resolution run in *a*), we note maximum differences of  $0.03 \text{ mm yr}^{-1}$ , which further confirms the reliability of the test run.

Comparing the high-resolution results in Table 5 (*R100/L512/I5*, column *a*)) with those obtained using the ICE-6G\_C(VM5a) model in the original implementation of WR Peltier (see <http://www.atmos.physics.utoronto.ca/~peltier/data.php>, last accessed 06 June 2019), reported in column *e*), we note a fair agreement between the two model predictions. **The two sets of predictions have the same sign with the only exception of Cascais and Lagos. The differences between the values obtained with *R100/L512/I5* and the original implementation ICE-6G\_C(VM5a) are generally close to  $0.2 \text{ mm yr}^{-1}$  or slightly larger.** The values of  $\dot{S}$  averaged over the tide gauges differ, but they are both  $\leq 0.1 \text{ mm yr}^{-1}$ . More significant differences in the  $\dot{S}$  values are however apparent when we compare model predictions for sites located in the polar regions beneath the former ice sheets, which are not considered in Table 5. At these locations, the expected  $\dot{S}$  values are of the order of several  $\text{mm yr}^{-1}$ , due to the large isostatic disequilibrium still associated with ice unloading. For example, at the tide gauge of Stockholm, we obtain a rate of  $-4.43 \text{ mm yr}^{-1}$  for the high resolution run *R100/L512/I5* while in the original ICE-6G\_C(VM5a) implementation, the rate is  $-3.75 \text{ mm yr}^{-1}$ . **To better evaluate the meaning of these differences, it is worth to note that they largely exceed the typical  $2\sigma$  uncertainty in the observed rates, which according to Spada and Galassi (2012) (see their Table 2), is never larger than  $0.3 \text{ mm yr}^{-1}$ .** We have also ascertained that misfits of the order of  $1 \text{ mm yr}^{-1}$  are not uncommon in other high-latitude sites of both hemispheres. **Tracing** the origin of the discrepancies in the two sets of GIA predictions (and therefore in the whole set of the GIA geodetic fingerprints considered in Figure 8) is not easy at this stage, and would demand a detailed model inter-comparison study like those performed in the GIA community by Spada et al. (2011) and Martinec et al. (2018). We can however guess that the misfit between the two sets of GIA predictions stems from the different discretisations of the ice time-histories, from the effects of mantle compressibility, and possibly from the different rotation theories adopted.

### 3.3.3 Stokes coefficients of the gravity field

In Figure 9 we study the present-day rates of change of the variations of Stokes coefficients ( $\dot{\delta c}_{lm}, \dot{\delta s}_{lm}$ ) induced by GIA, computed in the test run with *R44/L128/I3*. These quantities represent the coefficients of the expansion of the **gravity potential** variation  $\Phi(\gamma, \mathbf{t}) - \Phi(\gamma, \mathbf{t}_0)$  in series of spherical harmonics, hence they contain information upon the response of the Earth to surface loading and to movements of the axis of rotation. In SELEN<sup>4</sup> we use a real, fully normalised representation for the Stokes coefficients, following the Gravity Recovery and Climate Experiment (GRACE) conventions for spherical harmonics (see, in particular, Bettadpur 2018 and S8.9). However, it is important to note that in Figure 9, the Stokes coefficients also include the direct effect of Earth **rotation, associated with the change in centrifugal potential, on the degree 2 TLNs** (*i.e.*, they account for the ' $\delta(t)$ ' term in ' $\delta(t) + k_2^T(t)$ ', see Eq. S173), hence the rates we have computed are not directly comparable with the GRACE rates. In fact, since in its orbit GRACE is not physically connected with the Earth, it cannot be influenced by the direct rotational effect (the whole issue has been the subject of discussion a few years ago, see Chambers et al., 2010; Peltier et al., 2012; Chambers et al., 2012). The user of SELEN<sup>4</sup>, however, can supply the program with a rotation response

function  $\mathcal{G}^{rot}$  that does not include the direct term in order to produce GRACE-compliant Stokes coefficients which are only indirectly affected by Earth rotation.

The fully normalised cosine (squares) and sine (circles) coefficients ( $\dot{\bar{\delta c}}_{lm}, \dot{\bar{\delta s}}_{lm}$ ) are shown in Figure 9a only for harmonics with degree  $l \leq 6$ . The dominance of the degree 2 coefficients is apparent, which reflect the symmetries of the  $\dot{\mathcal{G}}$  fingerprint in Figure 8d. We note that since  $\dot{\mathcal{N}} = \dot{\mathcal{G}} + \dot{c}$ , where  $\dot{\mathcal{N}}$  is the absolute sea-level fingerprint in Figure 8c and  $c$  is the FC76 constant (see Eq. 22), the Stokes coefficients for  $\dot{\mathcal{G}}$  and for  $\dot{\mathcal{N}}$  coincide for  $l \geq 2$ . For reference, the numerical values of the degree  $l = 2$  **coefficients obtained in the test run are**  $\dot{\bar{\delta c}}_{20} = +1.59$ ,  $\dot{\bar{\delta c}}_{21} = -0.76$ ,  $\dot{\bar{\delta s}}_{21} = +3.37$ ,  $\dot{\bar{\delta c}}_{22} = -0.35$ , **and**  $\dot{\bar{\delta s}}_{22} = +0.07$  in units of  $10^{-11} \text{ yr}^{-1}$ ; the modulus of all other coefficients is  $< 1$  in these units. To better **visualize** the decay of the Stokes coefficients with increasing  $l$ , in the diagram of Figure 9b we show the harmonic spectrum defined in S8.9 (see Eq. S477). By inspection of the spectrum plot it is now apparent that the energy contained in the degree  $l = 2$  harmonic component exceeds by at least one order of magnitude all those with  $l \geq 3$ . After a *plateau* that indicates a substantial power equipartition in the range of harmonics  $3 \leq l \leq 7$ , the spectrum clearly shows a red character and decays very rapidly, closely following a power law  $\sim l^{-5}$  (solid line). This result is consistent with those obtained by Spada and Galassi (2015), although they have used a simplified GIA model with fixed shorelines and the traditional rotation theory. They confirm that, for  $l \geq 3$ , the power contained in the GIA-induced regional variations in absolute sea level is negligible when compared with the spectrum observed during the altimetry era.

## 4 Conclusions

We have presented an updated version of the SLE solver SELEN, which **was** originally introduced by Spada and Stocchi (2007) and principally meant as a tool for students. Along with a condensed theory background and the basic features of the new program, we have provided a step-by-step description of the outcomes of a medium-resolution *test run* that requires modest computing resources. However, the run accounts for an up-to-date description of the time history of melting since the **LGM** and a realistic rheological profile, being based upon a **realization** of model ICE-6G\_C (VM5a) of Peltier et al. (2015). The outputs of the test run, which cover different temporal scales, have been briefly discussed in order to appreciate some of the possible geodynamical implications. Outputs of a high-resolution test **run** have been also presented to illustrate the effects of spatial and harmonic resolution on some GIA predictions.

With respect to the original version of the code, two major improvements have been made **in SELEN**<sup>4</sup>. The first is represented by an increased **realism** in the description of the GIA process. Indeed, now the program accounts for the migration of the shorelines and for the rotational feedback on sea-level change, which enable a fully topographically and gravitationally self-consistent modelization, **in the sense defined by Peltier (1994)**. Furthermore, SELEN<sup>4</sup> can be configured assuming two different rotation theories, or even excluding rotational effects. The second improvement is in terms of usability, efficiency and versatility, and covers various aspects. First, the solution of the SLE is now performed by a single Fortran program unit, leaving to a flexible and customizable post-processor the computation of various outputs encompassing the broad spectrum of the GIA phenomenology. Second, on modern multi-core systems, SELEN<sup>4</sup> can take advantage of multi-threaded parallelism to

speed up the most computationally intensive portions of the code. **The reader can find details about computational aspects as execution time and code parallelism in Section S8.7 of SSM19.** Third, the user can easily customize the **time evolution** of the surface load and the rheological layering of the Earth providing pre-computed loading and tidal Love numbers. Last, SELEN<sup>4</sup> comes with a User guide and with a fully detailed theory background **in a supplement**, which is particularly meant to illustrate the basic concepts of GIA to young scientists or colleagues and to allow transparency and reproducibility.

**In a recent benchmarking initiative (Martinec et al., 2018), a preliminary version of the new program has been successfully tested against other independently developed SLE solvers, in the particular case in which rotational effects are not taken into account and assuming simplified surface loads. The version of SELEN<sup>4</sup> that is distributed with the present work reproduces the numerical results published in Martinec et al. (2018), if the code is configured with the parameters employed in the benchmark exercise.** After it has been progressively developed in various *interim* versions, SELEN<sup>4</sup> is now released to the GIA and to the global geodynamics community as an open source tool.

*Acknowledgements.* GS is funded by a FFABR (Finanziamento delle Attività Base di Ricerca) grant of MIUR (Ministero dell’Istruzione, dell’Università e della Ricerca) and by a research grant of DISPEA (Dipartimento di Scienze Pure e Applicate) of the Urbino University “Carlo Bo”. We thank D. Ripsati from the INGV Laboratorio Grafica e Immagini for drawing the SELEN logo. We thank M. Tegmark for having made available his pixelization routines, which have had an essential role in the development of SELEN (see <https://space.mit.edu/home/tegmark/isosahedron.html>). We also thank M. Wiczeorek for distributing the SHTOOLS (the Spherical Harmonics Tools) to the community (<https://shtools.oca.eu/shtools>). Some of the figures have been drawn using the Generic Mapping Tools (GMT) of Wessel and Smith (1998). We are indebted to all the colleagues who participated to the various stages of the Glacial Isostatic Adjustment and Sea Level Equation benchmark activities, namely: V. R. Barletta, P. Gasperini, T.S. James, M.A. King, S.B. Kachuck, V. Klemann, B. Lund, Z. Martinec, R.E.M. Riva, K. Simon, Y. Sun, L.L.A. Vermeersen, W. van der Wal and D. Wolf (see Spada et al., 2011; Martinec et al., 2018). A special acknowledgement goes to F. Colleoni for help in the code implementation and to F. Mainardi for advice on the theory of linear visco-elasticity. We are also indebted to M. Bevis and E. Ivins for encouragement and advice. **We thank G. Milne for discussion about the meaning of the “GIA fingerprints”. We are grateful to V. Klemann, S. Kachuck and G. A for their constructive review and advice, and M. Bagge and E. Gowan for their very helpful comments. We have greatly benefited of discussion, advice and encouragement from all the teachers and the students of the 2019 Glacial Isostatic Adjustment (GIA) Training School (26-30 August 2019, Lantmäteriet, Gävle, Sweden).** R. Mascetti has patiently revised the manuscript during various stages of its development, also providing invaluable inspiration.

*Code and data availability.* SELEN<sup>4</sup> is available from Zenodo at the link <https://zenodo.org/record/3339209> (DOI: 10.5281/zenodo.3339209) and from the Computational Infrastructure for Geodynamics (CIG) at [github.com/geodynamics/selen](https://github.com/geodynamics/selen). The ice history data for ICE-6G (VM5a) have been downloaded from <http://www.atmos.physics.utoronto.ca/~peltier/data.php> (last accessed 20 Apr 2019). The Model ETOP01 has been obtained from <https://www.ngdc.noaa.gov/mgg/global/> (last accessed 26 Feb 2019).

*Copyright statement.* SELEN<sup>4</sup> is released under a 3-Clause BSD License (for details, see <https://opensource.org/licenses/BSD-3-Clause>).

*Author contributions.* G.S. and D.M. have both contributed to the design and implementation of the research, to the analysis of the results and to the writing of the manuscript. The supplement has been written by G.S. with the support of D.M. The code has been progressively developed by G.S. and D.M., who has edited the User Guide and the on-line version of the code.

*Competing interests.* The authors declare no competing interests.



## References

- Adhikari, S., Ivins, E. R., and Larour, E.: ISSM-SESAW v1. 0: mesh-based computation of gravitationally consistent sea-level and geodetic signatures caused by cryosphere and climate driven mass change., *Geoscientific Model Development*, 9, 2016.
- Amante, C. and Eakins, B.: ETOPO1 Arc-Minute Global Relief Model: Procedures, Data Source and Analysis, Tech. rep., 2009.
- 5 Antonioli, F., Ferranti, L., Fontana, A., Amorosi, A., Bondesan, A., Braitenberg, C., Dutton, A., Fontolan, G., Furlani, S., Lambeck, K., et al.: Holocene relative sea-level changes and vertical movements along the Italian and Istrian coastlines, *Quaternary International*, 206, 102–133, 2009.
- Bamber, J., Riva, R., Vermeersen, B., and LeBrocq, A.: Reassessment of the potential sea-level rise from a collapse of the West Antarctic Ice Sheet, *Science*, 324, 901–903, 2009.
- 10 Bettadpur, S.: Level-2 gravity field product user handbook, The GRACE Project (Jet Propulsion Laboratory, Pasadena, CA, 2003), [ftp://podaac.jpl.nasa.gov/allData/grace/docs/L2-UserHandbook\\_v4.0.pdf](ftp://podaac.jpl.nasa.gov/allData/grace/docs/L2-UserHandbook_v4.0.pdf), 2018.
- Bevis, M., Melini, D., and Spada, G.: On computing the geoelectric response to a disk load, *Geophysical Journal International*, 205, 1804–1812, 2016.
- Blanchon, P.: Meltwater pulses, in: *Encyclopedia of Modern Coral Reefs: Structure, form and process*.
- 15 <http://unam.academia.edu/PaulBlanchon/Papers>, pp. 683–690, *Encyclopedia of Earth Science Series*, Springer, 2011.
- Cavalli-Sforza, L. L., Menozzi, P., and Piazza, A.: Demic expansions and human evolution, *Science*, 259, 639–639, 1993.
- Cazenave, A. and Llovel, W.: Contemporary sea level rise, *Annual Review of Marine Science*, 2, 145–173, 2010.
- Cazenave, A., Dominh, K., Guinehut, S., Berthier, E., Llovel, W., Ramillien, G., Ablain, M., and Larnicol, G.: Sea level budget over 2003–2008: A reevaluation from GRACE space gravimetry, satellite altimetry and Argo, *Global and Planetary Change*, 65, 83–88, 2009.
- 20 Chambers, D., Wahr, J., Tamisiea, M., and Nerem, R.: Ocean mass from GRACE and glacial isostatic adjustment, *J. geophys. Res.*, 115, B11 415, 2010.
- Chambers, D. P., Wahr, J., Tamisiea, M. E., and Nerem, R. S.: Reply to comment by WR Peltier et al. on Ocean mass from GRACE and glacial isostatic adjustment, *Journal of Geophysical Research: Solid Earth (1978–2012)*, 117, 2012.
- Church, J., Clark, P., Cazenave, A., Gregory, J., Jevrejeva, S., Levermann, A., Merrifield, M., Milne, G., Nerem, R., Nunn, P., Payne, A.,
- 25 Pfeffer, W., Stammer, D., and Unnikrishnan, A.: Sea Level Change, in: *Climate Change 2013: The Physical Science Basis. Contribution of Working Group I to the Fifth Assessment Report of the Intergovernmental Panel on Climate Change*, edited by Stocker, T., Qin, D., Plattner, G.-K., Tignor, M., Allen, S., Boschung, J., Nauels, A., Xia, Y., Bex, V., and Midgley, P., pp. 1138–1191, Cambridge University Press, Cambridge, 2013a.
- Church, J., Clark, P., Cazenave, A., Gregory, J., Jevrejeva, S., Levermann, A., Merrifield, M., Milne, G., Nerem, R., Nunn, P., Payne, A.,
- 30 Pfeffer, W., Stammer, D., and Unnikrishnan, A.: Climate Change 2013: The Physical Science Basis. Contribution of Working Group I to the Fifth Assessment Report of the Intergovernmental Panel on Climate Change, in: *Sea Level Change*, edited by Stocker, T., Qin, D., Plattner, G.-K., Tignor, M., Allen, S., Boschung, J., Nauels, A., Xia, Y., Bex, V., and Midgley, P., pp. 1138–1191, Cambridge University Press, Cambridge, 2013b.
- Clark, J. A., Farrell, W. E., and Peltier, W. R.: Global changes in postglacial sea level: a numerical calculation, *Quaternary Research*, 9, 265–287, 1978.
- 35 Dalca, A., Ferrier, K., Mitrovica, J., Perron, J., Milne, G., and Creveling, J.: On postglacial sea level III. Incorporating sediment redistribution, *Geophysical Journal International*, 194, 45–60, 2013.

- de Boer, I., Stocchi, P., Whitehouse, P., and van de Wal RSW: Current state and future perspectives on coupled ice-sheet–sea-level modelling, *Quaternary Science Reviews*, 169, 13–28, 2017.
- Dobson, J.: Explore Aquaterra-Lost Land Beneath the Sea, *Geo World*, 12, 30–31, 1999.
- Dobson, J. E.: Aquaterra Incognita: Lost Land Beneath The Sea, *Geographical Review*, 104, 123–138, 2014.
- 5 Douglas, B.: Global sea level rise: a redetermination, *Surveys in Geophysics*, 18, 279–292, 1997.
- Dziewonski, A. M. and Anderson, D. L.: Preliminary reference Earth model, *Physics of the Earth and Planetary Interiors*, 25, 297–356, 1981.
- Eakins, B. and Sharman, G.: Hypsographic curve of Earth’s surface from ETOPO1, NOAA National Geophysical Data Center, Boulder, CO, 2012.
- Evelpidou, N., Pirazzoli, P., Vassilopoulos, A., Spada, G., Ruggieri, G., and A. T.: Late Holocene Sea Level Reconstructions Based on  
10 Observations of Roman Fish Tanks, Tyrrhenian Coast of Italy, *Geoarchaeology*, 27, 259–277, 2012.
- Farrell, W. and Clark, J.: On postglacial sea-level, *Geophys. J. Roy. Astr. S.*, 46, 647–667, 1976.
- Fretwell, P., Pritchard, H. D., Vaughan, D. G., Bamber, J. L., Barrand, N., Bell, R., Bianchi, C., Bingham, R., Blankenship, D. D., Casassa, G., et al.: Bedmap2: improved ice bed, surface and thickness datasets for Antarctica, 2013.
- Gregory, J. M., Griffies, S. M., Hughes, C. W., Lowe, J. A., Church, J. A., Fukimori, I., Gomez, N., Kopp, R. E., Landerer, F., Le Cozannet,  
15 G., et al.: Concepts and terminology for sea level: mean, variability and change, both local and global, *Surveys in Geophysics*, pp. 1–39, 2019.
- Heiskanen, W. A. and Moritz, H.: Physical geodesy, *Bulletin Géodésique (1946–1975)*, 86, 491–492, 1967.
- Husson, L., Bodin, T., Spada, G., Choblet, G., and Kreemer, C.: Bayesian surface reconstruction of geodetic uplift rates: Mapping the global fingerprint of Glacial Isostatic Adjustment, *Journal of Geodynamics*, 122, 25–40, 2018.
- 20 Jerri, A.: Introduction to integral equations with applications, John Wiley & Sons, 1999.
- Kachuck, S. B.: giapy: Glacial Isostatic Adjustment in PYthon (1.0.0), <https://github.com/skachuck/giapy>, 2017.
- Kachuck, S. B. and Cathles, L M, I.: Benchmarked computation of time-domain viscoelastic Love numbers for adiabatic mantles, *Geophysical Journal International*, <https://doi.org/10.1093/gji/ggz276>, <https://doi.org/10.1093/gji/ggz276>, 2019.
- Kendall, R. A., Mitrovica, J. X., and Milne, G. A.: On post-glacial sea level–II. Numerical formulation and comparative results on spherically  
25 symmetric models, *Geophysical Journal International*, 161, 679–706, 2005.
- Kendall, R. A., Latychev, K., Mitrovica, J. X., Davis, J. E., and Tamisiea, M. E.: Decontaminating tide gauge records for the influence of glacial isostatic adjustment: The potential impact of 3-D Earth structure, *Geophysical Research Letters*, 33, 2006.
- King, M. A., Altamimi, Z., Boehm, J., Bos, M., Dach, R., Elsoegui, P., Fund, F., Hernández-Pajares, M., Lavalée, D., Cerveira, P. J. M., et al.: Improved constraints on models of glacial isostatic adjustment: a review of the contribution of ground-based geodetic observations,  
30 *Surveys in Geophysics*, 31, 465–507, 2010.
- Klemann, V., Heim, B., Bauch, H. A., Wetterich, S., and Opel, T.: Sea-level evolution of the Laptev Sea and the East Siberian Sea since the last glacial maximum, *arktos*, 1, 1, 2015.
- Lambeck, K.: The Earth’s variable rotation: geophysical causes and consequences, Cambridge University Press, 1980.
- Lambeck, K.: Sea-level change through the last glacial cycle: geophysical, glaciological and palaeogeographic consequences, *Comptes Rendus Geoscience*, 336, 677–689, 2004.  
35
- Lambeck, K. and Purcell, A.: Sea-level change in the Mediterranean Sea since the LGM: model predictions for tectonically stable areas, *Quaternary Science Reviews*, 24, 1969–1988, 2005.
- Leuliette, E. W. and Miller, L.: Closing the sea level rise budget with altimetry, Argo, and GRACE, *Geophysical Research Letters*, 36, 2009.

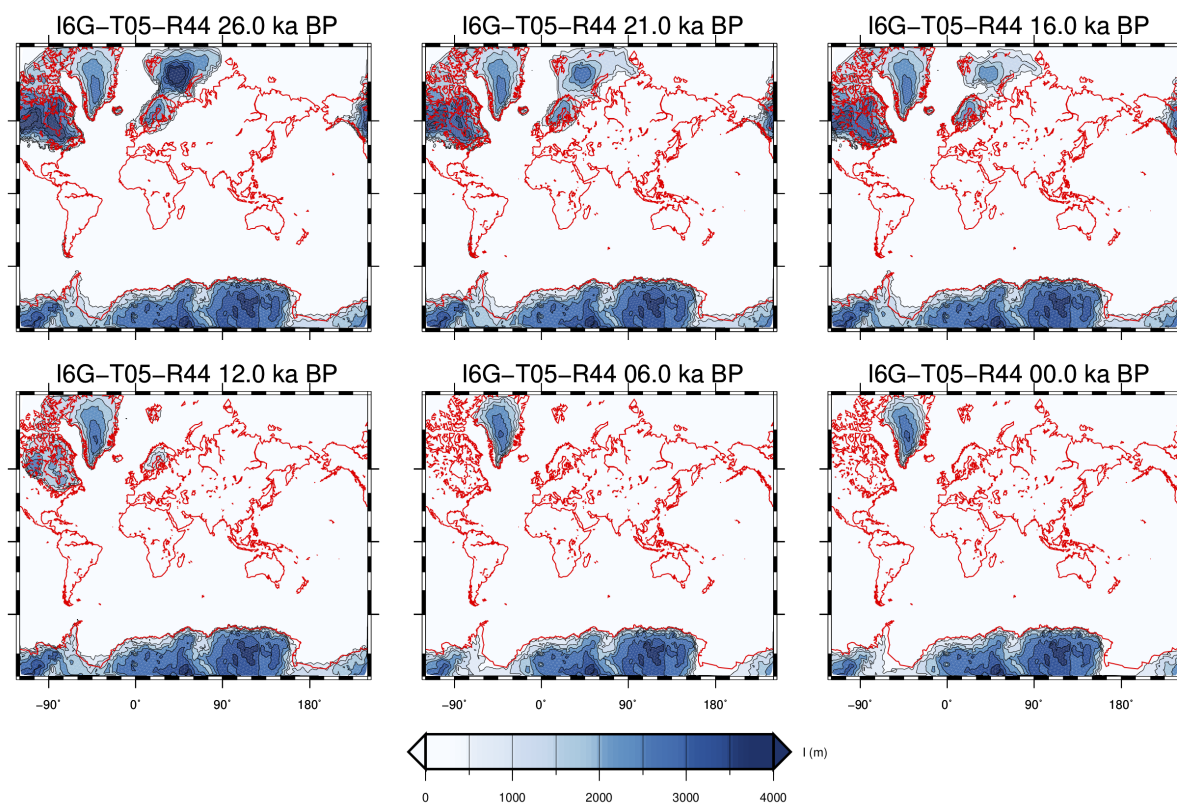
- Martinec, Z. and Hagedoorn, J.: The rotational feedback on linear-momentum balance in glacial isostatic adjustment, *Geophysical Journal International*, 199, 1823–1846, 2014.
- Martinec, Z., Klemann, V., van der Wal, W., Riva, R., Spada, G., Sun, Y., Melini, D., Kachuck, S., Barletta, V., and Simon, K.: A benchmark study of numerical implementations of the sea level equation in GIA modelling, *Geophysical Journal International*, 215, 389–414, 2018.
- 5 Mauz, B., Ruggieri, G., and Spada, G.: Terminal Antarctic melting inferred from a far-field coastal site, *Quaternary Science Reviews*, 116, 122–132, 2015.
- Melini, D. and Spada, G.: Some remarks on Glacial Isostatic Adjustment modelling uncertainties, *Geophysical Journal International*, 218, 401–413, <https://doi.org/10.1093/gji/ggz158>, <https://doi.org/10.1093/gji/ggz158>, 2019.
- Melini, D., Gegout, P., King, M., Marzeion, B., and Spada, G.: On the rebound: Modeling Earth’s ever-changing shape, *Eos T. Am. Geophys. Un.*, 96, <https://doi.org/10.1029/2015EO033387>, 2015.
- 10 Milne, G. A. and Mitrovica, J. X.: Postglacial sea-level change on a rotating Earth, *Geophysical Journal International*, 133, 1–19, 1998.
- Milne, G. A. and Mitrovica, J. X.: Searching for eustasy in deglacial sea-level histories, *Quaternary Science Reviews*, 27, 2292–2302, 2008.
- Mitrovica, J. and Milne, G.: On the origin of late Holocene sea-level highstands within equatorial ocean basins, *Quaternary Science Reviews*, 21, 2179–2190, 2002.
- 15 Mitrovica, J., Davis, J., and Shapiro, I.: A spectral formalism for computing three-dimensional deformations due to surface loads, *Journal of Geophysical Research*, 99, 7057–7073, 1994.
- Mitrovica, J., Gomez, N., Morrow, E., Hay, C., Latychev, K., and Tamisiea, M.: On the robustness of predictions of sea level fingerprints, *Geophysical Journal International*, 187, 729–742, 2011.
- Mitrovica, J. X. and Milne, G. A.: On post-glacial sea level: I. General theory, *Geophysical Journal International*, 154, 253–267, 2003.
- 20 Mitrovica, J. X. and Peltier, W.: On postglacial geoid subsidence over the equatorial oceans, *Journal of Geophysical Research: Solid Earth*, 96, 20 053–20 071, 1991.
- Mitrovica, J. X. and Wahr, J.: Ice Age Earth Rotation, *Annual Review of Earth and Planetary Sciences*, 39, 577–616, 2011.
- Mitrovica, J. X., Wahr, J., Matsuyama, I., and Paulson, A.: The rotational stability of an ice-age earth, *Geophysical Journal International*, 161, 491–506, 2005.
- 25 Nerem, R., Chambers, D., Choe, C., and Mitchum, G.: Estimating mean sea level change from the TOPEX and Jason altimeter missions, *Marine Geodesy*, 33, 435–446, 2010.
- Peltier, W.: Global glacial isostasy and the surface of the ice-age Earth: the ICE-5G (VM2) Model and GRACE, *Annual Review of Earth and Planetary Sciences*, 32, 111–149, <https://doi.org/10.1146/annurev.earth.32.082503.144359>, 2004.
- Peltier, W. and Drummond, R.: A “broad-shelf effect” upon postglacial relative sea level history, *Geophysical Research Letters*, 29, 2002.
- 30 Peltier, W. and Tushingham, A.: Global sea level rise and the greenhouse effect: might they be connected?, *Science*, 244, 806–810, 1989.
- Peltier, W., Drummond, R., and Roy, K.: Comment on Ocean mass from GRACE and glacial isostatic adjustment by DP Chambers et al., *Journal of Geophysical Research: Solid Earth (1978–2012)*, 117, 2012.
- Peltier, W., Argus, D., and Drummond, R.: Space geodesy constrains ice age terminal deglaciation: The global ICE-6G\_C (VM5a) model, *Journal of Geophysical Research: Solid Earth*, 120, 450–487, 2015.
- 35 Peltier, W. R.: The impulse response of a Maxwell Earth, *Review of Geophysics and Space Physics*, 12, 649–669, 1974.
- Peltier, W. R.: Ice age paleotopography, *Science*, 265, 195–195, 1994.
- Plag, H.-P. and Jüttner, H.-U.: Inversion of global tide gauge data for present-day ice load changes (scientific paper), *Memoirs of National Institute of Polar Research. Special issue*, 54, 301–317, 2001.

- Purcell, A., Lambeck, K., et al.: Palaeogeographic reconstructions of the Aegean for the past 20,000 years: Was Atlantis on Athens' doorstep?, in: *The Atlantis Hypothesis: Searching for a Lost Land*, Heliotopos Publications, 2007.
- Roy, K. and Peltier, W.: Relative sea level in the Western Mediterranean basin: A regional test of the ICE-7G\_NA (VM7) model and a constraint on late Holocene Antarctic deglaciation, *Quaternary Science Reviews*, 183, 76–87, 2018.
- 5 Sabadini, R. and Peltier, W.: Pleistocene deglaciation and the Earth's rotation: implications for mantle viscosity, *Geophysical Journal International*, 66, 553–578, 1981.
- Serpelloni, E., Faccenna, C., Spada, G., Dong, D., and Williams, S. D.: Vertical GPS ground motion rates in the Euro-Mediterranean region: New evidence of velocity gradients at different spatial scales along the Nubia-Eurasia plate boundary, *Journal of Geophysical Research: Solid Earth*, 118, 6003–6024, 2013.
- 10 Spada, G.: ALMA, a Fortran program for computing the viscoelastic Love numbers of a spherically symmetric planet, *Computers & Geosciences*, 34, 667–687, 2008.
- Spada, G.: Glacial Isostatic Adjustment and Contemporary Sea Level Rise: An Overview, *Surveys in Geophysics*, 38, 1–33, 2017.
- Spada, G. and Galassi, G.: New estimates of secular sea level rise from tide gauge data and GIA modelling, *Geophys. J. Int.*, 191, 1067–1094, 2012.
- 15 Spada, G. and Galassi, G.: Spectral analysis of sea-level during the altimetry era, and evidence for GIA and glacial melting fingerprints, *Global and Planetary Change*, 143, 34–49, 2015.
- Spada, G. and Galassi, G.: Extent and dynamic evolution of the lost land *aquaterra* since the Last Glacial Maximum, *Comptes Rendus Geoscience*, 349, 151–158, 2017.
- Spada, G. and Melini, D.: SELEN: a program for solving the “Sea Level Equation” - Manual version 1.2, December 2015, Computational
- 20 Infrastructure for Geodynamics (CIG), available from: <http://www.geodynamics.org/>, 2015.
- Spada, G. and Melini, D.: On Some Properties of the Glacial Isostatic Adjustment Fingerprints, *Water*, 11, 1844, 2019.
- Spada, G. and Stocchi, P.: The Sea Level Equation, Theory and Numerical Examples, Aracne, Roma, 2006.
- Spada, G. and Stocchi, P.: SELEN: a Fortran 90 program for solving the “Sea Level Equation”, *Comput. and Geosci.*, 33, 538–562, 2007.
- Spada, G., Antonioli, A., Boschi, L., Brandi, V., Cianetti, S., Galvani, G., Giunchi, C., Perniola, B., Piana Agostinetti, N., Piersanti, A., and
- 25 Stocchi, P.: Modeling Earth post-glacial rebound, EOS, Transactions American Geophysical Union, 85, 62–64, 2004.
- Spada, G., Barletta, V. R., Klemann, V., Riva, R., Martinec, Z., Gasperini, P., Lund, B., Wolf, D., Vermeersen, L., and King, M.: A benchmark study for glacial isostatic adjustment codes, *Geophysical Journal International*, 185, 106–132, 2011.
- Spada, G., Melini, D., Galassi, G., and Colleoni, F.: Modeling sea level changes and geodetic variations by glacial isostasy: the improved SELEN code, ArXiv e-prints, 2012.
- 30 Spada, G., Bamber, J., and Hurkmans, R.: The gravitationally consistent sea-level fingerprint of future terrestrial ice loss, *Geophysical Research Letters*, 40, 482–486, 2013.
- Spada, G., Olivieri, M., and Galassi, G.: A heuristic evaluation of long-term global sea level acceleration, *Geophysical Research Letters*, 42, 4166–4172, 2015.
- Suess, E.: *Face of the Earth*, Clarendon Press, Oxford, 1906.
- 35 Tamisiea, M. E.: Ongoing glacial isostatic contributions to observations of sea level change, *Geophysical Journal International*, 186, 1036–1044, 2011.
- Tegmark, M.: An icosahedron-based method for pixelizing the celestial sphere, *The Astrophysical Journal*, 470, L81, 1996.

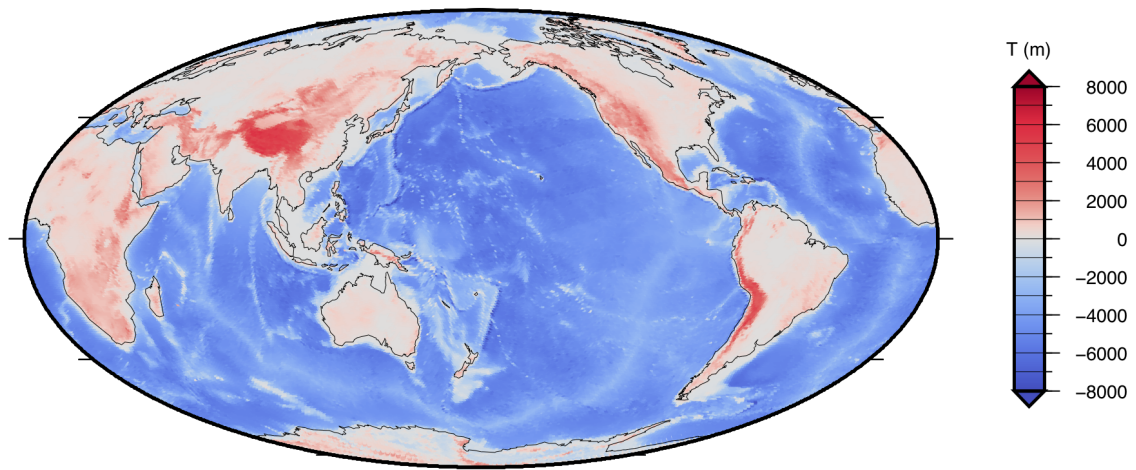
- Tushingham, A. and Peltier, W.: ICE-3G – A new global model of late Pleistocene deglaciation based upon geophysical predictions of post-glacial relative sea level change, *Journal of Geophysical Research*, 96, 4497–4523, 1991.
- Tushingham, A. and Peltier, W.: Validation of the ICE-3G model of Würm-Wisconsin deglaciation using a global data base of relative sea level histories, *Journal of Geophysical Research*, 97, 3285–3304, 1992.
- 5 Tushingham, A. and Peltier, W.: Relative Sea Level Database. IGPB PAGES/World Data Center-A for Paleoclimatology Data Contribution Series, Tech. Rep. 93-106, 1993.
- Vacchi, M., Marriner, N., Morhange, C., Spada, G., Fontana, A., and Rovere, A.: Multiproxy assessment of Holocene relative sea-level changes in the western Mediterranean: Sea-level variability and improvements in the definition of the isostatic signal, *Earth-science reviews*, 155, 172–197, 2016.
- 10 Wahr, J., Molenaar, M., and Bryan, F.: Time variability of the Earth’s gravity field: Hydrological and oceanic effects and their possible detection using GRACE, *Journal of Geophysical Research: Solid Earth*, 103, 30,205–30,229, 1998.
- WCRP: Global sea-level budget 1993–present, *Earth System Science Data*, 10, 1551–1590, <https://doi.org/10.5194/essd-10-1551-2018>, <https://www.earth-syst-sci-data.net/10/1551/2018/>, 2018.
- Wessel, P. and Smith, W. H. F.: New, improved version of Generic Mapping Tools released, *Eos T. Am. Geophys. Un.*, 79, 579, 1998.
- 15 Whitehouse, P.: Glacial isostatic adjustment and sea-level change, State of the art report. Svensk Kärnbränslehantering AB, Swedish Nuclear Fuel and Waste Management Co., Stockholm, p. 105, 2009.
- Whitehouse, P. L.: Glacial isostatic adjustment modelling: historical perspectives, recent advances, and future directions, *Earth Surface Dynamics*, 6, 401–429, <https://doi.org/10.5194/esurf-6-401-2018>, <https://www.earth-surf-dynam.net/6/401/2018/>, 2018.
- Wöppelmann, G. and Marcos, M.: Vertical land motion as a key to understanding sea level change and variability, *Reviews of Geophysics*, 20 54, 64–92, 2016.
- Wu, P. and Peltier, W.: Viscous gravitational relaxation, *Geophysical Journal International*, 70, 435–485, 1982.

<i>Test run</i> feature	Parameterisation used	Notes and links
Ice model	I6G-T05-R44	Section 3.1.1 and Figure 1
Rheology	VM5i	Section 3.1.3 and Table 2
Compressibility	No	Spada et al. (2011)
Mantle layers	$N_v = 9$	Table 2
Density and shear modulus	PREM-averaged	Table 2
Lithosphere / Core	Elastic / Fluid inviscid	Spada et al. (2011)
Reference frame origin	<b>CM</b>	Spada et al. (2011)
Final topography	ETO-R44	Section 3.1.2 and Figure 2
Rotational effects	Revised theory	See S5.2 in SSM19
Tegmark resolution	$R = 44$	See S8.6
Maximum harmonic degree	$l_{max} = 128$	See S8.6
External / internal iterations	$n_{ext} = n_{int} = 3$	See S8.7

**Table 1.** Details of the configuration of the SELEN<sup>4</sup> *test run* whose results are considered in Section 3, with notes and links to text and figures.



**Figure 1.** Ice distribution according to model I6G-T05-R44, at six different epochs since 26 ka. The maps are obtained by direct triangulation of the pixelized ice thickness data using the GMT program `pscontour`. This and the following figures are drawn using GMT scripts adapted from those which are available in the output folders of SELEN<sup>4</sup> after execution.

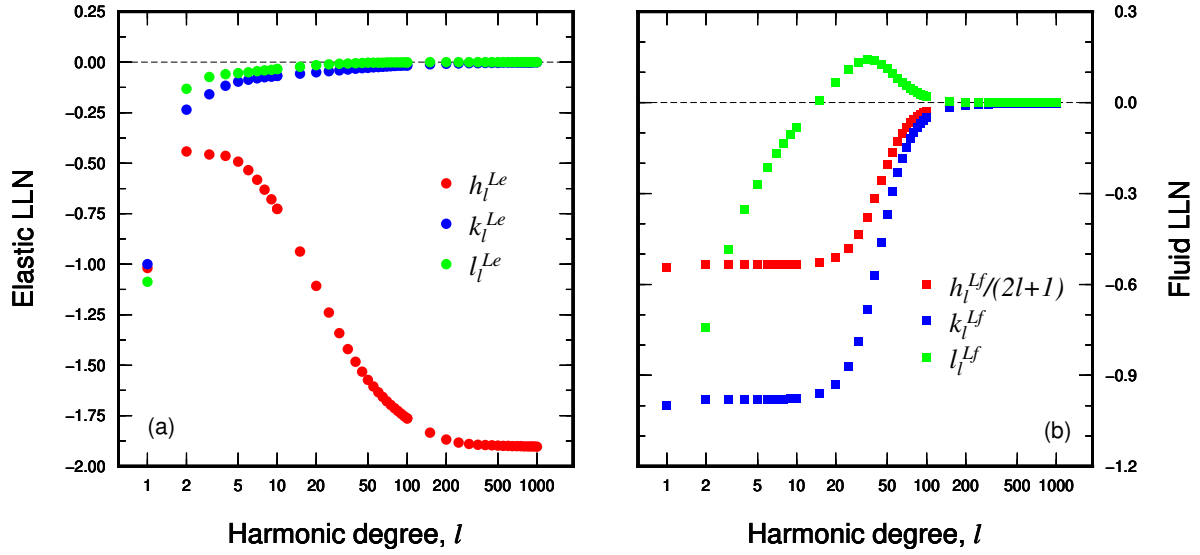


**Figure 2.** Present day relief according to model ETO-R44 used in the test run, obtained from model ETOPO1 by bilinear interpolation on the pixels of the Tegmark grid with resolution  $R = 44$ , using the GMT program `grdtrack`.



Radius, $r_-$ (km)	Radius, $r_+$ (km)	Density, $\rho$ (kg m <sup>-3</sup> )	Rigidity, $\mu$ (Pa $\times 10^{11}$ )	Viscosity, $\eta$ (Pa $\cdot$ s $\times 10^{21}$ )	Layer
6281.000	6371.000	3192.800	0.596	$\infty$	LT
6151.000	6281.000	3369.058	0.667	0.5	UM1
5971.000	6151.000	3475.581	0.764	0.5	UM2
5701.000	5971.000	3857.754	1.064	0.5	TZ1
5401.000	5701.000	4446.251	1.702	1.5	LM1
5072.933	5401.000	4615.829	1.912	3.2	LM2
4716.800	5072.933	4813.845	2.124	3.2	LM3
4332.600	4716.800	4997.859	2.325	3.2	LM4
3920.333	4332.600	5202.004	2.554	3.2	LM5
3480.000	3920.333	5408.573	2.794	3.2	LM6
0	3480.000	10931.731	0	0	Core

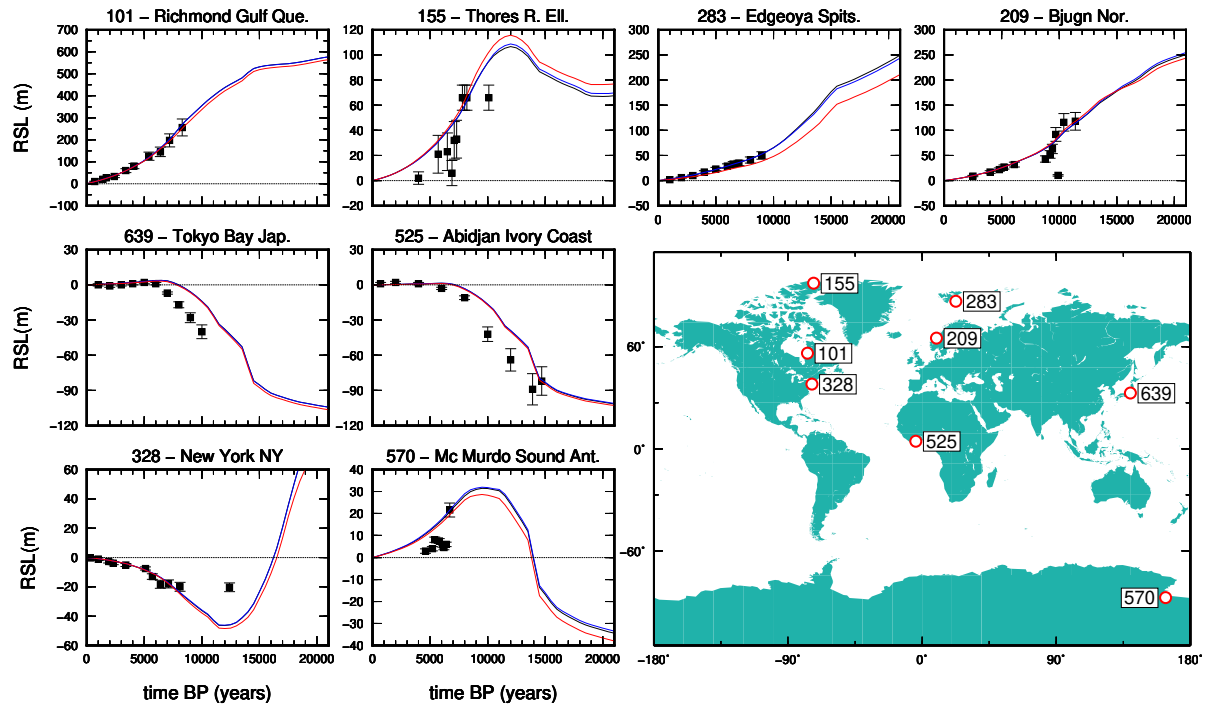
**Table 2.** Density, rigidity and viscosity profiles adopted in the rheological model VM5i, where abbreviations LT, UM, TZ and LM stand for lithosphere, upper mantle, transition zone and lower mantle, respectively. **The [R2-16] radii  $r_-$  and  $r_+$  indicate the lower and upper radii of each layer. Some [R1-48] spectral properties of model VM5i are given in Figure 3 and in Table 3.**



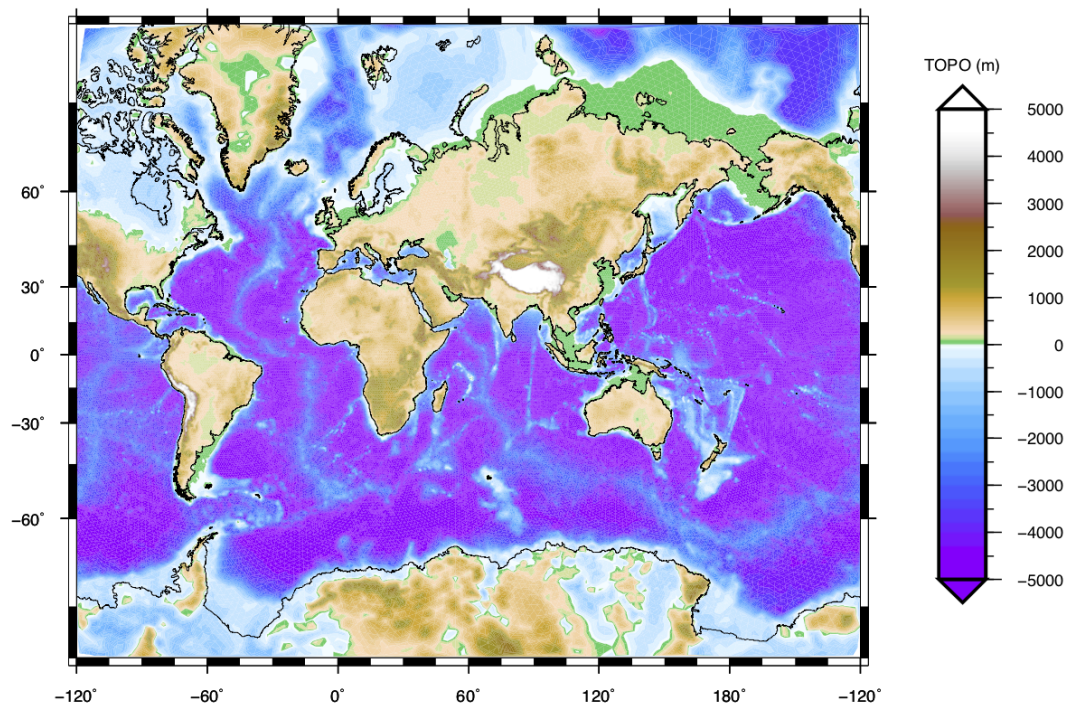
**Figure 3.** Elastic (a) and fluid (b) LLNs as a function of harmonic degree  $l$  for the 11-layer rheological model VM5i employed in the test run (see Table 2). It is apparent that for this model asymptotic values are reached, in both cases, for  $l$  exceeding a few hundreds. Note that in (b), where the fluid LLN for vertical displacement is normalised by  $(2l + 1)$ , the relationship  $h_l^{Lf} \approx (2l + 1)k_l^{Lf}$  is apparent.

	$l = 1$	2	4	16	64	128	256	512	1024
$k_l^{Le}$	$-1.000^0$	$-0.235^0$	$-0.116^0$	$-0.557_1$	$-0.227_1$	$-0.123_1$	$-0.641_2$	$-0.323_2$	$-0.162_2$
$h_l^{Le}$	$-0.101^1$	$-0.442^0$	$-0.463^0$	$-0.974^0$	$-0.165^1$	$-0.180^1$	$-0.188^1$	$-0.189^1$	$-0.190^1$
$\ell_l^{Le}$	$-0.108^1$	$-0.131^0$	$-0.600_1$	$-0.207_1$	$-0.189_2$	$-0.451_3$	$-0.579_4$	$-0.108_4$	$-0.272_5$
$k_l^{Lf}$	$-1.000^0$	$-0.980^0$	$-0.981^0$	$-0.956^0$	$-0.192^0$	$-0.248_1$	$-0.702_2$	$-0.323_2$	$-0.162_2$
$h_l^{Lf}$	$-0.163^1$	$-0.267^1$	$-0.481^1$	$-0.173^2$	$-0.139^2$	$-0.363^1$	$-0.198^1$	$-0.189^1$	$-0.190^1$
$\ell_l^{Lf}$	$-0.167^1$	$-0.740^0$	$-0.352^0$	$+0.209_1$	$+0.690_1$	$+0.787_2$	$+0.230_3$	$-0.104_4$	$-0.272_5$

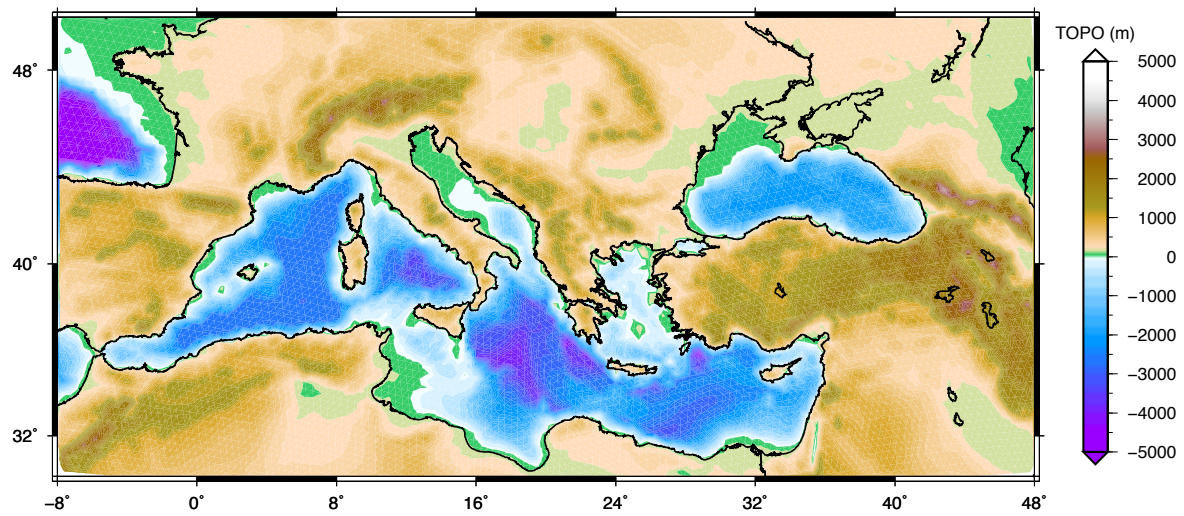
**Table 3.** Numerical values of the LLNs for the rheological model VM5i (see Table 2), for some harmonic degrees  $l$ . We use the compact notation  $v_e = a \times 10^{-v}$  and  $v^e = v \times 10^e$ , where  $v$  is any value in the table and  $e$  is an exponent. Note that, for this model, the elastic TLNs of degree  $l = 2$  are  $(k_2^{Te}, h_2^{Te}, l_2^{Te}) = (0.289^0, 0.524^0, 0.108^0)$  while the fluid values are  $(k_2^{Tf}, h_2^{Tf}, l_2^{Tf}) = (0.931^0, 0.191^1, 0.514^0)$ . **[R1-49]**.



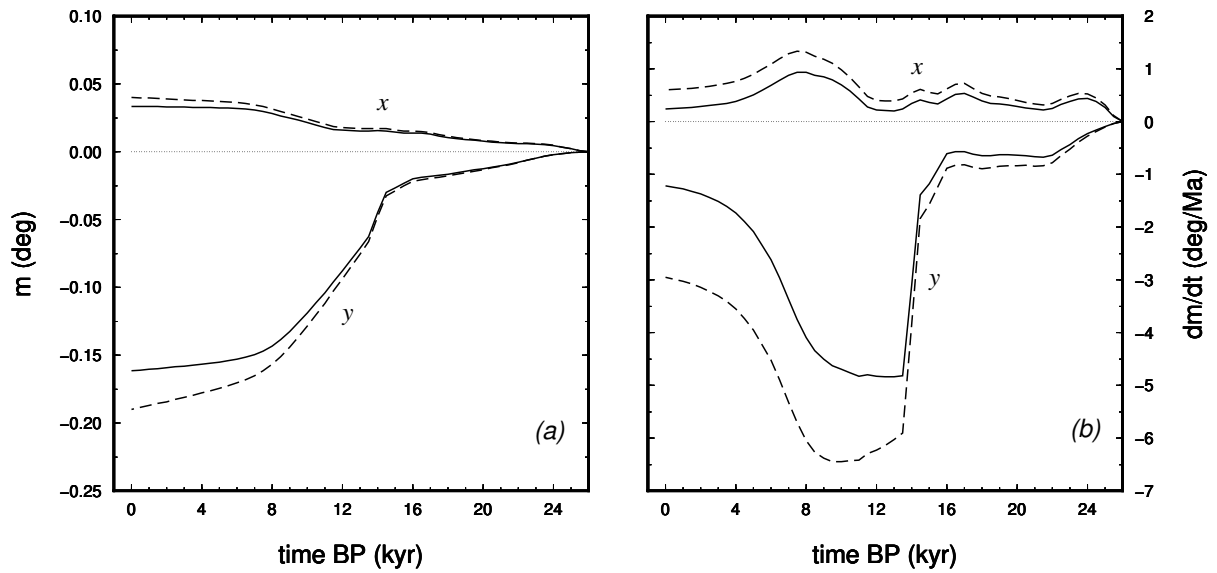
**Figure 4.** RSL data (with error bars) at eight of the 392 sites of the TP93 RSL database. Black curves show the results of the standard test run with configuration  $R44/L128/I3$ , the blue ones are for the high-resolution run with  $R100/L512/I5$  while those in red are for a low-resolution configuration with  $R30/L64/I2$ . The map shows the location of the RSL [R2-17] sites.



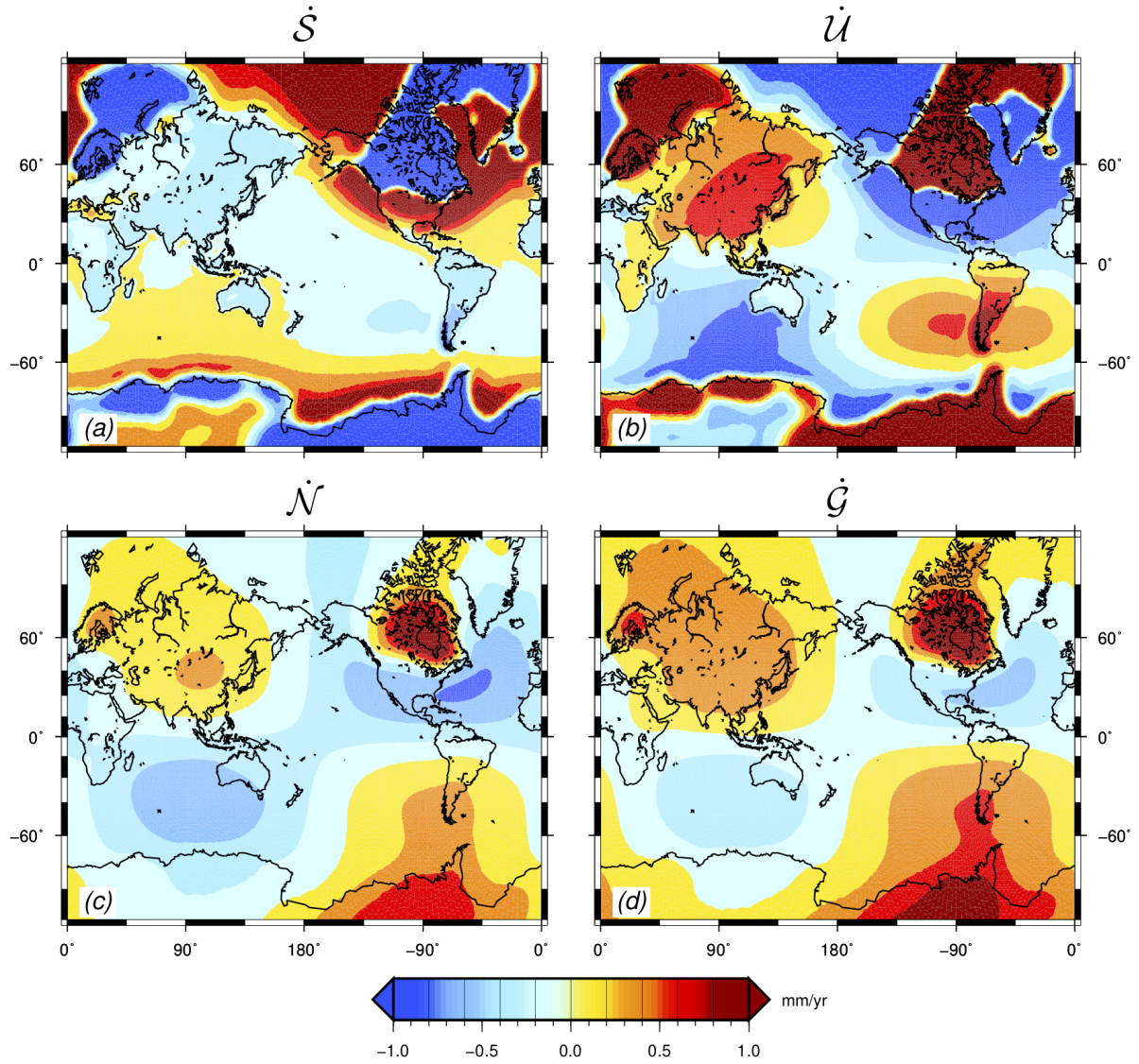
**Figure 5.** Sample SELEN<sup>4</sup> output of the global relief at the LGM (21 ka), according to the test run with *R44/L128/I3*, where topography ETO-R44 of Figure 2 has been used as a final condition for the SLE.



**Figure 6.** Paleo-topography of the Mediterranean Sea and of the Black Sea at 26 ka, obtained by a high-resolution SELEN<sup>4</sup> run with configuration *R100/L512/I5*, in order to enlighten the exposed lands in detail.



**Figure 7. Cartesian components of polar motion along the axes  $x$  and  $y$  (a) and their time derivatives (b) as a function of time since the beginning of deglaciation, for the test run with configuration  $R44/L128/I3$ . The  $x$ -axis points along the prime meridian and the  $y$  points to  $90^\circ$  East. Dashed and solid curves show results for the *traditional* and for the *revised* rotational theories, respectively. The steep change in the  $y$  components at  $\sim 14$  ka is forced by the inertia variations due to the occurrence of the Melt Water Pulse MWP-1A.**



**Figure 8.** Present-day GIA fingerprints obtained for the test run with *R44/L128/I3*. Note that the color table is saturated in a narrow interval. The effects of Earth rotation, evaluated according to the revised rotation theory, can be well discerned for  $\dot{N}$  and  $\dot{G}$ , with the characteristic high-amplitude lobes with a harmonic degree  $l = 2$  and order  $m = 1$  symmetry (Spada and Galassi, 2015). Spatial averages of these maps are given in Table 4. **Min/max values for  $\dot{S}$ ,  $\dot{U}$ ,  $\dot{N}$ , and  $\dot{G}$  after truncation of the SELEN<sup>4</sup> outputs to one decimal place, [R1-50] are:  $-13.3/4.8$ ,  $-5.2/14.1$ ,  $-0.7/1.2$ , and  $-0.5/1.4$  in units of  $\text{mm yr}^{-1}$ , respectively.**

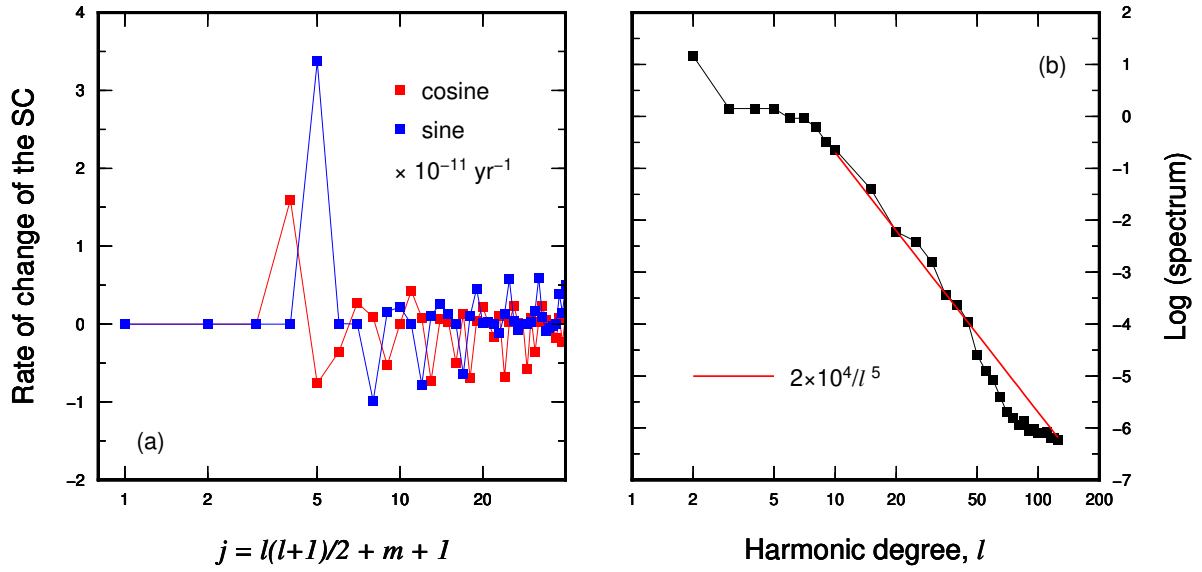


Average	<i>a)</i> New theory (mm yr <sup>-1</sup> )	<i>b)</i> Traditional theory (mm yr <sup>-1</sup> )	<i>c)</i> No rotation (mm yr <sup>-1</sup> )
$\langle \dot{S} \rangle^e$	-0.20	-0.20	-0.19
$\langle \dot{U} \rangle^e$	+0.00	+0.00	+0.00
$\langle \dot{\mathcal{N}} \rangle^e$	-0.20	-0.20	-0.19
$\langle \dot{\mathcal{G}} \rangle^e$	+0.00	+0.00	+0.00
$\langle \dot{S} \rangle^o$	-0.01	-0.01	-0.01
$\langle \dot{U} \rangle^o$	-0.24	-0.27	-0.22
$\langle \dot{\mathcal{N}} \rangle^o$	-0.25	-0.27	-0.23
$\langle \dot{\mathcal{G}} \rangle^o$	-0.05	-0.08	-0.03

**Table 4.** Whole Earth and ocean averages of the GIA fingerprints according to the test run based upon the new rotation theory (column *a*)), and the traditional theory *b*). In *c*) we also consider the case when no rotational effects are taken into account. In all the computations we have adopted the combination *R44/L128/I3*. Note that  $\langle \dot{\mathcal{N}} \rangle^e = \dot{c}$ , where *c* is the FC76 constant. In this table, the SELEN<sup>4</sup> outputs are rounded to two significant figures.

	<i>a) R100/L512/I5</i>	<i>b) R44/L128/I3</i>	<i>c) R44/L128/I3</i>	<i>d) R44/L128/I3</i>	<i>e) ICE-6G_C(VM5a)</i>
Tide gauge site	Revised theory	Revised theory	Traditional theory	No rotation	$l_{max} = 512$
	$\dot{S}$ (mm yr <sup>-1</sup> )	$\dot{S}$ (mm yr <sup>-1</sup> )	$\dot{S}$ (mm yr <sup>-1</sup> )	$\dot{S}$ (mm yr <sup>-1</sup> )	$\dot{S}$ (mm yr <sup>-1</sup> )
1. Newlyn	+0.19	+0.18	+0.17	+0.13	+0.37
2. Brest	+0.26	+0.26	+0.25	+0.21	+0.26
3. Cascais	+0.01	+0.01	+0.00	-0.05	-0.05
4. Lagos	-0.14	-0.14	-0.14	-0.14	+0.02
5. S.C. Tenerife	+0.16	+0.14	+0.13	+0.06	+0.15
6. Marseille	+0.09	+0.07	+0.06	+0.05	+0.05
7. Genova	-0.01	+0.00	+0.00	-0.01	-0.07
8. Trieste	-0.11	-0.11	-0.11	-0.10	-0.15
9. Auckland	-0.18	-0.19	-0.20	-0.24	-0.35
10. Dunedin	-0.18	-0.19	-0.21	-0.26	-0.40
11. Wellington	-0.21	-0.24	-0.25	-0.29	-0.36
12. Honolulu	-0.07	-0.07	-0.07	-0.09	-0.09
13. San Francisco	+0.62	+0.60	+0.58	+0.48	+0.31
14. Santa Monica	+0.47	+0.46	+0.44	+0.33	+0.20
15. La Jolla	+0.43	+0.43	+0.40	+0.30	+0.20
16. San Diego	+0.43	+0.43	+0.40	+0.29	+0.21
17. Balboa	-0.07	-0.09	-0.10	-0.15	-0.11
18. Cristobal	-0.06	-0.07	-0.08	-0.13	-0.07
19. Quequen	-0.42	-0.42	-0.39	-0.22	-0.51
20. Buenos Aires	-0.52	-0.52	-0.49	-0.35	-0.49
21. Pensacola	+0.63	+0.63	+0.60	+0.46	+0.49
22. Key West	+0.27	+0.27	+0.24	+0.12	+0.25
23. Fernandina	+0.59	+0.58	+0.55	+0.41	+0.40
Average	+0.09	+0.09	+0.08	+0.04	+0.01

**Table 5.** Present-day rates of sea-level change at the 23 Douglas (1997) tide gauges, for the test run of SELEN<sup>4</sup> (column *b*)) and for other configurations. Results based upon the original implementation of model **ICE-6G\_C(VM5a)** [R3-4] are reproduced in column *e*). The average rate is also shown in the bottom line. The SELEN<sup>4</sup> outputs have been rounded to two significant figures.



**Figure 9.** Present-day rate of change of the low harmonic degree ( $l \leq 6$ ) Stokes coefficients obtained for the test run of SELEN<sup>4</sup> (frame a) and their full spectrum extended to harmonic degree  $l_{max} = 128$  (b). The solid line in (b) represents the power law that best-fits the spectrum (in the least squares sense), obtained for  $l \geq 10$ .