

Reply to referee #1

Some of the replies that were posted originally (e.g. B1) have been refined in this final document.

A) GENERAL COMMENTS

The manuscript represents a weather-generator-type algorithm for simulating extreme events like heatwaves. Using so-called empirical importance sampling in generating the daily sequences of weather, the algorithm can be tailored to produce extremely warm summers much (presumably, several orders of magnitude) more commonly than they would occur in the real world or without the importance sampling. The algorithm is generic and should therefore also be applicable to other types of “long” extreme events such as extended periods of heavy precipitation.

Importance sampling has previously been applied to simulations by dynamical atmospheric models (e.g., Ragone et al. (2017) cited in the manuscript). Compared with this, the use of a stochastic weather generator requires much less computing time, and therefore potentially allows a much larger number of simulations. However, I have a major scientific concern about the fidelity of the method. If the motivation is anything else than to find the extremes of the summer (June-July-August) mean temperature and the associated summer mean atmospheric circulation, the realism of the daily time series also matters. However, as shown by Fig. 5, the warmest simulated summers have no seasonality at all, with equally high temperatures occurring from the beginning of June to the end of August. This appears quite unrealistic, since very high temperatures are much less probable (if possible at all) in the beginning and the end of the summer than in July or early August. The problem likely results from the fact that the method has no strict constraint on the time of year of the circulation analogies, and the warmest trajectories therefore sample days from the height of the summer even in the beginning and the end of the summer. This could be mitigated, though at the cost of reduced sampling space, by only accepting analogue days from a moving window of (e.g.) +/- 15 calendar days around the target day. Alternatively, it might be possible to work with anomalies (removing the mean seasonal cycle before applying the algorithm) or with normalized anomalies of Z500 and T (removing the mean seasonal cycle and dividing by standard deviation), although this is uncharted terrain that might create its own problems.

Referee#2 had a similar comment. We thank both of them for their careful reviews. The weight that is devoted to the calendar day was indeed too weak. We were deceived by the experiments of Ragone et al. (2017) of perpetual summer. We now use a “stiffer nudging” for calendar days, and obtain more realistic summers (i.e., summers that eventually end into a Fall season). The procedure is explained below (B5).

B) SPECIFIC COMMENTS

1. P5L1. Does this mean the best 20 analogues regardless of the time of the year (cf. general comments)?

The 20 best analogues are searched within 30 calendar days. This is corrected in the text (P4L8).

2. P5L18-19 and 26-27. I suppose the weight is directly, not inversely proportional to the correlation, i.e., days with higher correlation are more likely chosen as analogues.

This is true (P5L24). Please note that this condition is not used in the importance sampling SWG. This is clarified in the revised text, in the empirical importance sampling definition.

3. P5L28-30. Does this procedure lead to a realistic autocorrelation of the daily mean temperatures?

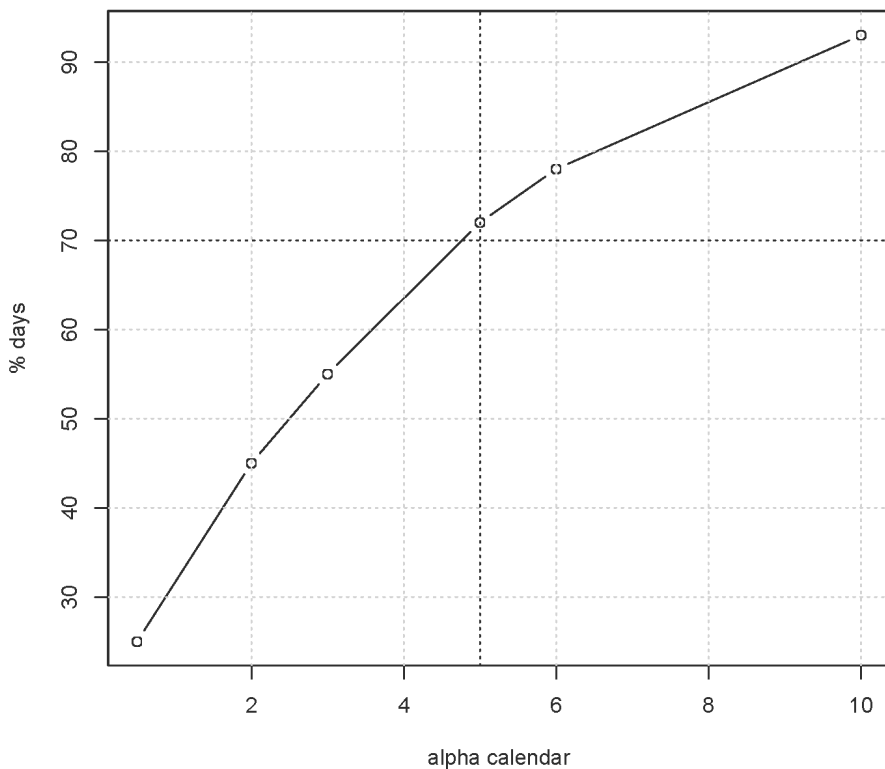
This was checked in the original paper of Yiou (GMD, 2014, Figure 4). The analog stochastic weather generators generally underestimate temporal auto-correlation. "Real" temperature is not as random as a stochastic weather generator. This is mentioned at the end of Sec. 3.2.

4. P7L10. I assume that this is an addition to the factors 1-2 on P5L24-27, not a replacement.

Thank you for this remark. This rule actually replaces the weight on the spatial correlation, and the weights on the calendar days are maintained. This is clarified in the revised manuscript (P7L10).

5. P7L16-18. Is physical relevance really ensured? See the general comment about the lack of seasonality.

This is indeed a crucial point (see reply to general comment). This problem was treated by increasing the weight on the calendar days. This "calendar nudging" parameter was estimated by trial and error, by taking the smallest value for which most (e.g. more than 70%) of the dynamic simulations end with dates after the second half of August. In our case (summer temperature simulations), a parameter value of 5 is deemed reasonable for summer temperature simulations. All the figures are changed accordingly. This will be explained in the revised text. Note that if this criterion is used (more than 70% of simulations end towards the end of the season), then the value of this weight parameter might be different for another season. This is explained in the revised manuscript (P7L25), with an additional figure (below) showing the dependence to the calendar weight of the percentage of simulations for which the last day is within the last two weeks of the summer.



6. P9L26-27. The only way in which this paper currently answers this question (“how likely is the occurrence of an event”) is by fitting a normal distribution to the observed JJA mean temperatures (right scale in Figure 4). Would it be possible to refine these estimates based on the SWG approach (cf. Figure 4 in Ragone et al. (2017), cited in the manuscript)?

This is a good question on the theory. One can give a heuristic formula for the probability of trajectories from the analogues. For example, let A be the smallest number (of analogues) for which

$\frac{1}{S} \sum_{k=1}^A \exp(-\alpha_T k) > 1 - \epsilon$, where ϵ is a small positive number (for example $1/\text{Number of simulations that are needed to observe an event}$) and S is the sum of all exponential weights. Then the probability of trajectories is close to $\left(\frac{A}{K}\right)^M$, where

M is the number of independent days in the season ($M=18$ for a season of 90 days) and K is the number of analogues ($K=20$). In this case, we verified that such an estimate is close to the Gaussian quantiles, for values of α_T that are not too large (< 1), if $K=20$ analogues are considered. Such a formulation needs several parameter adjustments (e.g., ϵ and M). A rigorous formulation would be a statistics paper in itself. In the case of seasonal temperature averages, it is probably wiser to stick to the Gaussian approximation, which does not require too many trials. This is mentioned in the revised manuscript, near the end of section 3.

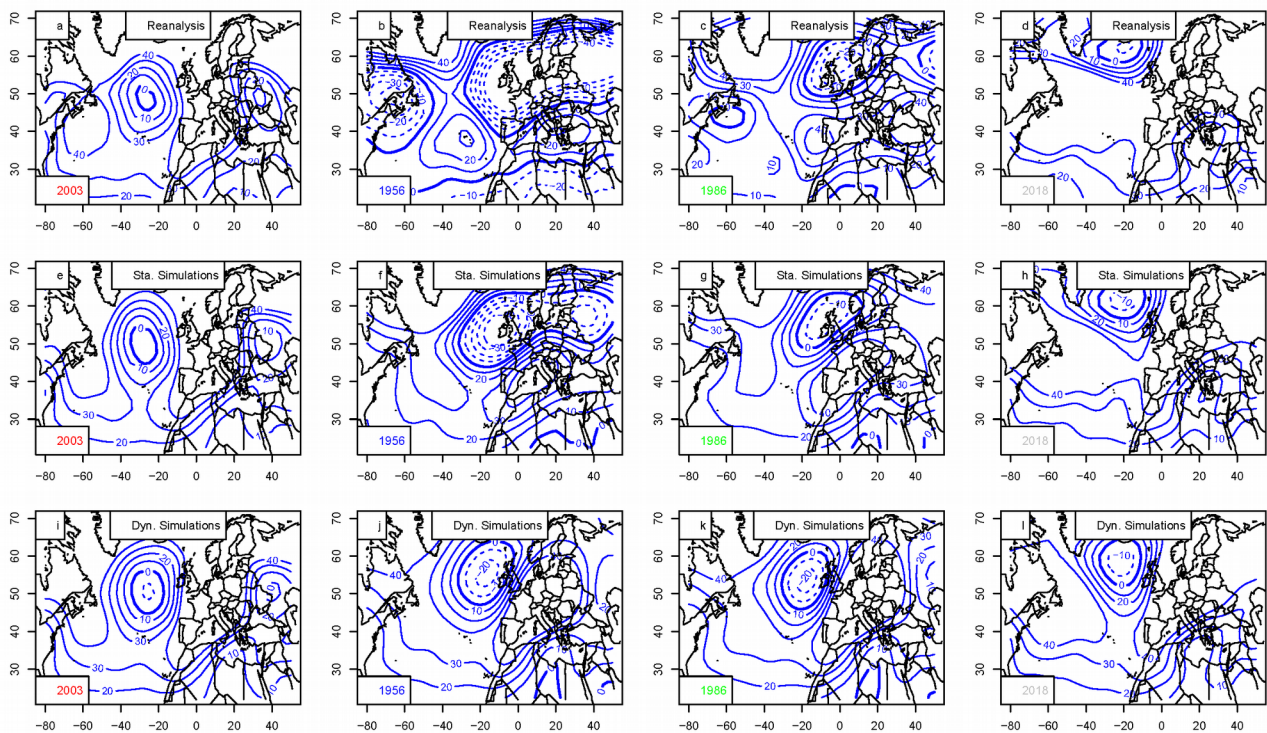
7. P12L22-24. This interpretation “small perturbations of the atmospheric Z500 structures can add $\approx 4K$. . .” is dubious, because there is no one-to-one physical relationship between Z500 and surface temperature. Much more likely, the $4K$ addition in temperature comes from the tendency of the algorithm to select the warmest days among days with similar Z500 fields. The slight changes in the Z500 anomalies are a side effect of this, but they are not large enough to

“cause” the change in surface temperature. Note that, for the whole atmospheric column to be 4 K warmer, the layer between 500 and 1000 hPa should become 80 meters thicker.

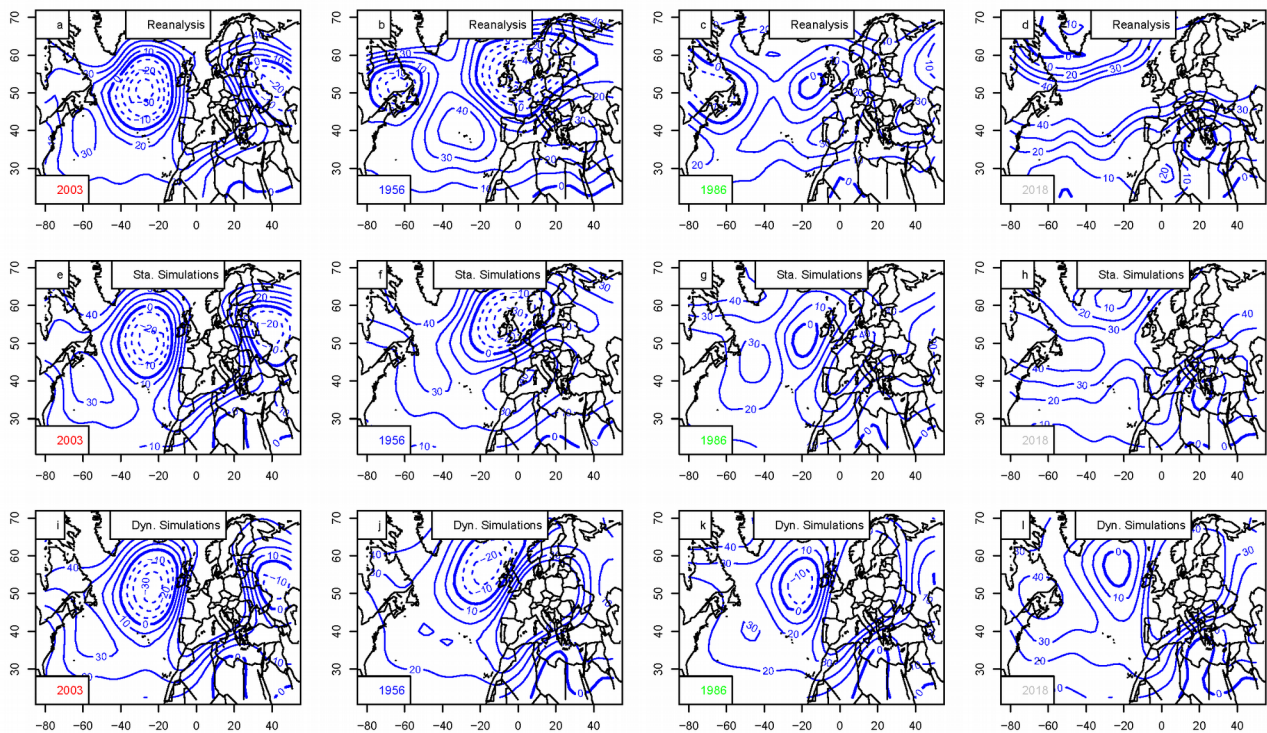
Point taken. What we meant was that a small modification of Z500 patterns (a few meters at most) can be associated to large surface temperature changes (4K, i.e. larger changes than the expected isostatic change). This is larger than the temperature trend ($\sim 0.1\text{K/decade}$). This is clarified in the revised manuscript (P15L10).

8. P12L27-29. How long does the simulation remember its initial conditions? Would there still be a difference in the Z500 fields if they were only averaged over July-August?

The “regular” stochastic weather generator remembers the initial conditions (for temperature) up to one month ahead (Yiou and Déandréis, GMD, 2019). Starting all simulations in June, the SLP/Z500 fields averaged over July-August (rather than JJA) do quantitatively change, although the patterns are still anticyclonic over Europe (see figures below). We do not discuss this issue in the manuscript.



July-August (JA) Z500 composites for 2003, 1956, 1986 and 2018.



June-July-August (JJA) composites for 2003, 1956, 1986 and 2018.

C) TECHNICAL COMMENTS AND CORRECTIONS

1. P1L19: ensembles in plural
OK.

2. P2L26: linked to
OK.

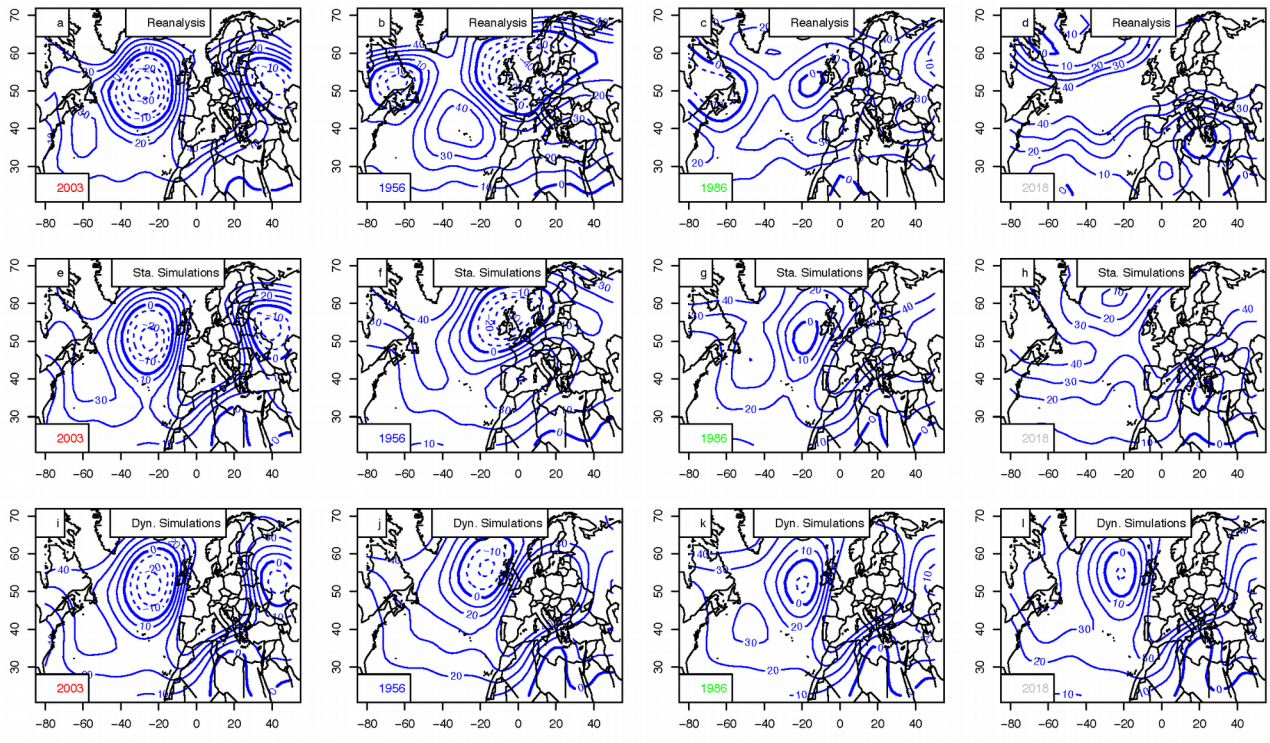
3. P3L1: recalls
OK.

4. Figure 3 could be improved by including the values of the alpha parameter in the figure panels. In addition, it would be useful to describe the interpretation of the box plots in the caption (there are several versions around, although some are more common than others).

The caption for boxplot figures is completed in the revision (see also comment of referee#2).

5. Figures 6, 7, A2, A4 and A6. These maps could be improved by using different colors for positive and negative anomalies. It would also be better to use the same contour interval in all panels of each figure.

The contour lines use the same interval increments. The lines will be continuous for positive anomalies, dashed for negative anomalies, and thick for 0. This facilitates reading the figure on a B&W printout. An example of maps is given below (Z500 anomalies):



Reply to Referee #2

GENERAL COMMENTS

The authors introduce a new method to simulate extreme heatwaves by using a stochastic weather generator, which is adapted to simulate high temperature values with low probability based on importance sampling. Ragone et al. (2017) had shown that importance sampling can be used to simulate heatwaves with numerical models at low computational costs. The present work is based on the same idea, but the importance sampling is implemented in case of a stochastic weather generator. The authors underline the computational effectiveness and flexibility of their method, which can be implemented to simulate also other types of persistent extreme events. Although I think that the method is a promising complementary tool to simulate persistent events, I am afraid that the simulated time series become physically less and less realistic with increasing alpha values. There are obviously limitations of this method which should be handled more carefully. Overall, the structure of the manuscript is clear, the abstract is clear and concise. I appreciate that the authors mention several caveats of the method and of the used data sets. Nonetheless, the description of the method is not totally and unequivocally clear. Furthermore, the majority of the figures is hard to read, and some figure captions are lacking important information.

Thank you for the general comments. Most of those comments were also made by the first referee (physical realism of the simulations, figure captions, clarity of the method presentation). A better set of parameters was used to make more realistic simulations (i.e. with a seasonality). This is explained in the text and reflects in revised figures. The figure captions now fully describe the features of the figures. Many points on the methodological presentation were expanded and clarified.

SPECIFIC COMMENTS

P2 L9-12: The statement about EVT is too general and one-sided. EVT has been used successfully to estimate extreme temperature and precipitation events also in case of relatively short time series of about 30 years (see for example Zahid et al. 2017), and has the advantage to provide estimates for unobserved events. It is true, however, that EVT is more useful to model instantaneous extremes instead of long lasting events. Thus, the main problem of using EVT to simulate heat waves lies in the temporal persistence of these events.

Fair enough. The paragraph is reformulated.

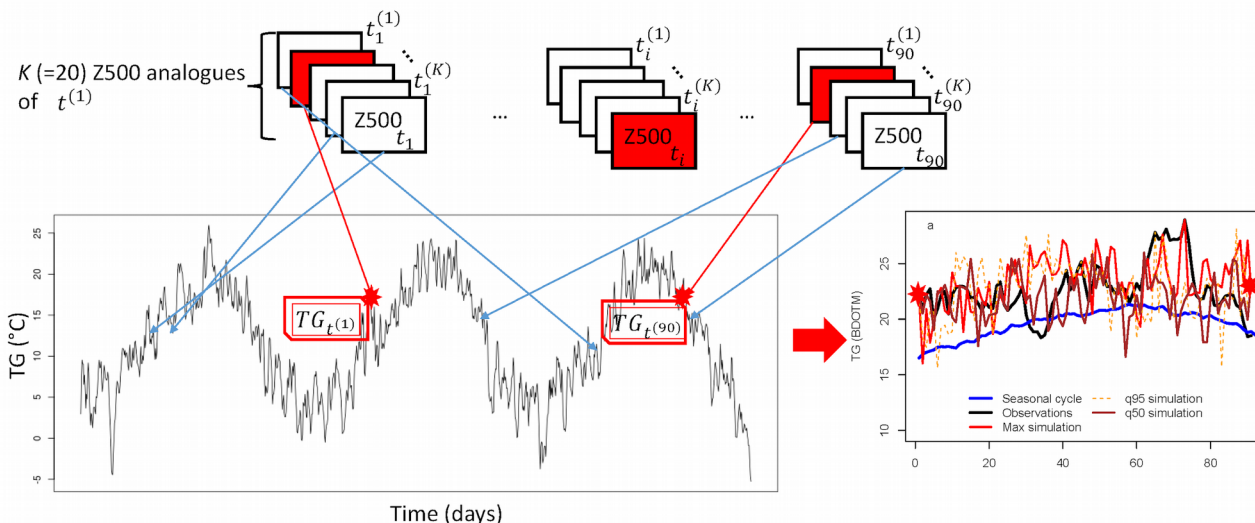
P5 L28-29: A more detailed formulation would help understanding.

OK. We clarified the formulation.

Sec. 3: In Sec. 3.2 K best analogues are mentioned (with $K=20$), and in Sec. 3.3 as well. Furthermore $t(k)$ (k as superscript) is used to denote the dates of the K best analogues. However, in Fig. 2 N analogues are mentioned ($N=?$) and we find $t(1)$, $t(i)$ and $t(90)$. It seems like the notation is not totally consistent.

The notation was streamlined: K instead of N in Fig. 2, and care taken to superscripts. See revised figure below.

Goal: Simulate ensembles of sequences of analogue TG with highest possible temperature and compatible Z500



P16 L6-8: Other climate variables, like precipitation and wind speed, are very different from temperature in terms of their probability distribution and the auto-correlation. Are the authors totally convinced about the applicability of the presented method also in these cases?

Prolonged episodes of precipitation are being tested in a separate study. We leave this to another paper. Short lived events (e.g. storms or Mediterranean events) are out of the scope of this methodology, as pointed out in the manuscript.

TECHNICAL CORRECTIONS

FIG3: error bars and circle markers are not explained in the caption. In the upper left panel the black line representing the observations is almost invisible. Sorry. Red is for “dynamic” weather generator and blue is for “static” weather generator. The boxplots indicate the median, 25th and 75th quartiles. The upper “whisker” classically indicate $\min(1.5 (q_{75}-q_{25}) + q_{50}, \max(T))$. The lower whisker is the symmetrical formulation. This is explicit in the revised manuscript.

FIG4: the meaning of the colours red and blue, the error bars and circle markers are not explained in the caption.

Sorry. Red is for “dynamic” weather generator and blue is for “static” weather generator. The boxplots indicate the median, 25th and 75th quartiles. The upper “whisker” classically indicate $\min(1.5 (q_{75}-q_{25}) + q_{50}, \max(T))$. The lower whisker is the symmetrical formulation.

FIG5: What is BDOTM? Orange dashed line is almost invisible.

Berlin-De Bilt-Orly-Toulouse-Madrid. This is now explicit in the figure caption. The orange line will be thicker.

P2-L14: poor English

OK. The sentence is rephrased more linearly.

P2-L26: linked to P3-L1: Sec. 3 recalls

OK.

P14-L2: The optimal Z500 patterns . . . are similar to...

OK.

Simulation of Extreme Heatwaves with Empirical Importance Sampling

Pascal Yiou¹ and Aglaé Jézéquel²

¹Laboratoire des Sciences du Climat et de l'Environnement, UMR 8212 CEA-CNRS-UVSQ, IPSL and U Paris Saclay, 91191 Gif-sur-Yvette cedex, France

²Laboratoire de Météorologie Dynamique, UMR CNRS-ENS-UPMC-X, IPSL and U Paris-Sorbonne, 75005 Paris, France

Correspondence: Pascal Yiou (pascal.yiou@lsce.ipsl.fr)

Abstract. Simulating ensembles of extreme events is a necessary task to evaluate their probability distribution and analyse their meteorological properties. Algorithms of importance sampling have provided a way to simulate trajectories of dynamical systems (like climate models) that yield extreme behavior, like heatwaves. Such algorithms also give access to the return periods of such events. We present an adaptation based on circulation analogues of importance sampling to provide a data-based algorithm that simulates extreme events like heatwaves in a realistic way. This algorithm is a modification of a stochastic weather generator, which gives more weight to trajectories with higher temperatures. This presentation outlines the methodology on European heatwaves and illustrates the spatial and temporal properties of simulations.

Copyright statement. TEXT

1 Introduction

The summer heatwaves in Western Europe in 2003 or in Russia in 2010 were not only record breaking events, but outliers of the temperature distribution by exceeding several standard deviations. Those events were considered as catastrophes in the countries where they occurred, and drastic measures of adaptation had to be taken, so that the following events (although milder) had much lower impacts. One can wonder whether such events were unprecedented because the observational records are too short (i.e. their return periods are longer than any time series of observations) or because climate change created new conditions of emergence. In order to solve this conundrum, it is necessary to be able to simulate the most intense event over a given region that is compatible with present-day conditions, and compare it with observed records. This necessitates efficient simulation methods. The general challenge that we want to address is to simulate an ensemble of heatwaves with a return period larger than 1000 years, with present-day conditions (i.e. less than 100 years of observations)

Available [ensemble ensembles](#) of climate model simulations from CMIP5 (Taylor et al., 2012), Euro-CORDEX (Vautard et al., 2013), and weather@home (Massey et al., 2015) contain mostly "normal" summers, so that samples of extreme summers are often scarce. In addition, model biases can add issues on the reliability of simulated structures or return levels (Maraun et al., 2017).

Long lasting events like heatwaves or cold spells yield a challenge beyond the simulation of large values of temperature. For example, heatwaves are characterized by prolonged episodes of high temperatures that are associated with persisting anticyclonic atmospheric patterns (Cassou et al., 2005; Kornhuber et al., 2017; Quesada et al., 2012). The maximum duration of those events is obviously bounded by the seasonal cycle because the lower solar input in Autumn imposes an end to all summer heatwaves, although the length of seasons is subject to variations (Cassou and Cattiaux, 2016). This outlines the necessity to simulate the climate ingredients leading to a warm/cold spell. This inspired the idea of *storylines* that emphasize the mechanisms behind extremes (Hazeleger et al., 2015; Zappa and Shepherd, 2017; Shepherd et al., 2018; Shepherd, 2019) and investigate how they are affected by climate change.

Statistical models have been developed to simulate extreme events (Ghil et al., 2011). ~~It turns out that extreme~~ Extreme value theory (EVT) based on observations is useful to investigate and simulate short-lived events, especially when they deviate from Gaussian distributions. But it might not be ~~very useful because only ≈ 70 years of reanalyses are available and generally less for high quality observations. The estimation of EVT parameters would suffer from too high uncertainties to simulate the tail of the temperature distribution. In addition, such simulations would not give information on~~ appropriate to investigate long lasting events (which end up leading to a Gaussian distribution). The investigation of multivariate fields (e.g. a temperature and the atmospheric circulation, nor the time sequence of climate variables during the events.) is possible but requires rather complex implementations.

~~To circumvent this sampling difficulty, dynamic weather generators to~~ Dynamic weather generators that simulate ensembles of climate variables have been devised to circumvent this sampling difficulty. The weather@home experiment (Massey et al., 2015) simulate tens of thousands of trajectories of the HadAM3P model, which is the atmosphere component of the coupled ocean-atmosphere model of the UK Met Office Hadley Centre (Gordon et al., 2000). Although spectacular, this system is not very flexible (the model parameters are fixed, the region is imposed, etc.) nor optimal in the sense that one get "only" ten millennial heatwaves in 10^4 runs. The limits of atmospheric only models approaches have also been demonstrated (Fischer et al., 2018; Dong et al., 2017).

Stochastic weather generators (Ailliot et al., 2015) are statistical models that yield reasonable physical features and can be run many times for a low computational cost. In principle, such stochastic models can enlarge the sampling size to millions of simulations so that one could obtain hundreds of extreme events with millennial return times rather inexpensively.

Ragone et al. (2017) were the first to perform simulations of extreme heatwaves in Europe with *importance sampling* algorithms and a simplified climate model. They were able to simulate a hundred of heatwaves with a return period of 1000 years at the cost of one hundred simulations, by avoiding simulating normal years. The main caveat of that proof of concept is linked to potential model (Fraedrich et al., 2005) biases and the lack of a seasonal cycle (they simulated perpetual summers).

The goal of this study is to assemble ideas from stochastic weather generators and importance sampling to simulate extreme events with realistic atmospheric circulation features. We will call this system an *empirical importance sampling algorithm*. For simplicity (and without lack of generality) we will focus on the simulation of summer European heatwaves, as a proof of concept. Hence the paper will be based on summer daily temperature in several European stations. The paper will present a data-based stochastic weather generator that nudges simulated trajectories toward high temperatures. We will investigate

the physical and statistical properties of this weather generator. In particular, we will identify the weather types associated to extreme heatwaves.

Sec. 2 presents the temperature and atmospheric circulation data that are used in the paper. Sec. 3 ~~recall~~recalls the ideas of importance sampling and details the analogue-based algorithm for sampling heatwaves. Sec. 4 shows the results of simulations
5 of extreme heatwaves.

2 Data

2.1 Atmospheric circulation

We use the reanalysis data of the National Centers for Environmental Prediction (NCEP) (Kistler et al., 2001). We consider the geopotential height at 500mb (Z500) over the North Atlantic region for computation of circulation analogues. Sea-level
10 pressure (SLP) is used for *a posteriori* diagnostics. We used the daily averages between January 1st 1948 and December 31st 2018. The horizontal resolution is 2.5° in longitude and latitude. The rationale of using this reanalysis is that it covers 70 years and is regularly updated.

We consider Z500/SLP fields over two regions outlined in Fig. 1. The region in red is used to compute Z500 analogues. It is similar to the one advocated by Jézéquel et al. (2018). The region in blue is used for verification. The reason to use Z500 for
15 computations, rather than SLP, is linked to the "heat low" of SLP during heatwaves (Jézéquel et al., 2018). SLP and Z500 yield similar properties during the winter.

One of the caveats of this reanalysis dataset is the lack of homogeneity of assimilated data, in particular before the satellite era. This can lead to breaks in pressure related variables, although such breaks are mostly detected in the southern hemisphere and the Arctic regions (Sturaro, 2003), and marginally impacts the eastern north Atlantic region.

20 Since Z500 values depend on temperature, we detrend the Z500 daily field by removing a seasonal average linear trend from each grid point. This preprocessing is performed to ensure that the results do not depend on atmospheric trends. All the analogue computations of this paper were performed on detrended and raw Z500 data, in order to verify the robustness of the results to Z500 trends.

2.2 Temperature observations

25 We took daily averages (TG) of temperatures from the ECA&D project (Klein-Tank et al., 2002). We extracted data from Berlin, De Bilt, Toulouse, Orly and Madrid (Fig. 1). Those five stations cover a large longitudinal and latitudinal range in western Europe. These datasets were also chosen because:

- they start before 1948 and end after 2018. This allows the computation of analogue temperatures with the Z500 from the NCEP reanalysis, which includes that period,
- 30 - they contain less than 10% of missing data.

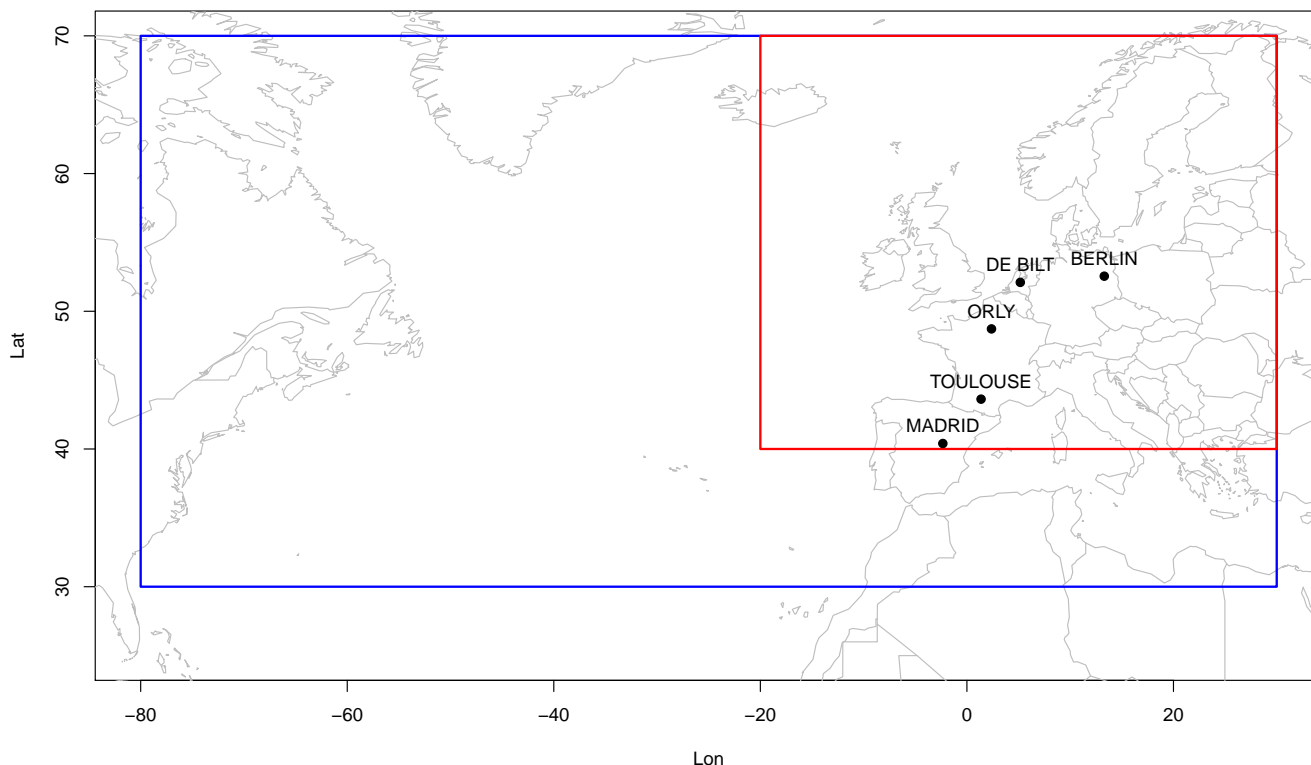


Figure 1. Location of five European stations. The red rectangle indicate the zone on which Z500 circulation analogues are computed. The blue rectangle indicates the region of pattern verification for Z500 and SLP.

These two criteria allow keeping 528 out of the 11422 ECA&D stations that are available in 2018.

The five daily temperature averages are then averaged in order to provide a daily European temperature index. This choice is done to simplify the presentation of results. Results for individual stations are presented in the supplementary material. This would overcome the potential caveat of the European temperature index, which does not capture the spatial variability of European heatwaves (Stefanon et al., 2012). Since we focus on extremely hot temperature spells, this proof-of-concept study is limited to summer, we consider the period between June 1st to August 31st.

3 Methodology

This section first recalls how analogues of circulation are computed and the general principle of a stochastic weather generator based on analogues. It then focuses on an empirical algorithm to simulate heatwaves, based on this stochastic weather generator.

3.1 Circulation analogues

Analogues of circulation are computed on Z500 data from reanalysis data of the NCEP reanalysis (Sec. 2.1) on the region outlined in red in Fig. 1. The reason to use this field rather than SLP is linked to the "heat low" of SLP during heatwaves (Jézéquel et al., 2018). SLP and Z500 yield similar properties during the winter. For each day between Jan. 1st 1948 and Dec. 5 31st 2018, the best 20 analogues (with respect to a Euclidean distance) in a different year and within 30 calendar days are searched. This follows the procedure of Yiou et al. (2013).

The small region (20W–25E; 40–70N) is used to compute analogues of Z500, to simulate continental temperatures, following the domain recommendations of the analysis of Jézéquel et al. (2018). We compute analogues on "raw" daily Z500 data and detrended Z500. Detrending is performed by removing a smoothing spline on the spatially averaged Z500. The increasing trend 10 of surface temperatures necessitates this trend removal in Z500.

The larger region (80W–25E; 30–70N) covers the North Atlantic region. The atmospheric circulation of the North Atlantic evolves within this region. This region is used to compute composites of large-scale SLP/Z500 fields during simulated events, for an evaluation of large scale features during those small scale events.

The analogues of Z500 are computed with the "blackswan" (<https://github.com/bird-house/blackswan>) Web Processing Ser- 15 vice (WPS) described by Hempelmann et al. (2018)).

3.2 Stochastic weather generators

Ensembles of simulations of temperature can be performed with the rules illustrated by Yiou (2014), with analogue-based stochastic weather generators (SWG). This type of SWG is equivalent to a resampling procedure (Ailliot et al., 2015).

A *static* SWG can be defined to simulate surrogate ensembles of Z500 sequences that are analogous to observed Z500 20 sequences. For each day t between the 1st of June and the 31st of August, we keep the $K = 20$ best Z500 analogues. We randomly select one day (k) among those K analogues and t (i.e., among $K + 1$ days), with a probability weight that is inversely proportional to the correlation of the K analogues with the Z500 pattern at time t . This constraint favors analogues with the best patterns, among those with the closest distance. This also favors the choice of t . With this type of SWG, simulated trajectories are random perturbations (by analogues) of an observed trajectory.

25 A *dynamic* SWG is defined to simulate ensembles of Z500 sequences that *could have been*, from a given initial condition. For an initial day t (e.g., a 1st of June), we have K best Z500 analogues. We randomly select one date \tilde{t} among the dates of the K analogues and t (hence $K + 1$ dates), with a probability weight that is

1. inversely proportional to the number of calendar days between the analogues dates \tilde{t} and t . This constrains the time of analogues to move forward. The weights of the analogues can be chosen proportional to $\exp(-\alpha_{cal}|\tilde{t} - t|)$, where $\alpha_{cal} > 0$ weighs the importance given to seasonality or the calendar day; 30
2. ~~inversely~~ proportional to the correlation of the analogue with the Z500 pattern at time t . This constraint favors analogues with the best patterns, among those with the closest distance.

The simulated next day t' (e.g., a 2nd of June) is then the next day of the selected analogue: $t' = \tilde{t} + 1$. ~~In this paper, we sequentially repeat these two steps of the initial day (1st of June). Then t is replaced by t' . This random selection of analogues is sequentially repeated~~ until a lead time $T = 90$ days, to simulate a whole summer. This generates one random daily trajectory of Z500 or any climate variable between t and $t + T$. Note that the dynamic weather generator spans a wider range of possibilities than the static weather generator, which is constrained by observed trajectories.

Those two types of SWG (static and dynamic) give useful information that are exploited in this paper. The random sampling procedures are repeated S times to generate an ensemble of trajectories. (Yiou, 2014) showed that temperature biases are rather small but the time auto-covariance is under estimated in both SWGs.

3.3 Empirical importance sampling

The idea behind *importance sampling* is to simulate trajectories of a physical system that optimize a criterion in a computationally efficient way. Ragone et al. (2017) used such an algorithm to simulate extreme heatwaves with an intermediate complexity climate model. The procedure of importance sampling algorithms, say to simulate extreme heatwaves with a climate model, is to start from an ensemble of S initial conditions and compute trajectories of the climate model from those initial conditions. An optimization *observable* is defined for the system. In this case, it can be the spatially-averaged temperature over Europe. The trajectories for which the observable (daily average temperature) is lowest during the first steps of simulation are deleted, and replaced by small perturbations of remaining ones. In this way, each time increment of the simulations keeps trajectories with the highest values of the observable. At the end of the season, one obtains S simulations for which the observable (here average temperature over Europe) has been maximized. Since those trajectories are solutions of the equations of a climate model, they are necessarily physically consistent. Ragone et al. (2017) argue that the probability of the simulated trajectories is controlled by a parameter that weighs the importance to the highest observable values: if n trajectories are deleted at each time step, the simulation of an ensemble of T -long trajectories has a probability of $(1 - n/S)^T$. Hence one obtains a set of S trajectories with very low probability after T time increments, at the cost of the computation of S trajectories. For comparison purpose, if one wants to obtain S trajectories that have a low probability (p) observable, then the number of necessary "unconstrained" simulations is of the order of S/p , so that most of those simulations are left out. Systems like weather@home (Massey et al., 2015) that generate tens of thousands of climate simulations are just sufficient to obtain $S = 100$ centennial heatwaves, and the number of "wasted" simulations is very high. Therefore, importance sampling algorithms are very efficient ways to circumvent this difficulty.

Here, we propose an adaptation of such an algorithm to the stochastic weather generators of Sec. 3.2 to simulate extreme heatwaves. The observable to be optimized is average daily temperature (named TG in the ECAD nomenclature (Klein-Tank et al., 2002)). To this end, we ~~add-propose~~ a new "rule" to the SWGs (static and dynamic) by giving more weight to the hottest temperatures. At each time step t , we note $t^{(k)}$ the dates of the K best analogues. The temperature values of the K analogues of t and TG_t are sorted in decreasing order. The ranks are written R_k ($k \in \{0, \dots, K\}$). For example, the rank of the hottest

temperature among analogues and temperature at day t is 1. We chose weights $\{w^{(k)}\}_{k \in \{0, \dots, K\}}$ so that:

$$w^{(k)} = Ae^{-\alpha R_k} \quad (1)$$

where α is a positive number and A is a normalizing constant so that the sum of weights over k is 1:

$$A = e^{-\alpha} \frac{1 - e^{-K\alpha}}{1 - e^{-\alpha}}. \quad (2)$$

5 The useful property of this formulation of weights is that the values of $w^{(k)}$ do not depend on time t , because the rank values R_k are integers between 1 and $K + 1$. The weight values do not depend on the unit of the variable either, so that this procedure does not need major adaptation to simulate other types of climate variables (e.g. precipitation or wind speed). If $\alpha = 0$, this is equivalent to a stochastic weather generator described in Sec. 3.2.

10 The date for the next day is chosen at random by sampling $\{t, t^{(1)}, \dots, t^{(K)}\}$ with the weights $\{w^{(k)}\}_{k \in \{0, \dots, K\}}$. Therefore, if \tilde{T} is the simulated temperature among $\mathbf{T} = \{\text{TG}_t, \text{TG}^{(1)}, \dots, \text{TG}^{(K)}\}$, then $\Pr(\tilde{T} = \mathbf{T}^{(k)}) = w^{(k)}$. The expected value $E(\tilde{T})$ is then:

$$E(\tilde{T}) = A \sum_{k=0}^K e^{-\alpha R_k} \mathbf{T}^{(k)} = A \sum_{k=0}^K e^{-\alpha k} \text{sort}(\mathbf{T})^{(k)}, \quad (3)$$

15 where $\text{sort}(\mathbf{T})$ are the sorted values of \mathbf{T} in *descending* order. This allows to select the circulation analogues that favor the highest temperature. The α parameter gives some flexibility to select analogues with lower temperatures. It plays the same role as the simulation parameter of Ragone et al. (2017), which controls the return times of trajectories. This choice of weights is also interesting because it allows for an approximation of the mean value of simulations as a function of the parameter α , as one can recognize a discrete Laplace transform of the distribution of \mathbf{T} in Eq. (3).

20 This new rule ~~is applied to~~ replaces the analogue correlation weights of the dynamic and static SWGs defined in Section 3.2. The calendar day weight have to be maintained in order to keep a seasonality, especially for the dynamic scheme. Hence, this allows simulating

1. the hottest season that could have been with a similar atmospheric circulation, with a static analogue SWG,
2. the hottest season that could have been in the same climate, with a dynamic analogue SWG.

The algorithm is illustrated in Figure 2.

25 The dynamic SWG option is closest to the importance sampling experiments performed by Ragone et al. (2017). The major algorithmic difference is that importance sampling "eliminates" trajectories with "poor" properties of the observable, while the analogue importance sampling "favors" the trajectories with the "best" properties. ~~The fact that~~

The analogue importance sampling uses a self coherent dataset as a basis (here: observations for temperature and a reanalysis for Z500 analogues) ensures that the simulated trajectories bear physical ~~relevance~~ consistence between temperature and the atmospheric circulation. The physical relevance also requires that simulations follow a seasonal cycle. If one is interested in

Goal: Simulate ensembles of sequences of analogue TG with highest possible temperature and compatible Z500

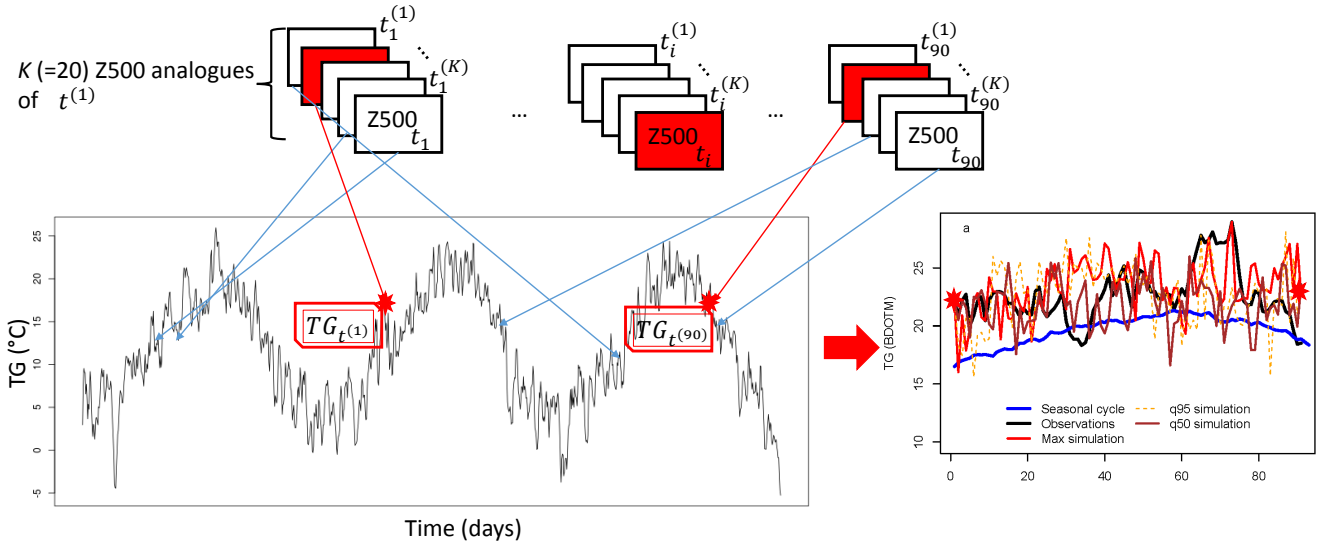


Figure 2. Illustration of the analogue importance sampling. The red rectangles indicate the selected Z500 analogues for date $t^{(i)}$. The red stars in the lower graphs are the temperature values during the selected analogue date.

simulating a perpetual summer, then the weight value α_{cal} on the calendar day is not very important. For physically realistic simulations, the value of α_{cal} can be chosen to be the smallest for which the temperature simulation median yields a seasonality. This prevents the system from staying in a perpetual mid-August.

5 The calendar "nudging" parameter α_{cal} needs to be chosen with care so that the additional rule does not create un-physical simulations (i.e. with time going backwards or simulating a perpetual summer). The value of α_{cal} was estimated by trial and error, by taking the smallest value for which most (e.g. more than 70%) of the dynamic simulations end with dates after the second half of August. In our case (summer temperature simulations), a parameter value of 5 is deemed reasonable for summer temperature simulations. The value of α_{cal} could be different if another warm season has to be simulated, because the dynamics of temperature variations depends on the season.

10 From the numerical point of view, if $\alpha = 0.1$, 15 to 18 analogues have a probability larger than 0.1 of being selected. If seasonal trajectories ($N = 90$ days) are simulated, this means that more than $15^{90} \approx 10^{100}$ different trajectories of warm seasons are possible.

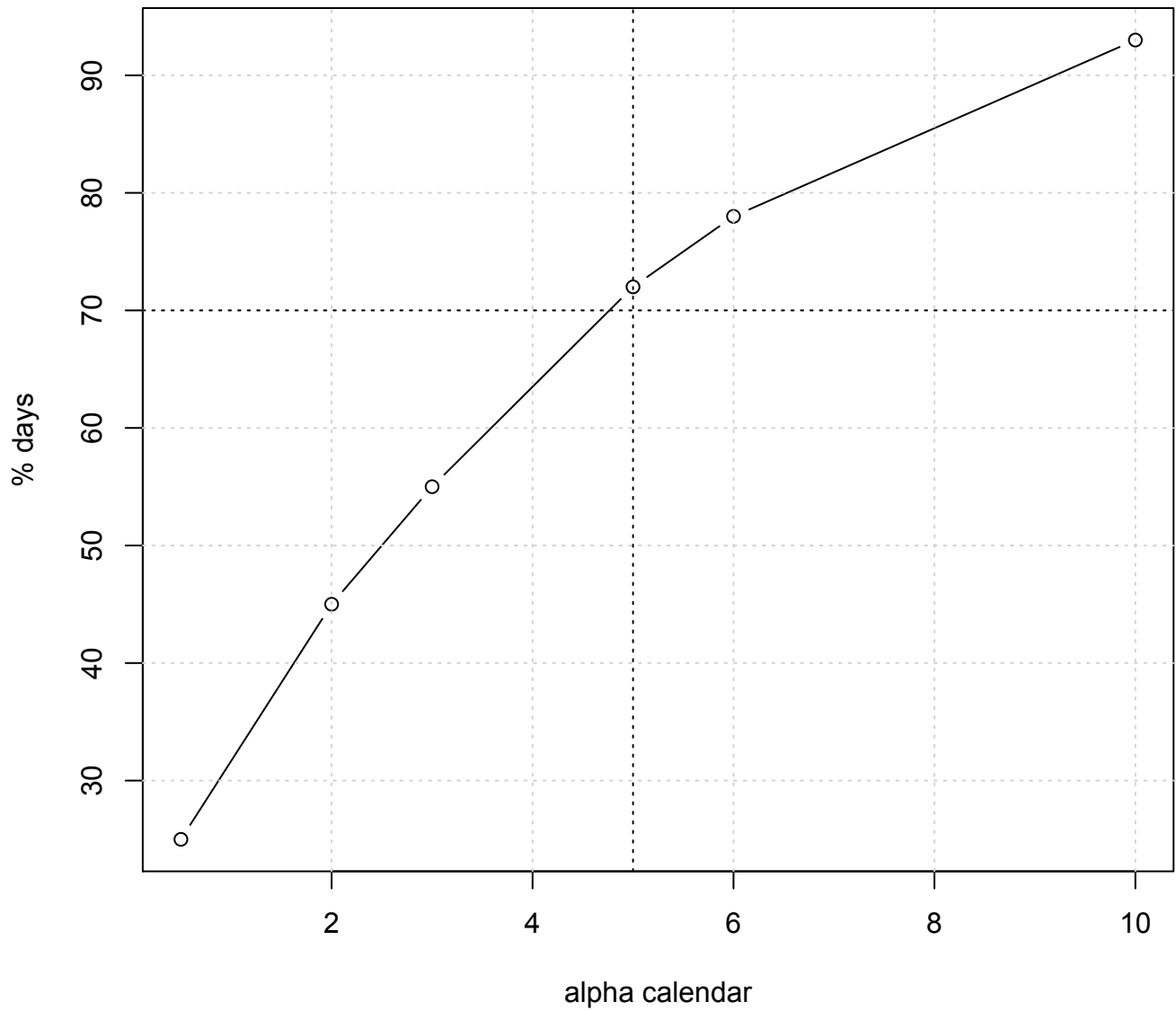


Figure 3. Percentage of dynamic simulations (from 100 simulations) of extreme summers for which the last day falls after August 15th, as a function of the parameter α_{cal} , between 1 and 10. The vertical dashed line is for $\alpha_{cal} = 5$; the horizontal dashed line is for 70%.

From Eq. (3), the probability distribution of the simulations is linked to the value of α . A formulation of the expected probability can be obtained heuristically. For example, let Q be the smallest number so that:

$$\frac{1}{A} \sum_{k=1}^Q \exp(-\alpha k) > 1 - \epsilon, \quad (4)$$

where $\epsilon > 0$ is a small number (for example $1/N$, where N is the number of simulations that are needed to observe one simulated event) and A was given by Eq. (2). Then the probability of dynamic trajectories with parameter value α is close to $(Q/K)^M$, where M is the average number of independent days during the simulated season ($M \approx 18$ for a season of 90 days), and K is the number of analogues ($K = 20$). Such a heuristic formulation is close to what is obtained by Ragone et al. (2017). Yet, this formulation suffers from numerical problems for large values of α (larger than 0.5) and small values of K (like 20). An alternate empirical estimation of the probability distribution of the average of the trajectories is to consider that the seasonal average of temperature closely follows a Gaussian distribution. Then an empirical estimate of the probability is obtained by comparing the quantiles of the observed distribution of average temperatures and the mean of simulated averages. With a chosen value of $K = 20$, the heuristic and empirical approximations give similar estimates of the probability (or return period) for values of $\alpha \leq 0.5$. We shall keep the empirical estimate of probabilities/return periods in the rest of the paper. Refined heuristic estimates are left for future (more statistical) work.

We emphasize that the methodology shown in this section (or in Ragone et al. (2017)) is quite general and not specific to summer heatwaves, as other types of extremes like cold spells (Cattiaux et al., 2010) or long episodes of precipitation (Schaller et al., 2016) can be envisioned.

~~Illustration of the analogue importance sampling. The red rectangles indicate the selected Z500 analogues for date $t(i)$. The red stars in the lower graphs are the temperature values during the selected analogue date.~~

4 Results

SWG simulations are done for each individual city (Berlin, De Bilt, Orly, Toulouse and Madrid) and their average. Only the results on the average over the five cities are shown in the core of the paper, for compactness. Results for individual cities are shown in the Supplementary Figures. $S = 100$ simulations are performed with the static and dynamic SWGs. The simulations are initialized by conditions at the 1st of June, between 1948 and 2018, and are run until the 31st of August. Hence 100×71 summers are simulated for each experiment. The parameter α takes its values in $\{0, 0.2, 0.5, 1\}$ to evaluate the relation between the simulation averages and their return period (or probability).

In order to evaluate the effect of the initial condition on the simulated patterns, we select the warmest (2003), coldest (1956) and median (1986) summers for the averaged European temperature. For illustration purposes, we add 2018, which was a major heatwave in Northern Europe. This selection helps showing how extremely hot summers can be amplified (2003 and 2018), and how median and rather cool summers could have been hot, with present day climate conditions.

4.1 Interannual trends

The distribution of temperature simulations are shown in Figure 4, with parameter α values of 0, 0.2, 0.5 and 1. The static SWG distributions (blue boxplots) yield variations that are closely correlated ($r = 0.75$) with the observed values (black lines). The dynamic SWG distributions (red boxplots) have lower amplitude variations, although they are also correlated with observed values ($r = 0.58$). Figure 4 shows that the SWG distribution means increase with the α parameter. When $\alpha = 0$, there is no importance sampling, so that both types of simulations fluctuate around the mean value of observations (Figure 4a). In that case, the record value (in 2003) or second highest value (in 2018) of temperature is not reached by the $S = 100$ simulations. The record low temperature (in 1956) is also barely reached.

We observe no trend in the simulated trajectories with $\alpha > 0$ for all years. This is explained by a tendency to select recent analogues in the importance sampling, because of the general temperature trend. The amplitude of the simulations is higher for dynamical simulations than for static simulations, because the simulated trajectories are not constrained by the observed ones, and could hence behave in a rather different way.

As soon as $\alpha > 0$, the distributions of simulated temperature exceed the observed values (Figure 4b-d), because the SWG tend to select analogues for which temperature is higher than observed, by construction. When $\alpha > 0$, the dynamic trajectories generally yield higher values than the static trajectories, because the dynamic SWG chooses the warmest analogues among all analogues. We observe that when $\alpha \geq 0.5$ then the dynamic trajectories are all above the 2003 record. Roughly half of the static trajectories with $\alpha = 1$ stand above the 2003 record.

When $\alpha > 0$, the static SWG generates similar circulation patterns that lead to warmer summer temperatures (blue boxplots). The 2003 record value in observations always yields the warmest JJA simulations. 2018 is the second hottest summer in the observations but it is no longer the second when $\alpha > 0$, with the static SWG, as a few years with heatwaves with analogue atmospheric circulation could have exceeded the 2018 temperature value.

We observe an increase of average extreme summers with parameter α . Fig. 5 summarizes the temperature probability distributions for all years, in the observations and simulations, for varying values of α . Here, return periods are estimated from a Gaussian approximation of the variability of average temperature (e.g. the black boxplot in Fig. 5) for present-day conditions. This is justified by noting that we consider the probability distribution of temporal averages (92 days in JJA) of spatial averages (5 stations). Those averages motivate a Gaussian approximation from the Central Limit Theorem (von Storch and Zwiers, 2001).

Here we obtain a return time of the 2003 summer heatwave of around 350 years in present-day conditions (i.e. the last decades) (Fig. 5). The return time of this heatwave has been estimated to be as large as 10^6 years (Schaer et al., 2004; Stott et al., 2004; Cattiaux and Ribes, 2018). Such results were based on extrapolating the probability density law of temperature observations since 1900. Therefore the underlying hypothesis to estimate the return period (or probability) is different from the estimate of Schaer et al. (2004). The SWG approach answers the question "how likely is the occurrence of an event (in present day conditions)?" Note that the event itself does not need to have occurred. Using long time series answers the question "what

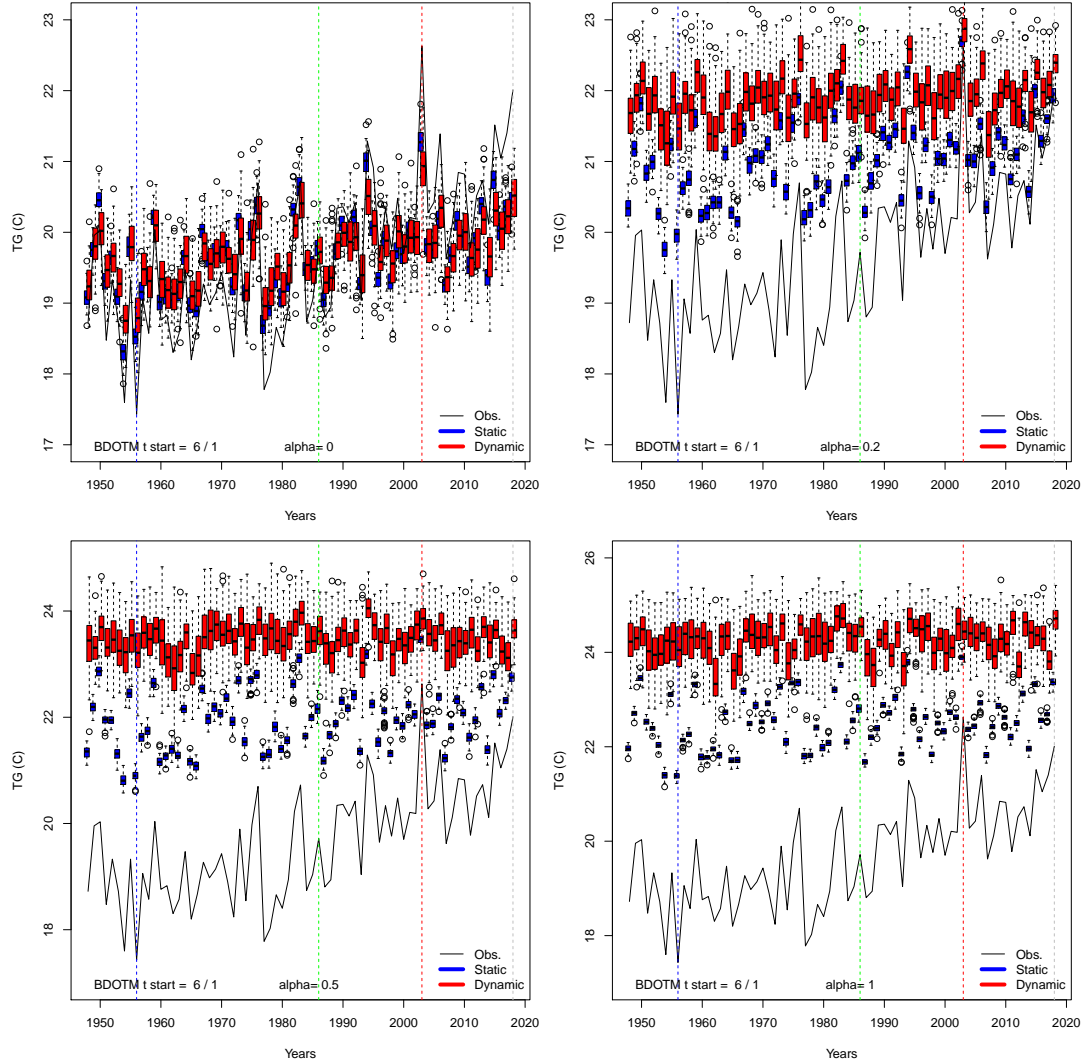


Figure 4. Time variations of probability distributions of simulated average temperatures for values of [the weight on temperatures](#) $\alpha_{TG} \in \{0, 0.2, 0.5, 1\}$. [The black continuous line represents the observed variations of Berlin-De Bilt-Orly-Toulouse-Madrid \(BDOTM\) summer averages between 1948 and 2018.](#) [The vertical colored lines outline the coldest \(blue\), median \(green\), warmest \(red\) and 2018 summers.](#) [The boxplots represent the ensemble variability of the simulations for each year. The red boxplots are for the dynamic simulations. The blue boxplots are for the static simulations. The boxes of boxplots indicate the median \(\$q_{50}\$ \), lower \(\$q_{25}\$ \) and upper \(\$q_{75}\$ \) quartiles. The upper whiskers indicate \$\min\[\max\(T\), 1.5 \times \(q_{75} - q_{25}\)\]\$. The lower whisker has a symmetric formulation. The points are the simulated values that are above or below the defined whiskers.](#)

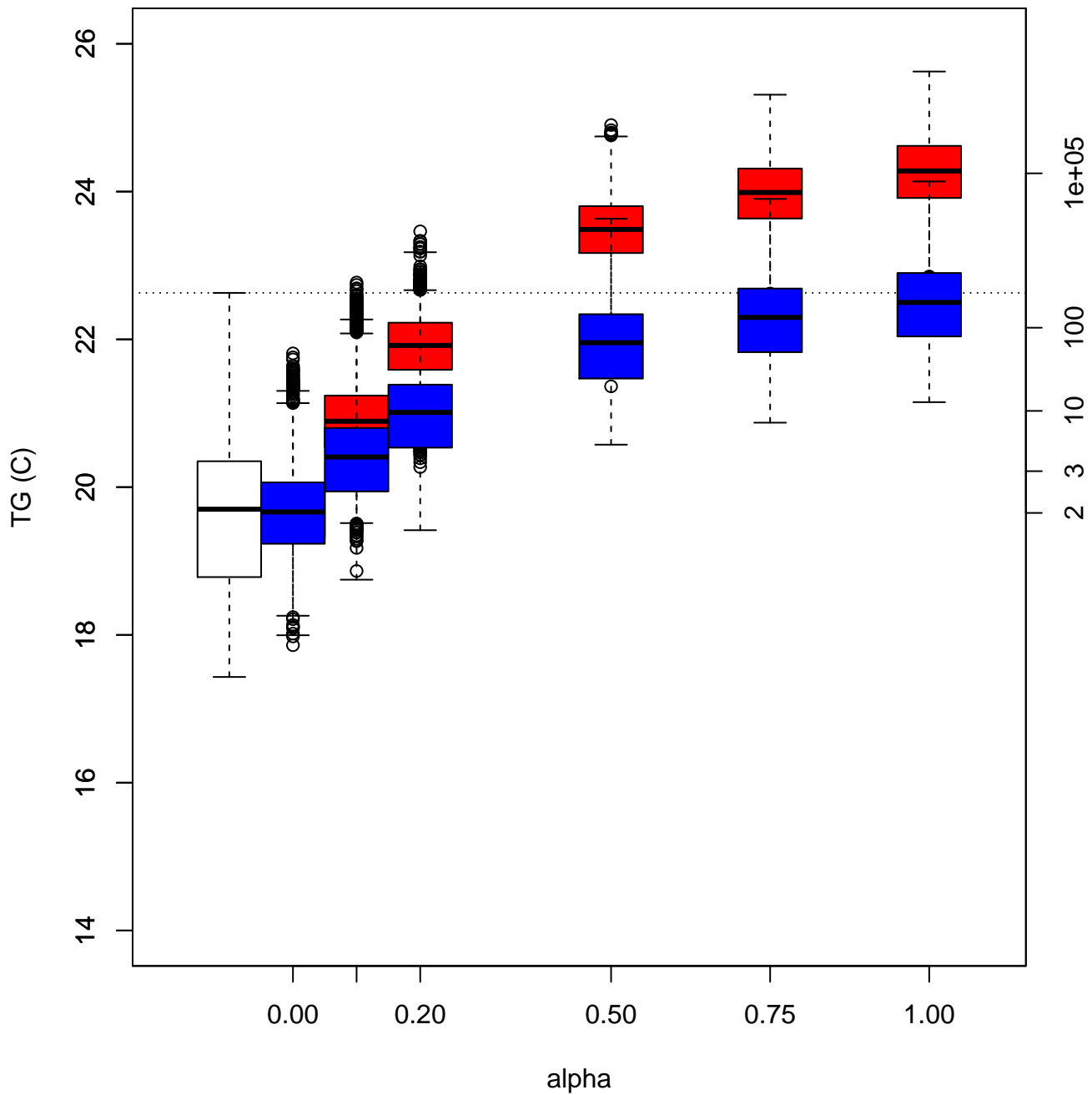


Figure 5. Probability distributions-Boxplots of simulated JJA temperatures as a function of the parameter α for all years. The boxes of boxplots indicate the median ($q50$), lower ($q25$) and upper ($q75$) quartiles of the simulated values. The upper whiskers indicate $\min[\max(T), 1.5 \times (q75 - q25)]$. The lower whisker has a symmetric formulation. The points are the simulated values that are above or below the defined whiskers. The axis on the right indicates return times (in years), assuming a Gaussian distribution of JJA temperature averages with parameters estimated from the white boxplot. The horizontal dotted line is the mean TG in 2003.

is the frequency of the event?" In that case, the event must have occurred. Hence, our estimate is closer to a "hitting time" than a "return time", according to the definition of Haydn et al. (2005).

For the rest of the paper, we chose a value of $\alpha = 0.5$, which corresponds to heatwaves whose intensity is comparable to the 2003 record for the static SWG, and higher for the dynamic SWG (Fig. 5). The simulated heatwaves are more intense than the one of 2003, although the climate conditions are similar to present day ones. Therefore, such heatwaves are even rarer than the 2003 record value.

For comparison purposes, we simulated local heatwaves in each of the five stations. The appendix figures A1, A3 and A5 show the probability distribution of simulated summers (with $\alpha = 0.5$) for Berlin, Orly and Madrid.

4.2 Daily variations

The daily variations of dynamic simulations of average temperature for the four selected years (1956, 1986, 2003 and 2018) are shown in Fig. 6, with $\alpha = 0.5$. This figure illustrates how the simulated temperatures evolve above the seasonal cycle.

The values exceed the observed values within 3 days, especially for the coldest summer (in 1956, Fig. 6b). The maximum of the ensembles (red lines) generally reaches a plateau in 10 days after June 1st. The median and 95th quantile trajectories yield a higher temporal variability, which is lower than the observed one. We note that the algorithm allows selecting colder Z500 analogues, so that temperature does not continuously increase, but yields time variability. This also means that all trajectories are different from each other.

The daily variations also explain the weak (visual) correlation between the means of simulations and observations in Fig. 4. The whole correlation is constrained by the few days after the initial condition (1st of June), as the simulations progressively "forget" the initial condition, especially for the cold summer in 1956.

4.3 Atmospheric patterns

We focus on the atmospheric circulation patterns that prevail in summer (JJA) over the North Atlantic region for simulation ensembles, during the four selected years. We show the SLP (Fig. 7) and Z500 (Fig. 8) composites over JJA. The composites are the JJA averages for reanalyses and, over all static and dynamic simulations.

The observed mean JJA SLP patterns are very different for each year (Fig. 7a–d). In particular, the two major heatwaves of 2003 (hottest) and 2018 (second hottest) shown in Fig. 4 yield rather contrasting SLP and Z500 pattern anomalies at the North Atlantic scale, although both years are characterized by positive SLP/Z500 anomalies over Western Europe.

Static simulations show mean JJA SLP and Z500 patterns that are similar to the observed ones for 2003, 1956, 1986 and 2018 (Fig. 7e–h and Fig. 8e–h). The mean SLP/Z500 patterns show deepened or shifted structures to maximize mean temperature. Those figures illustrate how a slight modification of the atmospheric structure could increase European summer temperature. Therefore, small perturbations of the daily atmospheric Z500 structures ~~can add~~ (a few meters) can be associated to $\approx 4\text{K}$ to the mean JJA temperature of the coldest summer in the time series (1956), with $\alpha = 0.5$. This temperature change is larger than the expected increase from a perfect gas law ($\approx 0.4\text{K}$). Interestingly, the shifts in SLP ~~structures-patterns~~ are much larger than for Z500.

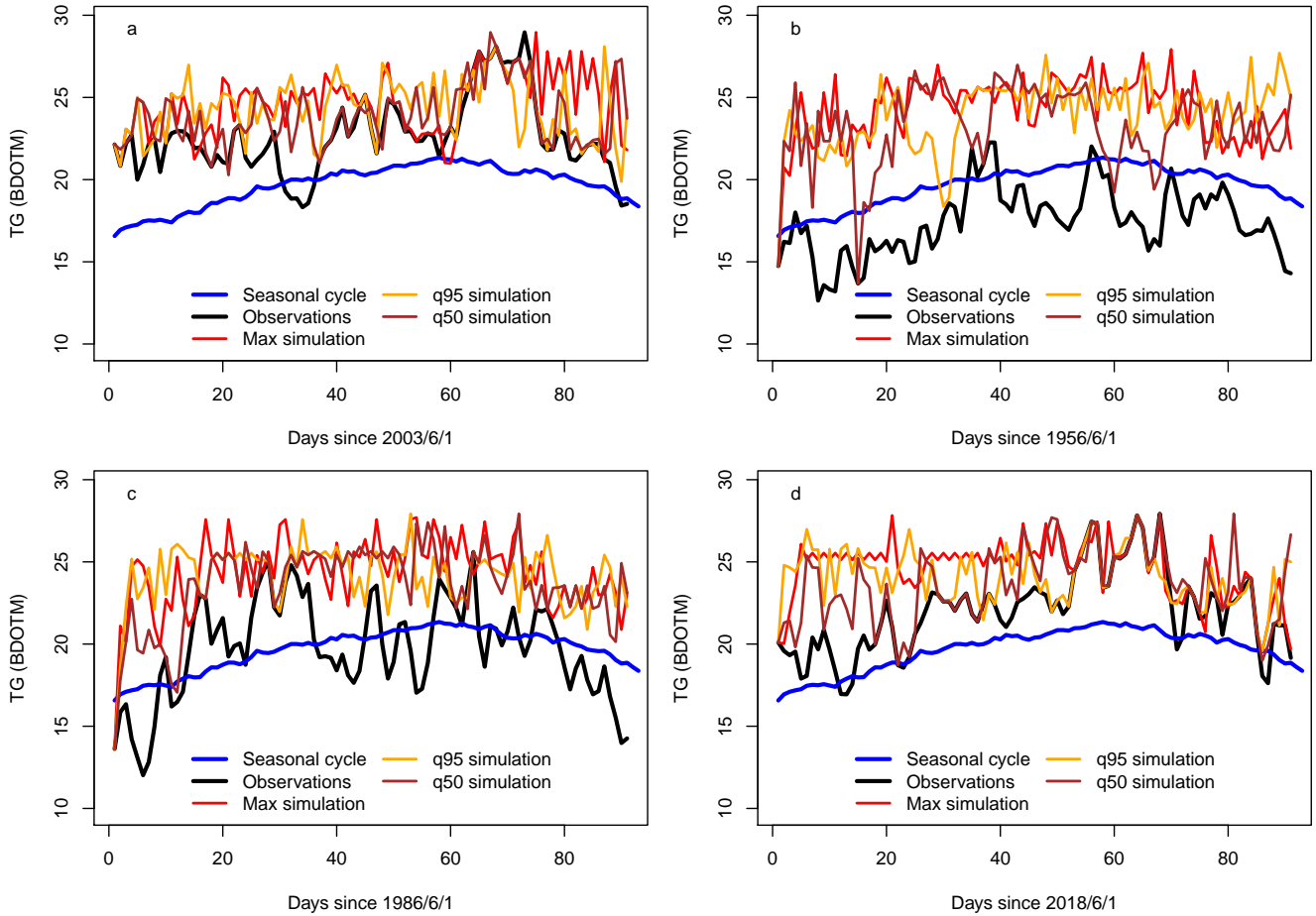


Figure 6. Observed and simulated daily temperature variations (for the [Berlin-De Bilt-Orly-Toulouse-Madrid \(BDOTM\)](#) average) for the four selected summers: 2003 ([panel a](#)), 1956 ([panel b](#)), 1986 ([panel c](#)) and ~~2018-2018~~ ([panel d](#)). The simulation parameters are $\alpha_{cel} = 5$ and $\alpha = 0.5$. The blue lines indicate the average seasonal cycle. The black lines are the observed TG. The red lines are the simulations with the highest JJA mean TG. The dashed lines are the simulations with the 95th quantile of JJA mean TG. The brown lines are for the median simulations.

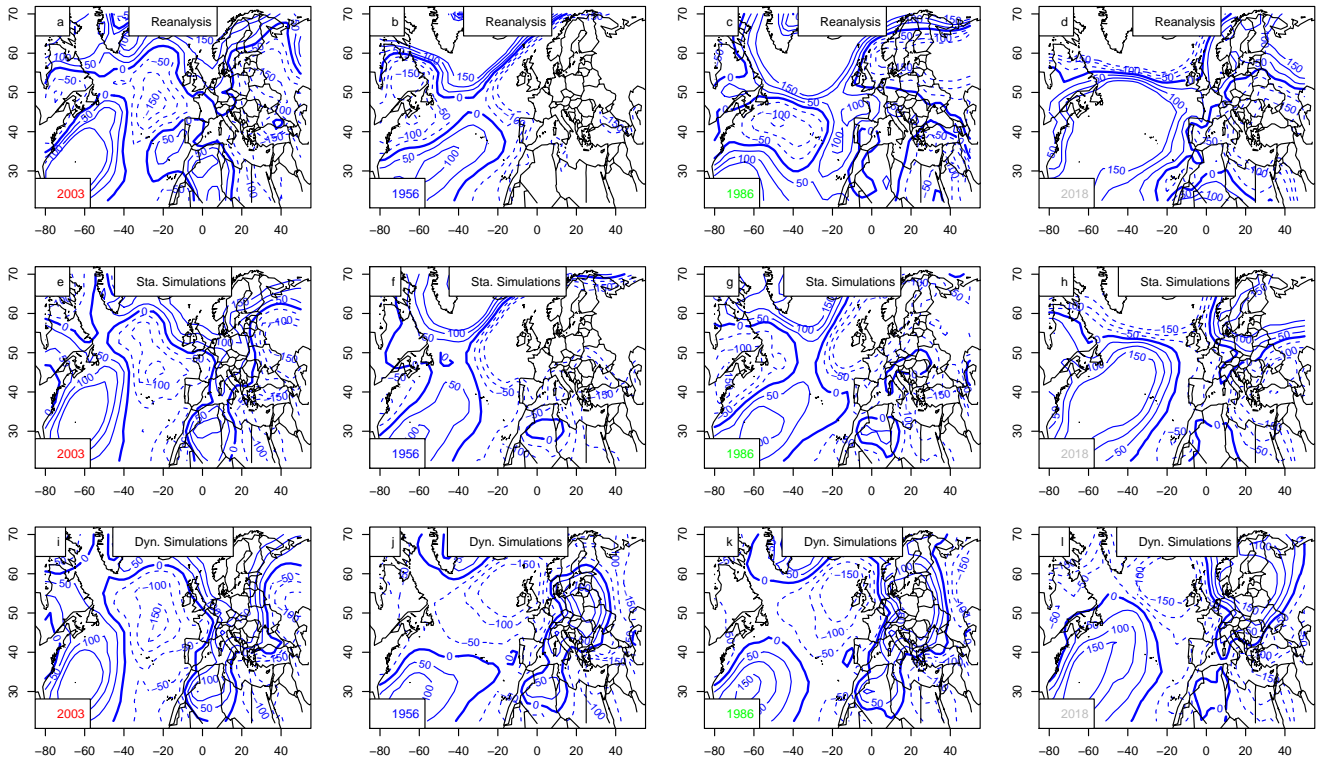


Figure 7. SLP anomaly composites (Pa) for the warmest summer (2003), coolest (1956), median (1986) and 2018. Upper row (panels a–d): mean SLP from NCEP reanalyses. Center row (panels e–h): Static simulations. Bottom row (panels i–l): Dynamic simulations. [The blue isolines are shown with 50 Pa increments. The thick blue line is for the 0 isoline. Dotted lines are for negative anomalies. Continuous lines are for positive anomalies.](#)

Dynamic simulations simulate optimal atmospheric patterns that are very similar across the North Atlantic, with strong anticyclonic patterns over western Europe (Fig. 7i–l and Fig. 8i–l). The resulting SLP and Z500 patterns are very similar for the four selected years, with positive anomalies above western Europe. The Z500 conditions for 2018 contrast with the other years with positive anomalies in the central North Atlantic. This shows how the dynamic simulations differ from each other and depend on the initial conditions. [The sensitivity to initial conditions was exploited by Yiou and Déandréis \(2019\) for ensemble forecasts with analogues.](#)

The differences between the static and dynamic simulations illustrate the different concepts that those two weather generators convey. The dynamic simulations end up with rather similar ranges of temperatures, and resembling SLP/Z500 structures over the whole North Atlantic (high pressure or Z500 over western Europe), which can be interpreted as an optimal pattern leading to major heatwaves.

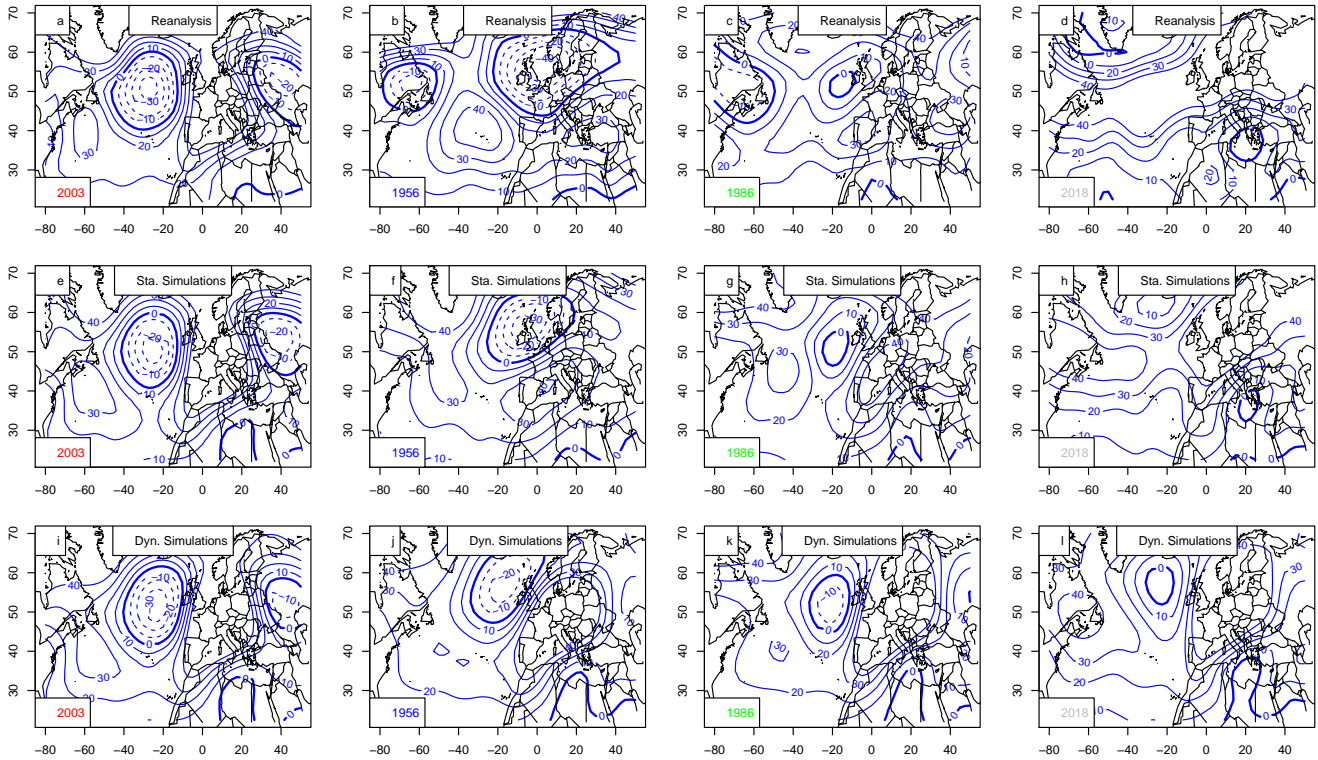


Figure 8. Z500 anomaly composites (m) for the warmest summer (2003), coolest (1956), median (1986) and 2018, for European averages. Upper row (panels a–d): mean Z500 from NCEP reanalyses. Center row (panels e–h): Static simulations. Bottom row (panels i–l): Dynamic simulations. The blue isolines are shown with 10 m increments. The thick blue line is for the 0 isoline. Dotted lines are for negative anomalies. Continuous lines are for positive anomalies.

For comparison purposes, Fig. A2, A4 and A6 show the atmospheric Z500 patterns linked to local heatwaves centered on Berlin, Orly and Madrid (from East to West). The optimal Z500 patterns with dynamic simulations for Orly are similar to the ones of the average temperature across the five stations.

5 Conclusions

- 5 This paper presents a method to simulate ensembles of extreme climate conditions. The underlying principle was to combine ideas from importance sampling (Ragone et al., 2017) and stochastic weather generators based on circulation analogues (Yiou, 2014). This method was tested to simulate European summer heatwaves, but can be adapted to simulate other types of events. The stochastic analogue sampling ensures a physical coherence of daily variations (circulation and temperature) through realistic circulation patterns (Yiou, 2014). The main caveat of this method is that it is based on a closed framework of a relation
- 10 between temperature and the atmospheric circulation. It does not take into account the role of feedbacks, like soil moisture

(Vautard et al., 2007), that could amplify a temperature response. A second caveat is that this resampling methodology is useful to simulate seasons (or long periods of time). It would not be relevant to simulate short lived events, because there would not be enough resampling possibilities. We emphasize that daily temperature values are bounded by the observations, therefore one cannot simulate a daily value that has not been observed. However, the seasonal averages are not bounded because they are close to a Gaussian distribution, and simulated average variables can exceed (by far) the observed ones. The methodology explicitly exploits this mathematical property of random variables, in particular in the estimation of return periods. A third caveat of the present study is the length of available observations for the simulation of extreme events, so that the links between the atmospheric circulation and temperature might not be completely sampled.

This methodology simulates ensembles of extreme heatwaves that are possible in present-day conditions. We emphasize that no hypothesis on climate change is made to simulate events that are more intense than the record of 2003.

One parameter of the simulations controls the weight to be given to the hottest analogues. This parameter also controls the return period of simulation ensembles, similarly to the control parameter of Ragone et al. (2017). Thus, the simulated ensembles are associated to a return period (or a range of return periods).

This methodology is relatively easy to implement, and does not require to run a high resolution climate model, because it uses already existing datasets. It was tested on rather restricted cases of summer warm temperatures. It can be adapted to simulate other types of extreme events:

- Temperature extremes in other seasons. For example, extremely hot/cool winters or cool summers also have large impacts on society (energy, agriculture) and ecosystems' phenology.
- Extremes with other climate variables (precipitation, wind speed). Long lasting precipitation episodes do depend on atmospheric circulation patterns (e.g. Schaller et al., 2016). The fact that the weights that are chosen in the simulations do not depend on the units of the variables facilitates such an adaptation.
- Time-varying constraints can be added to simulate impacting compound events (Zscheischler et al., 2018), e.g. wet springs and hot summers. For example, one could maximize precipitation rate during spring, then temperature in early summer in order to generate events that have high impacts on the agriculture.
- Extremes in scenario model simulations. The examples of this paper exclusively used NCEP reanalysis (Kistler et al., 2001) data and ECAD (Klein-Tank et al., 2002) observations, for present-day climate conditions. Simulations could use the CMIP model database (Taylor et al., 2012) for analogue computation, and hence it would be possible to investigate changes in extremes for scenario simulations, relative to control simulations.

Therefore, we consider that this paper paves the way for many types of studies of impacts of extreme events and risk assessment for extremes (Sutton, 2019).

Code availability. The R code for simulations are available from zenodo (<https://doi.org/10.5281/zenodo.3358023>) under a free CeCILL licence. The analogues are computed with the "blackswan" WPS, available at: <https://github.com/bird-house/blackswan>.

Data availability. NCEP reanalysis and ECA& D data are available on open web sites. Sample input temperature and Z500 analogue files are provided at <https://doi.org/10.5281/zenodo.3358023>.

- 5 *Sample availability.* A sample file for Orly temperature simulations is available at <https://doi.org/10.5281/zenodo.3358023>.

Appendix A: Diagnostics for Berlin

Time variations of simulated trajectories for extreme heatwaves (with $\alpha_{TG} = 0.5$) in Berlin are shown in Fig. A1. The hottest year is 1992. The coolest summer is in 1954. The median summer is in 1989.

The atmospheric Z500 patterns for the summers of 1954, 1989, 1992 and 2018 are shown in Fig. A2. The patterns are
10 different from the ones that are obtained when maximizing European average temperature (Fig. 8).

Appendix B: Diagnostics for Orly

Time variations of simulated trajectories for extreme heatwaves (with $\alpha_{TG} = 0.5$) in Orly are shown in Fig. A3. The hottest year is 2003. The coolest summer is in 1956. The median summer is in 1964.

The atmospheric Z500 patterns for the summers of 1956, 1964, 2003 and 2018 are shown in Fig. A4. The patterns are similar
15 to the ones that are obtained when maximizing European average temperature (Fig. 8).

Appendix C: Diagnostics for Madrid

Time variations of simulated trajectories for extreme heatwaves (with $\alpha_{TG} = 0.5$) in Madrid are shown in Fig. A5. The hottest year is 1992. The coolest summer is in 1954. The median summer is in 1989.

The atmospheric Z500 patterns for the summers of 1977, 1982, 2015 and 2018 are shown in Fig. A6. The patterns are
20 different from the ones that are obtained when maximizing European average temperature (Fig. 8).

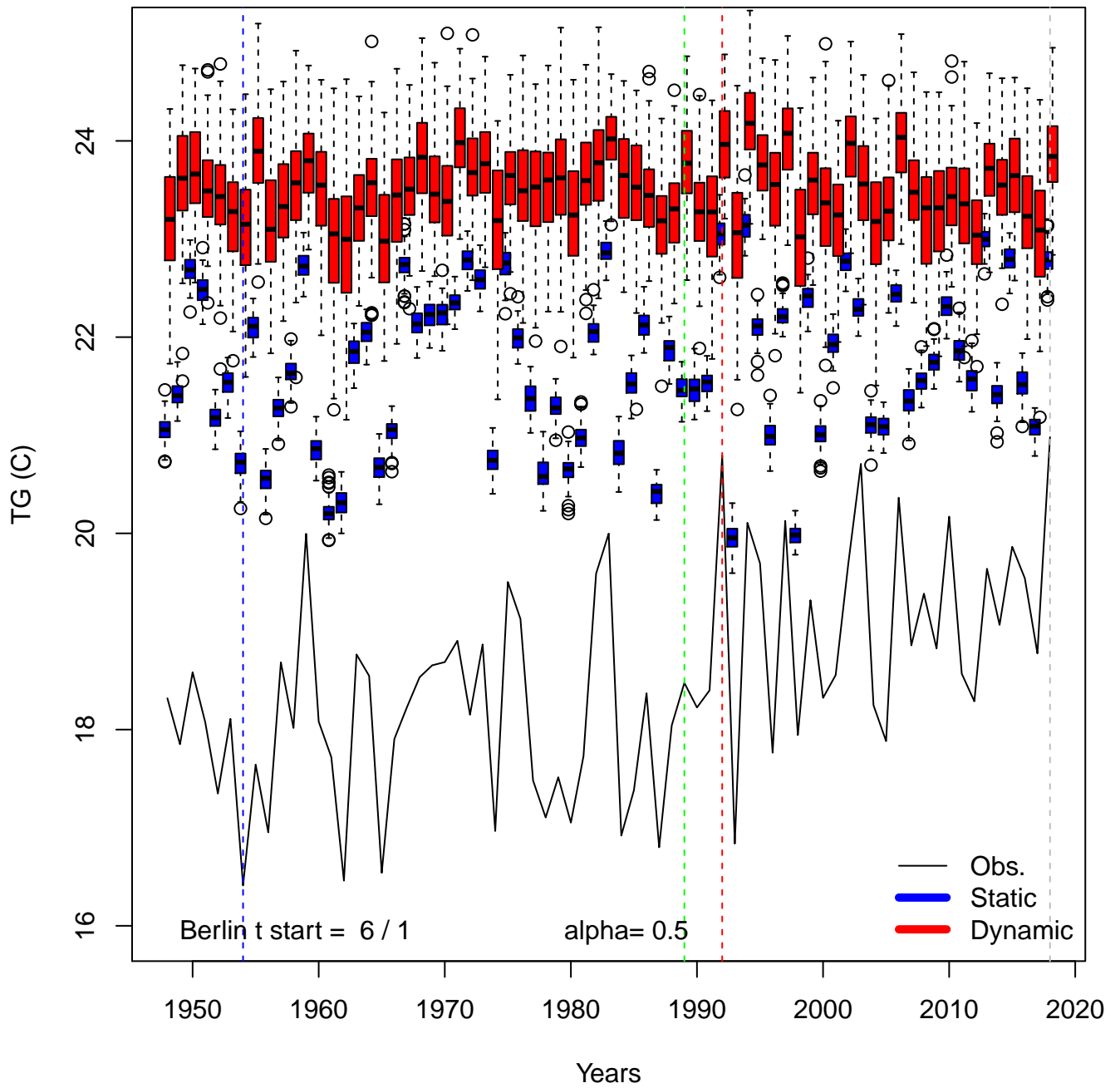


Figure A1. Time variations of probability distributions of simulated average temperatures for Berlin, for $\alpha_{TG} = 0.5$. Vertical dashed lines indicate the warmest (red: 1992), coolest (blue: 1954) and median (green: 1989) summer, and 2008 (grey).

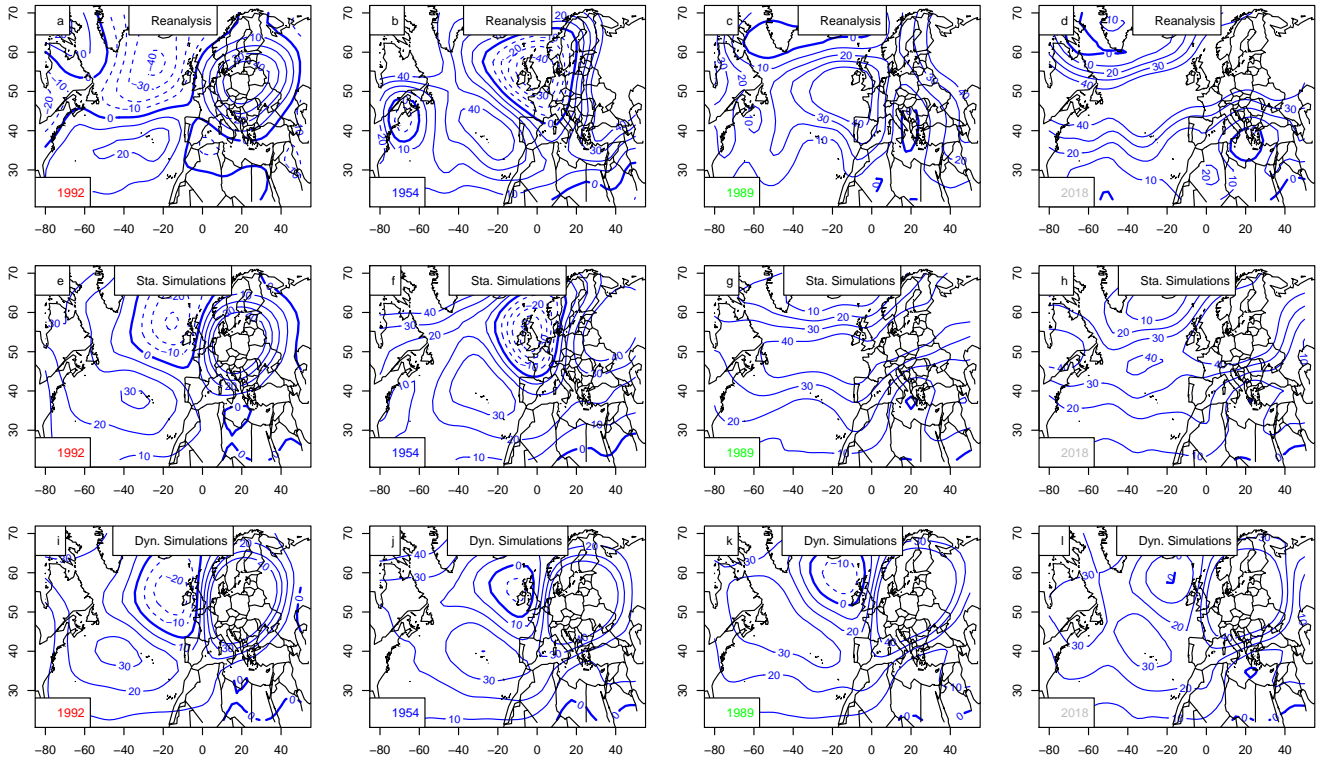


Figure A2. Z500 anomaly composites (m) for the warmest summer in Berlin (1992), coolest (1954), median (1989) and 2018. Upper row (panels a–d): mean Z500 from NCEP reanalyses. Center row (panels e–h): Static simulations. Bottom row (panels i–l): Dynamic simulations.

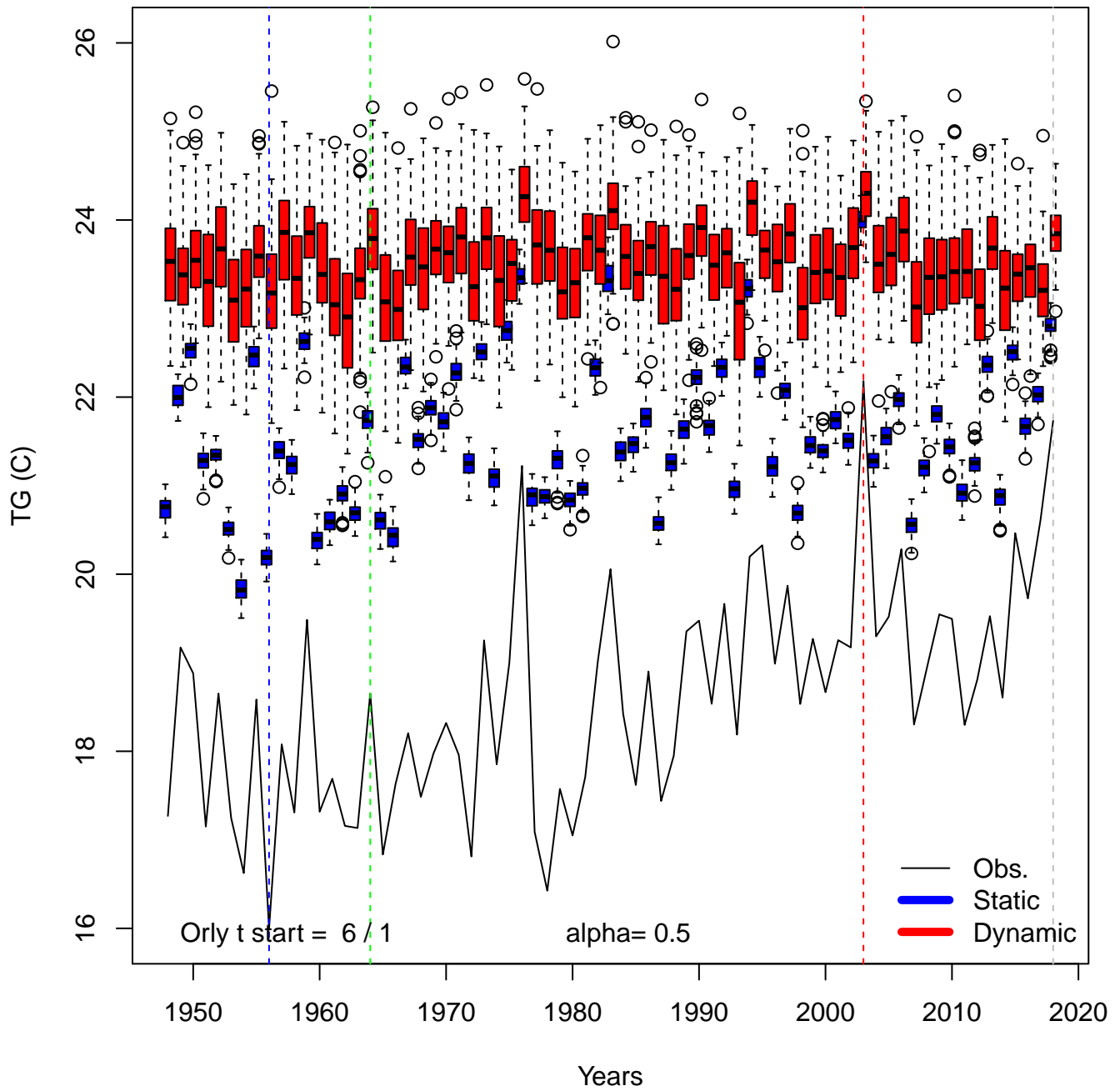


Figure A3. Time variations of probability distributions of simulated average temperatures for Orly, for $\alpha_{TG} = 0.5$. Vertical dashed lines indicate the warmest (red: 2003), coolest (blue: 1956) and median (green: 1964) summer, and 2008 (grey).

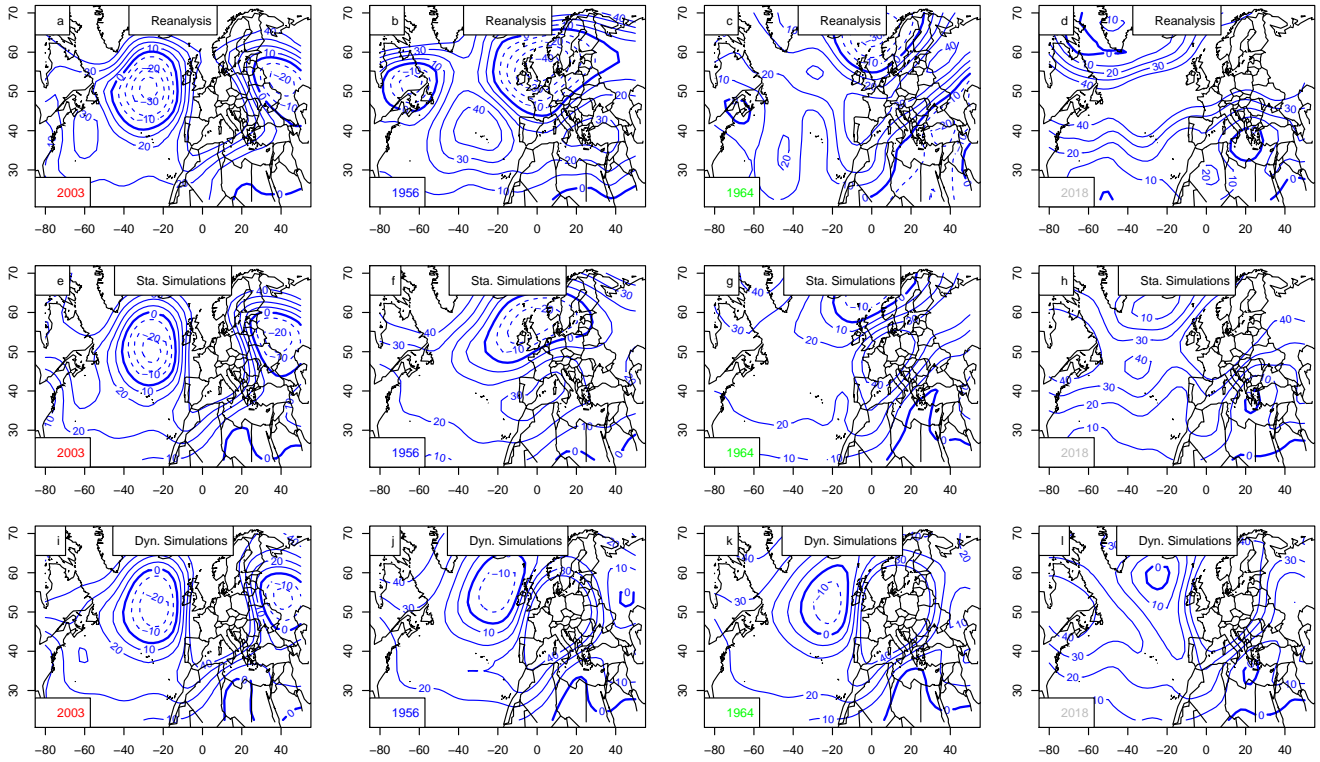


Figure A4. Z500 anomaly composites (m) for the warmest summer in Orly (2003), coolest (1956), median (1964) and 2018. Upper row (panels a–d): mean Z500 from NCEP reanalyses. Center row (panels e–h): Static simulations. Bottom row (panels i–l): Dynamic simulations.

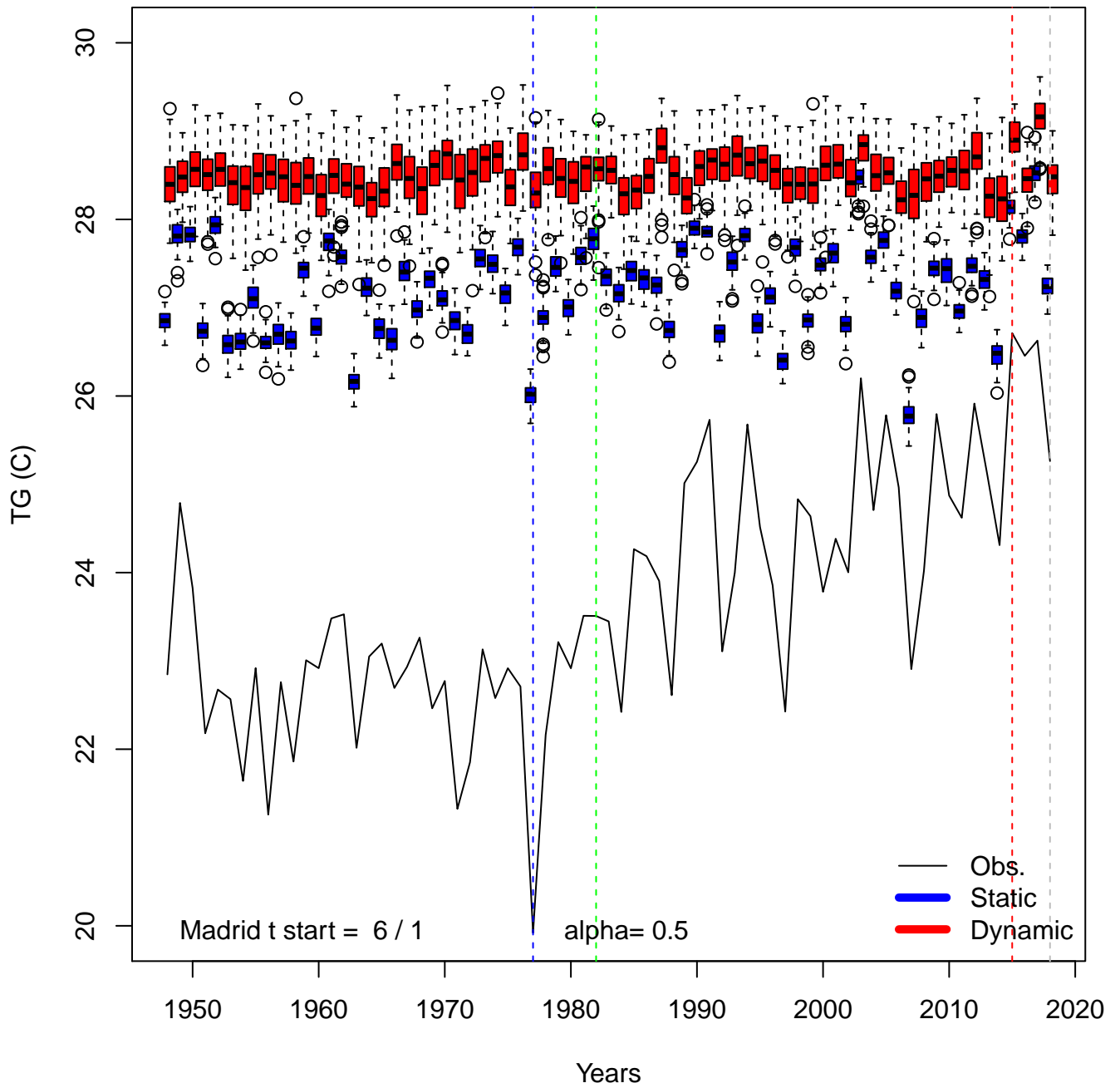


Figure A5. Time variations of probability distributions of simulated average temperatures for Madrid, for $\alpha_{TG} = 0.5$. Vertical dashed lines indicate the warmest (red: 2015), coolest (blue: 1977) and median (green: 1982) summer, and 2008 (grey).

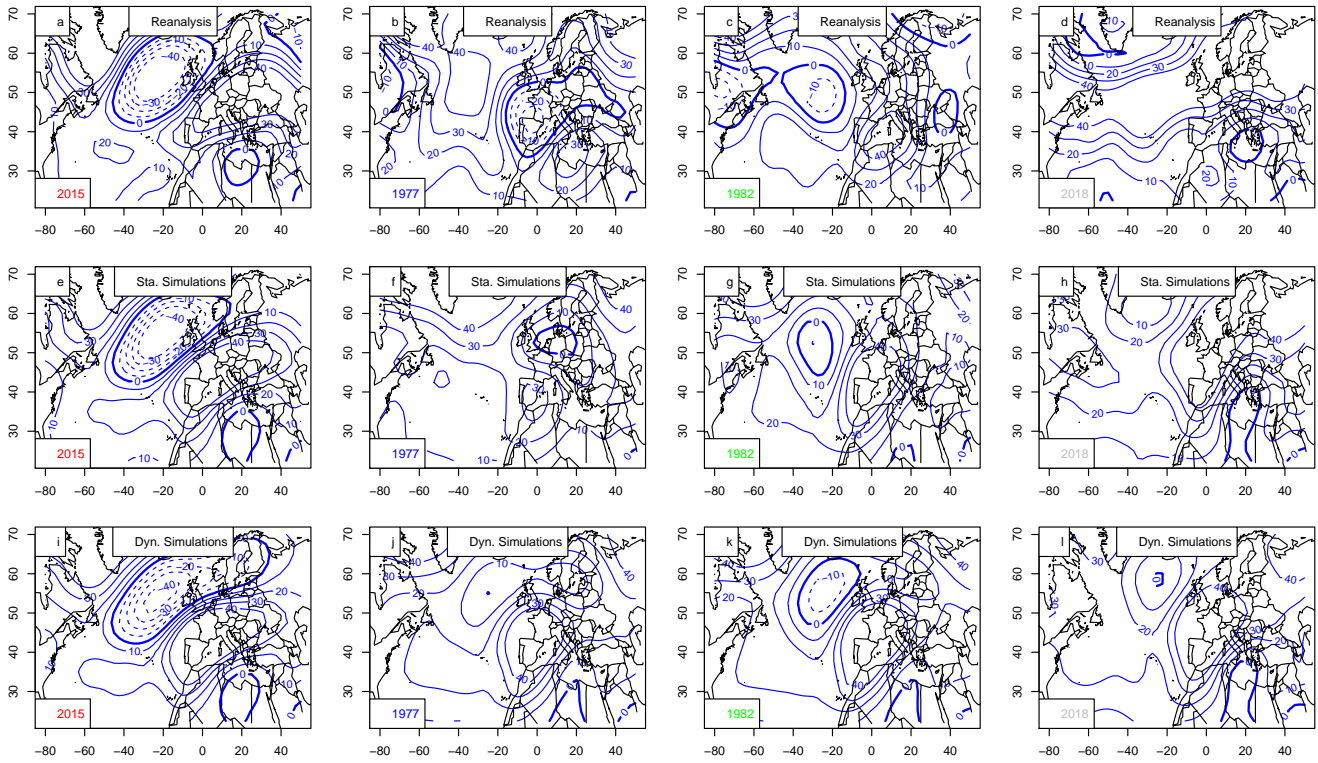


Figure A6. Z500 anomaly composites (m) for the warmest summer in Madrid (2015), coolest (1977), median (1982) and 2018. Upper row (panels a–d): mean Z500 from NCEP reanalyses. Center row (panels e–h): Static simulations. Bottom row (panels i–l): Dynamic simulations.

Author contributions. PY designed the model and conducted the numerical experiments. AJ stimulated the conception of the manuscript and participated to its writing.

Competing interests. The authors declare no competing interest.

Disclaimer. TEXT

Acknowledgements. We thank F. Bouchet and F. Ragone for enlightening discussions on importance sampling. We thank J. Legrand, N. Legrix, J. Markantonis, P. Pfeiderer, E. Vignotto for discussions on the implementation of the computing code. The two anonymous reviewers greatly helped improving the manuscript. This work was supported by ERC grant No. 338965-A2C2.

References

- Ailliot, P., Allard, D., Monbet, V., and Naveau, P.: Stochastic weather generators: an overview of weather type models, *Journal de la Société Française de Statistique*, 156, 101–113, 2015.
- Cassou, C. and Cattiaux, J.: Disruption of the European climate seasonal clock in a warming world, *Nature Climate Change*, 6, 589–594, 5 2016.
- Cassou, C., Terray, L., and Phillips, A. S.: Tropical Atlantic influence on European heat waves, *Journal of Climate*, 18, 2805–2811, 2005.
- Cattiaux, J. and Ribes, A.: Defining single extreme weather events in a climate perspective, *Bulletin of the American Meteorological Society*, <https://doi.org/https://doi.org/10.1175/BAMS-D-17-0281.1>, 2018.
- Cattiaux, J., Vautard, R., Cassou, C., Yiou, P., Masson-Delmotte, V., and Codron, F.: Winter 2010 in Europe: A cold extreme in a warming 10 climate, *Geophys. Res. Lett.*, 37, doi:10.1029/2010gl044613, 2010.
- Dong, B., Sutton, R. T., Shaffrey, L., and Klingaman, N. P.: Attribution of forced decadal climate change in coupled and uncoupled ocean–atmosphere model experiments, *Journal of Climate*, 30, 6203–6223, 2017.
- Fischer, E. M., Beyerle, U., Schleussner, C. F., King, A. D., and Knutti, R.: Biased estimates of changes in climate extremes from prescribed SST simulations, *Geophysical Research Letters*, 45, 8500–8509, 2018.
- 15 Fraedrich, K., Jansen, H., Kirk, E., Luksch, U., and Lunkeit, F.: The Planet Simulator: Towards a user friendly model, *Meteorologische Zeitschrift*, 14, 299–304, 2005.
- Ghil, M., Yiou, P., Hallegatte, S., Malamud, B. D., Naveau, P., Soloviev, A., Friederichs, P., Keilis-Borok, V., Kondrashov, D., and Kos-sobokov, V.: Extreme events: dynamics, statistics and prediction, *Nonlinear Processes in Geophysics*, 18, 295–350, 2011.
- Gordon, C., Cooper, C., Senior, C. A., Banks, H., Gregory, J. M., Johns, T. C., Mitchell, J. F., and Wood, R. A.: The simulation of SST, sea 20 ice extents and ocean heat transports in a version of the Hadley Centre coupled model without flux adjustments, *Climate Dynamics*, 16, 147–168, 2000.
- Haydn, N., Lacroix, Y., and Vaienti, S.: Hitting and return times in ergodic dynamical systems, *The annals of Probability*, 33, 2043–2050, 2005.
- Hazeleger, W., Van den Hurk, B., Min, E., Van Oldenborgh, G. J., Petersen, A. C., Stainforth, D. A., Vasileiadou, E., and Smith, L. A.: Tales 25 of future weather, *Nature Climate Change*, 5, 107, 2015.
- Hempelmann, N., Ehbrecht, C., Alvarez-Castro, C., Brockmann, P., Falk, W., Hoffmann, J., Kindermann, S., Koziol, B., Nangini, C., Radanovics, S., Vautard, R., and Yiou, P.: Web processing service for climate impact and extreme weather event analyses. Flyingpi-geon (Version 1.0), *Computers & Geosciences*, 110, 65–72, <https://doi.org/10.1016/j.cageo.2017.10.004>, <http://www.sciencedirect.com/science/article/pii/S0098300416302801>, 2018.
- 30 Jézéquel, A., Yiou, P., and Radanovics, S.: Role of circulation in European heatwaves using flow analogues, *Climate Dynamics*, 50, 1145–1159, 2018.
- Kistler, R., Kalnay, E., Collins, W., Saha, S., White, G., Woollen, J., Chelliah, M., Ebisuzaki, W., Kanamitsu, M., Kousky, V., van den Dool, H., Jenne, R., and Fiorino, M.: The NCEP-NCAR 50-year reanalysis: Monthly means CD-ROM and documentation, *Bulletin of the American Meteorological Society*, 82, 247–267, <GotoISI>://000166742900003, 2001.
- 35 Klein-Tank, A., Wijngaard, J., Konnen, G., Bohm, R., Demaree, G., Gocheva, A., Mileta, M., Pashiardis, S., Hejkrlik, L., Kern-Hansen, C., Heino, R., Bessemoulin, P., Muller-Westermeier, G., Tzanakou, M., Szalai, S., Palsdottir, T., Fitzgerald, D., Rubin, S., Capaldo, M., Maugeri, M., Leitass, A., Bukantis, A., Aberfeld, R., Van Engelen, A., Forland, E., Miletus, M., Coelho, F., Mares, C., Razuvaev, V.,

- Nieplova, E., Cegnar, T., Lopez, J., Dahlstrom, B., Moberg, A., Kirchhofer, W., Ceylan, A., Pachaliuk, O., Alexander, L., and Petrovic, P.: Daily dataset of 20th-century surface air temperature and precipitation series for the European Climate Assessment, *Int. J. Climatol.*, 22, 1441–1453, 2002.
- Kornhuber, K., Petoukhov, V., Karoly, D., Petri, S., Rahmstorf, S., and Coumou, D.: Summertime Planetary Wave Resonance in the Northern and Southern Hemispheres, *Journal of Climate*, 30, 6133–6150, 2017.
- Maraun, D., Shepherd, T. G., Widmann, M., Zappa, G., Walton, D., Gutiérrez, J. M., Hagemann, S., Richter, I., Soares, P. M., and Hall, A.: Towards process-informed bias correction of climate change simulations, *Nature Climate Change*, 7, 764, 2017.
- Massey, N., Jones, R., Otto, F. E. L., Aina, T., Wilson, S., Murphy, J. M., Hassell, D., Yamazaki, Y. H., and Allen, M. R.: weather@home—development and validation of a very large ensemble modelling system for probabilistic event attribution, *Quat. J. Roy. Met. Soc.*, 141, 1528–1545, <https://doi.org/10.1002/qj.2455>, 2015.
- Quesada, B., Vautard, R., Yiou, P., Hirschi, M., and Seneviratne, S. I.: Asymmetric European summer heat predictability from wet and dry southern winters and springs, *Nature Climate Change*, 2, 736–741, <https://doi.org/10.1038/Nclimate1536>, 2012.
- Ragone, F., Wouters, J., and Bouchet, F.: Computation of extreme heat waves in climate models using a large deviation algorithm, *Proceedings of the National Academy of Sciences*, p. 201712645, <https://www.pnas.org/content/pnas/115/1/24.full.pdf>, 2017.
- Schaer, C., Vidale, P., Luthi, D., Frei, C., Haberli, C., Liniger, M., and Appenzeller, C.: The role of increasing temperature variability in European summer heatwaves, *Nature*, 427, 332–336, 2004.
- Schaller, N., Kay, A. L., Lamb, R., Massey, N. R., van Oldenborgh, G. J., Otto, F. E. L., Sparrow, S. N., Vautard, R., Yiou, P., Ashpole, I., Bowery, A., Crooks, S. M., Haustein, K., Huntingford, C., Ingram, W. J., Jones, R. G., Legg, T., Miller, J., Skeggs, J., Wallom, D., Weisheimer, A., Wilson, S., Stott, P. A., and Allen, M. R.: Human influence on climate in the 2014 southern England winter floods and their impacts, *Nature Clim. Change*, 6, 627–634, <http://dx.doi.org/10.1038/nclimate2927>, 2016.
- Shepherd, T. G.: Storyline approach to the construction of regional climate change information, *Proceedings of the Royal Society A*, 475, 2019013, 2019.
- Shepherd, T. G., Boyd, E., Calel, R. A., Chapman, S. C., Dessai, S., Dima-West, I. M., Fowler, H. J., James, R., Maraun, D., Martius, O., Senior, C. A., Sobel, A. H., Stainforth, D. A., Tett, S. F. B., Trenberth, K. E., van den Hurk, B. J. J. M., Watkins, N. W., Wilby, R. L., and Zenghelis, D. A.: Storylines: an alternative approach to representing uncertainty in physical aspects of climate change, *Climatic Change*, 151, 555–571, <https://doi.org/10.1007/s10584-018-2317-9>, 2018.
- Stefanon, M., D’Andrea, F., and Drobinski, P.: Heatwave classification over Europe and the Mediterranean region, *Environmental Research Letters*, 7, 014023, 2012.
- Stott, P. A., Stone, D. A., and Allen, M. R.: Human contribution to the European heatwave of 2003, *Nature*, 432, 610–614, <https://doi.org/10.1038/Nature03089>, <GotoISI>://000225433200043, 2004.
- Sturaro, G.: A closer look at the climatological discontinuities present in the NCEP/NCAR reanalysis temperature due to the introduction of satellite data, *Climate dynamics*, 21, 309–316, <https://doi.org/10.1007/s00382-003-0334-4>, 2003.
- Sutton, R. T.: Climate science needs to take risk assessment much more seriously, *Bulletin of the American Meteorological Society*, <https://doi.org/https://doi.org/10.1175/BAMS-D-18-0280.1>, 2019.
- Taylor, K. E., Stouffer, R. J., and Meehl, G. A.: An Overview of CMIP5 and the Experiment Design, *Bull. Amer. Met. Soc.*, 93, 485–498, 2012.

- Vautard, R., Yiou, P., D'Andrea, F., de Noblet, N., Viovy, N., Cassou, C., Polcher, J., Ciais, P., Kageyama, M., and Fan, Y.: Summertime European heat and drought waves induced by wintertime Mediterranean rainfall deficit, *Geophys. Res. Lett.*, 34, doi:10.1029/2006GL028001, 2007.
- Vautard, R., Gobiet, A., Jacob, D., Belda, M., Colette, A., Déqué, M., Fernandez, J., Garcia-Diez, M., Goergen, K., Guettler, I., Halenka, T., Karacostas, T., Katragkou, E., Keuler, K., Kotlarski, S., Mayer, S., Meijgaard, E., Nikulin, G., Patarcic, M., Scinocca, J., Sobolowski, S., Suklitsch, M., Teichmann, C., Warrach-Sagi, K., Wulfmeyer, V., and Yiou, P.: The simulation of European heat waves from an ensemble of regional climate models within the EURO-CORDEX project, *Clim. Dyn.*, 41, 2555–2575, <https://doi.org/10.1007/s00382-013-1714-z>, <http://dx.doi.org/10.1007/s00382-013-1714-z>, 2013.
- von Storch, H. and Zwiers, F. W.: *Statistical Analysis in Climate Research*, Cambridge University Press, Cambridge, 2001.
- 10 Yiou, P.: AnaWEGE: a weather generator based on analogues of atmospheric circulation, *Geoscientific Model Development*, 7, 531–543, <https://doi.org/10.5194/gmd-7-531-2014>, <http://www.geosci-model-dev.net/7/531/2014/>, 2014.
- Yiou, P. and Déandréis, C.: Stochastic ensemble climate forecast with an analogue model, *Geoscientific Model Development*, 12, 723–734, 2019.
- Yiou, P., Salameh, T., Drobinski, P., Menut, L., Vautard, R., and Vrac, M.: Ensemble reconstruction of the atmospheric column from surface pressure using analogues, *Clim. Dyn.*, 41, 1333–1344, <https://doi.org/10.1007/s00382-012-1626-3>, 2013.
- Zappa, G. and Shepherd, T. G.: Storylines of atmospheric circulation change for European regional climate impact assessment, *Journal of Climate*, 30, 6561–6577, 2017.
- Zscheischler, J., Westra, S., Hurk, B. J., Seneviratne, S. I., Ward, P. J., Pitman, A., AghaKouchak, A., Bresch, D. N., Leonard, M., and Wahl, T.: Future climate risk from compound events, *Nature Climate Change*, 8, 469–477, 2018.