

Author comments

On the discretization of the ice thickness distribution in the NEMO3.6-LIM3 global ocean–sea ice model

F. Massonnet et al.

submitted to Geoscientific Model Development, manuscript ID: gmd-2019-16

May 29, 2019

Anonymous Referee #1

This paper investigates the sensitivity of the ORCA1-LIM3 model to the choice of ice thickness distribution discretization. It stands to reason that an improved representation of the ice thickness field should also lead to more realistic simulations of the coupled sea ice-ocean system. However, this is not always the case, and there has been only a handful of papers devoted to clarifying why this is so. This manuscript is therefore welcome. It is a worthwhile attempt to shed some light on this important issue by focussing on physical processes that may explain the simulated sea ice response to changes in the formulation of the IDT. I am not sure, though, the authors entirely succeed, especially as regards elucidating the reason for the non-convergence of total ice volume as the number of ice categories increases. We do not learn enough from the paper about the sensitivity of the different physical processes that control ice growth to the choice of ice thickness categories. The authors show the average bottom ice growth for experiments S1 and S3, but there is virtually no discussion in the paper as to the physics that controls the ice growth, notably, air-ice and ice-ocean heat budgets and snow and ice thermal conductivities (others?). There also seems to be a strong nonlinearity in the system's response to the number of thin ice categories, as evinced in Figs. 4 and A2, and this, I believe, should be explained through a more detailed process analysis. In its present form the paper is basically a summary of the experimental results rather than a discussion of the said results. While I understand that the authors might not desire to embark on a major overhaul of the paper, I would certainly advise that, at the very least, they report in greater depth on the mechanisms and non-linearities that control the increase in basal ice growth as the number of thin ice categories is increased.

Reply. We thank the reviewer for the helpful feedback on our manuscript. We take note that the paper deserves more investigations to understand the physical controls on the processes of ice growth and melt when the ITD discretization is changed, a point that was also raised by Reviewer #2. To meet these requests, we have conducted a comprehensive sea ice mass balance analysis to the output of our simulations. Namely, we have split the seasonal changes of ice volume by distinguishing between (1) the source vs. sink terms, and (2) the thermodynamic vs. dynamic processes:

- Source terms include:
 - (Thermodynamic) basal growth, that was already diagnosed in the first version of the manuscript (Fig. 4 of the original manuscript)
 - (Thermodynamic) snow-ice production;
 - (Thermodynamic) growth in open water;
 - Dynamic production, i.e., ice formed due to refreezing of seawater after entrapment into porous ridges.
- Sink terms include:
 - (Thermodynamic) basal melt;
 - (Thermodynamic) surface melt.

We show in Fig. R1.1 below the contributions of the various terms to the sea ice mass balance in the set of simulations “S1”, whereby the number of categories and their boundaries are changed simultaneously following the default discretization of LIM3.

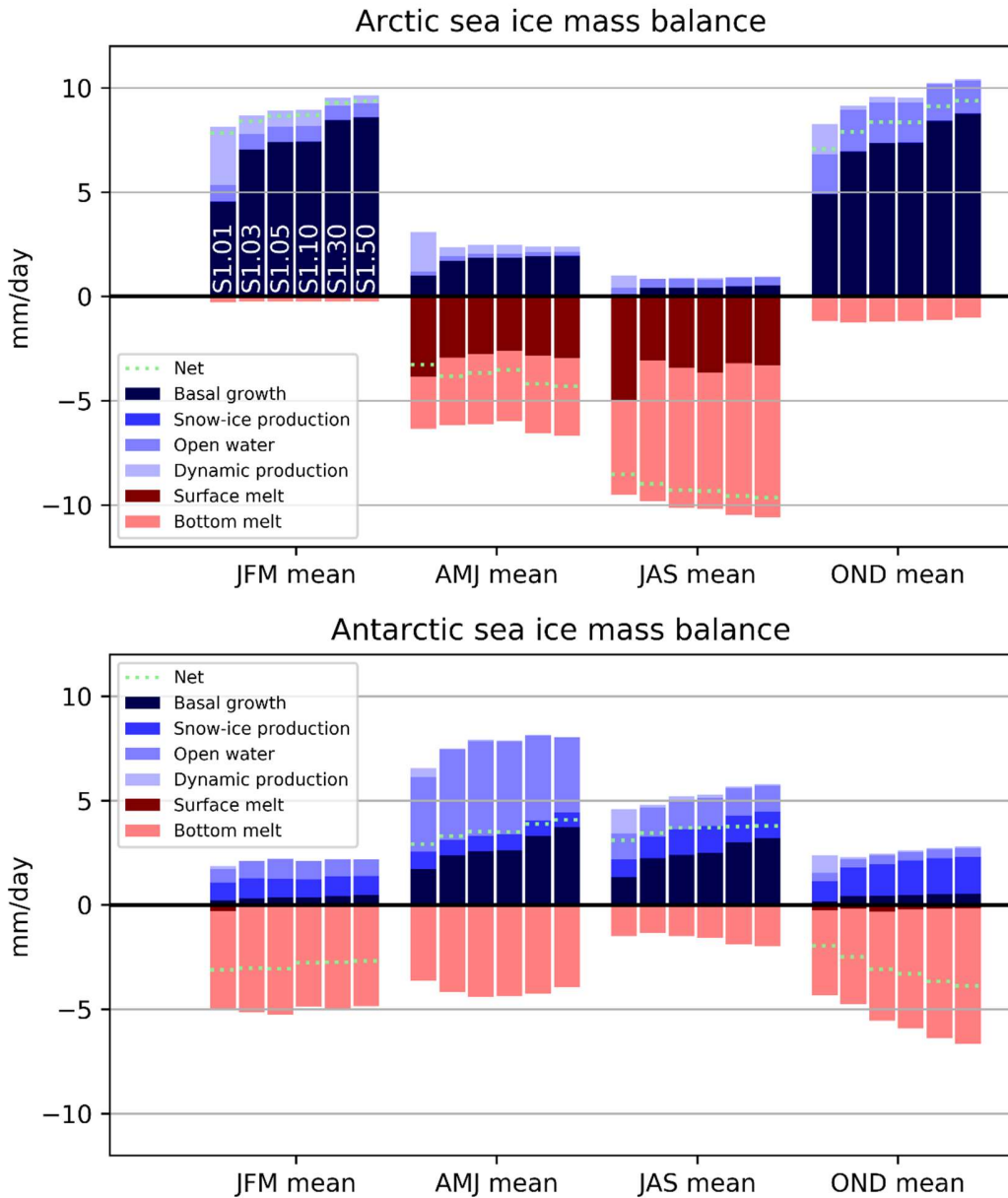


Figure R1.1. Contributions to the seasonal mass balance of Arctic (top) and Antarctic (bottom) sea ice as simulated by “S1” (varying number of categories with the default LIM3 ITD discretization), averaged over the areas depicted in Fig. A1 of the original manuscript. Blue colors refer to processes that contribute to *positive* ice volume changes, while red colors indicate processes implying *negative* ice volume changes. The name of experiments is indicated in the upper panel for the January-February-March season and is not repeated for the sake of clarity.

Thanks to this figure, we now have better evidence for the physical mechanisms at play behind our sensitivity tests. Fig. R.1.1 confirms our initial finding, by showing that basal growth is indeed the first-order factor to explain the increases in winter ice volumes noted in Fig. 2 of the original manuscript. It also reveals interesting findings regarding the simulation with one ice thickness category in the Arctic. Indeed, the decreased thermodynamic basal ice production in S1.01 is balanced by enhanced dynamic growth compared to multi-category experiments. We can understand this finding as follows:

- Decreased basal growth is a direct consequence of the lack of subgrid-scale sea ice thickness variability in the experiment with one category, as explained in the original version of the manuscript (p. 9, lines 5-9);
- Enhanced dynamic production is a consequence of the ice being thinner. Indeed, in the model, the ice strength is parameterized using the classical Hibler 1979 formulation:

$$P = P^* H e^{-C(1-A)}$$

where P is the ice strength, P^* and C are empirical constants set to 20 kN/m² and 20, respectively, and A and H denote the grid-cell ice concentration and average volume, including open water, respectively. This formulation does not depend directly on the ice thickness distribution but well on the grid-cell average thickness. In winter, A approaches 1 in all our experiments due to the thermal constraint imposed by the atmospheric forcing, so that ice strength is essentially proportional to the thickness. Since sea ice is on average thinner in the 1-category simulation (Fig. 3 of the original manuscript), mechanical redistribution is more intense in thinner 1-category simulation, which fosters dynamic ice production.

Regarding the origins of the lack of convergence in sea ice volumes, we agree with the reviewer that the result is somewhat surprising. To better understand the mechanisms at play, we first computed the theoretical dependence on growth rates on the number of categories. For this, we assumed a grid cell in which the sea ice thickness distribution follows a log-normal law with mean of 3 m and standard deviation 2 m, as depicted in Fig R1.2, left panel. We then discretized this distribution using $n = 1, 2, 3, \dots, 100$ categories according to the default formulation of LIM3, and computed the expected grid-cell average basal growth rate for an atmosphere-ocean temperature difference of $\Delta T = 30$ K, assuming no snow, a sea ice conductivity of $k = 2$ W/mK, latent heat of fusion of $L_f = 334\,000$ J/kg and sea ice density of $\rho_i = 917$ kg/m³:

$$\dot{h} = \frac{1}{\rho_i L_f} \cdot \sum_{i=1}^n \frac{k \Delta T}{h_i} g(h_i) dh_i$$

where h_i is the mean thickness of category i , dh_i is the category bin width, and $g(h_i)dh_i$ is the fraction of the grid cell occupied by sea ice in that category. From this theoretical analysis, we find that growth rates reach 95% of the asymptotic value when five categories or more are used (Fig. R1.2, right). Based on these considerations, the increase in basal growth rates noted between 30 and 50 categories in the model (Fig. R1.1) cannot be attributed to the ITD discretization alone. Our

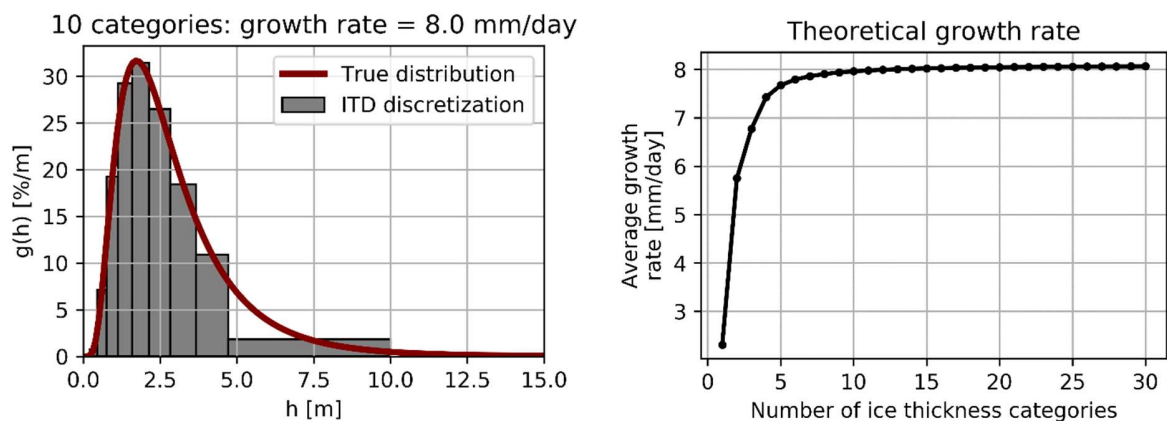


Figure R1.2. (Left) A supposed true ice thickness distribution in a model grid cell (red; log-normal with mean 3 m and standard deviation 2m) and its discretization in 10 categories following the default formulation of LIM3. (Right) Average basal growth rates for 1, 2, ... 100 categories (only the first 30 are shown): for each category, the basal growth rate was computed assuming sea ice thickness equal to the category mean, assuming no snow, an atmosphere-ocean temperature difference of 30 K, sea ice conductivity of 2 W/mK, latent heat of fusion of 334 000 J/kg and sea ice density of 917 kg/m³. The growth rates were then averaged over categories, taking into account the relative area of each category.

hypothesis is that, in these simulations, basal growth compensates for the removal of thin ice by dynamic processes. However, it is not possible to produce deeper analyses as the ice mass balance terms are only available at the grid-cell level, not at the ice thickness category level (primarily because of storage space constraints).

We find that Fig. R1.1 is a good example of the added value of process-oriented diagnostics compared to simpler diagnostics like integrated sea ice volume. It also illustrates that a reorganization of ice production takes place among the various terms involved when going from one to more categories. We have, therefore, replaced Fig. 4 of the original manuscript by Fig. R1.1, which allows appreciating the sensitivity to selected processes (or the lack thereof) to the ITD discretization.

We finish by clarifying one point about the simulation with 100 categories that we mention in the manuscript. The reason that the simulation was not included in the manuscript figures is that it crashed after a few years and was finally deleted. Initial comparisons had indeed revealed larger volumes compared to 50 categories, as mentioned in the text. However, we propose to remove this sentence since the point of non-convergence can be established with 50 categories.

Action. We have made the following changes to the manuscript:

- Fig. R1.1 now replaces Fig. 4 of the original manuscript;

- We discuss in greater depth the origins of volume increases as the number of categories increases, confirming our initial findings that the chief reason for the increase is the enhanced basal growth rates. We also discuss the origins of increased dynamic production in the run with one category, along the lines of our explanations above.
- We discuss the possible origins of non-convergence of volumes beyond five categories (as predicted by theory, Fig. R1.2).

Minor comments. The article is very well written and very clear. I commend the authors for the care taken in creating the figures. Some other punctual comments and corrections can be found in the attached pdf.

Thank you. We now address these minor comments, which we copy/paste below for the sake of clarity.

p. 3, l. 26. Because of minus sign, this term is a convergence, not a divergence.

Action. "divergence" was changed to "convergence"

p.5, l. 21 "position ," → "position,"

Action. Change accepted.

p. 6, Fig. 1. "Weft"?

Action. "weft" has been changed to "set."

p. 6, Fig. 1. Shouldn't the experiments in this set be presented from lower number of categories (top) to largest (bottom) for consistency with panels S1 and S2?

Reply. Yes, this is a good idea.

Action. The order of experiments has now been inverted in this panel of Fig. 1.

p. 8, l. 6. [on the sentence: "even at 100 categories (not shown), the winter ice volume is significantly higher than with 50 categories"] Isn't this a major source of concern?

Reply. Indeed, this result would warrant further investigations. As explained in our answer to the reviewer's major comment, that 100-category run is not available for publication because it crashed before completion and was finally deleted. Still, the non-convergence until 50 categories remains puzzling. We conjecture that this result might be a consequence of the experimental setup, in which the atmospheric forcing is prescribed (offering no possibility for negative feedbacks to operate, or at least as not as strongly as they might do in a coupled model). Shortly, we aim to repeat the sensitivity experiments conducted in this paper with a coupled model (EC-Earth) to establish the robustness of this result in coupled mode. We finally note that we do not know other studies that conducted simulations with such a large number of categories. This non-convergence has, therefore, to be confirmed by subsequent studies using other models.

Action. We have added two sentences postulating that this result might be the consequence of our experimental setup and that it will require confirmation using other models. We have also deleted the reference to the run with 100 categories, as it is not available for further investigations.

p.12, Fig. 6. It's not so easy to distinguish between the OBS/REA and the S2.03 curves because their colours are very similar. Please use a better colour code.

Action. A new color code has been used following the reviewer comment.

p. 13, l. 1. All right. This is suitable for present climatic conditions, but it is probably correct to say that, for past climates (e.g., glacial times) or future warmer ones, these upper boundaries would be different.

Reply. We agree that the optimal ITD discretization is context-dependent, as is any tuning parameter of climate models.

Action. We have added a sentence to reflect this notion better.

p. 16, Fig. A1 (caption). I do not understand.

Reply. We mark a grid cell as part of the mask if its 1995-2014 monthly mean of sea ice concentration for March (Arctic) or September (Antarctic) is above 99%.

Action. We have clarified the caption accordingly.

p. 16, l. 11. Delete

Action. Deleted.

Anonymous Referee #2

The paper examines the impact of the discretization of the subgrid-scale Ice Thickness Distribution (ITD) on the evolution of sea ice in an ocean – sea ice model. Sensitivity experiments are discussed changing the number and the range of ice thickness categories. The authors find that the number of categories and the lower bound of the thickest category have an impact on winter ice volume of up to 30% in the Arctic and 10% in the Southern Ocean. They contribute this change to the larger basal ice growth rate in a better resolved ITD. Altogether, the authors conclude that the default ITD discretization with 5 thickness categories is recommended for large-scale climate application. The ITD is a key part of most sea ice models used for climate application and the best way to apply the ITD is a relevant scientific question. The applied model and the performed sensitivity studies are suitable to address this. With a few exceptions the paper is well structured and clearly written. The information provided allows the community to reproduce the presented experiments. While the impact of the number of ice thickness categories on ice properties has been studied in the past, the amount of sensitivity studies is novel. The key result that the default ITD discretization is sufficient confirms existing studies. The described impact of basal ice melt on ITD is known to sea ice modellers, but this has not been published in such a clear way beforehand. However, there are issues which need to be addressed.

Reply. We thank the reviewer for his/her constructive comments on the manuscript.

Major Issues.

From a principle point of view, the discretization of a distribution will become more realistic by increasing the number of categories. Here, Arctic sea ice extent and volume are most realistic for 1 category only and they become worse by increasing the number of categories. It is stated as a side comment that the total ice volume does not converge (higher for 100 categories when for 50 categories). This is worrying and mentioning that the sensitivity experiments have not been tuned and that there are uncertainties in the observations does not address this issue properly. A comprehensive analysis why the ice becomes thicker is required. It has been shown that the basal ice growth depends on discretization of the thinner categories, but the explanation for the increase from S2.07 to S2.09 (leaving more room for thinner ice) is not convincing and needs further evidence.

Reply. Regarding the statement that “Arctic sea ice extent and volume are most realistic for one category and they become worse by increasing the number of categories”, we would like to draw the reviewer’s attention on one point. While it is true that the run with one category displays a more realistic seasonality in ice extent and volume against observational/reanalysis references for Arctic sea ice, this is readily not the case for Antarctic sea ice. In Fig. 1 of the original manuscript, the simulation with one category largely overestimates the summertime Antarctic sea ice extent, unlike the simulations using more categories. Also, the Antarctic sea ice volume is more overestimated (underestimated) in summer (winter) in the run with one category than in the other

runs. So, concluding that the 1-category run is the most realistic one is, to our view, an overstatement. Our scientific question in this manuscript is primarily about understanding the sensitivity of the model to the ITD discretization, and the purpose of showing observational references or reanalysis in Fig. 1 was to show that the model has a sufficiently decent seasonality to start these investigations.

Still, we agree with the reviewer (and with Reviewer #1, who raised a similar issue) that more in-depth analyses are required to understand what controls the increases in volume with a larger number of categories. As per the suggestion of the reviewer, we have conducted a detailed budget analysis to identify the nature of processes driving the ice volume changes from one simulation to the next. Namely, we have separated the thermodynamic processes from the dynamical ones and produced the seasonal cycles of ice volume changes in all simulations. Fig. R1.1 (above) confirms our initial hypothesis that most of the increases in volume with more categories can be attributed to enhanced basal growth rates. The role of melting processes is less clear.

Such process-oriented analyses also bring further evidence for our explanation that appending thick categories beyond 4 m and 2 m has a negligible impact on ice volumes in the Arctic and Antarctic, respectively. We show in Fig. R2.1 the same mass balance analysis as in Fig. R1.1 but for the experiments "S2", i.e., those with successive addition of thick categories. Fig. R2.1 illustrates that the net gains in Arctic ice volume in fall (OND) and winter (JFM) level off after experiment S2.09. Breaking down the net gains by the processes involved, it appears more clearly that the reason for the stabilization is the convergence in basal growth rates. This finding confirms a posteriori our hypothesis that experiments S2.09 (S2.07) and beyond use an ITD discretization that allows a clear separation between deformed ice and thermodynamically-grown Arctic (Antarctic) sea ice.

The new version of the manuscript now includes a caution note on the meaning of Fig. 1, in particular regarding the results of experiment S1.01 (1 category). At this occasion, we have stressed that the realism of a simulation cannot be inferred solely from its agreement with observational references or reanalyses. As explained in our answer to Reviewer #1, the experiment with one ice thickness category has reduced basal growth compare to other experiments and has enhanced dynamic production compared to them. From a theoretical point of view, we know that growth rates cannot be realistic in a model without subgrid-scale thickness distribution since the subgrid-scale variability is missed by definition (and fluxes are nonlinear functions of sea ice thickness). The larger production of ice through dynamic processes in the one-category run might compensate for this shortcoming.

Action.

- We have replaced Fig. 4 of the original manuscript by Fig. R1.1. A discussion around that new figure, along the lines of our reply, has been added to the manuscript.

- We have replaced Fig. A2 by Fig. R2.1. This figure gives a better justification regarding the stabilization of volume increases after S2.09 and S2.07 for the Arctic and Antarctic, respectively. We have updated the discussion accordingly.

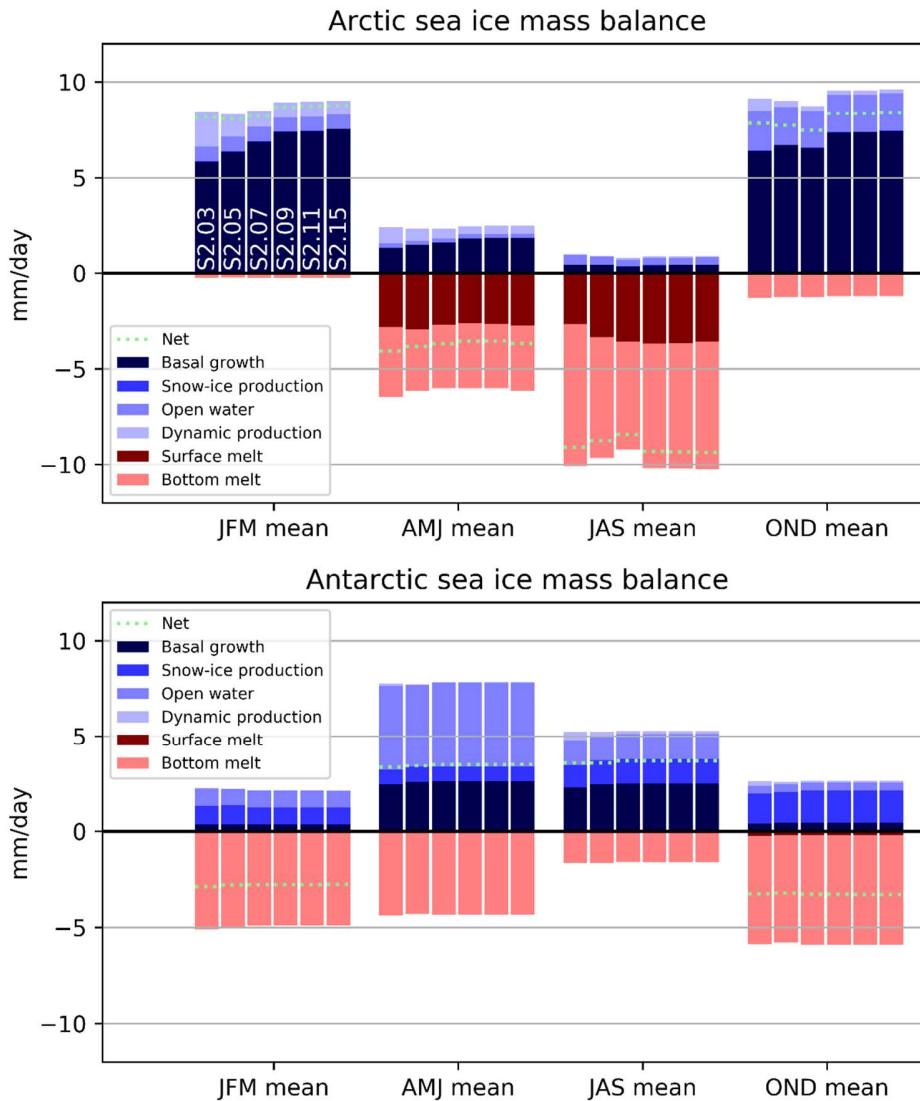


Figure R2.1. Contributions to the seasonal mass balance of Arctic (top) and Antarctic (bottom) sea ice as simulated by “S2” (appending new categories), averaged over the areas depicted in Fig. A1 of the manuscript. Blue colors refer to processes that contribute to *positive* ice volume changes, while red colors indicate processes implying *negative* ice volume changes.

While the Conclusions summarize the paper quite well, the abstract does not. In the abstract the key statement (default ITD discretization with 5 thickness categories is fine for large-scale climate application) is missing and the impact of ITD discretization is overstated.

Reply. This is indeed important information that needs to be stated to those readers who will not go through the paper. Regarding the point that “the impact of ITD discretization is overstated”, we are not sure to understand to what sentence(s) the reviewer refers to. Our results indeed show that the ITD discretization has a large influence on the model mean state, perhaps more than we anticipated. Of course, the conclusions hold when all other factors are kept identical, and this needs to be better stated. Another possible source of misunderstanding is that we referred to the *sea ice* mean state. We do not claim that the ITD discretization can influence the climate mean state.

Action. We have re-written the abstract to include the recommendation that five thickness categories are fine for large-scale climate applications. We have made clear that the importance of the ITD discretization has to be appreciated compared to other factors (atmospheric forcing uncertainties, parameter uncertainty) as was done in the conclusion. We have also changed “mean state” by “sea ice mean state”.

Minor issues

Page 1, Line 3: “how to implement” the ITD is too general given you only address the discretization.

Action. We have changed the sentence into “how to discretize it remains an open question”.

Page 2, Lines 5-6: Melt ponds should be added.

Action. We have changed the relevant sentence into “To quote only three, the ice growth rate critically depends on the local thickness (Maykut, 1982), the albedo of a given region is largely dependent on the presence of open water and thin ice (Maykut and McPhee, 1995; Holland et al., 2006a), and the areal extent of melt ponds depends on the local topography of sea ice (Eicken., 2002).”

Eicken, H. (2002). Tracer studies of pathways and rates of meltwater transport through Arctic summer sea ice. *Journal of Geophysical Research*, 107(C10). <https://doi.org/10.1029/2000jc000583>

Figure 1: S3 panel: Typo for experiment name: S3.09 (not S2.09)

Reply. Experiment S3.09 uses an identical discretization as experiment S2.09 (as explained in the figure caption), but we agree that for the sake of clarity, it is better to use S3.09.

Action. All corrections have been done throughout the text.

Figure 7: I do not understand this figure: Why are only grey bars shown for $n-1$ categories? Why is the fraction per category divided by thickness, so the integral is not 1?

Reply. What we show in Fig. 7 is the sea ice thickness distribution from the model. We recall that, in the model, the upper bound of the last category is forced to be at 99 m. In Fig. 7, the last category contains ice, but the height of the grey bars are small. This is because, by definition of the function $g(h)$ (in [%/m]), the product $g(h).dh$ (in %) must be equal to the relative area occupied by sea ice with thickness comprised between the category limits (dh is the category bin width). Since the last category has a large value for dh , the function $g(h)$ is relatively small for that category. In several panels, the grey bars are not visible for category n because of this small value.

Action. We checked that the sum of the grey bars amounts to 100% for each panel. For the sake of clarity, we have now added the relative areas occupied by each category on top of the grey bars, as shown in this figure:

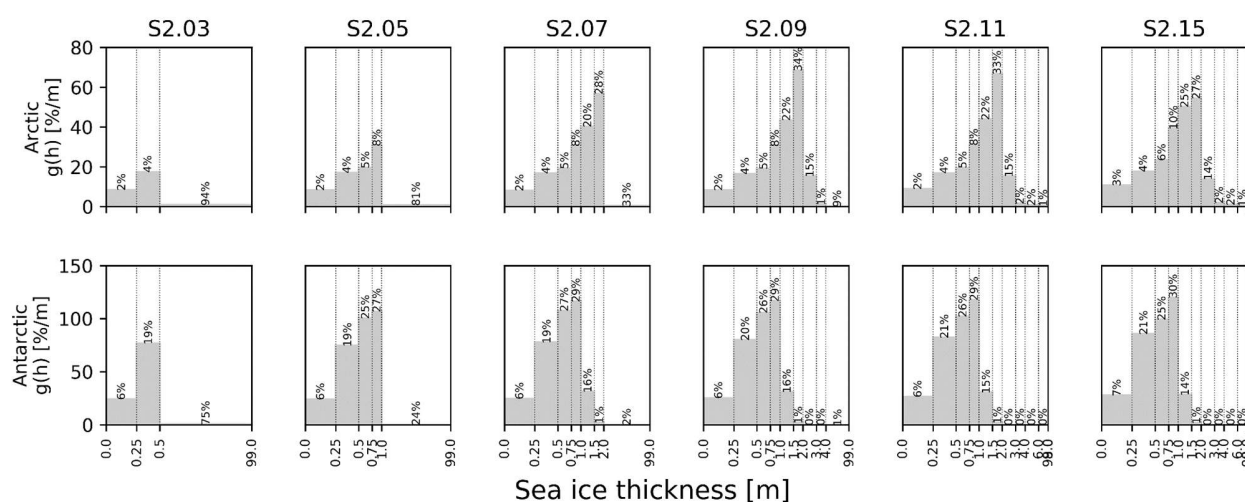


Figure R2.2 New version of Fig. 7 : ice thickness distributions for the experiments S2. The relative areas covered by sea ice in each category are now explicitly displayed.

Conclusions: better inclusion of literature mentioned in Introduction

Action. The Conclusion has been updated to mention the literature cited in the Introduction.

Figure A2: S3.09 (not S2.09)

Action. Changed.

On the discretization of the ice thickness distribution in the NEMO3.6-LIM3 global ocean–sea ice model

François Massonnet¹, Antoine Barthélemy¹, Koffi Worou¹, Thierry Fichefet¹, Martin Vancoppenolle², Clément Rousset², and Eduardo Moreno-Chamarro³

¹Georges Lemaître Centre for Earth and Climate Research, Earth and Life Institute, Université catholique de Louvain, Louvain-la-Neuve, Belgium

²Sorbonne Universités (UPMC Paris 6), LOCEAN-IPSL, CNRS/ IRD/MNHN, Paris, France

³Barcelona Supercomputing Center (Centro Nacional de Supercomputación), Nexus II?Planta 1 C/ Jordi Girona, 29, 08034 Barcelona, Spain

Correspondence: François Massonnet (francois.massonnet@uclouvain.be)

Abstract. The Ice Thickness Distribution (ITD) is one of the core constituents of modern sea ice models. The ITD accounts for the unresolved spatial variability of sea ice thickness within each model grid cell. While there is a general consensus on the added physical realism brought by the ITD, how to **implement discretize** it remains an open question. Here, we use the ocean–sea ice general circulation model NEMO3.6-LIM3 forced by atmospheric reanalyses to test how the ITD discretization (number of ice thickness categories, positions of the category boundaries) impacts the simulated mean Arctic and Antarctic sea ice states. We find that winter ice volumes in both hemispheres increase with the number of categories, and attribute that increase to a net enhancement of basal ice growth rates. The range of simulated mean winter volumes in the various experiments amounts to $\sim 30\%$ and $\sim 10\%$ of the reference values (run with 5 categories) in the Arctic and Antarctic, respectively. This suggests that the way the ITD is discretized has a significant influence on the model mean state, all other things being equal. We also find that the existence of a thick category with lower bounds at ~ 4 m and ~ 2 m for the Arctic and Antarctic, respectively, is a prerequisite for allowing the storage of deformed ice, and therefore for fostering thermodynamic growth in thinner categories. Our analysis finally suggests that increasing the resolution of the ITD without changing the lower limit of the upper category results in small but not negligible variations of ice volume and extent. Our study proposes for the first time a bi-polar process-based explanation of the origin of mean [sea ice](#) state changes when the ITD discretization is modified. The sensitivity experiments conducted in this study, based on one model, emphasize that the choice of category positions, especially of thickest categories, has a primary influence on the simulated mean sea ice states while the number of categories and resolution have only a secondary influence. It is also found that the current default discretization of the NEMO3.6-LIM3 model is sufficient for large-scale present-day climate applications. In all cases, the role of the ITD discretization on the simulated mean sea ice state has to be appreciated relative to other influences (parameter uncertainty, forcing uncertainty, internal climate variability).

1 Introduction

Sea ice forms a very heterogeneous medium at the surface of polar oceans. Open water, thin new ice, undeformed ice floes, and thick pressure ridges may coexist on scales as small as a few meters (Thorndike et al., 1975; Williams et al., 2014). Several ocean-ice-atmosphere interaction processes are influenced by this small-scale heterogeneity. To quote only ~~two~~three, the ice growth rate critically depends on the local thickness (Maykut, 1982), ~~and~~ the albedo of a given region is largely dependent on the presence of open water and thin ice (Maykut and McPhee, 1995; Holland et al., 2006a), and the areal extent of melt ponds depends on the local topography of sea ice (Eicken, 2002).

Sea ice models as components of climate models are primary tools to characterize climate variability at high latitudes (Holland et al., 2008), to diagnose the existence and the role of feedbacks (Goosse et al., 2018), and to estimate projected changes under various emission scenarios (Massonnet et al., 2012). They are also increasingly used to generate predictions from operational (Rabatel et al., 2018) to seasonal (Hamilton and Stroeve, 2016) timescales. The spatial resolution of sea ice models typically ranges from values as coarse as $\sim 5^\circ$ for palaeoclimate studies to 1 km for short-range forecasting. As such, the high heterogeneity in sea ice thickness and therefore the complex nature of related physical processes cannot explicitly be modelled even in highest resolution configurations. The subgrid-scale variability of ice properties is often taken into account through the use of an ice thickness distribution (ITD). The ITD theory, as first introduced by Thorndike et al. (1975), aims at describing the time evolution of the statistical distribution of ice thickness in a given region under the action of thermodynamic growth and melt, advection by winds and currents, and mechanical redistribution by ridging, rafting and lead opening. In practice, the thickness distribution is discretized into a fixed number of categories. A compromise must be made, when choosing this number, between an accurate physical representation of the ITD and a containment of the computational costs.

The benefits of including an ITD for polar climate modelling have been addressed and recognized in numerous previous studies (e.g., Bitz et al., 2001; Holland et al., 2006b; Massonnet et al., 2011; Uotila et al., 2017; Ungermann et al., 2017). Pilot studies have attempted to determine the minimum number of categories necessary to resolve the seasonal cycle of climatically important variables. Using a Lagrangian formulation of the ITD, Bitz et al. (2001) concluded that five categories are sufficient to obtain the convergence of the Arctic sea ice extent and heat and freshwater fluxes, but that the volume is dependent on the details of the discretization for ice below 2 m thick. Similarly, Lipscomb (2001) suggested that five to seven categories, with higher resolution for thinner ice, are sufficient. Hunke (2014) rather stressed the importance of thick ice categories for a proper modelling of Arctic sea ice volume. In particular, her results showed that simulations of Arctic ice volume require more than five categories, with a few of them above 2 m. Lately, Ungermann et al. (2017) demonstrated that the mean ice thickness in the Arctic increases with the number of categories used in the ITD, and found that the better resolved solution does not lead to the better model-data fit. Since simulations were tuned by minimizing cost functions, they did not investigate the physical processes explaining the model behaviors.

In this targeted study, we aim at assessing the response of a state-of-the-art coupled ocean–sea ice model, NEMO3.6-LIM3, to changes in the ITD discretization. From this model assessment, we wish to provide recommendations to the NEMO community (and more largely to users of large-scale sea ice models) regarding the number of thickness categories and the

position of their boundaries, based on a physical understanding of the mechanisms at play. To our knowledge, all studies on the ITD but one (Holland et al., 2006b) focused on Arctic sea ice, so we wish to present a systematic assessment of the role of the ITD for sea ice in the Southern Hemisphere too. As we will see, the sensitivity of sea ice to the ITD discretization is generally less pronounced in that hemisphere than in the Northern Hemisphere. However this might be an interesting indication of what will happen in the future in the Arctic Ocean, as its sea ice cover will become more seasonal in a near future (e.g., Massonnet et al., 2012). Finally, our objective is to understand the processes driving the model response to changes in the ITD discretization, a question that has not been explored in depth and that could be relevant for sea ice model developers beyond the NEMO-LIM community. [To this end, we analyze ice volume tendency terms diagnosed in the model in order to separate thermodynamic contributions from dynamic ones, but also surface from bottom ones.](#) We focus our analysis on the response of the model climatology, rather than on the long-term trends and interannual variability (which will be analyzed in a second companion study).

This paper is organized as follows. The ocean–sea ice model NEMO3.6-LIM3, its configuration and the series of sensitivity experiments are described in Section 2. The results are presented and discussed in Section 3. Conclusions and recommendations are finally drawn in Section 4. Note that all results and figures presented in this article can be reproduced bit-wise thanks to the archiving of the data and scripts on publicly available repositories (see "Code and data availability" at the end of the manuscript).

2 Model and experimental design

2.1 Ocean–sea ice model NEMO3.6-LIM3

This study is conducted using the dynamic-thermodynamic sea ice model LIM3.6 (Louvain-la-Neuve sea Ice Model, Rousset et al., 2015). It is coupled to a finite-difference, hydrostatic, free-surface, primitive-equation ocean model within version 3.6 of the NEMO framework (Nucleus for European Modelling of the Ocean, Madec, 2008). LIM includes an ITD, which is described in more details in the next section, energy conserving thermodynamics (Bitz and Lipscomb, 1999), a time dependent salinity profile (Vancoppenolle et al., 2009a), and an elastic-viscous-plastic rheology formulated on a C-grid to model the ice dynamics (Bouillon et al., 2013).

2.2 Ice thickness distribution

One of the key features of LIM is the ITD that is used to represent the subgrid-scale distribution of sea ice thickness, enthalpy and salinity (Thorndike et al., 1975). The probability density function for thickness h , $g(h, \mathbf{x}, t)$, evolves according to the following equation:

$$\frac{\partial g}{\partial t} = -\nabla \cdot (\mathbf{u}g) - \frac{\partial}{\partial h}(fg) + \psi$$

The first term of the right-hand side is the ~~divergence~~-convergence of the horizontal flux of g , with \mathbf{u} the ice velocity. In the second term, f is the thermodynamic growth rate. The third term term, ψ , is the mechanical redistribution. The way this term is modelled is somewhat specific to LIM: it includes ridging and lead opening terms (as in other models) but also a rafting term (Vancoppenolle et al., 2009b). Another specificity of LIM is that newly formed ridges have a prescribed 30% porosity.

5 The numerical formulation of the ITD in the model follows Lipscomb (2001). The thickness distribution is discretized into a fixed number of categories. Sea ice in each category occupies a varying areal fraction of the grid cell. Ice thickness in each category is constrained to remain between user-prescribed boundaries. Ice growth and melt induces transfers of ice volume and area between categories, which is dealt with the linear remapping scheme of Lipscomb (2001). This scheme combines the advantages of being computationally inexpensive and only weakly diffusive.

10 In the current version of LIM, the ITD is discretized by default by using a fitting function that places the category boundaries between 0 and $3\bar{h}$, with \bar{h} the expected mean ice thickness over the domain. A greater resolution is placed for thin ice (Rousset et al., 2015). More specifically, the lower and upper limits for ice thickness in category $i = 1, \dots, N$ are $f(i-1)$ and $f(i)$ with

$$f(i) = \left(\frac{N(3\bar{h} + 1)^\alpha}{(N - i)(3\bar{h} + 1)^\alpha + i} \right)^{\alpha^{-1}} - 1 \quad (1)$$

where N is the number of categories, $i = 1, \dots, N$ refers to the category index and $\alpha = 0.05$. The upper limit of the last category
15 is always reset from $3\bar{h}$ to 99.0 m, in order to allow hosting very thick ice.

2.3 Model configuration

The configuration of NEMO3.6-LIM3 is almost identical to the one used in Barthélemy et al. (2017), where the reader may find the details that are not recalled here. The revision 6631 of the branch 2015/nemo_v3_6_STABLE of the NEMO SVN repository (<https://forge.ipsl.jussieu.fr/nemo/svn/NEMO/releases/release-3.6/>) is used. The ocean and sea ice models are run on the global
20 eORCA1 grid, which has a nominal resolution of 1° in the zonal direction. In the ocean, a partial step z coordinate with 75 levels is used along the vertical. The layer thickness increases non-uniformly from 1 m at the surface to 10 m at 100 m depth, and reaches 200 m at the bottom. To avoid spurious model drift, a weak restoring towards the World Ocean Atlas 2013 surface salinity climatology (Zweng et al., 2013) is applied, with strength 167 mm/day (i.e., a relaxation time scale of 10 months for a
25 ice (multiplied by one minus sea ice concentration), i.e. where the observations are less reliable.

The atmospheric forcing is provided by the DRAKKAR Forcing Set version 5.2 (DFS5.2, Brodeau et al., 2010; Dussin et al., 2016). This global forcing set is derived from the ERA-Interim reanalysis over 1979-2015 and from ERA-40 for the period 1958-1978. It has a spatial resolution close to 0.7° , or 80 km, and is utilized within the CORE forcing formulation of NEMO, which uses bulk formulas developed by Large and Yeager (2004). Continental freshwater inputs consist of river runoff rates
30 from the climatological dataset of Dai and Trenberth (2002) north of 60°S , of prescribed meltwater fluxes from ice shelves along the coastline of Antarctica (Depoorter et al., 2013), and of climatological freshwater fluxes from iceberg melt at the surface of the Southern Ocean (Merino et al., 2016).

The sole difference compared to Barthélemy et al. (2017)'s setup is the shorter integration time (1979-2015 instead of 1958-2015), due to the computational cost of the multiple sensitivity experiments. Simulations are only weakly impacted by the length of integrations. A comparison of the reference simulation labelled S1.05 (see below) with the corresponding experiment in the aforementioned study indicates that the interannual variability of hemispheric ice volumes is the only sea ice index showing a weak sensitivity to the start date, while other ones are not affected (not shown). The ocean is initialized at rest with temperature and salinity fields from the World Ocean Atlas 2013 (Locarnini et al., 2013; Zweng et al., 2013) and we analyze the last 20 years of the simulations (1995-2014).

2.4 Sensitivity experiments

An ITD discretization features two characteristics: the number of categories used and the position of category boundaries. By default, the LIM sets automatically the position of category boundaries for a given number of categories, according to Eq. 1. However, this choice can be overridden by the user, in order to explore specific discretizations.

We are running three successive sets of sensitivity experiments. In the first set, labelled S1, the default ITD discretization of LIM is used and both the number and positions of category boundaries are changing according to Eq. 1, for a number of 1, 3, 5, 10, 30 and 50 categories. The value for \bar{h} is set to 2.0 m and represents a tradeoff between gross estimates of Antarctic and Arctic basin-wide average thickness (~ 1.0 m and 3.0 m, respectively). The category boundaries are displayed in Fig. 1, top panel.

The results derived from this first set of experiments can potentially be useful for users of the model, but not necessarily for understanding the physical processes driving the model response. Indeed, in S1, both the position and the resolution of the thickness categories vary from one experiment to the next; it is thus impossible to disentangle one effect from the other. Therefore, in a second set of experiments, labelled S2, we bypass the default formulation of LIM and successively append new thickness categories without changing the existing category boundaries (Fig. 1, middle panel). This set of experiments allows testing the influence of thick ice categories, as Hunke (2014) suggested this aspect to be potentially important. In that set of experiments, the resolution of the ITD is unchanged and we can test the specific role of the category positions on the simulated mean sea ice state.

Finally, in order to test the influence of the number of ice categories, independently of their position, we run a third set of sensitivity experiments (S3), in which the lower boundary of the thickest category is locked to 4.0 m as in experiment S2.09, and the ITD is coarsened/refined by merging/splitting the existing categories (Fig. 1, bottom panel). The upper limit of 4.0 m corresponds to the maximum thickness that thermodynamic ice growth can sustain in the Arctic (Maykut and Untersteiner, 1971) and allows therefore the thickest category to host the deformed ice produced by the model.

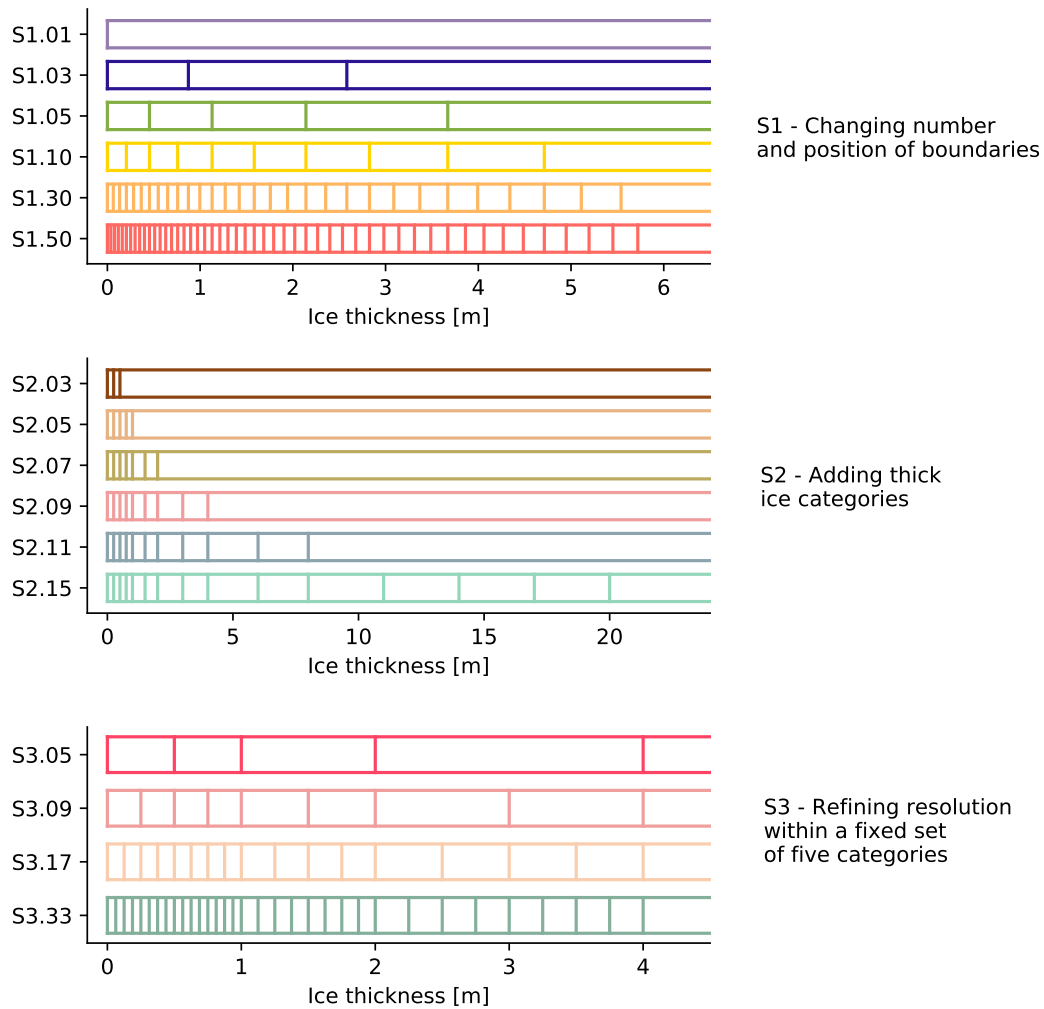


Figure 1. Ice thickness category boundaries in the three sets of sensitivity experiments. The upper boundary of the last category is always set to 99.0 m. Note that the ice thickness scale is different in the three panels. Because the ITD discretization in the third set of experiments (S3) branches from experiment S2.09 of the second set, that experiment is repeated in the list [but labelled as S3.09](#).

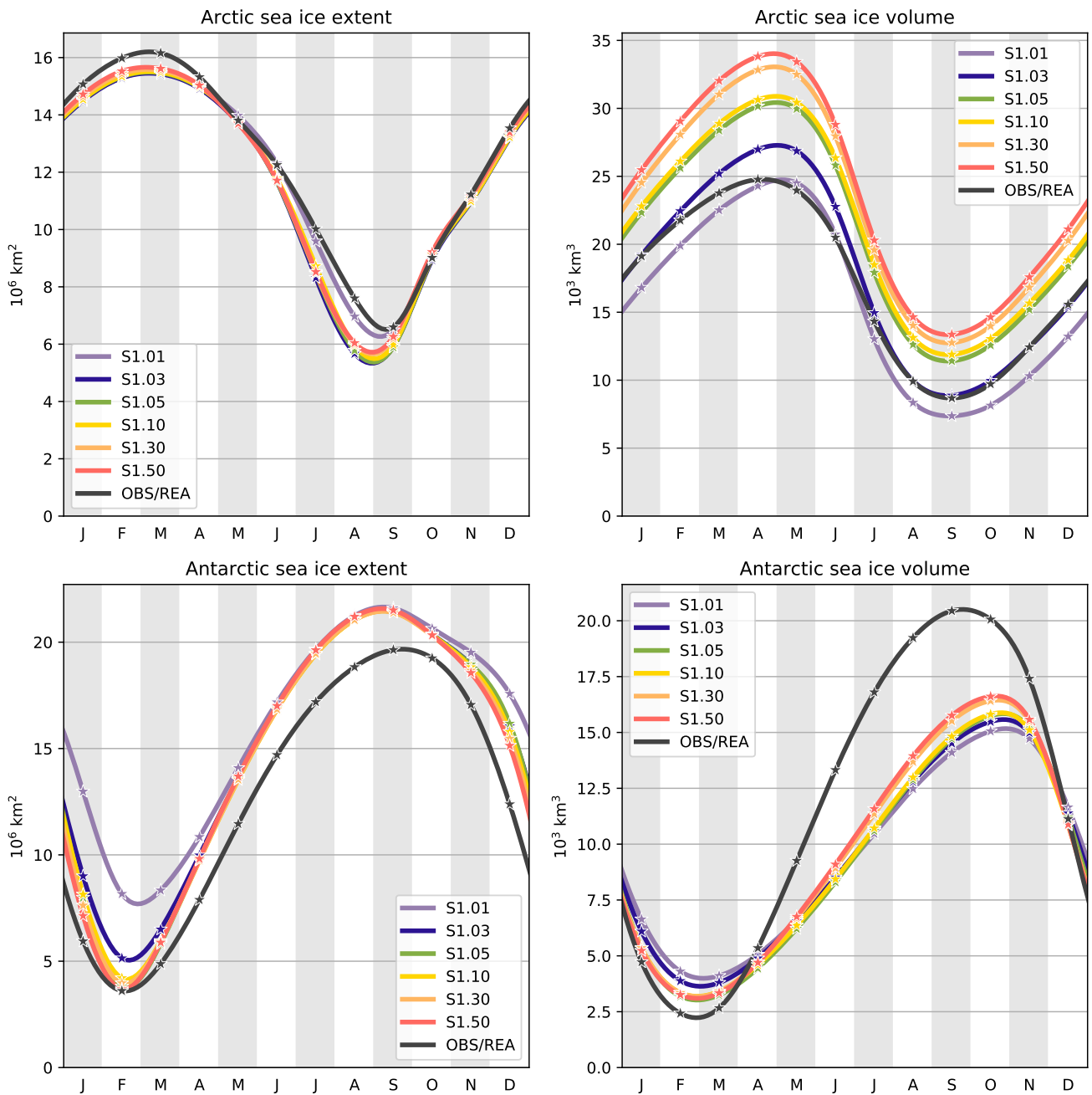


Figure 2. Mean seasonal cycles of Arctic (top) and Antarctic (bottom) sea ice extents (left) and volumes (right), over 1995-2014, in the first set of sensitivity experiments. Ice extents derived from the OSISAF sea ice concentration observational product (OSI-409a; EUMETSAT, 2015) are also shown, as well as Arctic and Antarctic ice volumes derived from the PIOMAS and GIOMAS reanalyses, respectively (Schweiger et al., 2011; Zhang and Rothrock, 2003). The stars show the monthly data and the curves are cubic interpolations between the data points.

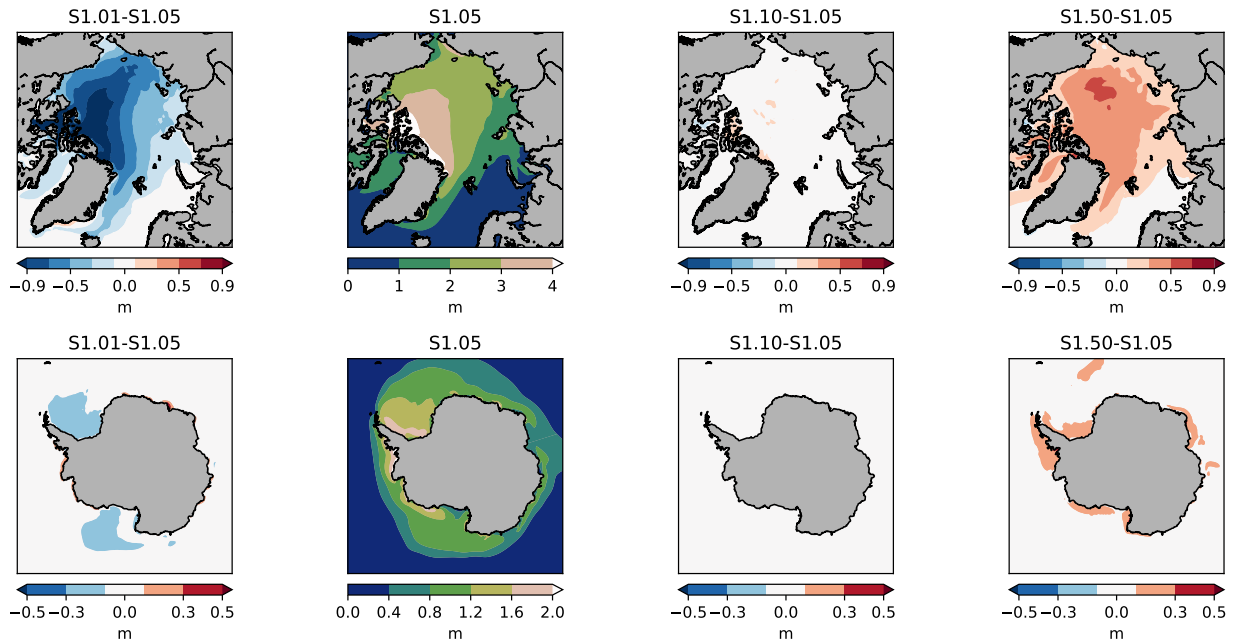


Figure 3. Effective sea ice thickness (grid cell ice volume divided by grid cell area) in the Arctic in March (top) and in the Antarctic in September (bottom), averaged over 1995-2014. Experiment S1.05 and differences with selected experiments of the first set are shown.

3 Results and discussion

3.1 Influence of the number of categories in the default formulation (S1 experiments)

Seasonal cycles of Arctic and Antarctic sea ice extents and volumes are presented in Fig. 2. Following the usual conventions, sea ice extent is defined as the sum of all oceanic grid cell areas that contain at least 15 % of ice concentration, while sea ice volume is defined as the sum of individual grid cell volumes. The main consequence of using a larger number of ice thickness categories is to increase the ice volume in winter. In the Arctic, the increase persists during the whole seasonal cycle, even though it becomes smaller in summer. To position the volume produced by our model, a comparison is made with the PIOMAS reanalysis (Schweiger et al., 2011). The model produces higher volume than the PIOMAS reanalysis for simulations with more than 3 categories. In the Antarctic, the increase is limited to the ice growing season while the rest of the year features a decrease in volume when using only few categories (S1.01 and S1.03), which is due to an excessive sea ice extent in summer (discussed later). In either hemisphere, the annual maximum of ice volume does not converge to an asymptotic value when increasing the number of categories: *even at 100 categories (not shown), the winter ice volume is significantly higher than with 50 categories.* The possible origins of this lack of convergence will be discussed in the next section.

3.1.1 Response of sea ice thickness

The impact of changing the number of categories on the spatial distribution of ice thickness is shown in Fig. 3. Compared to experiment S1.05, using only 1 category reduces the ice thickness mainly in the thick ice areas, by up to 1 m north of the Canadian Arctic Archipelago and the Canada Basin in the Arctic, and by around 0.2 m in the Ross and Weddell Seas in the Antarctic. By contrast, increasing the number of categories leads to a more uniform thickening of the ice, by up to 0.5 m (0.2 m) for S1.50 in the Arctic (Antarctic).

~~Mean seasonal cycles of Arctic (top) and Antarctic (bottom) bottom ice growth, over 1995-2014, in the first set of sensitivity experiments. The spatial averages are computed in the areas delineated in Fig. A1.~~

The origin of a thickness increase with the number of ice thickness categories can be explored with the tendency diagnostics provided in LIM. Indeed, variations in state variables, including volume in each category and therefore the aggregate volume, can be attributed to various physical processes accounted for in the model such as open water ice formation, bottom growth, ~~bottom melt, surface melt and snow-ice formation. We found that the production and dynamic production (i.e., ice formed due to refreezing of seawater after entrapment into porous ridges), but also bottom melt and surface melt.~~

The increase in sea ice thickness is mainly due to an enhancement of thermodynamic basal growth in rates in fall and winter (Fig. ??4). Our hypothesis is that, for the same grid cell average thickness, a better resolved ITD results in larger basal ice growth rates due to the inverse relationship between conductive heat fluxes and sea ice thickness. To illustrate this point, let us consider two counterfactual configurations A and B, with the same grid-cell average ice thickness but different ITDs. In A, a uniform 2-m thick slab of ice covers 100 % of the grid cell, while in B 50 % of the grid cell is covered by a 1-m thick slab of ice and the other 50 % by a 3-m thick slab of ice. All other things being equal (surface and bottom ice temperatures, snow, ice conductivity, ocean-ice heat flux), the heat conduction flux will be proportional to $1/2 \text{ Wm}^{-2}$ in A as per Fourier's law of conduction. By contrast, the heat conduction flux will be proportional to 1 and $1/3 \text{ Wm}^{-2}$ on each half of the grid cell in B, giving an average of $2/3 \text{ Wm}^{-2}$. The basal ice growth, resulting from the imbalance between ocean-ice heat flux and the heat conduction flux, will therefore be higher in B.

The diagnosed sea ice mass balance analysis of Fig. 4 also shows that, in the Arctic, the run with one thickness category compensates the deficit of basal ice growth (relative to multicategory runs) by enhanced dynamic production during fall and winter (October to March). We can understand this finding as follows. First, the deficit of ice growth leads to a thinner ice pack. However, in the model, compressive ice strength is a function of the grid-cell average thickness H and the concentration A :

$$P = P^* H e^{-C(1-A)} \quad (2)$$

where $P^* = 20 \text{ kN/m}^2$ and $C = 20$ are two empirical constants. In all simulations, $A \sim 1$ in winter due to the thermal constraint imposed by the atmospheric forcing. Small values of H in the one-category simulation lead to less resistance of ice to compression and hence enhanced mechanical redistribution, which fosters dynamic growth.

What is the origin of non-convergence of sea ice volumes noticed in Fig. 2? Based on the mass balance analysis, the non-convergence is primarily due to a non-convergence in basal growth rates (Fig. 4). However, in an idealized configuration

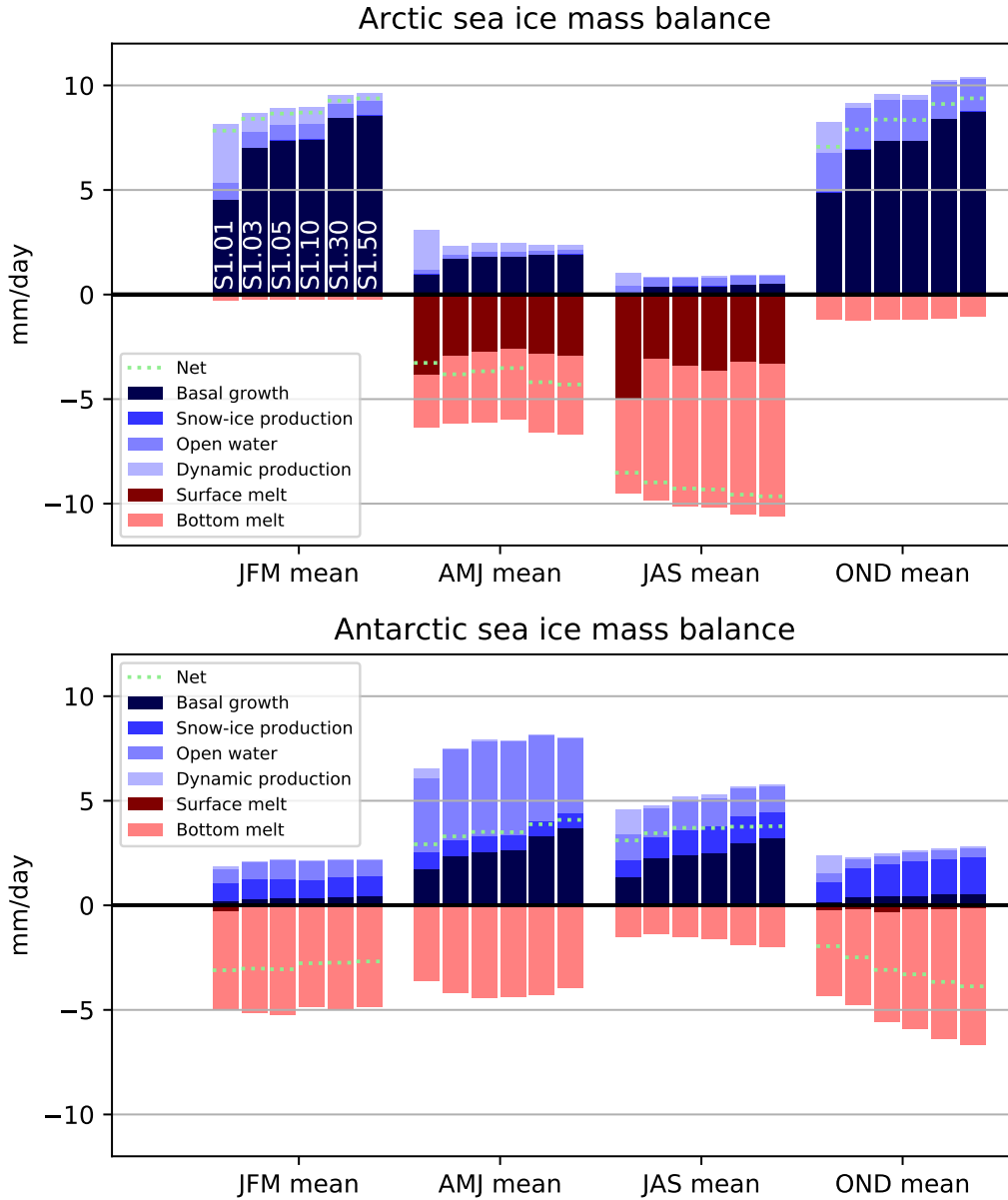


Figure 4. Contributions to the seasonal mass balance of Arctic (top) and Antarctic (bottom) sea ice as simulated in the first set of sensitivity experiments S1 (varying number of categories with the default LIM3 ITD discretization), averaged over the areas depicted in Fig. A1. Blue colors refer to processes that contribute to positive ice volume changes, while red colors indicate processes implying negative ice volume changes. The name of experiments is indicated in the upper panel for the January-February-March season.

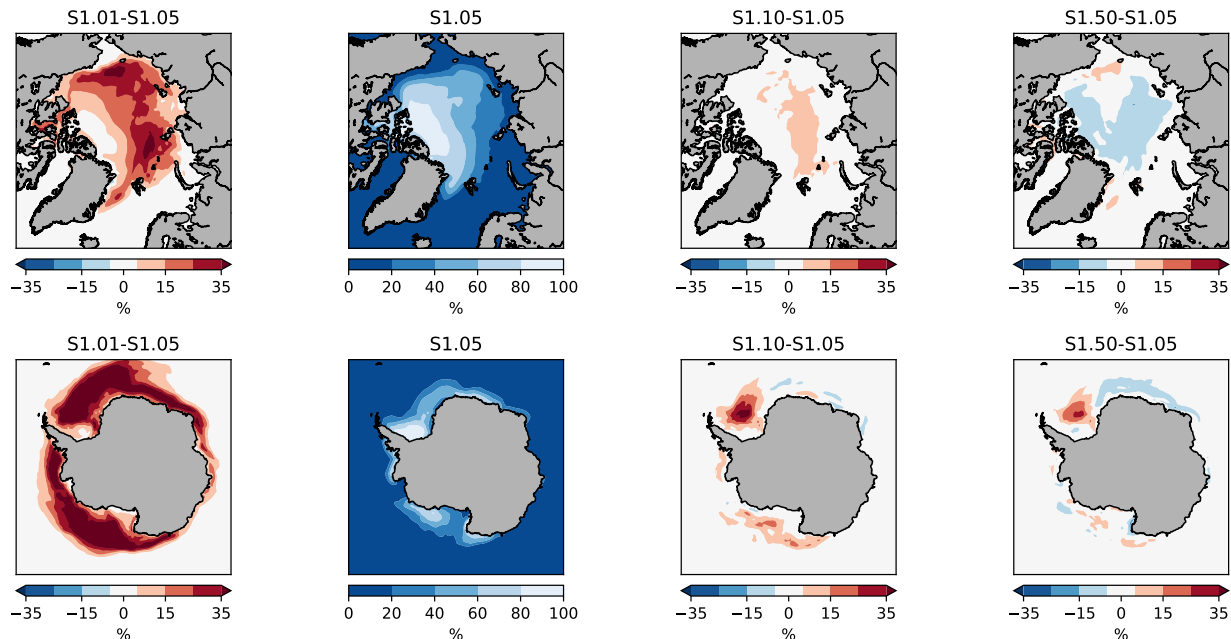


Figure 5. Sea ice concentration in the Arctic in August (top) and in the Antarctic in February (bottom), averaged over 1995-2014. Experiment S1.05 and differences with selected experiments of the first set are shown.

with no snow and without ice dynamics, growth rates reach 95% of the asymptotic value when 5 categories or more are used (Fig. 6). Thus, the non-convergence has to be the consequence of an interplay between the dynamic and thermodynamic processes: ridging or rafting transfers thin ice to thicker categories, allowing more ice production by thermodynamic growth. It is not possible to produce deeper analyses at this stage as the ice mass balance terms are only available at the grid-cell level, not at the ice thickness category level. It is also unclear if the non-convergence is the consequence of our experimental setup, in which the atmospheric forcing is prescribed – offering no possibility for negative feedbacks to operate, or at least not as strongly as they might do in a coupled model. We will be testing soon this hypothesis with a coupled model.

3.1.2 Response of sea ice concentration

In winter, the sea ice concentration within the ice pack is close to 100% in all simulations, and the total ice extent shows no sensitivity to the ITD discretization (Fig. 2). This was expected, since the same prescribed atmospheric forcing is used throughout all sensitivity experiments: in all cases, the ice edge follows to a first approximation the 0°C isotherm of SST and of the near-surface air temperature field in the atmospheric forcing.

By contrast to the winter response, the summer response of sea ice concentration to the ITD discretization is noticeable, especially for the run with one category (Fig. 5). To understand these differences, we first recall that sea ice concentration at the end of the melting season is defined by three factors: the initial thickness (thick ice is less prone to melt away during

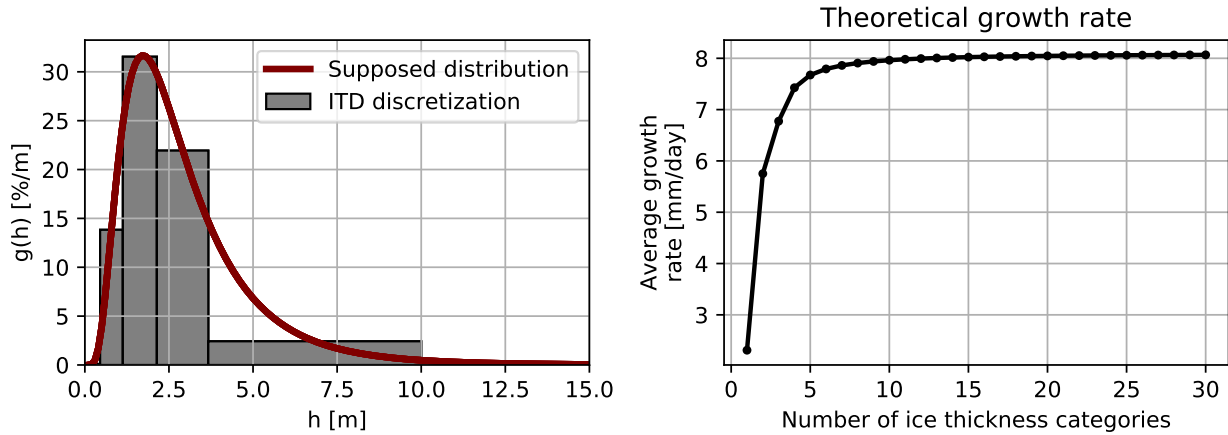


Figure 6. (Left) A supposed ice thickness distribution in a model grid cell (red; log-normal distribution with mean 3 m and standard deviation 2m) and its discretization in 5 categories following the default formulation of LIM3 (grey bars). (Right) Average basal growth rates for 1, 2, ... 30 categories. For each category, the basal growth rate was computed assuming sea ice thickness equal to the category mean (h_i with $i = 1, \dots, N$ where N is the number of categories), assuming no snow, an atmosphere-ocean temperature difference of $\Delta T = 30\text{K}$, sea ice conductivity of $k = 2 \text{ W/mK}$, latent heat of fusion of $L_f = 334000 \text{ J/kg}$ and sea ice density of $\rho_i = 917 \text{ kg/m}^3$. The growth rates were then averaged over categories, taking into account the relative area of each category: $\bar{h} = \frac{1}{\rho_i L_f} \sum_{i=1}^N \frac{k \Delta T}{h_i} g(h_i) dh_i$ with dh_i the width of category i .

summer (Goosse et al., 2009)), the strength of the ice-albedo feedback, and the history of atmospheric conditions (advection of warm air or moisture, anomalous radiative fluxes, advection of mechanical redistribution induced by winds). This latter factor cannot explain the differences seen in Fig. 5, since the same forcing is used in all experiments. As for the ice-albedo feedback, including ITD is known to enhance it: open water formation is more active as sea ice thins (Bitz et al., 2001; Holland et al., 2006a; Massonnet et al., 2018). Higher sea ice concentrations in summer in S1.01 are suggestive of a weaker feedback in these experiments. The impact is strong enough to be visible on the mean seasonal cycles of ice extent (Fig. 2). By the same reasoning, the large number of thin categories in S1.50 is likely causing a stronger feedback, which explains the lower concentrations in August in the Arctic. However (first factor) thicker ice is less prone to melt during summer. Since we have shown above that increasing the number of ITD categories also increases the ice thickness, this counteracts the effect related to the ice-albedo feedback. The competition between both effects results in a non-linear response of the summer sea ice concentration to changes in the number of thickness categories. This is why there is, at least for runs with more than one category, no obvious dependence of the mean summer sea ice concentration on the number of categories used in the ITD discretization in Fig. 5.

While the Arctic and Antarctic summer sea ice concentration responses for two or more categories appear to be complex for the reasons explained above, the run with one category displays a consistent increase in concentration (Fig. 5) and extent (Fig. 2) in both hemispheres. In one category runs, it is not possible to melt thin ice as efficiently as in multiple category runs,

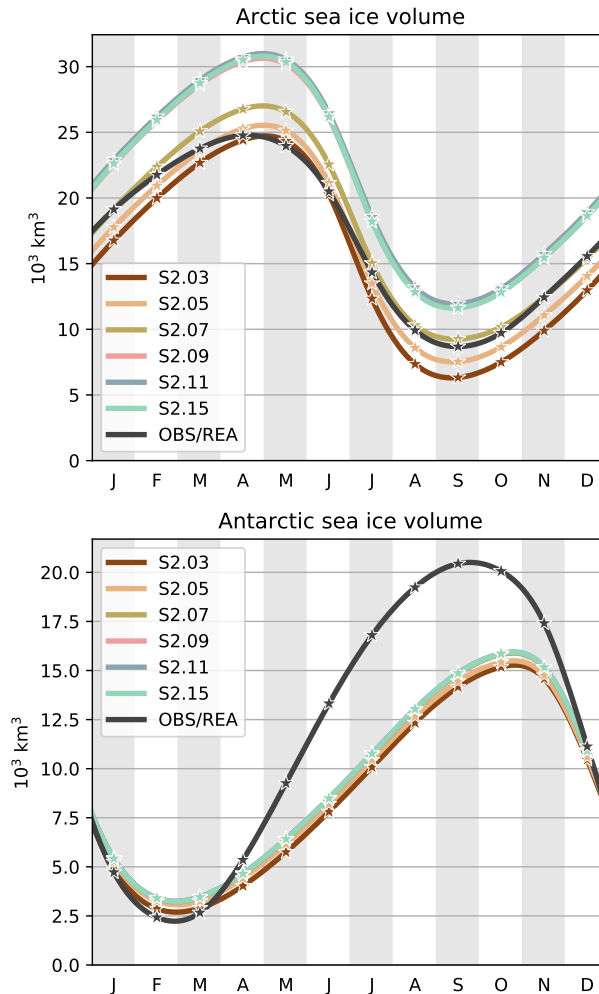


Figure 7. Mean seasonal cycles of Arctic (top) and Antarctic (bottom) sea ice volumes, over 1995-2014, in the second set of sensitivity experiments. Also shown are the Arctic and Antarctic ice volumes derived from the PIOMAS and GIOMAS reanalyses, respectively (Schweiger et al., 2011; Zhang and Rothrock, 2003). The stars show the monthly data and the curves are cubic interpolations between the data points.

since by definition there is no dedicated room for thin ice. Our hypothesis is that, in those runs, sea ice melt occurs mostly by thinning and not so much by lateral melting, thus leaving large ice-covered areas by the end of local summer.

3.2 Influence of thick ice categories (S2 experiments)

The aim of the second set of sensitivity experiments is to examine specifically the importance of thick ice categories in the ITD, without refining the discretization in the thin range (Fig. 1, middle panel). In this set, the sea ice volume is again the variable that is most impacted by the selected number of categories (Fig. 7). The Arctic ice volume increases monotonically with

the addition of new thick categories until a threshold at ~ 4 m is reached: adding categories beyond that threshold (experiments from S2.09 on) does not have an impact on the total volume. The Antarctic ice volume is less sensitive.

In order to understand the origin of this convergence of sea ice volume, we show in Fig. 8 the mean ITDs in March in the Arctic and in September in the Antarctic. March and September correspond to the hemispheric ice extent maxima, and are one month ahead of the ice volume maxima. The volume gains essentially stop (from S2.09 and S2.07 on in the Northern and Southern Hemispheres, respectively) when there exists categories that can contain the very thick ice produced by ridging (around 10 m and above). When this is the case, the thickest ice occupies only a small fraction of the grid cells, leaving more room for thinner ice that can sustain non-negligible thermodynamic growth rates. Including additional thicker categories allows a more detailed representation of the ice cover, but without effects on the growth rates, and thereby on the total volumes. The threshold values of 4 m (Arctic) and 2 m (Antarctic) are no coincidence. Maykut and Untersteiner (1971) found that the equilibrium thickness of level ice would reach 3-4 m in standard Arctic conditions. In the Antarctic, a larger climatological snow depth and larger ocean-ice basal heat flux both contribute to a thinner level ice cover on average.

We also note that the Arctic sea ice volume is more sensitive than the Antarctic sea ice volume in the set of experiments S2 (Fig. 7). This is because, in the model, the proportion of Antarctic ice volume produced by deformation (and stored in the thickest categories) is low compared to the Arctic. Creating the categories to host that deformed ice thus has only a moderate effect in the Antarctic. An investigation on the ability of NEMO3.6-LIM3 to realistically simulate the volume of deformed ice is currently underway in another study.

We conclude that setting the lower boundary of the thickest category at 4 m and 2 m for the Arctic and Antarctic, respectively, is sufficient to allow convergence in simulated ice volumes, provided that the resolution of the ITD in the thin categories remains unchanged. [These conclusions hold for present climate conditions and may have to be updated for other applications \(e.g., palaeoclimate simulations\).](#)

3.3 Influence of increasing resolution (S3 experiments)

In the previous set of experiments (S2), we have determined the minimal requirements for the position of the thick ice category in order to achieve convergence of ice volumes, without refining the ITD elsewhere. The final set of sensitivity experiments (S3) is designed to assess the specific role of the resolution of the ITD discretization in the thin range, without changing the upper bound (set to 4 m since we are using a global model). Starting from experiment S2.09 ([renamed S3.09 in this third set of experiments](#)), we coarsen and refine the ITD by merging or splitting category boundaries in two. Fig. 9 shows the mean seasonal cycles of Arctic and Antarctic sea ice volumes. Increasing the resolution leads to higher sea ice volumes through enhanced bottom growth rates (Fig. [??A3](#)), as explained in Section 3.1. However, the differences become significant in the Arctic only for S3.33, in which the ITD resolution is four times finer than in [S2S3.09](#). Overall, these results suggest that refining the ITD resolution by adding more intermediate categories has a small but not negligible impact on the total simulated sea ice volume.

In line with the results of Section 3.2, we conclude that the position of the thickest category (experiments S2) exerts a first-order control on the total sea ice volume by allowing the existence of thick and deformed ice, while the resolution of the ITD

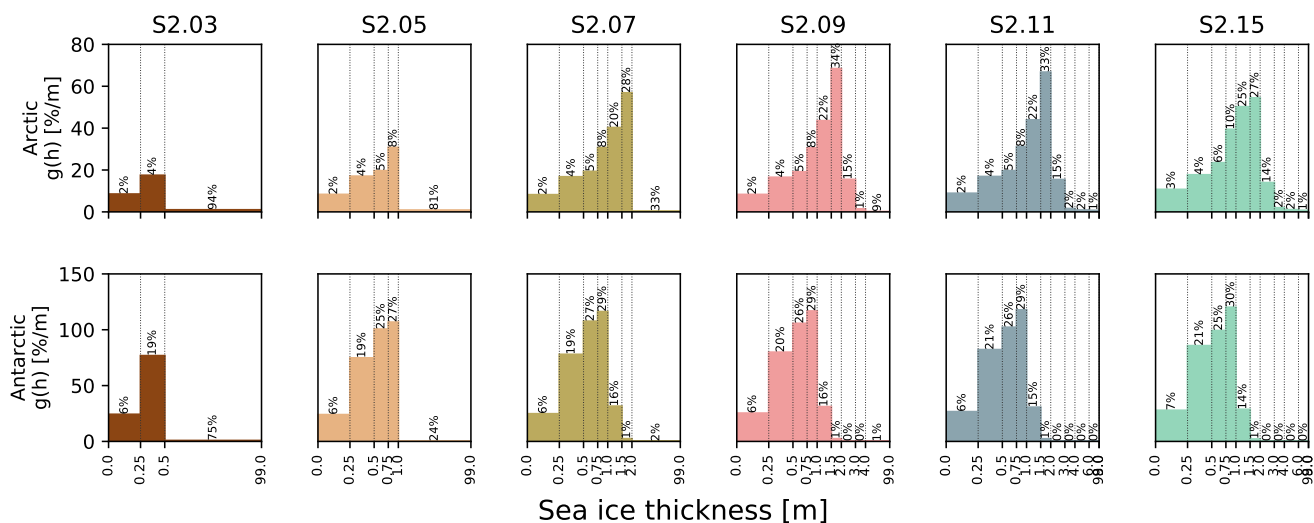


Figure 8. Mean ice thickness distribution in the second set of sensitivity experiments. For each ice thickness category, the relative areal proportion of ice for that category was estimated from the Arctic (March, top) and Antarctic (September, bottom) 1995–2014 average sea ice concentration field restricted to the domain shown in Fig. A1. Thin vertical lines delimit the category boundaries. Note that, for the sake of readability, the spacing along the x -axis is logarithmic. The upper bound of the last category is always set to 99.0 m and is not displayed.

discretization in the thin range (experiments S3) has a second-order effect on the total volume, by controlling the amount of thermodynamically grown ice.

4 Conclusions

The objective of this study was to examine the sensitivity of Arctic and Antarctic sea ice, as simulated by the global ocean–sea ice general circulation model NEMO3.6-LIM3, to the discretization of the ice thickness distribution. We also (ITD). Indeed, previous studies using coupled (Bitz et al., 2001; Holland et al., 2006b) and uncoupled (Massonnet et al., 2011; Uotila et al., 2017; Ungermann et al., 2018) models suggested the potential role of the ITD discretization on the simulate mean sea ice state. We aimed at understanding the physical processes behind the model responses. Our results have shown that increasing the number of categories leads to an increase of winter sea ice volumes, which persists in summer in the Arctic. In both hemispheres, the summer extents are sensitive to the number of categories only for fewer than five categories. Higher winter ice volumes are caused by higher thicknesses due to enhanced bottom growth, which is related to the ice thickness distribution discretization via the conductive heat flux through the ice. Our results also indicate that the inclusion of a very large number of ice thickness categories does not systematically improve the realism of the simulations against available observational references and reanalyses (Fig. 2). However, these sensitivity experiments have not been tuned (unlike the reference experiment). In addition, verification data is itself

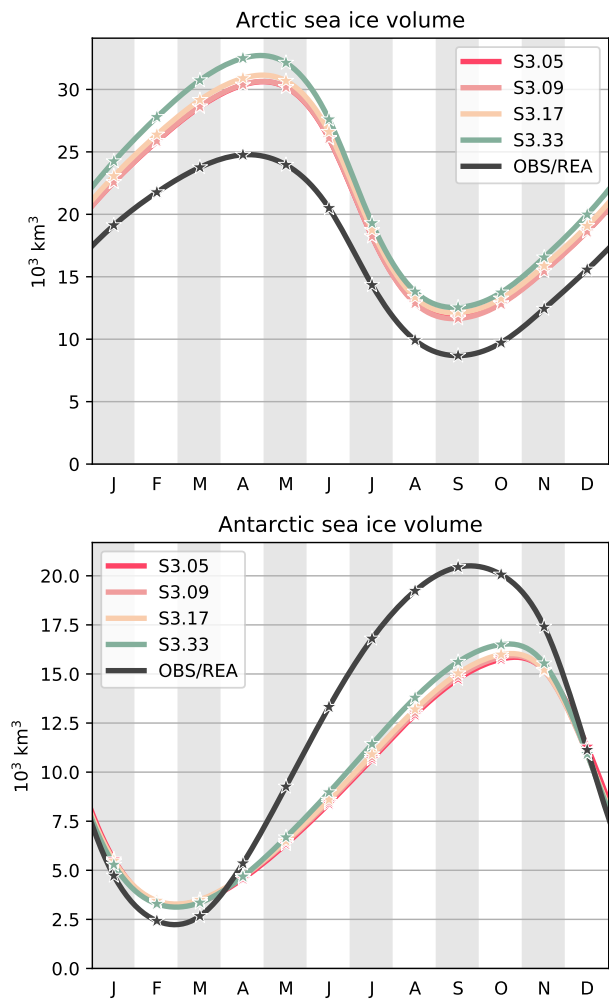


Figure 9. Mean seasonal cycles of Arctic (top) and Antarctic (bottom) sea ice volumes, over 1995-2014, in the third set of sensitivity experiments. Also shown are the Arctic and Antarctic ice volumes derived from the PIOMAS and GIOMAS reanalyses, respectively (Schweiger et al., 2011; Zhang and Rothrock, 2003). The stars show the monthly data and the curves are cubic interpolations between the data points.

uncertain: for sea ice extent, variations among products can reach values as high as 1 million km² (Meier and Stewart, 2018). The sea ice volume values provided for reference in our figures are even more uncertain, being estimated from reanalyses.

No strict convergence of ice volumes is achieved with less than 10 categories and the following observations can be made. First, it is required to have categories with lower bounds around 4 m and 2 m in the Arctic and the Antarctic, respectively. When this is not the case, the thick ice produced by ridging is blended with thinner ice, increasing its thickness, reducing the bottom growth and eventually decreasing the total ice volume. This confirms and explains the importance of thick ice categories already noted for the Northern Hemisphere by Hunke (2014). The existence of these thick categories is critical to host deformed ice and to let thin ice, which is subject to high basal growth rates in winter, occupy a sufficient fraction of the grid cells. Second, refining the ice thickness distribution discretization in the thin range (below 4 m and 2 m for the Arctic and Antarctic, respectively) causes hemispheric ice volumes to keep growing, though a very large number of categories (at least 33) is necessary to detect a significant increase. We stress that by design, our experimental protocol ignores possible feedbacks between the atmosphere and the ice-ocean system, which could enhance or damp the responses seen in our results.

One important criterion when choosing the ice thickness distribution discretization is the associated computing cost. Compared to a reference case with one category, computing time increases by 2-6 % when 5 categories are used, by 42 % when 17 categories are used, and by 210 % when 50 categories are used (Fig. A4). However, as discussed above, the gains in terms of convergence of modelled sea ice volumes are weak for such a number of categories. Hence, using 5 categories, with sufficiently thick ones, appears as an appropriate compromise for global experiments: the ice extent converges in both hemispheres, while a reasonable level of convergence is reached for ice volume. Simulations of the Southern Ocean sea ice may require fewer categories, while applications needing a very detailed representation of the thick Arctic sea ice should use a much finer ice thickness distribution discretization. Thus, for large-scale climate applications with NEMO3.6-LIM3, we recommend using the default ITD discretization (experiment S1.05).

It is finally important to place the results of the sensitivity tests conducted in this study in a broader context. Specifically, one should investigate how the sea ice volume and extent responses seen in this study compare to other influences. For instance, the net increase of $\sim 3 \times 10^3$ km³ in annual mean Arctic sea ice volume seen in Fig. 2 when changing from S1.05 to S1.50, lies in the $2-5 \times 10^3$ km³ range of interannual variability noted by Olonscheck and Notz (2017), who analyzed the output from climate models participating to the fifth phase Coupled Model Intercomparison Project (CMIP5). The response is in addition much smaller than the range obtained in the sensitivity tests conducted by Urrego-Blanco et al. (2016) to various parameters in the CICE model. The response is also small compared to the range of sea ice volumes estimated by state-of-the-art sea ice reanalyses (Chevallier et al., 2016), which are supposed to be among the best constrained estimates on this quantity. In conclusion, choices related to the ITD discretization should always be put in the perspective of other competing influences, such as parameter tuning and background internal variability (Notz, 2015), the choice of atmospheric forcing (Barthélemy et al., 2017; Hunke, 2010) and the choice of observational references or reanalyses (Massonnet et al., 2018) used to evaluate the outcome of such sensitivity tests.

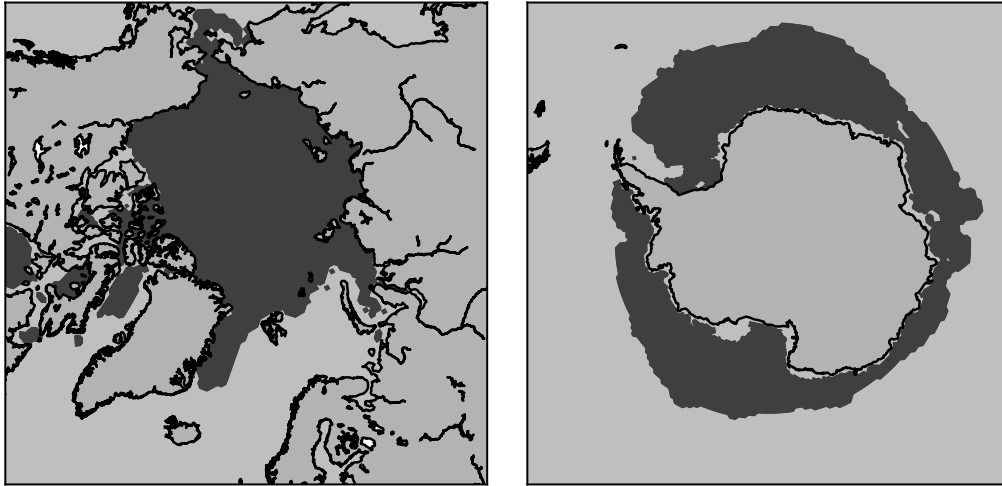


Figure A1. Arctic and Antarctic masks selected for the computation of spatial averages in Figs ?? and 4, 8, A2 and A3. A grid cell is part of the mask if the 1995-2014 seasonal cycle of mean March (mean September) Arctic (Antarctic) sea ice concentration within that grid cell is greater than 99 % for all months of the year.

Code and data availability. The source code of the model used and the source code of the scripts used to produce the figures and results of the manuscript are available at <http://dx.doi.org/10.5281/zenodo.2566088>. Model output is available upon request but can also be downloaded from the aforementioned URL

Author contributions. AB, TF, KW and FM designed the study. AB ran the experiments. AB and FM wrote the manuscript. All authors
5 provided scientific input.

Competing interests. The authors declare no competing interests.

Acknowledgements. Computational resources have been provided by the supercomputing facilities of the Université catholique de Louvain (CISM/UCL) and the Consortium des Equipements de Calcul Intensif en Fédération Wallonie Bruxelles (CECI) funded by the F.R.S.-FNRS under convention 2.5020.11. F. Massonnet is a F.R.S.-FNRS Research Associate. The research leading to these results has received funding
10 from the European Commission's Horizon 2020 projects APPLICATE (GA 727862) and PRIMAVERA (GA 641727).

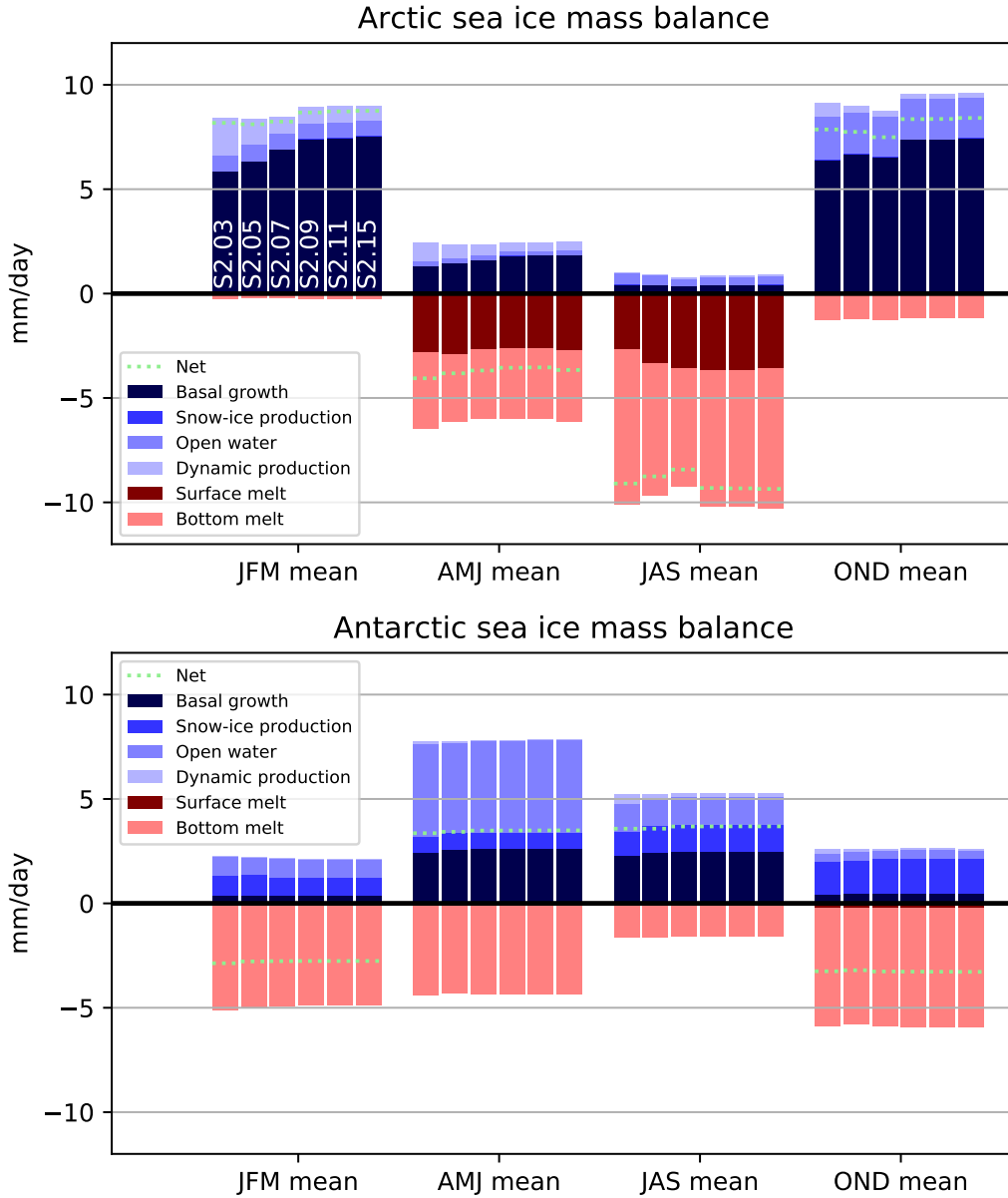


Figure A2. Mean Contributions to the seasonal ice mass balance of Arctic (top) and Antarctic (bottom) sea ice growth, over 1995-2014, as simulated in the third set of sensitivity experiments. The spatial averages are computed in S2 (appending thick ice categories), averaged over the areas delineated depicted in Fig. A1. Blue colors refer to processes that contribute to positive ice volume changes, while red colors indicate processes implying negative ice volume changes. The name of experiments is indicated in the upper panel for the January-February-March season.

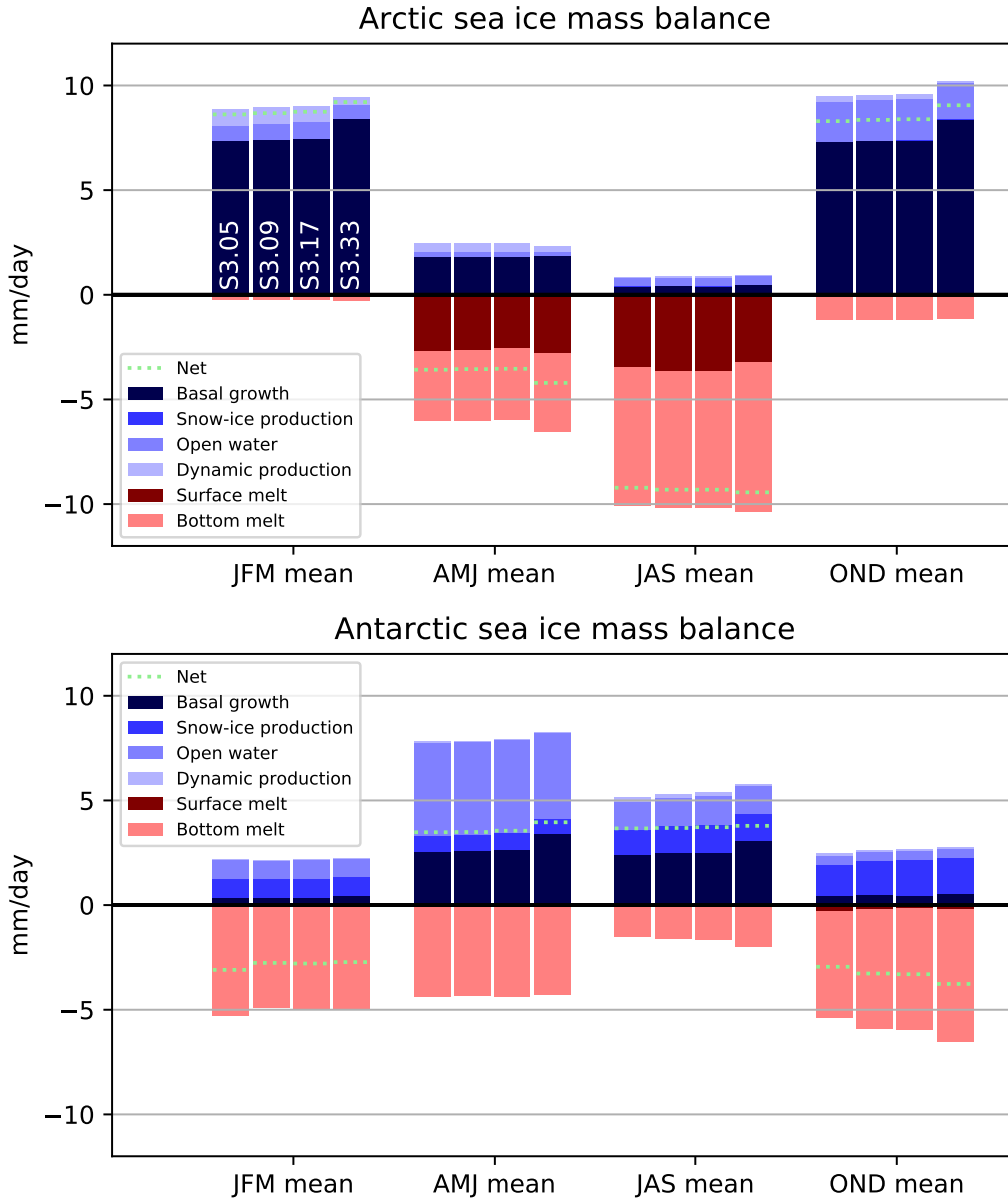


Figure A3. Contributions to the seasonal mass balance of Arctic (top) and Antarctic (bottom) sea ice as simulated in the third set of sensitivity experiments S3 (refining the ITD within a fixed set of categories), averaged over the areas depicted in Fig. A1. Blue colors refer to processes that contribute to positive ice volume changes, while red colors indicate processes implying negative ice volume changes. The name of experiments is indicated in the upper panel for the January-February-March season.

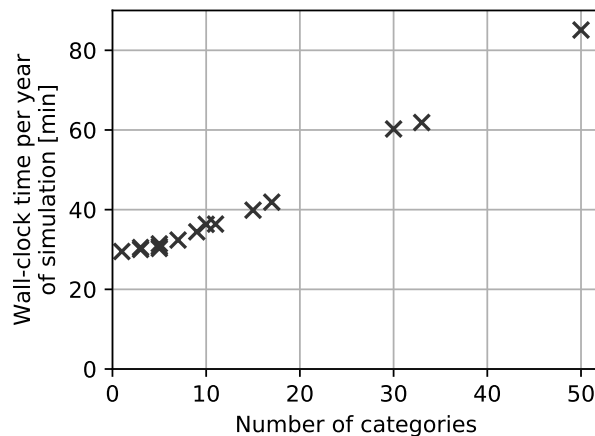


Figure A4. Wall-clock time required for one year of simulation as a function of the number of ice thickness categories. The coupled ocean–sea ice model is run on 260 cores. The computing times indicated in this figure correspond to the average over the first 5 years of each simulation.

References

- Barthélemy, A., Goosse, H., Fichefet, T., and Lecomte, O.: On the sensitivity of Antarctic sea ice model biases to atmospheric forcing uncertainties, *Clim. Dynam.*, <https://doi.org/10.1007/s00382-017-3972-7>, <https://doi.org/10.1007/s00382-017-3972-7>, 2017.
- Bitz, C. M. and Lipscomb, W. H.: An energy-conserving thermodynamic model of sea ice, *J. Geophys. Res.*, 104, 15 669–15 677, <https://doi.org/10.1029/1999JC900100>, <http://dx.doi.org/10.1029/1999JC900100>, 1999.
- Bitz, C. M., Holland, M. M., Weaver, A. J., and Eby, M.: Simulating the ice-thickness distribution in a coupled climate model, *J. Geophys. Res.*, 106, 2441–2463, <https://doi.org/10.1029/1999JC000113>, <http://dx.doi.org/10.1029/1999JC000113>, 2001.
- Bouillon, S., Fichefet, T., Legat, V., and Madec, G.: The elastic-viscous-plastic method revisited, *Ocean Modell.*, 71, 2–12, <https://doi.org/10.1016/j.ocemod.2013.05.013>, <http://www.sciencedirect.com/science/article/pii/S146350031300098X>, 2013.
- Brodeau, L., Barnier, B., Treguier, A.-M., Penduff, T., and Gulev, S.: An ERA40-based atmospheric forcing for global ocean circulation models, *Ocean Modell.*, 31, 88–104, <https://doi.org/10.1016/j.ocemod.2009.10.005>, <http://www.sciencedirect.com/science/article/pii/S1463500309002017>, 2010.
- Chevallier, M., Smith, G. C., Dupont, F., Lemieux, J.-F., Forget, G., Fujii, Y., Hernandez, F., Msadek, R., Peterson, K. A., Storto, A., Toyoda, T., Valdivieso, M., Vernieres, G., Zuo, H., Balmaseda, M., Chang, Y.-S., Ferry, N., Garric, G., Haines, K., Keeley, S., Kovach, R. M., Kuragano, T., Masina, S., Tang, Y., Tsujino, H., and Wang, X.: Intercomparison of the Arctic sea ice cover in global ocean–sea ice reanalyses from the ORA-IP project, *Clim. Dynam.*, SI, 1–30, <https://doi.org/10.1007/s00382-016-2985-y>, <http://dx.doi.org/10.1007/s00382-016-2985-y>, 2016.
- Dai, A. and Trenberth, K. E.: Estimates of Freshwater Discharge from Continents: Latitudinal and Seasonal Variations, *J. Hydrometeorol.*, 3, 660–687, [https://doi.org/10.1175/1525-7541\(2002\)003<0660:EOFDFC>2.0.CO;2](https://doi.org/10.1175/1525-7541(2002)003<0660:EOFDFC>2.0.CO;2), [http://dx.doi.org/10.1175/1525-7541\(2002\)003<0660:EOFDFC>2.0.CO;2](http://dx.doi.org/10.1175/1525-7541(2002)003<0660:EOFDFC>2.0.CO;2), 2002.

- Depoorter, M. A., Bamber, J. L., Griggs, J. A., Lenaerts, J. T. M., Ligtenberg, S. R. M., van den Broeke, M. R., and Moholdt, G.: Calving fluxes and basal melt rates of Antarctic ice shelves, *Nature*, 502, 89–92, <https://doi.org/10.1038/nature12567>, <http://dx.doi.org/10.1038/nature12567>, 2013.
- Dussin, R., Barnier, B., Brodeau, L., and Molines, J.-M.: The making of the DRAKKAR Forcing Set DFS5, Drakkar/myocean report 01-04-16, Laboratoire de Glaciologie et de Géophysique de l'Environnement, Université de Grenoble, Grenoble, France, <https://www.drakkar-ocean.eu/forcing-the-ocean>, 2016.
- Eicken, H.: Tracer studies of pathways and rates of meltwater transport through Arctic summer sea ice, *Journal of Geophysical Research*, 107, <https://doi.org/10.1029/2000jc000583>, <https://doi.org/10.1029/2000jc000583>, 2002.
- EUMETSAT: Global sea ice concentration reprocessing dataset 1978-2015 (v1.2), Available from <http://osisaf.met.no>, Ocean and Sea Ice Satellite Application Facility, Norwegian and Danish Meteorological Institutes, <http://osisaf.met.no/p/ice/>, 2015.
- Goosse, H., Arzel, O., Bitz, C. M., de Montety, A., and Vancoppenolle, M.: Increased variability of the Arctic summer ice extent in a warmer climate, *Geophysical Research Letters*, 36, <https://doi.org/10.1029/2009gl040546>, <https://doi.org/10.1029/2009gl040546>, 2009.
- Goosse, H., Kay, J. E., Armour, K. C., Bodas-Salcedo, A., Chepfer, H., Docquier, D., Jonko, A., Kushner, P. J., Lecomte, O., Massonnet, F., Park, H.-S., Pithan, F., Svensson, G., and Vancoppenolle, M.: Quantifying climate feedbacks in polar regions, *Nature Communications*, 9, <https://doi.org/10.1038/s41467-018-04173-0>, <https://doi.org/10.1038/s41467-018-04173-0>, 2018.
- Hamilton, L. C. and Stroeve, J.: 400 predictions: the SEARCH Sea Ice Outlook 2008–2015, *Polar Geography*, 39, 274–287, <https://doi.org/10.1080/1088937x.2016.1234518>, <https://doi.org/10.1080/1088937x.2016.1234518>, 2016.
- Holland, M. M., Bitz, C. M., Hunke, E. C., Lipscomb, W. H., and Schramm, J. L.: Influence of the Sea Ice Thickness Distribution on Polar Climate in CCSM3, *J. Climate*, 19, 2398–2414, <https://doi.org/10.1175/JCLI3751.1>, <http://dx.doi.org/10.1175/JCLI3751.1>, 2006a.
- Holland, M. M., Bitz, C. M., and Tremblay, B.: Future abrupt reductions in the summer Arctic sea ice, *Geophys. Res. Lett.*, 33, n/a–n/a, <https://doi.org/10.1029/2006GL028024>, <http://dx.doi.org/10.1029/2006GL028024>, 2006b.
- Holland, M. M., Serreze, M. C., and Stroeve, J.: The sea ice mass budget of the Arctic and its future change as simulated by coupled climate models, *Climate Dynamics*, 34, 185–200, <https://doi.org/10.1007/s00382-008-0493-4>, <https://doi.org/10.1007/s00382-008-0493-4>, 2008.
- Hunke, E. C.: Thickness sensitivities in the CICE sea ice model, *Ocean Modell.*, 34, 137–149, <https://doi.org/10.1016/j.ocemod.2010.05.004>, <http://www.sciencedirect.com/science/article/pii/S146350031000079X>, 2010.
- Hunke, E. C.: Sea ice volume and age: Sensitivity to physical parameterizations and thickness resolution in the CICE sea ice model, *Ocean Modell.*, 82, 45–59, <https://doi.org/10.1016/j.ocemod.2014.08.001>, <http://www.sciencedirect.com/science/article/pii/S1463500314000973>, 2014.
- Large, W. G. and Yeager, S. G.: Diurnal to decadal global forcing for ocean and sea-ice models: The data sets and flux climatologies, Tech. rep., National Center for Atmospheric Research, Boulder, Colorado, USA, 2004.
- Lipscomb, W. H.: Remapping the thickness distribution in sea ice models, *J. Geophys. Res.*, 106, 13 989–14 000, <https://doi.org/10.1029/2000JC000518>, <http://dx.doi.org/10.1029/2000JC000518>, 2001.
- Locarnini, R. A., Mishonov, A. V., Antonov, J. I., Boyer, T. P., Garcia, H. E., Baranova, O. K., Zweng, M. M., Paver, C. R., Reagan, J. R., Johnson, D. R., Hamilton, M., and Seidov, D.: World Ocean Atlas 2013, Volume 1: Temperature, S. Levitus, ed., a. mishonov technical ed., noaa atlas nesdis 73, 40 pp, National Centers for Environmental Information, <https://www.nodc.noaa.gov/OC5/woa13/>, 2013.
- Madec, G.: NEMO ocean engine, Note du Pôle de modélisation 27, Institut Pierre-Simon Laplace, France, iSSN No 1288-1619, 2008.

- Massonnet, F., Fichet, T., Goosse, H., Vancoppenolle, M., Mathiot, P., and König Beatty, C.: On the influence of model physics on simulations of Arctic and Antarctic sea ice, *The Cryosphere*, 5, 687–699, <https://doi.org/10.5194/tc-5-687-2011>, <http://www.the-cryosphere.net/5/687/2011/>, 2011.
- Massonnet, F., Fichet, T., Goosse, H., Bitz, C. M., Philippon-Berthier, G., Holland, M. M., and Barriat, P.-Y.: Constraining projections of summer Arctic sea ice, *The Cryosphere*, 6, 1383–1394, <https://doi.org/10.5194/tc-6-1383-2012>, <http://www.the-cryosphere.net/6/1383/2012/>, 2012.
- Massonnet, F., Vancoppenolle, M., Goosse, H., Docquier, D., Fichet, T., and Blanchard-Wrigglesworth, E.: Arctic sea-ice change tied to its mean state through thermodynamic processes, *Nature Clim. Change*, <https://doi.org/10.1038/s41558-018-0204-z>, 2018.
- Maykut, G. A.: Large-scale heat exchange and ice production in the central Arctic, *J. Geophys. Res.*, 87, 7971–7984, <https://doi.org/10.1029/JC087iC10p07971>, <http://dx.doi.org/10.1029/JC087iC10p07971>, 1982.
- Maykut, G. A. and McPhee, M. G.: Solar heating of the Arctic mixed layer, *J. Geophys. Res.*, 100, 24 691–24 703, <https://doi.org/10.1029/95JC02554>, <http://dx.doi.org/10.1029/95JC02554>, 1995.
- Maykut, G. A. and Untersteiner, N.: Some results from a time-dependent thermodynamic model of sea ice, *Journal of Geophysical Research*, 76, 1550–1575, <https://doi.org/10.1029/jc076i006p01550>, <https://doi.org/10.1029/jc076i006p01550>, 1971.
- Meier, W. N. and Stewart, J. S.: Assessing uncertainties in sea ice extent climate indicators, *Environmental Research Letters*, <https://doi.org/10.1088/1748-9326/aaf52c>, <https://doi.org/10.1088/1748-9326/aaf52c>, 2018.
- Merino, N., Le Sommer, J., Durand, G., Jourdain, N. C., Madec, G., Mathiot, P., and Tournadre, J.: Antarctic icebergs melt over the Southern Ocean : Climatology and impact on sea ice, *Ocean Modell.*, 104, 99–110, <https://doi.org/10.1016/j.ocemod.2016.05.001>, <http://www.sciencedirect.com/science/article/pii/S1463500316300300>, 2016.
- Notz, D.: How well must climate models agree with observations?, *Philosophical Transactions of the Royal Society A: Mathematical, Physical and Engineering Sciences*, 373, 20140 164, <https://doi.org/10.1098/rsta.2014.0164>, <https://doi.org/10.1098/rsta.2014.0164>, 2015.
- Olonscheck, D. and Notz, D.: Consistently Estimating Internal Climate Variability from Climate Model Simulations, *Journal of Climate*, 30, 9555–9573, <https://doi.org/10.1175/jcli-d-16-0428.1>, <https://doi.org/10.1175/jcli-d-16-0428.1>, 2017.
- Rabatel, M., Rampal, P., Carrassi, A., Bertino, L., and Jones, C. K. R. T.: Impact of rheology on probabilistic forecasts of sea ice trajectories: application for search and rescue operations in the Arctic, *The Cryosphere*, 12, 935–953, <https://doi.org/10.5194/tc-12-935-2018>, <https://doi.org/10.5194/tc-12-935-2018>, 2018.
- Rousset, C., Vancoppenolle, M., Madec, G., Fichet, T., Flavoni, S., Barthélemy, A., Benshila, R., Chanut, J., Levy, C., Masson, S., and Vivier, F.: The Louvain-La-Neuve sea ice model LIM3.6: global and regional capabilities, *Geosci. Model Dev.*, 8, 2991–3005, <https://doi.org/10.5194/gmd-8-2991-2015>, <http://www.geosci-model-dev.net/8/2991/2015/>, 2015.
- Schweiger, A., Lindsay, R., Zhang, J., Steele, M., Stern, H., and Kwok, R.: Uncertainty in modeled Arctic sea ice volume, *J. Geophys. Res.*, 116, C00D06, <https://doi.org/10.1029/2011JC007084>, <http://dx.doi.org/10.1029/2011JC007084>, 2011.
- Thorndike, A. S., Rothrock, D. A., Maykut, G. A., and Colony, R.: The Thickness Distribution of Sea Ice, *J. Geophys. Res.*, 80, 4501–4513, <https://doi.org/10.1029/JC080i033p04501>, <http://dx.doi.org/10.1029/JC080i033p04501>, 1975.
- Ungermann, M., Tremblay, L. B., Martin, T., and Losch, M.: Impact of the ice strength formulation on the performance of a sea ice thickness distribution model in the Arctic, *J. Geophys. Res. Oceans*, 122, 2090–2107, <https://doi.org/10.1002/2016JC012128>, <http://dx.doi.org/10.1002/2016JC012128>, 2017.

- Uotila, P., Iovino, D., Vancoppenolle, M., Lensu, M., and Rousset, C.: Comparing sea ice, hydrography and circulation between NEMO3.6 LIM3 and LIM2, *Geosci. Model Dev.*, 10, 1009–1031, <https://doi.org/10.5194/gmd-10-1009-2017>, <http://www.geosci-model-dev.net/10/1009/2017/>, 2017.
- Urrego-Blanco, J. R., Urban, N. M., Hunke, E. C., Turner, A. K., and Jeffery, N.: Uncertainty quantification and global sensitivity analysis of the Los Alamos sea ice model, *Journal of Geophysical Research: Oceans*, 121, 2709–2732, <https://doi.org/10.1002/2015jc011558>, <https://doi.org/10.1002/2015jc011558>, 2016.
- Vancoppenolle, M., Fichefet, T., and Goosse, H.: Simulating the mass balance and salinity of Arctic and Antarctic sea ice. 2. Importance of sea ice salinity variations, *Ocean Modell.*, 27, 54–69, <https://doi.org/10.1016/j.ocemod.2008.11.003>, <http://www.sciencedirect.com/science/article/pii/S1463500308001625>, 2009a.
- 10 Vancoppenolle, M., Fichefet, T., Goosse, H., Bouillon, S., Madec, G., and Morales Maqueda, M. A.: Simulating the mass balance and salinity of Arctic and Antarctic sea ice. 1. Model description and validation, *Ocean Modell.*, 27, 33–53, <https://doi.org/10.1016/j.ocemod.2008.10.005>, <http://www.sciencedirect.com/science/article/pii/S1463500308001613>, 2009b.
- Williams, G., Maksym, T., Wilkinson, J., Kunz, C., Murphy, C., Kimball, P., and Singh, H.: Thick and deformed Antarctic sea ice mapped with autonomous underwater vehicles, *Nature Geoscience*, 8, 61–67, <https://doi.org/10.1038/ngeo2299>, <https://doi.org/10.1038/ngeo2299>,
15 2014.
- Zhang, J. and Rothrock, D. A.: Modeling Global Sea Ice with a Thickness and Enthalpy Distribution Model in Generalized Curvilinear Coordinates, *Mon. Wea. Rev.*, 131, 845–861, [https://doi.org/10.1175/1520-0493\(2003\)131<0845:MGSIIWA>2.0.CO;2](https://doi.org/10.1175/1520-0493(2003)131<0845:MGSIIWA>2.0.CO;2), [http://dx.doi.org/10.1175/1520-0493\(2003\)131<0845:MGSIIWA>2.0.CO;2](http://dx.doi.org/10.1175/1520-0493(2003)131<0845:MGSIIWA>2.0.CO;2), 2003.
- Zweng, M., Reagan, J., Antonov, J., Locarnini, R., Mishonov, A., Boyer, T., Garcia, H., Baranova, O., Johnson, D., D. Seidov, and Biddle, M.: *World Ocean Atlas 2013, Volume 2: Salinity*, S. Levitus, ed., a. mishonov technical ed., noaa atlas nesdis 74, 39 pp, National Centers for Environmental Information, <https://www.nodc.noaa.gov/OC5/woa13/>, 2013.
- 20