

Explicit aerosol-cloud interactions in the Dutch Atmospheric Large-Eddy Simulation model DALES4.1-M7

Marco de Bruine^{1,2}, Maarten Krol^{1,2}, Jordi Vilà-Guerau de Arellano², and Thomas Röckmann¹

¹Institute for Marine and Atmospheric Research Utrecht, Utrecht University, Utrecht, The Netherlands

²Department of Meteorology and Air Quality, Wageningen University, Wageningen, The Netherlands

Correspondence: M. de Bruine (m.debruine@uu.nl)

Abstract. Large-Eddy Simulations (LES) are an excellent tool to improve our understanding of the aerosol-cloud interactions (ACI). We introduce a prognostic aerosol scheme with multiple aerosol species in the Dutch Atmospheric Large-Eddy Simulation model (DALES), especially focused on simulating the impact of cloud microphysical processes on the aerosol population. The numerical treatment of aerosol activation is a crucial element for simulating both cloud and aerosol characteristics. Two methods are implemented and discussed: an explicit activation scheme based on κ -Köhler theory and a more classic approach using updraft strength. Sample model simulations are based on the Rain in Shallow Cumulus over the Ocean (RICO) campaign, characterised by rapidly precipitating, warm-phase shallow cumulus clouds.

We find that in this pristine ocean environment virtually all aerosol mass in cloud droplets is the result of the activation process, while in-cloud scavenging is relatively inefficient. Despite the rapid formation of precipitation, most of the in-cloud aerosol mass is returned to the atmosphere by cloud evaporation. The strength of aerosol processing through subsequent cloud cycles is found to be particularly sensitive to the activation scheme and resulting cloud characteristics. However, the precipitation processes are considerably less sensitive. Scavenging by precipitation is the dominant source for in-rain aerosol mass. About half of the in-rain aerosol reaches the surface, while the rest is released by evaporation of falling precipitation. The effect of cloud microphysics on the average aerosol size depends on the balance between the evaporation of clouds and rain, and ultimate removal by precipitation. Analysis of typical aerosol size associated with the different microphysical processes shows that aerosols resuspended by cloud evaporation have a radius that is only 5 to 10% larger than the originally activated aerosols. In contrast, aerosols released by evaporating precipitation are an order of magnitude larger.

1 Introduction

Aerosol-cloud interactions (ACI) remain a major source of uncertainty for future climate predictions (e.g. Boucher et al., 2013; Fan et al., 2016). The effect of changes in the aerosol population on the cloud radiative properties (Twomey, 1977) and the formation of precipitation (Albrecht, 1989) in warm-phase shallow cumulus clouds have long been recognised. However, cloud responses in different cloud regimes have proven to be complex and the net effect on climate is not well established (Rosenfeld et al., 2014). Aerosol induced changes can be buffered by compensating cloud mechanisms, e.g. the lifetime effect might be weaker than implied by simple arguments and commonly assumed in climate models (Stevens and Feingold, 2009). In

25 convective clouds increased aerosol concentrations might invigorate updrafts and increase precipitation formation (e.g. Koren et al., 2008; Fan et al., 2018).

Although the microphysics of the cloud processes is relatively well known, the representation in global climate models (GCMs) requires simplifications accompanied by high uncertainties (e.g. Seinfeld et al., 2016). Climate models neither resolve cloud structures nor the micro-scale processes determining the cloud properties and have to rely on parameterizations. Consequently, quantification of the influence of changes in aerosol distribution on climate remains difficult. On the other side of the modelling spectrum, process-based small-scale simulations (e.g. Roelofs, 1992) describe the microphysical processes in high detail, but cannot model the effect of aerosol-cloud interactions on the macro-scale thermodynamics and structure of a cloud. To bridge this gap, cloud resolving models play a role, in particular Large-Eddy Simulation (LES) models. For these models, present-day computational power is sufficient to resolve cloud structures in mesoscale domain sizes ($> 10 \times 10 \text{ km}^2$) to simulate and connect spatial and temporal scales of aerosol-cloud interactions (e.g. Bretherton, 2015; Schneider et al., 2017). Typical spatial resolution and temporal resolutions of $\sim 10 \text{ m}$ and $\sim 1 \text{ s}$ are generally considered as high resolution. However, this is still too coarse to simulate the processes on particle-level that take place on the Kolmogorov length-scales in the order of 1 mm . These processes (e.g. condensation, collision-coalescence) remain parameterized in LES. Nevertheless, the resolution and explicit calculation of turbulence allows for a certain level of internal variability resulting from inter and intra-cloud variations. While some clouds develop to considerable height and produce strong precipitation, others dissipate before forming rain and their influence on the aerosol population might be very different. Moreover, processing of the aerosol population by one cloud influences the microphysical processes in subsequent clouds. For example, when one cloud depletes the aerosol population by wash out, this might lead to larger clouds droplets in the subsequent cloud formed on the depleted aerosol population. This might lead to faster rain formation and an even further depletion of the aerosol population. This underlines the non-linear character of the interaction between aerosols and clouds and the need to simultaneously simulate the clouds and the aerosol population.

LES has become a widely-used tool in research on structure and behaviour of clouds. An important research topic is the influence of changes in aerosol concentration on the cloud characteristics. However, the emphasis remains on the cloud processes and the numerical description of the distribution of cloud water over the cloud or rain droplets. Numerous numerical methods have been developed to describe the hydrometeor size distribution. Traditionally, there was a distinction between bulk and bin schemes. In the former, droplet size distributions are described by one or more moments (total number, mass etc.) of the hydrometeor size distribution, while other moments are diagnosed from implicitly assumed size distribution shape. In bin schemes, the shape of the size distribution is more free to evolve as the particle size distribution is divided into bins of different sizes. Recent advances complement this choice by Lagrangian particle based methods, e.g. Andrejczuk et al. (2008) or Shima et al. (2009). Lebo and Seinfeld (2011) developed an extensive 2D-bin method that resolves the hydrometeor characteristics as well as the solute mass dissolved in the hydrometeors. For a detailed overview and comparison of these methods see e.g. Khain et al. (2015) and Grabowski et al. (2019).

In LES modelling less attention is devoted to the other side of ACI, i.e. the feedback of cloud microphysical processes on the aerosol distribution. This is reflected in the often relatively simple representation of the aerosol population. Nowadays, methods based on a fixed cloud droplet number or (infinite) ambient aerosol concentration are almost completely replaced by methods that include the aerosol size distribution in a prognostic way. Aerosol composition, however, is often assumed to be uniform.

In larger scale models, more attention is focused on a description of the chemical composition of the aerosol population. However, due to coarse resolution and computational limitations, methods still employ traditional modal (bulk) and bin-schemes. In a modal aerosol scheme, several fixed-shape size distributions (i.e. modes) are chosen in such a way that the sum of these distributions approximates a certain (observed) aerosol population. An example of a modal scheme is M7 (Vignati et al., 2004), which will be used in this study. In bin schemes (e.g. SALSA; Kokkola et al. (2008)), the aerosol size distribution is discretised into a number of bins according to particle size. The two methods are a good example of the trade-off between accuracy and computational cost. The modal approach requires a relatively low number of prognostic variables and is computationally efficient and is used in GCMs (e.g. EC-Earth (van Noije et al., 2014) and ECHAM-HAMMOZ (Schultz et al., 2018)). However, the shape of the aerosol size distribution in each mode is assumed to always resemble a lognormal shape. The shape of the total aerosol distribution in bin schemes is more free to evolve, but this comes at a much higher computational cost.

Recent examples of studies with a focus on multiple aerosol species and/or (aqueous-phase) chemistry are the inclusion of the SALSA aerosol module in UCLALES (Tonttila et al., 2017) and PALM (Kurppa et al., 2019). This bin scheme allows for multiple aerosol species, but the added value of taking into account the aerosol composition on simulating clouds in an LES model has not yet been explored. The implementation in UCLALES still uses a uniform composition in the aerosol distribution, while the study with the PALM model is focused on urban climates under dry conditions. Another promising example is the aqueous-phase chemistry extension of the libcloudph++ library (Arabas et al., 2015), described in Jaruga and Pawlowska (2018). The added attributes of chemical composition to the superdroplets in this method open up a range of possibilities to interactively calculate multiple aerosol species and their behaviour in clouds and precipitation.

In this work, we focus on closing the loop of aerosol-cloud interactions and quantify the contribution of different cloud processes to changes in the aerosol distribution. We take a step forward with the DALES model and combine microphysical cloud processes with M7 (Vignati et al., 2004): a multi-species, modal representation of the aerosol distribution. From the perspective of pollution and atmospheric budgets, we opted to implement an aerosol framework with multiple species. This also allows for explicit calculation of aerosol characteristics like hygroscopicity. Consequently, aerosol activation can be based on the characteristics of the aerosol population, instead of using a parameterization solely based on e.g. updraft velocity. Including multiple aerosol species also allows for a better future coupling to gas-phase chemistry and semi-volatile species and accommodates emission-based simulations, so that less assumptions on the atmospheric composition are needed. In contrast to the SALSA and libcloudph++ aerosol frameworks, the computational cost of M7 is considerably lower and allows for longer simulations.

This work is motivated by our earlier work (de Bruine et al., 2018) in which the removal of aerosol by clouds on the global scale using the EC-Earth-TM5 model was investigated. This work showed that different (reasonable) choices in the parameterization of wet removal have a considerable impact on simulated global aerosol burdens. By revisiting the aerosol-cloud interactions in LES simulations we aim to answer the following questions:

- What are the effects of the aerosol-cloud interactions on the aerosol (size) distribution?
- How do the characteristics of the aerosol change due to cloud processes, and which cloud processes are responsible?
- Does the relative importance of the different microphysical processes change for different aerosol species (e.g. small vs. coarse or hygroscopic vs. hydrophobic aerosol)?

The paper is structured as follows. A short description of the standard version of the DALES model and cloud microphysics numerical scheme is given in Sect. 2, together with a more elaborate explanation of the new modal aerosol scheme and additional cloud-microphysical calculations in Sect. 2.2. The case set-up and simulation ensemble are outlined in Sect. 3.1. The results are separated into two parts: the differences in cloud microphysical properties between simulations is discussed in Sect. 3.2.1 and the effects on the aerosol characteristics in Sect. 3.2.2. The overall results are discussed in Sect. 4 and general conclusions are drawn in Sect. 5.

2 Model description

The model used in this study is the Dutch Atmospheric Large-Eddy Simulation (DALES) (Heus et al., 2010; Ouwersloot et al., 2017), version 4.1. DALES was initially designed to study the physics of the atmospheric boundary layer. Previous research has expanded the application of DALES and combines the physics with chemistry and biology. Applications using the DALES model include (gas-phase) chemistry (e.g. Vilà-Guerau de Arellano et al., 2011), direct aerosol effects (Barbaro et al., 2013, 2014), semi-volatile species (Aan de Brugh et al., 2013), and interaction with the biosphere (Vilà-Guerau de Arellano et al., 2014).

In this study we conduct simulations at a horizontal resolution of $\Delta x = \Delta y = 100$ m with a domain size of 12.8×12.8 km² using a periodic boundary condition. The vertical resolution is $\Delta z = 40$ m with a domain height of 5040 m. The time step is limited by the Courant-Friedrichs-Lewy (CFL) criterion and diffusion number (Wesseling, 1996) but never longer than 2 s. Time integration is done using a third-order Runge-Kutta scheme based on the work of Wicker and Skamarock (2002). Advection is calculated using a 5th-order scheme for momentum and heat, while a monotonous scheme (Hundsdoerfer et al., 1995) is used for moisture and aerosol fields to ensure positive values.

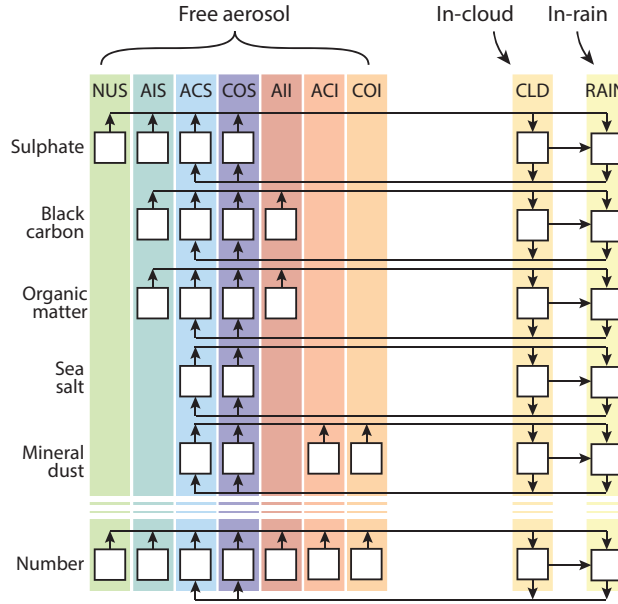


Figure 1. Overview of the aerosol framework, where the free aerosol section is the original M7 representation of the aerosol population. The extension of this framework in the current work is represented by the prognostic variables for in-cloud and in-rain aerosol mass. Cloud and rain particle number coincide with the corresponding parameters in the SB bulk microphysics scheme. Arrows represent possible pathways for the aerosols to transfer between states.

2.1 Dynamics and moist processes

In DALES version 4.1, the cloud-microphysical scheme is a bulk scheme for precipitating liquid-phase clouds, distinguishing between cloud water and precipitation. Cloud liquid water is diagnosed using a classic saturation adjustment (Sommeria and Deardorff, 1977). The cloud droplet number concentration is a fixed parameter, regardless of simulated amount of cloud water. However, the cloud droplet number concentration can be adjusted to simulate different pollution levels.

For the calculation of precipitation, two schemes have been implemented in DALES. The first scheme is based on Seifert and Beheng (2001), with updated numerical representation of the rain drop size distribution and sedimentation (Seifert and Beheng, 2006; Stevens and Seifert, 2008), and rain evaporation (Seifert, 2008). In the remainder of this work, this scheme is referred to as the SB scheme. The second cloud scheme is based on Khairoutdinov and Kogan (2000), but is valid only for (drizzle formation in) stratocumulus clouds. In this work, we will simulate shallow cumulus and thus use the SB scheme. For more information and details on the implementation of this scheme in DALES, see Section 2.8 of Heus et al. (2010).

2.2 Aerosol framework

The aerosol population is described by the modal aerosol scheme M7 (Vignati et al., 2004). The modal representation is compatible to the existing SB cloud microphysics scheme since this uses a 2-moment bulk approach as well. By using M7, cloud

activation can be based on fundamental principles linked to the explicit simulation of the properties of the aerosol species (see Sect. 2.2.2). Moreover, calculations of the cloud microphysical processes can also be directly linked to their influence on the aerosol distribution. This framework allows for the simulation of an external mixture of multiple aerosol species. In future development, this will be coupled to atmospheric chemistry, including aqueous-phase chemistry.

2.2.1 Numerical representation

In the M7 scheme (see Fig. 1) the aerosol population is described by a combination of 5 aerosol species: sulphate, black carbon, particulate organic matter, sea salt and mineral dust. The aerosol species are distributed over 7 lognormal modes, hence the name M7, with prescribed mode widths σ . Four of these modes represent soluble aerosols of different sizes, i.e. nucleation, Aitken, accumulation and coarse size and are abbreviated as: NUS, AIS, ACS, and COS. The remaining 3 modes represent insoluble aerosol in the sizes of Aitken, accumulation and coarse aerosol, abbreviated as AII, ACI and COI. As visualised in Fig. 1, each mode is described by 1 prognostic variable for number concentration, plus a maximum of 5 variables for the mass of the different aerosol species that are contained in that mode. For example, the Aitken soluble mode contains the masses of 3 species (sulphate, black carbon and organic matter) and thus has $1 + 3 = 4$ prognostic variables. The M7 framework includes a numerical treatment for temporal evolution, or 'ageing', by e.g. coagulation as well as sedimentation of the aerosol. However, these are not applied in this work as the associated timescales for these processes are long compared to those of the interaction between aerosol, clouds and precipitation.

To connect the description of aerosol to the SB microphysics scheme, the M7 framework is extended with two additional modes containing the in-hydrometeor (i.e. cloud droplet and raindrop) aerosol. Similar to the free aerosol modes, both the in-cloud and in-rain aerosols are described by 1 variable for number concentration and 5 for the in-hydrometeor aerosol mass concentration for each aerosol species. This modal approach leads to the implicit assumption that the in-hydrometeor aerosol mass is homogeneously distributed over the cloud or rain drop distributions, i.e. aerosol concentrations do not change with hydrometeor size. As a result, size (and mass) information of the original free aerosol mode is lost once aerosols are incorporated in cloud and raindrops. In more technical terms: the external mixture of 7 modes for the free aerosol is transformed to one internal mixture of aerosols in the hydrometeor mode. Although this approach might not be completely realistic, the aerosol distribution in clouds and rain have been found to be homogeneous in later stages of the cloud lifecycle due to frequent collision-coalescence (e.g. Roelofs, 1992).

Note that the cloud and rain droplet modes do not necessarily need to have a lognormal shape like the aerosol modes. Instead, the SB microphysics scheme assumes generalised Γ -distribution, better resembling the droplet size distributions found in clouds and rain. The cloud droplet number N_c and raindrop number N_r are used in the calculations of the cloud microphysics, together with cloud liquid water q_c and rain water q_r .

The combination of the aerosol framework and the individual microphysical processes opens up the opportunity to explicitly simulate the transfer of aerosol between the free, in-cloud and in-rain aerosol state by the individual processes. The current

numerical implementation focuses on the mode-specific activation and size resolved aerosol scavenging described in this section. Note that there are numerous other processes involved in the interaction between aerosols and clouds. Our framework is not yet linked to the calculation of (gas-phase) chemistry. Also, our model does not include aqueous-phase oxidation of dissolved species which might influence the aerosol size distribution (e.g., Feingold and Kreidenweis, 2002; Ovchinnikov and Easter, 2010). Neither does our model calculate the formation of secondary aerosol nor the influence clouds can have on that process (e.g., Wehner et al., 2015).

2.2.2 Activation

In the new aerosol representation, activation of aerosols can be based on the κ -Köhler method as defined in Petters and Kreidenweis (2007). This method describes the relationship between the dry radius of a particle and its ability to act as cloud condensation nucleus (CCN), where hygroscopicity is expressed in a single hygroscopicity parameter κ . At a given supersaturation S and depending on hygroscopicity, aerosols with a radius larger than the critical radius r_c will be activated to form cloud droplets. Based on Eq. (10) in Petters and Kreidenweis (2007), r_c is calculated for the aerosol mode k as:

$$r_{c,k} = \left(\frac{4 A^3}{27 \kappa_k \ln^2 S} \right)^{1/3}, \text{ with } A = \frac{4 \sigma_{s/a} M_w}{R T \rho_w} \quad (1)$$

with mode mean hygroscopic parameter κ_k , supersaturation (saturation ratio) S , surface tension of a water-air interface $\sigma_{s/a}$, molar mass of water M_w , density of water ρ_w , gas constant R and ambient temperature T . Note that $r_{c,k}$ (m) can change between aerosol modes as κ_k depends on the relative mass of the aerosol species within a mode, calculated following Eq. (5).

Using the lognormal properties of the M7 aerosol modes, the activated fraction of aerosol for mode k is given by:

$$f_k = 1 - \frac{1}{2} \operatorname{erfc} \left(-\frac{\ln(r_{c,k}/\tilde{r}_k)}{\sqrt{2 \ln(\sigma_k)}} \right) \quad (2)$$

where \tilde{r}_k is the mode median radius and σ_k is the mode geometric standard deviation. This equation can be applied to both aerosol number and aerosol mass by replacing \tilde{r}_k by the number median radius $r_{n,k}$ or mass median radius $r_{m,k}$ respectively. These are calculated as:

$$r_{n,k} = \left(\frac{6 M_k}{\pi N_k \rho_k} \right)^{1/3} \exp \left(-\frac{3 \ln^2 \sigma_k}{2} \right) \quad (3)$$

$$r_{m,k} = r_{n,k} \exp(3 \ln^2(\sigma_k)) \quad (4)$$

with N_k (kg^{-1}) the aerosol number mixing ratio, M_k (kg kg^{-1}) the sum of the aerosol mass mixing ratio of all species and ρ_k (kg m^{-3}) the mean aerosol density in mode k .

Table 1. Values of density ρ and the hygroscopic parameter κ for the five aerosol species considered in M7.

	ρ (kg m ⁻³)*	κ (-)**
Sulphate	1841	0.88
Black carbon	1300	0
Organic matter	1800	0.1
Sea salt	2165	1.28
Mineral dust	2650	0

*van Noije et al. (2014), **Pringle et al. (2010)

Mean properties for each mode k are calculated as the volume-mean averages of the different aerosol species i within that mode, following:

$$\varphi_k = \frac{\sum_i V_{i,k} \varphi_i}{\sum_i V_{i,k}}, \quad V_{i,k} = \frac{m_{i,k}}{\rho_i} \quad (5)$$

Here, $V_{i,k}$ and $m_{i,k}$ is the volume and mass of species i in mode k . φ_i is substituted by the species-specific hygroscopic parameter κ or density ρ (kg m⁻³) to calculate the mode mean values used in Eq. (1) and (3). Values for density ρ and the hygroscopic parameter κ for the five M7 aerosol species are given in Table 1.

205

As stated above, DALES uses an ‘all-or-nothing’ saturation adjustment scheme in which cloud liquid water q_c is a diagnostic variable. Therefore, we use a fixed value of supersaturation ($S = 0.4\%$) in Eq. (1) which is representative for the simulated case (Derksen et al., 2009). However, by fixing S , the model omits the competition for moisture between particles (aerosols and cloud droplets) or the role of supersaturation in this process. Moreover, by directly linking supersaturation levels to particle activation, we implicitly assume that the equilibration time of the droplets is instantaneous or considerably shorter than the model timestep. This might lead to an overestimation of activated droplets as some particles would activate at a certain supersaturation, but did not have enough time to grow to the respective critical radius. This process would be better captured by a numerical framework that directly calculates condensational growth. However, including this in a multi-species aerosol scheme would be computationally too demanding. To assess the impact of using a fixed supersaturation on the cloud characteristics in our simulations, we will perform sensitivity simulations with different values of S . Although fixing the value of S is an approximation, it does allow for an interactive calculation of cloud droplet number concentration based on simulated aerosol.

215

A modal representation of the aerosol size distribution poses a fundamental problem for the numerical calculation of aerosol activation. Cloud activation strongly modifies the shape of the aerosol size distribution by removing the larger particles exclusively. However, in the subsequent timestep, the model again assumes a full lognormal distribution. This effectively redistributes aerosol mass and number to all sizes of the lognormal size distribution, including aerosols exceeding the critical radius which allows for additional activation. Frequent repeated activation and re-distribution of aerosol might lead to a possible

220

‘runaway activation’ which depletes the complete aerosol population and yields unrealistically high cloud droplet number. To avoid this ‘runaway activation’ in the κ -Köhlker-based scheme, activation in a cloudy grid cell is allowed only once. Additional
 225 activation is suppressed until the grid cell becomes cloud-free again.

To be able to disentangle effects of the numerical description of activation from other processes, an alternative method for activation is implemented. This method is based on the work of Pousse-Nottelmann et al. (2015), hereinafter PN15. This activation method is also geared towards a modal representation of the aerosol distribution, but calculates N_c using updraft
 230 velocity w and the number concentration of soluble mode particles larger than 35 nm $N_{>35}$ as given by Eq. (2) in PN15:

$$\left. \frac{\partial N_c}{\partial t} \right|_{\text{acti}} = \max \left\{ \frac{1}{\Delta t} \left[0.1 \left(\frac{w N_{>35}^t}{w + \alpha N_{>35}^t} \right)^{1.27} - N_c^{t-1} \right], 0 \right\}, \quad (6)$$

with w the updraft vertical velocity, Δt the length of the timestep, N_c^{t-1} the number of cloud droplets present, $N_{>35}^t$ the number concentration of soluble/mixed aerosol particles larger than 35 nm and $\alpha = 0.023 \text{ cm}^4 \text{ s}^{-1}$ an empirically derived constant. $N_{>35}$ is calculated as the sum of the soluble accumulation and coarse mode number concentrations, plus the fraction of soluble
 235 Aitken mode particles above 35 nm, evaluated using Eq. (2). As described in PN15, activation is assumed to progress from the biggest to the smallest particles in each mode.

By including updraft velocity w and the existing cloud droplet number N_c^{t-1} , this formulation does include competition for moisture between condensation on existing droplets and activation of new particles. However, the strongest limitation of this
 240 formulation is found in the prefactor of 0.1. This prefactor was determined in Zubler et al. (2011a) by comparison of their model outcome against satellite data with respect to the cloud droplet effective radius. The combination of this prefactor and the subtraction of N_c^{t-1} poses such a strong limitation on aerosol activation that ‘runaway activation’ does not occur in the PN scheme.

2.2.3 Scavenging

245 With the addition of prognostic variables for the aerosol population, scavenging has to be addressed in the aerosol budget. Our implementation of aerosol scavenging is based on the framework of Croft et al. (2009, 2010) and distinguishes between scavenging by cloud droplets (i.e. in-cloud scavenging) and by falling precipitation (i.e. below-cloud scavenging). Because scavenging by falling raindrops also takes place within a cloud, this process is referred to as rain scavenging in the remainder of this work to avoid confusion. The separation of scavenging by cloud droplets and precipitation matches the description in the
 250 cloud microphysics scheme that makes a similar distinction between cloud and rain droplets. The calculation of the scavenging efficiency is implemented into the model using a look-up table approach. For each aerosol mode, the size-dependent scavenging efficiencies for in-cloud scavenging are determined using aerosol median radii ranging from 10^{-2} to $10^3 \text{ } \mu\text{m}$ and median cloud drop radii between 5 and $50 \text{ } \mu\text{m}$. Rain scavenging is defined for aerosol median radii from 10^{-3} to $10^3 \text{ } \mu\text{m}$ and rainfall intensities between 10^{-2} to 10^2 mm hr^{-1} .

All microphysical processes that were previously implemented in DALES (i.e. autoconversion, accretion, sedimentation, self-collection and break-up) now have to take into account the in-hydrometeor aerosol mass and the transfer of aerosol mass between free, in-cloud and in-rain states. For these processes it is assumed that the aerosol mass is dissolved in the hydrometeor water and homogeneously distributed over the cloud and rain drop distributions, i.e. the aerosol concentration does not
 260 change with hydrometeor size. With this assumption, the fraction of transformed in-hydrometeor aerosol mass is equal to the transformed fraction of water. For example, if 2% of the cloud water is transformed to rain by autoconversion, 2% of the in-cloud aerosol mass is transferred to the in-rain mode as well.

With the introduction of a prognostic variable for N_c in DALES, the process of cloud droplet self-collection has to be added
 265 to the microphysical framework. For this, we use the parameterization of SB described in Seifert and Beheng (2006) Eq. (9):

$$\left. \frac{\partial N_c}{\partial t} \right|_{sc} = -k_{cc} \frac{(\nu_c + 2)}{(\nu_c + 1)} \frac{\rho_0}{\rho} q_c^2 - \left. \frac{\partial N_c}{\partial t} \right|_{au}, \quad (7)$$

where $k_{cc} = 4.44 \times 10^9 \text{ m}^3 \text{ kg}^{-2} \text{ s}^{-1}$ is a constant describing the cloud-cloud collision efficiency, ν_c (–) the width parameter in the generalised Γ -distribution for cloud droplets, ρ (kg m^{-3}) the air density, $\rho_0 = 1.225 \text{ kg m}^{-3}$ the reference air density and q_c cloud liquid water (kg kg^{-1}). The last term on the right-hand side represents subtraction of the colliding particles involved
 270 in the autoconversion process.

2.2.5 Evaporation and aerosol resuspension

An explicit calculation of raindrop evaporation is given by the SB microphysical framework and was previously implemented in the DALES model. With the saturation adjustment approach in DALES, aerosol resuspension resulting from cloud evaporation cannot be calculated in a similar way. Instead, it is based on the diagnostic variable for cloud liquid water q_c . Evaporation of
 275 cloud water is calculated as the difference between q_c in the current timestep and the previous timestep if q_c decreases. Note that this approach neglects the changes in q_c due to advection. However, to disaggregate the different sources and sinks of q_c , cloud water needs to be calculated prognostically. The corresponding transfer of aerosol particle number is calculated as:

$$\left. \frac{\partial N_c}{\partial t} \right|_{evpc} = \begin{cases} \frac{q_{c,t-1} - q_{c,t}}{q_{c,t-1}} \frac{N_c}{\Delta t}, & \text{if } q_{c,t-1} > q_{c,t}. \\ 0, & \text{otherwise.} \end{cases} \quad (8)$$

By applying this relation, we implicitly assume a Marshall-Palmer size distribution for the cloud droplets, so that the evapo-
 280 rated fraction of cloud water equals the fraction of cloud drop number that is resuspended (de Bruine et al., 2018, Appendix A).

For the in-hydrometeor processes a one-to-one relation is used for the fraction of transferred water and the fraction associated aerosol mass. However, for the evaporation of clouds and/or rain we have to take into account that the evaporation of water does not immediately lead to the resuspension of aerosol (e.g. Gong et al., 2006). Only upon complete evaporation of a

285 hydrometeor, aerosol mass is released. Hence, the resuspended aerosol mass fraction is not equal to the evaporated fraction of water. We use a similar approach as de Bruine et al. (2018) to account for this effect (Eq. 4 therein). Additionally, as the number of aerosol particles incorporated in the hydrometeors is not explicitly tracked we apply the commonly used assumption that one evaporated hydrometeor releases one aerosol particle (Mitra et al., 1992). The resuspended aerosols are assumed to follow a lognormal size distribution with a width of $\sigma = 1.5$ (Pousse-Nottelmann et al., 2015) and are divided between the ACS and
290 COS modes based on the aerosol radius that divides these two modes in M7, i.e. $0.5 \mu\text{m}$ (Vignati et al., 2004). The aerosols with radius $< 0.5 \mu\text{m}$ are transferred to the ACS mode and the aerosols with radius $> 0.5 \mu\text{m}$ are transferred to the COS mode.

3 Sample simulations

3.1 Model setup

295 3.1.1 RICO case

To test and validate the explicit aerosol-cloud interaction framework, the simulations are based on the The Rain in Cumulus over the Ocean (RICO) field campaign (Raubert et al., 2007). This campaign, which took place during the period of November 2004 to January 2005, is characterised by shallow, precipitating maritime cumulus clouds. RICO is widely used in research on cloud processes in (trade wind) cumulus clouds, and served as the test case in an intercomparison project of twelve LES models
300 (vanZanten et al., 2011). It is especially well-suited for the testing of our new framework because of the rapid development of precipitation, and thus including the 'full suite' of aerosol-cloud interactions. Initial profiles for moisture, temperature and wind as well as large scale tendencies and surface fluxes are the same as the those prescribed in vanZanten et al. (2011).

3.1.2 Aerosol initialisation

305 Although the RICO campaign did include aerosol observations, these are fairly restricted. The aerosol size distribution was measured on aircraft flight RF12, and the measurements were fitted to a bimodal lognormal distribution of aerosols with uniform composition, assuming characteristics of ammonium-bisulfate (see vanZanten et al. (2011), Sect 2.2.3 therein), despite the marine nature of the environment. The campaign did not collect in-situ data of aerosol composition that can be used to initialise and validate the M7 aerosol variables for our simulations. Instead we use vertical aerosol profiles of the region where RICO
310 took place from a simulation with the chemistry transport model TM5 (van Noije et al. (2014), Bergman et al. (2019)). The simulations were originally carried out for a remote sensing experiment within the Aerocom project (<http://aerocom.met.no>) by the Dutch Meteorological Institute (KNMI) in 2017.

Since TM5 uses the same modal aerosol framework M7, a one-to-one translation of the aerosol scalar fields can be made. The only difference between the latest version of TM5 (Bergman et al., 2019) and DALES in the aerosol representation is the
315 inclusion of secondary organic aerosol in the TM5 model. This is expressed in the presence of POM in the soluble nucleation

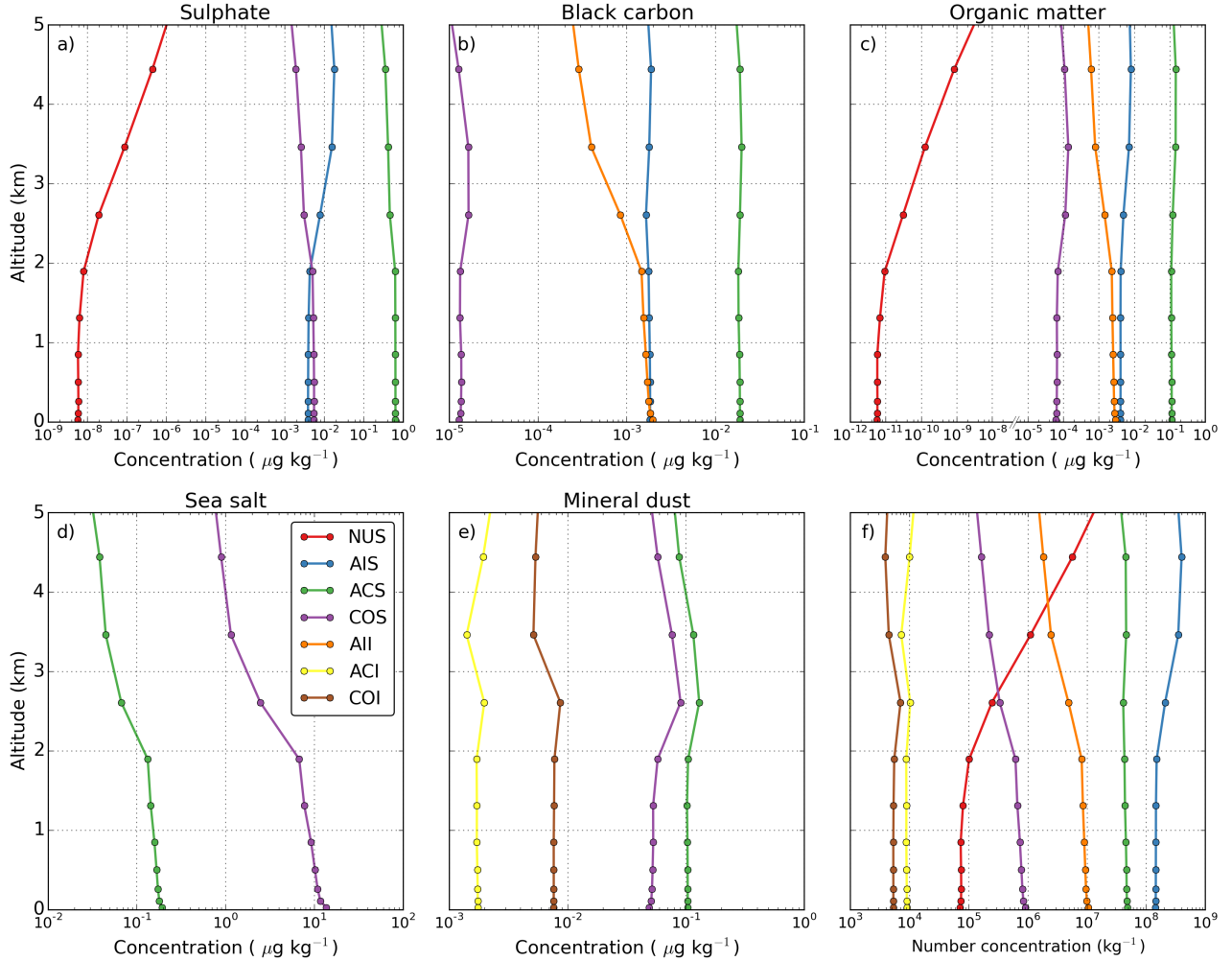


Figure 2. Initial vertical profiles of aerosol mass concentration ($\mu\text{g kg}^{-1}$) of (a) sulphate, (b) black carbon, (c) particulate organic matter, (d) sea salt, (e) mineral dust and (f) number concentration (kg^{-1}) extracted from the TM5 model (Bergman et al., 2019). Aerosol modes are specified by different colors which are consistent between panels. Circles correspond to the TM5 model levels. Note the break in the horizontal axis in panel (c).

(NUS) mode which does not exist in DALES. The corresponding mass is negligible, but is incorporated in the POM Aitken soluble (AIS) mode mass nevertheless.

The TM5 output is provided on native model pressure fields. These pressure fields are transformed to altitude coordinates using corresponding temperature fields. Since our simulations concern a case over the ocean, no corrections for topography are needed. The resulting transformation yields 9 levels in the lowest 5000 m, which is the vertical extent of the DALES model simulations. Of these pressure levels, 4 are located near the surface (i.e. below 1000 m). Linear interpolation is used between

Table 2. Overview and description of the different simulations performed in this study.

Name	Description
BASE	No explicit aerosol, fixed N_c (70 cm^{-3}).
BASE30	No explicit aerosol, fixed N_c (30 cm^{-3}).
KAPPA	Explicit aerosol, activation based on Petters and Kreidenweis (2007) with $S = 0.4\%$
PN	Explicit aerosol, activation based on Pousse-Nottelmann et al. (2015)
SAT0.2	Similar to KAPPA except $S = 0.2\%$
SAT1.0	Similar to KAPPA except $S = 1.0\%$

these levels and the values between top and bottom of DALES gridboxes are averaged and assigned to the DALES vertical grid. Resulting profiles are shown in Fig. 2.

The aerosol population mainly consists of sea salt particles, as expected for this ocean region with trade winds blowing from the open ocean. The sea salt mass concentration in the lowest 2000 m is $10.0 \mu\text{g m}^{-3}$. The other species account for $0.69 \mu\text{g m}^{-3}$ (sulphate), $0.19 \mu\text{g m}^{-3}$ (mineral dust), $0.14 \mu\text{g m}^{-3}$ (organic matter) and $0.027 \mu\text{g m}^{-3}$ (black carbon). Additionally, the sea salt mass concentration shows a decrease with height, explained by the fact that it is locally generated. The concentrations of the other species are more or less constant with height or even show a slight increase with height. For the pristine environment in the RICO campaign, these species are advected into the region and display characteristics of an aged aerosol population. For example, the mineral dust particles are considerably smaller than the sea salt particles and mainly reside in the soluble modes.

The total number concentration in the lowest 2000 m is 202 cm^{-3} , mainly consisting of Aitken mode particles (150 cm^{-3}). Of all aerosol particles, 83 cm^{-3} activate at a supersaturation of 0.4% . This value is diagnosed by applying the κ -Köhler theory with the characteristic values of the different species shown in Table 1.

3.1.3 Overview

To establish a baseline for the model results, the first simulation (BASE) uses the base version of DALES. This version uses a prescribed, fixed cloud drop number concentration (i.e. 70 cm^{-3}) and follows the settings described for the model intercomparison of vanZanten et al. (2011). The second simulation uses a lower cloud drop number concentration (30 cm^{-3}) which corresponds to the actual observed mean values (see Sect 3.2.1). This simulation is referred to as BASE30.

In the KAPPA simulation, aerosols are activated using the κ -Köhler-based aerosol activation scheme. Based on this simulation, two sensitivity simulations are performed using supersaturations of 0.2% and 1.0% (SAT0.2 and SAT1.0 respectively). To test the results of the κ -Köhler activation, the alternative activation scheme of Pousse-Nottelmann et al. (2015) is used in the PN simulation. An overview of the different simulations is given in Table 2. Because we do not simulate the emission of new

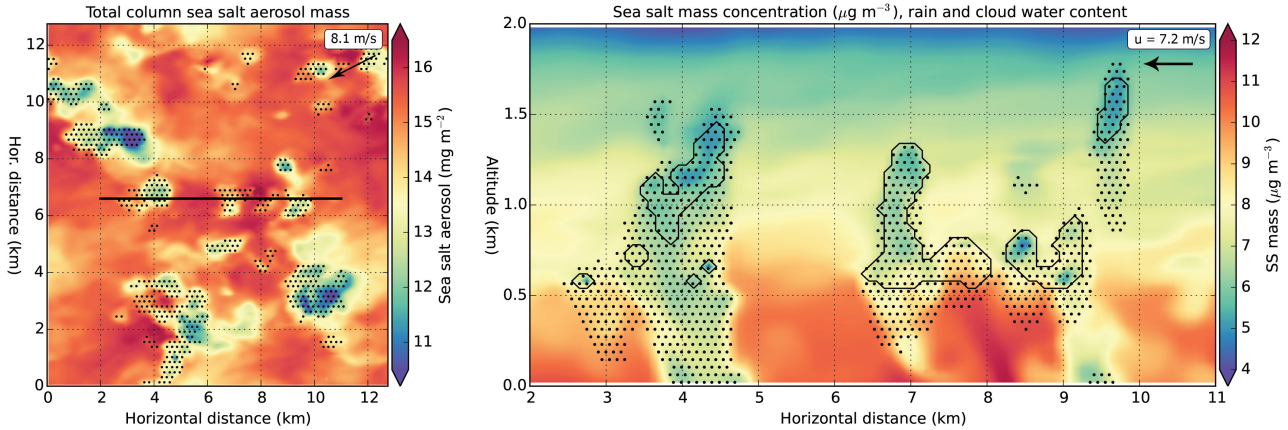


Figure 3. (left) Instantaneous horizontal cross sections of the cloud and aerosol spatial distribution at $t = 5.5$ hours. Occurrence of clouds and precipitation is indicated by the hatched areas. The underlying color scale indicates sea salt aerosol mass concentration. Average wind speed and direction in the cloud layer (500 - 2000 m) is denoted in the top-right corner. The black line indicates the vertical cross-section shown in the right panel. (right) Vertical cross-section of sea salt aerosol concentration, with cloud (outline) and precipitation (hatching) indicated separately. Arrow in the top right corner indicates the zonal component of the wind.

aerosol during the simulations, the originally 24 hour-long simulations in vanZanten et al. (2011) are shortened to 6 hours. In longer simulations, the wash-out by precipitation would deplete the aerosol population to unrealistically low levels. The first 3
345 hours of the simulation are considered spin-up and discarded in the analysis of the results. Although the simulation has not yet fully equilibrated after 3 hours, metrics like liquid water path and cloud fraction only show a slow change after that as can be seen in e.g. Fig 3 in vanZanten et al. (2011).

3.2 Results

A qualitative overview of the simulated cloud scene for the RICO campaign is shown in Fig. 3. These cross-sections display
350 the internal variability within the LES model domain that results from the high spatial resolution. Both large and small cloud structures are found in the simulated domain, and developing clouds coexist with readily precipitating clouds. Simulations show characteristics typical for shallow cumulus clouds, which is in accordance with observations. Clouds are sparsely spread over the domain, covering about 10% of the total sky. The cloud base is located at about 500 m and cloud tops reach up to 2000-2500 m.

355 The interaction between the clouds and aerosol is clearly visible in the strong reduction of aerosol mass in the presence of liquid water. In addition, changes to the aerosol distribution as a result of cloud processing and/or wash-out are reflected in the inhomogeneities of the aerosol field in the regions where clouds no longer exist. More details of the influence of clouds and precipitation on the aerosol concentration are shown in the right-hand panel of Fig. 3. Here, we can observe a decreased aerosol concentration in the precipitation field (around 4 km). In contrast, an increased aerosol concentration is found below the clouds

360 (around 8 km) as a result of evaporating precipitation between cloud base and the surface.

Further results of the simulations will be discussed in two steps. Section 3.2.1 will focus on the cloud characteristics and compare the results of the different simulations. Section 3.2.2 addresses the effect of the cloud microphysics on the aerosol distribution. The strength of the aerosol fluxes associated with the cloud microphysical processes are quantified as well as
365 the location in the vertical column where these processes take place. In addition, the differences between the aerosol species are discussed. Particular attention is given to the typical aerosol size associated with the various processes in clouds and precipitation.

3.2.1 Cloud microphysics

To evaluate the modelled cloud characteristics produced in the different simulations we follow the analysis of vanZanten et al.
370 (2011). Domain-averaged cloud characteristics are shown in Fig. 4, which is constructed to resemble Fig. 8 in vanZanten et al. (2011). Similar to their work we use an aggregate of 1 Hz FFSSP measurements on flights RF06-RF12 with the C-130 aircraft (Rauber et al., 2007). Cloud characteristics are filtered using the condition $q_c > 0.01 \text{ g kg}^{-1}$, while rain characteristics use the condition $q_r > 0.001 \text{ g kg}^{-1}$.

The above-mentioned aircraft observations show values for N_c up to 90 cm^{-3} , but mean values are around 30 cm^{-3} , while
375 median values are about 20 cm^{-3} , slightly decreasing with altitude. This is considerably lower than the default fixed value of N_c of 70 cm^{-3} used in the BASE simulation, which was the prescribed value for the simulations in vanZanten et al. (2011). The BASE30 simulation uses $N_c = 30 \text{ cm}^{-3}$, based on the observed mean N_c of the aircraft observations. In the other simulations, N_c is not prescribed but interactively calculated from the aerosol distribution. The new framework with explicit κ -Köhler activation used in the KAPPA simulation yields values for N_c of about $4\text{--}10 \text{ cm}^{-3}$. Increasing the values for critical
380 supersaturation to 1% in the SAT1.0 simulation shows an insignificant increase in median N_c of about 1 cm^{-3} . Decreasing S to 0.2% in the SAT0.2 simulation shows a similar decrease the modelled amount of N_c . When using the alternative activation scheme in the PN simulation, N_c values of 30 cm^{-3} are found at cloud base, but N_c decreases to about 10 cm^{-3} at an altitude of about 1500 m and remains constant above this level.

The relatively low N_c in the KAPPA, SAT0.2 and SAT1.0 simulations is the direct result of prohibiting 'repeated activation'
385 as discussed above in Sect. 2.2.2. With the absence of additional in-cloud activation, droplets only activate at cloud base and are distributed over the whole cloud, leading to low N_c . Although in-cloud activation is allowed in the PN simulation, the governing equation also severely limits how much of the available aerosol is activated. Both simulations show a decrease of N_c with altitude as most activation takes place near cloud base.

Simulated cloud liquid water content q_c increases with the calculated or assumed N_c . The BASE simulation has the highest
390 (fixed) value of N_c and simulates q_c with a continuous increase up to 1.5 g m^{-3} at 2500 m altitude. The BASE30 simulation shows a similar profile up to an altitude of 1500 m. From there to cloud top, q_c is considerably lower, with values around 0.7 g m^{-3} . The PN simulation follows the BASE and BASE30 simulations up to 1200 m, but levels off at values around 0.4 g m^{-3} . The KAPPA simulation diverges from the other simulations as it levels off at 0.25 g m^{-3} . In comparison, observations of the

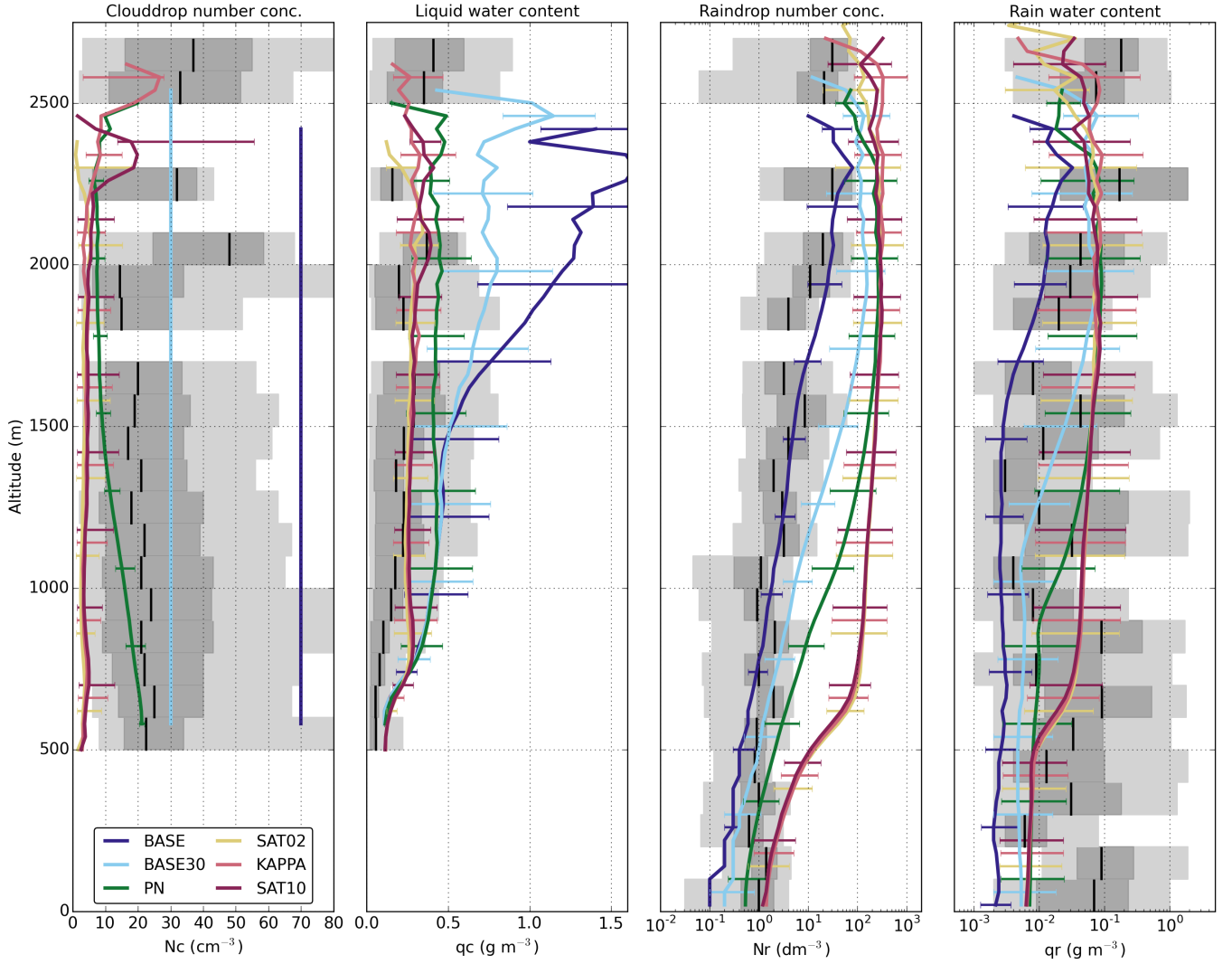


Figure 4. Validation of modeled cloud and rain characteristics against observations of a) cloud droplet number concentration N_c , b) cloud liquid water q_c , c) rain drop number concentration N_r and d) rain water content q_r . Observations are grouped by altitude using increments of 100 m. Median value is shown by vertical black bars, light grey shading indicates the 5th to 95th percentile, while dark grey indicates 25th to 75th percentile. Median simulated values are represented by colored lines with the errorbars indicating the 25th to 75th percentile.

RICO campaign show a somewhat slower continuous increase with height (as expected for shallow cumulus clouds), to about 0.25 g m⁻³ around 1250 m and above.

Above-mentioned differences in q_c are accompanied by substantial differences in domain-averages in liquid water path (LWP). Consistent with q_c the BASE and BASE30 simulations calculate the highest LWP: 11.4 and 11.1 g m⁻² respectively. The lowest LWP is simulated by KAPPA: 4.43 g m⁻², while PN has an average LWP of 8.81 g m⁻². The relative differences in

LWP are larger than q_c because the simulations also differ in average cloud fraction. When considering actual volume occupied
 400 by clouds (i.e. $q_c > 0.01 \text{ g kg}^{-1}$) in the cloud layer between 500 and 2000 meter BASE and BASE30 are again highest and
 virtually equal (2.04 % and 2.07% respectively). KAPPA deviates most from this and calculates 1.58%. In the PN simulation
 this is 1.97%.

While the observations of the cloud characteristics are fairly well constrained, values for precipitation show considerably
 more spread. Hence, a logarithmic scale is used for both N_r and q_r . Observed rain water content q_r fluctuates greatly with
 405 median values between 0.001 and 2 g m^{-3} .

Simulated values show more stable values and smoother profiles. Simulations with the highest q_c show the lowest values for
 q_r . The BASE simulation calculates values for q_r of about 0.0025 g m^{-3} up to an altitude of 1500 m, above which the values
 increase with height to 0.03 g m^{-3} at 2300 m. The BASE30 simulation shows a substantially higher amount of rainwater in
 the lowest lowest 1100 m with a median of about 0.006 g m^{-3} . From there q_r increases to 0.01 g m^{-3} at 2000 m altitude. In
 410 the KAPPA simulation q_r is similar to the BASE30 simulation near the surface. However, in KAPPA q_r shows a sharp increase
 between 500 and 600 m followed by gradual increases to 0.01 g m^{-3} at 2000 m. The PN simulation shows a similar profile,
 with the sharp increase located around 1000 m to the same value of 0.01 g m^{-3} .

Observations indicate values of N_r around 1 dm^{-3} up to 1000 m, increasing to 10 dm^{-3} at 2000 m and even higher
 above. The BASE simulation shows the lowest values for N_r , in accordance with q_r . From $10\text{-}100 \text{ dm}^{-3}$ at the surface, N_r
 415 continuously increases to $10\text{-}100 \text{ dm}^{-3}$ at the cloud tops. The BASE30 simulation calculates higher N_r values at all altitudes,
 especially in the upper half of the cloud layer. In the KAPPA simulation, values for N_r are substantially higher. Surface values
 are around 1 dm^{-3} , but increase with a much steeper slope to 100 dm^{-3} in the lower parts of the cloud layer around 1000 m.
 From there, N_r shows a steady increase to 350 dm^{-3} at the top of the cloud layer. Note the stark contrast of high values for
 N_r combined with low values of N_c . The vertical profile in PN is in between the BASE/BASE30 and the KAPPA simulations.
 420 It resembles the profile found in BASE30, albeit with higher values.

The differences in q_c and and precipitation are all related to the simulated (or prescribed) cloud droplet concentration N_c .
 The initial conditions (i.e. total water content and temperature) under which the clouds form are the same in all simulations.
 By decreasing N_c , the liquid water is distributed over less droplets leading to larger cloud droplets. This leads to a faster
 rain formation as the droplets grow more quickly. From a macrodynamic perspective, a lower N_c decreases the water holding
 425 capacity of a cloud. This is reflected in the profiles of q_c . Near cloud base all simulations show the same q_c , but in the KAPPA
 and PN simulations the water holding capacity is reached and all excess water is transformed into precipitation. This level
 is maintained in the rest of the cloud layer. In the BASE and BASE30 simulations, this limit is not reached and q_c keeps
 increasing throughout the cloud layer. Another interesting result is that a decrease in N_c leads to an increase in N_r (reversed
 order of the simulations in the first and third panel of Fig. 4). The cloud droplets in the KAPPA simulation (and to a somewhat
 430 lesser extent in the PN simulation) are so large that collision-coalescence of cloud droplets quickly results in rain size droplets
 (i.e. autoconversion). In the BASE and BASE30 simulations, the cloud droplets are smaller and more collisions are needed to
 form raindrops. Indeed, we find that the strength of autoconversion is higher in the KAPPA and PN simulations than in the

BASE and BASE30 simulations and takes place at lower altitudes (not shown). In the BASE and BASE30 simulations, most rainwater is gained through the collection of cloud droplets by falling raindrops (accretion).

435 A full validation and direct comparison of the simulation results with observations would require inputs derived from collocated observations of both aerosol size distributions and composition as well as an elaborate investigation of the influence of model set-up, i.e. convergence of results regarding model resolution and domain size (e.g. Matheou et al., 2011). Nevertheless, it is noteworthy that the KAPPA simulation with the lowest N_c best resembles the observed q_c , while setting N_c to the observed values in the BASE30 simulation results in an overestimation of q_c . In our framework, N_c can no longer be adjusted to improve the simulated values of the other cloud microphysical properties, but follows from the aerosol population and calculated thermodynamics. In this way, the results of our framework can act as a starting point for further improvement of the numerical implementation of the microphysical processes. Possible pathways for improvement are discussed in Sect. 4.

3.2.2 Aerosol microphysics

In this section we focus on changes to aerosol population as a result of cloud microphysical processes. Here, we discuss the results of the KAPPA and PN simulations. As shown above, the different numerical descriptions of activation (Sect. 2.2.2) cause substantial differences in the cloud and rain characteristics. This, in turn, yields differences in the feedback to the aerosol population. A comparison between the two simulations provides insight into the network of the different microphysical processes and the overall impact on the aerosol distribution.

Section 3.2.3 describes the influence of the different microphysical processes to the bulk properties of the aerosol (i.e. domain average of the aerosol mass) and the resulting vertical profiles of aerosol mass and number at the end of the simulation. Section 3.2.4 subsequently focusses on the aerosol size in more detail. This is done by comparing the typical aerosol size associated with the different microphysical processes (i.e. typical aerosol size after resuspension from raindrops compared to the initially activated aerosols).

3.2.3 Contribution of individual processes to the aerosol budget

455 The effective influence of the different microphysical processes on the five aerosol species is shown in Tables 3 and 4 for the KAPPA and PN simulation respectively. The values are scaled to the species-specific total mass and thus can be interpreted as a processing timescale.

The in-cloud aerosol mass has two source processes: activation and in-cloud scavenging by cloud droplets, displayed in the first two columns of Tables 3 and 4. For both simulations, we find that virtually all in-cloud aerosol mass ($> 99\%$) is gained through activation while in-cloud scavenging of interstitial aerosol is negligible. The relatively low values for N_c lead to rather ineffective in-cloud scavenging. Most of the in-cloud aerosol mass is resuspended to the atmosphere after evaporation of cloud droplets carrying the aerosol. In the KAPPA simulation $\sim 87\%$ of the in-cloud aerosol is resuspended, while in the PN simulation this 'cloud evaporation fraction' is $\sim 96\%$. The activation scheme in the PN simulation activates more aerosol and thus calculates higher N_c . This delays precipitation formation which is reflected in higher q_c in clouds, higher LWP and

Table 3. Domain-average total column microphysical process strengths ($\text{kg kg}^{-1} \text{ day}^{-1}$) in the KAPPA simulation for the different aerosol species, divided by the species total column aerosol mass (kg kg^{-1}) and rescaled to have the unit day^{-1} . Reported values can be thus interpreted as timescales, e.g. activation processes 1.36 times the total column sea salt aerosol mass per day.

		in-cloud	cloud	cloud-to-rain	rain	rain	rain
	activation	scavenging	evaporation	conversion	scavenging	evaporation	sedimentation
Sea salt	1.36	1.09×10^{-2}	1.18	0.21	2.30	1.30	1.25
Sulphate	0.70	3.46×10^{-3}	0.61	0.11	0.89	0.56	0.45
Organic matter	0.44	2.20×10^{-3}	0.38	0.07	0.55	0.35	0.28
Black carbon	0.52	2.65×10^{-3}	0.45	0.08	0.62	0.39	0.31
Mineral dust	0.37	2.83×10^{-3}	0.32	0.06	0.60	0.38	0.29
Water						3.60×10^{-2}	2.62×10^{-3}

Table 4. Same as Table 3, but for the PN simulation.

		in-cloud	cloud	cloud-to-rain	rain	rain	rain
	activation	scavenging	evaporation	conversion	scavenging	evaporation	sedimentation
Sea salt	18.0	2.41×10^{-4}	17.40	0.74	1.70	0.97	1.47
Sulphate	9.70	1.24×10^{-4}	9.34	0.41	0.75	0.51	0.65
Organic matter	6.06	1.46×10^{-4}	5.84	0.26	0.47	0.32	0.41
Black carbon	6.89	3.83×10^{-4}	6.64	0.29	0.53	0.36	0.46
Mineral dust	5.07	1.54×10^{-3}	4.89	0.22	0.52	0.33	0.40
Water						2.02×10^{-2}	2.60×10^{-3}

465 cloud fraction as discussed in Sect. 3.2.1. Consequently, less aerosol is removed from the atmosphere by precipitation and resuspended when the cloud evaporates instead.

Corresponding aerosol fluxes for activation and cloud evaporation are 13 times larger in PN compared to KAPPA, i.e. in the PN simulation clouds process a total of 18.0 times the available sea salt aerosol mass per day instead of 1.36 when using the KAPPA activation. Due to the large cloud evaporation fraction the large activation flux does not directly lead to a
470 similar increase in cloud-to-rain conversion of aerosol. Instead, we find that conversion is 'only' ~3.5 times stronger in the PN simulation compared to the KAPPA simulation (e.g. conversion of the available sea salt mass: 0.74 day^{-1} in PN vs. 0.21 day^{-1} in KAPPA).

The strength of interaction between aerosol and clouds differs greatly between aerosol species. For example, the processing rate of sea salt by cloud activation (1.36 day^{-1} in KAPPA) is 2.6 times larger than for mineral dust (0.52 day^{-1} in KAPPA).
475 As expected, the most hygroscopic species are most susceptible to the activation process. However, note that the combination of the different species within a lognormal mode of the aerosol framework determines the activation for that mode (see

Sect. 2.2.2). As a result, organic matter is processed more slowly than black carbon despite the higher hygroscopicity of this species. Because the simulated case is over the ocean and relatively remote, species like black carbon have aged significantly and mainly reside in the accumulation mode. Therefore it is activated alongside the highly hygroscopic sea salt aerosol in the
480 accumulation mode. The differences in the rates for resuspension after cloud evaporation and cloud-to-rain conversion closely follow those of the activation process. This is caused by the fact we assume an internal aerosol mixture of the in-cloud aerosol mass. Cloud processes thus act similar on the aerosol species as soon as they are incorporated in cloud droplets.

Besides cloud-to-rain conversion, falling precipitation gains additional aerosol mass by rain scavenging. In fact, this process
485 is the dominant source for in-rain aerosol mass. Comparing the process strengths in the KAPPA simulation of cloud-to-rain conversion (e.g. 0.21 day^{-1} for sea salt) and rain scavenging (2.30 day^{-1} for sea salt), we find that 89-91% of the in-rain aerosol mass is gained by falling precipitation. This is a direct result of the high q_r in this simulation. The lower q_r in the PN simulation (see Fig. 4) corresponds to a lower scavenging by precipitation. With a relative contribution of 64-70% it remains the most dominant source process for in-rain aerosol mass. Interestingly, cloud-to-rain conversion and scavenging together
490 process a relatively similar amount of aerosol mass in both simulations.

Once the aerosol is incorporated in rain, it can be removed from the atmosphere by sedimentation (rain-out) or it can be resuspended upon evaporation of the rain drops, shown in the last two columns of Tables 3 and 4. The strength of these two processes is about the same. In the KAPPA simulation, 51-56% of the aerosol mass is resuspended by evaporating rain, while in the PN simulation this is 40-45%. This difference is again linked to the slower rain water formation in the PN simulation (i.e.
495 smaller N_r , see Fig. 4). Less cloud drops are transformed to rain, which are on average larger and thus less prone to evaporate. Because the aerosol mass is only released upon complete evaporation of a rain, this leads to a lower evaporating fraction. The precipitation rate (i.e. water that reaches the surface) is the same in both simulations (see Table 3 and 4 as well as Fig. 4). This leads to a removal of aerosol in the PN simulation that is 17% (sea salt) to 48% (black carbon) higher than in the KAPPA simulation.

The above-mentioned balance between the two sink processes for in-rain aerosol (i.e., resuspension vs. sedimentation) is substantially different than for the rainwater itself. In the KAPPA simulation, 93% of the falling precipitation evaporates which leads to the resuspension of only 51-56% of the in-rain aerosol mass. A similar ratio is found in the PN simulation: 86% evaporated rainwater vs. 40-45% resuspended aerosol. As explained in Sect. 2.2.5, the fraction of released aerosol mass is always lower than the fraction of evaporated rain water. However, the disparity exceeds the correction of Gong et al. (2006) because
505 below the cloud, falling precipitation keeps gaining additional in-rain aerosol through scavenging, whereas the amount of water only decreases.

The combination of the microphysical processes discussed above leads to the ultimate removal of aerosol shown in Fig. 5. Total column aerosol mass at the end of the simulation has decreased 24% in the KAPPA simulation and 21% in the PN
510 simulation. The two simulations show different vertical profiles of the remaining aerosol, which is the result of the different balance between microphysical described processes above. In the KAPPA simulation, rain scavenging was found to account

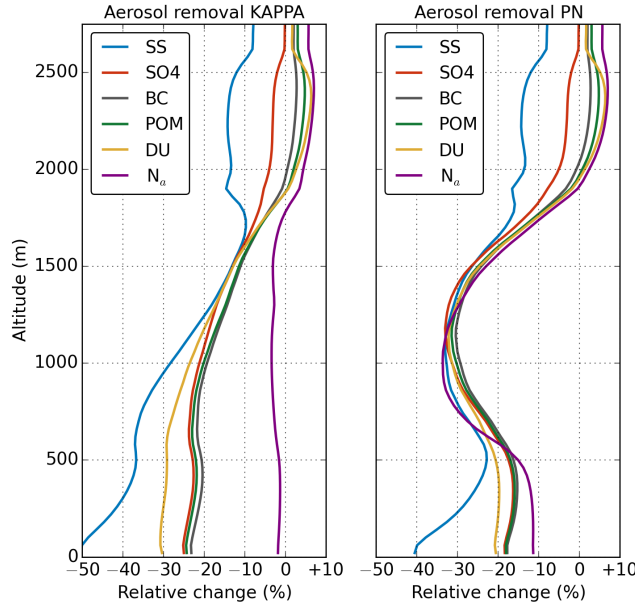


Figure 5. Vertical profile of domain-averaged aerosol mass and number concentration after 6 hours for the KAPPA (left) and PN (right) simulations relative to the initial profile.

for about 90% of the in-rain aerosol. Consequently, the the removal is strongest near the surface and decreases with height. The small local maximum around 400 m reflects evaporation of precipitation below the cloud base, while the zone of activation at the cloud base is visible in the local minimum around 600 m. When using the PN activation scheme, aerosol removal and the
515 governing processes change considerably. The importance of cloud-to-rain conversion for the in-rain aerosol mass increases in the PN simulation compared to KAPPA. Consequently, aerosol removal in the cloud layer is enhanced by -30%. In contrast, net removal below the cloud layer decreased as a result of resuspended aerosol mass originating from the cloud layer.

The decrease in aerosol number is substantially different between the KAPPA and PN simulation. While the reduction in
520 aerosol number in KAPPA is limited ($< 3\%$), the PN simulation calculates removal of aerosol number up to -34%. The dominant removal by rain scavenging in the KAPPA simulation is most effective for large particles and thus results in the removal of the largest particles. Moreover, when droplets evaporate, the smallest droplets evaporate first and thus resuspend the smallest aerosols first since the aerosol mass in rain is distributed homogeneously over all available rainwater. This further increases the tendency for large particles to be removed from the atmosphere. The resulting removal of aerosol number in the KAPPA
525 simulation is therefore much smaller than the removal in aerosol mass. In the PN simulation, aerosols are cycled through the clouds more frequently. Due to collision-coalescence of cloud droplets, resuspended aerosols will be larger than the initially activated particles. This results in removal of aerosol number in the cloud layer, but has no effect on aerosol mass.

Table 5. Typical dry aerosol median radius (nm) associated with the microphysical processes for the KAPPA and PN simulations

	KAPPA	PN
In the cloud layer (500 - 2000 m)		
Activation	132	192
In-cloud scavenging	76	10
Cloud-to-rain conversion	174	275
Cloud evaporation	140	210
Rain scavenging	631	595
Rain evaporation	456	794
Below the cloud layer (0 - 500 m)		
Rain scavenging	675	701
Rain evaporation	1649	2909
Rain sedimentation	1838	3570

The behaviour of the different aerosol species is similar in the PN and KAPPA simulations and mainly determined by the typical aerosol particle size because the effectivity of scavenging as well as activation increases with aerosol size. The largest decrease is found for sea salt, followed by mineral dust. Profiles of sulphate, organic matter and black carbon are similar and display the weakest removal. The vertical profile for sea salt stands out due to the vertical distribution of this species, which decreases strongly with height (see Fig. 2). The concentrations of the other species are relatively constant with altitude. Due to this, resuspension of sea salt aerosol brought down from the cloud layer is not sufficient to replenish the sea salt aerosol scavenged by falling precipitation close to the surface.

3.2.4 Changes in the aerosol size distribution

Analysis of the remaining aerosol total mass and number in the previous Sect. 3.2.3 already indicates that changes in the cloud characteristics might cause substantial differences in the cloud processes influence the aerosol size distribution. To better quantify this cloud processing, the following section will compare the median radius for particles associated with the different microphysical processes.

An overview of the typical aerosol median radius associated with the cloud and rain microphysical processes is shown in Table 5. At the beginning of a cloud cycle, we find an average median radius of activated aerosols of 132 nm in the cloud layer

(between 500 and 2000 m) in the KAPPA simulation. In the PN simulation this radius is 192 nm. This increase of 45% is caused
545 by the substantially stronger cycling of aerosol through the clouds in the PN simulation. Inside the clouds, droplets are merged
into larger droplets by collision-coalescence. When these cloud droplets evaporate, larger and less numerous aerosol particles
are resuspended to the atmosphere. Because a larger fraction (compare Tables 3 and 4) of the cloud droplets are actually
resuspended to the atmosphere in the PN simulation, this 'cloud processing' has a stronger effect on the aerosol population.

Additionally, the higher evaporation fraction in the PN simulation also has a direct influence on the size of the resuspended
550 aerosols. As explained in Sect. 2.2.5 aerosols are only resuspended when a droplet completely evaporates. Because the small-
est droplets evaporate first, the smallest incorporated aerosols are also resuspended first, since the aerosol concentration is
homogeneously distributed over the hydrometeor size distribution. When the evaporation fraction increases, larger droplets
can evaporate completely increasing the average resuspended aerosol size. In the KAPPA simulation, resuspended aerosol par-
ticles resulting from cloud evaporation are 6% larger (140 nm) than the initially scavenged aerosols. In the PN simulation, the
555 resuspended aerosols are 9% larger (210 nm).

Interstitial aerosols scavenged by cloud droplets are substantially smaller than the activated aerosols as the largest particles
have been activated. In the KAPPA simulation the typical radius of scavenged interstitial aerosol is 76 nm, compared to 10
nm in the PN simulation. The activation scheme in the PN simulation activates a larger amount of particles, leaving even less
interstitial aerosol for in-cloud scavenging. In both simulations, in-cloud scavenging is relatively weak and has no substantial
560 influence on the typical aerosol size associated with the other processes.

The cloud-to-rain converted droplets contain aerosols with a median radius of 174 nm, which is 32% larger than the activated
aerosol in the KAPPA simulation. In the PN simulation, the relative size of aerosols involved in cloud-to-rain conversion is 275
nm (+43%). This increase in aerosol size is again linked to the higher cloud evaporation fraction. Higher cloud evaporation
allows larger droplets to evaporate completely, but the largest ones still remain and are converted to raindrops. In fact, by
565 now evaporating more droplets, conversion is further shifted towards the large-end tail of the cloud droplet size distribution.
Consequently, the typical aerosol radius for cloud-to-rain conversion increases together with the typical radius for resuspension.

Due to the strength of rain scavenging in the simulations, in-rain aerosol mass grows considerably. As a result, raindrops
evaporating in the cloud layer produce aerosols with a median radius of 456 nm in the KAPPA simulation. In the PN simulation,
the average aerosol radius associated rain evaporation is 794 nm. This difference is caused by the fact that the rain water and
570 in-rain aerosol mass is distributed over fewer and therefore larger raindroplets in the PN simulation. This leads to a direct
increase of the typical aerosol size associated with the evaporation of precipitation.

The average median radius of the aerosol particles scavenged by falling precipitation is 631 nm in the cloud layer in the
KAPPA simulation. Note that this exceeds the typical median radius for evaporated aerosols. The preference for scavenging
to remove the largest particles still plays a role for aerosols of this size, i.e. rain scavenging is an order of magnitude more
575 effective for mass than number (Croft et al., 2009, their Fig. 1).

Below the cloud layer (<500 m), falling precipitation has had more time to collect aerosol mass. Additionally, outside the
cloud the evaporation fraction is substantially higher. This leads to a considerable increase in the size of the resuspended
aerosols. In the KAPPA simulation, the typical median aerosol radius is 1.65 μm , 12.5 times larger than the initially activated

aerosols. The average size of the resuspended aerosols in the PN simulation is 2.91 μm . This is an even stronger increase of
580 15.2 times the size of the originally activated aerosols. Note that these large resuspended aerosols are prone to sedimentation,
a process that has been left out of the current simulations.

To summarize, the results of the KAPPA and PN simulations illustrate that the influence of cloud processing on the aerosol
size distribution depends on how much of the in-cloud and in-rain aerosol is ultimately removed. Due to collision-coalescence
585 of cloud droplets, aerosol mass is redistributed over fewer droplets. Complete evaporation of these droplets would release
aerosol particles larger than those originally activated and scavenged. However, when the clouds produce precipitation, the
largest cloud droplets containing most aerosol mass are the droplets most likely to be converted to precipitation and to be
removed from the atmosphere. Subsequent evaporation of the remaining droplets then also leads to a decrease of the average
aerosol size. It thus depends on the balance between evaporation fraction and precipitation, whether the average size of the
590 resuspended aerosols is larger or smaller than the initially activated aerosols. With a high evaporation fraction, fewer droplets
are transformed to rain and these contain larger aerosols on average. Additionally, when precipitation is formed, scaveng-
ing of aerosols by falling precipitation adds a substantial amount of aerosol mass to the rainwater. The aerosols released by
evaporation of these raindrops increase the average aerosol size considerably.

4 Discussion

595 The aerosol framework now implemented in the DALES model is specifically designed to gain insight in the aerosol-cloud
interactions and the effect on the aerosol population in particular. By incorporating aerosols into the modelling framework
and coupling it to the cloud microphysics, there is no longer a need for assumptions on how cloud characteristics change due
to changes in the aerosol population. Instead, measured (or modelled in large scale models) aerosol concentrations can be
used to calculate corresponding cloud characteristics. An important feature of the aerosol framework is the ability to simulate
600 multiple aerosol species, so that aerosol activation can be based on the aerosol characteristics in a fundamental way, i.e. through
 κ -Köhler theory. Moreover, the effect of ACI on the aerosol population can be determined for individual aerosol species.

However, this increased complexity requires additional validation of the simulated aerosol population. To better constrain
model results, there is particular interest in collocated cloud and aerosol measurements in, next to, and below clouds. Examples
of recent campaigns collecting this type of measurements are GoAmazon2014/5 (Martin et al., 2017) and DACCIWA (Flamant
605 et al., 2018). Observations of both aerosol size distribution and chemical composition are invaluable to the level of detail we
pursue here. Measurements of aerosols near cloud-base in combination with N_c provide insight in the process of activation.
Cloud processing of aerosols can be investigated by determining the aerosol characteristics near cloud edges or at the location
of dissipating clouds. Additionally, measuring aerosols in the wake of a precipitation zone allows for the validation of the
effect of rain scavenging and evaporation of precipitation on the aerosol population. As discussed in Sect. 3.1.3, the original
610 simulation length of vanZanten et al. (2011) was shortened from 24 to 6 hours to avoid a too strong depletion of the aerosol

population by wash-out. This would let the simulations diverge too much from the original case and decrease the already low simulated N_c and strengthen the rain formation at the expense of clouds forming and evaporation without precipitation.

615 Including aerosol emission and chemical formation to sustain aerosol levels would facilitate longer simulations. However, without observation-based constraints on these processes this would introduce additional uncertainty and partly negate the goal of this work to have a model that includes both sides of ACI: the effect of aerosols on cloud and vice versa. Simulated N_c would be a direct result of the chosen emission strength, basically going back to the BASE simulations in which N_c is prescribed.

The exploratory analysis performed in this work only considered domain average values of the clouds and aerosol. However, the richness of LES modelling allows for a deeper understanding of the aerosol-cloud interactions. Translating model data into quantitative results that do justice to the resolved complexity in LES simulations requires more comprehensive techniques. For
620 example, convective cell tracking described in Heikenfeld et al. (2019) enable this kind of research by tracking of individual clouds and averaging their statistics.

The introduction of aerosols puts increased demands on the numerical implementation of the cloud microphysical processes as well. Sect. 3.2.1 showed a trade-off between correct simulation of N_c or q_c . Because the aerosol population now determines
625 the cloud characteristics, a previously prescribed value like N_c can no longer be adjusted to improve model results. Especially cases like the RICO campaign (with a pristine environment and low values for N_c) might reveal issues that were previously hidden. At the same time, combined with detailed observations, our framework is an excellent starting point to improve the microphysics parameterization in LES models. Parameters of the microphysics framework that might strongly influence the model outcome are (1) the radius that separates cloud from raindrops and (2) the parameters that describe the size distribution
630 of the hydrometeors. Moreover, processes like autoconversion and accretion, as well as cloud droplet self-collection do not depend on N_c in the current numerical implementation of the cloud microphysics in DALES. A well-validated case of both aerosol and cloud characteristics could provide a good starting point to evaluate the accuracy modelled microphysical processes and its sensitivity to these critical parameters.

The difference in N_c between the KAPPA and PN simulations translated into substantial differences in the resulting aerosol
635 population. In fact, this difference in N_c is part of a more general issue on how to numerically address the microphysical process of aerosol activation. The number of activated aerosol particles is largely determined by the maximum value of supersaturation near cloud base (e.g. Derksen et al., 2009). Supersaturation is the result of the balance between the source of available moisture resulting from the dynamics and the sink of moisture by condensation on aerosols and cloud droplets. Currently, DALES uses a diagnostic description of cloud liquid water and a fixed value for supersaturation. Although this gives
640 a strict limitation to which aerosols can grow to cloud droplets, the modal aerosol framework does not allow this sharp cut-off in the size distribution. In subsequent timesteps, aerosol mass and number are redistributed within the lognormal modes. Consequently, a part of the large-end tail of the size distribution is considered to be large enough to activate each timestep. This results in a 'runaway' activation yielding unrealistic $N_c > 200 \text{ cm}^{-3}$ (not shown). This problem was also recognised in Pousse-Nottelmann et al. (2015), but the PN activation scheme limits activation by subtracting the number of existing cloud
645 droplets N_c from the calculated amount of newly activated aerosols. Furthermore, a hard limit is set by only allowing particles

larger than 35 nm to activate. A complete solution to this problem would be to use a sectional or bin approach to describe the aerosol population, which does allow changes to the shape of the size distribution and thus a sharp cut-off that results from activation. However, this flexibility comes with high computational cost; especially with a focus on the chemical composition of the aerosol population and the inclusion of multiple aerosol species (e.g. Kurppa et al. (2019), Table 2). A future improvement to DALES would be to replace the diagnostic calculation of cloud water by a prognostic variable. Supersaturation and activation can then be calculated interactively and be determined by the balance between available moisture resulting from the dynamics and available surface of aerosol and existing cloud droplets to condense on.

In Sect. 3.2.2, the comparison between the KAPPA and PN simulations illustrated important aspects of the interaction between aerosol and clouds. Here, we found an interesting competition between growth of aerosols through cloud processing and removal of the largest particles by precipitation. Future research could investigate the mechanisms that determine the balance between processing and removal. Settings like the pristine ocean of the RICO campaign alone might not be suitable for this as the low values of N_c inherently lead to rapid formation of precipitation and strong scavenging by falling precipitation. Simulations with higher aerosol burden and different meteorological settings should be used to investigate a large range of different cloud regimes.

5 Conclusions

The implementation of an explicit aerosol framework is a step forward in the simulation of aerosol-cloud interactions in the DALES model (Heus et al., 2010; Ouwersloot et al., 2017) as we can now quantify the feedback of the cloud microphysics on the aerosol population. Moreover, the aerosol module M7 (Vignati et al., 2004) represents an external mixture of multiple aerosol species. This allows an explicit and more fundamental approach to calculating aerosol activation by using κ -Köhler theory (Petters and Kreidenweis, 2007). Evaluation for the Rain in Shallow Cumulus over the Ocean (RICO) campaign (Rauber et al., 2007), showed that DALES reproduces the precipitating shallow cumulus clouds typical for this case. After evaluation with the RICO observations, our framework has been used to explore the feedback of aerosol-cloud interactions on the aerosol population. The main findings of this study are:

1. In the clean background atmosphere, virtually all in-cloud aerosol mass is gained through activation regardless of the activation scheme. In-cloud scavenging is inefficient at the low simulated cloud droplet concentrations. Despite the relatively rapid formation of precipitation, only 5-15% of the aerosol mass is converted to rain.
2. Most of the in-rain aerosol mass is gained through scavenging by falling precipitation. It is the most dominant removal process of aerosol (mass) from the atmosphere. For the aerosol mass incorporated in rain, resuspension after evaporation of falling precipitation is of similar magnitude as the aerosol mass removed from the atmosphere by precipitation reaching the surface. This is in stark contrast to the evaporation/sedimentation ratio of rain water, of which only ~10% reaches the surface in our simulations.

3. The strength of aerosol-cloud interaction differs considerably between aerosol species. Timescales associated with the ultimate removal of aerosol by sedimentation range from almost 4 days for organic matter to less than a day for sea salt. For water, the timescale is even slower due to the strong evaporation of precipitation caused by the meteorological conditions in RICO.
4. The change in aerosol radius between activated aerosol and aerosol resuspended from evaporated cloud droplets is found to be relatively small (5-10%). In contrast, the median radius of aerosols released by evaporating precipitation is an order of magnitude larger than the initially scavenged aerosol.

Future research will focus on evaluation of the M7-DALES framework under more polluted regimes in which cloud processing of the aerosol population may differ substantially. Additionally, further development includes the implementation of M7 aerosol microphysical processes (e.g. coagulation) and inclusion of aqueous-phase oxidation of dissolved (gaseous) species. The diagnostic approach to cloud water will be replaced by a prognostic calculation to incorporate the interaction between aerosols and clouds through changes in supersaturation.

Code availability. The DALES source code is available on <https://github.com/dalessteam/dales> (last access: 13 May 2019). The distribution is under the GNU General Public License v3. This line of development of DALES is currently in progress and still an unfinished research line. After completion, we intend to merge this branch into the main DALES repository. The exact version used in this work DALES4.1-M7 and case-specific input files can be downloaded from <http://doi.org/10.5281/zenodo.3241356>.

Author contributions. MdB and MK set up the research. MdB implemented the code in DALES and carried out the simulations. MdB interpreted the data and prepared the manuscript with comments and contributions from all co-authors.

Competing interests. The authors declare that they have no conflict of interest.

Acknowledgements. This work is supported by the Netherlands Organization for Scientific Research (NWO), project number GO/13-01. The computations were carried out on the Dutch national supercomputer Cartesius, and we thank SURFSara (www.surfsara.nl) for their support. We would like to thank Twan van Noije and Tommi Bergman for kindly providing aerosol profiles for the initialisation of our simulations, Betty Croft for providing the data used for the scavenging look-up tables, and Chiel van Heerwaarden, Huug Ouwersloot and Xabier Pedruzo Bagazgoitia for their support with the DALES code.

References

- Aan de Brugh, J. M. J., Ouwersloot, H. G., Vilà-Guerau de Arellano, J., and Krol, M. C.: A large-eddy simulation of the phase transition of ammonium nitrate in a convective boundary layer, *J. Geophys. Res.: Atmos*, 118, 826–836, <https://doi.org/10.1002/jgrd.50161>, 2013.
- Albrecht, B. A.: Aerosols, Cloud Microphysics, and Fractional Cloudiness, *Science*, 245, 1227–1230, <https://doi.org/10.1126/science.245.4923.1227>, 1989.
- Andrejczuk, M., Reisner, J. M., Henson, B., Dubey, M. K., and Jeffery, C. A.: The potential impacts of pollution on a non-drizzling stratus deck: Does aerosol number matter more than type?, *Journal of Geophysical Research: Atmospheres*, 113, <https://doi.org/10.1029/2007JD009445>, 2008.
- Arabas, S., Jaruga, A., Pawlowska, H., and Grabowski, W. W.: libcloudph++ 1.0: a single-moment bulk, double-moment bulk, and particle-based warm-rain microphysics library in C++, *Geosci. Model Dev.*, 8, 1677–1707, <https://doi.org/10.5194/gmd-8-1677-2015>, 2015.
- Barbaro, E., Vilà-Guerau de Arellano, J., Krol, M. C., and Holtslag, A. A. M.: Impacts of Aerosol Shortwave Radiation Absorption on the Dynamics of an Idealized Convective Atmospheric Boundary Layer, *Bound.-Lay. Meteorol.*, 148, 31–49, <https://doi.org/10.1007/s10546-013-9800-7>, 2013.
- Barbaro, E., Arellano, J. V.-G., Ouwersloot, H. G., Schröter, J. S., Donovan, D. P., and Krol, M. C.: Aerosols in the convective boundary layer: Shortwave radiation effects on the coupled land-atmosphere system, *J. Geophys. Res.: Atmos*, 119, 5845–5863, <https://doi.org/10.1002/2013JD021237>, 2014.
- Bergman et al., T.: Evaluation of a secondary organic aerosol scheme in TM5, in prep, 2019.
- Boucher, O., Randall, D., Artaxo, P., Bretherton, C., Feingold, G., Forster, P., Kerminen, V.-M., Kondo, Y., Liao, H., Lohmann, U., Rasch, P., Satheesh, S., Sherwood, S., Stevens, B., and Zhang, X.: Clouds and Aerosols, book section 7, pp. 571 – 658, Cambridge University Press, Cambridge, United Kingdom and New York, NY, USA, <https://doi.org/10.1017/CBO9781107415324.016>, 2013.
- Bretherton, C. S.: Insights into low-latitude cloud feedbacks from high-resolution models, *Philos. T. Roy. Soc. A*, 373, 20140415, <https://doi.org/10.1098/rsta.2014.0415>, 2015.
- Croft, B., Lohmann, U., Martin, R. V., Stier, P., Wurzler, S., Feichter, J., Posselt, R., and Ferrachat, S.: Aerosol size-dependent below-cloud scavenging by rain and snow in the ECHAM5-HAM, *Atmos. Chem. Phys.*, 9, 4653–4675, <https://doi.org/10.5194/acp-9-4653-2009>, 2009.
- Croft, B., Lohmann, U., Martin, R. V., Stier, P., Wurzler, S., Feichter, J., Hoose, C., Heikkilä, U., van Donkelaar, A., and Ferrachat, S.: Influences of in-cloud aerosol scavenging parameterizations on aerosol concentrations and wet deposition in ECHAM5-HAM, *Atmos. Chem. Phys.*, 10, 1511–1543, <https://doi.org/10.5194/acp-10-1511-2010>, 2010.
- de Bruine, M., Krol, M., van Noije, T., Le Sager, P., and Röckmann, T.: The impact of precipitation evaporation on the atmospheric aerosol distribution in EC-Earth v3.2.0, *Geosci. Model Dev.*, 11, 1443–1465, <https://doi.org/10.5194/gmd-11-1443-2018>, 2018.
- Derksen, J. W. B., Roelofs, G.-J. H., and Röckmann, T.: Influence of entrainment of CCN on microphysical properties of warm cumulus, *Atmos. Chem. Phys.*, 9, 6005–6015, <https://doi.org/10.5194/acp-9-6005-2009>, 2009.
- Fan, J., Wang, Y., Rosenfeld, D., and Liu, X.: Review of Aerosol-Cloud Interactions: Mechanisms, Significance, and Challenges, *J. Atmos. Sci.*, 73, 4221–4252, <https://doi.org/10.1175/JAS-D-16-0037.1>, 2016.
- Fan, J., Rosenfeld, D., Zhang, Y., Giangrande, S. E., Li, Z., Machado, L. A. T., Martin, S. T., Yang, Y., Wang, J., Artaxo, P., Barbosa, H. M. J., Braga, R. C., Comstock, J. M., Feng, Z., Gao, W., Gomes, H. B., Mei, F., Pöhlker, C., Pöhlker, M. L., Pöschl, U., and de Souza, R. A. F.: Substantial convection and precipitation enhancements by ultrafine aerosol particles, *Science*, 359, 411–418, <https://doi.org/10.1126/science.aan8461>, 2018.

- 740 Feingold, G. and Kreidenweis, S. M.: Cloud processing of aerosol as modeled by a large eddy simulation with coupled microphysics and aqueous chemistry, *J. Geophys. Res.-Atmos.*, 107, AAC 6–1–AAC 6–15, <https://doi.org/10.1029/2002JD002054>, 2002.
- Flamant, C., Knippertz, P., Fink, A. H., Akpo, A., Brooks, B., Chiu, C. J., Coe, H., Danuor, S., Evans, M., Jegede, O., Kalthoff, N., Konaré, A., Lioussé, C., Lohou, F., Mari, C., Schlager, H., Schwarzenboeck, A., Adler, B., Amekudzi, L., Aryee, J., Ayoola, M., Batenburg, A. M., Bessardon, G., Borrmann, S., Brito, J., Bower, K., Burnet, F., Catoire, V., Colomb, A., Denjean, C., Fosu-Amankwah, K., Hill, P. G., Lee, 745 J., Lathon, M., Maranan, M., Marsham, J., Meynadier, R., Ngamini, J.-B., Rosenberg, P., Sauer, D., Smith, V., Stratmann, G., Taylor, J. W., Voigt, C., and Yoboué, V.: The Dynamics–Aerosol–Chemistry–Cloud Interactions in West Africa Field Campaign: Overview and Research Highlights, *B. Am. Meteorol. Soc.*, 99, 83–104, <https://doi.org/10.1175/BAMS-D-16-0256.1>, 2018.
- Gong, W., Dastoor, A. P., Bouchet, V. S. B. S., Gong, S., Makar, P. A., Moran, M. D., Pabla, B., Menard, S., Crevier, L.-P., Cousineau, S., and Venkatesh, S.: Cloud processing of gases and aerosols in a regional air quality model (AURAMS), *Atmos. Res.*, 82, 248 – 275, 750 <https://doi.org/10.1016/j.atmosres.2005.10.012>, 14th International Conference on Clouds and Precipitation, 2006.
- Grabowski, W. W., Morrison, H., Shima, S.-I., Abade, G. C., Dziekan, P., and Pawlowska, H.: Modeling of Cloud Microphysics: Can We Do Better?, *B. Am. Meteorol. Soc.*, 100, 655–672, <https://doi.org/10.1175/BAMS-D-18-0005.1>, 2019.
- Heikenfeld, M., White, B., Labbouz, L., and Stier, P.: Aerosol effects on deep convection: the propagation of aerosol perturbations through convective cloud microphysics, *Atmos. Chem. Phys.*, 19, 2601–2627, <https://doi.org/10.5194/acp-19-2601-2019>, 2019.
- 755 Heus, T., van Heerwaarden, C. C., Jonker, H. J. J., Pier Siebesma, A., Axelsen, S., van den Dries, K., Geoffroy, O., Moene, A. F., Pino, D., de Roode, S. R., and Vilà-Guerau de Arellano, J.: Formulation of the Dutch Atmospheric Large-Eddy Simulation (DALES) and overview of its applications, *Geosci. Model Dev.*, 3, 415–444, <https://doi.org/10.5194/gmd-3-415-2010>, 2010.
- Hundsdoerfer, W., Koren, B., vanLoon, M., and Verwer, J.: A Positive Finite-Difference Advection Scheme, *J. Comput. Phys.*, 117, 35 – 46, <https://doi.org/https://doi.org/10.1006/jcph.1995.1042>, 1995.
- 760 Jaruga, A. and Pawlowska, H.: libcloudph++ 2.0: aqueous-phase chemistry extension of the particle-based cloud microphysics scheme, *Geosci. Model Dev.*, 11, 3623–3645, <https://doi.org/10.5194/gmd-11-3623-2018>, 2018.
- Khain, A. P., Beheng, K. D., Heymsfield, A., Korolev, A., Krichak, S. O., Levin, Z., Pinsky, M., Phillips, V., Prabhakaran, T., Teller, A., van den Heever, S. C., and Yano, J.-I.: Representation of microphysical processes in cloud-resolving models: Spectral (bin) microphysics versus bulk parameterization, *Rev. Geophys.*, 53, 247–322, <https://doi.org/10.1002/2014RG000468>, 2014RG000468, 2015.
- 765 Khairoutdinov, M. and Kogan, Y.: A New Cloud Physics Parameterization in a Large-Eddy Simulation Model of Marine Stratocumulus, *Mon. Weather Rev.*, 128, 229–243, [https://doi.org/10.1175/1520-0493\(2000\)128<0229:ANCPPI>2.0.CO;2](https://doi.org/10.1175/1520-0493(2000)128<0229:ANCPPI>2.0.CO;2), 2000.
- Kokkola, H., Korhonen, H., Lehtinen, K. E. J., Makkonen, R., Asmi, A., Järvenoja, S., Anttila, T., Partanen, A.-I., Kulmala, M., Järvinen, H., Laaksonen, A., and Kerminen, V.-M.: SALSA; a Sectional Aerosol module for Large Scale Applications, *Atmos. Chem. Phys.*, 8, 2469–2483, <https://doi.org/10.5194/acp-8-2469-2008>, 2008.
- 770 Koren, I., Martins, J. V., Remer, L. A., and Afargan, H.: Smoke Invigoration Versus Inhibition of Clouds over the Amazon, *Science*, 321, 946–949, <https://doi.org/10.1126/science.1159185>, 2008.
- Kurppa, M., Hellsten, A., Roldin, P., Kokkola, H., Tonttila, J., Auvinen, M., Kent, C., Kumar, P., Maronga, B., and Järvi, L.: Implementation of the sectional aerosol module SALSA2.0 into the PALM model system 6.0: model development and first evaluation, *Geosci. Model Dev.*, 12, 1403–1422, <https://doi.org/10.5194/gmd-12-1403-2019>, 2019.
- 775 Lebo, Z. J. and Seinfeld, J. H.: A continuous spectral aerosol-droplet microphysics model, *Atmos. Chem. Phys.*, 11, 12 297–12 316, <https://doi.org/10.5194/acp-11-12297-2011>, 2011.

- Martin, S. T., Artaxo, P., Machado, L., Manzi, A. O., Souza, R. A. F., Schumacher, C., Wang, J., Biscaro, T., Brito, J., Calheiros, A., Jardine, K., Medeiros, A., Portela, B., de Sá, S. S., Adachi, K., Aiken, A. C., Albrecht, R., Alexander, L., Andreae, M. O., Barbosa, H. M. J., Buseck, P., Chand, D., Comstock, J. M., Day, D. A., Dubey, M., Fan, J., Fast, J., Fisch, G., Fortner, E., Giangrande, S., Gilles, M., Goldstein, A. H., Guenther, A., Hubbe, J., Jensen, M., Jimenez, J. L., Keutsch, F. N., Kim, S., Kuang, C., Laskin, A., McKinney, K., Mei, F., Miller, M., Nascimento, R., Pauliquevis, T., Pekour, M., Peres, J., Petäjä, T., Pöhlker, C., Pöschl, U., Rizzo, L., Schmid, B., Shilling, J. E., Dias, M. A. S., Smith, J. N., Tomlinson, J. M., Tóta, J., and Wendisch, M.: The Green Ocean Amazon Experiment (GoAmazon2014/5) Observes Pollution Affecting Gases, Aerosols, Clouds, and Rainfall over the Rain Forest, *B. Am. Meteorol. Soc.*, 98, 981–997, <https://doi.org/10.1175/BAMS-D-15-00221.1>, 2017.
- 785 Matheou, G., Chung, D., Nuijens, L., Stevens, B., and Teixeira, J.: On the Fidelity of Large-Eddy Simulation of Shallow Precipitating Cumulus Convection, *Monthly Weather Review*, 139, 2918–2939, <https://doi.org/10.1175/2011MWR3599.1>, 2011.
- Mitra, S., Brinkmann, J., and Pruppacher, H.: A wind tunnel study on the drop-to-particle conversion, *J. Aerosol Sci.*, 23, 245 – 256, [https://doi.org/http://dx.doi.org/10.1016/0021-8502\(92\)90326-Q](https://doi.org/http://dx.doi.org/10.1016/0021-8502(92)90326-Q), 1992.
- Ouwensloot, H. G., Moene, A. F., Attema, J. J., and de Arellano, J. V.-G.: Large-Eddy Simulation Comparison of Neutral Flow Over a Canopy: Sensitivities to Physical and Numerical Conditions, and Similarity to Other Representations, *Bound.-Lay. Meteorol.*, 162, 71–89, <https://doi.org/10.1007/s10546-016-0182-5>, 2017.
- 790 Ovchinnikov, M. and Easter, R. C.: Modeling aerosol growth by aqueous chemistry in a nonprecipitating stratiform cloud, *J. Geophys. Res.-Atmos.*, 115, <https://doi.org/10.1029/2009JD012816>, 2010.
- Petters, M. D. and Kreidenweis, S. M.: A single parameter representation of hygroscopic growth and cloud condensation nucleus activity, *Atmos. Chem. Phys.*, 7, 1961–1971, <https://doi.org/10.5194/acp-7-1961-2007>, 2007.
- 795 Pousse-Nottelmann, S., Zubler, E. M., and Lohmann, U.: Microphysical processing of aerosol particles in orographic clouds, *AtJ. Atmos. Sci.mos. Chem. Phys.*, 15, 9217–9236, <https://doi.org/10.5194/acp-15-9217-2015>, 2015.
- Pringle, K. J., Tost, H., Pozzer, A., Pöschl, U., and Lelieveld, J.: Global distribution of the effective aerosol hygroscopicity parameter for CCN activation, *Atmos. Chem. Phys.*, 10, 5241–5255, <https://doi.org/10.5194/acp-10-5241-2010>, 2010.
- 800 Rauber, R. M., Stevens, B., Ochs, H. T., Knight, C., Albrecht, B. A., Blyth, A. M., Fairall, C. W., Jensen, J. B., Lasher-Trapp, S. G., Mayol-Bracero, O. L., Vali, G., Anderson, J. R., Baker, B. A., Bandy, A. R., Burnet, E., Brenguier, J.-L., Brewer, W. A., Brown, P. R. A., Chuang, R., Cotton, W. R., Di Girolamo, L., Geerts, B., Gerber, H., Göke, S., Gomes, L., Heikes, B. G., Hudson, J. G., Kollias, P., Lawson, R. R., Krueger, S. K., Lenschow, D. H., Nuijens, L., O’Sullivan, D. W., Rilling, R. A., Rogers, D. C., Siebesma, A. P., Snodgrass, E., Stith, J. L., Thornton, D. C., Tucker, S., Twohy, C. H., and Zuidema, P.: Rain in Shallow Cumulus Over the Ocean: The RICO Campaign, *B. Am. Meteorol. Soc.*, 88, 1912–1928, <https://doi.org/10.1175/BAMS-88-12-1912>, 2007.
- 805 Roelofs, G. J. H.: Drop size dependent sulfate distribution in a growing cloud, *J. Atmos. Chem.*, 14, 109–118, <https://doi.org/10.1007/BF00115227>, 1992.
- Rosenfeld, D., Sherwood, S., Wood, R., and Donner, L.: Climate Effects of Aerosol-Cloud Interactions, *Science*, 343, 379–380, <https://doi.org/10.1126/science.1247490>, 2014.
- 810 Schneider, T., Teixeira, J., Bretherton, C. S., Brient, F., Pressel, K. G., Schär, C., and Siebesma, A. P.: Climate goals and computing the future of clouds, *Nat. Clim. Change*, 7, 3, <https://doi.org/10.1038/nclimate3190>, 2017.
- Schultz, M. G., Stadtler, S., Schröder, S., Taraborrelli, D., Franco, B., Krefting, J., Henrot, A., Ferrachat, S., Lohmann, U., Neubauer, D., Siegenthaler-Le Drian, C., Wahl, S., Kokkola, H., Kühn, T., Rast, S., Schmidt, H., Stier, P., Kinnison, D., Tyndall, G. S., Or-

lando, J. J., and Wespes, C.: The chemistry–climate model ECHAM6.3-HAM2.3-MOZ1.0, *Geosci. Model Dev.*, 11, 1695–1723, <https://doi.org/10.5194/gmd-11-1695-2018>, 2018.

Seifert, A.: On the Parameterization of Evaporation of Raindrops as Simulated by a One-Dimensional Rainshaft Model, *J. Atmos. Sci.*, 65, 3608–3619, <https://doi.org/10.1175/2008JAS2586.1>, 2008.

Seifert, A. and Beheng, K. D.: A double-moment parameterization for simulating autoconversion, accretion and selfcollection, *Atmospheric Research*, 59–60, 265 – 281, [https://doi.org/10.1016/S0169-8095\(01\)00126-0](https://doi.org/10.1016/S0169-8095(01)00126-0), 13th International Conference on Clouds and Precipitation, 2001.

Seifert, A. and Beheng, K. D.: A two-moment cloud microphysics parameterization for mixed-phase clouds. Part 1: Model description, *Meteorol. Atmos. Phys.*, 92, 45–66, <https://doi.org/10.1007/s00703-005-0112-4>, 2006.

Seinfeld, J. H., Bretherton, C., Carslaw, K. S., Coe, H., DeMott, P. J., Dunlea, E. J., Feingold, G., Ghan, S., Guenther, A. B., Kahn, R., Kraucunas, I., Kreidenweis, S. M., Molina, M. J., Nenes, A., Penner, J. E., Prather, K. A., Ramanathan, V., Ramaswamy, V., Rasch, P. J., Ravishankara, A. R., Rosenfeld, D., Stephens, G., and Wood, R.: Improving our fundamental understanding of the role of aerosol-cloud interactions in the climate system, *P. Natl. Acad. Sci. USA*, 113, 5781–5790, <https://doi.org/10.1073/pnas.1514043113>, 2016.

Shima, S., Kusano, K., Kawano, A., Sugiyama, T., and Kawahara, S.: The super-droplet method for the numerical simulation of clouds and precipitation: a particle-based and probabilistic microphysics model coupled with a non-hydrostatic model, *Quarterly Journal of the Royal Meteorological Society*, 135, 1307–1320, <https://doi.org/10.1002/qj.441>, 2009.

Sommeria, G. and Deardorff, J. W.: Subgrid-Scale Condensation in Models of Nonprecipitating Clouds, *J. Atmos. Sci.*, 34, 344–355, [https://doi.org/10.1175/1520-0469\(1977\)034<0344:SSCIMO>2.0.CO;2](https://doi.org/10.1175/1520-0469(1977)034<0344:SSCIMO>2.0.CO;2), 1977.

Stevens, B. and Feingold, G.: Untangling aerosol effects on clouds and precipitation in a buffered system, *Nature*, 461, 607–613, <https://doi.org/10.1038/nature08281>, 2009.

Stevens, B. and Seifert, A.: Understanding macrophysical outcomes of microphysical choices in simulations of shallow cumulus convection, *J. Meteorol. Soc. Jap. Ser. II*, 86A, 143–162, <https://doi.org/10.2151/jmsj.86A.143>, 2008.

Tonttila, J., Maalick, Z., Raatikainen, T., Kokkola, H., Kühn, T., and Romakkaniemi, S.: UCLALES–SALSA v1.0: a large-eddy model with interactive sectional microphysics for aerosol, clouds and precipitation, *Geosci. Model Dev.*, 10, 169–188, <https://doi.org/10.5194/gmd-10-169-2017>, 2017.

Twomey, S.: The Influence of Pollution on the Shortwave Albedo of Clouds, *J. Atmos. Sci.*, 34, 1149–1152, [https://doi.org/10.1175/1520-0469\(1977\)034<1149:TIOPOT>2.0.CO;2](https://doi.org/10.1175/1520-0469(1977)034<1149:TIOPOT>2.0.CO;2), 1977.

van Noije, T. P. C., Le Sager, P., Segers, A. J., van Velthoven, P. F. J., Krol, M. C., Hazeleger, W., Williams, A. G., and Chambers, S. D.: Simulation of tropospheric chemistry and aerosols with the climate model EC-Earth, *Geosci. Model Dev.*, 7, 2435–2475, <https://doi.org/10.5194/gmd-7-2435-2014>, 2014.

vanZanten, M. C., Stevens, B., Nuijens, L., Siebesma, A. P., Ackerman, A. S., Burnet, F., Cheng, A., Couvreux, F., Jiang, H., Khairoutdinov, M., Kogan, Y., Lewellen, D. C., Mechem, D., Nakamura, K., Noda, A., Shipway, B. J., Slawinska, J., Wang, S., and Wyszogrodzki, A.: Controls on precipitation and cloudiness in simulations of trade-wind cumulus as observed during RICO, *Journal of Advances in Modeling Earth Systems*, 3, <https://doi.org/10.1029/2011MS000056>, 2011.

Vignati, E., Wilson, J., and Stier, P.: M7: An efficient size-resolved aerosol microphysics module for large-scale aerosol transport models, *J. Geophys. Res. Atmos.*, 109, <https://doi.org/10.1029/2003JD004485>, 2004.

- 850 Vilà-Guerau de Arellano, J., Patton, E. G., Karl, T., van den Dries, K., Barth, M. C., and Orlando, J. J.: The role of boundary layer dynamics on the diurnal evolution of isoprene and the hydroxyl radical over tropical forests, *J. Geophys. Res.: Atmos.*, 116, <https://doi.org/10.1029/2010JD014857>, 2011.
- Vilà-Guerau de Arellano, J., Ouwersloot, H. G., Baldocchi, D., and Jacobs, C. M. J.: Shallow cumulus rooted in photosynthesis, *Geophysical Research Letters*, 41, 1796–1802, <https://doi.org/10.1002/2014GL059279>, 2014.
- 855 Wehner, B., Werner, F., Ditas, F., Shaw, R. A., Kulmala, M., and Siebert, H.: Observations of new particle formation in enhanced UV irradiance zones near cumulus clouds, *Atmos. Chem. Phys.*, 15, 11 701–11 711, <https://doi.org/10.5194/acp-15-11701-2015>, 2015.
- Wesseling, P.: von Neumann stability conditions for the convection-diffusion equation, *IMA J. Numer. Anal.*, 16, 583–598, <https://doi.org/10.1093/imanum/16.4.583>, 1996.
- Wicker, L. J. and Skamarock, W. C.: Time-Splitting Methods for Elastic Models Using Forward Time Schemes, *Mon. Weather Rev.*, 130, 2088–2097, [https://doi.org/10.1175/1520-0493\(2002\)130<2088:TSMFEM>2.0.CO;2](https://doi.org/10.1175/1520-0493(2002)130<2088:TSMFEM>2.0.CO;2), 2002.
- 860