

**Anonymous referee #1**  
**Authors response**  
**(Changes in manuscript)**

This paper is a valid contribution to the scientific literature. It assesses the performance of the CCLM v5.0 for the Weddell Sea region. I have one general and a couple of specific concerns regarding the paper. I recommend the paper to be published only after these concerns have been adequately addressed.

Using Re-analyses data as reference in the validation is problematic. A recent paper by Gossart et al., (2019) for example shows strong warm biases in the interior of the continent in the different re-analyses products. It would be much better if only the observations were used for model validation. I recommend to remove the discussion of the re-analyses and remove fig 3, 4 and 5 from the paper. If the authors feel strongly about keeping the re-analyses in their paper, it needs to be framed differently than is done now. From a comparison with observations – it can be investigated whether there is an added value in CCLM compared to the (driving) re-analyses. This can – for example – be done by extending figure 7, 8 and 9 and include the re-analyses here – if you think plots become too busy, you can differentiate winter and summer.

We tried to take also comment 6 from referee #2 into account. We liked the idea of having Fig.3-5 at the beginning of the paper to give an impression of the performance of CCLM in comparison to AMPS and reanalyses. Because the later verifications are just single point observations that need to be seen in the right context. For example, the climatological difference of C15, T15, AMPS, ERA5/Interim are strongest over the east Antarctic plateau. But in this area we just have one station in the verifications shown later (surface and radio sounding).

We tried to address all raised concerns by moving the subsection 3.1 “Model and reanalyses” into another new section “Comparison” between the section “Data and Methods” and “Verification” and revising the section. It now states more clearly that AMPS and ERA5/Interim are not to be taken as verification data (we changed for example the phrasing “bias” to “difference” in the text and Fig. 3, 4 and 5).

We added “a short comparison to another model and reanalyses (section 3), then” to the introduction and renamed (and moved) the section to “Comparison with model and reanalyses”.

In this section we changed “bias” to “difference” added two paragraphs: “Although a verification with measurements is preferable, due to the small number of stations in polar regions this is not possible for the whole model domain. A comparison to other simulations is therefore an addition to the evaluation, although it has its limits. Gossart et al. (2019) found that in some respects different reanalyses (including ERA5 and ERA-Interim) differ greatly for Antarctica and thus comparisons of CCLM with simulations should not be seen as a validation.”

and

“The study by Gossart et al. (2019) showed the largest differences in mean temperature between reanalyses over the interior Antarctica during winter (approx. 8 K) and that ERA and ERA-Interim are warmer than the observations. An evaluation of AMPS (Fig. A1 in Bromwich et al., 2005) showed only a small bias (down to -3 K) of AMPS in the interior Antarctica. Verifications using surface

and radio sounding data (shown in section 4) confirm that C15 is too warm over the plateau and that this could be attributed to a too strong mixing in the surface boundary layer.”

Related to that, I recommend to restructure the paper: 1) statistical analysis with station data, 2) comparison with Halley, 3) comparison with AWS3 buoys, 4) comparison with radiosondes 5) comparison with lidar

We actually wanted the comparison with Halley (Fig.6) as a case study before the statistical analysis. We moved the reanalysis/model section as proposed. (see comment above).

The methodology describing the sea ice is not completely clear: Is a fractional sea ice cover used in the model? This is particularly relevant when studying atmosphere-iceocean interactions – a goal that the authors have in mind. Can one grid box have sea ice classes of different thickness? Please clarify and also state the limitation associated with the assumptions made in the model.

We revised the section concerning the sea ice also with respect to the referee’s later comment about ice thickness and fractions and referee #2 comment 3.

Concerning this comment we added to section 2.1: “A fractional sea ice cover is not used in the model, thus for each grid box there is only one value of sea ice thickness that is assumed to cover the whole grid box. Benefits of modelling a fractional sea ice cover are investigated in Gutjahr et al. (2016).”

The reduction of minimal diffusion coefficients for heat and momentum does indeed improve the performance in the interior, but deteriorates the performance on the ice shelves. Esp. in Fig 7 there is a strong increase in RMSE in winter over the east coast (and southern peninsula). This should be stated more clearly in the abstract and conclusions (in esp. the sentence ‘Differences in other regions were small’ is somewhat misleading). Do the authors have any idea how to improve the performance over the ice shelves? Is the albedo of the ice shelves correctly represented in the model and might deficiencies in albedo play a role?

The albedo of 0.8 is reasonable (see e.g. [doi.org/10.1007/BF00120464](https://doi.org/10.1007/BF00120464)), but most likely plays no role, as the RMSE is biggest in winter when no solar radiation is present. There is no general solution for improvement for the performance over ice shelves, since the Ronne-Filchner Ice Shelf (station 6) and Brunt Ice Shelf (station 4) show an increase in RMSE, but the Larsen Ice Shelf (station 12) shows a decrease for the new parameterization.

We removed the sentence “Differences in other regions were small.” From the abstract and conclusion and added in the abstract “, but resulted in a negative bias for some coastal regions.”

Related to the previous point: Some information on the snow module should be included in the paper. Are albedo variations taken into account? How is the snow profile initialized and is this realistic? Even though this is a run in forecast mode, I assume that the surface is freely evolving. Is that right? Are snow temperatures drifting away from the forcing or is this not the case.

We made revisions to include more details about this (we modified Table 2 accordingly).

We added in section 2.1: “The snow temperature profile is initialized with the forcing data, then the snow temperatures freely evolve. The surface albedo for inland ice and ice shelves is kept constant and has no seasonal variations. The albedo of sea ice is parameterized as a function of ice thickness and temperature by a modified Køltzow scheme (Køltzow, 2007) as described in Gutjahr et al. (2016a).”

We also added in section 2.1.: “For grid points with a sea ice thickness of 0.1 m the modified Køltzow scheme yields an albedo of 0.07 and we assume no snow cover. For a thickness of 1 m the albedo is 0.84 (for temperatures lower than - 2°C) and fixed snow layer of 10 cm snow cover (Schröder et al. 2011) is assumed.”

I am not sure if the forecast mode is the best when studying atmosphere ice ocean interactions – the sea ice cover in the driving re-analyses can be different than the observed cover and in that way processes related to atmosphere ice ocean interactions can be destroyed. A discussion on this topic in the conclusions / future work would be welcome. Moreover, it should be clearly indicated in abstract and conclusions that the model is used in forecast mode.

We use daily updated sea-ice concentrations from satellite data (6 km resolution) in the forecast mode, but we use a 6 hour spin up to allow for the atmosphere to adapt to the difference between the high-resolution sea ice data from satellite and the coarse-resolution temperatures from ERA-Interim.

We added “and used in forecast mode” in the abstract and “in forecast mode and” in the summary.

We added the sentence in section 2.1: “We used the first 6 hours as spin up to allow for the atmosphere to adapt to the difference between the high-resolution sea ice data from satellite and the coarse-resolution temperatures from ERA-Interim.”

At the end of page 3 you describe you have a sea ice thickness of 0 m when the sea ice cover is 0-15%. I am not sure what this means – does it mean that sea ice is simply ignored for these small fractional coverages? Although I did not dive into the reference, the value of 0.1 m for fractions between 15-70% seems very low to me. Can you somehow extend the argumentation on these values in the paper. Again this is quite relevant for the application that the authors have in mind.

Yes, with an ice thickness 0 m we meant open water. We corrected it.

The value of 0.1 m for fractions between 15-70% is justified by studies of sea ice thickness in polynyas (see e.g. <https://doi.org/10.5194/tc-10-2999-2016>). A threshold of 70% is a well-accepted value for the detection of polynyas. Many observational studies have shown that only a small area of wintertime polynyas is ice-free. We assume this for 0-15% sea ice concentration, as 15% is also a common threshold for the ice edge.

We changed the sentence to: “Grid points with a sea ice concentration of 0-15% are set to open water. For 15-70% a sea ice thickness of 0.1 m is assumed (see e.g. Gutjahr et al., 2016b). For 70-100% we assume a thickness of 1 m, which is a reasonable estimate for the Weddell Sea (see Kurtz and Markus, 2012).”

Page 5 line 27 – you compare hourly averaged observations with grid box average instantaneous model output. You have to motivate this better – what is the typical advection speed and to which horizontal length scale does a time period of one hour correspond? Is it still possible to compare models and re-analyses with different resolutions if an evaluation is performed in this way. This point definitely needs more attention and a solid methodology needs to be presented and executed.

This is a general question of comparison of model data with observations at a point. As mentioned, model data represent volume averages over a grid box. If you only look at the advection speed, then a 10 m/s speed would correspond to a distance of 36 km, which is about two times the horizontal grid spacing for C15/T15 and seven times for C05/T05. On the other hand, the horizontal grid distance is not the resolution of the model in the sense of the representation of processes. Using spectral analysis methods for CCLM it was found that the effective model resolution is at least 5-7 times the horizontal grid spacing (Zentek et al. 2016, 10.1175/JCLI-D-15-0540.1). An instantaneous model output at a grid point is therefore always a smoothed value over a much larger scale than the grid distance. For the lidar data, it is the other way round. Here the sampling for a single measurement is a few seconds (and thus contains also turbulence), and a wind profile corresponds to a time scale of 1-2 minutes. Therefore, we averaged the profiles over time in order to remove some of the small-scale variability. The same problems occur when model data is compared e.g. to radio soundings. It is generally assumed that the time of the ascent is e.g. 1200 UTC, but in reality the ascent is over about two hours and the 1200 UTC sonde is launched much earlier. It is also not clear, if the synoptic observations and AWS data used for the comparison are really averages over an hour or if they are e.g. 10min averages every hour. In summary, we follow the methodology of previous verification studies. We rephrased the sentence, on why we averaged the lidar data, but we will not discuss all other possible problems.

Before:

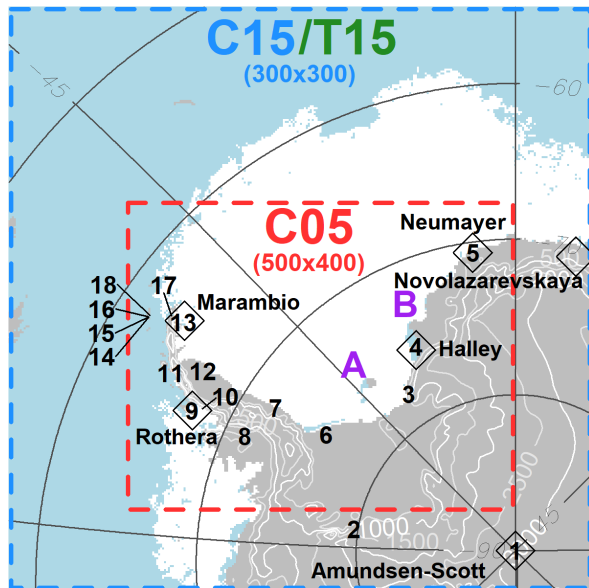
“Further note that the lidar data is an average over one hour around every full hour, which smooths the data and makes it better comparable to the simulation data that represent the wind average over the whole model grid box.”

Now:

“Further note that the lidar data is an average over one hour around every full hour, which removes small-scale variability as the single measurements were done approximately every 15 min for 1-2 min. This makes it better comparable to the simulation data, because although the output is instantaneous, it unlikely shows turbulence on such a small scale as it always represent the wind average over the whole model grid box.”

Figure 7, 8, and 9 are key figures to the paper, but difficult to interpret for the reader. Consider remaking them by plotting the box plots on a map, so that the reader directly knows to which station the comparison belong and is facilitated in the interpretation.

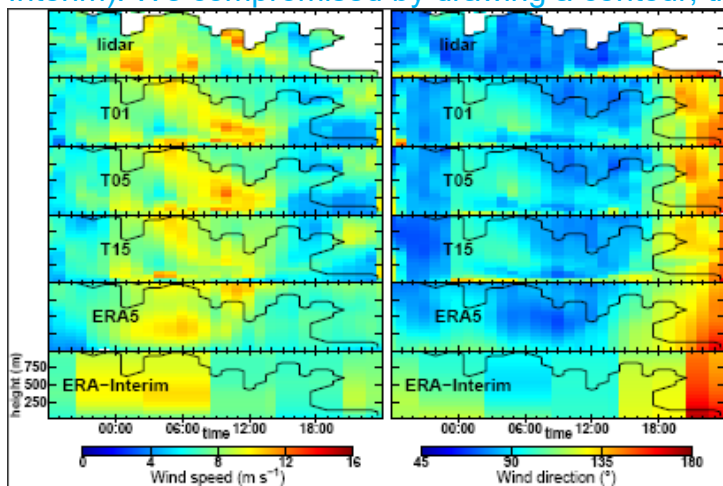
We adapted the map (Fig. 1) by replacing the symbols with the stations numbers used in Fig. 7, 8 and 9.



Consider switching Fig 11 with Fig 12.  
 We switched them.

Fig. 15 and 16: to facilitate the visual comparison, please remove the parts that are not measured with the lidar.

By removing these parts, some information would also be lost (e.g. the wind maxima around 11:00 UTC in 750 m height in Fig.15 that is present in ERA5 but not in ERA-Interim). We compromised by drawing a contour, thus enhancing the visual comparison.



For the last part with the lidar comparison, also an evaluation of higher resolution integrations is added. Since sensitivity to resolution is small, I recommend to leave out this comparison. It is sufficient to just make a note saying that decreasing the resolution to 5 or 1 km does not affect the wind patterns at the location of the lidar.

Generally we agree. On the other hand, not much space is gained by leaving that out these results and readers prefer to see the results directly, so we kept it.

I suggest to merge the summary and conclusion and outlook section as there is some redundancy.

The summary is more detailed while the conclusion and outlook section is more general (and very short). Thus we think it is justified to stay with the two separate sections.

Reference:

Gossart, A., Helsen, S., Lenaerts, J.T M., Vanden Broucke, S., van Lipzig, N.P M., Souverijns, N. (2019). An Evaluation of Surface Climatology in State-of-the-Art Reanalyses over the Antarctic Ice Sheet. JOURNAL OF CLIMATE, 32 (20), 6899-6915. doi: 10.1175/JCLI-D-19-0030.1

=====

## Anonymous referee #2

### Authors response

#### (Changes in manuscript)

In this paper the authors present an interesting series of climate simulations for the Weddell Sea region of Antarctica run using the CCLM model version 5. They test two different turbulence parameterisations and use observations from manned and automatic weather stations as well as radiosondes and Lidar measurements to assess how well the model downscales Antarctic climate and the potential uses of CCLM in modelling atmosphere sea ice and ocean interactions.

This is an interesting paper presenting solid work evaluating a regional climate model in Antarctica with a range of data sources. It is well written and easy to follow and is in fact a pretty good model of an evaluation paper for other groups who run climate simulations in the polar regions. I have a few comments that I think could help to improve the paper:

1) My main comment is the lack of detail in describing the model set-up. As one example, in section 2.1 (page 3 lines 6-11) the modifications to the turbulence parameterisation is discussed. The improvement in results shown in the figures is significant and it is therefore important, given also that this is a GMD paper, to be clear on exactly what was implemented.

We changed the paragraph:

Before:

“In the T15 simulation, the minimal diffusion coefficients for heat and momentum were lowered (from 0.4 to 0.01  $\text{m}^2\text{s}^{-1}$ ) to allow for a very stable boundary layer over the Antarctic ice sheet during winter. Further, the parametrization of the impact of the inhomogeneity of the surface on the turbulent kinetic energy (TKE) was modified. These modifications are based on the studies of Cerenzia et al. (2014), Hebbinghaus and Heinemann (2006) and Souverijns et al. (2019).”

Now:

“These modifications are based on the studies of Cerenzia et al. (2014), Hebbinghaus and Heinemann (2006) and Souverijns et al. (2019). In the standard version of CCLM, the diffusion coefficients for heat and momentum are restricted to the minimal value of 0.4  $\text{m}^2\text{s}^{-1}$ . In the T15 simulation, these minimal diffusion



coefficients were set to  $0.01 \text{ m}^2\text{s}^{-1}$  to allow for a very stable boundary layer (SBL) over the Antarctic ice sheet during winter. Further, the standard setup of CCLM uses a parameterization of the impact of the inhomogeneity of the surface via the energy transfer from subgrid scale eddies on the turbulent kinetic energy (TKE). Since this leads to an overestimation of the TKE in the SBL (Cerenzia et al. 2014), this parameterization was removed in the T15 runs.”

2) Similarly when looking at the results compared with the station data it is not really clear what surface scheme is being used here as this may also have an impact on the biases shown.

We added to section 2.1:

“Over land, we use the standard land surface model of CCLM (TERRA, see archived documentation under zenodo (Zentek, 2019). The soil model has eight layers (down to 15 m) and allows for an additional snow layer on top of the soil, which varies with precipitation and sublimation. For the land ice regions, soil was replaced by snow using the parameters listed in Table 2.”

3) The section on sea ice and SST setup is fairly clear but the authors do not mention if there is snow on sea ice and if/how this is dealt with in the model. Snow on sea ice can have important effects on the energy balance and it would be interesting to hear more about this aspect in CCLM.

We revised the section concerning the sea ice also with respect to the comments of referee #1.

Concerning this comment we added in section 2.1: “The snow temperature profile is initialized with the forcing data, then the snow temperatures freely evolve. The surface albedo for inland ice and ice shelves is kept constant and has no seasonal variations. The albedo of sea ice is parameterized as a function of ice thickness and temperature by a modified Køltzow scheme (Køltzow, 2007) as described in Gutjahr et al. (2016a).”

We also added in section 2.1.: “For grid points with a sea ice thickness of 0.1 m the modified Køltzow scheme yields an albedo of 0.07 and we assume no snow cover. For a thickness of 1 m the albedo is 0.84 (for temperatures lower than  $-2^\circ\text{C}$ ) and fixed snow layer of 10 cm snow cover (Schröder et al. 2011) is assumed.”

4) It would similarly be useful to briefly discuss if/how similar this model version is with others that have been published recently such as by Gossart et al and Souverijns et al.

We added to section 2.1: “Lastly we want to point out some differences between the present model setup and the setup of Souverijns et al. (2019), as they also used the CCLM model for simulations in the Antarctic. Souverijns et al. (2019) use CCLM with the community land model CLM (van Kampenhout et al., 2017), while we use default land surface model of CCLM with the adaptations described above. While we use daily high-resolution (6 km) sea ice data from satellites, they use coarse resolution ERA-Interim data (80 km) for the sea ice. In addition, they use only the standard one-layer sea ice model of CCLM.”

5) Is there nudging or relaxation in the domain or is forcing applied only on the boundaries? This has been shown by van Wessem to have a very significant affect on simulated Antarctic climate and details should be included if it is used

We appended another sentence to the last changes concerning the last comment: "They also ran CCLM in climate mode and applied spectral nudging, while we used forecast mode with a restart every day and applied forcing only at the boundaries."

6) Figures 3- 5 showing the bias with respect to the different reanalyses is very interesting, in particular because it seems clear then reanalyses themselves disagree substantially in some locations. This point is not however well expressed within the paper and should be brought to the fore as it makes it challenging to verify against a reanalysis product if the reanalysis itself has some issues.

We tried to take also the first comment from referee #1 into account and made an effort to express more clearly the issues of reanalyses and discuss the comparison in a way that gives it more importance on the one hand (e.g. by moving it to a new separate section of its own), but also raises awareness of the limits of such a comparison on the other hand.

We added "a short comparison to another model and reanalyses (section 3), then" to the introduction and renamed (and moved) the section to "Comparison with model and reanalyses".

In this section we changed "bias" to "difference" added two paragraphs: "Although a verification with measurements is preferable, due to the small number of stations in polar regions this is not possible for the whole model domain. A comparison to other simulations is therefore an addition to the evaluation, although it has its limits. Gossart et al. (2019) found that in some respects different reanalyses (including ERA5 and ERA-Interim) differ greatly for Antarctica and thus comparisons of CCLM with simulations should not be seen as a validation."

and

"The study by Gossart et al. (2019) showed the largest differences in mean temperature between reanalyses over the interior Antarctica during winter (approx. 8 K) and that ERA and ERA-Interim are warmer than the observations. An evaluation of AMPS (Fig. A1 in Bromwich et al., 2005) showed only a small bias (down to -3 K) of AMPS in the interior Antarctica. Verifications using surface and radio sounding data (shown in section 4) confirm that C15 is too warm over the plateau and that this could be attributed to a too strong mixing in the surface boundary layer."

---

### Several smaller corrections on our part

Correted the Souverijns et al.2019/2018 citation

Correted some spelling errors

Small correction related to other changes (e.g. changing "filled squares" to "diamonds")



# Verification of the regional atmospheric model CCLM v5.0 with conventional data and Lidar lidar measurements in Antarctica

Rolf Zentek and Günther Heinemann

Department of Environmental Meteorology, University of Trier, Germany

**Correspondence:** Rolf Zentek (zentek@uni-trier.de)

**Abstract.** The non-hydrostatic regional climate model CCLM was used for a long-term hindcast run (2002-2016) for the Weddell Sea region with resolutions of 15 and 5 km and two different turbulence parametrizations. CCLM was nested in ERA-Interim data [and used in forecast mode](#). We prescribed sea-ice concentration from satellite data, and used a thermodynamic sea-ice model. The performance of the model was evaluated in terms of temperature and wind using data from Antarctic stations, AWS over land and sea ice, operational forecast model and reanalyses data, and lidar wind profiles. For the reference run we found a warm bias for the near-surface temperature over the Antarctic plateau. This bias was removed in the second run by adjusting the turbulence parametrization, which results in a more realistic representation of the surface inversion over the plateau. ~~Differences in other regions were small, but resulted in a negative bias for some coastal regions.~~ A comparison with measurements over the sea ice of the Weddell Sea by three AWS buoys for one year showed small biases for temperature around  $\pm 1$  K and for wind speed of  $1 \text{ ms}^{-1}$ . Comparisons of radio soundings showed a model bias around zero and a RMSE of 1-2 K for temperature and of 3-4  $\text{ms}^{-1}$  for wind speed. The comparison of CCLM simulations at resolutions down to 1 km with wind data from Doppler Lidar lidar measurements during December 2015 and January 2016 yielded almost no bias in wind speed and RMSE of ca.  $2 \text{ ms}^{-1}$ . Overall CCLM shows a good representation of temperature and wind for the Weddell Sea region. These results encourage for further studies using CCLM data for the regional climate in the Antarctic at high resolutions and the study of atmosphere-ice-ocean interactions processes.

## 1 Introduction

Regional climate models (RCMs) are a valuable tool for improving our understanding of processes and interactions of the climate system in the polar regions. These processes are e.g. atmosphere-ice-ocean (AIO) interactions, which are particularly pronounced when sea ice formation is involved. This is associated with strong impacts on the surface energy fluxes and the atmospheric boundary layer (ABL). The added value of RCMs compared to coarser reanalysis and Global Climate Models (GCMs) has been shown in a number of studies (e.g., Rummukainen, 2010) and is the background of the POLAR-CORDEX (COordinated Regional Downscaling Experiment) initiative (Akperov et al., 2018). For the polar regions, the spatial and temporal coverage by the observational network is sparse compared to mid-latitudes, therefore RCMs are the only means to provide climatological information at a high resolution with full spatial coverage (e.g., Kohnemann et al., 2017). High-resolution atmospheric simulations are also important for forcing ocean models (Haid et al., 2015), the understanding of the

surface mass balance ([Souverijns et al., 2019](#); [Gorodetskaya et al., 2014](#)) ([Souverijns et al., 2018](#); [Gorodetskaya et al., 2014](#)) and topographic effects such as foehn winds, which could play a role for the instability of ice ~~shelFs~~ shelves (Cape et al., 2015) as well as katabatic winds (Ebner et al., 2014; Heinemann, 1997).

For the Antarctic, van Lipzig (2004) show that for a sufficient consideration of topography-induced atmospheric processes a resolution of at least 15 km is necessary. van Lipzig (2004) used the hydrostatic regional climate model RACMO (Regional Atmospheric Climate Model) with 14 km resolution for the period 1987-1993. van Wessem et al. (2015) used also the RACMO model at a high resolution of 5.5 km over the period 1979–2013 for the Antarctic Peninsula (AP) and found more detailed and more pronounced temperature and wind speed gradients compared to the ERA-Interim forcing (approx. 80 km horizontal resolution), which are mostly related to the katabatic wind. However, the sea ice cover data set with 80 km resolution and the assumption that non-hydrostatic effects are small at 5 km resolution are drawbacks of that study. Foehn winds were studied by Elvidge et al. (2015) particularly for the Larsen C ice shelf using the Met Office Unified Model at 1.5 km grid size. King et al. (2017) used model data from the Antarctic Mesoscale Prediction System (AMPS) with 5 km resolution for the summer season 2010/11 to study foehn wind effects also over Larsen C Ice Shelf. Turton et al. (2017) studied foehn effects over Larsen C Ice Shelf for May 2011 using the non-hydrostatic polar WRF model with 1.5 and 5 km resolution and find in general better results for the higher resolution. The latter studies were performed with non-hydrostatic models, but for rather short periods. The need of non-hydrostatic models for high-resolution regional climate simulations is outlined by Giorgi and Gutowski (2015) and Prein et al. (2015).

In the present study the regional non-hydrostatic Consortium for Small-Scale Modeling (COSMO) model in Climate Mode [COSMO-CLM (CCLM)] is used to run simulations for the Antarctic with resolutions of  $\approx 15$  and  $\approx 5$  km for the time period 2002 to 2016. The simulation is forced with ERA-Interim reanalysis data and is the first long-term hindcast simulation with a high-resolution non-hydrostatic regional climate model for the Weddell Sea region. The main purpose of the simulations is the study of AIO interactions in polynyas (see Ebner et al., 2014), which require a high resolution also in the sea ice data used as boundary conditions for the simulations. Thus we focus on the period since 2002, for which high resolution sea ice data from microwave satellite sensors are available (see Section 2). The CCLM data is also used as atmospheric forcing for a high-resolution sea-ice/ocean model (see Haid et al., 2015).

This dataset of atmospheric variables is compared to conventional measurements like radio soundings (RS) and both manned stations (MS) and automatic weather stations (AWS). Further an investigation is presented concerning the usage of Doppler wind lidar measurements in polar regions for verifications of model simulations. In section 2 the model and data sets used for the simulation and the verification are described, followed by [a short comparison to another model and reanalyses \(section 3.1\)](#), then the results of the verification (section 4) and finally the summary (section 5) and conclusions (section 6).

## 2 Data and Methods

### 2.1 CCLM

The CCLM is a regional non-hydrostatic model and is used as the community model for German climate research. It is a modified version of the COSMO model (version 5.0; Steppeler et al., 2003, <http://www.cosmo-model.org>; archived documentation under zenodo (Zentek, 2019)) used by the Climate Limited-area Modelling (CLM) - Community (Rockel et al., 2008, <http://www.clm-community.eu>). Three different model setups are used for the simulations (see Table 1 and Fig. 1).

The first simulation with a resolution of  $\approx 15$  km (C15) is forced with ERA-Interim (Dee et al., 2011) for the time period 2002 to 2016 and the domain covers a quarter of Antarctica centered over the Weddell Sea. The second simulation with a resolution of  $\approx 5$  km (C05) is nested inside the C15 domain and is only done for winter periods (Apr.-Sept.) 2002-2016. The third simulation (T15) uses the same setup as C15, but the turbulence parametrization was changed, since deficits in the C15 simulations were found for the stable boundary layer. ~~In the T15 simulation, the minimal~~ These modifications are based on the studies of Cerenzia et al. (2014), Hebbinghaus and Heinemann (2006) and Souverijns et al. (2019). In the standard version of CCLM, the diffusion coefficients for heat and momentum were lowered (from are restricted to the minimal value of  $0.4 \text{ m}^2\text{s}^{-1}$ . In the T15 simulation, these minimal diffusion coefficients were set to  $0.01 \text{ m}^2\text{s}^{-1}$ ) to allow for a very stable boundary layer (SBL) over the Antarctic ice sheet during winter. Further, the ~~parametrization of standard setup of CCLM uses a parameterization of~~ the impact of the inhomogeneity of the surface via the energy transfer from subgrid scale eddies on the turbulent kinetic energy (TKE) was modified. These modifications are based on the studies of Cerenzia et al. (2014), Hebbinghaus and Heinemann (2006) and Souverijns et al. (2019). Since this leads to an overestimation of the TKE in the SBL (Cerenzia et al., 2014), this parameterization was removed in the T15 runs.

All simulations have a vertical resolution of 60 levels, that are terrain-following on the ground and gradually change into pressure following coordinates around 12 km height with the model top being at 25 km height. The runs were performed in a forecast mode, i.e. daily ~~24-hour simulations with 6-hour spinup~~ 30-hour simulations to keep the hindcast close to reality. ~~The model was~~ We used the first 6 hours as spin up to allow for the atmosphere to adapt to the difference between the high-resolution sea ice data from satellite and the coarse-resolution temperatures from ERA-Interim.

Over land, we use the standard land surface model of CCLM (TERRA, see archived documentation under zenodo (Zentek, 2019)). The soil model has eight layers (down to 15 m) and allows for an additional snow layer on top of the soil, which varies with precipitation and sublimation. For the land ice regions, soil was replaced by snow using the parameters listed in Table 2. Over sea ice the model was adapted to polar regions by the implementation of a thermodynamic sea ice model (Schröder et al., 2011), ~~and a change of the albedo and snow parametrizations (Table 2).~~ The snow temperature profile is initialized with the forcing data, then the snow temperatures freely evolve. The surface albedo for inland ice and ice shelves is kept constant and has no seasonal variations. The albedo of sea ice is parameterized as a function of ice thickness and temperature by a modified Køltzow scheme (Køltzow, 2007) as described in Gutjahr et al. (2016).

Further the RTopo2 data set (Schaffer and Timmermann, 2016; Schaffer et al., 2016) is used for the topography as the default data set of CCLM did not include ice shelves. Parameters for the subgrid-scale orography (SSO, Lott and Miller, 1997) module were computed for the new dataset and the SSO module was used for both the 15 and 5 km simulation.

For sea-ice data, daily sea ice concentration (SIC) is used. The data is based on AMSRE and AMSR2 (Advanced Microwave Scanning Radiometer for Earth Observing System / 2) and for data gaps SSMIS (Special Sensor Microwave Imager / Sounder) satellite measurements (Spreen et al., 2008; Ezraty et al., 2007) are used. The resolution of the sea ice concentration data is 6.25 km for AMSRE/AMSR2, but coarser for SSMIS (12.5 km). Details for the used data are given in Table 3. Sea surface temperature (SST) data and initial surface temperature were taken from ERA-Interim. In the case of inconsistency between SST and SIC (surface temperature below the freezing temperature ( $-1.7^{\circ}\text{C}$ ) for a SIC of 0%), the SST was set to the freezing temperature. The SIC data included some missing values that were replaced in the following way. In a first step missing values were filled with values from the day before and after (mean if both were available). In a second step, days where no data was available were interpolated linearly in time (overall 35 days; maximal 9 in succession). This still left some missing values (mostly along the coastline due to the different land masks of RTopo2 and AMSRE/SSMIS/AMSR2). These remaining missing values are filled in a third step with an iterative procedure for each day separately using the surrounding grid points.

A fractional sea ice cover is not used in the model, thus for each grid box there is only one value of sea ice thickness that is assumed to cover the whole grid box. Benefits of modelling a fractional sea ice cover are investigated in Gutjahr et al. (2016). As daily sea ice thickness data like PIOMAS (Zhang and Rothrock, 2003) is not available for Antarctica, ~~a sea ice thickness of 0 / 0.1 / 1 is assumed for grid points where the~~ we assume two different ice classes depending on the initial sea ice concentration. Grid points with a sea ice concentration is of 0-15% are set to open water. For 15-70% a sea ice thickness of 0.1 m is assumed (see e.g. Gutjahr et al., 2016). For 70-100% .This estimate is reasonable ~~we assume a thickness of 1 m, which is a reasonable estimate~~ for the Weddell Sea (Kurtz and Markus, 2012)(see Kurtz and Markus, 2012). With a threshold of 70% SIC commonly used for the identification of polynyas, this choice is in accordance with previous studies (Ebner et al., 2014; Bauer et al., 2013). For grid points with a sea ice thickness of 0.1 m the modified Køltzow scheme yields an albedo of 0.07 and we assume no snow cover. For a thickness of 1 m the albedo is 0.84 (for temperatures lower than  $-2^{\circ}\text{C}$ ) and fixed snow layer of 10 cm snow cover (Schröder et al., 2011) is assumed.

Lastly we want to point out some differences between the present model setup and the setup of Souverijns et al. (2019), as they also used the CCLM model for simulations in the Antarctic. Souverijns et al. (2019) use CCLM with the community land model CLM (van Kampenhout et al., 2017), while we use default land surface model of CCLM with the adaptations described above. While we use daily high-resolution (6 km) sea ice data from satellites, they use coarse resolution ERA-Interim data (80 km) for the sea ice. In addition, they use only the standard one-layer sea ice model of CCLM. They also ran CCLM in climate mode and applied spectral nudging, while we used forecast mode with a restart every day and applied forcing only at the boundaries.

## 2.2 AMPS and ERA

Beside the forcing data set ERA-Interim (Dee et al., 2011), the newer ERA5 reanalysis data (Hersbach et al., 2018) and data from the Antarctic Mesoscale Prediction System (AMPS, Bromwich et al., 2005; Powers et al., 2012) is used for comparisons. ERA5 reanalysis data is the new version of ERA-Interim reanalysis. Both data sets are products of the European Centre  
5 for Medium-Range Weather Forecasts. The AMPS data set was produced as a collaborative effort between Mesoscale and Microscale Meteorology Laboratory of the National Center for Atmospheric Research and The Ohio State University. The horizontal/temporal resolutions are approximately 80 km/6h (ERA-Interim), 30 km/1h (ERA5) and 10 km/3h (AMPS).

## 2.3 Surface measurements

We use near surface temperature and wind measurements from manned stations (MS) and automatic weather stations (AWS).  
10 The location of used MS and AWS are shown in Fig. 1 (circle/triangle numbers) and detailed information are given in Table 4. The data was collected by the National Antarctic Operators and collated by the British Antarctic Survey ([ftp://ftp.bas.ac.uk/src/SCAR\\_EGOMA](ftp://ftp.bas.ac.uk/src/SCAR_EGOMA)).

Because maintenance of AWS is difficult for logistic reasons, they are more likely to include measurement errors. Thus we used the data from MS whenever possible and only fell back to AWS data for regions where no MS was available. An  
15 examination of the data showed some obviously wrong data where the wind speed drops e.g. from from  $15 \text{ ms}^{-1}$  to  $0 \text{ ms}^{-1}$  between two data records. As there were also longer periods even over days during which the data showed  $0 \text{ ms}^{-1}$ , we refrained from searching for these drop-offs with a threshold and instead removed all wind data with a wind speed of  $0 \text{ ms}^{-1}$ . This removed less than 8% of the data for each station except for three manned stations (Belgrano II, Esperanza and San Martin) where up to 35% were removed. Furthermore the wind direction for the years 2002-2005 of the Larsen AWS were  
20 removed as there seemed to be an offset compared to all following years.

As this MS and AWS data set lacks observations over the ocean and sea ice, we also used another dataset of three AWS (Grosfeld et al., 2016) that were placed on ice floes and cover each a timespan of about one year. As they were placed on ice floes, these AWS drifted through the Weddell Sea from January to December 2016. The locations are shown in Fig. 2. For this  
25 data set we only removed 4 outliers where longitude and latitude was obviously wrong. Further the last 31 data points from AWS 3 were removed as the AWS 3 data stops in December and a corruption in the end is very likely.

## 2.4 Radio soundings

To assess the model performance in the whole atmosphere, radio sounding (RS) data was downloaded from the University of Wyoming (<http://weather.uwyo.edu/upperair/sounding.html>). The location of RS are shown in Fig. 1 (filled squares diamonds) and detailed information are given in Table 5. Some RS had an unrealistic pressure value at a given height. To remove these, we  
30 checked if the deviation from the mean pressure was bigger than three times the standard deviation for that height. This removed only 2-3% of the RS. Further we only selected RS done at either 00:00 UTC for Amundsen-Scott and Novolazarevskaya or at 12:00 UTC for Halley, Marambio, Neumayer and Rothera, because these were the only times when the RS were done regularly.

## 2.5 Lidar

In the austral summer 2015/2016 we conducted in-situ measurements in the Weddell Sea region. We installed a Doppler lidar onboard the RV *Polarstern* and measured vertical profiles of horizontal wind speed and direction from 24th December till 30th January. In Zentek et al. (2018) we compared the measurements to radio soundings and ship measurements and found a bias (root mean square deviation) of approx.  $0.1 (1) \text{ ms}^{-1}$  for wind speed and  $1 (10)^\circ$  for wind direction, respectively. Lidar wind profiles are available with a vertical resolution of 10 m and with a temporal resolution of ca. 15 minutes. For the comparison, profiles were average to hourly values and 50 m height resolution (Zentek and Heinemann, 2019a).

For the purpose of comparisons we also set up another model domain with a 1 km resolution and nested it inside the 5 km domain. We ran both with the original settings (C01/C05) and changed turbulence parameters (T01/T05) for the measuring period (see Table 1).

## 2.6 Methods

For the comparison of CCLM with AMPS and ERA-Interim data, the latter were interpolated bilinearly to the CCLM grid points. For the comparisons to measurements (MS, AWS, RS and lidar) the nearest ~~neighboring~~ neighbouring grid point of CCLM was selected. For surface stations, the CCLM temperature was corrected with 1 K per 100 m for the height difference of the station and the respective grid point (see Table 4 and 5 for information on grid point heights and difference to the actual station height).

For the radio sounding comparisons, we made a vertical linear interpolation of model and radio sounding data to the same pressure level (equidistant every 50 hPa). Only data at a certain pressure level was ~~analyzed~~ analysed if the amount of measurements was more than half the median of the number of observations over all heights. Prior to the calculation of the correlation for temperature, monthly means were subtracted to remove influence from the seasonal cycle.

In case of the three AWS buoy on ice floes, the wind speed was measured at a height of approximately 2 m. We therefore assumed a logarithmic wind profile and neutral stability with a roughness length of 0.001 m and thus scaled CCLM 10 m wind speed by a factor of 0.825 to calculate the 2 m wind speed. For the AWS over land no correction was applied as the height of sensors was uncertain or unknown.

For the lidar comparisons we interpolated model, reanalyses and lidar data to an equidistant grid (height every 50 m up to 1000 m). As ERA-Interim only has output every 6 hours we did not interpolate linearly in between, to have a sharper distinction to ERA5. Further note that the lidar data is an average over one hour around every full hour, which ~~smooths the data and removes small-scale variability as the single measurements were done approximately every 15 min for 1-2 min. This makes it better comparable to the simulation data~~ that, because although the output is instantaneous, it unlikely shows turbulence on such a small scale as it always represent the wind average over the whole model grid box.

The wind comparisons are based on the magnitude of wind speed and the wind direction (no vector differences) unless stated otherwise. For wind direction we always assume a maximal possible difference of  $180^\circ$  and removed cases where wind speed is lower than  $0.5 \text{ ms}^{-1}$ . We compute the root mean square error (RMSE) and use the Pearson correlation coefficient (Corr) for



temperature and wind speed, but use an adapted version for angular variables (Jammalamadaka and Sarma, 1988) (circ.Corr) for wind direction.

### 3 ~~Verification~~Comparison with model and reanalyses

#### 3.1 ~~Model and reanalyses~~

5 ~~In the first~~ Although a verification with measurements is preferable, due to the small number of stations in polar regions this is not possible for the whole model domain. A comparison to other simulations is therefore an addition to the evaluation, although it has its limits. Gossart et al. (2019) found that in some respects different reanalyses (including ERA5 and ERA-Interim) differ greatly for Antarctica and thus comparisons of CCLM with simulations should not be seen as a validation.

In this analysis the near-surface variables of CCLM are compared with ERA-Interim, ERA5 and AMPS. We computed 10 monthly mean values over the period of 2002-2016 of 2 m temperature and 10 m wind speed. As the data sets of AMPS (with the latest configuration) does not cover the whole period, we selected the years 2014-2016 for the main comparisons. For ERA-Interim we show both time periods.

The 2 m temperature ~~bias difference~~ for C15 for the winter (Apr.-Sep.) and summer (Jan.-Mar. and Oct.-Dec.) is shown in Fig. 3. The ~~bias difference~~ for summer is small~~and acceptable~~. For winter C15 is 1-3 K colder over sea ice than ERA5 and 15 ERA-Interim, but this is still ~~an acceptable a small~~ difference. Over the East Antarctic Plateau (topography approximately higher than 2 km), a large temperature ~~bias difference~~ up to 8 K compared to ERA5/ERA-Interim and up to 15 K compared to AMPS is visible during winter. ~~The too warm temperature of CCLM-~~

The study by Gossart et al. (2019) showed the largest differences in mean temperature between reanalyses over the interior Antarctica during winter (approx. 8 K) and that ERA and ERA-Interim are warmer than the observations. An evaluation of AMPS (Fig. A1 in Bromwich et al., 2005) showed only a small bias (down to -3 K) of AMPS in the interior Antarctica. Verifications using surface and radio sounding data (shown in section 4) confirmed that C15 is too warm over the plateau and that this could be attributed to a too strong mixing in the surface boundary layer. This was the reason for changing the turbulence parametrization (T15).

As the change of turbulence parameters allows for more stable atmospheric boundary layer, T15 is overall colder than C15 25 near the surface, but this influence is very weak during summer or over the sea ice. The 2 m temperature ~~bias difference~~ for T15 is shown in Fig. 4. Over land and especially over the East Antarctic Plateau the strong ~~bias difference~~ in winter present in C15 is reduced in T15 compared to AMPS and even turns into a negative ~~bias difference~~ compared to ERA5 and ERA-Interim. Fig. 5 shows the 10 m wind speed ~~bias difference~~ for C15 for the summer and winter period. The ~~bias difference~~ for T15 is very similar (see supplement; Fig. S1). Compared to ERA5 and ERA-Interim, C15 shows stronger winds (up to 5 ms<sup>-1</sup> more) 30 over the Antarctic Peninsula and in the katabatic wind areas. For the winter period C15 simulates slightly weaker winds over the northern part of the sea ice when compared to ERA5 and ERA-Interim, which may be a result of the different sea-ice parametrization. The ~~bias difference~~ of C15 compared to AMPS is mainly negative over the ice sheet ~~, and a slight positive~~

~~bias can be seen only and slightly positive~~ for the Filchner-Ronne Ice Shelf. The C05 simulation (not shown) shows slightly higher 10 m winds ( $1 \text{ ms}^{-1}$ ) compared to the C15 and slightly lower (1 K) 2 m temperature.

Overall the C15 simulation is comparable to ~~reanalyses ERA5, ERA-Interim~~ and AMPS model data except for the large ~~positive temperature bias temperature difference (C15 warmer)~~ during winter over high topography. When using the modified turbulence scheme, the ~~bias difference~~ with respect to the ~~reanalyses is reversed, but the agreement with AMPS is improved~~ ERA is reversed (T15 colder), but it becomes more similar to AMPS.

## 4 Verification

### 4.1 AWS and surface stations

To further investigate the differences between CCLM and other simulations from the last section, we compared C15 and T15 with surface measurements. The selection of stations was done after a quality check and using only stations with sufficient record length. In addition the stations should represent typical areas of the Weddell Sea region. The locations of the selected stations are shown in Fig. 1 and detailed information is given in Table 4.

An 10 day comparison of measurements and CCLM model output at the station Halley is shown in Fig. 6. Both C15 and T15 capture the daily cycle of temperature, but T15 underestimates the temperature during some nights with low wind speeds. Wind speed and direction of C15 and T15 are similar and agree very well with the measurements. Only during the first day the change of wind direction is different but the wind speed for this day is also very low.

For the full comparison of C05, C15 and T15 with all stations we calculated monthly bias, RMSE and correlation for winter and summer separately. Statistics for 2 m temperature are shown in Fig. 7.

The problem of the temperature bias of C15 over the plateau can be demonstrated for the Amundsen Scott data (No. 1). The +8 K bias for C15 in winter is reduced to less than 1 K in case of T15, thus showing the better performance of T15. The improvement can be seen also for summer. On the other hand a small cold bias is present for T15 for the coastal region. The statistics for 10 m wind speed (Fig. 8) and direction (Fig. 9) show almost no difference between C15 and T15. The reduced bias of T15 compared to C15 in wind direction for Amundsen Scott (No. 1) is a result of the better representation of the stable boundary layer in T15. This yields colder surface temperatures that allows for a stronger wind shear and thus a reduced wind direction bias.

At AWS Union (No. 2) wind direction is almost constant with time which results in a low correlation although the bias and RMSE are comparable to other stations. For AWS Fossil (No. 8) there are two dominant wind directions both ~~measured measured~~ and simulated, but they do not ~~always always~~ coincide in time and thus the RMSE is also very high.

The strong bias in wind direction for Bellinghausen (No. 16) is likely explained by the different small-scale topography around the stations, which is not captured at the model resolutions. Also a data error of the station cannot be ruled out, as the other northern Antarctic Peninsula stations are relatively close to each other and do not show this bias. The reasons for the high bias and RMSE of wind direction for Belgrano II (No. 3) are also likely a result of small-scale topography ~~effet~~ effects.

Overall CCLM has a tendency to perform slightly better during summer and differences between the model runs C05, C15 and T15 are only visible in case of 2 m temperature. When calculating daily instead of monthly bias, RMSE and correlation, the results are similar, but show a much higher variance. These statistics are shown in the supplement (Fig. S2, S3 and S4).

In the last section (3.1), biases (3.1), differences in temperature and wind speed were found compared to AMPS, ERA5 and ERA-Interim over sea ice. Observations over sea ice are rare, but the three drifting AWS buoys allow for a comparison for a full yearly cycle for the year 2016. All buoys were deployed in January 2016 near the east coast of the Weddell Sea, but at different positions. The buoys No. 1 and 3 drifted from their original position near the coast of northwards out of the Weddell Sea and No. 2 stayed near the east coast (see Fig 2). An overview of the measurements for the AWS3 buoy is shown in Fig. 10. The seasonal cycle in temperature is captured by all model runs and wind speed and direction agree well.

The bias and RMSE of CCLM based on hourly temperature and wind speed for all AWS is given in Table 6 and 7. Overall AWS1 and AWS3 show similar statistics as both drifted relative synchronously northwards while AWS2 stayed close to the coast north of the station Halley (No. 4). C15 shows a temperature bias of -0.3/-0.8 K for AWS1/AWS3 during winter, while T15 shows a slightly larger bias of -1.4/-1.7 K. This is not as high as the previously seen cold bias over sea ice during winter of CCLM compared to ERA-Interim and ERA5 of -2 K for C15 and -3 K for T15 (see Fig. 3 and Fig. 4). The RMSE is approx. 4 (3) K during summer (winter). For wind speed the RMSE is around 1.5 to 2  $\text{ms}^{-1}$  and biases are equal or smaller than 0.7  $\text{ms}^{-1}$  during summer and a little higher around 1  $\text{ms}^{-1}$  during winter (see supplement; Fig. S5 and S6).

## 4.2 Radio soundings

The location of the radio soundings are shown in Fig. 1 as ~~black-squares~~ diamonds. Note that Novolazarevskaya is very close to the model boundary (8 grid points) and CCLM may be partly influenced by the ERA-Interim boundary data. The radio soundings are done regularly at 00:00 UTC (= 6 hours after model start) for Novolazarevskaya and Amundsen Scott and 12:00 UTC (= 18 hours after model start) for Marambio, Neumayer, Rothera and Halley. ~~The-~~

To address the differences of C15 and T15, a comparison of the mean temperature for the lowest 1 km of the atmosphere is shown in Fig. 11. The changed turbulence parametrization only influences the cases of strong surface inversions. For Amundsen Scott (f) there is a clear improvement of T15 for the mean SBL structure during winter, but also during summer. Similar but weaker improvements can be seen for the eastern Weddell Sea (Halley (e) and Neumayer (b)). However, for Novolazarevskaya (c) and Rothera (d) a stronger bias in the lowest 100 m is present for T15.

The whole profiles of the temperature statistics (Fig. 12) show almost no bias except below 800 hPa and the RMSE is around 1 K in the upper troposphere for the coastal stations. The bias is slightly lower for C05 (only winter) and for C15 in summer. The correlations are larger than 0.8. These results are similar to the findings of Souvereinjs et al. (2018), Souvereinjs et al. (2019) that show a mean average error of 0.5 to 1.4 K. For Amundsen Scott (f) a large positive bias and a large RMSE is present in the lowest layers, which is most pronounced in winter. While for the winter the RMSE and the correlation above 500 hPa is comparable to the coastal stations, a larger RMSE and correlations of less than 0.75 are present above 500 hPa during summer. The higher resolution of C05 yields only slight improvements for Marambio (a) and Rothera (d) at the Antarctic Peninsula, where the influence of the topography is larger than at the other stations. We did not include T15 in Fig. 12 as the statistics

were almost identical to C15 with the exception of the lowest levels for Amundsen Scott. To address the differences of C15 and T15, a comparison of the mean temperature for the lowest 1 of the atmosphere is shown in Fig. 11. The changed turbulence parametrization only influences the cases of strong surface inversions. For Amundsen Scott (f) there is a clear improvement of T15 for the mean SBL structure during winter, but also during summer. Similar but weaker improvements can be seen for the eastern Weddell Sea (Halley (e) and Neumayer (b)). However, for Novolazarevskaya (c) and Rothera (d) a stronger bias in the lowest 100 is present for T15.

Above the surface inversion, differences for C05, C15 and T15 and the summer and winter season are relatively small, with only a minor exception of a small increase of RMSE above 500 hPa for Amundsen Scott (f) during summer.

For the comparison of wind speed (Fig. 13) and direction (Fig. 14) we excluded T15 again, as it was almost identical to C15. The bias is again almost zero except near the surface. The RMSE for wind speed is around 3 to 4  $\text{ms}^{-1}$  and slightly lower during summer. Bias and RMSE are largest for Marambio (a) and Rothera (d) in the lowest 200 hPa, and as for the temperature C05 yields slight improvements for these stations. Souverijns et al. (2018) Souverijns et al. (2019) found a mean average error for wind speed of 2.1 to 3.6  $\text{ms}^{-1}$  for all seasons. The RMSE for wind direction is around 50° near the surface and reduces with height to 20° at 250 hPa, except for Amundsen Scott (f) where it stays around 50°.

### 4.3 Verification using wind lidar data

Wind profile measurements from lidar data are available for 24 December 2015 to 30 January 2016. We selected two case studies for comparisons. The first one features the occurrence of three low level jets (LLJs) during one “night” and the following morning. The second case study gives an overview of the differences and similarities between lidar measurements and simulations during a 10 day period.

#### 4.3.1 Overall statistics

We also computed the overall statistics for all available lidar measurements (see Table 8). The different CCLM runs are very similar with no or only very small bias in wind speed and a RMSE of around 2  $\text{ms}^{-1}$ . For wind direction there was a small bias of -5° present and an RMSE of 30°. ERA5 and ERA-Interim show similar values. This good agreement could stem partially from the fact, that the radio soundings of the ship (2-3 per day) are assimilated in ERA, which show also a good agreement with the lidar data (Zentek et al., 2018). The computation of the statistics for different heights showed that the wind speed RMSE of CCLM is largest around 1000 m height, while the RMSE of ERA5 and ERA-Interim is mostly constant with height (see supplement; Fig. S7).

#### 4.3.2 Case study A

During the night from 16 Jan. 2016 to 17 Jan. 2016 the RV *Polarstern* operated in a polynya in the lee of the iceberg A23 (see Fig. 1). Three LLJ events were observed with the lidar (Fig. 15). The first LLJ occurred between 00:00 UTC and 02:00 UTC (LLJ1). The LLJ between 06:00 and 08:00 UTC (LLJ2) was captured by the radio sounding at 07:00 UTC (Zentek et al., 2018),

and the wind maximum between 10:00 and 14:00 UTC (LLJ3) was also measured by a radio sounding in 800 to 1000 m height at 12:00 UTC. While the 6 hourly ERA-Interim data cannot reproduce the structure and evolution of the wind field of the lidar measurements, the hourly ERA5 data capture LLJ2 and LLJ3, which is likely explained by the assimilation of radio sounding data. However, the LLJ wind speeds are underestimated and LLJ1 is missing in ERA5. The CCLM simulations (nested in ERA-Interim) show that the increase of resolution yields increased wind speeds particularly for LLJ3, but the height of the LLJ is too low. An indication of LLJ1 is seen in the CCLM simulations, but the wind speed is underestimated. The overall pattern of the wind direction field is well reproduced by all CCLM simulations. Since the ship's position was not stationary for this period, we also tested for the dependency on the chosen grid point of the model, by choosing one grid point over the iceberg A23 and in the middle of the open polynya instead of the ship location. This had only a small effect and we therefore concluded that all the changes and patterns are mostly time and height dependent.

### 4.3.3 Case study B

From 20 to 30 Jan. 2016 RV *Polarstern* was navigating around the area of the Brunt Ice Shelf (see Fig. 1). The days show a broad variety of different wind patterns (Fig. 16) ranging from no wind (on the 21th) to wind speeds exceeding  $20 \text{ ms}^{-1}$  (on the 29th) and also featuring vertically inhomogeneous winds both in speed and direction (on the 24th-26th). On the scale of days T15, ERA5, ERA-Interim and the lidar show the same evolution of the wind field. On smaller scales CCLM and the lidar show more detail, but CCLM does not always agree well with the lidar (e.g. on the 26th). ERA5 agrees well with the lidar data and sometimes even catches the small-scale details of measured wind patterns (e.g. on the 27th). T05 and T01 are very similar to T15, with only little increased wind speeds (see supplement; Fig. S8).

If we presume that the lidar measurements are representative for the winds in the whole area that is covered by the model grid box, this case study gives a good impression on how reliable reanalyses and models are on those scales: e.g. for a simulated LLJ we cannot always assume that a LLJ was really present, even if the overall RMSE is shown to be smaller than  $3 \text{ ms}^{-1}$ .

## 5 Summary

We used the non-hydrostatic model COSMO-CLM (CCLM) [in forecast mode and](#) nested in ERA-Interim data to produce a long-term hind cast (2002-2016) for the Weddell Sea region with resolutions of approximately 15 and 5 km and two different turbulence parametrizations. Sea-ice concentration is prescribed from satellite data and a thermodynamic sea-ice model is used. In this paper we evaluated the performance of the model in terms of temperature, wind speed and direction using data from Antarctic stations and AWS over land and sea ice. Comparisons to AMPS model and reanalyses data showed good agreement, except for a large difference in surface temperature over the Antarctic plateau. The warm bias is also found in comparison to measurements at the Amundsen Scott station (surface and radio sounding), where the reference run C15 showed a strong warm bias near the surface (+8 K). This bias to station and AMPS data was removed in the second run T15 by adjusting the turbulence parametrization, which results in a more realistic representation of the surface inversion over the Antarctic plateau. But this caused also a small cold bias (down to -4 K) for other surface stations located on ice shelves in the eastern Weddell

Sea. ~~Differences in other regions were small.~~ A comparison with measurements over the sea ice of the Weddell Sea done by three AWS buoys for one year showed small biases for temperature around  $\pm 1$  K and for wind speed of  $1 \text{ ms}^{-1}$ .

Comparisons with radio soundings showed a model bias around zero for all model levels except near the surface. In general, a RMSE of 1-2 K for temperature and of  $3\text{-}4 \text{ ms}^{-1}$  for wind speed was found.

- 5 The comparison of CCLM simulations at resolutions down to 1 km with wind data from Doppler lidar measurements during December 2015 and January 2016 in the southern and eastern Weddell Sea yielded almost no bias in wind speed and an RMSE of ca.  $2 \text{ ms}^{-1}$ . For wind direction the bias was ca.  $-5^\circ$  with a RMSE of around  $30^\circ$ . Overall, CCLM is able to produce realistic evolution and structures of the wind in the ABL, but for specific events like LLJs differences occur in the location.

## 6 Conclusions and outlook

- 10 CCLM shows a good representation of temperature and wind for the Weddell Sea region. The adjustment of the turbulence parametrization for very stable conditions is important for the realistic representation of the surface inversion over the Antarctic plateau. Since verification data for simulations are rare in the Antarctic, new types of measurements like Doppler lidar or controlled meteorological balloons (Hole et al., 2016) can give additional insights in the performance of atmospheric models. For the comparisons of CCLM with ship-based Doppler lidar in the present study the benefit of CCLM compared to ERA5 is
- 15 small due to the fact that the ship's data were assimilated in the reanalysis and effects of topography were small. A larger benefit is seen for polynya areas and the Antarctic Peninsula with small-scale topography. The YOPP (Year of Polar Prediction) project will lead to more and enhanced observational data, which can be used for further verifications in the future. Future work with CCLM will be the study of atmosphere-ice-ocean interactions processes and quantification of sea ice production in polynyas.

- Code and data availability.* The COSMO-CLM model is completely free of charge for all research applications. The current version of the
- 20 COSMO-CLM model is available from the CCLM website: <https://www.clm-community.eu> under the licence <http://www.cosmo-model.org/content/consortium/licencing.htm>. The particular version of the CCLM model used in this study is based on the official version 5.0 with additions to the sea ice module (according to Schröder et al. (2011)) and the changes in the turbulence parameterizations described in this study. If eligible access can be granted to the model source code under zenodo (Zentek and Heinemann, 2019b). The model output used in this study is archived under zenodo (Zentek and Heinemann, 2019c). The full model output data will be archived for a limited amount
- 25 of time and are available on request ([zentek@uni-trier.de](mailto:zentek@uni-trier.de)). The model documentation is archived under zenodo (Zentek, 2019). The scripts and configurations to run the simulations are archived under zenodo as well (Zentek and Heinemann, 2019d). The scripts to analyse the simulations and produce the figures in this paper are archived under zenodo as well (Zentek and Heinemann, 2019e).

- Author contributions.* RZ carried out the setup of the model, simulation, data curation, methodology, validation, visualization and writing of the original draft. GH carried out the conceptualization, methodology, a review of the writing, editing, supervision, project administration
- 5 and funding acquisition.



*Competing interests.* The authors declare that they have no conflict of interest.

*Acknowledgements.* The lidar measurements were performed during the *Polarstern* cruise PS96 funded by the Alfred-Wegner-Institute under *Polarstern* grant AWI\_PS96\_03. The research was funded by the SPP 1158 ‘Antarctic research’ of the DFG (Deutsche Forschungsgemeinschaft) under grant HE 2740/19. The COSMO-CLM model was provided by the German Meteorological Service and the CLM community. Computing time was provided by DKRZ. AWS buoy sea ice measurements for 2016 are from <http://www.meereisportal.de> (funding: 5 REKLIM-2013-04). From all the software that was used we would like to highlight cdo, nco, R, RStudio and the R-packages data.table. We thank Niels Souverijns (KU Leuven, Belgium) and our colleagues in Trier for helpful discussions.

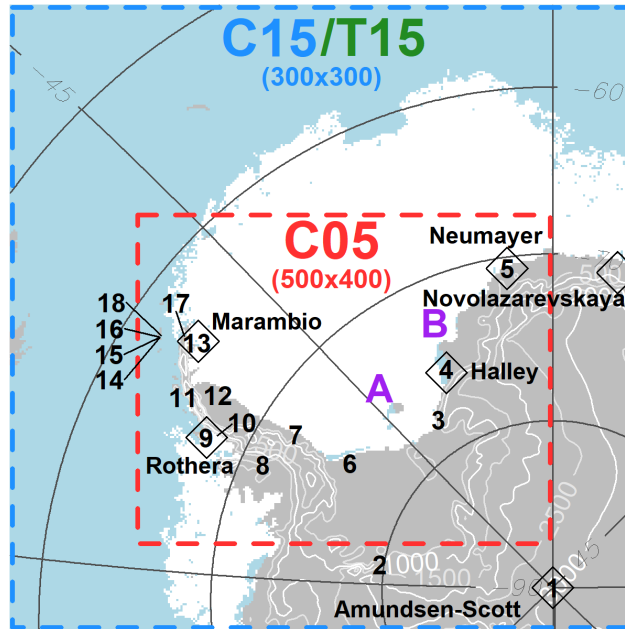
## References

- Akperov, M., Rinke, A., Mokhov, I. I., Matthes, H., Semenov, V. A., Adakudlu, M., Cassano, J., Christensen, J. H., Dembitskaya, M. A., Dethloff, K., Fettweis, X., Glisan, J., Gutjahr, O., Heinemann, G., Koenigk, T., Koldunov, N. V., Laprise, R., Mottram, R., Nikiéma, O., Scinocca, J. F., Sein, D., Sobolowski, S., Winger, K., and Zhang, W.: Cyclone Activity in the Arctic From an Ensemble of Regional Climate Models (Arctic CORDEX), *Journal of Geophysical Research: Atmospheres*, 123, 2537–2554, <https://doi.org/10.1002/2017JD027703>, 2018.
- Bauer, M., Schröder, D., Heinemann, G., Willmes, S., and Ebner, L.: Quantifying polynya ice production in the Laptev Sea with the COSMO model, *Polar Research*, 32, 20922, <https://doi.org/10.3402/polar.v32i0.20922>, 2013.
- 15 Bromwich, D. H., Monaghan, A. J., Manning, K. W., and Powers, J. G.: Real-Time Forecasting for the Antarctic: An Evaluation of the Antarctic Mesoscale Prediction System (AMPS)\*, *Monthly Weather Review*, 133, 579–603, <https://doi.org/10.1175/mwr-2881.1>, 2005.
- Cape, M. R., Vernet, M., Skvarca, P., Marinsek, S., Scambos, T., and Domack, E.: Foehn winds link climate-driven warming to ice shelf evolution in Antarctica, *Journal of Geophysical Research: Atmospheres*, 120, 11,037–11,057, <https://doi.org/10.1002/2015JD023465>, 2015.
- 20 Cerenzia, I., Tampieri, F., and Stefania Tesini, M.: Diagnosis of Turbulence Schema in Stable Atmospheric Conditions and Sensitivity Tests, *COSMO Newsletter* 14, 2014.
- Dee, D. P., Uppala, S. M., Simmons, A. J., Berrisford, P., Poli, P., Kobayashi, S., Andrae, U., Balmaseda, M. A., Balsamo, G., Bauer, P., Bechtold, P., Beljaars, A. C. M., van de Berg, L., Bidlot, J., Bormann, N., Delsol, C., Dragani, R., Fuentes, M., Geer, A. J., Haimberger, L., Healy, S. B., Hersbach, H., Hólm, E. V., Isaksen, L., Kållberg, P., Köhler, M., Matricardi, M., McNally, A. P., Monge-Sanz, B. M., Morcrette, J.-J., Park, B.-K., Peubey, C., Rosnay, P. d., Tavolato, C., Thépaut, J.-N., and Vitart, F.: The ERA-Interim reanalysis: configuration and performance of the data assimilation system, *Quarterly Journal of the Royal Meteorological Society*, 137, 553–597, <https://doi.org/10.1002/qj.828>, 2011.
- Ebner, L., Heinemann, G., Haid, V., and Timmermann, R.: Katabatic winds and polynya dynamics at Coats Land, Antarctica, *Antarctic Science*, 26, 309–326, <https://doi.org/10.1017/S0954102013000679>, 2014.
- 30 Elvidge, A. D., Renfrew, I. A., King, J. C., Orr, A., Lachlan-Cope, T. A., Weeks, M., and Gray, S. L.: Foehn jets over the Larsen C Ice Shelf, Antarctica, *Quarterly Journal of the Royal Meteorological Society*, 141, 698–713, <https://doi.org/10.1002/qj.2382>, 2015.
- Ezraty, R., Girard-Ardhuin, F., Piollé, J. F., Kaleschke, L., and Heygster, G.: Arctic and Antarctic sea ice concentration and Arctic sea ice drift estimated from SSM/I. User’s manual, version 2.1, <ftp://ftp.ifremer.fr/ifremer/cersat/products/gridded/psi-drift/documentation/ssmi.pdf>, (last access: 5 May 2019), 2007.
- 35 Giorgi, F. and Gutowski, W. J.: Regional Dynamical Downscaling and the CORDEX Initiative, *Annual Review of Environment and Resources*, 40, 467–490, <https://doi.org/10.1146/annurev-environ-102014-021217>, 2015.
- Gorodetskaya, I. V., Tsukernik, M., Claes, K., Ralph, M. F., Neff, W. D., and Van Lipzig, Nicole P. M.: The role of atmospheric rivers in anomalous snow accumulation in East Antarctica, *Geophysical Research Letters*, 41, 6199–6206, <https://doi.org/10.1002/2014GL060881>, 2014.
- Gossart, A., Helsen, S., Lenaerts, J. T. M., Broucke, S. V., van Lipzig, N. P. M., and Souverijns, N.: An Evaluation of Surface Climatology in State-of-the-Art Reanalyses over the Antarctic Ice Sheet, *Journal of Climate*, 32, 6899–6915, <https://doi.org/10.1175/jcli-d-19-0030.1>, 2019.

- Grosfeld, K., Treffeisen, R., Asseng, J., Bartsch, A., Bräuer, B., Fritzscher, B., Gerdes, R., Hendricks, S., Hiller, W., Heygster, G., Krumpfen, T., Lemke, P., Melsheimer, C., Nicolaus, M., and Ricker, R. and Weigelt, M.: Online sea-ice knowledge and data platform <www.meereisportal.de>, Polarforschung, Bremerhaven, Alfred Wegener Institute for Polar and Marine Research & German Society of Polar Research, pp. 143–155, <https://doi.org/10.2312/polfor.2016.011>, 2016.
- 10 Gutjahr, O., Heinemann, G., Preußer, A., Willmes, S., and Drüe, C.: Quantification of ice production in Laptev Sea polynyas and its sensitivity to thin-ice parameterizations in a regional climate model, *The Cryosphere*, 10, 2999–3019, <https://doi.org/10.5194/tc-10-2999-2016>, 2016.
- Haid, V., Timmermann, R., Ebner, L., and Heinemann, G.: Atmospheric forcing of coastal polynyas in the south-western Weddell Sea, *Antarctic Science*, 27, 388–402, <https://doi.org/10.1017/S0954102014000893>, 2015.
- 15 Hebbinghaus, H. and Heinemann, G.: LM simulations of the Greenland boundary layer, comparison with local measurements and SNOWPACK simulations of drifting snow, *Cold Regions Science and Technology*, 46, 36–51, <https://doi.org/10.1016/j.coldregions.2006.05.003>, 2006.
- Heinemann, G.: Idealized simulations of the Antarctic katabatic wind system with a three-dimensional mesoscale model, *Journal of Geophysical Research: Atmospheres*, 102, 13 825–13 834, <https://doi.org/10.1029/97JD00457>, 1997.
- 20 Hersbach, H., de Rosnay, P., Bell, B., Schepers, D., Simmons, A., Soci, C., Abdalla, S., Alonso-Balmaseda, M., Balsamo, G., Bechtold, P., Berrisford, P., Bidlot, J.-R., Boisséson, E. d., Bonavita, M., Browne, P., Buizza, R., Dahlgren, P., Dee, D., Dragani, R., Diamantakis, M., Flemming, J., Forbes, R., Geer, A. J., Haiden, T., Hólm, E., Haimberger, L., Hogan, R., Horányi, A., Janiskova, M., Laloyaux, P., Lopez, P., Muñoz-Sabater, J., Peubey, C., Radu, R., Richardson, D., Thépaut, J.-N., Vitart, F., Yang, X., Zsótér, E., and Zuo, H.: Operational global reanalysis: progress, future directions and synergies with NWP, ERA Report Series, <https://doi.org/10.21957/tkic6g3wm>, 2018.
- 25 Hole, L. R., Bello, A. P., Roberts, T. J., Voss, P. B., and Vihma, T.: Measurements by controlled meteorological balloons in coastal areas of Antarctica, *Antarctic Science*, 28, 387–394, <https://doi.org/10.1017/s0954102016000213>, 2016.
- Jammalamadaka, S. and Sarma, Y.: A correlation coefficient for angular variables, *Statistical Theory and Data Analysis* 2, 1988.
- King, J. C., Kirchgaessner, A., Bevan, S., Elvidge, A. D., Kuipers Munneke, P., Luckman, A., Orr, A., Renfrew, I. A., and van den Broeke, M. R.: The Impact of Föhn Winds on Surface Energy Balance During the 2010–2011 Melt Season Over Larsen C Ice Shelf, Antarctica, *Journal of Geophysical Research: Atmospheres*, 122, 12,062–12,076, <https://doi.org/10.1002/2017JD026809>, 2017.
- 30 Kohnemann, S. H. E., Heinemann, G., Bromwich, D. H., and Gutjahr, O.: Extreme Warming in the Kara Sea and Barents Sea during the Winter Period 2000–16, *Journal of Climate*, 30, 8913–8927, <https://doi.org/10.1175/jcli-d-16-0693.1>, 2017.
- Køltzow, M.: The effect of a new snow and sea ice albedo scheme on regional climate model simulations, *Journal of Geophysical Research*, 112, <https://doi.org/10.1029/2006jd007693>, 2007.
- 35 Kurtz, N. T. and Markus, T.: Satellite observations of Antarctic sea ice thickness and volume, *Journal of Geophysical Research: Oceans*, 117, n/a, <https://doi.org/10.1029/2012JC008141>, 2012.
- Lott, F. and Miller, M. J.: A new subgrid-scale orographic drag parametrization: Its formulation and testing, *Quarterly Journal of the Royal Meteorological Society*, 123, 101–127, <https://doi.org/10.1002/qj.49712353704>, 1997.
- Powers, J. G., Manning, K. W., Bromwich, D. H., Cassano, J. J., and Cayette, A. M.: A Decade of Antarctic Science Support Through Amps, *Bulletin of the American Meteorological Society*, 93, 1699–1712, <https://doi.org/10.1175/bams-d-11-00186.1>, 2012.
- Prein, A. F., Langhans, W., Fosser, G., Ferrone, A., Ban, N., Goergen, K., Keller, M., Tölle, M., Gutjahr, O., Feser, F., Brisson, E., Kollet, S., Schmidli, J., Van Lipzig, Nicole P. M., and Leung, R.: A review on regional convection-permitting climate modeling: Demonstrations, prospects, and challenges, *Reviews of Geophysics*, 53, 323–361, <https://doi.org/10.1002/2014RG000475>, 2015.
- 5

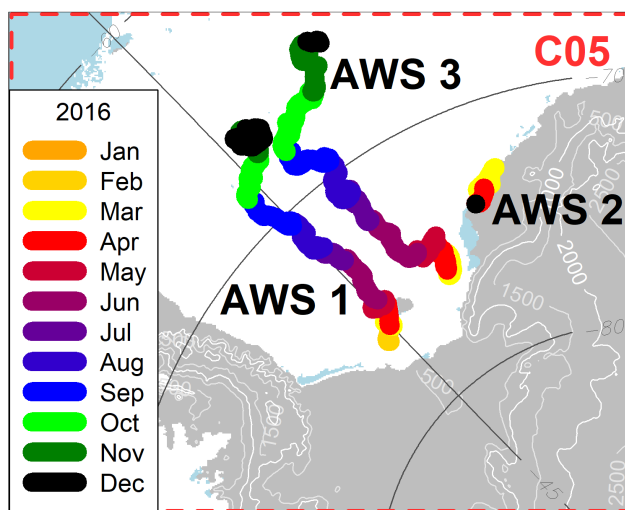
- Rockel, B., Will, A., and Hense, A.: The Regional Climate Model COSMO-CLM (CCLM), *Meteorologische Zeitschrift*, 17, 347–348, <https://doi.org/10.1127/0941-2948/2008/0309>, 2008.
- Rummukainen, M.: State-of-the-art with regional climate models, *Wiley Interdisciplinary Reviews: Climate Change*, 1, 82–96, <https://doi.org/10.1002/wcc.8>, 2010.
- 10 Schaffer, J. and Timmermann, R.: Greenland and Antarctic ice sheet topography, cavity geometry, and global bathymetry (RTopo-2), links to NetCDF files, supplement to: Schaffer, Janin; Timmermann, Ralph; Arndt, Jan Erik; Kristensen, Steen Savstrup; Mayer, Christoph; Morlighem, Mathieu; Steinhage, Daniel (2016): A global, high-resolution data set of ice sheet topography, cavity geometry, and ocean bathymetry. *Earth System Science Data*, 8(2), 543–557, <https://doi.org/10.1594/pangaea.856844>, 2016.
- 15 Schaffer, J., Timmermann, R., Arndt, J. E., Kristensen, S. S., Mayer, C., Morlighem, M., and Steinhage, D.: A global, high-resolution data set of ice sheet topography, cavity geometry, and ocean bathymetry, *Earth System Science Data*, 8, 543–557, <https://doi.org/10.5194/essd-8-543-2016>, 2016.
- Schröder, D., Heinemann, G., and Willmes, S.: The impact of a thermodynamic sea-ice module in the COSMO numerical weather prediction model on simulations for the Laptev Sea, Siberian Arctic, *Polar Research*, 30, 6334, <https://doi.org/10.3402/polar.v30i0.6334>, 2011.
- 20 Souverijns, N., Gossart, A., Gorodetskaya, I. V., Lhermitte, S., Mangold, A., Laffineur, Q., Delcloo, A., and Van Lipzig, Nicole P. M.: How does the ice sheet surface mass balance relate to snowfall? Insights from a ground-based precipitation radar in East Antarctica, *The Cryosphere*, 12, 1987–2003, <https://doi.org/10.5194/tc-12-1987-2018>, 2018.
- Souverijns, N., Gossart, A., Demuzere, M., Lenaerts, J. T. M., Medley, B., Gorodetskaya, I. V., Vanden Broucke, S., and van Lipzig, N. P. M.: A New Regional Climate Model for POLAR-CORDEX: Evaluation of a 30-Year Hindcast with COSMO-CLM 2 Over Antarctica, *Journal of Geophysical Research: Atmospheres*, 124, 1405–1427, <https://doi.org/10.1029/2018JD028862>, 2019.
- 25 Spreen, G., Kaleschke, L., and Heygster, G.: Sea ice remote sensing using AMSR-E 89-GHz channels, *Journal of Geophysical Research*, 113, 14 485, <https://doi.org/10.1029/2005jc003384>, 2008.
- Steppeler, J., Doms, G., Schättler, U., Bitzer, H. W., Gassmann, A., Damrath, U., and Gregoric, G.: Meso-gamma scale forecasts using the nonhydrostatic model LM, *Meteorology and Atmospheric Physics*, 82, 75–96, <https://doi.org/10.1007/s00703-001-0592-9>, 2003.
- 30 Turton, J., Kirchaessner, A., Ross, A., King, J., and Kuipers Munneke, P.: Foehn-induced surface melting of the Larsen C ice shelf, Antarctica, in: *EGU General Assembly Conference Abstracts*, vol. 19 of *EGU General Assembly Conference Abstracts*, p. 4692, 2017.
- van Kampenhout, L., Lenaerts, J. T. M., Lipscomb, W. H., Sacks, W. J., Lawrence, D. M., Slater, A. G., and van den Broeke, M. R.: Improving the Representation of Polar Snow and Firm in the Community Earth System Model, *Journal of Advances in Modeling Earth Systems*, 9, 2583–2600, <https://doi.org/10.1002/2017ms000988>, 2017.
- 35 van Lipzig, N. P. M.: Precipitation, sublimation, and snow drift in the Antarctic Peninsula region from a regional atmospheric model, *Journal of Geophysical Research*, 109, 31,739, <https://doi.org/10.1029/2004JD004701>, 2004.
- van Wessem, J. M., Reijmer, C. H., van de Berg, W. J., van den Broeke, M. R., Cook, A. J., van Ulft, L. H., and van Meijgaard, E.: Temperature and Wind Climate of the Antarctic Peninsula as Simulated by a High-Resolution Regional Atmospheric Climate Model, *Journal of Climate*, 28, 7306–7326, <https://doi.org/10.1175/JCLI-D-15-0060.1>, 2015.
- Zentek, R.: COSMO documentation (archived version from 2019, uploaded with permission of the DWD), <https://doi.org/10.5281/zenodo.3339384>, 2019.
- 5 Zentek, R. and Heinemann, G.: Wind and backscatter profiles measured by a wind lidar during POLARSTERN cruise PS96 (ANT-XXXI/2 FROSN), <https://doi.org/10.1594/PANGAEA.902794>, 2019a.

- Zentek, R. and Heinemann, G.: CCLM simulation (Antarctica 2002-2016) - model source codes and domain files, <https://doi.org/10.5281/zenodo.3355411>, 2019b.
- Zentek, R. and Heinemann, G.: CCLM simulation (Antarctica 2002-2016) - selected data, <https://doi.org/10.5281/zenodo.3355401>, 2019c.
- 10 Zentek, R. and Heinemann, G.: CCLM simulation (Antarctica 2002-2016) - scripts and configuration files, <https://doi.org/10.5281/zenodo.3339363>, 2019d.
- Zentek, R. and Heinemann, G.: CCLM simulation (Antarctica 2002-2016) - analysis and plotting scripts, <https://doi.org/10.5281/zenodo.3361625>, 2019e.
- 500 Zentek, R., Kohnemann, S. H. E., and Heinemann, G.: Analysis of the performance of a ship-borne scanning wind lidar in the Arctic and Antarctic, *Atmospheric Measurement Techniques*, 11, 5781–5795, <https://doi.org/10.5194/amt-11-5781-2018>, 2018.
- Zhang, J. and Rothrock, D. A.: Modeling Global Sea Ice with a Thickness and Enthalpy Distribution Model in Generalized Curvilinear Coordinates, *Monthly Weather Review*, 131, 845–861, [https://doi.org/10.1175/1520-0493\(2003\)131<0845:MGSIIWA>2.0.CO;2](https://doi.org/10.1175/1520-0493(2003)131<0845:MGSIIWA>2.0.CO;2), [https://doi.org/10.1175/1520-0493\(2003\)131<0845:MGSIIWA>2.0.CO;2](https://doi.org/10.1175/1520-0493(2003)131<0845:MGSIIWA>2.0.CO;2), 2003.

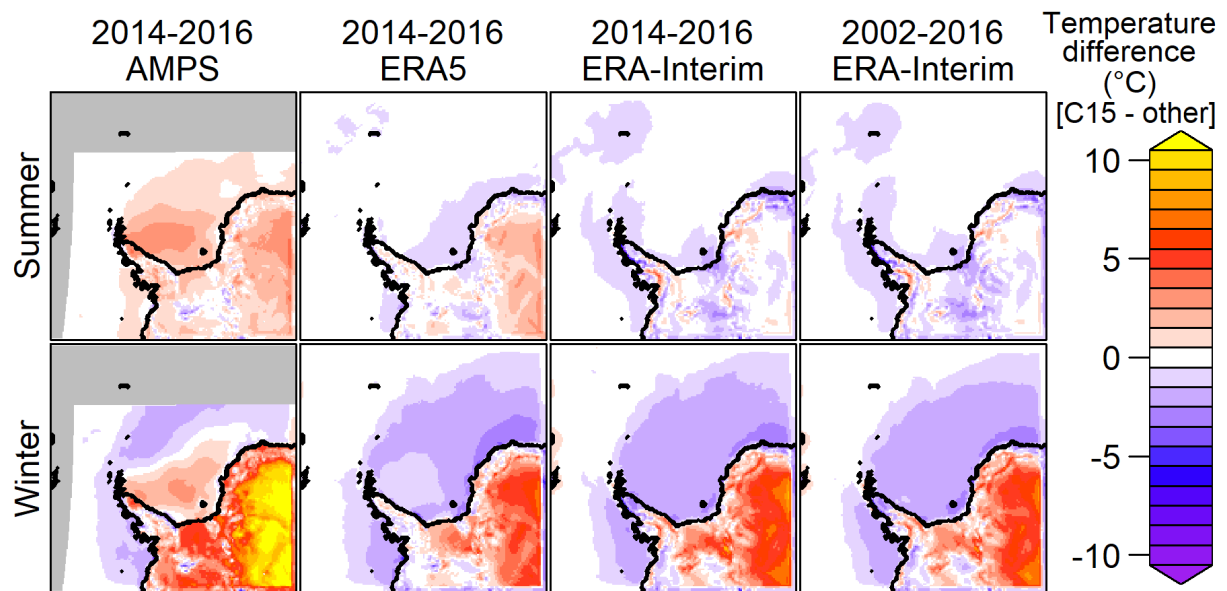


**Figure 1.** Overview of the C15/T15 (blue/green) and C05 (red) simulation domain, locations of 6 radio sounding stations (filled squares/diamonds), surface stations (circles), automatic weather stations (triangles/numbers) and location of the RV *Polarstern* during our three-two case studies A and B (purple). Topography contours are plotted every 500 m and sea ice concentration >70% for the 1 June 2015 is shown in white. (Note that the T15 domain is the same as the C15 domain.)

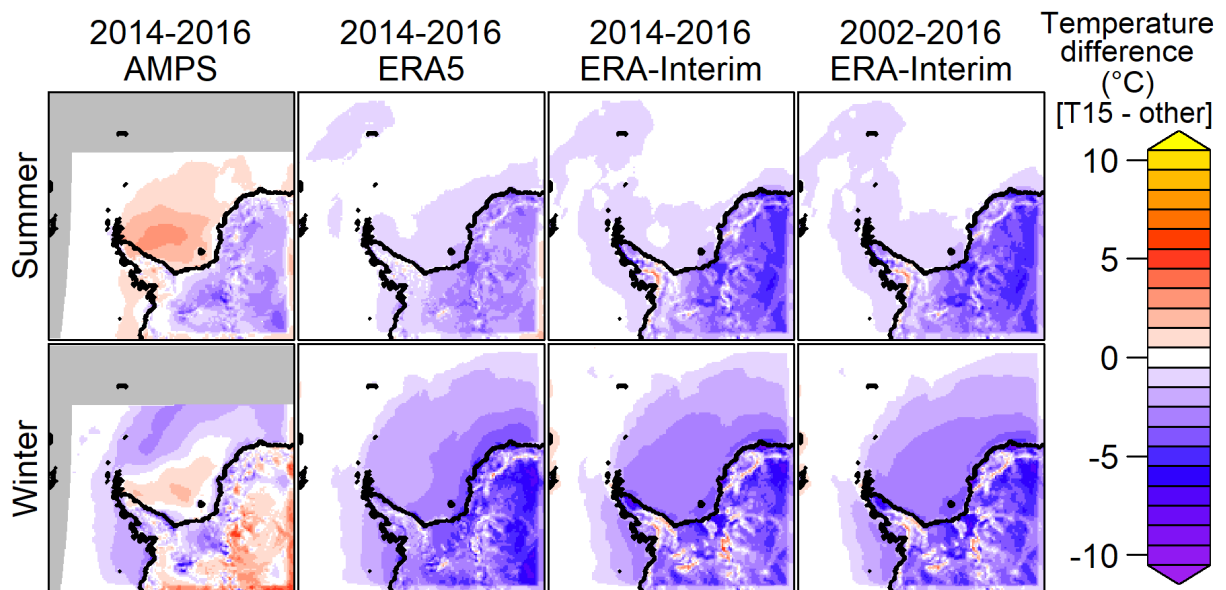




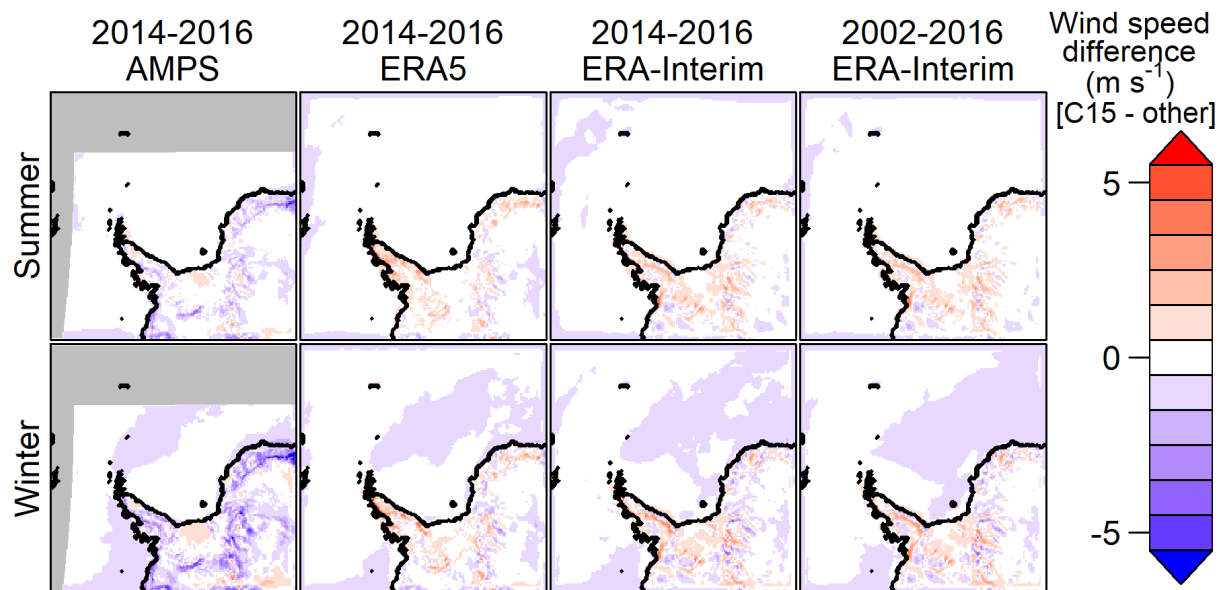
**Figure 2.** Overview of track of the three AWS buoy inside the C05 domain. Topography and sea ice concentration as in Fig. 1



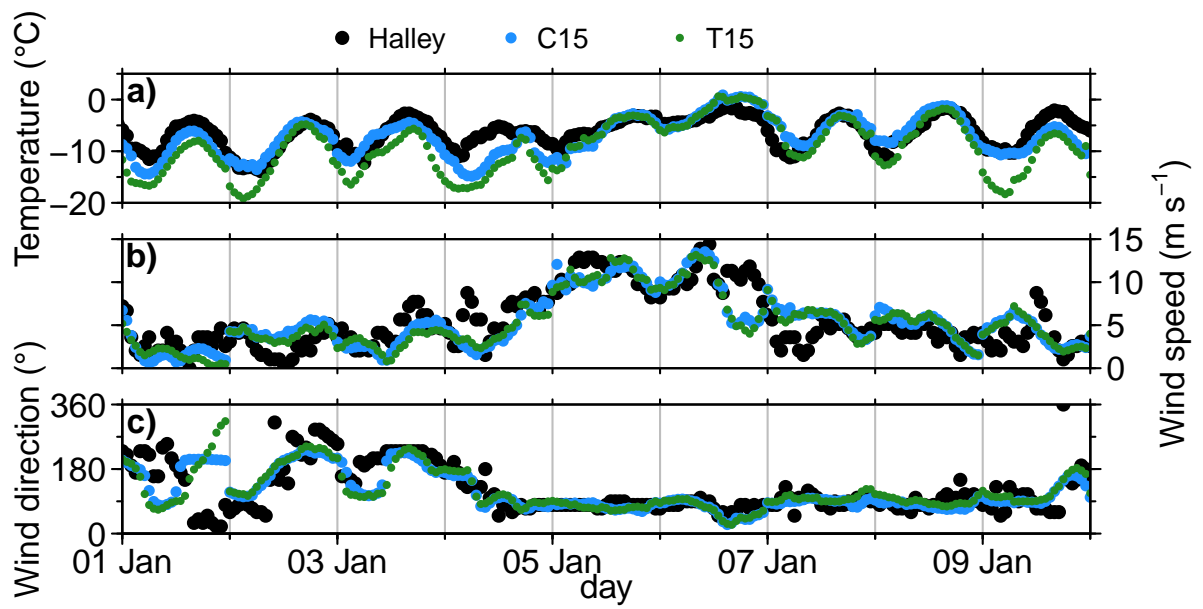
**Figure 3.** 2 m temperature bias of difference (C15 compared to minus AMPS, ERA5 and ERA-Interim) for the years 2014-2015 and to ERA-Interim for the year / 2002-2016. Summer (ONDJFM, top) and winter (AMJJAS, bottom) are shown separately. The gray area is outside the AMPS-domain.



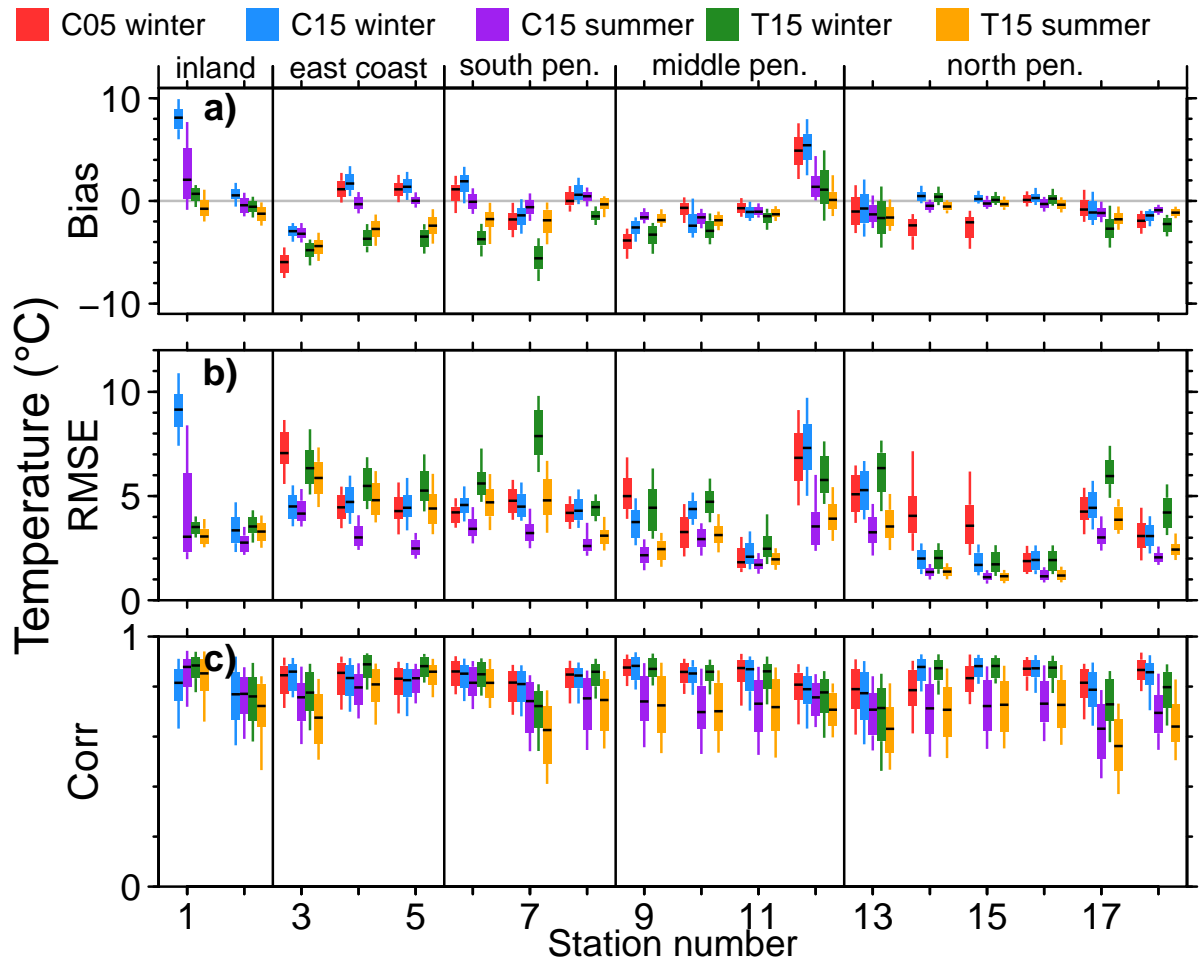
**Figure 4.** As Fig. 3 but for T15.



**Figure 5.** As Fig. 3 but for 10 m wind speed.

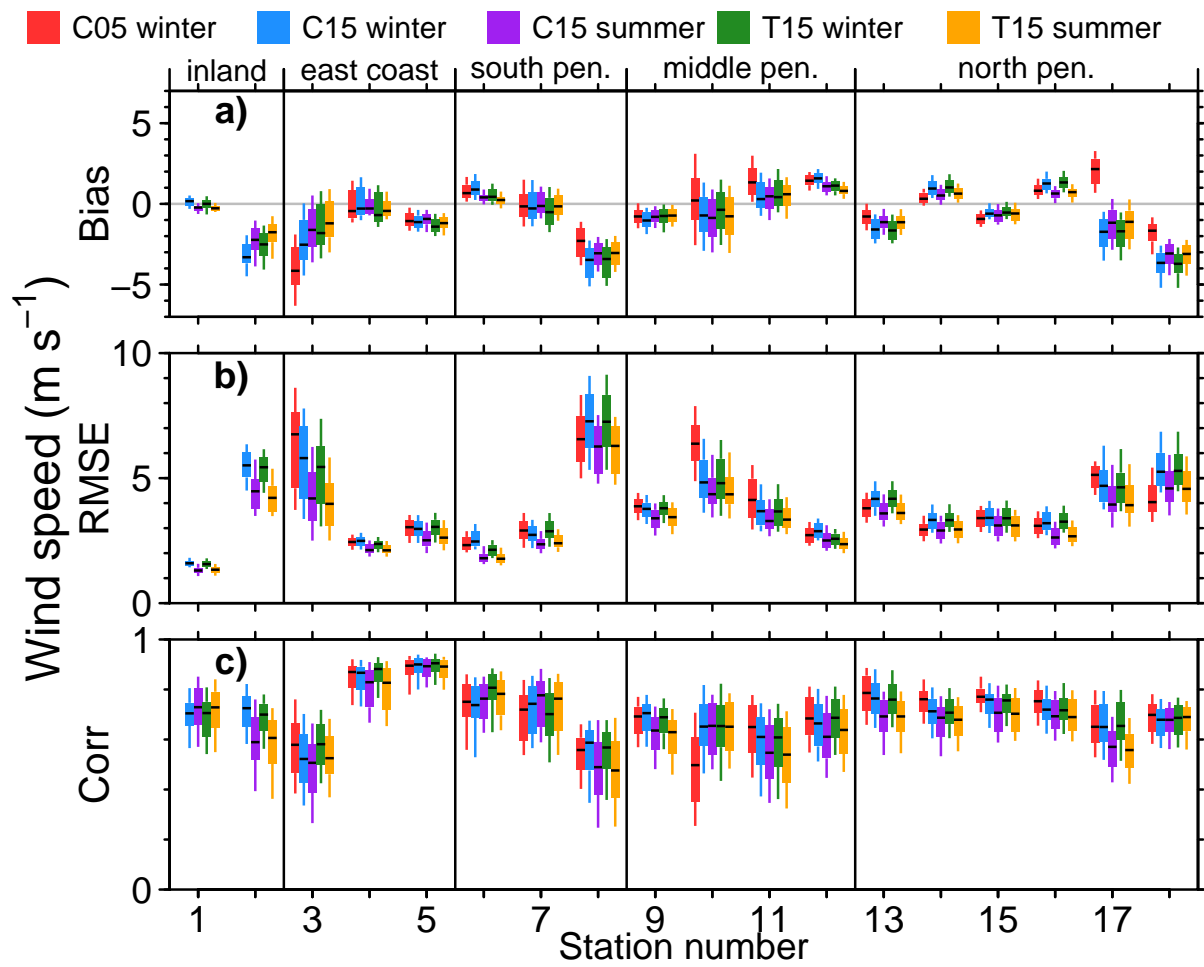


**Figure 6.** Comparison for Halley of 2 m temperature (a) 10 m wind speed (b) and 10 m wind direction (c) for station measurements (black), C15 (blue) and T15 (green) during January 2016. Vertical grey lines indicate the restart of the daily simulations.

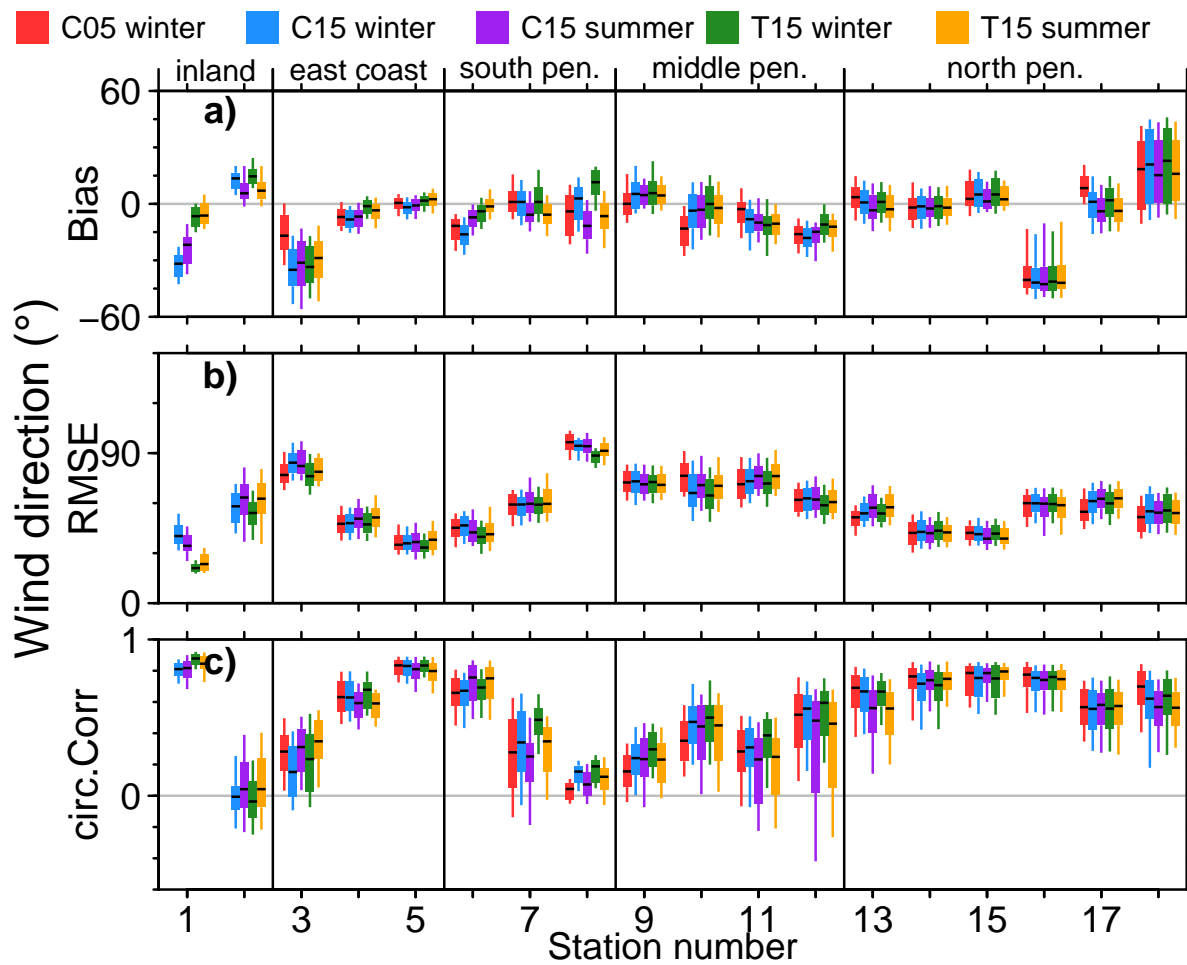


**Figure 7.** CCLM 2 m temperature bias (a), RMSE (b) and correlation (c) for C05, C15 and T15 for different surface stations (see Table 4). Boxes indicate the 25/75% and whiskers the 10/90% quantile; the median is indicated by a black line inside the box. Statistics (bias, RMSE and correlation) are calculated for every month.

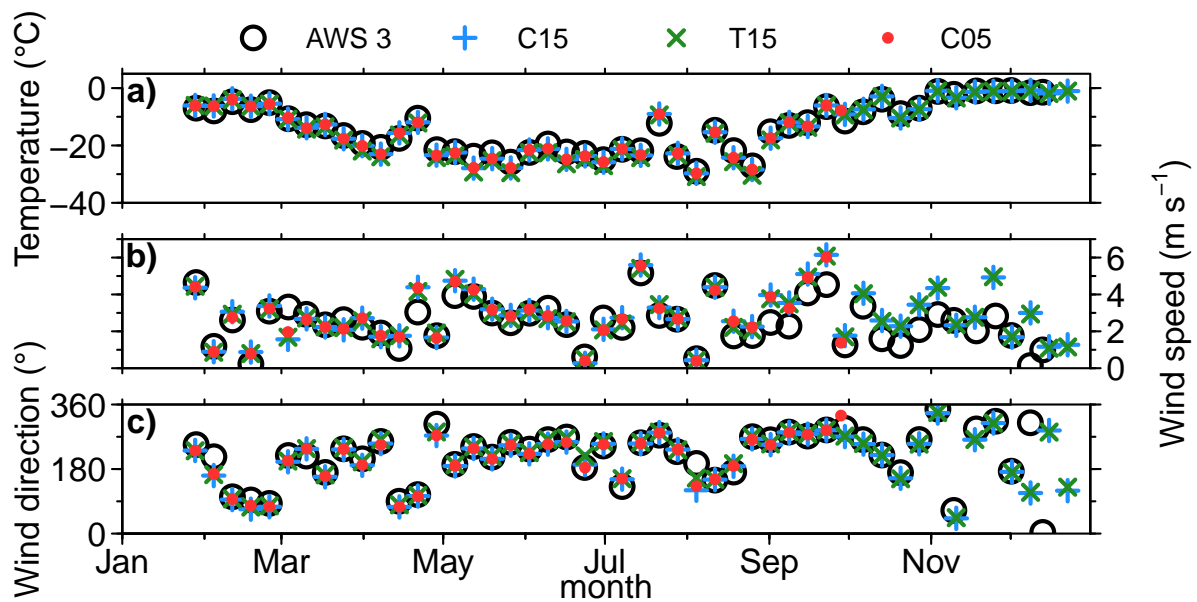




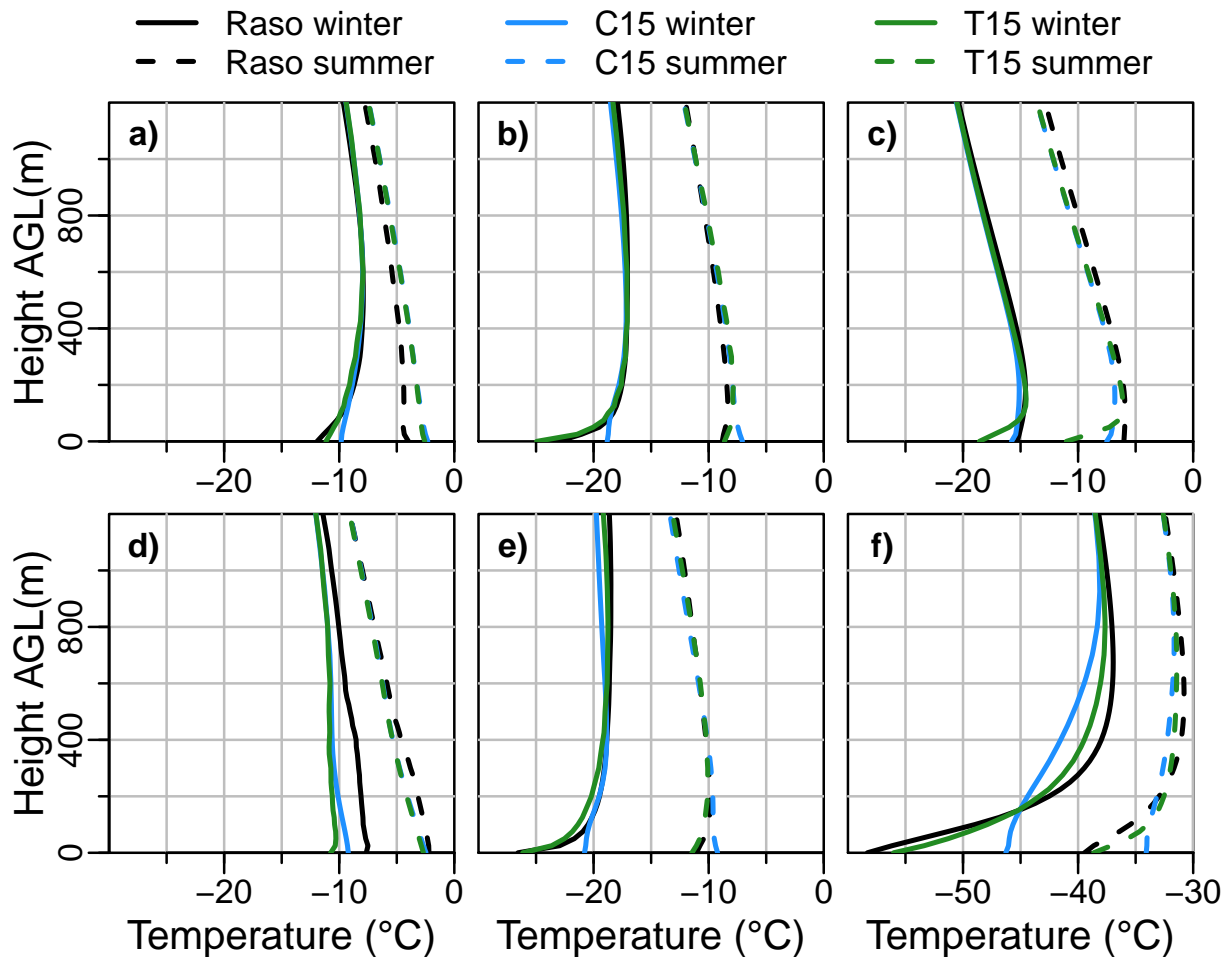
**Figure 8.** As Fig. 7 but for 10 m wind speed.



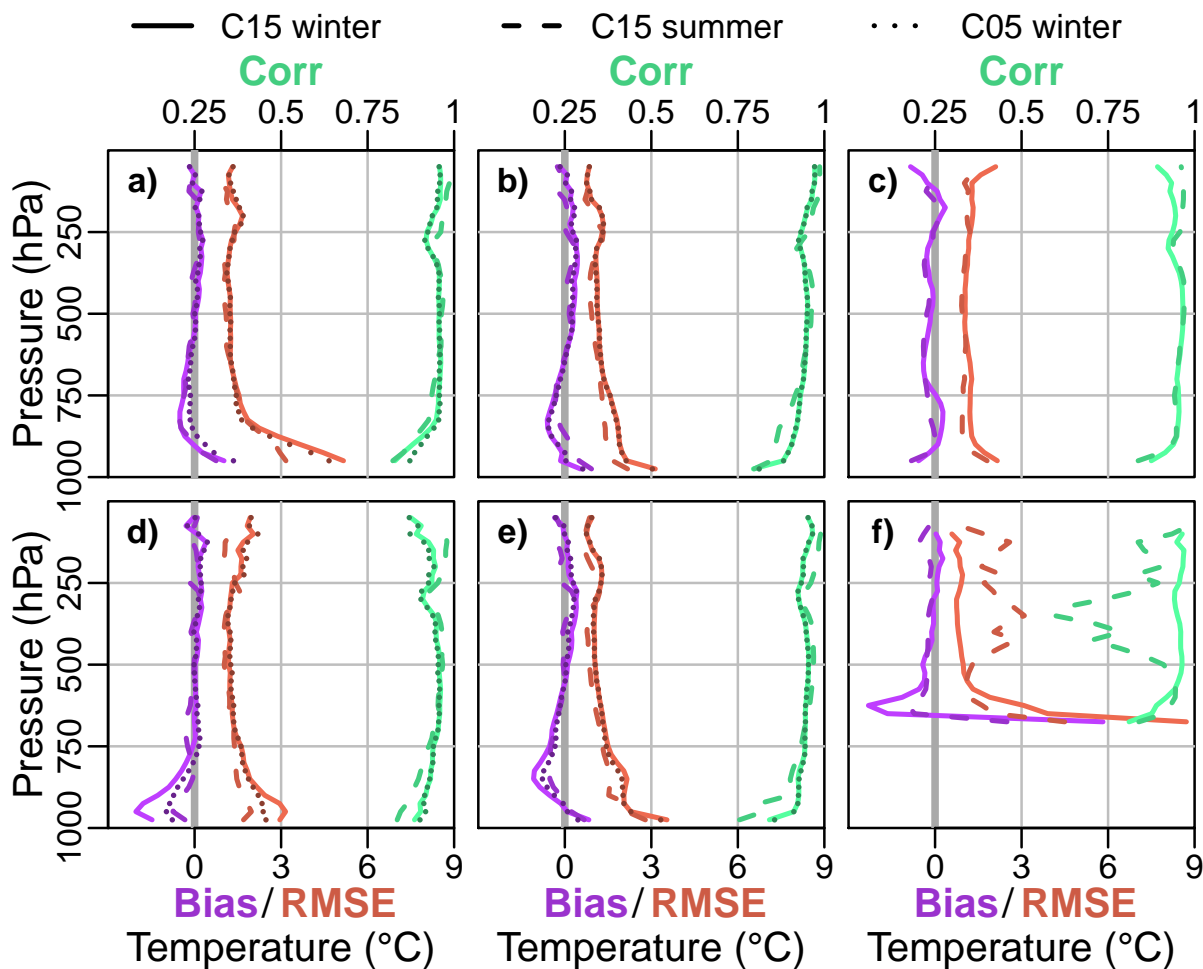
**Figure 9.** As Fig. 7 but for 10 m wind direction.



**Figure 10.** Weekly temperature (a), wind speed (b) and wind direction (c) in 2016 for AWS3 buoy in black (see Fig. 2), C15 (blue), T15 (green), C05 (red). The weekly mean was computed for zonal and meridional winds.



**Figure 11.** Temperature bias Mean temperature of radio sounding (Raso, RMSE-black), C15 (bottom-axis blue) and correlation-T15 (top axis green) of C15-during winter (solid line), C15-and during summer (dashed line) and C05-during winter (dotted line) for the stations Marambio (a), Neumayer (b), Novolazarevskaya (c), Rothera (d), Halley (e) and Amundsen Scott (f). Note the different range on the x-axis for Amundsen Scott (f). AGL is short for "above ground level", meaning above the surface.



**Figure 12.** Mean temperature of radio sounding (Raso), Temperature bias, C15 RMSE and T15 correlation of C15 during winter (solid line) and C15 during summer (dashed line) and C05 during winter (dotted line) for the stations Marambio (a), Neumayer (b), Novolazarevskaya (c), Rothera (d), Halley (e) and Amundsen Scott (f). Note the different range on the x-axis for Amundsen Scott (f).

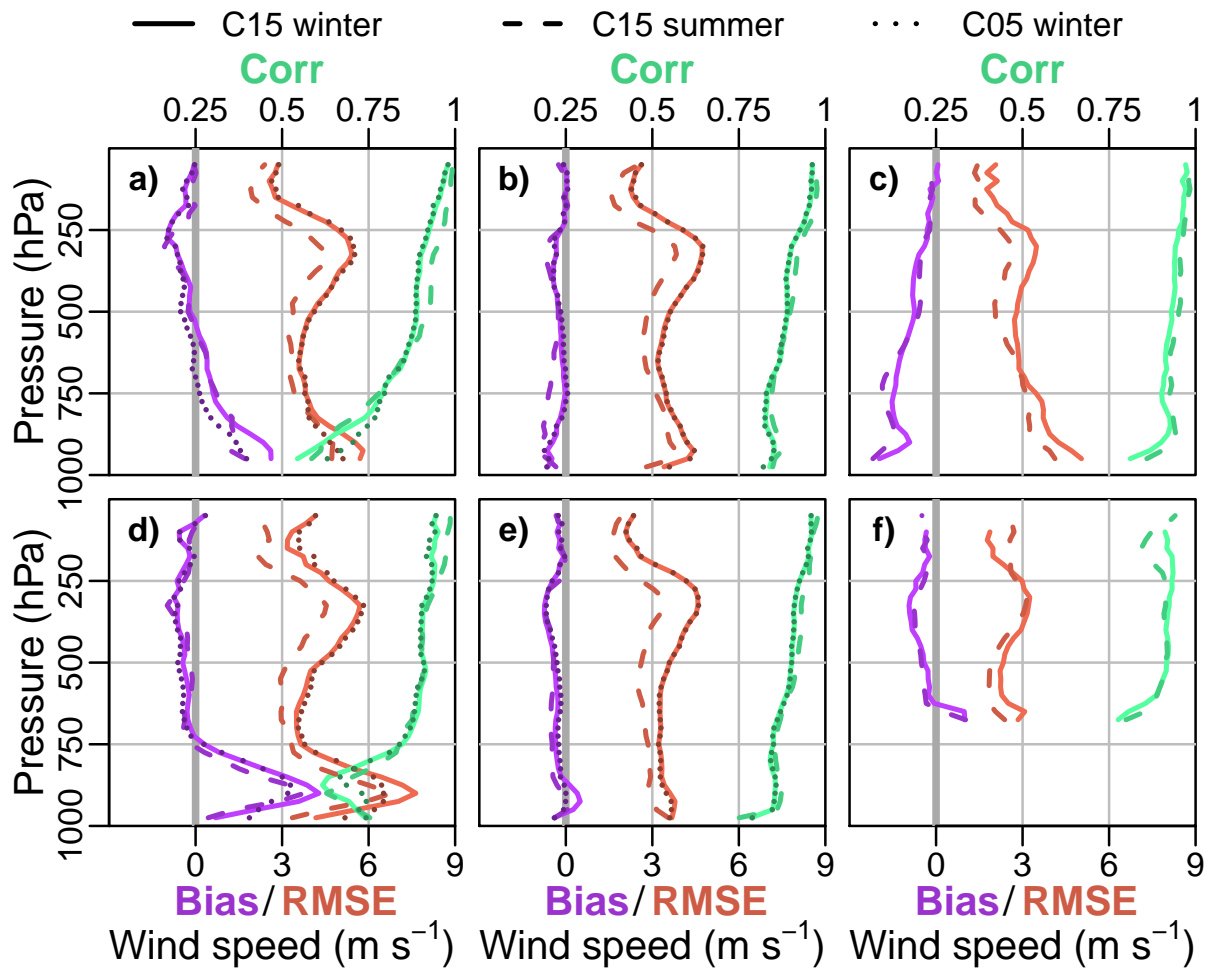


Figure 13. Like Fig. 12 but for wind speed.

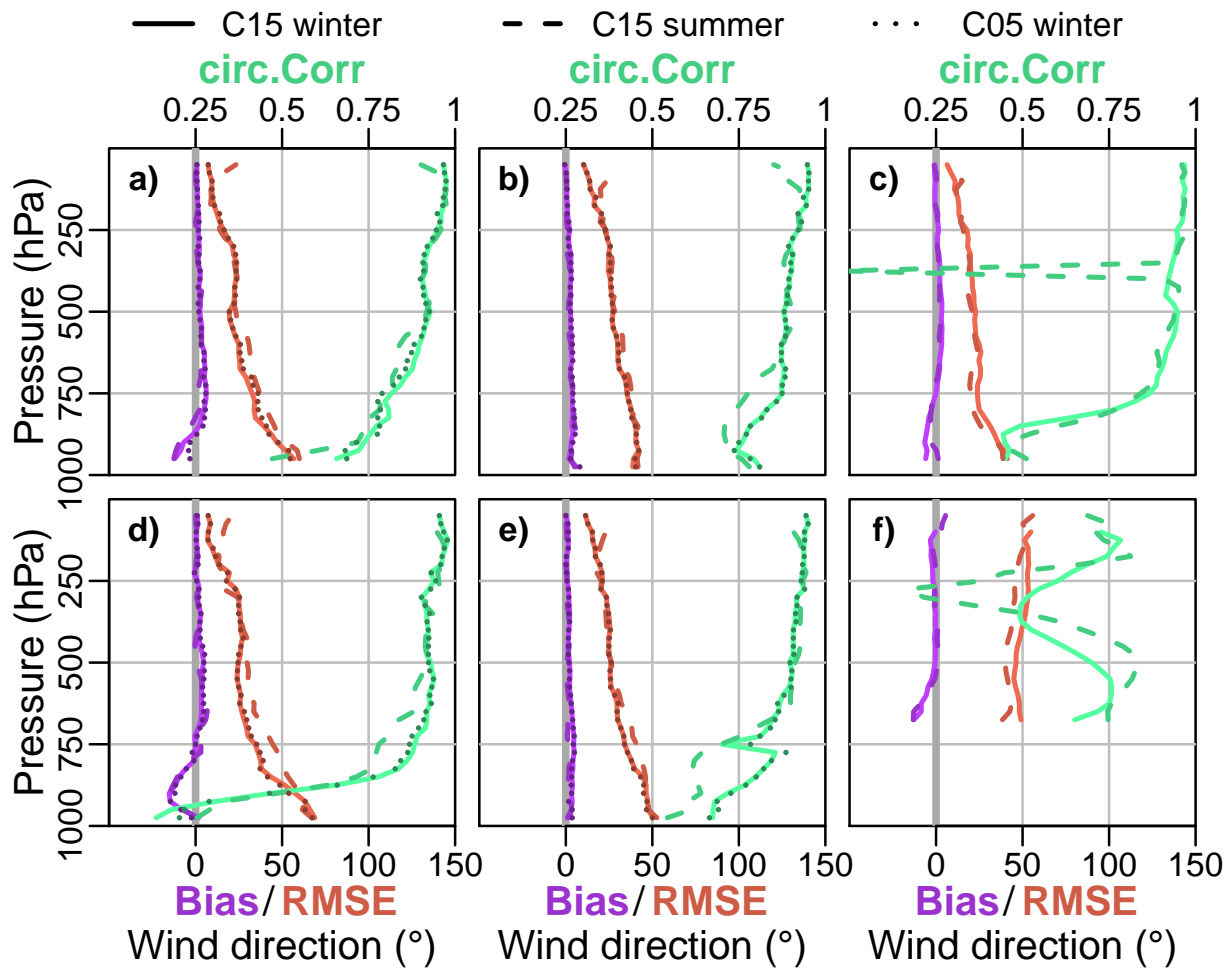
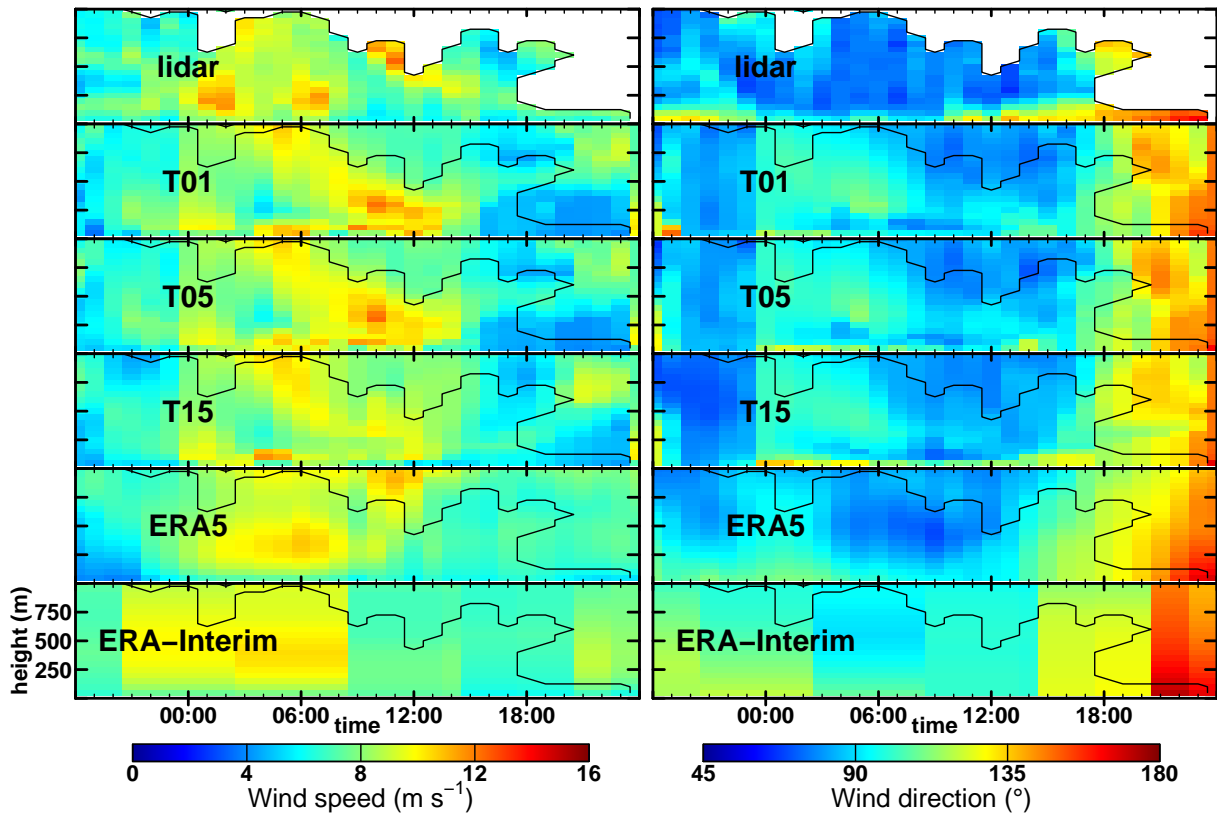
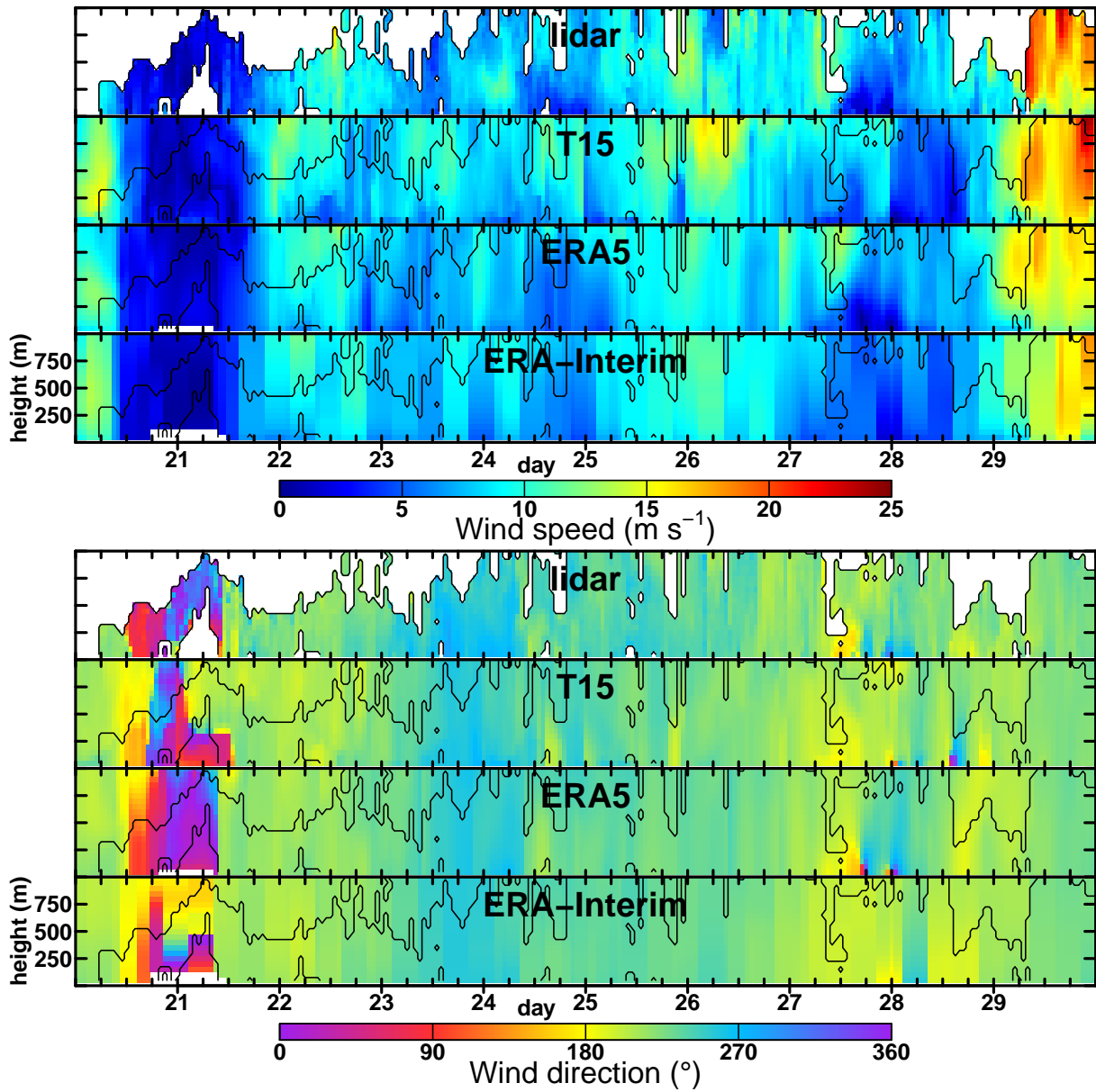


Figure 14. Like Fig. 12 but for wind direction.



**Figure 15.** Time-height cross-sections for wind speed (left) and direction (right) for 16 Jan. 2016 18:00 UTC to 17 Jan. 2016 12:00 UTC.





**Figure 16.** Time-height cross-sections for wind speed (top) and direction (bottom) for 20 Jan. 00:00 UTC to 30 Jan. 00:00 UTC.

**Table 1.** Overview of the different simulations. The grid size for C01 and T01 was changed for each day with a minimal (maximal) size of 200 x 200 (353 x 464).

	<b>Simulations</b>					
	<b>C15</b>	<b>T15</b>	<b>C05</b>	<b>T05</b>	<b>C01</b>	<b>T01</b>
Turbulence parameters changed	no	yes	no	yes	no	yes
Actual grid size (for rotated lat=0)	13.88 km		5.55 km		1.11 km	
Grid size	300 x 300		400 x 400		> 200 x 200	
Grid resolution (in rotated system)	0.125°		0.05°		0.01°	
SSO used	yes		yes		no	
Period	Jan-Dec 2002-2016		Apr-Sept 2002-2016		Case Study only: Dec 2015, Jan 2016	

**Table 2.** Overview of surface parameters.

Parameter	Value
Snow heat capacity (inland ice/ice shelf)	$0.73 \times 10^6 \text{ J/m}^3/\text{K}$
Snow heat conductivity (inland ice/ice shelf)	$0.30 \text{ W/m/K}$
Albedo ( <del>glacial</del> <u>inland ice/ice shelf</u> )	0.80
Heat capacity sea ice / snow on sea ice	$1.91/0.63 \times 10^6 \text{ J/m}^3/\text{K}$
Heat conductivity sea ice / snow on sea ice	$2.26/0.75 \text{ W/m/K}$
Albedo (sea ice)	<del>0.75</del> <u>0.17 (10 cm) / 0.84 (1 m)</u>

**Table 3.** Overview of used sea ice concentration data in CCLM. Download for CERSAT/IFREMER under <http://cersat.ifremer.fr/data/> and for Uni Bremen under <https://seaice.uni-bremen.de/start/data-archive/>.

Satellite	Provider	Time period
SSMI	CERSAT / IFREMER	2002-01-01 till 2002-05-31
AMSR	Uni Bremen	2002-06-01 till 2011-10-04
SSMI <sub>a</sub>	Uni Bremen	2011-10-05 till 2012-07-23
AMSR2	Uni Bremen	2012-07-24 till 2016-12-31

<sup>a</sup> There were two datasets of SSMI data based on different sensors (F17 and F18). A comparison for the overlapping periods of two month (August, September) with AMSR (2011) and AMSR2 (2012) were compared with the F17 and F18 SSMI data. Standard deviation was computed and it was found that F17 is closer to AMSR and F18 is closer to AMSR2, but overall F17 seemed to have less deviation in the area of interest. So only the F17 data was taken for Oct. 2011 – July 2012.

**Table 4.** Information of the surface stations. “yes” over land indicates that the surface type of the compared model grid point is land and not water. Years give the approximate data record length in years. AWS = automatic weather station, KGI = on King George Island

	No.	Station	Longitude	Latitude	Height (m)			Land		Years
					real	C05	C15	C05	C15	
inland	1	Amundsen Scott	0.00	-90.00	2835		2796		yes	15
	2	Union (AWS)	-83.27	-79.76	767		1173		yes	6
east coast	3	Belgrano II	-34.62	-77.87	256	235	388	yes	yes	14
	4	Halley	-26.22	-75.43	30	14	19	yes	yes	15
	5	Neumayer	-8.25	-70.67	50	35	36	yes	yes	14
south pen.	6	Limbert (AWS)	-59.15	-75.87	58	58	57	yes	yes	10
	7	Butler (AWS)	-60.17	-72.20	115	8	34	yes	yes	12
	8	Fossil (AWS)	-68.28	-71.32	66	182	279	yes	yes	10
middle pen.	9	Rothera	-68.12	-67.57	32	1	7	yes		15
	10	San Martin	-67.13	-68.12	4	104	145		yes	15
	11	Vernadsky	-64.27	-65.25	11	0	0			15
	12	Larsen (AWS)	-61.47	-67.00	43	37	31	yes	yes	10
north pen.	13	Marambio	-56.72	-64.23	198	0	3			15
	14	Great Wall (KGI)	-58.97	-62.22	10	37	61	yes		14
	15	Marsh(KGI)	-58.98	-62.18	10	20	61	yes		8
	16	Bellingshausen (KGI)	-58.88	-62.183	16	35	61			13
	17	Esperanza	-56.98	-63.40	13	212	201	yes	yes	15
	18	Jubany/Carlini (KGI)	-58.63	-62.23	4	72	119	yes	yes	15

**Table 5.** Information of radio sounding stations. Obs(ervation) at UTC indicates the hour when the sounding was done. Interval shows usual time difference between the radio soundings (for 85% of all radio soundings). N indicates the number of radio soundings during 2002-2016.

	Station	Longitude	Latitude	Height (m)			Obs at UTC	Interval (in days)	N
				real	C05	C15			
a	Marambio	-56.63	-64.23	198	16	5	12	1-5	1312
b	Neumayer	-8.27	-70.67	50	40	41	12	1	4765
c	Novolazarevskaya	11.83	-70.77	119		216	0	1	5224
d	Rothera	-68.13	-67.57	16	6	12	12	1-3	954
e	Halley	-26.66	-75.58	30	34	35	12	1	4723
f	Amundsen Scott	0.00	-90.00	2835		2800	0	1	5168

**Table 6.** CCLM temperature bias and RMSE for the three AWS buoy (see Fig. 2). N indicates the number of data points in 2016. Winter(month) are Apr.-Sept. and Summer(month) are Jan.-Mar. and Oct.-Dec.

Name	N (hours)	Temperature bias				Temperature RMSE			
		Winter		Summer		Winter		Summer	
		C15	T15	C15	T15	C15	T15	C15	T15
AWS 1	7044	-0.3	-1.4	0.9	0.7	3.7	4.0	2.7	2.8
AWS 2	7915	2.5	0.4	1.5	0.8	4.9	3.6	3.6	3.2
AWS 3	6640	-0.8	-1.7	0.1	-0.1	3.4	4.0	2.3	2.4

**Table 7.** As Table 6 but for wind speed.

Name	N (hours)	Wind speed bias				Wind speed RMSE			
		Winter		Summer		Winter		Summer	
		C15	T15	C15	T15	C15	T15	C15	T15
AWS 1	7044	1.0	0.8	0.5	0.4	1.8	1.8	1.5	1.5
AWS 2	7915	1.2	0.9	0.7	0.6	2.0	1.8	1.7	1.6
AWS 3	6640	0.7	0.6	0.7	0.7	1.8	1.9	2.0	2.0



**Table 8.** Bias and RMSE for wind speed and direction compared to lidar measurements during December 2015 and January 2016.

		<b>C01<sub>a</sub></b>	<b>T01<sub>a</sub></b>	<b>C05</b>	<b>T05</b>	<b>C15</b>	<b>T15</b>	<b>ERA5</b>	<b>ERA-I</b>
Wind speed ( $\text{ms}^{-1}$ )	Bias	0.0	0.1	0.0	0.1	-0.1	0.0	-0.3	-0.2
	RMSE	2.1	2.4	2.2	2.3	2.3	2.3	1.7	2.0
Wind direction ( $^{\circ}$ )	Bias	-3	-5	-3	-5	-5	-5	-1	-2
	RMSE	28	30	32	29	32	30	22	29

<sup>a</sup> The runs with 1 km resolution were not performed for the whole period, but only for 37 days and 25 days (out of 39 days) for T01 and C01, respectively.