

Response to Review 1

Blue: Reviewer comments, black: Author response

< The article includes an impressive line-up of authors from prestigious institutes around the world and proposes a model that is promising and will be appreciated by the scientific community. It presents a Nexus analysis, which is valuable and covers the synergies and trade-offs that are realized when a series of SDGs specifically considered are achieved. The case study of the Indus River Basin in South Asia is developed to showcase model results. This is a transboundary case study, including India and Pakistan, so it is really valuable to see how each country is affected differently.>

Thank you for your review of our paper. We are glad that you find the research valuable.

< Some of the issues with the paper that the authors should address are the following:

- It is not clear what scale the platform is developed for. My impression is that it is developed on a global scale, but only the Indus River Basin is presented in this article with the different SDG scenarios, so the scale is not very clear from the manuscript. This is important to mention in order to let the reader know what the potential of this platform is. >

The NEST framework has been so far implemented for the Indus River Basin.

The data, come from a combination of global databases or global modelling assessments and local data sources which were collected specifically for the Indus Basin study. The global data is cropped to the basin-scale. The use of global data makes the implementation flexible in the sense that a first-cut analysis of the system can be made using available sources consistent across regions.

We think that the two following statements explain it quite clearly, however we introduced an additional sentence to avoid ambiguity.

We state in line 13 pg 3 of the revised version that: “The new decision-making and open modeling platform provides a flexible framework for identifying and assessing EWL nexus solutions that can be applied to different geographic regions and multiple spatial and temporal scales.”

We also state in line 3 pg 8 of the revised version that: “To enable a transboundary perspective, the approach further intersects the sub-basin boundaries with country administrative units; sub-national administrative units and regions covering multiple basins (e.g., a country) could be considered.”

To clarify this, we added this explanatory sentence in the manuscript:

Line 32 pg 7: “The current framework focuses on an individual river basin. Future work will adapt the framework to expand and connect multiple basins.”

<- Data Sources: It is not clear where all the data presented in the article come from and how reliable it is. For example, in Figure 3 we see that for the water system the modelling entities are surface water, ground water and saline water, with each one of these streams being split to urban use, rural use, irrigation, etc. As a result, fresh water is allocated to a total of 12 “diversions”, with many of these diversions having a different value for surface water and groundwater. Furthermore, urban and rural water use is split to piped and unpiped distribution and all kinds of waste streams are modelled separately. This is an impressively fine granularity of data, but how possible is it to define all this with some sort of reasonable accuracy for a country, or even a region? It is important that the authors show that this type of data is available and that it is reasonable to consider it in such a detail. Obviously, it is a plus to present the water system in great detail, but when the data cannot support that detail, then it

becomes an important source of error. The fact that each one of the “diversions” has its corresponding energy associated with it indicates that any error introduced in the water system with this classification will also be propagated to the energy system. If the authors use gross approximations for allocating demands to the different modules, then it is not clear how beneficial such detail is at the end. Experience shows that there is a lot of inaccuracy and error in this data and the modeller is better off relying on national or regional statistics, rather than on global databases. Whatever the case, the authors should definitely address this critical issue. Needless to say that the same issue of presenting an extreme level of detail without supporting it with the corresponding data applies for all systems, not only for the water system. The way it is presented right now, there is a serious lack of detailed explanation, which reduces the scientific reproducibility of the modelling science in the article. >

Thanks for the comment, it help us realize that some aspects are not clearly described.

Firstly, it is important to clarify that the purpose of the paper is not to perform a policy-relevant scenario analysis but instead to demonstrate the key features of the model and the interactions it enables users to investigate.

We now clearly write it in the text on line 28 page 15 that: “In this article we present an illustrative comparison between a baseline (business as usual) scenario and a multi-objective scenario achieving multiple SDG indicators by 2030. The analysis is not meant to provide a policy-relevant scenario analysis but instead to demonstrate the key features of the model and the interactions it enables users to investigate. Ongoing work is focusing on calibrating the model to local stakeholder perspectives and the analysis of future pathways relevant for policy-makers. These results will be presented in a future publication.”

Secondly, concerning data we tried not refer to specific data sources we used for the Indus Basin, but rather clarify what type of data we linked in the framework. This is because we claim the NEST framework is flexible to easily change data sources in case of need. What is important, and you highlight it with your comment is to make the reader understand how the system described in the text and figures is linked with data.

This lead to the main clarification to address the issue you raised. The boxes in the system diagrams represent the portfolio of possible technologies that the model can ‘decide’ to install and apply to supply the given demands. To give an example, if we see a certain amount of surface water used in piped distribution in 2020 (optimization time horizon 2020-2050), it is a solution of the optimization process that ‘chooses’ investments, capacity and utilization activity of these technologies.

The only data that characterize these technologies are costs and consumptions per unit of production (parametric data). The data is collected from the literature and the databases outlined in the paper. This type of data collection and modeling is typical in the energy, water and land-use planning literature, and the integration of these planning frameworks is the main contribution of the model.

Other historical data and projection assumptions are quite exhaustively described in the three sector sections. However we have improved the text to explain the different types of data used, adding the following at the end of the Reference system Architecture subsection:

“Two broad categories of data are used to characterize the NEST reference system: historical data on resource use and availability (synchronized with exogenous projections into future time horizon) and historical technology installed capacity; parametric data for technologies used in the optimization model, expressed as costs or consumption of resources per unit of production. These data are based on assumptions and can vary spatially or over time. The information is used in the optimization process to determine the model solution and output into cost and resource use trends that can then be compared to current situation.

Figures 3, 4 and 5 show diagrams of the EWL sectors in the reference system. Some boxes represent resources availability or demands characterized by historical data and future projections as explained in the

following sections. Other boxes represent technologies parameterized with per unit costs and consumptions assumptions, for which specific data sources are reported in the case study section on the Indus River Basin.”

Finally, the modeling framework is fully reproducible and available for download on github. Hence we refer to the model as ‘open’ in the title and throughout the text.

< - SDG2 and Figure 8 (Land use by crop): Even though SDG2 refers to food security, the authors do not clearly show how food security is affected. They show cotton and fodder that are not intended for human consumption, for example. Also, the fact that they show land used for crops and not yields makes a comparison difficult. For example, for the multiple SDG scenario, many of the crops are substituted by non-irrigated, which might have lower yields, when compared to irrigated. How does that affect food security? I understand that the authors explore SDG 2.4, which only refers to irrigation technologies, but it is a bit misleading when addressing SDG 2, to present and compare land used for crops and make no reference to food security and how food production is affected. >

Thanks for the observation. Concerning SDG 2 we only explore the production/supply aspect and its sustainability (regardless it is food crop or other).

With the current framework we do not represent distributional food access for the population or nutrition rate. However, food demand is scaled with population projections equally in the baseline and in the multiple SDG scenario. We added the following text after Scenario the table and edited the table to avoid misunderstanding.

“Energy, water and agriculture yield demands are kept equal to the baseline scenario, which assumes SSP projections. Further work will aim to disentangle the distributional variation needed to increase equality in line with the SDG targets across different social groups (e.g. urban rural).”

< - Figure 7(b): When comparing baseline and multiple SDG scenarios, we see that there is a great increase in Energy for Water and a great decrease in water for irrigation. But, how are Green House Gas emissions affected with such Energy increase and how is food security affected with such a reduction in irrigated land? This is an important question that comes to mind and is not addressed in the text. >

Thank you, we have improved the explanation of Figure 7b as below. To briefly answer your questions: in the multiple SDG scenario there is a stringent constraint on GHG emission. Therefore even if energy use in the water sector increases, the produces energy should mostly come from nuclear, hydropower or renewable energies (Figure 8);

Similarly, in the multiple SDG scenario, food demand (all crop production demand) is the same as in the baseline. What changes is the irrigation system, which allows to significantly save water from the irrigation sector to allocate it for environmental flows, or other uses.

Edits, line 25 pg 19

“This is to support increased water access in the municipal sector and massively expanded wastewater treatment capabilities in urban areas, but still represent less than 2% of total energy production in 2020. Given GHG emission target set for the multiple SDG scenario, increase in energy production does not imply increase in emissions, as the generation fleet is mostly carbon neutral (See Figure 8). On the other hand, water withdrawals for agriculture reduce relative to the baseline scenario, while meeting the same crop production, due to the increase in rain-fed agriculture and more efficient irrigation.”

< - Figure 7(a) / Nuclear Energy: I see that the authors drastically increase the use of nuclear energy in the suggested multiple SDG scenario. I assume that this was

done due to the high efficiency of nuclear plants, which made possible to achieve the SDGs considered. However, it is not clear if such an increase in nuclear is desirable and/or even feasible for these countries. The amount of nuclear power used in the electricity mix of individual countries is a complex issue and it depends on many factors.

It is not clear whether the authors have considered these factors for the case study presented, or whether the increase in nuclear power is merely a “modelling decision”.>

The choice of nuclear was merely a modelling decision, in later work on the basin we are refining constraints on Nuclear given it is a critical technology for the region.

As disclaimer we added the following sentence when describing SDG7 scenario:

“Since nuclear is currently a critical issue in both India and Pakistan, further research will investigate the feasibility of nuclear with more detail and interacting with local stakeholders.”

<- Discussion: What is missing from the manuscript is some discussion on the Nexus, in association with the results. For example, looking at Figure 7, when comparing baseline and multiple_SDG scenarios, we see that as one arrow gets thinner, another one gets thicker, which in a sense shows the effects of a Nexus analysis. In other words, we see the interdependence and “compromise” in resource use (we can’t reduce everything at the same time, or as we reduce one sector, another one is affected). The choice of what is reduced and what is increased and the effects of these interlinkages is at the heart of a Nexus analysis and I feel that such a discussion after the presentation of results is missing. Also, the coherence of the SDGs themselves is relevant and should be discussed. How are things different when one tries to achieve only one goal vs. when multiple goals are considered. This is shown quite clearly in Figure 8, but the discussion on the coherence and/or conflicts of the SDGs themselves seems to be missing. >

Added the following paragraph after Figure 7 explanations:

“These results demonstrate the value of interconnection across EWL sectors in terms of chain reaction in investments (i.e. expanding piping distribution also require expansion in electricity production and distribution), synergies (investing in irrigation efficiency implies saving in water distribution for irrigation) and trade-offs, as it is clearly not possible to minimize costs and resource use across all sectors to achieve the SDGs.”

And, at the end of the paragraph on synergies among SDG:

“Considering multiple target simultaneously shows different results than summing individual analysis. As mentioned above, the electricity mix changes when considering water constraints and climate targets. Similarly, land use is different when efficiency policies are in place together with environmental targets. This clearly shows the importance of an integrated multi-sectoral analysis to highlight synergies and barriers among objectives. The authors intend expand this topic in upcoming research.”

<- Uncertainty / Sensitivity: There is no mention of an uncertainty/sensitivity analysis of the results in the article. Such an assessment is necessary, even if it is limited, since in reality this uncertainty is multifaceted, involving human behaviour and is not so easily quantified.>

We added a new paragraph with some sensitivity analysis driven by uncertainty in scenario assumptions (SSP, RCP and climate models). However we leave more parametric sensitivity analysis to coming publication that focus more on specific results.

In this review process I also removed Figure 10 (b) that was representing the seasonality in crops, because it often lead to misunderstanding. I explained the concept in the text and also made room for the new Figure 11 that show the sensitivity analysis.

Review 2

This article is well written and presents a substantive body of work. I enjoyed reading the paper and can see the value in the conclusions reached and thus the motivation of the research and sharing it with the scientific community. However, having read the paper, I find I'm missing various details that would greatly enhance my confidence in the conclusions, meaning some substantive modifications should be made prior to publication.

The introduction and description of the modelling framework were very clear. The presentation of some aspects of the model is left to other papers, however given the complexity of the model and focus on linking existing models this seemed a sensible approach.

< There is a brief presentation of hydrological model calibration and performance in section 2.3, but beyond this it is not very clear to me what the outcomes of the model are sensitive to and to what extent uncertainties in various parameters and components might impact upon the outcomes.

The model is very complex and has many parameters, but what is it sensitive to in this test case. I would assume many of the components have a minor effect on the outcomes. The computation time was not clear to me, apologies if I have missed this, thus it's difficult to know what a realistic expectation for the authors is in this regard however at the very least this issue requires more discussion. >

Thank you for the comments and for expressing the need of more uncertainty assessment. We added a section on sensitivity to major scenario assumptions, both for the outcomes of CWaTM and MESSAGEix. We decided not to include parametric sensitivity as our tests show lower uncertainty compared to SSP and RCP scenarios, and the number of parameters involved is very high. Future publication focusing on more precise sectorial questions will also explore the related parametric uncertainty.

< How the model was parameterised is also not very clear to me. The combination of tables 1 and 2 do not seem to represent all the data layers required by the model and they don't clearly (to me) map onto model parameters or distinct elements of the system. Perhaps this would be too long for the main text, but could it be a supplement? I'm not criticising the research as such but I don't feel I adequately understand the model data requirements from the text. >

Most of the update in this review expands the data section, in the main text and in the appendix. We expanded the summary table on data (Table1) to cover each single data source.

We also included several tables in the SI on demand assumptions, historical conditions, costs and other technology parameters. An additional xls file will be attached to the SI, including data on solar and wind variable capacity factor.

< The limitations section is primarily a list of things that could be added to the model in future versions, in my opinion it's not sufficiently critical of the current model as implemented and the outputs. The text chooses to focus on several things that could be added without much evidence of how sensitive model results might be to these. There

should be a discussion around the data sets needed, how well these can define model parameters and what implications these might have on the reliability of the conclusions.>

We made minor changes to the limitation sections, excluding not possible improvements that are not evident from what shown in the paper and adding some reference to results.

We have not included discussion on the quality of the datasets used for the Indus case study as we would like to present the framework as applicable to other scopes and flexible in terms of data sources.

< Specific points: Figure 6: What simulations does this plot? Is it the mean of calibrated simulations by CWaTM for the four climate models? Why not present the range and performance stats for each simulation? Section 2.3: Multiple climate models are used, but what about uncertainties in the other component? Why have an ensemble for this and then a deterministic set of parameters for the hydrological model? >

Yes, the plot shows the mean of calibrated simulations. It is a quite standard figure often shown in (<https://www.geosci-model-dev-discuss.net/gmd-2019-214/>). For sure including all climate model outputs would be interesting but also less clear to visualize.

Concerning sensitivity, as mentioned in the first answer, we show the variability for different climate models.

< P24: “However, it brings greater computational challenges associated with using classical mathematical programming methods” perhaps I missed it but what is the computational burden of the model and how does resolution affect this? >

We added the following paragraph in the ‘Model setup’ section

“CWaTM is run with fixed spatial and temporal resolution as mentioned in previous sections. Therefore, performances are not affected by the final scale of the optimization model. Running times are in the order of few hours on personal computers. The MESSAGEix component is instead scale sensitive, increasing the number of BCU or the temporal resolution increases the matrix of the LP optimization significantly. In the configuration described here, the *cplex* solver in the GAMS model reduces the system of equations to a LP matrix of approximately 1 million x 1 million elements and solves in less than 30 minutes on personal computers. For each policy scenario described in the following sections, CWaTM is only run once for each SSP and RCP combination, while additional policies are only implemented and run in the optimization model.”

The Nexus Solutions Tool (NEST) v1.0: An open platform for optimizing multi-scale energy-water-land system transformations

Adriano Vinca^{1,2}, Simon Parkinson^{1,2}, Edward Byers¹, Peter Burek¹, Zarrar Khan³, Volker Krey^{1,4}, Fabio A. Diuana^{5,1}, Yaoping Wang¹, Ansir Ilyas⁶, Alexandre C. Köberle^{7,5}, Iain Staffell⁸, Stefan Pfenninger⁹, Abubakr Muhammad⁶, Andrew Rowe², Roberto Schaeffer⁵, Narasimha D. Rao^{10,1}, Yoshihide Wada^{1,11}, Ned Djilali², and Keywan Riahi^{1,12}

¹International Institute for Applied Systems Analysis, Austria

²Institute for Integrated Energy Systems, University of Victoria, Canada

³Joint Global Change Research Institute, Pacific Northwest National Laboratory, United States

⁴Dept. of Energy & Process Engineering, Norwegian University of Science and Technology, Norway

⁵Energy Planning Program, Federal University of Rio de Janeiro, Brazil

⁶Center for Water Informatics & Technology, Lahore University of Management Sciences, Pakistan

⁷Grantham Institute, Faculty of Natural Sciences, Imperial College London, United Kingdom

⁸Centre for Environmental Policy, Faculty of Natural Sciences, Imperial College London, United Kingdom

⁹Dept. of Environmental Systems Science, ETH Zurich, Switzerland

¹⁰School of Forestry and Environmental Studies, Yale University, United States

¹¹Department of Physical Geography, Faculty of Geosciences, Utrecht University, The Netherlands

¹²Institute for Thermal Engineering, TU Graz, Austria

Correspondence: Adriano Vinca (vinca@iiasa.ac.at)

Abstract. The energy-water-land nexus represents a critical leverage future policies must draw upon to reduce trade-offs between sustainable development objectives. Yet, existing long-term planning tools do not provide the scope or level of integration across the nexus to unravel important development constraints. Moreover, existing tools and data are not always made openly available or are implemented across disparate modeling platforms that can be difficult to link directly with modern scientific computing tools and databases. In this paper, we present the Nexus Solutions Tool (NEST): a new open modeling platform that integrates multi-scale energy-water-land resource optimization with distributed hydrological modeling. The new approach provides insights into the vulnerability of water, energy and land resources to future socioeconomic and climatic change and how multi-sectoral policies, technological solutions and investments can improve the resilience and sustainability of transformation pathways while avoiding counterproductive interactions among sectors. NEST can be applied at different spatial and temporal resolutions, and is designed specifically to tap into the growing body of open access geospatial data available through national inventories and the earth system modeling community. A case study analysis of the Indus River Basin in South Asia demonstrates the capability of the model to capture important interlinkages across system transformation pathways towards the United Nations' Sustainable Development Goals, including the intersections between local and regional transboundary policies and incremental investment costs from rapidly increasing regional consumption projected over the coming decades.

1 Introduction

The United Nations' Sustainable Development Goals (SDGs) provide 17 broad targets and diverse indicators for guiding humanity and the environment towards prosperity. Many of the SDG indicators are interdependent, and thus implementation

5 strategies should be based on a broader systems perspective [Liu et al. \(2015\)](#); [Nilsson et al. \(2016\)](#); [McCollum et al. \(2018\)](#) ([Liu et al., 2015](#)

The concept of nexus thinking has gained traction, and is increasingly applied within the context of the linkages among energy, water and land (EWL) resources [Khan et al. \(2017\)](#); [Liu et al. \(2018b\)](#); [Albrecht et al. \(2018\)](#) ([Khan et al., 2017](#); [Liu et al., 2018b](#); [Albrecht](#)

A nexus approach balances EWL interactions across multiple sectors and livelihoods to better understand the synergies and trade-offs associated with meeting future resource demands in a sustainable way [Bazilian et al. \(2011\)](#); [Biggs et al. \(2015\)](#); [Liu et al. \(2018a\)](#)

10 A number of previous studies address nexus challenges with computational modeling. Generally, these studies demonstrate that co-optimization, in the sense that decisions for EWL sectors are made simultaneously and incorporate the interlinkages, can identify strategies that avoid trade-offs and achieve synergies [Buras \(1979\)](#); [Lall and Mays \(1981\)](#); [Matsumoto and Mays \(1983\)](#); [Huang et](#)

Similarly, previous analyses integrated water, energy and food systems across multiple temporal and spatial scales, and quantified the economic benefits that joint water-energy planning can provide by reducing the investment and operational costs of fu-

15 ture infrastructure systems [Howells et al. \(2013\)](#); [Dubreuil et al. \(2013\)](#); [Parkinson et al. \(2016\)](#); [Zhang and Vesselinov \(2017\)](#); [Khan et al.](#)

Land-use impacts of energy decisions, including bioenergy supply-chain interactions, are also increasingly integrated into long-term energy planning models to provide improved estimates of biomass availability and cost [Mesfun et al. \(2018\)](#); [Akhtari et al. \(2018\)](#); [de](#)

[\(Mesfun et al., 2018; Akhtari et al., 2018; de Carvalho Köberle, 2018\)](#). Analysis of decarbonization pathways for the United
20 States demonstrates that multi-scale modeling is crucial for assessing the EWL nexus because of the diverse constraints on EWL resources at high spatial resolution, and the interaction with policies impacting different sectors and administrative levels [Sattler et al. \(2012\)](#); [Hejazi et al. \(2015\)](#) ([Sattler et al., 2012](#); [Hejazi et al., 2015](#)). Similarly, other recent global analysis with an integrated assessment model highlights important differences between spatial scales relevant for energy, water and food supply

[Bijl et al. \(2018\)](#) ([Bijl et al., 2018](#)). In this context, some large-scale hydro-economic and integrated assessment models increas-

25 ingly take a multi-scale perspective and consider water infrastructure investments across multiple basins, sectors and end-uses [Kahil et al. \(2018\)](#); [Robinson et al. \(2015\)](#); [Kim et al. \(2016\)](#); [?\(Kahil et al., 2018; Robinson et al., 2015; Kim et al., 2016; Parkinson et al](#)

Energy, water and land systems optimization models are [thus](#) important sectoral tools that inform utility and national planning towards the sustainable long-term development of natural resources. Yet, models used to develop long-term pathways consistent with the fundamental transformational changes called for under the SDGs do not represent simultaneously re-
30 allocation of resources and capacity expansion decisions across tightly linked EWL sectors. [Cross-sector interactions are crucial to consider when resource availability is limited and infrastructure expansion is expensive. Unforeseen constraints could lead to stranded assets and vulnerable water, food and energy supplies.](#) More integration across EWL systems and re-

source planning decisions is required to capture important interactions in an explicit way, so that least-cost nexus solutions can be identified using engineering-economic tools such as optimization.

Leveraging open source tools will promote end-user accessibility and should be prioritized for long-term system optimization models to enable validation and re-use in future research ~~Howells et al. (2011); DeCarolis et al. (2017). Examples of previous integrated analysis combine~~ (Howells et al., 2011; DeCarolis et al., 2017). Previous analysis combines different energy, water and land sector planning tools to achieve open-access integration ~~Welsch et al. (2014)~~ (Welsch et al., 2014). The results of each sectoral planning tool are passed between tools as boundary conditions until the models reach an acceptable level of convergence. This process can take time and the decision solution obtained is not necessarily optimal across sectors. Moreover, the individual resource planning models require specific expertise to develop and run, and it can be time-consuming to design and implement a robust database for the model inputs and results, as well as online systems for sharing and merging model changes across different users. Other recent model developments are focusing mainly on water infrastructure (Payet-Burin et al., 2019) or city-scale scenarios (Bieber et al., 2018; McManamay et al., 2019), leaving room for improvement in terms of the sectoral and geographic scope for solutions.

In this paper, we present the NExus Solutions Tool (NEST): a new open platform for integrated EWL systems analysis under global change. The framework links a high-resolution distributed hydrological model to an engineering-economic modeling scheme that integrates multi-scale decisions impacting long-term EWL transformations. We mapped the output variables from NEST to the SDG indicators enabling integrated modeling of coordinated implementation and quantification of the investment costs. The new decision-making and open modeling platform provides a flexible framework for identifying and assessing EWL nexus solutions that can be applied to different geographic regions and multiple spatial and temporal scales.

The following section describes the NEST implementation. ~~Section 3 demonstrates~~ Sections 3 and 4 demonstrate the enhanced approach using data collected and processed for integrated policy analysis and capacity building in the Indus River Basin. Section 4-5 presents the conclusions and opportunities for future research.

2 Modeling framework

NEST links databases, processing scripts and state-of-the-art models covering multiple disciplines (Figure 1). The core framework consists of a distributed hydrological model (CWatM) and a resource supply planning model (MESSAGEix), both capturing the historical period and a future time horizon. NEST is used to generate future scenarios, where a scenario represents the technological and earth system transformation pathway under a given set of input data assumptions. In this context, the Shared Socioeconomic Pathways (SSP) and Representative Concentration Pathways (RCP) act as coupled scenario narratives framing climate and human development trajectories and driving exogenous demand profiles for specific sectors (Van Vuuren et al., 2011; O'Neill et al., 2017). Sectoral coverage is harmonized between CWatM and MESSAGEix so that demand profiles can be translated between models. CWatM is initially run under baseline conditions to inform MESSAGEix of dynamic constraints on water availability, hydropower potential and irrigation water requirements. In future work elements of the resulting MESSAGEix pathway will be passed back to CWatM to simulate the expected human impacts under adaptive management at a high spatial resolution (Figure 1).

2.1 Community Water Model (CWatM)

The Community Water Model (CWatM) provides a grid-based representation of terrestrial hydrology, applied in this instance at a spatial resolution of 5 arc-minutes (grid-cells approximately 8 km wide near the equator) and daily temporal resolution ~~Burek et al. (2019)~~ [\(Burek et al., 2019\)](#). CWatM distinguishes between six land cover types, including forest, irrigated non-paddy cropland, irrigated rice paddy, impervious surface, water bodies, and other land cover in simulating the water balance of each grid cell. CWatM includes processes relevant for high altitude implementations, including snow, glacier, and permafrost. Potential evaporation is calculated using the Penman-Monteith equations. Processes within soil layers include frost, infiltration, preferential flow, capillary rise, surface runoff, interflow, and groundwater percolation.

The model simulates river streamflow using the kinematic wave routing approach, and can simulate either naturalized streamflow or streamflow impacted by human activities including reservoirs, irrigation demand, and water withdrawals and return flows by industrial and domestic sectors. Reservoir outflow in the model is a function of the relative filling of the reservoir, storage parameters, and outflow parameters ~~Burek et al. (2013)~~ [\(Burek et al., 2013\)](#). Irrigation demand is a function of crop water demand, water availability, and crop type (paddy or non-paddy) ~~Wada et al. (2014)~~ [\(Wada et al., 2014\)](#). Parameter calibration uses an evolutionary algorithm that optimizes a modified version of the Kling-Gupta Efficiency (KGE) between the simulated and observed discharge ~~Fortin et al. (2012); Beck et al. (2016)~~ [\(Fortin et al., 2012; Beck et al., 2016\)](#).

2.2 MESSAGEix

MESSAGEix is an open-source, dynamic systems-optimization model developed for strategic energy planning ~~Huppmann et al. (2019)~~ [\(Huppmann et al., 2019\)](#). MESSAGEix is based on the original MESSAGE model that has been developed and applied widely over the past three decades to analyze scenarios of energy system transformation, both globally and in different geographic regions, under technical-engineering constraints and political-societal considerations, e.g., ~~Messner and Strubegger (1995); Riahi et al. (2007); Van Vliet et al. (2011)~~ [\(Messner and Strubegger, 1995; Riahi et al., 2007; Van Vliet et al., 2012; Kiani et al., 2013\)](#). ~~We demonstrate in this paper how the MESSAGEix modeling scheme is readily extended to the EWL nexus because the general form of the equations (detailed online at) enable representation of diverse resource supply-chains covering multiple decision-scales.~~

~~(Messner and Strubegger, 1995; Riahi et al., 2007; Van Vliet et al., 2012; Kiani et al., 2013)~~. A defining feature of MESSAGEix that distinguishes it from other energy models in its class (e.g., OSeMOSYS ~~Howells et al. (2011)~~ [\(Howells et al., 2011\)](#) and MARKAL ~~Loulou et al. (2004)~~ [\(Loulou et al., 2004\)](#)), and that leverages its widespread use as a nexus solutions tool, is that it incorporates the ix modeling platform (ixmp): a back-end database and version control system that enables users to collaboratively develop, solve and visualize models using the open-source R and Python programming environments ~~Huppmann et al. (2019)~~ [\(Huppmann et al., 2019\)](#). This feature complements with the philosophy and design of CWatM, which utilizes similar open access software (Python) as the main interface for collaborative model development and calibration. In this context, the NEST framework employs the *reticulate* package to integrate R and python work environments ~~Ushey et al. (2019)~~ [\(Ushey et al., 2019\)](#).

~~The primary purpose of NEST is scenario analysis, where a given scenario represents the technological system transformation pathway under a given set of input data assumptions. In this context, the Shared Socioeconomic Pathways (SSP) and Representative~~

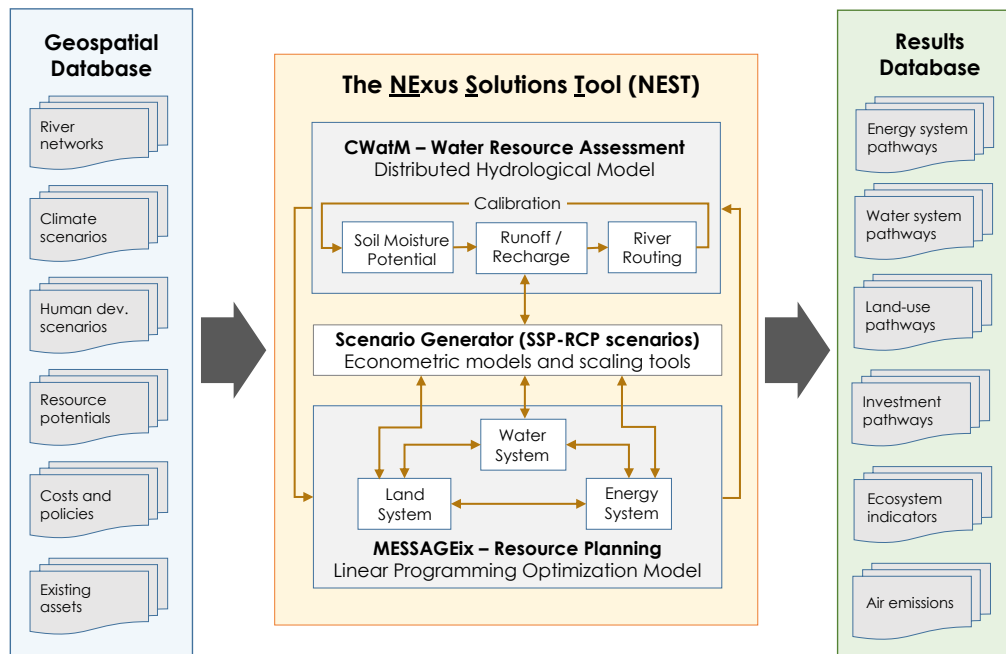


Figure 1. The NEST modeling scheme integrates the Community Water Model (CWatM) with a unified EWL technological system implemented in MESSAGEix. A scenario generator harmonizes data across the models and generates exogenous demand profiles aligned with coupled climate-human development narratives from the Shared Socioeconomic Pathways (SSP) and Representative Concentration Pathways (RCP).

Concentration Pathways (RCP) act as coupled scenario narratives framing climate and human development trajectories and driving exogenous demand profiles for specific sectors Van Vuuren et al. (2011); O'Neill et al. (2017). Sectoral coverage is harmonized between CWatM and MESSAGEix so that demand profiles can be translated between models. CWatM is initially run under baseline conditions to inform MESSAGEix of dynamic constraints on water availability, hydropower potential and irrigation water requirements. In future work elements of the resulting MESSAGEix pathway will be passed back to CWatM to simulate the expected human impacts under adaptive management at a high spatial resolution (Figure 1).

2.3 Optimal system transformation pathways

System transformation pathways are simulated with MESSAGEix. The As a bottom-up systems optimization model includes an explicit representation of, MESSAGEix includes resource consumption and capacity limitations at the technology-level.

- 10 Each technology modeled in MESSAGEix is defined and characterized by commodity input/output efficiencies (the rate at which a particular commodity is consumed or produced during technology operation), economic costs (investment, fixed and variable components), and environmental impacts (e.g., greenhouse gas emissions, water consumption, etc.). A technology

in this context can represent any process that transfers or transforms commodities, including natural systems such as rivers, aquifers and crops. By solving the following deterministic inter-regional and inter-temporal LP-linear programming (LP) problem, MESSAGEix minimizes the total cost for system capacity and operation over a future time period while meeting user-specified levels of demand and technical/policy constraints ~~Krey and Riahi (2013):~~ :

$$\min f(\mathbf{x}) = \sum_{r,t} \mathbf{c}_{r,t}^T \mathbf{x}_{r,t} \delta_{r,t} ; \mathbf{A} \mathbf{x} \geq \mathbf{b} \quad (1)$$

In the above system of equations, the time period index is given by $t=1,2,\dots,n$ and the region index is given by r . The solution vector containing the capacity and activity of the technologies is given by $\mathbf{x}=(\mathbf{x}_1,\mathbf{x}_2,\dots,\mathbf{x}_n)\mathbf{x}$. Economic costs are described in the cost coefficient vector of the objective function $\mathbf{c}_t\mathbf{c}$. The discount rate associated with future cash flows is represented by $\delta_t\delta$. The set of constraints including the supply-demand balances, capacity limits, technology retirements and capacity additions, activity bounds and additional policies addressing environmental impacts are contained in the technical coefficient matrix \mathbf{A} and right-hand side constraints vector \mathbf{b} . The full set of equations is summarized in the online model documentation (<https://messageix.iiasa.ac.at>). The single-objective LP formulation can also readily be transformed to handle multiple objectives, such as minimum total investments, emission level or other environmental indicators ~~Parkinson et al. (2018)~~ (Parkinson et al., 2018).

~~As we demonstrate in the forthcoming sections, EWL technologies and processes~~ By linking the inputs and outputs of individual processes, energy, water and land decisions can be represented ~~together~~ as a single system using the MESSAGEix modeling scheme. Thus, decisions impacting system design and operation over the planning horizon are made understanding the nexus interactions ~~across EWL systems~~, and will adapt the transformation pathways for each sector to avoid constraints and reduce trade-offs from the perspective of the objective function. Moreover, MESSAGEix supports spatially-distributed systems modeling using a node-link representation, where commodities can be transferred between nodes based on the definition of dedicated technologies. It is therefore possible to explicitly represent the interplays between up- and downstream water users. Commodities are ~~also~~ distinguished by the location (level) within the supply-chain ~~. For example, electricity commodities can be defined pre- and post-transmission to enable~~ enabling explicit accounting of associated efficiency losses and costs for grid ~~infrastructure and conveyance infrastructures~~. The temporal representation enables users to select the investment periods (e.g., annual) and sub-investment periods (e.g., sub-annual) over which supply, demand and system capacity must be balanced ~~Huppmann et al. (2019)~~ (Huppmann et al., 2019).

~~Despite its flexible and general representation of the long-term resource planning problem, the existing MESSAGEix core model does not represent sub-annual storage dynamics and associated capacity constraints. Previous work demonstrates specific approaches for integrating short-term (i.e., daily) storage dynamics into long-term energy system models similar to MESSAGEix Johnson et al. (2017); yet, sequential seasonal storage dynamics are most critical to represent from the perspective of water resources management, because of the important role reservoirs play in balancing seasonal hydrologic and demand variability, and the potential for future reservoir development to compete with other water uses during initial filling. To enable inclusion of seasonal reservoirs in NEST, sequential monthly sub-annual time steps are included in the MESSAGEix implementation and the core model is enhanced with the following set of equations merged into the existing technical coefficient~~

matrix and right-hand constraints vector:-

$$\begin{aligned}\Delta S_{n,c,l,y,m} \cdot \Delta t_m + S_{n,c,l,y,m+1} - (S_{n,c,l,y,m} \cdot \lambda_{n,c,l,y,m}) &= 0 \\ S_{n,c,l,y,m}^- &\leq S_{n,c,l,y,m} \leq S_{n,c,l,y,m}^+ \\ S_{n,c,l,y,m} &\leq Z_{n,c,l,y} \\ \Delta S_{n,c,l,y,m} &\leq \Delta Z_{n,c,l,y}\end{aligned}$$

In the above equations, n is the node where the storage is located, c is the commodity stored, l is the level in the supply-chain the storage interacts with, y is the investment period (annual), and m is the operational periods (sub-annual). The storage level is given by S , whereas the change in storage is given by ΔS . Eventual storage losses (i.e. evaporation losses of reservoir) are given by the factor λ . The sub-annual time period duration Δt converts the storage change calculated as a rate into a volume consistent with the storage level. To account for filling behaviour and interannual variations... In Equation 5, the first set of inequality constraints is used to limit the storage level to within a specific range (S^- is the lower bound and S^+ the upper bound), for example to include operating rules for reservoirs used for multiple purposes. The second and third inequality constraints are the capacity limitations both in terms of system size (Z) and rate of commodity transfer (ΔZ). Future work will consider the capacity limitations as control variables that can be expanded through increased investment in storage capacity.

2.3 Reference system

Further adjustments to the core model are needed to ensure the physical balance of EWL resources. Specifically, the existing MESSAGEix core model constrains resource supply to be greater than or equal to resource demand. This setup enables the model to spill excess resource production when beneficial to the overall operating costs of the system. However, this configuration poses challenges when accounting for inflows into the system to effectively size infrastructure capacity. For example, when considering wastewater return flows as a specific commodity that should be managed using wastewater treatment technologies, it is crucial to ensure a complete commodity balance across all time periods. Otherwise, the model would be able to exclude inflows to avoid building wastewater treatment capacity. To reconcile inconsistencies and to ensure a physical balance of EWL resources, we define a new set of supply-demand balance equality constraints in the enhanced MESSAGEix core model used in NEST, and enable users to select which commodities to include.

Finally, for computational efficiency we developed a set of tools in the R programming interface that enable users to rapidly prototype new models during the testing phase by selectively managing interactions with ixmp. We found that for the case study described in section 3 that the new approach cuts model instance generation time by an order of magnitude. Importantly, the ixmp utilities can be optionally used so that once debugging is complete, models can readily be shared and modified using the powerful database utilities enabled with ixmp. All of the enhancements to the MESSAGEix model implemented in this paper can be obtained from the online repository for NEST (-).

2.4 Reference system architecture

The reference system ~~architecture is a~~ is the user-defined bottom-up representation of the technological system and its spatio-temporal delineation in MESSAGEix that ~~implicitly~~ defines interactions between technologies and the balance of commodity flows across the system ~~Messner and Strubegger (1995)~~ (Messner and Strubegger, 1995). The reference system contains the

5 portfolio of possible technologies and interventions (existing and future) and does not typically change across scenarios; the parameterization of data, including the constraints, are varied to compare how the system reacts to certain inputs, policies and objectives. ~~NEST incorporates an innovative reference system architecture that enables users to explore analytical outcomes characteristic of hydro-economic and agro-economic models. Specifically, we consider interactions between up-~~

10 ~~and downstream water users in different sectors, crop choices and the economic value of water, energy and agricultural commodities in different locations and time periods arising from the geospatial distribution of resources.~~ Two broad categories of data are used to characterize the NEST reference system: (1) historical data on resource use and availability, existing and planned technology capacities; and (2) parametric data for technologies used in the optimization model, expressed as costs or consumption of resources per unit of production. These data are based on assumptions and can vary spatially and temporally.

2.3.1 Spatial delineation ~~and model integration~~

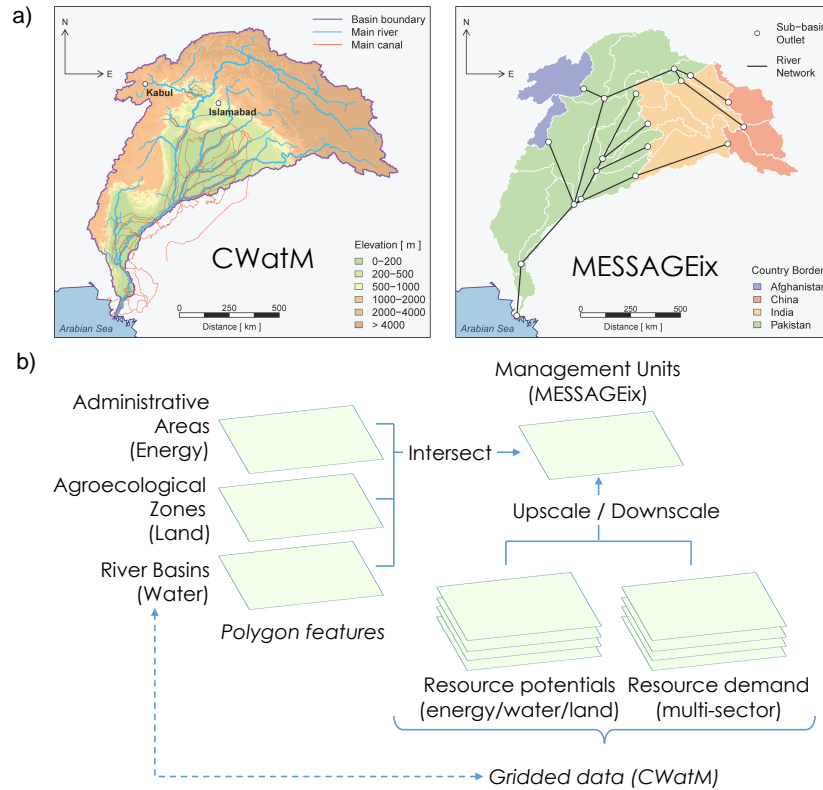
15 River basins are defined as fundamental spatial units in the reference system ~~in NEST~~ because they indicate how surface runoff (discharge) is directed across space and towards a single outlet downstream to the sea or an inland lake. River basins are disaggregated into sub-basins (tributaries) in NEST to improve accounting of within-basin surface water flows and impacts of upstream water use on downstream water availability. To enable a transboundary perspective, the approach further intersects the sub-basin boundaries with country administrative units; sub-national administrative units and regions covering multiple basins

20 ~~(e.g., a country) could be considered~~ could be considered. The framework does not represent countries entirely, unless countries completely fit within the basin delineation or multiple basins covering a country's borders are included. Optionally, the units can be further intersected with agro-ecological zone boundaries to support diverse climatic characteristics within each sub-basin. The intersection of the administrative, agro-ecological and sub-basin units results in a new classification of management units defined as Basin Country Units (BCUs) (Figure 2). ~~The framework does not represent countries entirely, unless countries~~

25 ~~completely fit within the basin delineation or multiple basins covering a country's borders are included. Boundary conditions are needed to address trade flows outside the study region.~~ (Gaupp et al., 2015).

Each ~~management unit or node in MESSAGEix is~~ BCU is defined as a management unit (or node) in MESSAGEix. The nodes are an aggregated representation of the embedded resources and infrastructure assets that ~~support water, energy and agriculture demands. Importantly, infrastructure supply demands in the model, and are the fundamental spatial scale~~

30 over which supply and demand are balanced. Infrastructure connections that move ~~commodities resources~~ outside the region ~~must be~~ are included as boundary conditions. A reduced-form network for guiding surface water flows between the ~~MESSAGEix management units is estimated~~ BCUs is derived based on high-resolution flow-direction data consistent with CWatM ~~Kahil et al. (2018)~~ (Kahil et al., 2018). An example ~~using data from HydroSHEDS at 15 are seconds~~ for the Indus



22

Figure 2. Delineation of spatial units in NEST. (a) The Indus River Basin elevation changes, river system in CWatM (left), and the basin delineated into Basin Country Units (BCUs) with a reduced form node-link river network for implementation in MESSAGEix (right); (b) the methodology intersecting basin boundaries, administrative regions and agro-ecological zones to converge on a common spatial scale, and linkage to gridded resource potentials and demands.

River Basin in South Asia is depicted in Figure (2). ~~HydroSHEDS~~ The approach is leveraging flow direction data at 15 arc-seconds from HydroSHEDS, which provides hydrographic data layers that allow for the derivation of watershed boundaries for any given location based on the high-resolution Shuttle Radar Topography Mission (SRTM) digital elevation model ~~Lehner and Grill (2013)~~ (Lehner and Grill, 2013).

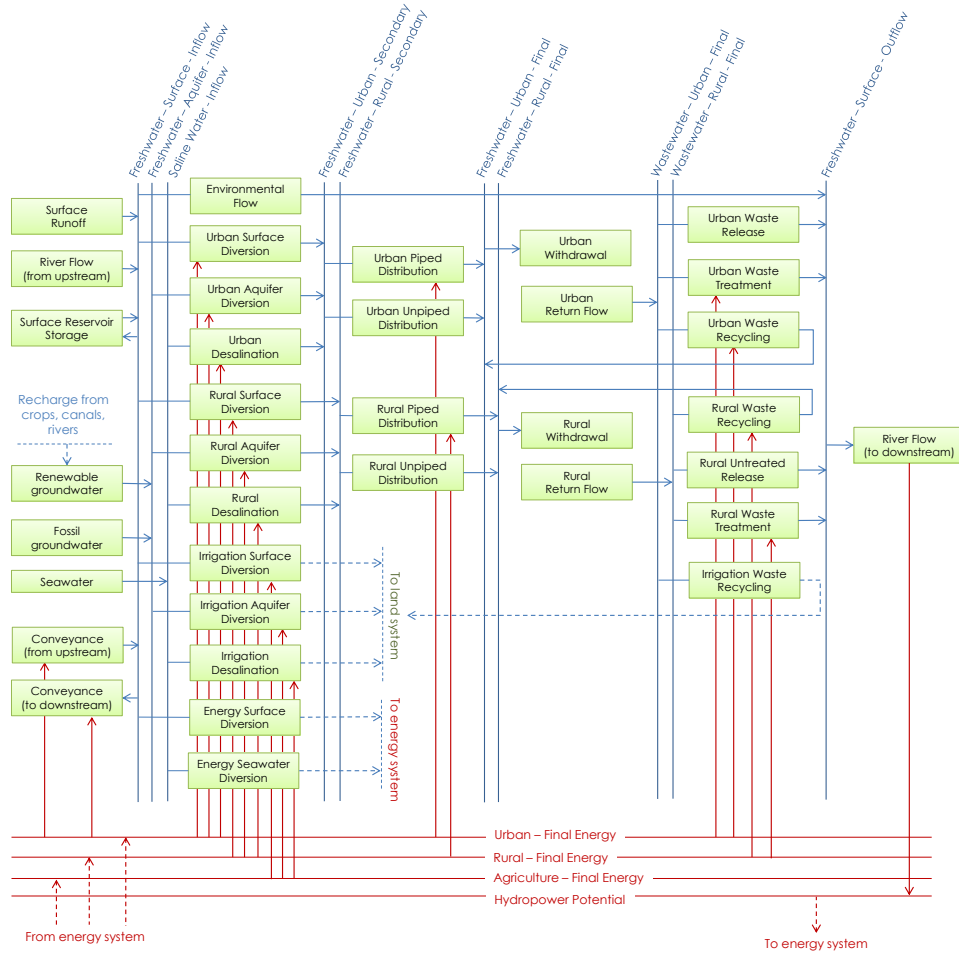
- 5 Renewable surface water and groundwater inflows into each ~~management-unit~~ BCU are represented by aggregating (up-scaling) the gridded run-off and recharge projections simulated with CWatM under current land-use patterns (Figure 2). This approach is likely to overestimate the available freshwater for human use within each BCU, because water users are distributed and do not have uniform access to the aggregate BCU-level water resources. Grid-cells in CWatM are mapped to specific management units in MESSAGEix by overlaying the polygons and identifying the grid-cell centroids that fall within a given
- 10 polygon boundary. Daily run-off sequences from CWatM are converted to decadal inflow scenarios by averaging monthly volumes over a 30-year time period; inflow percentiles can alternatively be stipulated to consider extreme flow conditions.

Similarly, other gridded resource potential and demand projections detailed in the following subsections are harmonized to the CWatM spatial grid to facilitate upscaling and downscaling between models.

2.3.2 Water ~~system~~sector

The ~~MESSAGEix-reference-system~~ scheme for water management within each ~~node-(management-unit)~~BCU is depicted in Figure 3. ~~Water from different~~Different water resources (surface, aquifer and saline) ~~is~~are accounted for and allocated across sectors (urban, rural, energy and agriculture). Internal runoff~~in each BCU~~, regulation of reservoirs and water flowing from adjacent nodes through rivers or canals, all contribute to available surface water in each BCU. Renewable and non-renewable groundwater use is distinguished using groundwater recharge scenarios from CWatM and the efficiency losses from irrigation ~~Yang et al. (2016)~~(Yang et al., 2016). Simultaneously, return-flow volumes are managed, including opportunities to recycle wastewater streams within and between sectors. River flow and conveyance technologies move water between ~~nodes~~BCUs. Sectoral water withdrawals and return flows occurring outside the energy and land systems (i.e., municipal and manufacturing sectors) are exogenous and, together with endogenous water requirements for power plants and crops, drive the investments in water distribution and wastewater treatment infrastructure. ~~Nexus interactions~~Interactions across sectors are ~~accounted for explicitly~~included in the model decision-making, including the energy required for pumping and treating water, and the water needed for crops and electricity generation. Average elevation changes between major urban areas are used to estimate energy intensities for specific conveyance routes (Parkinson et al., 2016), whereas average water table depths are used to estimate energy intensities for lifting groundwater to the surface (Kahil et al., 2018).

~~Hydropower represents a critical nexus linkage for water resource managers in many regions of the world, in particular due to trade-offs between electricity generation and the availability of water up and down stream from hydropower systems~~ ~~Tilmant et al. (2009)~~. Figure 3 depicts an explicit linkage enabled between nodal outflows and the production of hydropower potential in the model; ~~which~~. The potential is passed to the energy system representation described in the following section, and limits the maximum monthly hydropower generation in each BCU. An important challenge surrounds the aggregation of distributed hydropower potential that varies ~~significantly within each management unit~~within each BCU both spatially and temporally. We ~~apply the approach described in Khan et al. (2018) to directly link surface water (river)~~estimate a linear transformation coefficient between modeled flows in the reduced-form ~~node-link network to the provision of hydropower potential to the energy system Khan et al. (2018)~~. The approach estimates a linear transformation coefficient that converts network flows aggregated to the management unit level into hydropower potential assessed using gridded results basin network and the BCU-level hydropower potential calculated using the gridded data from the hydrological model. ~~Gridded potential located Hydropower projects~~ off the main river tributary ~~is treated differently in the model to reflect that these projects are expected to be independent from flows coming from upstream management units in the node-link network~~. The potential is ~~categorized differently in MESSAGEix by defining a separate hydropower technology~~do not depend on upstream flows in the BCU river network and are identified based on the gridded flow direction data. Separate technologies and linear transformation coefficients are defined for these projects, where the ~~monthly capacity factor varies based on a~~ linear transformation coefficient



22

Figure 3. The water **system-sector** representation in **each BCU** using the **MESSAGE-MESSAGEix** reference **system** scheme. The **system water sector** is **represented-in-each-BCU-and** hard-linked to the energy and land **systems-based-on-sector representations using** the indicated interactions.

~~fitted to internal BCU run-off. This differs from the total flow between nodes used as the indicator to quantify hydropower potential for sites located along the main river tributaries and thus benefiting significantly from upstream flows.~~

is estimated using the internal BCU runoff. In NEST, we map the CWatM runoff data onto the 15 arc seconds flow accumulation grids from HydroSHEDS to estimate discharge at scales that preserve elevation differences governing hydropower potential ~~Gernaat et al. (2017); Korkovelos et al. (2018)~~ (Gernaat et al., 2017; Korkovelos et al., 2018). Potential hydropower capacity hp is calculated with the following equation:

$$hp = \eta \cdot \rho \cdot g \cdot q \cdot (h_i - h_o) \quad (2)$$

where η is the turbine efficiency, ρ is the density of water, g is the gravitational acceleration, q is the design discharge (taken to be the 70th percentile of the inflow sequence), h_o is the outlet elevation and h_i is the inlet elevation. Individual projects are identified along 5 km reaches of the 15-arc second river system based on their estimated annual production level and a set of exclusion zones including the distance to existing infrastructure, land-use and population density ~~Gernaat et al. (2017)~~ (Gernaat et al., 2017). We assume that new projects can only utilize 10% of the total flow to ensure a high level of ecological security ~~Richter et al. (2012)~~ (Richter et al., 2012), and limit the canal lengths to a maximum of 3 km based on observed historical trends in installations. We do not consider dam storage or transfers of water between rivers in the assessment of hydropower potential due to additional planning challenges that are associated with these projects not readily monetized in the framework; ~~alternatively.~~ Alternatively, new dam projects are considered on a case-by-case basis based on published information on planned projects and stakeholder engagement ~~(see the case study analysis for further information).~~

2.3.3 Energy ~~system~~sector

The energy system representation for EWL nexus analysis using the MESSAGEix framework is depicted in Figure 4. The approach mimics closely conventional energy systems modeling with MESSAGEix, but integrates directly interactions with the novel implementation of the water and land systems. A diverse range of fossil and low-carbon energy resource extraction, processing and power generation technologies can be included in the framework. Water system interactions are enabled through the definition of water withdrawal and consumption intensities for each energy technology and connection to water diversion technologies constrained by the availability of water resources. Thermal power plants are also distinguished by cooling technology, with the choice of cooling technology impacting the plant's economics and efficiencies. Alternative formulations may disaggregate the cooling technology choice from the prime mover technology in order to enable retro-fitting of cooling systems directly ~~?~~ (Parkinson et al., 2019).

Wind and solar potential is estimated by linking NEST to the Renewables.ninja application programming interface (<https://www.renewables.ninja/>). Renewables.ninja estimates hourly capacity factors for wind and solar technologies covering most terrestrial locations in the world, and generated based on calibrated resource data and technology representations ~~Pfenninger and Staffell (2016)~~. In NEST, the grid-cell centroids from CWatM are passed to Renewables.ninja which then generates hourly production times series at each location. Exclusions zones are used to limit the areas where wind and solar can expand. The gridded potential

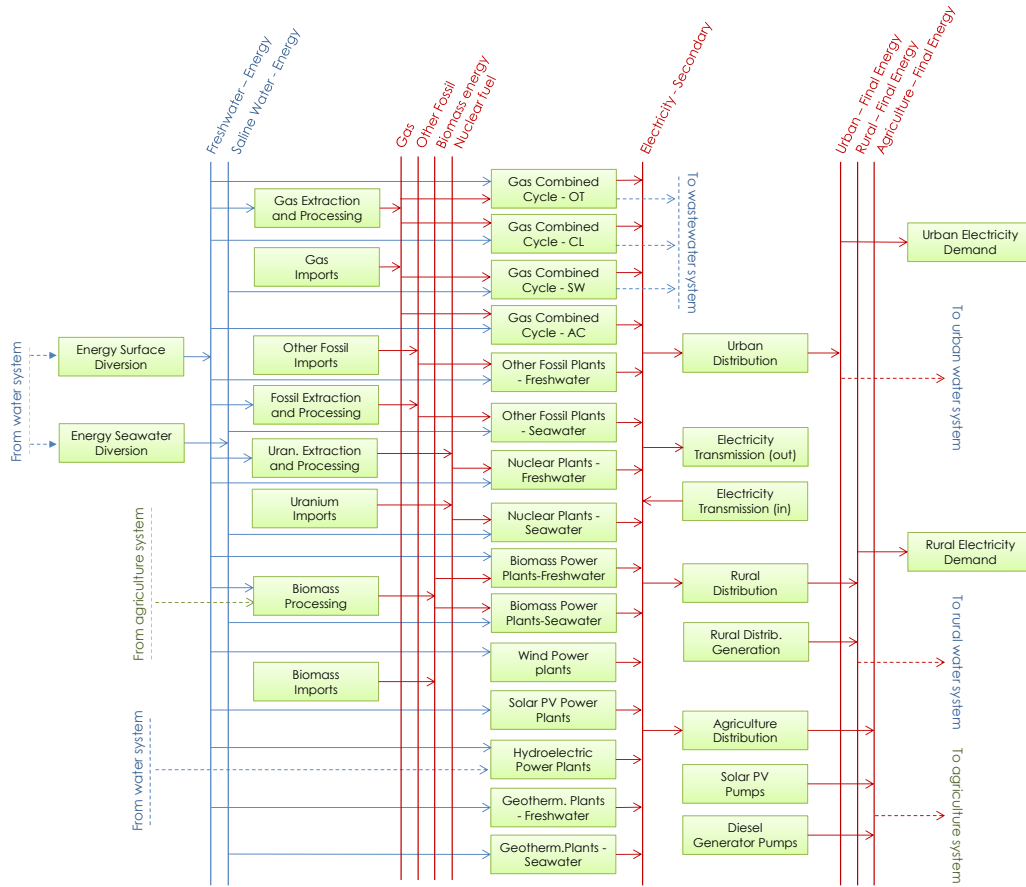


Figure 4. The energy system-sector representation in each BCU using the MESSAGE-MESSAGEix reference system scheme. The energy system-sector is represented in each management unit (node) and hard-linked to the water and land systems based on agriculture sector representations using the indicated interactions.

in each management unit is categorized into capacity factors for representing diverse performance characteristics within each BCU.

- ~~Transmission between nodes and distribution of energy commodities to end-users is explicitly modeled in the framework using a simple transport representation commonly found in large-scale energy models. Transmission grids can connect any adjacent BCU, eventually considering national borders and cross boundary lines, to represent electricity import and exports. Fuel import and exports.~~ A simple energy transfer scheme is considered for electricity transmission between adjacent BCUs, with distinct costs for each route estimated based on the average distances between the most populated urban area within each BCU (Parkinson et al., 2016). Fuel trade with areas outside the delineated study region are defined using consistent fuel price projections as boundary conditions from the MESSAGEix-GLOBIOM global integrated assessment model (Fricko et al., 2017).
- The energy system interacts directly with land agriculture systems through the inclusion of bioenergy technologies that utilize specific crop-related commodities described in the following section as feedstock. This includes consume crop yields. Included are categories of dedicated bioenergy power plants providing electricity to grid-connected and distributed consumers, as well as categories for existing plant-types that can be co-fired using a limited fraction of bioenergy feedstock (e.g., crop residues). The current version of the model does not account for the direct land footprint of energy system technologies. Electricity Energy demands from the agriculture and water sector activities are also accounted for to ensure sufficient capacity of power plants are built power generation capacity and to account for additional associated air pollution and greenhouse gas emissions.

2.3.4 Land-use and agriculture system Agriculture sector

- An important feature of the reference system that bridges decision-making across the nexus is a detailed crop and land use an agriculture sector representation integrated with the water and energy sectors presented previously. Various Diverse crop types and management strategies can be included in the approach, with the model selecting the cropping area and management method. The latter enables a diverse representation of representation of alternative irrigation technologies, land preparation methods, and/or fertilizer application intensities, and importantly incorporates the spatial re-distribution of crops as a management strategy. In Figure 5 we show a simple example for a system containing rice and wheat crop types with rain-fed, canal and drip irrigation options. We adopt a similar approach for integrating land-use into the reference system to that proposed in Koberle Köberle (2018) de Carvalho Köberle (2018) (de Carvalho Köberle, 2018), so that when the model selects a specific land-use it must balance the decision with the available land area within each management unit BCU. Land-use is categorized into specific types (forest, pasture, crop, natural, etc.), with dedicated land-use change processes defined in the reference system to convert land-use between types. The maximum cropping area is constrained based on the suitability of land within each management unit BCU to support specific crop-types due to topographic and climatic conditions, as well as the total area available for cropping across all crop types. On-farm Non-CO₂ emissions as well as on-farm energy requirements besides that used for water pumping are tracked based on average energy intensity requirements, which can be estimated for different crops based on data from the literature Rao et al. (2019) (Rao et al., 2019). The model does not currently include dynamic growth and harvest of short-rotation forest crops, but this feature could be added as a feature in future work through appropriate definition

in MESSAGEix using, e.g., the interannual stock and storage variables –(Section 2.4). In Figure 5 we show an example for a system containing rice and wheat crop types with rain-fed, canal and drip irrigation options.

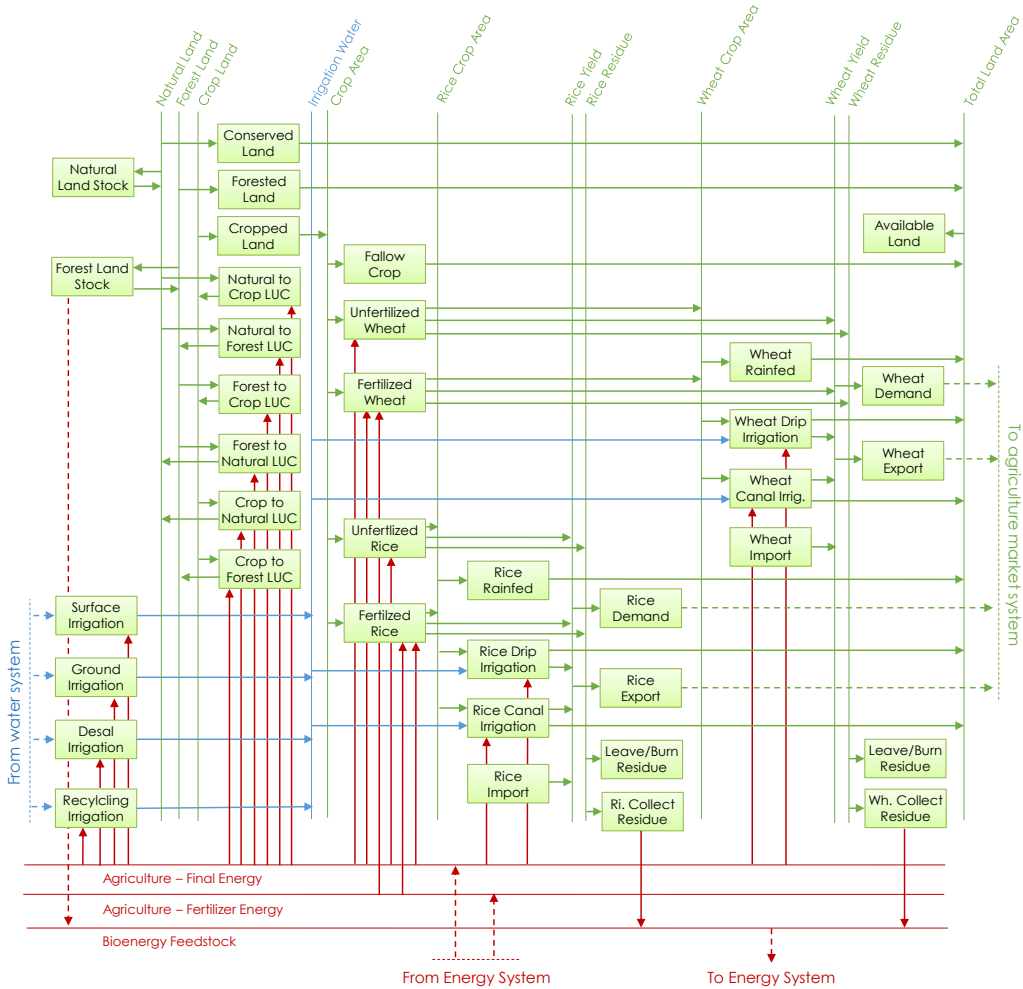


Figure 5. The ~~land-use and~~ agriculture ~~system sector~~ representation in ~~each BCU~~ using the ~~MESSAGE MESSAGEix~~ reference ~~system~~ scheme. ~~The agriculture sector is hard-linked to the water and energy sector representations using the indicated interactions.~~

Each management unit is treated analogously to what is typically referred to as homogeneous response units in the agricultural modeling literature Havlík et al. (2011). The units are homogeneous because they smooth out fine-grained spatial variability in crop productivity and water use to aggregate crop parameters into coarser spatial units with average land-use parameters (Havlík et al., 2011). Crop yields ~~ton/ha~~ are calculated aggregating spatial historical data at the ~~BCU level~~BCU-level. This results in different yield coefficients for each crop, unit area and water

supply (irrigation or rain). Similarly, crop water requirements vary across types and the intensity per unit area is estimated for each BCU using consistent water resource projections from the hydrological model. The ~~amount of water needed~~ irrigation per unit area for each crop w is calculated using the CROPWAT approach ~~Smith (1992);~~ (Smith, 1992);

$$w_{n,x,y,m} = \max \left\{ \left(k_{n,x,y,m} \cdot e_{n,x,y,m} - p^*_{n,x,y,m} \right), 0 \right\} \quad (3)$$

- 5 In the above equation, ~~x is the crop type, w is the irrigation intensity per unit area m^3/ha ,~~ k is the crop coefficient, e is the reference evapotranspiration ~~m^3/ha~~ and p^* is the effective precipitation ~~m^3/ha~~ . The reference evapotranspiration is calculated with CWatM using the Penman-Monteith method. The effective precipitation accounts for soil water storage and is estimated following the CROPWAT approach: ~~Smith (1992)~~ (Smith, 1992);

$$p^* = \begin{cases} p \cdot (4.17 - 0.2 \cdot p) & p < 8.3 \text{ mm/day} \\ 4.17 + 0.1 \cdot p & \text{otherwise} \end{cases} \quad (4)$$

- 10 For non-paddy crops, p is the 10-day moving average daily precipitation (in mm/day), and for paddy crops it is the 3-day moving average to account for saturated soils ~~Döll (2002)~~ (Döll, 2002). Irrigation intensities can optionally be calibrated such that, when aggregated across a given BCU, reproduce annual historical irrigation withdrawals when multiplied by the historical cropping area.

Similarly to the other sectors, the model defines the infrastructure portfolio to meet an exogenous demand for crop ~~products~~ yields.

- 15 Additionally to internal production, import and export of ~~products are allowed~~ crop yields are allowed and demands can be defined and aggregated across multiple regions to simulate national accounts. Moreover, crop residues are ~~accounted for as additional products of agriculture, which~~ tracked as by-products of agriculture activities. The residues can be burnt resulting in air emissions or transported and processed to have solid or liquid ~~bio-fuel~~ biofuel for electricity production.

2.3.5 Multi-sector demands and return-flows

- 20 Despite the endogenous representation of interactions between energy, water and land systems, there remains the need to exogenously define consumption profiles for the different sectors of the economy categorized in NEST but not specifically modeled at the technology-level. This currently includes the municipal and manufacturing sectors. Baseline demands for freshwater and cropping pattern are also required for the hydrological modeling. A demand scenario generator incorporated into NEST combines gridded climate and socioeconomic data from the coupled SSP-RCP scenario framework with econometric models
- 25 fit to historical data. The SSP-RCP scenario data is harmonized at 7.5 arc-minutes and includes urban and rural populations, income-level and climatic indicators. Sector specific econometric models convert the gridded demand drivers into consumption profiles (water and electricity) and water infrastructure access rates for each sector ~~Parkinson et al. (2016); ?~~ The specific formulation for the econometric model depends on the sector and geographic region, but should be formulated to respond to the SSP-RCP drivers. (Parkinson et al., 2016, 2019). For regions lacking universal electricity access and transmission data, gridded
- 30 electrification rates ~~are~~ are estimated using satellite derived night-time light intensity combined with recent maps of population

changes [Falchetta et al. \(2019\)](#), are [\(Falchetta et al., 2019\)](#), and used to parameterize historical grid capacities and downscale national electricity projections from econometric models.

Food and fiber demands are represented as constraints on yields from specific crops aggregated to the national-scale. Import and export demands are included using variable prices, which might be calibrated in future work by optimizing parameter settings so that the model is able to reproduce prices observed historically [Howitt \(1995\)](#) [\(Howitt, 1995\)](#). Transport of agricultural products is not considered in the modeling, but might be added as a feature in future work by integrating geospatial and economic indicators for existing and future transport options including road networks [Mosnier et al. \(2014\)](#) [\(Mosnier et al., 2014\)](#). Land and surface water resource availability is also added as an exogenous inflow into the system that must be continuously balanced by technologies and processes included in the model. This supports accounting for conservation measures that preserve land and move water downstream (environmental flows).

2.4 Modeling SDG implementation in [Enhancements to the Indus River Basin MESSAGEix model](#)

The existing MESSAGEix core model does not represent sub-annual storage dynamics and associated capacity constraints. Previous work demonstrates specific approaches for integrating short-term (i.e., daily) storage dynamics into long-term energy system models similar to MESSAGEix (Johnson et al., 2017); yet, sequential seasonal storage dynamics are most critical to represent from the perspective of water resources management, because of the important role reservoirs play in balancing seasonal hydrologic and demand variability, and the potential for future reservoir development to compete with other water uses during filling. To enable inclusion of seasonal reservoirs in NEST, sequential monthly sub-annual time steps are included in the MESSAGEix implementation and the core model is enhanced with the following set of equations merged into the existing technical coefficient matrix and right-hand constraints vector:

$$\begin{aligned} \Delta S_{n,c,l,y,m} \cdot \Delta t_m + S_{n,c,l,y,m+1} - (S_{n,c,l,y,m} \cdot \lambda_{n,c,l,y,m}) &= 0 \\ S_{n,c,l,y,m}^- &\leq S_{n,c,l,y,m} \leq S_{n,c,l,y,m}^+ \\ S_{n,c,l,y,m} &\leq Z_{n,c,l,y} \\ \Delta S_{n,c,l,y,m} &\leq \Delta Z_{n,c,l,y} \end{aligned} \quad (5)$$

In the above equations, n is the node where the storage is located, c is the commodity stored, l is the level in the supply-chain the storage interacts with, y is the investment period (annual), and m is the operational periods (sub-annual). The storage level is given by S , whereas the change in storage is given by ΔS . The first set of inequality constraints is used to limit the storage level to within a specific range (S^- is the lower bound and S^+ the upper bound), for example to include operating rules for reservoirs used for multiple purposes. The second and third inequality constraints are the capacity limitations both in terms of system size (Z) and rate of commodity transfer (ΔZ). Storage losses (i.e. evaporation and seepage) are given by the factor λ , and computed as a function of the estimated evaporation from the hydrological model and a linear area-volume relationship (Liu et al., 2018c). The sub-annual time period duration Δt converts the storage change calculated as a rate into a volume consistent with the storage level. To account for filling behavior and interannual variations we ensure: (1) the start and

end levels are the same across years when no new storage capacity is added; and (2) when new storage capacity is added, it must be filled uniformly throughout the first 10 years, thus presenting an additional freshwater demand. Capacity additions are exogenously defined based on reported data; future work will consider the capacity limitations as control variables that can be expanded through increased investment in storage capacity.

- 5 To avoid integer (binary) decision variables associated with the choice of whether or not to plant a specific crop in a specific area, an additional set of minimum utilization constraints are defined for crops included in MESSAGEix. This forces the optimization to maintain the growing schedule over the course of the year, while balancing the total land area across crop types. Further adjustments to the core model are needed to ensure the physical balance of EWL resources. Specifically, the existing MESSAGEix core model constrains resource supply to be greater than or equal to resource demand. This setup
10 enables the model to spill excess resource production when beneficial to the overall operating costs of the system. However, this configuration poses challenges when accounting for inflows into the system to effectively size infrastructure capacity. For example, when considering wastewater return flows as a specific commodity that should be managed using wastewater treatment technologies, it is crucial to ensure a complete commodity balance across all time periods. Otherwise, the model would be able to exclude inflows to avoid building wastewater treatment capacity. To reconcile inconsistencies and to ensure
15 a physical balance of EWL resources, we define a new set of supply-demand balance equality constraints in the enhanced MESSAGEix core model used in NEST.

- Finally, for computational efficiency we developed a set of tools in the R programming interface that enable users to rapidly prototype new models during the testing phase by selectively managing interactions with ixmp. We found that for the case study described in Section 3 that the new approach cuts model instance generation time by an order of magnitude. Importantly,
20 the ixmp utilities can be optionally used so that once debugging is complete, models can readily be shared and modified using the powerful database utilities enabled with ixmp. All of the enhancements to the MESSAGEix model implemented in this paper can be obtained from the online repository for NEST (<https://github.com/iiasa/NEST>).

3 Modeling SDG implementation in the Indus River Basin

- As a first application of NEST, we focus on the Indus River Basin (IRB). The setup is meant to demonstrate the capabilities
25 of the model, with ongoing work dedicated to the integration of local data and understanding of the policy implications for the region, and to be summarized in a future publication. The IRB, located in South Asia, is home to an estimated ~~300-million~~ 250-million people (Pakistan 61%), India 35%, Afghanistan 4%, and China less than 1%) and has the highest density of irrigated land in the world ~~Laghari et al. (2012)~~(Laghari et al., 2012; Yu et al., 2013). In recent years, the region experienced rapid population and economic activity growth, and this is expected to continue in the next decades leading to reduced poverty
30 and growing demands for water, energy and food. With no surface water left in the basin for expanded use and accelerating exploitation of fossil groundwater as a result, long-term management of systems dependent on water is fundamental for the sustainable development of the region (Wada et al., 2019).

There have been a number of previous analyses of EWL challenges in the IRB, including integrated modeling of the systems in Pakistan's portion of the basin to understand the cost of climate change [Yu et al. \(2013\)](#); [Yang et al. \(2016\)](#) ([Yu et al., 2013](#); [Yang et al., 2016](#)). Other recent analysis has quantified existing and future gaps in water supply caused by projected socioeconomic and climate change or gaps in estimating electricity demand variation due to groundwater pumping for agriculture [Wijngaard et al. \(2018\)](#); [Siddiqi and V \(2018\)](#). Previous work on the IRB does not provide a full assessment of EWL adaptation options or long-term pathways for the IRB as a whole. Specifically, there remains a need to link long-term capacity expansion decisions across EWL systems to understand the best strategies for developing the region's infrastructure into the future while accounting for existing transboundary policies. Crucially, there are important interplays between irrigation efficiency, land-use change and groundwater recharge that need to be reconciled to ensure water saving policies have the intended effect [Grafton et al. \(2018\)](#) ([Grafton et al., 2018](#)). The NEST framework is ideally positioned to tackle these research questions because of its explicit representation of EWL capacity expansion and land-use change across spatially distributed regions and features basin wide water accounting for surface and groundwater systems.

~~In this article we present an illustrative comparison between a baseline (business as usual) scenario and a multi-objective scenario achieving multiple SDG indicators by 2030. The business as usual scenario assumes the continuation of existing policies, aiming at cost minimization with limited environmental constraints such as emission or infrastructure access targets. The SDG implementation pursues a vision of economic growth (poverty eradication) jointly combined with reducing resource access inequalities and the environmental impacts of infrastructure systems. The scenarios, parameters and constraints are summarized in Table 3.~~

3.1 [Model setup](#)

20 ~~Target Description Modeling: SDG vs baseline~~

~~Global Greenhouse gas (GHG) Emissions SDG 13.a Implement the commitment undertaken by to the United Nations Framework Convention on Climate Change Set GHG emission budget and climate scenario accordingly. Baseline: no emission targets~~

~~Clean energy access SDG 7.2 By 2030 50% share of renewable energy in the global energy mix Set targets on share of renewables (wind, solar, geothermal). Baseline: no targets~~

~~Power plant cooling SDG 7.b By 2030, expand infrastructure and upgrade technology for supplying modern and sustainable energy services for all Phase out of once-through cooling, imposing capacity constraint. Baseline: no targets~~

~~Sustainable water withdrawals SDG 6.6 By 2020, protect and restore water-related ecosystems, including mountains, forests, wetlands, rivers, aquifers and lakes Minimum of 20% of monthly natural flow left in rivers and aquifers by 2030. Set sustainable levels of groundwater extractions (also in baseline)~~

~~Wastewater treatment SDG 6.3 By 2030, improve water quality by reducing pollution, halving the proportion of untreated wastewater and substantially increasing recycling and safe reuse globally Treat half of return flows treated by 2030, recycle one quarter of return flows. Baseline: no targets~~

~~Food & agriculture infrastructure access SDG 2.4 By 2030, 100% implementation of modern so-called smart irrigation technologies that increase productivity and production relative to 2015 SDG 2.4 constraint technologies with low efficiency to have zero capacity in 2030. Baseline: no smart irrigation technologies adopted before 2030-~~

~~Policy scenarios embedding specific SDG targets~~

- 5 ~~To parametrize the model,~~ To parameterize the model in terms of ~~inputs, technology specification, historical data and projections~~ resources, technologies and demands, we used the data sources outlined in Table 1. Importantly, much of the data needed to run NEST can be obtained from open access geospatial datasets with global coverage. Thus, NEST is readily adapted to other regions of the world. Nevertheless, it is important to emphasize the prioritization of approved local data, as well as use of the calibration steps that can be embedded in the framework that improve the performance of the model in
- 10 terms of reproducing historical conditions. Moreover, it is important to stress the use of multiple climate models and RCP-SSP scenarios to bridge the range of uncertainties in the hydrological modeling and demand drivers.

~~Data Description/Use Spatial/temporal res. source Population and GDP growth SSP data national projection to 2100 SSP O'Neill et al. (2017)-~~

- ~~Wind and Solar PV potential The dataset provides gridded capacity factors for possible wind turbines and solar PV installation 0.05 degrees spatial resolution. Hourly data, up to 2016 Renewables. ninja Pfenninger and Staffell (2016); Staffell and Pfenninger (2016)-~~
- 15

~~Thermal power plants data power plants and cooling technologies historical capacity global/national CARMA 2016 Jorgenson et al. (2014) and Raptis Raptis et al. (2016), Black & Veatch Bla (2012)-~~

~~Electricity consumption historical electricity demand projected to determine future demands national data up to 2015 IEA statistics IEA~~

- 20 ~~Elevation, water network, water accumulation Spatial resolution: from 3 arc-second to 5 minute. Year 2008 HydroSHEDS v1.1 hyd-~~ We calibrated CWatM for the IRB at

~~Water reservoirs Global database of Capacity of existing reservoir 6862 dams data points around the world. Updated up to 2011 Global Reservoir and Dam (GRanD) database V1.1 Gra-~~

- ~~crop and land data Data on land availability, historical yields and crop land arcmin resolution using the monthly streamflow data during 1995-2010 at the Besham station, in northern Pakistan. It is important to emphasize the complexity of the hydrology in the IRB and the difficulties in calibrating to observed data due to extreme elevation changes (Forsythe et al., 2019). For calibration, the CWatM simulations included human impacts on streamflow and a spin-up period of 5 years to allow long-term storage components to stabilize. Analysis of the initial calibration results showed that the calibration was mainly impacted by the ice melt coefficient and empirical shape parameter of the ARNO model for infiltration (Todini, 1996; Burek et al., 2013). Therefore, we ran a second calibration that searched for optimal values for only these two parameters. The calibrated parameter values are given in Table 2. The performance of the model after the two calibration runs is in Figure 6. We then used the calibrated CWatM for the IRB for historical (1956-2005) and future (2006-2099) simulations using the downscaled meteorological inputs of the ISI-MIP2b project from four global climate models (GCMs: GFDL-ESM2M, HadGEM2-ES, IPSL-CM5A-LR, MIROC5) (Frieler et al., 2017). The streamflow in CWatM were naturalized because human activity, and water withdrawals in particular, are represented and accounted for in the~~
- 25
- 30
- 35

Parameter(s)	Dataset	Spatial Resolution	Latest Year
Country administrative boundaries	Database of Global Administrative Areas (GADM)	polygon	2008
Basin and sub-basin boundaries	HydroBASINS database	polygon	2012
Climate forcing	Intersectoral Impact Model Intercomparison Project (ISIMIP)	$0.5^{\circ} \times 0.5^{\circ}$	2015
Urban and rural population	Jones and O'Neill (2016)	$0.125^{\circ} \times 0.125^{\circ}$	2010
Urban and rural GDP	Byers et al. (2018)	$0.125^{\circ} \times 0.125^{\circ}$	2010
Elevation, flow-direction, basin/lake boundaries	HydroSHEDS Database	$0.004^{\circ} \times 0.004^{\circ}$	2008
Non-hydro power plant capacity, age and location	World Electric Power Plant (WEPP) Database	asset-level	2017
Power plant cooling technologies	Raptis et al. (2016)	asset-level	2014
Hydro power plant capacity, age and location	van Vliet et al. (2016)	asset-level	2017
Reservoir capacity, age and location	Global Reservoir and Dam (GRAND) Database	asset-level	2014
Crop areas, yields and location	Global Agro Ecological Zones (GAEZ) Database	$0.1^{\circ} \times 0.1^{\circ}$	2005
Protected areas	World Database on Protected Areas (WDPA)	polygon	2014
Forests	Global Forest Change (GFC) Database	$0.004^{\circ} \times 0.004^{\circ}$	2014
Depth to groundwater	Fan et al. (2013)	$0.01^{\circ} \times 0.01^{\circ}$	2012
Historical energy supply and demand by sector	International Energy Agency (IEA)	national	2017
Historical water supply and demand by sector	Information System on Water and Agriculture (AQUASTAT)	national	2015
Historical irrigation water supply by source	Cheema et al. (2014)	$0.1^{\circ} \times 0.1^{\circ}$	2015
Historical non-irrigation groundwater use	Wada et al. (2016)	$0.5^{\circ} \times 0.5^{\circ}$	2005
Historical transmission capacity and roads	OpenStreetMap	asset-level	2017
Historical on-farm energy use incl. pumping	Siddiqi and Wescoat (2013); Rao et al. (2019)	provincial	2015
Historical water conveyance capacity	Estimated from technical reports	asset-level	2018
Historical crop prices, fertilizers and crop coefficients	Food and Agriculture Organization (FAO)	national	2018
Planned reservoir and power plant capacity	Estimated from technical reports	asset-level	2030
Power plant cost and performance	Parkinson et al. (2016); Fricko et al. (2016)	technology-level	2014
Surface and groundwater performance	Kahil et al. (2018)	technology-level	2010
Irrigation cost and performance	Local data collected	technology-level	2010
Wastewater cost and performance	Parkinson et al. (2016)	technology-level	2014
Desalination cost and performance	Parkinson et al. (2016)	technology-level	2014

Table 1. Data sources leveraged to parameterize the NEST implementation of the IRB.

MESSAGEix framework. The resulting ensemble mean monthly runoff profiles for each riparian country's basin area and the Indus as a whole are depicted in Figure 7. The total basin runoff matches closely with other reported data (Laghari et al., 2012).

~~national-crop production-Historical levels of crop production by country~~~~national data up to 2016~~ FAOSTAT-FAO

5 ~~In this provisional case study~~

For implementation in MESSAGEix, the IRB is delineated into 24 Basin Country Units (BCUs) using the basin and country administrative boundary datasets (Figure 2). Further disaggregation into the agro-ecological zones is not pursued in this case because of limited spatial variability in crop potential ~~across~~ within the delineated BCUs. The planning horizon considers

Parameter	Value
Snow melt coefficient	0.003597
Crop factor correction	1.211
Ice melt coefficient	0.5366
Soil preferential flow constant	5.4
ARNO b	1.259
Interflow part of recharge factor	1.807
Groundwater recession coefficient factor	3.823
Runoff concentration factor	1.492
Routing Manning's N	8.104
Reservoir normal storage limit	0.5257
Lake alpha factor	1.154
Lake wind factor	1.205

Table 2. Calibration parameters values for convergence of CWatM.

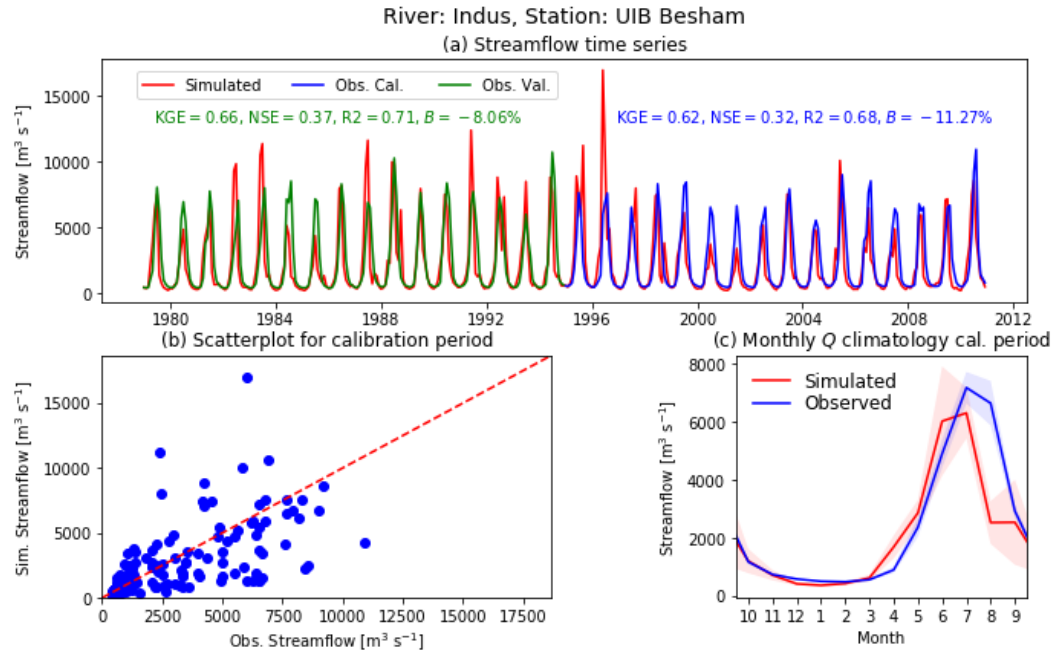


Figure 6. ~~Data with global coverage used in combination with NEST framework~~ Comparison between the simulated streamflow by the calibrated model and the observation. KGE: Kling-Gupta Efficiency, NSE: Nash-Sutcliffe Efficiency, R-sq: R-square, B: mean bias.

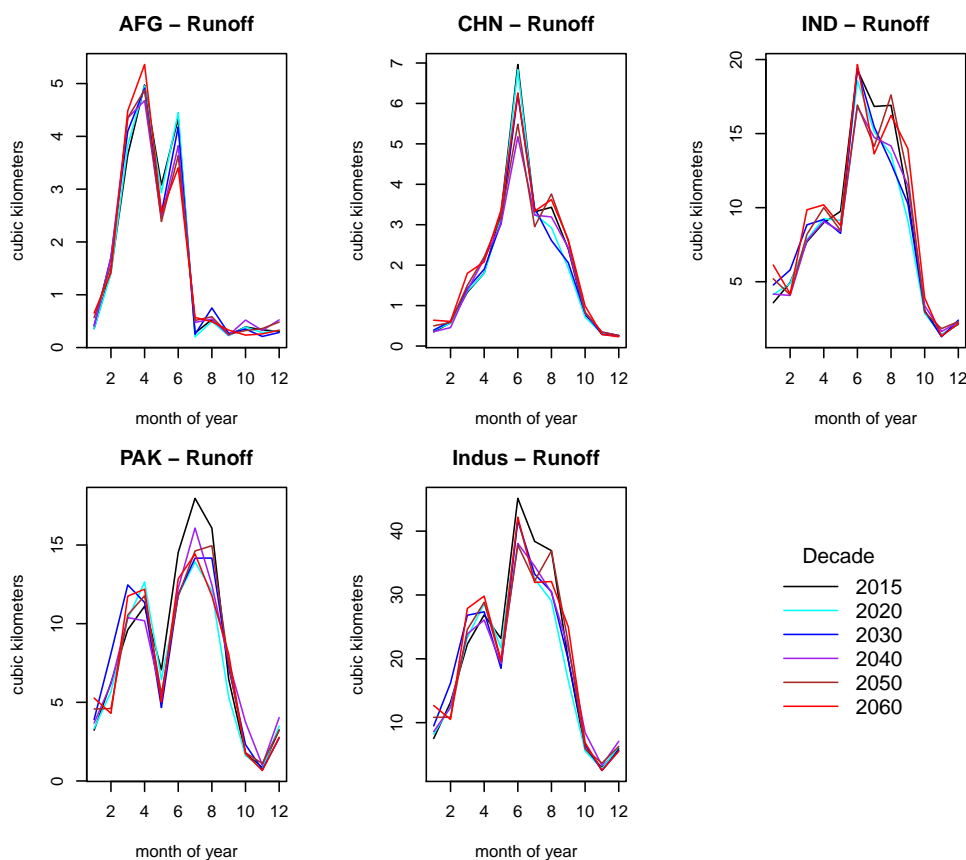


Figure 7. Ensemble mean monthly runoff in each country and the IRB as a whole. Daily run-off sequences from CWaTM are converted to decadal runoff scenarios by averaging monthly gridded volumes over a 30-year time period. Outputs from four global climate models are included in the ensemble: GFDL-ESM2M, HadGEM2-ES, IPSL-CM5A-LR, MIROC5.

investment periods spanning 2020 to 2060 in 10 year time steps, and 2015 is parameterized as the base historical year (i.e., the initial starting point). Monthly sub-annual time steps are considered.

- 5 CWaTM is run with fixed spatial and temporal resolution as mentioned in previous sections. Therefore, performances are not affected by the final scale of the optimization model. Running times are in the order of few hours on personal computers. The MESSAGEix component is instead scale sensitive, increasing the number of BCU or the temporal resolution increases the size of the matrix of the LP optimization significantly. In the current configuration, the *cplex* solver in the GAMS model reduces the system of equations to a LP matrix of approximately 1 million x 1 million elements and solves in less than 30 minutes on personal computers. For each policy scenario described in the following sections, CWaTM is only run once for each SSP and RCP combination, while additional policies are only implemented and run in the optimization model.

With most of the land area dedicated to crop production, we simplify the reference system by limiting the land-use options to crop land choices and limit the crop types to fertilized options. The SSP2 (middle-of-the-road) socioeconomic scenario is explored in the analysis and the *ensemble* mean climate scenario across the RCP climate models is used for climate forcing.

~~We calibrated CWatM for the IRB at Urban and rural population and per capita income for SSP1, 2 and 5 are in resolution using the monthly streamflow data during 1995-2010 at the Besham station, in northern Pakistan. It is important to emphasize the complexity of projected for 2050 are compared to 2010 values for each riparian country's part of the IRB in Figure 8. It can be seen that rapid urbanization and growth in income levels is projected in the scenarios, and these changes translate into increased consumption of water, energy and crops in the modeling framework. Figure A1 depicts the corresponding sectoral exogenous demands for the SSP2 scenario. Note that results for China are not included because the existing and projected population growth in this region is very low and thus the consumption has negligible impact on the downstream resources. Electricity demands increase most dramatically across countries due to the hydrology in the IRB and the difficulties in calibrating to observed data due to extreme elevation changes Forsythe et al. (2019). For calibration, the CWatM simulations included human impacts on streamflow and a spin-up period of 5 years to allow long-term storage components to stabilize. Analysis of the initial calibration results showed that the calibration was mainly impacted by the ice melt coefficient and empirical shape parameter of the ARNO model for infiltration Todini (1996); Burek et al. (2013). Therefore, we ran a second calibration that searched for optimal values for only these two parameters. The calibrated parameter values are given in Table 2. The performance of the model after the two calibration runs is in Figure 6. We then used the calibrated CWatM for the IRB for historical (1956-2005) rapid increases in GDP and the assumption that electrification is supporting economic development. Water demands increase more gradually due to less influence of economic growth, although for India the manufacturing sector water uses increases significantly due to the existing water intensity. Corresponding projections of the population with and without access to pre- and future (2006-2099) simulations using the downscaled meteorological inputs of the ISI-MIP2b project from four global climate models (GCMs: GFDL-ESM2M, HadGEM2-ES, IPSL-CM5A-LR, MIROC5) Frieler et al. (2017). The streamflow in CWatM were naturalized because human activity, post-treatment of freshwater are generated based on the GDP projections.~~

Canals play an important role in enabling the Indus Water Treaty, and are mapped to specific BCUs using the data in Table B1. Operational constraints are also added to force the linkages to transfer water between routes, in line with the Indus Treaty. The Indira Gandhi canal is considered as a constraint on flows originating from the particular BCU where the inlet is found. Similarly, an urban water transfer to Karachi near the Indus Delta is included as an additional demand. The capacities of other water diversion infrastructures (surface and groundwater) for each sector are estimated from the historical withdrawals. The energy source for groundwater pumping is also identified, where diesel generators dominate in Pakistan and Afghanistan, and electricity is used predominately in India.

The existing and planned capacity of power generation in the IRB is depicted Figure B1. Hydropower is the main source of generation capacity in the basin, with the basin regions of Pakistan also hosting significant amount of fossil generation. A number of large-scale hydropower projects are also planned in the region (Table B2) that were not found in the global databases, and these projects have also been included in the model. For projects with an opening date before 2025, it is assumed they are

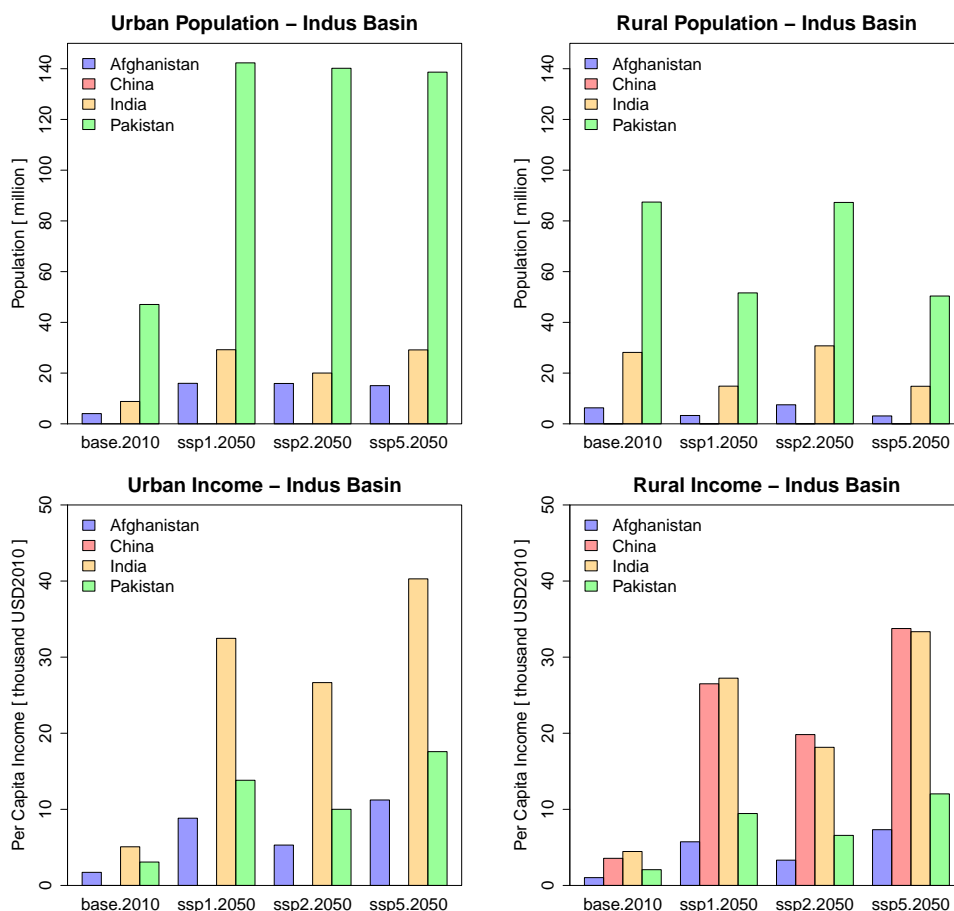


Figure 8. Urban and rural population and per capita income for SSP1, 2 and 5 in 2050 and 2010 for each riparian country's part of the IRB.

operational in 2020; all other projects are assumed to be operational in 2030. For hydropower projects with storage, the storage capacity is added to the BCU level storage in the year it becomes operational, with the filling of the reservoir averaged over the first 10 years of operation, as described previously. Existing storage capacity includes 26.4 km³ in Pakistan, 22.2 km³ in India and 0.6 km³ in Afghanistan. Operating rules are derived for the largest existing dams based on the historical reported releases for 2016 and ~~water withdrawals in particular, are represented and accounted for in the MESSAGEix framework, 2017.~~ Approximately 45 GW of additional hydropower potential is estimated using the approach described in Section 2.3.2, mainly in the Upper Indus Basin. The assessed solar and wind potential greatly exceeds the electricity demand, with most of the wind potential focused mainly in the Indus Delta region. Tapping the solar and wind potential, however, requires investment in transmission and flexible assets (e.g., storage). In the Supplementary Information we provide variable capacity factor of solar and wind aggregated for each BCU (*Variable_capacity_factor.csv*).

The performance of the different crop types considered in the model in terms of yields are presented in Figure C1 for irrigated and non-irrigated options. Crop categories are set according to the main types of crops grown in the region, with some aggregation of crop types occurring to simplify the number of decision variables. The maximum productivity on a per hectare basis demonstrates that irrigation significantly boosts crop productivity in many locations, enabling less land to be used. As mentioned previously, land for each crop type in each BCU is constrained based on suitability and total area. Certain crops also are performing better than others in some regions, while some crops are not available entirely in some regions. The historical crop yields are harmonized to historical irrigation water use by calculating the required irrigation to support the historical crop areas using Eq. 3, and then calibrating the irrigation intensities such that the withdrawals match with the reported irrigation deliveries in Cheema et al. (2014) aggregated to the BCU-scale.

3.2 Scenario analysis

The parameterized NEST model of the IRB is applied within a scenario analysis in which a baseline (business as usual) scenario and a multi-objective scenario achieving multiple SDG indicators by 2030 are compared. The SSP2 information is used to parameterize population and economic indicators in each scenario. The business as usual scenario assumes the continuation of existing policies (e.g., Indus Water Treaty), and is aiming at cost minimization with limited environmental constraints such as emission or infrastructure access targets. Conversely, the SDG implementation pursues a vision of economic growth (poverty eradication) jointly combined with reducing resource access inequalities and the environmental impacts of infrastructure systems. It is important to emphasize the SDG scenario is not exploring all of the individual targets and indicators, but instead a limited set relevant for water, energy and land systems that are also well represented in the NEST framework. The main features of the baseline and multiple-SDG scenarios are summarized in Table 3. The scenarios are simulated by solving NEST under the different implementations. Additional sensitivity analysis is performed to highlight uncertainties in the modeling framework.

4 Results and discussion

4.1 Role of water storage and seasonal effects

Figure 9 shows the balance of surface water in the model for a specific sub-catchment (BCU) in Pakistan with planned storage expansion in 2030. Inflows in the region from upstream river flows or from internal runoff are subject to strong seasonal variations (a). Urban, rural and industry water demands are assumed to be constant through the year (therefore not shown in Figure 9), while water requirements for agriculture and power plants' cooling are instead endogenous and thus variable during the year (c). Supply and demand are not constrained to specific water sources, Figure 9 depicts a case in which water requirements for agriculture are supplied by groundwater (b). Most surface water is indeed outflowing from the region to downstream nodes (d) due to environmental flow requirement and it is in turn used for hydroelectric generation (e). Noticeably, storage absorbs the high inflow peaks in the months of April and June, and releases high outflows in July (f). However, it is

Target	Description	Modeling: SDG vs baseline
Climate action		
Global Greenhouse gas (GHG) Emissions	SDG 13.a Implement the commitment undertaken by to the United Nations Framework Convention on Climate Change	Set GHG emission budget and climate scenario accordingly. Baseline: no emission targets
Clean and affordable energy development scenarios		
Clean energy access	SDG 7.2 By 2030 50% share of renewable energy in the global energy mix	Set targets on share of renewables (wind, solar, geothermal). Baseline: no targets
Power plant cooling	SDG 7.b By 2030, expand infrastructure and upgrade technology for supplying modern and sustainable energy services for all	Phase out of once-through cooling, imposing capacity constraint. Baseline: no targets
Water sector development scenarios		
Sustainable water withdrawals	SDG 6.6 By 2020, protect and restore water-related ecosystems, including mountains, forests, wetlands, rivers, aquifers and lakes	Minimum of 20% of monthly natural flow left in rivers and aquifers by 2030. Set sustainable levels of groundwater extractions (also in baseline)
Wastewater treatment	SDG 6.3 By 2030, improve water quality by reducing pollution, halving the proportion of untreated wastewater and substantially increasing recycling and safe reuse globally	Treat half of return flows treated by 2030, recycle one quarter of return flows. Baseline: no targets
Sustainable agriculture scenarios		
Food & agriculture infrastructure access	SDG 2.4 By 2030, 100% implementation of modern so-called smart irrigation technologies that increase productivity and production relative to 2015	SDG 2.4 constraint technologies with low efficiency to have zero capacity in 2030. Baseline: no smart irrigation technologies adopted before 2030

Table 3. Policy scenarios embedding specific SDG targets, (SDG)

not straightforward to directly link the reservoir level changes to hydropower generation or other regional water requirements under the conjunctive management strategy. Storage regulation appears in this case to mostly be serving downstream water demands as opposed to supporting hydropower potential.

5 Results and discussion

- 5 Seasonality effects embedded in the model input are mostly related to water availability, renewable energy capacity factors and crop water requirements and productivity. Figure 10 shows outputs of the model that are affected by the above mentioned seasonal variations. Electricity generation fluctuations in hydropower generation are mostly compensated by nuclear, imports or natural gas. Similarly, the time for crop cultivation, growth and yield is season specific, taking into account precipitation and crop coefficients seasonality. Other studies have looked at the role of hydropower in the region with a nexus perspective,
- 10 considering both electricity production and water management (Yang et al., 2016). Whilst the results from the Indus Basin

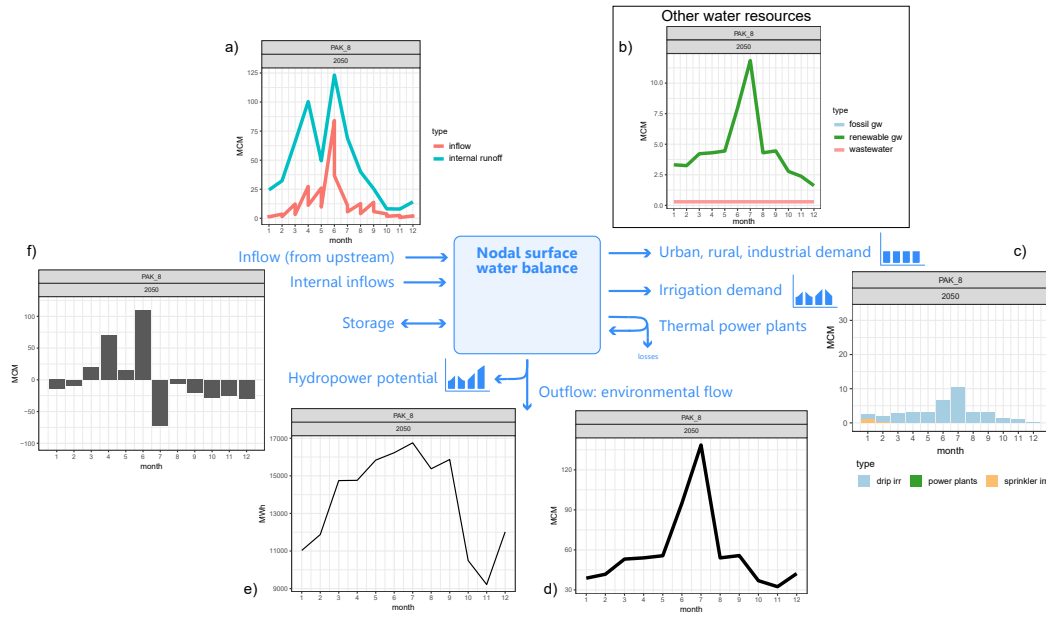


Figure 9. Comparison between the simulated streamflow by the calibrated model and the observation. Surface water balance for a specific BCU (PAK_8) in 2050 (a) surface water inflows (b) supply from other water sources (c) variable water demand (d) surface water outflow (e) hydroelectric generation (f) storage level changes, recharging if positive, discharging if negative. KGE: Kling-Gupta Efficiency. NSE: Nash-Sutcliffe Efficiency. R-sq: R-square. B: mean bias.

Model Revised (IBMR) and NEST could be compared, if similar scenarios were run, it must be noted that IBMR only focuses on a sub-region of the basin network with higher spatial detail, while NEST includes a more complete representation of energy demands, supply and water-energy linkages.

4.1 Quantifying investments to achieve the SDGs

- 5 We present a comparison between the baseline and the multiple SDG scenarios. Figure 11 (a) shows depicts the yearly average new investment portfolio and associated average operational costs for the entire basin comparing the baseline to the multiple SDG scenario (which includes all the scenarios of Table 3) each scenario. To achieve the sustainability goals, investment costs approximately double, while operational costs increase by about 30% (these include fixed costs, variable costs of operation and costs of electricity import). In order to meet imports. To meet the targets for wastewater treatment and the share of renewable energy (solar and wind and geothermal), a large portion of the new investments are dedicated to technology development and shift of power plants. While the former case also implies consistent additional operational costs, in the case of renewables, operational costs in the SDG scenario, summed with those of nuclear plants, are comparable to those of fossil power plants in the baseline scenario, which is in this case characterized by high share of hydropower a shift in power plant type. Hydropower emerges as an important option in the baseline because of the huge unexploited potential. It is important to emphasize that other
- 10

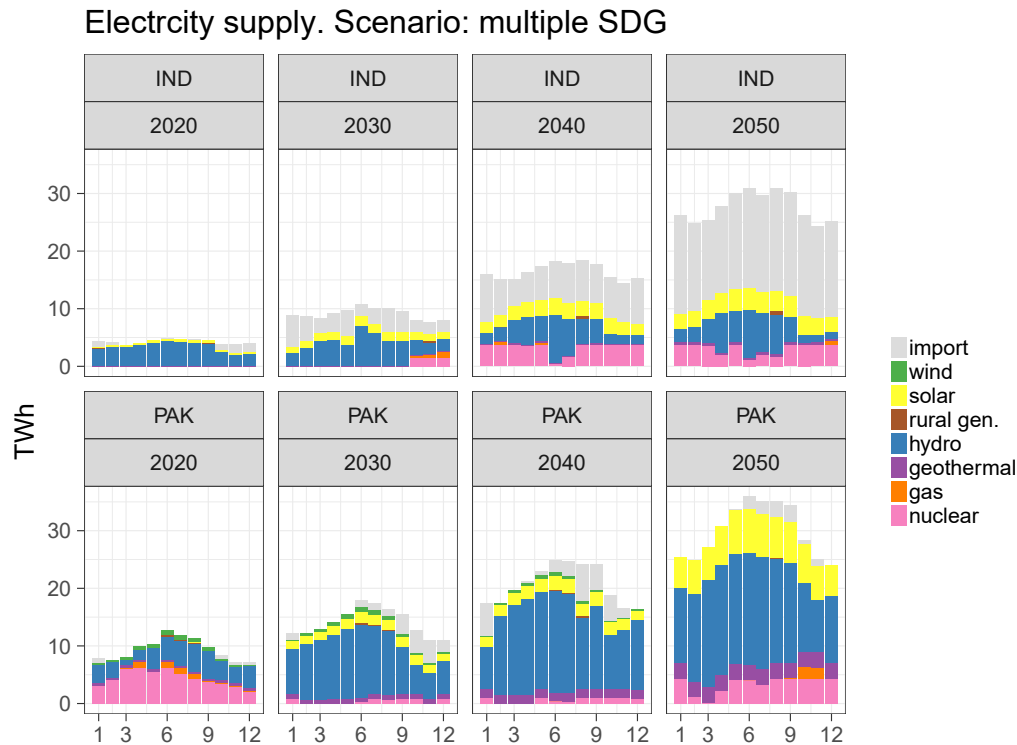


Figure 10. Monthly electricity generation under the multiple SDG scenario

project-related costs not readily monetized in the framework are excluded, and could impact the economic competitiveness of hydropower in the region. Nonetheless, the results are in line with regional planning documents that also indicate untapped hydropower potential is vast and could supply a significant portion of future electricity demands Siddiqi et al. (2012). planned expansions and unexploited potential quantified in the assessment.

- 5 As a consequence of the environmental flow policy in SDG6, ~~the agriculture sector needs~~ multiple sectors need to adapt to lower water availability, ~~meaning expanding the crop area to non-irrigated practices (with low crop yields).~~ This implies a ~~larger area and~~. The agriculture sector is particularly impacted due to its high share of total water demands and expands to non irrigated areas to avoid water withdrawals. However, this implies lower yields and so more area is needed to support the same production and at higher operational costs due to lower productivities (as shown in Figure 12) the lower productivities.
- 10 Additionally, there is increased investment into more efficient irrigation technologies, especially where most of the available arable land is cultivated and production still needs to be boosted to maintain agricultural supplies.

- Figure 11 (b) ~~quantifies nexus interactions, namely electricity consumed for water technologies and for land management, water used in the energy sector or for irrigation and amounts of crop residues used as biomass (either converted into liquid ethanol or burned as solid biomass in co-fired coal power plants)~~ compares the nexus interactions at the basin-scale for each scenario. The multiple SDG ~~scenarios display~~ scenario displays an almost fivefold increase (from 500 GWh to 2500 GWh
- 15

per year) in energy requirements for water management (mostly pumping, treatment and arrangement of new canals). This is to support increased water access in the municipal sector and massively expanded wastewater treatment capabilities in urban areas. ~~On the other hand, water withdrawals for agriculture reduce relative to the baseline scenario, due to the increase in rain-fed agriculture and more efficient irrigation. Water used for cooling of power plants remains at similar levels in the two scenarios. This is because the generation fleet changes from a fossil-fuel based portfolio towards a system based entirely on nuclear and other renewable generation sources (Figure 12), and nuclear causes water withdrawals and consumption to remain about the same throughout the simulation horizon. Finally, we observe a reduction in the use of crop residues in the energy sector. The result is dependent on the phase-out of co-fired coal power plants which are using crop residues in the baseline scenario, and the relative cost for the biomass conversion technologies compared to other low-carbon interventions implemented in this particular scenario, but still represent less than 2% of total electricity generation projected in 2020. A combined GHG emission target ensures the increased demands are met without increasing carbon emissions.~~

These results demonstrate the value of interconnection across EWL sectors in terms of chain reaction in investments (i.e. expanding piping distribution also require expansion in electricity production and distribution), synergies (investing in irrigation efficiency implies saving in water distribution for irrigation) and trade-offs, as it is clearly not possible to minimize costs and resource use across all sectors to achieve the SDGs.

4.2 Synergies and trade-off among SDG targets

The sustainability scenario includes multiple policy objectives across different sectors, which are considered simultaneously by the model. Specific policy objectives can thus be analyzed individually or in combination. Cross-sectoral implications are not necessarily the same when assessing multiple policies at the same time or individually. However, to additionally understand the implication of each single SDG policy on the water, energy and land systems, we tested each policy independently (as in Table 3).

Figure 12 depicts the electricity generation, water withdrawal by source and the land use for agriculture in India and Pakistan from 2020 to 2050 in all the scenario permutations tested. The baseline scenario assumes that enough water is present in the basin to meet increasing energy, water and food demands, while fulfilling the Indus Water Treaty allocations, but neglecting the additional environmental flow standards, water efficiency guidelines and infrastructure access constraints present in the SDG6 case. The second row of plots depicts the sectoral changes induced by the multiple sustainability policies. Intuitively, constraining the use of surface water for environmental purposes has most impact on cross-sectoral activities in Pakistan because it is the most downstream country and thus faces the greatest challenge in meeting increasing water demands while concurrently allocating more flow to ecosystems when water is already scarce. In fact, its hydroelectric potential is significantly reduced and the main water source left is renewable groundwater. This has a large impact on the agriculture system, where both India and Pakistan expand cultivated land with rain-fed crops, to adapt to water scarcity¹.

It is crucial to note that in India the total available land for agriculture is already utilized in the base year in most of the modeled regions due in part to the Indus Water Treaty obligations (which allows India to use a limited amount of western

¹ For this case study we do not consider land use change to other types of land, such as forests

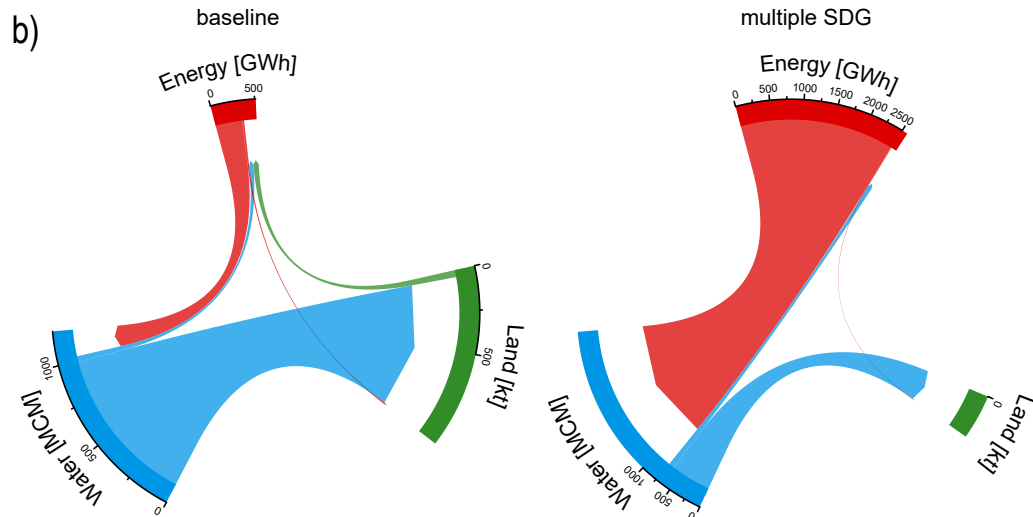
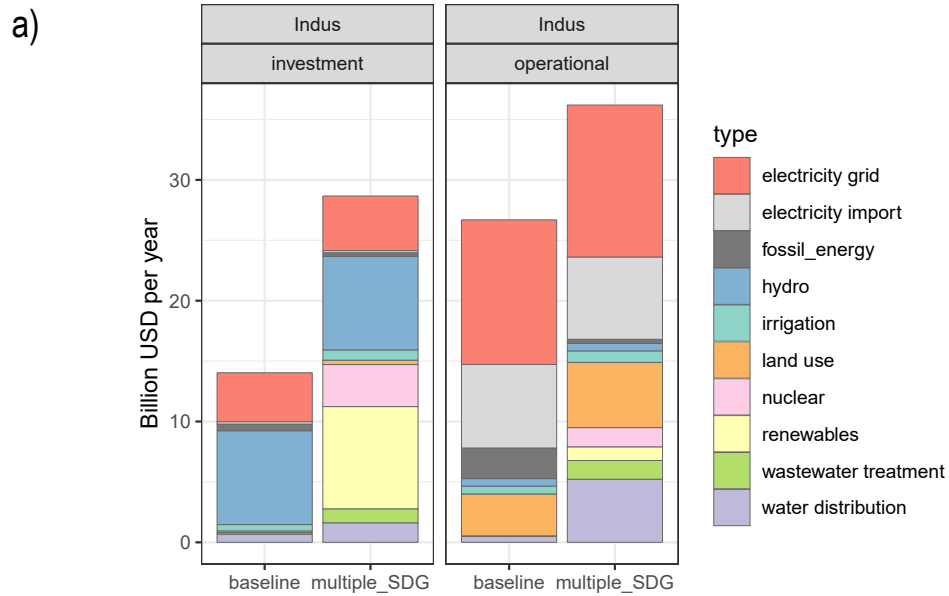


Figure 11. (a) Comparison of investment and operational cost (yearly average) for the entire basin. (b) Representation of water for energy (excluding hydropower) and irrigation [MCM], energy for water management technologies and for agriculture [GWh] and biomass used for energy production [kt].

river waters for irrigation). Thus, to fulfill increasing food demand and reduce the water consumption per hectare in the SDG scenario, an uptake in more efficient irrigation technologies is observed. Importantly, the basin-wide water accounting framework enables the applied water efficiency policies to account for the complex interactions between irrigation water losses and groundwater availability, to ensure that a combination of surface and non-renewable groundwater sources are conserved.

5 Looking at single scenarios separately helps to understand what policy drives the specific changes and what sector is mostly affected.

– SDG2. Most of the existing flood irrigation systems are substituted by drip and sprinkler technologies. This reduces the water demand for irrigation. For further analysis the authors intend to add other SDG2 related targets concerning changes in food demand, import, export and shifts to different types of crops.

10 – SDG6. The environmental flow policy represents one of the major constraints for the resource management in the region. Indeed, we notice how, particularly in Pakistan, electricity and water supply systems would require complete restructuring, as well as management of land for agriculture. The main water resource for Pakistan becomes renewable groundwater, which is recharged from via infiltration including losses from irrigated fields. One important difference to the multiple SDG scenario is the role of hydropower and the consequences on the remaining surface water availability
15 in Pakistan. In fact, as the SDG6 scenario is not bound by emission constraints, fossil fuel generation (gas and oil) is rapidly deployed. When adding CO₂ emission and renewable energy shares consistent with SDG7, results show it can be optimal for Pakistan to exploit all the possible hydropower potential, while meeting environmental flow minimum requirements. This reduces the surface water availability both for irrigation and other demands. As a consequence, less irrigation technologies are adopted in the multiple SDG scenario in favor of more rain-fed crops. However, this leads
20 to a vicious circle where less irrigated land means less water recharging groundwater aquifers, but at the same time the model accounts for the interaction and finds an optimal balance.

– SDG7. This policy imposes specific targets for solar, wind and geothermal electricity production in terms of the share in the entire energy mix. We set the share target of 30% by 2050, which is achieved gradually starting with 10% in 2020. In addition, a phase out of coal and once through cooling technologies after 2030 are also considered. One consequence of
25 this policy is a more rapid transformation away from fossil fuels. Nonetheless, this is not necessarily the most economically optimal way of achieving CO₂ emission reduction (see SDG13). When compared to the multiple SDG scenario, nuclear plays a more significant role, despite higher water consumption. Since nuclear is currently a critical issue in both India and Pakistan, further research will investigate the feasibility of nuclear with more detail and interacting with local stakeholders.

30 – SDG13. To understand what are the possible pathways towards a carbon neutral electricity system, the SDG13 results show how nuclear electricity generation can be an important option due to cost and reliability, and is complemented well by the available hydropower potential. Importantly cost and policy barriers difficult to monetize in the framework could cause development constraints for nuclear systems in the region.

In summary, this overview of the single policy objectives shows that constraints on land and water availability push the system to make transformational changes to the development pathway for each sector, and can drastically alter the structure of the energy and water supplies and land-use pattern. Considering multiple target simultaneously shows different results than summing individual analysis. As mentioned above, the electricity mix changes when considering water constraints and climate targets.

5 Similarly, land use is different when efficiency policies are in place together with environmental targets. This clearly shows the importance of an integrated multi-sectoral analysis to highlight synergies and barriers among objectives. The authors intend expand this topic in upcoming research.

4.3 **Role of water storage** Uncertainty and **seasonal effects** sensitivity

Figure 9 shows the balance of surface water in the model for a specific sub-catchment (BCU) in Pakistan with high storage potential in 2050. Inflows in the region from upstream river flows or from internal runoff are subject to strong seasonal variations (a). Urban, rural and industry water demands are assumed to be constant through the year (therefore not shown in Figure 9), while water requirements for agriculture and power plants' cooling are instead endogenous and thus variable during the year (c). Supply and demand are not constrained to specific water sources, Figure 9 depicts a case in which water requirements for agriculture are supplied by groundwater (b). Most surface water is indeed outflowing from the region to downstream nodes (d) due to environmental flow requirement and it is in turn used for hydroelectric generation (e). Noticeably, storage absorbs the high inflow peaks in the months of April and June, and releases high outflows in July (f). However, it is not straightforward to directly link the reservoir level changes to hydropower generation or other regional water requirements under the conjunctive management strategy. Storage regulation appears in this case to mostly be serving downstream water demands as opposed to supporting hydropower potential. Integrated assessment models are subjected to different types of

20 uncertainty, which can cumulate and therefore require particular attention. Uncertainty can be broadly divided in data or parametric uncertainty, which is given by data sources, often represented as distribution or numerical ranges; and assumption uncertainty, occurring when dealing with future scenario in the scope of policy analysis (Rotmans and van Asselt, 2001).

Surface water balance for a specific BCU (PAK_8) in 2050 (a) surface water inflows (b) supply from other water sources (c) variable water demand (d) surface water outflow (e) hydroelectric generation (f) storage level changes, recharging if positive,

25 discharging if negative.

Seasonality effects embedded in the model input are mostly related to water availability, renewable energy capacity factors and crop water requirements and productivity. Figure 10 shows outputs of the model that are affected by the above mentioned seasonal variations. Looking at electricity generation (a), fluctuations in hydropower generation are mostly compensated by nuclear, imports or natural gas. Panel b) of Figure 10 shows the time in which land is allocated to start specific crop cultivation, taking into account precipitation and other water sources' seasonal fluctuations. Other studies have looked at the role of hydropower in the region with a nexus perspective, considering both electricity production and water management Yang et al. (2016). Whilst the results from the Indus Basin Model Revised (IBMR) This paper illustrates the behavior of a model for policy assessment that can be applied to different case studies. We therefore leave data source uncertainty analysis to future publication that will to focus specifically on numerical outputs and implications. Still, we show an example of uncertainty

30

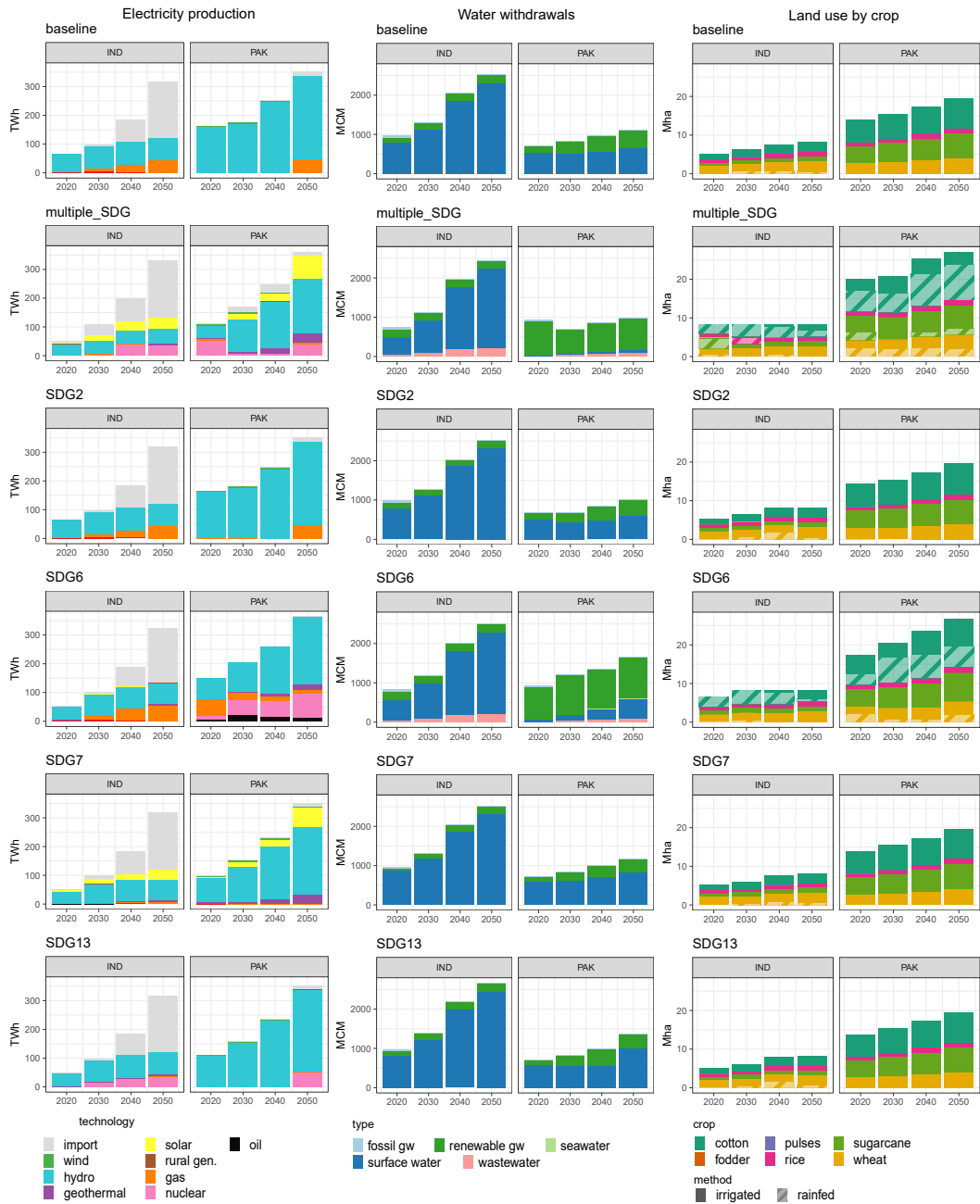


Figure 12. Comparison among different scenarios of yearly values for Pakistan (PAK) and part of India in the Indus basin (IND) of: electricity supply mix [TWh], water withdrawals from different sources [MCM], total land used for farming different crops [Mha], distinguishing between irrigated (dark color) and non irrigated area (semi-transparent)

originated by scenario assumptions and how it propagates when linking the two different models in NEST. Figure 13 (a) shows different level of monthly total runoff from the CWaTM using different climate models and under two different climate scenarios (RCP 2.6 and RCP 6.0). We notice major diversity in trend given by different climate models, while climate scenario implies changes mostly in the eighth and ninth months of year 2020. When running the optimization model in NEST, outcomes carry the uncertainty from the hydrological model and cumulate it with other types of uncertainty. Figure 13 (b) show total cost for the Indus region where the uncertainty of different SSP assumptions is added the previous set of climate scenarios. We notice how SSP assumptions more greatly affect total cost compared to either climate model or RCP (each bundle of same-color lines includes runs with all climate scenario and RCP assumptions). However, looking at SSP 2 and 1, with reduced stress caused by population growth, climate uncertainty is more significant than for SSP 5.

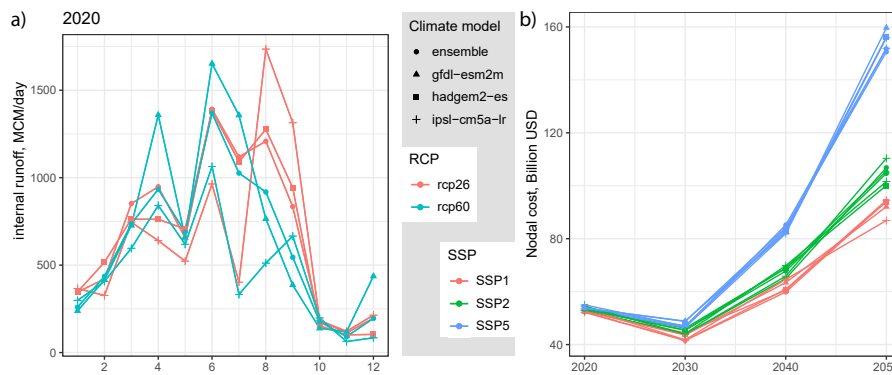


Figure 13. Total monthly runoff availability in 2020 under different RCP and climate models (a). Total costs under different climate model, RCP and SSP assumptions (b)

4.4 Limitations

Increasing spatial and temporal resolution might be helpful to focus on sub-regions and identify possible critical areas with higher detail. However, it brings greater computational challenges associated with using classical mathematical programming methods. In this context, scaling of the input-output coefficients to ensure fast solution times can be challenging for nexus models, because many cross-sector interactions require definition of input-output coefficient ranges covering multiple orders of magnitude. Future work may need to explore heuristics or other emulations as an alternative approach to classical optimization methods in order to integrate and optimize the vast amounts of geospatial data increasingly available and promoting the use of ultra-high resolution models for infrastructure planning.

From a hydrological perspective, some limitations of the current NEST formulation include the use of static land-use maps in the development of the water resource potentials. Dynamic land-use maps could be used in future work using the optimal

solutions from MESSAGEix. An important next step involves downscaling water- and land-use results to the spatial scale used in the hydrological model, improving the visualization and analysis of results, as well as enabling spatially explicit calculation of water availability and demands to represent dynamic changes of water and land-use consistently across the two models in NEST. The assessment of groundwater could also be improved by including lateral groundwater flows and by changing the representation of aquifer recharge to a non-linear model. ~~Likewise, the framework could be extended to include alternative water storage mechanisms to optimize aquifer recharge between seasons or the storage of rainfall in highly distributed cisterns.~~

A major constraint in modeling hydrological processes is the linear formulation of the optimization model which limits dynamic representation of key sustainability indicators as continuous model decision variables (e.g., water quality).

Finally, assumptions on boundary conditions, such as costs of imports (of food, electricity or water), are important for ~~the results.~~ simplistic assumptions (e.g. electricity imports in Figure 12). Future work could improve the representation of boundary conditions with supply-cost curves or by linking with market models representative of the system outside the study area. Linking with global and regional integrated assessment models through the common commodity markets could improve the expected import-export response in NEST under scenarios of global change and explore different scenarios of basin self-sufficiency and resilience to external shocks. ~~Other than looking at basin or national decisions, future work may also include city-scale or local-scale issues related to EWL systems to enhance the representation of important demand drivers and end-use interventions.~~

~~Monthly electricity generation (top) and land allocation for agriculture (bottom) under the multiple SDG scenario~~

5 Conclusions

The NExus Solution Tool (NEST) links a distributed hydrological model with a multi-sector infrastructure optimization model, the framework of which described in this paper in detail and applied to the Indus River Basin's energy, water and land systems. The framework is flexible and can be adapted to other regions of the world. NEST is designed to produce indicators relevant to the SDGs for water, energy, land and climate and to tap into the increasing volumes of geospatial data openly available through national inventories and the earth system modeling community. Comparing results for a business as usual scenario to one where multiple SDGs are enforced highlights the framework's capability to capture clear differences in the optimal investment portfolio and cross-sector interactions characteristic of the SDGs.

A key innovative feature of the NEST framework is the dynamic linking of the distributed hydrological and infrastructure optimization tools through a combination of geospatial analytics and scenario generation algorithms. The underlying CWatM and MESSAGEix open source modeling tools could be interchanged with other similar tools in use by national and basin planning agencies. NEST incorporates detailed representation of the EWL sectors and linkages among them. The representation of these sectors builds mostly on open global data, facilitating transferability to other geographical regions and the definition of Basin-Country-Units (BCUs) embedding geopolitical borders. Among these data, we make use of 3-D cross-sectoral resource flows and potentials, such as water availability, hydropower and renewable capacity. Additional local data can substitute or complement global data in empowering the model, facilitating calibration and validation and for building stakeholder trust.

The application of NEST to the Indus River Basin demonstrates the usefulness of such a tool in highlighting cross-sectoral policy impacts. An example are the implications of water treatment and recycling policies on energy consumption and the consequences for agriculture when attaining river environmental flow standards. Moreover, the delineation of the model into spatial units and the parametrization based on spatial data, enables results interrogation for single countries or BCUs within the basin boundaries. In this context, results for Pakistan and India are very different for water supply, electricity generation and agriculture.

Finally, critical areas for possible future improvement include: increasing spatial resolution and capability to deal with ultra-high resolution data; iterating MESSAGEix and CWatM to obtain a dynamic solution and better representing the non-linear interactions between groundwater and surface water; and, the improving assumptions at the geographical (and model) boundaries, for instance with cost curves or market models for food and electricity to represent the options of international trade.

Code and data availability. Code and data is made available at <https://github.com/iiasa/NEST>

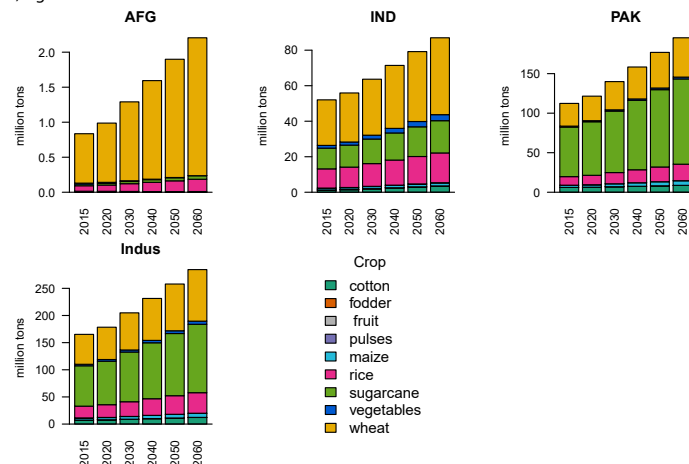
The code and documentation for CWatM can also be found at: <https://cwatm.iiasa.ac.at/>

Similarly documentation and code of MESSAGEix is available at: <https://messageix.iiasa.ac.at>

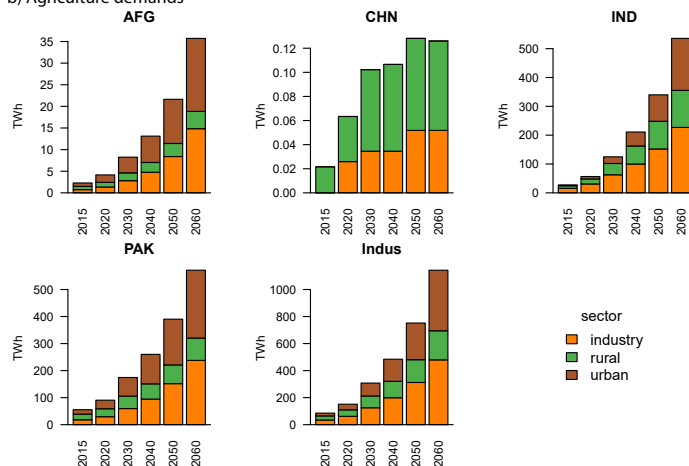
Appendix A: ~~C~~WatM-calibration

Appendix A: Exogenous demands

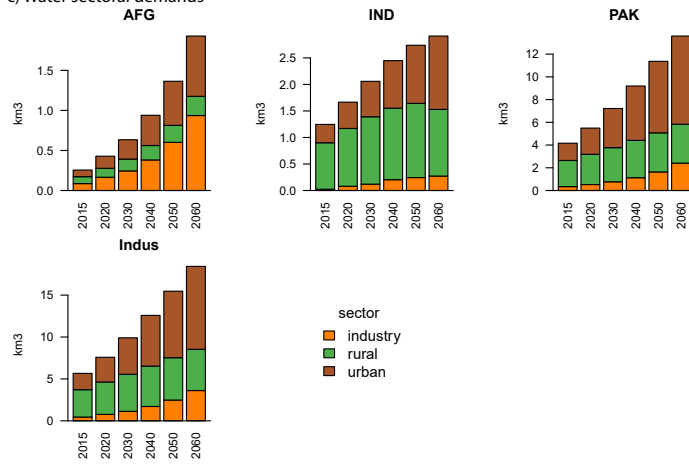
a) Agriculture demands



b) Agriculture demands



c) Water sectoral demands



22

Figure A1. Exogenous agriculture products (a), electricity (b) and water (c) demands. For each country and the whole Indus basin, from 2010 to 2060.

Appendix B: Canals, hydroelectric projects and power plants data

Project	Capacity [m ³ / sec]	Length [km]	Long. In [°E]	Lat. In [°N]	Long. Out [°E]	Lat. Out [°N]
Rasul-Qadirabad	538	44	73.5187	32.6830	73.7135	32.3370
Qadirabad-Bulloki	527	129	73.6858	32.3228	73.9138	31.2982
Balloki-Sulemanki	524	87	73.8590	31.2226	73.9241	30.4953
Trimmu-Sidhnai	312	64	72.1462	31.1450	72.1933	30.5690
Sidhnai-Mailsi	283	94	72.1582	30.5713	72.2459	29.7278
Chashma-Jhelum	615	135	71.3837	32.4358	72.2214	31.9680
Taunsa-Panjnad	340	72	70.8505	30.5137	71.3677	30.2735
Marala-Ravi	622	97	74.4698	32.6699	74.6239	31.8966
Ravi-Bedian	142	82	74.4701	31.7212	74.1755	30.7265
Bambanwala-Ravi	142	82	74.2941	32.3609	74.4701	31.7212
Chenab-Bambanwala	453	28	74.4698	32.6699	74.2941	32.3609
Chenab-Ravi	311	44	74.2941	32.3609	74.0820	31.4142
Keenjhar-Karachi	31	44	68.0500	24.9500	-	-
Indira Gandhi	138	602	75.0111	31.1628	-	-

Table B1. Major conveyance canals in the NEST implementation of the IRB that are linking river systems or for interbasin transfers. Locations, capacities and lengths are approximate and estimated by the authors based on reported technical data. Interbasin transfers are occurring where no outlet location is defined.

Project	Country	Longitude [°E]	Latitude [°N]	Capacity [MW]	Storage [km ³]	Opening
Azad Pattan	Pakistan	73.5715	33.7678	700	-	2022
Patrind	Pakistan	73.4288	34.3440	150	-	2017
Gulpur	Pakistan	73.8625	33.4553	102	-	2019
Suki Kinari	Pakistan	73.5427	34.7231	870	-	2022
Kohala	Pakistan	73.6546	34.2023	1100	-	2025
Athmuqam	Pakistan	73.9107	34.5891	350	-	2020
Golen Gol	Pakistan	72.0143	35.9212	58	-	2018
Mahl	Pakistan	73.5667	34.9167	590	-	2025
Neelum-Jhelum	Pakistan	73.7189	34.3928	968	-	2018
Diamer-Bhasha	Pakistan	73.7370	35.5207	4500	10.5	2023
Tarbela Extension	Pakistan	72.6983	34.0897	1410	-	2018
Karot	Pakistan	73.6012	33.5998	720	-	2021
Kalabagh	Pakistan	71.6136	32.9564	3600	7.5	proposed
Munda	Pakistan	71.5330	34.3532	740	0.9	proposed
Bunji	Pakistan	74.6159	35.6358	7100	0.2	proposed
Dasu	Pakistan	73.1933	35.3173	4320	0.8	2021
Akhori	Pakistan	72.4528	33.6905	600	8.6	2025
Sharmai	Pakistan	72.0053	35.2766	150	0.3	2023
Kishanganga	India	74.7647	34.6475	360	-	2018
Sawalkote	India	75.0759	33.1691	1856	-	proposed
Kirthai I	India	75.1994	33.3868	390	-	proposed
Kirthai II	India	75.1994	33.3868	930	-	proposed
Pakal Dul	India	75.8136	33.4572	1000	0.1	proposed
Kwar	India	75.8280	33.3623	540	-	proposed
Kiru	India	75.8898	33.3518	624	-	proposed
Bursar	India	75.6956	33.3903	800	0.6	proposed
Ujh	India	75.5156	32.5590	212	-	proposed

Table B2. Additional planned hydropower projects included in the NEST implementation of the IRB. Locations, capacities and dates are approximate and estimated by the authors based on reported technical data.

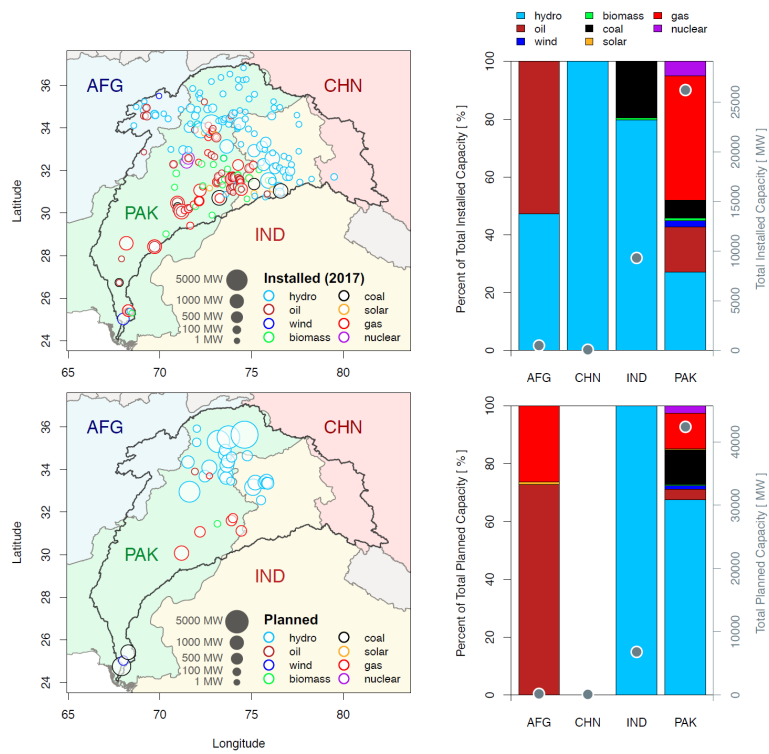


Figure B1. Existing and planned power plant capacity in the NEST implementation of the IRB.

Appendix C: Costs and Capacity Factor assumptions

5 Tables C1 and C2 show costs and capacity factor values for a number of technologies in the model. Technologies like transmission lines or water canals are not included, as costs are dependent on the length and the region. The tables only include a subset of energy technologies with different cooling systems. Costs for gas plant in combined cycle (*cc*), single turbine (*gt*) and steam turbine (*st*) configurations are reported for all cooling systems, air cooling (*ac*), closed loop (*cl*) and once through cooling (*oc*). Although we model these different cooling systems also for oil, coal, geothermal and nuclear power plants, we only show costs for closed loop in Tables C1 and C2.

Solar and wind power plants are divided in three groups having same cost assumptions but different levels of capacity factor, attached in the Supplementary Information *Variable_capacity_factor.csv*.

Parameter Value Snow-melt coefficient 0.003597 Crop factor correction 1.211 Ice-melt coefficient 0.5366 Soil preferential flow constant 5.4
ARNO b 1.259 Interflow part of recharge factor 1.807 Groundwater recession coefficient factor 3.823 Runoff concentration factor 1.492
Routing Manning's N 8.104 Reservoir normal storage limit 0.5257 Lake alpha factor 1.154 Lake wind factor 1.205

Technology	I_{cost} [unit]	F_{cost} [unit]	Var_{cost} [unit]	CF [-]
Crops	[\$/ha]	[\$/ha]	[\$/(ha month)]	
wheat	341	36	72	1
rice	716	15	22	1
cotton	416	9	13	1
fodder	130	3	4	1
sugarcane	849.6	17	25.5	1
pulses	1320	26.4	39.6	1
maize	1000	20	30	1
fruit	545.5	11.5	16.5	1
vegetables	1362.5	27.5	41	1
Energy Technologies	[\$/kW]	[\$/kW]	[\$/kWh]	
coal st cl	6860	24	0.048611	0.9
electricity distribution industry	1120	36	0.034722	0.9
electricity distribution irrigation	1120	36	0.034722	0.9
electricity distribution rural	1120	36	0.034722	0.9
electricity distribution urban	1120	36	0.034722	0.9
electricity short strg	3000	16	0.020833	0.9
gas cc ac	1105	17	0.037264	0.9
gas cc cl	1064	16	0.036875	0.9
gas cc ot	1023	15	0.036111	0.9
gas gt	676	7	0.122222	0.9
gas st cl	1205	17	0.048611	0.9
geothermal cl	6343	135	0.025	0.9
hydro old	5000	15	0	0.95
igcc cl	4131	32	0.079167	0.9
nuclear cl	5751	97	0.029167	0.9
oil cc cl	1064	16	0.036875	0.9
oil gt	676	7	0.122222	0.9
solar pv 1	3873	15	0.004167	variable
solar pv 2	3873	15	0.004167	variable
solar pv 3	3873	15	0.004167	variable
wind 1	7000	8	0	variable
wind 2	7000	8	0	variable
wind 3	7000	8	0	variable

Table C1. Calibration parameters—Investment, fixed and variable costs and capacity factor values for convergence of CWatM model technologies

Technology	I_{cost} [unit]	F_{cost} [unit]	Var_{cost} [unit]	CF [-]
Irrigation technologies	[\$/ha]	[\$/ha]	[\$/(ha month)]	
drip	2600	52	78	0.9
flood	460	10	14	0.9
sprinkler	1625	33	49	0.9
canal lining flood	3110	62	94	0.9
smart	2825	57	85	0.9
drip smart	3100	62	93	0.9
sprinkler smart	2125	43	64	0.9
Water diversion/treatment technologies	[\$/(mq /day)]	[\$/(mq /day)]		
industry gw diversion	20	8.5	0	0.9
industry sw diversion	57	3	0	0.9
industry wastewater recycling	1350	99	0	0.9
industry wastewater treatment	431	37	0	0.9
irrigation gw diversion	8.5	1	0	0.9
irrigation sw diversion	57	3	0	0.9
rural gw diversion	8.5	1	0	0.9
rural piped distribution	326	18	0	0.9
rural sw diversion	57	3	0	0.9
rural wastewater recycling	1350	99	0	0.9
rural wastewater treatment	759	77	0	0.9
smart irrigation sw diversion	62.7	3.3	0	0.9
urban gw diversion	20	8.5	0	0.9
urban piped distribution	1013	252	0	0.9
urban sw diversion	57	3	0	0.9
urban wastewater collection	785	251	0	0.9
urban wastewater irrigation	1350	99	0	0.9
urban wastewater recycling	1350	99	0	0.9
urban wastewater treatment	431	37	0	0.9

Table C2. [Investment, fixed and variable costs and capacity factor values for model technologies](#)

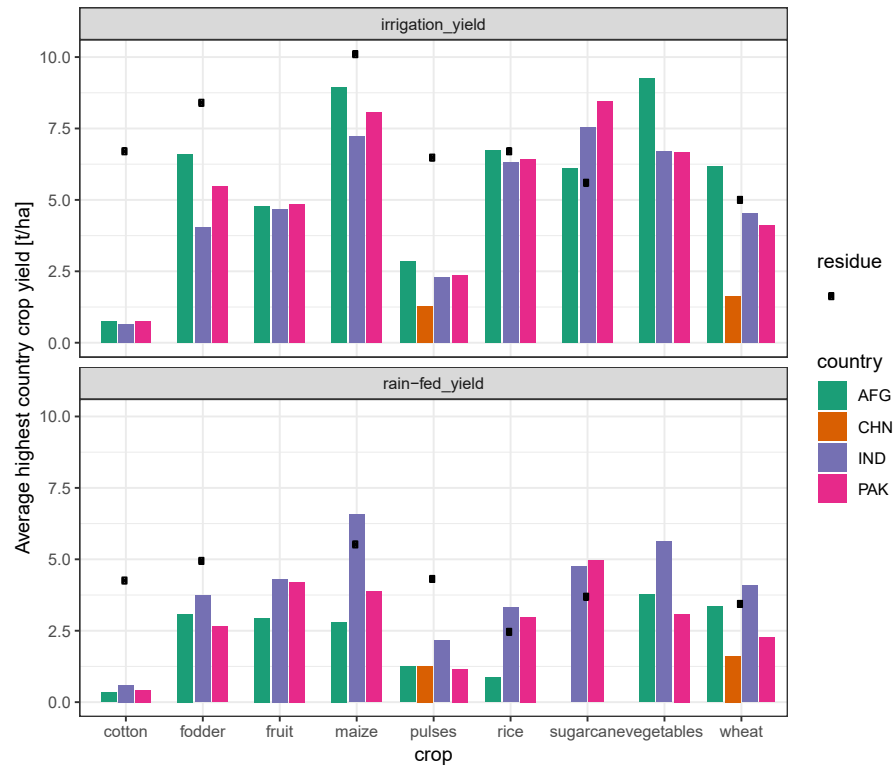


Figure C1. Average highest irrigated and non-irrigated yield for each crop-country pairing in the NEST implementation of the IRB as well as the corresponding rates of residue generation.

Author contributions. AV, SiP, EB, VK, ZK and KR conceived of the framework. AV and SiP led model development, with support from EB, PB, ZK, VK, FD, YaW, AI, NR and AK. PB, YaW and YoW contributed the development and calibration of the hydrological model. IS and StP contributed algorithms and analysis for wind and solar systems representation. AV led analysis of results and preparation of figures, data tables and online repositories. All authors contributed to the review of the modeling framework and the writing of the manuscript. SiP coordinated the research.

Competing interests. The authors declare that they have no conflict of interest.

Acknowledgements. The authors acknowledge the Global Environment Facility (GEF) for funding the development of this research as part of the Integrated Solutions for Water, Energy, and Land (ISWEL) project (GEF Contract Agreement: 6993), and the support of the United Nations Industrial Development Organization (UNIDO). Part of this research was developed during the Young Scientists Summer Program at the International Institute for Applied Systems Analysis (IIASA), with financial support from the IIASA Annual Fund. The research has also been supported by the University of Victoria's Building Connections internal grant, the Natural Sciences and Engineering Research Council of Canada. Internal support was provided by the Center for Water Informatics & Technology (WIT) at Lahore University of Management Sciences (LUMS), Pakistan and Coordenação de Aperfeiçoamento de Pessoal de Nível Superior - Brasil (CAPES). The hydrological model development was partly funded by the Belmont Forum Sustainable Urbanisation Global Initiative's Food-Water-Energy Nexus theme, for which coordination and research were supported by the US National Science Foundation under grant ICER/EAR-1829999 to Stanford University and by the Austrian Research Promotion Agency under the FUSE project funded to IIASA (grant agreement 730254).

References

- UN FAO, FAOSTAT statistics database, <https://search.library.wisc.edu/catalog/999882363002121>.
- GAEZ: Global Agro-Ecological Zones, <http://www.fao.org/nr/gaez/en/>.
- GRanD Database :: GWSP, <http://www.gwsp.org/products/grand-database.html>.
- 5 Statistics | World - Total Primary Energy Supply (TPES) by source (chart), <https://www.iea.org/statistics>.
- SDGs: UN Sustainable Development Goals, <https://www.un.org/sustainabledevelopment/sustainable-development-goals/>.
- HydroSHEDS technical documentation v1.0., <https://www.researchgate.net/publication/285649478{ }HydroSHEDS{ }technical{ }documentation{ }v1.0.>
- Cost and Performance Data For Power Generation Technologies – Lintas EBTKE, Tech. rep., Black&Veatch, <https://lintasebtke.com/cost-and-performance-data-for-power-generation-technologies/>, 2012.
- 10 Akhtari, S., Sowlati, T., and Griess, V. C.: Integrated strategic and tactical optimization of forest-based biomass supply chains to consider medium-term supply and demand variations, *Applied Energy*, 213, 626–638, 2018.
- Albrecht, T. R., Crotoft, A., and Scott, C. A.: The Water-Energy-Food Nexus: A systematic review of methods for nexus assessment, *Environmental Research Letters*, 13, 043 002, 2018.
- Bazilian, M., Rogner, H., Howells, M., Hermann, S., Arent, D., Gielen, D., Steduto, P., Mueller, A., Komor, P., Tol, R. S., et al.: Considering the energy, water and food nexus: Towards an integrated modelling approach, *Energy Policy*, 39, 7896–7906, 2011.
- 15 Beck, H. E., van Dijk, A. I., De Roo, A., Miralles, D. G., McVicar, T. R., Schellekens, J., and Bruijnzeel, L. A.: Global-scale regionalization of hydrologic model parameters, *Water Resources Research*, 52, 3599–3622, 2016.
- Bieber, N., Ker, J. H., Wang, X., Triantafyllidis, C., van Dam, K. H., Koppelaar, R. H., and Shah, N.: Sustainable planning of the energy-water-food nexus using decision making tools, *Energy Policy*, 113, 584–607, 2018.
- 20 Biggs, E. M., Bruce, E., Boruff, B., Duncan, J. M., Horsley, J., Pauli, N., McNeill, K., Neef, A., Van Ogtrop, F., Curnow, J., et al.: Sustainable development and the water–energy–food nexus: A perspective on livelihoods, *Environmental Science & Policy*, 54, 389–397, 2015.
- Bijl, D. L., Bogaart, P. W., Dekker, S. C., and van Vuuren, D. P.: Unpacking the nexus: Different spatial scales for water, food and energy, *Global Environmental Change*, 48, 22–31, 2018.
- Buras, N.: Determining the feasibility of incorporating water resource constraints into energy models, NASA STI/Recon Technical Report N, 80, 1979.
- 25 Burek, P., Knijff van der, J., Roo de, A., and European Commission. Joint Research Centre. Institute for the Protection and the Security of the Citizen.: LISFLOOD, distributed water balance and flood simulation model : revised user manual 2013., Publications Office, <https://ec.europa.eu/jrc/en/publication/eur-scientific-and-technical-research-reports/lisflood-distributed-water-balance-and-flood-simulation-model-revised-user-manual-2013>, 2013.
- 30 Burek, P., Satoh, Y., Kahil, T., Tang, T., Greve, P., Smilovic, M., Guillaumot, L., and Wada, Y.: Development of the Community Water Model (CWatM v1.04) A high-resolution hydrological model for global and regional assessment of integrated water resources management, *Geoscientific Model Development Discussions*, pp. 1–49, <https://doi.org/10.5194/gmd-2019-214>, <https://www.geosci-model-dev-discuss.net/gmd-2019-214/>, 2019.
- Cheema, M., Immerzeel, W., and Bastiaanssen, W.: Spatial Quantification of Groundwater Abstraction in the Irrigated Indus Basin, *Groundwater*, 52, 25–36, <https://doi.org/10.1111/gwat.12027>, <http://doi.wiley.com/10.1111/gwat.12027>, 2014.
- 35

- de Carvalho Köberle, A.: Implementation of Land Use in an Energy System Model to Study the Long-Term Impacts of Bioenergy in Brazil and its Sensitivity to the Choice of Agricultural Greenhouse Gas Emission Factors, Ph.D. thesis, Universidade Federal do Rio de Janeiro, 2018.
- DeCarolis, J., Daly, H., Dodds, P., Keppo, I., Li, F., McDowall, W., Pye, S., Strachan, N., Trutnevyte, E., Usher, W., et al.: Formalizing best practice for energy system optimization modelling, *Applied energy*, 194, 184–198, 2017.
- Dodder, R. S., Barnwell, J. T., and Yelverton, W. H.: Scenarios for low carbon and low water electric power plant operations: Implications for upstream water use, *Environmental science & technology*, 50, 11 460–11 470, 2016.
- Döll, P.: Impact of climate change and variability on irrigation requirements: a global perspective, *Climatic change*, 54, 269–293, 2002.
- Dubreuil, A., Assoumou, E., Bouckaert, S., Selosse, S., Mai, N., et al.: Water modeling in an energy optimization framework: The water-scarce Middle East context, *Applied energy*, 101, 268–279, 2013.
- Falchetta, G. et al.: A High-Resolution Gridded Dataset to Assess Electrification in Sub-Saharan Africa, Submitted, pp. 1–24, 2019.
- Forsythe, N., Archer, D. R., Pritchard, D., and Fowler, H.: A Hydrological Perspective on Interpretation of Available Climate Projections for the Upper Indus Basin, in: *Indus River Basin*, pp. 159–179, Elsevier, 2019.
- Fortin, F.-A., Rainville, F.-M. D., Gardner, M.-A., Parizeau, M., and Gagné, C.: DEAP: Evolutionary algorithms made easy, *Journal of Machine Learning Research*, 13, 2171–2175, 2012.
- Fricko, O., Parkinson, S. C., Johnson, N., Strubegger, M., van Vliet, M. T., and Riahi, K.: Energy sector water use implications of a 2 C climate policy, *Environmental Research Letters*, 11, 034 011, 2016.
- Fricko, O., Havlik, P., Rogelj, J., Klimont, Z., Gusti, M., Johnson, N., Kolp, P., Strubegger, M., Valin, H., Amann, M., et al.: The marker quantification of the Shared Socioeconomic Pathway 2: A middle-of-the-road scenario for the 21st century, *Global Environmental Change*, 42, 251–267, 2017.
- Frieler, K., Lange, S., Piontek, F., Reyer, C. P. O., Schewe, J., Warszawski, L., Zhao, F., Chini, L., Denvil, S., Emanuel, K., Geiger, T., Halladay, K., Hurtt, G., Mengel, M., Murakami, D., Ostberg, S., Popp, A., Riva, R., Stevanovic, M., Suzuki, T., Volkholz, J., Burke, E., Ciais, P., Ebi, K., Eddy, T. D., Elliott, J., Galbraith, E., Gosling, S. N., Hattermann, F., Hickler, T., Hinkel, J., Hof, C., Huber, V., Jägermeyr, J., Krysanova, V., Marcé, R., Müller Schmied, H., Mouratiadou, I., Pierson, D., Tittensor, D. P., Vautard, R., van Vliet, M., Biber, M. F., Betts, R. A., Boudirsky, B. L., Deryng, D., Froking, S., Jones, C. D., Lotze, H. K., Lotze-Campen, H., Sahajpal, R., Thonicke, K., Tian, H., and Yamagata, Y.: Assessing the impacts of 1.5 degrees C simulation protocol of the Inter-Sectoral Impact Model Intercomparison Project (ISIMIP2b), *Geoscientific Model Development*, 10, 4321–4345, <https://doi.org/10.5194/gmd-10-4321-2017>, <https://www.geosci-model-dev.net/10/4321/2017/>, 2017.
- Gaupp, F., Hall, J., and Dadson, S.: The role of storage capacity in coping with intra-and inter-annual water variability in large river basins, *Environmental Research Letters*, 10, 125 001, 2015.
- Gernaat, D. E., Bogaart, P. W., van Vuuren, D. P., Biemans, H., and Niessink, R.: High-resolution assessment of global technical and economic hydropower potential, *Nature Energy*, 2, 821, 2017.
- Grafton, R., Williams, J., Perry, C., Molle, F., Ringler, C., Steduto, P., Udall, B., Wheeler, S., Wang, Y., Garrick, D., et al.: The paradox of irrigation efficiency, *Science*, 361, 748–750, 2018.
- Havlik, P., Schneider, U. A., Schmid, E., Böttcher, H., Fritz, S., Skalský, R., Aoki, K., De Cara, S., Kindermann, G., Kraxner, F., et al.: Global land-use implications of first and second generation biofuel targets, *Energy policy*, 39, 5690–5702, 2011.

- Hejazi, M. I., Voisin, N., Liu, L., Bramer, L. M., Fortin, D. C., Hathaway, J. E., Huang, M., Kyle, P., Leung, L. R., Li, H.-Y., et al.: 21st century United States emissions mitigation could increase water stress more than the climate change it is mitigating, *Proceedings of the National Academy of Sciences*, 112, 10635–10640, 2015.
- Howells, M., Rogner, H., Strachan, N., Heaps, C., Huntington, H., Kypreos, S., Hughes, A., Silveira, S., DeCarolus, J., Bazillian, M., et al.: OSeMOSYS: the open source energy modeling system: an introduction to its ethos, structure and development, *Energy Policy*, 39, 5850–5870, 2011.
- Howells, M., Hermann, S., Welsch, M., Bazilian, M., Segerström, R., Alfstad, T., Gielen, D., Rogner, H., Fischer, G., Van Velthuizen, H., et al.: Integrated analysis of climate change, land-use, energy and water strategies, *Nature Climate Change*, 3, 621, 2013.
- Howitt, R. E.: Positive mathematical programming, *American journal of agricultural economics*, 77, 329–342, 1995.
- 10 Huang, W., Ma, D., and Chen, W.: Connecting water and energy: Assessing the impacts of carbon and water constraints on China’s power sector, *Applied Energy*, 185, 1497–1505, 2017.
- Huppmann, D., Gidden, M., Fricko, O., Kolp, P., Orthofer, C., Pimmer, M., Kushin, N., Vinca, A., Mastrucci, A., Riahi, K., and Krey, V.: The MESSAGEix Integrated Assessment Model and the ix modeling platform (ixmp): An open framework for integrated and cross-cutting analysis of energy, climate, the environment, and sustainable development, *Environmental Modelling & Software*, 112, 143–156, <https://doi.org/10.1016/J.ENVSOFT.2018.11.012>, <https://www.sciencedirect.com/science/article/pii/S1364815218302330>, 2019.
- 15 Johnson, N., Strubegger, M., McPherson, M., Parkinson, S. C., Krey, V., and Sullivan, P.: A reduced-form approach for representing the impacts of wind and solar PV deployment on the structure and operation of the electricity system, *Energy Economics*, 64, 651–664, 2017.
- Jones, B. and O’Neill, B. C.: Spatially explicit global population scenarios consistent with the Shared Socioeconomic Pathways, *Environmental Research Letters*, 11, 084003, 2016.
- 20 Jorgenson, A., Longhofer, W., and Grant, D.: Disproportionality in Power Plants’ Carbon Emissions: A Cross-National Study, *Scientific Reports*, 6, 28661, <https://doi.org/10.1038/srep28661>, <http://www.nature.com/articles/srep28661>, 2016.
- Kahil, T., Parkinson, S., Satoh, Y., Greve, P., Burek, P., Veldkamp, T. I., Burtscher, R., Byers, E., Djilali, N., Fischer, G., et al.: A Continental-Scale Hydroeconomic Model for Integrating Water-Energy-Land Nexus Solutions, *Water resources research*, 2018.
- Kernan, R., Liu, X., McLoone, S., and Fox, B.: Demand side management of an urban water supply using wholesale electricity price, *Applied energy*, 189, 395–402, 2017.
- 25 Khan, Z., Linares, P., and García-González, J.: Integrating water and energy models for policy driven applications: A review of contemporary work and recommendations for future developments, *Renewable and Sustainable Energy Reviews*, 67, 1123–1138, 2017.
- Khan, Z., Linares, P., Rutten, M., Parkinson, S., Johnson, N., and García-González, J.: Spatial and temporal synchronization of water and energy systems: Towards a single integrated optimization model for long-term resource planning, *Applied Energy*, 210, 499–517, 2018.
- 30 Kiani, B., Rowe, A., Wild, P., Pitt, L., Sopinka, A., and Pedersen, T. F.: Optimal electricity system planning in a large hydro jurisdiction: Will British Columbia soon become a major importer of electricity?, *Energy Policy*, 54, 311–319, 2013.
- Kim, S. H., Hejazi, M., Liu, L., Calvin, K., Clarke, L., Edmonds, J., Kyle, P., Patel, P., Wise, M., and Davies, E.: Balancing global water availability and use at basin scale in an integrated assessment model, *Climatic Change*, 136, 217–231, 2016.
- Korkovelos, A., Mentis, D., Siyal, S., Arderne, C., Rogner, H., Bazilian, M., Howells, M., Beck, H., and De Roo, A.: A Geospatial Assessment of Small-Scale Hydropower Potential in Sub-Saharan Africa, *Energies*, 11, 3100, 2018.
- 35 Krey, V. and Riahi, K.: Risk hedging strategies under energy system and climate policy uncertainties, in: *Handbook of Risk Management in Energy Production and Trading*, pp. 435–474, Springer, 2013.

- Laghari, A., Vanham, D., and Rauch, W.: The Indus basin in the framework of current and future water resources management, *Hydrology and Earth System Sciences*, 16, 1063, 2012.
- Lall, U. and Mays, L. W.: Model for planning water-energy systems, *Water Resources Research*, 17, 853–865, 1981.
- Lehner, B. and Grill, G.: Global river hydrography and network routing: Baseline data and new approaches to study the world’s large river systems, *Hydrological Processes*, 27, 2171–2186, 2013.
- Li, X., Yang, L., Zheng, H., Shan, Y., Zhang, Z., Song, M., Cai, B., and Guan, D.: City-level water-energy nexus in Beijing-Tianjin-Hebei region, *Applied Energy*, 235, 827–834, 2019.
- Liu, J., Mooney, H., Hull, V., Davis, S. J., Gaskell, J., Hertel, T., Lubchenco, J., Seto, K. C., Gleick, P., Kremen, C., et al.: Systems integration for global sustainability, *Science*, 347, 1258–1262, 2015.
- 10 Liu, J., Hull, V., Godfray, H. C. J., Tilman, D., Gleick, P., Hoff, H., Pahl-Wostl, C., Xu, Z., Chung, M. G., Sun, J., et al.: Nexus approaches to global sustainable development, *Nature Sustainability*, 1, 466, 2018a.
- Liu, J., Mao, G., Hoekstra, A. Y., Wang, H., Wang, J., Zheng, C., van Vliet, M. T., Wu, M., Ruddell, B., and Yan, J.: Managing the energy-water-food nexus for sustainable development, *Applied Energy*, 210, 1–4, 2018b.
- Liu, L., Parkinson, S., Gidden, M., Byers, E., Satoh, Y., Riahi, K., and Forman, B.: Quantifying the potential for reservoirs to secure future surface water yields in the world’s largest river basins, *Environmental Research Letters*, 13, 044 026, 2018c.
- 15 Loulou, R., Goldstein, G., Noble, K., et al.: Documentation for the MARKAL Family of Models, 2004.
- Matsumoto, J. and Mays, L. W.: Capacity Expansion model for large-scale water-energy systems, *Water Resources Research*, 19, 593–607, 1983.
- McCollum, D. L., Echeverri, L. G., Busch, S., Pachauri, S., Parkinson, S., Rogelj, J., Krey, V., Minx, J. C., Nilsson, M., Stevance, A.-S., et al.: Connecting the sustainable development goals by their energy inter-linkages, *Environmental Research Letters*, 13, 033 006, 2018.
- 20 McManamay, R. A., DeRolph, C. R., Surendran-Nair, S., and Allen-Dumas, M.: Spatially explicit land-energy-water future scenarios for cities: Guiding infrastructure transitions for urban sustainability, *Renewable and Sustainable Energy Reviews*, 112, 880–900, 2019.
- Mesfun, S., Leduc, S., Patrizio, P., Wetterlund, E., Mendoza-Ponce, A., Lammens, T., Staritsky, I., Elbersen, B., Lundgren, J., and Kraxner, F.: Spatio-temporal assessment of integrating intermittent electricity in the EU and Western Balkans power sector under ambitious CO₂ emission policies, *Energy*, 164, 676–693, 2018.
- 25 Messner, S. and Strubegger, M.: User’s Guide for MESSAGE III, 1995.
- Mosnier, A., Havlík, P., Obersteiner, M., Aoki, K., Schmid, E., Fritz, S., McCallum, I., and Leduc, S.: Modeling impact of development trajectories and a global agreement on reducing emissions from deforestation on Congo Basin forests by 2030, *Environmental and Resource Economics*, 57, 505–525, 2014.
- 30 Nilsson, M., Griggs, D., and Visbeck, M.: Map the interactions between sustainable development goals, *Nature*, 534, 320–323, 2016.
- Oikonomou, K. and Parvania, M.: Optimal Coordination of Water Distribution Energy Flexibility with Power Systems Operation, *IEEE Transactions on Smart Grid*, 2018.
- O’Neill, B. C., Kriegler, E., Ebi, K. L., Kemp-Benedict, E., Riahi, K., Rothman, D. S., van Ruijven, B. J., van Vuuren, D. P., Birkmann, J., Kok, K., et al.: The roads ahead: Narratives for shared socioeconomic pathways describing world futures in the 21st century, *Global Environmental Change*, 42, 169–180, 2017.
- 35 Parkinson, S., Krey, V., Huppmann, D., Kahil, T., McCollum, D., Fricko, O., Byers, E., Gidden, M. J., Mayor, B., Khan, Z., et al.: Balancing clean water-climate change mitigation trade-offs, *Environmental Research Letters*, 14, 014 009, 2019.

- Parkinson, S. C., Djilali, N., Krey, V., Fricko, O., Johnson, N., Khan, Z., Sedraoui, K., and Almasoud, A. H.: Impacts of groundwater constraints on Saudi Arabia's low-carbon electricity supply strategy, *Environmental science & technology*, 50, 1653–1662, 2016.
- Parkinson, S. C., Makowski, M., Krey, V., Sedraoui, K., Almasoud, A. H., and Djilali, N.: A multi-criteria model analysis framework for assessing integrated water-energy system transformation pathways, *Applied Energy*, 210, 477–486, 2018.
- 5 Payet-Burin, R., Kromann, M., Pereira-Cardenal, S., Strzepek, K. M., and Bauer-Gottwein, P.: WHAT-IF: An open-source decision support tool for water infrastructure investment planning within the water–energy–food–climate nexus, *Hydrology and Earth System Sciences*, 23, 4129–4152, 2019.
- Pereira-Cardenal, S. J., Mo, B., Gjelsvik, A., Riegels, N. D., Arnbjerg-Nielsen, K., and Bauer-Gottwein, P.: Joint optimization of regional water-power systems, *Advances in water resources*, 92, 200–207, 2016.
- 10 Pfenninger, S. and Staffell, I.: Long-term patterns of European PV output using 30 years of validated hourly reanalysis and satellite data, *Energy*, 114, 1251–1265, 2016.
- Rao, N., Poblete-Cazenave, M., Bhalerao, R., Davis, K., and Parkinson, S.: Spatial analysis of energy use and GHG emissions from cereal production in India, *Science of The Total Environment*, 654, 841–849, <https://doi.org/10.1016/J.SCITOTENV.2018.11.073>, <https://www.sciencedirect.com/science/article/pii/S0048969718344255?via%3Dihub>, 2019.
- 15 Raptis, C. E., van Vliet, M. T. H., and Pfister, S.: Global thermal pollution of rivers from thermoelectric power plants, *Environmental Research Letters*, 11, 104011, <https://doi.org/10.1088/1748-9326/11/10/104011>, <http://stacks.iop.org/1748-9326/11/i=10/a=104011?key=crossref.7a2b2c2dfaec2038518ecba79efec9d6>, 2016.
- Riahi, K., Grübler, A., and Nakicenovic, N.: Scenarios of long-term socio-economic and environmental development under climate stabilization, *Technological Forecasting and Social Change*, 74, 887–935, 2007.
- 20 Richter, B. D., Davis, M., Apse, C., and Konrad, C.: A presumptive standard for environmental flow protection, *River Research and Applications*, 28, 1312–1321, 2012.
- Robinson, S., Mason-D'Croz, D., Sulser, T., Islam, S., Robertson, R., Zhu, T., Gueneau, A., Pitois, G., and Rosegrant, M.: The international model for policy analysis of agricultural commodities and trade (IMPACT): model description for version 3, 2015.
- Rotmans, J. and van Asselt, M.: Uncertainty in Integrated Assessment Modelling: A Labyrinthic Path, *Integrated Assessment*, 2, 43–55, <https://doi.org/10.1023/A:1011588816469>, 2001.
- 25 Santhosh, A., Farid, A. M., and Youcef-Toumi, K.: Real-time economic dispatch for the supply side of the energy-water nexus, *Applied Energy*, 122, 42–52, 2014.
- Sattler, S., Macknick, J., Yates, D., Flores-Lopez, F., Lopez, A., and Rogers, J.: Linking electricity and water models to assess electricity choices at water-relevant scales, *Environmental Research Letters*, 7, 045 804, 2012.
- 30 Siddiqi, A. and Wescoat, J. L.: Energy use in large-scale irrigated agriculture in the Punjab province of Pakistan, *Water International*, 38, 571–586, <https://doi.org/10.1080/02508060.2013.828671>, <http://www.tandfonline.com/doi/abs/10.1080/02508060.2013.828671>, 2013.
- Siddiqi, A., Wescoat Jr, J. L., Humair, S., and Afridi, K.: An empirical analysis of the hydropower portfolio in Pakistan, *Energy Policy*, 50, 228–241, 2012.
- Smith, M.: CROPWAT: A computer program for irrigation planning and management, 46, Food & Agriculture Org., 1992.
- 35 Staffell, I. and Pfenninger, S.: Using bias-corrected reanalysis to simulate current and future wind power output, *Energy*, 114, 1224–1239, 2016.
- Tilmant, A., Goor, Q., and Pinte, D.: Agricultural-to-hydropower water transfers: Sharing water and benefits in hydropower-irrigation systems, *Hydrology and Earth System Sciences*, 13, 1091–1101, 2009.

- Todini, E.: The ARNO rainfall—runoff model, *Journal of Hydrology*, 175, 339–382, [https://doi.org/10.1016/S0022-1694\(96\)80016-3](https://doi.org/10.1016/S0022-1694(96)80016-3), <https://www.sciencedirect.com/science/article/pii/S0022169496800163?via%3Dihub>, 1996.
- Ushey, K. et al.: R: Package 'reticulate', R Foundation for Statistical Computing, <https://cran.r-project.org/web/packages/reticulate/index.html>, 2019.
- 5 Vakilifard, N., Bahri, P. A., Anda, M., and Ho, G.: An interactive planning model for sustainable urban water and energy supply, *Applied Energy*, 235, 332–345, 2019.
- van Vliet, M. T., Wiberg, D., Leduc, S., and Riahi, K.: Power-generation system vulnerability and adaptation to changes in climate and water resources, *Nature Climate Change*, 6, 375, 2016.
- Van Vliet, O., Krey, V., McCollum, D., Pachauri, S., Nagai, Y., Rao, S., and Riahi, K.: Synergies in the Asian energy system: Climate change, energy security, energy access and air pollution, *Energy Economics*, 34, S470–S480, 2012.
- 10 Van Vuuren, D. P., Edmonds, J., Kainuma, M., Riahi, K., Thomson, A., Hibbard, K., Hurtt, G. C., Kram, T., Krey, V., Lamarque, J.-F., et al.: The representative concentration pathways: An overview, *Climatic change*, 109, 5, 2011.
- Wada, Y., Wisser, D., and Bierkens, M. F. P.: Global modeling of withdrawal, allocation and consumptive use of surface water and ground-water resources, *Earth System Dynamics*, 5, 15–40, <https://doi.org/10.5194/esd-5-15-2014>, <https://www.earth-syst-dynam.net/5/15/2014/>,
- 15 2014.
- Wada, Y., Flörke, M., Hanasaki, N., Eisner, S., Fischer, G., Tramberend, S., Satoh, Y., van Vliet, M. T. H., Yillia, P., Ringler, C., Burek, P., and Wiberg, D.: Modeling global water use for the 21st century: the Water Futures and Solutions (WFaS) initiative and its approaches, *Geoscientific Model Development*, 9, 175–222, <https://doi.org/10.5194/gmd-9-175-2016>, <https://www.geosci-model-dev.net/9/175/2016/>, 2016.
- 20 Wada, Y., Vinca, A., Parkinson, S., Willaarts, B. A., Magnuszewski, P., Mochizuki, J., Mayor, B., Wang, Y., Burek, P., Byers, E., Riahi, K., Krey, V., Langan, S., van Dijk, M., Grey, D., Hillers, A., Novak, R., Mukherjee, A., Bhattacharya, A., Bhardwaj, S., Romshoo, S. A., Thambi, S., Muhammad, A., Ilyas, A., Khan, A., Lashari, B. K., Mahar, R. B., Ghulam, R., Siddiqi, A., Wescoat, J., Yogeswara, N., Ashraf, A., Sidhu, B. S., and Tong, J.: Co-designing Indus Water-Energy-Land Futures, *One Earth*, 1, 185–194, <https://doi.org/10.1016/j.oneear.2019.10.006>, <https://linkinghub.elsevier.com/retrieve/pii/S2590332219300879>, 2019.
- 25 Wang, X., Guo, M., Koppelaar, R. H., van Dam, K. H., Triantafyllidis, C. P., and Shah, N.: A Nexus Approach for Sustainable Urban Energy-Water-Waste Systems Planning and Operation, *Environmental science & technology*, 52, 3257–3266, 2018.
- Welsch, M., Hermann, S., Howells, M., Rogner, H. H., Young, C., Ramma, I., Bazilian, M., Fischer, G., Alfstad, T., Gielen, D., et al.: Adding value with CLEWS—Modelling the energy system and its interdependencies for Mauritius, *Applied energy*, 113, 1434–1445, 2014.
- Wijngaard, R. R., Biemans, H., Lutz, A. F., Shrestha, A. B., Wester, P., and Immerzeel, W. W.: Climate change vs. socio-economic development: understanding the future South Asian water gap, *Hydrology and Earth System Sciences*, 22, 6297–6321, 2018.
- 30 Yang, Y. E., Ringler, C., Brown, C., and Mondal, M. A. H.: Modeling the Agricultural Water–Energy–Food Nexus in the Indus River Basin, Pakistan, *Journal of Water Resources Planning and Management*, 142, 04016 062, 2016.
- Yu, W., Yang, Y.-C., Savitsky, A., Alford, D., Brown, C., Wescoat, J., Debowicz, D., and Robinson, S.: The Indus basin of Pakistan: The impacts of climate risks on water and agriculture, *The World Bank*, 2013.
- 35 Zhang, X. and Vesselinov, V. V.: Integrated modeling approach for optimal management of water, energy and food security nexus, *Advances in Water Resources*, 101, 1–10, 2017.

Editor's review

Dear Adriano,

Thank you for your revised version of the manuscript. I believe it is much improved from the original version and would like to thank the reviewers for their constructive comments in the discussion. In my view the paper is an important contribution and thus should be published.

However, in line with the reviewers I do have concerns about the number of parameters in such a complex model, small changes to some of these may have profound impact on the outcomes while others may have negligible impact. I fully appreciate that a substantive sensitivity analysis is beyond the scope of this paper, it's not the purpose of the paper in my view, but I think in your response to the reviewers and edits to the manuscript this is perhaps underplayed given the level reviewers concerns.

Could I ask specifically that you review the sections outlined below as a technical revision.

Best wishes,
Jeff

Section 3.1 on model calibration.

This section is much improved however the section on calibration needs to be far more upfront on the limitations of the calibration conducted here. A distributed model with 13 parameters over a huge area has been calibrated to a single point. Thus, the model is likely to perform poorly in many other parts of the basin I would assume. At the moment, the difficulty of simulating the basin is highlighted but not the limitations of the calibration adopted – in a real application of the model more calibration data would be needed I assume? I don't think you need to change the calibration, but please be upfront about the limitations in this example. Furthermore, one-gauge location seems very limited, was this the only data available or did you chose one location for another reason?

4.3 Uncertainty section

Should this include model structure as a source of uncertainty? Presumably in such a complex system feedbacks and parts of the system could be omitted from the model, distorting the response other parts of the systems?

Around page 33 "We therefore leave data source uncertainty analysis to future publication that will to focus specifically on numerical outputs and implications" – Both reviews highlight this as a critical issues. I can appreciate that you are keen not to extend the paper to include a sensitivity analysis on the model parameters and data sources, but I think the reviewers raise legitimate concerns about the use of such a complex model for scenario analysis over large basins. The sentences here are insufficient at reflecting this in my opinion.

Thus, I'd be more comfortable if you either refute the opinion of the reviewers (and mine) or set out some expectations about how potentially challenging model parameterisation might be. My assumption is that data source and parametric uncertainty will likely have profound impact on the outcomes of the model and if you don't think this will be the case you need to explain why in the text.

Also please check the typo in this sentence.

Finally, I agree with Review 2 that the section on limitations is more focused on further development, or simply known limitations in model structure. Could you make the section title more specific in this regard?

Author's response

Dear Jeff,

Thank you for your comments and the revision work you did. I made further changes in response to the issues you rose.

In section 3.1 I now wrote more clearly that having one single station is a limitation for the hydrological model calibration. At page 16, line 18 of the newly uploaded manuscript I added:

“The Besham station is chosen because of its coverage of historical years, it incorporates the runoff from both glacial and seasonal snowmelt. However, multiple stations would be necessary to better represent regional heterogeneity (in particular lower versus upper basin). Future work will incorporate spatially distributed observations to improve the calibration. “

To address the concerns on the uncertainty, I added a preliminary parametric sensitivity analysis where input parameters are varied within a fixed range and we look at output variations. An entire new paragraph is added at page 28, line 19.

At the end of this paragraph I also mention the importance of structural uncertainty, which I believe is substantial but it is also a too vast topic to be assessed in this article.

Finally, I changed the title of the limitations section.

I think that these changes, in particular the additional sensitivity analysis, further improve the accuracy of some sections. I hope the article is now better in line with your suggestions and the journal requirements.

Kind regards,
Adriano