

The multiscale Routing Model mRM v1.0: simple river routing at resolutions from 1 to 50 km

Stephan Thober¹, Matthias Cuntz², Matthias Kelbling¹, Rohini Kumar¹, Juliane Mai³, and Luis Samaniego¹

¹Computational Hydrosystems, Helmholtz Centre for Environmental Research - UFZ, Leipzig, Germany

²INRA, Université de Lorraine, AgroParisTech, UMR Silva, Nancy, France

³Civil and Environmental Engineering, University of Waterloo, Canada

Correspondence: Stephan Thober (stephan.thober@ufz.de)

Abstract. Routing streamflow through a river network is a fundamental requirement to verify lateral water fluxes simulated by hydrologic and land surface models. River routing is performed at diverse resolutions ranging from few kilometers to ~~around~~ 1°. The presented multiscale Routing Model mRM calculates streamflow at diverse spatial and temporal resolutions. mRM solves the kinematic wave equation using a finite difference scheme. An adaptive time stepping scheme fulfilling a numerical stability criteria is introduced in this study and compared against the original parametrization of mRM that has been developed within the mesoscale Hydrologic Model (mHM). mRM requires a high-resolution river network, which is upscaled internally to the desired spatial resolution. The user can change the spatial resolution by simply changing ~~one-a single~~ number in the configuration file without any further adjustments of the input data. The performance of mRM is investigated on two datasets: a high-resolution German dataset and a slightly lower ~~resolution-resolved~~ European dataset. The adaptive time ~~step-stepping~~ scheme within mRM shows a remarkable scalability compared to its predecessor. Median Kling-Gupta efficiencies change less than 3 percent when the model parametrization is transferred from 3 to 48 km resolution. mRM also exhibits seamless scalability in time, providing ~~identical-similar~~ results when forced with hourly and daily runoff. The streamflow calculated over the Danube catchment by the Regional Climate Model REMO coupled to mRM ~~is-comparable-at-25-and-reveals that the~~ 50 km ~~simulation shows a smaller bias with respect to observations than the simulation at 12 km~~ resolution. The mRM source code is freely available and highly modular ~~facilitating an-~~, ~~facilitating~~ easy internal coupling in existing Earth System Models.

1 Introduction

Streamflow provides an integrated signal of lateral hydrologic fluxes at the land surface over a catchment area. Streamflow observations are routinely used within hydrologic modeling to perform model characterization or calibration/validation (Beven, 2012). Comparisons between simulated and observed streamflow are typically conducted using measures focusing on daily values (Nash and Sutcliffe, 1970; Gupta et al., 2009). Similarly to hydrologic models (HM), land-surface models (LSM) also represent the terrestrial hydrologic cycle. They additionally include the terrestrial energy budget and biogeochemical cycles, such as the carbon cycle, to provide the exchange fluxes of the land-surface with the atmosphere in, for example, Regional Circulation Models (RCM) or Earth System Models (ESM). Streamflow is estimated in ESMs to provide fresh water input of

the land surface into the ocean (Sein et al., 2015). Streamflow observations are also used in land surface models in the context of climate studies to validate the hydrologic cycle at daily (a.o., Marx et al., 2018; Thober et al., 2018; Samaniego et al., 2018), monthly (a.o., Hagemann et al., 2009; Li et al., 2015; Zhang et al., 2016) or even annual time scales (a.o., Zhou et al., 2012).

Hydrologic models and land surface models (LSM) are historically run at different spatial resolutions. Hydrologic models (HM) are, for instance, applied at scales of few kilometers and less, even in continental-scale applications (Wood et al., 2011; Marx et al., 2018) whereas LSMs are applied at resolutions of tens of kilometers and more within climate change studies (Van der Linden and Mitchell, 2009; Taylor et al., 2012). However, a substantial increase in model resolution has been achieved for Regional Circulation Models (RCM) in the past years and these are run nowadays at different resolutions down to the convection-permitting scale of a few kilometers (Jacob et al., 2014). Applying RCMs at diverse resolutions implies that the same LSM (i.e., the same representation of water, energy, and biogeochemical processes) is used on diverse resolutions. This imposes a challenge on the LSM parametrizations to be able to represent all included processes at the different resolutions (Wood et al., 1998; Haddeland et al., 2002; Boone et al., 2004). ~~One~~ The main goal of this study is to ~~make streamflow observations accessible to LSMs independent of their modeling resolution~~ provide LSMs, that do not include a river routing scheme, with a framework to compute streamflow for comparison against observations. The distinctive property of this framework is that the spatial resolution can be easily changed by the user without any modification of the model setup.

River routing is the process of predicting the hydrograph evolution as runoff moves through a river network. It can be described at different levels of complexity. The general governing equation of this phenomena are the uni-dimensional Saint-Venant equations (de Saint-Venant, 1871). Models using the Saint-Venant equations are referred to as hydraulic models that are especially suited if backwater effects occur such as in flat regions or river deltas (Paiva et al., 2011; Miguez Macho and Fan, 2012; Paiva et al., 2013; Yamazaki et al., 2013). These models exploit remote sensing to derive model parameters and setup (Neal et al., 2012; Beighley et al., 2009). If rivers are steep enough and relatively shallow, simplification of the Saint-Venant equations such as the kinematic wave equation are sufficient (Lohmann et al., 1996; Hagemann and Dümenil, 1997; Todini, 2007). They require less information about river topography and only account for wave advection and attenuation. These models are not applicable for large river basins with extensive floodplains such as the Amazonas and Niger because they cannot account for floodplain inundation (Neal et al., 2012; Getirana et al., 2012; Pontes et al., 2017), which causes a negatively skewed hydrograph (Collischonn et al., 2017). It is worth noting that the impact of floodplain processes dominates the differences between a ~~hydrodynamic~~-hydraulic model and kinematic wave models (Paiva et al., 2013).

A common approach to achieve scale-independent streamflow is to perform the river routing calculations on a fixed spatial and temporal resolution, regardless of the resolution of the hydrologic or land surface model providing the input runoff flux. Global routing schemes, for example, often use fixed 0.5° or 1.0° resolutions to produce river discharge of large river basins globally (Hagemann and Dümenil, 1997; Pappenberger et al., 2009; Hagemann et al., 2009; Oki et al., 1999) (Hagemann and Dümenil, 1997). Within hydrologic models, high-resolution routing algorithms at fixed scales of 5 to 16 km are used (David et al., 2011; Kumar et al., 2013b, a). Only few studies have explicitly investigated the spatial scaling capabilities of existing routing approaches by introducing sub-grid and between-grid heterogeneities (Li et al., 2013).

The main objective of the multiscale Routing Model mRM presented in this study is to provide a simple ~~-, both in in both,~~ model complexity and applicability, river routing of hydrologic and land surface model outputs at various spatial resolutions ranging from the kilometer scale to large scales at 50 km or more in a seamless way (Samaniego et al., 2017b). The stand-alone model allows the user to adjust freely the spatial resolution by simply changing a single ~~number-value~~ in a configuration file
5 without any further modifications of the input data. The ~~resolution-of-routing-model resolution~~ should thereby not influence the obtained streamflow, otherwise model re-calibrations at each resolution would be necessary. mRM also keeps the computational demand to a minimum (see Appendix B for details on run times of mRM), one major advantage of a scalable modeling system (Kumar et al., 2013a).

The analysis of the scaling capabilities of the multiscale Routing Model mRM is shown ~~at-for~~ 622 ~~catchments in Europe~~
10 ~~ranging in size from about~~ European catchments ranging from 100 ~~km²-km²~~ to 100,000 ~~km²-km²~~ in size and spatial resolutions from 1 to 48 km (section 3.2). The river network has to be provided only at the ~~highest-finest~~ spatial resolution supported by the available data, for example a digital elevation map. This high-resolution river network is then internally upscaled to the resolution specified by the user in a configuration file. The upscaling accounts for the correct representation of the catchment area/stream network without any further data requirement (section 2.4). A parameter sensitivity analysis is presented ~~at-all-of~~
15 ~~for~~ the 622 catchments, which highlights the ~~little-small~~ influence of the model parameter of mRM (section 3.1). The multiscale Routing Model mRM is coupled internally to the mesoscale Hydrologic Model mHM (Samaniego et al., 2010; Kumar et al., 2013b) and the improvement of mRM over the original routing parametrization in mHM is demonstrated (section 3.3). The overall focus of mRM is to provide a simple routing tool that can be coupled to any land-surface and hydrologic model across several spatial resolutions, and ~~giving them access to allowing them to access~~ streamflow observations. mRM is applied as a
20 stand-alone post-processor to the output of the REMO Regional Climate model over the Danube catchment for demonstration (section 3.4).

2 Description of the multiscale Routing Model mRM

2.1 Finite Difference Approximation of Kinematic Wave Equation

The multiscale Routing Model mRM uses the kinematic wave equation, first ~~analyzed-analysed~~ by Lighthill and Whitham
25 (1955), to describe the water flow within a stream as

$$\frac{\partial Q}{\partial t} + c \frac{\partial Q}{\partial x} = 0, \quad (1)$$

where Q ($\text{m}^3 \text{s}^{-1}$) is streamflow, x (m) the space dimension, t (s) the time dimension, and c (m s^{-1}) the celerity. The kinematic wave equation is a simplification of the Saint-Venant equations (Chow et al., 1988). The derivation is based on the assumption that the continuity equation is sufficient to describe the movement of flood waves. In detail, a constant river bed slope and time-
30 invariant celerity c have to be assumed (Lighthill and Whitham, 1955). Kinematic waves account for the advection of water but not for complex fluvial processes such as flood wave attenuation, backwater effects, and floodplain inundation. ~~However, it is~~ ~~It is~~ ~~however~~ widely used because advection is the governing fluvial process as long as backwater and floodplain inundation

effects can be neglected (Paiva et al., 2013). mRM employs the classical finite difference weighted approximation on a four ~~points~~-point scheme to solve equation (1). Details about the derivation can be found in Chow et al. (1988) and Todini (2007). It is summarized shortly in the following.

The partial derivatives within equation (1) are represented as finite differences between four values, that means on two
5 locations at two points in time:

$$\begin{aligned}\frac{\partial Q}{\partial t} &\approx \frac{\epsilon(Q(x_j, t_{i+1}) - Q(x_j, t_i)) + (1-\epsilon)(Q(x_{j+1}, t_{i+1}) - Q(x_{j+1}, t_i))}{\Delta t}, \\ \frac{\partial Q}{\partial x} &\approx \frac{\varphi(Q(x_{j+1}, t_{i+1}) - Q(x_j, t_{i+1})) + (1-\varphi)(Q(x_{j+1}, t_i) - Q(x_j, t_i))}{\Delta x},\end{aligned}\quad (2)$$

where j denotes the spatial location (i.e., reach id) and i denotes the timestep. ϵ is a space-weighting factor and φ is a time-weighting factor. mRM uses a rectangular grid to represent the river network with a river reach in the model connecting two
10 ~~center~~-grid-grid center locations. Different spatial locations are separated by Δx and time steps by Δt . The two weighting factors, ϵ and φ , can be chosen between 0 and 1, but the numerical solution becomes unstable for $\epsilon > 0.5$ (Cunge, 1969). The numerical diffusion depends linearly on ϵ (Cunge, 1969), with 0 implying full numerical diffusion and 0.5 no numerical diffusion, respectively.

Setting φ to 0.5, which represents a time-centered scheme, and substituting equation (2) into equation (1) results in the
15 classical linear equation:

$$Q(x_{j+1}, t_{i+1}) = C_1 Q(x_j, t_{i+1}) + C_2 Q(x_j, t_i) + C_3 Q(x_{j+1}, t_i), \quad (3)$$

with the coefficients C_1 , C_2 and C_3 being:

$$\begin{aligned}C_1 &= \frac{-2\Delta x\epsilon + c\Delta t}{2\Delta x(1-\epsilon) + c\Delta t}, \\ C_2 &= \frac{2\Delta x\epsilon + c\Delta t}{2\Delta x(1-\epsilon) + c\Delta t}, \\ 20 \quad C_3 &= \frac{2\Delta x(1-\epsilon) - c\Delta t}{2\Delta x(1-\epsilon) + c\Delta t}.\end{aligned}\quad (4)$$

The coefficients C_1 , C_2 and C_3 add up to one. The spatial resolution ~~at which equation 3 is applied is~~ applied in equation (3) is called ‘‘routing’’ resolution in the following.

2.2 Stream Celerity Parametrization based on Terrain Slope

Two parametrizations of equation (4) are available in mRM: ~~firstly~~-first, the regionalized Muskingum-Cunge (rMC) parametriza-
25 tion with a fixed time step as implemented in the mesoscale Hydrologic Model mHM presented in Samaniego et al. (2010) and Kumar et al. (2013b), and ~~secondly~~-second, the newly developed parametrization using spatially varying celerities in combination with an adaptive time step (aTS). A short summary of the former is presented in the Appendix A and is referred to as rMC in the following. The latter is described in detail in this and the next section and is referred to as aTS scheme.

The aTS calculates stream celerity as a function of terrain slope using a simple relationship:

$$30 \quad c_i = \gamma \sqrt{s_i}, \quad (5)$$

where c_i , s_i and γ are celerity, terrain slope and a free model parameter, respectively, and i is the grid cell index. Equation 5 (5) was proposed by Miller et al. (1994) for evaluating the accuracy of atmospheric GCMs against streamflow observations. They used $\gamma = 49$ with a topography at 5' resolution (ca. 10 km at the equator). Coe (2000) used the same formulation also at 5' resolution but set $\gamma = 113$. $\gamma = c_0/\sqrt{s_0}$ is the ratio of a minimum celerity c_0 over the square root of a reference slope s_0 .

5 The latter should depend on the resolution of the input data so that the aTS model parameter γ should theoretically also depend on the resolution of the underlying terrain data, i.e., the ~~Digital Elevation Model~~ digital elevation model (DEM). Because both parameters, c_0 and s_0 , are unknown, aTS ~~uses only the combined model~~ conceptualizes them as one effective parameter γ . It is set to range between 0.1 and 30 in this study because values above 30 led to unrealistic celerities with the two used DEMs of 100 m and 500 m resolution ~~used~~ (see below). The parametrization used here (equation 5) is an alternative to Manning's

10 equation (Manning, 1891; Chow et al., 1988), which is more physically based than equation 5(5), but additionally requires information of river cross sections and Manning's roughness coefficient, which need to be parametrized if observations are not available. Manning's equation thus typically requires more parameters than ~~the equation 5. The latter is equation (5). The simplified representation~~ used in aTS because of its ~~simplicity and the~~ sufficiently high model performance and its simplicity (see Section 3.1).

15 The celerity relationship (equation 5) is applied at the resolution of the ~~Digital Elevation Model~~ digital elevation model (DEM), from which terrain slope is derived. Ideally, channel slope instead of terrain slope should be used in equation 5(5), but it is not as readily available as terrain slope. Applying equation 5(5) at the resolution of the DEM provides a compromise because a high-resolution DEM provides a close approximation of channel slope. A median absolute deviation (MAD) filter (Sachs, 1999) is applied to the high resolution slope data along the path of the main river with a threshold value of 2.25 to

20 correct for outliers. Large slope outliers happen easily in DEMs, for example, when the river flows in a valley and one grid cell represents the valley while the next grid cell represents the hill top. A minimum river bed slope of 0.1% is further assumed to avoid numerical instabilities in flat terrains. The celerities are then upscaled to the routing resolution, i.e., the resolution at which the kinematic wave equation is solved (equation 3). The upscaling is by averaging with the harmonic mean, the correct averaging operator for celerities (or speed). This follows the Multiscale Parameter Regionalization (MPR) approach

25 (Samaniego et al., 2010; Kumar et al., 2013b), which relates model parameters to physiographic characteristics at the highest ~~resolution possible~~ possible resolution. The upscaling considers also only those high-resolution grid cells that align with the ~~path of the main river~~ main river network because aTS only considers the flow in the main river reach, assuming that travel times in the main reach dominate the routing process in tributaries. Alternative models such as MOSART (Li et al., 2013) also consider flow in tributaries and head waters.

30 2.3 Adaptive Time Step (aTS) Implementation

The aTS scheme uses an adaptive time step to calculate the linear coefficients in equation (4). The basic idea is that the time step should be such that water has not been transported further than Δx during a single step. This condition is generally known as Courant-Friedrich-Lewy criterium, which is a necessary condition for numerical stability of finite difference schemes (Courant

et al., 1928). The condition can be expressed as:

$$C_r = \frac{c\Delta t}{\Delta x} \leq C_{max} = 1, \quad (6)$$

where C_{max} is the Courant number. aTS uses a Courant number of 1 (Bates et al., 2010). The Courant condition couples the applied spatial resolution with the integration time step of the finite difference scheme. Celerities c_i are typically in the order of a few m s^{-1} , calculated using equation 5(5) and averaged harmonically along the river path. Spatial grids are in the range of a few kilometers to around 100 km in the case of regional to continental applications. The time step Δt is chosen such that it does not deviate too much from the Courant number C_{max} (equation 6) to keep computational demand to a minimum (see Appendix B for details on run times of mRM). This implies that Δt ranges from a few minutes for high-resolution grids to a few hours for continental scale applications.

10 In detail, aTS chooses Δt from a set of prescribed values such that $c_i\Delta t/\Delta x$ is close to but less than 1 for all celerities c_i . The prescribed values range from one minute to one day, namely: 1 min, 2 min, 3 min, 4 min, 5 min, 6 min, 10 min, 12 min, 15 min, 20 min, 30 min, 1 h, 2 h, 3 h, 4 h, 6 h, 8 h, 12 h, and 1 day. The choice of these values is motivated from the fact that these represent multiples or ~~dividers~~ fractions of hourly and daily time steps. These time steps allow in principle model applications from 100 m to 100 km, for typical celerities around 1.5 m s^{-1} .

15 Note that the chosen time step depends only on the spatial resolution and is independent of the time resolution of the provided forcing. For example, applying aTS at 12 km resolution using a celerity of $c = 1.5 \text{ m s}^{-1}$ gives $\Delta x/c$ of 2.2 hours and, hence, a time step of two hours will be chosen. If aTS is forced with hourly input, it will aggregate the input over two consecutive time steps prior to the routing. The calculated streamflow is then distributed to the previous two time steps because these represent the mean flow over this period. If aTS is forced with daily input, it will use internally 12 iterations of 2-hour time steps to route the water through the river network. In this case, aTS will also return the average of the calculated 12 streamflow values at each reach.

2.4 Data Requirements and Model Setup

Three different input ~~variables~~ sources are required to run the multiscale Routing Model mRM. First, mRM requires information about the river network. mRM uses a rectangular grid to represent the river network over a domain (Yamazaki et al., 2011). Water can only be transported from a specific grid cell to one of the eight neighboring cells following the steepest slope direction (D8 method, O'Calaghan and Mark, 1984). This procedure has to be carried at the highest possible resolution supported by the available dataset. For example, a high-resolution 100 m digital elevation model (DEM) can be used to calculate flow directions following the D8 method (Figure 1 top left). It is worth mentioning that DEMs typically have to be adjusted to align with existing river networks using additional information about river locations (Döll and Lehner, 2002). High-resolution datasets such as HydroSHEDS (Lehner et al., 2006) can be used alternatively. Once the high-resolution flow direction is obtained following the nomenclature of 1 – east to 128 – north east clockwise, it is internally upscaled in mRM (Figure 1 center top) to the routing resolution specified by the user, employing the method of Döll and Lehner (2002). This upscaling technique has already been implemented in Samaniego et al. (2010). The flow direction at a low resolution grid cell (3×3 grid in Figure 1)

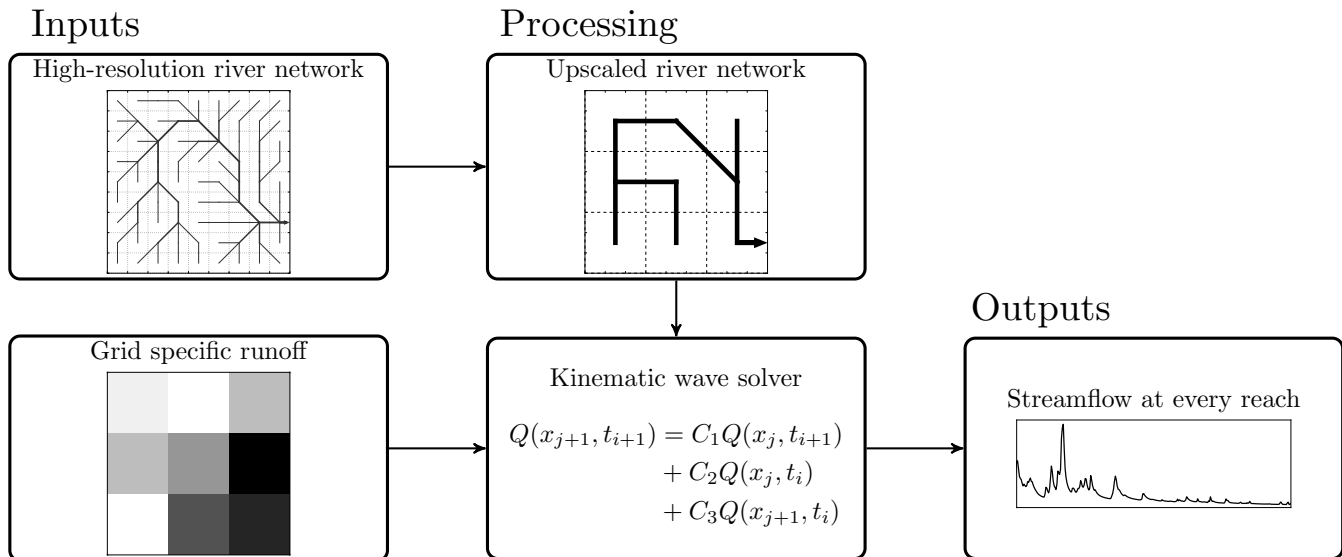


Figure 1. Flowchart of the processing steps required to run the multiscale Routing Model mRM: left, input: static high-resolution information about the routing network and dynamic runoff field; middle, internal mRM processing: aggregation of static and dynamic data to the routing resolution given by the user and execution of routing at this resolution; right, output: calculated streamflow at prescribed gauge.

is equal to the flow direction of the underlying high resolution grid cell with the highest flow accumulation. If this high resolution grid cell is not **along-on** an edge of the low resolution grid cell, then the low resolution grid cell is an outflow of the domain. It is worth mentioning that this procedure leads to incorrect basin areas at coarse resolution (Yamazaki et al., 2009). A detailed investigation of four large European river basins reveals that basin area is correctly calculated for model resolutions less than 40 km (see Appendix C). At these resolutions, mRM will route water to the correct ocean basin in global scale applications. Note that mRM can also handle rotated grids, if the high-resolution digital elevation model is provided on a rotated grid.

Second, the gridded runoff fields have to be provided in Network Common Data Form (NetCDF). Units of the forcing can be either mm h^{-1} or $\text{kg m}^{-2} \text{s}^{-1}$ to facilitate applications to hydrologic models as well as land surface models. The most common use case is that mRM is applied to the sum of all runoff components of the driving model, which is based on the assumption that all components enter the river in the same grid cell. However, it is possible to apply mRM to different components individually which can be used as a model diagnostic. We acknowledge that equation (1) considers the entire channel flow. Its application to individual runoff components should be interpreted with caution, which may require conceptualizations for different flow celerities and varying topography among other factors. The spatial resolution of the runoff field is required to be a multiple of the resolution of the flow direction field. The most common use case is that streamflow is calculated at the resolution of the runoff and mRM will upscale the river network to the resolution as described before. However, mRM puts no constraints on model resolution **and-simulations**. Simulations at higher or lower resolutions can be conducted as long as it is a multiple of both, the runoff grid and the grid of the flow directions. In this case, runoff will be up-/down-scaled employing weighted area

fractions, which guarantees mass conservation. When mRM is coupled to coarse scale simulations (e.g., spatial resolution of 1°), it is advisable to choose a lower resolution for mRM to correctly represent basin areas (see Appendix C).

Third, observed river streamflow can be provided to mRM at multiple locations within the river network. These locations have to be specified within the high-resolution river network and are then located on the upscaled river network internally within mRM. However, users should be cautious when selecting the model resolution so that the streams represented by the gauging data are still resolved within the upscaled river network. Thus, the upscaled flow accumulation in each grid cell is given in an output NetCDF file, which allows comparison to the drainage area of a given gauge. Observed discharge data is not required for mRM when applied, for example, at ungauged locations. It is, however, mandatory when performing model optimization. Different error measures such as Nash-Shuttleliffe-Nash-Sutcliffe efficiency (Nash and Sutcliffe, 1970) and Kling-Gupta efficiency (Gupta et al., 2009) can be calculated directly in mRM to inform the user about model performance.

A test basin is provided alongside the model code to illustrate the different data required to run the model and their formatting. The model code also contains pre-processing scripts to calculate the flow direction from a given DEM, or flow accumulation from given flow directions.

2.5 Experimental Setup

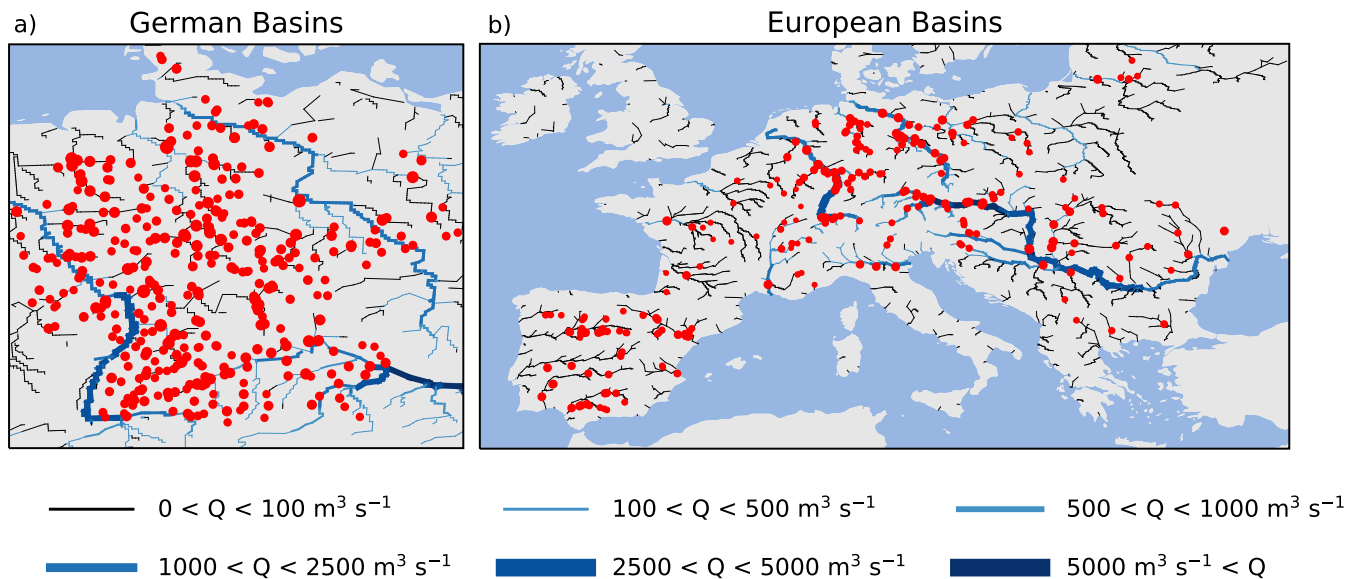


Figure 2. Discharge gauges used for the evaluation of the multiscale Routing Model mRM: a) 368 gauges in the German dataset, b) 254 gauges in the European dataset. In the background, the results of a pan-European simulation using the multiscale Routing Model mRM and the mesoscale Hydrologic Model mHM at a 5 km resolution is shown. The simulated streamflow Q is depicted for the 5th Aug 2002.

A total of 622 stream gauges are used in this study to assess the performance and scaling capabilities of mRM (Figure 2). These contain 368 basins in the German dataset (Figure 2a) and 254 basins in the European dataset (Figure 2b). Input for mRM

is derived from simulations carried out with the mesoscale Hydrologic Model mHM (Samaniego et al., 2010; Kumar et al., 2013b). Two different model setups for mHM are used in this study. The setup for the German dataset is identical to Samaniego et al. (2013) and Zink et al. (2016) with details given in Zink et al. (2017). The flow direction and accumulation are derived from a 100 m DEM. The setup for the European dataset was used in Thober et al. (2015) with details given in Rakovec et al. (2016).

5 The DEM used to derive the river network has a 500 m resolution in this case. Runoff simulated by mHM was stored at hourly and daily resolution in NetCDF files for both sets of basins. mHM simulations for the German dataset are provided at 4 km resolution while European simulations are provided at 24 km spatial resolution. The difference originates from the available meteorological forcing datasets, which are derived from station data of the German weather service at 4 km resolution (Zink et al., 2017) for the German dataset while E-OBS data at 24 km resolution (Haylock et al., 2008) was used for the European

10 dataset. To study the spatial scalability of mRM, streamflow is routed at different spatial resolutions, which are 1 km, 2 km, 4 km, 8 km, and 16 km for the German dataset and 3 km, 6 km, 12 km, 24 km, and 48 km for the European dataset. The selected resolutions cover a range of hydrologic applications from small to large scale modeling studies (Wood et al., 2011; Samaniego et al., 2017a) as well as scales of 0.5° used in climate studies (Taylor et al., 2012)(Taylor et al., 2012; Jacob et al., 2014). Input runoff on 4 km for the German dataset and on 24 km for the European dataset is rescaled internally in mRM to the desired

15 routing resolution that is provided in a configuration file.

The mesoscale Hydrologic Model mHM coupled to mRM using the regionalized Muskingum-Cunge (rMC) and adaptive time step (aTS) parametrization were calibrated at all catchments to provide a realistic representation of the hydrologic cycle. Details about model calibration can be found in Samaniego et al. (2010); Kumar et al. (2013b); Rakovec et al. (2016), and Zink et al. (2017). The calibrations of both mHM and mRM parameters are carried out using the Shuffled Complex Evolution (SCE) algorithm (Duan et al., 1992). SCE is coupled internally to both models and SCE parameters (e.g., number of complexes) can be specified by users in a namelist.

20

The Kling-Gupta efficiency (KGE) is selected as a metric for evaluating model performance (Gupta et al., 2009). KGE is composed of three measures that relate simulated and observed streamflow. These are the ratio of simulated and observed mean values, the ratio of simulated and observed standard deviations, and the Pearson correlation coefficient. In comparison to the

25 Nash-Sutcliffe efficiency (NSE, Nash and Sutcliffe, 1970), KGE provides a more balanced metric that is less sensitive to high streamflow values than NSE.

The model calibration and evaluation employs daily values of observed streamflow, ~~which was~~. The observed values are obtained from the Global Runoff Data Centre (GRDC) for the period from 1950 to 2010. Although mRM is run internally at higher temporal resolutions, the simulated streamflow is eventually aggregated to daily values for comparison against obser-

30 vations. Daily observed values are chosen here because ~~they allow to investigate~~ the hydrologic cycle can be investigated in greater detail compared to monthly values, commonly used with land surface models (e.g., Hagemann et al., 2009; Zhang et al., 2016).

3 Results

3.1 General Model Performance and Parameter Sensitivities

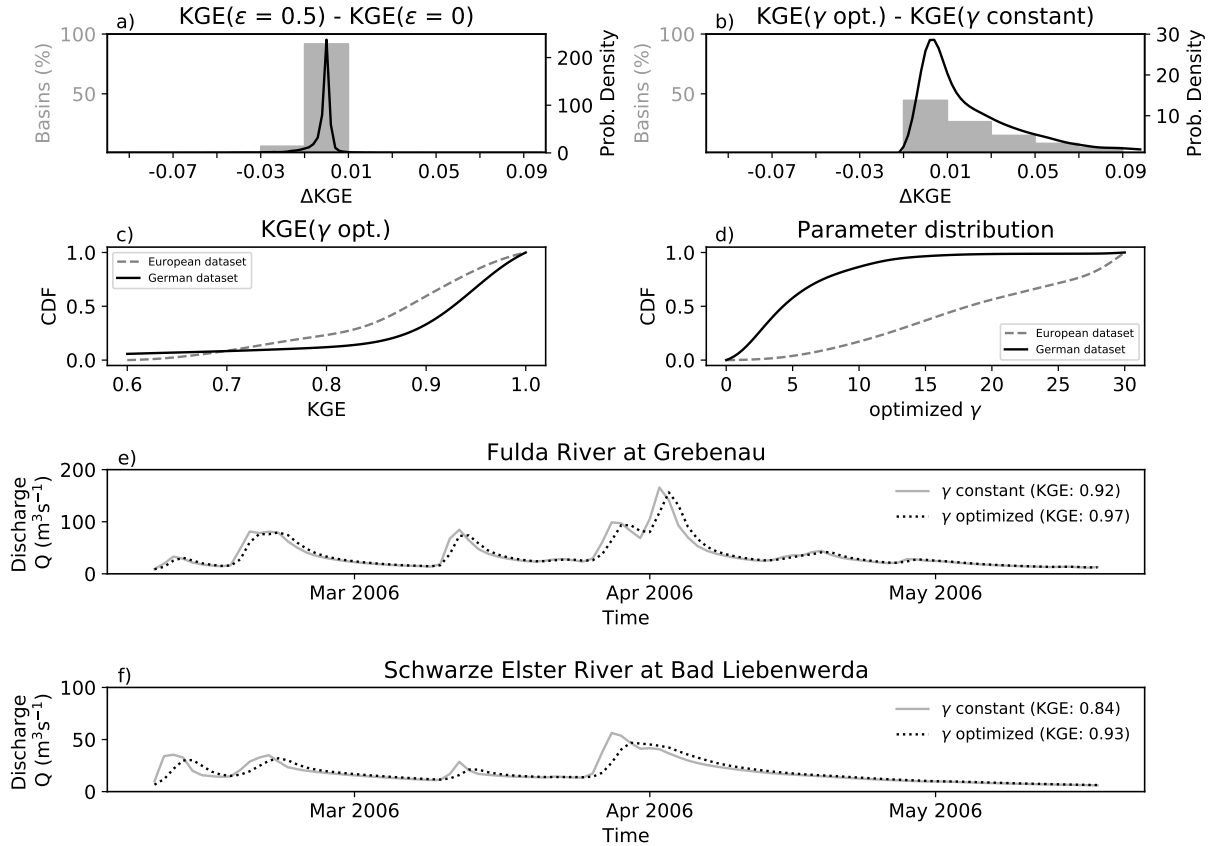


Figure 3. Differences in KGE between no numeric diffusion ($\epsilon = 0.5$) and full numeric diffusion ($\epsilon = 0$) for the combined European and German datasets (panel a), and differences in KGE between model runs with optimized parameter values at each gauge and one constant parameter for all gauges (panel b). Probability density functions (PDF) are shown as black lines. The integrals of the PDFs over intervals of 0.02 (e.g., -0.01 to 0.01) are shown as gray bars normalized with respect to all basins. Panel c: Cumulative distribution functions (cdfs) of Kling-Gupta Efficiencies (KGE) for the European and German datasets separately based on optimized parameters γ . Panel d: CDF of optimized γ for the two datasets. The underlying data shown in panels a-d is pooled for all catchments and all resolutions. Panels e) and f) show the hydrographs for two catchments at 4 km resolution for a parameter value of $\gamma = 15$ (solid gray line) and the optimized value (dashed black line).

The adaptive time step parameterization (aTS) in mRM ~~has one parameter modulating~~ contains one parameter representing the relationship between terrain slope and streamflow celerity (γ in equation 5). There is also an adjustable coefficient for the space weighting in the finite difference solver (ϵ in equation 2). The sensitivity of aTS to ϵ and γ is explored here. The performance of simulated streamflow of aTS appears to be very high in general ~~and exhibits limited impact to changes of~~
5 almost independent of the choice of ϵ and γ .

The density function peaks around $\Delta\text{KGE} = 0$ for the space-weighting factor ϵ (Figure 3a). The ΔKGE estimated across all the investigated basins are within the interval -0.03 to 0.01 . All changes in KGE below a magnitude of 0.01 are considered negligible, in alignment with previous literature, corresponding roughly to an error level in stream-flow-streamflow of 1 mm d^{-1} (Kollat et al., 2012). Some large basins in the European dataset show up to 0.03 higher KGE values using $\epsilon = 0$ compared to
10 $\epsilon = 0.5$. Note that the numerical diffusion of this finite difference solver (equation 4) depends linearly on ϵ (Cunge, 1969). An ϵ value of 0 corresponds to full numeric diffusion, whereas a value of 0.5 to no diffusion. The numerical diffusion is often chosen to correspond to the actual physical diffusion of the river by adjusting the value of ϵ (Todini, 2007; Beighley et al., 2009). aTS is using a space-weighting factor $\epsilon = 0$ because this value provides slightly better estimates than a value of 0.5 , but the impact of this factor is overall negligible.

15 The density function of ΔKGE is skewed when comparing the performances between optimized γ values at each gauging station and resolution with a constant value of 15 for all stations (Figure 3b). A value of 15 is chosen because it provides the best compromise solution of the obtained optimized values (Figure 3d). It can be expected that optimized parameters give higher performances than a fixed value. The performance increments with optimized parameters were, however, less than 0.01 in more than 37% of the basins while only about 42% of the basins exhibited ΔKGE values of 0.01 to 0.05 . This means that
20 performance increments with optimized γ values were below 0.05 in 79% of the basins (Figure 3b).

Overall, the KGE values for the European and German dataset are very high with only 4% of the basins exhibiting a KGE value less than 0.6 (Figure 3c). The median KGE values are 0.89 and 0.94 for the European and German dataset, respectively. KGE values are, however, highly dependent on the used hydrologic model (i.e., mHM) and the quality of the input data. The hydrologic model determines the partitioning of precipitation into evapotranspiration and runoff as well as the temporal
25 dynamics of generated runoff. It thus affects all three components of KGE: the bias, the variance and the correlation. The routing model, on the other hand, is not able to change the long-term water balance and is thus not affecting the bias term of the KGE. The routing model is, however, able to change the dynamics of simulated streamflow and thus greatly affect the variance term of KGE. The distribution of the optimized parameter values is very different for the German and the European datasets with median values of 4 and 21 , respectively (Figure 3d). These differences originate from the resolution of the underlying
30 digital elevation model (DEM) and hence the slopes used in equation 5(5). The slope data for the German dataset is available at a 100 m resolution, while it is at 500 m resolution for the European dataset. The slopes will hence be larger and more variable at 100 m resolution compared to 500 m resolution. This implies that lower slope values (European dataset) are associated with higher γ values and higher slope values (German dataset) are associated with lower γ values, which results in similar celerities for the two datasets. This highlights that the obtained parameter values are highly dependent on the underlying dataset, which
35 has been identified as a major source of hydrologic modelling uncertainty (Livneh et al., 2015).

Hydrographs for two German river basins that exhibit ΔKGE s of 0.05 and 0.11, respectively, are shown in Figure 3e and Figure 3f. These ΔKGE values were among the highest of all basins and model resolutions considered in this study. A shift in peak flows of about one day can be spotted visually at ΔKGE values of 0.05 (Figure 3e). This difference is representative for around 21% of all catchments. A difference in KGE of 0.11 implies a change in the amount and timing of peak flows (Figure 3f) and is representative for around 8% of all catchments. The overall recession dynamics are comparable ~~regardless-independent~~ of the change in γ (Figure 3e and 3f). Moreover, no substantial shift in amount and timing of peak flows is observed in 79% of the catchments. It will ultimately depend on the preference of the model user if parameter calibration is applied for a specific use case.

3.2 Temporal and Spatial Scalability

10 The aTS scheme is run ~~firstly-first~~ with different temporally aggregated inputs and ~~secondly-second~~ on different spatial resolutions to demonstrate its scalability across time and space.

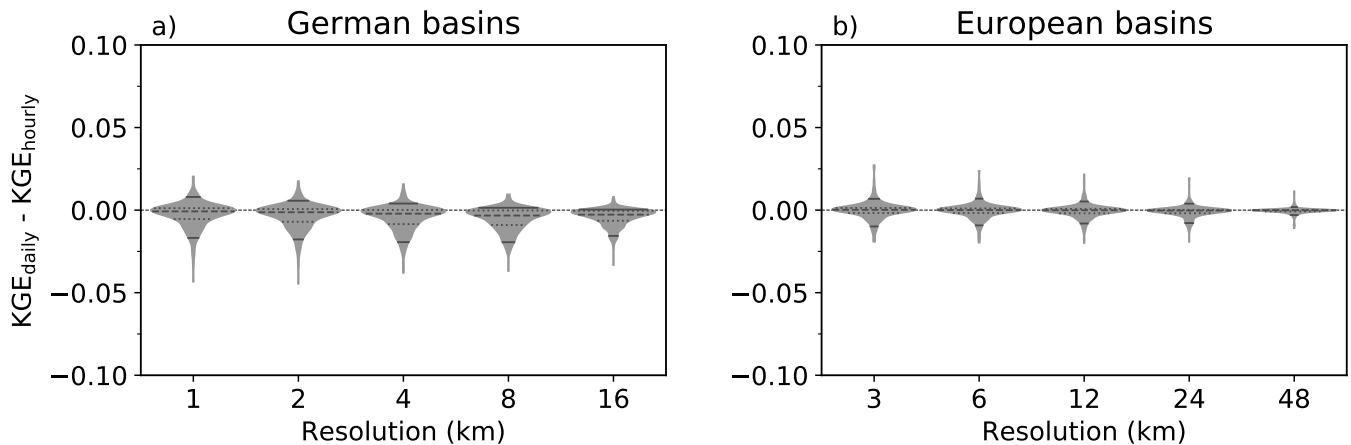


Figure 4. Probability density functions (PDF) of differences in KGE values obtained with hourly and daily input to aTS. PDFs are limited to the minimum and maximum ΔKGE values and have been normalized with respect to its width to ease the comparison. A thin dashed horizontal line is given at $\Delta\text{KGE} = 0$ for reference. Dashed lines in the violins indicate the medians, dotted lines the 25th and 75th percentiles and solid lines the 5th and 95th percentiles.

The adaptive time step procedure of aTS allows ~~to-use-the user to choose~~ different input time steps. This might be the case if input runoff is provided as an aggregate over a specific period, for example as daily runoff. aTS aggregates or disaggregates any given temporal resolution to the internal time step constrained by a Courant number of 1 (equation 6). Similar performances are achieved with aTS using either daily or hourly inputs across all basins in the German and European dataset at every spatial resolution (Figure 4). This is achieved ~~because-of-the-by~~ aggregation and disaggregation to the internal time step but it is also affected by the fact that we compare against observed daily discharge. Sub-daily differences are thus averaged out before comparison. Observed hourly discharge would contain information about sub-daily variability that could not be obtained from

daily inputs and, thus, hourly inputs might perform better in this case. However, observed discharge is mainly available on a daily resolution.

Evidently, aggregated input provides less variable runoff to the routing scheme, leading to less variable river discharge. Aggregation does, however, not change absolute values (bias). The ΔKGE values therefore appear due to changes in streamflow variability, which should be reduced with aggregated runoff values.

Subtle differences exist between the ΔKGE values for the German and European dataset. The median ΔKGE values are almost zero for the European basins (Figure 4b) with very little-low standard deviations. Median ΔKGE values for the German dataset are in contrast slightly negative around -0.005 (Figure 4a). The differences between the German and European dataset come mainly from the spatial resolution at which gridded runoff inputs for mRM were generated. Forcing for mRM was provided at 4 km resolution for the German dataset, which is the lowest resolution of the meteorological input (Zink et al., 2017). The input runoff for mRM has been generated at a 24 km resolution for the European dataset, which corresponds to the resolution of the meteorological E-OBS dataset (Haylock et al., 2008). Runoff data at 4 km scale exhibit much higher spatial variability compared to the coarser 24 km runoff. The higher spatial variability of the German dataset is substantially reduced when using daily runoff compared to hourly runoff, which generates the little-small mismatch between using hourly and daily inputs for the German dataset (Figure 4a). The equalization of variability from averaging is less pronounced in the less variable runoff fields of the European dataset.

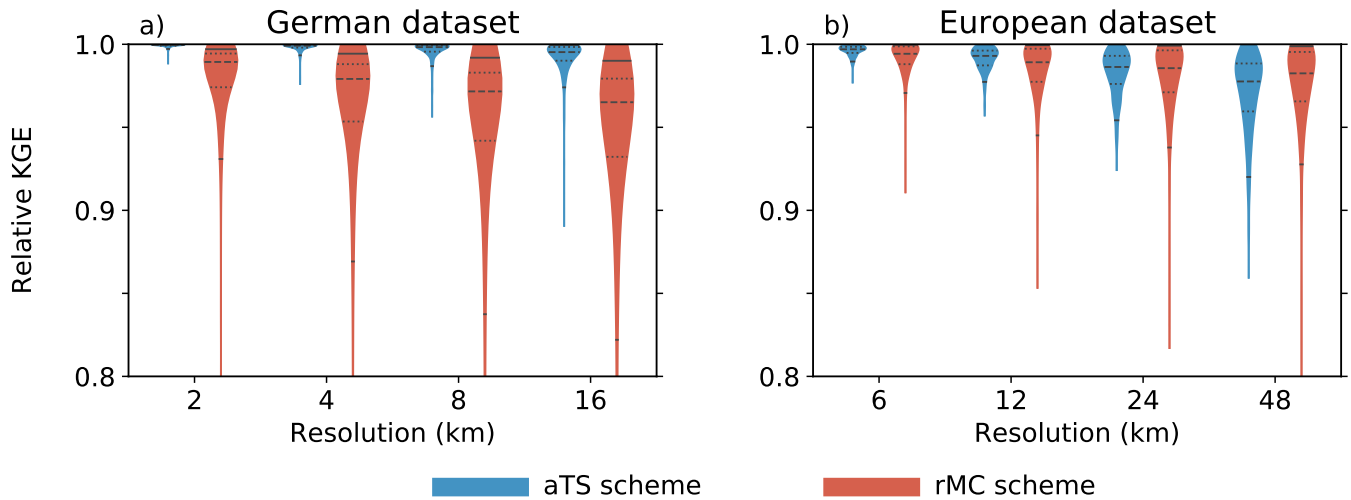


Figure 5. Probability density functions (PDF) of relative KGE values for adaptive time step scheme (aTS) (dark gray, blue violins) and the regionalized Muskingum-Cunge (rMC) routing scheme (light gray-red violins). KGE values are calculated relative to the finest possible spatial resolution, which is 1 km for the German (a) and 3 km for the European dataset (b). PDFs are limited to the minimum and maximum relative KGE values and have are scaled to the same widths. Dashed lines in the violins indicate the medians, dotted lines the 25th and 75th percentiles and solid lines the 5th and 95th percentiles.

For the spatial scaling, KGE values relative to the finest possible model resolutions (1 km for German and 3 km for European dataset) are reported (Figure 5). In other words, the reference values (observations) in the calculations of KGE are replaced by simulated streamflow obtained with optimized parameters at the highest resolution. Perfect spatial scaling is hence indicated by a relative KGE value of one. Figure 5 shows the probability density functions of the relative KGE values estimated over all 5 basins for each model resolution. The optimized parameter obtained at the highest spatial resolution for each basin is transferred for the aTS and the rMC parametrization to the model runs at the coarser spatial resolutions.

Results shown in Figure 5 clearly demonstrate a remarkable spatial scalability of aTS in comparison to the original rMC parametrization (Appendix A). The lowest median relative KGE of 0.977, which represents a change of less than 3 percent, is observed at the coarsest resolution of 48 km for the European dataset. The overall lowest relative KGE is 0.85 for aTS and 10 0.22 for the rMC scheme. The aTS scheme shows an improved scalability because it considers the between-grid heterogeneity of celerities through the parametrization based on terrain slope (equation 5) and the numerical stability criteria (equation 6). The spatial scalability of aTS is higher for the German dataset compared to the European one. This can be attributed to the spatial resolution of the slope data used in the parametrization of celerity (equation 5), which is available at 100 m resolution in the German dataset compared to 500 m in the European dataset. The representation of river slopes is thus more realistic in 15 the German dataset. Notably, a similar spatial scalability is found for both aTS and rMC parametrization if default parameters are used (not shown).

The adaptive time step scheme (aTS) shows, in summary, remarkable temporal and spatial scalability in comparison to its predecessor. The adaptive time step allows for aggregated or disaggregated input (generated runoff) from any given temporal resolution.

20 3.3 Comparison of Adaptive Time Step Routing with Regionalized Muskingum-Cunge Parametrization

The adaptive time step scheme (aTS) is the successor of the regionalized Muskingum-Cunge (rMC) routing implemented in mHM. A detailed analysis of the differences in model performances between the two routing parametrizations is presented here for the German and European dataset and selected spatial resolutions (Figure 6).

~~If aTS and rMC are calibrated individually on each basin and at each resolution, then the~~ The performances are comparable 25 across the German and European dataset (Figure 6), ~~if aTS and rMC are calibrated individually on each basin and at each resolution.~~ However, the cumulative distribution functions (cdfs) of ΔKGE values ~~is-are~~ are skewed towards positive values indicating in general higher performance for aTS than rMC (Figure 6a-6j, solid blue line in right panels). This improvement is slightly higher for the German dataset compared to the European one, which can be attributed to the higher spatial resolution of the slope data in the former. ΔKGE values are closer to zero for resolutions finer than 4 km indicating a more comparable 30 model performance for aTS and rMC at higher spatial resolutions than at coarser ones. This is due to the fact that the original rMC routing scheme was developed at this resolution (Samaniego et al., 2010; Kumar et al., 2013b). At spatial resolution coarser than 12 km, the rMC routing strongly violates the Courant-Friedrichs-Lewy criterium (i.e., $c\Delta t/\Delta x \leq 1$) which results in poorer performance. Even re-optimizing the routing parameters ~~could-not-cannot~~ compensate for the scaling error because

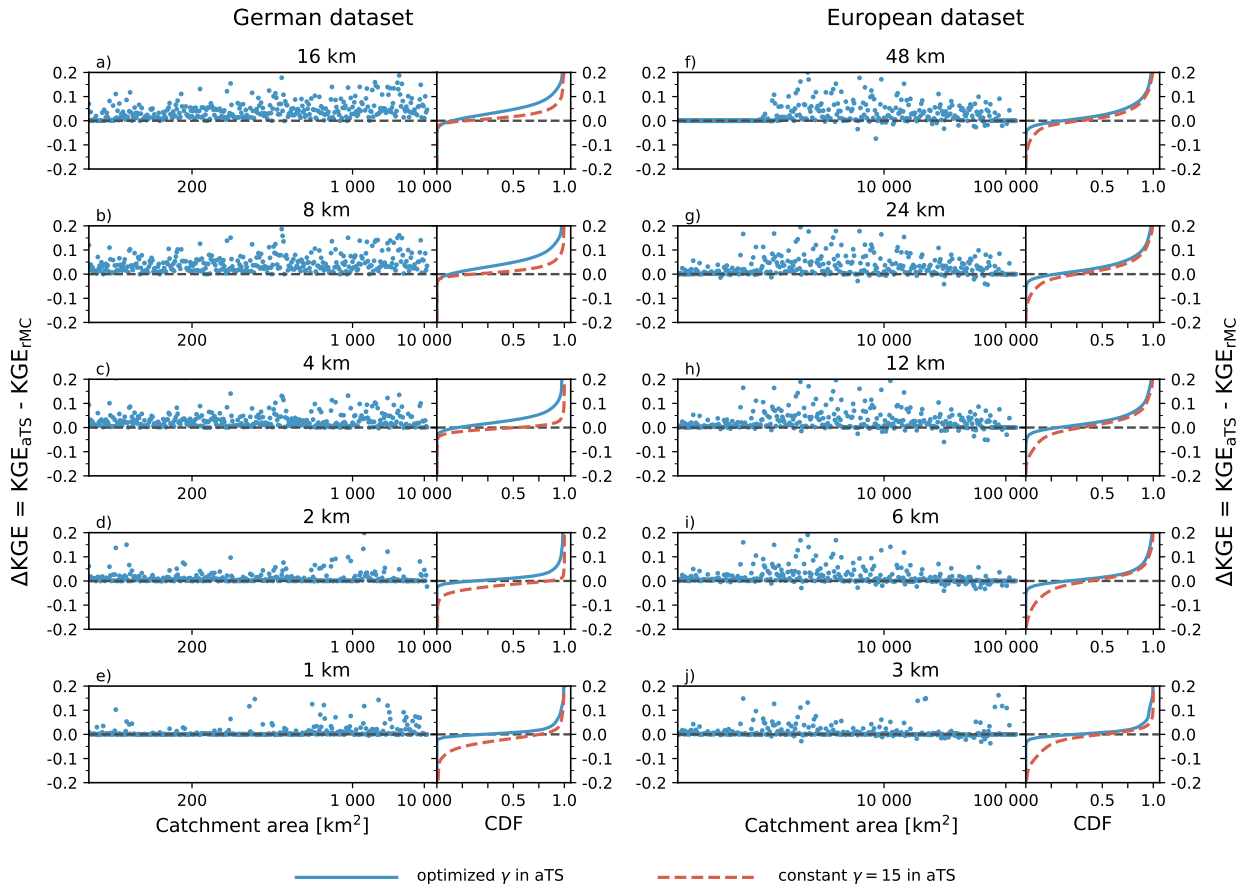


Figure 6. Differences in KGE between the multiscale Routing Model mRM using a optimized parameter γ , constant parameter value $\gamma=15$ and the original Muskingum-Cunge routing scheme (rMC) implemented in the mesoscale Hydrologic Model mHM for the German (left column) and European dataset (right column). ΔKGE values between aTS and rMC using optimized parameter values on each basin and at each resolution are shown for the respective basins on the right-left of each panel, where basins are sorted according to catchment area (note the logarithmic scale). Cumulative distribution functions of ΔKGE between aTS and rMC using optimized parameter values (solid blue line) and aTS with constant parameter and rMC with optimized ones (dashed red line) are depicted on the left-sides-right of the panels each panel. The zeroth-line at $KGE = 0$ (dashed black line) is added for reference.

water is moved too fast through the river network. At these coarse resolutions, the aTS scheme is still outperforming the rMC scheme when run with a constant $\gamma = 15$ parameter for all catchments (Figure 6a-6j, dashed red line in right panels).

In summary, the adaptive time step scheme (aTS) demonstrates at least the same performances as its calibrated predecessor, the regionalized Muskingum-Cunge routing scheme (rMC). The scalability of mHM across spatial resolutions has been demonstrated before, but employing a fixed spatial routing resolution for the rMC scheme (see Kumar et al., 2013a). For

this purpose, the gridded runoff fields are spatially up- or down-scaled to the ~~desired-specified~~ spatial resolution (e.g., 8 km runoff field disaggregated to 4 km). The aTS parametrization allows ~~the user~~ to simultaneously scale both the hydrologic and routing model. Notably, aTS requires no specific up/downscaling of runoff fields and parameters can be transferred across spatial and temporal resolutions. Both of these properties ~~offers-offer~~ distinct advantages in reducing the computational costs because mRM can be directly applied at the resolution of the gridded runoff input. Using a constant $\gamma = 15$ parameter for all catchments, avoiding ~~optimisation, further-reduce-optimization, further-reduces~~ the computational costs but might result in slightly decreased model performances in comparison to model runs with optimized γ ~~s-values~~ ($\Delta KGE \approx 0.1$ ~~(at a 95% confidence)~~interval). This is, however, still ~~little-small~~ compared to the impact that ~~has the hydrologic the hydrological~~ model used as input to the routing scheme ~~has~~. Using fixed γ parameters also ~~allows-further-enables~~ the seamless application of aTS at ungauged basins (Rakovec et al., 2016).

3.4 Streamflow Simulations over the Danube Catchment by applying mRM to the Regional Climate Model REMO

Regional Climate Models (RCMs) are used to dynamically downscale Global Climate Models over a specific region to obtain higher resolution information about the local climate. The evaluation of RCMs often focuses on surface fluxes and states, such as 2 m air temperature, precipitation, and evapotranspiration amongst others. River runoff, which provides an integrated signal of the water cycle over a region, is not often used as a further model diagnostic. This might be ~~due~~, besides other reasons, ~~due~~ to the fact that RCMs are designed to be run at various spatial resolutions, ranging from few kilometers (e.g., Jacob et al., 2014) to tenth of kilometers (e.g., Van der Linden and Mitchell, 2009). RCM output has hence to be aggregated or disaggregated to current routing schemes with fixed routing resolutions. This is not necessary with the multiscale Routing Model mRM employing the adaptive time step parameterization (aTS) that runs seamlessly at various spatial and temporal scales (section 3.2). This eases the comparison of RCM-derived streamflow with observations as the routing model has to be setup only once and can then be applied at different resolutions without adjusting the model parameter γ or the model setup. ~~Note that mRM is not limited to regular grids if high resolution flow directions are given already on a rotated grid, for example from a rotated digital elevation model.~~

This section shows one exemplary application of mRM to output of the Regional Climate Model REMO (Jacob et al., 2001) over the Danube catchment. Generated runoff by REMO has been obtained from the ~~ENSEMBLES-project (Van der Linden and Mitchell, 2009)~~ EURO-CORDEX project (Jacob et al., 2014) at 12 km and 50 km resolutions. Both resolutions were used to run mRM employing the aTS parameterization ($\gamma = 15$) over the Danube catchment (Figure 7a for ~~25~~12 km and 7b for 50 km). REMO was nested into ~~ERA-40~~ERA-Interim reanalysis in the ~~ENSEMBLES-EURO-CORDEX~~ project, which therefore ~~allows-permits~~ the comparison against observed streamflow. The Danube basin is part of the European dataset used for the evaluation in previous sections. The same setup was used for routing gridded runoff fields of the REMO model and only the number indicating the routing resolution had to be changed in the mRM configuration file.

There are striking differences between the observed and simulated streamflow (Figure 7). This ~~comes-from-is due to~~ the fact that REMO uses a simple runoff generation consisting of direct surface runoff and soil drainage. There is no groundwater description in REMO so that the only water storage is in the river itself and baseflow is ~~therefore~~ much too low. This ~~becomes~~

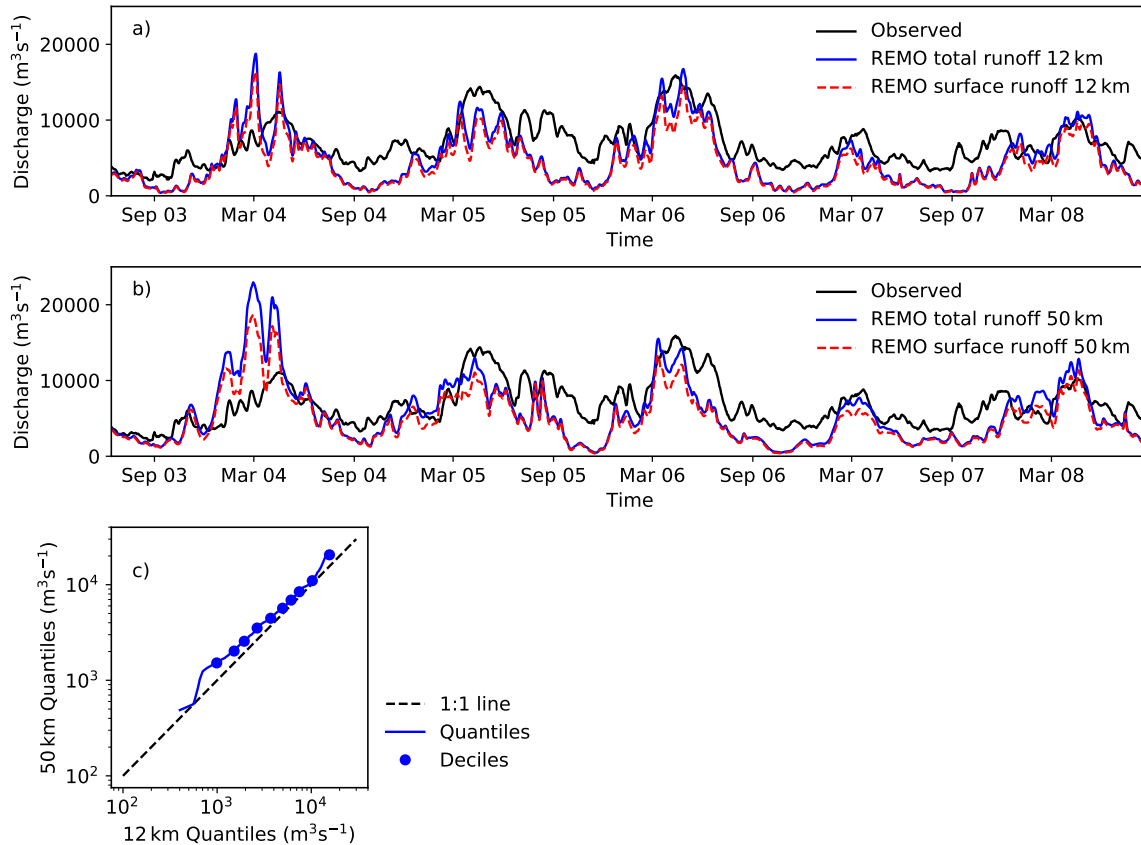


Figure 7. Hydrographs for the Danube river basin at the gauging station Cetel-Izmail obtained by routing drainage-runoff output from the regional climate model REMO with mRM, employing the adaptive time step parameterization (aTS) at 25 spatial resolutions of 12 km (a) and 50 km (b) spatial resolutions. The solid black line show the observed streamflow. The solid blue line is mRM output using as input the sum of the REMO surface and subsurface runoff components. The dashed red line is mRM output using only REMO's surface runoff component. Panel c) Q-Q plot of the two-routed REMO outputs (sum of surface and sub-surface component) at 12 km and 50 km resolutions.

evident as most runoff generated by REMO is surface runoff. REMO at 50 km resolution shows substantial contribution from subsurface runoff only during spring 2004 (Figure 7b). This highlights a common misunderstanding when using river routing with land surface models: most land surface models include only a simple runoff generation that does not account for the temporal variability of the runoff signal such as-, which is separated into fast flow, interflow and baseflow -in hydrologic models (e.g., mHM). Routing directly drainage fluxes directly leads to seasonal high flows that are much earlier than observed. Using very low celerities in the routing models might improve this model-data mismatch (see Oki et al., 1999, for celerities in several routing schemes). Other runoff schemes represent different runoff components within the model code (e.g., Lohmann

et al., 1996; Hagemann and Dümenil, 1997; Pappenberger et al., 2009). The multiscale Routing Model mRM does not contain runoff generation because most hydrologic models already include detailed runoff generation and also land surface models start to include groundwater components nowadays (e.g., Niu et al., 2011; Clark et al., 2015). Details of these components depend strongly on model focus which should not be imposed by the river routing model (cf. section 4).

5 Three main conclusions can be drawn from the comparison of modeled and observed discharge: first, REMO is able to capture the overall seasonal variations of runoff. There is a pronounced seasonality within the first ~~four~~ ~~three~~ years in both, observation and REMO simulated streamflow, which is much reduced in the last two years (Figure 7a & b). Seasonality in the Danube catchment is dominated by spring melt, which is very ~~little~~ ~~low~~ in the last two years. REMO is therefore able to simulate inter-annual variations in precipitation and surface temperature over the Danube catchment.

10 Second, REMO produces too little runoff on average at both resolutions. Runoff is underestimated by about ~~50% on both~~ ~~25~~ ~~30%~~ and 17% on 12 km and 50 km ~~resolution, whereas biases in resolutions, respectively.~~ Interestingly, REMO overestimates catchment average precipitation ~~are less than 10%~~ compared to E-OBS (Haylock et al., 2008) by 2% and 15% on 12 km and 50 km, respectively. Hence, the partitioning of precipitation into runoff and evapotranspiration is not correct in REMO, under the reasonable assumption that groundwater tables around the Danube river exhibit no significant trend over the simulation
15 period. This implies that evapotranspiration is overestimated ~~in REMO but~~ very similarly on ~~25~~ 12 km and on 50 km resolution by REMO.

Third, REMO exhibits statistically ~~very similar~~ ~~different~~ runoff on both model resolutions ~~, 25~~ (i.e., 12 km and 50 km). The quantile-quantile plot (Figure 7c) shows ~~only very little for the different deciles.~~ that the 50 km simulation produces more runoff than the 12 km simulation, most likely because REMO simulates also higher precipitation on 12 km resolution. It is
20 worth noting that this mismatch is not present in the ENSEMBLES project (see Appendix D).

This section underlines the fact that hydrologic and land surface models have to include the processes of runoff generation and groundwater for a fair comparison of modeled and observed ~~discharge.~~ ~~It also highlights the added value of investigating simulated streamflow from Regional Climate Models even with a simple runoff generation by pinpointing overestimated evapotranspiration within REMO.~~ ~~In particular, REMO's very good reproducibility on different spatial scales is shown.~~ ~~Once runoff generation
25 has been improved,~~ streamflow. Process parametrizations with an instantaneous surface runoff component are common in land-surface models (Vereecken et al., 2019), but they are too inflexible to reproduce observed discharge. After these process parametrizations account for more runoff components (e.g., fast and slow interflow), the multiscale Routing Model mRM would allow to further ~~analyze~~ ~~analyse~~ the responses of land surface models to climatic extremes (Reichstein et al., 2013) using indices and signatures of the discharge time series (Thober and Samaniego, 2014; Shafii and Tolson, 2015).

30 4 Comparison with Existing Routing Schemes

River routing is performed at various resolutions ~~,~~ depending on the application. Global streamflow simulations, using output of land-surface models (LSMs) or hydrological models (HMs) for example, are typically carried out at 0.5° or 1.0° resolutions (a.o., Oki et al., 1999; Hagemann et al., 2009; Pappenberger et al., 2009; Zhang et al., 2016). However, climate models are run

on ever increasing spatial scales (Jacob et al., 2014), or using even internally nested grids or zooming functionality (Zängl et al., 2014). Also, spatial resolutions of few kilometers are used within the hydrologic modeling community to obtain national and continental estimates of hydrologic fluxes and states (David et al., 2011; Marx et al., 2018; Thober et al., 2018)(David et al., 2011; Marx et al., 2018). Despite the fact that diverse spatial resolutions are used to represent the hydrologic cycle, spatial resolutions of routing are mostly fixed and cannot be changed easily. In many models, the user needs to provide the input data (e.g., flow direction, DEM, channel information) for every resolution the model is applied on (a. o., Lohmann et al., 1998; Beighley et al., 2011; Neal et al., 2012). The multiscale Routing Model mRM, on the other hand, is able to scale the river network to the desired routing resolution internally. This allows to make full use of the information provided by the input runoff data, without uncertainties coming from the rescaling process (e.g., from a 12 km LSM output to a 0.5° river network). It also avoids ~~further computational demand by scaling the generated~~ ~~scaling the input~~ runoff to a hyper-resolution river network, which then requires high-performance computing resources such as in the case of the RAPID framework (David et al., 2011). This might especially be valuable if parameter estimations using discharge data ~~is-need~~ to be carried out, which requires ~~multiple-a large amount of~~ model evaluations.

Current solvers describing water movement within a river network can ~~principally-in principle~~ be applied at different resolutions. For example, the solution of the diffusion equation by Greens functions proposed by Lohmann et al. (1996) is valid independently of the resolution of the river network. The CaMa-Flood model can similarly be applied to different resolutions as long as the Courant-Friedrichs-Lewy condition is fulfilled (Yamazaki et al., 2013). aTS employs the same condition to identify an adaptive time step that guarantees the numerical stability and achieves a scalability across spatial resolution. Yamazaki et al. (2009) also developed a pre-processor for the CaMa-Flood model that explicitly allows to generate a river network at different spatial resolutions. mRM follows the same idea but it internally includes the upscaling of the river network to the required resolution in the model code. The user has to provide the routing network only once even if the application will focus on different spatial resolutions. The derived river network can be stored in a restart file to further speed-up the computation (see Appendix B for run times). However, aTS performance is dependent on the resolution of the underlying slope data (see Section 3.1 and 3.2) and it is advisable to use the highest resolution data available. This is due to the fact that channel slope instead of terrain slope should be used in equation 5-(5) and a high-resolution DEM provides a close approximation of channel slope.

Another reason that hampers the scalability of existing routing models is that they include not only the routing of water in the river network but also a runoff generation mechanism, which represents a variety of other components of the hydrologic cycle (Pappenberger et al., 2009). The complexity of existing runoff generation descriptions reflects the diversity of use cases of hydrologic and land surface models. Descriptions range from simple linear models (Niu et al., 2011; Beven, 2012) to more complex representations considering surface groundwater interactions (Maxwell and Kollet, 2008; Miguez Macho and Fan, 2012). Existing routing schemes often opt for more simple parsimonious representations. For example, routing models use linear reservoirs for overland flow, baseflow and riverflow to delay runoff generated by the land surface (e.g., Hagemann and Dümenil, 1997; Pappenberger et al., 2009; Getirana et al., 2012). mRM does not include any runoff generation because it is beyond the scope of a river routing model to reflect the complexity of existing runoff generation processes. Notably, there

is currently ongoing research in understanding how a particular process parametrization impacts hydrologic simulations (Niu et al., 2011; Clark et al., 2015). Runoff generation also hampers the scalability of routing models because of their highly non-linear behavior. The Multiscale Parameter Regionalization (MPR, Samaniego et al., 2010) is one of few approaches that has proven to provide consistent generated runoff at resolutions ranging from 2 km to 16 km for mesoscale catchments (Kumar et al., 2013b) and from 0.125° to 1° for continental scale basins (Kumar et al., 2013a).

Among the plethora of routing models presented over the past decades, only few have rigorously evaluated their spatial scalability. The “Model for Scale Adaptive River Transport” (MOSART) has been developed explicitly to achieve seamless application of river routing across scales (Li et al., 2013), similar to mRM. MOSART has been successfully coupled, for example, to the Community Land Model (CLM) to compare with global discharge data (Li et al., 2015). MOSART differs from mRM in that it solves by solving the kinematic wave equation with Manning’s equation for channel velocity (Manning, 1891) not only for the main channel but also for hillslope routing and subgrid tributaries. It thus explicitly accounts for sub-grid heterogeneity by considering all lateral travel times across hillslopes and tributaries. mRM, on the other hand, solves a kinematic wave equation with spatially varying velocities for the main channel only (equation 1 and 5). The assumption within mRM is that travel times in the main channel dominate travel times at hill slopes and tributaries and the latter are negligible. This, in turn, leads to a simpler approach with one model parameter. However, further research is needed to explicitly investigate the validity of this model assumption. It is for example possible to return to the original formulation of Miller et al. (1994), using a reference slope s_0 , that should depend on the underlying digital elevation model (DEM). But two DEM resolutions, as in this study, are not enough to find a suitable formulation for the dependence of s_0 on DEM characteristics such as resolution or maximal slope. s_0 was hence lumped with the minimum celerity c_0 to give only one identifiable parameter γ .

It is worth reminding that mRM represents a simple approach towards river routing. The results in this study demonstrate that mRM employing the adaptive time step parameterization in combination with upscaled high resolution celerities (aTS) achieves almost identical daily streamflow simulations at various model resolutions in diverse German and European catchments. Recent literature has shown that a realistic representation of streamflow in river basins with extensive floodplains such as the AmazonasAmazon, Niger, and Congo river require the representation of floodplain inundation processes (Getirana et al., 2012; Paiva et al., 2013; Fleischmann et al., 2016; Pontes et al., 2017). Floodplain processes are currently not considered in mRM and further research is required to include these. Paiva et al. (2013) showed that floodplain processes dominate the difference between a hydrodynamic and kinematic wave models. The approach used therein should be exploited within mRM to be applicable at different resolutions.

5 Conclusions

The adaptive time step scheme in combination with upscaled high resolution celerities (aTS) implemented in the multiscale Routing Model mRM estimates streamflow at various resolutions ranging from the hyper-resolution of 1 km to the large scale of 0.5° . Differences in Kling-Gupta efficiencies of simulated daily streamflow between various model resolutions and temporal forcings (i.e., hourly or daily runoff) are negligible with a median of 0.03 over Germany and Europe (Section 3.2). The

aTS scheme shows an improved scalability over its predecessor because it considers the linkage between spatial resolution and integration timestep by virtue of the Courant criteria (equation 6) ~~and it~~. It considers the between-grid heterogeneity of celerities through the parametrization based on high-resolution terrain slope (equation 5). mRM represents the river network internally at the resolution of the model input, which allows seamless application to output of any hydrologic model (HM) and land surface model (LSM). It can also easily be coupled ~~internal~~ internally in the code of HMs or LSMs, providing error measures such as ~~Nash-Shutcliffe~~ Nash-Sutcliffe and Kling-Gupta efficiencies for model evaluation or calibration.

mRM uses a simple kinematic wave equation to describe water flow within a river network. This representation is regarded suitable as long as backwater effects and floodplain inundation processes are comparatively small. mRM does not represent runoff generation mechanisms, which are included in other routing models. Runoff generation is included in hydrologic models and nowadays often in land surface models ~~and~~. The details of the implementation depend strongly on the application of interest. Users of river routing schemes should not be limited by the options implemented in the river routing model itself.

mRM can in principle ~~also~~ be used on rotated model grids commonly used for climate models if high resolution flow directions are provided at the same grid. However, mRM represents the river network as a rectangular grid, allowing to apply a constant time step over the entire model domain. Future developments will focus on implementing reservoirs and natural lakes, floodplain processes, and a location dependent time stepping scheme, ~~which will allow~~. The latter will enable the use of mRM on irregular grids or in models with local refinement. Also, parallelisation is currently implemented in mRM to take full advantage of high-performance computing clusters. The model source code along with a test case to validate successful installation is freely available within the codebase of the mesoscale Hydrologic Model mHM at www.ufz.de/mhm.

Code availability. The software code is available through a public git repository hosted at the Helmholtz-Centre for Environmental Research - UFZ with the url <https://git.ufz.de/mhm/mrm/>. The software version used for this paper can also be identified by the git tag “mRMv1.0”. The manual of mHM contains a chapter on the installation and user guide of mRM (Chapter 9) and the full mHM manual is also contained in the mRM git repository. Input and output data of mRM is also included in the git repository to test successful installation (see manual on how to run the test basin).

Appendix A: Regionalized Muskingum-Cunge (rMC) routing

The regionalized Muskingum-Cunge (rMC) parametrization implemented in the mesoscale Hydrologic Model mHM calculates the Muskingum coefficients C_1 , C_2 , and C_3 in equation 3-(3) as a function of high-resolution river network properties. The coefficients C_1 , C_2 , and C_3 are parametrized as follows

$$C_1 = \nu_2; C_2 = \nu_1 - \nu_2; C_3 = 1 - \nu_1, \tag{A1}$$

where the parameters ν_1 and ν_2 are given as

$$\begin{aligned}\nu_1 &= \frac{\Delta t}{\beta(1-\epsilon) + \frac{\Delta t}{2}}; \\ \nu_2 &= \frac{\frac{\Delta t}{2} - \beta\epsilon}{\beta(1-\epsilon) + \frac{\Delta t}{2}}\end{aligned}\tag{A2}$$

following the nomenclature of appendix A2 in Samaniego et al. (2010). This formulation is identical to equation 4-(4) of the present study, using $\beta = \Delta x/c$ in equation A2-(A2) and substituting equation A2-(A2) into equation A1-(A1). The parameters β and ϵ are then conceptualized as

$$\begin{aligned}\beta &= \gamma_1 + \gamma_2 L + \gamma_3 S + \gamma_4 C; \\ \epsilon &= \gamma_5 \frac{S}{\max(S)},\end{aligned}\tag{A3}$$

where L is the length of the reach, S is the slope of the reach, and C is the fraction of impervious land cover within the floodplains (see table 4 in Kumar et al. (2013b)). Overall, there are five global parameters γ_1 to γ_5 in equation A3-(A3) that can be chosen by the user. The integration time step is fixed at one hour. To guarantee the numerical stability of the parameterization, the following upper and lower bounds are applied

$$0 < \epsilon \leq 0.5,\tag{A4}$$

$$\frac{\Delta t}{2(1-\epsilon)} < \beta \leq \frac{\Delta t}{2\epsilon},\tag{A5}$$

where Δt is set to one hour.

Appendix B: Run times

The run times of mRM do not scale linearly with the number of grid cells. The reason is that the arrays containing the network information cannot be stored continuously in memory because the river network can be mathematically represented as a tree. The run times for a small and large basin are reported here to provide an overview of the range of possible run times. The Moselle catchment with an area of 28 286 km² is selected to represent a small catchment. A spatial resolution of 24 km results in 34 grid cells to cover the Moselle catchment. The Danube river with an area of 801 463 km² is selected to represent a large catchment. The REMO simulations (Section 3.4) at 12 km resolution resulted in 5775 grid cells.

The run time has to be separated for the initialization and computation step of mRM. During the initialization step of mRM, all input data is read and the high resolution river network is upscaled to the model resolution specified by the user. mRM offers restart capabilities that allows the user to perform this step only once. The initialization of mRM takes about 1.3 s and 3300 s for the Moselle and Danube river, respectively. It heavily depends on the speed of I/O because all the data is read during this step and the cache size of the employed CPU. If mRM reads the upscaled river network from a restart file, this step takes a negligible amount of time. For example, the initialization step takes 60 s for the Danube river if a restart file is used. During the computation step of mRM, the streamflow values within the river network are calculated. The run time of this step scales linearly with the length of the simulation period. This step takes 0.1 s and 24 s per year for the Moselle and Danube

river, respectively. These run times have been estimated with the Intel 18 fortran compiler and level 3 code optimization on a Dual Intel Xeon Platinum 8169 CPU (http://www.fz-juelich.de/ias/jsc/EN/Expertise/Supercomputers/JUWELS/Configuration/Configuration_node.html).

Appendix C: Drainage area for different model resolutions

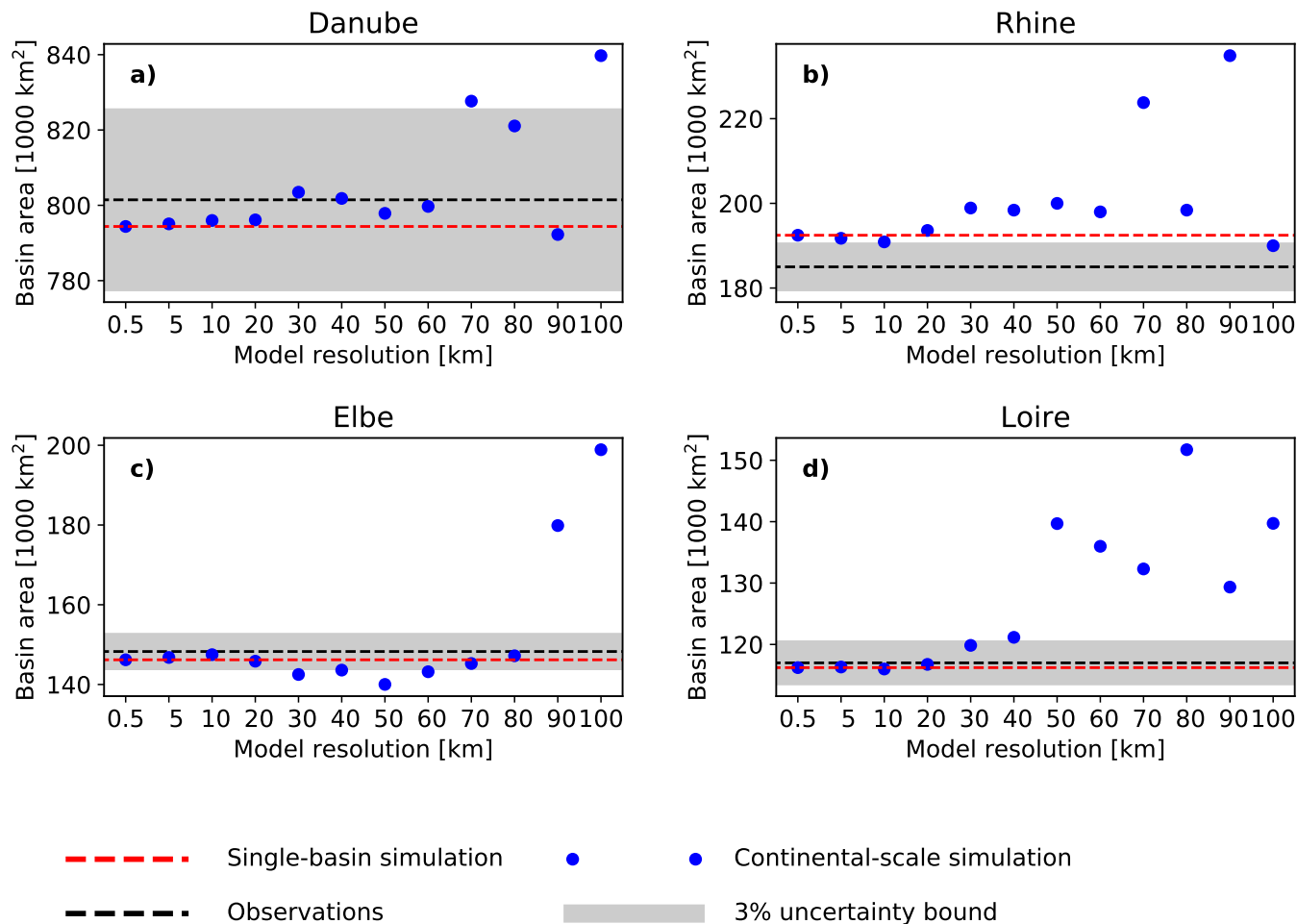


Figure C1. Basin areas for four major European river basins. Blue circles denote the calculated basin area derived by the D8 method at different resolutions for continental scale simulation. Red dashed line shows the basin area for a single-basin setup. Black dashed line show the true value with an uncertainty bound of 3% around it.

5 The D8 method (O’Calaghan and Mark, 1984) is known to be unable to reproduce basin area correctly at large scales (e.g., 1°). This effect can also be seen for mRM in four major European river basins (Figure C1). The setup for this analysis is the same as the one described in Samaniego et al. (2018, see data availability section). Two use cases of mRM are investigated

here: first, a single-basin setup where the entire model domain drains to one outlet; second, a continental-scale setup that contains multiple rivers and the model domain contains multiple outlets. In the former case, the basin area calculated in mRM is independent of the model resolution and equal to the basin area at the high-resolution input data (0.5 km in this case). This is achieved by using weighted area fractions for grid cells that are only partly covered by the study domain. The calculated basin area is very close to the true basin area and differences stem from mismatches in the delineation of the basin. In the second case, the basin area is correctly reproduced up to a model resolution of 40 km and tends to increase for lower model resolutions (blue markeres in Figure C1). This effect is larger for small basins (e.g., the Elbe river and Loire river) than for large basins (e.g., the Danube river) because it enlarges as the ratio between basin size and model resolution decreases. The increase of basin area with the size of grid cells can be expected because larger grid cells have longer edges and thus unify more head water streams. If the underlying rivers do not unite, but depart downstream, then water is not routed correctly and no meaningful analysis can be carried out. Yamazaki et al. (2009) provide an insightful illustration of this deficiency of the D8 method the 1° resolution. They also proposed an improvement of the D8 method to correctly route water at this coarse scale and provide an example for the Mekong, Salween, and Yangtze rivers (see Figure 6 in Yamazaki et al., 2009). This improvement is not implemented in mRM because firstly, basin area is correctly represented in single-site setups, which are frequently used for parameter estimation. Secondly, mRM can be run at high resolution of less than 40 km even if the input is provided at coarser scale (e.g., 100 km). mRM distributes the input equally among all high-resolution grid cells and then routes the water downstream. mRM is also computationally efficient to simulate streamflow at high resolution of 5 km over continental scales in the context of climate change studies (e.g., Thober et al., 2018; Marx et al., 2018) and seasonal forecasting (Wanders et al., 2019). Notably, the calculated flow accumulation of mRM is saved in a restart file. The user can thus easily check whether the chosen model resolution adequately represents the actual river basin size (i.e., within the acceptable error bounds).

Appendix D: REMO simulations from the ENSEMBLES project

The same simulations as in Section 3.4 have been conducted with the REMO simulations created within the ENSEMBLES project. There are two main differences between the ENSEMBLES and the EURO-CORDEX simulations. First, the higher resolution is 25 km in ENSEMBLES whereas it is 12 km in EURO-CORDEX. Second, ERA-40 is used as boundary condition in the ENSEMBLES project whereas ERA-INTERIM is used in EURO-CORDEX. Interestingly, the bias of precipitation is less than 3% for both resolutions used in the ENSEMBLES project whereas it is 15% for the 50 km run of EURO-CORDEX. However, the ENSEMBLES simulations show an underestimation of observed streamflow by up to 50% (Figure D1). This bias is reduced in the EURO-CORDEX simulations. A commonality between the EURO-CORDEX and ENSEMBLES simulations is that the absolute bias in streamflow is larger than the absolute bias in precipitation. This highlights that REMO overestimates evapotranspiration.

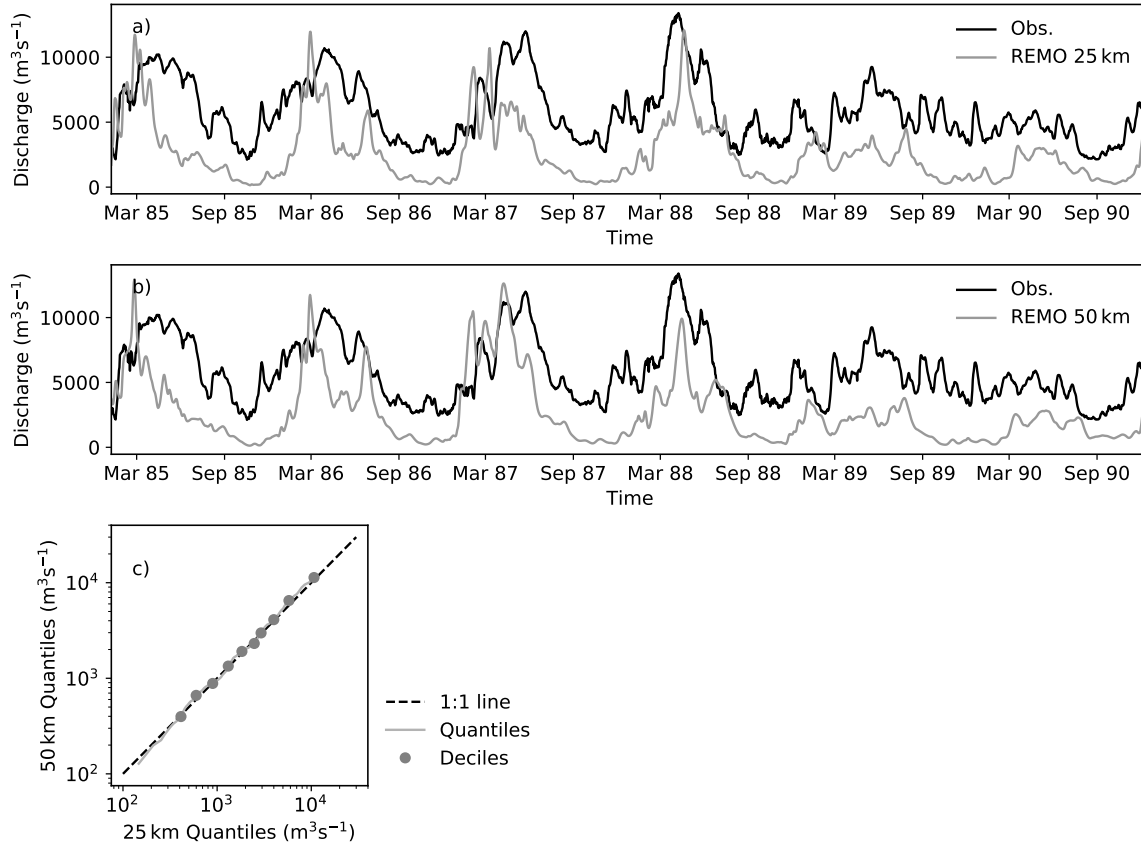


Figure D1. Same as Figure 7, but using REMO simulations from the EURO-CORDEX project.

Author contributions. ST, MC, and LS designed the study. ST, MK, and JM conducted parameter estimation and model validation. RK and LS provided insights into rMC parametrization. All authors contributed to the writing of the manuscript.

Acknowledgements. This study has been partially funded within the scope of the HOKLIM project (www.ufz.de/hoklim) by the German Ministry for Education and Research (grant number 01LS1611A). This study has been partially funded by the Copernicus Climate Change Service. ECMWF implements this Service and the Copernicus Atmosphere Monitoring Service on behalf of the European Commission. The study is a contribution to the Helmholtz Association climate initiative REKLIM (www.reklim.de). MC was supported by a grant overseen by the French National Research Agency (ANR) as part of the "Investissements d'Avenir" program (ANR-11-LABX-0002-01, Lab of Excellence ARBRE). The ENSEMBLES data used in this work was funded by the EU FP6 Integrated Project ENSEMBLES (Contract number 505539) whose support is gratefully acknowledged. We acknowledge the E-OBS dataset from the EU-FP6 project ENSEMBLES

(<http://ensembles-eu.metoffice.com>) and the data providers in the ECA&D project (<http://www.ecad.eu>). We also acknowledge our data providers: the European Environment Agency, the Harmonized World Soil Database, the Global Runoff Data Centre, German Meteorological Service (DWD), the Joint Research Center of the European Commission, the Federal Institute for Geosciences and Natural Resources (BGR), the Federal Agency for Cartography and Geodesy (BKG), and the European Water Archive. The data used within the European dataset are described in Rakovec et al. (2016) and the data used within the German dataset are described in Zink et al. (2017). Further simulation data that supports findings of this study are available from the corresponding author upon request. We thank the editor ~~Paul Dirmeyer~~ Jeffrey Neal for handling our manuscript and ~~two anonymous reviewers~~ Thomas Riddick and one anonymous reviewer for their constructive comments that helped to substantially improve our model and manuscript.

References

- Bates, P. D., Horritt, M. S., and Fewtrell, T. J.: A simple inertial formulation of the shallow water equations for efficient two-dimensional flood inundation modelling, *Journal of Hydrology*, 387, 33–45, 2010.
- Beighley, R. E., Eggert, K. G., Dunne, T., He, Y., Gummati, V., and Verdin, K. L.: Simulating hydrologic and hydraulic processes throughout the Amazon River Basin, *Hydrological Processes*, 23, 1221–1235, 2009.
- Beighley, R. E., Ray, R. L., He, Y., Lee, H., Schaller, L., Andreadis, K. M., Durand, M., Alsdorf, D. E., and Shum, C. K.: Comparing satellite derived precipitation datasets using the Hillslope River Routing (HRR) model in the Congo River Basin, *Hydrological Processes*, 25, 3216–3229, 2011.
- Beven, K.: *Rainfall-Runoff Modelling, The Primer*, Wiley-Blackwell, 2012.
- Boone, A., Habets, F., Noilhan, J., Clark, D., Dirmeyer, P., Fox, S., Gusev, Y., Haddeland, I., Koster, R., Lohmann, D., Mahanama, S., Mitchell, K., Nasonova, O., Niu, G. Y., Pitman, A., Polcher, J., Shmakina, A. B., Tanaka, K., Van den Hurk, B., Vèrant, S., Verseghy, D., Viterbo, P., and Yang, Z. L.: The Rhône-Aggregation land surface scheme intercomparison project: An overview, *Journal of Climate*, 17, 187–208, 2004.
- Chow, V. T., Maidment, D. R., and Mays, L. W.: *Applied Hydrology*, McGraw-Hill series in water resources and environmental engineering, Tata McGraw-Hill Education, 1988.
- Clark, M. P., Nijssen, B., Lundquist, J. D., Kavetski, D., Rupp, D. E., Woods, R. A., Freer, J. E., Gutmann, E. D., Wood, A. W., Brekke, L. D., Arnold, J. R., Gochis, D. J., and Rasmussen, R. M.: A unified approach for process-based hydrologic modeling: 1. Modeling concept, *Water Resources Research*, 51, 2498–2514, 2015.
- Coe, M. T.: Modeling terrestrial hydrological systems at the continental scale: Testing the accuracy of an atmospheric GCM, *Journal of Climate*, 13, 686–704, 2000.
- Collischonn, W., Fleischmann, A., Paiva, R. C. D., and Mejia, A.: Hydraulic Causes for Basin Hydrograph Skewness, *Water Resources Research*, 53, 10 603–10 618, 2017.
- Courant, R., Friedrichs, K., and Lewy, H.: Über die partiellen Differenzgleichungen der mathematischen Physik, *Mathematische Annalen*, 100, 32–74, 1928.
- Cunge, J. A.: On The Subject Of A Flood Propagation Computation Method (Muskingum Method), *Journal of Hydraulic Research*, 7, 205–230, 1969.
- David, C. H., Maidment, D. R., Niu, G.-Y., Yang, Z.-L., Habets, F., and Eijkhout, V.: River Network Routing on the NHDPlus Dataset, *Journal of Hydrometeorology*, 12, 913–934, 2011.
- de Saint-Venant, A. J. C. B.: Théorie du mouvement non permanent des eaux, avec application aux crues des rivières et à l'introduction de marées dans leurs lits, *Comptes Rendus des Séances de l'Académie des Sciences*, pp. 1–11, 1871.
- Döll, P. and Lehner, B.: Validation of a new global 30-min drainage direction map, *Journal of Hydrology*, 258, 214–231, 2002.
- Duan, Q., Sorooshian, S., and Gupta, V.: Effective and efficient global optimization for conceptual rainfall-runoff models, *Water Resources Research*, 28, 1015–1031, 1992.
- Fleischmann, A. S., Paiva, R. C. D., Collischonn, W., Sorribas, M. V., and Pontes, P. R. M.: On river-floodplain interaction and hydrograph skewness, *Water Resources Research*, 52, 7615–7630, 2016.
- Getirana, A. C. V., Boone, A., Yamazaki, D., Decharme, B., Papa, F., and Mognard, N.: The Hydrological Modeling and Analysis Platform (HyMAP): Evaluation in the Amazon Basin, *dx.doi.org*, 13, 1641–1665, 2012.

- Gupta, H. V., Kling, H., Yilmaz, K. K., and Martinez, G. F.: Decomposition of the mean squared error and NSE performance criteria: Implications for improving hydrological modelling, *Journal of Hydrology*, 377, 80–91, 2009.
- Haddeland, I., Matheussen, B. V., and Lettenmaier, D. P.: Influence of spatial resolution on simulated streamflow in a macroscale hydrologic model, *Water Resources Research*, 38, 29–1–29–10, 2002.
- 5 Hagemann, S. and Dümenil, L.: A parametrization of the lateral waterflow for the global scale, *Climate Dynamics*, 14, 17–31, 1997.
- Hagemann, S., Göttel, H., Jacob, D., Lorenz, P., and Roeckner, E.: Improved regional scale processes reflected in projected hydrological changes over large European catchments, *Climate Dynamics*, 32, 767–781, 2009.
- Haylock, M. R., Hofstra, N., Klein Tank, A. M. G., Klok, E. J., Jones, P. D., and New, M.: A European daily high-resolution gridded data set of surface temperature and precipitation for 1950–2006, *Journal of Geophysical Research: Atmospheres (1984–2012)*, 113, 2008.
- 10 Jacob, D., van den Hurk, B. J. J. M., Andrae, U., Elgered, G., Fortelius, C., Graham, L. P., Jackson, S. D., Karstens, U., Köpken, C., Lindau, R., Podzun, R., Rockel, B., Rubel, F., Sass, B. H., Smith, R. N. B., and Yang, X.: A comprehensive model inter-comparison study investigating the water budget during the BALTEX-PIDCAP period, *Meteorology and Atmospheric Physics*, 77, 19–43, 2001.
- Jacob, D., Petersen, J., Eggert, B., Alias, A., Christensen, O. B., Bouwer, L. M., Braun, A., Colette, A., Déqué, M., Georgievski, G., Georgopoulou, E., Gobiet, A., Menut, L., Nikulin, G., Haensler, A., Hempelmann, N., Jones, C., Keuler, K., Kovats, S., Kröner, N., Kotlarski, S., Kriegsmann, A., Martin, E., van Meijgaard, E., Moseley, C., Pfeifer, S., Preuschmann, S., Radermacher, C., Radtke, K., Rechid, D., Rounsevell, M., Samuelsson, P., Somot, S., Soussana, J.-F., Teichmann, C., Valentini, R., Vautard, R., Weber, B., and Yiou, P.: EURO-CORDEX: new high-resolution climate change projections for European impact research, *Regional Environmental Change*, 14, 563–578, 2014.
- 15 Kollat, J. B., Reed, P. M., and Wagener, T.: When are multiobjective calibration trade-offs in hydrologic models meaningful?, *Water Resources Research*, 48, 2012.
- 20 Kumar, R., Livneh, B., and Samaniego, L.: Toward computationally efficient large-scale hydrologic predictions with a multiscale regionalization scheme, *Water Resources Research*, 49, 5700–5714, 2013a.
- Kumar, R., Samaniego, L., and Attinger, S.: Implications of distributed hydrologic model parameterization on water fluxes at multiple scales and locations, *Water Resources Research*, 49, 360–379, 2013b.
- 25 Lehner, B., Verdin, K., and Jarvis, A.: HydroSHEDS technical documentation, version 1.0, World Wildlife Fund US, 2006.
- Li, H., Wigmosta, M. S., Wu, H., Huang, M., Ke, Y., Coleman, A. M., and Leung, L. R.: A Physically Based Runoff Routing Model for Land Surface and Earth System Models, *Journal of Hydrometeorology*, 14, 808–828, 2013.
- Li, H.-Y., Leung, L. R., Getirana, A., Huang, M., Wu, H., Xu, Y., Guo, J., and Voisin, N.: Evaluating Global Streamflow Simulations by a Physically Based Routing Model Coupled with the Community Land Model, *Journal of Hydrometeorology*, 16, 948–971, 2015.
- 30 Lighthill, M. J. and Whitham, G. B.: On Kinematic Waves. I. Flood Movement in Long Rivers, *Proceedings of the Royal Society of London A: Mathematical, Physical and Engineering Sciences*, 229, 281–316, 1955.
- Livneh, B., Kumar, R., and Samaniego, L.: Influence of soil textural properties on hydrologic fluxes in the Mississippi river basin, *Hydrological Processes*, 29, 4638–4655, 2015.
- Lohmann, D., Nolte Holube, R., and Raschke, E.: A large-scale horizontal routing model to be coupled to land surface parametrization schemes, *Tellus A*, 48, 708–721, 1996.
- 35 Lohmann, D., Raschke, E., Nijssen, B., and Lettenmaier, D. P.: Regional scale hydrology: I. Formulation of the VIC-2L model coupled to a routing model, *Hydrological Sciences Journal*, 43, 131–141, 1998.

- Manning, R.: On the flow of water in open channels and pipes , Transactions of the Institution of Civil Engineers of Ireland, 20, 161–207, 1891.
- Marx, A., Kumar, R., Thober, S., Rakovec, O., Wanders, N., Zink, M., Wood, E. F., Pan, M., Sheffield, J., and Samaniego, L.: Climate change alters low flows in Europe under global warming of 1.5, 2, and 3°C, *Hydrology and Earth System Sciences*, 22, 1017–1032, 2018.
- 5 Maxwell, R. M. and Kollet, S. J.: Interdependence of groundwater dynamics and land-energy feedbacks under climate change, *Nature Geoscience*, 1, 665–669, 2008.
- Miguez Macho, G. and Fan, Y.: The role of groundwater in the Amazon water cycle: 1. Influence on seasonal streamflow, flooding and wetlands, *Journal of Geophysical Research: Atmospheres (1984–2012)*, 117, 2012.
- Miller, J. R., Russell, G. L., and Caliri, G.: Continental-Scale River Flow in Climate Models, *Journal of Climate*, 7, 914–928, 1994.
- 10 Nash, J. E. and Sutcliffe, J. V.: River flow forecasting through conceptual models part I — A discussion of principles, *Journal of Hydrology*, 10, 282–290, 1970.
- Neal, J., Schumann, G., and Bates, P.: A subgrid channel model for simulating river hydraulics and floodplain inundation over large and data sparse areas, *Water Resources Research*, 48, 2012.
- Niu, G.-Y., Yang, Z.-L., Mitchell, K. E., Chen, F., Ek, M. B., Barlage, M., Kumar, A., Manning, K., Niyogi, D., Rosero, E., Tewari, M., and Xia, Y.: The community Noah land surface model with multiparameterization options (Noah-MP): 1. Model description and evaluation with local-scale measurements, *Journal of Geophysical Research*, 116, 2011.
- 15 O’Calaghan, J. F. and Mark, D. M.: The Extraction of Drainage Networks From Digital Elevation Data, *Computer Vision Graphics and Image Processing*, 28, 323–344, 1984.
- Oki, T., Nishimura, T., and Dirmeyer, P.: Assessment of annual runoff from land surface models using Total Runoff Integrating Pathways (TRIP), *Journal of the Meteorological Society of Japan*, 77, 235–255, 1999.
- 20 Paiva, R. C. D., Collischonn, W., and Tucci, C. E. M.: Large scale hydrologic and hydrodynamic modeling using limited data and a GIS based approach, *Journal of Hydrology*, 406, 170–181, 2011.
- Paiva, R. C. D., Buarque, D. C., Collischonn, W., Bonnet, M. P., Frappart, F., Calmant, S., and Bulhões Mendes, C. A.: Large-scale hydrologic and hydrodynamic modeling of the Amazon River basin, *Water Resources Research*, 49, 1226–1243, 2013.
- 25 Pappenberger, F., Cloke, H. L., Balsamo, G., Ngo-Duc, T., and Oki, T.: Global runoff routing with the hydrological component of the ECMWF NWP system, *International Journal of Climatology*, 30, 2155–2174, 2009.
- Pontes, P. R. M., Fan, F. M., Fleischmann, A. S., Paiva, R. C. D., Buarque, D. C., Siqueira, V. A., Jardim, P. F., Sorribas, M. V., and Collischonn, W.: MGB-IPH model for hydrological and hydraulic simulation of large floodplain river systems coupled with open source GIS, *Environmental Modelling & Software*, 94, 1–20, 2017.
- 30 Rakovec, O., Kumar, R., Mai, J., Cuntz, M., Thober, S., Zink, M., Attinger, S., Schäfer, D., Schrön, M., and Samaniego, L.: Multiscale and multivariate evaluation of water fluxes and states over european river Basins, *Journal of Hydrometeorology*, 17, 287–307, 2016.
- Reichstein, M., Bahn, M., Ciais, P., Frank, D., Mahecha, M. D., Seneviratne, S. I., Zscheischler, J., Beer, C., Buchmann, N., Frank, D. C., Papale, D., Rammig, A., Smith, P., Thonicke, K., van der Velde, M., Vicca, S., Walz, A., and Wattenbach, M.: Climate extremes and the carbon cycle, *Nature*, 500, 287–295, 2013.
- 35 Sachs, L.: *Angewandte Statistik: Anwendung statistischer Methoden*, Springer-Verlag Berlin Heidelberg GmbH, 9 edn., 1999.
- Samaniego, L., Kumar, R., and Attinger, S.: Multiscale parameter regionalization of a grid-based hydrologic model at the mesoscale, *Water Resources Research*, 46, 2010.

- Samaniego, L., Kumar, R., and Zink, M.: Implications of Parameter Uncertainty on Soil Moisture Drought Analysis in Germany, *Journal of Hydrometeorology*, 14, 47–68, 2013.
- Samaniego, L., Kumar, R., Breuer, L., Chamorro, A., Flörke, M., Pechlivanidis, I. G., Schäfer, D., Shah, H., Vetter, T., Wortmann, M., and Zeng, X.: Propagation of forcing and model uncertainties on to hydrological drought characteristics in a multi-model century-long experiment in large river basins, *Climatic Change*, 141, 435–449, 2017a.
- 5 Samaniego, L., Kumar, R., Thober, S., Rakovec, O., Zink, M., Wanders, N., Eisner, S., Müller Schmied, H., Sutanudjaja, E. H., Warrach-Sagi, K., and Attinger, S.: Toward seamless hydrologic predictions across spatial scales, *Hydrology and Earth System Sciences*, 21, 4323–4346, 2017b.
- Samaniego, L., Thober, S., Kumar, R., Wanders, N., Rakovec, O., Pan, M., Zink, M., Sheffield, J., Wood, E. F., and Marx, A.: Anthropogenic warming exacerbates European soil moisture droughts, *Nature Climate Change*, pp. 1–9, 2018.
- 10 Sein, D. V., Mikolajewicz, U., Gröger, M., Fast, I., Cabos, W., Pinto, J. G., Hagemann, S., Semmler, T., Izquierdo, A., and Jacob, D.: Regionally coupled atmosphere-ocean-sea ice-marine biogeochemistry model ROM: 1. Description and validation, *Journal of Advances in Modeling Earth Systems*, 7, 268–304, 2015.
- Shafii, M. and Tolson, B. A.: Optimizing hydrological consistency by incorporating hydrological signatures into model calibration objectives, *Water Resources Research*, 51, 1–19, 2015.
- 15 Taylor, K. E., Stouffer, R. J., and Meehl, G. A.: An Overview of CMIP5 and the Experiment Design, *Bulletin of the American Meteorological Society*, 93, 485–498, 2012.
- Thober, S. and Samaniego, L.: Robust ensemble selection by multivariate evaluation of extreme precipitation and temperature characteristics, *Journal of Geophysical Research: Atmospheres*, 119, 594–613, 2014.
- 20 Thober, S., Kumar, R., Sheffield, J., Mai, J., Schäfer, D., and Samaniego, L.: Seasonal Soil Moisture Drought Prediction over Europe Using the North American Multi-Model Ensemble (NMME), *Journal of Hydrometeorology*, 16, 2329–2344, 2015.
- Thober, S., Kumar, R., Wanders, N., Marx, A., Pan, M., Rakovec, O., Samaniego, L., Sheffield, J., Wood, E. F., and Zink, M.: Multi-model ensemble projections of European river floods and high flows at 1.5, 2, and 3 degrees global warming, *Environmental Research Letters*, 13, 2018.
- 25 Todini, E.: A mass conservative and water storage consistent variable parameter Muskingum-Cunge approach, *Hydrology and Earth System Sciences*, 11, 1783–1783, 2007.
- Van der Linden, P. and Mitchell, J.: ENSEMBLES: Climate Change and its Impacts: Summary of research and results from the ENSEMBLES project, Tech. rep., Met Office Hadley Centre, FitzRoy Road, Exeter EX1 3PB, UK, 2009.
- Vereecken, H., Weihermüller, L., Assouline, S., Simunek, J., Verhoef, A., Herbst, M., Archer, N. A. L., Mohanty, B., Montzka, C., Vanderborght, J., Balsamo, G., Bechtold, M., Boone, A., Chadburn, S., Cunz, M., Decharme, B., Ducharne, A., Ek, M., Garrigues, S., Gørgen, K., Ingwersen, J., Kollet, S., Lawrence, D., Li, Q., Or, D., Swenson, S., De Vrese, P., Walko, R., Wu, Y., and Xue, Y.: Infiltration from the pedon to global grid scales: an overview and outlook for land surface modelling, *Vadose Zone Journal*, <https://doi.org/doi:10.2136/vzj2018.10.0191>, available from: <https://dl.sciencesocieties.org/publications/vzj/first-look> , last access: 3rd May 2019, 2019.
- 30 Wanders, N., Thober, S., Kumar, R., Pan, M., Sheffield, J., Samaniego, L., and Wood, E. F.: Development and Evaluation of a Pan-European Multimodel Seasonal Hydrological Forecasting System, *Journal of Hydrometeorology*, 20, 99–115, 2019.
- Wood, E. F., Lettenmaier, D. P., Liang, X., Lohmann, D., Boone, A., Chang, S., Chen, F., Dai, Y., Dickinson, R. E., Duan, Q., Ek, M., Gusev, Y. M., Habets, F., Irannejad, P., Koster, R., Mitchel, K. E., Nasonova, O. N., Noilhan, J., Schaake, J., Schlosser, A., Shao, Y., Shmakin,

- A. B., Verseghy, D., Warrach, K., Wetzel, P., Xue, Y., Yang, Z.-L., and Zeng, Q.-c.: The Project for Intercomparison of Land-surface Parameterization Schemes (PILPS) Phase 2(c) Red–Arkansas River basin experiment:, *Global and Planetary Change*, 19, 115–135, 1998.
- Wood, E. F., Roundy, J. K., Troy, T. J., van Beek, L. P. H., Bierkens, M. F. P., Blyth, E., de Roo, A., Döll, P., Ek, M., Famiglietti, J., Gochis, D., van de Giesen, N., Houser, P., Jaffé, P. R., Kollet, S., Lehner, B., Lettenmaier, D. P., Peters Lidard, C., Sivapalan, M., Sheffield, J., Wade, A., and Whitehead, P.: Hyperresolution global land surface modeling: Meeting a grand challenge for monitoring Earths terrestrial water, *Water Resources Research*, 47, 2011.
- 5 Yamazaki, D., Oki, T., and Kanae, S.: Deriving a global river network map and its sub-grid topographic characteristics from a fine-resolution flow direction map, *Hydrology and Earth System Sciences*, 13, 2241–2251, 2009.
- Yamazaki, D., Kanae, S., Kim, H., and Oki, T.: A physically based description of floodplain inundation dynamics in a global river routing model, *Water Resources Research*, 47, 2011.
- 10 Yamazaki, D., de Almeida, G. A. M., and Bates, P. D.: Improving computational efficiency in global river models by implementing the local inertial flow equation and a vector-based river network map, *Water Resources Research*, 49, 7221–7235, 2013.
- Zängl, G., Reinert, D., Rípodas, P., and Baldauf, M.: The ICON (ICOsahedral Non-hydrostatic) modelling framework of DWD and MPI-M: Description of the non-hydrostatic dynamical core, *Quarterly Journal of the Royal Meteorological Society*, 141, 563–579, 2014.
- 15 Zhang, Y., Zheng, H., Chiew, F. H. S., Peña-Arancibia, J., Zhou, X., Zhang, Y., Zheng, H., Chiew, F. H. S., Peña-Arancibia, J., and Zhou, X.: Evaluating Regional and Global Hydrological Models against Streamflow and Evapotranspiration Measurements, *Journal of Hydrometeorology*, 17, 995–1010, 2016.
- Zhou, X., Zhang, Y., Wang, Y., Zhang, H., Vaze, J., Zhang, L., Yang, Y., and Zhou, Y.: Benchmarking global land surface models against the observed mean annual runoff from 150 large basins, *Journal of Hydrology*, 470-471, 269–279, 2012.
- 20 Zink, M., Samaniego, L., Kumar, R., Thober, S., Mai, J., Schäfer, D., and Marx, A.: The German drought monitor, *Environmental Research Letters*, 11, 074002, 2016.
- Zink, M., Kumar, R., Cuntz, M., and Samaniego, L.: A high-resolution dataset of water fluxes and states for Germany accounting for parametric uncertainty, *Hydrology and Earth System Sciences*, 21, 1769–1790, 2017.