

Supplementary Information: The NASA Eulerian Snow on Sea Ice Model (NESOSIM): Initial model development and analysis

Alek A. Petty^{1,2}, Melinda Webster¹, Linette Boisvert^{1,2}, Thorsten Markus¹

¹ Cryospheric Sciences Laboratory, NASA Goddard Space Flight Center, Greenbelt, MD, USA.

² Earth System Science Interdisciplinary Center, University of Maryland, College Park, MD, USA.

Correspondence to: Alek A. Petty (alek.a.petty@nasa.gov)

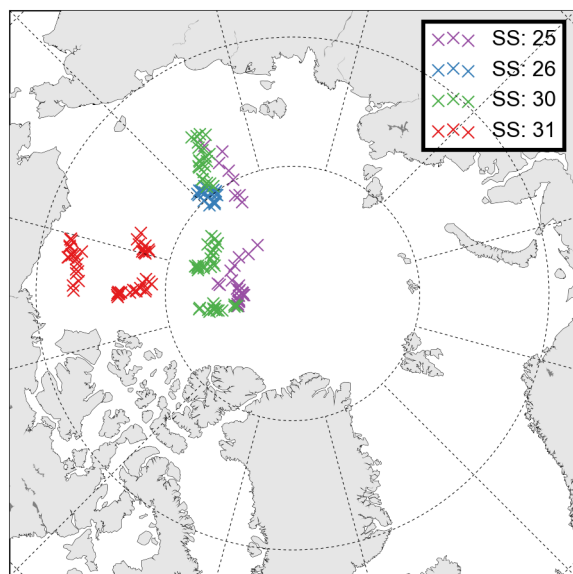


Figure S1: Map of the drifting Soviet station data used in this study. The number indicates the respective station number.

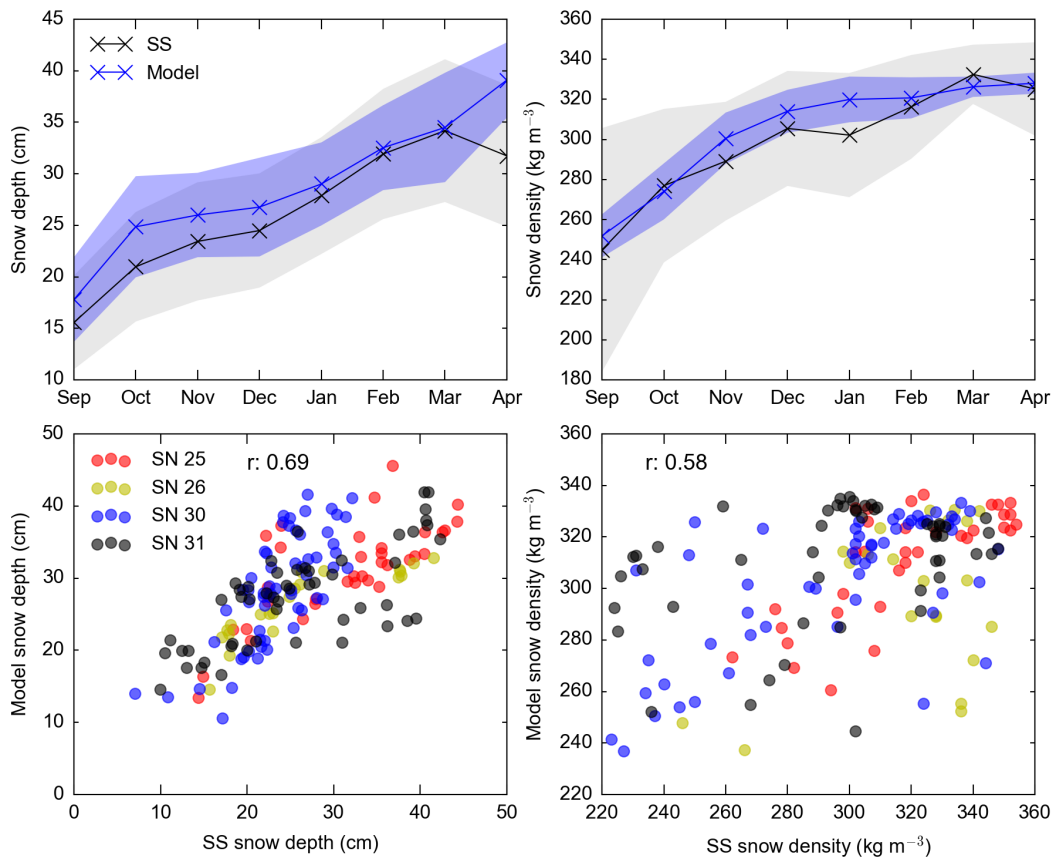


Figure S2: As in Figure 5 but for NESOSIM forced by the JRA-55 snowfall data.

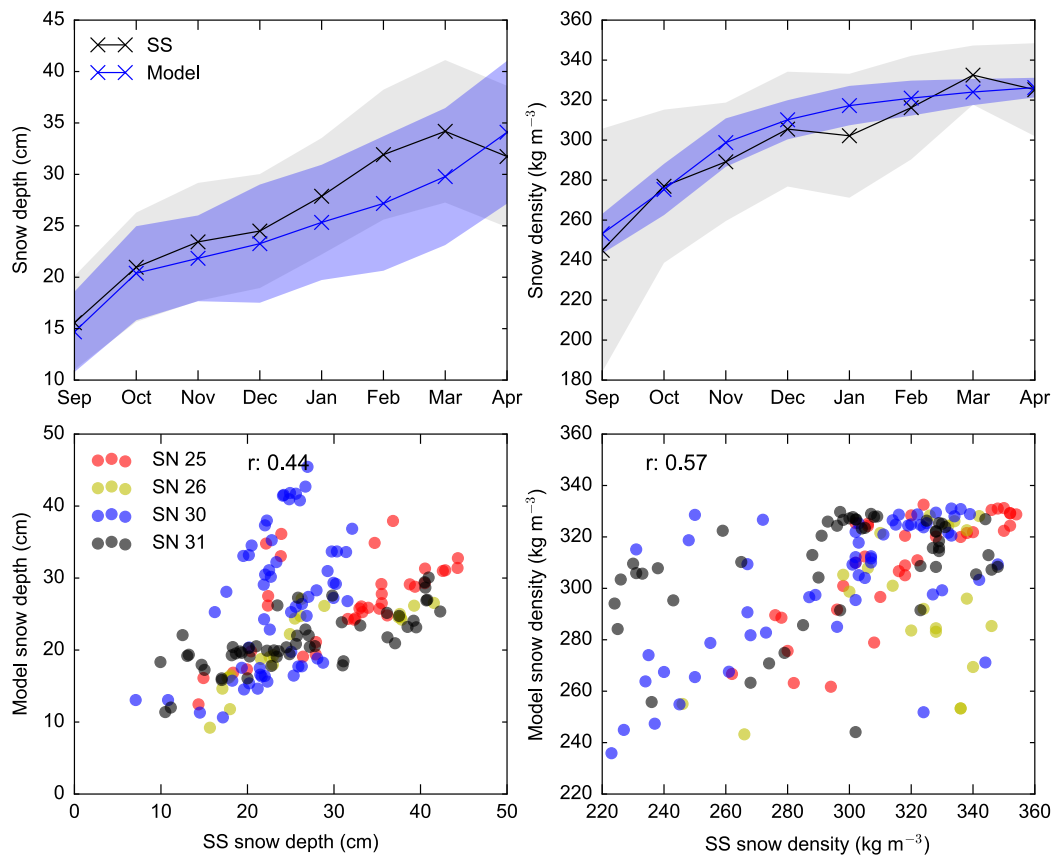


Figure S3: As in Figure 5 but for NESOSIM forced by the MERRA snowfall data.

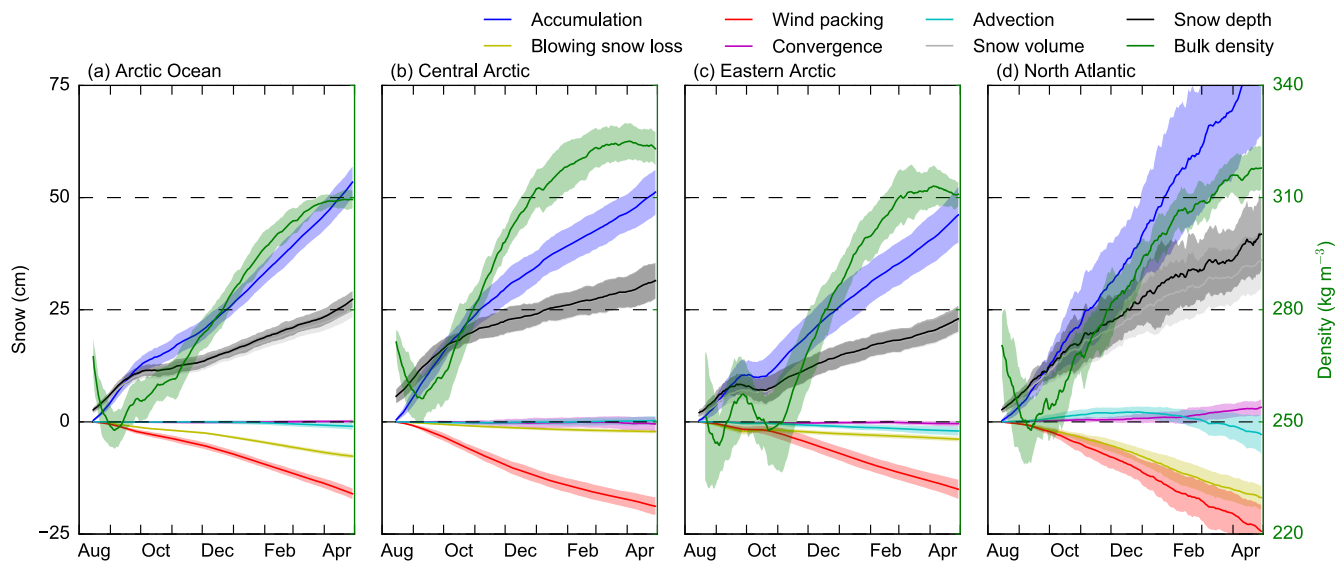


Figure S4: As in Figure 8 but for the regional snow depth/density results initiated on August 15th 2000-2014.

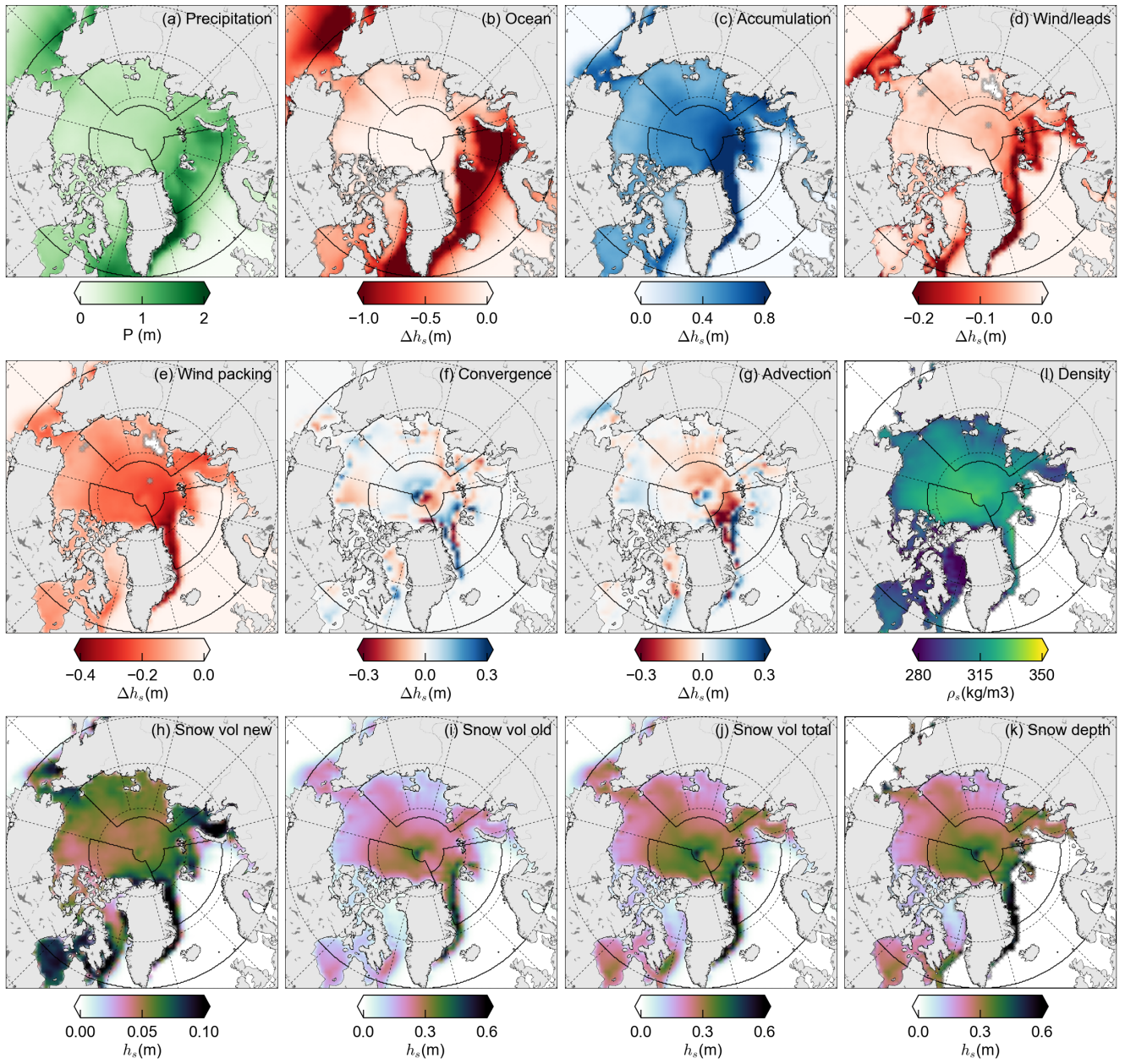


Figure S5: As in Figure 9 but for the 2001-2015 May 1st mean budget terms.

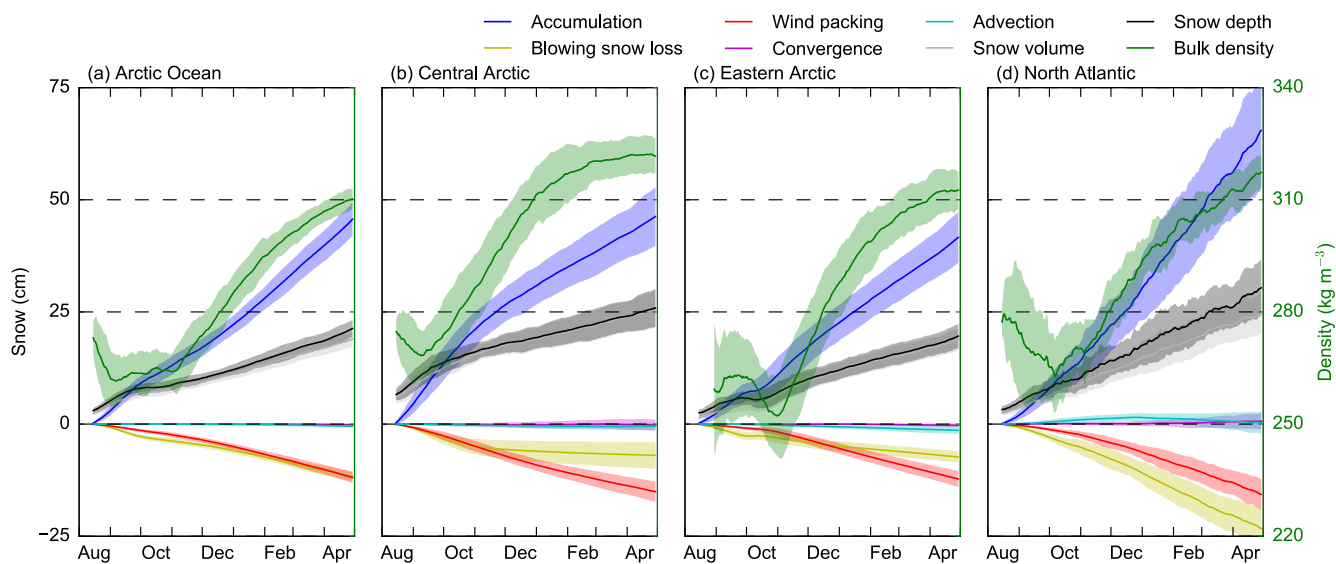


Figure S6: As in Figure 8 but for the default/ERA-I NESOSIM simulations forced with the NASA Team ice concentration data.