

Comments to Reviewers

Our responses to reviewer comments are in blue font below.

Executive Editor: A. Kerkweg

- "The main paper must give the model name and version number (or other unique identifier) in the title."

Please add a version number of MALI in the title of your article in your revised submission to GMD.

We have added the model version number to the title.

Additionally, do not forget to enter the DOI in the code availability section upon final submission!

We have added the final DOI for the code release in the code availability section.

Reviewer 1: S. L. Cornford

Specific comments

I suggest removing all section 8. The authors acknowledge that Antarctic ice dynamics are not well described at 20 km resolution in other (conventional) models, and agree that probably applies to MALI too (which is conventional in its treatment), and their own results in earlier sections (especially MISMIP3d) are not distinct from other models in that regard. Yet they claim that the results might be considered 'reasonable'. On what basis? Given that we know that the GL issues are leading order Don't get me wrong, I appreciate that a realistic example is a good way to show that all the parts (inverse problem, analysis tools etc) work to a reader more interested in ice sheets than models, but how happy would the authors be to have others cite them in future as saying that Antarctic simulations at 20km are reasonable (i.e suggesting that it gives a rough answer, accurate if not precise, rather than an utterly misleading answer). Is the authors are keen to have a realistic example, and don't have the capacity to demonstrate that MALI actually works well for Antarctica at the required resolution, then perhaps a regional model might be more suitable.

We agree with the reviewer of the inappropriateness of 20 km resolution for scientific purposes. While we endeavored to emphasize this in the text, we are sensitive to the hazard of the inclusion of these results as tacit endorsement of unresolved simulations. In our revised manuscript we have replaced the 20 km simulation results with results from a variable resolution grid that maintains 2 km resolution at present day grounding lines and anywhere grounding lines retreat during the simulation. That mesh coarsens to 20 km in the ice sheet interior. The 2km resolution is chosen based on grid convergence analysis

from the MISMIP3d test case, giving us confidence this resolution is scientifically meaningful (even if the schematic forcing of the experiments shown is not). The increased configuration and simulation time of this high resolution mesh is partly to blame for the delayed resubmission of our manuscript.

Technical corrections and minor comments

P2L24. 'adjoint capability' seems like a made up / slang phrase to me. What is needed is the ability to compute gradients / Hessians / Jacobians (depending on what you are trying to achieve) and the ability to solve problems involving the adjoint of a particular operator is a key part of that. I'd say 'differentiation capabilities' if anything.

We replaced "adjoint capability" with "automatic differentiation capability for the computation of adjoint sensitivities".

P6L9. The Jacobian of the residuals of the discrete PDEs, presumably?

Yes, we clarified this in the text.

P9L16 'The scalability of nonlinear solvers'. Missing definite article? See also L19 re linear solvers.

Added definite articles to both phrases.

P9L31 'blue layer interfaces'. Not sure what has happened here, but there seem to be some extra 'blue's scattered about.

Extraneous "blue"s have been removed!

P10L21. I think PISM does/did treat SIA explicitly.

This is a fair comment, but we believe the statement that "SIA models *typically*" solve an implicit problem to be accurate, so we have left the text unchanged. We have chosen not to mention PISM's explicit SIA treatment because PISM's normal mode of operation is to combine SIA with SSA in a hybrid mode that is different from the class of models we are considering here.

L11L11. 'Conservation of mass is used to conduct...' seems awkward. Mass is conserved: ice is transported accordingly.

Arguably, one could choose an ice transport scheme that is not based on conservation of mass. In an attempt to reduce the awkwardness, we have reworded this sentence as "Ice sheet mass transport and evolution is conducted using the principle of conservation of mass."

P12L5. Can you comment on the choice of first order Euler? It's true that other models often end up being first order in time (and space), sometimes without being aware, but

few would pick Euler as the first choice.

First-order Euler was chosen solely for simplicity as choice that is easy to implement in a new model. We have investigated semi-implicit and Runge-Kutta time integration methods, but neither approach is mature enough to include in this paper.

P12 (all of section 4.4) Aschwanden 2012 described a polythermal energy transport model that is more natural than the cold ice model used here and not much more work to implement. Why cold ice?

We have added a description of an enthalpy formulation for the conservation of energy. This was already in the code but had not been verified, so we had left it out of the original manuscript. We have completed the verification of the enthalpy model, so we have added a description of it in addition to the cold ice formulation, and we have added a new section to the “Model Verification and Benchmarks” section showing the enthalpy model verification. The cold ice model description has been retained.

P16 Section 5 - ‘Additional model physics?’

Change made.

P22, L19. I’m pretty sure there are no optimization methods in Cornford et al 2013. They are in Cornford 2015.

You would be the definitive person on that topic! Correction made.

P23. footnote 6 - you *do* have different scalar constants (α β and α γ) in eq.55. Perhaps you mean something different, but since β and γ have such different typical values, you must be scaling the $|\text{grad}(X)|^2$ somehow, no?

You are correct. The footnote was referring to an older version of the equation and has now been removed.

P25 ‘The order of convergence *of* 0.78’. of -> is, but more seriously, in what sense is 0.78 consistent with 1. 1.02, or 0.98, maybe, but 0.78 ?

This is a fair criticism, and the text has been modified accordingly: “The order of convergence is 0.78, somewhat lower than expected from the first-order methods used for advection and time evolution.”

L29: L13. Convergence does not as a rule ‘occur’ when there is an error of $O(h^n)$ so this seems like sloppy language. You mean that, at $h < 500\text{m}$, your results appear converging to be converging at some satisfactory and uniform rate, and are separated by some acceptable tolerance yes?

We have reworded this to use more precise language:

“With the grounding line parameterization, the grounding line positions at 500 m and 250 m resolution are very similar (differing by less than the grid resolution), whereas without the grounding line parameterization the grounding line positions in our two highest resolution simulations still differ by 6 km.”

P29: L17 - you note here that Leguy 2015 had a Blatter-Pattyn model working for this problem, but elsewhere - including the abstract, you claim to be the first.

We were making the distinction of peer-reviewed literature, but to avoid splitting hairs we have removed those assertions.

Reviewer 1: Thomas Zwinger

Major point of critics

The Antarctic test cases, both for ice dynamics (spinup) and the hydrology are run on equal-spaced (or equal sized, if talking of tessellations) cells with horizontal resolution of 20 km, which in my view is insufficient to test the physics implemented. The underlying hydrology as well as the dynamics of the fast outlet systems in Antarctica demand a way higher resolution (as outlet ice-streams usually are of similar or even smaller width). As I see it, one cannot assume that you capture the dynamics of such a system by placing a single cell to resolve it horizontally. In particular, you claim that the hydrology solver is grid- dependent, arguing that usually topography dominates the routing of water, which one certainly not resolves with 20 km. MPAS' and ALBANY's numerics to me seem to be optimized to be deployed on HPC systems as you are utilizing highly parallel scalable linear solvers provided by Trilinos. If so, I suggest to increase the number of cells to overcome that issue. Or – should you by some reason be confined in problem size – just focus on a single outlet system. In that connection I have a further question: On page two, line 21 you mention that your model has the possibility to utilize varying mesh density – why then using so large equal-sized cells in this test case? Could you resolve the critical areas with a sufficient dense mesh?

See response above to the first reviewer. The real-world application section has been replaced with a mesh using 2 km resolution in areas of important ice dynamics. For the demonstration of the subglacial hydrology model and eigencalving parameterization we have retained the coarse 20 km meshes. We do claim to resolve all the important physics at that scale, but merely to demonstrate the functionality of those physics modules. Tuning those physical processes for high resolution has not yet been completed and is beyond the scope of this paper.

I like the elegance how you use the connection via the geometric dual between the triangulation of the FE model and the Voronoi tessellation to solve the transport equations. That seems to ease the problem of horizontal velocity interpolation. Nevertheless, for me it raises also a question on how vertical advection in those equations where it in my view is needed (heat transfer, passive tracer and age/depth) is introduced. You thoroughly explain how you split the vertical diffusion of the heat transfer equation (HTEQ) from the horizontal advection and ignore horizontal diffusion. But: how do you treat vertical advection? Usually, the in SIA and Blatter-Pattyn missing vertical velocity component is obtained from

the three-dimensional field of horizontal velocities by utilizing the incompressibility condition, resolving it with respect to the vertical component and integrating it up to a certain z-coordinate (e.g., Greve and Blatter, 2007). Are you performing the same procedure? Else, I would suggest to give a clear explanation why you neglect vertical advection or – in case this applies – how it somehow implicitly is accounted for, for instance within the derivatives of your layer thickness in equation (20). In the latter case, please mention it in the text and introduce this formulation into the HTEQ, such that the reader can link (22) and (35) to (20). In that connection, it would be from my point of view generally valuable to indicate which vectors and operators are defined in 2D and which in 3D. For instance, I read your HTEQ (22) to be defined for $i=1,2,3$, hence containing a vertical velocity that remains unaccounted for in the description of the numerical implementation given by (35). In my opinion, also the between equations varying index and vector notations do not really help to sort things for the reader.

The treatment of vertical advection is handled through a vertical remapping step after horizontal advection is complete. This was described at the end of section 4.3, but it was not explicitly stated that this step serves to produce vertical advection for thickness and tracers. That paragraph has been modified to more clearly explain how this works, and Section 4.4 has been modified to reiterate how this applies for the advection of temperature as a tracer.

Thirdly, I am missing an analysis on the parallel performance of your implementation. You are mentioning the recent HPC-buzzword “Exascale”, but do not really provide any numbers. What would be interesting (at least to me): Is the ice sheet part negligible or significant in terms of computational resources needed if run inside an ESM? How is the performance of the Blatter-Pattyn model compared to a complete Stokes solution and how much more faster is the shallow ice solution compared to the 1st order solver? Do you have to adapt a general partitioning scheme for all MPAS-cores, or can you choose the number of CPU-cores to be deployed for each sub-model? Do you provide load balancing in case of changing meshes/domains? Those are questions I think would be valuable information to the reader, as you raise the interest by advertising this code to be massive parallel scalable and to operate within an ESM-framework. If the project has not proceeded so far that you would be able to provide these figures at the moment, then please mention it in the text, as it might be valuable information for people that else might think that this is ready for production.

We have added a short performance section describing performance for the high-res Antarctica runs that have been added and their relation to the computational cost of E3SM. Details on performance and scaling of the velocity solver (which makes up the vast majority of the total model cost) have previously been described in 3 publications. Comparing the cost of MALI to a Stokes model is no easily done without a coordinated comparison exercise with such a model. Also we do not think a comparison of the Blatter-Pattyn solver in MALI to the SIA solver is meaningful as the SIA solver was written primarily as a prototyping tool and additionally it cannot be run for Antarctica due to the presence of ice shelves. Each component of E3SM can be run on differing numbers of processors within the coupled model including the individual MPAS cores. A note in the E3SM section has been added stating this.

Detailed Points

Points I see to be either corrected or elaborated on, sorted by their occurrence within the text.

page 3, line 23: Shared memory parallelization through OpenMP is also supported, but the implementation is left up to each core.

What does that mean? I would consider multi-threading to make sense only with multiple cores (talking of CPU-cores) that share a common memory. If you mean “core” in the sense of MPAS model component, then please use “MPAS-cores”, as it else might be misleading.

MPAS core was meant here. This has been clarified.

page 4, line 29: Planar meshes can easily be made periodic by taking advantage of the unstructured mesh specification.

A minor issue, but I cannot follow your argumentation here: Why would the unstructured nature of grids ease the introduction of periodic conditions? In contrary, if I have a nicely structured mesh, the mapping of conformal nodes by indexes should be easier.

What is meant is that because of the unstructured nature, there is little difference between specifying relationships between neighboring cells and periodic cells. I agree that finding periodic correspondence between cells is simpler on a structured mesh, but then most operations require special treatment of the periodic condition rather than simply relying on expected changes to cell indices between neighboring cells. We have adjusted this sentence to make this clearer:
“Planar meshes can easily be made periodic by taking advantage of the unstructured mesh specification, such that for most operations periodic cell relationships are handled the same as for neighboring cell relationships.”

page 4, line 31: Each core chooses its own vertical coordinate system.

Again, I presume this is “core” used in the sense of MPAS model component but by a computational scientist it could be misinterpreted as CPU-core, also in view of a later occurrence (page 6, line 11) where you actually use “core” in the sense of CPU-core: It is a massively parallel code by design and recently it has been adopting the Kokkos (Edwards et al., 2014a) programming model to provide manycore performance portability (Demeshko et al., 2018) on major HPC platforms

This has been clarified to refer to “MPAS core”. I have searched the entire document and used the term “MPAS core” instead of just “core” wherever that is the intended meaning.

page 5, line 18: Additionally, the JIGSAW(GEO) mesh generation tool (Engwirda, 2017a, b) can be used to generate high quality variable resolution meshes with data-based density functions very efficiently.

Please, explain if and how this is relevant to your application. Do you for instance use some Hessian of velocity field in order to manipulate mesh density?

This mention of the meshing tool is included for reference due to the unusual form of the model meshes used by MALI (Voronoi), but applications of the tool form a more detailed topic that are specific to each mesh created and its intended purpose. However, we’ve added a general statement about applications: “Density functions that are a function of observed ice velocity or its spatial derivatives and/or distance to the existing or potential future grounding line position have been used.”

page 6, line 27. eq. (2):

$$\frac{\partial \sigma_{ij}}{\partial x_j} + \rho g = 0, \quad i, j = 1, 2, 3$$

Gravity should be displayed as a vector in this balance and hence is missing the index i .

Good catch – this has been corrected.

page 7, line 9: In Equation 5, A is a temperature dependent rate factor, n is an exponent commonly taken as 3 for polycrystalline glacier ice, and γ is an ice “stiffness” factor (inverse enhancement factor) commonly used to account for other impacts on ice rheology, such as impurities or crystal anisotropy (see also Section 6.1).

If you are referring to the commonly applied enhancement factor, E , as a pre-factor to the rate factor in Glen’s flow law, then not its inverse (as at least I would interpret it), $\gamma = E^{-1}$, but rather $\gamma = E^{-1/n}$ would be correct. This might not be unimportant to spell out, as you use this factor in the inversions and – presumably – plug it back into your forward model.

This is a good distinction to mention. The way we have written gamma here is as it is implemented in the model, so we have clarified this relationship parenthetically to eliminate potential confusion.

page 7, line 18: in which A_0 is a constant, (T^*) is the absolute temperature (i.e., corrected for the dependence of melt temperature on ice pressure), Q_a is the activation energy for crystal creep, and R is the gas constant.

I would see T^* (BTW. why do you put it into brackets?) to be (quoting Greve and Blatter, 2007) the temperature relative to the pressure melting point and not the absolute temperature.

That clarification to the definition has been made and the parentheses have been removed.

page 8, line 2: Ice sheets typically have a small aspect ratio, small surface and bed slopes, and vertical pressure distributions that are very nearly hydrostatic.

In the light that you apply Blatter-Pattyn, in my opinion it would be better not to refer to pressure but rather the vertical distribution of the vertical normal Cauchy stress, i.e. the hydrostatic stress approximation (Greve and Blatter, 2007).

Good point. Considering the fact that the validity of the hydrostatic stress approximation is a consequence of the ice sheet small aspect ratio, we decided to mention only that the small aspect ratio and the small surface and bed slopes as a motivation for the reduced-order approximations.

page 9, line 3, equation (15):

If the symbol μ stands for the effective viscosity (that is what I presume), you are deviating from the symbol η_f you used in equation (9) – which by subscript (e -> f) again deviates from its initial definition in equation (5) and also from the definition in the table of symbols - and you should correct it. If it defines something else, then you should declare it. Same accounts for equation (16). For someone who wants to really understand what you are doing in your code, consistency in notation is very helpful.

This variable has been corrected to consistently be μ_e everywhere.

page 9, line 5, equation (16):

The first term in equation (16) to me reads a scalar-product between two vectors, which leads to a scalar, but the other terms to me read as a with the surface normal aligned vector. To me this seems to be inconsistent.

Thanks for noticing the inconsistent notation, we have fixed it.

page 12, line 26: ... k is assumed constant and uniform

The temperature dependent heat conductivity of ice varies about 34% between atmospheric pressure melting point and -50 C (Greve and Blatter, 2007). As this is a temperature span that easily can occur in a single column of the Antarctic ice sheet, could you please elaborate how big of an error do you introduce by using a constant value, and which value (corresponding to which temperature) you are choosing?

We have added some clarifying text to the section explaining this methodological choice:

“The method for evolving ice temperature and default parameter value choices are adapted from the implementation in the Community Ice Sheet Model \citep{price2015}, which is in turn based on the Glimmer model \citep{Rutt2009}. The choice of constant k with a temperate ice value will lead to underestimation of conduction in cold ice. Relaxation of this assumption is planned for future releases of MALI.”

The value used (2.1 W/mK) is listed in Table A.1.

page 19, line 17, equation (52):

$$\tau_b = C_0 N u_b^m$$

A minor issue, but this type of notation leaves room for (mis)interpretation of a vector subject to an exponent. Looking at equation (15), I conclude you mean that the exponent applies component-wise. My suggestion: Either mention that in the text or perhaps write (52) out on a component level – just like (15).

This has been corrected.

page 21, line 1: ... , suggesting a basal friction law based on the subglacial hydrologic state could be configured to yield realistic ice velocity.

This links to one of the major points of criticism: I do not think you can draw that conclusion from a run done on 20 km grid spacing, when the hydrology in the major outlet systems takes place on subgrid scale.

This statement has been removed. See above for response to general resolution concerns.

page 21, line 10: The calving front is maintained at its initial location by adding or removing ice after thickness evolution is complete. This option does not conserve mass or energy but provides a simple way to maintain a realistic ice shelf extent (e.g., for model spinup).

I don't get the point of this statement: Doesn't this apply to any sort of calving process? In my opinion introduction of discontinuous calving processes in a continuum model, simply by the fact that it instantaneously removes parts of the continuum, by definition drains mass and energy. I guess you referring to the artificially added mass – then it would be interesting to know how you implemented this. Do you add a layer of minimum ice-depth of 1m as on land?

[The statement about violation of conservation was referring to the case where thin ice has to be added back in maintain the same ice extent. This has been clarified in the text and we also state that this ice has a 1 m thickness.](#)

page 31, line 10: The Antarctica model configuration we demonstrate here uses a 20 km uniform resolution mesh, ...

As I explained before, I see 20 km resolution as a problem, in particular in connection with the marine ice sheet dynamics. In particular, as you claim yourself on page 29: Thus for marine ice sheets with similar configuration to the MISMIP3d test, we recommend using MALI with the grounding line parameterization and a resolution of 1 km or less.

[See general response above regarding improved mesh resolution used in this section.](#)

Typos and type-setting

page 7, line 23: Ice sheet models solve Eq. 2-8 with ...

Please, check how GMD wants to have references to equations. I see inconsistencies throughout the text, with either the word Equation/s spelled out or abbreviated (like here). Also check, whether you should put the equation numbers into brackets or not.

[We have updated the text to follow GMD's guidelines for Equation, Figure, Table, and Section references.](#)

page 17, line 7: ... space can be represented by the effective water depth in the macorporous sheet, W: macorporous -> macroporous

[Fixed.](#)

page35,line17: An implicit subglacial hydrology model basedon existing such models(Werderetal., 2013; Hoffman and Price, 2014) is under development using the Albany framework.

To me this sentence reads strange, except if the word "such" is removed

[Here "such" refers to subglacial hydrology models that are implicit, as opposed to the explicit approach presented in the paper.](#)

page 42, line 7: Those longish (and in this case for my browser not existing) links could be dropped - these occur several times throughout the list of references. In general, I think the DOI link is sufficient and no other link is needed. Perhaps GMD has a policy for reference-styles.

The unneeded URLs have been removed from the references.

MPAS-Albany Land Ice (MALI): A variable resolution ice sheet model for Earth system modeling using Voronoi grids

Matthew J. Hoffman¹, Mauro Perego², Stephen F. Price¹, William H. Lipscomb^{1,3}, Tong Zhang¹, Douglas Jacobsen¹, Irina Tezaur⁴, Andrew G. Salinger², Raymond Tuminaro², and Luca Bertagna²

¹Fluid Dynamics and Solid Mechanics Group, Los Alamos National Laboratory, P.O. Box 1663, MS B216, Los Alamos, NM, 87545, USA.

²Center for Computing Research, Sandia National Laboratories, P.O. Box 5800, MS 1320, Albuquerque, NM 87185, USA.

³National Center for Atmospheric Research, Boulder, CO, USA.

⁴Extreme Scale Data Science and Analytics, Sandia National Laboratories, P.O. Box 969, MS 9159, Livermore, CA 94551, USA.

Correspondence to: Matthew Hoffman (mhoffman@lanl.gov)

Abstract. We introduce MPAS-Albany Land Ice (MALI) [v6.0](#), a new, variable resolution land ice model that uses unstructured Voronoi grids on a plane or sphere. MALI is built using the Model for Prediction Across Scales (MPAS) framework for developing variable resolution Earth System Model components and the Albany multi-physics code base for solution of coupled systems of partial-differential equations, which itself makes use of Trilinos solver libraries. MALI includes a three-dimensional, first-order momentum balance solver (“Blatter-Pattyn”) by linking to the Albany-LI ice sheet velocity solver, as well as an explicit shallow ice velocity solver. Evolution of ice geometry and tracers is handled through an explicit first-order horizontal advection scheme with vertical remapping. Evolution of ice temperature is treated using operator splitting of vertical diffusion and horizontal advection and can be configured to use either a temperature or enthalpy formulation. MALI includes a mass-conserving subglacial hydrology model that supports distributed and/or channelized drainage and can optionally be coupled to ice dynamics. Options for calving include “eigencalving”, which assumes calving rate is proportional to extensional strain rates. MALI is evaluated against commonly used exact solutions and community benchmark experiments and shows the expected accuracy. ~~We report first results~~ [Results](#) for the MISMIP3d benchmark experiments ~~for a with MALI’s~~ Blatter-Pattyn ~~type model and show that results~~ [solver](#) fall in-between ~~those of models using Stokes flow~~ [published results from Stokes](#) and L1L2 ~~approximations~~ [models as expected](#). We use the model to simulate a semi-realistic Antarctic Ice Sheet problem ~~for 1100 years~~ [at 20 km resolution following the initMIP protocol and using 2 km resolution in marine ice sheet regions](#). MALI is the glacier component of the Energy Exascale Earth System Model (E3SM) version 1, and we describe current and planned coupling to other [E3SM](#) components.

1 Introduction

During the past decade, numerical ice sheet models (ISMs) have undergone a renaissance relative to their predecessors. This period of intense model development was initiated following the Fourth Assessment Report of the Intergovernmental Panel on Climate Change (IPCC, 2007), which pointed to deficiencies in ISMs of the time as being the single largest shortcoming with

respect to the scientific community’s ability to project future sea-level rise stemming from ice sheets. Model maturation during this period, which continued through the IPCC’s Fifth Assessment Report (IPCC, 2013) and to the present day, has focused on improvements to ISM “dynamical cores” (including the fidelity, discretization, and solution methods for the governing conservation equations (e.g., Bueler and Brown, 2009; Schoof and Hindmarsh, 2010; Goldberg, 2011; Perego et al., 2012; 5 Leng et al., 2012; Larour et al., 2012; Aschwanden et al., 2012; Cornford et al., 2013; Gagliardini et al., 2013; Brinkerhoff and Johnson, 2013)), ISM model “physics” (for example, the addition of improved models of basal sliding coupled to explicit subglacial hydrology (e.g., Schoof, 2005; Werder et al., 2013; Hewitt, 2013; Hoffman and Price, 2014; Bueler and van Pelt, 2015); and ice damage, fracture, and calving (e.g., Åström et al., 2014; Bassis and Ma, 2015; Borstad et al., 2016; Jiménez et al., 2017)) and the coupling between ISMs and Earth System Models (ESMs) (e.g., Ridley et al., 2005; Vizcaíno et al., 10 2008, 2009; Fyke et al., 2011; Lipscomb et al., 2013). These “next generation” ISMs have been applied to community-wide experiments focused on assessing (i) the sensitivity of ISMs to idealized and realistic boundary conditions and environmental forcing and (ii) the potential future contributions of ice sheets to sea-level rise (see e.g., Pattyn et al., 2013; Nowicki et al., 2013a, b; Bindschadler et al., 2013; Shannon et al., 2013; Edwards et al., 2014b).

While these efforts represent significant steps forward, next-generation ISMs continue to confront new challenges. These 15 come about as a result of (1) applying ISMs to larger (whole-ice sheet), higher-resolution (regionally $O(1\text{ km})$ or less), and more realistic problems, (2) adding new or improved sub-models of critical physical processes to ISMs, and (3) applying ISMs as partially or fully coupled components of ESMs. The first two challenges relate to maintaining adequate performance and robustness, as increased resolution and/or complexity have the potential to increase forward model cost and/or degrade solver reliability. The latter challenge relates to the added complexity and cost associated with optimization workflows, which are 20 necessary for obtaining model initial conditions that are realistic and compatible with forcing from ESMs. These challenges argue for ISM development that specifically targets the following model features and capabilities:

1. parallel, scalable, and robust, linear and nonlinear solvers
2. variable and / or adaptive mesh resolution
3. computational kernels based on flexible programming models, to allow for implementation on a range of High-Performance 25 Computing (HPC) architectures¹
4. ~~adjoint capabilities for use~~ automatic differentiation capability for the computation of adjoint sensitivities to be used in high-dimensional parameter field optimization and uncertainty quantification

Based on these considerations, we have developed a new land ice model, the MALI model, which is composed of three major components: 1) model framework, 2) dynamical cores for solving equations of conservation of momentum, mass, and energy, and 3) modules for additional model physics. The model leverages existing and mature frameworks and libraries, namely the Model for Prediction Across Scales (MPAS) framework and the Albany and Trinos solver libraries. These have

¹For example, traditional CPU-only architectures and MPI programming models versus CPU+GPU, hybrid architectures using MPI for nodal communication and OpenMP or CUDA for on-node parallelism.

allowed us to take into consideration and address, from the start, many of the challenges discussed above. We discuss each of
5 these components in more detail in the following sections.

2 MPAS Framework

The MPAS Framework provides the foundation for a generalized geophysical fluid dynamics model on unstructured spherical and planar meshes. On top of the framework, implementations specific to the modeling of a particular physical system (e.g., land ice, ocean) are created as MPAS *cores*. To date, MPAS cores for atmosphere (Skamarock et al., 2012), ocean (Ringler et al., 2013; Petersen et al., 2015, 2018), shallow water (Ringler et al., 2011), sea ice (Turner et al., 2018), and land ice have been implemented. At the moment the land ice model is limited to planar meshes due to the planar formulation of the flow models; however, we have an experimental implementation of the flow model for spherical coordinates that enables runs on spherical meshes. The MPAS design philosophy is to leverage the efforts of developers from the various MPAS cores to provide common framework functionality with minimal effort, allowing MPAS core developers to focus on development of the physics
15 and features relevant to their application.

The framework code includes shared modules for fundamental model operation. Significant capabilities include:

- *Description of model data types.* MPAS uses a handful of fundamental Fortran derived types for basic model functionality. ~~Core-specific model variables~~ Model variables specific to an MPAS core are handled through custom groupings of model fields called *pools*, for which custom accessor routines exist. Core-specific variables are easily defined in XML
20 syntax in a *Registry*, and the framework parses the Registry, defines variables, and allocates memory as needed.
- *Description of the mesh specification.* MPAS requires 36 fields to fully describe the mesh used in a simulation. These include the position, area, orientation, and connectivity of all cells, edges, and vertices in the mesh. The mesh specification can flexibly describe both spherical and planar meshes. More details are provided in the next section.
- *Distributed memory parallelization and domain decomposition.* The MPAS Framework provides needed routines for exchanging information between processors in a parallel environment using Message Passing Interface (MPI). This
25 includes halo updates, global reductions, and global broadcasts. MPAS also supports decomposing multiple domain blocks on each processor to, for example, optimize model performance by minimizing transfer of data from disk to memory. Shared memory parallelization through OpenMP is also supported, but the implementation is left up to each MPAS core.
- *Parallel input and output capabilities.* MPAS performs parallel input and output of data from and to disk through the commonly used libraries of NetCDF, Parallel NetCDF (pnetcdf), and Parallel Input/Output (PIO) (Dennis et al., 2012). The Registry definitions control which fields can be input and/or output, and a framework *streams* functionality provides easy run-time configuration of what fields are to be written to what file name and at what frequency through an XML streams file. The MPAS framework includes additional functionality specific to providing a flexible model restart capability.
30

- *Advanced timekeeping.* MPAS uses a customized version of the timekeeping functionality of the Earth System Modeling Framework (ESMF), which includes a robust set of time and calendar tools used by many Earth System Models (ESMs). This allows explicit definition of model epochs in terms of years, months, days, hours, minutes, seconds, and fractional seconds and can be set to three different calendar types: Gregorian, Gregorian no leap, and 360 day. This flexibility helps enable multi-scale physics and simplifies coupling to ESMs. To manage the complex date/time types that ensue, MPAS framework provides routines for arithmetic of time intervals and the definition of alarm objects for handling events (e.g., when to write output, when the simulation should end).
 - *Run-time configurable control of model options.* Model options are configured through *namelist* files that use standard Fortran namelist file format, and input/output are configured through *streams* files that use XML format. Both are completely adjustable at run time.
 - *Online, run-time analysis framework.* See section [Section-Sect. 6.2](#) for examples.
- 15 Additionally, a number of shared operators exist to perform common operations on model data. These include geometric operations (e.g., length, area, and angle operations on the sphere or the plane), interpolation (linear, barycentric, Wachspress, radial basis functions, spline), vector and tensor operations (e.g., cross products, divergence), and vector reconstruction (e.g., interpolating from cell edges to cell centers). Most operators work on both spherical and planar meshes.

2.1 Model Meshes

20 The MPAS mesh specification is general enough to describe unstructured meshes on most two-dimensional manifold spaces, however most applications use centroidal Voronoi tessellations (Du and Gunzburger, 2002) on a sphere or plane. This manuscript focuses on applications with planar centroidal Voronoi meshes, with some additional consideration of spherical centroidal Voronoi meshes. Voronoi meshes are constructed by specifying a set of generating points (cell centers), and then partitioning the domain into cells that contain all points closer to each generating point than any other. Edges of Voronoi cells are equidis-

25 tant between neighboring cell centers and perpendicular to the line connecting those cell centers. A planar Voronoi tessellation is the dual graph of a Delaunay triangulation, which is a triangulation of points in which the circumcircle of every triangle contains no points in the point set. Voronoi meshes that are centroidal (the Voronoi generator is also the center of mass of the cell) have favorable properties for some geophysical fluid dynamic applications (Ringler et al., 2010) and maintain high quality cells because cells tend towards equidimensional aspect ratios, and mesh resolution (where non-uniform) changes smoothly.

30 On both planes and spheres, Voronoi tessellations tend toward perfect hexagons as resolution is increased. Note that, while the MPAS mesh specification supports quadrilateral grids, such as traditional rectangular grids, they are described as unstructured, which introduces significant overhead in memory and calculation over regular rectangular grid approaches.

Because MPAS meshes are two-dimensional manifold spaces, they are convenient for describing geophysical locations, either on planar projections or directly on a sphere. Because they are unstructured, meshes can contain varying mesh resolution and can be culled to only retain regions of interest. Planar meshes can easily be made periodic by taking advantage of the unstructured mesh specification [and, for most operations, periodic cell relationships are handled the same as for neighboring](#)

5 [cell relationships](#). MPAS meshes are static in time. The vertical coordinate, if needed by ~~a~~[an MPAS](#) core, is extruded from the base horizontal mesh. Each [MPAS](#) core chooses its own vertical coordinate system. A comprehensive suite of tools for the generation of centroidal Voronoi tessellations on a plane or sphere has been developed, as well as tools for modifying existing meshes (e.g., removing unneeded cells, coordinate transformations, etc.) and converting some common unstructured mesh formats (e.g., *Triangle*, Shewchuk (1996)) to the MPAS specification.

10 The basic unit of the MPAS mesh specification is the *cell*. A cell has area and is formed by three or more sides, which are referred to as *edges*. The endpoints of edges are defined by *vertices*. Figure 1 illustrates the relationships between these mesh primitives. The MPAS mesh specification utilizes 36 fields that describe the position, orientation, area, and connectivity of the various primitives. Only four of these fields (x, y, z cell positions and connectivity between cells) are necessary to describe any mesh, but the larger set of fields in the mesh specification provide information that is commonly used for routine operations.

15 This avoids the need for the model to calculate these fields internally, speeding up the process of model initialization and integration.

MALI typically uses centroidal Voronoi meshes on a plane. Spherical Voronoi meshes can also be used, but little work has been done with such meshes to date. MALI employs a C-grid discretization (Arakawa and Lamb, 1977) for advection, meaning state variables (ice thickness and tracer values) are located at Voronoi cell centers, and flow variables (transport velocity, u_n)

20 are located at cell edge midpoints (~~Figure Fig.~~ 1). MALI uses a sigma vertical coordinate (specified number of layers, each with a spatially uniform layer thickness fraction, see (Petersen et al., 2015) for more information):

$$\sigma = \frac{s - z}{H} \tag{1}$$

where s is surface elevation, H is ice thickness, and z is the vertical coordinate.

A set of tools supporting the MPAS Framework includes tools for generating uniform and variable resolution centroidal

25 Voronoi meshes. Additionally, the JIGSAW(GEO) mesh generation tool (Engwirda, 2017a, b) can be used to [efficiently](#) generate high quality, variable resolution meshes with data-based density functions~~very efficiently~~. [Density functions that are a function of observed ice velocity or its spatial derivatives and/or distance to the existing or potential future grounding line position have been used.](#)

3 The Albany Software Library

30 Albany is an open source, C++ multi-physics code base for the solution and analysis of coupled systems of partial-differential equations (PDEs) (Salinger et al., 2016). It is a finite element code that can (in three spatial dimensions) employ unstructured meshed comprised of hexahedral, tetrahedral, or prismatic elements. Albany is designed to take advantage of the computational mathematics tools available within the Trilinos suite of software libraries (Heroux et al., 2005) and it uses template-based generic programming methods to provide extensibility and flexibility (Pawlowski et al., 2012). Together, Albany and Trilinos provide parallel data structures and I/O, discretization and integration algorithms, linear solvers and preconditioners, nonlinear solvers, continuation algorithms, and tools for automatic differentiation (AD) and optimization. By formulating a system

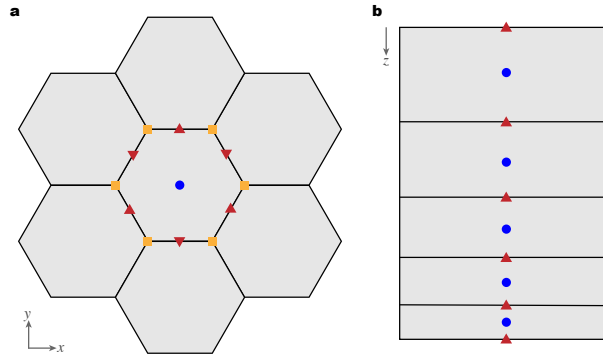


Figure 1. MALI grids. a) Horizontal grid with cell center (blue circles), edge midpoint (red triangles), and vertices (orange squares) identified for the center cell. Scalar fields (H , T) are located at cell centers. Advective velocities (u_n) and fluxes are located at cell edges. b) Vertical grid with layer midpoints (blue circles) and layer interfaces (red triangles) identified. Scalar fields (H , T) are located at layer midpoints. Fluxes are located at layer interfaces.

of equations in the residual form, Albany employs AD to automatically compute the Jacobian [matrix of the discrete PDE residual](#), as well as forward and adjoint sensitivities. Albany can solve large-scale PDE-constrained optimization problems, using Trilinos optimization package ROL, and it provides uncertainty quantification capabilities through the Dakota framework (Adams et al., 2013). It is a massively parallel code by design and recently it has been adopting the Kokkos (Edwards et al., 2014a) programming model to provide manycore performance portability (Demeshko et al., 2018) on major HPC platforms. Albany provides several applications including LCM (Laboratory for Computational Mechanics) for solid mechanics problems, QCAD (Quantum Computer Aided Design) for quantum device modeling, and LI (Land Ice) for modeling ice sheet flow. We refer to the code that discretizes these diagnostic momentum balance equations as Albany-LI. Albany-LI was formerly known as Albany/FELIX (Finite Elements for Land Ice eXperiments), and described by Tezaur et al. (2015a, b) and Tuminaro et al. (2016) under that name. Here, these tools are brought to bear on the most complex, expensive, and fragile portion of the ice sheet model, the solution of the momentum balance equations (discussed further below).

4 Conservation Equations

The “dynamical core” of the the MALI ice sheet model solves the governing equations expressing the conservation of momentum, mass, and energy.

4.1 Conservation of Momentum

Treating glacier ice as an incompressible fluid in a low-Reynolds number flow, the conservation of momentum in a Cartesian reference frame is expressed by the Stokes-flow equations, for which the gravitational-driving stress is balanced by gradients

5 in the viscous stress tensor, σ_{ij} :

$$\frac{\partial \sigma_{ij}}{\partial x_j} + \rho g_i = 0, \quad i, j = 1, 2, 3 \quad (2)$$

where x_i is the coordinate vector, ρ is the density of ice, and $g =$ is acceleration due to gravity².

Deformation results from the deviatoric stress, τ_{ij} , which relates to the full stress tensor as

$$\tau_{ij} = \sigma_{ij} - \frac{1}{3} \sigma_{kk} \delta_{ij}, \quad (3)$$

10 for which $-\frac{1}{3} \sigma_{kk}$ is the mean compressive stress and δ_{ij} is the Kroneker delta (or the identity tensor). Stress and strain rate are related through the constitutive relation,

$$\tau_{ij} = 2 \eta \mu_e \dot{\epsilon}_{ij}, \quad (4)$$

where $\dot{\epsilon}_{ij}$ is the strain-rate tensor and $\eta \mu_e$ is the “effective”, non-Newtonian ice viscosity given by Nye’s generalization of Glen’s flow law (Glen, 1955),

$$15 \quad \eta \mu_e = \gamma A^{-\frac{1}{n}} \dot{\epsilon}_e^{\frac{1-n}{n}}. \quad (5)$$

In [Equation 5 Eq. \(5\)](#), A is a temperature dependent rate factor, n is an exponent commonly taken as 3 for polycrystalline glacier ice, and γ is an ice “stiffness” factor (inverse enhancement factor) ~~commonly used related to the commonly used enhancement factor E_f by $\gamma = E_f^{-\frac{1}{n}}$~~ used to account for other impacts on ice rheology, such as impurities or crystal anisotropy (see also [Section Sect. 6.1](#)). The effective strain rate $\dot{\epsilon}_e$ is given by the second invariant of the strain-rate tensor,

$$20 \quad \dot{\epsilon}_e = \left(\frac{1}{2} \dot{\epsilon}_{ij} \dot{\epsilon}_{ij} \right)^{\frac{1}{2}}, \quad (6)$$

The strain rate tensor is defined by gradients in the components of the ice velocity vector u_i :

$$\dot{\epsilon}_{ij} = \frac{1}{2} \left(\frac{\partial u_i}{\partial x_j} + \frac{\partial u_j}{\partial x_i} \right), \quad i, j = 1, 2, 3. \quad (7)$$

Finally, the rate-factor A follows an Arrhenius relationship

$$A(T^*) = A_0 e^{-Q_a/RT^*}, \quad (8)$$

25 in which A_0 is a constant, ~~(T^*) is the absolute temperature (i.e., corrected for the dependence of melt temperature on ice pressure)~~ T^* is the temperature (relative to the pressure melting point), Q_a is the activation energy for crystal creep, and R is the gas constant.

Boundary conditions required for the solution of [Eq. 2 \(2\)](#) depend on the form of reduced-order approximation applied and are discussed further below.

²In [Equation Eq. \(2\)](#) and elsewhere we use indicial notation, with summation over repeat indices.

4.2 Reduced-order Equations

Ice sheet models solve [Eq. 2Eqs. \(2\)–8\(8\)](#) with varying degrees of complexity in terms of the tensor components in [Eq. 2Eqs. \(2\)–7\(7\)](#) that are accounted for or omitted, based on geometric scaling arguments. Because ice sheets are inherently “thin” – their widths are several orders of magnitude larger than their thickness – reduced-order approximations of the full momentum balance are often appropriate (see, e.g., Dukowicz et al., 2010; Schoof and Hewitt, 2013) and, importantly, can often result in considerable computational cost savings. Here, we employ two such approximations, a first-order-accurate “Blatter-Pattyn” approximation and a zero-order, “shallow-ice approximation” as described in more detail in the following sections.

4.2.1 First-Order Velocity Solver and Coupling

Ice sheets typically have a small aspect ratio ~~and small surface and bed slopes, and vertical pressure distributions that are very nearly hydrostatic.~~ These characteristics imply that reduced-order approximations of the Stokes momentum balance may apply over large areas of the ice sheets, potentially allowing for significant computational savings. Formal derivations involve non-dimensionalizing the Stokes momentum balance and introducing a geometric scaling factor, $\delta = H/L$, where H and L represent characteristic vertical and horizontal length scales (often taken as the ice thickness and the ice sheet span), respectively. Upon conducting an asymptotic expansion, reduced-order models with a chosen degree of accuracy (relative to the original Stokes flow equations) can be derived by retaining terms of the appropriate order in δ . For example, the first-order accurate Stokes approximation is arrived at by retaining terms of $\mathcal{O}(\delta^1)$ and lower (The reader is referred to Schoof and Hindmarsh (2010) and Dukowicz et al. (2010) for additional discussion³).

Using the notation of Perego et al. (2012) and Tezaur et al. (2015a)⁴, the first-order accurate Stokes approximation (also referred to as the “Blatter-Pattyn” approximation, see Blatter, 1995; Pattyn, 2003) is expressed through the following system of PDEs,

$$\begin{cases} -\nabla \cdot (2\mu_e \dot{\epsilon}_1) + \rho g \frac{\partial s}{\partial x} = 0, \\ -\nabla \cdot (2\mu_e \dot{\epsilon}_2) + \rho g \frac{\partial s}{\partial y} = 0, \end{cases} \quad (9)$$

where $\nabla \cdot$ is the divergence operator, $s \equiv s(x, y)$ represents the ice sheet upper surface, and the vectors $\dot{\epsilon}_1$ and $\dot{\epsilon}_2$ are given by

$$\dot{\epsilon}_1 = \begin{pmatrix} 2\dot{\epsilon}_{xx} + \dot{\epsilon}_{yy}, & \dot{\epsilon}_{xy}, & \dot{\epsilon}_{xz} \end{pmatrix}^T, \quad (10)$$

and

$$\dot{\epsilon}_2 = \begin{pmatrix} \dot{\epsilon}_{xy}, & \dot{\epsilon}_{xx} + 2\dot{\epsilon}_{yy}, & \dot{\epsilon}_{yz} \end{pmatrix}^T. \quad (11)$$

Akin to [Equations 5 and 6, \$\eta_T\$ in Equation 9Eqs. \(5\) and \(6\), \$\mu_e\$ in Eq. \(9\)](#) represents the effective viscosity but for the case of

the first-order stress balance with an effective-strain rate is given by

$$\dot{\epsilon}_e \equiv \left(\dot{\epsilon}_{xx}^2 + \dot{\epsilon}_{yy}^2 + \dot{\epsilon}_{xx}\dot{\epsilon}_{yy} + \dot{\epsilon}_{xy}^2 + \dot{\epsilon}_{xz}^2 + \dot{\epsilon}_{yz}^2 \right)^{\frac{1}{2}}, \quad (12)$$

³In practice, additional scaling parameters describing the ratio of deformation to sliding velocity may also be introduced.

⁴Vectors and tensors are given in bold rather than using indices. Note that, in a slight abuse of notation, we have switched from using x_1, x_2, x_3 to denote the three coordinate directions to x, y, z .

rather than by [Equation 6 Eq. \(6\)](#), and with individual strain rate terms given by,

$$\dot{\epsilon}_{xx} = \frac{\partial u}{\partial x}, \quad \dot{\epsilon}_{yy} = \frac{\partial v}{\partial y}, \quad \dot{\epsilon}_{xy} = \frac{1}{2} \left(\frac{\partial u}{\partial y} + \frac{\partial v}{\partial x} \right), \quad \dot{\epsilon}_{xz} = \frac{1}{2} \frac{\partial u}{\partial z}, \quad \dot{\epsilon}_{yz} = \frac{1}{2} \frac{\partial v}{\partial z}. \quad (13)$$

At the upper surface, a stress-free boundary condition is applied,

$$10 \quad \dot{\epsilon}_1 \cdot \mathbf{n} = \dot{\epsilon}_2 \cdot \mathbf{n} = 0, \quad (14)$$

with \mathbf{n} the outward normal vector at the ice sheet surface, $z = s(x, y)$. At the bed, $z = b(x, y)$, we apply no slip or continuity of basal tractions (“sliding”),

$$\begin{aligned} u = v = 0, & \quad \text{no slip} \\ 2\mu_e \dot{\epsilon}_1 \cdot \mathbf{n} + \beta u^m = 0, \quad 2\mu \dot{\epsilon}_2 \cdot \mathbf{n} + \beta v^m = 0, & \quad \text{sliding,} \end{aligned} \quad (15)$$

where β is a linear-friction parameter and $m \geq 1$. In most applications we set $m = 1$ (see also [Section Sect. 5.1.6](#)).

15 On lateral boundaries, a stress boundary condition is applied,

$$2\mu_e (\dot{\epsilon}_1 \cdot \mathbf{n}, \dot{\epsilon}_2 \cdot \mathbf{n}, 0)^T - \rho_o g (s - z) \mathbf{n} = \rho_o g \max(z, 0) \mathbf{n}, \quad (16)$$

where ρ_o is the density of ocean water and \mathbf{n} the outward normal vector to the lateral boundary (i.e., parallel to the (x, y) plane), so that lateral boundaries above sea level are effectively stress free and lateral boundaries submerged within the ocean experience hydrostatic pressure due to the overlying column of ocean water.

20 We solve these equations using the Albany-LI momentum balance solver, which is built using the Albany and Trilinos software libraries discussed above. The mathematical formulation, discretization, solution methods, verification, and scaling of Albany-LI are discussed in detail in Tezaur et al. (2015a). Albany-LI implements a classic finite element discretization of the first-order approximation. At the grounding line, the basal friction coefficient β can abruptly drop to zero within an element of the mesh. This discontinuity is resolved by using an higher-order Gauss quadrature rule on elements containing the grounding
25 line, which corresponds to the sub-element parametrization *SEP3* proposed in Seroussi et al. (2014). Additional exploration of solver scalability and demonstrations of solver robustness on large scale, high-resolution, realistic problems are discussed in Tezaur et al. (2015b). The efficiency and robustness of [the](#) nonlinear solvers are achieved using a combination of the Newton method (damped with a line search strategy when needed) and of a parameter continuation algorithm for the numerical regularization of the viscosity. The scalability of [the](#) linear solvers is obtained using a multilevel preconditioner (see Tuminaro et al. (2016)) specifically designed to target shallow problems characterized by meshes extruded in the vertical dimension, like
30 those found in ice sheet modeling. The preconditioner has been demonstrated to be particularly effective and robust even in the presence of ice shelves that typically lead to highly ill-conditioned linear systems. ~~Because the momentum balance solver is $\geq 95\%$ of the cost of a typical forward model time step, the model performance reported on in Tezaur et al. (2015a, b) and Tuminaro et al. (2016) is generally representative of overall MALI performance.~~

The Albany-LI first-order velocity solver written in C++ is coupled to MPAS written in Fortran using an interface layer. Albany uses a three-dimensional mesh extruded from a basal triangulation and composed of prisms or tetrahedra (see Tezaur

Table 1. Correspondence between the MPAS Voronoi tessellation and its dual Delaunay triangulation used by Albany. Key MALI model variables that are natively found at each location are listed. Note that variables are interpolated from one location to another as required for various calculations.

Voronoi tessellation	Delaunay triangulation	Variables
cell center	triangle node	H, T, u, v, Φ (MPAS)
cell edge	triangle edge	u_n (for advection)
cell vertex	triangle center	Φ (Albany)

et al. (2015a)). When coupled to MPAS, the basal triangulation is the part of the Delaunay triangulation, dual to an MPAS Voronoi mesh, that contains active ice and it is generated by the interface. Bed topography, ice lower surface, ice thickness, basal friction coefficient (β), and three-dimensional ice temperature, all at cell centers (Table 1), are passed from MPAS to Albany. Optionally, Dirichlet velocity boundary conditions can also be passed. After the velocity solve is complete, Albany returns the x and y components of velocity at each cell center and blue-layer interfaces, the normal component of velocity at each cell edge and blue-layer interfaces, and viscous dissipation at blue each cell vertex and layer midpoints.

10 The interface code defines the lateral boundary conditions on the finite element mesh that Albany will use. Lateral boundaries in Albany are applied at cell centers (triangle nodes) that do not contain dynamic ice on the MPAS mesh and that are adjacent to the last cell of the MPAS mesh that does contain dynamic ice. This one element extension is required to support calculation of normal velocity on edges (u_n) required for advection of ice out of the final cell containing dynamic ice (Figure Fig. 2). The interface identifies three types of lateral boundaries for the first-order velocity solve: terrestrial, floating marine, and grounded marine. Terrestrial margins are defined by bed topography above sea level. At these boundary nodes, ice thickness is set to a small ice minimum thickness value ($\epsilon = 1$ m). Floating marine margin triangle nodes are defined as neighboring one or more triangle edges that satisfy the hydrostatic floatation criterion. At these boundary nodes, we need to ensure the existence of a realistic calving front geometry, so we set ice thickness to the minimum of thickness at neighboring cells with ice. Grounded marine margins are defined as locations where the bed topography is below sea level, but no adjacent triangle edges satisfy the floatation criterion. At these boundary nodes, we apply a small floating extension with thickness ϵ . For all three boundary types, ice temperature is averaged from the neighboring locations containing ice.

4.2.2 Shallow-Ice Approximation Velocity Solver

A similar procedure to that described above for the first-order accurate Stokes approximation can be used to derive the so-called “shallow-ice approximation” (SIA) (Hutter, 1983; Fowler and Larson, 1978; Morland and Johnson, 1980; Payne et al., 2000), in this case by retaining only terms of $\mathcal{O}(\delta^0)$. In the case of the SIA, the local gravitational driving stress is everywhere balanced by the local basal traction and the horizontal velocity as a function of depth is simply the superposition of the local

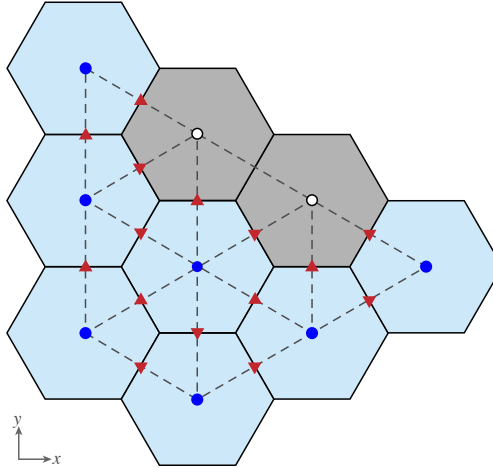


Figure 2. Correspondence between MPAS and Albany meshes and application of boundary conditions for the first-order velocity solver. Solid black lines are cells on the Voronoi mesh and dashed gray lines are triangles on the Delaunay Triangulation. Light blue Voronoi cells contain dynamic ice and gray cells do not. Dark blue circles are Albany triangle nodes that use variable values directly from the co-located MPAS cell centers. White circles are extended node locations that receive variable values as described in the text based on whether they are terrestrial, floating marine, or grounded marine locations. Red triangles indicate Voronoi cell edges on which velocities (u_n) are required for advection.

basal sliding velocity and the integral of the vertical shear from the ice base to that depth:

$$5 \quad \mathbf{u} = -2(\rho g)^n \left(\int_b^z A(s-z)^n dz \right) |\nabla s|^{n-1} \nabla s + \mathbf{u}_b \quad (17)$$

where b is the bed elevation and \mathbf{u}_b is the sliding velocity.

SIA ice sheet models typically combine the momentum and mass balance equations to evolve the ice geometry directly in the form of a depth-integrated, two-dimensional diffusion problem (Hindmarsh and Payne, 1996; Payne et al., 2000). However we implement the SIA as an explicit velocity solver that can be enabled in place of the more accurate first order solver, while
 10 keeping the rest of the model identical. The purpose of the SIA velocity solver is primarily for rapid testing, so the less efficient explicit implementation of Eq. 17 (17) is not a concern.

We implement Eq. 17 (17) in sigma coordinates on cell edges, where we only require the normal component of velocity, u_n :

$$u_n = -2(\rho g)^n H^{n+1} |\nabla s|^{n-1} \frac{ds}{dx_n} \int_1^\sigma A \sigma^n d\sigma + u_{b_n} \quad (18)$$

where x_n is the normal direction to a given edge and u_{b_n} is sliding velocity in the normal direction to the edge. We average A and H from cell centers to cell edges. $\frac{ds}{dx_n}$ is calculated as the difference in surface elevation between the two cells that neighbor a given edge divided by the distance between the cell centers; on a Voronoi grid, cells edges are midway between cell

5 centers by definition. The surface slope component tangent to an edge (required to complete the calculation of ∇s) is calculated by first interpolating surface elevation from cell centers to vertices.

4.3 Conservation of Mass

~~Conservation of mass is used to conduct ice~~ Ice sheet mass transport and evolution is conducted using the principle of conservation of mass. Assuming constant density to write conservation of mass in volume form, the equation relates ice
10 thickness change to the divergence of mass and sources and sinks:

$$\frac{\partial H}{\partial t} + \nabla \cdot H \bar{\mathbf{u}} = \dot{a} + \dot{b}, \quad (19)$$

where H is ice thickness, t is time, $\bar{\mathbf{u}}$ is depth-averaged velocity, \dot{a} is surface mass balance, and \dot{b} is basal mass balance. Both \dot{a} and \dot{b} are positive for ablation and negative for accumulation.

Eq. ~~19~~ (19) is used to update thickness in each grid cell on each time step using a forward Euler, fully explicit time evolution
15 scheme. Eq. ~~19~~ (19) is implemented using a finite volume method, such that fluxes are calculated for each edge of each cell to calculate $\nabla \cdot H \bar{\mathbf{u}}$. Specifically, we use a first-order upwind method that applies the normal velocity on each edge (u_n) and an upwind value of cell centered ice thickness. Note that with the First Order velocity solver, normal velocity is interpolated from cell centers to edges using the finite element basis functions in Albany. In the shallow ice approximation velocity solver, normal velocity is calculated natively at edges. MPAS Framework includes a higher-order flux-corrected transport scheme (Ringler
20 et al., 2013) for which we have performed some initial testing, but is not routinely used in ~~the Land Ice core MALI~~ at this time.

Tracers are advected ~~layer-by-layer horizontally layer-by-layer~~ with a similar equation:

$$\frac{\partial(Q_t l)}{\partial t} + \nabla \cdot (Q_t l \bar{\mathbf{u}}) = \dot{S} \quad (20)$$

where Q_t is a tracer quantity (e.g., temperature – see below), l is layer thickness, and \dot{S} represents any tracer sources or
25 sinks. While any number of tracers can be included in the model, the only one to be considered here is temperature, due to its important effect on ice rheology through Eq. ~~8~~ (8) and will be discussed further in the following section.

~~Because we employ a sigma vertical coordinate system with~~ Vertical advection of tracers is included through a vertical remapping operation. On the upper and lower domain boundaries, the grid moves to follow the material, and in the interior we maintain fixed layer fractions ~~;~~ that need to be updated on each time step after Eqs. ~~19 and 20 are applied, a vertical remapping operation is required.~~ (19) and (20) are applied. The model does not explicitly calculate vertical velocity, but the appropriate
30 vertical transport of tracers occurs during this vertical remapping operation. We employ a first-order vertical remapping method. Overlaps between the newly calculated layers and the target sigma layers are calculated for each grid cell. Assuming uniform values within each layer, mass, energy, and other tracers are transferred between layers based on these overlaps to restore the prescribed sigma layers while conserving mass and energy.

4.4 Conservation of Energy

Conservation of energy ~~is expressed~~ within glaciers can be formulated in terms of temperature or enthalpy (internal energy) (Aschwanden et al., 2012; Kleiner et al., 2015). The enthalpy formulation has the advantage of eliminating the need of tracking the cold-temperate transition surface, as both cold (below the pressure melting point) and temperate (at the pressure melting point) ice regions are handled with the same equations. MALI includes both temperature and enthalpy formulations. In both cases, an operator splitting technique is used. At each time step, an implicit vertical solve accounting for the diffusion and dissipation terms (described below) is performed, followed by explicit advection of the resulting temperature or enthalpy field (described above in Sect. 4.3). We describe the temperature formulation in detail, followed by a briefer description of the enthalpy formulation that uses a similar procedure. Note that the thermal model described here shares a common lineage with that of the Community Ice Sheet Model, and parts of the description below therefore are similar to the documentation of the thermal solver in the Community Ice Sheet Model (Price et al., 2015; Lipscomb et al., 2018).

4.4.1 Temperature Formulation

Conservation of energy can be expressed in terms of temperature through the three-dimensional, advective-diffusive heat equation:

$$\frac{\partial T}{\partial t} = \frac{1}{\rho c} \frac{\partial}{\partial x_i} \left(k \frac{\partial T}{\partial x_i} \right) - u_i \frac{\partial T}{\partial x_i} + \frac{\Phi}{\rho c}, \quad (21)$$

with thermal conductivity k and heat capacity c . In Equation 21 Eq. (21), the rate of temperature change (left-hand side) is balanced by diffusive, advective, and internal (viscous dissipation – see Equation 28 Eq. (28) for Φ) source terms (first, second, and third terms on the right-hand side, respectively). In MALI we solve an approximation of Equation 21 Eq. (21),

$$\frac{\partial T}{\partial t} = \frac{k}{\rho c} \frac{\partial^2 T}{\partial z^2} - u_i \frac{\partial T}{\partial x_i} + \frac{\Phi}{\rho c}, \quad (22)$$

in which horizontal diffusion is assumed negligible (van der Veen, 2013, p. 280) and k is assumed constant and uniform. The viscous dissipation term Φ is discussed further below (Section ??).

Temperatures are staggered in the vertical relative to velocities and are located at the centers of $nz - 1$ vertical layers, which are bounded by nz vertical levels (grid point locations). This convention allows for conservative temperature advection, since the total internal energy in a column (the sum of $\rho c T \Delta z$ over $nz - 1$ layers) is conserved under transport. The upper surface temperature T_s and the lower surface temperature T_b , coincident with the surface and bed grid points, give a total of $nz + 1$ temperature values within each column.

~~Equation 22 is solved using an operator splitting technique. At each time step, we first perform~~ As mentioned above, Eq. (22) is solved by first performing an implicit vertical solve accounting for the diffusion and dissipation terms, and then we explicitly advect horizontally (described below), followed by explicit advection of the resulting temperature field. The method for evolving ice temperature and default parameter value choices are adapted from the implementation in the Community Ice Sheet Model (Price et al., 2015; Lipscomb et al., 2018), which is in turn based on the Glimmer model (Rutt et al., 2009). The

choice of constant k with a temperate ice value (Table A1) will lead to underestimation of conduction in cold ice. Relaxation

5 of this assumption is planned for future releases of MALI.

4.4.2 Vertical Diffusion

Vertical Diffusion

Using a “sigma” vertical coordinate, the vertical diffusion portion of Equation-22Eq. (22) can be discretized as:

$$\frac{\partial^2 T}{\partial z^2} = \frac{1}{H^2} \frac{\partial^2 T}{\partial \sigma^2}. \quad (23)$$

10 In σ -coordinates, the central difference formulas for first partial derivatives at the upper and lower interfaces of layer k are

$$\begin{aligned} \left. \frac{\partial T}{\partial \sigma} \right|_{\sigma_k} &= \frac{T_k - T_{k-1}}{\tilde{\sigma}_k - \tilde{\sigma}_{k-1}}, \\ \left. \frac{\partial T}{\partial \sigma} \right|_{\sigma_{k+1}} &= \frac{T_{k+1} - T_k}{\tilde{\sigma}_{k+1} - \tilde{\sigma}_k}, \end{aligned} \quad (24)$$

where $\tilde{\sigma}_k$ is the value of σ at the midpoint of layer k , halfway between σ_k and σ_{k+1} . The second partial derivative, defined at the midpoint of layer k , is then given by

$$\left. \frac{\partial^2 T}{\partial \sigma^2} \right|_{\tilde{\sigma}_k} = \frac{\left. \frac{\partial T}{\partial \sigma} \right|_{\sigma_{k+1}} - \left. \frac{\partial T}{\partial \sigma} \right|_{\sigma_k}}{\sigma_{k+1} - \sigma_k} \quad (25)$$

15 By inserting Equation into Equation Eq. (24) into Eq. (25), we obtain the discrete form of the vertical diffusion term in Equation 22Eq. (22):

$$\begin{aligned} \left. \frac{\partial^2 T}{\partial \sigma^2} \right|_{\tilde{\sigma}_k} &= \frac{T_{k-1}}{(\tilde{\sigma}_k - \tilde{\sigma}_{k-1})(\sigma_{k+1} - \sigma_k)} - T_k \left(\frac{1}{(\tilde{\sigma}_k - \tilde{\sigma}_{k-1})(\sigma_{k+1} - \sigma_k)} + \frac{1}{(\tilde{\sigma}_{k+1} - \tilde{\sigma}_k)(\sigma_{k+1} - \sigma_k)} \right) \\ &\quad + \frac{T_{k+1}}{(\tilde{\sigma}_{k+1} - \tilde{\sigma}_k)(\sigma_{k+1} - \sigma_k)}. \end{aligned} \quad (26)$$

20 To simplify some expressions below, we define the following coefficients associated with the vertical temperature diffusion,

$$a_k = \frac{1}{(\tilde{\sigma}_k - \tilde{\sigma}_{k-1})(\sigma_{k+1} - \sigma_k)}, b_k = \frac{1}{(\tilde{\sigma}_{k+1} - \tilde{\sigma}_k)(\sigma_{k+1} - \sigma_k)}. \quad (27)$$

4.4.2 Viscous Dissipation

Viscous Dissipation

The source term from viscous dissipation in Equation-22Eq. (22) is given by the product of the stress and strain rate tensors:

25

$$\Phi = \sigma_{ij} \dot{\epsilon}_{ij} = \tau_{ij} \dot{\epsilon}_{ij}. \quad (28)$$

The change to deviatoric stress on the right-hand side of Equation-28Eq. (28) follows from terms related to the mean compressive stress (or pressure) dropping out due to incompressibility. Analogous to the effective strain rate given in Equation-6Eq.

(6), the effective-deviatoric stress is given by

$$\tau_e = \left(\frac{1}{2} \tau_{ij} \tau_{ij} \right)^{\frac{1}{2}}, \quad (29)$$

which can be combined with ~~Equations 28 and 6~~ Eqs. (28) and (6) to derive an expression for the viscous dissipation in terms
5 of effective deviatoric stress and strain,

$$\Phi = 2\tau_e \dot{\epsilon}_e \quad (30)$$

Finally, an analog to ~~Equation 4~~ Eq. (4) gives

$$\tau_e = 2\eta\mu_e \dot{\epsilon}_e, \quad (31)$$

which can be used to eliminate $\dot{\epsilon}_e$ in ~~Equation 30~~ Eq. (30) and arrive at an alternate expression for the dissipation based on only
10 two scalar quantities

$$\Phi = 4\eta\mu_e \dot{\epsilon}_e^2. \quad (32)$$

The viscous dissipation source term is computed within Albany-LI at MPAS cell vertices and then reconstructed at cell centers in MPAS.

For the SIA model, dissipation can be calculated in sigma coordinates as

$$15 \quad \Phi(\sigma) = \frac{\sigma g}{c} \frac{\partial \mathbf{u}}{\partial \sigma} \cdot \nabla_s \quad (33)$$

which can be combined with Eq. ~~17~~ (17) to make:

$$\Phi(\sigma) = -\frac{2\sigma g}{c\rho} (g\sigma\rho)^{n+1} (H|\nabla_s|)^{n+1} A \quad (34)$$

We calculate Φ on cell edges following the procedure described for Eq. ~~18~~ (18), and then interpolate Φ back to cell centers to solve Eq. ~~22~~ (22).

20 **4.4.2 Vertical Temperature Solution**

Vertical Temperature Solution

The vertical diffusion portion of ~~Equation 22~~ Eq. (22) is discretized according to

$$\frac{T_k^{n+1} - T_k^n}{\Delta t} = \frac{k}{\rho c H^2} (a_k T_{k-1}^{n+1} - (a_k + b_k) T_k^{n+1} + b_k T_{k+1}^{n+1}) + \frac{\Phi_k}{\rho c}, \quad (35)$$

where a_k and b_k are defined in Eq. (27), n is the current time level, and $n + 1$ is the new time level. Because the vertical
25 diffusion terms are evaluated at the new time level, the discretization is backward-Euler (fully implicit) in time.

The temperature T_0 at the upper boundary is set to $\min(T_{\text{air}}, 0)$, where the mean-annual surface air temperature T_{air} is a two-dimensional field specified from observations or climate model output.

At the lower boundary, for grounded ice there are three potential heat sources and sinks: (1) the diffusive flux from the bottom surface to the ice interior (positive up),

$$F_d^{\text{bot}} = \frac{k}{H} \frac{T_{nz} - T_{nz-1}}{1 - \tilde{\sigma}_{nz-1}}; \quad (36)$$

(2) the geothermal flux F_g , prescribed from a spatially variable input file (based on observations), and (3) the frictional heat flux associated with basal sliding,

$$5 \quad F_f = \tau_b \cdot \mathbf{u}_b, \quad (37)$$

where τ_b and \mathbf{u}_b are 2D vectors of basal shear stress and basal velocity, respectively, and the friction law from [Equation-15 Eq. \(15\)](#) becomes

$$F_f = \beta \sqrt{u_b^2 + v_b^2}. \quad (38)$$

If the basal temperature $T_{nz} < T_{\text{pmp}}$ (where T_{pmp} is the pressure melting point temperature), then the fluxes at the lower boundary must balance,

$$F_g + F_f = F_d^{\text{bot}}, \quad (39)$$

so that the energy supplied by geothermal heating and sliding friction is equal to the energy removed by vertical diffusion. If, on the other hand, $T_{nz} = T_{\text{pmp}}$, then the net flux is nonzero and is used to melt or freeze ice at the boundary:

$$M_b = \frac{F_g + F_f - F_d^{\text{bot}}}{\rho L}, \quad (40)$$

15 where M_b is the melt rate and L is the latent heat of melting. Melting generates basal water, which may either be stored at the bed locally, serve as a source for the basal hydrology model (See [Section Sect. 5.1](#)), or may simply be ignored. If basal water is present locally, T_{nz} is held at T_{pmp} .

For floating ice the basal boundary condition is simpler: T_{nz} is simply set to the freezing temperature T_f of seawater. Optionally, a melt rate can be prescribed at the lower surface.

20 Rarely, the solution for T may exceed T_{pmp} for a given internal layer. In this case, T is set to T_{pmp} , excess energy goes towards melting of ice internally, and the resulting melt is assumed to drain to the bed immediately.

If [Eq. 40](#) applies, we compute M_b and adjust the basal water depth. When the basal water goes to zero, T_{nz} is set to the temperature of the lowest layer (less than T_{pmp} at the bed) and flux boundary conditions apply during the next time step.

4.4.2 Horizontal Advection

25 [Temperature Advection](#)

Temperature advection in any individual layer k is treated using tracer advection, as in [Equation-20 Eq. \(20\)](#) above, where the ice temperature T_k is substituted for the generic tracer Q . After horizontal transport, the surface and basal mass balance

is applied to the top and bottom ice surfaces, respectively. Because layer transport and the application of mass balance terms results in an altered vertical-layer spacing with respect to σ coordinates, a vertical remapping scheme is applied [to provide the necessary vertical advection of temperature](#). This conservatively transfers ice volume and internal energy between adjacent layers while restoring σ layers to their initial distribution. Internal energy divided by mass gives the new layer temperatures.

5 Enthalpy Formulation

[The specific enthalpy \(internal energy\), \$E\$, in ice sheets and glaciers can be expressed as a combination of ice temperature \(\$T\$ \) and liquid water fraction \(water content; \$\omega\$ \) \(Aschwanden et al., 2012\)](#)

$$E = \begin{cases} c(T - T_{\text{ref}}), & E \leq E_{\text{pmp}} \\ E_{\text{pmp}} + \omega L, & E \geq E_{\text{pmp}} \end{cases} \quad (41)$$

[where \$T_{\text{ref}}\$ is the reference temperature, \$c\$ is the heat capacity of ice and \$L\$ is the latent heat of fusion, and \$E_{\text{pmp}}\$ is the specific enthalpy at the pressure-melting-point for different vertical locations \(\$T_{\text{pmp}}\(z\)\$ \), defined as](#)

$$E_{\text{pmp}} = c(T_{\text{pmp}}(z) - T_{\text{ref}}) \quad (42)$$

[The balance equation for enthalpy reads:](#)

$$\frac{\partial E}{\partial t} = \frac{\partial}{\partial x_i} \left(K \frac{\partial E}{\partial x_i} \right) - u_i \frac{\partial E}{\partial x_i} + \Phi \quad (43)$$

[where \$K\$ is the diffusivity of ice, defined differently in cold and temperate ice,](#)

$$K = \begin{cases} \frac{k}{\rho c}, & E \leq E_{\text{pmp}} \\ \frac{\nu}{\rho}, & E \geq E_{\text{pmp}} \end{cases} \quad (44)$$

[where \$\nu\$ is the water diffusivity in temperate ice, which is generally taken as an empirical small number due to a lack of its knowledge \(Greve and Blatter, 2016\).](#)

[The implementation of the enthalpy model follows that of the temperature model. Vertical diffusion is as described above but replacing \$T\$ with \$E\$. Viscous dissipation remains unchanged. Boundary conditions in the vertical enthalpy solution follow those applied for the temperature formulation above, but cast in terms of \$E\$. Advection is as described above for temperature but replacing \$T\$ with \$E\$. Verification of the enthalpy model is described below in Sect. 7.3.](#)

5 Additional Model Physics

~~Physical~~ [Additional physical](#) processes currently implemented in MALI are a mass-conserving subglacial hydrology model and a small number of basic schemes for iceberg calving. These are described in more detail below.

25 5.1 Subglacial Hydrology

Sliding of glaciers and ice sheets over their bed can increase ice velocity by orders of magnitude and is the primary control on ice flux to the oceans. The state of the subglacial hydrologic system is the primary control on sliding (Clarke, 2005; Cuffey and Paterson, 2010; Flowers, 2015), and ice sheet modelers have therefore emphasized subglacial hydrology and its effects on basal sliding as a critical missing piece of current ice sheet models (Little et al., 2007; Price et al., 2011).

MALI includes a mass-conserving model of subglacial hydrology that includes representations of any or all of water storage
5 in till, distributed drainage, and channelized drainage and is coupled to ice dynamics. The model is based on the model of Bueler and van Pelt (2015) with an additional component for channelized drainage and modified for MALI's unstructured horizontal grid. While the implementation follows closely that of Bueler and van Pelt (2015), the model and equations are summarized here along with a description of the features unique to the application in MALI.

5.1.1 Till

10 The simple till component represents local storage of water in subglacial till without horizontal transport within the till. Evolution of the effective water depth in till, W_{till} is therefore a balance of delivery of meltwater, m_b , to the till, drainage of water out of the till at rate C_d (mass leaving the subglacial hydrologic system, for example, to deep groundwater storage), and overflow to the distributed drainage system, γ :

$$\frac{\partial W_{till}}{\partial t} = \frac{m_b}{\rho_w} - C_d - \gamma_t. \quad (45)$$

15 In the model, meltwater (from either the bed or drained from the surface), is first delivered to the till component. Water in excess of the the maximum storage capacity of the till, W_{till}^{max} , is instantaneously transferred as a source term to the distributed drainage system through the γ_t term.

5.1.2 Distributed drainage

The distributed drainage component is implemented as a “macroporous sheet” that represents bulk flow through linked cavities
20 that form in the lee of bedrock bumps as the glacier slides over the bed (Flowers and Clarke, 2002; Hewitt, 2011; Flowers, 2015). Water flow in the system is driven by the gradient of the hydropotential, ϕ , defined as

$$\phi = \rho_w g z_b + P_w \quad (46)$$

where P_w is the water pressure in the distributed drainage system. A related variable, the ice effective pressure, N , is the difference between ice overburden pressure and water pressure in the distributed drainage system, P_w :

25 $N = \rho g H - P_w. \quad (47)$

The evolution of the area-averaged cavity space is a balance of opening of cavity space by the glacier sliding over bedrock bumps and closing through creep of the ice above. The model uses the commonly used assumption (e.g. Schoof, 2010; Hewitt,

2011; Werder et al., 2013; Hoffman and Price, 2014) that cavities always remain water filled (c.f. Schoof et al., 2012), so cavity space can be represented by the effective water depth in the ~~maeorporous~~ macroporous sheet, W :

$$\frac{\partial W}{\partial t} = c_s |\mathbf{u}_b| (W_r - W) - c_{cd} A_b N^3 W \quad (48)$$

where c_s is bed roughness parameter, W_r is the maximum bed bump height, c_{cd} is creep scaling parameter representing geometric and possibly other effects, and A_b is the ice flow parameter of the basal ice.

Water flow in the distributed drainage system, \mathbf{q} , is driven the hydropotential gradient and is described by a general power-law:

$$\mathbf{q} = -k_q W^{\alpha_1} |\nabla \phi|^{\alpha_2 - 2} \nabla \phi \quad (49)$$

where k_q is a conductivity coefficient. The α_1 and α_2 exponents can be adjusted so that Eq. 49 (49) reduces to commonly used water flow relations, such as Darcy flow, the Darcy-Weisbach relation, and the Manning equation.

5.1.3 Channelized drainage

10 The inclusion of channelized drainage in MALI is an extension to the model of Bueler and van Pelt (2015). The distributed drainage model ignores dissipative heating within the water, which in the real world leads to melting of the ice roof, and the formation of discrete, efficient channels melted into the ice above when the distributed discharge reaches a critical threshold (Schoof, 2010; Hewitt, 2011; Werder et al., 2013; Flowers, 2015). These channels can rapidly evacuate water from the distributed drainage system and lower water pressure, even under sustained meltwater input (Schoof, 2010; Hewitt, 2011; Werder
15 et al., 2013; Hoffman and Price, 2014; Flowers, 2015).

The implementation of channels follows the channel network models of Werder et al. (2013) and Hewitt (2013). The evolution of channel area, S , is a balance of opening and closing processes as in the distributed system, but in channels the opening mechanism is melting caused by dissipative heating of the ice above:

$$\frac{dS}{dt} = \frac{1}{\rho L} (\Xi - \Pi) - c_{cc} A_b N^3 S \quad (50)$$

20 where c_{cc} is the creep scaling parameter for channels.

The channel opening rate, the first term in Eq. 50 (50), is itself a balance of dissipation of potential energy, Ξ , and sensible heat change of water, Π , due to changes in the pressure-dependent melt temperature. Dissipation of potential energy includes energy produced by flow in both the channel itself and a small region of the distributed system along the channel:

$$\Xi = \left| \frac{d\phi}{ds} \mathbf{Q} \right| + \left| \frac{d\phi}{ds} \mathbf{q}_c l_c \right| \quad (51)$$

25 where s is the spatial coordinate along a channel segment, \mathbf{Q} is the flow rate in the channel, and \mathbf{q}_c is the flow in the distributed drainage system parallel to the channel within a distance l_c of the channel. The term adding the contribution of dissipative melting within the distributed drainage system near the channel is included to represent some of the energy that has been ignored from that process in the description of the distributed drainage system and allows channels to form even when channel

area is initially zero if discharge in the distributed drainage system is sufficient (Werder et al., 2013). The term representing sensible heat change of the water, Π , is necessitated by the assumption that the water always remains at the pressure-dependent melt temperature of the water. Changes in water pressure must therefore result in melting or freezing:

$$\Pi = -c_t c_w \rho_w (\mathbf{Q} + l_c \mathbf{q}_c) \frac{dP_w}{ds} \quad (52)$$

where c_t is the Clapeyron slope and c_w is the specific heat capacity of water. The pressure-dependent melt term can be disabled in the model.

Water flow in channels, \mathbf{Q} , mirrors Eq. 49(49):

$$\mathbf{Q} = -k_Q S^{\alpha_1} |\nabla \phi|^{\alpha_2 - 2} \nabla \phi \quad (53)$$

where k_Q is a conductivity coefficient for channels.

5.1.4 Drainage component coupling

Eqs. 45(45)-53(53) are coupled together by describing the drainage system with two equations, mass conservation and pressure evolution. Mass conservation of the subglacial drainage system is described by

$$\frac{\partial W}{\partial t} + \frac{\partial W_{till}}{\partial t} = -\nabla \cdot (\mathbf{V}_d W) + \nabla \cdot (D_d \nabla W) - \left[\frac{\partial S}{\partial t} + \frac{\partial Q}{\partial s} \right] \delta(x_c) + \frac{m_b}{\rho_w} \quad (54)$$

where V_d is water velocity in the distributed flow, D_d is the diffusivity of the distributed flow, and $\delta(x_c)$ is the Dirac delta function applied along the locations of the linear channels.

Combining Eq. 54(54) and Eq. 48(48) and making the simplification that cavities remain full at all times yields an equation for water pressure within the distributed drainage system, P_w :

$$\frac{\phi_0}{\rho_w g} \frac{\partial P_w}{\partial t} = -\nabla \cdot \mathbf{q} + c_s |\mathbf{u}_b| (W_r - W) - c_{cd} A_b N^3 W - \left[\frac{\partial S}{\partial t} + \frac{\partial Q}{\partial s} \right] \delta(x_c) + \frac{m_b}{\rho_w} - \frac{\partial W_{till}}{\partial t} \quad (55)$$

where ϕ_0 is an englacial porosity used to regularize the pressure equation. Following Bueler and van Pelt (2015), the porosity is only included in the pressure equation and is excluded from the mass conservation equation.

Any of the three drainage components (till, distributed drainage, channelized drainage) can be deactivated at runtime. The most common configuration currently used is to run with distributed drainage only.

5.1.5 Numerical implementation

The drainage system model is implemented using Finite Volume Methods on the unstructured grid used by MALI. State variables (W, W_{till}, S, P_w) are located at cell centers and velocities and fluxes ($\mathbf{q}, \mathbf{V}_d, \mathbf{Q}$) are calculated at edge midpoints. Channel segments exist along the lines joining neighboring cell centers. Eq. 54 Equation (54) is evaluated by summing tendencies from discrete fluxes into or out of each cell. First-order upwinding is used for advection. At land-terminating ice sheet boundaries, $P_w = 0$ is applied as the boundary condition. At marine-terminating ice sheet boundaries, the boundary condition is

$P_w = -\rho_w g z_b$, where ρ_w is ocean water density. The drainage model uses explicit forward Euler time-stepping using Eqs. 45, 54, 50, and 55 (45), (54), (50), and (55). This requires obeying advective and diffusive Courant–Friedrichs–Lewy (CFL) conditions for distributed drainage as described by Bueller and van Pelt (2015), as well as an additional advective CFL condition for channelized drainage, if it is active.

We acknowledge that the non-continuum implementation of channels can make the solution grid-dependent, and grid convergence may therefore not exist for many problems (Bueller and van Pelt, 2015). However, for realistic problems with irregular bed topography, we have found dominant channel location is controlled by topography, mitigating this issue.

5 5.1.6 Coupling to ice sheet model

The subglacial drainage model is coupled to the ice dynamics model through a basal friction law. Currently, the only option is a modified Weertman-style power law (Bindschadler, 1983; Hewitt, 2013) that adds a term for effective pressure to Eq. 15: (15):

$$\tau_{bi} = C_0 N u_{bi}^m, \quad i, j = 1, 2 \quad (56)$$

where C_0 is a friction parameter. Implementation of a Coulomb friction law (Schoof, 2005; Gagliardini et al., 2007) and a plastic till law (Tulaczyk et al., 2000; Bueller and van Pelt, 2015) are in development. When the drainage and ice dynamics components are run together, coupling of the systems allows the negative feedback described by (Hoffman and Price, 2014) where elevated water pressure increases ice sliding and increased sliding opens additional cavity space, lowering water pressure. The meltwater source term, m , is calculated by the thermal solver in MALI. Either or both of the ice dynamics and thermal solvers can be disabled, in which case the relevant coupling fields can be prescribed to the drainage model.

5.1.7 Verification and Real-world Application

To verify the implementation of the distributed drainage model, we use the nearly exact solution described by Bueller and van Pelt (2015). The problem configuration uses distributed drainage only on a two-dimensional, radially-symmetric ice sheet of radius 22.5 km with parabolic ice sheet thickness and a nontrivial sliding profile. Bueller and van Pelt (2015) showed that this configuration allows for nearly-exact reference values of W and P_w to be solved at steady state from an ordinary differential equation initial value problem with very high accuracy. We follow the test protocol of Bueller and van Pelt (2015) and initialize the model with the near-exact solution and then run the model forward for one month, after which we evaluate model error due to drift away from the expected solution. Performing this test with the MALI drainage model, we find error comparable to that found by Bueller and van Pelt (2015) and approximately first order convergence (Figure Fig. 3).

To check the model implementation of channels, we use comparisons to other, more mature drainage models through the Subglacial Hydrology Model Intercomparison Project (SHMIP)⁵. Steady state solutions of the drainage system effective pressure, water fluxes, and channel development for an idealized ice sheet with varying magnitudes of meltwater input (SHMIP experiment suites A and B) compared between MALI and other models of similar complexity (GlaDS, Elmer) are very similar.

⁵<https://shmip.bitbucket.io/>

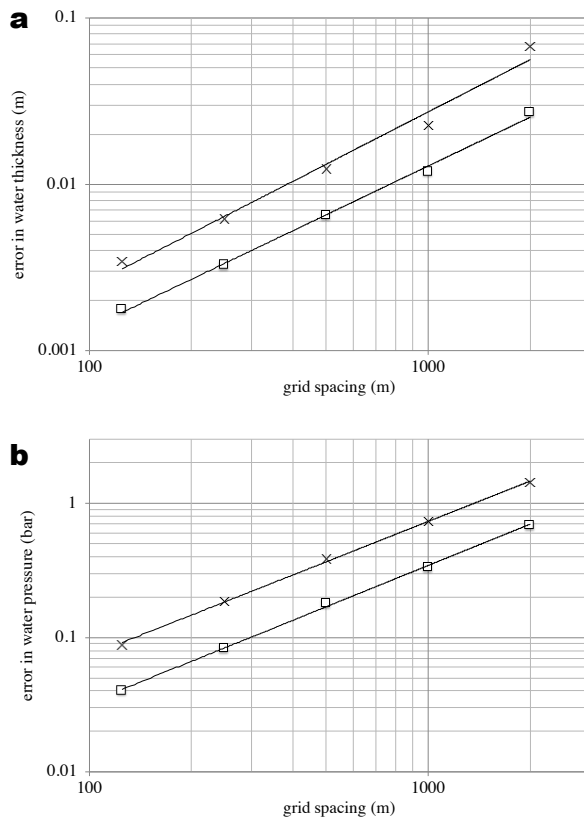


Figure 3. Error in subglacial hydrology model for radial test case with near-exact solution described by Bueler and van Pelt (2015) for different grid resolutions. a) Error in water thickness. \times symbols indicate maximum error, and squares indicate mean error. Average error in water thickness decays as $O(\Delta x^{0.97})$. b) Error in water pressure, with same symbols. Average error in water pressure decays as $O(\Delta x^{1.02})$.

To demonstrate a real-world application of the subglacial hydrology model, we perform a standalone subglacial hydrology simulation of the entire Antarctica Ice Sheet on a uniform 20 km resolution mesh (Figure Fig. 4). We force this simulation with basal sliding and basal melt rate after optimizing the first-order velocity solver optimized to surface velocity observations (Figure Fig. 4a). We then run the subglacial hydrology model to steady state with only distributed drainage active and using standard parameter values. Results show a and prescribed ice dynamic forcing. Though this mesh is too coarse to provide scientifically valid results, the modeled subglacial hydrologic state that is reasonable. For example, the subglacial water flux shows similar spatial patterns to the basal sliding speed (Figure 4), suggesting a basal friction law based on the subglacial hydrologic state could be configured to yield realistic ice velocity increases downglacier and is greatest in fast-flowing outlet glaciers and ice streams (Fig. 4b), as expected from theory and seen in other subglacial hydrology models (e.g., Le Brocq et al., 2009). Calibrating parameters for the subglacial hydrology model and a basal friction law and performing coupled subglacial-hydrology/ice-dynamics simulations are beyond the scope of this paper; we merely mean to demonstrate plausible behavior from the subglacial hydrology model for a realistic ice-sheet-scale problem.

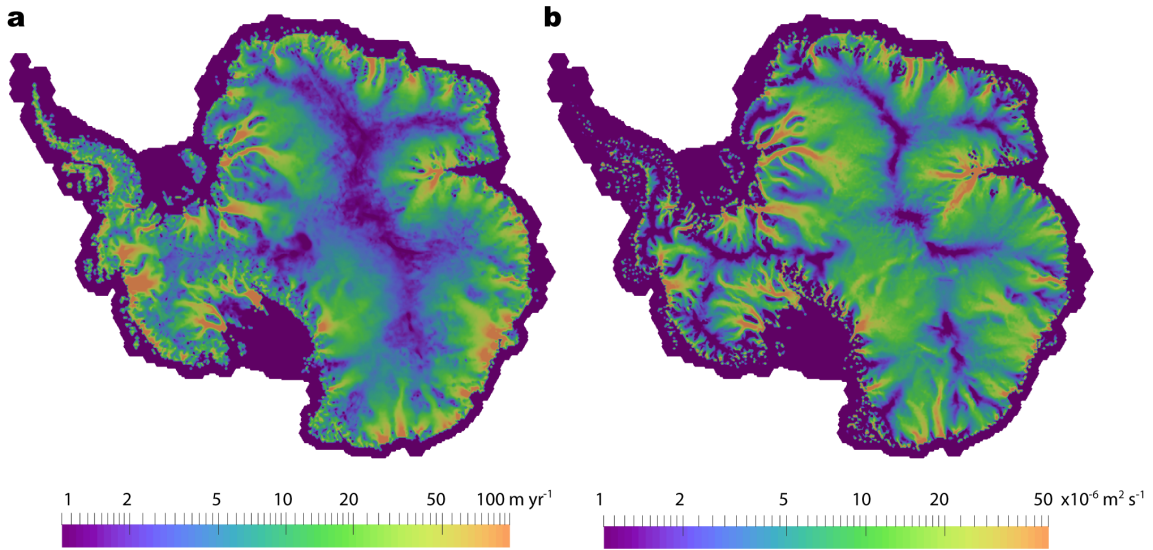


Figure 4. Demonstration of subglacial hydrology model capability using 20 km resolution simulation of Antarctica (too coarse resolution for scientific validity but sufficient for demonstrating model capabilities). Subglacial hydrology model results for 20 km resolution Antarctic Ice Sheet. a) Basal-Grounded basal ice speed calculated by the first-order velocity solver optimized to surface velocity observations. This field and the calculated basal melt are the forcings applied to the standalone subglacial hydrology model. b) Water flux in the distributed system calculated by the subglacial hydrology model at steady state. (Ice dynamics is prescribed.)

5.2 Iceberg Calving

MALI includes a few simple methods for removing ice from calving fronts during each model time step:

- 5 1. All floating ice is removed.
2. All floating ice in cells with an ocean bathymetry deeper than a specified threshold is removed.
3. All floating ice thinner than a specified threshold is removed.
4. The calving front is maintained at its initial location by adding or removing ice after thickness evolution is complete. This option-When ice is completely lost in a grid cell through evolution, it is replaced with a thin layer of ice (default value of 1 m). This does *not* conserve mass or energy but provides a simple way to maintain a realistic ice shelf extent (e.g., for model spinup).
- 10 5. “Eigencalving” scheme (Levermann et al., 2012). Calving front retreat rate, C_v , is proportional to the product of the principal strain rates (ϵ_1, ϵ_2) if they both are extensional:

$$C_v = K_2 \epsilon_1 \epsilon_2 \text{ for } \epsilon_1 > 0 \text{ and } \epsilon_2 > 0. \quad (57)$$

15 The eigencalving scheme can optionally also remove floating ice at the calving front with thickness below a specified thickness threshold (Feldmann and Levermann, 2015). In practice we find this is necessary to prevent formation of tortuous ice tongues and continuous, gradual extension of some ice shelves along the coast.

Ice that is eligible for calving can be removed immediately or fractionally each time step based on a calving timescale. To allow ice shelves to advance as well as retreat, we implement a simple parameterization for sub-grid motion of the calving front by forcing floating cells adjacent to open ocean to remain dynamically inactive until ice thickness there reaches 95% of the minimum thickness of all floating neighbors. This is an *ad hoc* alternative to methods tracking the calving front position at sub-grid scales (Albrecht et al., 2011; Bondzio et al., 2016). In [Section Sect. 8](#) below, we demonstrate the eigencalving scheme applied to a realistic Antarctic ice sheet simulation. More sophisticated calving schemes are currently under development.

To demonstrate a real-world application of the eigencalving parameterization, we perform a 1000 year spinup of Antarctica with evolving velocity, geometry, and temperature and active eigencalving (Fig. 5). For the purposes of this demonstration, we use the same uniform, 20 km resolution mesh used in Fig. 4, which is too coarse to accurately resolve grounding line dynamics (see Sect. sect:MISMIP3d), and therefore should not be interpreted as a scientifically realistic simulation. We use an initial internal ice temperature field from Van Liefferinge and Pattyn (2013), and the optimization capability described below in Sect. 6.1 (note that we optimize both β and γ in this case), along with observed surface velocities from Rignot et al. (2011) to obtain a realistic model initial state (Fig. 5a). For the 1000 year spinup, we apply steady forcing of present-day estimates for surface mass balance and submarine melting (Lenaerts et al. (2012) and Rignot et al. (2013), respectively). For temperature boundary conditions, we apply the steady geothermal flux field from Shapiro and Ritzwoller (2004) and the surface (2 meter) air temperature field from Lenaerts et al. (2012). We apply eigencalving calving with the K_2 parameter tuned individually for large ice shelves and a minimum calving front thickness threshold of 100 m. This spin-up, albeit much too short to come to full to equilibrium, allows ample time for migration of the calving front and grounding line and removes a substantial portion of the largest model transients. It demonstrates that a tuned eigencalving parameterization is capable of maintaining stable and realistic calving front positions in MALI during ice sheet evolution (Fig. 5a,b), consistent with its implementation in other models (Levermann et al., 2012; Feldmann and Levermann, 2015).

6 Additional Capabilities

6.1 Optimization

MALI includes an optimization capability through its coupling to the Albany-LI momentum-balance solver described in [Section Sect. 4.2.1](#). We provide a brief overview of this capability here, while referring to Perego et al. (2014) for a complete description of the governing equations, solution methods, and example applications. In general, our approaches are similar to those reported on for other advanced ice sheet modeling frameworks already described in the literature ([e.g., Goldberg and Sergienko, 2011; focus \(here\)](#)) ([e.g., Goldberg and Sergienko, 2011; Larour et al., 2012; Gagliardini et al., 2013; Brinkerhoff and Johnson, 2013; Cornford et](#)

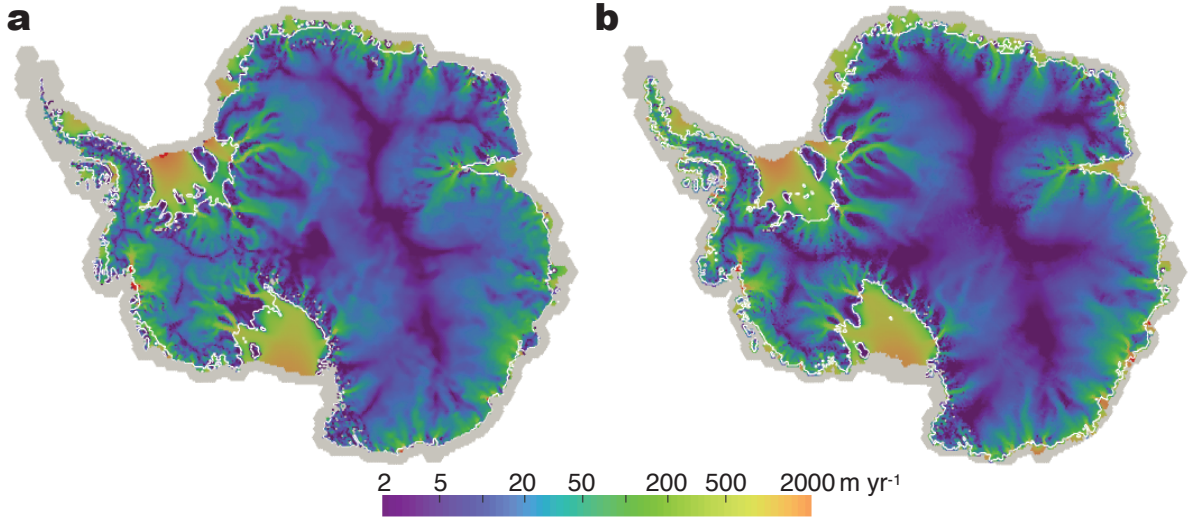


Figure 5. [Demonstration of eigencalving capability using using 20 km resolution simulation of Antarctica \(too coarse resolution for scientific validity but sufficient for demonstrating model capabilities\).](#) a) [Modeled ice extent and surface speed after optimization.](#) White contour line in each plot is the grounding line. Areas colored red exceed the maximum speed shown in the colorbar. Gray areas are ice-free regions of the computational domain. b) [Modeled ice extent and surface speed after 1000 years with evolving velocity, geometry, and temperature and active eigencalving, plotted as in a\).](#)

[we focus here](#) primarily on optimizing the model velocity field relative to observed surface velocities. Briefly, we consider the optimization functional

$$20 \quad \mathcal{J}(\beta, \gamma) = \int_{\Sigma} \frac{1}{2\sigma_u^2} |\mathbf{u}_s - \mathbf{u}_s^{\text{obs}}|^2 ds + \frac{c_\gamma}{2} \int_{\Sigma} |\gamma - 1|^2 ds + \mathcal{R}_\beta(\beta) + \mathcal{R}_\gamma(\gamma), \quad (58)$$

where the first term on the right-hand side (RHS) is a cost function associated with the misfit between modeled and observed surface velocities, the second term on the RHS is a cost function associated with the ice stiffness factor, γ (see [Equation 5](#)) [Eq. \(5\)](#), and the third and fourth terms on the RHS are Tikhonov regularization terms given by

$$\mathcal{R}_\beta(\beta) = \frac{\alpha_\beta}{2} \int_{\Sigma} |\nabla\beta|^2 ds, \quad \mathcal{R}_\gamma(\gamma) = \frac{\alpha_\gamma}{2} \int_{\Sigma} |\nabla\gamma|^2 ds. \quad (59)$$

25 σ_u is an estimate for the the standard deviation of the uncertainty in the observed ice surface velocities and the parameter c_γ controls how far the ice stiffness factor is allowed to stray from unity in order to improve the match to observed surface velocities. The regularization parameters $\alpha_\beta > 0$ and $\alpha_\gamma > 0$ control the tradeoff between a smooth β field and one with higher-frequency oscillations (that may capture more spatial detail at the risk of over-fitting the observations). The optimal values of α_β and α_γ can be chosen through a standard L-curve analysis⁶. The optimization problem is solved using the Limited

⁶We note that, while not done here, additional scalar parameters could be placed in front of $\mathcal{R}(\beta)$ and $\mathcal{R}(\gamma)$ in Equation 58 to differentially weight their contributions to the cost function

Memory BFGS method, as implemented in the Trilinos package ROL⁶, on the reduced-space problem. The functional gradient is computed using the adjoint method.

5 An example application of the optimization capability applied to a realistic, whole-ice-sheet problem is given below in [Section Sect. 8](#). Hoffman et al. (2018) present another application to the assimilation of surface velocity time series in Western Greenland.

We note that our optimization framework has been designed to be significantly more general than implied by [Equation-58 Eq. \(58\)](#). While not applied here, we are able to introduce additional observational-based constraints (e.g., mass balance terms) and optimize additional model variable (e.g., the ice thickness). These are necessary, for example, when targeting model initial conditions that are in quasi-equilibrium with some applied climate forcing. These capabilities are discussed in more detail in [Perego et al. \(2014\)](#).

6.2 Simulation Analysis

As with other climate model components built using the MPAS framework, MALI supports the development and application of “analysis members”, which allow for a wide range of run-time-generated simulation diagnostics and statistics output at user specified time intervals. Support tools included with the code release allow for the definition of any number or combination of pre-defined “geographic features” – points, lines (“transects”), or areas (“regions”) – of interest within an MPAS mesh. Features are defined using the standard GeoJSON format (Butler et al., 2016) and a large existing database of globally defined features is currently supported⁷. Python-based scripts are available for editing GeoJSON feature files, combining or splitting them, and using them to define their coverage within MPAS mesh files. Currently, MALI includes support for standard ice sheet model diagnostics (see Table 2) defined over the global domain (by default) and / or over specific ice sheet drainage basins and ice shelves (or their combination). Support for generating model output at points and along transects will be added in the future (e.g., vertical samples at ice core locations or along ground-penetrating radar profile lines). In [Section Sect. 8](#) below we demonstrate the analysis capability applied to an idealized simulation of the Antarctica ice sheet.

10 7 Model Verification and Benchmarks

MALI has been verified by a series of configurations that test different components of the code. In some cases analytic solutions are used, but other tests rely on intercomparison with community benchmarks that have been run previously by many different ice sheet models.

15 MALI currently includes 86 automated system regression tests that run the model for various problems with analytic solutions or community benchmarks. In addition to checking the accuracy of model answers, some of the tests check that model restarts give bit-for-bit exact answers with longer runs without restart. Some others check that the model gives bit-for-bit exact answers on different numbers of processors. All but 20 of the longer running tests are run every time new features are added to

⁶<https://trilinos.org/packages/rol/>

⁷https://github.com/MPAS-Dev/geometric_features

Table 2. Standard model diagnostics available for an arbitrary number of predefined geographic regions.

diagnostic	units
net ice area and volume	m^2, m^3
net grounded ice area and volume	m^2, m^3
net floating ice area and volume	m^2, m^3
net volume above floatation	m^3
minimum, maximum, and mean ice thickness	m
net surface mass balance	kg yr^{-1}
net basal mass balance	kg yr^{-1}
net basal mass balance for floating ice	kg yr^{-1}
net basal mass balance for grounded ice	kg yr^{-1}
average surface mass balance	m yr^{-1}
average basal mass balance for grounded ice	m yr^{-1}
average basal mass balance for floating ice	m yr^{-1}
net flux due to iceberg calving	kg yr^{-1}
net flux across grounding lines	kg yr^{-1}
maximum surface and basal velocity	m yr^{-1}

the code, and these tests each also include a check for answer changes. The verification and benchmark descriptions below are the most important examples from the larger test suite.

20 7.1 Halfar analytic solution

In (Halfar, 1981, 1983), Halfar described an analytic solution for the time-evolving geometry of a radially-symmetric, isothermal dome of ice on a flat bed with no accumulation flowing under the shallow ice approximation. This test provides an obvious test of the implementation of the shallow-ice velocity calculation and thickness evolution schemes in numerical ice sheet models and a way to assess model order of convergence (Bueler et al., 2005; Egholm and Nielsen, 2010). Bueler et al. (2005) showed the Halfar test is the zero accumulation member of a family of analytic solutions, but we apply the original Halfar test here.

In our application we use a dome following the analytic profile prescribed by Halfar (1983) with an initial radius of 21213.2 m and an initial height of 707.1 m. We run MALI with the shallow ice velocity solver and isothermal ice for 200 years and then compare the modeled ice thickness to the analytic solution at 200 years. We find the root mean square error in model thickness decreases as model grid spacing is decreased (Figure Fig. 6a). The order of convergence of ~ 0.78 , consistent with is somewhat lower than expected from the first-order approximation methods used for advection and time evolution.

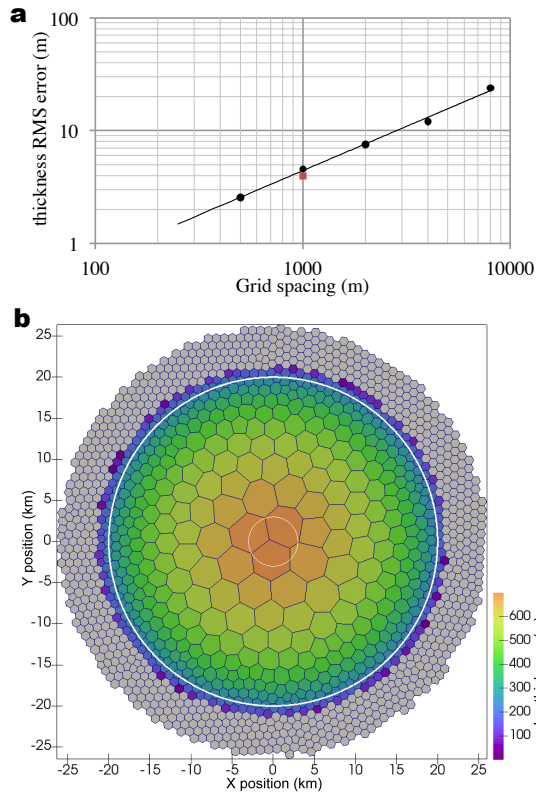


Figure 6. a) Root mean square error in ice thickness as a function of grid cell spacing for the Halfar dome after 200 years shown with black dots. The order of convergence is 0.78. The red square show the RMS thickness error for the variable resolution mesh shown in b) with 1000 m spacing around the margin. b) Mesh with resolution that varies linearly from 1000 m grid spacing beyond a radius of 20 km (thick white line) to 5000 m at a radius of 3 km (thin white line). The ice thickness initial condition for the Halfar problem is shown. This mesh requires 1265 cells for the 200 yr duration Halfar test case, while a uniform 1000 m resolution mesh requires 2323 cells.

We also use this test to assess the accuracy of simulations with variable resolution. We perform an additional run of the Halfar test using a variable resolution mesh that has 1000 m cell spacing beyond a radius of 20 km that transitions to 5000 m cell spacing at a radius of 3 km (Figure Fig. 6b), generated with the JIGSAW(GEO) mesh generation tool (Engwirda, 2017a, b). Root mean square error in thickness for this simulation is similar to that for the uniform 1000 m resolution case (Figure Fig. 6a), providing confidence in the advection scheme applied to variable resolution meshes. The variable resolution mesh has about half the cells of the 1000 m uniform resolution mesh.

5 7.2 EISMINT

European Ice Sheet Modeling Initiative (EISMINT) model intercomparison consisted of two phases designed to provide community benchmarks for shallow-ice models. Both phases included experiments that grow a radially symmetric ice sheet on a

flat bed to steady state with a prescribed surface mass balance. The EISMINT intercomparisons test ice geometry evolution and ice temperature evolution with a variety of forcings. Bueler et al. (2007) describe an alternative tool for testing thermo-
10 mechanical shallow-ice models with artificially constructed exact solutions. While their approach has the notable advantage of providing exact solutions, we have not implemented the non-physical three-dimensional compensatory heat source necessary for its implementation. While we hope to use the verification of Bueler et al. (2007) in the future, for now we use the EISMINT intercomparison suites to test our implementation of thermal evolution and thermomechanical coupling.

The first phase (Huybrechts et al., 1996) (sometimes called EISMINT1) prescribes evolving ice geometry and temperature,
5 but the flow rate parameter A is set to a prescribed value so there is no thermomechanical coupling. We have conducted the Moving Margin experiment with steady surface mass balance and surface temperature forcing. Following the specifications described by Huybrechts et al. (1996), we run the ice sheet to steady state over 200 ka. We use the grid spacing prescribed by Huybrechts et al. (1996) (50 km), but due to the uniform Voronoi grid of hexagons we employ, we have a slightly larger number of grid cells in our mesh (1080 vs 961). At the end of the simulation, the modeled ice thickness at the center of the dome by
10 MALI is 2976.7 m, compared with a mean of 2978.0 ± 19.3 m for the ten three-dimensional models reported by Huybrechts et al. (1996). MALI achieves similar good agreement for basal homologous temperature at the center of the dome with a value of -13.09° C, compared with $-13.34 \pm 0.56^\circ$ C for the six models that reported temperature in Huybrechts et al. (1996).

The second phase of EISMINT (Payne et al., 2000) (sometimes called EISMINT2), uses the basic configuration of the EISMINT1 Moving Margin experiment but activates thermomechanical coupling through Eq. 8(8). Two experiments (A and
15 F) grow an ice sheet to steady state over 200 ka from an initial condition of no ice, but with different air temperature boundary conditions. Additional experiments use the steady state solution from experiment A (the warmer air temperature case) as the initial condition to perturbations in the surface air temperature or surface mass balance forcings (experiments B, C, and D). Because these experiments are thermomechanically coupled, they test model ice dynamics and thickness and temperature evolution, as well as their coupling. There is no analytic solution to these experiments, but ten different models contributed results, yielding a range of behavior against which to compare additional models. Here we present MALI results for the five such experiments that prescribe no basal sliding (experiments A, B, C, D, F). Our tests use the same grid spacing as prescribed
5 by Payne et al. (2000) (25 km), again with a larger number of grid cells in our mesh (4464 vs 3721).

Payne et al. (2000) report results for five basic glaciological quantities calculated by ten different models, which we have summarized here with the corresponding values calculated by MALI (Table 3). All MALI results fall within the range of previously reported values, except for volume change and divide thickness change in experiment C and melt fraction change in experiment D. However, these discrepancies are close to the range of results reported by Payne et al. (2000), and we consider
10 temperature evolution and thermomechanical coupling within MALI to be consistent with community models, particularly given the difference in model grid and thickness evolution scheme.

A long-studied feature of the EISMINT2 intercomparison is the cold “spokes” that appear in the basal temperature field of all models in Experiment F and, for some models, experiment A (Payne et al., 2000; Saito et al., 2006; Bueler et al., 2007; Brinkerhoff and Johnson, 2013). MALI with shallow-ice velocity exhibits cold spokes for experiment F but not experiment
15 A (Figure-Fig. 7). Bueler et al. (2007) argue these spokes are a numerical instability that develops when the derivative of

Table 3. EISMINT2 results for MALI shallow-ice model. For each experiment, model name “EISMINT2” refers to mean and range of models reported in Payne et al. (2000), where we assume the range reported in by Payne et al. (2000) is symmetric about the mean. For experiments B, C, and D reported values are the change from experiment A results. MALI results that lie outside the range of values in Payne et al. (2000) are italicized.

Experiment	Model	Volume 10^6 km^3	Area 10^6 km^2	Melt fraction	Divide thickness m	Divide basal temperature K
A	EISMINT2	2.128±0.0725	1.034±0.043	0.718±0.145	3688.3±48.3	255.6±1.4
	MALI	2.097	1.030	0.637	3671.8	255.2
Experiment	Model	% change	% change	% change	% change	change (K)
B	EISMINT2	-2.589±0.4735	0.0±0.0	11.836±9.3345	-4.9±0.658	4.6±0.259
	MALI	-2.258	0.0	16.832	-5.013	4.6
C	EISMINT2	-28.505±0.602	-19.515±1.777	-27.806±15.6855	-12.9±0.7505	3.7±0.3075
	MALI	-27.529	-20.179	-35.521	<i>-12.049</i>	3.8
D	EISMINT2	-12.085±0.618	-9.489±1.63	-1.613±2.8725	-2.2±0.266	-0.2±0.03
	MALI	-12.265	-9.459	<i>-5.216</i>	-2.092	-0.2

the strain heating term is large. Brinkerhoff and Johnson (2013) demonstrate that the model VarGlaS avoids the formation of these cold spokes. However, that model differs from previously analyzed models in several ways: it solves a three-dimensional, advective-diffusive description of an enthalpy formulation for energy conservation; it uses the Finite Element Method on unstructured meshes; conservation of momentum and energy are iterated on until they are consistent (rather than lagging energy and momentum solutions as in most other models). At present, it is unclear which combination of those features is responsible for preventing the formation of the cold spokes.

7.3 [Enthalpy benchmarks](#)

[Kleiner et al. \(2015\)](#) present a set of benchmark experiments to test numerical models of ice sheet enthalpy evolution. The experiments use designs that allow comparison to analytic solutions. Here we only give very brief descriptions of the enthalpy benchmark experiments. Details can be found in [Kleiner et al. \(2015\)](#). The benchmark includes two different experiments for testing the capability of transient behavior and horizontal and vertical advection of the enthalpy model. Both experiments use a parallel-sided ice slab with constant thickness and inclination and prescribed ice dynamics decoupled from thermodynamics, resulting in effectively one-dimensional, vertical experiments.

7.3.1 [Experiment A](#)

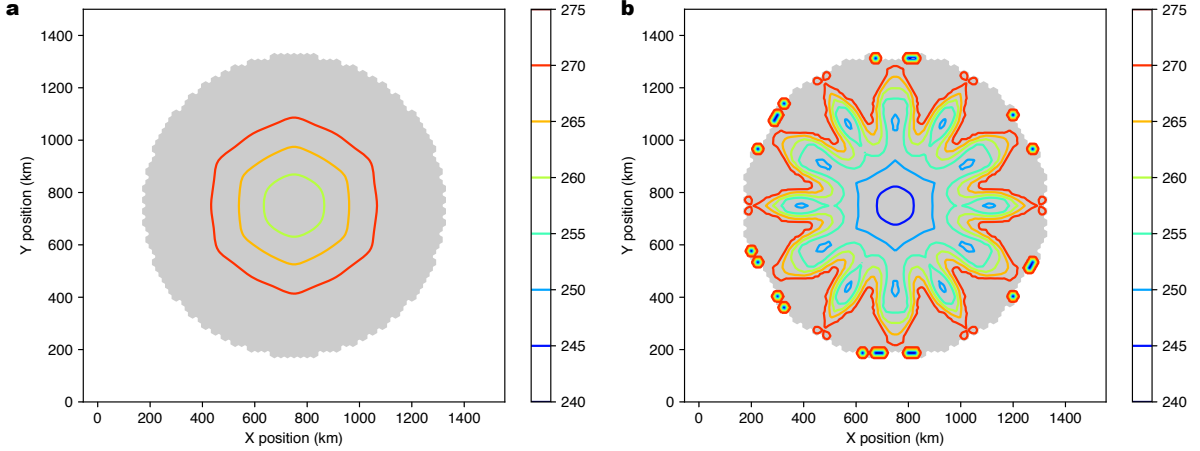


Figure 7. a) Basal homologous temperature (K) for EISMINT2 Experiment A. b) Same for Experiment F. Figures are plotted following Payne et al. (2000).

Both heat advection and frictional heating are neglected in this experiment. Heat diffusion is the only controlling process in the re-distribution of enthalpy, i.e., the enthalpy balance equation simplifies to

$$\frac{\partial E}{\partial t} = \frac{\partial}{\partial z} \left(K \frac{\partial E}{\partial z} \right) \quad (60)$$

- 5 To test the transient ability of the enthalpy model, this experiment was designed to run for a time period of 300 ka. During the run, the geothermal heat flux (G) is constant over time, but the surface temperature (upper dirichlet boundary condition) changes in 3 different time intervals.

$$T_s = \begin{cases} -30^\circ\text{C}, & 0 \leq t \leq 100ka \\ -5^\circ\text{C}, & 100 \leq t \leq 150ka^8 \\ -30^\circ\text{C}, & 150 \leq t \leq 300ka \end{cases} \quad (61)$$

- 10 During the time period of 100 – 150 ka, when the surface temperature rises to -5°C , the glacier base becomes temperate and the basal boundary condition changes from Neumann-type ($\partial T/\partial z = G$) to Dirichlet-type ($T = T_{mfp}$). Then the surface temperature switches back to its initial value, -30°C , for testing the reversibility of the enthalpy model. In this experiment the basal water content produced by basal melting is allowed to freely accumulate in order to test the basal melt rate calculation.

- 15 From Fig. 8a, we can clearly see that the basal temperature becomes steady (-10°C) at around 50 ka, and then starts to rise to the pressure melting point after the prescribed change in surface temperature to -5°C at 100 ka. The model then keeps

⁸ $T_s = -5^\circ\text{C}$ from pers. comm. T. Kleiner compared to $T = -10^\circ\text{C}$ incorrectly stated in Kleiner et al. (2015)

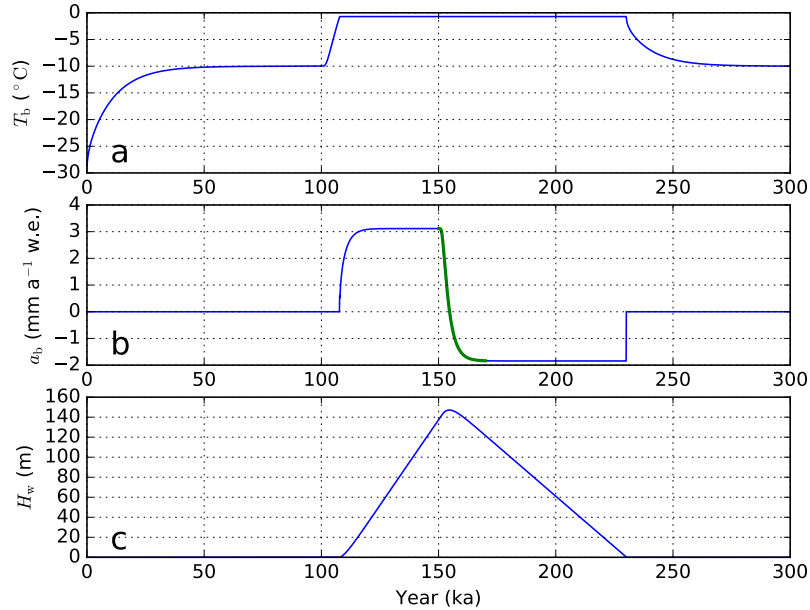


Figure 8. The result of a) basal temperature (T_b), b) basal melt rate (a_b), and c) basal water thickness (H_w) for enthalpy benchmark experiment A. The green line from 150 ka to 170 ka in (b) indicates the analytical results (overlapped with model results).

the glacier base temperature until 225 ka, the prescribed change in the surface temperature boundary condition back to -30°C . The subglacial water layer starts to accumulate from around 110 ka when the basal ice starts to melt (Fig. 8b) and reaches a maximum layer thickness of around 133 m at around 155 ka (Fig. 8c). After the surface gets colder again, it gradually decreases and disappears completely at 225 ka. From the comparison with the analytical basal melt rate result during 150 – 170 ka (green line), we can clearly see that the enthalpy model of MALI captures the features of basal melting (water content production).

7.3.2 Experiment B

In experiment B, a 200 m thick, 4° downward inclined slab is used as the model domain. A particular objective of this experiment is to test the model ability of finding the correct position of the cold-temperate ice transition interface. The horizontal velocity is given as an analytical (shallow-ice approximation type) expression, and the vertical velocity is set to be constant (i.e., thermo-mechanically decoupled). In addition, the geothermal heat flux is set to be zero during the model run so that the englacial strain heating is the only energy source in the enthalpy balance equation. Initialized from an isothermal field (-1.5°C), our model spins up for several thousand years with a constant surface temperature of -3°C until a steady-state temperate ice layer thickness is achieved (Figure 9).

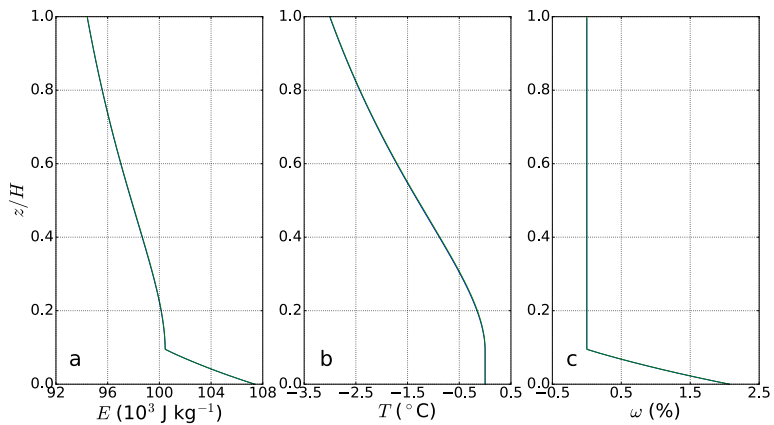


Figure 9. The vertical distribution of a) enthalpy (E), b) temperature (T), and c) water content (ω) for enthalpy benchmark experiment B. The green lines indicate the analytical results (overlapped with model results)

10 From Figure 2 we can see that our enthalpy model can predict very close enthalpy, temperature and basal water content results (blue lines), compared to analytical solutions (green lines; almost overlapped). Using a uniform vertical resolution of 1 m, MALI simulates a temperate ice layer thickness of 19 m, nearly identical to the analytical output. This experiment also shows that MALI can accurately compute the englacial enthalpy distribution in the presences of non-zero horizontal ice advection.

15 **7.4 ISMIP-HOM**

The Ice Sheet Model Intercomparison Project-Higher Order Models (ISMIP-HOM) is a set of community benchmark experiments for testing higher-order approximations of ice dynamics (Pattyn et al., 2008). Tezaur et al. (2015a) describe results from the Albany-LI velocity solver for ISMIP-HOM experiments A (flow over a bumpy bed) and C (ice stream flow). For all configurations of both tests, Albany-LI results were within one standard deviation of the mean of first-order models presented in Pattyn et al. (2008), and showed excellent agreement with the similar first-order model formulation of Perego et al. (2012). These tests only require a single diagnostic solve of velocity, and thus results through MALI match those of the standalone Albany-LI code it is using.

7.5 MISIMP3d

25 The Marine Ice Sheet Model Intercomparison Project-3d (MISIMP3d) is a community benchmark experiment testing ground-ling line migration of marine ice sheets and includes nontrivial effects in all three dimensions (Pattyn et al., 2013). The experiments use a rectangular domain that is 800 km long in the longitudinal direction and 50 km wide in the transverse direction, with the transverse direction making up half of a symmetric glacier. The bedrock forms a sloping plane below sea level. The

first phase of the experiment (Stnd) is to build a steady state ice sheet from a spatially uniform positive surface mass balance, with a prescribed flow rate factor A (no temperature calculation or coupling) and prescribed basal friction for a nonlinear basal friction law. A marine ice sheet forms with an unbuttressed floating ice shelf that terminates at a fixed ice front at the edge of the domain. From this steady state, the P75R perturbation experiment reduces basal friction by a maximum of 75% across a Gaussian ellipse centered where the Stnd grounding line position crosses the symmetry axis. The perturbation is applied for 100 years, resulting in a curved grounding line that is advanced along the symmetry axis. After the completion of P75S, a reversibility experiment named P75R removes the basal friction perturbation and allows the ice sheet to relax back towards the Stnd state.

Pattyn et al. (2013) report results from 33 models of varying complexity and applied at resolution ranging from 0.1 to 20 km. Participating models used depth-integrated shallow-shelf or L1L1/L2L2 approximations, hybrid shallow-ice/shallow-shelf approximation, or the complete Stokes equations; there were no three-dimensional first-order approximation models included. This relatively simple experiment revealed a number of key features necessary to accurately model even a simple marine ice sheet. Insufficient grid resolution prevented reversibility of the steady state grounding line position after experiments P75S and P75R. Reversibility required grid resolution well below 1 km without a subgrid parameterization of grounding line position, and grids a couple times coarser with a grounding line parameterization (Pattyn et al., 2013; Gladstone et al., 2010). The steady state grounding line position in the Stnd experiment was dependent on the stress approximation employed, with Stokes model calculating grounding lines the farthest upstream and models that simplify or eliminate vertical shearing (e.g., shallow shelf) having grounding lines farther downstream, by up to 100 km. With these features resolved, numerical error due to grounding line motion is smaller than errors due to parameter uncertainty (Pattyn et al., 2013).

We find MALI using the Albany-LI first-order velocity solver is able to resolve the MISMIP3d experiments satisfactorily compared to the Pattyn et al. (2013) benchmark results when using a grid resolution of 500 m with grounding line parameterization. Results at 1 km resolution with grounding line parameterization are close to fully resolved. We first assess grid convergence by comparing the position of the steady state grounding line in the Stnd experiment for a range of resolutions against our highest resolution configuration of 250 m (Figure Fig. 10). ~~Without a~~ With the grounding line parameterization, the grounding line ~~position appears unconverged, but with~~ positions at 500 m and 250 m resolution are very similar (differing by less than the grid resolution), whereas without the grounding line parameterization ~~, grid convergence occurs at 500 m resolution, the grounding line positions in our two highest resolution simulations still differ by 6 km.~~ The converged grounding line position for the Stnd experiment with MALI is ~~534 km. This represents the first results published for a~~ 533 km. The grounding line position from our three-dimensional, first-order stress approximation ~~that we are aware of, and this grounding line position model~~ falls between that of the L1L2 and Stokes models reported by Pattyn et al. (2013), consistent with the intermediate level of approximation of our model. The dissertation work by Leguy (2015) reported similar results for the Blatter-Pattyn velocity solver ~~with grounding line parameterization~~ in the Community Ice Sheet Model (Lipscomb et al., 2018) ~~when using a subgrid grounding line parameterization.~~

Reversibility of the P75S and P75R experiments shows the same grid resolution requirement of 500 m, while the 1 km simulation with grounding line parameterization is close to reversible (Figure Fig. 11). Our highest resolution 250 m simulation

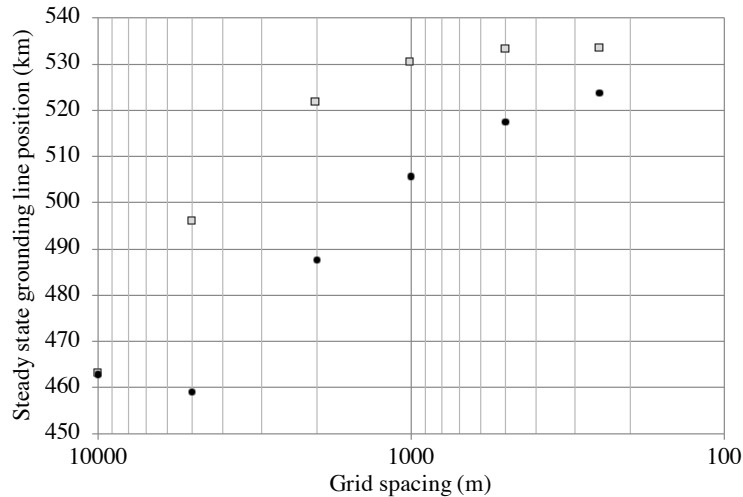


Figure 10. Grid resolution convergence for MISMIP3d Stnd experiment with (gray squares) and without (black circles) grounding line parameterization.

without grounding line parameterization does show reversibility at the end of P75R (not shown), but the results differ somewhat from the runs with grounding line parameterization due to the differing starting position determined from the Stnd experiment. Thus for marine ice sheets with similar configuration to the MISMIP3d test, we recommend using MALI with the grounding line parameterization and a resolution of 1 km or less.

The transient results using the MALI three-dimensional first-order stress balance look most similar to those of the “SCO6” L1L2 model presented by Pattyn et al. (2013) in that it takes about 50 years for the grounding line to reach its most advanced position during P75S. In contrast, the Stokes models took notably longer and the models with reduced or missing representation of membrane stresses reached their furthest advance within the first couple decades (Pattyn et al., 2013).

In addition to MISMIP3d, we have used MALI to perform the MISMIP+ experiments (Asay-Davis et al., 2016). These results are included in the MISMIP+ results paper in preparation and not shown here.

8 Realistic Application: Antarctic Ice Sheet Spinup Perturbation Experiment

To demonstrate a large scale, semi-realistic ice sheet simulation that exercises many of the model capabilities discussed above, we ~~apply MALI to the InitMIP-Antarctica experiments~~⁹ describe MALI results from the initMIP-Antarctica experiments. The overall goal of InitMIP-initMIP is to explore the impact of different ice sheet model initialization approaches on simulated ice sheet evolution. Following model initialization – via spin-up, optimization approaches, or both – three 100 year forward model experiments are conducted in order to examine model response to (1) an unforced control run, (2) an idealized surface mass balance perturbation, and (3) an idealized sub-ice shelf melt perturbation. Here we show results from simulations 1 and

⁹Additional realistic applications of MALI to Greenland simulations are discussed in Shannon et al. (2013) and Edwards et al. (2014b).

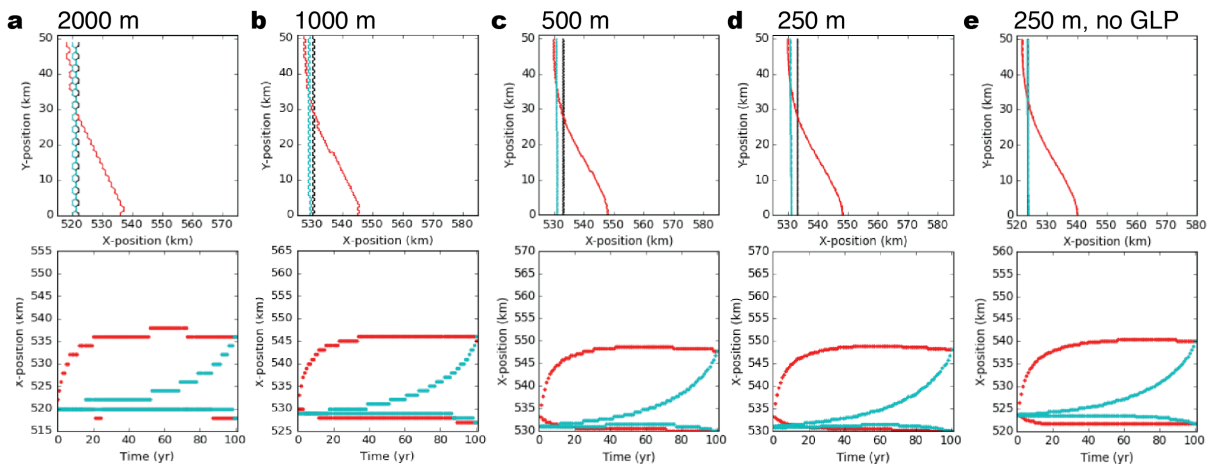


Figure 11. Results of the MISMIP3d P75R and P75S experiments from MALI at increasing grid resolution: a) 2000 m, b) 1000 m, c) 500 m, d) 250 m. Results for 250 m without grounding line parameterization (e) are also shown for reference. Plots follow conventions of Figures 5 and 6 in Pattyn et al. (2013). Upper plot in each subplot shows steady state grounding line positions for steady-state spin-up (black), P75S (red), and P75R (blue) experiments. Lower plot in each subplot shows grounding line position with time for P75R (red) and P75S (blue) at $y=0$ km (top curves) and $y=50$ km (bottom curves). 500 m and 250 m results are nearly identical. 250 m results without grounding line parameterization are intermediate of those at 1000 m and 2000 m resolution with grounding line parameterization.

[3 for brevity.](#) Additional details of the experiments are described in Seroussi and others (2018)⁹ and additional details on the broader Ice Sheet Model Intercomparison Project (ISMIP6, part of CMIP6) that [InitMIP-initMIP](#) is a part of are described in Nowicki et al. (2016) and Goelzer and others (2018). [Additional realistic applications of earlier versions of MALI to Greenland simulations are discussed in Shannon et al. \(2013\) and Edwards et al. \(2014b\).](#)

The Antarctica model configuration we ~~demonstrate here uses a~~ [use here has 2 km resolution near grounding lines and in regions of marine \(below sea level\) bedrock in West Antarctica and regions of East Antarctica where present day ice thickness is less than 2500 m to ensure that the grounding line remains in the fine resolution region even under full retreat of West Antarctica and large parts of East Antarctica. The resolution then slowly coarsens to 20 km ~~uniform resolution mesh, an initial internal ice temperature field from Van Liefferinge and Pattyn \(2013\), and the optimization capability described above in Section 6.1 \(note that we optimize both elsewhere, but maintaining no greater than 6 km resolution on ice shelves \(Fig. 12a\).~~ The 2 km resolution in regions of potential grounding line migration was chosen as a balance between acceptable accuracy \(Sect. 7.5\) and computational cost. The mesh has 1,642,490 horizontal grid cells and uses 10 vertical layers, which are finest near the bed \(4% of total thickness\) and coarsen towards the surface \(23% of total thickness\).](#)

[Basal friction \(\$\beta\$ and \$\gamma\$ in this case\), along with\) fields are optimized as described above in Sect. 6.1 to best allow the model to match observed surface velocities from Rignot et al. \(2011\) to obtain a realistic model initial state \(Figure ??a, b\). Then, Calving position is fixed as described in option 2 in Sect. 5.2. To avoid energy conservation issues related](#)

⁹<http://www.climate-cryosphere.org/wiki/index.php?title=InitMIP-Antarctica>

to maintaining a fixed calving front position, we use a steady internal ice temperature field from Van Liefferinge and Pattyn (2013).
30 Over the short timescales investigated here (200 yr), we expect the assumption of fixed ice temperature to be a minor uncertainty
(Seroussi et al., 2013). From this initial state, we perform a 1000-yr spin-up 99 yr relaxation with evolving velocity, geometry,
and temperature, and geometry (Fig. 12), applying steady forcing of present-day estimates for surface mass balance and subma-
rine melting (Lenaerts et al. (2012) and Rignot et al. (2013), respectively) (Figure ??e,d). For temperature boundary conditions,
we apply the steady geothermal flux field from Shapiro and Ritzwoller (2004) and the surface (2-meter) air temperature field
35 from Lenaerts et al. (2012). We use the “eigencalving” calving option (discussed in Section 5.2) with the K_2 parameter tuned
by ice shelf and include a minimum calving front thickness threshold of 100 m. This standard spin-up, albeit much too short
to come to full equilibrium. This relaxation removes a substantial portion of the largest model transients (Figure ??d) and
retains an ice sheet extent and ice speed field qualitatively very similar to the observations (Figure ??a,e) (Fig. 12c,d). The
model state at this point serves as our final initial condition from which we run the control and sub-ice shelf melt perturbation
5 experiments mentioned above. Simulation outputs for these two experiments are shown in Figure 14.

In Figure 14 we use the online analysis capability discussed above in Section 6.2 to present some of the broad features of
the initMIP. In this initial state, the volume above floatation mass loss for the entire Antarctic Ice Sheet is 602 Gt yr^{-1} . This is
substantially larger than the current best estimate for Antarctic Ice Sheet mass loss of 109 Gt yr^{-1} for the 1992–2017 period,
as well as the larger value of 219 Gt yr^{-1} for the 2012–2017 period (IMBIE team, 2018) and results largely from retreat and
5 thinning in the Thwaites Glacier basin during the 99 yrs of relaxation (Fig. 12d).

The control simulation lost mass above floatation equivalent to a 167 mm sea level rise after 100 yr. The sub-ice shelf melt
perturbation experiment. The left column of Figure 14 shows area-integrated time series of sub-ice shelf melt flux, grounding
line flux, calving flux (left column; Gt yr^{-1}), and yielded an equivalent of 250 mm sea level rise, an 83 mm sea level rise addition
beyond the control run. During the control run, the Ross and Filchner-Ronne ice shelves experienced a modest slowdown with
10 some acceleration near the grounding line (Fig. 13a). Amery and Thwaites ice shelves exhibited significant speedup, with the
acceleration propagating inland from Thwaites. Thickness changes in the control run are modest with pronounced thinning
occurring only on Thwaites Glacier and inland of Cook Ice Shelf (Fig. 13b). The only noticeable grounding line changes in the
control run are a slight retreat at Thwaites Glacier and a slight advance at Princess Ragnhild Coast in Queen Maud Land. In
the right column shows volume above floatation (VAF), grounded area change, and floating area change (right column; percent
15 change) measured over a few specific drainage basins and their respective ice shelves. As expected, for the sub-ice shelf melt
perturbation experiments the sub-ice shelf melt flux time series show an approximately linear increase from the start of the
simulation up to around 40 years, at which point it plateaus for most ice sheet/shelf systems or, in the case of Pine Island /
Thwaites (PT), rapidly drops off. This rapid drop in sub-shelf melt for PT can be explained as the result of a rapid loss in
ice shelf area, as supported by the plot showing loss of the majority of floating ice for the PT system. As expected due to a
20 thinning ice shelf leading to reduced buttressing, the PT system initially shows an increase in flux across the grounding line
. A seemingly counterintuitive result for the PT system is the subsequent rapid decrease in grounding line flux after year 31,
which closer examination reveals is due to experiment there is much more pronounced speedup at Thwaites and Pine Island
glaciers, propagating far inland (Fig. 13c), with corresponding ice thinning up to 1000 m (Fig. 13d). All other ice shelves show

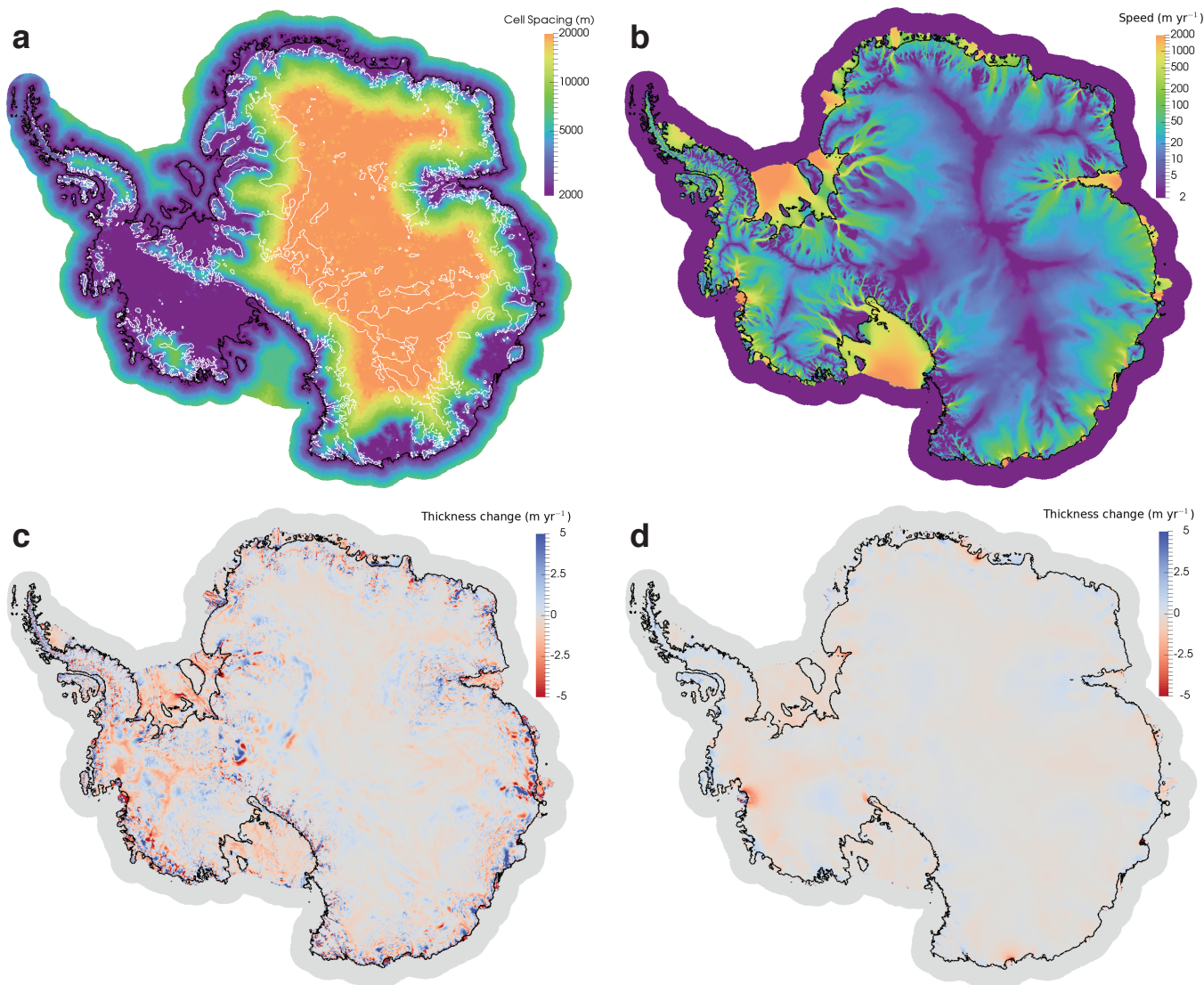


Figure 12. (a) Mesh resolution used for initMIP simulations. Black line is the grounding line at the end of the relaxation and white line is the bed topography contour at sea level. (b) Modeled ice surface speed at end of relaxation. Black line is the grounding line. (c) Thickness rate of change at start of relaxation. (d) Thickness rate of change at end of relaxation (99 yr).

25 increased thinning or reduced thickening relative to the control run, consistent with the application of increased ice shelf basal melt rates. The regions of Ross and Filchner-Ronne ice shelves near the grounding line experience greater ice speedup than in the control run and some associated grounding line retreat into an area of relatively less slippery bed, whereby velocities at the grounding line slow down by ~ 50 – 100% . For the Ross and Filchner-Ronne (FR) systems, we see a more muted decrease in grounded area and VAF as a result of the melt perturbation, which is anticipated as the prescribed melt rate perturbations

30 applied to these systems is more than four times smaller. An additional counterintuitive result observed for the Amery system is that, despite a substantial loss of floating ice area (and to a much lesser extent, grounded ice area), the overall VAF for this system *increases* following the melt perturbation, relative to the control run. A detailed examination indicates that the overall floating and grounded ice area loss for this system occurs in smaller, isolated systems of this region rather than within the main Amery ice shelf. The increase in volume above floatation in the run with increased basal melting relative to the control run can be explained for the same reason as in PT—grounding line retreat into a stickier bed leads to decreased but little additional ice thinning. The Totten Glacier region exhibits significant ice speedup and thinning in the sub-ice shelf melt perturbation experiment.

5 To summarize the disparate regional behavior seen in the experiments, simulation statistics for selected drainage basins for the control and sub-ice shelf melt perturbation experiments are shown in Fig. 14 using the analysis capability described in Sect. 6.2. The applied basal melt forcing for selected basins can be seen in Fig. 14a. The prescribed sub-ice shelf melt perturbation according to the initMIP protocol increases for 40 years and then remains constant. The continued growth in total ice shelf basal melt after year 40 in Fig. 14a reflects increasing ice shelf area as the grounding line retreats while we have forced the ice shelf calving front to remain fixed. Ice shelf thinning from increase basal melt results in increased flux across the grounding line, with the largest increase in the Thwaites-Pine Island catchment where the ice shelf basal melt perturbation was largest (Fig. 14b). In turn, increased flux across the grounding line and retention of mass within the ice sheet interior. Lastly, we note the strongly stochastic nature of the (annually averaged) calving flux, which varies over time by up to an order of magnitude for some systems. Overall, relative to the control run, calving fluxes are eventually lower for the basal-melt leads to ice sheet mass loss (Fig. 14c) and grounding line retreat (Fig. 14d). The largest changes occur in the Thwaites-Pine Island catchment. Mass loss and grounding line retreat occur in all basins for the control run but are greater in the perturbation experiment, which can be explained by the overall decrease in ice shelf thickness under conditions of increased basal melting.

10 We note that, based on this coarse-resolution model configuration, our non-equilibrated initial conditions, and the idealized climate forcing applied we do not attempt to interpret results from these experiments as predictive of real-world conditions (e.g., grounding line migration will be severely restricted and unrealistic due to our coarse resolution mesh). Rather, our as expected. Note that the initMIP experiments use schematic forcing, and results should not be interpreted as realistic ice sheet or sea level projections. Our aim here is simply to demonstrate that when applied to large scale, whole-ice-sheet simulations on realistic geometries, MALI is robust and evolves reasonably during multi-century-length, free-running simulations. Future work will include running the complete set of initMIP experiments, taking advantage of the variable-resolution mesh capability to place adequate resolution where needed, like at and near to grounding lines.

9 Coupling to Energy Exascale Earth System Model

MALI is the current land ice model component of the U.S. Department of Energy's *Energy Exascale Earth System Model* (E3SM). E3SM is an Earth System Model with atmosphere, land, ocean, and sea ice components, linked through a coupler that passes the necessary fields (e.g., model state, mass, momentum, and energy fluxes) between the components. E3SM,

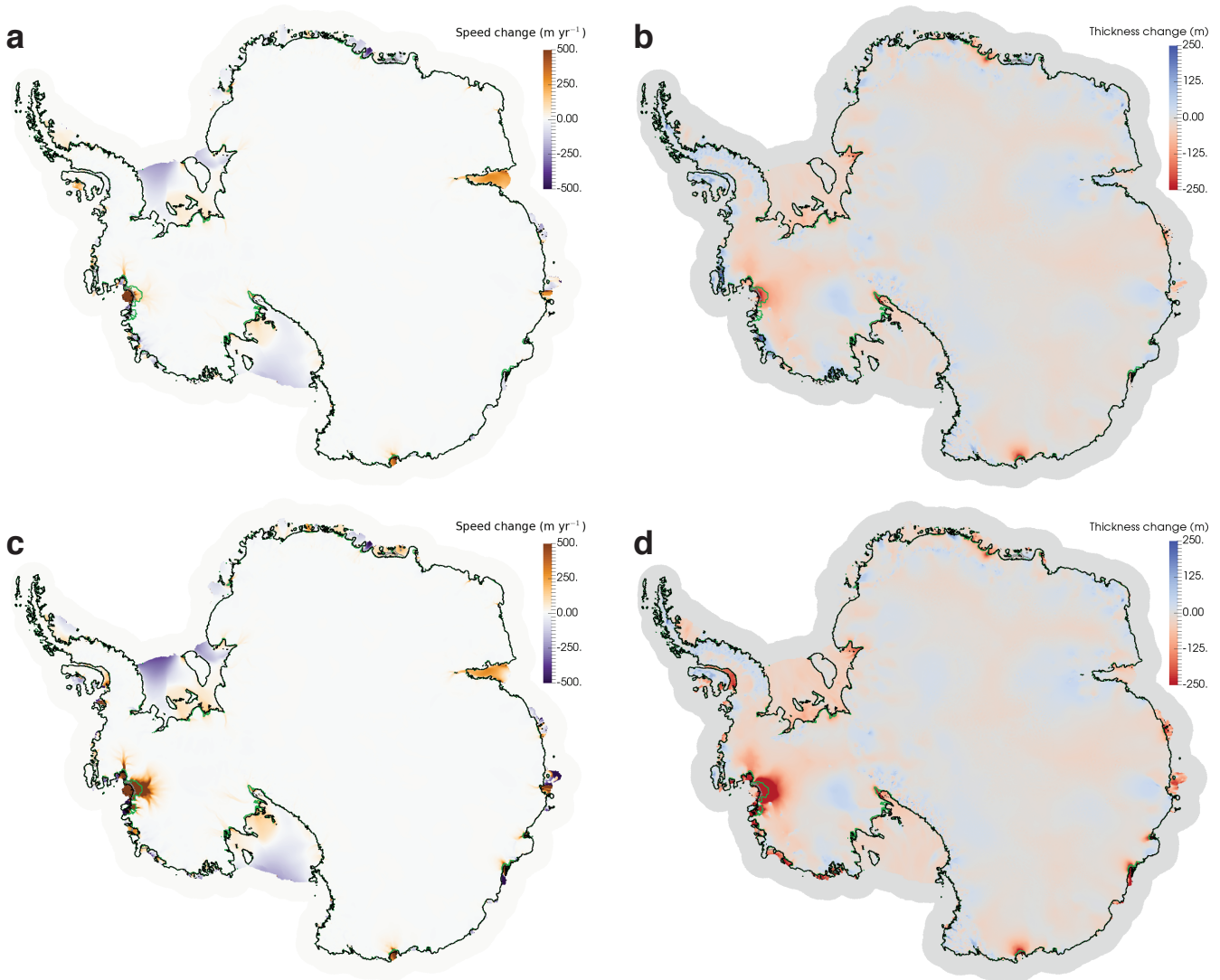


Figure 13. Speed and thickness change during 100 yr initMIP simulations. (a) Change in surface speed at 100 yr relative to initial condition for control simulation. (b) Change in ice thickness at 100 yr relative to initial condition for control simulation. (c) Change in surface speed at 100 yr relative to initial condition for sub-ice shelf melt perturbation simulation. (d) Change in ice thickness at 100 yr relative to initial condition for sub-ice shelf melt perturbation simulation. In all panels, the black line indicates the grounding line at the initial time, the gray line is the grounding line at year 100 in the control simulation, and the green line is the grounding line at year 100 in the sub-ice shelf melt perturbation simulation. SP: Note that you have slightly diff. colorbar limits for the thickness change in the top / bottom rows.

which branched from the Community Earth System Model (CESM, version 1.2 beta10) in 2014, targets high resolution global simulations, and all components have a variable resolution mesh capability. The ocean (Ringler et al., 2013; Petersen et al., 2015, 2018) and sea ice (Turner et al., 2018) components are also built on the MPAS Framework. Because the coupling between

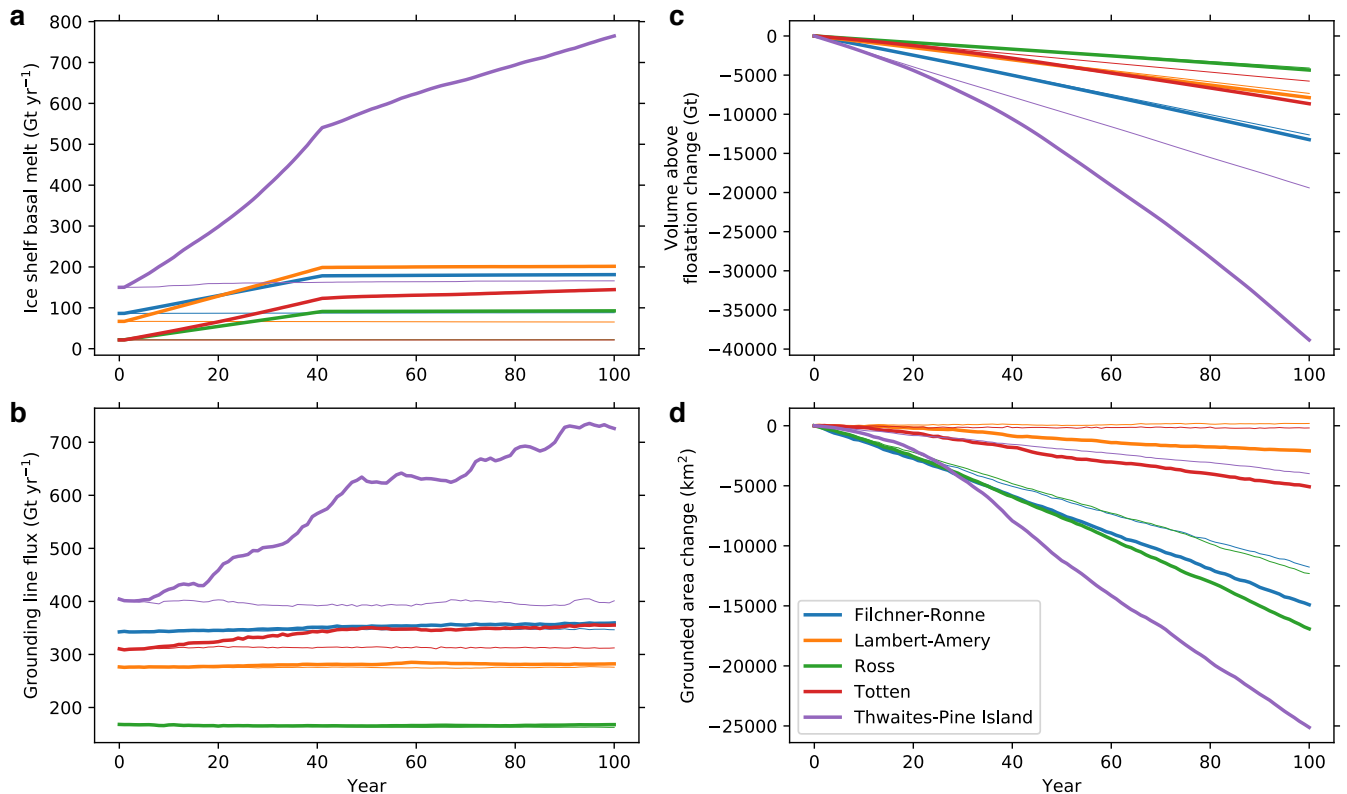


Figure 14. Model spin-up results for Antarctica at 20 km resolution: initMIP control (thin lines) Ice surface speed from satellite observation (Rignot et al., 2013) and sub-ice shelf melt perturbation (thick lines) experiments for selected drainage basins. White contour line in each plot is Basins are composed of their respective ice shelves and the grounding line IMBIE basins (Shepherd et al., 2012) flowing into them from upstream. Areas colored red exceed the maximum speed shown in the colorbar. b(a) Modeled total ice surface speed after optimization, plotted as in a shelf basal melt; (b) total flux across grounding line; (c) Modeled ice surface speed after 1000 years with evolving velocity, geometry, and temperature and active eigenvalving, plotted as change in a); (d) Time series of volume above floatation, grounding line flux, from initial time; (d) change in grounded area, and floating area during 1000-yr spin-up from initial time.

Model results for initMIP control (thin lines) and sub-ice shelf melt perturbation (thick lines) experiments for the Filchner-Ronne (black), Lambert-Amery (purple), Ross (blue), and Thwaites and Pine Island Glacier (red) ice shelf systems. Combined systems are composed of their respective ice shelves and the IMBIE basins (Shepherd et al., 2012) flowing into them from upstream.

30 E3SM and MALI is currently still fairly rudimentary, we include only a few additional details below and leave a more detailed description to future work. Having all three of these E3SM components in the MPAS framework has simplified adding and maintaining them within E3SM, because developments in the component driver code and build and configuration scripts made by one MPAS component can easily be leveraged by the others. Note that each component of E3SM can be run on differing numbers of processors within the coupled model including the individual MPAS cores.

Physics at the ice sheet atmosphere interface are handled by the snow model within the E3SM Land Model (ELM; Zhu et al. (2018); Ricciuto et al. (2018)). ELM's snow model calculates ice sheet surface mass balance using a surface energy balance model and, at each coupling interval, MALI passes the current ice sheet extent and surface elevation through the coupler to ELM. The coupler then returns the surface mass balance and surface temperature calculated by ELM to MALI. These fields are used within MALI as boundary conditions to the mass and thermal evolution equations (Sections Sects. 4.3 and 4.4). Currently, runoff from surface melting is calculated within ELM and routed directly through E3SM's runoff model, rather than being passed to and used by MALI. The subglacial discharge model discussed above in Section Sect. 5.1 is not currently coupled to the rest of E3SM.

Ongoing and future work on MALI and E3SM coupling includes: passing subglacial discharge at terrestrial ice margins to the land runoff model in E3SM; passing surface runoff calculated in E3SM to the land ice model (for use as a source term in the subglacial hydrology model); two-way coupling between the ocean and a dynamic MALI model¹⁰; discharge of icebergs (solid ice flux from MALI) to the coupler and from there to the ocean and sea ice models.

10 Model Performance

Detailed analysis of the performance and scalability of the Albany/LI velocity solver for idealized test cases and realistic high resolution applications to Greenland and Antarctica has been reported by Tezaur et al. (2015a, b) and Tuminaro et al. (2016). Because the momentum balance solver is $\geq 95\%$ of the cost of a typical forward model time step outside of I/O, the model previously reported performance is generally representative of overall MALI performance. To provide some additional context we summarize MALI performance for the high resolution Antarctica application described in the previous section. That mesh contained 1,642,490 horizontal grid cells and 11 vertical interfaces (10 vertical levels) where the two horizontal components of velocity are solved. The simulations described above were run on the *Edison* Cray XC30 supercomputer¹¹ at the National Energy Research Scientific Computing (NERSC) Center. Computational nodes on *Edison* each contain two 12-core Intel "Ivy Bridge" processors operating at 2.4 GHz and 64 GB DDR3 1866 MHz memory. Simulations were done using 6400 processors. The control simulation averaged 5.26 simulated years per wall-clock hour (SYPH) over 2031 time steps, and the sub-ice shelf melt perturbation experiment averaged 4.61 SYPH over 2181 time steps. The differing performance is partially due to the longer number of time steps required by the perturbation experiment due to faster maximum ice velocity forcing the adaptive time stepper to take smaller time steps, but may also be a symptom of varying machine performance; performance during different segments of the simulations varied from 3.25–7.38 SYPH presumably due to the usage of different node layouts on the machine and varying I/O performance. On average the velocity solve took 91.9% of the computational time, writing output took 7.5%, and all over operations the remaining 0.6%. Total simulation cost for the 100 year simulations was 122 thousand core-hours for the control run and 139 thousand core-hours for the perturbation simulation. For reference the high resolution E3SM configuration (25 km resolution in atmosphere and land components, varying 18 to 6 km resolution in ocean and sea

¹⁰Coupling to a static Antarctic ice sheet with ocean circulation in sub-ice shelf cavities is supported in E3SM version 1.0.0

¹¹More information about Edison can be found at <http://www.nersc.gov/users/computational-systems/edison/configuration/>

ice components) runs at 0.12 SYPH using 52,000 processors on *Edison*. While MALI could be run at substantially fewer processors to match the slower throughput of E3SM, the current optimal processor layout for high resolution E3SM could run MALI at the processor count we have done here without incurring any additional expense due to latent processors during model time stepping. At the resolution described here, MALI's computational cost of 1400 processor-hours per simulated year would be insignificant compared to the cost of high resolution E3SM of 448,000 processor-hours per simulated year. Of course running MALI within E3SM would restrict simulation lengths to those used for the coupled model (decades to centuries), which are too short for the investigation of many ice sheet science questions. At E3SM low resolution (100 km resolution in atmosphere and land components, varying 60 to 30 km resolution in ocean and sea ice components), the computational cost of MALI within E3SM remains a minor cost.

10 11 Conclusions and Future Work

We have described MPAS-Albany Land Ice (MALI), a higher-order, thermomechanically coupled ice sheet model using unstructured Voronoi meshes. MALI takes advantage of the MPAS framework for development of unstructured grid Earth system model components and the Albany and Trilinos frameworks for parallel, performance-portable, implicit solution of the challenging higher-order ice sheet momentum balance through the Albany-LI velocity solver. Together, these tools provide an accurate, efficient, scalable, and portable ice sheet model targeted for high resolution ice sheet simulations within a larger Earth system modeling framework run on tens of thousands of computing cores, and MALI makes up the ice sheet component of the Energy Exascale Earth System Model version 1.

MALI includes three-dimensional Blatter-Pattyn and shallow-ice velocity solvers, a standard explicit mass evolution scheme, a thermal solver that can use either a temperature or enthalpy formulation, and an adaptive time stepper. Physical processes represented in the model include subglacial hydrology and calving. The model includes a mass-conserving subglacial hydrology model that can represent combinations of water drainage through till, distributed systems, and channelized systems, and can be coupled to ice dynamics. A handful of basic calving schemes are currently implemented, including the physically based "eigencalving" method.

We have demonstrated accuracy of the various model components through commonly used exact solutions and community benchmarks. Of note, we presented the first results for the MISMIP3d benchmark experiments using a Blatter-Pattyn model, and the results are intermediate to those of Stokes and L1L2 models, as might be expected. We also showed simulation results for a semi-realistic Antarctic Ice Sheet configuration at coarse resolution, and this capability was facilitated by the optimization tools within Albany-LI.

A number of model improvements are planned over the next five years, focused heavily on improved representation of ice sheet physical processes and Earth system coupling. An implicit subglacial hydrology model based on existing such models (Werder et al., 2013; Hoffman and Price, 2014) is under development using the Albany framework. It will include optimization capabilities, a technique which has yet to be applied to subglacial hydrology beyond a spatially-average, 0-dimension application (Brinkerhoff et al., 2016). The difficulty in subglacial drainage parameter estimation remains one of the primary reasons

5 drainage models have yet to be widely applied in ice sheet models. Improved calving schemes are also under development using a continuum damage mechanics approach (Borstad et al., 2012; Duddu et al., 2013; Bassis and Ma, 2015). Additionally, solid earth processes affecting ice sheets are planned future development, including gravitational, elastic and viscous effects. Higher-order advection, through the flux-corrected transport (Ringler et al., 2013) and/or incremental remapping (Dukowicz et al., 2010; Lipscomb and Hunke, 2004; Turner et al., 2018) schemes that are already implemented in MPAS, and semi-implicit time-stepping are planned. Finally, a high priority is completing coupling between ice sheet, ocean, and sea ice models
5 in E3SM.

12 Code availability

MPAS releases are available at <https://mpas-dev.github.io/> and model code is maintained at <https://github.com/MPAS-Dev/MPAS-Release/releases>. MPAS-Albany Land Ice is included in MPAS version ~~6.6.0~~. The Digital Object Identifier for MPAS v6 is ~~(Zenodo link to be added when release is complete)~~. [doi:http://doi.org/10.5281/zenodo.1219886](https://doi.org/10.5281/zenodo.1219886). [MPAS is openly developed at https://github.com/MPAS-Dev/MPAS-Release](https://github.com/MPAS-Dev/MPAS-Release). The Albany library is developed openly at <https://github.com/gahansen/Albany> and the Trilinos library is developed openly at <https://github.com/trilinos/Trilinos>. Region definitions for analysis are openly maintained at https://github.com/MPAS-Dev/geometric_features.

15 *Competing interests.* The authors declare that they have no competing financial interests.

Disclaimer. This paper describes objective technical results and analysis. Any subjective views or opinions that might be expressed in the paper do not necessarily represent the views of the U.S. Department of Energy or the United States Government.

Sandia National Laboratories is a multimission laboratory managed and operated by National Technology and Engineering Solutions of Sandia, LLC., a wholly owned subsidiary of Honeywell International, Inc., for the U.S. Department of Energy's National Nuclear Security
20 Administration under contract DE-NA-0003525.

Acknowledgements. We thank additional contributors to MALI code, Michael Duda, Dominikus Heinzler, Benjamin Hills, and Adrian Turner, as well as developers of the MPAS, Albany, and Trilinos libraries. Support for this work was provided through the Scientific Discovery through Advanced Computing (SciDAC) program and the Energy Exascale Earth System Model (E3SM) project funded by the US Department of Energy (DOE), Office of Science, Biological and Environmental Research and Advanced Scientific Computing Research and Programs. Development of the subglacial hydrology model was supported by a grant to M.J.H. from the Laboratory Directed Research and Development Early Career Research Program at Los Alamos National Laboratory (20160608ECR). This research used resources of
25 the National Energy Research Scientific Computing Center, a DOE Office of Science User Facility supported by the Office of Science of the U.S. Department of Energy under Contract No. DE-AC02-05CH11231, and resources provided by the Los Alamos National Laboratory

Institutional Computing Program, which is supported by the U.S. Department of Energy National Nuclear Security Administration under

30 Contract No. DE-AC52-06NA25396.

Table A1. Physical constants.

Symbol	Description	Standard Value	Units
g	gravitational acceleration	9.81	m s^{-2}
ρ	density of ice	910	kg m^{-3}
R	gas constant	8.3145	$\text{kg m}^2 \text{s}^{-2} \text{K}^{-1} \text{mol}^{-1}$
ρ_w	density of freshwater	1000	kg m^{-3}
ρ_o	density of ocean water	1028	kg m^{-3}
c	heat capacity of ice	2009	$\text{J kg}^{-1} \text{K}^{-1}$
k	thermal conductivity of ice	2.1	$\text{W m}^{-1} \text{K}^{-1}$
L	latent heat of fusion of water	3.35×10^5	J kg^{-1}
c_t	pressure melt coefficient	7.5×10^{-8}	K Pa^{-1}
c_w	heat capacity of water	4.22×10^3	$\text{J kg}^{-1} \text{K}^{-1}$

Table A2. General variables and parameters.

Symbol	Description	Units
$x, y (x_1, x_2)$	horizontal coordinates	m
$z (x_3)$	vertical elevation	m
nz	number of vertical layers	
t	time	s
σ	"sigma" coordinate	unitless
H	ice thickness	m
s	upper surface elevation	m
b	lower surface elevation	m
\dot{a}	surface mass balance	m s^{-1}
\dot{b}	basal mass balance	m s^{-1}
Q_t	tracer quantity	
l	layer thickness	
\dot{S}	tracer sources and sinks	

Table A3. Ice dynamics variables and parameters.

Symbol	Description	Units
σ_{ij}	stress tensor	Pa
τ_{ij}	deviatoric stress tensor	Pa
τ_e	effective deviatoric stress	Pa
δ_{ij}	Kroneker delta	
$\dot{\epsilon}_{ij}$	strain rate tensor	s^{-1}
$\dot{\epsilon}_e$	effective strain rate	s^{-1}
$\eta_e \mu_e$	effective ice viscosity	Pa s
γ	ice stiffening factor	
n	Glen's flow law exponent	
m	basal friction law exponent	
u_i	horizontal ice velocity vector	$m s^{-1}$
u_n	horizontal advective ice velocity normal to cell edges	$m s^{-1}$
\mathbf{u}_b	basal slip velocity vector	$m s^{-1}$
$\bar{\mathbf{u}}$	depth-averaged velocity	$m s^{-1}$
A	ice flow rate factor	$s^{-1} Pa^{-n}$
A_0	ice flow rate factor constant	$s^{-1} Pa^{-n}$
β	basal friction coefficient	$Pa yr m^{-1}$

Table A4. Ice thermodynamics variables and parameters.

Symbol	Description	Units
T	ice temperature	K
E	<u>enthalpy</u>	<u>$J kg^{-1}$</u>
T^*	absolute ice temperature	K
T_{pmp}	pressure melting temperature	K
Q_a	activation energy for crystal creep	$kg m^2 s^{-2} mol^{-1}$
Φ	viscous dissipation	$Pa s^{-1}$
F_d	diffusive flux at ice base	$W m^{-2}$
F_f	geothermal heat flux	$W m^{-2}$
F_f	frictional heating	$W m^{-2}$

Table A5. Subglacial hydrology variables and parameters.

Symbol	Description	Units
W_{till}	water layer thickness in till	m
W	water layer thickness at bed	m
m_b	basal melt rate	m s^{-1}
C_d	till drainage rate	m s^{-1}
γ_t	overflow rate from till	m s^{-1}
ϕ	basal hydropotential	Pa DUPLICATE!!!
P_w	basal water pressure	Pa
z_b	bed elevation	m
N	ice effective pressure	Pa
c_s	basal roughness parameter	m^{-1}
W_r	maximum bed bump height	m
c_{cd}	creep scaling parameter for distributed drainage	
A_b	ice flow rate factor for basal ice	$\text{s}^{-1} \text{Pa}^{-n}$
q	water flow in distributed drainage system	$\text{m}^2 \text{s}^{-1}$
k_q	conductivity coefficient for distributed flow	$\text{m}^{2\alpha_2 - \alpha_1} \text{s}^{2\alpha_2 - 3} \text{kg}^{1 - \alpha_2}$
α_1	exponent on water thickness for water flow	
α_2	exponent on water pressure for water flow	
S	subglacial channel area	m^2
Ξ	dissipation of potential energy in water flow	$\text{J s}^{-1} \text{m}^{-2}$
Π	sensible heat change of water	$\text{J s}^{-1} \text{m}^{-2}$
c_{cc}	creep scaling parameter for channelized drainage	
Q	water flow in channelized drainage system	$\text{m}^3 \text{s}^{-1}$
k_Q	conductivity coefficient for channelized flow	$\text{m}^{2\alpha_2 - \alpha_1} \text{s}^{2\alpha_2 - 3} \text{kg}^{1 - \alpha_2}$
q_c	water flow in distributed drainage system along a channel	$\text{m}^2 \text{s}^{-1}$
l_c	distance perpendicular to a channel where channel is influenced by distributed flow dissipation	m
V_d	water velocity of distributed flow	m s^{-1}
D_d	diffusivity of distributed flow	$\text{m}^2 \text{s}^{-1}$
δ	Dirac delta function	
ϕ_0	notional englacial porosity	
C_0	basal friction parameter	$(\text{s m}^{-1})^m$

Table A6. Calving variables and parameters.

Symbol	Description	Units
$\dot{\epsilon}_1, \dot{\epsilon}_2$	horizontal principal strain rates	s^{-1}
C_v	calving velocity	m s^{-1}
K_2	eigencalving parameter	m s

Table A7. Optimization variables and parameters.

Symbol	Description	Units
\mathcal{J}	optimization functional	
σ_u	standard deviation of uncertainty in observed velocity	m s^{-1}
c_γ	control parameter for ice stiffness factor	
$\alpha_\beta, \alpha_\gamma$	regularization parameters	

References

- Adams, B., Bauman, L., Bohnhoff, W., Dalby, K., Ebeida, M., Eddy, J., Eldred, M., Hough, P., Hu, K., Jakeman, J., Swiler, L., and Vigil, D.: DAKOTA, A Multilevel Parallel Object-Oriented Framework for Design Optimization, Parameter Estimation, Uncertainty Quantification, and Sensitivity Analysis: Version 5.4 User's Manual, Sandia Technical Report SAND2010-2183, 2013.
- 35 Albrecht, T., Martin, M., Haseloff, M., Winkelmann, R., and Levermann, a.: Parameterization for subgrid-scale motion of ice-shelf calving fronts, *The Cryosphere*, 5, 35–44, doi:10.5194/tc-5-35-2011, 2011.
- Arakawa, A. and Lamb, V. R.: Computational Design of the Basic Dynamical Processes of the UCLA General Circulation Model, Academic Press, Inc., New York, 1977.
- Asay-Davis, X. S., Cornford, S. L., Durand, G., Galton-Fenzi, B. K., Gladstone, R. M., Hilmar Gudmundsson, G., Hattermann, T., Holland, D. M., Holland, D., Holland, P. R., Martin, D. F., Mathiot, P., Pattyn, F., and Seroussi, H.: Experimental design for three interrelated
5 marine ice sheet and ocean model intercomparison projects: MISMIP v. 3 (MISMIP +), ISOMIP v. 2 (ISOMIP +) and MISOMIP v. 1 (MISOMIP1), *Geoscientific Model Development*, 9, 2471–2497, doi:10.5194/gmd-9-2471-2016, 2016.
- Aschwanden, A., Bueler, E., Khroulev, C., and Blatter, H.: An enthalpy formulation for glaciers and ice sheets, *Journal Of Glaciology*, 58, 441–457, 2012.
- Åström, J. A., Vallot, D., Schäfer, M., Welty, E. Z., O'neel, S., Bartholomäus, T. C., Liu, Y., Riikilä, T. I., Zwinger, T., Timonen, J., and
10 Moore, J. C.: Termini of calving glaciers as self-organized critical systems, *Nature Geoscience*, 2014.
- Bassis, J. N. and Ma, Y.: Earth and Planetary Science Letters, *Earth And Planetary Science Letters*, 409, 203–211, 2015.
- Bindschadler, R.: The importance of pressurized subglacial water in separation and sliding at the glacier bed, *Journal of Glaciology*, 29, 3–19, 1983.
- Bindschadler, R. A., Nowicki, S., Abe-Ouchi, A., Aschwanden, A., Choi, H., Fastook, J., Granzow, G., Greve, R., Gutowski, G., Herzfeld,
15 U., Jackson, C., Johnson, J., Khroulev, C., Levermann, A., Lipscomb, W. H., Martin, M. A., Morlighem, M., Parizek, B. R., Pollard, D., Price, S. F., Ren, D., Saito, F., Sato, T., Seddik, H., Seroussi, H., Takahashi, K., Walker, R., and Wang, W. L.: Ice-sheet model sensitivities to environmental forcing and their use in projecting future sea level (the SeaRISE project), *Journal Of Glaciology*, 59, 195–224, 2013.
- Blatter, H.: Velocity and Stress-Fields in Grounded Glaciers - a Simple Algorithm for Including Deviatoric Stress Gradients, *Journal Of Glaciology*, 41, 333–344, 1995.
- 20 Bondzio, J. H., Seroussi, H., Morlighem, M., Kleiner, T., Rückamp, M., Humbert, A., and Larour, E. Y.: Modelling calving front dynamics using a level-set method : application to Jakobshavn Isbræ , West Greenland, *The Cryosphere*, 10, 497–510, doi:10.5194/tc-10-497-2016, 2016.
- Borstad, C., Khazendar, A., Scheuchl, B., Morlighem, M., Larour, E., and Rignot, E.: A constitutive framework for predicting weakening and reduced buttressing of ice shelves based on observations of the progressive deterioration of the remnant Larsen B Ice Shelf, *Geophysical
25 Research Letters*, 43, 2027–2035, doi:10.1002/2015GL067365, 2016.
- Borstad, C. P., Khazendar, a., Larour, E., Morlighem, M., Rignot, E., Schodlok, M. P., and Seroussi, H.: A damage mechanics assessment of the Larsen B ice shelf prior to collapse: Toward a physically-based calving law, *Geophysical Research Letters*, 39, L18 502, doi:10.1029/2012GL053317, 2012.
- Brinkerhoff, D. J. and Johnson, J. V.: Data assimilation and prognostic whole ice sheet modelling with the variationally derived, higher order,
30 open source, and fully parallel ice sheet model VarGlaS, *The Cryosphere*, 7, 1161–1184, doi:10.5194/tc-7-1161-2013, 2013.

- Brinkerhoff, D. J., Meyer, C. R., Bueler, E., Truffer, M., and Bartholomaeus, T. C.: Inversion of a glacier hydrology model, *Annals of Glaciology*, pp. 1–12, doi:10.1017/aog.2016.3, 2016.
- Bueler, E. and Brown, J.: Shallow shelf approximation as a “sliding law” in a thermomechanically coupled ice sheet model, *Journal of Geophysical Research*, 114, 1–21, 2009.
- 35 Bueler, E. and van Pelt, W.: Mass-conserving subglacial hydrology in the Parallel Ice Sheet Model version 0.6, *Geoscientific Model Development*, 8, 1613–1635, 2015.
- Bueler, E., Lingle, C. S., Kallen-Brown, J. a., Covey, D. N., and Bowman, L. N.: Exact solutions and verification of numerical models for isothermal ice sheets, *Journal of Glaciology*, 51, 291–306, doi:10.3189/172756505781829449, 2005.
- Bueler, E., Brown, J., and Lingle, C.: Exact solutions to the thermomechanically coupled shallow-ice approximation: effective tools for verification, *Journal of Glaciology*, 53, 499–516, doi:10.3189/002214307783258396, 2007.
- Butler, H., Daly, M., Doyle, A., Gillies, S., Hagen, S., and Schaub, T.: The GeoJSON Format, Tech. rep., Hobu Inc., <https://www.rfc-editor.org/rfc/rfc7946.txt>, 2016.
- 5 Clarke, G. K.: Subglacial Processes, *Annual Review of Earth and Planetary Sciences*, 33, 247–276, doi:10.1146/annurev.earth.33.092203.122621, 2005.
- Cornford, S. L., Martin, D. F., Graves, D. T., Ranken, D. F., Le Brocq, A. M., Gladstone, R. M., Payne, A. J., Ng, E. G., and Lipscomb, W. H.: Adaptive mesh, finite volume modeling of marine ice sheets, *Journal of Computational Physics*, 232, 529–549, 2013.
- Cornford, S. L., Martin, D. F., Payne, a. J., Ng, E. G., Le Brocq, a. M., Gladstone, R. M., Edwards, T. L., Shannon, S. R., Agosta, C., van den
10 Broeke, M. R., Hellmer, H. H., Krinner, G., Ligtenberg, S. R. M., Timmermann, R., and Vaughan, D. G.: Century-scale simulations of the response of the West Antarctic Ice Sheet to a warming climate, *The Cryosphere*, 9, 1579–1600, doi:10.5194/tc-9-1579-2015, 2015.
- Cuffey, K. and Paterson: *The Physics of Glaciers*, Butterworth-Heinemann, Amsterdam, 4th edn., 2010.
- Demeshko, I., Watkins, J., Tezaur, I. K., Guba, O., Spatz, W. F., Salinger, A. G., Pawlowski, R. P., and Heroux, M. A.: Toward performance portability of the Albany finite element analysis code using the Kokkos library, *The International Journal of High Performance Computing Applications*, 0, 1094342017749 957, doi:10.1177/1094342017749957, 2018.
- 15 Dennis, J. M., Edwards, J., Loy, R., Jacob, R., Mirin, A. A., Craig, A. P., and Vertenstein, M.: An application-level parallel I/O library for Earth system models, *The International Journal of High Performance Computing Applications*, 26, 43–53, doi:10.1177/1094342011428143, 2012.
- Du, Q. and Gunzburger, M.: Grid generation and optimization based on centroidal Voronoi tessellations, *Applied Mathematics and Computation*, 133, 591–607, 2002.
- 20 Duddu, R., Bassis, J. N., and Waisman, H.: A numerical investigation of surface crevasse propagation in glaciers using nonlocal continuum damage mechanics, *Geophysical Research Letters*, 40, 3064–3068, doi:10.1002/grl.50602, 2013.
- Dukowicz, J. K., Price, S. F., and Lipscomb, W. H.: Consistent approximations and boundary conditions for ice-sheet dynamics from a principle of least action, *Journal of Glaciology*, 56, 480–496, doi:10.3189/002214310792447851, 2010.
- 25 Edwards, H. C., Trott, C. R., and Sunderland, D.: Kokkos: Enabling manycore performance portability through polymorphic memory access patterns, *Journal of Parallel and Distributed Computing*, 74, 3202 – 3216, doi:<https://doi.org/10.1016/j.jpdc.2014.07.003>, domain-Specific Languages and High-Level Frameworks for High-Performance Computing, 2014a.
- Edwards, T. L., Fettweis, X., Gagliardini, O., Gillet-Chaulet, F., Goelzer, H., Gregory, J. M., Hoffman, M., Huybrechts, P., Payne, A. J., Perego, M., Price, S., Quiquet, A., and Ritz, C.: Effect of uncertainty in surface mass balance–elevation feedback on projections of the
30 future sea level contribution of the Greenland ice sheet, *The Cryosphere*, 8, 195–208, 2014b.

- Egholm, D. L. and Nielsen, S. B.: An adaptive finite volume solver for ice sheets and glaciers, *Journal of Geophysical Research*, 115, F01 006, doi:10.1029/2009JF001394, 2010.
- Engwirda, D.: JIGSAW-GEO (1.0): Locally orthogonal staggered unstructured grid generation for general circulation modelling on the sphere, *Geoscientific Model Development*, 10, 2117–2140, doi:10.5194/gmd-10-2117-2017, 2017a.
- 35 Engwirda, D.: JIGSAW(GEO): Unstructured grid generation for geophysical modelling, <https://github.com/dengwirda/jigsaw-geo-matlab>, 2017b.
- Feldmann, J. and Levermann, A.: Collapse of the West Antarctic Ice Sheet after local destabilization of the Amundsen Basin, *Proceedings of the National Academy of Sciences*, 112, 14 191–14 196, doi:10.1073/pnas.1512482112, 2015.
- Flowers, G. E.: Modelling water flow under glaciers and ice sheets, *Proceedings of the Royal Society A: Mathematical, Physical and Engineering Sciences*, 471, 20140 907, 2015.
- Flowers, G. E. and Clarke, G. K.: A multicomponent coupled model of glacier hydrology 1. Theory and synthetic examples, *Journal of Geophysical Research*, 107, 2287, doi:10.1029/2001JB001122, 2002.
- 5 Fowler, A. C. and Larson, D. A.: On the flow of polythermal glaciers I. Model and preliminary analysis, *Proceedings of the Royal Society A: Mathematical, Physical and Engineering Sciences*, 363, 217–242, doi:10.1098/rspa.1983.0054, 1978.
- Fyke, J. G., Weaver, A. J., Pollard, D., Eby, M., Carter, L., and Mackintosh, A.: A new coupled ice sheet/climate model: description and sensitivity to model physics under Eemian, Last Glacial Maximum, late Holocene and modern climate conditions, *Geoscientific Model Development*, 4, 117–136, 2011.
- 10 Gagliardini, O., Cohen, D., Råback, P., and Zwinger, T.: Finite-element modeling of subglacial cavities and related friction law, *Journal of Geophysical Research*, 112, F02 027, doi:10.1029/2006JF000576, 2007.
- Gagliardini, O., Zwinger, T., Gillet-Chaulet, F., Durand, G., Favier, L., De Fleurian, B., Greve, R., Malinen, M., Martin, C., Råback, P., Ruokolainen, J., Sacchetti, M., Schäfer, M., Seddik, H., and Thies, J.: Capabilities and performance of Elmer/Ice, a new-generation ice sheet model, *Geoscientific Model Development*, 6, 1299–1318, 2013.
- 15 Gladstone, R. M., Lee, V., Vieli, a., and Payne, a. J.: Grounding line migration in an adaptive mesh ice sheet model, *Journal of Geophysical Research*, 115, F04 014, doi:10.1029/2009JF001615, 2010.
- Glen, J. W.: The Creep of Polycrystalline Ice, *Proceedings of the Royal Society A: Mathematical, Physical and Engineering Sciences*, 228, 519–538, doi:10.1098/rspa.1955.0066, 1955.
- Goelzer, H. et al.: Design and results of the ice sheet model initialisation experiments initMIP-Greenland: an ISMIP6 intercomparison, *The Cryosphere*, in press, 2018.
- 20 Goldberg, D. N.: A variationally derived, depth-integrated approximation to a higher-order glaciological flow model, *Journal Of Glaciology*, 57, 157–170, 2011.
- Goldberg, D. N. and Sergienko, O. V.: Data assimilation using a hybrid ice flow model, *Cryosphere*, 5, 315–327, 2011.
- Greve, R. and Blatter, H.: Comparison of thermodynamics solvers in the polythermal ice sheet model SICOPOLIS, *Polar Science*, 10, 11–23, 25 2016.
- Halfar, P.: On the dynamics of the ice sheets, *Journal of Geophysical Research*, 86, 11 065–11 072, doi:10.1029/JC088iC10p06043, 1981.
- Halfar, P.: On the Dynamics of the Ice Sheets 2, *Journal of Geophysical Research*, 88, 6043–6051, 1983.
- Heroux, M., Bartlett, R., Howle, V., Vicki, E., Hoekstra, R., Hu, J., Kolda, T., Lehoucq, R., Long, K., Pawlowski, R., Phipps, E., Salinger, A., Thornquist, H., Tuminaro, R., Willenbring, J., Williams, A., and Stanley, K.: An overview of the Trilinos project, *ACM Trans. Math. Softw.*, 31, 397–423, 2005.
- 30

- Hewitt, I. J.: Modelling distributed and channelized subglacial drainage: the spacing of channels, *Journal of Glaciology*, 57, 302–314, doi:10.3189/002214311796405951, 2011.
- Hewitt, I. J.: Seasonal changes in ice sheet motion due to melt water lubrication, *Earth And Planetary Science Letters*, 371-372, 16–25, 2013.
- Hindmarsh, R. C. and Payne, A. J.: Time-step limits for stable solutions of the ice-sheet equation, *Annals of Glaciology*, 23, 74–85, 1996.
- 35 Hoffman, M. and Price, S.: Feedbacks between coupled subglacial hydrology and glacier dynamics, *Journal Of Geophysical Research-Earth Surface*, 119, 414–436, 2014.
- Hoffman, M. J., Perego, M., Andrews, L. C., Price, S. F., Neumann, T. A., Johnson, J. V., Catania, G., and Lüthi, M. P.: Widespread moulin formation during supraglacial lake drainages in Greenland, *Geophysical Research Letters*, 45, doi:10.1002/2017GL075659, 2018.
- Hutter, K.: *Theoretical glaciology; material science of ice and the mechanics of glaciers and ice sheets*, Reidel Publishing Co., Terra Scientific Publishing Co., Tokyo, 1983.
- 5 Huybrechts, P., Payne, T., and Group, T. E. I.: The EISMINT benchmarks for testing ice-sheet models, *Annals of Glaciology*, 23, 1–12, 1996.
- IMBIE team: Mass balance of the Antarctic Ice Sheet from 1992 to 2017, *Nature*, 558, 219–222, doi:https://doi.org/10.1038/s41586-018-0179-y, 2018.
- IPCC: *Climate Change 2007 - The Physical Science Basis: Working Group I Contribution to the Fourth Assessment Report of the IPCC*, Cambridge University Press, Cambridge, United Kingdom and New York, NY, USA, 2007.
- 10 IPCC: *Climate Change 2013: The Physical Science Basis. Contribution of Working Group I to the Fifth Assessment Report of the Intergovernmental Panel on Climate Change*, Cambridge University Press, Cambridge, United Kingdom and New York, NY, USA, doi:10.1017/CBO9781107415324, www.climatechange2013.org, 2013.
- Jiménez, S., Duddu, R., and Bassis, J.: An updated-Lagrangian damage mechanics formulation for modeling the creeping flow and fracture of ice sheets, *Comput. Methods Appl. Mech. Engrg.*, 313, 406–432, 2017.
- 15 Kleiner, T., Rückamp, M., Bondzio, J. H., and Humbert, A.: Enthalpy benchmark experiments for numerical ice sheet models, *The Cryosphere*, 9, 217–228, doi:10.5194/tc-9-217-2015, 2015.
- Larour, E., Seroussi, H., Morlighem, M., and Rignot, E.: Continental scale, high order, high spatial resolution, ice sheet modeling using the Ice Sheet System Model (ISSM), *Journal of Geophysical Research*, 117, F01 022, doi:10.1029/2011JF002140, 2012.
- Le Brocq, A., Payne, A., Siegert, M., and Alley, R.: A subglacial water-flow model for West Antarctica, *Journal of Glaciology*, 55, 879–888, doi:10.3189/002214309790152564, 2009.
- 20 Leguy, G. R.: *The Effect of a Basal-friction Parameterization on Grounding-line Dynamics in Ice-sheet Models*, Ph.D. thesis, New Mexico Institute of Mining and Technology, 2015.
- Lenaerts, J. T. M., Van Den Broeke, M. R., Van De Berg, W. J., Van Meijgaard, E., and Kuipers Munneke, P.: A new, high-resolution surface mass balance map of Antarctica (1979–2010) based on regional atmospheric climate modeling, *Geophysical Research Letters*, 39, 2012.
- 25 Leng, W., Ju, L., Gunzburger, M., Price, S., and Ringler, T.: A parallel high-order accurate finite element nonlinear Stokes ice sheet model and benchmark experiments, *Journal of Geophysical Research*, 117, 2012.
- Levermann, A., Albrecht, T., Winkelmann, R., Martin, M. A., Haseloff, M., and Joughin, I.: Kinematic first-order calving law implies potential for abrupt ice-shelf retreat, *The Cryosphere*, 6, 273–286, doi:10.5194/tc-6-273-2012, 2012.
- Lipscomb, W. H. and Hunke, E. C.: Modeling Sea Ice Transport Using Incremental Remapping, *Monthly Weather Review*, pp. 1341–1354, 30 2004.

- Lipscomb, W. H., Fyke, J. G., Vizcaíno, M., Sacks, W. J., Wolfe, J., Vertenstein, M., Craig, A., Kluzek, E., and Lawrence, D. M.: Implementation and Initial Evaluation of the Glimmer Community Ice Sheet Model in the Community Earth System Model, *Journal of Climate*, 26, 7352–7371, 2013.
- Lipscomb, W. H., Price, S. F., Hoffman, M. J., Leguy, G. R., Bennett, A. R., Bradley, S. L., Evans, K. J., Fyke, J. G., Kennedy, J. H., Perego, M., Ranken, D. M., Sacks, W. J., Salinger, A. G., Vargo, L. J., and Worley, P. H.: Description and Evaluation of the Community Ice Sheet Model (CISM) v2.1, *Geoscientific Model Development Discussions*, pp. 1–65, 2018.
- Little, C. M., Oppenheimer, M., Alley, R. B., Balaji, V., Clarke, G. K. C., Delworth, T. L., Hallberg, R., Holland, D. M., Hulbe, C. L., Jacobs, S., Johnson, J. V., Levy, H., Lipscomb, W. H., Marshall, S. J., Parizek, B. R., Payne, A. J., Schmidt, G. A., Stouffer, R. J., Vaughan, D. G., and Winton, M.: Toward a new generation of ice sheet models, *Eos, Transactions American Geophysical Union*, 88, 578–579, doi:10.1029/2007EO520002, 2007.
- 5 Morland, L. W. and Johnson, I. R.: Steady motion of ice sheets., *Journal of Glaciology*, 25, 229–246, 1980.
- Nowicki, S., Bindschadler, R. A., et al.: Insights into spatial sensitivities of ice mass response to environmental change from the SeaRISE ice sheet modeling project II: Greenland, *Journal of Geophysical Research*, 118, 1025–1044, 2013a.
- Nowicki, S., Bindschadler, R. A., et al.: Insights into spatial sensitivities of ice mass response to environmental change from the SeaRISE ice sheet modeling project I: Antarctica, *Journal of Geophysical Research*, 118, 1002–1024, 2013b.
- 10 Nowicki, S. M. J., Payne, A., Larour, E., Seroussi, H., Goelzer, H., Lipscomb, W., Gregory, J., Abe-Ouchi, A., and Shepherd, A.: Ice Sheet Model Intercomparison Project (ISMIP6) contribution to CMIP6, *Geoscientific Model Development*, 9, 4521–4545, 2016.
- Pattyn, F.: A new three-dimensional higher-order thermomechanical ice sheet model: Basic sensitivity, ice stream development, and ice flow across subglacial lakes, *Journal of Geophysical Research*, 108, 1–15, doi:10.1029/2002JB002329, 2003.
- Pattyn, F., Perichon, L., Aschwanden, A., Breuer, B., de Smedt, B., Gagliardini, O., Gudmundsson, G. H., Hindmarsh, R. C. a., Hubbard, A., Johnson, J. V., Kleiner, T., Kononov, Y., Martin, C., Payne, a. J., Pollard, D., Price, S., Rückamp, M., Saito, F., Souček, O., Sugiyama, S., and Zwinger, T.: Benchmark experiments for higher-order and full-Stokes ice sheet models (ISMIP–HOM), *The Cryosphere*, 2, 95–108, doi:10.5194/tc-2-95-2008, 2008.
- Pattyn, F. et al.: Grounding-line migration in plan-view marine ice-sheet models: results of the ice2sea MISMIP3d intercomparison, *Journal Of Glaciology*, 59, 410–422, 2013.
- 20 Pawlowski, R. P., Phipps, E. T., Salinger, A. G., Owen, S. J., Siefert, C. M., and Staten, M. L.: Automating embedded analysis capabilities and managing software complexity in multiphysics simulation, Part II: Application to partial differential equations, *Scientific Programming*, 20, 327–345, doi:10.3233/SPR-2012-0351, 2012.
- Payne, A. J., Huybrechts, P., Calov, R., Fastook, J. L., Greve, R., Marshall, S. J., Marsiat, I., Ritz, C., Tarasov, L., and Thomassen, M. P. A.: Results from the EISMINT model intercomparison: The effects of thermomechanical coupling, *Journal of Glaciology*, 46, 227–238, 2000.
- 25 Perego, M., Gunzburger, M., and Burkardt, J.: Parallel finite-element implementation for higher-order ice-sheet models, *Journal of Glaciology*, 58, 76–88, doi:10.3189/2012JoG11J063, 2012.
- Perego, M., Price, S., and Stadler, G.: Optimal initial conditions for coupling ice sheet models to Earth system models, *Journal of Geophysical Research Earth Surface*, 119, 1–24, doi:10.1002/2014JF003181.Received, 2014.
- Petersen, M. R., Jacobsen, D. W., Ringler, T. D., Hecht, M. W., and Maltrud, M. E.: Evaluation of the arbitrary Lagrangian-Eulerian vertical coordinate method in the MPAS-Ocean model, *Ocean Modelling*, 86, 93–113, doi:10.1016/j.ocemod.2014.12.004, 2015.
- 30

- Petersen, M. R., Asay-Davis, X., Jacobsen, D., Jones, P., Maltrud, M., Ringler, T. D., Turner, A. K., Van Roekel, L., Veneziani, M., Wolfe, J., and Wolfram, P. J.: An evaluation of the ocean and sea ice climate of E3SM using MPAS and interannual CORE-II forcing, *Journal of Advances in Modeling Earth Systems*, in prep., 2018.
- Price, S., Flowers, G., and Schoof, C.: Improving Hydrology in Land Ice Models, *Eos*, 92, 164, 2011.
- 35 Price, S., Lipscomb, W., Hoffman, M., Hagdorn, M., Rutt, I., Payne, T., Hebel, F., and Kennedy, J. H.: Community Ice Sheet Model (CISM) v2.0.5 Documentation, Tech. rep., Los Alamos National Laboratory, Los Alamos, NM, [http://oceans11.lanl.gov/cism/data/cism\[_\]documentation\[_\]v2.0.pdf](http://oceans11.lanl.gov/cism/data/cism[_]documentation[_]v2.0.pdf), 2015.
- Ricciuto, D., Sargsyan, K., and Thornton, P.: The Impact of Parametric Uncertainties on Biogeochemistry in the E3SM Land Model, *JAMES*, doi:10.1002/2017MS000962, 2018.
- Ridley, J. K., Huybrechts, P., and Gregory, J. M.: Elimination of the Greenland ice sheet in a high CO₂ climate, *Journal of Climate*, 18, 3409–3427, 2005.
- 5 Rignot, E., Mouginot, J., and Scheuchl, B.: Ice Flow of the Antarctic Ice Sheet, *Science*, 333, 1427–1430, 2011.
- Rignot, E., Jacobs, S., Mouginot, J., and Scheuchl, B.: Ice-Shelf Melting Around Antarctica, *Science*, 341, 266–270, 2013.
- Ringler, T., Petersen, M., Higdon, R. L., Jacobsen, D., Jones, P. W., and Maltrud, M.: A multi-resolution approach to global ocean modeling, *Ocean Modelling*, 69, 211–232, doi:10.1016/j.ocemod.2013.04.010, 2013.
- Ringler, T. D., Thuburn, J., Klemp, J. B., and Skamarock, W. C.: A unified approach to energy conservation and potential vorticity dynamics
10 for arbitrarily-structured C-grids, *Journal of Computational Physics*, 229, 3065–3090, doi:10.1016/j.jcp.2009.12.007, 2010.
- Ringler, T. D., Jacobsen, D., Gunzburger, M., Ju, L., Duda, M., and Skamarock, W.: Exploring a Multiresolution Modeling Approach within the Shallow-Water Equations, *Monthly Weather Review*, 139, 3348–3368, doi:10.1175/MWR-D-10-05049.1, 2011.
- Rutt, I. C., Hagdorn, M., Hulton, N. R. J., and Payne, A. J.: The Glimmer community ice sheet model, *Journal of Geophysical Research*, 114, F02004, doi:10.1029/2008JF001015, 2009.
- 15 Saito, F., Abe-ouchi, A., and Blatter, H.: European Ice Sheet Modelling Initiative (EISMINT) model intercomparison experiments with first-order mechanics, *Journal of Geophysical Research*, 111, 1–9, doi:10.1029/2004JF000273, 2006.
- Salinger, A. G., Bartlett, R. A., Bradley, A. M., Chen, Q., Demeshko, I. P., Gao, X., Hansen, G. A., Mota, A., Muller, R. P., Nielsen, E., Ostien, J. T., Pawlowski, R. P., Perego, M., Phipps, E. T., Sun, W., and Tezaur, I. K.: Albany: Using component-based design to develop a flexible, generic multiphysics analysis core, *International Journal for Multiscale Computational Engineering*, 14, 415–438, 2016.
- 20 Schoof, C.: The effect of cavitation on glacier sliding, *Proceedings of the Royal Society A: Mathematical, Physical and Engineering Science*, 461, 609, 2005.
- Schoof, C.: Ice-sheet acceleration driven by melt supply variability, *Nature*, 468, 803–806, doi:10.1038/nature09618, 2010.
- Schoof, C. and Hewitt, I.: Ice-sheet dynamics, *Annual Review of Fluid Mechanics*, 45, 217–239, 2013.
- Schoof, C. and Hindmarsh, R. C. A.: Thin-Film Flows with Wall Slip: An Asymptotic Analysis of Higher Order Glacier Flow Models, *The
25 Quarterly Journal of Mechanics and Applied Mathematics*, 63, 73–114, 2010.
- Schoof, C., Hewitt, I. J., and Werder, M. A.: Flotation and free surface flow in a model for subglacial drainage. Part 1. Distributed drainage, *Journal of Fluid Mechanics*, 702, 126–156, doi:10.1017/jfm.2012.165, 2012.
- Seroussi, H. et al.: initMIP-Antarctica: An ice sheet model initialization experiment of ISMIP6, *The Cryosphere*, in prep, 2018.
- Seroussi, H., Morlighem, M., Rignot, E., Khazendar, A., Larour, E., and Mouginot, J.: Dependence of century-scale projections of the
30 Greenland ice sheet on its thermal regime, *Journal of Glaciology*, 59, 1024–1034, doi:10.3189/2013JoG13J054, 2013.

- Seroussi, H., Morlighem, M., Larour, E., Rignot, E., and Khazendar, a.: Hydrostatic grounding line parameterization in ice sheet models, *The Cryosphere*, 8, 2075–2087, doi:10.5194/tc-8-2075-2014, 2014.
- Shannon, S. R., Payne, A. J., Bartholomew, I. D., Van Den Broeke, M. R., Edwards, T. L., Fettweis, X., Gagliardini, O., Gillet-Chaulet, F., Goelzer, H., Hoffman, M. J., Huybrechts, P., Mair, D. W. F., Nienow, P. W., Perego, M., Price, S. F., Smeets, C. J. P. P., Sole, A. J.,
35 van de Wal, R. S. W., and Zwinger, T.: Enhanced basal lubrication and the contribution of the Greenland ice sheet to future sea-level rise, *Proceedings Of The National Academy Of Sciences Of The United States Of America*, 110, 14 156–14 161, 2013.
- Shapiro, N. and Ritzwoller, M.: Inferring surface heat flux distributions guided by a global seismic model: particular application to Antarctica,
1255 *Earth Planet. Sc. Lett.*, 223, 213–224, 2004.
- Shepherd, A., Ivins, E. R., Geruo, A., and Barletta, V. R.: A reconciled estimate of ice-sheet mass balance, *Science*, 338, 2012.
- Shewchuk, J.: Triangle: Engineering a 2D Quality Mesh Generator and Delaunay Triangulator, 1148, 203 – 222, 1996.
- Skamarock, W. C., Klemp, J. B., Duda, M. G., Fowler, L. D., Park, S.-H., and Ringler, T. D.: A Multiscale Nonhydrostatic Atmospheric
1260 Model Using Centroidal Voronoi Tessellations and C-Grid Staggering, *Monthly Weather Review*, 140, 3090–3105, doi:10.1175/MWR-D-11-00215.1, 2012.
- Tezaur, I. K., Perego, M., Salinger, A. G., Tuminaro, R. S., and Price, S.: Albany/FELIX: a parallel, scalable and robust, finite element, first-order Stokes approximation ice sheet solver built for advanced analysis, *Geoscientific Model Development*, 8, 1–24, doi:10.5194/gmd-8-1-2015, 2015a.
- Tezaur, I. K., Tuminaro, R. S., Perego, M., Salinger, A. G., and Price, S. F.: On the Scalability of the Albany/FELIX first-order Stokes
1265 Approximation ice Sheet Solver for Large-Scale Simulations of the Greenland and Antarctic ice Sheets, *Procedia Computer Science*, 51, 2026–2035, doi:10.1016/j.procs.2015.05.467, 2015b.
- Tulaczyk, S., Barclay, W., and Engelhardt, F.: Basal mechanics of Ice Stream B, West Antarctica: 1. Till mechanics, *Journal of Geophysical Research*, 105, 463–481, 2000.
- Tuminaro, R., perego, M., Tezaur, I., Salinger, A., and Price, S. F.: A matrix dependent/algebraic multigrid approach for extruded meshes
1270 with applications to ice sheet modeling, *SIAM Journal on Scientific Computing*, 38, c504–c532, 2016.
- Turner, A. K., Lipscomb, W. H., Hunke, E. C., Jacobsen, D. W., Jeffery, N., Ringler, T. D., and Wolfe, J. D.: MPAS-Seaice: a new variable resolution sea-ice model, *Journal of Advances in Modeling Earth Systems*, submitted, 2018.
- van der Veen, C. J.: *Fundamentals of Glacier Dynamics*, CRC Press, Boca Raton, FL, 2nd edn., 2013.
- Van Liefferinge, B. and Pattyn, F.: Using ice-flow models to evaluate potential sites of million year-old ice in Antarctica, *Climate of the Past*,
1275 9, 2335–2345, 2013.
- Vizcaíno, M., Mikolajewicz, U., Gröger, M., Maier-Reimer, E., Schurgers, G., and Winguth, A. M. E.: Long-term ice sheet–climate interactions under anthropogenic greenhouse forcing simulated with a complex Earth System Model, *Climate Dynamics*, 31, 665–690, 2008.
- Vizcaíno, M., Mikolajewicz, U., Jungclaus, J., and Schurgers, G.: Climate modification by future ice sheet changes and consequences for ice sheet mass balance, *Climate Dynamics*, 34, 301–324, 2009.
- 1280 Werder, M. A., Hewitt, I. J., Schoof, C. G., and Flowers, G. E.: Modeling channelized and distributed subglacial drainage in two dimensions, *Journa of Geophysical Research - Earth Surface*, 118, 2013.
- Zhu, Q., Riley, W., Tang, J., Collier, N., Hoffman, F., Randerson, J., Yang, X., and Bisht, G.: Representing carbon, nitrogen, and phosphorus interaction in the E3SM Land Model v1: Model development and global benchmarking, *JAMES*, in review, 2018.