

Dear Editor,

in this document we report the modifications implemented in the manuscript in order to satisfy the Referees' comments. As the manuscript has undergone major revisions, only the main changes are listed below, but all changes (including minor/technical corrections) are visible in the marked-up manuscript version attached at the end of this document.

Yours faithfully,

Sara Bacer

## **Main changes made in the manuscript**

The main changes regard Section 3 (Model results) and Section 4 (Model comparisons and observations). There are only few modifications in the Introduction and Section 2. The Abstract has been slightly changed to satisfy the Referee's comments. The Conclusions have been extended and slightly modified as well.

Along the whole manuscript, new references (suggested by the Referees) have been included. In the supplement file, the annual means of cloud radiative effects (SCRE, LCRE, NCRE) have been added.

### **1 Introduction**

- The description of mixed-phase clouds has been extended.
- The issue about the “overestimation of vertical velocity” has been explained better.

### **2 Model description and set-up of simulations**

#### **2.1 EMAC model**

- Information about the CONVECT submodel, how convective clouds are treated and interact with the CLOUD submodel has been provided.
- The description of the cloud droplet formation parameterization (UAF) has been added.

#### **2.3 Ice nucleation parameterization BN09**

- The way how BN09 output variables are weighted over a Gaussian updraft velocity distribution has been explained more extensively in Subsection 2.3.1 (Scheme characteristics) and removed from Subsection 2.3.2 (Implementation).

#### **2.4 Setup of simulations**

- The aerosol emissions used for the simulations have been explained more clearly.
- A better explanation why only dust and black carbon are used by P13 has been provided at the end of the Section.

### **3 Model results**

The level of significance at 95% has been marked in all figures showing relative changes.

### 3.1 Annual zonal means

- In general, more explanations have been provided in the analysis of Figure 2.
- The observation that ICNCs in the mixed-phase regime are influenced by the ice nucleation scheme used for cirrus clouds has been added.
- The last paragraph regarding IWC has been improved with clearer explanations and comparisons with observations (new citations).

### 3.2 Global distributions

- Also here, more explanations have been provided in the analysis of Figure 3.
- The ICNC pattern in Figure 3a has been described more deeply. Some features have been linked to the turbulent contribution of the vertical velocity. The comparison with the recent lidar-radar satellite retrievals is also new.
- The biases in Figure 3b have been better analysed, and the possible influence by convection has been mentioned.
- The issue of high ICNCs over Antarctica has been discussed more and compared with observations.
- The last paragraph regarding IWC has been changed to satisfy the Referees' comments.

## 4 Model comparison and observations

### 4.1 Annual global means

- Standard deviations have been included in Table 2.
- Two new variables ( $ICNC_{burden,cirri}$  and  $ICNC_{burden,mixed}$ ) have been added in Table 2 and described in the text.

### 4.2 Comparison with aircraft measurements

This Subsection has substantially changed.

- The text about the comparison with flight measurements in the cirrus regime has changed after the correction of Figure 5-left.
- The fact that the observations in the mixed-phase regime are actually of INPs (and not ICNCs) has been commented more accurately. Moreover, the comparison with a new reference (suggested by Referee#2) has been added.
- A new paragraph at the end mentions some recent works which report lidar-radar satellite retrievals of ICNCs and compares the modeled results with them.

## 5 Conclusions

- The Conclusions have been corrected accordingly to the changes made before in the manuscript.
- In particular, the last paragraph has been modified. The assertion that the model “performs generally better” has been deleted, and the importance of the model capability to simulate new processes after the implementation has been stressed.
- At the end, some new lines remark the importance of this work from a more general point of view.

# Implementation of a comprehensive ice crystal formation parameterization for cirrus and mixed-phase clouds into the EMAC model (based on MESSy 2.53)

Sara Bacer<sup>1</sup>, Sylvia C. Sullivan<sup>2</sup>, Vlassis A. Karydis<sup>1</sup>, Donifan Barahona<sup>3</sup>, Martina Krämer<sup>4</sup>, Athanasios Nenes<sup>2,5,6,7</sup>, Holger Tost<sup>8</sup>, Alexandra P. Tsimpidi<sup>1</sup>, Jos Lelieveld<sup>1,9</sup>, and Andrea Pozzer<sup>1</sup>

<sup>1</sup>Atmospheric Chemistry Department, Max Planck Institute for Chemistry, Mainz, Germany

<sup>2</sup>School of Chemical and Biomolecular Engineering, Georgia Institute of Technology, Atlanta, USA

<sup>3</sup>NASA Goddard Space Flight Center, Greenbelt, USA

<sup>4</sup>Institut für Energie und Klimaforschung, Forschungszentrum Jülich, Jülich, Germany

<sup>5</sup>School of Earth and Atmospheric Sciences, Georgia Institute of Technology, Atlanta, USA

<sup>6</sup>ICE-HT, Foundation for Research and Technology, Hellas, Greece

<sup>7</sup>IERSD, National Observatory of Athens, Athens, Greece

<sup>8</sup>Institute for Atmospheric Physics, Johannes Gutenberg University Mainz, Mainz, Germany

<sup>9</sup>Energy, Environment and Water Research Center, The Cyprus Institute, Nicosia, Cyprus

**Correspondence:** Sara Bacer (sara.bacer@mpic.de)

**Abstract.** A comprehensive ice nucleation parameterization has been implemented in the global chemistry-climate model EMAC to ~~realistically represent~~ improve the representation of ice crystal number concentrations (ICNCs). The parameterization of Barahona and Nenes (2009, hereafter BN09) allows the treatment of ice nucleation, taking into account the competition for water vapour between homogeneous and heterogeneous nucleation ~~and pre-existing ice crystals in cold in cirrus~~ clouds. Furthermore, the influence of chemically-heterogeneous, polydisperse aerosols is considered ~~via~~ by applying one of the multiple ice nucleating particle ~~spectra~~ parameterizations which are included in ~~the parameterization~~ BN09 to compute the heterogeneously formed ice crystals. BN09 has been modified in order to consider the pre-existing ice crystal effect and implemented to operate both in the cirrus and in the mixed-phase regimes. Compared to the standard EMAC ~~results~~ parameterizations, BN09 produces fewer ice crystals in the upper troposphere but higher ~~ice-crystal-number-concentrations~~ ICNCs in the middle troposphere, especially in the Northern Hemisphere where ice nucleating mineral dust particles are relatively abundant. ~~The comparison with a climatological data set of aircraft measurements shows that~~ Overall, ICNCs agree well with the observations, especially in cold cirrus clouds (at temperatures below 205 K), although they are underestimated between 200 K and 220 K. As BN09 used in the cirrus regime improves the model results and, therefore, takes into account processes which were previously neglected by the standard version of the model, it is recommended for future EMAC simulations.

## 1 Introduction

Clouds play an important role in the Earth System by affecting the global radiative energy budget, the hydrologic cycle, the scavenging of gaseous and particulate substances, and by providing a medium for aqueous-phase chemical reactions. Never-

theless, clouds remain one of the ~~most elusive~~ less understood components of the atmospheric system, and their representation in models (including processes like cloud droplet formation, ice nucleation, cloud phase transitions, secondary ice production, aerosol-cloud interactions) is one of the major challenges in climate studies (IPCC, 2013; Seinfeld et al., 2016). Compared to the liquid droplet activation process, the ice crystal formation (in mixed-phase and cirrus clouds) is affected by large uncertainties because of the poor understanding of the chemical and physical principles underlying ice nucleation ~~and~~ the complexity of ice nucleation mechanisms and aerosol-ice interactions (Cantrell and Heymsfield, 2005; Gultepe and Heymsfield, 2016; Heymsfield et al., 2017; Korolev et al., 2017).

Cirrus clouds form at high altitudes and very low temperatures (~~typically below  $-35^{\circ}$~~  below 238 K) and consist purely of ice crystals. They strongly impact the transport of water vapour entering the stratosphere (Jensen et al., 2013) and play an important role as modulator of radiation fluxes in the global radiative budget: they scatter solar radiation back into the space (albedo effect) and absorb and re-emit longwave terrestrial radiation (greenhouse effect). Differently from other types of clouds, cirrus clouds produce a net warming at the top of the atmosphere (TOA) (e.g. Chen et al., 2000; Hong et al., 2016; Matus and L'Ecuyer, 2017). In addition, mixed-phase clouds consist of both supercooled liquid cloud droplets and ice crystals and ~~generally appear at temperatures above  $-20^{\circ}$~~  appear at subfreezing temperatures above 238 K. Mixed-phase clouds generates a net cooling at TOA, although the estimates of their radiative effects are complicated by the coexistence of both ice and liquid cloud phases (Matus and L'Ecuyer, 2017). Due to the difference between vapour pressure over water and over ice, ice crystals grow at the expense of water droplets (Wegener-Bergeron-Findeisen process), thus, mixed-phase clouds are thermodynamically unstable and can convert into ice-only clouds ~~. Mixed-phase clouds are responsible for the majority of precipitation, lightning and strong storms (e.g. Korolev, 2007; Korolev et al., 2017)~~ . As ice crystals can grow quickly to precipitation-sized particles, precipitation is mainly formed in mixed-phase clouds, while precipitation from cirrus clouds does not usually reach the surface (Lohmann, 2017). The mixed phase is also important for cloud electrification and intracloud lightning, which occur through the in-cloud charge separation via a transition from supercooled raindrops to graupel over the mixed-phase temperature range (Korolev et al., 2017). The fraction of cloud ice has a profound impact on the cloud forcing in global climate models, one of the reasons why cloud radiative forcing is so diverse and uncertain ~~(McCoy et al., 2016; Tan et al., 2016; Vergara-Temprado et al., 2018)~~.

Ice crystal formation takes place via homogeneous and heterogeneous nucleation, depending on environmental conditions (e.g. temperature, supersaturation, vertical velocity) and aerosol populations (i.e. aerosol number concentrations and physico-chemical characteristics) (Pruppacher and Klett, 1997; Kanji et al., 2017; Heymsfield et al., 2017; Korolev et al., 2017). Homogeneous nucleation occurs through the freezing of supercooled liquid droplets at low temperatures ( $T < 238$  K) and high supersaturation over ice (140% – 160%) (Koop et al., 2000). Heterogeneous nucleation refers to the formation of ice on an aerosol surface, which reduces the energy barrier for ice nucleation and lets ice crystals form at lower supersaturations and/or at warmer (subfreezing) temperatures than homogeneous nucleation. The aerosols that lead to the generation of ice crystals are called ice nucleating particles (INPs) and are mostly insoluble, like mineral dust, soot, organics, and biological particles (Pruppacher and Klett, 1997). Heterogeneous nucleation occurs via different mechanisms called “nucleation modes” (deposition, condensation, immersion, and contact nucleation). Based on modeling studies, homogeneous nucleation has been considered



the dominant process for cirrus formation (e.g. Haag et al., 2003; Gettelman et al., 2012) because the concentration of liquid droplets is higher than that of INPs in the upper troposphere. However, ~~due to some field measurements found a predominance of heterogeneous nucleation and lower ice crystal number concentrations (ICNCs) than produced by homogeneous nucleation (e.g. Cziczo et al., 2013; Jensen et al., 2013) . What process is dominant is still under debate, although recent studies suggested~~  
 5 the overestimation of ~~vertical velocity this is under debate (Cziczo et al., 2013; Barahona and Nenes, 2011; Barahona et al., 2017) .~~  
~~the vertical velocity as possible cause of the discrepancy between modeled results and observations (e.g. Barahona and Nenes, 2011; Zhou~~

Overall, two different regimes for ice crystal formation are distinguished: ~~the~~ The cirrus regime at cold temperatures ( $T < 238$  K), where ice crystals originate via heterogeneous and homogeneous nucleation to form cirrus clouds. The mixed-  
 10 phase regime at subfreezing temperatures between 238 K and 273 K, where ice crystals form exclusively by via heterogeneous nucleation and alter the phase composition of the mixed-phase clouds,~~and the cirrus regime at colder temperatures ( $T < 238$ ), where ice crystals originate via heterogeneous and/or homogeneous nucleation to form cirrus clouds. In the latter regime,~~  
besides primary nucleation, another mechanism which controls ICNCs is the secondary ice production, i.e. the production of new ice crystals via the multiplication of pre-existing ice particles without the action of INPs.

15 As heterogeneous nucleation takes place at lower supersaturation than homogeneous nucleation, the available water vapour and the degree of supersaturation decrease, reducing or inhibiting the formation of ice crystals from homogeneous nucleation. This competition between homogeneous and heterogeneous nucleation for water vapour drastically affects the ~~ice crystal number concentration (ICNC)~~ ICNC in the cirrus regime, even at low INP concentrations (Kärcher and Lohmann, 2003; Spichtinger and Cziczo, 2010). ~~Water~~ On the other hand, both in the cirrus regime and in the mixed-phase regime,  
 20 water vapour can also be reduced by ~~condensation onto pre-existing cloud droplets,~~ depositional growth onto pre-existing ice crystals and ice crystals carried into the cloud via convective detrainment and advective transport, thus, inhibiting ice nucleation. The impact of pre-existing ice crystals (PREICE) ~~on cirrus clouds can be important~~ can be especially important in cirrus clouds, when ice crystals ~~have~~ are of small size and have low sedimentation rates at low temperatures (Barahona and Nenes, 2011), leading to optically thinner cirrus clouds characterized by fewer ice crystals with a diverse age distribu-  
 25 tion and high supersaturation levels, especially in the case of tropical upper troposphere/lowermost stratosphere (UTLS) cirrus ~~(Barahona and Nenes, 2011; Hendricks et al., 2011; Kuebbeler et al., 2014) .~~ clouds (Barahona and Nenes, 2011; Hendricks et al., 2011; K

Cloud schemes in atmospheric and climate models have evolved from using only macrophysical properties like cloud cover to representing the microphysics explicitly, e.g. formation, evolution, and removal of cloud droplets and ice crystals (Kärcher et al., 2006; Lohmann et al., 2008; Gettelman et al., 2010; Barahona et al., 2014). Including sophisticated schemes in general  
 30 circulation models (GCMs) allows for a more realistic description of the variability of cloud properties and cloud radiative effects, improving the model climate predictions (Lohmann and Feichter, 2005; Barahona et al., 2014) . Recently, sophisticated parameterizations have been developed, taking into account the aerosol influence on ice formation and different modes of heterogeneous nucleation. Liu and Penner (2005) presented an ice nucleation scheme based on ~~parcel numerical~~ numerical  
 35 parcel model simulations which considers the competition between homogeneous and heterogeneous nucleation following the

~~classic nucleation theory~~ classical nucleation theory (CNT). Kärcher et al. (2006) developed a physically based parameterization scheme of ice initiation and ice crystal initial growth in cirrus clouds, considering the PREICE effect and allowing for the competition between heterogeneous and homogeneous nucleation. Barahona and Nenes (2009) introduced an ice cloud formation parameterization, based on the analytical solution of the cloud parcel model equations, which ~~accounts for the competition~~ calculates the competition for water vapour between homogeneous and heterogeneous nucleation and ~~the variability of aerosol concentration and composition~~ takes into account the variability (in size and chemical composition) of different aerosol species through a variety of INP ~~spectra~~ parameterizations. Since then, these parameterizations have been included in GCMs in order to better predict cloud phase partitioning. Hendricks et al. (2011) and Kuebbeler et al. (2014) have implemented the parameterization ~~by of~~ by Kärcher et al. (2006) into the ECHAM4 and ECHAM5-HAM models, respectively. Liu et al. (2007) and Liu et al. (2012) have implemented the parameterization ~~by of~~ by Liu and Penner (2005) into the CAM3 and CAM5 models, respectively. Also, Liu et al. (2012) and Barahona et al. (2014) have implemented the scheme of ~~by~~ Barahona and Nenes (2009) in CAM5 and GEOS-5, respectively.

In this study the parameterization of Barahona and Nenes (2009, hereafter BN09) has been implemented into the ECHAM/MESSy Atmospheric Chemistry (EMAC) global model to improve the representation of ice nucleation. ~~The parameterization calculates the competition for water vapour between homogeneous and heterogeneous nucleation and takes into account the variability (in size and chemical composition) of different aerosol species. Moreover, the PREICE effect has been added in the parameterization. The BN09 algorithm has been modified in order to include the PREICE effect and~~ has been used to compute the new ice crystals formed both in the cirrus regime and/or in the mixed-phase regime, ~~and its~~ Its performance has been compared with the results generated via the standard model configuration. ~~The model evaluation is carried out, and the model evaluation has been carried out~~ paying particular attention to the ice-related results. The paper is ~~organized~~ organised as follows: the description of the operational model and the BN09 scheme are in Section 2, as well as the information about the implementation work and the simulations run for this study, Section 3 describes the modeled ice-related products, Section 4 contains the evaluation of the model, and Section 5 presents our conclusions.

## 2 Model description and set-up of simulations

### 2.1 EMAC model

The EMAC model is a numerical chemistry-climate model (CCM) which describes tropospheric and middle-atmosphere processes and their interactions with ocean, land, and human influences. Such interactions are simulated via dedicated submodels in the MESSy framework (Modular Earth Submodel System, Jöckel et al., 2010), while the 5th generation European Centre Hamburg GCM (ECHAM5, Roeckner et al., 2006) is used as core of the atmospheric dynamics. For the present study we have used ECHAM5 version 5.3.02 and MESSy version 2.53.

The EMAC model has been extensively described and evaluated against in-situ observations and satellite data, e.g. aerosol optical depth, acid deposition, meteorological parameters (e.g. Pozzer et al., 2012, 2015; Karydis et al., 2016; Tsimpidi et al., 2016; Klingmüller et al., 2017). It computes gas-phase species on-line through the MECCA (Module Efficiently Calculating

the Chemistry of the Atmosphere) submodel (Sander et al., 2011) and provides a comprehensive treatment of chemical processes and dynamical feedbacks through radiation (Dietmüller et al., 2016). Aerosol microphysics and gas/aerosol partitioning are calculated by the GMXe (Global Modal-aerosol eXtension) submodel (Pringle et al., 2010), a two-moment aerosol module which predicts the number concentration and the mass mixing ratio of the aerosol modes, along with the mixing state. The aerosol size distribution is described by 7 lognormal modes (defined by total number concentration, number mean radius, and geometric standard deviation): 4 hydrophilic modes, which cover the aerosol size spectrum of nucleation, Aitken, accumulation, and coarse modes, and 3 hydrophobic modes, which have the same size range except for the nucleation mode which is not required. The aerosol composition within each mode is uniform ~~with-in~~ size (internally mixed) but it varies among modes (externally mixed). The aging of aerosols, through coagulation or condensation of water vapour and sulfuric acid, is described by GMXe by transferring aerosols from the externally mixed to the internally mixed modes. Convective and large-scale clouds are separately treated and individually calculated by the submodels CONVECT and CLOUD, respectively. The CONVECT submodel contains multiple convection parameterizations (Tost et al., 2006) . In this work the scheme of Tiedtke (1989) has been used. Convective cloud microphysics is highly simplified and neither explicit aerosol activation into liquid droplets nor aerosol effects in the ice formation processes are taken into account, i.e. convective microphysics is solely based on temperature and updraft strength. Detrainment from convection is treated by taking updraft (and downdraft) concentrations of water vapour and cloud condensate and the corresponding massflux detrainment rates into account. These are merged including turbulent detrainment (i.e. exchange of mass through the cloud edges) and organised detrainment (i.e. organized outflow at cloud top). The detrained water vapour is added to the large-scale water vapour field, while the detrained cloud condensate is directly used as a source term for cloud condensate by the large-scale cloud scheme (i.e. the CLOUD submodel), which considers the detrained condensate either liquid or ice depending on the temperature (if  $T < 238$  K the phase is ice) and the updraft velocity. The size and numbers of the detrained condensate are not taken into account explicitly. The CLOUD submodel uses a double-moment stratiform cloud microphysics scheme for cloud droplets and ice crystals (Lohmann et al., 1999; Lohmann and Kärcher, 2002; Lohmann et al., 2007) which defines prognostic equations for specific humidity( $q_w$ ), liquid cloud mixing ratio( $q_l$ ), ice cloud mixing ratio( $q_i$ ), cloud droplet number concentration ( $N_{TCDNC}$ ), and ~~ice-crystal-number-concentration~~ ( $N_{TICNC}$ ). The advantage of using a two-moment scheme is that it allows for the explicit computation of cloud particle size distribution, which interacts with radiation and influences the evolution of cloud properties. In the CLOUD submodel, ice crystals form via homogeneous nucleation in the cirrus regime, via immersion and contact freezing in the mixed-phase regime (more details about ice nucleation are given in the next Subsection). Cloud droplet formation is parameterized by the “unified activation framework” (UAF) (Kumar et al., 2011; Karydis et al., 2011) . It is an advanced physically based parameterization which merges two theories:  $\kappa$ -Köhler theory (KT) (Petters and Kreidenweis, 2007) , which governs the activation of soluble aerosols, and Frenkel-Halsey-Hill adsorption activation theory (FHH-AT) (Kumar et al., 2009) , which describes the droplet activation due to water adsorption onto insoluble aerosols (e.g. mineral dust). Aerosol modes that consist of only soluble material follow the KT, and the required effective hygroscopicity ( $\kappa$ ) is calculated based on the chemical composition of the mode as described by the ISORROPIA thermodynamic equilibrium model (Fountoukis and Nenes, 2007) . Aerosol modes that consist of an insoluble core with soluble coating follow the UAF scheme, which takes into account the effects of adsorption and

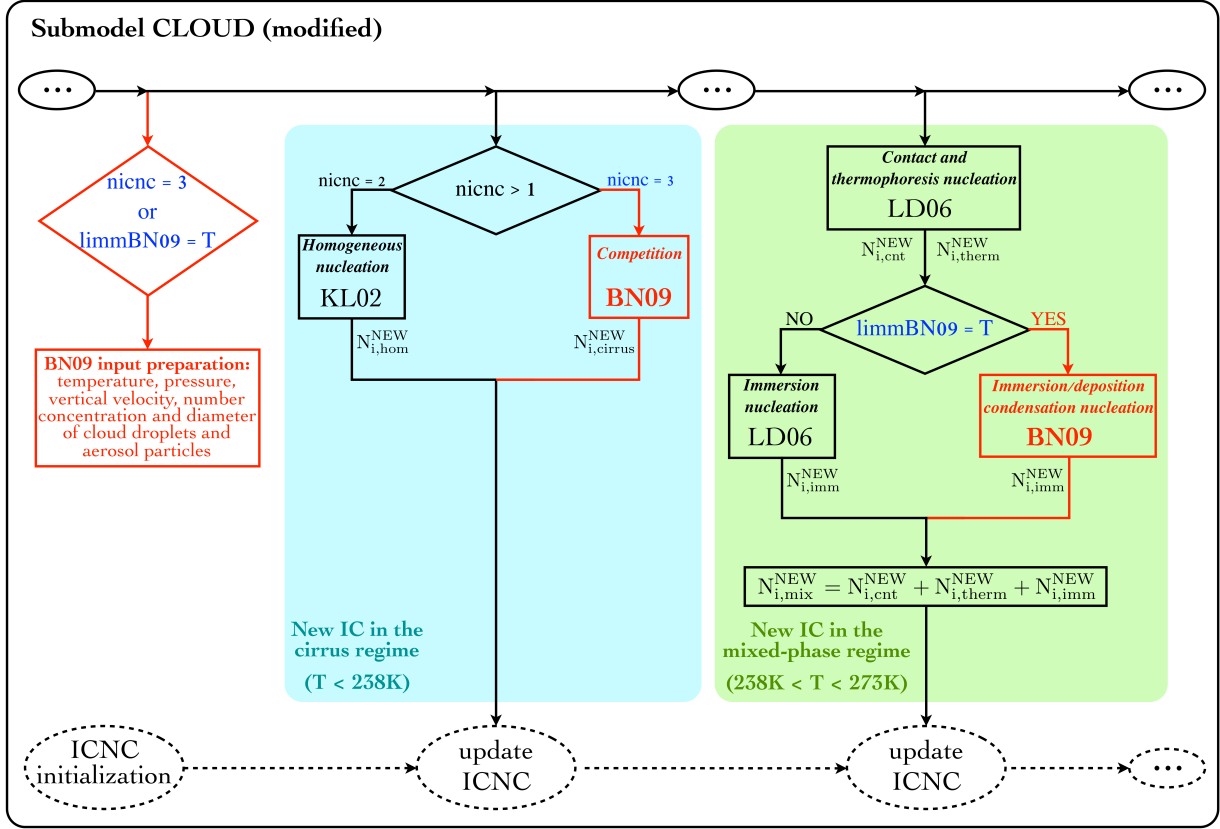
absorption on the cloud condensation nuclei (CCN) activity of the mixed aerosol. More details about the UAF scheme and its implementation in the EMAC model can be found in Karydis et al. (2017). The diagnostic cloud cover scheme of Sundqvist et al. (1989) based on the grid mean relative humidity is used; it assumes that a grid box is partly covered by clouds when the relative humidity exceeds a threshold and is totally covered when saturation is reached. Other microphysical processes, like phase transitions, autoconversion, aggregation, accretion, evaporation of rain, melting of snow, sedimentation of cloud ice, are also taken into account. In by the CLOUD submodel, ice clouds form via homogeneous nucleation in the cirrus regime, via immersion and contact freezing in the mixed-phase regime (more details about ice cloud formation are given in the next subsection). The CLOUD submodel is coupled to GMXe to simulate aerosol-cloud interactions. Physical. An evaluation of the double-moment cloud microphysics scheme used by ECHAM5 was presented in Lohmann et al. (2007, 2008) and Lohmann and Hoose (2009), applying the two-moment aerosol microphysics scheme HAM (Stier et al., 2005). Lauer et al. (2007) and Righi et al. (2013, 2015, 2016) showed an evaluation of the CLOUD submodel in conjunction with the aerosol microphysics submodel MADE (Ackermann et al., 1998), while Tost (2017) evaluated the CLOUD submodel in combination with the GMXe submodel. In Section 4 we will extend the comparison with various observations. Finally, physical loss processes, like dry deposition, wet deposition, and sedimentation of aerosol, are explicitly considered by the submodels DRYDEP, SCAV and SEDI, and SCAV (Kerkweg et al., 2006; Tost et al., 2006).

## 2.2 Default ice nucleation in EMAC

The CLOUD submodel describes the evolution of the prognostic variables which undergo all cloud microphysical processes (e.g. precipitation, deposition, evaporation/sublimation). As far as the formation of the new ice crystals is concerned, they are computed via two independent parameterizations, as shown in black in Figure 1.

In the cirrus regime ( $T \leq 238.15$  K) it is assumed that cirrus clouds form exclusively homogeneously using the parameterization by of Kärcher and Lohmann (2002, hereafter referred to as KL02). Such parameterization computes the newly formed ice crystals via homogeneous nucleation ( $N_{i,hom}^{NEW}$ ) of supercooled solution droplets and allows supersaturation with respect to ice. Alternatively, it is possible to use the parameterization by of Kärcher and Lohmann (2003) to simulate cirrus formation via pure heterogeneous freezing, however, by default the model operates with KL02, under the assumption that the dominant freezing mechanism for cirrus clouds is homogeneous nucleation.

In the mixed-phase regime ( $238.15 \text{ K} < T \leq 273.15 \text{ K}$ ) heterogeneous nucleation occurs via immersion ( $N_{i,imm}^{NEW}$ ) and contact ( $N_{i,cnt}^{NEW}$ ) freezing as described in Lohmann and Diehl (2006, hereafter referred to as LD06). Insoluble dust can initiate contact nucleation in the presence of supercooled water droplets following the parameterization of Levkov et al. (1992). Soluble dust and black carbon can act as immersion nuclei, according to the stochastic freezing hypothesis described in Diehl and Wurzler (2004). Possibly, contact freezing via thermophoresis can be included ( $N_{i,therm}^{NEW}$ ), but it is usually not considered (i.e.  $N_{i,therm}^{NEW} = 0$ ) since its contribution is negligible (Lohmann and Hoose, 2009). The Wegener-Bergeron-Findeisen (WBF) process at subfreezing temperatures is parameterized, so liquid water is forced to evaporate from cloud droplets and deposit onto existing ice crystals.



**Figure 1.** Scheme of the new ice crystal formation in the CLOUD submodel: different ice nucleation schemes can be used in the cirrus and in the mixed-phase regimes. nicnc and limm\_BN09 are variables defined in the namelist-file “cloud.nml”; red parts are new; three dots indicate other processes coded in the CLOUD submodel.

In the CLOUD submodel, a single updraft velocity ( $w$ ) is used for the whole grid cell, although  $w$  can vary strongly in reality within the cell horizontal dimension (e.g. Guo et al., 2008). This is a simplification which is commonly used by GCMs, nevertheless, important progress has been recently achieved on this front to describe the subgrid-scale variability of updraft velocity using high resolution simulations (Barahona et al., 2017). In EMAC, the subgrid-scale variability of vertical velocity is introduced by a turbulent component ( $w_{sub}$ ) which depends on the subgrid-scale turbulent kinetic energy ( $TKE$ ) described by Brinkop and Roeckner (1995), such that  $w_{sub} = 0.7\sqrt{TKE}$ . The vertical velocity is given by the sum of the grid mean vertical velocity ( $\bar{w}$ ) and the turbulent contribution:  $w = \bar{w} + 0.7\sqrt{TKE}$  (Kärcher and Lohmann, 2002). Zhou et al. (2016) analysed the effect of different updraft velocity representations on ice number concentrations and showed that using  $w_{sub}$  overestimates the ice-crystal-number-concentrations-ICNCs at temperatures below 205 K, but agrees better with the observations at higher temperatures. Other studies, e.g. Kärcher and Ström (2003) and Joos et al. (2008), showed that  $w$  is in good agreement with

vertical velocity observations. Given the importance of updraft velocities for ice formation (Donner et al., 2016; Sullivan et al., 2016), future studies could implement a complete probability distribution of updrafts.

Finally, the influence of the pre-existing ice particles is not taken into account. The only ~~precaution~~ expedient adopted by the CLOUD submodel is ~~the reduction of~~ to reduce the number of aerosol particles available for ice nucleation by the existing ice particle number in the cirrus regime.

### 2.3 Ice nucleation parameterization BN09

~~In order to improve the representation of ice nucleation in the current EMAC model, we have implemented the ice crystal formation parameterization introduced by Barahona and Nenes (2009). In this Section we briefly describe the parametrization and its implementation into the EMAC model.~~

#### 2.3.1 Scheme characteristics

The BN09 parameterization is computationally efficient and suitable for large-scale atmospheric models. It explicitly considers the competition for water vapour between homogeneous and heterogeneous nucleation in the cirrus regime, the influence of ~~polydisperse (in size and composition)~~ chemically-heterogeneous, polydisperse aerosols acting as INPs, and allows to use different heterogeneous nucleation spectra ~~parameterizations~~.

The BN09 algorithm can be divided in three subsequent parts. First, the limiting number of INPs ( $N_{lim}$ ) needed to inhibit homogeneous nucleation is computed if temperatures are below 238 K. Indeed, at such cold temperatures homogeneous and heterogeneous nucleation compete for water vapour decreasing ice supersaturation. When INPs exceed  $N_{lim}$  and the maximum supersaturation ( $s_{max}$ ) ~~that develops in the cloud parcel~~ is less than the threshold for homogeneous nucleation ( $s_{hom}$ ), homogeneous nucleation is suppressed and ice crystals are formed only heterogeneously.  $N_{lim}$  is determined by computing the number of INPs required to drop  $s_{max}$  below  $s_{hom}$ .

In the second step, ice crystals nucleated heterogeneously ( $N_{i,het}$ ) are computed via the selected INP spectrum ~~parameterization~~ at  $s_{hom}$ , then two cases can follow. If the condition  $N_{i,het}(s_{hom}) \geq N_{lim}$  is satisfied, ice crystals are formed only heterogeneously at  $s_{max}$  (i.e.  $N_{i,het}(s_{max})$ ), as homogeneous nucleation is suppressed. Here, the  $s_{max}$  is determined using a bisection method to balance the supersaturation within the air parcel. If  $N_{i,het}(s_{hom}) < N_{lim}$ , the competition between homogeneous and heterogeneous nucleation is simulated. The ice crystals nucleated homogeneously ( $N_{i,hom}$ ) are determined via the homogeneous nucleation parameterization of Barahona and Nenes (2008, 2009) (hereafter BNhom):

$$f_c = f_{c,hom} \left[ 1 - \left( \frac{N_{i,het}(s_{hom})}{N_{lim}} \right)^{3/2} \right] \quad (1)$$

$$N_{i,hom} = N_c e^{-f_c} (1 - e^{-f_c}) \quad (2)$$

where  $N_c$  is the number concentration of supercooled liquid cloud droplets and  $f_c$  is the fraction of freezing soluble aerosol. The first factor of  $f_c$  (i.e.  $f_{c,hom}$ ) is defined by Barahona and Nenes (2008), while the second factor is the correction introduced by

Barahona and Nenes (2009) to take into account the reduction of the probability of homogeneous nucleation due to the change in the droplet size distribution during crystal formation.

Third, the total concentration of new ice crystals formed in the cirrus regime ( $N_{i,cirrus}^{NEW}$ ) is determined by the contribution of both heterogeneous and homogeneous nucleation. i.e.  $N_{i,cirrus}^{NEW} = N_{i,heter} + N_{i,hom}$  (see Figure 1). On the other hand, if the temperature is higher than 238 K, the algorithm uses the INP ~~spectrum-parameterization~~ to compute  $N_{i,heter}(s_{max})$ .

It is important to stress that the BN09 code actually includes five INP ~~spectra-parameterizations~~ to deal with heterogeneous nucleation (as mentioned before) and these are described by (i) Meyers et al. (1992), (ii) Phillips et al. (2007), (iii) Phillips et al. (2008), (iv) Phillips et al. (2013), and (v) Barahona and Nenes (2009). They are all empirically based except the latter, which is derived from the ~~classie-nucleation-theory-(CNT)CNT~~. Sensitivity studies have shown that global means of ICNC vary up to a factor twenty according ~~the-INP-spectrum-to-the-INP-parameterization~~ used (when the competition between homogeneous and heterogeneous nucleation is taken into account) and ~~that-empirical-based-spectra-empirical-based-parameterizations~~ better agree with observations, while ~~the-CNT-spectrum-CNT~~ overestimates the number of ice crystals (Barahona et al., 2010; Sullivan et al., 2016). Therefore, the simulations described in Subsection 2.4 use the ~~spectrum-by-parameterization-of~~ Phillips et al. (2013, hereafter referred to as P13) to simulate heterogeneous nucleation, since it better agrees with observations (Sullivan et al., 2016). P13 is the improved version of Phillips et al. (2008), a comprehensive empirical formulation which takes into account the surface area contribution of different insoluble aerosols (with diameters larger than 0.1  $\mu m$ ) to deposition and immersion/condensation nucleation modes, besides the temperature and the supersaturation with respect to ice. The aerosol particles responsible for ice nucleation are divided in four groups: mineral dust (DU), inorganic black carbon (BC), biological aerosols (BIO), and soluble organics (OCsol). Dust and soot, the aerosol species considered in this work ~~for the reasons explained in Subsection 2.4~~, contribute to determine  $N_{i,heter}$  in the following way:

$$n_{INP,X} = \int_{\log(0.1\mu m)}^{\infty} \left[ 1 - e^{-\mu_X(D_X, S_i, T)} \right] \frac{dn_X}{d\log D_X} d\log D_X \quad X = DU, BC; \quad T < 273.15 K \quad (3)$$

$$N_{i,heter}(s_{max}) = \sum_{X=1}^{N_X} n_{INP,X} \quad (4)$$

where  $n_{INP,X}$  is the number concentration of INPs activated at a saturation ratio with respect to ice  $S_i$  and temperature  $T$  for the aerosol species  $X$ ,  $\mu_X$  represents the mean number of activated ice embryos per insoluble aerosol particle of species  $X$  with diameter  $D_X > 0.1 \mu m$ ,  $n_X$  is the number concentration of aerosol particles ~~(interstitial and INP immersed in cloud droplets)~~ of species  $X$ , and  $N_X$  is the number of different aerosol species. Equation (3) can be further extended for biological aerosols and soluble organics, as shown in Phillips et al. (2013), and  $N_{i,heter}$  denotes the new ice crystals formed via deposition and immersion/condensation ~~nucleation modes~~.

Summarizing (see Figure 1), according to BN09 the new ice crystals formed in the cirrus regime are:

$$N_{i,cirrus}^{NEW} = \begin{cases} N_{i,hom} + N_{i,heter}(s_{hom}) & N_{i,heter}(s_{hom}) < N_{lim}, s_{max} = s_{hom} \\ N_{i,heter}(s_{max}) & N_{i,heter}(s_{hom}) \geq N_{lim}, s_{max} < s_{hom} \end{cases} \quad (5)$$



while in the mixed-phase regime ~~, as a result of deposition and immersion/condensation nucleation,~~ they are computed as:

$$N_{i,imm}^{NEW} = N_{i,hct}(s_{max}) \quad (6)$$

In order to account for sub-grid variabilities, the output variables of BN09 which depend on the vertical velocity ( $f(w)$ ) are weighted over a Gaussian updraft velocity distribution by numerically calculating the integral (Morales and Nenes, 2010; Sullivan et al., 20

5

$$\overline{f(w)} = \frac{\int_0^\infty f(w') P(w') dw'}{\int_0^\infty P(w') dw'} \quad (7)$$

where  $P(w')$  is the Gaussian probability density function of sub-grid vertical velocities ( $w'$ ) with mean  $0.1 \text{ cm s}^{-1}$  and standard deviation equal to  $w_{sub}$ .

### 2.3.2 Implementation

10 The BN09 parameterization has been added in the MESSy framework in order to compute the newly formed ice crystals in the cirrus regime and/or in the mixed-phase regime. The input variables of BN09 are: temperature ( $T$ , [K]); pressure ( $P$ , [Pa]); width of the vertical velocity distribution ( $w_{sub}$ , [ $\text{m s}^{-1}$ ]) with upper limit  $3 \text{ m s}^{-1}$  and lower limit  ~~$0.001$~~   $0.01$   ~~$\text{m s}^{-1}$  (like in Sullivan et al., 2016)~~; number concentration of activated cloud droplets ( $N_c$ , [ $\text{m}^{-3}$ ]), dry diameter of ~~sulfate in~~ Aitken soluble mode ( $D_c$ , [m], see Appendix A) and standard deviation of Aitken soluble mode ( $\sigma_c$ ); number concentrations ( $N_X$ ,  
15 [ $\text{m}^{-3}$ ]), geometric mean dry diameters ( $D_M$ , [m]), and lognormal standard deviations ( $\sigma_M$ ) of  ~~$X$ -aerosol-species-interstitial aerosol of species  $X$~~  (which can be DU, BC, OCsol, BIO, depending on the choice of the INP ~~spectrum~~ parameterization). Given the internally mixed representation of aerosols in EMAC, the diameters  ~~$D_M$~~   $D_M$  are not distinguished among aerosol species but only among the  ~~$M$~~ -modes (Aitken ( $K$ ), accumulation ( $A$ ), coarse ( $C$ ), i.e.  $M = K, A, C$ ) which the species belong to. Similarly, the standard deviations  $\sigma_M$  are differentiated only by mode (in EMAC  $\sigma_K = \sigma_A = 1.59$  and  $\sigma_C = 2.0$ ). ~~The~~  
20 ~~output variables of BN09 are number concentration and radius of new ice crystals. They are weighted over a Gaussian updraft velocity distribution, with mean  $0.1$  and standard deviation equal to  $w_{sub}$ , in order to account for the sub-grid variability (Sullivan et al., 2016).~~

A schematic overview of how BN09 has been implemented ~~into the EMAC chemistry-climate model in EMAC~~ through the CLOUD submodel is shown in Figure 1. Moreover, the PREICE effect has been included in the BN09 code. This effect is  
25 parameterized by reducing the vertical velocity for ice nucleation ( $w_{sub}$ ) by a factor depending on the pre-existing ice crystal number concentration and size, limiting the expansion cooling. ~~We compute such~~ Such “corrected” vertical velocity ( $w_{sub,pre}$ ) ~~as defined by~~ has been computed as defined in equation (24) ~~in by~~ Barahona et al. (2014). Further information about the implementation is given in Appendix A. ~~Overall, BN09 is a scheme more realistic than KL02 and LD06 which improves the ice nucleation in EMAC by taking into account processes which were previously neglected (e.g. water vapour competition, influence of polydisperse aerosols, PREICE effect).~~  
30



## 2.4 Setup of simulations

In this study EMAC simulations have been carried out with T42L31ECMWF resolution, which corresponds to a spherical truncation of T42 (i.e. quadratic Gaussian grid of approx.  $2.8^\circ \times 2.8^\circ$  in latitude and longitude) and 31 vertical hybrid pressure levels up to 10 hPa (approx. 25 km) at the lower stratosphere. All simulations have been run for 6 years (1 year as spin-up time plus 5 years for the analyses) using emissions starting from the year 2000 emissions (GFEDv3.1 from van der Werf et al., 2010 for biomass burning and CMIP5-RCP4.5 from Clarke et al., 2007 for biomass burning), 2007 for anthropogenic emissions). As in Pozzer et al. (2012), dust is offline prescribed using monthly emission files based on the AEROCOM data set (Dentener et al., 2006). Also volcanic and secondary organic aerosol emissions are based on AEROCOM, while GFEDv3.1 and CMIP5-RCP4.5 have been used to simulate emissions of black carbon and organic aerosols, respectively. Finally, aerosol climatologies have been used for the interactions with radiation (Tanre et al., 1984) and heterogeneous chemistry (Aquila et al., 2011). Prescribed climatologies of sea surface temperatures (SST) and sea-ice concentrations (SIC) from AMIP (30 years: 1980-2009) have been used as boundary conditions, and climatologies of aerosols (CMIP5-RCP4.5, GFEDv3.1, AEROCOM) have been used to take into account the interactions with radiation and heterogeneous chemistry. Daily means have been saved as output, and monthly means have been used for the analysis in Sections 3 and 4.1.

Table 1 lists all simulations of this study and summarises their main characteristics. The default experiment (DEF or KL+LD) is performed with the standard configuration of the EMAC model, i.e. using the parameterization by of Kärcher and Lohmann (2002) for cirrus clouds and the parameterization by of Lohmann and Diehl (2006) for immersion nucleation in the mixed-phase regime. The “unified activation framework” (UAF) of Kumar et al. (2011) UAF scheme is used as cloud droplet formation parameterization, like in Karydis et al. (2017). UAF is an advanced physically based parametrization which takes into account the effects of adsorption and absorption of dust on the cloud condensation nuclei (CCN) activity. In order to investigate the model performance using the BN09 scheme, we carried out three other experiments where BN09 operates in the two cloud regimes in different combinations: BN09 computing the new ice crystals in the cirrus regime (BN+LD), in the mixed-phase regime (KL+BN), and in both regimes (BN+BN).

In all experiments, contact nucleation is computed according to LD06, while thermophoresis contact nucleation is not considered since its contribution is negligible (as commented in Subsection 2.2). The P13 spectrum parameterization is used to simulate heterogeneous deposition and immersion/condensation nucleation whenever BN09 is called (for the reasons explained in Subsection 2.3). Biological and organic aerosol contributions (which are potential inputs Since LD06 takes into account only dust and soot for immersion nucleation, we set the same aerosol species as contributions for P13) are turned off to compare all the tests under the same conditions, since LD06 includes only dust and soot, and turned off the biological and organic contributions.

## 3 Model results

Experiment name	Ice nucleation scheme	
	<i>Cirrus regime</i>	<i>Mixed-phase regime</i>
KL+LD or DEF	KL02, pure homogeneous nucleation	LD06, immersion nucleation
BN+LD	BN09, competition and PREICE	
KL+BN	KL02, pure homogeneous nucleation	BN09, immersion/condensation and deposition nucleation via P13
BN+BN	BN09, competition and PREICE	

**Table 1.** All experiments carried out in this study.

BN09 improves the ice nucleation representation in EMAC by taking into account processes (e.g. water vapour competition, influence of polydisperse aerosols, PREICE effect) which were previously neglected by KL02 and LD06. In this Section we investigate the changes and the effects obtained by using BN09 in the different regimes.

### 3.1 Annual zonal means

- 5 The annual zonal means of ICNC and ice water content (*IWC*) are shown as a function of altitude in Figure 2, where the isolines at 273 K and 238 K indicate the approximate bounds of cirrus and mixed-phase regimes. Despite the different ice nucleation parameterizations, ICNCs show similar qualitative patterns in all simulations, indicating the important role of atmospheric dynamics. Their numbers decrease towards lower altitudes ~~because the homogeneous~~ (Figure 2a) because the ice nucleation rate reduces with increasing temperature, while they are much higher over the mid-latitudes in
- 10 the Northern Hemisphere (NH) because of larger INP concentrations ~~(Figure 2a) and the influence of big mountain chains, e.g. Rocky Mountains and the Himalayas.~~ Looking at the relative changes, we note that ICNCs computed with BN09 in the cirrus regime are much lower than the default ICNCs in the upper troposphere and at high latitudes in the Southern Hemisphere (SH), where they are lower by up to 80% (Figure 2b). ~~This is likely due to the PREICE effect predicted by BN09, as it has been shown that~~ As ice crystals are formed almost exclusively via homogeneous nucleation here (not shown)
- 15 ~~and BNhom and KL02 produce the same order of magnitude of ICNC (Barahona and Nenes, 2008). On the other hand, ICNCs increase at lower altitudes and especially in the NH. This is due to higher TKE at lower altitudes, which impacts the updraft velocity and increases heterogeneous nucleation contribution, particularly in the NH (not shown) with larger sources of efficient ice-nucleating mineral dust~~ ICNCs (Barahona and Nenes, 2008), the negative bias is likely due to the PREICE effect predicted by BN09. Indeed, it has been demonstrated that homogeneous nucleation dominates in the upper
- 20 troposphere in the tropics and in the SH (Haag et al., 2003; Liu et al., 2012; Barahona et al., 2017), while heterogeneous nucleation is important in the NH (Cziczo et al., 2009), where cirrus clouds are formed from a combination of homogeneous and heterogeneous processes, ~~while homogeneous nucleation dominates in the upper troposphere in the tropics and in the SH (Haag et al., 2003; Liu et al., 2012; Barahona et al., 2017).~~ Interestingly, ICNCs at lower altitudes are also influenced by the ice nucleation parameterization used in the cirrus regime. In fact, there is an increase of ICNCs in the mixed-phase regime
- 25 probably due to a faster sedimentation of the larger ice crystal produced by BN09 in cirrus clouds, especially in the NH

where there are larger sources of efficient ice-nucleating mineral dust. Overall, as commented later in Subsection 4.1, the total ICNC in BN+LD globally decreases. The changes produced by applying BN09 in the mixed-phase regime (Figure 2c) result from the different heterogeneous ice nucleation parameterizations used to simulate immersion nucleation, P13 vs. LD06. The changes are especially evident in the NH (more than 40%), where mineral dust is more abundant than in the SH.

Overall, the ICNC differences obtained using the various ice schemes As P13 produces fewer new ice crystals than LD06 (not shown), the positive biases in the mixed-phase regime are possibly due to influences from the cirrus regime (e.g. ice crystal sedimentation) and convective detrainment. Overall, the ICNC deviations in the mixed-phase regime obtained using the two different parameterizations are smaller (mostly within  $\pm 20\% \pm 20\%$ ) than in the cirrus regime. Finally, the simulation using BN09 in both regimes combines the effects described so far (Figure 2d). Since cirrus clouds do not occur throughout the whole year, we present in the supplement file (Figure S1) the ICNC seasonal means for summer (June-July-August, JJA) and winter (December-January-February, DJF). The seasonal analysis helps to understand why there is cirrus occurrence at temperatures warmer than 238 K, showing that the ICNC growth in the mixed-phase region predicted by BN+LD is actually very small, as expected given that the ice scheme used in the mixed-phase regime is the same as the default simulation.

IWC decreases with increasing temperature, where ICNC is lower (Krämer et al., 2016), and we find three areas with higher values over the mid-latitudes in both hemispheres and the tropics. The IWC pattern (Figure 2e). Overall, the pattern qualitatively follows the ICNC distribution. It is quite symmetrical between the two hemispheres, except at high latitudes in the NH, where IWC is slightly higher because of the higher values of ICNC. Particularly, IWC exhibits three local maxima: two over the mid-latitudes in both hemispheres and one in the tropics, associated to storm tracks and deep convections, respectively (Li et al., 2012), in agreement with satellite observations, e.g. Waliser et al. (2009), Li et al. (2012). The relative changes in Figure 2f show a pattern very similar to Figure 2b, therefore, IWC decreases where ICNC reduces (and vice versa) when BN09 is used in the cirrus regime. IWC decreases with ICNC. On the other hand, BN09 in the mixed-phase regime produces slightly lower IWC. IWC in KL+BN slightly reduces (up to 20%) in the mixed-phase regime in areas where ICNC increases, especially in the NH at high latitudes (Figure 2g). On average, P13 calculates a larger INP number, and hence smaller. This could be due to the the different sizes of ice crystals, than LD06. The TKE updraft formulation may also predict higher supersaturations that allow a contribution of numerous but smaller crystals from heterogeneous nucleation however, the areas with significance are rather small. Finally, BN+BN in Figure 2h simulates an overall reduction of IWC except in the three areas with higher values of IWC described in Figure 2e.

### 3.2 Global distributions

Figure 3 shows the global distributions of ICNC annual means at two different altitudes: 200 hPa (cirrus regime) where temperatures vary between 200 K and 220 K to represent the cirrus regime and 600 hPa (where temperatures are approximately between 240 K and 260 K) to represent the mixed-phase regime. ICNCs in the cirrus regime mostly follow the precipitation pattern, while other areas with higher ICNC ( $> 500$ ) correspond to (Figure 3a) show areas with high values over land and in correspondence with mountainous regions, e.g. the Rocky Mountains, Andes, Tibetan Plateau (and Tibetan Plateau with ICNCs  $> 500 \text{ L}^{-1}$ ). Such pattern is strongly related to the turbulent contribution of the vertical velocity  $w_{sub}$  and in agreement

with Gryspeerdt et al. (2017), who detected in these areas mostly orographic cirrus clouds. Figure 3a). At 200 hPa, the also shows higher ICNCs around the edge of the Antarctic ice sheet and over those regions which experience a strong convective activity, i.e. the Inter Tropical Convergence Zone (ITCZ) and the Tropical Warm Pool (TWP), as observed in Sourdeval et al. (2018). The annual global mean of ICNC at 200 hPa is about  $200 \text{ L}^{-1}$  ( $\sim 390 \text{ L}^{-1}$  over land and  $\sim 124 \text{ L}^{-1}$  over ocean). The relative changes clearly show that BN09 used in the cirrus regime (Figure 3b, d) reduces ICNC (up to 60%) worldwide with respect to the default experiment, ~~except over Indian and Indonesian areas. The and the~~ ICNC annual global mean ~~decreases drops~~ to  $137 \text{ L}^{-1}$  (i.e. more than 30%) ~~in BN+LD~~. Such a reduction occurs mostly because of the PREICE effect ~~in the SH and the competition in the NH~~, being the ice crystals mainly of homogeneous origin at this altitude. However, there are positive biases along the ITCZ and over the TWP area. As the concentrations of new ice crystals produced by BN09 are not particularly remarkable in these regions (not shown), convective detrainment is likely to play a role. Indeed, there is a certain response of the convective activity to the choice of the ice nucleation scheme used in the cirrus regime. On the contrary, KL+BN is characterised by a general increase of ICNC (Figure 3c). However, most of the areas with strong positive changes (larger than 60%) correspond to regions characterized by low ICNC ( $< 30 \text{ L}^{-1}$ ), thus, the global annual mean increases just up to  $218 \text{ L}^{-1}$  (i.e. +9%). At 600 hPa, ~~ICNC increases~~ 600 hPa, ICNCs increase towards high latitudes, in particular over Greenland (up to  $2000 \text{ L}^{-1}$ ) and Antarctica (mostly  $> 2000 \text{ L}^{-1}$ ) (Figure 3e). ~~It must be said that, due to the very low temperatures in the the latter region, even at 600 hPa the conditions are typical of the cirrus regime, and the high ICNCs can be related to the high values of both  $w_{sub}$  and ice supersaturation.~~ Gryspeerdt et al. (2017) found that cirrus clouds over Antarctica have primarily synoptic origin. However, differently from Figure 3e, observations do not present such a high peak of ICNC over Antarctica (Gryspeerdt et al., 2018; Sourdeval et al., 2018). The annual global mean is about  $53 \text{ L}^{-1}$ , which means about one quarter with respect to the ICNC global mean at 200 hPa. ~~Interestingly, Figure 3f confirms what already noticed in Figure 2b, that is the ice nucleation scheme used in the cirrus regime affects the ICNC at the mixed-phase regime altitudes. In fact, as shown in Figure 2b, BN+LD predicts predicting~~ higher ICNCs especially in the NH (Figure 3f). However, the largest differences occur in areas where ICNCs are very low and slightly affect the absolute ICNC values. As a result, the annual global mean actually decreases to  $47 \text{ L}^{-1}$  because of the negative contribution in the SH. Figure 3g also shows strong positive biases, but ICNCs do not change globally ( $52 \text{ L}^{-1}$ ). In general, we find that the ICNC in the mixed-phase regime is less sensitive to the ice nucleation scheme changes than the ICNC in the cirrus regime. Vertically integrated ice crystal number concentrations ( $ICNC_{burden}$ , Figure S2 in the supplement file) clearly show that concentrations are higher over continents ( $\sim 48 \cdot 10^8 \text{ m}^{-2}$ ), where vertical updrafts are stronger and aerosol concentrations more abundant, than over oceans ( $\sim 11 \cdot 10^8 \text{ m}^{-2}$ ).

IWC at 200 hPa and 600 hPa (Figure 4) presents a pattern qualitatively similar to the ICNCs at the corresponding heights. Nevertheless, two interesting features appear. First, the high IWC values ( $> 10 \text{ mg kg}^{-1}$ ) over the ~~Indonesian region-TWP~~ at 200 hPa, where ICNCs are not particularly high. ~~Maritime updraft velocities are weaker, and recent work has shown that there are important oceanic sources of INP (e.g. DeMott et al., 2016). These effects may combine to produce few large crystals in this Southern Pacific region~~ This is probably caused by the bigger radii of the newly formed ice crystals simulated in this area, both by KL02 and BN09. Second, IWC at 600 hPa is rather low over Antarctica ~~(likely because of the low water vapour concentration)~~, which is instead one of the regions with the highest ICNC ~~(likely because of the low water vapour~~

~~concentration~~). The relative changes of IWC with respect to the default simulation (Figure S3 in the supplement file) approximately follow the changes obtained for ICNC, i.e. IWC reduces where ICNC decreases and vice versa, ~~but using BN09 in the cirrus regime dramatically increases IWC in equatorial regions at 200~~.

## 4 Model comparisons and observations

~~An evaluation of the double-moment cloud microphysics scheme used by ECHAM5 was presented in Lohmann et al. (2007, 2008) and Lohmann and Hoose (2009), applying the two-moment aerosol microphysics scheme HAM (Stier et al., 2005). Lauer et al. (2007) and Righi et al. (2013, 2015, 2016) showed an evaluation of the CLOUD submodel in conjunction with the aerosol microphysics submodel MADE (Ackermann et al., 1998). Although Tost (2017) evaluated the CLOUD submodel in combination with the GMXe submodel, in this section we extend the comparison with various observations.~~

### 4.1 Annual global means

Table 2 shows an overview of the global annual means of cloud microphysical ~~and radiative parameters and variables and~~ radiative fluxes computed for different observations and for all experiments, and the percentage changes ~~of these values~~ with respect to the default simulation. The global vertically integrated ice crystal number concentration changes considerably depending on the ice scheme used in the cirrus regime and in mixed-phase regime. When BN09 operates in the cirrus regime, ICNC<sub>burden</sub> decreases by 10% due to the competition between homogeneous and heterogeneous nucleation and the PREICE effect (a similar result has been found also by Liu et al., 2012, Kuebbeler et al., 2014, and Shi et al., 2015). On the other hand, ICNC<sub>burden</sub> increases by almost 7% when BN09 is used in the mixed-phase regime, i.e. when P13 simulates heterogeneous nucleation. On a large scale, these effects offset each other in BN+BN, where the global annual mean is basically unchanged with respect to the default simulation. Overall, ~~all the~~ ICNC<sub>burden</sub> values are very close to the global annual means found by Lohmann et al. (2008) and Kuebbeler et al. (2014), while they are an order of magnitude higher compared to the results of Wang and Penner (2010) and Shi et al. (2015). ~~Unfortunately, there are no global observations of ICNC, but we will provide a statistical comparison with flight measurements in Section 4.2~~ ICNC<sub>burden,cirri</sub> and ICNC<sub>burden,mixed</sub> are vertically integrated ICNCs in the cirrus regime and in the mixed-phase regime, respectively. It is interesting to see quantitatively the different contributions to the total ICNC<sub>burden</sub>: ICNCs in the cirrus regime are about 6 times bigger than the ICNCs in the mixed-phase regime when KL02 is used and about 5 times when BN09 is applied in the cirrus regime. In general, we observe that the variability of ICNC increases when BN09 is used. Vertically integrated cloud droplet number concentration ( $CDNC_{burden}$ ) is basically not influenced by the choice of the ice nucleation scheme, ~~and the~~. Its values are comparable with ~~the observations and~~ previous modeling studies (e.g. Lohmann et al., 2007; Hoose et al., 2008; Salzmann et al., 2010; Wang and Penner, 2010; Kuebbeler et al., 2014; Shi et al., 2015) and observations, although satellite observations are still affected by strong uncertainties (Bennartz and Rausch, 2017).

The ice water path ( $IWP$ ) ~~is quite sensitive to the ice scheme used. It~~ decreases by almost 7% when BN09 is used in the cirrus regime, similarly to what has been found in Kuebbeler et al. (2014) and Lohmann et al. (2008), who compared, respectively,

simulations assuming pure homogeneous nucleation against simulations including water vapour competition and against simulations considering homogeneous and heterogeneous nucleation (in different grid boxes). Overall, the model underestimates the IWP, also found in other studies that applied ~~ECHAM~~ ECHAM-HAM (e.g. Lohmann et al., 2008; Lohmann and Hoose, 2009; Kuebbeler et al., 2014). The liquid water path (*LWP*) estimates derived from satellite observations vary substantially, between 23 and 87 g/m<sup>2</sup>. The modeled results fall within this range and the one indicated as acceptable by Mauritsen et al. (2012), which is 50 – 80 g/m<sup>2</sup>. The LWP variations among the experiments are much smaller than the IWP variations.

The absolute values of the shortwave cloud radiative effect (*SCRE*) and longwave cloud radiative effect (*LCRE*) are higher than those derived from satellite data, especially when KL02 is employed in the cirrus regime. However, when the net cloud radiative effect (*NCRE*) is computed, the same simulations with KL02 in the cirrus regime are closer to the observations. ~~From Looking~~ at the percentage changes and the global distributions in the supplement file (Figure S4) it is evident that the cloud radiative effects are sensitive to the ice nucleation scheme used for cirrus clouds. Indeed, SCRE increases more than 5% with BN09 because of the less efficient scattering of shortwave radiation by fewer and larger crystals. More importantly, ~~LWCR decreases more than 14%~~ LCRE decreases up to 15% in BN+LD because cirrus clouds, at the same, can trap less longwave radiation in the Earth-atmosphere system. As a result, ~~the NCRE diminishes~~ NCRE diminishes with statistical significance over some areas in the tropics and high latitudes, and the cooling effect is enhanced.

The total cloud cover (*TCC*) is slightly overestimated by the model (likely explaining why the cloud radiative forcing is high despite IWP being half of the observed values). However, Mauritsen et al. (2012) assert that a global model is acceptable if TCC is higher than 60%. The changes with respect to the default simulation are very low (below 2%), and the biggest change is in BN+LD where TCC reduces by 1.39%, since lower ICNCs leads to higher sedimentation rates. Finally, the model tends to overestimate the total precipitation ( $P_{tot}$ ), i.e. the sum of large scale and convective precipitations, but this has also been found with other global models (e.g. Barahona et al., 2014 with GEOS-5, Shi et al., 2015 with CAM5, and Lohmann et al., 2008 and Kuebbeler et al., 2014 with ~~ECHAM~~ ECHAM-HAM as well). When BN09 is used in the cirrus regime,  $P_{tot}$  grows by 4% especially because of the increase of the convective precipitation contribution ~~(the large scale precipitation of all simulations remain almost constant)~~. BN09 predicts fewer and larger crystals over tropical, continental regions where previous studies show that the majority of precipitation initiates in the ice phase (e.g. Mülmenstädt et al., 2015).

The annual zonal means of vertically integrated number concentration of ice crystals and cloud droplets, ice water path, liquid water path, shortwave and longwave cloud radiative ~~effect~~ effects, and total cloud cover are shown in Figure ~~S4~~ S5 (in the supplement file) and are comparable with the literature cited before. The annual zonal mean profiles show clearly that the simulations using the same ice nucleation scheme in the cirrus regime are very close to each other, i.e. KL+LD and KL+BN, and BN+LD and BN+BN (as already visible in Table 2).

Overall, the model performs well with respect to observations and the literature. Mostly, the experiments do not yield evident differences among each other at the global scale, as regional variations may cancel out, ~~and there~~. There are clear effects on SCRE and LCRE from changing the cirrus ice nucleation scheme. As there is not a clear indication which simulation performs better, in the next ~~subsection~~ Subsection we extend our analysis including a statistical comparison with aircraft measurements.



	KL+LD (DEF)		BN+LD (2)		KL+BN (3)		BN+BN (4)		OBSERVATIONS	2 vs DEF	3 vs DEF	4 vs DEF
CDNC <sub>burden</sub>	4.15	(4.52)	4.21	(4.56)	4.12	(4.45)	4.18	(4.35)	4.01 <sup>(A)</sup>	1,32	-0,72	0,72
ICNC <sub>burden</sub>	21.86	(82.75)	19.61	(97.64)	23.33	(87.85)	21.75	(97.11)		-10,29	6,72	-0,50
ICNC <sub>burden,cirri</sub>	18.95	(76.35)	16.47	(91.01)	20.26	(81.37)	18.40	(90.52)		-13,09	6,91	-2,90
ICNC <sub>burden,mixed</sub>	3.06	(11.16)	3.29	(11.71)	3.23	(11.48)	3.52	(12.48)		7,44	5,52	14,82
LWP	75.37	(62.33)	72.73	(59.91)	76.58	(62.58)	74.62	(60.67)	87.1 <sup>(B)</sup> , 23.0 <sup>(C)</sup>	-3,50	1,61	-1,00
IWP	12.79	(10.33)	11.95	(9.92)	12.70	(10.25)	11.85	(9.86)	25.8 <sup>(C)</sup> , 29.0 <sup>(D)</sup>	-6,57	-0,70	-7,35
SW <sub>NET,TOA</sub>	229.30	(107.80)	232.20	(108.60)	229.10	(107.7)	231.70	(108.50)	241.70 <sup>(1)</sup> , 240.50 <sup>(3)</sup>	1,26	-0,09	1,05
LW <sub>TOA</sub>	-224.80	(38.54)	-230.70	(38.35)	-224.40	(38.58)	-230.10	(38.49)	-235.40 <sup>(1)</sup> , -239.80 <sup>(3)</sup>	-2,62	0,18	-2,36
Imbalance <sub>TOA</sub>	4.53	(85.63)	1.52	(87.23)	4.66	(85.37)	1.58	(86.78)	5.87 <sup>(1)</sup> , 0.71 <sup>(3)</sup>	-66,41	2,90	-65,10
SCRE	-57.81	(41.78)	-54.83	(41.16)	-58.07	(41.76)	-55.37	(41.23)	-48.50 <sup>(1)</sup> , -47.14 <sup>(2)</sup> , -47.04 <sup>(3)</sup>	5,15	-0,45	4,22
LCRE	33.95	(22.72)	28.90	(21.58)	34.40	(22.67)	29.52	(21.26)	29.42 <sup>(1)</sup> , 26.87 <sup>(2)</sup> , 26.00 <sup>(3)</sup>	-14,87	1,33	-13,05
NCRE	-23.87	(35.63)	-25.93	(34.26)	-23.67	(35.66)	-25.84	(34.34)	-19.07 <sup>(1)</sup> , -19.7 <sup>(2)</sup> , -21.04 <sup>(3)</sup>	-8,63	0,84	-8,25
TCC	70.01	(22.93)	69.04	(23.47)	70.04	(22.92)	69.23	(23.42)	66.83 <sup>(4)</sup> , 66.7 <sup>(5)</sup>	-1,39	0,04	-1,11
P <sub>tot</sub>	2.902	(0.012)	3.032	(0.013)	2.892	(0.012)	3.024	(0.013)	2.624 <sup>(6)</sup> , 2.669 <sup>(7)</sup>	4,48	-0,34	4,20

**Table 2.** Global annual means for simulations and observations. Shown are [grid-averaged](#) vertically integrated cloud droplet number concentration ( $CDNC_{burden}$ ,  $[10^{10} \text{ m}^{-2}]$ ), vertically integrated ice crystal number concentration ( $ICNC_{burden}$ ,  $[10^8 \text{ m}^{-2}]$ ), [vertically integrated ice crystal number concentration in the cirrus regime](#) ( $ICNC_{burden,cirri}$ ,  $[10^8 \text{ m}^{-2}]$ ), [vertically integrated ice crystal number concentration in the mixed-phase regime](#) ( $ICNC_{burden,mixed}$ ,  $[10^8 \text{ m}^{-2}]$ ), [grid-averaged liquid water path](#) ( $LWP$ ),  $[g \text{ m}^{-2}]$  and ice water path ( $IWP$ ),  $[g \text{ m}^{-2}]$  [averaged over the whole spatial grid](#), [net shortwave radiative flux](#) ( $SW_{NET,TOA}$ ),  $[W \text{ m}^{-2}]$ , [longwave radiative flux](#) ( $LW_{TOA}$ ),  $[W \text{ m}^{-2}]$ , and [radiative imbalance](#) ( $Imbalance_{TOA}$ ),  $[W \text{ m}^{-2}]$  at TOA, shortwave cloud radiative effect ( $SCRE$ ),  $[W \text{ m}^{-2}]$ , longwave cloud radiative effect ( $LCRE$ ),  $[W \text{ m}^{-2}]$ , net cloud radiative effect ( $NCRE$ ),  $[W \text{ m}^{-2}]$ , total cloud cover ( $TCC$ ),  $[\%]$ , and total precipitation ( $P_{tot}$ ),  $[mm \text{ day}^{-1}]$ . The values in brackets are (temporal and spatial) [standard deviations](#). The sixth column contains the annual global means computed using the satellite data from ERBE 1985-1990<sup>(1)</sup> and 2000-2006<sup>(4)</sup>, CERES-SYN1deg 2004-2010<sup>(2)</sup>, CERES-EBAF 2000-2016<sup>(3)</sup>, MODIS-TERRA 2004-2008<sup>(5)</sup>, CMAP 1970-2016<sup>(6)</sup>, GPCP 19790-2009<sup>(7)</sup>, and global means taken from the literature: <sup>(A)</sup> is derived from AVHRR data (Gettelman et al., 2010), <sup>(B)</sup> from NOAA-9 and NOAA-10 data (Han et al., 1994), <sup>(C)</sup> from CloudSat data (Li et al., 2012), and <sup>(D)</sup> from ISCCP data (Storelvmo et al., 2008). Last three columns [on the right](#) show the percentage changes  $[\%]$  of the experiments 2, 3, 4 with respect to the default simulation, i.e.  $(experiment - DEF)/|DEF| \cdot 100$ .

## 4.2 Comparison with aircraft measurements

The validation of climate models with measurements from field experiments or aircraft campaigns is always limited by the fact that the models have difficulties to capture individual meteorological events. Nevertheless, here we consider [the a](#) big collection of aircraft measurements recorded in 15 years, between 1999 and 2014 (*Krämer: personal communication, not yet published*). 18 field campaigns (113 total number of flights and about 127 hours in cirrus clouds) covered Europe, Australia, Africa, Seychelles, Brazil, USA, Costa Rica, and tropical Pacific (i.e. between 25°S and 75°N) in the temperature range of 185 – 243 K. This extensive observational data set is compared to the modeled in-cloud [ICNC-ICNCs](#) in Figure 5 (*left*). The observed ICNC varies between 8 and 80  $L^{-1}$  over the entire temperature range, and the lower and upper quartiles vary between 0.6 and 300  $L^{-1}$ .

Again, the simulations can be grouped in two sets according to the ice nucleation scheme used in the cirrus regime, i.e. KL+LD/KL+BN and BN+LD/BN+BN, because of their similarities. ~~At temperatures below 205 K, the first set strongly underestimates (at least three orders of magnitude) the observed ICNC, while the second set shows good agreement with the measurements. The strong ICNC underestimation at cold temperatures has been already pointed out by Kuebbeler et al. (2014). They used the parameterization of Kärcher et al. (2006) with the ECHAM5-HAM GCM, and indicated a too low vertical velocity as the reason for such underestimation. From Figure 5 (left) we deduce that for most of the temperature range, the simulations which use KL02 produce too low ICNCs in the cirrus regime overestimate the observed ICNCs (although they mostly remain below the 75<sup>th</sup> percentile). The overestimation of ICNCs is common to other modeling studies (e.g. Wang and Penner, 2010; especially in cold cirrus clouds (for  $T < 205$  K) as well, while. On the other hand, the simulations which use BN09 works better at such low temperatures. Between 205 K in the cirrus regime are very close to the observations at temperatures below 200 K and between 220 K and 230 K there is a reverse tendency. The simulations KL, while they underestimate ICNCs between 200 K and 220 K. In this temperature range the simulations can exceed the observed 25<sup>th</sup> percentile (although remaining within the 5<sup>th</sup> percentile). In comparison with the other two simulations, BN+LD and KLLD and BN+BN are closer to the observations and lie within the observed 25<sup>th</sup>–75<sup>th</sup> percentiles at temperatures higher than 215 K. The simulations with BN09 in the cirrus regime underestimate the observations and are outside the 25<sup>th</sup>–75<sup>th</sup> percentiles in the interval 205–222 K. BN always predict lower ICNCs at temperatures below 230 K. In this case, the changes between the simulations indicate that competitive nucleation, as expected because of the competition and PREICE effects are overestimated in warm cirrus clouds (for  $T > 205$  K). Finally, all simulations show the same profiles at temperatures higher than 230 K: they overestimate the ICNC four simulations overestimate ICNCs by one order of magnitude in the temperature range 230–240 K but agree again with the observations at higher temperatures. We reiterate that ICNC is highly dependent on the vertical velocity which is usually poorly represented in terms of spatial and temporal variability (Barahona et al., 2017).~~

Overall, the simulations BN+LD and BN+BN are always within the observed 5<sup>th</sup>–95<sup>th</sup> percentiles and, for most of the temperature range, within the 25<sup>th</sup>–75<sup>th</sup> percentiles. They show a negative bias (below the 25<sup>th</sup> percentile) only between 205 and 220 K but agree particularly well with the measurements at temperatures lower than 200 K. ~~On the contrary, the simulations which consider only homogeneous nucleation but underestimate the ICNCs within the interval 200–220 K, due to an overestimation of the competitive nucleation and PREICE effects. Barahona et al. (2010) showed that the competitive nucleation effect is small using P13. Also, Liu et al. (2012) found that BN09 (using the parameterization of Phillips et al. (2008) for heterogeneous nucleation) and BNhom produced very similar results in the cirrus regimes show a large underestimation (even below the 5<sup>th</sup> percentile) at temperatures lower than 210 K, however, they are always within the observed 25<sup>th</sup>–75<sup>th</sup> percentiles at higher temperatures. ECHAM5 has strongly underestimated ICNC at low temperatures thus far (Kuebbeler et al., 2014), while most modeling studies (, suggesting that the competitive nucleation effect was small because of the low ICNCs formed heterogeneously. Thus, we can deduce that the PREICE effect is the one which is likely overestimated in our simulations. Interestingly, modeled ICNCs do not show any particular trend, like also Kuebbeler et al. (2014) who used ECHAM-HAM. Differently, other studies found that ICNCs are inversely proportional with temperature, e.g. Wang and Penner, 2010, Liu et al., 2012, and Shi et al., 2015) have shown overestimations. The implementation of Liu et al. (2012) and Shi et al. (2015) with~~



CAM5, indifferently if they used the ice nucleation scheme of Liu and Penner (2005) or BN09, and Barahona et al. (2010) with GEOS-5 and BN09 has helped to alleviate this dramatic underestimation of cold cirrus ICNC (in agreement with Barahona et al., 2017). Such distinct behaviours are likely derived from the wide model variabilities in reproducing subgrid-scale processes, like vertical velocity, which play a role in ice nucleation. We reiterate that ICNC is highly dependent on the vertical velocity which is usually poorly represented in terms of spatial and temporal variability (Barahona et al., 2017).

For further information, in Figure 5 (right) we also show the modeled in-cloud ICNCs in the mixed-phase regime (i.e. in the temperature range of 238–273 K), considering the same latitudes as the case before (25°S - 75°N). The simulations do not show significant differences among each other. The distinctive features are the ICNC decrease with increasing temperatures and a positive “bulge” between 265 K and 270 K caused by secondary ice production (rime splintering). The simulations do not show any significant difference among each other, meaning that the parameterizations P13 and LD06 produce similar ICNC via pure heterogeneous nucleation. The modeled ICNCs are in quite good agreement with two data sets of flight measurements taken from the projects Winter Icing Storms Project (WISP-94) and Ice in Clouds Experiment-Layer Clouds (ICE-L), which consider about 99 and 46 flight hours, respectively. It is important to stress that this comparison is less accurate than the previous one because the observations here are much more limited both in time and in space than the extensive observational data used for the cirrus regime. Additionally, it should be also noted that the measurements actually concern INPs. At mixed-phase conditions, When the INP number is usually not so high that supersaturation is depleted before all particles have nucleated, so not high enough to deplete the ambient supersaturation, INP concentrations and ICNCs should generally correspond. can correspond, however, it is well known that the two concentrations show discrepancies with increasing temperature because of the secondary ice formation (Kanji et al., 2017). Finally, ICNCs in Figure 5 (right) are in good agreement with the results of Heymsfield et al. (2013), also based on flight campaigns. They found that ICNCs decrease as temperature increases and are within the range  $5 - 50 \text{ L}^{-1}$  in the mixed-phase regime.

Besides the flight measurements, the recent ICNC estimates from lidar-radar satellite retrievals must be mentioned, e.g. Sourdeval et al. (2018) and Gryspeerd et al. (2018). In particular, Gryspeerd et al. (2018) analysed the behaviour of ICNCs within clouds as a function of temperature. Differently from Figure 5 (left), they showed that there is a weak temperature dependence of ICNC, which increases with decreasing temperature. On the other hand, similarly to Figure 5, they found a small increase of ICNC around 265–270 K and, interestingly, a small peak at about 233 K due to orographic and frontal regimes, which could explain our higher modeled ICNCs between 230 K and 240 K.

## 5 Conclusions

In this study we have implemented the ice nucleation scheme of Barahona and Nenes (2009) into the chemistry-climate model EMAC. The parameterization takes into account the water vapour competition between homogeneous and heterogeneous nucleation and has been modified to consider also the depositional growth of pre-existing ice crystals. Heterogeneous nucleation can be computed through different INP spectra parameterizations, and we have chosen the empirical INP spectrum parameterization of Phillips et al. (2013) for our experiments. We have tested the BN09 scheme operating in

the the cirrus and/or in the mixed-phase regimes and compared the results with the standard configuration of the model, which assumes that cirrus clouds form via pure homogeneous nucleation (Kärcher and Lohmann, 2002) and uses the immersion nucleation parameterization of Lohmann and Diehl (2006) for ~~the~~ mixed-phase clouds.

Focusing on the ice-related results, e.g. ICNC and IWC, we found that using BN09 in the cirrus regime strongly reduces the total ICNC worldwide because of the competition and PREICE effects, however, increases ICNC along the tropics. In contrast, BN09 in the mixed-phase regime produces slightly higher ICNCs, especially in the NH where mineral dust particles are more abundant. ~~At the global scale the experiments have not shown evident differences, although~~ We found that changing the ice nucleation scheme in the cirrus regime generates larger differences of ICNC and IWC than changing parameterization in the mixed-phase regime, that is the simulations using the same parameterization in the cirrus regime ~~were discernable~~ (e.g. BN+LD and BN+BN) are easily discernible from the others ~~, particularly in the reduction of longwave cloud forcing, (LD+KL and LD+BN). Interestingly, we observed a certain dependence of ICNC and IWC in the mixed-phase regime on the parameterization used for cirrus clouds.~~

Overall, all modeled results agree well with global observations and the literature data. The comparison made with flight measurements ~~has demonstrated~~ has pointed out that ICNCs are ~~more realistically simulated when BN09 is used~~ overestimated ~~by KL02~~ in the cirrus regime. ~~The experiments BN+LD and BN+BN are always within the observed 5<sup>th</sup>–95<sup>th</sup> percentiles and perform particularly well at low temperatures, in contrast to the default model which severely underestimates ICNC~~ BN09 agrees well with the observations in cold cirrus clouds, however, the PREICE effect is likely overestimated causing the underestimation of ICNCs between 200 K and 220 K.

~~Considering that~~ As BN09 ~~(+)~~ takes into account additional processes which were previously neglected ~~, (2) performs generally better, and (3) consumes the same computational resources as by~~ the standard version of the model, ~~we conclude that BN09 is the recommended~~ without consuming extra computational resources, we recommend to apply this ice nucleation scheme ~~to be applied~~ in future EMAC simulations. ~~Since~~ We also suggest to select P13 among the INP parameterizations available in BN09, since it incorporates the ice-nucleating ability of different aerosol species (dust, soot, bioaerosols, and soluble organics) and simulates both deposition and immersion/condensation nucleation, ~~it is also suggested to be used with~~ BN09. By using the configuration BN+BN, the EMAC model becomes one of the few GCMs which take into account in a detailed manner the complexity of ice nucleation. Finally, this work offers further material for future GCM comparisons with focus on ICNC estimates and for future modeling evaluations against flight measurements and lidar-radar satellite retrievals.

*Code and data availability.* The Modular Earth Submodel System (MESSy) is continuously further developed and applied by a consortium of institutions. The usage of MESSy and access to the source code is licensed to all affiliates of institutions, which are members of the MESSy Consortium. Institutions can become a member of the MESSy Consortium by signing the MESSy Memorandum of Understanding. More information can be found on the MESSy Consortium Website (<http://www.messy-interface.org>). All code modifications presented in this article will be included in the next version of MESSy.

## Appendix A

In this Appendix we provide some additional technical information about the implementation of BN09 into the EMAC model. The BN09 parameterization has been added as a Fortran95 module in the submodel core layer (SMCL) of MESSy (named as `messy_cloud_ice_BN09.f90`). BN09 operates in the cirrus regime and/or in the mixed-phase regime according to the calls made in the CLOUD submodel (`messy_cloud_lohmann10.f90`). As shown in Figure 1, BN09 computes the newly formed ice crystals in the cirrus regime when `nicnc=3` and in the mixed-phase regime when `limm_BN09=.TRUE.`, where `nicnc` and `limm_BN09` are variables defined in the namelist-file `cloud.nml` (the setup of `cloud.nml` for the simulation BN+BN is shown in Table S5-S1 as an example).

Other changes made during the implementation are the following ones.

- *Temperature threshold.* The original BN09 assumes the value 235 K as temperature threshold between the two regimes, while the CLOUD submodel uses the value 238.15 K. For consistency, we ~~use~~used the second threshold as limit condition to call BN09, and we ~~change~~changed the original threshold of BN09 to the value 238.15 K inside the BN09 code.
- *Number concentration and diameter of cloud droplets.* The original BN09 computes the cloud droplet number concentration starting from the number concentration of sulfate aerosol in the Aitken mode. However, since the EMAC model computes the activated cloud droplet number concentration via other parameterizations (e.g. Abdul-Razzak and Ghan, 2000; Lin and Leaitch, 1997; Karydis et al., 2017), we provide BN09 with such variable (neglecting the corresponding computations inside the BN09 code). Unfortunately, these parameterizations do not compute the diameter of the new cloud droplets, therefore, BN09 still computes the diameter using the wet diameter of ~~sulfate~~ aerosol in the Aitken mode (i.e.  $D_c$ ).

*Competing interests.* The authors declare that they have no conflict of interest.

*Acknowledgements.* We would like to thank Dr. Mattia Righi from the German Aerospace Center (DLR) for the discussion on the modeled results. We acknowledge the usage of the Max Planck Computing and Data Facility (MPCDF) for the simulations performed in this work. Sylvia C. Sullivan and Athanasios Nenes acknowledge funding from a NASA Earth and Space Science Fellowship (NNX13AN74H), a NASA MAP grant (NNX13AP63G), and a DOE EaSM grant (SC0007145). Moreover, Athanasios Nenes acknowledges funding by the European Research Council Consolidator Grant 726165 (PyroTRACH), Vlassis A. Karydis acknowledges support from an FP7 Marie Curie Career Integration Grant (project reference 618349), Holger Tost acknowledges funding from the Carl-Zeiss foundation, and Alexandra P. Tsimpidi acknowledges support from a DFG individual grand programme (project reference TS 335/2-1). ~~We acknowledge the NCAR—Earth Observing Laboratory for providing the data from the WISP94 (<https://data.eol.ucar.edu/dataset/236.001>) and the ICE-L (<https://data.eol.ucar.edu/dataset/105.021>) projects, under the sponsorship of the National Science Foundation.~~ Finally, we acknowledge the use of the programs Ferret (product of the NOAA’s Pacific Marine Environmental Laboratory, <http://ferret.pmel.noaa.gov/Ferret/>) and NCL

(product of the Computational and Information Systems Laboratory at the NCAR, <https://www.ncl.ucar.edu/>) for the analyses and graphics in this paper.

## References

- Abdul-Razzak, H. and Ghan, S. J.: A parameterization of aerosol activation: 2. Multiple aerosol types, *Journal of Geophysical Research: Atmospheres*, 105, 6837–6844, <https://doi.org/10.1029/1999JD901161>, 2000.
- Ackermann, I. J., Hass, H., Memmesheimer, M., Ebel, A., Binkowski, F. S., and Shankar, U.: Modal aerosol dynamics model for Europe: development and first applications, *Atmospheric Environment*, 32, 2981–2999, [https://doi.org/https://doi.org/10.1016/S1352-2310\(98\)00006-5](https://doi.org/https://doi.org/10.1016/S1352-2310(98)00006-5), <http://www.sciencedirect.com/science/article/pii/S1352231098000065>, 1998.
- Aquila, V., Hendricks, J., Lauer, A., Riemer, N., Vogel, H., Baumgardner, D., Minikin, A., Petzold, A., Schwarz, J. P., Spackman, J. R., Weinzierl, B., Righi, M., and Dall’Amico, M.: MADE-in: a new aerosol microphysics submodel for global simulation of insoluble particles and their mixing state, *Geoscientific Model Development*, 4, 325–355, <https://doi.org/10.5194/gmd-4-325-2011>, <https://www.geosci-model-dev.net/4/325/2011/>, 2011.
- Barahona, D. and Nenes, A.: Parameterization of cirrus cloud formation in large-scale models: Homogeneous nucleation, *Journal of Geophysical Research: Atmospheres*, 113, n/a–n/a, <https://doi.org/10.1029/2007JD009355>, d11211, 2008.
- Barahona, D. and Nenes, A.: Parameterizing the competition between homogeneous and heterogeneous freezing in ice cloud formation - polydisperse ice nuclei, *Atmospheric Chemistry and Physics*, 9, 5933–5948, <https://doi.org/10.5194/acp-9-5933-2009>, <https://www.atmos-chem-phys.net/9/5933/2009/>, 2009.
- Barahona, D. and Nenes, A.: Dynamical states of low temperature cirrus, *Atmospheric Chemistry and Physics*, 11, 3757–3771, <https://doi.org/10.5194/acp-11-3757-2011>, <https://www.atmos-chem-phys.net/11/3757/2011/>, 2011.
- Barahona, D., Rodriguez, J., and Nenes, A.: Sensitivity of the global distribution of cirrus ice crystal concentration to heterogeneous freezing, *Journal of Geophysical Research: Atmospheres*, 115, <https://doi.org/10.1029/2010JD014273>, d23213, 2010.
- Barahona, D., Molod, A., Bacmeister, J., Nenes, A., Gettelman, A., Morrison, H., Phillips, V., and Eichmann, A.: Development of two-moment cloud microphysics for liquid and ice within the NASA Goddard Earth Observing System Model (GEOS-5), *Geoscientific Model Development*, 7, 1733–1766, <https://doi.org/10.5194/gmd-7-1733-2014>, <https://www.geosci-model-dev.net/7/1733/2014/>, 2014.
- Barahona, D., Molod, A., and Kalesse, H.: Direct estimation of the global distribution of vertical velocity within cirrus clouds, *Scientific Reports*, 7, 1–11, <https://doi.org/10.1038/s41598-017-07038-6>, 2017.
- Bennartz, R. and Rausch, J.: Global and regional estimates of warm cloud droplet number concentration based on 13 years of AQUA-MODIS observations, *Atmospheric Chemistry and Physics*, 17, 9815–9836, <https://doi.org/10.5194/acp-17-9815-2017>, <https://www.atmos-chem-phys.net/17/9815/2017/>, 2017.
- Brinkop, S. and Roeckner, E.: Sensitivity of a general circulation model to parameterizations of cloud? turbulence interactions in the atmospheric boundary layer, *Tellus A*, 47, 197–220, <https://doi.org/10.1034/j.1600-0870.1995.t01-1-00004.x>, 1995.
- Cantrell, W. and Heymsfield, A.: Production of Ice in Tropospheric Clouds: A Review, *Bulletin of the American Meteorological Society*, 86, 795–807, <https://doi.org/10.1175/BAMS-86-6-795>, 2005.
- Chen, T., Rossow, W. B., and Zhang, Y.: Radiative Effects of Cloud-Type Variations, *Journal of Climate*, 13, 264–286, [https://doi.org/10.1175/1520-0442\(2000\)013<0264:REOCTV>2.0.CO;2](https://doi.org/10.1175/1520-0442(2000)013<0264:REOCTV>2.0.CO;2), 2000.
- Clarke, L., Edmonds, J., Jacoby, H., Pitcher, H., Reilly, J., and Richels, R.: Scenarios of Greenhouse Gas Emissions and Atmospheric Concentrations, Sub-report 2.1A of Synthesis and Assessment Product 2.1 by the US Climate Change Science Program and the Subcommittee on Global Change Research, Department of Energy, Office of Biological & Environmental Research, Washington, DC, USA, p. 260, 2007.

- Cziczo, D. J., Stetzer, O., Worringen, A., Ebert, M., Weinbruch, S., Kamphus, M., Gallavardin, S. J., Curtius, J., Borrmann, S., Froyd, K. D., Mertes, S., Möhler, O., and Lohmann, U.: Inadvertent climate modification due to anthropogenic lead, *Nature Geoscience*, 2, 333–336, <https://doi.org/10.1038/ngeo499>, 2009.
- Cziczo, D. J., Froyd, K. D., Hoose, C., Jensen, E. J., Diao, M., Zondlo, M. A., Smith, J. B., Twohy, C. H., and Murphy, D. M.: Clarifying the Dominant Sources and Mechanisms of Cirrus Cloud Formation, *Science*, 340, 1320–1324, <https://doi.org/10.1126/science.1234145>, <http://science.sciencemag.org/content/340/6138/1320>, 2013.
- DeMott, P. J., Hill, T. C. J., McCluskey, C. S., Prather, K. A., Collins, D. B., Sullivan, R. C., Ruppel, M. J., Mason, R. H., Irish, V. E., Lee, T., Hwang, C. Y., Rhee, T. S., Snider, J. R., McMeeking, G. R., Dhaniyala, S., Lewis, E. R., Wentzell, J. J. B., Abbatt, J., Lee, C., Sultana, C. M., Ault, A. P., Axson, J. L., Diaz Martinez, M., Venero, I., Santos-Figueroa, G., Stokes, M. D., Deane, G. B., Mayol-Bracero, O. L., Grassian, V. H., Bertram, T. H., Bertram, A. K., Moffett, B. F., and Franc, G. D.: Sea spray aerosol as a unique source of ice nucleating particles, *Proceedings of the National Academy of Sciences*, 113, 5797–5803, <https://doi.org/10.1073/pnas.1514034112>, <http://www.pnas.org/content/113/21/5797.abstract>, 2016.
- Dentener, F., Kinne, S., Bond, T., Boucher, O., Cofala, J., Generoso, S., Ginoux, P., Gong, S., Hoelzemann, J. J., Ito, A., Marelli, L., Penner, J. E., Putaud, J.-P., Textor, C., Schulz, M., van der Werf, G. R., and Wilson, J.: Emissions of primary aerosol and precursor gases in the years 2000 and 1750 prescribed data-sets for AeroCom, *Atmospheric Chemistry and Physics*, 6, 4321–4344, <https://doi.org/10.5194/acp-6-4321-2006>, <https://www.atmos-chem-phys.net/6/4321/2006/>, 2006.
- Diehl, K. and Wurzler, S.: Heterogeneous Drop Freezing in the Immersion Mode: Model Calculations Considering Soluble and Insoluble Particles in the Drops, *Journal of the Atmospheric Sciences*, 61, 2063–2072, [https://doi.org/10.1175/1520-0469\(2004\)061<2063:HDFITI>2.0.CO;2](https://doi.org/10.1175/1520-0469(2004)061<2063:HDFITI>2.0.CO;2), 2004.
- Dietmüller, S., Jöckel, P., Tost, H., Kunze, M., Gellhorn, C., Brinkop, S., Frömming, C., Ponater, M., Steil, B., Lauer, A., and Hendricks, J.: A new radiation infrastructure for the Modular Earth Submodel System (MESSy, based on version 2.51), *Geoscientific Model Development*, 9, 2209–2222, <https://doi.org/10.5194/gmd-9-2209-2016>, <https://www.geosci-model-dev.net/9/2209/2016/>, 2016.
- Donner, L. J., O'Brien, T. A., Rieger, D., Vogel, B., and Cooke, W. F.: Are atmospheric updrafts a key to unlocking climate forcing and sensitivity?, *Atmospheric Chemistry and Physics*, 16, 12 983–12 992, <https://doi.org/10.5194/acp-16-12983-2016>, <https://www.atmos-chem-phys.net/16/12983/2016/>, 2016.
- Fountoukis, C. and Nenes, A.: ISORROPIA II: a computationally efficient thermodynamic equilibrium model for  $\text{K}^+$ - $\text{Ca}^{2+}$ - $\text{Mg}^{2+}$ - $\text{NH}_4^+$ - $\text{Na}^+$ - $\text{SO}_4^{2-}$ - $\text{NO}_3^-$ - $\text{Cl}^-$ - $\text{H}_2\text{O}$  aerosols, *Atmospheric Chemistry and Physics*, 7, 4639–4659, <https://doi.org/10.5194/acp-7-4639-2007>, <https://www.atmos-chem-phys.net/7/4639/2007/>, 2007.
- Gettelman, A., Liu, X., Ghan, S. J., Morrison, H., Park, S., Conley, A. J., Klein, S. A., Boyle, J., Mitchell, D. L., and Li, J.-L. F.: Global simulations of ice nucleation and ice supersaturation with an improved cloud scheme in the Community Atmosphere Model, *Journal of Geophysical Research: Atmospheres*, 115, n/a–n/a, <https://doi.org/10.1029/2009JD013797>, d18216, 2010.
- Gettelman, A., Liu, X., Barahona, D., Lohmann, U., and Chen, C.: Climate impacts of ice nucleation, *Journal of Geophysical Research: Atmospheres*, 117, n/a–n/a, <https://doi.org/10.1029/2012JD017950>, d20201, 2012.
- Gryspeerdt, E., Quaas, J., Goren, T., Klocke, D., and Brueck, M.: Technical note: An automated cirrus classification, *Atmospheric Chemistry and Physics Discussions*, 2017, 1–18, <https://doi.org/10.5194/acp-2017-723>, <https://www.atmos-chem-phys-discuss.net/acp-2017-723/>, 2017.

- Gryspeerdt, E., Sourdeval, O., Quaas, J., Delanoë, J., and Kühne, P.: Ice crystal number concentration estimates from lidar-radar satellite retrievals. Part 2: Controls on the ice crystal number concentration, *Atmospheric Chemistry and Physics Discussions*, 2018, 1–25, <https://doi.org/10.5194/acp-2018-21>, <https://www.atmos-chem-phys-discuss.net/acp-2018-21/>, 2018.
- Gultepe, I. and Heymsfield, A. J.: Introduction Ice Fog, Ice Clouds, and Remote Sensing, *Pure and Applied Geophysics*, 173, 2977–2982, <https://doi.org/10.1007/s00024-016-1380-2>, 2016.
- Guo, H., Liu, Y., Daum, P. H., Senum, G. I., and Tao, W.-K.: Characteristics of vertical velocity in marine stratocumulus: comparison of large eddy simulations with observations, *Environmental Research Letters*, 3, 1–8, <https://doi.org/10.1088/1748-9326/3/4/045020>, 2008.
- Haag, W., Kärcher, B., Ström, J., Minikin, A., Lohmann, U., Ovarlez, J., and Stohl, A.: Freezing thresholds and cirrus cloud formation mechanisms inferred from in situ measurements of relative humidity, *Atmospheric Chemistry and Physics*, 3, 1791–1806, <https://doi.org/10.5194/acp-3-1791-2003>, <https://www.atmos-chem-phys.net/3/1791/2003/>, 2003.
- Hendricks, J., Kärcher, B., and Lohmann, U.: Effects of ice nuclei on cirrus clouds in a global climate model, *Journal of Geophysical Research: Atmospheres*, 116, n/a–n/a, <https://doi.org/10.1029/2010JD015302>, d18206, 2011.
- Heymsfield, A. J., Schmitt, C., and Bansemer, A.: Ice Cloud Particle Size Distributions and Pressure-Dependent Terminal Velocities from In Situ Observations at Temperatures from 0° to -86°C, *Journal of the Atmospheric Sciences*, 70, 4123–4154, <https://doi.org/10.1175/JAS-D-12-0124.1>, 2013.
- Heymsfield, A. J., Krämer, M., Luebke, A., Brown, P., Czicz, D. J., Franklin, C., Lawson, P., Lohmann, U., McFarquhar, G., Ulanowski, Z., and Van Tricht, K.: Cirrus Clouds, *Meteorological Monographs*, 58, 2.1–2.26, <https://doi.org/10.1175/AMSMONOGRAPHIS-D-16-0010.1>, 2017.
- Hong, Y., Liu, G., and Li, J.-L. F.: Assessing the Radiative Effects of Global Ice Clouds Based on CloudSat and CALIPSO Measurements, *Journal of Climate*, 29, 7651–7674, <https://doi.org/10.1175/JCLI-D-15-0799.1>, 2016.
- Hoose, C., Lohmann, U., Bennartz, R., Croft, B., and Lesins, G.: Global simulations of aerosol processing in clouds, *Atmospheric Chemistry and Physics*, 8, 6939–6963, <https://doi.org/10.5194/acp-8-6939-2008>, <https://www.atmos-chem-phys.net/8/6939/2008/>, 2008.
- ICE-L: Continuous Flow Diffusion Chamber Ice Nuclei. Version 1.0. UCAR/NCAR - Earth Observing Laboratory, <https://doi.org/10.5065/D6GF0RTM>, last access: 14 December 2017, 2011.
- IPCC: Climate Change 2013: The Physical Science Basis, Cambridge University Press, 1535 pp., 2013.
- Jensen, E. J., Diskin, G., Lawson, R. P., Lance, S., Bui, T. P., Hlavka, D., McGill, M., Pfister, L., Toon, O. B., and Gao, R.: Ice nucleation and dehydration in the Tropical Tropopause Layer, *Proceedings of the National Academy of Sciences*, 110, 2041–2046, <https://doi.org/10.1073/pnas.1217104110>, <http://www.pnas.org/content/110/6/2041>, 2013.
- Jöckel, P., Kerkweg, A., Pozzer, A., Sander, R., Tost, H., Riede, H., Baumgaertner, A., Gromov, S., and Kern, B.: Development cycle 2 of the Modular Earth Submodel System (MESSy2), *Geoscientific Model Development*, 3, 717–752, <https://doi.org/10.5194/gmd-3-717-2010>, <https://www.geosci-model-dev.net/3/717/2010/>, 2010.
- Joos, H., Spichtinger, P., Lohmann, U., Gayet, J.-F., and Minikin, A.: Orographic cirrus in the global climate model ECHAM5, *Journal of Geophysical Research: Atmospheres*, 113, <https://doi.org/10.1029/2007JD009605>, 2008.
- Kanji, Z. A., Ladino, L. A., Wex, H., Boose, Y., Burkert-Kohn, M., Czicz, D. J., and Krämer, M.: Overview of Ice Nucleating Particles, *Meteorological Monographs*, 58, 1.1–1.33, <https://doi.org/10.1175/AMSMONOGRAPHIS-D-16-0006.1>, 2017.
- Kärcher, B. and Lohmann, U.: A parameterization of cirrus cloud formation: Homogeneous freezing of supercooled aerosols, *Journal of Geophysical Research: Atmospheres*, 107, AAC 4–1–AAC 4–10, <https://doi.org/10.1029/2001JD000470>, 2002.

- Kärcher, B. and Lohmann, U.: A parameterization of cirrus cloud formation: Heterogeneous freezing, *Journal of Geophysical Research: Atmospheres*, 108, n/a–n/a, <https://doi.org/10.1029/2002JD003220>, 4402, 2003.
- Kärcher, B. and Ström, J.: The roles of dynamical variability and aerosols in cirrus cloud formation, *Atmospheric Chemistry and Physics*, 3, 823–838, <https://doi.org/10.5194/acp-3-823-2003>, <https://www.atmos-chem-phys.net/3/823/2003/>, 2003.
- 5 Kärcher, B., Hendricks, J., and Lohmann, U.: Physically based parameterization of cirrus cloud formation for use in global atmospheric models, *Journal of Geophysical Research: Atmospheres*, 111, n/a–n/a, <https://doi.org/10.1029/2005JD006219>, d01205, 2006.
- Karydis, V. A., Kumar, P., Barahona, D., Sokolik, I. N., and Nenes, A.: On the effect of dust particles on global cloud condensation nuclei and cloud droplet number, *Journal of Geophysical Research: Atmospheres*, 116, <https://doi.org/10.1029/2011JD016283>, 2011.
- Karydis, V. A., Tsimpidi, A. P., Pozzer, A., Astitha, M., and Lelieveld, J.: Effects of mineral dust on global atmospheric nitrate concentrations, *Atmospheric Chemistry and Physics*, 16, 1491–1509, <https://doi.org/10.5194/acp-16-1491-2016>, <https://www.atmos-chem-phys.net/16/1491/2016/>, 2016.
- 10 Karydis, V. A., Tsimpidi, A. P., Bacer, S., Pozzer, A., Nenes, A., and Lelieveld, J.: Global impact of mineral dust on cloud droplet number concentration, *Atmospheric Chemistry and Physics*, 17, 5601–5621, <https://doi.org/10.5194/acp-17-5601-2017>, <https://www.atmos-chem-phys.net/17/5601/2017/>, 2017.
- 15 Kerkweg, A., Buchholz, J., Ganzeveld, L., Pozzer, A., Tost, H., and Jöckel, P.: Technical Note: An implementation of the dry removal processes DRY DEPosition and SEDimentation in the Modular Earth Submodel System (MESSy), *Atmospheric Chemistry and Physics*, 6, 4617–4632, <https://doi.org/10.5194/acp-6-4617-2006>, <https://www.atmos-chem-phys.net/6/4617/2006/>, 2006.
- Klingmüller, K., Metzger, S., Abdelkader, M., Karydis, V. A., Stenchikov, G. L., Pozzer, A., and Lelieveld, J.: Revised mineral dust emissions in the atmospheric chemistry-climate model EMAC (based on MESSy 2.52), *Geoscientific Model Development Discussions*, 2017, 1–31, <https://doi.org/10.5194/gmd-2017-160>, <https://www.geosci-model-dev-discuss.net/gmd-2017-160/>, 2017.
- 20 Koop, T., Luo, B., Tsias, A., and Peter, T.: Water activity as the determinant for homogeneous ice nucleation in aqueous solutions, *Nature*, 406, 611–614, <https://doi.org/10.1038/35020537>, 2000.
- Korolev, A.: Limitations of the Wegener–Bergeron–Findeisen Mechanism in the Evolution of Mixed-Phase Clouds, *Journal of the Atmospheric Sciences*, 64, 3372–3375, <https://doi.org/10.1175/JAS4035.1>, 2007.
- 25 Korolev, A., McFarquhar, G., Field, P. R., Franklin, C., Lawson, P., Wang, Z., Williams, E., Abel, S. J., Axisa, D., Borrmann, S., Crosier, J., Fugal, J., Krämer, M., Lohmann, U., Schlenczek, O., Schnaiter, M., and Wendisch, M.: Mixed-Phase Clouds: Progress and Challenges, *Meteorological Monographs*, 58, 5.1–5.50, <https://doi.org/10.1175/AMSMONOGRAPHIS-D-17-0001.1>, 2017.
- Krämer, M., Rolf, C., Luebke, A., Afchine, A., Spelten, N., Costa, A., Meyer, J., Zöger, M., Smith, J., Herman, R. L., Buchholz, B., Ebert, V., Baumgardner, D., Borrmann, S., Klingebiel, M., and Avallone, L.: A microphysics guide to cirrus clouds – Part 1: Cirrus types, *Atmospheric Chemistry and Physics*, 16, 3463–3483, <https://doi.org/10.5194/acp-16-3463-2016>, <https://www.atmos-chem-phys.net/16/3463/2016/>, 2016.
- 30 Kuebbeler, M., Lohmann, U., Hendricks, J., and Kärcher, B.: Dust ice nuclei effects on cirrus clouds, *Atmospheric Chemistry and Physics*, 14, 3027–3046, <https://doi.org/10.5194/acp-14-3027-2014>, <https://www.atmos-chem-phys.net/14/3027/2014/>, 2014.
- Kumar, P., Sokolik, I. N., and Nenes, A.: Parameterization of cloud droplet formation for global and regional models: including adsorption activation from insoluble CCN, *Atmospheric Chemistry and Physics*, 9, 2517–2532, <https://doi.org/10.5194/acp-9-2517-2009>, <https://www.atmos-chem-phys.net/9/2517/2009/>, 2009.
- 35

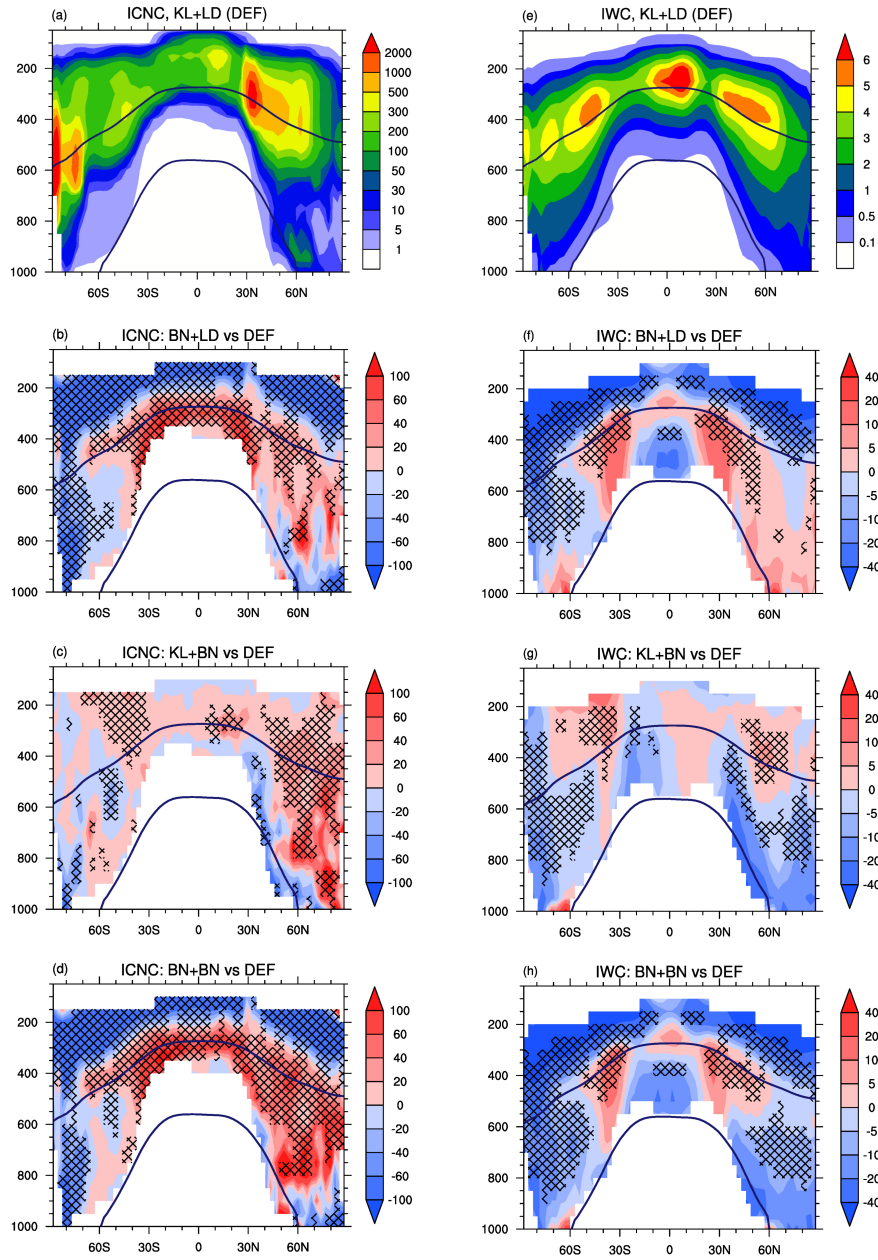


- Kumar, P., Sokolik, I. N., and Nenes, A.: Cloud condensation nuclei activity and droplet activation kinetics of wet processed regional dust samples and minerals, *Atmospheric Chemistry and Physics*, 11, 8661–8676, <https://doi.org/10.5194/acp-11-8661-2011>, <https://www.atmos-chem-phys.net/11/8661/2011/>, 2011.
- Lauer, A., Eyring, V., Hendricks, J., Jöckel, P., and Lohmann, U.: Global model simulations of the impact of ocean-going ships on aerosols, clouds, and the radiation budget, *Atmospheric Chemistry and Physics*, 7, 5061–5079, <https://doi.org/10.5194/acp-7-5061-2007>, <https://www.atmos-chem-phys.net/7/5061/2007/>, 2007.
- Levkov, L., Rockel, B., Kapitza, H., and E., R.: 3D mesoscale numerical studies of cirrus and stratus clouds by their time and space evolution, *Beitr. Phys. Atmos.*, 65, 35–58, 1992.
- Li, J.-L. F., Waliser, D. E., Chen, W.-T., Guan, B., Kubar, T., Stephens, G., Ma, H.-Y., Deng, M., Donner, L., Seman, C., and Horowitz, L.: An observationally based evaluation of cloud ice water in CMIP3 and CMIP5 GCMs and contemporary reanalyses using contemporary satellite data, *Journal of Geophysical Research: Atmospheres*, 117, n/a–n/a, <https://doi.org/10.1029/2012JD017640>, d16105, 2012.
- Lin, H. and Leaitch, W. R.: Development of an in-cloud aerosol activation parameterization for climate modelling in: *Proceedings of the WMO Workshop on measurement of Cloud Properties for Forecasts of Weather, Air Quality and Climate*, World Meteorological Organization, Geneva, pp. 328–335, 1997.
- Liu, X. and Penner, J. E.: Ice nucleation parameterization for global models, *Meteorological Magazine*, 14, 499–514, <https://doi.org/10.1127/0941-2948/2005/0059>, 2005.
- Liu, X., Penner, J. E., Ghan, S. J., and Wang, M.: Inclusion of Ice Microphysics in the NCAR Community Atmospheric Model Version 3 (CAM3), *Journal of Climate*, 20, 4526–4547, <https://doi.org/10.1175/JCLI4264.1>, 2007.
- Liu, X., Shi, X., Zhang, K., Jensen, E. J., Gettelman, A., Barahona, D., Nenes, A., and Lawson, P.: Sensitivity studies of dust ice nuclei effect on cirrus clouds with the Community Atmosphere Model CAM5, *Atmospheric Chemistry and Physics*, 12, 12061–12079, <https://doi.org/10.5194/acp-12-12061-2012>, <https://www.atmos-chem-phys.net/12/12061/2012/>, 2012.
- Lohmann, U.: Anthropogenic Aerosol Influences on Mixed-Phase Clouds, *Current Climate Change Reports*, 3, 32–44, <https://doi.org/10.1007/s40641-017-0059-9>, 2017.
- Lohmann, U. and Diehl, K.: Sensitivity Studies of the Importance of Dust Ice Nuclei for the Indirect Aerosol Effect on Stratiform Mixed-Phase Clouds, *Journal of the Atmospheric Sciences*, 63, 968–982, <https://doi.org/10.1175/JAS3662.1>, 2006.
- Lohmann, U. and Feichter, J.: Global indirect aerosol effects: a review, *Atmospheric Chemistry and Physics*, 5, 715–737, <https://doi.org/10.5194/acp-5-715-2005>, <https://www.atmos-chem-phys.net/5/715/2005/>, 2005.
- Lohmann, U. and Hoose, C.: Sensitivity studies of different aerosol indirect effects in mixed-phase clouds, *Atmospheric Chemistry and Physics*, 9, 8917–8934, <https://doi.org/10.5194/acp-9-8917-2009>, <https://www.atmos-chem-phys.net/9/8917/2009/>, 2009.
- Lohmann, U. and Kärcher, B.: First interactive simulations of cirrus clouds formed by homogeneous freezing in the ECHAM general circulation model, *Journal of Geophysical Research: Atmospheres*, 107, AAC 8–1–AAC 8–13, <https://doi.org/10.1029/2001JD000767>, 2002.
- Lohmann, U., Feichter, J., Chuang, C. C., and Penner, J. E.: Prediction of the number of cloud droplets in the ECHAM GCM, *Journal of Geophysical Research: Atmospheres*, 104, 9169–9198, <https://doi.org/10.1029/1999JD900046>, 1999.
- Lohmann, U., Stier, P., Hoose, C., Ferrachat, S., Kloster, S., Roeckner, E., and Zhang, J.: Cloud microphysics and aerosol indirect effects in the global climate model ECHAM5-HAM, *Atmospheric Chemistry and Physics*, 7, 3425–3446, <https://doi.org/10.5194/acp-7-3425-2007>, <https://www.atmos-chem-phys.net/7/3425/2007/>, 2007.

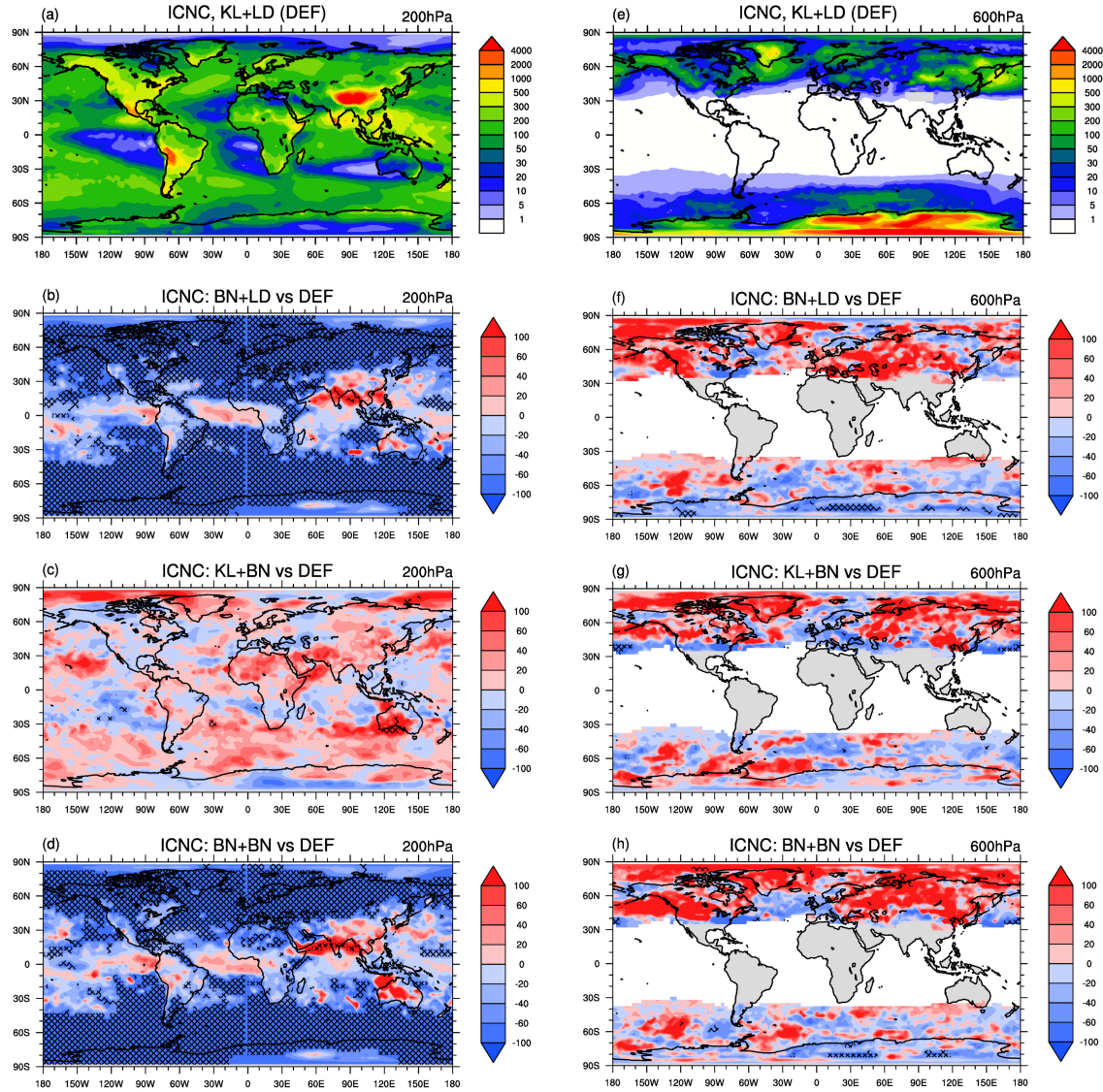
- Lohmann, U., Spichtinger, P., Jess, S., Peter, T., and Smit, H.: Cirrus cloud formation and ice supersaturated regions in a global climate model, *Environmental Research Letters*, 3, 045 022, <https://doi.org/10.1088/1748-9326/3/4/045022>, <http://stacks.iop.org/1748-9326/3/i=4/a=045022>, 2008.
- Matus, A. V. and L'Ecuyer, T. S.: The role of cloud phase in Earth's radiation budget, *Journal of Geophysical Research: Atmospheres*, 122, 2559–2578, <https://doi.org/10.1002/2016JD025951>, 2017.
- Mauritsen, T., Stevens, B., Roeckner, E., Crueger, T., Esch, M., Giorgetta, M., Haak, H., Jungclaus, J., Klocke, D., Matei, D., Mikolajewicz, U., Notz, D., Pincus, R., Schmidt, H., and Tomassini, L.: Tuning the climate of a global model, *Journal of Advances in Modeling Earth Systems*, 4, n/a–n/a, <https://doi.org/10.1029/2012MS000154>, m00A01, 2012.
- McCoy, D. T., Tan, I., Hartmann, D. L., Zelinka, M. D., and Storelmo, T.: On the relationships among cloud cover, mixed?phase partitioning, and planetary albedo in GCMs, *J. Adv. Model. Earth Syst.*, 8, 650–668, <https://doi.org/10.1002/2015MS000589>, <https://agupubs.onlinelibrary.wiley.com/doi/abs/10.1002/2015MS000589>, 2016.
- Meyers, M. P., DeMott, P. J., and Cotton, W. R.: New Primary Ice-Nucleation Parameterizations in an Explicit Cloud Model, *Journal of Applied Meteorology*, 31, 708–721, [https://doi.org/10.1175/1520-0450\(1992\)031<0708:NPINPI>2.0.CO;2](https://doi.org/10.1175/1520-0450(1992)031<0708:NPINPI>2.0.CO;2), 1992.
- Morales, R. and Nenes, A.: Characteristic updrafts for computing distribution?averaged cloud droplet number and stratocumulus cloud properties, *Journal of Geophysical Research: Atmospheres*, 115, <https://doi.org/10.1029/2009JD013233>, 2010.
- Mülmenstädt, J., Sourdeval, O., Delanoë, J., and Quaas, J.: Frequency of occurrence of rain from liquid-, mixed-, and ice-phase clouds derived from A-Train satellite retrievals, *Geophysical Research Letters*, 42, 6502–6509, <https://doi.org/10.1002/2015GL064604>, 2015GL064604, 2015.
- Petters, M. D. and Kreidenweis, S. M.: A single parameter representation of hygroscopic growth and cloud condensation nucleus activity, *Atmospheric Chemistry and Physics*, 7, 1961–1971, <https://doi.org/10.5194/acp-7-1961-2007>, <https://www.atmos-chem-phys.net/7/1961/2007/>, 2007.
- Phillips, V. T. J., Donner, L. J., and Garner, S. T.: Nucleation Processes in Deep Convection Simulated by a Cloud-System-Resolving Model with Double-Moment Bulk Microphysics, *Journal of the Atmospheric Sciences*, 64, 738–761, <https://doi.org/10.1175/JAS3869.1>, 2007.
- Phillips, V. T. J., DeMott, P. J., and Andronache, C.: An Empirical Parameterization of Heterogeneous Ice Nucleation for Multiple Chemical Species of Aerosol, *Journal of the Atmospheric Sciences*, 65, 2757–2783, <https://doi.org/10.1175/2007JAS2546.1>, 2008.
- Phillips, V. T. J., Demott, P. J., Andronache, C., Pratt, K. A., Prather, K. A., Subramanian, R., and Twohy, C.: Improvements to an Empirical Parameterization of Heterogeneous Ice Nucleation and Its Comparison with Observations, *Journal of the Atmospheric Sciences*, 70, 378–409, <https://doi.org/10.1175/JAS-D-12-080.1>, 2013.
- Pozzer, A., de Meij, A., Pringle, K. J., Tost, H., Doering, U. M., van Aardenne, J., and Lelieveld, J.: Distributions and regional budgets of aerosols and their precursors simulated with the EMAC chemistry-climate model, *Atmospheric Chemistry and Physics*, 12, 961–987, <https://doi.org/10.5194/acp-12-961-2012>, <https://www.atmos-chem-phys.net/12/961/2012/>, 2012.
- Pozzer, A., de Meij, A., Yoon, J., Tost, H., Georgoulias, A. K., and Astitha, M.: AOD trends during 2001–2010 from observations and model simulations, *Atmospheric Chemistry and Physics*, 15, 5521–5535, <https://doi.org/10.5194/acp-15-5521-2015>, <https://www.atmos-chem-phys.net/15/5521/2015/>, 2015.
- Pringle, K. J., Tost, H., Message, S., Steil, B., Giannadaki, D., Nenes, A., Fountoukis, C., Stier, P., Vignati, E., and Lelieveld, J.: Description and evaluation of GMXc: a new aerosol submodel for global simulations (v1), *Geoscientific Model Development*, 3, 391–412, <https://doi.org/10.5194/gmd-3-391-2010>, <https://www.geosci-model-dev.net/3/391/2010/>, 2010.
- Pruppacher, H. R. and Klett, J. D.: *Microphysics of Clouds and Precipitation*, Springer, New York, 954 pp, 1997.

- Righi, M., Hendricks, J., and Sausen, R.: The global impact of the transport sectors on atmospheric aerosol: simulations for year 2000 emissions, *Atmospheric Chemistry and Physics*, 13, 9939–9970, <https://doi.org/10.5194/acp-13-9939-2013>, <https://www.atmos-chem-phys.net/13/9939/2013/>, 2013.
- Righi, M., Hendricks, J., and Sausen, R.: The global impact of the transport sectors on atmospheric aerosol in 2030 – Part 1: Land transport and shipping, *Atmospheric Chemistry and Physics*, 15, 633–651, <https://doi.org/10.5194/acp-15-633-2015>, <https://www.atmos-chem-phys.net/15/633/2015/>, 2015.
- Righi, M., Hendricks, J., and Sausen, R.: The global impact of the transport sectors on atmospheric aerosol in 2030 – Part 2: Aviation, *Atmospheric Chemistry and Physics*, 16, 4481–4495, <https://doi.org/10.5194/acp-16-4481-2016>, <https://www.atmos-chem-phys.net/16/4481/2016/>, 2016.
- 10 Roeckner, E., Brokopf, R., Esch, M., Giorgetta, M., Hagemann, S., Kornblueh, L., Manzini, E., Schlese, U., and Schulzweida, U.: Sensitivity of Simulated Climate to Horizontal and Vertical Resolution in the ECHAM5 Atmosphere Model, *Journal of Climate*, 19, 3771–3791, <https://doi.org/10.1175/JCLI3824.1>, 2006.
- Salzmann, M., Ming, Y., Golaz, J.-C., Ginoux, P. A., Morrison, H., Gettelman, A., Krämer, M., and Donner, L. J.: Two-moment bulk stratiform cloud microphysics in the GFDL AM3 GCM: description, evaluation, and sensitivity tests, *Atmospheric Chemistry and Physics*, 10, 8037–8064, <https://doi.org/10.5194/acp-10-8037-2010>, <https://www.atmos-chem-phys.net/10/8037/2010/>, 2010.
- 15 Sander, R., Baumgaertner, A., Gromov, S., Harder, H., Jöckel, P., Kerkweg, A., Kubistin, D., Regelin, E., Riede, H., Sandu, A., Taraborrelli, D., Tost, H., and Xie, Z.-Q.: The atmospheric chemistry box model CAABA/MECCA-3.0, *Geoscientific Model Development*, 4, 373–380, <https://doi.org/10.5194/gmd-4-373-2011>, <https://www.geosci-model-dev.net/4/373/2011/>, 2011.
- Seinfeld, J. H., Bretherton, C., Carslaw, K. S., Coe, H., DeMott, P. J., Dunlea, E. J., Feingold, G., Ghan, S., Guenther, A. B., Kahn, R., Kraucunas, I., Kreidenweis, S. M., Molina, M. J., Nenes, A., Penner, J. E., Prather, K. A., Ramanathan, V., Ramaswamy, V., Rasch, P. J., Ravishankara, A. R., Rosenfeld, D., Stephens, G., and Wood, R.: Improving our fundamental understanding of the role of aerosol-cloud interactions in the climate system, *Proceedings of the National Academy of Sciences*, 113, 5781–5790, <https://doi.org/10.1073/pnas.1514043113>, <http://www.pnas.org/content/113/21/5781>, 2016.
- 20 Shi, X., Liu, X., and Zhang, K.: Effects of pre-existing ice crystals on cirrus clouds and comparison between different ice nucleation parameterizations with the Community Atmosphere Model (CAM5), *Atmospheric Chemistry and Physics*, 15, 1503–1520, <https://doi.org/10.5194/acp-15-1503-2015>, <https://www.atmos-chem-phys.net/15/1503/2015/>, 2015.
- Sourdeval, O., Gryspeerdt, E., Krämer, M., Goren, T., Delanoë, J., Afchine, A., Hemmer, F., and Quaas, J.: Ice crystal number concentration estimates from lidar-radar satellite remote sensing. Part 1: Method and evaluation, *Atmospheric Chemistry and Physics Discussions*, 2018, 1–31, <https://doi.org/10.5194/acp-2018-20>, <https://www.atmos-chem-phys-discuss.net/acp-2018-20/>, 2018.
- 30 Spichtinger, P. and Cziczo, D. J.: Impact of heterogeneous ice nuclei on homogeneous freezing events in cirrus clouds, *Journal of Geophysical Research: Atmospheres*, 115, n/a–n/a, <https://doi.org/10.1029/2009JD012168>, d14208, 2010.
- Stier, P., Feichter, J., Kinne, S., Kloster, S., Vignati, E., Wilson, J., Ganzeveld, L., Tegen, I., Werner, M., Balkanski, Y., Schulz, M., Boucher, O., Minikin, A., and Petzold, A.: The aerosol-climate model ECHAM5-HAM, *Atmospheric Chemistry and Physics*, 5, 1125–1156, <https://doi.org/10.5194/acp-5-1125-2005>, <https://www.atmos-chem-phys.net/5/1125/2005/>, 2005.
- 35 Sullivan, S. C., Morales Betancourt, R., Barahona, D., and Nenes, A.: Understanding cirrus ice crystal number variability for different heterogeneous ice nucleation spectra, *Atmospheric Chemistry and Physics*, 16, 2611–2629, <https://doi.org/10.5194/acp-16-2611-2016>, <https://www.atmos-chem-phys.net/16/2611/2016/>, 2016.

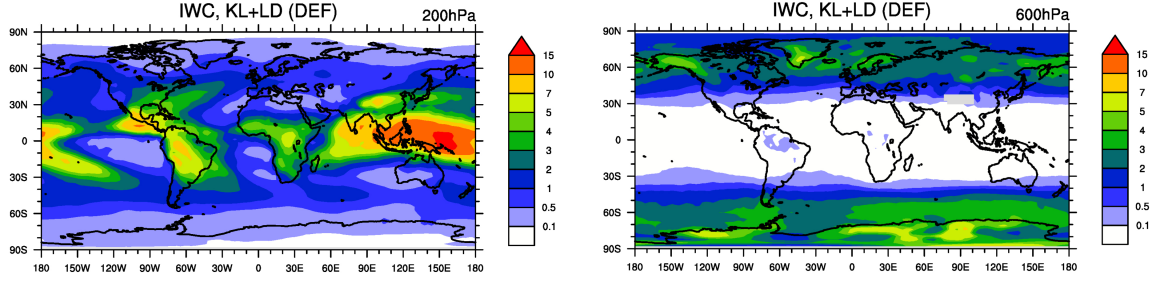
- Sundqvist, H., Berge, E., and Kristjansson, J. E.: Condensation and Cloud Parameterization Studies with a Mesoscale NUmberical Weather Prediction Model, *Monthly Weather Review*, 117, 1641–1657, 1989.
- Tan, I., Storelvmo, T., and Zelinka, M. D.: Observational constraints on mixed-phase clouds imply higher climate sensitivity, *Science*, 352, 224–227, <https://doi.org/10.1126/science.aad5300>, <http://science.sciencemag.org/content/352/6282/224>, 2016.
- 5 Tanre, D., Geleyn, J.-F., and Slingo, J. M.: First results of the introduction of an advanced aerosol-radiation interaction in the ECMWF low resolution global model, in: *Aerosols and their climatic effects*, A. Deepak, 133–177, 1984.
- Tiedtke, M.: A Comprehensive Mass Flux Scheme for Cumulus Parameterization in Large-Scale Models, *Monthly Weather Review*, 117, 1779–1800, [https://doi.org/10.1175/1520-0493\(1989\)117<1779:ACMFSF>2.0.CO;2](https://doi.org/10.1175/1520-0493(1989)117<1779:ACMFSF>2.0.CO;2), 1989.
- Tost, H.: Chemistry–climate interactions of aerosol nitrate from lightning, *Atmospheric Chemistry and Physics*, 17, 1125–1142, <https://doi.org/10.5194/acp-17-1125-2017>, <https://www.atmos-chem-phys.net/17/1125/2017/>, 2017.
- 10 Tost, H., Jöckel, P., Kerkweg, A., Sander, R., and Lelieveld, J.: Technical note: A new comprehensive SCAVenging submodel for global atmospheric chemistry modelling, *Atmospheric Chemistry and Physics*, 6, 565–574, <https://doi.org/10.5194/acp-6-565-2006>, <https://www.atmos-chem-phys.net/6/565/2006/>, 2006.
- Tsimpidi, A. P., Karydis, V. A., Pandis, S. N., and Lelieveld, J.: Global combustion sources of organic aerosols: model comparison with 84 AMS factor-analysis data sets, *Atmospheric Chemistry and Physics*, 16, 8939–8962, <https://doi.org/10.5194/acp-16-8939-2016>, <https://www.atmos-chem-phys.net/16/8939/2016/>, 2016.
- van der Werf, G. R., Randerson, J. T., Giglio, L., Collatz, G. J., Mu, M., Kasibhatla, P. S., Morton, D. C., DeFries, R. S., Jin, Y., and van Leeuwen, T. T.: Global fire emissions and the contribution of deforestation, savanna, forest, agricultural, and peat fires (1997–2009), *Atmospheric Chemistry and Physics*, 10, 11 707–11 735, <https://doi.org/10.5194/acp-10-11707-2010>, <https://www.atmos-chem-phys.net/10/11707/2010/>, 2010.
- 20 Vergara-Temprado, J., Miltenberger, A. K., Furtado, K., Grosvenor, D. P., Shipway, B. J., Hill, A. A., Wilkinson, J. M., Field, P. R., Murray, B. J., and Carslaw, K. S.: Strong control of Southern Ocean cloud reflectivity by ice-nucleating particles, *Proceedings of the National Academy of Sciences*, 115, 2687–2692, <https://doi.org/10.1073/pnas.1721627115>, <http://www.pnas.org/content/115/11/2687>, 2018.
- Waliser, D. E., Li, J.-L. F., Woods, C. P., Austin, R. T., Bacmeister, J., Chern, J., Del, G. A., Jiang, J. H., Kuang, Z., Meng, H., Minnis, P., Platnick, S., Rossow, W. B., Stephens, G. L., Sun-Mack, S., Tao, W.-K., Tompkins, A. M., Vane, D. G., Walker, C., and Wu, D.: Cloud ice: A climate model challenge with signs and expectations of progress, *Journal of Geophysical Research: Atmospheres*, 114, <https://doi.org/10.1029/2008JD010015>, 2009.
- 25 Wang, M. and Penner, J. E.: Cirrus clouds in a global climate model with a statistical cirrus cloud scheme, *Atmospheric Chemistry and Physics*, 10, 5449–5474, <https://doi.org/10.5194/acp-10-5449-2010>, <https://www.atmos-chem-phys.net/10/5449/2010/>, 2010.
- 30 WISP-94: Low Rate Navigation, State Parameter, and Microphysics Flight-Level Data. Version 1.0. UCAR/NCAR - Earth Observing Laboratory, <https://doi.org/10.5065/D6125QXM>, last access: 14 December 2017, 2011.
- Zhou, C., Penner, J. E., Lin, G., Liu, X., and Wang, M.: What controls the low ice number concentration in the upper troposphere?, *Atmospheric Chemistry and Physics*, 16, 12 411–12 424, <https://doi.org/10.5194/acp-16-12411-2016>, <https://www.atmos-chem-phys.net/16/12411/2016/>, 2016.



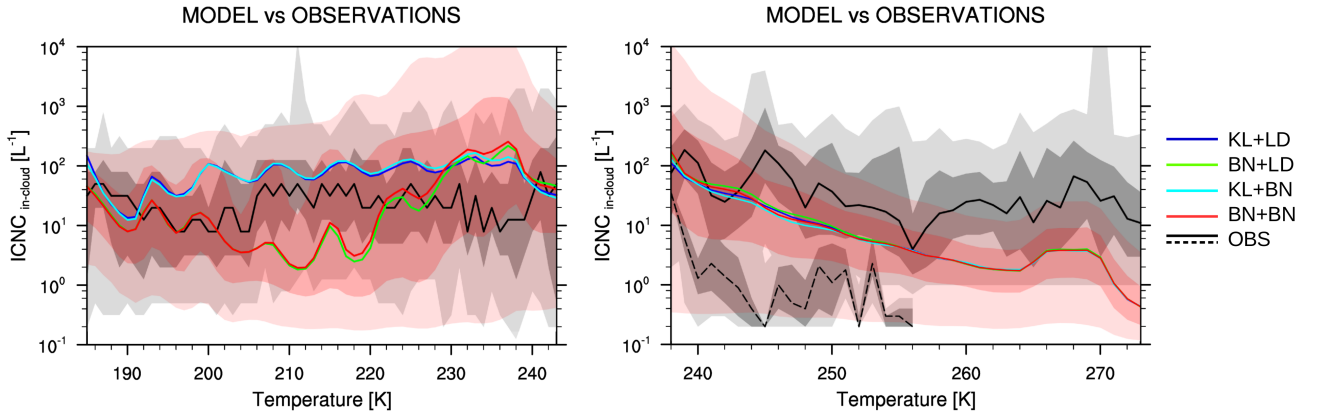
**Figure 2.** Annual zonal means of ([grid-averaged](#)) ice crystal number concentration ( $ICNC$ , [ $L^{-1}$ ]) and non-precipitable ice water content ( $IWC$ , [ $mg\ kg^{-1}$ ]) for the default simulation KL+LD and the relative percentage changes of BN+LD, KL+BN, and BN+BN with respect to it (i.e.  $(experiment - DEF)/|DEF| \cdot 100$ ), computed where  $ICNC^{DEF} \geq 1\ L^{-1}$  and  $IWC^{DEF} \geq 0.1\ mg\ kg^{-1}$ . The [isolines](#) [isotherms](#) at 273 K and 238 K [and the tropopause \(dotted line\)](#) are annual means, [the crossed pattern indicates areas with a significance level of 95%.](#)



**Figure 3.** Annual means of (grid-averaged) ice crystal number concentration ( $ICNC$ , [ $L^{-1}$ ]) at 200 hPa (cirrus regime) and 600 hPa (mixed-phase regime) for the default simulation KL+LD and the relative percentage changes of BN+LD, KL+BN, and BN+BN with respect to it (i.e.  $(experiment - DEF)/|DEF| \cdot 100$ ). The crossed pattern indicates areas with a significance level of 95%.



**Figure 4.** Annual means of (grid-averaged) ice water content ( $IWC$ , [ $\text{mg kg}^{-1}$ ]) at 200 hPa (cirrus regime) and 600 hPa (mixed-phase regime) for the default simulation KL+LD.



**Figure 5.** In-cloud ice crystal number concentrations ( $ICNC_{in-cloud}$ , [ $\text{L}^{-1}$ ]) versus temperature for modeled results and flight measurements. Medians are computed for modeled results (using daily means between  $25^{\circ}\text{S}$  and  $75^{\circ}\text{N}$ , masking  $ICNC_{in-cloud} < 0.1 \text{ L}^{-1}$ , i.e. the minimum observed value) and observations, for each 1 K temperature bin. They are shown with colored lines: KL+LD (blue), BN+LD (green), KL+BN (light blue), and BN+BN (red), and observations (black). The darker gray color indicates/red colors indicate the observations/BN+BN between  $25^{th}$  and  $75^{th}$  percentiles, while the lighter gray color indicates/red colors indicate the observations/BN+BN between  $5^{th}$  and  $95^{th}$ . (Left) Cirrus regime: the modeled medians are computed approximately in the range of 4 – 20 km height, the observations come from Krämer (*personal communication, not yet published*). (Right) Mixed-phase regime: the modeled medians are computed approximately in the range of 0 – 20 km height, the observations belong to the projects WISP-94 (solid line) and ICE-L (dashed line) and concern INP concentrations.