

We thank the editor and reviewers for their comments, which helped improve this manuscript. Please note: response to reviewers is italicized and bolded text below each reviewer's comments.

Reviewer 1 (T. Wagener)

The manuscript by Hamman et al. introduces a new version of the widely used and highly cited VIC model. It is, to my knowledge, the first time the model is properly published in a journal of the nature of GMD. This is a relatively short and well written manuscript, focusing on the latest version of VIC (5) and its implementation for distribution within the scientific community. The extensive use of VIC in the community already suggests that this will be a very welcome activity. As such I have few comments:

Thank you for taking the time to review this paper. We have appreciated your comments.

[1] Is the African flood and drought monitor different from the global drought monitor? If yes, then maybe one could add this in the introduction section.

The Global drought monitor (Nijssen et al 2014) and the African drought monitor (Sheffield et al 2014) are, indeed, different systems. We have added a citation to the African drought monitor in table 1.

[2] The authors might have excluded it on purpose, but I would find it helpful to see the schematic figure of VIC that is widely used. This would be mainly helpful for people not familiar with VIC. My suggestion would be to include a version of it.

We appreciate the suggestion. Versions of the classic “VIC schematic” have been published many times before and we did not feel it was necessary to include in this paper. The VIC documentation website, which is linked to from this paper, does include the figure for interested readers.

[3] Maybe the conclusions section could include a brief outlook paragraph in which the authors discuss what they see as the future evolution of VIC? It would be interesting to hear what the authors think is the future of this code as a scientific and/or operational tool for hydrology and water management.

We have expanded our conclusions section to provide additional discussion on the future evolution of VIC. We have intentionally emphasized the role of the open-source community in future maintenance and development activities.

[4] One issue that in the past has been problematic for LSMs is the detailed assessment of uncertainty (see Wood et al. vs Beven and Cloke discussion in WRR). I wonder what impact the re-structuring of the code in VIC-5 for the ability of modellers to undertake a detailed uncertainty analysis (especially of space-time fields)? Both in terms of memory requirements as well as in terms of model run times (on clusters).

Our intent in this paper was to emphasize the new developments in and possible applications of VIC.5. Uncertainty analysis is one application that would be easier in VIC.5 when leveraging new features such as 1) configurable model parameters, 2) parallel computing enhancements that greatly speed up run and post-process times, and 3) improved I/O formats for both model parameters and model output. When combined, these new features allow a scientific user to more readily perform sensitivity analysis. We have highlighted this point in the manuscript.

[5] And finally, given the tremendous number of papers in which VIC is advanced and used, could the authors make some suggestions about what papers a new user should start with? Maybe a basic reading list. Where should a new user start after downloading VIC-5?

While the original Liang et al (1994) papers provide good context for the origins of the VIC model, significant model development has occurred since then and the early papers do not necessarily provide new users with a complete, or even accurate, description of the model. Even more so, overview papers describing VIC model development (such as this one) have been few and far between. We therefore suggest starting with the VIC documentation website. Users can easily read an overview of current model features and follow citations to specific papers describing the development of individual components of the mode according to their specific interest. This point has been emphasized more clearly in the manuscript.

Reviewer 2

This paper presents an overview of the recent changes to the widely-used VIC hydrology model, with a major reworking of its structure. The manuscript is well written and organized, and apart from a few minor issues I think it is in very good shape. The one aspect of the new model that was not described adequately was the extension system, and I would like to see a bit more detail on how the coupling with other models was done. Other minor issues that would need some clarification are outlined below:

Thank you for taking the time to review this paper. We have appreciated your comments.

We have extended our description of both the extensions system and CESM coupling.

* p. 2, l. 16: might want to clarify "coupled" to "two-way coupled".

We have changed the wording of this line to reflect that the previous versions of VIC didn't have to communicate with any other program (1 or 2 way coupling).

* p. 7, l. 10- 11: have there been any tests and evaluation of the vectorization (if any is included) performance? This would be relevant to different types of processors such as the Intel C1 Xeon Phi (~60 cores).

None that we are aware of. We would be open to community contributions to the development and evaluation of vectorization performance metrics for VIC.5.

* p. 7, l. 30: would it have been possible to modify MT-CLIM instead in order to facilitate exact restarts?

Technically, yes, it would have been possible to modify MT-CLIM instead of removing it. However, as we describe in the manuscript, the decision to remove MT-CLIM was made based on a number of factors, including model transparency, simplicity, and extensibility. One practical limitation with including MT-CLIM in VIC 5 was that its memory model would have incurred a significant memory footprint that was not practical in image-driver simulations.

* p. 8, l. 12: are there any other preprocessing packages provided that can help with preparing e.g. soil information in the new format?

We are aware of a number of efforts across the VIC community to develop tools supporting the new VIC.5 file formats. We expect those to be published separate from this paper.

Reviewer 3

General Comments:

This paper provides a comprehensive overview of the new updates and major revisions made to the Variable Infiltration Capacity (VIC) macroscale hydrology. This new version 5 of the model allows for different instances of the model driver, preserving legacy aspects of VIC and paving ways for coupling with other models, e.g., atmospheric models. A major change involves allowing the model to run in space first then in time, which was done in reverse in its legacy versions (prior to version 5). Also, the authors describe and provide some examples of several new test cases, which can be used for either unit and more scientific testing.

Overall it is very well written paper and provides many details on the way new model drivers and components can be run and interact in VIC. Not many papers prior to this have described the main software components of VIC, so in that of itself makes the paper more novel for the VIC and land surface model communities to reference in the future.

Thank you for taking the time to review this paper. We have appreciated your comments.

Specific Comments:

One area that is not addressed well in this paper is how the VIC distributed parameters (e.g., LAI or soils information) are handled and provided for the different drivers. The legacy “Classic” driver’s original I/O is mentioned to still be supported, but how is that information changed (or not) for the other formats (e.g., NetCDF) to support the other space-before-time or “image-based” drivers. The VIC parameters for previous versions have been another problem for the community as they are hard to generate or customize for each user’s needs. Please address how parameters can be generated (e.g., any tools) to support the “Image” type drivers and how some of the parameter tuning processes and practices (e.g., for soil parameters) can be used to optimize

streamflow estimates. The handling of the parameters and preprocessing to other resolutions and grids is an important part of any model structure and release.

We agree that a new set of tools is needed in the “VIC ecosystem” to enable community wide adoption of new features in VIC, specifically the Image Driver. For example, the Image Driver now uses a netCDF file format for distributed input model parameters (e.g. soil and vegetation). We are aware of a number of efforts across the VIC community to develop tools supporting the new VIC.5 file formats. We expect those to be published separate from this paper.

Minor Comments:

Page 2, lines 13-15: Part c): Previous VIC versions that have been run, prior to 5, were very slow, especially when run for large-scale simulations (e.g., NLDAS), since each gridcell was run separately through time (as referred to as “time-before-space” in the paper). Many of the other LSMs that you mention are not always run in “coupled” mode and tend to run faster than VIC in uncoupled mode. You may want to consider removing this statement or addressing the deficiency of it in relation to computation speed and how truly it was able to run faster.

The statement in question is already conditioned on the comparison to larger coupled models. Moreover, our experience with previous versions of VIC taught us that the model was typically I/O bound – a fact that was exasperated by running each grid cell independent and writing separate files for each grid cell. Nevertheless, the computational resource required to run the model were in fact reasonably achieved without the requirement of large HPC systems.

Page 4, line 15: Please try to indicate what the acronym, “MT-CLIM”, stands for.

We have indicated in the manuscript that MT-CLIM name is derived from the “Mountain Climate Simulator”.

Page 5, line 6: Does “RVIC” simply stand for “routing VIC”? Please include any additional information to specify this acronym.

We have indicated in the manuscript that RVIC is short for “Routing VIC”.

Page 7, lines 30-32: The terminology convention of using “restarts” can be specific to certain communities, like the hydrometeorology community. It may be useful here to provide some short background on, first, what the “restart” represents and then to further specify what “exact” and “near-exact” indicate. Also, do all VIC versions, including 5, have an option to write out “instant” states and fluxes versus time-averaged?

Thank you for this comment. We have clarified what we mean by the terms restarts/exact/near-exact/instant.

Page 8, lines 9-13: The authors state here that the “input forcings must now have the same time step length as the model simulation” due to the removal of the MT-CLIM temporal

disaggregation code, which has now become a separate preprocessing step. The reviewer wonders why temporal interpolation options have not been considered at the driver level for the forcing inputs, or why the MT-CLIM could not be rewritten to be incorporated more at the driver level. Please address in a statement or two.

The specific reasons MT-CLIM was omitted VIC at the driver level are described in the numbered list in section 2.6.

Page 8, lines 25-27: Which libraries and compilers has the new VIC version been tested with? This information would be useful to the user-audience.

VIC is routinely tested with GNU (C and Fortran) and Clang (C) compilers, and the Open-MPI, and netCDF libraries. Though not part of the continuous integration system for licensing reasons, VIC has also been tested with Intel, PGI, and Cray compilers and the MPICH and Intel-MPI libraries. We have indicated these details to the manuscript.

Page 8, lines 28-29: Are unit tests also available to be tested with the other drivers? What if changes to the drivers affect the unit tests? Please address this concern.

At the time of writing, VIC's unit tests only test the physical core of the model, and the shared driver code. The system tests are designed to test the driver functions and they are tested using a similar python testing framework. This point has been clarified in the manuscript.

Page 9, lines 1-5: Why are the science-level tests only available with one driver type? Do you have science tests also set up for the other driver types?

We have scoped the science test category for those simulations that can be compared directly to observations (i.e. from flux towers). Within the system tests are configurations that test for equivalency between drivers (image vs. classic). By the transitive relation, we can say that the image driver will behave just like the classic driver. Therefore, running the science tests again for other drivers is not necessary. However, the release tests do mainly target the image driver and provide the opportunity for additional verification through model evaluation. We have tried to clarify these points in the manuscript.

Page 9, lines 1-15: Authors may want to mention that further descriptions of the different test figures and configuration setup are found also in Section 3.

Thank you for the suggestion. We have pointed to section 3 in this case.

Page 9, line 16: The “Travis CI” system is outlined for how it is used with VIC workflow and testing. Can the authors provide some additional information on the origins and source of Travis?

Travis CI is a hosted service for testing open-source software. The TravisCI Wikipedia page (https://en.wikipedia.org/wiki/Travis_CI) and the “Travis CI About Page” (<https://about.travis-ci.com/>) provide good overviews of the service, its typical uses, and its adoption across the software development community.

Page 11, lines 16-19, and Figure 3: Please either indicate here that the VIC-5 version performs at or above 0.99 r^2 values relative to previous VIC-4.x version(s), as you did C3 with the observed SNOTEL peak SWE comparison in Figure 2, or include a third time series of the VIC-4 version to show overlap with VIC-5.

We have added the VIC.4 results to this figure. The reviewers may note that the r^2 values comparing VIC-4 and VIC-5 are 1.00 for all sites.

Page 11, lines 24-29: Please add to this discussion how the information in Table 3 may relate to the tested parallelization performance metrics shown in Figure 5.

We have elaborated on our previous point that as VIC is scaled out, it becomes more and more I/O bound. Therefore, a more performant disk system (e.g. fast SSDs) along with faster interconnects (e.g. infiniband) would likely yield improved scalability.

Figure 1: Please provide more information in the caption as to what is represented in the “Shared Driver Utilities”. This part of the figure was not well addressed in the figure or accompanying documentation.

We have added a brief paragraph in section 2.3 describing what we mean by the Shared Driver Utilities.

Figure 3: Mention in figure caption what the red and blue shading represent.

We have added a sentence describing the meaning of this shading (interannual variability represented as ± 0.5 standard deviation).

Table 4: Replace “they” with “that” and don’t need the parentheses around “Liang et al. (1994)”, just 1994.

We have correct these two typos.

The Variable Infiltration Capacity Model, Version 5 (VIC-5): Infrastructure improvements for new applications and reproducibility

Joseph J. Hamman^{1,2}, Bart Nijssen¹, Theodore J. Bohn³, Diana R. Gergel¹, and Yixin Mao¹

¹Department of Civil & Environmental Engineering, University of Washington, Seattle, WA, USA.

²Now at: Hydrometeorological Applications Program, Research Applications Laboratory, National Center for Atmospheric Research, Boulder, Colorado, USA

³School of Earth and Space Exploration, Arizona State University, Tempe, AZ, USA.

Correspondence to: Bart Nijssen (nijssen@uw.edu)

Abstract. The Variable Infiltration Capacity (VIC) model is a macro-scale semi-distributed hydrologic model. VIC development began in the early 1990s and the model has since been used extensively for basin- to global-scale applications that include hydrologic data set construction, trend analysis of hydrologic fluxes and states, data evaluation and assimilation, forecasting, coupled climate modeling, and climate change impact assessment. Ongoing operational applications of the VIC model include the University of Washington's drought monitoring and forecasting systems and NASA's Land Data Assimilation System. This paper documents the development of VIC version 5 (VIC-5), which includes a major reconfiguration of the legacy VIC source code to support a wider range of modern hydrologic modeling applications. The VIC source code has been moved to a public GitHub repository to encourage participation by the broader user and developer communities. The reconfiguration has separated the core physics of the model from the driver source code, where the latter is responsible for memory allocation, pre- and post-processing and input/output (I/O). VIC-5 includes four drivers that use the same core physics modules, but which allow for different methods for accessing this core to enable different model applications. Finally, VIC-5 is distributed with robust test infrastructure, components of which routinely run during development using cloud-hosted continuous integration. The work described here provides an example to the model development community for extending the life of a legacy model that is being used extensively. The development and release of VIC-5 represents a significant step forward for the VIC user community in terms of support for existing and new model applications, reproducibility, and scientific robustness.

1 Introduction

The Variable Infiltration Capacity (VIC) model (Liang et al., 1994) is a semi-distributed, macro-scale hydrologic model (MHM) that has been applied in a broad set of use cases. The model has been used for numerous water and energy balance studies in the U.S. (Abdulla and Lettenmaier, 1997; Nijssen et al., 1997), the Arctic (Adam and Lettenmaier, 2008; Su et al., 2005; Tan et al., 2011; Hamman et al., 2016) and globally (Nijssen et al., 2001a, b, c; Sheffield et al., 2009). One result of these studies has been refinement of the model to better represent key hydrological processes (Andreadis et al., 2009; Cherkauer et al., 2003; Liang et al., 1996, 1999). Ongoing realtime applications of the VIC model include the University of Washington's drought monitor-

ing and forecasting systems (<http://www.hydro.ucla.edu/SurfaceWaterGroup/forecast/monitor/index.shtml>), and NASA's Land Data Assimilation System (LDAS; <https://ldas.gsfc.nasa.gov>). Table 1 provides additional examples of the use of VIC for hydrological, water resources, and water and energy budget applications.

Although the motivation for the development of VIC, as documented in the original VIC publication (Liang et al., 1994), was as a land surface scheme for coupled land-atmosphere models and earth system models (ESMs), the VIC model has been applied predominantly in uncoupled modeling studies in which there is no feedback from the land surface to the atmosphere. VIC and other uncoupled MHMs have continued to exist alongside the fully-coupled land surface schemes and have developed a large user community for a number of reasons: a) their focus on the representation of hydrological processes often resulted in simulations that were hydrologically more credible than the land surface schemes typically used in coupled land-atmosphere models (as shown, for instance, in the Project for Intercomparison of Land Surface Parameterizations (PILPS; Bowling et al., 2003; Wood et al., 1998)); b) their ability to simulate variables that are directly relevant for water resources management, such as streamflow, makes them useful for planning and impact studies; and c) their lower demand for computational resources (compared with coupled models) allows research groups that do not have access to supercomputers to perform large-scale simulations. Most of these uncoupled MHMs can, for most applications, be run on single processors or small computer clusters.

Because VIC was traditionally operated as a stand-alone land surface scheme, there were no requirements for the model code to communicate with other model components in a coupled environment. In other words, there was no requirement for the model to *"play well with others"*. Instead, the model run-time environment focused on simplicity with the goal that VIC could run without the need for specific machine architectures, compilers or third-party libraries. Model development prior to version 5 did not follow a well-defined development track and was directed primarily by the needs of specific model experiments. Relatively little attention was paid to improvements of the model infrastructure, which had remained essentially unchanged since its initial release in the early 1990s, including input/output (I/O) formats. As a consequence, model implementation typically required extensive pre- and post-processing, including reformatting and processing of model input and output files. The few VIC applications within multi-model frameworks (e.g. NASA LIS, Kumar et al., 2006) required significant customized reconfiguration of the model interface. While VIC model source code was version controlled and publicly available since the early 1990s, model development was not always transparent. The source code repository of record resided on a private machine at the University of Washington, where most of the development was conducted.

Although the ability to run MHMs such as VIC in uncoupled mode has been one of their strengths, earth system science has reached a point where the inability of some MHMs to be used in both coupled and uncoupled mode is a serious shortcoming. While a few previous efforts have been made to couple VIC to both atmospheric and fully-coupled earth system models (e.g. Zhu et al., 2009; Hamman et al., 2016), these methods have been ad-hoc and required significant rewriting of the model infrastructure. In effect, this resulted in a version of the model code that was coupled, but which would rapidly become obsolete relative to the uncoupled VIC version which was the main path for model enhancement and improvement.

Interest in and advocacy for the use of established software development methods has grown in recent years in the fields of hydrology and the earth sciences to promote reproducibility of model and analysis results (e.g. Wilson et al., 2014; Ceola et al., 2015; Fienen and Bakker, 2016; Gil et al., 2016; Hutton et al., 2016). Opinions differ with respect to the best workflows to

promote reproducibility. For example, an active discussion ensued in response to the paper by Hutton et al. (2016), not so much about the need for improved workflows, but about implementation details and the required level of rigor (Anel, 2017; Melsen et al., 2017; Hut et al., 2017; Hutton et al., 2017a, b). This debate takes place within a broader academic discussion of the need for open-source computer programs to increase scientific transparency in the model development and application process (Ince et al., 2012). Improved model source code maintenance, standardized test setups, and transparency comprise only part of this drive towards greater reproducibility. Other aspects include model and workflow documentation, versioning of data sets, and inclusion and standardization of metadata. It is with these points in mind that many of the new process and infrastructure improvements discussed in this paper were developed.

This paper documents the development of VIC version 5, hereafter referred to as VIC-5, a new major release of the VIC model. The motivation for the development of VIC-5 is to extend the usefulness of VIC by adding the necessary infrastructure to allow the model to operate in a number of coupled and uncoupled modes, while relying on the same underlying physics implementations, and to ensure that upgrades to the physics routines are automatically available to all model configurations. In this paper we describe the software, infrastructure, and associated improvements in VIC-5 and provide baseline model diagnostics in terms of computational performance. The initial VIC-5 release does not add new or improved physical process representations compared to the last release of the VIC-4 development track (version 4.2.d). Instead, the development of VIC-5 focused on reconfiguring the legacy VIC source code to support a wider range of modeling applications, to better integrate VIC with other applications, and to enhance reproducibility and source code maintenance. Therefore, this paper does not attempt to provide a scientific benchmarking of the VIC model. We have, however, provided a summary table of the key improvements to the VIC model since the original Liang et al. (1994) paper in Appendix A.

This paper is organized as follows. Sect. 2 briefly outlines the VIC legacy infrastructure in the model versions before VIC-5, details our design objectives, and discusses the major infrastructure changes implemented to meet those objectives. Sect. 3 includes results from test simulations with the new model code. The results and discussion from these test simulations are presented in Sect. 4. Concluding remarks are provided in Sect. 5 along with a discussion of our efforts to create and cultivate a VIC user community and to share the model source code.

2 VIC Infrastructure

2.1 Legacy Implementation

Although VIC was originally intended to function as a land surface component in ESMs (Liang et al., 1994), its early development as a stand-alone model led to a model infrastructure that was poorly suited to coupling with atmospheric models. Most importantly, because model physics did not account for fluxes between adjacent grid cells (as was and remains common among land surface components of ESMs), VIC used a *time-before-space* computation order in which all time steps for a given model grid cell were completed before the model moved to the next location. We will refer to the *time-before-space* configuration as *vector* mode. This scheme is in direct conflict with atmospheric models, which use a *space-before-time* computation order in which all grid cells in the entire model domain are simulated for a single time step before advancing to the next time step. We

will refer to the *space-before-time* configuration as *image* mode. In addition, consistent with the vector mode implementation, VIC's inputs and outputs consisted of one or more (ASCII or binary) files per grid cell, each containing the entire timeseries of a cell's fluxes and states. While this kept VIC's memory requirements relatively low, it led to an unwieldy number of files as domain size and grid resolution increased. Furthermore, analyzing, plotting, and publishing results from these files often required a time-consuming conversion to more flexible formats such as Unidata's Network Common Data Format (NetCDF; Rew and Davis, 1990). The challenge presented by separate files for each model grid cell is insidious. While it makes it easy to examine time series for individual grid cells, it makes it more difficult to examine time series of domain-wide model output and can hide errors in spatial model inputs and outputs that may be readily apparent upon inspection of a time series of spatial output.

While VIC's original infrastructure may have made coupling within ESMs difficult, it also contributed to the model's wide uptake throughout the hydrologic modeling community. Previous versions of VIC were very portable, required no third-party libraries, were easy to run in single point mode for testing or comparison with point observations, and were trivial to parallelize across many processors and machines by manually subdividing the domain and running each sub-domain on a separate processor. It was this simple infrastructure, combined with the inclusion of built-in convenience tools such as the meteorological variable disaggregator based on the Mountain Climate Simulator (MT-CLIM) algorithms (Thornton and Running, 1999; Bohn et al., 2013), publicly available regional and global forcing and parameter datasets, and publicly available source code, that greatly contributed to VIC's wide adoption in the hydrologic modeling community.

2.2 Design goals for VIC-5

The VIC-5 release includes a complete refactor of the model source code. The design goals of the refactor included:

- separation of the model physical core from the driver code;
- multiple model drivers to support a range of modeling applications;
- parallel processing to facilitate efficient large domain simulations;
- machine-independent and self-documenting I/O formats such as NetCDF;
- model extensions framework to facilitate coupling of sub-model components;
- comprehensive test suite to guide future model use and development;
- source code availability and version control via an online platform to enable community participation in model maintenance and development, and to promote transparency;
- improved model documentation.

The implementation details for each of these topics are discussed in the following sections.

A practical motivating factor in the development of VIC-5 was to enable coupling of VIC within the Regional Arctic System Model (RASM; Hamman et al., 2016), a regional implementation of the Community Earth System Model (CESM; Hurrell et al., 2013), while maintaining usability as a stand-alone model. In RASM, VIC-5 is directly coupled to CESM's flux coupler (CPL7; Craig et al., 2012) via the Model Coupling Toolkit interface (MCT; Larson et al., 2005). As implemented within RASM, this interface allows VIC to be coupled to the Weather Research and Forecasting (WRF) atmospheric model (Skamarock, 2008) and the RVIC streamflow routing model (Hamman et al., 2017) components, while maintaining the legacy and stand-alone model infrastructure, which have a large existing user base. The successful coupling of VIC-5 within RASM is a key demonstration of the benefits of the source code refactor. The new infrastructure will facilitate VIC to be coupled more readily to other modeling systems in the future.

2.3 Drivers

The most significant change in the model reconfiguration was the separation of the physical model core from the model drivers, which are responsible for memory allocation, pre- and post-processing, and input and output (I/O). The VIC-5 source code structure is depicted in Fig. 1. The initial VIC-5 release includes four drivers, each using the same physical model core:

1. The *Classic Driver* supports legacy VIC configurations and runs in the traditional time-before-space or vector mode. It uses ASCII and flat-binary file formats for I/O. With the exceptions of the removal of the forcing disaggregator and minor changes to formatting and naming of input options, the *Classic Driver* is backwards-compatible with VIC version 4.2.d. More discussion on the removal of the forcing disaggregator from the *Classic Driver* is provided in Sect. 2.6.
2. The *Image Driver* includes a stand-alone space-before-time configuration, NetCDF I/O, and uses the message passing interface (MPI; Gropp et al., 1996) and OpenMP (Dagum and Menon, 1998) standards for parallel processing. The parallel processing functionality combined with NetCDF I/O has significantly streamlined VIC simulations over large spatial domains. This configuration also facilitates the direct coupling within VIC of streamflow routing, reservoir, and irrigation processes, all of which require spatial knowledge of hydrologic conditions as the model advances in time.
3. The *CESM Driver* couples VIC to the Community Earth System Model's (CESM; Hurrell et al., 2013) flux coupler (CPL7; Craig et al., 2012) and a prognostic atmosphere. The current application of the *CESM Driver* is within the Regional Arctic System Model (RASM; Hamman et al., 2016), a regional implementation of CESM. Future applications of the *CESM Driver* could be applied within the global version of CESM. Furthermore, the CESM driver may serve as a template for other coupled model applications as it provides the infrastructure necessary to couple VIC, which is written in C, to libraries and model components written in Fortran via a standardized interface. The *CESM Driver* shares much of its foundational infrastructure with the *Image Driver*. In particular, they share common source code for their parallelization and I/O layers. See Fig. 1 for illustration of the shared infrastructure between the Image Driver and the CESM Driver.

4. The *Python Driver* provides Python bindings to the functions and data structures of VIC's physical core. These functions are made available as Python functions using the C Foreign Function Interface for Python (CFFI; <http://cffi.readthedocs.io>). Although the *Python Driver* is currently only used for testing, this driver is uniquely suited for future interactive classroom sessions, data assimilation, or large ensemble applications.

5 Additionally, VIC includes a set of general "Shared Driver Utilities" that may be used by the individual drivers. These utilities perform driver level tasks, such as logging and allocating memory, that are shared among all drivers. Grouping these common utilities eliminated duplication of source code among the individual drivers.

2.4 Extensions

In VIC-5, we have introduced a model extensions framework to facilitate the coupling of sub-model components. Previous versions of VIC have added extended functionality to the model such as streamflow routing (Lohmann et al., 1996; Hamman et al., 2017), reservoirs, irrigation (Haddeland et al., 2006), glaciers and ice sheets, and dynamic vegetation and crops (Adam et al., 2015). These extensions were added either as stand-alone post-processing options or via highly customized interfaces. The motivating factor for developing a model extensions framework was to allow for the optional coupling of existing sub-models that are beyond the scope of core VIC applications or that are not feasible to add for all drivers.

15 The updated model configuration facilitates the direct coupling of new and existing subcomponents to VIC. Many of the previously developed sub-model components required information from neighboring grid cells or upstream processes (e.g. reservoir operations, irrigation, etc.). Leveraging the new functionality within the *Image Driver*, VIC is now able to provide information of storages and states from anywhere in the model domain to these sub-models. As of VIC version 5.1, only the streamflow routing extension, which couples the RVIC streamflow routing model (Hamman et al., 2017) to the *Image Driver*,
20 is complete.

A key concept in the design of the VIC extensions framework is to allow for modular use and development of specific extensions. Therefore, each extension is enabled via compile-time options with the requirement that the model be able to run with or without the extension turned on. When turned off, each extension provides stub, or no operation, functions that allow the model to run without impacting the simulation. When turned on, each extension may use or modify state and flux variables
25 from the core VIC model.

2.5 Parallel Computing

The VIC model does not include horizontal exchange between grid cells. In the past, this feature has allowed users to manually parallelize their VIC applications by running VIC simulations for different grid cells on separate cores or computers (a technique referred to as *poor man's parallelization*). While this approach generally worked well for increasing the throughput of model simulations, it required laborious and time-intensive post-processing of the model output. Oftentimes, the time
30 required to post-process these VIC simulations exceeded the model run time. In the image and CESM drivers in VIC-5, we

have added formal parallel processing support by utilizing the MPI standard and shared memory threading via OpenMP. The parallel scaling performance of the VIC-5 image driver is discussed in detail in Sect. 3.

Because VIC model grid cells do not exchange water or energy with their neighbors, each grid cell can be modeled independently. Our MPI parallelization strategy is to use MPI only to facilitate I/O operations. Thus, all I/O is performed by the master process. Inputs are read and scattered to the individual processors, while outputs are gathered and written out by the master process. The default domain decomposition uses a simple round-robin approach in which each grid cell in the model domain is sequentially distributed to another processor. For example, in the case of four MPI processes and 20 model grid cells, the first MPI process would handle grid cells 1, 5, 9, 13, and 17; the second would handle 2, 6, 10, 14, 18; and so forth. In practice, this ensures a similar computational load for each MPI process for the most common VIC spatial configuration (a regular 2-D grid).

We have also implemented an alternative parallelization strategy using OpenMP threading that may be used for concurrent simulation of multiple grid cells within a node or process. As opposed to the full MPI parallelization, OpenMP avoids some of the overhead inherent in MPI (e.g. communication, data transfer). On some machines, the use of hyper-threading with OpenMP may result in better scaling than with MPI. Finally, the addition of OpenMP allows for *Hybrid OpenMP-MPI* parallelism wherein OpenMP and MPI are used in concert. This advanced form of parallelism utilizes MPI for inter-node communication and OpenMP for shared-memory threading on-node.

2.6 Input and Output

The *Image* and *CESM drivers* use Unidata's NetCDF library for all I/O related to input parameters, meteorological forcings, and model output. NetCDF is a software library that reads and writes self-describing array-oriented scientific data with its metadata. It has been widely adopted among the geo-scientific modeling community and provides a convenient self-describing machine-independent data format. Interfaces to the NetCDF library are available in many scripting languages including Python, R, Matlab, and Julia. Output files from the *Image* and *CESM drivers* are formatted such that they meet the NetCDF Climate and Forecast (CF) metadata conventions version 1.6 (Eaton et al., 2003).

All drivers share a common logging module that greatly improves VIC's ability to self-document each model experiment. This logging module records the model version, input files, model settings, and performance statistics from key parts of the model source code. The verbosity of the logging module is controlled by a compile-time option. During model development, the logging module also facilitates debugging by providing full stack traces and line numbers when the model exits unexpectedly. When using MPI for parallelization, the logging module provides MPI task granularity when logging messages.

The *Classic Driver* continues to support the legacy ASCII and raw binary input and output file formats. We have also added additional metadata to the header of the ASCII file format but it has basically remained the same since VIC-4.

VIC previously included a meteorological forcing processor that made use of the MT-CLIM algorithms to estimate radiation and humidity from daily inputs of precipitation and temperature and which created sub-daily forcings from daily inputs. In VIC-5, this forcing processor has been removed from the model to facilitate a number of key enhancements that are described below:

1. *Exact restarts*: In the versions of VIC that included MT-CLIM meteorological disaggregator, exact restarts were not possible due to a rolling time average in the MT-CLIM algorithm. By removing MT-CLIM in VIC-5, it is now possible to end a run and save the model state at that timestep and then start a new model run with exactly the same model state. This improvement has widespread applicability in hydrologic modeling and is particularly important for forecasting and climate modeling applications.

2. *Identical treatment of forcings between drivers*: The development of the *Image Driver*, which runs in a space-before-time loop order, was not compatible with MT-CLIM's loop order, which requires a time-before-space order.

3. *Improved transparency in the forcing generation process*: While VIC's core function is as a hydrologic model, specific modeling decisions were made when MT-CLIM was chosen as VIC's meteorological preprocessor and those decisions were abstracted deep within the model source code. As a result, the implications of forcing VIC with only minimum and maximum temperature and precipitation were abstracted away from and mostly invisible to the user. Removing the preprocessor from VIC enhances the transparency of the model by forcing users to make specific choices about the source of the model forcings.

A result of this change is that the input forcings must now have the same time step length as the model simulation. Consequently, for offline simulations based on widely-used gridded daily observations (e.g. Livneh et al., 2015), forcing disaggregation must occur outside the model as a pre-processing step. A Python-based stand-alone disaggregation tool, MetSim (<http://metsim.readthedocs.io>), has been developed for this purpose.

VIC-5 also has eliminated all hard-coded model parameters (e.g. emissivity of snow and the temperature lapse rate) from the body of the source code and collected physical constants into a single header file. Users may now specify an optional "parameters" configuration file to override default model constants that were previously hard-coded values. These changes follow a push in the hydrologic modeling community for hydrologic models to expose constant parameters (e.g. Mendoza et al., 2015), and greatly improves the transparency, flexibility and accessibility of the model.

2.7 Testing

VIC-5 introduces a comprehensive test suite, now distributed with the model source code. The VIC test suite was designed to serve three primary purposes: 1) automated diagnostics and benchmarking of model performance, following Luo et al. (2012); 2) continuous integration providing automated build and unit tests to ensure reproducibility; and 3) enable development contributions from a broader user community by facilitating consistency between model developers. As the VIC developer community continues to grow, this test suite will be an important tool in maintaining the function of the supported drivers.

The test suite is made up of seven components:

1. *Build*: The build tests ensure that VIC may be compiled and linked using a variety of different libraries and compilers. Given the increased complexity of the software stack supporting VIC, these tests are important to ensure portability of the model.

2. *Unit*: The unit tests check function-level source code behavior. Using the same C-to-Python bindings used in the *Python Driver*, many of the individual functions in VIC are tested using the “Py-Test” unit test framework (<http://doc.pytest.org>). These tests target individual functions in the physical core of the model and the shared driver. Specific tests for each driver are handled in the *System Tests*.
- 5 3. *System*: The system tests check the behavior of the individual drivers. Examples of these tests include checks for exact restarts using model-generated state files, binary equivalence for simulations run with and without parallel processing, and comparisons between drivers.
4. *Science*: The science tests utilize the *Classic Driver* to run point simulations at a selection of observation locations (e.g. SNOTEL or AMERIFLUX sites). We describe the types of datasets that are used for these tests in Sect. 3.1. Analysis
10 figures and summary statistics are made as part of the automated test framework. Results from these point simulations are quantitatively and qualitatively compared to observations and also to simulation results from previous VIC versions. Figs. 2 and 3 provide examples of aggregated output from the science test suite. Additional discussion related to these figures is provided in Sect. 4.
- 15 5. *Examples*: A set of short example VIC configurations and inputs (parameters and forcings) are provided to users for the *Classic* and *Image drivers*. The *Examples* tests check that the example data continue to run such that new users can quickly and easily get started with the VIC model.
6. *Release*: The release tests are longer, full domain (e.g. North America, global, etc.), *Image Driver* simulations performed prior to each model release. These tests demonstrate the current model behavior and are compared to previous releases to evaluate the changes in the model physics. These tests are archived for each model release to allow for retrospective
20 model comparison.
7. *Performance*: With the addition of parallel processing to the *Image* and *CESM drivers*, a set of tools for assessing the parallel performance were needed. The performance tests assess timing and memory statistics of the VIC model. Results from these tests are highlighted in Sect. 4.

The *Build*, *Unit*, *System*, and *Examples* tests are routinely run using the Travis CI continuous integration system (<https://about.travis-ci.com/>, <https://travis-ci.org/UW-Hydro/VIC>) where the VIC test suite is executed using multiple compilers (GNU and Clang), MPI libraries (MPICH and Open-MPI) and computational architectures (Linux and OS X). VIC’s Travis CI workflow includes the following steps: 1) selection of virtual machine with preinstalled environments, 2) download of VIC source code and test datasets from GitHub, 3) compilation of specific driver along with Python unit tests, and 4) execution of test simulations for the specific driver implementation (e.g. *image*). If any of the tests in these steps fail for any part of the
30 test matrix, Travis CI returns a failed test status to the VIC GitHub page. This functionality is routinely used in evaluating VIC modifications that are suggested on GitHub via pull requests. VIC-5 has also been tested with the PGI, Intel, and Cray compilers, however, they are not used by default in the Travis CI test system.

2.8 Model Distribution and Documentation

Beginning in 2013, the VIC source code has been publicly available on GitHub (<https://github.com/UW-Hydro/VIC>). GitHub is a web-hosting service built on top of the Git version control system and is meant to facilitate collaborative software development. VIC development uses many of the features available from GitHub including user and administrator controls, code review tools, and a bug and issue tracker. The ability to provide detailed, line-by-line code reviews has been particularly useful in the process of developing VIC-5 with multiple developers who have varying familiarity with the VIC source code.

We have adopted the widely used “Gitflow” branching model and workflow for managing the VIC Git repository. The workflow provides guidance for managing development branches and releases. Key features of the workflow are the separation of the master branch from development, feature, support, and bug-fix branches. This workflow is described in detail as part of VIC’s online documentation.

Finally, VIC has adopted the semantic versioning system (Preston-Werner, 2018) for determining new release names. In short, beginning with VIC version 5.0.0, version numbers follow a pattern of ‘MAJOR.MINOR.PATCH’ where MAJOR versions represent when changes are included that are not backward compatible, MINOR versions represent when features and new functionality are added in a backwards-compatible manner, and PATCH versions represent when backwards-compatible bug fixes are made.

As part of the development of VIC-5, we have implemented an updated, comprehensive documentation website for VIC (<http://vic.readthedocs.io>). While previous versions of the VIC model did have a documentation website, edits were only possible by the VIC administrator, and the documentation was maintained separately from the model source code. In VIC-5, the documentation content is part of the VIC source code repository and is hosted on ReadTheDocs (<https://readthedocs.org/>), a public documentation hosting service. A key benefit of the updated documentation is the ability to provide versioned documentation that matches specific model releases. This website is a particularly valuable tool for new users as it combines tutorials for how to setup and run VIC with a detailed description of the model itself.

3 VIC-5 Simulations

The science, release, and performance tests described above were performed prior to the release of VIC-5. The tests were used to evaluate the final model version and were archived for future comparisons during the model development process. This section, along with Table 2, describes specifics of the test simulations.

3.1 Science Tests

The scientific verification of the VIC-5 release included point comparisons of VIC simulations with 66 Ameriflux sites (Baldocchi et al., 1996, 2001; Bohn and Vivoni, 2016) and 448 SNOTEL sites. These sites cover a range of hydroclimates across North America, providing a sufficiently large collection of environments for testing purposes. For the VIC-5 release, these

datasets were used to ensure that the refactor did not significantly modify the model behavior relative to VIC-4. Future model development will use these archived test outcomes to motivate and evaluate scientific changes to the physical core of the model.

3.2 Release Tests

We have designed a series of release tests that may be used to benchmark the VIC model during the development and release process. The release tests are continental scale domain simulations performed using typical model settings. The specifics of the release test simulations for the VIC-5 release are described in Table 2.

3.3 Performance Tests

We tested the parallel scaling performance of the *Image Driver* using a series of model simulations on the 50-km near equal-area pan-Arctic domain used as the standard configuration in RASM. This model domain is shown in Fig. 4 and is detailed in Table 2. Here we demonstrate the scaling performance of the parallelization scheme applied in VIC-5 where model throughput, defined as simulated model years divided by wall-time in units of days, is shown as a function of the number of processors used. Two RASM image driver model configurations were tested on the Thunder supercomputer at the U.S. Air Force Research Laboratory (AFRL) Department of Defense (DoD) Supercomputing Resource Center (DSRC). Table 3 provides details on the hardware specifications of this machine. The different model configurations represent two ends of the complexity spectrum available in the VIC model. Configuration A was run in water balance mode, in which the energy balance is not explicitly closed, resulting in a computationally less expensive model. Conversely, configuration B represents a much more complex model, in which the energy and water budgets are solved together using an iterative solver. Both configurations were run over the same model domain with the same meteorological forcings, with only differences in model configuration settings as described above. Both model configurations were also tested using a hybrid OpenMP-MPI configuration with a combination of shared memory threading and parallel processes. Because memory requirements are modest for VIC, we do not include any memory profiling of the VIC parallelization schemes.

4 Results and Discussion

The inclusion of a comprehensive science testing framework within the VIC-5 repository, as introduced in Sect. 2.7, facilitates continuous and repeatable validation of the model throughout the development process. Fig. 2 shows a summary graphic from the SNOTEL component of the science testing package. This figure demonstrates that VIC-4 and VIC-5 are producing basically identical ($r^2 > 0.99$) results for snow water equivalent (SWE) and that the two model versions have similar performance statistics when compared to observations. Fig. 3 demonstrates an example comparison of latent and sensible heat from the FLUXNET component of the science testing package, showing a comparison between VIC-5 and flux tower observations for a subset of the sites included in the dataset. These automated diagnostics are particularly important throughout the model development and evaluation process to ensure that changes to the core physics of the model do not result in unintentional outcomes in other parts of the code. Additionally, these tests help provide baseline diagnostics for future VIC releases.

Improving the scaling performance of VIC-5 by adding parallel processing functionality enables VIC-5 to be used for more computationally expensive applications, such as high-resolution modeling studies, sensitivity analyses, and coupled earth system models (e.g. RASM) that have shorter coupling intervals (e.g. 20 minutes) than the timesteps that have traditionally been used in VIC (hourly to daily). Fig. 5 demonstrates the scaling performance for the two model configurations. For the simpler model configuration (A), VIC run with MPI shows high throughput, but extending parallelization beyond four to eight nodes (144 to 288 cores) provides little speedup. This behavior is indicative of a program that is I/O limited. For the more complex model configuration (B), VIC has significantly lower throughput, but scales efficiently beyond 32 nodes (1,152 cores). In this case, the physics code is much more time intensive than the I/O code of the model. For example, a comparison of the timing logs for two simulations that each use 144 MPI tasks shows that configuration A spends 48% on I/O operations, while configuration B spends only 28%. In practice, the scaling performance for most parallel VIC applications is predominantly a function of a computer's interconnect and disk speeds. We expect that VIC's scaling performance would be therefore improved on machines with more performant file systems (e.g. solid-state-disks) or faster interconnects.

We also evaluated the scaling performance of the Hybrid OpenMP-MPI parallelization in VIC and found that these simulations do not perform as well as the pure MPI implementation. Fig. 5 also includes the Hybrid OpenMP-MPI test simulations. One probable explanation for this is that the MPI libraries on the Thunder supercomputer are optimized such that the overhead of switching between MPI and OpenMP is larger than the performance improvements gained by shared memory threading. We expect that for other combinations of model configuration, machine, compiler, and MPI and OpenMP libraries, this hybrid parallelization scheme will perform better than pure MPI.

Additional performance enhancement in scaling of the VIC *Image* and *CESM drivers* will likely occur through the application of parallel I/O. Collective parallel reading and writing of NetCDF files, made possible through the NetCDF-4 and HDF5 libraries, is expected to dramatically reduce the amount of data passed via MPI processes. For computers with high-performance parallel disk systems, parallel IO should allow the model to scale well beyond the limits shown in Fig. 5. The development of this feature has been reserved for later releases in the VIC-5 development track.

5 Conclusions

The VIC model continues to serve a broad user community. The VIC Users email list-serve (vic_users@u.washington.edu) has more than 420 active members, and the analytics from the VIC website and documentation indicate that there are upwards of one-thousand individual VIC users. The original VIC paper (Liang et al., 1994) continues to be widely cited in the hydrologic modeling literature with nearly 2,300 citations as of January 2018. The VIC source code was moved to a public GitHub repository in 2013. Since then over 160 users and developers have checked out "Forks". Additionally, we are aware of multiple ongoing developing efforts by the VIC community to implement new features. The open-source framework that we have implemented will facilitate mechanisms for the integration of model improvements from the greater VIC community into future VIC releases.

Beginning in 2014, the VIC model has been licensed with the open-source GNU General Public License version 2. The motivation behind making the model source code completely open-source was to encourage participation by the model user and development community-at-large, and to increase scientific transparency in the model development and application process (Ince et al., 2012). The VIC source code now uses the Git version control system (Torvalds and Hamano, 2010) and is publicly available on GitHub (<https://github.com/UW-Hydro/VIC>). While the majority of the VIC-5 development was done by researchers at the University of Washington, a number of features additions and bug fixes were made by unsolicited contributors. For example, the implementation of the RVIC streamflow routing extension within VIC (Sect. 2.4) was a community contribution and provides a poignant illustration of the benefits of convenient open-source collaboration.

The development of VIC-5 focused on refactoring the legacy source code to support a range of modern modeling applications. While the release of VIC-5 does not modify existing or add new process representations, it does modernize the supporting infrastructure in the model while preserving legacy functionality. The incorporation of state of the art software engineering tools, such as GitHub and continuous integration, will facilitate the ongoing development and maintenance of the model by the broader VIC developer community.

We expect VIC-5's infrastructure improvements, combined with a suite of modern software tools, will help guide future VIC development and enable new applications of the model. For example, the enhancements related to high-performance computing will enable the application of the VIC model across larger, higher-resolution domains or for larger sensitivity experiments. Moreover, the improvements to development process that were part of the path to VIC-5 represent a key component of the long-term sustainability of the model source code and the continued availability of the model as a tool for the modeling community.

6 Code Availability

Appendix B describes the locations and license information for the the VIC source code and documentation. The source code, input data and VIC configurations used as demonstrations for this paper are provided in this GitHub repository: https://github.com/jhamman/VIC5_paper.

Appendix A: Key VIC Model Development Milestones

Since the original release of the VIC model and the original publication of Liang et al. (1994), continued model development has added a series of new features and additional process representations. Table 4 highlights the key model development milestones and provides citations for the relevant literature.

Appendix B: VIC Model Source Code and Documentation

B1 Archive

- *Name*: VIC.5.0.1
- *Persistent identifier*: <http://doi.org/10.5281/zenodo.267178>
- 5 – *License*: GNU General Public License, version 2 (GPL-2.0)
- *Publisher*: Zenodo
- *Version published*: 5.0.1
- *Date published*: February 1, 2017

B2 Code Repository

- 10 – *Name*: GitHub
- *Identifier*: <https://github.com/UW-Hydro/VIC>
- *License*: GNU General Public License, version 2 (GPL-2.0)
- *Date published*: February 1, 2018

B3 Versioned Documentation

- 15 – *Name*: ReadTheDocs
- *Identifier*: <http://vic.readthedocs.io/en/vic.5.1.0>
- *License*: GNU General Public License, version 2 (GPL-2.0)
- *Date published*: February 1, 2018

20 *Author contributions.* J. Hamman, B. Nijssen, and T. Bohn performed the majority of the source code reconfiguration. B. Nijssen provided overall oversight. J. Hamman designed the experiments with help from Y. Mao and D. Gergel to carry them out. J. Hamman and B. Nijssen prepared the manuscript with contributions from all co-authors.

Acknowledgements. This research was supported, in part, by United States Department of Energy (DOE) grants DE-FG02-07ER64460 and DE-SC0006856 to the University of Washington, and grant 1216037 of the National Science Foundation’s Science, Engineering, and Education for Sustainability (SEES) Program. Supercomputing resources were provided through the United States Department of Defense (DOD) High Performance Computing Modernization Program (HPCMP) at the Army Engineer Research and Development Center (ERDC) and the Air Force Research Laboratory (AFRL). We thank Anthony Craig for his feedback during the design and implementation of the Image and CESM drivers. We also thank Wietse Franssen and Iwan Supit for their contributions to the streamflow routing extension.

References

- Abdulla, F. A. and Lettenmaier, D. P.: Application of regional parameter estimation schemes to simulate the water balance of a large continental river, *Journal of Hydrology*, 197, 258–285, 1997.
- Adam, J. C. and Lettenmaier, D. P.: Application of new precipitation and reconstructed streamflow products to streamflow trend attribution in northern Eurasia, *Journal of Climate*, 21, 1807–1828, 2008.
- Adam, J. C., Stephens, J. C., Chung, S. H., Brady, M. P., Evans, R. D., Kruger, C. E., Lamb, B. K., Liu, M., Stöckle, C. O., Vaughan, J. K., Rajagopalan, K., Harrison, J. A., Tague, C. L., Kalyanaraman, A., Chen, Y., Guenther, A., Leung, F.-Y., Leung, L. R., Perleberg, A. B., Yoder, J., Allen, E., Anderson, S., Chandrasekharan, B., Malek, K., Mullis, T., Miller, C., Nergui, T., Poinsatte, J., Reyes, J., Zhu, J., Choate, J. S., Jiang, X., Nelson, R., Yoon, J.-H., Yorgey, G. G., Johnson, K., Chinnayakanahalli, K. J., Hamlet, A. F., Nijssen, B., and Walden, V.: BioEarth: Envisioning and developing a new regional earth system model to inform natural and agricultural resource management, *Climatic Change*, 129, 555–571, doi:10.1007/s10584-014-1115-2, 10.1007/s10584-014-1115-2, 2015.
- Andreadis, K. M. and Lettenmaier, D. P.: Assimilating remotely sensed snow observations into a macroscale hydrology model, *Advances in Water Resources*, 29, 872–886, 2006.
- Andreadis, K. M., Storck, P., and Lettenmaier, D. P.: Modeling snow accumulation and ablation processes in forested environments, *Water Resources Research*, 45, doi:10.1029/2008WR007042, w05429, 2009.
- Anel, J. A.: Comment on "Most computational hydrology is not reproducible, so is it really science?" by Christopher Hutton et al., *Water Resources Research*, 53, 2572–2574, doi:10.1002/2016wr020190, 2017.
- Baldocchi, D., Valentini, R., Running, S., Oechel, W., and Dahlman, R.: Strategies for measuring and modelling carbon dioxide and water vapour fluxes over terrestrial ecosystems, *Global Change Biology*, 2, 159–168, doi:10.1111/j.1365-2486.1996.tb00069.x, 1996.
- Baldocchi, D., Falge, E., Gu, L., Olson, R., Hollinger, D., Running, S., Anthoni, P., Bernhofer, C., Davis, K., Evans, R., Fuentes, J., Goldstein, A., Katul, G., Law, B., Lee, X., Malhi, Y., Meyers, T., Munger, W., Oechel, W., Paw, K. T., Pilegaard, K., Schmid, H. P., Valentini, R., Verma, S., Vesala, T., Wilson, K., and Wofsy, S.: FLUXNET: A New Tool to Study the Temporal and Spatial Variability of Ecosystem–Scale Carbon Dioxide, Water Vapor, and Energy Flux Densities, *Bulletin of the American Meteorological Society*, 82, 2415–2434, doi:10.1175/1520-0477(2001)082<2415:FANTTS>2.3.CO;2, 2001.
- Barnett, T. P., Adam, J. C., and Lettenmaier, D. P.: Potential impacts of a warming climate on water availability in snow-dominated regions, *Nature*, 438, 303–309, 2005.
- Beyene, T., Lettenmaier, D. P., and Kabat, P.: Hydrologic impacts of climate change on the Nile River Basin: implications of the 2007 IPCC scenarios, *Climatic Change*, 100, 433–461, 2010.
- Bohn, T. J. and Vivoni, E. R.: Process-based characterization of evapotranspiration sources over the North American monsoon region, *Water Resources Research*, 52, 358–384, doi:10.1002/2015WR017934, 2016.
- Bohn, T. J., Livneh, B., Oyler, J. W., Running, S. W., Nijssen, B., and Lettenmaier, D. P.: Global evaluation of MTCLIM and related algorithms for forcing of ecological and hydrological models, *Agricultural and Forest Meteorology*, 176, 38–49, doi:10.1016/j.agrformet.2013.03.003, 2013.
- Bowling, L. C. and Lettenmaier, D. P.: Modeling the Effects of Lakes and Wetlands on the Water Balance of Arctic Environments, *Journal of Hydrometeorology*, 11, 276–295, doi:10.1175/2009JHM1084.1, 2010.

- Bowling, L. C., Lettenmaier, D. P., Nijssen, B., Graham, L. P., Clark, D. B., El Maayar, M., Essery, R., Goers, S., Gusev, Y. M., Habets, F., et al.: Simulation of high-latitude hydrological processes in the Torne–Kalix basin: PILPS Phase 2 (e): 1: Experiment description and summary intercomparisons, *Global and Planetary Change*, 38, 1–30, 2003.
- Bowling, L. C., Pomeroy, J. W., and Lettenmaier, D. P.: Parameterization of Blowing-Snow Sublimation in a Macroscale Hydrology Model, *Journal of Hydrometeorology*, 5, 745–762, doi:10.1175/1525-7541(2004)005<0745:POBSIA>2.0.CO;2, 2004.
- Ceola, S., Arheimer, B., Baratti, E., Blöschl, G., Capell, R., Castellarin, A., Freer, J., Han, D., Hrachowitz, M., Hundecha, Y., Hutton, C., Lindström, G., Montanari, A., Nijzink, R., Parajka, J., Toth, E., Viglione, A., and Wagener, T.: Virtual laboratories: New opportunities for collaborative water science, *Hydrology and Earth System Sciences*, 19, 2101–2117, doi:10.5194/hess-19-2101-2015, 2015.
- Cherkauer, K. A. and Lettenmaier, D. P.: Hydrologic effects of frozen soils in the upper Mississippi River basin, *Journal of Geophysical Research: Atmospheres*, 104, 19 599–19 610, doi:10.1029/1999JD900337, 1999.
- Cherkauer, K. A., Bowling, L. C., and Lettenmaier, D. P.: Variable infiltration capacity cold land process model updates, *Global and Planetary Change*, 38, 151–159, 2003.
- Christensen, N. S. and Lettenmaier, D. P.: A multimodel ensemble approach to assessment of climate change impacts on the hydrology and water resources of the Colorado River Basin, *Hydrology and Earth System Sciences Discussions*, 11, 1417–1434, 2007.
- Craig, A. P., Vertenstein, M., and Jacob, R.: A new flexible coupler for earth system modeling developed for CCSM4 and CESM1, *International Journal of High Performance Computing Applications*, 26, 31–42, doi:10.1177/1094342011428141, 2012.
- Dagum, L. and Menon, R.: OpenMP: an industry standard API for shared-memory programming, *IEEE computational science and engineering*, 5, 46–55, doi:10.1109/99.660313, 1998.
- Das, T., Pierce, D. W., Cayan, D. R., Vano, J. A., and Lettenmaier, D. P.: The importance of warm season warming to western US streamflow changes, *Geophysical Research Letters*, 38, 2011.
- Eaton, B., Gregory, J., Drach, B., Taylor, K., Hankin, S., Caron, J., Signell, R., Bentley, P., Rappa, G., Höck, H., et al.: NetCDF Climate and Forecast (CF) metadata conventions, 2003.
- Fienen, M. N. and Bakker, M.: HESS Opinions: Repeatable research: What hydrologists can learn from the Duke cancer research scandal, *Hydrology and Earth System Sciences*, 20, 3739–3743, doi:10.5194/hess-20-3739-2016, 2016.
- Gao, Y., Vano, J. A., Zhu, C., and Lettenmaier, D. P.: Evaluating climate change over the Colorado River basin using regional climate models, *Journal of Geophysical Research: Atmospheres*, 116, 2011.
- Gebregiorgis, A. and Hossain, F.: How much can a priori hydrologic model predictability help in optimal merging of satellite precipitation products?, *Journal of Hydrometeorology*, 12, 1287–1298, 2011.
- Gergel, D. R., Nijssen, B., Abatzoglou, J. T., Lettenmaier, D. P., and Stumbaugh, M. R.: Effects of climate change on snowpack and fire potential in the western USA, *Climatic Change*, 141, 287–299, doi:10.1007/s10584-017-1899-y, 2017.
- Gil, Y., David, C. H., Demir, I., Essawy, B. T., Fulweiler, R. W., Goodall, J. L., Karlstrom, L., Lee, H., Mills, H. J., Oh, J. H., Pierce, S. A., Pope, A., Tzeng, M. W., Villamizar, S. R., and Yu, X.: Toward the Geoscience Paper of the Future: Best practices for documenting and sharing research from data to software to provenance, *Earth and Space Science*, 3, 388–415, doi:10.1002/2015ea000136, 2016.
- Gropp, W., Lusk, E., Doss, N., and Skjellum, A.: A high-performance, portable implementation of the MPI message passing interface standard, *Parallel Computing*, 22, 789 – 828, doi:10.1016/0167-8191(96)00024-5, 1996.
- Haddeland, I., Lettenmaier, D. P., and Skaugen, T.: Effects of irrigation on the water and energy balances of the Colorado and Mekong river basins, *Journal of Hydrology*, 324, 210 – 223, doi:10.1016/j.jhydrol.2005.09.028, 2006.


- Hamlet, A. F. and Lettenmaier, D. P.: Effects of climate change on hydrology and water resources in the Columbia River Basin, *JAWRA Journal of the American Water Resources Association*, 35, 1597–1623, doi:10.1111/j.1752-1688.1999.tb04240.x, 1999.
- Hamlet, A. F. and Lettenmaier, D. P.: Effects of 20th century warming and climate variability on flood risk in the western US, *Water Resources Research*, 43, 2007.
- 5 Hamlet, A. F., Mote, P. W., Clark, M. P., and Lettenmaier, D. P.: Effects of temperature and precipitation variability on snowpack trends in the Western United States*, *Journal of Climate*, 18, 4545–4561, 2005.
- Hamlet, A. F., Mote, P. W., Clark, M. P., and Lettenmaier, D. P.: Twentieth-century trends in runoff, evapotranspiration, and soil moisture in the Western United States*, *Journal of Climate*, 20, 1468–1486, 2007.
- Hamman, J., Nijssen, B., Brunke, M., Cassano, J., DuVivier, A., He, J., Lettenmaier, D., Maslowski, W., Roberts, A., and Zeng, X.: The Land Surface Climate in the Regional Arctic System Model, *Journal of Climate*, doi:10.1175/JCLI-D-15-0415.1, 2016.
- 10 Hamman, J., Nijssen, B., Roberts, A., Craig, A., Maslowski, W., and Osinski, R.: The Coastal Streamflow Flux in the Regional Arctic System Model, *Journal of Geophysical Research: Oceans*, doi:10.1002/2016JC012323, 2017.
- Hurrell, J. W., Holland, M. M., Gent, P. R., Ghan, S., Kay, J. E., Kushner, P., Lamarque, J.-F., Large, W. G., Lawrence, D., Lindsay, K., et al.: The Community Earth System Model: a framework for collaborative research, *Bulletin of the American Meteorological Society*, 94, 1339–1360, doi:10.1175/BAMS-D-12-00121.1, 2013.
- 15 Hut, R. W., van de Giesen, N. C., and Drost, N.: Comment on "Most computational hydrology is not reproducible, so is it really science?" by Christopher Hutton et al.: Let hydrologists learn the latest computer science by working with Research Software Engineers (RSEs) and not reinvent the waterwheel ourselves, *Water Resources Research*, 53, 4524–4526, doi:10.1002/2017wr020665, 2017.
- Hutton, C., Wagener, T., Freer, J., Han, D., Duffy, C., and Arheimer, B.: Most computational hydrology is not reproducible, so is it really science?, *Water Resources Research*, 52, 7548–7555, doi:10.1002/2016wr019285, 2016.
- 20 Hutton, C., Wagener, T., Freer, J., Han, D. W., Duffy, C., and Arheimer, B.: Reply to comment by Melsen et al. on "Most computational hydrology is not reproducible, so is it really science?", *Water Resources Research*, 53, 2570–2571, doi:10.1002/2017wr020476, 2017a.
- Hutton, C., Wagener, T., Freer, J., Han, D. W., Duffy, C., and Arheimer, B.: Reply to comment by Anel on "Most computational hydrology is not reproducible, so is it really science?", *Water Resources Research*, 53, 2575–2576, doi:10.1002/2017wr020480, 2017b.
- 25 Ince, D. C., Hatton, L., and Graham-Cumming, J.: The case for open computer programs, *Nature*, 482, 485–488, 2012.
- Kumar, S., Peters-Lidard, C., Tian, Y., Houser, P., Geiger, J., Olden, S., Lighty, L., Eastman, J., Doty, B., Dirmeyer, P., Adams, J., Mitchell, K., Wood, E., and Sheffield, J.: Land information system: An interoperable framework for high resolution land surface modeling, *Environmental Modelling & Software*, 21, 1402 – 1415, doi:10.1016/j.envsoft.2005.07.004, 2006.
- Larson, J., Jacob, R., and Ong, E.: The Model Coupling Toolkit: A New Fortran90 Toolkit for Building Multiphysics Parallel Coupled Models, *The International Journal of High Performance Computing Applications*, 19, 277–292, doi:10.1177/1094342005056115, 2005.
- 30 Li, H., Luo, L., Wood, E. F., and Schaake, J.: The role of initial conditions and forcing uncertainties in seasonal hydrologic forecasting, *Journal of Geophysical Research: Atmospheres*, 114, 2009.
- Liang, X., Lettenmaier, D. P., Wood, E. F., and Burges, S. J.: A simple hydrologically based model of land surface water and energy fluxes for general circulation models, *Journal of Geophysical Research: Atmospheres*, 99, 14 415–14 428, doi:10.1029/94JD00483, 1994.
- 35 Liang, X., Lettenmaier, D. P., and Wood, E. F.: One-dimensional statistical dynamic representation of subgrid spatial variability of precipitation in the two-layer variable infiltration capacity model, *Journal of Geophysical Research: Atmospheres*, 101, 21 403–21 422, 1996.
- Liang, X., Wood, E. F., and Lettenmaier, D. P.: Modeling ground heat flux in land surface parameterization schemes, *Journal of Geophysical Research: Atmospheres*, 104, 9581–9600, 1999.

- Livneh, B., Bohn, T. J., Pierce, D. W., Munoz-Arriola, F., Nijssen, B., Vose, R., Cayan, D. R., and Brekke, L.: A spatially comprehensive, hydrometeorological data set for Mexico, the US, and Southern Canada 1950–2013, *Scientific data*, 2, 2015.
- Lohmann, D., Nolte-Holube, R., and Raschke, E.: A large-scale horizontal routing model to be coupled to land surface parametrization schemes, *Tellus A*, 48, 708–721, doi:10.1034/j.1600-0870.1996.t01-3-00009.x, 1996.
- 5 Luo, Y. Q., Randerson, J. T., Abramowitz, G., Bacour, C., Blyth, E., Carvalhais, N., Ciais, P., Dalmonech, D., Fisher, J. B., Fisher, R., Friedlingstein, P., Hibbard, K., Hoffman, F., Huntzinger, D., Jones, C. D., Koven, C., Lawrence, D., Li, D. J., Mahecha, M., Niu, S. L., Norby, R., Piao, S. L., Qi, X., Peylin, P., Prentice, I. C., Riley, W., Reichstein, M., Schwalm, C., Wang, Y. P., Xia, J. Y., Zaehle, S., and Zhou, X. H.: A Framework for Benchmarking Land Models, *Biogeosci.*, 9, 3857–3874, doi:10.5194/bg-9-3857-2012, 2012.
- Matheussen, B., Kirschbaum, R. L., Goodman, I. A., O'Donnell, G. M., and Lettenmaier, D. P.: Effects of land cover change on streamflow in the interior Columbia River Basin (USA and Canada), *Hydrological Processes*, 14, 867–885, 2000.
- 10 Maurer, E., Wood, A., Adam, J., Lettenmaier, D., and Nijssen, B.: A long-term hydrologically based dataset of land surface fluxes and states for the conterminous United States*, *Journal of Climate*, 15, 3237–3251, 2002.
- Maurer, E. P. and Lettenmaier, D. P.: Predictability of seasonal runoff in the Mississippi River basin, *Journal of Geophysical Research: Atmospheres*, 108, 2003.
- 15 Maurer, E. P., O'Donnell, G. M., Lettenmaier, D. P., and Roads, J. O.: Evaluation of the land surface water budget in NCEP/NCAR and NCEP/DOE reanalyses using an off-line hydrologic model, *Journal of Geophysical Research: Atmospheres*, 106, 17 841–17 862, 2001.
- Melsen, L. A., Torfs, P. J. J. F., Uijlenhoet, R., and Teuling, A. J.: Comment on "Most computational hydrology is not reproducible, so is it really science?" by Christopher Hutton et al., *Water Resources Research*, 53, 2568–2569, doi:10.1002/2016wr020208, 2017.
- Mendoza, P. A., Clark, M. P., Barlage, M., Rajagopalan, B., Samaniego, L., Abramowitz, G., and Gupta, H.: Are we unnecessarily constrain-20 ing the agility of complex process-based models?, *Water Resources Research*, 51, 716–728, doi:10.1002/2014WR015820, 2015.
- Mote, P. W., Hamlet, A. F., Clark, M. P., and Lettenmaier, D. P.: Declining Mountain Snowpack in western North America, *Bulletin of the American Meteorological Society*, 86, 39–49, doi:10.1175/BAMS-86-1-39, 2005.
- Nijssen, B. and Lettenmaier, D. P.: Effect of precipitation sampling error on simulated hydrological fluxes and states: Anticipating the Global Precipitation Measurement satellites, *Journal of Geophysical Research: Atmospheres*, 109, 2004.
- 25 Nijssen, B., Lettenmaier, D. P., Liang, X., Wetzel, S. W., and Wood, E. F.: Streamflow simulation for continental-scale river basins, *Water Resources Research*, 33, 711–724, 1997.
- Nijssen, B., O'Donnell, G. M., Hamlet, A. F., and Lettenmaier, D. P.: Hydrologic sensitivity of global rivers to climate change, *Climatic Change*, 50, 143–175, 2001a.
- Nijssen, B., O'Donnell, G. M., Lettenmaier, D. P., Lohmann, D., and Wood, E. F.: Predicting the discharge of global rivers, *Journal of*30 *Climate*, 14, 3307–3323, 2001b.
- Nijssen, B., Schnur, R., and Lettenmaier, D. P.: Global retrospective estimation of soil moisture using the variable infiltration capacity land surface model, 1980–93, *Journal of Climate*, 14, 1790–1808, 2001c.
- Nijssen, B., Shukla, S., Lin, C., Gao, H., Zhou, T., Sheffield, J., Wood, E. F., and Lettenmaier, D. P.: A prototype global drought information system based on multiple land surface models, *Journal of Hydrometeorology*, 15, 1661–1676, 2014.
- 35 Pan, M. and Wood, E. F.: Data assimilation for estimating the terrestrial water budget using a constrained ensemble Kalman filter, *Journal of Hydrometeorology*, 7, 534–547, 2006.
- Pan, M., Li, H., and Wood, E.: Assessing the skill of satellite-based precipitation estimates in hydrologic applications, *Water Resources Research*, 46, 2010.

- Preston-Werner, T.: Semantic Versioning 2.0.0, <https://semver.org/>, 2018.
- Rew, R. and Davis, G.: NetCDF: an interface for scientific data access, *IEEE Comput. Grap. Appl.*, 10, 76–82, doi:10.1109/38.56302, 1990.
- Schewe, J., Heinke, J., Gerten, D., Haddeland, I., Arnell, N. W., Clark, D. B., Dankers, R., Eisner, S., Fekete, B. M., Colón-González, F. J., Gosling, S. N., Kim, H., Liu, X., Masaki, Y., Portmann, F. T., Satoh, Y., Stacke, T., Tang, Q., Wada, Y., Wissler, D., Albrecht, T., Frieler, K., Piontek, F., Warszawski, L., and Kabat, P.: Multimodel assessment of water scarcity under climate change, *Proceedings of the National Academy of Sciences*, 111, 3245–3250, doi:10.1073/pnas.1222460110, 2014.
- Sheffield, J. and Wood, E. F.: Characteristics of global and regional drought, 1950–2000: Analysis of soil moisture data from off-line simulation of the terrestrial hydrologic cycle, *Journal of Geophysical Research: Atmospheres*, 112, 2007.
- Sheffield, J. and Wood, E. F.: Global trends and variability in soil moisture and drought characteristics, 1950–2000, from observation-driven simulations of the terrestrial hydrologic cycle, *Journal of Climate*, 21, 432–458, 2008.
- Sheffield, J., Goteti, G., and Wood, E. F.: Development of a 50-year high-resolution global dataset of meteorological forcings for land surface modeling, *Journal of Climate*, 19, 3088–3111, 2006.
- Sheffield, J., Andreadis, K., Wood, E., and Lettenmaier, D.: Global and continental drought in the second half of the twentieth century: severity-area-duration analysis and temporal variability of large-scale events, *Journal of Climate*, 22, 1962–1981, 2009.
- Sheffield, J., Wood, E. F., Chaney, N., Guan, K., Sadri, S., Yuan, X., Olang, L., Amani, A., Ali, A., Demuth, S., and Ogallo, L.: A Drought Monitoring and Forecasting System for Sub-Sahara African Water Resources and Food Security, *Bulletin of the American Meteorological Society*, 95, 861–882, doi:10.1175/BAMS-D-12-00124.1, 2014.
- Shi, X., Groisman, P. Y., Déry, S. J., and Lettenmaier, D. P.: The role of surface energy fluxes in pan-Arctic snow cover changes, *Environmental Research Letters*, 6, 035 204, 2011.
- Shukla, S., Steinemann, A. C., and Lettenmaier, D. P.: Drought monitoring for Washington State: Indicators and applications, *Journal of Hydrometeorology*, 12, 66–83, 2011.
- Skamarock, W. C.: A description of the advanced research WRF version 3, NCAR Tech. Note, pp. 1–96, doi:10.5065/D68S4MVH, 2008.
- Su, F., Adam, J. C., Bowling, L. C., and Lettenmaier, D. P.: Streamflow simulations of the terrestrial Arctic domain, *Journal of Geophysical Research: Atmospheres*, 110, 2005.
- Su, F., Hong, Y., and Lettenmaier, D. P.: Evaluation of TRMM Multisatellite Precipitation Analysis (TMPA) and its utility in hydrologic prediction in the La Plata Basin, *Journal of Hydrometeorology*, 9, 622–640, 2008.
- Tan, A., Adam, J. C., and Lettenmaier, D. P.: Change in spring snowmelt timing in Eurasian Arctic rivers, *Journal of Geophysical Research: Atmospheres*, 116, 2011.
- Thornton, P. E. and Running, S. W.: An improved algorithm for estimating incident daily solar radiation from measurements of temperature, humidity, and precipitation, *Agricultural and Forest Meteorology*, 93, 211–228, doi:10.1016/S0168-1923(98)00126-9, 1999.
- Torvalds, L. and Hamano, J.: Git: Fast version control system, <http://git-scm.com>, 2010.
- Wang, A., Lettenmaier, D. P., and Sheffield, J.: Soil moisture drought in China, 1950–2006, *Journal of Climate*, 24, 3257–3271, 2011.
- Wigmosta, M. S., Vail, L. W., and Lettenmaier, D. P.: A distributed hydrology-vegetation model for complex terrain, *Water Resources Research*, 30, 1665–1679, doi:10.1029/94WR00436, 1994.
- Wilson, G., Aruliah, D. A., Brown, C. T., Chue Hong, N. P., Davis, M., Guy, R. T., Haddock, S. H. D., Huff, K. D., Mitchell, I. M., Plumbley, M. D., Waugh, B., White, E. P., and Wilson, P.: Best Practices for Scientific Computing, *PLOS Biology*, 12, 1–7, doi:10.1371/journal.pbio.1001745, 2014.

Wood, A. W., Maurer, E. P., Kumar, A., and Lettenmaier, D. P.: Long-range experimental hydrologic forecasting for the eastern United States, *Journal of Geophysical Research: Atmospheres*, 107, 2002.

Wood, E. F., Lettenmaier, D. P., Liang, X., Lohmann, D., Boone, A., Chang, S., Chen, F., Dai, Y., Dickinson, R. E., Duan, Q., et al.: The project for intercomparison of land-surface parameterization schemes (pilps) phase 2 (c) red–arkansas river basin experiment:: 1.

5  Experiment description and summary intercomparisons, *Global and Planetary Change*, 19, 115–135, 1998.

Zhu, C., Leung, R. L., Gochis, D., Qian, Y., and Lettenmaier, D. P.: Evaluating the influence of antecedent soil moisture on variability of the North American Monsoon precipitation in the coupled MM5/VIC modeling system, *Journal of Advances in Modeling Earth Systems*, 1, 22 pp., doi:10.3894/james.2009.1.13, 2009.

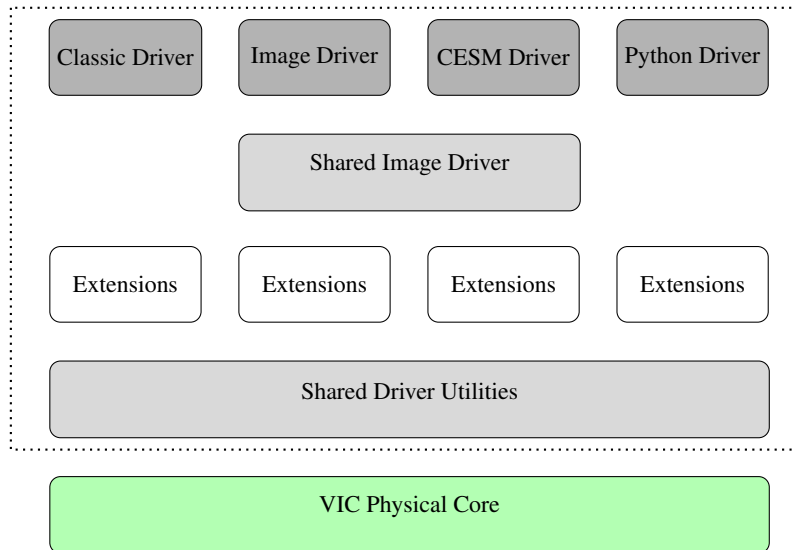


Figure 1. The reconfigured VIC-5 source code structure. The “Physical Core” includes the scientific modules of VIC (e.g. routines that simulate the fluxes and states of the model) and is used by each of the four drivers. The remainder of the VIC source code structure is considered driver-level code. Each driver uses components of the *Shared Driver* to minimize code duplication at the driver level. Likewise, the *Shared Image Driver* includes source code that is used by both the *Image* and *CESM drivers* (e.g. MPI and NetCDF utilities). Finally, the “Extensions” constitutes optional and driver specific sub-models.

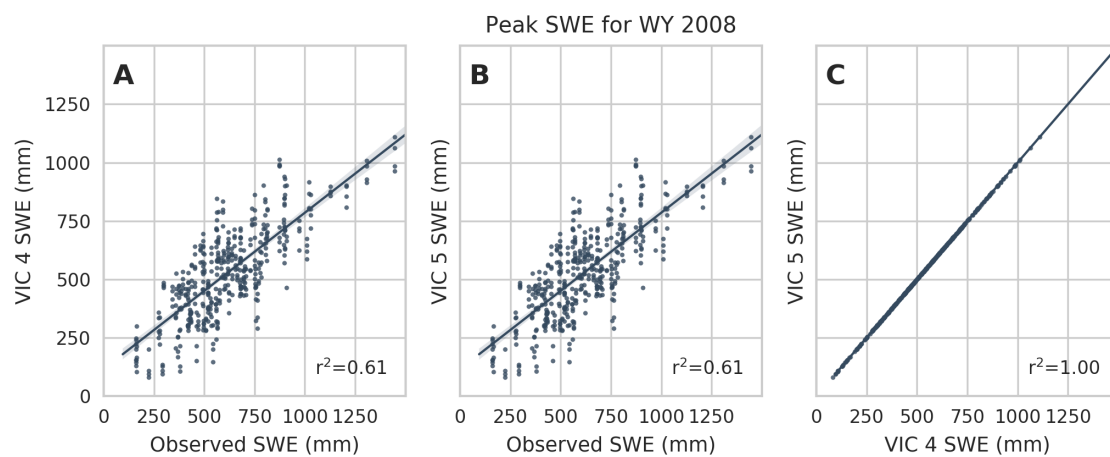


Figure 2. Example summary figure from the VIC-5 SNOTEL science tests. Panels A and B compare observed snow water equivalent (SWE) from SNOTEL sites to simulated SWE from VIC-4 (A) and VIC-5 (B). Panel C compares the results from the two VIC versions.

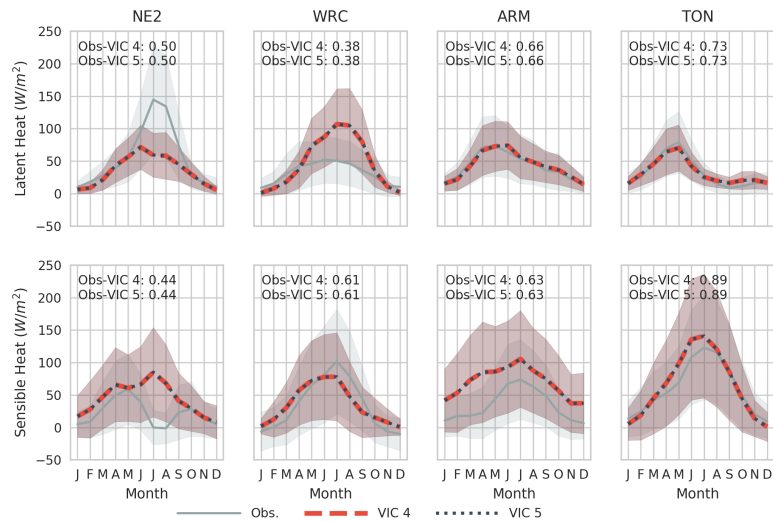


Figure 3. Example summary output from the VIC-5 science testing package comparing the annual cycle of latent heat (top) and sensible heat (bottom) for four sample locations for VIC-4 (red) and VIC-5 (blue) to FluxNet observations (gray). The shaded range represents the interannual variability (± 0.5 std. dev.). The r^2 statistic shown in the upper-left corner is calculated using the hourly time series from the observations and model output from VIC-4 and VIC-5. The r^2 statistic comparing VIC-4 and VIC-5 is 1.00 for all sites and is not shown on this figure.

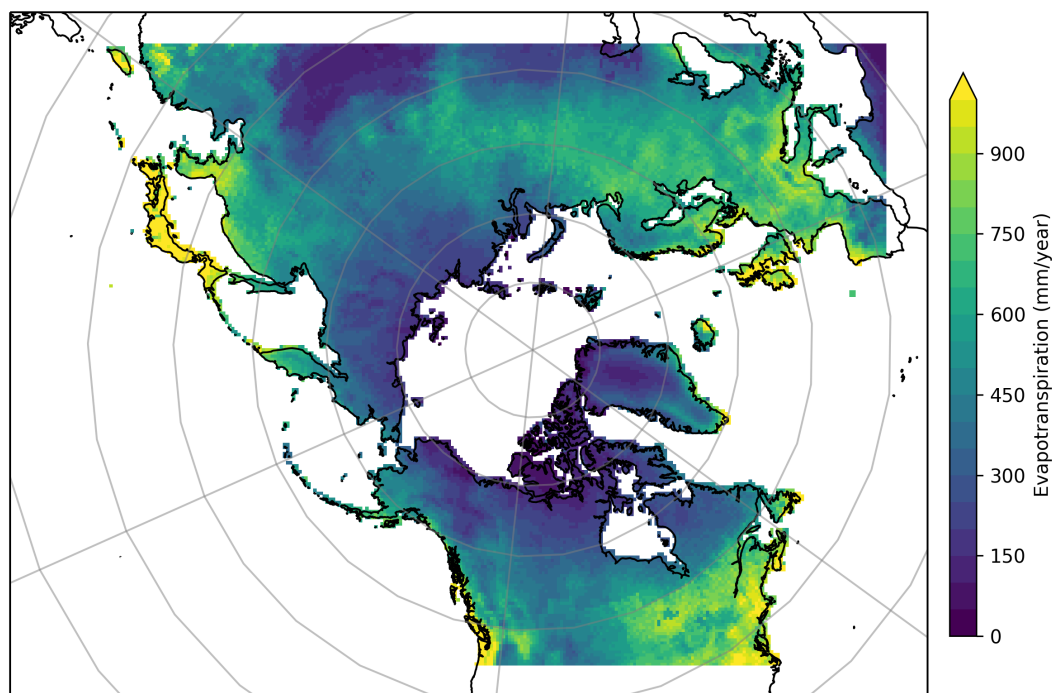


Figure 4. The 50-km near equal-area Regional Arctic System Model (RASM) domain. The model domain is comprised of 25,996 grid cells. Shading denotes mean annual evapotranspiration from a test simulation run with model configuration (B) as described in Section 3.

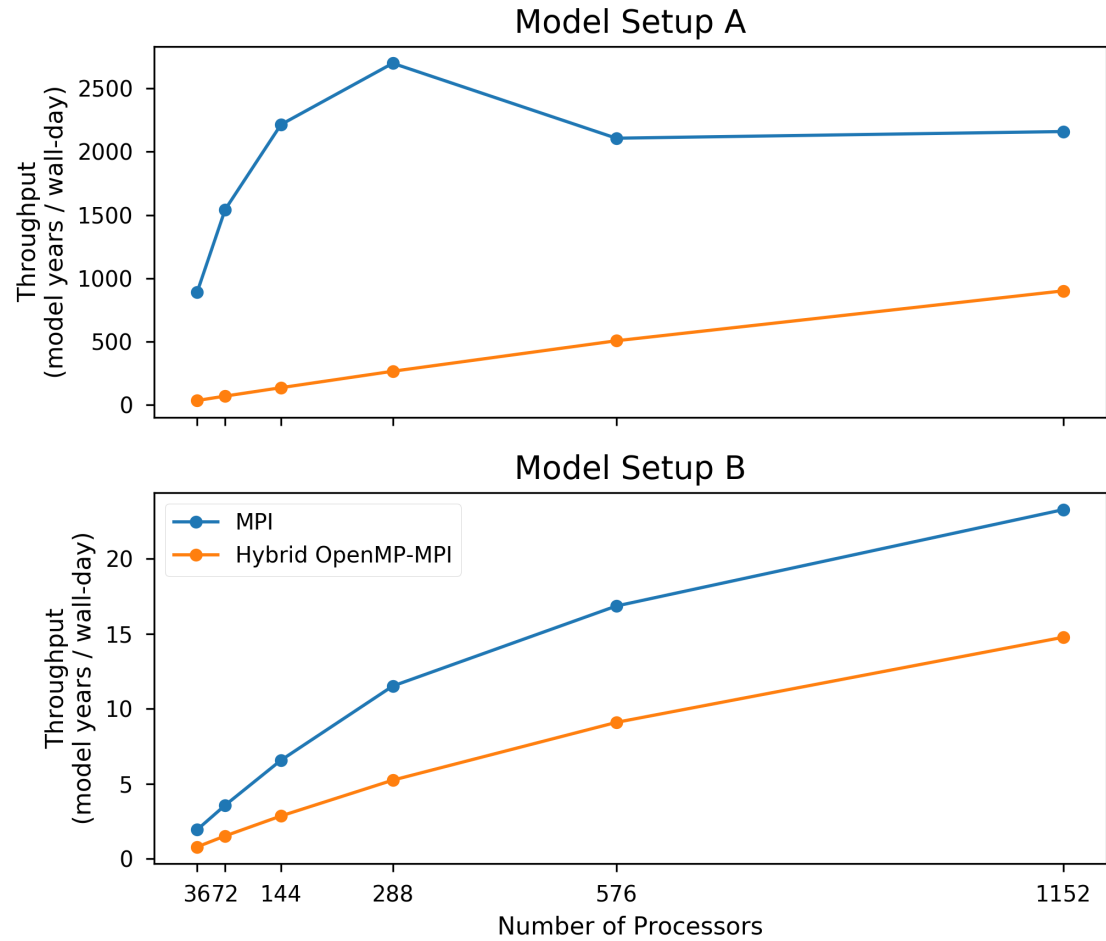


Figure 5. Model throughput for the two model configurations described in Section 3 run on the Thunder (SGI Ice X) supercomputer. The MPI-only simulations are shown in blue and the Hybrid OpenMP-MPI simulations are shown in orange.

Table 1. Examples of VIC applications

Data set construction	
US	Maurer et al. (2002)
Global	Nijssen et al. (2001a, c); Sheffield et al. (2006)
Arctic	Hamman et al. (2017)
Historic trend analysis	
Snow	Hamlet et al. (2005); Shi et al. (2011); Mote et al. (2005)
Land use/cover change	Matheussen et al. (2000)
Streamflow	Hamlet and Lettenmaier (2007); Hamlet et al. (2007); Tan et al. (2011)
Drought	Gao et al. (2011); Sheffield and Wood (2007, 2008); Sheffield et al. (2009); Wang et al. (2011); Nijssen et al. (2014)
Data evaluation	
Satellite precipitation	Nijssen and Lettenmaier (2004); Pan et al. (2010); Su et al. (2008)
Reanalysis	Maurer et al. (2001)
Data assimilation	
Snow	Andreadis and Lettenmaier (2006)
Soil moisture	Pan and Wood (2006)
Forecasting and nowcasting	
Droughts	Shukla et al. (2011); Sheffield et al. (2014)
Streamflow	Hamlet and Lettenmaier (1999); Li et al. (2009); Wood et al. (2002)
Predictability	Gebregiorgis and Hossain (2011); Maurer and Lettenmaier (2003)
Climate change impact analysis	
Hydrology	Barnett et al. (2005); Beyene et al. (2010); Nijssen et al. (2001b); Schewe et al. (2014); Gergel et al. (2017)
Water resources	Christensen and Lettenmaier (2007); Das et al. (2011); Hamlet and Lettenmaier (1999)
Coupled land-atmosphere modeling	
US	Zhu et al. (2009)
Arctic	Hamman et al. (2016)

Table 2. Summary of tests and datasets.

Test type	Driver	Domain	Grid cells	Resolution	Timestep	Forcings	Parameters	On Travis
Build	Classic, Image, CESM, Python	-	-	-	-	-	-	yes
Unit	Python	-	-	-	-	-	-	yes
System	Classic, Image, CESM	Stehekin	16	1/8-deg.	1-hour	Maurer et al., 2002	Maurer et al., 2002	yes
Science	Classic	SNOTEL	448 point locations	point	1-hour	in-situ observations	Maurer et al., 2002	no
		FLUXNET	66 point locations	point	1-hour	in-situ observations	Maurer et al., 2002	
Examples	Classic, Image	Stehekin	16	1/8-deg.	1-hour	Maurer et al., 2002	Maurer et al., 2002	yes
		Global	61,345	1/2-deg.	6-hour	CRU-NCEP	Adam et al., 2006	
Release	Image	N. America	333,579	1/16-deg.	3-hour	Livneh et al., 2015	Livneh et al., 2015	no
		RASM	25,996	50-km	3-hour	Sheffield et al., 2006	Hamman et al., 2016	
Performance	Image	RASM	25,996	50-km	3-hour	Sheffield et al., 2006	Hamman et al., 2016	no

Table 3. Hardware used in VIC Image driver parallel scaling performance tests.

	Thunder
Operated By	Air Force Research Laboratory (AFRL)
System	SGI ICE X
Peak PFlops	5.62
Parallel disk storage (Pbytes)	12.2
Total Nodes	3,216
Cores per Node	36
Core Type	Intel Xeon E5-2699v3
Core Speed (GHz)	2.3
Memory/Node (Gbytes)	128
Memory Model	Shared on node. Distributed across cluster.
Interconnect Type	FDR 14x InfiniBand / Enhanced LX Hypercube

Table 4. Summary of major VIC developments present in VIC-5, focusing on improved process representations, and the model versions that were added in since the original publication of Liang et al. (1994).

Vegetation	
VIC.4.0.3	Resistance factor approach to canopy resistance (Wigmosta et al., 1994)
VIC.4.2.0	Fractional canopy coverage; daily timeseries of phenology (Bohn and Vivoni, 2016)
Lakes and Wetlands	
VIC.4.1.0	Lake/wetland model (Cherkauer et al., 2003; Bowling and Lettenmaier, 2010)
Soil	
VIC.4.0.3	Finite difference soil temperature scheme with frozen soil (Cherkauer and Lettenmaier, 1999)
VIC.4.0.3	Exponential (quick-flux) soil temperature profile (Liang et al., 1999)
VIC.4.1.0	Soil temperature statistical heterogeneity (Cherkauer et al., 2003)
VIC.4.1.0	Implicit soil temperature scheme with optional exponential node distribution (Adam and Lettenmaier, 2008)
Snow	
VIC.4.0.3	Elevation (snow) bands (Nijssen et al., 1997)
VIC.4.0.3	Multi-layer snow pack (Cherkauer and Lettenmaier, 1999; Andreadis et al., 2009)
VIC.4.1.0	Blowing snow sublimation (Bowling et al., 2004)