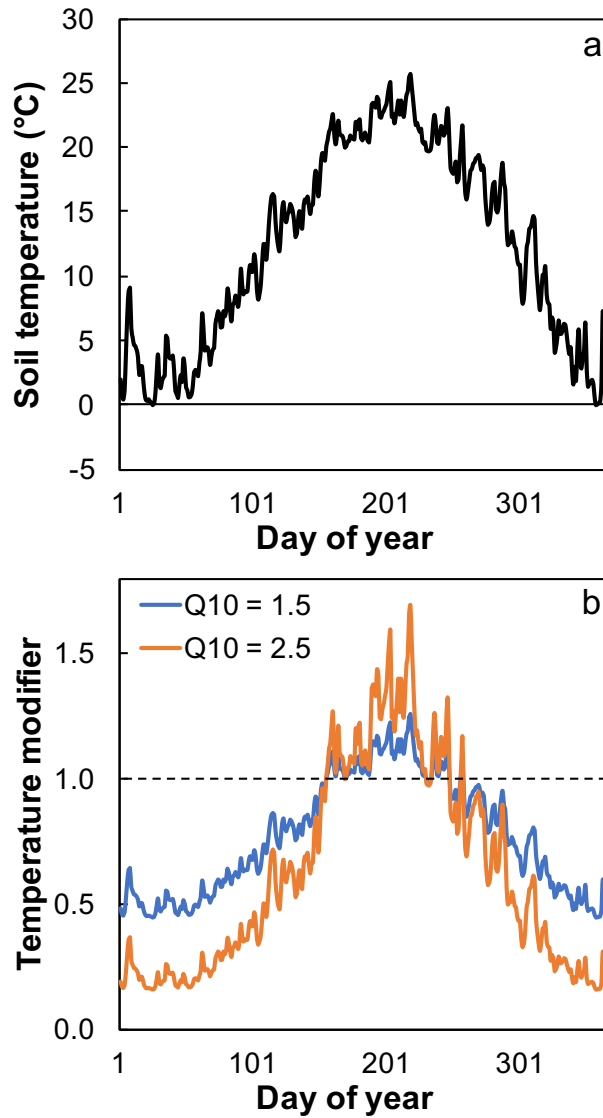


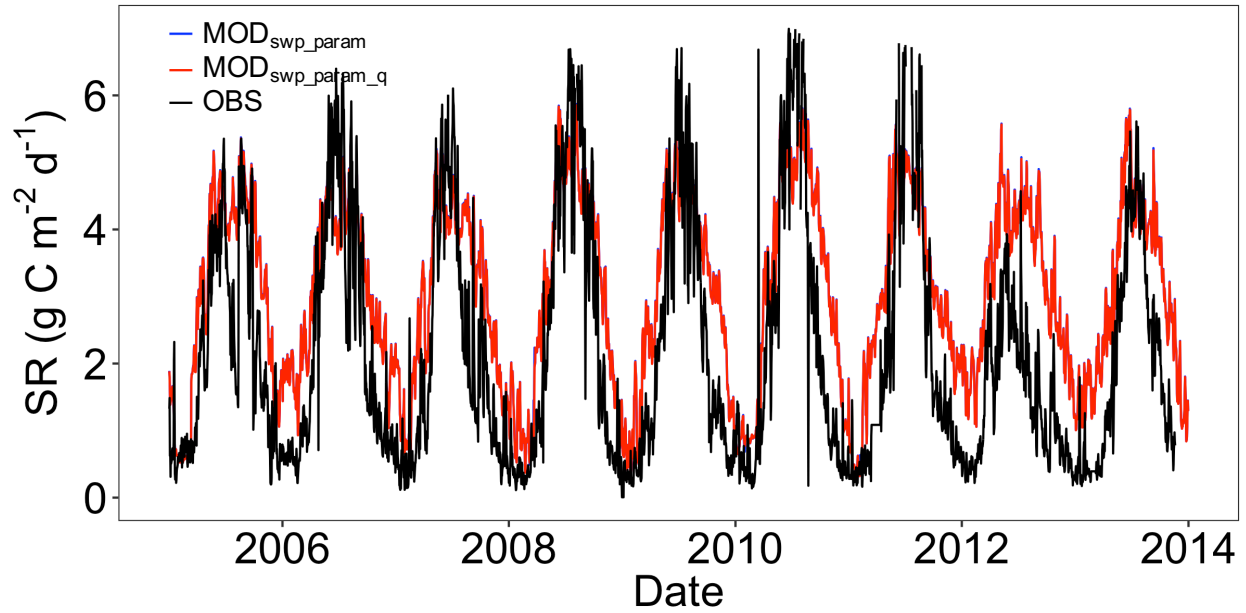
1

2 **Figure S1. Residual (modeled – observed) of soil respiration (SR) from 2005 to 2013.** The
3 respective negative and positive residuals indicate that the E3SM underestimated SR during peak
4 growing seasons and overestimated SR during other seasons.



5

6 **Figure S2. An example showing the effect of Q_{10} on the seasonality of soil heterotrophic**
 7 **respiration. a, soil temperature; b, temperature modifier on soil heterotrophic respiration with**
 8 Q_{10} of 1.5 (blue) and 2.5 (orange).



9

10 **Figure S3. Effect of Q_{10} modification on soil respiration (SR).** OBS: observation;
 11 MOD_{swp_param}: model output after soil water potential improvement and parameter modification
 12 but with the default Q_{10} value (i.e., 1.5); MOD_{swp_param_q}: model output after soil water potential
 13 improvement and parameter modification with modified Q_{10} (i.e., 2.5). The blue and red lines are
 14 almost overlap with each other, indicating that changing Q_{10} resulted in little change in SR.

15