

Please find the Referees' comments (COM), our reply (REP), and the according underlined changes (CHA) to the manuscript below:

REFEREE 1:

COM: 1. It is absolutely necessary to have an open system, both in software and in the modification of parameters. 2. the use cases are well-founded. 3. Its efficiency is verified with respect to other systems, such as CAPRA, widely used in Latin America. 4. They demonstrate their use for risk analysis for different scales.

REP: Thank you for your feedback and for stressing the need for CLIMADA. We aim to further increase its capabilities and validation as far as possible.

REFEREE 2:

COM: The authors present the open source software CLIMADA, a python-based tool to assess global weather and climate risk, as well as an application of this tool to tropical cyclone risks in the Caribbean. The CLIMADA tool is very useful and timely tool as it allows to address the full modeling chain of climate impacts within a single tool in a very efficient manner. The paper is well written. However, I do have some comments I would like the authors to consider, in particular with respect to the uncertainty assessment.

MAJOR COMMENTS:

1. COM: The authors choose to use the term "impact function" instead of vulnerability (function) because an impact function is not directly associated with negative impacts, as discussed on p. 4, line 5-6. This is slightly confusing as the term vulnerability is repeatedly used prior to this, e.g., in Figure 1 and in the equation on page 4. Moreover, I would like the authors to elaborate on some examples for the option of opportunities/negative damages that could be captured by their impact function that assesses direct impacts of climate extremes.

REP: An example and reference of positive impacts has been added to the text. The impact functions have then no restriction on the sign of the mean damage degree.

CHA: An opportunity can arise, for example, for specific bird species populations in a warmer environment (e.g. Gregory et al., 2009).

2. COM: p. 6, line 28: Could the authors clarify how PMI is calculated from $v(x)$? What is "h" in eq. 6. Moreover, I am unable to follow the last equality in eq. 6.

REP: h is the hazard intensity. We have added a description of the terms which appear in the last equality in order to facilitate its understanding. Also, a PMI example is given.

CHA: where $v(x)$ is the exceedance frequency of impact x , $T(x)$ its equivalent return period and h the hazard intensity. $p(h|E_{\bar{t}})$ is the probability density function of h given that the historical event $E_{\bar{t}}$ took place, and is computed using the event's ensemble members. The probability of exceeding an impact value given intensity h , $P(X > x|h)$, is computed using the exposures values and their impact functions (Eq. **Error! Reference source not found.**). We assume that the impacts of an event at different exposures are independent. Following these

definitions, a stakeholder interested in impacts with 300 years return period can define the PMI as x such that $v(x) = \frac{1}{300} 1/\text{years}$.

3. COM: p. 7, section 3.1: *The authors motivate their application by a study of non-sovereign countries and do present some results throughout the paper. However, the motivation remains vague and the results are never interpreted in this context. Please add relevant discussion parts or remove this motivation initially.*

REP: This motivation is reflected in the results shown in Table 3 and Figure 6. The text already comments on the impacts per mainland power shown in Figure 6. Additionally, we have added an interpretation on Table 3 results at mainland level.

CHA: *The metrics per mainland power are also shown. After Irma's crisis the Foreign Affairs Committee of the House of Commons recognized the vulnerability to natural disasters of their Overseas Territories and the need to address it (Foreign Affairs Committee; House of Commons, 2018). The results per mainland presented here account for the probability of several Overseas Territories being hit by the same event, and the accumulated damage that might arise. These metrics can therefore help mainlands to define natural disaster response strategies able to cope with all expected impacts, as well as long-term cost-effective resilience measures.*

4. COM: p. 8, line 13: *BlackMarble seems to be a very relevant part of the model but it discussed only vaguely. I would suggest to create a separate section for BlackMarble and introduce this method more thoroughly.*

REP: The black marble methodology has been used in previous studies performed with CLIMADA's MATLAB version (see the cited Gettelman et al. 2017). We therefore think that a general description of the implemented version in CLIMADA Python is enough.

5. COM: p. 9, line 15: *Why is this sentence needed "Their GDP data is from 2011 and their spatial resolution is of 5km." ? Is exposure hence also based on 2011 values? If so, I strongly suggest to compare exposure values for 2011 in Table 2 (and not across different years), e.g., by rescaling exposure. Otherwise this comparison is not very useful.*

REP: Sentence removed. Added sentence in paragraph to explain the motivation of the comparison with GAR 2015 values:

CHA: *The GAR 2015 models (de Bono and Chatenoux, 2014) are also presented since they are used in Cardona et al. 2017 to compute Irma's damage with CAPRA.*

6. COM: p. 10, line 21: *Please state the impact function here explicitly. What parameters were used? How did choice of parameters influence the result? There is an uncertainty assessment later on, but it remains totally unclear what and how the impact function is changed.*

REP: Equation added. The uncertainty generated by the parameters selection is discussed later (see answer to comment 9).

CHA: *In this function the property damage starts above a threshold v_{thresh} equal to 25.7 m/s and increases as the cubic power of the wind speed as follows:*

$$f_{ij} = \frac{v_{ij}^3}{1+v_{ij}^3}, \quad v_{ij} = \frac{\max(v_{ij}-v_{thresh},0)}{v_{half}-v_{thresh}} \quad (1)$$

where v_{half} is the wind gust where half of the property is damaged and v_{ij} is the maximum wind gust at centroid i due to event j . Following the findings of Sealy and Strobl 2017 for the Bahamas, we consider $v_{half} = 74.7$ m/s.

7. COM: p. 10, line 25: Are the damages generated by Irma based on CLIMADA or based on observations? Adjust caption to Fig. 3 accordingly.

REP: The damages represented are based on CLIMADA. Caption has been adjusted in Figures 3 and 4.

CHA Fig.3: Left panels: rendered exposed value, contour lines of Irma maximum 1 min sustained winds (in knots) and Irma track as modelled by CLIMADA. Right panels: economic damage generated by Irma computed by CLIMADA.

CHA Fig 4: Economic damage computed by CLIMADA as percentage of local exposure (per pixel). Left panel: Lesser Antilles; right panel: Turks and Caicos Islands.

8. COM: p. 12, line 2: I am missing a complete uncertainty discussion of the assessment here, see also comment on impact function above. It is not sufficient to change one parameter at random but rather the whole change of uncertainties needs to be discussed. How sensitive is the assessment to changing parameters in the impact function and what is the impact on damage estimates? What about storm surge effects? I assume that the fraction of surge-related losses might be substantial for small island states and cannot be neglected here.

REP: The aim of the analysis presented here is to show how sensitivity analyses can be easily performed and communicated following a Monte Carlo approach. The sensitivity to changing parameters in the impact function and its impact to damage estimates is represented in figure 3.5. It is true that surge-related losses can be substantial. During Irma significant storm surges occurred in the U.S Virgin Islands. However, specific inundation amounts are not available (Cangialosi et al 2018). An additional difficulty to model surges is to distinguish between damages generated by rainfall, surge or wind. Therefore, the model presented here aims to account for all the damage sources and is shown to work well for hurricanes like Irma. Introducing a surge model (as mentioned in the conclusions as further work) can allow to perform further sensitivity analyses, but is out of the scope of this paper.

CHA 1: modifying 10% the shape of the impact function by uniformly sampling from its parameters of Eq. (12): $v_{half} + \varepsilon_{half}$ and $v_{thresh} + \varepsilon_{thresh}$, where $\varepsilon \in [-0.1v, 0.1v]$.

CHA 2: The highest uncertainty range is obtained for extremely rare events (once every 3,400 years events), which produce a total damage in the region between 12.5 and 21 billion dollars. Other sources of uncertainty can originate from modelling tropical cyclone damages based only on their wind gusts. Even if the model works fine for regular hurricanes like Irma (Section 3.3), rainfall and storm surges can account for high damages also in less windy storms (e.g. hurricane Sandy in 2012) that are not completely captured.

9. COM: p. 12, line 10: I doubt that the aggregated return period for the countries in Fig.5 (based on eq. 6) adds up to 3,500 years in reality. The assessments for each island are not independent as tropical cyclone tracks follow a usual pattern and therefore tend to affect several islands at once on a regular basis. The discussion here and around Eq. 6 should be extended to account for uncorrelated and correlated occurrence of events.

REP: Following the procedure explained in Section 3.2.2., we base our analysis on all the historical tracks that occurred between 1950 and 2017 (68 years) and an ensemble of 50 members per historical event. Setting an equal probability of occurrence per year, each event (historical and synthetic) has a period of $68 \times 50 = 3400$ years. This is the highest return period observed in Fig 6, which has been obtained using Eq. 6. These event frequencies will appear from factors $p(h|E_i)$ and $F(E_i)$ after discretization of Eq. 6, similarly as in eq. 4.

The fact that a tropical cyclone affects several islands is fully dealt with by the model and therefore well represented in Fig 6. The metrics per mainland power contain this information, and other questions like the likelihood of exceedance of damage on one island given that another has been impacted before can be addressed as well.

The assumption of independence of impacts over exposures, allows to consider any collection of exposures for discretization of Eq. 6. The question of compound events (correlated occurrence of events) cannot be addressed following Eqs. 4-9, since independence of events is assumed when adding over events. Moreover, we assign the same probability of occurrence ($F(E_i)$) to all events.

CHA 1: *Independence of events is assumed.*

CHA 2: *The events' frequency is then: $\frac{1}{50} \frac{1}{2017-1950+1} = \frac{1}{3400}$ 1/years.*

CHA 3: *We notice that the assumption of independent events in Eq. (6) does not allow to study compound events. Fig. 3.4 provides therefore the probability of exceedance of an impact caused by a single tropical cyclone; the occurrence of correlated events is not fully addressed.*

MINOR COMMENTS:

1. COM: p. 5, line 4; correct sentence

REP: reformulated

CHA: *They are defined by the base class Hazard (see Fig. 2.2) which gathers the required attributes that enable the impact computation (such as centroids, frequency per event, and intensity per event and centroid) and common methods such as readers and visualization functions.*

2. COM: p. 7, line 4; remove colon in the middle of the sentence

REP: done

3. COM: reference in caption to Table 2 missing

REP: done

4. COM: p. 10, line 23: stick to original BlackMarble way of writing

REP: done

5. COM: p. 12, line 2: correct sentence

REP: reformulated

CHA: *Changing the islands' income group level does lead to less realistic damages.*

6. COM: p. 12, line 5: correct sentence: "are represented..."

REP: reformulated

CHA: *Fig. 3.3 represents the maximum 1 min sustained wind speeds in knots for return periods 25, 50, 100 and 250.*

7. COM: p. 14, table 3: make table more readable by aligning values and uncertainty in separate columns.

REP: Not implemented. This would cause a table which would be too wide and not add key information.

8. COM: p. 15, line 23: "Using a cluster ..." sounds pretty sloppy and not very specific. You probably mean parallel execution on 300 nodes?

REP: reformulated

CHA: *On a laptop with 4 virtual CPUs, it took less than two hours to generate the full probabilistic hazard set and only a few seconds to calculate the resulting impact and risk metrics.*

9. COM: Add enumeration to subfigures/panels in order to make orientation and referencing easier

REP: done

10. COM: regarding the bibliography: - the citation of Cardona et al 2017 is incomplete - the citation of Geiger et al 2017 needs to be updated

REP: done

CLIMADA v1: a global weather and climate risk assessment platform

Gabriela Aznar-Siguan^{1,2} & David N. Bresch^{1,2}

¹Institute for Environmental Decisions, ETH Zurich, Zurich, Switzerland

²Federal Office of Meteorology and Climatology MeteoSwiss, Zurich, Switzerland

5 *Correspondence to:* Gabriela Aznar-Siguan (aznarsig@ethz.com)

Abstract. The need for assessing the risk of extreme weather events is ever increasing. In addition to quantification of risk today, the role of aggravating factors such as high population growth and changing climate conditions do matter, too. We present the open source software CLIMADA, which integrates hazard, exposure and vulnerability to compute the necessary metrics to assess risk and to quantify socio-economic impact. The software design is modular and object-oriented, offering a simple collaborative framework and a parallelization strategy which allows for scalable computations on clusters. CLIMADA supports multi-hazard calculations and provides an event-based probabilistic approach that is globally consistent for a wide range of resolutions, suitable for whole-country to detailed local studies. This paper uses the platform to estimate and contextualize the damage of hurricane Irma in the Caribbean in 2017. Most of the affected islands are non-sovereign countries and do also rely on overseas support in case disaster strikes. The risk assessment performed for this region, based on remotely available data available shortly before or hours after landfall of Irma, proves to be close to reported damage and hence demonstrates a method to provide readily available impact estimates and associated uncertainties in real time.

1 Introduction

Improving the resilience of our societies in the face of volatile weather is an urgent priority today and will increase in importance in the years to come. This is due not only to changing climate conditions, but also to rising population and economic growth. Given that the increased exposure has been a significant driver to higher damages in the last century (Nicholls, 2011), the climate of the past is by no means sufficient a basis for decisions going forward. In 2017, the natural catastrophe-related economic losses amounted to around USD 330 billion, 0.44% of global domestic product (GDP) and almost double the previous 10-year average. A new annual record was set for the highest insured losses - more than two fifths of the economic losses - mainly due to pay-outs related to three major hurricanes in the US (Harvey, Irma and Maria), wildfire outbreaks in California, and many thunderstorms, windstorms and other severe weather events around the world (Bevere et al., 2018). In order to foster the use of the continuously increasing weather and climate information to undertake pre-emptive (and precautionary) action we present here the global and multi-hazard decision support tool for CLIMate ADaptation, CLIMADA.

While measures exist to adapt to an ever changing environment, decision makers on all levels - from multinational organizations, sovereigns, sub- sovereigns, cities and companies down to the local community - need the facts to identify the

Gelöscht: v1:

Formatiert: Schwedisch (Schweden)

Formatiert: Schwedisch (Schweden)

Formatiert: Schwedisch (Schweden)

Formatiert: Schwedisch (Schweden)

Formatiert: Schwedisch (Schweden)

Formatiert: Schwedisch (Schweden)

most cost-effective instruments, they need to know the potential weather and climate-related damages over the coming decades, to identify measures to mitigate these risks – and to decide whether the benefits will outweigh the costs. For this purpose, CLIMADA was developed, which supports the appraisal of risk management options and adaptation measures by estimating the expected socioeconomic impact of weather and climate as a measure of risk today, the incremental increase from economic growth and the further incremental increase due to climate change. Starting from a comprehensive mapping of hazards and exposures, using state-of-the-art probabilistic risk modelling techniques, it integrates different economic development and climate impact scenarios combined with a cost/benefit approach to assess a comprehensive portfolio of adaptation measures. Adaptation measures include, for example, building defences, improved spatial planning, ecosystem-based approaches, building regulations and risk transfer (insurance) against some of the more extreme weather events. In this context, CLIMADA implements the Economics of Climate Adaptation methodology, which establishes an economic framework to fully integrate risk and reward perspectives of different stakeholders (Bresch, 2016; Bresch and ECA working group, 2009; Bresch and Schraft, 2011; Souvignet et al., 2016).

The first step in the cost/benefit analysis is to determine the current risk. CLIMADA does this by modelling socioeconomic impacts of weather extremes following an event-based probabilistic approach. Whilst other multi-hazard impact modelling platforms exist, like HAZUS (Schneider et al., 2006), CAPRA (Cardona et al., 2012) and RISKSCAPE (King and Bell, 2006), CLIMADA has a global scope and is open source, hosted in GitHub¹ under the GNU GPL license (GNU Operating System, 2007). We present here the new generation of the platform, with improved performance, scalability, maintainability and a streamlined user interface. Written from scratch in Python and based on an object-oriented design, the architecture defines classes which enable risk assessment computations for independent research areas to be developed separately yet with high reusability of common functionalities. With this design we aim to foster usage of the platform in interdisciplinary studies and international collaboration.

In this study, we describe the impact modelling procedure of CLIMADA and demonstrate its capabilities through a risk analysis of tropical cyclones in several overseas territories of the Caribbean. The methodology for the cost/benefit estimation of adaptation measures is going to be presented in a further paper. Even if the previous version of CLIMADA has been used in several impact modelling analyses in the past (e.g. Geiger et al., 2018; Gettelman et al., 2017; Welker et al., 2016), this is the first formal description and detailed exemplary validation of the methodological approach. Following the introduction, Section 2 describes the concept and design of the tool. Section 3 specifies the impact modelling implementation for tropical cyclones through the reproduction of hurricane Irma in the affected overseas territories, compares it against the reported economic damage and provides a risk analysis. The paper concludes with a discussion of the results obtained with CLIMADA.

¹ https://github.com/CLIMADA-project/climada_python

Gelöscht: (
Feldfunktion geändert
Gelöscht:)
Gelöscht:
Gelöscht: Geiger et al., 2017

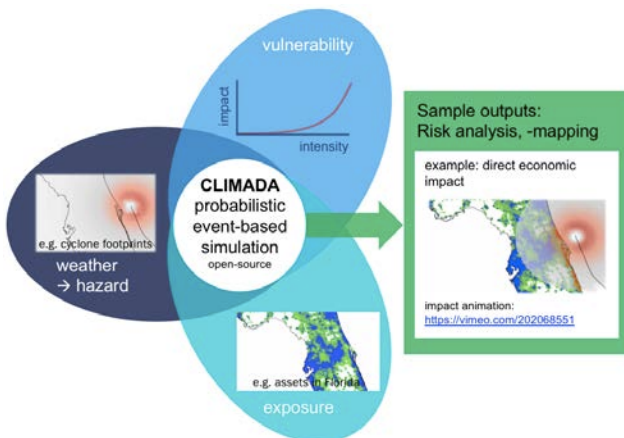


Figure 2.1: In essence, CLIMADA implements the concept of risk as in IPCC 2014. CLIMADA combines hazard (e.g. a tropical cyclone wind footprint, leftmost inset), exposure (e.g. an asset distribution, centre bottom inset) and vulnerability (functional relationship between hazard intensity and impact, centre at the top) to calculate risk. Severity, measured e.g. as direct economic impact, is rendered by the red dots on the right panel. Please refer to the link provided for an animated version.

2 Framework Concept and Design

2.1 Concept

CLIMADA implements a fully probabilistic risk assessment model. According to the IPCC (IPCC, 2014), natural risks emerge through the interplay of climate and weather-related hazards, the exposure of goods or people to this hazard, and the specific vulnerability of exposed people, infrastructure and environment. The unit chosen to measure risk has to be the most relevant one in a specific decision problem, not necessarily monetary units. Wildfire hazard might be measured by burned area, exposure by population or replacement value of homes and hence risk might be expressed as number of affected people in the context of evacuation, or repair cost of buildings in the context of property insurance. See e.g. the definitions box of Zscheischler et al. 2018 for a complete description of the weather and climate risk elements used here.

Risk has been defined by the International Organization for Standardization as the “effect of uncertainty on objectives” (Lark, 2015) and similarly by the IPCC 2012 as the potential for consequences when something of value is at stake and the outcome is uncertain, recognizing the diversity of values. Risk can then be quantified as the combination of the probability of a consequence and its magnitude:

$$risk = probability \times severity \quad (1)$$

- Gelöscht: 0
- Formatiert: Nicht vom nächsten Absatz trennen
- Gelöscht: 1
- Feldfunktion geändert
- Gelöscht: ,

In the simplest case, \times stands for a multiplication, but more generally, it represents a convolution of the respective distributions of probability and severity. We approximate the severity as follows:

$$severity = F(hazard\ intensity, exposure, vulnerability) = exposure * f_{imp}(hazard\ intensity) \quad (2)$$

where f_{imp} is the impact function which parametrizes to what extent an exposure will be affected by a specific hazard. While 'vulnerability function' is broadly used in the modelers community, we refer to it as 'impact function' to explicitly include the option of opportunities (i.e. negative damages). An opportunity can arise, for example, for specific bird species populations in a warmer environment (e.g. Gregory et al., 2009). Using this approach, CLIMADA constitutes a platform to analyse risks of different hazard types in a globally consistent fashion at different resolution levels, at scales from multiple kilometres down to meters, depending on the purpose. Fig. 2.1 shows the main components of CLIMADA and demonstrates one possible output.

2.2 Implementation

The component diagram in Fig. 2.2 shows the architecture of CLIMADA, which distinguishes three main packages, *hazard*, *entity* and *engine*, as described in the following.

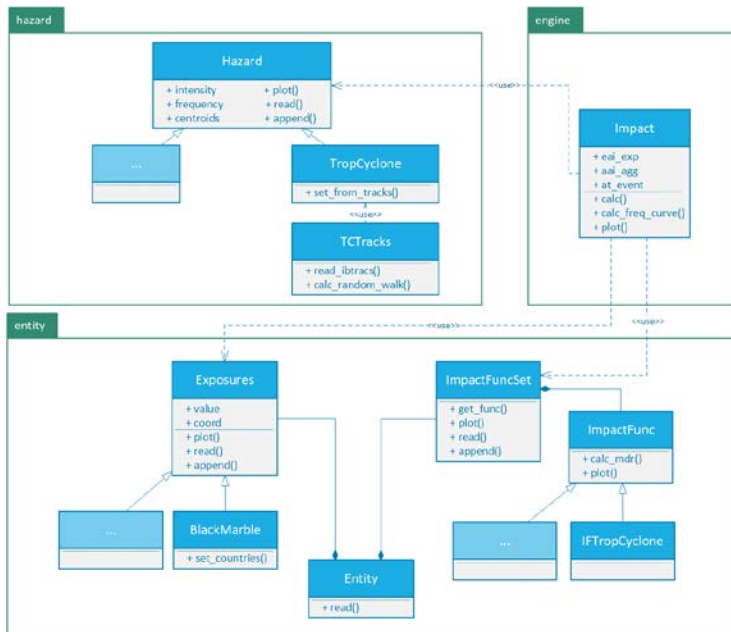


Figure 2.2: Simplified risk assessment architecture of CLIMADA. See Section 3 for more details on BlackMarble and TropCyclone. See for more information on CLIMADA's components <https://climada-python.readthedocs.io/en/stable/>.

Feldfunktion geändert

Gelöscht: (

Gelöscht:)

Gelöscht: Fig. 1

Gelöscht: Fig. 2

Gelöscht: 0

Gelöscht: 2

Gelöscht: latest

2.2.1 Hazard

A hazard describes weather events such as storms, floods, droughts, or heatwaves both in terms of probability of occurrence as well as physical intensity. They are defined by the base class *Hazard* (see Fig. 2.2) which gathers the required attributes that enable the impact computation (such as centroids, frequency per event, and intensity per event and centroid) and common methods such as readers and visualization functions. Each hazard class collects historical data and transforms it, if necessary, in order to construct a coherent event database. Stochastic events are generated taking into account the frequency and main intensity characteristics (such as local water depth for floods or gust speed for storms) of historical events, producing an ensemble of probabilistic events for each historical event. CLIMADA provides therefore an event-based probabilistic approach, which does not depend on hypothesis on a-priori general probability distribution choices. The source of the historical data (e.g. inventories or satellite images) and the methodologies used to compute the hazard's attributes and its stochastic events depend on each hazard type and are defined in its corresponding *Hazard* derived class (e.g. *TropCyclone* for tropical cyclones, explained later in Section 3.2.2). This procedure provides a solid and homogeneous methodology to compute impacts worldwide. In case the risk analysis comprises a specific region where good quality data or models describing the hazard intensity and frequency are available, these can be directly ingested by the platform through the reader functions, skipping the hazard modelling part (in total or partially) and allowing to easily and seamlessly combine CLIMADA with external sources. Hence the impact model can be used for a wide variety of applications, e.g. deterministically to assess the impact of a single (past or future) event or to quantify risk based on a (large) set of probabilistic events. Note that since the *Hazard* class is not an abstract class, any hazard that is not defined in CLIMADA can still be used by providing the *Hazard* attributes.

2.2.2 Entity

The *entity* package of CLIMADA contains the socioeconomic aspects of a risk assessment: exposures and impact functions. Default values of those can be obtained using the container class *Entity*.

The exposure is quantified with a value, but this not necessarily need to be a monetary asset. It can describe the geographical distribution of people, livelihoods and assets or infrastructure, generally speaking of all items potentially exposed to hazards, including ecosystems and their services. This information is provided by the *Exposures* class, where also optional attributes related to insurability, such as deductible and coverage, are defined. Similarly to the *Hazard* class, *Exposures* provides the values needed for the impact computation - *coord* for coordinates and *value* defined for each coordinate - and common functionalities of a container, reader and visualization class (see Fig. 2.2). It can be also directly used to compute the impact, or the user might use the different exposure models and data collections of CLIMADA, which are defined in the *Exposures* derived classes. The black marble model explained in Section 3.2.1 below consists on an approximation of the economic exposure downscaling macroeconomic parameters, which is suited for economic analyses on a worldwide scale or at country

Gelöscht: se

Gelöscht: a

Gelöscht: ,

Formatiert: Nicht Hervorheben

Formatiert: Nicht Hervorheben

Gelöscht: base class

Gelöscht: Fig. 2

Formatiert: Nicht Hervorheben

Gelöscht: a hazard needs to have

Formatiert: Nicht Hervorheben

Formatiert: Nicht Hervorheben

Formatiert: Nicht Hervorheben

Gelöscht: o

Gelöscht: make its

Gelöscht: possible

Formatiert: Nicht Hervorheben

Gelöscht: -

Formatiert: Nicht Hervorheben

Gelöscht: -

Formatiert: Nicht Hervorheben

Gelöscht: Fig. 2

or regional levels. Smaller scale studies (cities) use normally georeferenced archives. Extensive GIS data can be ingested with the reader methods.

Impact functions (f_{imp} in Eq. (2)) are defined for different exposure and hazard types. They approximate the loss probability function by relating the hazard intensity to the exposure's Mean Damage Ratio (MDR) in method *calc_mdr* of class *ImpactFunc* (see Fig. 2.2). Impact function models can be defined using derived classes of *ImpactFunc*. *ImpactFuncSet* is the container of the *ImpactFunc* instances that are used in an assessment, which represent the different exposures and hazards.

Gelöscht: Fig. 2

2.2.3 Engine

Finally, the *engine* package contains the end products of the interactions of the classes defined in *hazard* and *entity*. The *Impact* class (see Fig. 2.2) is used to compute the impact of a hazard on its corresponding exposures and impact functions using the *calc* method and storing all the resulting risk assessment metrics. The hazard defined at its centroids is first mapped to the exposure coordinates. Then, the damage ratio derived by the impact functions is translated into direct impact by multiplying it by the exposed value as follows (based on Eq. (2)):

Gelöscht: Fig. 2

$$x_{ij} = val_j f_{imp}(h_{ij}|\gamma_j) \quad (3)$$

where x_{ij} and h_{ij} are, respectively, the impact and hazard intensity due to event i at location j , val_j the value of exposure at location j , γ_j are the parameters of exposure j that characterize its vulnerability and f_{imp} the impact function. The impact is obtained for every exposure j and every event i affecting it (historical and stochastic). Based on this impact for event and the frequency of each event, almost any risk metric can be calculated. Following the formalism of Cardona et al. 2012 we approximate:

- Expected Annual Impact (EAI) at exposure j , contained in attribute *eai_exp*:

$$EAI_j = \sum_{i=1}^{N_{hist}} E[X|E_i]F(E_i) = \sum_{i=1}^{N_{hist}} \sum_{\hat{i}} x_{ij} F(E_i) = \sum_{i=1}^{N_{ev}} x_{ij} F(E_i) \quad (4)$$

where X is the impact random variable, E its expectation, E_i is an event and F its (annual) frequency. N_{hist} is the number of historical events, \bar{i} represents an historical event, while \hat{i} represents all the ensemble members of event \bar{i} and N_{ev} the total number of events. **Independence of events is assumed.**

- Average Annual Impact (AAI) is contained in attribute *aai_agg* and is the addition of *EAI* over all exposures:

$$AAI = \sum_{j=1}^{N_{exp}} EAI_j \quad (5)$$

where N_{exp} is the number of exposures.

- Probable Maximum Impact (PMI): PMI represents the impact that is exceeded at a fixed low annual frequency (typically 1/1500 to 1/250). It is obtained from the impact exceedance curve computed with method *calc_freq_curve*.

Taking the total probability theorem into account, this curve is approximated by discretization of relation:

$$v(x) = \frac{1}{T(x)} P(X > x) = \sum_{i=1}^{N_{hist}} P(X > x|E_i)F(E_i) = \sum_{i=1}^{N_{hist}} \int_0^{\infty} P(X > x|h)p(h|E_i)dh F(E_i) \quad (6)$$

where $v(x)$ is the exceedance frequency of impact x , $T(x)$ its equivalent return period and h the hazard intensity. $p(h|E_i)$ is the probability density function of h given that the historical event E_i took place, and is computed using the event's ensemble members. The probability of exceeding an impact value given intensity h , $P(X > x|h)$, is computed using the exposures values and their impact functions (Eq. (3)). We assume that the impacts of an event at different exposures are independent. Following these definitions, a stakeholder interested in impacts with 300 years return period can define the PMI as x such that $v(x) = \frac{1}{300} 1/\text{years}$.

Gelöscht: and

Gelöscht: the

Gelöscht:

If one aims to compare the risk of two sets of exposures it is helpful to retain the per event information:

- Impact at event (*at_event* attribute of *Impact*): contains the per event impact over all locations:

$$x_i = \sum_{j=1}^{N_{exp}} x_{ij} \quad (7)$$

Using this formalism, metrics EAI and AAI can be expressed as follows:

$$- EAI_j = x_j = \sum_{i=1}^{N_{ev}} x_{ij} F(E_i) \quad (8)$$

$$- AAI = \sum_{i=1}^{N_{ev}} x_i F(E_i) \quad (9)$$

If we now consider two sets of exposures (e.g. in two Caribbean islands), risk aggregation, as often applied in an insurance context, becomes straightforward. Let us assume in country A damages are only considered above a threshold T_A and up to a cover limit C_A , and likewise T_B and C_B for country B. We calculate from ground up x_i^A and x_i^B , and can now apply the non-linear coverage conditions as follows:

$$\hat{x}_i^A = \min(\max(x_i^A - T_A, 0), C_A), \quad \hat{x}_i^B = \min(\max(x_i^B - T_B, 0), C_B) \quad (10)$$

Hence the combined covered impact is $\hat{x}_i = \hat{x}_i^A + \hat{x}_i^B$ and now risk measures as defined above easily apply to the resulting \hat{x}_i .

This formalism allows for an elegant way to handle non-linear risk transfer options on a portfolio of exposure sets.

Formatiert: Einzug: Links: 0 cm

3 Case study: hurricane Irma hitting the Antilles non self-governing territories

3.1 Case study area

Nineteen countries in the Caribbean region are not independent sovereign states; rather they retain constitutional relationships with their original metropolitan powers through different systems (Clegg, 2015). Natural catastrophes like hurricane Irma in September 2017 allow for the comparison of the reactions of their respective mainland governments (see Aballain, 2018). Irma made seven landfalls, four of which occurred as category 5 in the Saffir-Simpson scale across the northern Caribbean Islands. It hold a 60-h period of sustained category 5 intensity, which is the second longest such period on record, behind the 1932 Cuba Hurricane (Cangialosi et al., 2018). Irma's track over our study area is depicted in Fig. 3.1.

Gelöscht: Fig. 3

The Caribbean island groups we analyse in this paper are specified in [Table 3.1](#). Whilst Antigua and Barbuda and St. Kitts and Nevis are sovereign countries, the other islands are either overseas collectivities of France (St. Barthélemy and Saint Martin), constituent territories of the Netherlands (Sint Maarten), special municipalities of the Netherlands (St. Eustatius and Saba), British Overseas Territories (Anguilla, British Virgin Islands and Turks and Caicos Islands) or unincorporated and organized territories of the United States (United States Virgin Islands). As such, the corresponding mainland is the one responsible for security and defence.

Island group	Metropolitan power	Area (km ²)	Population	GDP (current USD)	GNI per capita (current USD)
Anguilla	UK	91	14,764 ^a	337,201,995 ^a	22,525 ^a
Antigua And Barbuda	Sovereign	440	100,963 ^a	1,460,144,703 ^a	13,973 ^a
British Virgin Islands	UK	153	30,661 ^a	971,237,110 ^a	28,897 ^a
Saba And St. Eustatius	Netherlands	13	1,947 ^a	48,000,000 ^a	>12,235 ^a
		and 21	and 3,193 ^a	and 100,000,000 ^a	
St Barthelemy	France	25	9,625 ^b	414,710,000 ^c	>12,235 ^a
St Kitts And Nevis	Sovereign	261	54,821 ^a	909,854,630 ^a	16,050 ^a
St Maarten	Netherlands	37	39,969 ^a	1,081,577,185 ^a	26,208 ^a
St Martin	France	53	31,949 ^a	614,258,169 ^d	>12,235 ^a
Turks And Caicos Islands	UK	616	34,900 ^a	917,550,492 ^a	28,767 ^a
US Virgin Islands	USA	346	107,510 ^a	3,765,000,000 ^b	>12,235 ^a

Table 3.1: Group of islands studied. Source is, in order prioritized, the World Bank, the UN data, the Central Bureau voor Statistiek, Comptes Economiques Rapides de l'Outre-mer and L'Institut d'Émission des Départements d'Outre-mer. The areas are obtained from the Wikipedia. The superscripts indicate the year of the data: a: 2016, b: 2015, c: 2014 and d: 2010.

In the past the considered islands have developed their economy mainly through the primary sector but a discernible trend towards an expanding service sector started in the latter half of the 20th century, specially towards tourism (it accounts for 80% of the economy of Sint Maarten). Some of the islands also developed their economies based on offshore finance, like the British Virgin Islands, Nevis, Anguilla or the Turks and Caicos Islands.

3.2 Data and methods

3.2.1 Economic model using the Black Marble

In order to approximate the spatial distribution and the amount of exposed economic value, we downscale the national Gross Domestic Product (GDP) using the night-time lights of NASA's Black Marble 2016 annual composite of the Visible Infrared Imaging Radiometer Suite (VIIRS) Day-Night Band (DNB) at 500 m resolution (Román et al., 2018). This has been implemented in the the *BlackMarble* class of [Fig. 2.2](#). Data derived from night-time satellite imagery has helped develop

Gelöscht: Table 1

Gelöscht: 0

Gelöscht: 1

Gelöscht: Fig. 2

various globally consistent proxy measures of human well-being at the gridded, sub-national, and national level such as socioeconomic variables, energy use, urban built-in expansion and carbon emissions (see review of Ghosh et al., 2013).

Henderson et al. 2012 relate growth of GDP to growth of night lights intensity, while later Bickenbach et al. 2016 argue that Henderson's result is stable at country level but unstable at lower levels. We consider the nominal GDP values at current US dollar at year 2016, before Irma's intervention, from the World Bank and the UN data. For the overseas collectivities of France, we infer the values from local reports, as specified in Table 3.1. As observed by Bickenbach et al. 2016, the GDP values for Saba and St. Eustatius result an overestimation if retrieved from the downscaling of Netherlands' GDP through night light. In this case, we consider the GDP values reported by the Central Bureau voor Statistiek.

According to Zhao et al. 2017, a linear relation between night-time lights and GDP would result in over-distributions in suburban areas, under-distributions in urban areas, and very large under-distributions in urban core areas, where saturated pixels exist. To overcome this problem, we use a square transformation to correct urban and suburban GDP distribution. In addition, we multiply the total GDP by the income group level defined by the World Bank, which is based on the Gross National Income (GNI), as in Gettelman et al. 2017. The economic value exposed in each pixel val_i is then:

$$val_i = GDP (inc_grp + 1) \frac{DN_i^2}{\sum_j DN_j^2} \quad (11)$$

where inc_grp is the income group level (4 in all the islands) and $DN_i \in [0, 255]$ the digital number of the light in pixel i .

In Table 3.2 we show the exposure values per island. The GAR 2015 models (de Bono and Chatenoux, 2014) are also presented since they are used in Cardona et al. 2017 to compute Irma's damage with CAPRA. In GAR 2015, statistical data such as socioeconomic information, building type and capital stock are transposed onto a grid of 5km size using GIS data such as gridded population dataset (LandScan) and VIIRS DNB data.

Island group	Exposed value CLIMADA	Exposed value GAR 2015	Damage CLIMADA	Damage EM-DAT	Damage NHC	Damage CAPRA	Damage Others
Anguilla	1,686	865	792	200	>190	555	188 ^a
Antigua And Barbuda	7,301	6,257	538	250	150-300	374	-
British Virgin Islands	4,856	3,849	1,426	3,000	-	2,466	1,650 ^a
Saba And St. Eustatius	740	-	93	-	-	-	-
St Barthelemy	2,074	-	771	-	>480	-	-
St Kitts And Nevis	4,549	4,112	261	20	-	465	20 ^b
St Maarten	5,408	-	2,182	2,500	500	-	1,049 ^a
St Martin	3,071	-	1,282	4,100	1,000	-	-
Turks And Caicos Islands	4,588	1,049	687	500	>500	284	290 ^a

Gelöscht: ¶

Gelöscht: regional

Gelöscht: Table 1

Gelöscht: 11

Gelöscht: ¶

Gelöscht: Table 2

Gelöscht: compare

Gelöscht: aggregated

Gelöscht: ed

Gelöscht: with t

Gelöscht: reported in

Gelöscht: .

Gelöscht: They

Gelöscht: transpose

Gelöscht: at national and sub-national scale

Gelöscht: regular

Gelöscht: Their GDP data is from 2011 and their spatial resolution is of 5km.

Gelöscht: ¶

US Virgin Islands	18,825	5,344	2,038	-	-	1,338	5,500 ^e
-------------------	--------	-------	-------	---	---	-------	--------------------

Table 3.2: Exposed economic values and Irma damage (discussed further below in Section 3.3) per island group in current million US dollars. The superscripts indicate the source of the data: a: ECLAC, b: estimate of damage in public sector², c: amount claimed to be needed for recovery³.

3.2.2 Modelling tropical cyclones damage

5 The *TropCyclone* class handles the tropical cyclone model in CLIMADA. It computes the hazard properties from input tropical cyclone tracks, which are managed by the class *TCTracks* (see Fig. 2.2). *TCTracks* ingests the tracks of the International Best Track Archive for Climate Stewardship (IBTrACS) archive (Knapp et al., 2010). We use the latest version 04 of the archive. Since not all the track records contain all the necessary information, specially before 1980, we use the selection and processing of tracks described by Geiger et al., 2018, which does not consider tracks before 1950. Synthetic tracks are obtained from

10 historical ones by a direct random walk process, starting at slightly perturbed initial locations of the tracks (Kleppek et al., 2008). Moreover, in order to take the decay of wind intensities after landfall into account, we statistically build an exponential decay coefficient of the wind speed (and corresponding increasing pressure) and apply it to the synthetic tracks after landfall. 693 tracks have crossed the surrounding area of study (a square of approximately 3'000 km side length containing the islands) between 1950 and 2017, and we generate an ensemble of 50 samples for each historical event, obtaining a catalogue of 34'650

15 tropical cyclones. Assuming stationarity to estimate current risk, the annual frequency assigned to each event is the same as observed in the historic dataset. The events' frequency is then: $\frac{1}{50} \frac{1}{2017-1950+1} = \frac{1}{3400} 1/\text{years}$.

A tropical cyclone track contains the following information about the eye: time, location, radius of maximum winds and central and environmental pressure. From these properties the 1-min sustained peak gusts are computed as the sum of a static circular wind field (following Holland 2008) and the translational wind speed that arises from the storm movement. We incorporate the decline of the translational component from the cyclone's centre by multiplying it by an attenuation factor. See Geiger et al., 2018, for more details about the implementation and its limitations.

Finally, the events intensities are translated into damage using the impact function of Emanuel 2011. In this function the

25 property damage starts above a threshold v_{thresh} equal to 25.7 m/s and increases as the cubic power of the wind speed as follows:

$$f_{ij} = \frac{v_{ij}^3}{1+v_{ij}^3}, \quad v_{ij} = \frac{\max(v_{ij}-v_{thresh}, 0)}{v_{half}-v_{thresh}}$$

Textmarke nicht definiert.Fehler! Textmarke nicht definiert.(12)

² Based on interview to St Kitts and Nevis prime minister Dr. Timothy Harris (<http://www.thestkittsnevisobserver.com/local-news/hurricane-irma-leaves-st-kitts-and-nevis-with-initial-53-2-million-in-damages/>).

³ Based on interview to Virgin Islands governor Kenneth Mapp (<https://eu.usatoday.com/story/news/2017/11/09/no-electricity-homes-ruins-reporter-goes-home-and-finds-misery-hope-and-resilience-u-s-virgin-island/826573001/>).

Gelöscht: Table 2

Gelöscht: 0

Gelöscht: Fig. 2

Feldfunktion geändert

Gelöscht: (

Gelöscht: ,

Gelöscht: Geiger et al. 2017

Gelöscht:)

Feldfunktion geändert

Gelöscht: (

Formatiert: Dänisch

Gelöscht: ,

Gelöscht:)

Gelöscht: Geiger et al. 2017

Formatiert: Dänisch

Formatiert: Dänisch

Formatiert: Dänisch

Formatiert: Dänisch

Fehler!

where v_{half} is the wind gust where half of the property is damaged and v_{ij} is the maximum wind gust at centroid i due to event j . Following the findings of Sealy and Strobl 2017 for the Bahamas, we consider $v_{half} = 74.7 \text{ m/s}$.

3.3 Model evaluation: direct economic damage of hurricane Irma

The left panels of Fig. 3.1 show the exposed economic value of the islands computed with the BlackMarble model (Section 3.2.1), Irma's track and the contour curves of its maximum 1-min sustained wind in knots computed with the tropical cyclone model (Section 3.2.2). The right panels show the computed damage generated by the storm using Eq. (3). The aggregated values of damage are shown in Table 3.2. Economic damage estimations can vary significantly between data sources. In Table 3.2 we compare our results against the following sources: The Emergency Events Database (EM-DAT)⁴, the National Hurricane Center's (NHC) Tropical Cyclone Report (Cangialosi et al., 2018) and the Economic Commission for Latin America and the Caribbean (ECLAC) report (ECLAC, 2018). Moreover we consider the results of CAPRA in Cardona et al. 2017.

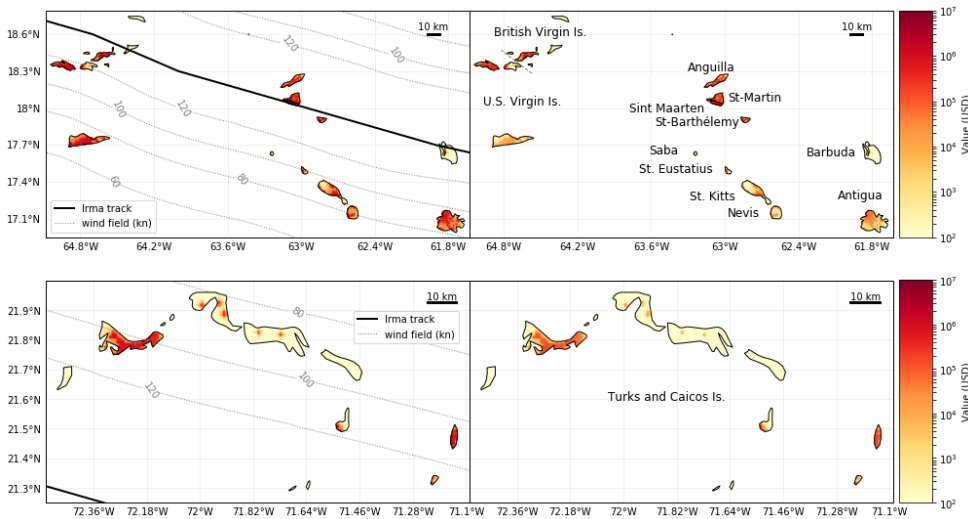


Figure 3.1: Left panels: rendered exposed value, contour lines of Irma maximum 1 min sustained winds (in knots) and Irma track as modelled by CLIMADA. Right panels: economic damage generated by Irma computed by CLIMADA.

- Gelöscht: (
- Gelöscht: ,
- Gelöscht:)
- Feldfunktion geändert
- Gelöscht: ¶
- Formatiert: Rechtschreibung und Grammatik prüfen
- Gelöscht: Fig. 3
- Gelöscht: b
- Gelöscht: m
- Formatiert: Rechtschreibung und Grammatik prüfen
- Formatiert: Rechtschreibung und Grammatik prüfen
- Feldfunktion geändert
- Formatiert: Schriftart: Nicht Fett
- Gelöscht: Table 2
- Gelöscht: from
- Gelöscht: the
- Gelöscht: platform ingesting the GAR 2015 exposure values

- Gelöscht: 0
- Gelöscht: 3

⁴ EM-DAT: The Emergency Events Database – Université catholique de Louvain (UCL) – CRED, D. Guha-Sapir – www.emdat.be, Brussels, Belgium.

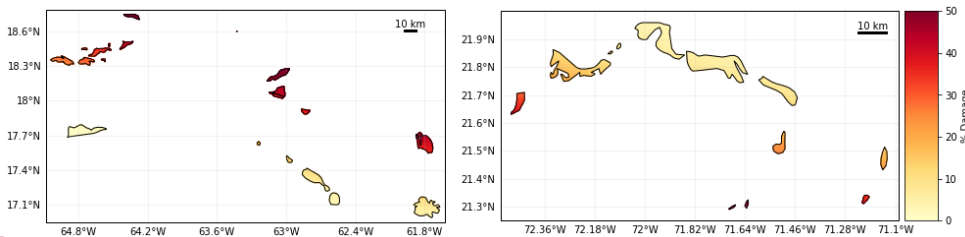


Figure 3.2: Economic damage computed by CLIMADA as percentage of local exposure (per pixel). Left panel: Lesser Antilles; right panel: Turks and Caicos Islands.

In all the cases the order of magnitude of the damages computed by CLIMADA lies within the ranges provided by various sources. Whilst one might argue that Anguilla reaches a higher damage because of its presumably inflated GDP from offshore finances, this is not the case for other tax havens, as the Turks and Caicos Islands, the British Virgin Islands or the US Virgin Islands. The amount claimed by the latter one represents the money needed for recovery, which can exceed the replacement cost to previous standards computed by the models. We note that in this case changing the polynomial transformation of the night lights does not change considerably the aggregated amount of damage per island. This is due to the small scale of the islands compared to the wind fields scope. Changing the islands' income group level does lead to less realistic damages.

3.4 Risk assessment

Risk emerges from the interaction between natural hazard and its exposure. From the tropical cyclone ensembles built according to Section 3.2.2, hazard return period maps can be calculated. Fig. 3.3 represents the maximum 1 min sustained wind speeds in knots for return periods 25, 50, 100 and 250. All the island groups studied are approximately equally exposed to the same level of intensity, which reaches the category 5 every 250 years.

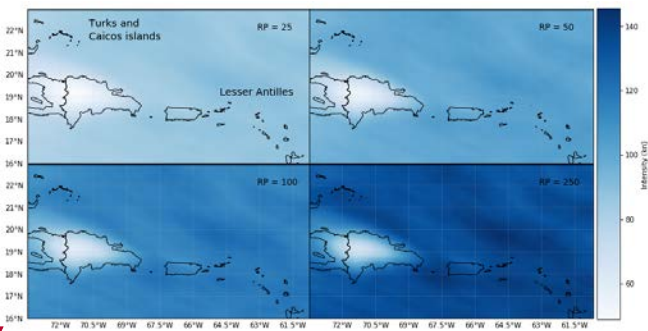


Figure 3.3: Wind fields in knots for return periods (RP) of 25, 50, 100 and 250 years in the study region.

Gelöscht: ¶

Gelöscht: 0

Gelöscht: 4

Gelöscht: total

Formatiert: Nicht Hervorheben

Gelöscht: Accordingly, c

Gelöscht: generates

Formatiert: Nicht Hervorheben

Gelöscht: (

Gelöscht: Fig. 5

Gelöscht:),

Gelöscht: There

Gelöscht: is represented

Formatiert: Zeilenabstand: einfach

Gelöscht: ¶

Formatiert: Links

Gelöscht: 0

Gelöscht: 5

Combining the hazard with the exposure value and location as in Eq. (6), we obtain the damage levels of Fig. 3.4 for return periods of up to 3'400 years. The curves grow initially fast, reaching the tenths of millions of US dollar damages with a return period of 10 years in all the islands. The whole region being susceptible to frequent and intense tropical cyclones, every mainland and sovereign territory should count with damages exceeding one billion dollars every 100 years. The dots in the figure represent the damage caused by Irma, which exemplifies an event with return period of 20-30 years for the US Virgin Islands, St. Kitts and Nevis, Antigua and Barbuda, and Saba and St. Eustatius. We notice that the assumption of independent events in Eq. (6) does not allow to study compound events. Fig. 3.4 provides therefore the probability of exceedance of an impact caused by a single tropical cyclone; the occurrence of correlated events is not fully addressed.

The quality of the probability distribution obtained by the ensembles is assessed in the probability-probability plot of Fig. 3.5. There we compare the cumulative probability distribution of the damages of the historical events (693 events) – empirical distribution in Fig. 3.5 – with the cumulative probability distribution obtained from the full set of events (34'650 events) – model distribution in Fig. 3.5 – evaluated at every historical event. Whilst the zero damaging historical events ($P(X \leq 0) \approx 0.94$) are slightly underestimated by the model, the high damaging events reach a better fitting. In general, the historical damages lie close to the identity line.

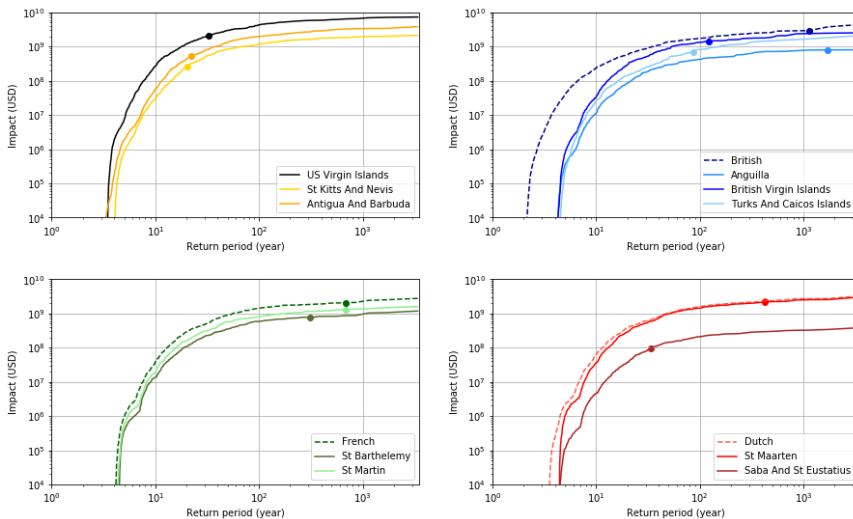


Figure 3.4: Impact exceedance frequency curves for the different island groups and their accumulated value per mainland power. The dots represent the damage reached by hurricane Irma.

Formatiert: Schriftart: Nicht Fett

Gelöscht: Fig. 6

Formatiert: Schriftart: Nicht Fett

Gelöscht: 50

Gelöscht: Fig. 7

Gelöscht: Fig. 7

Gelöscht: -

Gelöscht: Fig. 7

Gelöscht: ¶

Formatiert: Vom nächsten Absatz trennen

Gelöscht: 6

Formatiert: Schriftart: 9 Pt.

Formatiert: Schriftart: 9 Pt.

Gelöscht: 0

Formatiert: Schriftart: 9 Pt.

Formatiert: Schriftart: 9 Pt.

Formatiert: Schriftart: 9 Pt.

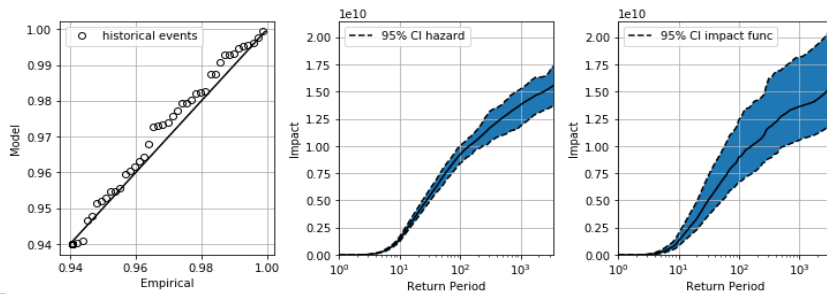


Figure 3.5: Quality metrics of the impact distribution. The left panel shows the probability-probability plot. The middle panel shows the mean value and the 95% confidence interval (CI) when sampling on the hurricane tracks and the right panel represents the 95% CI when sampling on impact functions with a maximal 10% shape modification, allowing to assess the uncertainty introduced by the models.

Furthermore, we analyse the amount of uncertainty intrinsic to the probabilistic hazard model and the vulnerability model. Performing a Monte Carlo-based simulation with 100 repetitions of the synthetic tracks generation, we compute their corresponding total damage and represent the 95% confidence interval (CI) in the middle panel of Fig. 3.5. We compute the same number of scenarios with a fixed hazard and modifying 10% the shape of the impact function by uniformly sampling from its parameters of Eq. (12): $v_{half} + \epsilon_{half}$ and $v_{thresh} + \epsilon_{thresh}$, where $\epsilon \in [-0.1v, 0.1v]$. The 95% CI of the last distribution is shown in the right panel. The highest uncertainty range is obtained for extremely rare events (once every 3,400 years events), which produce a total damage in the region between 12.5 and 21 billion dollars. It is clear from the comparison of both figures that the uncertainty induced by the socioeconomic model is greater than the one produced by the tropical cyclone model, which is in line with Gettelman et al. 2017. Other sources of uncertainty can originate from modelling tropical cyclone damages based only on their wind gusts. Even if the model works fine for regular hurricanes like Irma (Section 3.3), rainfall and storm surges can account for high damages also in less windy storms (e.g. hurricane Sandy in 2012) that are not completely captured.

Gelöscht: ¶

Gelöscht: 0

Gelöscht: 7

Gelöscht: added either by

Gelöscht: model

Gelöscht: or

Gelöscht: entity

Formatiert: Rechtschreibung und Grammatik prüfen

Formatiert: Rechtschreibung und Grammatik prüfen

Formatiert: Rechtschreibung und Grammatik prüfen

Gelöscht: Fig. 7

Gelöscht: sampling on impact functions of Emanuel 2011 with a maximal 10% of shape perturbation

Gelöscht: Fig. 7

Gelöscht: sampling on impact functions of Emanuel 2011 with a maximal 10% of shape perturbation

Gelöscht: ¶

Island group	Average Annual Impact	RP 25	RP 100	RP 250	RP 1000	RP 3000
Anguilla	18 ± 4	155 ± 41	435 ± 89	571 ± 104	732 ± 117	814 ± 118
Antigua And Barbuda	83 ± 18	714 ± 189	2,018 ± 387	2,596 ± 443	3,208 ± 484	3,546 ± 512
British Virgin Islands	50 ± 11	416 ± 110	1,268 ± 270	1,647 ± 321	2,118 ± 321	2,366 ± 345
Saba And St. Eustatius	8 ± 2	71 ± 20	204 ± 40	266 ± 46	334 ± 50	371 ± 51
St Barthelemy	22 ± 5	194 ± 55	547 ± 113	733 ± 128	905 ± 142	1,015 ± 142
St Kitts And Nevis	50 ± 10	430 ± 111	1,238 ± 239	1,590 ± 269	1,975 ± 310	2,189 ± 327
St Maarten	57 ± 13	502 ± 138	1,411 ± 290	1,878 ± 338	2,335 ± 370	2,614 ± 386

St Martin	33 ± 7	285 ± 78	800 ± 163	1,060±192	1,322±205	1,472 ± 221
Turks And Caicos Islands	33 ± 7	236 ± 63	841 ± 181	1,229 ± 245	1,703 ± 304	1,991 ± 314
US Virgin Islands	198 ± 41	1,792 ± 425	4,425 ± 817	5,466 ± 899	6,489 ± 1,091	7,143 ± 1,194
<i>British</i>	117 ± 28	952 ± 245	2,434 ± 510	3,211 ± 607	4,145 ± 680	4,721 ± 697
<i>Dutch</i>	66 ± 16	586 ± 165	1,614 ± 332	2,136 ± 376	2,651 ± 410	2,966 ± 467
<i>French</i>	56 ± 13	495 ± 143	1,352 ± 276	1,790 ± 317	2,181 ± 347	2,462 ± 390

Table 3.3: Average annual impact and exceedance impact level for several yearly return periods in million US dollars.

Performing a last Monte Carlo simulation which combines both hazard and impact function sampling, we obtain the results of [Table 3.3](#). The average annual impact reported (see Eq. (5)) indicates that the money every island should yearly put aside to cover for all the coming hurricane damages ranges from 8 ± 2 million for Saba and St. Eustatius to 198 ± 41 million for the US Virgin Islands. [The metrics per mainland power are also shown. After Irma's crisis the Foreign Affairs Committee of the House of Commons recognized the vulnerability to natural disasters of their Overseas Territories and the need to address it \(Foreign Affairs Committee; House of Commons, 2018\). The results per mainland presented here account for the probability of several Overseas Territories being hit by the same event, and the accumulated damage that might arise. These metrics can therefore help mainlands to define natural disaster response strategies able to cope with all expected impacts, as well as long-term cost-effective resilience measures.](#)

Other risk assessment studies have been performed on the Caribbean before. Bertinelli et al. 2016 study the hurricane damage over the whole Caribbean and obtain 30 billion US dollars damage for a 500-year event. They compute a local wind damage index using night light intensities and aggregate by country to compute the translated monetary value using the GDP – night light relation of Chen and Nordhaus 2011. Given that their study region includes bigger islands, such as the Cayman Islands, Jamaica and Puerto Rico, which amounts to a total GDP 28 times bigger than in our study area, their result is in agreement with the 1.25 billion US dollars we obtain for a 500-year event in the whole region. Comparing at island level, CCRIF The Caribbean Catastrophe Risk Insurance 2010 estimates an expected annual damage of 15 million US dollars in Anguilla, which lies in our range estimate of 18 ± 4 million dollars. However, their study includes both damage from wind and flooding of tropical cyclones.

4 Discussion and conclusions

CLIMADA offers a risk assessment framework to perform multi-hazard analyses at global and local scales. We are building a catalogue of event-based probabilistic hazard models for weather and climate disasters such as drought, flood or wind storm, and their corresponding socioeconomic exposure on a global scale at medium (10 km) to high (500 m) resolution. These models allow to perform risk analyses globally in a consistent way and with the minimum necessary information. The modularity of the object-oriented tool allows to easily integrate third-party models through reading functions and

Gelöscht: 0

Gelöscht: 3

Gelöscht: Table 3

Gelöscht: 8

Gelöscht: 198

Gelöscht: (

Gelöscht:)

Formatiert: Nicht Hervorheben

Formatiert: Nicht Hervorheben

Feldfunktion geändert

Formatiert: Nicht Hervorheben

Gelöscht: ¶

Gelöscht: ¶

complimentary Python libraries which support a vast variety of file formats (e.g. for shape and grid files). Thanks to the description of the most computation cost-intensive algorithms in matrix form, CLIMADA can compute impacts and risk metrics on a laptop efficiently even at high geographic resolution for hundreds of thousands of events. Moreover, its parallelized components allow to scale the computations on a cluster, reducing significantly the execution time of the most time-consuming computations, such as the synthetic events generation (which does – nota bene – not need to be repeated for each risk assessment). The performance characteristics are indispensable for decision making, where different scenarios need to be tested and compared as fast as possible to obtain a better understanding of the inherent uncertainty.

In this paper we have presented the application of CLIMADA to assess the economic impact of hurricane Irma to small Caribbean islands, which most of them rely on overseas security support because of their non-sovereign condition. The computed damages agree well with reported ones, within the uncertainties inherent to the losses reported. To put these impacts in context, we performed a probabilistic tropical cyclone risk analysis in the same region and estimated the *intrinsic* model uncertainties originating from the *hazard* and *vulnerability* used. The only data used were satellite nightlight intensities, two macroeconomic indicators (GDP and income group level) of the islands and the historical hurricane tracks of the IBTrACS repository. This has allowed to perform an analysis at 500 meters spatial resolution. The corresponding amount of exposure coordinates is 9'311 and we have generated a catalogue of 34'560 hurricane events. On a laptop *with 4 virtual CPUs*, it took less than two hours to generate the full probabilistic hazard set and only a few seconds to calculate the resulting impact and risk metrics.

Future work includes the modelling of tropical cyclone damages not only based on their wind intensity, but also based on coupled rainfall amount and surge height, components that might become increasingly dominating because of climate change (Gamer et al., 2017). Other hazard types, exposures and impact functions are being developed in CLIMADA under a cooperative model using unit testing and a continuous integration platform. The presented work constitutes the base for the risk assessment functionality that will allow to perform adaptation options appraisal under different future scenarios.

5 Code availability and data availability

CLIMADA is openly available in GitHub (https://github.com/CLIMADA-project/climada_python) under the GNU GPL license (GNU Operating System, 2007). The documentation is hosted in Read the Docs (<https://climada-python.readthedocs.io/en/stable/>) and includes a link to the interactive tutorial of CLIMADA. v1.0.0 was used for this publication, which is permanently available at the ETH Data Archive: <http://doi.org/10.5905/ethz-1007-187>. The script reproducing the main results of the paper and all the figures is available under https://github.com/CLIMADA-project/climada_papers.

Gelöscht: hazard

Gelöscht: exposure

Gelöscht: models

Gelöscht: Using a cluster, it took the same amount of time to execute all the uncertainty analysis (300 Monte Carlo executions).

Formatiert: Hervorheben

Feldfunktion geändert

Gelöscht: latest

6 Author contribution

David N. Bresch conceptualized CLIMADA and oversaw its implementation in Python, based on the previous MATLAB implementation by himself. Gabriela Aznar Siguan designed and executed the Python implementation of the software, defined the case study and performed the analysis. Gabriela Aznar Siguan prepared the manuscript in discussion with and contributions of David N. Bresch.

7 Acknowledgements

David N. Bresch developed the first version of CLIMADA as a basis for teaching a master course on uncertainty and risk at ETH back in 2010. He is thankful for many students' feedback and improvement suggestions, without which the model would not be as comprehensive and stable a tool as it is by now.

10 References

Aballain, O.: Hurricane Irma and Hurricane Maria in the media: France vs America, a Contrastive Analysis, Utrecht University., 2018.

Bertinelli, L., Mohan, P. and Strobl, E.: Hurricane damage risk assessment in the Caribbean: An analysis using synthetic hurricane events and nightlight imagery, *Ecol. Econ.*, 108(21), 8589–8594, doi:10.1016/j.ecolecon.2016.02.004, 2016.

Bevere, L., Schwartz, M., Sharan, R. and Zimmerli, P.: Natural catastrophes and man-made disasters in 2017: a year of record-breaking losses. [online] Available from: http://media.swissre.com/documents/sigma1_2018_en.pdf, 2018.

Bickenbach, F., Bode, E., Nunnenkamp, P. and Söder, M.: Night lights and regional GDP, *Rev. World Econ.*, 152(2), 425–447, doi:10.1007/s10290-016-0246-0, 2016.

de Bono, A. and Chatenoux, B.: A global exposures model for GAR 2015. [online] Available from: [https://www.preventionweb.net/english/hyogo/gar/2015/en/bgdocs/risk-section/De Bono, Andrea, Bruno Chatenoux. 2015. A Global Exposure Model for GAR 2015, UNEP-GRID.pdf](https://www.preventionweb.net/english/hyogo/gar/2015/en/bgdocs/risk-section/De%20Bono,%20Andrea,%20Bruno%20Chatenoux.%202015.%20A%20Global%20Exposure%20Model%20for%20GAR%202015.%20UNEP-GRID.pdf), 2014.

Bresch, D. N.: Shaping Climate Resilient Development - Economics of Climate Adaptation, in *Climate Change Adaptation Strategies - An Upstream-downstream Perspective*, edited by G. Salzmann, N., Huggel, C., Nussbaumer, S. U., and Ziervogel, Springer. [online] Available from: <https://link.springer.com/book/10.1007%2F978-3-319-40773-9>, 2016.

Bresch, D. N. and ECA working group, 2009: Shaping climate-resilient development: A framework for decision-making. [online] Available from: https://www.ethz.ch/content/dam/ethz/special-interest/usys/ied/wcr-dam/documents/Economics_of_Climate_Adaptation_ECA.pdf, 2009.

Bresch, D. N. and Schraft, A.: Neue, integrierte sichtweise zum Umgang mit Klimarisiken und deren Versicherung, *Schweizerische Zeitschrift für Forstwes.*, 162(12), 464–468, doi:10.3188/szf.2011.0464, 2011.

Cangialosi, J. P., Latta, A. S. and Berg, R.: National Hurricane Center Tropical Cyclone Report: Hurricane Irma (AL12017), 30 August-12 September 2017., 2018.

[1] nach unten verschoben: (Foreign Affairs Committee; House of Commons): The UK's response to hurricanes in its Overseas Territories, Fifth Report of Session 2017-19, London. [online] Available from: <https://publications.parliament.uk/pa/cm201719/cmselect/cm/aff/722/722.pdf>, 2018.¶

Formatiert: Deutsch (Deutschland)

Formatiert: Deutsch (Deutschland)

Cardona, O., Ordaz, M., Reinoso, E., Yamín, L. E. and Barbat, A. H.: CAPRA - comprehensive approach to probabilistic risk assessment: international initiative for risk management effectiveness, Proc. 15th World Conf. Earthq. Eng. - WCEE, 1(SEPTEMBER), 1–10 [online] Available from: http://www.iitk.ac.in/nicee/wcee/article/WCEE2012_0726.pdf, 2012.

5 Cardona, O., Bernal, G. A. and Villegas, C. P.: Loss assessment for hurricane irma., [INGENIAR Risk Intelligence: CIMNE](#), 2017.

CCRIF The Caribbean Catastrophe Risk Insurance, E. of C. A. (Eca) I.: Enhancing the Climate Risk and Adaptation Fact Base for the Caribbean, CCRIF's Econ. Clim. Adapt. Initiat., 2010.

10 Chen, X. and Nordhaus, W. D.: Using luminosity data as a proxy for economic statistics, Proc. Natl. Acad. Sci., 108(21), doi:10.2139/ssrn.1666164, 2011.

Clegg, P.: The Non-Self Governing Territories of the Caribbean and Debates over Autonomy, in South America, Central America and the Caribbean 2016, edited by E. West, J., pp. 33–39, Routledge, Abingdon. [online] Available from: <https://www.routledge.com/products/9781857437850>, 2015.

15 ECLAC: Irma and Maria By Numbers, Focus (Madison), (1), 1–17 [online] Available from: <https://repositorio.cepal.org/bitstream/handle/11362/43446/1/FOCUSIssue1Jan-Mar2018.pdf>, 2018.

20 Emanuel, K.: Global Warming Effects on U.S. Hurricane Damage, Weather. Clim. Soc., 3(4), 261–268, doi:10.1175/WCAS-D-11-00007.1, 2011.

~~Foreign Affairs Committee, House of Commons: The UK's response to hurricanes in its Overseas Territories. Fifth Report of Session 2017-19, London, [online] Available from: <https://publications.parliament.uk/pa/cm201719/cmselect/cmfaff/722/722.pdf>, 2018.~~

25 Garner, A. J., Mann, M. E., Emanuel, K. A., Kopp, R. E., Lin, N., Alley, R. B., Horton, B. P., DeConto, R. M., Donnelly, J. P. and Pollard, D.: Impact of climate change on New York City's coastal flood hazard: Increasing flood heights from the preindustrial to 2300 CE, Proc. Natl. Acad. Sci., 114(45), 201703568, doi:10.1073/pnas.1703568114, 2017.

30 Geiger, T., Frieler, K. and Bresch, D. N.: A global historical data set of tropical cyclone exposure (TCE-DAT), Earth Syst. Sci. Data, 10(1), 185–194, doi:10.5194/essd-10-185-2018, 2018.

35 Gettelman, A., Bresch, D. N., Chen, C. C., Truesdale, J. E. and Bacmeister, J. T.: Projections of future tropical cyclone damage with a high-resolution global climate model, Clim. Change, 146(3–4), 575–585, doi:10.1007/s10584-017-1902-7, 2017.

Ghosh, T., Anderson, S. J., Elvidge, C. D. and Sutton, P. C.: Using nighttime satellite imagery as a proxy measure of human well-being, Sustainability, 5(12), 4988–5019, doi:10.3390/su5124988, 2013.

40 GNU Operating System: GNU General Public License, version 3, [online] Available from: <https://www.gnu.org/licenses/gpl.html>, 2007.

45 Gregory, R. D., Willis, S. G., Jiguet, F., Voříšek, P., Klvaňová, A., van Strien, A., Huntley, B., Collingham, Y. C., Couvet, D. and Green, R. E.: An indicator of the impact of climatic change on European bird populations, PLoS One, 4(3), doi:10.1371/journal.pone.0004678, 2009.

Henderson, J. V., Storeygard, A. and Weil, D. N.: Measuring Economic Growth from Outer Space †, Am. Econ. Rev., 102(2), 994–1028, doi:10.1257/aer.102.2.994, 2012.

50 Holland, G.: A Revised Hurricane Pressure–Wind Model, Mon. Weather Rev., 136(9), 3432–3445,

[1] verschoben (Einfügung)

Gelöscht: (

Gelöscht: ;

Gelöscht:)

doi:10.1175/2008MWR2395.1, 2008.

IPCC: *Managing the Risks of Extreme Events and Disasters to Advance Climate Change Adaptation. A Special Report of Working Groups I and II of the Intergovernmental Panel on Climate Change*, edited by C. B. Field, V. Barros, T. F. Stocker, D. Qin, D. J. Dokken, K. L. Ebi, M. D. Mastrandrea, K. J. Mach, G.-K. Plattner, S. K. Allen, M. Tignor, and P. M. Midgley, Cambridge University Press, Cambridge, UK, and New York, NY, USA., 2012.

IPCC: *Climate Change 2014: Impacts, Adaptation and Vulnerability. Part A: Global and Sectoral Aspects. Contribution of Working Group II to the Fifth Assessment Report of the Intergovernmental Panel on Climate Change*, edited by C. B. Field, V. R. Barros, D. J. Dokken, K. J. Mach, M. D. Mastrandrea, T. E. Bilir, M. Chatterjee, K. L. Ebi, Y. O. Estrada, R. C. Genova, B. Girma, E. S. Kissel, A. N. Levy, S. MacCracken, P. R. Mastrandrea, and L. L. White, Cambridge University Press, United Kingdom and New York, NY, USA., 2014.

King, A. B. and Bell, R.: Riskscape New Zealand - A Multihazard Loss Modelling Tool, in 2006 NZSEE Conference, p. 9., 2006.

Kleppek, S., Muccione, V., Raible, C. C., Bresch, D. N., Koellner-Heck, P. and Stocker, T. F.: Tropical cyclones in ERA-40: A detection and tracking method, *Geophys. Res. Lett.*, 35(10), 1–5, doi:10.1029/2008GL033880, 2008.

Knapp, K. R., Kruk, M. C., Levinson, D. H., Diamond, H. J. and Neumann, C. J.: The international best track archive for climate stewardship (IBTrACS), *Bull. Am. Meteorol. Soc.*, 91(3), 363–376, doi:10.1175/2009BAMS2755.1, 2010.

Lark, J.: ISO31000: Risk Management: a Practical Guide for SMEs, International Organization for Standardization. [online] Available from: https://thaiindustrialoffice.files.wordpress.com/2016/02/iso_31000_for_smes.pdf, 2015.

Nicholls, N.: Comments on “have disaster losses increased due to anthropogenic climate change?,” *Bull. Am. Meteorol. Soc.*, 92(6), 791, doi:10.1175/2011BAMS3167.1, 2011.

Román, M. O., Wang, Z., Sun, Q., Kalb, V., Miller, S. D., Molthan, A., Schultz, L., Bell, J., Stokes, E. C., Pandey, B., Seto, K. C., Hall, D., Oda, T., Wolfe, R. E., Lin, G., Golpayegani, N., Devadiga, S., Davidson, C., Sarkar, S., Praderas, C., Schmaltz, J., Boller, R., Stevens, J., Ramos González, O. M., Padilla, E., Alonso, J., Detrés, Y., Armstrong, R., Miranda, I., Conte, Y., Marrero, N., MacManus, K., Esch, T. and Masuoka, E. J.: NASA’s Black Marble nighttime lights product suite, *Remote Sens. Environ.*, 210(April), 113–143, doi:10.1016/j.rse.2018.03.017, 2018.

Schneider, P. J., Schauer, B. A. and Asce, M.: HAZUS — Its Development and Its Future, *Nat. Hazards Rev.*, 7(May), 40–44, 2006.

Sealy, K. S. and Strobl, E.: A hurricane loss risk assessment of coastal properties in the caribbean: Evidence from the Bahamas, *Ocean Coast. Manag.*, 149, 42–51, doi:10.1016/j.ocecoaman.2017.09.013, 2017.

Souvignet, M., Wieneke, F., Müller, L. and Bresch, D. N.: *Economics of Climate Adaptation (ECA) - Guidebook for Practitioners.*, 2016.

Welker, C., Martius, O., Stucki, P., Bresch, D., Dierer, S. and Brönnimann, S.: Modelling economic losses of historic and present-day high-impact winter windstorms in Switzerland, *Tellus, Ser. A Dyn. Meteorol. Oceanogr.*, 68(1), 29546, doi:10.3402/tellusa.v68.29546, 2016.

Zhao, N., Liu, Y., Cao, G., Samson, E. L. and Zhang, J.: Forecasting China’s GDP at the pixel level using nighttime lights time series and population images, *GIScience Remote Sens.*, 54(3), 407–425, doi:10.1080/15481603.2016.1276705, 2017.

Gelöscht: 1

Zscheischler, J., Westra, S., Van Den Hurk, B. J. J. M., Seneviratne, S. I., Ward, P. J., Pitman, A., Aghakouchak, A., Bresch, D. N., Leonard, M., Wahl, T. and Zhang, X.: Future climate risk from compound events, *Nat. Clim. Chang.*, 8(6), 469–477, doi:10.1038/s41558-018-0156-3, 2018.