

Response to Reviewer #2

1. Response to general comment

The topic of the paper is very interesting with the description of the Australian regional reanalysis system BARRA. It gives a good general overview of the system and provides a snapshot of the first results. Therefore, it is a valuable contribution, though there are some shortcomings, which should be addressed in its final version. Particularly, I see as a major problem that there is a major numerical problem in the dataset, which is manifested in "grid-point storms". This should not happen, since reanalysis should be based on a robust and mature numerical weather prediction system, where such problems are already corrected. Overall I propose to accept the paper for publication provided the comments below are properly addressed in the updated version.

[AR] We thank the reviewer for their comments. We acknowledge the shortcomings of the work and have used this opportunity to undertake a major revision of the manuscript. In particular, we expanded our discussion around "grid-point storms" to emphasize the difficulties to remove their occurrence completely. We have also extended the analysis period from 2007-2016 to 2003-2016, and conducted additional analyses to ascertain (1) the locations of precipitation excess in the tropics and New Zealand, and (2) whether there are shifts in BARRA-R due to SST and soil moisture changes. See below for more details.

The main question for a regional reanalysis is to clearly demonstrate whether the use of such system is justified, which means that more value can be added to the global reanalysis than it would be the case with a pure dynamical downscaling. For this question one has to understand the additional information brought into the regional system in terms of more precise dynamical and physical description of the atmosphere, but also in terms of additional and advanced use of observations. I miss a summary of this kind from the manuscript though some of these aspects are highlighted here and there in the paper.

[AR] The introduction has reviewed several papers on the usefulness of regional reanalyses over dynamical downscaling, underpinning efforts around the various regional reanalysis projects internationally.

The comparisons of short-ranged O-A (observation – analysis) and O-B (observation – background) statistics in Table 1 (now moved to Table S1 of the Supplementary Material) showed that, with O-A being consistently better O-B for various observational types, an analysis within the BARRA-R system yields a more accurate short-ranged forecast than simply using the background, where the background from the previous analysis is, by extension, better than pure dynamical downscaling from the very first cycle.

2. Response to specific comments

2.1. Special attention is needed, when different types of driving datasets are used for the reanalysis during the reanalysis period since the continuity should be ensured. Otherwise, there might be some spurious climate signal which is coming from the change of the dataset and not from the climate itself. It should be assessed carefully. In the manuscript we got some examples, as the applied soil moisture fields, which are different from 2015 onwards or the SST and SIC, which is changing in 2007. Some text is needed to emphasise and discuss this aspect.

[AR] Agreed. We have now extended the study period to include BARRA-R data from 2003-2016 (previously 2007-2016), to consider whether the change of the OSTIA data at 2007 leads to discontinuities. Our evaluation has been extended as follows:

- Section 3.1.2 "Comparisons with gridded analysis of observed 2 m temperature has been extended to look at the 14-year changes to biases in TMax (daily maximum temperature) and TMin (daily minimum temperature) relative to AWAP – in new Figure 6. We found shifts in biases in BARRA-R, but also in the global reanalyses ERA-Interim and MERRA-2. Further, these changes do not coincide with our changes in soil moisture initialization in 2014-2015 or OSTIA data.
- Section 3.2 "Pressure levels" has been extended to look at 14-year changes to air temperature at 500, 700 and 850 hPa pressure levels – new Figure 8. We found shifts in biases between BARRA-R and ERA-Interim from 2010, but these shifts are absent when comparing BARRA-R with MERRA-2. The results are therefore inconclusive.
- Section 3.3 "Precipitation" has been extended to look at 14-year differences in monthly precipitation between BARRA-R and TMPA, ERA-Interim and TMPA, BARRA-R and GPCC, and ERA-Interim and GPCC – revised Figure 10 and 11. The most apparent shifts in precipitation occur in north Australia, where BARRA-R shows wetter summer events after 2010, at the end of the Australian millennium drought and onset of La Nina.

We summarise our observations in the conclusion as follows: "These coincident shifts in daily maximum 2 m temperature (over Australia), upper-air temperature (across the BARRA-R domain), and tropical precipitation in all the reanalyses suggest larger differences in large-scale synoptic patterns after 2010."

2.2. When the reanalysis is validated sometimes it is not clear enough what are the shortcomings of the datasets used for validation. In some cases, it is not clear if the deficiencies identified are coming from the weaknesses of the applied observational datasets or the reanalysis itself. Therefore, at the validation part, it should be also mentioned what are the limitations, which are coming from some of the shortcomings of the validating data itself.

[AR] Agree. The first paragraphs of Section 3.1.1 "Point evaluation of 2m temperature, 10 m wind speed, and surface pressure", 3.1.2 "Comparisons with gridded analyses of observed 2 m temperature", and 3.3 "Precipitation" describe the issues of the validating data.

2.3. The existence of the "grid-point storms" is embarrassing since such numerical problems should not happen in a reanalysis, where a robust and properly (thoroughly) tested NWP system should be used. Normally, the reanalysis should not be run if such problems are not yet solved. There is a need for a thorough explanation how this could happen and how this deficiency compromises the validity of the reanalysis results.

[AR] The Unified Model is sufficiently robust to be useful for many operational meteorological centres in Australia, UK, India, Singapore, Korea, South Africa and New Zealand. The issue of "grid-point storms" is also not unique to UM but for instance, also occurs in the widely-used Weather Research and Forecasting (WRF) model from NCAR. When the convective (sub-grid) parameterization scheme in non-convective resolving models does not stabilize the air column, meteorological events can develop at the smallest resolvable scales in the model, producing unrealistically strong vertical velocities and precipitation (Scinocca and McFarlane, 2004; Williamson, 2013). The resulting "grid-point storms" occur more readily in models with higher horizontal resolutions (Williamson, 2013). The issue becomes unavoidable for BARRA-R as it aims to be sufficiently higher resolution than global reanalyses but could not be sufficiently high resolution (< 2 km) (and computationally prohibitive) to resolve convection explicitly without the need for a convective parameterization scheme.

Further, we do not think that the wet biases in BARRA-R over the tropics and New Zealand are entirely due to grid point storms. Additional analyses have been made to identify the location of

precipitation excess in the tropics and New Zealand (Figure S3 in Supplementary Material). We found that the higher precipitation in BARRA-R are concentrated at high or sharp topographical regions in PNG, Indonesia, Sumatra and small Indonesian Islands, and west coast and Southern Alps of New Zealand. At these locations, GPCC (gauge analysis) and TMPA would underestimate the precipitation. With these considerations, the actual levels of bias observed in BARRA-R are not entirely clear.

2.4. The figure captions should provide enough details that the figure can be read without consulting with the main text. In some figures (particularly figure 5 and 7) some information is missing in the caption.

[AR] Agreed. The captions have been revised.

Figure 5 has been simplified and its caption now reads " Mean differences in (row i) daily maximum (TMax) and (ii) minimum 2 m temperature [K] for 2007-2016, between (column a) ERA-Interim and AWAP, (b) MERRA-2 and AWAP, and (c) BARRA-R and AWAP. The spatial means of the differences are reported in text."

The caption for Figure 9 (previously Figure 7) has been revised to read "(row i) Mean annual precipitation [mm], and (ii) fractions of light rain days with 1-10 mm precipitation, (iii) heavy precipitation days with 10-50 mm and (iv) very heavy precipitation days with > 50 mm, over 2007-2016 from (column a) AWAP, (b) GPCC, (c) TMPA, (d) ERA-Interim, and (e) BARRA-R. Regions with more than 10% missing values in AWAP are masked. Close ups of the plots over Australia are provided in the Supplementary Material."

2.5. Abstract: "BARRA-R improves upon ERA-Interim global reanalysis in several areas at point scale to 25km resolution"; would you explain what do you exactly mean and make the sentence clearer, please? (I guess this sentence means that BARRA gives extra value to ERA-Interim until 25km resolution scale.)

[AR] Agreed. We are careful with specifying the spatial scale of the evaluation as the relative skills between BARRA and ERA-Interim are expected to vary with the scale.

The text has been rewritten as

"BARRA-R provides a realistic depiction of the meteorology at and near the surface over land as diagnosed by temperature, wind speed, surface pressure, and precipitation. Comparing against global reanalyses ERA-Interim and MERRA-2, BARRA-R scores lower root-mean-square errors when evaluated against (point-scale) 2 m temperature, 10 m wind speed and surface pressure observations. It also shows reduced biases in daily 2 m temperature maximum and minimum at 5 km resolution, and a higher frequency of very heavy precipitation days at 5 and 25 km resolution when compared to gridded satellite and gauge analyses."

2.6. page 2, line 6: ERA5 (no hyphen)

[AR] Agreed.

2.7. page 2, line: 18: please provide reference for Europe reanalysis

[AR] Agree, it now reads "The first regional reanalyses was the North America Regional Reanalysis (NARR, Mesinger et al., 2006), and the more recent examples include the Arctic System Reanalysis (ASR, Bromwich et al., 2018), Indian Monsoon Data Assimilation and Analysis (IMDAA, Mahood et al.,

2018) and Uncertainties in Ensembles of Regional Reanalyses (UERRA) in Europe (Borsche et al. (2015) and therein)."

2.8. page 2, line 25: *please give reference for the Copernicus reanalysis*

[AR] Agreed. I have added a reference to Ridal et al. (2017).

2.9. page 3, line 7: *"intermittency and covariability"; what do you mean exactly?*

[AR] We expand the text, which now reads "For renewable energy production, they can provide valuable information on intermittency (e.g., wind lull) and covariability (e.g., spatial or between variables) of phenomena."

2.10. page 4, line 5: *I think, there is a bit of confusion with reference to the UERRA (Uncertainties in Ensembles of Regional Reanalyses) system. UERRA is a system of ensemble of reanalyses, which includes several regional reanalyses. For instance, the UKMO system is one member of the UERRA system, but that is not the "UKMO's UERRA system", since UERRA is the ensemble system itself. I think, the use of UERRA in that regard is not sufficiently precise here and also other parts of the manuscript.*

[AR] Agreed. It now reads "...UKMO's system in UERRA". Other appearances have been modified accordingly.

2.11. page 6, lines 7-14: *the soil moisture treated differently before and after 2015, which might cause a discontinuity. This should be mentioned and discussed in the text.*

[AR] Agree. We have added to Section 2.1.2, which now also reads " The daily initialisation was conducted with the purpose of avoiding spurious drift in the BARRA moisture fields and reducing the time needed to spin up from ERA-Interim initial conditions. However, as multiple parallel production streams are needed to produce the reanalysis (see Section 2.2), a discontinuity in soil moisture in the bottom two layers exists between successive production streams, although soil moisture in the top two layers become stable after one-month of runs. A discontinuity occurring at the 2014-2015 changeover has recently been reported by BARRA data users. These impacts, particularly on forested regions where trees extract water from the deep soil layers, are under investigation."

So far, our investigations described in our reply to comment 2.1 do not show changes to screen temperature, precipitation, and upper-air temperature, due to the changes in soil moisture initialization.

2.12. page 6, lines 20-30: *here inhomogeneity of the SST and SIC fields are revealed and mentioned, but it is not clear how the user should interpret this inhomogeneity while using the BARRA reanalysis dataset.*

[AR] Agree. Our investigations of the possible impacts are described in our reply to comment 2.1.

We have included plots of OSTIA SST anomalies in long-term analyses in Figure 6, 10 and 11. They do not show unexpected discontinuities at 2006/2007.

2.13. page 7, line 14: *"linearised about a guess", not "linearised around a guess"?*

[AR] Agreed.

2.14. page 8, line 13-15: *the one-month spin-up period seems quite short for me particularly for the surface processes.*

[AR] First, BARRA-R is initialized from ERA-Interim, and not an arbitrary state. Second, the land state and in particular sub surface soil moisture can have a very long memory. One month is indeed likely to be too short to adequately spin-up the BARRA soil moisture. To ameliorate this problem, BARRA soil moisture was initialised using soil moisture analyses from an off-line JULES simulation. This off-line JULES simulation used a 10-year long spin-up period and then was run continuously for the 1990 to 2014 period. Even so, it appears that the soil moisture at bottom two layers did not fully spin up after one-month runs, while the top two layers appear stable after a month. To highlight this shortcoming with the added text in Section 2.1.2 that reads,

"The daily initialisation was conducted with the purpose of avoiding spurious drift in the BARRA moisture fields and reducing the time needed to spin up from ERA-Interim initial conditions. However, as multiple parallel production streams are needed to produce the reanalysis (see Section 2.2), a discontinuity in soil moisture in the bottom two layers exists between successive production streams, although soil moisture in the top two layers become stable after one-month of runs. A discontinuity occurring at the 2014-2015 changeover has recently been reported by BARRA data users. These impacts, particularly on forested regions where trees extract water from the deep soil layers, are under investigation."

2.15. page 8, lines 22-24: *"Most of the observations prior to 2003 are supplied by ECMWF and those between 2003 and 2009 and conventional data from 2003 are extracted from the UKMO operational archives" Does this choice causes any discontinuity? (Though changes in the observing system are usual and the data assimilation system should be able to handle to minimise such discontinuities.)*

[AR] The observational data are extracted from different archives due to practical reasons (project funding and delivery). Conventional observation data are maintained and transmitted to the international community via GTS (global telecommunication system) by local operators so all meteorological centres share the same data, albeit in different formats in respective data archives. Satellite data is produced using the same algorithms and software packages developed by the satellite operators and their partners.

2.16. page 9, line 4: "UKMO's OPS system", what is that? Please have a reference there.

[AR] It refers to Observation Processing System. The best reference we can find is Rawlins et al. (2007), with methods described in Lorenc and Hammon (1988). Both are cited.

2.17. page 9, lines 15-19: *changes in observation quantities and screening (thinning) are mentioned here, which might cause discontinuities. It should be explained how this problem can be alleviated.*

[AR] Changes in observation quantities are unavoidable in any reanalysis, be it from changes made to the screening mid-production or changes in observing systems. While it is unfortunate that we had to make an adjustment to observation screening mid-production, any reanalyses including BARRA need to be used with some caution, due to inherent variability in quality due to observation changes. It is not within the scope of this work to look further. We added a discussion to Section 3.2 that reads, " There are abrupt changes to the amount of satellite data assimilated at the start and end of satellite missions and the various observational data archives; in some cases, changes occur when corrections were made to the observation screening and thinning rules mid-production of the

2010-2015 reanalyses. The impacts of such changes, known to cause artificial shifts and spurious trends in a reanalysis (e.g., Thorne and Vose, 2010; Dee et al., 2011) are still to be investigated for BARRA-R."

2.18. *page 9, lines 26-28: it is a basic characteristic of the data assimilation system that the analysis draws nearer to the observations than the guess (RMSE and biases are smaller). This is more a basic sanity check than a real evaluation. On top of that it does not ensure that there are no spurious jumps in standard deviations and biases in the timeseries.*

[AR] Agreed. We have moved the O-A vs O-B comparison to the Supplementary Material. Additional analyses described in our reply to comment 2.1.

2.19. *page 10, pages 3-5: this kind of information, what needs to be consolidated and presented altogether in the overview part of the document in order to get an impression what additional information is provided from the regional reanalysis (see also at specific comments)*

[AR] We assume the reviewer's comment pertains to page 10, lines 3-5. We have placed parts of this alongside the description of results. Then, an overview paragraph is added at the start of Section 3 "Preliminary evaluation", which reads

"Our evaluation focuses on three areas: surface variables, pressure-level temperature and wind, and precipitation. For the surface variables, we compare BARRA-R against point-scale observations and gridded analyses of observations for 2 m temperature. For the pressure levels, we evaluate BARRA-R against point-scale observations of temperature and wind, and examine the timeseries of the bias between BARRA-R and the global reanalyses. Finally, as rain observations are not assimilated in BARRA-R, gridded analyses of rain observations from gauges and satellites are used to provide the best independent reference in this study."

Section 4 provides an overview summary of the additional information provided from BARRA-R.

2.20. *page10, lines 8-9: what observations do you mean, which are not used in the analysis? Or do you mean that since it is a forecast it is an indirect relation, only?*

[AR] It is the latter. The text now reads "These observations have only an indirect relation to the forecasts as they are not used in the analysis for the associated cycle t_0 ."

2.21. *page 11, lines 11-14: please mention "figure not shown" when you discuss a particular aspect, which is not supported by any presented figures.*

[AR] We refer to the supporting figure in the Supplementary Material.

2.22. *page 11, lines 16-19: it would be good to include some information about the strengths and weaknesses of the AWAP dataset, which is used for validation since it influences the interpretation of the results.*

[AR] See our reply to comment 2.2.

2.23. *page 11, lines 24-26, Figure 5: "... BARRA-R shows cold and warm biases around 1K in daily maximum and minimum temperature, respectively..." It is quite confusing since the order of the figures is the opposite than in the text (top: minimum, bottom: maximum temperature) and the colour code in the inset is counter-intuitive (red: cold bias, blue: warm bias). I think, that the text states just the opposite than what is seen in the figure: in the minimum temperature there is a*

cold bias (the reanalysis is colder than the AWAP dataset) and a warm bias (the reanalysis is warmer than the AWAP dataset) in the maximum temperature. Please, clarify this confusion and improve the colour scale of the Figure.

[AR] The colour schemes in Figure 5 have been changed to use red to represent warm bias, and blue for cold bias. The result shows cold bias in TMax, and warm bias in TMin.

2.24. *page 12, lines 14-19: one would expect that at least at lower levels some improvements can be detected. Maybe some discussion about this can be put here.*

[AR] We speculate that this is because we are benchmarking against ERA-Interim analysis which is already a close fit to the sonde observations. Hence the differences are not apparent at the observation locations. The text has been amended to emphasize this, it reads "There are also small differences between the analyses and BARRA-R background, indicating that the 0.11° forecast model does not degrade from the lower-resolution analysis of BARRA-R but also does not improve upon the ERA-Interim's 0.75° representation of these fields at the observation locations."

New analysis in Figure 8 shows that there are notable differences in air temperature between the reanalyses.

2.25. *page 13, line 2: "... to adjust to remove the excess", is that correct English-wise? Please check.*

[AR] "excess" can be used as an adjective or a noun.

2.26. *page 13, line 11: I think, there is a typo there, since it should read as "The first row...." and not the "first column".*

[AR] Agreed.

2.27. *Figure 7: it is difficult to read these figures, maybe figures only for Australia (as in the supplementary material) would be sufficient.*

[AR] We do not wish to restrict the evaluation only on Australia. Many differences are notable in regions exterior to Australia, particularly in the tropics and New Zealand.

2.28. *page 13, line 25: it is very difficult to see the details in Tasmania, I am not sure if such details should be discussed here.*

[AR] Zoomed in plots of Australia is provided in Supplementary Material. This is noted in the caption of Figure 9.

2.29. *page 14, line 17: what do you mean "temperate region", please? How the latitude bands were selected (for instance 39.2 looks a bit strange choice)?*

[AR] The text has been revised to discuss the new results. The 39.2 to 49 deg South sub-domain is defined to focus on Tasmania and New Zealand.

2.30. *page 14, lines 18-24: "grid-point storms"; as I mentioned above, I see this numerical issue as a major problem and the reanalysis should not have such numerical instability (and this should have been corrected prior to production).*

[AR] Please see our reply to comment 2.3.

2.31. *Summary and outlook: page 15, line 2: what do you mean on “global effort”?*

[AR] The text has been simplified as "BARRA is the first regional reanalysis that focuses on the Australasian section of the Southern Hemisphere."

2.32. *page 15, line 18: I think the wind bias should be improved with model development efforts and not via post-processing. It is true that some specific users might use postprocessing, but I think the modelling community should aim to improve the reanalysis with the improvements of the NWP methodology.*

[AR] Model development is an ongoing but very challenging endeavour, leading to different generations of NWP and reanalyses. Despite the community's best efforts however, model biases are not likely to disappear in the foreseeable future. Yet, by working within the limitations of the models we are still able to provide valuable information to users. Therefore, practical approaches to relate model fields to observations are through post-processing and statistical methods. They are commonly used internationally by meteorological centres including the Bureau and National Weather Service, NOAA using a MOS (Model Output Statistics) method based on Glahn and Lowry (1972).

2.33. *page 15, line 22: what is “GA6 configuration”?*

[AR] GA6 configurations are stated in section 2.1 "Forecast model".

2.34. *page 16, line 3: I disagree that the grid-point storms should be screened out via postprocessing. This is a major numerical problem, which has to be solved before producing a reanalysis.*

[AR] Please see our reply to comment 2.3.

2.35. *page 16, line13-14: it is important to get an overview in this paper about the relative merits between reanalysis and downscaling, since this gives justification for having reanalysis instead of simple downscaling. Therefore, some information about this issue should be provided at an early part of this paper.*

[AR] The introduction has reviewed several papers on the usefulness of regional reanalyses over dynamical downscaling, underpinning efforts around the various regional reanalysis projects internationally.

The comparisons of short-ranged O-A (observation – analysis) and O-B (observation – background) statistics in Table 1 (now moved to Table S1 of the Supplementary Material) showed that, with O-A being consistently better O-B for various observational types, an analysis within the BARRA-R system yields a more accurate short-ranged forecast than simply using the background, where the background from the previous analysis is, by extension, better than pure dynamical downscaling from the very first cycle.

2.36. *page 16: lines 18-22: this part of the text is mostly repetition (see page 15, lines 3-7), which should be avoided.*

[AR] Agreed. The paragraph has been merged with the first paragraph of the section.

[AR] **Other significant changes not described above**

- **Figure 4**, which shows comparisons between models and observations in terms of percentiles, has been revised. An error in the codes to interpolate model grids to observing station locations has been fixed.
- **Table 1**, which lists the various observational data sources, has been revised to reflect the extension of the reanalysis period to include 2018. Data sources has also been corrected.

BARRA v1.0: The Bureau of Meteorology Atmospheric high-resolution Regional Reanalysis for Australia

Chun-Hsu Su¹, Nathan Eizenberg¹, Peter Steinle¹, Dörte Jakob¹, Paul Fox-Hughes², Christopher J. White^{3,4}, Susan Rennie¹, Charmaine Franklin¹, Imtiaz Dharssi¹, Hongyan Zhu¹

¹ Bureau of Meteorology, Docklands, Victoria 3008, Australia

² Bureau of Meteorology, Hobart, Tasmania 7000, Australia

³ Department of Civil and Environmental Engineering, University of Strathclyde, Glasgow, Scotland, UK

⁴ Antarctic Climate and Ecosystems Cooperative Research Centre, Hobart, Australia

Correspondence to: C.-H. Su (chunhsu.su@bom.gov.au)

Abstract. The Bureau of Meteorology Atmospheric high-resolution Regional Reanalysis for Australia (BARRA) is the first atmospheric regional reanalysis over a large region covering Australia, New Zealand and southeast Asia. The production of the reanalysis with approximately 12 km lateral resolution – BARRA-R – is well underway with completion expected in 2019. This paper describes the numerical weather forecast model, the data assimilation methods, and the forcing and observational data used to produce BARRA-R, and analyses results from the 2003-2016 reanalysis. BARRA-R provides a realistic depiction of the meteorology at and near the surface over land as diagnosed by temperature, wind speed, surface pressure, and precipitation. Comparing against global reanalyses ERA-Interim and MERRA-2, BARRA-R scores lower root-mean-square errors when evaluated against (point-scale) 2 m temperature, 10 m wind speed and surface pressure observations. It also shows reduced biases in daily 2 m temperature maximum and minimum at 5 km resolution, and a higher frequency of very heavy precipitation days at 5 and 25 km resolution when compared to gridded satellite and gauge analyses. Some issues with BARRA-R are also identified: biases in 10 m wind, lower precipitation than observed over the tropical oceans, higher precipitation over regions with higher elevations in south Asia and New Zealand. Some of these issues could be improved through dynamical downscaling of BARRA-R fields using convective-scale (< 2 km) models.

1 Introduction

Reanalyses are widely used for climate monitoring and studying climate change as they provide long-term spatially complete records of the atmosphere. This is achieved by using data assimilation techniques that produce an observation-constrained model estimate of the atmosphere. They draw short-term model states towards observations from multiple, disparate sources to form an atmospheric analysis. A physically realistic model provides the means to infer atmospheric states at locations without observations from the limited collection of irregularly distributed observations.

Global-scale reanalyses using global atmospheric circulation models (GCMs) have advanced in quality and quantity during the past two decades (Dee et al., 2014; Hartmann et al., 2013). At present, the available global reanalyses established for the satellite era include the NCEP/NCAR reanalysis at 210 km horizontal resolution (Kalnay et al., 1996), the Japanese 55-year Reanalysis (JRA-55) at 60 km (Ebita et al., 2011), the Modern-Era Retrospective analysis for Research and Applications-2 (MERRA-2) at about 50 km (Gelaro et al., 2017) and the European Centre for Medium Range Weather Forecasts (ECMWF) ReAnalysis Interim (ERA-Interim) at ~79 km (Dee et al., 2011). The latter is currently being replaced by the new ERA5 ~31 km reanalysis (Hersbach and Dee, 2016). These global reanalyses have the advantage of providing globally consistent information, but at the expense of spatial resolution. With resolutions typically greater than 50 km, they may be deficient in accounting for important subgrid variations in meteorology over heterogeneous terrains and islands, and across irregular coastlines, and other small-scale processes (Mesinger et al., 2006; Randall et al., 2007, and references therein).

To address these shortcomings, the development in global reanalysis has also driven concurrent efforts in statistical approaches and dynamical downscaling (e.g., Dickinson et al., 1989; Fowler et al., 2007; Evans and McCabe, 2013). The latter typically embeds a high-resolution meteorological model within a global reanalysis, where effects of small-scale forcing and processes such as convection are modelled. Such development is supported by improvements in non-hydrostatic models that run at high resolution in operational numerical weather prediction (NWP) (e.g., Clark et al., 2016). Regional reanalyses are emerging as a step further in this direction. The first regional reanalysis was the North America Regional Reanalysis (NARR, Mesinger et al., 2006). More recent examples include the Arctic System Reanalysis (ASR, Bromwich et al., 2018), Indian Monsoon Data Assimilation and Analysis (IMDAA, Mahood et al., 2018) and Uncertainties in Ensembles of Regional Reanalyses (UERRA) in Europe (Borsche et al. (2015) and therein). In contrast to dynamically downscaled global reanalyses, observations are used in regional reanalyses in the same way as in the global ones to reduce model errors in high-resolution simulations (Bollmeyer et al., 2015). The resulting reanalyses are expected to have better representations of frequency distributions, extremes and actual space and time-dependent variability (particularly for near-ground variables). UERRA consists of four regional reanalyses developed by the Swedish Meteorological and Hydrological Institute (SMHI), Météo France, Deutscher Wetterdienst (DWD), and UK Met Office (UKMO), producing an ensemble of high resolution (5–25 km) regional reanalyses of essential climate variables. The SMHI's HARMONIE [Hi-Resolution Limited Area Model (HIRLAM) Aire Limitée Adaptation Dynamique Développement International (ALADIN) Regional/Mesoscale Operational NWP in Europe] reanalysis has entered production for the Copernicus Climate Change Service (Ridal et al., 2017).

Regional reanalyses provide significant added value to their global counterparts in diverse applications ranging from traditional climate studies to industry applications, including regional climate change assessments that include local impact studies (e.g., Fall et al., 2010) and extreme events reconstruction (e.g., Zick and Matyas, 2015). As the regional reanalyses are generally produced with high spatial as well as temporal resolution, the extremes of variables at local scales may be quantified more accurately. They are also an alternative reference to evaluate climate projections (e.g., Ruiz-Barradas and Nigam, 2006; Radic

and Clarke, 2011). At the same time, embedded forecast models can be used within the framework of the Coordinated Regional Climate Downscaling Experiment (CORDEX, Martynov et al., 2013) within a seamless framework for weather and climate prediction, where model deficiencies that differ in spatial and time scales can be more readily understood (Brown et al., 2012). They also offer useful data sets for designing new infrastructure, particularly if they are sufficiently long and spatially relevant to define the likelihood of extremes. For renewable energy production, they can provide valuable information on intermittency (e.g., wind lull) and covariability (e.g., correlation spatially or between variables) of phenomena. For instance, COSMO (Consortium for Small-scale Modelling) 6 km reanalysis has shown the potential to provide realistic sub-daily representations of winds at 10 to 40 m height (Borsche et al., 2016), and to resolve small-scale cloud structures (Bollmeyer et al., 2015). NARR was used to define a climatology of surface wind extremes (Malloy et al., 2015), and 30-year trends in wind at hub height (Holt and Wang, 2012) over northern America.

To date, while regional reanalyses exist for North America, Europe and India, no atmospheric regional reanalysis for the Australasian region has been produced. To close this gap, the Bureau of Meteorology Atmospheric high-resolution Regional Reanalysis for Australia (BARRA, Jakob et al., 2017) has been produced. BARRA is the first atmospheric regional reanalysis that covers Australia, New Zealand, southeast Asia, and south to the Antarctic ice edge (Figure 1). It is produced by the Australian Bureau of Meteorology (Bureau), with sponsorship from state fire and governmental agencies across Australia, because of the important advantages it provides for planning and management to reduce risks due to extreme weather events including bushfires. For instance, BARRA will address the lack of accurate climate information on highly variable surface winds over large areas of Australia due to the low density of the surface observation network in remote areas. BARRA covers a 29-year period from 1990 to 2018, with possible further extensions back and forward in time. The BARRA project delivers a whole-of-domain reanalysis (identified as BARRA-R) with approximately 12 km lateral resolution, and additional convective-scale (1.5 km horizontal grid-length) downscaling (BARRA-x), nested within BARRA-R, centred on major Australian cities to generate additional high-resolution information needed for local-scale applications and studies. These resulting gridded (12 km and 1.5 km) products include a variety of 10 min to hourly surface parameters, describing weather and land-surface conditions, and hourly upper-air parameters covering the troposphere and stratosphere. The fields on standard pressure levels are generated from vertical interpolation of model-level fields. BARRA serves to lay the foundation for future generations of reanalyses at the Bureau and to further develop its capabilities to produce seamless climate information that integrates its observational networks and NWP programme.

In this paper, we describe the forecast model, data assimilation methods, and the forcing and observational data used to produce BARRA-R in Section 2. Section 3 provides an initial assessment of the reanalysis system over the first 14 years 2003-2016, with a focus on analysing the quality at or near the surface; Section 4 concludes with a brief summary of our findings.

2 The BARRA-R reanalysis

The development of BARRA builds on the Bureau's experience in operational (deterministic) NWP forecasting over the Australian region using the Australian Community Climate and Earth-System Simulator (ACCESS)-R system (Bureau of Meteorology, 2010; 2013; Puri et al., 2013), and BARRA-R is produced using the UKMO's system in UERRA (based on Jerney and Renshaw, 2016) but without the ensemble component. An ensemble NWP forecast system is currently under development at the Bureau. BARRA-R is produced by running a limited-area meteorological forecast model forced with global reanalysis boundary conditions, drawn closer to observations via data assimilation. This section provides an overview of these components while more technical details are included in the references.

2.1 Forecast model

The Unified Model (UM, Davies et al., 2005) is the grid-point atmospheric model used in BARRA-R and ACCESS. It uses a non-hydrostatic, fully compressible, deep-atmosphere formulation and its dynamical core (Even Newer Dynamics for General atmospheric modelling of the environment, ENDGame) solves the equations of motion using mass-conserving semi-implicit, semi-Lagrangian time-integration methods (Wood et al., 2014). The model includes a comprehensive set of parametrizations, including a modified boundary layer scheme based on Lock et al. (2000), a variant of Wilson and Ballard (1999) for mixed-phase cloud microphysics, the mass flux convection scheme of Gregory and Rowntree (1990), and the radiation scheme of Edwards and Slingo (1996), which have all since been improved. Other parametrized sub-grid scale processes include fractional cloud cover and orographic drag. More details on all of the physics schemes can be found in Walters et al. (2017a).

The prognostic variables are three-dimensional wind components, virtual dry potential temperature and Exner pressure, dry density, and mixing ratios of moist quantities. The model is discretized on a horizontally staggered Arakawa C-grid (Arakawa and Lamb, 1977) and a vertically staggered Charney-Phillips grid (Charney and Phillips, 1953). The staggered arrangement of grid points allows for accurate finite differencing but results in different model fields located on staggered grids displaced by half a grid spacing along both axes. Data has been left on the staggered grids to allow users to apply the most appropriate re-gridding methods suited for given applications. The vertical levels smoothly transition from terrain-following coordinates near the surface, to constant height surfaces in the upper atmosphere (Davies et al., 2005).

BARRA-R uses version 10.2 of the UM and is configured with 70 vertical levels extending from near the surface to 80 km above sea level: 50 model levels below 18 km, and 20 levels above this. While configured with this height based on ACCESS-R, we have more confidence in the data up to a height of 25-30 km where we have most information from observations. The horizontal domain of BARRA-R spans from 65.0° to 196.9° E, -65.0° to 19.4° N (Figure 1), with constant latitude and longitude increments of $0.11^\circ \times 0.11^\circ$ and 1200×768 grid points in the horizontal. The model was run to produce 12-hour (12h) forecasts in each 6-hourly cycle (see Section 2.2) to give extra data for driving dynamical downscaling within the domain.

The model parametrizations in BARRA-R are inherited from the UKMO Global Atmosphere (GA) 6.0 configurations described in Walters et al. (2017a). The GA6 configurations are also suited for limited-area models with resolutions > 10 km, but with some modifications:

- 5 i. A variable Charnock coefficient is used in surface heat exchange over the sea to improve the tropical Pacific air-sea exchange (Ma et al., 2015).
- ii. The heat capacity of "inland water canopy" is set to $2.11 \times 10^7 \text{ J K}^{-1} \text{ m}^{-2}$ for modelling lakes. This improves the diurnal cycle over inland waters. By contrast, grid cells containing salt lakes in Australia are modelled as bare soil surface (for Lake Eyre and Lake Frome) and vegetated surface (e.g., Lake Lefroy, Lake Ballard).
- 10 iii. For its deep convective mass flux scheme, a grid-box dependent convective available potential energy (CAPE) closure scheme is chosen to limit the role of parameterized convection. When vertical velocity exceeds the given threshold of 1 m/s, the vertical velocity dependent CAPE closure is chosen to release the convective instability efficiently (Zhu and Dietachmayer, 2015). These changes aim to improve the model stability.
- 15 iv. The river routing scheme has been turned off because it is not designed for a limited-area model. Therefore, there is no routing of runoff from inland grid points out to sea and inland water bodies, and soil moisture is not affected by this hydrological process.

The characteristics of the lower boundary, climatological fields and natural and anthropogenic emissions are specified using static ancillary fields. These are created as per Walters et al. (2017a, Table 1), with the exceptions of the land-sea mask and canopy tree heights. The land-sea mask is created from the 1 km resolution International Geosphere–Biosphere Programme (IGBP) land cover data (Loveland et al., 2000), and the canopy tree heights are derived from satellite light detection and ranging (LiDAR, Simard et al., 2011; Dharssi et al., 2015). Climatological aerosol fields (ammonium sulphate, mineral dust, sea salt, biomass burning, fossil-fuel black carbon, fossil-fuel organic carbon, and secondary organic (biogenic) aerosols) are used to derive the cloud droplet number concentration. Absorption and scattering by the aerosols are included in both the shortwave and longwave.

2.1.1 Land surface

25 The UM uses a community land surface model, the Joint UK Land Environment Simulator (JULES, Best et al., 2011). It models partitioning of rainfall into canopy interception, surface runoff and infiltration, and uses the Richards' equation and Darcy's law to model soil hydrology. Sub-grid scale heterogeneity of soil moisture is represented by the Probability Distributed Moisture (PDM) model (Moore, 2007). A nine-tile approach is used to represent sub-grid scale heterogeneity in land cover, with the surface of each land point subdivided into five vegetation types (broadleaf tree, needle-leaved trees, temperate C3
30 grass, tropical C4 grass and shrubs) and four non-vegetated surface types (urban, inland water, bare soil and land ice). It describes a 3 m soil column with a 4-layer soil scheme with soil thicknesses of 0.1, 0.25, 0.65 and 2.0 m, and models vertical

heat and water transfer within the column with van Genuchten hydraulic parameters. The JULES urban parameters are optimised for Australia as described by Dharssi et al. (2015).

2.1.2 Soil moisture

For the 1990-2014 period, soil moisture fields in BARRA-R are initialised daily at every 06 UTC using soil moisture analyses from an offline simulation of JULES, at 60 km resolution, driven by bias corrected ERA-Interim atmosphere forcing data, using methods described in Dharssi and Vinodkumar (2017) and Zhao et al. (2017). The simulation used a 10-year long spin-up period and then was run continuously for the 1990 to 2014 period. The near-surface soil moisture analyses are found to have good skill for the Australian region when validated against ground-based soil moisture observations (Dharssi and Vinodkumar, 2017). As the offline runs were terminated at the end of December 2014, the daily initialization scheme is continued with soil moisture analyses from the Bureau's global NWP system – ACCESS-G (Bureau of Meteorology, 2016). These external soil moisture analyses are downscaled to the BARRA-R grid using a simple method that takes into account differences in soil texture. As well, in each 6-hourly cycle, a land surface analysis is conducted within BARRA (see Section 2.2). The daily initialisation was conducted with the purpose of avoiding spurious drift in the BARRA moisture fields and reducing the time needed to spin up from ERA-Interim initial conditions. However, as multiple parallel production streams are needed to produce the reanalysis (see Section 2.2), a discontinuity in soil moisture in the bottom two layers exists between successive production streams, although soil moisture in the top two layers become stable after one-month of runs. A discontinuity occurring at the 2014-2015 changeover has recently been reported by BARRA data users. These impacts, particularly on forested regions where trees extract water from the deep soil layers, are under investigation.

2.1.3 Boundary conditions

The BARRA-R sequential data assimilation process is initialized using ERA-Interim analysis fields (see Section 2.2), after which the only relationship with ERA-Interim is solely through the lateral boundary conditions. Hourly lateral boundary conditions for BARRA-R are interpolated from ERA-Interim's 6-hourly analysis fields at $0.75^\circ \times 0.75^\circ$ resolution. The rim width of the boundary frame is 0.88° .

The land boundary is provided by a land surface analysis (Section 2.2). Daily sea-surface temperature (SST) and sea ice (SIC) analysis at $0.05^\circ \times 0.05^\circ$ resolution from reprocessed (1985-2007, Roberts-Jones et al., 2012) and near real-time (NRT) Operational Sea Surface Temperature and Ice Analysis (OSTIA, Donlon et al., 2012) are used as lower boundaries over water after being interpolated to the UM grid. The NRT data is used from January 2007. OSTIA is widely used by NWP centres and operational ocean forecasting systems, owing to their short real-time latency. Even though the re-processed and NRT data do not constitute a homogeneous timeseries, OSTIA is favoured over other SST reanalyses owing to its higher spatial resolution. Masunaga et al. (2015, 2018) have shown steep SST gradients, unresolved by coarse SST reanalyses, can influence the

organization of long-lived rain bands and enhancement or reduction of surface convergence, and this is particularly problematic for atmosphere-only reanalyses as thermal structure and motions in the marine atmospheric boundary layer are not well constrained by data assimilation.

2.2 Data assimilation system

5 The BARRA-R analysis scheme is based on fixed deterministic atmospheric and land surface assimilation systems used by the UKMO in UERRA (Jermey and Renshaw, 2016) and IMDAA (Mahmood et al., 2018). BARRA-R uses a sequential data assimilation scheme, advancing forward in time using 6-hourly analysis cycles centred at synoptic hours $t_0 = 0, 6, 12$ and 18 UTC, and 12h forecast cycles from t_0-3h (Figure 2).

In each analysis cycle, available observations, distributed across a 6h analysis window $t_0-3h \leq t < t_0+3h$, are combined with
10 the prior information of the model forecast from the previous cycle (the background state), to provide a more accurate estimate of the atmosphere over this window. This first involves a 4-dimensional variational (4DVar) analysis of the basic upper-air atmospheric fields (wind, temperature, specific humidity, pressure) with conventional and satellite observations (see below). 4DVar is favoured over 3DVar as it takes account of time tendency information in the observations and this has a positive impact on the resulting forecasts (Rawlins et al., 2007). The UKMO's VAR assimilation system (version 2016.03.0) is used.
15 The 4DVar uses a linear perturbation forecast (PF) model (Lorenc 2003; Rawlins et al., 2007, Lorenc and Payne, 2007), which uses a simpler model state linearised about a 'guess' trajectory (i.e., tangent linear model) with a lower resolution (0.33° cf. 0.11°) than the full forecast model. The lower resolution is chosen to limit computational costs. The PF model uses a simplified set of physical parameterizations including a simple boundary layer, cloud latent heat release, large-scale precipitation and convection. In other words, it is assumed that the lower-resolution corrections to the background state (i.e. increments),
20 interpolated to a higher resolution, are suitable corrections for the full model. The analysis increments from 4DVar valid at t_0-3h are added to the background state at t_0-3h to produce an improved initial condition for the forecast model to perform the next 12h forecast from t_0-3h to t_0+9h . A constraint of zero analysis increments is specified at the model boundary such that BARRA-R relies on the driving model ERA-Interim to define large-scale flow and other atmospheric conditions (Section 2.1.3).

25 The variational method minimises a cost function whose two principal terms penalise distance to the background state and distance to the observations. The two terms are squared differences weighted by the inverse of their corresponding error covariances. In BARRA-R, the background error covariance has been estimated by a smooth parameterised approximation to climatology tuned by forecast differences (Ingleby, 2001). Accordingly, the estimated background error covariance is invariant between successive analysis windows, but is time varying within the analysis window. The cost function also includes a
30 pressure-based energy norm that serves as a weak constraint digital filter to suppress spurious fast oscillations associated with

gravity-inertia waves produced in model forecasts when analysis increments are added to the background state (Gauthier and Thépaut, 2001).

The initial land surface state can have a significant impact on short-term forecasts of screen-level temperature and humidity, and its quality can also be improved through data assimilation. An Extended Kalman Filter (EKF) using observations of 2 m
5 temperature and humidity is used to analyse the BARRA land state at every 6 hour cycle and provide analyses of soil moisture, soil temperature and skin temperature as described by Dharssi et al. (2012). The assimilation of satellite-retrieved soil moisture is not attempted here as it has not been realised in ACCESS. The UKMO's SURF analysis system (version 2016.07.0) is used to perform EKF. The Jacobian, which relates observed variables to model variables, for the Kalman gain matrix is estimated using finite difference by perturbing each model variable to be analysed in 40 perturbations and performing short 3-hour
10 forecasts. Here JULES (version 3.0) is run in the standalone mode, decoupled from the UM. The BARRA-R land state is reconfigured with EKF-derived surface analyses at every t_0 .

Notice that the last 6h forecast of this model run represents the prior state estimates needed for the next analysis cycle. The forecast fields valid at t_0-3h , t_0-2h and t_0-1h are discarded, as these fields may still be influenced by transient artefacts due to the slight imbalance introduced by the addition of the analysis increments. It is already noted that this effect is also mitigated
15 with the energy norm in the 4DVar's cost function that penalises the unbalanced structure in the increments.

The reanalysis is produced with multiple parallel production streams to speed up production. Each stream has a month of spin-up time from the ERA-Interim initial conditions before production data is archived, with most streams producing one year of reanalyses. Trials have shown that a one-month period is sufficient for spin-up the atmosphere (Renshaw et al., 2013) and top levels of soil moisture, but insufficient for soil moisture in the deeper layers.

20 **2.3 Observations**

Conventional observations from land surface stations, ships, drifting buoys, aircrafts, radiosondes, wind profilers, and satellite observations, namely retrieved wind, radiances and bending angle, are assimilated in BARRA-R. The various observational types are chosen as they have been assimilated in the Bureau's operational NWP systems; other observational types, such as clear-sky radiances, have not been assimilated due to resource constraints. Rain observations from radar and gauges are also
25 not assimilated as their assimilation schemes are still being tested for operational NWP. As listed in [Table 1](#), the data sets are pragmatically taken from multiple sources, as they are being prepared during the production runs. Most of the observations prior to 2009 are supplied by ECMWF, and the satellite radiance data from 2017 and onwards are extracted from the UKMO operational archive.

The Bureau's archived observational data is also used to support this work, especially for the cycles from 2010 onwards. BARRA-R also assimilates additional high frequency (10 min) land surface observations from automatic weather stations in Australia, and locally derived satellite atmospheric motion vectors (AMV). Ground positioning system (GPS) radio occultation bending angle data up to 2009 is provided by the Radio Occultation Meteorology Satellite Application Facility (ROM SAF).
5 Additional land surface observations over New Zealand are extracted from their National Climate Database (CliFlo, 2017). The 4DVar assimilation of local AMV (Le Marshall et al., 2013) and GPSRO (Le Marshall et al., 2010) has been shown to improve operational forecasts.

Before being assimilated, observations are screened to select the best quality observations, remove duplicates and reduce data redundancy via thinning, using the UKMO's Observing Processing System (OPS) (based on version 2016.03.0) (Rawlins et al., 2007). There are per-cycle quality controls performed based on the method of Lorenc and Hammon (1988). Observations significantly different from the model background are rejected when exceeding a threshold calculated by a Bayesian scheme, unless they are consistent with other observations nearby. The observational error variances and thinning distances are established at the UKMO and the Bureau for their NWP systems. For the surface, sonde and aircraft observations, an observation automatic monitoring system performs monthly blacklisting of sites that show consistently large differences with
10 BARRA-R's forecast over a one-month period. The system also calculates bias corrections for surface pressure and for aircraft and sonde temperature.
15

For the satellite data, instruments and their individual channels are rejected when they become unreliable. The blacklisting is informed by the work of ECMWF and MERRA-2 reanalysis teams. Further, airmass-dependent variational bias correction is applied to satellite radiances as part of the assimilation process, allowing the time-varying corrections to fit drifts in instrumental bias (Harris and Kelly, 2001; Dee and Uppala, 2008). The bias corrections were calculated monthly, with the satellite radiances during the first month of each production stream not assimilated. There are abrupt changes to the amount of satellite data assimilated at the start and end of satellite missions and the various observational data archives. In some cases, changes occur when corrections were made to the observation screening and thinning rules mid-production of the 2010-2015 reanalyses. The impacts of such changes, known to cause artificial shifts and spurious trends in a reanalysis (e.g., Thorne and
20 Vose, 2010; Dee et al., 2011) are still to be investigated for BARRA-R.
25

3 Preliminary evaluation

Our evaluation focuses on three areas: surface variables, pressure-level temperature and wind, and precipitation. For the surface variables, we compare BARRA-R against point-scale observations and gridded analyses of observations for 2 m temperature. For the pressure levels, we evaluate BARRA-R against point-scale observations of temperature and wind, and examine the
30 timeseries of the bias between BARRA-R and the global reanalyses. Finally, as rain observations are not assimilated in

BARRA-R, gridded analyses of rain observations from gauges and satellites are used to provide the best independent reference in this study.

3.1 Surface

3.1.1 Point-scale evaluation of 2 m temperature, 10 m wind speed and surface pressure

5 The t_0+6h model forecasts of 2 m (screen) temperature, 10 m wind speed and surface pressure are evaluated against land observations. These observations have only an indirect relation to the forecasts as they are not used in the analysis for the associated cycle t_0 . Since errors tend to grow with the forecast range, the assessment places an upper bound on the true errors of the analysis fields between time t_0 and t_0+3h . These fields are interpolated from the model levels using surface similarity theory (Walters et al., 2017a). The ERA-Interim t_0+6h forecasts from 0 and 12 UTC and the MERRA-2 hourly time-averaged
10 forecast fields (M2T1NXSLV) are also evaluated to serve as benchmarks. It is not ideal to directly compare reanalyses with different resolutions, and interpolating them onto common (observed) locations diminishes some of the improvement achieved by BARRA-R relative to coarser reanalyses. Nonetheless, we undertake the latter to assess whether the models contain finer-scale information captured by point measurements; it therefore does not provide an assessment of the true quality of the reanalyses at their native resolutions.

15 To correct representativity errors in both reanalyses, their model values at (modelled) land grid cells are interpolated to the observation times and the station locations via bilinear interpolation in time and in the horizontal direction. Height corrections are applied to the interpolated fields to match the station heights: the corrections to the screen temperature is based on dry adiabatic lapse rate (Sheridan et al., 2010), 10 m wind speed is based on Howard and Clark (2007), and the correction to surface pressure is based on the hydrostatic equation under a constant lapse rate. As the observations are irregularly distributed
20 in time, we consider all observations within a t_0+5h to t_0+7h time window, with t_0 being 0 and 12 UTC, and the model grids are linearly interpolated to the observation times. Root-mean-squared difference (RMSD), Pearson's linear correlation, additive bias and variance bias are calculated at each station, with $bias = mean(d_m) - mean(d_o)$, the variance bias as $Mbias = var(d_m)/var(d_o) - 1$ to capture differences in the dispersion, where $var(*)$ computes the variance in time.

Boxplots in [Figure 3](#) show the distribution of scores across 900-1500 stations in the BARRA-R domain. BARRA-R shows
25 better agreement with the point observations than the global reanalyses for all three surface variables by most of the measures. This result is expected since BARRA-R resolves near-surface features below 50 km horizontal scale, and assimilates more surface observations over Australia and New Zealand. In particular, BARRA-R shows lower RMSD at about 80% of the stations for screen temperature and 10 m wind speed, and at 70% of stations for surface pressure (see the Supplementary Material). At closer inspection in [Figure 4\(a\)](#), a percentile comparison plot of screen temperature deviation from monthly mean

indicates that the frequency distribution of BARRA-R temperature is closer to that of the observations than ERA-Interim, particularly in regimes below 25% percentiles and above 90% percentiles.

For 10 m wind speed, negative biases for variance exist in all the reanalyses. [Figure 4\(b\)](#) shows that 10 m wind speeds are positively biased during light wind conditions and vice versa during strong wind speeds. There are many possible reasons for under-estimating strong winds: the inaccurate descriptions of boundary layer mixing and form drag for sub-grid orography, and of surface properties such as land cover and vegetation types. Changing the fractional area of the vegetation canopy modifies scalar roughness of the vegetated tiles, affecting the wind speed. The seemingly linear variation in wind speed is known in the global reanalyses (e.g., Carvalho et al., 2014), and Rose and Apt (2016) attributed the problem of wind underestimation to inaccuracy in modelling wind speeds in unstable atmospheric conditions.

Pressure is a large-scale variable which is likely to be better represented by a global model than a limited-area model. However, the BARRA-R estimates of point-scale surface pressure are more accurate in topographically complex regions and coastlines (see the Supplementary Material), where the estimates from the coarser reanalyses are less representative.

3.1.2 Comparison with gridded analysis of observed 2 m temperature

The reanalyses are compared against a gridded daily $0.05^\circ \times 0.05^\circ$ analysis of station maximum and minimum 2 m temperature data from the Australian Water Availability Project (AWAP, Jones et al., 2007). The AWAP grids are generated using an optimised Barnes successive-correction method that applies weighted averaging of the station data. Topographical information is included by using anomalies from long-term (monthly) averages in the analysis process. The analysis errors for maximum temperature are larger near the coast around northwest Australia and around the Nullarbor Plain, due to strong temperature gradients between the coast and inland deserts and a relatively sparse network (Jones et al., 2007). The coast of Western Australia and parts of Northern Territory are likely to share this similar analysis issue. The analysis errors are greater for minimum temperature, especially over Western Australia and the Nullarbor Plain.

[Figure 5](#) shows the differences for 2007-2016 averages in daily maximum and minimum temperature from AWAP, ERA-Interim, MERRA-2 and BARRA-R. The daily statistics are derived from 3-hourly forecast fields of ERA-Interim and hourly fields of MERRA-2 and BARRA-R. While inherent biases due to sampling are expected, this comparison also highlights the advantage of higher frequency data when examining lower and upper tail statistics. BARRA-R shows cold and warm biases (relative to AWAP) of around 1 K in daily maximum and minimum temperature respectively, particularly over the eastern region. MERRA-2 also shows similar levels of biases but with different signs and variability. BARRA-R and MERRA-2 agree better with AWAP than ERA-Interim, which reports differences (in mean) up to 5 K in magnitude. The reduced amplitude of the diurnal cycle of temperature is a long-standing problem in the UM; experiments have shown that changes to the

representation of the land surface (e.g., reductions in the amount of bare soil and changes to scalar roughness and albedo of vegetated tiles) reduce clear-sky biases (Bush et al., 2019).

[Figure 6](#) shows the monthly means of the differences in daily maximum and minimum temperature between the reanalyses and AWAP averaged across Australia. Here the OSTIA SST anomaly timeseries is also included, and it does not show a visible discontinuity at 2006/2007 (Section 2.1.3). The maximum temperature in BARRA-R appears cooler than AWAP after a strong La Nina event in 2010-2011, while the global reanalyses also show cooler trends in biases after 2010. BARRA-R and ERA-Interim show smaller levels of temporal variability than MERRA-2. The minimum temperature in BARRA-R does not show an obvious trend but is warmer during 2010-2011 when ERA-Interim and MERRA-2 are cooler. These changes do not coincide with our changes in soil moisture initialization in 2014-2015 (Section 2.1.2) or OSTIA SST.

10 3.2 Pressure levels

To assess BARRA-R in the atmosphere, we compare the t_0+6h forecasts on pressure levels with radiosonde and pilot wind observations at 0 and 12 UTC on standard pressure levels ranging from 1000 to 10 hPa, using the harmonized data set produced by Ramella Pralungo et al. (2014a; 2014b). The pressure-level fields of BARRA-R and ERA-Interim's analyses at time t_0 are also compared, even though they are not independent from the observations; such comparisons only provide baselines to interpret the relative quality of the BARRA-R forecasts. Similar comparisons with ERA-Interim's twice-daily forecasts at these observation times are also not possible because they start from 0 and 12 UTC. The model data is interpolated horizontally to the sonde and pilot launch locations via bilinear interpolation, and RMSD is calculated at each location and pressure level. The resulting boxplots of RMSD are shown in [Figure 7](#). Depending on the pressure level and parameter evaluated, between 54 to 203 sites were available. There is a marked variability in RMSD with the pressure levels, particularly for wind speed, due to reasons such as variations in the number of observing sites, increasing sonde drift error on ascent, and differences in dynamic range of the fields with height. A markedly higher RMSD for wind speed occurs at 200 hPa where the jet stream can occur.

It is difficult to discern the differences between the two analyses, suggesting that they perform similarly from assimilating the same observations. Assimilation at a coarser resolution of 0.33° (cf. 0.11° of the forecast model) in BARRA-R does not drastically improve 0.75° representations of temperature and wind at these pressure levels and at point scales. There are also small differences between the analyses and BARRA-R background, indicating that the 0.11° forecast model does not degrade from the lower-resolution analysis of BARRA-R but also does not improve upon the ERA-Interim's 0.75° representation of these fields at the observation locations.

[Figure 8](#) compares BARRA-R's 0 UTC analysis of air temperature at 850, 700 and 500 hPa against the analyses from ERA-Interim and MERRA-2 (M2I3NPASM). BARRA-R is cooler at 500 hPa across the domain, and warmer at 850 hPa in the tropics than the global reanalyses, and the monthly differences in the zonal mean are of order 1 K. BARRA-R also shows a

cooling shift at 700 and 500 hPa in the tropics, and a warming shift over south of 40°S after 2010. But when compared against MERRA-2, in the tropics, BARRA-R is warmer at 700 hPa, and the apparent shift in BARRA-R is also seen in MERRA-2 (relative to ERA-Interim) at these levels.

3.3 Precipitation

5 We consider three reference gridded data sets to compare with the reanalyses. First is the $0.05^\circ \times 0.05^\circ$ rain gauge analysis of
daily accumulation over Australia from AWAP, produced using the Barnes method where the ratio of observed rainfall to
monthly average is used in the analysis process (Jones et al., 2009). There is a north-south gradient in the AWAP analysis
errors with larger analysis errors in the northern tropical regions, where length scales of convective rainfall events are shorter
and more variable (Jones et al., 2009). Second is the $1^\circ \times 1^\circ$ (full data daily) rain gauge analysis over the domain from the
10 Global Precipitation Climatology Centre (GPCC version 2018, Ziese et al., 2018), created using an empirical weighting-based
interpolation method described in Becker et al. (2013). As with AWAP, GPCC is less accurate in regions where station scarcity
and high precipitation variability coexist. For instance, different GPCC interpolation methods can yield very different analyses
over the south Asia region (Becker et al., 2013). The third reference is the $0.25^\circ \times 0.25^\circ$ satellite-based analysis of 3-hourly
rain rates from the Tropical Rainfall Measuring Mission (TRMM) multi-satellite precipitation analysis (TMPA 3B42 version
15 7, Huffman et al., 2006). TMPA 3B42 combines precipitation estimates from various satellite systems and rain gauge monthly
analysis. Satellite-derived estimates of convective precipitation are largely accurate in the low latitudes (Ebert et al., 2007,
Chen et al., 2013), but the TMPA product is less accurate over the ocean due to the absence of local observations used for
gauge adjustments (Sapiano and Arkin, 2009), and south of 40°S due to limited local cross-sensor calibration (Huffman et al.,
2008). TRMM often underestimates precipitation in high-latitude regions with significant topography due to difficulties of
20 satellite retrievals over snow covered surfaces and/or due to the high elevations (Barros et al. 2006; Matthews et al. 2013).
TRMM is also known to underestimate light rainfall and drizzle over subtropical and high-latitude oceans (Berg et al., 2010).
In addition to these considerations, there are inherent limitations in comparing the reanalyses with AWAP, GPCC and TMPA.
Specifically, products with coarser grids tend to over-represent low-threshold events occurring at spatial scales smaller than
their grid sizes and under-represent high-threshold events. Further evaluation of BARRA-R precipitation estimates against
25 point gauge observations and AWAP are reported in Acharya et al. (2019).

Neither BARRA-R nor ERA-Interim assimilated rainfall observations. Precipitation estimation from their forecast models is
constrained by other observation types. Following Section 2.1, in BARRA-R, the microphysics scheme based on Wilson and
Ballard (1999) parameterises the atmospheric processes that transfer water between the four modelled states of water (vapour,
liquid droplets, ice, and raindrops) to remove moisture resolved on the grid scale. As the 12 km model is not "storm resolving",
30 BARRA-R uses the mass flux convective parameterization scheme of Gregory and Rowntree (1990) with the CAPE closure
to model sub-grid scale precipitating and non-precipitating convection using an ensemble of cumulus clouds as a single

entraining-detraining plume. Such a scheme prevents unstable growth of cloudy structures on the grid, which is otherwise required for explicit vertical circulations to develop (Clark et al., 2016). The modelled convection also works independently at each grid point, and the model can only predict the area-average rainfall, instead of the spectrum of rainfall rates. Consequently, BARRA-R's precipitation estimates from sub-grid convection will be more erroneous than those for large-scale precipitation. In other words, the accuracy of BARRA-R is expected to worsen during the warm season and at low latitudes, and to improve during cooler season and at high latitudes where non-convective precipitation is dominant. To allow the UM to spin-up from the analysis increments, we examine the quality of the precipitation accumulation between t_0+3h to t_0+9h , by comparing against gridded data sets. This also addresses the issue that the UM yields excess precipitation at analysis time (t_0-3h) due to a temporary imbalance in the moisture fields, by allowing time for the model to adjust and remove the excess. For ERA-Interim, we used its first 12h accumulation, which is considered the most accurate (Kallberg, 2011).

3.3.1. Mean annual precipitation and frequency of rain days

[Figure 9](#), row (i) compares the ten-year (2007-2016) annual mean precipitation estimated from the five data sets. A close-up over Australia can be found in the Supplementary Material. BARRA-R provides a realistic depiction when compared with TMPA across the domain, but shows higher precipitation over the tropics and over the Tasman Sea and Southern Ocean. BARRA-R agrees very well with AWAP and GPCC over Australian land areas, reflecting the markedly higher precipitation in the northern tropics, and western Tasmania. It also agrees with GPCC over New Zealand. BARRA-R also shows better agreement with AWAP, GPCC and TMPA in some of the dry areas such as western Australia.

The frequency of days with three intensity regimes is examined next in [Figure 9](#). First in row (ii), we examine the frequency of light rain days with amounts between [1,10) mm. The 1 mm threshold is chosen to account for the tendency of the model to create light "drizzle" events with very low rain rates. Even so, the two reanalyses show significantly more rain days in the tropics than TMPA and GPCC, and more rain days than TMPA over the Southern Ocean. TRMM is known to miss light rainfall events over subtropical and high-latitude oceans (Berg et al., 2010), while simulated precipitation over the Southern Ocean over-estimates drizzle when compared with satellite observations (Franklin et al., 2013; Wang et al., 2015). Some of these differences from TMPA are not mirrored by AWAP over Australia, suggesting possible under-estimation of rain days in TMPA over land (e.g., eastern seaboard, southwest Australia) where the gauge network is relatively dense (see the Supplementary Material). Despite these considerations, BARRA-R over-estimates the frequency of light rain days when compared with AWAP, notably in the northern and central regions of Australia, and Tasmania. The UM's parameterized convection scheme assumes that there are many clouds per grid box – which is marginal at the BARRA-R's resolution, and thus produces a bias towards widespread precipitation and has little indication of the areas which could expect larger rain rates (Clark et al., 2016).

For heavy precipitation days, with amounts [10,50) mm, [Figure 9\(iii\)](#) shows greater similarities between BARRA-R, AWAP and GPCC, over land regions such as southeast coast of Australia and Tasmania, than for ERA-Interim. BARRA-R shows differences from AWAP and GPCC over Australia north of 30°S where the gauge analyses are poorer. Over the ocean, the two reanalyses show more heavy precipitation days than TMPA in the tropics.

5 Lastly for the very heavy precipitation days ($\geq 50\text{mm}$) in [Figure 9\(iv\)](#), it is obvious that ERA-Interim does not fully capture the frequency over land in northern Australia, and southeast Asia, whereas BARRA-R is more comparable with the three reference datasets. This agrees with the findings of Jerney and Renshaw (2016) that higher-resolution regional reanalyses show improvement in representing high-threshold events at these spatial scales. Over the ocean, BARRA-R also shows greater rainfall intensity in the tropics than ERA-Interim, but both reanalyses show lower intensity compared to TMPA. These reflect
10 the deficiency of the parameterized convection scheme in BARRA-R for estimating convective precipitation amounts in this region.

3.3.2. Comparison of monthly totals

[Figure 10](#) and [Figure 11](#) compare differences in domain-averaged monthly totals between the reanalyses (BARRA-R and ERA-Interim) and reference data (TMPA and GPCC) over five separate sub-domains between 80 to 180° E. Precipitation over land
15 and ocean are distinguished. Over the tropical ocean between $\pm 10^\circ\text{N}$ [[Figure 10](#), row (i)], the two reanalyses show different shifts in overall differences from TMPA at around 2010, and these shifts are not apparent in the other sub-domains. Across the sub-domains, the variances of the differences are similar between the two reanalyses.

Over tropical land regions, BARRA-R shows much higher totals than others [[Figure 11\(i\)](#)], due to higher precipitation occurring at high or sharp topographical regions in Papua New Guinea (PNG), Indonesia and Sumatra, and relatively small
20 Indonesian islands (see the Supplementary Material). Other reanalyses and other gridded precipitation products disagree greatly at these locations with few observations and mountainous terrains (e.g., over PNG in Smith et al., (2013)). BARRA-R (and GPCC) also shows markedly higher monthly totals below 39.2° S [[Figure 11\(v\)](#)], than TMPA and ERA-Interim. This is due to higher BARRA-R precipitation estimates on the west coast and Southern Alps of New Zealand (see the Supplementary Material), where precipitation is likely underestimated in TMPA.

25 The UM can produce grid localized high precipitation in BARRA-R, especially in unstable atmospheric conditions over steep orographic slopes. This issue is not unique to the UM but for instance also occurs in the Weather Research and Forecasting model (Gustafson et al., 2014). When the convective parameterization in non-convective resolving models does not stabilize the air column, meteorological events can develop at the smallest resolvable scales in the model, producing unrealistically strong vertical velocities and precipitation; this is known as "grid-point storms" (Scinocca and McFarlane, 2004; Williamson,
30 2013). Such storms occur more readily in models with higher horizontal resolutions (Williamson, 2013). As the resolution

increases, resolved motions can produce moisture convergence and increase CAPE very rapidly, and the rate at which column instability is produced depends on the scale of moisture and heat convergence. This also tends to occur over tropical land areas, over steep topography, and during the warm seasons, when the atmosphere is unstable and there is sufficient warm moisture supply at the surface. These considerations do not lend themselves to explain the observed bias in BARRA-R.

5 By contrast, BARRA-R shows better agreement with GPCC and TMPA in other sub-domains between 39.2° to 10.0° S [Figure 11(ii-iv)]. Over the land between 23 to 10°S, BARRA-R simulates wetter summer events than observed in TMPA and GPCC from 2011, when Australia was recovering from drought conditions with the onset of La Nina. Between 39 to 23°S, BARRA-R also simulated wetter events over Mt Kosciuszko, Tasmania, and North Island of New Zealand than TMPA after 2014. This over-estimation is however less apparent when BARRA-R is compared with GPCC.

10 4 Discussion and outlook

The recent development of global and regional reanalyses addresses the need for high-quality, increasingly higher resolution, and longer-term reanalyses, accompanied by estimates of uncertainty, within the research and broader user communities. BARRA is the first regional reanalysis that focuses on the Australasian section of the Southern Hemisphere. It is developed with significant co-investment from state-level emergency service agencies across Australia, due to the advantages of deeper
15 understanding of past weather, including extreme events, and especially in areas that have been poorly served by observation networks. The 29-year BARRA reanalysis, which is expected to be completed in 2019, will ultimately represent a collection of high-resolution gridded meteorological data sets with 12 km and 1.5 km horizontal resolution and 10 minutes to hourly time resolution.

In this paper, we describe the BARRA 12 km regional reanalysis – BARRA-R, which is closely related to the Bureau's regional
20 NWP system, although with an updated UM, 4DVar, variational bias correction, and automated station blacklisting systems. BARRA-R covers a significant region of the globe including parts of South East Asia and the eastern Indian Ocean, the southwest Pacific, Australia and New Zealand and assimilates a wide range of conventional and satellite observations that have proven to improve the skill of NWP.

BARRA-R produces a credible reproduction of the meteorology at and near the surface over land as diagnosed by the selected
25 variables. BARRA-R improves upon its global driving model, ERA-Interim, showing better agreement with point-scale observations of 2 m temperature, 10 m wind speed and surface pressure. Results are similar when BARRA-R is compared with MERRA-2. Daily maximum and minimum statistics for 2 m temperature at 5 km resolution are captured in BARRA-R with smaller biases than ERA-Interim. There appear to be shifts in biases, relative to land observation analyses, over Australia amongst all the reanalyses, mirroring changes in SST. This behaviour however does not coincide with known changes to the
30 forcing data (soil moisture and SST) used in BARRA-R and requires further analysis to be better understood. BARRA-R's 10

m wind fields show lower biases than ERA-Interim and MERRA-2, but the negative bias during strong winds, which is common amongst other reanalyses, remains significant. Altogether, BARRA-R provides good representation of near-surface extremes, which has implications for its uses for energy management, fire risk and storm damages. The bias could be addressed via post-processing using methods such as those of Glahn and Lowry (1972), and Rose and Apt (2016). More generally, a variety of post-processing methods can further improve the accuracy of BARRA-R data (e.g., Berg et al., 2012; Frank et al., 2018). Our study did not discern clear merits in BARRA-R analysis and forecast, relative to ERA-Interim analysis, for the pressure-level temperature and wind. Further, there is no conclusive explanation for the shifts in 500, 700 and 850 hPa air temperature occurring at 2010, as comparisons with ERA-Interim and MERRA-2 yield mixed results. Other evaluations of the UM GA6 configuration including tropical cyclones, precipitation, clouds and large-scale flow, are reported in Walters et al. (2017a; 2017b), albeit in global models at coarser spatial resolutions.

Precipitation fields from BARRA-R show similarities with AWAP and GPCP rain gauge analyses over Australia, where it reflects more similar frequency statistics for heavy rain events and annual mean than ERA-Interim. While this is expected from comparing grids with different resolutions, BARRA-R contains more information pertaining to rain events at local scales. The frequency statistics (of both light and heavy rain days) of the two reanalyses are markedly different from TMPA over regions exterior to Australia. BARRA-R is likely to be positively biased over land in the regions north of 10° S and New Zealand due to higher precipitation estimates concentrated in regions with high or steep topography. This is partly due to the presence of grid-point storms that commonly occur in non-convective resolving models. Alas, the likely underestimation in observations associated with the high elevations poses difficulties to quantify the wet bias. The characteristics of grid-point storms in terms of superficial spatial localization, precipitation amount and vertical wind speed, could be detected and screened out via post-processing. The disagreement with TMPA is also apparent over the oceans, but consensus between satellite-based products generally degrades over higher latitudes, especially over the Southern Ocean (Behrangi et al., 2014). Over the 2003-2016 period, the variability of the monthly precipitation totals is similar amongst the reanalyses, TMPA and GPCP across the domain. Notable exceptions are a dry shift occurring in BARRA-R at 2010 over the tropical ocean, and wetter summer events over land in northern and southeast Australia, and the North Island of New Zealand after 2014. These coincident shifts in daily maximum 2 m temperature (over Australia), upper-air temperature (across the BARRA-R domain), and tropical precipitation in all the reanalyses suggest larger differences in large-scale synoptic patterns after 2010.

Higher resolution models used to downscale BARRA-R could alleviate the observed shortcomings by resolving sharp topographical features, resolving sub-grid processes (e.g., convection), and using science configurations more suited for a given climatic region. Assessment of the UM's first Regional Atmosphere (RA1) science configurations for convective-permitting models, recently concluded in December 2017, distinguishes two different science configurations for mid-latitude and tropical regions (RA1-M and RA1-T respectively). Developments in RA1 have produced improvements to 2 m temperature, 10 m wind speed and precipitation (Bush et al., 2019). Further, it is known that BARRA-R's convection scheme,

involving instantaneous adjustment of cloud fields to changes in forcing (e.g., solar heating, land/sea temperature differences), can lead to unrealistic behaviour at places such as coasts and in time (e.g., incorrect diurnal cycle) (Clark et al., 2016). A companion article will examine the merits from downscaling BARRA-R with convective-scale models.

5 Finally, BARRA represents an important step in supporting the Bureau's ability to prepare for future reanalysis-related activities such as data rescue and reprocessing of observational data. Future reanalyses could use higher resolution models and ensemble-based forecast and assimilation systems to quantify uncertainties. They will also benefit from international efforts in reprocessing historical conventional and satellite observations with enhanced quality and/or more accurate uncertainty estimates.

10 *Code availability.* All code, including the UM (version 10.2), VAR (version 2016.03.0), JULES (version 3.0), OPS (version 2016.03.0), SURF (version 2016.07.0) systems, used to produce BARRA is version-controlled under Met Office Science Repository Service. Readers are referred to <https://code.metoffice.gov.uk/trac/home> for access information.

Data availability. The first releases of the BARRA-R data set for period 2003-2016 are available for academic use, with subsequent releases planned for mid-2019. Readers are referred to <http://www.bom.gov.au/research/projects/reanalysis> for information on available parameters and access.

15 *Competing interests.* The authors declare that they have no conflict of interest.

Author contribution. PS, DJ, PFH and CJW conceived and/or designed BARRA. CHS, NE and PS developed the BARRA system with inputs from SR, CF, ID and HZ. CHS and NE performed the production and evaluation. CHS prepared the manuscript with contributions from all co-authors.

Acknowledgements

20 Funding for this work was provided by emergency service agencies (New South Wales Rural Fire Service, Western Australia Department of Fire and Emergency Services, South Australia Country Fire Service, South Australia Department of Environment, Water and National Resources) and research institutions (Antarctic Climate and Ecosystems Cooperative Research Centre (ACE CRC) and University of Tasmania). Funding from Tasmania is supported by the Tasmanian Government and Australian Government, provided under the Tasmanian Bushfire Mitigation Grants Program.

25 BARRA-R is set up with assistance from the UKMO reanalysis team (R. Renshaw, P. Jermey, J. Davis) and colleagues (A. Maycock, D. Walters, I. Boutle), and many colleagues at the Bureau of Meteorology (T. Le, I. Bermous, L. Rikus, C. Sanders, J. Lee, G. Dietachmayer, J. Le Marshall, X. Sun, G. Kociuba, C. Tingwell, H. Zhang), the Commonwealth Scientific and Industrial Research Organisation (CSIRO, M. Dix), National Computational Infrastructure (NCI, D. Roberts). We thank R.

Renshaw for providing the observational data from the UKMO and ECMWF archives; S. Moore and T. Carey-Smith at National Institute of Water and Atmospheric Research (NIWA) for providing additional local observations over New Zealand; R. Smalley and D. Jones for their advice on AWAP; P. May, E. Ebert, A. Dowdy and T. Hirst for their feedback on early drafts of manuscript. BARRA-R uses the ERA-Interim data, provided through ARC Centre of Excellence for Climate System Science (P. Petrelli) at NCI. Many of the observational data sets were provided by ECMWF, UKMO and NIWA. The radio occultation data were provided by the Radio Occultation Meteorology Satellite Application Facility (ROM SAF, through K. B. Lauritsen) which is a decentralized operational RO processing center under EUMETSAT. RO data are available at <http://www.romsaf.org>. This project was undertaken with the assistance of resources and services from NCI, which is supported by the Australian Government.

10 ERA-Interim can be retrieved from ECMWF, <https://www.ecmwf.int/en/forecasts/datasets/archive-datasets/reanalysis-datasets/era-interim>. AWAP data can be requested from, <http://www.bom.gov.au/climate>, TMPA v7 data is retrieved via NASA Goddard Earth Sciences (GES) Data and Information Services Center (DISC), https://disc.gsfc.nasa.gov/datasets/TRMM_3B42_V7/summary, and GPCC v2018 data is retrieved from Deutscher Wetterdienst.

15 References

- Acharya, S. C., Nathan, R., Wang, Q. J., Su, C.-H., and Eizenberg, N.: An evaluation of daily precipitation from atmospheric reanalysis products over Australia, *Hydrol. Earth Syst. Sci. Discuss.*, <https://doi.org/10.5194/hess-2018-607>, in review, 2019.
- Arakawa, A., and Lamb, V. R.: Computational design of the basic dynamical processes of the UCLA general circulation model. *Methods of Comp. Phys.: Adv. Res. Appl.*, 17, 173–265, doi: 10.1016/B978-0-12-460817-7.50009-4, 1977.
- 20 Barros, A. P., Chiao, S., Lang, T. J., Burbank, D., and Putkonen, J.: From weather to climate—Seasonal and interannual variability of storms and implications for erosion process in the Himalaya. *Geological Society of America Spatial Paper 398*, Penrose Conference Series, 17–38, 2006.
- Becker, A., Finger, P., Meyer-Christoffer, A., Rudolf, B., Schamm, K., Schneider, U., and Ziese, M.: A description of the global land-surface precipitation data products of the Global Precipitation Climatology Centre with sample applications including centennial (trend) analysis from 1901–present, *Earth Syst. Sci. Data*, 5, 71-99, <https://doi.org/10.5194/essd-5-71-2013>, 2013.
- 25 Behrangi, A., G. Stephens, R.F. Adler, G.J. Huffman, B. Lambrigtsen, and M. Lebsock: An update on the oceanic precipitation rate and its zonal distribution in light of advanced observations from space. *J. Climate*, 27, 3957–3965, doi: 10.1175/JCLI-D-13-00679.1, 2014.
- 30 Berg, W., T. L’Ecuyer, and J.M. Haynes: The distribution of rainfall over oceans from spaceborne radars. *J. Appl. Meteor. Climatol.*, 49, 535–543, doi: 10.1175/2009JAMC2330.1, 2010.
- Berg, P., Feldmann, H., and Panitz, H.-J.: Bias correction of high resolution regional climate model data. *J. Hydrol.*, 448-449, 80-92, doi: 10.1016/j.jhydrol.2012.04.026, 2012.
- Best, M.J., Pryor, M., Clark, D.B., Rooney, G.G., Essery, R.L.H., M’enard, C.B., Edwards, J.M., Hendry, M.A., Porson, A., 35 Gedney, N., Mercado, L.M., Sitch, S., Blyth, E., Boucher, O., Cox, P.M., Grimmond, C.S.B. and Harding, R.J.: The Joint UK

- Land Environment Simulator (JULES), model description - Part 1: Energy and water fluxes. *Geosci. Model Dev.*, 4(3) 677–699. doi:10.5194/gmd-4-677-2011, 2011.
- Bollmeyer, C., Keller, J. D., Ohlwein, C., Wahl, S., Crewell, S., Friederichs, P., Hense, A., Keune, J., Kneifel, S., Pscheidt, I., Redl, S. and Steinke, S.: Towards a high-resolution regional reanalysis for the European CORDEX domain. *Q. J. R. Meteorol. Soc.*, 141: 1-15. doi:10.1002/qj.2486, 2015.
- Borsche, M., Kaiser-Weiss, A. K., Unden, P., and Kaspar, F.: Methodologies to characterize uncertainties in regional reanalyses. *Adv. Sci. Res.*, 12, 207-218, doi: 10.5194/asr-12-207-201, 2015.
- Borsche, M., Kaiser-Weiss, A.K., and Kaspar, F.: Wind speed variability between 10 and 116 m height from the regional reanalysis COSMO-REA6 compared to wind mast measurements over Northern Germany and the Netherlands. *Adv. Sci. Res.*, 13, 151–161, doi: 10.5194/asr-13-151-2016, 2016.
- Bromwich, D., A. Wilson, L. Bai, Z. Liu, M. Barlage, C. Shih, S. Maldonado, K. Hines, S.-H. Wang, J. Woollen, B. Kuo, H. Lin, T. Wee, M. Serreze, and J. Walsh: The Arctic System Reanalysis Version 2. *Bull. Amer. Meteor. Soc.*, 99, 805-828, doi: 10.1175/BAMS-D-16-0215.1, 2018.
- Brown, A., S. Milton, M. Cullen, B. Golding, J. Mitchell, and A. Shelly: Unified modeling and prediction of weather and climate: A 25-Year journey. *Bull. Amer. Meteor. Soc.*, 93, 1865–1877, doi: 10.1175/BAMS-D-12-00018.1, 2012.
- Bureau of Meteorology: Operational implementation of the ACCESS numerical weather prediction systems, NMOC Op. Bull. No. 83, accessed online, <http://www.bom.gov.au/australia/charts/bulletins/apob83.pdf>, 2010.
- Bureau of Meteorology: APS1 upgrade of the ACCESS-R numerical weather prediction system, NMOC Op. Bull. No. 98, accessed online, <http://www.bom.gov.au/australia/charts/bulletins/apob98.pdf>, 2013.
- Bureau of Meteorology: APS2 upgrade to the ACCESS-G numerical weather prediction system, BNOC Op. Bull. No. 105, accessed online, <http://www.bom.gov.au/australia/charts/bulletins/APOB105.pdf>, 2016.
- Bush, M., et al.: The Met Office Unified Model Regional Atmosphere 1 and JULES Regional Land 1 configurations, in prep., 2018.
- Carvalho, D., Rocha, A., Gomez-Gesteira, M., and Santos, C. S.: WRF wind simulation and wind energy production estimates forced by different reanalyses: comparison with observed data for Portugal, *Appl. Energy*, 117, 116-126, doi: 10.1016/j.apenergy.2013.12.001, 2014.
- Charney, J. G, and Phillips, N. A.: Numerical integration of the quasi-geostrophic equations for barotropic and simple baroclinic flows. *J. Meteorol.* 10: 71–99, doi: 10.1175/1520-0469(1953)010<0071:NIOTQG>2.0.CO;2, 1953.
- Chen, Y., E. E. Ebert, K. J. E. Walsh, and N. E. Davidson: Evaluation of TRMM 3B42 precipitation estimates of tropical cyclone rainfall using PACRAIN data, *J. Geophys. Res. Atmos.*, 118, 2184-2196, doi: 10.1002/jgrd.50250, 2013.
- Clark, P., Roberts, N., Lean, H., Ballard, S. P., and Charlton-Perez, C.: Review: Convection-permitting models: a step-change in rainfall forecasting, *Meteor. App.*, 23, 165–181, doi: 10.1002/met.1538, 2016.
- CliFlo: NIWA’s National Climate Database on the Web, <http://cliflo.niwa.co.nz>, Data Retrieved: 17 February 2017.
- Davies, T., Cullen, M. J. P., Malcolm, A. J., Mawson, M. H., Staniforth, A., White, A. A., and Wood, N.: A new dynamical core for the Met Office’s global and regional modelling of the atmosphere, *Quart. J. Roy. Meteor. Soc.*, 131, 1759–1782, doi:10.1256/qj.04.101, 2005.
- Dee, D. P. and Uppala, S.: Variational bias correction of satellite radiance data in the ERA-Interim reanalysis. *Q. J. R. Meteor. Soc.*, 135: 1830-1841, doi: 10.1002/qj.493, 2009.
- Dee, D. P., E. Källén, A. J. Simmons, and L. Haimberger: Comments on “Reanalyses suitable for characterizing long-term trends.” *Bull. Amer. Meteor. Soc.*, 92, 65–70, doi:10.1175/2010BAMS3070.1, 2011.

- Dee, D. P., Uppala, S. M., Simmons, A. J., Berrisford, P., Poli, P., Kobayashi, S., Andrae, U., Balmaseda, M. A., Balsamo, G., Bauer, P., Bechtold, P., Beljaars, A. C. M., van de Berg, L., Bidlot, J., Bormann, N., Delsol, C., Dragani, R., Fuentes, M., Geer, A. J., Haimberger, L., Healy, S. B., Hersbach, H., Holm, E. V., Isaksen, L., Kallberg, P., Kohler, M., Matricardi, M., McNally, A. P., Monge-Sanz, B. M., Morcrette, J. J., Park, B. K., Peubey, C., de Rosnay, P., Tavolato, C., Thepaut, J. N., Vitart, F.: The Era-Interim reanalysis: Configuration and performance of the data assimilation system, *Q. J. R. Meteor. Soc.* 137: 553–597, doi: 10.1002/qj.828, 2011.
- Dee, D. P., Balmaseda, M., Balsamo, G., Engelen, R., Simmons, A. J., and Thepaut, J.-N.: Towards a consistent reanalysis of the climate system, *B. Am. Meteorol. Soc.*, 95, 1235–1248, doi:10.1175/BAMS-D-13-00043.1, 2014.
- Dharssi, I., Steinle, P., and Candy, B.: Towards a Kalman filter based land surface data assimilation scheme for ACCESS, Bureau of Meteorology CAWCR Technical Report No. 54, http://www.cawcr.gov.au/technical-reports/CTR_054.pdf, 2012.
- Dharssi, I., Steinle, P., and Fernon, J.: Improved numerical weather predictions by using optimised urban model parameter values and satellite derived tree heights. In Weber, T., McPhee, M.J. and Anderssen, R.S. (eds) MODSIM2015, 21st International Congress on Modelling and Simulation. Modelling and Simulation Society of Australia and New Zealand, December 2015, pp. 1161–1167. ISBN: 978-0-9872143-5-5. <https://www.mssanz.org.au/modsim2015/M4/dharssi.pdf>, 2015.
- Dharssi, I., and Vinodkumar: JASMIN: A prototype high resolution soil moisture analysis system for Australia, Bureau of Meteorology Report No. 026, <http://www.bom.gov.au/research/publications/researchreports/BRR-026.pdf>, 2017.
- Dickinson, R.E., Errico, R.M., Giorgi, F., and Bates, G. T.: A regional climate model for the western United States, 15: 383–422, doi: 10.1007/BF00240465, 1989.
- Donlon, C. J., M. Martin, J. D. Stark, J. Roberts-Jones, E. Fiedler, and W. Wimmer: The Operational Sea Surface Temperature and Sea Ice analysis (OSTIA) system, *Rem. Sens. Environ.*, 116, 140–158, doi: 10.1016/j.rse.2010.10.017, 2012.
- Ebert, E.E., J.E. Janowiak, and C. Kidd: Comparison of near-real-time precipitation estimates from satellite observations and numerical models. *Bull. Amer. Meteor. Soc.*, 88, 47–64, doi: 10.1175/BAMS-88-1-47, 2007.
- Ebita, A., Kobayashi, S., Ota, Y., Moriya, M., Kumabe, R., Onogi, K., Harada, Y., Yasui, S., Miyaoka, K., Takahashi, K., Kamahori, H., Kobayashi, C., Endo, H., Soma, M., Oikawa, Y., and Ishimizu, T.: The Japanese 55-year reanalysis JRA-55: An interim report, *SOLA*, 7, 149–152, doi: 10.2151/sola.2011-038, 2011.
- Edwards, J. M. and Slingo, A.: Studies with a flexible new radiation code. I: Choosing a configuration for a large-scale model, *Quart. J. Roy. Meteorol. Soc.*, 122, 689–719, doi:10.1002/qj.49712253107, 1996.
- Evans, J. P., and McCabe, M. F.: Effect of model resolution on a regional climate model simulation over southeast Australia. *Clim. Res.*, 56,131–145, doi: 10.3354/cr01151, 2013.
- Fall, S., Niyogi, D., Gluhovsky, A., Pielke Sr, R. A., Kalnay, E., and Rochon, G.: Impacts of land use land cover on temperature trends over the continental United States: assessment using the North American Regional Reanalysis. *Int. J. Climatol.*, 30, 1980-1993, doi: 10.1002/joc.1996, 2010.
- Fowler, H. J., Blenkinshop, S., and Tebaldi, C.: Linking climate change modelling to impacts studies: recent advances in downscaling techniques for hydrological modeling. *Int. J. Climatol.* 27, 1547–1578, doi: 10.1002/joc.1556, 2007.
- Frank, C. W., Wahl, S., Keller, J. D., Pospichal, B., Hense, A., and Crewell, S.: Bias correction of a novel European reanalysis data set for solar energy applications. *Solar Energy*, 164, 12-24, doi: 10.1016/j.solener.2018.02.012, 2018.
- Franklin, C. N., Z. Sun, D. Bi, M. Dix, H. Yan, and A. Bodas-Salcedo: Evaluation of clouds in ACCESS using the satellite simulator package COSP: Global, seasonal, and regional cloud properties, *J. Geophys. Res. Atmos.*, 118, 732–748, doi: 10.1029/2012JD018469, 2013.
- Gauthier, P., and Thépaut, J.-N.: Impact of the digital filter as a weak constraint in the preoperational 4DVar assimilation system of Météo-France.” *Mon. Wea. Rev.*, 129, 2089-2102, doi: 10.1175/1520-0493(2001)129<2089:IOTDFA>2.0.CO;2, 2001.

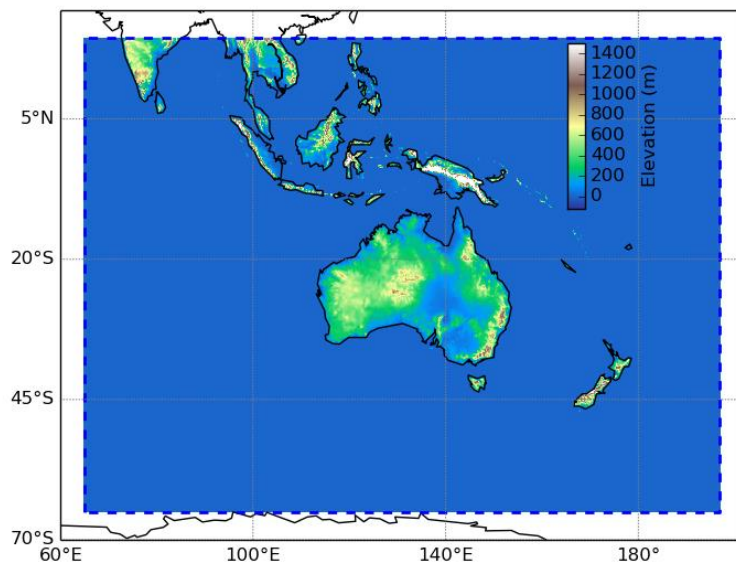
- 5 Gelaro, R., W. McCarty, M. J. Suárez, R. Todling, A. Molod, L. Takacs, C. A. Randles, A. Darmenov, M. G. Bosilovich, R. Reichle, K. Wargan, L. Coy, R. Cullather, C. Draper, S. Akella, V. Buchard, A. Conaty, A.M. da Silva, W. Gu, G. Kim, R. Koster, R. Lucchesi, D. Merkova, J. E. Nielsen, G. Partyka, S. Pawson, W. Putman, M. Rienecker, S. D. Schubert, M. Sienkiewicz, and B. Zhao: The Modern-Era Retrospective Analysis for Research and Applications, Version 2 (MERRA-2), *J. Clim.*, 30, 5419–5454, doi: 10.1175/JCLI-D-16-0758.1, 2017.
- Gregory, D., and P. R. Rowntree: A mass flux convection scheme with representation of cloud ensemble characteristics and stability-dependent closure, *Mon. Weath. Rev.*, 118, 1483–1506, doi: 10.1175/1520-0493(1990)118<1483:AMFCSW>2.0.CO;2, 1990.
- 10 Harris, B. A. and Kelly, G.: A satellite radiance-bias correction scheme for data assimilation. *Q.J.R. Meteorol. Soc.*, 127: 1453-1468. doi:10.1002/qj.49712757418, 2001.
- Hartmann, D. L., Klein Tank, A. M. G., Rusticucci, M., Alexander, L. V., Brönnimann, S., Charabi, Y., Dentener, F. J., Dlugokencky, E. J., Easterling, D. R., Kaplan, A., Soden, B. J., Thorne, P. W., Wild, M., and Zhai, P. M.: Observations: Atmosphere and Surface, in: *Climate Change 2013: The Physical Science Basis. Contribution of Working Group I to the Fifth Assessment Report of the Intergovernmental Panel on Climate Change*. Cambridge University Press, Cambridge, United Kingdom and New York, NY, USA, 2013.
- 15 Glahn, H. R., and D. A. Lowry: The use of model output statistics (MOS) in objective weather forecasting. *J. Appl. Meteor.*, 11, 1203–1211, doi:10.1175/1520-0450(1972)011<1203:TUOMOS>2.0.CO;2, 1972.
- Gustafson Jr., W. L., P.-L. Ma, and B. Singh: Precipitation characteristics of CAM5 physics at mesoscale resolution during MC3E and the impact of convective timescale choice, *J. Adv. Model. Earth Syst.*, 6, 1271–1287, doi:10.1002/2014MS000334, 20 2014.
- Hersbach, H., and Dee, D.: ERA5 reanalysis is in production, *ECMWF Newsletter No. 147*, 7, accessed online <https://www.ecmwf.int/sites/default/files/elibrary/2016/16299-newsletter-no147-spring-2016.pdf>, 2016.
- Holt, E., and Wang, J.: Trends in wind speed at wind turbine height of 80 m over the contiguous United States using the North American Regional Reanalysis (NARR), *J. Appl. Meteor. Climatol.*, 51, 2188–2202, doi: 10.1175/JAMC-D-11-0205.1, 2012.
- 25 Howard, T., and Clark, P.: Correction and downscaling of NWP wind speed forecasts, *Meteorol. Apps.*, 14, 105-116, doi: 10.1002/met.12, 2007.
- Huffman, G. J., Adler, R. F., Bolvin, D. T., Gu, G., Nelkin, E. J., Bowman, K. P., Hong, Y., Stocker, E. F., and Wolff, D. B.: The TRMM multisatellite precipitation analysis (TMPA): Quasi-global, multiyear, combined-sensor precipitation estimates at fine scales, *J. Hydrometeorol.*, 8, 38–54, doi: 10.1175/JHM560.1, 2006.
- 30 Ingleby, N. B.: The statistical structure of forecast errors and its representation in The Met. Office Global 3-D variational data assimilation scheme. *Q. J. R. Meteor. Soc.* 127: 209-231, doi: 10.1002/qj.49712757112, 2001.
- Jakob, D., Su, C.-H., Eizenberg, N., Kociuba, G., Steinle, P., Fox-Hughes, P., and Bettio, L.: An atmospheric high-resolution regional reanalysis for Australia, *Bull. Aus. Meteor. Oceanog. Soc.*, 30, 16-23, 2017.
- Jermey, P. M., and Renshaw, R. J.: Precipitation representation over a two-year period in regional reanalysis, *Q. J. R. Meteorol. Soc.*, 142, 1300–1310, doi: 10.1002/qj.2733, 2016.
- 35 Jones, D. A., Wang, W., and Fawcett, R.: High-quality spatial climate data-sets for Australia, *Aust. Meteorol. Oceanogr. J.*, 58, 233–248, 2009.
- Kallberg, P.: Forecast drift in ERA-Interim. ERA report series 10, accessed online <https://www.ecmwf.int/sites/default/files/elibrary/2011/10381-forecast-drift-era-interim.pdf>, 2011.
- 40 Kalnay, E., M. Kanamitsu, R. Kistler, W. Collins, D. Deaven, L. Gandin, M. Iredell, S. Saha, G. White, J. Woollen, Y. Zhu, M. Chelliah, W. Ebisuzaki, W. Higgins, J. Janowiak, K.C. Mo, C. Ropelewski, J. Wang, A. Leetmaa, R. Reynolds, R. Jenne, and D. Joseph: The NCEP/NCAR 40-Year Reanalysis Project. *Bull. Amer. Meteor. Soc.*, 77, 437–472, doi: 10.1175/1520-0477(1996)077<0437:TNYRP>2.0.CO;2, 1996.

- Le Marshall, J., Xiao, Y., Norman, R., Zhang, K., Rea, A., Cucurull, L., Seecamp, R., Steinle, P., Puri, K., and Le, T.: The beneficial impact of radio occultation observations on Australian region forecasts, *Aust. Meteorol. Oceanogr. J.*, 60:121–125, 2010.
- 5 Le Marshall, J., R. Seecamp, Y. Xiao, P. Gregory, J. Jung, P. Stienle, T. Skinner, C. Tingwell, and T. Le: The Operational Generation of Continuous Winds in the Australian Region and Their Assimilation with 4DVar. *Wea. Forecasting*, 28, 504–514, doi: 10.1175/WAF-D-12-00018.1, 2013.
- Lean, H. W., Clark, P. A., Dixon, M., Roberts, N. M., Fitch, A., Forbes, R., and Halliwell, C.: Characteristics of high-resolution versions of the Met Office Unified Model for forecasting convection over the United Kingdom, *Mon. Weath. Rev.*, 136, 3408–3424, doi: 10.1175/2008MWR2332.1, 2008.
- 10 Lock, A. P., Brown, A. R., Bush, M. R., Martin, G. M., and Smith, R. N. B.: A new boundary layer mixing scheme. Part I: Scheme description and single-column model tests, *Mon. Weather Rev.*, 128, 3187–3199, doi:10.1175/1520-0493(2000)128<3187:ANBLMS>2.0.CO;2, 2000.
- Lorenc, A. C., and Hammon, O.: Objective quality control of observations using Bayesian methods. Theory, and a practical implementation. *Q. J. Roy. Meteor. Soc.*, 114, 515–543, doi: 10.1002/qj.49711448012, 1988.
- 15 Lorenc, A. C.: Modelling of error covariances by 4D-Var data assimilation, *Q. J. Roy. Meteor. Soc.*, 129, 3167–3182, doi: 10.1256/qj.02.131, 2003.
- Lorenc, A. C., and Payne, T. J.: 4D-Var and the butterfly Effect: Statistical four-dimensional data assimilation for a wide range of scales, *Q. J. Roy. Meteorol. Soc.*, 133, 607–614, doi: 10.1002/qj.36, 2007.
- 20 Loveland, T. R., B. C. Reed, J. F. Brown, D. O. Ohlen, Z. Zhu, L. Yang, and J. W. Merchant: Development of a global land cover characteristics database and IGBP DISCover from 1 km AVHRR data. *Int. J. Rem. Sens.*, 21, 1303–1330, doi: 10.1080/014311600210191, 2000.
- Ma, Y., Zhou, X., Bi, D., Sun, Z., and Hirst, A. C.: Improved air-sea flux algorithms in an ocean-atmosphere coupled model for simulation of global ocean SST and its tropical pacific variability, *Clim. Dyn.*, 44, 1473–1485, doi: 10.1007/s00382-014-2281-7, 2015.
- 25 Mahmood, S., Davie, J., Jermey, P., Renshaw, R., George, J. P., Rajagopal, E. N., and Rani, S. I.: Indian monsoon data assimilation and analysis regional reanalysis: Configuration and performance, *Atmos. Sci. Lett.*, 19, doi: 10.1002/asl.808, 2018.
- 30 Malloy, J.W., D.S. Krahenbuhl, C.E. Bush, R.C. Balling, M.M. Santoro, J.R. White, R.C. Elder, M.B. Pace, and R.S. Cerveny: A surface wind extremes (“wind lulls” and “wind blows”) climatology for central North America and adjoining oceans (1979–2012). *J. Appl. Meteor. Climatol.*, 54, 643–657, doi: 10.1175/JAMC-D-14-0009.1, 2015.
- Martynov, A., Laprise, R., Sushama, L., Winger, K., Separovic, L., and Dugas, B.: Reanalysis-driven climate simulation over CORDEX North America domain using the Canadian Regional Climate Model, version 5: model performance evaluation. *Clim. Dyn.*, 41, 2973–3005, doi: 10.1007/s00382-013-1778-9, 2013.
- 35 Masunaga, R., H. Nakamura, T. Miyasaka, K. Nishii, and Y. Tanimoto: Separation of climatological imprints of the Kuroshio Extension and Oyashio fronts on the wintertime atmospheric boundary layer: Their sensitivity to SST resolution prescribed for atmospheric reanalysis. *J. Climate*, 28, 1764–1787, doi: 10.1175/JCLI-D-14-00314.1, 2015.
- Masunaga, R., Nakamura, H., Kamahori, H., Onogi, K., and Okajima, S.: JRA-55CHS: An atmospheric reanalysis produced with high-resolution SST, *SOLA*, 14, 6–13, doi: 10.2151/sola.2018-002, 2018.
- 40 Matthews, A. J., Pickup, G., Peatman, S.C., Clews, P., and Martin, J.: The effect of the Madden-Julian Oscillation on station rainfall and riverlevel in the Fly River System, Papua New Guinea, *J. Geophys. Res. Atmos.*, 118, 10926–10935, doi:10.1002/jgrd.50865, 2013.

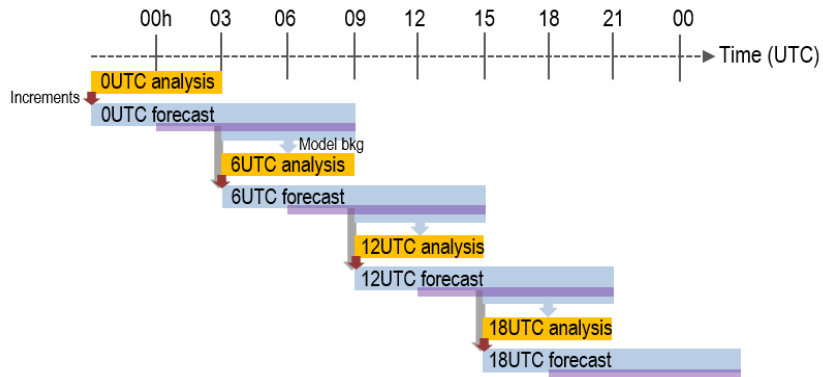
- Mesinger, F., G. DiMego, E. Kalnay, K. Mitchell, P.C. Shafran, W. Ebisuzaki, D. Jović, J. Woollen, E. Rogers, E.H. Berbery, M.B. Ek, Y. Fan, R. Grumbine, W. Higgins, H. Li, Y. Lin, G. Manikin, D. Parrish, and W. Shi: North American Regional Reanalysis, *Bull. Amer. Meteor. Soc.*, 87, 343–360, doi: 10.1175/BAMS-87-3-343, 2006.
- Moore, R. J.: The PDM rainfall-runoff model. *Hydrol. Earth Syst. Sci.*, 11: 483–499, doi: 10.5194/hess-11-483-2007, 2007.
- 5 Puri, K., G. Dietachmayer, P. Steinle, M. Dix, L. Rikus, L. Logan, M. Naughton, C. Tingwell, Y. Xiao, V. Barras, I. Bermous, R. Bowen, L. Deschamps, C. Franklin, J. Fraser, T. Glowacki, B. Harris, J. Lee, T. Le, G. Roff, A. Sulaiman, H. Sims, X. Sun, Z. Sun, H. Zhu, M. Chattopadhyay and C. Engel, Implementation of the initial ACCESS numerical weather prediction system. *Aust. Meteorol. Oceanogr. J.*, 63, 265–284, 2013.
- Radic, V., and Clarke, G. K. C.: Evaluation of IPCC models' performance in simulating late-twentieth-century climatologies and weather Patterns over North America. *J. Climate*, 24, 5257–5274, doi: 10.1175/JCLI-D-11-00011.1, 2011.
- Ramella Pralungo, L., Haimberger, L., Stickler, A., and Brönnimann, S.: A global radiosonde and tracked balloon archive on 16 pressure levels (GRASP) back to 1905 – Part 1: Merging and interpolation to 00:00 and 12:00 GMT, *Earth Syst. Sci. Data*, 6, 185–200, doi: 10.5194/essd-6-185-2014, 2014.
- Ramella Pralungo, L., and Haimberger, L.: A "Global Radiosonde and tracked-balloon Archive on Sixteen Pressure levels" (GRASP) going back to 1905 – Part 2: homogeneity adjustments for pilot balloon and radiosonde wind data, *Earth Syst. Sci. Data*, 6, 297–316, doi: 10.5194/essd-6-297-2014, 2014.
- 15 Rawlins, F., Ballard, S. P., Bovis, K. J., Clayton, A. M., Li, D., Inverarity, G. W., Lorenc, A. C., and Payne, T. J.: The Met Office global 4-dimensional data assimilation system. *Q. J. Roy. Met. Soc.*, 133, 347–362, doi: 10.1002/qj.32, 2007.
- Randall D. A., et. al., Climate models and their evaluation. In: climate change 2007: The physical science basis. Contribution of working group I to the fourth assessment report of the intergovernmental panel on climate change. In: Solomon, S., Qin, D., Manning, M., Chen, Z., Marquis, M., Averyt, K. B., Tignor, M., and Miller, H. L. (eds.) Cambridge University Press, Cambridge and New York, NY, 2007.
- 20 Renshaw, R., Jerney, P., Barker, D., Maycock, A., and Oxley, S.: EURO4M regional reanalysis system. Forecasting Research Technical Report No. 583, <https://www.metoffice.gov.uk/binaries/content/assets/mohippo/pdf/o/4/frtr583.pdf> (last access: 13 February 2018), 2013.
- 25 Ridal, M., Olsson, E., Unden, P., Zimmermann, K., and Ohlsson, A.: HARMONIE reanalysis report of results and dataset, UERRA Project Deliverable D2.7, <http://www.uerra.eu/> (last access: 13 February 2018), 2017.
- Roberts-Jones, J., E.K. Fiedler, and M.J. Martin: Daily, global, high-resolution SST and sea ice reanalysis for 1985–2007 Using the OSTIA system, *J. Clim.*, 25, 6215–6232, doi: 10.1175/JCLI-D-11-00648.1, 2012.
- 30 Rose, S., and Apt, J.: Quantifying sources of uncertainty in reanalysis derived wind speed, *Renewable Energy*, 94, 157–165, doi: 10.1016/j.renene.2016.03.028, 2016.
- Ruiz-Barradas, A. and Nigam, S.: IPCC's twentieth-century climate simulations: Varied representations of North American hydroclimate variability. *J. Clim.*, 19, 4041–4058, doi: 10.1175/JCLI3809.1, 2006.
- Sapiano, M. R. P., and Arkin, P. A.: An intercomparison and validation of high-resolution satellite precipitation estimates with 3-hourly gauge data, *J. Hydrometeor.*, 10, 149–166, doi: 10.1175/2008JHM1052.1, 2009.
- 35 Scinocca, J. F., and McFarlane, N. A.: The variability of modeled tropical precipitation, *J. Atmos. Sci.*, 61, 1993–2015, 2004.
- Sheridan, P., Smith, S., Brown, A., and Vosper, S.: A simple height-based correction for temperature downscaling in complex terrain, *Meteor. App.*, 17, 329–339, doi: 10.1002/met.177, 2010.
- Smith, I., A. Moise, K. Inape, B. Murphy, R. Colman, S. Power, and C. Chung: ENSO-related rainfall changes over the New Guinea region, *J. Geophys. Res. Atmos.*, 118, 10,665–10,675, doi:10.1002/jgrd.50818, 2013.
- 40 Simard, M., N. Pinto, J. B. Fisher, and A. Baccini: Mapping forest canopy height globally with spaceborne lidar. *J. Geophys. Res.: Biogeosci.*, 116, G04021, doi:10.1029/2011JG001708, 2011.

- Thorne, P. W., and R. S. Vose: Reanalyses suitable for characterizing long-term trends. *Bull. Amer. Meteor. Soc.*, 91, 353–361, doi:10.1175/2009BAMS2858.1, 2010.
- Walters, D., Boutle, I., Brooks, M., Melvin, T., Stratton, R., Vosper, S., et al.: The Met Office Unified Model Global Atmosphere 6.0/6.1 and JULES Global Land 6.0/6.1 configurations. *Geosci. Model. Dev.*, 10, 1487–1520, doi: 10.5194/gmd-10-1487-2017, 2017a.
- Walters, D., Baran, A., Boutle, I., Brooks, M., Earnshaw, P., Edwards, J., et al.: The Met Office Unified Model Global Atmosphere 7.0/7.1 and JULES Global Land 7.0 configurations. *Geosci. Model Dev. Discuss.*, doi: 10.5194/gmd-2017-291, 2017b.
- Wang, Z., Siems, S. T., Belusic, D., Manton, M. J., and Huang, Y.: A climatology of the precipitation over the Southern Ocean as observed at Macquarie Island. *J. Appl. Meteorol. Climatol.*, 54, 2321–2337, doi: 10.1175/JAMC-D-14-0211.1, 2015.
- Williamson, D. L.: The effect of time steps and time-scales on parametrization suites, *Q. J. R. Meteorol. Soc.*, 139, 548–560, doi:10.1002/qj.1992, 2013.
- Wilson, D. R. and Ballard, S. P.: A microphysically based precipitation scheme for the UK Meteorological Office Unified Model, *Q. J. R. Meteorol. Soc.*, 125, 1607–1636, doi:10.1002/qj.49712555707, 1999.
- Wood, N., Staniforth, A., White, A., Allen, T., Diamantakis, M., Gross, M., Melvin, T., Smith, C., Vosper, S., Zerroukat, M., and Thuburn, J.: An inherently mass-conserving semi-implicit semi-Lagrangian discretization of the deep-atmosphere global non-hydrostatic equations, *Q. J. R. Meteorol. Soc.*, 140, 1505–1520, doi:10.1002/qj.2235, 2014.
- Ziese, M., Rauthe-Schöch, A., Becker, A., Finger, P., Meyer-Christoffer, A, and Schneider, U: GPCC full data daily version.2018 at 1.0°: Daily land-surface precipitation from rain-gauges built on GTS-based and historic data. doi: 10.5676/DWD_GPCC/FD_D_V2018_100, 2018.
- Zhao, M., Zhang, H-Q., and Dharssi, I.: Impact of land-surface initialization on ACCESS-S1 and comparison with POAMA. Bureau of Meteorology Research Report No. 023, Accessed online: <http://www.bom.gov.au/research/publications/researchreports/BRR-023.pdf>, 2017.
- Zhu, H., and Dietachmayer, G.: Improving ACCESS-C convection settings, Bureau Research Report No. 008, Accessed online: <http://www.bom.gov.au/research/publications/researchreports/BRR-008.pdf>, 2015.
- Zick, S. E., and Matyas, C. J.: Tropical cyclones in the North American Regional Reanalysis: An assessment of spatial biases in location, intensity, and structure, *J. Geophys. Res.: Atmos.*, 120, 1651–1669, doi: 10.1002/2014JD022417, 2015.

Figures



5 Figure 1 BARRA-R domain enclosed by the dashed box. Blue shading shows the model orography.



5 **Figure 2** Cycling setup of BARRA-R at base time $t_0 = 0, 6, 12,$ and 18 UTC. Each UM forecast is initialized at t_0-3h by the previous forecast (grey arrows) with increments from current analysis (red arrows). The purple bars indicate the time steps of the model states that have been archived.

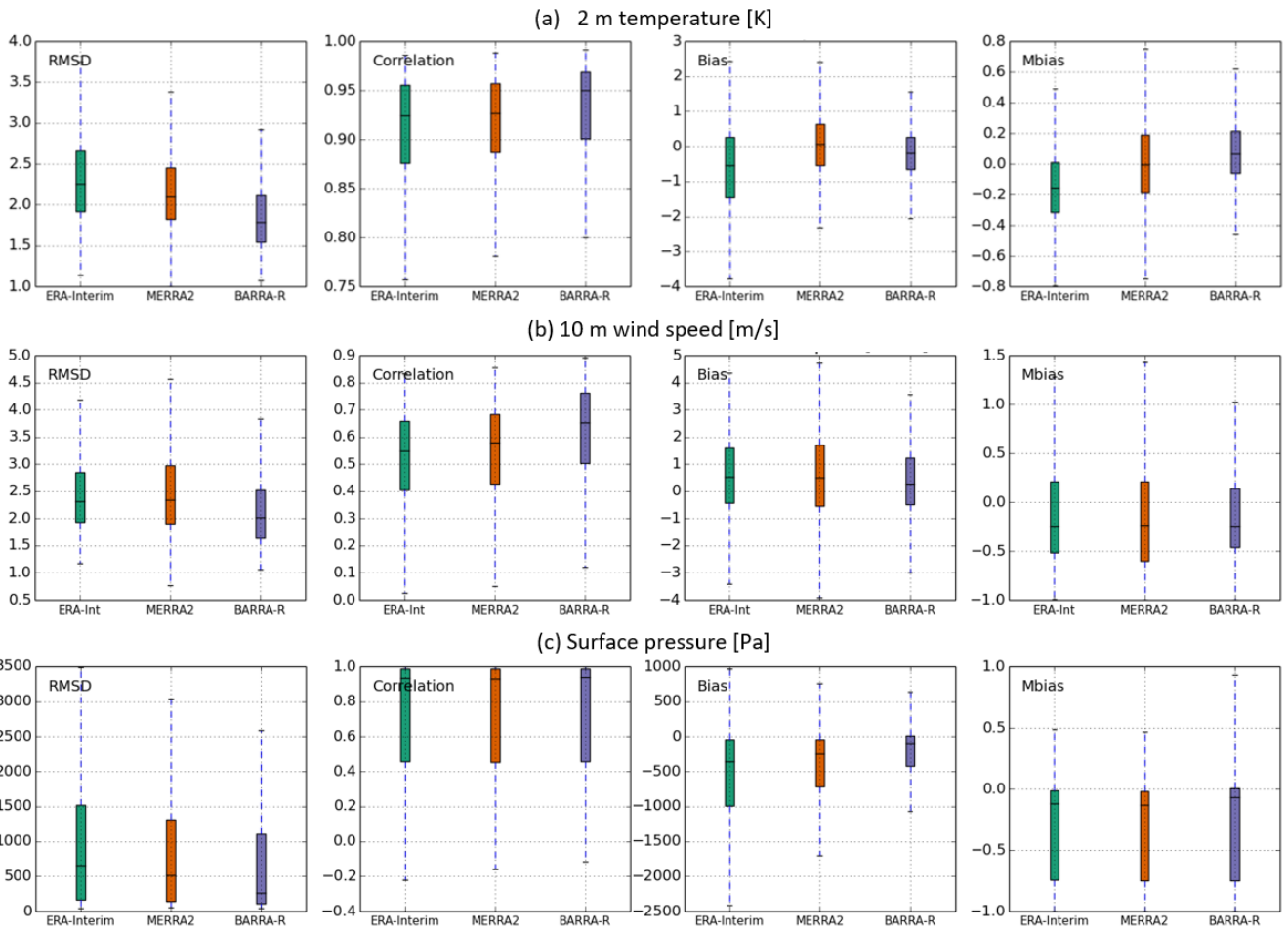


Figure 3 Boxplots showing the distribution of ERA-Interim, MERRA-2, and BARRA-R evaluation scores for (a) 2 m temperature, (b) 10 m wind speed, and (c) surface pressure over all stations in the BARRA-R domain. The scores are calculated on model forecasts valid between t_0+5h and t_0+7h against observations during 2007-2016. Individual boxes show the interquartile range of the scores, medians are marked in each box and 'whiskers' cover the 5-95% percentile range.

5

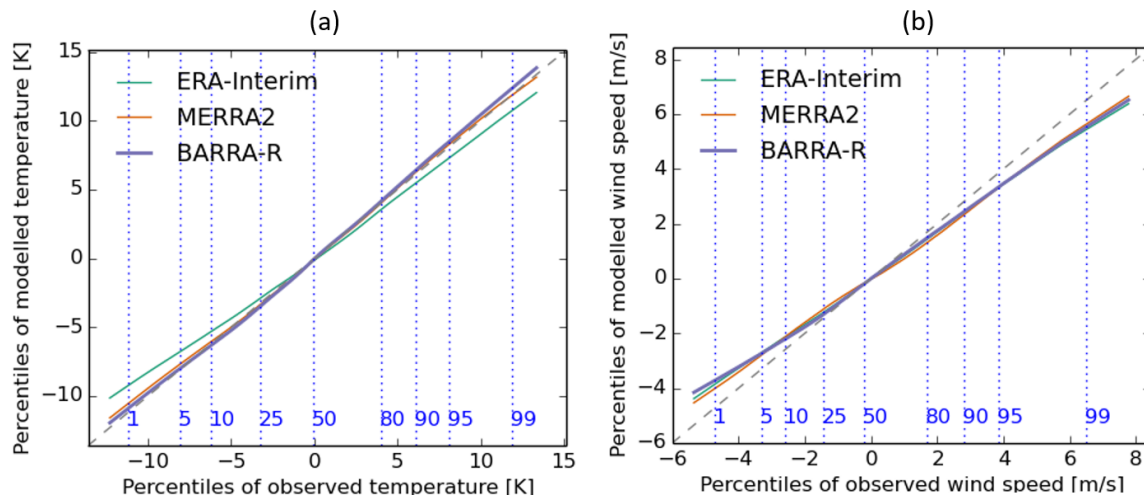


Figure 4 Comparisons of percentile values between observations and reanalyses for (a) 2 m temperature, and (b) 10 m wind speed during 2010-2013. The values from 0.05% to 99.95% percentiles are calculated using values derived from monthly means. The vertical blue dashed lines indicate the corresponding percentiles of the observations.

5

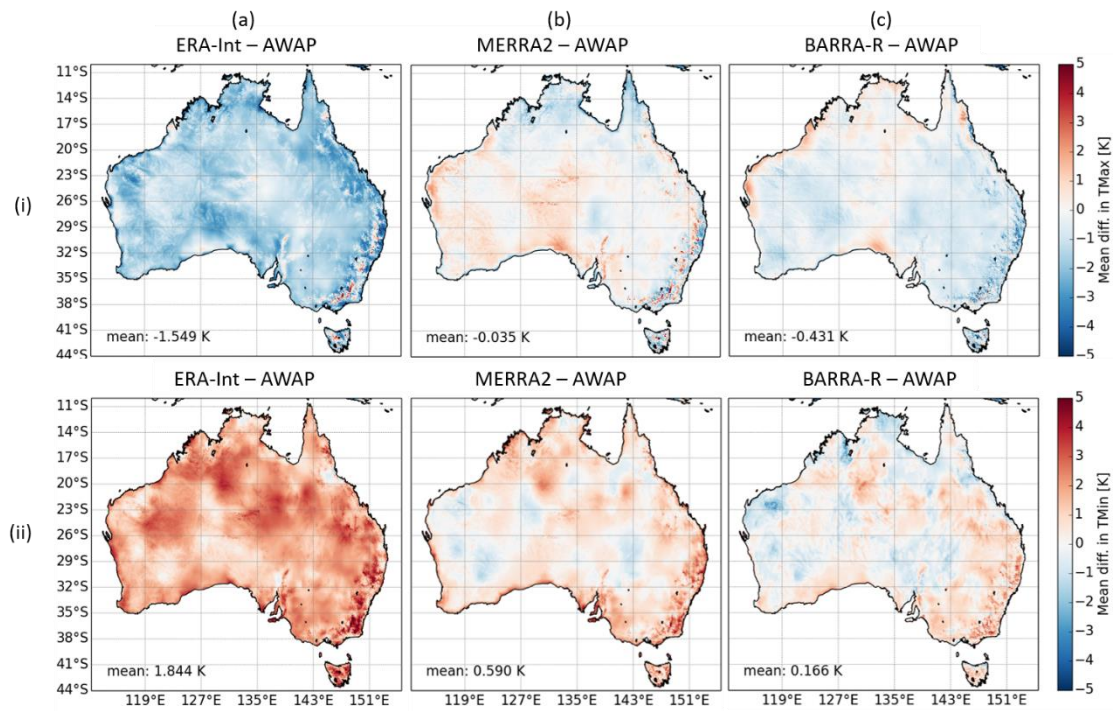


Figure 5 Mean differences in (row i) daily maximum (TMax) and (ii) minimum 2 m temperature [K] for 2007-2016, between (column a) ERA-Interim and AWAP, (b) MERRA-2 and AWAP, and (c) BARRA-R and AWAP. The spatial means of the differences are reported in text.

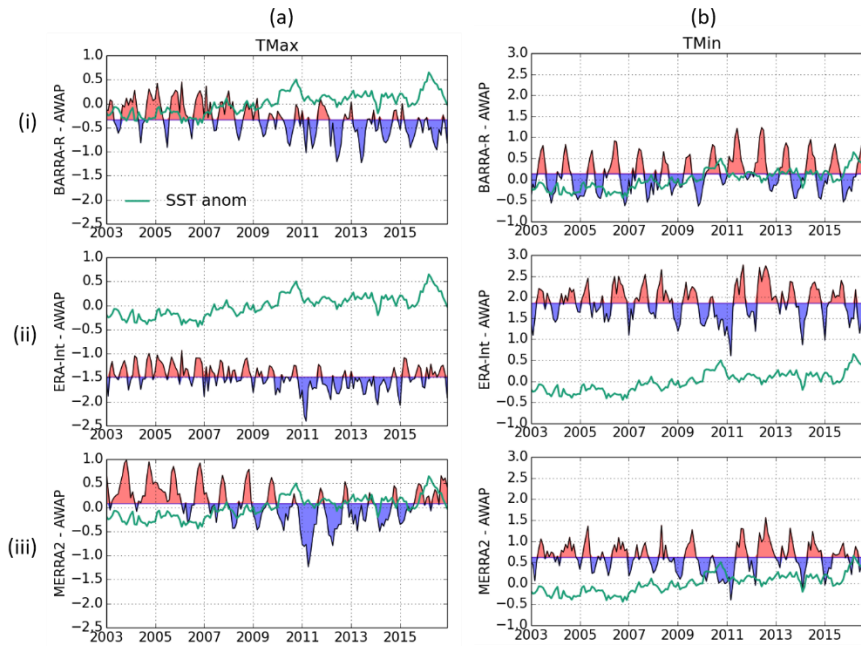


Figure 6 Monthly mean differences in daily (column a) maximum (TMax) and (b) minimum (TMin) 2 m temperature [K] averaged over Australia, between (row i) BARRA-R and AWAP, (ii) ERA-Interim and AWAP, and (iii) MERRA-2 and AWAP. Black curves are shaded around the 14-year means. Green curves plot the monthly anomalies, from 2003-2016 monthly averages, of the OSTIA sea surface temperature averaged over 46-4° S and 94-174° E.

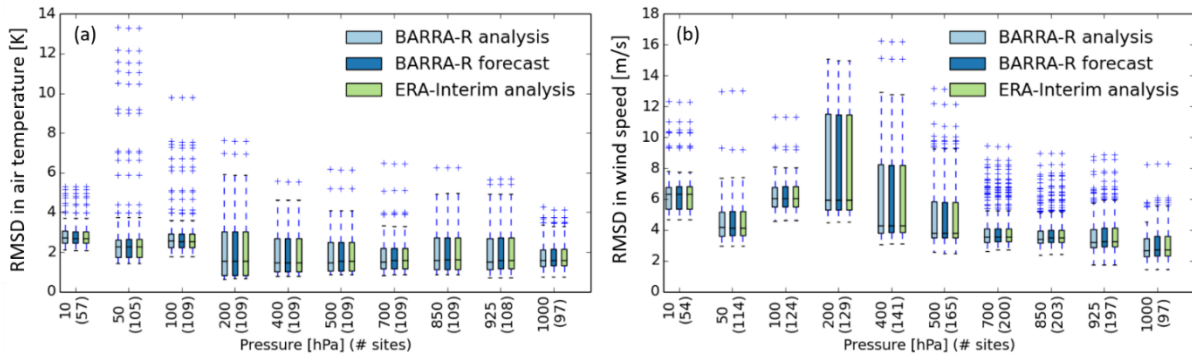


Figure 7 Boxplots showing the RMSD distribution of BARRA-R t_0+6 forecast and t_0 analysis, and ERA-Interim analysis for (a) temperature and (b) wind speed at over multiple sites in the BARRA-R domain. RMSD is calculated for temperature and wind speed at pressure levels 10, 50, 100, 200, 400, 500, 700, 850, 925 and 1000 hPa against pilot balloon and radiosonde observations at 0 and 12 UTC. The numbers of sites are indicated in the brackets.

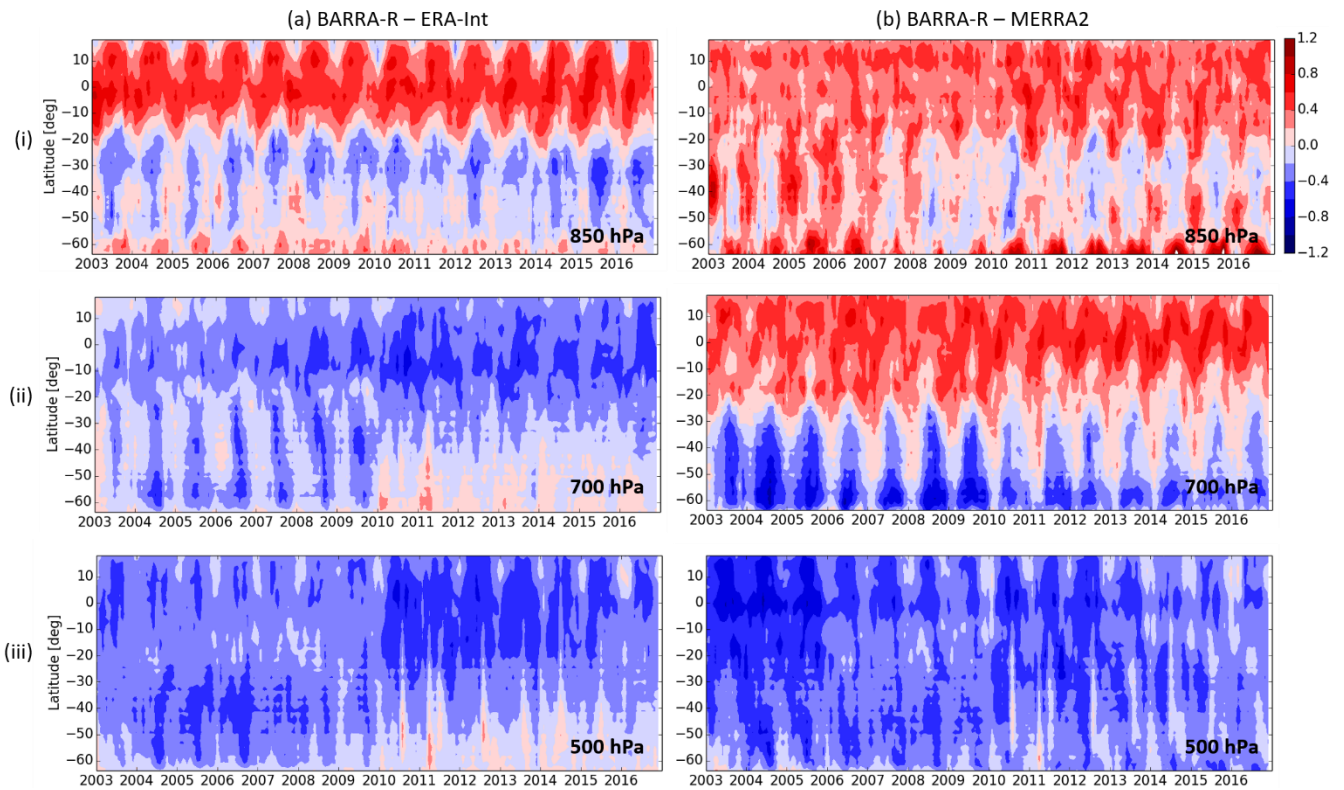


Figure 8 Hovmöller plots of the monthly difference in zonal mean air temperature [K] at 0 UTC and three pressure levels (row i) 850, (ii) 700, and (iii) 500 hPa, between (column a) BARRA-R and ERA-Interim, and (b) BARRA-R and MERRA-2.

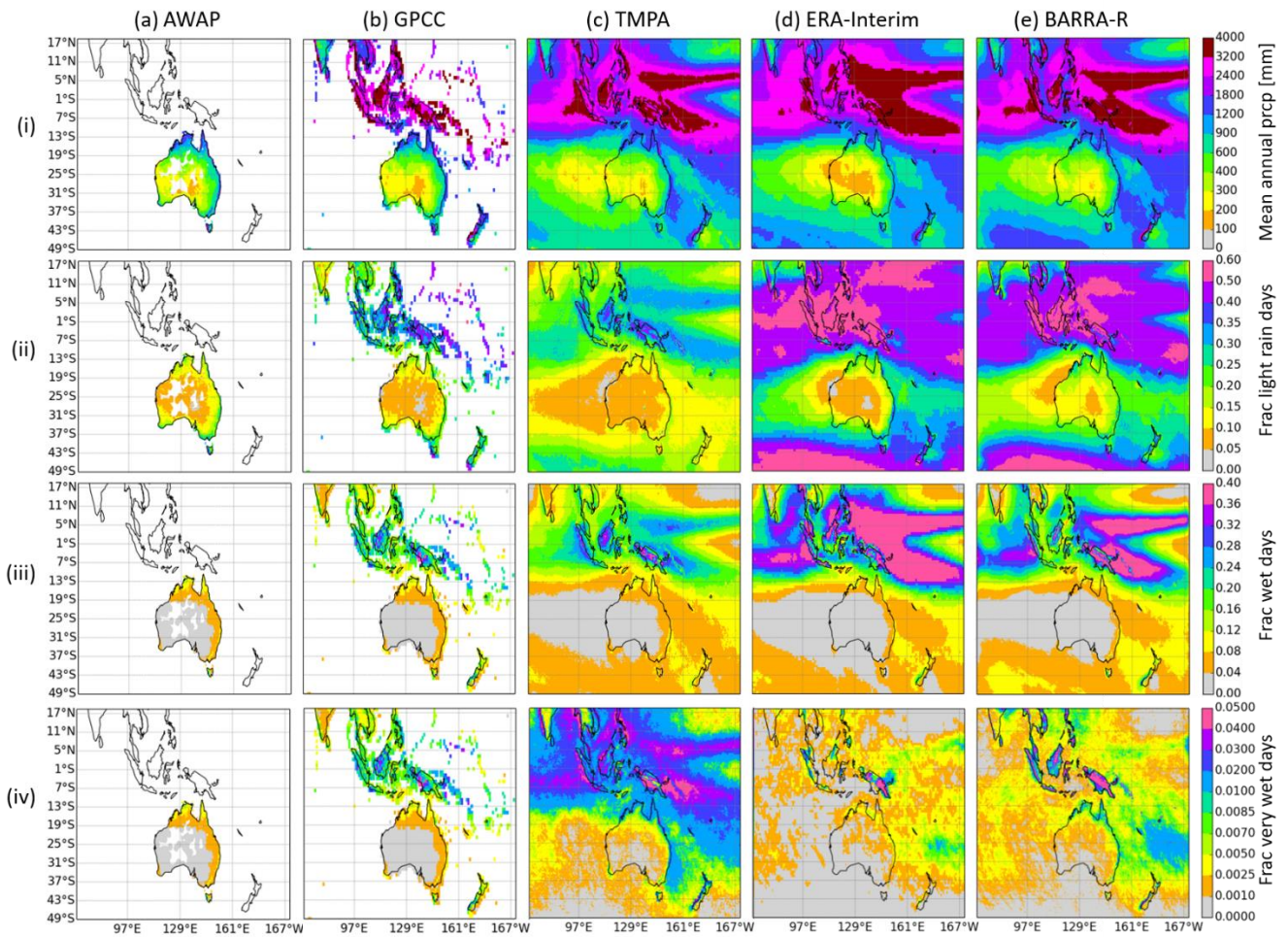


Figure 9 (row i) Mean annual precipitation [mm], and (ii) fractions of light rain days with 1-10 mm precipitation, (iii) heavy precipitation days with 10-50 mm and (iv) very heavy precipitation days with > 50 mm, over 2007-2016 from (column a) AWAP, (b) GPCC, (c) TMPA, (d) ERA-Interim, and (e) BARRA-R. Regions with more than 10% missing values in AWAP are masked. Close ups of the plots over Australia are provided in the Supplementary Material.

5

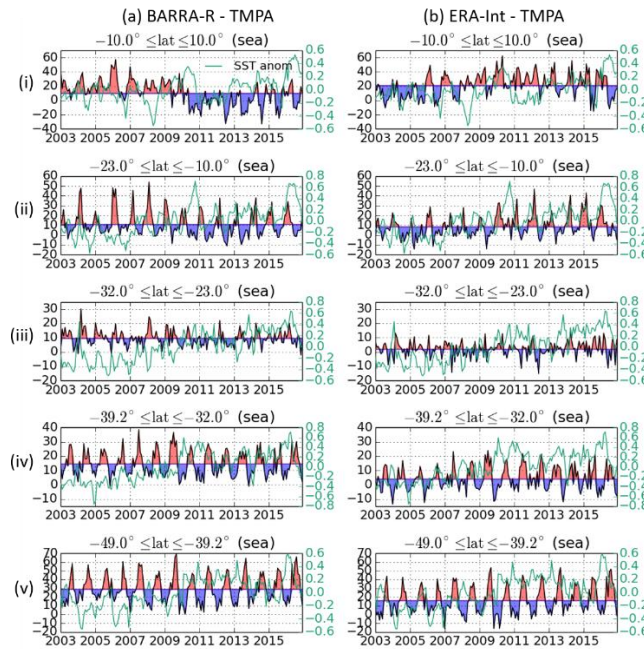


Figure 10 Differences in monthly precipitation total [mm] averaged over the ocean in five sub-domains (row i-v), between (column a) BARRA-R and TMPA, and (b) ERA-Interim and TMPA. Black curves are shaded around the 14-year means. Green curves plot the monthly anomalies, from 2003-2016 monthly averages, of the OSTIA sea surface temperature averaged over respective sub-domains.

5

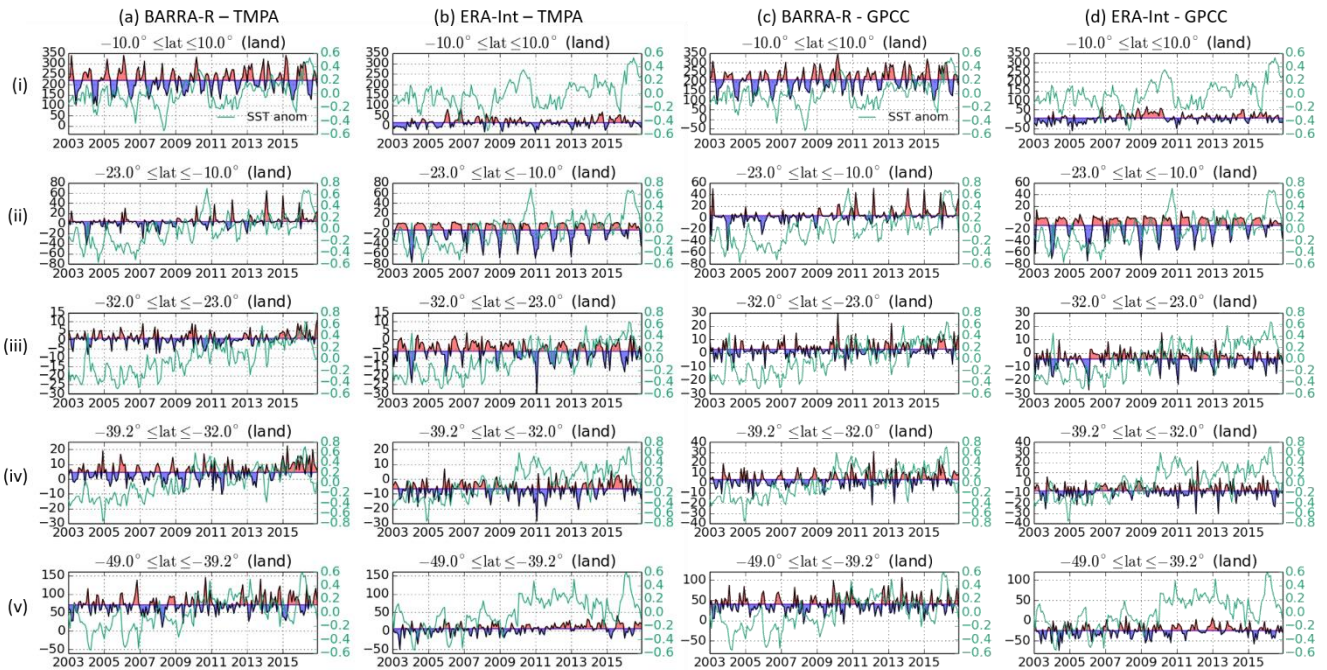


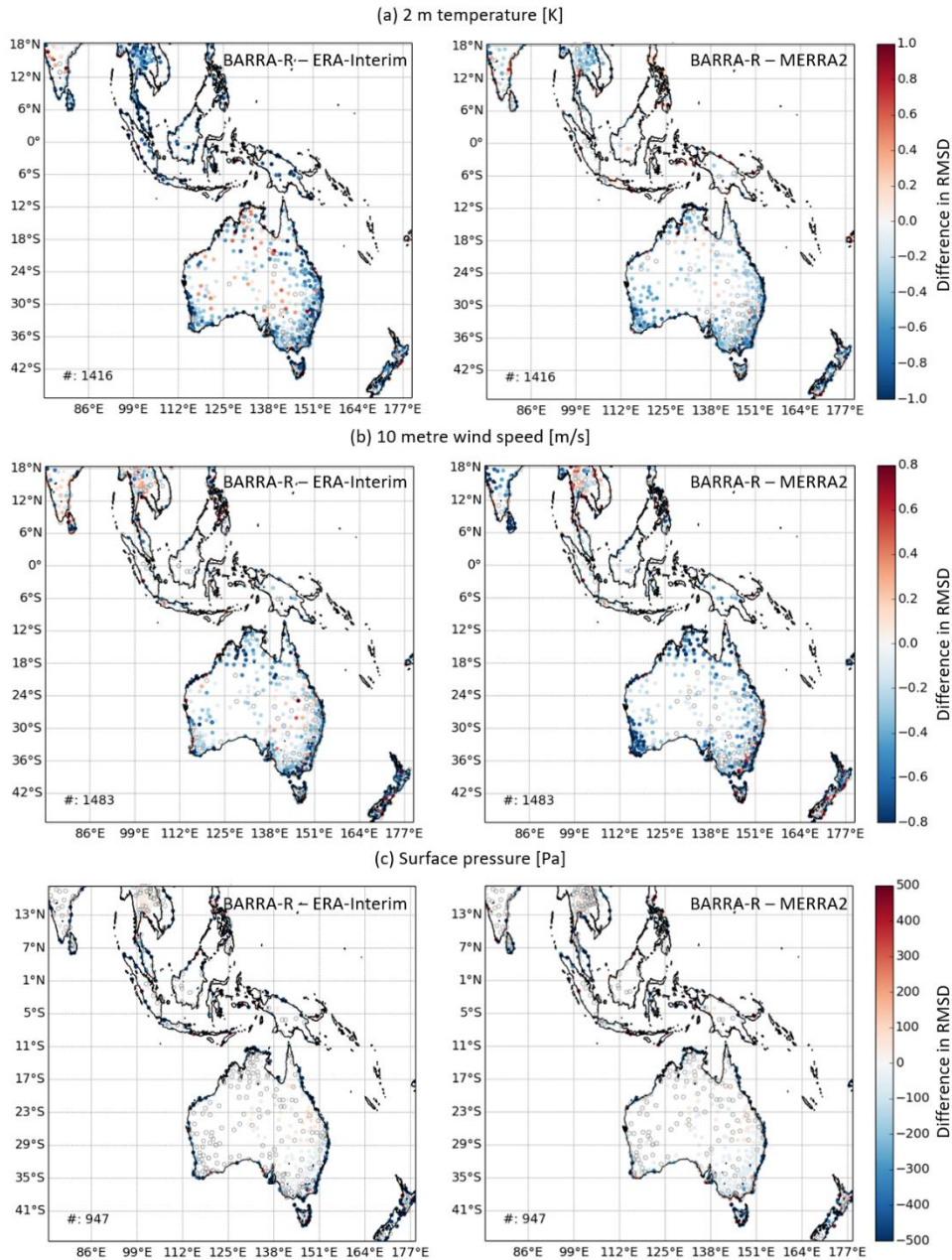
Figure 11 As with [Figure 10](#) (column a) and (b), but over land. Additional comparisons are made between (c) BARRA-R and GPCC, and (d) ERA-Interim and GPCC.

Tables

Observations	Variables	Time periods	Sources
Land synoptic observations (LNDSYN)	Surface pressure, temperature, humidity, wind	1978-2018	Reanalysis prior to 2003 uses the data from ECMWF archive collected for ERA-Interim and ERA-40. Reanalysis between 2003 and 2009 uses the data from ECMWF operational archive. Reanalysis from 2017 uses satellite radiance data from the UKMO operational archive. Reanalysis from 2010 also uses satellite data from the Bureau's operational archive. Bureau's archive also provides 10 minute land synoptic data from 2001, METARS between 2000 to 2009, TEMP from 2002 and WINPRO from 2010. New Zealand National Climate Database (CliDB) provides additional LNDSYN data over New Zealand.
Meteorological airfield reports (METARS)			
Ship synoptic observations (SHPSYN)			
Buoy	Surface pressure, temperature, wind		
Radiosondes (TEMP)	Upper-air wind, temperature, humidity	1978-2009	
Wind profilers (WINPRO)			
Wind-only sondes (PILOT)	Upper-air wind	1978-2018	
Aircraft Meteorological Data Relay (AMDAR)	Flight-level temperature, wind	1978-2018	
Air Report (AIREP)			
Advanced Infrared Sounder (AIRS)	Infrared radiances	2003-2018	
Advanced TIROS operational vertical sounder (ATOVS)	HIRS/AMSU radiances	1998-2018	
TIROS operational vertical sounder (TOVS)	MSU and HIRS radiances	1979-2002	
Infrared Atmospheric Sounding Interferometer (IASI)	Infrared radiances	2007-2018	
ESA Cloud motion winds (ESACMW)	Satellite radiometer-based winds (satwinds): cloud motion winds, AMV	1982-2018	
Geostationary Operational Environmental (GOESBUFR)		1995-2018	
Meteosat 2 nd Generation satellite winds (MSGWINDS)		1982-2018	
Japanese Geostationary satellite winds (JMAWINDS)		1987-2018	
MODIS winds (MODIS)		2005-2018	
SeaWinds		1996-2009	
Advanced Scatterometer (ASCAT)		2007-2018	
GPS Radio Occultation (GPSRO)	Bending angle	2001-2018	
Australian locally derived satwinds	AMV	2002-2018	Bureau of Meteorology operational archive
WindSat	Scatwinds	2015-2018	
Advanced Technology Microwave Sounder (ATMS)	Microwave radiances	2014-2018	
Cross-track Infrared Sounder (CrIS)	Infrared radiances	2014-2018	
Tropical Cyclone track (TCBOGUS)	Central pressure and position	1848-2018	The International Best Track Archive for Climate Stewardship (IBTrACS) provides the track data up to 2017. The Australian Tropical Cyclone Database is used for 2018.

Table 1 Observations assimilated in BARRA. Only the period concurrent with the reanalysis period is used. The various data sets were retrieved during the production, and thus the exact periods of each set used may differ.

Supplementary Material



5 **Figure S1** Spatial maps of the difference in RMSD between (left column) BARRA-R and ERA-Interim, and (right) BARRA-R and MERRA-2. RMSD is calculated on model forecasts against observed (a) 2 m temperature, (b) 10 m wind speed and (c) surface pressure. These figures supplementing Figure 3.

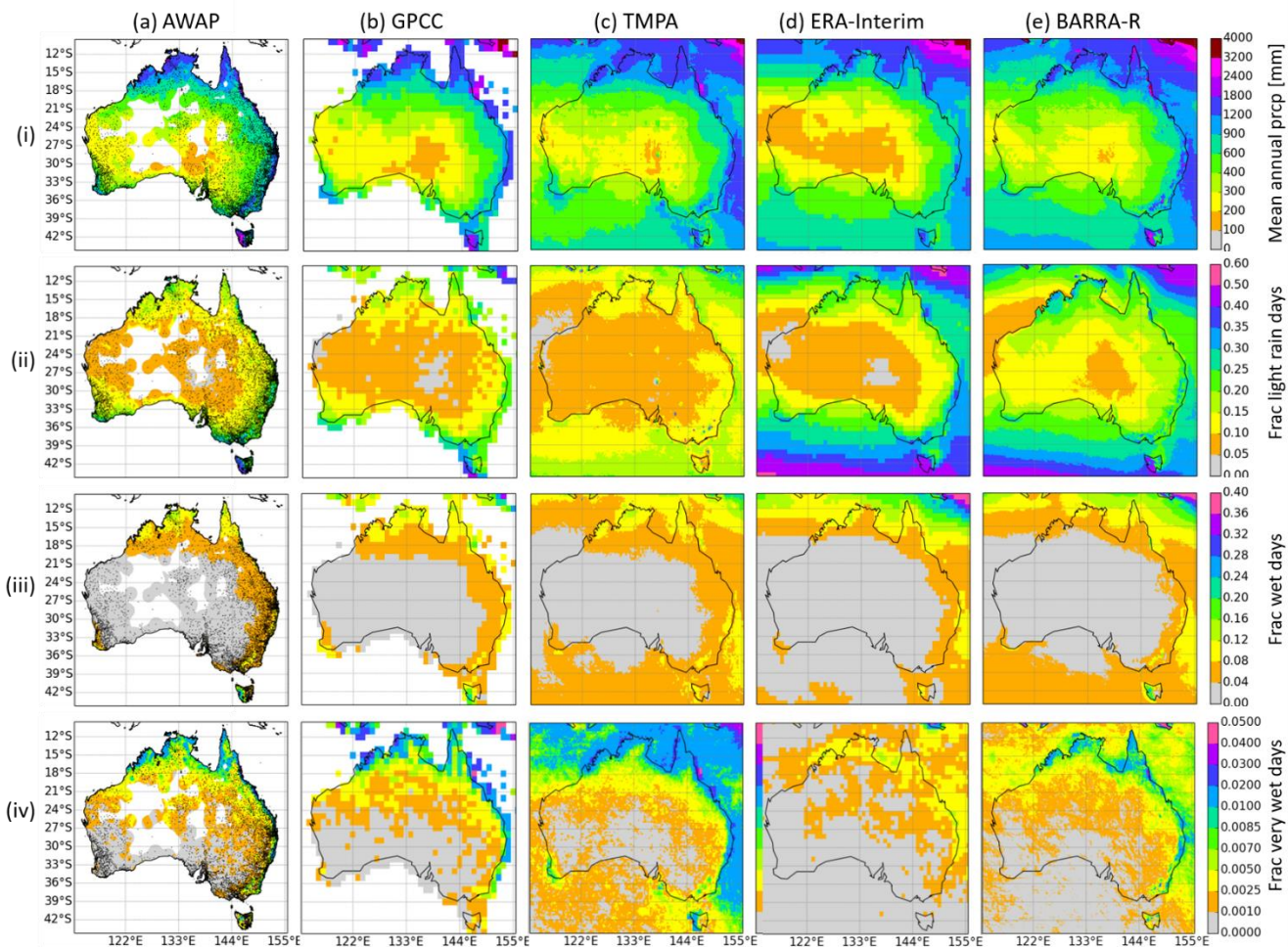


Figure S2 As Figure 8 but over Australia only. (i) Mean annual precipitation [mm], and (ii) fractions of rain days, (iii) heavy precipitation days and (iv) very heavy precipitation days, from 2007 to 2016 from (a) AWAP, (b) GPCP, (c) TMPA, (d) ERA-Interim, and (e) BARRA-R. Regions with more than 10% missing values in AWAP are masked.

5

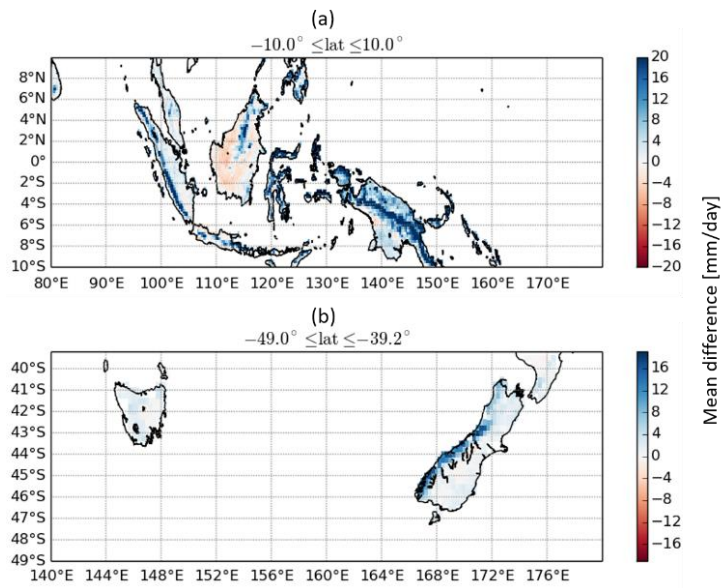


Figure S3 Mean difference in daily precipitation between BARRA-R and TMPA from 2007-2016 over two sub-domains in the tropics and New Zealand. The data is regridded to the TMPA 0.25° grid.

Fields	O-B		O-A	
	Bias	RMSD	Bias	RMSD
Surface temperature [K]	-0.09	1.78	-0.10	1.61
Surface pressure [Pa]	-3.67	101.69	-2.08	68.85
Surface relative humidity [%]	0.0	10.0	0.00	8.0
Surface zonal wind [m/s]	0.05	1.97	-0.01	1.74
Surface meridional wind [m/s]	0.04	1.94	0.01	1.72
Aircraft potential temperature [K]	-0.24	1.34	-0.17	1.10
Aircraft zonal wind [m/s]	-0.04	3.05	-0.03	2.09
Aircraft meridional wind [m/s]	-0.18	3.06	-0.07	2.07
Sonde temperature at 980 hPa [K]	-0.15	1.11	-0.08	0.81
Sonde temperature at 500 hPa [K]	-0.33	0.92	-0.18	0.60
Sonde zonal wind at 980 hPa [m/s]	-0.15	2.45	-0.06	1.45
Sonde zonal wind at 500 hPa [m/s]	-0.17	2.52	-0.07	1.41
Sonde meridional wind at 980 hPa [m/s]	0.23	2.34	0.09	1.38
Sonde meridional wind at 500 hPa [m/s]	0.11	2.44	0.03	1.39
Satwind zonal wind [m/s]	0.36	3.16	0.27	2.72
Satwind meridional wind [m/s]	0.05	2.90	0.01	2.40
Scatwind zonal wind [m/s]	0.06	1.39	0.03	0.95
Scatwind meridional wind [m/s]	0.20	1.78	-0.02	1.32

Table S1 Comparisons of the 10-year (2007-2016) mean of the RMSD and bias between the analyses and observations (O-A) and those between the background and observations (O-B), calculated for various observational types across the BARRA-R domain. Bold values show reduction in the RMSD and the magnitude of the bias by the analyses, i.e., the analyses draw the model forecasts closer to these observation types.

5